

**MASTER
NEGATIVE
NO. 95-82323-5**

COPYRIGHT STATEMENT

The copyright law of the United States (Title 17, United States Code) governs the making of photocopies or other reproductions of copyrighted materials including foreign works under certain conditions. In addition, the United States extends protection to foreign works by means of various international conventions, bilateral agreements, and proclamations.

Under certain conditions specified in the law, libraries and archives are authorized to furnish a photocopy or other reproduction. One of these specified conditions is that the photocopy or reproduction is not to be "used for any purpose other than private study, scholarship, or research." If a user makes a request for, or later uses, a photocopy or reproduction for purposes in excess of "fair use," that user may be liable for copyright infringement.

The Columbia University Libraries reserve the right to refuse to accept a copying order if, in its judgement, fulfillment of the order would involve violation of the copyright law.

Author:

**U.S. Bureau of
Agricultural Economics**

Title:

**Fruits and nuts: bearing
acreage, 1919-1946**

Place:

Washington, D.C.

Date:

1949

95-82323-5

MASTER NEGATIVE #

COLUMBIA UNIVERSITY LIBRARIES
PRESERVATION DIVISION

BIBLIOGRAPHIC MICROFORM TARGET

ORIGINAL MATERIAL AS FILMED - EXISTING BIBLIOGRAPHIC RECORD

Business
D305
Un3234

U. S. ~~Bureau of agricultural economics~~. Crop
reporting board.

Fruits and nuts: bearing acreage, 1919-1946
prepared by C. D. Palmer, E. O. Schlotzhauer,
and P. F. Kiesler, Washington, U. S. Govt.
print. off., 1949.

cover-title, 39 p. (chiefly diags., tables)

At head of title: United States Department of
agriculture. Bureau of agricultural economics.
Crop reporting board.

RESTRICTIONS ON USE:

TECHNICAL MICROFORM DATA

FILM SIZE: 35mm

REDUCTION RATIO: 16x

IMAGE PLACEMENT: IA IIB

DATE FILMED: 1-18-95

INITIALS: W.W

TRACKING #: MSH 03676

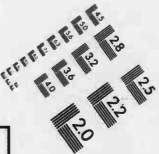
FILMED BY PRESERVATION RESOURCES, BETHLEHEM, PA.



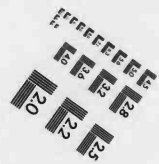
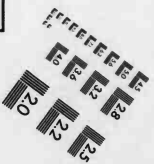
2.5 mm
ABCDEF GHIJ KLMNOPQRSTUWVXYZ
abcde fghij klmnopqrstuvwxy z
1234567890

2.0 mm
ABCDEF GHIJ KLMNOPQRSTUWVXYZ
abcde fghij klmnopqrstuvwxy z
1234567890

1.5 mm
ABCDEF GHIJ KLMNOPQRSTUWVXYZ
abcde fghij klmnopqrstuvwxy z
1234567890



PM-MGP 13"x18" METRIC GENERAL PURPOSE TARGET PHOTOGRAPHIC

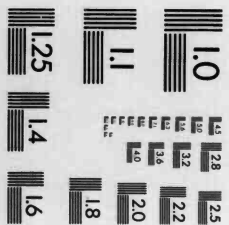


ABCDEF GHIJ KLMNOPQRSTUWVXYZ
abcde fghij klmnopqrstuvwxy z
1234567890

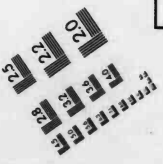
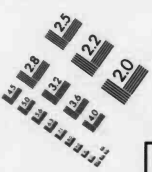
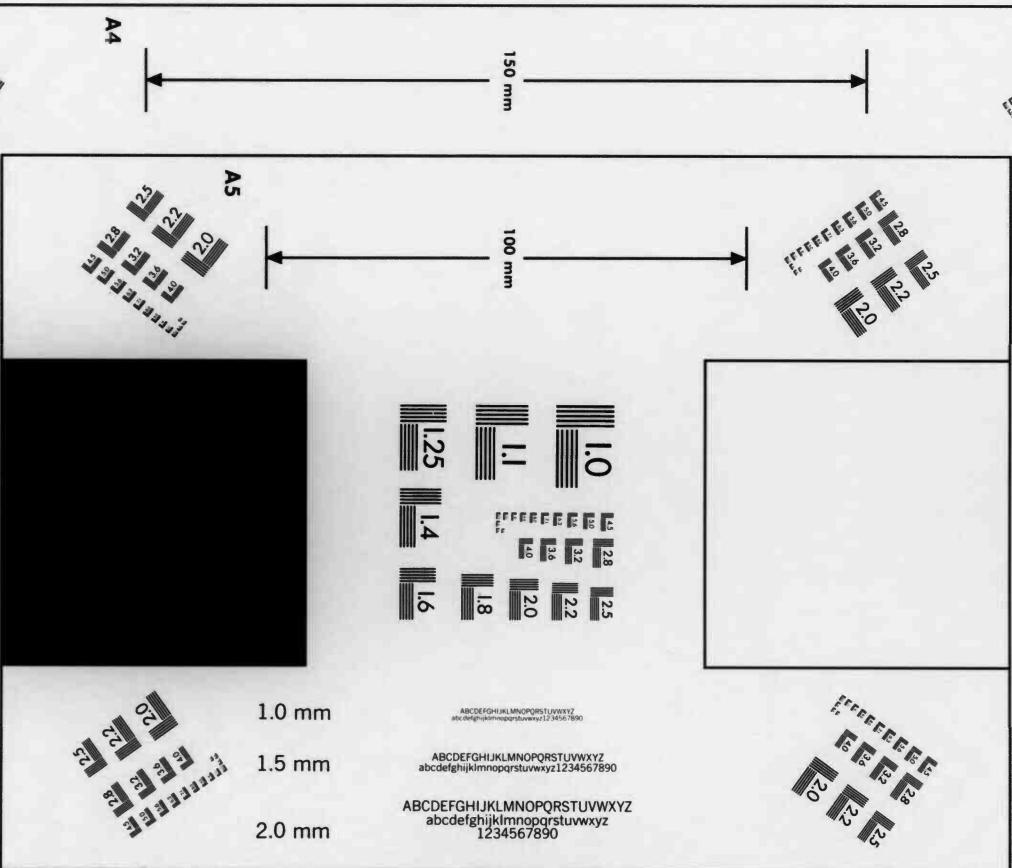
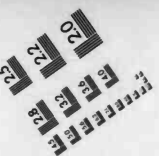
ABCDEF GHIJ KLMNOPQRSTUWVXYZ
abcde fghij klmnopqrstuvwxy z
1234567890

ABCDEF GHIJ KLMNOPQRSTUWVXYZ
abcde fghij klmnopqrstuvwxy z
1234567890

ABCDEF GHIJ KLMNOPQRSTUWVXYZ
abcde fghij klmnopqrstuvwxy z
1234567890



1.0 mm
1.5 mm
2.0 mm
2.5 mm



PRECISIONSM RESOLUTION TARGETS

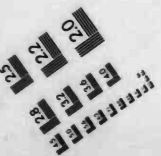
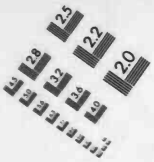


1303 Geneva Avenue
St. Paul, MN 55119

ABCDEF GHIJ KLMNOPQRSTUWVXYZ
abcde fghij klmnopqrstuvwxy z
1234567890

4.5 mm
ABCDEF GHIJ KLMNOPQRSTUWVXYZ
abcde fghij klmnopqrstuvwxy z
1234567890

3.5 mm
ABCDEF GHIJ KLMNOPQRSTUWVXYZ
abcde fghij klmnopqrstuvwxy z
1234567890



A3

A4

A5

Agriculture. Bureau
Economics
Hearing Acreage 1919-

0305 - Un3234

Columbia University
in the City of New York

THE LIBRARIES



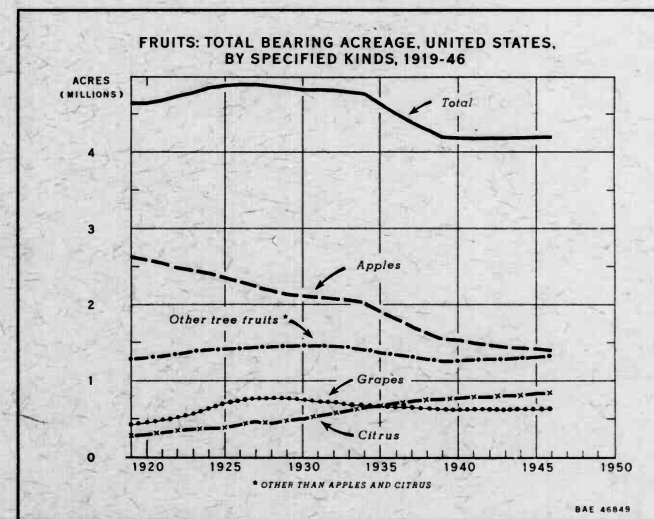
SCHOOL OF BUSINESS

COLUMBIA UNIVERSITY
LIBRARIES
FEB 17 1949

UNITED STATES DEPARTMENT OF AGRICULTURE
BUREAU OF AGRICULTURAL ECONOMICS
CROP REPORTING BOARD

Fruits and Nuts

BEARING ACREAGE 1919 - 1946



WASHINGTON, D. C.
JANUARY 1949
CS-32

Business

D 305
Un 3234

- CONTENTS -

FRUITS AND NUTS: BEARING ACREAGE, 1919 - 1946

	<u>Page</u>
TOTAL FRUITS AND NUTS	6-11
TOTAL NONCITRUS FRUITS	6-7
TOTAL CITRUS FRUITS	38-39
NONCITRUS FRUITS:	
Apples	12-19
Apricots	31
Avocados	31
Cherries	32-34
Dates	31
Figs	31
Grapes	28-31
Olives	31
Peaches	20-23
Pears	24-27
Persimmons	31
Plums	35-36
Pomegranates	31
Prunes	35-36
CITRUS FRUITS:	
Grapefruit	38-39
Lemons	38-39
Limes	38-39
Oranges	37-39
Tangerines	37-39
NUTS:	
Almonds	35-36
Filberts	35-36
Walnuts	35-36
LIST OF FRUITS AND NUTS INCLUDED, BY STATES	5

UNITED STATES DEPARTMENT OF AGRICULTURE
Bureau of Agricultural Economics
Crop Reporting Board

FRUITS AND NUTS:
BEARING ACREAGES
1919-46

APR 1950 55
This is the first publication that gives a complete statistical series of estimates of bearing acreages for noncitrus fruit crops for all States. Estimates of bearing acreages for citrus fruits were first published in October 1947 in "Citrus Fruits: Production, Farm Disposition, Value and Utilization of Sales" and for almonds, walnuts, and filberts in "Tree Nuts: Acreage, Production, Farm Disposition, Value, and Utilization of Sales." For most crops and States the acreage estimates in these publications include the years 1919-46. Production estimates corresponding to all of the bearing-acreage series are found in the publications mentioned above and in "Fruits (Noncitrus): Production, Farm Disposition, Value, and Utilization of Sales," for the years 1889 to 1944 dated May 1948 and for 1945 to 1947 dated July 1948.

These estimates include bearing acreages of most of the fruits and bearing acreages of almonds, walnuts, and filberts. Because large numbers of pecan trees are located outside of established orchards, data on tree numbers are very incomplete and are not sufficiently reliable to justify the preparation of estimates of acreages of pecan trees. (Bearing acreage refers to trees of bearing age.)

For California, estimates of bearing acreages have been published annually since 1921. The first detailed coverage by age groups and varieties for all counties was obtained by the extensive Federal-State survey of 1936. Since then, records for this State have been provided through cooperation between the respective county agricultural commissioners and the California Crop and Livestock Reporting Service, partly from new surveys and partly by recording changes from the previous years.

In developing these records for California, most of the field work was done by the county agricultural commissioners and their staffs, while some of the field work and much of the assembling and compilation of data were done by the staff of the California Crop and Livestock Reporting Service. The major year-to-year changes include: acreages removed or abandoned, new plantings made, and the shifting from a nonbearing position to bearing. All improved records obtained from more recent surveys are used each year.

This report includes some revisions of the estimates shown in the annual publications of the California Crop and Livestock Reporting Service. The totals published by that agency are summations of county totals and are shown to the nearest acre. In this publication, these totals have been rounded to the nearest 100 acres except in the case of dates, persimmons, and pomegranates; their totals have been rounded to the nearest 10 acres.

Prepared by Cary D. Palmer, E. C. Schlotzhauer, and P. F. Kiesler under the general direction of R. Royston, from reports submitted by field statisticians of the Bureau of Agricultural Economics and other available data.

Business

*D 305
Un 3234*

- CONTENTS -

FRUITS AND NUTS: BEARING ACREAGE, 1919 - 1946

	<u>Page</u>
TOTAL FRUITS AND NUTS	6-11
TOTAL NONCITRUS FRUITS	6-7
TOTAL CITRUS FRUITS	38-39
NONCITRUS FRUITS:	
Apples	12-19
Apricots	31
Avocados	31
Cherries	32-34
Dates	31
Figs	31
Grapes	28-31
Olives	31
Peaches	20-23
Pears	24-27
Persimmons	31
Plums	35-36
Pomegranates	31
Prunes	35-36
CITRUS FRUITS:	
Grapefruit	38-39
Lemons	38-39
Limes	38-39
Oranges	37-39
Tangerines	37-39
NUTS:	
Almonds	35-36
Filberts	35-36
Walnuts	35-36
LIST OF FRUITS AND NUTS INCLUDED, BY STATES	5

UNITED STATES DEPARTMENT OF AGRICULTURE
Bureau of Agricultural Economics
Crop Reporting Board

FRUITS AND NUTS:
BEARING ACREAGES
1919-46

APR 10 1950

This is the first publication that gives a complete statistical series of estimates of bearing acreages for noncitrus fruit crops for all States. Estimates of bearing acreages for citrus fruits were first published in October 1947 in "Citrus Fruits: Production, Farm Disposition, Value and Utilization of Sales" and for almonds, walnuts, and filberts in "Tree Nuts: Acreage, Production, Farm Disposition, Value, and Utilization of Sales." For most crops and States the acreage estimates in these publications include the years 1919-46. Production estimates corresponding to all of the bearing-acreage series are found in the publications mentioned above and in "Fruits (Noncitrus): Production, Farm Disposition, Value, and Utilization of Sales," for the years 1889 to 1944 dated May 1948 and for 1945 to 1947 dated July 1948.

These estimates include bearing acreages of most of the fruits and bearing acreages of almonds, walnuts, and filberts. Because large numbers of pecan trees are located outside of established orchards, data on tree numbers are very incomplete and are not sufficiently reliable to justify the preparation of estimates of acreages of pecan trees. (Bearing acreage refers to trees of bearing age.)

For California, estimates of bearing acreages have been published annually since 1921. The first detailed coverage by age groups and varieties for all counties was obtained by the extensive Federal-State survey of 1936. Since then, records for this State have been provided through cooperation between the respective county agricultural commissioners and the California Crop and Livestock Reporting Service, partly from new surveys and partly by recording changes from the previous years.

In developing these records for California, most of the field work was done by the county agricultural commissioners and their staffs, while some of the field work and much of the assembling and compilation of data were done by the staff of the California Crop and Livestock Reporting Service. The major year-to-year changes include: acreages removed or abandoned, new plantings made, and the shifting from a nonbearing position to bearing. All improved records obtained from more recent surveys are used each year.

This report includes some revisions of the estimates shown in the annual publications of the California Crop and Livestock Reporting Service. The totals published by that agency are summations of county totals and are shown to the nearest acre. In this publication, these totals have been rounded to the nearest 100 acres except in the case of dates, persimmons, and pomegranates; their totals have been rounded to the nearest 10 acres.

Prepared by Cary D. Palmer, E. O. Schlotzhauer, and P. F. Kiesler under the general direction of R. Royston, from reports submitted by field statisticians of the Bureau of Agricultural Economics and other available data.

For the other States, the estimates of acreages are the joint product of the field and the Washington statisticians of the Bureau of Agricultural Economics. Information on the numbers and acreages by age groups is much less comprehensive for these States than for California. Measures of year-to-year change, such as annual records of removals and new plantings, are not available for most States but all available basic data were used in preparing these estimates. These include the Federal Quinquennial Census of tree numbers, results of the sample surveys of tree numbers and acreages conducted by the Bureau of Agricultural Economics and other agencies, and other available indications. Surveys of tree numbers and acreages similar to the 1936 California survey are needed for nearly all of the other important fruit States.

Trends in Fruit Acreages

The area devoted to fruit crops in the United States has declined one-tenth, but the production has more than doubled during the quarter-century (1919-46) covered by the fruit-acreage estimates given in this report. This decline in bearing acreage has resulted from a combination of several factors, including the abandonment of orchards on poor soils and of orchards with high risks of spring frost. Many of these poorly located orchards came from unwise promotional ventures. The increase in production is due largely to an increased acreage in the irrigated areas of the West and to a decline in the low-yielding, nonirrigated areas of the central and eastern States. Improved cultural practices, increased use of fertilizer, and improved control of insects and diseases, have also been influential in increasing fruit yields. (Fig. 1.)

In this quarter of a century, the area devoted to noncitrus fruit crops has declined materially in the eastern and central States. The decline was sharpest during the late 1930's when the production of fruit was relatively unprofitable. In the western States, the acreage increased until the late 1920's; it declined during the 1930's and has not varied much since the late 1930's, although it showed a slight upward trend during the early 1940's. (Fig. 2.)

Apples: The bearing acreage of apples in the United States has declined steadily since 1919, but still is the largest of any single fruit crop. Total bearing acreage in 1946 was only about half the total bearing acreage in 1919. The largest decline occurred in the central States, which have less than half of the acreage they had a quarter-century ago. The decline was only slightly less drastic in the eastern States. In these areas, farm orchards were planted extensively in the last century and in the early 1900's, but they have declined in importance and are apparently still declining gradually. In the western States, the peak of bearing acreage of apples was reached before 1919. The acreage declined gradually after that until the early 1940's, and at present it appears to be on about a level trend. In all areas, the greatest decline in acreage has occurred in the sections which have proved to be least suited to fruit production. Estimates are available for noncommercial and commercial counties, separately, for the period 1934-46. In this 13-year period the decline in noncommercial areas has been greater than in commercial areas. (Figs. 3 and 4.)

Peaches: The bearing acreage of peaches in the United States reached a peak in the mid-1920's, declined steadily until the late 1930's, and increased during the early 1940's. California, which in 1946 had about 13 percent of the United States bearing acreage of peaches and 43 percent of the production, showed a marked shift in trend during the last quarter of a century. The acreage increased during the 1920's largely because of an increase in Clingstones for canning; it declined from the late 1920's until the early 1940's. The acreage shows considerable increase during the 1940's. Peaches have proved to be profitable in other western irrigated areas, especially in the State of Washington. The acreage in the western States, excluding California, has increased gradually since the late 1920's and still appears to be increasing. In the 10 southern States, which furnish the bulk of the peaches for the June and July markets, the acreage increased until the mid-1920's, declined until the mid-1930's and has gradually increased since then. A noteworthy change within this group of States has been the increase within the past 15 years in South Carolina. In the central States, the acreage devoted to peaches reached a low point in the late 1930's and increased in the early 1940's, largely through new plantings in Michigan. (Figs. 5 and 6.)

Pears: Following the large plantings of pears in the Pacific Coast States during the 1920's and shortly before, the United States bearing acreage of pears reached a peak in the mid-1930's. While acreage was increasing in the western States, it was gradually declining in the central and eastern States, mainly because of the more favorable climate and soils in the irrigated areas of the West. But the ravages of fire blight have eliminated much pear acreage in both the East and the West. The pear acreage in the Pacific Coast States, which in 1946 comprised 47 percent of the U. S. acreage and accounted for 81 percent of the production, more than doubled between 1919 and 1933 but declined about one-fifth between 1933 and 1942. (Figs. 7 and 8.)

Grapes: California dominates the grape industry of the United States. In recent years, this State has produced more than 90 percent of the U. S. grape crop on about four-fifths of the U. S. grape acreage. The bearing acreage of all three types of California grapes (raisin, wine, and table varieties) increased during the 1920's, declined during the 1930's, and has been about stable since the late 1930's. The acreage of raisin and table varieties reached a peak about 1927 and wine varieties about 1929. There has been a decline in acreage on the poorly adapted sites and soils, and an increase in the better adapted areas of California during the last 15 years. In the central and eastern States the bulk of the commercial production is found around the Great Lakes and is utilized mostly for grape juice. The acreage increased until the early 1930's and has declined gradually since then. (Figs. 9 and 10.)

Cherries: The bearing acreage of cherries in the United States is divided into the sour varieties produced primarily for processing and grown in the Great Lakes States, and the sweet varieties produced primarily for fresh market but also for processing, and grown mostly in the Pacific Coast States. The acreage of the sour varieties increased very sharply in the early 1930's principally because of extensive plantings in Michigan. The acreage declined

gradually in the late 1930's when prices were very unsatisfactory to orchardists but has increased gradually since then. In the Pacific Coast States, there was a steady increase in acreage devoted to sweet cherries, between 1919 and 1939. The acreage peak was reached in California in the late 1930's and in Washington and Oregon in the middle 1940's. (Figs. 11 and 12.)

Prunes and Plums: The bearing acreage of prunes for drying in California increased sharply until the early 1930's and has since declined gradually. California prune trees are very old on the average and a continuing decline in acreage seems likely. In the Northwest (Oregon, Washington, and Idaho), total bearing acreage of prunes in 1946 was about equal to that of 1919. In western Oregon and Washington--where prunes are produced primarily for processing and where a large proportion of the crop formerly was produced for drying--acreage reached a peak in the late 1920's. It has declined sharply since then, and appears to be still on a downward trend. In eastern Oregon, eastern Washington, and Idaho, where prunes are produced primarily for fresh market, the acreage has increased since the late 1930's. The plum acreage in California increased until the late 1920's, declined until the early 1940's, and has increased slightly since then. (Fig. 13.)

Tree Nuts: The bearing acreage devoted to tree nuts in the Pacific Coast States has increased sharply during the last 25 years. Between 1919 and 1939 the walnut acreage doubled; since 1939 it has increased slightly. Almond acreage increased sharply in the 1920's, was almost stable in the 1930's, and has been increasing during the last few years. The almond acreage in California has declined in the low-yielding coastal counties and increased in the high-yielding interior valleys. The bearing acreage of filberts, a relatively new crop, has increased from 2,290 acres in 1929 to 18,570 acres in 1946. Practically all of the country's acreage of filberts is located in the Willamette Valley of Oregon and in southwestern Washington. (Fig. 14.)

Citrus: Practically all of the citrus fruits are produced in California, Arizona, Texas, and Florida. The bearing acreage has tripled during the last 25 years. The California acreage averages the oldest with 194,000 acres in 1919 and 321,400 acres in 1946. In contrast, Florida had an increase from 84,100 acres in 1919 to 389,200 acres in 1946. In Texas, where the bulk of the citrus acreage is in grapefruit, large plantings occurred in the late 1920's and early 1930's. The bearing acreage was only 10,400 acres in 1928 but reached 112,900 acres in 1946.

Oranges accounted for about two-thirds of the bearing acreage of citrus in the United States in 1946, when about one-fourth was in grapefruit and nearly a tenth in lemons. Nearly all of the country's lemon acreage is located in California. During the last quarter-century, the orange acreage has increased 2½ times, grapefruit acreage nearly 7 times, and the lemon acreage has nearly doubled. (Figs. 15 and 16.)

FRUITS AND NUTS; KINDS IN EACH STATE FOR WHICH BEARING ACREAGES ARE SHOWN

Alabama	Arizona	Arkansas	California	Colorado	Connecticut	Delaware	Florida
apples	apples	apples	almonds	olives	apples	apples	avocados
grapes	grapes	grapes	apples	oranges	cherries	grapes	grapes
oranges	grapefruit	peaches	apricots	peaches	grapes	peaches	grapefruit
peaches	oranges	pears	avocados	pears	peaches	pears	lemons
pears	peaches		cherries	persimmons			oranges
	pears		dates	plums			peaches
			figs	pomegranates			pears
			grapes	prunes			tangerines
			grapefruit	walnuts			
			lemons				

Georgia	Idaho	Illinois	Indiana	Iowa	Kansas	Kentucky	Louisiana	Maine	Maryland
apples	apples	apples	apples	apples	apples	apples	apples	apples	apples
grapes	cherries	grapes	grapes	grapes	grapes	grapes	oranges	pears	grapes
peaches	grapes	peaches	peaches	peaches	peaches	peaches	peaches		peaches
pears	peaches	pears	pears	pears	pears	pears	pears		pears
	pears								
	prunes								

Massachusetts	Michigan	Minnesota	Mississippi	Missouri	Montana	Nebraska	Nevada	New Hampshire	New Jersey
apples	apples	apples		apples	apples	apples	apples	apples	apples
grapes	cherries		oranges	grapes	cherries	grapes	peaches	peaches	grapes
peaches	grapes		peaches	peaches		peaches	pears	pears	peaches
pears	peaches		pears	pears		pears			pears
	pears								
	plums								

New Mexico	New York	North Carolina	Ohio	Oklahoma	Oregon	Pennsylvania	Rhode Island	South Carolina	South Dakota
apples	apples	apples	apples	apples	apples	apples	apples	apples	apples
grapes	cherries	grapes	cherries	grapes	cherries	cherries	grapes	grapes	grapes
peaches	grapes	peaches	grapes	peaches	filberts	grapes	peaches	peaches	pears
pears	peaches	pears	peaches	pears	grapes	peaches	pears	pears	
	pears		pears		peaches	pears			
	plums				pears				
					prunes				
					walnuts				

Tennessee	Texas	Utah	Vermont	Virginia	Washington	West Virginia	Wisconsin	Wyoming
apples	apples	apples	apples	apples	apples	apples	apples	apples
grapes	grapes	apricots	pears	grapes	apricots	grapes	cherries	
peaches	grapefruit	cherries		peaches	cherries	peaches	grapes	
pears	oranges	grapes		pears	filberts	pears		
	peaches	peaches			grapes			
	pears	pears			peaches			
					pears			
					prunes			

FRUITS-NONCITRUS: TOTAL BEARING ACREAGE, UNITED STATES, BY AREAS, 1919-46

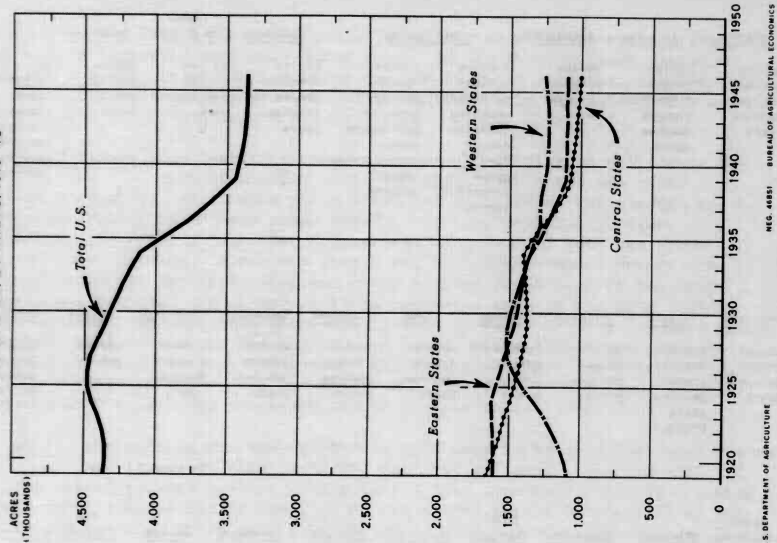


FIGURE 2
U.S. DEPARTMENT OF AGRICULTURE
BUREAU OF AGRICULTURAL ECONOMICS
NEG. 44851

FRUITS AND NUTS: TOTAL BEARING ACREAGE, UNITED STATES, BY AREAS, 1919-46

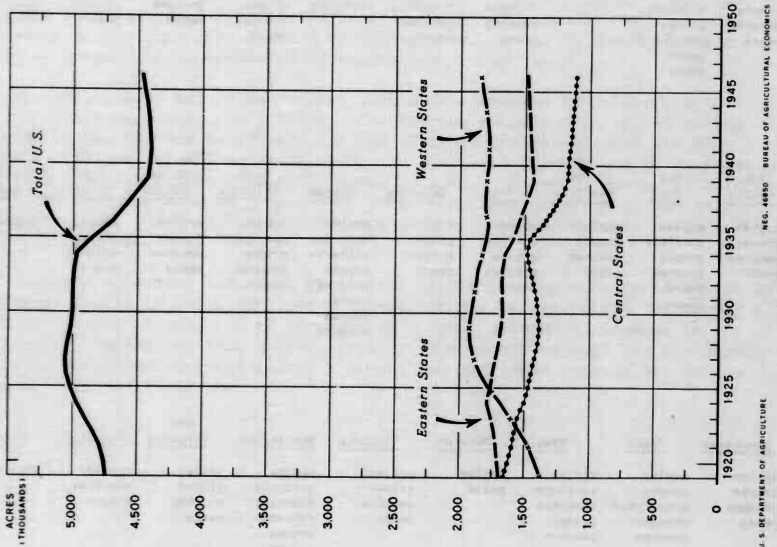


FIGURE 1
U.S. DEPARTMENT OF AGRICULTURE
BUREAU OF AGRICULTURAL ECONOMICS
NEG. 44850

FRUITS AND NUTS: TOTAL BEARING ACREAGE, UNITED STATES, BY AREAS, 1919-1946

Year	Total	Eastern States		Central States		Total	Western States
		North Atlantic 1/	South Atlantic 2/	North Central 3/	South Central 4/		
1919	4,747.6	868.5	829.9	1,698.4	1,047.1	618.8	1,665.9
1920	4,780.5	861.0	846.8	1,707.8	1,030.9	601.0	1,631.9
1921	4,790.6	855.4	868.0	1,723.4	1,015.4	581.7	1,607.1
1922	4,845.1	847.8	890.4	1,738.2	1,003.4	570.6	1,574.0
1923	4,914.2	839.4	921.0	1,790.4	992.3	565.2	1,547.5
1924	4,984.4	831.5	958.6	1,790.1	972.8	559.2	1,502.0
1925	5,021.3	817.6	949.0	1,766.6	959.1	519.3	1,477.4
1926	5,059.4	800.5	952.9	1,753.4	943.8	509.2	1,453.0
1927	5,041.6	782.4	945.4	1,727.8	928.2	502.0	1,430.2
1928	5,044.2	764.8	940.8	1,705.4	914.6	497.1	1,411.9
1929	5,018.5	748.2	937.5	1,685.7	906.5	493.6	1,399.1
1930	5,001.2	744.2	931.5	1,675.7	913.8	491.7	1,405.5
1931	5,006.3	741.2	941.4	1,682.6	926.4	492.9	1,419.3
1932	5,009.7	736.8	946.6	1,683.4	939.8	501.6	1,441.4
1933	4,993.8	731.1	944.9	1,678.0	956.5	514.4	1,470.9
1934	4,972.6	714.9	937.4	1,652.3	967.8	522.2	1,490.0
1935	4,950.6	695.8	932.8	1,596.6	923.3	521.8	1,445.1
1936	4,716.6	635.4	923.5	1,558.9	847.2	519.5	1,356.7
1937	4,614.7	605.1	913.9	1,519.0	771.5	514.6	1,286.1
1938	4,517.0	581.1	901.3	1,482.4	713.6	511.2	1,225.0
1939	4,426.7	553.9	890.0	1,443.9	672.5	509.0	1,181.5
1940	4,417.2	552.1	899.6	1,451.7	666.0	510.2	1,176.2
1941	4,407.3	550.3	909.9	1,460.2	646.3	512.1	1,158.4
1942	4,410.3	549.9	920.4	1,470.3	635.5	514.4	1,149.9
1943	4,415.6	548.7	925.4	1,474.1	633.5	507.9	1,141.4
1944	4,426.3	549.7	933.2	1,482.9	635.3	495.9	1,131.2
1945	4,449.0	547.6	940.9	1,488.5	632.4	495.0	1,127.4
1946	4,481.0	545.5	944.5	1,490.0	628.3	495.1	1,123.4

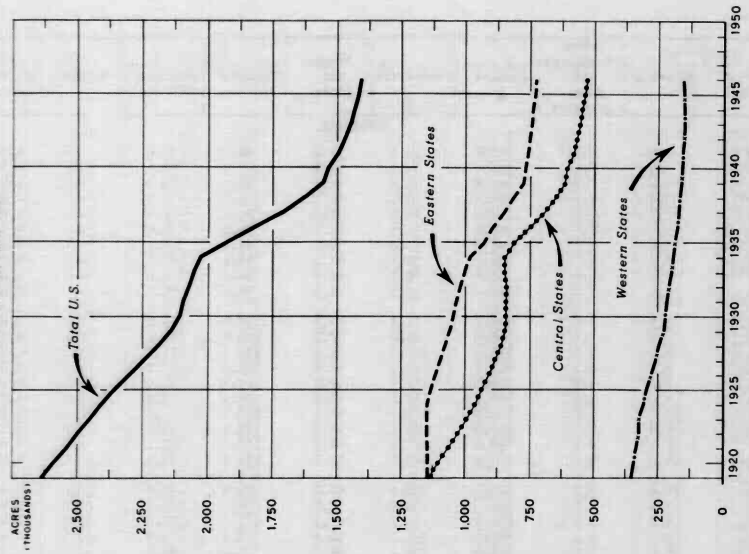
1/ Mo., N.H., Vt., Mass., N.I., Conn., N.Y., N.J. and Pa. 2/ Del., Md., Va., W.Va., N.C., S.C., Ga. and Fla. 3/ Ohio, Ind., Ill., Mich., Wis., Minn., Iowa, Mo., S.D., Nebr. and Kans. 4/ Ky., Tenn., Ala., Miss., Ark., La., Okla. and Texas. 5/ Mont., Idaho, Wyo., Colo., N.Mex., Ariz., Utah, Nev., Wash., Ore. and Calif.

FRUITS-NONCITRUS: TOTAL BEARING ACREAGE, UNITED STATES, BY AREAS, 1919-1946

Year	Total	Eastern States		Central States		Total	Western States
		North Atlantic 1/	South Atlantic 2/	North Central 3/	South Central 4/		
1919	4,368.7	868.5	745.8	1,614.3	1,047.1	615.5	1,662.6
1920	4,356.3	861.0	752.0	1,613.0	1,030.9	594.6	1,625.5
1921	4,358.6	855.4	760.8	1,616.2	1,015.4	574.1	1,589.5
1922	4,379.1	847.8	770.9	1,618.7	1,003.4	555.9	1,559.3
1923	4,418.1	839.4	785.1	1,624.5	992.3	538.0	1,530.3
1924	4,464.0	831.5	798.0	1,629.5	972.8	522.3	1,495.1
1925	4,486.3	817.6	785.9	1,603.5	959.1	511.3	1,469.4
1926	4,486.4	800.5	768.7	1,569.2	943.8	499.6	1,443.4
1927	4,487.0	782.4	752.1	1,534.5	928.2	490.1	1,418.3
1928	4,424.5	764.8	740.0	1,504.6	914.6	481.5	1,396.3
1929	4,372.2	748.2	729.3	1,477.5	906.5	472.3	1,377.8
1930	4,326.2	744.2	711.3	1,455.5	913.8	464.1	1,377.9
1931	4,282.8	741.2	694.9	1,436.1	926.4	465.9	1,382.3
1932	4,241.9	736.8	681.2	1,418.0	939.8	448.4	1,388.2
1933	4,188.2	731.1	665.2	1,396.3	956.5	442.5	1,399.0
1934	4,124.8	714.9	645.6	1,360.5	967.8	436.8	1,404.6
1935	3,996.7	683.6	627.4	1,291.2	923.3	428.9	1,352.2
1936	3,803.9	635.4	609.4	1,244.8	847.2	420.2	1,267.4
1937	3,678.6	605.1	591.4	1,196.5	771.5	413.0	1,184.5
1938	3,564.0	581.1	572.3	1,153.4	713.6	407.3	1,121.1
1939	3,449.6	553.9	557.5	1,111.4	672.5	403.4	1,075.9
1940	3,423.1	552.1	556.8	1,108.9	666.0	403.4	1,069.4
1941	3,397.6	550.3	555.2	1,105.5	646.3	406.8	1,053.1
1942	3,383.1	549.9	556.0	1,105.9	635.5	407.5	1,043.0
1943	3,373.2	548.7	555.6	1,104.5	633.5	399.4	1,032.9
1944	3,369.0	547.6	558.4	1,108.1	635.3	396.0	1,021.3
1945	3,368.7	547.6	557.2	1,104.8	632.4	381.6	1,014.0
1946	3,363.8	545.5	555.3	1,100.6	628.3	377.7	1,006.0

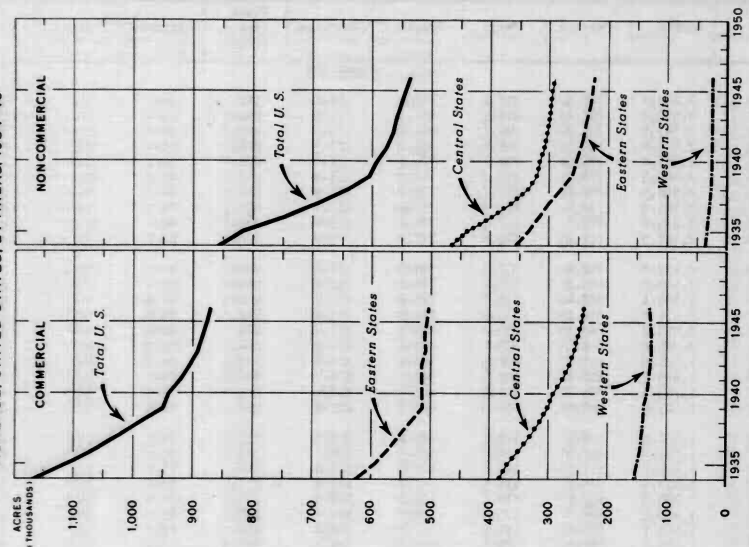
1/ Mo., N.H., Vt., Mass., N.I., Conn., N.Y., N.J. and Pa. 2/ Del., Md., Va., W.Va., N.C., S.C., Ga. and Fla. 3/ Ohio, Ind., Ill., Mich., Wis., Minn., Iowa, Mo., S.D., Nebr. and Kans. 4/ Ky., Tenn., Ala., Miss., Ark., La., Okla. and Texas. 5/ Mont., Idaho, Wyo., Colo., N.Mex., Ariz., Utah, Nev., Wash., Ore. and Calif.

APPLES: TOTAL BEARING ACREAGE, UNITED STATES, BY AREAS, 1919-46



U.S. DEPARTMENT OF AGRICULTURE
NEG. 4882 BUREAU OF AGRICULTURAL ECONOMICS
FIGURE 3

APPLES: COMMERCIAL AND NONCOMMERCIAL: TOTAL BEARING ACREAGE, UNITED STATES, BY AREAS, 1934-46



U.S. DEPARTMENT OF AGRICULTURE
NEG. 4883 BUREAU OF AGRICULTURAL ECONOMICS
FIGURE 4

APPLES - TOTAL: BEARING ACREAGE, UNITED STATES, BY AREAS, 1919-1946

Year	Total	Eastern States		Central States		Total	Western States	
		North Atlantic	South Atlantic	North Central	South Central			
1919	2,638.7	608.0	536.5	1,144.5	794.5	348.8	1,143.3	350.9
1920	2,590.0	604.3	539.3	1,143.6	770.8	332.7	1,103.5	342.9
1921	2,543.5	602.6	543.0	1,145.6	748.2	316.1	1,064.3	333.6
1922	2,499.4	599.5	547.4	1,146.9	726.7	301.4	1,028.1	324.4
1923	2,453.8	595.4	551.0	1,146.4	705.8	287.3	993.1	314.3
1924	2,409.5	591.9	555.4	1,147.3	683.3	275.2	958.5	303.7
1925	2,358.9	581.4	551.5	1,132.9	668.1	266.7	934.8	291.2
1926	2,301.9	570.8	544.3	1,115.1	652.1	259.0	911.1	275.7
1927	2,243.2	559.2	537.1	1,096.3	634.8	251.2	886.0	260.9
1928	2,187.9	547.4	530.8	1,078.2	620.7	243.9	864.6	245.1
1929	2,137.8	536.0	524.5	1,060.5	611.4	236.1	847.5	229.8
1930	2,113.7	534.0	513.3	1,047.3	616.1	227.8	843.9	222.5
1931	2,093.1	531.9	501.1	1,035.0	624.2	219.3	843.5	214.6
1932	2,071.8	529.5	491.6	1,021.1	632.0	211.5	843.5	207.2
1933	2,053.2	525.1	480.4	1,005.5	643.1	205.0	848.1	199.6
1934	2,025.0	517.7	466.6	984.3	649.4	199.3	848.7	192.0
1935	1,921.9	481.0	447.0	928.0	616.4	193.4	809.8	184.1
1936	1,815.7	462.8	428.3	891.1	561.3	187.5	748.8	175.8
1937	1,715.6	443.1	409.1	852.2	510.0	183.0	695.0	170.4
1938	1,627.9	426.6	387.2	813.8	471.0	177.9	646.9	165.2
1939	1,553.5	406.4	369.0	775.4	445.0	174.1	619.1	159.0
1940	1,532.4	404.4	364.4	768.8	437.7	170.0	607.7	155.9
1941	1,495.7	401.8	358.3	760.1	417.6	165.5	583.1	152.5
1942	1,470.9	400.8	352.7	753.5	405.1	161.6	566.7	150.7
1943	1,448.9	398.6	346.5	745.1	397.7	157.6	555.3	148.5
1944	1,436.1	398.4	341.3	739.7	394.5	153.6	546.1	146.3
1945	1,421.7	397.1	336.1	733.2	387.8	150.9	538.7	149.8
1946	1,409.0	395.2	332.8	721.7	381.6	148.6	530.2	151.1

1/ Maine, N.H., Vt., Mass., R.I., Conn., N.Y., N.J., and Pa. 2/ Del., Md., Va., W.Va., N.C., S.C., and Ga.
3/ Ohio, Ind., Ill., Mich., Wis., Minn., Iowa, Mo., S.Dak., Neb., and Kans. 4/ Ky., Tenn., Ala., Miss., Ark., La., Okla., and Texas. 5/ Mont., Idaho, Wyo., Colo., N.Mex., Ariz., Utah, Nev., Wash., Oreg. and Calif.

APPLES - TOTAL: BEARING ACREAGE, BY STATES, 1919-1946

Year	Maine	New Hampshire	Vermont	Massachusetts	Rhode Island	Connecticut	New York	New Jersey
1919	57.8	15.4	13.7	25.4	3.9	16.9	267.7	18.5
1920	56.2	14.9	12.3	26.2	3.9	17.0	266.8	19.8
1921	54.6	14.4	12.8	27.0	3.9	17.0	265.9	21.3
1922	53.0	13.9	12.2	27.8	3.9	17.0	264.9	22.5
1923	51.4	13.5	11.6	28.4	3.9	17.0	264.0	22.5
1924	49.8	13.2	11.0	29.2	3.9	17.1	263.0	23.3
1925	47.6	12.9	11.2	29.2	3.9	16.8	256.4	24.2
1926	45.4	12.5	11.5	29.2	4.0	16.5	249.8	24.9
1927	43.0	11.8	11.7	29.2	4.0	16.1	243.2	25.5
1928	40.2	11.4	11.9	29.2	4.0	15.8	236.6	25.8
1929	37.5	10.8	12.1	29.3	4.1	15.5	230.1	26.4
1930	36.0	11.1	11.8	30.7	4.2	16.4	228.2	26.8
1931	34.5	11.4	11.5	32.0	4.3	17.3	226.3	27.3
1932	33.0	11.6	11.1	33.3	4.4	18.2	224.4	27.7
1933	29.5	11.8	10.7	34.7	4.5	19.2	222.5	27.9
1934	22.6	12.8	10.3	35.9	4.6	20.2	220.5	28.0
1935	16.9	12.2	9.6	35.3	4.5	18.8	199.4	27.6
1936	15.9	11.6	9.0	34.7	4.3	17.4	191.4	26.5
1937	14.9	10.9	8.3	34.0	4.2	16.0	183.8	25.0
1938	13.9	10.2	7.7	33.4	4.1	14.6	177.3	23.9
1939	12.9	9.5	7.1	30.0	4.0	13.2	169.3	23.4
1940	13.1	9.6	7.3	30.0	3.9	13.4	169.8	22.8
1941	13.3	9.7	7.5	30.0	3.9	13.6	169.5	22.3
1942	13.5	9.8	7.7	30.0	3.8	13.8	170.4	21.8
1943	13.7	10.0	7.9	30.1	3.7	14.0	169.8	21.4
1944	13.9	10.2	8.1	30.2	3.7	14.3	170.0	21.1
1945	14.1	10.2	8.1	30.2	3.7	14.3	169.8	20.6
1946	14.3	10.2	8.1	30.0	3.7	14.2	169.5	20.1

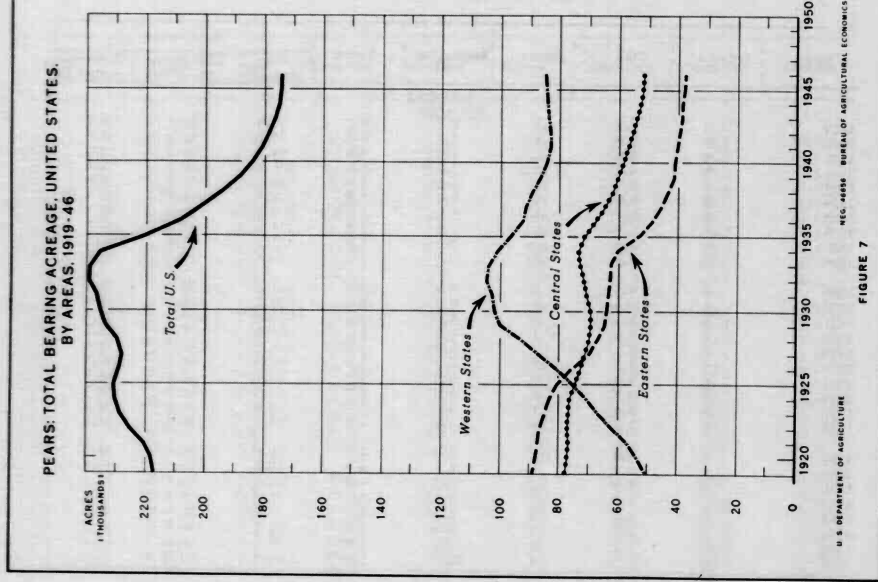
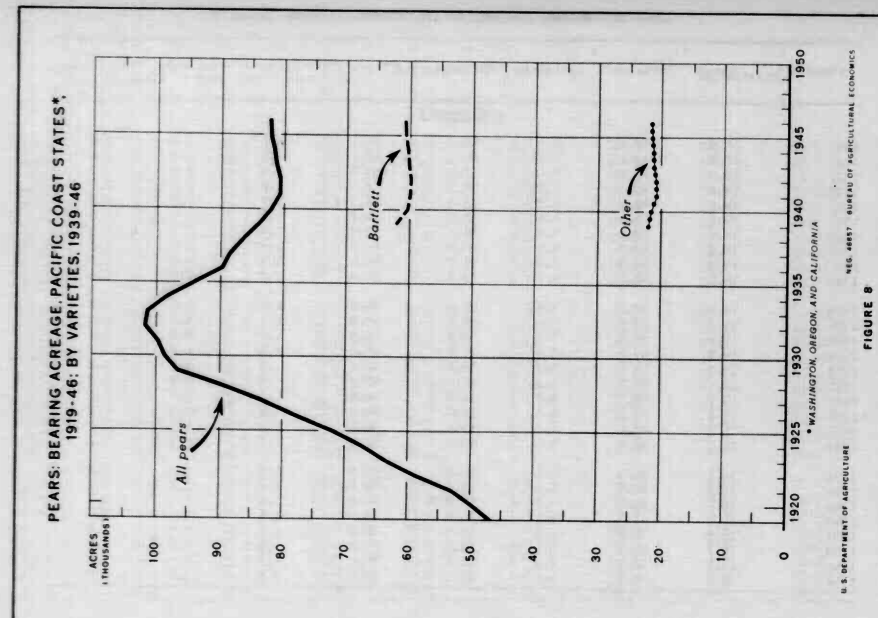


FIGURE 8
BUREAU OF AGRICULTURAL ECONOMICS
WASHINGTON, OREGON, AND CALIFORNIA

FIGURE 7
BUREAU OF AGRICULTURAL ECONOMICS

PEARS: BEARING ACREAGE, UNITED STATES, BY AREAS, 1919-1946

Year	Total	Eastern States		Central States		Pacific Coast States ^{6/}		Total Western States ^{6/}
		North Atlantic ^{1/}	South Atlantic ^{2/}	North Central ^{3/}	South Central ^{4/}	Bartlett ^{5/}	Other ^{5/}	
1919	217.1	59.2	29.4	88.6	47.9	30.0	77.9	46.8
1920	218.2	58.7	29.1	87.8	47.8	29.2	77.0	49.7
1921	220.7	58.5	28.6	87.1	48.0	28.7	76.7	53.2
1922	225.5	58.0	28.4	86.4	48.6	28.4	77.0	58.5
1923	228.4	56.7	28.1	84.3	48.9	27.8	76.7	65.5
1924	230.2	55.5	28.0	83.5	48.7	27.5	76.3	67.0
1925	230.7	54.2	26.6	80.8	47.5	27.3	74.6	71.9
1926	229.0	50.2	25.3	75.5	45.7	27.0	72.7	77.5
1927	227.9	46.5	25.7	70.2	44.3	26.9	71.2	83.1
1928	229.6	44.7	22.4	67.1	43.0	26.8	69.8	89.3
1929	233.9	43.3	21.3	64.6	42.4	26.8	69.2	96.7
1930	235.1	43.0	20.9	63.9	42.4	26.8	69.2	98.7
1931	236.5	42.7	20.6	63.3	43.3	27.0	70.3	99.7
1932	239.3	42.6	20.3	62.9	44.2	27.4	71.6	101.7
1933	239.2	42.4	20.0	62.4	45.0	27.7	72.7	101.5
1934	235.1	41.2	19.4	60.6	45.5	27.8	73.3	98.4
1935	220.5	33.3	19.1	52.4	43.5	28.0	71.5	94.0
1936	208.6	30.0	18.6	48.6	39.9	27.9	67.8	89.6
1937	201.5	27.4	18.3	45.7	36.7	28.0	64.7	88.5
1938	134.6	25.6	17.9	43.5	34.1	27.9	62.0	86.5
1939	188.1	23.3	17.6	41.4	32.2	28.0	60.2	83.9
1940	184.0	23.7	17.5	41.2	31.0	27.5	58.5	81.8
1941	180.6	23.2	17.1	40.3	30.3	26.8	57.1	80.6
1942	178.6	22.8	16.9	39.7	29.6	26.0	56.6	80.6
1943	176.8	22.4	16.6	39.0	29.1	24.7	55.8	81.2
1944	175.2	22.2	16.2	38.4	28.7	24.0	52.7	81.5
1945	174.4	22.0	16.0	38.0	28.5	23.3	51.8	82.0
1946	174.1	21.8	16.0	37.8	28.4	23.1	51.5	82.3

^{1/} Maine, N.H., Vt., Mass., R.I., Conn., N.Y., N.J., and Pa. ^{2/} Del., Md., Va., W.Va., N.C., S.C., Ga. and Fla. ^{3/} Ohio, Ind., Ill., Mich., Iowa, Mo., Nebr. and Kans. ^{4/} Ky., Tenn., Ala., Miss., Ark., La., Okla. and Texas. ^{5/} Wash., Ore. and Calif. Acreage for these States included in Total Western States. ^{6/} Idaho, Colo., N.Mex., Ariz., Utah, Nev., Wash., Ore. and Calif.

PEARS: BEARING ACREAGE, BY STATES, 1919-1946

Year	Maine	New Hampshire	Vermont	Massachusetts	Rhode Island	Connecticut	New York	New Jersey	Pennsylvania	Delaware
1919	.4	.3	.2	1.5	.2	1.0	38.5	6.9	10.2	3.3
1920	.4	.3	.2	1.5	.2	1.0	38.5	6.4	10.1	3.2
1921	.4	.3	.2	1.6	.2	1.0	39.0	5.9	9.9	3.0
1922	.4	.3	.2	1.6	.2	1.0	39.0	5.8	9.7	2.8
1923	.4	.3	.2	1.7	.2	1.0	38.0	5.4	9.5	2.6
1924	.4	.3	.2	1.7	.2	1.1	37.0	5.4	9.2	2.5
1925	.5	.2	.2	1.8	.2	1.1	37.0	4.5	8.9	2.2
1926	.5	.2	.2	1.9	.2	1.1	34.0	3.7	8.6	1.9
1927	.2	.2	.2	2.0	.2	1.1	31.5	2.8	8.3	1.5
1928	.2	.2	.2	2.1	.2	1.1	30.5	2.2	8.0	1.2
1929	.2	.2	.2	2.3	.2	1.1	29.6	1.7	7.8	.9
1930	.2	.2	.2	2.1	.2	1.2	29.6	1.6	7.7	.7
1931	.2	.2	.2	1.9	.2	1.2	29.7	1.5	7.6	.6
1932	.2	.2	.2	1.7	.2	1.2	29.3	1.4	7.6	.5
1933	.2	.2	.2	1.6	.2	1.2	29.9	1.3	7.6	.4
1934	.2	.3	.2	1.5	.2	1.2	28.7	1.3	7.6	.3
1935	.2	.2	.2	1.4	.2	1.1	21.3	1.2	7.0	.3
1936	.2	.2	.2	1.2	.2	1.1	19.7	1.0	6.2	.3
1937	.2	.2	.2	1.1	.1	1.0	18.3	.8	5.6	.3
1938	.2	.2	.1	1.0	.1	1.0	17.5	.7	5.0	.2
1939	.2	.1	.1	.8	.1	.9	16.2	.6	4.8	.2
1940	.2	.1	.1	.8	.1	.9	16.1	.6	4.8	.2
1941	.1	.1	.1	.8	.1	.9	15.9	.6	4.6	.1
1942	.1	.1	.1	.8	.1	.9	15.8	.5	4.4	.1
1943	.1	.1	.1	.8	.1	.9	15.6	.6	4.2	.1
1944	.1	.1	.1	.8	.1	.9	15.5	.4	4.2	.1
1945	.1	.1	.1	.8	.1	.9	15.4	.4	4.1	.1
1946	.1	.1	.1	.8	.1	.9	15.3	.4	4.0	.1

CHERRIES: BEARING ACREAGE, 1919-46;
BY VARIETIES, 1938-46

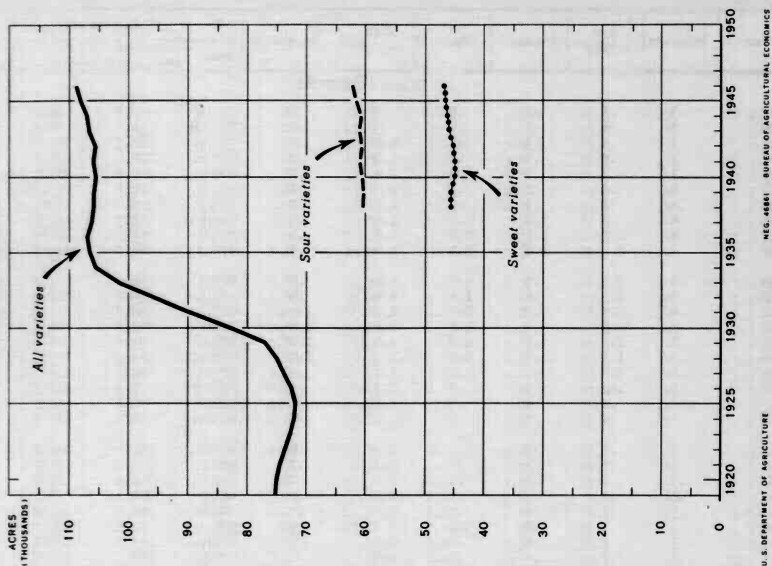


FIGURE 12
U. S. DEPARTMENT OF AGRICULTURE
BUREAU OF AGRICULTURAL ECONOMICS
NEG. 4681

CHERRIES: BEARING ACREAGE,
BY AREAS, 1919-46

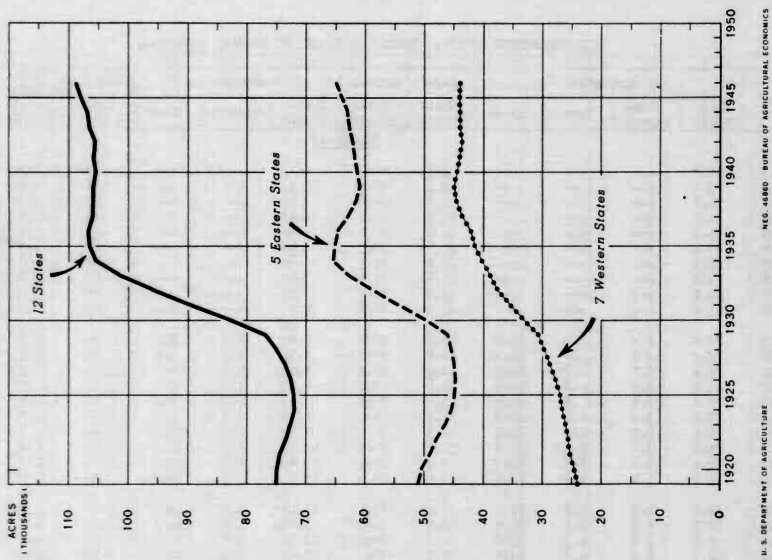


FIGURE 11
U. S. DEPARTMENT OF AGRICULTURE
BUREAU OF AGRICULTURAL ECONOMICS
NEG. 4680

CHERRIES: BEARING ACREAGE, BY STATES, 1919-1946

Year	12 States			5 Eastern States ^{1/}			7 Western States ^{2/}			New York		
	All	Sweet	Sour	All	Sweet	Sour	All	Sweet	Sour	All	Sweet	
1919	75.1	---	---	51.1	---	---	24.0	---	---	12.1	---	
1920	74.9	---	---	50.3	---	---	24.6	---	---	12.0	---	
1921	74.3	---	---	49.1	---	---	25.2	---	---	11.8	---	
1922	73.3	---	---	47.8	---	---	25.5	---	---	11.5	---	
1923	72.6	---	---	46.6	---	---	26.0	---	---	11.3	---	
1924	71.9	---	---	45.3	---	---	26.6	---	---	11.0	---	
1925	71.9	---	---	44.9	---	---	27.0	---	---	10.8	---	
1926	72.4	---	---	44.7	---	---	27.7	---	---	10.7	---	
1927	73.6	---	---	45.0	---	---	28.6	---	---	10.6	---	
1928	75.0	---	---	45.4	---	---	29.6	---	---	10.5	---	
1929	76.8	---	---	46.1	---	---	30.7	---	---	10.4	---	
1930	82.8	---	---	49.7	---	---	33.1	---	---	11.6	---	
1931	89.7	---	---	54.3	---	---	35.4	---	---	12.7	---	
1932	95.8	---	---	58.5	---	---	37.3	---	---	13.6	---	
1933	101.4	---	---	62.7	---	---	38.7	---	---	14.3	---	
1934	105.5	---	---	65.3	---	---	40.2	---	---	13.7	---	
1935	106.4	---	---	65.1	---	---	41.3	---	---	13.7	---	
1936	106.7	---	---	64.6	---	---	42.1	---	---	13.5	---	
1937	106.1	---	---	62.7	---	---	41.4	---	---	12.3	---	
1938	105.8	45.5	60.3	61.4	9.1	52.3	44.4	36.4	8.0	12.0	1.9	10.1
1939	105.7	45.4	60.3	60.8	8.7	52.1	44.9	36.7	8.2	12.0	1.9	10.1
1940	105.5	44.9	60.6	61.2	8.7	52.5	44.3	36.2	8.1	12.0	1.9	10.1
1941	105.8	44.9	60.9	61.8	8.7	53.1	44.0	36.2	7.8	12.1	1.9	10.2
1942	105.6	45.0	60.6	62.1	8.7	53.4	43.5	36.3	7.2	12.2	1.9	10.3
1943	106.6	45.7	60.9	62.7	8.8	53.9	43.9	36.9	7.0	12.4	2.0	10.4
1944	106.9	46.2	60.7	63.0	9.0	54.0	43.9	37.2	6.7	12.4	2.0	10.4
1945	108.0	46.4	61.6	64.0	9.1	54.9	44.0	37.3	6.7	12.6	2.0	10.6
1946	108.8	46.7	62.1	64.9	9.3	55.6	43.9	37.4	6.5	12.7	2.0	10.7

Year	Pennsylvania			Ohio			Michigan			Montana		
	All	Sweet	Sour	All	Sweet	Sour	All	Sweet	Sour	All	Sweet	
1919	11.9	---	---	10.3	---	---	12.2	---	---	---	---	
1920	11.5	---	---	10.0	---	---	12.1	---	---	---	---	
1921	11.0	---	---	9.5	---	---	12.0	---	---	---	---	
1922	10.5	---	---	9.0	---	---	12.0	---	---	---	---	
1923	10.0	---	---	8.5	---	---	11.9	---	---	---	---	
1924	9.5	---	---	8.0	---	---	11.9	---	---	---	---	
1925	9.4	---	---	7.5	---	---	12.2	---	---	---	---	
1926	9.3	---	---	7.0	---	---	12.6	---	---	---	---	
1927	9.2	---	---	6.5	---	---	13.4	---	---	---	---	
1928	9.1	---	---	6.0	---	---	14.3	---	---	---	---	
1929	9.0	---	---	5.5	---	---	15.5	---	---	.5	---	
1930	8.9	---	---	5.4	---	---	17.6	---	---	.6	---	
1931	8.8	---	---	5.8	---	---	20.2	---	---	.7	---	
1932	8.7	---	---	6.2	---	---	22.6	---	---	.7	---	
1933	8.6	---	---	6.6	---	---	25.2	---	---	.7	---	
1934	8.4	---	---	7.0	---	---	27.6	---	---	.7	---	
1935	8.2	---	---	6.5	---	---	28.0	---	---	.7	---	
1936	8.0	---	---	6.0	---	---	28.2	---	---	.4	---	
1937	7.9	---	---	5.5	---	---	28.0	---	---	.4	---	
1938	7.7	3.1	4.6	4.9	1.5	3.4	27.6	2.6	25.0	.4	3/	.4
1939	7.6	3.0	4.6	4.4	1.2	3.2	27.4	2.6	24.8	.4	3/	.4
1940	7.5	2.9	4.6	4.3	1.1	3.2	27.9	2.8	25.1	.5	3/	.5
1941	7.5	2.8	4.7	4.3	1.0	3.3	28.4	3.0	25.4	.6	.1	.5
1942	7.4	2.7	4.7	4.2	.9	3.3	28.9	3.2	25.7	.7	.3	.4
1943	7.3	2.6	4.7	4.2	.8	3.4	29.3	3.4	25.9	.8	.4	.4
1944	7.3	2.6	4.7	4.2	.8	3.4	29.7	3.6	26.1	.8	.5	.3
1945	7.5	2.6	4.9	4.1	.8	3.3	30.3	3.7	26.6	.8	.5	.3
1946	7.9	2.7	5.2	4.0	.8	3.2	30.7	3.8	26.9	.8	.5	.3

^{1/} New York, Pennsylvania, Ohio, Michigan and Wisconsin.
^{2/} Montana, Idaho, Colorado, Utah, Washington, Oregon, and California.
^{3/} Less than 50 acres.

CHERRIES: BEARING ACREAGE, BY STATES, 1919-1946, Continued

Year	Idaho			Colorado			Utah		
	All varieties	Sweet varieties	Sour varieties	All varieties	Sweet varieties	Sour varieties	All varieties	Sweet varieties	Sour varieties
1919	1.5	—	—	3.1	—	—	1.2	—	—
1920	1.5	—	—	3.2	—	—	1.3	—	—
1921	1.5	—	—	3.2	—	—	1.3	—	—
1922	1.4	—	—	3.1	—	—	1.3	—	—
1923	1.4	—	—	3.0	—	—	1.4	—	—
1924	1.4	—	—	2.9	—	—	1.5	—	—
1925	1.4	—	—	2.8	—	—	1.6	—	—
1926	1.3	—	—	2.7	—	—	1.6	—	—
1927	1.3	—	—	2.6	—	—	1.4	—	—
1928	1.3	—	—	2.6	—	—	1.3	—	—
1929	1.3	—	—	2.5	—	—	1.2	—	—
1930	1.4	—	—	2.7	—	—	1.3	—	—
1931	1.4	—	—	2.9	—	—	1.4	—	—
1932	1.4	—	—	3.1	—	—	1.5	—	—
1933	1.4	—	—	3.1	—	—	1.6	—	—
1934	1.5	—	—	3.2	—	—	1.6	—	—
1935	1.6	—	—	3.3	—	—	1.7	—	—
1936	1.6	—	—	3.4	—	—	1.8	—	—
1937	1.5	—	—	3.5	—	—	1.9	—	—
1938	1.5	1.2	.3	3.6	.3	3.3	2.0	1.5	.5
1939	1.4	1.1	.3	3.7	.3	3.4	2.1	1.6	.5
1940	1.5	1.2	.3	3.5	.3	3.2	2.1	1.6	.5
1941	1.6	1.3	.3	3.3	.3	3.0	2.1	1.6	.5
1942	1.6	1.3	.3	3.1	.3	2.8	2.0	1.6	.4
1943	1.6	1.3	.3	3.1	.3	2.8	2.0	1.6	.4
1944	1.6	1.3	.3	2.9	.3	2.6	2.0	1.6	.4
1945	1.6	1.3	.3	2.9	.3	2.6	2.0	1.6	.4
1946	1.6	1.3	.3	2.8	.3	2.5	2.1	1.7	.4

Year	Washington			Oregon			California	Wisconsin
	All varieties	Sweet varieties	Sour varieties	All varieties	Sweet varieties	Sour varieties	All varieties	All varieties
1919	4.4	—	—	6.4	—	—	7.4	4.6
1920	4.4	—	—	6.5	—	—	7.7	4.7
1921	4.5	—	—	6.6	—	—	8.1	4.8
1922	4.5	—	—	6.7	—	—	8.5	4.8
1923	4.6	—	—	6.8	—	—	8.8	4.9
1924	4.7	—	—	6.9	—	—	9.2	4.9
1925	4.9	—	—	6.9	—	—	9.4	5.0
1926	5.2	—	—	7.0	—	—	9.9	5.1
1927	5.5	—	—	7.0	—	—	10.8	5.3
1928	5.8	—	—	7.1	—	—	11.5	5.5
1929	6.1	—	—	7.1	—	—	12.0	5.7
1930	6.8	—	—	7.6	—	—	12.7	6.2
1931	7.6	—	—	8.2	—	—	13.2	6.8
1932	8.3	—	—	8.7	—	—	13.6	7.4
1933	8.8	—	—	9.2	—	—	13.9	8.0
1934	9.2	—	—	9.7	—	—	14.3	8.6
1935	9.4	—	—	10.3	—	—	14.3	8.7
1936	9.6	—	—	10.9	—	—	14.4	8.8
1937	9.8	—	—	11.5	—	—	14.8	9.0
1938	10.0	7.7	2.3	12.0	10.8	1.2	14.9	9.2
1939	10.3	8.0	2.3	12.4	11.1	1.3	14.6	9.4
1940	10.5	8.2	2.3	12.5	11.2	1.3	13.7	9.5
1941	10.6	8.4	2.2	12.6	11.3	1.3	13.2	9.5
1942	10.8	8.8	2.0	12.8	11.5	1.3	12.5	9.4
1943	11.0	9.2	1.8	12.9	11.6	1.3	12.5	9.5
1944	11.1	9.3	1.8	13.1	11.8	1.3	12.4	9.4
1945	11.2	9.4	1.8	13.1	11.8	1.3	12.4	9.5
1946	11.2	9.5	1.7	13.1	11.8	1.3	12.3	9.6

1/ California cherries are practically all sweet varieties; Wisconsin nearly all sour varieties.

NUTS: BEARING ACREAGE, CALIFORNIA, OREGON AND WASHINGTON, BY KINDS, 1919-46

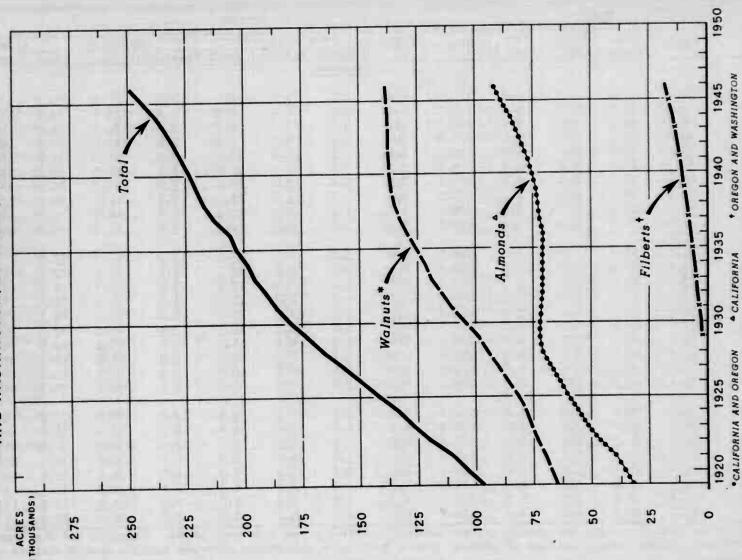


FIGURE 14
U. S. DEPARTMENT OF AGRICULTURE
BUREAU OF AGRICULTURAL ECONOMICS
REG. 4683

PLUMS AND PRUNES: BEARING ACREAGE, 1919-46

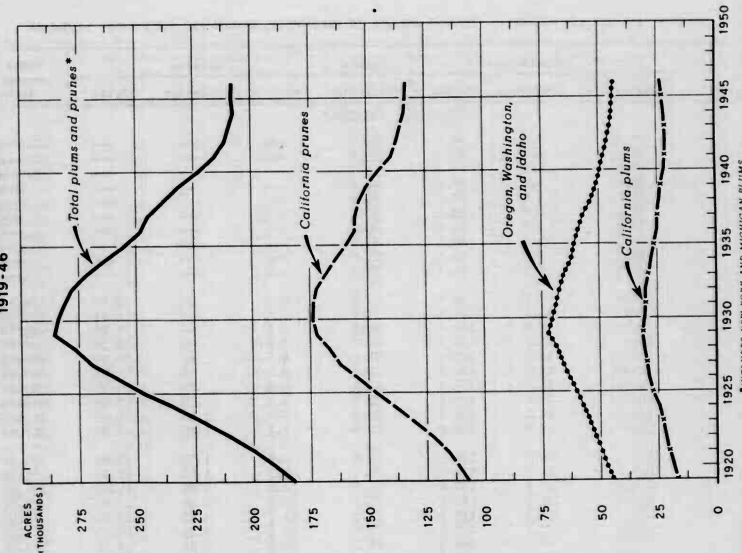


FIGURE 13
U. S. DEPARTMENT OF AGRICULTURE
BUREAU OF AGRICULTURAL ECONOMICS
REG. 4682

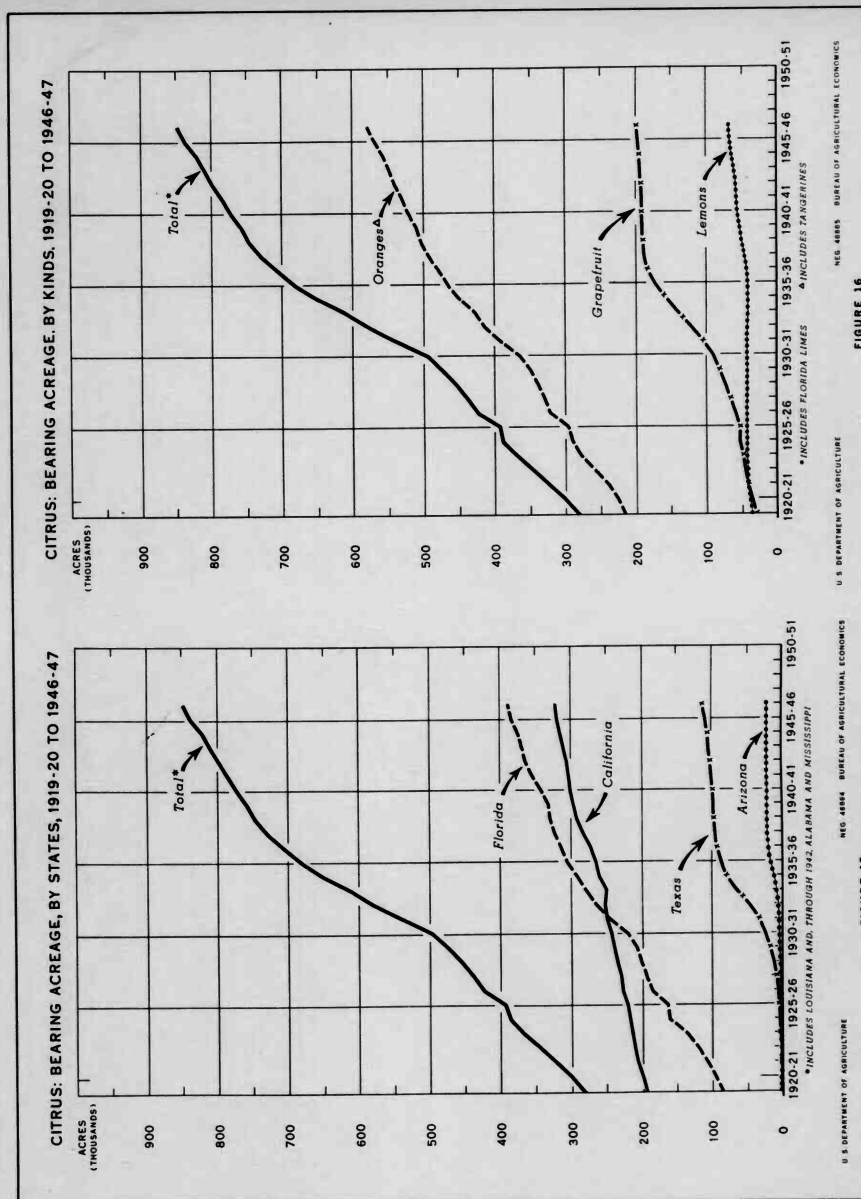
GRAPEFRUIT, LEMONS AND LIMES: BEARING ACREAGE, BY STATES, 1919-20 TO 1946-47

Crop Season	Grapefruit				Total	Lemons	Limes
	Florida	Texas	Arizona	California		California	Florida
Thousands							
1919-20	25.9	.1	.2	2.6	28.8	35.6	1.5
1920-21	31.4	.3	.3	2.9	34.9	38.3	1.6
1921-22	36.1	.8	.3	3.2	40.4	40.5	1.6
1922-23	39.1	1.2	.3	3.4	44.0	41.0	1.6
1923-24	40.7	1.8	.4	3.6	46.5	41.2	2.5
1924-25	45.7	2.4	.5	3.8	52.4	41.3	2.5
1925-26	43.7	3.0	.6	4.5	51.8	41.6	2.5
1926-27	48.2	3.9	.7	5.5	58.3	41.5	2.5
1927-28	53.0	5.1	.9	6.7	65.7	41.0	1.8
1928-29	55.0	7.4	1.3	8.8	72.3	40.8	1.8
1929-30	58.0	11.1	2.1	10.1	81.3	40.5	1.8
1930-31	60.0	15.3	2.5	10.8	88.6	40.7	1.8
1931-32	67.8	21.9	3.0	11.3	104.0	41.0	1.7
1932-33	72.0	34.0	3.8	12.1	121.9	40.7	1.9
1933-34	75.9	47.4	4.9	13.1	141.3	40.2	2.0
1934-35	78.3	57.9	7.2	13.7	157.1	40.4	2.1
1935-36	82.4	64.4	10.8	14.6	172.2	40.8	2.2
1936-37	84.1	70.0	13.0	15.4	182.5	42.1	2.4
1937-38	85.8	71.0	14.0	16.5	187.3	45.4	2.9
1938-39	87.0	72.0	14.0	16.4	189.4	49.4	3.3
1939-40	87.5	73.1	13.8	16.4	190.6	52.0	3.7
1940-41	88.0	74.1	13.4	16.4	190.9	54.1	4.3
1941-42	88.2	75.1	13.3	16.1	191.7	55.7	6.0
1942-43	89.0	76.0	13.3	14.7	193.0	57.1	5.7
1943-44	89.5	76.8	13.0	14.8	194.1	60.1	5.4
1944-45	90.0	77.0	13.0	14.6	194.6	62.7	5.1
1945-46	90.5	78.6	12.9	14.6	196.6	65.5	4.8
1946-47	91.0	80.0	12.9	14.8	198.5	66.6	4.5

TOTAL CITRUS: BEARING ACREAGE, BY STATES, 1919-20 TO 1946-47

Crop Season	California	Florida	Texas	Arizona	Louisiana	Alabama and Mississippi	Total
	Thousands						
1919-20	194.0	84.1	.3	.7	1.1	1.9	282.1
1920-21	199.0	94.8	.8	.9	1.1	4.7	301.1
1921-22	206.9	107.2	1.3	.9	1.2	5.1	322.6
1922-23	210.9	119.5	1.8	1.0	1.2	11.7	348.1
1923-24	214.5	135.9	2.6	1.2	1.3	13.3	368.8
1924-25	218.1	160.6	3.4	1.4	1.4	2.1	387.0
1925-26	220.9	163.1	4.2	1.5	1.7	2.1	393.5
1926-27	227.6	184.2	5.3	1.7	2.1	2.2	423.3
1927-28	230.6	193.3	6.9	1.9	2.8	2.4	437.7
1928-29	235.3	200.6	10.4	2.4	3.0	2.2	454.1
1929-30	240.7	206.2	16.2	3.2	3.4	1.7	473.4
1930-31	244.0	220.2	22.7	3.8	3.6	1.3	495.6
1931-32	249.6	246.5	31.8	4.6	3.8	1.4	537.7
1932-33	253.2	265.2	47.7	5.8	4.0	1.5	577.6
1933-34	251.2	279.7	65.8	7.6	4.2	1.9	610.4
1934-35	260.8	291.8	78.8	11.3	4.3	2.3	649.3
1935-36	286.3	305.4	85.8	16.3	4.5	2.6	690.9
1936-37	273.2	314.1	92.0	19.3	4.6	2.7	705.9
1937-38	283.5	322.5	94.1	20.8	4.8	2.7	728.4
1938-39	292.1	329.0	95.0	21.0	4.9	3.0	746.0
1939-40	297.6	332.5	97.3	21.1	5.1	3.2	756.8
1940-41	300.6	342.8	98.8	20.7	5.0	3.0	770.9
1941-42	302.9	354.7	100.6	20.6	4.8	—	783.5
1942-43	305.5	364.4	102.3	20.6	4.6	—	797.4
1943-44	310.9	369.6	104.0	20.2	4.5	—	809.2
1944-45	315.1	374.8	105.4	20.1	4.5	—	819.9
1945-46	319.6	383.7	108.9	20.0	4.5	—	836.7
1946-47	321.4	389.2	112.9	20.0	4.5	—	848.0

1/ Acreage nearly eliminated by low temperatures during the winter of 1939-40.



**END OF
TITLE**