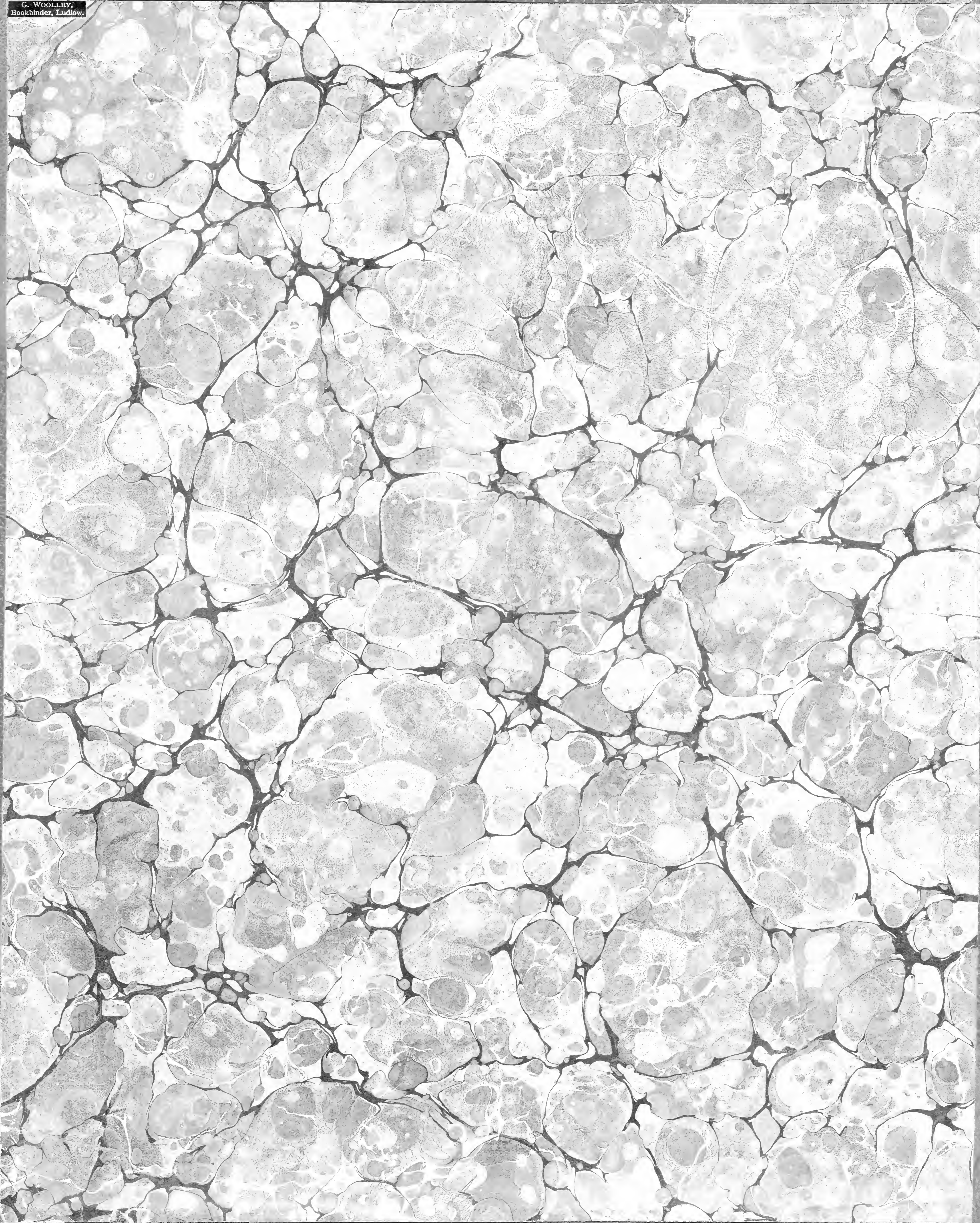
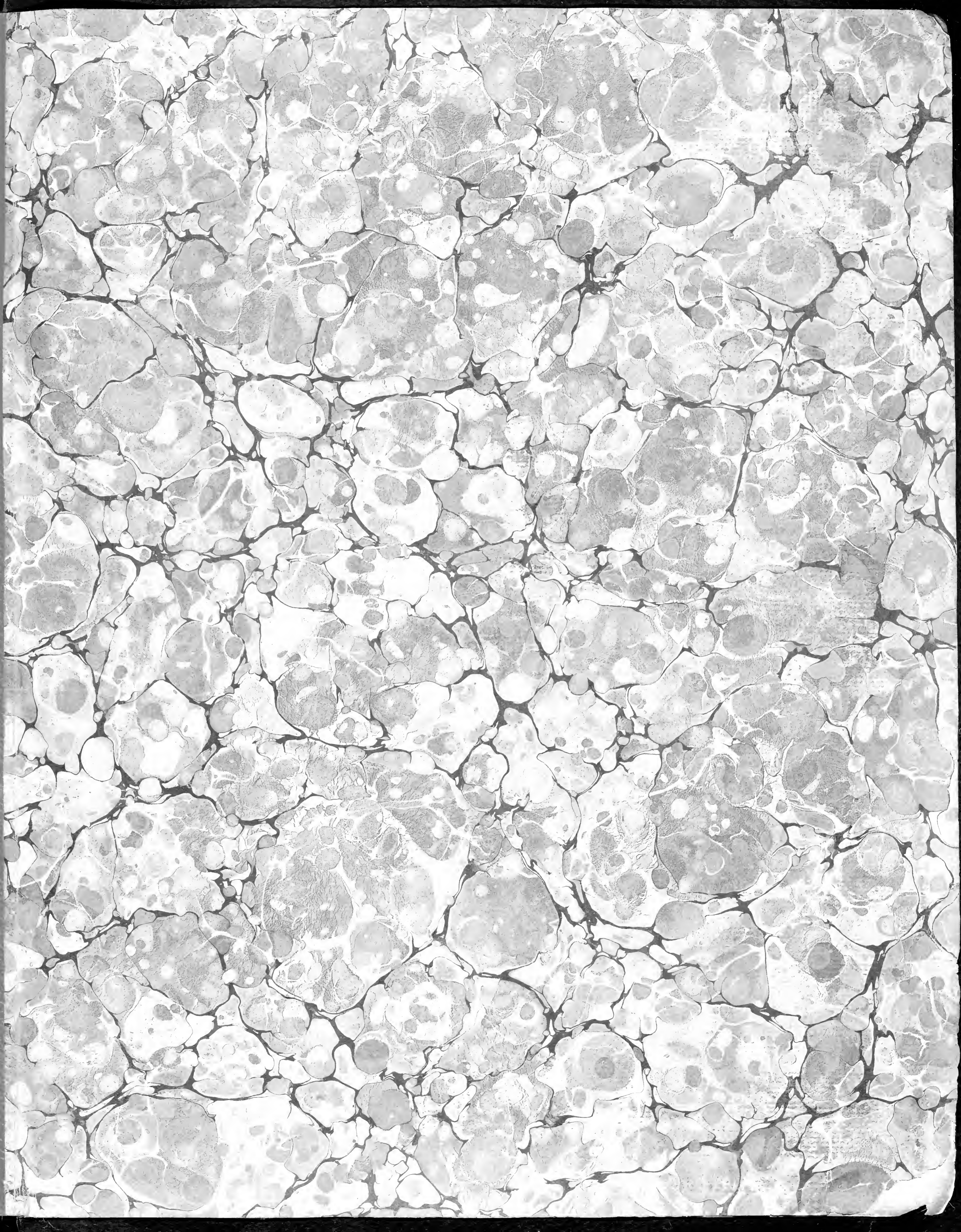


G. WOOLLEY,
Bookbinder, Ludlow.





MANN
SPEC
COLL

OverSize

OK

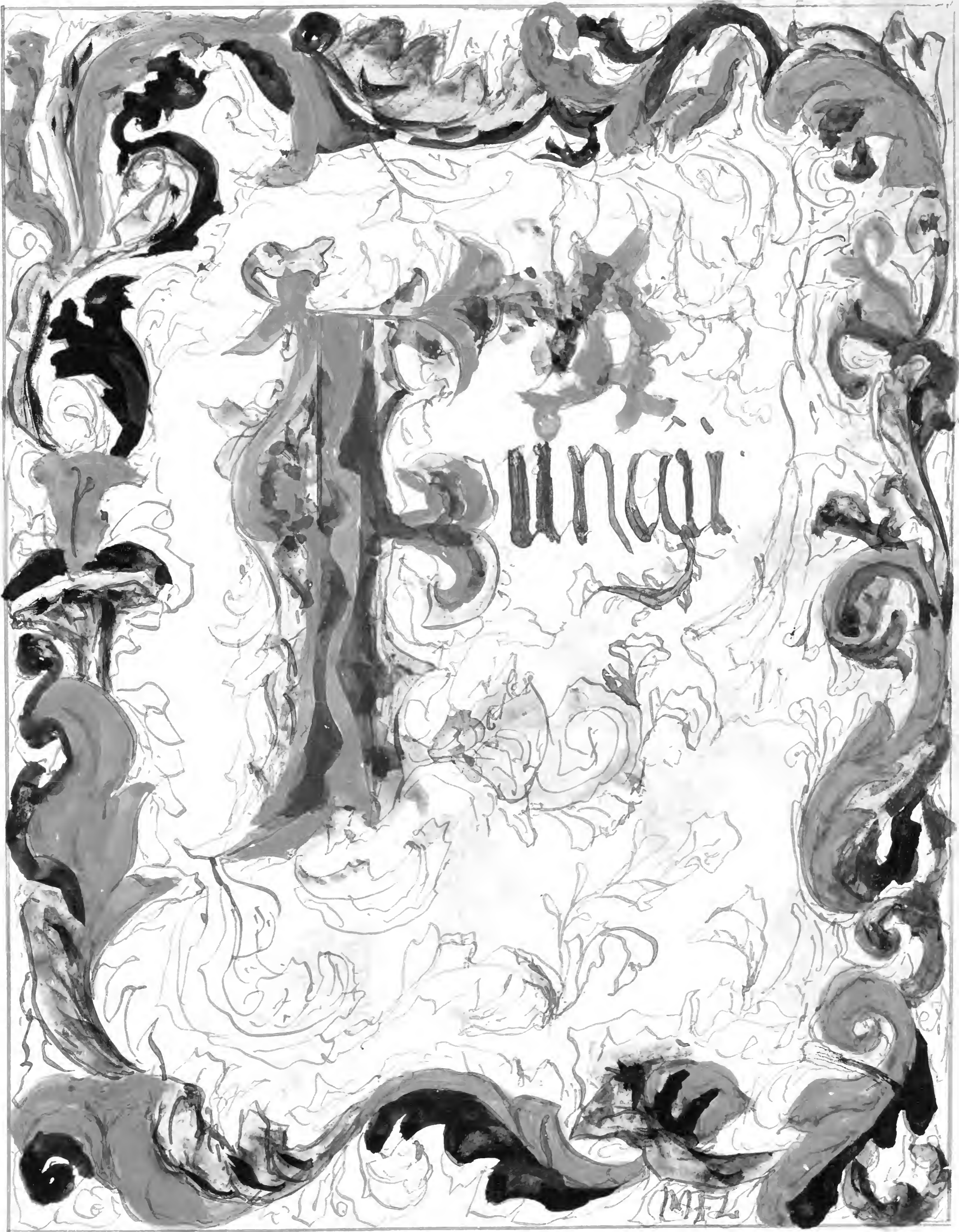
607

449

v.3



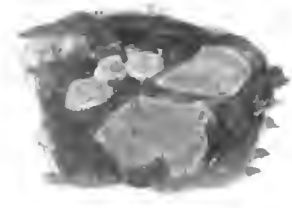








On fir spines
Buttington July 23^d
*Spathularia
flavida.*



P. luteo nitens?



*Peziza
venosa*



on charred
fir wood
Vine the spines July 23^d
Buttington



July 27th
in an
asparagus bed. *Petariaria
Stropharia*



P. Vesiculosa July 28
Dunghill
Nellie Andrews Green



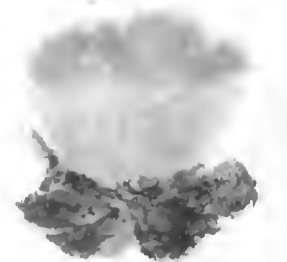
P. Helveticus

Nt. Ch.
Aug 13th



Craterellus Crispus

Oct 23rd
Lectow.



Peziza (?)

Craterellus cornucopiae



P. Trachycarpa.
(Cook's name)

Whitely
Oct 23
On charcoal.
P. Bacia



Pez. Succosa Oct 29

1862.



*Coprinus
Abraimentarius.*



*Coprinus
Comatus
On bark.*



Agaricus Arvensis.



*Cantharellus
Aurantiacus*

Sept 31st



Oct 1st



Oct 1st
Whitchiff.

U. Plumosus





Hy Ceraceus



Hy Coccineus



Hy Virgineus



Cortuarius



Hy juniceus
Ch. Stricklandii



1863
Mrs. Welchpool.
L. Ludlow?



Agaricus vesiculosus



A. canthareus



A. nivalis



C. fastigiata



A. helmaricus

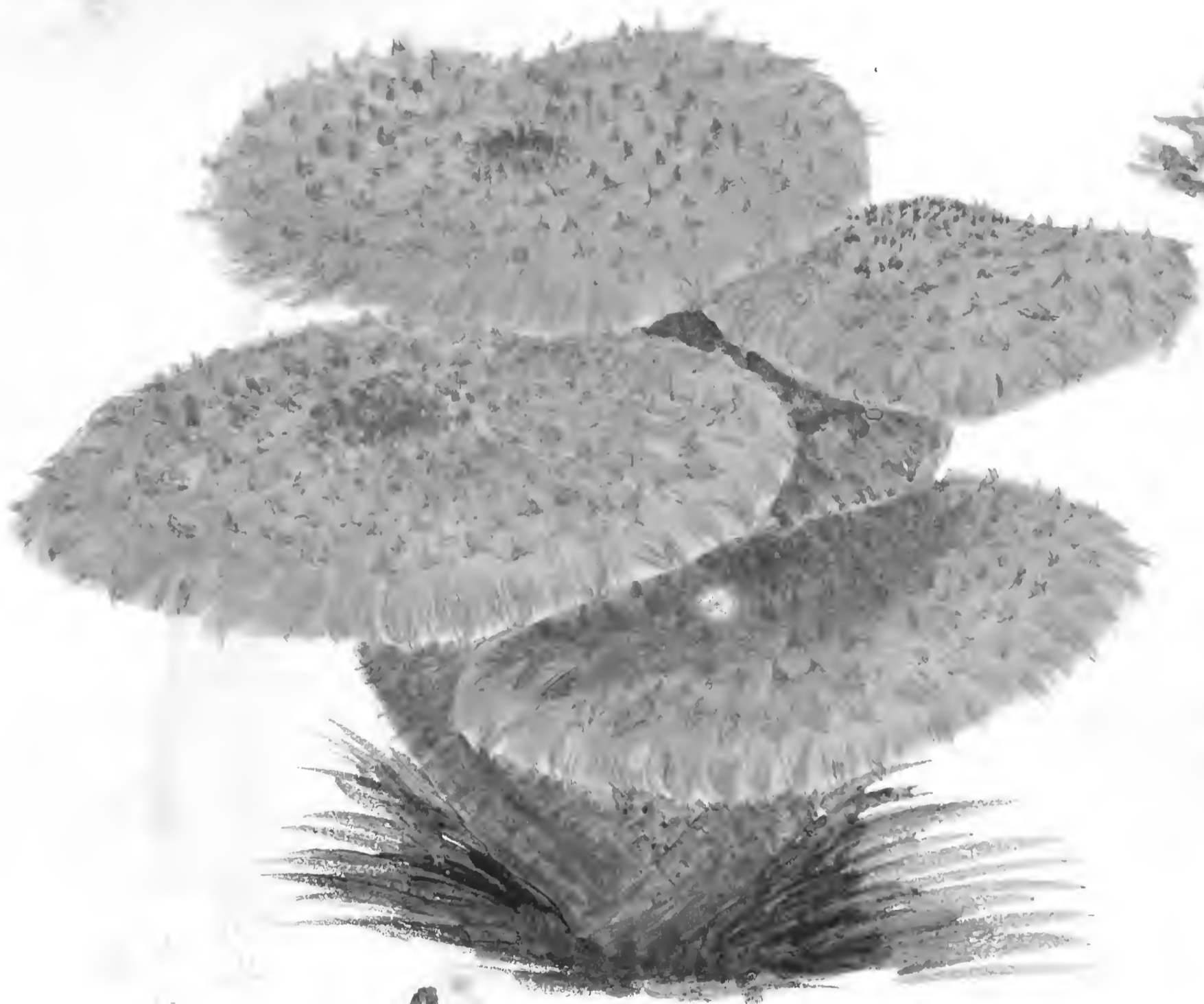




Tubaeformis



Bolitus Subtomatensis
Accepted
1865
Qualifield



A. Squarrosus



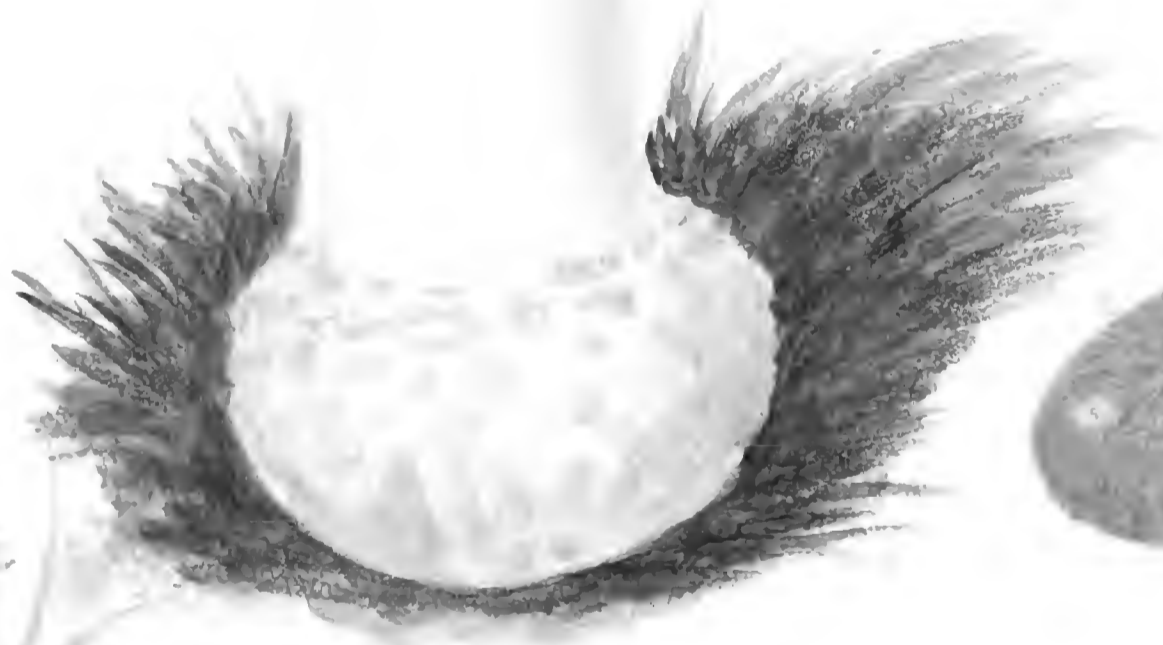
Dec 20th
Stantoulany
Agaricus
Cinnamomeus?



Agaricus velutipes
about 1840



Ag. Muscarius



On White Cliff
Old Shawbury Heath.
Much larger at Shawbury
Agaricus outilon

1863



G. atro-maculata

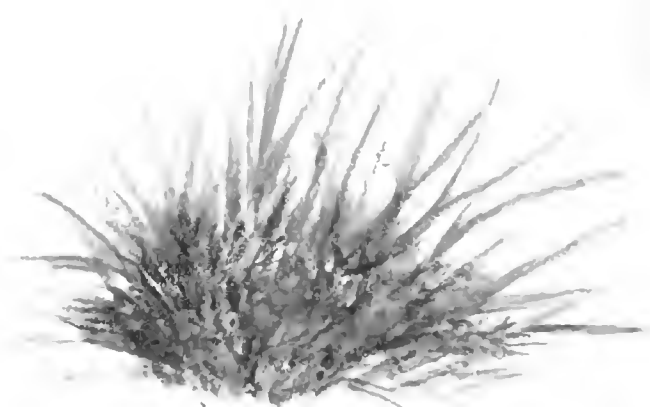


Ch.



Sept 27

Rusula



Oct 30

Ludford Park
P. Sulphureus



Jew's Ear
Cattle walk
Ludlow—



Peziza Cochlearia.

Sept. 4
Oct
Bitterley
L. Moor Park



Melocolla sulcata.



Geastrum rufescens
Oct 13th



Whitchiff



Hyl. zonatum

Maryknock
woods



Sept & Oct



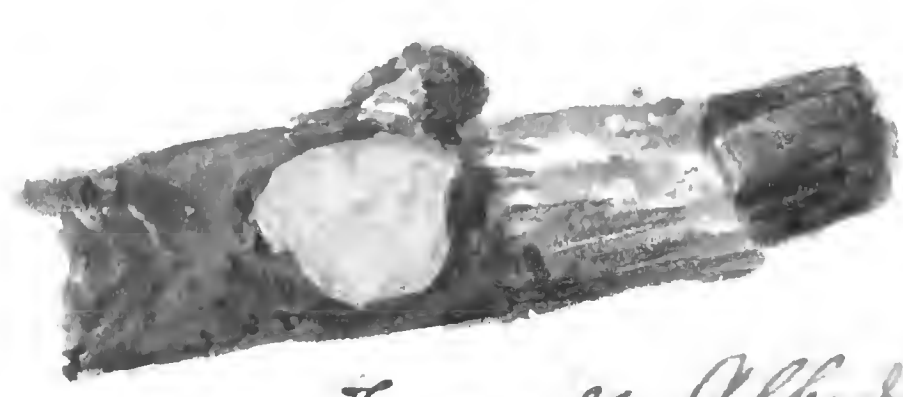
Cyathia
serotina



Helotium Pallidum
Nov.



Cordicium Quercinum



Tremella Albida



1862 & 1863



Sept 20
Bovista nigrescens



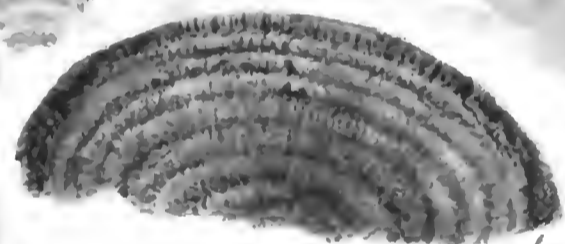
Stamphylodol
Plantations
Sept. 6th / 63

Cynophallus caninus



Hypoxylon concentricum

from Moor End W. Cheltenham Aug 1st / 63



Merulius palens



Merulius loricum & Corbicaria quercum



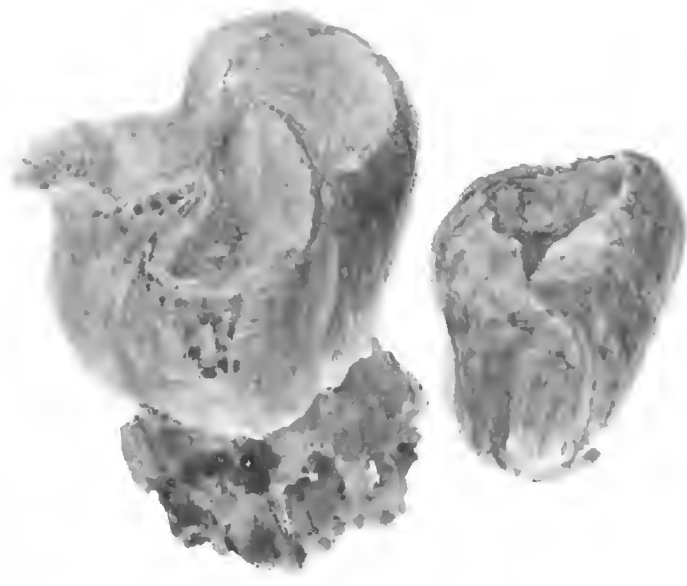
Antennaria



Trilobites diplo
Aug 18th



Wood Quercus



Sept 2
Oct 2

Dactylina?
Leptocarpus



Coprinus comatus
Sept 30



Boletus laevigatus
+ Mrs
Halsey's
road.



*A Pezatatus
on thatch
Sunderfield
Sept 25*

B. Edwards



A. ...

1863. Sept. 21.



Boletus Pechysus.



Boletus Pechysus.



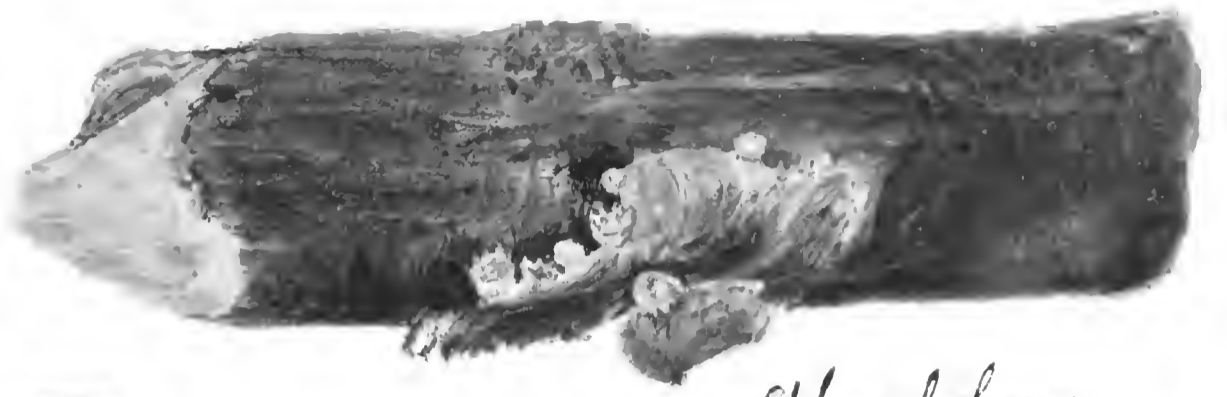
Fistulina hepatica

1864



A. Procera

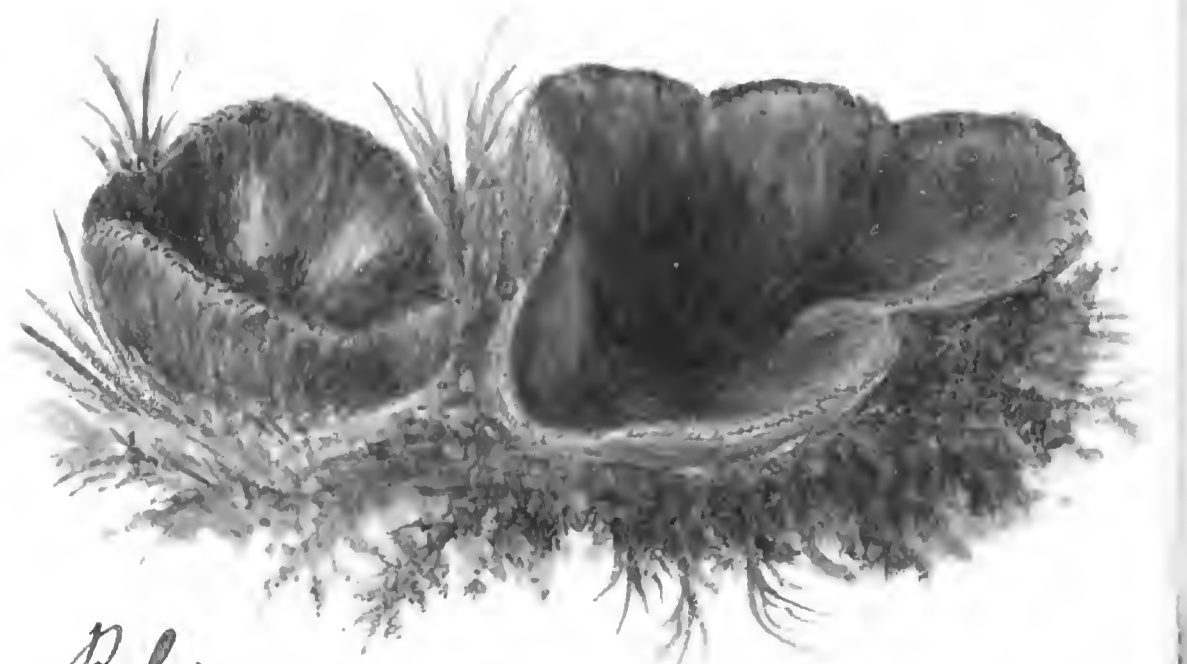
Trechyma Lam
Sept 19th 1863



Sphaerobolus
Stellatus
Maryknole Oct 12th 1863



Oct 4



P. Leiocarpa Oct 30 On turf
Oct 8 On turf
Oct 11 On turf
Oct 12 On turf

Found nearly
Every year at Mary Knobel



A. rubi



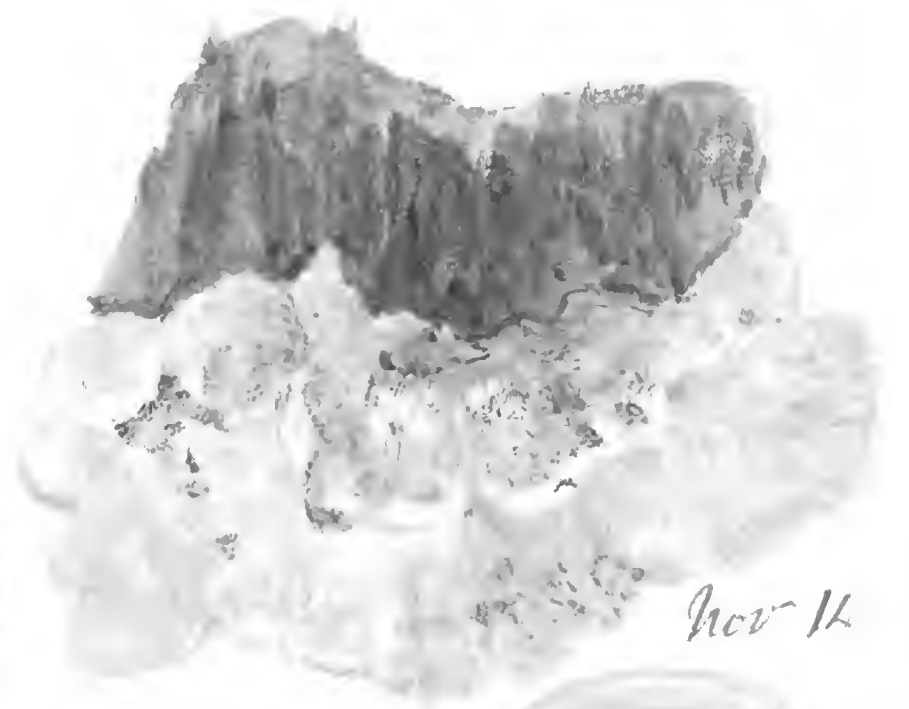


Buller's
Nov 11
Inside P. Varius

Polyphorus contiguus



Nov 11



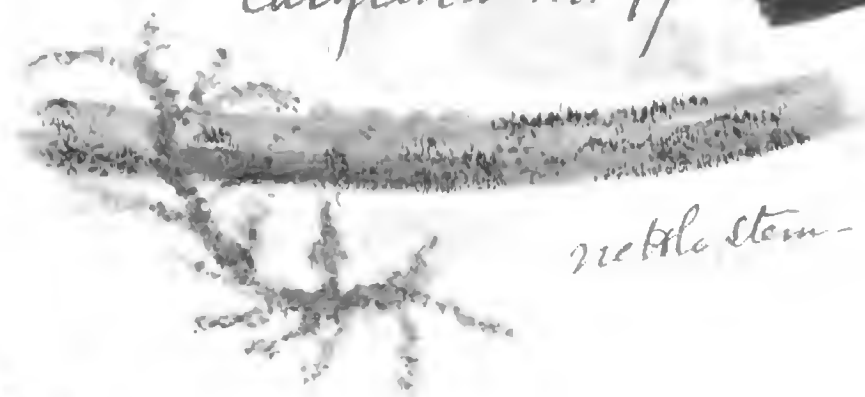
Nov 11



Nov 12



Helotium Calyculus Nov 17



on the stem



Agrostolus



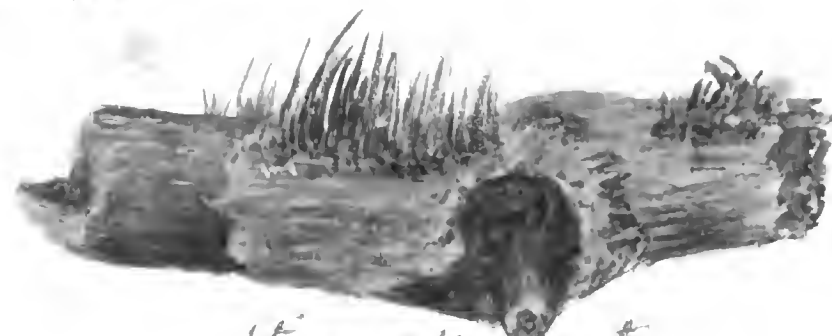
M. Hodsoni



Stemonites fusca



17th
Cubaria Internodia



Stemonites obtusata



Nov 17th



A. pterigenus
Nov 17th



Myathus Vermicolas
Buller's Nov 21st



Dec 22
1863

Peziza Coccarum
Orange Parvity



Muricula sp?
Jan 20 1864
Crested wall
London on an old lime tree



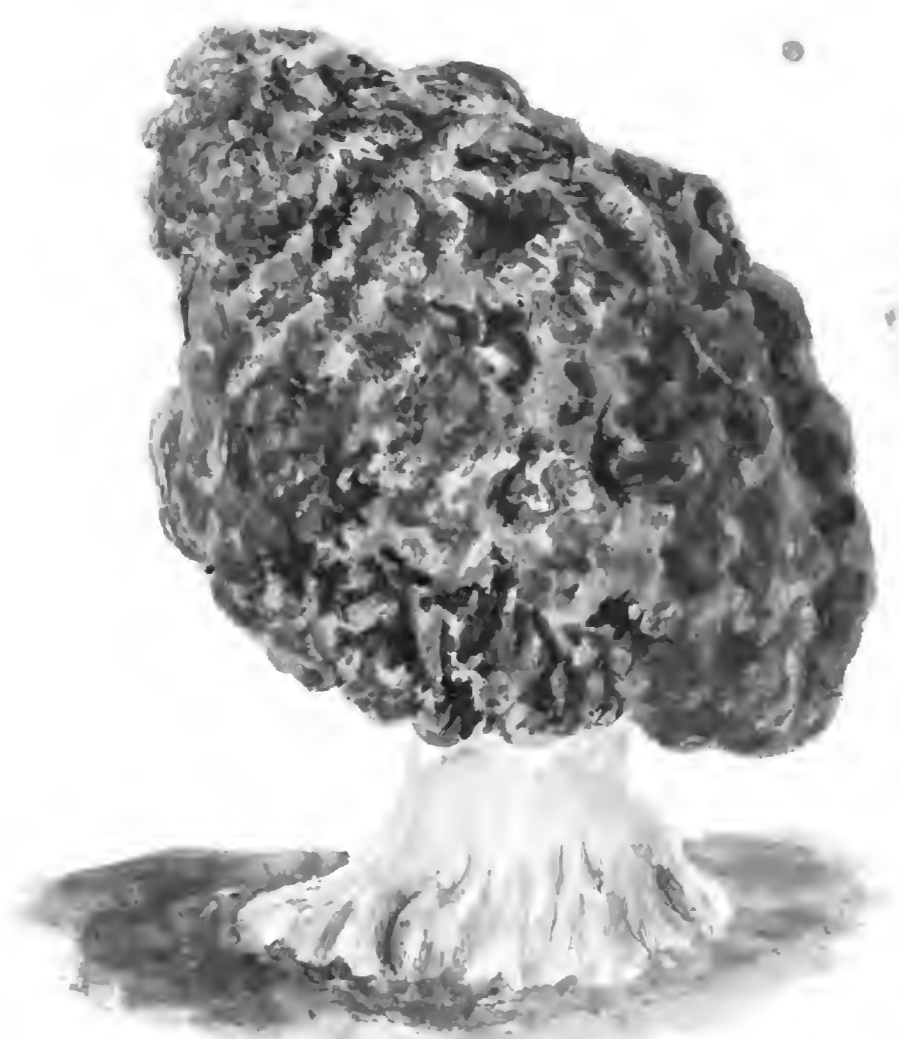
Clavaria cinerea
Sept 5
1865
The Vernal
w. Ludlow



Corticium Quercinum



Marasmius candidum
July 1st 1864
Guilford



Morchella Esculenta
Gigas
May 1864
April 6th 71



Oct 27th
Guilford



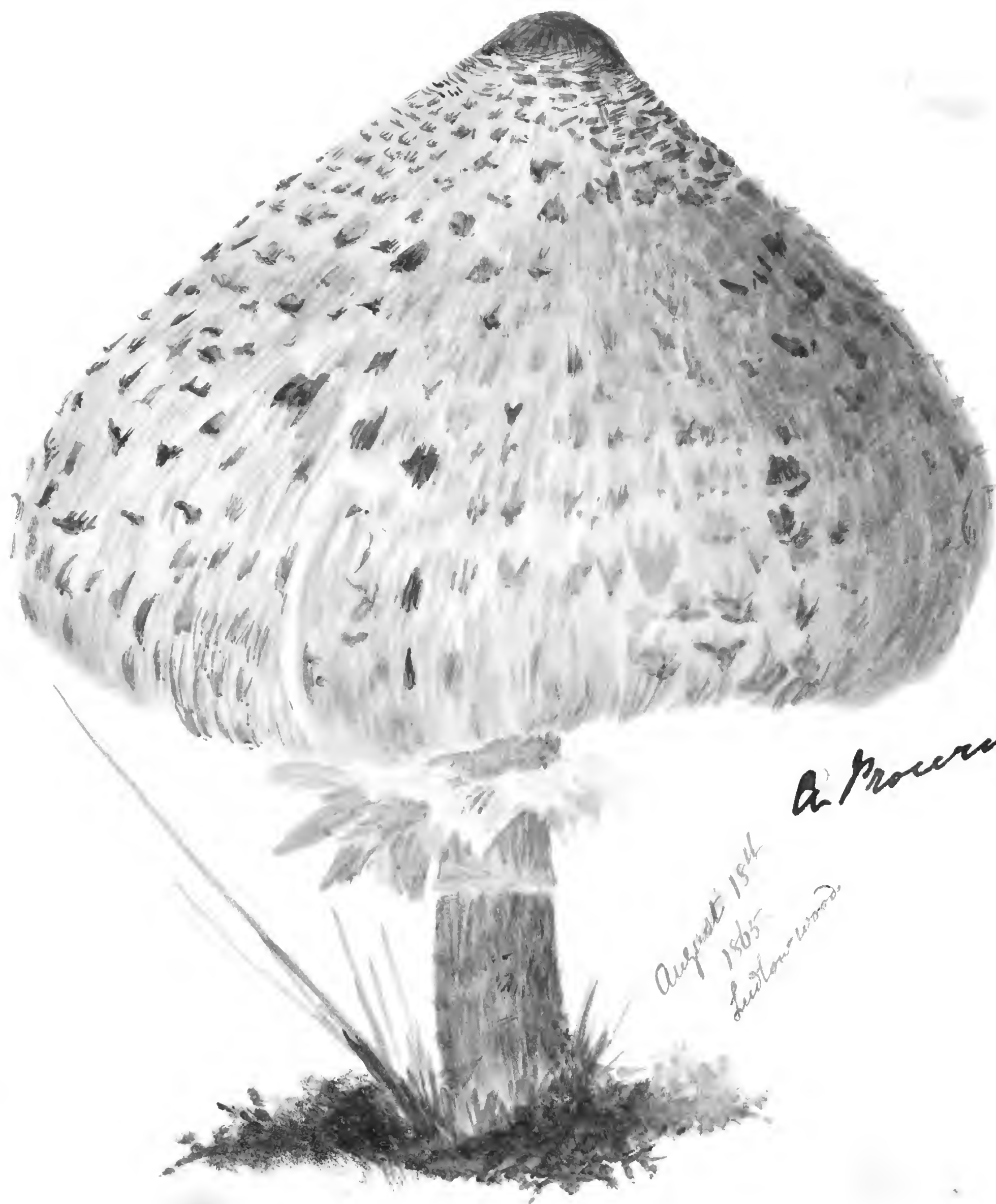
Marasmius Corium
Weston Mass
Jan 19 1865



Oecidium
Urtica
Guilford
Vicarage Garden
June 1865



Morchella
Esculenta
May 1860



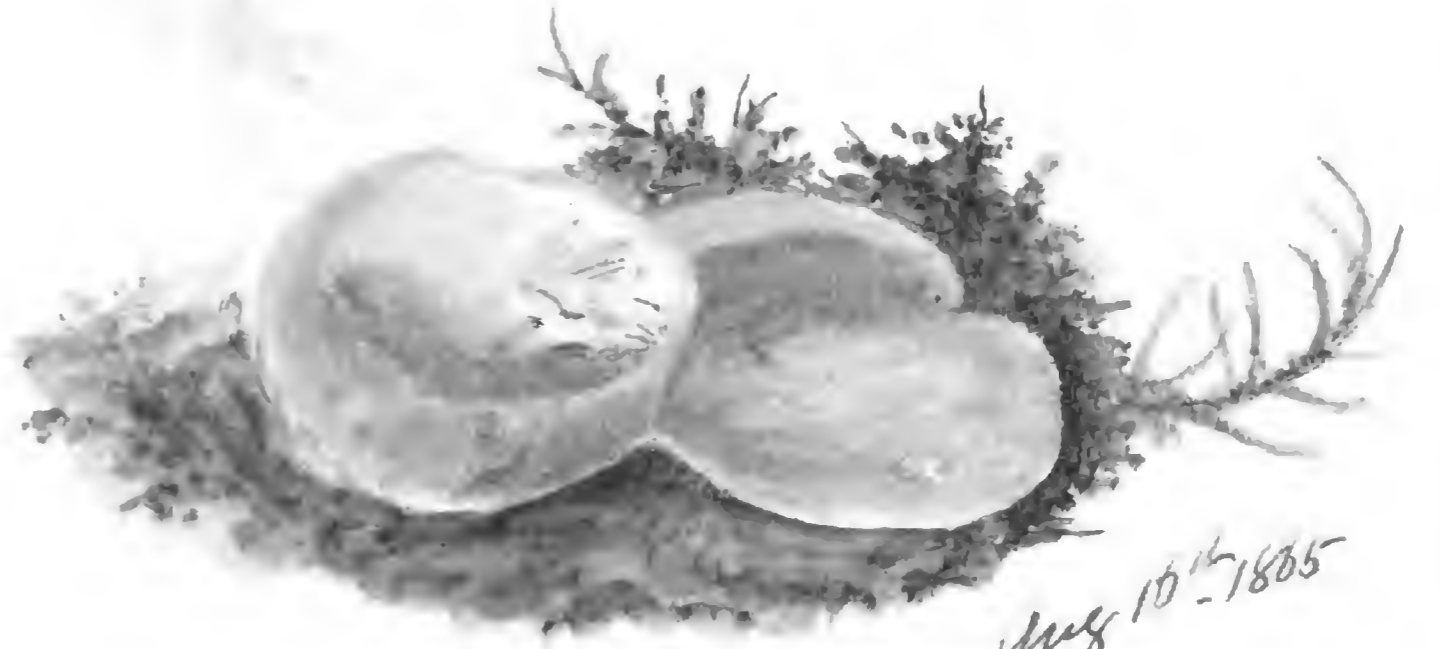
August 1864
1865
Easton Woods
A. Procerus.



*Clavaria ~~rotunda~~
fastigiata*



Epithelium
June 12th / 65



Periza Aug 10th - 1865
Viridaria



Aug 10
1865 *Periza hemisphaerica*



P. ferruginotus

Aug 10th - 1865 Linn. & d.



*Cortinarius
climatochelis*
Garraugh Lane.

Aug 15th
1865



Aug 15th
1865
Cortinarius (climatochelis?)
flavobrunneus



Aug 16th



Aug 18th Mary Knowle
Blisford
Lenta



Polyporus Intybaceus
August 21st 1863



Amanita muscaria



Boletus caperatus



Very young
B. reticulatus



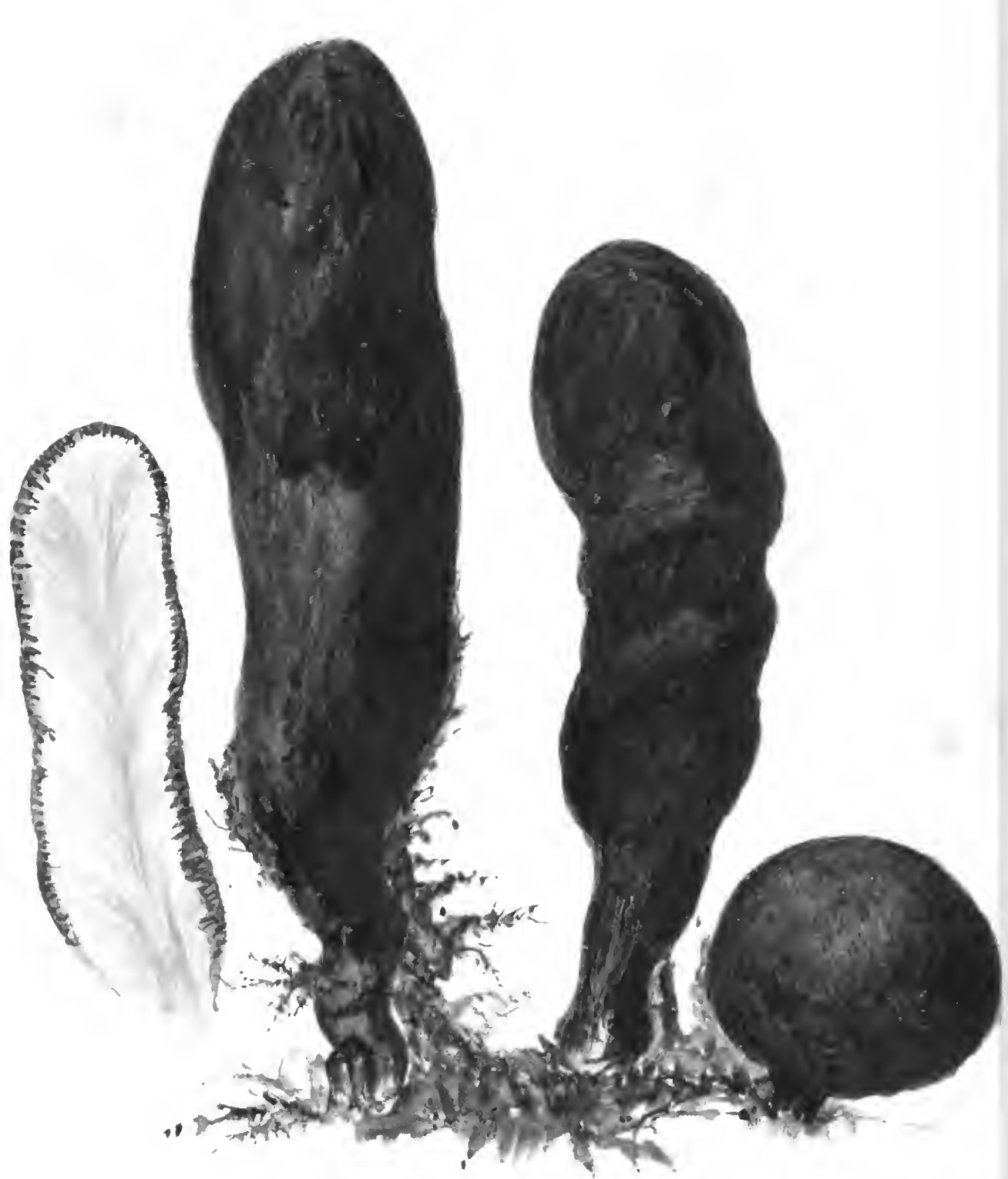


Belvella Elastica (rare.) Sept 8th 1855
Sheppard





Strobilomyces Strobilaceus (Oak Woods) ^{Augt Sept & Oct}



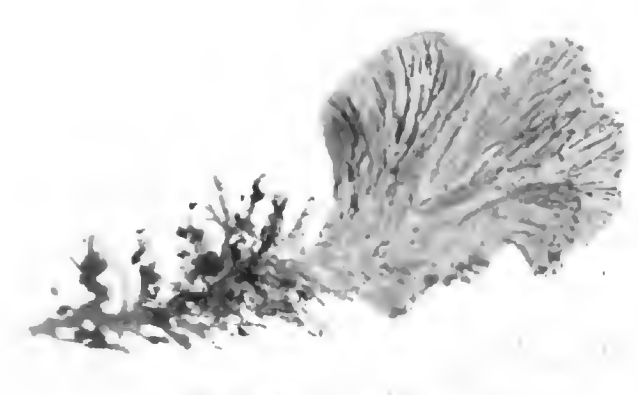
Polymerophya - B.



Cyphella Capula



Stropharia



Truncatus



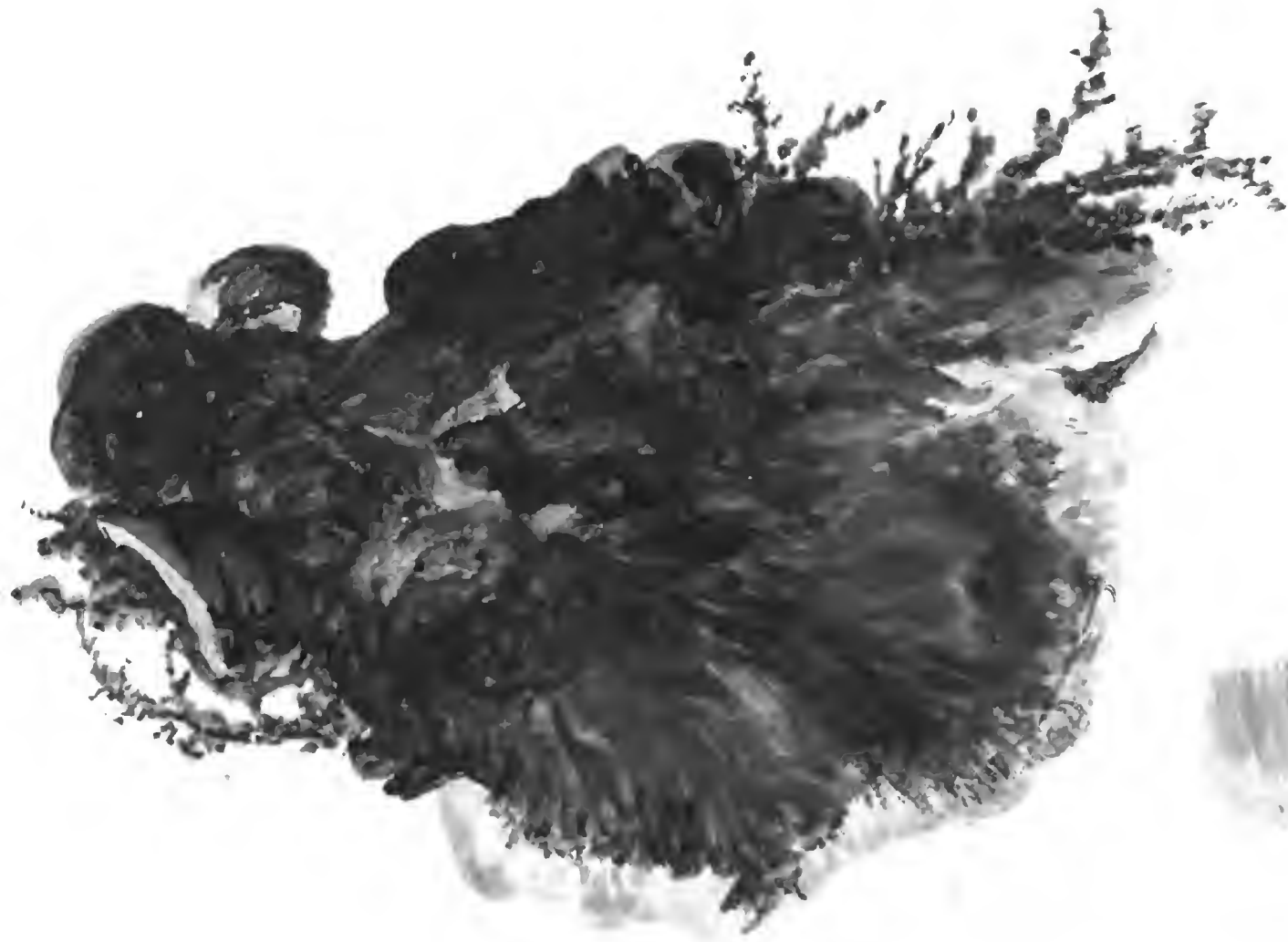
Capula (Oak Woods)
Wolffia Vitellina
Sept. 1868



eed



*Hydnum
auriscalpium*
New York
Cathlamet Camp, Wilson & M.
Cathlamet - 1866



Uropygia umbrosa on an oak stump
Quilfield June 4th
1866



Helvella Ehippium
1866

Helvella Ehippium
New York
M. Berkeley



Agaricus geotrupus
Dr. Mitis

Decr. 11th 1865
Weston's Mare



Maricus stylolobus

Weldon Jan'y 29/66



Sterea Shadiceum
Feb'y 26th 1866 Weston S.M.



Copwood.

Merasmus Androsaccus

Sept 5th 1866
Asxaccus
C. K. L.



Dark plant matter
Soft + velvety



Polyporus July 21/67
dispidus -
light col. - variety



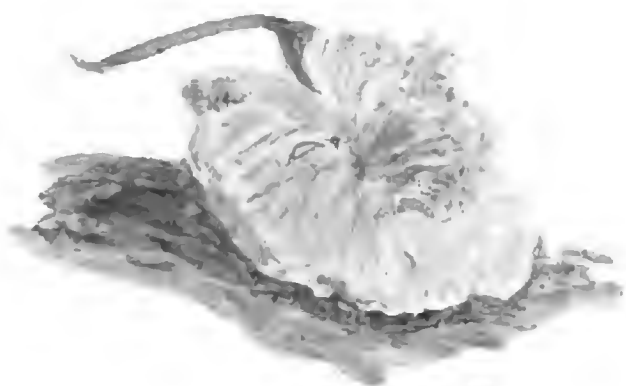
Clavaria juncea
Oct 29th 1867



Calocera pulchrosa
8-20th 67



Hypericus (leucopus)
(220)



Zadalea
Latipinna
Oct 29



Stereum spadiceum
K. J. [unclear]



Spathulata
Hawaii
Oct 27/67
from [unclear]



Clavaria
Cerauoides
Clem
Oct 26



Arizma
Bull. Boston
Nov 2/67



Nov 21
Corticium
levis



Morchella semilibera
April 9th 1868 + Canham



Peziza reticulata
(of Greville)
Ludlow - April 9th 1868



Corticium falcatum

Apr 17th 1868

Mucor ramosus
on the above Ludlow



Cordiceps entomorticia
Hay Park, May 3rd 1868



Apr 11th
Sporodina dichotoma
growing on *Peziza reticulata*



May 13





Polyborus Picipes?



Polyporus Dryadeus.
On an oak stump
July 20th 1868



Pteroclitus
Jul. 22/08.

W. d.



Clavaria pistillaris

Oct. 16th 1868

Oct. 31st 1868



a applicatus Jan 22 1869.



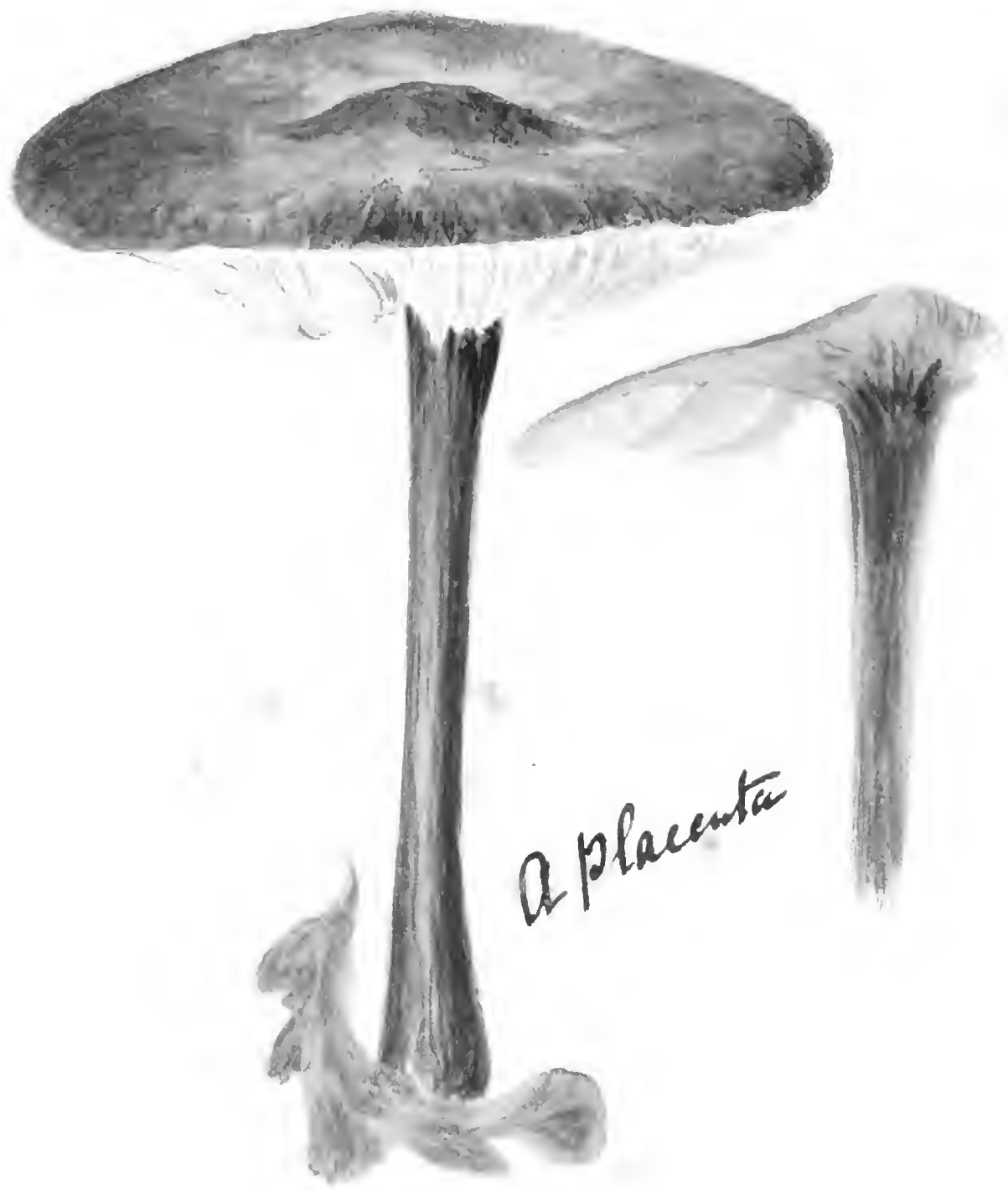
a. Vaginatius
Sept. 1869



Cortinarius
aureus
Aug 29/69



Lindholm



A. placenta



A. nidorosa



A. pantherinum
Oct. 1869



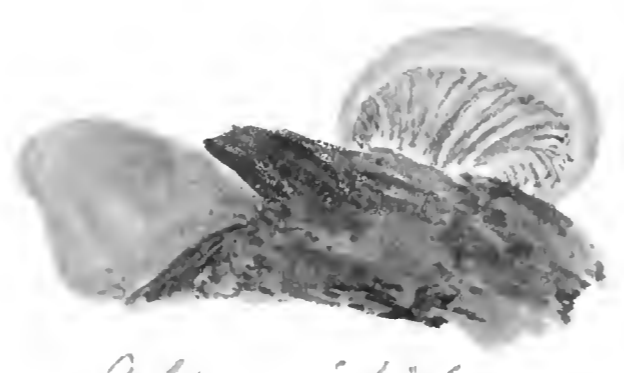
Craterellus cornucopioides
Nov. 1869



Auricularia lobata
Feby 15 - 1871



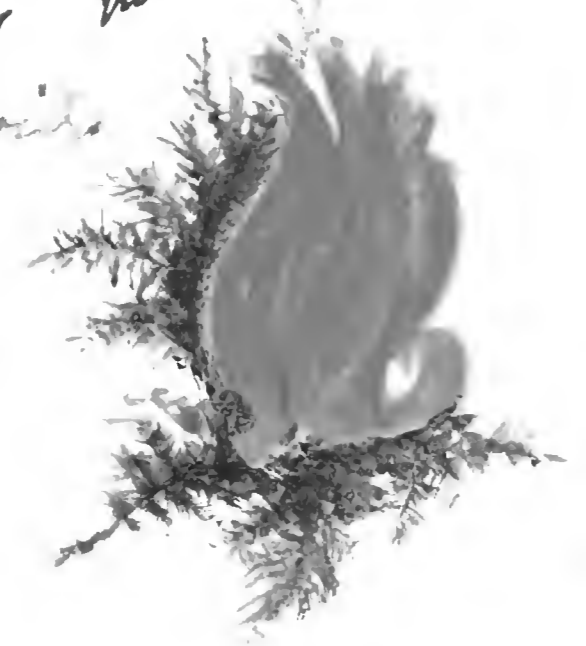
Cordyceps ophioglossoides
Nov. 1869



A. variabilis
Nov/69



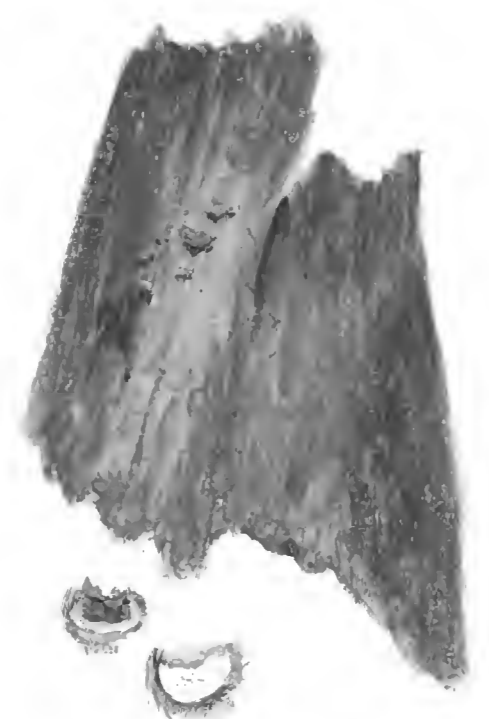
Anthracium flammea
Nov. =



Ludlow
Cortinarius Evermus
Oct. 69



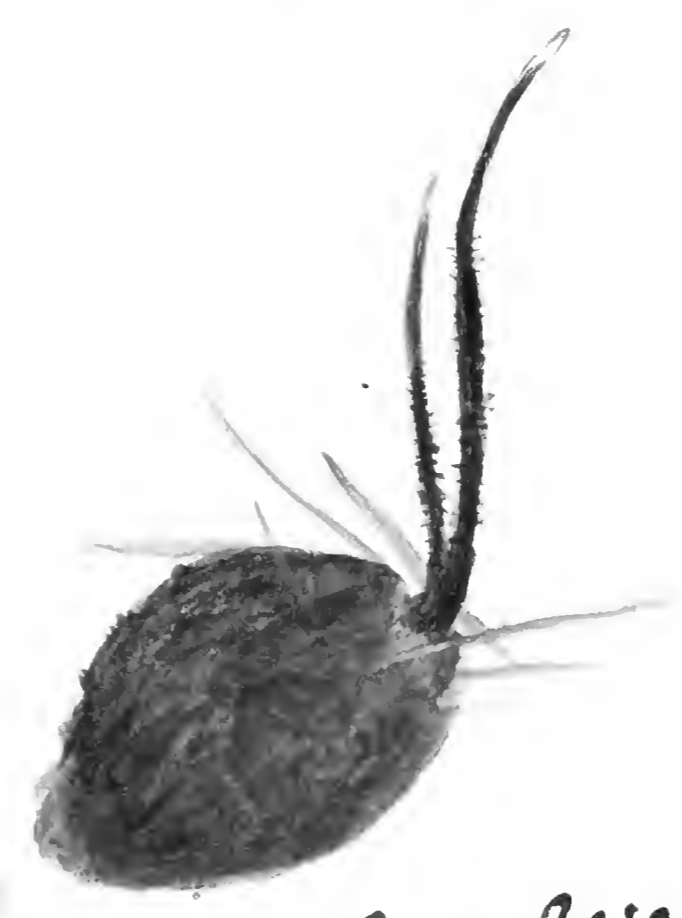
Puffula Vitellina
Oct. 69 rare



March 3rd
1871



Double size. March 11th



Xylaria Carposphila
March 11th
Wetmore, S. Mex
Camban (873)



Cyphella muscigena
The largest on
3 times the
size of nature
March 11th
1871



Boletus



Boletus



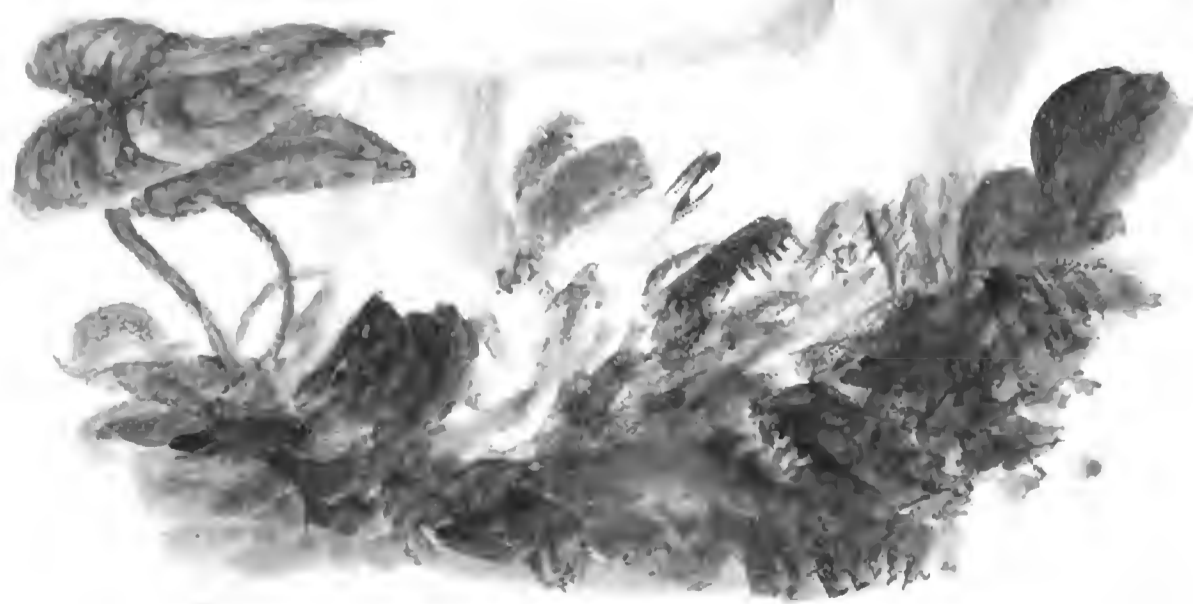
15



16



17



Boletus

18

Boletus

Boletus



Boletinus
Boletus *Callochorus*

17





A. longipes
Cayman Camp
Nov. 7th / 91



As tritipes pale form



A. Aurilorum



A. Rimosa



*Psilocybe
aurata*
Shawbury



*Psilocybe
radicata*
Langford
Abbey.



A. mucidus
on beech
Langford





Cainham Camp



Cainham



Uredo filicum
on *Cyrtoporus fragilis*



Puffula
Ochrroleuca
Fir woods
Shawburyheath



Lactarius deliciosus
Fir woods
Shawburyheath



Sept 1872

Cladonia furcata



Ann Churchyard.

Geaster Bryantii



Sept 1872



Oct 9th 1872

Geaster hygrometricus

Rare name. Middlebury
(named by Mr. Brown).



