



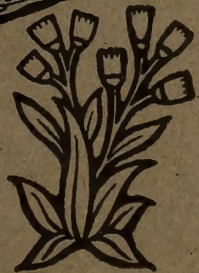
Presented to the
LIBRARIES *of the*
UNIVERSITY OF TORONTO
by
Glen Frankfurter

The **SHERIDAN** **NURSERIES.**



“And I beseech you, forget
not to inform yourself as dili-
-gently as may be, in things
that belong to GARDENING.”

John Evelyn.



NOTICE:—Owing to abnormal trade conditions due to the war, the prices in this catalogue are subject to change without notice.

Terms and Remarks

It gives us much pleasure to be able to present our patrons and the general public with our fifth catalogue of ornamental nursery stock. In spite of the war with its resultant, curtailment of expense on every hand, the past season has brought forth a demand for our nursery stock which has exceeded by far our most sanguine expectations. Surely this phenomenal demand can be only attributed to a rapidly increasing interest in the joys of gardening on the part of the Canadian public.

We take this opportunity to thank our patrons for their past favors and to extend to them and their friends a cordial invitation to visit our Nurseries at Clarkson's. Owing to our greatly increased trade we have doubled the acreage of our ornamental stock since last season and we now have over 35 acres solidly planted with nursery stock.

The following prices are net, delivered to carriers, f.o.b. at Clarkson's, after which our responsibility ceases. Special quotations will be made on orders exceeding \$25.00. Cash should accompany all orders under \$25.00. Customers are requested to address all orders to the city office.

Every reasonable care will be taken to ensure the safe delivery of the plants at their destination.

Orders will be sent out in the order received.

Only such plants are here listed as are actually to be found growing successfully in our Nurseries. Should any variety become exhausted, a substitute will be suggested, but not sent without instructions. If our suggestions are not acceptable, the cash for the missing varieties will be immediately refunded. As we are anxious to ship nothing but high class stock, true to name and certain to give satisfaction, we do not wish to purchase special varieties from other sources for our customers unless specially requested to do so.

Although we do not anticipate any errors in nomenclature, mistakes are occasionally bound to occur in the best managed Nursery. In such cases we expect to be immediately notified as soon as the error becomes apparent, when it will be either rectified at the earliest possible date or the money refunded.

For the assistance of customers who experience difficulty in making a suitable choice of perennials for their gardens, we take pleasure in making the following special offers:

1. We are prepared to plan, supply stock, and plant herbaceous borders of any size, exceeding 10 square yards, in Toronto or its immediate vicinity, for the sum of \$1.50 per square yard.

2. For the sum of \$12.00 cash in advance, we will supply 66 perennial plants of our own selection of varieties most likely to give satisfaction, including in the order not more than six plants of any one variety.

3. For the sum of \$30.00 cash in advance, we are prepared to supply 200 perennial plants of varieties most likely to give satisfaction, including in the order not more than six plants of any one variety.

Our Nursery farms are situated on the west side of the town line between the Counties of Halton and Peel. They front on to the middle road between Toronto and Hamilton, about one and a half miles west of Clarkson's Station, being intersected by the right of way of the G.T.R., C.P.R. and C.N.E. The distance from Lake Ontario is about one mile.

AUTUMN, 1918
AND
SPRING, 1919

A
GARDEN MANUAL
AND
CATALOGUE
OF

	PAGES
PERENNIALS - - - - -	11-32
SHRUBS - - - - -	33-45
TREES - - - - -	47-49
EVERGREENS - - - - -	51-55
CLIMBERS - - - - -	56-57
ROSES - - - - -	59-60



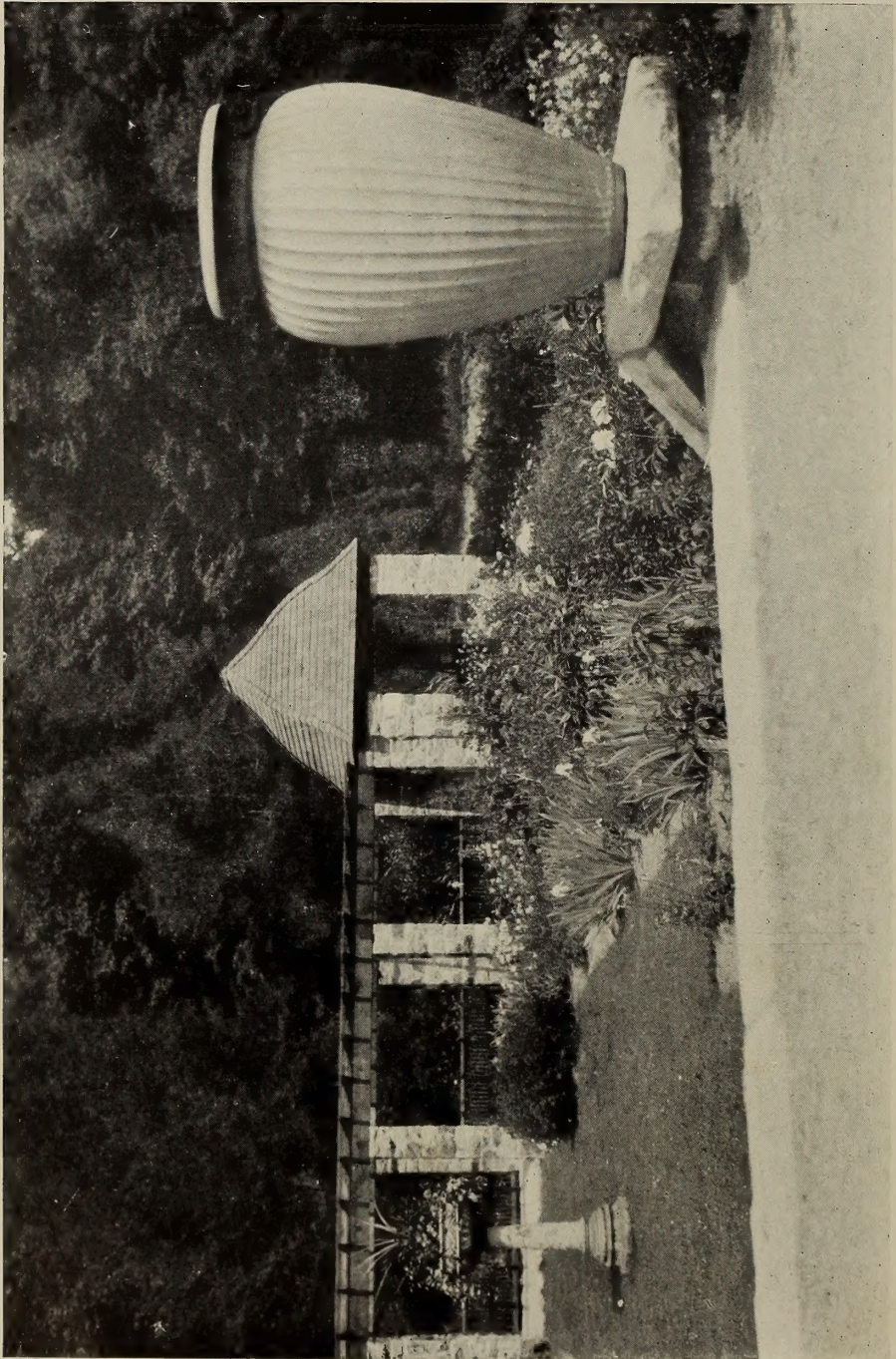
GROWN BY
THE SHERIDAN NURSERIES
AT THEIR NURSERY FARMS NEAR
CLARKSONS, ONT.

POSTAL ADDRESS:
SHERIDAN, ONT.

TELEPHONE:
CLARKSONS 20 R 2

CITY OFFICE—34 NORTH STREET, TORONTO
TELEPHONE NORTH 8064

SHERIDAN NURSERIES



A view in one of our recently completed gardens.

Landscape Department

We wish to give special prominence in this issue of our catalogue to our Landscape Department. So great have been the demands on us recently for this class of work that we believe it will prove of considerable interest to our patrons and prospective customers to be shown a few examples of gardens designed, constructed and planted by us.

The first step to take when making a garden is to have a good plan. The second is to get skilled workmen to carry it out. The third is good nursery stock. That the arrangement and furnishing of a garden is a matter of extreme difficulty, demanding the services of those who have given their lives to its study, many have already found out. To these we offer that type of assistance which only years of experience and training can give. We place at their disposal our advice, our trained men, and our large stock of ornamental trees, shrubs, and perennials, grown at our own nurseries.

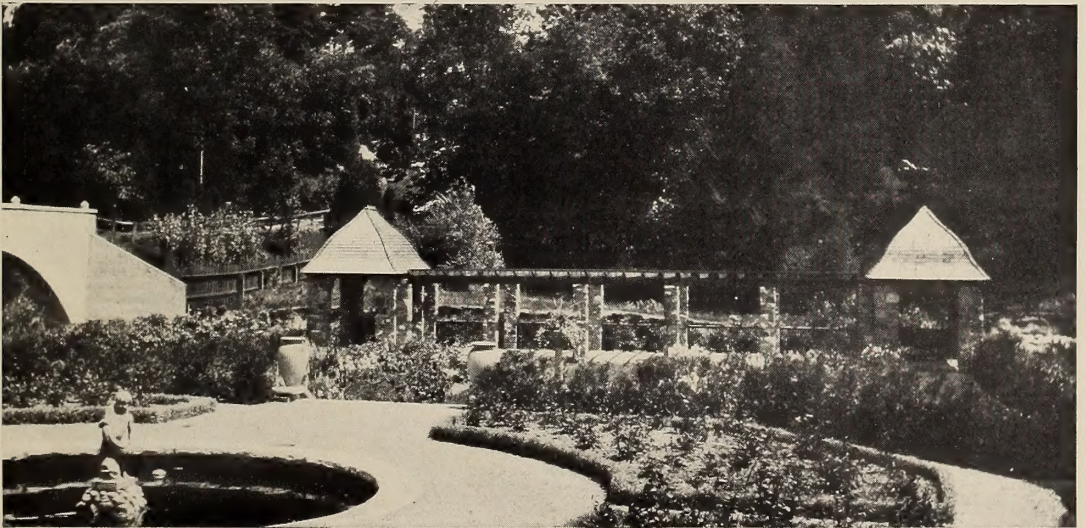
Plans Free

We will furnish plans for a charge of 10 per cent. on the cost of stock at our catalogue prices, whether supplied by us or not.

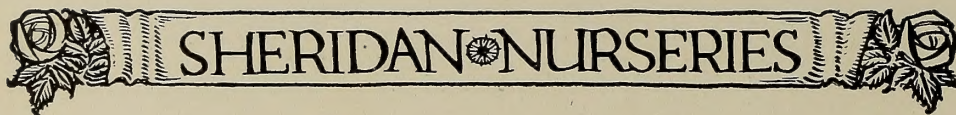
If, however, the full order is placed in our care we will be pleased to deduct the cost of the plans from the account.

The Cost of Gardens

As the question of cost is usually one of the principal causes of hesitation, when the layout of the grounds come up for consideration, we have taken particular care to include in our examples some which illustrate what charming results can be secured by a modest outlay. On the other hand, for those who contemplate the development of a considerable area of property, or who feel that their grounds demand a more intensive and ambitious treatment we have selected views of more costly undertakings.



A Recent Example of our work



THE HERBACEOUS BORDER

In cases where only a small amount of money is available and expectations are large, it frequently happens that the garden will restrict itself to beds and borders. Of these the herbaceous border is the most interesting, the most showy, and usually the most popular. If any satisfying results are looked for, the herbaceous border must be planned and arranged by those thoroughly acquainted with the habit, height, period of bloom, and color of the varieties to be used.

As comparatively few amateurs have sufficient leisure to master the varieties of perennials, most people will secure best results by expert planning.

Bedding Plants Inferior

Although hardy herbaceous perennials are becoming increasingly popular, yet comparatively few people realize how easy they are of culture and what a great variety of color and form they offer throughout the entire season from early summer to late fall.

In the case of the ordinary tender bedding plants the season is half over before they present any great display of bloom.

The initial cost of the plants and the proper preparation of the ground to receive them is the only expense worth considering. The after maintenance will be found insignificant when compared with the very considerable annual expense of buying or raising tender summer bedding plants.

Succession of Bloom

It will be readily seen that where space is limited great care should be taken to select plants that have a long period of blooming in order to avoid, as much as possible, ugly gaps in beds and borders. For example, the Perennial Blue Flax and *Viola Cornuta* in its white and purple forms will be found to flower almost the entire season, and there are many others equally good.

It is not generally known that a number of our early summer hardy plants will bloom again later in the season if the first crop of flowering stalks be cut off close to the ground immediately they show signs of deterioration. In this connection we may mention the Canterbury Bell (*Campanula Media*), and the perennial Larkspur or *Delphinium*.

Preparation of Soil

Failure to grow these truly beautiful garden subjects successfully is traceable to several causes. In the first place, it is most important to see that, previous to planting, all beds are deeply trenched, poor soil amply enriched by the addition of well-rotted manure, and that the drainage is good. Clay soils, especially, should be well drained. The necessity for this, borne out by the fact that many plants, which are apparently quite hardy on a dry, sandy soil, will winter-kill on a water-logged clay. On the other hand, where clay soils have been drained, the same plants will prove equally hardy on either sand or clay.

Winter Protection

It is not so much the severity of our winters that injures our gardens as the treacherous alternate thawing and freezing during the early spring. A top dressing in the autumn of

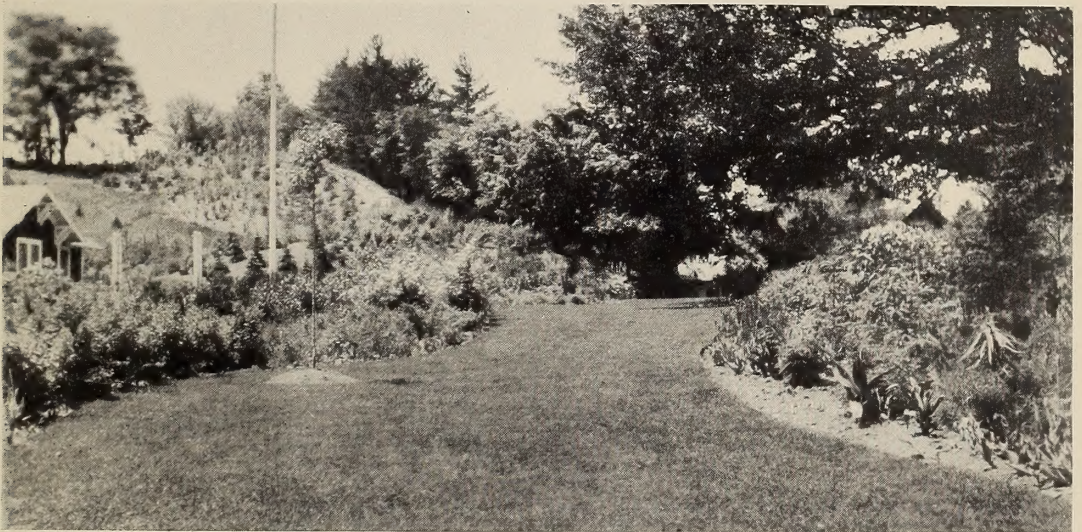
SHERIDAN NURSERIES

dry litter or straw will do much to ameliorate this condition. Want of moisture at the roots is another common cause of mortality in the flower garden. It is better to give the borders a good soaking once or twice a week during dry weather, than a mere sprinkling every day. A frequent use of the hose to break up the surface of the soil will do more to conserve moisture and keep the plants healthy, than dozens of light and inefficient sprinklings of water.

Color Arrangement

The artistic success of the herbaceous border depends entirely on the color grouping and bold massing of the plants. Their time of flowering and their heights also should be borne well in mind. Indiscriminate dotting of single plants and haphazard mixtures of colors result in failure and disappointment. To obtain complete satisfaction, we strongly recommend a carefully thought-out plan specially prepared by an expert to suit the needs of each individual client. This work we are prepared to undertake from the preparation of the beds to the supplying and planting of the stock.

THE SHRUB BORDER



A glade bounded by shrubberies. Photographed eighteen months after planting.

As the upkeep of the herbaceous borders involves a certain amount of labor, many people prefer to confine their efforts to flowering shrubs which call for little or no attention when once established.

Like the herbaceous border, the shrub border needs thorough planning. Let us plan yours. In our nurseries, near Clarksons, will be found all the most popular sorts of hardy flowering shrubs, and an immense number of varieties less well-known, but in many cases more beautiful.

SHERIDAN NURSERIES

THE EVERGREEN BORDER

Of all plantations the evergreen border is the most handsome and the most permanent. The comparatively slow growth of evergreens, their initial cost, and the difficulty of getting them well established, however, are the chief reasons why they are so seldom planted. The Sheridan Nurseries are making a specialty of evergreens. Our large stock includes many dwarf varieties.

HEDGES

No garden is complete without at least one good flowering or evergreen hedge.

We suggest a list of plants suitable for this purpose and while we do not claim that it is complete, it includes several varieties which will probably be unfamiliar as hedge plants and yet which have considerable merit.

Shrubs Suitable for Hedges

Berberis Vulgaris.	Ligustrum Amurense.	Caragana Arborescens.
“ “ Purpurea.	Philadelphus Lemoinei Erectus.	Gleditschia Triacanthos.
“ Thunbergii.	Rhamnus Cathartica.	Abies Excelsa.
Hippophae Rhamnoides.	Rosa Rugosa.	“ Alba.
Hydrangea Paniculata.	“ Rubiginosa.	“ Canadensis.
Ligustrum Vulgaris.	Spiraea Van Houttei.	Thuja Occidentalis.

THE WILD GARDEN



A Wild Garden planted by us in Rosedale

SHERIDAN NURSERIES

There exists much misunderstanding as to what constitutes a wild garden. It is not, as some people seem to imagine, a wilderness of native plants left to grow as they please untended by the gardener. A wild garden consists of the informal grouping of those flowers and plants which are unsuited to the herbaceous border or formal garden by reason of their habit and growth. Some plants are too tall and coarse, while others are specially adapted to shade under trees or to the margins of ponds and streams. The wild garden is usually located in some special part of the ground set aside for the purpose.

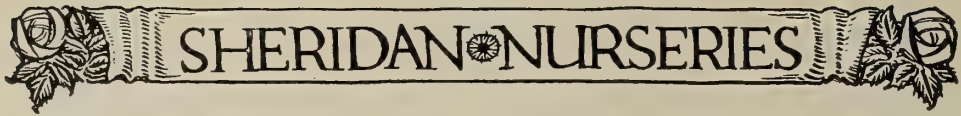
Amongst the following list of plants suitable for the wild garden a number of choice species commonly used in the border and flower garden have been included:

Achillea Eupatorium	Digitalis	Monarda
“ Millefolium	Echinops	Pæonies
Aconitum Autumnale	Epilobium	Oenothera
Anemone Japonica	Eupatoriums	Polygonum
Aquilegias	Ferns	Rudbeckia “Golden Glow”
Asters (Perennial)	Funkias	Scabiosa Ochroleuca
Bocconia Cordata	Helianthus	Senecio Clivorum
Campanulas	Iris	Spiraeas (Herbaceous)
Dicentra	Linaria	Tradescantias

THE ROCK OR ALPINE GARDEN



A Rock Garden recently constructed by us



SHERIDAN NURSERIES

A scientifically constructed rock garden is a truly beautiful addition to the ornamental grounds, especially if it can be combined with a stream or pond. No form of gardening offers such a wealth of concentrated beauty as the growing of Alpines. The term "Alpine" is used rather loosely to include flowering plants, evergreens and deciduous shrubs of dwarf growth suitable for clothing a rock garden. The true Alpines are flowering plants of diminutive growth which flourish above the tree line on any of the great mountain ranges of the world, but a number of plants of similar habit from lower altitudes are largely grown as substitutes where the true Alpines are not obtainable.

The well designed Alpine garden should convey the idea of the natural outcropping of stone met with on a mountain side, and should never consist of a mound of earth stuck over with stones on end, or a heap of tree stumps. These are but pitiful imitations of the real thing, and are unsuited to the growth of plants. Much disappointment would be saved in this form of gardening if expert advice were sought. We have, on our staff, men specially trained in Europe. This enables us to carry out the construction of this class of work. Appended is a list of suitable plants for the rock garden:

Flowers

Achillea, dwarf varieties.	Dianthus, in variety, except Sweet Will.	Phlox Laphami.
Alyssum Saxatile, in variety.	Epimedium macranthum.	" Amœna.
Aquilegia, in variety.	Funkias.	" Subulata.
Arabis.	Geraniums, in variety.	Platycodon.
Arenaria Montana.	Gypsophylla.	Potentilla.
Armeria, in variety.	Geums.	Santolina.
Aster, Alpinus.	Heuchera.	Saxifraga Megasea
Aubrietia, in variety.	Iris pumila, in variety.	Saponaria Ocymoides
Campanulas, dwarf varieties.	Linaria repens.	Sedum spectabile.
Cerastium tomentosum.	Linum.	Sempervivums.
Delphinium Chinensis.	Lysimachia nummularia	Veronica, in variety.
	aria	Viola cornuta.
	Nepeta Mussini.	Yucca filamentosa.
	Oenothera, dwarf.	Vincas.

Shrubs

Berberis repens.	Phil. Lem. Ochroleuca.	Juniper. Dwarf and
" Thunbergii.	" Microphyllus.	Creeping varieties.
Deutzia gracilis.	Rosa Wichuriana.	Pinus Mugho.
Forsythia suspensa.	Spiræa Callosa Alba.	" Sylvestris Globosa.
Hypericum Henryi.	Lyceum Europeum.	" Sylvestris Viridis.
Kerria Japonica.	Tsuga Canadensis.	Taxus Cuspidata.
Lonicera Morrowi.	Abies Subalpina.	Thuya, dwf. varieties.
" Alberti.	Picea Maxwelli.	

SHERIDAN PERENNIALS



A massing of perennials on the South front

FREE ADVICE

We are well aware that in many instances the accompanying catalogue of plants will be no more than a mere list of unfamiliar names, and that intending purchasers would be unable to make suitable selections in order to obtain any specially desired result. In cases such as these we are most willing to give all the assistance in our power, free of charge, either by phone from our city office, or by mail.



SHERIDAN NURSERIES



Sheridan perennials growing in one of our gardens.

SHERIDAN PERENNIALS

Perennials



This Perennial Border is never out of bloom.

ACHILLEA. Yarrow

Hardy herbaceous border and Alpine plants.
Easy of culture. Dwarf forms excellent
for bedding.

Eupatorium. Golden yellow. 3 feet. June-
August.

Millefolium rubrum. A fine red form, good
for cutting. 2-3 feet. June-August.
15 cents each.

Mongolica. Columns of snowy white flowers.
Height 2 feet. June-July.

Perry's White. A greatly improved form of
"The Pearl." More compact and later
blooming. 25 cents each.

Ptarmica (The Pearl). Pure white, double,
good for cutting. 2 feet. June-August.

All Achilleas, except as otherwise stated,
20 cents each.

ACONITUM. Monkshood. Wolfbane

Napellus. Dark blue, long spikes. 4 feet.
July-August.

" **Bicolor.** Blue and white, very
showy. 4 feet. July-August.

Wilsonii. Very large porcelain blue flowers
in handsome spikes. August-September.
4 feet.

All Aconitums, 25 cents each.

Dozen rate less 15%; 25 rate less 20%; 100 rate less 30%.

SHERIDAN NURSERIES

ALYSSUM. Rock Mad Wort

Dwarf shrubby perennials. Excellent plants for rockeries or fronts of borders. Blooms in early spring.

Saxatile (Gold Dust). Golden yellow. 12-18 inches.

Saxatile compactum. A compact form of the above. 1 foot.

“ **citrinum**. Pale yellow. 1 foot. 25 cents each.

All at 20 cents each, except where otherwise noted.

ANCHUSA. Alkanet

Handsome hardy perennials with gentian blue flowers. Very suitable for large borders.

Italica, Dropmore Variety. About 4 feet. Blooms mid-summer. 25 cents each.

“ **Opal**. About 4 feet. Very similar to the Dropmore variety but flowers are of a lighter blue. 25 cents each.

ANEMONE Windflower

One of the best hardy perennials, as they bloom from August until the frost kills them back and are splendid for cutting.

Japonica Elegans Rosea. Silvery pink. 2-3 feet.

“ **Queen Charlotte**. Pink. Semi-double. 2-3 feet.

“ **Geant des Blanches**. Snowy white. Single 2-3 feet.

Japonica Whirlwind. Snowy white. Double. 2-3 feet.

All at 35 cents each.

ANTHEMIS. Chamomile

A good border plant. Very fine for cutting.

Tinctoria Kelwayi. Deep yellow flowers. 2 feet. June-September. 15 cents each.



Our *Aquilegia Nivea Grandiflora* and *Iris Dalmatica* in a border in Rosedale.

AQUILEGIA. Columbine

Useful for rockeries or borders. Will thrive either in sun or shade. Spring flowering.

Cærulea. Very lovely blue and white. 9-15 inches. 25 cents each.

Glandulosa. Outer petals blue, centre white. 25 cents each.

Many of these perennials can be supplied in large clumps at increased prices, according to size.

SHERIDAN PERENNIALS

Chrysantha. Yellow. 2 feet.

Haylogensis. Long spurred. Mixed colors.
2 feet.

Long Spurred Hybrids. Mixed colors. 2 feet.

Mixed. 15 cents each.

Nivea Grandiflora. Beautiful large white
flowers. 12-18 inches.

Vulgaris. Dark blue.

All at 20 cents each, except where otherwise
stated.

ARABIS. Rock Cress

Hardy spring flowering trailing plant, suitable
for rockeries or front of borders.

Alpina. Pure white flowers. 6-9 inches.
20 cents each.

“ **fl; pl.** Double form of above. 35
cents each.

ARENARIA. Sandwort

Beautiful spring blooming rock plant.

Montana. Snow-white. 4 inches. 25 cents
each.

ARMERIA. Sea Pink.

A pretty, hardy Alpine Perennial. Very
suitable for edging.

Formosa hybrida. Deep rose. 12-18 inches.
August-September.

“ “ **alba.** White form of
above. 15 cents each.

Maritima splendens. Bright rosy pink. 6-12
Inches. July-August.

“ “ **alba.** White form of
above. 25 cents each

Plantaginea Gigantea. A giant thrift with
vivid pink flowers. 25 cents each.

All at 20 cents, except as otherwise noted.

ARTEMISIA. Southernwood

Grown principally for its beautiful greyish
aromatic foliage.

abrotanum (Old Man). Yellowish flower-
heads. 2-3 feet. 15 cents each. \$10.00 per
100. \$50.00 per 1,000.

HARDY PERENNIAL ASTER.

Michaelmas Daisies (Starwort)

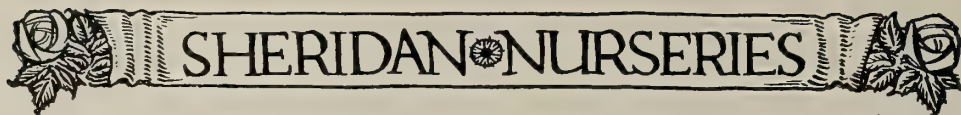
These comprise a very handsome and much
neglected late summer and autumn flowering
group of plants. Owing to several varieties
being found amongst our native flora, they
are frequently regarded as too common for
the choice flower border. So much has been
done, however, in recent years by hybridiza-
tion and careful selection that we now have
a class of showy late blooming plants that
can be no longer passed over by true garden
lovers. Michaelmas Daisies are easy of cul-
ture and are splendid for cutting.

Alpinus. Blue mountain daisy. 6-9 inches.
Blooms throughout summer. 25 cents each.

Amellus Bessarabicus. Purplish blue flowers.
2 feet. Early. 25 cents each.

Beauty of Colwall. Double lavender blue. 4
feet. September-October. 25 cents each.

Dozen rate less 15%; 25 rate less 20%; 100 rate less 30%.



SHERIDAN NURSERIES

F. W. Burbidge. Soft heliotrope, large flower. 4 feet. September. 20 cents each.

Gertrude. Small, clear, purple flowers. September. 2 feet. 20 cents each.

grandiflora. Dark violet; late; large. 2-3 feet. September-October. 20 cents each.

Linosyris. Bright yellow. 2-2½ feet. September-October. 20 cents each.

Miss Wilmot. Slate blue. 4 feet. August-September. 20 cents each.

Mrs. Wright. Large rosy purple flowers. 4 feet. September-October. 25 cents each.

Novelty. Clear mauve pink, very distinct. 3-4 feet. September-October. 25 cents each.

Novae Angliae. Purple violet. 4 feet. September-November. 20 cents each.

,, **Angliae Rubra.** Reddish violet. 4 feet. August-November. 25 cents each.

Perry's Pink. Clear pink. 3 feet. September-October. 35 cents each.

Polyphyllus. Small white flowers, lemon centres. 4 feet. August. 20 cents each.

Regina. Dwarf rosy purple. 2 feet. September-October. 20 cents each.

Robert Parker. Large sprays, lavender blue. 5 feet. September-November. 20 cents each.

Ryecroft Purple. Purple. 4 feet. September-October. 25 cents each.

Ryecroft Pink. Large rosy pink. 4-5 feet. September-October. 25 cents each.

Semi-plenus. Semi-double, lavender blue. 3-4 feet. August-October. 20 cents each.

Tartaricus. Large purple blue. 6 feet. Late bloomer. 15 cents each.

Top Sawyer. Large lilac, good shape. 5 feet. September-November. 20 cents each.

Trinervis. Rich violet purple. 1-2 feet. Late bloomer. 25 cents each.

Vimineus Osprey. Pale pink with golden centre. 2½-3 feet. September-October. 25 cents each.

AUBRIETIA. Rock Cress

Dwarf spring flowering evergreen trailers, suitable for rockeries or front of borders. Height about 3-4 inches.

Dr. Mules. Very dark violet; large flowers.

Fire King. Very effective, with deep red flowers.

Moerheimi. Very fine pink flowers.

All at 25 cents each.

BOCCONIA. Plume Poppy

Handsome free flowering plant, suitable for shrubbery or large borders.

Cordata. Silvery foliage with plumes of buff colored flowers. 6 feet. June-August. 20 cents each.

BOLTONIA. False Starwort

Aster-like flowers. Late blooming. Good for cutting. Bloom September.

Asterioides. White. 5-6 feet.

Latisquama. Pink. 3 feet.

“ **Nana.** Dwarf form. Pink. 2 feet.

All at 20 cents each.

Many of these perennials can be supplied in large clumps at increased prices, according to size.

SHERIDAN PERENNIALS

CAMPANULA. Bell Flower

One of the best class of hardy perennial plants. Easy of culture, thriving either in shady or sunny positions.

Carpatica. Carpathian Harebell. Porcelain Blue, very free. Suitable for front of border or rockery. 9 inches. June-August.

“ **Alba.** White form of above.

glomerata. Cluster Harebell. Clusters of deep violet flowers. 1-2 feet. May-September. 20 cents each.

glomerata Dahurica. Violet blue bells in clusters. June-August.

Grandis. Large saucer shape blue flowers.

“ **Alba.** White form of above.

lactiflora. White tinged with blue. 2-4 feet. July-September.

latifolia. Large drooping blue bells. June-August.

media. Canterbury Bells. 18-24 inches. Blue, white, pink. Single and double. 20 cents each.

“ **calycanthema.** Cup and Saucer Canterbury Bells. Blue, white, pink.

Persicifolia. Deep blue. 2 feet. June-July. 20 cents each.

“ **alba.** White form of the above. 20 cents each.

turbinata. Rich purple blue. 6-12 inches. June-July.

“ **alba.** White form of above.

All 25 cents each, except as otherwise noted.

CENTAUREA. Perennial Cornflower.

Splendid border plant, giving large profusion of flowers which are very useful for cutting.

dealbata. Rosy purple flowers. Nearly all summer. 2 feet. June-September.

macrocephala. Large flowers, rich golden yellow. 4 feet. June-August.

montana. Flowers large and handsome. Blue. 2 feet. May-August.

“ **alba.** White form of above. All at 20 cents each.

CEPHALARIA. Giant Scabious

Attractive, free growing, hardy perennial, useful for cutting.

Tartarica. Sulphur yellow. 6-7 feet. July-August. 20 cents each.



Cerastium tomentosum blooming in one of our gardens in May.

CERASTIUM. Snow in Summer

Silvery foliage covered with masses of snow white flowers in early summer.

Dozen rate less 15%; 25 rate less 20%; 100 rate less 30%.

SHERIDAN NURSERIES

Tomentosum. 6 inches. May-June. 20 cents each.

CHELONE. Shell Flower

Very handsome plants, free flowering and easy of culture.

barbata. Deep scarlet red, graceful spikes. 2-3 feet. July-August. 20 cents each.

Torreyi. Scarlet. 3½ feet. 25 cents each.



Chrysanthemum Maximum Alaska, planted by us in a North Toronto garden.

CHRYSANTHEMUM. Giant White Daisy

Articum. White tinged with pink. 1 foot. July-October. 25 cents each.

Maximum. King Edward VII. Good for cutting. 2 feet. 20 cents each.

“ **Alaska.** White, larger blooms. 3 feet. July-August. 20 cents each.

CLEMATIS. Old Man's Beard. Virgin's Bower

The herbaceous clematis are valuable border plants.

Davidiana. Clusters of pale blue flowers. 3 feet. July-September. 35 cents each.

Erecta alba. White flowers. Good border plant. 4 feet. 25 cents each.

“ **cœrulea.** Blue form of above. 25 cents each.

Integrifolia. Deep blue. 3 feet. June-August. 25 cents each.

COREOPSIS. Tickseed

Fine border plant and very valuable for cutting.

Grandiflora. Golden yellow flowers. 18-30 inches. June-August. 20 cents each.

lanceolata. Flowers large, bright golden yellow. 2 feet. July-August. 15 cents each.

DACTYLIS Ribbon Grass

glomerata, fol. var. Silver variegated grass for edging purposes. 1½ feet. 15 cents each.

DELPHINIUM. Larkspur

One of the finest old English perennials. Very easy of culture, being very hardy, and if cut down immediately after blooming, another bloom may be obtained at the end of the summer.

belladonna. Sky blue. Low growing, branching habit. Early blooming. 3 feet. 20 cents each.

“ **Fanny Stormonth.** Special new variety of the above. 25 cents each.

Brunonianum. Light blue. Musk scented. 1½ feet. July-August. 25 cents each.

Many of these perennials can be supplied in large clumps at increased prices, according to size.

SHERIDAN PERENNIALS

Chinensis album grandiflora. White flowers. 1½ feet. June-September. 20 cents each.

“ **azureum.** Dark blue; dwarf. 2 feet. June-August. 20 cents each.

“ **Tom Thumb.** Deep blue dwarf. 8 inches. June-August. 20 cents each.

Formosum. Dark blue with white centre. August-September. 20 cents each.

Formosum coelestinum. Sky blue, very fine. 2 feet. August-September. 25 cents each.

Gold Medal Hybrids. Shades of blue. July-August. 4-5 feet. 20 cents each.

King of Delphiniums. Rich gentian blue with white eye. Large and very handsome. 6 feet. July-August. \$1.00 each.

Tatsienense. Beautiful gentian blue. 18 inches. July-August. 20 cents each.



A bed of garden pinks in our nurseries

DIANTHUS. “The Pinks”

A popular group of plants for the flower border, edging beds or for the rock garden.

Dianthus Barbatus. (Sweet William). Old English garden favorites. They are so well known that they require no words of ours to recommend them.

Dianthus Barbatus albus. White. 12-18 inches. June-July.

“ “ **Holborn Glory.** Light shades. Mixed. 15 cents each.

“ “ **Newport Pink.** Pink beauty. 12-18 inches. June-July.

“ “ **Nigricans.** Dark red. 12-18 inches. June-July.

Dozen rate less 15%; 25 rate less 20%; 100 rate less 30%.

SHERIDAN NURSERIES

Dianthus Barbatus. Scarlet Beauty. 12-18 inches. June-July.

“ **Coesius.** (Cheddar Pink). Foliage glaucous. Covered with rosy pink flowers. Likes rockeries. 9 inches. June-July.

“ **Deltoides.** (Maiden Pink). Suitable for rockeries. 9 inches. June-July.

“ “ **Alba.** White form of above. 6 inches. June-July.

“ “ **Brilliant.** Small crimson flowers in profusion. 6 inches. June-July. 25 cents each.

“ **Plumarius. Garden Pinks.** Invaluable for borders and edgings. Very useful for cutting. Blooms June-July.

“ “ **Single Mixed.** 15 cents

“ “ **Double Mixed.** 15 cents

“ “ **Double White.**

“ “ **Cyclops.** Fine single rosy carmine with dark zone.

“ “ **Mrs. Sinkins.** Large pearl white, clove scented. 25 cents each.

“ “ **Munstead Hybrids.**

“ “ **Superbum Mixed.**

All at 20 cents each, except where otherwise noted.

DICENTRA. Bleeding Heart

Showy old-fashioned border plant. Good for shade or sun.

spectabilis. Rosy red. 1-2 feet. June-July. 25 cents each.

DICTAMNUS. Burning Bush

One of the best known and oldest perennials.

Fraxinella. Rosy pink. 2 feet. June-August. 25 cents each.

“ **alba.** Pure white. 2 feet. June-August. 25 cents each.

DIGITALIS. Foxglove

A fine old-fashioned hardy plant, easy of culture and preferring partial shade.

gloxiniæflora. Ranging in color from white to pink. 3 feet. June-July.

“ **alba.** White. 2 feet. June-July.

“ **Rosea.** 3 feet. Pink. June-July.

All at 20 cents each.

DORONICUM. Leopard's Bane

Large daisy-like flowers, thriving well in sun or shade.

excelsum. Bright yellow, continuous blooming from May. 3 feet. 25 cents each.

DRACOCEPHALUM. Dragon's Head

Very fine border plants.

Ruyschianum. Blue gem. 12-18 inches. July. 20 cents each.

ECHINOPS. Globe Thistle

Handsome plants with steel blue globular thistle heads, suitable for wide border.

ritro. Steel blue. 3-4 feet. August. 20 cents each.

Sphærocephalus. White spherical heads. 25 cents each.

EPILOBIUM. French Willow Herb

Suitable for shrubbery or woodland planting, thriving in moist situations.

angustifolium. Rose magenta. 4 feet. July. 20 cents each.

Many of these perennials can be supplied in large clumps at increased prices, according to size.



SHERIDAN PERENNIALS

ERYNGIUM. Sea Holly

Handsome stiff flowers and foliage of metallic blue. Very striking.

Amethystinum. Metallic blue stems and flowers, resembling "Planum," but deeper in colour. 25 cents each.

cœruleum. Dwarf. The whole plant takes on a beautiful bluish tinge in late summer, bearing a profusion of globular blue flower heads. 18 inches. August-September. 25 cents each.

planum. A profusion of small steel blue flowers. 2-3 feet. July-August. 20 cents each.

FUNKIA. Plaintain Lily

Handsome in flower and foliage. Thrive in any position, sun or shade, borders, or marshy ground.

Undulata variegata (Thomas Hogg). Very handsome variegated foliage with rosy purple flowers. 18 inches. 25 cents each.

GAILLARDIA. Blanket Flower.

One of the most gorgeous of our border plants. Have a long period of blooming and are excellent for cutting.

Grandiflora maxima rubra. Rich orange red flowers, with golden yellow margins. 2 feet. July-August. 20 cents each.

GALEGA. Goat's Rue.

Very ornamental border plants, covered with sprays of small pea-shaped flowers. Good for cutting.

Hartlandii bicolor. The best. Blue and white. 3-4 feet. July-August. 25 cents each.

GERANIUM. Crane's Bill

Hardy, showy plants for border and rockery.

pratense. Rich purple blue. 2 feet. June-August. 20 cents each.

sanguineum. Purple red. 12 inches. June-July. 20 cents each.

GEUM. Avens

Free flowering border perennials. Good for cutting.

coccineum. Mrs. Bradshaw. Scarlet. 12-18 inches. June-July. 20 cents each.

GYPSOPHILA. Chalk Plant

Masses of miniature white or rosy flowers, much prized for cutting.

monstrosa repens. White to rose dwarf. 9 inches. July-August. 25 cents each.

paniculata (Baby's Breath). Pure white. 2-3 feet. July-August. 20 cents each.

" **fl; pl.** Double form of above. 50 cents each.

HELENIUM. Sneezewort

Handsome border plants, mostly autumn flowering.

autumnale rubrum. Reddish brown. One of the finest autumn flowering. August-September. 4-5 feet.

" **superbum.** Pure yellow. Grand plant. 4-5 feet. August-September.

Hoopesii. Earliest variety to bloom. Pure orange. 2-3 feet. June.

pumilum. Golden yellow. 2 feet. July-August.

Riverton Beauty. New large lemon colored flowers, darker centre. 5 feet. August-September. 25 cents each.

Riverton Gem. Coppery red flowers; fine novelty. 5 feet. August-September. 25 cents each.

Dozen rate less 15%; 25 rate less 20%; 100 rate less 30%.



SHERIDAN NURSERIES

striatum. Golden yellow, striped brownish red. 4-5 feet. August-September.

All at 20 cents, except where otherwise noted.

HELIANTHUS. Perennial Sunflower

Hardy, free flowering plants. Easy of culture and splendid for cutting.

Miss Mellish. Very large, semi-double flowers of a bright orange yellow. 6 feet. August-September. 15 cents each.

Mollis. Large, single. Pale yellow. 5 feet. August-September. 25 cents each.

Soliel D'or. Full double flowers, very profuse. 4 feet. August-September. 25 cents each.

strumosus. Great masses of lemon-yellow flowers, suitable for back of wide border. 6-7 feet. September. 20 cents each.

HELIOPSIS. False Sunflower

Very similar to the Helianthus. Well suited for back of borders. Especially valuable for cutting.

Pitcherianus. Deep orange. 2-3 feet. July-September.

scabra major. Bright yellow. 4 feet. July-September.

All at 15 cents each.

HEMEROCALLIS. Yellow Day Lily

One of the most popular of our hardy perennials, easy of culture, preferring moist places and partial shade.

aurantiaca. Large orange yellow flowers of great size and substance. 3 feet. August-September. 20 cents each.

flava Orange Man. Fine deep orange. 2 feet. June-July. 20 cents each.

Kwanso, fl; pl. Semi-double, orange shaded crimson. July-August. 50 cents each.

HEUCHERA. Alum Root

Very suitable for borders, rockeries, etc. Small delicate bell-shaped flowers in panicles.

sanguinea. (**Crimson Bells**). Bright coral red flowers. 12-18 inches. June-August. 35 cents each.

Brizioides. Pink. 18 inches. June-August. 35 cents each.

HIBISCUS. Mallow

Beautiful tall growing plants of handsome foliage, stately habit and large flowers. Holly-hock family.

Militaris. Flesh pink, ringed deeper towards centre. Lance shaped leaf. 4-6 feet. August.

Moscheutos. Pink bellshaped flowers of large size. August.

Moscheutos. (**Crimson Eye**). White with crimson eye. August. All at 25 cents each.

HOLLYHOCKS. Althea Rosea

One of the most beautiful of the hardy perennials and deservedly a great favorite. No garden is complete without these highly decorative plants.

Single. Pink, white and mixed. 20 cents each.

Double. Carmine, Crimson, Primrose, Purplish Violet, Scarlet, White to Purple, Rose, White. 20 cents each.

Paling Belle. Large double pink. Rare. 25 cents each.

INCARVILLEA. Hardy Gloxinia

One of our choicest perennials. Dwarf, very useful for rock gardens. Splendid for cutting.

Delavayi. Large gloxinia like flowers of a rosy purple shade. 2 feet. June-August. 25 cents each.

Grandiflora. Flowers bright pink. May-June. 1 foot. 25 cents each.

Many of these perennials can be supplied in large clumps at increased prices, according to size.

SHERIDAN PERENNIALS



A border of Sheridan Iris in Toronto

IRIS. Fleur-de-lis

These beautiful hardy spring and early summer flowering plants are amongst the most valuable we have, and should find a place in every Canadian garden. They thrive in sun or shade and are well adapted for cities. The best known and hardiest for general purposes are the German Flag Iris or Iris Germanica. The Japanese Iris (Iris Kaempferi) are usually associated with water, thriving along the margins of ponds and streams, though they can be grown perfectly in the ordinary flower border. Not so well-known, but equally valuable in their own way, are the Siberian Iris and the giant yellow banded Iris (Iris Ochroleuca Gigantea). As a permanent edging plant the miniature Flag Iris (Iris Pumila) will be found excellent and most ornamental in the early summer.

- Germanica Albino.** S. Pale lavender. F. Tipped royal purple. 20 cents each.
- “ **Edith.** S. Azure blue. F. Purple.
- “ **Fairy Queen.** S. Lavender. F. Tipped reticulated violet. 20 cents each.

- Germanica Florentine.** S. & F. White. 25
- “ **Garrick.** S. Light blue. F. Violet. 20 cents each.
- “ **Honorabalis.** S. Golden yellow. F. Rich mahogany brown. 25 cents each.
- “ **Kharput.** Large deep purple. 50 cents each.
- “ **King Edward.** Light blue. 15 cents each.
- “ **Lilacena.** S. & F. White and mottled. Small flowers. 35 cents each.
- “ **Mrs. H. Darwin.** Pure white. Falls slightly reticulated. Violet at the base. 20 cents each.
- “ **Pallida Dalmatica.** Tallest of the German Iris. Handsome, distinct Flag Iris, with broad glaucous blue foliage. Flowers S. Lavender. F. Lavender tinged with purple. Height 40 inches. 50 cents each.
- “ **Panchrea.** S. Bronze. F. White, striped crimson. 25 cents each.
- “ **Primrose Queen.** S. & F. Light yellow. 15 cents each.
- “ **Queen of the May.** Rosy Lilac. Almost pink. A lovely shade. 25 cents each.
- “ **Royal Blue.** S. & F. Dark blue. 35 cents each.
- “ **Sparta.** S. Bronze yellow. F. Maroon and old gold. Late flowering. 50 cents each.
- “ **William III.** White streaked with light blue. 15 cents each.
- “ **Yellow.** Large. S. & F. Yellow. 15 cents each.
- Kaempferi.** Japanese Iris. Best varieties. Mixed. 50 cents each.

Dozen rate less 15%; 25 rate less 20%; 100 rate less 30%.

SHERIDAN NURSERIES

ochroleuca gigantea. Golden banded Iris. S. White. F. Yellow and white. Very handsome, tall, 4 feet. 25 cents each.

Pseudo-Acorus. Large yellow. Suitable for moist situations. 15 cents each.

pumila. Blue dwarf Iris, suitable for edging, very early. 15 cents each.

“ Yellow. 15 cents each.

“ Early flowering, purple. 15 cents each.

Siberica. Siberian beardless Iris. 25 cents each.

LATHYRUS. Everlasting or Perennial Sweet Peas

Semi-climbing plants, suitable for low walls and trellis.

latifolius. Rosy flowers. July-August. 25 cents each.

Pink Beauty. Soft pink. July-August. 25 cents each.



Liatris spicata and *Rudbeckia purpurea*.
A charming colour grouping in one
of our borders in August

LIATRIS. Blazing Star

Useful autumn flowering border plants, producing densely crowded flower spikes of purple shades. Thrive on dry soils where little else will grow.

spicata. Rosy purple. 30-36 inches. 20 cents each.

LINARIA. Toad Flax

Flowers somewhat resemble the annual Snapdragon.

Dalmatica. Lemon yellow flowers, glaucous foliage. 19-30 inches. July. 20 cents each.

repens. Summer Lily of the Valley. White dainty spikes. 1 foot. July. 20 cents each.

LINUM. Perennial Flax

Strongly recommended on account of its long flowering season. One of the best perennials.

Flavum. Golden yellow. June-August. 12 inches. 20 cents each.

perenne. Pearly blue. 18 inches. All summer. 20 cents each.

LOBELIA. Lobelia

These should be distinguished from the annual Lobelias. Being moisture-loving plants, they are well adapted for wet places.

Syphilitica. Native plant, suitable for bog garden. July-August. 25 cents each.

LUPINUS. The Lupines

Very showy border plants, throwing up handsome spikes of pea-like flowers in June.

Polyphyllus. Handsome blue flowers. June. 20 cents each.

“ **roseus.** Long spikes of soft rose pink flowers; one of the best herbaceous plants. 25 cents each.

Many of these perennials can be supplied in large clumps at increased prices, according to size.

SHERIDAN PERENNIALS

LYCHNIS. Maltese Cross

These brilliant border plants are of special value on account of the comparative scarcity of pure scarlet amongst our hardy perennials.

Chalcedonica. Scarlet. 30-36 inches. June-July. 20 cents each.

Haageana. Vivid scarlet. Very large flowers. 9-12 inches. June-July. 25 cents each.

LYSIMACHA. Loose-Strife

Very pretty plants. Mostly with yellow flowers.

Nummularia. Creeping Jenny. Yellow, dwarf, creeping over surface of ground. Good for baskets. June-August. 15 cents each.



Malva Moschata growing in one of our gardens

MALVA. Mallow

Very free flowering, good for cutting.

Moschata Rosea. Rosy pink. 2-3 feet. June-July. 20 cents each.

“ **alba.** White. 2-3 feet. June-July. 20 cents each.

MERTENSIA. Borage Wort

Siberica. Drooping clusters of pale blue flowers, glaucous foliage. 1½ feet. June-August. 25 cents each.

MONARDA. Bergamot. Bee Balm

Brilliant, hardy plants, thriving in sun or partial shade. Very aromatic.

didyma. Deep scarlet. 2½ feet. August-September. 20 cents each.

NEPETA. Cat mint

Dwarf plants, suitable for rockeries, dry walls or foot of borders.

mussini. Pale lavender blue. Continuous bloom. Most attractive in mass. 12-18 inches. June-August. 20 cents each.

ÆNOTHERA. Evening Primrose

Beautiful showy plants of various heights. Flowers mostly yellow. Require plenty of sun.

Frazeri. Large golden yellow flowers. 18 inches. July-August.

Youngii. Bright golden yellow. July-August. All at 20 cents each.



Dozen rate less 15%; 25 rate less 20%; 100 rate less 30%. •



Part of one of the Pæony plantations in our Nursery.

PÆONIES

Of all our hardy spring flowers, the Pæonies are perhaps the most beautiful and are so well known that a lengthy description of them seems almost unnecessary. The herbaceous varieties, having been derived from a Siberian ancestor, *P. Albiflora*, are sufficiently hardy to stand the most rigorous of our winters. While thriving in almost any position, they are especially grateful for a little shade. September is the best month to plant Pæonies, though they can be moved both in the late fall and early spring. Those moved in the spring will not produce good typical blooms the first year, and on that account should not be critically judged. Pæonies should be disturbed as little as possible when once they are planted, and an overabundance of fresh manure near the roots should be avoided.

Even more beautiful than the herbaceous varieties are the Tree Pæonies. These are of shrubby deciduous growth, with extremely ornamental foliage of a glaucous green. While

the roots are quite hardy in Toronto, some little protection from the frosts is needed in the spring for the foliage and buds. This can be afforded by surrounding them with clean straw or small boughs of fir trees. Although we strongly recommend this extra protection, we have successfully flowered these plants in our own nurseries without taking such precautions. Tree Pæonies are best grown as single specimens, either in a shrubbery or on a lawn, whereas the herbaceous varieties should be grown in masses in beds or borders for bold color effect.

- Chinensis Agida.** Semi-double. Violet pink.
- “ **Alba plena.** Double white.
- “ **Baron Rothschild.** Light lilac pink.
- “ **Canari.** Creamy white, very fine. \$1.00 each.
- “ **Charles de Belleyme.** Dark Crimson. 60 cents each.
- “ **Denis Helye.** Dark carmine rose. \$1.50 each.
- “ **Duchess de Nemours.** Sulphur white. 75 cents each.
- “ **Edulis Superba.** Bright mauve pink. 75 cents each.
- “ **Elegans.** Outer petals pink, shading in centre to white.
- “ **Festiva Maxima.** Pure white. 75 cents each.
- “ **Fragrans.** Dark pink.
- “ **General Cavaignac.** Light violet. \$1.00 each.
- “ **Henri Demay.** Purplish crimson. 75 cents each.
- “ **Isadore Leroy.** Light pinkish purple.
- “ **Lucrece.** Centre cream, outer petals white shaded pink. \$1.00 each.

Many of these perennials can be supplied in large clumps at increased prices, according to size.

SHERIDAN PERENNIALS

Chinensis Mme. Calot. Light pink. 75 cents each.

“ **Mme. de Verneville.** White. \$1.00 each.

“ **Marie Lemoinei.** Pure white, with creamy centre. \$1.00 each.

“ **Mons. Boucharletaine.** Rosy lilac. 75 cents each.

“ **Mons. D’Offroy.** Rich, crimson.

“ **Mons. Paul Rosburg.** Red.

“ **Ne Plus Ultra.** Mauve. 75 cents each

“ **Phyrne.** Purplish red.

“ **Pottsii Superba.** Lilac pink.

“ **Reine des Roses.** Lilac pink.

“ **Rosa Magna.** Deep pink salmon centre.

“ **Rose d’Amour.** Hydrangea pink. \$1.00 each.

“ **Rosa Odorata.** Bright pink. Large and full.

“ **Rubens. Semi-double.** Dark crimson. 75 cents each.

“ **Rubracunda.** Reddish pink with yellow.

“ **Rubra Triumphans.** Dark crimson. 75 cents each.

Officinalis Alba. White.

“ **Rosea.** Pink.

“ **Rubra.** Red.

All Pæonies not priced, 50 cents each.

MOUTAN PÆONIES. Tree Pæonies

Mixed, \$2.50 each.

PAPAYER. Perennial Poppies

These comprise some of the gayest flowers available for our borders. The Iceland Poppies, owing to their compact growth and continuous blooming, are specially to be recommended for small gardens. Perhaps the most gorgeous of all are the enormous Orientales. The scarlet shades of these stand out as flaming beacons.

Both of the above varieties, if cut in early morning in semi-bud, will last well in water.

Alpinum. Charming dwarf poppy in mixed colours, suitable for rock gardens.

nudicaule coccineum. Scarlet orange. 1 foot. June - August. 25 cents each.

“ “ White. 1 foot. June-August.

“ “ Yellow. 1 foot. June-August.

“ “ Mixed. 1 foot. June-August. 15 cents each.

Single and double varieties of each of above, 20 cents each, except where otherwise noted.

Oriental Blush Queen. Large pale blush pink flowers. 2½ feet. June-July.

“ **Lady Roscoe.** Salmon. 2½ feet.

“ **Perry’s White.** Satiny white with bold crimson base.

“ **Royal Scarlet.** Glorious scarlet. June-July.

All 25 cents each

Rupifragrum Atlanticum. Delicate orange buff. 18 inches. June-July. A charming variety too seldom seen in our gardens. 25 cents each.

Dozen rate less 15%; 25 rate less 20%; 100 rate less 30%.



Napeta Mussini planted by us on a wall.

PHLOX. Perennial Phlox

These brilliant hardy border plants are amongst the most valuable we have on account of their wide diversity of color, habit of growth and time of flowering. They should be found in every garden. The dwarf types, such as Ph. Subulata, Ph. Amæna and Ph. Divaricata, are spring flowering. The Suffruticosa section are early summer bloomers, while the Decussata type are mid and late summer flowering. The latter comprise the tallest and strongest growing of the perennial Phloxes.

Amæna. Dwarf spreading plant, covered with masses of bright flowers. Will frequently flower again in fall if cut back. Rosy pink. 6 inches. 20 cents each. May-June.

decussata Auguste Riviere. Bright salmon red. 25 cents each.

“ **Baron Von Dedem.** Deep blood red. 30 cents each.

“ **Coquelicot.** Fine pure scarlet with crimson red eye. 30 cents each.

“ **Crepuscle.** Dwarf, large trusses, mauve with dark centre. Large flowers. 25 cents each.

decussata De Mirabel. White with large crimson eye. 30 cents each.

“ **Dr. Konigschofer.** The best scarlet. 25 cents each.

“ **Edgar Quinet.** Fine deep red. 30 cents each.

“ **Frau Anton Buchner.** Flowers pure white of enormous size, dwarf. 30 cents each.

“ **G. A. Strohleim.** Bright scarlet with carmine eye. 25 cents each.

“ **Gen. Van Heutsz.** Salmon scarlet with white centre, very fine. 30 cents each.

“ **Goliath.** Very tall, bright carmine. 35 cents each.

“ **Hanny Pfeiderer.** Cream changing to salmon, crimson eye. 30 cents each.

“ **Independence.** Pure white. 25 cents each.

“ **Jeanne d'Arc.** White, late. 25 cents each.

“ **Jules Cambon.** Carmine with large white centre, very effective. 30 cents each.

“ **Jourdain.** Purplish rose. 25 cents each.

“ **Le Mahdi.** Deep violet. 25 cents each.

“ **L'Esclairmonde.** Lilac with white eye. 25 cents each.

“ **Mme. Dutrie.** Delicate lilac rose. Immense panicles. 30 cents each.

“ **Mrs. Elizabeth Campbell.** Light salmon changing to pink. 30 cents each.

Many of these perennials can be supplied in large clumps at increased prices, according to size.

SHERIDAN PERENNIALS

- decussata Mrs. Jenkins.** Pure white, huge trusses. 25 cents each.
- “ **Pantheon.** Cerise salmon with white centre. 30 cents each.
- “ **Richard Wallace.** Pure white with pink eye. 25 cents each.
- “ **Rosenburg.** Carmine-violet with blood red eye. 30 cents each.
- “ **R. P. Struthers.** Rosy carmine, dark eye. 30 cents each.
- “ **Selma.** Pink with crimson eye. 25 cents each.
- “ **Tapis Blanc.** Dwarf. 1 foot. Large white flowers. 30 cents each.
- “ **Von Hochberg.** Purplish crimson. 25 cents each.
- “ **Von Lassburg.** The best white. 30 cents each.
- “ **Widar.** Light reddish violet with large white centre. 30 cents each.
- “ **White Queen.** Tall white, late. 30 cents each.
- subulata (Moss Pink).** So called on account of the moss-like creeping foliage from which the numerous flowers arise on short stems in great profusion. Suitable for front of borders, edging beds, or for rockeries. Pink. 6 inches. 15 cents each.
- “ **alba.** White. 6 inches. 15 cents each.
- “ **lilacina.** Starch blue. 6 inches. May. 15 cents each.
- suffruticosa Cleopatra.** Rosy crimson with darker eye. 30 cents each.
- “ **Harrison Seedling.** White with pink centre. 30 cents each.
- “ **Miss Lingard.** Pearly white, invisible pink eye, good for cutting. Height 30 inches. 30 cents.
- “ **Miss Lingard.** Pearly white. Invisible pink eye. Good for cutting. Height 30 inches. 25 cents each.

Divaricata, or Canadensis. This, in its improved form, “Laphamii,” is one of the most valuable of our low-growing hardy plants, chiefly on account of its long blooming season. It is extremely showy and is an excellent dwarf border or rock plant, or it can be used as a carpeter for late tulip beds.

Divaricata Laphamii. Lavender blue. 30 cents each.

Maculata. Rosy purple. 15 cents each.

Ovata Carolina. Mountain phlox. Reddish pink. 20 cents each.



Dozen rate less 15%; 25 rate less 20%; 100 rate less 30%.

SHERIDAN NURSERIES



Phlox growing in one of our borders

PHYSALIS. Winter Cherry

Franchetti. Low growing plant, producing scarlet balloon-shaped seed cases containing red berries good for winter decoration. 20 cents each.

PHYSOSTEGIA. False Dragon's Head

Useful border plants, producing graceful flower spikes of delicate shades of pink and white.

Speciosa. Very delicate pink. 3-4 feet. July.

Virgincia. Soft pink. 3-4 feet. July-August.

“ **alba.** White form of above. 3-4 feet. July-August.

All at 20 cents each.

PLATYCODON. Chinese Balloon Flower

Handsome low-growing perennials of the

Campanula family, having large open cup-shaped flowers.

grandiflora. Deep blue. 18-30 inches. July-August.

grandiflora alba. White. July-August.

All at 20 cents each.

POLYGONUM. Knotweed

Handsome plants of rapid growth. Suitable for shrubberies and woodland planting.

Cuspidatum. White flowers, red stems. 6 feet. July. 20 cents each.

POTENTILLA. Cinquefoil

Charming dwarf plants, suitable for front of borders and rockeries.

Hybrida. Mixed colors. 6 inches. Flowers all summer. 20 cents each.

Many of these perennials can be supplied in large clumps at increased prices, according to size.

SHERIDAN PERENNIALS

PRIMULA. Primrose

Very showy and handsome.

Japonica (Japanese Primrose). Very useful for moist situations; rosy red. 18 inches. 25 cents each. June-July.

PYRETHRUM. Persian Daisy

The most showy flowers for cutting purposes that can be grown. The Roseum section are known as colored Marguerites, and cover a large range of shades from pure white through pink to deepest crimson. They can be obtained in both double and single forms.

roseum. Single. Mixed. 18 inches. May-July. 20 cents each.

“ **A. M. Kelway.** Single. Bright rose. \$1.00 each.

uliginosum. White, bold, strong growing. 4-5 feet. August-September. 20 cents each.

RUDBECKIA. Cone Flower

Showy late summer and autumn flowering perennials. Good for cutting.

laciniata, fl; pl. Golden Glow. Double golden yellow. 5-7 feet. August-September. 15 cents each.

purpurea. Giant purple cone flower. Very handsome. Large flowers. 30-36 inches. July-September. 20 cents each.

subtomentosa. Erect; flowers bright yellow in bunches with chocolate colored disc. 3-4 feet. August-September, 20 cents each.

SANTOLINA. Lavender Cotton

Grown chiefly for their silvery white foliage, for edging purposes, or rockeries.

incana. Small globular yellow flowers. 1 foot. July-August. 25 cents each.

SAPONARIA. Soapwort

Very attractive dwarf growing plants, suitable for rockeries or front of borders.

Ocymoides splendens. Rosy crimson. 6-9 inches. May-June. 20 cents each.



View, through garden gate, of one of our gardens.

SCABIOSA. Pincushion Flower

Hardy border plants. Good for cutting.

Caucasica. Soft lilac blue. 18 inches. June-July. 25 cents each.

Dozen rate less 15%; 25 rate less 20%; 100 rate less 30%.

SHERIDAN NURSERIES

Caucasica alba. White form of above. 25 cents each.

Ochroleuca. Yellow. Handsome. 4-5 feet. Suitable for shrubbery or very wide border. July-August. 20 cents each.

SEDUM. Stonecrop

Spectabile. Pink flowers, glaucous leaves. 18 inches. August-September. 20 cents each.

“ **atropurpurea.** Purple form of above. 25 cents each

SEMPERVIVUM. House Leek

A large group of succulent evergreen plants, suitable for rock gardens and walls.

Commonly known as “Hen and Chickens.

Arachnoideum. Cobweb House Leek. 25 cents each.

Pyrenaicum. 35 cents each.

Tectorum. Common House Leek. 20 cents each.

SENECIO. Groundsel

Handsome perennials for rough borders or waterside.

Clivorum. Orange yellow, bright shining green foliage. 2 feet. June-August. 50 cents each.

SILENE Catchfly

Ideal for rock gardens or edging of beds.

Alpestris. Glistening white. 4 inches. May-July. 25 cents each.

Schafta. Rosy pink. 4 inches. July-September. 25 cents each.

SPIRÆA. Meadow Sweet

Highly ornamental plants, preferring half shade and moisture.

Aruncus. Long feathery panicles of small white flowers. A splendid variety. 3 feet. June-July.

Palmata. Rosy crimson plumes. Good for cutting. 1-2 feet. June-July.

“ **elegans.** Silvery pink form of above. 3 feet.

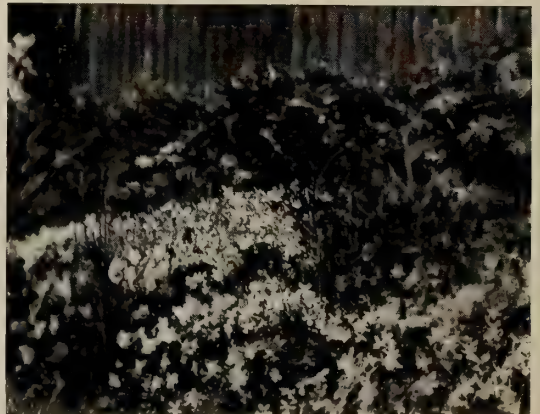
All at 25 cents each.

STATICE. Sea Lavender

Very useful plant, suitable for either rockery or border, very ornamental either on the plant or as cut flowers.

Gmelini. Dark blue. 18 inches. July-August. 25 cents each.

Latifolia. Blue. 2 feet. July-September. 25 cents each.



Viola Cornuta in one of our spring borders.

Many of these perennials can be supplied in large clumps at increased prices, according to size.



SHERIDAN PERENNIALS

THALICTRUM. Meadow Rue

Thrives in sun or shade, also on marshy ground. Ornamental in leaf and flower.

Adiantifolium. Foliage like maidenhair fern. Flowers white. 18 inches. June-July. 20 cents each.

Aquilegifolium. Graceful foliage, flowers white, purple stamen. 2-3 feet. June-July. 25 cents each.

“ **purpureum.** Feathery purple flowers. 2-3 feet. June-July. 25 cents each.

Dipterocarpum. Rosy purple flowers. 2 feet. 50 cents.

THERMOPSIS. False Lupine

An attractive plant with Lupine-like flowers.

Caroliniana. Tall spikes of clear yellow flowers. 4-5 feet. June. 20 cents each.

TRADESCANTIA. Spiderwort

An old garden favorite.

Virginica. Violet blue. 18-24 inches. June-July. 20 cents each.

“ **album.** White form. 20 cents each.

TUNICA. Coat Flower

A pretty rock plank with mossy foliage.

Saxifraga. Pink flowers. 6 inches. All summer. 20 cents each.

VERBASCUM. Mullein

Miss Willmott. New variety. Tall spikes of white flowers. Noble plant for large border or wild garden. 6 feet. July-September. 25 cents each.

VERONICA. Speedwell

The low-growing varieties are excellent for rockeries, and the taller ones make good border plants.

Prostrata. Very dwarf. Blue. May. 20 cents each.

Rupestris. Deep blue. 4 inches. May-June. 20 cents each.

Spicata. Showy purplish blue spikes. 30-36 inches. June-July. 20 cents each.

“ **alba.** White form of above. 25 cents each.

Spicata rosea. Pink form of above. 25 cents each

VINCA. Periwinkle

Dwarf trailing evergreen, valuable for covering shady banks.

Minor. White flower. 20 cents each.

“ Double blue flower. 20 cents each.

“ **variegata.** Foliage variegated. 25 cents each.

“ **viridissima.** 20 cents each.

VIOLA CORNUTA. Tufted Pansy

Highly ornamental perennials, too well known to need a special description. Bloom all summer.

Dozen rate less 15%; 25 rate less 20%; 100 rate less 30%.

SHERIDAN NURSERIES

Cornuta. Mixed tufted pansy. 20 cents each.

“ alba. White tufted pansy. 25 cents each.

YUCCA. Adam's Needle

Tropical looking plants with ornamental leaves and flowers.

Filamentosa. Drooping, bell-shaped, creamy white flowers. 30-36 inches. June-July. From 25 cents to \$2.00 each.



SHERIDAN SHRUBS

Shrubs



Syringa Marie le Graye (White Lilac) growing in our Nurseries.

The planting of ornamental shrubs in the vicinity of Toronto has been so frequently attended in the past with disappointment that we are able to offer the following list of Toronto grown stock in full confidence that in doing so we are satisfying a long-felt want in this city.

There are two reasons why Toronto-grown shrubs must give greater satisfaction than specimens imported from a distance or from a foreign country. In the first place, shrubs grown in this climate north of Lake Ontario are much better adapted to withstand our severe winters, while in the second place the shock of transplantation is very much minimized, as the shrubs can be planted out in the garden the following day after they are dug from the nursery. This latter consideration is all-important. The principal cause of disappointment with shrubbery is the long delay between the nursery row and the garden bed.

Owing to our proximity to Toronto, we are able to offer our shrubs at prices considerably

lower than those usually charged, as we have no duty and very light freight charges to pay.

Customers will bear in mind that we include in our catalogue only such trees, shrubs, evergreens, and vines as we have now growing in our nurseries in the sizes named. Personal inspection is welcomed at any time. We are therefore able to guarantee the high-class quality of everything we ship, as we are unwilling to subject our customers to the uncertainty of stock not grown under our personal supervision.

For a small extra charge we are prepared to deliver and plant shrubs, and also guarantee them to live for a period of twelve months, replacing free of charge any which may fail during that time.

In the propagation of the following ornamental shrubs, it has been our ambition to offer to the public every shrub of ornamental value which has been found hardy in this climate. We do not anticipate a demand for any hardy shrub that is not to be found growing in our nurseries.

SHERIDAN NURSERIES

ACER

Palmatum. (*Japanese Maple*). 3 feet. \$1.50 each.

AMORPHA

Canescens. (*Lead Plant*). Handsome low-growing shrub. Compact habit. Panicles of blue flowers in July. 40 cents each.

Fruticosa. (*False Indigo*). Strong growing shrub with finger like spikes of indigo flowers. Blooms early in June. 50 cents each.

ARALIA. Angelica Tree

Pentaphylla. A distinct ornamental shrub with graceful arching branches. Good for banks and slopes. 50 cents each.

Sinensis. (*Dimorphantus Mandshuricus*). Handsome tree with fine large foliage. \$1.00 each.

Spinosa. (*Hercules Club*). Very large bipinnate leaves and enormous terminal clusters of white flowers. A fine specimen tree. \$1.00 each.

BERBERIS. The Barberries

Among the Barberries are to be found some of our most popular shrubs. Some of the best, unfortunately, however, are not hardy in this climate. The following list includes only the best of the hardy varieties.

Aquifolia. (*Mahonia*). American holly. Holly-like leaves of dark lustrous green, remaining until Christmas. Low-growing. 50 cents each.

Illicifolia. (*Holly-leaved Barberry*). Valuable low-growing shrub with large spiny, light-green leaves, remaining until Christmas. 75 cents each.

Thunbergii. (*Japanese Barberry*). The most popular variety. Dense habit, gorgeous autumn color. Excellent for hedges. 35 cents each. \$3.00 per 10. \$20.00 per 100.

Vulgaris. (*Common or European Barberry*). Forms a dense and beautiful tall hedge. Excellent for mass plantations. 35 cents each. \$3.00 per 10. \$20.00 per 100.

Vulgaris atropurpurea. (*The purple Barberry*). Produces a beautiful contrast when massed with other shrubbery. 40 cents each. \$3.50 per 10. \$30.00 per 100.

BUDDLEIA

Variabilis Veitchiana. A handsome, quick growing shrub with graceful spikes of purple flowers. Should be given a sheltered position. \$1.00 each.

CARAGANA. Siberian Pea

Arborescens. Hardy, tall growing shrub or dwarf tree producing small yellow flowers in June. 35 cents each. \$2.50 per 10.

„ **Pendula.** A weeping form of the above. \$1.00 each.



Berberis vulgaris. The Common Barberry

SHERIDAN SHRUBS

Arborescens Pygmaea. Charming little shrub suitable for a rock garden. \$1.00 each.

“ **Chamlagu.** A low growing, almost evergreen shrub. Most ornamental. 50 cents each. \$3.50 per 10.

CHIONANTHUS. White Fringe Tree

Virginica. An ornamental shrub bearing a profusion of pure white fringe-like flowers. 50 cents each.

COLUTEA. Bladder Senna

Arborescens. Dwarf tree or tall shrub. Dull green leaves, yellow and brownish red flowers, followed by red bladder-shaped seed pods. 3-4 feet. 50 cents each.



Cornus elegantissima. The silver-leaved Dogwood.

CORNUS. The Dogwoods

The Dogwoods are particularly prized for winter effect on account of their brightly colored bark, beautiful berries, and immunity from disease.

Amomum. A tall shrub from 6 to 8 feet, with dark green foliage. 40 cents each.

Alba siberica. (*The red-barked Dogwood*). Invaluable for winter effect. Bark almost scarlet. 50 cents each.

Elegantissima. (*Silver leaved*). \$1.00 each.

Stolonifera Flaveramea. (*The Yellow bark Dogwood*). A medium sized shrub with brilliant yellow bark. 40 cents each.

CORYLUS AVELLANA. The European Hazel

A handsome tall shrub with large dark-colored leaves. 35 cents each.

Pendula (*The weeping hazel*). \$1.50 each.

Purpurea. (*The purple hazel*). A fine shrub for color effect. 75 cents each.

CYDONIA JAPONICA. The Japanese Quince

Japanese Quinces should find a place in every garden on account of their large brightly colored flowers. They are excellent for training on walls.

Aurora. Salmon Rose.

Candida. Yellowish White.

Gaujardi. Rosy white, exterior carmine.

Ruba. Grandiflora. Pomegranate red.


Simoni. Velvety dark red.

Umbilicata. Bright rose.

Versicolor Lutescens. Yellowish white and rosy.

All 50 cents each.

Extra large specimen shrubs can be supplied in many varieties at increased prices, according to size.



SHERIDAN NURSERIES

DEUTZIA. The Snowflower

We are able to offer an unusually large variety of these charming shrubs. The delicacy and abundance of their bloom is widely appreciated.

Corymbiflora. White flowers in long panicles. 30 cents each.

Crenata. Crenate-leaved Deutzia. A very floriferous form bearing single white blossoms. 40 cents each.

“ **candidissima plena.** A strong growing variety, producing an abundance of pure white double flowers. 40 cents each.

“ **fl; roseo plena.** Spikes of double rosy flowers 5 inches long. A tall shrub of rapid growth. 40 cents each.

“ **Pride of Rochester.** Probably hardiest and best Deutzia for this climate. 50 cents each.

Discolor carnea. Forms a compact large bush. Pink flowers in compact panicles. Good for cutting. 35 cents each.

“ **densiflora.** White flowers and dense foliage. 35 cents each.

“ **elegantissima.** Rosy white. 35 cents each.

“ **floribunda.** Porcelain-white and pinkish reverse. 35 cents each.

Lactea. Flowers milk-white. \$1.00 each.

Fortunei. A rare Japanese species. 40 cents each.

Gracilis. The well known shrub, so popular for forcing and cutting. Earlier blooming and of a dwarf growth. 35 cents each.

“ **Campanulata.** Milky white. 35 cents each.

Gracilis carminea. Snow white. 35 cents each.

“ **Eximia.** Flowers pure white, reverse soft rose. 35 cents each.

“ **fol; aureis.** Golden foliage. 50 cents each.

“ **multiflora.** Large white flowers. Best for cutting. 50 cents each.

“ **rosea.** Soft rose, reverse shaded pink. 35 cents each.

Lemoinei avalanche. Strong grower. Abundance of white bloom. 40 cents each.

“ **compacta.** Pure white. Dwarf grower. 40 cents each.

ELEAGNUS. Oleaster

Angustifolia. Silvery foliage. Fragrant yellow flowers. 3 feet. 40 cents each. \$2.75 per 10.

Longipes. A large shrub with foliage bright green above and silvery white underneath. 18 inches. 50 cents each.

EULALIA. Ornamental Grass

Japonica variegata. Very ornamental variegated foliage. 75 cents each.

“ **Zebrina.** Golden variegated. \$1.00 each.

EUONYMUS. Spindle Tree

Europeus linearis. A low growing spreading form of the European Spindle Tree, with narrow leaves and curious flowers and fruit. 75 cents each.

Radicans. Dwarf evergreen shrubs suitable for edging beds, covering banks or as climbers.

“ **Silver Gem.** Handsome silver leaved.

SHERIDAN SHRUBS

Radicans. Variegata. Attractive variegated foliage.

“ **Viridus.** Dark, shiny green foliage.

All varieties of E. Radicans, 75 cents each.
\$6.00 per 10. \$50.00 per 100.

EXOCHORDA. Pearl Bush

Grandiflora. Showy spring flowering shrub bearing large snow-white flowers in profusion. 75 cents each.

FORSYTHIA. The Golden Bell

The earliest shrub to bloom in the spring.
Excellent for banks and walls.

Fortunei. Upright growth.

Fortunei Aurea. Golden form of above.
75 cents each.

Intermedia densiflora. Spreading habit.

“ **spectabilis.** Spreading habit.

“ **vitellina.** Spreading habit.

Suspensa. Drooping habit. 50 cents each.

All varieties 40 cents each except where otherwise noted.

HIPPOPHAE. Sea Buckthorn

Very valuable on account of its graceful, silvery grey foliage. Makes an excellent hedge.

Rhamnoides. 35 cents each. \$3.00 per 10.
\$25.00 per 100.



A block of Hydrangea blooming in our nurseries

Extra large specimen shrubs can be supplied in many varieties at increased prices, according to size.

SHERIDAN NURSERIES

HYDRANGEA

One of the showiest of all shrubs and probably the best known. Undoubtedly the most useful all-round shrub for this climate.

Arborescens. Grandiflora alba. A tall-growing shrub, with white flowers resembling a Guelder rose, but much larger. 40 cents each. \$3.50 per 10.

Paniculata grandiflora. Well known variety. Flowers somewhat later than preceding one. 40 cents each. \$3.50 per 10. \$30.00 per 100.

HYPERICUM. St. John's Wort

A low-growing shrub of creeping habit. Striking flowers of bright yellow. Excellent for banks.

Henryi. A low shrub, bearing a profusion of yellow flowers all the summer. 75 cents each.

KERRIA

A beautiful dense green shrub, with delicate foliage, bearing an abundance of yellow flowers.

Japonica. 35 cents each.

“ **folius Aurea.** 50 cents each.

“ **laciniata.** 40 cents each.

“ **Variegata alba.** 50 cents each.

LIGUSTRUM. The Privet

Vulgaris. (*The Common Privet*). 3 feet. \$1.50 per 10. \$12.00 per 100.

“ **fructu luteo.** An unusual variety bearing yellow berries. 50 cents each.



Ligustrum Amurense. The Amoor River Privet.

Amurense. (*The Amoor River Privet*). The only really hardy Privet for this climate. 3 feet, \$2.00 per 10; \$16.00 per 100. 2 feet, \$1.50 per 10; \$12.00 per 100.

LONICERA. Bush or Upright Honeysuckle

Alberti. Rosy pink flowers. Very fragrant. Useful dwarf shrub. 50 cents each.

Ledebouri. Scarlet red flowers. Vigorous grower. 40 cents each.

Morrowi. Low spreading shrub. Pure white flowers with bright red fruit in fall. Very decorative. 40 cents each.

Tartarica, fl; albo. Tall shrubs with white flowers. 40 cents each.

“ **Grandiflora Rosea.** Handsome tall shrub with rose-colored flowers. 40 cents each.

“ **rosea coerulea.** Pink flowers, followed by blue berries. 40 cents each.

SHERIDAN SHRUBS

MALUS. The Flowering Crabs

These should be used as specimen shrubs or half standards.

Floribunda. Bud dark red, changing to light pink.

“ **atrosanguinea.** Deep red flowers.

“ **purpurea.** A novelty.

Niedzwetzkyana. A charming variety with deep carmine flowers. \$1.00 each.

Parkmani. Flowers very double dark rose.

Schiedeckeri. The best of flowering crabs. Double flesh color. Very free flowering.

Spectabilis rosea pleno. Double, rose colored flowers, 2 inches across.

All Crabs 75 cents each, except where otherwise quoted.



Lonicera Tartarica. The Tartarian Honeysuckle, a valuable shrub for city gardens

PHILADELPHUS. Syringa or Mock Orange

An old favorite on account of the profusion of large bloom produced in June and July.

Cordifolius. Heart-shaped leaves. 40 cents each.

Coronarius aureus. A useful, compact shrub with golden foliage. 50 cents each.

Grandiflorus. The largest flowered variety. A conspicuous tall growing shrub. 40 cents each. \$3.50 per 10.

Lemoinei erectus. A shrub about 4 feet high. 35 cents each. \$3.00 per 10. \$25.00 per 100.

“ **ochroleucus.** Moderate growth. Creamy white, double or semi-double flowers. 40 cents each.

Microphyllus. A dense, neat, bush, dwarf, with myrtle-like foliage and sprays of quince-scented flowers. Good for formal hedging. 50 cents each.

Myrtifolius. (*The Myrtle-leaved Syringa*). A tall, handsome shrub with white flowers. 40 cents each.

Sanguineus. Strong growing with long shaped leaves. 40 cents each.

POTENTILLA

Fruticosa. Hardy dwarf shrub, bearing numerous bright yellow flowers. Suitable for rock gardens. 50 cents each.

PRUNUS. The Flowering Plums and Cherries

Large shrubs or small trees, valuable for their dense masses of spring bloom.

Extra large specimen shrubs can be supplied in many varieties at increased prices, according to size.

SHERIDAN NURSERIES

Blireiana, fl; pl. A variety of Pissardi with purple foliage and double bright pink flowers. 75 cents each.

Moserii, fl ;pl. A handsome variety with double pink flowers. 75 cents each.

Japonica Watereri. An ornamental cherry tree with pale pink flowers. \$1.50 each.

Pissardi nigra. (*Purple-leaved plum*). Standards. \$1.25 each.

Sinensis fl; pl; alba. An abundance of double white button-shaped flowers. 24-30 inches. 75 cents each.

“ “ “ **rubra.** Same as above, with deep pink colored flowers. 24-30 inches. 75 cents each.

Spinosa purpurea. (*Purple-leaved blackthorn Plum*). 75 cents each.

Triloba, fl; pl. Double flowers of delicate pink. One of the best. 75 cents each.

Tsarkura. An ornamental cherry from Japan. Rare. \$2.00 each.

RHAMNUS. The Buckthorn

An attractive shrub for mass planting or lawn, with black berries.

Cathartica. A handsome shrub. Good for mass planting, also for hedges. 35 cents each.

RHODOTYPOS. White Kerria

A graceful shrub with light green foliage and bearing large white flowers late in summer.

Kerrioides. 40 cents each.

RHUS. The Sumacs

These useful native shrubs are well known on account of their handsome foliage and bright autumn color.

Cotinus. (*The smoke bush*). 50 cents each.

“ **atropurpureus.** (*The purple fringe*). These striking shrubs should be used as specimens on the lawn.

At midsummer the whole shrub is surrounded by a mist of hair-like flowers. \$1.00 each.

Glabra laciniata. (*The cut-leaved Sumac*). Beautiful fern-like foliage. 50 cents each.

Typhina laciniata. (*The cut-leaved Staghorn Sumac*). 40 cents each.

RIBES. The Flowering Currant

Alpinum. A dwarf Alpine variety, very choice. 40 cents each.

Aureum. A somewhat coarse growing shrub. Yellow flower. Very useful for shady banks. 35 cents each.

Atrosanguineum. Brilliant blood-red flowers. The best variety grown. 50 cents each.

Gordonianum. A somewhat coarse-growing shrub. Flowers pink. 35 cents each.



Rosa Rugosa, excellent for massing on the lawn.

SHERIDAN SHRUBS

ROSA RUGOSA. The Japanese Crinkled Rose

A tall, compact shrub with handsome dark shiny foliage. Excellent for massing or hedging. Bright colored fruit, very striking.

Alba. White flowers. 50 cents each.

Rubra. Flowers magenta pink. 40 cents each. \$3.50 per 10.

RUBUS. The Salmon Berry

A charming little shrub when in fruit.

Spectabilis. fl; rubro. Fragrant purplish flowers. 50 cents each.

SALIX. The Willow

Alba Regalis. (The Royal Willow). A handsome low-growing tree with silver foliage. 6-7 feet. \$1.00 each. \$7.50 per 10.

Laurifolia. (The laurel-leaved willow). A handsome vigorous species. 40 cents each. \$3.50 per 10.

Rosmarinaefolia. A very handsome, dense shrub with grey foliage. (*The rosemary-leaved willow*). 35 cents each. \$3.00 per 10. \$25.00 per 100.

Vitellina aurea. (The yellow bark). 35 cents each. \$3.00 per 10.

“ **Britzensis. (The red bark).** 35 cents each.

SAMBUCUS. Elder

Handsome, quick-growing shrubs, valuable for shade or sun.

Nigra. (European or black-berried Elder). A spreading shrub of robust growth, with creamy white flowers. 35 cents each.

“ **flore rosea plena.** Rare variety with double pink flowers. 75 cents each.

“ **folius aurea.** Ornamental golden-leaved variety. 40 cents each.

“ **laciniata.** Cut-leaved variety. 40 cents each.

“ **pyramidalis.** Very fastigate, dark green foliage. Rare. \$1.00 each.

Pubens maxima. A north American species, with enormous heads of white flowers. Very handsome. Blooms in August. \$1.00 each.

Racemosus. (Red-berried elder). 40 cents each.

Racemosus. Plumosa Aurea. Golden-leaved variety of above. \$1.00 each.

SPIRAEA. Meadowsweet

Of all the flowering shrubs available for our gardens, none are so universally popular nor offer us so great a variety of flower and form as the shrubby Spiraeas. The varieties we list are all perfectly hardy and will readily adapt themselves to almost any soil or situation. Some of the more compact growing Spiraeas are excellent subjects for hedges, while those of looser growth are better either as single specimens or massed in shrubberies. *S. Van Houttei* is perhaps the only free growing variety which we list for hedging purposes. This, if kept well pruned back, will be found quite satisfactory.

Extra large specimen shrubs can be supplied in many varieties at increased prices, according to size.

SHERIDAN NURSERIES

Arguta multiflora. Moderate growth. Compact, a mass of white bloom in May. 50 cents each.

Billardi. Tall growing, dense panicles of pink flowers. July-August. 35 cents each.

Callosa alba. Dwarf, blooms all summer. White panicles. 40 cents each.

“ **Froebeli.** Dark violet red. Very free. Early. 50 cents each.

“ **rosea.** Deep rosy flowers. Nearly all summer. 40 cents each.

“ **superba.** Dwarf. White to pink flowers. Throughout season. 50 cents each.

Douglassi rosea. Tall, with showy spikes of deep pink flowers. July-August. 40 cents each.

Eximia. Variety of Douglassi. Rare. 40 cents each.

Opulifolia. Handsome, vigorous growing shrub. Fragrant white flowers in June. Red colored seed pods in fall. 35 cents each.

Paniculata rosea. Resembling Salicifolia. Moderate growth, flowers pink sprays. 40 cents each.

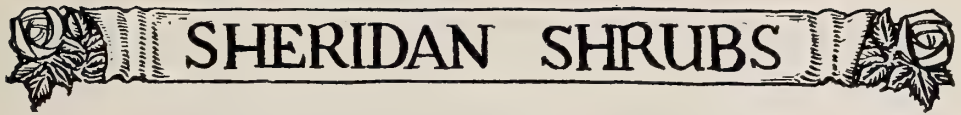
Prunifolia, fl; pl. Tall growing. Beautiful sprays of small double white flowers in May. 50 cents each.

Salicifolia alba. (*Willow leaved Spiraea*). Medium sized. Free growing. Dense panicles of white flowers in July. 35 cents each.

Sorbifolia. Ash leaved species, with plumes of creamy white flowers in August. 40 cents each.



Symphoricarpos Vulgaris in our Nursery, excellent for hedges in shade.



SHERIDAN SHRUBS

Thunbergii. Medium growth. Small green leaves, coloring in autumn. One of the best for hedges. Pure white flowers in May. 40 cents each.

tomentosa. Tall, with deep purplish pink flowers. August. 40 cents each.

Van Houttei. (*The Bridal Wreath*). Graceful pendulous branches of white flowers in May. Good for hedges. 3 feet. 40 cents each; \$3.50 per 10, \$30.00 per 100.

STEPHANANDRA FLEXUOSA

A low native shrub with ornamental foliage and deeply cut leaves. White flowers in soft, feathery racemes. 50 cents each.

SYMPHORICARPOS

Excellent shrubs for shade.

conglomeratus. A very ornamental shrub of compact growth and striking foliage. 75 cents each.

Racemosus. (*Snowberry*). 40 cents each.

Vulgaris. (*The Coral Berry*). This variety, being of more erect growth than racemosus, makes a good hedge for shady situations. 40 cents each. \$3.50 per 10. \$30.00 per 100.

SYRINGA. Lilac

It will be seen that we list an unusually good selection of these well known beautiful shrubs, both in their double and single forms. They comprise some of the choicest varieties in cultivation.

Josikea. (*Hungarian Lilac*). Vigorous, sturdy shrub. Upright branches, broad, dark, glossy green leaves. Beautiful purple flowers. The tallest of all. Late bloomer. 30 inches. 50 cents each.

Persica alba. White Persian. 50 cents each.

Varina Saugeana alba. 50 cents each.

Villosa. Tall growing variety with rosy purple flowers. 75 cents each.

Vulgaris. **Charles Joly.** Double dark red. Fine.

“ **Charles Sargent.** Double light blue with metallic sheen.

“ **Charles X.** Large clusters of deep purple single flowers.

“ **Condorcet.** Double, shaded blue.

“ **Dr. Masters.** Double lilac, specially recommended.

“ **Dr. Von Regal.** Single red, shaded light blue.

“ **Emile Lemoinei.** Double rosy lilac.

“ **Emodi** Single blush white.

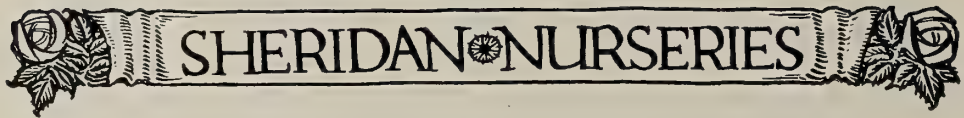
“ **Francisque Morel.** Double pink.

“ **Goliath.** Large blue single.

“ **Lavalensis.** Single. Rose.

“ **Leon Simone.** Double compact spikes of bluish violet; very fine.

Extra large specimen shrubs can be supplied in many varieties at increased prices, according to size.



SHERIDAN NURSERIES

- Vulgaris. **Leopold Rubra.** Red.
- “ **Ludwig Spaeth.** Very dark crimson purple.
- “ **Michael Buchner.** Double lilac, rose.
- “ **Mme. Abel Chatenay.** Double, pure white, very floriferous.
- “ **Mme. Casimir Perier.** Double creamy white.
- “ **Mme. Jules Finger.** Double satin pink.
- “ **Mme. Lemoine.** Pure white.
- “ **Marie la Graye.** Pure white single. One of the best.
- “ **Miss Ellen Wilmott.** Snow white double.
- “ **President Carnot.** Double light lilac.
- “ **President Grevy.** Double lilac blue.
- “ **Souvenir d'Alphonse Lavallee.** Double. Clear lilac.
- “ **Souvenir de Louis Spaeth.** Very large, dark purple, single.
- “ **Tournafoot.** Double dense lilac, shaded blue in centre.
- “ **Volcan.** The darkest red grown. Large flowers, single.

- Vulgaris. **Waldeck Rousseau.** Double, pale lilac pink.
- “ **The common purple lilac.** 35 cents each.
- All lilacs 60 cents each, except where otherwise noted.

VIBURNUM

- Very handsome shrubs with white flowers, followed by ornamental berries.
- lantana.** (*Wayfaring Tree*). Flat heads of white flowers, succeeded by red berries, changing to black. 40 cents each.
- opulus sterilis.** (Snowball Tree). Large globular heads of white flowers. 40 cents each.
- plicatum tomentosum.** (*The Japanese Viburnum*). Compact habit, moderate growth, dark green leaves, flowers white. 60 cents each.

WEIGELIA

- One of the best of our flowering shrubs. They can either be grown in beds or trained as low-growing creepers against a wall.
- Amabilis rosea.** Pale pink.
- Beranger.** Red.
- Camelion.** Flesh pink, turning red.
- Candida.** White.

SHERIDAN SHRUBS

Descartes. Reddish brown.

Eva Rathke. Bright red.

Gratissima.

Gustave Mallet. Pink.

Hortensis Rubra. Red.

Lavallii. Dark red.

Mme. Conturier. White.

Mme. Lemoinei. Clear pink.

purpurata. Bright purple.

All Weigelias 60 cents each. \$5.00 per 10
of one variety.



Weigelias growing in our Nurseries.

Extra large specimen shrubs can be supplied in many varieties at increased prices, according to size.

SHERIDAN NURSERIES



This rough bank was transformed into an object of beauty by skilful design and a liberal use of Sheridan shrubs

SHERIDAN TREES

Trees



A landscape constructed by us. Trees and shrubs need expert arrangement to produce results like this

ACER. The Maple

Dasycarpum. (*Silver Maple*). 6 feet. 60 cents each.

Negundo. (*Ash Leaved Maple*). 6 feet. 75 cents each.

Platanoides. (*Norway Maple*). 7-8 feet. \$1.00 each. \$7.50 per 10.

“ **Reitenbachi.** A handsome specimen tree, with purple foliage. 7-8 feet. \$2.00 each. \$15.00 per 10.

Schwedleri. The most decorative of all purple maples. 7-8 feet. \$2.00 each.

ALNUS. The Alder

glutinosa. A valuable tree for planting in damp situations. 6 feet Standards. 75 cents each.

imperialis Asplenifolia. Fern-leaved. 4 feet. \$1.50 each.

incana laciniata. Pretty dwarf tree with oval leaves, white underneath. 5 feet. \$1.50 each.

AESCULUS. Horse Chestnut

Rubicunda Brioti. (*Red Flowering Horse Chestnut*). 3 feet. \$2.00 each.

BETULA. Birch

alba. (*European White Birch*). Graceful trees with silvery bark. Effective in winter. 6-7 feet. \$1.00 each.

lutea. (*Yellow Birch*). Has light orange bark. 6-7 feet. \$1.00 each.

papyracea. (*Paper or Canoe Birch*). Very ornamental tree with white trunk and loose, graceful head. 5-6 feet. \$1.00 each.

SHERIDAN NURSERIES

CATALPA. Indian Bean

Kaempferi. (*Japanese Catalpa*). Medium sized tree of rapid growth. Deep green glossy foliage. Fragrant white flowers in June. 6-8 feet. \$1.00 each.

speciosa. (*Western Catalpa*). Hardy and of rapid growth. Flowers purple and white. 6-8 feet. \$1.00 each. \$7.50 per 10.

CRATAEGUS. The Thorn

Oxyacantha alba plena. (*Double White Hawthorn*).

“ **flore coccinea plena.** Double crimson hawthorn. Probably the brightest of the spring flowering trees. Standards.

“ **flore rosea plena.** Double pink.

Standards. 6-8 feet. All \$2.00 each.

FAGUS. The Beech

Sylvatica pendula. Weeping form. 3 feet. \$2.50 each.

“ **purpurea.** (*Purple leaved Beech*). 6-7 feet, \$2.50 each. 2½-4½ feet, \$1.50 each.

“ “ **Riversii.** (*Rivers' purple Beech*). The darkest variety grown. 3 feet. \$2.50 each.

GINGKO BILOBA. The Maidenhair Tree

A deciduous broad leafed conifer. One of the most handsome trees for park or street planting. 4-5 feet. \$2.00 each.

GLEDITSCHIA. Locust

triacanthos. (*Honey Locust*). Makes a good hedge if kept clipped. 4-5 feet. 35 cents each. \$3.00 per 10. \$20.00 per 100.

JUGLANS. Walnut

nigra. (*Black American Walnut*). 5-6 feet. \$1.00 each.

LARIX. The Larch

Tall, deciduous conifers of great beauty.

Europea. (*The European Larch*). Very quick growing tree, suitable for massing as boundary and woodland plantations. 3 feet. 50 cents each. \$4.00 per 10.

Leptolepis. (*The Japanese Larch*). A handsome quick growing tree, excellent for massing with good winter effect. 3 feet. 75 cents each. \$6.00 per 10.

PLATANUS. Plane Tree

Orientalis Acerifolia. (*Eastern Plane*). A good park tree. 10-12 feet. \$1.50 each. \$12.00 per 10. \$75.00 per 100.

POPULUS. Poplar

Angulata Cordata Robusta. A rapid growing tree with heart-shaped leaves. 10-12 feet, \$1.25 each. 6-7 feet, 75 cents each; \$5.50 per 10.

Bolleana. Similar to Lombardy Poplar. 6 feet. \$1.50 each.

Canadensis Nova. Large foliage. Good variety for town planting. 6-8 feet. 75 cents each.

fastigiata. (*Lombardy Poplar*). Very tall columnar tree 10-12 feet. \$1.25 each, \$9.00 per 10. 6 feet, 60 cents each, \$4.50 per 10. \$30.00 per 100.

SALIX. Willow

Babylonica pendula. (*Babylonian Weeping Willow*). A graceful specimen tree of pendulous habit. 10-12 feet. Well headed. \$2.00 each down to \$1.00 each.

SHERIDAN TREES

SORBUS Sorbus.

aucuparia. (*Mountain Ash*). Ornamental tree, covered in autumn with bright red berries. Standards. 6-7 feet. \$1.50 each.

TILIA. Lime or Linden

Euchlora or **dasystyla.** A large-leaved species

of distinct and ornamental character. Standards. \$2.00 each.

Europaea. (*European Lime*). Standards. \$1.50 each.

ULMUS. Elm

Americana. (*American Elm*). A good shade tree. 7-8 feet. \$1.00 each.



SHERIDAN NURSERIES



A Block of Evergreens growing in our Nurseries.

SHERIDAN EVERGREENS

Evergreens



Juniperous cupressifolia mascula. Probably the most handsome of the Junipers.

EVERGREENS

Owing to the severity of our winters, we are entirely dependent upon coniferous trees and shrubs for our supply of evergreens for our gardens. The broad-leaved evergreens, such as Rhododendrons, Aucubas, Laurels and Hollies, so largely used in more temperate climates, are not hardy in Canada. We have, therefore, introduced an exceptionally large collection of highly ornamental hardy Conifers to take their place. We can supply dwarf Conifers in great variety, both for bedding purposes and for planting on rock and Alpine gardens. We also stock tall-growing kinds for specimen planting. The golden, silver and blue forms are to be specially recommended for winter effect. We have on hand a large stock of White Cedars, which we can supply in quantity in several sizes for hedging purposes at unusually low prices.

ABIES. The Fir

The Firs consist almost entirely of tall, handsome trees. They are chiefly valued as lawn specimens for the park and pleasure grounds. Most of the species are too choice for mass planting.

- concolor.** A very distinct handsome specimen fir of grey blue color. 12-18 ins. \$1.50 each. 3-4 feet. \$3.50 each.
- “ **Compacta.** 9-12 feet. \$2.00 each.
- “ **Pendula.** 9-12 feet. \$2.00 each.
- Nordmanniana.** One of the finest conifers for ornamental planting. 12-18 inches. \$2.00 each.
- pectinata.** The common Silver Fir of Scotland, used extensively for pleasure grounds. 12-18 inches. 75 cents each.

All our specimen evergreens sent out in ball and burlap



SHERIDAN NURSERIES

pectinata glauca. Same as above, with glaucous foliage. 12 inches. \$1.00 each.

JUNIPERUS. The Juniper

Among the Junipers are to be found some of our choicest evergreen subjects for garden plantations.

Cupressifolia foemina. Handsome prostrate form. 12 inches. \$3.00 each.

“ *mascula.* Resembles *Juniperus Sabina*, but more prostrate. 12-18 inches. \$3.00 each.

Hibernica Pyramidalis. Pyramidal form of the Irish Juniper. 12-18 inches. \$2.00 each.

Sabina (Savin's Juniper). A low-growing, spreading bush unexcelled for bank planting. 12-18 inches. \$3.00 each.

Sinensis Pfitzeriana. Chinese Juniper. 9-12 inches. \$3.00 each.

Suesica. Resembles *J. Communis*, but is much hardier. 9-12 inches. \$3.00 each.

Tamariscifolia. Probably the best of all creeping forms. 6-9 inches. \$3.00 each.

Virginiana. (The Red Cedar). Pyramidal habit. Rivals Italian *Cyprresses* in beauty. 12-18 inches. \$2.50 each.

“ *Elegantissima.* Golden tipped variety, very ornamental. 12-18 inches. \$3.50 each.

Virginiana Glauca. Blue form of Red Cedar. 9-12 inches. \$3.50 each.

“ *Schotti.* A distinct dark green variety. Rich, beautiful foliage. Strong upright grower. 9-12 inches. \$4.00 each.

“ *Tripartita.* The best spreading Juniper — new. Feathery foliage. 12-18 inches. \$3.50 each.

PICEA. The Spruce

The Spruce family embraces a large number of forms. Many of these trees are grown as magnificent lawn specimens, while others are more suitable for hedges, wind-breaks, and general mass planting. There is also a very large selection of dwarf forms invaluable for the rock garden and small borders.

alba. (The White Spruce). A handsome northern native variety with bluish foliage and good shape. 2½-3 feet. \$1.50 each.

“ *aurea.* A more dwarf variety with a golden tinge. 1½-2 feet. \$2.50 each.

Amabilis glauca. Low spreading variety with blue foliage. 9 inches. \$3.00 each.

Arizona Argentea. Choice dwarf variety with silvery foliage. 6 inches. \$3.00 each.

Coerulea Hudsonii. Choice variety suitable for rock gardens. 9 inches. \$2.50 each.

All our specimen evergreens sent out in ball and burlap



SHERIDAN EVERGREENS

Excelsa. (*The Norway Spruce*). The common spruce seen everywhere, good wind-break and hedge plant. 2-3 feet. 60 cents each. \$4.50 for 10.

“ **elegans.** Resembles above only finer foliage. 3 feet. \$5.00 each.

“ **Maxwelli.** A globular or dwarf spreading bush for rockeries. 9 inches. \$2.50 each.

“ **Parviformis.** A stunted form for rock gardens. 9 inches. \$2.50 each.

“ **Pumilla Glauca.** A dwarf variety of conical habit. 9 inches. \$2.50 each.

“ **Pygmea.** A diminutive dense bush. 6-9 inches. \$2.50 each.

Excelsa Pyramidalis. Suitable for rock gardens or small borders. 12 inches. \$2.50 each. 24-30 inches. \$5.00 each.

“ **Pyramidalis. Compacta.** A dwarf form of above. 18-24 inches. \$3.00 each.

Nigra Doumetti. A dwarf form of the black spruce. 18 inches. \$3.00 each.

Pungens. (*The Pacific Blue Spruce*). An attractive specimen tree of great beauty. 18-24 inches. 1.50 each.

Pungens Glauca. A bluer form of above. One of the most popular spruce for specimen planting. 18-24 inches. \$2.50 each.

“ **Kosteriana Glauca.** (*Koster's Blue Spruce*). The popular spruce for lawns. 12-18 inches. \$3.50 each.

“ “ “ **Agentea.** A greatly improved variety with light shining silvery blue foliage. 12-18 in. \$5.00 each.

Sub-Alpina. A very fine dwarf variety suitable for rock gardens. 6 inches. \$2.50 each.

PINUS. The Pines

The Pines are probably our best evergreens for mass planting. There are also some valuable dwarf forms.

Austriaca. (*Austrian Pine*). A very valuable tree for massing or lawn planting; also good lawn specimen. 18-24 inches. \$1.50 each.

Montana (*Mountain Pine*). 9-12 inches. \$1.00 each.

All our specimen evergreens sent out in ball and burlap



SHERIDAN NURSERIES

Mugho. (*Dwarf Mountain Pine*). Forms a compact bush or dwarf tree. One of the best for bed planting. 9-12 inches. \$1.50 each.

Murrayana. A tall pine of rapid growth. 2 feet. \$1.50 each.

sylvestris. (*The Scotch Pine*). A good pine for massing and town planting. 1½-2 feet. 75 cents each.

“ **Globosa Viridis.** A compact globose bush, good for rockeries or beds. 9 inches. \$2.50 each.

PSEUDOTSUGA

Douglassii. (*The Douglas Spruce*). A quick-growing, graceful tree of excellent shape. Recommended for large lawns. 18-24 inches. \$2.00 each.

“ **glauca.** A great improvement on the type, with glaucous foliage. It is much hardier and more shapely. 18-24 inches. \$2.50 each.

“ **Colorado.** (*The Blue Douglas Spruce*). 18-24 inches. \$2.50 each.

TAXODIUM. Cypress

Distichum (*Bald Cypress*). A handsome deciduous evergreen, suitable for moist sheltered situations. 18-24 inches. \$2.00 each.

THUYA. The *Arbor Vitae* or Cedar
Medium sized or low-growing trees or shrubs of dense outline. They comprise

many of our best evergreens, being used for wind screens, hedges, mass plantations, specimens, beds and rockeries.

Occidentalis. (*White Cedar or American Arbor Vitae*). Too well known to require further description.
12-18 inches. 45 cents each.
\$3.50 per 10. \$25.00 per 100.
18-24 inches, 60 cents each.
\$4.50 per 10. \$30.00 per 100.

“ **Boothii.** A very striking, distinct dwarf form with compact habit. 12 inches. \$2.00 each.

“ **compacta.** Good specimens for formal planting. 12 inches. \$2.00 each.

“ **Cristata folius Argentea.** Silver foliage. 9-12 inches. \$2.50 each.

“ **de Cuyper.** (*Cuyper's variety*). 12-18 inches. \$2.00 each.

“ **Froebelii.** A rare dwarf form. 12 inches. \$2.00 each.

Occidentalis globosa. (*Globose Arbor Vitae*). Round compact form with dense foliage. 12 inches. \$2.00 each.

“ **Hoveyii.** Dwarf globe shape. 18 inches. \$2.00 each.

“ **Little Gem.** Suitable for rock gardens. 12-18 inches. \$2.50 each.

All our specimen evergreens sent out in ball and burlap

SHERIDAN EVERGREENS

Occidentalis Verstmanni compacta. Verstman's variety. 12-18 inches. \$2.50 each.

“ **Wagneri.** A recent introduction; very rare, upright growth. 12-18 inches. \$2.50 each.

“ **Warreana.** Ware's variety. 6-9 inches. \$2.00 each.

Occidentalis Warreana Lutescens. Ware's variety. Golden form. 9 inches. \$2.50 each.

TSUGA

Canadensis. (*The Canadian Hemlock Spruce*). Good for specimens on lawn. 12-15 inches. Very bushy. \$1.50 each. 15-24 inches. \$2.00 each.



All our specimen evergreens sent out in ball and burlap

Climbers



Arches in the garden effectively show off climbers.

AKEBIA

quinata. A delicate climber of rapid growth with clover-like leaves and dark purple flowers. 50 cents each.

AMPELOPSIS

dissecta. Cut-leaved Virginia Creeper. 50 cents.

Engelmanni. Similar to Virginia Creeper, but smaller leaved and self-clinging. 40 cents each.

Veitchii. The Boston Ivy. 40 cents each.

ARISTOLOCHIA

Sipho. The Dutchman's Pipe. One of our best creepers. Universally popular. Its large leaves and quaint flowers distinguish it from every other vine. 60 cents each.

BIGNONIA. Trumpet Creeper

Grandiflora.

Mme. Tallen.

radicans.

Speciosa rubra.

Thunbergii.

All at 75 cents each.

CELASTRUS. Bitter Sweet

articulatus. A ramping climber or scrambler with shiny, handsome foliage and showy red fruit in fall. 50 cents each.

Scandens. 40 cents each.

CLEMATIS. Clematis

Graveolens. An unusual variety with pale yellow flowers. 50 cents each.

paniculata. Native variety with massive, handsome foliage and feathery bloom. 75 cents each.

LONICERA. Honeysuckle

Brachypoda. 60 cents each.

“ *Aurea reticulata*. Very ornamental. Variegated foliage. \$1.00 each.

SHERIDAN CLIMBERS

Douglassi. Reddish yellow. 60 cents each.

Early Dutch. Low-growing with fragrant red flowers. 75 cents each.

Fuschyoides. \$1.00 each.

Halleana. Hall's Honeysuckle. 60 cents each.

Punicea. \$1.00 each.

LYCIUM. Matrimony Vine

Europeum. Hardy shrub with tender spiny stems. 35 cents each.

Sinensis. Vigorous scrambling shrub with grey foliage. 35 cents each.

WISTARIA. Wistaria

Sinensis. For a permanent creeper, the Wistaria is hard to beat, though bloom is uncertain in this climate. 60 cents each.



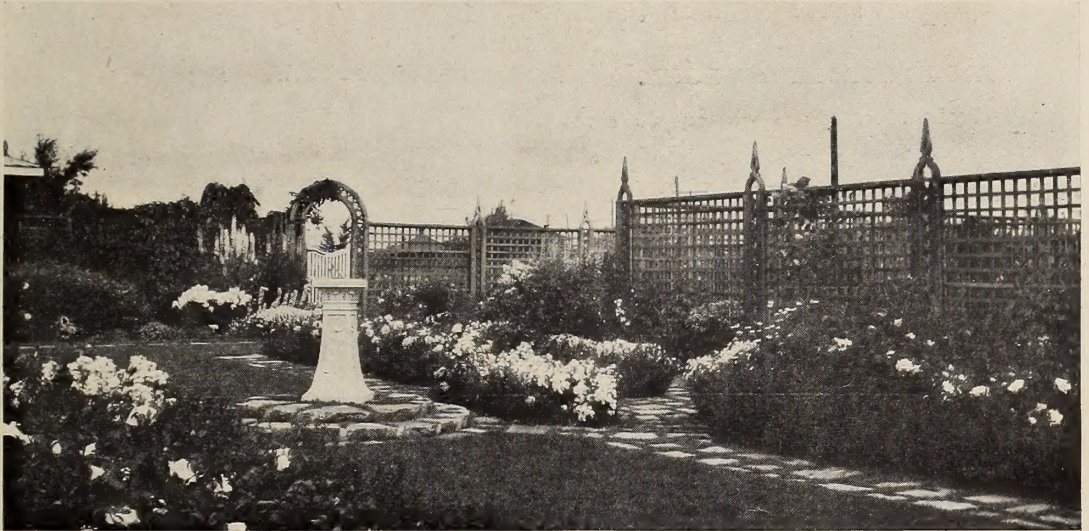
SHERIDAN NURSERIES



A Rose Garden planted by us close to Toronto.

SHERIDAN ROSES

Roses



One of our Rose Gardens

HYBRID TEA ROSES

Betty. Ruddy gold.

Captain Christy. Soft rose.

Caroline Testout. Bright rose.

Chateau de Clos Vougeot. Dark, velvety, crimson. 75 cents each.

Dean Hole. Silvery carmine.

Dorothy Page Roberts. Coppery pink.

George C. Wand. Orange red.

Gruss an Teplitz. Crimson.

Harry Kirk. Sulphur yellow.

J. B. Clarke. Crimson.

Juliet. Gold on rose.

Jonkheer L. Mock. Deep rose.

Kaiserine Augusta Victoria. White.

Killarney. Flesh.

Lady Ashtown. Pink.

La France. Silvery pink.

La Tosca. Blush white.

Le Progres. Nankeen yellow.

Mme. Able Chatenay. Salmon pink.

Mme. E. Herriot. Coral red, shaded yellow.
75 cents.

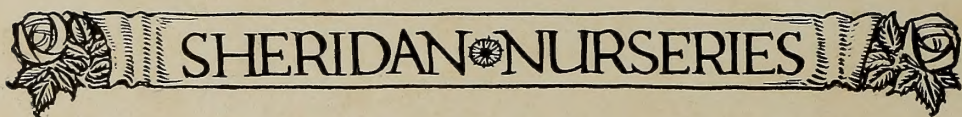
Mme. J. Bonnaire. Pink.

Mme. Ravary. Orange yellow.

Mme. Segond Weber. Salmon rose.

Mrs. Arthur H. Waddell. Salmon.

Mrs. Charles Russell. Carmine rose.



Richmond. Scarlet.

Sunburst. Yellow. 75 cents.

All at 50 cents each, except where otherwise stated.

HYBRID PERPETUAL ROSES

Candeur Lyonnaise. Pure white. 60 cents each.

Commander Jules Gravereaux. Red.

Frau Karl Druschki. White.

Hugh Dickson. Crimson.

Mrs. John Laing. Pink.

Paul Neyron. Deep rose.

Ulrich Brunner. Cherry crimson.

All at 45 cents, except where otherwise stated.

DWARF POLYANTHA ROSES

Ashenbrodel. Peach pink.

Golden Fairy. Yellow bud, opening white.

Gruss au Aachen. Orange. 75 cents.

Jessie. Cherry crimson.

Katherine Zeimet. White.

Leonie Lamesch. Copper red.

Mme. Levavasseur. Pink.

All at 50 cents, except where otherwise noted.

HYBRID RUGOSA ROSES

Belle Poitevine. Pink.

Blanc D. de Coubert. White.

Conrad F. Meyer. Pure pink, flowers large.

Mme. Alvarez del Campo. Salmon rose.

Mme. Georges Bruant. Double white.

Rosarie de l'Haye. Large double red flowers.

All at 50 cents.

CLIMBING ROSES

Crimson Rambler. Crimson double.

Dorothy Perkins. Pink, double.

Euphrosine. Pink.

Flower of Fairfield. Resembles Crimson Rambler.

Hiawatha. Brilliant crimson single. 60 cents.

Lady Gay. Pink, double.

Tausendschon. Pink. 60 cents.

Thalia. White.

Trier. White.

White Pet. White.

All at 50 cents, except where otherwise noted.

VARIOUS ROSES

Austrian Copper (Capucine). Single copper, with buff reverse. 50 cents.

Blanda. Pink.

Carolina. Single pink.

Humilis.

Lucida.

Persian Yellow (Capucine). Profusion of small double yellow flowers. 50 cents.

Rubiginosa. Sweet briar.

Rubrifolia (Ferruginea). Ornamental red foliage. 50 cents.

Setigera. Prairie rose.

Wichuriana. The Type. Small single white flowers and metallic green leaves. Excellent for covering banks.

Zepherin Drouhin (Bourbon). The thornless rose. A very beautiful rose with flowers of an unusual shade of pink. Foliage red when young. 75 cents.

All at 45 cents each, except where otherwise stated.



W. R. MAXWELL & COMPANY
PRINTERS
TORONTO