

Historic, archived document

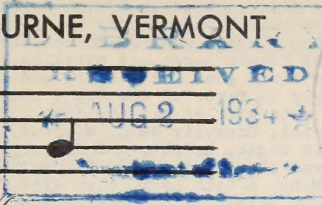
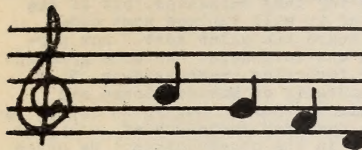
Do not assume content reflects current scientific knowledge, policies, or practices.

62.87

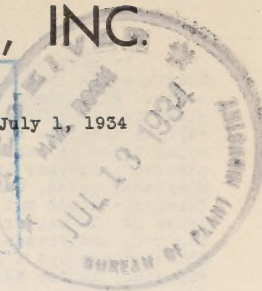
Midsummer list

GARDENSIDE NURSERIES, INC.

SHELBURNE, VERMONT



July 1, 1934



Most Everyone Knows:-

-that July is the time to plant Iris and Poppies, and that Peony time is not far away. This circular offers you a good selection of these three, and in addition, calls to your attention many other items, some common, some unusual, which, for various reasons, should be purchased and planted at this time.

This is a supplement to the issue of March 15th which contains a quite complete list of all the plants we grow. Additional copies of that issue will gladly be sent you upon request. The usual terms and conditions apply to this circular and all prices include delivery east of the Mississippi. Add 5% for points west.

"GARDENSIDE GOSSIP"

This copy of the circular comes to you in new form, one that we hope to continue to use. We think that it will be more convenient, in this smaller size, and will be easily read. Your comments, as always, will be appreciated.

Following the severe winter this entire section has experienced a spring drought of unusual duration. As a result many plants which were partly damaged by the cold have been very slow to start into growth, and in some cases have finally died out. As an example of this, on June 20th some Hemerocallis are just coming up. Beyond any doubt we have sent out plants this spring which we believed alive, but which have failed to grow for the reason stated above. We shall be glad to know of any trouble you have had of this sort, and will attempt to make it right.

The drought has finally been broken by fine rains and the nursery now is at its best. The Peonies have flowered well, though some buds appear to have been blasted by the drought. Iris were not so good as usual, but one or two varieties, of which we will make note later, stood out above the others, thus proving their stronger constitution. Poppies, however, are better than usual and have been a wonderful blaze of color. We have obtained some newer varieties and will be able to sell them next year, as by their flowering they have been proven true to name, and we can now increase them with confidence. Luckily, our Trollius were on damp ground and we had a fine display;-the plants, which make their growth early in the season, have done better than usual.

Chief among the items we are offering at this time, in a matter of interest, are the Eremurus. When last we were able to offer these they were still scarce and dear. Now, we can supply good plants in all the best varieties at reasonable prices and we are sure you will want to try them.

Not long ago we had a visit with a man whose knowledge of Tulips and other Holland Bulbs is very extensive. If we could, we would like to tell you much which we learned, but one fact is most important. There can be no cheap bulbs offered this fall. Last year the Dutch Government purchased and destroyed a certain part of all bulbs produced, and in that way reduced the surplus. Then, when the gulder increased in value from forty to nearly seventy cents, the wholesale price of bulbs increased with it. The retail price can be affected by but two things: either the gulder must lose its present high value, or the retailer must take a smaller profit. The price is the same to every buyer in this country, but by advance ordering the likelihood of disappointment may be avoided, and because of the certainty of sale, we can afford to make lower prices for July orders. For that reason we are offering a moderate selection of bulbs for advance sale only, as you will note on page 8. While it is probable that many may be able to buy bulbs at usual prices this fall, it is also possible that a shortage may develop and prices may increase. It doesn't seem likely that they will be lower.

If you are to be in Vermont this summer we trust you will pay us a visit. Shelburne is six miles south of Burlington on Route 7, the main highway between New York and Montreal. Road signs direct you to us, but a short distance from this highway, just north of Shelburne Village toward Burlington. The Nursery is open until five. After that hour it is safer to make an appointment.

IRIS

We have a very fair collection of the more modern Iris. Each year we have bought a few of the varieties recommended to us by authorities whose judgment we trust. Many times when these flower we do not care for them ourselves, but if the plant is vigorous, the flower large and striking, and it will replace some older variety which we have found good, we keep it and discard the older sort. Our personal taste is strongly in favor of the light blues and lavenders. We were greatly pleased this year to note that of all the Iris, our favorites,--Ambassadeur, B. Y. Morrison, Dejah, Gabriel, Souvenir de L. Michaud, Souvenir de Mme. Gaudichau and Yolande,--stood out in vigor, height, and size of bloom, where other sorts failed because of the winter and the dry spring. Coronation, yellow; Indian Chief, a striking red; and Frieda Mohr, a tall pink, also excelled in the other colors. We offer all of these and a good selection of other sorts in strong young rhizomes. All at 25¢ each; 10 for \$2.00; 100 for \$18.00, except as noted.

AFTERGLOW. Misty lavender, lighted soft yellow at center.

ALABASTER. A milky white of rare beauty. 50¢ each.

AMBASSEDEUR. Wonderfully large purple and maroon blooms. Tall and late.

B. Y. MORRISON. Pale lavender standards; raisin-purple falls. Very large.

CORONATION. A deep golden yellow self, flowers large. Stems large, well branched. 50¢.

DEJAH. A tall early flowering pallida, dark silver blue, and bright blue.

FOLKWANG. Rose pink standards, falls claret red with lighter edge.

FRIEDA MOHR. Very large deep pink, almost 4 ft. high. 50¢ each.

GABRIEL. A clear violet blue; one of the most beautiful Iris.

INDIAN CHIEF. Standards pinkish red, falls deep rich velvety red. Large heavy flowers. 40 inches. \$2.00 each.

MEDRANO. Very late sort. A beautiful dark smoky claret. Fine when massed.

MME. CHABAUT. Pale yellow-white flower, streaked with wine-red. Unusual.

MORNING SPLENDOR. Very tall. Petunia violet and rich dark purple. Large.

MILDPED PRESBY. White standards; falls dark velvety pansy-violet.

RHEIN NIXE. Snow white standards and plum colored falls.

SHEKINAH. A tall, pale yellow bloom. The first yellow pallida.

SUSAN BLISS. A fine pink variety, quite tall and large.

SOUVENIR DE L. MICHAUD. Rich gentian blue, fading to lavender at the edges. 50¢.

SOUVENIR DE MME. GAUDICHAU. Violet and purple black. Very large, and showy.

SWEET LAVENDER. Pale lavender standards, deeper lavender falls. Fine.

TRUE CHARM. A lovely frilled, white variety.

WYOMISSING. Creamy white, overspread soft rose.

YOLANDE. A wonderful velvety dark purple. Large.

IRIS FOR MASSING

To those who wish to mass Iris for color effects only, we offer the following list of varieties. All have been good standard varieties and are strong plant makers, so that for massing for a show of color they are unexcelled.

10 for \$1.00; \$8.00 for 100. Delivery included in all prices.

CAPRICE; DR. BERENICE; HER MAJESTY; HONORABILIS; JUNIATA; MME. CHEREAU; PAULINE; PALLIDA DALMATICA; POWHATAN; QUAKER LADY

IRIS PUMILA

The Pumila Iris are suitable for the rockery or for use as edging in garden beds. They are early and are always welcome. BLUE, YELLOW or REDDISH PURPLE. Please state choice of color. 20¢ each; \$1.50 for 10.

ORANGE QUEEN, a uniform shade of clear deep yellow, fragrant and charming. 25¢ each.

IRIS CRISTATA

This little Iris is the earliest of all. It is fine for carpeting banks in the rockery, and the roots intertwine to form a close mat that prevents erosion. The grey green leaves are a delightful patch of color all season. The flowers are a clear light porcelain blue.

Strong clumps 25¢ each; 5 for \$1.00; 10 for \$1.75; 25 for \$3.75.

IRIS CRISTATA ALBA, the rare white form of the preceding is offered at 50¢ ea.

BEARDLESS IRIS

DOROTHEA K. WILLIAMSON. Large velvety flowers of the most vivid purple. Thirty inches. Generally considered one of the very finest of the beardless Iris. It requires a moister situation than bearded Iris. 50¢ each.

PEONIES

We prefer not to ship Peonies until September but from then on and until mid-October they may safely be planted and we can make delivery during that period. Our planting has increased in size and has flowered profusely this season in spite of the dry weather. In most cases we shall send out strong divisions or plants one year old. It should be borne in mind that the price of these Peonies includes delivery and that they are sufficiently heavy to make our price lower than those usually asked.

ALBATRE. Better than Festive Maxima. The finest white Peony. 75¢ each.
ALBERT CROUSSE. Very late, seashell pink flower of perfect shape. \$1.00.
BARONESS SCHROEDER. A large, late, white, like a water lily. \$1.00. each.
CHESTINE GOWDY. Silvery pink, growing deeper at the center. \$1.00. each.
CLAIRE DUBOIS. A later M. Jules Elie. Wonderful silvery sheen. \$1.25 each.
DORCHESTER. The latest Peony. Fine deep pink, almost salmon. \$1.00. each.
EDULIS SUPERA. The earliest rose-pink sort. First Peony to open. 75¢ each.
EUGENIE VERDIER. An early, extra large pink sort. Lasts well. \$1.00. each.
FELIX CROUSSE. The best midseason red. Few better at any price. 75¢ each.
FESTIVA MAXIMA. The favorite white. Pink tipped petals. 50¢ each.
FRANCES WILLARD. An immense flower, blush-white, fading to pure white. \$2.00 each.
GEORGIANNA SHAYLOR. Extremely large, flesh-pink flower. Midseason. \$2.00. each.
JAMES KELWAY. Rose-white, changing to milk-white, fading to pure white. \$2.00 each.
KARL ROSENFELD. Fine rich velvety crimson. Midseason. Good. \$1.00 each.
LADY ALEXANDRA DUFF. Immense, cup shaped bloom. Pale rose, shading lighter. \$1.00.
LE CYGNE. The world's finest Peony. White. Very large. \$2.50 each.
LIVINGSTONE. Pale lilac-rose, with silver tips. Compact double flower. 75¢ each.
LONGFELLOW. Brilliant crimson. Brightest colored sort we grow. \$2.00 each.
LOUIS VAN HOUTTE. A midseason, red. Double and good. 50¢ each.
MARGUERITE GERARD. Pale pink, fading to white. Enormous flat flowers. 75¢ each.
MARIE CROUSSE. Pale lilac rose. Bomb type. Midseason. 75¢ each.
MARIE LEMOINE. Latest white, and a fine large double sort. \$1.00 each.
MARTHA BULLOCK. Very large. Deep rose pink, fading silvery pink. \$2.00 each.
MARY BRAND. Finest red Peony grown. Midseason, and lasts well. \$1.50 each.
MME. AUG. DESSERT. Bright rose, center flecked crimson. Early midseason. 75¢ each.
MME. DUCEL. Large incurved silvery-pink bloom. Midseason to late. 75¢ each.
MME. EMILE GALLE. Sea-shell pink. Ethereally beautiful. \$1.00.
MME. JULES DESSERT. Pure white, with distinct pink center. \$1.50 each.
MONS. JULES ELIE. Finest early rose colored sort. Always fine. 75¢ each.
OFFICINALIS RUBRA. Early red "Decoration Day" Peony. 75¢ each.
PRIMEVERE. The nearest to yellow in this type of Peony. \$1.50 each.
SARAH BERNHARDT. Apple-blossom pink. Immense flowers. \$1.00.
SOLANGE. No other Peony like this. White, shaded brown. Beautiful. \$1.00 each.
SUZETTE. Bengal rose, slightly shaded carmine purple. Silvery reflex. \$1.00 each.
THERESE. Rich violet-rose. Enormous flower. \$2.00 each.
TOURANGELLE. Delicate rose, over pearly white, shaded salmon. Late. \$1.50 each.
TR. DE L'EX. DE LILLE. Flat fragrant hydrangea pink blooms. Fine. 50¢ each.
VENUS. Pale hydrangea-pink with lighter collar. Midseason. 75¢ each.
WALTER FAXON. Bright rose. A distinct, delicately colored bloom. \$1.50 each.

SINGLE PEONIES

These are in demand, for their landscape effect, and their charm. The opening buds are like roses.

LA FIANCEE. Single white. Indescribably graceful flower. \$1.00 each.
L'ETINCELANTE. Rich clear carmine, broadly edged with silver. \$1.50 each.

ORIENTAL POPPIES

About twelve varieties of Oriental Poppies are in blossom in our fields as we write this, and the color range is from the brightest scarlet through orange, cerise and magenta to rose pink, shell pink and white. One variety which we shall offer next year has flowers about 15" across when open. No other flower makes such a display and brings so many exclamations of wonder from visitors. When they are done flowering the plants soon disappear to make room for Zinnias and other showy annuals which can readily be planted around them. It is during this dormant period, in July, that Poppies may be most safely moved, and we offer strong one year old field-grown plants of the following varieties for delivery as soon as the foliage ripens, at the following prices. 25¢ each; 5 for \$1.00; 10 for \$1.75

MRS. PERRY. Lovely salmon pink. The first variety to depart from the old scarlet form. It is still one of the finest varieties grown. Hardy, sure to blossom, readily established in the garden.
MAY QUEEN. This is the first good double poppy. It is earlier than the other varieties and flowers more profusely. The best description we have seen for it is "flame orange". To us there is no scarlet in it. It makes a glorious showing against evergreens. It is inclined to spread and is a very permanent sort.

HYBRID ~~HEMEROCALLIS~~

Some of these Day Lilies have been so popular in the past year that our stocks have been sold below the safety point and we are obliged to withdraw the offerings of a number of sorts which we cataloged in the March 15th issue. We can not supply varieties other than those listed below. These Day Lilies are perfectly hardy and even when the crowns are hurt by extreme cold they will start from the roots if left undisturbed in spring. We advise planting them during August and September at which time they have finished flowering and are developing their buds for next season. We offer strong divisions at the prices quoted.

ANNA BETSCHER. Deep orange, touched bronze red. Early July. \$1.75.
BAY STATE. Very large, pure glistening yellow flowers. July to August. \$1.00.
CALYPSO. A Burbank creation. Very fine light lemon yellow. \$1.00.
DR. REGEL. Small foliage. Flowers late, with rich apricot blooms; fragrant. 50¢.
D. D. WYMAN. Light golden yellow, with a tawny splash. July and August. \$1.50.
FLAVA. The Lemon Daylily. An old variety, but fragrant and excellent for massing. 30¢.
GEORGE YELD. Large flowers, nearly 6" across; rich orange and orange scarlet. One of the finest English varieties. \$2.50.
GOLDENI. Deep golden orange flowers in early July. \$1.00.
GOLD DUST. Large, rich clear golden yellow flower, in June. 35¢.
GYPSY. Orange-yellow. Tall, strong growing. We like it. July, August. \$2.00.
J. A. CRAWFORD. Extra large, cadmium yellow and apricot flowers. June and July. We consider it among the best. \$1.00.
LEMONA. Pale lemon yellow, a glorified flava. July. Very lovely. \$1.00.
MRS. A. H. AUSTIN. Large flowers, deep golden yellow. July to August. \$2.00.
MRS. W. H. WYMAN. Very pale, glistening, yellow. Late August. Delicate. \$1.00.
SOVEREIGN. Free flowering English variety. Orange yellow blooms, shaded brown on the outside. June. \$1.00.
THUNBERGI. Much like flava, and fine for massing with that variety to prolong its season. Buttercup yellow. 30¢ each; 10 for \$2.00.
VARIEGATED LEAF. This is probably Kwanoo variegata, though it came to us from an odd source. The leaves are attractively striped with cream. A scarce variety. Stock limited. \$2.00.
WINSOME. One of the earliest yellows. Very floriferous and lovely. \$2.00.

HYBRID TROLLIUS

We have some exceptionally fine plants of these Globe Flowers, all of which, have been grown by divisions of the original stock and are true to name. For massed color effects in the early garden they are unsurpassed, as each plant of a variety is identical with its neighbor in height and coloring. They are splendid for combining with Anchusa myosotidiflora or other early blue flowers.

All at 35¢ each; 10 for \$3.00; 100 for \$25.00, -except as noted.

CANARY BIRD. Pale lemon yellow, tall and strong growing. One of the first to bloom, and very fine for cutting, long stems, and lasts well.
EARLIEST OF ALL. Light orange-yellow, and very early, sometimes opening in April. Often too, it flowers again, later in the season.
ELEANOR. A fine bright yellow variety, flowering profusely in late May, and into June.
EXCELSIOR. Bright orange-red flowers. Grows two feet high, and is a fine strong growing sort that will usually give a good second bloom, if cut down as soon as thru flowering.
FIRE GLOBE. Bright orange, semi-double flowers on a moderately low plant. A very popular variety, though not as bright as Orange Globe.
GOLDEN GLEAM. Golden yellow, and a very large double flower. One of the more recent varieties. 50¢ each.
HIS MAJESTY. One of the very best, with very large, round, orange-red flowers. Dwarf and compact.
LEDEBOURI. Large, orange yellow flowers. A fine type of bloom, and very satisfactory in the garden. Blooms till the end of June.
LICHTBALL. Extra large globe shaped flowers of orange-yellow, on strong stiff stems. Fine for cutting. Plant of medium height.
LODDIGESI. This is an extremely fine form, with bright golden yellow flowers, which maintain their close round shape until fully faded.
ORANGE GLOBE. A profuse bloomer, of robust growth. Very fine large orange flowers. We have a fine lot of these.
ORANGE PRINCESS. A very free flowering variety, with blooms of an extra deep orange. Flowers in May and June. 50¢ each.
SALAMANDER. A fine orange variety, flowering late. It is tall and strong, is fine for cutting, and especially for garden effect.
SINENSIS. This is a very fine form, growing three feet tall, with fine glossy foliage. Its greatest value lies in its late blooming date. The large flat bright orange flowers do not appear until late June, and last into July. Fine for garden effect, and for cutting.

EREMURUS

The Eremurus is a native of the dry uplands of the Himalayas. Its hardiness comes from its exposure to the cold of the high altitudes, but these fields are also very dry during the dormant time of the plant which is from August almost until growth starts the next spring. It is necessary therefore to provide ample drainage facilities where these plants are grown, and too, where late spring frosts may be expected, protection should be given to the flower bud as it is sometimes damaged by freezing. The plants have fleshy large roots growing laterally from the crown and a large flat hole should be dug with a mound of sand in the center, on which the crown can rest. A light soil, moderately enriched, will be most satisfactory. The flower spikes of these plants are often six feet tall and though quite strong and able to withstand winds, they will be better if protected on the north by evergreens and certainly nicely placed against such a background. Soon after flowering, the plant disappears and something should be provided to fill the vacant spot left by it. It is while the plant is dormant, after flowering is completed, that they can be moved with safety. We offer the following varieties for delivery when ready, in August or September. Please do not ask for spring delivery.

AURANTIACA (Bungei). This variety does not grow so tall, but has citron yellow flowers on wiry spikes 3 to 4' high. It blossoms nearly a month later than the taller sorts which follow. Extra large plants \$2.00 each; flowering size \$1.50 ea.
ELWESI. A very vigorous light pink sort, enormous spikes thickly set with flowers. Extra large plants \$3.00 each; flowering size \$2.00 each.
ELWESI ALBUS. A huge variety, pure white flowers on superb stalks. Extra large plants \$3.00 each; flowering size \$2.00 each.
HIMALAICUS. A hardy and vigorous variety, which sometimes has 8' flower stems, one third covered with flowers. One of the older sorts and still one of the best. Extra large plants \$3.00 each; flowering size \$2.00 each.
ROBUSTUS. This is said to grow to a height of ten feet when happily established. The color is a rosy pink. Extra large plants \$3.50 each; flowering size \$3.00 ea.

We can supply four other varieties at prices much lower than in the past. If you wish a complete collection we will be glad to quote on them. Of the sorts we offer, smaller sizes are available, many of which would flower, at \$1.00 each.

LYCORIS SQUAMIGERA

This is the hardy Amaryllis. Its flowering habit is peculiar. A strong leafy growth appears in the spring and is nearly ripened off by July. In late summer or early fall a naked flower spike bursts through the ground, making a rapid growth and finally producing on its top an exceedingly lovely pink blossom. Some shallow rooted plant like Thyme should be used as a ground cover for these bulbs. They make a splendid combination with Hemerocallis, as the leafy growth of the latter adds to the beauty of the Lycoris flower. It is finely used to edge paths even in shade, as is the Day Lily. The bulb is perfectly hardy and grows readily. We offer large bulbs of our own growing at \$1.00 each, 10 for \$9.00.

CORYDALIS BULBOSA

If you are familiar with Dutchman's Breeches and can imagine it colored a rosy pink, you have a very good idea of the appearance of this little bulbous plant. The roots resemble small Gladioli, and are perfectly hardy in well drained soil. The leafy growth and the flowers appear very early in spring and by July the foliage has fully disappeared. It may be used nicely in crevices of the rocky, later to be covered by trailing plants, and we like it when massed with Coral Lilies or other small lilies that flower in midsummer. We again have a splendid stock of bulbs at 50¢ each; 5 for \$1.75; 10 for \$3.00.

LILIUM CANDIDUM

The Madonna Lily can scarcely need description. Almost everyone knows the tall white spikes as they appear in July against a background of Larkspur, and everyone knows that the best bulbs come from the North of France and are imported in late summer, arriving usually in September. It is necessary to plant them early enough so that the strong leafy fall growth can appear before winter. This is sometimes difficult if the bulbs are delayed in transit.

Last year we purchased an extra quantity of this lily and have some fine plants now, almost ready to bloom. They are of the North of France strain, and we will be able to ship bulbs any time after mid-August. We advise early ordering to avoid disappointment.

Large bulbs 35¢ each; 10 for \$3.00; 100 for \$25.00.

NATIVE BULBOUS PLANTS

There are many early spring flowering, native plants, whose bulbs or crowns mature early in summer. Practically all of these flower with the first spring days, many of them in dense woodland, which at that season has little if any shade. By the time shade is dense the plant has ripened and died away. For that reason it is not necessary to grow these plants in shade, but they may be used where summer shade will be thick. All of these may safely and best be planted at any time now. Some of them making slight fall growth, but none show above the ground until next spring. Ordinary well drained garden soil will suit them all. We can make delivery at any time until September, but urge and advise immediate ordering to permit us to obtain sufficient supplies.

BLOODROOT (*Sanguinaria canadensis*)

The Bloodroot carpets rockery hillsides with its large flat leaves and glistening white flowers in very early spring. Particularly is it likely to be found where the root can nestle against a stone, and we often lift a flat rock to find it completely encircled with the pinkish roots of this plant. This suggests a use for it in the rock garden, where it may be combined with *Corydalis* Bulbosa or with Squirrel Corn and Dutchman's Breeches. Next they may be planted *Tiarella* or *Mitella*, which will carpet the bare spot later in the season.

Strong roots, 25¢ each; 3 for 50¢; 5 for 75¢; 10 for \$1.50; 100 for \$10.00.

CAMASSIAS

The Camassias are bulbous plants of the middle West and the Pacific Coast, the more common variety being found over the greater part of the whole section. They are among the finest of bulbs for naturalizing in the woodland or wild garden, and their splendid spikes reach a height of 2 to 3 ft., studded along their length with exquisitely formed starry flowers. They succeed well in dry or damp situations and in shade as well as in sun. They should be planted in clusters of several bulbs and left undisturbed to form a large clump.

ESCULENTA. Blue flowers in May. 15¢ each; 10 for \$1.00; \$9.00 for 100.

LEICHTLINI. Taller and stronger western form. Lighter blue flowers. 25¢ ea; 10 for \$1.50.

DUTCHMAN'S BREECHES (*Dicentra cucullaria*)

These little native bulbs are a logical adornment for the base of a stone or ledge in a rockery, for that is where they grow naturally. Then too, flowering so early, they come and are gone before Thymes and Veronics spread to fill the space. They are charming with their finely cut foliage and odd yellow-white flowers. As suggested, they may be combined with *Corydalis* bulbosa and *Lilium tenuifolium*. A gritty soil of leaf mold and sand suits them best.

D. CANADENSIS. Squirrel Corn is very similar to the preceding.

Either variety at 25¢ each; 3 for 50¢; 5 for 75¢; 10 for \$1.50; 100 for \$10.00

VIRGINIA COWSLIP (*Mertensia virginica*)

Early May brings the tall arching stems of *Mertensia*, sometimes called Bluebells, which open pink buds and turn an exquisite pale blue. During its period of growth it is charming under shrubs or in woodland, and is very satisfactorily massed in the border. By July it has disappeared, and its place may be taken by such other natives as *Mitella* or the *Heucheras* whose foliage will fill the vacant spot. Strong nursery grown roots, 25¢ each; 10 for \$2.00.

STARLILY (*Leucocrinum montanum*)

A very early spring flower of crystal white, the size of a crocus, forming a rosette of narrow foliage. One large clump will often bear fifty blooms in one season. Hardy and satisfactory.

25¢ each; 3 for 50¢; 5 for 75¢ 10 for \$1.50; 100 for \$10.00.

WAKE ROBINS (*Trilliums*)

Trilliums are charming woodland plants suitable for use under shrubs or among evergreens, as often planted about the front of a house. They are very fine to use for north-side planting with ferns which will cover the vacant spot they leave after they mature in July. They are also useful for the open border and we grow them in nursery beds in full sun. All at 25¢ ea; 3 for 50¢; 10 for \$1.50; 100 for \$10.00.

ERECTUM. Common purple *Trillium*; Wake Robin.

GRANDIFLORUM. The giant White *Trillium* that carpets acres of woodland here.

Gradually turns pink as it ages and is altogether fine. Of easy culture.

UNDULATUM. Rare Painted *Trillium*. A native of deep, cool shady woods. White, with a deep reddish blotch at the center.

STYLOSUM. Called the Rose *Trillium*; the white petals are tinged with that color.

A number of nursery plants, which are not natives, are very satisfactorily transplanted at this season when they are through flowering and before they make fall growth. In one or two cases, planting at this time tends to produce flowers in fall, and a satisfactory growth is almost sure to result and give plants more likely to winter safely. We urge the planting of all the following during mid-summer whenever ordinary care can be given.

ANEMONE VERNALIS (Glory of the Snows)

We are still urging everyone who has space to do so, to plant a good clump of these earliest of all spring flowering Anemones in the garden or rockery. While reputed to be difficult, we find that ordinary soil, a sandy loam, not too moist, and full sun suit them perfectly, and we feel that over-fertilization and too much care may be responsible for some losses. The flowers, like furry Crocus, appear with the first warm spring days, each plant sending up several in succession. They are a creamy white, fading to rose with age. The foliage does not die down, and is attractive during the summer. They are comparatively dormant right now, and should be set out in summer or early fall, since they blossom so very early in spring. 25¢ each; 10 for \$2.00.

ANEMONE PULSATILLA (Pasque Flower)

The Pasque Flower is like a larger edition of the preceding. It flowers somewhat later and is taller and larger in all its parts. The color, however, is generally a lavender blue, but we also have it in good red purple form, which is not quite so large, and also in the pure white, which is more dainty and attractive and very rare. This Anemone also should be planted at this season for much the same reasons as vernalis. The LAVENDER and the RED forms are priced at 25¢ each; 10 for \$2.00; and the WHITE is 50¢ each. Please state which color you prefer.

DICENTRA SPECTABILIS (Bleeding Heart)

Bleeding Hearts are very well known, and while they have long been used as a border plant, not everyone has tried them for massing on the north side of a building or in partial shade under old fruit trees or small flowering trees in the garden. They seem to like the coolness and are more inclined to prolong their season of flowering. In spring when trees and plants are both in bloom, they make a charming picture. Ripening gradually, as summer progresses, we feel they are best transplanted in July and August and not too late in September, so that they get thoroughly established before cold weather.

Strong field grown roots, 25¢ each; 10 for \$2.00; \$18.00 for 100.

DORONICUM (Leopardbane)

CAUCASICUM. The common form of Doronicum is a tall daisy-like perennial with from one to three bright yellow single flowers, about two inches across, on a tall slender stem above bright green foliage, which never gets but a few inches high. It is splendid for cutting and is a welcome touch of yellow in early May in the hardy border. The plant often becomes thoroughly dormant in July, losing all its leaves only to start anew with the fall rains. It spreads readily from small root pieces, and makes a good clump in one year. We are offering root pieces at a lower price for midsummer delivery only. 15¢ each; 10 for \$1.00.

CORDIFOLIUM. We obtained this variety of Leopardbane three years ago, and were immediately charmed by it when it flowered. Moreover, everyone who has seen it while in blossom has demanded it. In habits, it is unlike the preceding. The flowers are yellow and nearly as large, but are carried in a broad flat corymb. The entire growth with us is seldom over 18 inches. The foliage is heart shaped, and is very persistent, and good, making the plant a decided ornament to the border at all seasons. Flowering continues much longer than with the older sort, and the plant also may be satisfactorily forced in the greenhouse during the winter when it will flower for several months. Our stock is still limited, but we offer strong young plants from 3" pots for delivery in September at 35¢ each.

VIOLET, SINGLE RUSSIAN

Violas and Violets are a decided hobby with us, and we have bought and tried nearly every form offered us. Among all the Sweet Violets we have grown, with the possible exception of Rosina, this is the most satisfactory. To begin with, it is a strong vigorous grower making large mounds of dark green foliage, so that it is suitable for edgings of broad paths or for carpeting under trees and shrubs, but it may also be used in the garden. It is absolutely hardy with us, surviving the past winter when all other sorts killed badly. The flowers themselves are fragrant and large and equal the single greenhouse varieties. The stems are long and easily permit bunching. There are no flowers through the summer, but in fall they again flower until frozen down. Young plants put out at this time are most sure to flower this fall. We offer young field grown clumps at 25¢ each; 10 for \$2.00.

FALL FLOWERING BULBS

In Fall, when the Rockery is bare, save for foliage, it is possible to have showy flowers appear from the soil, as if by magic, and continue to brighten the garden for weeks. The fall-flowering Crocus, and the Colchicums, or Meadow Saffron, all flower in this way. Growth is made in the Spring, after which the leaves die down and not until Fall do the flowers appear. During this dormant period, in mid-Summer is the time to plant them. They will flower this very Fall.

COLCHICUM

AUTUMNALE. Large lavender cups, sometimes two inches across. Blooms appear in succession, over a long period. 35¢ each; 10 for \$3.00.

AUTUMNALE ALBUM. The white form of the preceding. A very lovely and charming flower. 35¢ each; 10 for \$3.00.

CROCUS

SATIVUS. Large, lilac purple flowers, with a showy orange center. The flowers appear over a long period, and at a time when they are fully appreciated.

SPECIOSUS. Bright blue, with deep orange anthers. Slightly larger, and very showy.

ZONATUS. Beautiful large rose-like blossoms, with yellow center and an orange zone. A striking beauty, of delightful coloring.

Above at 10 for 50¢; 100 for \$4.00.

MIXED. A mixture of above, 10 for 50¢; 100 for \$3.50.

TULIPS

The following bulbs, all of which are imported from Holland, are offered for advance orders only. As you will note, prices advance on July 15th, and the offer closes on August 1st. This is because we must place our orders in Holland on that date, to be sure of delivery in time for planting. These prices are for cash with order, only. We are certain that they are lower than these bulbs will be sold at, later in the season.

LATE FLOWERING TULIPS

Including Breeder, Darwin and Cottage Types.

	July 1-15			July 15-31		
	3	10	100	3	10	100
<u>BARONNE DE LA TONNAYE</u> . Bright rose, margined blush-rose.	15¢	40¢	\$3.75	18¢	45¢	\$4.00
<u>BARRIGON</u> . Fiery crimson, white base. 22".	15	40	3.75	18	45	4.00
<u>BRONZE QUEEN</u> . Soft buff; inside tinged golden bronze.	15	40	3.75	18	45	4.00
<u>CARDINAL MANNING</u> . Dull wine red, rosy bronze shadings.	15	40	3.75	18	45	4.00
<u>CLARA BUTT</u> . Soft salmon-rose. 22"	15	40	3.75	18	45	4.00
<u>DOM PEDRO</u> . Coffee-brown, shaded rich mahogany maroon.	18	45	4.00	20	50	4.25
<u>FARNCOMBE SANDERS</u> . Deep rose scarlet; white center.	15	40	3.75	18	45	4.00
<u>FULGENS</u> . Scarlet-crimson; petals recurve gracefully.	20	50	4.25	25	55	4.50
<u>GODET PARFAIT</u> . Large, bright violet flower, keeps well.	20	50	4.25	25	55	4.50
<u>GRENADEUR</u> . Dazzling brilliant orange. Large. 20".	18	45	4.00	20	50	4.25
<u>INGLESCOMBE YELLOW</u> . Canary yellow. 18".	15	40	3.75	18	45	4.00
<u>LA TULIPE NOIRE</u> . Darkest tulip known. 24".	18	45	4.00	20	50	4.25
<u>LE NOTRE</u> . Beautiful shade of bright rose. 26".	15	40	3.75	18	45	4.00
<u>LOUIS XIV</u> . Dark purple, broad golden brown margin.	18	45	4.00	20	50	4.25
<u>PHILIPPE DE COMINES</u> . Large dark purple flower. 24".	15	40	3.75	18	45	4.00
<u>PICOTEE</u> . Cream white, faintly edged with pink. 20".	15	40	3.75	18	45	4.00
<u>PRIDE OF HARLEM</u> . Brilliant rosy red. 30".	15	40	3.75	18	45	4.00
<u>PRINCE OF ORANGE</u> . Orange scarlet, edged with yellow.	20	50	4.25	25	55	4.50
<u>PRINCESS ELIZABETH</u> . Soft lilac-rose, with pale edges.	15	40	3.75	18	45	4.00
<u>REV. H. EWBANK</u> . Lilac mauve shading to silvery blue.	15	40	3.75	18	45	4.00
<u>RETROFLEXA</u> . Bright yellow; lily-like reflexing petals.	18	45	4.00	20	55	4.25
<u>SNOWDON</u> . Pure white, globular formation 24".	18	45	4.00	20	55	4.25
<u>WILLIAM PITT</u> . Carmine, shaded purple. Large 24".	15	40	3.75	18	45	4.00
<u>MIXED</u> .	12	35	3.25	15	40	3.75

SINGLE EARLY TULIPS

<u>COULEUR CARDINAL</u> . Brilliant scarlet crimson. Large.	20	50	4.25	25	55	4.50
<u>CRAMOISI BRILLIANT</u> . Crimson. For forcing or bedding.	20	50	4.25	25	55	4.50
<u>FLAMINGO</u> . Large, bright pink flower. 12".	20	50	4.25	25	55	4.50
<u>KETZERKROON</u> . Rich scarlet, deeply edged bright yellow.	20	50	4.25	25	55	4.50
<u>YELLOW PRINCE</u> . Golden yellow. Best for forcing 12".	20	50	4.25	25	55	4.50

DOUBLE EARLY TULIPS

<u>COURONNE D'OR</u> . Deep yellow, flaked orange.	20	50	4.25	25	55	4.50
<u>MR. VAN DER HOEF</u> . Pure golden Murillo. 12".	20	50	4.25	25	55	4.50
<u>MURILLO</u> . White, with soft rose flush. Good forcer.	20	50	4.25	25	55	4.50
<u>VOUREBANK</u> . Bright scarlet. 12".	20	50	4.25	25	55	4.50