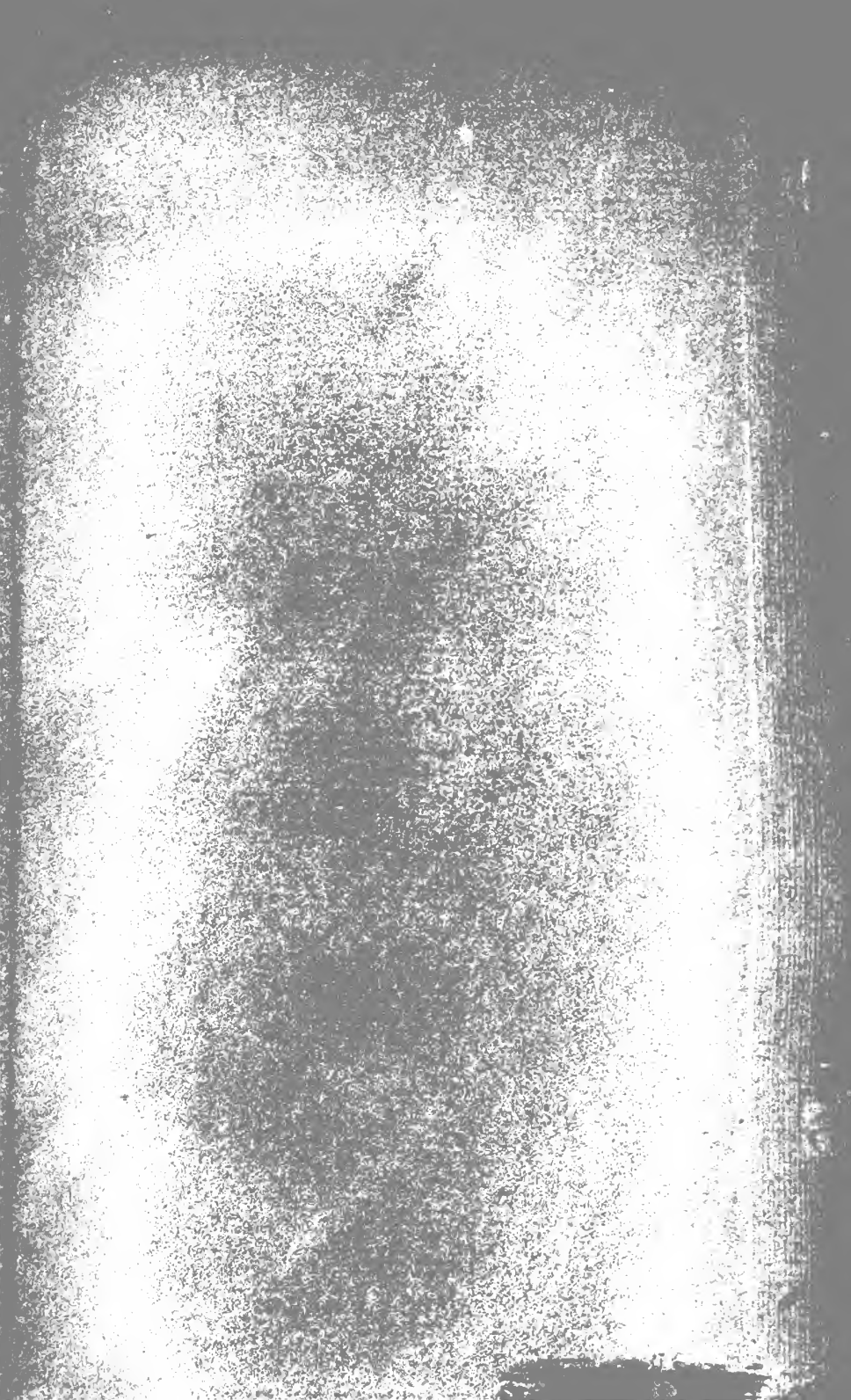
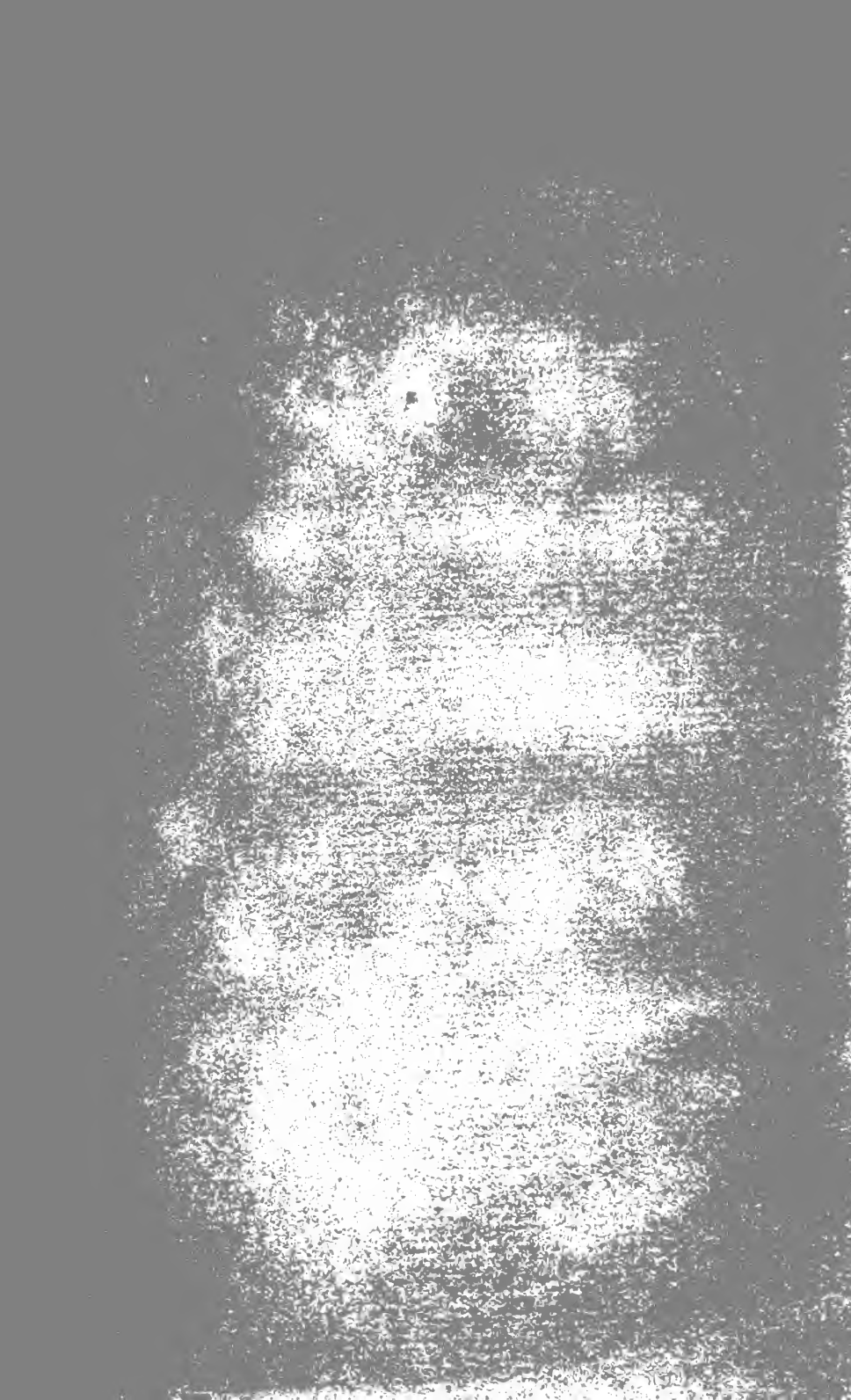


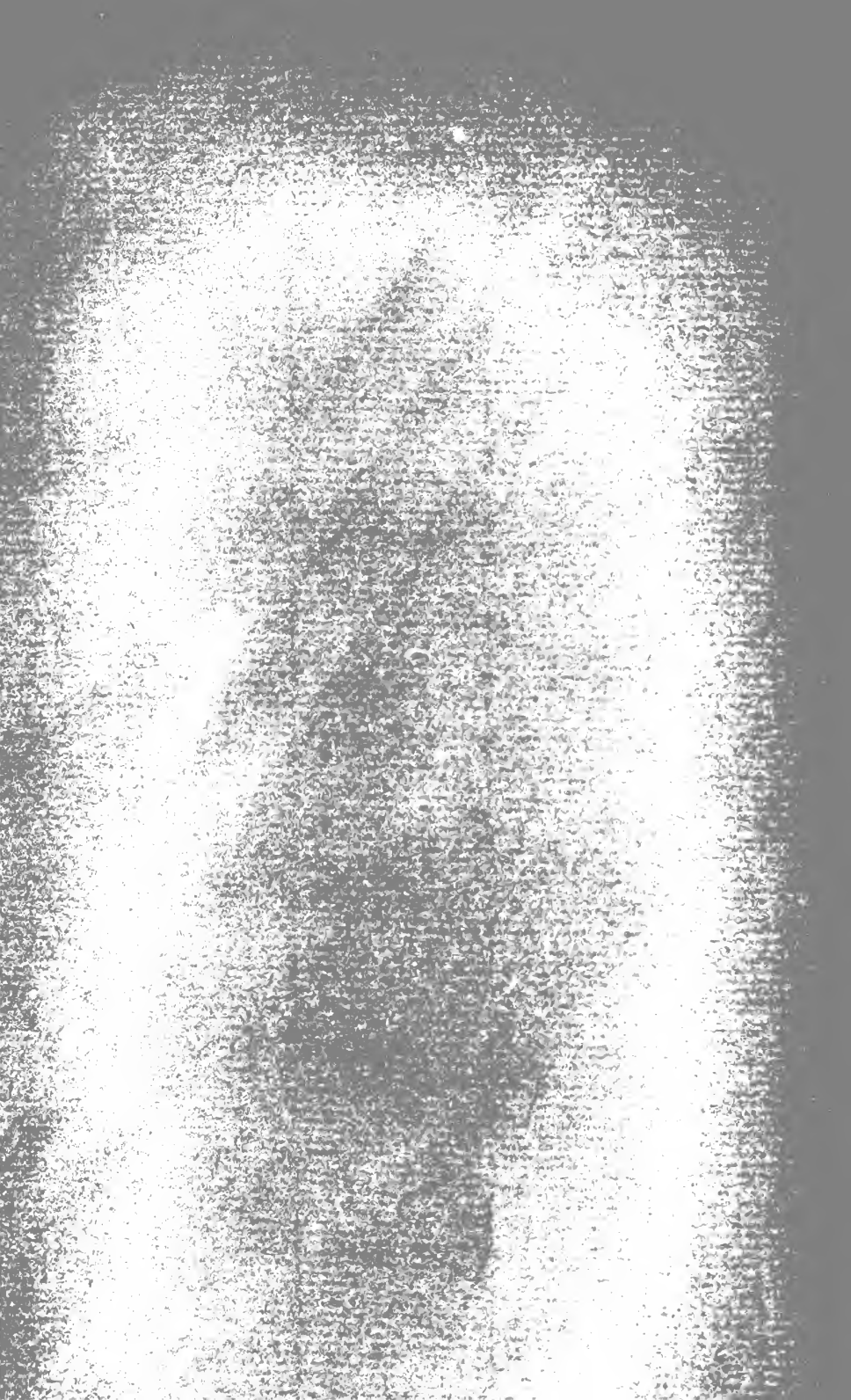


3 1761 06706776 9

BONAPARTE'S  
BIRDS  
OF  
EUROPE & NORTH AMERICA







BIRDS  
OF  
EUROPE AND NORTH AMERICA.

Digitized by the Internet Archive  
in 2007 with funding from  
Microsoft Corporation

*Good  
Owes*

A

GEOGRAPHICAL AND COMPARATIVE

LIST OF THE

B I R D S

OF

EUROPE AND NORTH AMERICA.

---

BY

CHARLES LUCIAN BONAPARTE,

PRINCE OF MUSIGNANO.

---

*90/22  
13/8/08.*

LONDON:

JOHN VAN VOORST, 1, PATERNOSTER-ROW.

---

1838.

Handwritten text, possibly a library stamp or date, located in the upper left corner of the page.

LONDON:  
PRINTED BY MANNING AND SMITHSON,  
IVY LANE, PATERNOSTER ROW.



## P R E F A C E.

---

THE Comparative List of Birds of Rome and Philadelphia, which was first published in the 33rd No. of the "Nuovo Giornale de' Letterati," and printed as a separate Tract at Pisa in 1827, having met with the kind attention of several eminent Ornithologists, both in this country and on the Continent, I have been induced to publish on the same plan, a general enumeration of the Birds of Europe and North America, which, besides giving the comparative Ornithology of these two regions, contains the most complete list hitherto published of the Birds of each, arranged under their respective Genera and Tribes according to the present state of Ornithology.

The Genera are arranged in these lists in Families and Tribes according to the general system of Birds on which I have been long engaged, and which I now hope very shortly to bring before the Public. It is necessary to make this remark, as some of the groups may not appear to follow in their most natural order, if the Birds in the list are alone taken into consideration; but this arises from my series of affinities being filled up and completed by Birds which are not found either in Europe or North America.

The specific name adopted in this catalogue is always that used by Linnæus, or the first describer after the establishment of his Binominal Nomenclature to whom I can with certainty refer the species. If by any mistake this should not be the case, it has arisen from oversight, or from my not having been able to determine, with certainty, any previous description; but whenever any instance of this kind is pointed out to my satisfaction, I shall be always glad to adopt the correction.

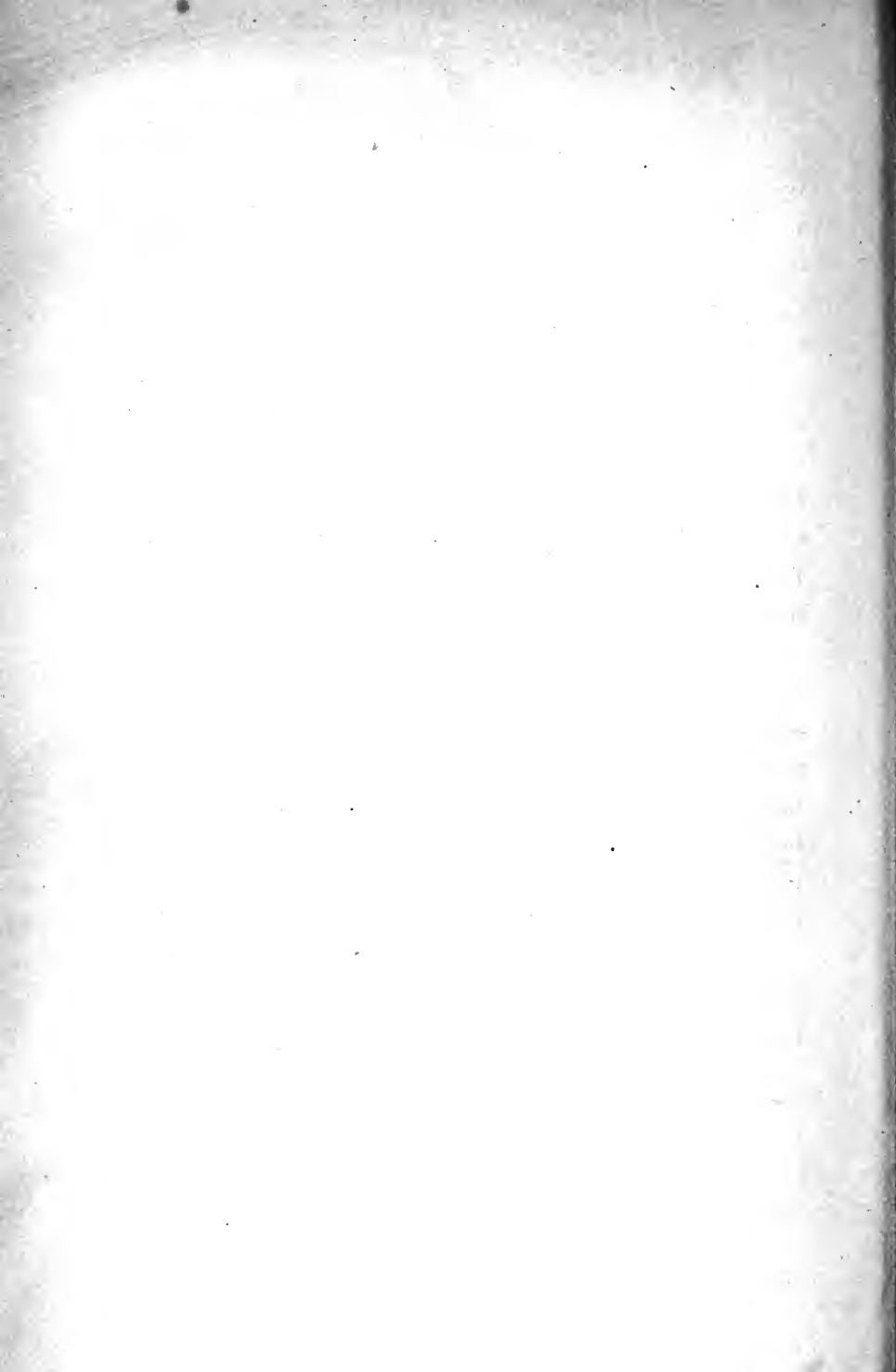
Although I myself make it a rule, when in want of a name, always to ascertain whether an appropriate denomination is to be found in the writings of the older Naturalists, I do not think that any Naturalist is bound to do so; and in no case do I consider it right to take any of the names of the older authors, however great may be their merits, in preference to those given by Linnæus. We owe this compliment to that great man; and besides, it is not fair to assume that our Binominal system of Nomenclature was established before his time, because we meet with a few instances capable of being referred to the invaluable principle which he was the first to generalize and render universal. Throughout the list, I have quoted as Types of the Species under consideration, the figures of the great works of Mr. Gould and M. Audubon on the Ornithology of the two regions, as they must be considered the standard works on the subject. The merit of M. Audubon's work yields only to the size of his book; while Mr. Gould's work on the Birds of Europe, inferior in size to that of M. Audubon's, is the most beautiful work on Ornithology that has ever appeared in this or any other country. The latter Ornithologist has expressed his intention of including in his Supplement all the European

Species indicated in this list that have not yet appeared in his work, together with such others as his unrivalled industry may add to the existing Fauna.

It is easy to perceive the advantages likely to result from a careful comparison of the natural productions of a fully inhabited country with those of another, the climate of which is in many respects the same. Botanists have contributed much to further, so to speak, our acquaintance with the Planet on which we live: I refer especially to those Botanists who continue daily to add to the edifice of Vegetable Geography;—a temple of which the foundations were laid, and the framework erected, by the truly illustrious Humboldt.

Zoologists, however, up to the present time have been most remiss in their attention to Ornithological Geography; and I am not on that account the more backward in contributing my share to this branch of knowledge. As in the *Specchio Comparativo*, the reader will find in the same line the species which are common to both Continents, as well as those which, although different, are to be regarded as corresponding to each other, by a greater or less degree of affinity or analogy.

A synonymy is added, to point out the species which I have in view, and selected in such a way as always to give information or present interest.



GEOGRAPHICAL AND COMPARATIVE  
**LIST OF THE BIRDS**  
 OF  
**Europe and North America.**

---

A V E S.

*SUBCLASSIS I.—INSESSORES.*

ORDO I.—ACCIPITRES.

FAMILIA I.—VULTURIDÆ.

Europe.

*a. VULTURINÆ.*

North America.

Genus 1. NEOPHRON, Savigny.

1. NEOPHRON PERCNOPTERUS, Sav.  
 (*Vultur Percnopterus*, L.)  
 Gould, Birds of Europe, pl. 13.  
 South of Europe.

Genus 2. CATHARTES, Ill.

1. CATHARTES IOTA, Nob. (*Vultur atratus*, Wils.) Audubon,  
 Birds of America, pl. 106.  
 South of North America.
2. CATHARTES AURA, Ill. (*Vultur aura*, L.) Aud. pl. 151.  
 South of North America.
3. CATHARTES CALIFORNIANUS, Ranz.  
 (*Vultur Californianus*, Shaw.)  
 Aud. pl. 411. South-west.

Gen. 3. SARCORAMPHUS, Dum.

4. SARCORAMPHUS GRYPHUS, Dum.  
 (*Vultur Gryphus*, L.) Nob.  
 Am. Orn. iv. pl. 1. Acci-  
 dental in the south-west.
5. SARCORAMPHUS PAPA, Dum.  
 (*Vultur Papa*, L.) Buffon,  
 pl. enl. 428. Accidental in the  
 most southern parts.

## Genus 4. VULTUR, L.

2. VULTUR FULVUS, L. Gould,  
pl. 1. South of Europe.
3. VULTUR KOLBII, Lath. Gould,  
pl. suppl. South of Europe.

## Gen. 5. GYPS, Sav.

4. GYPS CINEREUS, Sav. (*Vultur cinereus*, Gm.) Gould, pl. 2.  
South of Europe.

## b. GYPAËTINÆ.

## Gen. 6. GYPAËTOS, Storr.

5. GYPAËTOS BARBATUS, Storr.  
(*Vultur barbatus*, L.) South  
and Alps of Europe.

## FAMILIA II.—FALCONIDÆ.

## a. POLYBORINÆ.

## Gen. 7. POLYBORUS, Vieill.

6. POLYBORUS BRASILIENSIS, Sw.  
(*Falco brasiliensis*, Lath.) Aud.  
pl. 161. South of North Ame-  
rica.

## b. AQUILINÆ.

## Gen. 8. AQUILA, Brisson.

- |  |  |
|--|--|
| <ol style="list-style-type: none"> <li>6. AQUILA CHRYSÆTOS, Cuv. (<i>Falco chrysaetos &amp; fulvus</i>, L.)<br/>Gould, pl. 6. Europe generally.</li> <li>7. AQUILA HELIACA, Sav. (<i>Falco imperialis</i>, Bechst.)<br/>Gould, pl. 5. South of Europe.</li> <li>8. AQUILA BONELLII, Nob. (<i>Falco Bonelli</i>, Temm.)<br/>Gould, pl. 7. Sardinia.</li> <li>9. AQUILA NÆVIA, Briss. (<i>Falco nævius &amp; maculatus</i>, Gm.)<br/>Gould, pl. 8. Eastern Europe.</li> <li>10. AQUILA PENNATA, Cuv. (<i>Falco pennatus</i>, Gm.)<br/>Gould, pl. 9. Eastern Europe.</li> </ol> | <ol style="list-style-type: none"> <li>7. AQUILA CHRYSÆTOS. (<i>Falco fulvus</i>, Wils.)<br/>Aud. pl. 81. Northern parts.</li> </ol> |
|--|--|

## Genus 9. HALIAËTOS, Sav.

- |   |  |
|---|--|
| 11. HALIAËTOS ALBICILLA, Sav.<br>( <i>Falco albicilla</i> & <i>ossifragus</i> , Gm.) Gould, pl. 10. Europe generally. | 8. HALIAËTOS WASHINGTONI, Nob.<br>( <i>Falco Washingtoni</i> , Aud.) Aud. pl. 11. Northern parts.                      |
| 12. HALIAËTOS LEUCOCEPHALUS, Sav. ( <i>Falco leucocephalus</i> , L.) Gould, pl. 11. Accidental in northern Europe.    | 9. HALIAËTOS LEUCOCEPHALUS.<br>( <i>Falco leucocephalus</i> , Wils.) Aud. pl. 31 adult, pl. 126 young. Northern parts. |

## Gen. 10. PANDION, Sav.

- |  |  |
|--|--|
| 13. PANDION HALIAËTUS, Sav.<br>( <i>Falco haliaëtus</i> , L.) Gould, pl. 12. Europe generally. | 10. PANDION CAROLINENSIS, Nob.<br>( <i>Falco carolinensis</i> , Gm.) Aud. pl. 81. America generally. |
|--|--|

## Gen. 11. CIRCAËTOS, Vieill.

14. CIRCAËTOS GALLICUS, Nob.  
(*Falco gallicus*, Gm.) Gould, pl. 13. Central and southern Europe.

## c. BUTEONINÆ.

Gen. 12. BUTAËTES, Less. (*Archibuteo*, Brehm.)

- |  |  |
|--|--|
| 15. BUTAËTES LAGOPUS, Less. ( <i>Falco lagopus</i> , L.) Gould, pl. 15. Northern and central Europe. | 11. BUTAËTES SANCTI-JOHNANNIS, Nob. ( <i>Falco lagopus</i> & <i>niger</i> , Wils.) Aud. pl. 422 adult, and pl. 166 young. America generally. |
|--|--|

## Gen. 13. BUTEO, Bechst.

- |  |   |
|--|---|
| 16 BUTEO VULGARIS, Bechst. ( <i>Falco Buteo</i> , L.) Gould, pl. 14. Europe generally,<br>Conf. <i>Buteo Mutans</i> , Vieill. <i>Buteo Fasciatus</i> , Vieill. <i>Buteo Pojana</i> , Savi. | 12. BUTEO SWAINSONI, Nob. ( <i>Buteo vulgaris</i> , Aud.) Aud. pl. 372.                                     |
|  | 13. BUTEO HARLANI, Aud. pl. 86. Southern parts.   |
|  | 14. BUTEO BOREALIS, Nob. ( <i>Falco borealis</i> & <i>leverianus</i> , Gm.) Aud. pl. 51. America generally. |
|  | 15. BUTEO HYEMALIS, Nob. ( <i>Falco hyemalis</i> & <i>lineatus</i> , Gm.) Aud. pl. 56. America generally.   |
|  | 16. BUTEO HARRISI, Aud. pl. 392.  |
|  | 17. BUTEO PENNSYLVANICUS, Wils. ( <i>Falco pennsylvanicus</i> , Wils.) Aud. pl. 91. America generally.      |
- Gen. 14. PERNIS, Cuv.
17. PERNIS APIVORUS, Cuv. (*Falco apivorus*, L.) Gould, pl. 16. Europe generally.

## d. MILVINÆ,

Genus 15. MILVUS, Bechst.

18. MILVUS NIGER, Briss. (*Falco ater* & *Aegyptius*, Gm.) Gould, pl. 29. Central Europe.
19. MILVUS REGALIS, Briss. (*Falco Milvus*, L.) Gould, pl. 28. Europe generally.

Gen. 16. NAUCLERUS, Vig.

20. NAUCLERUS FURCATUS, Vig. (*Falco furcatus*, L.) Gould, pl. 30. Accidental.
18. NAUCLERUS FURCATUS, Vig. (*Falco furcatus*, Wils.) Aud. pl. 72. Southern parts.

Gen. 17. ELANUS, Sav.

21. ELANUS MELANOPTERUS, Leach. (*Falco melanopterus*, Daud.) Gould, pl. 31. Accidental.
19. ELANUS LEUCURUS, Nob. (*Falco dispar*, Temm.) Aud. pl. 352. Southern parts.

Gen. 18. ICTINIA, Vieill.

20. ICTINIA PLUMBEA, Vieill. (*Falco Mississipiensis*, Wils.) Aud. pl. 117. Southern parts.

## e. FALCONINÆ.

Gen. 19. FALCO, L.

22. FALCO GYRFALCO, L. (*Falco islandicus*, Lath.) Gould, pl. 19. Northern Europe. Genus *Hierofalco*, Cuv.
21. FALCO GYRFALCO, L. (*Falco islandicus*, Lath.) Aud. pl. 366. and pl. 196 young. Northern parts.
23. FALCO LANARIUS, L. Gould, pl. 20. Eastern Europe.
24. FALCO PEREGRINUS, L. Gould, pl. 21. Europe generally.
22. FALCO ANATUM, Nob. (*Falco peregrinus*, Wils.) Aud. pl. 16. Northern parts.
25. FALCO SUBBUTEO, L. Gould, pl. 22. Europe generally. Genus *Hypotriorchis*, Boie.
26. FALCO ÆSALON, Gm. (*Falco Lithofalco*, Gm.) Gould, pl. 24. Europe generally.
23. FALCO COLUMBARIUS, L. (*Falco temerarius*, Aud.) Aud. pl. 75 adult, and pl. 92 young. Northern parts.
27. FALCO CONCOLOR, Temm. Gould, pl. 25. South-eastern Europe.
28. FALCO VESPERTINUS, Gm. (*Falco rufipes*, Bechst.) Gould, pl. 23. Europe generally. Genus *Erythropus*, Brehm.



Genus 20. CERCHNEIS, Boie, (*Tinnunculus?* Vieill.)

- |  |   |
|--|---|
| <p>29. CERCHNEIS TINNUNCULUS, Boie.<br/>(<i>Falco tinnunculus</i>, L.) Gould,<br/>pl. 26. Europe generally.</p> <p>30. CERCHNEIS CENCHRIS, Brehm.<br/>(<i>Falco Tinnunculoides</i>, Temm.)<br/>Gould, pl. 27. Southern Eu-<br/>rope.</p> | <p>24. CERCHNEIS SPARVERIUS, Boie.<br/>(<i>Falco sparverius</i>, L.) Aud. pl.<br/>142. America generally.</p> |
|--|---|

f. ACCIPITRINÆ.

Gen. 21. ACCIPITER, Ray. (*Nisus*, Cuv.)

- |  |   |
|--|---|
| <p>31. ACCIPITER NISUS, Nob. (<i>Falco<br/>nisus</i>, L.) Gould, pl. 18.<br/>Europe generally.</p> | <p>25. ACCIPITER FUSCUS, Nob. (<i>Falco<br/>velox &amp; pennsylvanicus</i>, Wils.)<br/>Aud. pl. 374. America gene-<br/>rally.</p> |
|--|---|

Gen. 22. ASTUR, Cuv.)

- |   |   |
|---|---|
| <p>32. ASTUR PALUMBARIUS, Bechst.<br/>(<i>Falco palumbarius</i>, L.) Gould,<br/>pl. 17. Europe generally.</p> | <p>26. ASTUR COOPERI, Nob. (<i>Falco<br/>Stanleyi</i>, Aud.) Aud. pl. 36.<br/>America generally.</p> <p>27. ASTUR ATRICAPILLUS, Nob.<br/>(<i>Falco palumbarius</i>, Aud.)<br/>Aud. pl. 141. Northern parts.</p> |
|---|---|

g. CIRCINÆ.

Gen. 23. CIRCUS, Bechst.

33. CIRCUS ÆRUGINOSUS, Nob.  
(*Falco æruginosus*, L. & *rufus*,  
Gm.) Gould, pl. 32. Europe  
generally.

Gen. 24. STRIGICEPS, Nob.

- |   |  |
|---|--|
| <p>34. STRIGICEPS PYGARGUS, Nob.<br/>(<i>Falco Pygargus &amp; cyaneus</i>,<br/>L.) Gould, pl. 33. Europe<br/>generally.</p> <p>35. STRIGICEPS PALLIDUS, Nob.<br/>(<i>Circus pallidus</i>, Sykes.) Gould,<br/>pl. 34. Southern Europe.</p> <p>36. STRIGICEPS CINERACEUS, Nob.<br/>(<i>Circus Montagui</i>, Vieill.)<br/>Gould, pl. 35. Europe gene-<br/>rally.</p> | <p>28. STRIGICEPS ULIGINOSUS, Nob.<br/>(<i>Falco cyaneus</i>, Aud.) Aud.<br/>pl. 356. America generally.</p> |
|---|--|
-

## FAMILIA III. STRIGIDÆ.

## a. SURNINÆ.

## Genus 25. SURNIA, Dum.

37. SURNIA FUNEREA, Dum. (*Strix funerea*, Lath. nec. L.) Gould, pl. 45. Northern Europe.      29. SURNIA FUNEREA, Nob. (*Strix funerea*, Wils.) Aud. pl. 378. Northern parts.

## Gen. 26. NYCTEA, Nob.

38. NYCTEA CANDIDA, Nob. (*Strix nyctea*, L.) Gould, pl. 43. Northern Europe.      30. NYCTEA CANDIDA, Nob. (*Strix Nyctea*, Wils.) Aud. pl. 121. Northern parts.

## Gen. 27. GLAUCIDIUM, Boie.

39. GLAUCIDIUM PASSERINUM, Boie. (*Strix Acadica*, Temm.) Gould, pl. 50. North-eastern Europe.

Gen. 28. ATHENE, Boie. (*Nyctipetes*, Sw.)

40. ATHENE NOCTUA, Nob. (*Strix Passerina*, Temm. nec. L.) Gould, pl. 48. Europe generally.      31. ATHENE CUNICULARIA, Nob. (*Strix cunicularia*, Mol.) Aud. pl. 412. North-western parts.

## Gen. 29. SCOPS, Sav.

41. SCOPS ALDROVANDI, Ray. (*Strix Scops*, L.) Gould, pl. 41. Southern and central Europe.      32. SCOPS ASIO, Nob. (*Strix Asio & naviæ*, Gm.) Aud. pl. 97. America generally.

## b. BUBONINÆ.

Gen. 30. BUBO, Cuv. (*Asio & Heliaptex*, Sw.)

42. BUBO ASCALAPHUS, Sav. (*Strix Ascalaphus*, Temm.) Gould, pl. 38. Eastern Europe.      33. BUBO VIRGINIANUS, Nob. (*Strix virginiana*, Gm.) *Heliaptex Arcticus*, Sw. *albino*. Aud. pl. 61. America generally.

Gen. 31. SYRNIUM, Cuv. (*Scotiaptex*, Sw.)

44. SYRNIUM CINEREUM, Nob. (*Strix lapponica*, Retz.) Gould, pl. 24. Northern Europe.      34. SYRNIUM CINEREUM, Nob. (*Strix cinerea*, Gm.) Aud. pl. 351. Northern parts.
45. SYRNIUM URALENSE, Boie. (*Strix uralensis*, Pallas.) Gould, pl. 44. North-eastern Europe.
46. SYRNIUM ALUCO, Boie. (*Strix Aluco*, & *Stridula*, Gm.) Gould, pl. 47. Europe generally.

c. ULULINÆ.

Genus 32. OTUS, Cuv.

47. OTUS VULGARIS, Flem. (*Strix Otus*, L.) Gould, pl. 39. Europe generally.
35. OTUS AMERICANUS, Nob. (*Strix Otus*, Wils.) Aud. pl. 383. America generally.
36. OTUS MEXICANUS, Nob. (*Otus clamator*, Vieill.) Aud. pl. 412. Southern parts.

Gen. 33. BRACHYOTUS, Gould.

48. BRACHYOTUS PALUSTRIS, Gould, *Strix brachyotus*, Gm.) Gould, pl. 40. Europe generally.
37. BRACHYOTUS PALUSTRIS, Gould, *Strix brachyotus*, Wils.) Aud. pl. 410. Northern parts.

Gen. 34. ULULA, Cuv.

49. ULULA NEBULOSA, Cuv. (*Strix nebulosa*, L.) Gould, pl. 46. Northern Europe.
38. ULULA NEBULOSA, Cuv. (*Strix nebulosa*, L.) Aud. pl. 46. Northern parts.

Gen. 35. NYCTALE, Brehm. (*Scotophilus*, Sw.)

50. NYCTALE TENGMALMI, Nob. (*Strix tengmalmi*, Gm.) Gould, pl. 49. Northern Europe.
39. NYCTALE RICHARDSONI, Nob. (*Strix tengmalmi*, Richards.) Aud. pl. 380.
40. NYCTALE ACADICA, Nob. (*Strix acadica*, Gm.) Aud. pl. 199. Northern and central parts.

a. STRIGINÆ.

Gen. 36. STRIX, L.

51. STRIX FLAMMEA, L. Gould, pl. 36. Europe generally.
41. STRIX PRATINCOLA, Nob. (*Strix flammea*, Wils.) Aud. pl. 171. Northern parts.

## ORDO II.—PASSERES.

## SECTIO I.—AMBULATORES.

## FAMILIA IV.—CAPRIMULGIDÆ.

## a. CAPRIMULGINÆ.

- Genus 37. CAPRIMULGUS, L.
52. CAPRIMULGUS RUFICOLLIS, Temm. Gould, pl. 52. South-western Europe during summer.
53. CAPRIMULGUS EUROPEUS, L. Gould, pl. 51. Europe generally in summer.
- Gen. 38. ANTROSTOMUS, Gould.
42. ANTROSTOMUS CAROLINENSIS, Nob. (*Caprimulgus Carolinensis*, Gm.) Aud. pl. 52. Southern parts.
43. ANTROSTOMUS VOCIFERUS, Nob. (*Caprimulgus Virginianus*, Vieill. nec Auct.) Aud. pl. 82. Southern and central parts.
- Gen. 39. CHORDEILES, Sw.
44. CHORDEILES VIRGINIANUS, Nob. (*Caprimulgus Popetue*, Vieill.) Aud. pl. 147. Southern and central parts.

## FAMILIA V.—HIRUNDINIDÆ.

## a. CYPSELINÆ.

- Gen. 40. CYPSELUS, Illiger.
54. CYPSELUS APUS, Illig. (*Hirundo apus*, L.) Gould, pl. 53, fig. 1. Europe generally.
55. CYPSELUS MELBA, Illig. (*Hirundo Melba*, L.) Gould, pl. 53, fig. 2. Southern Europe.
- Gen. 41. CHÆTURA, Steph. (*Aconthylis*, Boie.)
45. CHÆTURA PELASGIA, Steph. (*Hirundo pelasgia*, L.) Aud. pl. 158. America generally, during summer.

## b. HIRUNDININÆ.

- Gen. 42. PROGNE, Boie.
46. PROGNE PURPUREA, Boie. (*Hirundo purpurea*, L.) Aud. pl. 22. America generally, during summer.
- Gen. 43. CHELIDON, Boie.
56. CHELIDON URBICA, Boie. (*Hirundo urbana*, L.) Gould, pl. 57. Europe generally.
47. CHELIDON BICOLOR, Nob. (*Hirundo bicolor*, Vieill.) Aud. pl. 98. America generally, during summer.

## Genus 44. COTYLE, Boie.

57. COTYLE RIPARIA, Boie. (*Hirundo riparia*, L.) Gould, pl. 58. Europe generally.
58. COTYLE RUPESTRIS, Boie. (*Hirundo rupestris*, L.) Gould, pl. 56. Southern Europe.
48. COTYLE RIPARIA? Boie. (*Hirundo riparia*, Wils.) Aud. pl. 385, fig. 1, 2, 3. America generally, during summer.

Gen. 45. HIRUNDO, L. (*Cecropis*, Boie.)

49. HIRUNDO THALASSINA, Sw. Aud. pl. 385, fig. 4, 5.
50. HIRUNDO FULVA, Vieill. (*Hirundo lunifrons*, Say.) Aud. pl. 68. North-western parts.
51. HIRUNDO RUFULA, Gm. (*Hirundo Americana*, Wils.) Aud. pl. 173. America generally, during summer.
59. HIRUNDO RUFULA, Temm. (*Hirundo daurica*, Sav.) Gould, pl. 55. Southern Europe.
60. HIRUNDO RUSTICA, L. Gould, pl. 54. Europe generally.

## FAMILIA VI.—AMPELIDÆ.

## Gen. 46. BOMBYCILLA, Briss.

52. BOMBYCILLA GARRULA? Vieill. (B. G. Nob. Am. Orn.) Aud. pl. 363.
53. BOMBYCILLA CAROLINENSIS, Briss. (*Bombycilla cedrorum*, Vieill.) Aud. pl. 43. America generally.
61. BOMBYCILLA GARRULA, Vieill. (*Ampelis garrulus*, L.) Gould, pl. 160. Europe generally.

## Gen. 47. CORACIAS, L.

62. CORACIAS GARRULA, L. Gould, pl. 60. Southern and central Europe.

## FAM. VII.—MEROPIDÆ.

## Gen. 48. MEROPS, L.

63. MEROPS APIASTER, L. Gould, pl. 59. Southern and central Europe.
64. MEROPS PERSICUS, Pallas. (*Merops superciliosus*, var. B. Lath. Eastern Europe.

## FAMILIA VIII.—ALCEDINIDÆ.

## Gen. 49. ALCEDO, L.

65. ALCEDO ISPIDA, L. Gould, pl. 61. Europe generally.

Genus 50. CERYLE, Boie. (*Ispida*, Swains.)

66. CERYLE RUDIS, Boie. (*Alcedo rudis*, L.) Gould, pl. 62. South-eastern Europe.
54. CERYLE ALCYON, Boie. (*Alcedo alcyon*, L.) Aud. pl. 77. America generally.

#### FAMILIA IX.—UPUPIDÆ.

Gen. 51. UPUPA, L.

67. UPUPA EPOPS, L. Gould pl. 238. Europe generally.

#### FAM. X.—TROCHILIDÆ.

Gen. 52. TROCHILUS, L.

55. TROCHILUS COLUBRIS, L. Aud. pl. 47. North America generally, during summer.
56. TROCHILUS ANNA, Less. Aud. pl. 425.

Gen. 53. LAMPORNIS, Sw.

57. LAMPORNIS MANGO, Sw. (*Trochilus mango*, L.) Aud. pl. 184.

Gen. 54. CALLIPHLOX, Boie.

58. CALLIPHLOX RUFUS, Nob. (*Trochilus rufus*, Gm.) Aud. pl. 379.

#### FAMILIA XI.—CERTHIDÆ.

##### a. SITTINÆ.

Gen. 55. SITTA, L.

68. SITTA SYRIACA, Ehrenberg. (*Sitta Neumayeri* Michols.) Gould, pl. 235. South-eastern Europe.
59. SITTA CAROLINENSIS, Briss. Aud. pl. 152. America generally.
69. SITTA EUROPÆA, L. Gould, pl. 234. Europe generally.
60. SITTA CANADENSIS, L. Aud. pl. 105. America generally.
70. SITTA ASIATICA, Temm. Gould, pl. 236. Eastern Europe.
61. SITTA PUSILLA, Lath. Aud. pl. 125. Southern parts.
62. SITTA PYGMÆA, Vigors. Aud. pl. 419. South-western parts.

b. *CERTHINÆ*.Genus 56. *TICHODROMA*, Ill.

71. *TICHODROMA MURARIA*, Ill.  
(*Certhia muraria*, L.) Gould,  
pl. 239. Southern Europe.

Gen. 57. *CERTHIA*, L.

72. *CERTHIA FAMILIARIS*, L. Gould,  
pl. 237. Europe generally.
73. *CERTHIA NATTERERI*, Nob.  
Eastern Europe (*Dalmatia*.)

63. *CERTHIA AMERICANA*, Nob.  
(*Certhia familiaris*, L.) Aud.  
pl. 419. Western and northern  
parts.

Gen. 58. *MNIOTILTA*, Vieill.  
(*Oxyglossus*, Sw.)

64. *MNIOTILTA VARIA*, Vieill.  
(*Motacilla varia*, L.) Aud.  
pl. 90.

Gen. 59. *THRYOTHORUS*, Vieill.

65. *THRYOTHORUS OBSOLETUS*, Nob.  
(*Troglodytes obsoleta*, Say.)  
Aud. pl. 360, fig. 4. North-  
western parts.

66. *THRYOTHORUS LUDOVICIANUS*,  
Nob. (*Certhia Caroliniana*,  
Wils.) Aud. pl. 78. Southern  
and central parts.

67. *THRYOTHORUS PALUSTRIS*, Nob.  
(*Certhia palustris*, Wils.) Aud.  
pl. 100. Central parts.

68. *THRYOTHORUS BEWICKI*, Nob.  
(*Troglodytes Bewicki*,) Aud.  
pl. 18.

Gen. 60. *TROGLODYTES*, Vieill.

69. *TROGLODYTES AMERICANUS*,  
Aud. pl. 179.

70. *TROGLODYTES ÆDON*, Vieill.  
(*Sylvia domestica*, Wils.) Aud.  
pl. 83. America generally,  
during summer.

74. *TROGLODYTES EUROPÆUS*, Cuv.  
(*Motacilla troglodytes*, L.)  
Gould, pl. 130. Europe gene-  
rally.

71. *TROGLODYTES HYEMALIS*, Vieill.  
(*Sylvia troglodytes*, Wils.) Aud.  
pl. 360, fig. 1, 2, 3. America  
generally.

72. *TROGLODYTES BREVIROSTRIS*,  
Nutt. Aud. pl. 175.

## FAMILIA XII.—TURDIDÆ.

a. *CALAMOHERPINÆ*.Gen. 61. *CETTIA*, Nob.

75. *CETTIA ALTISONANS*, Nob.  
(*Sylvia cetti*, Marmor.) Gould,  
pl. 114. South of Europe.

76. *CETTIA SERICEA*, Nob. (*Sylvia sericea*, Nait.) Gould, pl. 115. Southern Europe.

Gen. 62. PSEUDO-LUSCINIA, Nob.

77. PSEUDO-LUSCINIA SAVII, Nob. (*Sylvia luscinioides*, Savi.) Gould, pl. 104. Southern Europe.

Gen. 63. LOCUSTELLA, Ray.

78. LOCUSTELLA FLUVIATILIS, Gould. (*Sylvia fluviatilis*, Meyer.) Gould, pl. 102. Eastern Europe.

79. LOCUSTELLA RAYI, Gould. (*Sylvia locustella*, Lath.) Gould, pl. 103. Europe generally.

80 LOCUSTELLA CERTHIOLA, Nob. (*Sylvia certhiola*, Temm.) Gould, pl. 105. Eastern Europe.

Gen. 64. CALAMODYTA, Nob.

81. CALAMODYTA MELANOPOGON, Nob. (*Sylvia melanopogon*, Temm.) Gould, pl. 111, fig. 2. Southern Europe.

82. CALAMODYTA CARICETI, Nob. (*Sylvia cariceti*, Naum.) Central Europe.

83. CALAMODYTA PHRAGMITIS, Nob. (*Sylvia phragmitis*, Bechst.) Gould, pl. 110. Europe generally.

84. CALAMODYTA SCHÆNOBÆNUS, Nob. (*Motacilla Schœnobænus*, L.) Gould, pl. 111, fig. 2. Europe generally.

Gen. 65. CYSTICOLA, Less.

85. CYSTICOLA SCHÆNICOLA, Nob. (*Sylvia cysticola*, Temm.) Gould, pl. 113. Southern Europe.

Gen. 66. ERYTHROPYGIA, Smith. (*Agrobates*, Sw.)

86. ERYTHROPYGIA FAMILIARIS, Nob. (*Sylvia familiaris*, Menestries.) South-eastern Europe.



87. ERYTHROPGIA GALACTOTES,  
Nob. (*Sylvia galactodes*, Temm.)  
Gould, pl. 112. South-western  
Europe.

Gen. 67. CALAMOHERPE, Meyer.

88. CALAMOHERPE TURDOIDES, Boie.  
(*Turdus arundinaceus*, L.)  
Gould, pl. 106. Continental  
Europe.

89. CALAMOHERPE? OLIVETORUM,  
Nob. (*Salicaria olivetorum*.)  
Gould, pl. 109. South-eastern  
Europe.

90. CALAMOHERPE ARUNDINACEA,  
Boie. (*Sylvia arundinacea*,  
Lath.) Gould, pl. 109. Eu-  
rope generally.

91. CALAMOHERPE PALUSTRIS, Boie.  
(*Sylvia palustris*, Bechst.)  
Gould, pl. 109. Central and  
southern Europe.

Gen. 68. HIPPOLAIS, Brehm.

92. HIPPOLAIS SALICARIA, Nob.  
(*Motacilla hippolais*, L.) Gould,  
pl. 133. Central and southern  
Europe.

b. SYLVINÆ.

Gen. 69. PHYLLOPNEUSTE, Meyer. (*Phylloscopus*, Boie.)

93. PHYLLOPNEUSTE? ICTERINA,  
Nob. (*Sylvia icterina*, Vieill.)  
Gould, pl. 132. Southern and  
central Europe.

94. PHYLLOPNEUSTE SIBILATRIX,  
Nob. (*Sylvia sylvicola*, Lath.)  
Gould, pl. 131, fig. 3. Europe  
generally.

95. PHYLLOPNEUSTE TROCHILUS,  
Nob. (*Motacilla trochilus*, L.)  
Gould, pl. 131, fig. 1. Europe  
generally.

96. PHYLLOPNEUSTE RUFÆ, Nob.  
(*Sylvia rufa*, Lath.) Gould,  
pl. 131, fig. 2. Europe gene-  
rally.

97. PHYLLOPNEUSTE BONELLII,  
Nob. (*Sylvia Nattereri*, Temm.)  
Gould, pl. 134. Southern Eu-  
rope.

Genus 70. MELIZOPHILUS, Leach.

98. MELIZOPHILUS PROVINCIALIS, Leach. (*Motacilla provincialis*, Gm.) Gould, pl. 129. Europe generally.

Gen. 71. SYLVIA, Lath.

99. SYLVIA MELANOCEPHALA, Lath. (*Motacilla melanocephala*, Gm.) Gould, pl. 129. Southern Europe.
100. SYLVIA SARDA, Marmora. Gould, pl. 127. Southern Europe.
101. SYLVIA CONSPICILLATA, Marmora. Gould, pl. 126. South Europe.
102. SYLVIA SUBALPINA, Bonelli. (*Sylvia leucopogon*, Meyer.) Gould, pl. 124. Southern Europe.
103. SYLVIA CURRUCA, Lath. (*Curruca garrula*, Br.) Gould, pl. 125, fig. 2. Europe generally.
104. SYLVIA MYSTACEA, Menetr. South-eastern Europe.
105. SYLVIA ICTEROPS, Menetr. South-eastern Europe.
106. SYLVIA CINEREA, Nob. (*Motacilla Sylvia*, L.) Gould, pl. 125, fig. 1. Europe generally.

Gen. 72. CURRUCA, Briss.

107. CURRUCA HORTENSIS, Br. (*Motacilla hortensis*, Gm.) Gould, pl. 121. Europe generally.
108. CURRUCA ORPHEA, Br. (*Sylvia Orphea*, Temm.) Gould, pl. 119. Eastern and southern Europe.
109. CURRUCA ATRICAPILLA, Br. (*Motacilla atricapilla*, L.) Gould, pl. 120. Europe generally.
110. CURRUCA? RUPPELLI, Nob. (*Sylvia Ruppelli*, Temm.) Gould, pl. 122.

## Genus 73. NISORIA, Nob.

111. NISORIA UNDATA, Nob. (*Sylvia nisoria*, Bechst.) Gould, pl. 128.

## Gen. 74. ACCENTOR, Bechst.

112. ACCENTOR ALPINUS, Bechst. (*Motacilla alpina* & *Sturnus collaris*, Gm.) Gould, pl. 99. Central and southern Europe.
113. ACCENTOR MODULARIS, Cuv. (*Motacilla modularis*, L.) Gould, pl. 100. Europe generally.
114. ACCENTOR MONTANELLUS, Temm. Gould, pl. 101. South-eastern Europe.

## Gen. 75. CALLIOPE, Gould.

115. CALLIOPE LATHAMI, Gould. (*Motacilla Calliope*, Lath.) Gould, pl. 114. Eastern Europe.

Gen. 76. LUSCINIA, Br.  
(*Philomela*, Sw.)

116. LUSCINIA MAJOR, Briss. (*Sylvia philomela*, Bechst.) Gould, pl. 117. Central Europe.
117. LUSCINIA PHILOMELA, Nob. (*Motacilla luscinia*, L.) Gould, pl. 116. Europe generally.

## c. SAXICOLINÆ.

Gen 77. DANDALUS, Boie. (*Erythaca*, Sw.—*Rubecula*, Br.)

118. DANDALUS RUBECULA, Boie. (*Motacilla Rubecula*, L.) Gould, pl. 98. Europe generally.

## Gen. 78. CYANECULA, Brehm.

119. CYANECULA SUECICA, Boie. (*Motacilla Suecica*, L.) Gould, pl. 97. Europe generally.

Gen. 79. RUTICILLA, Br.  
(*Phœnicura*, Sw.)

120. RUTICILLA PHÆNICURA, Nob. (*Motacilla phœnicurus*, L.) Gould, pl. 95. Europe generally.

121. *RUTICILLA TITHYS*, Brehm.  
(*Sylvia tithys*, Scopoli.) Gould,  
pl. 96. Europe generally.

Gen. 80. *SAXICOLA*, Bechst.

122. *SAXICOLA RUBICOLA*, Bechst.  
(*Motacilla rubicola*, L.) Gould,  
pl. 94. Europe generally.
123. *SAXICOLA RUBETRA*, Bechst.  
(*Motacilla rubetra*, L.) Gould,  
pl. 93. Europe generally.

Gen. 81. *VITIFLORA*, Briss.  
(*Ænanthe*, Vieill.)

124. *VITIFLORA SALTATRIX*, Nob.  
(*Saxicola saltator*, Menetr.)  
South-eastern Europe.

125. *VITIFLORA AURITA*, Nob.  
(*Saxicola aurita*, Temm.) Gould,  
pl. 92. Southern Europe.

126. *VITIFLORA STAPAZINA*, Nob.  
(*Motacilla stapazina*, L.) Gould,  
pl. 91. Southern Europe.

127. *VITIFLORA ÆNANTHE*, Nob.  
(*Motacilla Ænanthe*, L.) Gould,  
pl. 90.

128. *VITIFLORA LEUCOMELA*, Nob.  
(*Motacilla leucomela*, Pallas.)  
Northern and eastern Europe.

129. *VITIFLORA LEUCURA*, Nob.  
(*Turdus leucurus*, Gm. *Saxi-*  
*cola cachinnans*, Temm.) Gould,  
pl. 88. Southern Europe.

Gen. 83. *PETROCINCLA*, Vig. part.

130. *PETROCINCLA SAXATILIS*, Vig.  
(*Turdus saxatilis*, L.) Gould,  
pl. 86. Southern and central  
Europe.

Gen. 84. *PETROCOSSYPHUS*, Boie.

131. *PETROCOSSYPHUS CYANEUS*,  
Boie. (*Turdus cyaneus*, L. &  
*solitarius*, Gm.) Gould, pl. 87.  
Southern and central Europe.

d. *ORIOLINÆ*.

Gen. 85. *ORIOLUS*, L.

132. *ORIOLUS GALBULA*, L. Gould,  
pl. 71. Southern and central  
Europe.

Gen. 82. *SIALIA*, Sw.

73. *SIALIA WILSONI*, Sw. (*Mota-*  
*cilla sialis*, L.) Aud. pl. 113.  
America generally.

74. *SIALIA ARCTICA*, Sw. Aud.  
pl. 318, fig. 2, 3. Northern  
parts.

75. *SIALIA MEXICANA*, Sw. (*Sia-*  
*lia occidentalis*? Towns.) Aud.  
pl. 318, fig. 45. Southern  
parts.

## c. TURDINÆ.

Genus 86. MERULA, Ray.

133. MERULA VULGARIS, Ray.  
(*Turdus merula*, L.) Gould,  
pl. 72. Europe generally.
134. MERULA TORQUATA, Briss.  
(*Turdus torquatus*, L.) Gould,  
pl. 73. Europe generally.
135. MERULA ATROGULARIS, Nob.  
(*Turdus atrogularis*, Naumann.  
Gould, pl. 75. Eastern Europe.

Gen. 87. TURDUS, L.

136. TURDUS PILARIS, L. Gould,  
pl. 76. Northern and central  
Europe.
137. TURDUS VISCIVORUS, L.  
Gould, pl. 77. Europe generally.
138. TURDUS MUSICUS, L. Gould,  
pl. 78, fig. 1. Europe generally.
139. TURDUS ILIACUS, L. Gould,  
pl. 78, fig. 2. Europe generally.
140. TURDUS NAUMANNI, Temm.  
Gould, pl. 79. Eastern Europe.
141. TURDUS PALLIDUS, Pallas.  
Gould, pl. 80. Eastern Europe.
142. TURDUS WERNERI, Genè.  
Suppl. pl. Eastern Europe.
143. TURDUS SIBIRICUS, Pall.  
Gould, pl. 82. Eastern Europe.
144. TURDUS AUREUS, Pall.  
Eastern Europe.
76. TURDUS MIGRATORIUS, L.  
Aud. pl. 131. America generally.
77. TURDUS MUSTELINUS, Gm.  
(*Turdus melodus*, Wils.) Aud.  
pl. 73. America generally.
78. TURDUS SOLITARIUS, Wils.  
(*Merula solitaria*, Sw. pl. 35.)  
Aud. pl. 58. Northern parts.
79. TURDUS MINOR, Gm. (*Me-  
rula minor*, Sw. pl. 36.) Ame-  
rica generally.
80. TURDUS WILSONI, Nob. (*Tur-  
dus mustelinus*, Wils.) Aud.  
pl. 164. America generally.
81. TURDUS NÆVIUS, Gm. (*Or-  
pheus meruloides*, Sw.) Aud.  
pl. 369, fig. 2, 3. Northern  
parts.

Gen. 88. OREOCINCLA, Gould.

145. OREOCINCLA WHITEI, Gould.  
(*Turdus Whitei*, Eyton). Gould,  
pl. 81. Eastern Europe. Ac-  
cidental in England.

Gen. 89. MIMUS, Boie.  
(*Orpheus*, Sw.)

82. MIMUS MONTANUS, Nob. (*Or-  
pheus montanus*, Towns.) Aud.  
pl. 369, fig. North-western  
parts.
83. MIMUS POLYGLOTTUS, Boie.  
(*Turdus polyglottus*, L.) Aud.  
pl. 21. America generally.

84. MIMUS RUFUS, Nob. (*Turdus rufus*, L.) Aud. pl. 116. America generally.
85. MIMUS FELIVOX, Nob. (*Turdus felivox*, Vieill.) Aud. pl. 128. America generally.

## Genus 90. CINCLUS, Bechst.

146. CINCLUS PALLASI, Temm. Gould, pl. 85. Eastern Europe.
147. CINCLUS AQUATICUS, Bechst. (*Sturnus cinclus*, L.) Gould, pl. 83 and pl. 84, var.?
86. CINCLUS UNICOLOR, Nob. (*Cinclus Mexicanus*, Sw.) Aud. pl. 370.

## f. MOTACILLINÆ.

## Gen. 91. ANTHUS, Bechst.

148. ANTHUS RICHARDI, Vieill. Gould, pl. 135. Europe generally. (Gen. *Corydalla*, Vig.)
149. ANTHUS CAMPESTRIS, Meyer. (*Anthus rufescens*, Temm.) Gould, pl. 137. Southern Europe.
150. ANTHUS RUPESTRIS, Menetr. nec Auct. South-eastern Europe.
151. ANTHUS SPINOLETTA, Nob. (*Anthus aquaticus*, Bechst.) Gould, pl. 138. Europe generally.
152. ANTHUS RUFOGULARIS, Brehm. Gould, pl. 140. South-eastern Europe.
153. ANTHUS PRATENSIS, Bechst. (*Alauda pratensis*, L.) Gould, pl. 136. Europe generally.
154. ANTHUS ARBOREUS, Bechst. Gould, pl. 139. Europe generally.
87. ANTHUS LUDOVICIANUS, Licht. (*Alauda rufa*, Wils.) Aud. pl. 10. Northern parts.
88. ANTHUS PIFIENS. Aud. pl. 80. North-western parts.

## Gen. 92. BUDYTES, Cuv.

155. BUDYTES FLAVA, Cuv. (*Motacilla flava*, L.) Gould, pl. 146. Continental Europe.
156. BUDYTES RAYI, Gould. (*Motacilla flava*, Ray.) Gould, pl. 145. British Islands.

157. BUDYTES CINEREOCAPILLA, Nob.) (*Motacilla cinereocapilla*, Savi.) Gould, Suppl. pl. Southern Europe.

158. BUDYTES MELANOCEPHALA, Nob. (*Motacilla melanocephala*, Licht.) Gould, Suppl. pl. South-eastern Europe.

159. BUDYTES CITREOLA, Nob. (*Motacilla citreola*, Pallas.) Gould, pl. 144. Eastern Europe.

Genus 93. MOTACILLA, L.

160. MOTACILLA BOARULA, Lath. Gould, pl. 147. Europe generally.

161. MOTACILLA ALBA, L. Gould, pl. 143. Central and southern Europe.

162. MOTACILLA YARRELLI. Gould, pl. 141. British Islands.

163. MOTACILLA LUGUBRIS, Pallas. Gould, pl. 142. Eastern Europe.

g. PARINÆ.

Gen. 94. REGULUS, Ray.

164. REGULUS IGNICAPILLUS, Cuv. (*Sylvia ignicapilla*, Brehm.) Gould, pl. 148, fig. 2. Central and southern Europe.

165. REGULUS CRISTATUS, Ray. (*Motacilla regulus*, L.) Gould, pl. 148, fig. 1. Europe generally.

166. REGULUS MODESTUS, Gould, pl. 149. South-eastern Europe.

89. REGULUS SATRAPA, Licht. (*Sylvia regulus*, Wils.) Aud. pl. 183. Northern parts.

90. REGULUS CUVIERII, Aud. pl. 55. Northern parts.

91. REGULUS CALENDULA, Licht. (*Motacilla calendula*, L.) Aud. pl. 195. Northern and central parts.

Gen. 95. PARUS, L.

167. PARUS MAJOR, L. Gould, pl. 150. Europe generally.

168. PARUS LUGUBRIS, Natter. Gould, pl. 151, fig. 1. South-eastern Europe.

169. PARUS SIBIRICUS, Gm. Gould, pl. 151, fig. 2. North-eastern Europe.

92. PARUS HUDSONICUS, Lath. Aud. pl. 191. Northern parts.

170. *PARUS ATER*, L. Gould, pl. 155, fig. 1. Europe generally.
171. *PARUS PALUSTRIS*, L. Gould, pl. 155, fig. 2. Europe generally.
172. *PARUS CÆRULEUS*, L. Gould, pl. 154. Europe generally.
173. *PARUS CYANUS*, Pallas. Gould, pl. 153. North-eastern Europe.
174. *PARUS BICOLOR*, L. Gould, pl. 152. Northern Europe.
175. *PARUS CRISTATUS*, L. Gould, pl. 156. Central Europe.
93. *PARUS ATRICAPILLUS*, L. Aud. pl. 353, fig. 3, 4. America generally.
94. *PARUS CAROLINENSIS*, Aud. pl. 160. Southern parts.
95. *PARUS RUFESCENS*, Towns. Aud. pl. 353, fig. 1, 2. North-western parts.
96. *PARUS MINIMUS*, Towns. Aud. pl. 353, fig. 5, 6. North-western parts.
97. *PARUS BICOLOR*, L. Aud. pl. 39. Northern parts.

Genus 96. *MECISTURA*, Leach. (*Paroides*, Brehm).

176. *MECISTURA CAUDATA*, Leach. (*Parus caudatus*, L.) Gould, pl. 157. Europe generally.

Gen. 97. *CALAMOPHILUS*, Leach, (*Mystacinus* Brehm).

177. *CALAMOPHILUS BIARMICUS*, Leach. (*Parus biarmicus*, L.) Gould, pl. 158. Europe generally.

Gen. 98. *ÆGITHALUS*, Vig. (*Pendulinus*, Cuv.)

178. *ÆGITHALUS PENDULINUS*, Vig. (*Parus pendulinus*, L.) Gould, pl. 159. Southern Europe.

#### h. SYLVICOLINÆ.

Gen. 99. *PARULA*, Nob.

98. *PARULA AMERICANA*, Nob. (*Parus Americanus*, L.) Aud. pl. 15. Central and southern parts.

Gen. 100. *TRICHAS*, Sw.

99. *TRICHAS MARILANDICA*, Nob. (*Turdus trichas*, L.) Aud. pl. 23. America generally.

100. *TRICHAS PHILADELPHIA*, Nob. (*Sylvia Philadelphia* & *S. agilis*, Wils.) Aud. pl. 399, and pl. 138, young. Southern parts.

Gen. 101. *VERMIVORA*, Swains.

101. *VERMIVORA PENNSYLVANICA*, Sw. (*Sylvia vermivora*, Lath.) Aud. pl. 34. Southern and central parts.



102. VERMIVORA SWAINSONI, Nob.  
(*Sylvia Swainsonii*.) Aud. pl.  
198.
103. VERMIVORA PROTONOTARIUS,  
Nob. (*Sylvia protonotarius*,  
Lath.) Aud. pl. 3. Southern  
parts.
104. VERMIVORA SOLITARIA, Sw.  
(*Sylvia solitaria*, Wils.) Aud.  
pl. 20. America generally.
105. VERMIVORA CHRYSOPTERA, Sw.  
(*Motacilla chrysoptera*, L.)  
Aud. pl. 414. Southern parts.
106. VERMIVORA BACHMANI, Nob.  
(*Sylvia Bachmani*.) Aud. pl.  
185.
107. VERMIVORA PEREGRINA, Nob.  
(*Sylvia peregrina*, Wils.) Aud.  
pl. 154. South-western parts.
108. VERMIVORA CARBONATA, Nob.  
(*Sylvia carbonata*.) Aud. pl.  
60.
109. VERMIVORA NIGRESCENS, Nob.  
(*Sylvia nigrescens*, Towns.)  
Aud. pl. 395, fig. 5, 6. North-  
western parts.
110. VERMIVORA RUBRICAPILLA,  
Sw. (*Sylvia rubricapilla*,  
Wils.) Aud. pl. 89. Southern  
parts.
111. VERMIVORA CELATA, Jard.  
(*Sylvia celata*, Say.) Aud. pl.  
178. Central parts.
- Genus 102. SEIURUS, Sw.
112. SEIURUS AUROCAPILLUS, Sw.  
(*Turdus aurocapillus*, L.) Aud.  
pl. 143. America generally.
113. SEIURUS NOVEBORACENSIS,  
Nob. (*Motacilla noveboracensis*,  
Gm.) Aud. pl. 426. America  
generally.
114. SEIURUS LUDOVICIANUS, Nob.  
(*Turdus ludovicianus*.) Aud. pl.  
19.
- Gen. 103. SYLVICOLA, Sw.
115. SYLVICOLA AUDUBONI, Nob.  
(*Sylvia Auduboni*, Towns.) Aud.  
pl. 395, fig. 1, 2. North-  
western parts.

116. SYLVICOLA CORONATA, Sw.  
(*Motacilla coronata*, L.) Aud.  
pl. 153. America generally.
117. SYLVICOLA RUFICAPILLA, Nob.  
(*Sylvia ruficapilla*, Lath, nec  
Viell.) (*Sylvia palmarum*,  
Nob. & *petechia*.) Aud. pl.  
163, and pl. 145 young. Central  
and southern parts.
118. SYLVICOLA MACULOSA, Sw.  
(*Sylvia maculosa*, Lath.) Aud.  
pl. 123 adult, and 50 young.  
America generally.
119. SYLVICOLA MARITIMA, Sw.  
(*Sylvia maritima*, Wils.) Aud.  
pl. 414. Northern parts, rare.
120. SYLVICOLA PARDALINA, Nob.  
(*Motacilla Canadensis*, sp. 27,  
L.) Aud. pl. 103. America  
generally.
121. SYLVICOLA PENSILIS, Nob.  
(*Sylvia pensilis*, Lath.) Aud.  
pl. 85. Northern parts.
122. SYLVICOLA VIRENS, Sw. (*Syl-  
via virens*, Lath.) Aud. pl.  
399. America generally.
123. SYLVICOLA BLACKBURNIÆ, Jard.  
(*Sylvia Blackburniæ*, Lath.)  
Aud. pl. 135. America gene-  
rally.
124. SYLVICOLA ICTEROCEPHALA,  
Sw. (*Sylvia icterocephala*,  
Lath.) Aud. pl. 59. America  
generally.
125. SYLVICOLA CASTANEA, Sw.  
(*Sylvia castanea*, Wils.) Aud.  
pl. 69. America generally.
126. SYLVICOLA STRIATA, Sw. (*Syl-  
via striata*, Lath.) Aud. pl.  
123. America generally.
127. SYLVICOLA PINUS, Jard. (*Syl-  
via pinus*, Lath.) Aud. pl.  
140 and pl. 30 (*Sylvia vigorii*)  
young. Southern parts.
128. SYLVICOLA PARUS, Jard. (*Syl-  
via parus*, Wils.) Aud. pl. 134  
adult, and pl. 88 (*S. autumnalis*,  
Wils.) young. Northern parts.

129. SYLVICOLA TIGRINA, Nob.  
(*Sylvia montana*, Wils.) Aud.  
pl. 414? America generally.
130. SYLVICOLA DISCOLOR, Nob.  
(*Sylvia minuta*, Wils.) Aud.  
pl. 14. Southern and western  
parts.
131. SYLVICOLA OCCIDENTALIS, Nob.  
(*Sylvia occidentalis*, Towns.)  
Aud. pl. 395, fig. 3, 4. North-  
western parts.
132. SYLVICOLA TOWNSENDI, Nob.  
(*Sylvia Townsendi*.) Aud. pl.  
318, fig. 1. North-western  
parts.
133. SYLVICOLA RATHBONIA, Nob.  
(*Sylvia Rathbonia*.) Aud. pl. 65.
134. SYLVICOLA ÆSTIVA, Sw.  
(*Sylvia æstiva & petechia*, Lath.)  
Aud. pl. 95 adult, and pl. 35  
(*Sylvia Childrenii*) young.  
America generally.
135. SYLVICOLA FORMOSA, Jard.  
(*Sylvia formosa*, Wils.) Aud.  
pl. 38. South-western parts.
136. SYLVICOLA CANADENSIS, Sw.  
(*Motacilla canadensis*, sp. 42, L.)  
Aud. pl. 155 adult, and pl. 148  
young. (*Sylvia sphagnosa*, Nob.)  
Northern parts.
137. SYLVICOLA CÆRULEA, Sw.  
(*Sylvia cærulea*, Wils.) Aud.  
pl. 48 adult, and pl. 49 (*Sylvia  
rara*, Wils.) young. Southern  
parts.

## Genus 104. WILSONIA, Nob.

138. WILSONIA MITRATA, Nob.  
(*Sylvia mitrata*, Lath.) Aud.  
pl. 90, and pl. 9 young. (*Muscicapa  
Selbyi*, Aud.)
139. WILSONIA BONAPARTII, Nob.  
(*Muscicapa Bonapartii*.) Aud.  
pl. 5.
140. WILSONIA MINUTA, Nob.  
(*Muscicapa minuta*, Wils.) Aud.  
pl. Southern and central parts.
141. WILSONIA PUSILLA, Nob.  
(*Muscicapa pusilla*, Wils.) Aud.  
pl. 124. Southern parts.

Gen. 105. CULICIVORA, Sw.

142. CULICIVORA CÆRULEA, Sw.  
(*Sylvia cærulea*, Lath.) Aud.  
pl. 84. Central and southern  
parts.

### FAMILIA XIII.—MUSCICAPIDÆ.

#### a. MUSCICAPINA.

Gen. 106. SETOPHAGA, Sw.

143. SETOPHAGA RUTICILLA, Sw.  
(*Muscicapa ruticilla*, L.) Aud.  
pl. 40. America generally.

Gen. 107. TYRANNULA, Sw.

144. TYRANNULA PUSILLA, Sw.  
Aud. pl. 415. Northern parts.
145. TYRANNULA ACADICA, Sw.  
(*Muscicapa acadica*, Gm.) Aud.  
pl. 144. America generally.
146. TYRANNULA TRAILLI, Nob.  
(*Muscicapa traillii*.) Aud. pl.  
45. North-western parts.
147. TYRANNULA VIRENS, Jard.  
(*Muscicapa virens*, L.) Aud.  
pl. 115. America generally.
148. TYRANNULA PHÆBE, Nob.  
(*Muscicapa Phæbe*, Lath.) *Ty-*  
*rannula richardsonii*, Sw.) Aud.  
pl.
149. TYRANNULA FUSCA, Sw. (*Mus-*  
*cicapa fusca*, Gm.) Aud. pl.  
120. America generally.
150. TYRANNULA SAYA, Sw. (*Mus-*  
*cicapa saya*, Nob. Am. Orn.)  
Aud. pl. 359, fig. 4, 5. North-  
western parts.
151. TYRANNULA NIGRICANS, Sw.  
Aud. pl. 415. North-western  
parts.
- Genus 108. TYRANNUS, Vieill.
152. TYRANNUS COOPERI, Nob.  
(*Tyrannus borealis*, Sw.) Aud.  
pl. 174. Northern parts.
153. TYRANNUS INTREPIDUS, Vieill.  
(*Lanius tyrannus*, L.) Aud.  
pl. 79. Southern parts.

154. TYRANNUS DOMINICENSIS, Nob.  
(*Tyrannus matulinus*, Vieill.)  
Aud. pl. 170. Southern parts.

155. TYRANNUS VERTICALIS, Say.  
(*Muscicapa verticalis*, Nob.  
Am. Orn.) Aud. pl. 359, fig.  
1, 2. North-western parts.

156. TYRANNUS CRINITUS, Sw.  
(*Muscicapa crinita*, L.) Aud.  
pl. 129. America generally.

Genus 109. MILVULUS, Sw.

157. MILVULUS FORFICATUS, Sw.  
(*Muscicapa forficata*, Gm.)  
Aud. pl. 359, fig. 3. South-  
western parts.

158. MILVULUS TYRANNUS, Nob.  
(*Muscicapa tyrannus*, L.) Aud.  
pl. 168. America generally.

Gen. 110. BUTALIS, Boie.

179. BUTALIS GRISOLA, Boie. (*Mus-  
cicapa Grisola*, L.) Gould, pl.  
65. Europe generally.

Gen. 111. MUSCICAPA, L.

180. MUSCICAPA ATRICAPILLA, L.  
(*Muscicapa luctuosa*, Temm.)  
Gould, pl. 63, fig. 1. Europe  
generally.

181. MUSCICAPA ALBICOLLIS  
Temm. Gould, pl. 63, fig. 2.  
Southern Europe.

Gen. 112. ERYTHROSTERNA, Nob.

182. ERYTHROSTERNA PARVA, Nob.  
(*Muscicapa parva*, Bechst.)  
Gould, pl. 64. Eastern Eu-  
rope.

#### b. VIREONINÆ.

Gen. 113. ICTERIA, Vieill.

159. ICTERIA VIRIDIS, Nob. (*Pipra  
polyglotta* Wils. *Muscicapa  
viridis*, Gm.) Aud. pl. 137.

Gen. 114. VIREO, Vieill.

160. VIREO FLAVIFRONS, Vieill.  
(*Muscicapa sylvicola*, Wils.)  
Aud. pl. 119. America gene-  
rally.

161. VIREO SOLITARIUS, Vieill.  
(*Muscicapa solitaria*, Wils.)  
Aud. pl. 28. Southern and  
central parts.
162. VIREO NOVEBORACENSIS, Nob.  
(*Muscicapa noveboracensis*, Gm.)  
Aud. pl. 63. America generally.
163. VIREO GILVUS, Nob. (*Muscicapa gilva*, Vieill.) Aud.  
pl. 118. America generally.
- Genus 115. VIREOSYLVA, Nob.
164. VIREOSYLVA OLIVACEA, Nob.  
(*Muscicapa olivacea*, L.) Aud.  
pl. 150. America generally.
165. VIREOSYLVA BARTRAMI, Nob.  
(*Vireo Bartrami*, Sw.) Aud.  
pl. 415. North-western parts.

## FAMILIA XIV.—LANIDÆ.

## c. LANINÆ.

Gen. 116. LANIUS, L. (*Collurio*, Vig.)

183. LANIUS EXCUBITOR, L. Gould,  
pl. 66. Northern and central  
Europe.
184. LANIUS MERIDIONALIS, Temm.  
Gould, pl. 67. South-western  
Europe.
185. LANIUS MINOR, Gm. (*Lanius italicus*, Lath.) Gould, pl. 68.  
Southern Europe.
166. LANIUS SEPTENTRIONALIS,  
Gm. (*Lanius excubitor*, Wils.  
*L. borealis*, Vieill.) Aud. pl.  
192. Northern parts.
167. LANIUS LUDOVICIANUS, L.  
(*Lanius ardosiaceus*, Vieill.)  
Aud. pl. 57. Southern parts.

Gen. 117. ENNEOCTONUS, Boie. (*Lanius*, Vig.)

186. ENNEOCTONUS COLLURIO,  
Boie. (*Lanius Collurio*, L.)  
Gould, pl. 69. Europe generally.
187. ENNEOCTONUS RUFUS, Boie.  
(*Lanius rufus*, Briss.) Gould,  
pl. 70. Central and southern  
Europe.

## FAMILIA XV.—CORVIDÆ.

## d. CORVINÆ.

Genus 118. PERISOREUS, Nob. (*Dysornithia*, Sw.)

188. PERISOREUS INFAUSTUS, Nob. ( *Corvus infaustus*, L.) Gould, pl. 215. Northern Europe.
168. PERISOREUS CANADENSIS, Nob. ( *Corvus canadensis*, L. & *Dysornithia brachyrhyncha*, Sw.) Aud. pl. 107. Northern parts.

## Gen. 119. GARRULUS, BRISS.

189. GARRULUS GLANDARIUS, Briss. ( *Corvus glandarius*, L.) Gould, pl. 214. Europe generally.
- Gen. 120. CYANOCORAX, Boie. part.
169. CYANOCORAX STELLERI, Nob. ( *Corvus Stelleri*, Pall.) Aud. pl. 362, fig. 2.

170. CYANOCORAX CRISTATUS, Boie. ( *Corvus cristatus*, L.) Aud. pl. 102. Northern and central parts.

171. CYANOCORAX FLORIDANUS, Nob. ( *Corvus floridanus*, Bartram.) Aud. pl. 87. Southern parts.

172. CYANOCORAX ULTRAMARINUS, Nob. ( *Garrulus sordidus*, Sw.) Aud. pl. 362, fig. 3.

## Gen. 121. CYANURUS, Sw. part.

173. CYANURUS BULLOCKI, Nob. ( *Garrula gubernatrix*, Temm.) Aud. pl. 96. Southern parts.

## Gen. 122. PICA, BRISS.

190. PICA CYANEA, Wagl. ( *Corvus cyaneus*, Pallas.) Gould, pl. 217. South-western Europe.
174. PICA NUTTALLI. Aud. pl. 362, fig. 1.

191. PICA CAUDATA, Ray. ( *Corvus Pica*, L.) Gould, pl. 216. Europe generally.
175. PICA HUDSONICA, Nob. ( *Corvus Hudsonicus*, Sabine. *Corvus Pica*, Wils.) Aud. pl. 357. North-western parts.

## Gen. 123. CORVUS, L.

192. CORVUS SPERMOLOGUS, Vieill. Gould, Suppl. pl. . Central Europe.
193. CORVUS MONEDULA, Linn. Gould, pl. 223. Europe generally.
194. CORVUS FRUGILEGUS, L. Gould, pl. 224. Europe generally.
176. CORVUS OSSIFRAGUS, Wils. Aud. pl. 145. America generally.

195. *CORVUS CORNIX*, L. Gould,  
pl. 222. Europe generally.

196. *CORVUS CORONE*, L. Gould,  
pl. 221. Europe generally.

197. *CORVUS CORAX*, L. Gould,  
pl. 220. Europe generally.

Genus 124. *FREGILUS*, Cuv.

198. *FREGILUS GRACULUS*, Cuv.  
(*Corvus Graculus*, L.) Gould,  
pl. 219. Europe generally, in  
restricted mountainous locali-  
ties.

Gen. 125. *PYRRHOCORAX*, Cuv.

199. *PYRRHOCORAX ALPINUS*, Vieill.  
(*Corvus Pyrrhocorax*, L.) Gould,  
pl. 218. Central Europe.

Gen. 126. *NUCIFRAGA*, Briss.

200. *NUCIFRAGA CARYOCATACTES*,  
Briss. (*Corvus caryocatactes*,  
L.) Gould, pl. 213. Central  
Europe.

179. *NUCIFRAGA COLUMBIANA*, Aud.  
(*Corvus Columbianus*, Wils.)  
Aud. pl. 362, fig. 4, 5.  
Western parts.

e. *STURNINÆ*.

Gen. 127. *QUISCALUS*, Vieill.

180. *QUISCALUS MAJOR*, Vieill.  
Aud. pl. 187. Southern parts.

181. *QUISCALUS VERSICOLOR*, Vieill.  
(*Gracula quiscula*, L.) Aud.  
pl. 7. America generally.

Gen. 128. *SCOLECOPHAGUS*, Sw.

182. *SCOLECOPHAGUS FERRUGINEUS*,  
Boie. (*Gracula ferruginea*,  
Wils.) Aud. pl. 157. America  
generally.

Gen. 129. *ACRIDOTHERES*, Ranz.  
(*Pastor*, Temm.)

201. *ACRIDOTHERES ROSEUS*, Ranz.  
(*Turdus roseus*, L.) Gould,  
pl. 212. Europe generally.  
Accidental in the western parts.

Gen. 130. *STURNUS*, L.

202. *STURNUS VULGARIS*, L. Gould,  
pl. 210. Europe generally.

203. *STURNUS UNICOLOR*, Marmor.  
Gould, pl. 211. Southern Eu-  
rope.



## Genus 131. STURNELLA, Vieill.

183. STURNELLA LUDOVICIANA, Nob. (*Sturnus Ludovicianus*, L.) Aud. pl. 136. America generally.

## Gen. 132. ICTERUS, Br.

184. ICTERUS BALTIMORE, Daud. (*Oriolus Baltimore*, L.) Aud. pl. 12. America generally.
- Gen. *Yphantes*, Vieill. (*Zanthornis*, Sw.)
185. ICTERUS BULLOCKI, Sw. Aud. pl. 388, fig. 5. South-western parts.
186. ICTERUS SPURIUS, Nob. (*Oriolus mutatus*, Wils.) Aud. pl. 62. America generally.

## Gen. 133. AGELAIUS, Vieill.

187. AGELAIUS XANTHOCEPHALUS, Nob. (*Icterus icterocephalus*, Nob. Am. Orn.) Aud. pl. 388, fig. 2, 3. North-western parts.
188. AGELAIUS TRICOLOR, Nob. (*Icterus tricolor*.) Aud. pl. 388, fig. 1. Southern parts.
189. AGELAIUS PHENICEUS, Vieill. (*Oriolus phæniceus*, L.) Aud. pl. 67. America generally.
190. AGELAIUS GUBERNATOR, Nob. (*Psarocolius gubernator*, Wagl.) Southern parts.

## Gen. 134. MOLOTHRUS, Sw.

191. MOLOTHRUS PECORIS, Sw. (*Fringilla pecoris*, Gm.) Aud. pl. 99. America generally.

## Gen. 135. DOLICHONYX, Sw.

192. DOLICHONYX ORYZIVORUS, Sw. (*Emberiza Oryzivora*, L.) Aud. pl. 54. America generally.
-

## FAMILIA XVI.—FRINGILLIDÆ.

## a. FRINGILLINÆ.

Genus 136. CALAMOSPIZA, Nob.

193. CALAMOSPIZA BICOLOR, Nob.  
(*Fringilla bicolor*, Towns.)  
Aud. pl. 390, fig. 2, 3. Western  
parts.

Gen. 137. GUIRACA, Sw.  
(*Coccororus*, Sw.)

194. GUIRACA CÆRULEA, Sw.  
(*Loxia cærulea*, L.) Aud. pl.  
122. Southern parts.

195. GUIRACA LUDOVICIANA, Sw.  
(*Loxia ludoviciana*, L.) Aud.  
pl. 127. Northern and central  
parts.

196. GUIRACA MELANOCEPHALA,  
Sw. (*Fringilla xanthomaschalis*,  
Wagl.) Aud. pl. 373, fig. 2,  
3, 4.

Gen. 138. COCCOTHRAUSTES, Briss.

204. COCCOTHRAUSTES VULGARIS,  
Briss. (*Loxia coccothraustes*,  
L.) Gould, pl. 199. Europe  
generally.

197. COCCOTHRAUSTES VESPERTI-  
NUS, Cooper. (*Coccothraustes*  
*Bonapartii*, Less. fem.) Aud.  
pl. 373, fig. 1. North-western  
parts.

Gen. 139. CHLOROSPIZA, Nob.

205. CHLOROSPIZA CHLORIS, Nob.  
(*Fringilla chloris*, L.) Gould,  
pl. 200. Europe generally.

206. CHLOROSPIZA INCERTA, Nob.  
(*Fringilla incerta*, Roux.) Gould  
Suppl. pl. Southern Eu-  
rope.

Gen. 140. PETRONIA, Nob.

207. PETRONIA RUPESTRIS, Nob.  
(*Fringilla petronia*, L.) Gould,  
pl. 186. Southern Europe.

Gen. 141. PYRGITA, Cuv.  
(*Passer*, Br.)

208. PYRGITA SALICARIA, Vieill.  
(*Fringilla hispaniolensis*, Temm.)  
Gould, pl. 185, fig. 1. Southern  
Europe.

209. PYRGITA ITALICA, Vieill. (*Fringilla cisalpina*, Temm.) Gould, pl. 185, fig. 2. Southern Europe.

210. PYRGITA DOMESTICA, Cuv. (*Fringilla domestica*, L.) Gould, pl. 184, fig. 1. Southern and central Europe.

211. PYRGITA MONTANA, Cuv. (*Fringilla montana*, L.) Gould, pl. 184, fig. 2. Europe generally.

Genus 142. FRINGILLA, L.  
(*Struthus*, part, Boie.)

212. FRINGILLA CÆLEBS, L. Gould, pl. 187. Europe generally.

213. FRINGILLA MONTIFRINGILLA, L. Gould, pl. 188. Europe generally.

Gen. 143. MONTIFRINGILLA, Brehm.

214. MONTIFRINGILLA NIVALIS, Brehm. (*Fringilla nivalis*, L.) Gould, pl. 189. Central Europe.

Gen. 144. STRUTHUS, Nob. (Boie, part.)

215. STRUTHUS HYEMALIS, Nob. (*Fringilla hyemalis*, L.) Gould, pl. 190. Northern Europe.

198. STRUTHUS HYEMALIS, Nob. (*Fringilla hyemalis*, L.) Aud. pl. 13. America generally.

199. STRUTHUS OREGANUS, Nob. (*Fringilla oregana*, Towns.) Aud. pl. 398.

Gen. 145. PASSERELLA, Sw.

200. PASSERELLA ILIACA, Sw. (*Fringilla rufa*, Wils.) Aud. pl. 108. America generally.

201. PASSERELLA CINEREA, Nob. Aud. pl. 390, fig. 1.

Gen. 146. ZONOTRICHIA, Sw.

202. ZONOTRICHIA MELODIA, Nob. (*Fringilla ferruginea*, L.) Aud. pl. 25. America generally.

203. ZONOTRICHIA GRAMINEA, Nob. (*Fringilla graminea*, Gm.) Aud. pl. 94. America generally.

204. ZONOTRICHIA PENNSYLVANICA, Sw. (*Fringilla Pennsylvanica*, Lath.) Aud. pl. 8. America generally.

205. ZONOTRICHIA ATRICAPILLA, Nob. (*Emberiza atricapilla*, Gm.) Aud. pl. 394, fig. 3. Western parts.

206. ZONOTRICHIA LEUCOPHRYS, Sw. (*Emberiza leucophrys*, Wils.) Aud. pl. 114. Northern and central parts.

Genus 147. CHONDESTES, Sw.

207. CHONDESTES GRAMMACA, Nob. (*Fringilla grammaca*, Say.) Aud. pl. 390, fig. 1. North-western parts.

Gen. 148. EUSPIZA, Nob.

216. EUSPIZA MELANOCEPHALA, Nob. (*Emberiza melanocephala*, Scopoli.) Gould, pl. 172. South-eastern Europe.

208. EUSPIZA AMERICANA, Nob. (*Emberiza Americana*, & *Fring. flavicollis*, Gm.) Aud. pl. 384.

209. EUSPIZA TOWNSENDI, Nob. (*Fringilla Townsendi*.) Aud. pl. 400, fig. 3. Southern parts.

Gen. 149. COTURNICULUS, Nob.

210. COTURNICULUS PASSERINUS, Nob. (*Fringilla passerina*, Wils.) Aud. pl. 130. Northern and central parts.

211. COTURNICULUS HENSLOWI, Nob. (*Fringilla Henslowi*.) Aud. pl. 170.

Gen. 150. AMMODRAMUS, Sw.

212. AMMODRAMUS BACHMANI, Nob. (*Fringilla bachmani*.) Aud. pl. 165.

213. AMMODRAMUS MACGILLIVRAYI, Nob. (*Fringilla macgillivrayi*.) Aud. pl. 355.

214. AMMODRAMUS MARITIMUS, Sw. (*Fringilla maritima*, Wils.) Aud. pl. 93. North-eastern parts.

215. AMMODRAMUS CAUDACUTUS, Nob. (*Oriolus caudacutus*, Gm.) Aud. pl. 149. North-eastern parts.

## Genus 151. PASSERCULUS, Nob.

216. PASSERCULUS SAVANNA, Nob.  
(*Fringilla Savanna*, Wils.)  
Aud. pl. 109.
217. PASSERCULUS PALUSTRIS, Nob.  
(*Fringilla palustris*, Wils.) Aud.  
pl. 64. America generally.
218. PASSERCULUS LINCOLNI, Nob.  
(*Fringilla Lincolnii*.) Aud. pl.  
193. Central parts.

## Gen. 152. SPIZELLA, Nob.

219. SPIZELLA CANADENSIS, Nob.  
(*Fringilla Canadensis*, Lath.)  
Aud. pl. 188. America generally.
220. SPIZELLA PALLIDA, Nob.  
(*Emberiza pallida*, Sw.) Aud.  
pl. 398. North-western parts.
221. SPIZELLA SOCIALIS, Nob.  
(*Fringilla socialis*, Wils.) Aud.  
pl. 104. Central and northern  
parts.
222. SPIZELLA PUSILLA, Nob.  
(*Fringilla pusilla*, Wils.) Aud.  
pl. 139. America generally.

## Gen. 153. CARDUELIS, Briss.

217. CARDUELIS ELEGANS, Steph.  
(*Fringilla carduelis*, L.) Gould,  
pl. 196. Europe generally.

Gen. 154. CHRYSOMITRIS, Boie. (*Spinus*, Brehm.)

223. CHRYSOMITRIS TRISTIS, Nob.  
(*Fringilla tristis*, L.) Aud.  
pl. 33. America generally.
218. CHRYSOMITRIS SPINUS, Boie.  
(*Fringilla spinus*, L.) Gould,  
pl. 197. Europe generally.
224. CHRYSOMITRIS PINUS, Nob.  
(*Fringilla pinus*, Wils.) Aud.  
pl. 180. America generally.
225. CHRYSOMITRIS PSALTRIA, Nob.  
(*Fringilla psaltria*, Say.) Aud.  
pl. 400. Western parts.
226. CHRYSOMITRIS MEXICANA, Nob.  
(*Carduelis Mexicana*, Sw.) Aud.  
pl. 427. Southern parts.
227. CHRYSOMITRIS MAGELLANICA,  
Nob. (*Carduelis Magellanica*,  
Vieill.) Aud. pl. 394, fig. 2.

Genus 155. CITRINELLA, Nob.

219. CITRINELLA SERINUS, Nob.  
(*Fringilla citrinella*, L.) Gould,  
pl. 198. Central and southern  
Europe.

Gen. 156. SERINUS, Br.

220. SERINUS MERIDIONALIS,  
Brehm. (*Fringilla serinus*, L.)  
Gould, pl. 195. Southern Eu-  
rope.

Gen. 157. LINOTA, Nob. (*Cannabina* & *Linaria*, Brehm.)

CANNABINÆ.

221. LINOTA CANNABINA, Nob.  
(*Fringilla cannabina*, L.) Gould,  
pl. 191. Europe generally.
222. LINOTA MONTIUM, Nob.  
(*Fringilla montium*, Linn.)  
Gould, pl. 192

LINARIÆ.

223. LINOTA CANESCENS, Nob.  
Gould, pl. 193. Northern and  
central Europe.

224. LINOTA BOREALIS, Nob.  
(*Fringilla borealis*, Savi.) Gould,  
Suppl. pl. . Europe gene-  
rally.

225. LINOTA LINARIA, Nob. (*Li-  
naria rufescens*? Vieill.) Gould,  
pl. 194.

226. LINOTA BREVIROSTRIS. Gould,  
pl. . South-eastern Eu-  
rope.

Gen. 158. ERYTHROSPIZA, Nob. (*Erythrothorax*, Brehm.)

227. ERYTHROSPIZA PHÆNICOPTERA,  
Nob. (*Linaria phœnicoptera*  
Gould, Proceed.) South-east-  
ern Europe.

228. ERYTHROSPIZA GITHAGINEA,  
Nob. (*Fringilla githaginea*,  
Licht.) Gould, pl. 208.  
Eastern Europe.

229. ERYTHROSPIZA ROSEA, Nob.  
(*Fringilla rosea*, Pallas.) Gould,  
pl. 207. Eastern Europe.

228. LINOTA BOREALIS, Nob.  
(*Fringilla borealis*, Savi.) Aud.  
pl. 42.

229. LINOTA LINARIA, Nob.  
(*Fringilla linaria*, L.) Aud.  
pl. . Northern parts.

230. ERYTHROSPIZA TEPHROCOTIS,  
Nob. (*Linaria leucosticta et  
tephrocotis*, Sw.) Aud. pl.  
424. Northern parts.

231. ERYTHROSPIZA PURPUREA,  
Nob. (*Fringilla purpurea*, Gm.)  
Aud. pl. 4. America gene-  
rally.

230. ERYTHROSPIZA ERYTHRINA, Nob. (*Fringilla erythrina*, Meyer). Gould, pl. 206. Eastern Europe.
232. ERYTHROSPIZA FRONTALIS, Nob. (*Fringilla frontalis*, Say). Aud. pl. 424. North-western parts.  
Genus 159. CARDINALIS, Nob.
233. CARDINALIS VIRGINIANUS, Nob. (*Loxia cardinalis*, L.) Aud. pl. 159. Southern parts.  
Gen. 160. PIPILO, Vieill.
234. PIPILO ERYTHROPHthalmus, Nob. (*Fringilla erythrophthalma*, L.) Aud. pl. 29. America generally.
235. PIPILO ARCTICUS, Sw. Aud. pl. 394, fig. 4, 5. Northern parts.  
Gen. 161. SPIZA, Nob.
236. SPIZA AMENA, Nob. (*Fringilla amena*, Say). Aud. pl. 398, fig. 3. North-western parts.
237. SPIZA CYANEA, Nob. (*Tanagra cyanea*, L.) Aud. pl. 74. Southern parts.
238. SPIZA CIRIS, Nob. (*Emberiza ciris*, L.) Aud. pl. 53. Southern parts.
- b. TANAGRINÆ.
- Gen. 162. PYRANGA, Vieill.
239. PYRANGA RUBRA, Vieill. (*Tanagra rubra*, L.) Aud. pl. 354, fig. 3, 4. America generally.
240. PYRANGA ÆSTIVA, Vieill. (*Tanagra æstiva* & *Mississippiensis*, Gm.) Aud. pl. 44. Southern and central parts.
241. PYRANGA LUDOVICIANA, Nob. (*Tanagra ludoviciana*, Wils.) Aud. pl. 354, fig. 1, 2. Western parts:

c. EMBERIZINÆ.

Gen. 163. CYNCHRAMUS, Nob. (*Miliaria*, Brehm.)

231. CYNCHRAMUS MILIARIA, Nob. (*Emberiza miliaria*, L.) Gould, pl. 171. Europe generally.

## Genus 164. EMBERIZA, L.

232. EMBERIZA CITRINELLA, L.  
Gould, pl. 173. Europe generally, rare in the south.
233. EMBERIZA AUREOLA, Pallas.  
Gould, pl. 174. North-eastern Europe.
234. EMBERIZA GRANUTINARA,  
Menetries. South - eastern Europe.
235. EMBERIZA CASPIA, Menetries.  
South-eastern Europe.
236. EMBERIZA CIRLUS, L. Gould,  
pl. 175. Europe generally.
237. EMBERIZA HORTULANA, L.  
Gould, pl. 176. Central and southern Europe.
238. EMBERIZA RUSTICA, Pallas.  
Gould, pl. 177. North-eastern Europe.
239. EMBERIZA LESBIA, Gm.  
Gould, pl. 178. Southern Europe.
240. EMBERIZA CIA, L. Gould,  
pl. 179. Southern and central Europe.
241. EMBERIZA PITHYORNUS, Pallas.  
Gould, pl. 180. Eastern Europe.
242. EMBERIZA CÆSIA, Cretschmaer.  
Gould, pl. 181. South-eastern Europe.
243. EMBERIZA PALUSTRIS, Savi.  
Gould, pl. 182. Southern Europe.
244. EMBERIZA SCHÆNICULUS, L.  
Gould, pl. 183. Europe generally. Genus *Hortulanus*, Vieill.  
(*Cynchramus*, Boie.)

## Gen. 165. PLECTROPHANES, Meyer.

245. PLECTROPHANES LAPPONICUS,  
Selby. (*Fringilla lapponica*, L.)  
Gould, pl. 169. Northern Europe.
242. PLECTROPHANUS LAPPONICUS,  
Selby. (*Plectrophanus calcaratus*, Meyer.)  
Aud. pl. 365. Northern parts.



246. PLECTROPHANES NIVALIS, Meyer. (*Emberiza nivalis*, L.) Gould, pl. 170. Northern and central Europe.
243. PLECTROPHANES NIVALIS, Meyer. (*Emberiza nivalis*, L.) Aud. pl. 189. Northern parts.
244. PLECTROPHANES PICTUS, Sw. Aud. pl. 400, fig. 5. Northern parts.
245. PLECTROPHANES ORNATUS, Towns. Aud. pl. 394, fig. 1. North-western parts.

## d. ALAUDINÆ.

Genus 166. CERTHILAUDA, Sw.

247. CERTHILAUDA BIFASCIATA, Sw. (*Alauda bifasciata*, Licht.) Gould, pl. 168. Accidental in southern Europe.

Gen. 167. ALAUDA, L.

248. ALAUDA ARVENSIS, L. Gould, pl. 166. Europe generally.
249. ALAUDA CANTARELLA, Nob. Southern Europe.
250. ALAUDA PISPALETTA, Pallas. Eastern Europe.

Gen. 168. GALERIDA, Boie.

251. GALERIDA CRISTATA, Boie. (*Alauda cristata*, L.) Gould, pl. 165. Southern and central Europe.
252. GALERIDA ARBOREA, Boie. (*Alauda arborea*, L.) Gould, pl. 167. Europe generally.

Gen 169. PHILEREMOS, Brehm. (*Eremophilus*, Boie.)

253. PHILEREMOS ALPESTRIS, Br. (*Alauda alpestris*, L.) Gould, pl. 164. Northern Europe.
246. PHILEREMOS CORNUTUS, Nob. (*Alauda cornuta*, Sw.) Aud. pl. 200. Northern parts.
254. PHILEREMOS SCRIBA, Gould, pl. South-eastern Europe.

Gen. 170. MELANOCORYPHA, Boie.

255. MELANOCORYPHA BIMACULATA, Nob. (*Alauda bimaculata*, Menetr.) South-eastern Europe.

256. MELANOCORYPHA ARENARIA,  
Nob. (*Alauda brachydactyla*,  
Temm.) Gould, pl. 163.  
Southern Europe.
257. MELANOCORYPHA CALANDRA,  
Boie. (*Alauda calandra*, L.)  
Gould, pl. 162. Southern Eu-  
rope.
258. MELANOCORYPHA TATARICA,  
Nob. (*Alauda tatarica*, Pallas).  
Gould, pl. 161. Eastern Eu-  
rope-

e. LOXINÆ.

Genus 171. PYRRHULA, Briss.

259. PYRRHULA VULGARIS, Briss.  
(*Loxia pyrrhula*, L.) Gould,  
pl. 209. Europe generally.

Gen. 172. CORYTHUS, Cuv.

260. CORYTHUS SIBIRICUS, Nob.  
(*Pyrrhula longicauda*, Temm.  
*Loxia Sibirica*, Pall.) Gould,  
pl. 205. Eastern Europe.
261. CORYTHUS ENUCLEATOR, Cuv.  
(*Loxia enucleator*, L.) Gould,  
pl. 204. Northern Europe.
247. CORYTHUS ENUCLEATOR, Cuv.  
(*Loxia enucleator*, L.) Aud.  
pl. 358. Northern parts.

Gen. 173. LOXIA, Briss.

262. LOXIA PYTIOPSITTACUS, Bechst.  
Gould, pl. 201. Northern and  
central Europe.
263. LOXIA CURVIROSTRA, L.  
Gould, pl. 202. Europe gene-  
rally.
264. LOXIA LEUCOPTERA, Gmel.  
Gould, pl. 203. Accidental in  
northern Europe.
248. LOXIA AMERICANA, Wils.  
Aud. pl. 197. Northern and  
central parts.
249. LOXIA LEUCOPTERA, Gm.  
(*Loxia falcirostra*, Lath.) Aud.  
pl. 364. Northern and central  
parts.

TRIBUS II.—SCANSORES.

FAM. XV.—PSITTACIDÆ.

- Gen. 174. CONURUS, Kuhl.
250. CONURUS CAROLINENSIS, Kuhl.  
(*Psittacus Carolinensis*, L.)  
Aud. pl. 26. Southern and  
western parts.

## FAMILIA XVI.—PICIDÆ.

## a. PICINÆ.

Genus 175. DENDROCOPUS, Nob.  
(*Picus*, Sw.)

251. DENDROCOPUS PRINCIPALIS,  
Boie. (*Picus principalis*, L.)  
Aud. pl. 66. Southern parts.

Gen. 177. DRYOCOPUS, Boie.

265. DRYOCOPUS MARTIUS, Boie.  
(*Picus martius*, L.) Gould,  
225. Central and northern  
Europe.

Gen. 176. DRYOTOMUS, Sw.

252. DRYOTOMUS PILEATUS, Sw.  
(*Picus pileatus*, L.) Aud. pl.  
111. America generally.

Gen. 178. PICUS, L. (*Dryobates*, Boie,—*Dendrocopus*, Sw.)

266. PICUS LEUCONOTUS, Bechst.  
Gould, pl. 228. North-eastern  
Europe.

253. PICUS LEUCOTIS, Illig. (*Picus  
querulus*, Wils.) Aud. pl. 389.  
Southern parts.

267. PICUS MAJOR, L. Gould, pl.  
229. Europe generally.

254. PICUS VILLOSUS, L. Aud.  
pl. 421. Northern parts.

268. PICUS MEDIUS, L. Gould,  
pl. 230. Central and southern  
Europe.

255. PICUS VARIUS, L. Aud. pl.  
190. America generally.

269. PICUS MINOR, L. Gould,  
pl. 231. Europe generally.

256. PICUS PUBESCENS, L. Aud.  
pl. 112. America generally.

257. PICUS AUDUBONI, Trudean.  
Aud. pl. 421. North-western  
parts.

258. PICUS MARTINI, Aud. pl.  
423.

Gen. 179. APTERNUS, Sw. (*Picoides*, Lacep.)

270. APTERNUS TRIDACTYTUS, Sw.  
(*Picus tridactylus*, L.) Gould,  
pl. 232. Northern and central  
Europe.

259. APTERNUS HIRSUTUS, Nob.  
(*Picus hirsutus*, Vieill.) Aud.  
pl. 423. Northern parts.

260. APTERNUS ARCTICUS, Sw.  
(*Picus tridactylus*, Nob. Am.  
Orn.) Aud. pl. 132. Northern  
parts.

Gen. 180. MELANERPES, Sw.

261. MELANERPES RUBER, Nob.  
(*Picus flaviventris*, Vieill. *Picus  
ruber*, Lath.) Aud. pl. 421.  
Southern parts.

262. MELANERPES ERYTHROCEPHA-  
LUS, Sw. (*Picus erythrocephalus*,  
L.) Aud. pl. 27. North-  
ern and central parts.

263. MELANERPES TORQUATUS, Sw.  
(*Picus torquatus*, Wils.) Aud.  
pl. 421.  
Genus 181. CENTURUS, Sw.
264. CENTURUS CAROLINUS, Sw.  
(*Picus Carolinus*, L.) Aud.  
pl. 421. America generally.  
Gen. 183. COLAPTES, Sw.
265. COLAPTES AURATUS, Sw. (*Pi-  
cus auratus*, L.) Aud. pl. 37.  
America generally.
266. COLAPTES RUBRICATUS, Nob.  
(*C. Mexicanus*, Sw. *C. collaris*  
Vig.) Aud. pl. 421. Southern  
parts.
- b. YUNCINÆ.
- Gen. 184. YUNX, L.
273. YUNX TORQUILLA, L. Gould,  
pl. 233. Europe generally.

## FAMILIA XVII.—CUCULIDÆ.

## a. CUCULINÆ.

- Gen. 185. ERYTHROPHRYS, Sw. (*Piaya*, Less.)
267. ERYTHROPHRYS SENICULUS,  
Nob. (*Cuculus seniculus*, L.)  
Aud. pl. 169.
268. ERYTHROPHRYS ERYTHROPH-  
THALMUS, Nob. (*Cuculus ery-  
throphthalmus*, Wils.) Aud.  
pl. 32. America generally.
269. ERYTHROPHRYS AMERICANUS,  
Sw. (*Cuculus Americanus*, L.)  
Aud. pl. 2. America gene-  
rally.
- Gen. 186. CUCULUS, L.)
275. CUCULUS CANORUS, L. Gould,  
pl. 240. Europe generally.
- Gen. 187. OXYLOPHUS, Sw.  
(*Edolius*, Less.)
276. OXYLOPHUS GLANDARIUS, Nob.  
(*Cuculus glandarius*, L.) Gould,  
pl. 241. Accidental in southern  
Europe.

## SECTIO III.—GYRANTES.

## FAMILIA XVIII.—COLUMBIDÆ.

## a. COLUMBINÆ.

## Genus 188. COLUMBA, L.

277. COLUMBA PALUMBUS, L. Gould, pl. 243. Europe generally.
278. COLUMBA ŒNAS, L. Gould, pl. 244. Europe generally.
279. COLUMBA LIVIA, Br. Gould, pl. 245. Europe generally.
270. COLUMBA FASCIATA, Say. Aud. pl. 367. North-western parts.
271. COLUMBA LEUCOCEPHALA, L. Aud. pl. 177. Southern parts.

## Gen. 189. ECTOPISTES, Sw.

272. ECTOPISTES MIGRATORIA, Sw. (*Columba migratoria*, L.) Aud. pl. 62. North-western parts.
273. ECTOPISTES CAROLINENSIS, Sw. (*Columba carolinensis*, L.) Aud. pl. 17. America generally.
- Gen. 190. TURTUR, Ray. (*Peristera*, Boie.)
280. TURTUR AURITUS Ray. (*Columba turtur*, L.) Gould, pl. 246.

## Gen. 191. ZENAIDA, Nob.

274. ZENAIDA AMABILIS, Nob. (*Columba zenaida*, Nob.) Aud. pl. 162. Southern parts.
275. ZENAIDA MONTANA, Nob. (*Columba montana*, L.) Aud. pl. 167. Southern parts.

## Gen. 192. CHAMEPELIA, Sw.

276. CHAMEPELIA PASSERINA, Sw. (*Columba passerina*, L.) Aud. pl. 182. Southern parts.

## Gen. 193. STARNŒNAS, Nob.

277. STARNŒNAS CYANOCEPHALA, Nob. (*Columba cyanocephala*, L.) Aud. pl. 172.

## SUBCLASSIS II.—GRALLATORES.

## ORDO III.—GALLINÆ.

## FAM. XIX.—PTEROCLIDÆ.

## a. SYRRHAPTINÆ.

Genus 194. SYRRHAPTES, Ill.

281. SYRRHAPTES PARADOXUS, Ill.  
(*Tetrao paradoxus*, Pall.) Eastern Europe.

## b. PTEROCLINÆ.

Gen. 195. PTEROCLES, Temm.

282. PTEROCLES ALCHATA, Steph.  
(*Tetrao alchata*, L.) Gould,  
pl. 258. (*P. Setarius*). South-  
western Europe.
283. PTEROCLES ARENARIUS, Temm.  
(*Tetrao arenarius*, Pall.) Gould,  
pl. 257. South-western Eu-  
rope.
284. PTEROCLES CASPICUS, Menetr.  
South-eastern Europe.

## FAMILIA XX.—PHASIANIDÆ.

Gen. 196. MELEAGRIS, L.

278. MELEAGRIS GALLOPAVO, L.  
Aud. pl. 1 male, pl. 6 fem. and  
young. Western and southern  
parts.

Gen. 197. PHASIANUS, L.

285. PHASIANUS COLCHICUS, L.  
Gould, pl. 247. Eastern Eu-  
rope.

## FAMILIA XXI.—TETRAONIDÆ.

## a. PERDICINÆ.

Gen. 198. LOPHORTYX, Nob.

279. LOPHORTYX CALIFORNICA, Nob.  
(*Tetrao californicus*, Shaw.)  
Aud. pl. 418. North-western  
parts.

280. LOPHORTYX DOUGLASI, Nob.  
(*Ortyx douglasi*, Vig.) Aud.  
pl. 418.

Genus 199. ORTYX, Steph.

281. ORTYX VIRGINIANA, Steph.  
(*Tetrao virginianus et marilandicus*, L.) Aud. pl. 76. America generally.

Gen. 200. FRANCOLINUS, Briss.

286. FRANCOLINUS VULGARIS, Briss.  
(*Tetrao francolinus*, L.) Gould,  
pl. 259. Southern Europe.

Gen. 201. PERDIX, Nob.

287. PERDIX GRÆCA, Briss. (*Perdix saxatilis*, Mey.) Gould,  
pl. 261, fig. 2. Southern Europe.

288. PERDIX RUBRA, Briss. (*Tetrao rufus*, L.) Gould, pl. 260.  
Southern and central Europe.

289. PERDIX PETROSA, Lath. (*Tetrao petrosus*, Gm.) Gould,  
pl. 261, fig. 1. Southern Europe.

Gen. 202. STARNA, Nob.

290. STARNA CINEREA, Nob. (*Tetrao perdix*, L.) Gould, pl. 262.  
Europe generally.

Gen. 203. COTURNIX, Temm.

291. COTURNIX DACTYLISONANS, Meyer. (*Tetrao coturnix*, L.)  
Gould, pl. 263. Europe generally.

Gen. 204. BONASIA, Nob.

292. BONASIA SYLVESTRIS, Brehm.  
(*Tetrao bonasia*, L.) Gould,  
pl. 251. Northern and central Europe.

282. BONASIA UMBELLUS, Nob.  
(*Tetrao umbellus*, L.) Aud.  
pl. 41. America generally.

Gen. 205. TETRAO, L.

293. TETRAO UROGALLUS, L. Gould,  
pl. 248. Northern and central Europe.

283. TETRAO OBSCURUS, Say. (*Tetrao richardsoni*, Sabine.) Aud.  
pl. 361. North-western parts.

294. TETRAO MEDIUS, Leisler.  
(*T. hybridus*, Sp.) Gould, pl. 249.  
Northern Europe.

295. TETRAO TETRIX, L. Gould, pl. 250. Northern and central Europe.  
Genus *Lyrurus*, Sw.
284. TETRAO CANADENSIS, L. (*Tetrao Franklini*, Dougl.) Aud. pl. 176. Northern parts.
285. TETRAO CUPIDO, L. Aud. pl. 186. North-western parts.
286. TETRAO PHASIANELLUS, Gm. Aud. pl. 382. Western parts. (Genus *Centrocercus*, Sw.)
287. TETRAO UROPHASIANUS, Nob. Aud. pl. 371. (*Centrocercus urophasianus*, Sw.) North-western parts.

## Genus 206. LAGOPUS, Vieill.

296. LAGOPUS SCOTICUS, Gould. (*Tetrao scoticus*, Lath.) Gould, pl. 252. British islands only.
297. LAGOPUS ALBUS, Nob. (*Lagopus Saliceti*, Sw.) Gould, pl. 255. Northern Europe.
288. LAGOPUS ALBUS. (*Tetrao albus*, L.) Aud. pl. 191. Northern parts.
298. LAGOPUS MUTUS, Leach. (*Tetrao lagopus*, L.) Gould, pl. 253. Northern and central Europe.
289. LAGOPUS MUTUS. (*Tetrao mutus*, L.) Aud. pl. 418. Northern parts.
299. LAGOPUS RUPESTRIS, Leach. Gould, pl. 254. Northern Europe.
290. LAGOPUS RUPESTRIS, Sw. (*Tetrao rupestris*, Sab.) Aud. pl. 368. Northern parts.
300. LAGOPUS BRACHYDACTYLUS, Gould. (*Tetrao brachydactylus*, Temm.) Gould, pl. 256. North-eastern Europe.
291. LAGOPUS LEUCURUS, Sw. Aud. pl. 418. North-western parts.

## FAMILIA XXII.—CRYPTURIDÆ.

## a. ORTYGINÆ.

Gen. 207. ORTYGIS, Ill. (*Hemipodius*, Temm.)

301. ORTYGIS GIBALTARICA, Ill. (*Tetrao Gibraltarius*, Gm.) Gould, pl. 264. South-western Europe.

## ORDO IV.—GRALLÆ.

## FAMILIA XXIII.—CHARADRIDÆ.

## Genus 208. OTIS, L.

302. OTIS TARDA, L. Gould, pl. 267. Europe generally.
303. OTIS TETRAX, L. Gould, pl. 269. Europe generally.



304. OTIS HOUBARA, L. Gould,  
pl. 268. Accidental in south-  
west of Europe.

Genus 209. *ÆDIGNEMUS*, L.

305. *ÆDIGNEMUS CREPITANS*, Tem.  
(*Charadrius ædignemus*, Linn.)  
Gould, pl. 288. Europe generally.

Gen. 210. *CURSORIUS*, Lacep.

306. *CURSORIUS EUROPEUS*, Lath.  
(*C. isabellinus*, Meyer.) Gould,  
pl. 266. Southern Europe.

Gen. 211. *GLAREOLA*, Briss.

307. *GLAREOLA PRATICOLA*, Nob.  
(*Hirundo pratincola*, L.) Gould,  
pl. 265. South-eastern Europe.

Gen. 212. *ÆGIALITES*, Boie. (*Charadrius*, L.)

308. *ÆGIALITES HIATICULA*, Boie.  
(*Charadrius hiaticula*, Linn.)  
Gould, pl. 296. Europe generally.

292. *ÆGIALITES SEMIPALMATUS*,  
Nob. (*Charadrius semipalmatus*,  
Bon.) Aud. pl. 330. America  
generally.

309. *ÆGIALITES INTERMEDIUS*,  
Menetr. South-eastern Europe.

293. *ÆGIALITES MONTANUS*, Nob.  
(*Charadrius montanus*, Towns.)  
Aud. pl. 350.

310. *ÆGIALITES MINOR*, Nob.  
(*Charadrius minor*, Meyer.)  
Gould, pl. 297. Central and  
southern Europe.

294. *ÆGIALITES MELODUS*, Nob.  
(*Charadrius melodus*, Ord.)  
Aud. pl. 220. America generally.

311. *ÆGIALITES CANTIANUS*, Nob.  
(*Charadrius cantianus*, Lath.)  
Gould, pl. 298. Europe generally.

295. *ÆGIALITES WILSONIUS*, Nob.  
(*Charadrius wilsonius*, Ord.)  
Aud. pl. 219. Southern and  
central parts.

312. *ÆGIALITES PYRRHOTHORAX*,  
Nob. (*Charadrius pyrrhorthorax*,  
Tem.) Gould, pl. 299.

296. *ÆGIALITES VOCIFERUS*, Nob.  
(*Charadrius vociferus*, L.) Aud.  
pl. 225. America generally,  
but rare in the northern parts.

Gen. 213. *EUDROMIAS*, Boie.

313. *EUDROMIAS MORINELLA*, Boie.  
(*Charadrius morinellus*, L.)  
Gould, pl. 295. Europe generally.

Gen. 214. *CHARADRIUS*, L.

314. *CHARADRIUS PLUVIALIS*, L.  
Gould, pl. 294. Europe generally.

297. *CHARADRIUS VIRGINIACUS*,  
Borkh. (*Charadrius pluvialis*,  
Wils.) Aud. pl. 300. America  
generally.

## Genus 215. SQUATAROLA, Cuv.

315. SQUATAROLA HELVETICA, Cuv.  
(*Tringa Helvetica*, L.) Gould,  
pl. 290. Europe generally.

298. SQUATAROLA HELVETICA, Cuv.  
(*Charadrius apricarius*, Wils.)  
Aud. pl. 384. America generally.

## Gen. 216. VANELLUS, Briss.

316. VANELLUS GREGARIUS, Pall.  
(*Vanellus Keptuschka*, Tem.)  
Gould, pl. 292. South-eastern  
Europe.

317. VANELLUS CRISTATUS, Meyer.  
(*Charadrius Vanellus*, Linn.)  
Gould, pl. 291. Europe generally.

## Gen. 217. HOPLOPTERUS, Nob.

318. HOPLOPTERUS SPINOSUS, Nob.  
(*Charadrius spinosus*, L.) Gould,  
pl. 293.

## Gen. 218. STREPSILAS, Ill.

319. STREPSILAS INTERPRES, Ill.  
(*Tringa interpres*, L.) Gould,  
pl. 318. Europe generally.

299. STREPSILAS INTERPRES, Ill.  
(*Tringa interpres*, Wils. *Strepsilas melanocephala*, Vig.) Aud.  
pl. 304. America generally.

## Gen. 219. HÆMATOPUS, L.

320. HÆMATOPUS OSTRALLEGUS, L.  
Gould, pl. 300. Europe generally.

300. HÆMATOPUS PALLIATUS, Tem.  
(*Hæmatopus ostralegus*, Wils.  
*H. Brasiliensis*, Licht.) Aud.  
pl. 223. Southern parts.

## FAMILIA XXIV.—PSOPHIDÆ.

## Gen. 220. GRUS, Briss.

321. GRUS CINEREA, Bechst. (*Ardea Grus*, L.) Gould, pl. 270.  
Europe generally.

301. GRUS AMERICANA, Tem.  
(*Ardea Americana*, Gm. *Grus Canadensis*, Tem. juv.) Aud.  
pl. 226 adult, 261 young.

322. GRUS LEUCOGERANOS, Pall.  
Gould, pl. 271. Eastern Europe.

## Gen. 221. CICONIA, Briss.

323. CICONIA ALBA, Belon. (*Ardea ciconia*, L.) Gould, pl. 283.  
Central Europe.

324. CICONIA NIGRA, Belon. (*Ardea Nigra*, L.) Gould, pl. 284.  
Central and southern Europe.

325. CICONIA MAGUARI, Tem.  
(*Ardea Maguari*, Vieill.) Gould,  
pl. 285. Accidental in Eu-  
rope.

a. ARDEANÆ.

Genus 222. ARDEA, L.

- |  |   |
|--|---|
| 326. ARDEA CINEREA, L. Gould,<br>pl. 273. Europe generally.                | 302. ARDEA OCCIDENTALIS, Aud.<br>pl. 281. Southern parts.                         |
| 327. ARDEA PURPUREA, L. Gould,<br>pl. 274. Central and southern<br>Europe. | 303. ARDEA HERODIAS, L. Aud.<br>pl. 211. America generally,<br>rare in the north. |

Gen. 223. EGRETTA, Nob.

- |   |  |
|---|--|
| 328. EGRETTA ALBA, Nob. ( <i>Ardea<br/>alba</i> , L.) Gould, pl. 276.<br>South-eastern Europe.                | 304. EGRETTA LEUCE, Nob. ( <i>Ar-<br/>dea Leuce</i> , Ill. <i>Ardea Egretta</i> ,<br>Wils.) Aud. pl. 386. South-<br>ern and central parts. |
| 329. EGRETTA NIGRIROSTRIS, Nob.<br>East of Europe.  |  |
| 330. EGRETTA ORIENTALIS, Nob.<br>( <i>Ardea xanthodactyla</i> , Gm.)  |  |
| 331. EGRETTA, GARZETTA, Nob.<br>( <i>Ardea Garzetta</i> , L.) Gould,<br>pl. 277. South and eastern<br>Europe. | 305. EGRETTA CANDIDISSIMA, Nob.<br>( <i>Ardea candidissima</i> , Wils.)<br>Aud. pl. 242. Southern and<br>central parts.                    |
|   | 306. EGRETTA RUFESCENS, Nob.<br>( <i>Ardea rufescens</i> , Gm. adult<br><i>Ardea Peali</i> , Nob. juv.) Aud.<br>pl. 256. Southern parts.   |
|   | 307. EGRETTA LUDOVICIANA, Nob.<br>( <i>Ardea Ludoviciana</i> , Wils.)<br>Aud. pl. 217. Southern and<br>central parts.                      |
|   | 308. EGRETTA CÆRULEA, Nob.<br>( <i>Ardea cærulea</i> , L. & <i>cæru-<br/>lescens</i> , Lath. Aud. pl. 307.<br>Southern and central parts.  |

Gen. 224. BUPHUS, Boie.

332. BUPHUS RUSSATUS, Nob.  
(*Ardea russata*, Wagl.) Gould,  
pl. 278. South and eastern  
parts of Europe.

333. BUPHUS VERRANI. (*Ardea Verrani*, ROUX.) Southern Europe.

334. BUPHUS RALLOIDES, Nob. (*Ardea ralloides*, Scop.) Gould, pl. 275. South and central parts of Europe.

Genus 225. HERODIAS, Boie.

309. HERODIAS VIRESCENS, Nob. (*Ardea virescens*, L.) Aud. pl. 333. America generally.

Gen. 226. ARDEOLA, Nob.

335. ARDEOLA MINUTA, Nob. (*Ardea minuta*, L.) Gould, pl. 282. Europe generally.

310. ARDEOLA EXILIS, Nob. (*Ardea exilis*, Gm.) Aud. pl. 210. South and central parts.

Gen. 227. BOTAURUS, Steph.

336. BOTAURUS STELLARIS, Steph. (*Ardea stellaris*, L.) Gould, pl. 280. Europe generally.

337. BOTAURUS LENTIGINOSUS, Ste. (*Ardea lentiginosa*, Montag.) Gould, pl. 281. Accidental in Europe.

311. BOTAURUS MINOR, Nob. (*Ardea minor*, Wils.) Aud. pl. 337. America generally.

Gen. 228. NYCTICORAX, Steph.

338. NYCTICORAX GARDENI, Jard. (*Ardea nycticorax*, L.) Gould, pl. 279. Europe generally.

312. NYCTICORAX AMERICANUS Nob. (*Ardea nycticorax*, Wils.) Aud. pl. 236. America generally; but rarely in the north.

b. PLATALEINÆ.

Gen. 229. PLATALEA, L.

339. PLATALEA LEUCORODIA, L. Gould, pl. 286. Europe generally.

313. PLATALEA AJAJA, L. Aud. pl. 321. Southern parts.

FAMILIA XXV.—TANTALIDÆ.

Gen. 230. TANTALUS, L.

314. TANTALUS LOCULATOR, L. Aud. pl. 216. Southern parts.

315. TANTALUS FUSCUS, Aud. pl. Southern parts.

Gen. 231. IBIS, Cuv.

316. IBIS RUBRA, Vieill. (*Tantalus ruber*, L.) Aud. pl. 397. Accidental in the southern parts.

340. IBIS FALCINELLUS, Vieill. (*Scolopax falcinellus*, L.) Gould, pl. 311. South and central parts of Europe.
317. IBIS ALBA, Cuv. (*Tantalus albus*, Gm.) Aud. pl. 222. Southern parts.
318. IBIS ORDI, Nob. (*Ibis Falcinellus*, Nob. *Tantalus Mexicanus*, Ord. *T. Chalcopterus?* Tem.) Aud. pl. 387. South. Accidental in the central parts.

## FAMILIA XXVI.—SCOLOPIDÆ.

## Genus 232. NUMENIUS, Lath.

341. NUMENIUS ARQUATA, Lath. (*Scolopax arquata*, L.) Gould, pl. 302. Europe generally.
319. NUMENIUS LONGIROSTRIS, Wils. Aud. pl. 231. South and central parts.
342. NUMENIUS PHÆOPUS, Lath. (*Scolopax Phæopus*, L.) Gould, pl. 303. Europe generally.
320. NUMENIUS HUDSONICUS, Lath. Aud. pl. 237. America generally.
343. NUMENIUS TENUIROSTRIS, Vieill. South of Europe.
321. NUMENIUS BOREALIS, Lath. (*N. brevirostris*, Tem.) Aud. pl. 208. America generally.

## Gen. 233. HEMIPALAMA, Nob.

322. HEMIPALAMA HIMANTOPUS, Nob. (*Tringa Douglasii*, Sw. ætate.) Aud. pl. 344. America generally.

## Gen. 234. HETEROPODA, Nutt.

323. HETEROPODA MAURI, Nob. South and central parts.
324. HETEROPODA SEMIPALMATA, Nutt. (*Tringa semipalmata*, Wils.) Aud. pl. 405. America generally.

## Gen. 235. EURINORHYNCHUS, Nilss.

344. EURINORHYNCHUS PYGMÆUS, Nilss. (*Platalea pygmæa*, L.) Gould, pl. . . Accidental in Europe.

Gen. 236. TRINGA, Nob. (*Calidris*, Cuv.)

345. TRINGA MARITIMA, Brunn. Gould, pl. 344. Europe generally.
325. TRINGA MARITIMA, Brunn. Aud. pl. 284. America generally.
346. TRINGA CANUTUS, L. (*Tringa islandicus*, Linn.) Gould, pl. 324.
326. TRINGA CANUTUS, L. Aud. pl. 315.

347. *TRINGA RUFESCENS*, Vieill.  
Gould, pl. 326. Accidental in  
Europe.

327. *TRINGA RUFESCENS*, Vieill.  
Aud. pl. 265.

Genus 237. *PELIDNA*, Cuv.

348. *PELIDNA SUBARQUATA*, Cuv.  
(*Scolopax subarquata*, Gm.)  
Gould, pl. 328. Europe generally.

328. *PELIDNA SUBARQUATA*, Cuv.  
Aud. pl. 263. America generally.

349. *PELIDNA CINCLUS*, Cuv.  
(*Tringa Cinclus et alpina*, L.)  
Gould, pl. 329. Europe generally.

329. *PELIDNA CINCLUS*, Cuv.  
Aud. pl. 290. America generally.

350. *PELIDNA SCHINZI*, Nob.  
(*Tringa Schinzi*, Brehm.)  
Gould, pl. 330. Europe generally.

330. *PELIDNA SCHINZI*, Nob. Aud.  
pl. 278. America generally.

351. *PELIDNA PECTORALIS*, Nob.  
(*Tringa Pectoralis*, Bonap.)  
Gould, pl. 327. Accidental in  
Europe.

331. *PELIDNA PECTORALIS*, Say.  
(*Tringa Pectoralis*, Bon.) Aud.  
pl. 294. America generally.

352. *PELIDNA PLATYRHYNCHA*, Cuv.  
(*Tringa platyrhyncha*, Tem.)  
Gould, pl. 331. Eastern and  
central parts of Europe.

353. *PELIDNA MINUTA*, Cuv.  
(*Tringa minuta*, Leisl.) Gould,  
pl. 332. Europe generally.

354. *PELIDNA TEMMINCKII*, Cuv.  
(*Tringa Temminckii*, Leisl.)  
Gould, pl. 333. Europe generally.

332. *PELIDNA PUSILLA*, Nob.  
(*Tringa Pusilla*, Wils.) Aud.  
pl.

Gen. 238. *CALIDRIS*, Ill.

355. *CALIDRIS ARENARIA*, Ill.  
(*Tringa arenaria*, L.) Gould,  
pl. 335. Europe generally.

333. *CALIDRIS ARENARIA*, Ill.  
(*Charadrius rubidus et Calidris*,  
Wils.) Aud. pl. 230. America  
generally.

Gen. 239. *FALCINELLUS*, Cuv.

356. *FALCINELLUS CUVIERI*, Nob.  
(*Scolopax pygmaeus*, L.) Gould,  
pl. . . Accidental in Europe.

Gen. 240. *MACHETES*, Cuv.

357. *MACHETES PUGNAX*, Cuv.  
(*Tringa pugnax*, L.) Gould,  
pl. 328. Europe generally.

Genus 241. ACTITIS, Boie, nec Ill.

358. ACTITIS HYPOLEUCUS, Boie.  
(*Tringa Hypoleucus*, L.) Gould,  
pl. 318. Europe generally.
359. ACTITIS MACULARIUS, Nob.  
(*Tringa macularia*, L.) Gould,  
pl. 317. Accidental in Europe.
334. ACTITIS MACULARIUS, Nob.  
(*Tringa macularia*, Wils.) Aud.  
pl. 310. America generally.

Gen. 242. ACTITURUS, Nob.

360. ACTITURUS BARTRAMIUS, Nob.  
(*Tringa longicauda*, Bechst.)  
Gould, pl. 313. Accidental in  
Europe.
335. ACTITURUS BARTRAMIUS, Nob.  
(*Tringa Bartramia*, Wils.)  
Aud. pl. 303. America gene-  
rally.

Gen. 243. TOTANUS, Bechst.

361. TOTANUS STAGNATILIS, Bechst.  
(*Scolopax totanus*, L. nec Auct.)  
Gould, pl. 314. Eastern and  
southern Europe.
362. TOTANUS OCHROPUS, Temm.  
(*Tringa ochropus*, L.) Gould,  
pl. 315, fig. 1. Europe gene-  
rally.
363. TOTANUS GLAREOLA, Tem.  
(*Tringa Glareola*, Gm.) Gould,  
pl. 315, fig. 2. Europe gene-  
rally.
364. TOTANUS CALIDRIS, Bechst.  
(*Scolopax Calidris*, L.) Gould,  
pl. 310. Europe generally.
365. TOTANUS FUSCUS, Bechst.  
(*Tringa fusca*, L.) Gould,  
pl. 309. Europe generally.
336. TOTANUS FLAVIPES, Vieill.  
(*Scolopax flavipes*, Wils.) Aud.  
pl. 288. America generally.
337. TOTANUS CHLOROPYGIUS,  
Vieill. (*Tringa solitaria*,  
Wils.) Aud. pl. 289. America  
generally.
338. TOTANUS MELANOLEUCUS,  
Vieill. (*Scolopax vocifera*,  
Wils.) Aud. pl. 308. Ame-  
rica generally.

Gen. 244. CATOPTROPHORUS, Nob.

366. CATOPTROPHORUS SEMIPAL-  
MATUS, Nob. (*Scolopax semi-  
palmata*, L.) Gould, pl. 311.  
Accidental in Europe.
339. CATOPTROPHORUS SEMIPAL-  
MATUS, Nob. (*Scolopax semi-  
palmata*, L.) Aud. pl. 274.  
America generally.

Gen. 245. GLOTTIS, Nils.

367. GLOTTIS CHLOROPUS, Nils.  
(*Totanus Glottis*, Bechst.)  
Gould, pl. 312. Europe gene-  
rally.
340. GLOTTIS FLORIDANUS, Nob.  
(*Totanus Glottis*, Bechst.) Aud.  
pl. 269. Southern parts.

Genus 246. TEREKIA, Nob.

368. TEREKIA JAVANICA, Nob.  
(*Tringa Javanica*, Horsf.)  
Gould, pl. 307.

Gen. 247. LIMOSA, Briss.

- |  |  |
|--|--|
| <p>369. LIMOSA RUFa, Briss. (<i>Scolopax lapponica</i>, L.) Gould, pl. 306. Europe generally.</p> <p>370. LIMOSA ÆGOCEPHALA, Nob. (<i>Limosa melanura</i>, Leisl.) Gould, pl. 305. Europe generally.</p> | <p>341. LIMOSA FEDOA, Vieill. (<i>Scolopax Fedoa</i>, L.) Aud. pl. 238. America generally.</p> <p>342. LIMOSA HUDSONICA, Sw. (<i>Scolopax Hudsonica</i>, Lath.) Aud. pl. 258. America generally.</p> |
|--|--|

b. SCOLOPACINÆ.

Gen. 248. MACRORAMPHUS, Leach.

- |   |   |
|---|---|
| <p>371. MACRORAMPHUS GRISEUS, Leach. (<i>Scolopax grisea &amp; noveboracensis</i>, Gm.) Gould, pl. 323. Accidental in Europe.</p> | <p>343. MACRORAMPHUS GRISEUS, Leach. Aud. pl. 335. America generally.</p> |
|---|---|

Gen. 249. GALLINAGO, Steph.

- |  |  |
|--|--|
| <p>372. GALLINAGO GALLINULA, Nob. (<i>Scolopax gallinula</i>, L.) Gould, pl. 322. Europe generally. The genus <i>Philolimnos</i>, Boie.</p> <p>373. GALLINAGO SCOLOPACINUS, Nob. (<i>Scolopax gallinago</i>, L.) Gould, pl. 321, fig. 2. Europe generally. The genus <i>Telmatias</i>, Boie.</p> <p>374. GALLINAGO BREHMI, Nob. (<i>Scolopax Brehmi</i>, Kaup.) Gould, pl. Central and southern Europe.</p> <p>375. GALLINAGO SABINI, Nob. (<i>Scolopax Sabini</i>, Vigors.) Gould, pl. 321, fig. 1. British Islands.</p> <p>376. GALLINAGO MONTAGUI, Nob. (<i>Scolopax major</i>, Montague.) Gould, pl. North and central parts of Europe.</p> <p>377. GALLINAGO MAJOR, Nob. (<i>Scolopax major</i>.) Gould, pl. 320. Europe generally.</p> | <p>344. GALLINAGO WILSONI, Nob. (<i>Scolopax gallinago</i>, Wils.) Aud. pl. 243. America generally.</p> <p>345. GALLINAGO DRUMMONDII, Nob. (<i>Scolopax Drummondii</i>, Sw.) Aud. pl. North-western parts.</p> |
|--|--|

Gen. 250. RUSTICOLA, (Vieill.) Nob. (*Microptera*, Nutt.)

346. RUSTICOLA MINOR, Vieill. (*Scolopax minor*, Gm.) Aud. pl. 248. America generally.



Genus 251. *SCOLOPAX*, (L.) Nob.

378. *SCOLOPAX RUSTICOLA*, L.  
Gould, pl. 319. Europe generally.

### FAMILIA XXVII.—RALLIDÆ.

Gen. 252. *ARAMUS*, Vieill.

347. *ARAMUS SCOLOPACEUS*, Vieill.  
(*Rallus gigas*, Nob.) Aud. pl.  
377. Southern parts.

Gen. 253. *RALLUS*, L.

348. *RALLUS ELEGANS*, Aud. pl.  
203. Southern and central  
parts.
349. *RALLUS CREPITANS*, Gm.  
Aud. pl. 204. Southern and  
central parts.
379. *RALLUS AQUATICUS*, Linn.  
Gould, pl. 339. Europe generally.
350. *RALLUS VIRGINIANUS*, L.  
Aud. pl. 205. Northern and  
central parts.

Gen. 254. *CREX*, Bechst.

380. *CREX PRATENSIS*, Bechst.  
(*Rallus crex*, L.) Gould, pl.  
341. Europe generally.

Gen. 255. *ORTYGOMETRA*, Leach.

381. *ORTYGOMETRA PORZANA*, Steph.  
(*Rallus porzana*, L.) Gould,  
pl. 343. Europe generally.
382. *ORTYGOMETRA BAILLONI*,  
Steph. (*Rallus Bailloni*, Vieill.)  
Gould, pl. 344. South and  
eastern parts of Europe.
383. *ORTYGOMETRA PUSILLA*, Nob.  
(*Rallus pusillus*, Pall.) Gould,  
pl. 345. Europe generally.
351. *ORTYGOMETRA CAROLINA*, Nob.  
(*Rallus Carolinus*, L.) Aud.  
pl. 233. Central parts.
252. *ORTYGOMETRA NOVEBORACENSIS*,  
Steph. (*Rallus noveboracensis*,  
Nob.) Aud. pl. 329. America  
generally.
353. *ORTYGOMETRA JAMAICENSIS*,  
Steph. (*Rallus Jamaicensis*, Gm.)  
Aud. pl. 349. Southern parts.

Gen. 256. *GALLINULA*, Briss. (*Stagnicola*, Br.)

384. *GALLINULA CHLOROPUS*, Lath.  
(*Fulica chloropus*, L.) Gould,  
pl. 342. Europe generally.
354. *GALLINULA GALEATA*, Licht.  
(*G. chloropus*, Bon.) Aud. pl.  
244. Southern parts.
355. *GALLINULA MARTINICA*, Gm.  
Aud. pl. 305. Southern parts.

Gen. 257. *FULICA*, L.

385. *FULICA ATRA*, L. Gould, pl.  
338. Europe generally.
356. *FULICA AMERICANA*, Gm.  
Aud. pl. 239. Northern and  
central parts.

Genus 258. PORPHYRIO, Ray.

386. PORPHYRIO ANTIQUORUM, Nob.  
(*Porphyrio hyacinthinus*, Ten.)  
Gould, pl. 340. Southern Europe.

### FAMILIA XXVIII.—PHALAROPODIDÆ.

Gen. 259. PHALAROPUS, Briss. (*Crymophilus*, Vieill.)

387. PHALAROPUS FULICARIUS, Nob.      357. PHALAROPUS FULICARIUS, Nob.  
(*Phalaropus platyrhynchus*, Tem.)      Aud. pl. 255. Northern parts.  
Gould, pl. 337. Northern and  
central parts of Europe.

Gen. 260. LOBIPES, Cuv.

388. LOBIPES HYPERBOREUS, Cuv.      358. LOBIPES HYPERBOREUS, Cuv.  
(*Phalaropus hyperboreus*, Lath.)      (*Phalaropus hyperboreus*, Lath.)  
Gould, pl. 336. Europe generally.      Aud. pl. 254. America generally.

Gen. 261. HOLOPODIUS, Nob.

359. HOLOPODIUS WILSONI, Nob.  
(*Phalaropus Wilsonii*, Sabine.)  
Aud. pl. 254. America generally.

### FAMILIA XXIX.—RECURVIROSTRIDÆ.

Gen. 262. HIMANTOPUS, Briss.

389. HIMANTOPUS MELANOPTERUS,      360. HIMANTOPUS NIGRICOLLIS,  
Meyer. (*Charadrius himantopus*, L.)      Vieill. (*Recurvirostra himantopus*,  
Gould, pl. 289. Europe generally.      Wils.) Aud. pl. 328.  
Northern and central parts.

361. HIMANTOPUS MEXICANUS,  
Briss. Southern parts.

Gen. 263. RECURVIROSTRA, L.

390. RECURVIROSTRA AVOCETTA, L.      362. RECURVIROSTRA AMERICANA, L.  
Gould, pl. 368. Europe generally.      (*Recurvirostra occidentalis?* Vi-  
gors.) Aud. pl. 318. America  
generally.

### FAMILIA XXX.—PHÆNICOPTERIDÆ.

Gen. 264. PHÆNICOPTERUS, L.

391. PHÆNICOPTERUS ANTIQUORUM,      363. PHÆNICOPTERUS RUBER, Br.  
Tem. (*Phœnicopterus ruber*, L.)      (*Phœnicopterus ruber*, L. part.)  
Gould, pl. 287. Southern Europe.      Aud. pl. 416. Southern, and  
rare in central parts.

## · ORDO V.—ANSERES.

## FAMILIA XXXI.—ANATIDÆ.

## a. CYGNINÆ.

## Genus 265. CYGNUS, Mey.

392. CYGNUS OLOR, Ill. (*Anas olor*, Gm.) Gould, pl. 354. North-eastern Europe.
393. CYGNUS IMMUTABILIS, Yarr. North of Europe and Great Britain.
394. CYGNUS MUSICUS, Bechst. (*Anas cygnus*, L.) Gould, pl. Europe generally.
364. CYGNUS AMERICANUS, Sharpless. (*Cygnus musicus*, Nob. Syn) Aud. pl. 406. Northern parts.
395. CYGNUS BEWICKII, Yarr. Gould, pl. 356. Europe generally.
365. CYGNUS BUCCINATOR, Rich. Aud. pl. 376. Northern parts.

## b. ANSERINÆ.

## Gen. 266. CHEN, Boie.

396. CHEN HYPERBOREUS, Boie. (*Anas hyperborea*, L.) Gould, pl. 346. Northern parts of Europe.
366. CHEN HYPERBOREUS, Boie. Aud. pl. 381. Northern and central parts.

## Gen. 267. ANSER, Briss.

397. ANSER ALBIFRONS, Bechst. (*Anas albifrons*, Gm.) Gould, pl. 349. North and central parts of Europe.
367. ANSER ALBIFRONS, Bechst. Aud. pl. 286. Northern parts.
398. ANSER CINEREUS, Meyer. (*Anas anser*, L.) Gould, pl. 347. Europe generally.
399. ANSER SEGETUM, Meyer. (*Anas segetum*, Gm.) Gould, pl. 348. Europe generally.
368. ANSER CANADENSIS, Vieill. (*Anas Canadensis*, Gm.) Aud. pl. 201. Northern and central parts.
369. ANSER HUTCHINSI, Richard. Aud. pl. 277. Northern parts.

## Gen. 268. BERNICLA, Briss.

400. BERNICLA LEUCOPSIS, Steph. (*Anas erythropus*, Gm.) Gould, pl. 250. North and central parts of Europe.
370. BERNICLA LEUCOPSIS, Steph. Aud. pl. 296. Northern parts.

401. BERNICLA BRENTA, Steph.  
(*Anas bernicla*, Gm.) Gould,  
pl. 352. North and central  
parts of Europe.
402. BERNICLA RUFICOLLIS, Steph.  
(*Anas ruficollis*, Pall.) Gould,  
pl. 351. Eastern Europe.
- Genus 269. CHENALOPEX, Antiq.
403. CHENALOPEX ÆGYPTIACA,  
Steph. (*Anas Ægyptiaca*, Gm.)  
Gould, pl. 353. South-eastern  
Europe.

## c. ANATINÆ.

- Gen. 270. TADORNA, Leach.
404. TADORNA VULPANSER, Leach.  
(*Anas Tadorna*, L.) Gould, pl.  
357. Europe generally.
- Gen. 271. CASARCA, Nob.
405. CASARCA RUTILA, Nob. (*Anas  
rutila*, Pall.) Gould, pl. 358.  
Eastern Europe.

Gen. 272. ANAS, L. (*Boschas*, Sw.)

406. ANAS BOSCHAS, L. Gould,  
pl. 361. Europe generally.
372. ANAS BOSCHAS, L. Aud. pl.  
221. America generally.
373. ANAS OBSCURA, Gm. Aud.  
pl. 302. America generally.
374. ANAS AUDUBONI, Bon. (*Anas  
bimaculata*.) Aud. pl. 338.

## Gen. 273. MARECA, Steph.

407. MARECA PENELOPE, Nob.  
(*Anas Penelope*, L.) Gould,  
pl. 359. Europe generally.
375. MARECA AMERICANA, Steph.  
(*Anas Americana*, Wils.) Aud.  
pl. 345. Northern and central  
parts.

Gen. 274. CHAULELASMUS, G. R. Gray. (*Chauliodes*, Sw.)

408. CHAULELASMUS STREPERUS,  
G. R. Gray. (*Anas strepera*,  
L.) Gould, pl. 366. Europe  
generally.
376. CHAULELASMUS STREPERUS,  
G. R. Gray. Aud. pl. 346.  
Northern parts.

## Gen. 275. DAFILA, Leach.

409. DAFILA ACUTA, Nob. (*Anas  
acuta*, L.) Gould, pl. 365.  
Europe generally.
410. DAFILA MARMORATA, Eyton.  
(*Anasmarmorata*, Tem.) Gould,  
pl. 373. Southern Europe.

GENUS 276. RHYNCHASPIS, Leach. (*Clypeata*, Br.)

411. RHYNCHASPIS CLYPEATA, Leach. (*Anas clypeata*, L.) Gould, pl. 360. Europe generally.
377. RHYNCHASPIS CLYPEATA, Leach. (*Anas clypeata*, Wils.) Aud. pl. 327. America generally.

## Gen. 277. CYANOPTERUS, Eyton.

412. CYANOPTERUS CIRCIA, Eyton. (*Anas querquedula*, L.) Gould, pl. 364. Europe generally.
378. CYANOPTERUS DISCORS, Eyton. (*Anas discors*, L.) Aud. pl. 313. America generally.

## Gen. 278. QUERQUEDULA, Steph.

413. QUERQUEDULA CRECCA, Steph. (*Anas crecca*, L.) Gould, pl. 362. Europe generally.
379. QUERQUEDULA CAROLINENSIS, Nob. (*Anas crecca*, Wils.) Aud. pl. 228. America generally.
414. QUERQUEDULA GLOCITANS, Vig. (*Anas bimaculata*, Gm.) Gould, pl. 363. East of Europe.
415. QUERQUEDULA ANGUSTIROSTRIS, Menetr. Gould, pl. South-east of Europe.

Gen. 279. AIX, Boie. (*Dendronessa*, Sw.)

380. AIX SPONSA, Boie. (*Anas sponsa*, L.) Aud. pl. 206. America generally.

## d. FULIGULINÆ.

## Gen. 280. SOMATERIA, Leach.

416. SOMATERIA MOLLISSIMA, Leach. (*Anas mollissima*, L.) Gould, pl. 374. Northern Europe.
381. SOMATERIA MOLLISSIMA, Leach. Aud. pl. 246. Northern coast.
417. SOMATERIA SPECTABILIS, Leach. (*Anas spectabilis*, L.) Gould, pl. 375. Northern Europe.
382. SOMATERIA SPECTABILIS, Leach. Aud. pl. 276. Accidental on the northern coast.

Gen. 281. STELLARIA, Nob. (*Polysticta*, Eyton—*Macropus*, Nutt.)

418. STELLARIA DISPAR, Nob. (*Anas stellaris*, Pall.) Gould, pl. 372. North-eastern Europe.
383. STELLARIA DISPAR, Nob. Aud. pl. 417. Northern coast.

Gen. 282. OIDEMIA, Flem. (*Melanitta*, Br.)

419. OIDEMIA PERSPICILLATA, Flem. (*Anas perspicillata*, L.) Gould, pl. 376. Accidental in Europe.
384. OIDEMIA PERSPICILLATA, Flem. Aud. pl. 317. Northern coast.
420. OIDEMIA FUSCA, Flem. (*Anas fusca*, L.) Gould, pl. 377. Northern and central parts of Europe.
385. OIDEMIA FUSCA, Flem. (*Anas fusca*, Wils.) Aud. pl. 247. Northern and central coasts.

421. OIDEA NIGRA, Flem. (*Anas Nigra*, L.) Gould, pl. 378. Northern and central parts of Europe.
386. OIDEA AMERICANA, Sw. (*Anas Nigra*, Wils.) Aud. pl. 408. Northern and central coasts.

Gen. 283. CALLICHEN, Br. (*Mergoides*, Eyton.)

422. CALLICHEN RUFINUS, Brehm. (*Anas rufina*, Pall.) Gould, pl. 369. Eastern and southern Europe.

Gen. 284. NYROCA, Flem.

423. NYROCA LEUCOPHTHALMA, Fl. (*Anas Nyroca*, Gm.) Gould, pl. 368. Europe generally.

Gen. 285. AYTHYA, Boie.

424. AYTHYA FERINA, Boie. (*Anas ferina*, L.) Gould, pl. 367. Europe generally.
387. AYTHYA ERYTHROCEPHALA, Nob. (*Anas ferina*, Wils.) Aud. pl. 322. Northern and central coasts.

388. AYTHYA VALLISNERIA, Boie. (*Anas vallisneria*, Wils.) Aud. pl. 301. Northern and central coasts.

Gen. 286. FULIGULA, Steph.

425. FULIGULA MARILA, Steph. (*Anas Marila*, L.) Gould, pl. 371. Europe generally.
389. FULIGULA MARILA, Steph. (*Anas Marila*, Wils.) Aud. pl. 229. America generally.
426. FULIGULA CRISTATA, Steph. (*Anas Fuligula*, L.) Gould, pl. 370. Europe generally.
390. FULIGULA RUFITORQUES, Nob. (*Anas fuligula*, Wils.) Aud. pl. 234. Northern and central coasts.

Gen. 287. CAMPTORHYNCHUS, Eyton.

391. CAMPTORHYNCHUS LABRADORUS, Eyt. (*Anas Labradoria*, Gm.) Aud. pl. 332. Northern coast.

Gen. 288. CLANGULA, Flem.

427. CLANGULA GLAUCION, Boie. (*Anas clangula*, L.) Gould, pl. 379. Europe generally.
392. CLANGULA AMERICANA, Nob. (*Anas clangula*, Wils.) Aud. pl. 342. America generally.
428. CLANGULA BARROVI, Sw. Gould, pl. 380. Accidental in northern Europe.
393. CLANGULA BARROVI, Sw. Aud. pl. 403. Northern.
394. CLANGULA ALBEOLA, Nob. (*Anas albeola*, L.) Aud. pl. 325. Northern coast.
429. CLANGULA HISTRIONICA, Leach. (*Anas histrionica*, Gm.) Gould, pl. 381. North of Europe.
395. CLANGULA HISTRIONICA, Leach. (*Anas histrionica*, Wils.) Northern.

## Genus 289. HARELDA, Leach.

430. HARELDA GLACIALIS, Leach. 396. HARELDA GLACIALIS, Leach.  
 (*Anas glacialis*, L.) Gould, 400. (*Anas glacialis*, Wils.) Aud.  
 pl. 382. Northern Europe. pl. 312. America generally.

## Gen. 290. ERISMATURA, Nob.

431. ERISMATURA MERSA, Nob. 397. ERISMATURA RUBIDA, Nob.  
 (*Undina leucocephala*.) Gould, 400. (*Anas rubida*, Wils.) Aud.  
 pl. 383. Eastern Europe. pl. 343. Northern and central  
 coasts.

## c. MERGINÆ.

## Gen. 291. MERGUS, L.

432. MERGUS ALBELLUS, L. Gould, 398. MERGUS ALBELLUS, L. Aud.  
 pl. 387. Europe generally. pl. 347. Northern and central  
 coasts.

## Gen. 292. MERGANSER, Leach.

433. MERGANSER CASTOR, Leach. 399. MERGANSER CASTOR, Leach.  
 (*Mergus castor and Mergan- Aud. pl. 331. America generally.*  
 ser, L.) Gould, pl. 384. Eu-  
 rope generally.
434. MERGANSER SERRATOR, Leach, 400. MERGANSER SERRATOR, Leach.  
 (*Mergus serrator*, L.) Gould, Aud pl. 401. America generally.  
 pl. 385. Europe generally.
435. MERGANSER CUCULLATUS, Nob. 401. MERGANSER CUCULLATUS, Nob.  
 (*Mergus cucullatus*, L.) Gould, Aud. pl. 232. America generally.  
 pl. 386. Accidental in Europe.

## FAMILIA XXXII.—PELECANIDÆ.

## Gen. 293. PHALACROCORAX. BRISS.

436. PHALACROCORAX CARBO, CUV. 402. PHALACROCORAX CARBO, CUV.  
 (*Pelecanus carbo*, L.) Gould, (*Pelecanus carbo*, Wils.) Aud.  
 pl. 407. Europe generally. pl. 266.
437. PHALACROCORAX GRACALUS, 400. PHALACROCORAX GRACALUS, CUV.  
 CUV. (*Pelecanus Gracalus*, Gm.) Gould, pl. 408. Europe generally.
438. PHALACROCORAX PYGMÆUS, 400. PHALACROCORAX PYGMÆUS, CUV.  
 CUV. (*Pelecanus pygmæus*, Pall.) Eastern Europe.
439. PHALACROCORAX CRISTATUS, 400. PHALACROCORAX CRISTATUS, CUV.  
 CUV. (*Pelecanus cristatus*, Olf.) Gould, pl. 410. Northern Europe.
440. PHALACROCORAX DESMARESTI, 400. PHALACROCORAX DESMARESTI, CUV.  
 CUV. (*Pelecanus desmaresti*, Olf.) Gould, pl. 411. Southern and  
 eastern Europe.

403. PHALACROCORAX BRASILIENSIS Nob. (*Ph. Floridanus*, Aud.) pl. 252.

404. PHALACROCORAX DILOPHUS, Nob. (*Carbo dilophus*, Sw.) Aud. pl. 257.

Genus 294. PELECANUS, L.

441. PELECANUS ONOCROTALUS, L. Gould, pl. 405.

442 PELECANUS CRISPUS, Feldegg. Gould, pl. 406. South-eastern Europe.

405. PELECANUS TRACHYRHYNCUS, Lath. (*Pelecanus erythrorhynchus*, Gm. *P. Americanus*, Aud.) Aud. pl. 311. Rare in central parts.

406. PELECANUS FUSCUS, L. Aud. pl. 251. Southern parts.

Gen. 295. SULA, Briss.

443. SULA BASSANA, Briss. (*Pelecanus bassanus and maculatus*, Gm.) Gould, pl. 412. Europe generally.

407. SULA AMERICANA, Nob. (*Pelecanus bassanus*, Nob.) Aud. pl. 326. Central coast.

408. SULA FUSCA, Briss. (*Pelecanus sula*, L.) Aud. pl. 207. Southern coast.

Gen. 296. TACHYPETES, Vieill.

409. TACHYPETES AQUILUS, Vieill. (*Pelecanus aquilus*, L.) Aud. pl. 271. Southern coast.

Gen. 297. PLOTUS, L.

410. PLOTUS ANHINGA, L.) Aud. pl. 316. Southern coast.

Gen. 298. HELIORNIS, Bonn.

411. HELIORNIS SURINAMENSIS, Bonn. Accidental on the southern coast.

Gen. 299. PHÆTON, L.

412. PHÆTON ÆTHEREUS, L. Aud. pl. 262. Tropical coast.

FAMILIA XXXIII.—LARIDÆ.

a. RHYNCHOPSINÆ.

Genus 300. RHYNCHOPS, L.

413. RHYNCHOPS NIGRA, L. Aud. pl. 262. Tropical coast.



## b. STERNINÆ.

## Gen. 301. STERNA, L.

444. STERNA HIRUNDO, L. Gould,  
pl. 417. Europe generally.
445. STERNA ARCTICA, Tem. Gould,  
pl. 419. Northern Europe.
446. STERNA DOUGLALII Mont.  
Gould, pl. 418. Europe generally.
447. STERNA MINUTA, L. Gould,  
pl. 420. Europe generally.—  
The genus *Sternula*, Boie.
414. STERNA WILSONI, Nob. (*Sterna hirundo*, Wils.)
415. STERNA HIRUNDO, L. Aud.  
pl. 309. Northern and central  
coasts.
416. STERNA ARCTICA, Tem. Aud.  
pl. 250. Northern coast.
417. STERNA DOUGALLII, Mont.  
Aud. pl. 240.
418. STERNA ARGENTEA, Nutt.  
(*Sterna minuta*, Wils.) Aud.  
pl. 319. Northern and central  
coasts.

## Genus STERNULA, Boie.

## Gen. 302. HYDROCHELIDON, Boie.

448. HYDROCHELIDON NIGRUM,  
*Sterna Nigra*, L.) Gould, pl.  
422. Europe generally.
449. HYDROCHELIDON LEUCOPTERUM,  
Boie. (*Sterna leucoptera*,  
Tem.) Gould, pl. 423. Southern  
and eastern Europe.
450. HYDROCHELIDON LEUCOPAREIA,  
Nob. (*Sterna leucopareia*,  
Natt.) Gould, pl. 424.  
Southern and eastern Europe.
419. HYDROCHELIDON NIGRUM,  
Boie. (*Sterna Nigra*, L.) Central  
coast.

420. HYDROCHELIDON FULIGINOSUM,  
Nob. (*Sterna fuliginosa*,  
Gm.) Aud. pl. 235. Southern  
and south-eastern coasts.

## Gen. 303. MEGALOPTERUS, Boie.

451. MEGALOPTERUS STOLIDUS, Boie  
(*Sterna stolidus*, L.) Gould, pl.  
421. Accidental in Europe.
421. MEGALOPTERUS STOLIDUS, Boie  
(*Sterna stolidus*, L.) Aud. pl.  
275. Rare on the northern  
coast.

## Genus 304. THALASSEUS, Boie.

452. THALASSEUS CANTIACUS, Boie.  
(*Sterna cantiaca*, Gm.) Gould,  
pl. 415. Europe generally.
422. THALASSEUS CANTIACUS, Boie.  
Aud. pl. 279.
423. THALASSEUS CAYANUS, Boie.  
(*Sterna cayana*, Gm.) Aud.  
pl. 273. Southern coast.

## Gen. 305. GELOCHELIDON, Brehm.

453. GELOCHELIDON ANGLICA, Nob.  
(*Sterna anglica*, Mont.) Gould,  
pl. 416. Great Britain.
424. GELOCHELIDON ARANEA, Nob.  
(*Sterna aranea*, Wils.) Aud.  
pl. 409. Northern coast.

Gen. 306. SYLOCHELIDON, Brehm.

454. SYLOCHELIDON CASPIA, Br.  
(*Sterna Caspia*, Gm.) Gould,  
pl. 414. Southern Europe.

c. LARINÆ.

Gen. 307. GAVIA, Boie.

455. GAVIA EBURNEA, Boie. (*Larus Eburnea*, Gm.) Gould,  
pl. 436. Northern Europe.

425. GAVIA EBURNEA, Boie. (*Larus Eburnea*, Gm.) Aud. pl. 287.  
Northern coast.

Gen. 308. XEMA, Leach.

456. XEMA SABINI, Leach. (*Larus Sabini*, Leach.) Gould, pl.  
429. Northern Europe.

426. XEMA SABINI, Leach. Aud.  
pl. 288. Northern coast.

457. XEMA MINUTUM, Boie. (*Larus minutus*, Pall.) Gould,  
pl. 428. North-eastern Europe.

458. XEMA CAPISTRATUM, Boie.  
(*Larus capistratus*, Tem.)  
Gould, pl. .

427. XEMA BONAPARTII, Nob.  
(*Larus Bonapartii*, Richards.)  
Aud. pl. 324. Northern coast.

459. XEMA MELANOCEPHALUM,  
Boie. (*Larus Melanocephalus*,  
Natt.) Gould, pl. 427. South-  
ern Europe.

460. XEMA RIDIBUNDUM, Boie.  
(*Larus ridibundus*, L.) Gould,  
pl. 425. Europe generally.

461. XEMA PLUMICEPS, Nob.  
Southern Europe.

462. XEMA ATRICILLA, Nob.  
(*Larus atricilla*, Pall.) Gould,  
pl. 426. Accidental in Europe.

428. XEMA ATRICILLA, Nob.  
(*Larus atricilla*, L.) Aud. pl.  
314. America generally.

429. XEMA FRANKLINI, Nob.  
(*Larus Franklini*, Rich.) Aud.  
pl. . Northern coast.

463. XEMA ICHTHYAËTUM, Nob.  
(*Larus ichthyaëtus*, Pall.) South-  
eastern Europe.

Genus 309. RISSA, Leach.

464. RISSA TRIDACTYLA, Leach.  
(*Larus tridactylus*, L.) Gould,  
pl. 435. Northern Europe.

430. RISSA TRIDACTYLA, Leach.  
(*Larus tridactylus*, L.) Aud.  
pl. 224. Northern coast.

Gen. 310. ROSSIA, Nob.

465. ROSSIA ROSEA, Nob. (*Larus Rossii*, Sabine.) Gould, pl.—  
Northern Europe.

431. ROSSIA ROSEA, Nob. (*Larus Rossii*, Sab.) Aud. pl.  
Northern coast.

Gen. 311. LARUS, L.

- |   |  |
|---|--|
| <p>466. LARUS GLAUCUS, Brunn. Gould, pl. 432. Northern Europe.</p> <p>467. LARUS MARINUS, L. Gould, pl. 430. Europe generally.</p> <p>468. LARUS AUDOUINI, Peyr. Gould, pl. 438.</p> <p>469. LARUS CANUS, L. Gould, pl. 437. Europe generally.</p> <p>470. LARUS FUSCUS, L. Gould, pl. 431. Europe generally.</p> <p>471. LARUS LEUCOPTERUS, Nob. (<i>Larus islandicus</i>, Edm.) Gould, pl. 433. Northern Europe.</p> <p>472. LARUS ARGENTATUS, Brunn. Gould, pl. 434. Europe generally.</p> | <p>432. LARUS GLAUCUS, Brunn. Aud. pl. 396. Northern, very rare on southern coast.</p> <p>433. LARUS MARINUS, L. Aud. pl. 241. Northern and central coasts.</p> <p>434. LARUS ZONORHYNCHUS, Rich. Aud. pl. 212. Northern coast.</p> <p>435. LARUS LEUCOPTERUS, Nob. (<i>Larus islandicus</i>, Edm.) Aud. pl. 282. Northern and central coasts.</p> <p>436. LARUS ARGENTATUS, Brunn. Aud. pl. 291. America generally.</p> |
|---|--|

d. LESTRINÆ.

Gen. 312. CATARACTA, Brunn.

473. CATARACTA SKUA, Brunn. (*Larus Catarractes*, L.) Gould, pl. 439. Northern Europe.

Gen. 313. LESTRIS, Illis.

- |  |  |
|--|--|
| <p>474. LESTRIS POMARINUS, Tem. Gould, pl. 440. Northern Europe.</p> <p>475. LESTRIS PARASITICA, Ill. (<i>Larus parasiticus</i>, L.) Gould, pl. 442.</p> <p>476. LESTRIS RICHARDSONI, Sw. Gould, pl. 441. Northern Europe.</p> | <p>437. LESTRIS POMARINUS, Tem. Aud. pl. 253. Northern coast.</p> <p>438. LESTRIS BUFFONI, Boie. (<i>Larus parasiticus</i>, L.) Aud. pl. 267. Accidental in North America.</p> <p>439. LESTRIS RICHARDSONI, Sw. (<i>Lestris parasitica</i>, Boie.) Aud. pl. 272. Northern coast.</p> |
|--|--|

FAMILIA XXXIV.—PROCELLARIDÆ.

Genus 314. DIOMEDEA, L.

440. DIOMEDEA FUSCA, Nob. Aud. pl. 407. Central coast.

## Gen. 315. PROCELLARIA, L.

477. PROCELLARIA GLACIALIS, L.  
Gould, pl. 446. Northern  
Europe.
441. PROCELLARIA GLACIALIS, L.  
Aud. pl. . Accidental in  
North America.

## Gen. 316. PUFFINUS, Briss.

478. PUFFINUS ANGLORUM, Ray.  
(*Procellaria Anglorum*, Tem.)  
Gould, pl. 443. Northern and  
central parts of Europe.
442. PUFFINUS ANGLORUM, Ray.  
Aud. pl. 295. Accidental in  
North America.
479. PUFFINUS OBSCURUS, Steph.  
(*Procellaria obscurus*, Vieill.)  
Gould, pl. 444. Europe generally.
443. PUFFINUS OBSCURUS, Steph.  
Aud. pl. 299. Accidental on  
the central coast.
480. PUFFINUS CINEREUS, Steph.  
(*Procellaria puffinus*, L.)  
Gould, pl. 445. Europe generally.
444. PUFFINUS CINEREUS, Steph.  
Aud. pl. 283. Northern coast.

## Gen. 317. THALASSIDROMA, Vig.

481. THALASSIDROMA PELAGICA,  
Vig. (*Procellaria pelagica*,  
L.) Gould, pl. 447, fig. 2.  
Europe generally.
445. THALASSIDROMA PELAGICA,  
Vig. Aud. pl. 311. Atlantic  
ocean.
482. THALASSIDROMA LEACHI, Nob.  
(*Procellaria Leachii*, Tem.)  
Gould, pl. 447, fig. 1. Europe  
generally.
446. THALASSIDROMA LEACHI,  
Nob. Aud. pl. 260. Atlantic  
ocean.
483. THALASSIDROMA WILSONI,  
Nob. (*Procellaria Wilsoni*,  
Nob. Accidental  
in Europe.
447. THALASSIDROMA WILSONI,  
Nob. (*Procellaria pelagica*,  
Wils.) Aud. pl. 270. South-  
ern coast.
484. THALASSIDROMA BULWERI,  
Nob. (*Procellaria Bulwerii*,  
Jard.) Gould, pl. 448. Acci-  
dental in Europe.

## FAMILIA XXXV.—COLYMBIDÆ.

## a. PODICIPINÆ.

## Genus 318. SYLBEOCYCLUS, Nob.

485. SYLBEOCYCLUS MINOR, Nob.  
(*Podiceps minor*, Lath.) Gould,  
pl. 392. Europe generally.
448. SYLBEOCYCLUS CAROLINENSIS,  
Nob. (*Podiceps Carolinensis*,  
Lath.) Aud. pl. 248. Ame-  
rica generally.

## Gen. 319. PODICEPS, Lath.

486. PODICEPS AURITUS, Lath.  
Gould, pl. 391. Europe generally.
449. PODICEPS AURITUS, Lath.  
Aud. pl. 404. Northern coast.

- |   |  |
|---|--|
| <p>487. <i>PODICEPS CORNUTUS</i>, Lath. Gould, pl. 390. Europe generally.</p> <p>488. <i>PODICEPS RUBRICOLLIS</i>, Lath. Gould, pl. 389. Europe generally.</p> <p>489. <i>PODICEPS CRISTATUS</i>, Lath. Gould, pl. 388. Europe generally.</p> | <p>450. <i>PODICEPS CORNUTUS</i>, Lath. Aud. pl. 259. Northern and central coasts.</p> <p>451. <i>PODICEPS RUBRICOLLIS</i>, Lath. Aud. pl. 298. Northern and central coasts.</p> <p>452. <i>PODICEPS CRISTATUS</i>, Lath. Aud. pl. 292. Northern and central coasts.</p> |
|---|--|

b. *COLYMBIDÆ*.

Genus 320. *COLYMBUS*, L.

- |   |   |
|---|---|
| <p>490. <i>COLYMBUS GLACIALIS</i>, L. Gould, pl. 393. Northern and central parts of Europe.</p> <p>491. <i>COLYMBUS ARCTICUS</i>, L. Gould, pl. 394. Northern and central parts.</p> <p>492. <i>COLYMBUS BALTHICUS</i>, Horns. Gould, Suppl. pl. Northern Europe.</p> <p>493. <i>COLYMBUS SEPTENTRIONALIS</i>, L. Gould, pl. 395. Europe generally.</p> | <p>453. <i>COLYMBUS GLACIALIS</i>, L. Aud. pl. 306. Northern and central coasts.</p> <p>454. <i>COLYMBUS ARCTICUS</i>, L. Aud. pl. 346. Northern coast.</p> <p>455. <i>COLYMBUS SEPTENTRIONALIS</i>, L. Aud. pl. 202. Northern coast.</p> |
|---|---|

FAMILIA XXXVI.—*ALCIDÆ*.

Gen. 321. *URIA*, Briss.

- |   |   |
|---|---|
| <p>494. <i>URIA TROILE</i>, Lath. Gould, pl. 396 and 397. Europe generally.</p> <p>495. <i>URIA BRUNNICHII</i>, Sabine. (<i>Uria Franesii</i>, Leach.) Gould, pl. 398. North of Europe.</p> <p>496. <i>URIA GRYLLE</i>, Lath. Gould, pl. 399. North and central parts of Europe.</p> <p>497. <i>URIA MAUDTHII</i>, Licht. North-east of Europe.</p> | <p>456. <i>URIA TROILE</i>, Lath. Aud. pl. 318. On the coast generally.</p> <p>457. <i>URIA BRUNNICHII</i>, Sabine. Aud. pl. 245. North-western of North America.</p> <p>458. <i>URIA GRYLLE</i>, Lath. Aud. pl. 219. On the coast generally.</p> |
|---|---|

Genus 322. *MERGULUS*, Ray.

- |   |   |
|---|---|
| <p>498. <i>MERGULUS ALLE</i>, Nob. (<i>Alca alle</i>, L.) Gould, pl. 402. Northern and central parts of Europe.</p> | <p>459. <i>MERGULUS ALLE</i>, Nob. Aud. pl. 339. (<i>Uria alle</i>, Wils.) Northern shores.</p> |
|---|---|

460. MARGULUS ANTIQUUS, Nob.  
(*Alca antiqua*, Pall.) Aud.  
pl. 402. Northern shores.

Genus 323. CERATORHYNCHA, Nob.  
(*Cerorhynca*, Nob.)

461. CERATORHYNCHA OCCIDENTALIS,  
Nob. (*Phaleris cerorhynca*, Nob.)  
Aud. pl. 402. Western coast.

Gen. 324. PHALERIS, Tem.

462. PHALERIS NODIROSTRA, Nob.  
(*Cerorhynca occidentalis*, Vig.)  
Aud. pl. 402.

463. PHALERIS SUPERCILIOSA, Nob.  
(*Phaleris cristatella*, Tem.)  
Aud. pl. 402.

464. PHALERIS CRISTATELLA, Nob.  
nec Tem. (*Alca cristatella*,  
*Auct. nec Vieill.*) Aud. pl.  
On the western shores.

465. PHALERIS TETRACULA, Steph.  
(*Alca tetracula*, Pall.)

466. PHALERIS PSITTACULA, Steph.  
(*Alca psittacula*, Pall.) North  
western coast.

Gen. 325. MORMON, Ill.

499. MORMON ARCTICUS, Ill. (*Alca  
Arctica*, L.) Gould, pl. 403.  
Northern Europe.

467. MORMON ARCTICUS, Ill. Aud.  
pl. 213. Northern coast.

500. MORMON GLACIALIS, Leach.  
Gould, pl. 404. Northern Eu-  
rope.

468. MORMON GLACIALIS, Leach.  
Aud. pl. 293. On the coast  
generally.

469. MORMON CIRRHATUS, Tem.  
(*Alca cirrhata*, Gm.) Aud. pl.  
249. Western coast.

Gen. 326. UTAMANIA, Leach.

501. UTAMANIA TORDA, Leach.  
(*Alca Torda*, and *Pica*, L.)  
Gould, pl. 401. Europe gene-  
rally.

470. UTAMANIA TORDA, Leach.  
Aud. pl. 214. America gene-  
rally.

Gen. 327. ALCA, Leach.

502. ALCA IMPENNIS, L. Gould,  
pl. 400. Northern Europe.

471. ALCA IMPENNIS, L. Aud. pl.  
341. Northern coast.

## SUMMARY.

---

FAMILIES found in Europe - - - 36	FAMILIES found in North America - - 34
Families of Europe, not of North Ame- rica - - - 4	Families of North America, not of Europe - - 2

---

GENERA found in Eu- rope - - - 246	GENERA found in North America - - - 218
Genera of Europe, not of North Ame- rica - - - 109	Genera of North America, not of Europe - - 81

---

SPECIES found in Eu- rope - - - 503	SPECIES found in North America - - - 471
Species of Europe, not of North Ame- rica - - - 403	Species of North America, not of Europe - - 371

---

## ERRATA.

Familia XV. read XVII.; and two additional numbers must be added to each of the succeeding Families.

Page 49. "SCOLOPIDÆ," read "SCOLOPACIDÆ."

Add,  
183a. TURDUS MIGRATORIUS, L.  
Gould, pl. 74. Accidental in  
Europe.

LONDON :

PRINTED BY MANNING AND SMITHSON,  
IVY LANE, PATERNOSTER ROW.





*New Works published by John Van Voorst,*  
1, PATERNOSTER-ROW, LONDON.

## A HISTORY OF BRITISH QUADRUPEDS;

BY THOMAS BELL, F.R.S. F.L.S.

PROFESSOR OF ZOOLOGY IN KING'S COLLEGE, LONDON.

1 vol. 8vo. price 28s., royal 8vo. 2l. 16s.

This work is ornamented with nearly 200 beautifully-executed wood-engravings, comprising Portraits of the Animals, drawn and engraved under the immediate superintendence of the Author, and Vignettes.

"Nothing remains to be added but an assurance as strong as our critical character can warrant, that without an inspection and perusal of the work, no one can believe how rich it is in useful and entertaining knowledge, or how graphically and exquisitely the production is embellished by the happiest efforts of artists."—MONTHLY REVIEW.

## A HISTORY OF BRITISH FISHES;

BY WILLIAM YARRELL, F.L.S. V.P.Z.S.

In 2 vols. 8vo. price 2l. 8s.

This work, which contains a complete history of the Ichthyology of Great Britain, including many species never before noticed, is embellished with 240 figures of Fishes, mostly taken from the objects themselves, and 145 illustrative vignettes, drawn and engraved by the most eminent artists, and no pains have been spared to render it worthy of public estimation.

"We feel a positive pleasure, amid the inundation of trash and superficiality which flows from our press on the subject, in submitting to our readers a brief account of the 'History of British Fishes.'"—ATHENÆUM.

## A HISTORY OF BRITISH BIRDS;

BY WILLIAM YARRELL, F.L.S. V.P.Z.S.

Five Parts published, demy 8vo. 2s. 6d., royal 8vo. 5s.

"The letter-press shews the opinions and the newest facts collected by the leading naturalists. The engravings of birds are beautiful, lively, and true."—TAIT'S MAG.

"The whole being admirably described, and beautifully depicted, with tail-pieces of uncommon excellence."—LIT. GAZETTE.

## A HISTORY OF BRITISH REPTILES;

BY THOMAS BELL, F.R.S.

PROFESSOR OF ZOOLOGY IN KING'S COLLEGE, LONDON.

To be completed in Three Parts, demy 8vo. 2s. 6d., royal 8vo. 5s. each.

The History will be of species, habit, transformation, and geographical distribution; and the illustrations will comprise one of each species, and some varieties, including structure, development, and transformation.

The above four Works will form a complete and uniform Series of the Vertebrate Animals of Great Britain, in 6 vols.

\* \* \* A few copies may be had in royal 8vo. as published, and a very limited number in imperial 8vo; the latter not delivered until the completion of each respective work.

## GRAY'S ELEGY IN A COUNTRY CHURCH-YARD:

Each Stanza Illustrated

With an Engraving on Wood, from 33 original Drawings expressly made for the volume, by the most eminent living Artists.

Post 8vo. price 9s. in cloth.

"It is truly a beautiful volume, a curiosity in art."—MORNING POST.

## THE BARD. BY GRAY.

WITH ILLUSTRATIONS FROM DRAWINGS BY THE  
HON. MRS. JOHN TALBOT.

Post 8vo. price 7s. cloth, uniform with the Elegy.

"The subjects are well chosen, and various,—are drawn with artist-like tact and cleverness, and engraved with extreme delicacy and sharpness."—SPECTATOR.

## AN ANGLER'S RAMBLES.

BY EDWARD JESSE, F.L.S.

AUTHOR OF "GLEANINGS IN NATURAL HISTORY."

Post 8vo. price 10s. 6d. cloth.

CONTENTS:—Thames Fishing—Trolling in Staffordshire—Perch Fishing-club—Two Days' Fly-fishing on the Test—Luckford Fishing-club—Grayling Fishing—A Visit to Oxford—The Country Clergyman.

"It is full of anecdote, of pleasant portraitures, of smooth sunny descriptions, of agreeable sketches, and stories referring to times past as well as present, and will long be a favourite with the lovers of literary rambles."—COURT JOURNAL.

## BEAUTIES OF THE COUNTRY;

OR,  
DESCRIPTIONS OF RURAL CUSTOMS, OBJECTS,  
SCENERY, AND THE SEASONS.

BY THOMAS MILLER,

Author of "A Day in the Woods," &c.

Post 8vo. with Twenty-six Illustrations, price 12s.

"To the real lovers of Nature, this work will be most welcome. It is written with graphic truth, and in a healthy tone. Mr. Miller describes his object to be, to embody in his volume whatever is most 'beautiful or poetical in country life and scenery.' All this he has done, and has also portrayed with vividness and skill many of the old country customs and festivals. The literary extracts with which his pages are studded, have been gathered with excellent taste from every illustrator of the seasons, both in poetry and prose."—EXAMINER.

## NOTES ON NETS;

OR, THE QUINCUNX PRACTICALLY CONSIDERED:

To which are added, Miscellaneous Memoranda.

BY THE HON. & REV. CHARLES BATHURST, LL.D.

Late Fellow of All-Souls College, Oxford.

12mo. price 4s.

“Dr. Bathurst is evidently a most amiable man, and his book is a very agreeable book, and is embellished with sundry plates, descriptive of its subject in all its varieties.”—JOHN BULL.

## CATTERMOLE'S ILLUSTRATED EDITION OF DR. AIKIN'S CALENDAR OF NATURE;

Or, Natural History of each Month of the Year: with a few Additions to the Text, by a Fellow of the Linnæan and Zoological Societies.

This edition “is ornamented with Eighteen Designs, from the accomplished pencil of Mr. CATTERMOLE,”—twelve illustrative of the peculiar characteristics of the months, and six tail-pieces.

Price 4s. 6d. cloth, lettered.

“A beautiful little book, which we can warmly recommend to every lover of nature.”—LOUDON'S GARDENERS' MAGAZINE.

## CABINET (POCKET) EDITION OF THE HOLY BIBLE;

The Authorized Version, with 24 highly finished steel engravings, beautifully printed and elegantly bound, price 10s. 6d.

“Very handsomely got up in every respect,—form, typography, binding, and illustrations; and, consequently, well merits the public encouragement.”—LITERARY GAZETTE.

Uniform in size with the above,

## THE BOOK OF COMMON PRAYER.

The Authorized Version, with 10 engravings, executed in the best manner on steel, elegantly bound, price 4s.

## LITTLE FABLES FOR LITTLE FOLKS.

Selected for their moral tendency; and re-written in Familiar Words, not one of which exceeds Two Syllables.

Designed as Reading Lessons, to amuse and instruct.

Illustrated with Wood-cuts, price 2s.

“A remarkably pretty collection of Fables, illustrated with wood-cuts, which would not discredit a work of more pretensions.”—ATHENÆUM.

A CABINET EDITION OF  
**THE ECONOMY OF HUMAN LIFE;**  
IN TWELVE BOOKS. BY DODSLEY.

With Twelve Plates, beautifully engraved on Steel, from original  
Designs by FRANK HOWARD, HARVEY, WILLIAMS, &c.

Neatly done up, with gilt edges, price 5s.

“A new and delightful edition of a delightful little work; a prettier  
present for youth we know not.”—COURT JOURNAL.

**ELEMENTS OF  
PRACTICAL KNOWLEDGE;**  
OR, THE YOUNG INQUIRER ANSWERED:

Explaining in Question and Answer, and in familiar language, what  
most things daily used, seen, or talked of, are; what they are made of,  
where found, and to what uses applied. Including articles of Food and  
Aliment; miscellanies in common use; Metals, Gems, Jewellery; and  
some account of the principal Inventions, and most interesting Manu-  
factures.

In 18mo. with Illustrations, price 3s. cloth.

“Our attention has of late been frequently directed to improved books  
of education adapted for juvenile minds, and we can venture, with con-  
fidence, to recommend this as an excellent work of this kind.”

ASIATIC JOURNAL.

---

*In Preparation,*  
**A HISTORY OF BRITISH CRUSTACEA.**  
BY PROFESSOR BELL.

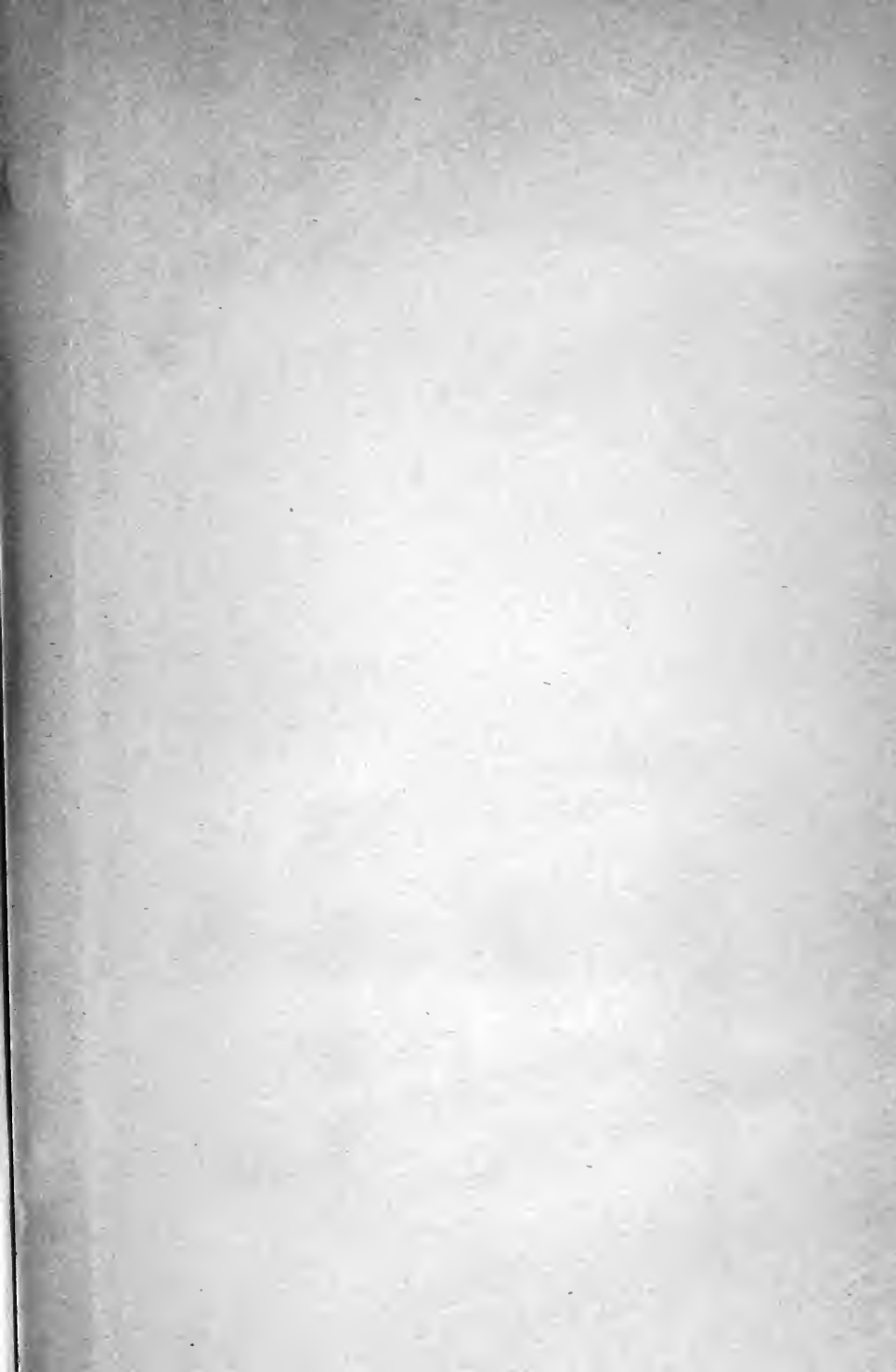
The Drawings for this work will be by J. O. WESTWOOD, F.L.S.  
Secretary to the Entomological Society.

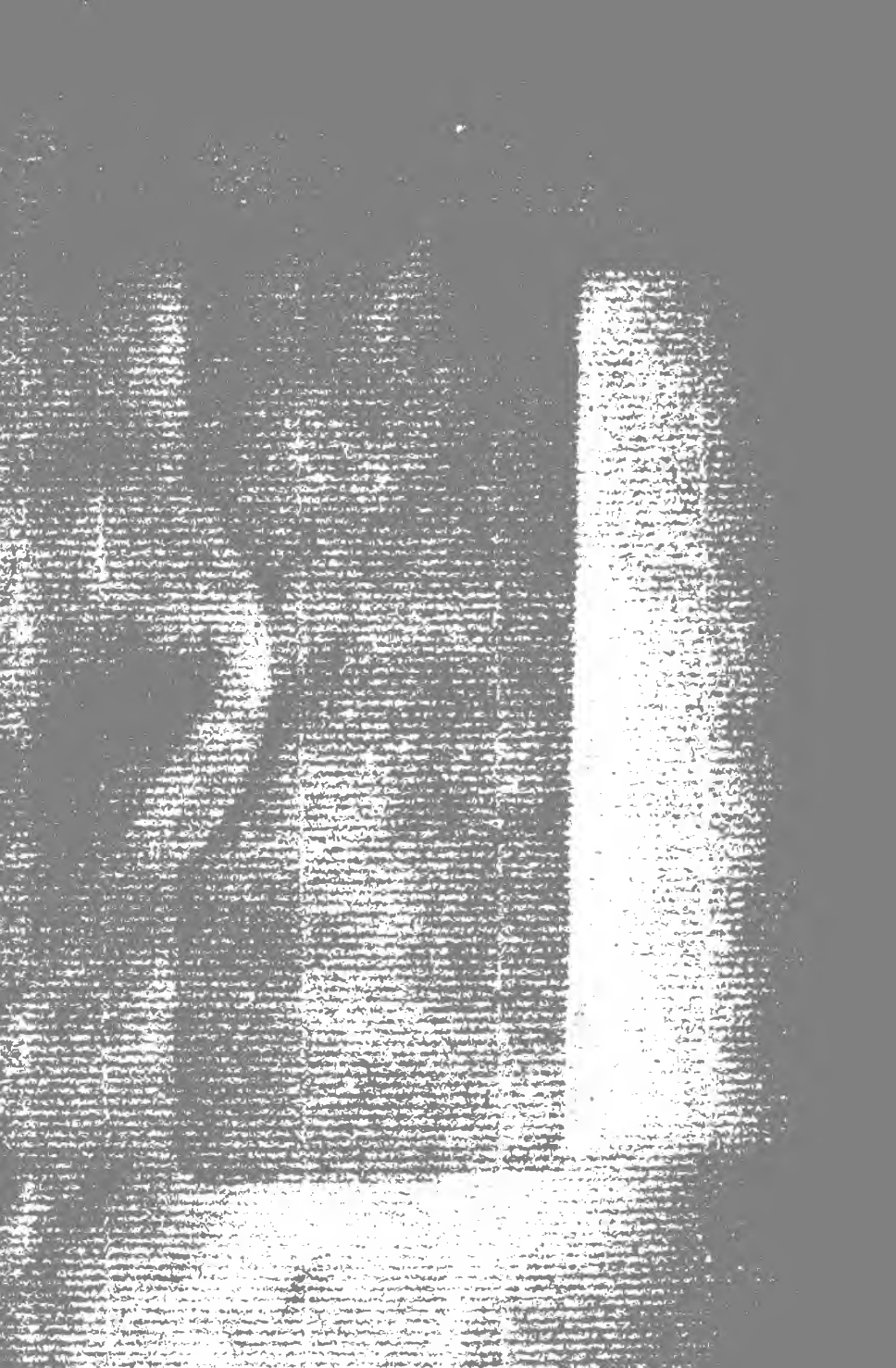
**A HISTORY OF THE FOSSIL FRUITS  
AND SEEDS OF THE LONDON CLAY.**  
BY JAMES SCOTT BOWERBANK, F.G.S.

This subject has been the peculiar study of Mr. Bowerbank for many  
years, during which time more than 120,000 specimens have passed  
through his hands. The work will be illustrated by as many specimens  
as can with certainty be determined, drawn and engraved by Mr. James  
de Carl Sowerby.

---

JOHN VAN VOORST, 1, PATERNOSTER-ROW.





Author *Bonaparte, 18122 Jool.*  
Title *Birds of Europe & North America*

DATE. \_\_\_\_\_  
NAME OF BORROWER. \_\_\_\_\_  
*Oct 24th 1812*

UNIVERSITY OF TORONTO  
LIBRARY

Do not  
remove  
the card  
from this  
Pocket.

Acme Library Card Pocket  
Under Pat. "Ref. Index File."  
Made by LIBRARY BUREAU

