

SF 486

.66

Copy 1

THE GILLETTE POULTRY HOUSES

SUGAR BROOK FARM CO.
CENTRAL VILLAGE, CONNECTICUT



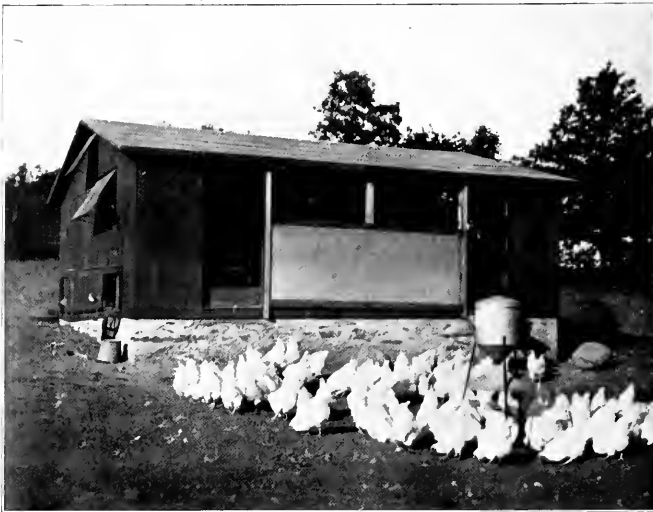
Class SF486

Book 66

Copyright N° _____

COPYRIGHT DEPOSIT

The GILLETTE POULTRY HOUSES



GILLETTE COLONY HOUSE

Sugar Brook Farm Co.

CENTRAL VILLAGE, CONNECTICUT

WINDHAM COUNTY

57483



SOME OF THE GILLETTE COLONY HOUSES
ON SUGAR BROOK FARM CO'S RANGE

Price of these Gillette Poultry House Plans, \$1.00, postage free

All Orders must be accompanied by Cash or Money Order

*These plans copyrighted January, 1912, by
SUGAR BROOK FARM CO
Entered at Stationers' Hall*



© 1,4305335

NO. 1



GENERAL REMARKS

IN building the Gillette houses we wish to caution against changes. We do not believe it wise to change one single thing. The drawings show only the frame where spaces are not marked. Openings:— All doors or windows must fit tight.

We wish to call attention to the north side, which must be tight.

A piece of roofing paper should be nailed under eaves, coming down about three inches on all sides. This is important.

Floors are a matter of choice, also dropping boards and roosts, which are not shown in drawings.

The Gillette Continuous house is built by placing the Colony houses twenty feet apart, in a straight line, and the same height from the ground if possible, connecting them on the north side with a tight board wall the same height as the Colony houses at eaves, and a two-foot board wall with wire above on the south side. This makes a sun parlor between the houses. Make a concrete floor, starting on the north side, one inch above bottom of board wall with a pitch of three inches toward the south wall. This brings the floor three inches below bottom of board wall on the south side and takes care of all water. Use four to five inches of sand on concrete. On this throw your litter, using sand or gravel inside of house. You will be surprised with results if you follow these directions. The birds do not need any yards if kept for eggs only. The concrete floor prevents contamination and is a necessity.

In building the Gillette open front brooder house be sure to have windows on north side tight. In building for pipe systems simply add nine feet to the length of the building, cutting doors into pit and feed room as shown in drawing. Do not leave partitions out. Use moisture in alley-way with all brooders. This is a necessity.

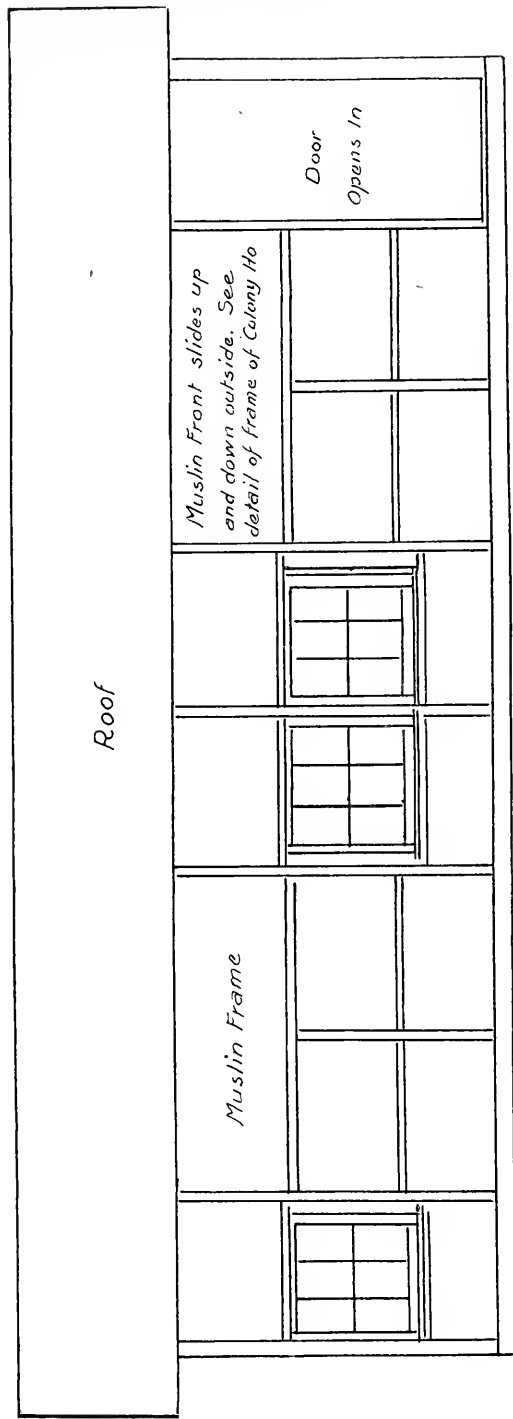


GILLETTE OPEN FRONT BROODER HOUSE

The Gillette Open Front Brooder House

Plate No. 1

Copyrighted

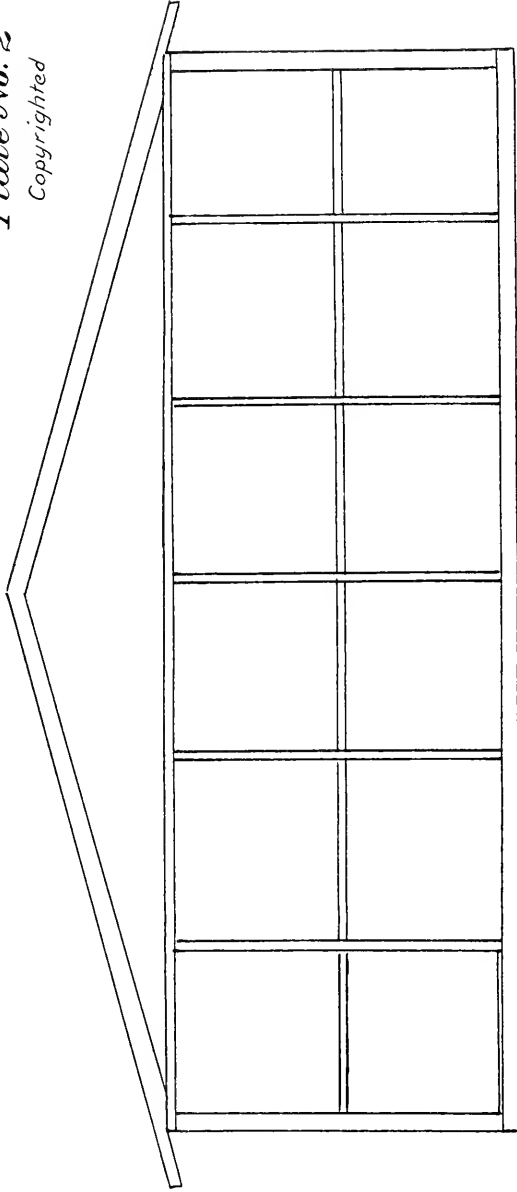


SOUTH ELEVATION SCALE $\frac{3}{8}'' = 1'-0''$

The Gillette Open Front Brooder House

Plate No. 2

Copyrighted

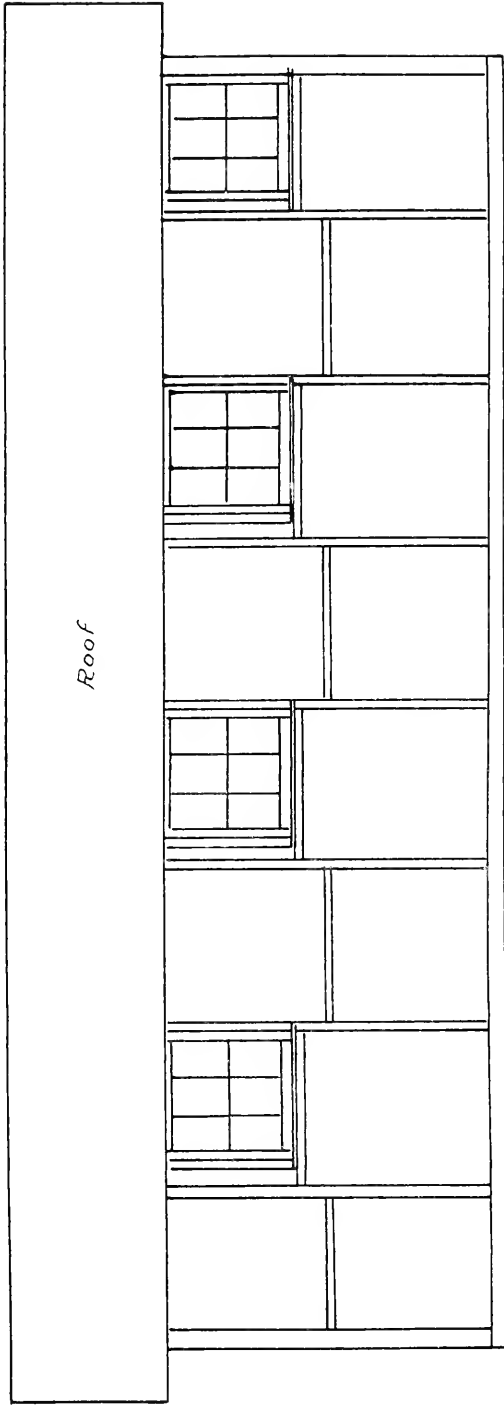


EAST AND WEST ELEVATIONS SCALE $\frac{3}{8}$ " = 1'-0"

The Gillette Open Front Brooder House

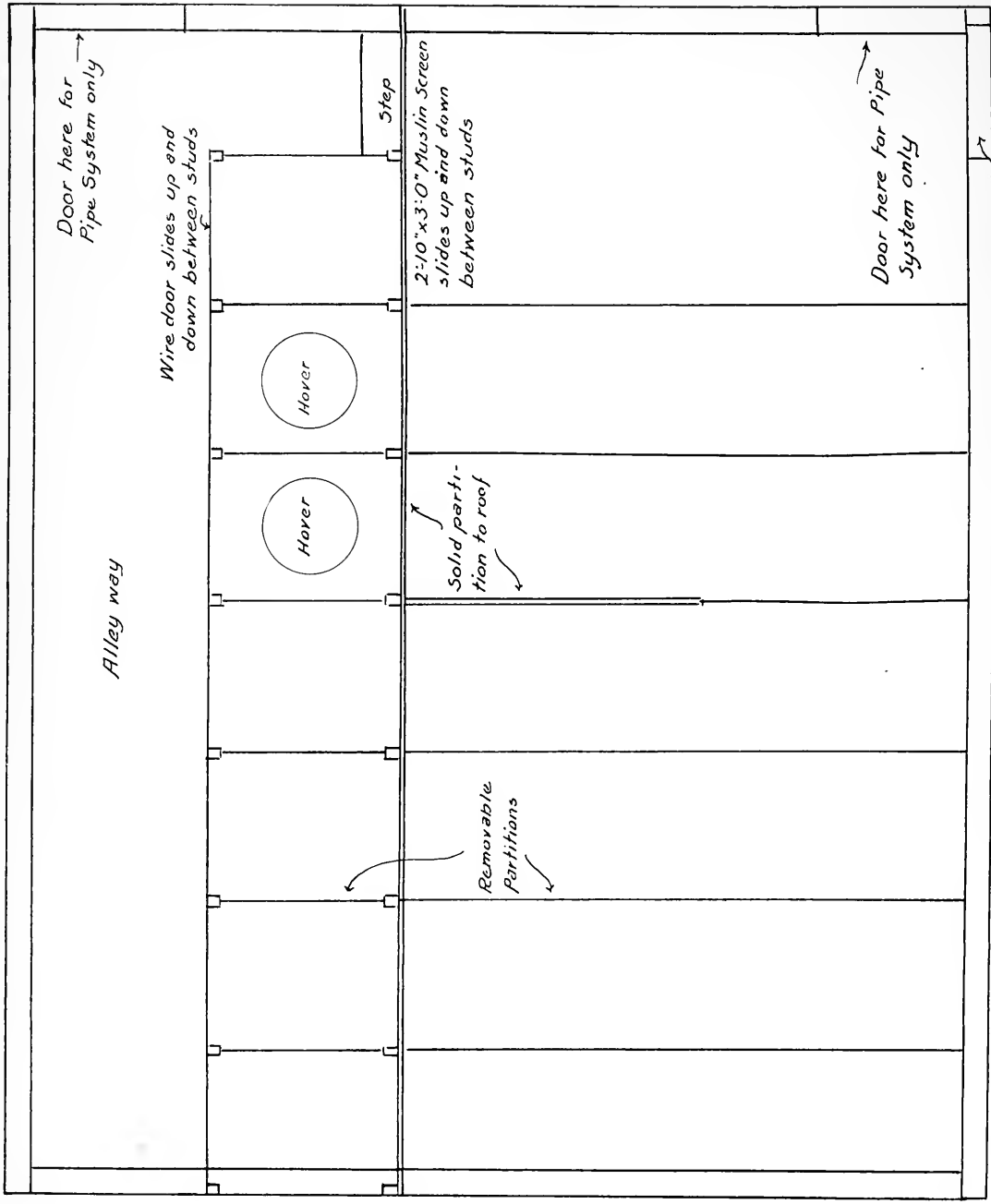
Plate No. 3

Copyrighted



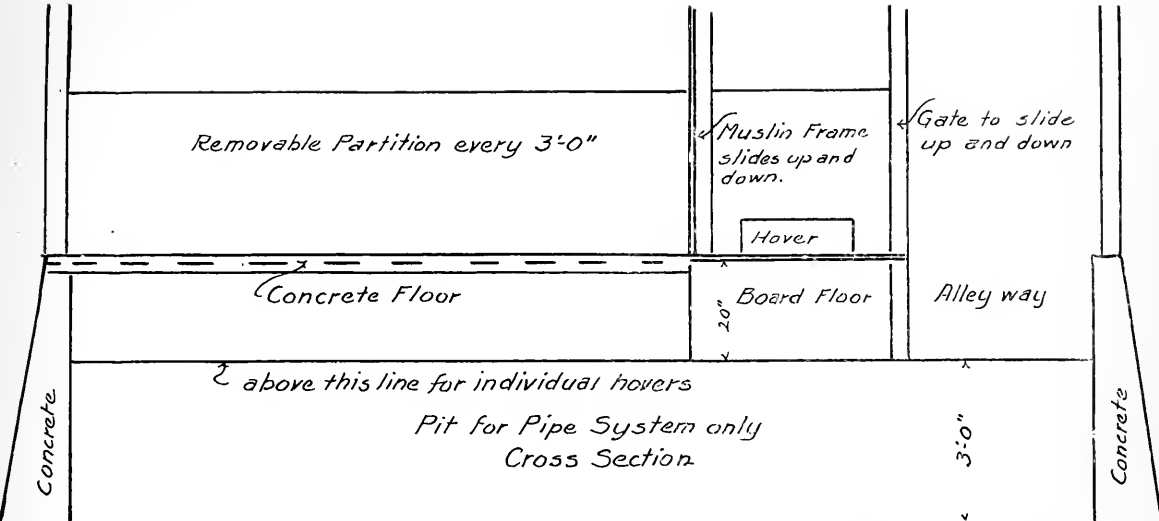
NORTH ELEVATION SCALE 3/8" = 1'0"

The Gillette Open Front Brooder House Plate No. 4



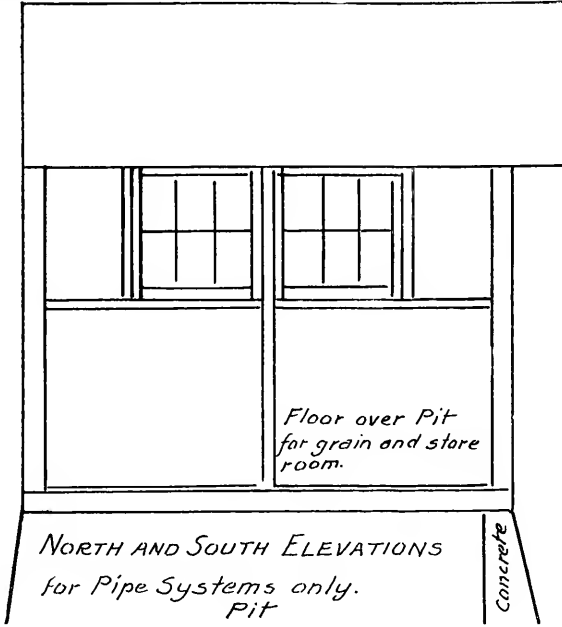
Copyrighted

Outside Door - Do not have at any other place or any other outside door.



The Gillette Open Front Brooder House

Plate No. 5
Copyrighted

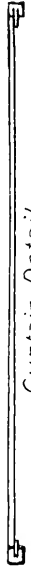


NORTH AND SOUTH ELEVATIONS
for Pipe Systems only.
Pit

The Gillette Colony House

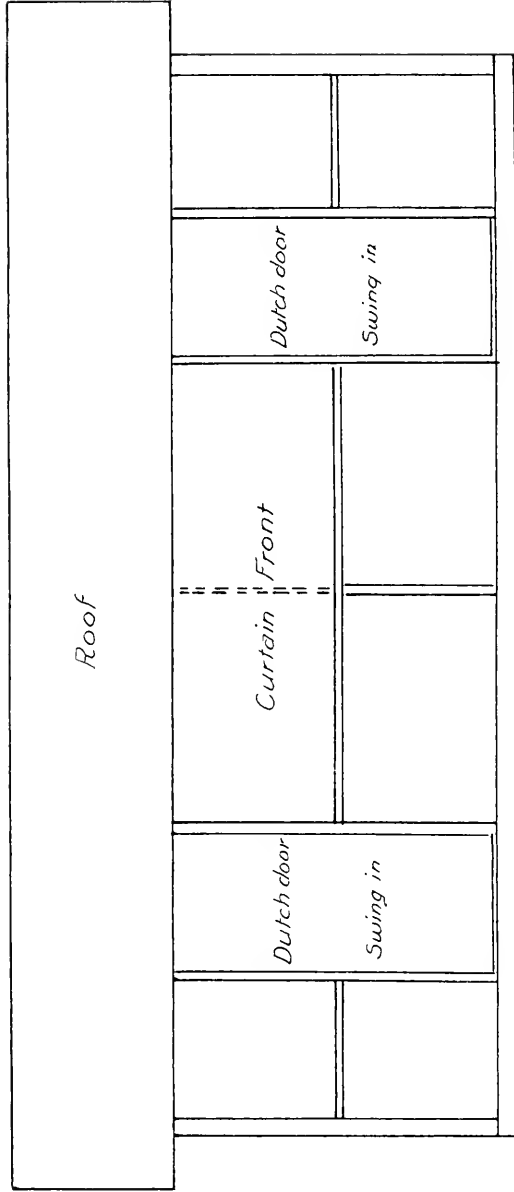
Plate No. 1

Copyrighted



Curtain Detail

Scale: $\frac{3}{8}$ " = 1'-0"



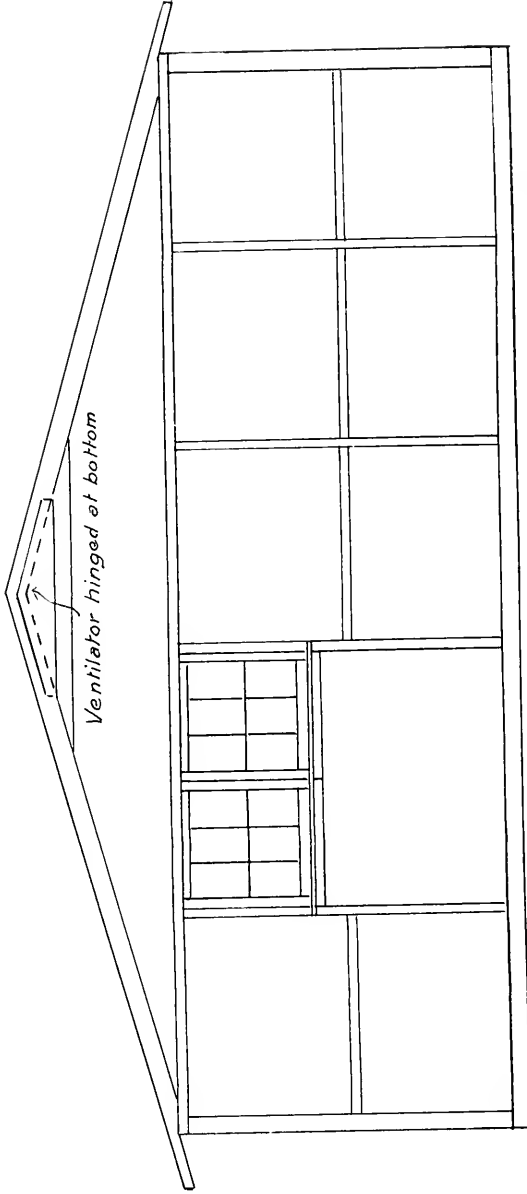
FRONT ELEVATION

Use Screen Doors on outside.

The Gillette Colony House

Plate No. 2

Copyrighted



EAST AND WEST ELEVATIONS. SCALE $\frac{3}{8}'' = 1'-0''$

The Gillette Colony House

Plate No. 3

Copyrighted

PLAN SCALE 3/8" = 1'-0"

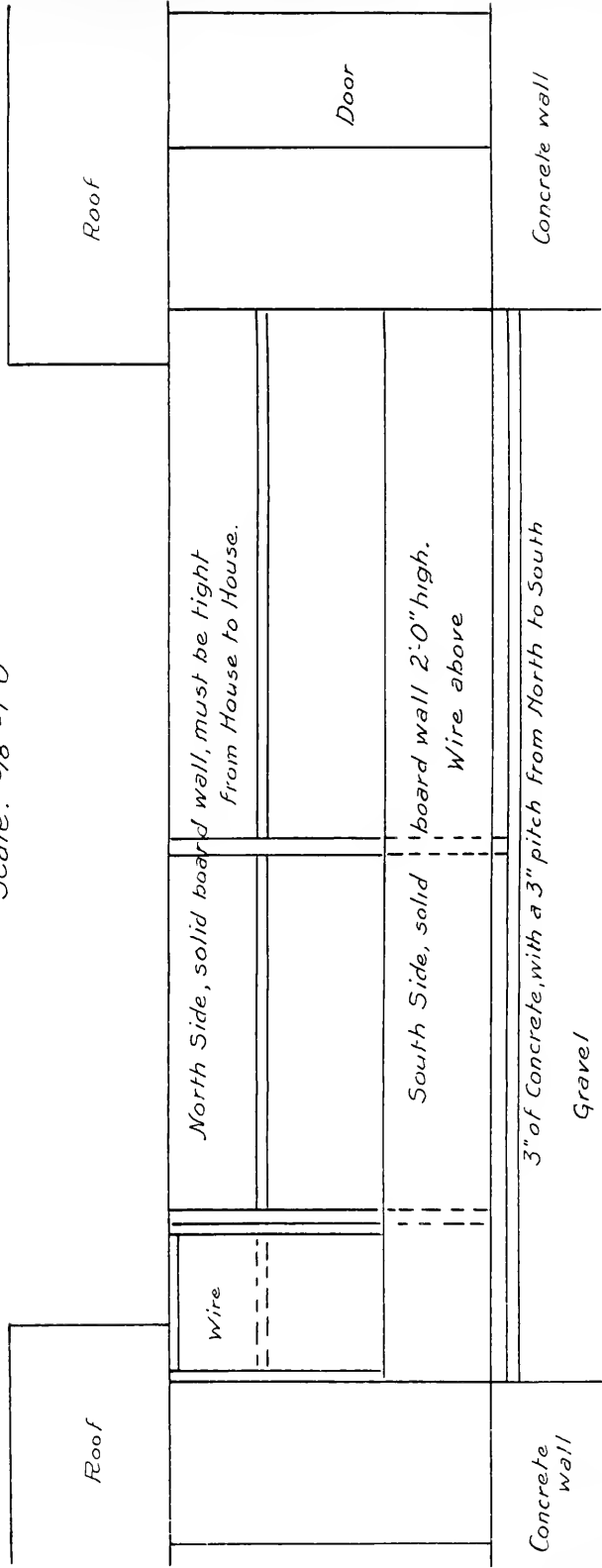
South Side

Gillette Continuous House

Plate No. 1

Copyrighted

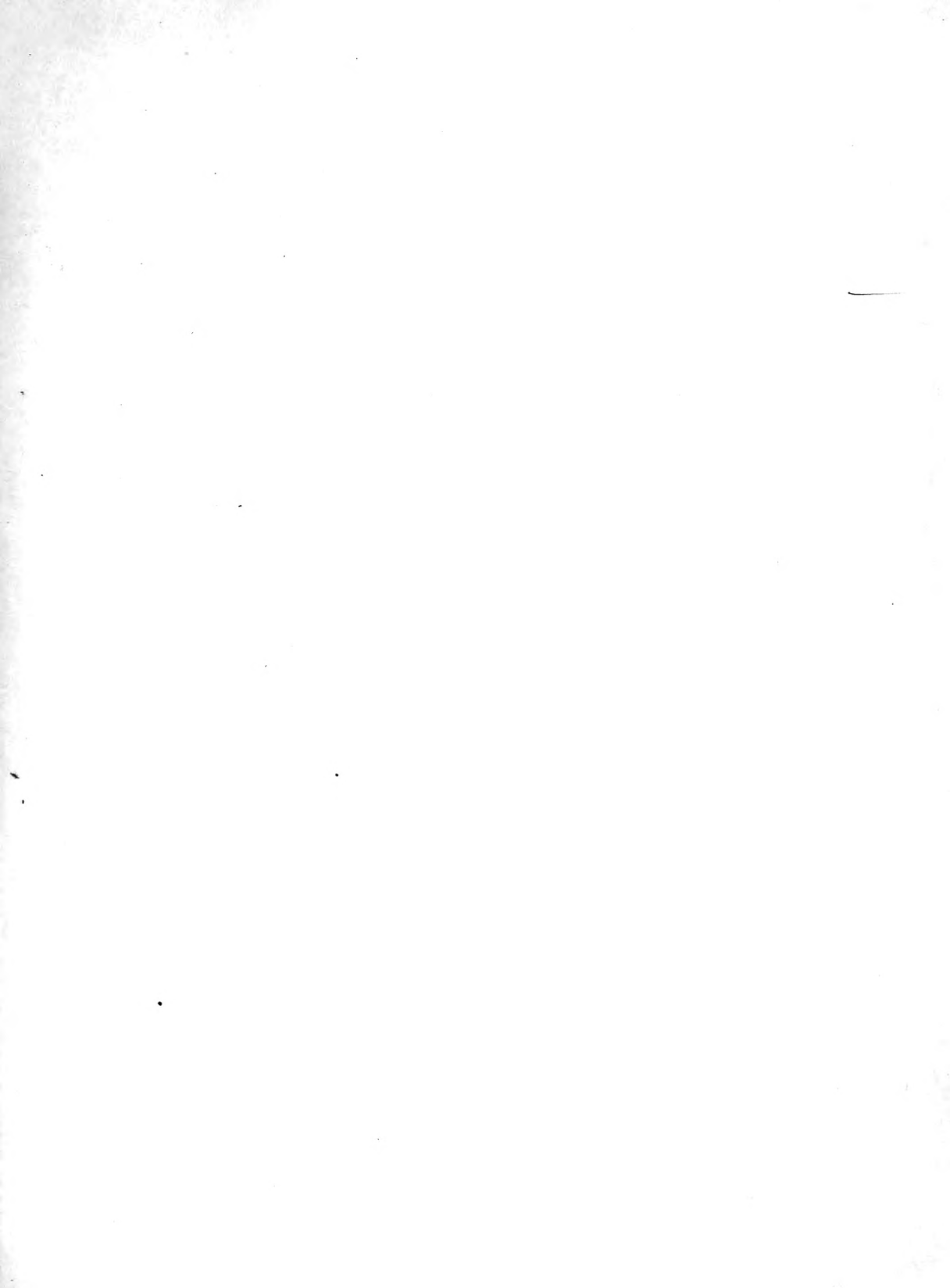
Scale: 3/8" = 1'-0"





PART OF THE FOUR HUNDRED ACRES OF
FREE RANGE

Sugar Brook Farm Company
Central Village, Conn.





JAN 13 1912

One copy del. to Cat. Div.

JAN 12 1932

LIBRARY OF CONGRESS



0 002 838 837 8 ●