

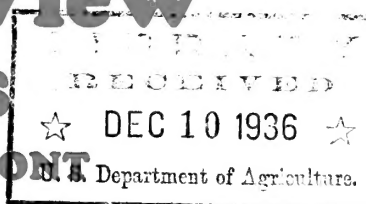
Historic, archived document

Do not assume content reflects current scientific knowledge, policies, or practices.

62,87 1936

Champlain View Gardens

BURLINGTON, VERMONT



Substitutions.

We do not like to substitute in filling orders and very seldom do unless it is at the end of the season or when someone is in a hurry for the bulbs and there is not time to correspond. However bulbs are moving so fast this year and we are constantly getting sold out of certain sizes or kinds at wholesale I wish you would give a short list of possible substitutions that we could use if positively necessary. For the rest of the season we shall be getting a lot of rush orders and if we are sold out of a certain size or variety and you are willing for us to substitute just mention it when you order. If necessary to substitute we would give some just as good or better.

CALLING ATTENTION

to some items especially recommended

<i>No. 1 Collection</i>	<i>No. 1A Collection</i>	<i>No. 1B Collection</i>
\$3.00 per 100	\$2.00 per 100	\$1.00 per 100

If you are a beginner or just want a fine garden of glads but are not particular about keeping the varieties labeled I can assure you that you can secure no better collections anywhere in the country at the price than these three. They contain about 45 varieties of most every color imaginable. The large bulbs in the No. 1 Collection of course will give you the best flowers but the No. 1A will give you flowers that are sometimes nearly as good as the large ones and the No. 1B Collection though the bulbs look rather small will surprise you with the wonderful blooms that they will give. Anyone who loves flowers at all will get an immense amount of satisfaction even out of No. 1B collection. I know that these collections contain much greater and finer varieties than the so-called Gold Medal or De Luxe collections or collections put out under some other high

sounding name by any seed house in the country at the price. We sell thousands of them every year and have many testimonials in regard to them.

Collections Under Number.

If you want to get the greatest value in labeled varieties I want to recommend collections 4, 6, 8 and 5, 7, 9. There is not much profit in these collections for us but they will give you wonderful value. The varieties in these collections cannot be changed in any way. You have to take them as they are though at the end of the season we may possibly be obliged to substitute in a few cases but will give you something just as good or better.

Fifty Cent and Dollar Specials.

These are wonderful value and very popular. Each one will give you different size bulbs which will bloom at different dates and so prolong the blooming season.

The Palmer Strain.

This strain of which *Picardy* was the forerunner is becoming increasingly popular all the time. Some of the varieties have been high priced because of the lack of stock but as prices come down people are buying them. This strain is characterized by unusual and a unique beauty of form and color. They seem to have a charm that many other varieties do not possess. *Picardy* is now the most popular variety in existence and though I had an immense stock at the beginning of the season I am getting low on large sizes. *Picardy* has been sold in immense quantities to cut flower growers and is still going very strong but a lot of growers who have tried *Duna*, *Debonair*, *Rapture* and *Wasaga* in a small way tell me that they are convinced that these varieties, especially *Debonair*, will become more popular and will make a better cut flower than *Picardy*. They are all strong propagators and though *Rapture* and *Duna* are both light pinks they are entirely different. Personally I believe that *Rapture* will become as popular as any of them and a number of cut flower growers have told me it is a favorite with them. *Coronation* is another fine one though the stem is not quite so long as we would like, the flowers are large and beautiful. *Wasaga* is considered and I think

Gladiolus Price List

Spring 1936

**THIS LIST SUPERSEDES
ALL PREVIOUS LISTS**

Do not use an old list. There are many changes in this one.

Champlain View Gardens

ELMER E. GOVE BURLINGTON, VT.

PLEASE READ CAREFULLY

Do not change collections or special sets. The collections are made up as they are for definite reasons and we cannot change them. Any of these collections or specials are very good value.

Do not split quantities as listed. Where a variety is listed at 2 for 15 cents or 4 for 15 cents do not order 1 or 2 at a lower price. There is no profit in any items of less than ten cents and very little at that price. **No single item accepted for less than ten cents.**

EXTRAS ON CASH ORDERS. On cash orders of \$2.00 to \$5.00 you can select 10% extra in bulbs of your own choosing. From \$5.00 to \$25.00 select 15%; \$25.00 to \$50.00 select 20% and above \$50.00 select 25%. **These Discounts do not Apply to Collections, Special Offers or Wholesale prices.**

TO MAKE OUT YOUR ORDER put everything down on the order blank, just as listed in the price list. Add it up then figure out any special discounts or add on the extra bulbs of your choosing. It is all very simple but some people seem to have a lot of trouble in making out an order.

Also on all orders of \$15.00 or more I will put in a bulb of **Royal York**. (See below).

On orders of \$30.00 or more I will put in a free bulb of **The Mogul** and **Royal York**.

The above discounts and extras are all for cash orders. The earlier the orders are received and the larger they are the more generous we will be with our extras. If you cannot spare all the cash now send 25% and the balance later and we will see that you are satisfied. **But the above extras are only for cash before shipment.**

On cash orders of \$12.00 or more, except collections, I will give a copy of the "Gladiolus Book" by Rockwell if you ask for it and if you have not already had one.

Packages of bullets run from twenty-five to fifty or more. We give very good value.

You can have 3 bulbs at the 10 rate; 25 at the 100 rate. But no single items for less than 10 cents.

I GUARANTEE SATISFACTION and I mean just that. If at any time, either after receiving the bulbs or after blooming, you have cause for complaint just write me about it and I will do my utmost to make things right. This is the only basis on which anyone can hope to conduct a business that will be permanently successful.

At these prices all bulbs, except the wholesale offers, are prepaid anywhere in the United States and Canada and all countries in the Postal Union.

SPECIAL QUOTATIONS. Do not ask for special quotations unless you have a large order. We will not consider quoting any special prices on small orders. I publish this price list to give people the prices and do not consider it honest to give one person a lower price than another. **However on a very large order we may be able to make lower prices on certain items to Growers, Dealers or Jobbers.**

REMEMBER in buying bulbs price is not everything. In fact sometimes price is a minor item. Consider the quality, count, the reliability of the grower, etc. I always mean to put in enough extra count or over size to make up for any lower price that other good reliable growers might make. **Just leave it to me.**

IF YOU WANT TO PAY TRANSPORTATION and get extra count on your order just mention it and I will send your order collect and will see that you are more than satisfied. Just mention whether you want extra count on your order or extras in other kinds and what kinds. If you want bulbs sent by mail it is better to have them go C.O.D., then we know the postage is correct and I will give you more than enough bulbs to make it up.

ON FAIR SIZED ORDERS, EXPRESS is safest and best especially in the winter time; I advise express if you are situated so as to get free delivery by the express company.

EXTRAS. It is the practice of most growers to give extras on orders. I always put in some myself. So it would help me if you will mention whether you want extras of the same varieties that you order or in other kinds. And if you have a preference it will help me still more if you can name the varieties in which you want your extras and if you want large, medium or small bulbs or bullets. Just give us a list of varieties from which to select your extras. We will put in what we think the order rates.

In figuring extras and discounts do not take them on **Incense** or new introductions of this year.

TWO NEW PALMER VARIETIES FREE

These varieties are not for sale this year at any price. They can be secured only by sending in cash orders.

ROYAL YORK. Sdlg. No. 28293. Deep salmon scarlet. Very large with heavy texture. This seedling won a prize offered by the Royal York Hotel in Toronto for the best seedling at the Canadian Exhibition. Many people have wanted to buy this variety but we have held it to work up a stock. A few bulbs were sent out last year in collections to see how the public would like it and the result has been most gratifying. This variety will be sold next year at probably not less than \$4.00 each for large bulbs. **A bulb of this variety will be given FREE only with orders of not less than \$15.00.**

THE MOGUL, Sdlg. No. 28422. Immense dark salmony maroon or to me the color is more of a brownish red. A magnificent variety opening up to eight at a time and holding its size well to the end. People who have seen this in my garden this past year have thought it wonderful. It is one of my favorites. I am sure you will like it. This variety is also not for sale and next year will be listed at not less than \$5.00 for large bulbs and no bulblets will be available next year either. Through a mistake the bulblets of this variety were not planted this past season but were destroyed. For that reason my stock is limited. **A bulb of this variety will be given FREE only with a cash order of \$30.00 or more.**

The past three years I have used the varieties **The Moor, Rose** and **Mywag** as premium bulbs. These have all proven to be top-notch varieties and I am sure that the two that I am using this year as premium bulbs will prove just as good as those I have given in the past. Get your orders in early to secure these bulbs.

PRICE LIST

	Per	Large	Medium	Small	BULBLETS Per	
ACADIA	115	.10	20	.25
Geranium pink. Choice color.	10	1.20	.80	100	1.00
AFLAME		2-.12	4-.15	10-.15	Pa.	.10
Huge begonia rose.	10	.50	.30	.15
AIDA		2-.12	4-.15	10-.15	Pa.	.10
Early deep blue.	10	.50	.30	.15
ALAYNE , \$5.00 each for large. A small bulb free with each large one.						
ALBATROSS		2-.15	2-.10	5-.15	25	.10
Large pure white.	10	.60	.40	.25	100	.30
ALLEGRO	1	3.00	2.00
New light blue.						
ALLEMANIA	1	3.00	2.00	1.20	1	.25
New red.						
AL SMITH		2-.15	2-.10	5-.15	25	.10
Very early pink.	10	.60	.40	.25	100	.30
AMADOR	1	.15	.10	2-.15	15	.20
Large glowing red.	10	1.20	.80	.60	100	1.20
AMBERGLOW ,		\$5.00 each for any size.				
AMBROSIA		2-.12	4-.15	10-.15	Pa.	.10
Distinctive old rose shade.	10	.50	.30	.15
ANGELUS ,		\$5.00 each-only small size left.				
APRICOT GLOW	4-.15	10-.15	Pa.	.10
Early Apricot.	1030	.15	100	.15
AVE MARIA		2-.12	4-.15	10-.15	Pa.	.10
Tall medium blue, fine.	10	.50	.30	.15	100	.15
BAGDAD		2-.15	2-.10	6-.15	Pa.	.10
Huge smoky old rose.	10	.60	.40	.20	100	.20
BEACON	1	4.00	3.00	2.00
Salmon with large cream blotch.						
BELLA DONNA	1	.60	.40	.30
New early light blue.						
BENEDICT	1	.50	.30	.15
Rich deep rose.						
BERTY SNOW		2-.12	4-.15	10-.15	Pa.	.10
Exhibition and commercial lavender.	10	.50	.30	.15
BETSY BOB-UP	1	\$1.00
BETTY COED		2-.15	2-.10	3-.10	20	.25
Soft creamy pink.	10	.60	.40	.25	100	.80
BETTY NUTHALL		2-.12	4-.15	10-.15	Pa.	.10
Salmon, orange throat. Fine commercial.	10	.50	.30	.15	100	.15
BETTY-SPORT	1	1.00
Very similar to Betsy Bob-Up. Possibly the same.						
BILL SOWDEN		2-.15	2-.10	5-.15	25	.10
Large deep blood red.	10	.60	.40	.25	100	.30
BLEEDING HEART		2-.15	2-.10	5-.15	25	.10
White tinted pink, big red blotch.	10	.60	.40	.25	100	.30
BLUE ADMIRAL	1	.60	.35	5	.20
Tall dark blue. New.	10	4.80	2.80

	Per	Large	Medium	Small	BULBLETS	
					Per	
BLUE DANUBE		2-.15	2-.10	5-.15	25	.10
Strong growing light blue.	10	.60	.40	.25	100	.30
BLUSHES OF CREAM	1	.15	.10	2-.10	15	.10
Cream pink.	10	1.20	.80	.40
BLUE TRIUMPHATOR	1	.10	2-.15
BONNY SCOTLAND	1	.25	.15
BRIGHTSIDE	1	.15	.10
BULLFINCH	1	1.00	.75
Orange overlaid slate.						
CAMELOT	1	.10	2-.15	10	.15
Coral pink, scarlet blotch. Several open.	10	.80	.60	100	1.00
CARDINAL PRINCE		2-.12	4-.15	10-.15	Pa.	.10
Exhibition red.	10	.50	.30	.15
CAROLUS CLUSIUS		2-.12	4-.15	10-.15	Pa.	.10
Early deep shrimp pink.	10	.50	.30	.15
CASSANDRA	110	2-.15	15	.10
Pink, large red blotch. Exhibition type.	1080	.50	100	.50
CHAMPLAIN	1	.60	.40	.25	7	.50
Very early light blue. Healthy. A coming commercial.	10	4.80	3.20	2.00	100	6.00
CHAS. DICKENS	4-.15	10-.15	Pa.	.10
Best low priced clear purple.	1030	.15	100	.20
CHEROKEE	1	2.00	1.50	1.00	2	.25
Very early large blotched pink.						
CLARION	1	.10	2-.15	3-.15	25	.10
Very early yellow. Good.	10	.80	.60	.40
COMMANDER KOEHL		2-.15	2-.10	4-.15	25	.10
Very large deep blood red.	10	.60	.40	.25	100	.30
CONSTANCY	1	.10	2-.15	3-.15	25	.10
Lavender rose.	10	.80	.60	.40	100	.25
COQUETTE , CORONATION	1	.20	.10	2-.12	12	.15
Beautiful salmon, cream throat.	10	1.60	.80	.50	25	.25
CRIMSON GLOW		2-.12	4-.15	10-.15	Pa.	.10
Good medium red.	10	.50	.30	.15
DEBONAIR	1	.20	.10	2-.12	12	.15
LaFrance pink, cream throat. Very tall and straight.	10	1.60	.80	.50	25	.25
DESEMONE	1	.10	2-.15
Smoky purple, cream throat.	10	.80	.60
DOMINUS		2-.12	4-.15	10-.15	Pa.	.10
Purplish red.	10	.50	.30	.15
DORCAS ALDRICH		2-.12	Pa.	.10
Smoky rose, strong. Popular.	10	.50
DR. BENNETT		2-.12	4-.15	10-.15	Pa.	.10
Most popular light scarlet.	10	.50	.30	.15	100	.20
DR. DURR	1	.15	.10	2-.15	15	.15
Large white, cream throat. Early	10	1.20	.80	.60	100	.70
DREAM O'BEAUTY	1	.10	2-.15
DR. L. H. BAILEY	1	.15	.10	2-.15	15	.15
Velvety rose. Beautiful.	10	1.20	.80	.60	100	.70
DR. MOODY		2-.12	4-.15	10-.15	Pa.	.10
Early large lavender.	10	.50	.30	.15	100	.15
DR. NELSON SHOOK		2-.12	4-.15	10-.15	Pa.	.10
Large deep rose.	10	.50	.30	.15	100	.15
DR. HOEG	115
DUNA	1	.20	.10	2-.12	12	.15
Beautiful soft light pinky buff.	10	1.60	.80	.50	25	.25
EARLY DAWN	1	.20	2-.25	2-.15	20	.15
New tall early rose.	10	1.60	1.00	.50	100	1.00
EARLY MELODY	1	.15	2-.15	3-.10	25	.10
Light lavender pink. Strong grower.	10	1.00	.50	.25	100	.30
ECSTASY		2-.12	4-.15	10-.15	Pa.	.10
Deep red, large blotches.	10	.50	.30	.15

	Per	Large	Medium	Small	BULBLETS	
					Per	
EDITH MASON		2-.12	4-.15	10-.15	Pa.	.10
Large light pink. Good.	10	.50	.30	.15
EDITH ROBSON	1	.20	.12	.10	15	.20
Salmon, red blotch. Very tall and strong.	10	1.60	1.00	.70	100	1.00
EMILE AUBRUN		2-.12	4-.15	10-.15	Pa.	.10
Smoky bronze, large red blotch.	10	.50	.30	.15
EMMA		2-.12	4-.15	10-.15	Pa.	.10
Exhibition rose, large darker blotch.	10	.50	.30	.15	100	.15
ESCORT	1	.30	.20	10	.35
Earliest white.	10	2.40	1.60
EVENSONG	1	.25	.20	.15	10	.15
Smoky, cream blotch.	10	2.00	1.60	1.20	100	1.20
EXCELLENCE		2-.12	10-.15	Pa.	.10
Large very early scarlet.	10	.5015	100	.25
GATE OF HEAVEN	1	.25	.15	.10	10	.25
Fine ruffled rich yellow.	10	2.00	1.20	.80	100	2.00
GAY HUSSAR	4-.15	10-.15	Pa.	.10
Salmon orange.	10	.50	.30	.15
GIANT NYMPH		2-.12	4-.15	10-.15	Pa.	.10
Good commercial pink.	10	.50	.30	.15
GLADYS CLEGG, GLORIANA		\$1.00	any size.	Large sold out.		
Golden salmon, yellow throat.	10	.50	.30	.15	Pa.	.10
GOLDEN ANNIVERSARY	1	.15	.10	2-.15	15	.15
Cream yellow and pink.	10	1.20	.80	.60	100	.70
GOLDEN BROWN		2-.12	4-.15	10-.15	Pa.	.10
The name describes it. Very distinct.	10	.50	.30	.15
GOLDEN CUP	1	.15	.10	2-.15	15	.15
Large clear deep yellow.	10	1.20	.80	.60	100	.70
GOLDEN FLAME	1	.50	.30	.25	10	.25
Salmon red, yellow throat.						
GOLDEN GODDESS	1	2.50
GRAND SLAM		2-.15	2-.10	3-.10
Light orange.	10	.60	.40	.30
HEATHFIELD	1	.25	.20	.15
Red, purple blotch.						
HECTOR	1	1.00
HELEN JACOBS		2-.12	4-.15	10-.15	Pa.	.10
Light rose, cream throat.	10	.50	.30	.15
HELEN WILLS		2-.15	4-.15	10-.15	Pa.	.10
Cream white.	1030	.15
HERCULES	1	.75	.50	.30	5	.20
Large buff.						
HERITAGE	1	.80	.70	1	.15
Exhibition pink.						
HILLBILLY	1	.35	.25
Rose-doree, purple, yellow, red.						
HONOR	1	2.00	1.00
INCENSE	1	2.00
INNOVATION	1	1.00	1.00
INSPIRATION	112	.10	10	.25
Ruffled rose salmon.	10	1.00	.80	100	2.00
JALNA, JANET		\$5.00	any size.			
Smoky old rose, shaded peach rose.	10	.50	.30	.15	Pa.	.10
JOAN PETY	1	4.00	2.00
J. S. BACH	1	.80	.50
Exhibition salmon rose. Very fine.						
JONQUIL	1	1.75	1.25	.80	3	.50
New deepest yellow known.	10	12.00	8.00	5.00	100	10.00
KING ARTHUR	1	.25	.15	.10	20	.25
Very large rosy lavender.	10	2.00	1.20	.80	100	1.00
KING GEORGE	4-.15	10-.15	Pa.	.10
Exhibition red, white blotch.	1030	.15

	Per	Large	Medium	Small	BULBLETS Per	
KING OF REDS						
Nice bright red.	10	2-.12	4-.15	10-.15	Pa.	.10
LADY EATON	1	.50	.30	.15	2	.25
Large light pink, white throat.		.80	.50	.35		
LADY WINSOME	1	.30	.20	.15	5	.15
Very large rosy salmon.						
LA FIESTA	1	2.50	1.50	1.00
Fine new orange.						
LA PALOMA		2-.12	4-.15	10-.15	Pa.	.10
Early orange.	10	.50	.30	.15
LAUGHING WATER		2-.12	4-.15	10-.15	Pa.	.10
Fine dark salmon.	10	.50	.30	.15
LAVENDER BRIDE		2-.12	4-.15	10-.15	Pa.	.10
Smoky lavender rose.	10	.50	.30	.15
LEANDER	1	.20	.15	.10	15	.20
Orange salmon, magenta blotch.						
LESCHI	1	.50	.50
LINDESTA	1	.25	.15	.10	15	.25
Tall salmony rose. Fine.	10	2.00	1.20	.80	100	1.00
LITTLEJOHN		2-.12	4-.15	10-.15	Pa.	.10
Rose pink, lighter throat.	10	.50	.30	.15
LOTUS	1	.10	2-.15	2-10	10	.20
Cream pink.	10	.80	.60	.40
LOYALTY		2-.12	4-.15	10-.15	Pa.	.10
Fine deep yellow.	10	.50	.30	.15
LUCIFER	1	.15	.10	2-.15	10	.15
Exhibition orange, dark blotch.	10	1.25	.75	.50	100	1.00
MAGNA BLANCA		2-.12	4-.15	10-.15	Pa.	.10
Very tall white, cream throat.	10	.50	.30	.15
MAID OF ORLEANS	1	.12	3-.15	20	.25
The coming commercial white.	10	.9040	100	1.00
MAMMOTH WHITE		2-.15	5-10	25	.10
Huge white. Very popular.	10	.6020	100	.25
MARGARET FULTON		2-.15	3-.15	5-10	25	.10
Beautiful clear rose salmon.	10	.60	.30	.20	100	.25
MARGARET PETER	1	.20	.15
Early white, red blotch.	10	1.60	1.20
MARION LOUISE	1	.20	.15	.10	10	.15
Early white.						
MARMORA		2-.12	4-.15	10-.15	Pa.	.10
Large grav, purple blotch.	10	.50	.30	.15
MARY ELIZABETH	1	.25	.20	.10	15	.20
Ruffled white, cream throat.	10	2.00	1.60	.80	100	1.00
MARY FREY		2-.12	4-.15	10-.15	Pa.	.10
Nice early lavender.	10	.50	.30	.15
MAUNGA		Withdrawn for increase.				
Immense white.						
MAUVE MAGIC	1	.10	2-.15	3-.15	25	.10
Nice mauve shade.	10	.80	.60	.40	100	.25
MAY DAVIDSON	1	.50	.35	.25	5	.20
Pink, grayish cast.						
MIBLOOM		2-.12	4-.15	10-.15	Pa.	.10
Very early white, scarlet blotch.	10	.50	.30	.15
MIGNON	1	.75	.50	.25	5	.25
Pink with white center.						
MILDRED LOUISE	1	.20	.12	2-.15	10	.25
Strawberry pink.	10	1.60	1.00	.60	100	2.00
MILFORD	1	1.50	1.00	.70	2	.25
New exhibition light blue.						
MINUET		2-.12	4-.15
Very fine lavender.	10	.50	.30

	Per	Large	Medium	Small	BULBLETS Per	
MISS BLOOMINGTON		2-12	4-15	10-15	Pa.	.10
Earliest good yellow.	10	.50	.30	.15
MISS GREELEY		2-16	.10	3-10
Very like W. H. Phipps but three weeks earlier.	10	.66	.44	.28
MISS NEW ZEALAND	1	3.50	2.75	2.00	3	1.00
Immense pink						
MOONDARA	1	.25	.20	.15	10	.25
Deep salmon, darker blotch.	10	2.00	1.60	1.20	100	2.00
MOORISH KING	1	.25	.20
Deep red.						
MOROCCO	4-15	10-15	Pa.	.10
Deep red, fine.	1030	.15
MOTHER MACHREE	1	.10	2-10	3-10	50	.10
Smoky lavender tinged salmon.	10	.60	.40	.20	100	.15
MR. WM. CUTHBERTSON	110	2-10
Rose with cream throat.	1080	.40
MRS. CHARLES A. STEVENS	115	.10	15	.10
Mallow purple flaked darker.	10	1.20	.80
MRS. E. J. HEATON	1	.75	.50	.30	10	.50
	10	6.00	4.00	2.50
MRS. F. E. BENNETT		2-12	4-15	10-15	Pa.	.10
White, purple feather. Good.	10	.50	.30	.15
MRS. GALBRAITH		2-12	4-15	10-15	Pa.	.10
Large rose.	10	.50	.30	.15
MRS. GERTRUDE PFITZER		2-12	4-15	10-15	Pa.	.10
Medium blue. Strong grower.	10	.50	.30	.15
MRS. G. WADE	1	2.00
Yellow, many open.						
MRS. LEON DOUGLAS		2-12	4-15	10-15	Pa.	.10
Very large salmon.	10	.50	.30	.15
MRS. P. W. SISSON		2-12	4-15	10-15	Pa.	.10
Fine light pink.	10	.50	.30	.15
MRS. T. E. LANGFORD	1	.15	.10	15	.15
Peaches and cream.	10	1.20	.80	100	.70
MYWAG	1	4.00	3.00	2.00
Wonder blotched salmon.						
NANCY ANN	1	4.00	2.00
NERISSA	1	.20	.15	.10	25	.15
Large salmon pink, scarlet blotch.	10	1.60	1.20	.80	100	.50
NETHERLAND PRINCE	1	.15	2-15	15	.15
Giant salmon pink. Good.	10	1.2060	100	.70
NYORA	1	.15	.10	2-15	15	.15
Exhibition salmon, dark blotch.	10	1.20	.80	.60	100	.70
ODALISQUE	115
White scarlet blotch. Fine.	10	1.20
ORANGE BUTTERFLY		2-12	4-15	10-15	Pa.	.10
Orange prim.	10	.50	.30	.15
ORANGE LADY	1	.20	.15
Light orange suffused pink.	10	1.60	1.20
ORANGE PRINCESS	1	.25	.20	.15	20	.25
Salmon orange.	10	1.60	1.20
ORANGE QUEEN		2-12	4-15	10-15	Pa.	.10
Good cut flower orange.	10	.50	.30	.15
ORANGE SOVEREIGN	1	.25	.20	.15
Fine orange	10	2.00	1.60	1.20
ORANGE WONDER		2-12	4-15	Pa.	.10
	10	.50	.30
ORLANDO	1	.30	.25
Rosy salmon.						

	Per	Large	Medium	Small	BULBLETS Per	
OUR SELECTION		2-.12	4-.15	10-.15	Pa.	.10
Exhibition salmon flaked darker.	10	.50	.30	.15
PAUL PFITZER		2-.12	Pa.	.10
Early deep reddish purple.	10	.50
PEARL OF CALIFORNIA		2-.12	4-.15	10-.15	Pa.	.10
LaFrance pink, white throat.	10	.50	.30	.15
PEERLESS PINK	1	.30	.20
Deep salmon.						
PELEGRINA	1	.15	.10	2-.15	20	.25
Best deep blue.	10	1.20	.80	.60	100	.80
PFITZER'S TRIUMPH		2-.12	4-.15	10-.15	Pa.	.10
Giant reddish salmon orange.	10	.50	.30	.15
PHILIP BREITMEYER		2-.12	4-.15	10-.15	Pa.	.10
Dark lavender rose.	10	.50	.30	.15
PHILOMELA	1	.20	.15
Salmon, flaked orange scarlet. Cream blotch.	10	1.60	1.20
PHYLLIS McQUISTON	1	1.00	.60	.35	3	.20
	10	8.00	4.80	2.80	25	1.00
PICARDY		2-.12	4-.15	5-10	50	.10
Sensational new salmon.	10	.50	.30	.15	100	.15
PINNACLE	1	.65	.40	.20	4	.15
Tall exhibition rose pink.	10	5.00	3.00	1.50	10	.30
PIRATE	1	.15	.10	2-.15	20	.25
Fine deep purplish rose red.	10	1.20	.80	.60	100	1.00
POLAR ICE	1	.25	.18	10	.15
Tall straight white, several open.	10	2.20	1.60
POND LILY		2-.12	4-.15	10-.15	Pa.	.10
Deep rose self color.	10	.50	.30	.15
PRAIRIE GOLD	1	5.00	5.00
Tall, dark yellow						
PREMIER HENRY	1	1.00	.60	.45	2	.25
Immense ruffled geranium pink.	10	8.00	4.80	3.60
PRIDE OF WANAKAH		2-.12	4-.15	10-.15	Pa.	.10
Deep lavender rose.	10	.50	.30	.15
PRIMROSE PRINCESS		2-.12	4-.15	10-.15	Pa.	.10
Large light yellow.	10	.50	.30	.15
PRINCESS YAADA	115
Apricot tinted pink.	10	1.20
PROF. V. SLOTEREN		2-.15	2-.10	3-10	20	.15
Beautiful soft pink.	10	.60	.40	.25
PURPLE GLORY		2-.12	Pa.	.10
Ruffled maroon.	10	.50
QUEEN HELEN II	1	.15	.10	2-.15	15	.15
Bright pink, yellow blotch.	10	1.20	.80	.60	100	.70
RAMASSES	1	.10	2-.12	3-10	25	.10
Large tall ruffled purple.	10	.80	.50	.25	100	.35
RAPTURE	1	.12	2-.15	2-10	10	.15
Tall late salmon, creamy blotch.	10	1.00	.60	.40	100	1.00
RED LORY	1	.15	.10	2-.15	10	.15
Exhibition red, purplish blotch.	10	1.20	.80	.60	100	1.00
RED PHIPPS		2-.16	2-10	3-10
Light red. Similar to Phipps in growth.	10	.66	.44	.28
RED SPLENDOR		2-.12	4-.15	10-.15	Pa.	.10
Light red.	10	.50	.30	.15
REGENT ,		\$5.00 any size.				
REVERIE	1	1.25	.90	.60	2	.25
Light pink and cream	10	10.00	7.00	4.50	100	10.00
RIDEAU	1	.12	2-.12	3-12	25	.15
Smoky salmon. Several open.	10	1.00	.50	.30	100	.60
RODERICK DHU	1	.10	2-.15	2-10	25	.10
Immense ruffled pink.	10	.80	.60	.40	100	.30
ROI ALBERT		2-.12	4-.15	10-.15	Pa.	.10
Beautiful smoky rose.	10	.50	.30	.15

	Per	Large	Medium	Small	BULBLETS	
					Per	Pa.
ROI SOLEIL		2-.12	4-.15	10-.15		.10
Early large yellow.	10	.50	.30	.15		
ROSE MARIE PFITZER	1	.35	.25			
Exhibition peaches and cream.						
ROSE MIST		2-.12	4-.15	10-.15	Pa.	.10
Old rose bordered buff.	10	.50	.30	.15		
ROSE STANDISH	1	.50	.35			
New light rose pink.	10	4.00	3.00			
ROSE WINGS	1	.30	.20			
Deep rose; decorative.						
ROSEX	1	2.00	1.00			
Salmon scarlet shading to rose. 8-10 open.						
ROYAL YORK . Premium bulb. See page 2.						
RUSTY	1	.75	.35			
SAHARA	1	5.00	4.00	3.00		
New light brown.						
SALBACH'S ORCHID		2-.16	2-.10			
Pink orchid shade.	10	.70	.40			
SALBACH'S PINK		2-.15	2-.10	6-.15	Pa.	.10
Geranium pink.	10	.60	.40	.20	100	.20
SALMON EMPEROR	1	.25	.20			
Ruffled salmon orange.						
SARABAND			4-.15	10-.15	Pa.	.10
Deep mulberry, cream blotch.	10		.30	.15		
SCARLET BEDDER		2-.12	4-.15	10-.15	Pa.	.10
Fiery scarlet.	10	.50	.30	.15		
SCARLET WONDER		2-.12	4-.15	10-.15	Pa.	.10
Huge red.	10	.50	.30	.15		
SCHUBERT	1	.15	.10	2-.15	15	.15
Cream, yellow blotches.	10	1.20	.80	.60	100	.70
SCHWABEN GIRL	1	.15	.10			
Pure pink.	10	1.20	.80			
SENORITA			4-.15	10-.15	Pa.	.10
Large showy red and yellow.	10		.30	.15		
SILVER SHEEN	1	.25	.15	.10	5	.20
Exhibition pink.	10	2.00	1.20	.80		
SMILING MAESTRO	1	.75	.50	.30	5	.20
Deep salmon rose, flaked brown.	10	6.40	4.40	2.40		
SO BIG	1	8.00	4.00			
SOLVEIG	1	1.50	1.00	.50	3	.25
Ruffled white, small pink blotch.	10	10.00	6.00	4.00	10	.75
SONATINE	1	1.00	.60		4	.25
Light pink, small red blotches.						
SPIRIT OF ST. LOUIS		2-.12	4-.15	10-.15	Pa.	.10
Orange buff.	10	.50	.30	.15		
SPRAY OF GOLD		2-.15	2-.10	4-.10	25	.10
Early deep clear yellow.	10	.60	.30	.20	100	.30
STAR OF BETHLEHEM	1	.50	.35	.25	3	.25
Immense show white.	10	4.00	2.80			
STAR PRINCE	1	.75	.50	.25		
Huge light pink.						
STUTTGARDIA		2-.12	4-.15		Pa.	.10
Large fiery orange red.	10	.50	.30			
SULTAN	1	.15	.10	2-.15	25	.25
Large velvety rose red.	10	1.20	.80	.60	100	.75
SUNSET CLOUD	1	.20	.15			
White shaded pink.	10	1.60	1.20			
SUNSHINE GIRL		2-.12	4-.15	10-.15	Pa.	.10
Early clear geranium pink.	10	.50	.30	.15		
SUNSHINE SUSIE	1	.20	.15			
Very early orange, tinted pink.	10	1.60	1.20			
SYMPHONY	1	.20	.15	.10	15	.20
Light pink.	10	1.60	1.20	.80	100	1.00

	Per	Large	Medium	Small	BULBLETS	
	1	4.00	2.50	2.00	Per
TAKINA						
Huge purple.						
TERESA	1	.25	.15	.10	25	.20
Exhibition yellowish pink.						
THE MOGUL . Premium bulb. See page 2.						
THE MOOR	1	.80	.50	.30	3	.20
Deep rose red. Opens 8 at a time.						
THE ORCHID			4-.15	10-.15	Pa.	.10
Orchid colored prim.	10		.30	.15		
TOBERSUN		2-.12	4-.15	10-.15	Pa.	.10
Fine late yellow.	10	.50	.30	.15		
TROUBADOUR		2-.12	4-.15	10-.15	Pa.	.10
Best clear purple	10	.50	.30	.15		
VAGABOND PRINCE	1	4.00	3.00	2.00		
Deep brown with flame blotch.						
WASAGA	1	.20	.10	2-.15	20	.25
Very beautiful buff.	10	1.60	.80	.50	100	1.00
W. H. PHIPPS		2-.12	4-.15	10-.15	Pa.	.10
Late show salmon.	10	.50	.30	.15		
WINGED VICTORY			4-.15	10-.15	Pa.	.10
Immense pink.	10		.30	.15		
WURTEMBERGIA	1	.12	2-.15	3-.15	25	.20
Dazzling large light red with cream throat.	10	1.00	.60	.40	100	.60
YVONNE		2-.12	4-.15	10-.15	Pa.	.10
Flesh color, pink blotch. Fine.	10	.50	.30	.15		
3 L O	1			.50		
Exhibition rose, darker blotch.						
NUMBERED PALMER SEEDLINGS:						
26892	1	.10	2-.15	4-.15		
Salmon pink.						
26121	1	.15	.10	2-.15		
Large salmon, yellow throat.						
BC25084	1	.10	2-.15	4-.15		
Tall orange.						
26935	1	.25	.20			
Large pink similar to Rosex.						
26242	1	.15	.10	2-.15		
Tall ruffled rose red.						
27271	1	.25	.20	.15		
Huge red.						
26895	1		.50	.30		
Immense rich smoky.						
M7021	1	.25	.20	.15		
Fine cerise, many open						
27694	1	.15	.10			
Ruffled needlepoint rose						
27585	1	.25	.20			
Salmonv smoke or mulberry Ruffled						

Choice Bulbs and Bulblets at Prepaid Prices

In selecting from this list you may have 3 bulbs at the 10 rate. Also 25 of one kind and size for twice the price of 10. 25 bulblets at 100 rate.

If you want to pay express or parcel post just mention it and I will send them C.O.D. for carrying charges and will put in enough extra bulbs to much more than make it up.

	Per	No. 1	No. 2	No. 3	No. 4	No. 5	No. 6	BULBLETS	
ACADIA	1	.25	.20	.15	.12	.10	2-.15	20	.25
	10	2.00	1.60	1.20	.95	.80	.60	100	1.00
BLUE ADMIRAL	1	.75	.60	.45	.35			5	.20
	10	6.50	5.00	3.50	2.80				

	Per	No. 1	No. 2	No. 3	No. 4	No. 5	No. 6	BULBLETS	
BULLFINCH.....	1	1.25	1.00	.75
CHAMPLAIN.....	1	.80	.60	.50	.40	.30	.25	3	.25
	10	6.40	4.80	4.00	3.20	2.40	2.00	100	6.00
CORONATION.....	1	.25	.20	.15	.10	2-.15	2-.12	12	.15
	10	2.00	1.60	1.20	.80	.60	.50	25	.25
DEBONAIR.....	1	.25	.20	.15	.10	2-.15	2-.12	12	.15
	10	2.00	1.60	1.20	.80	.60	.50	25	.25
DUNA.....	1	.25	.20	.15	.10	2-.15	2-.12	12	.15
	10	2.00	1.60	1.20	.80	.60	.50	25	.25
EDITH ROBSON.....	1	.25	.20	.15	.12	.10	2-.15	15	.20
	10	2.00	1.60	1.20	1.00	.80	.60	100	1.00
ESCORT.....	130	.25	.20	10	.35
	10	2.40	2.00	1.60
EVENSONG.....	1	.30	.25	.22	.20	.18	.15	10	.15
	10	2.40	2.00	1.80	1.60	1.40	1.20	100	1.20
HERCULES.....	1	.75	.60	.50	.40	.30	.25	5	.20
	10	6.00	5.00	4.00	3.20	2.40	2.00	100	3.00
JONQUIL.....	1	2.00	1.75	1.50	1.25	1.00	.80	3	.50
	10	15.00	12.00	9.00	7.00	6.00	4.00	100	10.00
KING ARTHUR.....	1	.30	.25	.20	.15	.12	.10	20	.25
	10	2.40	2.00	1.60	1.20	1.00	.80	100	1.00
LINDESTA.....	1	.30	.25	.20	.15	.12	.10	15	.20
	10	2.40	2.00	1.60	1.20	1.00	.80	100	1.00
MAID OF ORLEANS....	1	.15	.12	.10	2-.15	3-.15	20	.25
	10	1.00	.90	.80	.60	.40	100	1.00
MARION LOUISE.....	1	.25	.20	.18	.15	.12	.10	10	.15
	10	2.00	1.60	1.40	1.20	1.00	.80	100	1.00
MARY ELIZABETH....	120	.15	.10	2-.15	3-.15	15	.20
	10	1.60	1.20	.80	.60	.40	100	1.00
MILDRED LOUISE.....	1	.25	.20	.15	.12	.10	2-.15	10	.25
	10	2.00	1.60	1.20	1.00	.80	.60	100	2.00
MILFORD.....	1	1.75	1.50	1.25	1.00	.80	2	.25
	10	15.00	12.00	10.00	8.00	6.40	4	.50
MOONDARA.....	1	.30	.25	.22	.20	.18	.15	10	.25
	10	2.40	2.00	1.80	1.60	1.40	1.20	100	2.00
MRS. E. J. HEATON...	1	1.00	.75	.60	.50	.40	.30	10	.50
	10	8.00	6.00	4.80	4.00	3.60	2.40	100	4.00
MRS. T. E. LANGFORD	1	.20	.1510	15	.15
	10	1.60	1.2080	100	.70
MYWAG.....	1	4.50	4.00	3.50	3.00	2.50	2.00
NERISSA.....	1	.25	.20	.18	.15	.12	.10	25	.15
	10	2.00	1.60	1.40	1.20	1.00	.80	100	.50
PELEGRINA.....	1	.15	.12	.10	.08	2-.15	3-.15	20	.25
	10	1.20	1.00	.80	.70	.60	.50	100	.80
PHYLLIS McQUISTON..	1	1.00	.80	.70	.60	.50	.35	3	.20
	10	8.00	6.40	5.60	4.80	4.00	2.80	25	1.00
PINNACLE.....	1	.70	.65	.50	.40	.30	.20	4	.15
	10	5.60	5.00	4.00	3.00	2.00	1.50	10	.30
PREMIER HENRY.....	1	1.00	.80	.60	.50	2	.25
REVERIE.....	1	1.50	1.25	1.00	.90	.75	.60	2	.25
	10	12.00	10.00	8.00	7.00	6.00	4.50	100	10.00
SOLVEIG.....	1	2.00	1.50	1.25	1.00	.75	.50	3	.25
	10	16.00	12.00	10.00	8.00	6.00	4.00	10	.75
SYMPHONY.....	1	.25	.20	.18	.15	.12	.10	15	.20
	10	2.00	1.60	1.40	1.20	1.00	.80	100	1.00
THE MOOR.....	1	1.00	.80	.60	.50	.40	.30	3	.20
	10	8.00	6.40	4.80	4.00	3.20	2.40	10	.50

"Bill Sowden is liked by more people who see my Glads than any other of this color—even better than Com. Koehl.

—F. R. CATES, N. C.

Wholesale Prices, Not Prepaid

Prices listed are per 100.

Not less than 25 bulbs of one kind and size at the 100 rate. 1,000 bulbs for 8 times the 100 price with not less than 250 of one kind or size at the 1,000 rate.

500 bulblets at 1,000 rate or one pint at quart rate.

	No. 1	No. 2	No. 3	No. 4	No. 5	No. 6	BULBLETS	
							1,000	Quart
ACADIA.....				6.00	4.00	2.50	8.00
AIDA.....	2.00							
BAGDAD.....	4.00	3.00	2.00	1.60	1.20	1.00	1.00	4.50
BETTY NUTHALL.....	2.00	1.60		1.00	.80	.60	.75	2.00
BILL SOWDEN.....	4.00	3.20	2.40	2.00	1.60	1.20	2.50	8.00
BLEEDING HEART.....	3.00							
BLUE DANUBE.....	6.00	4.80	3.60	3.00	2.40			
COM. KOEHL.....	3.80	2.80	1.80					
CONSTANCY.....	4.50	3.75	3.00	2.50	2.00	1.25	1.50	5.00
CORONATION.....	10.00	8.00	6.50	5.00	4.00	3.00	6.00	20.00
DEBONAIR.....	10.00	8.00	6.50	5.00	4.00	3.00	8.00
DR. BENNETT.....			1.40					
DUNA.....	10.00	8.00	6.50	5.00	4.00	3.60	6.00	20.00
EDITH ROBSON.....	12.00	10.00	8.00	6.00	4.00	3.00	6.00	20.00
ESCORT.....			12.00	10.00				
EXCELLENCE.....					.90	.60	2.00	4.00
GIANT NYMPH.....			1.20	.90				
GLORIANA.....	2.00	1.60	1.20				.50	1.00
GOLDEN CUP.....	10.00	8.00	6.50	5.00	4.00	3.00	6.00	20.00
HELEN JACOBS.....		2.40	1.80	1.20	.90	.60	1.00	2.50
HELEN WILLS.....		2.00	1.60	1.20			.75	2.00
JANET.....	2.80	2.20	1.80	1.40	1.20	.80	1.50	3.00
KING ARTHUR.....	16.00	12.00				7.00	5.00	10.00 25.00
LA PALOMA.....				1.20	1.00	.70	1.00	3.00
LINDESTA.....	10.00	8.00				3.00	8.00
LOYALTY.....	2.50	2.00		1.20	.90	.60	1.50	3.00
MAMMOTH WHITE.....	3.00							
MAR. FULTON.....	4.50	4.00	3.50	3.00			1.50	3.00
MARMORA.....	2.20	1.80	1.40	1.20	.90	.60	.75	2.00
MARY FREY.....				1.20	.80	.60	.75
MIBLOOM.....		2.40	2.00	1.50	1.00	.70	1.50	3.00
MILDRED LOUISE.....	12.00	10.00	8.00	6.00	5.00	4.00	12.00	40.00
MISS BLOOMINGTON.....						.60	2.00	5.00
MOROCCO.....							.75	2.50
MOTHER MACHREE.....				1.60	1.20	1.00	1.00	3.50
MRS. DOUGLAS.....	2.50	2.00					.50	1.00
MRS. P. W. SISSON.....	2.40	1.80	1.40	1.20	1.00	.60	1.00	2.00
MRS. T. E. LANGFORD.....	8.00	6.00						
ORANGE QUEEN.....	2.00	1.60	1.20	.90	.70	.50	.75	1.50
OUR SELECTION.....		1.80	1.40	1.20	1.00	.80	1.00	3.00
PELEGRINA.....	8.00	6.00	4.00	3.00	2.00	1.50	8.00	20.00
PICARDY.....		2.40	1.60	1.20	.90	.70	1.00	2.00
PIRATE.....		8.00	6.00	4.50	4.00	3.00	10.00	25.00
POND LILY.....		2.50	2.00	1.50	1.00	.80	2.00
PRIDE OF WANAKAH.....		1.60	1.20	.80	.60	.40	.75	1.50

"I was very much pleased with the \$3.00 collection of glads I received from you last April. It was my first attempt with glads. They were gorgeous. I never saw glads grow so tall."

—CLARENCE S. JOY, Maine.

"I shall have to take back all the things I said against Debonair. It is very fine but you need large bulbs to see what it can do. We like Rapture a lot."

—C. C. WHITE, Pa.

"Just a few lines to thank you for the wonderful bulbs and fine extras you sent me last year. Rosex and Mywag are very outstanding.

"When Mywag gets a little cheaper I want lots of them."

—GUY C. SPERA, Iowa.

	No. 1	No. 2	No. 3	No. 4	No. 5	No. 6	BULBULETS	
							1,000	Quart
RAPTURE.....	8.00	6.00	4.00	3.20	2.40	1.80	6.00	20.00
REVERIE.....	80.00	60.00	40.00	35.00	30.00	25.00	60.00
SCARLET BEDDER.....		1.60	1.20	1.00	1.50
SCARLET WONDER.....	2.50	2.00		1.2075	1.50
SPRAY OF GOLD.....		2.40	2.00	1.60	1.20	.80	2.50	5.00
SULTAN.....		8.40	6.80	6.00	4.00	6.00
SUNSHINE GIRL.....		1.20	1.00	.80	.60	1.00
SYMPHONY.....	12.00	10.00	8.00	6.00	5.00	4.00	8.00
TOBERSUN.....	2.50	2.00	1.60	1.20	.90	.60	1.50	3.00
TROUBADOUR.....	3.00	2.40	1.40	1.00	.60	1.50	3.00
WASAGA.....	12.00	10.00	8.00	6.00	4.00	3.00	8.00	25.00
WURTEMBERGIA.....	9.00	7.00	5.40	4.20	3.80	3.00	5.00	15.00
YVONNE.....		2.00	1.60	1.20	.90	.50	1.00	2.50

Special Collections and Sets

I WILL DUPLICATE THE SPECIAL OFFERS OF ANY OTHER RELIABLE GROWER IF I HAVE THE STOCK

ALL COLLECTIONS PREPAID.

No. 1. UNLABELED COLLECTION. 100 assorted large bulbs (1 inch up) in at least 40 varieties in about every shade in gladiolus. I have sold this collection for years and have thousands of very well pleased customers. I positively guarantee there is not a better collection sold by any grower in the country for anywhere near the price. I get many repeat orders every year from well pleased customers. 100 for \$3.00; 50 for \$1.75; 25 for \$1.00 all prepaid. With each 100 bulbs of this collection I will put in 5 medium Picardy labeled, FREE. Also 1 large Reverie bulb worth \$1.25.

No. 1A. SAME COLLECTION IN MEDIUM SIZE BULBS. 100 bulbs for \$2.00. 50 for \$1.25. With 100 bulbs will give 5 medium Picardy free.

No. 1B. SAME COLLECTION IN SMALL BULBS. Same as above except the bulbs are small. They should all bloom but the blooms will not be quite so large as from large bulbs. Will make fine bulbs for another year. The biggest value in my catalog. If you don't get several dollars worth of pleasure out of this one dollar collection and have \$3.00 worth of bulbs in the fall I want to know about it. This is the size I plant myself. 100 Small Bulbs \$1.00. Not less than 100 sold.

No. 2. UNLABELED COLLECTION. 100 assorted as above containing 45 varieties or more including many of the newer and higher priced ones. A wonderful collection at a moderate price. 100 for \$5.00; 25 and 50 at the same rate.

No. 3. UNLABELED COLLECTION DE LUXE. 50 or more varieties many of them being exhibition sorts and worth several times the price asked. Real aristocrats in gladiolus. Nothing better to be had in an unlabeled collection. 100 for \$10.00; 25 and 50 at the same rate.

NONE OF THE ABOVE COLLECTIONS ARE LABELED AS TO VARIETIES. Don't ask us to give you the names of the varieties in the collections as we positively do not do it at these prices. If you want them labeled buy them under name. I guarantee the collections to be the best you can buy for the price.

No. 4. BETTER TIMES COLLECTION. Large bulbs \$3.00. All Labeled. A very fine collection for a beginner or anyone else. Splendid varieties in many types and colors ranging from white thru many shades of pink, red, orange, yellow, salmon, smoke, blue and lavender. You can't get started in good named varieties in a less expensive way than in getting this collection or one of the next five.

2 AIDA
4 APRICOT GLOW
3 BETTY NUTHALL
3 BLEEDING HEART
3 DUNA
2 ECSTASY
2 EMMA
4 EXCELLENCE
4 SPRAY OF GOLD

2 HELEN JACOBS
4 JANET
3 LA PALOMA
2 LAUGHING WATER
2 LOYALTY
2 MAGNIFICENT
2 MAMMOTH WHITE
2 MARMORA
2 MARY FREY

2 MRS. GALBRAITH
2 OUR SELECTION
2 PAUL PFITZER
4 RED SPLENDOR
3 RIDEAU
2 SARABAND
2 SENORITA
4 SUNSHINE GIRL

No. 5. Same as above in **medium size bulbs for \$2.10.** Wonderful value.

No. 6. **\$3.00 LABELED COLLECTION.** Another fine assortment of varieties and colors. **Large bulbs.**

2 ACADIA	2 CONSTANCY	4 MISS BLOOMINGTON
2 AFLAME	3 DOMINUS	4 ORANGE BUTTERFLY
2 ALBATROSS	2 EMBLEM	2 PFITZER'S TRIUMPH
2 AMBROSIA	3 GIANT NYMPH	3 POND LILY
5 BAGDAD	2 GOLDEN ANNIVERSARY	3 RAPTURE
3 BILL SOWDEN	2 27271 Red Seedling	2 SALBACH'S PINK
3 BRIGHT WINGS	3 LITTLEJOHN	2 SCHUBERT
2 BROWN WINGS	2 HELEN WILLS	5 YVONNE
2 CASSANDRA	2 SEEDLING 27123, fine blue.	

No. 7. **\$2.00 LABELED COLLECTION.** Same as above in **medium size.**

No. 8. **\$3.00 LABELED COLLECTION.** Large bulbs. Another lot all different from the two previous sets.

2 BEAUTY FLOWER	2 EMILE AUBRUN	3 OCTOBER
3 BERTY SNOW	3 GAY HUSSAR	4 ORANGE QUEEN
2 BLUSHES OF CREAM	3 GLORIANA	3 PELEGRINA
2 CAROLUS CLUSIUS	3 LAVENDER ROSE	4 PRIDE OF WANAKAH
2 CATTLEYA ROSE	2 MIBLOOM	4 PRIMROSE PRINCESS
2 CHAS. DICKENS	4 MOROCCO	3 STUTTGARDIA
2 CORONATION	2 MOTHER MACHREE	2 SWORD OF MAHOMET
3 CRIMSON GLOW	2 MRS. SISSON	2 TOBERSUN
2 DR. DURR		2 TROUBADOUR

No. 9. **LABELED COLLECTION. \$2.10.** Same as above in **medium size.**

The above collections, No. 4, No. 6, and No. 8 are all different. Also of course the corresponding collections No. 5, No. 7, and No. 9. The whole three sets either of the large or medium ones will make a really wonderful collection and will make your garden the envy of your neighborhood.

Will sell the three sets, No. 4, No. 6 and No. 8, for **\$8.00.** Or sets No. 5, No. 7 and No. 9, for **\$5.25.**

With any one set No. 4 to No. 9 ordered and paid for before April 15, I will put in **5 medium Picardy EXTRA.** Or if you order the three sets No. 4, No. 6 and No. 8, will put in a **large Rosex or Reverie FREE** in addition to the **5 medium Picardy.** With sets No. 5, No. 7 and No. 9, will give a **medium The Moor or Jonquil.**

No. 10. **LABELED COLLECTION ENTIRELY DIFFERENT FROM THE PREVIOUS ONES, \$1.90.** One large bulb each of the following. **2 bulbs each for \$3.40.**

BLUE DANUBE	LEANDER	NYORA
BLUSHES OF CREAM	KING ARTHUR	QUEEN HELEN II
COM. KOEHL	LINDESTA	RED LORY
EDITH MASON	MOONDARA	SULTAN
EDITH ROBSON	MRS. LANGFORD	WURTEMBERGIA
ESCORT	NERISSA	

No. 11. **LABELED COLLECTION. \$1.35.** One medium bulb each of the varieties in No. 10. **2 each for \$2.50.**

No. 11A. **CONNOISSEUR'S COLLECTION.** 1 large each **The Moor, Pinnacle, Rose Standish, Smiling Maestro, Sonatine, Hercules** for **\$3.25.**

No. 11B. Same as above except **medium size for \$2.00.**

No. 12. **LABELED PALMER COLLECTION. \$1.50.** One large bulb each of the following varieties. **2 bulbs each for \$2.75.**

ACADIA	DUNA	RAPTURE
BAGDAD	GOLDEN CUP	RIDEAU
CORONATION	LINDESTA	SPRAY OF GOLD
DEBONAIR	PICARDY	WASAGA
	PIRATE	

No. 13. **LABELED PALMER COLLECTION. \$1.50.** 2 medium bulbs each of the varieties in No. 12.

No. 14. **LABELED PALMER COLLECTION. \$1.75.** One large bulb each **Champlain, Lady Eaton and Premier Henry.**

No. 15. **LABELED PALMER COLLECTION. \$1.25.** One medium bulb each of varieties in No. 14.

No. 16. LABELED PALMER COLLECTION. \$3.50. One large bulb each *Jonquil, Reverie* and *Rosex*.

No. 17. LABELED PALMER COLLECTION. \$2.25. One medium bulb each of varieties in No. 16. 2 each for \$4.00.

No. 18. LABELED PALMER COLLECTION. \$.75. 2 selected bulblets each of varieties in No. 16.

No. 19. PICARDY SPECIAL. \$1.00. 3 large, 30 medium, 20 small. These Picardy collections have always been very popular.

No. 20. PICARDY SPECIAL. \$2.00. 5 large, 60 medium, 50 small, 100 bts.

No. 21. PICARDY SPECIAL. \$3.00. 30 large, 60 medium, 60 small, 400 bts.

No. 22. PICARDY SPECIAL. \$5.00. 12 No. 1, 35 No. 2, 50 No. 3, 50 No. 4, 60 No. 5, 70 No. 6, 800 bts. All for \$5.00.

No. 23. BAGDAD SPECIALS. I will duplicate the last four offers in **Bagdad**. This is very special as Bagdad is higher priced in the regular list than Picardy and is becoming increasingly popular all the time.

No. 24. DUNA SPECIAL. \$1.00. 3 large, 5 medium, 8 small.

No. 25. RAPTURE SPECIAL. \$1.00. 4 large, 8 medium, 10 small.

No. 26. DEBONAIR SPECIAL. \$1.00. 3 large, 5 medium, 8 small.

No. 27. CORONATION SPECIAL. \$1.00. 3 large, 5 medium, 8 small.

No. 28. GOLDEN CUP SPECIAL. \$1.00. 5 large, 5 medium, 10 small.

COLLECTIONS BY COLOR

No. 32. DARK BLUE. 5 medium each, *Aida, Pelegrina*, 1 Large *Blue Admiral* for 70 cents.

No. 33. MEDIUM AND LIGHT BLUE. 5 medium each *Ave Maria, Blue Danube*, 1 each medium *Bella Donna, Champlain* for 70 cents.

No. 34. DARK RED. 5 each medium *Ecstasy, Morocco, Dominus*, 3 *Pirate* for 50 cents.

No. 35. MEDIUM RED. 5 each medium *Bill Sowden, Com. Koehl*, 2 large 27271 for 60 cents.

No. 36. MEDIUM RED. 5 each medium *Crimson Glow, Cardinal Prince, Red Splendor, King of Reds* for 45 cents.

No. 37. SCARLET. 5 each medium *Excellence, Scarlet Bedder, Scarlet Wonder* and *Wurtembergia* for 55 cents.

No. 38. ORANGE. 5 medium each *Gay Hussar, La Paloma, Orange Butterfly, Orange Queen, Spirit of St. Louis, Orange Wonder* for 65 cents.

No. 39. YELLOW. 5 medium each *Loyalty, Primrose Princess, Spray of Gold, Tobersun*, 3 *Golden Cup* for 60 cents.

No. 40. PURPLE. 5 medium each *Troubadour, Paul Pfitzer*, 3 large each *Chas. Dickens, Ramasses*, 3 medium *Mrs. Chas. A. Stevens* for 75 cents.

No. 41. LAVENDER. 5 medium each *Berty Snow, Dr. Moody, Mary Frey, Philip Breitmeyer*, 3 *King Arthur* for 65 cents.

No. 42. ROSE PINK. 5 medium each *Constancy, Dr. Shook, Littlejohn, Pond Lily, Janet* for 65 cents.

No. 43. ROSE PINK. 5 medium each *Aflame, Bagdad, Dorcas Aldrich, October, seedling 27694* for 65 cents.

No. 44. SALMON PINK. 5 medium each *Betty Nuthall, Gloriana, Laughing Water, Mrs. Leon Douglas, Our Selection* for 55 cents.

No. 45. SALMON PINK. 5 medium Picardy, 3 Coronation, 4 Rapture, 2 each seedling 26892 and Acadia for 75 cents.

No. 46. LIGHT PINK. 5 medium each Carolus Clusius, Mrs. Sisson, Edith Mason, Pearl of California and 2 Debonair for 65 cents.

No. 47. PINK. 5 medium each Giant Nymph, Helen Jacobs, Sunshine Girl, 2 Lindesta, 3 Queen Helen II for 65 cents.

No. 48. WHITE. 5 medium each Albatross, Helen Wills, 3 each Dr. Durr, Mary Elizabeth, 4 Maid of Orleans for 80 cents.

No. 49. BLOTCHED. 5 medium each Mrs. F. E. Bennett, Bleeding Heart, Emma, 3 Edith Robson, 2 Moondara for 75 cents.

No. 50. SMOKY AND ODD SHADES. 5 medium each Mother Machree, Saraband, Rideau, Desdemone, Ambrosia for 65 cents.

No. 51. CREAM AND BUFF. 5 medium each Apricot Glow, Yvonne, 3 each Duna, Schubert, Wasaga for 65 cents.

No. 52. EARLY VARIETIES. 5 medium each Excellence, Mibloom, Al Smith, Miss Bloomington, Antione for 55 cents.

No. 53. EXHIBITION VARIETIES. 5 large each Picardy, Bagdad, Edith Robson, Mrs. Errey, Bleeding Heart, Pelegrina for \$1.80.

No. 54. EXHIBITION VARIETIES. Same as above except in medium size for \$1.10

"Last year you sent me gratis three or four Wasaga bulbs. This variety to me is the most beautiful of all glads."
—E. S. HARTRUM, Ohio.

"Last year I had your labeled collection which corresponds to your No. 4 of this year, also, I had your exhibitions No. 53 and No. 54. This lot of bulbs produced a very beautiful and satisfactory garden and I wish to add my word to that of many others that your bulbs are what you claim for them."
—JESSE S. JOSEPH, N. Y.

"We had 100 bulbs last year and certainly did have wonderful results. In fact we had gladiolus which were admired by thousands of our friends, neighbors and passerbys. Even professional flower growers and gardeners came admitting these flowers were the most beautiful they had seen."
—MRS. WM. B. GRAF, Pa.

"Bagdad was outstanding. I had small bulbs and they did not bloom till late, a few were caught by frost, but such flowers I have never seen from small bulbs. They were very sturdy and stood up against heavy winds. The blossoms were large and so many open at once. I got a lot of jumbo bulbs and plenty of bulblets.

"Bill Sowden did even better than Commander Koehl."
—H. B. SWEARINGEN, Mass.

"Will say collection I ordered of you last year went way beyond my expectations both in size of blooms and colors. Every day a different one opened till there were honestly fifty different colors and when I dug them I had 107 as fine clean healthy bulbs as any one could wish for."
—T. G. PINCKNEY, N. Y.

"Your bulbs have always been the best I can get even at higher prices than yours. Your extras are also appreciated."
—JAY T. SMITH, Kansas.

"Bagdad got the honors and deserved them for it is a wonderful glad. Think the Mywag is going to make good. It was big and strong and beautiful for me. It was too good to let bloom and die in the garden so I cut it and hauled it to Coatsville and showed it to the florists then to Reading and after standing rough handling for two days I brought it home and put it in a vase and it bloomed out beautifully."
—SAM F. LANTZ, Pa.

"We wish to state that each member of our club was very much pleased with results from your bulbs last year."
—MRS. ESTHER M. RHODES, Mass.

"Last summer I took the first Hercules down to the wholesale florists and they went wild about them. Just begged for more."
—GEO. W. SMITH, Wash.

"Bought bulbs for the past ten years from other dealers but this shipment of nine hundred was the healthiest lot I ever received."
—BERT HILBERT, N. Y.

50 CENT SPECIALS

To get first-class flowers it is not at all necessary to plant large bulbs. In my own fields I plant almost entirely small ones and get fine bloom. Small and medium size bulbs will often give you nearly as good flowers as larger ones but will bloom later. So if you plant various sizes all at the same time your season of bloom will last over a much longer period. For that reason I have selected some varieties here on which I can give you an assortment of sizes which if you plant at one time early in the season will give you a long blooming season in the same variety.

I am not telling just the number of bulbs and sizes that will be in each collection as it will depend somewhat on the variety and the stock I have on hand but I will give you very good value. Just leave it to me and I guarantee you will be satisfied.

If you want some **bulblets** in place of part of the bulbs just say so, otherwise I will put in all **bulbs** in several different sizes. There will be at least one or two large ones in each set to give you the biggest bloom and then some smaller ones to follow on later in the season.

On some of these varieties even giving you big value there will not be many bulbs so you really should have two sets of each one. But one set of a kind will give you more flowers than you could get in any other way at the price. Remember it is 50 cents for an assortment of sizes of just one variety. You cannot use more than one variety in making up 50 cents worth. But you can have as many varieties as you want. Any five lots for \$2.25. Any ten lots for \$4.00 or any fifteen for \$5.75. In addition to this I will put in a bulb or two of something good for you to try out.

ACADIA
 AFLAME
 ALBATROSS
 AMBROSIA
 APRICOT GLOW
 AVE MARIA
 BAGDAD
 BETTY NUTHALL
 BILL SOWDEN
 BLEEDING HEART
 BLUE DANUBE
 BLUSHES OF CREAM
 CARDINAL PRINCE
 CHAS. DICKENS
 COMMANDER KOEHL
 CONSTANCY
 CORONATION
 DEBONAIR
 DORCAS ALDRICH
 DR. BENNETT
 DR. DURR
 DR. NELSON SHOOK
 DUNA
 ECSTASY
 EDITH MASON
 EDITH ROBSON
 EMMA
 EXCELLENCE
 GAY HUSSAR
 GIANT NYMPH
 GLORIANA

GOLDEN ANNIVERSARY
 GOLDEN BROWN
 GOLDEN CUP
 HELEN JACOBS
 HELEN WILLS
 JANET
 KING GEORGE
 KING OF REDS
 LA PALOMA
 LAUGHING WATER
 LITTLEJOHN
 LOYALTY
 MAGNA BLANCA
 MAMMOTH WHITE
 MARGARET FULTON
 MARMORA
 MARY FREY
 MIBLOOM
 MISS BLOOMINGTON
 MOROCCO
 MOTHER MACHREE
 MRS. CHARLES A.
 STEVENS
 MRS. GALBRAITH
 MRS. GERTRUDE PFITZER
 MRS. LEON DOUGLAS
 MRS. P. W. SISSON
 ORANGE BUTTERFLY
 ORANGE QUEEN
 OUR SELECTION
 PAUL PFITZER

PEARL OF CALIFORNIA
 PELEGRINA
 PICARDY
 PIRATE
 POND LILY
 PRIDE OF WANAKAH
 PRIMROSE PRINCESS
 RAPTURE
 RIDEAU
 ROI ALBERT
 ROI SOLEIL
 ROSE MIST
 SALBACH'S PINK
 SARABAND
 SCARLET BEDDER
 SCHUBERT
 SENORITA
 SPIRIT OF ST. LOUIS
 SPRAY OF GOLD
 SULTAN
 SUNSHINE GIRL
 SYMPHONY
 TROUBADOUR
 WASAGA
 WURTEMBERGIA
 YVONNE
 26892
 26121
 BC25084
 26242
 27271

DOLLAR ASSORTMENTS

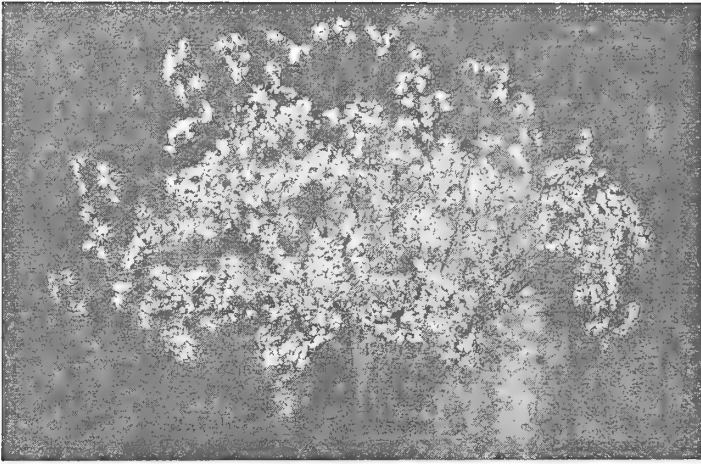
Here is another lot similar to the previous one but each set of assorted bulbs of a kind is \$1.00. Any five for \$4.60, any ten for \$8.50 or the fifteen for \$12.00.

Just leave it to me to satisfy you on any of these lots of assorted size bulbs in the last two offers. If you want **SOME** bulblets and less bulbs just say so and I can fix them up that way.

CHAMPLAIN
 ESCORT
 EVENSONG
 HEATHFIELD
 HERCULES

KING ARTHUR
 LINDESTA
 MARY ELIZABETH
 MAY DAVIDSON
 MIGNON

MILDRED LOUISE
 PINNACLE
 QUEEN HELEN II
 RED LORY
 THE MOOR



Euphorbia Corolata (FLOWERING SPURGE)

This is a hardy perennial somewhat similar to double Baby's Breath but blossoms later. Blooms through August and September. Just the thing to go with glads or any other kind of flower. Will grow on most any kind of soil, even on dry sand, but good garden soil will make it very much better.

This is a plant that should be grown in every garden and commercial growers should plant it by the hundred. Absolutely hardy and I am sure you will like it.

In the northern states I would suggest Euphorbia be planted early in the spring. In the south or where it does not freeze hard, fall planting would be perfectly all right.

Though Euphorbia is easy to handle, and there should be no reason for it not doing well, I have had some complaints about the roots not growing. I don't know why this is because if they are planted at once and given a good watering they should all grow. I have had no trouble with them myself. But in as much as I have had some complaints I no longer guarantee the roots. I do give good strong healthy roots and if given half a chance they should grow but if they do not grow I shall not be responsible.

Prices are 4 roots for 60 cents or one dozen for \$1.25 prepaid. **We do not sell less than four. As they cannot be shipped with the gladiolus bulbs we have to make a separate shipment.**

Order at once as these cannot be shipped after April 25th at the latest.

100 roots \$6.00 f.o.b. with 50 at the 100 rate.

"The prizes I won at the Gardens of the Nations were of your collection. I bought them through Mr. Johnson of The National Broadcasting Co. I bought five dollars worth and from that I won five first, five second, three thirds and a silver medal. Also the bulbs you just sent me I also sold \$25.00 worth of blooms and had plenty for my own home. I have had wonderful luck with your bulbs and will enter the same show this coming year. I hope I have the same luck again."
—FRED H. YOUNG, JR., N. J.

"I want to express my appreciation for the liberal extras received on an order comprising mostly specials and on which as you put it 'there is not much extra on specials.'"
—P. L. SILLARS, Mass.

"You deserve my thanks for the bulbs you sent me last year and I gladly give them. The bulbs were choice, in fine condition and produced some wonderful blooms."
—W. H. DETRICK, Maryland.

ABOUT THRIP

In many parts of the country gladiolus growers have licked the thrip menace but in many places thrip is still doing a great amount of damage. I firmly believe that where it has done damage it is due to the carelessness of the growers. Each gladiolus grower should not only disinfect his own bulbs before planting but should try to get all his neighbors to do the same. It is only by cleaning up a whole neighborhood that you can be reasonably sure of not getting any thrip. By all means disinfect every single bulb that is planted no matter where it came from even if they are some that you have grown yourself and you have not noticed any thrip on them. Disinfection of bulbs before planting is the first thing to do.

In the fall after the bulbs are cured and cleaned up put them in a fairly warm place, about sixty degrees or so, for four weeks, scatter naphthalene flakes over them, about one ounce to 100 bulbs, and cover the containers with paper or some material to confine the fumes. Then in about a month shake the naphthalene off and store the bulbs away in a cool place. Chances are very strong that there will be no thrip on them then but to be on the safe side I would disinfect before planting just the same. My new catalog will give full instructions for disinfecting and an instruction sheet will go with all orders of bulbs.

As soon as the plants are just a few inches high keep a watch out for thrip. They are a very small black insect about one-sixteenth of an inch long and about the size of a pencil mark. At the first sign of them begin to spray. There are various sprays on the market, commercial sprays and the Paris Green, molasses and water spray. Rototox has given good satisfaction in spraying in many places this past season. Another spray that has evidently done good work is Magnesium Arsenate, brown sugar and water. Four pounds of the Arsenate, sixty-six pounds of brown sugar and one hundred gallons of water or at that same rate.

I firmly believe that by proper treatment of bulbs, disinfecting, spraying, etc. that perfectly good gladiolus can be grown even in an infested area. Many people who have had trouble with thrip before have grown fine glads this year and say they have the pest entirely under control.

We used to think that gladiolus were impervious to all diseases and insects and that all we had to do was put them in the ground and they would bring forth a bountiful crop of bloom. It has got so now that we have got to spray for everything. We can't continue to raise good roses without spraying every few days and the same is true with dahlias. Why is it any worse to spray gladiolus? Of course they can be grown sometimes without spraying the same as roses and dahlias can be grown well sometimes with no special work, but it is safest to do things right and reap the reward.

If you have had thrip this year do not under any circumstances throw the bulbs away as they will not be harmed in any way whatever. Just treat in naphthalene, disinfect in the spring and they will be perfectly all right for another year.

TESTIMONIALS

"We bought a few bulbs of Sunshine Susie from you just to try them and they were really wonderful."
—ALMER DEAN, Ontario.

"I received a bulb of Mywag from you last year and it certainly is a wonderful variety."
—T. CAMPION, Michigan.

"This is my 3rd order for gladiolus bulbs and bulblets and I must tell you about the blooms I got last summer. They were the largest and most beautiful in this part of the country. Passersby were stopping and driving in to admire them. Several varieties measured four to six inches a single bloom. Wasaga, Picardy, Bagdad, King George were very large and wonderful. Wasaga and Picardy most beautiful. Mrs. T. E. Langford gave nice blooms from bulblets. Janet produced some extra nice blooms for me too."
—GLENN L. WARNER, Cuba, N. Y.

"Ten Debonair bulblets I received from you all grew and five of them bloomed and nice spikes too."
—GUSTAV A. SCHMITZ, Detroit, Mich.

"The bulbs you sent me last year were the best ever. They produced wonderful spikes of bloom."
—J. S. REARDON, Belmont, Mass.

HOW TO GROW GLADS

With every order of bulbs a four page circular is enclosed which gives you all the necessary information about growing glads. There was a time when anyone could just chuck the bulbs in the ground and be assured of having fine flowers. Some people still do that and in a neighborhood where there are no thrip or other injurious insects this can still be done. But nowadays we have to be more careful with most all kinds of plants and it certainly pays to do everything you can to get the best results.

Here are the main essentials for growing good glads. My cultural instruction sheet will fill in the details.

Plant in northern latitudes about the time that the trees are leafing out and up to July 1.

Glads will grow in most any kind of soil provided they have plenty of water during the blooming season but prefer a nice mellow loam. However with good culture and water at the right time they can be grown in hard clay or in sand.

Nowadays with thrip, a very injurious, very small insect so prevalent in many localities, it is best to disinfect your bulbs before planting and spray them occasionally through the season. In place of disinfecting the bulbs you can scatter naphthalene flakes on them and keep the flakes on and the bulbs in a warm place for about three weeks. (I can furnish naphthalene flakes if you can't obtain it locally.) I prefer to disinfect just before planting. Many careful growers both use naphthalene and disinfect.

TO DISINFECT. Use Bichloride of Mercury one ounce to seven or eight gallons of water and soak seven hours or longer. My instruction sheet will tell more about this.

Glads do not want wet soggy soil but if there is good drainage they will take a lot of water during blooming season.

If you wish one of my instruction sheets before getting your bulbs drop me a line and I will send you one.

ABOUT LABELS. There is an almost infinite variety of labels. Some prefer one kind and others another. Some like metal tags on a heavy wire stake and others use wooden ones. I personally prefer the wooden labels. Have always used painted labels but this past season had a little unpleasant experience in that the paint came off during the middle of the season and of course took the writing with it. I found that unpainted labels marked with an indelible pencil would last right through the season in good shape. I have a special pencil that I am using now and I can sell it for 15 cents each. As a convenience to my customers I can furnish any size wooden labels you wish.

WIRED TREE LABELS to use in marking bulbs while bulbs are being disinfected. You can wire these to any kind of stake afterwards to label plants in the field. 35 cents per 100, 500 for \$1.50, 1,000 for \$2.50 prepaid if sent with bulbs, otherwise f.o.b.

GARDEN LABELS

6 inch same price as tree labels. 10 inch, 25 for 25 cents, 100 for 90 cents.
8 inch, 25 for 20 cents, 100 for 75 cents. 12 inch, 25 for 35 cents, 100 for \$1.25.

Prepaid to 6th zone if with bulbs.

EVERMARK PENCIL, 15 cents each.

BAGS FOR DISINFECTING. For your convenience I am offering bags to disinfect your bulbs in. These will last for several soakings and can be kept two years or more.

Prices postpaid

Size A to hold up to about 5 or 6 large bulbs, 2 cents each.

Size B to hold up to about 25 large bulbs, 3 cents each.

Size C to hold up to about 1 peck of bulbs, 5 cents each.

Size D to hold up to about 1 bushel of bulbs, 10 cents each

There is a shortage of bulbs in many kinds and sizes. So if possible give us some substitutes that we may use if necessary. At the end of the season there is not time to correspond, so help us out by mentioning if we may substitute. We will not do so unless positively necessary.

"I had one No. 2 Duna last year on high white light sand, planted in a row with others. Cultivated twice, fertilized once. One-half pound bone meal to 100 ft. row. It made three long beautiful spikes. Grew 5 ft. high. I dug two bulbs. 2" and 2½" respectively and 200 nice bulblets.

—OTTO L. REGAN, Flint, Mich.

rightly the most beautiful glad in existence. *Bagdad* is an enormously strong grower and positively the finest exhibition smoky in existence. Can be grown with eight blooms 6-7½ inches or more across open at a time. Though it does not seem to be popular in the New York market it is a fine cut flower for local use and roadside stands or where people want something different. No kind of a smoky is popular in New York. This is really more of an old rose than a smoky but for exhibition is called smoky. *Golden Cup* is one of the very best yellows.

Among the newer Palmer varieties *Beacon* is sure to become extremely popular. Also *Vagabond Prince*. *Sahara* is fine but have very little stock. Of the varieties being introduced this year we dropped the price to \$5.00 each instead of putting them out at \$10.00 as previously because we introduced four varieties instead of three. This was to give all the growers a chance to get in on them. Do not think that these varieties are not up to the usual standard as they surely are. I have never seen a more beautiful pink than *Angelus*. *Amberglow* is the most beautiful yellow I have ever seen. *Jalna* is a big exhibition sort and *Regent* will surely become a popular red as it opens 8-10 large bright flowers at a time. You may rely upon the Palmer varieties being GOOD. Growers cannot do better than to tie up with this strain of glads.

Other New Introductions.

Alayne is having a fine sale this year. Mostly due to its having been shown at the National Show at South Bend. Many people have bought from seeing it at the Show or from the recommendation of people who did see it. Growers who are interested in investing \$100.00 or more in this variety should write me for a special offer.

Gladys Clegg being extremely early and a fine color I am sure will become popular as a cut flower. *Innovation* is something entirely different from other colors and sure to take well with the public.

To Growers.

The gladiolus business is coming back with a bang. It seems to recover from the depression sooner than other businesses as when people get the gladiolus bug they will have glads even when they

Order Blank

CHAMPLAIN VIEW GARDENS

ELMER E. GOVE
BURLINGTON, VERMONT

Name (Mr., Miss or Mrs.) Date
Please write plainly

Street and No., P. O. Box }
or R. F. D. }

Post Office County

Express Office State
If different from P. O.

Ship when
Anything pertaining to this order, please write on back of Order Blank or separate sheet of paper.

AMOUNT ENCLOSED	
Money Order	\$.....
Check - - -	\$.....
Cash - - -	\$.....
Stamps - - -	\$.....

Quantity	VARIETY	Size	Rate		Amount	
1						
2						
3						
4						
5						
6						
7						
8						
9						
10						
11						
12						
13						
14						
15						
16						
17						
18						

Balance Forward

In making out order please give price from latest price list. Continue order on other side.

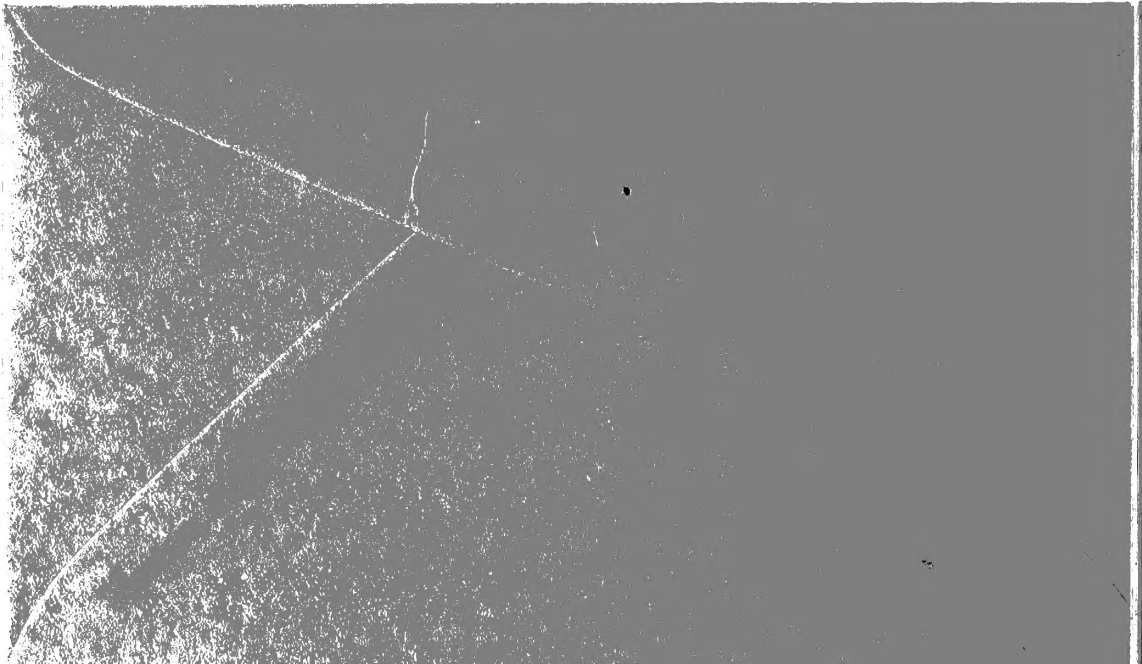
(Continue Order on this side)

Quantity	VARIETY	Size	Rate		Amount	
	Amount Brought Forward					
19						
20						
21						
22						
23						
24						
25						
26						
27						
28						
29						
30						
31						
32						
33						
34						
35						
36						
37						
38						
39						
40						
41						
42						
43						
44						
45						
46						
47						

FROM

Champlain View Gardens

Burlington, Vermont



have to go without some of the necessities of life. Aside from the *Palmer* varieties I have mentioned before, others that I would especially recommend are the following. *Constancy*, *Edith Robson*, *Pelegrina*, *King Arthur*, *Hercules*, *Mrs. Langford*, though I am not offering small stock of this variety this year, and *Pinnacle*. Now is the time to stock up with the good ones so that when the really big demand arrives you will be prepared.

Sold Out.

The following numbers of seeds are sold out. 3511, 3522, 3523, 3547, 3558, 3567, 3573, 3574, 3587, 3512, 3533, 3560, 3570. When ordering some of the other numbers better give two or three substitutions that we can use if necessary.

Read Your Catalog.

Just read over your catalog again if you want the descriptions of the varieties. If you have mislaid the catalog and want to order, drop me a card and tell me that you have received one but have mislaid it and I will send you another one P.D.Q. You may rely upon the descriptions in the catalog as I don't recommend a variety unless I honestly think it is worthy of recommendation. You will find a few varieties in my catalog that are not on the price list. This is because they are sold out and no more available this season.

Growers Collection No. 55.

We are sold out of so many varieties in this collection that we have had to withdraw it. However you may write us if interested as we may have some good varieties left that we can sell at that price.

Miss New Zealand. SPECIAL. Small bulbs \$1.75 each.

JUST READ THIS ABOUT MYWAG.

"I don't think I have told you about the *Mywag* that you sent me last year. You sent me one bulb. It was the prettiest thing that I have ever seen and I never saw a more perfect spike. The first bloom was exactly eight and one-half inches across. I wish you could have seen it. I can't describe it and do it justice, you wouldn't believe me. I would almost doubt it myself if anyone had told me that a glad could be so large and so pretty and so perfect. I picked the spike September 23 and kept it in the house just two weeks before it was through blooming. If I remember right I planted it about the middle of June."

—A. T. Riley, N. Y.