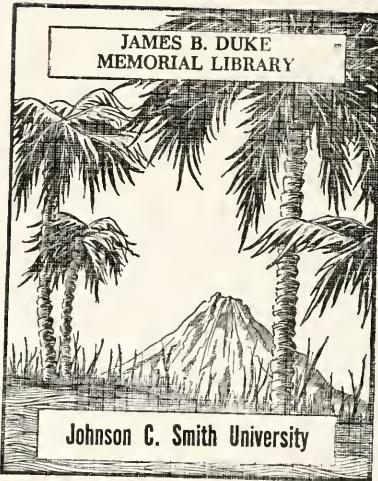




JAMES B. DUKE  
MEMORIAL LIBRARY

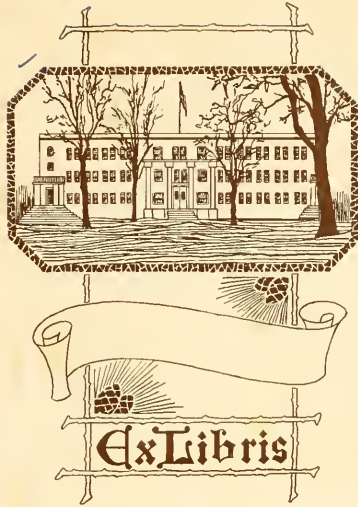


Johnson C. Smith University

## **For Reference**

**Not to be taken from this room**





Library  
Johnson C. Smith University

\_\_\_\_\_  
Librarian

\_\_\_\_\_  
19\_\_



COPYRIGHT

1929

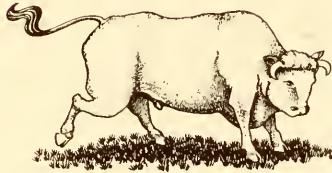
Digitized by the Internet Archive  
in 2010 with funding from

University of North Carolina at Chapel Hill

BY  
A. E. MANLEY  
Editor  
AND  
M. J. WHITEHEAD  
*Business Manager*

# THE BULL

1929



VOLUME II

PUBLISHED BY  
THE STUDENT BODY

OF

JOHNSON C. SMITH UNIVERSITY  
CHARLOTTE, N. C.



REV. H. L. MCCROREY, D.D., LL.D.  
*President*



Dedication

*To*

PRESIDENT H. L. McCROREY

WISE ADMINISTRATOR, PIONEER AND BUILDER OF

JOHNSON C. SMITH UNIVERSITY

STUDENT GUIDE, SPONSOR OF CHRISTIAN CHARACTER, AND

EMINENT PROMOTER OF HUMAN WELFARE

THIS

THE SECOND VOLUME OF THE BULL

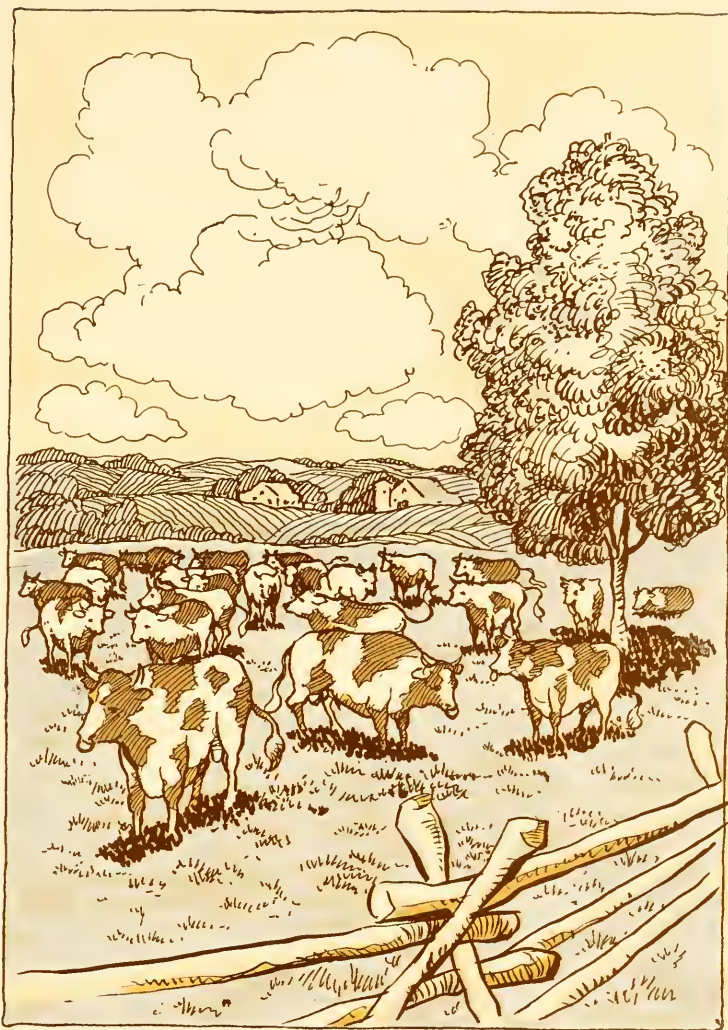
IS AFFECTIONATELY DEDICATED

## Alma Mater

(With Apologies to Wordsworth)

When I have borne in memory what has tamed  
Great nations: how ennobling thoughts depart  
When men change swords for ledgers, and desert  
The Student's bower for gold—some fears unnamed  
I had, my Country!—am I to be blamed?  
But when I think of thee, and what thou art,  
Verily in the bottom of my heart  
Of those unfilial fears I am ashamed.

For dearly must we prize thee: we who find  
In thee the bulwark of the cause of men:  
And I by my affection was beguiled:  
What wonder if a poet now and then,  
Among the many movements of his mind,  
Felt for thee as a lover or a child!



# THE COLLEGE

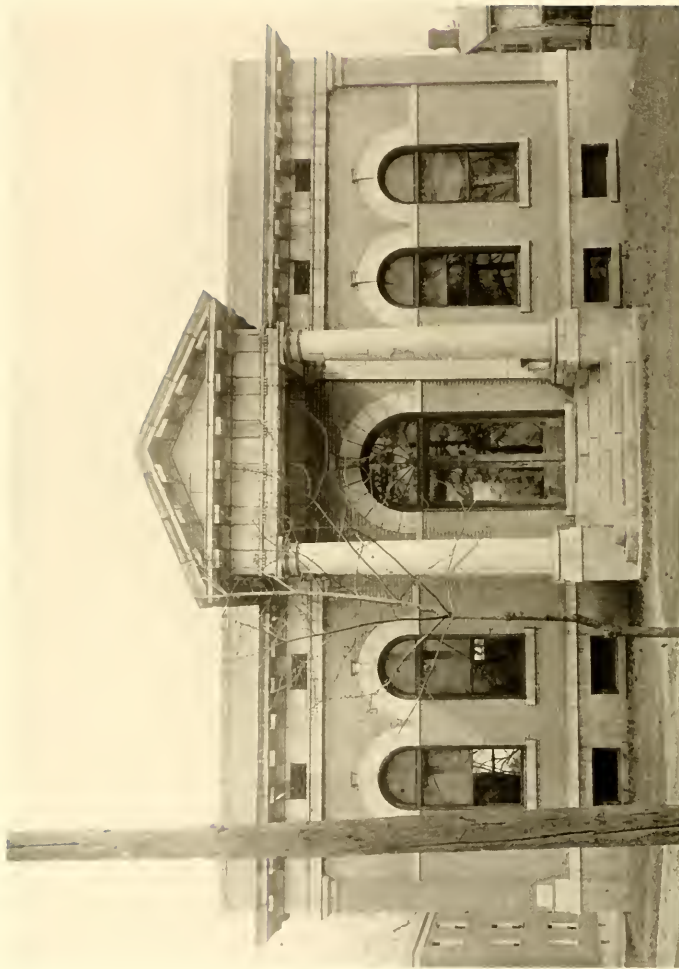


ARCH  
"O, noble arch, built with divine aspiration."



ADMINISTRATION BUILDING

*"A boy is better unborn than untaught."*



LIBRARY  
"The monument of vanished minds."



SCIENCE BUILDING  
"Science points to God."



GYMNASIUM  
*"Here's play, to ease the anguish of a torturing hour."*





SMITH HALL  
*"Rest, the fitting of self to its sphere."*



BERRY HALL

*"Weariness can snore upon the flint, when restive sloth,  
Finds the down pillow hard."*



CARTER HALL  
"Sleep after toil, port after stormy seas."



TEACHERS' COTTAGES  
*"A man's house is his castle."*



DEAN J. HENRY ALSTON, A.B., M.A.

## The College of Liberal Arts and Sciences

A standard "A" grade College, rated by the North Carolina Department of Education. Member of the "Association of Colleges for Negro Youth."

The College of Liberal Arts administers the work of the following classes of students:

1. Those desiring a liberal education with or without reference to future professional training.
2. Those who are planning to enter graduate schools and specialize in various fields of learning.
3. Those who are planning to enter schools of medicine, law or religion.

The College offers work with opportunity to major in the following departments:

- |                           |                     |
|---------------------------|---------------------|
| 1. Biology                | 7. Mathematics      |
| 2. Chemistry              | 8. Modern Languages |
| 3. Classics               | 9. Philosophy       |
| 4. Education              | 10. Physics         |
| 5. English                | 11. Religion        |
| 6. History and Government | 12. Social Sciences |

The College Faculty is composed of men who have pursued graduate work and are specialists in their respective fields. Men are selected who are of a strong Christian character, and who possess the qualities requisite for leadership.

Extra curricula activities, athletic, intellectual and social are permitted and carried on under faculty supervision. The college is represented by strong teams in football, baseball and basketball, the football team being awarded the State Championship for 1928.

The Hartley Woods Gymnasium was completed and dedicated at the last June commencement. It is fully equipped for work in physical education, and was occupied in the fall of 1928. Classes in physical education with a full-time instructor are being conducted. The health of the students is given special consideration, and all students are examined at the beginning of each year by the university physician, who gives such advice regarding exercise, games, etc., based on his examination as he deems proper.

The University Church, the gift of Mrs. Johnson C. Smith, is now being erected at a cost of \$125,000, including the installation of a pipe organ. It is expected that it will be completed and dedicated at the commencement in June. The church will seat 600 persons, and will have memorial glass windows.

## Faculty

S. HERBERT ADAMS  
*B.A., A.M.*

G. G. M. JAMES  
*B.A., M.A., B.Th.*

GEORGE W. BROWN  
*A.B., A.M., LL.B.*

T.C. MEYERS  
*A.B., M.A.*

T. S. JACKSON  
*A.B., A.M.*

J. C. BRYANT  
*A.B.*

W. M. MENARD  
*A.B.*

A. P. CORLEY  
*B.D.*





## Faculty

ROBERT A. THORNTON  
*B.S., M.S.*

C. RANDOLPH TAYLOR  
*B.S.*

THOS. A. LONG  
*A.M., Ph.D.*

R. L. DOUGLASS  
*A.M.*

CHAS. H. SHUTE  
*D.D.*

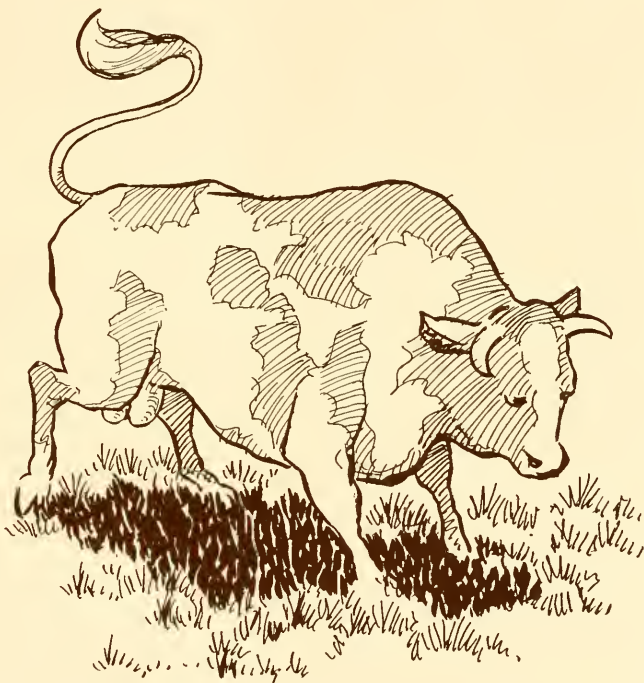
W. E. PARTEE  
*D.D.*

P. W. RUSSELL  
*D.D.*

E. L. RANN  
*A.M.*



# SENIOR



## Class Poem of the Class of '29

HENRI LOUIS MARSHALL

This is a bleak December spell:  
The melancholy oaks are still  
And white with snow like bards o'feld  
Who speak and sing a doleful trill.

The leaves are dead and fallen 'way,  
The twigs seem gone forever more,  
The bark is dry and like a day  
In March when West winds glaze a moor.

But the Spring comes quickly on;  
The twigs revive, the leaves come out  
All Winter's glaze has pass'd and gone,  
The trees have changed—the small twigs sprout

The winter comes and summer goes  
The changes come and pass us by  
Just as the race of mankind flows  
While others come to do and die.

I look out in the pregnant night  
Where I can hear a host of mine,  
And catch a gleam of random light  
And see the Class of Twenty-nine.

Just as the clouds are massing,  
And when the stars have fail'd to shine,  
I can see my class passing—  
The passing by of Twenty-nine.

We've labored long within your halls,  
O, ancient piece of masonry,  
And now just as the dead leaf falls,  
We're simply passing on from thee.

And now to us whose good deeds lie  
Upon the threshold of this tide,  
We bid these godly stones good bye,  
And farewell to our loyal pride.

May we in love and honour due,  
Look not upon the worse of things,  
But on those virtues rich and true,  
Look we on the best of things.



JOHN M. BELTON  
Alpha Phi Alpha  
B.S. in Mathematics  
ROCK HILL, S. C.

"Kat Hole" is from across the border line, but would have you believe he is from Philly, as he has spent his summer vacations there. Though not a satellite in the classroom, he is a persistent and diligent student. He has done his major in mathematics, which is no sop. As a socialite, "Kat Hole" has been a knife, i.e., cutting many hogs. In his last days, however, he has shown better tactics. "Kat Hole" plans to disprove Einstein's theory of relativity.

"We all can differentiate but there are few who can integrate."

1925-26: Mattoon Literary Society.  
1926-27: Mattoon Literary Society.

1927-28: Mattoon Literary Society; Die Lustigen Knaben; Philosophy Club; Junior Prize Orator.

1928-29: Mattoon Literary Society; Die Lustigen Knaben; Philosophy Club.

LEMUEL L. BLAKENEY  
Kappa Alpha Psi  
B.S. in Psychology  
PAGELAND, S. C.

From the backwoods came "His Head" and with all its indications. Yet, as we observe "Lem" now, the theory of evolution is no longer doubtful, for this country lad has emerged into a regular fellow. He is unassuming and passive, nevertheless, his rights must be respected. He is not a ladies' man but has a fondness for Duke's Mixture and Apple Sun Cured.

"If winter comes, can spring be far behind?"

1925-26: Glee Club; Mattoon Literary Society.

1926-27: Glee Club; Secretary Mattoon Literary Society.

1927-28: Glee Club; Mattoon Literary Society; Alexander Dumas Reading Circle.

1928-29: Glee Club; Mattoon Literary Society; Alexander Dumas Reading Circle; Secretary of Class.

JOHN ARCHIE BLOUNT  
Kappa Alpha Psi  
A.B. in English  
PORTSMOUTH, VA.

The Old Dominion sent us the "dog," Archie Blount. He now has all the ear-marks of a Tar Heelian. Dumb Dora is always ready for an argument. In Gaul, he was a debater, but he was unable to make the grade in college. During these four years he has been trying to decide whether staying on the "Hill" is more economical than staying in the city. He has changed residences not more than one hundred times. Blount will go into pedagogy and be a success. His weakness is women, women, and women.

"The man who is able to grit his teeth and smile in the face of difficulties and keep moving is sure to conquer the world."

1926-27: Glee Club; Die Lustigen Knaben.

1927-28: Glee Club; Die Lustigen Knaben; Keeper of Records and Exchequer of Alpha Epsilon Chapter, Kappa Alpha Psi.

1928-29: Glee Club; Die Lustigen Knaben.



HEMPHILL H. BROWN  
Omega Psi Phi  
B.S. in Education  
LEEDS, S. C.

"You can get a boy out of the country, but not the country out of the boy." However, "Floc," as he was called in the pupa stage, is an exception. "Hempill" is fearless, daring and courageous. It was he who led us against the mighty Sophs on that traditional Sophomore day when we took their costly dinner. Due to his rare sense of humor and amiability "Hempill" is one of the most popular in the class of '29.

*"The rational part of man is the true part."*

- 1925-26: Glee Club.
- 1926-27: Glee Club; Vice-President Mattoon Literary Society.
- 1927-28: Glee Club; Mattoon Literary Society; Secretary Alexander Dumas Reading Circle; Philosophy Club; Advertising Manager of 1928 BULL.
- 1928-29: Glee Club; Mattoon Literary Society; Alexander Dumas Reading Circle; Philosophy Club; Secretary Die Lustigen Knaben.

WILLIAM LEWIS BYRD  
Omega Psi Phi  
B.S. in Psychology  
CHESTER, S. C.

"Squats," "Dusty," "Oiseaux," "Jazz," are a few of the names given this son of Chester. From a "dog" "Dusty" has always striven to be a sheik. He has always possessed a heavy wardrobe of Biltrite's best. With the girls he has not had the best results. Due to an impediment in speech he has found difficulty in getting his line over. He possesses a silver-toned voice and has sung on the Glee Club for four years.

*"Act for the sake of acting, love for the sake of loving; and even if there is no heaven or hell, love God for His goodness."*

- 1925-26: Glee Club; Class Baseball.
- 1926-27: Glee Club; Die Lustigen Knaben.
- 1927-28: Glee Club; Art Editor 1928 BULL; Die Lustigen Knaben; Philosophy Club; Alexander Dumas Reading Circle.
- 1928-29: Die Lustigen Knaben; Philosophy Club; Alexander Dumas Reading Circle; Class Football.

JAMES O. CANNADY  
Omega Psi Phi  
B.S. in Psychology  
OXFORD, N. C.

"Chief" is one of the outstanding constituents of the creme de la creme of Smith. He is the Grand Scribe of the Order of Prevaricators. Unfortunately, all of his love affairs have been ephemeral. "Chief" is well acquainted with James S. Freud, Hall, Morton, Prince and other psychologists; he is a connoisseur of good liquids and dealer in struggle buggies and radios. He possesses the natural propinquities of a good lawyer.

*"Think of your own faults the first of the night when you are awake, and the faults of others while you are asleep."*

- 1926-27: Die Lustigen Knaben; Mattoon Literary Society.
- 1927-28: Die Lustigen Knaben; Mattoon Literary Society; Advertising Manager of 1928 BULL; Founder of Platonic Research Club; Philosophy Club.
- 1928-29: Les Choises Peux; President of Philosophy Club; Mattoon Literary Society; Platonic Research Club.



VANCE HENRY CHAVIS  
Alpha Phi Alpha  
B.S. in Chemistry  
WADESBORO, N. C.

Meet "Van," known also as "Peck," "Red," and "Dusty Yellow." "Van" is scholarly, suave, lazy, skeptical and egotistic. He boasts of having girls from Boston to Houston, and one in Portland, Oregon.

*"My faith exists in the ostensible, tangible, practical and concrete; that which is unseen, intangible, impracticable and abstract is fictitious."*

1925-26: Vice-President of Class; Secretary Sphinx Club; Secretary Les Choises Peu; Cheer Leader.

1926-27: President Sphinx Club; President Les Choises Peu; Manager Varsity Basketball; Cheer Leader.

1927-28: Recording Secretary Alpha Omicron Chapter, Alpha Phi Alpha; President Les Choises Peu; Society Editor 1928 BULL; Glee Club; Alexander Dumas Reading Circle; Cheer Leader; Junior Prize Orator; Scientific Club.

1928-29: President Les Choises Peu; Alexander Dumas Reading Circle; Scientific Club; Class Editor; Cheer Leader; Glee Club Editor-in-Chief of University Student.

ROBERT L. CRATER  
Alpha Phi Alpha  
B.S. in Biology  
PINE BLUFF, ARK.

It seems as though it was only yesterday that "Pug" came to the "Hill" city from the woolly West, with his trousers too long for short and too short for long. In a short time he grew from the rural "Pug" to a city "Bob." During the past two years he has been more interested in fast automobiles and fast women than in the amoeba or the Mendelian law. "Bob" will enter dental school. With his gift of gab and flattery he will make many lady patrons become oblivious of a molar extraction.

*"I doubt whether education makes one happier or bitter."*

1925-26: Assistant Secretary Sphinx Club; Assistant Secretary Athletic Council.

1926-27: Die Lustigen Knaben; Vice-President Athletic Council.  
1927-28: Historian of Alpha Omicron Chapter of Alpha Phi Alpha; Alexander Dumas Reading Circle; Die Lustigen Knaben.  
1928-29: Vice-President Die Lustigen Knaben; Alexander Dumas Reading Circle.

WILLIAM L. DAVIDSON  
B.S. in Education  
CHARLOTTE, N. C.

"Slue foot! Do that thing." "Slim" is a trombonist of the superior type. He can make weird notes on the "slide" like no one else. He is the trombonist of the Spanish Troubadours. "Slim" is one of those human beings who evokes laughter just to see him. His sense of humor is rarely found. By his good nature and frivolity he is known by all.

*"The body shows the species; only the face shows the personality."*

1925-26: Class Football.  
1926-27: Class Football.  
1927-28: Spanish Troubadours.  
1928-29: Class Orchestra.



PAUL E. DAVIS  
B.S. in Education  
OKMULGEE, OKLA.

"Web" has been more fortunate than his fellow statesman "Joe" Robinson, for he has been able to win a "Carolina maid." "Web" is another one of those boys who could buy from the Scotchman and sell to a Jew with a profit. All these years he has sold Baby Ruth to the Smith students. His profits were so great that he now drives an Essex, which means that he must have sold about ten billion boxes of this "toothache fomentor."

"People are persuaded by their own reasons—not ours."

- 1925-26: Class Football.
- 1926-27: Mattoon Literary Society.
- 1927-28: Mattoon Literary Society; Die Lustigen Knaben.
- 1928-29: Mattoon Literary Society; Die Lustigen Knaben.

PAUL R. DUSENBURY  
Omega Psi Phi  
B.S. in Psychology  
ASHEVILLE, N. C.

"There's no place like the Land of the Sky," says "Ops." Due to his huge consumption of those products that are mild, yet they satisfy, he is sometimes called Lord Chesterfield. This does not mean, however, that he would not walk a mile for a Camel. It is conceded that "Ops" is the best French student in the class. He also transposes jazz interpretations on the "sax" as easy as he translates clauses of Anatole France and Victor Hugo.

"Things are not always what they seem."

- 1925-26: University Band.
- 1926-27: Mattoon Literary Society; Les Choises Pen.
- 1927-28: Mattoon Literary Society; Les Choises Pen.
- 1928-29: Mattoon Literary Society; Les Choises Pen.

CASWELL, A. EVANS  
Omega Psi Phi  
B.S. in Biology  
APEX, N. C.

September, 1925, brought us a hefty, red chap who said he was from the State's capitol, but in the first bulletin we saw that "Horse" was from Apex instead. "Horse" has spent his four years in application and has proved that he is an excellent scholar. He is the class salutatorian. He has also shown that he is an efficient headwaiter, having acted in this capacity in the University Refectory.

"Success is always obtained through constant application."

- 1925-26: Glee Club; Mattoon Literary Society.
- 1926-27: Glee Club; Vice-President Mattoon Literary Society; Les Choises Pen.
- 1927-28: Vice-President Glee Club; Secretary Philosophy Club; Vice-President Les Choises Pen; Secretary Alexander Dumas Reading Circle; Derby Club; Mattoon Literary Society.
- 1928-29: Glee Club; Mattoon Literary Society; Philosophy Club; Vice-President Les Choises Pen; Keeper of Records of Rho Chapter of Omega Psi Phi; President Derby Club.



HERBERT C. GRAVES  
A.B. in Education  
CHARLOTTE, N. C.

Some say students miss a lot by not lodging on the Hill, but with "Bill," this has not been true. Due to the close proximity of his residence he has spent most of his time in the dorms with the old gang. "Bill" is a three-letter man in class athletics. In baseball he helped win most of the class games with his clever and efficient batting. He also was a star on the class basketball and football teams. "Bill" is likable and one we will miss in life.

*"Those who are busy making themselves loved have no time to make themselves unhappy."*

- 1925-26: Class Football; Class Basketball; Class Baseball.
- 1926-27: Class Football; Class Baseball.
- 1927-28: Class Football; Class Baseball.
- 1928-29: Class Football; Class Baseball; Class Basketball; Les Choises Pen.

BURNALLE J. HAYES  
Omega Psi Phi  
A.B. in History  
LOUISBURG, N. C.

This is not to introduce "Puss," for he is known by all. Among the "dogs" who were popular, "Bun" and his friend, Hicks, ranked first. Straightway he acquired one of Charlotte's best in femininity and has tenaciously clung to her ever since. Among his greatest accomplishments is the winning of two out of three pitchers' duels from the formidable Yokely of Livingstone College on Easter Mondays. "Bun" is an athlete, par-excellence.

*"Absence of occupation of the mind is not rest; A mind quite vacant is a mind distressed."*

- 1925-26: Les Choises Pen; Varsity Baseball.
- 1926-27: Les Choises Pen; Varsity Baseball; Varsity Football.
- 1927-28: Les Choises Pen; Captain Varsity Baseball; Junior Prize Orator, Mattoon Literary Society; Varsity Football.
- 1928-29: Les Choises Pen; Varsity Baseball; Manager Varsity Basketball; Mattoon Literary Society; Keeper of Peace of Rho Chapter, Omega Psi Phi.

ARTHUR A. JONES  
Alpha Phi Alpha  
B.S. in Chemistry  
ZEBULON, N. C.

"Stief" was given this name because of his melodious bass voice which resembles a Stief or Knabe piano. For four years "Deacon" has been the basso profundo of the University Quintette and Glee Club. He is a representative of the few who have ability and he is not ostensibly conscious of it. He is not only a first-rate singer but a student that is hard to beat. His only habits are those of masticating Brown Mules and borrowing "White Horse."

*"Let your belief harmonize with facts."*

- 1925-26: Mattoon Literary Society; Glee Club; University Quintette.
- 1926-27: Mattoon Literary Society; Glee Club; University Quintette.
- 1927-28: President Mattoon Literary Society; President Glee Club; Treasurer Alexander Dumas Reading Circle; Die Lustigen Knaben; Scientific Club; University Quintette.
- 1928-29: Mattoon Literary Society; Glee Club; Manager University Quintette; Die Lustigen Knaben; Alexander Dumas Reading Circle.



JOSEPH A. JONES  
Kappa Alpha Psi  
B.S. in Psychology  
SPRING HOPE, N. C.

Because of a very high soprano. "Sarah" is the appellation of this Berry O'Kelly product. All the spare time he has found, after selling various periodicals, has been devoted to his scholastic work and the Glee Club. Although his antipathy was evoked when initiated into the class he has ever been loyal and cooperative. He has also been active in the local chapter of the N. A. A. C. P.

*"Good taste is an essential part of good morals."*

- 1925-26: Glee Club; Mattoon Literary Society;
- 1926-27: Glee Club; Mattoon Literary Society;
- 1927-28: Glee Club; Mattoon Literary Society; Secretary Alexander Dumas Reading Circle; Derby Club; Philosophy Club;
- 1928-29: Glee Club; Mattoon Literary Society; Alexander Dumas Reading Circle; Derby Club; Philosophy Club; Les Choises Pen; Strategus of Alpha Epsilon Chapter, Kappa Alpha Psi.

JAMES H. JUSTICE  
Kappa Alpha Psi  
B.S. in Education  
CHARLOTTE, N. C.

"Bud" is another of the Charlotte boys who has always found time to spend on the campus with his classmates. From his gang of friends it must be admitted that he has gained much through his contact with the "bunch." "Bud" is an athlete, although he has not had much time to devote to it. As a tackle he is hard to surpass, playing every minute of the game.

*"Questions mark the force of the mind; answers mark its skill."*

- 1925-26: Varsity Football
- Squad Varsity Basketball;
- 1926-27: Varsity Football;
- 1927-28: Varsity Football;
- 1928-29: Class Football; Class Basketball; Les Choises Pen.

BAXTER E. LOWE  
Alpha Phi Alpha  
B.S. in Biology  
WINSTON-SALEM, N. C.

"Lum" is the most lethargic, yet most loquacious on the "Hill." He is the only one we know that can talk an hour or a day without a pause or rest. He possesses also the singular trait of perceiving while asleep. "Lum" is invariably asleep before the roll is called. He has an aversion for the "Weaker Sex." We believe he is girl-shy. He gives vent to only one animal passion, that is, love for camels.

*"Speak the truth at any cost."*

- 1925-26: Mattoon Literary Society; Glee Club;
- 1926-27: Mattoon Literary Society; Glee Club; Sphinx Club;
- 1927-28: Mattoon Literary Society; Secretary Glee Club; Alexander Dumas Reading Circle; Platonic Research Club;
- 1928-29: Mattoon Literary Society; Glee Club; Alexander Dumas Reading Circle; Platonic Research Club; Chaplain Alpha Omicron Chapter, Alpha Phi Alpha; Associate Editor, *University Student*; Les Choises Pen.





GEORGE G. LYERLY  
Alpha Phi Alpha  
B.S. in Biology  
SALISBURY, N. C.

"Buck" Lyerly is one of those "happy-go-lucky" boys, careless and nonchalant about everything—even women. By most of the occupants of Smith Dorm, he was declared lazy. When a "dog," "Snake" became a member of the varsity football squad. In his junior year he demonstrated real flashiness as a halfback. In the Terpsichorean art he ranks second to none. The "frauleins" like to trip the light fantastic toe with him.

*"Knowledge of your own ignorance is the secret of power."*

1925-26: Varsity Football; Glee Club; Class Baseball.  
1926-27: Varsity Football; Glee Club; Class Baseball.  
1927-28: Varsity Football; Glee Club; Les Choises Pen; Alexander Dumas Reading Circle; Chaplain of Alpha Omicron Chapter, Alpha Phi Alpha.  
1928-29: Alexander Dumas Reading Circle; Les Choises Pen.

EUGENE McDONALD  
A.B. in Education  
CHARLOTTE, N. C.

Everyone admires "Wing," the class baby, because he has the gift of gab and joviality. Although "Wing" has only one arm he is not handicapped. In fact, he says that the absence of the other is beneficial, especially in "cribbing," for he does not have to worry about letting his right hand know what his left is doing. Besides, he is the only man who is able to out-talk the Dean in an argument. He is the champion checker player in the class.

*"Pride yourself on sincerity, not infallibility."*

SCOTT S. MCKNIGHT  
Omega Psi Phi  
B.S. in Biology  
CHARLOTTE, N. C.

Here he is girls' Don't rush. "Scottie" is the most beautiful man in the class. He has more girls than Van Camp has pork and beans. He is a native son of Charlotte and is the Grand Mogul of the Queen City's society. "A man is not without, save in his own country," says he. "Skunk" is all bunk. He's got curly hair and dimpled cheeks, and is naturally the modern girls' "weakness." He's got "It," you bet, and how!

*"Guide thy brother's boat across, and lo, thine own has touched the shore."*

1925-26: Secretary Les Choises Pen.  
1926-27: Vice-President Les Choises Pen.  
1927-28: Les Choises Pen; Philosophy Club.  
1928-29: Les Choises Pen; Philosophy Club.



EMMETT F. MALLOY  
Omega Psi Phi  
B.S. in Biology  
LAURINBURG, N. C.

"Foots," "Sticks" and "Mack" Malloy are all the one and same. He hails from the Scotch section of the Old North State, which is exemplified by his penuriousness. He can stretch a nickel so that the buffalo takes on the appearance of a giraffe. "Mack" is a conscientious student and plans to take dentistry. He will become one of the hoity-toity opulent class as soon as he discovers an alloy of one per cent gold and ninety-nine per cent Scotland county clay.

*"Environment is the field in which heredity is sown; cultivate it and the harvest is great."*

- 1925-26: Class Baseball.
- 1926-27: Class Baseball; Die Lustigen Knaben; Platonic Research Club; Scientific Club.
- 1928-29: Class Baseball; Class Basketball; Die Lustigen Knaben; Platonic Research Club; Scientific Club; Class Football.

HENRI L. MARSHALL  
Alpha Phi Alpha  
A.B. in English  
CHERAW, S. C.

Cellulose and cloth are not the only products of the cotton fields. "White Chile" came directly from the Palmetto plantation. Nevertheless, after spending a few summer recesses in Chicago, he has all the habits of one from Cook county. "Chile" easily associates himself with Literati Intellegentia. In his alcoholic moods he shouts "I am a gentleman and a scholar."

*"Skepticism is the secret of knowledge."*

- 1925-26: Glee Club; Chaplain of Class; Mattoon Literary Society.
- 1926-27: Critic, Mattoon Literary Society; Secretary of Class; Glee Club; Assistant Secretary of Sphinx Club.
- 1927-28: Critic, Mattoon Literary Society; Derby Club; Die Lustigen Knaben; Alexander Dumas Reading Circle; Glee Club Literary Editor of 1928 Bruh; Secretary of Class.
- 1928-29: President of Mattoon Literary Society; Derby Club; Corresponding Secretary of Alpha Omicron Chapter; Alpha Phi Alpha; University Quintette.

GEORGE E. MASSEY  
A.B. in Philosophy  
MONROE, N. C.

"Count" is nobility itself. He is a descendent from the famous House of Masseys. When it comes to backbiting, he is a terror. He has been the catalyst in quite a few violent social reactions. Furthermore, he is tall and dark and handsome, together with an air of insouciance which in itself is an impelling force to the most vivacious maidens.

*"A wise man in the company of those who are ignorant is the same as a beautiful girl in the midst of blind men."*

- 1925-26: Class Basketball.
- 1926-27: Class Basketball.
- 1927-28: Philosophy Club; Assistant Secretary Die Lustigen Knaben; Mattoon Literary Society.
- 1928-29: Philosophy Club; Mattoon Literary Society; Die Lustigen Knaben; Class Basketball.



GEORGE F. NEWELL  
Alpha Phi Alpha  
B.S. in Education  
CLARKTON, N. C.

"Chink" is an orator, debater, executive and scholar. He has all the indications of becoming a renowned Baptist clergyman. Among his classmates "Chink" has been an unknown quantity, a decoy. His ability as a student is recognized by both faculty and students. He has well spent his college career in searching his texts. Living in obedience to social activities. Maybe he has gained much by it.

*"Always think before acting."*

1925-26: Mattoon Literary Society.

1926-27: Secretary of Class; Vice-President of Y. M. C. A.; Secretary of Mattoon Literary Society.

1927-28: Mattoon Literary Society; Platonic Research Club; Les Choises Feu; Class President; Winner of Second Junior Oratorical Prize Medal.

1928-29: Financial Secretary of Alpha Omicron Chapter of Alpha Phi Alpha; Treasurer of Les Choises Feu; Platonic Research Club; Debating Team; Class Vaedictorian.

DRAYTON A. OGLESBY  
A.B. in Philosophy  
CHARLOTTE, N. C.

Not being able to transcend the pianistic ability of Hoffman, "D. A." gave up in despair and concentrated his efforts on the cornet, in which he showed a little more aptitude. He is a member of the Spanish Troubadours where he drowns the melody with the noise of his trumpet.

*"From ignorance our comfort flows,*

*The only wretched are the wise."*

CHARLES W. OZIER  
Omega Psi Phi  
B.S. in Biology

This is "Bill," everybody, better known as "Georgia Boy." He is a lover of disputation. For four years he has tried to show that Georgia ranks ahead of North Carolina in education, good roads and industry. He is a member of the Loyal Order of Prevaricators. In the classroom "Bill" is superb; in the social whirl he is unsurpassable. He is quite pessimistic but capable of real reflective and creative thought. He agrees with Darrow that the soul is a myth.

*"Learning is based on inherited capacities."*

1925-26: Mattoon Literary Society; Class Basketball.

1926-27: Mattoon Literary Society; Class Basketball; Les Choises Feu; Class Football.

1927-28: Les Choises Feu; Scientific Club.

1928-29: Vice-Basileus of Rho Chapter, Omega Psi Phi Fraternity; Class Football; Class Basketball.



GUY WRIGHT PERRY  
Omega Psi Phi  
A.B. in Philosophy

Meet another of the "Cafe au lait" of the Queen City Society. "Gee" is one of those boastful fellows. He is a good soap box orator. He is proud of the fact that he is an alumnus of Second Ward High School. He is a devout believer of the Baptist faith. His ambition is to become an outstanding theologian. We know that he will not be anything less.

*"Every man is satisfied with his own opinions."*

1928-29: Class Will.

JAMES O. POPE  
Omega Psi Phi  
B.S. in Psychology  
MAXTON, N. C.

"Frog" was a detestable "Soph" when we were "Dogs," but after staying out a term he became one of us in our Junior year and oriented himself so well that he is one of the most favored in the class. "Frog" is one of the most jovial as well as one of the most comical that can be found. In facing the most extenuating circumstance he can give a big hearty laugh. Altruism, one of his many qualities is genuine indeed. Though frivolous and superficial at times, he is able to think accurately and precisely. For whenever A's are ushered he is always in store for a share. We lose him that some sweet girl might find him.

*"Cheerful yet rational."*

1924-25: Les Choises Pen.  
1925-26: Les Choises Pen.  
1927-28: Les Choises Pen.; Philosophy Club; Chairman of Rho Chapter of Omega Psi Phi; Alexander Dumas Reading Circle.  
1928-29: Les Choises Pen.; Philosophy Club; Alexander Dumas Reading Circle; Chairman Senior Program Committee.

ALPHONSO S. POWE  
Kappa Alpha Psi  
B.S. in Mathematics  
CHERAW, S. C.

Early one September morn there came a "Dog" from the corn fields of Cheraw. Unlike the rest, he was cocky and supercilious. Having been the "Ace" at Coulter Academy he felt that he should be respected; this one, to be sure, was ante Powe, so named because of his primitive ideas and fear of administrators. "Hoplite" is an unusual student. He has oratorical ability that would make Demosthenes bow his head in shame were he a contemporary.

*"To esteem others rather than myself."*

1925-26: Mattou Literary Society; Glee Club.  
1926-27: Mattou Literary Society; Glee Club.  
1927-28: Mattou Literary Society; Glee Club; Research Club; Derby Club; Debating Team; Winner of First Junior Oratorical Prize; Scientific Club.  
1928-29: Mattou Literary Society; Glee Club; Platonic Research Club; Scientific Club; Die Justigen Knaben; Vice-Polemarch of Alpha Epsilon Chapter of Kappa Alpha Psi.



HERBERT I. POWE  
*B.S. in Education*  
 CHERAW, S. C.

When it comes to expressing oneself in words not found in Webster's, "Mom" can do it like no other. Many of us recall those few hours in the "kennel" after a few hours of hard study when he, along with Tate, would do the "Charleston." However, "Mom," as expected, is now a more serious young man, not only on the matters ancient school life but married life. We do not know but it is disseminated that he "Faw down and go boom" for one of the ladies of Charlotte. If so, we cannot help but say he is "a man for a' that."

*"Let me live today; tomorrow, come what may."*

- 1925-26: Class Football.
- 1926-27: Class Football.
- 1927-28: Die Lustigen Knaben.
- 1928-29: Die Lustigen Knaben; Class Football.

RALPH A. RICKS  
*A.B. in Philosophy*  
 ANDERSON, S. C.

"Gimme a car ticket," "Le-lemme two-bits," is heard nightly. "Night Hawk," after attending the Glee Club rehearsals, is prone to go to the city. Since he contributed such a vast amount to S. P. U., the company runs the last car or midnight special just for him. The latest song hits can be emitted from him at any time. Can he bill and coo? Ask the crepe-de-chined femininities.

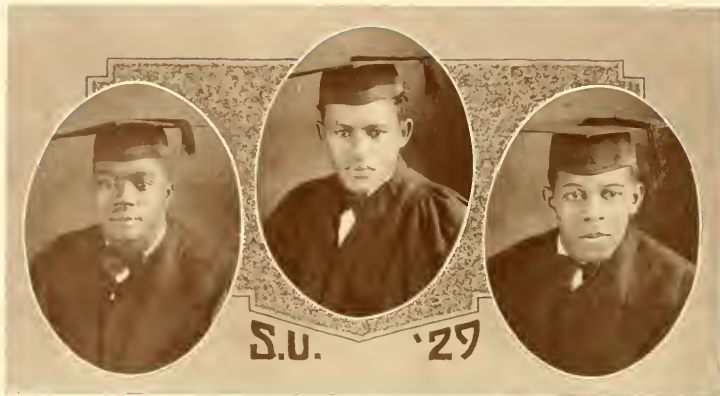
*"Knowledge comes, but wisdom lingers."*

- 1925-26: Glee Club; Les Choises Peu.
- 1926-27: Glee Club; Les Choises Peu; Secretary Lampados Club.
- 1927-28: Glee Club; Les Choises Peu; Philosophy Club.
- 1928-29: Glee Club; Les Choises Peu, Philosophy Club.

WALTER ROBERTS  
*B.S. in Biology*  
 KINGS MOUNTAIN, N. C.

For lo these few years—four to be exact, we have attempted to establish the identity of "Moon Mullins." He is quite an enigma. Instructors also have found it a colossal job in stimulating him to cogitate. In spite of his short comings, "Ology" is ebullient with unselfishness and hospitality. On several occasions he has entertained for his classmates up in the mountains.

*"Every pain in life must offer some compensation."*



JAMES O. SCIPIO  
Omega Psi Phi  
B.S. in Psychology  
CHADBOURNE, N. C.

"Lovin' Sip" is one of the Tar Heelia. During his first years of college he was dormant but awaked in his Junior year. His first leap from obscurity was his making the varsity football squad, and next, the acquiring of one of the city's best as a colleen. "Africanus" is a servant of philosophy and has natural aptitudes of a writer. It is reported that he will board the "Love-ship" to sail the sea of matrimony. Bon voyage.

*"Yellow gold is tested by fire; so is sincerity tested by adversity."*

1925-26: Mattoum Literary Society.

1926-27: Mattoum Literary Society; Varsity Football Squad; Vice-President Lampados Club.

1927-28: Mattoum Literary Society; Alexander Dumas Reading Circle; Philosophy Club; Varsity Football; Sports Editor; 1928 Bull; Die Lustigen Knaben.

1928-29: Mattoum Literary Society; Alexander Dumas Reading Circle; Philosophy Club; President Die Lustigen Knaben.

CLARENCE M. STEELE  
Omega Psi Phi  
B.S. in Biology  
DANVILLE, VA.

Why any one would rather be from Virginia than from South Carolina, we do not know. Maybe it is because Danville is a more popular town than Rock Hill. "Runt" is good, quiet and demure. "Still water runs deep," so he says. Yet in his case it is precarious. "Runt" is a champion gate-crasher and skater. Somehow he has made all exclusive affairs minus a bid. Even for formal occasions he can scarp up the correct togs. It is due, no doubt, to his reticence that he so easily gets by. We would rank him with "One-Eyed Connelly."

*"The essence for which everyone strives is perfection."*

1926-27: Mattoum Literary Society.

1927-28: Secretary Mattoum Literary Society; Die Lustigen Knaben; Derby Club; Philosophy Club.

1928-29: Mattoum Literary Society; Die Lustigen Knaben; Derby Club; Philosophy Club.

LEON STEELE  
Omega Psi Phi  
B.S. in Psychology  
MOCKSVILLE, N. C.

"Bigun," after graduation in June will return to Mocksville and have the city council to change Mocksville to Steelesville. As president of the class he was a judicious sage; as captain of the football team he lead not by compulsion, but by irresistible influence; as a socialtzer he is cosmopolitan.

*"He who loveth self-expression and truth must endure the scorn and criticism of his fellowman."*

1925-26: President of Class, Varsity Football; Varsity Basketball; Les Choises Pen.

1926-27: Varsity Football; Varsity Basketball; Les Choises Pen; Athletic Council.

1927-28: Assistant Captain, Varsity Football; Les Choises Pen; Platonic Research Club; Alexander Dumas Reading Circle; Manager Basketball; Junior Prize Orator; Editor-in-Chief 1928 BULL; Varsity Debater.

1928-29: Les Choises Pen; Platonic Research Club; Alexander Dumas Reading Circle; Athletic Board of Control; Captain Varsity Football; Basiliens, Rho Chapter, Omega Psi Phi.



**JAMES A. SQUIRE**  
Phi Beta Sigma  
B.S. in Mathematics  
WASHINGTON, D. C.

This young man began his college career in 1924 but became so obsessed in the "weakness" that he took her for his own after his Sophomore year. After remaining out a year he found that knowledge was indispensable, even in marriage, and so joined us at the beginning of our third year. "Bens" kindness and commiseration has won a large collection of friends.

*"Man's evils are written in brass; his virtues we write in water."*

1924-25: Y. M. C. A. Council.  
1925-26: Y. M. C. A. Council.  
1927-28: Manager Y. M. C. A. Cafeteria; Secretary Les Choises Pen; Philosophy Club; Alexander Dumas Reading Circle; Mattoon Literary Society.

1928-29: President Y. M. C. A.; Secretary Les Choises Pen; Alexander Dumas Reading Circle; Philosophy Club; Mattoon Literary Society.

**A. W. WADDELL**  
A.B. in Education  
CLEVELAND, N. C.

"Jack" is one of the most respected on the "Hill," due to his integrity and amiability. For two years he served as secretary of the University Sunday school. He has engaged in forms of Christian Endeavor. There is not a vestige of infidelity in his personality. We cannot be too ecomiastic in bestowing praise on good old "Jack." Though he does get out among the sisters occasionally, he has a greater love for his pipe and Prince Albert.

*"Altruism and love for truth."*

1925-26: Mattoon Literary Society.

1926-27: Mattoon Literary Society; Y. M. C. A. Council.

1927-28: Mattoon Literary Society; Secretary Alexander Dumas Reading Circle; Philosophy Club.

1928-29: Mattoon Literary Society; Treasurer Alexander Dumas Reading Circle; Philosophy Club.

**JOHN H. WHITEMAN**  
Omega Psi Phi  
B.S. in Psychology  
WILMINGTON, N. C.

Cast an eye upon this young man's physiognomy and you will not wonder why he is so familiarly known as "Barney Google." He has witnessed so much of the dark side of life that he is, without uncertainty, a cynic. As an all-round man he is hard to transcend. Extra-curricular activities, to which he is well adapted, have been given most of his efforts. During his leisure or spare moments he has studied, *En passant*, he has also scintillated in the social realms of Carolina.

*"Death is bitter and virtue is only an empty word, therefore we should let nothing go by."*

1925-26: Vice-President Athletic Council; Les Choises Pen.

1926-27: President Athletic Council; Les Choises Pen.

1927-28: Secretary Les Choises Pen; Philosophy Club; Manager Varsity Baseball; Business Manager 1928 BULL.

1928-29: Les Choises Pen; Philosophy Club; Manager Varsity Baseball.



GEORGE WILLIAMS  
Omega Psi Phi  
B.S. in Psychology  
WILMINGTON, N. C.

"Gosh a murey, knows!" This is "Sparky's" favorite expression. Since coming to Smith he has become quite an expert at five hundred and whist. He has the record for spreading nullos. "Let the ole man hav'em" he yells whenever he holds a good hand. His favorite pastime is sleeping. For a while "Spud" had an aversion to Eve's female progenition but after he met a "certain party" from South Carolina, it immediately vanished. We wish the "Ole Man" much luck in life and matrimony.

"Labor brings out the strength of manly character."

1925-26: Les Choises Pen.  
1926-27: Les Choises Pen.  
1927-28: Les Choises Pen;  
Philosophy Club,  
1928-29: Les Choises Pen.

JOHN T. WILSON  
Alpha Phi Alpha  
B.S. in Chemistry  
WASHINGTON, D. C.

If baldness is indicative of high morality, then the gentleman you are looking at is nothing short of genius. "Marble Top" tells us he is a Washingtonian, but we all are aware of the fact that he had his incipieny at Due West, S. C. As a student, he is A-1. He has shown rare ability in chemistry. Whatever field he takes up, it is a certainty he will succeed. It is true that "Teddy" is obstinate but his congeniality and other qualities easily outweigh it. Like all college men he has a nice "line" for the "fair ones."

"Trust every man just so much and nobody absolutely."

1925-26: President Sphinx Club; Glee Club,  
1926-27: Glee Club; Les Choises Pen; Varsity Football,  
1927-28: Glee Club; Les Choises Pen; Varsity Football;  
Alexander Dumas Reading Circle,  
1928-29: Glee Club; Les Choises Pen; President Alexander Dumas Reading Circle; Vice-President of Alpha Omicron Chapter, Alpha Phi Alpha.

JAMES T. YOUNG  
Alpha Phi Alpha  
B.S. in Mathematics  
WAKE FOREST, N. C.

"Shorty" thinks the class did him an injustice by not choosing him as the "Most Homely," but since he has other compensations he will not be peeved. Aside from being the shortest, most comical and most optimistic, "Rubber Nose" is the best ivory tickler. If friends were measured in dollars and cents "Buster" would be opulent. To know him is to like him.

"'Tis human to err, divine to forgive."

1925-26: University Pianist; Accompanist, University Quintette and Glee Club.

1926-27: University Pianist; Accompanist, University Quintette and Glee Club.

1927-28: University Pianist; Accompanist, University Quintette and Glee Club; Mattoon Literary Society; Die Lustigen Knaben.

1928-29: University Pianist; Accompanist, University Quintette and Glee Club; Mattoon Literary Society; Die Lustigen Knaben; Music Director Senior Class.



## Senior Class Honor Roll

King Sol had descended the western horizon a long time since. The atmosphere was polluted with heterogeneous, voluminous emanations from Luckies, Camels, Chesterfields, stogies and aged pipes: crude voices and smooth tones with an occasional interpolation of epithets were being diffused. The Senior class was assembled in its pandemonium to do honor or dishonor to its integrants. Three shakes of the gavel. The class was called to order. The presiding officer, G. F. Newell, announced that we were assembled in order to select the superlatives of the class.

Straightway the nomination began for the Adonis. This was difficult, for is not the Senior class "smooth" in its entirety? After eliminating "Barney" Whiteman, the debonair Scott Schenck McKnight was chosen as the "Most Handsome."

Although there are really no uncomely men in the class, "Bob" Crater, even after proffering his declination, got the majority vote for the "Ugliest."

Of course, every one of us are sheiks, John Gilberts, as it were, yet, we conceded that "Dusty" Byrd was the "Biggest Sheik."

Without an infinitesimal modicum of dissension "Dick" Cannady was unanimously declared the "Biggest Bull-shooter."

Not only the weaker sex, but boys as well, adore athletes. We decided that "Bun" Hayes had brought the class more glory in athletics than anyone else.

Though none of us wanted this honor some one had to get it. Effeminacy does not mean "lady-like" in this modern day anyway, rather it is just the antithesis. This being true, "Little" Jones was not peeved after captivating "Most Feminine."

The only man to be digging every day in the year when the sun appears is "Doc" Blue, hence, he was automatically the class "Book-worm."

At this time the vituperations became more accentuated and the smoke grew more dense. "Bigun" Steele, anti-volsteadite, was declared the "Biggest Sport."

"Barney" Whiteman, having featured in many political manuevers, easily captured the "Best Politician." He is also the "Best Dressed."

If you can beg and still maintain your dignity, if you can bum, yet not become submissive, you'll be a bum, my son. "Red" Chavis has always demanded car tickets, show fare, two-bits and so on *ad infinitum*. He has followed all baseball and football teams, attended exclusive affairs in the State, yet always broke. For those reasons he received more votes than Ricks as the "Biggest Hobo."

A doughnut was then exhibited. "Bill" Ozier saw the hole and "Shorty" Young, the whole of the doughnut. Thus they were chosen "Most Pessimistic" and "Most Optimistic," respectively. You can tell "Shorty" the world will end tomorrow and he will retort, "What d—I do I care?"

After choosing "Night Hawk" Ricks as the "Dumbest" to appease him, the title, "Biggest Necker" was added. Can he neck?—and how!

"Spud" Williams has no regard for the King's English or Hoover's vernacular. Without hesitation he was voted the "Most Ungrammatical."

Meet the winner of the coveted Junior prize, Mr. A. S. "Hoplite" Powe. He is the class orator.

Every class has its Bryants, and Ingersolls, Cannons and Darrows. "Jack" Waddell is the "Most Religious," "Van" Chavis the "Most Agnostic."

No one deemed that "Sticks" Malloy was other than the "Most Conceited." He opines that he weighs a ton.

There was silence! Every one desired to nominate himself as the "Most Popular." Whether axiomatic or not, "Hempie" Brown came away with the honor.

"Shorty" Young is the "Best Musician." "Sleepy" Lowe the "Most Lethargic." H. I. "Mom" Powe is the "Most Profane."

Having read all the Harvard Classics and the majority of the books in the University library worth perusing, "Chile" Marshall is the "Most Intellectual."

As all were not indulging in Old Golds, in fact, some were on their second carload, there was a short period of coughing, as the shorts and butts were slowly dying.



## Senior Class History

Another book in our lives is just coming to a close. College life with its tears and its smiles, its work and its play, its sorrow and its joy, is now a matter of history. And as we reflect over this history that had its beginning in the early fall of 1925 when eighty-five Freshmen from the rugged peaks of the mountains, from the coastal plains of the seashore, from the crowded cities of the far east, and from the cotton fields of Georgia reached their destination upon the picturesque campus of Johnson C. Smith University, we recall that even then a noble history was having its origin. Among this group was a variety of exceptional talent which by no means could be over emphasized in compiling the history of this to be famous number.

Now, in attempting to write the history of the class of '29, it is not our purpose to emphasize ostentatiously what the class has done, nor do we wish to foretell the future. We merely wish to place the facts upon the table of life and let the scrutinizing eyes of the observers of time peruse them and give credit to whom credit is due. We realize that when we face the world, the problem that will confront us will not be, what did you learn in College, or what do you know, but what can you do. The success and progress of the class of '29 will not be dependent upon the marks and grades of examination papers, which are already laid upon the dusty shelves of time, but upon the practical and serviceable application of our knowledge to the problems of every-day life.

The date of September 15, 1925, will always be to the members of the class of '29 as the date February 22, 1732, is to every red-blooded American: for it was then that we made our first adventure into college. We were subjected to the rules and regulations governing Freshmen, as outlined by the administration and also by the Sophomore class. It is very interesting to state, just here, that due to our large majority over the Sophomore class, we were able to defeat them in every attempted form of hazing. A fact which at that time helped us to adjust ourselves to our new environment. As the school year kept up its continual grind, some fortunate members of the new-comers began to win some distinction in the social life of the city, while others were engaged in other discoveries. During these long months of adjustment to our new life, Mr. Leon Steele was our popular and efficient leader.

After our summer vacation, we began our Sophomore year with big ideas and with the intentions of removing mountains and bringing about a complete revolution in the entire educational system. Therefore, we set out to work keeping up our routine of nightly study, and of course chasing Freshmen at odd intervals. We found our Sophomore year to be a very interesting one but as another vacation season was fast approaching, we began to realize, under the leadership of Mr. R. L. Crater, that we were not altogether as wise as we thought and that we still had our big ideas, with a few modifications, and that the educational system was sufficient for awhile longer. So after all, we only lived the ordinary lives of Sophomores.

During our Junior year we were under the leadership of Mr. G. F. Newell. It has been said very often that the Junior year is the turning point in a college education. Students really begin to take life seriously. If this be true, we could not have had a more fitting leader for our president, who with his executive ability, combined a high type of scholarship.

Our last year has been one of hard work and fanciful imaginations. We have worked hard to eradicate all possibilities of any conflicting elements between us and the final goal, and we have imagined ourselves reaching the goal that has been sought for four years. Throughout the three previous years, we have looked forward to the time when we would become Seniors, so we are not unmindful of the dignity and distinction which is ours; this being worthily typified in our president, Mr. G. F. Newell, who succeeded himself.

This history would be far from complete without a brief résumé of the various college activities which the members of the class of '29 have participated in. A well-rounded man must take part in various student activities and a well-rounded class must necessarily be represented in various student activities.

When the old "Bull" baseball aggregation defeated our ancient rival, Livingstone College, in 1926 and 1928 at Wearn Field before ten thousand fans, Mr. Burnalle J. Hayes, a member of the class of '29, was on the mound. With his exceptional ability as a pitcher he led the Bulls to the State championship.

While the Pampus Bulls romped over the State and snatched the football championship, the class of '29 was represented on the squad by three members, including Mr. Leon Steele, the captain of the squad.

It was due to the literary and executive abilities of the class of '29 that we had the honor of presenting to the University the first year book, known as THE BULL.

That we are not lacking in musical talent is shown by the fact that the University Glee Club, which broadcasts an annual program over station WBT, is represented by ten members of the class of '29; while the University Quintette, on its trip across the continent to Los Angeles, California, in 1927, carried with it three members of the class of '29, including the University pianist.

The fact that four members of the debating team for two years and members of oratorical contests and literary societies have come from the class of '29, is conclusive proof that this class will be well-represented in the field of jurisprudence in the coming ages.

To those who for four years have patiently guided our footsteps along the pathway of knowledge, who have borne with us in our mistakes, and rejoiced with us in our success, we would pay a farewell tribute. Future years alone will reveal how many lives were inspired by them to nobler heights of service—were directed by them along the road of truest success.

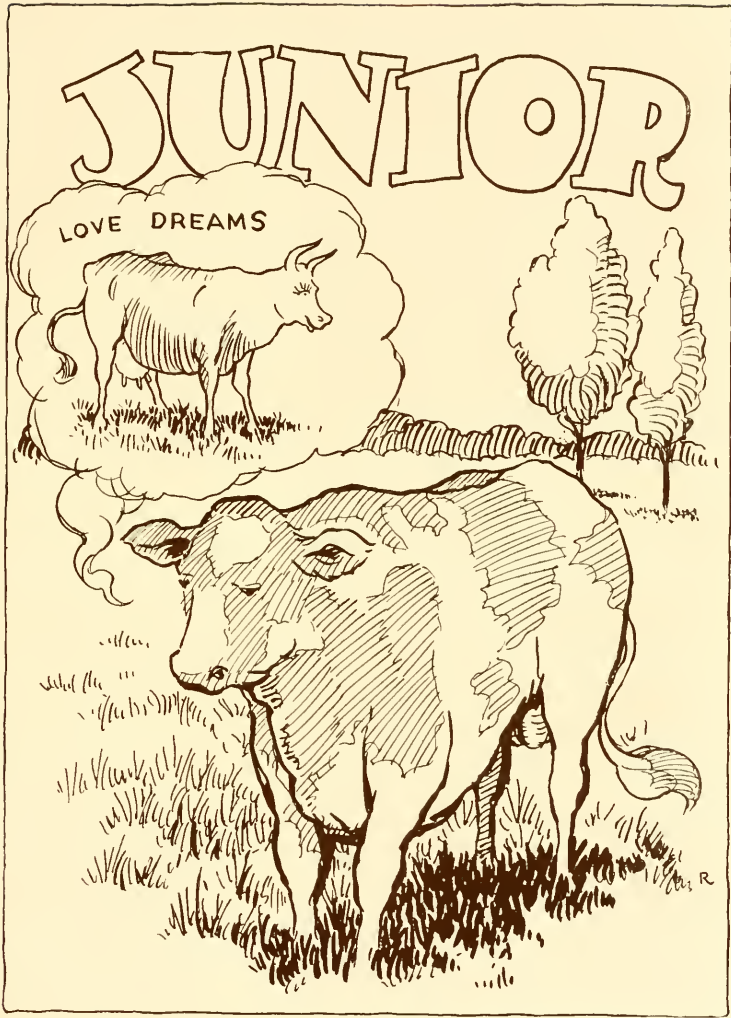
Now it is with a feeling of sadness that we come to the parting of the ways. However, we realize that we must break the link in the strong chain of association that has held us together for four years, and that the world is calling us to a nobler and greater service. Our departing words, therefore, are in the language of the song—

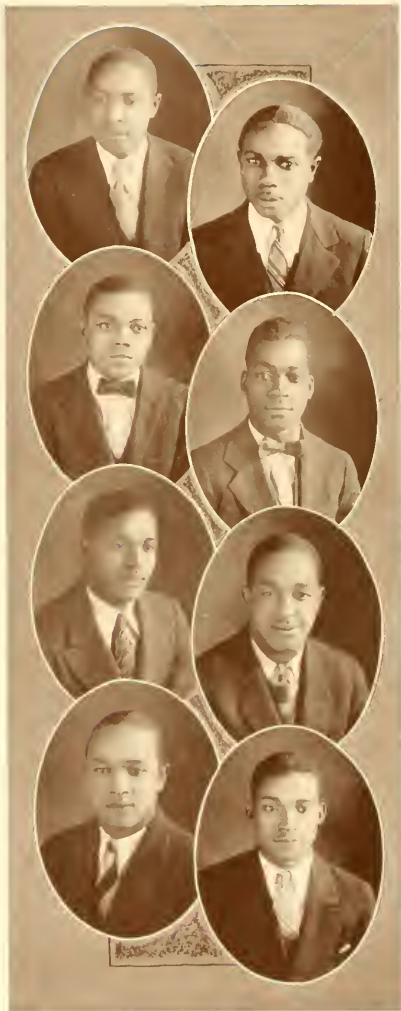
Good-bye to you.

Good-bye to you.

We'll ever sing good-bye to you.

—C. A. EVANS, *Historian*.





C. C. WATKINS  
Reidsville, N. C.

T. A. LASAINE  
Charleston, S. C.

R. E. JONES  
Dawson, Ga.

J. A. DUSENBURY  
Asheville, N. C.

R. E. VICK  
Wilson, N. C.

E. A. HOUSE-  
Asheville, N. C.

P. T. WILLIAMS  
Method, N. C.

J. D. TAYLOR  
Darien, Ga.

M. J. WHITEHEAD  
Rocky Mount, N. C.

A. S. BREWER  
Charlotte, N. C.

C. F. ERWIN  
Morganton, N. C.

T. A. JOHNSON  
Statesville, N. C.

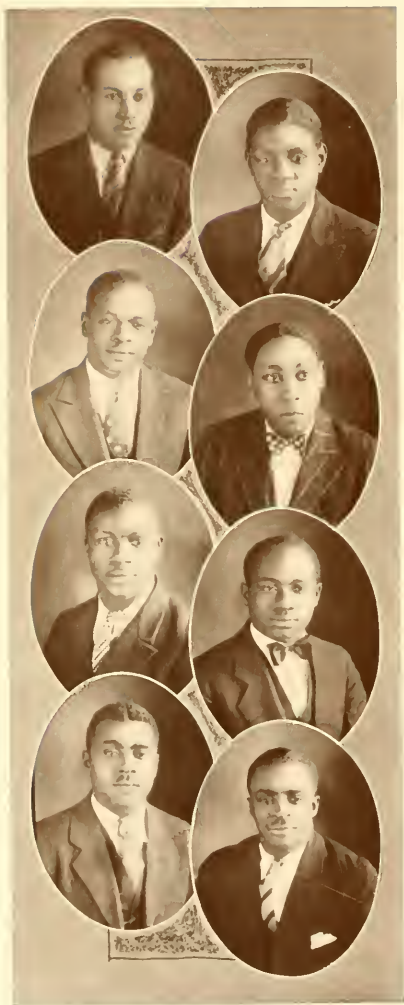
J. H. CARSON  
Morganton, N. C.

W. D. LITTLE  
Rockingham, N. C.

R. P. KIRKPATRICK  
Charlotte, N. C.

E. M. TOWNES  
Reidsville, N. C.





C. C. DE VANE  
Keer, N. C.

O. W. FLEMING  
Morganton, N. C.

L. H. THOMPSON  
Columbia, S. C.

W. T. FIELDS  
Pine Bluff, Ark.

L. SUMMERSETT  
Whiteville, N. C.

O. J. TAYLOR  
Brooklyn, N. Y.

E. B. FRINK  
Charlotte, N. C.

P. P. MCCORKLE  
Charlotte, N. C.



F. D. CURRY  
Bamberg, S. C.

W. P. BRODIE  
Charlotte, N. C.

O. L. WILSON  
Brunswick, Ga.

J. W. BROWN, JR.  
Charlotte, N. C.

A. T. HARRINGTON  
Newark, N. J.

E. H. JENKINS  
Charleston, S. C.

L. G. MULDROW  
Charlotte, N. C.

DEMSPE PETTWAY  
Warrenton, N. C.





A. J. CLEMENT, JR.  
Charleston, S. C.

A. E. MANLEY  
Asheville, N. C.

E. M. PRESSLEY  
Columbia, S. C.

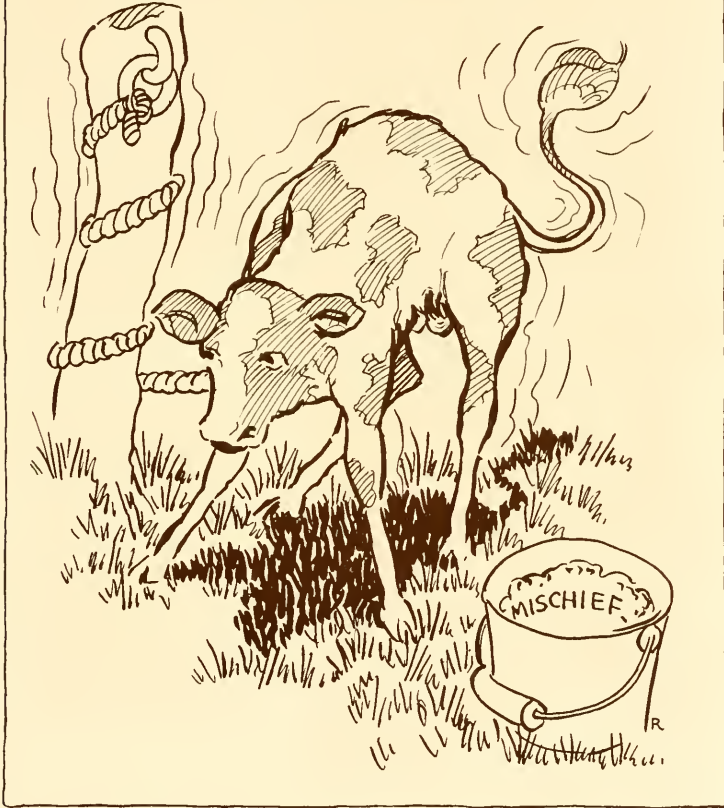
M. F. SHUTE  
Charlotte, N. C.

J. H. DIAMOND  
Charlotte, N. C.

H. E. WILLIAMS  
Lumberton, N. C.

J. O. STINSON  
Chester, S. C.

SOPH-





SOPHOMORE CLASS

OFFICERS

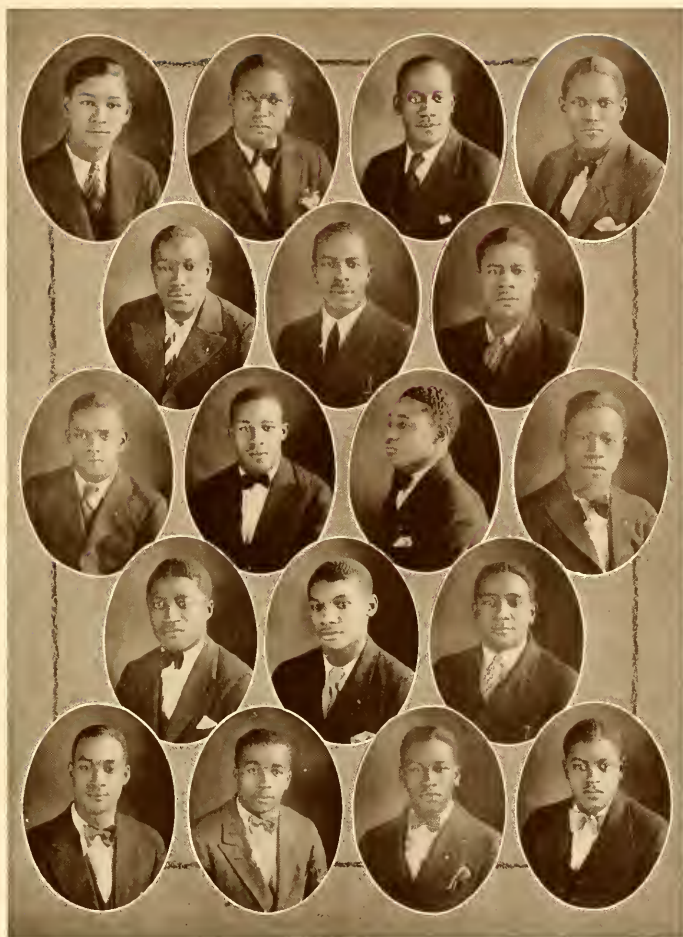
E. W. JONES  
S. H. TRAVIS

*President* H. TAFT THOMPSON  
*Vice-President* R. E. THOMPSON

*Secretary*  
*Treasurer*

MEMBERS

H. L. Biggs, W. M. Fowlkes, R. W. Dockery, Oliver W. Williams, R. E. Anderson, J. A. Murray, Jethro Henry, W. M. Coleman, E. R. Avant, W. H. Lindsay, R. A. Macon, R. H. Lee, H. M. Jefferson, Thebaud H. Jeffers.



SOPHOMORE CLASS

MEMBERS

H. B. Henderson, J. H. Bryant, T. R. Brown, E. A. McDowell, D. A. Horne, J. L. Powell, Paul Roddy, J. G. Benson, J. O. Ellis, H. L. Barksdale, C. A. Talbert, W. F. Shelly, J. H. Tucker, W. S. Brinkley, Harry Black, G. W. Neeley, G. W. Washington, T. J. Patton.



SOPHOMORE CLASS

MEMBERS

P. B. Adams, A. T. James, H. W. Leake, E. U. D. Goring, M. J. Jackson, F. A. Flemming, T. C. Goodwin, G. G. Haygood, J. H. Houston, P. W. Jenkins, E. S. Potts, J. T. Smith, C. G. Avent, I. D. Osa-  
bautey, G. G. Rice, J. S. Person, J. J. Jordan, J. H. McCrorey.



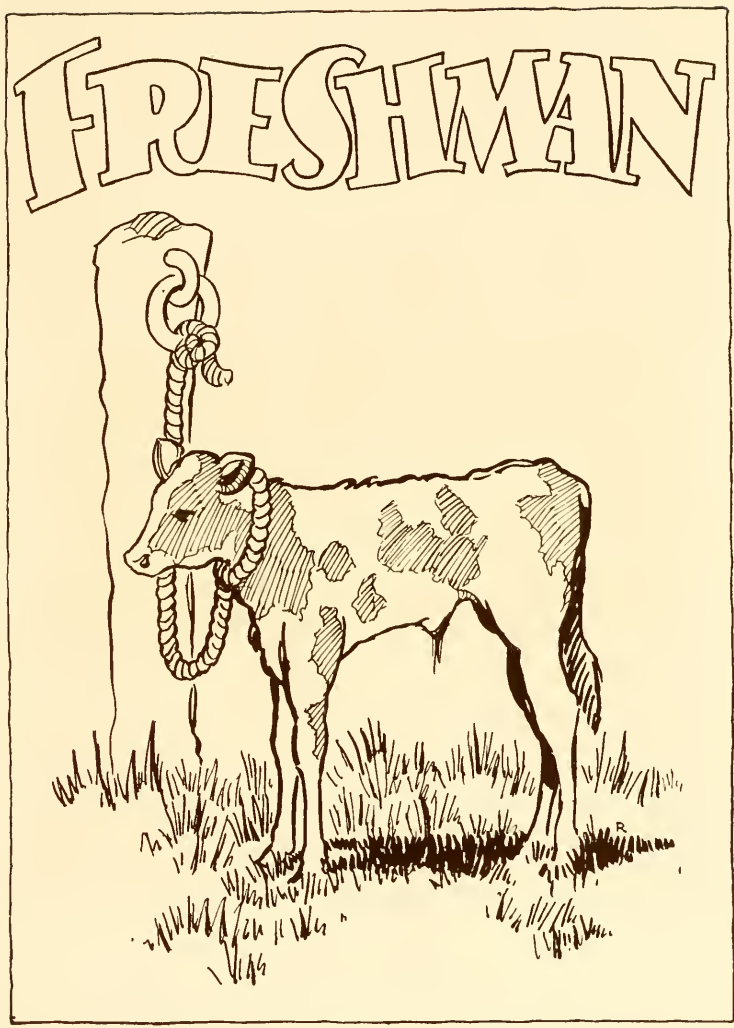
SOPHOMORE CLASS  
MEMBERS

T. M. Martin, F. K. Fawoo, S. L. Biggers, P. L. Daniel, T. M. Tolbert, B. L. Scott, H. E. Jones,  
W. H. Fletcher, S. G. Long, J. W. Martin, I. N. Wright, J. P. Massey, H. L. Clarkson, G. M. Williams.



SMITH COTTAGE  
*"This is the home of love."*







FRESHMAN CLASS

MEMBERS

h. b. rutherford, *secretary*, p. l. Neal, j. h. hargrove, f. p. haywood, j. e. hill, e. c. hall, j. j. jones, charles jones, III, m. h. kearns, w. b. mcmillan, andrew mack, jack lytle, j. m. mebane, j. d. powell, *chaplain*, j. ramsger, k. s. hall, quincy shooks, harmon fitch, w. d. delarge, *treasurer*, e. r. dudley, w. s. dinkins, ralph ellis, rufus flamingan.



FRESHMAN CLASS

MEMBERS

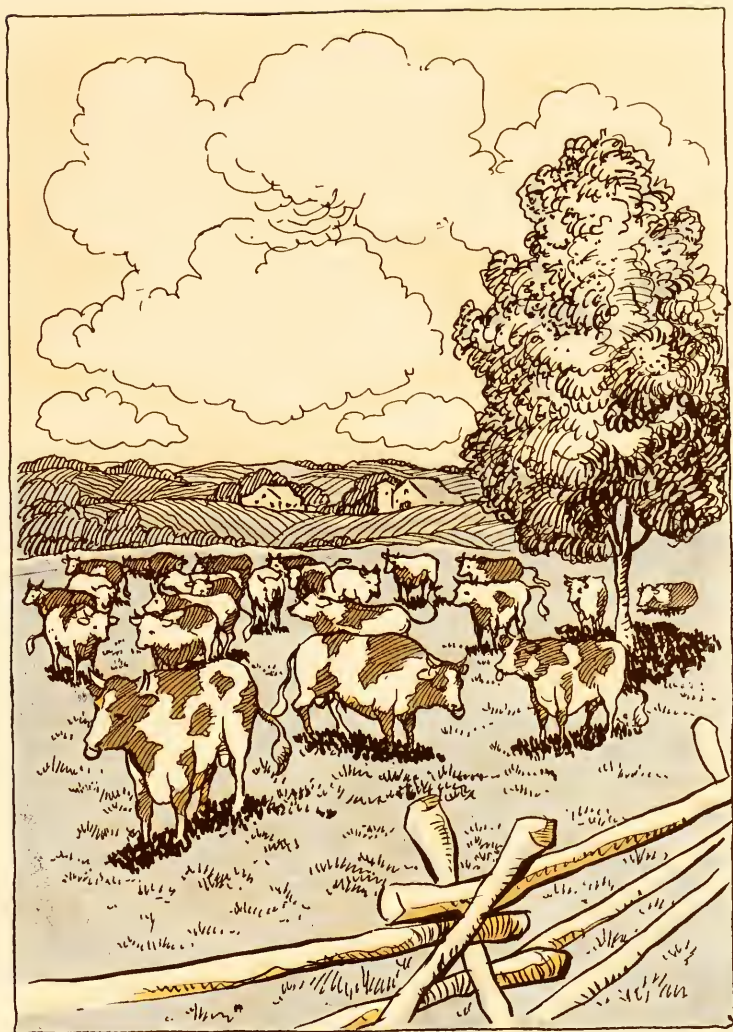
h. s. blue, *president*, s. carraway, h. t. hennett, e. c. hostie, w. g. bryan, w. r. crawford, spellman cunningham, j. e. pridgeon, e. l. rhodes, s. k. skinner, j. o. horne, j. c. belton, g. m. belton, h. r. richardson, h. d. belton, leroy tucker, j. h. stockton, arthur anderson, m. l. baker, f. d. alston, j. l. archia, frank bogie, *sergeant-at-arms*, h. c. givins.



### FRESHMAN CLASS

#### MEMBERS

luther gwyn, j. w. sexton, m. d. talley, h. g. sullivan, a. a. thompson, eddie tucker, j. f. towns, f. e. walker, s. weber, e. l. whitfield, troy williamson, w. l. white, d. l. hoyle, a. l. summer, *vice president*, charlie harris, *assistant secretary*, m. q. wyche, h. m. stinson v. h. long, engene ellis, e. o. ezell, e. c. griggs, j. e. griffin, *reporter*, e. e. gibson.

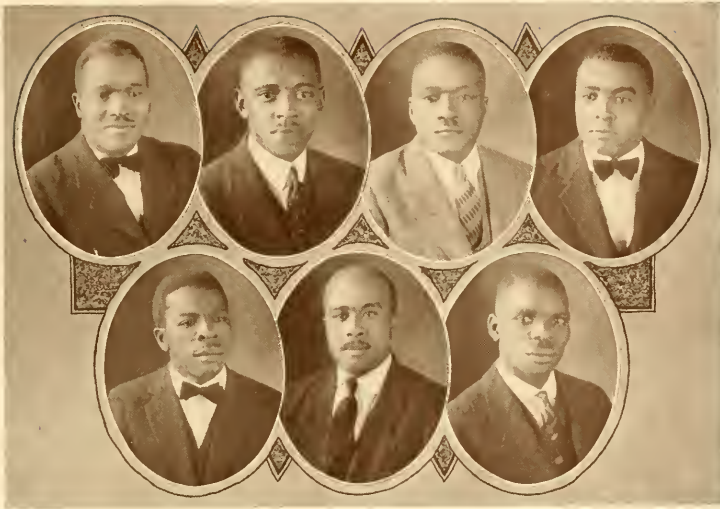


# SPECIAL CLASSES



YORKE JONES, D.D.  
*Dean, School of Theology*  
Johnson C. Smith University  
CHARLOTTE, N. C.

AUTHOR: "*The Climbers: A Story of Sun-Kissed Sweethearts*" and  
"*Gold and Incense.*"



## Theological Department of Smith University

C. H. WHITE, A.B., '26; B.D., '29  
 S. VANLANDINGHAM  
 A. E. FORTUNE, A.B., '26; B.D., '29  
 P. L. DEBERRY

E. E. GREGG  
 U. S. JOHNSON  
 B. L. GLENN

Since the beginning of Smith as Biddle Institute, and through the subsequent years after it became Biddle University, one of the most active departments has been the Theological School. In the charter of the University, and in its purpose as stated in all catalogs issued by Biddle-Smith, the aim of the Institution's existence is the training of teachers and ministers of the gospel. The institution has never once strayed from the purpose as set forth in these declarations.

At the present time the Theological School is enjoying a period of great popularity. To look into its future and try to guess what will be the immediate outcome of its work under the new name of Smith, one has but to look at the record made here and elsewhere by its graduates and to note the encouraging future looking just ahead of them. The graduates of this department are recognized by many standard theological graduate schools. When they succeed the name of Smith rises higher on the horizon of negro education.

The Smith Theological School stands facing the rising sun of a new day. Behind it is a past resplendent with the deeds of her older sons.



## The High School Department

### MEMBERS

Walter Alexander, Louis Blakeney, Albert Chance, W. E. Cook, T. S. Crawford, Charles Graham, T. E. Crier, McKenzie Hackett, J. L. Hollowell, Jr., Alfred Hunter, M. L. Leatherwood, B. L. Martin, C. G. Martin, Claude McAdams, E. McAdams, J. G. McKoy, W. K. Oliver, I. B. Plair, J. M. Russell, W. A. Samuel, L. H. Saunders.

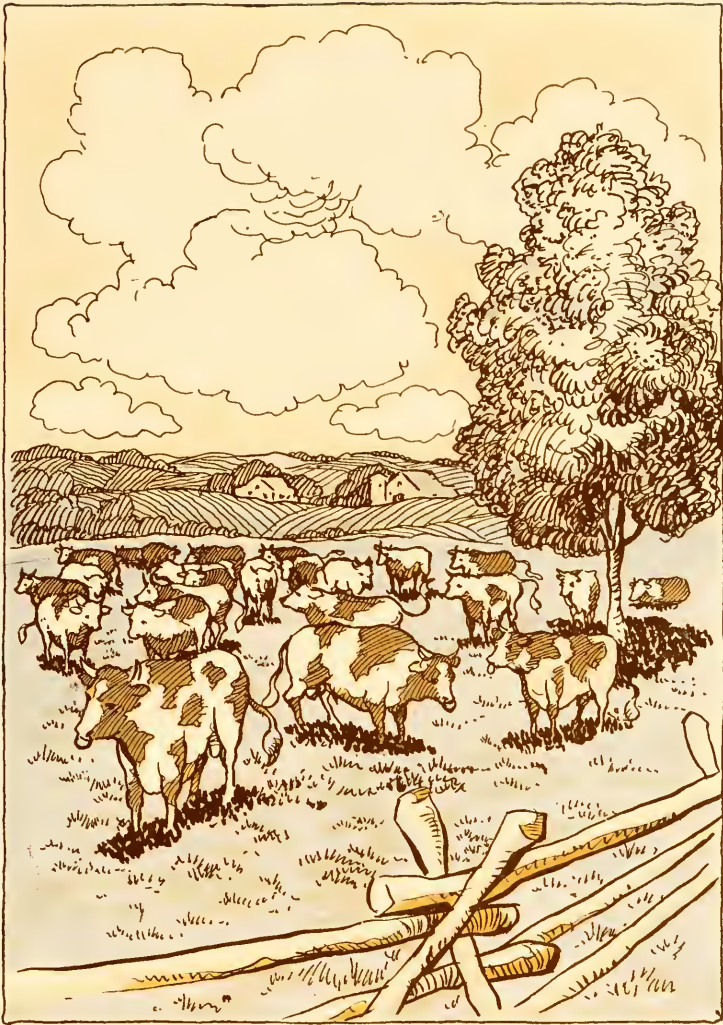
The closing days of a well-spent life extending over the days when there existed no schools for this type of learning; the end that comes to everything when it has served its purpose, lived its life of usefulness, known joys and success, shone in the dazzling light of fame and then the cold dustiness of an unheralded descent into oblivion. These may well typify the passing of the High School at Smith, they may well serve as epitaphs on the headstone of this passing sign of progress.

With this presentation in the 1929 B. A. the High School department ceases to be a part of Smith. The purpose for which it was founded has been served; the increase in number of accredited high schools in the State and this immediate vicinity has taken away the need for such a department in this University.

Throughout the years Smith has stood 61 years - this department has been connected with it. In this period there were times when the four high school classes far outnumbered students in other departments. They have dominated these and they have known how it feels to trample dignified and sophisticated college Juniors and Sophomores under clumsy high school prejudices.

Representatives of all walks of life have passed from this integral part of our school and it is with some reluctance that we relinquish hold on this part of our University.





# ORGANIZATIONS

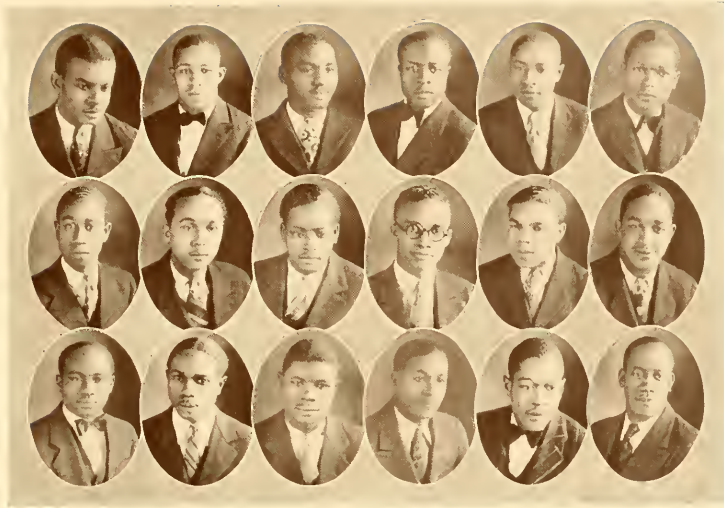


## Annual Staff

A. E. MANLEY  
*Editor-in-Chief*

M. J. WHITEHEAD  
*Business Manager*

G. W. BROWN  
*Faculty Advisor*



## Annual Staff

A. J. CLEMENT, JR.  
 O. L. WILSON  
 O. J. TAYLOR  
 J. O. ELLIS  
 T. JEFFERS  
 T. A. LASAINE  
 C. A. WALKER  
 J. H. CARSON  
 E. W. JONES  
 HEMPHILL BROWN  
 ROY LEE  
 R. E. VICK  
 C. C. WATKINS  
 C. F. ERWIN  
 T. A. JOHNSON  
 J. H. BRYANT  
 E. A. HOUSE  
 THEODORE BROWN

*Director of Divisions*  
*Literary Editor*  
*Photography Editor*  
*Associate Editor*  
*Publicity Manager*  
*Athletic Editor*  
*Assistant Business Manager*  
*Secretary*  
*Advertising Manager*  
*Advertising Manager*  
*Secretary*  
*Social Editor*  
*Advertising Manager*  
*Advertising Manager*  
*Publicity Manager*  
*Art Editor*  
*Feature Editor*  
*Fun Editor*



## Debaters

A. J. CLEMENT, JR.



E. W. JONES



G. F. NEWELL



S. H. TRAVIS



H. B. RUTHERFORD



J. C. GRIFFIN



E. C. GRIGG





WOODLAND SCENE FROM "In Abraham's Bosom"

# Alpha Phi Alpha

FOUNDED AT CORNELL UNIVERSITY, 1906

COLORS: *Black and Gold*

## ALPHA OMICRON CHAPTER

ESTABLISHED AT JOHNSON C. SMITH UNIVERSITY, 1923

There is so very little of the idealistic that can be realized individually. Man has recognized this law of living and doth turn to the group in his seekings for aid to perpetuate, to uphold and to honor a personal ideal or a group of ideals. It is this group aid that the fraternity strives to render. Only he who travels the highway of life, experiences the joys of a Heaven, with such a belief and a trying to realize the belief makes any fraternity a vital necessity to us of this earth world. May they ever truthfully live unto their purpose.

### OFFICERS

A. J. CLEMENT, JR.	President
J. O. ELLIS	Vice-President
O. J. TAYLOR	Recording Secretary
R. H. LEE	Financial Secretary
L. SUMMERSETT	Corresponding Secretary
H. B. HENDERSON	Editor to the <i>Sphinx</i>
J. L. POWELL	Chaplain
W. M. COLEMAN	Treasurer
E. S. POTTS	Historian
JETHRO HENRY	Sergeant-at-Arms

### ROSTER

J. M. BELTON, '28	B. E. LOWE, '27
H. L. BIGGS, '28	G. G. LYERLY, '26
V. H. CHAVIS, '27	R. H. LEE, '28
A. J. CLEMENT, '28	W. H. LINDSAY, '28
W. M. COLEMAN, '28	H. L. MARSHALL, '27
R. L. CRATER, '26	E. A. McDOWELL, '28
F. D. CURRY, '28	G. F. NEWELL, '26
J. O. ELLIS, '28	J. L. POWELL, '28
W. M. FLETCHER, '28	E. S. POTTS, '28
E. E. GREGG, '23 (Charter Bro.)	L. SUMMERSETT, '28
JETHRO HENRY, '28	O. J. TAYLOR, '27
H. B. HENDERSON, '28	C. H. WHITE, '26
T. A. JOHNSON, '28	J. T. WILSON, '26
A. A. JONES, '27	C. A. WALKER, '28
	J. T. YOUNG, '26

### FRATRES IN FACULTATE

T. C. MEYERS	C. R. TAYLOR
G. F. WOODSON, JR.	S. D. WILLIAMS



ALPHA OMIKRON CHAPTER OF THE ALPHA PHI ALPHA FRATERNITY AT  
 JOHNSON C. SMITH UNIVERSITY, CHARLOTTE, N. C.



# Kappa Alpha Psi

FOUNDED AT INDIANA STATE UNIVERSITY, JAN. 5, 1911

## ALPHA EPSILON CHAPTER

ESTABLISHED AT JOHNSON C. SMITH UNIVERSITY, DEC. 10, 1927

### OFFICERS

J. HENRY ALSTON	Polemarch
O. LEWIS WILSON	Vice-Polemarch
E. M. PRESSLEY	Keeper of Records
J. D. TAYLOR	Keeper of Exchequer
E. HARLESTON JENKINS	Strategus
A. T. JAMES	Lieutenant-Strategus
T. ALONZO LASAINE, JR.	Historian
C. C. DEVANE	Reporter

### ROSTER

#### Students

P. B. ADAMS	E. W. JONES
J. G. BENSON	H. E. JONES
L. L. BLAKENEY	J. A. JONES
J. A. BLOUNT	R. E. JONES
A. S. BREWER	J. H. JUSTICE
J. W. BROWN, JR.	DEMPSE PETTWAY
T. C. GOODWIN	A. S. POWE
A. T. HARRINGTON	H. T. THOMPSON

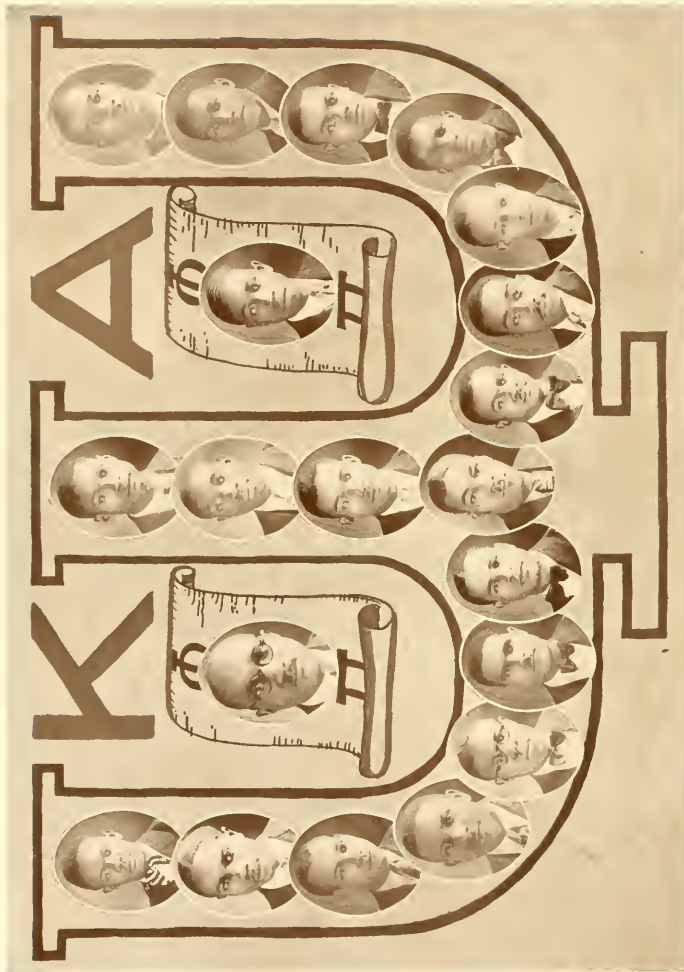
#### Faculty

T. S. JACKSON

#### City

A. M. ROLLINS

Established December 10, 1927, Alpha Epsilon Chapter of the Kappa Alpha Psi Fraternity has ever since that date been persistent in living up to the ideals of the grand body. The numbers maintain high standards of scholarship and morals, and constitute an ideal group in which good fellowship abounds. They are Kappas.



ALPHA EPSILON CHAPTER OF THE KAPPA ALPHA PSI FRATERNITY AT  
JOHNSON C. SMITH UNIVERSITY, CHARLOTTE, N. C.

# Omega Psi Phi

Rho Chapter of Omega Psi Phi Fraternity was among the first chapters established after the expansion program had been adopted by the National organization.

It came to the Smith campus November 7, 1921, and since that time has endeavored to keep high the ideals for which Omega stands and to uphold and encourage the ideals of this institution.

The roster of the chapter consists of the following:

## OFFICERS

A. E. MANLEY	<i>Basileus</i>
C. C. WATKINS	<i>Vice-Basileus</i>
M. J. WHITEHEAD	<i>Keeper of Records and Seals</i>
R. E. VICK	<i>Keeper of Finance</i>
E. A. HOUSE	<i>Keeper of Peace</i>
J. H. BRYANT	<i>Chaplain</i>
T. H. JEFFERS	<i>Chapter Editor</i>

## ROSTER

E. R. AVANT	C. W. OZIER
W. L. BYRD	G. W. PERRY
H. H. BROWN	J. O. POPE
J. O. CANNADY	C. M. STEELE
J. H. CARSON	L. STEELE
J. A. DUSENBURY	J. O. SCIPIO
W. M. DAVIS	M. F. SHUTE
C. A. EVANS	W. F. SHELLEY
C. F. ERWIN	E. M. TOWNES
B. J. HAYES	J. H. WHITEMAN
E. F. MALLOY	G. WILLIAMS
S. S. MCKNIGHT	P. T. WILLIAMS



RHO CHAPTER OF THE OMEGA PSI PHI FRATERNITY AT  
JOHNSON C. SMITH UNIVERSITY, CHARLOTTE, N. C.



## The Sphinx Club

### OFFICERS

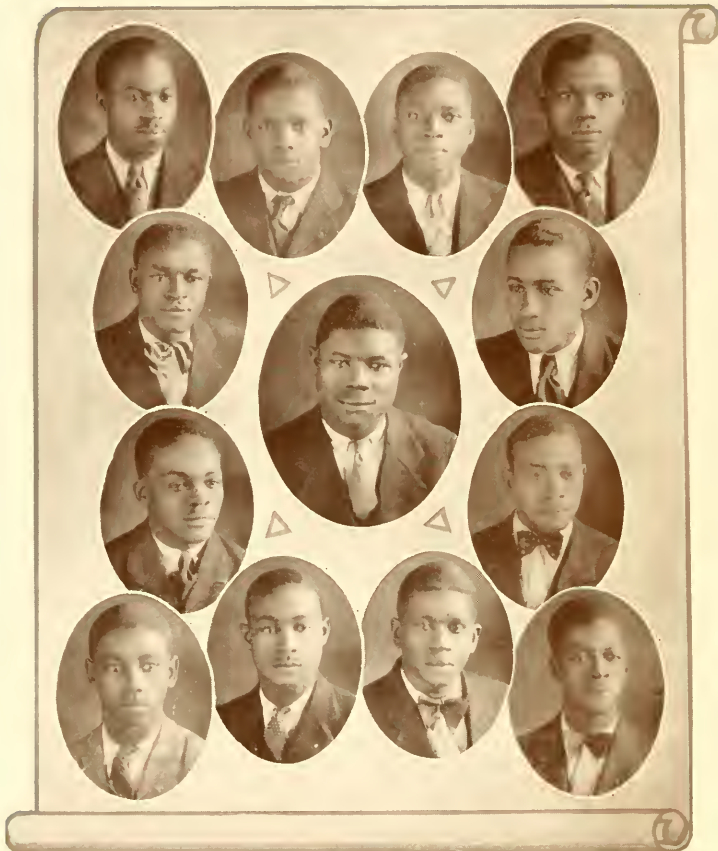
HARRY B. RUTHERFORD  
 ROBERT W. DOCKERY  
 PRICE L. NEAL  
 JAMES D. POWELL  
 FRED A. FLEMING  
 HUDSON L. BARKSDALE

*President*  
*Secretary*  
*Assistant Secretary*  
*Treasurer*  
*Chaplain*  
*Reporter*

### MEMBERS

S. H. TRAVIS  
 C. A. TOLBERT  
 S. H. BLUE  
 FRANK BOGLE  
 WILLIAM CRAWFORD  
 P. W. JENKINS  
 C. G. HARRIS

H. M. STINSON  
 J. L. LYTTLE  
 E. O. ELLIS  
 R. E. THOMPSON  
 E. R. DUDLEY  
 J. E. BELTON  
 S. P. BIGGERS



## Scrollers Club

### OFFICERS

G. G. RICE  
A. ANDERSON  
F. D. ALSTON

*President* R. W. ELLIS  
*Secretary* E. C. GIBSON  
*Treasurer* CHAS. JONES

*Sergeant-at-Arms*  
*Club Reporter*  
*Basketball Manager*

### MEMBERS

D. A. HORNE  
J. H. HOUSTON

W. D. LITTLE  
J. M. MEBANE

P. P. MCCORKLE  
J. F. TOWNES  
T. M. TOLBERT

W. S. DINKINS  
W. D. DeLARGE

L. L. GWYN  
A. J. MACK



JAMES H. (Teedumup) HOUSTON

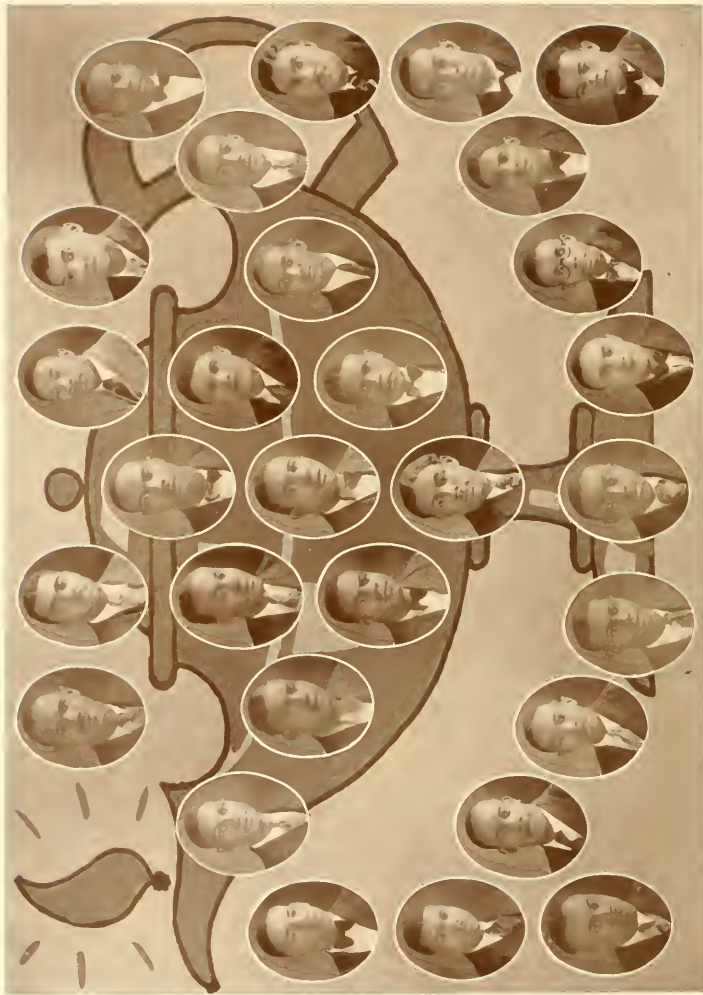
Houston is Captain of the Big Scroll Five. He is the other half of that forward combination of Houston and Goodwin. This boy is long and rangy, and plays with a world of form.

## Scrollers' Basketball Stars

DELANEY (Dump) HORNE

Horne is another player of Varsity calibre. He is one of the best defensive players in inter-pledge club basketball, or on the campus. He is fast and aggressive. The guard combination of Horne and Mebane was unbeatable.





LAMPADOS CLUB

OFFICERS: T. R. BROWN, *President*; J. C. GRIFFIN, *Vice-President*; E. C. GRIGG, *Secretary*; G. M. WILLIAMS, *Assistant Secretary*; J. W. MARTIN, *Member at Large*; J. C. COTT, *Chairman*; H. W. P. BRADY, *Business Manager*; W. P. BROWN, *Editor*; E. B. FRISK, *Reporter*; FRANKS, W. M., FOWLER, F. P., HAYWOOD, M. J., JOHNSON, H. W., LEVINE, R. A., MACON, W. B., McMELEN, E. L., ROBERTS, R. A., RUSS, R. P., KIRKPATRICK, S. K., SCHNEIDER, J. H., TUCKER, J. H., HARGROVE, O. B., WILLIAMS, W. S., WHITE, T., WILLIAMSON, J. N., WRIGHT.





UNIVERSITY QUINTETTE  
J. T. YOUNG, Pianist, L. W. GASTON, G. WILLIAMS, H. L. MARSHALL, J. A. DUSENBURY, A. A. JONES



## Glee Club

### OFFICERS

A. A. JONES  
 C. A. EVANS  
 B. E. LOWE  
 JOS. A. JONES  
 J. C. BRYANT  
 W. S. PEYTON  
 J. T. YOUNG  
 A. J. CLEMENT

#### *First Tenors*

J. C. BRYANT  
 F. D. CURRY  
 L. W. GASTON  
 G. HALL  
 E. A. McDOWELL  
 R. A. RICKS  
 H. G. SULLIVAN  
 R. E. VICK  
 G. WILLIAMS

#### *Second Tenors*

J. L. BLAKENEY  
 H. BROWN  
 V. H. CHAVIS  
 M. J. JACKSON

JOS. A. JONES  
 R. E. JONES  
 T. JEFFERS  
 J. D. POWELL  
 O. A. SHOOKS  
 H. E. WILLIAMS  
 J. P. WILSON

#### *First Bass*

J. A. BLOUNT  
 W. M. BRINKLEY  
 C. C. DEVANE  
 R. W. DOCKERY  
 J. C. GRIFFIN  
 M. M. HACKETT  
 S. G. LONG

*President*  
*Vice-President*  
*Secretary*  
*Treasurer*  
*Manager*  
*Director*  
*Pianist*  
*Reader*

H. L. MARSHALL  
 J. O. STINSON  
 J. T. WILSON

#### *Second Bass*

J. H. BRYANT  
 J. A. DUSENBURY  
 C. A. EVANS  
 T. E. GRIER  
 A. A. JONES  
 M. H. KEARNS  
 B. E. LOWE  
 E. L. MCADAMS  
 R. A. MACON  
 A. S. POWE  
 W. F. SHELLEY

## University Glee Club

The University Glee Club was organized in the autumn of 1926.

Under the direction of Mr. W. S. Peyton, it has become one of the most important student organizations in the University.

The Glee Club has filled several engagements this year and has several others booked.

## University Quintette

The Johnson C. Smith University Quintette was organized in 1908 by Dr. T. A. Long. For twenty years the Quintette has appeared on programs at the General Assembly of the Presbyterian Church, U. S. A.

In addition to singing at the General Assembly each year, the Quintette has appeared extensively in the Carolinas.



## Les Choises Peu Club

### OFFICERS

V. H. CHAVIS  
 C. A. EVANS  
 J. A. SQUIRE  
 S. S. MCKNIGHT  
 GEO. NEWELL

*President*  
*Vice-President*  
*Secretary*  
*Assistant Secretary*  
*Treasurer*

### MEMBERS

H. L. BIGGS  
 H. C. GRAVES  
 C. W. OZIER  
 G. G. LYERLY  
 PAUL R. DUSENBURY  
 L. L. BLAKENFY  
 J. H. WHITEMAN

J. T. WILSON  
 LEON STEELF  
 JAMES POPF  
 B. E. LOWE  
 GEORGE WILLIAMS  
 R. A. RICKS  
 B. J. HAYES

J. O. CANNADY



## Palmetto State Club

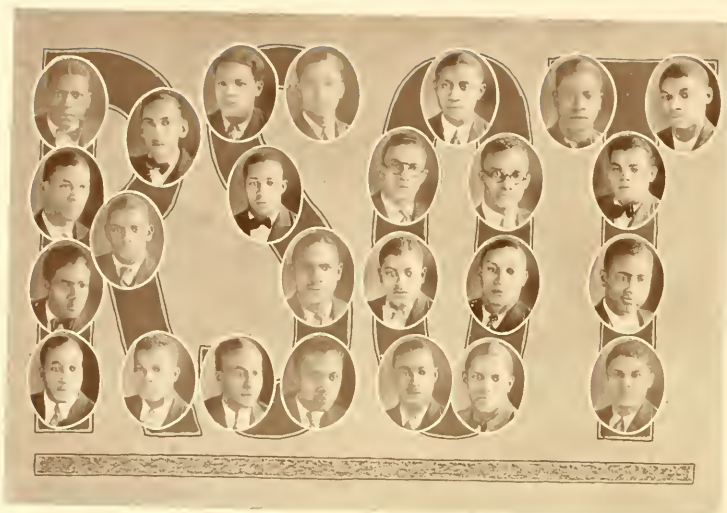
### OFFICERS

HEMPHILL BROWN, *President*

GRADY RICE .....	<i>Vice-President</i>	E. E. GREGG.....	<i>Historian</i>
H. T. THOMPSON.....	<i>Secretary</i>	R. W. ELLIS.....	<i>Sergant-at-Arms</i>

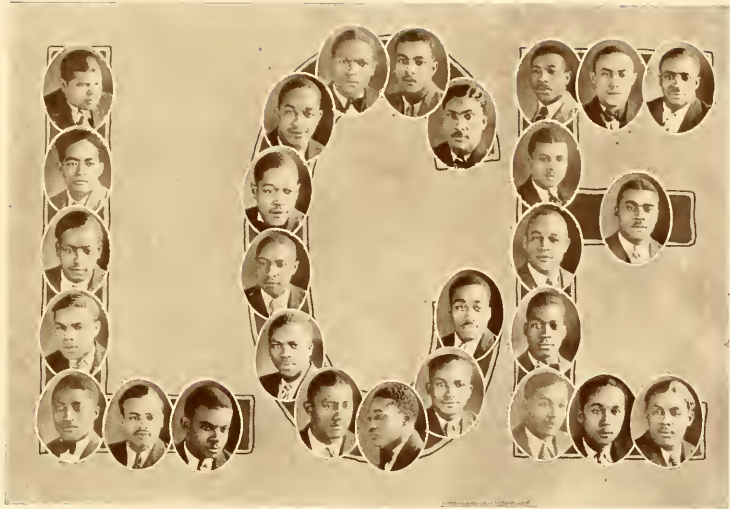
### MEMBERS

H. M. JEFFERSON, R. A. MACON, LEROY TUCKER, EDDIE TUCKER, C. A. WALKER, M. J. JACKSON, T. A. LA SAINÉ, A. J. CLEMENT, J. O. STINSON, H. L. BIGGS, J. E. BELTON, W. L. BYRD, H. L. CLARKSON, H. L. BARKSDALE, R. CUNNINGHAM, J. J. JORDAN, V. B. LONG, M. L. LEATHERWOOD, C. McADAMS, A. S. POWE, H. I. POWE, J. T. SMITH, Q. SHOOKS, M. D. TALLY, C. M. STEEL, G. W. WASHINGTON, J. M. BELTON, R. CRAWFORD.



## Royal Sons of Tut

W. H. FLETCHER, <i>H. P.</i>	P. W. JENKINS
R. W. DOCKERY, <i>R. S.</i>	R. H. LEE
J. H. MCCROREY, <i>A. S.</i>	W. H. LINDSAY
S. H. TRAVIS, <i>F. K.</i>	E. A. MCDOWELL
J. G. BENSON, <i>S. A.</i>	H. M. JEFFERSON, <i>K. T.</i>
S. L. BIGGERS	P. L. NEAL
W. R. CRAWFORD	I. N. WRIGHT
E. R. DUDLEY	J. M. MEBANE
J. O. ELLIS	T. J. PATTON
W. M. FOWLKES	H. B. RUTHERFORD
E. C. GRIGGS	C. A. TOLBERT
M. J. JACKSON	J. H. TUCKER
	O. B. WILLIAMS



## Les Chevaliers Elegants

### OFFICERS

M. J. WHITEHEAD  
 A. E. MANLEY  
 J. H. CARSON  
 C. F. ERWIN  
 W. F. SHELLY  
 J. W. MARTIN  
 A. J. CLEMENT, JR.

*President*  
*Vice-President*  
*Secretary*  
*Assistant Secretary*  
*Sergeant-at-Arms*  
*Chaplain*  
*Treasurer*

### MEMBERS

M. L. BAKER  
 J. L. LYTLE  
 J. H. BRYANT  
 E. A. HOUSE  
 T. A. JOHNSON  
 C. C. WATKINS  
 E. M. TOWNES  
 M. L. SHUTE  
 H. L. BARKSDALE  
 F. D. CURRY

SHAW BREWER  
 P. P. MCCORKLE  
 W. P. BRODIE  
 J. C. GRIFFIN  
 R. A. MACON  
 E. B. FRINK  
 P. L. DANIEL  
 J. A. DUSENBURY  
 R. E. VICK  
 THEBAUD H. JEFFERS

T. M. MARTIN



## Die Lustigen Knaben

### OFFICERS

J. O. SCIPIO  
 HEMPHILL BROWN  
 R. L. CRATER  
 E. F. MALLOY

*President*  
*Vice-President*  
*Treasurer*  
*Secretary*

### MEMBERS

J. P. MASSEY  
 A. A. JONES  
 W. M. COLEMAN  
 T. R. BROWN  
 GRADY G. RICE  
 H. B. HENDERSON  
 E. S. POTTS  
 J. DIAMOND  
 P. E. DAVIS

W. L. BYRD  
 OTIS TAYLOR  
 W. S. ROBERTS  
 GEORGE MASSEY  
 J. M. BELTON  
 J. A. BLOUNT  
 A. S. POWE  
 C. M. STEELE  
 H. I. POWE





## Bachelors

### OFFICERS

OTIS J. TAYLOR .....	.....	<i>President</i>
OSBORNE L. WILSON .....	.....	<i>Vice-President</i>
A. J. CLEMENT, JR. ....	.....	<i>Secretary</i>
E. M. PRESSLEY .....	.....	<i>Treasurer</i>
LEGRANDE SUMMERSETT .....	.....	<i>Sergeant-at-Arms</i>

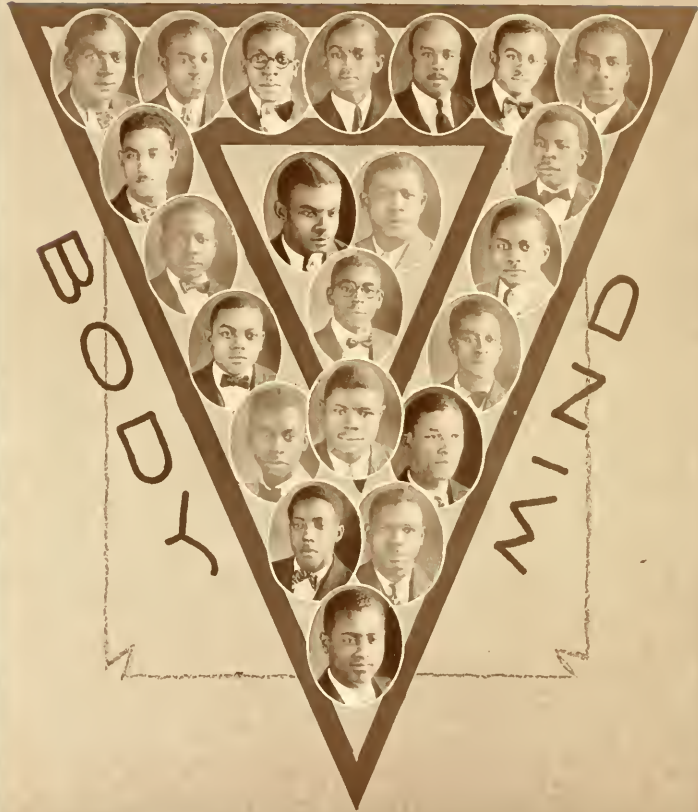
### MEMBERS

L. H. THOMPSON  
 JETHRO R. HENRY  
 H. B. HENDERSON  
 E. W. JONES  
 E. H. JENKINS  
 W. D. LITTLE

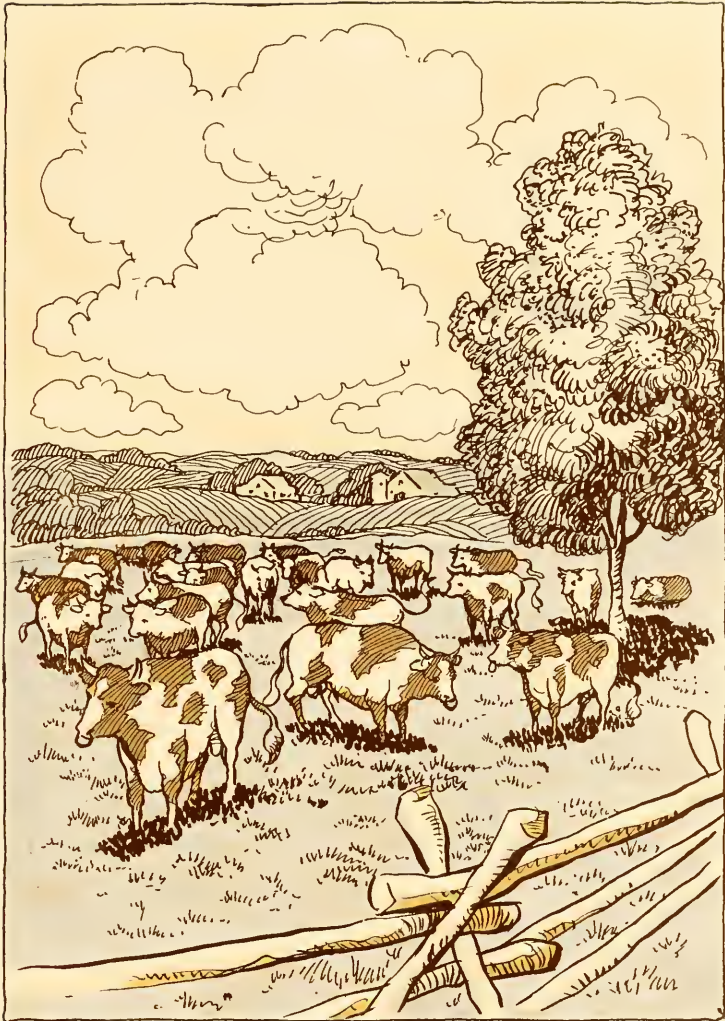
W. S. BRINKLEY

S. G. LONG  
 E. S. POTTS  
 J. D. TAYLOR  
 C. G. AVANT  
 G. G. HAYGOOD  
 C. O. EZELL

SPIRIT



Y. M. C. A.



# ATHLETICS



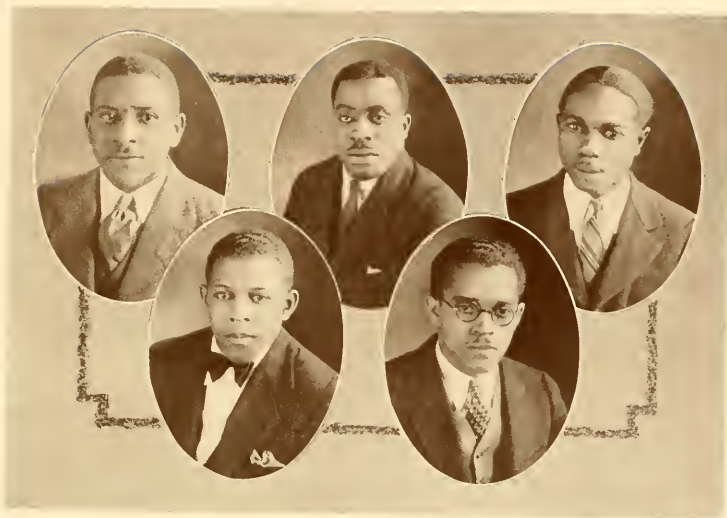
C. RANDOLPH TAYLOR  
*Director of Athletics*



IRVIN SCALES  
*Baseball Coach*



KENNETH DIAMOND  
*Assistant Football Coach*



## Board of Control

PROF. T. S. JACKSON

MR. T. A. LASAINE

PROF. C. R. TAYLOR

MR. LEON STEELE

PROF. G. F. WOODSON



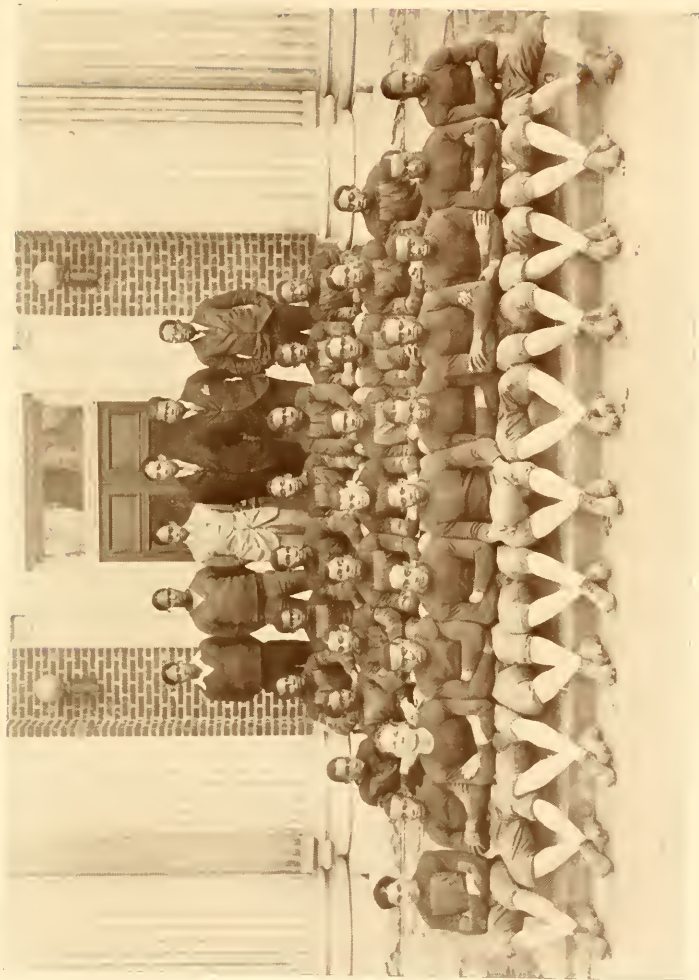


## Student Managers

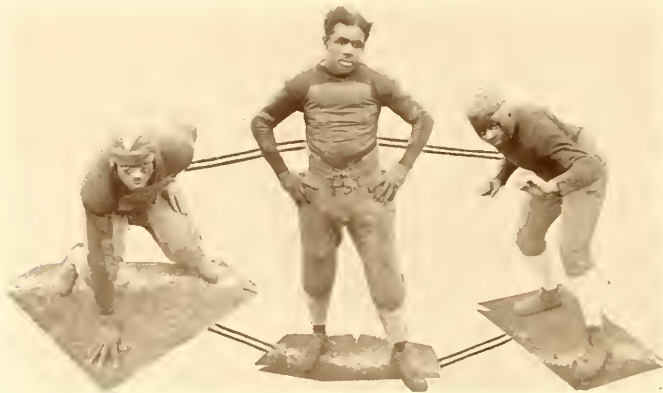
M. J. WHITEHEAD  
*Football*

B. J. HAYES  
*Basketball*

J. H. WHITEMAN  
*Baseball*



FOOTBALL SQUAD  
NORTH CAROLINA CHAMPIONS. 1928-'29



B. A. HALL

T. M. MARTIN

LEON STEELE



FRANK BOGLE  
*All-American Guard*



# Football Review

## RESULTS OF THE SEASON

Smith.....	3	North Carolina State	13
Smith.....	22	Shaw	6
Smith.....	47	State Normal	6
Smith.....	6	Howard	19
Smith.....	37	Paine	18
Smith.....	0	South Carolina State	6
Smith.....	19	Livingstone	6
Smith.....	13	Morehouse	19

## THAT CHAMPIONSHIP TEAM OF 1928

In the football season of 1928, Coach C. Randolph Taylor (affectionately "Randy"), turned out a team of stonewall linemen and whirlwind backs that galloped through its schedule to carry off the football championship of North Carolina.

Coach Taylor returned early to the campus with the grim determination to put out a team. However, the season was begun late in September, and with the memories of the doleful seasons of 1926 and 1927 ever present like gloomy ghosts, the outlook for 1928 was anything but cheerful.

With the services of Coach K. H. Diamond as assistant coach, and a nucleus of fifteen lettermen, Sir Randolph began the task of forming a "grid" machine. The men trained and drilled like Trojans and soon the Bull machine took shape, and needed only a little more drill in offensive playing—horsepower, we might say.

All too soon did the date come when the Bulls traveled to Du-hm, the nest of the North Carolina State Eagles. We who had been closely following our team through its daily drills were confident of victory. The Eagles, however, took to the air, and at this time of the season the Bulls had not as yet grown wings. The Eagles flew away with a 13-3 victory. "Red" Williams, versatile and clever of toe, saved the team from an "egging" with a goal from the field.

## HOWARD AT WASHINGTON

Cheer Leader "Van" Chavis, caught the Smith spirit and proceeded to convert the student body. "Van" and his able assistants, Carson and Griffin, called "pep" meetings daily, to which the students responded wonderfully. On October 11 the students were at the station en masse to send their team to Washington, D. C., to battle with the Howard Bisons. Amid a mighty stentorian demonstration the train rattled out of the Southern station, carrying twenty-two knights in gold and blue armor, determined to beat Howard.

The Bisons were expecting some very tame bullocks and came on the field prepared for a killing. Perhaps you would like to read Coach Taylor's write-up of that game:

"Howard won, but what a game! Eastern sports writers still speak of the valiant battle that the Bulls displayed in the Howard backyard. Bogle, huge guard, stopped everything that Howard had to offer. It was here that he made his bid that landed him a berth on Bill Gibson's All-American team. Martin, Hall and Foulkes spelled death to all the forward passes that Howard attempted. The end play of little Charlie Harris was beautiful to watch. Captain Steele was a tower of strength in the line. The Bulls' line completely outplayed the Howard forwards. Jack Martin intercepted a Howard pass and ran 65 yards for the lone Smith tally. However, two blocked punts turned the Gold and Blue back and Howard won, score 19-6. It was here that a great Smith team was born which was to mean sure death to all that were to come."

## SHAW AT CHARLOTTE

The Bulls saw red and went on a rampage. First came the Shaw Bears to be gored into passivity. The Bulls had now grown wings, and unleashed a whirlwind attack that left the Bears on their heads. That line! Whew! How it charged and blocked. That backfield of streaks and flashes—Hall, Martin, Foulkes and Williams running wild. Shaw had no chance. The closing gun found the Bears the victims of a 22-6 defeat.

## FAYETTEVILLE STATE NORMAL AT CHARLOTTE

Some cruel practical joker misinformed State Normal, and that team journeyed to Charlotte to tackle the Bulls. Whoopie look-a there! They line up: streaks, flashes, touchdown. A few repetitions of that with only one variation; and the score for the game was Smith 47, State Normal 6. In this game was a new man, Biggs in the backfield played a master game.

## SOUTH CAROLINA STATE AT ORANGEBURG

That game the Bulls played against S. C. State was one of those "tough breaks" heart-breaking affairs that leaves you using the word "if" quite often in any discussion thereof. It was a nip and tuck affair until in those last few minutes when a State player picked a loose pass out of space while his shoes sprouted wings. The game was a real exhibition of football as we like it. The score was State 6, Smith 0.

## PAINE AT CHARLOTTE

Paine College next visited us and received a severe drubbing at the hands of the fighting Bull machine. Score, 37-18.

## MOREHOUSE AT CHARLOTTE

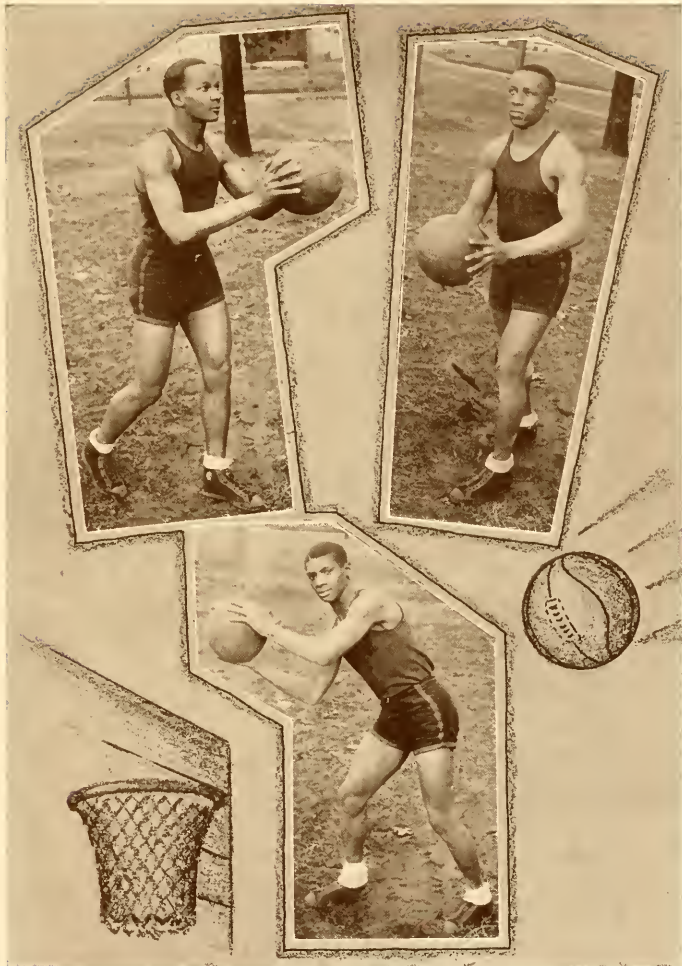
Next came the big Maroon Morehouse eleven up from Atlanta. This game was indeed a thriller. With both teams fighting last-ditch battles and with only three minutes to go with the score tied at 13-all, Ellis, elongated Maroon end, plucked a beautiful pass out of the air and raced 35 yards for a touchdown and a win at 19-13.

## THANKSGIVING GAME

On Thanksgiving Day the Bulls again met their ancient foes, the Livingstone Bears. The game was played on the Livingstone campus and drew quite a holiday crowd to Salisbury. Livingstone was easy for the Bulls. The final score was 19-6. This game gave the Championship of North Carolina to Smith.



BASKETBALL SQUAD  
NORTH CAROLINA CHAMPIONS, 1928-'29



H. EDWARD JONES

J. H. TUCKER

J. O. ELLIS

# Basketball Review

## RESULTS OF THE SEASON

Smith	32	Lutheran College	12	Smith	29	Shaw	40
Smith	18	Howard	23	Smith	21	Bricks	12
Smith	33	Livingstone College	5	Smith	30	Johnson Co. Tr. Sch.	32
Smith	17	Virginia Sem.	47	Smith	40	Howard	41
Smith	34	Clark	54	Smith	21	Lincoln	33
Smith	13	Morhouse	24	Smith	40	Bordentown	41
Smith	33	Shaw	12	Smith	26	Wissahickon	28
Smith	36	Johnson Co. Tr. Sch.	28	Smith	29	Virginia Sem.	44
				Smith	49	Danville Flashes	7

The cage season at Smith this year witnessed the first recognition here of basketball as a major sport. In response to Coach Taylor's call, there appeared a veritable army, willing, but exceedingly inexperienced. With not one man showing more than a possible potentiality for long-time basketball, Coach Taylor began the real task of building a team. After two weeks of intense drill the number of men out for the squad had been reduced to fifteen. These men worked hard, the coach worked harder, and the result was a basketball team.

The quint did not win all of its games; it did not win half of them, but it did play real basketball against some of the best teams in collegiate circles. The first game of the season was with Lutheran College of Greensboro, N. C., at Smith. Taylor's green team had a real scare, that evening and romped away with a 32-12 win. The Lutherites were outplayed, outfought, simply outclassed. This game was featured by the stellar playing of Jones, Christian and Avant. Avant was high scorer with 17 points.

### SMITH vs. HOWARD UNIVERSITY

The Smith Bulls, after a period of intensive training, took on the Howard Bisons for a heart-breaking, five-point loss. The score was Howard 23, Smith 18. In this game "Red" Ellis, Smith's stellar guard, gave a wonderful exhibition of defense playing. Avant played his usual scintillating game with Jones showing up well at center.

### SMITH vs. LIVINGSTONE COLLEGE

The next game caused the teams of the State Athletic Association to sit up and take notice. The Livingstone College Bears imagined themselves terrors and entered the bull pen. The Bears were soundly trounced to the tune of 33-5. The Bulls were going after the State championship. Avant, Jones and Christian played real basketball that evening.

### SMITH vs. VIRGINIA SEMINARY

When the Deacons came to Charlotte and took the Smith Bulls in tow to the tune of 47-17, it was simply a bad case of too much Henderson. A superior team whipped the Bulls that evening.

### THE CLARK GAME

The Clark University Panthers blew into the Hartley Herry Woods Gymnasium one evening to defeat a fighting Smith team 54 to 34. The Clark forwards, Johnson and Dalton, couldn't miss a shot; they accounted for 44 of Clark's 54 points.

### SHAW AND SMITHFIELD IN ONE EVENING

The Smith five had learned a few things from the C. I. A. A. and the S. I. A. A. champs, and after a brief drill period the team took on Shaw University and the Johnson County Training School on a double bill. The varsity played hang-up basketball to beat Shaw, 33-12. Avant, at forward, Ellis, at guard, and Jones jumping, played brilliantly in their positions. This game, we all thought, practically assured us the championship of North Carolina.

In the other game of the double-decker, the Junior varsity, the "Serams," to use Coach Randy's word, had a picnic in beating Johnson County Training School by the score of 36-28. Goodwin and Mebane showed up well, Mebane so well that when the team went North, he went as a part of it.

### SHAW AT RALEIGH

The quintet journeyed to Raleigh to clinch the State title. Something was wrong, however, and the Bulls came out on the short end of a 40-29 score, giving Shaw a slight edge in the race.

### THE NORTHERN TRIP

Coach Taylor had purposely picked a tough schedule in order to give his boys some much needed experience. They got it. From that viewpoint the entire season was a success. In the percentage column, however, the figures were rather small, especially the column for the trip.

The first game was a win from the Bricks Tigers; score 21-13. The game was hard-fought throughout with Christian and Avant playing scintillating basketball. The next game was a surprising loss to the Johnson County Training School's five. The score was 32-30. The Smith basketweavers then journeyed to the Capital City to play the Howard Bisons. Howard got the "break" and nosed out a fighting, flashing Bull team 41-40. Next followed a loss to Lincoln, score 33-21; a heart-breaking loss to Bordentown at Trenton, N. J., score 41-40, and then a nose-out at the hands of the fast Wissahickon Boys Club in Philadelphia; score 28-26.

The team now turned homeward meeting on the way back, Virginia Seminary and College; score, Seminary 44, Smith 29; and, The Danville Flashes at Danville; score, Smith 49, The Flashes 7.

When the season ended the Bulls were awarded the State Championship in basketball by the State Athletic Association.



BASEBALL SQUAD  
NORTH CAROLINA CHAMPIONS, 1928



RESULTS OF 1928 SEASON

Smith	7	N. C. State	6
Smith	10	A. & T. College	9
Smith	9	Albion	4
Smith	5	Livingstone College	3
Smith	6	N. C. State	9
Smith	6	A. & T. College	3
Smith	26	Shaw	5
Smith	27	St. Augustine	4
Smith	19	Mary Potter	0
Smith	15	Howard	5
Smith	16	Paine	2
Smith	3	Livingstone College	2
Smith	5	Shaw University	2



W. WILLIAMS

J. H. TUCKER

E. A. McDOWELL

J. PITCHFORD

J. O. HORNE



H. LINDSAY



B. J. HAYS

## 1929

# Tentative Baseball Schedule

JOHNSON C. SMITH UNIVERSITY

vs.

- March 23—N. C. College at Charlotte, N. C.  
 March 27—A. & T. College at Charlotte, N. C.  
 April 1—Livingstone College at Charlotte, N. C.  
 April 5—N. C. College at Charlotte, N. C.  
 April 6—St. Augustine at Charlotte, N. C.  
 April 8—Shaw University at Charlotte, N. C.  
 April 9—Fayetteville at Charlotte, N. C.  
 April 10—Bricks at Charlotte, N. C.  
 April 11—A. & T. College at Greensboro, N. C.  
 April 17—Shaw University at Raleigh, N. C.  
 April 20—St. Augustine at Raleigh, N. C.  
 May 6—Livingstone at Salisbury, N. C.



### NORTH CAROLINA CHAMPIONS FOR 1928

The baseball season of 1928 was one of the most glorious in Smith's history. The old reliable Coach Scales drilled his boys into the championship of North Carolina. That team of diamond heroes was really unbeatable. Losing only one game out of 13, this Smith team piled up a record sufficiently impressive to cause numerous individuals to designate it as National Collegiate Champions for 1928. This season the Bulls are going after the National title.

McKeithan is the only man not to return to the team this season. Mack's services will undoubtedly be missed. There are, however, quite a few good men around to fill the veteran catcher's shoes. There are on the campus ten lettermen: J. O. Ellis, selected by the faculty as the most athletic student, our fielder supreme; R. W. Ellis, pitcher of no mean ability and a hitter who can play the outfield with the best of them; B. J. Hayes, pitcher (invincible), who is picked to again beat Yokeley in the annual Easter Monday classic between Smith and Livingstone College; J. O. Horne, outfielder and first baseman with a world of goods; H. Lindsay, that flashy shortstop who takes all chances and hits with a will; T. M. Martin, who is expected to succeed McKeithan as backstop; E. A. McDowell, the kid ballplayer who plays a whale of a game at the third (parking sign) sack; J. Pitchford, a good little pitcher who can hit; J. Tucker, quite smooth, plays big league baseball at the keystone bag and blasts the apple all over the pasture, usually out; C. Walker, fleet-footed outfielder and W. Williams, an initial sacker who knows his bag. He kicks it from all angles with all manner of form. How can we lose a game with such players as these, a team of lettermen and every man a star?

## Outstanding Players

### FOOTBALL

During the football season of 1928, Coach Taylor brought out some very notable and scintillating stars. Among them were: Bogle, Captain Steele, Hall, Martin, Ellis, Baker, Jones, Henry, Foulkes and Biggs. One of these, Frank Bogle, was placed on Bill Gibson's All-American first team. Three others, Hall, Martin and Captain Steele, were given honorable mention. Let's hear a few things about these men.

Bogle, at guard, is a member of the Freshman class, a regular fellow, and an athlete who takes the game seriously. It was in the Howard game of the 1928 season that he first attracted the attention of Eastern sports writers by his hard and brilliant line play. This big fellow continued to play that kind of game throughout the season and was regarded as Smith's first All-American.

"Bus" Hall, a fleeting back with brains as well as dash, truly deserves at least an honorable mention on anybody's All-American squad. Hall is not a large man, weighing only 165 pounds. However, he is a most dependable man on defense. He is efficiency raised to the *nth* power, breaking up and intercepting forward passes, running like a Jazz Byrd, and tackling like a Wildman Lee. Hall is as good as the best.

"Jack" Martin, the Bulls' quarterback, gave all that he had in every game played; you could depend on "Jack" to do that. As the steering gear for the Smith machine he functioned perfectly. His team had confidence in him and played its hardest behind him. "Jack" was dependable.

Captain "Bigun" Steele, at left tackle, always played heads-up football. Seldom, if ever, brilliant or especially flashy in his playing, he was, nevertheless, always there in every play. Steele was one of those players who is never noticed unless he makes a misplay. You always expected the best from him, and his best he always gave. This is Steele's last year at Smith, and here's wishing him future success as great as those he has achieved here.

### BASKETBALL

The season of 1928-'29 was Smith's first with basketball as a major sport. However, Coach Taylor turned out a few men who really got into the sport and played real basketball. Three of these men are H. E. Jones, E. A. Avant and H. C. Christian.

"Ed" Jones, center, playing his first year of varsity basketball, shows promise of one crack basketball player in the seasons to come. "Ed" has played the full 40 minutes of every major game of the season. He is developing an uncanny ability to make shots from regions near the center circle.

"Ed" Avant, a flashy little forward, was high scorer of the team with a total of 151 points for the season. "Avy" is death on "crips" and shoots under pressure.

H. C. Christian, lanky forward, with a world of form, played some very good basketball, especially on that Northern trip when the combination of Christian, Avant and Jones was developed.

### BASEBALL

The members of that crack nine are all such stars that there is no real outstanding player. Those boys as I have told you in the baseball review, are all good. Hayes and Tucker, however, are the most talked of by the fans.

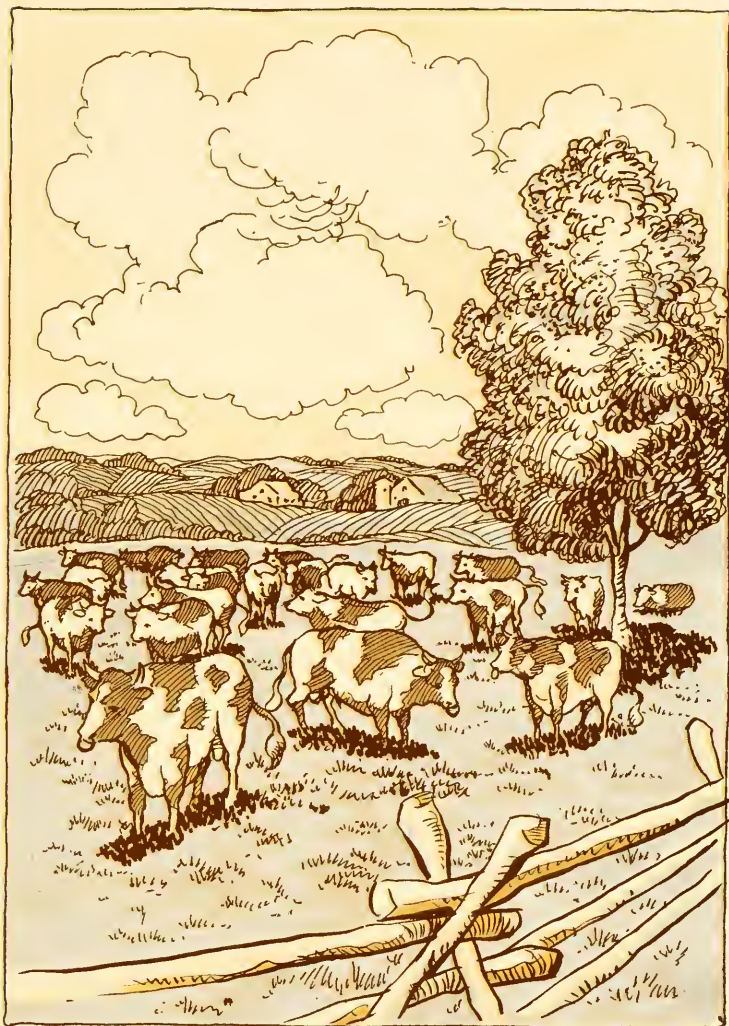
Hayes, as a pitcher, is truly an artist with the horseshoe enveloped sphere. Hayes delivers in big league style, and can hit when a hit is needed.

Tucker, at the keystone sack, is a ball player and that's that. This kid is the hardest hitter on the team and fields with all manner of ease.

### AN ALL-ROUND ATHLETE

James O. ("Red") Ellis is selected as the best all-round athlete. "Red" goes in for all sports with a will and enthusiasm that makes him an athlete of the first water. He possesses amazing vitality, and a sincerity of purpose that finds him always persevering. And—he trains.





HALL OF FAME



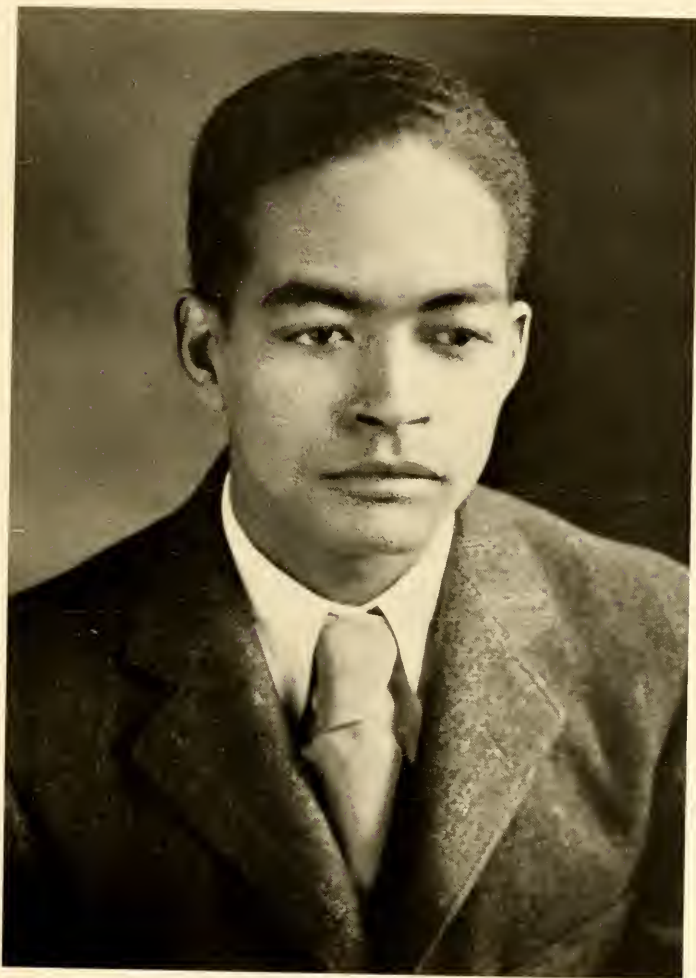
PRICE L. NEAL  
"Most Handsome"



A. J. CLEMENT  
*"Best Dressed"*



J. O. ELLIS  
"Best All-Round Athlete"



A. E. MANLEY  
*"Best All-Round Student"*



M. J. WHITEHEAD  
"Most Popular"



V. H. CHAVIS  
"Biggest Bum"



KAMPUS KLEETS



"WE'RE FUNNY THAT WAY"



CAMERA FRIGHT



SMOOTH ~



SOPH. SHIEK



TWIN CITY FRESHMEN



IDOLS







*Melancholy Baby*



*Mutt Steele, A Short Study Period  
Spectacular  
tackle*



*and his monument*

*The Hero McKnight*



*Looking wise when  
otherwise*



*It won't be  
long now*



*Campus Kids  
Sparkey + Ricks*



FIRST AND LAST ON PARADE



SWEETHEART



ENTRANCE TO KNOWLEDGE



CONSULTING CHEMISTS



"STINT"



CAMPUS COWBOYS



THREE SOUTHERN ESKIMOES



CAP'N KIDD



"FATS"



CO-ED'S WEAKNESS



*Horse Evans +  
Hoplight Powe*



*Figuring out Plans  
to Ship a Bird*



*A Fender ride beats walking  
says Chief Cannady*



*'Van' the  
Chemist*



*Just a few letters  
from her*



*Bun Hayes*

## Social Calendar, 1928-'29

- The registering of students in the College, Theological and High School Departments.
- SEPT. 30, 1928—The Alpha Fraternity entertains the Freshmen in the University gymnasium.
- OCT. 2, 1928—The annual new students' reception was given by the Y. M. C. A.
- OCT. 4, 1928—The football team left for Durham to engage in a game with N. C. College.
- OCT. 6, 1928—The students journeyed to Greensboro to witness the A. and T.-Tuskegee football game.
- OCT. 15, 1928—The Omega Fraternity entertained "Shaw" at their new home at 201 Martin street.
- OCT. 15, 1928—Mrs. Smith entertains the football squad and student body in banquet at the Refectory after the victory over the Shaw team.
- OCT. 21, 1928—The Scrollers, pledge club, entertains invited guests at the Clinton Park Casino.
- OCT. 29, 1928—The Good Fellows' Quartette is presented on the Lyceum Course in a musical recital.
- OCT. 31, 1928—The Vanity Fair entertains in their usual Halloween Masquerade.
- NOV. 20, 1928—The Omegas entertain their fourteen newly initiated brothers and guests at their home, 201 Martin street.
- NOV. 23, 1928—The Lampados Club gives a social at the Omega House.
- NOV. 24, 1928—W. E. B. DuBois is presented on the Lyceum Course in a lecture.
- NOV. 25, 1928—The Tatlers, social club, entertains its guest at its annual formal social at Clinton Park, lasting into the wee, wee hours of Turkey Day.
- NOV. 26, 1928—The day of days—On this Turkey Day, students walked, crawled and rode to Salisbury to attend the annual classic football game of the South, Livingstone vs. Smith University. Turkey Day celebration given in Salisbury at Crystal Lake Park, where the Smith students were guests.
- NOV. 27, 1928—The Kewpies gave their annual social at Clinton Park Casino.
- NOV. 28, 1928—The three fraternities entertain the fraters of the Morehouse football squad: The Kappas entertaining at the home of Dean and Mrs. J. Henry Alston, 601 Biddleville; the Alphas in a social at the Foster House, 609 Caldwell street; the Omegas at their home, 201 Martin street.
- DEC. 3, 1928—The Lyceum Course presented Kemper Harrelid in a violin recital, accompanied by his 13-year-old daughter, Josephine.
- DEC. 14, 1928—Basketball season opens with a game played with Lutheran College.
- DEC. 24, 1928—The Black Cats, social club, gave its annual reception, in a very unique style. It was enjoyed by students and holiday visitors. House parties galore were enjoyed by students remaining here during the holidays.
- JAN. 4, 1929—Students return from their homes after the strenuous Yuletide season.
- JAN. 8, 1929—A basketball game was played between the Howard Bisons and the Smith Bulls.
- JAN. 23, 1929—A thrilling game of basketball—Virginia State vs. Smith Bulls.
- FEB. 8, 1929—The Kewpie Cousins, social club, gave its annual social at Clinton Park Casino.
- FEB. 10, 1929—The Alphas open their new home, 100 Martin street. Many were the guests who enjoyed the hospitality of the evening.
- FEB. 11, 1929—The Smith Bulls defeat the Shaw Bears in a basketball game. The Scrollers Club defeat the Smithfield basketball team.
- FEB. 11, 1929—The Omegas entertain many guests and the Shaw basketball team at their home on Martin street.
- FEB. 15, 1929—Mr. W. L. Byrd entertained in honor of Miss Cousar of New York City, at the Omega House. Many were the guests who attended the affair.
- FEB. 15, 1929—The Ace of Clubs following with an evening given at Clinton Park Casino.
- FEB. 19, 1929—The Smith Bulls clashed with the Morehouse Tigers in a game of basketball.
- FEB. 19, 1929—The Alphas gave a social for the Morehouse team and its many guests at their home on Martin street.
- FEB. 19, 1929—The Kappas and Omegas entertained the Morehouse team and its guests at the Omega House on Martin street.
- FEB. 22, 1929—The basketball team leaves on its Northern tour.
- MARCH 8, 1929—The Fair Swastika Club entertains at the famous Casino.
- MARCH 15, 1929—The Royal Sons of Tut step out in all speed and style and give their second annual social at the Casino.
- MARCH 22, 1929—The baseball season opened with a game with N. C. College.
- MARCH 28, 1929—The elegant J. C. E.'s entertain their many friends and holiday visitors at Lakewood Park. The display of tricky lighting effect and wonderful music made the evening fully enjoyable.
- APRIL 1, 1929—The social rounds of the day are many. From 12 until 2:30, standing in line trying to purchase a ticket to attend the baseball classic of the South, Livingstone vs. Smith. From 9 P. M. and 7 A. M., students engage in struggle at Lakewood Park and Clinton Park Casino.
- MAY 3, 1929—The Alpha formal banquet.
- MAY 10, 1929—The Omega formal banquet.
- MAY 17, 1929—The Kappa formal banquet.

ADVERTISEMENTS

NILE ADV. CO.



## Jokes

WIFE: "I think I hear a burglar: are you awake hubby?"

HUSBAND: "No!"

---

### LEST WE FORGET

1. Steele, the religious skeptic.
2. Barney, the man who reasons and philosophies.
3. The "Want Ads" of "Van."
4. The advice of St. Pre.
5. 100 per cent coöperation is needed in the publication of a year-book.

---

PA (to son): "Son, what do you call a man who drives an automobile?"

SON: "That depends upon how close he drives to me."

—*Echo.*

---

### "ONE THING LACKING"

"My friend, have you enough confidence in me to lend me fifty dollars?"

FRIEND: "I have the confidence, but I don't have the fifty dollars."

---

### PLENTY!

HE: "Naw, I doesn't goes to college and I'se proud of my ignorance."

SHE: "Well, sweet kid, you have a *lot* to be proud of."

---

### "THE SEVEN WONDERS OF SMITH"

1. We wonder where the Dean of Soil got his "struggle buggs."
2. We wonder who leads prayer in Hell.
3. We wonder when the first prom will be given in the "gym."
4. We wonder if college isn't a bluff.
5. We wonder where the "blonde" came from.
6. We wonder why the Dean of Women is so cross.
7. We wonder who will be the first Negro President.

—Try N. Findout.

---

### EVIDENCE LACKING

TEACHER: "What part of speech is the word egg?"

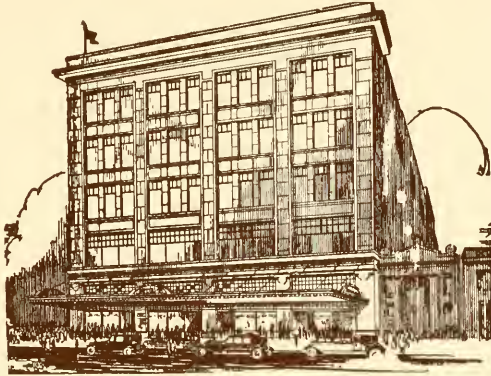
BOY: "'Noun,' madam."

TEACHER: "Is it masculine, feminine or neuter gender?"

BOY (looking sharp): "Can't tell 'til it is hatched."

*"Quality With Price"*

EFIRD  
CHAIN OF  
FORTY-TWO  
DEPARTMENT  
STORES



NEW CHARLOTTE STORE, CHARLOTTE, N. C.

Contains four acres floor space, six elevators, three escalators.  
Only Department Store in the South with escalators and self-leveling elevators.

STORES AT

Asheville, N. C.  
Charlotte, N. C.  
Winston-Salem, N. C.  
Concord, N. C.  
Gastonia, N. C.  
Rock Hill, S. C.  
Durham, N. C.  
Rocky Mount, N. C.  
Salisbury, N. C.  
High Point, N. C.  
Anderson, S. C.  
Monroe, N. C.  
Greer, S. C.  
Columbia, S. C.

Wilmington, N. C.  
Statesville, N. C.  
Danville, Va.  
Sumter, S. C.  
Goldsboro, N. C.  
Albemarle, N. C.  
Greensboro, N. C.  
Kannapolis, N. C.  
Hickory, N. C.  
Kinston, N. C.  
New York City  
Chester, S. C.  
Charlotte Bargain Center  
Charlotte Mercantile Co.

Greenville, S. C.  
Spartanburg, S. C.  
Laurinburg, N. C.  
Lumberton, N. C.  
Greenwood, S. C.  
Burlington, N. C.  
Lexington, N. C.  
Lincolnton, N. C.  
Lenoir, N. C.  
Florence, S. C.  
Forest City, N. C.  
Raleigh, N. C.  
Shelby, N. C.  
Wilson, N. C.

*Efird Brothers, Efird's Store Managers and Co-workers  
Appreciate your Patronage*

THE QUALITY MARKET

WE HANDLE THE BEST QUALITY OF MEATS

*Service is Our Motto*

Phone Hemlock 6281

Corner First and McDowell Streets

*"Better Printing Makes More Business"*

WASHBURN PRINTING  
COMPANY

18 W. 4th St. Phone Hem. 342

CHARLOTTE, N. C.

Drink and Enjoy Kenny's  
Coffee

C. D. KENNY CO.  
TEAS. COFFEES. SUGARS

327-329 East Trade St.  
Phone Hemlock 1551-1552

JOHNSON C. SMITH UNIVERSITY

CHARLOTTE, N. C.

FOOTBALL                      BASEBALL                      BASKETBALL  
TENNIS                              TRACK  
DEBATING                      DRAMATICS  
QUINTETTE                      CHORUS  
SCIENCE                              ARTS                              THEOLOGY  
A NEW GYMNASIUM

WRITE US FOR AN EDUCATION



ROYAL THEATRE *Go*

508 South McDowell Street

*The Finest Colored Theatre in Charlotte*

We Show the World's Greatest Productions

PICK OF THE PICTURES

*Always a Good Serial and a Funny Comedy*

A COMPLETE CHANGE OF PROGRAM EVERY DAY

DAVIDSON & WOLFE *Go*

*Wholesale Grocers*

313 South College Street

CHARLOTTE, N. C.

*Contractors for*

Sheet Metal Cornices

Sky Lights

Ventilators

Tin, Slate and

Gravel Roofing

G. G. RAY & CO. *Go*

OFFICE AND FACTORY

311 East Fifth St.

Telephone Hemlock 1094

CHARLOTTE, N. C.

*Specialties*

Warm Air Heating

Steel Furnaces

Lennox "Torrid Zone"

10-Year Guarantee

Ornamental Marques

*Drink* *Go*

NEHI

*for*

*Quality Beverages*

SOUTHEASTERN CONSTRUCTION CO.

210 West Second Street

CHARLOTTE, N. C.

We have erected the following buildings at Johnson C. Smith  
University

Berry Hall  
Smith Theological Dormitory  
Science Hall  
Refectory  
Printing Plant  
Three Residences for Faculty  
Gymnasium  
University Chapel

M E R I T A

BREAD and CAKES

Made by

MERITA BAKERS

WHY NOT OPEN AN ACCOUNT IN OUR  
SAVINGS DEPARTMENT?

FIRST NATIONAL BANK

Organized 1865

CHARLOTTE, N. C.

BELK'S - - For Value - - BELK'S

+ + +

We want you to know that you are always more than welcome at our store, and through our buying power we are in position to save you money.

+ + +

BELK BROS. CO.

EAST TRADE STREET

CHARLOTTE, N. C.

*When Better Automobiles Are Built—  
Buick Will Build Them*



C. C. CODDINGTON, Inc.

West Trade at Graham St.

Charlotte, N. C.

"There was a man from Havana,  
Who stepped on the peel of a banana,  
The word that he said  
As he stood on his head,  
Could not be used on Sunday school banners."

—I. W. JOKUM.

## Jokes

### WHY I FLUNKED HISTORY I THOUGHT THAT:

1. Joan of Arch was Noah's wife.
2. St. Bernard was a dog.
3. Monks had tails and lived in trees.
4. The fief was a musical instrument.
5. I also slept in class.

Now history is repeating itself—I'm taking it over.

—Howler.

### PROOF

The man who said money talks evidently was speaking of it when it said good-bye.

### FATHER AND SON

FATHER: "Bob, why are you always at the bottom of your class?"

SON: "It doesn't matter Dad, they teach the same thing at both ends."

### FOR SALE

"A good piano, by a lady with carved legs."

"FATS": "What did your wifey say when you came home late last night?"

"JIM": "Nothing—she just sat down at the piano and played. 'Tell Me the Same Old Story'."

—TONY.

### WANTED!

A new list of superlative adjectives, all old ones have been used in senior "write ups."

—"FATS"

### CURED!

"How did you cure your wife of her antique rage?"

"Oh, I gave her a 1900 model auto for her birthday."

### LOST!

Three hours of mathematics

Six months of sleep

Three beautiful girls

In publishing this edition.

—STAFF.

### HE DID NOT KNOW

(Student passing in notice to dean of men to inquire of book.)

"REV.": "The title of the book is 'The Last Days of Pompeii'."

DEAN: "The last days of Pompeii have been lost somewhere on the campus."

## MELLON'S

Smart Apparel for Men, Women  
and Boys

## Quality Jewelers

SPLENDID SELECTIONS TO CHOOSE FROM  
TRY OUR INDIVIDUAL CLASS AND FRATERNITY  
JEWELRY

+++

## M. B. SMITH & COMPANY

CASH AND CREDIT JEWELERS  
9 EAST TRADE STREET  
PHONE HEMLOCK 2877

## Louis G. Ratcliffe, Inc.

THE UNIVERSITY FLORIST

322 South Tryon Street

Charlotte, North Carolina

Five Point Drug  
Company

"At the Gates of the Campus"  
Hemlock 240 WE DELIVER

*Compliments of*  
**THE BANNER FURNITURE CO.**

"Out of the High Rent District"  
324-326 East Trade Street  
J. E. Dye, President and Manager

THE  
DOGGETT LUMBER CO.

*Builders' Supplies*  
Lath, Shingles  
Rough and Dressed Lumber  
Mantels, Sash and Doors  
Lime, Cement, Plaster, Etc.  
1-3-5 East Park Avenue  
Phones Hemlock 149-6624  
CHARLOTTE, N. C.

Standard Shoe Co.

32 East Trade Street  
Charlotte, N. C.  
*We Handle the Kangaroo Shoes  
for Men*

HARDWARE  
Charlotte Hardware Co.

JANITOR SUPPLIES  
House Furnishments for the  
KITCHEN AND DINING ROOM

Reliable Loan Co.

Phone Hemlock 5315  
*Licensed and Bonded Pawn Brokers*  
LOANS MADE ON  
Diamonds, Watches, Jewelry,  
Clothing and All Kinds of  
Personal Property  
209 East Trade Street -  
CHARLOTTE, N. C.

HEATING PLUMBING

J. V. ANDREWS  
*Contractor*

Phone Hem. 4874 28 N. Brevard St.  
CHARLOTTE, N. C.

*Quality—Service—Appreciation*  
**SOUTHEASTERN ICE UTILITIES  
CORPORATION**

"Y & B" BRANCH  
**ICE AND COAL**  
PURE ICE AND CERTIFIED COAL  
Phones Hem. 210-211 Charlotte, N. C.

*Home Furnishers Since 1899*



### *An Invitation*

A visit to McCoy is always interesting. Here you will see the largest assortment of Home Furnishings in Carolinas. And no matter at what season of the year you make a purchase you are sure of getting full value for every dollar invested. Visit us when you can. We'll be glad to have you.

*W. T. McCoy & Co.*  
*Home Furnishers*

423-425 SOUTH TRYON STREET  
CHARLOTTE N C

To the Johnson C. Smith University

+ + +

We extend our congratulations for the splendid work you  
have done for the betterment of your race

+ + +

QUEEN CITY COACH COMPANY

Call Us for Special Trips De Luxe Equipment—Careful Drivers  
Phone Jackson 377 CHARLOTTE, N. C. 410 W. Trade St.

MAXWELL BROS. & McDONALD

FURNITURE

222 North Tryon Street

CHARLOTTE, N.-C.

SOUTHERN FEED COMPANY

Garden Seed, Dairy Feed, Field Seed and  
Melrose Flour

220 East Fourth Street

Phones Hemlock 1677—6967

CHARLOTTE, N. C.



+ + +  
THE  
CHARLOTTE  
NEWS

is the paper of the Family  
Fireside and offers adver-  
tisers and readers the most  
pleasant, intimate and  
friendly contact

+ + +

JOIN NOW! 1901-1928 JOIN NOW!

THE SUPREME CAMP OF  
THE AMERICAN  
WOODMEN

The Giant Negro Fraternal has \$1,817-793.97 for the Protection of its Members. Pays Sick, Accident, Burial and Death Benefits for one monthly premium. Our Sick and Burial Benefits are in addition to and are NOT deducted from the amount due on policy. Issues Policies from \$100 to \$3,000. Rates are the same every month except June, which is 50 cents more. Our Contracts are in immediate Benefits and Accumulative.

Our Educational Department Boasts of a National Juvenile Department, a Uniform Rank, Green Cross Nurse Corps and Hospital Units.

This great Organization employs thousands of its members as Clerks, Stenographers and Field Representatives.

Under Special Dispensation, the Joining Fee of \$10.00 has been temporarily Reduced.

For Further Particulars, See—

LOUIS WHITESIDE, Supervisor

Local Office: 223 S. Brevard St.

Phone Hemlock 145

Room 11, M. I. C. Bldg. Charlotte, N. C.

CAROLINA FUNERAL  
HOME, INC.

Thompson & Pearson, Managers

+ + +

UNDERTAKERS AND  
EMBALMERS

+ + +

A. M. E. Zion Publication House

Office Phone Hemlock 4711

Residence Phones—Hem. 4972-J

Hem. 7624-J, Jax. 1044-J

Andrews Music  
Store, Inc.

Established 1892



"Everything in Music"



235 North Tryon St.

CHARLOTTE, N. C.

COMPLIMENTS OF CHARLOTTE  
MEDICAL SOCIETY

E. E. Blackman, M.D.

M. Percy Carter, M.D.

T. E. Craig, M.D.

S. F. Hogans, M.D.

N. B. Houser, M.D.

F. L. Lander, M.D.

J. A. Pethel, M.D.

E. F. Tyson, M.D.

A. G. Daly (Gastonia), M.D.

L. A. Yancey, Phar. D.

W. H. Fuller, Phar. D.

J. H. Isler, P.H.C.

R. H. Greene, M.D.

Thos. Watkins, D.D.S.

Field S. Russell, D.D.S.

Albert J. Williams, D.D.S.

Worth A. Williams, D.D.S.

G. S. Weaver (Gastonia), D.D.S.

W. M. Butler, D.D.S.

COMPLIMENTS OF  
THE JONES-BENTON FURNITURE  
COMPANY, Inc.

305 East Trade Street

CHARLOTTE, N. C.

Z. Alexander, Jr.  
Mgr. Embalmer

Z. Alexander, Sr.  
Secy.-Treas.

W. L. COLES, INC.

FUNERAL PARLORS  
UNDERTAKERS—EMBALMERS

313 South Brevard Street

Best Place—Best Service

WE GUARANTEE SATISFACTION

Day Phone Hem. 494 -Night, Hem. 6756-J

W. I. VAN NESS & Co.

*Developing and Printing*

*Picture Framing*

*Art Goods -*

PARKER-GARDNER  
COMPANY

*Furniture, Carpets, Draperies*

*Victrolas and Victor Records*

*Steinway and Ivers and Pond Pianos*

*Duo-Art Reproducing Pianos*

CHARLOTTE, N. C.

*Catering to the Best*

HOME COOKING

Our Specialty

CHEF JOHNSON'S  
PLACE

Arcade—Pearl Theatre

Your Health depends on you having  
"The Best in Plumbing and Heating"  
installed in your home

## GARRISON & HOPKINS CO.

CONTRACTORS AND DEALERS

"The Best in Plumbing and Heating"

1405 South Tryon Street

CHARLOTTE, N. C.

Athletic First Aid Equipment and Supplies  
Infirmary and Sick Room Supplies  
Trusses, Elastic Hosiery, and Abdominal Supports

## WINCHESTER LABORATORY SUPPLIES

No. 6 East Seventh St.

CHARLOTTE, N. C.

## Lebo's Shoe Store

Collegiate Footwear

Our Specialty

## Art Flower Shop

Believes in Smith University

223 South Tryon Street

The cover for  
this annual  
was created by  
The DAVID J.  
MOLLOY CO.

2857 N. Western Avenue  
Chicago, Illinois

  
Every Molloy Made  
Cover bears this  
trade mark on the  
back lid.

Smith & Wilson

+ + +

WHOLESALE DEALERS IN  
FANCY FRUITS AND  
VEGETABLES

+ + +

319 E. TRADE STREET  
CHARLOTTE, N. C.

Cochran & Ross

DEALERS IN HIGH-GRADE  
COAL

CHARLOTTE, N. C.

COMPLIMENTS  
OF

Hoskins Plumbing Co.

CHARLOTTE, N. C.

Brawley's Cleaning  
Company

1010 CENTRAL AVENUE

Telephone Hemlock 9479  
R. F. BRAWLEY, Manager  
CHARLOTTE, N. C.

COMPLIMENTS  
OF

Maxwell Clothes Co.

CHARLOTTE, N. C.

COMPLIMENTS  
OF

Charlotte Transfer  
Company

PHONE HEMLOCK 297

Pyramid Motor Co.



CHARLOTTE, N. C.

**WIGGINS BROS., Inc.**

Will furnish All Materials Required to Build Your Home and wait on

**BUILDING and LOAN**  
or **INSURANCE LOAN**

Phones Hemlock 2396-4838

**LUMBER**—and everything in Building Supplies

**B. F. HAAS**

**CONCRETE CONSTRUCTION**

**PLAIN AND REINFORCED RETAINING WALLS**  
**WALKS, DRIVEWAYS, COPINGS**

Phone County 5603

R. F. D. No. 7

CHARLOTTE, N. C.

**MATHIS & FORBES**

**SCOTCH WOOLEN MILLS**

300 All Woolen Patterns

Made to your order

2-Piece \$21.75 3-Piece \$25.75

328 East Trade Street

**N. B. ROBERTSON**

115 Savona Avenue

*Practical Shoe Rebuilding*

35 YEARS EXPERIENCE

Best Leather to Be Had and

Applied Right

**PRICES REASONABLE**

*The School Boys' Friend*

STUDENT (to professor during examination): "I have a complaint to make about the examination."

PROFESSOR: "What is it?"

STUDENT: "I cannot find my pony."

CONDUCTOR (to elderly colored woman on train): "Madam, will you please move your valise out of the aisle."

ELDERLY WOMAN: "Valise!! Man, dat's my foot."

## We Made All Photographs for This Book

Words create impressions slowly—pictures tell their story at a glance.

Let us do your Photographing. We are thoroughly equipped to produce all forms of photographic work.



*Appearances Count.  
Art plus Personality  
Warmth and brilliance of tone  
for the same price.*



### CAROLINA STUDIO

223 SOUTH BREVARD STREET  
CHARLOTTE, N. C.

J. E. HEMPHILL, Proprietor

Pound & Moore Co.

+++

COMMERCIAL  
STATIONERS  
OFFICE  
EQUIPMENT

+++

South Tryon Street  
CHARLOTTE, N. C.

Wear Clean Clothes

Entrust your Clothes to the Care of a  
Reputable Plant



Charlotte Laundry, Inc.

Phone Hemlock 7450

CHARLOTTE, N. C.

Corner Second and College Streets



Consider the quality of your Annual from the standpoint of clear and colorful engravings. Our reputation as Annual Engravers has been established through accuracy and attention to the little details for over fourteen years.

Bierman Engraving Co.  
School Annual Engravers  
Charlotte, N. C.

ANOTHER ONE OF THE  
MANY COLLEGE AND  
HIGH SCHOOL ANNUALS  
PRINTED IN OUR SHOP

---

**ANNUAL PRINTERS FOR THIRTY YEARS**

---

*HAVE YOU ever considered the quality of your Annual from the standpoint of careful typography and accurate proofreading? The reputation of The Observer Printing House, Inc., as Annual Printers, has been established through accuracy and attention to the little details that enter into the publication of a Year Book.*

## THE OBSERVER PRINTING HOUSE

INCORPORATED

29 South Church Street

CHARLOTTE, N. C.





## Acknowledgments

The Staff wishes to express its appreciation to:

Dr. H. L. McCrorey, who has been of great aid to us in our solution of the Student Pledge System.

The Observer Printing House, Inc., Charlotte, N. C., for the generous co-operation it has given the Editor and the Business Manager.

The Carolina Studio, Charlotte, N. C., for the very best service possible by a photographing concern.

The Bierman Engraving Company for the very helpful suggestions offered to the Staff.

Mr, H. C. Dugas for his unselfish service in keeping our tabulations.

Mr. Hemphill Brown, of the Senior Class, who through extraordinary efforts helped us in the securing of our ads.

And to our Advertisers, who to a very large degree have made this book possible.



