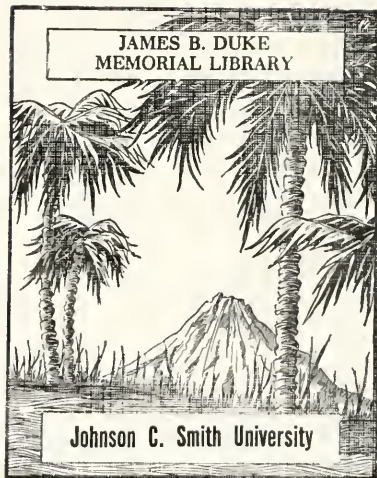




JAMES B. DUKE  
MEMORIAL LIBRARY



Johnson C. Smith University

## For Reference

Not to be taken from this room

JAMES SPRUNT MEMORIAL LIBRARY  
JOHNSON C. SMITH UNIVERSITY  
CHARLOTTE N.C. 28208







Digitized by the Internet Archive  
in 2010 with funding from  
University of North Carolina at Chapel Hill

<http://www.archive.org/details/goldenbull1931john>





*Lx Libris*



*Copyright 1931*

BY

HARRY B. RUTHERFORD

*Editor-in-Chief*

AND

JAMES C. GRIFFIN

*Business Manager*



# The Bull

Nineteen Hundred and Thirty-One



VOLUME IV

*Published by the Student Body of Johnson C. Smith University,  
Under the Auspices of the Junior Class*

CHARLOTTE, N. C.

# Contents

Book I

*UNIVERSITY*

Book II

*CLASSES*

Book III

*ORGANIZATIONS*

Book IV

*ATHLETICS*

Book V

*ADVERTISEMENTS*

## The Foreword

THE task to which we have dedicated ourselves in the pages that follow is not to be thought of lightly, nor has it been assumed by us that it was one of little responsibility. For to us has been given the sacred privilege of recording for ourselves and posterity a complete episode in the life of a great institution, of enthroning upon the pedestal of time a statue to the measureless joys of youth and the incalculable benefits of a college life. To our brothers in the bonds of Smith who have gone on before—these pages must reawaken in you memories which are at once, bitter and sweet, happy and sad. To those of us who yet remain within these sacred portals—they must bring the realization that we are heirs to a fortune which is immune alike to the ravages of time and the avarice of man. To you who must come after us—may they serve to instill in your hearts that love for our school that must characterize the life of every true Smith man.

So with a full consciousness of the enormity of our task we have approached it with that respect to which it is entitled. We have pursued our several duties diligently, to the end that the 1931 BULL may truly depict the 1931 Smith. How well we have succeeded is for you, who through change or intent peruse these pages, to judge. From the 1931 BULL staff there is no apology, we have done our best.



DEAN THEOPHILUS E. MCKINNEY

## Dedication

**I**N grateful admission, sincere appreciation, and hearty congratulations for the work accomplished in the making of Johnson C. Smith University a more thorough institution of learning, a more distinct landmark in the field of Negro education, we the staff of the 1931 BULL respectfully dedicate this, the culmination of our efforts, to Dean Theophilus E. McKinney.

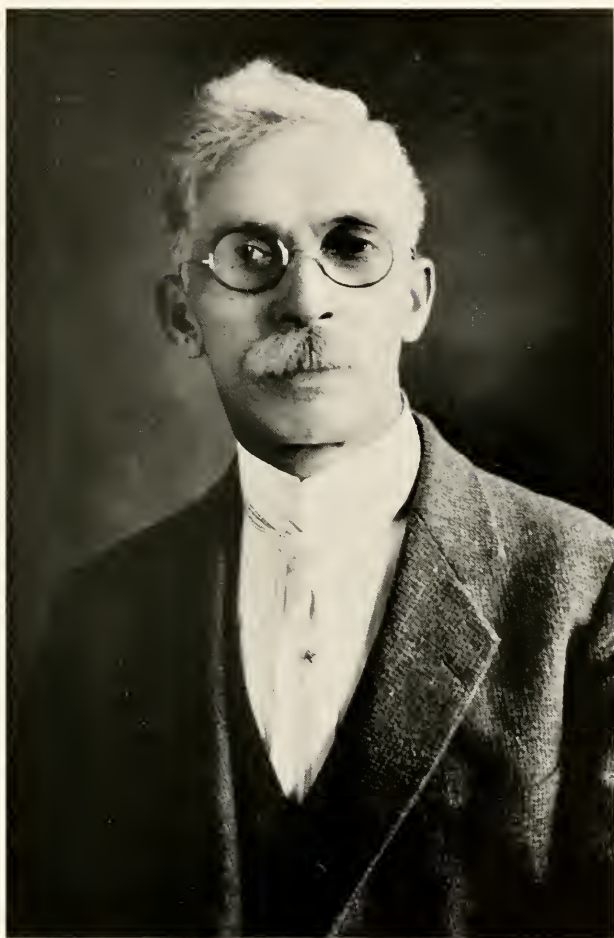
## The Dean's Message

As we peruse the pages of this book we look into the faces of red-blooded American men. Men who represent the ambitions and the hopes of many anxious mothers, fathers, sisters, brothers, sweethearts, relatives and friends.

Here at Johnson C. Smith University men enjoy the association and contact of the best minds in their generation. This association is inestimable. All of them are in college during the same generation. In the same generation they will labor and in the same generation they will pass off the scene of action. No matter in what section of the country one of these men may go after spending four years here, he will find some one there who knows him either personally or indirectly. So long as these men live they will enjoy genuine friendships that were formed during their college days.

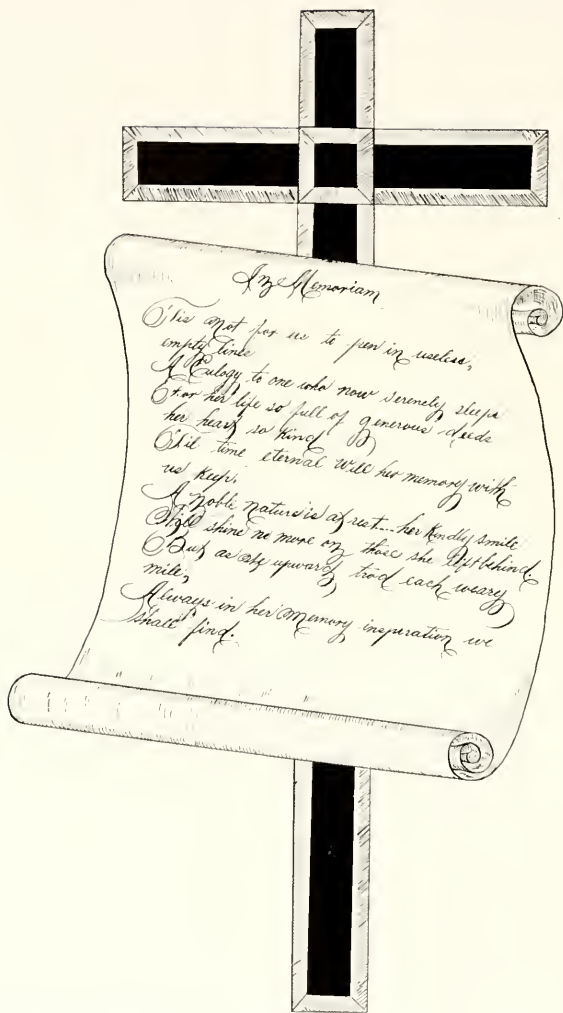
This institution is Christian. Here students have an opportunity to deepen their spiritual lives. The chief aim is to instill in those who are permitted to enter, those basic qualities that make for the best and highest in manhood and citizenship.

The great hope of the faculty is that each man will reflect in his daily life the principles for which the institution stands and for which it is so faithfully and prayerfully laboring.



REV. H. L. MCCROREY, D.D., LL.D.  
*President*





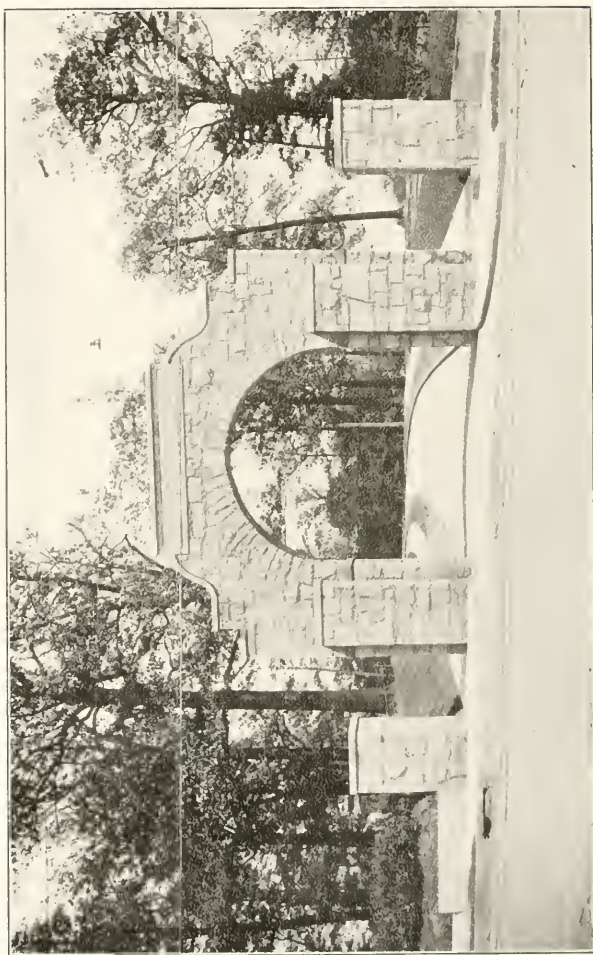
*In Memoriam*

Thou art for us to part in useless,  
empty words,  
A eulogy to one who now serenely sleeps  
For her life so full of generous deeds  
her heart so kind, so  
Still time eternal will her memory with  
us keep.  
A noble nature is at rest... her kindly smile  
Still shine no more on those she left behind  
But as they upward, tread each weary  
mile,  
Always in her memory inspiration we  
shall find.

IN MEMORIAM TO MRS. JOHNSON C. SMITH



# THE UNIVERSITY



THE LOWER ENTRANCE



ADMINISTRATION BUILDING

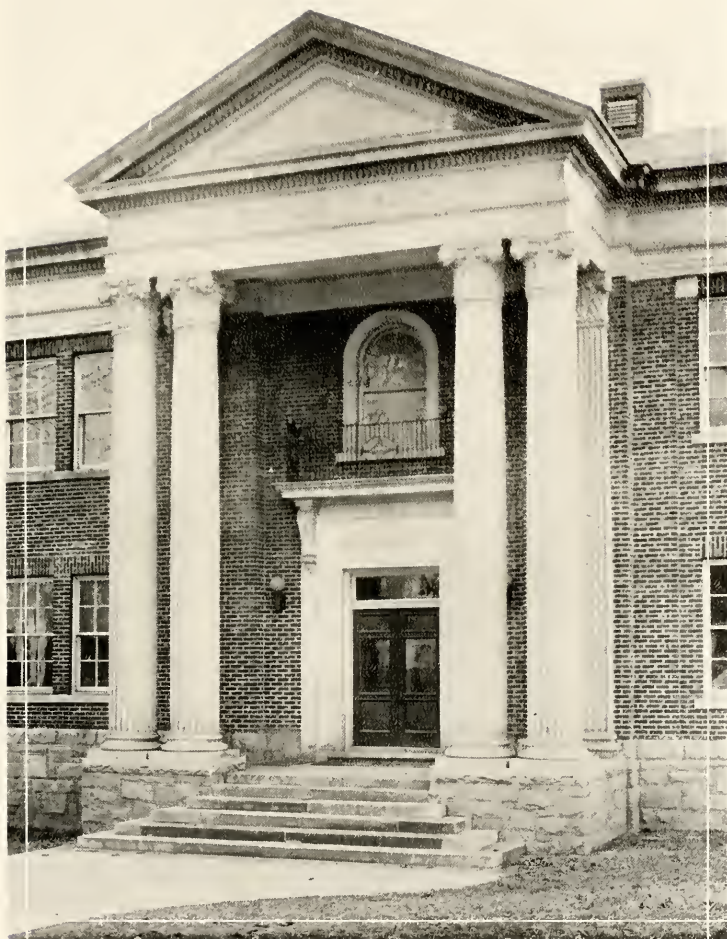
*"Education alone can conduct us to that enjoyment which is, at once, best in quality and infinite in quantity."*





### LIBRARY

*"Books should to one of these four ends conduce,  
For wisdom, piety, delight or use."*



SCIENCE BUILDING

*"He that seeketh the depth of knowledge is as it were in a Labyrinth, in the which the farther he goeth, the farther he is from the end."*

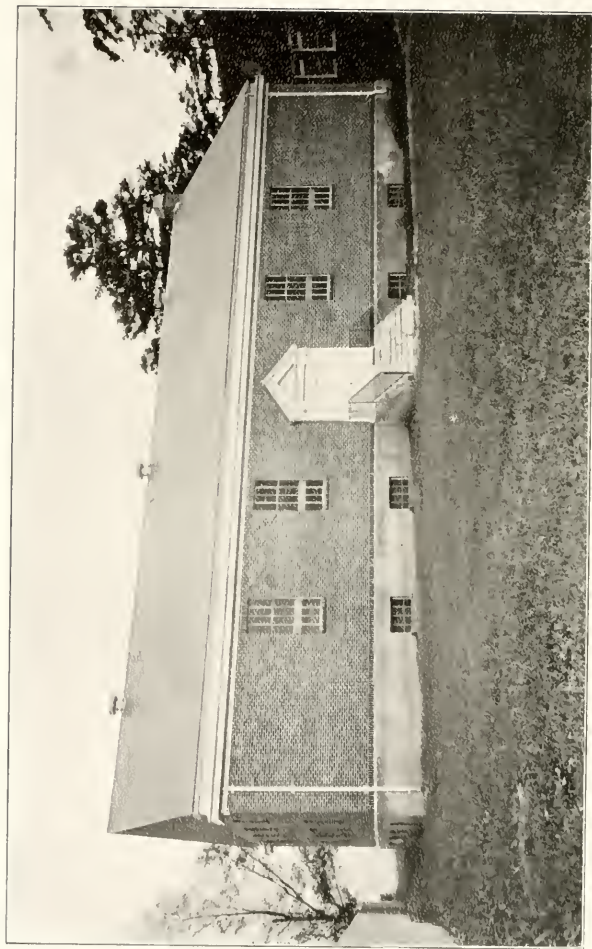


UNIVERSITY CHURCH IN WINTER  
*"More things are wrought by prayer than this world dreams of."*





UNIVERSITY CHURCH (Interior)  
"The Lord is in His Holy Temple, let all the earth keep silence."



GYMNASIUM

"Gold that buys health can never be ill spent,  
Nor hours laid out in harmless merriment."



SMITH HALL

*"Dreams, which, beneath the hood'ring shades of night,  
Sport with the ever restless minds of men,  
Descend not from the gods. Each busy brain  
Creates its own."*

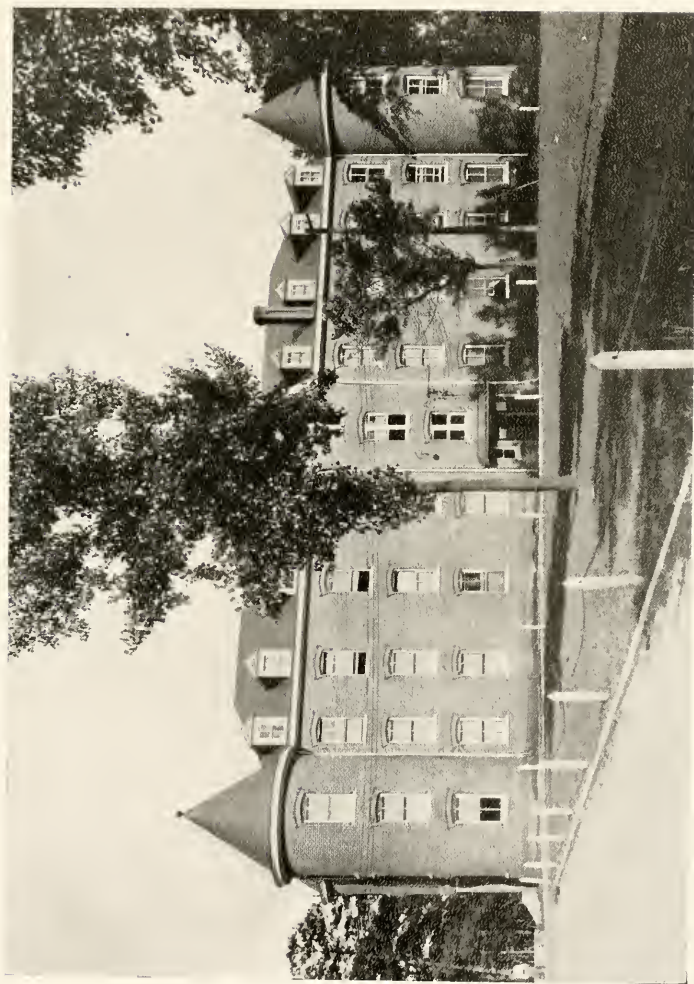




BERRY HALL

*The near approach a bed may show  
Of human bliss to human woe.*

*"In bed we laugh, in bed we cry,  
And born in bed, in bed we die;*



CARTER HALL

"O weary hearts! O slumbering eyes!  
O drooping souls, whose destinies  
Are fraught with fear and pain,  
Ye shall be loved again."



## Founders' Day at Johnson C. Smith University

On April 7, 1931, the first services in honor of the founders of Johnson C. Smith University were held in the University Church and Biddle Memorial Chapel.

The services were held to honor the late Mrs. Mary D. Biddle of Philadelphia, Pennsylvania, who gave the first money as a memorial to her husband, Major Biddle; and the late Colonel William R. Myers of Charlotte, North Carolina, who gave the first land for the building of the school.

Tablets in honor of the founders, placed on either side of the rostrum in Biddle Memorial Chapel were unveiled.

Complete program on next page.



# Founders' Day Program

Exercises in celebration of Founders' Day at Johnson C. Smith University  
Tuesday, April Seventh, A. D. Nineteen Hundred and Thirty-One, Three  
O'clock P. M. The University Church, Charlotte, North Carolina.

## ORDER OF EXERCISES

### PROCESSIONAL

ORGAN PRELUDE—Largo

DR. THOS. A. LONG

*Handel*

- I. HYMN—Dear Lord and Father of Mankind . . . . . *John Greenleaf Whittier*
- II. INVOCATION . . . . . *Dr. R. P. Wyche, Class of '77*  
(Second graduating class of the College)  
President Board of Trustees,  
Pastor of Seventh Street Presbyterian Church,  
Charlotte, North Carolina.
- III. ANTHEM—O Master Let Me Walk with Thee . . . . . *Speaks*  
THE COLLEGE CHORUS
- IV. GREETINGS FROM THE ALUMNI ASSOCIATION . . . . . *Dean J. W. Seabrook, Class of '09*  
Fayetteville State Normal School,  
Fayetteville, North Carolina.
- V. GREETINGS ON BEHALF OF THE CITIZENS OF CHARLOTTE . . . . . *Mr. C. O. Kuester*  
Vice-President and Business Manager,  
Charlotte Chamber of Commerce.
- VI. ANTHEM—Great Is the Lord . . . . . *Boex*  
THE COLLEGE CHORUS
- VII. ADDRESS . . . . . *Mr. Archie M. Palmer*  
Associate Secretary,  
Association of American Colleges,  
New York, N. Y.
- VIII. SAINT-ANNE—O God Our Help in Ages Past . . . . . *Croft*
- IX. RECESSIONAL—Grand March, from "Aida" . . . . . *Verdi*  
DR. THOS. A. LONG

## PART II

*The exercises will be concluded in the Biddle Memorial Chapel*

MUSICAL SELECTION—"Lead Kindly Light" . . . . .

*Buck*

COLLEGE QUINTETTE

UNVEILING OF TABLETS . . . . .

*President H. L. McCrorey*

DEDICATION PRAYER . . . . .

*President Walter L. Lingle*  
Davidson College,  
Davidson, North Carolina.

ALMA MATER

BENEDICTION



# Faculty



S. HERBERT ADAMS, M.A.  
*Registrar*



G. F. WOODSON, JR., A.M.  
*Professor of Mathematics*



W. C. DONNELL, A.M.  
*Professor of Education*



T. A. LONG, A.M.  
*Professor of Social Sciences*



W. C. COLEMAN, A.M.  
*Professor of Latin and Greek*



D. T. RAY, B.S.  
*Professor of Physics*



G. G. M. JAMES, B.Th., M.A.  
*Professor of Philosophy*



R. L. DOUGLASS, A.B.  
*Professor of Mathematics*

# Faculty

N. C. CROSBY, A.B.  
*Professor of French*

G. T. KYLES, A.M.  
*Professor of Psychology*

T. L. GUNN, A.B., B.L.S.  
*Librarian*

T. B. FAULKNER, Mus.B.  
*Music Director*

E. F. TYSON, M.D.  
*Physician*

A. P. CORLEY, S.T.B.  
*Superintendent of Buildings and Grounds*

F. W. BOND, A.M.  
*Associate Professor of English*

L. P. BYRAM, B.S.  
*Director of Physical Education*

W. G. MORGAN, A.B.  
*Secretary to Dean and Registrar*



# The College of Arts and Science

## OFFICERS OF INSTRUCTION

REVEREND HENRY L. McCROREY, D.D., LL.D.	<i>President and Treasurer</i>
THEOPHILUS E. MCKINNEY, A.M.	<i>Dean of the College</i>
REVEREND CHARLES H. SHUTE, D.D.	<i>Professor of English Bible</i>
ROBERT L. DOUGLASS, A.B., A.M.	<i>Professor of Mathematics</i>
THOMAS A. LONG, A.M.	<i>Professor of Social Sciences</i>
G. G. M. JAMES, M.A.	<i>Professor of Philosophy</i>
W. S. PEYTON, A.B.	<i>Professor of Biology</i>
GEORGE F. WOODSON, JR., A.M.	<i>Professor of Mathematics</i>
F. W. WILLIAMS, M.S.	<i>Professor of Chemistry</i>
T. C. MEYERS, A.M.	<i>Professor of English</i>
N. R. BOLDEN, A.M.	<i>Professor of History and Economics</i>
W. C. COLEMAN, A.M.	<i>Professor of Latin and Greek</i>
N. C. CROSBY, A.B.	<i>Professor of French</i>
E. L. RANN, A.M.	<i>Associate Professor of Education</i>
W. C. DONNELL, A.M.	<i>Professor of Education</i>
D. T. RAY, B.S.	<i>Professor of Physics</i>
R. L. ANDERSON, M.S.	<i>Professor of Biology</i>
F. W. BOND, A.M.	<i>Associate Professor of English</i>
G. T. KYLES, A.M.	<i>Professor of Psychology</i>
T. B. FAULKNER, Mus.B.	<i>Music Director</i>
L. P. BYRAM, B.S.	<i>Physical Director</i>

## OFFICERS OF ADMINISTRATION

REVEREND H. L. McCROREY, D.D., LL.D.	<i>President and Treasurer</i>
T. E. MCKINNEY, A.M.	<i>Dean of College of Liberal Arts</i>
S. H. ADAMS, M.A.	<i>Registrar</i>
H. C. DUGAS	<i>Business Manager</i>
T. L. GUNN, A.B., B.L.S.	<i>Librarian</i>
E. F. TYSON, M.D.	<i>Physician</i>
W. C. DONNELL, A.M.	<i>Director of Summer School</i>
A. W. WADE, A.B.	<i>Bookkeeper and Secretary to the President</i>
W. G. MORGAN, A.B.	<i>Secretary to the Dean and Registrar</i>
REVEREND A. P. CORLEY, S.T.B.	<i>Superintendent of Buildings and Grounds</i>
MRS. H. L. McCROREY	
MRS. M. K. SPAULDING	<i>Matron</i>
REVEREND C. J. PITCHFORD, S.T.B.	<i>Manager, University Press</i>
W. E. HILL	<i>Asso. Editor of Africo American Presbyterian; University Press</i>



# SENIORS

## Seniors



PAUL B. ADAMS

Kappa Alpha Psi Fraternity

A.B.—Major in French

HELENA, ARK.

*"Go not abroad; retire into thyself, for truth dwells in the inner man."*

Folks! Meet the one, and only one, "Bloody." "Bloody" has one abiding weakness and that is his love for the enrapturing arms of Morpheus. He is a ladies' man. Well, why not? He embodies all the good qualities that the fair ones could desire in a young "prince Charming." "Bloody" is a good student. It requires very little study for him to do well in his studies. We give him our best wishes and he may be assured that no one will ever forget old "Bloody."

1927-'28: Class Secretary.

1928-'29: Secretary of Scrollers Club; Class Football Team; Kappa Alpha Psi Fraternity.

1929-'30: Secretary of Class.

1930-'31: R. S. O. T. Club; Class Football Team; Y. M. C. A.; Sports Writer for Baseball.

JOSEPH A. ANCRUM

B.S.—Major in Mathematics

CHARLOTTE, N. C.

*"To seek responsibilities rather than honor,  
To share the joys and sorrows of others,  
To love for Love's sake."*

"Joe" is a great advocate of better "math" and more of it. He plans to improve "The Auxiliary Theorem." Go to it "Joe," much luck to you.

EDWARD R. AVANT

Omega Psi Phi Fraternity

AB.—Major in History

DURHAM, N. C.

We've often wondered how it is possible for an ordinary person to talk as much as "Brer" does, but after getting better acquainted with him we discovered that it makes very little difference to him whether he actually has something to say or not. His only worry is being able to find a listening ear. He takes to one branch of athletics, pushing his best in basketball. We lose a good man that the world might gain.

1927-'28: Les Chevaliers Elegants; Lampados Club.

1928-'29: Varsity Basketball; Omega Psi Phi Fraternity.

1929-'30: Captain of Basketball Team; Y. M. C. A.; Omega Psi Phi Fraternity.

1930-'31: Y. M. C. A.; Manager of Football Team; Varsity Basketball; Vice-President of the Class.



# Seniors

CHARLES G. AVENT

B.S.—Major in Chemistry

FAYETTEVILLE, N. C.

*"He that keepeth his mouth keepeth his life; but he that openeth wide his lips shall have destruction."*

"Chauf" or "Little Bit" is another one of those Easterners who is always talking about Fayetteville. The village has a magnetic attraction for him; he is often seen with "G. B.," his henchman, headed in that direction.

"Chauf" has been a member of:

1927-'28: Matton Literary Society.

1928-'29: Bachelors Club.

1929-'30: Bachelors Club.

1930-'31: Bachelors Club; Y. M. C. A.

J. GERARD BENSON

Kappa Alpha Psi Fraternity

B.S.—Major in Chemistry

CHARLOTTE, N. C.

*"Man is the measure of all things, therefore, know thyself."*

Jack is better known as the "Mighty," and you may lay to that. He has the "gift of gab" and joviality. During his college career, he has won the distinction of being the Grand Scribe of the Order of Prevaricators. Once you know him you will always like him.

The "Mighty" has been:

1927-'28: Class Baseball Team; Scrollers Club; Scrollers Basketball Team; R. S. O. T. Club.

1928-'29: Class Football Team; Class Baseball; Kappa Alpha Psi Fraternity; R. S. O. T. Club.

1929-'30: Class Football Team; Class Basketball and Baseball; Member of Board of Directors of Kappa Alpha Psi Fraternity; R. S. O. T. Club.

1930-'31: Class Football; Beta Kappa Chi Scientific Fraternity; Board of Directors of Kappa Alpha Psi Fraternity; Manager of Benson's Olympic Basketball Team; R. S. O. T. Club.

EDWARD E. BESS

B.S.—Major in Biology

BRITISH GUIANA, S. A.

*"Wisdom cannot be exaggerated; it is the highest achievement of life. Truth is the breath of life to human society. It is the food of the immortal spirit, yet, a single word of it may kill a man, as suddenly as a drop of prussic acid."*

Edward is one of those persons who always see the silver lining in every cloud.

1929-'30: Y. M. C. A.; Scientific Club.

1930-'31: Y. M. C. A.; Bachelors Club; Beta Kappa Chi Scientific Fraternity.



# Seniors



HOPSON L. BIGGS  
Alpha Phi Alpha Fraternity  
B.S.—Major in Chemistry  
GREENVILLE, S. C.

*"Procrastination is not only the thief of time; it is also the grave of opportunity."*

Here he is ladies' Don't rush. "Hop" is one of the campus sheiks. He has more girls than Merita has loaves of bread. He is an athlete of the first order and has made a good record in baseball.

- 1927-'28: Glee Club; Le Choices Peu Club; Matoon Literary Society; Sphinx Club; Varsity Baseball.  
1928-'29: Varsity Football; Varsity Baseball; Le Choices Peu Club.  
1929-'30: Varsity Baseball; Tailors Club.  
1930-'31: Tailors Social Club; Y. M. C. A.; Varsity Baseball.



HARRY D. BLACK  
Phi Beta Sigma Fraternity  
A.B.—Major in Economics  
RED SPRINGS, N. C.

*"Man's life is a ship, his conscience is the pilot."*

His "old ladies" call him "Old Gal," even if he does not like it. Although not exactly a ladies' man, he does have an unusual interest over town. His weakness is "town," numbers, and "Uncle Sam."

He has been a member of:

- 1927-'28: Baseball Squad.  
1928-'29: Bachelors Club; Crescent Club.  
1929-'30: Assistant Secretary of Phi Beta Sigma Fraternity.  
1930-'31: Secretary of Phi Beta Sigma Fraternity; Y. M. C. A.



MARCUS H. BOULWARE  
Kappa Alpha Psi Fraternity  
A.B.—Major in English  
CHESTER, S. C.

*"Let us not be weary in well-doing, for in due season we shall reap if we faint not."*

Being writer of these excerpts of each member of the class, he will not remark about himself. Here is what another says of him: "Hannibal" is very conservative and has most to say when he is on the forensic platform."

"Hannibal" has been:

- 1927-'28: Freshman Debating Squad; Y. M. C. A.  
1928-'29: Freshman-Sophomore Debate; Varsity Debating Squad; Scrollers Club; Palmetto State Club.  
1929-'30: Secretary of the University Student Staff; Literary Editor of THE 1930 BELL; Varsity Debating Team; Keeper of Records of Kappa Alpha Psi Fraternity; Secretary of Smith Debating Society; Junior Prize Contestant; Assistant Secretary of Y. M. C. A.; Member of Board of Directors of Kappa Alpha Psi Fraternity.  
1930-'31: Secretary of Senior Class; Member of University Student Staff; Secretary of Smith Debating Club; Y. M. C. A.; Treasurer of the Little Theatre; Member of Alpha Kappa Sigma Honorary Scholarship Society; Class Football.



## Seniors

WILLIAM S. BRINKLEY

Alpha Phi Alpha Fraternity

A.B.—Major in History

OVERHILL, N. C.

*"It is never too late to do good."*

"Deacon" came to us from over hills of North Carolina. Since his arrival on these compounds, he has risen from obscurity to the lime-lights. He is known by many of us as "Marse." "Deacon" boasts of having gone as far North as Canada and as far South as Charlotte.

1927-'28: Chaplain of Matoon Literary Society.

1928-'29: Chairman of Program Committee of the Y. M. C. A.

1929-'30: Vice-President of the Y. M. C. A.; Deacon of the University Church.

1930-'31: Y. M. C. A.; Alpha Kappa Sigma Honorary Scholarship Society.

HENRY L. CLARKSON

Phi Beta Sigma Fraternity

B.S.—Major in Chemistry

COLUMBIA, S. C.

*"The higher we ascend, the broader our views."*

Henry is hailed from the Palmetto Capital as "Pepo," but the gang calls him "Bojangles." This chap deals in "unknowns," and has proven his worth in the field of chemistry.

1928-'29: Matoon Literary Society; Phi Beta Sigma Fraternity.

1929-'30: President of Alpha Epsilon Chapter of Phi Beta Sigma Fraternity; Member of Pan-Hellenic Council.

1930-'31: President of Alpha Epsilon Chapter of Phi Beta Sigma Fraternity; Vice-President of Pan-Hellenic Council.

WILLARD M. COLEMAN

Alpha Phi Alpha Fraternity

B.S.—Major in Chemistry

ASHEVILLE, N. C.

*"No man is free who cannot command himself and that purpose is what gives life meaning."*

"Buddie" is a firm believer that plenty of sleep and two wholesome meals a day is sufficient for the maintenance of life. He is an athlete and has devoted much of his time to it.

1927-'28: Sphinx Club; Varsity Football Team; Member of "S" Club; President of R. S. O. T. Club; University Glee Club.

1928-'29: Alpha Phi Alpha Fraternity; Varsity Football Team; D. L. K. Club; Treasurer of Alpha Omicron Chapter of Alpha Phi Alpha Fraternity; Science Club; Matoon Literary Society.

1929-'30: Varsity Football Team; Winner of Junior Oratorical Contest Medal; Bachelors Club; Y. M. C. A.; President of Science Club; Fin. Sec. of Alpha Omicron Chapter of Alpha Phi Alpha.

1930-'31: Tennis Club; Bachelors Club; Chaplain of Science Club; Beta Kappa Chi Scientific Fraternity; Varsity Football Team; University Glee Club; Fin. Sec. of Alpha Omicron Chapter of Alpha Phi Alpha.



## Seniors



WILLIAM H. CREECY  
Kappa Alpha Psi Fraternity  
A.B.—Major in French  
EDENTON, N. C.

*"Whoever eats the bread that another has reaped and kneaded, is the debtor of his brothers, and is not able to say that he does not owe them anything in return."*

Because of a very unusual "gift of gab," "Bill" is considered the biggest filibuster of the class. He has done his major in French, which is no sop.

1929-'30: Bachelors Club; Scrollers Club; Kappa Alpha Psi Fraternity.  
1930-'31: Pan-Hellenic Council; President of Bachelors Club; Alpha Kappa Sigma Honorary Scholastic Society.



ROBERT W. DOCKERY  
Alpha Phi Alpha Fraternity  
B.S.—Major in Biology  
STATESVILLE, N. C.

*"There was one who thought himself above me, and he was above me until he had that thought."*

"Bob" makes the third of "The Three Musketeers." We wonder why they limited the organization to three only?

1927-'28: Secretary of Sphinx Club; Treasurer of Class; Glee Club; R. S. O. T. Club; Three Musketeers.  
1928-'29: Secretary of R. S. O. T.; Three Musketeers; Glee Club; Financial Secretary of Alpha Omicron Chapter of Alpha Phi Alpha Fraternity.  
1929-'30: Recording Secretary of Alpha Omicron Chapter of Alpha Phi Alpha Fraternity; Junior Prize Orator; Trainer of Baseball Team; Three Musketeers; Glee Club; Secretary of R. S. O. T. Club.  
1930-'31: Vice-President of Glee Club; V. M. C. A.; Three Musketeers; Manager of Tennis Team; R. S. O. T.; Class Football Team; Class Quartette; Trainer of Football Team; Recording Secretary of Alpha Omicron Chapter of Alpha Phi Alpha Fraternity; Beta Kappa Chi Scientific Fraternity.



JAMES O. ELLIS  
Alpha Phi Alpha Fraternity  
A.B.—Major in English  
LEXINGTON, N. C.

*"Whatever you attempt to do, give your best."*

Oh, peruser of biographies, stop to get an insight into the life of one who has fought the battle and has won an education. He has succeeded in overthrowing the forces of dumbness, and is now a monarch in the realm of English.

1927-'28: Class President; Sphinx Club; R. S. O. T. Club; Sergeant-at-Arms; Sport Editor of 1928 BULL.; Varsity Football; Varsity Basketball; Varsity Baseball.  
1928-'29: Associate Editor of 1929 BULL.; Member of Pan-Hellenic Council; Voted Best All-Round Athlete; R. S. O. T. Club; Varsity Football; Varsity Basketball; Varsity Baseball.  
1929-'30: Vice-President of Alpha-Omicron Chapter of Alpha Phi Alpha Fraternity; Member of Pan-Hellenic Council; R. S. O. T. Club; Varsity Football; Varsity Basketball; Editor-in-Chief of 1930 BULL.  
1930-'31: Class President; President of Alpha Omicron Chapter of Alpha Phi Alpha Fraternity; President of Pan-Hellenic Council; R. S. O. T. Club; Varsity Football; Varsity Basketball.

## Seniors

CLARENCE J. FEW

Alpha Phi Alpha Fraternity

A.B.—Major in History

ALBANY, GA.

*"No man is fit to be entrusted with the control of the present, who is ignorant of the past; and no people, who are indifferent to their past, need hope to make their future great."*

"Few Times" came to us straight from the heart of Georgia. He is one of those lads whom "maidens" turn around to look at, and say "isn't he grand?" "Few Times" is a historian, and plans to write a book entitled "Life and Times of Major Hoople."

1929-'30: Sphinx Club; Varsity Track Team; Historical Society.

1930-'31: Bachelors Club; Track Team; Class Football; Editor to Sphinx of Alpha Omicron Chapter of Alpha Phi Fraternity; Historical Society; Secretary of Social and Literary Advancement Club; Sphinx Treasurer.

MARVIN R. FLACK

A.B.—Major in Philosophy

ALEXANDER, N. C.

*"Serve the world with kindness, sweeten the world with brotherly love."*

Marvin calls himself "Mouse," but is better known on campus as "Mammy." If there is any place that he likes better than Greenville, it is Greenville. As a student of Philosophy, he is interested in the Scientific Method.

WILLIAM H. FLETCHER

Alpha Phi Alpha Fraternity

A.B.—Major in Economics

ROCKINGHAM, N. C.

*"The honor of greatness, a participant of pride, and a lover of beauty."*

From the very outset, we want you to know that "Bill" is a lover of the fairer sex, the ladies man; one ventures to say he is unsurpassable. Even from the time he was in hither Gaul, one saw in him the makings of an artist; he would make Raphael bow his head in shame were he a contemporary. To know him is to like him.

1927-'28: R. S. O. T. Club; Sphinx Club; Y. M. C. A. 1928-'29: R. S. O. T. Social Club; Alpha Phi Alpha Fraternity; Y. M. C. A.

1929-'30: Vice-President of R. S. O. T.; Art Editor of 1930 BULL.

1930-'31: R. S. O. T.; Y. M. C. A.; Art Editor of 1931 BULL.; Art Director of The Little Theatre; President of University Art Club.



## Seniors



OLIVER W. FLEMING

*B.S.—Major in Chemistry*

MORGANTON, N. C.

Meet "Stud" folks! He is known all over the campus. He is a diligent student, and, of all subjects prefers Chemistry. For the last two years he has been "student destructor" in Chemistry. Much luck to him in the future.



WYATT M. FOULKES

*Omega Psi Phi Fraternity*

*B.S.—Major in Mathematics*

LEAKSILLE, N. C.

*"Sell your words for cash. They are your most negotiable assets."*

On the gridiron, many are called but few are chosen. "Prof" is one of the chosen few. To see his broken-field running, side stepping, twirling, and shaking 'em off, would make a Walrus hug a Whale. In parting with "Prof," we are losing a good friend, a true sport, and a fine gentleman.

1927-'28: Varsity Football; R. S. O. T. Club; Class Sergeant-at-Arms.

1928-'29: Varsity Football; Lampados Club; R. S. O. T. Club.

1929-'30: Varsity Football; Omega Psi Phi Fraternity; R. S. O. T. Club.

1930-'31: Varsity Football; Omega Psi Phi Fraternity; R. S. O. T. Club.



E. B. FRINK

*A.B.*

*Omega Psi Phi Fraternity*

CHARLOTTE, N. C.

## Seniors

LUTHER S. GILLARD

Omega Psi Phi Fraternity

A.B.—Major in English

CHARLESTON, S. C.

*"Men of few words are best of men."*

Charleston has given quite a few men to Smith. We were unusually lucky to receive this lad whom we later called "Mon." "Mon" came here from Bricks College where he was a star athlete. He has done credit to his school and to himself by the earnest work he has done in two of our major sports, football and basketball. His success in the future is assured for success and work go hand in hand.

1929-'30: Varsity Football; Varsity Basketball.  
1930-'31: Varsity Football; Varsity Basketball; R. S. O. T. Club; Member of The Little Theatre.

THOMAS C. GOODWIN

Kappa Alpha Psi Fraternity

B.S.—Major in Mathematics

CHARLOTTE, N. C.

*"There is no physical energy outside of extension,  
nor mind energy outside of thought."*

"Tom" is one of action rather than words. He is interested in Science and plans to make some worthy contributions in that field. We wish him much luck.

EDWARD U. D. GORING

A.B.—Major in Sociology

GEORGETOWN, BRITISH GUIANA. S. A.





# Seniors



HERBERT B. HENDERSON

Alpha Phi Alpha Fraternity

*B.S.—Major in Chemistry*

CHARLOTTE, N. C.



JETHRO R. HENRY

Alpha Phi Alpha Fraternity

*B.S.—Major in Mathematics*

STUBENVILLE, OHIO

*"To think but not to worry."*

"Jeff" is an athlete of no small degree. "Little George" says when Howard, aided by a 65-yard penalty, was on Smith's 2-yard line, you could hear Captain Henry's cry to his men, "On Bleeding Hands and Knees," and Howard did not score. Thus Smith won 19-6 in the Fall of '29. He is efficient in math, which is no sop. Is he a lover? Ask the crepe-de-chined feminities.

1927-'28: Varsity football; Sphinx Club.  
1928-'29: Varsity Football; Bachelors Club.  
1929-'30: Captain of Football Team; Bachelors Club.  
1930-'31: Varsity Football; Bachelors Club.



MOSES J. JACKSON

Omega Psi Phi Fraternity

*B.S.—Major in Biology*

DALZELL, S. C.

*"Self-confidence is the first requisite to great undertakings."*

"Mullet" plans to take medicine. When we think of new discoveries that will be made in the science of medicine, we think of "Mullet." It is said that this is the first year he has been able to capture a regular girl.

1927-'28: R. S. O. T.; Glee Club; Y. M. C. A.; Class Football Team.  
1928-'29: R. S. O. T.; Glee Club; Y. M. C. A.; Class Football Team.  
1929-'30: Glee Club; R. S. O. T.; Class Football Team.  
1930-'31: R. S. O. T.; Glee Club; Y. M. C. A.; Class Football Team.

## Seniors

ALBERT T. JAMES  
Kappa Alpha Psi Fraternity  
A.B.—Major in Philosophy  
CHARLOTTE, N. C.

"Live virtuously and you cannot die too soon,  
nor live too long."

To know "Joe" is to know Socrates himself. His instructor in Philosophy has reason to be proud of him. He is truly a scholar of superb ability.

1927-'28: Dean's Honor Roll; Vice-President of Scrollers Club.  
1928-'29: Lt. Strategus of Alpha Epsilon Chapter of Kappa Alpha Psi; Dean's Honor Roll.  
1929-'30: Dean's Honor Roll.  
1930-'31: Alpha Kappa Sigma, Honorary Scholarship Society.

THEBAUD JEFFERS  
Omega Psi Phi Fraternity  
A.B.—Major in English  
DURHAM, N. C.

"Greta" hails from the thriving metropolis of Durham, but we do not hold that against him. His is, indeed, no common clay. He is a brilliant student, a yard-wide, full-fledged good fellow; one who always finds the cheerful side of life. His proficiency with the typewriter is only exceeded by his poetical ability.

1927-'28: Lampados Club; R. S. O. T. Club; Philosophy Club; Y. M. C. A.; Glee Club.  
1928-'29: Publicity Manager of 1929 BULL; Associate Editor of *The University Student*; Chapter Editor of *Omega Psi Phi*; Glee Club; L. C. E. Club.  
1929-'30: Class President; Director of Divisions of 1930 BULL; Editor-in-Chief of *The University Student*; Member of Pan-Hellenic Council; Keeper of Records and Seals of Rho Chapter of Omega Psi Phi; L. C. E. Club; Secretary of Board of Athletic Control.  
1930-'31: L. C. E. Club; Y. M. C. A.; Member of Pan-Hellenic Council; Keeper of Records and Seals of Rho Chapter of Omega Psi Phi; Chairman of Class Invitation Committee.

HARRY M. JEFFERSON  
Omega Psi Phi Fraternity  
B.S.—Major in Chemistry  
PHILADELPHIA, PA.

"My sympathy for my own sex increases in direct proportion with my knowledge of the opposite sex."

"King Tut" is from S'oth C'lina, but would have you believe that he is from "Philly." We do not know why, but there must be some good reason for his continual "crowing" about Harbison. Perhaps he can explain this. "Tut" is always complaining about "bad breaks." Nevertheless he is a jolly good fellow, much luck to him in love.

1927-'28: Lampados Club; R. S. O. T. Club.  
1928-'29: President of R. S. O. T. Club; Varsity Football; Omega Psi Phi Fraternity.  
1929-'30: Vice Basileus of Omega Psi Phi Fraternity; President of R. S. O. T. Club; News Reporter of Science Club.  
1930-'31: R. S. O. T. Club; Y. M. C. A.; President of Science Club; Beta Kappa Chi Scientific Society.



## Seniors



PLINY W. JENKINS  
Alpha Phi Alpha Fraternity  
A.B.—Major in Philosophy  
CHARLOTTE, N. C.

*"Happy the man and happy he alone*

*He who can call today his own,*

*He who, secure within, can say*

*Tomorrow, do thy worst, for I have lived today.*

"Ole Jenk" admits that he has not done what he could have done in college. He is a member of the Unholy Three—"muskeeters." As trainer, he has made an enviable record.

1927-'28: R. S. O. T. Club; Member of the Three Muskeeters.

1928-'29: R. S. O. T. Club; Three Muskeeters; Trainer of Baseball and Football Teams; Historian of Alpha Omicron Chapter of Alpha Phi Alpha Fraternity.

1929-'30: R. S. O. T. Club; Three Muskeeters; Trainer of Baseball and Football Teams.

1930-'31: R. S. O. T. Club; Three Muskeeters; Manager of Basketball Team; Chaplain of Alpha Omicron Chapter of Alpha Phi Alpha Fraternity; Football Trainer.

EDWARD W. JONES  
Kappa Alpha Psi Fraternity  
B.S.—Major in Mathematics and Physics  
CHARLOTTE, N. C.

*"A man may be down, but he is never out—till  
Ie thinks he is out; then he is dead mentally  
and physically; all dead things should be dis-  
carded."*

Hello everybody! This is "Monsieur." He is at his best on the forensic platform—another Webster or Hayne.

1927-'28: Scrollers Club; Freshman Debater; "man about the campus"; Bachelors Club.

1928-'29: Bachelors Club; Business Manager of *The University Student*; Varsity Debater; Member of 1929 Brill Staff; Class President.

1929-'30: Varsity Debater; Basketball Manager; Junior Prize Oratorical Contestant; Y. M. C. A.

1930-'31: Y. M. C. A.; Alpha Kappa Sigma, Honorary Scholastic Society; Varsity Debater.

HENRY E. JONES  
Kappa Alpha Psi Fraternity  
A.B.—Major in History and Government  
ASHFVILLE, N. C.

*"Since life fleets, all is change; the past is gone,  
seize today!"*

"Muddy Water" hails from "The Land of the Sky," but his friends are scattered everywhere. "Muddy Water's" athletic abilities were not confined to those of the indoor type. He has proven himself a player of the game in football, and shows up well on the diamond and track.

1927-'28: Varsity Football; Varsity Basketball; Varsity Baseball; L. C. E. Club; Y. M. C. A.; Scrollers Basketball Team.

1928-'29: Varsity Football; Varsity Basketball; Varsity Baseball; Varsity "S" Club.

1929-'30: Varsity Football; Varsity Basketball; Varsity Baseball; Varsity Track Team; Kappa Basketball Team.

1930-'31: Varsity Football; Varsity Basketball; Varsity Baseball; Varsity Track Team; Kappa Basketball Team; Y. M. C. A.

## Seniors

HERCULES W. LEAKE

Omega Psi Phi Fraternity

A.B.—Major in Economics

SAVANNAH, GA.

*"Work furnishes our daily bread; but it is gaiety which gives it the savour."*

"Georgia Boy" is another one of those boys from down South. It is said that he is a "non-prohibitionist." His love for Economics is only exceeded by his interest in Concord. Much luck to him in the future.

1927-'28: Lampados Club.  
1928-'29: Class Football Team; Lampados Basketball Team.  
1929-'30: Class Football; Omega Basketball Team.  
1930-'31: L. C. E. Club; Benson's Olympic Basketball Team; Member of 1931 BULL Staff.

WILLIAM H. LINDSAY

Alpha Phi Alpha Fraternity

A.B.—Major in French

SPARTANBURG, S. C.

*"Seek not after vain glory."*

"Red" is known to all of the Easter Monday fans. What "Joe Boley" is to the "Athletics," "Red" is the same to Smith in Baseball. His place will be hard to fill.

1927-'28: Captain of Varsity Baseball Team; President of R. S. O. T.; Sphinx Club.  
1928-'29: Varsity Baseball; Varsity Basketball Team; R. S. O. T.; Alpha Phi Alpha Fraternity.  
1929-'30: Varsity Baseball; R. S. O. T.; Alpha Phi Alpha Fraternity.  
1930-'31: Varsity Baseball Team; Varsity Basketball; R. S. O. T.; Alpha Phi Alpha Fraternity.

ROBERT A. MACON

Omega Psi Phi Fraternity

A.B.—Major in English

CHESTER, S. C.

*"Doubt whom you will, but never yourself."*

"Guinea" is another one of those Chester boys who decided to locate at Smith. During his four years here, he has been persistent and diligent in his studies. On the Quintette, he is a basso profundo. "Guinea" has the distinction of being the only man who sings in his place on the Class Quartette.

1927-'28: R. S. O. T.; Y. M. C. A.; Glee Club; Class Football Team; Lampados Club.  
1928-'29: Glee Club; Y. M. C. A.; R. S. O. T. Club; Class Football Team.  
1929-'30: University Quintette; L. C. E. Club; Glee Club; Class Football Team.  
1930-'31: Treasurer of L. C. E. Club; Y. M. C. A.; University Quintette; Class Quartette; Tennis Club; President of Glee Club; Member of Senior Class Program Committee; Class Football Team.



## Seniors



J. WENDELL MARTIN  
Omega Psi Phi Fraternity  
A.B.—Major in English  
CHARLOTTE, N. C.

*"The pleasant things in the world are pleasant thoughts, and the greatest art in life is to have as many of them as possible."*

"Jonny" has been:

- 1927-'28: Lampados Club; L. C. E. Club.  
1928-'29: Treasurer of Lampados Club; Chaplain of L. C. E. Club.  
1929-'30: L. C. E. Club; Omega Psi Phi Fraternity; Chapter Editor to the *Oracle*; Dean of Lampados Club; House Manager of Omega Psi Phi Fraternity.  
1930-'31: L. C. E. Club; Omega Psi Phi Fraternity; Chapter Editor to the *Oracle*; Dean of Lampados Club; House Manager of Omega Psi Phi Fraternity; Member of Little Theatre Group; Student Manager of Baseball.



PERCY D. MITCHELL  
Omega Psi Phi Fraternity  
A.B.—Major in French  
HIGH POINT, N. C.

*"Open mindedness is the channel through which flows the current of unlimited possibilities."*

"Spoony" came to us this year from St. Augustine. In both basketball and football, he has proven player of the games. Even though "Spoony" has been in our class for a short time, we will always remember him.

- 1930-'31: Varsity Football; Varsity Basketball; Glee Club; Varsity "S" Club; Lampados Club; Alpha Kappa Sigma; Honorary Scholastic Society; Student Instructor in French.



EDWARD A. McDOWELL  
Alpha Phi Alpha Fraternity  
B.S.—Major in Science  
STATESVILLE, N. C.

*"The first and best victory is to conquer self; to be conquered by self is, of all things, the most shameful and vile."*

"Cutie" is most cute on the baseball diamond, but he is a first-rater at that. He is not quite so serious minded, but is capable of real reflective and creative thought. "Mack" is a conscientious student and plans to enter the "Big League."

- 1927-'28: Sergeant-at-Arms of Class; Business Manager of *The University Student*; Trainer of Football Team; Sphinx Club; Glee Club; Varsity Baseball; Vice-President of R. S. O. T. Social Club.  
1928-'29: Alpha Phi Alpha Fraternity; R. S. O. T. Club; Varsity Basketball; Varsity Baseball; Trainer of Football Team; "S" Club.  
1929-'30: Alpha Phi Alpha Fraternity; R. S. O. T. Club; Glee Club; Science Club; Varsity Baseball.  
1930-'31: Sergeant-at-Arms of Alpha Omicron Chapter of Alpha Phi Alpha Fraternity; Glee Club; Varsity Football; R. S. O. T. Club; Varsity Baseball; Beta Kappa Chi Scientific Fraternity; Reporter of Glee Club; "S" Club.



## Seniors

JOHN S. PERSON  
A.B.—Major in History  
CARTHAGE, N. C.

*"As necessity is the mother of invention, strong desire is the mother of attainment."*

This lad is a jolly good fellow and you may lay to that. He played a jam-up game on the gridiron. We all like him.

1927-'28: Class Football.  
1928-'29: Class Football.  
1929-'30: Sergeant-at-Arms of Class.  
1930-'31: Varsity Football; Historical Society.

JOHN L. POWELL  
Alpha Phi Alpha Fraternity  
A.B.—Major in History  
MCKEESPORT, PA.

*"There is nothing so keenly as kindness and nothing so kind as love."*

Who is who and who in the Y. M. C. A.? "Rev." Powell. Well if you want to find "Rev." just look up in the tree, there you will find him, and the only way you can get him down is to cut the tree down. He is fond of every "fair damsel" that he meets. A "pink broad" can tie a wet paper string around his neck and lead him anywhere. "Rev." constantly refers to the Cosmological Theory of Hericlitus in most all of his speeches. We like him nevertheless.

1927-'28: Sphinx Club; Matoon Literary Society; Chairman of Social Service Work of the Y. M. C. A.  
1928-'29: Matoon Literary Society; Sphinx Club; Chaplain of Alpha Omicron Chapter of Alpha Phi Alpha Fraternity; Y. M. C. A.  
1929-'30: President of Y. M. C. A.; Junior Prize Orator; University Postmaster; Chaplain of Alpha Omicron Chapter of Alpha Phi Alpha Fraternity.  
1930-'31: University Postmaster; President of Y. M. C. A.; Alpha Phi Alpha Fraternity; Alpha Kappa Sigma Honorary Scholastic Society.

GRADY G. RICE  
Kappa Alpha Psi Fraternity  
B.S.—Major in Biology  
WOODRUFF, S. C.

*"Life means for us constantly to transform into light and flame all that we are to meet with."*

"Sam" is known by his rapid ejaculations of Biological or Chemical terms that he uses to carry a point "over big" in a Bull Session. With his gift of gab and flattering remarks he has made many friends.

1927-'28: Class Football; Serollers Basketball Team.  
1928-'29: Class Football; Die Lustigen Knaben; Vice-President of Palmetto State Club; President of Serollers Club.  
1929-'30: Class Football; Science Club; Die Lustigen Knaben, Treasurer.  
1930-'31: Class Football; Science Club.



## Seniors



CLAUDIUS C. SCOTT

Phi Beta Sigma Fraternity

A.B.—Major in History

LUMBERTON, N. C.

*"Know thyself and to thine own self be true."*

"Deacon" is now faced with a great problem. He doesn't know whether it will be best for him to be a preacher, or an undertaker. We hope he will solve it, however. He is the champion strip player in the class. If you don't believe it—ask "H. D. B."

1927-'28: Matton Literary Society.

1929-'30: Crescent Club.

1930-'31: Phi Beta Sigma Fraternity; Advisor of the Crescent Club; Y. M. C. A.



WALTER F. SHELLEY

Omega Psi Phi Fraternity

A.B.—Major in History

ROCKY MOUNT, N. C.

*"It is the bridge that you never cross which worries you most."*

"B. W." is always sincere, yet he appreciates real wit and humor. He has never flaunted his personality before people, but has slowly and surely worked his way into the hearts of all of us who have had the privilege of associating with him.

1927-'28: Glee Club; L. C. E. Club; Member of Baseball Team.

1928-'29: Omega Psi Phi Fraternity; Glee Club; Sergeant-at-Arms of L. C. E. Club.

1929-'30: Glee Club; Omega Psi Phi Fraternity; L. C. E. Club.

1930-'31: Glee Club; Omega Psi Phi Fraternity; L. C. E. Club.



TURNER K. SLADE

Omega Psi Phi Fraternity

A.B.—Major in History

WILLIAMSTON, N. C.

*"Life is what you make it."*

"Doodle" first began his college career at A. and T. First acquaintance shows him to be a regular fellow. "Doodle's" musical talent came into prominence when he was seen leading his "Harmony Hounds" in some popular song at a basketball game. We can wish for him nothing but success and happiness.

1930-'31: University Glee Club; Member of L. C. E. Club.

## Seniors

JEFFERSON R. J. SNYPE, JR.

*B.S.—Major in Biology*

CHARLESTON, S. C.

*"Work perseveringly; work can be made into a pleasure, and alone is profitable to man, to his city, to his country."*

Here he is folks! This is "Kingfish" of the "Amos 'N Andy Copulation." "Kingfish" came to us from Bricks. Since his arrival on the campus, he has proven himself a persistent and diligent student.

1929-'30: Treasurer of Scientific Club; Y. M. C. A.; Glee Club.

1930-'31: Treasurer of Scientific Club; Glee Club; Y. M. C. A.



JAMES H. STOKES

*A.B.—Major in Mathematics*

GOLDSBORO, N. C.

James calls himself "The Voice of the Spirit." He is as mysterious as Mahatma Gandhi himself. He says "It is well to be reasonable and temperate in all things, avoiding all excess, for that endangers happiness." Those who know him can testify that he is the "broads king."



ROBERT E. THOMPKINS

Alpha Phi Alpha Fraternity

*B.S.—Major in Mathematics*

MANNBORO, VA.

*"From the lowest depths there is a path to the loftiest heights."*

This chap is one that can be depended upon. He is a mathematician of the first order. Thompson plans to work out a formula for the "Theory of Numbers." If he does, he will be a success. He is good natured and we all like him.

1928-'29: Matton Literary Society; Class Treasurer; Sphinx Club; Alpha Phi Alpha Fraternity.

1929-'30: Class Treasurer; Sunday School Secretary; Treasurer of Alpha Omicron Chapter of Alpha Phi Alpha Fraternity.

1930-'31: Class Treasurer; R. S. O. T. Club; Treasurer of Alpha Omicron Chapter of Alpha Phi Alpha Fraternity.



## Seniors

CAMPBELL A. TOLBERT  
Alpha Phi Alpha Fraternity  
B.S.—Major in Biology  
LINCOLNTON, N. C.

*"Climb though the rocks be rugged."*

"Skeet" is musician of "The New York Sere-  
naders" fame. With his saxophone he can inter-  
pret Carl Sandburg's "Jazz Fantasia." He is more  
interested in Gastonia than in the hydra or Men-  
delian law.

1927-'28: Sphinx Club; R. S. O. T. Club; Member of  
The Three Musketeers; Glee Club; Y. M. C. A.  
1928-'29: Alpha Phi Alpha Fraternity; R. S. O. T. Club;  
Glee Club; Y. M. C. A.; Three Musketeers.  
1929-'30: R. S. O. T. Club; Y. M. C. A.; Three Mus-  
keteers.  
1930-'31: Alpha Phi Alpha Fraternity; R. S. O. T. Club;  
Y. M. C. A.; Three Musketeers.

SAMUEL H. TRAVIS  
Alpha Phi Alpha Fraternity  
A.B.—Major in English  
MARTINSVILLE, VA.

*"Today well lived makes every yesterday a dream  
of happiness and every tomorrow a vision of  
hope."*

"Judge" is a product of the Old Dominion.  
We sometimes call him "Comrade Travis," but he  
is more widely known as "Judge." He likes to  
argue and finds an outlet for his feeling on the  
debater's stand, where he says "gentlemen! I argue  
to you."

1927-'28: Sphinx Club; R. S. O. T.  
1928-'29: Treasurer of R. S. O. T.; Vice-President of  
Class; Varsity Debater.  
1929-'30: Treasurer of R. S. O. T.; Varsity Debater;  
Vice-President of Class; Member of 1930 BYU  
Staff; Associate Editor of *The University Stu-  
dent*; Junior Prize Contestant; House Manager  
of Alpha Phi Alpha Fraternity.  
1930-'31: Varsity Debater; Y. M. C. A.; R. S. O. T. Club  
Writer of Class Will.

CAESAR A. WALKER  
Alpha Phi Alpha Fraternity  
A.B.—Major in History  
CHESTER, S. C.

*"I am not concerned with where a man is from,  
but where he is going."*

"Chick" is another one of those boys from  
Brainerd. Since his arrival on the campus, he has  
been outstanding on the gridiron and diamond.  
He is an efficient business manager, we wish him  
much luck in the future.

1927-'28: Varsity Football; "S" Club; Varsity Baseball;  
Campus Track Team.  
1928-'29: Varsity Football; Varsity Baseball; "S" Club.  
1929-'30: Business Manager of the 1930 Bell; Varsity  
Football; Varsity Baseball; Track Team.  
1930-'31: Varsity Football; Captain of Baseball Team;  
Business Manager of The Little Theatre.

FELIX WALKER  
B.S.—Major in Chemistry  
CHARLOTTE, N. C.



# Seniors

GEORGE H. WASHINGTON

A.B.—Major in History

SENECA, S. C.

*"Wisdom is the principal thing: therefore get wisdom: and with all thy getting get understanding."*

1927-'28: Matoon Literary Society.  
1928-'29: Matoon Literary Society; Palmetto State Club.  
1929-'30: Crescent Club; Treasurer of Crescent Club.  
1930-'31: Y. M. C. A.; Crescent Club; Social and Literary Advancement Club.

OLIVER B. WILLIAMS

Omega Psi Phi Fraternity

A.B.—Major in Social Science

NEWBERRY, S. C.

*"None but himself can equal himself."*

1927-'28: Varsity Football Team; R. S. O. T. Club; Varsity "S" Club.  
1928-'29: Varsity Football Team; Lampados Club; R. S. O. T. Club.  
1929-'30: Varsity Football Team; Omega Psi Phi Fraternity; Varsity Track Team; R. S. O. T. Club; Omega Psi Phi Basketball Team.  
1930-'31: Varsity Football Team; R. S. O. T. Club; Varsity Track Team; Omega Psi Phi Fraternity; Omega Basketball Team.

GEORGE M. WILLIAMS

Omega Psi Phi Fraternity

A.B.—Major in History

KINSTON, N. C.

*"It is the intensive effort that educates."*

1927-'28: Glee Club; Y. M. C. A.; Matoon Literary Society.  
1928-'29: Glee Club; Quintette; Y. M. C. A.  
1929-'30: Glee Club; Quintette; Y. M. C. A.; Keeper of Finance of Rho Chapter of Omega Psi Phi Fraternity.  
1930-'31: Glee Club; Manager of Quintette; I. C. E. Club; Y. M. C. A.; Class Soloist; Keeper of Finance of Rho Chapter of Omega Psi Phi Fraternity; Keeper of Finance of University Glee Club.

ISAAC N. WRIGHT

Omega Psi Phi Fraternity

B.S.—Major in Biology

YORK, S. C.

*"Though a taste of pleasure may quicken the relish of life, an unrestrained indulgence leads to inevitable destruction."*

1927-'28: R. S. O. T. Club; Freshman Football Team; Y. M. C. A.  
1928-'29: Lampados Club; R. S. O. T. Club.  
1929-'30: R. S. O. T. Club; Omega Psi Phi Fraternity; Varsity Football Team.  
1930-'31: Omega Psi Phi Fraternity; R. S. O. T. Club; Varsity Football Team.





# Will and Testament

State of North Carolina,  
County of Mecklenburg,  
City of Charlotte.

We the Senior Class of 1931 being fully aware of the fact that our days of joy and sorrow at our dear institution must soon terminate and that, ere a few days, and we shall "join the innumerable caravan, which moves to that mysterious realm," and in order to prevent any legal controversies, after our decease, over our enormous accumulations, do seize this moment to make our final testament.

The Class of 1931 of Johnson C. Smith University, claiming full health of body and mind and believing ourselves absolutely capable of making provisions for the future disposition of all our worldly belongings, do declare this our last Will and Testament and render null and void any wills by us at any time heretofore made. Such accumulations and estate as it has pleased kind fate to bestow upon us we dispose of as follows:

It is our wish that all expenses incurred through our burial services be met by the money that we were to have received from home but never did.

Our beloved parents shall be the recipients of our heartfelt congratulations that they are at last rid of a troublesome proposition: one which has been the cause of many days of labor and great sacrifice—for which unselfish cooperation and needful assistance do we on this day arrange for a conscientious endeavor to so shape our hereafter that it will cause their old age to be a period of joy and contentment.

To our dear Alma Mater, that has so effectively served humanity during the three score and four years of its existence, we on our departure make the following pledge: That so long as it remains Johnson C. Smith University, for men only, we promise it our unwavering loyalty and support.

We do will and bequeath to the Board of Trustees our thanks for all that they have done for the development of the Institution.

To Dr. Henry Lawrence McCrory we do will and bequeath our love and appreciation for his long and useful service to the University and especially that part which we ourselves have fortunately partaken of.

We do bequeath to Dr. John M. Gaston our sincere thanks for the great work that he has done in the interest of the University and for our welfare.

To Dean T. E. McKinney we express our indebtedness for his sound and encouraging counsel on the many problems that have confronted us during our college days.

To our cherished faculty who have never misused an opportunity to flunk us—but who stand shoulder to shoulder with us in believing our Alma Mater the greatest in all the land—we will, devise and bequeath our sincere thanks for the knowledge they have imparted to us.

The teachers of our number pass on wholeheartedly to the budding teachers of the Junior Class the blunt uncompromising truth that the most difficult problem in the whole field of education is to construct a graph that will lead you to a job.

The omniscient Sophs are to be the possessors of our unreserved commission to lay aside their pestering ways and become sensible.

The athletes, debaters, writers, artists and scholars of our number will their abilities to any and all worthy successors.

To all who may come after us we offer congratulations tinged with envy that they may possibly be able to enjoy a decent meal in the dining hall, a dance in the gymnasium and to have access to the library at convenient hours—luxuries that were denied us during our stay in this earthly realm of petty restrictions.

We do hereby appoint and constitute the President of the First National Bank of Charlotte, in which our savings are deposited, and the Chief of Police to execute this our Last Will and Testament.

In testimony whereof we the Class of 1931 have to this our Last Will and Testament set our hands and seal this, the twenty-six day of May Anno Domini one thousand nine hundred and thirty-one.

THE CLASS OF 1931 (Seal).  
By SAMUEL H. TRAVIS.



# JUNIORS

## Juniors



W. F. ALEXANDER

A. C. ANDERSON

L. D. ARCHIA

A. D. BELTON

J. E. BELTON

H. S. BLUE

F. BOGLE

U. L. BREWER

W. L. BYNUM

LARDONIA CARR

## Juniors

S. CARRAWAY

S. CUNNINGHAM

C. S. DEVANE

E. R. DUDLEY, JR.

J. H. EDWARDS

E. O. ELLIS

R. W. ELLIS

L. W. GASTON

H. W. GIVENS

J. C. GRIFFIN



## Juniors



E. C. GRIGG, JR.

N. HAIRSTON

E. C. HALL

G. S. HALL

J. H. HARGROVE

C. G. HARRIS

JULIUS HILL

J. J. JORDIAN

V. B. LONG

A. J. MACK



## Juniors

J. P. MASSEY

A. D. MAXEY

J. M. MEYERS

W. H. MORRIS

E. R. PARHAM

J. D. POWELL

J. D. PRIDGEN

B. R. RICHARDSON

J. A. RAMSEUR

H. B. RUTHERFORD



## Juniors



H. M. STINSON

J. L. STINSON

H. G. SULLIVAN

A. A. THOMPSON

J. F. TOWNES

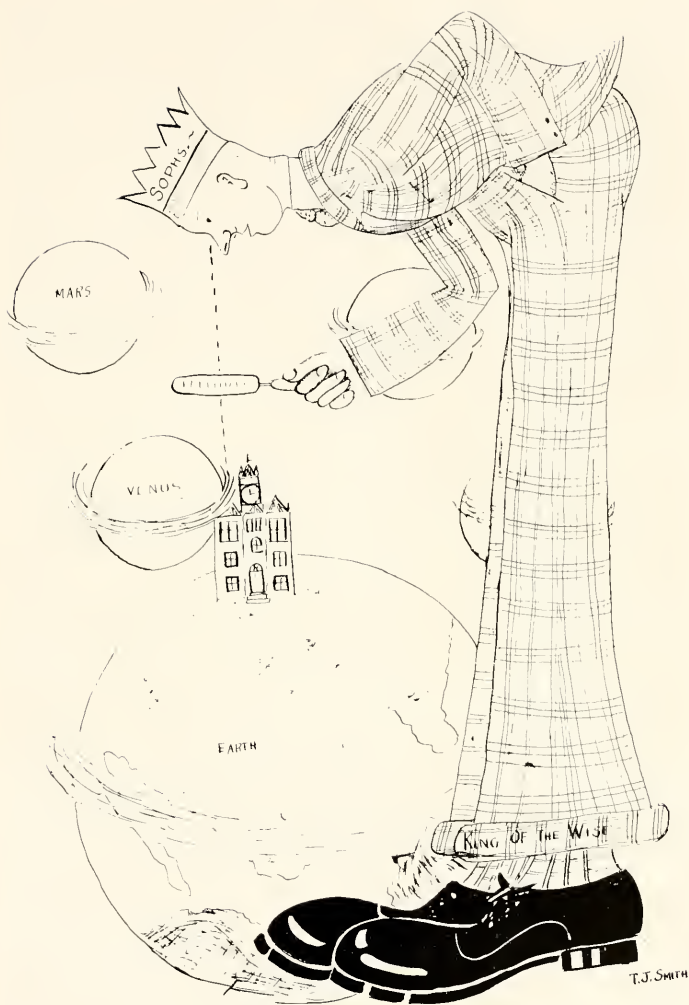
J. H. TUCKER

F. E. WALKER

W. S. WHITE

W. C. WITHERSPOON

M. Q. WYCHE



# SOPHOMORES



## Sophomores

L. F. ALEXANDER  
W. S. BAKER  
W. BAPTIST  
M. BELTON

B. T. BENNETT  
C. E. BOULWART  
C. W. BOYCE

A. H. BRYANT  
E. L. COLLINS  
H. L. COUNTS

P. F. DANIELS  
E. DUNN  
J. T. ELLERBE  
L. A. ELLIS



## Sophomores

R. K. FORTUNE  
G. T. FRANKLIN  
C. A. GRAHAM  
G. GREENE

W. M. HAMILTON  
M. J. HAWTHORNE  
H. W. HILL

J. L. HOLLOWELL  
W. HOWZE  
R. L. JEANS

LESLIE JOHNAKINS  
C. N. LIGHTNER  
C. L. LOWERY  
B. L. MARTIN





## Sophomores

CLAUDE McADAMS  
E. MEARS  
H. L. MOSLEY  
W. K. OLIVER

R. N. PERRY, JR.  
D. T. RAMSEUR  
J. R. RAWLINS  
C. H. RUSSELL

W. A. SAMUEL  
O. W. TAYLOR  
C. R. THOM

S. W. WHITTINGTON  
G. WILLIAMS  
M. L. WILSON  
J. R. WORTHLY



# FRESHMEN



## Freshmen

j. l. alexander  
e. e. balsey  
a. betha  
lewis blakney  
r. m. bulldware  
e. p. broom

dorris brown  
e. h. brown  
w. c. byers  
i. a. carrol  
e. a. chisolm  
e. l. clark

w. d. coxsum  
g. e. collins  
s. m. davis  
i. t. diggs  
j. dwiggins  
ellerbe

j. s. ellison  
l. foster  
e. c. fowlkes  
e. a. gallashaw  
i. e. glover  
d. c. greene



## Freshmen

j. k. hailey  
j. e. hairston  
j. w. hairston  
g. b. hall  
j. a. harris  
i. w. henderson

h. b. hill  
t. h. hooper, jr.  
h. b. jackson  
a. j. jefferson  
c. j. johnson  
e. s. johnson

r. c. johnson  
b. w. lane  
t. s. w. logan  
h. r. malloy  
c. g. martin  
t. s. martin

c. b. maxwell  
j. m. miller  
r. a. miller  
r. e. miller  
a. m. moone  
j. a. moone





## Freshmen

s. s. moore  
w. morton  
h. c. mcmanus  
j. c. mcmillian  
w. j. nelson  
w. t. nelson

i. norman  
t. m. pass  
h. b. perry  
j. c. pitts  
k. d. s. pogue  
e. l. rann

w. ross  
e. c. shaw  
o. d. simmons  
t. j. smith  
w. b. stinson  
j. b. thompson

l. n. thompson  
j. l. tyson  
r. c. tyson  
r. l. walker  
j. r. wilson  
w. d. wood



# School of Theology

## FACULTY

REVEREND YORKE JONES, D.D.

*Dean of School of Theology*

*Professor of Homiletics and Church History*

REVEREND P. W. RUSSELL, D.D.

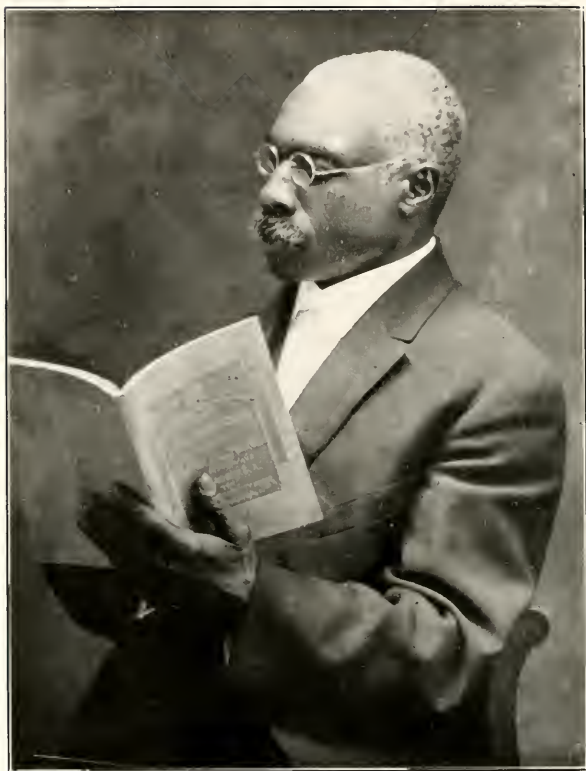
*Professor of Greek and Hebrew*

REVEREND W. E. PARTEE, D.D.

*Professor of Theology*

REVEREND C. H. SHUTE, D.D.

*Professor of English Bible*



REVEREND YORK JONES, D.D.

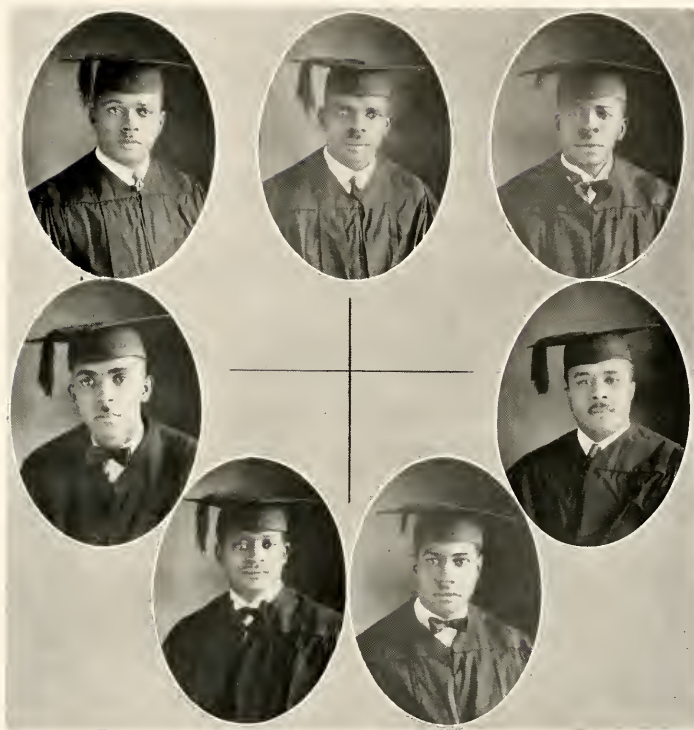
*Dean of the School of Theology*

*Professor of Homiletics, Church History and Christian Sociology*

Author: "The Climbers: A Story of Sun-kissed Sweethearts" (1912)

"Gold and Incense" (1925)

Composer: "The Slave Mother's Song" (1901)



## Graduating Class



T. A. JENKINS, A.B., B.D., *President*

F. M. BEAVER, A.B., B.D.

U. S. JOHNSON

P. L. DeBERRY

I. D. OSABUTEY

E. E. GREGG, A.B., B.D.

H. E. WILLIAMS, A.B., B.D.



SMITH COTTAGE







H. B. RUTHERFORD  
*Editor-in-Chief*

JAMES C. GRIFFIN  
*Business Manager*

## 1931 Bull Staff

MOSES BELTON

J. LESLIE HOLLOWELL, JR.

ERNEST C. GRIGG, JR.

JOSEPH F. TOWNES

WILLIAM H. FLETCHER

T. J. SMITH

EUGENE O. ELLIS

ANDREW J. MACK

WILLIAM S. BAKER

H. SHERWOOD BLUE

J. DERRING POWELL

WALTER R. HOWZE

H. W. LEAKE

E. R. AVANT

R. N. PERRY, JR.

G. E. MEARES

*Assistant Editor-in-Chief*

*Assistant Business Manager*

*Literary Editor*

*Associate Literary Editor*

*Art Editor*

*Associate Art Editor*

*Photography Editor*

*Publicity Manager*

*Secretary*

*Director of Divisions*

*Feature Editor*

*Athletic Editor*

*Advertising Department*

*Advertising Department*

*Advertising Department*

*Advertising Department*



## Debaters' Club



F. W. BOND  
*Faculty Advisor*



MOSES BELTON  
J. LESLIE HOLLOWELL, JR.



MARCUS H. BOULWARE  
*Student Secretary of Debate*

EDWARD W. JONES



CLYDE L. CLARKE

ISAAC F. NORMAN



WILLIAM D. COAXUM

WILLIAM A. SAMUEL



ERNEST C. GRIGG, JR.  
*Student Manager of Debate*

SAMUEL H. TRAVIS  
*Publicity Manager*

## Debating

Debating has for many years rated high among the extra-curricula activities at Johnson C. Smith University. This year was no exception to the rule and as it closes we note that the bone of contention has been gnawed clean by the Smith debaters and their opponents.

In the discussions this year every possible effort was made to choose subjects that are instructive and interesting to the debaters and audience. A consideration of the questions discussed reveals the fact that this object was approximated to a very marked degree.

### THE UNEMPLOYMENT QUESTION

From the economic condition that has prevailed throughout America and other capitalized countries during the last twenty months, and from the unfavorable criticism that has been made against the present system of production, and the claim made by persons—who are more or less socialistic in their views—that this capitalized system of industry is responsible for these alternating periods of acute unemployment, the question evolved, Resolved; That the present unemployment situation is an inherent weakness in the capitalistic system.

### THE INDIAN QUESTION

Persons who are interested in international affairs cannot help but notice the agitated condition of India. The Nationalistic movement—the passive resistance or "Soul Force" used by Mahatma Gandhi—in defiance of certain British laws has certainly presented a

new and delicate problem for England to solve. From this situation evolved the question. Resolved; That India should be granted complete independence.

#### BLUEFIELD—SMITH

The debating season opened (for Smith) on Friday evening, February 24, 1931, with Smith appearing at Bluefield Institute, Bluefield, West Virginia. The unemployment question was used in this discussion. Mr. W. H. Parries, Mr. R. M. Smith and Mr. W. H. Gray of Bluefield Institute upheld the affirmative, while Mr. E. C. Grigg, Jr., Mr. M. H. Boulware and Mr. S. H. Travis spoke for Johnson C. Smith on the negative. This debate was very interesting as well as instructive. This was a non-decision debate.

#### LINCOLN—SMITH

On February 4, 1931, Johnson C. Smith appeared at Lincoln University and upheld the affirmative of the proposition. Resolved; That the present unemployment situation is an inherent weakness in the modern capitalistic system. Mr. E. C. Grigg, Jr., Mr. M. H. Boulware and Mr. S. H. Travis were the speakers for Smith. Lincoln was represented by Mr. F. A. Decosta, Mr. Desumee Johnson and Mr. H. T. Cromwell. Lincoln was given the decision in the contest and thus avenged herself for last year's defeat by Smith.

#### WILBERFORCE—SMITH

On March 21, 1931, Johnson C. Smith will be visited by Wilberforce University. This intersectional contest is expected to be very interesting.



## PENTAGONAL LEAGUE

For several years Smith has been a member of the Pentagonal Debating League. The proposition to be used by the League this year is, Resolved: That India should be granted complete independence. Smith opponents this year are Knoxville College at Johnson C. Smith and Talladega College at Talladega, Alabama.

## SOUTH CAROLINA STATE—SMITH

The annual neutral-ground debate between State and Smith will be held this year at Charleston, S. C. The proposition to be used is, Resolved: That India should be granted complete independence.

## DEBATERS' CLUB

Debating at Smith is controlled by the Debaters' Club. Membership into the club is granted only by competitive tryouts held not later than the first of November of each year. Contestants that show ability in the preliminaries are accepted into the club, and from the Debaters' Club the members of the various teams are chosen.

## FACULTY COMMITTEE ON DEBATE

G. F. WOODSON, JR.  
*Chairman*

F. W. BOND  
*Secretary*

N. R. BOLDEN

W. C. DONNELL

D. T. RAY



#### STUDENTS' BAND

P. L. DANIELS, W. S. WHITE, J. ALEXANDER, W. BAPTIST, J. L. JORDAN, W. A. SAMUEL, S. CUSKINGHAM, *Trumpets*; G. T. FRANKLIN, J. B. THOMPSON, *Trombones*; J. R. WILSON, ELLISON, L. F. JOHNSON, C. A. TOBERT, C. H. RUSSELL, *Saxophones (E-flat)*; E. PARKMAN, *Saxophone (Tenor)*; A. J. JEFFERSON, E. L. KANN, JR., *Baritone*; T. S. MARTIN, *Clarinet*; N. E. HOWELL, *Alto*; E. BROOKS, *Baritone*; W. F. SHELLEY, *Drum*.



## The Little Theatre Group



PROFESSOR T. C. MEYERS

E. C. GRIGG, JR.

J. D. POWELL

P. W. JENKINS

J. C. GRIFFIN

C. A. WALKER

L. S. GILLIARD

W. F. ALEXANDER

S. CARRAWAY

W. H. FLETCHER

C. C. SCOTT

E. R. DUDLEY

M. H. BOULWARE

H. C. CHRISTIAN

A. JONES

N. HAIRSTON

J. L. POWELL

T. JEFFERS

R. A. MACON

J. H. HARGROVE



Scene From 'THE POT-BOILERS'

## The Little Theatre

On the first day of October in the year of our Lord, one thousand nine hundred and thirty the class in English 334 under Professor Timothy C. Meyers formed of themselves a permanent organization with the following offices held by the men named. President, J. H. Griffin, '32; Vice-President, E. R. Dudley, '32; Secretary, E. C. Grigg, Jr., '32; Recording Secretary, J. D. Powell, '32; Business Manager, C. A. Walker, '31; Caretaker, J. W. Martin, '31; Publicity Manager, W. F. Alexander, '32.

The express purpose of this organization was the production of plays suited to a Little Theatre group on as systematic a basis and in as business-like manner as possible. Accordingly, the group began work on two one-act plays, a comedy ("The Pot Boiler") and a tragedy ("Your Fiery Furnace"). Under the leadership of W. F. Fletcher, '31, Stage Designer, and J. D. Powell, '32, and E. R. Dudley, '32, Stage Managers, the scenery for both plays was built entirely by the group. The first milestone in the theatrical career of the group was reached on December 12, 1930, when, under the directorship of E. C. Grigg, Jr., '32, and Thebaud Jeffers, '31, respectively, the "Pot Boiler" and "Your Fiery Furnace" were presented in Biddle Memorial Hall.

The Little Theatre class is at present preparing for production, a four-act tragedy "Justice" by John Galsworthy. Present plans call for a short tour before the presentation of the play on the University campus in the late spring.





Scene From: "YOUR FIERY FURNACE"





## Y. M. C. A. Cabinet

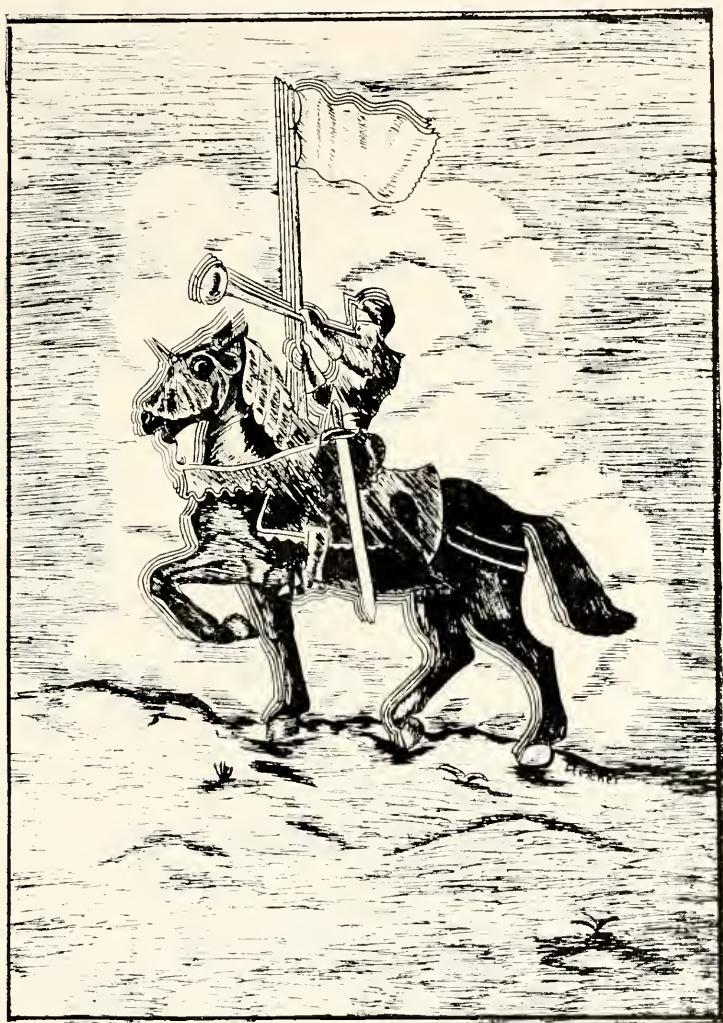
JOHN L. POWELL  
W. S. BRINKLEY  
M. BELTON  
R. N. PERRY, JR.  
R. L. JEANS  
H. L. COUNTS  
A. J. MACK  
W. C. L. LOWERY

J. L. BROWN  
R. K. FORTUNE

J. D. POWELL

*President*  
*Vice-President*  
*Secretary*  
*Assistant Secretary*  
*Treasurer*  
*Head of Youth Work*  
*Head of Forum*  
*Chairman of Hospital Committee*

J. C. GRIFFIN  
J. L. HOLLOWELL, JR.



## FRATERNITIES



## Pan-Hellenic Council

JAMES O. ELLIS, *President*  
*Alpha Phi Alpha*

H. L. CLARKSON, *Vice-President*  
*Phi Beta Sigma*

T. JEFFERS, *Secretary-Treasurer*  
*Omega Psi Phi*

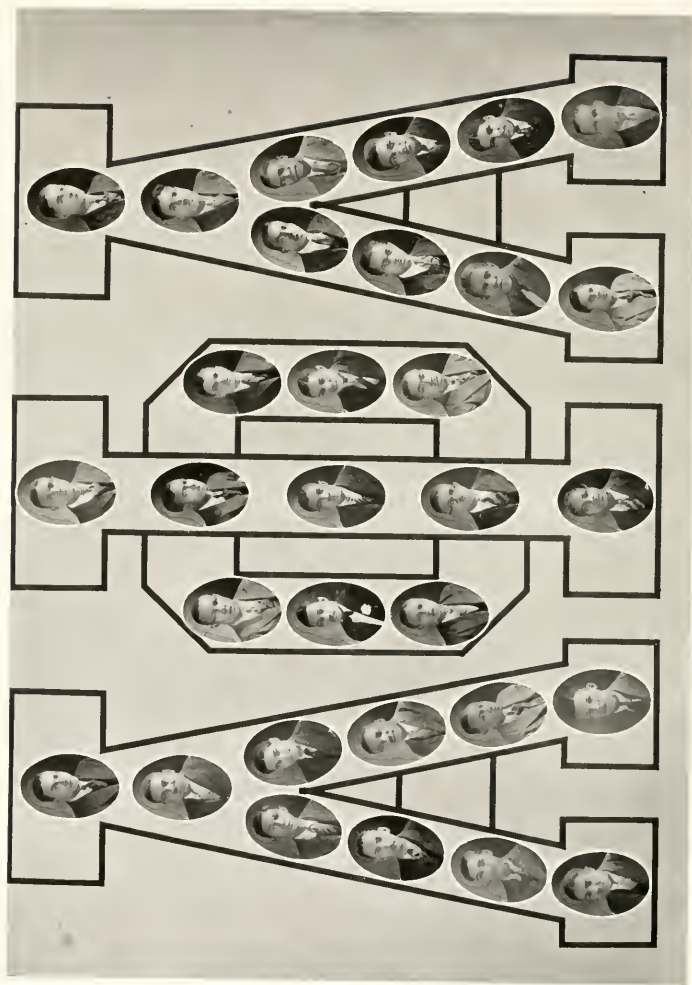
J. D. POWELL  
*Alpha Phi Alpha*

E. C. GRIGG, JR.  
*Omega Psi Phi*

W. H. CREECY  
*Kappa Alpha Psi*

R. N. PERRY, JR.  
*Kappa Alpha Psi*

PROFESSOR G. F. WOODSON, JR., *Faculty Advisor*  
*Alpha Phi Alpha*



ALPHA OMICRON CHAPTER, ALPHA PHI ALPHA FRATERNITY



# Alpha Phi Alpha Fraternity

FOUNDER AT CORNELL UNIVERSITY, 1906

## ALPHA OMICRON CHAPTER

ESTABLISHED AT JOHNSON C. SMITH UNIVERSITY, 1923

"The organization of the Greek letter fraternity among Negro college men has been one of the inevitable results of the development of college life among Negroes in America. College fraternities have been the special developments of the college and university life of the United States and Canada. Relationships may be noted with the fraternal organizations and the convocations of the Middle Ages and with the corps of German universities in the modern period. The underlying basis for their organization is found in two fundamental attractions for youth through all the ages: the comradeship which youth craves and finds for itself; and the spirit of high idealism which youth has been ever willing to follow."

### OFFICERS

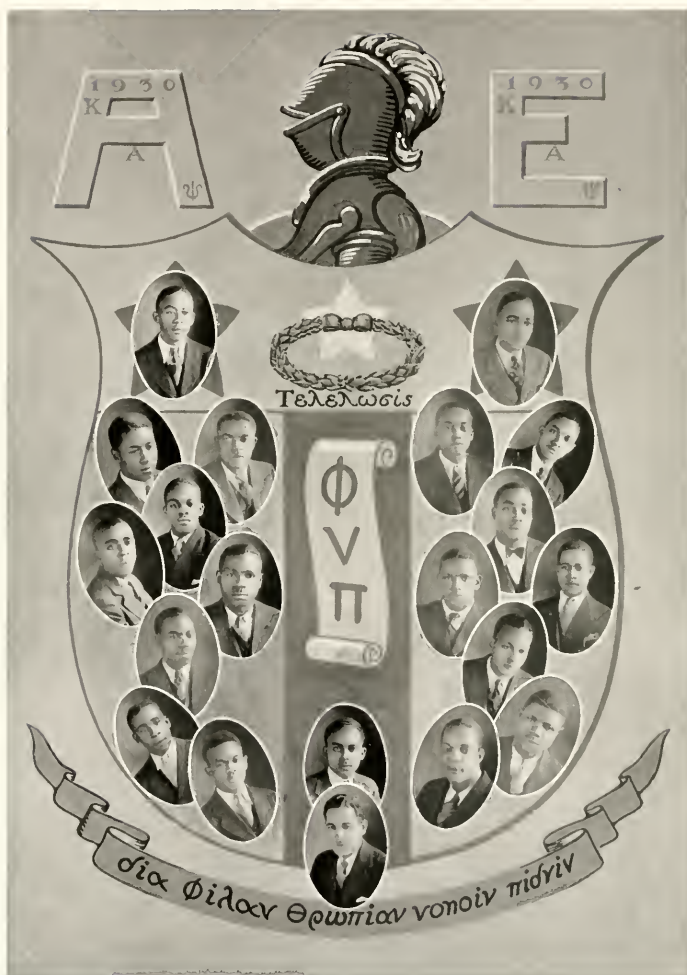
HARRY B. RUTHERFORD  
J. LESLIE HOLLOWELL, JR.  
WILLIAM A. SAMUEL  
JAMES D. POWELL  
JOSEPH E. BELTON  
H. SHERWOOD BLUE  
CLARENCE J. FEW  
ROBERT E. THOMPSON  
PLINY W. JENKINS  
ALBERT D. BELTON  
EDWARD A. MCDOWELL

*President*  
*Vice-President*  
*Recording Secretary*  
*Financial Secretary*  
*Corresponding Secretary*  
*House Manager*  
*Editor to the Sphinx*  
*Treasurer*  
*Chaplain*  
*Historian*  
*Sergeant-at-Arms*

### MEMBERS

W. S. BAKER  
A. D. BELTON  
J. E. BELTON  
H. L. BIGGS  
H. S. BLUE  
F. BOGLE  
W. M. COLEMAN  
N. C. CROSBY  
R. W. DOCKERY  
E. R. DUDLEY  
E. O. ELLIS  
J. O. ELLIS  
C. J. FEW  
W. H. FLETCHER  
H. B. HENDERSON  
J. R. HENRY

J. L. HOLLOWELL, JR.  
P. W. JENKINS  
L. F. JOHNAKINS  
W. H. LINDSAY  
E. A. MCDOWELL  
E. S. POTTS  
J. D. POWELL  
J. L. POWELL  
D. T. RAY  
H. B. RUTHERFORD  
W. A. SAMUEL  
R. E. THOMPSON  
C. A. TOLBERT  
S. H. TRAVIS  
C. A. WALKER  
G. F. WOODSON, JR.



ALPHA EPSILON CHAPTER, KAPPA ALPHA PSI FRATERNITY

# Kappa Alpha Psi Fraternity

FOUNDED AT INDIANA UNIVERSITY, JANUARY 5, 1911

## ALPHA EPSILON CHAPTER

ESTABLISHED AT JOHNSON C. SMITH UNIVERSITY, DECEMBER 10, 1927

COLORS: *Crimson and Cream*

### OFFICERS

C. J. JONES, III	Polemarch
C. L. LOWERY	Vice-Polemarch
H. L. COUNTS	Keeper of Records
L. A. ELLIS	Keeper of Exchequer
J. T. ELLERBE	Strategus
J. M. MEBANE	Lieutenant Strategus
R. N. PERRY, JR.	Historian and Reporter
J. W. HILL	House Manager

### BOARD OF DIRECTORS

C. J. JONES, III	Chairman
C. L. LOWERY	Vice-Chairman
H. L. COUNTS	Secretary
C. A. ANDERSON	J. W. HILL

### ROSTER

C. A. ANDERSON	E. W. JONES
P. B. ADAMS	H. E. JONES
M. H. BOULWARE	C. J. JONES, III
J. G. BENSON	A. T. JAMES
J. W. BROWN, JR.	C. L. LOWERY
H. L. COUNTS	V. B. LONG
W. H. CREECY	T. A. LAsAINE
C. S. DEVANE	A. J. MACK
L. A. ELLIS	P. P. McCORKLE
J. T. ELLERBE	J. M. MEBANE
J. W. HILL	R. N. PERRY, JR.
ARTHUR JONES	A. S. POWE

J. F. TOWNES



RHO CHAPTER, OMEGA PSI PHI FRATERNITY

# Omega Psi Phi Fraternity

## RHO CHAPTER

Friendship formed while we journey along life's way is always lasting. When we form friendships in college we work for the common good of all.

If it is possible for us to regain the utopian state while here in college, we shall surge on in our work.

May Rho Chapter of the Omega Psi Phi Fraternity be a friend to all. There is a light ahead for Rho Chapter. We are keeping step with the music of progress, and shall do our utmost to keep alive the sacred principles of Omega.

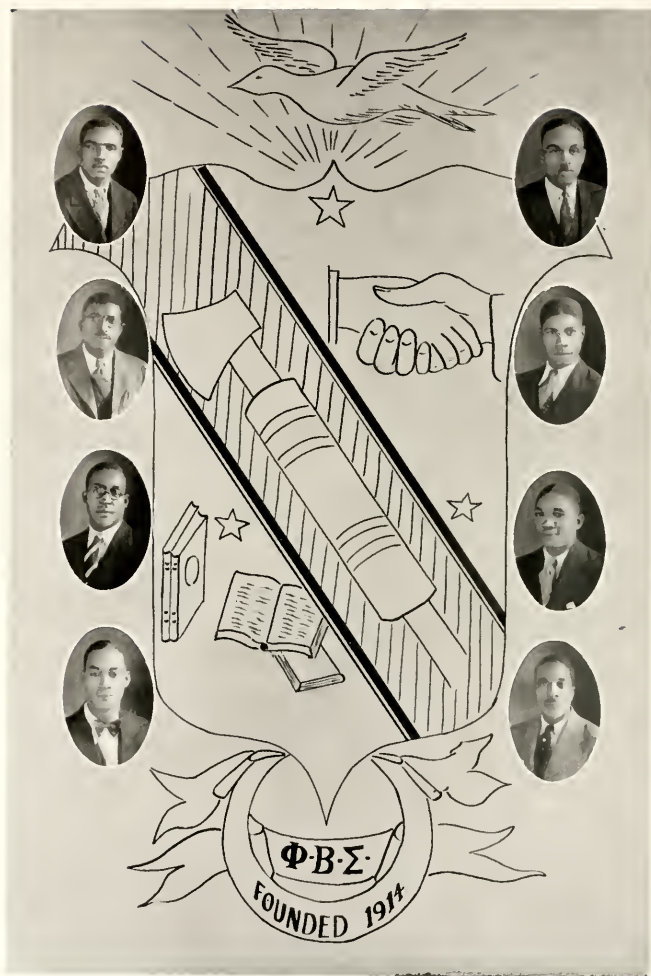
## OFFICERS

J. H. BRYANT	<i>Basileus</i>
H. M. JEFFERSON	<i>Vice-Basileus</i>
T. JEFFERS	<i>Keeper of Records and Seals</i>
G. M. WILLIAMS	<i>Keeper of Finance</i>
E. C. BOSTIC, JR.	<i>Chapter Editor</i>
J. C. GRIFFIN	<i>Chaplain</i>
R. A. MACON	<i>Keeper of Peace</i>
T. K. SLADE	<i>House Manager</i>

## MEMBERS

L. F. ALEXANDER	W. R. HOWZE
E. R. AVANT	M. J. JACKSON
I. J. BAILEY	H. M. LEAKE
M. BELTON	C. McADAMS
S. CARRAWAY	J. W. MARTIN
E. DUNN	J. H. RAWLINS
H. DENNY	E. L. RHODEN
E. B. FRINK	C. H. RUSSELL
W. M. FOWLKES	W. F. SHELLEY
L. S. GILLARD	O. B. WILLIAMS
E. C. GRIGG, JR.	W. C. WITHERSPOON
I. N. WRIGHT	





ALPHA EPSILON CHAPTER, PHI BETA SIGMA FRATERNITY

OFFICERS: H. L. CLARKSON, *President*; W. H. MORRIS, *Vice-President*; H. D. BLACK, *Secretary*; H. E. WILLIAMS, *Acting Treasurer and Corresponding Secretary*. MEMBERS: J. M. ALSTON, H. D. BLACK, D. C. BLUE, G. T. BUTLER, H. L. CLARKSON, W. L. DAVIDSON, G. G. HAGGARD, W. H. MORRIS, J. D. PRIDGEN, C. C. SCOTT, J. T. SMITH, H. W. GIVENS, H. E. WILLIAMS.



## Sphinx Club

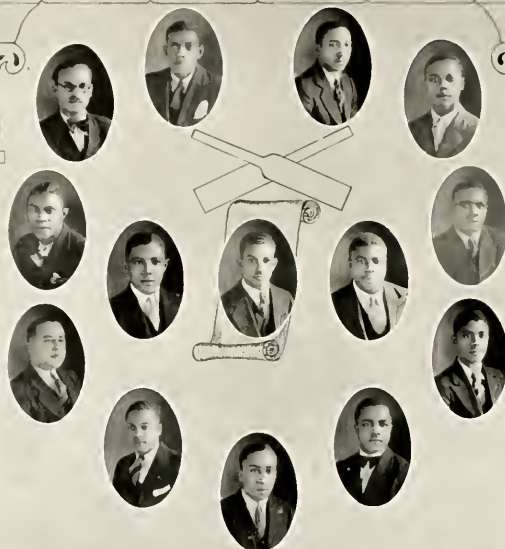
### OFFICERS

T. S. MARTIN	..... President	E. L. RANN, JR.	..... Treasurer
E. S. JOHNSON	..... Vice-President	W. D. COAXUM	..... Chaplain
J. E. HAINSTON	..... Secretary	H. R. MALLOY	..... Sergeant-at-Arms
J. B. THOMPSON	..... Assistant Secretary		

### MEMBERS

W. S. BRINKLEY	E. C. HALL	H. H. HILL	J. L. SMITH	M. L. WILSON
J. T. DIGGS	P. A. HALL	R. L. JEANS	F. E. WALKER	

# SCROLLERS



## CLUB

### OFFICERS

C. L. CLARKE	President
J. W. BROWN	Vice-President
J. E. McMILLAN	Secretary
C. E. SHAW	Assistant Secretary
R. C. JOHNSON	Treasurer
J. I. TYSON	Reporter and Historian
R. M. BOULWARE	Sergeant-at-Arms
G. B. HALL	Chaplain

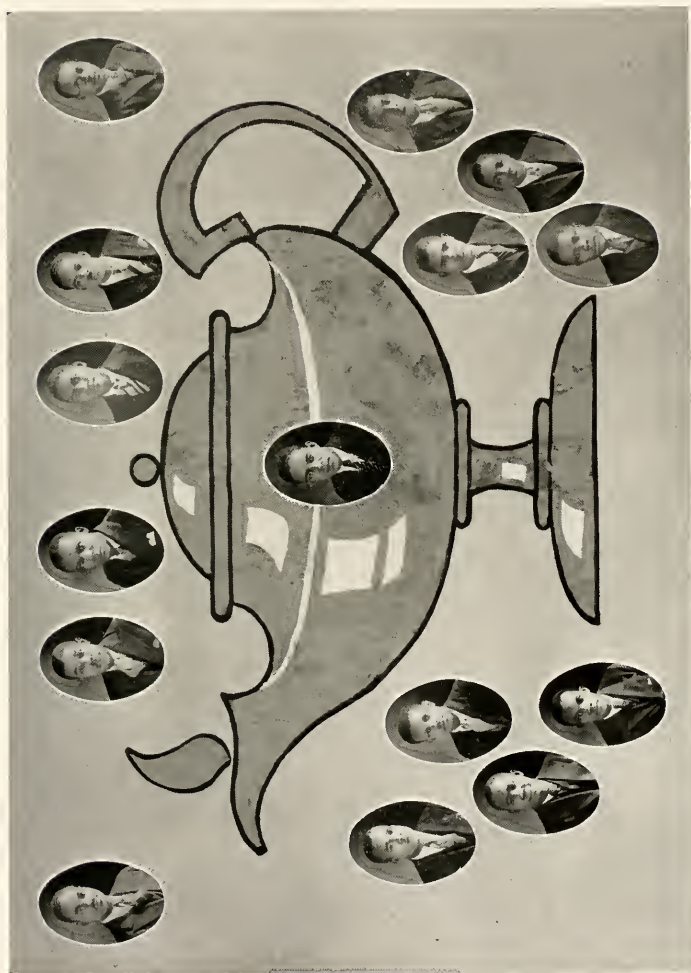
### MEMBERS

C. E. BOULWARE  
R. M. BOULWARE  
J. W. BROWN  
H. C. CHRISTIAN

C. L. CLARKE  
G. B. HALL  
N. HARRISTON  
H. W. HILL

R. C. JOHNSON  
J. E. McMILLAN  
H. L. MOSLEY  
C. E. SHAW

C. TURNER  
S. W. WHITTINGTON  
J. I. TYSON  
J. R. WORTHY



# LAMPADOS CLUB

OFFICERS: J. M. MILLER, *President*; C. J. JOHNSON, *Vice-President*; I. F. NORMAN, *Secretary*; R. A. CARROLL, *Assistant Secretary*; I. E. GLOVER, *Treasurer*; C. E. FOWLKES, *Sergeant-at-Arms*; W. F. ALEXANDER, *Reporter*; D. S. FOWLE, *Chaplain*; MEMBERS: E. H. BROWN, W. S. BYERS, F. L. DANIELS, F. D. MITCHELL, O. W. TAYLOR, R. E. YAGGS, F. C. FRIZZARD.





## Crescent Club

### OFFICERS

*President* S. S. MOORE

*Treasurer*

*Secretary*

### MEMBERS

J. K. HALLEY  
S. CUNNINGHAM

W. BAPTIST

A. D. MAXEY

A. A. THOMPSON

W. S. WILLIAMS

G. H. WASHINGTON





## Beta Kappa Chi Scientific Society

### DELTA CHAPTER

ESTABLISHED 1931

Beta Kappa Chi is an honorary scientific society established to encourage a deeper study into and a practical interpretation of general scientific phenomena.

The society covers all the branches of natural science and mathematics.

Delta Chapter is the outgrowth of a scientific club that was established on the campus in the fall of 1929.

All the members of the Scientific Club in 1931, with the exception of two, were eligible for membership in Beta Kappa Chi. These men are the charter members of Delta Chapter:

J. G. BENSON  
E. E. BESS, *Secretary*  
H. S. BLUE  
F. BOGLE  
W. M. COLEMAN

R. W. DOCKERY  
J. H. EDWARDS  
T. C. GOODWIN  
E. C. HALL, *President*  
H. M. JEFFERSON

V. B. LONG  
E. A. McDOWELL  
H. B. RUTHERFORD, *Vice-President*  
M. Q. WYCHE





NATURE'S MISTAKE



Hareless Cases



Why Girls Walk



CAROLINA'S BEST?

**SNAPS**



Sells it for less

Mama's Pride



WHO CARES  
(We don't)



OUR WORST Problem



Watch the Birdie

OLD ? JOE



$$(a+b)^2 = a^2 + 2ab + b^2$$



Weaned  
TOO  
EARLY



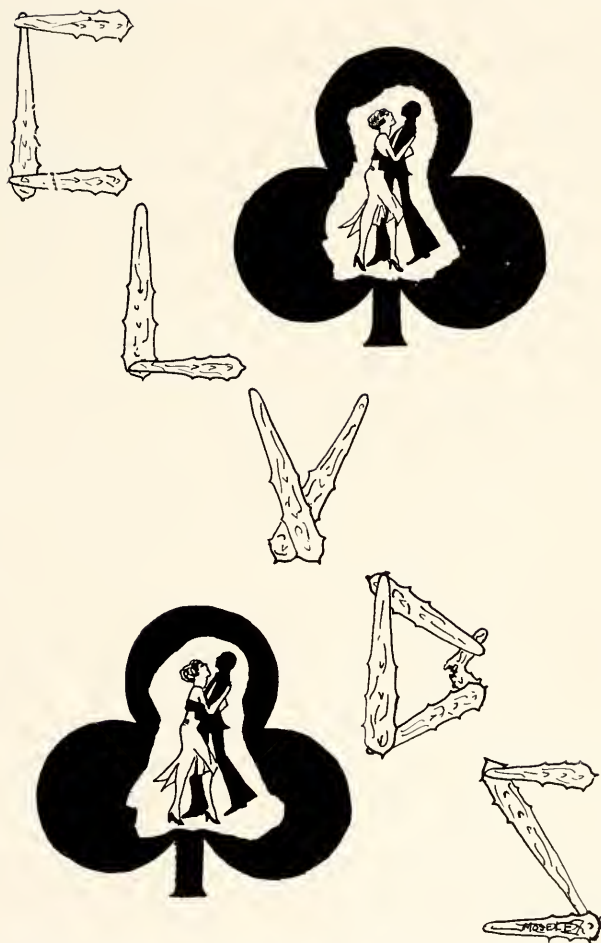
MORE LIGHT ON THE  
Subject *Crutches*



"ALIAS" GREEN











## University Glee Club

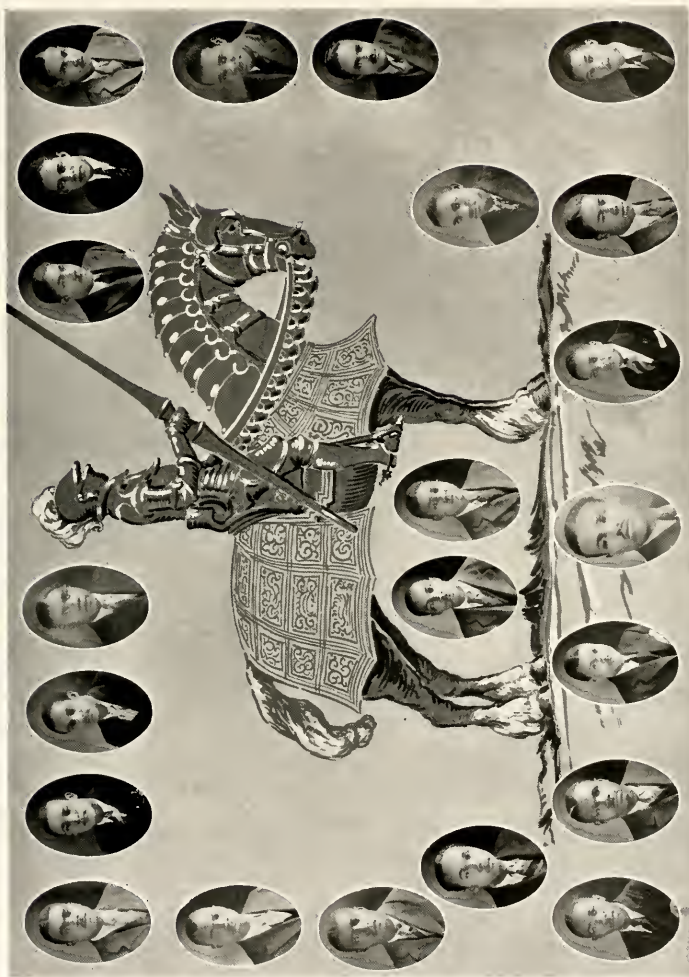
J. E. BELTON	<i>Baritone</i>	E. L. McADAMS	<i>Bass</i>
W. M. COLEMAN	<i>Bass</i>	E. A. McDOWELL	<i>First Tenor</i>
R. W. DOCKERY	<i>Baritone</i>	T. M. PASS	<i>Baritone</i>
L. W. GASTON	<i>Second Tenor</i>	J. D. POWELL	<i>Second Tenor</i>
L. A. ELLIS	<i>First Tenor</i>	W. F. SHELLEY	<i>Bass</i>
M. R. FLACK	<i>First Tenor</i>	J. R. SNIPE, JR.	<i>Bass</i>
R. K. FORTUNE	<i>Second Tenor</i>	T. K. SLADE	<i>Bass</i>
J. C. GRIFFIN	<i>Baritone</i>	H. G. SULLIVAN	<i>First Tenor</i>
J. W. HAIRSTON	<i>First Tenor</i>	G. M. WILLIAMS	<i>Second Tenor</i>
H. B. JACKSON	<i>Bass</i>	M. L. WILSON	<i>Baritone</i>
M. J. JACKSON	<i>Second Tenor</i>	W. B. WOOD	<i>First Tenor</i>
R. FLANNAGAN	<i>Baritone</i>	R. A. CARROLL	<i>Pianist</i>
T. S. MARTIN	<i>Second Tenor</i>	MR. THOM B. FAULKNER	<i>Director</i>



## University Quintette

L. A. ELLIS	<i>First Tenor</i>
G. M. WILLIAMS	<i>Second Tenor; Manager</i>
L. W. GASTON	<i>Second Tenor; Secretary</i>
J. E. BELTON	<i>Baritone</i>
R. A. MACON	<i>Bass</i>
R. A. CARROLL	<i>Pianist</i>
MR. THOM B. FAULKNER	<i>Director</i>

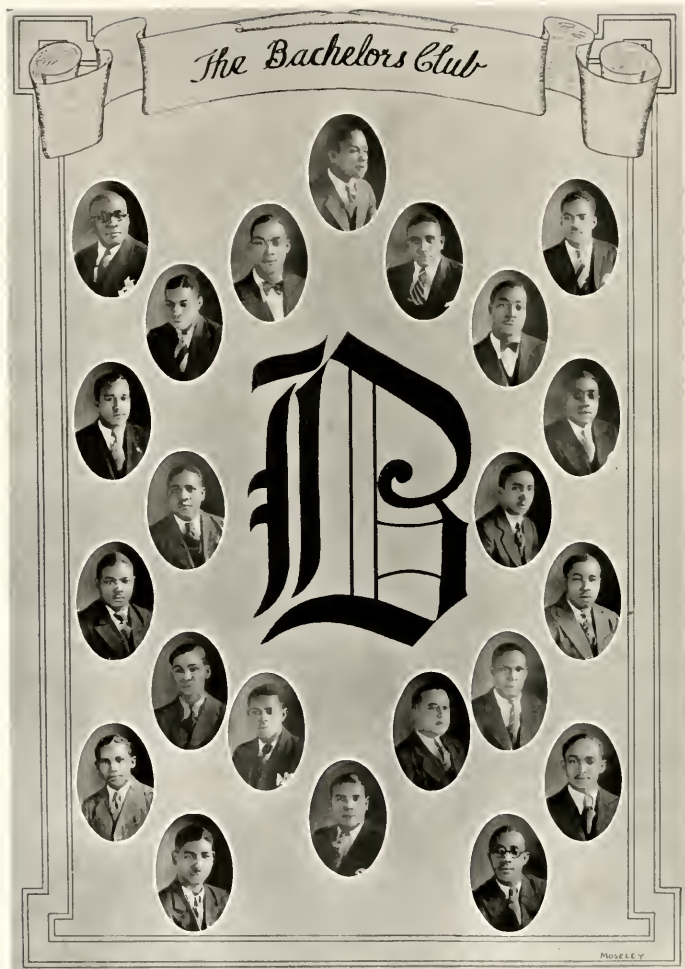




# LES CHEVALIERS ELEGANTS

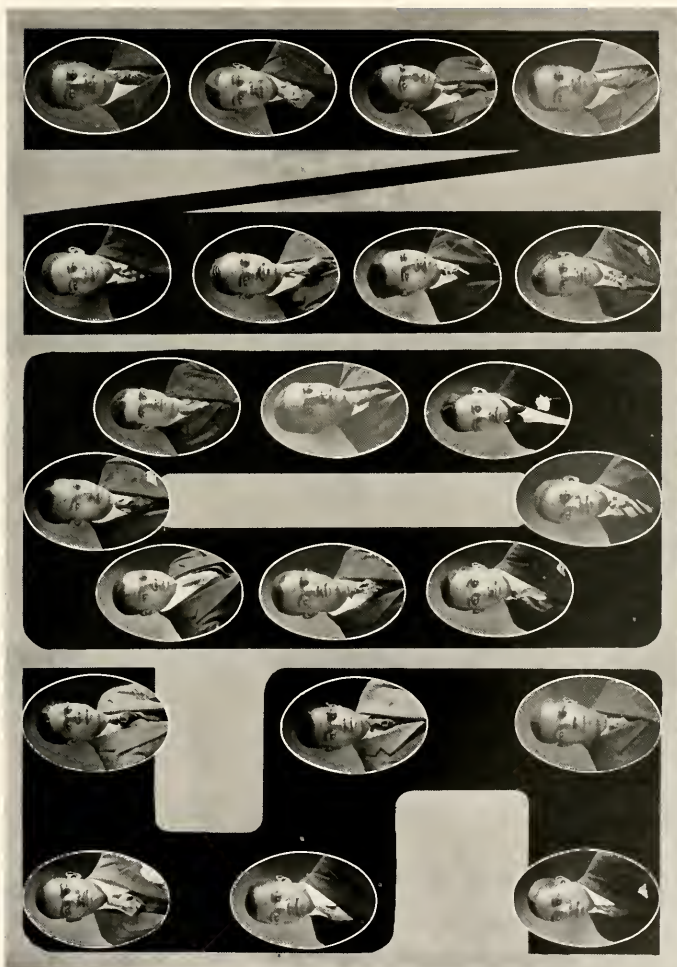
OFFICERS: W. R. HOWE, *President*; J. W. GASTON, *Sergeant-at-Arms*; MEM-  
 BERS: J. W. BAKER, *Secretary*; D. COLEMAN, *Treasurer*; T. K. SHARP, *Sergeant-at-Arms*; MEM-  
 HAMILTON, I. W. HENDERSON, J. W. HILL, T. JEFFERS, H. W. LEAKE, C. L. MARTIN, T. M. MARTIN, G. E.  
 MEARS, W. F. SHELLEY, I. P. H. STANDACK, O. W. TAYLOR, J. F. TOWERS, E. M. TOWERS, J. L. TYSON, M. J. WHITEHEAD, J. R. WILSON.  
 J. E. McMILLAN.





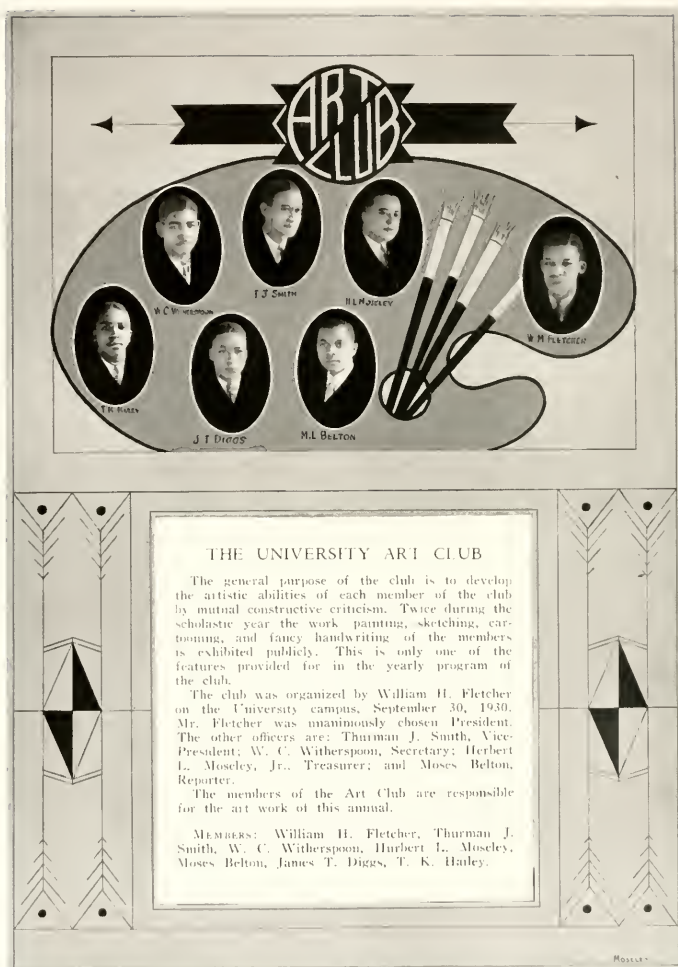
OFFICERS: W. H. CREECH, *President*, E. E. BISS, *Secretary*, J. L. SMITH, *Treasurer*, W. S. WHITE, *Chaplain*, A. M. COWARD, *Serjeant at Arms*. MEMBERS: C. G. AYANT, E. C. BOSTIC, E. H. BROWN, J. W. BROWN, JR., W. S. BRINTLEY, W. M. COLEMAN, P. L. DANIELS, C. O. EZELL, C. J. FEW, G. T. FRANKLIN, D. C. GRIFFIN, E. C. HALL, H. B. HENDERSON, J. R. HENRY, H. H. HILL, W. D. LITTLE, T. G. LONG, H. J. MOSELEY, E. S. POTTIS, B. R. RICHARDSON, J. L. STINSON, F. E. WALKER, W. C. WITHERSPOON, M. Q. WYCH.

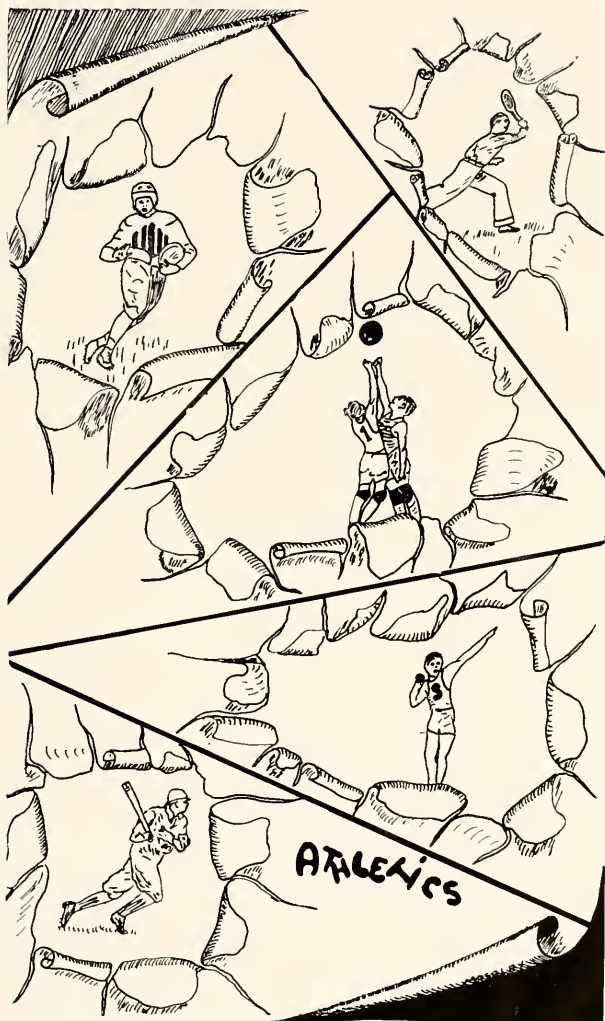




# SONS OF THE NILE

OFFICERS: J. L. HOLLOWELL, *President*; W. A. SHERMAN, *Vice President*; W. S. RAKER, *Secretary*; R. L. JAMES, *Treasurer*; MEMBERS: I. F. ALPHEUS, A. H. BAKER, M. BELTON, E. DUNN, E. L. COLLINS, J. T. ELLERRE, R. K. FORTINE, J. W. HARTSON, H. B. JACKSON, L. F. JOURNAL, C. J. JOHNSON, E. S. JOHNSON, J. S. MARTIN, J. M. MILLER, I. F. NORMAN, J. R. RAWLINS, J. B. THOMPSON, M. L. WILSON.







WOODSON  
FACULTY MANAGER OF ATHLETICS



BYRAM  
DIRECTOR OF ATHLETICS



RAY  
FOOTBALL COACH



WILLIAMS  
FOOTBALL COACH



## Board of Control

L. P. BYRAM  
*Coach*

D. T. RAY

G. F. WOODSON, JR.  
*President*

R. L. DOUGLASS

J. C. GRIFFIN

T. JEFFERS  
*Secretary*

W. H. PEARSON  
*Alumni Member*



## Student Managers



E. R. AVANT  
*Football*



P. W. JENKINS  
*Basketball*



R. W. DOCKERY  
*Tennis*



J. W. MARTIN  
*Baseball*

## Football 1930

The football season of 1930 presents an enigma to Smith that will probably never be solved. Exactly the same material which won positive success in the previous season, strengthened by a few men of ability, and coached under almost the same conditions, was unable to make a record to approach that of the preceding year. The season was a mystery. There was an element somewhere which conceived failure—an element which some attempted to attribute to the coaching, others to a lack of training, others to factions among the players, and still others to different causes or a combination of causes. That there was an element of failure was evident; its true nature was concealed.

In the opening game of the season against North Carolina State College, Smith won, under the flood lights of Durham, North Carolina, by a 13-7 score. Her supporters expected a walk away. The next game with Virginia State College ended in a 6-6 tie. This game was a surprise as a defeat had been predicted by many followers.

Then followed in rapid succession a 0-0 tie with South Carolina State.

On November first, a slight reaction set in, and Smith, through pure determination, won over Virginia Seminary, 6-0.

Fisk University swamped the Bulls by a 21-7 score, the following Saturday in Nashville, Tennessee, while only a week later the Bulls journeyed to Greensboro, North Carolina, to be content with a 0-0 tie with A. & T. College.

The final defeat of the season was administered by Lincoln University in our annual Home Coming game. The 6-0 score indicates an interesting combat.

Finally, on Thanksgiving, in Salisbury, North Carolina, eleven Smith men, with a record of doubt behind them, almost balanced that debit of ties and defeats, and contributed their part in probably the greatest chapter of the Smith-Livingstone Classic for many a moon.

In a post season game, in Asheville, North Carolina, the Bulls subdued a fighting Knoxville College eleven by a score of 13-7.

The season remains a mystery.

"Red" Ellis, Frank Bogle and John Massey were the stars of the season. Many members of the team will receive their degrees in June, including "Beef" Martin and "Red" Ellis, two exponents of all that football can expect. A wealth of material is still on hand.

What will be made from it remains to be seen.

## Basketball, 1931

The basketball season is almost a repetition of the football story. Material was abundant, composed of the previous year's five, all the scrubs and a few new candidates.

A handicap was encountered at the beginning of the season, as five first string men were banned from opening games on account of scholarship difficulties.

Later in the season these men were reinstated as a result of semester examinations only to be discharged by the cage mentor.

As a result of this action, Captain Avant, Tucker and Gillard were the only vets left to bolster the squad through a heavy C. I. A. A. schedule.

Avant led his team in scoring, while Mitchell, Tucker and Gillard helped bear the brunt of the burden through an indifferent season.

The following games were played:

Smith	24	Virginia State	33
Smith	32	Shaw	22
Smith	35	Howard	39
Smith	18	Hampton	22
Smith	29	Virginia Seminary	21
Smith	23	Morristown	13
Smith	23	Knoxville	34
Smith	24	Knoxville	30
Smith	34	Asheville Eagles	14
Smith	26	St. Augustine	24
Smith	25	A. and T. College	14
Smith	26	St. Paul	21
Smith	19	Livingstone	20
Smith	18	Lincoln	43
Smith	14	Hampton	33
Smith	19	Howard	29
Smith	17	Lincoln	39
Smith	31	Virginia Seminary	45
Smith	31	A. and T. College	37
Smith	29	N. C. State	13
Smith	28	St. Paul	30
Smith	36	Virginia State	42
Smith	21	Livingstone	12
Smith	32	Knoxville	33
Smith	38	Knoxville	32
<hr/>			<hr/>
674			712

- 31 -

## Tennis, 1931

The tennis team is getting in form. It will take part in the North Carolina State and C. I. A. A. tournaments.

The C. I. A. A. tournament meets here May 7-9, 1931.

Dockery, La Saine and Dudley are the most promising players.



FOOTBALL SQUAD



"RED" ELLIS  
HENRY  
"BEAR" MARTIN

"PROF." FOULKES  
"CHIC" WALKER

"RED" WILLIAMS  
"JONNA" BOGLE

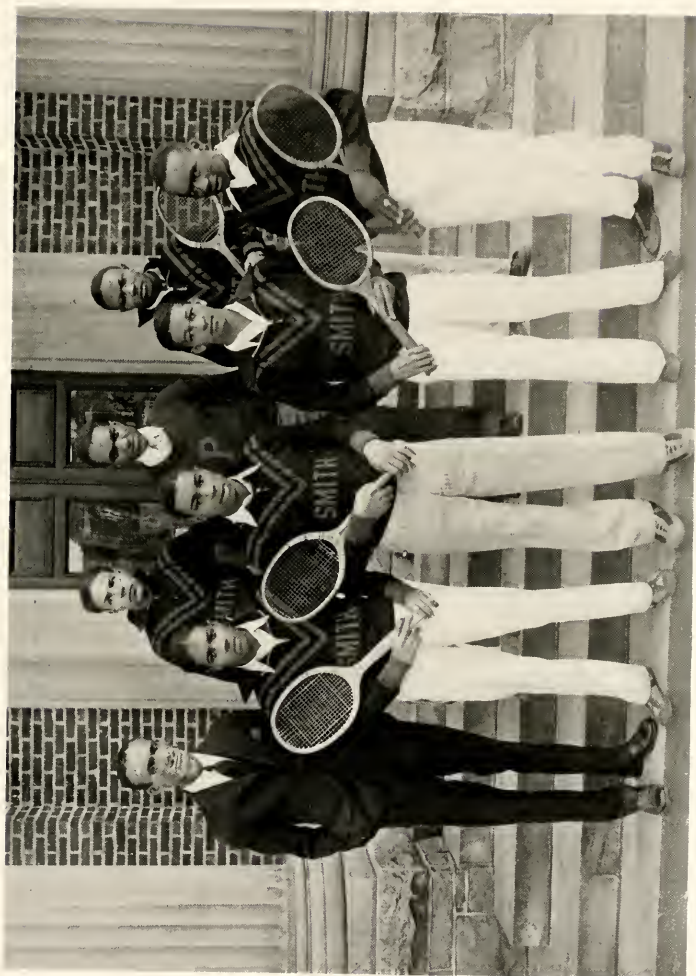




BASKETBALL TEAM



BASEBALL TEAM



TENNIS TEAM



## Outstanding Players

The Pig Skin season of 1930 marked the return of the Golden Bulls to C. I. A. A. competition. There was only one defeat recorded in the conference, but the abundance of tie games, and two non-conference set backs, sent the Bulls a far distance down the percentage column.

The team was well balanced with no outstanding stars as of the season of 1929.

Bogle at guard was again chosen on the All-American and as well placed on the All-C. I. A. A. first team.

Bogle's work at guard was far below the standard, however, Jonnie was a terror in the eyes and minds of opposing linemen. "Red" Ellis was placed on the second C. I. A. A. All-Star eleven as well as second All-Southern.

A hard plunging back was discovered in Massey who had played end heretofore. Hog Bear ran hard and low, being largely responsible for most of the ground gaining of the backs.

"Red" Williams, veteran triple threat, was off form at times, with occasional flashes of his uncanny broken field running.

"Beef" Martin with the responsibility of captain and field general did not share in the spot light, but gave his best in the directing of the team from the signal barking position.

The passing of the 'thirty season marked the close of the career of many loyal grid warriors. Among these stars slated to pass in June are: Jack "Beef" Martin, "Chic" Walker, "Jeff" Henry, "Ed" Jones, "Hog Bear" Massey, "Mon" Gillard, "Prof" Foulkes, "Red" Williams and "Red" Ellis. It will be hard to fill the shoes of these stars each of whom has at one time or another shared the spot light of the sporting arena.

Avant, flashy Bull forward, again led the squad in individual honors, while Gillard and Mitchell were important cogs in the cage machinery.

We can only offer our prediction as to the outcome of the National pastime season. The squad is engaged in daily workouts, ironing out kinks in preparation for the season opening, which will be played after we have gone to press.

The aces in person of Walker, Williams, Ellis, Lindsay, Massey, Ramseur, Biggs, Dunn and McDowell are all in the bull pen, along with a wealth of new material to choose from.

We feel safe in predicting a champion conference team this season.



## FEATURES





D. B. Smith, '99



R. E. Hyde, '77



H. L. Ward, '02



J. L. Phelps, '03



R. H. Tally, '04



R. W. Leonard, Jr., '05



W. C. Miller, '06



B. A. Davis, '06



W. G. Taylor, '06



J. H. Parson, '08



B. L. Allen, '16



L. J. Keweenaw, '16

ALUMNI

## Alumni

Reverend R. P. Wyche, D.D., '77. Dr. Wyche is one of the most outstanding of Smith's Alumni. He was a member of the second graduating class of the school; and is, at present, president of the Board of Trustees of this institution. Dr. Wyche is Pastor of Seventh Street Presbyterian Church in Charlotte, North Carolina, where he has been for the last forty-nine years.

Reverend T. J. Smith, M.D., '99. Dr. Smith is a minister and physician. He is serving humanity well. We are proud of him. Dr. Smith is located at Americus, Georgia.

Reverend C. A. Ward, '02. Reverend Ward is one to whom we point with pride. Although somewhat far away, he is always interested in Smith, and keeps in close touch with the institution. Reverend Ward is pastoring in Toledo, Ohio.

Mr. J. L. Phelps, '03, is principal of Boggs Academy at Keysville, Georgia. He is doing a very effective work there.

Reverend M. A. Tally, D.D., '04, is pastor of the Clark Memorial Baptist Church of Homestead, Pennsylvania. He is Editor of the Adult Quarterly, a Sunday School Periodical, Published by the National Baptist Convention, with circulation of 85,000 every quarter. Dr. Tally is the author of the Catechetical Exposition of Genesis, the first interpretation of this book undertaken by a Negro.

Mr. A. J. H. Clement, Sr., '05. Mr. Clement is a very prosperous business man. He is a director of the North Carolina Mutual Insurance Company. Mr. Clement keeps constantly in touch with the workings of the university. He is located at Charleston, South Carolina.

Reverend H. C. Miller, D.D., '06. Reverend Miller is Pastor of Saint James Presbyterian Church in Greensboro, North Carolina. Reverend Miller is an outstanding man in the Presbyterian Church.

Reverend J. G. Porter, '06, is president of Harbison Agricultural and Industrial Institute, which is located at Irmo, South Carolina. He is a loyal alumnus of Smith.

Reverend H. B. Taylor, D.D., '06, is Pastor in charge of the Fifteenth Street Presbyterian Church in Washington, D. C. This church is one of the oldest churches for colored people, having been organized in 1841.

Mr. W. H. Pearson, '15. Mr. Pearson is a very loyal alumnus of Smith. He is at present the alumni member of the Athletic Board of Control. Mr. Pearson is a very successful business man of Charlotte, North Carolina. He is manager of the Carolina Funeral Home, Inc., of Charlotte.

Mr. James Egert Allen, '16, is connected with the school system of New York City. He is very active in civic affairs and as an alumnus of this school. Mr. Allen is Provincial Polemarch of Kappa Alpha Psi Fraternity.

Mr. Lewis King Downing, '16, Associate Professor of Civil Engineering; Head of the Department of Civil Engineering and Acting Dean of the College of Applied Science in Howard University, Washington, D. C.

Dean Downing holds active membership in the National Technical Association; Permanent Association International Road Congress; The Society for the Promotion of Engineering Education; Howard University Engineering Society; Mu-So-Lit Club, Washington, D. C.; Smith Alumni Association; and the Alpha Phi Alpha Fraternity.



MISS MYRTLE A. BRODIE  
"Miss Johnson C. Smith"



MISS CATHERINE E. HAIRSTON  
*1931 Bull Sponsor*



MISS DOROTHY FLETCHER  
*Senior Class Sponsor*





MISS O'LEATHIA WILSON  
*Athletic Sponsor*

## In Gratitude

For their excellent service and great diligence in originating and executing the designs and other art decorations for the cover, fly leaves, division pages, and backgrounds of this, THE 1931 BULL, and for creditably mounting the pictures for the engravers, the staff expresses its profound gratitude to the *members* of the *University Art Club*.

The staff hopes and believes that, as the years roll by, the importance and worth of the club on the campus will reach the ideal for which it was founded and be an asset to the university.



ADS

**"WEAR CLEAN CLOTHES"**

HAVE THEM DRY CLEANED  
REGULARLY



*"Over Thirty-five Years of Service  
for Smith"*

DIAL 3-5191

E. Second Street

**CHARLOTTE LAUNDRY**  
INC.

MASTER DYERS AND CLEANERS



ESTABLISHED 1890

Compliments of  
**Charlotte Transfer  
Company**



DIAL 2-2128

**PHONES**

Office: 2-0105    Residence: 2-2587

**FRED MOORE  
TAXI**

25c Anywhere in the City 25c  
409 E. Second Street  
CHARLOTTE, N. C.

**CAROLINA SPORTING GOODS CO.**  
**WE SELL SPORTING GOODS FOR ALL SPORTS**  
Quality is the Watchword



316 SOUTH TRYON ST.

CHARLOTTE, N. C.

**J. O. JONES CO.**

208-210 South Tryon Street  
CHARLOTTE, N. C.

Outfitters for Men and Boys  
*Hart-Schaffner and Marx  
Clothes*

*Florsheim Shoes  
Stetson Hats    Student Shoes*

Sporting Goods For All Sports

**Myers Hardware and  
Sporting Goods Co.**

EAST TRADE STREET  
CHARLOTTE, N. C.

Do Not Let the Ecstasy of Your Present Joys  
Lull You Into the Forgetfulness of the Future



LIFE INSURANCE ASSURES  
PRESENT AND FUTURE  
PROTECTION



NORTH CAROLINA MUTUAL  
LIFE INSURANCE CO.

DURHAM, NORTH CAROLINA

C. C. SPAULDING, *President*

SOUTHEASTERN CONSTRUCTION CO.

210 West Second Street  
CHARLOTTE, N. C.



We have constructed the following buildings at Johnson C.  
Smith University:

BERRY HALL  
SMITH THEOLOGICAL DORMITORY  
SCIENCE HALL  
REFECTORY  
PRINTING PLANT  
THREE RESIDENCES FOR FACULTY  
GYMNASIUM  
THE UNIVERSITY CHAPEL



## ALEXANDER'S FUNERAL PARLOR

THE HOUSE OF SERVICE

*"Everything First Class and Up to the Minute"*

PHONE DAY  
8431

PHONE NIGHT  
3 2472—3.6027

323 SOUTH BREVARD ST

CHARLOTTE, N. C.

## CHAS. MOODY COMPANY

*"Where Quality Counts"*

**WHOLESALE GROCERS**

SOUTH COLLEGE STREET

CHARLOTTE, N. C.

## Louis G. Ratcliffe, Inc.

*The University Florist*



322 South Tryon Street

CHARLOTTE, N. C.

## Five Point Drug Co.

Prescriptions—Toilet Goods

Candies—Kodak Films



DIAL 3-6061

Rozzell Ferry Road

CHARLOTTE, N. C.

## I. M. FORBES

SCOTCH WOOLEN MILLS

300 All-Woolen Mills

MADE TO YOUR ORDER

Trousers, \$7.50

Coat and Trousers, \$20.25; Suit, \$23.50

328 East Trade Street

CHARLOTTE, N. C.

*"A Fit Guaranteed"*

IF  
**MAKING MONEY**

Is one of your aims in life after you shall have finished school—if you are not afraid of hard, honest work—if you are willing to study and be trained—if you want to render real service while you are making money—if you want to be connected with a growing institution where the path to success is traveled by those who have the courage to climb—we have a place for you.

Write the  
**AGENCY DIVISION OF THE  
NATIONAL BENEFIT LIFE INSURANCE COMPANY**  
Washington, D. C.

**BELK BROTHERS AND COMPANY**

The Home of Better Values

**CAROLINAS' GREATEST DEPARTMENT  
STORE**

EAST TRADE STREET

CHARLOTTE, N. C.

**GARRISON & HOPKINS COMPANY**

Your Health Depends on Your Having

THE BEST IN PLUMBING AND HEATING

INSTALLED IN YOUR HOME

CONTRACTORS AND DEALERS

1408 SOUTH TRYON ST.

CHARLOTTE, N. C.

Pyramid Motor Co.  
*for Economical Transportation*



CHARLOTTE, N. C.

M. B. SMITH CO.

*Jewelers*

♦  
"If It's Jewelry, We Have It"  
Keys, Rings, Pins, and  
Trophies

Dial 7103 9 E. Trade St.  
CHARLOTTE, N. C.

DAVIDSON & WOLFE

WHOLESALE GROCERS

SOUTH COLLEGE STREET  
CHARLOTTE, N. C.

Pound & Moore Co.  
Commercial Stationers  
Office Equipment



S. TRYON STREET  
CHARLOTTE, N. C.

COCHRAN & ROSS

DEALERS IN

HIGH-GRADE COAL

601 WEST SIXTH ST.

Dial 7149  
CHARLOTTE, N. C.

DRINK  
N E H I

FOR  
QUALITY BEVERAGES

CAROLINA FUNERAL HOME, INC.  
UNDERTAKERS AND EMBALMERS



*PROMPT SERVICE*

W. H. PEARSON, *Manager*

DAY PHONE 3-1833

NIGHT PHONES 3-5537, 2-0954

Corner Second and Brevard Streets

CHARLOTTE, N. C.

H. R. BIGGERS

**BIGGERS BROS., INC.**

SUCCESSORS TO BIGGERS & PARROTT

*Wholesale Dealers in Fruits, Vegetables, Poultry and Eggs*

DRESSED CHICKENS AND FRESH EGGS A SPECIALTY

208 S. COLLEGE STREET

CHARLOTTE, N. C.

PATRONIZE  
OUR  
ADVERTISERS

## FRANK'S

*Licensed and Bonded Brokers*  
Loans Made on

DIAMONDS, WATCHES, JEWELRY,  
CLOTHING, AND ALL KINDS OF  
PERSONAL PROPERTY

209 WEST TRADE ST. CHARLOTTE, N. C.  
PHONE 3-2327 HOTEL CHARLOTTE BLOCK

## O-BOY BREAD AND

## SOUTHERN CAKES

At Your Grocer's

Carolina Baking Co.  
CHARLOTTE, N. C.

## Lingle Clothing Shop

33 WEST TRADE STREET

MEN'S OUTFITTERS

Victor-5 Shoes  
Van Heusen Shirts

J. E. HEMPHILL

*The Official Photographer*



## ANNUALS A SPECIALTY

## Carolina Studio

223 S. BREVARD ST.

CHARLOTTE, N. C.

PHONE 7307

G. O. DOGGETT *President and Treasurer*  
A. W. DOGGETT *Secretary*

## THE DOGGETT LUMBER CO.

A charge account to some people is disastrous—but your home financed through the B. and L. is a credit to anybody and especially—when bought through The Doggett Lumber Co.—who has a record of approximately a quarter century.

If You Are Worthy of Credit  
SEE US

## ATHLETIC FIRST AID EQUIPMENT AND SUPPLIES INFIRMARY AND SICK ROOM SUPPLIES

Trusses, Elastic Hosiery and Abdominal Supports

## Winchester Surgical Supply Company

No. 6 E. SEVENTH ST.

CHARLOTTE, N. C.

WINCHESTER-RITCH SURGICAL CO., 111 N. GREENE ST., GREENSBORO, N. C.



ENGRAVINGS  
IN THIS BOOK  
BY

CHARLOTTE  
ENGRAVING  
COMPANY INC.

CHARLOTTE.  
N.C.

CAROLINAS—  
FINEST ENGRAVERS

# ANOTHER . . . . .

*ONE OF THE MANY COLLEGE AND  
HIGH SCHOOL ANNUALS PRODUCED  
IN OUR PLANT*



**H**AVE you ever considered the quality of your Annual from the standpoint of careful type composition and efficient proofreading? The reputation of The Observer Printing House, Inc., as Annual Printers, has been established through accuracy and attention to the little details for more than thirty years.

*{ ANNUAL PRINTERS FOR  
OVER THIRTY YEARS }*



*The* **OBSERVER PRINTING HOUSE**  
INCORPORATED

322-324 S. Church St.

Charlotte, N. C.

# AUTOGRAPHS



*The End*  
The 1931 Bull Staff

SMITH





DAVID B. DUKE MEMORIAL LIBRARY  
JOHNSON C. SMITH UNIVERSITY  
CHARLOTTE N. C. 28208

## For Reference

**Not to be taken from this room**

