

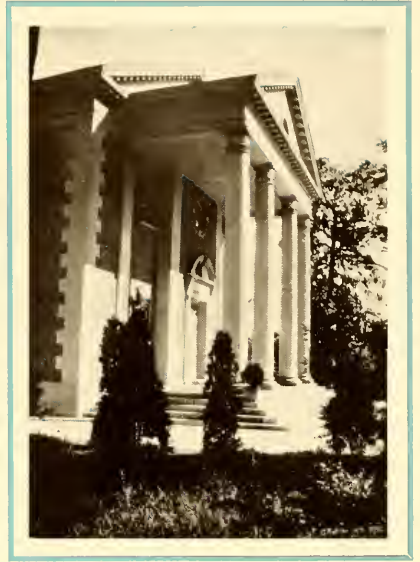
1919
B.M.L.L.
36





Digitized by the Internet Archive
in 2010 with funding from
University of North Carolina at Chapel Hill

<http://www.archive.org/details/goldenbull1936john>



THE BULL
1936



COPYRIGHT
1936

CLARENCE TURNER
Editor-in-Chief

HERBERT REID
Business Manager



THE 1936 BULL

VOLUME V

PUBLISHED BY THE JUNIOR COLLEGE CLASS

of

JOHNSON C. SMITH UNIVERSITY

CHARLOTTE, N. C.



FOREWORD

The nineteen hundred thirty-six BULL Staff has worked diligently in the production of this, the Fifth Edition of the BULL, in order that the memories of our Alumni may be freshened with current facts, that our own pleasant days may be easily referred to in days to come, and that new individuals may be attracted to our wonderful Institution.



CONTENTS

ADMINISTRATION

CLASSES

ORGANIZATIONS

ATHLETICS

FEATURES

ADVERTISEMENTS



DEDICATION

To

MRS. H. L. MCCROREY
Wife of Our Beloved President



PRESIDENT HENRY LAWRENCE MCCROREY
A.B., S.T.B., D.D., LL.D.



ALLEN

PERRY

MCNAIR

ALUMNI

JAMES EGERT ALLEN '10, New York, N. Y. A sketch of Mr. Allen's work, after teaching in Okolona, Miss., for several years follows: 1922 Graduate work at City College of New York and Columbia University; 1924 Organized the Smith Club of New York and served as president for seven years; 1925 Began teaching in New York public schools; 1932—One of the twelve Negroes appointed by Mayor J. J. Walker to serve on the George Washington Bi-Centennial Committee of New York. At present: Treasurer of the New York Smith Club; member of the Board of Managers and Chairman of Boys' Work Committee of the 135th Street Y. M. C. A.; president of New York Branch of N. A. A. C. P. (sixth term); president of Frederick Douglass Chapter of John Brown Memorial Association; Provincial Polemarch of North-West District of Kappa Alpha Psi Fraternity; Contributor to several magazines and papers; and recipient of several prizes for excellency in journalism; member of several civic groups in Harlem. Mr. Allen is a loyal alumnus of the University, and is the son of Rev. E. W. Allen who is also an alumnus of the University.

DR. C. E. BOMAR '16, Orange, New Jersey. Dr. C. E. Bomar is a prominent dentist in Orange, N. J. He enjoys a lucrative practice. Dr. Bomar keeps in touch with his alma mater and is interested in all of our activities. He is an active member of the Omega Psi Phi Fraternity.

W. H. CARROLL '96, Monticello, Arkansas. Reverend Carroll is an efficient minister and the president of Monticello Academy, Monticello, Ark. He has served the Presbyterian Church well and Smith boasts that he received his training within her walls.

GIBBS CHISOLM '14, Newark, New Jersey. Dr. Chisolm has been practicing medicine in Newark, N. J., for several years. The fine type of work he is doing reflects credit on the University. We take pride in saying that he is one of "J. C. S. U.'s loyal sons."

B. F. McDOWELL '22, Greenville, South Carolina. Dr. McDowell was ordained to the Presbyterian Ministry by Catawba Presbytery in 1879. He has served as pastor and teacher at the Mattson Presbyterian Church and School, Greenville, S. C., twenty-seven and one-half years. He was Stated Supply for the field comprising Walker's Church, Reidville, S. C., and Bowers Church, Wellford, S. C. Walker's twenty years, and Bowers twenty-two years or more. He served as Stated Clerk of McClelland Presbytery for thirty-six years. For a long period he served as Treasurer of the Synod of Atlantic, succeeding the Reverend W. R. Coles. He was several times Commissioner of the General Assembly. He received the D. D. degree from Biddle (now Johnson C. Smith) University in 1902. He was honorably retired by McClelland Presbytery in 1929, after fifty years of service.

HENRY WILLIAM MCNAIR '04, Burkeville, Virginia. Rev. McNair's first work was in New Market, and Dandridge, Tenn., where he erected two churches. His work in Tennessee was rewarded by an offer to take charge of Fee Memorial Institute, which he accepted and successfully brought the school from a non-accredited to an accredited institution and a student body that has increased five fold. At present he is principal of Ingleside-Fee Memorial Institute, Burkeville, Virginia. Much credit must be given Rev. McNair for his pioneer work in the educational system of Tennessee.

REV. W. L. METZ '92, Edisto Island, S. C. Rev. Metz spent a very colorful career in college, graduating with honors and being among the players that played on the first Negro college football team, the Biddle University football team of 1892. He graduated from Biddle Theological Seminary, June, 1898, and entered the Sabbath School mission work soon thereafter. He has pastored at Edisto Island for twenty years. He was elected State Clerk of the Atlantic Synod, October, 1916, and he has served in this ecclesiastical capacity ever since. His article "Migration of Races Old as Human History," created a great deal of favorable comment.

R. P. PERRY '25, Prairie View, Texas. Although Mr. Perry is quite a distance away from his institution he is a loyal alumnus. At present he is a member of the faculty at Prairie View College, Prairie View.



THOMPSON

TOOLEY

TALLEY

WILLIAMS



WINSTEAD

CHRISOM

BOMAR

METZ

Texas, serving in the capacity of Chairman of the Natural Science Department and Head of the Department of Chemistry. He is a member of the Alpha Phi Alpha Fraternity.

DR. CHARLES H. SHUTE '98, Charlotte, North Carolina. Dr. Shute graduated from the Theological department in 1898. Since that time he had been active in civic and church affairs. Dr. Shute organized the public school for Negroes in Gastonia, N. C., and served in the capacity of principal of Highland High School for seven years. During the same time he built and served as pastor of the Presbyterian church in that same town. In 1907 he became an instructor in the English department here at Smith; later he taught Greek and Latin in the high school department at the same time serving as librarian. We are indebted to Dr. Shute for setting up the present library under a modern system of library management. In 1932 he began teaching in the Theological Seminary; in 1934 he was made dean of the Theological Seminary. For a number of years he served as secretary to the college faculty. He has been secretary of the General Alumni Association for the past eighteen years. He represented the Presbytery of Catawba as Commissioner at the General Assembly twice—at St. Louis and at San Francisco. In 1934 when complaint was made against the Synod at Catawba he went to Cleveland, Ohio, as counselor of the Synod of Catawba. Dr. Shute has done extensive graduate work at Columbia University. We are proud of the fact that Dr. Shute is an alumnus of Smith and we are equally proud that we have him with us in the Theological Seminary.

JOHN EDGAR SMITH '97, Washington, District of Columbia. Captain John Edgar Smith has served as a monotype (typesetting machine) operator in the Government Printing Office in Washington, D. C., for thirty-six years. This fact is reason enough for Smith to be proud of him. He also serves in the capacity of secretary of the Board of Trustees of his Alma Mater.

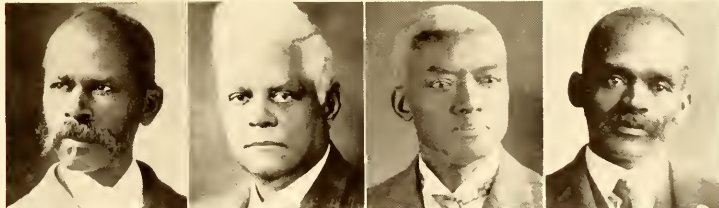
MARSHALL A. TALLEY '04, Indianapolis, Indiana. Rev. Talley is the pastor of the Mount Zion Baptist Church in Indianapolis, Indiana. He is editor of the *Adult Quarterly* and dean of the National Sunday School and B. Y. P. U. Congress. Rev. Talley has written *A Socratic Exposition of Genesis*. In 1903 he was varsity debater and president of his class and secretary of the Y. M. C. A. in 1904. He has kept in touch with his Alma Mater since his graduation.

YANCY M. THOMPSON '16, Newark, New Jersey. Matriculated at Johnson C. Smith in 1912. He won the Annual Gold Medal Prize given by the Alumni Association and was an active member of the Matteson Literary Society, member of the Literary Research Circle, and the Y. M. C. A. He has, since his graduation from Smith, received subsequent training in many other institutions. A sketch of his work follows: 1918-1924 - Organized the Trinity Mission Presbyterian Church at Bloomfield, New Jersey; 1924-1928 - Pastored Grace Presbyterian Church and served as Staff Director of education and recreation for the Gary Neighborhood House, Gary, Indiana; 1928-1934 - Served as Supply Minister at the Christ Church, Orange, N. J., and was special Parole Officer through the Juvenile Court of Essex County and was acting as social adjuster for the Juvenile Delinquents of Essex County; 1934-1935 - Was supervisor of the Negro Vocational Survey, research division, Department of Institutions and Agencies at Trenton, N. J.; 1935 - Supervised on the Federal Occupational Classification Project for the Works Progress Administration; 1935-1936 - Special Interviewer in the Clinic for Venereal Disease Department. Author of articles, "How to Run a Church School," Pilgrim Elementary Teacher, Boston, Mass.

JOHN H. TOATLEY '16, Due West, South Carolina. Rev. Toatley is the efficient pastor of the Presbyterian Church in Due West, S. C. He is also the principal of the Lincoln High School of the same city. Rev. Toatley is a loyal alumnus of Smith.

R. E. WILLIAMS '98, Washington, District of Columbia. Mr. Williams has served in the capacity of a postal clerk for many years. He is active in fraternal circles and a loyal alumnus of Smith one of whom we are proud.

GEORGE L. WINSTEAD '03, Pittsburgh, Pennsylvania. Dr. Winstead has a lucrative practice in Pittsburgh, Pennsylvania. He has done the type of work that reflects credit to this institution. Smith points to him with pride in that he received his early training within her walls.



McDOWELL

SMITH

SHUTE

CARROLL

Alma Mater

I.

Firm as the hills whereon thy walls arise,
Towering in beauty toward the lofty skies,
Steadfast and strong, illustrious is thy fame,
Johnson C. Smith, we proudly hail thy name.

II.

Led by the Power whose wisdom is our light,
Who, while we strove to scale the hill's steep high,
Sent noble friends to help us on our way,
Press on, our Smith, still higher day by day.

III.

Fair Alma Mater, while the years go by,
Through good and ill, we'll hold thy banner high.
Upward we'll climb, inspired by thee,
Onward forever, on to victory.

—GEORGE LEONARD ALLEN, '26.



OFFICERS AND FACULTY



DEAN THEOPHILUS E. MCKINNEY

UNIVERSITY CORPS

JEAN JOSEPH ADAM, B.és.-L., Lic.és.-L.
Associate Professor of French

S. HERBERT ADAMS, M.A.
*Registrar of the University, Secretary of
Faculty, and Professor of Latin*

RUSSELL LLOYD ANDERSON, S.M., Ph.D.
*Professor of Biology and Chairman of
Mathematics and Sciences*

CYRIL FITZGERALD ATKINS, S.M., Ph.D.
Professor of Chemistry

NORMAN RAY BOLDEN, A.M.
Associate Professor of Economics

FRED WELDON BOND, A.M.
Assistant Professor of Speech

ULYSSES SIMPSON BROOKS, S.M.
Assistant Professor of Chemistry and Physics

DAVID E. CARROLL, Mus.B.
Director of Music

WINSON COLEMAN, A.M.
Associate Professor of Foreign Languages

NORMAL CYRIL CROSBY, A.M.
Assistant Professor of History



UNIVERSITY CORPS



WILLIAM CECIL DONNELL, A.M.
*Professor of Education, Director of
College and State Extension*

ROBERT LANGHAM DOUGLASS, A.M.
Professor of Mathematics



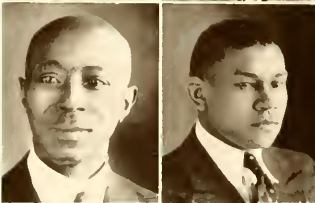
MRS. M. B. GREENLEAF
Dietitian

JOSEPH GRIMES, A.M.
*Dean of Men and Associate Professor of
Social Sciences*



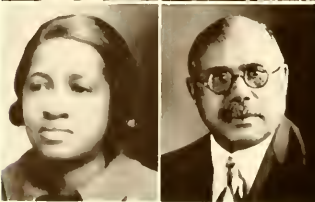
THEODORUS LAFAYETTE GUNN, A.B., B.L.S.
*Librarian and Assistant Professor of
Bibliography*

GEORGE THOMAS KYLE, A.M.
Associate Professor of Psychology



THOMAS ALEXANDER LONG, A.M., Ph.D.
*Professor of Sociology and Chairman of
Social Sciences*

WENDELL GRANT MORGAN, A.M.
*Assistant to the Dean and Registrar and
Assistant Professor of Social Sciences*



MISS C. L. RAMSEUR
Matron

EMERY LOUVELLE RANN, SR., A.M.
Associate Professor of English

UNIVERSITY CORPS

DAVID TOBIAS RAY, S.M.
Assistant Professor of Biology

MRS. M. K. SPAULDING
Matron

ALGERNON ODELL STEELE, A.M., B.D.
Assistant Professor of Religion

MAURICE ETHAN THOMASSON, A.M.
*Professor of Education, Associate Editor of
the Quarterly Review of Higher Edu-
cation Among Negroes*

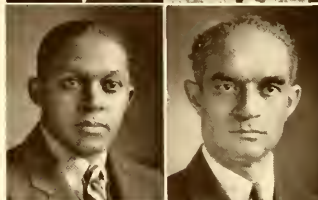
E. FRENCH TYSON, A.B., M.D.
College Physician

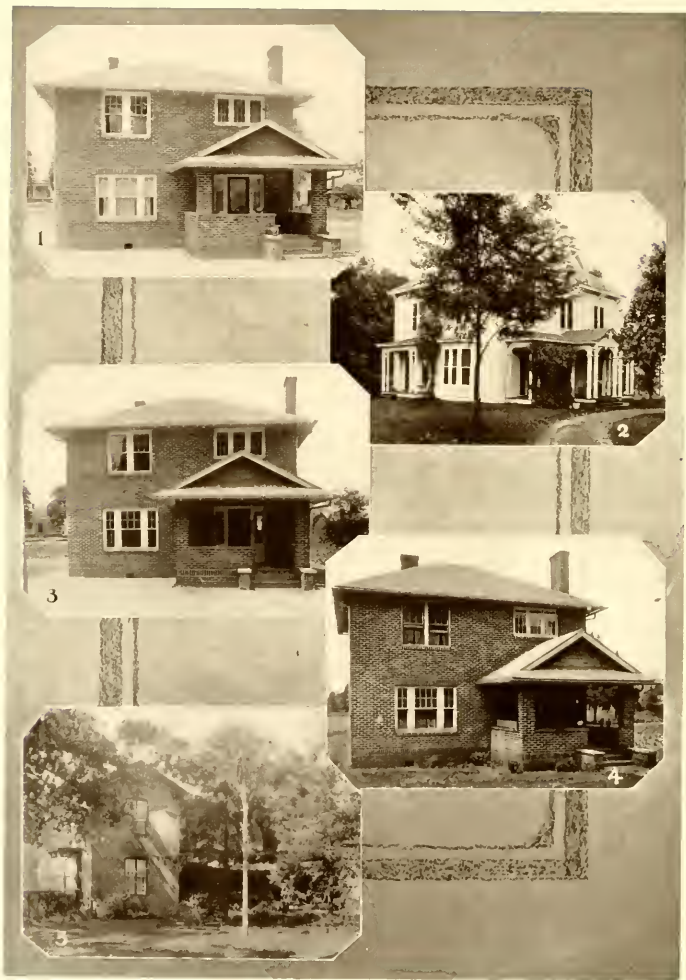
ARTHUR W. WADE, A.B.
Secretary and Bookkeeper

FORREST ORAN WIGGINS, A.M.
Associate Professor of Philosophy

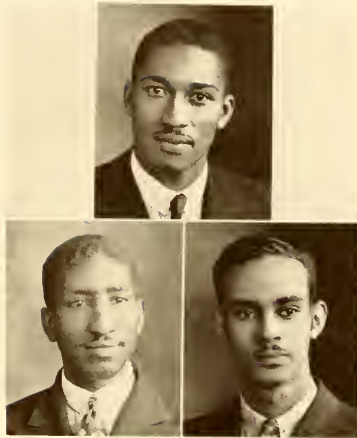
BERTRAM LAWRENCE WOODRUFF, A.M.
*Professor of English and Chairman of
Humanities, Associate Editor of the
Quarterly Review of Higher
Education Among Negroes*

GEORGE FRÉDERICK WOODSON, JR., A.M.
Professor of Mathematics





TEACHERS' COTTAGES



SENIOR CLASS OFFICERS

REGINALD HUTCHINSON

President

RUTH HILLSMAN

Vice-President

ROBERT SMITH

Business Manager

MOSES BLAIR

Secretary

SENIORS

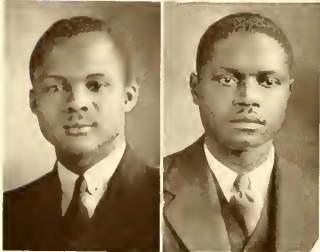


MOSSES A. E. BLAIR
Gastonia, N. C.
Omega Psi Phi

Major, Biology and Mathematics; Secretary of Class 1, 2, 3, 4; *University Student Staff* 3, 4; Mathematics Club 1, 2, 3, 4; Y. M. C. A. Cabinet 2, 3, 4; Science Club 2, 3; Alpha Kappa Sigma Honorary Society 3, 4.

BERNICE BLAKENEY
Pageland, S. C.

Major, English; American Sociological Society 3, 4; English Philological Society 3, 4; Little Theatre Guild 3, 4; Y. W. C. A. 3, 4; Choir 3, 4; Basketball 4.

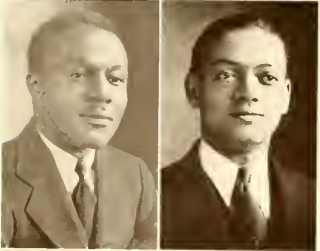


JAMES T. BOYD
Durham, N. C.
Omega Psi Phi

Major, Biology and General Science; Y. M. C. A. Cabinet 2; Varsity Football 1, 2, 3, 4; Varsity Basketball 1, 2, 3, 4; Co-Captain of Basketball 4; Member of American Sociological Society 3, 4; University Choir 1, 2, 3, 4; University Quintet 1, 2, 3, 4; Student Manager of University Quintet 4; Secretary of Varsity "S" Club 3; Le Cercle Français 2.

JAMES A. CHRISTIAN
Lumberton, N. C.
Phi Beta Sigma

Major, History; Christian Leadership Club 1, 2, 3, 4; American Sociological Society 4; Student Volunteer Movement 3; Y. M. C. A. 2, 3, 4; Manager of College Inn.

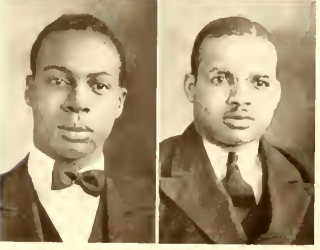


MILTON E. COX
Sanford, N. C.
Kappa Alpha Psi

Major, History; American Sociological Society 3, 4; Christian Leadership Club 1, 2, 3, 4; Y. M. C. A. 1, 2, 3, 4; Little Theatre Guild 2, 3; Varsity Baseball 2, 3.

BERRY DAVIS
Youngstown, Ohio

Major, Mathematics; Alpha Kappa Sigma Honorary Society 3, 4.



BOOKER T. DAVIS
Lancaster, S. C.

Major, Sociology; American Sociological Society 3, 4; Christian Leadership Club 1, 2, 3, 4.

CHARLES P. DUSENBURY
Youngstown, Ohio
Omega Psi Phi

Major, History; Dean of Lampados Club 3; American Sociological Society 3, 4; Little Theatre Guild 4; Varsity Football 1, 2, 3, 4; Captain of Football 4; Varsity Basketball 2, 3; Varsity "S" Club 1, 2, 3, 4; Representative, C. I. A. A. Annual Conference 4; Honorable mention, All-American Football Team 4.

HUBERT A. EATON
Winston-Salem, N. C.

Alpha Phi Alpha

Major, Biology and Chemistry; Pan-Hellenic Council
2, 3; Varsity Basketball 1, 2, 3; Varsity Tennis 1, 2,
3; Varsity "S" Club 2, 3.

ALIFFE ELLIS
Augusta, Ga.

Major, Mathematics; Y. W. C. A. 4; Choir 4;
Mathematics Club 4; American Sociological Society
4.

HARMON FITCH
Winston-Salem, N. C.

Major, Sociology; Varsity Tennis 1, 2, 3, 4; American
Sociological Society 3, 4; Varsity "S" Club 3, 4.

JUANITA GIBSON
Pineville, Kentucky

Major, English; Y. W. C. A. 3, 4; Little Theatre
Guild 3, 4; Choir 3, 4; American Sociological Society
3, 4; English Philological Society 3, 4.

PAUL GLOVER
Oxford, N. C.
Omega Psi Phi

Major, History and English; American Sociological
Society, 3, 4; Little Theatre Guild 4; English Philo-
logical Society 3, 4.

VERNON GRIGG
Charlotte, N. C.

Major, History and English; American Sociological
Society 3, 4; Glee Club 4; Football 1.

CLAUDIA HARGRAVE
Cincinnati, Ohio

Major, Sociology; Little Theatre Guild 4; Y. W.
C. A. 4; American Sociological Society 4; Choir 4.

ZOEL S. HARGRAVE
Charlotte, N. C.
Omega Psi Phi

Major, French; Le Cercle Francais 2, 3, 4.



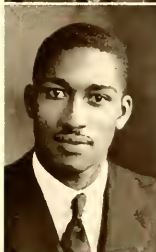


JOSEF A. HARRIS
Statesville, N. C.
Alpha Phi Alpha

Major, History; Varsity Baseball 1, 2; Varsity Football 2; Vice-President Sphinx Club 3; English Philological Society 3, 4; American Sociological Society 3, 4.

HENRY A. HILL
Chicago, Ill.
Kappa Alpha Psi

Major, Mathematics and Chemistry; Smith-Davidson Seminar 2, 3, 4; President, Alpha Kappa Sigma Honorary Society 3, 4; Varsity Debating Team 3, 4; President, Pan-Hellenic Council 4; University Student Staff 4; Honorary Member, American Sociological Society 4; Science Club 3; Mathematics Club 3, 4; Vice-Polemarch, Alpha Epsilon Chapter of Kappa Alpha Psi 3.



REGINALD HUTCHINSON
Washington, D. C.
Kappa Alpha Psi

Major, History and Economics; Varsity Basketball 3, 4; Smith-Davidson Seminar 3, 4; President of Class 4; Varsity "S" Club 3, 4.

MRS. IONE JONES
Chester, S. C.

Major, English; English Philological Society 3, 4; Little Theatre Guild 3, 4; American Sociological Society 3, 4.



ZILLA F. LEFEBETTER
Charlotte, N. C.
Major, Sociology.

OLYMPIA P. LOWE
Pittsburgh, Pa.

Major, Biology and Chemistry; Y. M. C. A. 1, 2, 3, 4; University Student Staff 2, 3, 4; Science Club 3, 4.



PEYTON MANNING
Knoxville, Tenn.
Alpha Phi Alpha

Major, Physical Education and Sociology; Varsity Football 3, 4; Varsity Basketball 3, 4; Y. M. C. A. 3, 4; American Sociological Society 3, 4; Varsity "S" Club 3, 4.

FLOYD MASSEY, JR.
Gastonia, N. C.
Omega Psi Phi

Major, History and Mathematics; Vice-President, Pan-Hellenic Council 3, 4; Debating Society 1, 3, 4; Student Manager of Debate 4; Student Volunteer Movement 1, 2, 3, 4; University Choir 1, 2, 3; Y. M. C. A. Cabinet 2, 3, 4; Varsity Football 2; University Student Staff 3; Mathematics Club 1, 2, 3, 4; Smith-Davidson Seminar 3, 4; Little Theatre Guild 3, 4.

SAMUEL J. McLEAN
Douglas, Ga.

Phi Beta Sigma
Major, Mathematics; Debating Society 4; Little Theatre Guild 3, 4; Christian Leadership Club 1, 2, 3, 4; American Sociological Society 3, 4; Y. M. C. A. 1, 2, 3, 4; Mathematics Club 1, 2, 3, 4.

JOSEPH H. MORRIS, JR.
Bennettsville, S. C.

Alpha Phi Alpha
Major, Chemistry and Mathematics; Little Theatre Guild 3, 4; Alpha Kappa Sigma Honorary Society 3, 4.

CLARENCE E. MORRISON
Oxford, N. C.

Omega Psi Phi
Major, French and History; Le Cercle Francais 1, 2, 3, 4; American Sociological Society 3, 4; Varsity Tennis 3, 4; Y. M. C. A. Cabinet 2, 3; Christian Leadership Club 1, 2, 3, 4.

CLARENCE A. PARHAM
Freehold, N. J.

Kappa Alpha Psi
Major, History and Sociology; President, American Sociological Society (Johnson C. Smith University Chapter) 3, 4; Little Theatre Guild 3, 4; Alpha Kappa Sigma Honorary Society 4; Y. M. C. A. 3, 4.

ISAAH POGUE
Sumter, S. C.

Omega Psi Phi
Major, Mathematics and General Science; Class President 1, 2, 3; President, Y. M. C. A. 3; Vice-President, Student Volunteer Movement 2, 3; Varsity Football 2, 3, 4; Le Cercle Francais 2; Mathematics Club 1, 2, 3, 4.

THOMAS RINGER
Rocky Point, N. C.

Major, History; Glee Club 1, 2, 3, 4; American Sociological Society 4; University Choir 1, 2, 3, 4; Y. M. C. A. 1, 2, 3, 4.

WALTER F. ROBINSON
Cheraw, S. C.

Kappa Alpha Psi
Major, Economics and French; Debating Society 2, 3, 4; Little Theatre Guild 3, 4; Smith-Davidson Seminar 2, 3, 4.

WILLIE M. RUDISILL
Charlotte, N. C.

Major, Sociology

ROBERT A. SMITH
Hickory, N. C.

Alpha Phi Alpha
Major, English and General Science; Debating Society 3; Le Cercle Francais 3, 4; American Sociological Society 3, 4; University Student Staff 3; English Philological Society 4; Business Manager of Class 4; Varsity "S" Club 4.

WILLIAM H. SMITH
Cape Charles, Va.

Kappa Alpha Psi
Major, General Science; Varsity Football 2; Varsity Baseball 2; American Sociological Society 3, 4; Little Theatre Guild 4; University Student Staff 4.



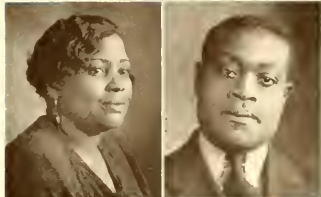


CHARLES W. TALLEY
Cheraw, S. C.

Major, History; American Sociological Society 3, 4; Christian Leadership Club 1, 2, 3, 4; Debating Society 2, 3, 4; Little Theatre Guild 3, 4; Y. M. C. A. 1, 2, 3, 4; Varsity Football 2, 3, 4; Varsity Baseball 1, 2, 3.

ETHEL WILLIAMS
Little Rock, Ark.

Major, History; American Sociological Society 3, 4; Student Volunteer Movement 3, 4; Y. W. C. A. 3, 4.

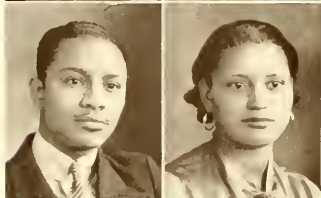


DORFATHA WILLIAMSON
Charlotte, N. C.

Major, Sociology.

THOMAS E. WILSON
Bishopville, S. C.

Major, History; Treasurer of Class 1, 2, 3, 4; Y. M. C. A. 2, 3, 4; Christian Leadership Club 1, 2, 3, 4; University Chorus 1, 2, 3, 4; Y. M. C. A. Quartet 2, 3, 4; American Sociological Society 3, 4.

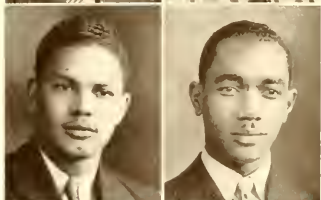


JOSEPH R. WILSON
Wilmington, N. C.
Kappa Alpha Psi

Major, History; Football 1, 2; American Sociological Society 3, 4; Little Theatre Guild 3; Y. M. C. A. 1, 2, 3, 4; Varsity Baseball 1.

MARY A. WRIGHT
York, S. C.

Major, French; Y. W. C. A. 3, 4; Le Cercle Français 3, 4; Choir 3; Little Theatre Guild 3, 4; University Student Staff 3; "Miss Johnson C. Smith" 3.

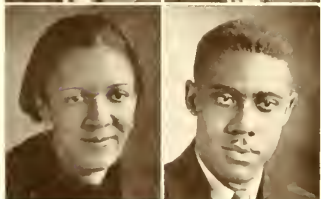


PAUL W. WRIGHT
York, S. C.
Omega Psi Phi

Major, Sociology and Biology; Football 1, 2, 4; Varsity "S" Club 4; American Sociological Society 3, 4.

ROBERT WYCHE
Charlotte, N. C.

Major, History; American Sociological Society 3, 4; Choir 2, 3; Football 1.



CATH-RINE YONGUE
Charlotte, N. C.

Major, Biology; Y. W. C. A. 3, 4; Le Cercle Français 3, 4.

ROBERT YOUNG
Wake Forest, N. C.

Major, French and General Science; American Sociological Society 3, 4; Le Cercle Français 1, 2, 3, 4; Varsity Tennis 3, 4.

SENIOR CLASS HISTORY

On the morning of September 19, 1932, Fame and Fortune opened their portals to the faces of seventy-five courageous lads, whose eager, beaming eyes sought the Registrar's Office and its registration service. These young men, each with a recently awarded high school diploma safely tucked under his arm, had come from far and near in response to the vibrant knock of Opportunity upon the veiled door of Education. All during the day they continued to come and to join arms with those natural anxieties, seasoned with current expectation and college fever, had sent them to the campus many hours in advance of the designated time for registration.

Thus entered the class of 1936, eager from its beginning, upon the pages of the history of Johnson C. Smith University. Behind this class lay twelve years of previous training, ahead of it lay four years of anticipation, in its immediate path lay brilliant records of many a prosperous Alumnus, as well as the history of some who were just ordinary. All these things were signal impressions upon the plastic minds of nearly four score college freshmen.

The first official gathering followed on the 21st of September, at which time Professor R. L. Douglass, "The Campus Philosopher," Mrs. H. L. McCroney, and Dr. H. L. McCroney, President of the Institution, welcomed the new students to the University and unveiled a huge block of educational marble, from which they were commissioned to carve a beautiful figure of mental, physical, and spiritual achievement.

As each student stood and introduced himself, it is to be doubted whether he, or any of the older students and faculty members to whom he spoke fully realized that the institution into which he had enrolled was starting on a new era. With the Class of '36, there came to the College the first regularly enrolled women students, whose Junior College work had been done at Barber-Scotia Junior College. There were no co-eds in the class, however, until its third season.

Several weeks after its entrance, the class met to elect officers, and after many a piece of oratorical brilliance, Isaiah P. Pogue was selected to lead the class over its first milestone on experience, Charles L. Hamilton was chosen to write notes, and T. English Wilson was designated to keep the treasury of the class. With this leadership, the class moved forward at an alarming pace. All of the major organizations, with the exception of the Greek Letter Fraternities, held representatives of this class. At the end of the first semester, seven members had been placed on the scholastic honor roll, and at the end of the first year, at least one member had achieved a semester "A" average.

Although heterogeneous from the beginning, the class functioned as a complete unit until late March of the first year. At this time came pledging to the various Greek Letter Fraternities, and the result was evident in four distinct factions, growing more distant every moment. Before a state of complete distraction was reached, the first milestone was reached, and the summer vacation brought relief to the situation.

In the fall of 1933, most of the original class returned. With them came a slightly larger assortment of women students, who like the first, entered the Junior Class. After three months of absence, factional differences were forgotten and again a seance was assembled to call leaders

to the front. This time, Isaiah P. Pogue was reelected to presidency, while the task of note-taking was given to Moses A. Blair. T. English Wilson was given charge of monies for the second time. During the first semester of 1933-34, pledges were initiated into the various Fraternities and the element of difference was minimized. The football team, the basketball team, the Y. M. C. A., the Christian Leadership Preparatory Club, Mathematics, French, and Science Clubs all found valuable members from the sophomore class. At the end of the semester five persons were still on the Dean's Honor Roll. During the second semester the class moved ahead more smoothly than the second semester of the first year. When the second milestone was reached and vacations began, another member had achieved the semester "A" rank.

In September, 1934, about fifty members registered as Juniors. With them came the first women to the class, and in the first meeting of the class, officers were elected—one of whom was a co-ed. The head of the class went to Isaiah P. Pogue for the third time, while Mary Coles Shaw was chosen to scribble accounts of the meetings. Also for the third time, T. English Wilson was elected treasurer. The same activities of the sophomore year were continued, with the addition of several class members on the staff of the *University Student*. At the end of the first semester, the first and second and third highest ranking scholastic records belonged to members of the class. Toward the middle of the second semester, factional differences arose again, and this time threatened to do big things for a while. But time, the healer of all wounds, stepped in and the sore spots were eased. At the Junior Prize Oration Contest, Ollie A. Johnson, a co-ed of the class, made history in the Institution by being the first woman student ever to be awarded the Oratorical Contest Prize in the history of the University.

In the fall of 1935, sixty members registered for the last milestone in the journey to a Bachelor's degree. Reginald T. Hutchinson replaced Isaiah Pogue as president, and Moses A. Blair was chosen to write minutes. For the fourth consecutive year, T. E. Wilson was given charge of the finances. Just before the close of the first semester, factional differences, after long smoldering, burst into flame again. This time, the whole machinery of the school was threatened, and all along the journey to the last milestone, the harmony of the group was never completely restored. At the end of the semester, the class had representatives in every organization on the campus for students, the two highest records of scholastic achievement were records of Seniors, who were also vying for Summa Cum Laude distinction at graduation. During this year the women's basketball team came into being, and several women of the class were members of the team. Finally in a last burst for perfection, the class functioned as a good unit and crossed the last milestone, with the belief that "To the Victor Belongs the Spoils."

Four years passed. Friends were made and lost. Difficulties were braved and conquered. Loads were lifted and work was done. Whether this class is to be remembered or not is a matter that only time can solve. Whether this class has completed its mission to carve a statue of intellectual perfection or not is left for the world to see and determine—but one thing is sure:

*Like the mighty warriors of Gog and Samothrace
They may not have carved Perfection's breast,
But when with problems and tasks face to face,
It is an established truth—they did their best . . .*

—MOSES BLAIR, *Secretary of Class.*



JUNIOR CLASS OFFICERS

JOSEPH BELTON

EDWIN GREENLEE

CLAUDE SLOAN

FRANCENA CLARKSON

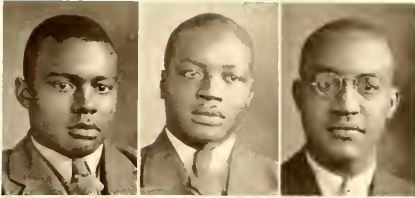
President

Vice-President

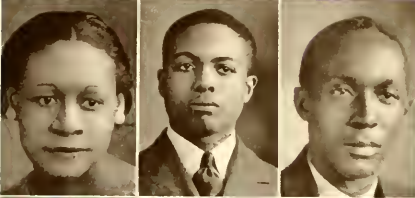
Business Manager

Secretary

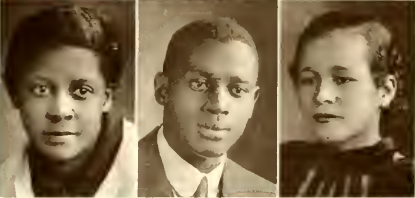
JUNIORS



EUGENE A. ADAIR
JAMES W. BARNETTE
WHITFIELD BATTLE



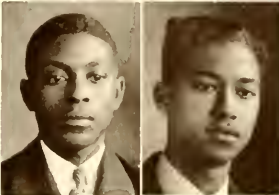
NORENE M. BAYLESS
JOSEPH C. BELTON
USHRY W. BEST



MARY E. BENTON
WELDON H. BROWN
FRANCENA G. CLARKSON



L. G. COTTINGHAM
OTIS C. DAVENPORT
SYLVIA C. DAVIS

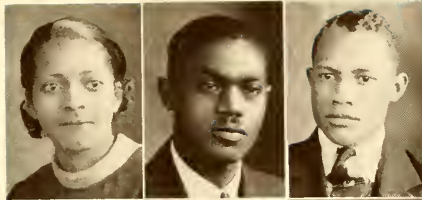


HAYWOOD W. DEBNAM
HENRY C. DUGAS, JR.

DOROTHY M. DUSENBURY

CHARLES H. FLEMING

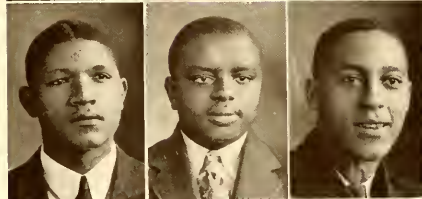
WILLIAM H. GAINES



JAMES A. GAULDEN

JAMES P. GEORGE

EDWIN C. GREENLEE



ASBURL L. HOLLAND

RENDALL A. HOWELL

LANNELL JACKSON



EDWARD J. JOHNSON

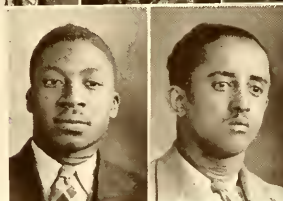
ETHEL D. JOHNSON

MINNIE W. JOHNSON



CORDELLE H. KENNEDY

JOHN N. LADSON





JAMES W. LYNCH
ALTA M. MCKNIGHT
ADDIE N. MOORE

JOHN H. MOORE
JOSEPH W. PARKER
CASSIUS M. PLAIR

GENEVA G. PLAIR
OLLIE B. PRATT
EDWARD L. PRICE

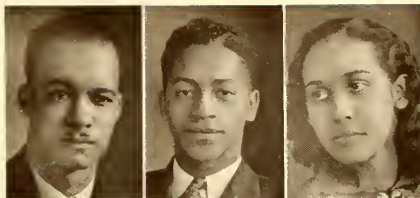
HERBERT O. REID
LUCINDA R. RUSSELL
MARGERY C. SIMMONS

HOWARD E. SIMS

JAMES H. SMITH

CLAUDE E. SLOAN

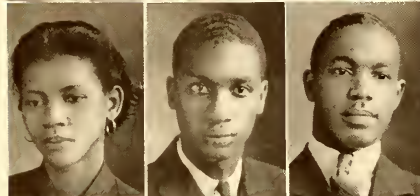
MARY H. STINSON



CECELIA M. TOATLEY

CLARENCE TURNER

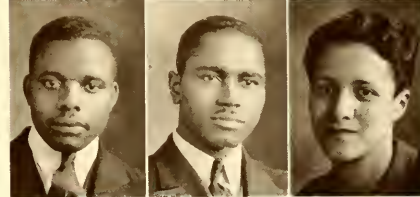
ODIE G. WALKER



EUGENE W. WALL

DAVID D. WEBBER

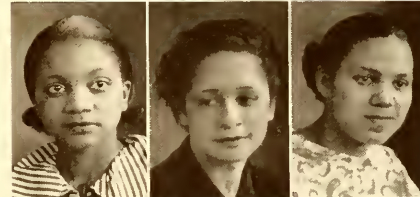
IRENE A. WEBSTER



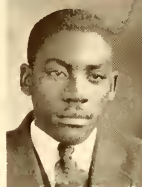
HATTIE H. WESTBROOK

CASTLE C. WILLIAMS

ETHELYN M. WILSON



JOHN A. WOODS

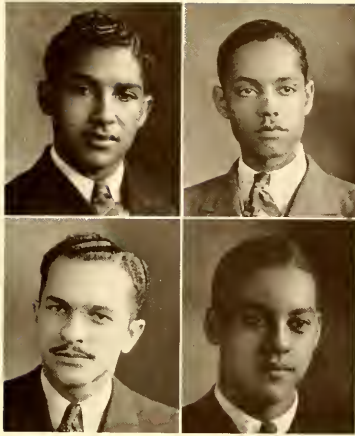


“TO A PICTURE”

Sighing away the minutes, trying to forget,
Sad heart pining with one mad regret,
You're looking at me with that teasing smile,
Would I be happy to talk with you awhile.

You change not your countenance with all that I say,
Just the same as ever, you must have your way,
Silent, you are, you change not your glance,
You don't ever offer me a second chance.

—JAMES LYNCH, *Class of '37*.



SOPHOMORE CLASS OFFICERS

ROBERT L. HARDIN

President

CORNELL A. JOHNSON

Vice-President

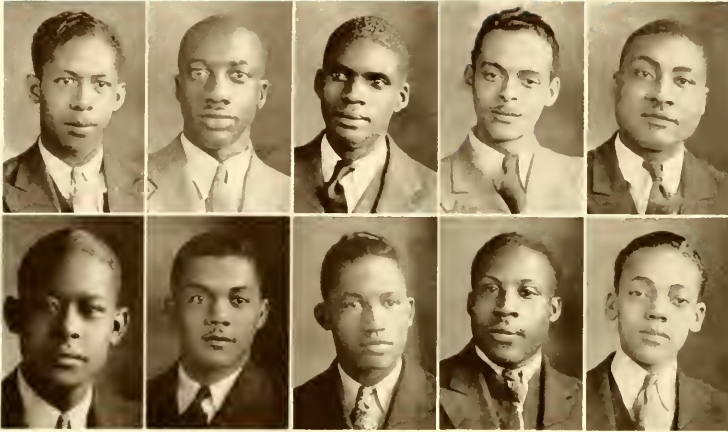
JAMES T. SMITH

Business Manager

EDWIN K. HANCOCK

Secretary

SOPHOMORES



SOPHOMORES

GARLAND R. BAXTER

MILTON M. BELLE

FRANCIS K. BOSTIC

JAMES A. BROWN

DEGRANVILLE BURKE

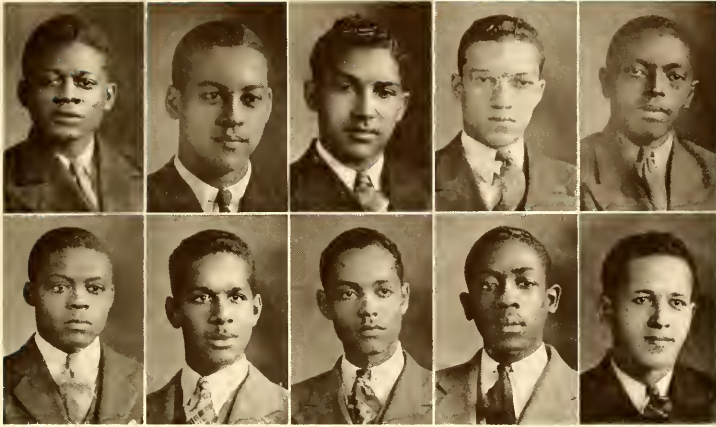
JOHN T. COLLINS

WILLIAM J. COSTNER

FRANK C. CREFT

JAMES B. ELLIS

MARION L. FLEMING



SOPHOMORES

JOHN L. GREEN

CLIFTON H. HAWTHORNE

EDWIN K. HANCOCK

WILLIAM C. HINES

ROBERT L. HARDIN

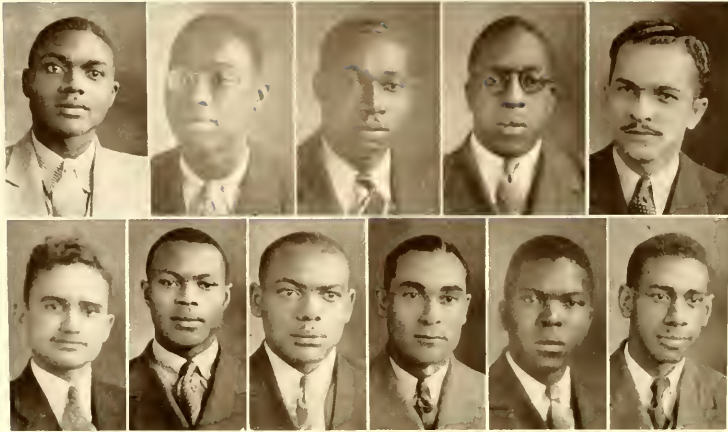
CORNELL A. JOHNSON

WALTER S. HARDY

SAMUEL J. LILLY

ROBERT W. HARRIS

ELIJAH J. MARBURY



SOPHOMORES

ROBERT MASSEY

BAMPHIELD STINSON

MARCELLUS MILLER

LOVETTE A. WARNER

ISAAC L. PRUITT

ALBERT L. WHITE

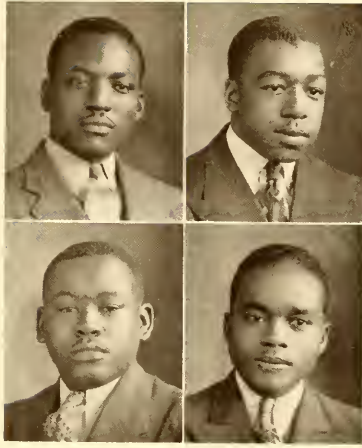
ANTONIO M. SIMPSON

EDWARD S. WILLIAMS

JAMES T. SMITH

MACK WILLIAMS

THOMAS H. WYCHIE



FRESHMAN CLASS OFFICERS

EDDIE EVANS

President

WILLIE WATT

Vice-President

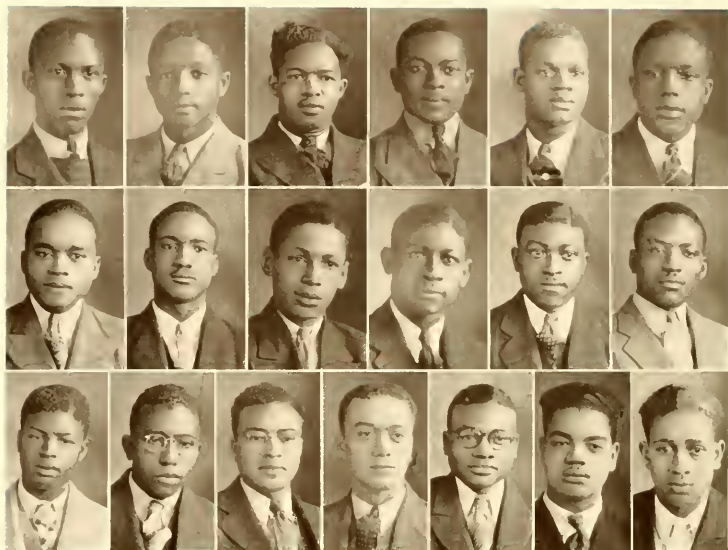
RICHARD RICHARDSON

Treasurer

FRANK CORBETT

Secretary

FRESHMEN



FRESHMEN

EUGENE G. ARRINGTON

HUBERT U. BARBOUR

EDWARD O. BROADNAX

PAUL L. BUTLER

JOHN F. CARR

ARTHUR G. COOPER

FRANK J. CORBETT

ANGUS P. CORLEY

GEORGE R. DOUGLASS

ASBURY E. ELLIS

HUNTER F. ELLIS

EDDIE W. EVANS

THEORY O. GARRETT

OHIA C. HARRIS

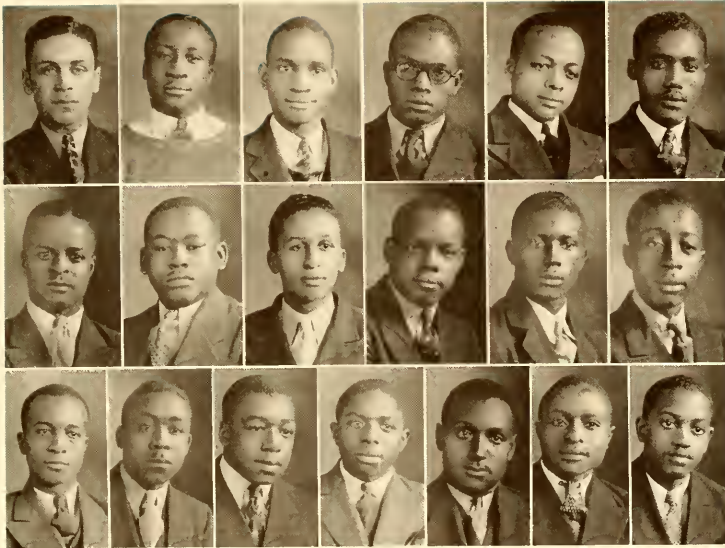
ELO L. HENDERSON

JOHN H. HOFFMAN

ERNEST C. JACKSON

CHARLES G. KEARNS

HERMAN C. McQUEEN



FRESHMEN

WILLIAM B. MARKHAM

MILTON B. MEADOWS

JAMES H. NELSON

OLIN W. PEARSON

JAMES W. PERRY

GARFIELD A. PRATT

JOHN H. RENNICK

RICHARD C. RICHARDSON

CHARLES W. ROBINSON

JOHNNIE H. SAUNDERS

WILLIAM G. SANDERS

DAVID SMITH

WILLIE R. TURNER

CLEVELAND N. TATE

WILLIE E. WATT

GEORGE WILKINS

ELIAS T. WILSON

FRANKLIN D. WOOD

GEORGE W. YOUNG



SPECIAL STUDENTS

CORRIE E. HART

LILIAN L. RUDISILL

MARY HOLLIDAY

SARAH L. WYCHE



THEOLOGICAL FACULTY

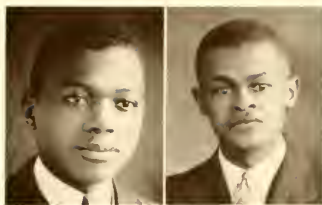
CHARLES H. SHUTE, A.B., S.T.B., D.D.
Dean and Professor of Systematic and Pastoral Theology

PINCKNEY W. RUSSELL, A.B., S.T.B., D.D.
Professor of Biblical Literature

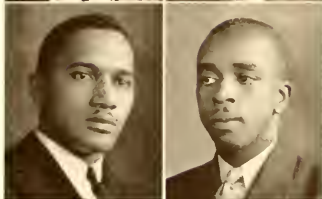
ALGERNON ODELL STEELE, A.B., A.M., B.D.
Professor of Religious Education and English Bible

ARTHUR H. GEORGE, A.B., S.T.M.
Professor of Homiletics and Church History

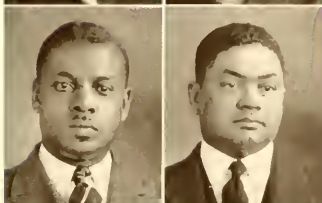
THEOLOGS



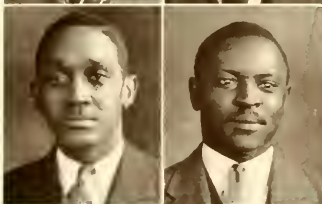
SENIORS
MOSES BELTON, S.B.
Columbia, South Carolina
CORRIE W. BOYCE, A.B.
Byphalia, Mississippi



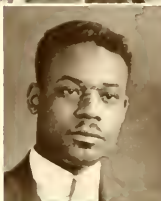
HERMAN L. COUNTS, A.B.
Roland, North Carolina
LEONARD A. ELLIS, A.B.
Due West, South Carolina



JAMES F. HENDERSON, A.B.
Columbia, South Carolina
ELMER H. HUNT, S.B.
Charlotte, North Carolina



ROBERT L. JEANS, A.B.
Shannon, Mississippi
WILLIAM V. JOYNER, A.B.
Rocky Mount, North Carolina



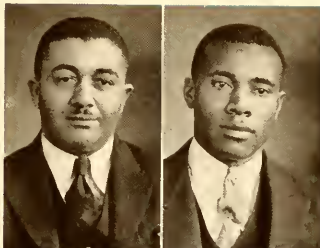
ALBERT A. THOMPSON, A.B.
Decatur, Georgia

THEOLOGS

UNDERGRADUATES

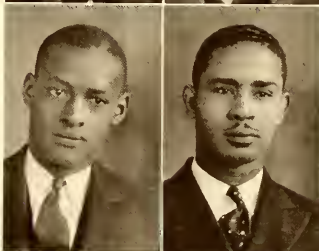
WILLIAM F. CANNON, S.B.
Laurens, South Carolina

OPRA J. HAWKINS, A.B.
Waskom, Texas



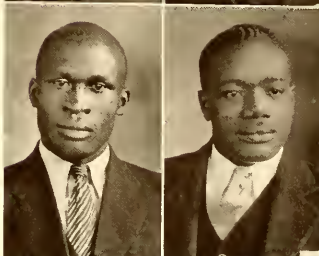
WILLIAM T. NELSON, A.B.
Maysville, South Carolina

DAVID S. POGUE, A.B.
Sumter, South Carolina



BACKMON R. RICHARDSON, S.B.
Irmo, South Carolina

LAZARUS B. WASHINGTON, A.B.
Charleston, South Carolina

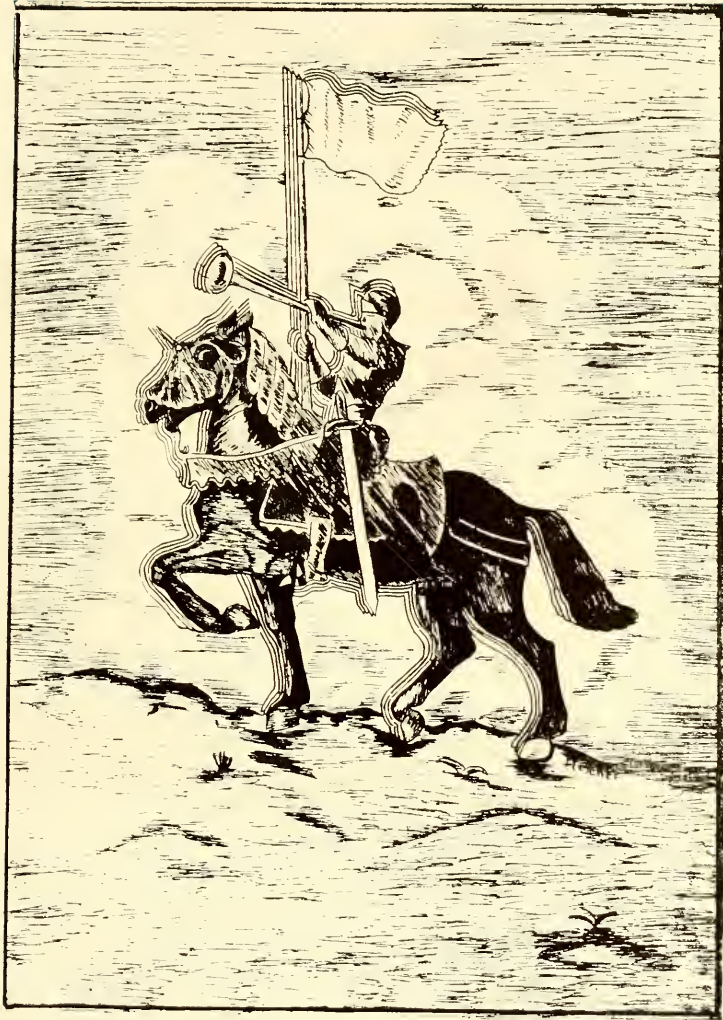


ROBERT C. JOHNSON, A.B.
Columbia, South Carolina





THEOLOGICAL LIBRARY



ORGANIZATIONS



BULL STAFF

CLARENCE D. TURNER

Editor-in-Chief

HERBERT O. REID

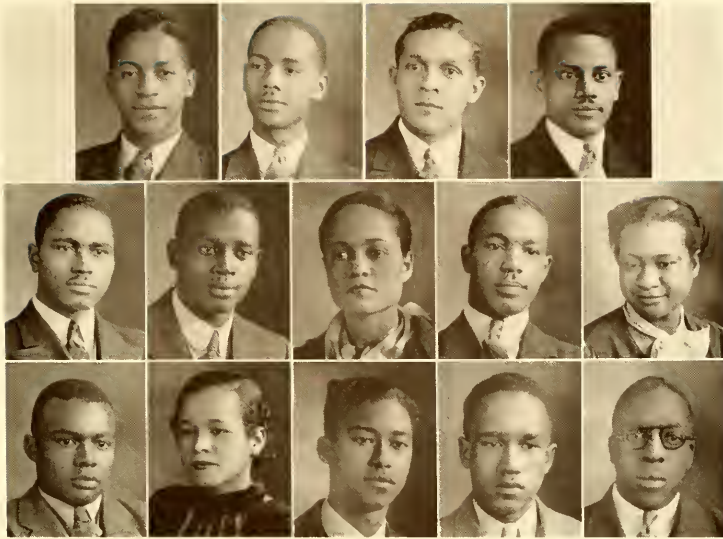
Business Manager

PROFESSOR BERTRAM L. WOODRUFF

Faculty Adviser

PROFESSOR WILLIAM C. DONNELL

Faculty Adviser



BULL STAFF

CLAUDE SLOAN

CASSIUS PLAIR

OTIS DAVENPORT

JOHN MOORE

DAVID WEBBER

WELDON BROWN

ETHEL JOHNSON

ODIE WALKER

GENEVA PLAIR

EUGENE ADAIR

FRANCENA CLARKSON

HENRY DUGAS, JR.

JOSEPH PARKER

ANTONIO SIMPSON

Assistant Editor

Assistant Business Manager

Advertising Manager

Advertising Manager

Advertising Manager

Photographic Editor

Literary Editor

Athletic Editor

Feature Editor

Publicity Manager

Secretary

Art Editor

Art Editor

Art Editor



UNIVERSITY STUDENT STAFF

OFFICERS

JAMES W. LYNCH

OLYMPIA LOWE

JAMES GAULDEN

MOSES BLAIR

CLAUDE SLOAN

ROBERT HARDIN

Editor-in-Chief

Associate Editor

News Editor

Secretary of Staff

Business Manager

Circulation Manager

REPORTERS

ASBURI HOLLAND

HENRY HILL

EUGENE WALL

JAMES SMITH

ETHEL JOHNSON

HOWARD SIMS

JOSEPH PARKER

JUANITA GIBSON

HERBERT REID

WILFORD HAMMOND

GEORGE YOUNG

ODIE WALKER

ERNEST MADISON

WILLIAM SMITH

FACULTY ADVISERS

PROFESSOR BERTRAM L. WOODRUFF

PROFESSOR WILLIAM C. DONNELL



RHO OMICRON SIGMA DEBATING SOCIETY

In 1931, while the Johnson C. Smith Debating Club was working under the leadership of Professor Bertram Woodruff, it was unanimously decided that the name of the club be changed to Rho Omicron Sigma. The purpose of this society is to sponsor and to encourage college debating. The members have worked unceasingly toward this end.

OFFICERS

FLOYD MASSEY

CLARENCE TURNER

JAMES GAULDEN

HENRY HILL

FRED W. BOND

Student Manager

Assistant Student Manager

Secretary

Publicity Manager

Faculty Adviser

MEMBERS

CHARLES TALLEY

SAMUEL MCLEAN

FREDERICK ROBINSON

HERBERT REID

JAMES LYNCH

ROBERT HARDIN

ELIAS WILSON

GEORGE YOUNG



ENGLISH PHILOLOGICAL SOCIETY

Professor Bertram I. Woodruff, seeing the need of an English Club to promote interest in good literature and practical application of English, founded the English Philological Society in 1931. That year the club was composed of men only and it was not until the following year with the entrance of young women to the campus that the club welcomed them into its folds.

The society has expanded from its original position of including only English majors to include all Juniors and Seniors who minor in English.

OFFICERS

OLLIE JOHNSON
RUTH HILLSMAN
JAMES LYNCH
DOROTHY DUSENBURY
PAUL GLOVER

President
First Vice-President
Second Vice-President
Secretary
Treasurer

MEMBERS

BERNICE BLAKINLY
FRANK CREEFF
SYLVIA DAVIS
ROBERTA DOUGLASS
DOROTHY DUSENBURY
ROBERTA ELLIS
PAUL GLOVER
VERNON GRIGG

AVANT HARRIS
RUTH HILLSMAN
ETHEL JOHNSON
MINNIE JOHNSON
OLLIE JOHNSON
IONE JONES
JOHN LADSON

JAMES LYNCH
ELIJAH MARBURY
GENEVA PLAIR
ROBERT SMITH
ESTHER STINSON
CASTLE WILLIAMS
ODIE WALKER
ETHELYN WILSON

Associate Members

EDWIN HANCOCK

ERNEST MATTISON

HOWARD SIMS

Faculty Advisers

PROFESSOR E. I. RANN

PROFESSOR BERTRAM WOODRUFF



THOMAS A. LONG, A.M., Ph.D.

Professor of Sociology and Chairman of the Division of Social Sciences

Dr. Long is a member of the American Sociological Society; the American Geographical Society, New York; the Academy of Political Science, Columbia University; the American Academy of Political and Social Science, University of Pennsylvania; the Southern Sociological Society; the American Guild of Organists and the North Carolina Chapter. He was a member of the Ninth Session of the International Psychological Congress, Yale University, 1929.

The Johnson C. Smith University Chapter of the American Sociological Society was granted a charter through the membership of Dr. Long in the parent society.



THE JOHNSON C. SMITH UNIVERSITY CHAPTER OF
**THE AMERICAN SOCIOLOGICAL
 SOCIETY**

The Johnson C. Smith University chapter of the American Sociological Society was granted a charter at Chicago, Illinois, February 3, 1934, and is recognized as chapter number three of the American Sociological Society. Dr. Thomas A. Long, Professor of Sociology and a member of the parent society, is adviser.

OFFICERS

CLARENCE A. PARHAM
 HERBERT O. REID
 CASTLE C. WILLIAMS
 ETHEL D. JOHNSON
 JUANITA C. GIBSON,

President
Vice-President
Secretary
Treasurer
Reporter

MEMBERS

CLARENCE A. PARHAM
 JOHN COLES
 PAUL GLOVER
 WILLIAM MARKHAM
 SYLVIA DAVIS
 ISAAC PRUITT
 CHARLES DUSENBURY
 RAINY WILSON
 WILLIAM SMITH
 CASTLE WILLIAMS
 OTIS DAVENPORT
 ETHEL JOHNSON
 WILFORD HAMMOND
 EDWARD SIMS
 HERBERT REID
 ROBERT MASSEY
 MRS. IONE JONES

EDWARD CANNADY
 PAUL WRIGHT
 PHYTON MANNING
 SAMUEL McLEAN
 BERNICE BLAKESNEY
 JAMES CHRISTIAN
 CLAUDE SLOAN
 GARLAND BAXTER
 WILLIAM COSTNER
 HUNTER ELLIS
 FLORELYN WILSON
 SAMUEL LILLY
 ELIAS WILSON
 CLAUDE WALKER
 MILTON COX
 MILTON MEADOWS
 CARRIE RAMSFUR

BAMFIELD STINSON
 CHARLES TALLEY
 JAMES LYNCH
 STERLETA PERRIN
 EUGENE WALL
 ALIFFE ELLIS
 EDWARD PRICE
 JAMES GEORGE
 BOOKER DAVIS
 ASBURN HOLLAND
 EDWARD JOHNSON
 AVANT HARRIS
 ZILLIA LEDBETTER
 JUANITA GIBSON
 ODIE WALKER
 CLAUDIA HARGRAVE
 MRS. MINNIE JOHNSON

ELIJAH MARBURY
 MACK WILLIAMS
 CORRIE HART
 WILLIE TURNER
 OLLIE PRATT
 THOMAS GRIER
 ALFRED COLEMAN
 HARMON FITCH
 DAVID WEBBER
 OTIS HAWKINS
 ANTONIO SIMPSON
 USHERY BEST
 EDWARD WILLIAMS
 EDDIE EVANS
 JEROME MARSHALL
 VERNON GRIGG



LITTLE THEATRE GUILD

During the academic year, the Little Theatre Guild of Johnson C. Smith University is a delectable, diligent, and colorful organization. The Little Theatre Guild is busy on the production of Shakespearean and modern drama. The work shop, always open for observation, is situated in an upper chamber of the Administration building where the students design, study, discuss, and rehearse. Here it is, that students gather around tables and in groups to prepare for the innumerable opportunities which the club has to offer. They not only participate in the practical application of stage craft, but exchange opinions and experiences with the director and nationally known critics and writers on the stage.

OFFICERS

JAMES WATKINS LYNCH	<i>President</i>
JUANITA GIBSON	<i>Secretary</i>
CLAUDE EUGENE SLOAN	<i>Business Manager</i>
OLLIE JOHNSON	<i>Production Manager</i>
OTIS CULLEN DAVENPORT	<i>Stage Manager</i>

COMMITTEE ON PLAY SELECTION

JAMES LYNCH	MARY COLES SHAW	OLLIE JOHNSON	JOSEPH BELTON
	OTIS C. DAVENPORT	CLAUDE E. SLOAN	
	PROFESSOR FRED W. BOND, <i>Director</i>		

MEMBERS

BERNICE BLAKENEY	ETHELYN WILSON	JAMES LYNCH	IONE JONES
CLAUDE E. SLOAN	CHARLES DUSENBURY	OTIS DAVENPORT	ALICE WRIGHT
LUCINDA RUSSELL	JOSEPH BELTON	SYLVIA DAVIS	RAINEY WILSON
MARY COLES SHAW	FLOYD MASSEY	NORENE BAYLESS	CLAUDIA HARGRAVE
WINSLOW TALLEY	MILTON COX	FRANCENA CLARKSON	JAMES SMITH
WILLIAM H. SMITH	FREDERIC ROBINSON	LA NELLE JACKSON	ROBERTA DOUGLASS
EUGENE ADAIR	PAUL GLOVER	MARY BENTON	HARMON FITCH
JUANITA GIBSON	IRENE WEBSTER	CLARENCE PARHAM	CASTLE WILLIAMS
	GENEVA PLAIR	JOHN COLES	



PAN-HELLENIC COUNCIL

For the purpose of creating better relations among the several fraternities on the campus, of affording equal opportunities, and of administering justice according to its constitution for the mutual good of the groups, the Pan-Hellenic Council was organized in 1929. It has since its inception endeavored to carry out this purpose and has been a constructive force in regulating fraternal activities for the best interest of all concerned. In all its efforts it has attempted to concert the best measures for the promotion of the fraternities and the development of the college life in general.

OFFICERS

HENRY A. HILL
 FLOYD MASSEY
 HUBERT A. EATON

President
Vice-President
Secretary

MEMBERS

HUBERT EATON
 CLAUDE SLOAN
 HENRY HILL
 HERBERT REID
 EDWIN GREENLEE
 FLOYD MASSEY
 SAMUEL McLEAN
 JAMES CHRISTIAN

Α Φ Α
 Α Φ Α
 Κ Α Ψ
 Κ Α Ψ
 Ω Ψ Φ
 Ω Ψ Φ
 Φ Β Σ
 Φ Β Σ



FACULTY ADVISER

PROFESSOR GEORGE T. KYLI

Α Φ Α



ALPHA OMICRON CHAPTER OF
ALPHA PHI ALPHA

The Alpha Phi Alpha Fraternity, the oldest of the four Negro Greek letter fraternities, was established at Cornell University, Ithaca, New York during the school year 1905-1906, by a small group of Negro students in various fields of endeavor.



The Alpha Omicron Chapter was set up on the campus of Johnson C. Smith University, May 4, 1923, and has exerted all efforts in the advancement of campus activities of the students and the University.

The active membership:

HUBERT A. EATON
 JAMES J. ABNEY
 HENRY C. DUGAS, JR.
 JOSEPH H. MORRIS
 CLAUDE E. SLOAN
 J. AVANT HARRIS
 ROBERT SMITH
 WINTHROP BOULWARE

President
Vice-President
Financial Secretary and Treasurer
Recording Secretary
Corresponding Secretary
Chaplain
 PEYTON MANNING
 ERNEST MATTISON



ALPHA EPSILON CHAPTER OF
PHI BETA SIGMA

The National Phi Beta Sigma Fraternity was founded in the year of 1914 on the campus of Howard University in Washington, D. C. The object of this fraternity is the promotion of brotherhood, scholarship, and service.

In 1927 the Alpha Epsilon Chapter was established on the campus of Johnson C. Smith University. The basic fundamentals of its constitution is "Culture For Service And Service For Humanity." The ideals of our predecessors have been preserved by the excellent leadership of our President and coöperation of its members. For nine years the chapter has been emphasizing "Bigger and Better Negro Business Week."

OFFICERS

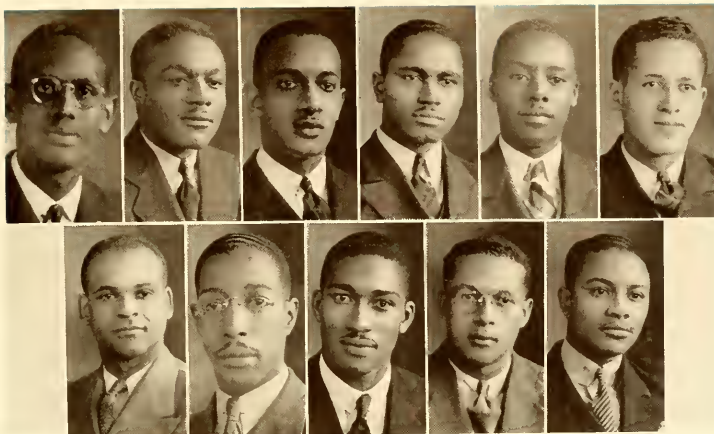
SAMUEL J. MCLEAN
JOHN K. HAILEY
JAMES A. CHRISTIAN
EDWARD J. JOINSON

President
Vice-President
Secretary and Treasurer
Crescent Manager

MEMBERS

ALFRED THOMPSON

LAZARUS WASHINGTON



ALPHA EPSILON CHAPTER OF

KAPPA ALPHA PSI

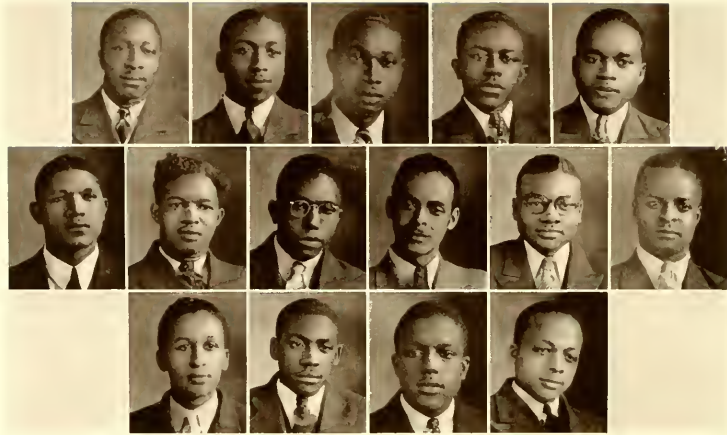
Kappa Alpha Psi was founded at the University of Indiana at Bloomington. It was incorporated under the laws of that state in 1911. The Alpha Epsilon Chapter was established at Johnson C. Smith University, December 10, 1927. We always strive to uphold the ideals of our fraternity. The unquenched desire for the attainment of this goal is always present. We are good Kappas—the world knows the rest.



ROSTER

HERBERT ORDRE REID
 MILTON EDWARD COX
 HENRY ARON HILL
 DAVID DEMOSTHENES WEBBER
 WILLIAM HENRY SMITH
 ELIJAH JEFFERSON MARBURY
 CLARENCE ANDREW PARHAM
 JAMES WATKINS LYNCH
 REGINALD THEODORE HUTCHINSON
 WALTER FREDERIC ROBINSON
 JOSEPH RAINEY WILSON

Polemarch
Vice-Polemarch
Keeper of Records
Assistant Keeper of Records
Keeper of Exchequer
Strategus
Lieutenant
Historian, Reporter
Polemarch-Emeritus
Polemarch-Emeritus



SCROLLER'S CLUB

The name Scroller's Club was first introduced by Elias Tuggle in 1919, at Ohio State University. Its purpose was to give the men of Kappa Alpha Psi Fraternity a chance to study the calibre of their prospective brothers. The Scroller's Club of Alpha Epsilon chapter at Johnson C. Smith University was founded in 1927.

The present membership of the Scroller's Club of Alpha Epsilon Chapter at Johnson C. Smith University, Charlotte, North Carolina, consists of the following named persons:

HOWARD SIMS

President

EDWARD PRICE

Vice-President

ISAAC PRUITT

Secretary

LEONIDAS COTTINGHAM

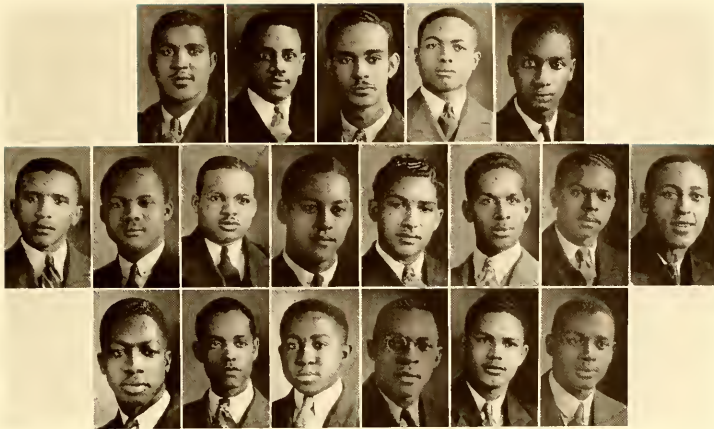
Reporter

MEMBERS

FRANK CORBETT
 JAMES GAULDEN
 CLAUDE WALKER
 EDWARD BROADNAX

OTHA HARRIS
 JOHN COLE
 JAMES BROWN
 ERNEST JACKSON
 JAMES PERRY

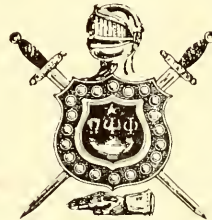
JOHN RENNICK
 CHARLES ROBINSON
 JOHN WOODS
 ARTHUR COOPER



RHO CHAPTER OF
OMEGA PSI PHI

On November 17, 1911 at Howard University, Washington, D. C., the Omega Psi Phi Fraternity was founded by Brothers Edgar A. Love, Oscar J. Cooper, and Frank Coleman, in company with Professor E. E. Just.

Rho Chapter of the Omega Psi Phi Fraternity was the first chapter of a national fraternity to be located on Smith's campus. It was established at Smith on November 7, 1921, and Rho has, from that time on, steadily progressed under the guidance of her loyal sons. At the present, Rho is striving to inculcate into her sons those ideas of manhood, scholarship, perseverance, and uplift, which tend to create a more wholesome spirit among all.



OFFICERS

ISAIAH POGUE
 JOHN MOORE
 MOSES BLAIR
 JOSEPH BELTON
 ROBERT DENSON
 CLARENCE TURNER
 PAUL GLOVER

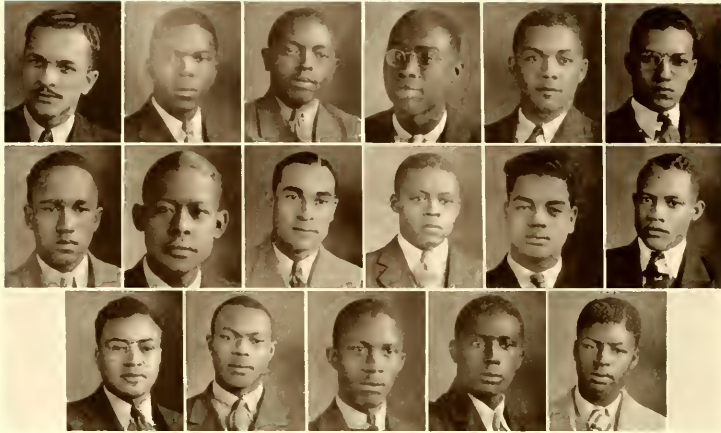
Basileus
Vice-Basileus
Keeper of Records and Seals
Keeper of Finance
Chaplain
Chapter Editor
Keeper of Peace

MEMBERS

JAMES BOYD
 CHARLES DUSENBURY
 EDWIN HANCOCK
 ROBERT HARDIN

WILLIAM HINES
 RENDALL HOWELL
 CHARLES GREENLEE
 ZOEL HARGRAVE
 CORNELL JOHNSON

CLARENCE MORRISON
 FLOYD MASSEY
 PAUL WRIGHT
 WELDON BROWN



LAMPADOS CLUB

The Lampados Club, the pledge club of Omega Psi Phi Fraternity, was founded for the purpose of preparing men for the true fraternal life. The members of the club have pledged themselves to the Omega Psi Phi Fraternity and they are striving to uphold those noble principles for which the Lampados Club stands.

OFFICERS

JAMES T. SMITH
 MACK WILLIAMS
 ROBERT A. HARRIS
 MARCELLUS MILLER
 WILLIAM J. COSTNER
 WALTER S. HARDY
 JOSEPH W. PARKER
 JOHN T. COLLINS

President
Vice-President
Secretary
Assistant Secretary
Sergeant-At-Arms
Treasurer
Reporter
Chaplain

MEMBERS

EDWARD S. WILLIAMS
 CLINTON H. HAWTHORN
 CHARLES G. KEARNS

WILLIAM H. GAINES
 ELO L. HENDERSON
 LORETTA A. WARNER
 ODELL T. GARRETT

EUGENE G. ARRINGTON
 HERMAN M. MOORE
 WILLIAM G. SANDERS



CHRISTIAN LEADERSHIP PREPARATORY CLUB

In the fall of 1929 a group of Freshmen, candidates for the ministry, resolved to organize a club for mutual benefit in facing the campus life and preparing for the greater problems of life after college. On October 17, 1929 the group met in a room in Carter Hall and organized the Christian Leadership Preparatory Club with Moses Belton as president and Herman L. Counts, secretary. The club was composed of thirteen members. During the scholastic year 1932-1933 the club was composed of every candidate for the ministry in the college and has thus continued ever since. The following Seniors in the School of Theology are charter members: Moses Belton, C. W. Boyce, H. L. Counts, I. A. Ellis, and R. L. Jeans. Other Theologs who were members of the club are: E. L. McAdams, charter member; T. H. Bullock, R. C. Johnson, W. T. Nelson, K. D. Pogue, and L. B. Washington.

OFFICERS

EDWARD S. WILLIAMS
ROBERT MASSEY
JOHN WOODS
GEORGE W. YOUNG
ELO L. HENDERSON
MILTON M. BELL
BOOKER T. DAVIS
DEGRANVILLE BURKE
ERNEST C. JACKSON

President
Vice-President
Secretary
Assistant Secretary
Treasurer
Chairman of Program Committee
Chairman of Social Committee
Chairman of Publicity Committee
Orderly

MEMBERS

CLARENCE MORRISON
BOOKER DAVIS
THOMAS WILSON
CHARLES TALLEY
EDWARD JOHNSON
EDDIE EVANS
SAMUEL McLEAN
GARFIELD PRATT
MILTON COX
CORDELL KENNEDY

EDWARD WILLIAMS
JAMES BARNETTE
ROBERT MASSEY
ERNEST MATTISON
DEGRANVILLE BURKE
WILLIAM BURKE
ANTONIO SIMPSON
MILTON BELL
JAMES GEORGE
ELIJAH MARBURY
THEODORE GOODJOIN

OLIN PEARSON
JOHN WOODS
FRANKLIN WOOD
ELO HENDERSON
ERNEST JACKSON
GEORGE YOUNG
JOHN RENNICK
JOHN CARR
OLLIE PRATT
JAMES CHRISTIAN



Y. W. C. A.

The Young Women's Christian Association is an organization on the campus to which every girl has the right and privilege to belong. This organization was first organized on February 11, 1935 with the suggestion and encouragement of Mrs. H. L. McCrorey. Soon after organizing the society became affiliated with the National Young Women's Christian Association.

— Its foremost purpose is for the all-around development of the lives of the girls on the campus.

OFFICERS

SYLVIA DAVIS
 BERNICE BLAKNEY
 FRANCENA CLARKSON
 CLAUDIA HARGRAVE
 MRS. H. L. MCCROREY

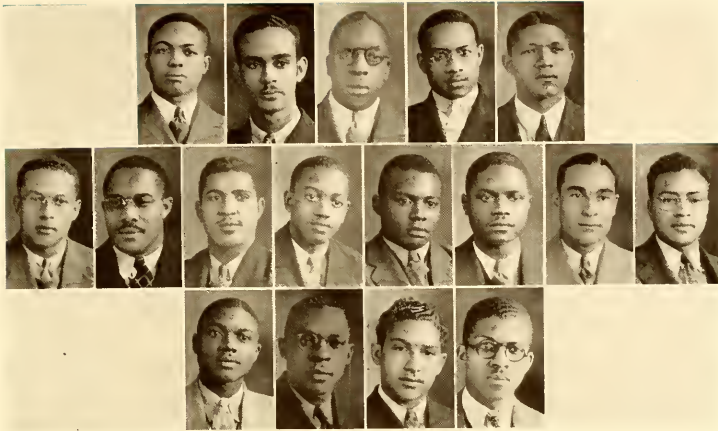
President
Vice-President
Secretary
Treasurer
Adviser

MEMBERS

JUANITA GIBSON
 MARY SHAW
 RUTH HILLSMAN
 GENEVA PLAIR
 HATTIE WESTBROOK
 CASTLE WILLIAMS

MARY A. WRIGHT
 ETHEL LEE WILLIAMS
 BERNICE BLAKENEY
 DOROTHY DUSENBURY
 FRANCENA CLARKSON

LUCINDA RUSSELL
 ETHELYN WILSON
 ALIFFE ELLIS
 CLAUDIA HARGRAVE
 SYLVIA DAVIS
 OLLIE JOHNSON



Y.M.C.A. CABINET

The Johnson C. Smith University Chapter of the Y. M. C. A. has always had for its fundamental purpose: the hope of building strong physical, mental, and spiritual characters, and to perpetuate the ideals of Christianity within the student body.

During 1935-1936, the chapter has taken on a very definite secondary purpose, which has been to germinate, incubate, give birth to and to nurture to maturity a well-rounded school spirit—something which has been hardly realized during the last college generation.

Those persons who were officers and members of the 1935-1936 Y. M. C. A. Cabinet, whose efforts are unparalleled in diligence, and whose struggles are about to merit positive results, are:

OFFICERS

JOSEPH C. BELTON

MOSES A. BLAIR

ANTONIO M. SIMPSON

SAMUEL J. MCLEAN

JAMES A. GAULDEN

PROFESSOR NORMAL C. CROSBY

President

Secretary

Assistant Secretary

Treasurer

Publicity Manager

Faculty Adviser

MEMBERS

FREDERIC ROBINSON

OLYMPIA P. LOWE

ISAIAH POGUE, JR.

GEORGE YOUNG

EUGENE ADAIR

JAMES CHRISTIAN

SAMUEL WILLIAMS

ELO HENDERSON

ROBERT MASSEY

FLOYD MASSEY

ROBERT HAWTHORNE



UNIVERSITY QUINTET

Dr. T. A. Long, realizing the beauty of harmony among five well-trained voices, organized in the year 1908 the University Quintet, which has since that time become a definite part of the institution.

The Quintet made its first appearance at the General Assembly of the Presbyterian Church in 1909 and has appeared at every Assembly since then.

Tenors

JAMES BOYD
FRANK CORBETT
RICHARD RICHARDSON

Baritone

RENDELL HOWELL

Bass

THOMAS RINGER

DAVID E. CARROLL, *Director*



THE WOMEN'S SEXTETTE

The Women's Sextette was organized the first semester of the school year, 1935-36, under the direction of Mr. David E. Carroll, the music instructor of the University. This organization, being the first women's sextette to be organized on the campus, was entered into with much enthusiasm, and interest on the part of the young women. They made their first appearance at the Vesper service on December 22, 1935.

The purpose of this organization is to interpret song literature according to the highest standards.

First Sopranos

NORENE BAYLESS
GENEVA PLAIR

Second Sopranos

MARY BENTON
RUTH HILLSMAN

Altos

CLAUDIA HARGRAVE
ETHELYN WILSON



THE UNIVERSITY CHOIR

The aim of the University Choir is to interpret artistically the best of choral music.

Sopranos

NORFNE BAYLESS
MARY BENTON
ALIFFE ELLIS
ROBERTA ELLIS
JUANITA GIBSON
RUTH HILLSMAN
OLLIE JOHNSON
GENEVA PLAIR

Tenors

JAMES BARNETT
JAMES BOYD
FRANK CORBETT
EDWIN HANCOCK
WALTER HARDY
RENDELL HOWELL
HARVEY MICHAEL
JOHN SAUNDERS
RICHARD RICHARDSON

Altos

BERNICE BLAKENFY
LA NELLE JACKSON
CLAUDIA HARGRAVE
LUCINDA RUSSELL
ETHELYN WILSON

Basses

DE GRANDVAL BURKE
ARTHUR COOPER
SAMUEL LILLY
THOMAS RINGER
THOMAS WILSON

DAVID E. CARROLL, *Director*



MEN'S GLEE CLUB

MEMBERS

JOHN BROOKS
ROBERT BROWN
ARLIN BRYANT
JOHN CARR
JOHN COHEN
JOHN COLLINS
ARTHUR COOPER
FRANK CORBETT
ANGUS CORLEY
HUNTER ELLIS
EDDIE EVANS
WILLIAM FREEMAN
THEODORE GOODJOHN
VERNON GRIGG
FRANK HAMMOND
OTHA HARRIS
ERNEST JACKSON
CORDELL KENNEDY

JAMES KENO
JOHN LADSON
PEYTON MANNING
ROBERT MASSEY
ERNEST MATTISON
MILTON MEADOWS
HARVEY MICHAEL
CLARENCE PARHAM
OLIN PEARSON
OLLIE PRATT
RICHARD RICHARDSON
JOHN SAUNDERS
WILLIAM SANDERS
CLAUDE SLOAN
DAVID SMITH
CLEVELAND TATE
WILLIE TURNER
GEORGE WILKINS

EDWARD WILLIAMS
DAVID E. CARROLL, *Director*



READING ROOM—THE LIBRARY—SCHOOL OF THEOLOGY



ATHLETICS

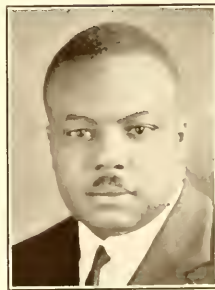
FOOTBALL



HERBERT PENN
Coach



DAVID RAY
Assistant Coach



DEAN MCKINNEY
Chairman Athletic Board



FOOTBALL REVIEW

RESULTS OF THE SEASON

Smith	0	A. & T. College	19
Smith	0	Knoxville College	0
Smith	3	Shaw University	14
Smith	19	St. Augustine College	0
Smith	0	Bluefield College	27
Smith	0	N. C. State College	6
Smith	14	Livingston College	0

During the football season of 1935, two motives were carried out by the gold and blue Bulls: discipline and clean sportsmanship. With these two motives functioning 100% the Bulls accomplished more than if they had won the championship. Although there is nothing to be regretted on the lower end of the scoring ranks winning is not the only viewpoint in athletics. Having won two games, lost four, and tied one, the Bulls closed a hard-fought season with hopes of redeeming themselves in the years following.

FOOTBALL



Those having played their last season of this well-loved sport will long be remembered by their team-mates, coaches, and spectators. C. P. Dusenbury, Captain, was very outstanding with his spectacular running and excellent driving of his team as quarterback. Charles Talley and Claude Walker, tricky ends, proved themselves very efficient and were liked by all. J. T. Boyd, halfback, was very outstanding during his years of play and his spectacular running and hard hitting won him a place among those of highest rank. With Abney and Manning in tackle only a strong wind could pass through them for they were known as stone walls. Now we come to Paul Wright and John Coles, guards, and did they guard! Nothing could keep them out of every play even after the games. I. P. Pogue, center, a 188-pound streak of lightning, stopped everything that opponents had to offer.

The undergraduate members of the squad who played very outstanding football the past season are: Willie Watt, halfback, a spectacular player from all angles; Haywood Robinson, fullback; O. G. Walker, quarterback; Albert White, center; Angus Corley, guard; Joseph Carr, end; Eddie Evans, tackle; Olin Pearson, guard; Walter Mills, halfback; C. A. Johnson, halfback; and Vernon Colbert, halfback. These men are expected to do great things when the whistle blows for their participation in another season of man to man hard-fighting football.

The graduating members of the squad will be greatly missed, but the golden Bulls will carry on to victory despite this handicap and will be praised far and wide.



GIRLS' BASKETBALL

SYLVIA DAVIS
BERNICE BLAKENEY
MARY BENTON

HATTIE WESTBROOK
RUTH HILLSMAN
LANELLE JACKSON

NORENE BAYLESS
LUCINDA RUSSELL
OLLIE JOHNSON

With the assistance of Coach Herbert Penn the young co-eds proved themselves remarkable in every respect. Since this is the first team composed of girls that Smith has produced, it will go down in the history of the institution as one of the greatest achievements in sports. Because of a late start and playing only four games this season these young ladies were unable to accomplish their desired rank among the winning teams, but the final analysis proved them playing 100% basketball considering the handicaps which we might say were inevitable.

Bernice Blakeney, forward, won the admiration of all with her spectacular style of play. Sylvia Davis, forward, will long be remembered for her accuracy in shooting. Ruth Hillsman, forward, played a very unique style of basketball. Captain Benton at guard was very outstanding and as recorded no points were made over her. Norene Bayless, another guard, won the admiration of all by playing real basketball. LaNelle Jackson, guard; Hattie Westbrook, guard, Lucinda Russell, guard, and Ollie Johnson, forward, also played a very outstanding game of basketball.

GAMES PLAYED

Smith	12	Barber-Scotia Junior College	39
Smith	7	Winston-Salem Teachers' College	23
Smith	7	Fayetteville State Normal	27
Smith	12	Fayetteville State Normal	15



BASKETBALL

LOVETTE WARNER
PEYTON MANNING
HUBERT EATON, *Captain*
WALTER HARDY
WINTHROP BOULWARE

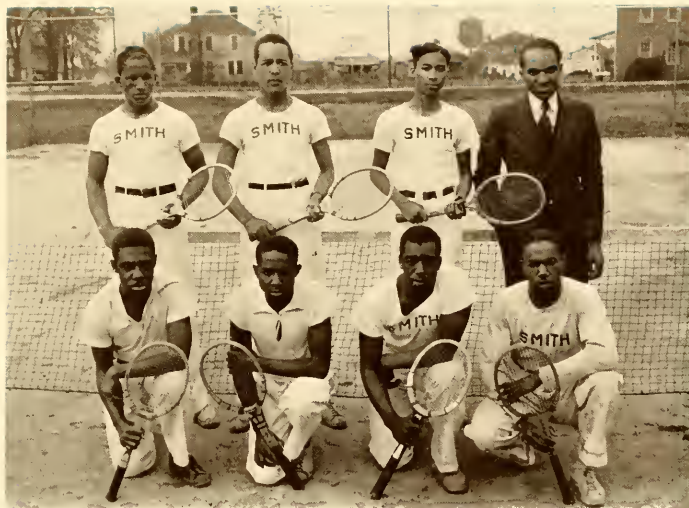
CLAUDE WALKER
WILLIE WATT
VERNON COLBERT
COACH PENN
REGINALD HUTCHINSON

DOUGLAS C. GREEN

Basketball competition as a whole was more evenly balanced as Smith won eight and lost eight this season. The style of offensive play was skillful and interesting. The defense was an assigned man-to-man in the main. In view of the comparatively recent changes to include the three-second rule, the writer believes that Smith successfully evaded the area outscoring their opponents 605 points to 585 points.

Smith apparently had a "second-half" rushing out on the court after the "half" giving a splendid exhibition of morals and comeback after a first half slump usually to win or lose by a two or three-point margin.

Individually, "Wee" Willie Watt at forward led the offense and the defense by running up a spectacular total of 65 field goals and 23 free throws. Captain Eaton at forward and playing his last year possessed fine ability, spirit, and cooperation which will be missed next year. Manning at center displayed rare ability to make a regular berth on this year's squad. Boulware's alternative play at guard and forward presented the team with lock, stock, and barrel, for guarding ability and offensive drive. Other players of marked ability were Hutchinson, guard, with a very unique style of play; Hardy, a lad with a very spectacular one hand shot; Walker, with a "point"; Warner, alternative center, with a roving disposition; and Colbert with ambition. D. C. Greene, guard, graduated at mid term but left a record competing with the highest.



TENNIS TEAM

Due mainly to the sterling playing of Harmon Fitch and Hubert Eaton, the Smith racquet wielders have dominated intercollegiate play during the past two years. Harmon W. Fitch, ranked second nationally in 1935, has been C. I. A. A. Singles and Doubles Champion, as well as Intercollegiate Champion for the last two years. Hubert A. Eaton, former National Junior Champion, has been a member of the C. I. A. A. Doubles Championship team two years in succession. C. E. Morrison, H. C. Dugas, Frank C. Creft, R. T. Young, O. G. Walker, Willie Watt, and others are members of the varsity squad (the first two being lettermen), and offer real promise in future collegiate competition.

SUNSET

Sinking, slowly, and resentfully it goes.
Trying to cast a last unfading impression.
Trying to make believe that all is as it were.
But knowing that each moment it is being
Drawn and choked to its daily death by this rising, visible,
But ungraspable enemy.

The one going down has fought hard and lost.
The sun.
The one rising has fought harder and won.
The dusk.

—CLIFTON HAWTHORNE. *Class of '38.*

INDIAN SUMMER

Pale moonlight falls upon
The frost-bitten faces
Of a thousand golden leaves
A thousand golden leaves
That fluttered so blithely
In the sunshine of a yesterday
A thousand golden leaves—
Whose radiance made glad
The heart of you.

—MOSES BLAIR. *Class of '36.*



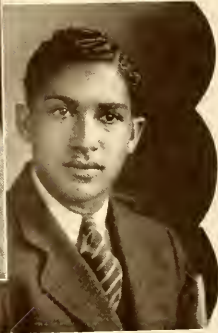
FEATURES



Miss Johnson C. Smith
MARY H. STINSON

Most Attractive
DOROTHY DUSENBURY

Most Popular
RICHARD RICHARDSON



"Best Dressed"
OTIS DAVENPORT

"Most Personality"
ISAIAH P. POGUE

"Best Physique"
PEYTON MANNING

"Best Looking"
FRANCENA CLARKSON

"Most Handsome"
ROBERT L. HARDIN

"Most Friendly"
NORENE BAYLESS



"Best-All-Round Student"
CHARLES E. GREENLEE

"Most Poised"
MARY COLES SHAW

"Most Serious"
JAMES GAULDIN

"Most Popular"
GENEVA PLAIR

"Most Studious"
CECELIA TOATLEY

"Best All-Round Athlete"
WILLIF WATT



ONE OF
THE ARCH
ENTRANCES

CARNEGIE
LIBRARY

A CAMPUS
DRIVE



ACKNOWLEDGMENTS

The Staff wishes to express its appreciation to:

DR. H. L. McCROREY, who has been of great aid to us in our planning for the finance of the BULL.

The members of the former 1936 BULL Staff who laid the foundation for the publication of this the fifth volume of the BULL.

THE OBSERVER PRINTING HOUSE, INC., Charlotte, N. C., for the generous coöperation it has been to the Editor and the Business Manager.

THE CAROLINA STUDIO, Charlotte, N. C., for the very best service possible by a photographing concern.

THE CHARLOTTE ENGRAVING COMPANY, Charlotte, N. C., for their generous coöperation and helpful suggestions.

MR. H. C. DUGAS, bursar of the University, for his unselfish service in keeping our financial tabulations.

MR. MOSES BELTON and MR. MOSES BLAIR, seniors of the theological and liberal arts schools respectively, who so generously aided the Literary Editor.

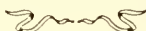
PROFESSOR BERTRAM WOODRUFF and PROFESSOR WILLIAM C. DONNELL, faculty advisers, whose advice has brought us through many difficulties.

And to our ADVERTISERS, who to a very large degree have made this book possible.





ECONOMIZING WITH ELECTRICITY



Intelligent and progressive housewives are not only relieving themselves of household and kitchen drudgery and making their homes healthier and brighter, and happier, but they are actually and substantially reducing their household budgets through the wise application of electricity to household duties.

Take the two all important matters of cooking and refrigeration for instance. With all of its advantages of coolness, convenience, the saving of time and labor, and other advantages, electric cookery costs no more than the old fashioned ways. And electric refrigeration, with all of its advantages over ordinary refrigeration, actually costs less—much less.

Equally important, however, are the small household appliances—the vacuum cleaner, coffee percolator, the smoothing iron, washing and iron machines, the mixmaster and others. These appliances make housework easier. More than that they actually add to the comfort and joy of living.

The cost of electric service has had a constant trend downward since the power industry came into being. *The cost of living has substantially increased during the past two years. The cost of electric service has continued to decrease.*

DUKE POWER COMPANY

CHARLOTTE, N. C.

CLOTHING OF DISTINCTION

Finest Quality and
authentic style char-
acterize Suits, Hats,
Furnishings & Shoes
from MELLON'S.

●
Mellon's

Travel by Motor Coach

LOW FARES—CONVEN-
IENT SCHEDULES

●
MODERN EQUIPMENT
CAREFUL DRIVERS

●
Charter Coaches Everywhere

Queen City Coach Company

Charlotte, N. C.

Phone 5813 417 W. 5th St.

Compliments of

HEATH MOTOR CO.

428 West Trade Street

CHARLOTTE, N. C.

STEINWAY AND SONS

And Other Fine Pianos

"Everything Musical"

Andrews Music Co.

Est. 1892 231 N. Tryon St.

Morris & Barnes, Inc.

Market of Quality

SPECIALTIES

Calf Sweetbreads, Brains and Liver, Ox
Tongue, Tripe, Pickled Pigs Feet, Game
in Season, Choice Western Meats, Fish
and Oysters, Dressed Poultry, All Kinds
of Sausage, Full Line of Delicatessen.

Dial 3-1116 227 W. Trade St.

☛ REMEMBER . . .

You Always Save At

BELK BROTHERS

*"Charlotte's Home of Better
Values"*



GET THIS PICTURE FIRMLY
FIXED IN YOUR MIND

This is the store in Charlotte that carries
over 250 brands of nationally known and
nationally advertised merchandise.

Efird's
DEPARTMENT STORE
CHARLOTTE, N.C.

Bread

Cake

MERITA

Baked-In Flavor Bread

Cakes Made with Fresh Eggs,
Milk and Butter

**American Bakeries
Company**

1310 West Trade Street

Compliments of

Southern Hardware

Charlotte, N. C.

Compliments of

Hardaway-Hecht Co.

WHOLESALE GROCERS

**M. B. Smith Jewelers,
Incorporated -**

105 East Trade Street

Dial 7361

CHARLOTTE, N. C.

Compliments of

**McDonald Service
Company**

Firestone Products

It's Easy to Pay the Haverly Way
Everything for the Home
No Interest—No Carrying Charge

**HAVERTY
FURNITURE Co.**

227 N. Tryon Street

A PURE DRINK
OF
NATURAL FLAVORS

EVERY BOTTLE STERILIZED



GARRISON & HOPKINS COMPANY

INCORPORATED 1922

A Complete Plumbing and Heating Service

1501 South Tryon Street

CHARLOTTE, N. C.

Specialties

Sheet Metal Work
Air-Conditioning
Automatic Stokers

Heat By

Vapor, Steam,
Arcola, Warm Air,
Hot Water

Palmer Printing Company

Quality Printing

TELEPHONE 3-4446

210 E. FIFTH ST.

CHARLOTTE, N. C.

SYMBOL OF THE WORLD'S

FOREMOST



FOOD

WHERE ECONOMY RULES

SERVICE

A Traveling Bag Given Away by Courtesy of
KAY JEWELRY COMPANY
"Buy on Our Easy Terms"

Diamonds—Watches—Radios—Jewelry
105 South Tryon Street Charlotte, North Carolina

Floor Wax, Mops, Brooms, Disinfectants and Soaps
CHARLOTTE HARDWARE CO.

POUND AND MOORE COMPANY
Commercial Stationers, Office Equipment
South Tryon St. Charlotte, N. C.

COMPLIMENTS OF
RELIABLE LOAN COMPANY

Charlotte's Oldest Pawn Shop
209 East Trade Street Charlotte, N. C.

PYRAMID CHEVROLET COMPANY
531 E. Trade Street Charlotte, N. C.

COMPLIMENTS OF
C. D. KENNY COMPANY
TEAS, COFFEES, SUGARS

216 East 7th Street Charlotte, North Carolina

COMPLIMENTS OF
WEARN LUMBER COMPANY
1420 South Mint Street Charlotte, North Carolina

J. O. JONES, INC.

HART SHAFFNER & MARX
FINE CLOTHES

\$30.00 and UP

J. O. JONES, INC.

Compliments of

J. B. IVEY & CO.

CHARLOTTE, N. C.

Compliments of

**Southern Fruit Co.,
Inc.**

*Jobbers of Fruits and
Vegetables*

Phone 3-6181

Compliments of

Ross Electric Co.

505 E. Trade St. Charlotte, N. C.

DIAL 2-3604

Five Point Cleaners

The Home of
VORCLONE CLEANING

Dial 9483

W. L. SULLIVAN, *Manager*

Compliments of

**Underwood-Elliott
Fisher Co.**

127 West Fourth Street

A. F. DANCY

Phone 3-6156

**T. J. Wiggins Lumber
Company**

*Will Furnish All Materials to
Build Your Home and Wait
on Building and Loan or
F. H. A. Loan*

Phone 5129

253 East Bland Street

*Lumber—and Everything in
Building Supplies*

H. V. Johnson & Son

To Provide You with Economical
Heat

Coal — Coke

Telephone 3-2187

"WEAR CLEAN CLOTHES"

HAVE THEM DRY CLEANED
REGULARLY

*"Over Forty Years of Service
for Smith"*

DIAL 3-5191

E. Second Street



ESTABLISHED 1890

SOUTHEASTERN CONSTRUCTION COMPANY

218 West Second Street

We have constructed the following buildings at Johnson C. Smith University:

Berry Hall
Smith Theological Dormitory
Science Hall
Refectory

Printing Plant
Three Residences for Faculty
Gymnasium
The University Chapel

Louis G. Ratcliffe, Inc.

The University Printer

431 South Tryon Street

CHARLOTTE, N. C.

J. E. HEMPHILL

Official Photographer

ANNUALS A SPECIALTY



Carolina Studio

516½ North McDowell St.

CHARLOTTE, N. C.

Phone 8651

Compliments

JAMES P. GEORGE

University Cleaners

"EVERY MAN A SUIT"

Achievement

~ ACHIEVEMENT IN ANY LINE OF ENDEAVOR IS THE NATURAL RESULT OF ABILITY AND EXPERIENCE, PLUS OPPORTUNITY. THIS ORGANIZATION TAKES PRIDE IN THE SUCCESS WHICH IS EARNED BY THE ABILITY OF ITS MEMBERS, THE EXPERIENCE GAINED IN TWENTY YEARS OF EFFORT, AND THE OPPORTUNITIES OFFERED BY ITS CLIENTS.

CHARLOTTE ENGRAVING COMPANY, INC.

ARTISTS- PHOTO-ENGRAVERS-DESIGNERS

CHARLOTTE
NORTH
CAROLINA

ESTABLISHED NINETEEN FIFTEEN



THIS ANNUAL PRINTED BY

**An
Organization**

Prepared to serve the
most exacting annual staff.

An organization with a thorough knowledge of printing and binding achieved through years of experience in the production of college and high school annuals . . .

OBSERVER PRINTING HOUSE

CHARLOTTE N.C.

ESTABLISHED 1893

