


BULL

48



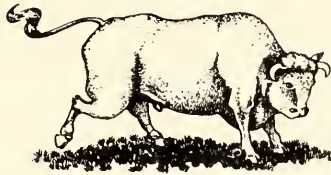
Digitized by the Internet Archive
in 2010 with funding from
University of North Carolina at Chapel Hill

<http://www.archive.org/details/goldenbull1949john>

Presenting the . . .

nineteen forty - nine

BULL



VOLUME VIII

Published by the Junior and Senior Classes

OF

JOHNSON C. SMITH UNIVERSITY

CHARLOTTE, NORTH CAROLINA

COPYRIGHT 1949

BY

WILLIE F. D. MACINTOSH, JR.
Editor-in-Chief

WILLIAM E. BEAVERS, III
Managing Editor

LLOYD L. SPAULDING, JR.
Business Manager



FOREWORD

In future years when Smith seems far removed from the items then at hand . . . if while tumbling through these pages at some distant date you recall vividly a half-forgotten happening, a long unseen classmate, or a once familiar campus scene . . . a picture at the Grand Theatre . . . a couple indulged in a date on the ole flagstand . . . and you will give anything to relive the four years that shaped you in more ways than you'll ever realize . . . if this book can make you want to turn back to the days spent at dear ole Smith . . . we believe we have succeeded in our task of presenting to you . . .

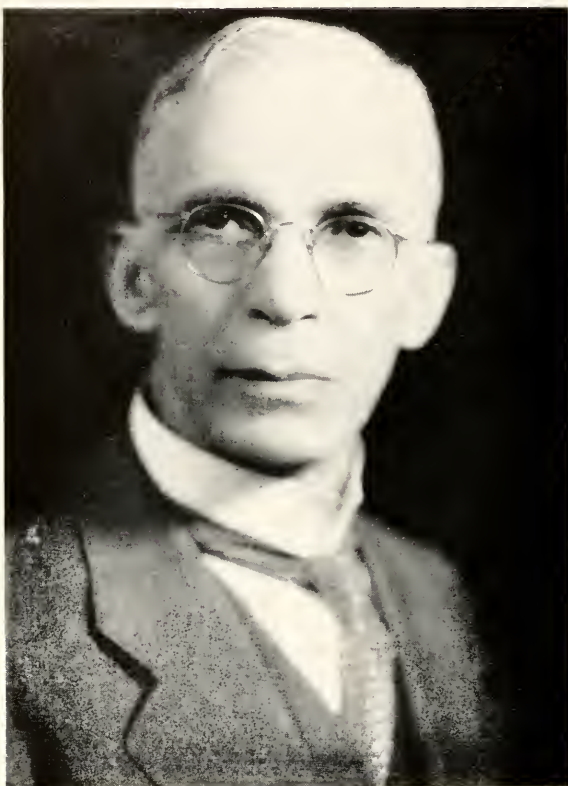
THE 1949 BULL

DEDICATION

As we peruse the pages of this book . . . we look into the faces of red-blooded Americans . . . Americans who represent the ambitions and hopes of many American mothers and fathers . . . To those persons who so faithfully and prayerfully labored to prepare us for a better life . . . to our FATHERS AND MOTHERS . . . WE AFFECTIONATELY DEDICATE OUR YEARBOOK.

CLASS OF 1949.

PRESIDENT-EMERITUS



DR. HENRY LAWRENCE MACCROREY

"The grounds from which he started, even if he from it parted,
Will always be a shrine of pleasure, that nothing in the world
could measure."

—From "Tribute" to Dr. MacCrorey by Jessie I. Brooks

THE PRESIDENT



DR. HARDY LISTON, SR.

An affable president who has the interest of the University at heart and one who practices his belief about a democratic administration and unique respect to the individual.

DEAN OF THE COLLEGE



DEAN THEOPHILUS ELISHA MCKINNEY

(Founder, The National Association of Collegiate Deans and Registrars in Negro Colleges.)

“A patient and tireless administrator who guides with meticulous efficiency the formulation of academic policy and procedure.”



MOSES S. BELTON, B.S., B.D.
Acting Registrar



ARTHUR HENRY GEORGE
A.B., S.T.B., S.T.M., D.D.
Dean, The School of Theology



WALTER E. JORDAN, B.S.C.
Business Manager



THEODORUS LAFAYETTE GUNN, A.B., B.L.S.
University Librarian



ARSULA BROWNIE REID, A.B., B.L.S.
Librarian, Seminary



JOSEPH ALBERT GRIMES, A.B., A.M.
Dean of Men



CARRIE LETSON RAMISEUR, A.B.
Dean of Women

WILLIAM CECIL DONNELL, A.M.
*Director, Summer School and
 University Extension
 Adviser, THE BULL.*



JEAN JOSEPH ADAM
 B-es-L, Lic-esL
*Professor of French
 Chairman, Department of
 Humanities*



ALGERNON ODELL STEELE
 A.B., A.M., B.D., Ph.D., D.D.
*Dean of the Chapel
 Professor of Religious Education*



U. S. BROOKS, B.S., M.S., Ph.D.
*Associate Professor of
 Chemistry
 Acting Chairman of Division
 of Science and Mathematics*

FACULTY



MRS. ADA E. ADAM, B.A., M.A.
French

MR. JACK GERARD BENSON, B.S., M.A.
Mathematics

MR. CLASAR R. BLAKE, A.B., M.A.
English

MR. LLOYD T. BLATCH, A.B., M.A.
Social Studies

MR. WM. E. BLIFFORD, A.B., M.A.
Social Studies

MISS JULIA BROWN, A.B.
Music

REV. DE GRANDVAL BURKE
A.B., B.D., M.A.
Religious Education

MRS. MARGARET L. COCHRAN
Matron

MR. HENRY T. COOPER
Manager, Printing Press

REV. HERMAN L. COUNTS
A.B., B.D., M.A.
Instructor, The Seminary

MR. BYRD D. CRUDUP, A.B., M.A.
Director, Dept. of Physical Ed.

MISS JO-AN W. DAUGHTRY, B.S.
Physical Education

MR. W. H. EDWARDS, B.S., M.S.
Science

MR. THOMAS FERGUSON, B.S., M.S.
Biology

MR. CLARENCE J. FIELD, A.B., M.A.
Psychology

MR. ADOLPHUS B. FOSTER,
A.B., M.A.
Education

MR. BOYD J. GATHERIGHT, B.S., M.A.
Mathematics

MRS. MATTIE B. GREENLEE
Dietician

MRS. BESSIE V. HARDY
Matron

MISS GWINDOLYN L. HARRISON, B.S.
Spanish

REV. SETH W. HESTER,
A.B., B.D., M.A.
Instructor, The Seminary

MR. HILEY H. HILL, A.B., M.A.
Sociology

MR. C. COULDEGE IRVIN, A.B., M.A.
Physical Education

MRS. JANIE B. JORDAN
Assistant Dietician

MR. CHRISTOPHER W. KEMP
B.M.S., M.M.S.
Music

MRS. CLARA B. LAWRENCE, A.B., R.N.
Nurse

MR. CLARENCE LIPSCOMB, A.B.
English

MR. CHARLES MACRAE
Assistant Manager, Printing Press

MRS. LAURA S. E. MALONE, B.S.
Manager, The Bookstore

MRS. VILTA L. NEAL, B.S.
Chemistry

MRS. INEZ MOORE PARKER, A.B., M.A.
English

MRS. MARY B. PLATT, B.S.C.
Secretary to the Registrar

FACULTY

MR. JOSEPH C. RAMSEY, A.B., M.A.
German

MR. EUGENE L. RHODES, B.S.
Supt. of Buildings and Grounds

MRS. M. K. SPAULDING
Matron

MR. GERSON L. STROUD, A.B., M.A.
Economics



MR. J. ARTHUR TWITTY, B.S.
Assistant to the Registrar

REV. EDWIN THOMPSON
B.S., B.D., M.A., M.Ed., S.T.M.
Instructor, The Seminary

MRS. L. HART WADDELL, A.B.
Matron

REV. L. B. WASHINGTON,
A.B., B.D., M.A.
Religious Education



MISS WILFRED WHITEHEAD, B.S.C.
Assistant to the Registrar

MISS FRANCES M. WILLIAMS, B.S.
Secretary, Business Manager

DR. O. B. WILLIAMS, M.D.
University Physician

MR. PRESTON N. WILLIAMS,
A.B., M.A.
History



MRS. ELSIE T. WOODARD, A.B., M.A.
English and Dramatics



In Memoriam



DR. ROBERT LANGHAM DOUGLAS
Professor Emeritus, Mathematics

(Dr. Douglas passed away at 2:30 P.M., June 27, 1949
at his home after an illness of a few hours.)

His life has been a living embodiment of the Smith Spirit. None
surpass him. It is not without thought and deliberation that the
Senior Class dedicates this section to Dr. Douglas.

*"You were living before that
And also, you are living after."*

—Shelley

Seniors

Our last, but surely our best years at Smith . . . our final Orientation program . . . the smug satisfaction of being honored on Founders' Day . . . the flurry of exams and the anxiety of registering for the last semester . . . the brief reprieve of Spring holidays and then the wonderful liberty of Senior Week . . . honor guest at teas, parties, banquets . . . the solemn dignity of the graduation procession . . . the door closing on our days at Smith, but not on our memories!

OFFICERS

JOHN PHARR *President*
THOMAS BYERS *Business Manager*

SENIORS



GROVER CLEVELAND ADAMS

A.B. Social Science

BENNETTSVILLE, S. C.

Omega Psi Phi Fraternity; S.C.A.; History Club.

ARCHIE ALEXANDER

A.B. Social Science

DAYTON, OHIO

Alpha Phi Alpha Fraternity; S.C.A.; History Club.



NAOMI VIRGINIA ALEXANDER

A.B. Elementary Education

CHARLOTTE, N. C.

Delta Sigma Theta Sorority; President, Delta Sigma Theta 48-49; President of Pan Hellenic Council 48-49; Vice President, Elementary Education Club 48-49; Miss Pyramid 46; Omega Sweetheart 47; Attendant to Miss J. C. Smith 48.

LENDELL ALSTON

A.B. Social Studies

ASHEVILLE, N. C.

Omega Psi Phi Fraternity; S.C.A.



FRANCES ELOISE ANDERSON

B.S. Mathematics

CHARLOTTE, N. C.

Delta Sigma Theta Sorority; S.C.A.; Math Club 46-47.

LEON ROBERT ANDERSON

A.B. Religious Education

CHARLOTTE, N. C.

Alpha Phi Alpha Fraternity; S.C.A. 48-49.



RICHARD ANDERSON

B.S. General Science

CHARLOTTE, N. C.

Omega Psi Phi Fraternity; Chemistry Club 47-48-49.

EARL LANIER AVANT

B.S. Biology

PLAINFIELD, N. J.

S.C.A.; Student Council; Chemistry Club; NAACP; Veterans Club.



JUANITA BACOTE

A.B. Elementary Education

SOCIETY HILL, S. C.

Elementary Education Club; Ivy Leaf Club; S.C.A.

GEORGE BARBOUR

A.B. Social Science

MONROE, N. C.

S.C.A.; Lampados Club.



WILLIAM BEAVERS, III

B.S. Chemistry

DANVILLE, VA.

Alpha Phi Alpha Fraternity; President, Alpha Phi Alpha; S.C.A.; BURL Staff; Pan Hellenic Council.

GOLAR BECKHAM

A.B. English and Psychology

CHARLOTTE, N. C.

S.C.A.

SENIORS

LUCILLE WILLIE BENNETT
B.S. General Science
 CHARLOTTE, N. C.
 S.C.A.

RUFUS BOSTIC
A.B. Economics
 HIGH POINT, N. C.

Alpha Phi Alpha Fraternity; Male Chorus; Sphinx Club; S.C.A.

MARIE GLADYS BOYKINS
A.B. Social Studies
 BELMONT, N. C.

Delta Sigma Theta Sorority; S.C.A.; Pyramid Club; History Club.

ELLA M. BROWN
A.B. Social Studies
 ROCKY MOUNT, N. C.

Zeta Phi Beta Sorority; S.C.A.; History Club.

LORENZO A. BROWN
B.S. Mathematics
 CHARLOTTE, N. C.
 S.C.A.; City Club.

BUNYON LEE BRYANT
A.B. Social Science
 KINSTON, N. C.
 Omega Psi Phi Fraternity; S.C.A.

LOTTIE LOUISE BYERS
A.B. Social Science
 CHARLOTTE, N. C.
 S.C.A.

CALLIE VIRGINIA BUTLER
A.B. English
 CLINTON, N. C.

Alpha Kappa Alpha Sorority; Student Council 48-49; Le Cercle Francais; Phi Kappa Alpha; Ira Aldridge Dramatic Guild; Speech Club; S.C.A.

THOMAS HOWARD BYERS
A.B. Political Science
 CHARLOTTE, N. C.

Omega Psi Phi Fraternity; Vice President, Freshman Class; Business Manager, Junior Class; Treasurer, Senior Class; President, Lamp Club; S.C.A.; Tennis Team, C.I.A.A. Singles Champion ++; Basketball Team; Pan Hellenic Council; Alpha Kappa Mu Honor Society; Sigma Rho Sigma.

NANCY DELORES CALDWELL
A.B. Elementary Education
 CHARLOTTE, N. C.

Delta Sigma Theta Sorority; Elementary Education Club; Y.W.C.A.

THOMAS CALDWELL
B.S. General Science
 CHARLOTTE, N. C.
 S.C.A.

DONALD RAY CARROLL
A.B. History
 FAYETTEVILLE, N. C.
 Alpha Phi Alpha Fraternity; S.C.A.

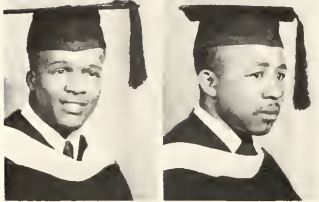


SENIORS



HELEN RUTH CARR
A.B. Religious Education
JACKSON, TENN.

Ivy Leaf Club; Spanish Club; S.C.A.; Intercollegiate Council.



ERNEST WYLIE CHERRY
B.S. Chemistry
CHARLOTTE, N. C.
Omega Psi Phi Fraternity; S.C.A.



JAMES ALEXANDER CLARKE
B.S. Biology
MILLEN, GA.

Phi Beta Sigma; Alpha Kappa Mu Honor Society; Beta Kappa Chi; Chemistry Club; S.C.A.; Collegiate Vet Club; Morehouse College 46-47; Alpha Phi Omega.



JAMES BRYANT COAXUM
B.S. Chemistry
CHARLESTON, S. C.

Alpha Phi Alpha Fraternity; Football Team; German Club; Dramatics; J. A. Grimes Chorus.



LOUELLA COFFEE
B.S. General Science
LENOIR, N. C.

University Choir; Speech Club; Ivy Leaf Club.



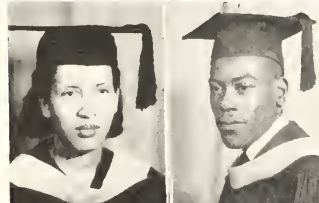
EVELYN HUETTA COOK
A.B. History
DANVILLE, VA.

Delta Sigma Theta Sorority; S.C.A.



HARRY COWAN
A.B. History
CHARLOTTE, N. C.

Omega Psi Phi Fraternity; S.C.A.; Basketball Team.



WILLIE JAMES CUTHBERTSON
B.S. General Science
DERITA, N. C.
Beta Kappa Chi; S.C.A.



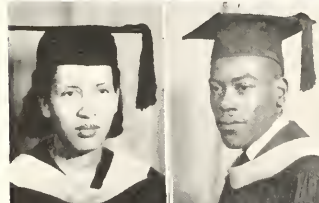
ANNE JANNETTE DAVISON
A.B. Elementary Education
CHARLOTTE, N. C.

Le Cercle Francais; Elementary Education Club.



LEWIS CALVIN DAVIS
A.B. Economics
SPARTANBURG, S. C.

S.C.A.; Veterans Club; Le Cercle Francais; NAACP.



MAMIE LEE DAVIS
A.B. English
CLINTON, S. C.

Alpha Kappa Alpha Sorority; S.C.A.



WALTER FRANKLIN DAVIS
B.S. Mathematics
BELMONT, N. C.

S.C.A.; Math Club; Football Team.

SENIORS

CHARLES WILLIAM DEAL
B.S. *Biology*

HICKORY, N. C.

Omega Psi Phi; University Choir; Chemistry Club; NAACP;
J. A. Grimes Chorus.

LOUISE GOMILLIAN DEAN
A.B. *Elementary Education*
CHARLOTTE, N. C.

S.C.A.; City Women Council.

WILSON CEASAR DEAS
B.S. *Chemistry*
CHERAW, S. C.

Omega Psi Phi Fraternity; Varsity "S" Club; Chemistry Club;
Basketball Trainer.

SIMPSON SYLVESTER DICKENS
B.S. *Physical Education*
ROCKY MOUNT, N. C.

Varsity "S" Club; Co Captain Football Team; Sports Editor,
The BULL.

MABEN DIXON
A.B. *English*

ASHEVILLE, N. C.

Alpha Kappa Alpha Sorority; Ira Aldridge Dramatic Guild;
University Student Staff; S.C.A.; J. A. Grimes Philharmonic
Queen; Alpha Phi Omega Sweetheart; Miss Johnson C. Smith.

JOHN CALVIN DULA
B.S. *Mathematics*
LENOIR, N. C.

Scroller Club; Alpha Phi Omega.

JOHN BENJAMIN DYER, JR.
B.S. *Physical Education*
ROCKWOOD, TENN.

S.C.A.; Knoxville College 41-42.

LENA VEE EDWARDS
A.B. *Elementary Education*
HOOKERTON, N. C.

Delta Sigma Theta Sorority; Ira Aldridge Guild; University
Choir; Cheering Squad; Speech Club.

THELMA REE EDWARDS
B.S. *General Science*
HOOKERTON, N. C.

Alpha Kappa Alpha Sorority; S.C.A.; Chemistry Club; Miss
May Day; Dramatic Guild.

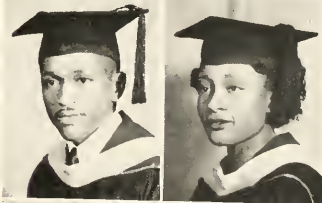
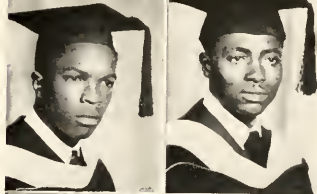
WALTER CALLUS ERWIN
B.S. *Mathematics*
MORGANTON, N. C.

Omega Psi Phi; S.C.A.; Debating Society; BKN; NAACP.

FRANCES MARTIN FRAZIER
A.B. *Social Studies*
CHARLOTTE, N. C.
S.C.A.

ANNIE LOUISE FRANKLIN
A.B. *French*
DARLINGTON, S. C.

Le Cercle Francais; The Spanish Club; Speech Club; Pyramid Club.



SENIORS



JUNIUS B. FRANCIS
B.S. General Science
WHITEVILLE, N. C.

Omega Psi Phi; S.C.A.; Knowledge Expansion Club.

ROGER GADSTON FOSTER
B.S. Physical Education
SHELBY, N. C.

S.C.A.; German Club; Varsity "S" Club.



RUTH GADDY
A.B. History
CHARLOTTE, N. C.
S.C.A.; Veterans Club.

JOSEPH ALEXANDER GASTON
A.B. Religious Education
WINNSBORO, S. C.

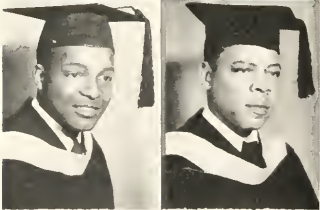
Omega Psi Phi Fraternity; BULL Staff; Student Activities Committee; President, S.C.A. 47 48 49.



JOHN ERNEST GIBB
A.B. History
CHARLOTTE, N. C.
S.C.A.

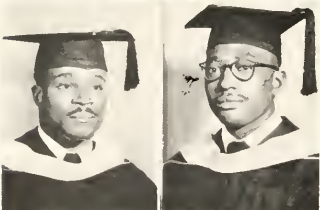
MAE OLA GILCHRIST
B.S. Mathematics
NEW YORK, N. Y.

Delta Sigma Theta Sorority; Coulter Junior College; NAACP; Math Club; Choir; S.C.A.



ROBERT FRANKLIN GLENN
B.S. General Science
SPARTANBURG, S. C.
Kappa Alpha Psi Fraternity; S.C.A.

WILLIAM IRVIN GOINS
B.S. Biology
CARTHAGE, N. C.
S.C.A.



THEODORE HILLIARD GOODIN
A.B. English
BIRMINGHAM, ALA.

Omega Psi Phi Fraternity; President, Student Council; Alpha Kappa Mu Honor Society; Sigma Eho Sigma Social Science Society; Alpha Phi Omega Service Fraternity; Ira Aldridge Dramatic Guild.

ALEXANDER CARR GRAHAM
A.B. History
COLUMBIA, S. C.

Alpha Phi Alpha Fraternity; S.C.A.; Football Team; Basketball Team.



DORIS VIVIAN GRAHAM
A.B. History
MONROE, N. C.
Alpha Kappa Alpha Sorority; S.C.A.

ROBERT W. GREY
B.S. Biology
ROANOKE, VA.

Omega Psi Phi Fraternity; NAACP; Veterans Club; S.C.A.

SENIORS

DELORIS HAIRSTON

A.B. English

NORTH WILKESBORO, N. C.

Delta Sigma Theta Sorority; S.C.A.; BOLL Staff; University Student Staff.

ROBERT L. HAIRSTON

B.S. Biology

DANVILLE, VA.

Omega Psi Phi; NAACP; S.C.A.

CARRIE HANNON

A.B. Elementary Education

TRYON, N. C.

Alpha Kappa Alpha Sorority; S.C.A.

CHARLES WILLIAM HARGRAVES

B.S. Chemistry

DANDRIDGE, TENN.

Omega Psi Phi Fraternity; Alpha Kappa Mu; Beta Kappa Chi; Student Council; Manager, Basketball Team.

CAROL G. HARRILL

A.B. Elementary Education

CHARLOTTE, N. C.

S.C.A.; Elementary Education Club; Sociological Society.

ANITA GENEVIEVE HARRIS

A.B. English

WINSTON-SALEM, N. C.

Delta Sigma Theta Sorority; University Choir; Dramatic Guild; Radio Guild; University Student Staff.

LENARD G. HARRIS

A.B. Social Science

WILKESBORO, N. C.

Alpha Phi Omega; University Choir; J. A. Grimes Chorus

EDWARD QUINCE HATCHER

B.S. Physical Education

WILMINGTON, N. C.

Omega Psi Phi Fraternity; S.C.A.; Varsity "S" Club; Basketball Team; Football Team.

ROLAND HAYES

B.S. Biology

WILSON, N. C.

Omega Psi Phi Fraternity; S.C.A.; NAACP.

EDWARD HILL

B.S. General Science

CHARLOTTE, N. C.

Kappa Alpha Psi Fraternity; S.C.A.; Alpha Phi Omega.

FRANCIS HOBSON

B.S. Chemistry

HARTFORD, CONN.

Alpha Phi Alpha Fraternity; S.C.A.; Math Club; Chemistry Club.

MARGARET HOFFMAN

A.B. Elementary Education

GASTONIA, N. C.

Elementary Education Club; S.C.A.

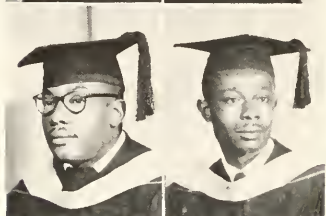


SENIORS



MARJORIE HYMES
A.B. Religious Education
LINCOLN UNIVERSITY, PA.

Alpha Kappa Alpha Sorority; University Student Staff; S.C.A.;
University Choir; Dramatic Guild.



HERBERT C. JAMES
B.S. Mathematics
JACKSONVILLE, FLA.

S.C.A.; Varsity Tennis Team; Math Club.

GIDEON THOMAS JOHNSON
B.S. Physical Education
GREENWOOD, S. C.

S.C.A.; Football Team; Varsity "S" Club.

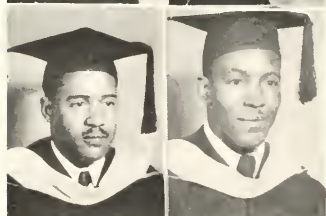


DAVID S. JOHNSON, JR.
A.B. Sociology
CHICAGO, ILL.
S.C.A.

HENRY LAWSON JOHNSON
A.B. History
GREENSBORO, N. C.
Omega Psi Phi Fraternity; S.C.A.; NAACP.

NAOMI NETTIE JOHNSON
A.B. Elementary Education
CHARLOTTE, N. C.

University Choir; Orpheus Club; Elementary Education Club.



PAUL WILLIAM JOHNSON
B.S. General Science
BIRMINGHAM, ALA.

Omega Psi Phi Fraternity; S.C.A.; Chemistry Club.

WILLIAM HENRY JOHNSON
A.B. Social Studies
PAGELAND, S. C.
S.C.A.



FRED D. JONES
B.S. Biology
WILSON, N. C.
S.C.A.; Lamp Club.

MAGGIE LOIS JONES
A.B. English
KINARDS, S. C.
S.C.A.; Le Cercle Francais



MILDRED SELLERS JORDAN
A.B. Social Science
FOREST CITY, N. C.
University Choir; S.C.A.

WILLIE GRAE JOYNER
A.B. History
BLOOMFIELD, N. J.

Ivy Leaf Club; University Choir; Exceum Committee; History Club.

SENIORS

NORMA LUCILLE KING
A.B. *Elementary Education*
LENOIR, N. C.

Delta Sigma Theta Sorority; S.C.A.; Elementary Education Club.

MAGGIE JEAN KIRK
B.S. *Chemistry*
CHARLOTTE, N. C.
S.C.A.; Chemistry Club.

MAGGIE REE LLOYD
A.B. *Social Science*
ROCKY MOUNT, N. C.
Spanish Club; Ivy Leaf Club; History Club.

THOMAS ANDREW LASSITER
A.B. *Sociology*
JERSEY CITY, N. J.

Omega Psi Phi Fraternity; S.C.A.; Ira Aldridge Dramatic Guild;
Sigma Rho Sigma Honor Society; Alpha Phi Omega; NAACP;
Veterans Club.

JOHN LEDBETTER
A.B. *Social Science*
CHARLOTTE, N. C.
S.C.A.

SUSIE MOZELL LEVEL
A.B. *Social Science*
SPARTANBURG, S. C.
University Choir; S.C.A.

TRACIE LEE LONG
B.S. *Physical Education*
GASTONIA, N. C.
Football Team; S.C.A.

WILLIAM GRADY LOWE
A.B. *History*
WILMINGTON, N. C.
S.C.A.; History Club.

HERBERT LINTON McCLAIN, JR.
A.B. *Religious Education*
DECATUR, GA.

Phi Beta Sigma Fraternity; S.C.A.; NAACP; University Choir;
Alpha Phi Omega; Pan Hellenic Council; Alpha Kappa Mu Honor
Society.

WILLIE FLEMING DUBOIS MacINTOSH, JR.
B.S. *Mathematics*
FLORENCE, S. C.

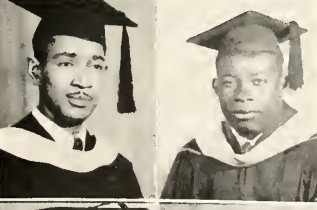
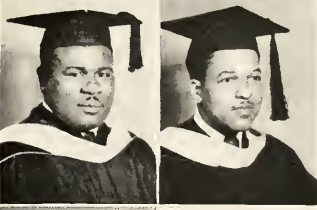
Omega Psi Phi Fraternity; Editor, *University Student*; Editor,
Homecoming Bulletin; Editor, *THE BULL*; Editor, *The Freshman*
Manual; Chairman, Student Activities Committee.

EDNA WEISS McMILLAN
A.B. *French*
FAYETTEVILLE, N. C.

Alpha Kappa Alpha Sorority; Le Cercle Francais; S.C.A.; Spanish
Club.

THELMA LEVERNE McMILLIAN
A.B. *Social Science*
COLUMBIA, S. C.

Delta Sigma Theta Sorority; University Choir; Spanish Club; S.C.A.



SENIORS

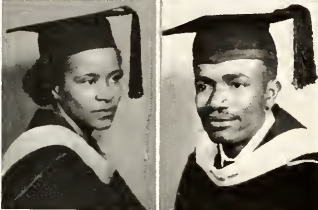


IRANTHA MAE MCNEIL
A.B. History
CHARLOTTE, N. C.
S.C.A.



GRETCHEN MARSHALL
B.S. Mathematics
WILSON, N. C.

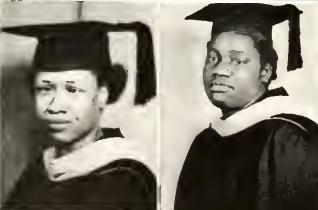
Delta Sigma Theta Sorority; University Club; S.C.A.; Math Club; Cheering Squad; Spanish Club.



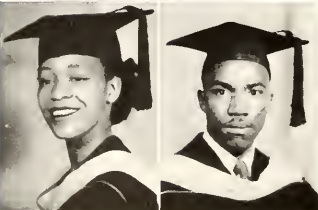
LILLA ALBERTA MARSHALL
A.B. History
ANDERSON, S. C.
S.C.A.



ROSA LEE MARTIN
B.S. Physical Education
CHARLOTTE, N. C.
Spanish Club; S.C.A.; Ivy Leaf Club.



VERA FRIDAY MAXWELL
A.B. History
CHARLOTTE, N. C.
S.C.A.



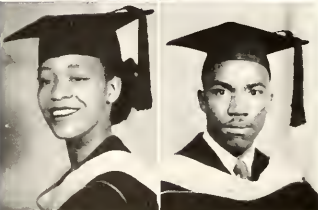
FLEMING JENKINS MEANS
A.B. History
CHARLOTTE, N. C.
S.C.A.; Alpha Phi Omega.



ROSA REBECCA MEANS
A.B. Elementary Education
CHARLOTTE, N. C.
Elementary Education Club; S.C.A.



ARTHUR LEE MOORE
B.S. Biology
LAURINBURG N. C.
Kappa Alpha Psi; S.C.A.; Chemistry Club; Knowledge Expansion Club; Tennis Team; Varsity "S" Club.



MARGARET ANN MOORE
A.B. History
CHARLOTTE, N. C.
Zeta Phi Beta Sorority; S.C.A.

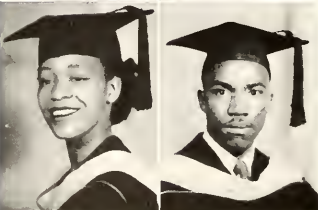


VIRGINIA DARE MORROW
A.B. Sociology
CHARLOTTE, N. C.
S.C.A.



HELEN OPHELIA MOSELEY
A.B. Social Science
MONROE, N. C.

Alpha Kappa Alpha Sorority; S.C.A.; BULL Staff; University Student; Dramatic Guild.



EDDIE G. MULLEN
B.S. Chemistry
WILSON, N. C.
Kappa Alpha Psi Fraternity; S.C.A.; Beta Kappa Chi; Chemistry Club.

SENIORS

RICHARD HARRIS NOBLE
A.B. *Social Science*
BURLINGTON, N. C.

University Choir; Male Chorus; Dramatic Guild; Alpha Phi Omega.

JAMES E. NORWOOD
A.B. *Sociology*
CHARLOTTE, N. C.

Alpha Phi Omega; Dramatic Guild; German Club; S.C.A.

ALLIE MAE PATTERSON
A.B. *Elementary Education*
LENOIR, N. C.

Alpha Kappa Alpha Sorority; S.C.A.; Elementary Education Club; Orpheus Club.

MARY LOUISE PEARSON
B.S. *Mathematics*
JACKSONVILLE, FLA.

Alpha Kappa Alpha Sorority; Math Club; S.C.A.; University Choir.

ADDIE MAXINE PERKINSON
B.S. *Mathematics*
CHARLOTTE, N. C.
Delta Sigma Theta Sorority; S.C.A.

JOHN LUCIUS PHARR
B.S. *Chemistry*
ROCK HILL, S. C.

Kappa Alpha Psi Fraternity; Alpha Kappa Mu; Beta Kappa Chi; President, Senior Class.

JOHN HENRY POTTS
B.S. *Mathematics*
CHARLOTTE, N. C.

Kappa Alpha Psi Fraternity; S.C.A.

JASPER NATHANIEL POWELL
B.S. *Mathematics*
KINSTON, N. C.

Kappa Alpha Psi Fraternity; Math Club; S.C.A.; Men's Chorus.

BENJAMIN POWERS, JR.
B.S. *General Science*
CHARLESTON, S. C.

Claffin College, 41-42; Lamp Club; Veterans Club; NAACP.

DANIEL WEBSTER PURNELL
A.B. *Social Science*
CRISFIELD, MD.

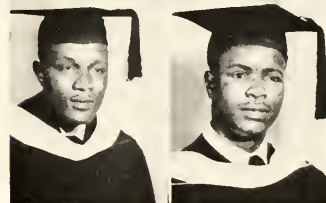
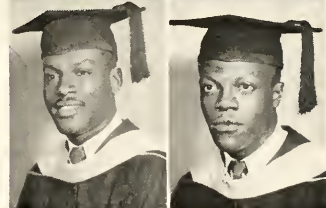
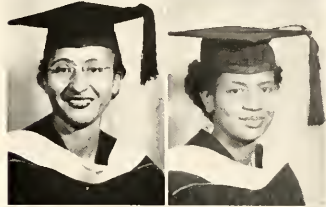
Omega Psi Phi Fraternity; S.C.A.; Knowledge Expansion Club; Rho Sigma Omicron; Debating Society; NAACP.

HERMAN CHARLES RACIN
B.S. *Physical Education*
ROME, GA.

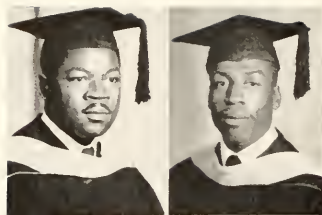
Kappa Alpha Psi Fraternity; Football Team; S.C.A.; Varsity "S" Club; NAACP.

HELEN ELIZABETH REESE
B.S. *Biology*
ASHEVILLE, N. C.

Alpha Kappa Alpha Sorority; S.C.A.; NAACP; Chemistry Club; Dramatic Guild; Library Staff; Speech Choir; Intercollegiate Council; University Choir.



SENIORS



HARVEY REID, JR.
B.S. Mathematics
 FAYETTEVILLE, N. C.
 Kappa Alpha Psi Fraternity; Math Club; Varsity "S" Club; S.C.A.



CHARLES S. RICE
B.S. Chemistry
 CHARLOTTE, N. C.
 Omega Psi Phi Fraternity; NAACP; S.C.A.

JAMES FRANKLIN RICHARDSON
B.S. Physical Education
 CHARLOTTE, N. C.
 S.C.A.; Football Team.

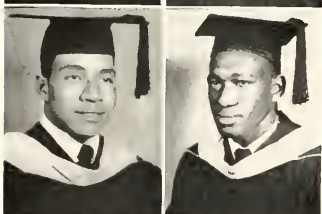


PAUL MITCHELL ROBINSON
A.B. Social Science
 HIGH POINT, N. C.
 Alpha Phi Alpha Fraternity; S.C.A.; Men's Chorus; NAACP.

WILBURN M. SANDERS
B.S. Biology
 CHARLESTON, S. C.

Omega Psi Phi Fraternity; S.C.A.; Chemistry Club.

THOMAS E. SPENCE
A.B. French
 CHARLOTTE, N. C.
 French Club; S.C.A.; NAACP.



LLOYD L. SPAULDING, JR.
B.S. Economics
 CHARLOTTE, N. C.

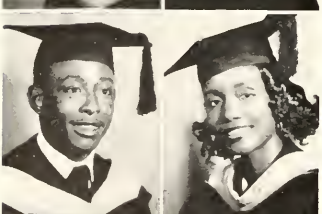
Omega Psi Phi Fraternity; S.C.A.; NAACP; Dramatic Guild;
 Bull Staff.

THEODORE SPENCER
A.B. Social Science
 PINEHURST, N. C.
 Alpha Phi Omega; S.C.A.; NAACP.



THEODORE STANLEY
A.B. French
 CHARLOTTE, N. C.
 Alpha Phi Omega; S.C.A.; NAACP; French Club.

IVERY ODELL STEELE
A.B. Elementary Education
 MOCKSVILLE, N. C.
 Y.W.C.A.; S.C.A.; Speech Choir; Elementary Education Club.



CLYDE EUGENE STRONG
B.S. General Science
 CHARLOTTE, N. C.
 Omega Psi Phi Fraternity; S.C.A.; NAACP.

MARY ANDERSON STRATFORD
A.B. English
 CHARLOTTE, N. C.
 Alpha Kappa Alpha Sorority; NAACP; S.C.A.

SENIORS

JOSEPHINE OLIVER STRUGHILL

A.B. English

ROCK HILL, S. C.

Alpha Kappa Alpha Sorority; S.C.A.; NAACP; Bull Staff;
University Student Staff; Alpha Kappa Mu Honor Society.

EDDIE GLEN TATE, JR.

A.B. Sociology

MORRISTOWN, TENN.

Alpha Phi Alpha Fraternity; S.C.A.; Sociological Society.

MARY ELLEN TAYLOR

A.B. Sociology

CORDELE, GA.

Sociological Society; German Club; Sigma Rho Sigma; S.C.A.

MARGARET TAYLOR

A.B. Elementary Education

CHARLOTTE, N. C.

Delta Sigma Theta Sorority; Dramatic Guild; Speech Choir;
Elementary Education Club; S.C.A.

MARIAN ROUSOULAN TILLMAN

B.S. General Science

WADESBORO, N. C.

Delta Sigma Theta Sorority; Dramatic Guild; Spanish Club;
Radio Guild; University Student Staff; S.C.A.

GABRELLA TOATLEY

A.B. Elementary Education

COLUMBIA, S. C.

Elementary Education Club; Spanish Club; Choir; Pyramid Club.

PATRICK TONEY

B.S. Physical Education

SUMTER, S. C.

S.C.A.; NAACP; Football Team.

LILLIAN EVELYN TOWNES

A.B. French

JETERSVILLE, VA.

Delta Sigma Theta Sorority; University Choir; Le Cercle Fran-
cais; S.C.A.

FREDDIE TOWNSEND

A.B. English

McFARLAND, N. C.

Alpha Phi Omega; S.C.A.

ALICE TUCKER

B.S. Biology

CHARLOTTE, N. C.

Pyramid Club; S.C.A.

ROBERT NATHANIEL VENABLE

B.S. Chemistry

OXFORD, N. C.

Chemistry Club; Beta Kappa Chi; S.C.A.

MARY WALDEN

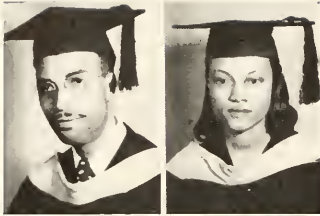
B.S. Chemistry

WILSON, N. C.

S.C.A.; Chemistry Club; Veterans Club.



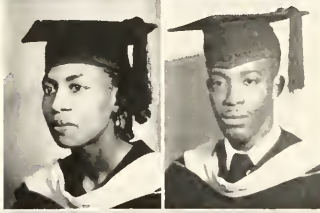
SENIORS



WILLIAM ROSCOE WALLS
A.B. Religious Education
WINSTON-SALEM, N. C.
Cheer Master; S.C.A.; Lamp Club; J. A. Grimes Chorus.



LOUISE WILLS
A.B. Elementary Education
LITTLETON, N. C.
Elementary Education Club; S.C.A.



SARAH PERRY WILSON
A.B. History
CHARLOTTE, N. C.
Alpha Kappa Alpha Sorority; S.C.A.



ALICE WITHERSPOON
A.B. Social Science
MATTHEWS, N. C.

Alpha Kappa Alpha Sorority; S.C.A.; Sigma Rho Sigma; Dramatic Guild; Sweetheart of Phi Beta Sigma Fraternity.

ODESSA DAVALINE WOODBURY
A.B. Social Science
BEAUFORT, S. C.

University Student Staff; Spanish Club; Orpheus Club; S.C.A.



LEE RUSSELL WOODY
A.B. Social Science
WINSTON-SALEM, N. C.

Alpha Phi Alpha Fraternity; S.C.A.; University Choir; Alpha Phi Omega.

PAUL WRIGHT
B.S. Chemistry
YORK, S. C.
S.C.A.; NAACP; Chemistry Club.

ROBERT FULTON WRIGHT
B.S. Chemistry
CHARLOTTE, N. C.
Claffin College; Lamp Club; S.C.A.; Chemistry Club.

ELIZABETH WYLIE
B.S. Biology
ROCK HILL, S. C.
NAACP; S.C.A.; Ivey Leaf Club; Speech Club.

"Four Long Years . . . All that we are and all that we hope to be . . . we owe it to our parents."

Junior Class

Well . . . at last . . . no more Bible, English or French . . .
Backslider's time . . . nothing but knowledge . . . To our Alma
Mater, we say, thanks, to the graduating seniors, we say, God's
Speed; to life, we say, we accept your challenge!

OFFICERS

BRYANT GEORGE *President*
ROBERT REEDER *Vice-President*
MARY WILSON *Secretary*
WENTWORTH O. BUNTON *Treasurer*

JUNIORS



JEAN ALLEN
 RICHARD R. AMOS
 MARIAN E. ANDERSON
 ALBERT BACOTE
 MILDRED J. BANNERMAN

RICHARD A. BENN
 SYLVESTER J. BENNETT
 ALBERTA F. BERRY
 REMATHA M. BEST
 RAPHAEL O. BLACK

SPOFFARD BLACKWELL
 KATHLEEN BOST
 JESSIE I. BROOKS
 CLYDE H. BROWN
 WENTWORTH O. BUNTON

CAMILLA BYERS
 HENRIETTA C. BYNUM
 MATTIE MAE CARTER
 WILLIE RAE CARTER
 JULIA MAYE CHISHOLM

MAE F. CLARK
 DOROTHY M. COGDILL
 GENEVA F. COLE
 WILMA M. COLE
 NOBLE PERCIVAL COOPER

WILLIAM C. COVINGTON
 ROBERT L. DAVIS
 CHRISTINE DERR
 ROBERT L. DINGUS
 LOLA M. DIXON

JUNIORS

PRENTICE M. DORSEY
 DANIEL W. EVANS, JR.
 ROSA L. FLACK
 HARRIET IMOGENE FRIDAY
 EDWARD LEE GADDY



WILLIE HARDEN GADISON
 LEOY BRADFORD GARNER, II
 ALEXANDER BUTLER GATES
 BENNIE JANE GEIGER
 CALVIN BURBANK GLENN



HOWARD H. GRIER
 MILDRED HAMIT
 CYNTHIA VERA HARPER
 PAULINE DELORES HARRIS
 CARL QUENTON HARRISON



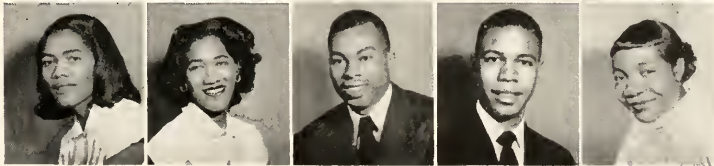
MAGGIE ESTELLA HEARD
 ANNIE LOUISE HOUSER
 RUTH SERENE HOUSTON
 BARBARA MEDJOSTA JAMISON
 WILLIE MAE JEFFERSON



NEVID ALEXANDER JOHNSON
 CHESTER BRUTUS JOHNSON
 DALLIE O. JONES
 DRUCILLA RACIEL JONES
 JOHNNIE BELL JORDAN



VIDA LA VERNE KEARNS
 VIDA LORETA KERNS
 ALEXANDER LANE
 VANDER M. LARKS
 MARIAN A. LAWS



JUNIORS



HELEN BARBARA LAWSON
 JESSIE J. LAWSON
 JOHNNIE HAZEL LaGRANDE
 JESSIE LEE McILWAIN
 JOHN L. MacKEE

ROBERT LAWSON MacNEELY
 CARRIE LOUISE MARION
 LILLA ALBERTA MARSHALL
 MARGARET FRENCH MARTIN
 GLORIA LUCY MASON

THOMAS MASON
 DAVID LEE MAYNARD
 SYLVIA MILDRED MIDDLETON
 ERMERSON EDWARD MILES
 EDNA MAE MOBLEY

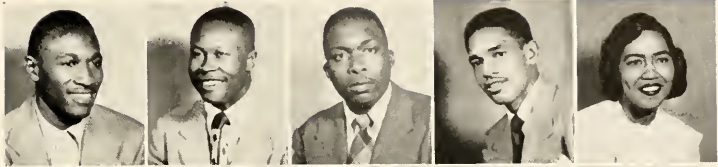
THADDEUS WILLIAM MOORE
 VIVIAN MOSES, JR.
 EDDIE TRENTON MURRAY
 JAMES MURRAY
 ELVERT ELLIS NANCE

RUTH ELIZABETH PATTON
 THEODORE PEARSON
 JAMES G. PEELER
 WARNER L. PINCHBACK
 JAMES G. POLK

JOHN H. PRIOLEAU
 LAWRENCE H. RATTLEY
 WILMA RAY
 ROBERT P. REEDER
 THOMAS A. REEVES

JUNIORS

O'DELL WILLIAM ROBINSON
 WILLIAM S. BODDY
 EARL V. RUSSELL
 JAMES SAUNDERS
 WILLIE GENEVA SHADE



BETTYE L. SHROPSHIRE
 JUANITA SMITH
 JOSEPHINE B. SOLOMAN
 NATHANIEL STILES
 CLYDE F. STITT



GLADYS SUTTON
 RUTH ELLEN THOMPSON
 MAURICE TODD
 GENEVA TORRENCE
 PLUMMER WHITEHEAD



CAROLYN W. WILKERSON
 WORTH ARMSTEAD WILLIAMS
 BETTY JOE W. JONES
 THOMAS LEWIS WILSON
 ISAAC A. WITHERS



JOHNNY E. WORSLEY
 EUNICE BERNICE YOUNG
 LEVENIA SMITH YOUNG
 EMMA MARIE DAVISON



"Tomorrow's Seniors"



Sophomore Class

Dog days over . . . Look forward to Chaucer and the traveling of Paul . . . How stupid it was being a Freshman . . . Who could ask for anything more? Well, "got it made now."

OFFICERS

- GEORGE FLANNIGAN *President*
BARBARA GOUDLOCK *Secretary*
GERALDINE CLARK *Treasurer*
LORAIN HUFF *Assistant Secretary*



SOPHOMORES

HERMAN L. ABEL
 JAMES FRANKLIN ALEXANDER
 WILLIAM ANDREW ALLISON
 GEORGE ANDERSON
 CLEVELAND ARDREY
 SAMUEL N. BAKER
 THOMAS BANKS
 AVIS BARGE
 JAMES ARTHUR BARNES
 NATHANIEL GEORGE BARRETT
 WALLACE ELI BAYNES
 MABLE LUCINDA BELL
 SAMUEL LEON BLOUNT
 JOHN LESTIE BLUE
 JOSEPH HUNTER BLUE
 ALICE DOROTHY BRICE
 PAUL LAWRENCE BROADY
 CATHERINE E. BROWN
 THOMAS HOLMES BROWNLEE
 GENEVIEVE BRYANT
 JAMES EDWARD BUFFALO
 EDWARD BYNUM
 CARRIE LUCILLE CALDWELL
 JULIA ANN CALLEHORNE
 COROLLA MOBLEY CARR

MAY FRANCES CARR
 FRANCES JANE CARTER
 GERALDINE CLARK
 ARTHUR JOSEPH CLEMENT, JR.
 IDA LEE COLEMAN
 MARY HELEN COLLINS
 RALPH H. COOPER
 JOHN GREELY CORRY
 MIRIAM EDYTHE COWAN
 ROBERT ELLYSON COWAN
 LEROY FITZGERALD CRAINE
 CARL CLEMON CRISP
 CLENNY ANDREW CRISP
 FAY CLIFTON CUNNINGHAM
 DAVID EARL DARDEN
 WILLIE E. DAVIS
 LUBY COLUMBUS DIGEY
 WILBERT MARION DORSEY
 ARTHUR REID EDINGTON
 JAMES ELLERBY
 CLAUDE FAUCETTE ERWIN, JR.
 GODWILL FEUI FIAWOOD
 NAOMI FAULKNER
 WILLIAM C. FITZGERALD
 GEORGE DALTON FLANIGAN

CHARLES SIMMONS FOSTER
 WILLIE ANNE FERNANDEZ
 WALTER SPAULDING GATLING
 JAMES L. GERALD
 LAWRENCE TALMADGE GLENN
 BARBARA OLYMPIA GOUDLOCK
 JERROD FRANKLIN GRAVES
 GEORGIA ELLA GREEN
 PATRICK CORNELIUS GRIFFITH
 MILDRED MAE HALL
 GERTRUDE PRISCILLA HARPER
 JOHN ROBERT HEATH
 ULRICH H. HESTER
 ARTHUR HOLLOWAY, JR.
 CALVIN AARON HOOD
 JUANITA LORRAINE HUFF
 KATHLEEN WARD HUGHES
 HERBERT LEE HUNTER
 HARRY LEE JACKSON
 PAUL STEWART JOHNSON
 WENDELL LEO JOHNSON
 WALTER LOWRY JONES
 SARAH ALLEN KEMP
 ALLEN KIRKLAND
 STEPHEN KWAKUTSE KWASIKUPI



SOPHOMORES

ROSA JANE LANEY
 MAGGIE RUTH LYNCH
 A. EUGENE McADOO
 CHARLES EDWARD McCOMBS
 ELMIRA MARTHA McDANIEL
 GEORGE MCGILL, JR.
 WILLIE McKNIGHT
 LFORA ERNESTINE McKOY
 VINCENT MALLORY
 CONSTANCE JEAN MANN
 NOAH HORACE MANN
 HORACE MAXWELL
 EMMA LEE MILLER
 PAULINE HAZEL MITCHELL
 JAMES LAWRENCE MOON
 JAMES WILLIAM MORGAN
 JOHN HENRY MORRIS
 EUGENE MOSES
 MILLARD ALBERT NAYLOR
 HOWARD NELSON
 THOMAS ALDRIDGE NEWSOME

ORLAND CLIFFORD NORMAN
 DELORIS MACALEAN PARKER
 PEARLIE MAE PAYTON
 RUTH ANNIE PEARSON
 TOBY FRANK PEARSON
 IRIS M. PEEBLES
 ADDIE ANNETTE PEELER
 ELMER B. PICKETT
 VERA PEARL POE
 GILBERT RAMSEUR
 HERBERT E. REEFER
 F. DAVID REESE, JR.
 EDITH MARIE REYNOLDS
 BENNY RICHMOND
 NOLAN HARRISON RICHMOND
 ROBERT JONES RIDLEY
 CHRISTINE CONDANCE RINGGOLD
 CECIL LILLIAN ROSS
 ROBERT A. RUFFIN
 JOHN M. RUSSELL
 REGINALD ENIMETT SCOTT

REUBEN C. SCOTT
 TYCER RODMAN SCRIVER
 EMANUEL K. T. SEDDOH
 WILLIAM HENRY SHEPPERSON
 CORY SHANNON SHERER
 LLOYD SIGLER
 MARTHA IBEAM SIMPSON
 GLORIA MARGARET SMITH
 WILLIAM HAYWOOD STANFIELD
 JOHN ALLEN STEELE
 JOHN ARTHUR STEWART
 HAROLD HERBERT TAYLOR
 RUDOLPH TORRENCE
 MATTIE LEE TYSON
 LILLIAN JOYCE VENABLE
 SALLIE ETHEL WARD
 ALFRED ROBERT WATKINS
 LEVI LESLIE WHEELING
 THELMA ANNETTE WHITE
 DAVID HENRY WOODBURY
 JOSEPH YATES

"Two Years And Still Going Strong"

Freshman Class

Frosh year, gosh. Glad that is over. Orientation week, pledge time . . . things aren't so bad . . . Must study and make the Dean's list . . . the beginning of a four year term . . . ain't long now . . .

OFFICER

JOHN BLACKWELL*President*



FRESHMEN

MARCELLUS ALEXANDER
 HOWARD ANDERSON
 NARCISUS L. ARMSTRONG
 ELLANE CRISTEL BAKER
 BERNICE CRAIG BARNES
 DOROTHY MAE BERRY
 JOHN EDWARD BLACKWELL
 RAYFORD ALLEN BROWN
 ALEXANDER HAMILTON BYERS
 CONSTANCE JUSTIAN CALDWELL
 LAURA MAE CALDWELL
 MYRTLE VIRGINIA CATHEY
 ROBERT GLENN CHAMBERS
 HARRY LEE CHANDLER
 NORMA ELOISE CHAPPELL
 THEOSIUS CLAYTON
 JOHN MORGAN COBB
 CALVIN COLSON, JR.
 SIDNEY C. CONNINGHAM, JR.
 CHARLES T. DANIELS
 EVELYN FRANCES DAVENPORT
 LAWRENCE U. DAVIDSON
 ROBERT EUGENE DAVIDSON
 FRANK MARION DAVIE
 ANGELA MERLYN DAVIS
 JAMES EDWARD DAVIS
 KLARA ELIZABETH DAVIS
 ROBERT LEE DAVIS
 WALTER ALBERT DAVIS
 AMELIA DELORES DEER
 MADGE GERTRUDE DEER
 MORRIS YOUNG DONALD

EDITH LOUISE DORSEY
 ALBERT MATTHEW DUPREE
 SARAH ELIZABETH EDINGTON
 MAMIE RUTH ELLIS
 JAMES HAROLD EVANS
 STEPHEN OLACOKE FAGBESWA
 ANDREW FEINISTER
 JAMES EDWARD FLANDERS
 NELLIE GERALDING FLANDERS
 EVELYN SUE FREEMAN
 VIVIAN DEVEAUX FREEMAN
 JAMES HENRY FRINK
 LEMUEL HENRY FULLER
 MILDRED K. FUNDERBURK
 WILLIAM WATSON FUNDERBURK
 FRANK THEODORE GAITHER
 ANNIE LEE GALLMON
 CHARLES RANE GALLOWAY, JR.
 ALLEAN CARRIE GASTON
 CATHERINE AUGUSTA GIBSON
 JOHNNIE MAE GILL
 AMANDA BELI GRAHAM
 LESTER GREENWOOD
 ADRION MAULDIN HAMPTON
 MALZETTA HANBERRY
 PHILANDER ROOSEVELT HANKINS
 JAMES HESTER HARGETT
 AMOS WAVERLY HARPER
 JOSEPH WALTER HARPER
 ALBERTA VIOLA HARRIS
 CHARLES HARRIS
 MAMIE DOROTHY HARRIS
 ROBERT HAYES

EUGENIA DELORIS HILL
 ROLAND JEROME HILL
 DORIS JUANITA HOLT
 DANIEL ROBERT HOOKS
 BENSIE PAULINE HOOVER
 HENRY HOUGH
 WENDELL B. HOUSTON
 LEROY HOWARD
 ROBERTA CHRISTINE HUGHES
 ADA LOUISE HUNTER
 JOHN EDWARD HUNTER
 SAMUEL JACKSON
 HUBERT JEFFERSON
 LOUISE MARIE JEFFERYS
 AUDREY BERNICE JOHNSON
 M. EVANGELINE JOHNSON
 CHARLES JUNIUS JOSEY
 JAMES EDWARD JOYNER
 EDITH MOZELLA LEAK
 PAUL AVON LEE
 JOHN EDWARD LOCKE
 KATHLEEN MARCEL LOVE
 ARMSTEAD SIDNEY LOVEACE
 MABLE FRANCES McADAMS
 JAMES HENRY McAFEE
 NANNIE LOUISE McCLURE
 RUBY ALICE McCLURE
 WILLIAM P. McCULLOUGH
 ARTHESIS C. McGILL
 ANNIE LOIS McKINNEY
 GLADYS EUGENIA MARSH
 ARTHUR MASSEY



FRESHMEN

JOHN EDWARD MASSEY
 CARL WESLEY MATTHEW
 AMOS MAXWELL
 GORDON RICHARD MAYERS
 JOHN WESLEY MAYNAR
 MILDRED BENNIE MEANS
 MABLE ESTERLINE MILLS
 MAXWELL CHARLES MINNIS
 WILLIAM H. MONTGOMERY
 CHARLES WILLIAM MOONEY
 SHIRLEY SAHARA MOORE
 SUSIE S. MOORE
 WILLIAM RODDEY MOORE
 WILLIAM EUGENE MORGAN
 JASPER MYERS
 EVELYN LOUISE NEAL
 FOLIS ALLEN NELSON
 NAPOLEON NELSON
 HATTIE MAE NESBITT
 MARGARET N. NETHERLAND
 WILFONA NICHOLSON

LOUISE OLIPHANT
 WILLIAM WINIFRED PERRY
 WILLIAM FLETCHER POINTER
 JEAN ELIZABETH POLK
 EUGENE POOLE
 ELIJAH POWELL, JR.
 CHARLOTTE OWENS RAPHAEL
 CARL MARION RATLIFF
 KARL THOMAS RATLIFF
 ROSA MARIE RAWLINS
 ARTHUR CONWELL REDDING
 ELIZABETH MAE RIVERS
 LEATRICE JOYCE ROBERTS
 WILLIAM STAFFORD ROBINSON
 VENETTA MATTIE LEE RUSSELL
 JOHN R. JACKSON RYANS
 CHARLIE LEE SAMUELS
 CHARLES A. C. SHERMAN
 EDNA FRANCES SIMMONS
 ARTHUR FRANKLIN SLADE
 MILLER SMITH

THOMAS CHARLES SPEARS
 JAMES FULTON STEELE
 JEAN WINIFRED STERLING
 JOSEPHINE STEVENSON
 EUGENE STITT
 ESTER LAVON STROMAN
 SARAH E. STROUD (MRS.)
 OSCAR DEPRIEST TATE
 RODERICK TAYLOR, JR.
 BENNIE LEE THOMAS
 SAMUEL L. THOMAS
 ROBERT MARION VANCE
 KATIE DELOIS WALLACE
 PHILLIP WATSON
 HENRY B. WEBB
 MARY CORNELIA WILLIAMS
 RAYMOND NAPOLEON WILLIAMS
 DOLORES DELCENE WOMBLE
 AUGUSTUS CLARK WOOD
 HARRIET LEE YOUNG
 SAMUEL VAN YOUNGBLOOD

"The first year at last has passed. What will the future bring?"





THE STUDENT ACTIVITIES COMMITTEE

(Presidents of all Students Organizations)

- | | | |
|----------------------------|--|---|
| WILLIE F. D. MACINTOSH JR. | | Chairman |
| | (Editor-in-Chief, The 1949 BULL) | |
| JOSEPH H. GASTON | | Vice-Chairman |
| | (President, Student Christian Association) | |
| DALLIE G. JONES | | Secretary |
| | (Basileus, Alpha Kappa Alpha Sorority) | |
| DEAN T. E. MCKINNEY | | Adviser |
| JOHN L. PHARR | | President, Senior Class; President Alpha Kappa Mu Honor Society;
Polemarch, Kappa Alpha Psi Fraternity |
| BRYANT GEORGE | | President, Junior Class; Editor, University Student |
| GEORGE FLANNIGAN | | President, Sophomore Class; President German Club |
| JOHN BLACKWELL | | President, Freshman Class |
| THEODORE H. GOODIN | | President, Student Council |
| I. GRANTHAM SIMPSONS | | President, Student Seminary Organization |
| WILLIAM POSTON | | President, University Choir |
| ALLIE MAE PATTERSON | | President, Elementary Education Club |
| THOMAS SPENCE | | President, French Club |
| SPOFFARD BLACKWELL | | President, Spanish Club; President, Dramatic Guild |
| H. CALVINE SHADD | | President, Sigma Rho Sigma Honor Society |
| EDDIE C. MULLEN | | President, Beta Kappa Chi Honor Society |
| SIMPSON DICKENS | | President, Varsity "S" Club |
| JAMES CLARK | | President, Alpha Phi Omega Service Fraternity |
| EDWARD HILL | | President, Scroller Club |
| SAMUEL BLOUNT | | President, Lampados Club |
| WILLIAM BEAVERS, III | | President, Alpha Phi Alpha Fraternity |
| LLOYD L. SPAULDING, JR. | | Basileus, Omega Psi Phi Fraternity; President, NAACP |
| NAOMI ALEXANDER | | President, Delta Sigma Theta Sorority; President, Pan Hellenic Council |
| JAMES HUDSON | | President, Phi Beta Sigma Fraternity |
| ELLA M. BROWN | | Basileus, Zeta Phi Beta Sorority |
| JULIA CALHORNE | | President, Pyramid Club |
| DOROTHY BRICE | | President, Ivy Leaf Club |
| PAUL BROADY | | President, Knowledge Expansion Club |
| WENTWORTH O. BUNTON | | President, Chemistry Club |
| ROBERT DINGUS | | President, Sphinx Club |

Miss Johnson C. Smith University



MISS MABEN DIXON

Miss Maben Dixon was chosen as "Miss Johnson C. Smith University" for the academic year 1948-49, and reigned in delicate taste at the homecoming game with Howard University.

Miss Dixon is a senior. Among her college affiliations are: Alpha Kappa Alpha Sorority, Alpha Kappa Mu Honor Society and the Dramatic Guild. She is the daughter of Mr. and Mrs. Benjamin Dixon of Asheville, North Carolina.

Miss Johnson C. Smith and Attendants



Left to right—Naomi Alexander, Charlotte, N. C., Helen Mosely, Monroe, N. C., Maben Dixon (Miss J. C. S. U.), Thelma Edwards, Kinston, N. C., and Anita Harris, Winston-Salem, N. C.



THE BULL STAFF

WILLIE FLEMON DuBOIS MacINTOSH, JR.
Editor-in-Chief



WILLIAM BEAVERS, III
Associate Editor



LLOYD L. SPAULDING, JR.
Business Manager



JOSEPH H. GASTON
Pictorial Editor

- HELEN MOSELY *Secretary*
 DELORIS HAIRSTON *Art Editor*
 BRYANT O. GEORGE *Junior Associate Editor*
 MARIE DAVISON *Junior Associate Editor*
 WENTWORTH O. BUNTON *Junior Associate Editor*
 SPOFFARD BLACKWELL *Junior Art Editor*
 JOSEPHINE STRUGHILL *Club Editor*
 LORRAINE HUFF *Associate Club Editor*
 EARL RUSSELL *Junior Secretary*
 ALEXANDER GATES *Junior Business Manager*

Typing Staff: Constance Mann, Staff Typist; Frances Carter, Associate; Barbara Goudlock, Associate.

Sports Editors: Simpson S. Dickens, Herbert "Porkey" Wilson.
Adviser: Mr. William Cecil Donnell ("Stateman".)

BULL



STAFF



THEODORE GOODIN

THE STUDENT COUNCIL

THEODORE H. GOODINPresident
 CHARLES W. HARGRAVESVice-President
 CALLIE V. BUTLERSecretary
 LORRAINE HUFFAssistant Secretary
 THOMAS H. BYERSTreasurer

James Peeler
 Dorothy Brice
 Walter Gatlin

Eunice Young
 Brinker Shropshire
 Samuel Q. Mitchell

"A Representative Body Is No Better Than Those Whom It Represents."



THE UNIVERSITY STUDENT

Published by the students of Johnson C. Smith University

Subscription Price: \$1.00 Per School Year

Official Student Body Organ of Johnson C. Smith University

EXECUTIVE OFFICERS

BRYANT GEORGE *Editor-in Chief*
 WENTWORTH O. BUNTON *Managing Editor*
 S. L. BLACKWELL *Acting Business Manager*

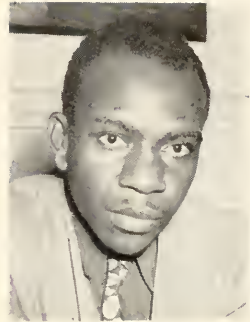
EDITORS

SPOFFARD L. BLACKWELL *News*
 PAUL W. BOYKIN, HELEN O. MOSELY *Feature*
 ANITA HARRIS *Review*
 HELEN LAWSON *Society*
 SAMUEL Q. MITCHELL, ROBERT RUFFIN *Sports*
 RUTH HOUSTON *Exchange*
 W. F. MACINTOSH, EVELYN STENCHCOMBE.

THEODORE GOODIN, LORRAINE HUFF, JOHN L. PHARR ... *Contributing*

BUSINESS STAFF

FRANCES J. CARTER *Secretary to the Editor*
 F. D. REESE, JR. *Staff Photographer*
 ERNESTINE MCCOY, BARBARA GOUELOCK *Secretaries*
 DEAN M. S. BELTON, MR. W. C. DONNELL,
 MR. CEASAR BLAKE, MRS. INEZ PARKER,
 MR. J. J. ADAM *Faculty Advisory Board*



BRYANT GEORGE
Editor-in-Chief



STUDENT CHRISTIAN ASSOCIATION



ROSTER

JOSEPH A. GASTON	President
BRYANT GEORGE	First Vice-President
THOMAS A. LASSITER	Second Vice-President
BARBARA GOUDLOCK	Secretary
HELEN MOSELY	Corresponding Secretary
MABEN DIXON	Treasurer
THOMAS H. BYERS	Reporter

COMMISSIONS

BRYANT GEORGE	Christian Heritage
HELEN LAWSON	Co-Chairman, Personal and Campus Affairs
EUNICE YOUNG	Co-Chairman, Personal and Campus Affairs
JOHN L. PHARR	Social Responsibility
LORRAINE HUFF	World Relations

COMMITTEES

ROBERT P. REEDER	Chairman, Y.M.C.A.
WILLIAM BEAVERS	Co-Chairman, Y.M.C.A.
EUNICE YOUNG	Y.W.C.A.
MIRIAM COWAN	Westminster Fellowship
VERA P. POE	Junior Missions
JAMES A. CLARK	Married Couples
PAUL M. ROBINSON	Full-Time Religious Workers
CHARLES JOSEY	
AMOS HARPER	
RUTH ELLIS	
CHARLOTTE RAPHAEL	Representatives from Freshman Class Fellowship

ADVISERS

DR. A. O. STEELE	MISS GWENDOLYN HARRISON
REV. M. S. BELTON	MISS JULIA E. SPANN
DEAN J. A. GRIMES	MR. JOSEPH C. RAMISEUR
MRS. LOLA H. WADDELL	MISS C. L. RAMISEUR

Mr. J. G. BENSON

IRA ALDRIDGE DRAMATIC GUILD



SPOFFARD L. BLACKWELL*President*

Mrs. E. E. WOODARD*Director*

Helen Mosely, Maben Dixon, Robert Dingus, Eliza Walker, Thaddeus Moore, Lloyd Spaulding, Nevid Johnson, David Woodbury, Carrie Marian, Robert Ridley, Vera Poe, Susie Moore, Ella M. Brown, Rose Rawlins, Helen Reese, Robert Davie, Josephine Strughill, William Gibson, Helen Lawson, Ruth Houston, Bryant George, Delores Parker, Callie Butler, Alice Witherspoon, Thelma R. Edwards, Dorothy Brice, Robert Mechan.

ELEMENTARY EDUCATION CLUB



ALLIE M. PATTERSON *President*
 NAOMI V. ALEXANDER *Vice-President*
 ANNIE J. DAVISON *Secretary*
 LUVENIA YOUNG *Treasurer*
 NANCY CALDWELL *Reporter*

Members: Juanita Bacote, Thomas Banks, Lucille Bennett, Louise Dean, Lena Edwards, Mrs. Frances Frazier, Mrs. Carrie Hannon, Mrs. Carol Harrill, Margaret Hoffman, Norma King, Minnie Massey, Rosa Means, Robert Reeder, Odell Steele, Margaret Taylor, Gabrella Toatley and Louise Wills.

ALPHA KAPPA MU HONOR SOCIETY



CARRIE MARION
JOSEPHINE STRUGHILL
BETTIE SHORPSHIRE
JAMES CLARK

THOMAS BYERS
JOHN PHARR
CHARLES HARGRAVES

THEODORE GOODIN
LOYD L. SPAULDING
THADDEUS MOORE
RAYMOND WORSLEY

BETA KAPPA CHI



JAMES CLARK
JEAN ALLEN
EDDIE MULLEN

PATRICK GRIFFITH
WILLIAM COVINSON
JAMES HOBISON
JOHN PHARR

CHARLES HARGRAVES
ROBERT VENABLE
PROF. U. S. BROOKS, *Adviser*

LE CERCLE FRANCAIS



THOMAS SPENCE	President
JAMES POLK	First Vice-President
EMMANUEL SEDDOH	Second Vice-President
BARBARA GOUDLOCK	Secretary
MARTHA SIMPSON	Assistant Secretary
CALLIE BUTLER	Journalist
THEODORE STANLEY	Critique
GODWILL FIAWOO	Treasurer

Members: Callie Butler, Jon Corry, Klara Davis, Mamie Davis, Arthur Holloway, Harry Jackson, Maggie Jones, Stephen Kwasikpui, Irantha McNeil, Shirley Moore, James Polk, Susie Moore, Emmanuel Seddoh, Maude Smith, Thomas Spence, Geneva Spence, Freddie Townsend, Mildred Washington, Lawrence Glenn, Martha Simpson.

SPANISH CLUB



OFFICERS

SPOFFARD L. BLACKWELL	<i>President</i>
BRYANT GEORGE	<i>Vice-President</i>
ERNESTINE MCKOY	<i>Secretary</i>
SARAH EDINGTON	<i>Assistant Secretary</i>
CARL W. MATTHEWS	<i>Treasurer</i>
MILDRED HALL	<i>Reporter</i>

Members: Ellane Baker, Avis Barge, Mildred Banneman, Raiforel Brown, Spoffard Blackwell, Mary Collins, Vincent Mallory, Ida Coleman, Francis Carter, Columbus Digby, Sarah E. Edington, Mildred Hall, Vivian Freeman, Ruth Houston, Gertrude Harper, Eugenia Hill, Lorraine Huff, Roberta Hughes, Bryant George, Annie Lee Callman, Louise Jefferys, Carrie Marion, Mildred Means, Carl Matthews, Frances Simmons, Jean Sterling, Venetia Russell, Raymond Worsley, Johnnie La Grande, Maggie Lynch, Julia Calhorne, Annette White, Genevia Bryant, Delois Parker, Pearlie Payton, Ernestine McKoy, Pauline Mitchell, Christine Ringgold, Robert Michean, Robert Ruffin, Martha Simpson, Roderick Taylor, William Pointer, Susie Moore, Laurichard Smith, Rose Rawlins, Arthur Slave.

GERMAN CLUB



GEORGE FLANNIGAN *President*
 H. CALVINE SHADD *Secretary*
 JAMES NORWOOD *Treasurer*

TYCER SCRIVEN	RICHARD ANDERSON	CLYDE BROWN
VANDER LARKS	WILLIAM S. RODDY	JOE FINKLE
JOHNNY WORSLEY	WILLIAM WELLS	RUTH PATTON
EDWIN HILL	WILLIAM FUNDERBURKE	KATHLEEN BOST
MARY TAYLOR	JULIA CHISHOLM	ROBERT COWAN
VIDA KEARNS	WARNER PINCHBACK	ROSE RAWLINS
	JACK FREEMAN	

PROF. J. C. RAMSEY, *Adviser*

UNIVERSITY CHOIR



WILLIAM POSTON	President
DOROTHY BRICE	Vice-President
ERNESTINE MCKOY	Secretary
JOHN ROBERT HEATH	Treasurer
ELLAINE BAKER AND DOROTHY BRICE	Librarians
DELOBES PARKER	Reporter
CECILE ROSS	Chairman, Social Committee
RICHARD NOBLE	Chairman, Decoration Committee
CHRISTOPHER KEMP	Director
JULIA L. BROWN	Accompanist
BETTYE SHROPSHIRE	Student Accompanist

Soprano: Jessie Brooks, Geneviev Brvant, Louise Byers, Francis Carter, Olivia Chavis, Dorothy Cogdell, Miriam Cowan, Katherine Gibson, Georgia Green, Anita Harris, Rosa Laney, Henrietta Mathis, Mabel McAdams, Margaret Moore, Delores Parker, Cecile Ross, Josephine Stevenson, Delores Womble, Eunice Young.

Contralto: Ellaine Baker, Dorothy Brice, Julia Caleborne, Evelyn Davenport, Lee V. Edwards, Imogene Friday, Eugene Hill, Will Joyner, Jean Allen, Marian Laws, Helen Lawson, Maggie Lynch, Elmire McDaniel, Ernestine McKoy, Susie Moore, Mary Pearson, Jean Sterling, Ester Stroman, Sallie Ward.

Tenor: James Davis, Walter Davis, Mitchell Dorsey, Charles Galloway, Jerod Graves, Paul Johnson, Charles Mooney, Eolus Nelson, Richard Noble, Robert Ridley.

Bass: Albert Dorsette, John Dula, P. R. Hankins, Leonard Harris, John Heath, Daniel Hennigan, Nevid Johnson, Clarence Lipscomb, John Maynor, Thomas McPhatter, Thaddeus Moore, Vivian Moses, Karl Ratcliff, David Reese, Jr., Tycer Scriven, Harold Taylor, Augustus Wood, Lee R. Woody, William Poston.



THE KOADAZA

- KAPPA ALPHA PSI Achievement
- OMEGA PSI PHI Manhood, Perseverance, Scholarship and Uplift
- ALPHA KAPPA ALPHA Nothing but the highest
- DELTA SIGMA THETA Intelligence is the torch of wisdom
- ALPHA PHI ALPHA First of all, servants of all, we shall transcend all
- ZETA PHI BETA Service, Sisterhood, and Scholarship
- PHI BETA SIGMA Culture for Service; Service for Humanity

PAN-HELLENIC COUNCIL



Purpose: To motivate high scholastic and cultural standards, to improve relations among Greek letter organizations, to elevate the principles of Greekdom, and to function as a joint governing body in co-operation with the administration and student government.

OFFICERS

NAOMI V. ALEXANDER, Delta Sigma Theta *President*
 PRESTON PENDERGRASS, Omega Psi Phi *Vice-President*
 DALLIE JONES, Alpha Kappa Alpha *Secretary*

MEMBERS

EDDIE MULLEN Kappa Alpha Psi
 WILLIAM BEAVERS Alpha Phi Alpha
 KATHLEEN BOST Zeta Phi Beta
 ELLA M. BROWN Zeta Phi Beta
 DELORIS HAIRSTON Delta Sigma Theta
 LLOYD L. SPAULDING, JR. Omega Psi Phi
 NOBLE P. COOPER Omega Psi Phi
 RICHARD BENN Alpha Phi Alpha
 MABEN DIXON Alpha Kappa Alpha
 WILLIAM FLETCHER Kappa Alpha Psi
 HERBERT McCLAIN Phi Beta Sigma

ALPHA KAPPA ALPHA

GAMMA DELTA CHAPTER



FOUNDED: HOWARD UNIVERSITY 1908
 COLORS: *Salmon Pink and Apple Green*

DALLIE G. JONES *Basileus*
 H. CALVINE SHADD *Epistoleus*

ROSTER

JEAN ALLEN
 DOROTHY BRICE
 MAXINE W. BROWN
 CALLIE BUTLER
 SADIE CARR
 MATTIE CARTER
 WILLIE CARTER
 DOROTHY COGDELL
 MAMIE DAVIS
 MARIE DAVISON
 LOLA DIXON
 MABEN DIXON

THELMA EDWARDS
 ROSA FLACK
 MARGARET K. FORD
 BARBARA GOUDLOCK
 DORIS GRAHAM
 MILDRED HALL
 CARRIE HANNON
 GERTRUDE HARPER
 RUTH HOUSTON
 LORRAINE HUFF
 MARJORIE HYMES

DALLIE JONES
 ERNESTINE MCKOY
 EDNA McMILLAN
 MARY MINNIS
 HELEN MOSELY
 DELORES PARKER
 ALLIE M. PATTERSON
 MARY PEARSON
 HELEN REESE
 H. CALVINE SHADD
 BETTY SHROPSHIRE

MARTHA SIMPSON
 GLORIA SMITH
 LAURICHARD SMITH
 MARY STRATFORD
 JOSEPHINE STRUGHILL
 ELIZA WALKER
 ALICE WITHERSPON
 MARY WILSON
 SARA P. WILSON
 CAROLYN WILKERSON
 CARRIE MARION



DALLIE JONES

ALPHA PHI ALPHA FRATERNITY

ALPHA OMIKRON CHAPTER



First of All—Servants of All—We Shall Transcend All

In the year 1906, at Cornell University, Ithaca, New York, seven young men founded the first Negro Fraternity—Alpha Phi Alpha. With the slogan "Scholarship, Fellowship and Devotion," the organization was soon established in other colleges until there are now one hundred sixty-eight chapters located in various parts of the United States and foreign countries. Among noteworthy activities sponsored by the fraternity are the "Go to High School—Go to College" movement and the "Education for Citizenship Week."

OFFICERS

WILLIAM BEAVERS, III	President
EDDIE TATE	Vice-President
JAMES COAXUM	Secretary
NEVID JOHNSON	Treasurer
RICHARD BENN	Sergeant-at-Arms
PAUL ROBINSON	Chaplain

MEMBERS

ARCHIE ALEXANDER
LEON ANDERSON
RUFUS BOSTIC
HOMER BUTLER

DONALD CARROLL
WANZA DAVIS
GEORGE FLANNIGAN
ALEXANDER GRAHAM
LEE RUSSELL WOODY

CHARLES GRIER
FRANCIS HOBSON
WILLIAM POSTON
ROBERT RUFFIN

DELTA SIGMA THETA SORORITY



Gamma Lambda Chapter of the Delta Sigma Theta Sorority was founded at Johnson C. Smith University in November, 1943. The aim of Delta is to perpetuate the ideals of womanhood and to maintain high standards of scholarship.

OFFICERS

NAOMI V. ALEXANDER	<i>President</i>
MARIE G. BOYKINS	<i>Vice-President</i>
DELORES HAIRSTON	<i>Recording Secretary</i>
MARION ANDERSON	<i>Corresponding Secretary</i>
NANCY D. CALDWELL	<i>Treasurer</i>
RUTH PATTON	<i>Dean of Pledges</i>

MEMBERS

FRANCES ANDERSON	ANITA HARRIS	THELMA McMILLAN
ALBERTA BERRY	NORMA KING	MAXINE PERKINSON
FRANCES CARTER	HELEN LAWSON	MARGARET TAYLOR
HUETTA COOK	MAGGIE LYNCH	MARION TILLMAN
MILDRED HAMIT	GRETCHEN MARSHALL	LILLIAN TOWNES
MRS. LUNELLE HAIR McKENZIE		<i>Adviser</i>



KAPPA ALPHA PSI

KAPPA ALPHA PSI

ALPHA EPSILON CHAPTER

JOHN PHARR *Polemarch*
W. OVAL BINTON *Vice-Polemarch*
EDDIE MULLENS *Keeper of Exchequer*

WALTER GATLING
HENRY L. GRANT
PAUL BROADY
THADDEUS MOORE
EDWARD HILL
ROBERT MEACHAN
EDDIE MULLEN

JAMUS FEENISTER
HERMAN RAGIN
ROBERT GLENN
OLIN PEARSON
HARVEY REID
SYLVESTER BENNETT
ROBERT GRAY

JOHN POTTS
ARTHUR MOORE
THEODORE PEARSON
JASPER POWELL
WILLIAM ALLISON
BRINKER SHROPSHIRE
WILLIAM FLETCHER



OMEGA PSI PHI FRATERNITY

RHO CHAPTER

OFFICERS

LLOYD SPAULDING, JR.	Basileus
J. HERBERT NELSON	Vice-Basileus
THOMAS A. LASSITER	Keeper of Records and Seal
THOMAS REEVES	Keeper of Finance
PRESTON PENDERGRASS	Chaplain
ROBERT GREY	Keeper of Peace
JAMES REEDER	Assistant KRS
JAMES WEBB	Editor

DIVISION OF PLEDGEES

GROVER CLEVELAND ADAMS	Dean of Lamps
HENRY K. JOHNSON	Assistant Dean of Lamps
WILLIE F. MACINTOSH, JR.	Division Secretary



OMEGA PSI PHI FRATERNITY

RHO CHAPTER

ROSTER

HERMAN L. ABLE
 JAMES ALEXANDER
 ANDREW ALLEN
 RICHARD ANDERSON
 WILLIAM BOWERS
 WILLIAM BAXTER
 RAPHAEL O. BLACK
 SAMUEL BLOUNT
 CLYDE BROWN
 BUNYAN L. BRYANT
 ALEXANDER BYERS
 THOMAS H. BYERS
 ELWOOD BYNUM
 VINCENT L. CALDWELL
 NOBLE P. COOPER
 HARRY COWAN
 WILLIE DAVIS
 CHARLES DEAL
 WILSON DEAS
 GODWILL FIAWOO
 JUNIUS FRANCES

WILLIE GADDISON
 LEROY B. GARNER, II
 JOSEPH GASTON
 WILLIAM E. GIBSON
 THEODORE H. GOODIN
 PATRICK GRIFFITH
 ROBERT HAIRSTON
 JOHN W. HARDIN
 CHARLES W. HARGRAVE
 EDWARD Q. HATCHER
 ZACHARIAH HAWKINS
 EDWIN HILL
 ROLAND HAYES
 WALTER ERWIN
 HENRY K. JOHNSON
 PAUL W. JOHNSON
 STEPHEN KWASIKPUI
 DAVID L. MAYNARD
 SAMUEL Q. MITCHELL
 W. FLEMING D. MACINTOSH, JR.
 VIVIAN MOSES

GROVER D. NELSON
 J. HERBERT NELSON
 EDWARD OBEY
 DANIEL PURNELL
 ROBERT L. RAY, JR.
 CHARLES RICE
 JAMES REEDER
 ODELL ROBINSON
 WILLIAM RODDY
 WILBURN SANDERS
 JAMES SAUNDERS
 EMMANUEL K. 'I. SEDDOH
 HARRY SHAW
 WILLIAM H. SHEPPERSON
 LLOYD SIGLER
 CLYDE STRONG
 BROOKS D. THOMAS
 RAYMOND WASHINGTON
 DAVID H. WOODBURY
 TROY ALLYN YOUNG
 ERNEST W. CHERRY



PHI BETA SIGMA FRATERNITY, INC.

OFFICERS

CLARENCE GARTRELI *President*
 HERBERT L. McCLAIN, JR. *Vice-President*
 JAMES G. POLK *Recording Secretary*
 JAMES H. HUDSON *Corresponding Secretary*
 JAMES A. CLARKE *Treasurer*

MEMBERS

EMANUEL WASHINGTON HOWARD GRIER
 JAMES FULWOOD FERDINAND PHARR
 JOHN W. WHITE

PLEDGEES

JOHN MAYNOR ALBERT L. DORSETTL
 PHILANDER R. HANKINS



ZETA PHI BETA

COLORS: *Blue and White*

FLOWER: *White Carnation*

MOTTO: *Labor Conquers All*

KATHLEEN BOST *Basileus*

ELLA BROWN *Grammateus*

MARGARET MOORE *Tanios*

MRS. CLARA LAWRENCE MISS C. L. HARRISON



IVY LEAF CLUB

OFFICERS

A. DOROTHY BRICE	<i>President</i>
CARRIE HANNON	<i>Vice-President</i>
BETTYE L. SHROPSHIRE	<i>Secretary</i>
ALBERTA MARSHALL	<i>Assistant Secretary</i>
MARION G. LAWS	<i>Treasurer</i>
GLORIA SMITH	<i>Reporter</i>

MEMBERS

HELEN RUTH CARR	MAGGIE R. LLOYD	LOUISE OLIPHANT
DORIS GRAHAM	ROSA LEE MARTIN	ALLIE MAE PATTERSON
RUTH S. HOUSTON	ERNESTINE MCKOY	ELIZABETH WILEY
WILLIE G. JOYNER	MARY A. MINNIS	



LAMPODAS CLUB

SAMUEL BLOUNT *President*
 WILLIAM SHEPPERSON *Vice-President*
 DAVID MAYNARD *Secretary*
 ALEXANDER BYERS *Treasurer*
 DAVID WOODBURY *Chaplain*

HERMAN ABLE
 JAMES ALEXANDER
 RAPHAEL BLACK

ELWARD BYNUM
 JOHN HARDIN
 FRED JONES

ROBERT RAY
 EMMANUEL SEDDOH



PYRAMID CLUB

OFFICERS

JULIA CALEHOORNE	<i>President</i>
EDNA MOBLEY	<i>Vice-President</i>
IRIS PEEBLES	<i>Secretary</i>
GABRELLA TOATLEY	<i>Treasurer</i>
IMOGENE FRIDAY	<i>Reporter</i>



SCROLLER CLUB

OFFICERS

JOHN A. DAVIS *President*
 EDWARD HILL *Secretary*
 WALTER GATLING *Treasurer*

MEMBERS

WILLIAM A. ALLISON	ULRICH HESTER
PAUL L. BROADY	JOHN C. DULA
DEWITT REID	JOHN H. POTTS



SPHINX CLUB

ROBERT DINGUS
AUGUSTUS WOODS
CALVIN HOOD

FRANK DAVIE
ALBERT BACOTE

GEORGE HARPER
CHARLES JOSEY
STEVEN FAGAWESA



HERBERT D. WILSON
SIMPSON S. DICKENS
Sports Editors

COACHING STAFF



Left to right: Calvin C. Irvin, Bryd D. Crudup, Sam George.

VARSIITY "S"





THE GOLDEN BULLS

NO.	NAMES	POS.	H.T.	WT.	AGE	CLASS
98	Barrett, N.	RG	5'9"	215	23	Junior
91	Brown, M.	RT	6'0"	180	23	Junior
90	Davis, E.	LG	5'11"	230	25	Senior
83	Dorsev, W.	RE	5'9"	185	23	Sophomore
94	Easter, J.	LT	5'11"	193	24	Junior
69	Evans, D.	LE	5'11"	175	23	Junior
67	Evans, K. J.	LH	5'9"	175	21	Freshman
	Feemster, A. C.	C	5'11"	170	19	Freshman
75	Fields, A.	RH	5'6"	169	22	Junior
79	Flannigan, G.	FB	5'10"	185	19	Sophomore
70	Graham, A.	QB	6'1"	170	19	Senior
72	Hatcher, E.	LH	5'9"	170	20	Senior
93	Johnson, G.	RG	6'0"	210	24	Senior
	Johnson, W.	RE	5'10"	185	21	Sophomore
74	Jones, W.	C	5'10"	178	20	Sophomore
71	Kirkland, A.	RE	5'11"	168	19	Sophomore
78	Lassiter, T.	RH	5'10"	169	21	Senior
99	Long, T.	I.T.	5'10"	250	24	Senior
80	McCullough, W.	RH	5'11"	175	18	Freshman
81	McDowell, T.	LH	6'0"	183	22	Junior
60	McGill, G.	LG	5'7"	163	22	Sophomore
95	McKnight, W.	RT	6'2"	210	21	Sophomore
61	Mallory, V.	RH	6'0"	170	20	Sophomore
72	Mason, T.	LT	6'2"	160	22	Junior
	Meacham, R.	RH	5'9"	142	21	Senior
65	Myers, J.	RG	5'9"	162	20	Freshman
88	Naylor, M.	LG	5'8"	182	20	Sophomore
	Nelson, N.	RE	5'11"	165	23	Freshman
85	Montgomery, J.	LE	6'1"	175	20	Sophomore
63	Norman, O.	FB	5'11"	180	19	Sophomore
97	Perry, W.	RE	6'2"	180	20	Freshman
	Pickett, E.	QB	5'9"	167	17	Sophomore
86	Poole, E.	RT	5'11"	165	19	Freshman
96	Poston, W.	LT	6'2"	200	26	Senior
66	Powell, E.	C	5'9"	160	17	Freshman
84	Ragin, H.	FB	5'11"	170	20	Senior
82	Redding, A.	RG	5'8"	173	17	Freshman
76	Reeder, J.	LE	6'0"	180	22	Senior
87	Reid, H.	LG	5'11"	190	22	Senior
92	Richardson, J.	C	6'2"	200	22	Senior
25	Washington, L.	LH	5'6"	160	22	Junior
73	Washington, R.	QB	5'11"	169	23	Junior
77	Worsley, R.	RT	5'9"	172	22	Senior
89	Yates, J.	FB	5'9"	180	26	Sophomore



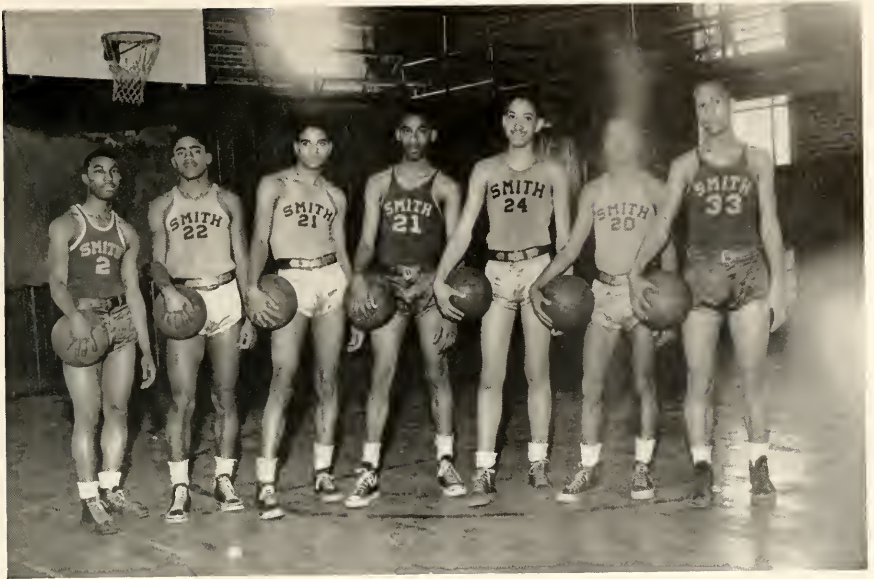
BASKETBALL SQUAD 1949 EDITION

JOHN M. COBB
 SIMPSON S. DICKENS
 WILNERT M. DORSEY
 AVERY C. FIELDS
 CHARLES S. FOSTER
 WILLIAM W. FUNDERBURKE
 ADRIAN M. HAMPTON

JAMES H. HARGETT
 EDWARD Q. HATCHER
 ROLAND HILL
 WENDELL L. JOHNSON
 WILLIAM McCULLOUGH
 ROBERT L. McNEELY
 ARTHUR MASSEY
 RAYMOND WASHINGTON

CARL MATTHEWS
 DAVID L. MAYNARD
 ELBERT NANCE
 NAPOLEON NELSON
 WILLIAM PERRY
 ARTHUR SLADE
 CHARLIE SAMUELS

CALVIN IRWIN, *Head Coach*
 WILLIAM BOWERS, *Assistant*



JUNIOR VARSITY "BABY BULLS"

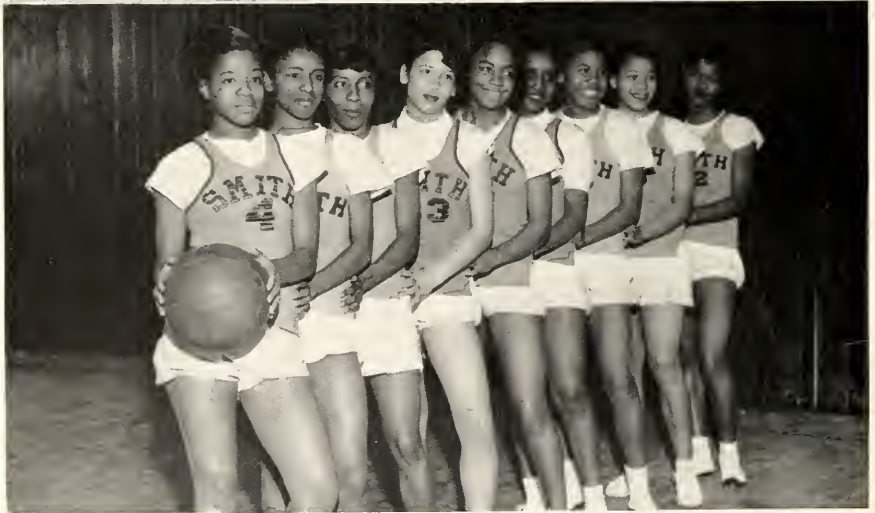
AVERY FIELDS
ARTHUR MASSEY
JOHN M. COBB

WILLIAM FUNDERBURKE
ADRIAN HAMPTON
ROLAND HILL

CARL MATHEWS
ARTHUR SLADE
CHARLIE SAMUELS

WILLIAM BOWERS, *Coach*

BOXING TEAM



GIRLS' BASKETBALL TEAM



PICTORIAL SPEAKING





ALPHA PHI OMEGA SERVICE FRATERNITY

DELTA PHI CHAPTER

"This fraternity offers college men unparalleled opportunities to render service to their campus and community and to their nation as a participating citizen."

OFFICERS

JAMES A. CLARK *President*
 JAMES G. PEELER *Secretary*
 DAVID WOODBURY *Treasurer*

MEMBERS

Members: Grover C. Adams, George Anderson, Earl Avant, John C. Dula, James Feemster, Clarence Gartrell, Alexander Gates, Theodore Goodin, Daniel O. Henning, Edward Hill, Alexander Lane, Paul Johnson, William Johnson, Thomas Lassiter, David Maynard, Fleming Means, Emmerson Miles, Samuel Mitchell, Herbert McClain, Robert McNeeley, Richard Noble, James Norwood, Olin W. Pearson, Preston Pendergrass, William Poston, Thomas A. Reeves, Theodore Stanley, Freddie Townsend, Maurice Todd, William R. Walls, Robert Wright, William Covington, Nevid Johnson, Leonard Harris, Theodore Spencer, John Gibbs, and Robert Davis.



*Fair Smith, where'er on earth we roam,
Send forth thy constant ray
And let it beam with steadfast gleam
To lead us o'er Life's way.*

The End

