

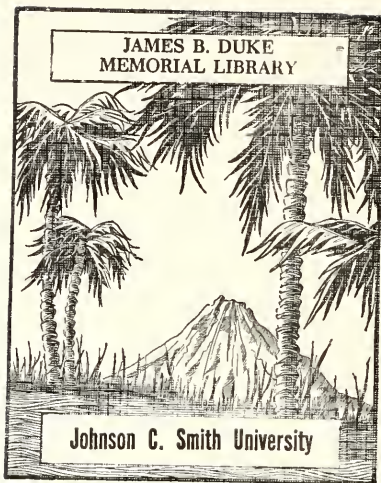
The

Bull

1933



JAMES B. DUKE  
MEMORIAL LIBRARY

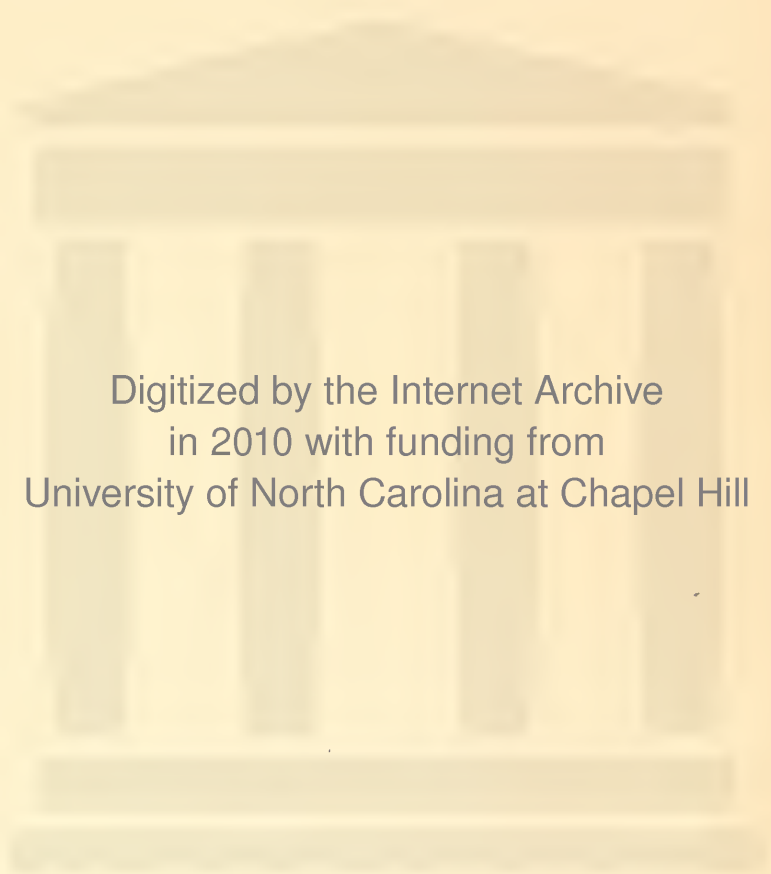


Johnson C. Smith University

# For Reference

Not to be taken from this room

JAMES B. DUKE MEMORIAL LIBRARY  
JOHNSON C. SMITH UNIVERSITY  
CHARLOTTE, N. C. 28208



Digitized by the Internet Archive  
in 2010 with funding from  
University of North Carolina at Chapel Hill

<http://www.archive.org/details/goldenbull1953john>

the nineteen hundred fifty-three



.... **BULL**



# THE BULL

Published by the Senior Class  
in Charlotte, North Carolina . . .  
edited by Louis G. King and J. Winstead

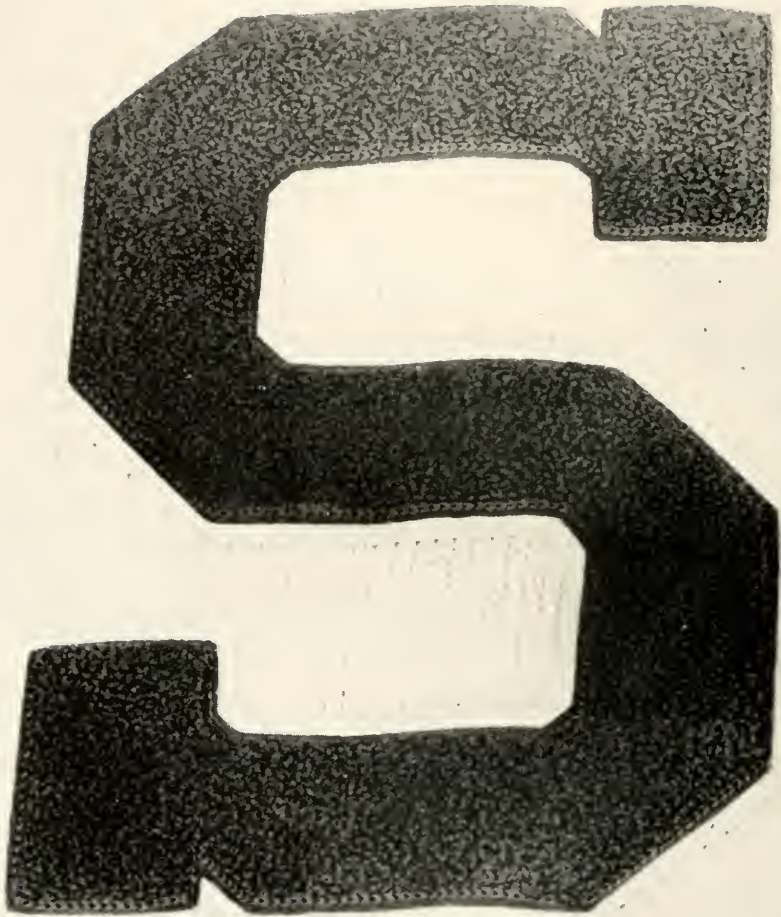


OF 1953

. . . of Johnson C. Smith University

Volume XII . . .

Adams . . . managed by Ernest E. Fair



# CONTENTS

ADMINISTRATION

CLASSES

ORGANIZATIONS

ACTIVITIES

GREEK ORGANIZATIONS

SPORTS



# FOREWORD

Every graduate treasures dearly the memories of his college days. In pleasant reminiscence he will recall and relive each glowing hour. With this in mind, we here present pictorially highlights of our campus life. For years after we have departed, it will be a memento of the happy days at Smith.

To reveal between the covers of this tabloid the happiness we've known, the treasured friendships we've shared, the information we've gained and the spiritual insight we've attained, is an impossibility. However, if you receive enjoyment from our Annual, we shall be happy, for you too will share with us the memories of our treasured college days.

THE SENIOR CLASS

# DEDICATION

In times of discouragement and fear, you gave us hope; in times of need and want, you gave us succor; in times of bereavement, you gave us comfort and soothed us with the warmth and gentleness of a parent.

Those who were acquainted with you were fortunate, but those who knew you were truly blessed.

Though you are deceased, the memory of you is eternal within our hearts.

To you, MRS. MATTIE B. GREENLEE; to you, MRS. LOLA H. WADDELL, we dedicate our 1953 Yearbook.

THE BULL STAFF

# ADMINIS



HARDY LISTON  
*President*

T. E. MCKINNEY  
*Dean of College*

A. H. GEORGE  
*Dean of Theological Seminary*

J. A. GRIMES  
*Dean of Men*

A. M. HAWKINS  
*Dean of Women*



# TRATION

## *President's Message*

To the 1953 BULL Staff, congratulations.

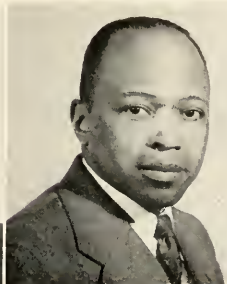
To the student body, greetings and good wishes for the present and future.

To the members of the graduating class I shall leave with you this thought as you leave the institution and go out into the activities of a busy world. An individual may devote his or her life to emphasizing what might well be termed the negative qualities in the world. One may, on the other hand, dedicate himself or herself to positive values. I would suggest four of the great values to which one may devote himself or herself with great profit and satisfaction. One of those values is man, the most positive of God's creations. Another is complete education, the most positive force in the development of man other than religion. A third is democracy, the most positive system devised by men for living and working together and finally, religion, the integrating force that makes all else effective.

THEODUS L. GUNN  
*University Librarian*



MOSES S. BELTON  
*Public Relations*



JOHN A. TWITTY  
*Registrar*



JOHN M. HOLLOWAY  
*Business Manager*



# JOHNSON C. SMITH



# FACULTY AND STAFF



ADAM  
ADAM  
BENJAMIN  
BENSON  
BLUFORD  
BROOKS  
BUCK

MRS. EUNICETINE ADAM, A.M. . . . . *Instructor in French*  
 JEAN JOSEPH ADAM, B-es-L, Lic-es-L . . . . . *Professor of French*  
 MRS. G. BENJAMIN, B.A. . . . . *Assistant Librarian*  
 JACK BENSON, M.S. . . . . *Professor of Mathematics*  
 WILLIAM E. BLUFORD, A.M. . . . . *Assistant Professor in History and  
 Political Science*  
 U. S. BROOKS, Ph.D. . . . . *Professor of Chemistry and Chairman of the  
 Division of Science and Mathematics*  
 MRS. ANNIE C. BUCK, M.S. . . . . *Instructor in Biology*



COLEMAN  
COLEMAN  
COLEMAN  
CRUDUP  
DAVENPORT  
DAVIS  
FERGUSON

MRS. FRANCIS COLEMAN, B.S. . . . . *Secretary to the President*  
 WILLIAM E. COLEMAN, B.S. . . . . *Bookkeeper*  
 WINSON R. COLEMAN, Ph.D. . . . . *Professor of Philosophy*  
 BYRD D. CRUDUP, M.Ed. . . . . *Associate Professor and Head of the  
 Physical Education Department*  
 EVELYN DAVENPORT, B.A. . . . . *Instructor in English*  
 LLOYD H. DAVIS, M.Ed. . . . . *Professor of Education and Head of  
 Education Department*  
 THOMAS J. FERGUSON, M.S. . . . . *Instructor in Biology*



FORNEY  
GAITHERRIGHT  
GORE  
GRADY  
HARDY  
HAWKINS  
HUNTER

JO-AN D. FORNEY, A.M. . . . . *Instructor in Physical Education*  
 BOYD J. GAITHERRIGHT, M.S. . . . . *Instructor in Mathematics*  
 PEARL M. GORE, M.A. . . . . *Instructor in Psychology*  
 EDYTHE R. GRADY, B.S., M.S.M. . . . . *Instructor in Music*  
 MRS. M. HARDY, B.A. . . . . *Assistant Matron of Berry Hill*  
 MRS. CATHERINE HAWKINS, B.A. . . . . *Assistant Registrar*  
 MRS. M. HUNTER, B.A. . . . . *Matron of Berry Hill*



JACKSON  
JOHNSON  
KEMP  
MCKEE  
MALONE  
MARTIN  
NEAL

ROBERT JACKSON, B.S. . . . . *Instructor in Physical Education*  
 EVANGELINE JOHNSON, B.A. . . . . *Secretary to Dean of School*  
 CHRISTOPHER W. KEMP, Mus.M. . . . . *Assistant Professor of Music*  
 MRS. BERNICE MCKEE, R.N. . . . . *School Nurse*  
 MRS. LAURA MALONE, B.A. . . . . *Bookstore Clerk*  
 MRS. M. MARTIN, B.A. . . . . *Cashier*  
 MRS. VIETTA E. NEAL, B.S. . . . . *Instructor in Chemistry*



NORRIS  
NORRIS  
RAMSEY  
REID  
ROLLINS  
ROOKS  
SPAULDING

MRS. HENRIETTA T. NORRIS, A.M. . . . . *Instructor in Elementary Education*  
 HUBERT W. NORRIS, A.M. . . . . *Assistant Professor of Economics and  
 Political Science*  
 JOSEPH C. RAMSEY, A.M. . . . . *Assistant Professor of Sociology*  
 ABSULA B. REID, A.B., B.L.S. . . . . *Theology Librarian*  
 JOSEPH M. ROLLINS, JR., A.B., B.D. . . . . *Instructor in Religion*  
 ALBERTA R. ROOKS, B.S., M.A. . . . . *Instructor in Elementary Education*  
 MRS. M. K. SPAULDING, B.A. . . . . *Matron of Carter Hall*



SCRIVEN  
STEELE  
THOMPSON  
THOMPSON  
WILLIAMS  
WILLIS  
WOODARD

MRS. E. L. SCRIVEN, B.A., M.A. . . . . *Matron of Duke Hall*  
 ALGERNON ODELL STEELE, Ph.D. . . . . *Chairman of Division of Humanities,  
 Professor of Religious Education, Dean of Chapel*  
 EDWIN THOMPSON, B.S., S.T.B., A.M., S.T.M., Ed.M., Ph.D. . . . .  
*Professor of Church History*  
 ALBERT A. THOMPSON, A.B., B.D., S.T.M. . . . . *Professor of Biblical Literature*  
 MRS. M. WILLIAMS, B.A., A.M. . . . . *Instructor in Music*  
 MRS. C. WILLIS, B.S. . . . . *Dietician*  
 MRS. ELSIE E. WOODARD, M.A. . . . . *Instructor in English*

# SENIOR CLASS



## OFFICERS

LOYL WORTH QUINN  
OLIVER CLARK  
JEAN E. ROBERSON  
THOMAS T. JEFFERSON  
LOUIS GEORGE KING  
ERNEST FAIR

*President*  
*Vice-President*  
*Secretary*  
*Treasurer*  
*Reporter*  
*Parliamentarian*

# Senior Class



**JAWN WINSTEAD ADAMS**  
3111 Centre Ave., Pittsburgh, Pa.  
Psychology

*"Labor to keep alive in your heart that little spark of celestial fire called conscience."*

Assistant K.R.S. of Omega Psi Phi Fraternity, Inc.; Co-Editor of 1953 BULL; President of Society for the Study of Psychology; Vice-President of University Band 1952-53; Ira Aldridge Dramatic Guild 1950-53; N.A.A.C.P.; University Student Staff; German Club; Secretary of Lampados Club; Officer of Vogue Club 1952-53; Football 1950; Sigma Rho Sigma Honorary Society; Co-King of the Clan.

**MARIE PARKER ADJAHOE**  
274 Grand Blvd., Westbury, N. Y.  
Social Science

*"Make each day useful and cheerful, and prove that you know the worth of time by employing it well. Then youth will be happy, old age without regret, and life a beautiful success."*

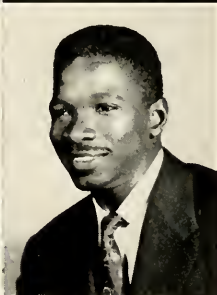
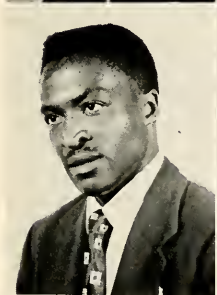
Treasurer of Freshman Class 1949-50; Member of the "P. K." Club; Member of the University Choir 1949-53; Member of the French Club; Member of the German Club; Treasurer of the Vogue Club; Treasurer of Alpha Kappa Alpha Sorority; Ivy Leaf Club; Dramatic Guild; Counselor for the Junior Class in Duke Hall 1951-52; Monitor for Duke Hall 1952-53; Pan-Hellenic Council; S.C.A.; Sundae School Class.



**JOHN ALLEN, JR.**  
790 W. New Hampshire Ave., Southern Pines, N. C.

**SARAH FRANCES AYNER**  
815 Beattys Ford Road, Charlotte, N. C.  
Elementary Education

*"All that I am or hope to be I owe to my darling mother."*  
Future Teachers of America; University Choir; Student Christian Association.



**LEWIS CALVIN BARBER**  
Rt. 2, Box 26, Rock Hill, S. C.  
Elementary Education

*"Know thyself."*  
Future Teachers of America; N.A.A.C.P.; German Club.

**WALLACE ELI BAYNES**  
Box 767, Apple St., Burlington, N. C.  
Sociology

*"If a man be not a thinking man to what purpose is he a man at all."*

Basketball Team 1944-45; Football Team 1945; Varsity "S" Club 1944-45; German Club 1948-49; President of Lampados Club 1951; Omega Psi Phi Fraternity 1952; Clan 1952-53.



**IRENE PATRICIA BLACKMAN**  
1200 E. Grand Ave., Rocky Mount, N. C.  
Elementary Education

*"There is nothing against you falling down, but to lie there is a disgrace."*

Dramatic Guild 1949-53; University Choir, 1949-51; Vogue Club 1950-53; Future Teachers of America 1951-53; Student Christian Association 1949-53.

**HELEN L. BOLDS**  
153 Spring St., Charleston, S. C.  
Physical Education

*"The higher we climb the broader the view."*

Member of the Spanish Club 1951-53; Student Christian Association; University Choir 1951-53; Vogue Club; "Miss Spanish Club" 1951-52; "Miss Senior Class" 1952-53.

# Senior Class

LAWRENCE BARTHE BROWN  
3615 Aspen St., Philadelphia, Pa.  
*Elementary Education*

*"When a person falls along the way they fall because those who passed before did not remove the stumbling block."*

*University Student; Choir 1950-51; Lampados Club; Future Teachers of America; Omega Psi Phi Fraternity; Varsity "S" Club; Football Team; Spanish Club; History Club; N.A.A.C.P.; Pan-Hellenic Council.*



MAGGIE BERNICE BROWN  
470 W. 146th St., New York 31, N. Y.  
*Psychology*

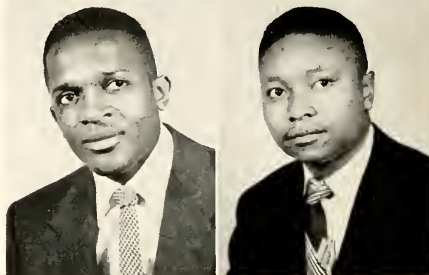
*"I've shut the door on yesterday and thrown the key away, tomorrow holds no fears for me since I have found today."*

*Vogue Club; Psychology Club; Secretary of the University Band; Prom Committee 1951-52; Dramatic Guild; German Club; Hazen Committee 1951-52.*

WILLIAM EDWARD BROWN  
605 W. 31st St., Savannah, Ga.  
*Social Science*

*"The world is yours for a prayer and a smile plus hard work."*

*Alpha Phi Alpha Fraternity; Football Team 1951-52; Varsity "S" Club; Pan-Hellenic Council 1952-53; Sigma Rho Sigma Honor Society; Basketball Team 1949-51; Sports Editor of 1953 BULL.*



CAIN DAVID BURGESS  
P. O. Box 72, Snow Hill, N. C.  
*Physical Education*

*"Know thyself."*

*Dramatic Guild 1944; Track 1949; Baseball 1947; Football 1944; Boxing Team 1948-49; J. A. Grimes Philharmonic Chorus 1947-48; University Student Staff 1949.*

LENCY GREENE BURGESS  
311 Clav St., Kinston, N. C.

*Elementary Education*

*"We ought to be silent or to speak things better than silence."*  
*Choir 1950-51; Future Teachers of America; Student Christian Association.*



MARY BELTON CABBAGESTALK  
Route 1, Box 18, Westville, S. C.

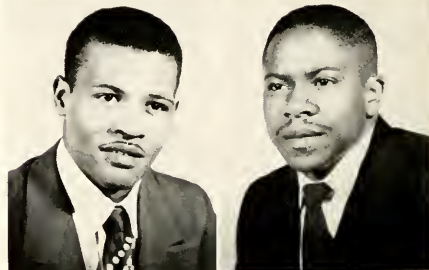
*Elementary Education*

*"Strive to excel."*

*Future Teachers of America.*

JAMES PHILLIP CHAVIS  
Route 1, Box 166, Oxford, N. C.  
*Biology and General Science*

*"Success and hard work go hand in hand."*



OLIVER NATHANIEL CLARK  
21 N.W. 3rd Ave., Delray Beach, Fla.  
*General Science*

*Kappa Alpha Psi Fraternity; Vice President of Senior Class.*



# Nineteen Fifty-three



**IRMA YVONNE COOKE**  
60 Belmont Ave., Jersey City, N. J.  
*English*

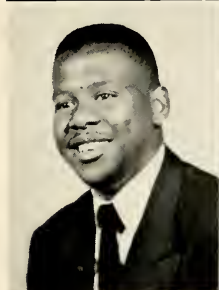
*"Make the most of what God has given you."*

University Choir 1951-53; Vogue Club; Student Christian Association Cabinet; Spanish Club; Debating Club; Delta Sigma Theta Sorority; Dramatic Guild; Freshman Reception Committee.

**JAMES FRANKLIN COOLEY**  
P. O. Box 411, Rowland, N. C.  
*Social Science*

*"Through many dangers, toils and snares, I have already come, 'tis' grace hath brought me safe thus far and grace will lead me on."*

German Club; Lampados Club; Omega Psi Phi Fraternity; Social Science Club; N.A.A.C.P.; Speech Club 1950.



**JAMES H. COSTEN**  
2717 N. 28th Ave., Omaha, Neb.  
*Social Science*

*"Always strive to know but apply knowledge with mother wit."*

President of Student Christian Association; Vice-President of Student Council; Vice-President of Junior Sunday School Class; President of the Interscholastic Council; Alpha Phi Alpha Fraternity; Alpha Kappa Mu Honor Society; University Student; Dramatics Guild; Rho Omicron Sigma Debators Club.

**NATALIE IOMIE COWAN**  
209 Mill Road, Charlotte, N. C.  
*Elementary Education*

*"Ideals are like stars—you will not succeed in touching them with your hand; but like the seafaring man you choose them as your guides, and following them, you will reach your destiny."*

Freshman Reception Committee 1951-52; Second Vice President of the Student Christian Association 1952-53; Pan-Hellenic Council 1951-52; President of Pyramid Club 1950-51; President of Delta Sigma Theta Sorority 1952-53; Future Teachers of America 1952-53; Associate Editor of *University Student* 1952-53; Student Council Representative 1950-53; N.A.A.C.P.; Dramatic Guild.



**CLOTE CLAUDETTE CRAWFORD**  
Box 504, Cary, Miss.  
*Social Science*

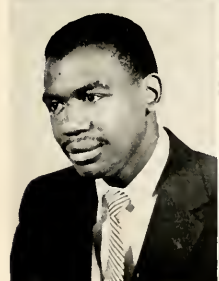
*"Look not mournful into the past; for it comes not back again. Wisely improve the present and go forth into the shadowy future, not for today, but for tomorrow, because tomorrow is forever."*

Student Christian Association; Ivy Leaf Club; History Club.

**RUBY LEE DAUGHERTY**  
Route 3, Box 114, Kinston, N. C.  
*Physical Education*

*"Give to the world the best that you have and the best will come back to you."*

Secretary of Vogue Club 1952-53; Student Christian Association; Attendant to Miss Vogue 1952-53; Creative Dance Group 1949-53; Cheering Squad 1950-52; Judicial Board 1952-53.



**WILLIAM HENRY DAVIS**  
2408 25th St., North Philadelphia, Pa.  
*History*

**GLORIA CONSTANCE DOUTHITT**  
1109 N. Highland Ave., Winston-Salem, N. C.  
*English and Psychology*

*"Beach for the moon and you may catch a star."*

University Student Staff 1949-53; Assistant Secretary of Junior Class 1951-52; "Miss Junior Class" 1951-52; Student Christian Association Cabinet 1951-52; French Club 1951-52; Secretary of the Society for the Study of Psychology; Reporter of Alpha Kappa Alpha Sorority 1952-53; Attendant to "Miss Alpha Phi Omega Fraternity" 1949-50.

# Senior Class

**AMOS HARRISON DUDLEY**  
1004 Bay St., Morehead City, N. C.

*Religious Education*

"Oh! What would I give to be a servant all my life to the man on the street, to the professor in the college. Life can be worth living."

President of Senior Sunday School; Vice President of Sophomore Student School; President Freshman Sunday School; Student Christian Association; Religious Club; Omega Psi Phi Fraternity.

**MARJORIE DELORES DUDLEY**  
408 Burn St., New Bern, N. C.

*English*

"Be not the first by whom the new is tried, nor yet the last to lay the old aside."

Freshman Secretary 1949-50; Lady-in-Waiting to Miss Johnson C. Smith 1949; Student Christian Association 1950-51; Reporter University Student 1950-51; "Miss Kappa Alpha Psi" 1950-51; Freshman Reception Committee 1950-52; Sophomore Secretary 1950-51; Assistant Secretary of Junior Class 1951-52; Secretary of Student Christian Association 1951-52; History Club; Epistulus of Alpha Kappa Alpha Sorority 1952-53.

**WALTER THEODORE DUNN, JR.**  
Route 1, Hookerton, N. C.

*Biology and General Science*

"To know one's limitations is a mark of wisdom, to rest content with them merits contempt."

Alpha Phi Omega Fraternity; German Club; Future Teachers of America; University Band; Sphinx Club; Student Christian Association; Photographers Club.

**MARGARET EDWARDS**  
Route 1, Box 114, Chesterfield, S. C.

**RUTH HILL ELY**  
707 E. 7th St., Charlotte, N. C.

*Elementary Education*

"Knowledge is power, hold it high; use it wisely."

Alpha Kappa Alpha Sorority; Ivy Leaf Club; N.A.A.C.P.; Future Teachers of America, Treasurer 1951-52.

**ERNEST EUGENE FAIR**  
1015 Ellis St., Winston-Salem, N. C.

*Social Science, Physical Education*

"Live humbly and unafraid, discipline your whole being to truth, right, mercy, and all such ideals and then achieve."

Dramatic Guild 1949-53; President 1952-53, Vice-President 1950-51; Student Christian Association Cabinet 1950-53; President 1951-52; Vice-President 1949-50; President of Sunday School 1950-52; Football 1949-53; Varsity "S" Club 1950-53; Representative at the Student Legislature 1950; Representative at Y.M.C.A. Student Council 1951-52; Representative to "Y" Conference 1951; German Club 1949-53; Intercollegiate Council 1950-53; Hazen Committee 1952-53; Lyceum Committee 1949-53; Parliamentarian of Class 1951-53; Business Manager of BULL 1952-53; Omega Psi Phi Fraternity 1950; Clan 1952-53.

**NARVIA DORIS FLACK**  
246 Gilly Ave., Big Stone Gap, Va.

*Social Science*

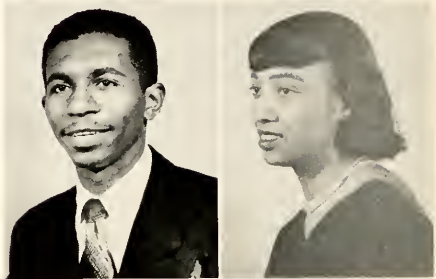
"It is better to remain silent and thought a fool than to speak and remove all doubt."

Student Council 1951-52; Judicial Board 1951-52; Spanish Club; Dramatic Guild; Secretary of the Press and Radio Club; President of the Ivy Leaf Club 1951-52; Alpha Kappa Alpha Sorority; Freshman Reception Committee 1952-53; Vogue Club; Photographers Club; Student Christian Association; University Choir; The P. K.'s Club.

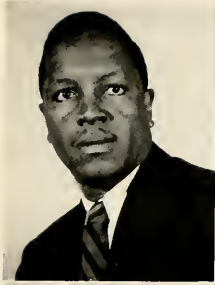
**SMITH GEORGE FLEAHING**  
202 S. Benedict Ave., Oak Ridge, Tenn.

*Physical Education*

Alpha Phi Alpha Fraternity; Track Team; Varsity "S" Club; University Band; Dramatic Guild; Photographers Club.



# Nineteen Fifty-three



**JAMES BENJAMIN FULTON**  
Route 1, Box 35, New Zion, S. C.

*Social Science*

*"Learn to do by doing."*

History Club; N.A.A.C.P.; Future Teachers of America.



**LOUILYN LOQUITA FUNDERBURK**  
407 Clinton Ave., Lancaster, S. C.

*Psychology, History, Social Science*

*"Choose your course with deliberation and preserve it firmly."*

Delta Sigma Theta Sorority; Alpha Kappa Mu Honor Society; Member of Hazen Foundation 1952-53; History Club; Psychology Club; Representative of State Student Legislature Assembly 1951-52; Attendant to Miss Homecoming 1952; Historian for Class of 1954; Journalist for Sorority; President of Judicial Board of Residence 1952-53; Freshman Reception Committee 1951-52.



**JOHNNIE MAE GAITHER**  
1601 Beattys Ford Road, Charlotte, N. C.

*Elementary Education*

*"Success is counted sweetest by those who ne'er succeed."*

Alpha Kappa Alpha Sorority; Choir 1951-52; Future Teachers of America 1951; Student Christian Association.



**ROBERT DONALD GARY**

1307 W. Broad St., Savannah, Ga.

*Mathematics*

*"A wise man will be master of his mind, a fool will be its slave."*

Alpha Phi Alpha Fraternity 1951-52, Vice President, Secretary; Sphinx Club 1950-51; Freshman Reception Committee 1951-52; Pan-Hellenic Council 1951-52; Student Christian Association; N.A.A.C.P.; Intramural Basketball; Treasurer Pan-Hellenic Council 1952-53; Clan.



**ALLEAN CARRIE GATSON**  
Box 61, Blackville, S. C.

*Elementary Education*

*"Look not mournful into the past, for it comes not back again. Wisely improve the present and go forth into the shadowy future, not for just today, but for tomorrow, because tomorrow is forever."*

Le Cercle Francais; History Club; Assistant Secretary N.A.A.C.P.; Future Teachers of America.

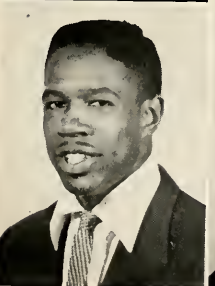


**DOLORES ELTON GRANT**  
595 Lincoln Park Drive, Cincinnati, Ohio

*Religious Education and Social Science*

*"To err is human; to forgive is divine."*

University Choir; Student Council Representative; Ivy Leaf Club Reporter; Alpha Kappa Alpha Sorority; Pan-Hellenic Council; Dramatic Guild Secretary; N.A.A.C.P.; Student Christian Association; Sunday School Secretary; "Miss Vogue Club."



**CHARLES H. GRAY**  
318 E. Tenth St., Wilmington, Del.

*Biology and General Science*

*"Immense have been preparations for me. Faithful and true have been the hands that have helped me."*

President of Student Council 1952-53; Alpha Phi Alpha Fraternity; Treasurer of Alpha Phi Alpha 1951-53; Sphinx Club; Football Team; Track Team; German Club.



**ERNESTINE SHERRILL HAILEY**  
127 N. Summit Ave., Charlotte, N. C.

*Social Science and Psychology*

*"All that I am and hope to be I owe to my dear mother."*

Spanish Club 1949-50; Future Teachers of America 1951; Student Christian Association; N.A.A.C.P. 1952.

# Senior Class

DOLORIS GENEVA HAWKINS  
Route 4, Box 194, Vienna, Va.

*Elementary Education*

*"Let no one tell you that life is too uncertain to plan. Hope for the best, prepare for the worst, take what comes."*

University Choir; Student Christian Association Cabinet; Freshman Reception Committee; Secretary of N.A.A.C.P.; Reporter of University Student; Club Editor of BULL; Future Teachers of America; "Miss Sphinx" 1949-50; Attendant to Miss Homecoming 1952-53; Sophomore Attendant to Mav Queen; Miss University Choir 1951-52; Alpha Kappa Alpha Sorority.



DORIS JUANITA HOLT  
8 High St., Martinsville, Va.

*Elementary Education*

AL JOLSON JARMAN  
725 Tower Hill Road, Kinston, N. C.

*Biology*

MARY ALBERTA JAUDON  
2410 Lee St., Brunswick, Ga.

*Social Science and Sociology*

*"A man's character is the reality of himself. His reputation is the opinion others have formed of him—character is in him, reputation is from other people—that is the substance that is the shadow."*

Assistant Secretary of Freshman Class; Lady-in-Waiting to Miss Johnson C. Smith 1949-50; Treasurer of Ivy Leaf Club; Alpha Kappa Alpha Sorority; Dramatic Guild 1949-53; Student Christian Association Cabinet 1952-53; Secretary of Pan-Hellenic Council 1952-53; BULL Staff; Usher 1951-52; Judicial Board 1952-53; Attendant to Miss Duke Hall 1951; Debating Club 1952-53.



THOMAS TIMOTHY JEFFERSON, JR.  
304 N. Woodland Ave., Winston-Salem, N. C.

*Economics*

*"Mental power cannot be gotten from ill-fed brains."*

Dramatic Guild; Treasurer Junior Class; President Lampados Club 1950-51; Omega Psi Phi 1951; Basileus of Omega Psi Phi Fraternity 1952-53; Student Council 1952-53; Student Legislative Assembly 1951-52; Student Christian Association; N.A.A.C.P.; BULL Staff 1953; Clan 1952-53; Vice President of Student Christian Association 1951-52; Pan-Hellenic Council 1951-52; Treasurer Senior Class 1952-53; Treasurer of Student Council 1952-53.



ANNETTE THERESA JOINSON  
2215 Douglas St., Charlotte, N. C.

BETTYE JEAN JOHNSON  
Route 1, Box 283, Kannapolis, N. C.

*Elementary Education*

*"All that I am and hope to be I owe to my darling parents."*

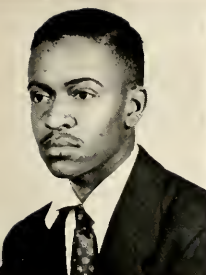
Dramatic Guild 1950-53; Cheerleader 1950-53; Creative Dance Group 1951-52; University Choir 1950-51; Student Christian Association; N.A.A.C.P.; Future Teachers of America 1952-53; French Club 1951-53.



WILLIAM MCKINLEY JONES  
P. O. Box 361, Spray, N. C.

*Biology*

# Nineteen Fifty-three



WILLIAM RICHARD JONES  
2439-A Statesville Ave., Charlotte, N. C.  
*Economics*

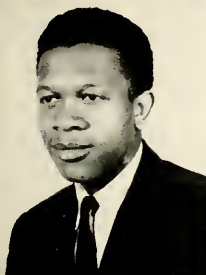
*"Tis not so bad as to fall on your face, but to lie there, that's disgrace."*

N.A.A.C.P.; Dramatic Guild 1951-52 Student Christian Association; The Clan 1952-53; Lampados Club 1950-51; French Club 1950-51; Manager of Football Team 1951-53; Dance Group 1951-52.

BETTY JOSEPHINE JORDAN  
Route 3, Box 95-B, Charlotte, N. C.  
*French and English*

*"On N'aurait jamais honteux de confesser qu'il a ete en deuit que dit en autres mots qu'il est plus sage aujourd' lui qu'il etait hier."*

La Journaliste du Cercle Francais 1953; Student Christian Association; N.A.A.C.P.



THOMAS ELLIOTT KERNS  
8 Nelson St., Greenville, S. C.  
*French*

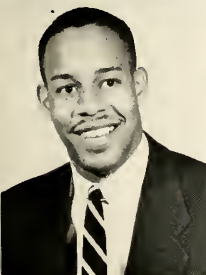
*"Il N' ya pas de fumee sans feu."*

Omega Psi Phi Fraternity; Chairman of the Program Committee of Le Cercle Francais; Smith Hall Men's Council; University Band; Clan 1952-53.

BETHEDA PANSY KING  
P. O. Box 425, Rowland, N. C.  
*French*

*"To err is human, to forgive is divine."*

Treasurer of French Circle 1952-53; Vogue Club Vice-President 1952-53; Student Christian Association; Assistant Secretary of History Club 1952-53; Alpha Kappa Alpha Sorority 1951-53.



LOUIS GEORGE KING  
3387 Webster Ave., Pittsburgh, Pa.  
*Mathematics*

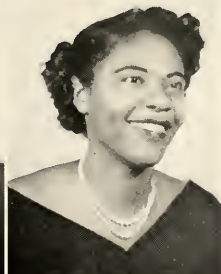
*"All that I am and all that I hope to be I owe to my parents."*

Football Team 1949-51; Varsity "S" Club 1950-53; Chairman of Mathematics Club 1952-53; Chairman of Prom Committee 1952; Co-Editor 1953 BULL; Art Editor of BULL 1951-52; Chaplain of Alpha Phi Alpha Fraternity 1951-52; President of Alpha Phi Alpha Fraternity 1952-53; Clan 1952-53.

HARRIETT LEHMAN LEWIS  
Route 1, Box 107, Millen, Ga.  
*Social Science*

*"Be yourself today, tomorrow and every day."*

Student Christian Association; Vogue Club; Junior Counselor 1951-52; History Club.



MOLLIE BRENDA LOWE  
2220 Davis Ave., Charlotte, N. C.  
*Social Science*

MABEL FRANCES McADAMS  
Box 131, Donalds, S. C.  
*French*

*"On N'est jamais si heureux ni si malheureux qu'on S' imagine."*

Student Christian Association; Choir 1949-50; Le Cercle Francais 1950-53; History Club 1953; Vogue Club 1951-52; Psychology Club 1949; Pyramid Club 1949-50; Delta Sigma Theta Sorority 1951-53; Intramural Basketball 1949.

# Senior Class

FRANCIS WILLIAM McCOWAN  
7420 Susquehanna St., Pittsburgh, Pa.

Biology

*"Love of God and man should be the melody note of everyone's scale of life."*

University Band; Omega Psi Phi; Secretary of Lampadus Club 1950; Student Council 1950-51; President of Band 1951-53; Vogue Club; Cheerleader 1949; Dramatic Guild; N.A.A.C.P.

JAMES ALFRED MCDANIEL  
756 Saxon St., Memphis, Tenn.

Sociology

*"Too many itch for something they are too lazy to scratch for."*

President of Sigma Rho Sigma Honor Society; President of Debators Club; Vogue Club; Student Christian Association.

LOTHELL YDEAR McLURKIN  
319 Solomon St., Charlotte, N. C.

Elementary Education

*"When you reach the heart of life you shall find beauty in all things, even in the eyes that are blind to beauty."*

N.A.A.C.P.; Future Teachers of America; French Club; History Club.

DOROTHY LOUISE McNEELY  
P. O. Box 812, Millen, Ga.

English

*"Associate yourself with men of good quality if you esteem your own reputation; for it is better to be alone than in bad company."*

French Club 1949-50; University Choir 1949; Dramatic Guild; Student Christian Association; Anti-Basileus of Alpha Kappa Alpha Sorority 1952-53; Intramural Basketball; Bull Staff 1952-53; Pan-Hellenic Council 1952; Ivy Leaf Club 1949; Cheerleader 1950; Attendant to "Miss Duke Hall" 1952; Basileus of Alpha Kappa Alpha Sorority 1952-53.

BERNICE McQUAIGE  
Rowland, N. C.

French and History

*"What lies behind us and what lies before us are tiny matters compared to what lies within us."*

University Choir 1949-51; Secretary of Pyramid Club 1950; Custodian of Delta Sigma Theta Sorority; Secretary Le Cercle Francais 1952-53; History Club.

RUTH ADA McRAE  
200 Harvard Ave., Stamford, Conn.

Social Science

*"The success of tomorrow depends upon the preparations we make today."*

Vogue Club 1951-53; History Club 1952-53; Vice-President of Spanish Club 1949-50; Student Christian Association.

WILMA LOUISE MANNING  
330 S. Marshall St., Graham, N. C.

General Science

*"He who does not look forward falls backward."*

Alpha Kappa Alpha Sorority; Vogue Club; Student Christian Association; French Club 1949-50; "Miss Junior Sunday School"; Vice-President of Ivy Leaf Club 1950.

ESTELLE TERRIES MARTIN  
1408 N. Hunter St., Charlotte, N. C.

Sociology

*"I've crossed the bay. The ocean lies before me."*

Future Teachers of America; Choir 1951-52; Vogue Club.



# Nineteen Fifty-three



EVELYN BRENT MARTIN  
1408 N. Hunter St., Charlotte, N. C.  
Social Science

*"The reward of a thing well done, is to have done it."*  
Choir; Future Teachers of America.

BESSIE RUTH MASSEY  
807 Third St., Monroe, N. C.  
Elementary Education

*"Our grand business is not to see what lies dimly at a distance, but to do what lies clearly at hand."*  
Future Teachers of America; Student Christian Association.



THOMAS DANIEL MATTOCKS  
616 S. Adkin St., Kinston, N. C.  
Social Science and Economics

*"To love vehemently, to live constructively, to think seriously and to have faith in God—for these things I wish."*  
History Club; Lampados Club; Omega Psi Phi Fraternity; Trainer of Football Team; Statistician of Football Team; Spanish Club.

WILLIAM THEODORE MORRISON, JR.  
Box 130, Woodleaf, N. C.  
Social Science

*"Character is a diamond that scratches any surface."*  
Alpha Phi Omega Service Fraternity.



CHARLES EDWARD MOTLEY  
3046 N. 16th St., Philadelphia, Pa.  
Economics

LENORA MALINDA NAPPER  
Route 2, Box 36, Ridgeway, Va.  
Social Science

*"The virtue lies in the struggle, not the prize."*  
French Club; N.A.A.C.P.; History Club; Future Teachers of America; Student Christian Association.



ROY PORTER PATTERSON  
308 Stonewall St., Lenoir, N. C.  
Biology

JACQUELINE ANITA PHARR  
626 S. Graham St., Charlotte, N. C.  
Biology

*"Our greatest glory consists not in never falling but in rising every time we fall."*  
Dance Group 1949; Student Christian Association; French Club; Alpha Kappa Alpha Sorority.

# Senior Class

JO ANNE PHEANIOUS  
Route 1, Box 111, Swainsboro, Ga.  
English

*"Individuality—a mark of distinction."*

President of Alpha Kappa Mu Honor Society 1952-53; Co-Chairman Judicial Board 1952-53; Pan-Hellenic Council 1952-53; Debating Club 1952-53.

LOTESS PRIESTLY  
1916 Renner St., Charlotte, N. C.  
History

THELMA ROBINSON PRUITT  
2315 Celia Ave., Charlotte, N. C.  
Elementary Education

*"Family, friends, faith, hope, and love, to these I owe the success of all my accomplishments."*

Future Teachers of America 1951-53; Correspondence Secretary 1953; Aurora Pledge Club 1952, President; Junior Prize Contest 1952; Dramatic Guild 1952-53.

DAVID LEE PUGH  
Route 3, Box E-32, Oxford, N. C.  
Physical Education

*"I've crossed the bay, the ocean lies before me."*

Varsity "S" Club; Football Team; Track; Field Team; Smith Hall Council; N.A.A.C.P.

LOYL WORTH QUINN  
513 W. Norman St., Gastonia, N. C.  
Mathematics

*"Unsound minds, like unsound bodies, if you feed you poison."*

Vice President Junior Class 1951-52; President of Senior Class 1952-53; K.R.S. of Omega Psi Phi Fraternity 1951-53; Track 1952; Intramural Basketball 1950-51; President of Mathematics Club.

LAVERNE MAGGEREE REEVES  
306 Loudon St., Lynchburg, Va.  
English

*"Education gives power; hence it is a blessing or a curse, according to how we use it."*

Dean of Pledges of Alpha Kappa Alpha Sorority 1952-53; Assistant Secretary of Vogue Club 1952-53; Lyceum Committee 1950-53; Dramatic Guild 1950-53; French Club 1950-53; Junior Counselor 1951-52; Ivy Leaf Club 1950.

HELEN ROBBINS  
404 Wilson St., Shelby, N. C.  
Elementary Education

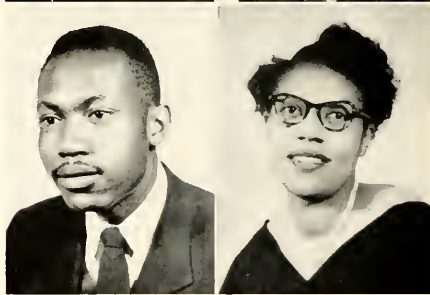
*"The road to success is narrow, long and crooked, but I will never stop until I reach my destination which shows the sign of success."*

Future Teachers of America; Le Cercle Francais Club; N.A.A.C.P.; Dramatic Guild; Student Christian Association; University Choir.

JEAN ELAINE ROBERSON  
430 Raleigh Road, Rocky Mount, N. C.  
French

*"Look not mournful into the past; for it comes not back again. Wisely improve the present and go forth into the shadowy future, not for just today, but for tomorrow, because tomorrow is forever."*

Ivy Leaf Club Secretary 1949-50; Alpha Kappa Alpha Anti-Basilisus 1952-53; Vogue Club Secretary; French Club, President 1952-53; Sweetheart of Kappa Alpha Psi Fraternity; Student Christian Association Secretary 1952-53; Freshman Reception Committee; Secretary of Junior Class; Secretary of Senior Class.





# Nineteen Fifty-three



IVAN ULRICH SAMPSON  
1723 Saxton St., Knoxville, Tenn.  
*Biology*

BESSIE L. SIGLER  
222 N. Myers St., Charlotte, N. C.  
*Elementary Education*

*"Our doubts are traitors and make us lose the good we oft might win by fearing to attempt."*

Delta Sigma Theta Sorority; May Queen 1950-51; "Miss Johnson C. Smith" 1951-52; Sweetheart of Omega Psi Phi Fraternity 1952-53; President of Future Teachers of America 1952-53.



HELEN VERONICA SIMMONS  
5 Frances St., Walterboro, S. C.  
*Elementary Education*

*"If someday they say to me that my work and I have contributed something to the welfare and happiness of mankind, I shall be satisfied."*

Spanish Club; Dramatic Guild; Cheering Squad 1951-53; "Miss Duke Hall" 1951-52; University Choir 1949-53; Vogue Club; Future Teachers of America; Student Christian Association.



MARGARET LILLIAN SMITH  
Route 1, Box 108, Angelus, S. C.  
*Elementary Education*

*"If the elevator to success is not running take the stairway."*

Future Teachers of America; Student Christian Association; N.A.A.C.P.



BAXTER SMOOT  
Box 83, Mocksville, N. C.  
*Elementary Education*

*"Oaks may fall while reeds brave the storm."*

Alpha Phi Omega Service Fraternity; Treasurer 1951-53; University Choir, President 1952-53; University Male Chorus, Treasurer 1952; Future Teachers of America; Student Christian Association.

CLAUDIA CELESTINE SMOOT  
Route 2, Box 190, Cheraw, S. C.  
*Elementary Education*

MARY MERLENE STEELE  
236 Hilltop Ave., Concord, N. C.  
*Elementary Education*

*"The battle is not given to the swiftest but to the one that endureth to the end."*

University Choir 1950-53; French Club 1950-52; Future Teachers of America; Student Christian Association; Senior Judicial Board 1952-53.

# Senior Class

**ROBERT E. STEELE**  
Route 1, Box 3, Raeford, N. C.  
Mathematics

*"There is no victory without labor."*

**COLONEL WESLEY SUTTON**  
1008 Reed St., Kinston, N. C.  
Social Science

*"Guidance of God, parents and common sense is the best solution to any problem."*

Omega Psi Phi Fraternity 1952-53; Chaplain of Alpha Phi Omega Service Fraternity 1950; Assistant Teacher of Freshman Sunday School 1949; Reporter of University Student 1950-53; Football Team 1951-52; Treasurer of History Club 1951; Student Christian Association 1949-53; Dramatic Guild 1949-53.

**LILLIAN JEANETTE TATE**  
850 N. Grant St., Manly, Iowa  
Sociology and Social Science

*"The beauty in life is what you make it."*

Alpha Kappa Alpha Sorority 1951-53; Typist of University Bull 1951-52; Typist of University Student 1950-51; Secretary of University Bull 1952-53; Student Christian Association 1949-53; French Club 1949-50; Sweetheart of Alpha Phi Alpha Fraternity 1952-53; Creative Dance Group 1951; University Band; Prom Committee 1952; Lady-in-Waiting 1950-51.

**RODERICK TAYLOR**  
607 E. Green St., Wilson, N. C.  
Elementary Education

*"Live as though you are going to die tonight; work as though you are going to live forever."*

Spanish Club 1949-50; University Choir 1950-52; Future Teachers of America 1950-51; Treasurer 1952-53; President of Scrollers Club 1952-53; Dramatic Club 1952-53; J. A. Grimes Philharmonic 1950-51; University Male Glee Club 1951-52; Student Christian Association 1949-53; Alpha Phi Omega Service Fraternity 1950-51, Secretary 1952-53.

**TRUSSIE WILLIAM TAYLOR**  
Route 3, Box 218, Maxton, N. C.  
Social Science

*"All that I am or hope to be I owe to my darling mother."*

University Band; Alpha Phi Omega Service Fraternity; Smith Hall Men's Council; German Club.

**CLARENCE TURNER**  
Box 237, Andersonville, N. C.  
Physical Education

*"Yesterday this day's madness did prepare; tomorrow's silence triumph or despair; Drink! For you know not where you come nor why; Drink! for you know not why you go nor where."*

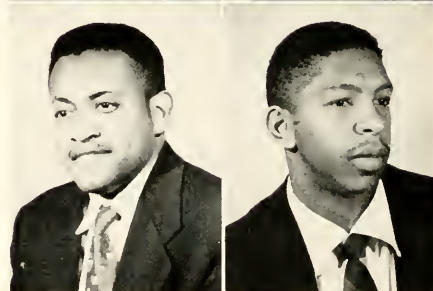
Alpha Phi Alpha Fraternity; Varsity "S" Club; Basketball; Football; Smith Hall's Council.

**JOHN M. WADE**  
1017 Druid Circle, Charlotte, N. C.  
Elementary Education

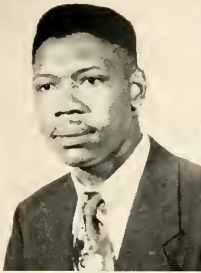
**LESTER JEAN WADE**  
Box 432, Rowland, N. C.  
Mathematics

*"All that I am and hope to be I owe it to my dear mother and father."*

German Club 1950-51; Sphinx Club 1950-51.



# Nineteen Fifty-three

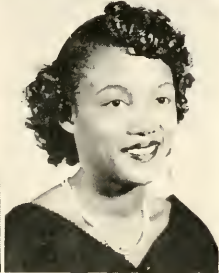
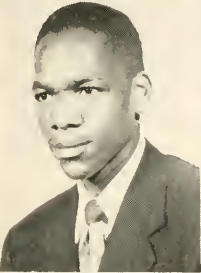


WYLIE SPENCER WALKER  
Catawba, S. C.  
*Social Science*

BENJAMIN ORESTES WATKINS  
468 Gay St., Danville, Va.  
*Biology*

German Club 1949-51; Basketball 1949-53; Varsity "S" Club 1950-53; Omega Psi Phi Fraternity 1951-53; BULL Staff 1952-53.

GEORGE RICHARD WHITE  
4 Oakland Ave., Boston, Mass.  
*General Science*  
*"No man can serve two masters."*



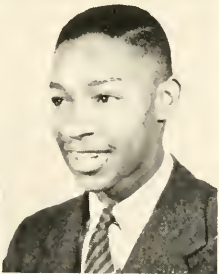
HELEN WHITE  
1642 Washington Ave., Charlotte, N. C.  
*Elementary Education and Physical Education*  
*"It is a pity how much we have to learn before we realize how little we know."*

Future Teachers of America.

BARBARA TICE WILLIAMS  
927 South St., Norfolk, Va.  
*Biology and General Science*

*"There is no short cut. But to one who has patience the end is well worth the journey."*

University Choir; University Band; President Pyramid Club 1951-52; German Club Queen 1951-52; Student Christian Association; Delta Sigma Theta Sorority; Freshman Reception Committee 1952-53; Student Council Representative 1952-53.



FRANK AMOS WILLIAMS  
106 Cherry St., Seneca, S. C.  
*Biology and General Science*

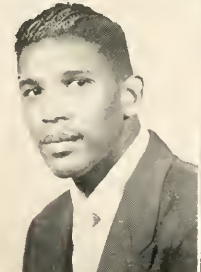
*"The moving finger writes; and having written moves on; now all your piety nor wit shall lure it back to cancel half a line, nor all your tears wash out a word of it."*

Omega Psi Phi Fraternity; Varsity "S" Club; Manager of the Football and Basketball Teams; Student Representative to Athletic Board of Control; Student Christian Association; N.A.A.C.P.; Smith Hall's Council.

HOWARD WILLIAMS  
274 High St., Hackensack, N. J.  
*Social Science*

*"Equality which knitteth friends to friends, cities to cities, allies unto allies, man's law of nature is equality."*

Omega Psi Phi Fraternity; Vice-President of History Club.



MARY ELIZABETH WILLIAMS  
331 Mill Road, Charlotte, N. C.  
*Elementary Education*

*"I shall pass this way but once, any good, therefore, that I can do, or any kindness that I can show to any human being let me do it now, let me not neglect nor defer it, for I shall not pass this way again."*

Treasurer of Pyramid Club 1950-51; Delta Sigma Theta Sorority 1951-53; Spanish Club 1949-50; Student Christian Association Cabinet 1951-52; Dramatic Guild 1951-53; Future Teachers of America Secretary 1952-53; Pan-Hellenic Council 1952-53.

# JUNIOR CLASS



## OFFICERS

KENNETH WILLIAMS

ELLEN MARTIN

ALDORA SAUNDERS

JOHN SLIGH

JAMES HAGENS

MARCELLUS PENN

*President*

*Vice-President*

*Secretary*

*Treasurer*

*Reporter*

*Parliamentarian*



ALEXANDER, SADIE MAMIE  
 ALFRED, WILLIE  
 ALLISON, PECOLA L.  
 AMOS, DOUGLAS  
 ANDERSON, LEON ROBERT, JR.  
 ARNETTE, JESSE THOMAS

CLINKSCALE, JANIE WILMA  
 CRAINE, MAUDE LEE  
 CRAWFORD, COLUMBUS  
 CREWS, ESTHER E.  
 CUNNINGHAM, ROY PHILLIP  
 CURRENCE, GWENDOLYN L.

ARNOLD, IRENE  
 BABBS, ROBERT LEON  
 BABCOCK, DAVID HAROLD  
 BAGBY, THELMA  
 BLOUNT, HORACE  
 BRISTER, RUTH ANDERA

DAVIDSON, ROSELLA IDEANIA  
 DAVIS, HILLIS DWIGHT  
 DAVIS, JEAN HERTENCE  
 DAWSON, LENA MILLS  
 EVANS, ERNEST THOMAS  
 EVANS, SARAH LOUISE

BROWN, NELL  
 CAMPBELL, SOPHRONIA P.  
 CHAPMAN, ESTHER ALEARS  
 CHILDERS, MARY LOUISE  
 CLEMMONS, WILLIAM JEWEL  
 CLEMONS, RAMEY BEATRICE

FAIR, KARENE SADALIA  
 FITE, CAROLIE GRAY  
 FORD, JAMES RUFUS

# J U N I O R S



FRANCIS, CATHERINE L.  
 FUNDERBURKE, GARNES O.  
 FUNDERBURKE, WALTER LEE  
 GARY, LELA M.  
 GORDAN, THELMA RUTH  
 GRIFFIN, JAMES MONROE

KNIGHT, WILLIAM HOWARD  
 LEAKE, FRANKLIN NEBRASKA  
 LEDBETTER, DOROTHY LOUISE  
 LENNON, CLARENCE EUGENE  
 LEVANT, BEAONIA CHARLOTT  
 LIGHTY, ALONZO ARNOLD

HAGANS, JAMES O.  
 HAIRSTON, JOHN ODELL  
 HAMPTON, JAMES RAYFORD  
 HARRISON, ROBERT LEWIS  
 HAWKINS, MARGARET M.  
 HENRY, ELMO RICHARD, JR.

McCLAIN, JOHNNIE MAE  
 McDONNELL, HENRIETTA I.  
 McILWAIN, MAX B.  
 McHILLAN, MARY ALTONELLE  
 McNEILL, RUFFIN HORNE  
 McRAE, CHARLES CLIFTON

HOLLAND, HIRAM  
 HOWELL, CHARLES E.  
 HUNT, IDA LETITIA  
 HUNT, RALPH ALEXANDER  
 HUNTER, WRIGHT, JR.  
 KING, EDWARD

MARSHALL, WYLMA G. YVONNE  
 MARTIN, BEATRICE  
 MARTIN, ELLEN JEAN

# J U N I O R S



MASSEY, JOHN  
 MAXWELL, BERTHA LYONS  
 MILLER, ANNIE MARGARET  
 MITCHELL, BILLIE MARIE  
 MORGAN, CHARLES LEROY  
 PAGE, THORNELL KENLY

ROBERSON, PANSIE  
 SANDERS, ALDORA ANITA  
 SLIGH, JOHN LEON, JR.  
 SMITH, BESSIE LILLIAN  
 STEEDE, ROBERT EARL  
 STEPHENS, BETSY R.

PARKER, MAMIE DOROTHY  
 PAYNE, JAMES HASKER  
 PENN, MARCELLUS HAROLD  
 PETTY, HOWARD CRAWFORD  
 PITTMAN, SAMMIE LEE  
 RAPHAEL, BETTYE JANE

STEWARD, ARRILLA RACHEL  
 TALBERT, BILLY CALVIN  
 TRUESDELL, HELENA JOSEPHINE  
 TURNER, LOUISE  
 WASHINGTON, GENERAL  
 WILLIAMS, KENNETH MAURICE

RATCLIFFE, CARL  
 RAY, BETTYE JEAN  
 RAY, ROBERT C.  
 REDDING, FLORA MARIE  
 REYNOLDS, AZALIA ROBERTA  
 RIGGSBEE, CLEMENTINE M.

WOODARD, JOHNNYE MARIE  
 WRIGHT, ROBERT CORNELIUS  
 YONGUE, MILDRED CATHERINE

# J U N I O R S

# S O P H O M O R E S

Adderley, Cecil Leopole, Jr.	Evans, Matthew	Mecheux, Doris Ella
Aikens, Elizabeth	Ferguson, Willie Columbus	Medford, Jacquelyn LaVerne
Allen, Eugene Rogers	Fontaine, Gerva Argatha	Miles, Leon Julius
Allen, Samuel Lee	Foster, Telezee Littlejohn	Mitchell, Richard
Anderson, Annie Eulia	Gaither, Willie Ruth	Moore, Jesse Lee
Antrum, Myrtle Elizabeth	Gladden, Quincy Adams	Morrison, Josephine
Avery, Charles Edward	Greene, Essie Lee	Nabinet, Samuel K.
Bagby, Felix William, Jr.	Greene, Mildred Gloria	Nash, Joan Lilly
Barber, Dorothy Lee	Guthrie, Booker T.	Neal, Margaret Ellen
Barber, Willie	Hagwood, Stafford	Nicholson, Geneva
Barnette, Sadie Lee	Hailey, Mable Clara	Odom, Roosevelt Delano
Bellinger, Luther Garic	Harris, Emily Blanche	Petticc, Elizabeth
Birtha, Lorese	Hemphill, Bennie Anderson	Plummer, Harriet Ann
Blakeney, Videlia Smith	Houston, James Henry	Pointer, Louis Waylon
Blue, Gwendoln Yvonne	Howard, Gloria Ann	Quick, Angela Janet
Bridgers, Howard C.	Humes, Simeon, Jr.	Ramseur, James
Brogden, Nell Bessie	Imcs, Daniel Lenton	Reid, Paul Gaither
Brown, Aileen	Ingram, Delores Costello	Rhodes, Thad, Jr.
Brown, Alfred Alexander	Jackson, Evelyn Mamie	Richmond, Albert
Brown, Billie Estelle	Jackson, Jessie Mae	Roddy, Dorothy Elizabeth
Burns, Thomas Samuel	Jackson, Lunella Mae	Roscboro, Benjamin Moore, Jr.
Cabiness, Vance R.	Johnson, Grace Joan	Rountree, Lillian
Camp, Feb	Johnson, James Henry	Satterwhite, Odessa Agnes
Cauthen, Etta Mae	Johnson, Margaret Edmonia	Saunders, Claude Edward
Cherry, Minnie	Johnson, Rosa Mae	Schell, Nathaniel, Jr.
Cokley, Janie B.	Johnson, Waddell	Simmons, Cleophus
Conley, Thomas Lee	Jones, Emma Doris	Smoot, Margaret Louise
Cook, David Berry	Joyner, Rosa Lee	Spaulding, Walter Benjamin
Cowan, Talmadge Vashti	King, Ellen Louise	Stitt, Wilbert
Cureton, Artie Lee	Knox, Gladys Louise	Talford, Mary Madglene
Curry, Charlie Lorenza	Leverett, Ulysses Simpson	Torrence, Rudolph
Daniel, Wendell Alexander	Levingston, Ora Mae	Tyson, Laura Jean
Davidson, Mack Lee	McCombs, John Excell	Vincent, James McKinley
Davidson, Mildred Lucille	McKenzie, James	Walker, Janetta Lucille
Dockery, Elaine Jeannette	McMillan, Mattie Darcus	Walker, Willie Alexander
Dogan, Barbara Constance	McNeill, Charles Donald	Wallace, Robert, Jr.
Eily, Henry	McPherson, Eva Olivia	Washington, Sarah L.
Ellis, Hazel Edward	McQueen, Sarah Catherine	Wilkins, Betty Jo
Eng, Mary Elizabeth	Martin, Edward Van	Wright, Margaret Elizabeth
	Massey, John Willie	





# F R E S H M E N

ABRAHAM, PECOLA  
 ADAMS, EARNEST  
 ADAMS, JAMES NAPOLEON  
 ALLEN, BETTY FAYE  
 ALLEN, DOROTHY LEA  
 ALLEN, ETHEL THERESA  
 ALLISON, PRESTON RAYMOND  
 ALLMOND, ELLA FRANCES SMITH  
 ALSTON, PEARLEASE ELLAMAE  
 ANDREWS, DONALD  
 ARCHIE, MILDRED MAE  
 BAILEY, VELMA ARMETRICE  
 BARNETT, ORA BESS  
 BETHEA, JULIUS EVERETTE  
 BETHEA, RUTH  
 BIBBY, JOHN WILLIAM  
 BLANKS, ROBERT LEE  
 BLIGEN, ROBERT EARNEST  
 BROADUS, LEE GREE  
 BROWN, GLORIA JEAN  
 BROWN, JAMES WALTER  
 BROWN, ODESSA CORINE  
 BRYAN, THOMAS JACKSON  
 BURCH, GENEVA  
 BURNS, SARAH LOUISE  
 CABINNESS, ROSE MARIE  
 CALDWELL, HATTIE LANE  
 CARDWELL, DWIGHT MAURICE  
 CARROLL, MILDRED MALISSIA  
 CARTER, THELMA HORTENSE  
 CASEY, DELANEY ELIAS  
 CHAMBERS, KELLY JAMES  
 CHAPMAN, SALLIE ANN  
 CLARK, NANCY VIRGINIA  
 CLEMENTS, MAMIE ELIZABETH  
 CLYBURN, THOMAS GLENN, JR.  
 COCHRANE, SYLVESTER W.  
 COLEMAN, WILLIE JAMES  
 COOK, ERNESTINE C.  
 COOPER, BESSIE LOUISE  
 CRAWFORD, BARBARA  
 CROMER, CHARLES TIMOTHY, JR.  
 CROSBY, BOBBIE JEAN  
 CUNNINGHAM, WILLIAM  
 CURRY, JANIE LEE  
 DAVIS, FRANCES PRIOLEAU  
 DAVIS, GUY ARTHUR, JR.  
 DAVIS, JAMES EDWARD  
 DAVIS, MILLIE REJINA  
 DAVIS, VARDRINE  
 DAWSON, WALTER LEE  
 DELOATCH, CAROL MARLENE  
 DOCKERY, MURIEL LUCILLE  
 DONALD, CHARLES PRICE  
 DORSEY, MARY ELIZABETH  
 DOUGLAS, ANNIE CLARA  
 DURANT, ALICE RUTH  
 ENSLEY, PEGGY MARIE  
 ERWIN, ROLAND EUGENE  
 FARMER, JAMES EDWARD, JR.  
 FARMER, JAMES HOWARD  
 FAULKNER, JESSE EDWARD  
 FLEMING, NELLIE MARGARET  
 FRASIER, DORIS ALETHIA  
 FLOOD, MARGARET RUBY  
 FORBES, REATHIER MADELENE  
 FORD, SARAH DELL  
 FORTUNE, JOE HARRISON  
 FUNDERBURK, ANGELIA ALMERIA  
 FUNDERBURK, CRAVEN  
 GAMBLE, FRANCES  
 GARRISON, CAROLYN VIRGINIA  
 GASTON, WOODIE MAE  
 GERMAN, MILDRED LOUISE  
 GIBSON, LAURA JOSEPHINE  
 GRAHAM, BESSIE LEE  
 GRAVES, EDWARD  
 HALLUMS, BETTY FAYE  
 HARDISON, MILLON R.  
 HARDISON, MILTON F.  
 HARRIS, ALTHIA PATRICIA  
 HARRIS, BENJAMIN AMOS  
 HARRIS, DWAIN MILTON  
 HARRIS, WILLIAM CHARLES  
 HAYES, ROBERT  
 HERRON, RUBY ELEREE  
 HILL, ALICE ELIZABETH  
 HILL, CARRIE WYNONA  
 HILL, LONNIE B.  
 HINTON, SYLVESTER L.  
 HODGES, MARION YVONNE  
 HOLMAN, THELMA DELORIS  
 HOLT, HAROLD  
 HUGHES, ARCHIE CLINTON  
 HUMPHREY, LULANN  
 HUSTONA, PEDRO SANTIAGO  
 INGRAM, JAMES LOUIS  
 JACKSON, FRANCES RUTH  
 JAGGERS, DELLA MAE  
 JAMES, HETTIE MAE  
 JOHNSON, EVA MAE  
 JOHNSON, HERMAN LOUIS  
 JONES, CASSIE MAE  
 JONES, CRAWFORD JAMES  
 JUNIOUS, ROSEBUD  
 KILGORE, FRANKLIN DELANO  
 KIMBALL, VIVIAN ROSE  
 KORNEGAY, SAMUEL HOWARD  
 LATIMER, WILBUR OTTO  
 LEDBETTER, PAUL LOUIS  
 LEE, NIOLA JEAN  
 LEE, WILLIAM JOSEPH  
 LONG, MARTHA ELIZABETH  
 LONG, NATHAN, JR.  
 LOVE, JANE ELIZABETH  
 LUMSDEN, JAMES ERSKIN  
 LYLES, GLORIA HARTWELL  
 MCCOY, FLORENCE WILMA  
 MCCULLOUGH, EMMA LOUISE  
 MCDUGALD, RAYMOND A.  
 MCDUFFIE, WILLIAM ALLEN  
 MCFADDEN, ADELLE  
 MCFARLEY, NELSON, JR.  
 MCGILL, SUSIE MARY  
 MCLWAIN, ROY CALVIN  
 MCKENZIE, CHARLES WILLIAMS  
 MCLEAN, STELLA EVELYN  
 MCNAIR, PETER ALFORD  
 MANGUM, LUCILLE LEE  
 MARSHALL, ROSA MAE  
 MASON, VIRGINIA  
 MASSEY, SHIRLEY ETHRIDGE  
 MATTHEWS, THOMAS T., JR.  
 MEANS, LOVETTE PAUL  
 MEDFORD, BARBARA MARIE  
 MITCHELL, WILTON WAUGH  
 MOFFETT, LULA MAE  
 MOSES, THEODORE ALBERT  
 NEELY, ROSA RHUNETTE  
 NELSON, JULIA MAE  
 NIXON, BARBARA JEAN  
 PAGE, WILHELMINA GAYRETHA  
 PARTLOW, WILLIAM EDWARD  
 PATTERSON, OLIVER H. A.  
 PATTON, EILEEN LENORA  
 PETTICE, JOHN ANTHONY  
 PIERCE, ALVIN ROOSEVELT  
 PITTS, JULIA PEARL  
 PRIESTLEY, OCTAVIA LEAH  
 RENWICK, HAYDEN BENTLEY  
 RHYNE, ABEL LESTER  
 ROBINSON, ARLENE JENNIFER  
 ROBINSON, MARGUERITE E.  
 RODGERS, WILLIAM EARL  
 ROGERS, JEANNE  
 ROWE, ERNESTINE  
 ROYSTER, MARY ELLA  
 RUSSELL, AUDREY JEAN  
 RUSSELL, SAMUEL, JR.  
 SEGEARS, DAISY ANNIE MAE  
 SETZER, GEORGE RAY  
 SHARPE, MOSES  
 SHROPSHIRE, DORETHA ANNETTE  
 SIMMONS, EARL  
 SMITH, BUNNY ELLA MAE  
 SMITH, PAULINE ELIZABETH  
 SMITH, WILLIE A. WILSON  
 STAFFORD, HATTIE LEE  
 STATON, JAMES C.  
 STATON, SARAH MARGARET  
 STEPHENS, IRIE ENGLISH  
 STEVENS, DORIS JEAN  
 STEVENSON, SALLIE FRANCES  
 STINSON, DOROTHY LOUISE  
 STOKES, JAMES HENRY  
 STRONG, EDNA ANN  
 STROUD, TAYLORA LANISE  
 SUDDITH, DOUGLAS GWYN  
 TALFORD, ETTA FRANCES  
 TANNER, HELEN  
 TAYLOR, BEATRICE  
 THOMAS, MARGARET MARIE  
 THOMPSON, MORDECAI WELDON  
 TRUESDALE, RUTH ANN  
 WALKER, ROBBY EVELYN  
 WALKER, MILDRED SMITH  
 WASHINGTON, JOSIAH REID  
 WATRINS, LEON CARR  
 WAY, MABLE  
 WELLS, ROBERT ALAN  
 WHITE, EVELYN ELIZABETH  
 WIDEMAN, JUANITA SOPHIA  
 WILLIAMS, JEROME NATHANIEL  
 WILLIAMS, LAVERNE  
 WILLIAMS, SHIRLEY THEORA  
 WILLIAMS, WALTER  
 WILLISTON, FRED DOUGLAS  
 WILSON, FRANKLIN DELANO  
 WILSON, JOHN THEODORE, JR.  
 WILSON, ROSA MAE  
 WOMBLE, RAMONA MARCEDES  
 WORLEY, WILLIE DAVID  
 WORSLEY, RUDOLPH CHARLES  
 WRIGHT, KIRBY  
 YOUNG, BETTY JEAN  
 YOUNG, ROBERT





You're in the Army Now!



Campus Lovers



Cool One



Berry Hall Beauties



Oo-Shoo-Be-do



Cool-Clansmen



Duke Hall Dames



Melancholy Baby



MEN OF DISTINKSHUN



WOW !!!



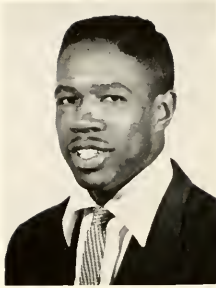
No!! Not Aready



Alpha Neophytes



# ORGANIZATIONS



CHARLES H. GRAY  
*President*

# STUDENT COUNCIL

## OFFICERS

CHARLES H. GRAY	<i>President</i>
JAMES COSTEN	<i>Vice-President</i>
CLEMENTINE M. RIGGSBEE	<i>Secretary</i>
THOMAS T. JEFFERSON	<i>Treasurer</i>

## MEMBERS

NATALIE I. COWAN	BARBARA TICE WILLIAMS
MARCELLUS PENN	EMILY HARRIS
BERTHA LYONS MAXWELL	DAVID COOK
ESSIE GREEN	



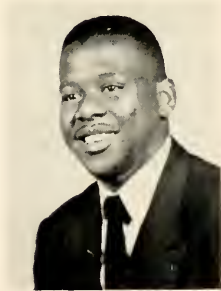


# STUDENT CHRISTIAN ASSOCIATION

## OFFICERS

JAMES COSTEN  
 WILLIAM DAVIS  
 NATALIE COWAN  
 JEAN E. ROBERSON  
 JOHN SLIGH

*President*  
*First Vice-President*  
*Second Vice-President*  
*Secretary*  
*Treasurer*



JAMES H. COSTEN  
*President*

## MEMBERS

CLARENCE LENNON  
 ERNEST FAIR  
 CLEMENTINE RIGGSBEE  
 AMOS DUDLEY  
 MILLIE DAVIS

ESSIE GREEN  
 IRMA COOK  
 MARY JAUDON  
 BETTYE RAPHAEL  
 HOWARD PETTY

ESTHER CHAPMAN

# THE 1953



LOUIS G. KING, J. WINSTEAD ADAMS  
*Co-Editors*

LOUIS GEORGE KING	<i>Co-Editor</i>
WINSTEAD ADAMS	<i>Co-Editor</i>
BENJAMIN O. WATKINS	<i>Associate Editor</i>
JEANNETTE TATE	<i>Secretary</i>
MARY JAUDON	<i>Class Editor</i>
THOMAS T. JEFFERSON	<i>Material Editor</i>
DOROTHY MCNEELY	<i>Secretary to Editor</i>
SMITH GEORGE FLEMING	<i>Photographer</i>
MARCELLUS PENN	<i>Junior Editor</i>





# BULL STAFF

ERNEST FAIR *Business Manager*

WILLIAM BROWN *Sports Editor*

DELOBES HAWKINS *Club Editor*

LOULYN FUNDERBURKE *Greek Editor*

ALDORA SAUNDERS *Secretary to Associate Editor*

FLORA REDDING *Secretary to Business Manager*

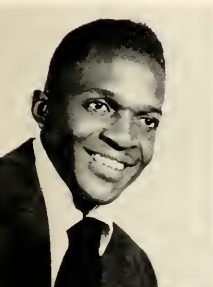
WILLIAM M. JONES *Art Editor*

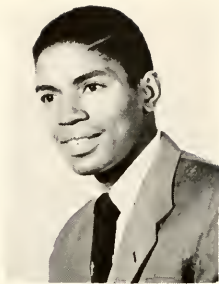
BILLY MITCHELL *Typist*

BETTY RAPHAEL *Typist*



ERNEST FAIR  
*Business Manager*





*Editor-in-Chief*

# UNIVERSITY STUDENT STAFF

## EXECUTIVE OFFICERS

KENNETH WILLIAMS  
NATALIE COWAN  
CHARLES MOTLEY

*Editor-in-Chief*  
*Associate Editor*  
*Business Manager*

## EDITORS

ERNEST FAIR  
HOWARD KNIGHT  
FRANK WILLIAMS  
ALDORA SANDERS  
RAMONIA LEVANT

*Head Reporter*  
*News Reporter*  
*Sports Editor*  
*Fashion Editor*  
*Exchange Editor*

## STAFF REPORTERS

LOUILYN FUNDERBURKE  
ESSIE GREENE  
JAMES COSTEN  
COLONEL SUTTON

GLORIA DOUTHITT  
CLARENCE TURNER  
WINSTEAD ADAMS  
LAURA TYSON

RAMONIA LEVANT  
ESTHER CHAPMAN  
JAMES GRIFFIN  
MARY ALICE LONG

## BUSINESS STAFF

JOAN DAVIS  
ELLEN MARTIN  
HENRIETTA McDONNELL  
BETTY RAPHAEL

*Secretary to Editor*  
*Secretary to Associate Editor*  
*Secretary to Business Manager*  
*Secretary to Sports Editor*

## TYPISTS

BILLIE MITCHELL  
MILDRED GREENE

EVA McPHERSON  
GWENDOLYN CURRENCE

JACQUELYN MEDFORD  
ROY CUNNINGHAM





# JOHNSON C. SMITH UNIVERSITY CHOIR

## *Sopranos*

PECOLIA ALLISON  
 SARAH AYNER  
 HELEN BOLDS  
 IRMA COOKE  
 SARAH EVANS  
 DORIS FLACK  
 RETHIA FORBES  
 CATHERINE FRANCIS  
 MILDRED GREENE  
 LETITIA HUNT  
 EVELYN JACKSON  
 ROSA JOHNSON  
 BETTYE RAPHAEL  
 ARLENE ROBINSON  
 HELEN ROBBINS  
 BETSY STEPHENS

## *Doris Mecieau*

MILDRED CARROLL  
 ERNESTINE ROWE  
 MARY STEELE

## *Altos*

MARIE ADJAHOE  
 ODESSA BROWN  
 MURIEL DOCKERY  
 MILLIE DAVIS  
 MARGARET HAWKINS  
 MARTHA LONG  
 JOHNSIE McCLAIN  
 ROSA NEELY  
 ALDORA SANDERS  
 HELEN SIMMONS  
 BARBARA WILLIAMS

## *Tenors*

JAMES DAVIS  
 BAXTER SMOOT  
 BENJAMIN THOMPSON  
 WALTER WILLIAMS  
 WILLIE WALKER  
 WADELL JOHNSON

## *Basses*

ROBERT BLIGIN  
 JAMES BROWN  
 W. C. HARRIS  
 JAMES HAMPTON  
 WILLIAM H. KNIGHT  
 CARL RATLIFF  
 FRANKLIN WILSON  
 PAUL LEDBETTER  
 ANKCRUM WILSON  
 HOWARD BRIDGES



# UNIVERSITY BAND



## OFFICERS

FRANCIS McCOWAN  
 J. WINSTEAD ADAMS  
 MAGGIE BROWN  
 DAVID COOK  
 MR. THOMAS PAGE

*President*  
*Vice-President*  
*Secretary*  
*Treasurer*  
*Director*

# FUTURE TEACHERS OF AMERICA



## OFFICERS

BESSIE L. SIGLER  
JAMES HAGAN  
MARY WILLIAMS  
THELMA PRUITT  
RODERICK TAYLOR  
SARAH AVNER

*President*  
*Vice-President*  
*Recording Secretary*  
*Corresponding Secretary*  
*Treasurer*  
*Reporter*



## RHO OMICRON SIGMA DEBATE CLUB

### OFFICERS

JAMES A. MCDANIEL  
 HOWARD KNIGHT  
 GENERAL WASHINGTON  
 BEATRICE TAYLOR

*President*  
*Vice-President*  
*Treasurer*  
*Secretary*

CAROL DELOATCH  
 JAMES COSTEN  
 PEARLEASE ALSTON  
 MARY JAUDON

*Assistant Secretary*  
*Parliamentarian*  
*Reporter*  
*Librarian*

## N. A. A. C. P.

### OFFICERS

CLARENCE LENNON  
 ARWILLA STEWARD

*President*  
*Vice-President*

YVONNE MARSHALL  
 HOWARD KNIGHT

*Secretary*  
*Treasurer*





# DRAMATIC GUILD

## OFFICERS

ERNEST FAIR  
JOHNSIE McCLAIN  
MARY CHILDERS

*President*  
*Vice-President*  
*Recording Secretary*

HENRIETTA McDONALD  
HARVEY KEY  
ELAINE DOCKERY

*Corresponding Sec.*  
*Treasurer*  
*Reporter*





## MATHEMATICS CLUB

### OFFICERS

LOYL WORTH QUINN  
 HELENA TRUESDALE  
 YVONNE MARSHALL  
 LOUIS GEORGE KING

*President*  
*Vice-President*  
*Secretary*  
*Activity Chairman*

## SPANISH CLUB

### OFFICERS

LEWIS POINTER  
 SARAH EVANS  
 GWENDOLYN CURRENCE  
 MARGUERITE ROBINSON  
 MORDECAI THOMPSON

*President*  
*Vice-President*  
*Secretary*  
*Assistant Secretary*  
*Treasurer*





# DEUTSCHES KLUB



## OFFIZIEREN

FRANCIS P. DAVIS  
KIRBY WRIGHT  
SALLIE STEVENSON  
BARBARA MEDFORD  
CHARLES McNEILL

*President*  
*Vice-President*  
*Sekretar*  
*Briefwechsel Sekretar*  
*Schatzmeister*

## MITGLIEDSCHAFT

LEON WATKINS  
LAVERNE WILLIAMS  
HARRIET PLUMMER  
U. S. LEVERETT  
BESSIE GRAHAM  
TAYLORIA STROUD  
THELMA HOLMAN  
JOHN HAIRSTON  
WILLIAM MORROW

BETTY ALLEN  
JANE LOVE  
JULIUS BETHEA  
ERNEST FAIR  
VASHTI COWAN  
CARRIE W. HILL  
WILLIAM CUNNINGHAM  
OTTO LATTIMER  
LONNIE HILL  
MAMIE CLEMENTS

HAYDEN RENWICK  
JANIE CURRY  
SARA STATEN  
LEE BROADUS  
MILLIE DAVIS  
BENNIE HEMPHILL  
JAMES HAGANS  
LULANN HUMPHREY  
HERMAN JOHNSON



## HISTORY CLUB

WILLIAM DAVIS .....President  
 HOWARD WILLIAM .....Vice-President  
 LOUILYN FUNDERBURKE .....Secretary  
 MABEL McADAMS .....Treasurer  
 LOTESS PRIESTLY .....Reporter

## ALPHA PHI OMEGA

WILLIAM DAVIS .....President  
 RODERICK TAYLOR .....Vice-President  
 BAXTER C. SMOOT .....Secretary  
 JESSE ARNETTE .....Sergeant-at-Arms  
 WILLIE WALKER .....Treasurer  
 TRUSSIE TAYLOR .....Historian  
 VANCE CABINISS .....Dean of Pledges

### MEMBERS

HORACE BLOUNT, JR.      HIRAM THEODORE HOLLAND      COLONEL WESLEY SUTTON  
 WALTER THEODORE DUNN      JAMES PAYNE      ROBERT C. WRIGHT  
 JAMES RAYFORD HAMPTON      ROBERT E. STEEDE      LOUIS POINTER





## SOCIETY FOR THE STUDY OF PSYCHOLOGY

### OFFICERS

J. WINSTEAD ADAMS  
 CLARENCE LENNON  
 GLORIA C. DOUTHITT  
 MAGGIE BROWN  
 MISS PEARL M. GORE

*President*  
*Vice-President*  
*Secretary*  
*Treasurer*  
*Adviser*

## ALPHA KAPPA MU HONOR SOCIETY



LOUILYN FUNDERBURKE



JAMES COSTEN



JO ANNE PHENIOUS



HOLD ME



RED



Shaggy



BLOW MAN, BLOW!



MIGHTY MILLE



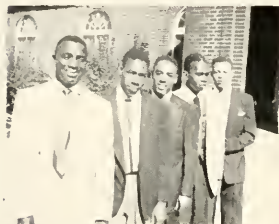
KAPPA'S NEOPHYTE



DELTA'S NEOPHYTE



Campus Sharpies



GASLIGHTER'S



Oo-la-la



To be DELTA PETE and DOT



Boo! to you too!!



Don't do it



Our Queen and ??



Lucky Boys



JR. AND SR. PROM



L'il Betty



Omega Neophytes



# ACTIVITIES



# HOMECOMING QUEEN

*Miss Johnson C. Smith*

1952-1953

WYLMIA G. YVONNE MARSHALL

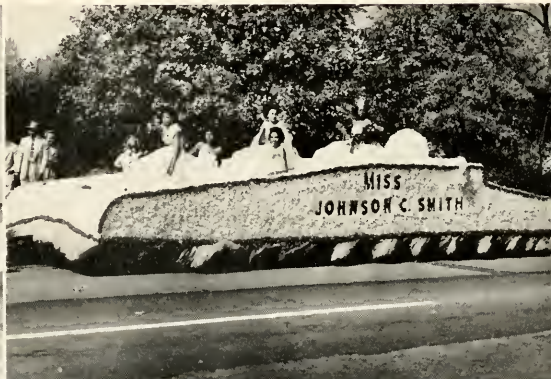
## *Attendants*

MISS LOUILYN FUNDERBURKE

MISS DELORES HAWKINS

MISS JANIE CLINKSCALE

MISS CAROLIE G. FITE



# SENIOR SUPERLATIVES

*Most Scholarly*

LOULYN FUNDERBURKE  
JAMES COSTEN



*Most Athletic*

WILLIAM M. JONES  
CLARENCE TURNER



*Most Efficient*  
LOUIS G. KING  
MARY JAUDON



*Most Popular*  
CHARLES H. GRAY  
DELORES HAWKINS

*Most Likely to Succeed*  
LAWRENCE BROWN  
MARIE ADJAHOE





Miss Sphinx



Miss J.C.S.U.



Our Nurses



Miss  $\Omega\Psi\Phi$



Miss S.C.A.



Smith's Cemetery



Miss  $\Delta\Sigma\Theta$



Smith vs. A. & T.



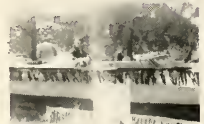
Miss A. $\Phi$  $\Omega$ .



Miss Alumni



Miss  $\Phi\beta\Sigma$



Miss A $\Phi$ A



Miss K.A. $\Psi$



Miss J.C.S.U.



Miss Lampados



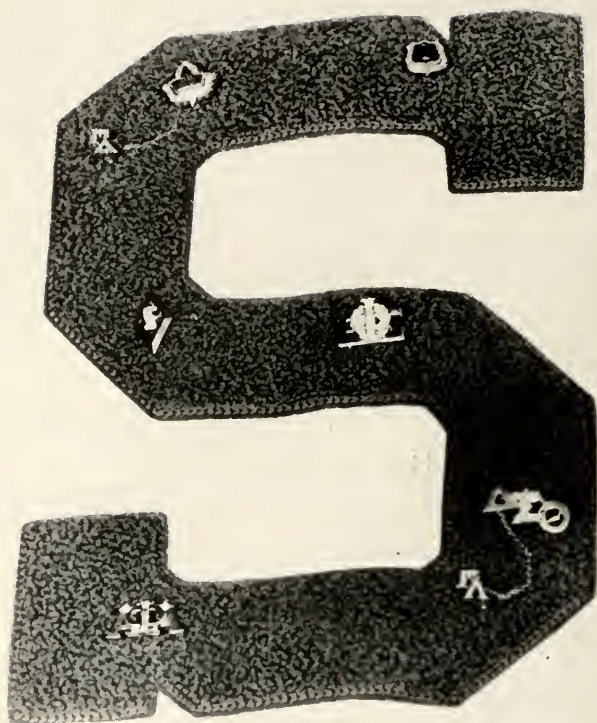
Photographer's Club



Smith vs. St. Aug.



Eva's Dance Show



**G R E E K S**

# PAN-HELLENIC COUNCIL



CHARLES SAMMONS  
*President*

## OFFICERS

CHARLES SAMMONS  
KENNETH WILLIAMS  
MARY JAUDON  
MARY WILLIAMS  
ROBERT GARY  
HOWARD KNIGHT

*President*  
*Vice-President*  
*Secretary*  
*Assistant Secretary*  
*Treasurer*  
*Reporter*

## MEMBERS

ELLEN MARTIN  
LAWRENCE BROWN  
JO ANN PHENIOUS

WILLIAM BROWN  
HENRY GRANT  
RICHARD MITCHELL



# ALPHA KAPPA ALPHA SORORITY



DOROTHY McNEELY  
President

## OFFICERS

DOROTHY McNEELY .....	<i>Basileus</i>
JEAN ROBESON .....	<i>Anti-Basileus</i>
HENRIETTA McDONNELL .....	<i>Grammateus</i>
DELORES DUDLEY .....	<i>Epistoleus</i>
MARIE ADJAHOE .....	<i>Tamiochos</i>
BETTY RAPHAEL .....	<i>Hodegas</i>
YVONNE MARSHALL .....	<i>Sentinel</i>
HELENA TRUESDALE .....	<i>Parliamentarian</i>
LAVERNE REEVES .....	<i>Dean of Pledges</i>
GLORIA DOUTHIT .....	<i>Ivy Leaf Reporter</i>

## MEMBERS

DOROTHY McNEELY	JO ANN PHEANIOUS	MARGARET HAWKINS
DELORES DUDLEY	GLORIA DOUTHIT	ALDORA SAUNDERS
BETHEDA KING	MARY JAUDON	HENRIETTA McDONNELL
JEAN ROBESON	JOSEPHINE MORRISON	EMILY HARRIS
DELORES GRANT	MARY ENG	RUTH BRISTER
JEANETTA TATE	ARWILLA STEWART	JACQUELINE PHARR
DORIS FLACK	RUTH ELI	CAROLIE FITE
LAVERNE REEVES	YVONNE MARSHALL	JOHNNIE M. GAITHER
MARIE ADJAHOE	BETTY RAPHAEL	HELENA TRUESDALE
DELORES HAWKINS	FLORA REDDING	THELMA GORDON
WILMA MANNING		LENA MILLS



# DELTA SIGMA THETA SORORITY



NATALIE IOMIE COWAN  
President

## OFFICERS

NATALIE IOMIE COWAN .....	President
ELLEN JEAN MARTIN .....	Vice-President
AZALIA REYNOLDS .....	Recording Secretary
BILLIE MARIE MITCHELL .....	Corresponding Secretary
ROMONIA LEVANT .....	Treasurer
BESSIE SIGLER .....	Chaplain
CLEMENTINE RIGGSBEE .....	Dean of Pledges
SADIE ALEXANDER .....	Assistant Dean of Pledges
LOUHLYN FUNDERBURKE .....	Journalist
BERNICE McQUADGE .....	Custodian
BARBARA WILLIAMS .....	Historian
JOAN DAVIS .....	Sergeant-at-Arms



## MEMBERS

ESTER CHAPMAN  
MARY CHILDERS  
ESTER CREWS  
GWENDOLYN CURRENCE  
ELAINE DOCKERY  
SARAH EVANS  
ROSA JOYNER  
GLADYS KNOX  
BERTHA MAXWELL

JACQUELYN MEDFORD  
FRANCIS McADAMS  
MATTIE McMILLAN  
SARAH McQUEEN  
ELIZABETH PEATTICE  
BETSY STEPHENS  
MARY WILLIAMS  
JOHNNIE WOODARD



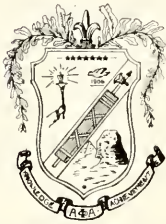


LOUIS G. KING  
President

# ALPHA PHI ALPHA FRATERNITY

## OFFICERS

LOUIS GEORGE KING	<i>President</i>
ROBERT DONALD GARY	<i>Vice-President</i>
ROBERT EARL STEEDE	<i>Secretary</i>
CHARLES HENRY GRAY	<i>Treasurer</i>
WILLIAM EDWARD BROWN	<i>Chaplain</i>
ROBERT RAY	<i>Sergeant-at-Arms</i>
JAMES COSTEN	<i>Historian</i>



## MEMBERS

FELIX BAGBY	CALVIN HOOD
EUGENE ALLEN	CAESAR SMITH
QUINCY GLADDEN	WADDELL JOHNSTON
CLARENCE TURNER	WILLIAM GILLESPIE
SMITH GEORGE FLEMING	



# OMEGA PSI PHI FRATERNITY



THOMAS T. JEFFERSON  
President

## OFFICERS

THOMAS T. JEFFERSON .....	Basileus
KENNETH WILLIAMS .....	Vice-Basileus
LOYL QUINN .....	Keeper of Records and Seals
J. WINSTEAD ADAMS .....	Assistant Keeper of Records and Seals
JOHN SLIGH .....	Keeper of Finance
RUFFIN MCNEILL .....	Keeper of Peace
ERNEST FAIR .....	Chaplain
WILLIAM M. JONES, MARCELLUS PENN .....	Co-Deans of Lamps
ROY CUNNINGHAM .....	Reporter

## MEMBERS

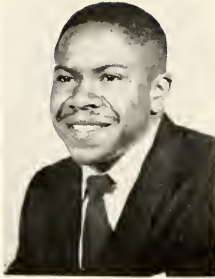
DAVID BABCOCK	THOMAS KERNS
WENDELL BEANE	FRANKLIN LEAKE
LAWRENCE BROWN	THOMAS MATTOCKS
DAVID COOK	FRANCIS MCCOWAN
JAMES COOLEY	CHARLES MCNEILL
CHARLES CURRY	CHARLES MOTLEY
WILLIAM DAVIS	CLAUDE SAUNDERS
AMOS DUDLEY	WILBERT STITT
ERNEST EVANS	COLONEL SUTTON
WALTER FUNDERBURKE	GENERAL WASHINGTON
JAMES HAGANS	BENJAMIN WATKINS
SIMEON HUMES	FRANK WILLIAMS
AL JARMON	HOWARD WILLIAMS

CHARLES HOWELL



# KAPPA ALPHA PSI FRATERNITY

## OFFICERS



OLIVER N. CLARK  
*Polemarch*

OLIVER N. CLARK  
HORACE MANN  
WILLIAM MORRISON  
CHARLES SAMMON  
HENRY GRANT

*Polemarch*  
*Vice-Polemarch-Exchequer*  
*Keeper of Records*  
*Dean of Pledges*  
*Chaplain*

THADDEUS MOORE

T. LITTLEJOHN FOSTER



## SCROLLERS CLUB

STAFFORD HAYWOOD  
WRIGHT HUNTER, JR.

JAMES MCKENZIE  
RODERICK TAYLOR







## IVY LEAF CLUB

### OFFICERS

ESSIE GREEN  
 JANETTA WALKER  
 EVELYN JACKSON  
 ODESSA BROWN  
 JOHNSIE McCLAIN

*President*  
*Vice-President*  
*Secretary*  
*Treasurer*  
*Reporter*

### OFFICERS

MARGARET JOHNSON  
 GWENDOLYN BLUE  
 ODESSA SATTERWHITE  
 VASHI COWAN  
 JANE LIGHTNER

*President*  
*Secretary*  
*Assistant Secretary*  
*Treasurer*  
*Club Reporter*

## PYRAMID CLUB



# LAMPADOS CLUB

## OFFICERS

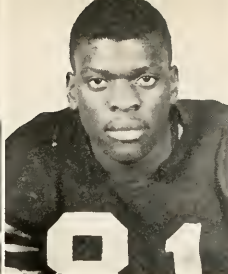
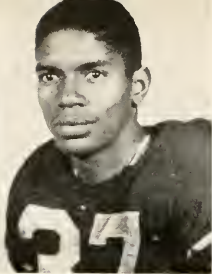
HENRY EILY	<i>President</i>
WALTER SPAULDING	<i>Vice-President</i>
THAD RHODES	<i>Secretary</i>
WILLIAM TALBERT	<i>Assistant Secretary</i>
JAMES VINCENT	<i>Treasurer</i>



TALBERT, JOHNSON, ALLEN, VINCENT, EILY, RHODES, SPAULDING.



# SPORTS



Kenneth "Slim" Williams

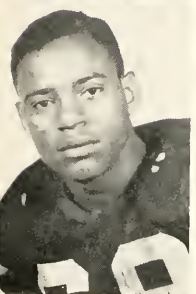
Robert "Big Boy" Wright

James "Curly" Vincent

William "Boo" Br



Fab "Jabbo" Camp



Howard "Bill" Pettv



Rufin "Pee wee" McNeill



Lawrence "Uncle" Brown



Marcellus "Motty" Penn

## SCORES

Smith	39
St. Paul	7
Smith	26
St. Augustine	0
Smith	21
Delaware State	0
Smith	6
Howard University	28
Smith	18
Winston-Salem	0
Smith	0
North Carolina	14
Smith	12
Fayetteville	8



est "Fab" Fair

David "Dangerous" Pugh

James "Monk" Griffin

Robert "Country" Steede

William "Psycho" Davis

# FOOTBALL TEAM

*First row:* Sharpe, Berthea, Sutton, Fair, Adderly, Cunningham, Bryant, Petty, W. Brown, McDougal.

*Second row:* Wright, Ray, Jones, Vincent, A. Brown, Rhodes, Schell, Anderson, Staten, Williams, Jones.

*Third row:* Faulkner, Curry, McIlwain, Eily, Massie, Camp, Davis, L. Brown, Griffin, Houston, Steede, Amos.



# 1952 SEASON IN RETROSPECT

It was hard to believe, but true in every detail: the Golden Bulls of Johnson C. Smith University were once again perched in the first division, after an absence of several years. "Amazing," said some; "Terrific," said others, that this heretofore "weak" football team finally ripped and tore its way into a perennial position among the rank and file of the Negro College sport world.

Just for the sheer thrill of it, let's turn back the pages of history, and recapture some of the never-to-be-forgotten memories of the 1952 football season.

Rah! Rah! Smith 39, Saint Paul 7. The Bulls really looked like a powerhouse during the second half, storming back to score 39 points after finishing the first half trailing the Saints, 7 to 0.

The following week, a cocky crew of Saint Augustine's players motored to town, but the Bulls virtually stomped them all over Memorial Field, smashing out a 26 to 0 victory over the herd from Raleigh.

After two successive victories, the Bulls were touted as the "dark horses" of the conference, but the following Saturday in Dover, Delaware, the Delaware Hornets renamed the Bulls as the "Race Horses" of the conference. Smith 21, Delaware 0.

Homecoming—Smith 6, Howard 28. Yes, the taste of defeat must come. Gee! Why in front of all of the family?

The following Saturday, the Golden Bulls really took it out on the Rams from Winston-Salem. The Brayboy Herd smashed the Rams all over the Twin City. Smith 18, Winston-Salem 0.

North Carolina 14, Smith 0. Is an alibi in order? All right, both of our quarterbacks were riddled with injuries, and you know a car cannot run without gas.

The Fayetteville Broncos came to town, and provided the Charlotte fans with one of the most exciting games of the year. The Bulls were in true form that night, eking out a close 12 to 8 victory for their fifth and final victory and thus ending the 1952 season.

In conclusion, the sports editors would like to inject a personal note. I think that the Golden Bulls had the most improved team in the CIAA. The coaching and the fellows were absolutely great. Never shall I forget those gruelling hours spent in the creaked clay of the "Bull Pen," practicing until after dark, and then going onto the gridiron and experiencing sweet victory and bitter defeat.

In short, I cherish every precious minute I have spent with you on the gridiron. In speaking for all the graduating seniors, I extend a hearty good luck, and remember, teammates, "the best way to kill a flea is with an axe."

WILLIAM "BOO" BROWN





# VARSITY "S" CLUB

## OFFICERS

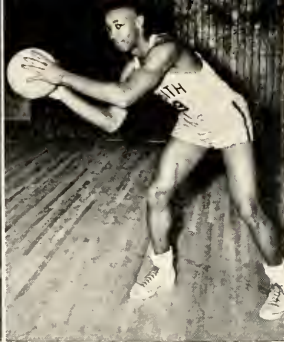
BENJAMIN O. WATKINS	<i>President</i>
LOUIS G. KING	<i>Vice-President</i>
ERNEST FAIR	<i>Secretary</i>
MARCELLUS PENN	<i>Treasurer</i>



Charles "Moes" Motley



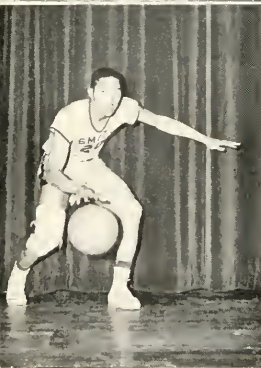
Benjamin "Shaggy" Watkins



Douglas "Dude" Miller



Robert "Dickie" Wells



Claude "Doc" Saunders

## BASKETBALL SCORES

Smith	93
Bluefield	83
Smith	90
Livingstone	67
Smith	58
Winston-Salem	81
Smith	86
St. Augustine	71
Smith	63
Shaw	58
Smith	82
A. & T. College	87
Smith	67
Virginia State	84
Smith	59
North Carolina College	66
Smith	68
A. & T. College	58
Smith	69
St. Augustine	66
Smith	64
Shaw	61
Smith	85
Fayetteville State	78
Smith	71
Howard	77
Smith	93
Morgan	74
Smith	61
Howard	65
Smith	72
Winston-Salem	68
Smith	77
Bluefield	72
Smith	81
Fayetteville State	77
Smith	69
Winston-Salem	65

## C. I. A. A. TOURNAMENT

Smith	69
Virginia State	59
Smith	61
St. Augustine	67
Smith	57
Morgan	95
	<i>Won</i> <i>Lost</i>
Conference Record	9.....6
Total Record, including Tournament	14.....8





William "Smiley" Partlow



William "Skinny" Jones



Caesar "Josh" Smith



Clarence "Snow" Turner

# BASKETBALL TEAM

*Left to right: Saunders, Wells, Towe, Vincent, Motley, Turner, Babs, Watkins, Smith, Miller, Partlow, Jones.*



# BASKETBALL SUMMARY

The 52-53 edition of the Golden Bull's basketball team under the guiding tutelage of Coach Jack Brayboy compiled a season's record of 14 wins and 8 losses.

Not only did the Bulls have a fine record in season games, but they also captured fourth place in the Central Intercollegiate Athletic Association Tournament.

What the Bulls lacked in experience was made up by the spirit and determination exhibited all during the 52-53 season.

The inspirational factor behind the team was the thrill of winning four out of five games with Winston-Salem and Saint Augustine, Winston-Salem was Visitatorial and Tournament Champs, and Saint Augustine was Tournament runners-up.

William Jones, and Claude Saunders shared high scoring honors for the season, however Charles (Jump Shot) Motlev, and Doug Miller stole the show more than once this season by snagging a few points of their own in several games with some sensational jump shooting. It would be impossible to mention basketball without giving Robert Wells credit for always playing a superb game, and adding that extra drive to the team which enabled it to come through during a close scrap.

To the seniors, "Snow" Turner, "Pete" Watkins, William Jones, Charles Motlev, and "Josh" Smith, we say thanks for a job well done. While this year's record might not have been comparable to some of the past seasons, many a team would look with envy on this year's record.

To the entire team, and to Coach Brayboy, three cheers for bringing us another first division team.



## TRACK TEAM



*Left to right: Harris, Jones, Rodgers, McDougal;  
Key, Pittman, Flyth, Fleming, Griffin.*

## TENNIS TEAM



*JOHN MCCOMBS, JAMES BEANE; CHARLES HOWELL.*

# *Autographs*



JAMES B. DUKE MEMORIAL LIBRARY  
JOHNSON C. SMITH UNIVERSITY  
CHARLOTTE, N. C. 28208

## **For Reference**

**Not to be taken from this room**

Copyright © 2000  
by  
The McGraw-Hill Companies  
All rights reserved.