

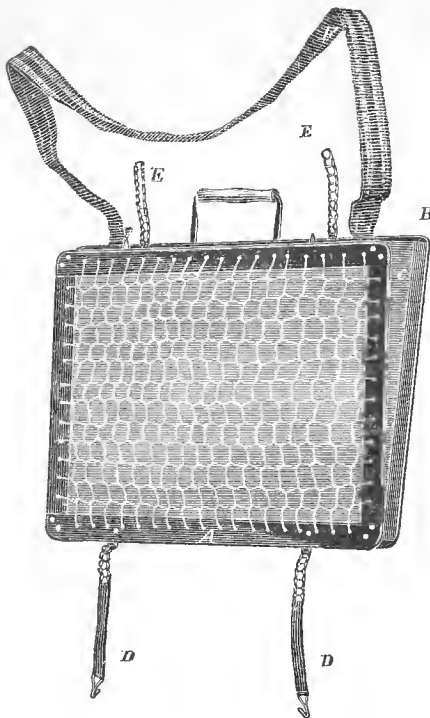
## Lists of Plants.

(4)

Cusick, W. C.	Oregon, 1880.	p. 40.
" " "	" 1881.	p. 46.
Barvey, F. E.	Arkansas, 1881.	p. 42.
Bowell, G. J.	Oregon, 1880.	p. 44.
Jones, M. E.	Utah, 1879.	p. 34.
Lemmon, J. G.	California, 1876.	p. 5.
Macoun, J.	February, 1880.	p. 37.
Mattreus, Dr. W.	California, 1879.	p. 32.
Palmer, E.	Arizona & S. Calif. 1876.	p. 13.
" "	S. Utah & Arizona, 1877.	p. 26.
Barry & Lemmon,	S. California, 1876.	p. 21.
Rothrock, G. J.	S. Cal. (Wheeler Exped.) 1875.	p. 1, 7.

## Roessler's Portable Wire Plant-Press.

AS DESCRIBED BY PROFESSOR D. C. EATON.



ROESSLER'S PORTABLE WIRE PLANT-PRESS.

press will securely hold and compress the contents. Elastic straps, D, at the ends of the chains, are furnished with hooks to secure the chains, so that the press cannot be thrown open by accident, but may be opened and readjusted without delay. The presses have their sides of knitted wire-work drawn tight, and are handsomely japanned, so that they will not rust. They may be carried by either a handle or strap, as seen in the figure. Presses or portfolios of this kind have the very great advantage of permitting evaporation to go on from the sides, while board presses depend entirely on absorption by the dryers. I have found that by the use of a press of this kind, even kelps and rockweed (*Laminariae* and *R. Fuci*) may be readily dried, especially if the press be placed in a current of heated air, as for instance, over a common hot-air register. These presses are made of just the proper size to prepare specimens suitable for the common size of American herbarium paper,  $16\frac{3}{4}$  by  $11\frac{1}{2}$  inches.

The undersigned keeps on hand and for sale a full assortment of Botanical Microscopes, such as the Gray's large Glass microscope, for dissecting; the Tenney microscope, and others; also, all the implements used in the study of botany, such as dissecting knives, forceps, Eaton's plant digger, and paper for drying and pressing.

Respectfully,

PAUL ROESSLER,  
251 Chapel Street, New Haven, Conn.

A few years ago, Professor Alphonso Wood described in the "Bulletin of the Torrey Botanical Club," a wire or wire-netting botanical press, which he had found of great service while collecting plants in California. But it does not appear that any presses of Professor Wood's pattern were ever manufactured for sale.

Mr. Paul Roessler, of New Haven, Conn., has now, however, perfected a wire botanical press, something like Professor Wood's, but more like the presses used in some parts of Germany. It will be seen from the accompanying engraving that instead of a heavy wire border, the border is of thin strap iron, A, which is perhaps an improvement.

One side of the press is furnished with chain-work straps E, and the other side with four little hooks, projections, to which the chains may be fastened, by any one of their links, with no trouble, so that whether empty or full, the

Box to Dr. Corson

Dr. E. Corson

7. Rue Abbeucci, etc.

- ✓ 1 copy Structural Botany
- ✓ 1 copy of Synopsis Flora N. Am.
- ✓ 1 " Fasc. 1 & 2, of Curtis's S. Plants
- ✓ 1 set of Embury's Mex. Plants - little value
- ✓ 1 set Fendler's Herbarium of Trinidad. \$ - 7.50
- ✓ 1 " Palmer & Parry's Plants of Mexico, 1833 Species, 1834
- ✓ 1 set Palmer's Plants of Arizona & California - said to be 439 sp. 2.50
- ✓ 1 set Wright Cuban Plants said to be 960 sp.
- ✓ 1 " 11- plates of Cuba
- ✓ 1 " a large set of Orchids etc. Dr. Corson to pay, what is proper

2 1/2 x 2 1/2 x 3 1/6

6 1/4  
25

24 feet

~~Alma~~

Other Contents of Box to Corson

Herbarium of Garden des Plantes

1 package of Dried Plants

1 book for Pwr. because

1 " Library of Botanical Society of France

1 Package (Curtis Florida Plants fasc. 2, for M. Boissier of Geneva)

1 Package Parry & Palmer Mex. Pts. for M. Boissier

		Corson	Boissier
3 bundles Curtis	\$ 60.00	40.00	20.00
1st imp. to Corson	65.00	65.00	-
1 " " Boissier	45.00	-	45.00
1 " Palmer, Arizona	25.00	25.00	-
1 " with Cuban	100.00	-	-
1 " mixed ferns	7.50	7.50	-
Miscellaneous	15.00	-	-
Books	11.00	-	-
	<u>\$ 331.50</u>		<u>\$ 65.00</u>

Insulation, 2.40

Recd. July 15<sup>th</sup> 1879 \$ 62.60

Department of Agriculture

Rothrock - continued.

346:225. Gayophytum diffusum.

7.

8.

9.

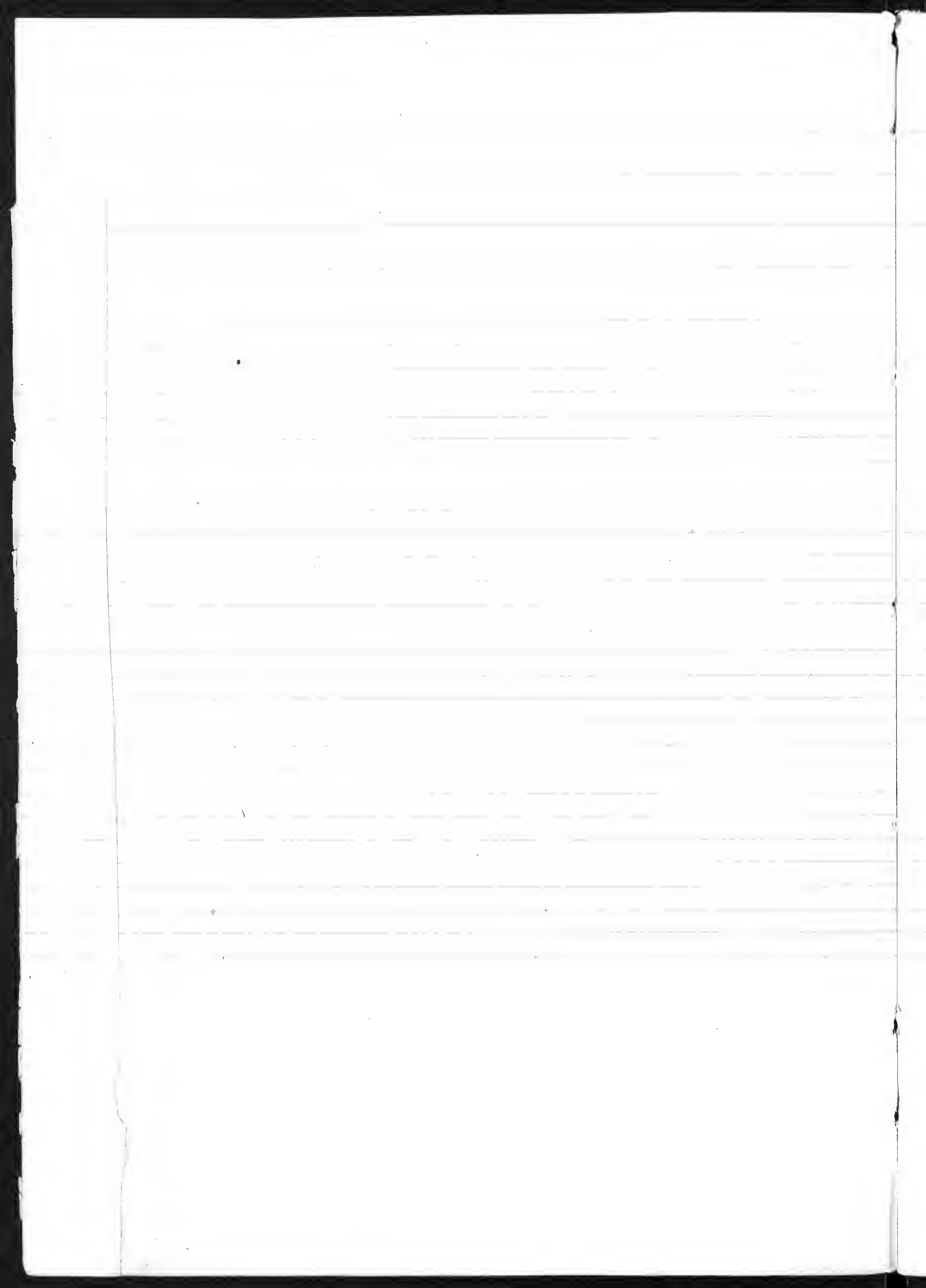
350, Pinus flexilis

F

292.

3. Madia elvans.

(4)



1876.

Lists of Plants.

---

Herbarium Receipts

of  
Distributions.

---

Rothrock - July 30

Nov. 1894 - Feb. 11

S. P. ... - July 12. S. Utah

Dr. Rothrock - S. Colorado

1. *Actis glabrum*
2. *Gambusia Americana*
3. *Ribes lacustre*, v. *schroterum*.
4. " *leptanthum*
5. " *langsinum*, var. (*R. wolffii*)
6. " *cesium*
7. = 4
8. " ~~*gambusia*~~
9. = 5
10. " *arvense*
11. = 5
12. *Malvastrum coccineum*
13. *Sphaeralcea incana*
14. *Sidalcea malvaeflora*
- 15, 16. *Galium trifidum*
17. " *boriale*
18. *Symphoricarpos arborescens*
19. *Lonicera involucrata*
20. *Campanula Schrenkii*
21. *Eriogonum cernuum*
22. 1 " *Wrightii*
23. = 21
24. " *umbellatum*
25. " *flavum*, var.
- 26, 28. " *flavum*
27. " *pauciflorum*
- 29, 30. *Rumex*



1.

Dr. J. T. Rothrock's Collection  
 in 1875 in S. California,  
 on Dr. G. M. Wheeler's Expedition  
 Recd. Jan'y 30<sup>th</sup>

- |  |  |
|--|--|
| 1.   | 41.  |
| 2.   | 42.  |
| 3. <i>Anemopsis Californica</i>                                | 43. <i>Audubertia stachyoides</i> , Bth.             |
| 4.   | 44.  |
| 5.   | 45. = 84. <i>Heteromelus arbutifolia</i> .           |
| 6.   | 46.  |
| 7. <i>Sandou con rigidum</i>                                   | 47.  |
| 8. <i>Mesembryanthemum aquilaterale</i> , Hav.                 | 48. <i>Mitella rubra</i> (New Mex.)                  |
| 9.   | 49.  |
| 10. <i>Opuntia Engelmannii</i> , var.?                         | 50.  |
| 11.  | 51.  |
| 12.  | 52.  |
| 13. <i>Clarkia elegans</i>                                     | 53. <i>Mimulus luteus</i>                            |
| 14. <i>Sidalcea humilis</i>                                    | 54.  |
| 15. = 222. <i>Menyanthes albicaulis</i> . Dougl.               | 55. = 96. <i>Frankenia grandiflora</i> .             |
| 16. <i>Brassica nigra</i>                                      | 56.  |
| 17. <i>Cardamine Gambellii</i> - n. sp.                        | 57.  |
| 18. <i>Oenothera cheiranthifolia</i> , v. <i>rufotuscula</i> . | 58.  |
| 19. <i>Horkelia Californica</i>                                | 59.  |
| 20.  | 60.  |
| 21.  | 61. <i>Chenopodium album</i>                         |
| 22. <i>Rosa Californica</i> = 225.                             | 62. <i>Chorizanthe stachyoides</i>                   |
| 23. "  | 63. <i>Polygonum aviculare</i>                       |
| 24. <i>Hosackia glabra</i> (scoparia)                          | 64. <i>Rumex conglomeratus</i>                       |
| 25. <i>Melilotus perfoliata</i>                                | 65. [ <i>Medicago sativa</i> , <sup>New Mex.</sup> ] |
| 26. <i>Trifolium involucreatum</i> = 216, 237, 245, 300        | 66.  |
| 27. <i>Lupinus arboreus</i> (at 497)                           | 67.  |
| 28. <i>Lupinus Brownii</i> = 270, 391.                         | 68.  |
| 29. }  | 69.  |
| 30. } <i>Oenothera Californica</i> , Watson.                   | 70.  |
| 31. }  | 71.  |
| 32. = 370, 384. <i>Carum Cairdneri</i> , Bth. + Hk.            | 72.  |
| 33. <i>Chaenactis Douglasii</i>                                | 73.  |
| 34. = 309. <i>Troximon glaucum</i> , var.                      | 74. <i>Rumex conglomeratus</i> (or 64?)              |
| 35. <i>Troximon Chilense</i>                                   | 75. <i>Heteromelus</i>                               |
| 36.  | 76.  |
| 37. <i>Bahia congestiflora</i> .                               | 77.  |
| 38.  | 78.  |
| 39. <i>Centaurea Militensis</i> .                              | 79.  |
| 40. <i>Abronia umbellata</i>                                   | 80.  |

81.

82. *Eucalia Californica*, Nutt.

83.

84.

85. = 45. *Heteromelis arbutifolia*.

86. *Eschscholtzia Californica*.

87. *Sambucus nemoralis*

88.

89. ~~*Hosackia*~~ *Aloupinia* [cf. *lup. arborus*, 27].

90. *Lupinus nanus*

91.

92.

93.

94. *Anagallis arvensis*.

95.

96. = 55. *Frankenia grandiflora*.

97.

98.

99.

100. *Iris foliacea* ?

1.

2. *Erysimum asperum* ? [*Toraria stellata* <sup>ariz.</sup>]

3. [*Zygadenus* ~~*stans*~~ - *ariz.*]

4.

5.

6. *Salicornia ambigua*

7. *Medicago denticulata* [*allim-connum*]

8. *Rhamnus Californica*. = 226.

9. *Lonicera involucrata*.

110.

11. *Thalictrum Fendleri*

12. = 126.

13. *Croton gracilis*

14.

15.

16. *Ribes Menziesii*

17.

18. *Boerhaavia occidentalis*.

19.

20. *Malvastrum splendens*, Mill. ?

21.

22.

23. *Eriogonum fasciculatum*

24.

25. *Helianthomum scoparium*.

26. *Amplex caesus* = 112. 335

27. *Adenostoma fasciculata* = 177.

28.

29. *Lupinus affinis*.

130.

131. *Solanum parti*.

2. *Ceanothus spinosus*

3.

4.

5.

6.

7. *Audubertia grandiflora*.

8.

9.

140.

1. *Silene laciniata*

2.

3. = 217. *Epilobium coloratum*

4.

5.

6.

7.

8. *Calochortus pulchellus*

9. *Corydalis laxa*.

150.

1. *Eremocarpus albidus*

2. *Cressa Crotica*.

3. *Chenopodium album*

4. *Lepigonium medium*.

5. *Oenothera micrantha* Hornem.

6. [*Mirabilis angustifolia*, form - *ariz.*]

6. *Aloupinia*

7. *Bouphonia longifolia*

8. *Erodium cicutarium*.

9.

160. *Silene Gallica*.

1.

2. *Urtica holosericea*

3.

4. *Quercus agrifolia*

5.

6.

7.

8. *Chorizanthe thalicoides*

9. = 415. *Zauschneria Californica*.

170.

1. *Sisyrinchium anceps* ?

2. *Psoralea macrostachya*

3.

4. *Datisca glomerata*

5. *Amaranthus albus*

6. *Isomeris arborescens*.

7. = 127. *Adenostoma fasciculata*.

8. *Hosackia Purshiana*. [Erm]

9. *Eriogonum fasciculatum* [*tripetalum*]

180.

1. *Guthriea Euthamiae*.

2.

3.

4.

- 6. *Quercus dumosa*
- 7. *Salix*
- 8. *Nasturtium officinale*
- 9. *Trif. tridactylum*, var. *rubra*
- 190. *Aeschylus fasciculatus*
- 1. *Elythrum album*, v. *linearifolium* (L. Californicum)
- 2.
- 3.
- 4.
- 5.
- 6. *Cercocarpus parvifolius*
- 7. *Abies Nuttallii*, Ariz.
- 8. *Quercus lobata*
- 9. *Eriogonum polyanthum*, v. *bahiae* formae
- 200. *Crotophaga filaginifolia*, var.
- 1. *Eriogonum nudum*, v. *pauciflorum*
- 2. *Eriogonum fasciculatum*, v. *psittacium*
- 3. *Salvia columbiana*
- 4.
- 5. *Quercus coronata*
- 6. = 209. *Lupinus albicaulis*
- 7.
- 8.
- 9. = 206. *Lupinus albicaulis* [Hab. *leucostachys*]
- 210. *Diosia santolinoides*
- 1.
- 2.
- 3. *Arceuthobium vaginatum*
- 4. *Pinus Sabiniana*
- 5. = 411. *Hosackia Torreyi*
- 6. = 26. *Trifolium involucreatum*
- 7. = 143. *Epilobium coloratum*
- 8.
- 9. *Eriogonum Baileyi*
- 220. *Eriogonum nudum*, v. *pauciflorum*
- 1.
- 2. = 15. *Mentzelia albicaulis*
- 3.
- 4. *Lupinus luteolus*, Kill.
- 5. = 346. *Gayophytum diffusum*
- 6. *Rhamnus Californica*. = 104.
- 7.
- 8. = 22. 23. *Rosa Californica*
- 9. *Clematis ligusticifolia*, v. *Californica*
- 230.
- 1.
- 2.
- 3.
- 4.
- 5. *Boissardalia densiflora*
- 6.
- 7. *Trifolium involucreatum* [Hab. *Nuttallii*] Ariz.
- 8. *Sisyrinchium Arizonicum*, Rottb. n. sp. = 26. 216. 245. 300.

- 239. *Asar Menziesii*
- 240. *Sidalcea malviflora*
- 1. *Hypericum Scouleri*
- 2. *Epilobium paniculatum*
- 3. *Potentilla gracilis*, v. *virgata*. [Zyg. ~~elegans~~ Ariz.]
- 4.
- 5.
- 6. *Gnaphalium Sprunglii*
- 7. *Achillea Millefolium*
- 8.
- 9.
- 250.
- 1. *Pinus Sabiniana* (?)
- 2.
- 3.
- 4.
- 5. *Chenopodium album*
- 6. *Iva axillaris*
- 7.
- 8. *Aesculus Californica*
- 9. *Eriogonum virgatum*
- 260. " *elatum*
- 1.
- 2. *Berula angustifolia*
- 3. *Quercus chrysolepis*
- 4. *Agundo Californica*
- 5.
- 6. *Pinus flexilis*
- 7. *Ribes cereum*
- 8.
- 9.
- 270. = 24. 391. *Lupinus Breweri*, var.
- 1.
- 2.
- 3. *Centrostegia Thurberi*
- 4. *Euphorbia albomarginata*
- [5. *Amaranthus Wrightii*] W. & R.
- 6. *Judaea Californica*
- 7.
- 8. *Fremontia Californica*
- 9. *Geranium caespitosum*
- 280. *Vitis Californica*
- 1. *Mentzelia albicaulis*, 704.
- 2.
- 3. *Aster aestivus*
- 4. *Chenopodium album*
- 5. = 216.
- 6.
- 7.
- 8.
- 9. *Hosackia oblongifolia*, B. H.
- 290.
- 1. = 304. *Ranunc. acutifolius*, v. *trichophyllus*.

# J. G. Lemmon - 1875

Sierra Co., Or.

Rec<sup>d</sup>. Feb'y 5, 1875.

- 66. *Ranunculus Californicus*, Bth., common
- 67. *Delphinium decorum*, v. *nevadense*, W. - Sierra val.
- 68. *Thelypodium laciniatum* Endl. Plants: Lake, between Lake & Carson
- 69. *Dentaria tenella*, Pursh. - Butterfly valley
- 1070. *Cleome platycarpa*, Torr. - Reno
- 1. *Thelyp. laciniatum*, var. ? till we get Grays valley, bet. Warm Spring Valley & Pyr. Lake. Sierra val.
- 2. = 1068. Shore of Pyr. Lake.
- 3. *Cleonella parviflora*, Gray. - Reno
- 4. *Lepidium wrightii*, apparently Sierra val.
- 5. *Silene Lemmonii*, Watson. Sierra & Walker Lake Vall.
- 6. = 1077. - Indian, Big Meadows, & Amer. Valley, Plumas Co.
- 7. *Silene pectinata* Watson. Sierra val.
- 8. *Silene Douglasii*, form Sierra & Walker vall.
- 9. *Silene Syallii*, Watson var. Sierra & Walker's Peaks
- 1100. *Arenaria congesta*, Nutt. Sierra Vall.
- 1. *Silene montana*, Watson Walker Lake Vall.
- 2. *Silene occidentalis* Watson. Caliche Valley, near Lemmon's Peak
- 3. *Silene Syallii*, Watson.
- 4. *Silene Douglasii*, form.
- 5. *Silene Douglasii*, form.
- 6. *Lupinus minimus*, Dougl.
- 7. *Astrag. Austinii*, Gray. n. sp.
- 8. *Astrag. Mortonii*
- 9. *Astragalus Andersonii*, Gray.
- 90. *Astrag. Bolanderi*, Gray.
- 1. *Ribes lacustre*, var. *molle*, Gray.
- 2. *Ribes oxycanthoides*
- 3. *Fuchsia rubescens*, Torr.
- 4. *Sedum Rhodiola*
- 5. *Oenanthe sargentosa*, Nutt. (new)
- 6. *Anglica Breweri*, Gray.
- 7. *Penicillium* - n. sp. ? P. Geyeri
- 8. *Ligusticum* ? - not determinable.
- 9. *Aralia California*, Watson
- 1100. *Aster integrifolius*, Nutt.
- 1. *Bridellia grandiflora*, v. *minor*.
- 2. *Senecioisus rigidus*
- 3. *Brachyactis frondosa*
- 4. *Erigeron divergens*
- 5. *Erigeron Nevadaense*
- 6. *Solidago occidentalis*
- 7. *Bridellia macrophylla*
- 8. *Aphlopappus paniculatus*, var. near virginicus
- 9. *Bigelovia Howardii*, var. *nevadensis*
- 1110. *Bigelovia Douglasii*, var. *stenophylla*, Gray
- 1. *Aphlopappus Moomeri*, Gray.
- 2. *Aster Moomeri*, Gray.
- 3. *Aster Menziesii*, form
- 4. *Bigelovia arborescens*
- 5. *Erigeron Canadense*
- 6. *Aster (Macharanthus) canescens*
- 7. *Pyrethrum Pammenium*
- 8. *Gilia floccosa*
- 9. *Lesingia leptoclada*
- 1120. *Lycopodium spinosa*, v. *cladophylla*
- 1. *Stephanomeria exigua*
- 2. *Stephanomeria virgata*
- 3. *Lactuca Canadensis*
- 4. *Comandra pallida*
- 5. *Claytonia Nevadaensis*, n. sp.
- 6. *Veronica pergrina*
- 7. *Pentstemon gracilentus*
- 8. *Pentstemon Lemmonii*, Gray
- 9. *Mimulus moschatius*, var. bicolor
- 1130. *Antirrhinum Kingii* bicolor
- 9. *Antirrhinum Kingii* bicolor
- 1. *Madia glomerata*
- 2. *Gilia heterophylla*
- 3. " *interlobata*
- 4. " *microantha*
- 5. " *divaricata*
- 6. = 1134.
- 7. *Gentiana simplex* or *errata* ?
- 8. " *calycosa*.
- 9. *Asarum canadense*, Lindl., var. *curtum*,
- 1140. *Achillea Moullepis pusilla*
- 1. *Chenopodium Botrys*.
- 2. *Atriplex phytostegia* ?
- 3. *Eriogonum Plumabilla*
- 4. " *marifolium*, ~~var.~~
- 5. " *lobbii*
- 6. " *marifolium*, var.
- 7. " *microthecum*
- 8. " *wrightii*, var.
- 9. " *pyrolae-folium*

1150. *Eriogonum caespitosum*  
 1. *Populus tremuloides*, Mex.  
 2. " *trichocarpa*  
 3. *Pinus flexilis*  
 4. *Quercus laevis*  
 5. " ~~\_\_\_\_\_~~ *Sonoranensis*  
 6. " *diversifolia*  
 7. *Triticum violaceum*, var.?  
 8. *Spiranthes Romanzoviana*  
 9. *Aspidium angustum*

1160. ~~*Cypripedium pubescens*~~ *Phryopteris alpestris*  
 1. *On. dubata* = 1233.  
 2. *Gilia aurea*  
 3. *Lamarckia aurea*  
 4. *Polycarpon depressum*  
 5. *Actinolepis Wallacei*  
 6.  
 7. *Gilia Palmieri*  
 8.  
 9.

1170.

- 1
- 2
- 3
- 4
- 5
- 6
- 7
- 8
- 9

1180. *Centrostegia Thurberi*

- 1
- 2
- 3
- 4
- 5

6. *Trifolium Scammoni*
7. *Astragalus Scammoni*
8. " *lentiginosus*
9. *Hulsia nana*, var. *Larsoni*

1190 = 1149.

- 1 *Ranunc. alismacefolius*, v. *alismellus*
- 2 *Antirrhinum Kingii*
- 3 = 1073
- 4 *Gilia intertexta*
- 5 *Lophanthus utricifolius*
- 6 *Monolepis pusilla*, var. = 895.
- 7 *Delphinium simplex*, var.
- 8 *Calochortus Leichtlinii*
- 9 *Horkelia fusca* - abnormis form.

1201. *Polygonum Shastense*

- 1202 *Eriogonum - marginatum*  
 3. *Gilia congesta*  
 4. *Echinopsium diflexum*, var.?? = 734.  
 5. *Polygonum Torreyi*  
 6. *Atriplex* - *tro-yang*.  
 7. *Mercurialis dispersa*  
 8. *Erysimum asperum*  
 9. *Troximon panicum*

1210 *Polygonum coarctatum*

- 1 = 1077.
- 2 *Minulus rubellus*
- 3 " " var. *latiflorus*.
- 4 *Claytonia Caroliniana*, var.
- 5 *Claytonia triphylla*
- 6 ~~*Horkelia fusca*~~  
~~*Atriplex tro-yang*~~
- 7 *Gilia trifida*, form.
- 8 *Ribes sanguineum*, var. *variegatum*
- 9 *Cnicus Andersonii*

1220 *Aonica foliosa*

- 1 *Aster adscendens*
- 2 *Sedum obtusatum*.
- 3 *Trifolium longipes* - low form.
- 4 *Abronia umbellata*
- 5 *Milla eximius*
- 6 *Athrocopus pilosus*
- 7 *Phloxopus lanceolatus*
- 8 *Gilia liniflora*, var.
- 9 *Pellaea Bridgessii*

1230. *Chaidanthes gracillima*

- 1
- 2 *Silene montana*
- 3 *On. dubata*, var. *grandiflora*
- 4 *Gilia dianthoides*
- 5 " *Palmieri* = 1167.
6. *Centrostegia leptoceras*
7. *Azolla Americana*
8. *Gilia cordata*
9. *Vesicaria montana*

1240. *Nemacladus tuberculatus*, n. sp.

1. *Gilia micromeria*
2. *Hulsia ~~\_\_\_\_\_~~ nana*, var. *Larsoni*
3. *Draba aurea*
4. *Cypripis inflexus*
5. *Linzula parviflora*
6. *Carex tenuis*
7. *Scirpus riparius*
8. *Carex Hoodii*
- 9.

1250.

1200 *Horkelia Brownii* - form.

b.

1251

- 2
- 3
- 4
- 5

6 *Lepigonum medium?*

7 *Loeflingia squarrosa*

8 -

9 *Nama demissa.*

1260. *Eritrichium circumsissum*

1. *Statice americana.*

2

3 *Arctostaphylos*

4

5

6

7

8

9

1270 *Halophila occidentalis*

1 *Trifolium Lemmonii*

2 *Ranunculus Lemmonii*

3 " *holosericeus*

4

5 *Draba alpina*, var.

6

7

8 *Astragalus sustinatus.*

9

1280

1

2

3 *Juncus acuminatus*

4

5 *Azoreum candidum*

6 *Lupidium Menziesii*

7 *Calandrinia Menziesii*

8

9 *Onosthera graciliflora*

1290

1 *Hosackia parviflora*

2 *Hesperocnide tinella*

3 *Cardamine oligosperma*

4

5 + 5/2. *Claytonia exigua*

6

7

8

9 *Sphaerophora annulina*, Roth

1300

292.  
 3. *Madia elegans*.  
 4.  
 5. *Oenothera biennis*, v. *grandiflora*.  
 6.  
 7.  
 8.  
 9.  
 300. = 264. *Trifolium involucreatum*  
 1.  
 2.  
 3.  
 4. = 291. *Ranunc. aquatilis*, v. *trichophyllum*.  
 5. *Lupinus confusus*, Kell.  
 6.  
 7. *Trifolium monanthum*  
 8.  
 9. = 24. *Troximon glaucum*, var.

310. *Stellaria longipes*.  
 1. *Sagina dimorpha*.  
 2.  
 3.  
 4.  
 5.  
 6.  
 7.  
 8.  
 9.

320.  
 1. *Aster pulchellus* (Rothrock thinks) - perhaps not aut.  
 2. *Trisetium obtusum*.  
 3.  
 4. *Potentilla Wheeleri*, n. sp.  
 5.  
 6.  
 7. *Horkelia purpurascens*, n. sp.  
 8. *Lupinus rivularis*  
 9.

330. *Cercocarpus ledifolius*.  
 1. *Eriogonum spargulinum*  
 2. " *trichopodium*  
 3.  
 4.  
 5. *Atriplex canescens*  
 6.  
 7. *Juniperus occidentalis*?  
 8.  
 9.

340. *Abronia tuberosa*  
 1.  
 2.  
 3. *Atriplex ligata*  
 4. *Castanopsis chrysocephala*  
 5.

346. = 225. *Gayophytum diffusum*. J.

7.  
 8.  
 9.  
 350. *Pinus flexilis*  
 1.  
 2.  
 3.  
 4. *Ceanothus divaricatus*.  
 5. *Angelica lineariloba*  
 6. *Eriog. Abertianum*  
 7.  
 8.  
 9. *Mirabilis longistylis*

360. *Eupatorium occidentale*.  
 1. *Epilobium origanifolium* (Barb.)  
 2.  
 3.  
 4.  
 5. *Hypericum Scouleri*, H.  
 6.  
 7. *Celtis*  
 8.  
 9. *Sisymbrium incisum*.

370. = 32. 384. *Carum Cairnsii*.  
 1.  
 2.  
 3. *Aconitum Fischeri*  
 4. *Delphinium depauperatum*.  
 5.  
 6. *Potentilla glandulosa*, v. *heraldensis*.  
 7.  
 8. *Boerhaavia spicata*  
 9. *Anemone Patens* ♂

380.  
 1.  
 2.  
 3. *Pinus contorta*  
 4. = 370.  
 5.  
 6.  
 7.  
 8.  
 9.

390. *Eriog. ovalifolium*, v. *virgatum*  
 1. = 26. 270. *Lupinus Broweri*, var.  
 2.  
 3.  
 4. *Aster Andersonii*  
 5. *Veronica Californica*  
 6. *Aster astivus*  
 7.  
 8.  
 9.

400. *Epilobium obcordatum*  
 1.  
 2.  
 3.  
 4.  
 5. *Lupinus Andersonii* (?) var. (?)

- 406.
- 7. *Lupinus Lyallii*, var. *Danaus*.
- 8. *Geranium Richardsonii*
- 9.

- 410.
- 1. = 215. *Hosackia Torrreyi*
- 2.
- 3. *Trif. monanthum*, Gray
- 4.
- 5. = 169. *Zauschneria Californica*.
- 6.
- 7.
- 8.
- 9.

- 420.
- 1.
- 2.
- 3. *Libocedrus decurrens*
- 4.
- 5.
- 6. *Trif. tridentatum*, var. *ovatifolium*
- 7.
- 8.
- 9.

- 430. = 535. *Artemisia scopulorum*
- 1.
- 2. *Trif. monanthum*, form (Arip.)
- 3.
- 4.
- 5.
- 6.
- 7.
- 8.
- 9.

- 440.
- 1.
- 2.
- 3.
- 4.
- 5.
- 6.
- 7.
- 8.
- 9.

- 450.
- 1.
- 2.
- 3.
- 4.
- 5.
- 6.
- 7.

- 455.
- 9. = 312. *Polygala puberula*, Gray.
- 460. *Onoseris Hookeri*, Bth.

- 1.
- 2.
- 3.
- 4. *Pellaea longifolia*
- 5.
- 6.
- 7. *Antholena sinuata*
- 8. " *dealbata*
- 9. *Gymnogramme pedata*
- 470. *Sida filiformis*, Moench, var. *(S. Louwii, Rott.)*
- 1.
- 2.
- 3. *Eriog. flavum*, *debatens* = *fansii*
- 4. *Erysimum asperum*, DC. var.
- 5.
- 6.
- 7.
- 8.
- 9.

- 480.
- 1. *Cheilanthes Lindheimeri*
- 2.
- 3.
- 4.
- 5.
- 6.
- 7.
- 8.
- 9.

- 490.
- 1.
- 2.
- 3.
- 4.
- 5.
- 6.
- 7.
- 8. *Clematis ligusticifolia*, v. *Calif.*
- 9. *Malva angustifolia* ?

- 500.
- 1.
- 2.
- 3. *Zauschneria Californica*
- 4. *Polygala puberula*
- 5.
- 6.
- 7.
- 8.
- 9.

- 510.
- 1.
- 2.
- 3. *Gymnogramme pedata*
- 4.



515.  
 6.  
 7.  
 8. *Linum perenne*  
 9.  
 520. *Gonolobus nitida*, R. & H. n. sp.

1.  
 2. *Talinum patens*, Mill.  
 3.  
 4.  
 5.  
 6.  
 7.  
 8.  
 9.

530.  
 1.  
 2.  
 3. *Rhus glabra*  
 4.

5. = 430.  
 6.  
 7.  
 8. *Talinum aurantiacum*  
 9.

540.  
 1.  
 2.  
 3.  
 4.  
 5.  
 6.  
 7.  
 8.  
 9.

550.  
 1.  
 2.  
 3.  
 4.  
 5.  
 6.  
 7.  
 8.  
 9.

560.  
 1.  
 2. *Hibiscus Drumstaps*, var. *imbricellatus*  
 3.  
 4.  
 5.  
 6.  
 7. *Clematis Drummondii*  
 8.  
 9. *Ageria pusilla*, var.

570.  
 1.  
 2. *Krameria ferrifolia*  
 3.

574.  
 5.  
 6. *Asph. pedunculifera*, Engelm.  
 7.  
 8.  
 9.

570.  
 1. *Elatium Wrightii*  
 2.  
 3.  
 4.  
 5.  
 6.  
 7.  
 8.  
 9.

590.  
 1.  
 2.  
 3. *Eriog. Wrightii*  
 4.  
 5.  
 6.  
 7.

8.  
 9.

600.  
 1.  
 2.  
 3.  
 4.  
 5.  
 6.  
 7.  
 8.

9. *Thelypodium longifolium* (= *Stroph. micranthum*)  
 10. *Notholaena ferruginea*  
 1.  
 2.  
 3.  
 4.  
 5.  
 6.  
 7.  
 8.

9. *Drymaria effusa*, Gray.  
 620.  
 1.  
 2.  
 3.  
 4.  
 5.  
 6.  
 7.  
 8.  
 9.

630.  
 1.  
 2.  
 3.

634.  
5.  
6.  
7.  
8.  
9.  
640.

1. *Geranium carpatum*

2.  
3.  
4.  
5.  
6.

7. *Anonoxia Schiedana*, Gray

8.  
9.

650

1.  
2.  
3.  
4.  
5.  
6.  
7.

8. *Senecio biennis*, var. *hispidissima*.

9.  
660.

1.  
2.  
3.

4. *Eriog. phanaceoides*, var.

5. *Sida filiformis*, Moench.

6. *Anoda hastata*, Cav.

7.  
8.  
9.

670. *Polyg. ~~angulata~~* v. *Muhlenbergii*

1.  
2.  
3.

4. *Pellaea flexuosa*

5.  
6.  
7.  
8.  
9.

680.

1.  
2.  
3.  
4.  
5.  
6.

687.

8. *Polygonum hydrophyllum*

9.  
690.  
1.  
2.  
3.

4.  
5.  
6.

7. *Angustifolia ~~perfoliata~~ triloba* DC.

9.  
700.

1.  
2. *Polyg. inornatum* nodosum

3.  
4.  
5.

6. *Sida* *apocyniflora*, n. sp.

7.  
8.  
9.

710. *Melilotus parviflora*, Desf.

1.  
2.  
3.  
4.  
5.  
6. = 710.

7.  
8.  
9.

720

1.  
2.  
3.  
4.  
5.

6. *Eriog. horiphitii*

7.  
8.  
9.

730

1.  
2.  
3.

4. *Microstylis*, n. sp.

5.  
6.  
7.  
8.

740.

1.  
2.  
3.  
4.  
5.  
6.  
7.  
8.  
9. *Goodenra Menziesii*

750 *Corallorhiza striata?*

- 1
- 2 *Spiranthes Romanzoffiana*
- 3
- 4
- 5
- 6
- 7
- 8. *Polyg. tenuis*, v. *laetifolium*.

ce.

1.  
 2.  
 3.  
 4.  
 5.  
 6.  
 7.  
 8.  
 9.  
 10.  
 11.  
 12.  
 13.  
 14.  
 15.  
 16.  
 17.  
 18.  
 19.  
 20.  
 21.  
 22.  
 23.  
 24.  
 25.  
 26.  
 27.  
 28.  
 29.  
 30.  
 31.  
 32.  
 33.  
 34.  
 35.  
 36.  
 37.  
 38.  
 39.  
 40.  
 41.  
 42.  
 43.  
 44.  
 45.  
 46.  
 47.  
 48.  
 49.  
 50.

Dr. E. Palmer - 1876

Arizona & S. California

Distributed by C.C. Parry

1. *Aquilegia truncata* - S. L. Obispo.
2. *Delphinium d'Arnyanum* - Cottonwood Cr. Ariz.
3. " *simplex* - Rock Spr.
4. " *cardinale* - Rock Springs
5. " = 3 - Clarks Crk.
6. *Ranunculus Californicus* - S. Luis Obispo
7. *Aconitum Fischeri* - Camp Halleck
8. *Platystemon Californicus*
9. *Eschscholzia minutiflora* - Rock Spr.
10. *Campylopus candida* - Mojave R.
11. *Corydalis arca*, v. *occidentalis* - Prescott
12. *Nasturtium lyratum* - Wadsworth
13. *Nasturtium officinale* - Walnut Grove
14. " *obtusum* - S. Luis Obispo
15. " *heterostachya* - Ehrenberg
16. *Veronica Arizonae*, n. sp. - juniper Mt.
17. *Lepidium fremontii* - Ehrenberg Moj. R.
18. " *flavum* - Mojave R.
19. " *wrightii* - Ehrenberg
20. *Sisymbrium canescens* - Williams Fork
21. " *reflexum* - Williams Fork
22. *Thelypodium integrifolium* - Wadsworth
23. *Arabis arcuata* - Prescott
24. *Streptanthus glandulosus* - S. L. Obispo
25. *Thelypodium Cooperi* - Mojave R.
26. *Tropidocarpum gracile* - Clarks Cr.
27. *Capsella bursa-pastoris* - Redwood
28. *Barbarea vulgaris* - Parac Mt.
29. " " - Prescott
30. *Cleome thurifera* - Mojave R.
31. *Cleome lutea* - Wadsworth
32. *Jonidium linear* - Cottonwood.
33. *Thymus subulata* - Ehrenberg
34. *Polygala subspinoza* - Cottonwood
35. *Krameria parvifolia* - Hardyville, Ariz
36. " " - Cottonwood
37. *Frankenia grandiflora* - S. Simon Bay
38. *Cerastium nutans* - Walnut Grove
39. *Stellaria media* - S. Simon Bay.
40. *Lepigonum macrothecum* - S. L. Obispo
41. *Arenaria Fendleri*, v. *glabrescens* - Moj. R. = *A. macrotheca* (Wats.)
42. *Silene antirrhina* - Prescott
43. " *occulta* - Lone Mt.
44. *Linum Breweri* - Lone Mt.
45. *Lewisia brachycalyx* - Prescott.
46. *Claytonia perfoliata* - Prescott.
47. *Hypericum Scouleri* - Wadsworth
48. " *anagaloides* - Clarks Cr.
49. *Malvastrum exile* - Cottonwood
50. " *Palmeri*, n. sp. - Cambria
51. " *munroanum* - Cottonwood
52. *Linum micranthum* - Pine Mt.
53. *Erodium cicutarium* - Rock Spring
54. *Oxalis corniculata* - Prescott
55. " *Oregana* - Lone Mt.
56. *Guzmania Richardsonii* - Halleck
57. *Stelma angustifolia* - Prescott.
58. *Stelma angustifolia* - Cottonwood, Ariz.
59. *Fagonia Californica* - Williams Fork
60. *Rhus aromatica*, var. - Walnut Grove
61. " " - Prescott.
62. *Vicia exigua* - Walnut Grove, Ariz
63. *Lathyrus puluster*, var. - Prescott.
64. *Vicia Americana* - Wadsworth.
65. *Sophora Arizonae* - Cottonwood, Ariz
66. *Dalea polyadenia* - Wadsworth
67. " *mollis* - Ehrenberg
68. " *Parryi* - Hardyville, Ariz
69. *Boralea macrostachya* - S. L. Obispo
70. *Trifolium* = 73.
71. " *tridactylum*, v. *obusifolium* - Lone Mt.
72. " *amplexans* - Lone Mt.
73. " *parviflorum* - Mojave R.
74. " *fraxinifolium*
75. *Hosackia puberula* - Walnut Grove
76. " *strigosa* - Ehrenberg
77. " *Purshiana* - Mojave R.
78. " *manitima* - S. Simon Bay
79. " *juncea* - S. Luis Obispo
80. " *sericea* - Mojave R.
81. " *Hermanni* - McQuinnis
82. " *grandiflora* - Mojave R.
83. *Lupinus concinnus* - Prescott
84. " *bravicaulis* - Mojave R.
85. " *micranthus* - "
86. " *concinus*, v. *Arizonae* - Walnut Grove
87. " *Palmeri*? - Prescott.
88. " *hirsutissimus*, var.? - Ehrenberg
89. " *albicaulis* + var. *Bridgmanii* - Lone Mt.
90. " *Chamissonis* - Springs.

- 91 Lupinus densiflorus - S. L. Obispo.
- 92. " littoralis - Clarks Crk
- 93. " Sericeus - Mojave R.
- 94. " affinis - Cambra
- 95. " gracilis - S. L. Obispo
- 96. " = 86. - Mojave R.
- 97. " junceus - Moj. R.
- 98. " laxiflorus - Camp Halleck
- 99. Astragalus hypoglottis - Halleck
- 100. " Arizonicus - Walnut Grove
- 1. " = triflorus - " "
- 2. " = 115. Prescott.
- 101. " ~~Erigeron~~ humistratus
- 4. " = 108. Rock Spring
- 5. " Missouriensis - Cottonwood
- 6. " = 108 " "
- 7. " atratus, var. - Juniper Mts.
- 8. " lentiginosus, Moj. R.
- 9. " Coulteri - Moj. R.
- 110. " leucophyllus - Jolon, Cal.
- 1. " Menziesii - S. Simeon Bay
- 2. " juncus - Halleck
- 3. " Mortonii "
- 4. " Nuttallianus - Walnut Grove
- 5. " Shottianus - Cottonwood.
- 6. Cassia arnuda - Moj. R.
- 7. Prosopis juliflora - Hardyville
- 8. Spiraea dumosa - S. L. Obispo
- 9. Fallegia paradoxa - Cottonwood
- 120. Amelanchier alnifolia - Clarks Cr.
- 1. " " Prescott.
- 2. ~~Quercus~~ ~~tridentata~~ - Rock Spr.
- 3. Horkelia Californica - Clarks Cr.
- 4. Hurchera pilosissima - Clarks Cr.
- 5. Boykinia occidentalis - Redwoods
- 6. Fendlera ovipicola - Cottonwood
- 7. Ribes cereum - Walnut Grove
- 8. " sanguineum - S. L. Obispo
- 9. Lythrum alatum - v. linearifolium - Spring
- 130. Epilobium paniculatum - Pine Mts.
- 1. Gayophytum ramosissimum - Halleck
- 2. Gaura coccinea - Cottonwood, Ariz
- 3. Oenothera caespitosa - Walnut Grove
- 4. " albicaulis R. - Moj. R.
- 5. " gauraeflora - Hardyville
- 6. " dentata - Mojave R.
- 7. " longipes - Hardyville
- 8. " scapoides - Ehrenberg.
- 9. " bistorta - Moj. R.
- 140. " micrantha - Clarks Cr.
- 1. Godthia tenella - Mojave R.
- 2. " abrescens, var. X McClinnis

- 143. Godthia ~~tenella~~ <sup>rimnea</sup> - McClinnis
- 4. " tenella - Clarks Crk
- 5. Godthia ~~tenella~~ - S. L. Obispo
- 5. <sup>5.1.</sup> ~~Boisduvallia~~ glabella - S. L. Ob.?
- 6. <sup>6.1.</sup> ~~Boisduvallia~~ densiflora - S. L. Ob.
- 7. Clarkia elegans - S. L. Obispo.
- 8. Zauschneria Calif. - S. L. Obispo
- 9. Eulobus Californicus - <sup>Moj. R.</sup> ~~S. L. Obispo~~
- 150. Petalonyx Thurberi - Moj. R.
- 1. Mentzelia ~~albicollis~~ Williams Fork
- 2. Mentzelia laevicaulis - Redwood
- 3. Megarrhiza - ? Walnut Grove, Ariz.
- 4. Aralia Californica - S. Lucia Mts.
- 5. Eryngium petidatum, var. arnuda, S. L. O.
- 6. Cornus Gairdneri - Pine Mt.
- 7. Cymopterus montanus, var. purpurascens - <sup>Prescott, Ariz.</sup>
- 8. Peredannum macrocarpum "
- 9. " villosum - Juniper Mts
- 160. Eryngium molle, Pine Mt.
- 1. " " S. L. O.
- 2. Lonicera involucrata - Cambra
- 3. Galium Californicum - R. Spr.
- 4. " Blandieri - Moj. R.
- 5. " Aparine - Cotton. W. Crk, Ariz
- 6. Valeriana sylvatica - Prescott.
- 7. Plectritis macrocarpa - "
- 8. Mitchellia biniflora - Moj. R.
- 9. Baccharis cornuliscens - Williams Fork
- 170. " Douglasii, fimb.
- 1. } " " male - Spring
- 2. } " " "
- 3. Cirsium juncus - Hardyville
- 4. Erigeron tenellus, br. off. Cambra
- 5. Diplopappus ericoides, var. - Walnut Gro
- 6. Aster totiflorus - Moj. R.
- 6. <sup>6.1.</sup> Erigeron foliosus, v. ~~strophophyllus~~ - <sup>Moj. R.</sup> ~~Clarks Cr.~~
- 7. " " "
- 8. Aster falcatus, v. - Halleck
- 9. " laxifolius, var.? - Wadsworth
- 180. " Chamissonis, var.? - Halleck
- 1. " elegans - "
- 2. " canescens - "
- 3. " radulinus - Pine Mts.
- 4. Erigeron divergens, v. cinereus? - <sup>Moj. R.</sup>
- 5. " Philadelphicum - "
- 6. " divergens, cinereus - Prescott
- 7. " concinnus - Cottonwood
- 8. " glaucus - S. Simeon Bay
- 9. Sidaea Guiradonis? - Wadsworth
- 190. " occidentalis - "
- 1. } " Californica - Spring
- 2. } " " Jolon.
- 2. Dyaudia prophyllodes - Hardyville
- 3. Pterophyllum asperum - "
- 4. Dyaudia Cooperi - Moj. R.
- 5. Nicotiana occidentalis - "

Dr. E. Palmer

- 196 } *Glossinia* *gummosa* } - McGinnis
- Hemizonia ramosissima* } - Redwood.
- Bigelovia arborescens* (two young) - Redwood.
- 7th } *Bigelovia* *arborescens* - Redwood
- 8. " *Menziesii* - S. Simon Bay
- 9 *Achillea lanceifolia* - Moj. R.
- linearifolia* - Cottonwood.
- 200. } *Glossinia* *gummosa* - Clark's Creek
- 1. *Achillea paniculata* - Rock Sp.
- 2. " *erecticostus* - C. Halleck.
- 3. " *the small form distinct?*
- 4. *Chryopsis sessiliflora*, v. *schizoides* - McGinnis
- 5. *Chaenactis calophyllina* - Hardyville
- 6. " *sterioides* - Moj. R.
- 7. " *lanosa* - det. spec. - Moj. R.
- 8. " *Douglasii* - Cedar Mt.
- 9. = 206. *macrantha* - Cottonwood. Agency
- 210. *Hymenopappus luteus* - "
- 1. *Palafoxia linearifolia*, rough. - Williams Fork.
- 2. } *Cochlospermum filaginifolia* - Santa Cruz
- 3. } - S. Simon Bay
- 4. } - Redwood
- 5. *Baeria chrysoptoma* - Dwarf. - S. Simon Bay.
- 6. " *gracilis* - Clark's Creek.
- 7. *Leptocarpus Newberryi* - Moj. R.
- 8. *Pentstemon Emoryi* - v. *nuda*. - Williams Fork.
- 9. *Acanthopappus sphaerocarpus* - Moj. R.
- 220. } *Baileya pleniradiata* - Agency
- 1. *Actinolepis multicaulis* - Clark's Cr.
- 2. *Eremiastrom bellidoides* - Williams Fork.
- 3. *Syntherisma pappus Fremonti* - Moj. R. with *actin. lanosa*
- 4. *Actinolepis Walpolei* - Cottonwood
- 5. *Baeria confertiflora* - Pine Mt.
- 6. " *adrenisifolia* - Cambra
- 7. " = 225. very open. - Moj. R.
- 8. *Hymenoclea salata* - Racine
- 9. *Trichophilium incanum* - Hardyville
- 230. *Psathyros annua* - Williams Fork
- 1. *Actinella odorata* - Agency
- 2. *Crotola coronopifolia* - S. Simon Bay
- 3. *Thalictrum discoida* - S. L. Obispo
- 4. " Redwood.
- 5. *Hemizonia juncea* - Moj. R.
- 6. *Lagophylla ramosissima* - S. L. Obispo
- 7. *Hemizonia corymbosa* - Clark's Cr.
- 8. *Madia stricta* - "
- 9. *Layia glandulosa*, v. *rosea*. - "
- 240. *Hemizonia juncea* -
- 1. " *lyulataefolia* - S. L. Obispo.
- 2. *Madia elegans* - McGinnis
- 3. *Hemizonia Douglasii* - S. Simon Bay
- 4. *Madia* = 242 - Pine Mt.
- 5. *Hemizonia virgata* - Jolon
- 6. = 240 " *Fitchii* - Jolon.
- 7. " *truncata*. - Redwood
- 8. *Grindelia robusta*, S. Simon Bay
- 9. " " var. (?) *rigida* - S. Luis Obispo

- 250. *Cymenecium enclitoides* - S. Luis Obispo
- 1. *Encelia farinosa* - Williams Fork
- 2. *Helenium autumnale* - Clark's Creek field
- 3. *Isa axillaris* - Moj. R.
- 4. *Eremiastrom bellidoides* - Shonberg
- 5. *Monopylon bellidiforme* - Moj. R.
- 6. *Tetradymia spinosa* - "
- 7. " *comosa* - S. Bernardia.
- 8. *Bigelovia Douglasii*, v. *ciliata* - Wadsworth, Nev.
- 9. *Bigelovia* " " *angustifolia* - "
- 9. " *graveolens* - "
- 260. " " S. Luis Obispo. (Clark's Cr.)
- 1. *Tetradymia canescens*, v. *inermis* - "
- 2. *Franseria dumosa* - Hardyville, Ariz.
- 3. *Arnica discoida* - Pine Mt.
- 4. *Senecio lugens*, var. - Prescott.
- 5. " *hydrophilus* - S. Luis Obispo (Clark's Cr.)
- 6. *Xanthium spinosum* - S. Simon Bay
- 7. *Cnicus Californicus?* "
- 8. " *occidentalis* - McGinnis
- 9. " *no-Mexicanus?* Rock Sp.
- 270. } *Artemisia documentoides* - Spring.
- 1. } S. Simon Bay
- 2. " *dudroviana*, var. *Cambra*
- 3. } Spring
- 4. } " " var. S. L. Ob. "
- 5. } " " " " "
- 6. } " " " " "
- 7. } *Gnaphalium Spranglei* - Cambra
- 8. } "
- 9. *Antennaria margaritacea* - "
- 280. *Gnaphalium ramosissimum* - S. L. Ob.
- 1. " *microcephalum* - McGinnis
- 2. " *ramosissimum* - "
- 3. " *purpureum* - Cambra.
- 4. " *palustre* - Moj. R.
- 5. *Antennaria dioica* - Prescott.
- 6. *Gnaph. palustre* - S. L. Obispo
- 7. }
- 8. *Anisocoma acaula* - Moj. R.
- 9. *Troximon apocynoides* - S. L. Obispo
- 290. *Microseris Bigelovii* - Cambra
- 1. *Stephanomeria Thurberi* - Moj. R.
- 2. *Calycecoris Parryi* - Cottonwood
- 3. *Rafinesquia Neomexicana* - Agency
- 4. *Lycopodium exiguum* - Hardyville, Ariz.
- 5. *Stephanomeria minor* - "
- 6. *Hieracium Scouleri* - Pine Mt.
- 7. *Stephanomeria paniculata* - Redwood
- 8. *Lycopodium spinosum* - Halleck
- 9. *Lactuca pulchella* - Wadsworth
- 300. *Remadastris ramosissimum* -
- 1. *Arctostaphylos Uva-ursi* - Halleck

- 302. *Arctostaphylos glauca* - S. Bernardino
- 3. *Arctostaphylos Menziesii* - Pine Mt.
- 4. *Phytolisma ornaria* - S. Diego
- 5. *America vulgaris*, v. Calif. - S. Simon Bay
- 6. *Plantago Virginica*, v. maxima - Clarks Cr.
- 7. " major - S. Luis Obispo
- 8. " lanceolata - Mc Ginnis
- 9. " Patagonica - Ehrenburg
- 310. *Anagallis arvensis* - S. Luis Obispo
- 311. *Pedicularis cuneanthera* - Prescott.
- 2. *Castilleja parviflora* - Walnut Grove
- 3. *Athanasia lasiochrysdus*, n. sp. Moj. R.
- 4. " densiflora - Clarks Cr.
- 5. " luteus, v. tingens - Halluck.
- 6. *Cordylanthus ramosus* - "
- 7. " filifolius, v. cinnarus.
- 8. *Collinsia bartoniaefolia* - S. L. Obispo
- 9. " parviflora - Prescott.
- 320. *Veronica purpurina* - Walnut Grove
- 1. *Antirrhinum Coulteri* - Moj. R.
- 2. *Minuartia Fremontii*, var. *Mc. Palmeri*, n. sp. <sup>Pine Mt.</sup> Moj. R.
- 3. " floribunda - "
- 4. " jilobosus - Moj. R.
- 5. " bradworthi - "
- 6. " luteus - Moj. R.
- 7. = 323 - Moj. R.
- 8. *Pentstemon breviflorus* - Springs.
- 9. " heterophyllus - Mc Ginnis
- 330. " confertus - Halluck
- 1. " Palmeri - Cottonwood
- 2. " Eatonii - Rock Spring
- 3. " spectabilis - Cottonwood
- 4. " antirrhinoides - "
- 5. " ambiguus - "
- 6. *Mohavea viscidula* - Ehrenburg
- 7. *Aphyllon ludoviciana* - Indian
- 8. " <sup>occidentale</sup> ~~occidentale~~ - Redwood
- 9. *Verbena ciliata* - White var. - N. Spring
- 340. " <sup>sonora</sup> ~~sonora~~ - Mc Ginnis
- 1. " ciliata - Ehrenburg
- 2. " bracteosa - S. L. Obispo
- 3. " <sup>bracteata</sup> ~~bracteata~~ - S. L. Obispo
- 4. *Lycopus lucidus* - v. *Americanus* - Bradworth
- 5. *Tenaxium Cubense* - Williams Fork
- 6. *Salvia Mexicana* - Moj. R.
- 7. *Salvia cordifolia* - "
- 8. *Lophanthus whittakeri*, Halluck +
- 9. *Micromeria Douglasii* - Clarks Cr.
- 350. *Trichostema lanceolatum* - Mc Ginnis
- 350. *Pogogyne Douglasii* - S. L. Obispo
- 1. " <sup>S. Simon Bay</sup> - "
- 2. *Sphaella calycina* - S. L. Obispo
- 3. *Mentha japonalis* - Bradworth
- 4. " - "
- 355. = 353
- 6. *Stachys Chamissonii* - Clarks Cr.
- 7. *Audubertia grandiflora* - S. L. Obispo
- 8. " <sup>grayi</sup> ~~grayi~~ *incana* - Rock sp.
- 9. *Monardella Palmeri*, n. sp. - Redwood
- 360. } " villosa - Clarks Cr.
- 1. } " <sup>Pine Mt.</sup> - "
- 2. " undulata - Clarks Cr.
- 3. " lanceolata - Moj. R.
- 4. " leuccephala - "
- 5. *Stachys pyrenantha*, var. - Pine Mt.
- 6. " albens - Mc Ginnis
- 7. " pyrenantha - Pine Mt.
- 8. " ajacoides - S. Luis Obispo
- 9. " bullata, var. *Coulteri* - "
- 370. *Amsinckia intermedia* - S. Simon Bay
- 1. *Eritrichium micranthum* - Agency
- 2. " *circumissum* - Cottonwood
- 3. } " *leucopum?* - Ehrenburg
- 4. } *Echinopsium Redowskii* - "
- 5. } *Lithospermum longifolium* - Willow Grove
- 6. } *Eritrichium oxycarpum* - Williams Fork
- 7. } *Heliospermum grayi*, n. sp. - Ehrenburg
- 8. } *miculatum* - Pine Mt.
- 9. *Coldenia Nuttallii* - Moj. R.
- 380. " *juniceolata* - Williams Fork
- 1. *Phacelia grisea*, n. sp. - Pine Mt.
- 2. " *circinata* - Mc Ginnis
- 3. " *ramosissima* - Cottonwood
- 4. " *ciliata?* - Ehrenburg
- 5. " *tanacetifolia* - v. *tennifolia* - Agency
- 6. " *brachyloba* - "
- 7. " <sup>Mojavensis, v. str.</sup> ~~curvis~~, v. *stricata* - Moj. R.
- 8. *Nolina demissa + hispida* - Ehrenburg
- 9. *Eriodictyon tonenbosum* - Mc Ginnis
- 390. *Emmenanthe penduliflora* - Pine Mt.
- 1. *Phlox longifolia* - Cottonwood
- 2. <sup>Calomia</sup> *grandiflora* - Walnut Grove
- 3. *Gilia inconspicua* - "
- 4. *Collomia pilivida* - Pine Mt.
- 5. *Gilia inconspicua* - v. *pubescens* - Cottonwood
- 6. " *biniflora*, v. *pharmacoides* - Moj. R.
- 7. " *Californica* - "
- 8. " *tenniflora* - "
- 9. " *achilleaefolia* - "
- 400. " *Patersonia Parryae* - "
- 1. " *androsacea* - " <sup>sp. Gray</sup>
- 2. " *tenniflora* <sup>var. latiflora</sup> ~~tenniflora~~, v. *sp. Gray* - "
- 3. " *artoisiana* - Hardyville
- 4. " *Schottii* - Moj. R. + Cottonwood
- 5. " *filifolia* - "
- 6. " } *florescens* - "
- 7. " } ~~403~~ - "
- 8. " *argata* or *florescens* - Moj. R.
- 9. " *hungaria* - Mc Ginnis
- 410. " *atrachyloides* - Pine Mt.

41  
2  
L  
42  
43  
44  
45  
46



- 411 *Gilia multicaulis* - Moj. R.
- 2. " *lutescens*
- 3. " *densiflora* - McQuinn
- 4. *Traximus nictaria* - Clark's Creek
- 5. *Gilia densiflora* - Clark's Creek
- 6. *Convolvulus luteolus* - Moj. R.
- 7. " *longipes* - McQuinn
- 8. " *californicus* - Cambra
- 9. *Lycium* - 426. - Rock Spring
- 9. " *pallidum* - Walnut Grove
- 420. " *Copuri* - Moj. R.
- 1. " *Andersonii* - Williams Fork
- 2. " } *gracilipes*, Gr. n. sp. "
- 3. " }
- 4. " *Zorreyi* "
- 5. " *Berlandieri*? - Hardyville
- 6. " *Andersonii*, Wrightii? - Elsinberg
- 7. *Solanum umbelliforme* - Cottonwood
- 8. } " *Xanthi* - McQuinn
- 9. } " - Clark's Creek
- 430. *Phytolacca heterophylla* - Rock Spring
- 1. " *ovalifolia* - Elsinberg
- 2. *Nicotiana trigloria* - Moj. R.
- 3. " *ipomopsisifolia*? - Williams Fork
- 4. " *attenuata* - Moj. R.
- 5. *Turroia* ~~linearis~~ *linearis* - Moj. R.
- 6. = 439. *McQuinnii*
- 7. *Adelphaea vestita* - Moj. R.
- 8. " *erivocarpa* - S. Bernardino
- 9. " *fascicularis* - Moj. R.
- 440. *Asclepias Wahavis* - Hardyville
- 1. ~~philipensis~~ *linearis* - "
- 2. *Gentiana affinis* - Halleck
- 3. *Grythosia Muhlenbergii* - McQuinn Moj. R.
- 4. " *Souleyi* - McQuinn
- 5. *Chenopodium album* - Wadsworth
- 6. *Atriplex Californica* - S. Simson Bay
- 7. *Blitum Californicum* - Moj. R.
- 8. *Chenopodium leptophyllum* - Moj. R.
- 9. *Atriplex hymenelytra* - Williams Fork
- 450. *Atriplex Nuttallii* - Rock Spr.
- 1. *Grythia polygylloids* - Rock Spr.
- 2. *Kochia Americana* - Wadsworth
- 3. *Monolepis chenopodioides* - Halleck
- 4. *Atriplex pusilla* - Camp Halleck
- 5. *Chenopodium ambrosioides* - Cambra
- 6. *Mungra* ~~californica~~ *californica* - John
- 7. " *californica* - Wadsworth
- 8. *Gouphonia globosa* - Walnut Grove
- 9. *Rumex maritimus* - S. Obispo
- 460. *Rumex pulcher* & *crispus* - Cambra
- 1. " *calicifolius* - John
- 2. *Polygonum aviculare* - Camp Halleck
- 3. " *tenue* - "
- 4. *Chorizanthe* ~~strobilata~~ *strobilata* - S. l. Obispo
- 5. " *californica* - Clark's Cr.
- 6. " *unicristata* - McQuinn
- 7. *Pentacera ramosissima* - Clark's Cr.

- 465. *Chorizanthe perfoliata* - Moj. R.
- 9. " *brevicornis* - "
- 9. " *Watsoni* - "
- 470. *Oxytheca perfoliata* - "
- 1. *Viburnum polytachya* - "
- 2. } *Leurostegia Thurberi* - Moj. R.
- 3. }
- 4. *Eriogonum microthecum* - Halleck
- 5. " *Baileyi* - Wadsworth
- 6. " *inflatum* - Cottonwood
- 7. " *Mojave* n. sp. - Mojave R.
- 8. " = 475. "
- 9. " *Baileyi*, yellow fl. - "
- 480. " } *angulosum* - "
- 1. " }
- 2. " *pusillum* - "
- 3. " *Thomasii* - Hardyville
- 4. " *virginicum*? - "
- 5. " *pusillum*, v. *myrsinanthum* - "
- 6. " *deflexum* - Moj. R.
- 7. " = 477. "
- 8. " = 482. - Rock Spr.
- 9. " *fasciculatum* - Spring
- 490. " } *parvifolium* - Clark's Cr.
- 1. " } *parvifolium* - Cambra
- 2. " } *parvifolium* - Redwood
- 3. " *latifolium* - S. Simson Bay
- 4. " *gracile* - John
- 5. " = 484. - Cottonwood
- 6. " *virgatum* - McQuinn
- 7. " = 475. - "
- 8. " = 480 - "
- 9. " *medium* - "
- 500. " = 486. - Wadsworth
- 1. " = 479. - Moj. R.
- 2. " *Plumabilla* - "
- 3. *Orodaphne Californica* - S. l. Obispo
- 4. *Cornandra pallida* - Cottonwood
- 5. *Arcuthobium vaginatum* - "
- 6. *Phoradendron Calif.* - Hardyville
- 7. ~~Stellaria~~ *Stellaria serpyllifolia* - Wadsworth
- 8. *Euphorbia* ~~glandulosa~~ *glandulosa* - McQuinn
- 9. " = 513? *pedunculata* - Prescott
- 510. " ~~schizoloba~~ *schizoloba* - Walnut Cr.
- 1. " ~~schizoloba~~ *schizoloba* - Cottonwood
- 2. " *subpuberula* n. sp. = 511. - Knott
- 3. " *albomarginata* - Rock Spr.
- 4. " *schizoloba* - Williams Fork
- 5. " *pedunculata* - "
- 6. " *polycomitosa* - Elsinberg
- 7. *Stillingia* ~~pedunculata~~ *pedunculata* - Moj. R.
- 8. *Tragia nepetaefolia* - Rock Spring
- 9. *Argyrothamnia* ~~aberrans~~ *aberrans*? - Williams Fork
- 520. *Mitabilis multiflora* - Rock Spr.
- 1. *Abronia umbellata* - McQuinn
- 2. *Morus parvifolia* - Prescott
- 3. *Asplundia ovata*? - Walnut Grove
- 4. *Ephedra trifurca* - Agency
- 5. " *amblyophylla* v. *pedunculata* - Moj. R.
- 5 1/2. *Sagittaria variabilis* - Halleck

Dr. E. Palmer - 1476.

526. Calochortus ~~hillebrandii~~ <sup>Palmeri</sup> - Rock Spr. - Moj. R. = C. Kennel <sup>et al.</sup>, ~~Palmer~~

527. " <sup>Palmeri</sup> - Moj. R. <sup>n. sp. (S. L.)</sup>  
1. Brodiaea grandiflora - "  
2. Milla capitata, v. pauciflora - Prescott.

530. Moomenia aurea - Moj. R.  
1. Milla longipes <sup>S. L.</sup> n. sp. - Pine Mt. = Br. ex Cordes  
2. Allium Beyerlii - Walnut Grove  
3. Cyperus inflexus - Camp Halluck  
4. ~~Hordeum pratense~~ - Cottonwood. *Elymus setaceus*  
5. Bromus brevirostris, var. ? - Walnut Grove.  
6. Loderia cristata - Rock Spr.

7. Aristida purpurea - "  
8. Brizopyrum spicatum, var. - S. Luis Obispo  
9. Muhlenbergia debilis - Ehrenberg  
540. ~~Gastridium~~ australe - S. Luis Obispo

1. Festuca tenuis - Williams Fork.  
2. Aristida bromoides. "  
3. Bouleoua aristoides - Ehrenberg  
4. Vilfa depauperata - Camp Halluck  
5. Aira danthonoides - Moj. R.  
6. Bromus viridis? - "  
7. Eriocoma cuspidata - Rock Sp.  
8. Sporobolus cryptandrus - Ehrenberg  
9. Adiantum Capillus-Veneris - Redwoods *Ch...*

550. Gymnogramma triangular - S. L. Obispo  
1. Pellaea densa - Redwoods  
2. Cheilanthes Fendleri - ~~Cabot Mt.~~ Rock Spr. <sup>- Cabot Mt. - Prescott.</sup>  
3. <sup>3/4</sup>   
4. Wodzia acapulcana - Prescott.  
5. Atholana Parryi - Hardyville  
6. Gymnogramma hispida - Prescott.  
7. Adiantum pedatum - Redwoods  
8. Aspidium argutum - Pine Mt.  
9. " minutum - Cambra.

560. Localities & Dates.

- Ehrenberg - on the Colorado, Arizona - Mar. 4.
- Williams Fork - its junction with the Colorado - Mar. 11.
- Agency - Mojave Reservation, between last localities
- Wickenburg, Arizona - Apr. 6.
- Prescott, Arizona - Apr. 20.
- Walnut Grove, Arizona - Apr. 24.
- Cottonwood Cr. - Arizona, 75 m. west of Prescott - May 4.
- Hardyville, Arizona - May 4.
- Rock Spring, S. E. California - May 14.
- Mojave River, " " - May 20 to June 8.
- S. Luis Obispo, California - June 26
- Clarks Creek (Holland's Ranch) - 10 m. from S. Luis Obispo & 4 from Moss Bay - July 2
- McCinnis' Farm - Head of Salinas, 25 m. N. E. of S. L. Obispo - July 10.
- Cambra, California - a mile from seabach ~~at Cambra~~ July 17.
- Pine Mt. - opposite S. Simon Bay - July 22
- San Simon Bay - July 22.
- Spring (Paso Robles Sp.) - 30 m. N. of Cambra - July 24.
- Jolon, California, Monterey Co. - ~~30 m. N. of~~ July 31.
- Redwoods, S. Lucia Mts. - Aug. 2.
- Madsworth, Nevada - Aug. 20.
- Camp Halluck, Nevada - Aug. 26.

Cabot Mt. Pass - about 35 m. E. of Hardyville - May 6.  
 Juniper Mt. - about 30 m. W. of Prescott - Aug. 23  
 S. Bernardino, Calif. - June 10.  
 Santa Cruz - July 24.  
 Lone Mountain, near San Francisco - June.

A. = Colorado valley  
B. = Wickenburg, Ariz. - &c.  
C. = Prescott, Ariz.

560. *Crossosoma Bigelovii* - B.

- 1.
2. " *rencholytica Dougl.ii*."
3. *Nasturtium palustre* - A.
4. *Arabis armata* - B.
5. *Draba* <sup>asprella, Greene</sup> (or probably *vesicaria* - C.)
6. " *Wiscivella viridigeni*."
7. *Thysanocarpus curvipes* - B.
8. " " *same*, var. *elegans* - B.

9. *Lepidium Wrightii* - A.

570. *Vesicaria angustifolia* - B. (= 410. Doni)

1. " *Thlaspi alpestris*."
2. *Viola Canadensis* - C.
3. " *cucullata* - C.
4. *Calyptridium monandrum* - B.
5. *Fouquieria splendens* - B.
6. *Malvastrum rotundifolium* - A.
7. *Sphaeralcea Emoryi* - B.
8. *Thamnosma montanum* - B.
9. *Zizyphus lycioides*, var. *pubescens* - B.

580. *Forstiera Mexicana*, var. *Arizona* - C.

581. *Lupinus ~~concolor~~ Arizonicus* -

2. " *viridissimus*, var? - A.
3. *Trifolium gracilentum* - B.
4. " *Macraei* - B.
5. " *Horsackia subpinata*" or " *undecumbens*"
6. " " *rigida*."
7. " *Astragalus Nuttallianus*."
8. *Astragalus albocoloratus*, n. sp.
9. " " *not determined* - B.

590. *Calliandra Rhamaedrya* - B.

1. *Astragalus Arizonicus* - B.
2. *Prunus fasciculata* - B.
3. *Robustilla Mexicana* - A.
4. *Oenothera ~~strigulosa~~* - A.
5. " " *caespitosa* - B.
6. " " *trichocalyx* - B.
7. " " *Palmeri*, n. sp.
8. *Menyanthes ~~truncata~~* <sup>if *viridiflora*, Watson</sup> - B.
9. *Bouleria lobata* - B.

600. *Sarcocolla pusillus* - B.

1. *Townsendia* - not named - C.
2. *Stylocline micropoides* - B.
3. *Psilobaropus Organensis* - B.
4. " *Actinolepis kaslova*" = *Stylocline micropoides*
5. *Layia glandulosa* - B.
6. *Aplopappus Coulteri* - B.
7. *Encelia ~~pubescens~~* <sup>= *viridis flexuosa*, Greene</sup> *radiata* - B.
8. *Melanopodium cinereum* - B.
- 9.

610. *Brickellia Coulteri* - B.

611. *Franseria eriocentra* - B.

2. " *Deltoides* - B.
3. *Linaphalium Sprenglii* - A.
4. *Senecio multilobatus* - B.
5. *Malacothrix Calif.*; var. *glabrata* - B.
6. *Galium multiflorum* - B.
7. *Androsace septentrionalis* - C.
8. *Collomia gracilis* - C.
9. *Gilia demissa*? - B.

620. " *dichotoma* - B.

1. " *aurca* - B.
2. *Phacelia Louisiana* - B.
3. " *bicolor* - B.
4. " *micrantha* - B.
5. " *crenulata* - B.
6. " " " - B.
7. *Sama hispida* - A.
- 7 1/2. *Eritrichium (municulatum)* - B.
7. " *pteroctenium*, v. *pectinatum* - B.
8. " *fulvum* - B.
9. " " " - B.

630. " *Physalis lobata* - B.

- 1 1/2. " *peruviana*, var. *peruviana*"
- 1 1/2. " *minutus retellus* - C.
2. " " " - A.
3. *Pentstemon centranthifolium* - B.
4. *Athrocarpus purpureus* - B.
5. *Collinsia parviflora* - C.
6. " *Salvia Columbiana*."
7. *Verbena ciliata* - B.
8. *Rumex ~~Borealis~~* - A.
9. *Eriog. Thomasii* - A.

640. " *Throtopia drymarisoides*."

641. *Chorizanthe rigida* - A.
2. " *corrugata* - A.
3. " *Parietaria debilis*"
4. " *Mirabilis Californica*."
5. *Juniperus ~~Californica~~* <sup>*Californica*, var.</sup> - B.
6. *Hieracium borealis* - C.
7. *Poa annua* - B.
8. " *bovifolia* - B.
9. *Pellaea Wrightiana* - B.

Also duplicate numbers -

147. *Eriogon divaricatum* - B.
216. *Baeria tenuissima* - A.
407. *Gilia glauca*? - B.
- 372 1/2. *Erit. circumscissum* - B.
377. *Coldenia Palmeri* - A.
521. *Abronia villosa* - A.
- Antirrhinum chytrographum* - A.
- Sphaeralcea Emoryi*, var. -
- Astrag. dispersus*, n. sp. - B.
226. *Actinolepis multicaulis*, v. *peppora* -



# Perry & Semmon.

S. California, 1876.

Checked numbers (X) not in our list

- |   |                             |
|---|-----------------------------|
| 1. Clematis pauciflora  | 51. Anemone cuneata         |
| 2. " lasiantha  | 2. " integrifolia           |
| + 3. Paeonia pauciflora <del>Bronnei</del>                            | 3. " divaricata             |
| 4. Crossosoma <del>Wrightii</del>                                     | 4. Lupinus Chamissonis      |
| 5. Delphinium varicatum   | 5. " rivularis              |
| 6. } " decorum  | 6. " albicaulis             |
| 7. }  | 7. } " affinis              |
| 8. Cardamine pauciseta  | 8. }                        |
| 9. Tropidocarpum gracile  | 9. " Breweri                |
| 10. Arabis ornata   | 60. " micrantha             |
| 11. Strophanthus flavescens?  | 1. " Arizonicus             |
| 12. <sup>11/2</sup> <del>Sisymbrium irio</del> Biscutella Californica | 2. " spissiflorus           |
| 13. Thysanocarpus curvipes  | 3. " hirsutissimus          |
| 14. " laciniatus  | 4. " concinnus              |
| 15. " pusillus  | 5. " densiflorus            |
| 16. = 13.   | 6. Trifolium gracilentum    |
| + 17. Isomeris arborea  | 7. " involucratum           |
| + 18. Dendromecon rigidum   | 8. " tridactylum            |
| + 19. Platystigma Californicum  | 9. " Macraei                |
| 20. Dicentra chrysantha   | 9                           |
| 1. Helianthemum scoparium   | 10. " microcephalum         |
| 2. Viola chrysantha   | 1. " ciliatum               |
| + 3. " pedunculata  | 2. Hesperis coccinea        |
| 4. Armonia Douglasii  | + 3. " labra                |
| 5. Polycarpon depressum   | 4. " Purshiana              |
| 6. Delphinium micranthum & medium                                     | + 5. " striosa              |
| 7. Lophosiphon squarrosa  | 6. " longifolia             |
| 8. Adiantum Cooperi   | 7. " decumbens              |
| 9. Calandrinia Nevadaensis  | 8. " angustifolia           |
| 30. Morbia fontana  | 9. " " var.?                |
| 1. Claytonia linearis   | 80. " grandiflora           |
| 2. Calyptrodium roseum  | 1. " micrantha              |
| 3. <sup>magnifolium</sup> Malvastrum Thunbergii + Munsonii            | 2. " subpinnata + maritima  |
| 4. /  | + 3. Psoralea orbicularis   |
| 5. Sphaeralcea Emoryi   | + 4. " macrostachya         |
| 6. Fremontia Californica  | + 5. Delia Emoryi           |
| + 7. Larrea mexicana  | 6. " Californica            |
| 8. Thymus montanus  | 7. Astragalus Coulteri      |
| + 9. Aca macrophyllum   | 8. " tricornatus            |
| 40. Zizyphus Perryi   | + 9. " oocarpus             |
| 1. Rhamnus crocea   | 90. " didymocarpus          |
| + 2. Rhus integrifolia  | + 1. " luteo-juncus         |
| + 3. " lanina   | 2. " <del>scoparium</del>   |
| + 4. " aromatica  | + 3. " Thompsonae           |
| + 5. Schinus molle  | 4. " Coralensis             |
| 6. Anemone crassifolia  | + 5. " Purshii              |
| 7. " "  | 6. " oocarpus               |
| 8. " "  | 7. Anemone Californica      |
| 9. " hirsuta  | 8. Lathyrus vestitus        |
| 50. " divaricata  | + 9. Cercocarpus ledifolius |
|   | 100. Potentilla Wheeleri    |

Page	Plant Name	Number	Page
22	101. <i>Rubus rosinus</i>	161.	22
	2. <i>Horkelia Californica</i>	2.	
	3. " " var. <i>cuneata</i> (H. B. S. Landeri, var.)	3.	
	4. <i>Lesia unguiculata</i>	4.	
	+ 5. <i>Adenostoma sparsifolium</i>	5.	
	+ 6. " <i>fasciculatum</i>	6.	
	+ 7. <i>Heteromelis obtusifolia</i>	7.	
	+ 8. <sup>Prunus</sup> <i>Prunus subcordata</i>	8.	
	+ 9. <i>Alchemilla arvensis</i>	9.	
	+ 10. <i>Boykinia occidentalis</i>	170.	
	x 1. <i>Tellima</i>	1.	
	x 2. <i>Saxifraga virginiana</i>	2.	
	x 3. <i>Hemlock pilosissima</i>	3.	
	+ 4. <i>Ribes</i>	4.	
	+ 5. " <i>sanguineum</i>	5.	
	+ 6. <i>Tillaea minima</i>	6.	
	7. <i>Sedum spathulifolium</i>	7.	
	8. <i>Echynidion foiosum</i>	8.	
	9. " <i>laxa</i>	9.	
	+ 120. <i>Lythrum album</i>	180.	
	1. } <i>Eriogonum coloratum</i>	1.	
	2. }	2.	
	+ 3. <i>Eriogonum Californicum</i>	2. <i>Hesperis flexuosum, Greene</i>	
	4. <i>Stenotheca Californica</i>	3.	
	5. " <i>trichocalyx</i>	4.	
	6. " <i>bistorta</i> , var. <i>Vitchiana</i>	5.	
	7. " <sup>+ micrantha</sup>	6.	
	8. <sup>micrantha</sup> " <i>bistorta</i>	7.	
	9. " <i>dubata</i> , var. <i>grandiflora</i>	8.	
	130. " <i>striatula</i>	9.	
	1. <i>Caryophytum racemosum</i>	190.	
	+ 2. <i>Oc. scapoides</i>	1.	
	3. " <i>cordiophylla</i>	2.	
	4. <i>Cratichia epilobioidea</i>	3.	
	5. " <i>quadriangularis</i>	4.	
	6. <i>Clarkia rhomboides</i>	5.	
	7. <i>Menyanthes dispersa</i>	6.	
	8. " <i>triantha</i>	7.	
	9. <sup>micrantha?</sup> <i>Salsola glomerata</i>	8.	
	+ 140. <i>Sanicula purpurascens</i>	9.	
	1. " <i>bipinnatifida</i>	200.	
	+ 2. " <i>tuberosa</i>	1.	
	3. [ " <i>maritima</i> ]	2.	
	4. <i>Apriastrum angustifolium</i>	3.	
	5. <i>Gaultheria microcarpa</i>	4.	
	6. <sup>Gaultheria pusillus</sup> <i>Osmorhiza brachypoda</i>	5.	
	7. <i>Cymopterus</i>	6.	
	8. <i>Geogygia arguta</i> , var. <i>745.</i>	7.	
	9. <i>Penstemon utriculatus</i>	8.	
	150. <i>Cornus Nuttallii</i>	9.	
	1. <i>Lonicera hispidula</i>	210.	
	2. <i>Galium Nuttallii</i>	1.	
	3. " <i>angustifolium</i>	2.	
	4. <sup>4 1/2</sup> " " var.	3.	
	+ 5. <i>Plectritis macrocarpa</i>	4.	
	6.	5.	
	7.	6.	
	8.	7.	
	9.	8.	
	160.	9.	
		220.	

221.  
2.  
3.  
4.  
5.  
6.  
7.  
8.  
9.  
230.  
1.  
2.  
3.  
4.  
5.  
6.  
7.  
8.  
9.  
240.  
1.  
2.  
3.  
4.  
5.  
6.  
7.  
8.  
9.  
250.  
1.  
2.  
3.  
4.  
5.  
6.  
7.  
8.  
9.  
260.  
1.  
2.  
3.  
4.  
5.  
6.  
7.  
8.  
9.  
270.  
1.  
2.  
3.  
4.  
5.  
6.  
7.  
8.  
9.  
280.  
1.  
2.  
3.

264.  
5.  
6.  
7.  
8.  
9.  
290.  
1.  
2.  
3.  
4.  
5.  
6.  
7.  
8.  
9.  
300.  
1.  
2.  
3.  
4.  
5.  
6.  
7.  
8.  
9.  
310.  
1.  
2.  
3.  
4.  
5.  
6.  
7.  
8.  
9.  
320.  
1.  
2.  
3.  
4.  
5.  
6.  
7.  
8.  
9.  
330.  
1.  
2.  
3.  
4.  
5.  
6.  
7.  
8.  
9.  
340.  
1.  
2.  
3.  
4.  
5.  
6.  
7.  
8.  
9.

- 7. " *leptolens*
- 8. *Mimulus Palmeri*, n. sp.
- 9. " *Fremontii*
- 310. " *brevifus*
- 1. " *glutinosus*
- 2. " *umbellus*
- x 3. "
- x 4. "
- 5. *Cestilleia parviflora*
- 6. " *foliolosa*
- 7. *Orthocarpus purpurascens*
- 8. " *basiothyridus*
- 9. *Cordylanthus tenuis*
- 320. " *filifolius*, var.
- 1. *Pedicularis semibarbata*
- 2. *Aphyllon uniflorum*
- 3. " *Ludovicianum*
- 4. *Brodiaea strobilacea*
- 5. *Beloperone Californica*
- 6. *Hyptis Euroyi*
- 7. *Pycnanthemum Californicum*
- 8. *Monardella macrantha*
- 9. " *odoratissima*
- 330. " *hypoleuca*, n. sp.
- 1. " *laeviflora*
- 2. *Salvia cardiaca*
- 3. *Audubonia stachyoides*
- 4. " *polystachya*
- 5. " *revera*
- 6. " *canadensis*, var.
- 7. *Scutellaria angustifolia*
- 8. " *tuberosa*
- 9. *Stachys alba*
- 340. *Nichostema micrantha*
- 1. " *lanatum*, Benth.
- 2. *Verbena polystachya*
- 3. *Oreodaphne Californica*
- x 4. " *Abronia aurea*
- 5. " *latifolia*
- 6. " *umbellata*
- 7. " *villosa*
- x 8. 9. *Nierembergia Californica*

- 24  
 350. *Atriplex*  
 + 1. *Chenopodium*  
 + 2. *Eragrostis polygaloides*  
 3. *Monolepis chenopodioides*  
 4. *Hesperomide tenella*  
 + 5. "*Utica divice*"  
 6. *Eriogonum Thunbergii*  
 7. " *pusilla*  
 8. " *Thunbergii*  
 9. " *gracile*  
 1360. " *Whipplei*  
 1. " *saxatile*, n. sp.  
 2. " *stomatium*  
 3. " *fasciculatum*  
 4. " *gracile*  
 5. *Phrostegia drymoniaoides*  
 6. *Oxytheca trilobata*  
 7. *Centrostegia leprocuras*  
 8. *Chorizanthe Xanthii*, n. sp.  
 9. " *staticoides*  
 370. " *Parryi*, n. sp.  
 1. 370k " *Californica*  
 2. *Lastarriaa Chilensis*  
 + 3. *Rumex conglomeratus*  
 + 4. *Phoradendron juniperinum*, var.  
 5. *Simmondsia Calif.*  
 6.  
 7.  
 + 8. *Euphorbia*  
 + 9. " *petaloides* ?  
 380. " *micromeris*  
 + 1. *Croton*  
 + 2. *Abies grandis*  
 + 3. *Libocedrus decurrens*  
 4. *Habenaria elegans*  
 5. *Isis longipetala*  
 + 6. *Lilium Humboldtii*  
 7. "  
 8. *Calochortus splendens*  
 9. " *luteus*  
 390. *Allium* — ?  
 1. *Yucca Whipplei*  
 2. *Mooeneria aurea*  
 + 3. *Milla* ~~sp.~~  
 4. *Modiola capitata*  
 + 5. *Carex*  
 + 6. 370k " "  
 + 7. "  
 8. *Eleocharis* — ?  
 9. *Scirpus pungens*  
 400. *Gramineae*  
 1.  
 2.  
 3.  
 4.  
 5.  
 6.  
 7.  
 8.  
 9.  
 410.

411.  
 2.  
 3.  
 4.  
 5.  
 6.  
 7.  
 8.  
 9.  
 420.  
 1.  
 2. *Stipa coronata*, *Thunbergii*  
 + 3.  
 + 4. *Polypodium Californicum*  
 + 5. *Cheilanthes Fendleri*  
 6. " *Clevelandii*  
 7. " *Cooperi*  
 8. *Isotriaena Parryi*  
 9. " *candida*  
 430. " *Thunbergii*  
 1. *Gymnogramme triangularis*  
 + 2. *Pellaea andromedaefolia*  
 + 3. " *ornithopus*  
 + 4. *Woodwardia radicans*  
 + 5. *Aspidium munitum*  
 + 6. " *argutum*  
 7. *Adiantum Chilense*





Palm Springs - S. West Arizona

1877

- 1. "Clematis" <sup>"Pycnostachya"</sup> B.V.
- 2. "Anemone multifida" B.
- 3. "Ranunculus" <sup>agrestis</sup> B.V.
- 4. " " <sup>Cymbalaria</sup> STG.
- 5. R. acris, L. B.V.
- 6. " " B. "maurandus" = repens
- 7. Aquil. formosa. B.
- 8. " " <sup>caerulea</sup> B.
- 9. Delph. <sup>deparviflora</sup> STG. x
- 10. " <sup>ajacium</sup> " "
- 11. "Anemone nasutum" B. x
- 12. Thalictrum <sup>fruticosa</sup> B.V.
- 13. " <sup>fruticosa</sup> Nutt.
- 14. "Ech." STG. x
- 15. "Corydalis aurea" STG. x
- 16. Anab. <sup>holosericea</sup> " "
- 17. Thalictrum <sup>fruticosa</sup> " "
- 18. Anab. <sup>acutata</sup> x
- 19. "Cordium cordatum" B.
- 20. Sisymbrium <sup>iriolepis</sup> Nutt R.C.
- 21. Erysimum <sup>incanum</sup> W. STG.
- 22. " <sup>asperum</sup> STG.
- 23. " <sup>strobiliferum</sup> " "
- 24. " <sup>crassicaulis</sup> Nutt
- 25. Thalictrum <sup>fruticosa</sup> B.
- 26. Arabis <sup>purpurea</sup> R.C.
- 27. " <sup>purpurea</sup> M-n. sp. B.
- 28. " <sup>laevigata</sup> STG.
- 29. " <sup>purpurea</sup> " "
- 30. " <sup>purpurea</sup> " "
- 31. " <sup>campanulata</sup> " x
- 32. " <sup>virginica</sup> B.V. x
- 33. " <sup>purpurea</sup> R.C. x
- 34. " <sup>purpurea</sup> Nutt.
- 35. " <sup>purpurea</sup> STG.
- 36. " <sup>purpurea</sup> " "
- 37. " <sup>purpurea</sup> R.C.
- 38. " <sup>purpurea</sup> STG. x
- 39. " <sup>purpurea</sup> Nutt.
- 40. " <sup>purpurea</sup> STG. x
- 41. " <sup>purpurea</sup> STG.
- 42. Veronica <sup>gibberna</sup> STG.
- 43. " <sup>purpurea</sup> Arizona, n. sp.
- 44. " <sup>purpurea</sup> B.
- 45. " <sup>purpurea</sup> STG. x
- 46. " <sup>purpurea</sup> " "
- 47. " <sup>purpurea</sup> Nutt. x

- 48. "Viola cucullata" Nutt
- 49. " " <sup>metallina</sup> " "
- 50. " <sup>subrepens</sup> Nutt x
- 51. " <sup>parviflora</sup> STG. x
- 52. " <sup>Stellaria</sup> " "
- 53. " <sup>Stellaria</sup> " x
- 54. " <sup>Stellaria</sup> B.V.
- 55. " <sup>Stellaria</sup> B.
- 55 1/2. " <sup>Stellaria</sup> B.V.
- 56. " <sup>Stellaria</sup> STG. x
- 57. " <sup>Stellaria</sup> B.
- 58. " <sup>Stellaria</sup> Nutt. x
- 58 1/2. " <sup>Stellaria</sup> R.C. x
- 59. " <sup>Stellaria</sup> Nutt.
- 60. " <sup>Stellaria</sup> B.
- 61. " <sup>Stellaria</sup> B.
- 62. " <sup>Stellaria</sup> B.
- 63. " <sup>Stellaria</sup> Nutt.
- 63 1/2. " <sup>Stellaria</sup> STG.
- 64. " <sup>Stellaria</sup> STG. x
- 65. " <sup>Stellaria</sup> " "
- 66. " <sup>Stellaria</sup> Nutt.
- 67. " <sup>Stellaria</sup> STG.
- 68. " <sup>Stellaria</sup> Nutt.
- 69. " <sup>Stellaria</sup> Nutt. x
- 70. " <sup>Stellaria</sup> STG. x
- 71. " <sup>Stellaria</sup> " "
- 72. " <sup>Stellaria</sup> Nutt. x
- 73. " <sup>Stellaria</sup> " "
- 74. " <sup>Stellaria</sup> Nutt.
- 75. " <sup>Stellaria</sup> Nutt.
- 76. " <sup>Stellaria</sup> B.
- 77. " <sup>Stellaria</sup> Nutt.
- 78. " <sup>Stellaria</sup> Nutt.
- 79. " <sup>Stellaria</sup> B.
- 80. " <sup>Stellaria</sup> Nutt.
- 81. " <sup>Stellaria</sup> STG. + <sup>arabica</sup> var
- 82. " <sup>Stellaria</sup> STG.
- 83. " <sup>Stellaria</sup> R.C.
- 84. " <sup>Stellaria</sup> (?) STG.
- 85. " <sup>Stellaria</sup> B.D.
- 86. " <sup>Stellaria</sup> STG. x
- 87. " <sup>Stellaria</sup> " x
- 88. " <sup>Stellaria</sup> Nutt.
- 89. " <sup>Stellaria</sup> STG.
- 90. " <sup>Stellaria</sup> B.
- 91. " <sup>Stellaria</sup> B.
- 92. " <sup>Stellaria</sup> B.
- 93. " <sup>Stellaria</sup> Nutt.

9  
93  
76  
97  
98  
99  
100  
101  
102  
103  
104  
105  
106  
107  
108  
109  
110  
111  
112  
113  
114  
115  
116  
117  
118  
119  
120  
121  
122  
123  
124  
125  
126  
127  
128  
129  
130  
131  
132  
133  
134  
135  
136  
137  
138  
139  
140  
141  
142  
143  
144  
145  
146  
147  
148  
149  
150  
151  
152  
153  
154  
155  
156  
157  
158  
159  
160  
161  
162  
163  
164  
165  
166  
167  
168  
169  
170  
171  
172  
173  
174  
175  
176  
177  
178  
179  
180  
181  
182  
183  
184  
185  
186  
187  
188  
189  
190  
191  
192  
193  
194  
195  
196  
197  
198  
199  
200

- 94. "Horsackia <sup>"nivalis, var."</sup> nivalis" W.K.
- 95. " " nivalis" S.H.
- 96. Parvalca saxatilis, n. sp. B.
- 97. " melitensis, n. sp. B.
- 98. "Salca mollis": B.D. x
- 99. " gibbosa, S.H.
- 100. "Glycyrrhiza lepidota" "
- 101. Astragalus amphioxys, n. sp. M.D.
- 102. " " "
- 103. " Diphysa, Gray "
- 104. " Prenesi, var. taxifolia B.H.
- 105. " Mohiacensis, Gray, n. sp. W.K.
- 106. " arabum, Watson "
- 107. " arabum, Watson? Tr. x
- 108. " nummularis, var. (C) W.K. x
- 109. " acerosus, Gray, n. sp. "
- 110. " rubricornis, Gray, n. sp. "
- 111. " tetralpaeus, Gray, n. sp. M.D.
- 112. " procerus, Gray, n. sp. S.H.
- 113. " concoloratus, Gray, n. sp. "
- 114. " lanceolatus, Gray, n. sp. Beauv.
- 115. " " " " W.C. x
- 116. " convallaria " W.K. x
- 117. " subobovatus, Gray, n. sp. W.K.
- 118. " campocoris B.D.
- 119. " microcarpa, Gray, var. parviflora W.K.
- 120. " anthyllifera, S.H. x
- 121. = 106.
- 122. " " Kentrophyta W.K.
- 123. " " " " "
- 124. = 106. " " " " W.K.
- 125. " vicaria exigua S.H. x
- 126. " zinnii W.C. x
- 127. " polytrichum, var. myrtilloides, x
- 128. " polytrichum W.K.
- 129. Prosopis juliflora x
- 130. Azacia Gussone B.D.
- 131. Pithecelobium besseyi W.K.
- 132. " pubescens " x
- 133. " pubescens " W.K.
- 134. Prosopis juliflora var. pubescens W.K.
- 135. " " pubescens " "
- 136. " pubescens " bicolor, var. "
- 137. " " pubescens " "
- 138. " " pubescens " "
- 139. Colony " " " " S.H.
- 140. Ceanothus " " " " "
- 141. Salvia " " " " " x
- 142. Genus " " " " " "
- 143. Salvia " " " " " "
- 144. " glandulosa W.K.
- 145. " " " " " B.D.

- 146. Pot. glandulosa B.D.
- 147. Rosa Calif., var. ultramontana W.K.
- 148. Ulmus terminalis W.K.
- 149. " Hedysarum repens " B.
- 150. " " parviflora, var. B.D. B.V.
- 151. Philadelphus macranthus, B.
- 152. Ribes cereum W.K. x
- 153. Sedum dehnbium B.
- 154. " epithymum apiculatum B.
- 155. " " epithymum ? B.
- 156. " tetragynum B.
- 157. Galearia pubescens B. x
- 158. Securidaca coccinea S.H. x
- 159. Desmodium pubescens B.V.
- 160. " albicaulis S.H.
- 161. " " caespitosa W.K. x
- 162. " ambigua n. sp. S.H.
- 163. " " ambigua (var. ambigua, pubescens) S.H.
- 164. " ambigua pubescens S.H.
- 165. " ambigua pubescens B.V.
- 166. " ambigua pubescens W.K.
- 167. " ambigua S.H.
- 168. " ambigua pubescens W.K.
- 169. " " " " B.D.
- 170. Desmodium pubescens W.K. x
- 171. " pubescens (var. pubescens) Gray
- 172. " pubescens W.K.
- 173. " pubescens "
- 174. " pubescens S.H. x
- 175. Paralimnium nivale W.K.
- 176. Alpinum pubescens W.K.
- 177. Alpinum pubescens W.K.
- 178. Alpinum pubescens W.K.
- 179. Alpinum pubescens W.K.
- 180. Alpinum pubescens S.H.
- 181. Alpinum pubescens W.K.
- 182. Alpinum pubescens W.K.
- 183. Alpinum pubescens W.K.
- 184. Alpinum pubescens W.K.
- 185. Alpinum pubescens W.K.
- 186. Alpinum pubescens W.K.
- 187. Alpinum pubescens W.K.
- 188. Alpinum pubescens W.K.
- 189. Alpinum pubescens W.K.
- 190. Alpinum pubescens S.H.
- 191. Alpinum pubescens W.K.
- 192. " " pubescens W.K. x
- 193. Alpinum pubescens W.K. x

- 194. *Guthriea* <sup>a</sup> *Euthamnia* B,
- 195. *Solidago pumila*, Nutt. "
- 196. *Diarrhena* *fermentaria* 150
- 197. "*Oenanthopappus sphaerocarpus*" S.F., +
- 198. *Mentzelia* *bicolorifera* "
- 199. *Raphanistrum* *Palmeri*, n. sp. 130
- 200. *Solidago* *missillifera*, Nutt. x "
- 201. *Aplopappus* *hirsutifolius* x "
- 201 1/2 " *granulifolius*, Gray "
- 202 " *americanus* RC
- 203. *Diarrhena* *nanus*, Nutt. 150.
- 204. *Diarrhena* *?* Tr
- 205. *Guthriea* *Canadensis*? 15,
- 206. " *virgata*, *multiradiata* "
- 207. *Diarrhena* *?* 150
- 208. " *terrestris* x S.F.,
- 209. " *altissima*, var. *altissima* 15
- 210. " *canadensis* x Nutt. &
- 211. " *tanacetifolia* S.F.,
- 212. *Diarrhena* *dispergillum*, *tetrapium* "
- 213. " *angustatum*, Gray "
- 214. "*Diarrhena* *?* x S.F.,
- 215. *Erigeron* *canadensis*, Nutt. RC
- 216. *Diarrhena* *flagellata* 150,
- 217. " *diversus*, T. & G. x Tr,
- 218. " *var. vivum* 4
- 219. " " "
- 220. " *macranthus*, Nutt. "
- 221. " *americanifolius* "
- 222. " *concinnum* x S.F.,
- 223. " *concinnum* *var. glaberrimum* "
- 224. *Stylocline* *micropodus* "
- 225. "*Filago californica*" RC,
- 226. "*Filago californica*" 150,
- 227. " " " 150,
- 228. " *var.* Tr,
- 229. " " " 150,
- 230. " *Sprengelii* 150,
- 231. " *palmeri*, n. sp. 150,
- 232. " " " 150,
- 233. " " " 150 x
- 234. "*Filago californica*" 150,
- 235. " " *var.* *gr.* Nutt. &
- 236. *Habenaria* *?* *Hornem.* S.F.,
- 237. " *canescens* 150,
- 238. " *fontes callos* Tr,
- 239. " *farinosa*, Gray 150
- 240. ( *?* ) *Habenaria* *enclitoides* S.F.,
- 241. ( *?* ) *Habenaria* *?* S.F.,
- 242. " *alba* *americana*, Nutt. 150,
- 243. " *puberula*? Nutt. &
- 244. *Lagotis glandulosa* S.F.,

- 245. *Gymnocoma* *multiflora* var. *missillifera* B,
- 246. *Rhodiola* *leptophylla*, *virgata* B,
- 247. " " " Tr
- 248. *Diarrhena* *multiradiata* S.F.,
- 249. " *plumifolia* " x
- 249. *Actinolychnis* *Wallacei* "
- 250. *Diarrhena* *?* *tenax*, Gray "
- 250 1/2. *Syntichopappus* *?* *?* x
- 251. "*Palmeria* *Hornem.*" "
- 252. "*Habenaria* *Douglasii*" Nutt. x
- 253. " *?* *?* S.F. x
- 254. " *?* *?* " x
- 255. " *?* *?* " x
- 256. "*Diarrhena* *pinnatifida* *var. hypnoides*" 150
- 257. " " " 150
- 258. " *?* *?* Tr
- 259. "*Diarrhena* *?* *occid.*" Tr
- 260. " *?* *?* *bimnis*, n. sp. 150
- 261. "*Habenaria* *?*" RC
- 262. "*Diarrhena* *?*" RC
- 263. "*Diarrhena* *?*" S.F.,
- 264. " *?* *glabrata*" RC
- 265. "*Diarrhena* *?*" S.F.,
- 266. " " " "
- 267. *Habenaria* *Douglasii*, var. 150
- 268. " *?* *?* *?* 150
- 269. "*Habenaria* *Douglasii*" RC
- 270. "*Habenaria* *?*" RC
- 271. "*Habenaria* *?*" S.F.,
- 272. " *?* *?*" S.F.,
- 273. "*Habenaria* *?*" S.F.,
- 274. "*Habenaria* *?*" S.F.,
- 275. "*Habenaria* *?*" S.F.,
- 276. "*Habenaria* *?*" S.F.,
- 277. "*Habenaria* *?*" S.F.,
- 278. "*Habenaria* *?*" S.F.,
- 279. "*Habenaria* *?*" S.F.,
- 280. "*Habenaria* *?*" S.F.,
- 281. "*Habenaria* *?*" S.F.,
- 282. "*Habenaria* *?*" S.F.,
- 283. "*Habenaria* *?*" S.F.,
- 284. "*Habenaria* *?*" S.F.,
- 285. "*Habenaria* *?*" S.F.,
- 286. "*Habenaria* *?*" S.F.,
- 287. "*Habenaria* *?*" S.F.,
- 288. "*Habenaria* *?*" S.F.,
- 289. "*Habenaria* *?*" S.F.,
- 290. "*Habenaria* *?*" S.F.,
- 291. "*Habenaria* *?*" S.F.,
- 292. "*Habenaria* *?*" S.F.,
- 293. "*Habenaria* *?*" S.F.,
- 294. "*Habenaria* *?*" S.F.,
- 295. "*Habenaria* *?*" S.F.,
- 296. "*Habenaria* *?*" S.F.,
- 297. "*Habenaria* *?*" S.F.,
- 298. "*Habenaria* *?*" S.F.,
- 299. "*Habenaria* *?*" S.F.,
- 300. "*Habenaria* *?*" S.F.,

294. <i>Arctostaphylos pungens</i>	STG,	344. <i>Lithospermum pilosum</i>	B,
295. <i>Pyrola rotundifolia, vestigiaria</i>	B,	345. " <i>multiflorum, Nutt</i>	"
296. " <i>chlorantha</i>	B,	346. = 344	"
297. " <i>recurva</i>	B,	347. <i>Mertensia Sibirica</i>	13V,
298. <i>Do dea catherinae Meadia</i>	13V	348. <i>Emtrichia basiflorum</i>	STG,
299. <i>Fraxinus americana</i>	STG	349. <i>Amelanchier tessellata</i>	"
300. <i>Asplenium carolinianum</i>	STG,	350. <i>Asplenium bostigum, Gray</i>	"
301. <i>Asclepias erosa</i>	"	351. " <i>oxycomum</i>	"
302. <i>Amorpha brevifolia, Gr.</i>	MK,	352. " <i>holotum, v. submolle</i>	"
303. <i>Asclepias decumbens</i>	"	353. " <i>micranthum</i>	STG,
304. <i>Erythraea Douglasii</i>	B	354. " <i>pterocephalum, v. puberulum</i>	"
305. " <i>albocapitata</i>	MK	355. " <i>circumscissum</i>	"
306. <i>Pilox tenuifolia</i>	MK	356. " <i>decephalum</i>	"
307. " <i>Douglasii</i>	"	357. " <i>glossum, v. adpressum</i>	"
308. <i>Polemonium canadense</i>	RC,	357 1/2. " <i>Californicum</i>	"
309. <i>Collomia frutescens</i>	B	358. <i>Salicopsis floribunda</i>	13V,
310. " <i>linearis</i>	13V,	359. " <i>Ridgwayi</i>	STG
311. " <i>gracilis</i>	STG	360. <i>Physalis linearis</i>	"
312. <i>Salvia Purshiana</i>	"	361. <i>Cressa Critica</i>	"
313. " <i>Trichostema</i>	MK	362. <i>Galium nigrum</i>	RC
314. " <i>bipartita</i>	"	363. <i>Physalis Fendleri, v. conifolia</i>	"
315. " <i>pungens</i>	13V	363 1/2. " <i>laevigata, v. laevigata (Lour.)</i>	13D
316. " <i>microcephala</i>	13D	364. <i>Lycium "Cooperi"</i>	STG
317. " <i>diversiflora</i>	RC	365. " <i>Torreyi ? (or Westlandii)</i>	"
318. " <i>polyphallum</i>	STG	366. " <i>torreyi Torrey</i>	"
319. " <i>paniculata, Nutt</i>	Tr	367. " <i>pallidum</i>	"
320. " <i>glauca</i>	BD	368. <i>Nicotiana triflora, phylla</i>	"
321. " <i>filifolia</i>	STG	369. <i>Mohavea viscidiflora</i>	Mud.,
322. " <i>caerulea</i>	BD	370. <i>Collomia parviflora</i>	MK,
323. " <i>filiformis</i>	STG	371. <i>Psilostemum Palmeri</i>	MK
324. " <i>lycomaria</i>	"	372. " <i>Suttoni</i>	STG
325. " <i>inconspicua</i>	"	373. " <i>Parryi</i>	MK
326. " <i>var. sinuata</i>	"	374. " <i>Parryi</i>	MK
327. " " "	"	375. " <i>strictus (complanatus, Gray)</i>	B,
328. " " "	"	376. " <i>glauca, v. cyananthus</i>	B,
329. " <i>aggregata</i>	B	377. " <i>Watsoni, Gr.</i>	MK
330. " <i>v. Douglasii</i>	MK,	378. " <i>acuminatus, var.</i>	"
331. <i>Desmodium occidentale</i>	MK,	379. " <i>amblyopus</i>	STG
332. <i>Phacelia crinita</i>	13V,	380. " <i>paniculata, v. Thomsonii</i>	MK
333. " <i>circumscissa, Nutt</i>	13V	381. <i>Phacelia rubellus</i>	MK
334. " <i>ramosissima</i>	STG,	382. " "	"
335. " <i>glandulosa, v. Mexicana</i>	Tr,	383. " "	MK,
336. " <i>hispidula, Gray</i>	Tr,	384. " <i>Parryi</i>	"
337. " <i>diversiflora, v. Palmeri</i>	STG	385. " <i>tuberosa</i>	"
338. " <i>microcephala</i>	"	386. <i>Limnium subulosa</i>	13,
339. " <i>puberula</i>	"	387. <i>Veronica peregrina</i>	13C
340. " <i>rotundifolia</i>	"	388. " <i>Americana</i>	"
341. <i>Mammillaria Douglasii</i>	"	389. <i>Castilleja lineariflora</i>	MK
342. <i>Erigeron occidentalis</i>	Mud.,	390. " <i>miniata</i>	"
343. <i>Erythraea Douglasii</i>	STG,	391. <i>Aphyllon fasciculatum</i>	13K
344. <i>Erythraea Douglasii</i>	"	392. " <i>Californicum + ludovicum</i>	13C
345. <i>Erythraea Douglasii</i>	"	393. <i>Chilopsis calycina</i>	STG
346. <i>Erythraea Douglasii</i>	"	394. <i>Menckia borealis</i>	B,
347. <i>Erythraea Douglasii</i>	"	395. <i>Morardella coarctata</i>	STG

394. <i>Sarcia columbiana</i>	SH,	443. <i>Euphorbia frutescens</i>	Muddy
395. <i>Ambrosia incana</i>	MK	444. " "	MK
396. <i>Lophanthus indicifolius</i>	B	445. " <i>albomarginata</i>	SH
397. <i>Hedyscyma piperita</i>	BL	446. <i>Cosmosia pellida</i>	"
398. <i>Proserpinaca purpurascens</i>	SH	447. " <i>Arenaria calycina</i>	"
399. <i>Salpiglossa mexicana</i>	"	448. <i>Eichleria anticyathica</i>	"
400. <i>Lantana Buddleia mesembryanthemifolia</i>	"	449. " <i>diffusa</i>	"
401. <i>Vestrum brachyca</i>	"	450. " <i>Carabidensis flexuosa</i>	"
402. <i>Selinocarpus diffusus</i>	"	451. " <i>flexuosa + Nuttallii</i>	MK
403. " <i>abrotina fragrans</i>	"	452. " <i>Nuttallii</i>	Tr
404. " <i>villosa</i>	"	453. <i>Althia Palmeri</i>	B
404 1/2. " <i>scabra, n. sp.</i>	B,	454. " <i>cristatum, n. sp.</i>	SH
405. " <i>cycloptera</i>	Muddy,	455. " <i>frutescens + Nuttallii</i>	BV
406. <i>Chemp. proserpinaca, v. incana</i>	SH,	456. " <i>frutescens + Nuttallii</i>	SH
407. " " <i>hirsuta</i>	"	457. <i>Triplaris mexicana</i>	RC
407 1/2 = 406.		458. <i>Zygadenus paniculatus</i>	MK
408. <i>Proserpinaca Chempodioridis</i>	M,	459. <i>Zygadenus flavus</i>	B,
409. " "		460. " <i>Habenaria dilatata</i>	RC
410. <i>Atriplex confertifolia</i>	BV,	461. " <i>hyperborea</i>	B,
411. " <i>canadensis</i>	"	462. " <i>virginiana</i>	SH
412. " <i>mittalii</i>	MK	463. " <i>frutescens " xiphoides, var."</i>	L
413. " "	"	464. " ( <i>pubens</i> ) = <i>f. Balticus</i>	Muddy
414. 1/2 = 411.	"	465. " <i>xiphoides, v. montana</i>	RC
415. " "	SH,	466. " "	"
416. " <i>Evania polygaloides</i>	"	467. " <i>frutescens + Nuttallii</i>	B
417. " <i>Sarcia verruculosa</i>	"	468. <i>Scirpus</i>	Muddy
418. " <i>brachyca</i>	BV	469. <i>Sporobolus cryptanthus, v. flexuosus</i>	"
419. " <i>brachyca debile</i>	MK	470. <i>Ageratum vesiculata</i>	"
420. " <i>Polygonum <u>terre</u></i>	"	471. <i>Poa canina</i>	"
421. " <i>brachyca</i>	BV,	472. " <i>frutescens + Nuttallii</i>	Muddy
422. " <i>hirsuta + Nuttallii</i>	SH,	473. <i>Eriocaulon cuspidatum</i>	Muddy
423. " <i>Elonchocarpus Thurbertii</i>	"	474. <i>Elymus canadensis</i>	RC
424. " <i>Elonchocarpus cuspidatum</i>	"	475. " <i>brachyca</i>	"
425. " <i>brachyca</i>	MK	476. " "	MK
426. " <i>umbellatum</i>	"	477. <i>Phlox</i>	RC
427. " <i>caespitosum</i>	"	478. <i>Abutilon purpureum</i>	Muddy
428. " <i>roseum</i>	B	479. " <i>brachyca</i>	Muddy
429. " <i>plumbeum, var?</i>	"	480. " <i>brachyca</i>	RC
430. " <i>reflexum</i>	SH,	481. <i>Vilfa zapoteco</i>	B
431. " <i>insigne, n. sp.</i>	RC,	482. <i>Calamagrostis angustata</i>	"
431 1/2. " <i>angulosum</i>	SH,	483. <i>Eriocaulon obtusum</i>	"
432. " <i>sulcatum, n. sp.</i>	"	484. <i>Arisaema caespitosum</i>	"
433. " <i>ingratum</i>	"	485. <i>Poa</i>	"
434. " <i>gracile, n. sp.</i>	"	486. <i>Calamagrostis angustata</i>	"
435. " <i>brachyca</i>	"	487. <i>Poa</i>	"
436. " <i>Thurbergia</i>	Muddy	488. " "	BV
437. " <i>brachyca</i>	MK	489. " "	SH
438. " <i>brachyca</i>	Muddy	490. " <i>brachyca</i>	B
439. " <i>brachyca</i>	Tr,	491. " <i>brachyca + Nuttallii</i>	Tr
440. " <i>brachyca</i> <i>peplogonia, n. sp.</i>	" <i>Engelm!</i>	492. " "	"
441. " <i>brachyca</i> <i>Engelm!</i>	MK	493. " <i>Stipa spartea</i>	"
442. " <i>brachyca</i>	Muddy	494. <i>Panicum jamesii</i>	"
		495. " <i>brachyca</i>	"

- 496. *Hordium pusillum* Nutt.
- 497. "*Pellaea longimacronata*" Stey
- 498. *Chilanthus lanuginosa* R.C.
- 499. *Adiantum Passy* Stey.
- 500. " *tenax* "
- 501. "*Woodsia scopulina* Tr.
- 502. "*Asplenium filix foemina* B.

Localities.

- MK = Mokiak Pass, 20 m. S.E. of St. George, in Arizona
- Muddy = 100 m. S. of St. George - Apr. 17, 1881 - St. Thomas, Nevada
- B.D. = Beaver Dam, 45 m. S. of St. George, in Arizona
- St. G. = St. George
- Tr. = Trumbull, 60 m. S. of St. George, in Arizona
- M.M. = Mountain Meadows, 50 m. W. St. George, in Utah
- B. = Beaver City & vicinity, Utah
- R.C. = Red Creek = Paragonah, Utah
- B.V. = Beaver Valley, near ibet Creek, Utah





1/2

Specimens named for Marcus E. Jones  
 - his Utah collection - as per letter of Oct. 6/1879

350. *Anemone multifida*  
 349. *Aquilegia caerulea*  
 356. *Draba alpina*, L.  
 432. *Brassica vulgaris*,  
 117. *Sisymbrium irio*  
 194. } *Nasturtium obtusum*  
 352. }  
 372. *Silene Menziesii*  
 263. *Arenaria verna*, v.  
 363. " *verna*  
 362. *Sagina dimorpha*, P.  
 439. *Lupinus angustis*  
 439A. " *latiflorus*,  
 157. " *argenteus*,  
 35. *Medicago lupulina*  
 440. " *denticulata*  
 46. *Trifolium parvifolium*  
 347. " *involutum*,  
 210. *Astragalus campestris*  
 231. *Jussiaea Utahensis*,  
 373. *Saxifraga caespitosa*  
 267. *Epilobium coloratum*  
 268. " *tabernaemontani*  
 148. *Caryophytum diffusum*  
 144. *Glycosmos occidentalis*  
 170. *digestivum filice*  
 241. *Galium bifolium*  
 466. " *aparinum*, L.  
 78. " *triflorum*,  
 243. " *trifidum*,  
 441. *Pyrola rotundifolia*,  
 395. " *chlorantha*, Sw.  
 42. *Erythraea Nuttallii*  
 230. *Phlox Douglasii*, Hook.  
 106. *Cilia Nuttallii*, Gray  
 400. " *Watsonii*, "  
 137. } *Phacelia circumscissa*, Jacq.  
 407. }  
 444. *Heliotropium Curassavicum*  
 443. *Eritrichium leucocarpum*, Watson  
 331. *Cuscuta decora*, Choisy.  
 12. *Physalis lanceolata*, Dup., var. *laevigata* Gray  
 50. *Pentstemon azureus*, var. *gaffrayana*  
 394. *Nimulus luteus*, var. *alpinus*, Gray

Oct. 6, 79  
 Grinnell, Iowa

Prof. Watson,  
 Dear Sir,

Your favor has arrived. I will accept your terms and send you a full set of my Utah plants for the names and corrections to the plants that I send you today.

Please correct all errors and name all the species and especially the varieties if they do not already have a name. I have taken great pains to arrange all the names in the enclosed list in their natural order and if I have erred in any respect please

Specimens named for Marcus E. Jones  
 — his Utah collection — as per letter of Oct. 6/1879

---

350. *Anemone multifida*, DC.

349. *Aquilegia caerulea*

mention it.

356. *Draba alpina*, L.

Please return the enclosed list and the plants (for

432. *Brassica vulgaris*, H.

117. *Sisymbrium irio*

194. } *Nasturtium obtusum*

352. }

372. *Silene Menziesii*

203. *Arenaria verna*, var.

363. " *verna*

362. *Sagina Lemnæi*, Pr.

439. *Lupinus angustis*

439A. " *laxiflorus*, DC.

157. " *argenteus*, L.

35. *Medicago lupulina*

440. " *denticulata*

46. *Trifolium parvif*

347. " *involutum*

210. *Astragalus campestris*

231. *Lorisia Utahensis*, N.

373. *Saxifraga caespitosa*

267. *Epilobium coloratum*

268. " *laberrimum*

144. *Caryophytum diffusum*

144. *Glycosmos occidentalis*

170. *digestivum filicin*

241. *Galium bifolium*, L.

466. " *aparinum*, L.

74. " *triflorum*, L.

243. " *trifidum*, L.

441. *Pyrola rotundifolia*, var.

395. " *chlorantha*, Sw.

42. *Erythraea Nuttallii*

230. *Phlox Douglasii*, Hook.

106. *Cilia Nuttallii*, Gray

400. " *Watsonii*, "

137. *Phacelia circinata*, Jacq.

407. }

444. *Heliotropium Curassavicum*

443. *Eritrichium leiocarpum*, Watson

331. *Cuscuta decora*, Choisy.

12. *Physalis lanceolata*, DC., var. *laevigata* Gray

50. *Pentstemon azureus*, var. *Jaffrayana*

390. *Nimulus luteus*, var. *alpinus*, Gray

which I enclose sufficient postage) and I will send you a full set with printed labels full specimens in all cases where it is possible as soon as I can get the labels printed and the plants put up.

I would also be very much obliged if you will give me the name of the *Toussend Pentstemon* & two *Bigelovias* that I sent you last year.

You promised to send the names, <sup>to some of them</sup> in a few days but another season has passed and they are not here.

Hoping to hear from you soon I am

Very Truly  
 Marcus E. Jones

Specimens named for Marcus E. Jones  
 — his Utah collection — as per letter of Oct. 6/179

---

350. *Anemone multifida*, DC.  
 349. *Aquilegia caerulea*, James  
 356. *Draba alpina*, L.  
 432. *Brassica vulgaris*, R. Br., var. *stricta*  
 117. *Sisymbrium incisum*, Eng., var. *Hortwegianum*  
 194. } *Nasturtium obtusum*, Nutt.  
 352. }  
 372. *Silene Menziesii*  
 263. *Arenaria verna*, var. *hirsuta*  
 363. " *verna*  
 362. *Sagina dimorpha*, Post  
 439. *Lupinus argenteus*, var. *decumbens*  
 439A. " *laxiflorus*, Dougl.  
 157. " *argenteus*, Pursh  
 35. *Medicago lupulina*, Linn.  
 440. " *denticulata*  
 46. *Trifolium parviflorum*, Nutt.  
 347. " *involutum*, Willd.  
 210. *Astragalus campestris* — reduced form; small-leaved  
 231. *Luzula Utahensis*, n. sp.  
 373. *Saxifraga caespitosa*, L.  
 267. *Epilobium coloratum*, Muhl.  
 268. " *glaberrimum* <sup>Barby, apparently</sup>  
 148. *Caryophytum diffusum*, <sup>var. *latifolium*</sup>  
 144. *Glycosmea occidentalis*, Nutt.  
 170. *Justicia filicinum*, Watson  
 241. *Galium bifolium*, Watson  
 466. " *aparinum*, L.  
 78. " *triflorum*, Mx  
 243. " *trifidum*, L.  
 441. *Pyrola rotundifolia*, var. *incarnata*, Hook.  
 395. " *chlorantha*, Sw.  
 42. *Erythraea Nuttallii*  
 230. *Phlox Douglasii*, Hook.  
 106. *Cilia Nuttallii*, Gray  
 408. " *Watsoni*, "  
 137. } *Phacelia circinata*, Jacq.  
 407. }  
 444. *Heliotropium Curassavicum*  
 443. *Eritrichium leucospermum*, Watson  
 331. *Cuscuta decorata*, Choisy.  
 12. *Physalis lanceolata*, Dc., var. *laevigata*, Gray  
 50. *Pentstemon azureus*, var. *Gaffrayana*  
 394. *Mimulus luteus*, var. *alpinus*, Gray

164. *Mimulus moschatrus*  
 65. *Veronica Anagallis*  
 139. *Castilleja miniata*, Gray  
 401. " *pallida*  
 400. " " var. *alpsentrionalis*, Gray  
 152. *Lophanthus urticifolius*, Nutt.  
 337. *Abronia fragrans*, Nutt.  
 143. *Eriogonum heracleoides*, Nutt.  
 336. " *Thomasii*, Torr.  
 140. " *chrysocephalum*, Gray  
 327. " *brevicaule*, Nutt.  
 327A. " " - form  
 143. *Ruinaea crispus*, L.  
 143A. " *occidentalis*, Watson  
 221. *Polygonum minimum*, "  
 66. " *nodosum*  
 67. " *persicaria*  
 100. " *tenue*, Mx  
 495. " *Hydropiper*  
 299A. *Amaranthus blitoides*, Watson  
 329. *Suaeda depressa*, Ledeb. - probably  
 17. " " var. *erecta*, Watson  
 60. " *intermedia*, Watson?  
 176. *Chenopodium leptophyllum*, Nutt., var. *Blouinifolium*, Watson  
 490. " *rubrum*, L.  
 49. " *glaucum*  
 330. *Atriplex patula*, var. *subspicata*, Wats.  
 491. " " "  
 91. " *Mutellii*, Watson  
 306. " *truncata*, Gray  
 492. *Kochia Americana*, Watson  
 493. *Spirostachys occidentalis*, Watson  
 493A. *Salicornia hubbaca*  
 27. *Chenopodium Botrys*, L.  
 502. *Habenaria hypiborea*  
 97. *Juncus trummondii*  
 503A. " *xiphioides*, var.  
 199. " *longistylis*, Torr.  
 94. " *Mexicanus*, Bong.  
 94A. " " the same probably?  
 504. *Scirpus pungens*, Vahl  
 16. " *maritimus*, L.  
 506. *Carex obtusata*, Lilje  
 252. " *Hoodii*, Benth  
 215. " *Dawsoniana*, Schw.  
 95. " *festiva*, Des.  
 95. " *Kelloggii*, Benth  
 257. " *agrostalis*, Wahlenb., var.  
 292. " *alpina*, L.  
 247. " *atroata*, L. var. *erecta*

- 36  
 263. *Cary* *absorta*, L., var. *nigra*, Benth.  
 259 A. " *two young*.  
 273 A. " *vitalis*, Presl  
 415. " *Hoodii*, Benth  
 505. " *lagopina*, Willd., var. *pleiostachya*  
 302. " *frigida*, All.  
 245. } " *vulgaris*, var. *alpina*, Benth. (*C. rigida*, Presl)  
 247. }  
 A. " *Jamouii*, Torr.  
 417. " *Raynoldsii*, Daw.  
 416. " *Schreibii*, Willd.?  
 416 hi " *Liddoni*, Benth.  
 94. A. " *Kelloggii*, W. Benth.

1.  
 2.  
 3.  
 4.  
 5.  
 -6. A  
 7.  
 -8.  
 9.  
 10.  
 -11.  
 12.  
 13.  
 14.  
 15.  
 16.  
 -17.  
 18.  
 -19.  
 20.  
 -1.  
 2.  
 3.  
 4.  
 5.  
 -6.  
 7.  
 -8.  
 9.  
 10.  
 11.  
 -12.  
 -13.  
 14.  
 15.  
 16.  
 17.  
 18.  
 19.  
 20.  
 21.  
 -22.  
 -23.  
 24.  
 25.  
 26.  
 27.  
 28.  
 29.  
 30.

Plants received from Prof. J. Macoun - Feby 1880.  
collected between 51° & 52° n. lat. and 97° & 115° long.

- 1. *Erigeron pumilum* - tall
- 2. " *caespitosum* ?
- 3. " *glabellum*, B
- 4. " *grandiflorum*
- 5. *Aster multiflorus*, var. *stricticaulis*
- 6. *Aster puniceus*, var. *vimineus*
- 57. " *simplex*
- 8. *Aster canescens*
- 59. " *aestivus*
- 10. *Aster carneus*
- 11. *Aster puniceus*
- 512. " *Noveboracensis*
- 513. " *montanus*
- 514. *Aplopappus Nuttallii*
- 515. *Aplopappus lanceolatus*
- 516. *Achillea Richardsonii*
- 17. *Arnica latifolia*
- 518. *Senecio integerrimus* ?, + *Arnica foliosa*
- 19. *Arnica angustifolia*
- 20.
- 1. *Antennaria dioica*
- 52. " *archica*
- 53. " *discolor*
- 54. ? " *longifolia*
- 55. ?
- 6. *Artemisia ludoviciana*
- 57. " *Canadensis*
- 8. *Artemisia biennis*
- 59. *Hieracium Canadense*
- 530. *Helianthus pumilus* ?
- 51. *Helianthus rigidus*
- 52. " *pehloianus*
- 3. *Helenium autumnale*
- 4. *Inaphthalium palustre*
- 55. *Crepis elegans*
- 56. " *runcinata*
- 57. *Crepis flauca*
- 58. *Crocopsis tinctoria*
- 59. *Cnicus Hookerianus* ?
- 540. " *Drummondii*
- 51. *Xanthium strumarium*, var.
- 52. *Madia glomerata*
- 3. *Toxicum glaucum*
- 54. " " var. *traxiaefolium*
- 5. *Toxicum glaucum*
- 6. *Taraxacum palustre*, DC
- 57. *Toxicum cuspidatum*
- 58. *Senecio aureus*, var. *Walpurgiana*
- 59. *Senecio carnosus*
- 550. " *integerrimus* ?

- 51. *Senecio lugens*, var. *Hookeri*
- 52. " *canus*, var. *minor*, Hook.
- 3. *Senecio lugens*
- 4. *Aplopappus acutis* - probably
- 5. ?
- 6. *Erigeron compositum*.
- 7. *Erigeron Canadense*
- 8. *Erigeron compositum*
- 59. *Solidago gigantea*, var.
- 60.
- 1. *Solidago Virga-aurea*, var. *multivida* M
- 2. *Solidago nemoralis*
- 53. " *Missouriensis*, var. *montana*, Gray
- 54. " *Virga-aurea*, var. *humilis*
- 5. *Solidago nemoralis*
- 6. *Solidago* - too poor
- 7. *Solidago nemoralis*
- 58. *Clematis ligusticifolia*
- 59. *Anemone parviflora*
- 70. *Ranunculus affinis*
- 1. " " var.
- 52. *Thalictrum trachycarpum*
- 3. " *palustre*
- 54. *Arabis Holboellii*, form?
- 55. " *Holboellii*
- 6. " *Drummondii*
- 7. *Arabis parviflora*
- 8. *Erysimum asperum*
- 9. *Sisymbrium incisum*
- 580. *Sisymbrium incisum*, v. *Hortegii*
- 51. " *canescens*
- 2. *Erysimum parviflorum*, Nutt.
- 53. *Draba alpina*, var.
- 54. " *alpina*, var. *glauca*
- 55. " *aurea* + *incana*
- 56. " *alpina*, var. *stellata*, var. *Joannis*
- 57. " *alpina*
- 58. *Resicaria ludoviciana*
- 59. *Phycaria didymocarpa*
- 590. *Cleome integrifolia*
- 51. *Polemonia gracilens*
- 52. *Stellaria crassifolia*
- 53. " *borealis*
- 54. *Sagina decumbens*
- 55. *Armeria cerna*
- 6. *Silene Menziesii*
- 57. *Lycium apetalum*
- 8. " *Drummondii*
- 59. *Cerastium alpinum*, v. *Belknapii*
- 5600. *Sium rigidum*

- 101. *Acanthopogon*
- 52. *Oxalis corniculata*
- 53. *Aimophila microphylla*, Nutt.
- 54. *Lupinus Kingii*
- 55. *Hedysarum Mackenzii*
- 56. *Oxytropis campestris*, var. *viscida*
- 57. " ~~laevigata~~ *campestris*
- 58. " ~~laevigata~~
- 9. " *splendens*

110. *Psoralea lanceolata*

- 51. *Astragalus frigidus*
- 52. " *bisulcatus*
- 53. " *Drummondii*
- 54. *Oxytropis podocarpa*??
- 55. *Astragalus aboriginum*
- 6. " *flexuosus*
- 57. " *Missouriensis*
- 58. " *pauciflorus*
- 9. " *flexuosus*

120. *Agrimonia eupatoria*

- 1. *Spiraea betulifolia*
- 52. *Crataegus coccinea*
- 53. *Potentilla Plattsensis*
- 54. " *nivea*
- 5. " *gracilis*, slender form
- 6. " *gracilis*
- 7. " " var. *viridis*
- 8. " *Hippiana*
- 9. " *Pennsylvanica*, var. *striata*

130. " *vivalis*, var

- 1. " *supina*
- 52. *Saxifraga cuspidata*
- 53. " *aizoides*
- 54. " *oppositifolia*
- 55. *Androsace Chamajasma*
- 6. *Arnica montana*
- 7. *Epilobium ciliatum*
- 8. *Epilobium ciliatum*
- 59. " *nolle*, var. *Wendlandii*

140. " *latifolium*

- 1. " *coloratum*
- 2. " *tetragonum*
- 53. *Androsace triloba*
- 54. " *brevisflora*
- 55. *Cicuta virosa*
- 6. *Sium lineare*
- 57. *Pleurodium macrocarpum*
- 58. *Muscivora divaricata*
- 59. *Cornus stolonifera*

150. *Lonicera pauciflora*

- 51. *Archostaphylos alpina*
- 52. *Plantago major*, var. *Asiatica*
- 3. *Plantago Patagonica*, var.

-154. *Plantago Patagonica*, var. *aristata*

- 5. *Primula farinosa*
- 6. *Androsace septentrionalis*
- 7. *Dodecatheon Meadia*, var.
- 58. *Centunculus minimus*
- 9. *Pentstemon acuminatus*
- 160. *Castilleja pallida*, var.
- 1. " *miniata*
- 2. *Euphorasia officinalis*
- 3. *Verbena bracteosa*

-4. *Echinopspermum floribundum*

- 55. " *leucocarpum*
- 6. *Eritrichium Californicum*

-7. *Heliotropium Curassavicum*

- 8. *Paronychia sessiliflora*
- 59. *Gilia intertexta*

-170. *Gentiana Anaxilla*, var. *acuta*

- 1. " " var. *stricta*
- 2. " *humilis*
- 3. *Calyptra repens*, var. *repens*
- 4. *Apocynum cannabinum*
- 5. *Asclepias speciosa*
- 56. " *oralipolia*
- 57. *Oxybaphus hirsutus*
- 8. *Chenopodium album*
- 9. *Chenopodium album*

180. *Chenopodium leptophyllum*, var. *glabrum*

- 1. *Chenopodium rubrum*
- 52. *Chenopodium rubrum*, var. (?)
- 53. *Blitum glaucum*, var. *humile*
- 54. *Eurotia lanata*
- 55. *Atriplex argentea*
- 56. *Atriplex confertifolia*
- 7. *Atriplex patula*
- 58. *Polygonum ramosissimum*?
- 59. *Polygonum lapathifolium*

190. " *imbricatum*, Nutt

- 51. *Eriogonum androsaceum*
- 52. *Rumex crispus*, Pursh
- 53. " *occidentalis*
- 54. *Rumex crispus*, var. *occidentalis*
- 55. *Shepherdia argentea*
- 56. *Euphorbia leptosperma*
- 57. *Callitriche verna*
- 58. " " *terr. form*

(9.) 1584. *Urtica gracilis*

1200. *Urtica gracilis*

- 51. *Alnus incana*, var
- 2. *Betula glandulosa*, Mx
- 53. " *occidentalis*, Hook
- 54. *Populus monilifera*
- 55. *Sperganium sermifolium*
- 56. *Typha latifolia*
- 7. *Alisma Plantago*, var.
- 58. *Sagittaria variabilis*, var. *gracilis*

-20  
52  
53  
54  
55  
56  
57  
58  
59  
60  
61  
62  
63  
64  
65  
66  
67  
68  
69  
70  
71  
72  
73  
74  
75  
76  
77  
78  
79  
80  
81  
82  
83  
84  
85  
86  
87  
88  
89  
90  
91  
92  
93  
94  
95  
96  
97  
98  
99  
100  
101  
102  
103  
104  
105  
106  
107  
108  
109  
110  
111  
112  
113  
114  
115  
116  
117  
118  
119  
120  
121  
122  
123



- 209. *Triglochin maritimum*
- ✓210. " " *palustre*
- ✓11. *Habenaria foetida*?
- ✓12. *Spizantha Romanoviana*
- ✓13. *Cypripedium parviflorum*
- ✓14. *Sisyrinchium mucronatum*
- ✓15. *Stenanthium occidentale*
- ✓16. *Tofieldia puberula*
- ✓17. *Prozartes trachocarpa*
- ✓18. *Allium reticulatum*
- 9. *Allium commune*, R.H.
- ✓20. " " —? *Zoony*

Lake ending - Mar. 1/100

- 1. *Potentilla Hippiana*, var *pulcherrima*
- 2. *Solidago humilis*
- 3. *Microrhiza laciniata*
- 4. *Troximon Chilense*
- 5, 6. *Epil. minutum*
- 7. " *rudde*
- 8. *Daba alpina*
- 9. *Erythronium albidum*
- 10. "Aster *torreyi*"
- 11. *Collomia gracilis*
- 12. *Eriogon concinnum*, var. *aphanachis*
- 13. *Phlox longifolia*
- 14. *Grayia polygaloides*
- 15. *Tetradymia spumosa*
- 16. *Critia inconspicua*
- 17. *Erigeron circumscissus*?
- 18. *Seneciojus Californicus*
- 19 = 16.
- 20. *Phacelia biflora*
- 21. *Luzula glandulosa*
- 22. *Critia achilleaefolia*
- 23. *Achillea spinescens*

W. C. Cusick - Sets of 100.  
Union Co., Oregon

35. *Kammanulus platissimus* (5)  
 40. *Allium macrum* (6)  
 41. *Metunsia elongifolia* (6)  
 45. *Lupinus arvensis* (6)  
 52. *Delphinium decorum* (6)  
 67. *Rivera cereum* (6)  
 54. *Balsamorhiza sagittata* (6)  
 122. *Spiraea betulifolia* (4)  
 145. *Pachystima naysimites* (6)  
 174. *Phlox Douglasii*, var. (6)  
 180. *Chiranthus Menziesii* (6)  
 182. *Balsamorhiza Hookeri* (6)  
 204. *Rosa Nutkana* (6)  
 253. *Aquilegia flavescens* (4)  
 255. *Gilia Nuttallii* (4)  
 445. *Antennaria Carpathica* (6)  
 464. *Epilobium organophilum* (4)  
 444. *Helianthus Nuttallii* (6)  
 514. *Pedicularis racemosa* (6)  
 523. *Ledum glandulosum* (5)  
 644. *Pentstemon confertus*? (4)  
 643. *Aster Cusickii* (6)  
 703. *Phacelia arctica* (4)  
 727. *Arabis Cusickii* (6)  
 724. *Platyspermum acapizumum* (4)  
 729. *Viola canina*, var. (4)  
 730. *Aplopappus lanuginosus* (6)  
 731. *Antennaria dimorpha* (6)  
 733. *Viola Nuttallii* (4)  
 734. *Saxifraga integrifolia* (4)  
 735. *Collomia tenella* (4)  
 736. *Gilia micromeria*, (6)  
 737. " *undicantis* (6)  
 734. *Crataegus tomentosa* (6)  
 741. *Antennaria alpina*, var. (4)  
 744. *Cardamine hirsuta*, var. (6)  
 745. *Sisymbrium incisum*, var. (6)  
 747. *Senecio exaltatus*, (5)  
 744. *Draba nemorosa* (6)  
 749. *Sisymbrium limifolium* (6)  
 750. *Erigeron Bloomeri* (5)  
 752. *Poa tenuifolia* (4)  
 753. *Festuca occidentalis* (4)  
 754. *Erigeron filifolium* (6)  
 754. *Emmenanthe pusilla* (6)  
 759. *Lepidium dichotomum* (6)  
 761. *Festuca rubra* (4)  
 763. *Zizicium repens* (6)  
 765. *Vilfa cuspidata* (5)  
 766. *Spartina gracilis* (6)  
 769. *Panicum tenuellus* (4)  
 770 = 754 (6)  
 771. *Chorizanthe Watsoni* (6)  
 774. *Elymus bitanion*, (5)  
 776. *Collomia leptalea* (6)  
 781. *Elymus condensatus* (6)  
 783. *Cotabrosa aquatica* (4)  
 786. *Scirpus sylvestris*, (6)  
 784. *Elymus sibiricus* (4)  
 789. *Carex vesicaria* (4)  
 792. *Juncus Nevadaensis* (4)  
 793. *Carex filiformis*, var. (3)  
 795. *Erythraea Douglasii* (4)  
 796. *Juncus xiphoides*, (4)  
 797. *Agrostis varians*? (4)  
 799. *Senecio hydrophila* (4)  
 801. *Carex athrostachya* (4)  
 804. *Agrostis exarata* (4)  
 807. *Kammanulus multifidus* (4)  
 812. *Sarcobatus vermiculatus* (4)  
 814. *Calamagrostis Langsdorffii* (4)  
 815. *Danthonia arctica* (6)  
 819. *Cryptogramma acrostichoides* (2)  
 834. *Thelypodium integrifolium* (6)  
 836. *Aster Douglasii* (4)  
 838. *Vaseya comata* (3)  
 840. *Castilleja pallida* (6)  
 841. *Carex aristata* (4)  
 842 (bi). *Anasthura alyssoides* (4)  
 843. *Malvastrum Munroanum* (6)  
 844. *Galium Bloomeri* (6)  
 845. *Populus balsamifera* (6)  
 850. *Arenaria Fendleri* (6)  
 852. *Bolandra Oregona* (6)  
 853. *Phacelia Oregona* (6) n.s.p.  
 856. *Metunsia sibirica*, (6)  
 860. *Linum micranthum* (6)  
 862. *Astragalus collinus* (6)  
 863. *Bahia integrifolia* (4)  
 864. *Zonella floribunda* (4)  
 865. *Pentstemon Cusickii* (6)  
 866. " *triphyllus* (4)  
 867. *Asclepias cryptoceras* (6)  
 868. *Pentstemon glandulosus* (6)  
 870. *Rhamnus Purshiana* (4)  
 872. *Stemophila parviflora* (4)  
 874. *Taxus brevifolia* (6)  
 875. *Salix cordata*, var. (6)  
 876. *Melica Gayana* (4)

- 877. *Rugula comosa* (6)
- 879. *Triticum cernuum* (4)
- 880. *Triticum caninum* (4)
- 884. *Minulus moenchianus* (4)
- 888. *Lathyrus polymorphus* (4)
- 889. *Carex filifolia* (4)
- 891. *Atriplex Nuttallii* (4)
- 894. *Phacelia circinata* (4)
- 897. *Lophanthus utricifolius* (4)
- 898. *Stipa occidentalis* (4)
- 899. *Spiraea discolor* (6)
- 900. *Melica bulbosa* (4)
- 901. *Viola canina*, var. (6)
- 902. *Pellaea Breweri* (5)
- 904. *Hieracium triste*, var. (6)
- 905. *Aster alpinus* (6)
- 906. *Jussiaea Gordonii* (4)
- 907. *Stylocolima filaginosa* (4)
- 908. *Salix livida*, var. (6)
- 910 = 439.

Set I.	} 117 spec.	W. M. Canby	7.00
II.			2.50
III.	116 "		
IV.	114 "		
V.	64 "	A. Commons	4.00
VI.	57 "	G. Vasey	4.00

F. L. Harvey - Fayetteville, Ark.

Coll. 7 1880

Det. Sept. 1881

- |                                      |                               |    |
|--------------------------------------|-------------------------------|----|
| 1. Eupatorium rotundifolium          | 47. Bellis integrifolia       | 9  |
| 2. Vernonia angustifolia             | 48. " ?                       | 9  |
| 3. " Baldwinii                       | 49. Schollera paniculata      | 9  |
| 4. Eup. purpureum                    | 50. Ranunc. abortivus         | 9  |
| 5. Aster oblongifolius               | 51. " oblongifolius           | 9  |
| 6. " umbellatus                      | 52. Cacyrops Crisp-Andria     | 9  |
| 7. Polypodium —? n. sp.?             | 53. Hypericum prolificum      | 10 |
| 8. Elephantopus scandens             | 54. " maculatum               | 10 |
| 9. Vernonia altissima                | 55. " Drummondii              | 10 |
| 10. Aster paludosus                  | 56. " nudiflorum              | 10 |
| 11. Vernonia angustifolia, v. Texana | 57. Elodea peltata            | 10 |
| 12. Liatris spicata                  | 58. Lechea tenuifolia         | 10 |
| 13. Eup. agrivoides                  | 59. " major                   | 10 |
| 14. Liatris squarrosa                | 60. Hypericum multilobum      | 10 |
| 15. Solidago bicolor                 | 61. Baptisia leucantha        | 10 |
| 16. " —?                             | 62. Seymeria macrophylla      | 10 |
| 17. Bigelonia Douglasii?             | 63. Aster ptarmicoides        | 10 |
| 18. Solidago —?                      | 64. Mollugo verticillata      | 11 |
| 19. " rigida                         | 65. Sagina decumbens          | 11 |
| 20. " arifolia                       | 66. Arsenaria Pitchei         | 11 |
| 21. " cæsia                          | 67. Linum Virgin. v. Texanum  | 11 |
| 22. " sparsiflorum?                  | 68. Polygala sanguinea        | 11 |
| 23. Aster ericoides?                 | 69. Apios tuberosa            | 11 |
| 24. " miser, var.                    | 70. Phacelus helostus         | 11 |
| 25. " —?                             | 71. Lepidogon capitata        | 11 |
| 26. " oblongifolius - narrow leaved  | 72. Centrosema virginicum     | 11 |
| 27. " aromatum, Engelm.              | 73. Clitoria Mariana          | 12 |
| 28. " Tradescanti                    | 74. Drummodium nudiflorum     | 12 |
| 29. " —?                             | 75. Phacelus divaricatus      | 12 |
| 30. " Tradescanti, v. fragilis       | 76. Cassia occidentalis       | 12 |
| 31. Chrysopsis pilosa                | 77. Jussiaea decurrens        | 12 |
| 32. Polypodium procumbens            | 78. Penthorum sedoides        | 12 |
| 33. Cynosciadium digitatum, DC.      | 79. Ornithoglossum fruticosum | 12 |
| 34. Nasturtium lacustre - apparently | 80. }                         | 12 |
| 35. Gerardia quinquefolia            | 81. =??                       | 12 |
| 36. Styrox puberula                  | 82. Stenonema ciliatum        | 12 |
| 37. Dianthus humilis, L. & G.        | 83. Oldenlandia Boeckii       | 13 |
| 38. Pentstemon pubescens.            | 84. Lythrum alatum            | 13 |
| 39. Asclepias perennis               | 85. Diodes Virginia           | 13 |
| 40. Talinum terrefolium              | 86. Galium Circægens          | 13 |
| 41. Echinacea purpurea               | 87. " pilosum?                | 13 |
| 42. Liatris squarrosa a form         | 88. " trifidum                | 13 |
| 43. Heterotheca hamorckii            | 89. Houstonia patens          | 13 |
| 44. Eupatorium celestinum            | 90. Spiræa Aruncus            | 13 |
| 45. Senecio aureus                   | 91. Rosa setigera             | 13 |
| 46. Helenium nudiflorum              | 92. Lobelia appendiculata     | 13 |
|                                      | 93. " puberula                | 13 |

- 94. *Lobelia siphilitica*, v. *Cudoviciana*
- 95. " *leptostachya*
- 96. *Vaccinium Pennsylvanicum*?
- 97. " *stamineum*
- 98. " *arborescens*
- 99. *Plantago Virginica*
- 100. " *Rugelii*
- 101. *Polygala verticillata*
- 102. *Gerardia heterophylla*
- 103. *Verbena bracteosa*
- 104. *Dicliptera brachiata*
- 105. *Lippia nodiflora*
- 106. " *lanceolata*
- 107. *Salvia lyrata*
- 108. *Calamintha glaberrima*
- 109. *Scutellaria canescens*
- 110. *Monarda punctata*, v.
- 110. *Scutellaria corniculata*
- 112. *Scutellaria rosea*
- 113. *Tenaxium Canadense*
- 114. *Scutellaria cardiophylla*
- 115. *Pyrolanthemum albescens*
- 116. *Phyostegia Virginica*
- 117. *Ethiopia Mytilica*
- 118. *Oenothera Carolina*, v. *modica*
- 119. *Convolvulus sepium*, v. *Americanus*
- 120. *Sporoxia parviflora*
- 121. *Phlox divaricata*
- 122. " *villosa*
- 123. " *paniculata*
- 124. *Physalis lanceolata*
- 125. *Gentiana Saponaria*
- 126. *Physalis angulata*
- 127. *Sabbatia angulata*
- 128. *Asterata longifolia*
- 129. *Podostigma (?) apodum* - 2. sp. ?
- 130. *Asclepias purpurascens*
- 131. *Oxybaphus albidus*
- 132. *Polygonum ramosissimum*
- 133. *Xyris tosta*
- 134. *Tradescantia Virginica*

J. & T. J. Howell - Union Co., Oregon

plants of Sept. & Oct. 1860

named Sept. 1861

- 260. *Artemisia congesta*, Nutt., v. *subcongesta*, N.
- 260. *Allium Nevii*, Watson - loc form
- 262. " *pleianthum*, Watson
- 264. *Psilocarphus tenellus*, Nutt.
- 265. *Aphlopappus uniflorus*
- 266. *Habenaria flabellaris*, Gray
- 267. *Lagophyllum ramosissimum*, Nutt.
- 268. *Lagophyllum diffusum*, Torr.
- 269. " *racemosum*, Torr.
- 290. *Gilia pusilla*
- 291. *Claytonia triphylla*, Watson
- 292. *Calandrinia Nevadaensis*, Gray
- 294. *Horkelia furca*, Link
- 295. *Eritrichium Calif.* - DC
- 296. *Lonicera conjugialis*, Kell
- 297. *Drimys rubella*, Gray
- 298. " *primuloides*, Benth
- 299. *Castilleja parviflora*, Gray
- 300. *Euphorbia leptocera*, Engelm
- 301. *Calochortus Tolmiei*, Hook.
- 302. *Habenaria gracilis*, Watson
- 303. *Isotria medeoloides*, Gray
- 304. *Carnegiea sacculata* ?
- 305, 306. *Artemisia Columbianum*, Nutt.
- 307. *Thalictrum occidentale*, Nutt & Gray
- 308. *Dicentra Cucullaria*, DC.
- 309. *Arabis platysperma*, Gray
- 310. *Vicia bartramia*, Dougl.
- 311. *Silene Oregona*, Watson
- 312. *Sphaerobolus rivularis*, Dougl.
- 313. *Stellaria crispa*, v. *pubescens*
- 314. *Linum Lyallii*, Gray
- 315. " *aridum*, Dougl.
- 316. " " v. *lobbii*, Watson
- 317. *Melilotus alba*, Lam.
- 318. *Spiraea behlendorfii*, Pall
- 319. *Saxifraga abellonis*, L.
- 320. " *Tolmiei*, Torr.
- 321. *Sedum Douglasii*, Hk., v. *uniflorum*
- 322. *Cotyledon Oregonum*, Watson. n. sp.
- 323. *Spiraea pectinata*, Torr.
- 324. *Epilobium paniculatum*, Nutt.
- 325. " *ovariifolium*, Lam. ?
- 326. *Godtia epilobioides*, Watson
- 327. *Percepsis triternatum* ?
- 328. *Symphoricarpos racemosus*, Mx.
- 329. *Aster*
- 330. *Vaccinium occidentale*, Gray
- 331. " *lygellus*, v. *macrophyllum*, Hk.
- 332. *Pyrola picta*, Sm., v. *dentata*, Gray

- 333. *Monarda hypoleuca*, L.
  - 334. *Phacelia proserpa*, Gray
  - 335. *Echinopsium hispidum*, Gr
  - 336, 339. *Eritrichium Scouleri*, DC
  - 337. " *barbigerum*, Gray
  - 338. " *tenellum*, Gray
  - 339. *Pectocarya pusilla*, B. & H.
  - 341. *Phlox Douglasii*, v. *diffusa*
  - 342. *Polemonium caeruleum*
  - 343. " " var.
  - 344. *Pentstemon Cairdii*, Hk.
  - 345. " *primosus*, Dougl.
  - 346. *Cordylanthus capitatus*
  - 347. = 294.
  - 348. *Pedicularis brachyca, Benth*
  - 349. " *racemosum*, Dougl.
  - 350. *Eriogonum umbellatum*
  - 351. *Polygonum ramosissimum*
  - 352. *Libocedrus densa*, Torr
  - 353. *Habenaria elegans*, B.S.
  - 354. *Aira caespitosa*, L.
  - 355. " *danthonioides*, Trin.
  - 356. *Calamagrostis* ?
  - 357. *Poa arctica*, R. Br. ?
  - 358. *Trisetum corymbosum*, Trin
  - 359. *Poa abenantha*, Trin
  - 360. " *pratensis* ?
  - 361, 362. *Glyceria agrostifolia*, Sm.
  - 363. *Danthonia Calif.* B.S.
  - 364. *Triticum repens*, L.
  - 365. *Atriplex tenuifolia*, Thurb.
  - 366. *Nasturtium Abundantum*, Nutt
  - 367. *Monolepis chrysoides*
- 
- 1. *Aster leptophyllus*, Gr.
  - 2. " " ?
  - 3. " " ?
  - 4. " *radulinus*, Gr.
  - 5. " *integrifolius*, Nutt.
  - 6. *Senecio carolinensis*, L. & R.
  - 7. *Erigeron* - n. sp.
  - 8. *Aster alpinus*, Gr.
  - 9. *Erigeron adhaerens*,
  - 10. " *inornatus*, Gray
  - 11. *Solidago elongata*, Nutt.
  - 12. *Senecio aridus*, Nutt.
  - 13. *Brickellia oblongifolia*, Hk.
  - 14. *Aphlopappus* - n. sp. ?  
near *A. carthamoides*

15. Balsamorhiza Holkeri, Nutt.
16. Gerundia hirsutula, H. & A.
17. " mana, Nutt.
18. Aplopappus Hallii, Gray
19. " Mooseri, Gray
20. Hesperis graveolens, Gr.
21. Gnaphalium macrocephalum, Nutt.
22. Senecio vulgaris, L.
- 23, 24. " tetraangularis, H.
25. Antennaria alpina, Gaertn.
26. Saussurea Americana, D.C. ex Gr.
27. Curicus undulatus, Gray
28. " carlinoides, v. Americanus, Gr.
29. Toxicum grandiflorum, Gray
30. " glaucum, Nutt.
31. Microseris curtus, Gray
32. Lactuca Canadensis, L.

## W. C. Cusick — Oct. 1881.

38. *Asyrachne Bourgeovii*, Gray  
 52. *Delphinium Menziesii*, DC.  
 53. " — ? a dubious thing.  
 54. *Brodiaea Douglasii*, Watson  
 70. *Erythronium grandiflorum* Nutt., v. *minus*, Hook.  
 78. *Pentstemon confertus*, Dougl.  
 93. *Athocarpus tenuifolius*, Bth.  
 111. *Trifolium pauciflorum*, Nutt.  
 118. *Echinopernum floribundum*  
 178. *Vida Beckwithii*, Torr.  
 181. " *aurea*, var. *venosa*  
 193. *Lathyrus Cusickii*, n. sp.  
 222. *Arenaria aculeata*, Watson  
 232. *Pentstemon attenuatus*, Lindl.  
 265. *Spiraea betulaeifolia*  
 384. *Vida carmentosa*, Dougl.  
 398. *Stellaria Jamesii*, Torr.  
 487. *Delphinium scopulorum*, Gray.  
 505. *Grindelia nana*, Nutt.  
 636. *Senecio. canus*, Hook., var.  
 846. *Sedum divaricatum*, Watson, n. sp.  
 849. *Cicciackia Paganensis*, Gray — n. gen.  
 853. *Physaria Oregonica*, Watson  
 855. *Echinopernum diffusum*, Hook., v. *lepidum*, Gr.  
 861. *Celtis reticulata*, Torr. ?  
 915. *Nemophila Menziesii*, H. & G.  
 916. *Glossopetalon spinosum*, Gr.  
 917. *Arabis arcuata*, Nutt.  
 918. " — ?  
 919. " — ?  
 921. *Thelypodium sagittatum*, Nutt.  
 924. *Eriogonum microthecum*, Nutt.  
 925. *Potamogeton natans*, L.  
 926. *Gilia flavo-rosea*, Gray  
 928. *Cyperus aristatus*, Kottl.  
 929. *Lupinus calcaratus*, Kull  
 927. *Rhus glabra*, L.  
 930. *Eriogonum Douglasii*, Nutt.  
 931. *Allium pleianthum*, W.  
 932. *Eriogonum Nevadaense*, Gray  
 933. *Eriogonum ovalifolium*, Nutt., var.  
 934. *Carex airowa*, Nutt.  
 935. *Phlox Douglasii*  
 936. *Eriogonum sphaerocepalum*, Dougl., var.  
 937. *Nitrophila occidentalis*, Watson  
 938. *Sanicula anserina*, L., v. *bovalis*  
 939. *Gaura parviflora*, Nutt.  
 940. *Erigeron circumscissus*, Torr.  
 941. *Crepis rusciniata*, 706.  
 942. *Allium* — ?  
 943. *Mifolium longipes*, Nutt.  
 944. *Luzula* — n. sp.?  
 945 = 936.  
 944. *Asyrachne Cusickii*, Watson n. sp.  
 949. *Arabis Lyallii*, Watson  
 950 = 942  
 { 954 }  
 955. *Cardamine cordifolia*, Gray  
 951. *Aplopappus hirtus*, Gray n. sp.  
 956. *Aster* — ?  
 957. *Arnica angustifolia*, Nutt.  
 958. *Aplopappus Lyallii*, Gray  
 959 = 938.  
 960. *Sanicula Nevadaensis*, Watson  
 961. *Stellaria umbellata*, Torr.  
 962. *Poa aradina*, Nutt.  
 963. *Claytonia triphylla*, W.  
 964. *Calandrinia pygmaea*, Gr.  
 965. *Rhamnus alnifolia*, L'Hér.  
 966. *Potentilla palustris*, Csp.  
 967. *Dulichium spathaceum*, Rich.  
 968.  
 969. *Arenaria arctica*, Gr.  
 970. *Silene Spaldingii*, Watson  
 971. *Aplopappus nansus*  
 972. { *Gypsophila affinis*, Griseb.  
           *Crastium douglasii*, L.  
 973.  
 974. *Calamagrostis stricta*, Trin  
 975. *Bridellia grandiflora*, Nutt.  
 976. *Franklinia grandis*, Nutt.  
 977. *Poa* — ?  
 978. *Pentstemon densus*, Dougl.  
 979. *Chrysoopsis villosa*, Nutt., var.  
 980. *Gilia congesta*, Hook.  
 981.  
 982.  
 983. *Rumex venosus*, Pl.  
 984. " *parvifolius*, Nutt.  
 985. *Allium* — ?  
 986. *Carex Geyeri*, Bratt  
 987. " *Peninsularis*, Lam.  
 988. *Claytonia megarhiza*, Parry.  
 989. *Vaccinium myrtilloides*, Hook  
 990. *Aster Bloomeri*, Gray  
 (a) *Poa* — ?





Received

1870

July 10 - Box from Kew, containing for A. Gray

- 1 Bundle - Dupl. Dr. Aitchison's coll.  
 1 " Burchell's Nestiaceae  
 1 " Dr. Schweinfurth's Trop. Afr. Gram<sup>s</sup>, named by Monro  
 1 " Miscellaneous Dupl.  
 3 " Set III. Whitman's Samoan Ferns, &c.

Leaflets Salix Britan. Exsic. Fasc. I.

- Books - Hutchins. Fl. Austr. vol. VII.  
 Hooker, Disser<sup>s</sup> on Bds. of Kerguelen's Land.  
 " Himalayan Generata, vol. I. II.  
 " Southern Flora Brit. Islands, 2 ed.  
 Kunz, Flora of Brit. Burma  
 Macrae, Flora of the Cape of Good Hope, I. pt. 1.  
 Baker, Flora Mauritius & Seychelles

For Dr. Fisher - delivered.

Musci Britannica - BirchallDumortier's Musci Amer. vol. I. II.Neske's Brit. Fungi - setPrint of W. C. C. C.For John MuirScrips, etc. - forwarded by Campbell, Esq.For Laura Spake Muir - forwarded.Benth. & Hooker Gen. Plank. vol. I. & II.For Prof. Reusch - delivered.

Book -

All as per Memorandum read

Received - Sept. 1874.

Box from Dr. Palmer - Mexico - containing

3 packages dried plants sent to Dr. Parry, Dartmouth, Dec. 1874.

1 Agave - to Falconer

1 Desmodium top

1 "Agave Englemanni"

1 package seeds - Sophora - do, - to Prof. Sargent

1 "Intensum of the Yucca" - to Prof. Goodale's room  
pine specimens

Palmer - S. Utah, 1877 - Feb 6	314 sp.	= \$ 25.00	} rec'd by Maximilian Mar. 5 or paid for July 30. - to Casson June 1879 ps for by Dr. Gray
Arizona Set 11.	484 sp	35.00	
" " 12.	437 sp	25.00	
" " 14.	384 sp	25.00	
" " 18.	255 sp	15.00	
(incl. 12/13)	13.	432 sp	30.00
		43	

432 sp - from 1 + 11 to Maximilian

Parry & Palmer's Mexican sets ordered -  
 Let to C. J. Maximilian, St. Petersburg Academy, July 29/76

Senders to Trinidad Ferns  
 # 6. to Dep't. of Agric., Washington, Aug. 9/76 \$7.50

Palmer's Trans-Mexican-Arizonan sets, 1879.  
 unpaid for Maximilian  
 Maximilian

Oaken park Dec 6<sup>th</sup> 1877

All ready to start to number. I have arranged to ship to Dr Gray, the balance of Palmer's sets viz set 5. 3 Utah. Sets 11-12-14 Arizona. all marked on outside with no price charge freight to Palmer.

Thanks for Liliun description; please change figure of size from 3-6 ft. to 2-5 ft. (means the mark has a very nice figure of cult. ~~the~~ proofs will be sent soon  
Yours  
C.C. Parry

1878

Sent in one package to Smith "Justit" by Express -  
+ notified Dr. by P.C. - Jan 4<sup>th</sup> 1878.

In same package to Smith from Dr. Gray 1 bundle for DeCandolle, Geneva

Jan 7<sup>th</sup>

By Express  
P.V. Kelley, Herb. Col. Cal., M.C. "Paid through" A.C.  
Populus, Argemone, + etc. from Dr. Gray, returned  
Dr. S. Vasey - Ag. Dept, Washington, D.C. - Savin, A.C.  
Populus, + plants determined - returned.

Apr. 16

By E.A. Snow to forward by Hamburg steamer - for Dr. Maximowicz  
Imp. Botanic Garden, St. Petersburg, Russia

1 Box, contain Palmer, set 6, as above  
" set 11 "  
Curtiss' sets from Florida - 3 bundles  
Miscal. plants from Gray Herb. - 2 "  
1 Mt. Contrib. (slab in t.) to Dr. Gray.  
Savin's charges paid by Dr. Gray.

} Act. marked

June 4.

By Express to  
from Macoun, Bellefille, Ontario, Canada  
Bundles of Palmer's Collections (copies) - etc.  
Large Flora II. etc.  
Box of seeds, from M.I. Savin's collection.

Faint vertical text or markings on the right edge of the page.



# Wright's Cuban sets in garret, Dec. 1878

# 9	- 2 bundles = "960 sp."	] to Cosson, June 1879
110	" 780 "	
11	" 750 "	
[12	1 bundle 660 "	Sent Prof. H. A. Ward, Rochester Jan 1 <sup>st</sup> 1879
8	2 " 283 + 188 sp.	

## Palms, -

# 7	
8	
9	
10	
x	Addressed to Buchanan - "about 15 sp." ] to Cosson, June 1879
x	manuscript

## Heptacerae

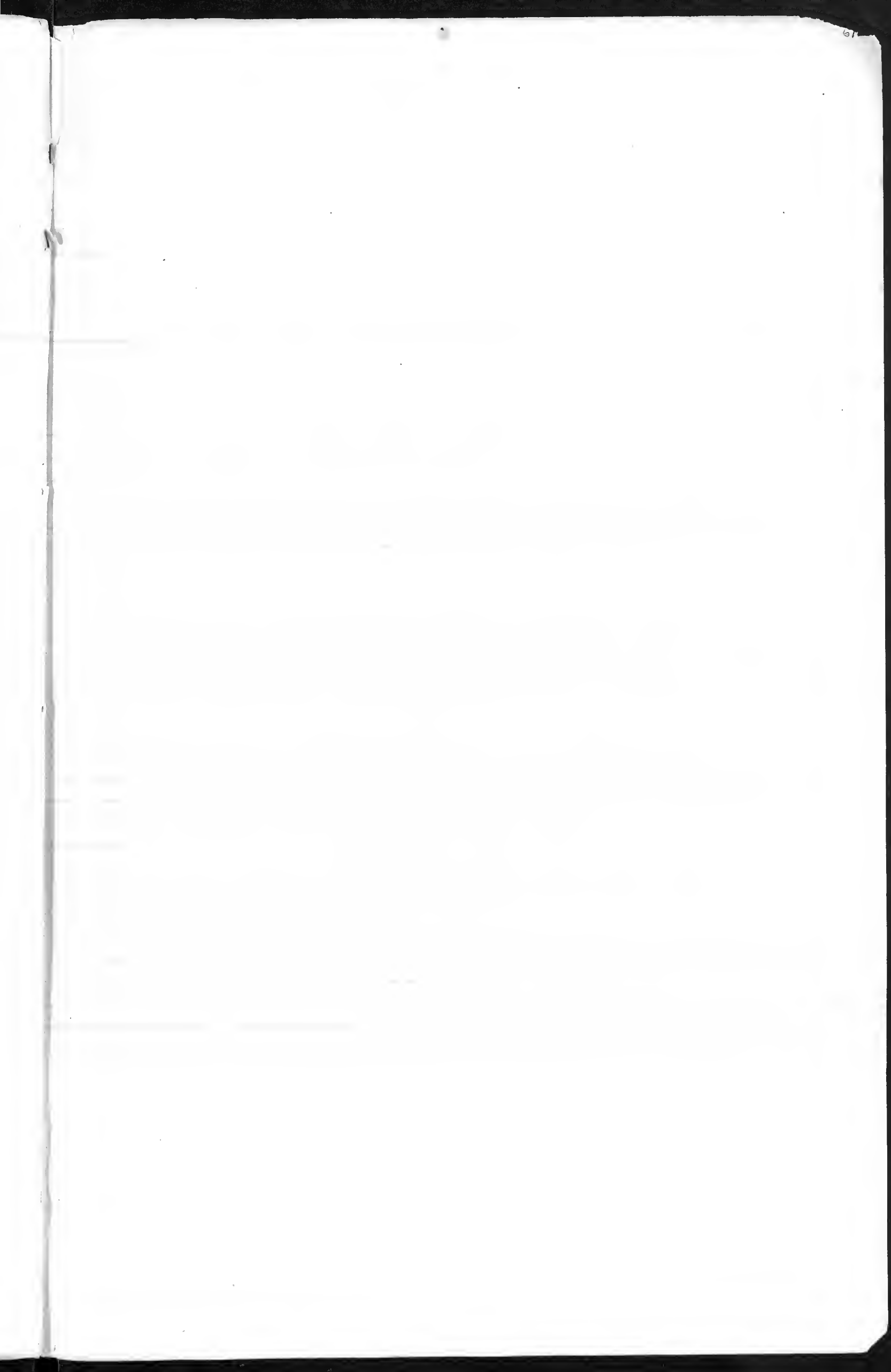
# 7	- 169 sp	J. D. Furlow	Jan 1879	Paid \$12.00
9	151	<del>J. D. Furlow</del>		
10	149	" Underwood		8.50
11	143	J. D. Smith	" "	11.44
12	148			
14	136	Prof. Trehan. (\$9.00) -	Jan 1879	9.06
15	137			
x	x			
13	141			

## Orchidaceae

1 Bundle ] to Cosson, June 1879

- Texas Duplicates - 1 Bundle - to J. D. Smith - Jan 1879
- Island of Pines plants - 1 Bundle.
- San Domingo Collection - to Agric. Dep't., Jan 1879





Handwritten text on the right margin, possibly bleed-through from the reverse side of the page.

