

977.389  
R279g

The  
Greater  
Belleville



..Saint Clair County..

Illinois, U. S. A.

Belleville, Illinois, . Published by James Allan Reid.

**Puderer's  
Agency.**

---

**Real Estate, Insurance,  
Loans, and Investments.**

---

**FARM LANDS.**

**Choice Farms in St. Clair and Adjoining  
Counties.**

---

**....Also Western Lands....**

---

**NO. 201 EAST MAIN STREET, BELLEVILLE.**

**....Satisfaction Guaranteed....**

R 1170

# THE GREATER BELLEVILLE

Saint Clair County  
Illinois



THE PUBLIC SQUARE FROM THE COURT HOUSE STEPS

ILLUSTRATED  
SEQUEL TO  
"BELLEVILLE, ILLINOIS, ILLUSTRATED"



Published by J. A. REID, Book Maker

SAINT LOUIS, MISSOURI, AND BELLEVILLE, ILLINOIS.

1910

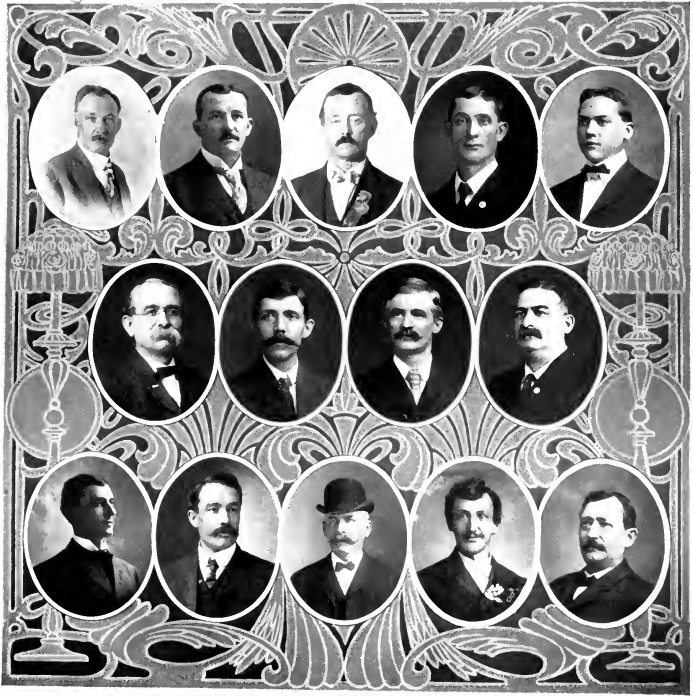


[Rembrandt Portrait.]

FRED. J. KERN,  
MAYOR.

977,389  
R274g

II h. 4



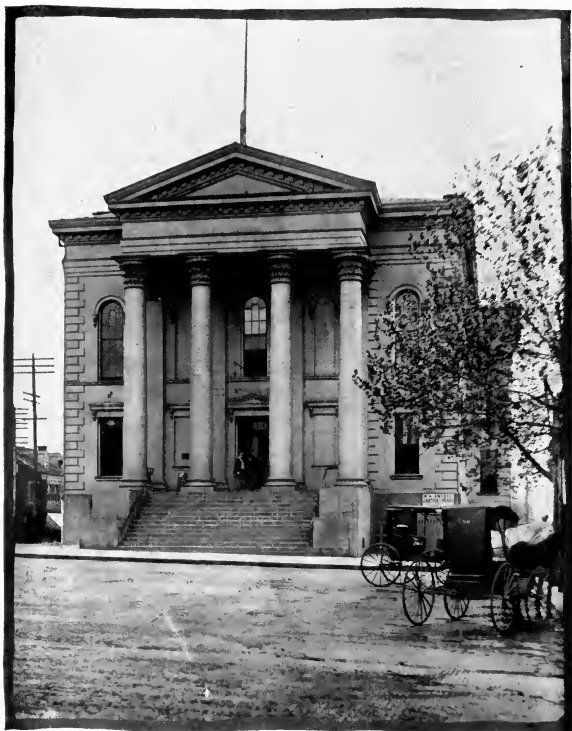
THE BOARD OF ALDERMEN.

Top Line--J. P. Stiehl, Heironimus Mauterer, James Taylor, Conrad Schildroth, Henry Adler.  
Centre Line--Fred. A. Hartnagel, Joseph L. Hermann, Louis G. Wetzlau, Fred. Winter.  
Lower Line--Walter Nesbit, William S. Campbell, Christ. Knebelkamp, Philip Gemina, Thomas Fischer.



THE GENERAL OFFICERS.

John A. Bedell, Treasurer, L. L. Harper, City Engineer, Frank R. Dinges, Fire Chief, William H. Snyder, City Attorney, August H. Bauer, Corporation Counsel, Henry Dietrich, Jr., Assessor, G. H. Beinske, City Clerk, John V. Brauch, Superintendent of Streets, William Nebgen, Chief of Police.



ST. CLAIR COUNTY COURT HOUSE.

South Side of The Public Square.

This is One of the Finest Court Houses in the State. The Front Was Built About 1860, an Addition Made in 1891, and a Very Large Addition in 1910. It is Headquarters For All the County Officers.

The Circuit Court, the County Court and the Probate Court Each Have Fine Rooms Within Its Walls.

X6773



THE CITY HALL, BELLEVILLE.

South Illinois Street.

The Mayor, the City Clerk, the Treasurer, the Chief of Police, and the City Engineer Have Offices in This Building.

The Board of Aldermen Have a Fine Chamber Here For Their Meetings.

# The Greater Belleville

---

---



GEORGE B. ROGERS,  
President  
of the  
BELLEVILLE  
COMMERCIAL CLUB.

**T**HE dream of the visionary of the past, the battle-cry of the progressive enthusiast of yesterday, the realization even of the conservative of today, this is the theme of our story.

A wonderful theme indeed. Prosaic it may seem to the idealist delving in the musty past, and whose imagination clothes with the imagery of fancy the deeds of men gone by.

But the heroic is found today. The achievement of mind over matter, the bursting asunder of bonds of conservative prejudice, the awakening of a people to the demands of progress, the onward march of a conquering municipality, even though all be tinged with the commercialism of our day, is as worthy of record as any deeds heroic of the days of long ago.

Belleville of the Forties and Belleville of today would form the basis of an interesting comparison. To Charles Dickens Belleville of the Forties presented a "small collection of wooden houses, huddled together in the very heart of bush and swamp, its main street a forest path nearly knee deep in mud and slime."

Greater Belleville, could the spirit of the departed English chronicler again revisit the scenes of his "American Notes," would be found to be a thriving metropolis of thirty thousand souls, of solid structures, paved streets, pulsating with the energies of the very highest of American progress and endeavors.

What a commentary on the fallibility of human judgment, especially when



A GLIMPSE OF THE WORKS OF THE AMERICAN BOTTLING COMPANY.

This is One of The Most Important Industries of The City of Belleville, Employing Over One Thousand Men and Boys. Its Smoke-Stacks and Chimneys Are Very Noticeable Objects of Interest to The Visitor Just Entering The Populous Sections of The City Over The Suburban Tracks.





EAST MAIN STREET FROM THE PUBLIC SQUARE.

This Section of One of The Principal Business Thoroughfares of The City is Headquarters for Many of The Leading Department Stores, The Belleville Savings Bank, The Jewelers, Clothiers, Grocers, Real Estate Dealers, Druggists, Milliners, &c.

untrammelled by the prejudices begotten of centuries of Old World conservatism. The Great American Bottom, with its alluvial deposits vying in richness with that of the Nile, to Dickens was but "an ill-favored black hollow," "an unbroken slough of mud and water" with "a deadly atmosphere" that rendered habitation well nigh impossible, while the great prairies that environed the western village were but the same "desolate kind of waste."

For it was this very "slough of mud and water," and more especially the small "desolate kind of waste" that made it possible for the pioneer spirits to lay the foundation for an evolution of this "small collection of wooden houses huddled



THE PUBLIC SQUARE IS THE GREAT CENTRE OF INTEREST IN BELLEVILLE.  
The Court House, City Hall, Public Library, Post Office, The Banks, And The  
Newspapers, Are Located Upon It Or Nearby.

together in the very heart of brush and sage" into the Greater Belleville of today.

Our theme is not the yesterday, but the today. Yet today's triumphs are but the fruitage of yesterday's sacrifices. Would we find the "why" of the "what" of today we must search for it in the yesterday. What to the novelist were scenes of discouragement and depression, to the far-seeing pioneer opened as vistas of brightest promise. Disguised in the "swamp and brush" Ceres had hidden riches untold, the development

of which attracted to early Belleville the choicest spirits from far and near. And it was to these the triumphs of the Greater Belleville of today are traceable. Environ-



GEORGE H. BUSIEK,  
Superintendent of Schools.

The Public School System of Belleville Ranks  
With The Highest In The State.

ment may be the potter moulding and fashioning the plastic material of mankind, but the value of the finished product depends upon the character of the material. America is great today not simply because of its wonderful natural advantages, but rather because of its men. And these are great because upon the parent stem of Plymouth Rock the choicest twigs of different mould and vintage have been grafted; and in the blood of the progressive American flows commingled the very choicest streams of blood of all the nations of the earth.



EAST MAIN STREET, LOOKING TOWARDS THE PUBLIC SQUARE.

The Main Avenues of The City of Belleville Were Mostly Laid Out on a Liberal Basis, and The Main Street, Running East and West, is a Broad, Well-Paved Thoroughfare Centring at The Public Square.

This is especially true of Belleville, and the success of Greater Belleville is but the fruitage of the commingling of the choicest fruitage of our own land, Sturdy New England with Cavalier Virginian, as well as those of France and Germany. Here found they the Land of Promise, the Mecca of their fondest hopes and anticipations. What to the eyes of the possessions: HOME. And today, after long stretches of years, many still live to attest to the healthfulness of the "deadly atmosphere" of Dickens, and to the

great Englishman was hidden to them was revealed, the wonderful riches of the future region of which Belleville was the centre. Entering upon the land of promise they found the richest of human



THE NEW RAAB SCHOOL BUILDING.

A Fine, Modern Structure, Located on One of The Most Delightful, Elevated Spots in The West End Section of The City of Belleville, at Union Avenue and Silver Street.

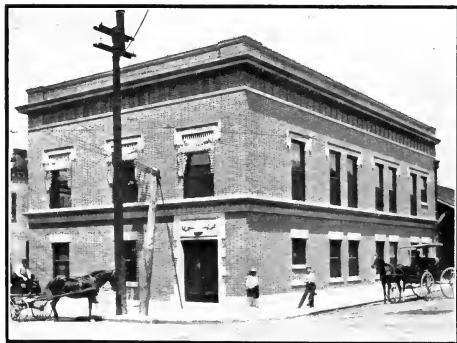


EAST MAIN STREET, LOOKING WEST TOWARDS "THE SQUARE."

"Romeiser's," "Feuss-Fischer's," "Horn's," "Saenger's," "Kreb's," "Puderer's," "Knapp Bros.'s," and Many of The Leading Retailers and Business People Are Located Along This Section of The Street.

economic value of the "ill-favored sloughs" and "desolate kinds of waste."

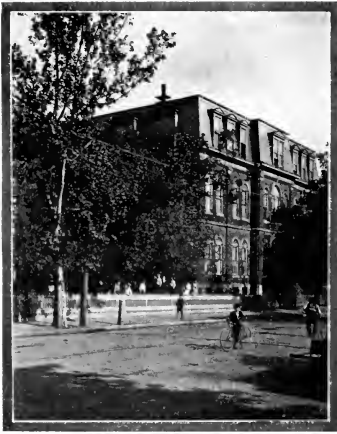
And there were "giants in those days." Along side of the hardy pioneer blazing his way through the trackless prairies we find the cultured products of Euro-



THE BELL TELEPHONE BUILDING, NORTH ILLINOIS STREET.

Belleville Demands The Best Service In Every Department Of Human Endeavor and Intends To Have The Best. The Spirit Of Progress Is Evident In All Lines.

pean universities. As a result Belleville from its earliest days was noted for its educational and cultural advantages. For these men recognized that "man cannot live by bread alone," and whilst delving and toiling found time for the development of the higher amenities of life, leaving to their descendants an inherent love for culture and for music that at times seemed to impede the onward march toward greatness, but which in reality has made it possible for Greater Belleville to be-



THE CENTRAL HIGH SCHOOL,  
SOUTH ILLINOIS STREET.

Ten Recitation Rooms, Beside The Assembly Hall and Laboratories.

come greater economically without the loss of the love for the higher things that alone make a people truly great.

Long before the little red school house dotted the land Belleville provided for the education of its youth. And with the earliest pioneer was the schoolmaster of that day. But with the advent of the German element came the real foundation of the splendid education facilities



ADAM KARR,  
Former President of The Belleville Commercial Club.

The Old Building in The Foreground Was a Tavern in The Days of 1842, and One Nook, as The Mansion House, Sheltered Charles Dickens, The Famous English Author. Later on, for Many Years the Ancient Hoed Was Known as The Pinn House.

JUNCTION EAST MAIN AND NORTH HIGH STREETS.





THE PUBLIC SQUARE, WITH THE ST. CLAIR COUNTY COURT HOUSE NEAR THE CENTRE.  
 East Main, North and South Illinois, and West Main Streets Radiate from the Square, and the Suburban Trolley Lines make their Connections Here.



BRIDGE OVER THE RICHLAND CREEK.

One of the First Granitoid Structures of the Kind Built in the United States.

ties of today. For the real elemental sources of strength in the educational life of today were found in Belleville from the very earliest times. Steadily has the school life been built upon these foundations deep and strong. The truths taught by Froebel and the great educational leaders were incorporated in the public school system by the Bunsens and Raabs years before the general educational world realized their scientific value. Avoiding frills and foibles, with the steadiness naturally to be expected from the Teutonic strain so prominent in Belleville's life, the public school system has grown, affording at all times to every child the opportunity of an education in the essentials that make life and character. School



NEW BRIDGE AT CENTREVILLE AVENUE.

Making a Fine Approach to this Recently Reconstructed, Cosmopolitan Thoroughfare.



NORTH ILLINOIS STREET FROM THE PUBLIC SQUARE.

Another of the Main Arteries. The First National Bank Building, on the Left, Is An-Up-To-Date Modern Edifice. The Commercial Club Occupies the Upper Floor as its Quarters.

houses built for comfort and use have been provided as the needs grew. Greater Belleville today has ten commodious public schoolhouses, a very fine structure having been erected within the last two years, and plans being under way for others. A corps of seventy-five teachers is employed, the schools running for ten months each year. The enrollment runs over three thousand.

All this pertains to public schools alone. In addition to these the Catholics maintain their parochial schools and the Lutherans one, these providing for over fifteen hundred more.

and third concert. Amongst the vocal organizations are the Liederkrantz, Kroantl-Liedertafel, Choral Symphony, and the West Belleville Harmonic. The



JOSEPH FUESS,  
Late President First National Bank.

As might naturally be expected Belleville is and always has been a musical centre, with flourishing societies cultivating both vocal and instrumental music. Of the latter the Philharmonic Society, an orchestral organization, occupies a high rank amongst these organizations of our land. It ante-dates most of these, having lately rendered its two hundred



JACKSON STREET FIRE STATION.

The Fire Department of Belleville is Modern in Every Respect. This Station Has a Permanent Force of Fire Fighters and is Equipped with an Engine, Hose Reel and Ladder Truck. Drills Take Place Daily at the Noon Hour and at Seven O'Clock in the Evening.

are products of the recent Greater Belleville years, while the former are direct descendants of organizations that kept alive the Germanic spirit of song from the earliest days of the settlement. Chief of these was The Saengerbund, an organization to which the city is



GOLD STREET FIRE STATION.

This West End Station is Similarly Equipped to the Jackson Street Station. The Men Are Employed Permanently and Devote All Their Service to the City.

indebted not only for much of its musical life, but for years to the maintenance of the higher literary culture. For years it kept up a Library which became the nucleus for THE BELLEVILLE PUBLIC LIBRARY, an institution of which the city may well be proud. Housed in a commodious



THE MONUMENT AT WALNUT HILL TO THE MEMORY OF THE LATE FIRE CHIEF FRED. B. PHILLIPS.

structure, erected by the citizens of Belleville long before the Carnegie libraries dotted the country, this library ranks high amongst the libraries of the country, serving not only as a fitting monument to those who, midst the pressing duties of early pioneer life kept alive the germs of intellectual culture, but in its





ST. PETER'S CATHEDRAL, BELLEVILLE.

With Residence of Bishop Janssen on the Left.

This Magnificent Structure Has For Years Been the Centre of Catholic Interest, Not Only For Belleville, But For the Whole of Southern Illinois.

present state a living testimonial to the fact that Greater Belleville of today is a worthy descendant of the intellectual spirit of the fathers. On its shelves is found a well selected, popular Library of more than 25,000 volumes; not popular in the sense of modern popularity, the rush for the ephemeral foam that floats on the crest of true literary waves, but popular inasmuch as it supplies all classes with the very best of modern as well as ancient literature, the Library having helped much to develop a taste for the eternal. With the development of the intellectual and cultural Belleville has not overlooked the religious.



ST. LUKE'S PAROCHIAL SCHOOL.  
GLEN ADDIE, EAST FRONT.

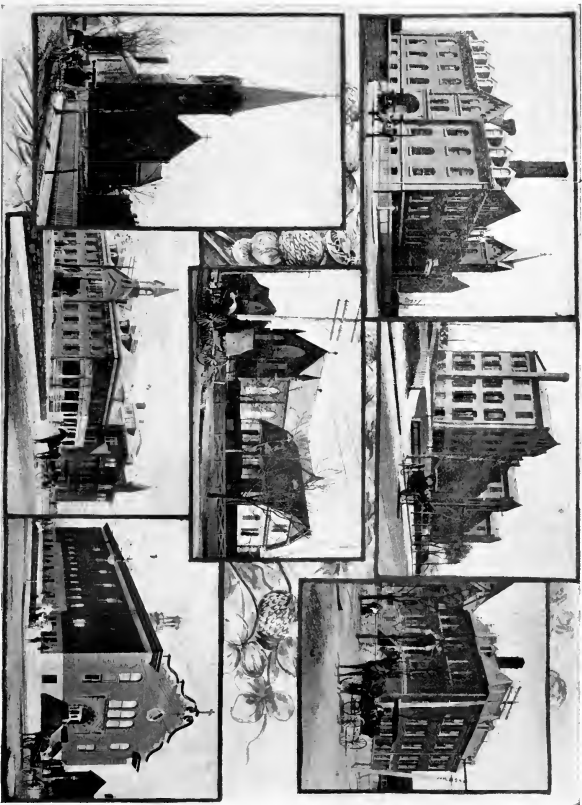
THE LAKE, GLEN ADDIE.

GLEN ADDIE, FRONT.  
ST. MARY'S PAROCHIAL SCHOOL.

**THE GLEN ADDIE ORPHAN HOME, WITH ST. MARY'S AND ST. LUKE'S PAROCHIAL SCHOOLS.**

The Catholic Parochial Schools of Belleisle are the Pride of the Members of that Faith.

Glen Addie, the Beautiful Orphan Home, is Located a Short Distance from the Centre of the City, and Has Recently Been Enlarged.



NOTRE DAME CONVENT.  
ST. LUKE'S CHURCH.

ST. ELIZABETH'S HOSPITAL.  
ST. MARY'S CHURCH.  
ST. VINCENT'S HOSPITAL.

CATHEDRAL RESIDENCE.  
CATHEDRAL SCHOOL.

**SOME NOTED CATHOLIC CHURCHES, SCHOOLS, CONVENTS, AND CHARITABLE INSTITUTIONS OF BELLEVILLE.**

Going Down South Race Street will be Greeted by a Group of Fine Buildings Devoted to Education and Charity, St. Elizabeth's Hospital, St. Vincent's Hospital, Cathedral Hall, and Notre Dame Convent. St. Mary's Handmade Office is Situated on West Main Street at the West End, while St. Luke's Beautiful Church, with its Gargoled Spire, Adorns North Church Street.

To the casual observer, accustomed to consider the religious as synonymous with the emotions, and to look for its fruitage only in certain customs indigenous to American soil, the religious development may seem to have lingered in comparison with the culture progress already referred to. But, upon deeper study, underneath the calm, philosophical surface there will be found the substratum of a true religious heart culture emphasizing the "doing the work of the Father." Belleville is known for its benevolence. In no city is the brotherhood of man more truly exemplified. The needs of



Rt. Rev. JOHN JANSSEN,  
Bishop of the Belleville Diocese.

orphans and hospitals minister to the afflicted in the name of Him whose cross they adore. Protestantism in all of its various denominations is also strongly represented, and has made its impress felt on the city since its earliest inception.

The earliest Protestant churches of the West were planted in its neighborhood, and the leaders have ever been forward in the religious life of the city and State.

The public press of a city is a barometer of its intellectual,

civic, commercial, and social life. Belleville lies within a few miles of Saint Louis and the mighty metropolitan presses hourly pour their editions into its borders. But notwithstanding this thriving city flourishes and reveals, as no one other thing, the remarkable vitality, progress, and energy, civic, industrial, commercially, and socially of the

other communities in calamity here have always touched a responsive chord, and her treasures were poured forth with a lavish hand to succor the needy in the hour of disaster.

The seat of the Belleville Diocese, Catholicism flourishes with a host of adherents. Its stately Cathedral and other churches furnish homes for thousands of its members, whilst its



REV. FATHER SCHLARMANN,  
St. Peter's Cathedral.

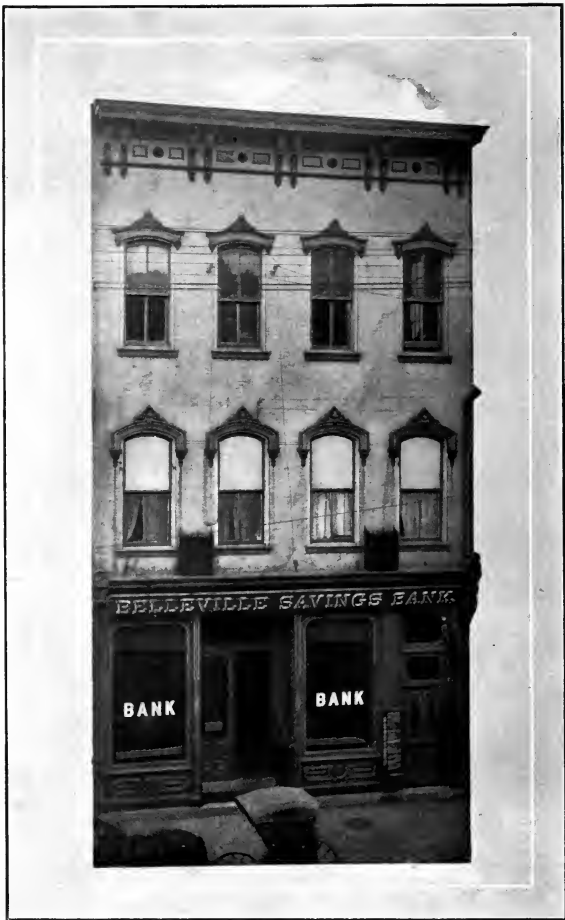


REV. FATHER GOUGH,  
St. Luke's Church.



WEST MAIN STREET FROM WEST SPRING, LOOKING WEST.

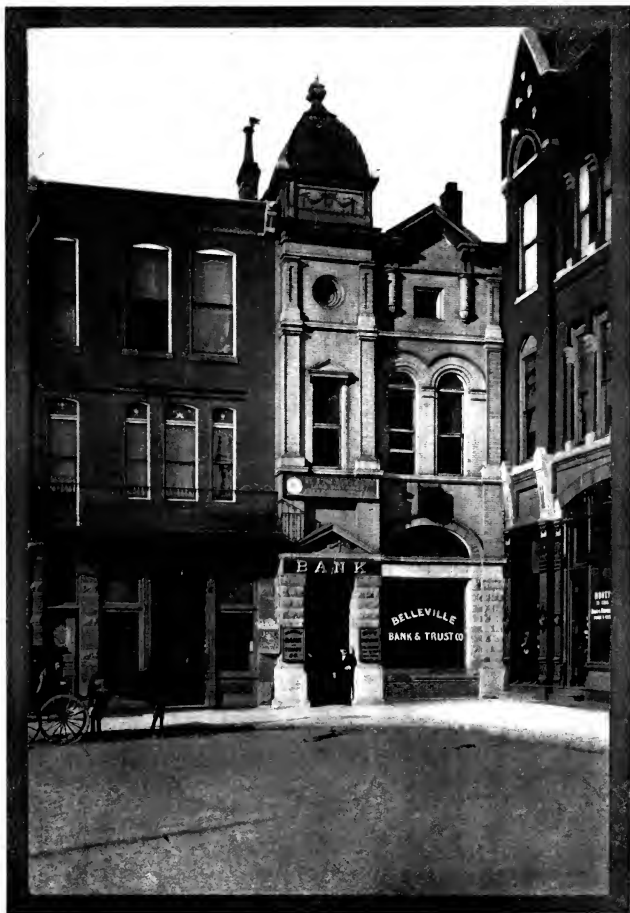
On this Bay Thorouglfare there are a Number of the Leading Retailers of the City; the Joseph Clothing Company, whose Establishment is a Conspicuous Feature at the Right of the Illustration; William Eckhardt, Jr., C. A. Schilder, George R. Long & Son, the Kerr Supply Company, Chas. Dent, the St. Clair Lumber Co., Gunenswold, the Inba Flour Mills, and the Plant of the Gas and Electric Light Company.



BELLEVILLE SAVINGS BANK, BELLEVILLE, ILLINOIS.  
CAPITAL, SURPLUS AND PROFITS, \$500,000.

President, L. D. TURNER. Vice-President, PETER J. KAERCHER. Cashier, RICHARD WANGELIN.  
DIRECTORS:

Edward Abend, B. Hartmann, P. J. Kaercher, A. F. Miller, Louis Opp, A. B. Smiley, L. D. Turner,  
Richard Wangelin, James A. Willoughby.



HOME OF THE BELLEVILLE BANK AND TRUST COMPANY,  
PUBLIC SQUARE.  
CAPITAL, \$150,000.00.

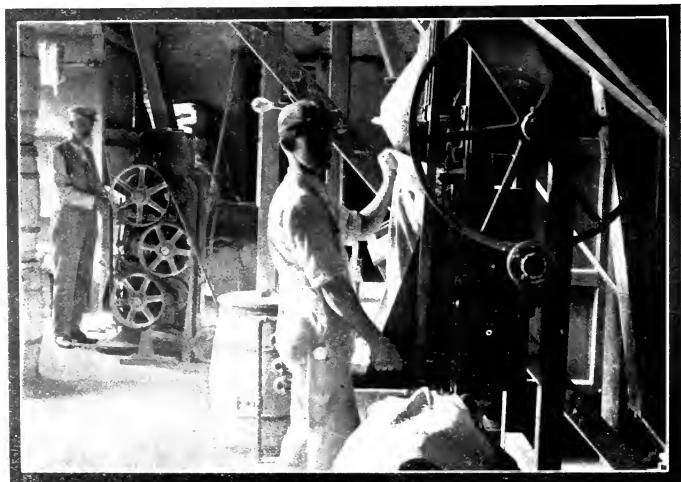
ED. M. IRWIN, President.      NIC WULLER, Cashier.      THOMAS MAY, Assistant Cashier.

DIRECTORS.

Jos. Flach, C. A. Monk, Adam Karr, Wm. Eckhardt, Jr., Theodore Karr, Peter Haupt, Ed. M. Irwin, Fred. Engelke,  
Aug. Barthel, Jos. B. Reis, Jacob Becheret, Nic Wuller, Philip Knapp, Chas. Spoenemann.

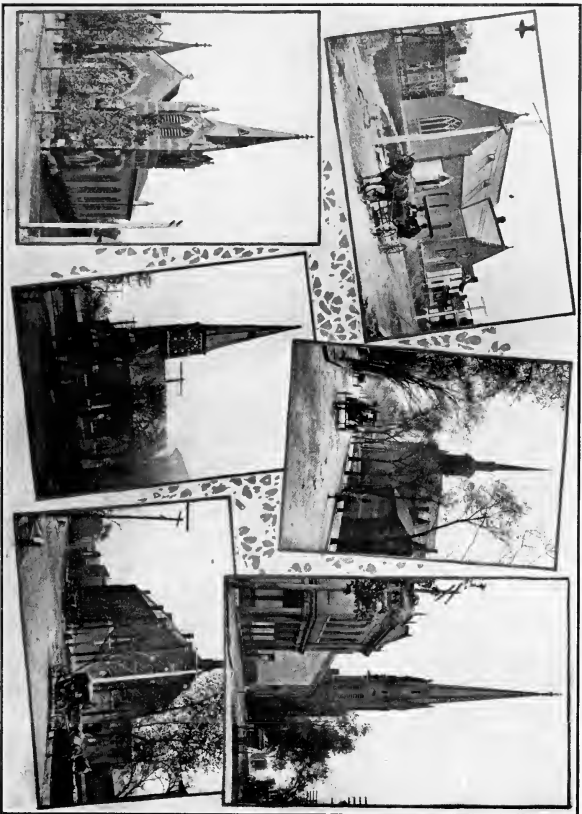


A MILLER AT HIS ROLL STAND.  
A Characteristic Interior View in the Rauch Mill, South Illinois Street.



ONE OF THE FOUR PACKERS.  
Packing "Security" Flour in the Mills of the Rauch Milling Company, South Illinois Street, Belleville.





St. George's Episcopal.  
St. Paul's Free Protestant.

Presbyterian.  
German Lutheran.

First Methodist.  
First Baptist.

SOME OTHER POPULAR CHURCHES.



EPWORTH M. E. CHURCH,  
Dewey Station.



REV. O. F. PESSELL,  
St. Paul's Free Protestant Church.



CHRIST CHURCH,  
North West Street, Between Main and A.

municipality. Five daily papers, three English and two German, flourish in the city, and in the great evolution we are chronicling herein, they have stood shoulder to shoulder, inciting and encouraging the onward movements; and to their efforts the success attained is largely due.

Belleville was always known as a City of Homes. Its residences, solid and substantial, in years past, however, appealed but little to the outside observer. In no respect has the city changed more, perhaps, than in this, and the stranger within its gates today is most forcibly impressed with the residential districts and the many beautiful homes scattered throughout the city. For, with true democracy, this City of Homes boasts of no one section where wealth has gathered its palatial



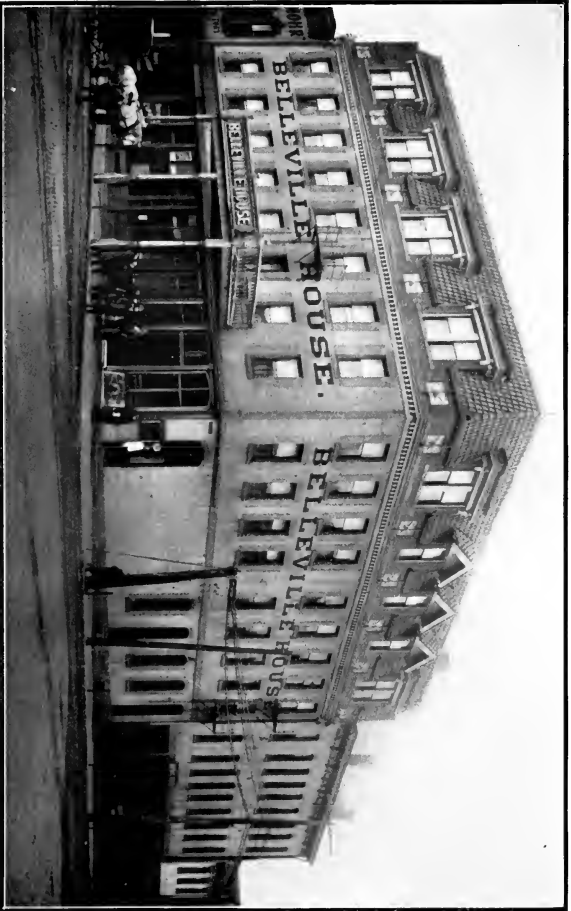
REV. MR. BURKHARDT,  
German Lutheran, A and Church Streets.



GERMAN METHODIST CHURCH,  
South Jackson Street.



REV. MR. SCHNATHORST,  
Christ Church.



**BELLEVILLE HOUSE.**  
The Leading Hotel in Belleville. Seventy-Five Rooms. Modern Throughout. American Plan.  
Terms, \$2.50 and \$2 Per Day.



THE SWINGS—RECREATION GROUNDS,  
NEAR THE CITY HALL.

residences. But, turn where you may, and you will find these homes, for the man has loved to linger and rebuild where as a child he dwelt at home. But richer far than these modern edifices, however beautiful architecturally they may be, is the old-fashioned home spirit of the city. For the German family spirit yet reigns supreme. And this is noticeable in the business and social life as in the family, and has developed the fraternal spirit and organizations for which the city is so noted.

While in its earlier days the city was chiefly known as an organization center, in which it is now supreme, the opening up of the rich deposits of coal underneath, around and about the city gave it a pre-eminent place amongst the industrial centres of the West.

As the nucleus of a successful manufacturing of all kinds. Its reputation based upon facts has steadily grown, and to-day we find all branches flourishing.

For Belleville is very fortunately situated so far as railroad facilities are con-

farmi ng community the manufacturing enterprises at first naturally centered in the production of farm implements, the present Harrison Machine Works, with a continuous history of over one-half a century, being amongst the pioneers.

But with the increasing development of the coal fields and the attendant railroad facilities, came a renewed impetus to manufacturing. The city soon gained recognition as a field especially adapted to suc-



MONUMENT  
TO THE SOLDIERS AND SAILORS.  
Walnut Hill Cemetery.  
Erected by The Women's Relief Corps of Belleville.



WEST MAIN STREET AT WEST END SQUARE, LOOKING EAST.

West Belleville is Keeping Pace With All Other Sections of the City. It is Growing Rapidly and Claims its Share of All the Honors.



THE NATIONAL HOTEL, Arthur Leiner, Proprietor,  
Public Square, Belleville.

cerned. Three great trunk lines, the Southern, Illinois Central, and the Louisville and Nashville furnish unto Belleville an outlet to the outer world. These are interlinked by a belt line built by the business men of Belleville and donated to the railroads under such conditions and restrictions that today every industry on any of these lines has the advantage of shipping both in and out over any of the other lines without the

with frequent communication unites Belleville with the great metropolis of St. Louis, which is but a few miles away; and with many of the surrounding towns. Add to these favorable transportation facilities, the natural advantages, especially in the line of an abundant and cheap fuel supply, together with the character of the labor (not the refuse of European dregs, but of the highest class intellectually); and the secret of the phenomenal manufacturing success of the city is easily understood.

In this respect Belleville stands pre-eminent not only in the character of its industry but in the uniformity of the success achieved by those engaged in manufacturing in this thriving centre.

We have already alluded to the farm implement industry of the city.

In speaking of its industrial life, we must not, however, forget to call attention to this coal mining industry, which forms such a prominent part in the fostering and sustaining of the manufacturing and commercial life of the city, for great as



THE LYRIC THEATRE.  
F. A. Hallam, Proprietor.



ARTHUR E. KREBS,  
Former President  
Belleville Retail Merchants'  
Association.

switching charges. A few miles away at the banks of the Mississippi all the great trunk lines of the country converge, and the city enjoys this basal rate to all points of the country. An electric line

In addition to this there are nail mills, brick yards, breweries, shoe factories, clothing factories, hosiery mills, glass works, and iron industries of all kinds, the stove and range works being in an especially flourishing condition. These give employment to laborers, skilled and unskilled of all kinds, numbering over 5,000, with pay rolls aggregating \$100,000 per week, and coal mines as much more.



THE PENN BLOCK.  
Public Square and East Main Street.

is the manufacturing life, the coal industry yields nothing to it in supremacy. Turn in whatever direction we may, we find the rich fields of bituminous coal, from the earliest days these furnishing a support to a large number of citizens; but with the increase of manufacturing not only in Belleville but in the great cities that border the mighty Mississippi, on its either side, all in close proximity to Belleville, coal mining has expanded into an industry giving steady, remunerative employment to over five thousand men, and representing a capital investment running into the millions.



A GLIMPSE OF THE COUNTY JAIL,  
With the Chain Gang in View.

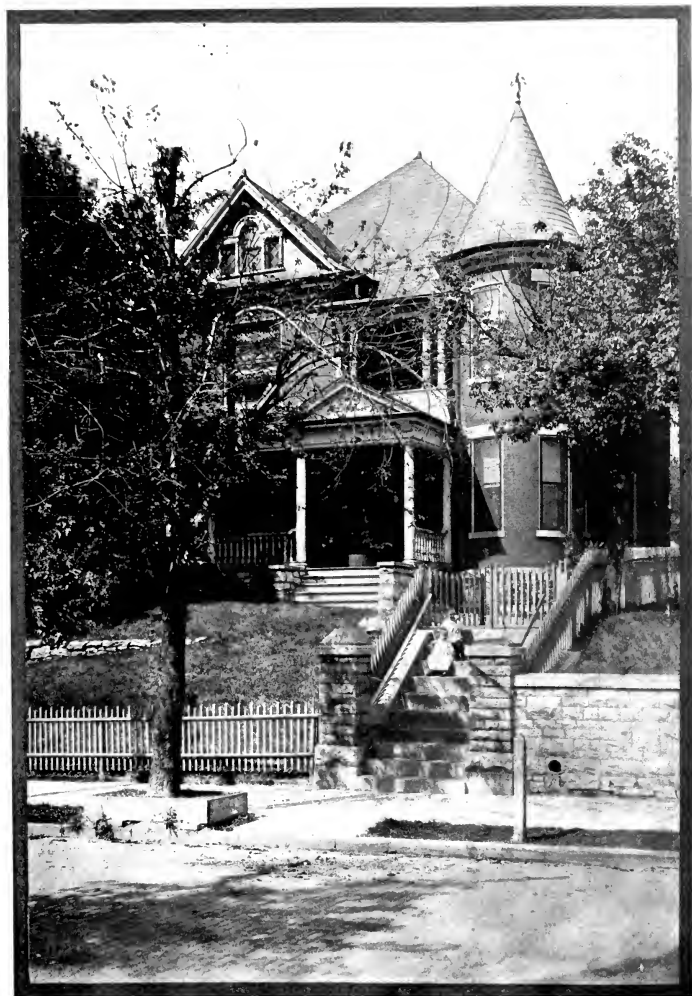


RESIDENCE OF P. FELLNER,  
President of The Fellner-Rathm D. G. Company,  
1 and 2 Windsor Place.



RESIDENCE OF GEORGE R. LONG,  
44 Sixth Street.





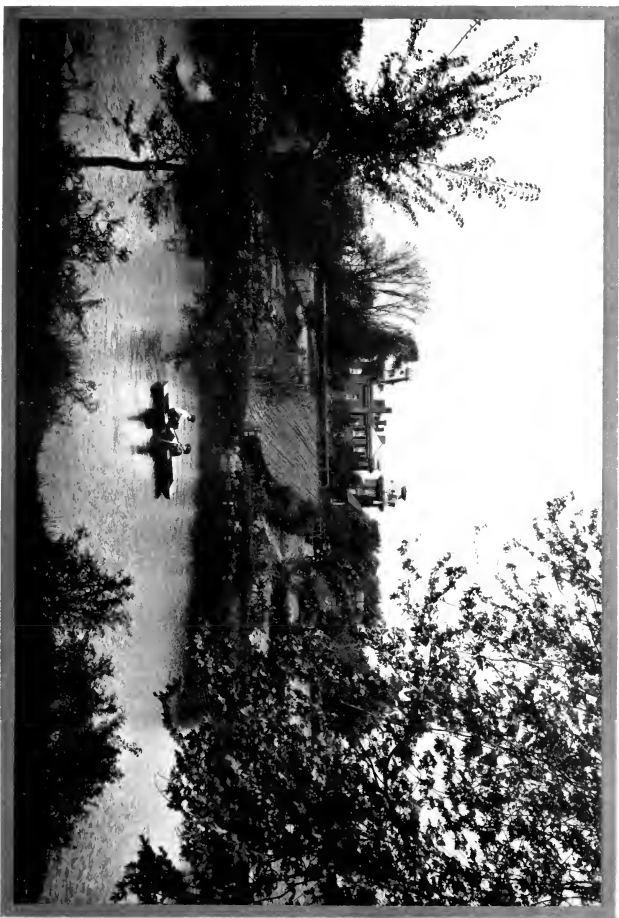
RESIDENCE OF ADAM KARR.  
Second Street.



RESIDENCE OF NIC WULLER,  
South High Street.

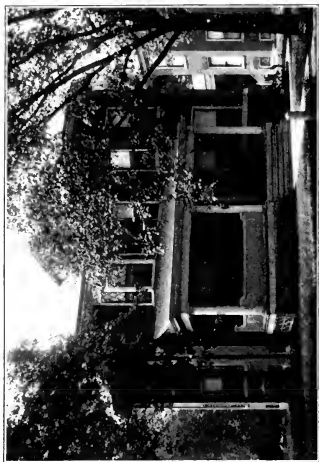


RESIDENCE OF WILLIAM J. CLAUS,  
South Jackson Street.

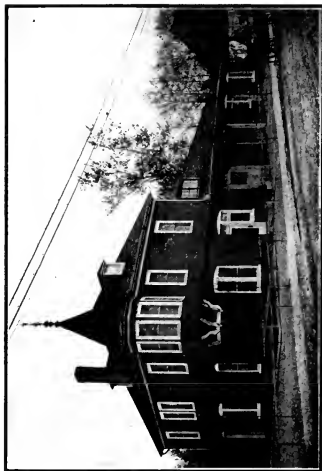


RESIDENCE OF JUDGE FRANK PERRIN, Douglas Pike, Belleville.

The Buildings were Fashioned after the Famous Castle at "KRONBERG," Germany. The Chapel on the Right is a Miniature Reproduction of the One at Kronberg.  
The Site was Formerly the Headquarters of the "Medicine Lodge" of the Tamaroa Indians.



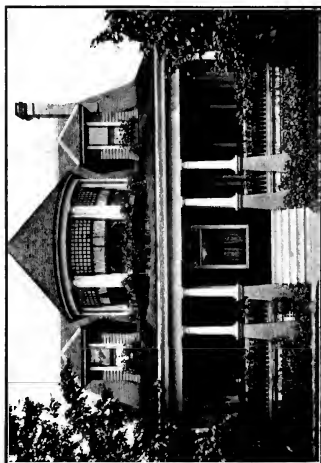
Residence of Dr. C. H. STARKEL, South Charles Street.



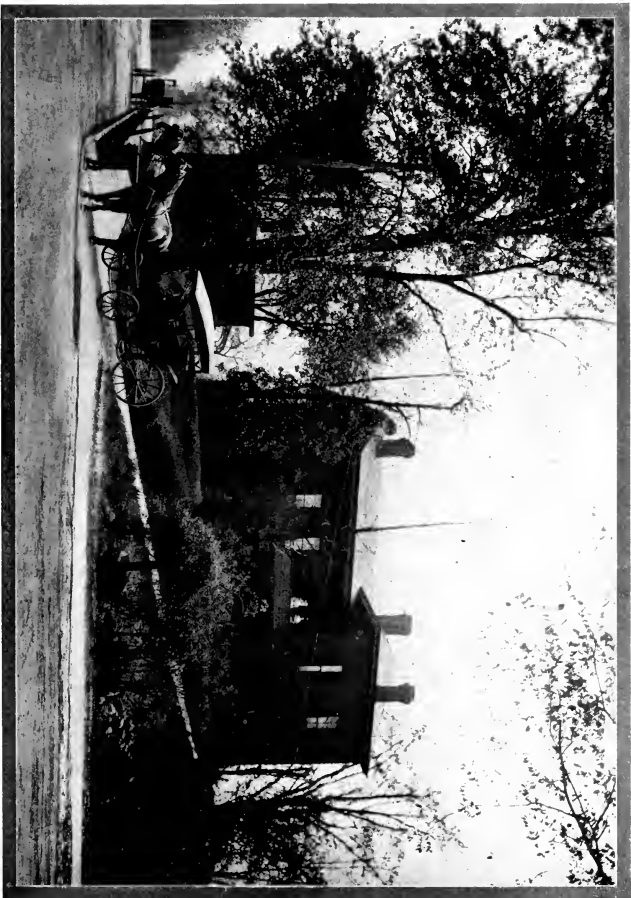
Residence of F. A. BADGLEY, East Main Street.



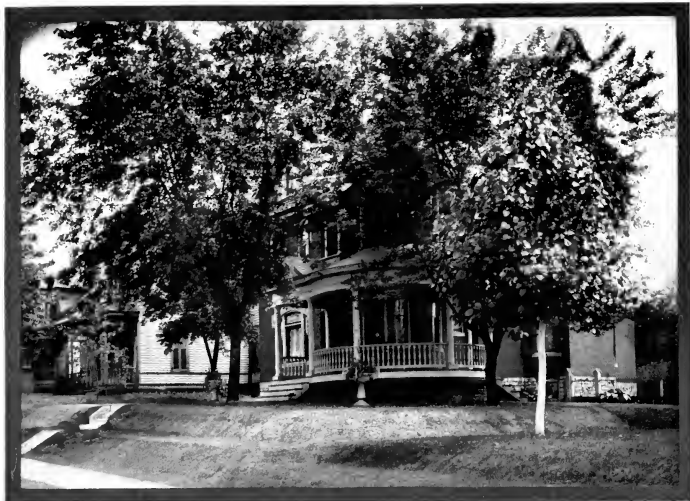
Residence of CHARLES A. STOOKEY, North Jackson Street.



Residence of ALBERT HUCKE, Lebanon Avenue.

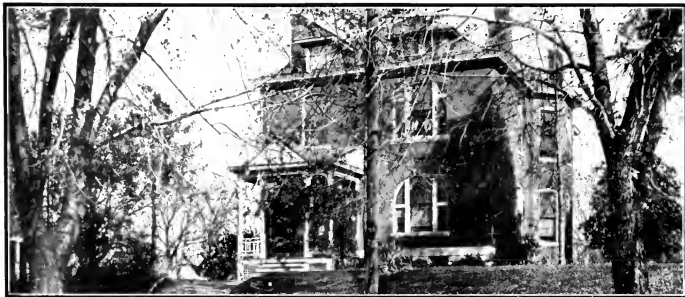


RESIDENCE OF L. D. TURNER, President of The Ballenville Savings Bank,  
South Jackson Street.



RESIDENCE OF GEORGE B. ROGERS, President of The Belleville Commercial Club,  
Pennsylvania Avenue.

It is, therefore, not to be wondered at that the mercantile and commercial life of Belleville is an especially successful one. Built upon conservative foundations Belleville business life has been steadily progressing. Panics have come and panics have gone, leaving in their wake the wreckage of business failures all over the country, but it is the proud boast of Belleville that during all of these years not



RESIDENCE OF VICTOR GAUSS,  
North High Street.

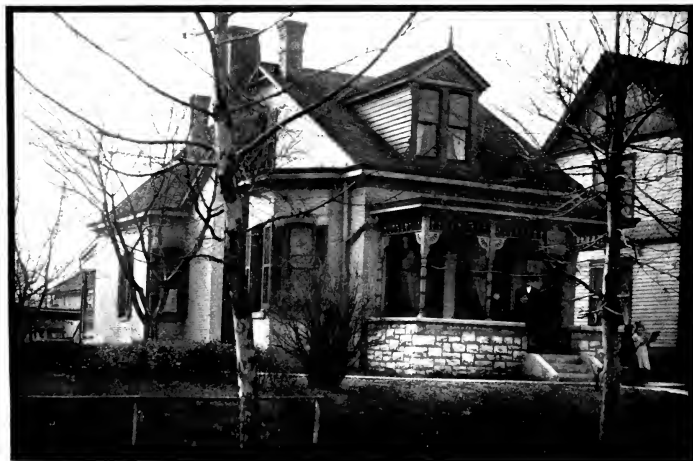


RESIDENCE OF FRED ENGELKE.

East First Street.

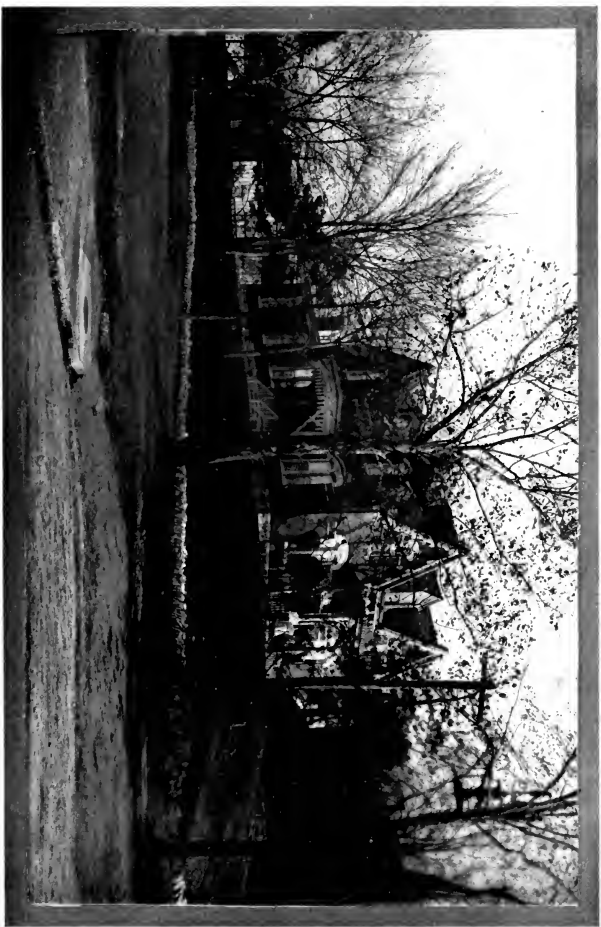


RESIDENCE OF F. W. PUDEKER,  
Abend Avenue.



RESIDENCE AND OFFICE OF GEORGE P. UHL, CONTRACTOR, 204 PORTLAND AVENUE.  
Contractor for the Brick and Stone Work on these Modern Buildings in Belleville: George C. Rebhan, Barthel Hug, Fred. Teufel, Ben. Yock,  
Mr. John Rodenmeyer, Walter Woods, Albert Sprich, St. Paul's Church, Belleville House.

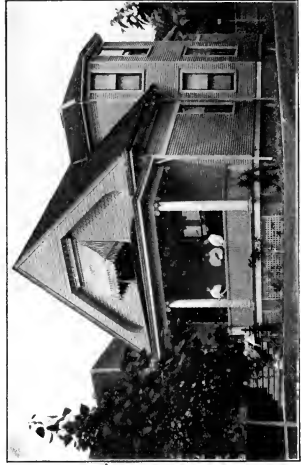




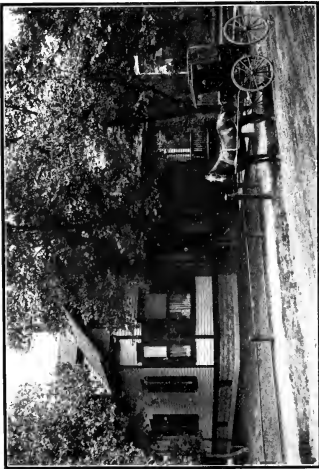
RESIDENCE OF CHARLES SPENEMANN, President of The Estimote<sup>®</sup> Foundry Company,  
North High Street.



THE MICHAEL REIS HOMESTEAD,  
West Main Street.



RESIDENCE OF CHRIS. DIETZ,  
502 South High Street.



RESIDENCE OF DR. HUGO WANGELIN,  
North Charles Street.



RESIDENCE OF HENRY W. NAGEL,  
602 Union Avenue.



RESIDENCE OF BERNARD HEICKENKAMP.

Center of Court and E. Street.



RESIDENCE OF ALDERMAN FRED. A. HARTNAGEL,  
Virginia Avenue--Oakland Addition.



RESIDENCE OF ALDERMAN WILLIAM S. CAMPBELL,  
Rock Road.



RESIDENCE OF ALBERT SPRICH,  
509 East B Street.

one serious business failure among its mercantile institutions has ever occurred.

The business houses of Belleville rank high in the commercial life of the country, and will bear comparison with their more pretentious competitors of the nearby metropolis. Perhaps no higher tribute could be paid to them than the fact that although the electrical communication has placed St. Louis at the very doors of the citizens of Belleville and of those of its contributory territory, the local business men have not suffered by

the competition, but instead have steadily grown.

Perhaps the best barometer of the financial condition of a city, its business and its people, is its financial institutions. The city has three banks, rock-ribbed Gibraltors. Two of these have stood for many years and never quivered under any financial storm or stress. The third is of more



GEO. W. DETHERDING,  
Formerly Treasurer of the Belleville  
Commercial Club.

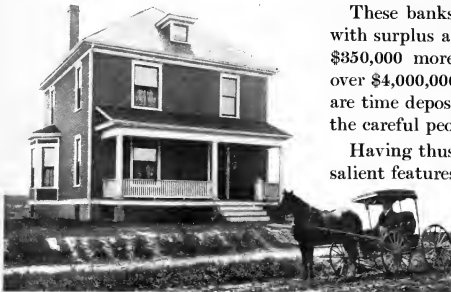
recent origin, but built upon the same solid foundation that characterizes the older institutions. A brief summary of their financial condition will substantiate the statement made concerning them, and will more eloquently than words, bear living testimony to the wonderful commercial and financial stability of the city and its enterprising citizens.



RESIDENCE OF JOHN BUX,  
North Richland Street.

These banks have a capital of \$550,000, with surplus and undivided profits of over \$350,000 more. The deposits amount to over \$4,000,000, of which almost \$2,500,000 are time deposits, representing the thrift of the careful people of the city.

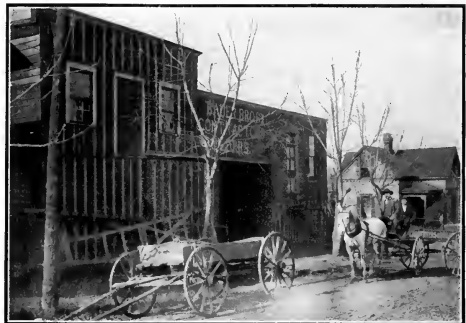
Having thus in passing sketched a few salient features of the city of the past and taken a few glimpses of its present development, its intellectual, social, religious and economic life, let us now turn to a brief view of the civic movement and the fruits



RESIDENCE OF GEORGE D. TUFTS,  
Teacher and Composer of Music, Wabash Avenue.

thereof that have truly entitled Belleville of today to the distinction of being the Greater Belleville.

For years the city's growth was steady, albeit somewhat plodding, marked neither by booms nor yet by re-action. Its natural advantages many, it grew because of them and despite the fact that no special effort was made to push it



RESIDENCE AND MANUFACTORY OF THE BAUER BROTHERS,  
317 North Airy Street.



RESIDENCE OF G. D. KLEMMÉ,  
Portland Avenue.

along. Its agricultural resources, its coal deposits, its transportation facilities in themselves produced an expansion industrially and commercially. This advancement being accepted as a matter of course, no strenuous nor systematic efforts were put forth to force the growth of the city or even to take advantage of opportunities.



RESIDENCE OF GEORGE A. KLOESS,  
West Main Street.



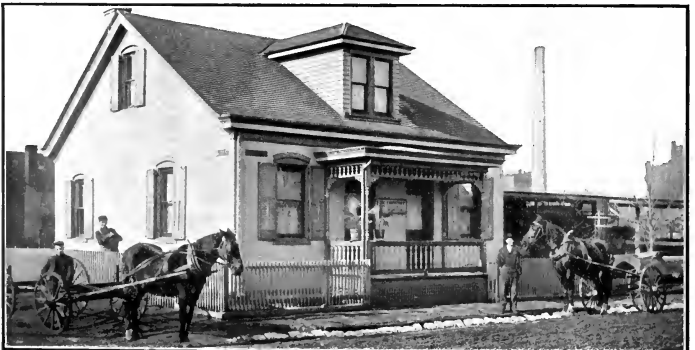
RESIDENCE OF E. P. DREWES,  
Union Avenue.



RESIDENCE OF JOHN KREHER,  
North High Street.



RESIDENCE OF JOHN L. SAHLNER,  
West Main, Kirkwood Station.



RESIDENCE OF JACOB CHRISTIAN,  
North Silver Street.



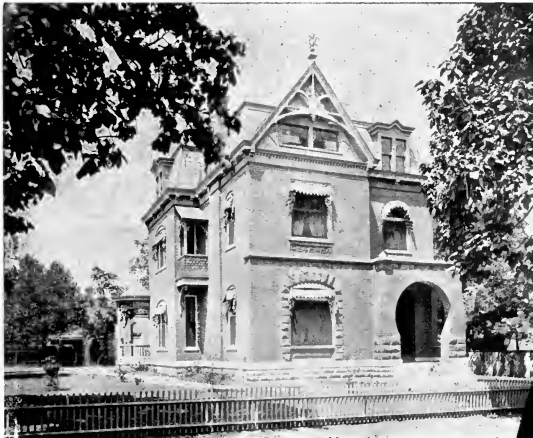


RESIDENCE OF MRS. JOHN EIMER.

South Jackson Street.

The storehouses of energy were being filled. A giant strength was being accumulated. Flashing forth in spasmodic efforts here and there the pent-up power was revealed. The fullness of time, however, had not yet come, but ever gathering was the dynamic force that was to give us Greater Belleville.

Organizations were brought into life, Greater Belleville must become Greater Belleville. These efforts culminated in the Commercial Club. Its purpose, the



RESIDENCE OF IRVIN H. WANGELIN.

Abend Avenue.



Residence of WILLIAM ALTHOFF, North Illinois Street.



Residence of HENRY REIS, South Race Street.



Residence and Cigar Factory of VALENTINE HOLM,  
Douglas Avenue and D Street.

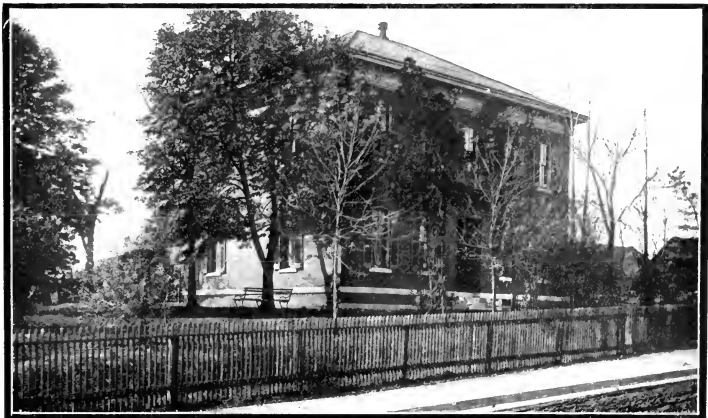


Residence of FRED TEUFFEL, Pennsylvania Avenue

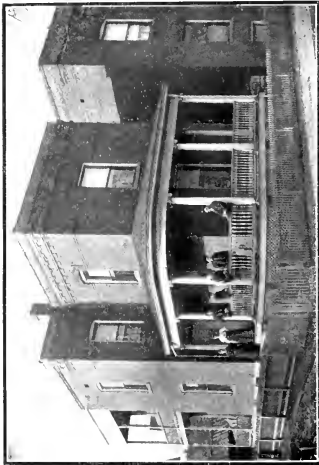


RESIDENCE OF ROBERT HILL, SR.,  
Sycamore Street.

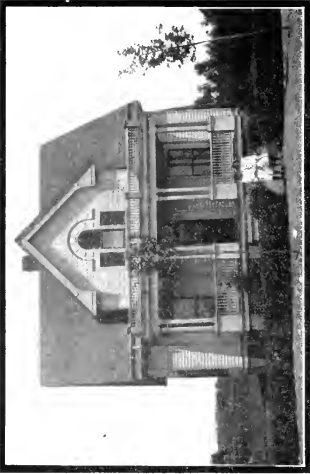
securing of additional industries, the awakening of the city to its opportunities, and the banding together of its business and professional men to take advantage of them, gave evidence that the seeds of progress sown through the years were germinating. Like all movements of this kind, the Commercial Club had at its



RESIDENCE OF FRED BRANDENBURGER,  
Second and Silver Streets.



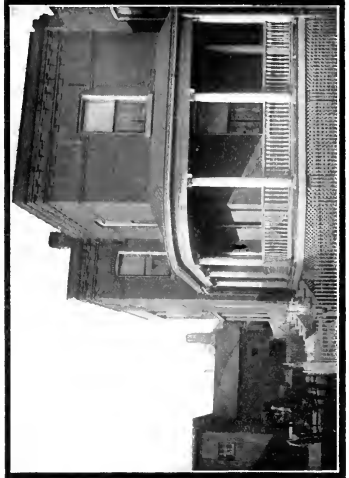
Residence of BARTHEL HUG, South Charles Street.



Residence of JOHN P. FALCONER, West Main Street.



Residence of MRS. E. STRUTTMATTER, South Illinois Street.



Residence of FERDINAND WINKLER, South Spring Street.

start but a precarious existence, nursed along by a few choice spirits, and meeting with toleration rather than approval. But it steadily continued to press forward. The three trunk lines that passed through the city connecting it with the outer world were linked together by a belt line built by the Club. New industries were secured. For this purpose a holding company was organized by the Club with the citizens as stockholders, its objects being the promotion of the industrial life by the securing of new industries as well as the development of those already



R. W. ROPIEQUET,  
 To Whose Loyalty and Public Spirit Belleville is Greatly Indebted for  
 "Belleville, Illinois, Illustrated," and  
 "The Greater Belleville."

in existence, the funds of the holding company to be invested in the companies as promoted. But not only in this line, but still more in civic lines were the foundations of a Greater Belleville laid by the Club. The bulwarks of conservatism that for years had withstood the onslaught of public progress were gradually undermined and the forces trained for the movement in civic life to which the present Greater Belleville is largely due.

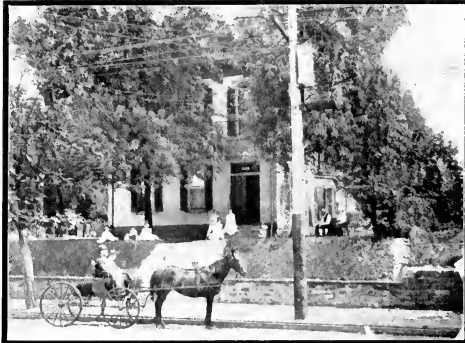
The movement grew rapidly, sweeping all before it with a force that simply overwhelmed all opposition

—for it was not without a struggle that the old order gave way to the new. For years the old Belleville was noted for its macadamized streets, which were far superior to those of any other western city of its size. This very fact stood in the way of its installation of modern improved streets. Many of the streets not good enough to be acceptable in this day seemed to the conservative element too



RESIDENCE OF MRS. CONRAD REINECKE,  
 North Jackson Street.

good to be replaced. Only fourteen and one-half blocks of streets were paved with brick. Large sums were collected for street improvements; but, under the old order this money was distributed among the wards, with the result that no permanent improvement was possible. Under the new order this was changed. Belleville today has over thirty-five miles of paved streets, with many more in process of construction, so that



RESIDENCE OF THEODORE KARR,  
South Illinois Street.

time pensioners on the public bounty, whose leisurely application, if such it might be called, seemed typical of much of the public spirit of the city. To-day an efficient street department, thoroughly organized on business principles and with all

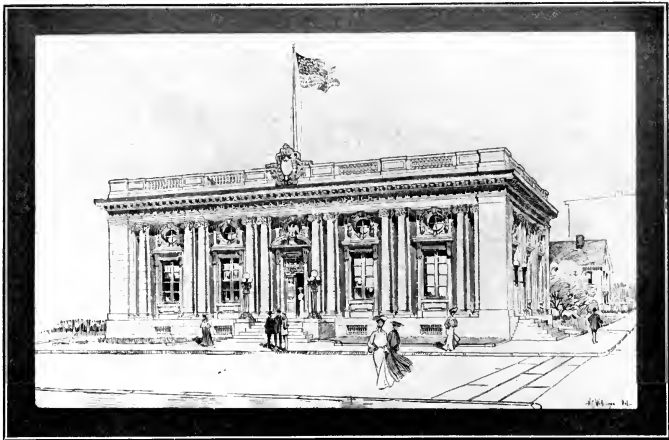
the close of 1910 finds the one mile of the old Belleville paved streets extended into thirty-five miles. The old street department was reorganized. In times past it had consisted mainly of old-



THE JOSEPH SAENGER MERCANTILE COMPANY,  
105-109 East Main Street.



RESIDENCE OF LOUIS OPP, Secretary and Treasurer of the Enterprise Foundry Company,  
East B Street.



THE NEW BELLEVILLE POST OFFICE.  
North Spring and A Streets.

KARR SUPPLY COMPANY,  
HEATING ENGINEERS.



WEST MAIN STREET AT WEST END SQUARE, LOOKING WEST.

On and About this Street a Number of the Progressive Business Firms and Professional Men Centre: The Lorenz Company, Neuhaus, Dr. Jacobs, Kissel, Storrs, Kuhn, Wilbret, Junck, and on Nearby Streets the Western Brewery and the Eagle Foundry.





"ROMEISERS."

One of the Most Famous Stores of the City of Belpre and of Southern Illinois.  
East Main Street.

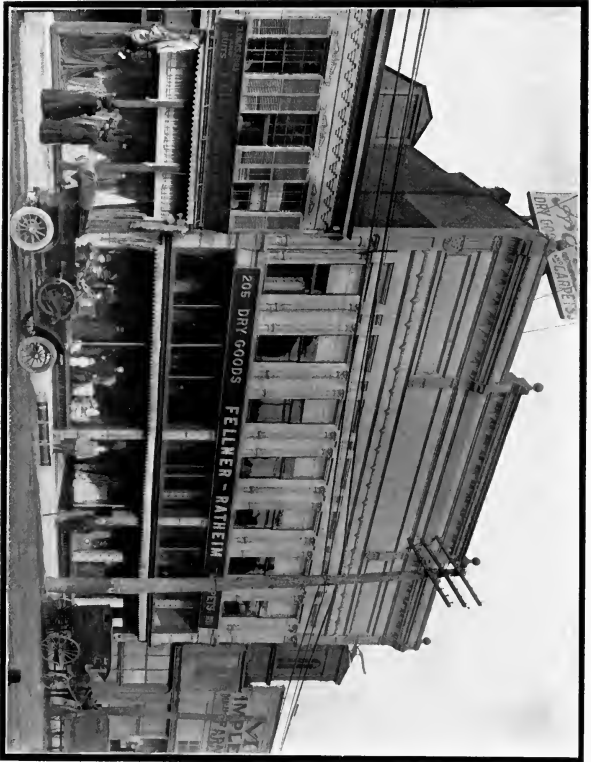


HEADQUARTERS OF WILLIAM ECKHARDT, JR., (INC.).

Leading Grocers and Seed Merchants of Belleville, Illinois. . . 108--110 West Main Street.

of the modern tools and appliances, attends to this important part of the public business.

Amongst the first of the public improvements the awakened civic conscience called for was an outlet sewer system. Plans had been devised, but they ended in plans, and in the matter of sewage Belleville was far behind the times. The Commercial Club had inaugurated a campaign for the construction of an intersecting sewer system which was to form the basis for a complete system for the



**STORE OF THE FELLNER-RATHEIM DRY GOODS COMPANY.**

Dealers in Dry Goods, Carpets, and Ladies' Ready-to-Wear Goods.

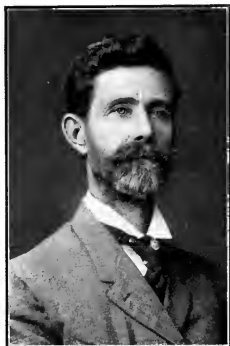
205 to 211 East Main Street.



HEADQUARTERS OF THE POST-ZEITUNG, the Leading German Daily,  
South Illinois Street.

city. Through the efforts of the Club the question was submitted to the people by a referendum and almost unanimously carried. But still nothing was done. The wishes of the people expressed at the polls were simply ignored. Under the new dispensation the plans were revived, and today the city boasts of a system miles upon miles in length, with a septic tank built on the highest modern scientific principles, the equal of any in the country.

Under the old order the city had an old-fashioned, semi-volunteer makeshift of a fire department. Instead of this a metropolitan department was organized, and so thorough is the organization that the loss from this demon of demonstrating how Greater Belleville has matured and is meeting the conditions of today. For the city realized that the old plan of quarantining the first house in



FRANK S. BURNS,  
Former Secretary of the Retail Merchant's  
Association.

Belleville is almost nominal. The police department, which formerly had been used for the purpose of paying the small political obligations of aldermen, was also placed upon a business foundation, and all of the various public utilities reorganized in conformity with the most improved of modern plans.

The Isolation Hospital, a large, commodious structure, built on a beautiful site, is one of the best evidences dem-

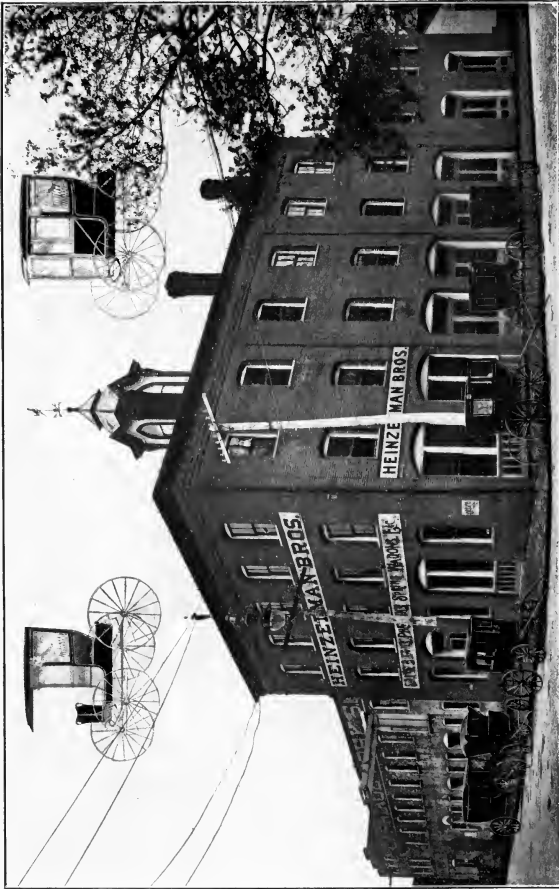


THE BELLEVILLE NEWS-DEMOCRAT :

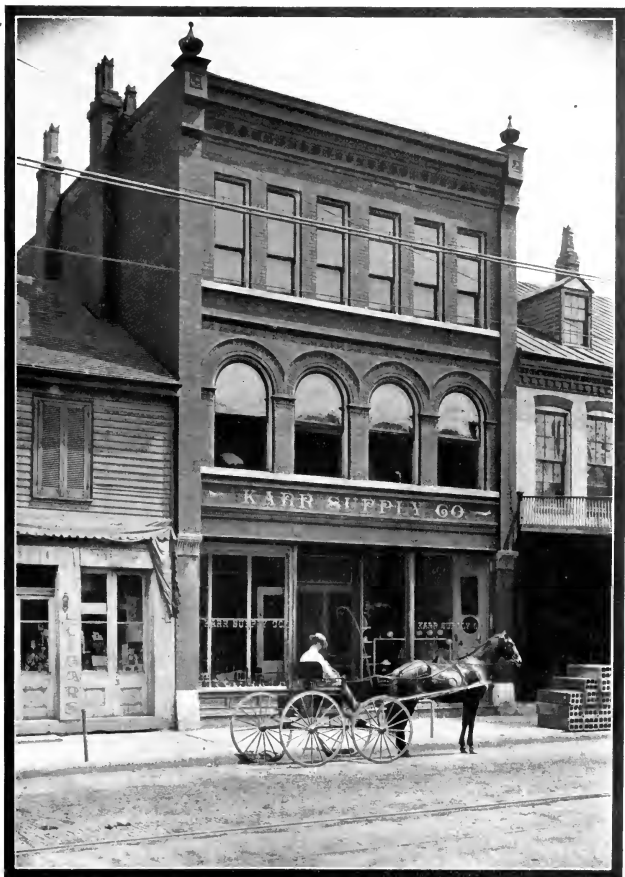
Some Interesting Interior Views of the Make-Up  
of a Modern Newspaper Printing Office.

The Mergenthaler Typesetting Machine.  
Sectional View of the Press Room.

The Ubiquitous Reporter, the Irrepressible News'ov, and the Sales and Advertising Man.



HEINZELMAN BROTHERS CARRIAGE COMPANY,  
Specialists in the Manufacture of Combination Winter and Summer Vehicles.  
Established 1857. Incorporated 1902.



THE KARR SUPPLY COMPANY,

Engineers and Contractors for Hot Water and Steam Heating, Plumbing, Sewering, Gas Fitting.

West Main Street, Belleville, Illinois.



THE GEO. W. STANLEY NAIL WORKS  
Grand Avenue.



THE MODERN MACHINE COMPANY,  
L. & N. R. R., Between Main Street and Grand Avenue.



THE OAKLAND FOUNDRY COMPANY,  
Grand Avenue, East of the L. & N. Tracks.  
Specialty: General Jobbing of Grey Iron and Stove Plate. Employs 35 to 50 Men.





PARTIAL VIEW OF THE WORKS OF THE EXCELSIOR FOUNDRY COMPANY.

Specialties: Gray Iron Castings, Corn Mills, Feed Mills and Boiler Fronts.



RESIDENCE AND GREENHOUSES OF ADOLPH G. FEHR, Carlyle Road and East Main Street, Belleville, Illinois.  
City Street for Cut Flowers, Plants, and Seeds for Local Requirements, 220 East Main Street. Shippers for the North, East, West, South and Southwest Made Direct from Carlyle Road Greenhouses.



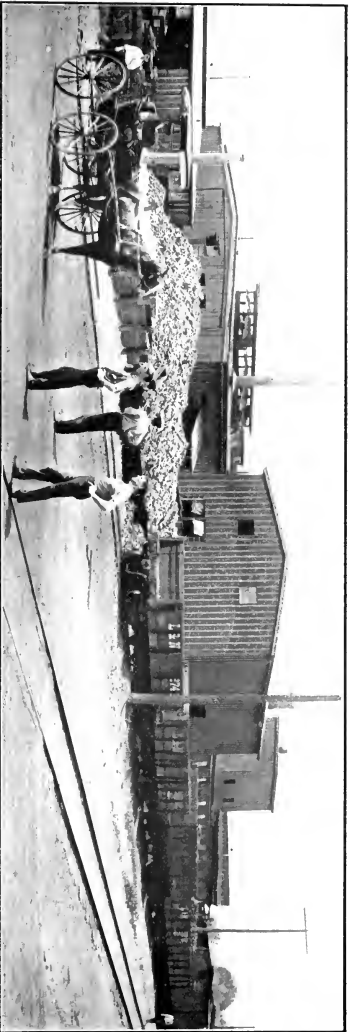
SECTION OF THE PLANT OF HARTMANN, HAY & REIS,  
Manufacturers of Iron and Steel Cut Nails, Nail and Tack Plate. Annual Production, 200,000 Kegs.  
Employs 200 Men.

which disease had gained a foothold was but a makeshift in case of epidemic. By means of this hospital it stamped out a serious epidemic, and now stands ever ready to throttle the foe on its first appearance.

Along the lines of water supply the city has made great progress. Originally it was supplied from lakes gathered from the surface water that flowed through the country surrounding. In times of draught, however, these proved totally insufficient, and deep wells were sunk striking a flowing stream of the very purest



THE QUALITY STOVE AND RANGE COMPANY,  
High Grade Steel Ranges and Heaters.  
Grand Avenue, Near Tracks of the Louisville & Nashville Railroad, Belleville, Illinois.



THE ENTERPRISE FOUNDRY.  
Sectional View Across Tracks of Louisville & Nashville Railroad.



THE JOHN GANNSMANN BRICK YARDS.  
North Illinois Street and Louisville & Nashville Railroad, Seneca, Illinois.



THE IMBS MILLING COMPANY'S FLOUR MILL,  
West Main Street.



UPPER EAST MAIN STREET, BELLEVILLE,  
Looking Towards the Plant of the Belleville Shoe Company and the New Hosiery Mill.



PLANT OF THE OREGON STOVE AND RANGE WORKS,

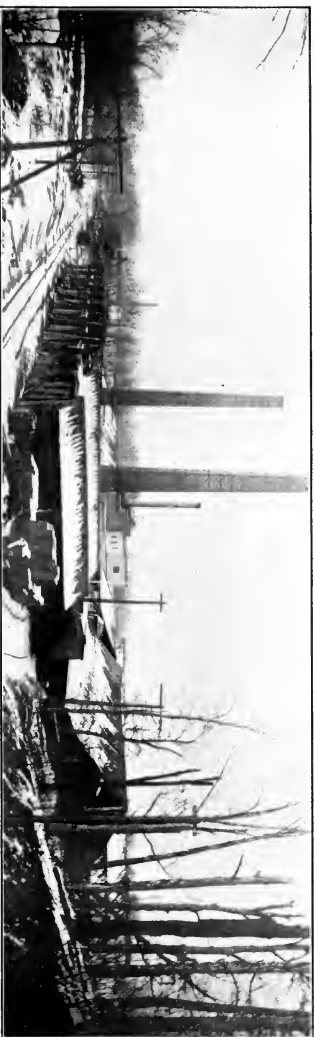
Tracts of the Louisville & Nashville Railroad, Bellville, Illinois.



THE RICHLAND MILLING COMPANY'S MILL,  
North Richland Street.



HENRY SCHOPP, CONTRACTOR AND BUILDER,  
804 East Seventh Street.



PRESSED AND ORNAMENTAL BRICK PLANT OF THE ANTHONY TITNER BRICK COMPANY, BELLEVILLE.

Capacity of the Plant, 30,000,000.



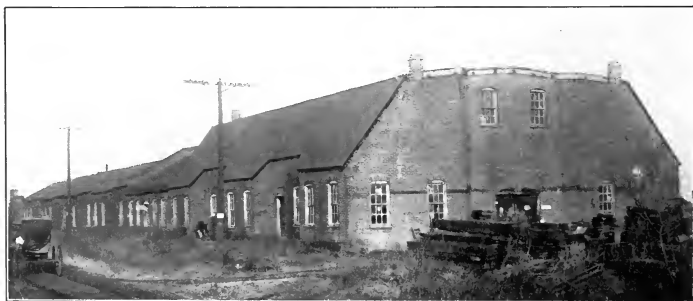
PLANT FOR THE PRODUCTION OF COMMON BRICK OF THE ANTHONY TITNER BRICK COMPANY, BELLEVILLE.

Plant Established in 1859. Incorporated in 1900.



RESIDENCE AND MANUFACTORY OF F. J. LOUIS,  
 Patente and Manufacturer of the Contracting and Expanding Water Cut-Off,  
 619, 621, 623, 625 East Main Street, Belleville, Illinois.

water, and furnishing an abundance for the city's needs; but looking forward to the future it was deemed wise to secure an additional supply, and additional wells were sunk at the foot of the Bluffs lying at the western limits of the city, and a supply secured which will meet the needs of the city for years to come. This lat-



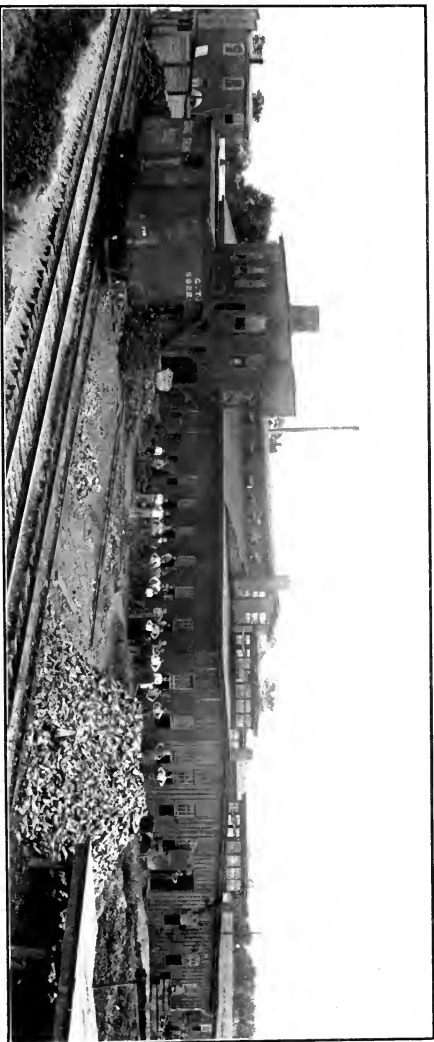
THE GUNDLACH DRILL WORKS.  
 P. M. Gundlach's Sons, Proprietors.  
 Manufacturers of the Renowned Gundlach Drills. First Patented in 1857, and Always Kept Up to Date.  
 Employs 35 to 50 Men.

Bauer Brothers Foundry Company Occupy a Portion of the Building  
 for the Manufacture of Fine Grey Iron Castings.

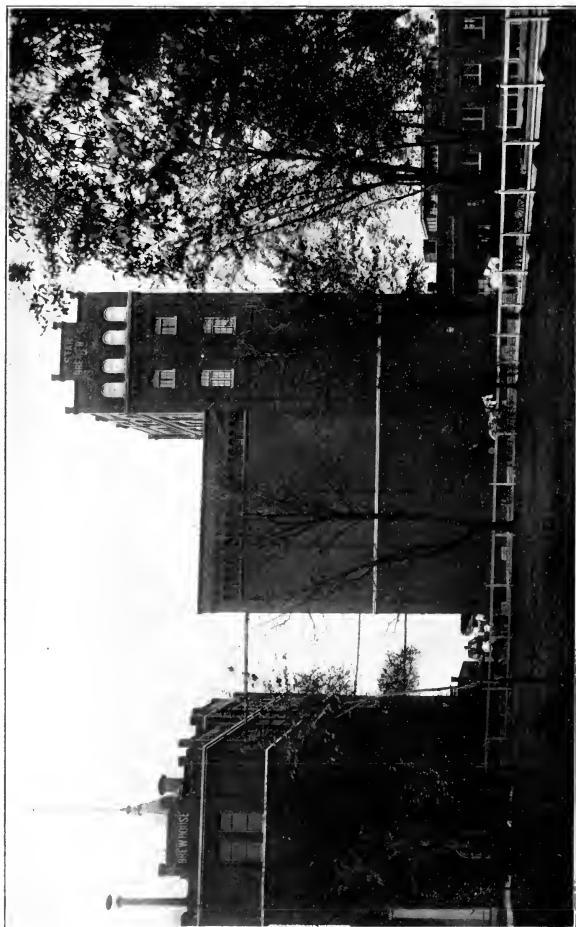




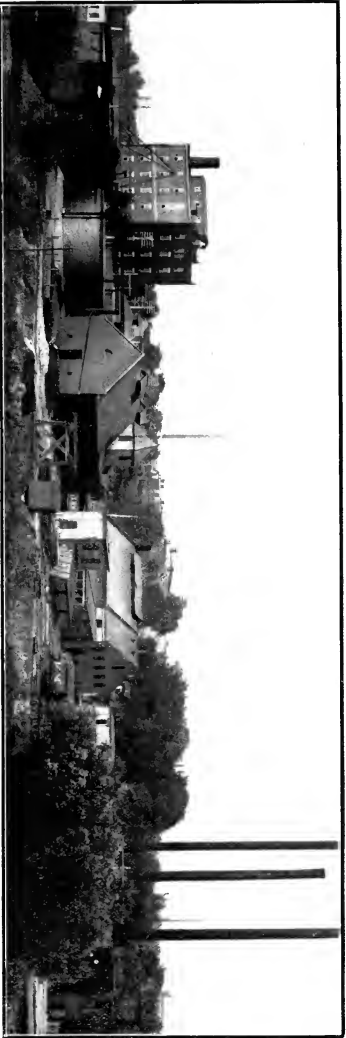
SECTIONAL VIEW OF THE HENTZLER & HENNINGER FOUNDRY AND MACHINE WORKS.  
Tracts of the Illinois Central Railroad.



THE EAGLE FOUNDRY COMPANY'S PLANT,  
West Street, . . . Illinois Canal Tracts, . . . Belleville, Illinois.



PARTIAL VIEW OF THE PLANT OF THE STAR BREWERY COMPANY.  
Bensenville, Illinois, U. S. A.



PARTIAL VIEW OF THE WORKS OF THE BELLEVILLE GAS AND ELECTRIC COMPANY. Established in 1856. Electrical Department in 1880



Established 1891. Employs 60 Men.

BELLEVILLE BRICK COMPANY.

Capacity, 65,000 All Grades of Building Bricks per Day



PARTIAL VIEW OF THE PLANT OF

THE SNYDER & BAKER STOVE WORKS, BELLEVILLE, ILLINOIS.

Ninth Street and Freeburg Avenue.



SECTION OF THE WORKS OF  
THE BELLEVILLE STOVE AND RANGE COMPANY,

Seventh and Race Streets, Belleville, Illinois.



PLANT OF THE MITCHELL-PARKS MANUFACTURING COMPANY,  
West Main Street, Tracks of the Illinois Central Railroad.

ter plan is but preliminary to the extension of the mains to the Mississippi River now in course of construction, and in the immediate future the city will be supplied with water from deep wells and from the Father of Waters, giving an unlimited supply for every purpose.

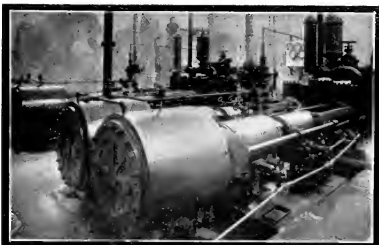
For almost decades this city had remained cooped up within the narrow limits of the fathers. Here and there the overflow added a little territory and population. To the enterprising suburbanite the staid city, apparently well satisfied to let well enough alone, appealed but little. But with the new civic life was born the naturally resultant spirit of Anglo-Saxon expansion. The interurban lines opened up a large territory of choicest residence property, soon dotted over with the homes of enterprising citizens. To these the newer, or the



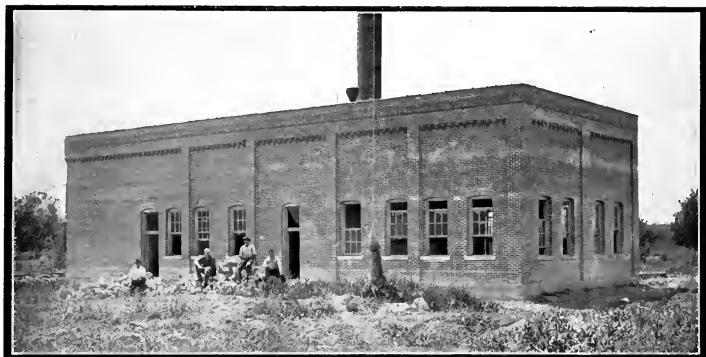
COAL MINE OF FRANK SARGENT,  
Mascoutah Avenue, Near City Limits.

Greater Belleville, appealed, and they clamored for admission into the city. And as the mother gathered these children into the fold she spread the expanding

wings of her public utilities until today the City of Yesterday, with its three square miles of territory, has grown to more than six, and the fifteen thousand of inhabitants to more than thirty, and over all this territory and to all these people every advantage of the modern life has been carried. And if a Rip Van Winkle should waken out of a five years' nap he would not recognize the city either in its material aspect, or still less in that which alone can build a city,



SECTION OF THE ENGINE ROOM.



THE POWER HOUSE.



SECTION OF THE BOILER ROOM.

THE BELLEVILLE DEEP WATER COMPANY'S PLANT AT EDMONT,  
Furnishes Belleville with an Unlimited Supply of Water for All Purposes.



BELLEVILLE CITY HOSPITAL,  
Smithson Road.

The Site Embraces Fifteen Acres of Splendid Grounds, and the Main Building will Comfortably Take Care of Sixty Patients, Besides Supplying Quarters for the Hospital Staff.

Has Private Gas and Steam Heating Plant and the City Deep-Well Hydrant Water.

its civic spirit. GREATER BELLEVILLE is greater in every respect and from every standpoint. For its growth as indicated herein it is entitled to highest praise and recognition. But today is only a harbinger of the even greater tomorrow. For all the work of the latter years was really only foundational, the growth merely



HEADQUARTERS OF L. WOLFPORT & COMPANY.

North Jackson Street.

Horses and Mules for All Purposes. - - - - - Established in 1869.

incidental. In its reorganized municipal life and public work, in the civic organization and awakened spirit the city stands among the foremost of today. Bound



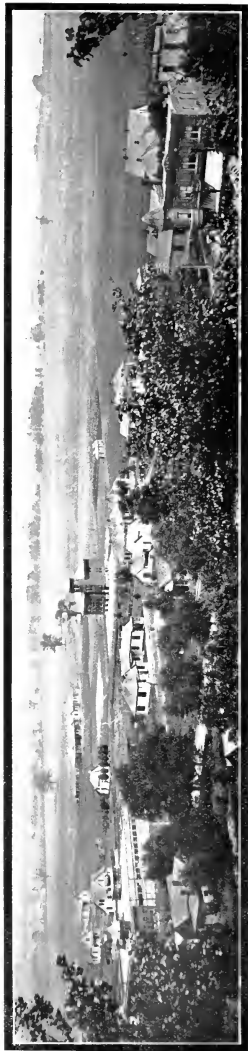


HEADQUARTERS OF FRANK C. BUX,  
Undertaker and Funeral Director,  
First and High Streets

down for years by the bonds of lethargy and prejudice, like Gulliver of old, it was the target for many of the irritating darts of the Lilliputians around and about it. But GREATER BELLEVILLE has burst her bonds, and stands today with the consciousness of its giant's strength, and is now entering upon an era that will from decade to decade make it ever a GREATER BELLEVILLE.



THE GLENDALE COAL MINE NUMBER ONE.  
Capacity, 700 Tons a Day.  
L. & N. Railroad Tracks. Owned and Operated by Peter Brandenburger.



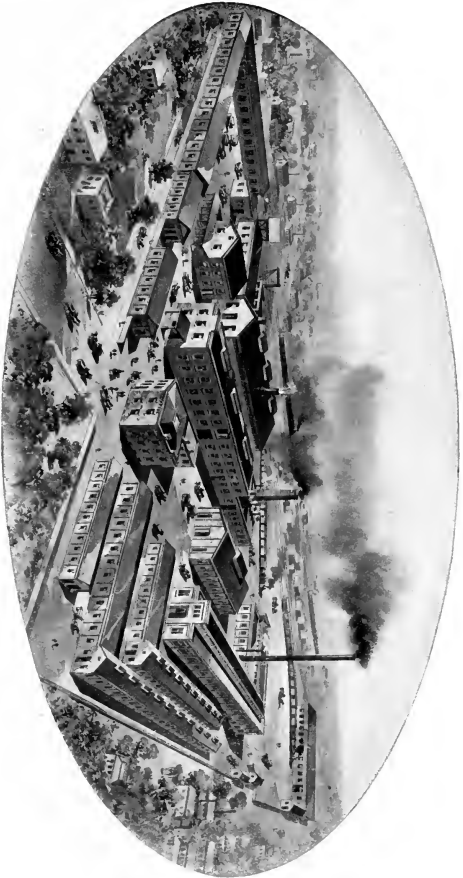
SCENE FROM THE BLUFFS OVERLOOKING EDGEWATER.



THE ENTRANCE TO SIGNAL HILL, A SECTION OF DELIGHTFUL MODERN HOMES.

**VIEWS ALONG THE BELLEVILLE DIVISION OF THE EAST ST. LOUIS AND SUBURBAN RAILWAY.**

The Trolleys of this Fiedly Equipped, Up-to-Dae Line Furnish a Very Enjoyable Means of Travel Between Belleville, East St. Louis, St. Louis, and all the Intermediate Points.



THE HARRISON MACHINE WORKS,  
BELLEVILLE, ILLINOIS.

ESTABLISHED 1848. . . . . INCORPORATED 1878



MODERN AUTOMOBILE AND GARAGE COMPANY,

AUTOMOBILES FOR SALE.

REPAIRS.

East Main Street, - - - Ballville, Illinois.



DEMONSTRATION DEPARTMENT ST. CLAIR COUNTY GAS AND ELECTRIC COMPANY,  
93 North Illinois Street.



OFFICES ST. CLAIR COUNTY GAS AND ELECTRIC COMPANY,  
93 North Illinois Street.



**GUNDLACH AND COMPANY,**

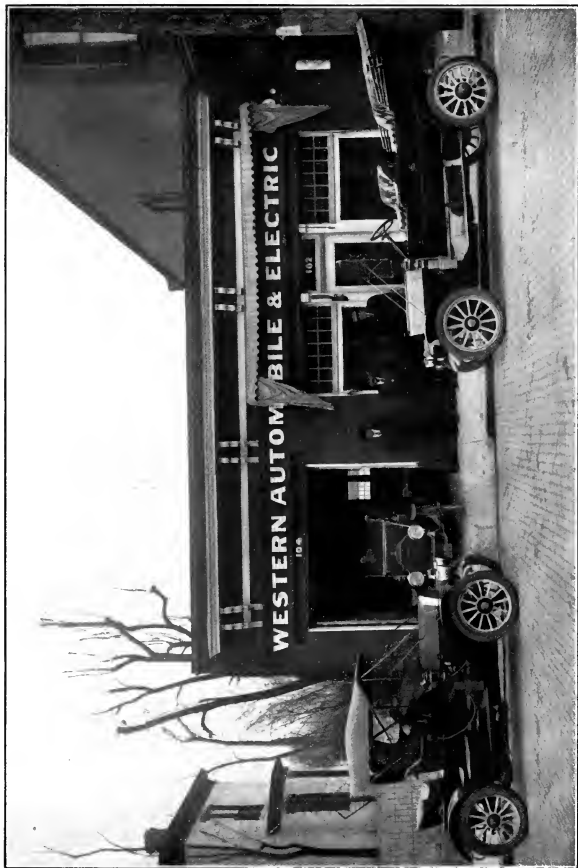
Livery--Boarding--Understanding.

High and A Streets. . . . . Ballsville, Illinois.



THE DRY GOODS, LADIES' READY-TO-WEAR GOODS, AND CARPET STORE OF  
FUESS, FISCHER & COMPANY,

110-112 East Main Street, Belleville, Illinois.



**WESTERN AUTOMOBILE AND ELECTRIC COMPANY.**

Automobiles and Accessories. . . . . Agency for the MITCHELL and the STODDARD-DAYTON AUTOMOBILES.  
102-104 North Illinois Street, Belleville, Illinois. Bell Phone 885.



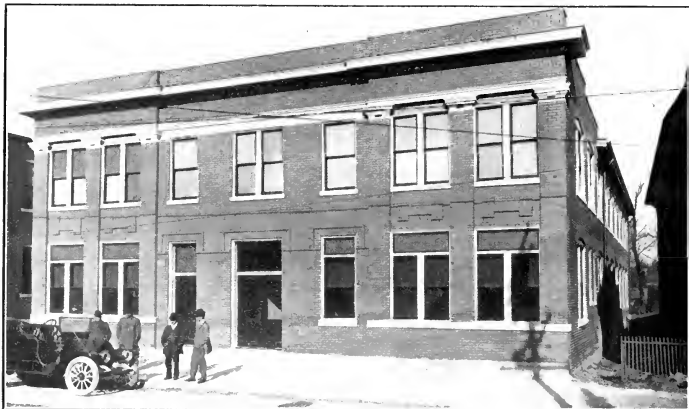


THE COMMERCIAL BUILDING.

East Main and North High Streets. . . . Belleville, Illinois.

OWNERS:

Joseph Leopold, Edward Leopold,  
John M. Bickler, Henry J. Fink.



BELLEVILLE HOSIERY MILLS,

EMIL GEIL, President.

PAUL F. VOCEL, Vice-President and Manager.

GEO. K. ANDEL, Secretary and Treasurer.

Manufacturers of Men's Fine Gauge Mercerized Hose,  
605 to 617 East Main Street, Belleville, Illinois.



LENGFELDER STOVE AND HARDWARE COMPANY,

413, 415, 501 East Main Street, Belleville, Illinois.

One of the Oldest and Leading Business Houses of Its Kind.



HOME OF THE B. P. O. ELKS LODGE, NO. 481,  
BELLEVILLE, ILLINOIS.



**THE BRICHLER-BUCHHOLZ COMPANY,**

Undertakers and Funeral Directors.

Livery and Boarding.

109-117 North Illinois Street, . . . . . Belleville, Illinois.



RESIDENCE OF WILLIAM A. TWENHOEFEL.  
President of The Twenhoefel Company.  
Real Estate.  
900 South Church Street.



RESIDENCE OF E. W. TWENHOEFEL.  
Secretary and Treasurer of The Twenhoefel Company.  
Real Estate.  
401 Forest Avenue.



RESIDENCE OF R. E. DUVALL,  
Wabash Avenue.



RESIDENCE OF EMIL GEIL,  
Portland Avenue.



RESIDENCE OF W. J. REICHERT,  
Corner Eighth and Church Streets.



PLANT OF THE REICHERT MILLING COMPANY,  
The Home of White Rose Flour.  
W. J. REICHERT, . . . PRESIDENT.



RESIDENCE OF J. C. JACOBS,  
317 Lebanon Avenue.



RESIDENCE OF HENRY BIEN,  
With the Plant of Messrs. Bien & Peters, Lincoln Street, Near the Tracks  
of the Illinois Central Railroad.





RESIDENCE OF EDWARD LEOPOLD,  
421 South Jackson Street.



APARTMENT HOUSE AND RESIDENCE OF P. J. RALPH,  
Portland Avenue and Olive Street.  
With Plumbing Establishment to the Left in the Distance.



RESIDENCE OF J. C. GAUCH, President of Gundlach and Company, High and A Streets,  
616 South Fourth Street.



RESIDENCE OF T. C. TISCH,  
Douglas Avenue.



RESIDENCE OF EDWARD N. JOSEPH,  
Wabash Avenue.



BELLEVILLE CHAPTER HOUSE AMERICAN WOMAN'S LEAGUE,  
Sauter Heights, West Main Street,--Rock Road.

Mrs. Carrie Alexander Bahenburg, President. Mrs. C. A. Highfield, Vice-President. Mm. Henrietta M. Herman, Treasurer.  
Miss Johanna T. Lotey, Secretary. Mm. Margaret S. Lancaster, Organizer.



RESIDENCE OF HUBERT HARTMANN,  
East First Street.



Former Residence of JOHN BRANCH, North Illinois Street.

CENTERING  
POINT  
OF  
ONE  
OF



THE  
LOVELIEST  
SPOTS  
ABOUT  
BELLEVILLE.

EBSSEN'S SWIMMING SCHOOL,  
Lebanon Avenue.

Its Attractions to be Enlarged and Enhanced in Nineteen Hundred and Eleven.



SECTION OF THE PLANT OF THE STANDARD BRICK COMPANY,  
Smithton Road and Illinois Central Railroad.

One of the Largest Manufacturers of All Grades of Building Brick in Illinois, and Has a Capacity for Producing 12,000,000.

President, Charles H. Starkel. Secretary and Treasurer, William Schmidt.  
General Manager, L. H. Alstip.



SECTIONAL VIEW OF THE PLANT OF THE NEVER-BREAK RANGE COMPANY.

Trucks of the Illinois Central Railroad, Ballsville, Illinois.

# The Civic Associations :



FRED. TEUFEL,  
President Master Builders Association.

## The Commercial Club.

President,  
GEO. B. M. ROGERS.

Vice-President,  
J. M. RAUCH.

Treasurer,  
EMIL J. KOHL.

Secretary,  
GEO. W. STANLEY.

Meets First Monday of  
Each Month.



GEO. W. STANLEY,  
President Manufacturers Association.

## The Manufacturers Association.

President,  
GEO. W. STANLEY.

Vice-President,  
A. W. ANDEL.

Secretary,  
C. T. MULLEN.

Treasurer,  
LEE HARRISON.

Meets Second Monday of  
Each Month.



C. T. MULLEN,  
Secretary Manufacturers Association.

## The Master Builders Association.

President,  
FRED. TEUFEL.

Secretary and Treasurer,  
ADOLPH KNEBELKAMP.

Meets  
First and Third Tuesdays  
of Each Month.



PETER FELLNER,  
Former President Retail Merchants Association.

## The Retail Merchants Association.

President,  
F. J. WOTTOWA.

Vice-President,  
CHARLES PELKUS.

Secretary,  
A. E. KREBS.

Treasurer,  
A. J. SCHUESSLER.

Meets  
on the Second and Third  
Wednesday of Each  
Month,

at Commercial Club Rooms.



F. J. WOTTOWA,  
President Retail Merchants Association.



WHY IS BELLEVILLE SO PROUD OF HER STREETS ?  
BECAUSE THEY ARE PAVED WITH THE CELEBRATED EGYPTIAN PAVING BLOCKS, MANUFACTURED BY THE MURPHYSBORO  
PAVING BRICK COMPANY, MURPHYSBORO, ILLINOIS.

They Stand The Most Severe Test.





ST. CLAIR VINEGAR WORKS, BELLEVILLE, ILLINOIS, U. S. A.  
Yearly Output, 2,000,000 Gallons.



SECTION OF THE PLANT OF THE CASPAR STOLLE QUARRY & CONTRACTING COMPANY, STOLLE, ILLINOIS, ON I. C. R. R.  
Earl St. Louis Office. Cobble Building. Rip Pavers. All Sizes Crushed Stone. Rip Plan and Rubble. Line Stone Dred for Soil Treatment.

# ..The Commercial Building..

In the construction of this great business building something more than the erection of a mere "skyscraper" entered into the consideration of the owners--it is essentially a monument to the "Greater Belleville"--a tribute to the new spirit of progress and enterprise distinguishing the new era of advancement--an inspiration to every business man and loyal citizen of Belleville. With this thought at its inception it is not remarkable that in all details of construction the motto has been "The Best," and "The Best Only," from the selection of location, the choice of architects, and discrimination in the materials used,--moreover a critical judgment in securing the best representative concerns having control of the essential elements of construction. An adherence to this determination for highest standards led to the selection of the firm of RIESTER & RUBACH, who are justly regarded as the leading architects of this section of country, and it goes without saying that the quality of materials insisted upon by these architects have been of the highest quality obtainable.

Naturally the selection of THE BRICK used was of prime consideration, and years of experience and practical knowledge led to the choice of THE HYDRAULIC PRESS BRICK COMPANY as the house best fitted for furnishing the high quality of material demanded in the building which it is to set the standard for business buildings in Greater Belleville for the next decade. The technical designation of the Brick employed is known as "NO. 110 DARK SHADE," and Mr. E. E. OEHLER, Manager of the Illinois Branch of this Company at the office in the Missouri Trust Building, St. Louis, gave his personal attention to prompt deliveries of these High-Grade Bricks, so that no delays were experienced at any stage of building. This Company has two plants at Collinsville, Illinois, and are amply equipped for promptly supplying materials in any quantity at briefest notice. It was the selection of this Brick that renders the Commercial Building not only actually enduring but gives it the air of great solidity, coupled with pleasing appearance, both of which are necessary in the modern skyscraper of every metropolis.

## BAUER BROTHERS,

Contractors,  
Carpenters, and Builders,

NO. 319 NORTH AIRY STREET, - - BELLEVILLE, ILLINOIS.

Kinloch Phone 238. Estimates Cheerfully Furnished.

We take pleasure in calling attention to three or four of our recently-put-up Structures: The Commercial Building, the Addition to the Saint Clair County Court House, the Elks Building, and among Residences that of George C. Rebhan, Esq.

## Interstate Contracting & Supply Co.



BOTH PHONES.

F. R. ROMER, Manager, . . 124 Virginia Avenue,  
BELLEVILLE, ILLINOIS.

**F. R. Romer**  
**Granitoid Company**

SIDEWALKS, COPING, TILE FLOOR,  
--AND MANTLE WORK A SPECIALTY--

ALL WORK GUARANTEED.

PHONES: -Kinloch 497- -Bell 178-

Successors to H. F. Gruetzemacher & Co.,

H. F. GRUETZEMACHER, Jr., President.

E. G. GRUETZEMACHER, Vice-President and General Manager.

A. G. GRUETZEMACHER, Secretary and Treasurer.

CONTRACTORS OF

**STONE WORK, GRANITE, MARBLE  
AND TILE WORK,**

Saint Louis Office, 1408 Liggett Building.

East St. Louis Office and Works, 19th Street and Illinois Avenue.

Some of Our Recent Contracts Covered the Marble Used in  
The St. Clair County Court House and the Elks Building, Belleville,  
the City Hospital and the Central Bank Building,  
Saint Louis.

## GEO. HIRTH,

SANITARY PLUMBING,

Hot Water and Steam Heating, Gas Fitting and Sewering.  
Estimates Cheerfully Given.

19 South High Street, Belleville, Illinois.

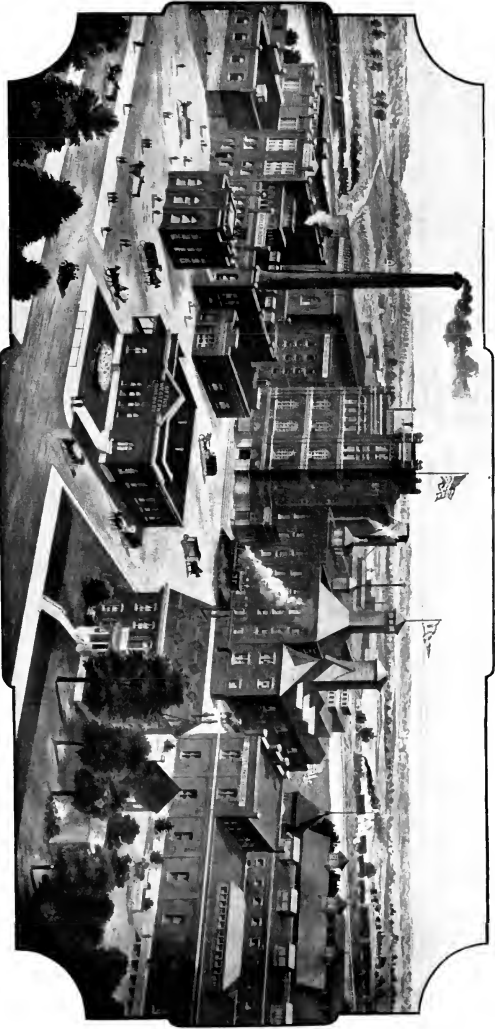
Phones: Kinloch 362, Bell 362.

## John B. Bohlsen,

Pleasant Hill Grocer,

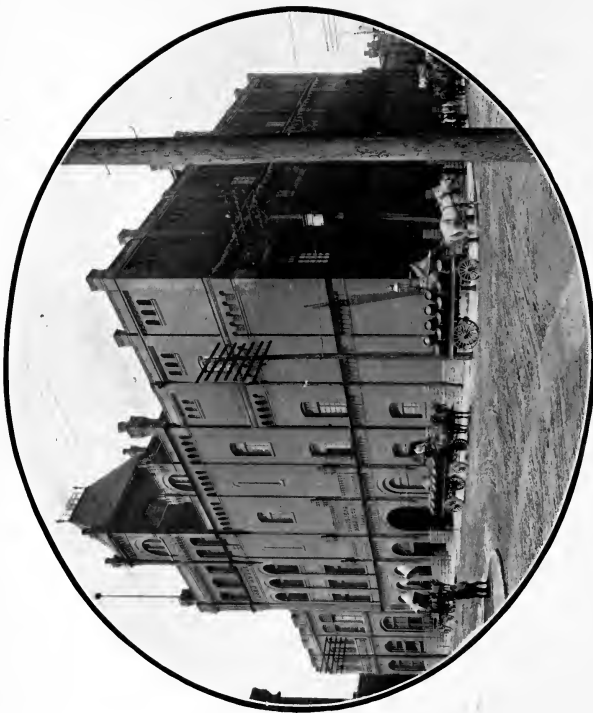
Dealer in Staple and Fancy Groceries, Fruits and  
Vegetables,

Kinloch 393. 316 Jarrott Street, Belleville, Illinois.



PLANT OF THE WESTERN BREWING COMPANY, BELLEVILLE, ILLINOIS.

Brewers and Bottlers of High Grade Beers. Established 1853.



**'PARTIAL VIEW OF THE PLANT OF THE CONSUMERS' BREWING COMPANY,  
ST. LOUIS, MISSOURI**

Don't Let Anyone's Prejudice or Selfish Opposition Convince You that Any of the Beers Brewed by THE CONSUMERS' BREWING COMPANY Are Not Better Than Any Others. That's No Way to Judge. You Can Test it for Yourself, and You are the Only One who Knows when the Beer Suits You. We are Willing to Stake Our Success Upon Opinion Founded on This Test.

Our Goods are for Sale at ALL PROMINENT PLACES IN AND AROUND BELLEVILLE.

For Other Particulars Call on our Agent, MR. ADAM MAURER, West Main Street, Belleville, Illinois.

*For Prompt Attention and Honest Treatment*

---

*Call on*

---

*Gundlach  
and Company:*

*Undertakers,*

---

*Funeral Directors.*

---

*High and A Streets. . . . Both Phones.*



*Wilharmil  
Coal and Coke Co.,*

*Belleville, Illinois.*

---

*Operating Royal and Massie Mines.*

---

*Daily Capacity, 1700 Tons.*

---

*...Best Coal for Local Delivery...*

*Both Phones.*

---

P. J. SOUCY, President.

GEO. W. DETHARDING, Treasurer.

# DONOVAN-GUIGNON LAND TITLE CO.,

E. W. MERTZ, Manager and Notary Public.

## *Abstracts and Certificates of Titles.*

CONVEYANCING A SPECIALTY.

OFFICE : No. 16 South Illinois Street, Belleville, Illinois. . . . Room 12 Arcade Building, East St. Louis, Illinois.

FRANK P. RIESTER.

OTTO W. RUBACH.

## *Riester and Rubach,*

ARCHITECTS  
AND SUPERINTENDENTS.

Rooms 9 and 12 West Building,  
Belleville, Illinois.

Main Office, Rooms 211 and 212 Insurance Building,  
East St. Louis, Illinois.

## The Geo. W. Stanley Company,

SMALL NAILS, D. P. TACKS,  
STAPLES, RIVETS.

Long Distance, Bell 109-A.

BELLEVILLE, . . . . ILLINOIS.

# FERDINAND WINKLER,

Manufacturer of All Kinds of

## Soda and Mineral Waters.

All Orders Promptly Attended to.

119 South Spring Street, - - - - - Belleville, Illinois.

## George Eidman Implement Company,

Dealers in  
AGRICULTURAL IMPLEMENTS,

Farm Machinery of all kinds, Binders, Mowers, Buggies, Wagons,



Pumps, Drills,  
Fan Mills, Cut-  
ting Boxes, Hay  
Forks, Hay Car-  
riers, Corn Plan-  
ters, Disc Har-  
rows, Hay  
Loaders, Ted-  
ders, Wind Mills,  
Flows, Engines,  
Thrashers, Sac-  
kers, Sewing  
Machines, &c.

18-20 North High Street, Belleville, Ill.

For Brick and Stone Work, Brick and Granitoid Paving,  
Concrete Work, Cementing and Sewering,

## *Hoeffken .. Brothers..*

General Contractors and Builders.

Dealers in Building Material,

Office and Warehouse, Race and C Streets.

BELLEVILLE, ILLINOIS.

Kinloch Phone 317.

# John Kreher, . . . Practical Horseshoer,

24 NORTH HIGH STREET, BELLEVILLE, ILLINOIS.

BELL, 371 M.

KINLOCH, 147.

# Wolleson-Wolf Abstract Company,

FURNISH ABSTRACTS AND CERTIFICATES OF TITLE TO  
REAL ESTATE IN ST. CLAIR COUNTY.

SPECIALTIES:—Surveying and Platting of Lots, Farms, Mines, &c. Writing of Deeds, Wills, Mortgages, Leases, &c. Taxes Paid for Non-Residents.

18 SOUTH ILLINOIS STREET, BELLEVILLE, ILLINOIS.

W. C. WOLF, Surveyor.

A. M. WOLLESON, Manager. Notary Public.

Kinloch 280.

Bell 502.

## CLAUS GROCERY CO.,

*Staple and Fancy Groceries,  
Flour and Feed.*

---715 South Jackson Street, Belleville, Illinois---

The

## South-End Cash Grocery,

J. A. GRUNEWALD, Manager.

Both Phones. 622 Freeburg Avenue, Belleville, Illinois.



**Vitrified Sewer Pipe,**  
Both Standard and Double Strength.

**Vitrified Drain Tile.**

**Vitrified Wall Coping.**

**Fire Clay Flue Lining.**

**Fire Clay Chimney Tops.**

**Fire Clay Chimney Pipe.**



# Blackmer & Post Pipe Co.,

SAINT LOUIS, MISSOURI.



Peter J. Zulauf,

Bricklayer  
and Contractor,

No. 505 Abend Street, Belleville, Illinois.

PHONE, KINLOCH 766.

*Adolph Engel  
& Brother,*

CONTRACTORS  
AND BUILDERS.   


Nos. 801 and 807 Park Avenue,  
BELLEVILLE, ILLINOIS.

# ...The Belleville Advocate...

DAILY.

ESTABLISHED IN 1839.

SEMI-WEEKLY.

THE LEADING REPUBLICAN NEWSPAPER IN ST. CLAIR COUNTY.

Best Advertising Medium. Brief Work Done. Job Work of Quality.



## G. A. SAHLENDER, Harnesses, Trunks, Valises,

No. 126 Main Street, - - - Belleville, Illinois.

## The Boul Hotel,

J. BOUL, Proprietor,

*==Lebanon Road==*

*Fine Wines, Liquors and Cigars.*



## J. P. Hausmann,

*Staple and Fancy Groceries,*

No. 110 South Illinois Street, Belleville, Illinois. . . . . The Kinloch Phone.



## Louis Weyhaupt,

722 Freeburg Avenue,

*Fine Wines, Liquors and Cigars.*

Phone, Bell 661.



THE  
Streets of Greater Belleville  
Should be Paved with



The Greatest  
Paving Blocks  
In the World.



Experience Everywhere Shows that  
the Best Paving Block Made is

*The Culver Block.*



Manufactured by  
The Wabash Clay Company  
Of Veedersburg, Indiana.

**JOHN GANNSMANN,**  
*Common and Select Stock Brick,*

*A Specialty of Brick to Contractors  
 at Lowest Prices.*

*North Illinois Street and Louisville & Nashville Railroad, Swansea, Illinois.*

**Thos. R. Mould,**

*Attorney-at-Law,  
 Notary Public,*

**No. 32 Public Square,**

**BELLEVILLE, ILLINOIS.**

*Peters & Sons*  
**320 EAST MAIN**

*Stoves and  
 Hardware,*

*Standard Warm Air Furnaces.*

*320 Main Street, Belleville, Illinois.*

*Telephone, Kinloch 465.*

**Union Dentists.**

**Established Ten Years.**

**18 East Main Street, Over Belleville Savings Bank.**

**---DR. GEORGE J. FORESTNER, - - - PROPRIETOR---**

**T. J. Price,**

*Dealer in*

*Pianos, Organs, Player Pianos,  
 and Talking Machines, Sewing  
 Machines, Musical Instruments,  
 Stationery, &c.*

*The New Home Machine Leads All Others.  
 Sewing Machines Repaired.*

**---15 West Main Street---**

**OPEN ALL NIGHT.**

*The*  
**Wide-Awake  
 Restaurant,**

*T. F. PHINNEY, . . . . Proprietor.*

*Short Orders. Regular Meals. Everything in Season.*

**Northwest Corner Public Square,**

**BELLEVILLE, ILLINOIS.**

**..Storrs===Signs..**

**1223 West Main Street, Belleville, Illinois. Kinloch Phone, 793.**

# LEUNIG-RHEIN SHOE COMPANY,

BELLEVILLE'S GREATEST SHOE HOUSE,

Where You Will Always Find the CORRECT STYLES.

102 East Main Street,

Belleville, Illinois.

Phone, Kinloch 258.

## FRICK Feed Company,

Wholesale and Retail Dealers in the  
Celebrated Cream and Cella Flour.

Also Hay, Oats, Corn and Chicken Feed.

All Orders Promptly Delivered.

623 South Illinois Street,

Belleville, Illinois.

*Wm. E. Siefert.*

*Real Estate,*

*LOANS,*

*INSURANCE,*

*Rents Collected. Notary Public.*

Phone, Kinloch 311.

Room No. 2, Court House,

Belleville, Illinois.

## - West End Lumber Yard -

JACOB CHRISTIAN, Proprietor.

CARPENTER AND BUILDER.

Contracts Taken for All Kinds of Buildings. Estimates Cheerfully Furnished on Application.

Shop, No. 301 North Silver Street. Lumber Yard, No. 200-220 North West Street,

Kinloch Phone 469.

BELLEVILLE, ILLINOIS.

## Joseph Kaiser, Florist

CUT FLOWERS, FUNERAL DESIGNS,

And All Kinds of Pot Plants.

No. 721 East Seventh Street,  
Belleville, Illinois.

PHONE, KINLOCH 192.

Bell, 571 A.

Heidelberger Fab.

Kinloch, 498.

## FARM YARD Boarding House and Saloon

Leonard Birkner & Son, Props.

*Choice Wines, Liquors  
and Cigars.*

No. 119 West Main Street,

Belleville, Illinois.

ALPH. GASS.

## GASS BROS., CONTRACTORS.

CEMENT WALKS, BASEMENTS, STEPS, ETC.

Office, 23 South Race Street.

Kinloch Telephone 278.

Belleville, Illinois

*M. G. Gannon,*

DEALER IN

Fresh Meats, Sausages, Etc.

No. 318 East Main Street, Belleville, Illinois.

*F. J. Schaeffler,*

Proprietor of the

IMPERIAL BAR AND POOL ROOM.

Kinloch Phone 654.

200-202 West Main Street,

Belleville, Illinois.

Kinloch 227. Bell 289-M.

# HENRY FORCADE & CO.

LOCAL AGENTS

*GOLD MEDAL and WHITE ROSE FLOUR.*

## F. G. WEHRLE

THE LEADING

# Jeweler



Diamonds, Watches, Jewelry

SOLID SILVER TEA and SOUVENIR  
SPOONS IN GREAT VARIETY.

THE BEST at the LOWEST PRICES

No. 16 EAST MAIN STREET

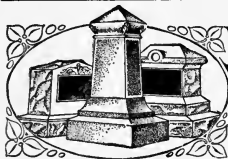


ESTABLISHED 1854.

## CHRIS. DIETZ, *The TAILOR.*

Our styles are always up-to-date and our goods choice in pattern, and our customers the best dressed men in the community. Our prices invariably reasonable.

We have a Department in which Suits are Cleaned and Dyed  
204 West Main Street, Belleville, Illinois.



## MONUMENTS

207-209  
West Main Street,  
Belleville.

## C. C. Tisch.

*The Largest Stock of Marble and Granite Monuments and Tombstones in the County. All Work Guaranteed First-Class.*

## *The Owl Saloon.*

C. J. KUNTZMANN, Prop.

*Fine Wines, Liquors  
and Cigars.*

20 West Main Street. Belleville, Illinois.

Ten Years' Experience as a Master Painter.

## Adolph C. Spies, Painter and Paper Hanger

Kinloch Phone 586.  
Cor. Glen Avenue and Monroe Street. Belleville, Illinois.

# Louis Kuhn Shoe Co.

1013 West Main Street,  
Belleville, . . . . . Illinois.

Have a Complete Line of

# .SHOES.

At Moderate Prices. Try them.

## Fred. Dabb Co.

DEALERS IN

Louisville and Portland Cement,  
Plaster Paris, Lime, Sand, An-  
thracite and Soft Coal.

Kinloch Phone.

700 South Illinois St. Belleville, Illinois.

PATRONIZE

## The Belleville Steam Bakery

*And Work for the Advancement of a Greater  
Belleville.*

### MARTIN GRADL, Prop.

Both Phones.

# George J. Kissel,

DEALER IN



## Drugs, Medicines, and Chemicals,

Paints, Oils, Glass, Putty, Etc.,  
Fancy and Toilet Articles, Brushes, Perfumery,  
Stationery, Etc., Etc.

**WE GUARANTEE:**

Personal Attention to Prescriptions. Only the Purest Drugs Used.  
Lowest Prices, Quality Considered.

### Physician's Prescriptions CAREFULLY COMPOUNDED.

1401 West Main Street, . . . . . Belleville, Illinois.

## B. Kissel's Son, Monuments.

Dealer in all kinds of Marble and Granite Monuments. Italian and American Marble and Granite Work.  
Tombstones, Monuments, Etc., a Specialty.

All Work Guaranteed at the Lowest Prices. Estimates Cheerfully Furnished. TELEPHONE, BELL 309 A.

324-326 West Main Street, Belleville, Illinois.

## Philip C. Wittlich, Jr.,

PAINTER and PAPER HANGER.

All Work Entrusted to Me  
Done in a First-Class Manner.

518 Abend Street, Belleville, Illinois.

Kinloch 104.

## LOUIS C. ZIMMERMANN & CO. Livery and Boarding Stables.

Horses Boarded by the Meal, Day or Month.  
First-Class Drivers a Specialty.

216-218 East B Street, Belleville, Illinois.

# Greater Belleville

Wants more Dry Goods, wants more Carpets, Linoleums and  
Lace Curtains, wants more Ladies' Ready-to-Wear Goods

And the Right Place to get the Right Goods at the Right Prices is at

*...Fuess-Fischer Company's...*

**W**E place advance orders on Dry Goods direct with the manufacturer. We buy Carpets direct from the mills. We give orders to the Linoleum mills for carload lots. We buy Lace Curtains direct from the Lace Curtain manufacturer. Underwear and Hosiery we buy in case lots from the mills. Now the above way of buying our goods gives us this advantage: We buy for cash direct from the manufacturer, thereby saving the middle dealer's profits; in other words, goods go direct to the consumer through us from the manufacturer. So you pay but one profit for the goods after leaving the manufacturer—do you see? Buy Dry Goods, Carpets, Lace Curtains, Linoleums, Etc., from us and save money on your purchases, as above illustrated and done by the

*Fuess-Fischer Company,*

Belleville's Exclusive Dry Goods, Carpets and Ladies' Ready-to-Wear Goods Store.

Bell 716. Kinloch 227.

## Eckert Flour Company

AGENTS

Washburn-Crosby Company's Gold Medal Flour

AND

Reichert Milling Company's White Rose Flour.

ALSO

Bran, Shipstuff, Chicken Feed, Hay, Corn and Oats.

Office, Sixth and Spring Street,

Belleville, Illinois.

**BOTTLERS**

*of  
All*

**BEVERAGES.**



Bell Phone 348 M.  
Kinloch, 460.

**124 N. High Street**

# ..Gottschalk Grocer Company..

HEADQUARTERS FOR FANCY CANNED AND BOTTLED GOODS.  
114 AND 116 EAST MAIN STREET, . . . . . BELLEVILLE, ILLINOIS.

RESIDENCE PHONE BELL 568 A.

**HARRY B. WANGELIN,**

Real Estate and Loans,

No. 5 South High Street, . . . . . Belleville, Illinois.

**-M. ZIMMERMANN-**

Dealer in Dry Goods and Groceries,

NO. 801 FREEBURG AVENUE, BELLEVILLE, ILLINOIS.

THE UP-TO DATE GROCERY AND  
DRY GOODS STORE.

Phone : KINLOCH 365.

# ..The Lorenzen Grocery Company..

1012 AND 1014 WEST MAIN STREET, BELLEVILLE, ILLINOIS.

Dealers in Staple and Fancy Groceries, Flour, Feed, and Miners' Supplies. Headquarters for  
Kinloch Phone 329. Dynamite and All Explosives.

M. BAUMANN.

L. BAUMANN.

**Baumann Bros.,**

Contractors  
And Builders,

No. 717 South Jackson Street, Belleville, Illinois.

—  
We Do All Kinds of Building and Repairing.



**Adolph H.  
Honer,**

Manufacturer of and Dealer in  
MARBLE and GRANITE

**Monuments,  
-Comb Stones-**

&C., &C.

No. 829 South Illinois Street, One  
Block South of the I. C. Depot.

Estimates Cheerfully Given and All  
Work Guaranteed.

See Me Before Placing Your Order.

# --JAMES P. RICH & SON--

**Real Estate, Loans and Insurance.**

No. 10 North High Street, Belleville, Illinois, . . . . . and . . . . . East St. Louis.

TELEPHONE : KINLOCH 247.

JAMES P. RICH.

W. J. P. RICH.

# **PARK GROCERY CO.,**

Wholesale and Retail Dealers in Choice Staple and Fancy Groceries, Vegetables,  
Fruits, Nuts, and Candies.

CORNER A AND JACKSON STREETS, BELLEVILLE, ILLINOIS. PHONES : BELL 239. KINLOCH 239.

*Heinz' 57 Varieties a Specialty with us.*

...The Greater Belleville...

St. Clair Lumber Co.,  
..Lumber..

SASH, DOORS AND BLINDS.

No. 309 West Main Street,  
Belleville, Illinois.

TELEPHONES . . . Kinloch 31. . . . Bell 383 A.

RESIDENCE TELEPHONE, KINLOCH 452. BELL 157 M.  
OFFICE TELEPHONE, KINLOCH 56.

DR. HENRY REIS.

OFFICE : 118 WEST MAIN STREET.  
RESIDENCE : 121 S. RACE STREET.

*Belleville, Illinois.*

OFFICE HOURS--9 TO 11 A. M. 2 TO 5 P. M.  
7 TO 9 P. M.



Lyric Theatre

Belleville,  
Illinois.

A Handsome Modern Playhouse Devoted to the Entertainment of Playgoers of All Classes. Playing the Highest Class  
Traveling Attractions and the Best Popular Priced Ones.  
One of the Most Profitable Houses in the Country for the Traveling Manager.

BADGLEY & SON  
Contractors  
And Builders

We Do All Kinds of Building and Repairing. Also Manu-  
facturers of the Smith-Badgley Company's Adjustable  
Shade Hanger Window Lock and Pull.

765-767 East Main Street, Belleville.

KINLOCH PHONE 592.

-D. DAHLEM--  
Wagon Maker.

602 North Richland Street, Belleville.

Wagon Making and Repairing Promptly Attended To.

Fritz Winter . . . . Saloonist

FINE CIGARS, LIQUORS, & C.

Corner Illinois and B Streets, . . . . Opposite Liederkrantz Hall, . . . . Belleville, Illinois.



...The Greater Belleville...

GANNSMANN & MUELLER,  
*Common and Select Stock Brick.*

WE MAKE A SPECIALTY OF BRICK TO CONTRACTORS AT LOWEST FIGURES.  
*North Illinois Street and Louisville and Nashville Railroad. SWANSEA, Illinois.*

There is a "BEST" of Everything, and a "BEST" Place to Get It.

113 EAST MAIN

Is THE BEST PLACE to Get THE BEST.

**-Krebs Bros.' Store-**

Dinner Sets, Decorated China, Art Ware, Oil and Gas Lamps, Aluminum,  
Enameled and Granite Cooking Utensils and House Furnishing Goods

**AT THE LOWEST PRICES.**

—Orchestra and Band Music Arranged—

—Tunes Composed for Songs—

GEORGE D. TUFTS,

---Teacher---

OF

..Vocal and Instrumental Music..

408 Wabash Avenue, Belleville, Illinois.

VISIT

**...KOENIG'S...  
MILLINERY.**

22 West Main Street, Belleville.

A COMPLETE LINE OF LADIES', MISSES', AND CHILDREN'S HATS ALWAYS ON HAND.

*The Latest Styles. The Lowest Prices.*

The LEADING GERMAN PAPERS in Southern Illinois.

**Tageblatt and Arbeiter Zeitung-Daily**  
**...And St. Clair Volksblatt-Weekly...**

Published by St. Clair Printing and News Company.

The Best Advertising Mediums in the City. Job Printing Promptly and Neatly Done.

NO. 302 NORTH ILLINOIS STREET, - - - BELLEVILLE, ILLINOIS.

**Henry Niedenfuehr,**

Dealer in Staple Groceries, Fancy Fruits, Vegetables,  
Flour and Feed.

318 WEST MAIN STREET, BELLEVILLE.

PHONE: KINLOCH 224.

...The Greater Belleville...

**BELLEVILLE**  
**PURE MILK AND ICE CREAM COMPANY**

PASTEURIZED BOTTLED MILK AND CREAM. WE MAKE SIXTY VARIETIES OF ICE CREAM,  
SHERBETS, FRUIT ICES, PUDDINGS, AND BRICK, ALL FLAVORS.

We Make Fancy Forms of Fruits and Flowers. All Orders Will Receive Our Prompt and Careful Attention.  
Telephones: BELL, 645 A. KINLOCH, 645. 105 NORTH MILL STREET, BELLEVILLE, ILLINOIS.

We Do the Horseshoeing for the Principal Departments of the City of Belleville.

**CHARLES STEGMEYER,**  
**Practical Horse Shoer,**

407 EAST MAIN STREET, BELLEVILLE, ILLINOIS. . . . . PHONE: BELL, 453 A.

**-O. W. PUSTMUELLER-**  
CHOICE AND STAPLE  
**--GROCERIES--**

FLOUR AND FRUITS.  
No. 220 Mascoutah Avenue, . . . Belleville, Illinois.  
PHONES: KINLOCH 343. BELL 390.

**--OTTO G. NEUHAUS--**

1021 West Main Street, Belleville, Illinois.  
PURE DRUGS, MEDICINES,  
Perfumery, Toilet and Fancy Articles, and All Druggists' Sundries,  
Fine Imported and Domestic Cigars.  
Physicians' Prescriptions Carefully Prepared.



**PARIS STEAM CLEANING AND**  
**--DYE WORKS--**

FRANK SADORF, PROPRIETOR.

CLOTHES STEAM RENOVATED AND PRESSED FOR \$1.00 PER SUIT.  
CLOTHES THOROUGHLY CLEANED AND PRESSED FOR \$2.25 PER SUIT.  
CARPETS CLEANED BY COMPRESSED AIR.

Kinloch Phone 535. Bell Phone 421 A. NO. 315 EAST MAIN STREET.

...JACOB MAGIN...

MANUFACTURER OF AND DEALER IN

**HAVANA AND DOMESTIC CIGARS**

Bell Phone, 272 M. No. 117 South Church Street, Belleville, Illinois. Kinloch Phone, 734.

Smoke the Following Popular Brands: "JAKE MAGIN'S HAVANA," "LITTLE VICTOR," AND "THE PATRIOT."

**WESSEL & SAINTEVE**

Staple and Fancy  
**--GROCERIES--**

NO. 1900 WEST MAIN STREET, BELLEVILLE.  
Bell Phone, 330 A. Kinloch Phone, 445.

**GEORGE W. SCHROEDER**  
DEALER IN

**Staple and Fancy Groceries,**

FLOUR AND FEED, FRUIT, VEGETABLES, &C., WITH  
SALOON IN CONNECTION.

Cor. Gilbert Street and Caseyville Avenue, Swansea, Illinois.

TROLLEY LEAGUE HEADQUARTERS.  
**GEORGE SAUERWEIN**

CHOICE WINES, LIQUORS,  
AND CIGARS.

423 SOUTH ILLINOIS STREET, . BELLEVILLE.  
Lunch From 9 to 11 A. M. Phones: Kinloch 565. Bell 320.

**Otto J. Keller Grocery Co.,**

NORTH ILLINOIS STREET, SWANSEA, ILLINOIS,  
STAPLE AND FANCY GROCERIES

AND VEGETABLES.  
Bell Phone 395 A. Kinloch 771. A Trial Order Will Convince You  
of Fair Treatment.

**A. SCHESKE, - - - MEAT MARKET,**

422 EAST B STREET, BELLEVILLE, ILLINOIS.

DEALER IN HOME-KILLED MEATS AND HOME-MADE SAUSAGES.

PHONES: KINLOCH, 337. BELL, 164 A.

...The Greater Belleville.

# ....Kinloch Telephone Company....

LOCAL AND LONG DISTANCE.

Furnish Long Distance Service to Principal Points in Illinois, Indiana, Kansas, Kentucky, Missouri and Ohio.

GENERAL OFFICES,

KINLOCH BUILDING, TENTH AND LOCUST STREETS, ST. LOUIS, MISSOURI.

JOS. BAUR.

FRANK BAUR.

## Baur Bros.' Foundry Co.

MANUFACTURERS OF ALL KINDS OF

**FINE GRAY IRON CASTINGS,**

NORTH ILLINOIS STREET, . . . BELLEVILLE, ILLINOIS:

A. M. HEINEMANN.

A. H. HEINEMANN.

## HEINEMANN BROS.

The Leading Grocers of Tower Grove,

LEBANON AVENUE, BELLEVILLE, ILLINOIS.

Phones : Kinloch, 265. . . . . Bell, 676.

# ....FRANK P. LANG....

..Painter and Paper Hanger..

WHITENING, GRAINING AND GLAZING A SPECIALTY.  
Phone, Kinloch 617.

All Work Entrusted To Me Done in a First-Class Manner.  
716 FREEBURG AVENUE, BELLEVILLE, ILLINOIS.

## ST. CLAIR --TITLE OFFICE--

BASEMENT OF COURT HOUSE,  
BELLEVILLE, ILLINOIS,

H. E. SCHRADER, MANAGER.

Investigators of Titles. Furnish Abstracts, Plats  
and Certificates of Titles.

CONVEYANCING A SPECIALTY.

BELL TELEPHONE 171.

KINLOCH 424.

ANTON SEHLINGER, President.  
TONY J. SEHLINGER, Secretary and Treasurer.

## Sehlinger Grain ..Company..

WHOLESALE AND RETAIL DEALERS IN

**Grain, Hay, Flour and Mill Feed.**

BOTH TELEPHONES 63.

800-812 SOUTH ABEND STREET, BELLEVILLE.

Ask Your Grocer for the Well-Known Brands of Flour,  
"Marvel," "Imperial," "Best," and "Sweet Locust."

## -F. N. GRUNEWALD-

Hardware, Sporting Goods, Miners' and Electrical Supplies.

AGENT FOR RUECHTER'S DURABLE PAINTS.

Kinloch Phone 195.

NO. 306 WEST MAIN STREET, BELLEVILLE, ILLINOIS.

## GEO. W. ROTHWEILER

DEALER IN

Staple Groceries, Fancy Fruits, Vegetables,

FLOUR, OYSTERS, ICE CREAM AND CONFECTIONS.

No. 206 Virginia Avenue, . . . . . Belleville, Illinois.

PHONE : KINLOCH 470.

## --GEORGE HIPPARD--

Dealer in Staple and Fancy Groceries,  
Flour, Hardware and Shoes.

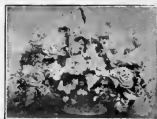
601 South Illinois Street, Belleville.

TELEPHONE, KINLOCH 242.

...The Greater Belleville...

HENRY EMUNDS.

GEORGE KISSEL.



## West End Floral Park,

---FLORISTS---

CHOICE CUT FLOWERS, DESIGNS, EMBLEMS, AND DECORATIONS.  
BEDDING PLANTS A SPECIALTY.

PHONE : KINLOCH 314.

2200 TO 2300 WEST MAIN STREET, BELLEVILLE.

## The Cash Meat Market,

OSCAR SCHESKE, PROPRIETOR.

804 East Main Street, Belleville.

A Full Line of Meats and Sausages.

KINLOCH 679.

BELL 628 M.

## C. C. SCHOTT,

Painter and Paper Hanger,

1308 NORTH CHURCH STREET,

BELLEVILLE, ILLINOIS.



## The F. J. LOUIS

PATENT

### Expanding and Contracting Water Cut-Off.

This Cut-Off Consists of Three Parts Made of Cast-Iron. viz: The Valve and the Two Sections of the Casing. It is Made in Three and Four Inch Sizes.

#### IT IS SUPERIOR TO OTHERS

Because--It Expands and Contracts, preventing breakage by freezing.

Because--It does not leak in the joints as do other cast-iron Cut-Offs.

Because--The valve is simple and strong, revolving from left to right, or vice versa as the need may be by means of a finger piece.

Because--Any of the parts can be replaced in case of breakage.

F. J. LOUIS--Copper and Galvanized Iron Cornice Work.

SKYLIGHTS AND VENTILATORS. ALL KINDS OF SHEET METAL WORK.

No. 623 EAST MAIN STREET, BELLEVILLE, ILLINOIS.

## Winkler & Schirmer,

STATIONERS,  
BOOKBINDERS,

*And Dealers in Blank Books, School  
Supplies, Wall Paper, Picture Frames,  
Fancy Stationery, &c.*

No. 15 East Main Street, Belleville, Illinois.

Selling Agents for "GREATER BELLEVILLE."

## CASH

PACKING HOUSE  
..MARKET..

JOHN SPRICH & SON, Proprietors.

212 East Main Street, Belleville, Illinois,

*Our Prices Are Always The Lowest.*

KINLOCH PHONE 436.

## ---W. & E. SCHAEFER---

DEALERS IN

Lime, Hair, Sand,  
Cement, Plaster Paris, &c.

*DRAIN TILE, SEWER TILE AND BOILER TILE CONSTANTLY  
ON HAND.*

PHONE : KINLOCH 135.

Nos. 404 and 406 North Illinois Street, Belleville, Illinois.

--The Greater Belleville--

**A. G. STOLZE,**  
**CONTRACTOR AND BUILDER,**

WASHINGTON PLACE, BELLEVILLE, ILLINOIS.

PHONE, KINLOCH 616.

ESTIMATES CAREFULLY FURNISHED.

**ARTHUR W. OBST,**

Sanitary Plumbing and Heating,  
Gas Fitting and Sewering.

332 West Main Street, Belleville.

Kinloch Phone 418. Bell, 543.

**MIKE KEEFE,**  
*Hotel and Saloon.*

CHOICE WINES, LIQUORS, CIGARS, &C.

Phone Kinloch 10. 1013 SCHEEL STREET, BELLEVILLE, ILL.

OPEN ALL NIGHT.

**Restaurant and**

No. 130 West Main Street,  
Belleville, Illinois.



**-Chilli--Parlor-**

**F. D. DILLARD,**  
*PROPRIETOR.*

QUICK SERVICE.

**EMIL FUNCKE,**  
CONTRACTOR FOR  
**Granitoid & Cement Work**

Use the Best Material Only and First-Class Work Guaranteed.  
Estimates Cheerfully Furnished.

807 South Jackson Street, . . . BELLEVILLE, ILLINOIS.

**GEORGE E. DAHM**

PLUMBING, SEWERING and GAS FITTING.

Jobbing Promptly Attended To. Estimates Furnished.

No. 1009 West Main Street, . . . . . Belleville, Illinois  
KINLOCH PHONE 556.

--AUGUST STEIN--

**Contractor and Builder,**

We Do All Kinds of Building and Repairing.

715 ABEND STREET, BELLEVILLE, ILLINOIS.

PHONE, KINLOCH 765.

**Niebruegge Feed Co.,**

212-214 East B Street, Belleville, Illinois.

Dealers in Flour, Hay, Corn, Oats, Chicken Feed,  
AND CRACKED CORN.

Telephone, Kinloch 727. All Orders Will Receive Prompt Attention.

**WILLIAM DITTMANN,**

**Contractor and Builder,**

412 South Church Street, Belleville, Illinois.

All Kinds of Repairing Promptly Attended To. Phone, Kinloch 393.

**HENRY SCHRECK,**  
**HOTEL AND BAR.**

*FINE IMPORTED WINES AND LIQUORS. BOARDING BY DAY OR WEEK.*

No. 119 West Main Street, Belleville, Illinois.

**BRAUCH & BISCHOF,**

CONTRACTORS,

GRANITOID WALKS AND CONCRETE  
WORK A SPECIALTY.

BELL PHONE 357. Office No. 102 South Illinois Street.

*Hotel Tiemann,*

LEOPOLD DITTEL, Proprietor.

FIRST-CLASS BAR IN CONNECTION.

Corner East Main and Mascoutah Avenue,  
Belleville, Illinois.

KINLOCH 34.

BELL 666.

...The Greater Belleville...

...HENRY J. FINK...  
Insurance, Financial and Bond  
...BROKER...

BELLEVILLE, . . . ILLINOIS.

---H. R. HEIMBERGER---

**Attorney at Law**

*NOTARY PUBLIC,*

Room 28, First National Bank Building,

*BELLEVILLE, ILLINOIS.*

PHONES : RESIDENCE, BELL 524 A. OFFICE, BELL 722.

...ADOLPH G. FEHR...

**Florist**

..AND SEEDSMAN..

Growers of Cut Flowers and Choice Plants.

**LEADERS IN OUR LINE.**

Greenhouses Carlyle Road, Store 222 East Main Street,  
BELLEVILLE, ILLINOIS.

**Jos. Hilpert . . Contractor and Builder**

NO. 825 WEST MAIN STREET, BELLEVILLE, ILLINOIS.

ESTIMATES FURNISHED ON ALL KINDS OF WORK. PROMPT ATTENTION WILL BE GIVEN TO REPAIRING.  
KINLOCH PHONE 286.

Among the Many Fine Buildings in and Around Belleville I have constructed I mention a few--The Henry Raab School House, The St. Vincent Hospital, St. Elizabeth Hospital, Belleville Bank and Trust Company, St. Paul's Church, The Gas and Electric Light Company Power Houses, Buesch Glass Works, The Residences of Andrew Hoerner, Ferdinand Winkler, and Doctor Brightfield.

**STORR'S  
S-I-G-N-S-S**

25 EAST FIRST STREET  
BELLEVILLE - - - ILLINOIS

Copies of "Greater Belleville" for Mailing to Friends can be obtained at the Book-stores of Belleville. . . . Price Fifty Cents.

**Knoebel's  
..Millinery..**

103 East Main Street,  
Belleville, Illinois.

DON'T MAKE A MISTAKE WHEN YOU BUILD, BUT USE

**-Swansea Artificial Stone-**

Manufactured by SWANSEA ARTIFICIAL STONE CO., Arthur J. Fournie, Prest. and Gen. Manager.

Telephone--Bell 589 M.

CONCRETE CONSTRUCTION WORK A SPECIALTY.

...The Greater Belleville.

---

JOHN D. VOGT,  
*Grading Contractor,*

Telephone, Bell 536 M.

BELLEVILLE, . . . . . ILLINOIS.

---

May SECURITY FLOUR

And Greater Belleville Never Reach Their Limit.

RAUCH MILLING CO.

---

Chris. Knebelkamp  
& Company,

—BUILDING CONTRACTORS—

Bridge Work and Pile Driving a Specialty.

OFFICE, NO. 211 ABEND STREET,  
BELLEVILLE, ILLINOIS.

PHONES: KINLOCH 194.

BELL 231 M.

BEN MERCK  
FURNITURE

225-227 E.

MAIN

ST

---

**Rauschkolb Realty Company**

19 WALNUT STREET, BELLEVILLE, ILLINOIS.

...REAL ESTATE, LOANS AND COLLECTIONS...

Call Up Phone 335 M, or 402 M, When You Want Good Results Promptly.

---

Dr. H. F. MERCK,

**..Dentist..**

CORNER CHURCH AND MAIN STREETS,

BELLEVILLE, ILLINOIS.

..L. Neumeyer & Son..

EAGLE BAKERY  
AND CONFECTIONERY.

MANUFACTURERS OF PRETZELS.

307 East Main Street, Belleville, Illinois.

--The Greater Belleville--

# JOSEPH Clothing Company

"The House for Values and Quality."



ADLER'S  
Collegian  
CLOTHES

--Leading Clothiers--  
**HATTERS,**

And Gents' Furnishers,  
107-109 West Main Street, Belleville, Illinois.

WE KINDLY SOLICIT YOUR PATRONAGE.

EDWARD JOSEPH.     ARTHUR A. HOFMEISTER.  
FRANK J. WOTTOWA.

THE  
PURINGTON  
PAVING  
BRICK  
COMPANY,

GALESBURG, ILLINOIS,

MANUFACTURERS OF

**Pressed  
Paving Brick  
and Blocks.**

---

SHIPPED DURING THE YEAR

1907

**...78,623,380...**



...The Greater Belleville...

# Belleville Threshing Machinery.

THERE IS NOTHING BETTER.

## THE JUMBO TRACTION ENGINES

Are All Equipped With 2-Speed Device, and Have the Most Sensitive Friction Clutch Ever Put on a Road Engine.

## BELLEVILLE SEPARATORS

Are Unsurpassed for Fast, Clean Threshing, and They SAVE THE GRAIN.

FOR CATALOGUE, PRICES AND TERMS ADDRESS,

HARRISON MACHINE WORKS, . . . Belleville, Illinois.

# THE BELL TELEPHONE COMPANY OF MISSOURI

A  
TELEPHONE  
IN YOUR  
OFFICE OR STORE.



A  
TELEPHONE  
IN YOUR  
HOME.

Long Distance Service From Every Bell Telephone.

FOR RATES CALL BELLEVILLE 300.

ADOLPH KEIL,  
STOVES  
AND RANGES.

WARM AIR HEATING.  
SHEET METAL WORK.

NO. 209 NORTH ILLINOIS STREET,  
BELLEVILLE, ILL.

FRITZ WINTER,  
Fine Whiskies, Wines, Brandies,  
Liquors, Cigars, &c.

200 North Illinois Street, . . Belleville, Illinois.

W. C. SPIES,

Painting, Whitening and Paper Hanging.

300 SOUTH CHURCH STREET,

Phone, Kinloch 657.

BELLEVILLE, ILLINOIS.

..The Greater Belleville..

---

*The Engravings Used in This Book  
Were Made by the*  
**MISSOURI ENGRAVING COMPANY,**  
OF SAINT LOUIS.

THEY SPEAK FOR THEMSELVES.  
IF YOU CONTEMPLATE A CATALOG OR OTHER ADVERTISING LITERATURE  
WE INVITE YOUR INQUIRIES.

**THE MISSOURI ENGRAVING COMPANY,**  
Publicity Building, 1127-29 Pine Street, Saint Louis, Missouri.

---

THE  
**Renowned Gundlach  
Grain Drill.**



The Simplest as Well as the Strongest and Most Durable Force Feed Grain Drill in the Market,  
and the Lightest Running. Every Drill Warranted.

Manufactured by P. M. GUNDLACH SONS,  
BELLEVILLE, ILLINOIS.

---



**QUALITY**  
**STOVE AND RANGE Co.,**  
MANUFACTURERS OF  
HIGH-GRADE

**Steel Ranges and Heaters,**

BELLEVILLE, ILLINOIS.

*The Greater Belleville.*

---

# LONG & SONS,

DEALERS IN

Furniture, Stoves, Sewing Machines, Washing Machines,  
Clothes Wringers, Bicycles, School Furniture, &c.

123, 125, 127, 205 and 205 1-2 West Main Street, Belleville, Illinois.

Storage Rooms: Spring and Third Streets.

Telephones: Bell 93 A. Kinloch 111.

*Repairing of All Kinds Promptly Attended To.*

---

**Miller & Schaal,**

Contractors and Carpenters,

310 WABASH AVENUE, . BELLEVILLE, ILLINOIS.

Estimates Furnished Promptly. Phone, Kinloch 138.

**Schiermeier & Nagel**

Jobbing Bricklayers,

Residence 400 South Church Street, . . . . Belleville, Illinois.

All Kinds of Brick Laying Promptly Attended To. Kinloch 652.

---

## *E. W. WEST, JR., Real Estate and Loans,*

No. 38 First National Bank Building, . . . . . Belleville, Illinois.

---

**Gust. W. Grossart,**  
**FLORIST,**

CHOICE ROSES, CUT FLOWERS, WEDDING DECORATIONS, FLORAL DECORATIONS.

Bell Phone 116 A, Kinloch 146. East Main Street, Belleville, Illinois.

**Jos. Schwarz & Son,**  
**General Machinists.**

Rebuild Engines, Steam Pumps, Mining Machines, &c. Also, Iron Work for Contractors and Builders.

512-514 East Main Street, . . . Belleville, Illinois.

---

## REEB BROTHERS,

*Coal, Lime, Sand, Cement, and General  
Contractors,*

OFFICE, 341 CENTREVILLE AVENUE,

*BELLEVILLE, . . . . . ILLINOIS.*

# W. L. BATDORF & COMPANY, DEALERS IN HAY, GRAIN AND FEED.

JOBBER OF SLEEPY EYE FLOUR. Corner Richland and A Streets, Belleville, Illinois.

ESTABLISHED 1889.

BOTH PHONES 201.

INCORPORATED 1908.

## *Joseph Leopold & Brother,* *Wholesale Liquors.*

*Belleville.*

*Illinois.*

### Thomas Fischer,

DEALER IN

## Crystal Ice --And Coal--

110 North Mill Street, . . Belleville, Illinois.

Phones : Kinloch 241. Bell, 546.

### George W. Fries,

SUCCESSOR TO AUG. KOOB.

## *Soda Water Factory,*

221 NORTH JARROTT STREET, BELLEVILLE.

Strict Attention Will Be Given To Family Trade, and All  
Orders Receive Prompt Attention.

Kinloch Phone 283.

Bell Phone 551.

## --The Douglas Pharmacy--

HARTNAGEL & GRUENEWALD,  
PROPRIETORS.

### *Everything in Drugs.*

DOUGLAS AVENUE AND EAST MAIN STREET, . . BELLEVILLE, ILLINOIS.

### Huber Jobbing Co.

JOBBERS IN

CANDY, ROLL PAPER, AND  
GROCERS' SUNDRIES,  
*Wholesale Produce.*

General Agents for Manewal Crackers.

South High and First Streets, . . . Belleville.

BOTH PHONES.

### *Louis Woltz,*

Moving, Expressing,  
And Hauling of all kinds.

PICNIC CAR FOR HIRE.

No. 10 South Mill Street, Belleville, Illinois.

PHONE, BELL 528.

...The Greater Belleville.

---

**C. MENSINGER,**

*A Fine Line of First-Class Groceries, Chinaware, Lamps.*

*Garden Seed that are True to Name.*

Be Sure to See Our Fancy Lamps and China Ware Before Buying Elsewhere.

208-210 North Illinois Street, Belleville, Illinois. . . . . Telephone: Bell 36.

---

*Otto R. Hauck,*

Contractor  
And Builder,

Smithton Road, . . Near City Limits,  
Belleville Rural Route No. 2.

ALL KINDS OF BUILDING AND REPAIRING.

*John Winkler,*

MANUFACTURER OF

**Mineral**

**And Soda Waters.**

Factory, Fulton Street, . . . . . Near Mascoutah Avenue,  
BELLEVILLE, ILLINOIS.

Agent for Sheboygan Mineral Water.

---

**The Twenhoefel Company,**

INCORPORATED.

**REAL ESTATE,**

**Insurance and Financial Agents,**

**The LARGEST DEALERS in Real Estate in the City---and Subdivision.**

Office, 20 South Illinois Street, Belleville, Illinois.

PHONES: BELL 183 M. KINLOCH 15.

---

**Theodore Neuf,**

MOVING, LIGHT EXPRESSING,  
HEAVY HAULING,

**And Coal.**

118 NORTH LINCOLN STREET, BELLEVILLE, ILLINOIS. KINLOCH PHONE 256.

---

**“The Greater Belleville,”**

BY PEN AND PENCIL SKETCHES,

Conveys in Concise, Eloquent and Picturesque Language and Illustration all the Salient and Important Phases of Life in this Growing City of 30,000 People.

150 Illustrations.

Price, 50 Cents Per Copy.

Send a Copy to Every Friend.

# ...AUTOMOBILES...

Dorris & Ford Machines for Sale and to Rent at  
*Belleville Automobile Company's,*

228 West Main Street.

*GEORGE G. BEHRENS, Manager.*

Phone: Kinloch 384.

R. E. McCullough,  
Coffee Roaster  
*..And Tea Blender..*

Spices and Extracts.

11 South Jackson Street, . Belleville, Illinois.

*John G. Metz,*  
*Groceries*  
*and Notions,*

230 NORTH SILVER STREET,  
BELLEVILLE, ILLINOIS.

## A. GUBSER,

### *Independent Oil Dealer.*

TANKS AT SWANSEA, ILLINOIS.

HOME ADDRESS, NO. 606 NORTH ILLINOIS STREET, BELLEVILLE, ILLINOIS.

PHONE: KINLOCH 730.

## John Bux,

Manufacturer of and Dealer in  
HAVANA AND DOMESTIC

### *Cigars:*

Factory No. 22, Corner First and High Streets,  
BELLEVILLE, ILLINOIS.

"The Old Landmark."

*DENNIS M. RENNER,*  
PROPRIETOR.

*Fine Wines, Liquors*  
*and Cigars.*

POOL ROOM IN CONNECTION.

231 Jarrott Street, . . . . Belleville, Illinois.

BELL PHONE 260.

## *..Karr Supply Company..*

*BELTING, HOSE AND PIPE, . 129 West Main Street, Belleville, Illinois.*

**The Greater Belleville.**

**Irvin H. Wangelin,**  
**- INSURANCE -**

OFFICE, 500 EAST MAIN STREET, . . . . . BELLEVILLE, ILLINOIS.

Kinloch Telephone, No. 25.

Bell Telephone, No. 828.

**KLOESS BRICK  
COMPANY,**

MANUFACTURERS OF  
PLAIN, STOCK AND ORNAMENTAL

**--BRICK--**

Yard No. 1, and Office, West D Street, Bell Phone, 114, Kinloch, 127.  
Yard No. 2. Opposite Air Line Junction, Kinloch Phone, 234.  
BELLEVILLE, ILLINOIS.

**PETERS & SONS,**  
STOVES  
AND HARDWARE,

Standard Warm Air Furnaces.

Telephone, Kinloch 465.

320 MAIN STREET,

BELLEVILLE.

**Saint Clair  
Lumber Company,**

Manufacturers of

**Sash, Doors, Blinds and Stair Work.**

Both Phones 190.

Nos. 700-708 West Main Street, Belleville, Ill.

**FREDERICK WOELK,**  
*Electrical Supplies  
and Construction.*

KINLOCH PHONE 745.

17 SOUTH HIGH STREET, BELLEVILLE, ILLINOIS.

**A. H. KNEBELKAMP,**  
CONTRACTOR AND BUILDER

KINLOCH, TELEPHONE 355.

No. 915 Union Avenue, Belleville, Illinois.

**HENRY MILLITZER,**  
Roofing, Guttering, Spouting, Heating, Etc.  
Moulded Gutter Formed Promptly.

Kinloch Phone 486.

No. 222 North Illinois Street, Belleville, Illinois.

ESTABLISHED 1835.

BELL PHONE 124.

**CHAS. MERCK,**  
BAKERY AND CONFECTIONERY,

24 West Main Street,

Belleville, Illinois

**-W. A. Weis, Decorator-**

16 East C Street, Belleville, Illinois.

Telephone, Kinloch 446.

--The Greater Belleville--

---

## --PHILLIPS & DAY--

DEALERS IN CHOICE STAPLE AND FANCY GROCERIES, FRUITS,  
VEGETABLES, and MINERS' SUPPLIES,

FORTY-SECOND STREET, OAKLAND STATION, BELLEVILLE, ILLINOIS.

---

GEORGE P. UHL,

**Contractor**

OF BRICK AND STONE WORK.

BUILDER OF SIDEWALKS,  
GRATES, CISTERNS, & C.

204 PORTLAND AVENUE, BELLEVILLE.

ALL WORK GUARANTEED.

AARON BAER.

AMSON BAER.

BAER BROS.,

DEALERS IN

HORSES AND MULES.

Residence Telephones:

No. 206 M. No. 268 A. No. 384 M.

Office Telephone, No. 79.

314 NORTH HIGH STREET,

BELLEVILLE, . . . . , ILLINOIS.

---

## V. GAUSS,

### --Best Groceries--

FRUITS AND VEGETABLES

AT MODERATE PRICES.

...GARDEN SEEDS THAT GROW...

No. 209 North Illinois Street, Belleville, Illinois.

---

*Dr. O. E. Jacobs,*

...DENTIST...

Dentistry Done in the Latest Style. Prices Very Reasonable.  
Bridge and Crown Work a Specialty. Largest Stock in the  
Dental Profession Always Kept on Hand. Lady Attendants.  
All Languages Spoken.

Office Hours, 8 A. M. to 6 P. M.

*1111 West Main Street,  
Belleville, Illinois.*

Adolph Stauder

Carpenter

...And Builder...

Also Manufacturer of All Kinds of LADDERS.

REPAIRING PROMPTLY  
ATTENDED TO.

Office and Shop, 115 North Spring Ave.,

PHONE: KINLOCH 252 J.

BELLEVILLE, . . . . , ILLINOIS.

---

## Charles Junck & Company,

*Hardware, Stoves and Tinware.*

Telephone: Kinloch 514.

1007 WEST MAIN STREET, BELLEVILLE, ILLINOIS.



...The Greater Belleville...

---

# ...Bergman & Lutz...

CONTRACTORS  
AND BUILDERS.

—MILL WORK OF ALL KINDS.—

SHEEL AND BENTON STREETS,  
Near L. & N. Freight Depot, Belleville, Illinois.

PHONE: KINLOCH 783.

---

THE

# Modern Machine Co.,

INCORPORATED,  
MANUFACTURERS OF

—THE CURTIS  
POWER EMBOSsing PRESSES  
AND APPLIANCES.

—THE PRESS WITHOUT A PEER.—

GENERAL MACHINE WORK.

L. & N. R. R., Between Main Street and Grand Avenue,

Bell Phone 859.

BELLEVILLE, ILLINOIS.

---

# Weaver & Co.

109-115 NORTH ILLINOIS STREET,  
BELLEVILLE, ILLINOIS.

UNDERTAKERS.  
Livery and Boarding.

Phones: Kinloch 98. Bell 98. Day or Night.

---

# SIMEON BUNN & SONS,

CONTRACTORS AND BUILDERS,

Inventors of the Latest Improved Gas and Coal Heating Furnaces, and Latest Improved Continuous Muffled Gas Annealing Furnaces, adopted for Annealing Malleable Iron, Nails, Tin Plate, &c.

GAS PRODUCERS AND FURNACES OF ALL DESCRIPTIONS A SPECIALTY.

Address SIMEON BUNN, Sr., 303 West Ninth, Cor. Race Street, Belleville.

PHONE: KINLOCH 539.

# Reuther & Schell, Ladies' New Clothing Store,

Suits, . . Skirts, . . Coats, . . Waists, . . Lingerie, . . &c.

123 East Main Street, . . . . Belleville, Illinois.

## JERGER BROTHERS,

Dealers in Choice Meats and Sausages of all kinds.

Fancy and Staple Groceries.

FRUITS AND VEGETABLES.

No. 1423 West Main Street, . . . . . Belleville, Illinois.

Bell Phone 437 A. Kinloch 199.

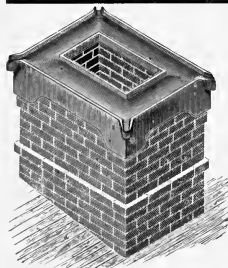
## C. COUKOULIS,

### Belleville Candy Kitchen Company

FRESH HOME MADE CANDIES AND  
CHOCOLATE BON BONS.

No. 117 East Main Street, . . . . . Belleville, Illinois.

Phone: Kinloch 713.



## Faulstich Chimney Tops:

WENDELIN FAULSTICH, Patentee,

BRICK AND STONE MASON AND CONTRACTOR,

NO. 1031 CHARLES STREET, . . . . . BELLEVILLE, ILLINOIS.

One of My Letters of Endorsement:

REISTER & RUBACH,

Architects and Superintendents,

Offices East St. Louis and Belleville,

BELLEVILLE, ILLINOIS.

Mr. W. FAULSTICH, Patentee, City.—Dear Sir:—We have been using the FAULSTICH IRON CHIMNEY TOP exclusively on our buildings for a number of years, and can readily recommend them as the most practical, the simplest, and best chimney protectors in the market.

Yours Respectfully,

REISTER & RUBACH, Architects.

SEND FOR CIRCULAR AND PRICE LIST.

## Belleville Medical Institute.

MODERN METHODS  
OF TREATMENT.

All Forms of Disease Cured by Nature's  
Methods. Consultation Free.

Bell Phone, 344 A. Hours 9 A. M. to 8 P. M.

Corner Main and Spring Streets.

## Chas. P. Born,

11 PINE STREET,

One Block North of L. & N. Freight Depot.

## Rubber Tires

For Buggies and Carriages.

New Rubber Tires Set and Old Repaired.

All Work Guaranteed First-Class. Only the Best  
Material Used. Kinloch Phone 323.

## ...Coggan... Fine Photography.

Babies' Photos a Specialty.

Special Attention Given to Wedding Groups.

Studio, 23 1-2 East Main Street, Belleville.

JOS. ROESCH, President.

ADOLPH BOUL, Manager.

ADOLPH ROESCH, Secretary and Treasurer.

# Roesch & Boul Plating Works,

Nickel, Brass and Copper Plating, Oxidizing and Lacquering.  
Chandeliers and Stove Plating a Speciality.

KINLOCH PHONE 360.

Office and Works, I. C. Tracks and Lincoln Street, BELLEVILLE, ILLINOIS.

## Koerner's ...Place...

300 West Main Street.

**HOTEL AND BAR.**

BELL TELEPHONE 885.

## Western Automobile and Electric Co.,

Automobiles and Accessories.

102-104 North Illinois Street,  
Belleville, Illinois.

## *Vogel-Schrader Grocery Company,* *Headquarters for Fancy Goods,*

118 East Main Street, Rentschler Building, Belleville, Illinois. Both Phones 22.

C. A. VOGEL, President.

G. F. A. SCHRADER, Secretary and Treasurer.

## ...A. H. Schwartz...

..Confectionery..

Candies, Fruits, Ice Cream, &c.

Best Accommodations in Town.

Bell Phone 990. Kinloch 596.

122 EAST MAIN STREET, BELLEVILLE.

# The St. Clair Title Office,

IN COURT HOUSE, BELLEVILLE, ILLINOIS.

HENRY G. C. SCHRADER, Manager.

Investigators of Titles. Furnish Abstracts and Certificates of Title, Plats, Wills, Deeds, Mortgages, and Any Information Regarding Land in St. Clair County, Illinois.

TELEPHONES: BELL 171. KINLOCH 424.

## *Douglas Pharmacy,*

ROY BRIDGES, Proprietor. Successor to HARTNAGEL & GRUNEWALD.

PRESCRIPTIONS A SPECIALTY.

EAST MAIN STREET AND DOUGLAS AVENUE, BELLEVILLE, ILLINOIS.

# GEO. GAUSS & SONS,

Dealers in Yarns, Dry Goods, Hosiery,  
Underwear,

NO. 209 NORTH ILLINOIS STREET,  
BELLEVILLE, . . . ILLINOIS.

---

---

**Fred. Daab  
Company**

700 South Illinois Street,

Dealers in

Portland and Louisville Cement, Wall Plaster,  
Plaster Paris, Sewer Pipe,  
Anthracite Coal, &c.

*Sole Agents for Glencoe Black Lime.*

**Wm. M.  
Voellinger**

STAPLE AND FANCY

GROCERIES,

425 North Illinois Street.

KINLOCH PHONE 583.

---

---

**JOHN BUX,**

*Manufacturer of and Dealer in Havana and Domestic*

**CIGARS,**

*Factory No. 22, 229 South Illinois Street, Belleville, Illinois.*

---

---

**Herzler & Henninger Machine Works**

Manufacturers of Coal Mining Machinery, Founders, and Machinists,

226 CENTERVILLE AVENUE, BELLEVILLE, ILLINOIS.

---

---

Office Phone, Bell 400. Residence, Bell 638.

**R. E. Duvall,**

Real Estate, Loan and Insurance Agent,  
Penn Building, . . . Belleville, Illinois.

Bell 298.

Kinloch 526.

**=Graf's Laundry=**

HUGO GRAF, Proprietor,  
823-825 West Main Street, Belleville, Illinois.

---

---

**J. B. Reis Lumber Co.,**

Manufacturers of Sash, Doors, Blinds, and Stair Work,

700-708 West Main Street, . . . . . Belleville, Illinois.

BOTH PHONES 190.



# Jewelry:

FINE WATCH REPAIRING. ALL WORK GUARANTEED.

**JOHN KLOCK, Jr., . . . Watchmaker and Jeweler,**  
Southeast Corner Main and Race Streets, BELLEVILLE, ILLINOIS.

WATCHES from \$1 to \$75. Guaranteed twenty years.  
Gold Filled, Elgin, or Other Movements, \$8.50. Complete 17-Jewel Adjusted Watch, \$8.25.

DIAMONDS.

ALARM CLOCKS, from 75 Cents to \$3.50.

Also Carry a Complete Line of Cuff Pins, Cuff Links, Lockets, Chains, Necklaces, Rings, Belt Pins, Bracelets, and Silver Novelties. Repairing a Specialty.

**Louis Reuther,**  
**COAL**  
**==AND ICE==**

Office, Lebanon Avenue, Belleville, Illinois.  
Telephones, . . . Kinloch No. 422. Bell 1030.

AUTO ACCESSORIES. REPAIRING A SPECIALTY.

THE  
**Belleville**  
**Garage,**

**GEO. W. SAHLENDER, Proprietor,**  
228 West Main St., Belleville, Ill.  
KINLOCH PHONE 384.



PHONE, BELL 513 M.

First-Class, Up-To-Date Music.

## Mayr's Concert Band

AND ORCHESTRA

522 East B Street, - - - - Belleville, Illinois.

INSTRUMENTATION OF THE BAND:—Cornets, Frank Fischer, Frank Andrews, Theo. Fischer, Fred Frick and Jac. Heant; Clarinets, John Butler, Jr., Walter Heant and Adolph Lindow, Piccolo and Flute, Clemens Renner and John Butler, Sr., Horns, Amin Hertzog, Tony Dornbeck, M. J. Baumgartner and Dan Fischer, Trombones, Carl Lindow, John Fischer, Arthur Snyder and Herman Frankenberg; Baritone, J. C. Kilian and George Stokes; Bass, Rob. Coxan and Joe. Schmidt; Bass Drum, Anton Peters. Drums and Traps, Herbert Stokes. **EDWIN MAYR, Bandmaster.**

One of the finest bands in Southern Illinois, with an enormous repertoire, and talented musicians well drilled under the able direction of Prof. Edwin Mayr. It has the most thoroughly equipped band room in the country, where weekly rehearsals are held with twenty-five of the best musicians.

*The Band is open for any engagement. Parties wishing Music will do well to call on, or phone,*

**EDWIN MAYR, Bandmaster, 522 East B St.**

Bell Phone 840.

Kinloch Phone 655.

*The Wick*  
**Jewelry Company,**

124 EAST MAIN STREET.

Watches, Gold and Silver Jewelry, Silverware, Etc.  
Watch Repairing and Engraving

# KANZLER'S

CHOICE GROCERIES.

**CHAS. F. KANZLER, PROPRIETOR.**

PHONES 86.

## ..Rhein Feed Company..

Hay, Grain, and Feed.

Distributors of Pillsbury's "Best" Flour.

212-214 EAST B STREET, BELLEVILLE, ILLINOIS.

KINLOCH 727.

BELL, 397

# NATIONAL DENTAL PARLORS,

THE LEADING, MOST UP-TO-DATE, AND  
LARGEST DENTAL ESTABLISHMENT IN THIS CITY.

21 East Main Street, Belleville, Illinois.

Bell Telephone 131.

J. M. BRICHLER. J. P. BUCHHOLZ.  
A. P. BRICHLER. W. G. BUCHHOLZ.  
H. P. LIESE.

## BRICHLER-BUCHHOLZ --COMPANY--

UNDERTAKERS AND  
...FUNERAL DIRECTORS...  
LIVERY AND BOARDING.

109-117 North Illinois Street, Belleville.  
BOTH PHONES.

## MICHAEL FREES,

SUCCESSOR TO PETER KNAPP,  
Manufacturer of and Dealer in Harnesses, Blankets,  
Robes, Collars, Saddles, Whips, Trunks, Valises, &c.  
302 East Main Street, Belleville, Illinois.

## Belleville Steam Laundry,

...INCORPORATED..  
CHAS. LINK, Jr., Secretary and Treasurer.  
Northwest Corner Public Square.

# Henry Reis & Sons Lumber Company

SUCCESSORS TO M. & H. REIS.

*Everything in LUMBER and MILLWORK.*

BEST QUALITY....LOW PRICES.

BELLEVILLE, ILLINOIS.

## GEORGE RAUSCHKOLB, Grocer,

Dealer in Staple and Fancy Groceries.

A and Walnut Streets, Belleville.

Phones: Bell 402 M.

Kinloch 335.

## WILL TAYLOR,

Candy and Fruit Store,

Belleville Pure Milk Ice Cream,  
Corner of Main and Church Streets,  
BELLEVILLE, ILLINOIS.

One of My Specialties is the HOLLY BRAND CHOCOLATE, about the Best Grade in the Market.  
During the Season I Carry the Famous SEALSHIPT OYSTERS, the Best there is.

## ...CHRISTINE HERRMANN...

*...Latest Styles in Millinery...*

Up-To-Date Headgear. Bridal Veils and Ornaments a Specialty. Mourning Orders Given Prompt Attention.  
114 South Illinois Street, Belleville, Illinois.

## C. P. BORN, Bicycle Repairing.

Rubber Tires, Solid Cushion Bicycle Tires. Rubber Tire Repairing. Wheels Changed from Steel Tires to Rubber Tires. All Work Guaranteed. Auto Tires Repaired.

Kinloch, 213 L. 6 North Church Street.

## John L. Woelfle's MODEL MARKET,

523 South Illinois Street, Belleville, Illinois.

Fresh and Smoked Meats. Home-Made Sausage a Specialty.  
PHONES: Kinloch 122. Bell 122.

# REEB BROS.,

---

## GENERAL CONTRACTORS,

---

BELLEVILLE, ILLINOIS,

---

Have Handled Some Heavy Contracts Recently,  
Among Them :

Belleville, Illinois,	.	\$1,000,000.00
Du Quoin,	“ . .	30,000.00
Lebanon,	“ .	17,000.00
Harrisburg,	“ . .	27,000.00
Metropolis,	“ .	60,000.00
East St. Louis,	“ . .	25,000.00
Greenville,	“ .	50,000.00
Albion,	“ . .	85,000.00

---

---



---

---

## REEB BROS.,

*Dealers in Hard and Soft Coal, Coke, Sawed  
Wood, and Cement,*

*Office, - - - 341 Centerville Avenue,*

*Belleville, Illinois.*

THE LEADING GERMAN PAPERS IN SOUTHERN ILLINOIS.

# ...Tageblatt and Arbeiter-Zeitung...

DAILY,

And St. Clair Volksblatt=Weekly.

PUBLISHED BY THE ST. CLAIR PRINTING AND NEWS COMPANY.

The Best Advertising Mediums in the City. Job Printing Promptly and Neatly Done.

302 NORTH ILLINOIS STREET, BELLEVILLE, ILLINOIS.

## ...Nold's Pharmacy...

423 North Illinois Street.

Drugs, Patent Medicines, Paints, Glass and Sundries.

GEO. W. NOLD, Prescription Druggist.

Phone: Kinloch 500 L.

Bell 790.

## ...Jos. Martin, Mover...

And Heavy Hauler.

Also Contracts Taken for All Kinds of GRADING.

Phones: Bell 106, Kinloch 203.

Office, 100 South Illinois Street.

### MONK

#### Implement Company,

213 East Main Street,  
Belleville, Illinois,

FARM MACHINERY, VEHICLES,  
Gasoline Engines, Gasoline Gas Lights,  
Cream Separators, Sewing Machines,  
Vulcanite Roofing, &c.

Agents for The Kick-Gounnermann Threshers, Engines, and  
Coal Mining Machinery, and Birdsall Clover Hullers.

Many of the Finest Photographs from which the  
Engravings in "The Greater Belleville"  
are Reproduced were Productions of

Samuel C. Crouch,

Photographer,

11 1-2 SOUTH HIGH STREET,  
BELLEVILLE, ILLINOIS.

## Totsch & Bub,

.....Barber Shop and Bath Rooms.....

N. E. Corner Public Square,

Belleville, . . . . . Illinois.





# Distinctive Jewelry:



In other words, Jewelry of character and quality, at prices usually asked for the common-place kind. LA VALLIERES are much in vogue, and we are showing many patterns set with precious stones. We have BRACELETS, NECKLACES, LOCKETS, FOBS, CUFF BUTTONS, SCARF PINS, HAT PINS, Etc. Everything up to date.

**F. G. WEHRLE, 16 East Main Street.**

*The Best Goods for the Price, no Matter What the Price.*

**L. F. Dintelman,**

*NURSERYMAN,  
Smithton Turnpike, Belleville.  
Kinloch Phone 614.*

**Albert G. Diller,**

*Painter and Paper Hanger,  
Brackett Street, . . . Swansea, Illinois.*

**ROBERT HILL & SON,**

*2101 WEST MAIN STREET.*

*Ale and Porter, Fine Whiskies, Wines, Brandies, Liquors, and Cigars.*

# ...THE BELLEVILLE BALER CO...

CYRUS THOMPSON, President. CHAS. E. WEHREBERG, Vice-President and General Manager.  
WM. A. THOMPSON, Secretary and Treasurer.



Patented June 14th, 1904; March 21st, 1905; June 5th, 1906; February 12th, 1907; March 8th, 1907; April 7th, 1908;  
October 18, 1910. Other Patents Pending.

The BELLEVILLE SELF-FEED HAY PRESS will bale more with less labor than any other press on the market. The saving effected by our patented fork device will soon pay for the press. If you bale for profit this is the baler you want.

**BELLEVILLE BALER COMPANY, BELLEVILLE, ILLINOIS.**

**HARRISON MACHINE WORKS, BELLEVILLE, ILLINOIS,**

*Sole Licensees.*

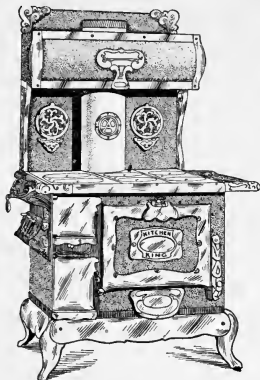
# GEORGE BARNES,

Contractor and Builder,

Grand Vue Avenue, . . . . . Belleville, Illinois.

TELEPHONE, BELL, EAST 1247.

## Perfect Stove and Manf'g Company,



MANUFACTURERS OF

## STOVES AND RANGES

HEATING AND LAUNDRY STOVES,

Office and Works, I. C. Tracks and South Lincoln  
Street, Belleville, Illinois.

Kinloch Phone 360. Send for Catalogue and Price List.

## M. C. RODENBERGER ....& SON....

...Manufacturers and Dealers...

GRANITE AND MARBLE

## ....MONUMENTS....

Mausoleums and Heavy Monumental Work a Specialty.  
Works and Office Opposite Mt. Carmel  
Cemetery, Belleville, Illinois.

P. O. Address Edgemont Station, East St. Louis.

Telephone, Bell, East 1773.



MR. N. SHERWOOD D'WOLF,  
5858 PLYMOUTH AVENUE,  
ST. LOUIS, MO.,

Furnished Many of the Brilliant Photographs from which were Repro-  
duced the Engravings Embellishing "The Greater Belleville."

## -F. S. BURNS-

DEALER IN GROCERIES  
AND NOTIONS,

201 SOUTH CHESTNUT STREET,  
BELLEVILLE, ILLINOIS.

Phones : Kinloch 297. Bell 619 M.

## KUNI'S

Hotel, Restaurant and Buffet...

A FIRST-CLASS PLACE.

NO. 27 WEST MAIN STREET, BELLEVILLE...

Everything in Season on Hand. Fine Fish, Lobsters, Poultry, Oysters on the Half Shell, and Delicacies of All Kinds.  
Fine Ladies' Restaurant Up-Stairs. Your Trade Kindly Solicited. PHONES : Bell 214. Kinloch 183.

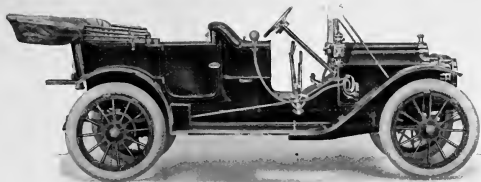
## JOHN W. DENNIS,

CONTRACTOR AND BUILDER,

We Do All Kinds of Building and Repairing. Estimates Cheerfully Given. Jobbing Promptly Attended To.

Office and Residence Signal Hill Station, Belleville Electric Line  
Post Office Address R. R. No. 1, Edgemont Station, East St. Louis, Illinois.

TELEPHONE, BELL, EAST 2219.



1911 Model.

# Judging The Performance of a Car.

The test of performance is not a day, month or year, but a number of years of constant service, reliability, and freedom from repairs.

Simplicity of construction is the best guarantee against repairs, skillful workmanship and excellent material used, have unquestionably proven that the

*Dorrison*

IS BUILT TO LAST.



**FRANK B. SMILEY, Representative, Belleville, Ill.,  
B and Jackson Streets.**

Phones : Bell 25. Kinloch 777.

# .....FINK & HOPPE.....

*INSURANCE,*

Financial and Bond Brokers,

*PUBLIC SQUARE, . . . BELLEVILLE.*



This Wagon Contains 12,068 Pounds of Our No. One Lump Coal.

## Illini Ice & Fuel Company

Successors to Fischer Coal & Ice Company, and City Ice & Fuel Company,

O. A. KRUSE, President and General Manager.

Office and Yards West A Street, Between Richland and Race Streets, Belleville, Illinois.

PHONES: Bell 127, Kinloch 440.

# KIRCHER & SON,



# HARDWARE



21 WEST MAIN STREET,  
BELLEVILLE, ILLINOIS.

THEO. E. KIRCHER, President.

H. B. KIRCHER, Secretary and Treasurer.



ADAM KARR.

President of The Karr Supply Company.

*Who Generously Financed  
"The Greater Belleville,"  
and "Belleville Illustrated."*

## *The Progressive Men*

---

Of the City of Belleville, with the publisher, are entitled to what of credit may be due for the issue of this elegant production.

It gives a true picture of many interesting and picturesque phases of life in a busy, growing, ambitious community.

It justifies a laudable pride in present accomplishments, and is an inspiring incentive for further efforts.

It indicates a milestone on the road of progression, and shows what intelligent, persistent strivings for betterment will do.

Every lover of "GREATER BELLEVILLE," after taking his bearings right now, will be more than ever a believer in its destiny to be one of the favored cities of this great Mississippi Valley—an up-to-date modern city of the new times.



THE ST. CLAIR COUNTY COURT HOUSE AND THE CITY HALL, BELLEVILLE, FEBRUARY, 1911.

**-Wal**

201 East N

**D**

**JEWELRY**

Repairing

**Give**

The Car  
Their I

My Scientific Methods of Examining  
Many Years of Practical Experience

Absolute Satisfac

Repairing of Glasses &

Brokers

**..Wal**

GRA

It Lies in  
the Very Heart of the  
Great Industrial  
Centre  
of the Nation.

It Stands at the  
Forefront  
of the  
Manufacturing Centres  
of the State.

THE  
**Invalid Supply  
..House..**

Where You Find Experts at Fitting  
Appliances for Rupture,  
Deformities, Flat-Foot, Abdom-  
inal Supporters, Silk  
Stockings, &c.

PRECISE EYE-FITTING, LENSE  
MOUNTING  
AND FRAME FITTING.

**R. J. DAWSON**

Invalid Supply Co.,

520 Pine Street, St. Louis, Mo.



ADAM KARR,  
President of The Karr Supply Company.

*Who Generously Financed  
"The Greater Belleville,"  
and "Belleville Illustrated."*

## *The Progressive Men*

---

Of the City of Belleville, with the publisher, are entitled to what of credit may be due for the issue of this elegant production.

It gives a true picture of many interesting and picturesque phases of life in a busy, growing, ambitious community.

It justifies a laudable pride in present accomplishments, and is an inspiring incentive for further efforts.

It indicates a milestone on the road of progression, and shows what intelligent, persistent strivings for betterment will do.

Every lover of "GREATER BELLEVILLE," after taking his bearings right now, will be more than ever a believer in its destiny to be one of the favored cities of this great Mississippi Valley—an up-to-date modern city of the new times.



THE ST. CLAIR COUNTY COURT HOUSE AND THE CITY HALL, BELLEVILLE, FEBRUARY, 1911.



**-Walter I. Grob-**

201 East Main Street, Belleville, Illinois.

**Diamonds,**  
Watches,  
**JEWELRY, SILVER WARE,**  
**..Cut Glass..**

Repairing of Fine Watches a Specialty.

--All Work Warranted--

Do You

**Give Your Eyes**

The Careful Consideration That  
Their Importance Demands ?

My Scientific Methods of Examination Will Reveal the Slightest Defect in Your Eyes, and My  
Many Years of Practical Experience Enables Me To Fit You With Proper Glasses.

Absolute Satisfaction Guaranteed. Examination Free.

Repairing of Glasses a Specialty. Prompt Service.

Broken Glasses Replaced. "Save The Pieces!"

**..Walter I. Grob..**

GRADUATE OPTICIAN.

2154.

CASIMIR ANDEL, . . . . . President.

PHIL. GASS, . . . . . Cashier.



# First National Bank

..Of Belleville..

ORGANIZED 1874.

CAPITAL, SURPLUS, AND UNDIVIDED PROFITS,

Over  
\$410,000.00.



## Directors :

CASIMIR ANDEL, CYRUS THOMPSON, WILLIAM FEICKERT,  
VICTOR GAUSS, WILLIAM KLOES, FRED. PRIESTER,  
HENRY REIS, AUG. THEBUS, J. J. WEINGARTNER.