

QL

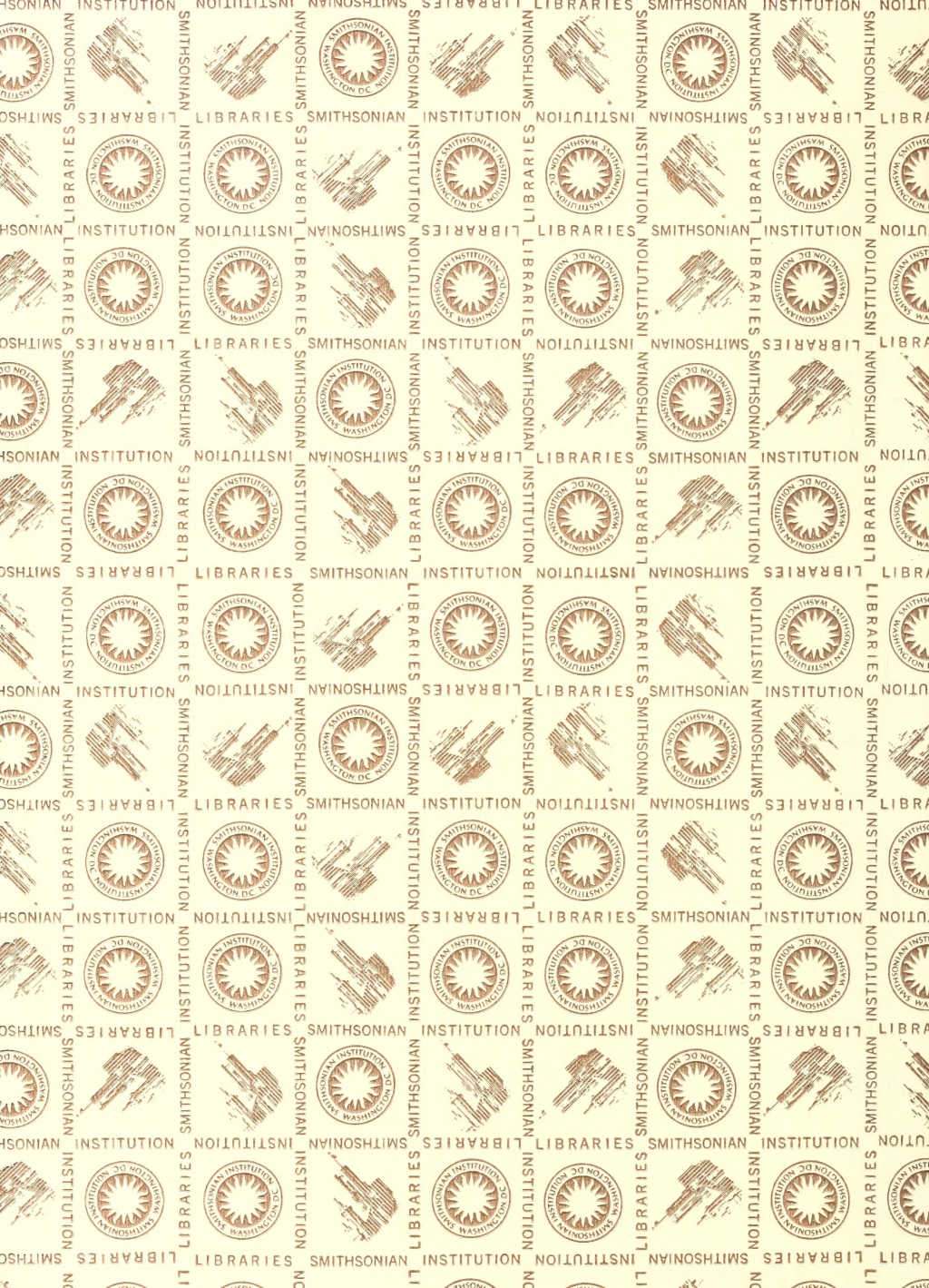
76.5

U62W317r

1989

CRLSSI













# GUIDES TO COLLECTIONS

NUMBER

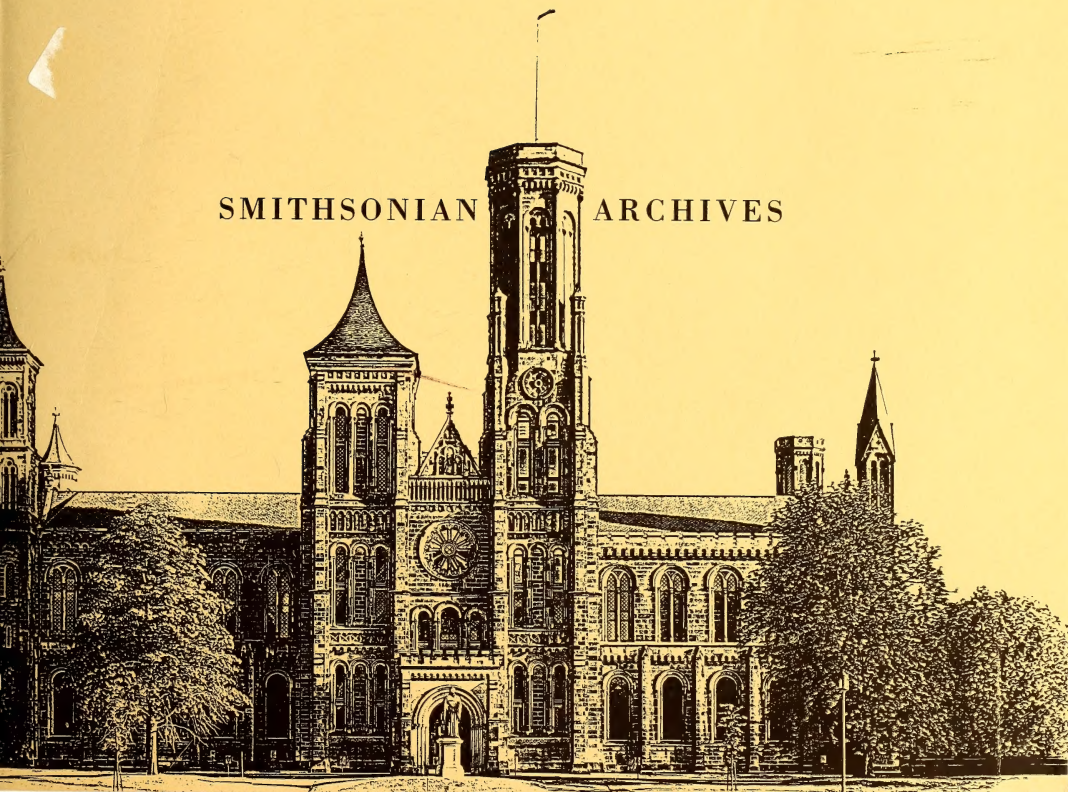
10

**GUIDE TO THE RECORDS OF  
THE NATIONAL ZOOLOGICAL PARK,  
1887-1965, AND UNDATED**

BY

**ALAN L. BAIN**

SMITHSONIAN ARCHIVES







7625  
U62 W317c  
1989  
CRLSSI

NUMBER

**10**

**GUIDE TO THE RECORDS OF  
THE NATIONAL ZOOLOGICAL PARK,  
1887-1965, AND UNDATED**

BY

**ALAN L. BAIN**



**ARCHIVES AND SPECIAL COLLECTIONS**  
OF THE  
**SMITHSONIAN INSTITUTION**

**CITY OF WASHINGTON**  
1989





# ARCHIVES AND SPECIAL COLLECTIONS OF THE SMITHSONIAN INSTITUTION

## Repository guides

1. *Preliminary Guide to the Smithsonian Archives, 1971\**
2. *Guide to the Smithsonian Archives, 1978\**
3. *Guide to Manuscript Collections in the National Museum of History and Technology, 1978\**
4. *Guide to the Smithsonian Archives, 1983*

## Guides to Collections

1. *Guide to the Papers of Waldo LaSalle Schmitt, 1983*
2. *Guide to the Charles D. Walcott Collection, 1984*
3. *Guide to the Papers of Charles P. Alexander, 1985*
4. *Guide to the Field Reports of the United States Fish and Wildlife Service, 1986*
5. *Guide to the Records of the Office of the Secretary (Charles D. Walcott), 1986*
6. *Guide to the Papers of Paul D. Hurd, Jr., 1987*
7. *Guide to the Records of the Office of the Secretary (Samuel P. Langley), 1988*
8. *Guide to the Papers of George Sprague Myers, 1988*
9. *Guide to the Papers of Robert E. Silberglied, 1989*
10. *Guide to the Records of the National Zoological Park, 1989*

## Occasional Papers

1. *Guide to Animal-Related Records at the National Zoological Park, 1988*

\* **Out of print**





## CONTENTS

Introduction .....	1
Historical Note .....	3
Descriptive Entry .....	7
Chronology .....	9
<u>Series 1</u> .....	15
Diaries of the Director, 1895-1930	
<u>Series 2</u> .....	16
Diaries, Ledgers, Memoranda, and Memorandum Books, 1890-1931, and undated	
<u>Series 3</u> .....	18
Accession and Removal Books, 1918-1924	
<u>Series 4</u> .....	19
National Zoological Park Commission Records, 1889-1891	
<u>Series 5</u> .....	20
Congressional Documents Containing Secretary Samuel P. Langley's Reports on National Zoological Park Expenditures, 1888-1905	
<u>Series 6</u> .....	21
Director's Outgoing Correspondence, 1889-1927	
<u>Series 7</u> .....	24
Letters to the Smithsonian Institution, Director's Outgoing Correspondence to Smithsonian Institution Administrators, 1900-1931	
<u>Series 8</u> .....	25
Letters from the Smithsonian Institution, Copies of Outgoing Correspondence from Smithsonian Administra- tors, Regarding the National Zoological Park, 1900-1907	

<u>Series 9</u> .....	26
Animal Voucher Book, 1905-1918	
<u>Series 10</u> .....	27
Voucher Abstracts, 1905-1927	
<u>Series 11</u> .....	28
Requisitions for Printing and Binding at the Government Printing Office, 1915-1931	
<u>Series 12</u> .....	29
Incoming Correspondence and Letter Registers to the Correspondence, 1887-1900	
<u>Series 13</u> .....	34
General Correspondence, 1889-1930, with additional material dating from 1867	
<u>Series 14</u> .....	89
General Correspondence, 1930-1965	
<u>Series 15</u> .....	134
Daily Reports of the Animal Department, August 1904-December 1915, January 1942- June 1966	
<u>Series 16</u> .....	138
Time Roll, January 1890-September 1892	
<u>Series 17</u> .....	139
National Zoological Park Pay Roll and Time Roll, 1891-1921, 1927-1932	
<u>Series 18</u> .....	140
Requisitions for Planting, Repairs, and Alterations, 1904-1942, Orders for Planting, Repairs and Alter- ations, 1902-1942, Shop Requests, 1960-1966	
<u>Series 19</u> .....	141
Scrapbooks, 1887-1931	
<u>Series 20</u> .....	142
Miscellaneous, <u>Circa</u> 1890- <u>Circa</u> 1918, and undated	



<u>Added Accession</u> .....	143
National Zoological Park Commission Records, 1889-1891	
<u>Appendix</u> .....	145
Index to Names and Subjects	

#### ILLUSTRATIONS

The Smithsonian Archives would like to thank the Office of Design and Exhibits Planning, National Zoological Park, for providing most of the photographs for this guide.

#### Following Page 6

Buffalo collection in the South Yard behind the Smithsonian Castle, under the care of the Department of Living Animals, United States National Museum, circa 1889

Samuel P. Langley, Secretary of the Smithsonian Institution, during a visit to the proposed NZP grounds, circa 1890

Preliminary study of the grounds of the NZP, 1890. Original is an ink on linen drawing at the Olmsted Associates, Inc., Brookline, Massachusetts. This was the first plan submitted by Frederick Law Olmsted and shows the "Olmsted Walk" through the Park. Courtesy of the National Park Service, Frederick Law Olmsted National Historic Site.

#### Following Page 28

William T. Hornaday, first Superintendent of the NZP, July 1889-June 1890, on the Mall with a buffalo calf

Frank Baker, Acting Manager and second Superintendent of the NZP, 1890-1916 (Courtesy of Georgetown University)

William H. Blackburne, first Headkeeper of NZP, 1891-1943, who oversaw the transfer of the original specimens to the Zoo beginning in June 1891

Dunk and Gold Dust, a gift from the Adam Forepaugh Shows in April 1891, were the first animals to arrive at the Zoo

Map of the Park, 1902

Carnivora House, 1902

Kalorama, neighborhood of NZP, circa 1913

Buffalo Barn designed by William Ralph Emerson, 1891

Construction of the Lion House, 1891

Building the lower ford, view from the east side of the creek,  
circa 1913

Following Page 58

Theodore Roosevelt embarking on the Smithsonian-Roosevelt African Expedition, 1909. Captured animals were shipped to NZP.

Early twentieth-century visitors to the Zoo

Easter Monday at the Zoo, circa 1910

Exterior of the old shops, before 1911

View of Holt House, 1896, used by the NZP as an administrative building. Courtesy of the National Park Service, Frederick Law Olmsted National Historic Site.

Building a stone bridge, 1913

Ned Hollister, third Superintendent of NZP, 1916-1924, at Plummer's Island

Alexander Wetmore, fourth Superintendent, November 1924-April 1925. Wetmore served as sixth Secretary of the Smithsonian, 1944-1952.

Easter Monday at NZP, 1919

William M. Mann, fifth Superintendent, May 1925-1926, and Director, 1926-1956

Aerial view of the Park from the top of the flagpole, May 1925

Following Page 88

On the dock at Dar-es-Salaam, Smithsonian-Chrysler Expedition to Tanganyika (now Tanzania), 1926

Old Elephant House, 1937

Connecticut Avenue entrance to the Zoo, 1932

Connecticut Avenue entrance to the Zoo, circa 1963

Aerial view of NZP, winter 1934-1935

Interior of the Lion House, 1934

Replacing the floor of the Lion House, completed in 1935

Interior of the Reptile House, circa 1938

Interior of the Elephant House, constructed 1936-1937

Lucile Quarry Mann, Alexander Wetmore, William H. Blackburne, and William M. Mann, undated

Lucy Mann and William Mann (center) crossing the St. Paul's River near Doblin's Island, during an expedition to Liberia, 1940

NZP employees' dinner, 1940

Following Page 116

Theodore H. Reed, NZP Acting Director, 1956-1957, and Director, 1958-1984

Luncheon, circa 1960, with (from left), Theodore H. Reed, Leonard Carmichael, Secretary of the Smithsonian, and James Bradley, Special Assistant to the Secretary

Exterior-central walkway, Bird House, spring 1961





## INTRODUCTION

The earliest records concerning the National Zoological Park date from 1887. They were kept by the Office of the Secretary of the Smithsonian Institution until 1890, when they were transferred to Holt House, the Park's administrative headquarters. During the late 1960's the records were transferred to the custody of the Smithsonian Institution Archives. The finding aid for these records was first written in 1972 and revised in 1989.

These records occupy 37.57 linear meters of shelf space. They are open to researchers and may be consulted in the Archives, located in the Arts and Industries Building, 900 Jefferson Drive S.W., Washington, D. C., 20560. The Archives is open to researchers from 9:00 A.M. to 5:00 P.M., Monday through Friday. Written and telephone inquiries (202-357-1420) are also welcome.

The Archives would like to thank Dr. Theodore H. Reed, former director of the National Zoological Park, and Sybil E. Hamlet, Public Information Officer, NZP, for their support and assistance in the transfer of the records to the Archives, and in providing historical information necessary for the processing of these records.

This is the tenth in an occasional series of published guides to collections in the Smithsonian Archives. Finding aids to other collections of Smithsonian records and personal papers are available in the Archives. In addition, the Guide to the Smithsonian Archives, 1983, available from the Archives, contains summary descriptions of all the Archives' processed holdings.

William W. Moss  
Archivist  
1989





### HISTORICAL NOTE

In 1989 the National Zoological Park celebrates its centennial. However, as early as 1855 the Smithsonian had received gifts of live animals. In addition, the United States National Museum acquired living animals for life studies in order to create lifelike specimens for exhibit in the Museum. Since there were no facilities for caring for animals not used as specimens, those animals were either transferred to the Superintendent of the United States Insane Asylum (now St. Elizabeth's Hospital) for the amusement of its patients, or else sent to the Philadelphia Zoological Garden.

However, parochial needs were not the only source for the idea of a national zoological park. During the last quarter of the nineteenth century there was growing concern that a number of animals would soon become extinct in their natural habitats, among them the American buffalo. William T. Hornaday, taxidermist at the Institution since 1882, had found the National Museum with only a few inferior specimens of the buffalo; and, with the support of Secretary Spencer F. Baird, he traveled to Montana in May and again in September of 1886 to collect specimens while they could still be had. Hornaday was able to collect numerous specimens. However, the state of the buffalo herds he observed during these trips evidently affected him deeply. In 1888, he published his The Extermination of the American Bison. Already, in March 1887 he had proposed to Secretary Baird that a zoological park be established in Washington under the Smithsonian's direction. Baird died before anything could be done; but in October 1887, with the consent of the new Secretary, Samuel P. Langley, a new Division of Living Animals was created in the U. S. National Museum and Hornaday was made its curator. In 1888 Hornaday had, at Secretary Langley's direction, undertaken a survey of land along Rock Creek in northwest Washington lying between the White House and Georgetown to determine its suitability as a zoo site.

The National Zoological Park was established by an Act of Congress in March 1889. The Secretary of the Smithsonian, the Secretary of the Interior, and the President of the Board of Commissioners of the District of Columbia, were constituted as Commissioners of a National Zoological Park in order to purchase land for a zoo in the District of Columbia, "...for the advancement of science and the instruction and recreation of the people..." The commissioners ultimately acquired one hundred and sixty-four acres at this site, some by condemnation, most by purchase. In April 1890 Congress passed

another act, placing the National Zoological Park under the direction of the Board of Regents of the Smithsonian Institution. Half its operating funds were to come from the federal government, half from the District of Columbia. The Board was authorized to expend funds, transfer and exchange specimens, accept gifts, and to generally oversee Zoo operations.

Secretary Langley wanted the best professional advice in planning the layout and design of the Park, and Frederick Law Olmsted, the noted landscape architect, was consulted about all aspects of the Park's layout and design, including pathways, animal enclosures, public access, and the like. Copies of Olmsted's drawings and sketches are at the National Zoological Park today. In practice, however, much of Olmsted's advice was ignored, either because the Park lacked funds to follow his plans or because Secretary Langley often chose to follow his own counsel.

Hornaday became the first Superintendent of the Park but soon resigned because of differences of opinion with Secretary Langley over the scope of the superintendent's authority to control Park operations. In 1890 Frank Baker, Assistant Superintendent of the Light House Service, was appointed Acting Manager in place of Hornaday. From 1893 to until his retirement in 1916 Baker served as superintendent. These early years were full of difficulties. While the Rock Creek site had much natural charm, it was necessary to balance the demands for building construction, park layout and roads, and acquisition of animals--all on an extremely tight budget. Still, as the more mundane affairs of the Park moved slowly forward, there were important "firsts" as well. In 1891 Dunk and Gold Dust, the Park's first elephants, arrived. They were great favorites at the Park, notwithstanding their reputations as troublemakers in the circus which sold them to their new owner. That same year came French, the first lion, then only a cub, who was sold to the Park after he began to alarm the neighbors of his owner in Alderson, West Virginia. During its early years the Park was also the site of Secretary Langley's efforts to study and film the flight of birds, work he undertook as part of his effort to produce a manned flying machine.

On Baker's retirement in 1916, Ned Hollister, an assistant curator of mammals in the U. S. National Museum, was appointed to succeed him. Hollister served until his death in 1924. During his tenure the Park continued to receive very modest appropriations. On that account, it was not possible to purchase much zoo stock; but gifts were numerous. In 1922 they

ranged from an opossum given by President Harding to the 15 mammals, 50 birds, and 17 reptiles collected by William M. Mann while on expedition with the Mulford Biological Exploration of the Amazon Basin. Housing for the animals remained inadequate, and many old structures had to remain in use. In 1924 the Park did manage to construct its first restaurant for the use of visitors, who numbered more than 2.4 million people in that year. Superintendent Hollister died in 1924 and was succeeded by Alexander Wetmore, who served only five months before leaving to become Assistant Secretary of the Smithsonian Institution.

In 1925 Dr. William M. Mann became Superintendent (Director after 1926) of the National Zoological Park, a job he was to hold until his retirement in 1956. He hoped to build a zoo which housed a first-class collection in a first-class environment. As in the past, there was little money for purchase of animals, so he continued to rely on gifts. Mann was a good publicist, and he enlisted the sympathies of Walter P. Chrysler. On March 20, 1926, the Smithsonian-Chrysler Expedition set out, arriving at Dar-es-Salaam, Tanganyika, on May 5 of that year. The expedition was a splendid success and returned with 158 mammals, 584 birds, 56 snakes, 12 lizards, 393 tortoises, and 1 frog. Many specimens, like the giraffe, were quite new to the Park. The male and female impala obtained were the only ones in any zoo in the world at that time.

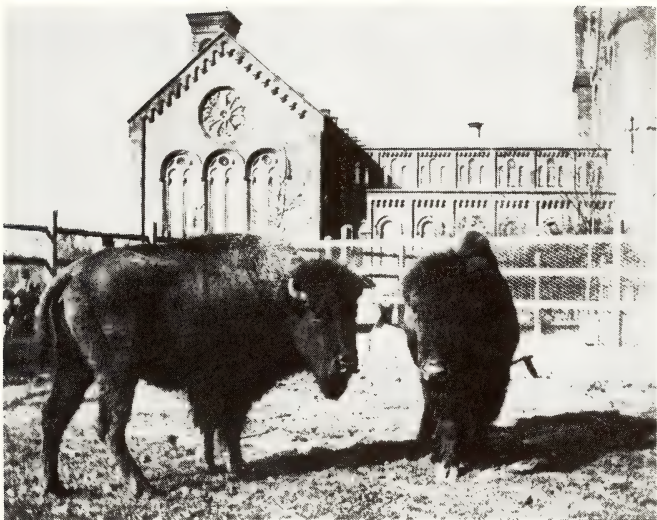
On his return Mann finally succeeded in obtaining an appropriation for a new bird house to replace the one erected 37 years before. A reptile house followed in 1929. In 1935 some of the Zoo's remaining need for new buildings was finally met. The Public Works Administration, a New Deal relief program, allocated \$680,000.00 for the construction of a Small Mammal and Great Ape House, a Pachyderm House, an addition to the Bird House, and several operations buildings. One of the New Deal's programs for the relief of artists, the Treasury Department's Section of Painting and Sculpture, furnished artists to decorate areas of the Zoo. In fact, the Park employed more artists than any other local institution.

In 1937 the Park was once more the beneficiary of a collecting expedition, the National Geographic Society-Smithsonian Institution Expedition to the Dutch East Indies. Mann brought back with him 74 crates of mammals, 112 crates of birds, and 30 crates of reptiles. In 1940 Harvey Firestone, Jr., offered to finance a collecting expedition to Liberia. Again, the expedition supplied the Park with many specimens, including a



female pygmy hippopotamus, Matilda, as companion for the lonely Billy, already at the Park.

When World War II began, the Zoo could not escape its effects. In fact, in 1942 for fear that poisonous snakes might be released from their cages if the Reptile House were struck by an air raid, all the Park's collection of cobras and other venomous snakes was traded to other locations less likely to undergo air attacks. Subsequently, the Park spent some time making repairs and resuming normal activities. In 1956 Dr. Mann retired and was succeeded by acting Director Theodore H. Reed, who was made Director in 1958. In 1958 the Friends of the National Zoo, a group dedicated to supporting the National Zoo and maintaining its reputation as one of the world's great zoos, was organized. In 1960 the Park's budget exceeded a million dollars for the first time. For many years the formula which charged half the Park's expenses to the budget of the District of Columbia had caused a great deal of difficulty. Local residents felt they were being taxed to pay for an institution national in character. Park officials argued that they needed more money than the existing formula could provide. Finally, in 1961, a compromise was reached. All costs for construction and repair of the Park would be carried in the appropriation for the Smithsonian Institution. The District of Columbia would contribute only to the Park's operating costs. As if to give the new arrangement a good send-off, in 1962 Congress appropriated four million dollars for the Park, more than half of it earmarked for a perimeter road around the Zoo and a tunnel to carry automobile traffic through the Zoo. In this way, it was at last possible to close the Park proper to through traffic and to devote the Park reservation solely to strengthening and improving the National Zoological Park's programs.



Buffalo collection in the South Yard behind the Smithsonian Castle, under the care of the Department of Living Animals, United States National Museum, circa 1889.





Samuel P. Langley, Secretary of the Smithsonian Institution, during a visit to the proposed NZP grounds, circa 1890.

Following page: Preliminary study of the grounds of the NZP, 1890. Original is an ink on linen at the Olmsted Associates, Inc., Brookline, Massachusetts. This was the first plan submitted by Frederick Law Olmsted and shows the "Olmsted Walk" through the Park.







Preliminary Study for Grounds of  
**National Zoological Park**  
 WASHINGTON, D. C.

Scale: 1" = 100' (Horizontal)  
 1" = 20' (Vertical)

Ball  
 1/2" = 100' (Horizontal)  
 1" = 20' (Vertical)

11



## DESCRIPTIVE ENTRY

The records of the National Zoological Park document the development of the Park, from the site survey work begun by William T. Hornaday in 1888 through the beginnings of its modernization plans in 1965.

Several series of records are of particular importance. They include records of the National Zoological Park Commission, 1889-1891, and records created by William T. Hornaday, who had a significant part to play in early development of the Park. Some of these records also demonstrate the important influence of Secretary Samuel P. Langley, who succeeded in persuading Congress to authorize the Park, and who kept it under his close personal supervision until he died in 1906. This material consists of minutes of the founding Commission, plats, maps, blueprints, photographs, and correspondence documenting acquisition of land for the Park, as well as records detailing the Park's changing boundaries, layouts of buildings and grounds, and construction of buildings. A more detailed description of the Park's correspondence system can be found in series 12 through 14. Additional information regarding the Commission's activities and Langley's close involvement with the Zoo may be found in record unit 31, the incoming correspondence of the Office of the Secretary (Samuel P. Langley), 1891-1906, and related records to 1908, and record unit 34, the Secretary's outgoing correspondence, 1887-1907.

Correspondence in these records embraces a number of other subjects as well. Acquisition of specimens is extensively documented. Animals were obtained from donors, from dealers in wild animals, from circuses, from American military and diplomatic personnel, from participation in various American expositions, and from expeditions abroad for the purpose of collecting animals for the Park. Collections gathered abroad came from the Smithsonian-Roosevelt African Expedition (1909), the Smithsonian-Chrysler Expedition (1926-1927), the Argentine Expedition (1938-1939), the Antarctic Expedition (1939-1940), and the Firestone-Smithsonian Expedition (1940-1941). In addition the Park provided specimen exhibitions and built facilities for several expositions, including the Pan-American Exposition (1901-1902), the Louisiana Purchase Exposition (1904), the Alaska-Yukon-Pacific Exposition (1909), and the Panama-Pacific International Exposition (1914-1917). Record unit 70 documents the Smithsonian's participation in expositions in detail.

The records also document the more mundane aspects of Park administration. There is considerable correspondence between the Park's director and colleagues at other institutions at home and abroad, and with various federal agencies. There is particularly full documentation of dealings with federal offices in control of animal quarantine regulations and with the rebuilding of the Park by various New Deal agencies in the 1930's. There are daily diaries of the superintendents, directors, and assistant directors of the Park (1895-1930), as well as diaries and daily reports of various subordinate staff members.

Lastly, records of the Park document Samuel P. Langley's 1901-1903 research on the flight of birds, Frank Baker's survey of private and public zoological parks and his buffalo census, 1902-1905, and Baker's involvement on a subcommittee entrusted with recommending a site for a zoological park to the New York Zoological Society.

An index to names and subjects found in the records is included as an appendix.



CHRONOLOGY OF THE HISTORY OF THE NATIONAL ZOOLOGICAL PARK  
1887-1965

- October 1887 Department of Living Animals created under the direction of the United States National Museum
- 1888 William T. Hornaday, curator of the Department of Living Animals, directed by Secretary Samuel P. Langley to draw up a preliminary plan for the Zoo
- March 1889 Congress authorized the formation of a National Zoological Park Commission to select and purchase land for a zoological park
- April 1890 Congress placed the National Zoological Park (NZN) under the Smithsonian Institution's Board of Regents
- May 1890 Frederick Law Olmsted invited by Langley to consult on the layout of the Zoo
- May 10, 1890 Hornaday appointed superintendent of the Zoo
- June 1, 1890 Frank Baker appointed temporary acting manager of the NZN
- June 9, 1890 Hornaday resigned
- 1891 Buffalo and elk barn built
- January 29, 1891 William H. Blackburne appointed first headkeeper
- April 30, 1891 First animals, two male Indian elephants, Dunk and Gold Dust, brought to Zoo grounds
- June 27, 1891 First group of animals moved from Mall to NZN
- 1892 Authorization to purchase and transport animals revoked for six years
- 1892 First permanent building completed. Called the main animal house, it was later renamed the Lion House.

- 1893 Baker appointed superintendent
- 1894 First beaver arrived from Yellowstone National Park. They inhabited "Missouri Valley," later called "Beaver Valley."
- 1898 Antelope House built
- 1898 NZP given authorization by Congress to purchase animals
- 1899 Illustrated circular on animals desired by NZP distributed to United States officers stationed overseas
- 1900 As a result of the circular, animals were received from Argentina, Brazil, Cuba, Panama, and the Philippine Islands
- 1900 New iron bridge constructed across the creek at Harvard Street (then called Quarry Road)
- 1901 Twenty-inch sundial purchased in London and installed on lawn near the Animal House
- 1902 A flying cage was completed
- November 1902 Two fifty-foot towers erected in order to provide platforms for photographers to take pictures of flying vultures. Work was in conjunction with Langley's research on flight.
- 1903 New Elephant House completed
- 1903 NZP received its first Kodiak bear
- November 24, 1904 President Theodore Roosevelt gives the Zoo an ostrich, the gift of King Menelik of Abyssinia
- 1908 Last of the bear cages were completed

1909 Theodore Roosevelt in British East Africa on a Smithsonian collecting expedition. Friend William Northrup Macmillan offered NZP his animal collection if transported by a Zoo official. Assistant superintendent A. B. Baker transferred the animals to the Park.

1913 Cook House used for food storage and preparation was built

1916 Estimated attendance reached over one and one-half million visitors

November 1, 1916 Baker retired. Ned Hollister appointed superintendent.

August 13, 1917 Zoo purchased first motor truck

October 1, 1920 Visitor attendance reached two million

1921 Two giant tortoises received from Albemarle and Indefatigable Islands

May 24, 1922 African Cape big-eared fox transported to the Zoo. First of its species to be exhibited alive in America.

November 3, 1924 Ned Hollister died. Alexander Wetmore appointed interim superintendent.

May 13, 1925 William M. Mann appointed superintendent

May-October 1926 Smithsonian-Chrysler Fund Expedition to Tanganyika (now Tanzania). 1,203 animals transferred to the Zoo.

1928 First breeding of an American white pelican on record

June 1928 New Bird House opened

February 27, 1931 Reptile House opened. Voted by the American Institute of Architects as the outstanding brick building in the east.

October 7, 1932 Eagle Cage completed

November 23, 1933	The only maned wolf from South America to be exhibited in a zoo was received by the NZP
June 21, 1934	Zoo received its first Komodo dragon
January 16, 1935	NZP received a \$680,000 Public Works Administration appropriation. Funds would provide for the construction of a Small Mammal and Great Ape House, Elephant House, addition to the Bird House, two shops, and a central heating plant.
January 12, 1937	Lucile and William Mann depart on the National Geographic Society-Smithsonian Institution Expedition to the East Indies
September 27, 1938	879 specimens from the East Indies Expedition are received at the Zoo
April 6, 1939	Lucile and William Mann leave for a collecting trip in Argentina
June 27, 1939	316 specimens are received at the Zoo from the trip to Argentina
November 11, 1939	Zoo keeper Malcolm Davis sailed with Admiral Richard E. Byrd to establish bases during the Antarctica Expedition.
February 17, 1940	Lucile and William Mann leave on the Smithsonian Institution-Firestone Expedition to Liberia
March 5, 1940	Zoo received first emperor penguin collected by Davis while on Antarctica expedition
August 6, 1940	Zoo received 195 specimens collected in Liberia
December 31, 1943	Blackburne retired from Zoo at 87, after fifty-two years of service
June 29, 1950	Smokey Bear, a four-month old cub, arrived at the Zoo

November 5, 1953 Two Philippine macaques, Pat and Mike, launched by an Aerobee rocket to an altitude of 200,000 feet, were transferred to the Zoo by the United States Air Force

July 15, 1955 Theodore H. Reed became the Zoo's first full-time veterinarian

October 31, 1956 Mann retired. Theodore H. Reed appointed acting director.

1957 The Zoo was the first to use the Cap-Chur gun for the immobilization and/or treatment of animals

March/April 1957 United States Signal Corps transferred two hero pigeons to NZP. Anzio Boy and Global Girl completed sixty-one missions between them.

March 12, 1958 Reed appointed director of the Zoo

April 10, 1958 Friends of the National Zoo (FONZ) organized

April 16, 1958 Female banded linsang received as a gift from a staff officer stationed in Kuala Lumpur, Malaya. The species had never been exhibited at the Zoo, and was the only one in captivity.

May 16, 1958 Julie Ann Vogt, two-and-a-half years old, was killed by one of the Zoo's lions

May 18, 1958 First birth of a female snow leopard in the Western Hemisphere

September 1958 First wisent born in this country

July 1, 1960 Davis retired after spending thirty-three years at the Zoo

December 5, 1960 Female white tiger, Mohini, received as a gift from the chairman of the board of Metropolitan Broadcasting Corporation

December 16, 1960 A master plan for the development of the Zoo was presented to the Smithsonian by the president of FONZ



September 9, 1961 A male gorilla, Tomoka, was born, the second born in captivity in the world

1962 An appropriation of 1.3 million dollars was approved by the Senate Appropriations Committee as an initial investment on a ten-year capital improvement program

April 17, 1962 The Zoo hired its first zoologist

April 5, 1963 Ham, the chimponaut, was formally transferred to the Zoo by the United States Air Force. On January 31, 1961, Ham handled the controls on a Redstone rocket. Traveling up to a speed of 5,887 miles per hour, Ham was on-board the rocket for a 16.5 minute flight. Three months later, Commander Alan B. Shepard operated Mercury 3, the United States' first manned space mission.

1964 Several construction projects, including reconstruction of the Bird House, a new Great Flight Cage, parking lots and roads were going on at the same time

January 6, 1964 Mohini gave birth to three cubs, one of which was white

September 1, 1965 Zoo hired first resident scientist to supervise the Scientific Research Department

SERIES 1.

DIARIES OF THE DIRECTOR, 1895-1930.

This series contains diaries created by the administrator and associate in charge of the National Zoological Park, whether his title was director, assistant director, superintendent, or assistant superintendent. Information within the thirty-six diaries includes a selected listing of NZP events, some important, others mundane; notices of appointments and important visitors; records of staff attendance; and weather reports for each day during this period.

Box 1

Diaries, 1895-1911

Box 2

Diaries, 1912-1926

Box 3

Diaries, January-March 1925, 1927-1930. The 1925 diary belongs to Alexander Wetmore, who was superintendent of the NZP from November 1924 through March 1925.

SERIES 2.

DIARIES, LEDGERS, MEMORANDA, AND MEMORANDUM BOOKS,  
1890-1931, AND UNDATED.

These records document various aspects of routine operations by the Zoo staff.

Box 3 (cont'd)

Daily diaries kept by D. C. Turner, superintendent of the fish house and NZP aquarium, 1900-1902. Folder contains information about food purchased, temperature of water, and level of tank filled. Three volumes.

Daily diaries possibly kept by L. E. Morgal, 1903-1904, 1911, 1916, 1921, 1928-1929, and 1931, for the mechanical department. Eight volumes.

Box 4

Daily work diaries for William Hunter, L. E. Morgal, and William H. Blackburne, 1914-1917. Diaries include information on animal accessions and removals. Four volumes.

Diary on construction and NZP grounds improvement, 1896. Author unidentified. One volume.

Personal diary of a workman who worked for Morgal and Blackburne. Ground crew, 1902-1905. Author unidentified. Four volumes.

Diary of NZP bird house, undated. Author unidentified. One volume.

"Memoranda Relative to Work on the National Zoological Park," July 1-September 8, 1890. One letterpress book.

Box 5 (cont'd)

"A Record of Operations Performed at the National Zoological Park," September 18, 1897-March 4, 1904. One volume.

William H. Blackburne memo books, 1905-1906, 1910-1911. Three volumes.

Memorandum books containing notes and drawings regarding foreign zoological parks, circa 1909-1910. Author unidentified. Four volumes.

Ledger of stone, sand, and other materials brought to the NZP, 1917-1931. One volume.

Cross-section book, undated. Author unidentified. One volume.



SERIES 3.

ACCESSION AND REMOVAL BOOKS, 1918-1924.

These records document the accessioning of animals for the Zoo collection and their subsequent removal from the collection by sale, exchange, or death. Visitor attendance reports are also included. Seven volumes, 1918-1924.

Box 5 (cont'd)

Accession and removal books, 1918-1922

Box 6

Folders 1-2          Accession and removal books, 1923-1924

SERIES 4.

NATIONAL ZOOLOGICAL PARK COMMISSION RECORDS,  
1889-1891.

These records document some of the proceedings of the National Zoological Park Commission and its agents. Additional records on this topic are in boxes 288 and 289.

Box 6 (cont'd)

- Folders 3-4      National Zoological Park Commission. Correspondence with Secretary Langley, 1889-1890.
- Folder 5        National Zoological Park Commission. Minutes, 1889.
- Folder 6        National Zoological Park Commission. Records, 1889-1890, and undated.
- Folder 7        National Zoological Park Commission. Maps, 1889-1914, and undated. Includes a topographic survey map drawn by Howell and Greenough, United States Coast and Geodetic Survey, 1889 and 1890.
- Folder 8        National Zoological Park Commission. Printed documents, 1887-1891. Also contains a typed manuscript regarding the creation of a Zoological Society in Washington, D. C., 1870. The Society was to establish a zoological garden containing various animals.

SERIES 5.

CONGRESSIONAL DOCUMENTS CONTAINING  
SECRETARY SAMUEL P. LANGLEY'S REPORTS ON  
NATIONAL ZOOLOGICAL PARK EXPENDITURES, 1888-1905.

These records consist of congressional documents containing Secretary Langley's reports to congressional oversight committees on expenditures made at the National Zoological Park.

Box 6 (cont'd)

Folder 9           Published congressional documents containing Secretary Langley's reports on expenditures to the House of Representatives, 1888-1905. Eighteen items.

SERIES 6.

DIRECTOR'S OUTGOING CORRESPONDENCE,  
1889-1927.

This series consists of the Director's official outgoing correspondence, July 3, 1889 to June 9, 1927, in sixty-eight indexed volumes. It includes correspondence by William T. Hornaday, Frank Baker, Ned Hollister, Alexander Wetmore, and William M. Mann, who were variously the director, superintendent, or acting manager of the National Zoological Park. Beginning with correspondence on April 2, 1900, the NZP numbered its volumes, 1-57.

Box 7

Correspondence, July 3, 1889-October 10, 1891. Volumes for June 1890-October 1891 contain Baker's non-official correspondence dealing primarily with scientific matters.

Box 8

Correspondence, October 13, 1891-March 13, 1895

Box 9

Correspondence, March 13, 1895-June 30, 1897

Box 10

Correspondence, July 1, 1897-June 15, 1899

Box 11

Correspondence, July 1, 1899-December 12, 1900

Box 12

Correspondence, December 13, 1900-February 20, 1902

Box 13

Correspondence, February 20, 1902-March 6, 1903

Box 14

Correspondence, March 6, 1903-April 11, 1904

Box 15

Correspondence, April 11, 1904-February 25, 1905

Box 16

Correspondence, February 25, 1905-February 5, 1906

Box 17

Correspondence, February 5, 1906-August 6, 1907

Box 18

Correspondence, August 6, 1907-January 27, 1909

Box 19

Correspondence, January 28, 1909-September 2, 1910

Box 20

Correspondence, September 2, 1910-January 11, 1912



Box 21

Correspondence, January 11, 1912-June 23, 1913

Box 22

Correspondence, June 23, 1913-March 19, 1915

Box 23

Correspondence, March 19, 1915-July 19, 1916

Box 24

Correspondence, July 20, 1916-December 8, 1919

Box 25

Correspondence, December 9, 1919-January 31, 1923

Box 26

Correspondence, February 1, 1923-November 14, 1925

Box 27

Correspondence, November 14, 1925-June 9, 1927

SERIES 7.

LETTERS TO THE SMITHSONIAN INSTITUTION,  
DIRECTOR'S OUTGOING CORRESPONDENCE TO SMITHSONIAN  
INSTITUTION ADMINISTRATORS,  
1900-1931.

These letters comprise the Director's correspondence with other officials of the Smithsonian Institution and also contain copies of NZP annual reports. Thirteen indexed letterpress volumes. April 2, 1900-July 31, 1931.

Box 27 (cont'd)

Correspondence, April 2, 1900-October 20, 1902. Contains NZP staff employment information, including job titles and salaries, 1889-1900.

Box 28

Correspondence, October 28, 1902-January 13, 1908

Box 29

Correspondence, January 15, 1908-January 27, 1916

Box 30

Correspondence, January 31, 1916-July 31, 1931

SERIES 8.

LETTERS FROM THE SMITHSONIAN INSTITUTION,  
COPIES OF OUTGOING CORRESPONDENCE FROM SMITHSONIAN  
INSTITUTION ADMINISTRATORS, REGARDING THE  
NATIONAL ZOOLOGICAL PARK, 1900-1907.

These volumes contain letterpress correspondence from Samuel P. Langley, Charles D. Walcott, and Richard Rathbun regarding the NZP.

Box 31

Letters from the Smithsonian Institution. Letterpress copies of correspondence from Samuel P. Langley, Charles D. Walcott, and Richard Rathbun, regarding the NZP. Indexed. January 10, 1900-February 13, 1907. Two volumes.

SERIES 9.

ANIMAL VOUCHER BOOK, 1905-1918.

These records provide information about animals shipped as exchange specimens to other zoos.

Box 31 (cont'd)

Animal voucher book. Outgoing letterpress correspondence regarding animal vouchers and animals shipped in exchange. Indexed. July 1905-May 1918. One volume.

SERIES 10.

VOUCHER ABSTRACTS, 1905-1927.

These records consist of correspondence and voucher abstracts.

Box 32

Outgoing letterpress correspondence and abstracts. Indexed except for volume four. July 6, 1905-November 15, 1927. Four volumes.



SERIES 11.

REQUISITIONS FOR PRINTING AND BINDING  
AT THE GOVERNMENT PRINTING OFFICE, 1915-1931.

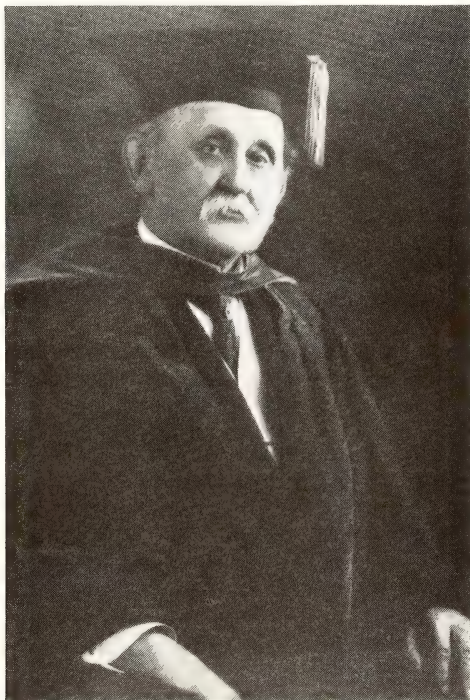
These records document requests for printing and binding services from the U. S. Government Printing Office in order to meet a part of the Zoo's publication needs.

Box 33

Requisitions for printing and binding. Outgoing letterpress correspondence requests to the Government Printing Office. September 1915-March 1931. Indexed. One volume.



Left, William T. Hornaday, first Superintendent of the NZP, July 1889-June 1890, on the Mall with a buffalo calf.

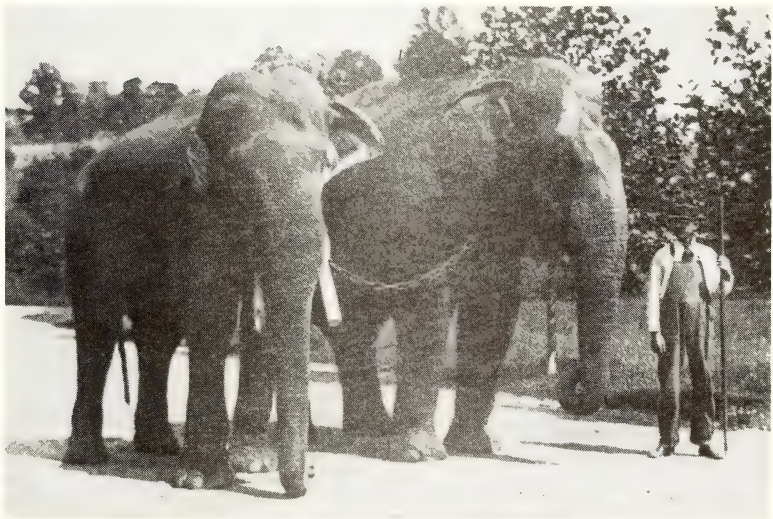


Right, Frank Baker, Acting Manager and second Superintendent of the NZP, 1890-1916. Courtesy of Georgetown University.





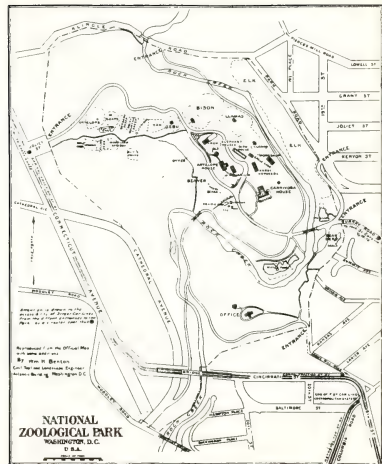
William H. Blackburne, first Headkeeper of NZP, 1891-1943, who oversaw the transfer of the original specimens to the Zoo beginning in June, 1891.



Dunk and Goldust, a gift from the Adam Forepaugh Shows in April, 1891, were the first animals to arrive at the Zoo.



Right, map of the Park, 1902.



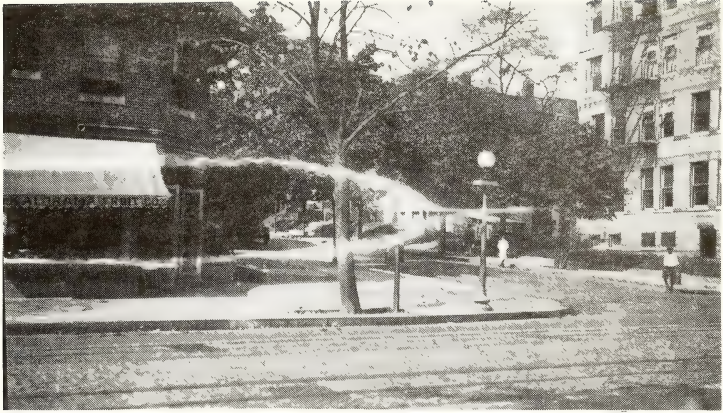
2000 (10-1-02)



Carnivora House, 1902.







Kalorama, neighborhood of NYP, circa 1913.



Buffalo Barn designed by William Ralph Emerson, 1891.





Construction of the Lion House, 1891.



Building the lower ford, view from the east side of the creek, circa 1913.



SERIES 12.

INCOMING CORRESPONDENCE AND LETTER REGISTERS  
TO THE CORRESPONDENCE, ARRANGED BY SUBJECT AND  
ALPHABETICALLY BY CORRESPONDENT THEREUNDER, 1887-1900.

These records constitute the Zoo's main incoming correspondence file for the period from 1887 through 1900. The correspondence is accompanied by three oversize volumes of register numbers, which provide access to the material. The registers and the correspondence are broken down into seven numerical subject file categories: (1) Animals, 1890-1900; (2) Applications, 1889-1900; (3) Bids, 1889-1900; (4) Construction, 1889-1899; (5) Improvements, 1890-1900; (6) Miscellaneous, 1887-1900; (7) Smithsonian, 1888-1900.

Volume one of the registers contains all seven file subject categories, while volumes two and three are a continuation of subject categories one and six. The register entries provide the name of the correspondent, correspondent's address, date when letter was written and received, a short summary of the letter and a register number, which is also written on the letter. Register numbers are sequential. The incoming correspondence within each subject file category is arranged alphabetically by correspondent and by register number thereunder. For the most part the arrangement by register number forms a chronological arrangement of the letters themselves.

Important correspondents within this series include Samuel P. Langley, whose letters in file category seven emphasize his role in the establishment of the NZP and his personal interest in its administration. Other important correspondents are Arthur B. Baker; William H. Blackburne; Frank Baker; G. Brown Goode; William Temple Hornaday; William Crawford Winlock; Frederick William True; Richard Rathbun; Frederick Law Olmsted and Company; Olmsted, Olmsted, and Eliot; Frederick Law Olmsted; John Charles Olmsted; and William W. Karr, under whose name the financial statements of the NZP, 1891-1894, are located.

Box 33 (cont'd)

Letter registers, oversize, three volumes



Box 34

File 1. Incoming correspondence, animals, 1888-1900. Westminster Abbey through William H. Blackburne.

Box 35

File 1. Incoming correspondence, animals, 1888-1900. E. G. Blackford through A. S. Crowninshield.

Box 36

File 1. Incoming correspondence, animals, 1888-1900. Cugley's Pet Stock Bazaar through A. J. Hayward.

Box 37

File 1. Incoming correspondence, animals, 1888-1900. Alfred Heald through S. Mayer.

Box 38

File 1. Incoming correspondence, animals, 1888-1900. William McAdoo through F. L. Payson.

Box 39

File 1. Incoming correspondence, animals, 1888-1900. J. & R. Peel through D. S. Seylar.

Box 40

File 1. Incoming correspondence, animals, 1888-1900. J. Clement Shafer through W. A. Whitworth.

Box 41

File 1. Incoming correspondence, animals, 1888-1900. Paul Wiesike through Z.

File 2. Incoming correspondence, applications, 1889-1900. Edward J. Anderson through W.

File 3. Incoming correspondence, bids, 1889-1900. George Creveling.

File 4. Incoming correspondence, construction, 1889-1900. C. A. Ball through Austin P. Brown.

Box 42

File 4. Incoming correspondence, construction, 1889-1900. Glenn Brown through W.

File 5. Incoming correspondence, improvements, 1890-1900. A through G.

Box 43

File 5. Incoming correspondence, improvements, 1890-1900. William H. Harrison & Son through W. Includes a map showing recommended plantings around NZP pools, 1893, and a proposed plan to add land to the NZP to secure a suitable landscape border at the entrance, 1895. Both items are located under Olmsted, Olmsted, and Eliot.

Box 44

File 6. Incoming correspondence, miscellaneous, 1887-1900. Cleveland Abbe through Cleaves.

Box 45

File 6. Incoming correspondence, miscellaneous, 1887-1900. Coe through Gurley.

Box 46

File 6. Incoming correspondence, miscellaneous, 1887-1900. Hadley through Kunz. Contains information on William T. Hornaday's role in the early development of the NZP and the New York Zoological Park, filed under William T. Hornaday, folder 7. After Hornaday resigned from the NZP, he became the first Director of the New York Zoological Park.

Box 47

File 6. Incoming correspondence, miscellaneous, 1887-1900. Lachance through Payne. Includes recommendations made for the site of the New York Zoological Park by the New York Zoological Society subcommittee on site plans, filed under New York Zoological Society, folder 14. Frank Baker, second Superintendent of the NZP, was a member of the subcommittee.

Box 48

File 6. Incoming correspondence, miscellaneous 1887-1900. Peary through Trimble.

Box 49

File 6. Incoming correspondence, miscellaneous, 1887-1900. True through Z.

File 7. Incoming correspondence, Smithsonian, 1888-1900. Acting Secretary through J. S. Goldsmith.

Box 50

File 7. Incoming correspondence, Smithsonian, 1888-1900. G. Brown Goode through W. W. Karr.

Box 51

File 7. Incoming correspondence, Smithsonian, 1888-1900. W. W. Karr through Samuel P. Langley.

Box 52

File 7. Incoming correspondence, Smithsonian, 1888-1900. Samuel P. Langley.

Box 53

File 7. Incoming correspondence, Smithsonian, 1888-1900. Samuel P. Langley through Richard Rathbun.

Box 54

File 7. Incoming correspondence, Smithsonian, 1888-1900. W. deC. Ravenel through W. C. Winlock.

### SERIES 13.

#### GENERAL CORRESPONDENCE, 1899-1930, WITH ADDITIONAL MATERIAL DATING FROM 1867.

These records contain both incoming and outgoing correspondence, divided among some 400 numbered subject topics. The same numbers were then assigned to correspondence as it was prepared or received. In some cases these numbers were also written on the correspondence in the outgoing letterpress copybooks, series 6 through 11, which makes it possible to move back and forth between the series in some instances. Following this series entry is a list of subjects arranged consecutively by subject number, which should facilitate matching incoming and outgoing correspondence.

#### ANIMAL CORRESPONDENCE

##### Animals Acquired

##### Box 55

- Folders 1-4 Alligators, caimans, crocodiles, 1900-1930. Subject #34.
- Folders 5-7 Antelope, 1900-1928. Subject #17.
- Folders 8-15 Aquarium, 1899-September 1902. Subject #5. Includes information about fish, crustacea, equipment, materials and designs for the aquarium.

##### Box 56

Aquarium, October 1902-1930. Subject #5.

##### Box 57

- Folder 1 Armadillos, 1901-1928. Subject #231.
- Folder 2 Badgers, 1900-1918. Subject #167.
- Folders 3-13 Bears, 1900-1930. Subject #29.

Box 57 (cont'd)

- Folder 14 Bears, grizzly, 1902-1919. Subject #87.
- Folders 15-16 Bears, polar, 1900-1924. Subject #8.
- Folder 17 Beaver, otter, sable, fox, 1901-1922. Subject #198.
- Folder 18 Beavers, 1919-1925. Subject #147.

Box 58

- Folder 1-6 Birds, 1901-1930. Subject #320.
- Folder 7 Boars, wild, 1901-1911. Subject #195.
- Folders 8-11 Buffalo, 1899-1904. Subject #4. Includes material concerning the buffalo census undertaken by Frank Baker in 1902 and 1905. For further material regarding the census, see animal research: buffalo census, 1902 and 1905, boxes 98-99.

Box 59

- Folders 1-6 Buffalo, 1905-1929. Subject #4.
- Folder 7 Cassowary, 1902-1919. Subject #290.
- Folder 8 Chamois, 1909-1930. Subject #18.
- Folder 9 Chinchilla, 1902-1925. Subject #281.
- Folders 10-16 Condors, California, 1900-1928. Subject #2.

Box 60

- Folders 1-2 Coyotes, 1901-1924. Subject #251.
- Folder 3 Cranes, sandhill, 1902-1919. Subject #143.
- Folder 4 Deer, Columbian blacktailed, 1902-1921. Subject #264.



Box 60 (cont'd)

- Folder 5 Deer, fallow, 1901-1927. Subject #256.
- Folder 6 Deer, mule. Folder also contains some correspondence pertaining to blacktailed deer. 1901-1915. Subject #149.
- Folder 7 Deer, sambur, 1901-1928. Subject #201.
- Folder 8 Deer, sika, 1926-1928. Subject #169.
- Folders 9-11 Deer, Virginia, 1899-1929. Subject #41.
- Folder 12 Dingoes, 1901-1925. Subject #258.
- Folder 13 Dogs, 1899-1924. Subject #28.
- Folders 14-16 Ducks, 1900-1926. Subject #109.
- Folders 17-20 Eagles, bald and golden, 1899-1903. Subject #21.

Box 61

- Folders 1-5 Eagles, bald and golden, 1904-1930. Subject #21.
- Folders 6-8 Elephants, 1900-1930. Subject #60.
- Folders 9-17 Elk, 1900-1928. Subject #35.

Box 62

- Folder 1 English wild cattle, 1901. Subject #296.
- Folder 2 Fishers, black fox or black cat, 1902-1908. Subject #266.
- Folder 3 Flamingos, 1900-1909. Subject #62.
- Folder 4 Foxes, blue, 1899-1917. Subject #26.
- Folder 5 Foxes, cross, 1901-1909. Subject #217.
- Folder 6 Foxes, cross and silver, 1901-1907. Subject #247.

Box 62 (cont'd)

Folder 7 Foxes, gray, 1900-1919. Subject #139.  
Folders 8-9 Foxes, red, 1900-1910. Subject #46.  
Folders 10-11 Geese, blue and snow, 1902-1929. Subject #261.  
Folder 12 General, 1900-1928. Subject #94.  
Folders 13-15 General, April 1898-1900. Subject #50.

Box 63

General, January 1901-July 1903. Subject #50.

Box 64

General, August 1903-July 1905. Subject #50.

Box 65

General, August 1905-September 1906. Subject #50.

Box 66

General, October 1906-April 1908. Subject #50.

Box 67

General, May 1908-May 1910. Subject #50.

Box 68

General, June 1910-August 1912. Subject #50.

Box 69

General, September 1912-September 1914.  
Subject #50.

Box 70

General, October 1914-December 1916. Subject  
#50.

Box 71

General, January 1917-July 1920. Subject  
#50.

Box 72

General, August 1920-August 1922. Subject  
#50.

Box 73

General, September 1922-March 1925. Subject  
#50.

Box 74

General, April 1925-May 1929. Subject #50.

Box 75

Folders 1-4      General, June 1929-June 1930. Subject #50.  
Folder 5        Gila monsters, 1900-1925. Subject #150.  
Folder 6        Giraffes, 1901-1928. Subject #205.  
Folder 7        Giraffes, 1914. Subject #309.  
Folder 8        Gnu, 1902. Subject #304.  
Folders 9-11    Goats, 1899-1916. Subject #25.  
Folder 12      Gorillas, 1928-1930. Subject #58A.

Box 75 (cont'd)

- Folder 13 Guinea pigs, 1900-1927. Subject #141.  
Folder 14 Hawks, 1900-1919. Subject #37.  
Folder 15 Hedgehogs, 1902-1907. Subject #284.  
Folder 16 Herons, 1901-1927. Subject #85.

Box 76

- Folder 1 Hyenas, 1902-1919. Subject #272.  
Folder 2 Jays and packrats, 1901-1924. Subject #238.  
Folder 3 Kangaroos, 1899-1928. Subject #174.  
Folders 4-6 Lions, 1900-1929. Subject #27.  
Folder 7 Llamas, 1902-1922. Subject #274.  
Folder 8 Martens, 1901-1920.  
Folders 9-11 Minks, 1901-1918. Subject #176.  
Folder 12 Mongoose, 1901-1929. Subject #242.  
Folders 13-15 Monkeys and apes, 1899-November 1902.  
Subject #58.

Box 77

- Folders 1-9 Monkeys and apes, March 1903-June 1930.  
Subject #58.  
Folders 10-14 Moose, 1900-1920. Subject #30.

Box 78

- Folder 1 Muskoxen, 1901-1904. Subject #168.  
Folder 2 Ocelot, 1902-1904. Subject #306.  
Folder 3 Opossum, 1902-1928. Subject #285.  
Folder 4 Ostriches, 1900-1925. Subject #93.

Box 78 (cont'd)

- Folders 5-9 Otters, 1900-1925. Subject #31.
- Folders 10-14 Owls, 1900-1926. Subject #33.
- Folder 15 Pacas, 1901-1909. Subject #178.
- Folders 16-18 Panthers, cougars, mountain lions, 1901-1907.  
Subject #145.

Box 79

- Folders 1-2 Panthers, cougars, mountain lions, 1909-1924.  
Subject #145.
- Folders 3-8 Parrots, cockatoos, macaws, 1900-1929.  
Subject #45.
- Folders 9-11 Peafowl, 1899-1929. Subject #89.
- Folder 12 Peccaries, 1902. Subject #265.
- Folder 13 Pelicans, 1919-1929. Subject #138.
- Folders 14-15 Pheasants, 1901-1930. Subject #259.
- Folder 16 Pigeons, 1919-1928. Subject #105.
- Folder 17 Porcupines, 1901-1928. Subject #39.
- Folder 18 Prairie dogs, 1900-1918. Subject #83.
- Folder 19 Rabbits and hares, 1901-1927. Subject #292.
- Folder 20 Raccoons, 1899-1927. Subject #13.
- Folder 21 Ravens, 1900-1919. Subject #160.
- Folder 22 Reindeer and caribou, 1912, 1923-1930.  
Subject #20.

Box 80

- Folders 1-4 Sea lions, 1900-1930. Subject #119.
- Folders 5-7 Seals, 1900-1928. Subject #102.

Box 80 (cont'd)

- Folder 8            Seals, Elephant, 1911-1912. Subject #401.
- Folder 9            Sheep, Aoudad, Barbary wild sheep and guanaco, 1901-1930. Subject #136.
- Folders 10-15      Sheep, Rocky Mountain, 1898-November 1900. Subject #3.

Box 81

Sheep, Rocky Mountain, December 1900-1904. Subject #3.

Box 82

- Folders 1-4        Sheep, Rocky Mountain, 1905-1929. Subject #3.
- Folder 5            Skunks, 1900-1915. Subject #22.
- Folders 6-17       Snakes, 1898-November 1905. Subject #55.

Box 83

- Folders 1-9        Snakes, March 1906-1930. Subject #55.
- Folder 10          Solenodons, 1910-1912. No subject number.
- Folders 11-14      Squirrels, 1900-1928. Subject #276.
- Folder 15          Storks, 1902-1907. Subject #276.

Box 84

- Folders 1-2        Swans and cranes, 1900-1927. Subject #23.
- Folder 3            Tapirs, 1923, 1929. Subject #204.
- Folders 4-5        Tortoises, Galapagos, 1900-1928. Subject #131.
- Folder 6            Turkeys, 1900-1923. Subject #19.

Box 84 (cont'd)

- Folders 7-11 Wildcats, bobcats, lynx, catamounts, 1901-1930. Subject #230.
- Folders 12-14 Wolves, timber and gray, and wolverines, 1900-1928. Subject #112.

Box 85

- Folder 1 Wolf, zebra, 1902. Subject #299.
- Folder 2 Yaks, 1900-1916. Subject #148.
- Folders 3-4 Zebras, 1905-1929. Subject #351.
- Folders 5-11 Correspondence regarding the shipment of animals to the NZP. No specific species, 1902, 1921-1930. Subject #57. Folder 11 includes photographs of cages shipped by NZP for the transfer of Kadiak [Kodiak] Island bears, April 1900.

Animals Acquired or Collected  
Arranged Alphabetically by Geographical Origin

Box 85 (cont'd)

- Folders 12-14 Abyssinia, 1903-1907. Subject #323.
- Folders 15-16 Africa, 1901, January-May 1909. Contains material pertaining to the Smithsonian-Theodore Roosevelt Expedition to Africa. Subject #257.

Box 86

- Folders 1-8 Africa, June 1909-1927. Subject #257.
- Folders 9-12 Alaska, 1898-September 1900. Subject #24.

Box 87

- Alaska, October 1900-1930. Subject #24.



Box 88

- Folders 1-4 Canada, 1916-1928. Subject #202.
- Folders 5-6 Cuba, 1900-1915. Subject #61.
- Folders 7-10 Egypt, 1913-1914. Subject #412.
- Folders 11-12 England, 1916. Subject #420. Also contains information regarding animals sent to England.
- Folders 13-15 New Zealand, 1908-1926. Subject #390.
- Folder 16 Panama Canal Zone, 1907-1921. Subject #381.
- Folders 17-18 Philippine Islands, 1900-1901. Subject #63.

Box 89

- Folders 1-2 Philippine Islands, 1902-1926. Subject #63.
- Folder 3 Porto (Puerto) Rico, 1900-1917. Subject #64.
- Folders 4-13 South America, 1900-1916. Subject #116.

Box 90

- Folders 1-3 South America, 1917-1930. Subject #116.
- Folder 4 Sudan, 1901-1926. Subject #234.
- Folders 5-11 Yellowstone National Park, 1890-1894, 1898-1917. Subject #100.

Animals Acquired, Boarding through Gifts

Box 91

- Folders 1-3 Boarding animals, loaning animals to the NZP, animals loaned from the NZP, and animal skins sent to the United States National Museum, 1900-1928. Subject #92.

Box 91 (cont'd)

- Folders 4-6            Gifts to and from the NZP, 1900-1907, 1920-1921. Subject #51.
- Folders 7-11          Gifts sent to the NZP, 1916-1927. Subject #382.

Box 92

- Folders 1-3            Gifts sent to the NZP, 1928-1930. Subject #382.
- Folders 4-5            Animals acquired through the United States Department of Agriculture and other government agencies, 1921-1930. Subject #57A.
- Folder 6                Animals acquired through the United States Department of State, Consular Service members, 1899-1930. Subject #52.
- Folder 7                Animals acquired through the United States Department of State, Consular Service members, 1899-1910. Arranged alphabetically by city, A. Subject #52A.

Box 93

Animals acquired through the United States Department of State, Consular Service members, 1899-1910. Arranged alphabetically by city, A (cont'd) through M. Subject #52A.

Box 94

- Folders 1-6            Animals acquired through the United States Department of State, Consular Service members, 1899-1910. Arranged alphabetically by city, N through W.

Animal Correspondence with Dealers

Box 94 (cont'd)

- Folder 7 Frank S. Armstrong, 1901-1908, Brownsville, Texas. Subject #250.
- Folder 8 William Bartels, 1902, New York City. Subject #278.
- Folder 9 R. C. Bristow, 1902, Farmville, Virginia. Subject #279.
- Folder 10 A. C. Robinson, 1900-1925, San Francisco. Subject #142.

Animal Correspondence

Box 95

Animals removed from the NZP; acknowledgment of specimens received from the NZP by the United States National Museum, 1900-1914, 1918-1930. For similar acknowledgments dating from 1896 through January 23, 1900, see under series 7, Incoming Correspondence, File 7, chiefly under Frederick William True, Charles D. Walcott, George P. Merrill, and Richard Rathbun.

Box 96

- Folder 1 Bound volume listing animals sent to the United States National Museum, 1900-1908
- Folder 2 Bird banding, 1915. Subject #269.
- Folders 3-7 Care and feeding of animals, 1900-1929. Subject #103.
- Folders 8-11 Federal and state laws regarding the capture and shipment of game and birds; destruction of NZP game and birds, 1900-1928. Subject #216.

Box 96 (cont'd)

- Folder 12 Hair and feather samples sent from the NZP, 1901-1902, 1910-1927. Subject #237.
- Folders 13-14 Importation permits and quarantine procedures, 1901-1903. Subject #216.

Box 97

- Folders 1-4 Importation permits and quarantine procedures, 1904-1926. Subject #216.
- Folder 5 Incubation and gestation, 1906, 1915-1929. Subject #48.
- Folders 6-10 Inquiries and replies regarding various animals, 1900-1909. Subject #15.
- Folders 11-15 Inquiries and replies regarding animals in general; animal feed and the NZP, 1918-1930. Subject #78.
- Folders 16-17 Animals in quarantine, 1901-1930. Subject #239.

Box 98

- Folder 1 Taxidermy, 1909-1930. Subject #73.

Animal Research

Box 98 (cont'd)

- Folders 2-10 Autopsy reports, 1901-1930. Subject #233.
- Folder 11 Bait for animal trapping, 1901-1906. Subject #175.
- Folder 12 Birds' eggs, 1912-1926. Subject #407.
- Folder 13 Flight power of birds, April 7-8, 1902. Subject #275.

Box 98 (cont'd)

- Folder 14            Blood specimens for research and temperature recordings of animals, 1904-1915. Subject #344.
- Folder 15            Correspondence regarding dead animals at the NZP wanted by research laboratories and taxidermists, 1916-1929. Subject #419.
- Folder 16            NZP census of buffalo in the United States, Canada, and Europe, February 1902. Subject #4. For additional correspondence pertaining to this census see Animals Acquired: Buffalo, boxes 58-59.

Box 99

- Folders 1-2           Buffalo census, March-August 1902. Subject #4.
- Folders 3-6           Buffalo census, 1905. Subject #4.
- Folders 7-9           Correspondence to and from Frank Baker regarding telephoto cameras, and the flight of various birds including albatrosses, buzzards, gulls, frigates, and condors, 1901-1903. Information pertains to Samuel P. Langley's experiments on the flight of birds. Subject #185.
- Folder 10            Correspondence regarding telephoto cameras in connection with Langley's experiments on buzzard flight, and the setting up of towers for the experiments, 1899-1906. Subject #190.
- Folder 11            Treatment of various animal diseases, 1901-1930. Subject #392.
- Folder 12            Correspondence between the NZP and other zoological parks regarding tuberculosis among animals and park employees, 1905-1915. Subject #362.

Box 100

Frank Baker survey of United States zoological parks, 1901-June 1912. The survey includes information on zoological park facilities and park animal collections. Correspondence to Frank Baker includes requests for information on the maintenance of zoological parks and the care and feeding of animals. Discussions between Baker and correspondents concern the growth and planning of various United States and foreign zoos, dealer prices, and dealer lists. Subject #91.

Box 101

Folders 1-4 Frank Baker survey of United States zoological parks, 1913-1930. Subject #91.

ADMINISTRATIVE RECORDS

Box 101 (cont'd)

Folders 5-6 Correspondence with the American Association of Park Superintendents, 1905-1913. Includes a photograph of the members of the Association, including Frank Baker. Subject #357.

Folder 7 Animals in the NZP collection, their cost and value, 1907-1925. Subject #380.

Folder 8 List of all animals received by the NZP from outside the United States, 1900-1905. Subject #356.

Folder 9 Material regarding the Brighton Aquarium, England, and other aquariums in the United States and Europe, 1867-1900. The folder includes interior and exterior photographs and drawings of the Brighton Aquarium, 1896.

Folders 10-13 Correspondence regarding the Smithsonian Institution Children's Room, 1900-1902. Subject #164.

Box 101 (cont'd)

Folder 14 "Circular in Regard to the Use of the Name of the Smithsonian Institution," 1894. Subject #224.

Box 102

Folders 1-6 Complaints, appreciation, and replies, 1904-1930. Subject #332.

Folders 7-12 General incoming and outgoing correspondence, 1898-1902. Includes questions about animals, recommendations for job appointments, letters of introduction, and materials ordered for the Park. Subject #42.

Box 103

Folders 1-9 General incoming and outgoing correspondence, 1903-1908. Subject #42.

Folders 10-13 Temporary incoming and outgoing correspondence, 1915-1916. Arranged alphabetically, A-E. Subject "T."

Box 104

Folders 1-9 Temporary incoming and outgoing correspondence, 1915-1916. Arranged alphabetically, F-Z. Subject "T."

Folder 10 Dead animals, 1900. Correspondence with Samuel P. Langley regarding mortality statistics of NZP animals. Subject #158.

Folder 11 Senate Committee on the District of Columbia, hearings on the unification of District parks, 1901. Subject #208.



Box 105

- Folders 1-2 Expeditions, 1916-1917. John Alden Loring Expedition to East and South Africa. Includes copies of William T. Hornaday correspondence with Loring forwarded to Frank Baker. Subject #200.
- Folder 3 Exhibits and expositions. Correspondence about wolverines from Alaska and about the American Association of Park Superintendents' exhibit at the Seattle Alaska-Yukon-Pacific Exposition, 1909. Subject #394.
- Folder 4 Exhibits and expositions. Panama-Pacific International Exposition, San Francisco, 1914-1917. Subject #416.
- Folder 5 Exhibits and expositions. Correspondence regarding proposed NZP participation in the Pan-American Exposition, 1901-1902. Subject #145.
- Folders 6-8 Exhibits and expositions. Picture labels for birds, 1903-1930. Correspondence for the years 1903-1905 is in regard to labels made for the Louisiana Purchase Exposition, St. Louis. Subject #322.
- Folders 9-15 Exhibits and expositions. Daily reports on the NZP-government bird exhibit, Louisiana Purchase Exposition, 1904. Reports were written by W. Seward Wallace, head keeper of the aviary. Subject #328.
- Folder 16 Exhibits and expositions. Record book of the NZP exhibit at the Louisiana Purchase Exposition, April-November 14, 1904. The book includes daily journal entries, requisition and supply records, and bird records. Volume one.

Box 106

- Folders 1-3 Exhibits and expositions. Record books of the NZP exhibit at the Louisiana Purchase Exposition, April-November 14, 1904, including daily journal entries, requisition and supply records, and bird records. Volumes two and three.
- Folders 4-11 Exhibits and expositions. Birds purchased for the Louisiana Purchase Exposition and for the NZP, 1901-July 1904. Subject #320.

Box 107

- Folders 1-3 Exhibits and expositions. Birds purchased for the Louisiana Purchase Exposition and for the NZP, August 1904-1919. Subject #320.
- Folder 4 Forms, 1901-1921. Samples of various formats to be used for correspondence. Subject #128.
- Folder 5 Forms used for NZP claims for damages, 1927
- Folder 6 Forms used for sketches completed by NZP investigating officers, 1927
- Folder 7 Forms used for contract proposals and notices, 1921-1927. Includes both contract forms and correspondence regarding contracts. Subject #153.
- Folder 8 Forms used for requisitions, 1926-1927
- Folder 9 Government property belonging to the NZP and correspondence regarding inventory lists of this property, 1906-1917. Subject #358.
- Folder 10 Removal of Indian wigwam from the NZP, 1901. Subject #232.
- Folders 11-13 Correspondence regarding the International Zoological Congress, 1907-1929. Subject #373.
- Folders 14-15 Labels for NZP animals, 1903-1930. Subjects #190 and #192.
- Folder 16 Correspondence regarding labels for the NZP, 1905-1929. Subject #246.

Box 107 (cont'd)

Folder 17 Letters of introduction to and from the NZP, 1901-1929. Subject #197.

Box 108

Daily report of the Mechanical Department, 1914-January 1916

Box 109

Daily report of the Mechanical Department, February 1916-September 1917

Box 110

Folders 1-9 Daily report of the Mechanical Department, October 1917-1918

Folder 10 NZP boundary, land, and titles. Deed of trust belonging to Mrs. Elizabeth Lanier Dunn, 1885. Includes a topographic map by J. A. Flemer, circa 1890's. No subject number.

Folder 11 NZP boundary, land, and titles. Senate document on the condemnation of land for the NZP, 1890. Includes copies of abstracts of land titles, 1891, with preliminary notes of explanation in connection with the abstracts of land titles. No subject number.

Folder 12 NZP boundary, land, and titles. Preliminary notes in regard to titles and abstracts of land information within the proposed National Zoological Park, circa 1890. No subject number.

Folder 13 NZP boundary, land, and titles. Abstracts of title for land belonging to James L. Kervand, 1890, Pacificus Ord, 1890, Thomas E. Waggam and John Ridout, 1890. Also includes metes and bounds of land belonging to J. P. Klinge, circa 1890, and Woodley Park, circa 1890. Contains inspection declaration for the Evans land, 1890. No subject number.

Box 110 (cont'd)

- Folder 14            NZP boundary, land, and titles. Correspondence regarding NZP acquisition of additional land owned by the Colored Union Benevolent Association, 1890-1926. Subject #308.
- Folder 15            NZP boundary, land, and titles. Correspondence regarding acquisition of NZP land, 1895-1922. Includes the firm of Olmsted, Olmsted and Eliot's location map of proposed site, 1895, and a map documenting the transfer of property at Meridian Hill, 1898. Subject #211.
- Folder 16            NZP boundary, land, and titles. Correspondence pertaining to NZP road building, and road and boundary changes, 1897-1903. Includes one map, undated, and two maps of a proposed plan for straightening the park road, Inglesede, 1901. There is also a plat, 1902. Subject #229.
- Folder 17            NZP boundary, land, and titles. Includes survey of the land and boundary changes, 1898-1904, and a letter from Frederick Law Olmsted, Jr., October 9, 1903, regarding the layout of newly acquired land. Subject #154.

Box 111

- Folders 1-4            NZP boundary, land, and titles. Correspondence and blueprints regarding the acquisition of land for the NZP, 1906-1930. Subject #154.
- Folder 5            NZP boundary, land, and titles. Abstract of title and other relative material concerning the property of Anna E. Von Hemert, 1920-1921. Includes a plat of survey, 1920. No subject number.
- Folder 6            NZP boundary, land, and titles. Contains a deed belonging to Ralph D. Quinter and Vernon E. West, and relevant material, 1920-1921. Includes a plat survey map, 1920. No subject number.

Box 111 (cont'd)

- Folder 7 NZP boundary, land, and titles. Contains documents and correspondence pertaining to the acquisition of lots 472-473, "Lanier Heights," 1921-1924. No subject number.
- Folder 8 NZP boundary, land, and titles. Contains a note with a list of papers of NZP land purchases sent to the Chief Clerk, Smithsonian, 1922, for deposit in the Smithsonian safe. No subject number.
- Folders 9-12 NZP gardens. General correspondence, circa 1894-1895, 1900-July 1903. Subject #49.

Box 112

NZP gardens. General correspondence, September 1903-1929. Subject #49.

Box 113

- Folder 1 NZP improvements. Memoranda taken from Langley's suggestions for park improvements and questions regarding the various functions of the NZP, 1900-1902. Subject #171.
- Folder 2 NZP improvements. Correspondence between Superintendent Frank Baker and Smithsonian Assistant Secretary Frederick William True regarding NZP improvements, 1912-1914. Subject #405.
- Folder 3 NZP improvements. Correspondence between Frank Baker, Secretary Charles D. Walcott, Frederick William True, and Harry W. Dorsey regarding NZP improvements, 1912-1916. Subject #406.
- Folder 4 NZP statement of operations, 1922, and undated. Also contains correspondence regarding camels, 1930. Subject #72.
- Folders 5-15 NZP correspondence pertaining to information about photographing animals, photographs taken by NZP staff, taking photographs at the NZP, and camera equipment, 1900-1910. Subject #66.

Box 114

- Folders 1-7 NZP correspondence pertaining to the photographing of animals, 1911-1930. Subject #66. Folder 2 also contains photographs of the Kalorama neighborhood, circa 1913.
- Folder 8 NZP and other zoological parks. Correspondence regarding the establishment of a large animal preserve in Alaska, 1900-1901. Subject #114.
- Folders 9-13 NZP and other zoological parks. Animal price lists, dealer price lists and zoological parks, 1910-1928. Subject #400.

Box 115

- Folders 1-2 NZP and other zoological parks. Animal price lists, 1929-1930. Subject #400.
- Folder 3 NZP and other zoological parks. Authorization and requests for inspecting other zoological parks and correspondence regarding the trips made, 1900-1908, 1921. Subject #161.
- Folders 4-5 NZP and other zoological parks. Game preserves, 1901-1912. Subject #213.
- Folder 6 NZP and other zoological parks. General exchange of information with other zoological parks, 1908, 1912-1920. Includes ground plans of the St. Louis Zoo, 1919. Subject #388.
- Folder 7 NZP and other zoological parks. List of public and private parks in the United States and Canada, and a list of bird dealers in the United States and Canada. Compiled by Boyd's City Dispatch, 1903. Subject #319.
- Folder 8 NZP and other zoological parks. Correspondence regarding maps, plans, and blueprints, 1897-1930. Includes an NZP map. Also, New York Zoological Park map, 1904, and a list of Olmsted's plans, 1912. Subject #192.

Box 115 (cont'd)

- Folder 9           NZP and other zoological parks. Correspondence pertaining to the New York Zoological Park, 1895, 1899-1912. Includes reprints on the New York Zoological Park, and articles by William Temple Hornaday, "Fighting Among Wild Animals," 1901, and "The New York Zoological Park," 1900. Subject #182.
- Folder 10           NZP and other zoological parks. Questions and answers regarding the NZP and other zoological parks, 1910, 1918-1930. 1910 material includes correspondence and statistics on the number of wild Bovidae in various zoological parks. Subject #399.
- Folder 11           Frederick Law Olmsted, Jr., correspondence, 1902. Includes excerpts from his opinions on European zoological parks after visiting them. Subject #298.
- Folder 12           Patents granted to NZP employees, 1907. Subject #378.
- Folders 13-14       Park concessions, 1891-1920. Subject #180.

Box 116

- Folders 1-3         Park concessions, 1921-1930. Subject #180.
- Folders 4-7         President's Commission on Economy and Efficiency, Committee on Business Methods, 1907-1929. The Committee was replaced by the Bureau of Efficiency, 1923-1929. Subject #373.
- Folder 8           Police. Park police correspondence pertaining to assaults and thefts, 1909-1929. Subject #364.
- Folders 9-10        Police. Daily report of Sergeant of the Watch, August-September 1911. Subject #339.



Box 117

Police. Daily report of Sergeant of the Watch, October 1911-February 1913. Subject #339.

Box 118

Police. Daily report of Sergeant of the Watch, March-October 1913, January-October 1916. Subject #339.

Box 119

Folders 1-8 Police. Daily report of Sergeant of the Watch, November 1916-1917. Subject #339.

Folder 9 Police. Correspondence mostly regarding visitor control on Easter morning and July 4th, 1924-1929. Subject #411.

Folder 10 Police. United States National Museum, "Regulations Governing Watch Force," circa 1928, one volume. Volume missing as of October 1984.

Folders 11-17 Publications, reports, and articles, 1901-1907. Includes information from the NZP annual report, correspondence regarding annual report requirements, animal accession lists for the report, appendices, and NZP maps. Subject #79.

Box 120

Folders 1-9 Publications, reports, and articles, 1908-1930. Subject #79.

Folder 10 Publications, reports, and articles. NZP guide correspondence, 1902-1927. Includes one guide, undated, and a second guide, 1902. Subject #223.

Folders 11-13 Publications, reports, and articles. Requests for NZP publications, 1894-1902. Includes NZP requests for journal articles, monographs, books, and publication lists. Subject #74.

Box 121

- Folders 1-8      Publications, reports, and articles. Requests for NZP publications, 1903-1930. Subject #74.
- Folders 9-14     Publications, reports, and articles. Requests made to the NZP for copies of its annual reports, 1900-1908. Includes other requests to the NZP for material regarding animals in the NZP and other zoological parks. Subject #18.
- Folder 15        Publications, reports, and articles. Lists containing names of those who received the NZP annual report, 1892-1897. No subject number.
- Folder 16        Publications, reports, and articles. Smithsonian Institution, "Animals Desired for the National Zoological Park, 1899." No subject number.

Box 122

- Folders 1-2      Publications, reports, and articles. Correspondence regarding magazine and newspaper articles concerning the NZP, 1900-1927. Includes an article on foreign animals bred in the NZP and four reprints of articles on the NZP, 1900-1906. Subject #80.
- Folders 3-4      Publications, reports, and articles. Printing and binding, 1906-1930. Subject #181.
- Folder 5         Recommendations made for a director of the Milwaukee Zoological Gardens, and a superintendent for the Memphis Zoological Gardens, 1917-1928. Subject #36.
- Folder 6         NZP roads. Closing of roads and restrictions on automobile traffic, 1905-1915. Subject #352.
- Folder 7         NZP roads. Permits to use automobiles on NZP grounds, 1906-1928. Subject #369.



Theodore Roosevelt embarking on the Smithsonian-Roosevelt African Expedition, 1909. Captured animals were shipped to NZP.





Early twentieth-century visitors to the Zoo.



Easter Monday at the Zoo, circa 1910.







Exterior of old shops, pre-1911.





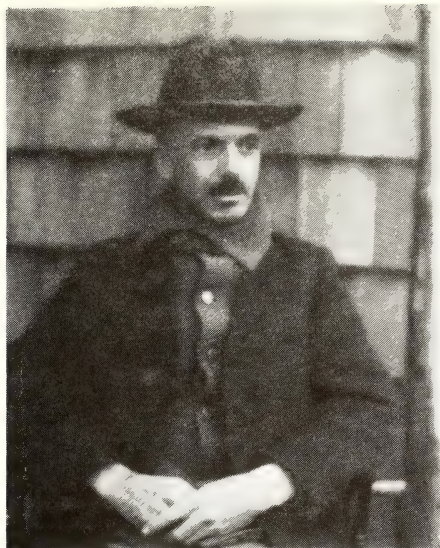


View of Holt House, 1896, used by the NZP as an administrative building. Courtesy of the National Park Service, Frederick Law Olmsted National Historic Site.



Building a stone bridge, 1913.





Left, Ned Hollister,  
third Superintendent  
of NZP, 1916-1924, at  
Plummer's Island.



Alexander Wetmore, fourth Superintendent,  
November 1924-April 1925. Wetmore served  
as sixth Secretary of the Smithsonian,  
1945-1952.



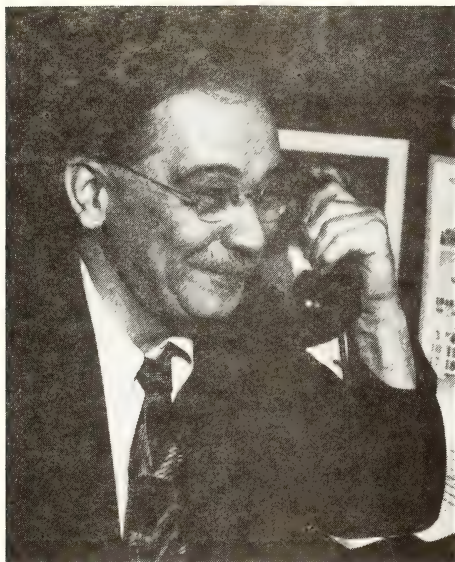




Easter Monday at NZP, 1919.







William M. Mann, fifth Superintendent, May 1925-1926, and Director, 1926-1956.



Aerial view of the Park from the top of the flagpole, May 1925.



Box 122 (cont'd)

- Folder 8 NZP roads. Snow removal, 1901-1922. Subject #183.
- Folder 9 Skating at the NZP, 1910-1914. Subject #395.
- Folder 10 Storeroom regulations, 1906-1913. Subject #363.
- Folder 11 Tennis courts and baseball diamond at the NZP and requests for their use, 1913-1926. Also contains requests for the use of Rock Creek for swimming. Subject #415.
- Folders 12-13 Transportation. Correspondence regarding licenses and veterinarian approval of NZP horses, 1900-1933. Subject #108.
- Folders 14-15 Transportation. Transportation and travel orders, 1905-1929. Subject #77.

Box 123

- Folder 1 Uniforms, circa 1925-1929. Subject #367.

BUILDINGS AND GROUNDS

Box 123 (cont'd)

- Folder 2 Adams Mill Road, 1915-1916. Subject #417.
- Folder 3 Animal enclosures, 1904-1908, 1927. Subject #345.
- Folders 4-11 Fencing for animal enclosures, 1900-1916. Subject #32.

Box 124

- Folders 1-2 Fencing for animal enclosures, 1917-1929. Subject #32.
- Folders 3-5 Boundary fence, 1900, 1902, 1914-1917, 1930. Subject #6.

Box 124 (cont'd)

- Folder 6 Building specifications, 1902-1907. Subject #268.
- Folders 7-8 Cage construction, bids and contracts, 1900-June 1928. Subject #53.

Box 125

- Folders 1-3 Cage construction, bids and contracts, July 1928-1929. Subject #53.
- Folders 4-5 Cage construction, bids and contracts, 1915-1918, 1921. Subject #220.
- Folder 6 Grading of Cathedral Avenue, 1898-1903. Subject #36.
- Folders 7-10 Furnishing and restoration of the Administration Building (Holt House), 1890, 1899-September 1901. Subject #75.

Box 126

- Folders 1-3 Furnishing and restoration of the Administration Building (Holt House), October 1901-1922. Subject #75.
- Folders 4-9 Construction. Animal house, 1891, 1902-April 1905. Includes bids, contracts, and general correspondence. Subject #307.

Box 127

- Folders 1-4 Construction. Animal house, May 1905-1906, 1910. Subject #307.
- Folder 5 Construction. Antelope house, 1902, 1909. Subject #214.
- Folders 6-7 Construction. The aviary, 1900-1904, 1910-1928. Includes sketches. Subjects #98 and #42.
- Folder 8 Construction. Bear cages, 1902-1911. Subject #273.

Box 127 (cont'd)

- Folder 9 Construction. Park benches, 1904-1928. Subject #330.
- Folder 10 Construction. Dam, lake, and pathways, 1902-1909. Subject #248.
- Folder 11 Construction. Boiler house, 1901, 1911. Subject #249.
- Folder 12 Construction. Repair of curbing, 1904. Subject #346.
- Folder 13 Construction. Eagle cage, 1902. Subject #280.
- Folder 14 Construction. Masonry work for a bridge located at the NZP, 1891. Includes blueprint. No subject number.

Box 128

- Folders 1-3 Construction. Elephant house, 1899-1909. Includes site plan of the house and copy drawings of German zoological park buildings. Subject #126.
- Folder 4 Construction. Entranceways to the NZP, 1902-1903, 1912, 1915. Subject #286.
- Folders 5-7 Construction. Flight cages, 1901-1929. Subject #162.
- Folder 8 Construction. Food house, 1912-1915. Includes drawings of the house. Subject #410.
- Folder 9 Construction. Fords, 1899-1902, 1926. Includes drawings. Subject #68.
- Folder 10 Construction. Cost and valuation sheets, 1900-1902, 1908-1918, 1925-1930. Subject #244.
- Folders 11-12 Construction. General, 1900-October 1904. Includes drawings. Subject #318.

Box 129

- Folders 1-6 Construction. General, November 1904-1929. Subject #318.
- Folders 7-8 Construction. Hospital, 1903-1908, 1915-1919. Subject #227. Includes drawings.
- Folder 9 Construction. Lion house, 1910-1913. Subject #291.
- Folders 10-13 Construction. Log bridge, 1900-1922. Includes drawings. Subject #12.
- Folder 14 Construction. Parrot cage, 1912-1917. Includes drawings. Subject #408.
- Folder 15 Construction. General repair work to be done, 1906-1912. Subject #348.

Box 130

- Folder 1 Construction. Underground restrooms, 1910. Subject #396.
- Folders 2-9 Construction. Roads, 1894-1928. Subject #210.
- Folders 10-11 Construction. Rock Creek bridge, 1912-1916. Subject #409.

Box 131

- Folder 1 Construction. Sea lion pool, 1907-1909. Subject #47.
- Folders 2-3 Construction. Sewer, 1906-1929. Includes drawings. Subject #212.
- Folders 4-5 Construction. Sundial, 1901-1903. Includes drawings. Subject #173.
- Folder 6 Construction. Water main, 1925. Subject #144.
- Folders 7-9 Construction. Acquisition of water pumps, 1903-1930. Subject #324.

Box 131 (cont'd)

- Folder 10 Correspondence regarding disinfectant for indoor and outdoor paddocks and cages, 1901-1918. Subject #245.
- Folder 11 Pamphlets and correspondence regarding machine parts and repairs, 1912-1929. Subject #194.
- Folders 12-13 Rat and roach extermination, 1901-1925. Subject #315.

Box 132

- Folder 1 Rat and roach extermination, 1927-1929. Subject #315.
- Folder 2 Correspondence regarding roofing, 1904-1927. Subject #15.
- Folders 3-4 Samples of building materials sent to the United States Geological Survey, United States Department of Agriculture, and the United States Commerce Department, Bureau of Standards, 1909, 1930. Subject #40.

FINANCIAL AND SUPPLY RECORDS

Box 132 (cont'd)

- Folders 5-6 Appropriations. Hearings of the House of Representatives on appropriations for the NZP, 1897-1919. No subject number.
- Folder 7 Memoranda, notes, and reports regarding appropriations for the NZP, 1890-1892. No subject number.
- Folder 8 Appropriation abstracts. Appropriations for the entrance and driveway to the NZP, 1900-1901. Subject #186.
- Folders 9-10 Budget estimates, 1898-1904. Subject #70.



Box 133

Budget estimates, 1905-1923. Subject #70.

Box 134

Folders 1-2 Budget estimates, 1924-1930. Subject #70.

Folders 3-5 Budget estimates, 1902-1926. Subject #309.

Folders 6-7 Budget. Monthly statement of expenditures, 1900-1902. Subject #47.

Box 135

Folders 1-3 Budget. Monthly statement of expenditures, 1903-1907. Subject #47.

Folders 4-11 Bureau of the Budget numbered circulars and bulletins, 1921-1930. Includes estimated expenditures and shipping costs. Subject #99, #99A, #99B, and #99C.

Box 136

Folders 1-7 Condemnation of property at the NZP, 1895, 1897, 1900-1930. Subject #166.

Folders 8-11 Construction supplies, 1901-1927. Subject #305.

Box 137

Contracts, 1891-1920. Subject #44.

Box 138

Folder 1 Contracts, 1921-1929. Subject #44.

Folder 2 Deficiency appropriations, 1892-1894. Subject #222.

Folders 3-4 Schedule of disbursements, 1928-1930. Subject #1.

Box 138 (cont'd)

- Folder 5 Disbursement statements, 1901-1922. Subject #370.
- Folder 6 Classified statement of expenditures, 1906-1914. Subject #402.
- Folders 7-11 Assortment of animal food for the NZP, 1901-1930. Subject #193.
- Folders 12-13 Bone food for the NZP, 1913-1917. Subject #329.
- Folder 14 Park reserve fund, 1905-1906. Subject #130.
- Folder 15 Proposals and requests for NZP supplies, 1906-1920. Subject #9.

Box 139

- Folders 1-8 Proposals for supplies to the NZP, 1913-1921. Subject #151.
- Folder 9 Quarterly financial statement, 1930. Subject #113.
- Folder 10 Vouchers and receipts, 1892-1898, 1906-1907. Subject #43.

PERSONNEL RECORDS

Box 140

Annuity fund deduction cards, 1920-1931

Box 141

- Folders 1-3 Appointment notifications to prospective employees, and personnel compensation, 1920-1929. Subject #115.
- Folder 4 Regular and acting appointment correspondence, 1901-1917. Subject #137.

Box 141 (cont'd)

- Folders 5-7 Civil Service Commission correspondence regarding certification of prospective employees, 1926-1930. Subject #117A.
- Folder 8 Civil Service employee material, 1916-1930. Includes retirement correspondence and material from the Federal Employees Union. Subject #418.
- Folder 9 Claims against employees working at the NZP, 1900-1928. Subject #268.
- Folders 10-12 Monthly classification changes and notifications, 1900-1907. Subject #56.

Box 142

- Folders 1-7 Monthly classification changes and notifications, 1908-1930. Subject #56.
- Folder 8 Compensation for injuries, 1908. Subject #225.
- Folders 9-12 Complaints, discharges, and resignations, 1901-1911, 1914-1930. Subject #129.

Box 143

- Folder 1 Contributions to charitable organizations made by NZP employees, 1900-1912. Subject #67.
- Folder 2 Eight-hour law and the suspension of same, 1913-1918. Subject #413.
- Folders 3-11 Requests for employment, 1891-1910. Subject #11.

Box 144

- Folder 1 Requests for employment, 1916-1928. Subject #11.
- Folders 2-7 General correspondence, 1898, 1902-1907. Subject #117.

Box 145

General correspondence, 1908-1917. Subject #117.

Box 146

Folders 1-4 General correspondence, 1918-1925. Subject #117.

Folders 5-6 General orders. Pertains mostly to permission for holiday leave and leave for portions of the day, 1900-1930. Subject #76.

Folders 7-8 Hiring, 1925-1930. Subject #118.

Folder 9 Income tax returns for NZP employees, 1919-1921. Subject #65.

Folders 10-11 Correspondence regarding laborers, 1902-1905. Subject #293.

Box 147

Folder 1 Record of leave, 1908-1911. One volume. No subject number.

Folder 2 Correspondence granting sick and annual leave, 1908-1911. One volume. Indexed. No subject number.

Folder 3 Notary Public appointments for the NZP, 1906-1923. Subject #360.

Folder 4 Oaths of office, 1902-1924. Subject #295.

Folders 5-6 Pay increase requests and job efficiency ratings, 1903-1922. Subject #228.

Folder 7 Personal injury reports, 1920, 1926. Subject #334.

Box 148

Folders 1-3 Personnel job position descriptions, 1919-1929. Subject #152.

Box 148 (cont'd)

- Folders 4-6 Personnel lists and information pertaining to same, 1895-1926. Subject #7.
- Folders 7-9 Police force appointments and reappointments, 1889-1922. Also includes receipts for equipment issued. Subject #263.

Box 149

- Folders 1-2 Police force appointments and reappointments, 1923-1929. Subject #263.
- Folder 3 Political assessments and partisan activity of officeholders, 1902-1920. Subject #300.
- Folders 4-9 Promotion and notification of job changes, 1899-1907. Subject #38.

Box 150

- Folders 1-4 Promotion and notification of job changes, 1908-1930. Subject #38.
- Folders 5-7 Recommendations for personnel going to other jobs, 1900-1929. Also includes licenses and advice on animal dealers. Subject #69.
- Folder 8 Reprimands and requests for explanation of action, 1902-1916, 1926-1928. Subject #376.
- Folder 9 Retirement record cards, 1890-1930. Contains salary and job position changes of some of the earliest NZP staff employees, including Arthur Baker and William Blackburne. No subject number.
- Folder 10 Retirement and disability fund records, 1920-1930
- Folder 11 Retirement and disability fund correspondence, 1925-1930
- Folder 12 Salary reports, 1901-1921. Subject #385.
- Folder 13 Age certificates and work permits for minors, 1896-1921. Subject #391.

PERSONAL CORRESPONDENCE

Box 150 (cont'd)

Folder 14 Frank Baker and Ned Hollister, 1912-1916: correspondence with directors of zoological parks, museums, and other scientific organizations on research matters, personal references, and general topics. Subject #404.

Box 151

Folder 1 Ned Hollister and William Mann, 1917-1926. Subject #404.

Folders 2-3 Ned Hollister papers, 1902-1925. No subject number.

Folder 4 Ned Hollister papers, 1916-1925. Subject #420.

Folder 5 Ned Hollister, bound volume containing measurements of specimens taken from British East Africa and correspondence probably relating to Hollister's planned publication on East African mammals, 1916-1917. No subject number.

A NUMERICAL KEY TO SUBJECT CATEGORIES FOR USE  
WITH OUTGOING CORRESPONDENCE, SERIES 6-11

Subject "T" Temporary correspondence, A-Z, 1915-1916. Boxes 103-104.

Subject #1 Schedule of disbursements, 1928-1930. Box 138.

Subject #2 California condors, 1900-1928. Box 59.

Subject #3 Rocky Mountain sheep, circa 1898-1929. Boxes 80-82.

Subject #4 Buffalo, 1899-1929. Boxes 58-59, 98-99.

NUMERICAL SUBJECT KEY (cont'd)

- Subject #4           NZIP buffalo census, 1902, 1905. Boxes 98-99.
- Subject #5           Aquarium, 1899-1930. Boxes 55-56.
- Subject #6           Boundary fence, 1900, 1902, 1914-1917, 1930.  
Box 124.
- Subject #7           Personnel lists, 1895-1926. Box 148.
- Subject #8           Polar bears, 1900-1924. Box 57.
- Subject #9           Proposals and requests for NZP supplies,  
1906-1920. Box 138.
- Subject #10          Acknowledgements of specimens received by the  
United States National Museum, 1900-1930.  
Box 95.
- Subject #11          Requests for employment, 1891-1928. Boxes  
143-144.
- Subject #12          Log bridge construction, 1900-1922. Box 129.
- Subject #13          Raccoons, 1899-1927. Box 79.
- Subject #15          Inquiries and replies regarding various  
animals, 1900-1909. Box 97.
- Subject #15          Roofing, 1904-1927. Box 132.
- Subject #17          Antelope, 1900-1928. Box 55.
- Subject #18          Chamois, 1909-1930. Box 59.
- Subject #18          Requests to the NZP for its annual reports,  
1900-1908. Box 121.
- Subject #19          Turkeys, 1900-1923. Box 84.
- Subject #20          Reindeer and caribou, 1912, 1923-1930. Box  
79.
- Subject #21          Bald and golden eagles, 1899-1930. Boxes 56-  
57.



NUMERICAL SUBJECT KEY (cont'd)

- Subject #22 Skunks, 1900-1915. Box 84.
- Subject #23 Swans and cranes, 1900-1927. Box 84.
- Subject #24 Animals collected from Alaska, 1898-1930. Boxes 86-87.
- Subject #25 Goats, 1899-1916. Box 75.
- Subject #26 Blue foxes, 1899-1917. Box 62.
- Subject #27 Lions, 1900-1929. Box 76.
- Subject #28 Dogs, 1899-1924. Box 60.
- Subject #29 Bears, 1900-1930. Box 57.
- Subject #30 Moose, 1900-1920. Box 77.
- Subject #31 Otters, 1900-1925. Box 78.
- Subject #32 Fencing for animal enclosures, 1900-1929. Boxes 123-124.
- Subject #33 Owls, 1900-1926. Box 78.
- Subject #34 Alligators, caimans, crocodiles, 1900-1930. Box 55.
- Subject #35 Elk, 1900-1928. Box 61.
- Subject #36 Grading of Cathedral Avenue, 1898-1903. Box 125.
- Subject #36 Recommendations for a director of the Milwaukee Zoological Gardens and superintendent for the Memphis Zoological Gardens, 1917-1928. Box 122.
- Subject #37 Hawks, 1900-1919. Box 75.
- Subject #38 Promotions and notifications of job changes, 1899-1930. Boxes 149-150.
- Subject #39 Porcupines, 1901-1928. Box 79.

NUMERICAL SUBJECT KEY (con't)

- Subject #40 Samples of building materials sent to the United States Geological Survey, United States Department of Agriculture and the United States Commerce Department, Bureau of Standards, 1909-1930.
- Subject #41 Virginia deer, 1899-1929. Box 60.
- Subject #42 General correspondence regarding questions on animals, recommendations for job appointments, letters of introduction, and materials ordered, 1898-1909. Boxes 102-103.
- Subject #43 Vouchers, 1892-1898, 1906-1907. Box 139.
- Subject #44 Financial and supply contracts, 1891-1929. Boxes 137-138.
- Subject #45 Parrots, cockatoos, macaws, 1900-1929. Box 79.
- Subject #46 Red foxes, 1900-1910. Box 62.
- Subject #47 Budget, monthly statements of expenditures, 1900-1907. Boxes 134-135.
- Subject #47 Sea lion pool construction, 1907-1909. Box 131.
- Subject #48 Incubation and gestation, 1906, 1915-1929. Box 97.
- Subject #49 NZP gardens, circa 1894-1929. Boxes 111-112.
- Subject #50 Animals acquired, general, 1898-1930. Boxes 62-75.
- Subject #51 Gifts to and from the NZP, 1900-1907, 1920-1921. Box 91.
- Subject #52 Animals acquired through the United States Department of State, consular service members, 1899-1930. Box 92.

NUMERICAL SUBJECT KEY (cont'd)

- Subject #52A      Animals acquired through the United States Department of State, consular service members. Arranged by city of origin, A-W, 1899-1910. Boxes 92-94.
- Subject #53      Bids and contracts for cage construction, 1900-1929. Boxes 124-125.
- Subject #55      Snakes, 1898-1930. Boxes 82-83.
- Subject #56      Personnel, monthly classification changes and notifications. Boxes 141-142.
- Subject #57      Shipments of animals to the NZP, no specific species, 1902, 1921-1930. Box 85.
- Subject #57A      Animals acquired through the United States Department of Agriculture and other government agencies, 1921-1930. Box 92.
- Subject #58      Monkeys and apes, 1899-1930. Boxes 76-77.
- Subject #58A      Gorillas, 1928-1930. Box 75.
- Subject #60      Elephants, 1900-1930. Box 61.
- Subject #61      Animals collected from Cuba, 1900-1915. Box 88.
- Subject #62      Flamingos, 1900-1909. Box 62.
- Subject #63      Animals collected from the Philippine Islands, 1900-1926. Boxes 88-89.
- Subject #64      Animals collected from Puerto Rico, 1900-1917. Box 89.
- Subject #65      Income tax returns for NZP employees, 1919-1921. Box 146.
- Subject #66      Correspondence regarding photographs of NZP animals, 1900-1930. Boxes 113-114.
- Subject #67      Contributions to different organizations made by NZP employees, 1900-1912. Box 143.

NUMERICAL SUBJECT KEY (cont'd)

- Subject #68 Construction of fords, 1899-1902, 1926. Box 128.
- Subject #69 Recommendations for personnel going to other jobs, 1900-1929. Box 150.
- Subject #70 Budget estimates, 1898-1930. Boxes 132-134.
- Subject #72 Statement of NZP operations, 1922, and undated. Box 113.
- Subject #73 Taxidermy, 1909-1930. Box 98.
- Subject #74 Requests for NZP publications and NZP requests for journal articles, monographs, books, 1894-1930. Boxes 120-121.
- Subject #75 Furnishing and restoration of the administrative building (Holt House), 1890, 1899-1922. Boxes 125-126.
- Subject #76 General orders, permission for leave, 1900-1930. Box 146.
- Subject #77 Transportation and travel orders, 1905-1929. Box 122.
- Subject #78 Inquiries and replies regarding animals in general, 1918-1930. Box 97.
- Subject #79 NZP annual report material, 1900-1930. Boxes 119-120.
- Subject #80 Correspondence regarding magazine and newspaper articles concerning the NZP, 1900-1927. Box 122.
- Subject #83 Prairie dogs, 1900-1918. Box 79.
- Subject #85 Herons, 1901-1927. Box 75.
- Subject #87 Grizzly bears, 1902-1919. Box 57.
- Subject #89 Peafowl, 1899-1929. Box 79.

NUMERICAL SUBJECT KEY (cont'd)

- Subject #91      A survey of U. S. and foreign zoological parks by Frank Baker, 1901-1930. Boxes 100-101.
- Subject #92      Boarding animals and loaning animals to the NZP, loaning animals from the NZP, and information about animal skins sent from the NZP to the USNM, 1900-1928. Box 91.
- Subject #93      Ostriches, 1900-1905. Box 78.
- Subject #94      Animals acquired, general correspondence, 1900-1928. Box 62.
- Subject #98      Construction of the aviary, 1900-1904, 1910-1928. Box 127.
- Subject #99,  
#99A, #99B,  
#99C              Bureau of the Budget, 1921-1930. Box 135.
- Subject #100     Animals collected from Yellowstone National Park, 1890-1894, 1898-1917. Box 90.
- Subject #101     Federal and state laws regarding the capture and shipment of animals and birds, 1900-1928. Box 96.
- Subject #102     Seals, 1900-1928. Box 80.
- Subject #103     Care and feeding of animals, 1900-1929. Box 96.
- Subject #105     Pigeons, 1919-1928. Box 79.
- Subject #108     Correspondence regarding licenses and veterinarian approval of NZP horses, 1900-1933. Box 122.
- Subject #109     Ducks, 1900-1926. Box 56.
- Subject #112     Timber and grey wolves and wolverines, 1900-1928. Box 84.

NUMERICAL SUBJECT KEY (cont'd)

- Subject #113      Quarterly financial statement, 1930.    Box 139.
- Subject #114      Correspondence regarding the establishment of a large animal preserve in Alaska, 1900-1901. Box 114.
- Subject #115      Appointment notifications to prospective employees and information about personnel compensation, 1920-1929. Box 141.
- Subject #116      Animals collected from South America, 1900-1930. Boxes 89-90.
- Subject #117      General correspondence, 1898, 1902-1925. Boxes 144-146.
- Subject #117A     Civil Service Commission correspondence regarding certification of prospective employees, 1926-1930. Box 141.
- Subject #118      Hiring, 1925-1930. Box 146.
- Subject #119      Sea lions, 1900-1930. Box 80.
- Subject #125      NZP proposed participation in the Pan-American Exposition, 1901-1902. Box 105.
- Subject #126      Elephant house construction, 1899-1909. Box 128.
- Subject #128      Forms to be used in correspondence, 1901-1928. Box 107.
- Subject #129      Complaints, discharges, and resignations, 1901-1911, 1914-1930. Box 142.
- Subject #130      Park reserve fund, 1905-1906. Box 138.
- Subject #131      Galapagos tortoises, 1900-1928. Box 84.
- Subject #136      Aoudad and Barbary wild sheep, and guanaco, 1901-1930. Box 80.

NUMERICAL SUBJECT KEY (cont'd)

- Subject #137 Regular and acting appointment correspondence, 1901-1917. Box 141.
- Subject #138 Pelicans, 1919-1929. Box 79.
- Subject #140 Squirrels, 1900-1928. Box 83.
- Subject #141 Guinea pigs, 1900-1927. Box 75.
- Subject #142 Dealers, A. C. Robinson, 1900-1935. Box 94.
- Subject #143 Sandhill cranes, 1902-1919. Box 60.
- Subject #144 Water main construction, 1925. Box 131.
- Subject #145 Panthers, cougars, and mountain lions, 1901-1924. Boxes 78-79.
- Subject #147 Beavers, 1919-1925. Box 57.
- Subject #148 Yaks, 1900-1916. Box 85.
- Subject #149 Mule deer. Box 60.
- Subject #150 Gila monsters, 1900-1925. Box 75.
- Subject #151 Proposals for supplies to the NZP, 1913-1921. Box 139.
- Subject #152 Personnel job position descriptions, 1919-1929. Box 148.
- Subject #153 Forms for contract proposals and notices, 1921-1927. Box 107.
- Subject #154 Correspondence and blueprints regarding acquisition of NZP land, surveys and boundary changes, 1898-1930. Boxes 110-111.
- Subject #158 Correspondence with Samuel P. Langley regarding record keeping about NZP animals, 1900. Box 104.
- Subject #160 Ravens, 1900-1919. Box 79.



NUMERICAL SUBJECT KEY (cont'd)

- Subject #161      Requests, permission, and correspondence regarding the inspection of other zoological parks, 1900-1908, 1921. Box 115.
- Subject #162      Construction of the flight cages, 1901-1929. Box 128.
- Subject #164      Smithsonian Institution Children's Room, 1900-1902. Box 101.
- Subject #166      Condemnation of property at the NZP, 1895, 1897, 1900-1930. Box 136.
- Subject #167      Badgers, 1900-1918. Box 57.
- Subject #168      Muskoxen, 1901-1904. Box 78.
- Subject #169      Sitka deer, 1926-1928. Box 60.
- Subject #171      Memoranda based on Langley's suggestions for park improvements, 1900-1902. Box 113.
- Subject #173      Construction of the sundial, 1901-1903. Box 131.
- Subject #174      Kangaroos, 1899-1928. Box 76.
- Subject #175      Bait for animal trapping, 1901-1906. Box 98.
- Subject #176      Mink, 1901-1918. Box 76.
- Subject #178      Pacas, 1901-1909. Box 78.
- Subject #180      Park concessions, 1891-1930. Boxes 115-116.
- Subject #181      Printing and binding, 1906-1930. Box 122.
- Subject #182      Material and correspondence regarding the New York Zoological Park, 1895, 1899-1912. Box 115.
- Subject #183      Snow removal on NZP roads, 1901-1922. Box 122.

NUMERICAL SUBJECT KEY (cont'd)

- Subject #185      Telephoto cameras; flight of buzzards; flying gulls and collection of birds for Langley's studies of bird flight, 1901-1903; also turkey buzzards and vultures, 1908-1924. Box 99.
- Subject #186      Appropriation abstracts regarding the entrance and driveway to the NZP, 1900-1901. Box 132.
- Subject #190      Telephoto camera correspondence relating to Langley's flying experiments, 1899-1906. Box 99.
- Subject #190      Labels for NZP animals, 1903-1930. Box 107.
- Subject #192      Correspondence regarding maps and plans of the NZP, 1897-1930. Box 115.
- Subject #193      Assortment of animal food for the NZP, 1901-1930. Box 138.
- Subject #194      Pamphlets and correspondence regarding machine parts and repairs, 1912-1929. Box 131.
- Subject #195      Wild boars, 1901-1911. Box 58.
- Subject #197      Letters of introduction to and from the NZP, 1901-1929. Box 107.
- Subject #198      Beaver, otter, sable, fox, 1901-1922. Box 57.
- Subject #199      Hearings of the House of Representatives on appropriations for the NZP, 1897-1919. Box 132.
- Subject #200      Loring Expedition to East and South Africa, 1916-1917. Box 105.
- Subject #201      Sambur deer, 1901-1928. Box 60.
- Subject #202      Animals collected from Canada, 1916-1928. Box 88.

NUMERICAL SUBJECT KEY (cont'd)

- Subject #204 Tapirs, 1923, 1929. Box 84.
- Subject #205 Giraffes, 1901-1928. Box 65.
- Subject #208 Senate Committee on the District of Columbia, hearing on consolidating District parks, 1901. Box 104.
- Subject #210 Construction of NZP roads, 1894-1928. Box 130.
- Subject #211 Correspondence regarding maps and acquisition of NZP land, 1895-1922. Box 110.
- Subject #212 Sewer construction, 1906-1929. Box 131.
- Subject #213 Game preserve correspondence, 1901-1912. Box 115.
- Subject #214 Antelope house construction, 1902, 1909. Box 127.
- Subject #216 Importation permits and quarantine procedures, 1901-1926. Boxes 96-97.
- Subject #217 Cross foxes, 1901-1909. Box 62.
- Subject #220 Cage construction, bids and contracts, 1915-1918, 1921. Box 125.
- Subject #222 Deficiency appropriations, 1892-1894. Box 138.
- Subject #223 NZP guide correspondence, 1902-1927. Box 120.
- Subject #224 "Circular in regard to the use of the name of the Smithsonian Institution," 1894. Box 101.
- Subject #225 Personnel compensation for injuries, 1908. Box 142.
- Subject #227 Construction of the hospital, 1903-1908, 1915-1919. Box 129.

NUMERICAL SUBJECT KEY (cont'd)

- Subject #228 Pay increase requests and personnel job efficiency ratings, 1903-1922. Box 147.
- Subject #229 Correspondence and maps regarding road building, road and boundary changes, 1897-1903. Box 110.
- Subject #230 Wildcats, bobcats, lynx, and catamounts, 1901-1930. Box 84.
- Subject #231 Armadillos, 1901-1928. Box 57.
- Subject #232 Removal of Indian wigwam, 1901. Box 107.
- Subject #233 Autopsy reports, 1901-1930. Box 98.
- Subject #234 Animals collected from the Sudan, 1901-1926. Box 90.
- Subject #237 Hair and feather samples received from the NZP, 1901-1902, 1910-1927. Box 96.
- Subject #238 Jays and packrats, 1901-1924. Box 72.
- Subject #239 Animals in quarantine, 1901-1930. Box 97.
- Subject #242 Mongoose, 1901-1929. Box 76.
- Subject #244 Cost and valuation sheets for construction, 1900-1902, 1908-1918, 1925-1930. Box 128.
- Subject #245 Correspondence regarding disinfectant for indoor and outdoor paddocks and cages, 1901-1918. Box 131.
- Subject #246 Correspondence regarding labels for the NZP, 1905-1929. Box 107.
- Subject #247 Cross and silver foxes, 1901-1907. Box 62.
- Subject #248 Dam, lake, and pathway construction, 1902-1909. Box 127.
- Subject #249 Construction of the boiler house, 1901, 1911. Box 127.

NUMERICAL SUBJECT KEY (cont'd)

- Subject #250 Dealers, Frank S. Armstrong, 1901-1908. Box 94.
- Subject #251 Coyotes, 1901-1924. Box 60.
- Subject #256 Fallow deer, 1901-1927. Box 60.
- Subject #257 Animals collected from Africa, 1901, 1909-1927. Boxes 85-86.
- Subject #258 Dingoes, 1901-1925. Box 60.
- Subject #259 Pheasants, 1901-1930. Box 79.
- Subject #260 Martens, 1901-1920. Box 76.
- Subject #261 Blue and snow geese, 1902-1929. Box 62.
- Subject #263 Police force appointments and reappointments, and receipts for equipment issued, 1889-1929. Boxes 148-149.
- Subject #264 Columbian blacktailed deer, 1902-1921. Box 60.
- Subject #265 Peccaries, 1902. Box 79.
- Subject #266 Fishers (black fox or black cat), 1902-1908. Box 62.
- Subject #268 Building specifications, 1902-1907. Box 124.
- Subject #268 Claims against employees at the NZP, 1900-1928. Box 141.
- Subject #269 Bird banding, 1915. Box 96.
- Subject #272 Hyenas, 1902-1919. Box 76.
- Subject #273 Construction of the bear cages, 1902-1911. Box 127.
- Subject #274 Llamas, 1902-1922. Box 76.

NUMERICAL SUBJECT KEY (cont'd)

- Subject #275 Flight power of birds, April 7-8, 1902. Box 98.
- Subject #276 Storks, 1902-1907. Box 83.
- Subject #278 Dealers, William Bartels, 1902. Box 94.
- Subject #279 Dealers, R. C. Bristow, 1902. Box 94.
- Subject #280 Construction of the eagle cage, 1902. Box 127.
- Subject #281 Chinchilla, 1902-1925. Box 59.
- Subject #284 Hedgehogs, 1902-1907. Box 75.
- Subject #285 Opossum, 1902-1928. Box 78.
- Subject #286 Entranceways to the NZP, 1902-1903, 1912, 1915. Box 128.
- Subject #290 Cassowary, 1902-1919. Box 59.
- Subject #291 Construction of the lion house, 1910-1913. Box 129.
- Subject #292 Rabbits and hares, 1901-1927. Box 79.
- Subject #293 Correspondence regarding laborers, 1902-1905. Box 146.
- Subject #295 Oaths of office, 1902-1924. Box 147.
- Subject #296 English wild cattle, 1901. Box 62.
- Subject #298 Correspondence of Frederick Law Olmsted, Jr., 1902. Box 115.
- Subject #299 Zebra wolf, 1902. Box 85.
- Subject #300 Political assessments and partisan activity of officeholders, 1902-1920. Box 149.
- Subject #304 Gnu, 1902. Box 75.

NUMERICAL SUBJECT KEY (cont'd)

- Subject #305      Construction supplies, 1901-1927. Box 136.
- Subject #306      Ocelot, 1902-1904. Box 78.
- Subject #307      Construction of the animal house, 1891, 1902-1906, 1910. Boxes 126-127.
- Subject #308      Correspondence regarding NZP acquisition of additional land owned by the Colored Union Benevolent Association, 1890-1926. Box 110.
- Subject #309      Budget estimates, 1902-1926. Box 134.
- Subject #309      Giraffes, 1914. Box 75.
- Subject #315      Rat and roach extermination, 1901-1929. Boxes 131-132.
- Subject #318      Construction, general, 1900-1914, 1918, 1928-1929. Boxes 128-129.
- Subject #319      List of public and private parks, and bird dealers in the United States and Canada, compiled by Boyd's City Dispatch, 1903. Box 115.
- Subject #320      Birds, 1901-1930. Box 58.
- Subject #320      Birds purchased in general, 1901-1919, and birds purchased specifically for the Louisiana Purchase Exposition in St. Louis, 1903-1905. Boxes 106-107.
- Subject #322      Picture labels for birds, 1903-1930, including labels made for the St. Louis Exposition, 1903-1905. Box 105.
- Subject #323      Animals collected from Abyssinia, 1903-1907. Box 85.
- Subject #324      Acquisition of water pumps, 1903-1930. Box 131.



NUMERICAL SUBJECT KEY (cont'd)

- Subject #328 Daily report of the NZP-government bird exhibition at the Louisiana Purchase Exposition, St. Louis, 1904. Box 105.
- Subject #329 Bone food for NZP collection, 1913-1917. Box 138.
- Subject #330 Construction of NZP benches, 1904-1923. Box 127.
- Subject #332 Complaints, appreciation, and replies, 1904-1930. Box 102.
- Subject #334 Personal injury reports, 1920, 1926. Box 147.
- Subject #339 Daily report of Sergeant of Watch, 1911-1913, 1916-1917. Boxes 116-119.
- Subject #344 Blood specimens for research and temperature records of animals, 1904-1915. Box 98.
- Subject #345 Animal enclosures, 1904-1908, 1927. Box 123.
- Subject #346 Repair of curbing, 1904. Box 127.
- Subject #348 General repair work to be done, 1906-1912. Box 129.
- Subject #351 Zebras, 1905-1929. Box 85.
- Subject #352 Closing of NZP roads and restrictions on automobiles, 1905-1915. Box 122.
- Subject #356 List of all animals received from outside the United States, 1900-1905. Box 101.
- Subject #357 American Association of Park Superintendents, 1905-1913. Box 101.
- Subject #358 Correspondence regarding inventory list of government property at the NZP, 1906-1917. Box 107.

NUMERICAL SUBJECT KEY (cont'd)

- Subject #360 Notary Public appointments for the NZP, 1906-1923. Box 147.
- Subject #362 Tuberculosis among animals and park employees, 1905-1915. Box 99.
- Subject #363 Storeroom regulations, 1906-1913. Box 122.
- Subject #364 Park police correspondence regarding assaults and thefts, 1909-1929. Box 116.
- Subject #367 NZP uniforms, circa 1925-1929. Box 123.
- Subject #369 Permits to use automobiles on NZP grounds, 1906-1928. Box 122.
- Subject #370 Disbursement statements, 1901-1922. Box 138.
- Subject #371 Correspondence regarding the International Zoological Congress, 1907-1929. Box 107.
- Subject #373 President's Commission on Economy and Efficiency, Committee on Business Methods, 1907-1929. Box 116.
- Subject #376 Reprimands and requests for explanation of action, 1902-1916, 1926-1928. Box 150.
- Subject #378 Patents granted to NZP employees, 1907. Box 115.
- Subject #380 Animals in the NZP collection, their cost and value, 1907-1925. Box 101.
- Subject #381 Animals collected from the Panama Canal Zone, 1907-1921. Box 88.
- Subject #382 Gifts sent to the NZP, 1916-1930. Boxes 91-92.
- Subject #385 Salary reports, 1901-1921. Box 150.
- Subject #388 General exchange information with other zoological parks, 1908, 1912-1920. Box 115.

NUMERICAL SUBJECT KEY (cont'd)

- Subject #390      Animals collected from New Zealand, 1908-1926. Box 88.
- Subject #391      Work permits for minors, age certificates, 1896-1921. Box 150.
- Subject #392      Treatment of various animal diseases, 1901-1930. Box 99.
- Subject #394      Alaska-Yukon-Pacific Exposition, 1909. Box 105.
- Subject #395      Skating at the NZP, 1910-1914. Box 122.
- Subject #396      Construction of underground restrooms, 1910. Box 130.
- Subject #398      Solenodons, 1910-1912. Box 83.
- Subject #399      Various questions and answers regarding the NZP and other zoological parks, 1910, 1918-1930. The 1910 material is in regard to the number of wild Bovidae in various zoological parks. Box 115.
- Subject #400      Animal price lists, zoological parks and dealer price lists, 1907-1930. Boxes 114-115.
- Subject #401      Elephant seals, 1911-1912. Box 80.
- Subject #402      Classified statement of expenditures, 1906-1914. Box 138.
- Subject #404      Ned Hollister and William Mann correspondence, 1912-1926. Boxes 150-151.
- Subject #405      Correspondence between Frank Baker and Frederick W. True regarding NZP improvements, 1912-1914. Box 113.
- Subject #406      Correspondence between Frank Baker, Charles D. Walcott, Frederick W. True, and Harry W. Dorsey regarding NZP improvements, 1912-1916. Box 113.

NUMERICAL SUBJECT KEY (cont'd)

- Subject #407      Bird eggs, 1912-1926. Box 98.
- Subject #408      Construction of the parrot cage, 1912-1917.  
Box 129.
- Subject #409      Construction of Rock Creek bridge, 1912-1916.  
Box 130.
- Subject #410      Construction of the food house, 1912-1915.  
Box 128.
- Subject #411      Correspondence mostly in regard to police  
control on Easter Morning and the Fourth of  
July, 1914-1929. Box 119.
- Subject #412      Animals collected from Egypt, 1913-1914. Box  
88.
- Subject #413      Eight-hour laws and their suspension, 1913-  
1918. Box 143.
- Subject #415      Requests to use tennis courts, the baseball  
diamond, and to swim in Rock Creek, 1913-  
1926. Box 122.
- Subject #416      Panama-Pacific International Exposition,  
1914-1917. Box 105.
- Subject #417      Adams Mill Road, 1915-1916. Box 123.
- Subject #418      Civil Service employee material, 1916-1930.  
Box 141.
- Subject #419      Use of dead animals at the NZP by research  
laboratories and taxidermists, 1916-1929.  
Box 98.
- Subject #420      Animals collected from England, 1916. Box  
88.
- Subject #420      Ned Hollister papers, 1916-1925. Box 151.



On the dock of Dar-es-Salaam, Smithsonian-Chrysler Expedition to Tanganyika (now Tanzania), 1926.



Old Elephant House, 1937.







Connecticut Avenue entrance to the Zoo, 1932.



Connecticut Avenue entrance to the Zoo, circa 1963.







Aerial view of NZP, winter 1934-1935.





Interior of the Lion House, 1934.



Replacing the floor of the Lion House,  
completed in 1935.





Interior of the Reptile House, circa 1938.







Interior of the Elephant House,  
constructed during 1936-1937.





Lucile Quarry Mann, Alexander Wetmore,  
William H. Blackburne, and William M. Mann,  
undated.



Lucy Mann and William Mann (center)  
crossing the St. Paul's River near  
Dobli's Island, during an expedition  
to Liberia, 1940.





NZP employees' dinner, 1940.



**SERIES 14.**

**GENERAL CORRESPONDENCE, 1930-1965.**

This series contains the incoming and outgoing correspondence of the Office of the Director of the Park. However, there is some material from other offices as well, since the director's correspondence file was, in part, used as a central office file for the Park as a whole. The records are arranged alphabetically by subject and chronologically thereunder. A 1953 filing plan for the Park was used in reconstructing the record order of the material.

**ANIMAL CORRESPONDENCE**

Animals, A-Z

Box 152

- Folders 1-7            Birds, 1940-1951
- Folder 8             Birds. Contains inquiries regarding feathers, butterflies, and feeding, 1957-1960.
- Folder 9             Index to the families of mammals, circa 1945
- Folders 10-13        Monkeys and gorillas, 1939-1948

Box 153

- Folders 1-4           Monkeys and gorillas, 1949-1952
- Folder 5             Penguins, 1956-1957
- Folders 6-12         Reptiles, 1940-1951

Box 154

- Folders 1-4           Reptiles, 1955-1960



Animals, Other

Box 154 (cont'd)

- Folders 5-9            Care and feeding, 1940-1946  
Folders 10-12        General information, 1940-1946

Box 155

- Folders 1-5            General information, 1947-1951  
Folder 6                Inquiries, birds and reptiles, 1957-1960  
Folders 7-9            Inquiries, mammals, 1954-1961  
Folder 10             Permits, importation and quarantine, 1930-1945

Box 156

- Folder 1                Nutrition, 1954-1957. Includes Paul E. Steiner's publications on "Anatomical Observations in a Gorilla Gorilla," 1954, and "Neuropathy, Cardiopathy, Hemosiderosis, and Testicular Atrophy in Gorilla Gorilla," 1955.  
Folder 2                Parasitology, 1956-1957  
Folder 3                Pathology, 1956-1963  
Folder 4                Pets boarded at the NZP, 1962  
Folder 5                Rat bait boxes, 1955, 1960  
Folders 6-7            Shipment of animals and crates, 1955-1965  
Folder 8                Shipment and handling, 1957-1958  
Folders 9-13          Animal shipments, 1960-1966  
Folder 14              Shipments pending, 1962-1963  
Folder 15              Treatment of animals, 1956-1957

Box 156 (cont'd)

Folder 16            Veterinary correspondence of Theodore H. Reed, 1955-1957

Box 157

Folder 1            Veterinary instruments, 1957

Folder 2            Veterinary publications on careers in veterinary medicine, 1957

Folder 3            Where to buy or obtain various animals, 1958-1959

Animals Acquired, Dealers and Dealings

Box 157 (cont'd)

Folder 4            Aguayo, C. G., 1940-1941

Folder 5            Allen, E. Ross, Florida Reptile Institute, 1937-1956

Folder 6            Animals Unlimited, Inc. (Miami, Florida), R. E. Chapman, 1951-1952

Folder 7            Arctic Institute of North America (lemmings), 1951

Folder 8            Arrigutti, Ennio, 1939-1941

Folder 9            Badger, June, 1947-1953

Folder 10           Bartels, Henry, 1931-1933

Folder 11           "Basilisk" (Basel, Switzerland), 1948-1953

Folder 12           Belgian government (Belgian Congo), okapi, elephant, and hornbill, 1950-1958

Folder 13           Benson, John T., 1930-1951

Box 157 (cont'd)

- Folder 14 Bergeron, Earl, 1950-1957
- Folder 15 Berry, Howard Morgan, Jr. (Bangkok, Thailand, boon vanit), 1952-1955
- Folder 16 Biname, J. L. (Leopoldville, Belgian Congo), 1952-1955
- Folder 17 Black Hills Reptile Gardens (Rapid City, South Dakota), Earl Chace, director, 1950-1951
- Folder 18 Buck, Warren E., 1942-1953
- Folder 19 Buide, Mario S. (Cuba), 1950-1955
- Folder 20 Burch, Paul R., 1948-1951
- Folder 21 Chase Wild Animal Farm, Samuel Chase, 1946-1959

Box 158

- Folder 1 Daverson, Alex, 1939-1941
- Folder 2 Dhotre, Damoo, 1946-1950
- Folder 3 Dornin, Walter W. (Phoenix, Arizona), 1936-1956
- Folder 4 Ehmler, Hans, 1941-1942
- Folder 5 Ethiopia, 1949-1951
- Folder 6 Everglades Aquatic Nurseries, Inc., Albert Greenberg, 1947-1955
- Folder 7 Everglades Wonder Gardens (Bonita Springs, Florida), L. Piper, 1952
- Folder 8 Fiji Islands, 1956-1957
- Folder 9 Fitzsimons, H., 1940-1947
- Folder 20 Firestone Tire and Rubber Company, 1957-1959

Box 158 (cont'd)

Folder 11           Foehl, A., Jr., 1938-1947

Folder 12           Garden City, Kansas (grasshoppers), 1958

Folder 13           Gaver, Gordon P. (Thurmont, Maryland), 1940

Folder 14           Guillermo, Mann F. (Santiago, Chile), 1949-1953

Folder 15           Haeseler, John A., 1952

Folder 16           Hagenbeck, Lorenz, 1938-1954

Folder 17           Hagenbeck, Carl, 1955-1959

Folder 18           Hamlet, John N., 1940-1952

Folder 19           Handman, John D. (Nyasaland), 1949-1950

Box 159

Folders 1-2         Handman, John D., 1951-1958

Folder 3           Hegener Research Supply (Sarasota, Florida), 1946-1950

Folder 4           Horne, I. S., 1929-1955

Folder 5           Howe, Howard A., 1950-1952

Folder 6           Humbert, Roy, 1946-1951

Folder 7           Ikao, Princess Tanit, 1949-1956

Folder 8           India, 1950-1959

Folder 9           Indian government (elephants), 1950-1952

Folders 10-14      Indian Rhino, II, 1940-1946

Box 160

Folder 1           Ingham, Rex (Ruffin, North Carolina), 1945-1954

Box 160 (cont'd)

- Folder 2           Ingles, Lloyd G., 1948-1952
- Folder 3           Jones, Arthur A. (Oklahoma City, Oklahoma),  
Western Snake Farms, 1950
- Folder 4           Joseph Ellis (estate of), 1931-1941
- Folder 5           Keegan, Hugh L., 1948-1950
- Folder 6           Kilham, Lawrence (Entebe, Uganda, East  
Africa), 1954-1958
- Folders 7-8        King, W. A., 1931-1952
- Folder 9           Latham, Marte, 1954-1956
- Folder 10          The Lemberger Company (Oshkosh, Wisconsin),  
1957
- Folder 11          Lepow, R. J., Inc., 1938-1954
- Folder 12          Ligon, J. Stokley (Carlsbad, New Mexico),  
1953-1955
- Folders 13-14     Lindemann, Roland, Catskill Game Farm  
(Catskill, New York), 1941-1959

Box 161

- Folder 1           Lions International, 1954-1957
- Folder 2           Locke, Otto Martin, 1939-1959
- Folder 3           Mackensen Game Farm (Yardley, Pennsylvania),  
1943-1950
- Folder 4           Madagascar, D. R. Paulian, 1947-1959
- Folder 5           Mazerski, C. S. (Tanganyika, East Africa),  
1957-1961
- Folders 6-7        Meems Brothers and Ward, 1941-1955
- Folder 8           Miller, William T., 1947-1956

Box 158 (cont'd)

Folder 11           Foehl, A., Jr., 1938-1947  
Folder 12           Garden City, Kansas (grasshoppers), 1958  
Folder 13           Gaver, Gordon P. (Thurmont, Maryland), 1940  
Folder 14           Guillermo, Mann F. (Santiago, Chile), 1949-1953  
Folder 15           Haeseler, John A., 1952  
Folder 16           Hagenbeck, Lorenz, 1938-1954  
Folder 17           Hagenbeck, Carl, 1955-1959  
Folder 18           Hamlet, John N., 1940-1952  
Folder 19           Handman, John D. (Nyasaland), 1949-1950

Box 159

Folders 1-2         Handman, John D., 1951-1958  
Folder 3           Hegener Research Supply (Sarasota, Florida), 1946-1950  
Folder 4           Horne, I. S., 1929-1955  
Folder 5           Howe, Howard A., 1950-1952  
Folder 6           Humbert, Roy, 1946-1951  
Folder 7           Ikao, Princess Tanit, 1949-1956  
Folder 8           India, 1950-1959  
Folder 9           Indian government (elephants), 1950-1952  
Folders 10-14       Indian Rhino, II, 1940-1946

Box 160

Folder 1           Ingham, Rex (Ruffin, North Carolina), 1945-1954

Box 160 (cont'd)

Folder 2           Ingles, Lloyd G., 1948-1952

Folder 3           Jones, Arthur A. (Oklahoma City, Oklahoma),  
Western Snake Farms, 1950

Folder 4           Joseph Ellis (estate of), 1931-1941

Folder 5           Keegan, Hugh L., 1948-1950

Folder 6           Kilham, Lawrence (Entebe, Uganda, East  
Africa), 1954-1958

Folders 7-8        King, W. A., 1931-1952

Folder 9           Latham, Marte, 1954-1956

Folder 10          The Lemberger Company (Oshkosh, Wisconsin),  
1957

Folder 11          Lepow, R. J., Inc., 1938-1954

Folder 12          Ligon, J. Stokley (Carlsbad, New Mexico),  
1953-1955

Folders 13-14     Lindemann, Roland, Catskill Game Farm  
(Catskill, New York), 1941-1959

Box 161

Folder 1           Lions International, 1954-1957

Folder 2           Locke, Otto Martin, 1939-1959

Folder 3           Mackensen Game Farm (Yardley, Pennsylvania),  
1943-1950

Folder 4           Madagascar, D. R. Paulian, 1947-1959

Folder 5           Mazerski, C. S. (Tanganyika, East Africa),  
1957-1961

Folders 6-7        Meems Brothers and Ward, 1941-1955

Folder 8           Miller, William T., 1947-1956



Box 161 (cont'd)

- Folder 9           Miscellaneous, foreign dealers, 1947-1959
- Folder 10          Miscellaneous, United States dealers, 1954-1957
- Folder 11          Mobley, D. L., Catalina Wildlife Expeditions, 1950-1953
- Folder 12          Monahan, Edward P., 1958-1959
- Folder 13          Moronta, Julio Michels, 1948-1950
- Folder 14          Newill, D. S., Sycamores Rare Bird Farm (Connellsville, Pennsylvania), 1946-1959
- Folder 15          North Atlantic Fertilizer and Chemical Company, Inc., 1952-1956

Box 162

- Folder 1           Paramount Aquarium, 1940-1953
- Folder 2           Palsson, William P. (Iceland), concerning hatching eggs, 1959
- Folder 3           Pearson's Bird and Animal Farm, 1958-1959
- Folder 4           Poland (wisents), 1957-1959
- Folder 5           Quivera Specialties Company, 1948-1957
- Folder 6           Randel, Hugh W., 1947-1950
- Folders 7-10       Rare Bird Farm, Inc. (Kendall, Florida), 1946-1959, 1961
- Folder 11          Riggs, Lowry, 1930
- Folder 12          Rogers, H. E., 1930-1931
- Folder 13          Romero, B. V. (Philippine Islands), 1947-1948
- Folders 14-15     Ruhe, Louis, Inc., 1925-1943

Box 163

- Folder 1 Ruhe, Louis, Inc., 1944-1960
- Folder 2 Russia, 1938-1939
- Folder 3 Ryhiner, Peter R., 1953-1954
- Folder 4 Sanderson, Ivan, 1951-1956
- Folder 5 San Jose, Costa Rica, and Central America, 1944-1946
- Folder 6 Saudi Arabia (eagle, owl, and oryx), 1950-1951
- Folder 7 Schaumann, Arnold J. (Allison Park, Pennsylvania), Hagenback agent, 1952-1954
- Folders 8-9 Schnegg, Paul (Barranquilla, Colombia), 1949-1954
- Folder 10 Schulz, Christoph, 1949-1956
- Folders 11-12 Seago, John, 1956-1960
- Folder 13 Seago, John, and Reggie Bloom, 1950-1953

Box 164

- Folders 1-2 Seago, John, and Reggie Bloom, 1954-1958
- Folder 3 Siemel, Sasha, 1950-1953
- Folder 4 Snow, Homer F. (Hermosa Beach, California), 1950-1951
- Folder 5 Steinbeck, J. W. (Concord, California, mandarin ducks), 1950, 1958
- Folder 6 Tarpon Zoo (Tarpon Springs, Florida), 1954-1959
- Folder 7 Thiele, John H., Jr. (Hawthorne, New York), 1947-1950
- Folder 8 Thayer, Mary V. R., "Molly," 1951-1955

Box 164 (cont'd)

Folders 9-10 Thomas, C. E., 1938-1942

Folder 11 Traub, Robert, 1949-1960

Folders 12-14 Trefflich Bird and Animal Company, Inc.,  
1941-1965

Folder 15 Tropical Hobbyland, J. Jay Segal, 1946-1953

Folder 16 Van Den Berghe, Louis, 1948-1955

Folder 17 Van Den Brink, J. J. (Amsterdam, Holland),  
1958-1962

Folder 18 Van Der Bejl, A. M. (Brooklyn, New York),  
1954-1961

Box 165

Folder 1 Van Dijk, C., and Zonen (Tilburg, Netherlands),  
1947-1952, 1961

Folder 2 Virginia Reptile and Tropical Bird Farm,  
1952-1955

Folder 3 Richmond, Virginia (elk), 1956-1958

Folder 4 Von Sneidern, Kjell (Popayan, Colombia),  
1954-1956

Folder 5 Vonderheid, Henry (Sweet Valley, Pennsylvania),  
1956-1960

Folder 6 Wheeler, Ralph E., 1948-1952

Folder 7 Wild Cargo, Ralph Curtis, 1962

Folder 8 Wildheim Game Farm (Roanoke, Virginia), J. J.  
Bower, 1949-1959

Folder 9 Eric Worrel and Company, 1948-1953

Folder 10 Young Engineering Company, Irvin L. Young,  
1951

Box 165 (cont'd)

- Folder 11            Zeehandelaar, F. J. (New Rochelle, New York),  
1957-1960
- Folder 12            Zetek, James (Balboa, Canal Zone), 1947

Animals Acquired, Deposits Through Purchases

Box 165 (cont'd)

- Folder 13            Deposits, Mrs. Kitts (Rhesus monkey), 1961-  
1963
- Folder 14            Deposits, Theodore Ruhoff (parakeets), 1959
- Folders 15-19        Miscellaneous exchanges, 1930-April 1932

Box 166

- Folders 1-5           Miscellaneous exchanges, May 1932-1946
- Folder 6             Gift returned to Mrs. Wochowiak (monkey),  
1961
- Folders 7-9           Gifts, 1930-1932

Box 167

Gifts, 1933-1945

Box 168

Gifts, 1946-1956

Box 169

- Folders 1-2           Gifts from government departments, United  
States Fish and Wildlife Service, 1940-1950,  
1954-1959
- Folders 3-5           Prospective collectors, 1947-1965

Box 169 (cont'd)

Folders 6-8 Purchases, 1929-1932

Box 170

Folder 1 Purchases, 1933

Folders 2-3 Miscellaneous purchases, 1938-1947

Animals Acquired From Various Zoos

Box 170 (cont'd)

Folder 4 Antwerp Zoo (Belgium), Walter Van Den Bergh, director, 1948-1951

Folder 5 Australian zoos, (miscellaneous), 1942-1951

Folder 6 Baltimore Zoo, 1941-1959

Folder 7 Basel Zoologischer Garten (Basel, Switzerland), E. M. Lang, director, 1948-1952

Folder 8 Berlin Zoological Garden, Heinz-Georg Klos, 1953-1959

Folder 9 Birmingham Zoo, Tom M. Briskey, director, 1957-1958

Folder 10 Birthday Park Zoo (Knoxville, Tennessee), 1949-1951

Folder 11 Brookfield Zoo (Chicago, Illinois), 1953-1959

Folder 12 Buffalo Zoological Gardens, 1943-1959

Folder 13 Calgary Zoological Society, Tom Baines, director, 1951-1959

Folder 14 Cheyenne Mountain Zoo (Colorado Springs, Colorado), Don G. Davis, director, 1953, 1957-1960

Box 170 (cont'd)

- Folder 15 Cincinnati Zoological Society, J. F. Heusser, director, 1947, 1957-1959
- Folders 16-17 Cleveland Zoological Park, 1947-1959
- Folder 18 Columbus Zoo (Powell, Ohio), 1951-1959

Box 171

- Folder 1 Concepcion Zoological Gardens (Concepcion, Chile), Carlos Junge, 1940-1953
- Folder 2 Concepcion, Chile (University of Concepcion), undated
- Folder 3 Copenhagen, Denmark (Zoologisk Have), 1948-1952
- Folder 4 Crandon Zoological Park (Miami, Florida), Robert H. Mattlin, director, 1952-1959
- Folder 5 Dallas Zoological Park, Pierre A. Fontaine, director, 1952-1959
- Folder 6 Detroit Zoological Gardens, 1946-1959
- Folder 7 Dublin, Ireland (Royal Zoological Society), 1947-1950
- Folder 8 Forth Worth Zoo, 1952-1959
- Folder 9 France (National Museum of Natural History, Paris), A. Urbain, 1947-1950
- Folder 10 Frankfurt Zoological Park (Frankfurt-Am Main, Germany), Bernard Grymek, director, 1952
- Folder 11 Franklin Park Zoo (Boston, Massachusetts), 1941-1961
- Folders 12-13 Foreign zoos, miscellaneous, 1950-1959
- Folder 14 Fresno Zoological Society, 1949-1953
- Folder 15 German zoos, 1948-1951

Box 171 (cont'd)

- Folder 16 Griffith Park Zoo (Los Angeles, California), 1953-1959
- Folder 17 The Hague Zoo (Holland), Peter Louwman, 1951-1952
- Folder 18 The Hague Zoo (Holland), Leo G. A. Hoeyers, 1958-1963

Box 172

- Folder 1 Hill City Zoo (Rapid City, South Dakota), Hal D. Wheaton, 1947-1954
- Folder 2 Hogle Zoological Garden (Salt Lake City, Utah), Robert H. Mattlin, director, 1948-1954
- Folder 3 Honolulu Zoo, 1951-1952
- Folder 4 Houston Zoological Gardens, John E. Werler, curator, 1954-1959
- Folder 5 Lincoln Park Zoo (Chicago, Illinois), Marlin Perkins, director, 1940-1959
- Folder 6 London, England (Whipsnade Park), E. H. Tong, director, 1952
- Folders 7-8 London, England (Zoological Society of London), Regents Park, L. H. Matthews, director, 1938-1952
- Folder 9 Memphis, Tennessee, 1956-1959
- Folders 10-11 Miscellaneous zoos, United States, 1940-1944, 1949-1959
- Folders 12-13 New York Zoological Park (Bronx, New York), 1944-1952
- Folders 14-15 New York Zoological Park, John Tee-Van, director, 1952-1956



Box 173

- Folders 1-2      New York Zoological Park, John Tee-Van,  
director, 1957-1965
- Folder 3          Norfolk Zoo, 1953-1959
- Folder 4          Philadelphia Zoological Park, 1929-1952
- Folders 5-6      Philadelphia Zoological Park, Freeman M.  
Shelly, director, 1953-1959
- Folder 7          Pittsburgh Zoo, 1940-1957
- Folder 8          Portland Zoo, Jack L. Marks, 1943-1959
- Folder 9          Rome Zoological Gardens (Rome, Italy), A.  
Crudi, 1949-1952
- Folder 10        Rotterdam Zoological Gardens (Rotterdam,  
Holland), F. J. Appleman, director, 1948-1950
- Folder 11        St. Louis Zoo, 1930-1959
- Folder 12        San Antonio Zoological Park, 1942-1959

Box 174

- Folders 1-3      San Diego Zoological Park, 1940-1954
- Folders 4-5      San Diego Zoological Park, Charles R.  
Schroeder, director, 1954-1959
- Folder 6          San Francisco Zoological Park, 1942-1944,  
1949-1959
- Folder 7          Scotland, Edinburgh Zoo, 1956, 1959
- Folder 8          Scotland, The Royal Zoological Society, 1944-  
1946, 1951
- Folder 9          Staten Island Zoo (Staten Island, New York),  
1943, 1949-1950
- Folder 10        Swope Park Zoological Gardens (Kansas City,  
Missouri), William Curry, 1954-1959

Box 174 (cont'd)

- Folder 11 Taronga Zoological Park (Sydney, Australia), 1945-1952
- Folder 12 Tokyo Zoo (Tokyo, Japan), Tadamichi Koga, director, 1947-1952
- Folder 13 Toledo Zoo, 1954-1959
- Folder 14 Trinidad, Emperor Valley Zoo, 1954-1958
- Folder 15 Tulsa Zoo, Hugh S. Davis, 1950
- Folder 16 Washington Park Zoological Garden (Milwaukee, Wisconsin), 1952-1959

Animals Desired Through Animals Removed

Box 174 (cont'd)

- Folder 17 Animals desired by the National Zoological Park, 1939-1944

Box 175

- Folders 1-6 Animals desired by the National Zoological Park, 1945-1958
- Folders 7-11 Animals desired by others, 1940-1947

Box 176

- Folders 1-8 Animals desired by others, 1948-1965
- Folder 9 Animals desired, lists of surplus and wants by the NZP, 1962-1965
- Folders 10-13 Animals offered and desired, 1940-1948

Box 177

- Folders 1-6 Animals offered and desired, 1949-1961

Box 177 (cont'd)

Folders 7-9      Animals offered, but not desired, 1930-1931

Box 178

Animals offered, but not desired, 1932-1948

Box 179

Folders 1-3      Animals offered, but not desired, 1949-1951

Folder 4          Animals removed and autopsies performed,  
1962-1963

Folders 5-9      Animals removed, dead specimens transferred  
to the United States National Museum, 1937-  
1953

Folder 10        Animals removed, disposal of dead specimens  
not sent to researchers, 1951-1956

ADMINISTRATIVE RECORDS

Box 179 (cont'd)

Folder 11        Accident reports, vehicles, 1952-1960

Folder 12        Acts of violence and meanness to animals by  
the public, 1948.    Contains correspondence  
and form letters sent out by the American  
Humane Association.

Folder 13        Agricultural quarantine conference, October  
27, 1959

Box 180

Folder 1          Animal births in the National Zoological  
Park, reports on, 1955-1959

Animal Food: Bids, Contracts, and Purchases

Box 180 (cont'd)

Folders 2-12      Animal feed and rations, 1958-1962

Box 181

Folders 1-6      Animal feed and rations, 1963-1965

Folders 7-10      Animal feed through diet A, 1958-1961

Box 182

Folders 1-3      Animal feed through diet A, 1962-1964

Folders 4-5      Bread, 1939-1957

Folder 6          Egg contract, C. W. Bishop, 1962

Folder 7          Feed, 1957-1960

Folders 8-10      Fish, 1957-1961

Box 183

Folders 1-2      Fish, 1962-1964

Folder 3          Butter and trout fish, 1964-1966

Folders 4-7      Horsemeat and horsemeat products, 1941-1946

Box 184

Horsemeat and horsemeat products, 1947-1960

Box 185

Horsemeat and horsemeat products, 1961-1966

Box 186

- Folder 1 Milk, 1949-1957
- Folders 2-6 Animal price lists, 1938-1942

Box 187

- Folders 1-2 Animal price lists, 1943-1944
- Folders 3-7 Annual reports, 1937-1944. Contains memoranda and lists of animals in the NZP.

Box 188

- Folders 1-6 Annual reports, 1945-1962. Contains memoranda and lists of animals in the NZP.
- Folder 7 Annual reports to the District of Columbia, 1957-1959
- Folder 8 Anti-venin serum, August 13, 1964
- Folder 9 Archives, 1935-1944
- Folder 10 Arizona Game and Fish Department, 1959
- Folder 11 Oren Arnold, "Sleepy Gun," Reader's Digest, 1959. Contains a few passages pertaining to the NZP.
- Folder 12 Automobile and truck information, 1946-1962
- Folder 13 Blasting at the NZP, 1960
- Folder 14 Board of Regents, Smithsonian Institution. National Zoological Park reports to the Board, 1937-1959.

Box 189

- Folders 1-4 Leonard Carmichael. Letters for Carmichael's signature, 1957-1964.

Box 189 (cont'd)

- Folder 5            Letters of commendation and complaint, 1939-1952
- Folders 6-7        Letters of commendation, 1953-1962
- Folders 8-10       Letters of complaint, 1939-1955

Box 190

- Folders 1-2        Letters of complaint, 1956-1965
- Folder 3            Congress. Bill HR 2126. Importation of wild ruminants, 1958-1959.
- Folder 4            Congressional surveys and other surveys and inquiries, 1942-1945
- Folders 5-6        Construction of new zoos, 1939-1959
- Folder 7            Construction. Proposed post-war planning, 1942-1943.
- Folder 8            Correspondence to be filed, 1964

Box 191

- Folder 1            Defense, civilian and national, 1941-1948
- Folder 2            Defense, National Zoological Park, 1941-1944
- Folder 3            Department heads, weekly meetings, 1960-1962
- Folder 4            Drug information, 1953-1963
- Folder 5            Easter Monday, 1957-1962
- Folder 6            Educational activities of the NZP, 1951-1956

Equipment and Materials  
Bids, Contracts, Information, and Specifications

Box 191 (cont'd)

Folder 7	Air compressor, 1957
Folder 8	Arc welding machine and torches, AC/DC, 1959-1960
Folder 9	Brush clipper, 1963
Folder 10	Gunite machine, 1961

Box 192

Folder 1	Hand box and pan brake machine, March 14, 1960
Folder 2	Industrial power sweeper, 1958
Folder 3	Ingersoll Rand Company, 1957
Folder 4	Lift gate, 1961
Folders 5-8	Open market purchases, 1940-1946

Box 193

Folders 1-2	Open market purchases, 1947-1950
Folder 3	Power mower for grass cutting, 1958
Folders 4-5	Power sweeper, 1963
Folder 6	Single surface planer, 1956
Folder 7	Steam line fittings, valves, and tubing, 1957
Folder 8	Traverse-type cutting saw, 1960
Folder 9	Equipment requested, 1958, 1961



### General Administration

#### Box 193 (cont'd)

Folder 10 Expeditions, Antarctic Expedition, 1939

#### Box 194

Folders 1-2 Expeditions, Antarctic Expedition, 1940-1948

Folder 3 Expeditions, Argentine Expedition, 1938-1939

Folder 4 Expeditions, Firestone-Smithsonian Expedition, 1940-1943

Folder 5 Expeditions, Smithsonian-Chrysler Fund Expedition, 1926

#### Box 195

Folder 1 Expeditions, Smithsonian-Chrysler Fund Expedition, 1926-1935

Folder 2 Discussion on feeding salt to marine birds, 1959. Included is a report, "Studies on the Albatrosses of Midway Island," by Hubert and Mable Fringes.

Folder 3 Films, 1948-1952

Folder 4 Pending orders on animals, 1959-1962

Folder 5 Guide, 1939-1962, 1966

Folder 6 Guide to the Reptile House. Forty-second annual meeting of the American Society of Ichthyologists and Herpetologists, June 14-17, 1962.

Folder 7 Inspection of boilers, 1937-1959

Folder 8 International conference, veterinary proceedings, 1956

Folder 9 Bird inventory, July 1, 1959

Box 195 (cont'd)

- Folder 10 Mammal inventory, April 1962
- Folder 11 Mammals, birds, and reptiles inventory, June 30, 1961
- Folder 12 Property inventory, 1963
- Folder 13 Keeper's injury, 1961
- Folder 14 Loans to or from NZP personnel, miscellaneous, 1938-1941
- Folder 15 National Zoological Park maps, 1910, 1914, 1954
- Folder 16 Mail statistics, 1941-1955
- Folder 17 General memorandum at the NZP, 1966
- Folder 18 "Master Development Plan for the NZP," 1961. Written by Daniel, Mann, Johnson, and Mendenhall. Oversize.

Box 196

- Folders 1-5 Office memoranda concerning the National Zoological Park, 1938-1961
- Folders 6-7 Theodore H. Reed's office memoranda to staff at the National Zoological Park, 1955-1961
- Folders 8-9 Theodore H. Reed's office memoranda to staff at the Smithsonian Institution, 1955-1959

Box 197

- Folders 1-2 Office Memoranda, Smithsonian Institution, 1958-1962
- Folders 3-5 Miscellaneous correspondence, 1938-1945
- Folder 6 Mobile communications system, 1961
- Folders 7-8 Newspaper clippings, 1949-1964

Box 198

- Folder 1 Office of the chief coordinator, 1927-1933
- Folders 2-4 Orders, executive. National Zoological Park and its departments, 1929-1945.
- Folder 5 Palmer Chemical and Equipment Company, 1957-1959. Contains correspondence regarding the Cap-Chur Gun.
- Folders 6-10 Periodicals and publications, 1940-1961

Box 199

- Folder 1 Periodicals and publications, 1962-1965
- Folder 2 Permits, miscellaneous, 1938-1957
- Folder 3 Photography, 1951-1965. Requests by the NZP for prints taken at the NZP and requests to the NZP for photographs.
- Folders 4-8 Photography, 1950-1959. Includes requests for NZP photographs.

Police

Box 199 (cont'd)

- Folders 9-16 Daily report of the Captain of Police, July 1942-February 1943

Box 200

Daily report of the Captain of Police, March 1943-September 1944

Box 201

Daily report of the Captain of Police, October 1944-July 1946

Box 202

Daily report of the Captain of police, August 1946-June 1948

Box 203

Daily report of the Captain of Police, July 1948-April 1950

Box 204

Folders 1-14 Daily report of the Captain of Police, May 1950-June 1951

Folders 15-20 Sergeant of the Watch, daybooks, 1933-1938. Includes information concerning the number of NZP policemen on duty, annual and sick leave of NZP police staff, and the number of visitors and cars at the NZP each day.

Box 205

Sergeant of the Watch, daybooks, 1939-1951

Box 206

Sergeant of the Watch, daybooks, 1952-1957. These volumes include information about lost children at the NZP, personal articles lost by visitors, arrests that were made by the NZP police for various disturbances, complaints made by visitors and neighborhood residents, first aid required by visitors, stray animals, fires, and overtime and leave requests by NZP police staff.

Box 207

Folders 1-11 Police records, bound volumes, 1949-1957

Box 207 (cont'd)

Folders 12-13      Police reports, bound volumes, 1953-1961. Volumes 1-2. These volumes include statistical information regarding juvenile arrests, truant children found on NZP grounds, lost children, removal of persons from the NZP grounds, number of deaths at the NZP, and the number of visitors requesting information.

Box 208

Folder 1            Police reports, volume 3, 1953-1961

Folders 2-3        Accident reports, 1957-1958, 1960

Folder 4            Complaints, 1955-1961

Folder 5            Injuries and complaints, 1960-1964

Folders 6-8        Personal injury reports, 1949-1960

Box 209

Folders 1-2        Personal injury reports, 1961

Folder 3            School children's violations and juvenile arrests, 1959-1960

Folders 4-6        School reports, 1951-1953. Folder contains information on the number of schools that visited NZP.

Folder 7            Traffic violation notices and withdrawals, 1955-1959

Box 210

Folders 1-2        Traffic violation notices and withdrawals, 1960-1961

Folder 3            Police reports, 1950-1958. Also contains court disposition slips, 1956-1959.

Box 210 (cont'd)

- Folder 4            Police department reports, 1962. Pertains to the NZP animal department.
- Folders 5-6        Repairs needed, 1957-1958

Box 211

- Folders 1-3        Repairs needed, 1959-1962
- Folder 4            Uniforms, 1940. Contains regulations for bidders.
- Folder 5            Manual for the National Zoological Park Police, 1953
- Folder 6            Police commission correspondence, 1942-1944, 1951-1953

General Administration

Box 211 (cont'd)

- Folder 7            Price lists and catalogs, 1953, 1958-1959
- Folder 8            Psittacosis, 1941-1954
- Folder 9            Publicity, 1942-1965

Box 212

- Folders 1-2        Publicity. Pertains to the death of Julie Ann Vogt, 1958. Contains letters strongly recommending the destroying of the lions Caesar and Queenie, and newspaper clippings about the accident.
- Folder 3            Publicity. Contains copies of newspaper clippings and magazine articles on the National Zoological Park, circa 1936-1942.
- Folder 4            Public relations, 1957-1963

Box 212 (cont'd)

- Folders 5-6      Questionnaires, 1957-1958, 1961. Contains responses to a questionnaire mailed out to foreign and United States zoological parks regarding their operations.
- Folder 7          Rabies, 1950-1955

Box 213

- Folder 1          Radio broadcasts, 1940-1961
- Folder 2          Ralston Purina Company, St. Louis, Missouri, 1958-1959
- Folder 3          Restaurant rent, 1937-1959
- Folder 4          Revolvers, .38 caliber, 1964
- Folder 5          Safety recommendations, 1954, 1958
- Folder 6          Safety regulations for the animal department, 1959
- Folder 7          Scale collections, 1939-1955
- Folder 8          Schoolboy patrol, 1962
- Folder 9          The Squibb Institute, 1956-1957
- Folder 10         Shop schedules, 1962
- Folder 11         Staff supervisors' meetings, 1957

Box 214

- Folder 1          United States Fish and Wildlife Service, Department of the Interior, 1951-1953
- Folder 2          Weekly supervisors' meetings, 1960-1962
- Folder 3          Supervisory training program, 1962
- Folder 4          Television, 1947-1963



Box 214 (cont'd)

- Folder 5            W. F. Widman and Vorous, "Hatching and rearing Kookaburras in the National Zoological Park," June, 1961
- Folder 6            Work of Zoo, 1950, 1954
- Folder 7            NZP statistics and vital information, 1941-1958

CONSTRUCTION

The correspondence in this section is, for the most part, arranged under the name of a building constructed, or for which material was purchased. There is also general correspondence, forms, allotments, regulations, and work progress reports regarding construction carried out under the auspices of the Civil Works Administration, Emergency Relief Administration, Federal Emergency Relief Administration, Public Works Administration, Work Projects Administration, and the Works Progress Administration. Correspondence and other documents concerning the above agencies can be found under the respective agency. These New Deal-sponsored programs, financed at both the federal and local level, provided the basis for the largest capital improvements made at the National Zoological Park from its inception to 1972.

Box 214 (cont'd)

- Folder 8            Bear cages, 1932-1933
- Folder 9            Bird house, information for bidders, 1927, 1935

Box 215

- Folder 1            Bird house, general requirements for bid on automatic steam control, 1936
- Folder 2            Bird house, new roof and steam line, 1932-1945, 1953
- Folders 3-4        Bird house, steam line, 1953-1954



Theodore H. Reed, NZP Acting Director, 1956-1957,  
and Director, 1958-1984.





Exterior-central walkway, Bird House, spring 1961.





Luncheon, circa 1960, with (from left) Theodore H. Reed, Leonard Carmichael, Secretary of the Smithsonian, and James Bradley, Special Assistant to the Secretary.





Box 215 (cont'd)

- Folder 5            Cage floor material, 1932-1940  
Folders 6-7        Civil Works Administration, 1933

Box 216

Civil Works Administration, 1933-1934

Box 217

- Folders 1-3        Civil Works Administration, 1934, 1938  
Folder 4           Civil Works Administration, local and state  
                    Civil Works Administration forms, 1934  
Folder 5           Civil Works Administration, labor and  
                    material costs for CWA projects, 1934  
Folder 6           Civil Works Administration, photographs of  
                    construction undertaken by CWA laborers,  
                    1933-1934  
Folder 7           Civil Works Administration, daily reports,  
                    November 1933-March 1934  
Folder 8           Civil Works Administration, work sheets for  
                    completed CWA projects, 1933-1934

Box 218

- Folder 1           Eagle flight cage, 1930-1931, 1945  
Folder 2           Eagle flight cage, 1963  
Folder 3           Electric underground conduit, PEPCO, 1936-  
                    1940  
Folders 4-7        Emergency Relief Administration, 1934-1938  
Folder 8           Emergency Relief Administration, daily  
                    reports, April-May 1934  
Folder 9           Fire prevention facilities, 1930-1947

Box 219

- Folder 1            Great flight cage, 1945-1946
- Folders 2-5        Incinerator, 1938-1952
- Folder 6            Insulation, 1935-1936

Box 220

- Folder 1            Lion house, structural steel, 1933-1943
- Folder 2            Machine and carpenter shop and garage, blueprints and drawings, 1936
- Folder 3            Machine and carpenter shop and garage, contracts and modifications, 1936
- Folder 4            Machine and carpenter shop and garage, inspection tests, 1936
- Folder 5            Machine and carpenter shop and garage, mechanical equipment, 1936
- Folder 6            Machine and carpenter shop and garage, miscellaneous reports, correspondence, and blueprints, 1936
- Folder 7            Machine and carpenter shop and garage, photographs, 1936
- Folder 8            Machine and carpenter shop and garage, reinforcing steel approved, 1936
- Folder 9            Machine and carpenter shop and garage, daily reports, 1936

Box 221

- Folder 1            Machine and carpenter shop and garage, weekly and monthly reports, 1936
- Folder 2            Machine and carpenter shop and garage, United States Labor Department reports, 1936

Box 221 (cont'd)

- Folders 3-4      Machine and carpenter shop and garage, correspondence regarding samples of materials, 1936-1937
- Folder 5        Machine and carpenter shop and garage, specifications for, 1936
- Folder 6        Machine and carpenter shop and garage, vouchers, 1936
- Folder 7        Mechanical shops, 1918, 1931-1936, 1948
- Folder 8        Miscellaneous, 1932-1950
- Folder 9        Miscellaneous repairs, 1930-1955
- Folder 10       Miscellaneous reports and correspondence mostly regarding the Bird House, small mammal building, and Pachyderm House, 1936-1937

Box 222

- Folder 1        Pachyderm House, 1935-1942
- Folder 2        Pachyderm House, concrete and cement, 1936
- Folders 3-4     Pachyderm House, contract and modifications, 1936-1937
- Folder 5        Pachyderm House, delays and extensions, 1936-1937
- Folder 6        Pachyderm House, drawings, 1936
- Folder 7        Pachyderm House, floors, 1936
- Folder 8        Pachyderm House, identification samples, 1936-1937
- Folder 9        Pachyderm House, independent contracts, 1936-1937
- Folder 10      Pachyderm House, information for bidders, circa 1935

Box 222 (cont'd)

Folder 11 Pachyderm House, matters pending, 1936-1937

Box 223

Folder 1 Pachyderm House, mechanical equipment, 1936-1937

Folder 2 Pachyderm House, miscellaneous correspondence, 1936-1937

Folder 3 Pachyderm House, ornamental metal, 1936-1937

Folder 4 Pachyderm House, payroll letters, 1936-1937

Folders 5-10 Pachyderm House, daily reports, 1936-1937

Folder 11 Pachyderm House, progress and weekly reports, 1936-1937

Box 224

Folder 1 Pachyderm House, Department of Labor reports, 1936-1937

Folder 2 Pachyderm House, reports, inspections, and tests, 1936-1937

Folder 3 Pachyderm House, reinforced and structural steel, 1936

Folder 4 Pachyderm House, reinforced steel approvals, 1936-1937

Folder 5 Pachyderm House, repairs, 1950-1951. Contains blueprints.

Folder 6 Pachyderm House, samples, 1936-1937

Folder 7 Pachyderm House, stone, brick and tile, 1936

Folder 8 Pachyderm House, vouchers, 1936-1937

Folder 9 Air conditioning the penguin cage, 1956

Box 225

- Folder 1            Public Works Administration, allotment, 1935-1938
- Folder 2            Public Works Administration, artists on PWA assignments, 1933-1934. Consists of one bound time book.
- Folder 3            Reptile Building, 1930-1938. Contains drawings and blueprints.
- Folder 4            Reptile Building, basement and cold storage rooms, 1931. Contains blueprints.
- Folder 5            Reptile Building, basement refrigerator room, 1950-1951
- Folder 6            Reptile Building, conversion of electric service, 1946-1948
- Folder 7            Reptile Building, heat control, 1952

Box 226

- Folder 1            Reptile Building, specifications for the construction of the building, 1929-1930
- Folder 2            Restaurant, changes made to the design, building, and contract, 1940
- Folders 3-6         Restaurant, blueprints, 1940

Box 227

- Folders 1-3         Restaurant, blueprints, 1940
- Folder 4            Restaurant, contracts, 1940
- Folder 5            Restaurant, delays, 1940
- Folder 6            Restaurant, shop drawings, 1940
- Folder 7            Restaurant, hardware, 1940
- Folder 8            Restaurant, mechanical equipment, 1940

Box 227 (cont'd)

- Folder 9            Restaurant, miscellaneous correspondence, 1940
- Folder 10          Restaurant, minor modifications, 1940
- Folder 11          Restaurant, painting, 1940
- Folder 12          Restaurant, payroll letters, 1940
- Folder 13          Restaurant, progress photographs of the building, 1940

Box 228

- Folder 1            Restaurant, progress report and financial records, 1940
- Folder 2            Restaurant, reinforcement inspection and approval, 1940
- Folders 3-4        Restaurant, progress reports, 1940
- Folder 5            Restaurant, specification listings, 1940
- Folder 6            Restaurant, specifications for restaurant construction plans, 1940
- Folder 7            Restaurant, stonework, 1940
- Folder 8            Restaurant, vouchers, 1940
- Folder 9            Restaurant, wood finish, 1940
- Folder 10          Restroom building, 1953-1957

Box 229

- Folder 1            Restroom building, specifications, 1953-1957. Contains drawings.
- Folder 2            Roof replacement, capital outlay, FY 1960
- Folder 3            Small Mammal House data on moonlight effect, 1937

Box 229 (cont'd)

- Folder 4 Small Mammals and Great Apes Building, 1930-1947
- Folder 5 Small Mammals and Great Apes Building, air conditioning, 1948
- Folder 6 Small Mammals and Great Apes Building, blueprints
- Folder 7 Small Mammals and Great Apes Building, concrete and cement, 1936-1937
- Folder 8 Small Mammals and Great Apes Building, contracts and modification, 1936-1937

Box 230

- Folder 1 Small Mammals and Great Apes Building, delays and extensions, 1936-1937
- Folder 2 Small Mammals and Great Apes Building, drawings and inspection, 1936-1937
- Folder 3 Small Mammals and Great Apes Building, general requirements for, 1936
- Folder 4 Small Mammals and Great Apes Building, heating and ventilating system, 1952
- Folder 5 Small Mammals and Great Apes Building, mechanical equipment, 1936-1937
- Folder 6 Small Mammals and Great Apes Building, miscellaneous correspondence, 1936-1937
- Folder 7 Small Mammals and Great Apes Building, ornamental metal, 1936-1937
- Folder 8 Small Mammals and Great Apes Building, photographs, 1936-1938
- Folder 9 Small Mammals and Great Apes Building, daily reports, 1936



Box 231

- Folder 1 Small Mammals and Great Apes Building, progress reports, and reinforcing steel approvals, 1936-1937
- Folder 2 Small Mammals and Great Apes Building, labor reports, 1936-1937
- Folder 3 Small Mammals and Great Apes Building, specifications, 1936
- Folder 4 Small Mammals and Great Apes Building, vouchers, 1936-1937
- Folder 5 Steam control, Bateman and Son, contractor, 1936-1937
- Folders 6-7 Steam line, 1954

Box 232

- Folder 1 Steam line, 1954
- Folder 2 Steam line, contracts and blueprints, 1952-1955
- Folder 3 Water mains, Engineering Department, District of Columbia, 1947-1951
- Folder 4 Wire, 1937-1940
- Folder 5 Work Projects Administration, job order forms, 1938
- Folders 6-7 Work Projects Administration and Works Progress Administration, projects, 1934-1935

Box 233

- Folders 1-3 Work Projects Administration and Works Progress Administration, projects, 1936-1940
- Folder 4 Work Projects Administration, proposed projects, 1939-1941

## BUDGET

### Box 233 (cont'd)

Folder 5            Animal fund, 31 A, 1956-1961  
Folders 6-7        Estimates for fiscal year 1937, 1935-1936  
Folder 8            Estimates for fiscal year 1938, 1935-1938

### Box 234

Folder 1            Estimates for fiscal year 1938, 1935-1938  
Folders 2-3        Estimates for fiscal year 1939, 1937-1939  
Folders 4-5        Estimates for fiscal year 1940, 1938-1939  
Folder 6            Estimates for fiscal year 1941, 1939-1940

### Box 235

Folders 1-7        Estimates for fiscal years 1941-1944, 1941-1943

### Box 236

Folders 1-2        Estimates for fiscal year 1945 and plan of operations, 1944  
Folders 3-5        Estimates for fiscal year 1946  
Folder 6            Report made in 1949  
Folder 7            Estimates for fiscal year 1958

### Box 237

Folder 1            Estimates for fiscal year 1960  
Folder 2            Pending estimates for fiscal year 1960  
Folders 3-5        Reports and budget sent to the District of Columbia, 1960-1962

Box 237 (cont'd)

- Folder 6            Smithsonian animal fund, 1930-1950
- Folder 7            Smithsonian animal fund, FY 1960
- Folder 8            Grounds department budget, FY 1961
- Folder 9            Monthly expenditure report, 1957-1959

PERSONNEL

Box 237 (cont'd)

- Folder 10          Allocations of positions, 1931-1938
- Folder 11          Appeals of employees, 1950-1956

Box 238

- Folder 1           Applications, animal department, 1953-1959
- Folder 2           Applications, mechanical department, 1958-1961
- Folder 3           Applications, veterinarian positions, 1954-1959
- Folders 4-5        Applications, temporary intermittent, 1952-1962
- Folders 6-7        Pending personnel appointments, 1943-1947. Arranged alphabetically. Includes information on animal keepers, laborers, firemen, and policemen.

Box 239

- Folders 1-2        Pending personnel appointments, 1943-1947
- Folders 3-10       Civil Service correspondence, 1934-June 1944

Box 240

- Folders 1-8        Civil Service correspondence, July 1944-1951

Box 240 (cont'd)

- Folder 9 Civil Service job descriptions, bulletins,  
1942-1943
- Folders 10-12 Civil Service register reports, 1940-1948

Box 241

- Folders 1-3 Civil Service register reports, 1949-1954
- Folders 4-11 Efficiency ratings, 1924, 1934-1945

Box 242

- Folders 1-4 General correspondence, 1935-1947, 1956-1962
- Folder 5 Home addresses arranged by department, no  
date
- Folders 6-7 Keeper aid, 1944-1946
- Folder 8 Requests for leave records of NZP employees  
formerly working for other government  
agencies, 1940-1942
- Folders 9-11 Memos requesting overtime for NZP employees,  
1958-1961
- Folders 12-13 Requests for positions, 1940-1941

Box 243

- Folders 1-5 Requests for positions, 1942-1956
- Folder 6 Automatic promotions and other legislative  
increases, 1941-1945
- Folder 7 Position descriptions of staff members  
working for the animal department, NZP,  
written for the Wage Board Commission, 1957-  
1960
- Folder 8 Retirement, 1929-1944

Box 243 (cont'd)

Folders 9-13 Temporary employees, 1930-1942

Box 244

Folders 1-4 Temporary employees, 1943-1949

Folders 5-8 Temporary employees, males, intermittent, 1949-1952

Box 245

Folders 1-4 Temporary employees, male, intermittent, 1952-1955

Folder 5 Temporary employees, female, intermittent, 1948-1954

Folder 6 Unacceptables and unavailables, 1955-1961

Box 246

Folder 1 Veterinarian examination, 1939-1942

Folder 2 Mostly regarding wage schedule, 1957-1962

MISCELLANEOUS

Box 246 (cont'd)

Folder 3 Blood donors, 1944-1945, 1956-1959

Folders 4-5 Blueprints, sketches and tracings on file in the National Zoological Park, key, 1955, and undated. Also contains two National Geographic Society maps, New York City and surrounding area, and the Washington, D. C. area, 1938.

Folder 6 Bulletin board data, 1952-1957. A random sample of the material was kept.

Box 246 (cont'd)

- Folder 7 Children's letters, 1947-1956  
Folder 8 Community Chest, 1941-1950  
Folder 9 Credit Union, 1940-1955, 1961  
Folders 10-11 Ephemeral correspondence, January-August 1941

Box 247

Ephemeral correspondence, September 1941-  
August 1945

Box 248

Ephemeral correspondence, September 1945-  
December 1952

Box 249

- Folders 1-5 Ephemeral correspondence, January 1953-1959  
Folder 6 Filing key, National Zoological Park, 1952-  
1953  
Folder 7 Freak letters, 1932-1959  
Folder 8 Gifts other than animals, 1937-1951

Box 250

- Folder 1 Information desired other than animals, 1952-  
1959  
Folder 2 Lost and found articles, 1956-1961  
Folder 3 New highway through the National Zoological  
Park, 1954  
Folder 4 Red Cross and first aid, 1944-1957  
Folder 5 Requests for concessions, 1947-1959

Box 250 (cont'd)

- Folders 6-7      Tiger Talk, 1964-1968
- Folder 8        The Torch, 1956-1960
- Folder 9        Things desired other than animals, 1950-1958,  
1963
- Folder 10      Zoo's Who, numbers 1-57

PERSONAL CORRESPONDENCE

Box 250 (cont'd)

- Folder 11      Malcolm Davis, 1956-1960

Box 251

- Folder 1        William M. Mann, American Institute of Park  
Executives, 1927-1941, 1953
- Folder 2        William M. Mann, American Institute of Park  
Executives, Chicago convention, 1933
- Folders 3-5     William M. Mann, American Society of Mammal-  
ogists, 1931-1932
- Folders 6-10    William M. Mann, ants, 1927-1933

Box 252

- Folders 1-4     William M. Mann, ants, 1934-1939
- Folder 5        William M. Mann, "Around the World for  
Animals," 1938. Contains correspondence  
regarding the article.
- Folder 6        William M. Mann, correspondence with Leslie  
Clarence Dunn, 1928-1931
- Folders 7-8     William M. Mann, great apes. Publications  
and photographs on this subject collected by  
Mann, 1938-1940.

Box 252 (cont'd)

- Folder 9 William M. Mann, International Association of Directors of Zoological Gardens, 1935-1938. Includes a letter from Julian S. Huxley on the formation of the Association, October 1, 1935.
- Folder 10 William M. Mann, correspondence regarding Mann's monkey article for the National Geographic magazine, 1938. Includes a letter from Harold J. Coolidge, Jr., on getting the National Geographic to publish articles on monkeys and apes, May 7, 1938.
- Folder 11 William M. Mann and Theodore H. Reed, National Geographic Society, 1952-1959
- Folders 12-13 William M. Mann, personal correspondence, 1937-March 1939

Box 253

- Folders 1-4 William M. Mann, personal correspondence, April 1939-1940
- Folder 5 William M. Mann, correspondence with Charles Wharton, 1947-1954
- Folder 6 Theodore H. Reed, birds, index to families, undated
- Folder 7 Theodore H. Reed, festival of the arts and music, 1958-1959
- Folder 8 Theodore H. Reed, fishers, Augusta, Maine, 1957-1959
- Folder 9 Theodore H. Reed, International Congress of Zoology conference, Washington, D. C., August 21-27, 1963
- Folder 10 Theodore H. Reed, correspondence with Boonsong Lekagul, Bangkok, Thailand, 1959
- Folder 11 Theodore H. Reed, correspondence with Fred A. Meyer, 1959



Box 253 (cont'd)

- Folder 12 Theodore H. Reed, information copy, purchase orders, 1963-1965
- Folder 13 Theodore H. Reed and Samuel W. Thompson, "Toxoplasmosis in a Swamp Wallaby," 1957, 1957-1960.
- Folder 14 Theodore H. Reed, United States Department of Agriculture, Agricultural Marketing Service and miscellaneous letters, 1960
- Folder 15 Theodore H. Reed, correspondence with veterinarians, 1955-1956
- Folder 16 W. T. Roth, correspondence and memoranda, 1961-1962

Box 254

- Folder 1 W. T. Roth, correspondence and memoranda, 1963-1964
- Folders 2-5 Ernest P. Walker, Biological Society of Washington, 1930-1937
- Folder 6 Ernest P. Walker, correspondence with Emil E. Liers, 1941-1950
- Folder 7 Ernest P. Walker, correspondence with Erna Mohr, Hamburg, Germany, concerning wisents, 1950
- Folders 8-9 Ernest P. Walker, personal correspondence, 1927-1931

Box 255

- Folders 1-4 Ernest P. Walker, personal correspondence, 1932-1940
- Folder 5 James F. Wright, articles for publication, 1958-1959

Box 255 (cont'd)

- Folders 6-8 James F. Wright, general correspondence, 1957-1962
- Folder 9 James F. Wright, requests for reprints and aid regarding the immobilization of animals, 1959-1962
- Folder 10 James F. Wright, "Necrotic Stomatitis in American Elk," Veterinary Medicine, October 1958
- Folder 11 James F. Wright, "Treatment of Captive Wild Animals Using an Automatic Projectile Type Syringe," 1959, 1959-1961.
- Folder 12 James F. Wright and H. R. Seibold, "Estrogen Contamination of Pelleted Feed," 1958-1959
- Folder 13 James F. Wright, A. V. Vadona, and V. I. Gel'shtein, "Spontaneous Tumors in Lower Catarrhine Monkeys," 1956

SERIES 15.

DAILY REPORTS OF THE ANIMAL DEPARTMENT  
AUGUST 1904-DECEMBER 1915, JANUARY 1942-JUNE 1966.

The reports in this series contain information regarding the accessioning of animals at the National Zoological Park, their births, physical condition, and deaths, as well as animal injuries, eating habits, and accidents. In addition the reports include information on repairs needed for the animal cages, and the attendance records of departmental staff. This material is arranged in chronological order.

Box 256

Animal Department reports, August 1904-  
December 1905

Box 257

Animal Department reports, January 1906-June  
1907

Box 258

Animal Department reports, July 1907-February  
1909

Box 259

Animal Department reports, March 1909-June  
1910

Box 260

Animal Department reports, July 1910-December  
1911

Box 261

Animal Department reports, January 1912-May 1913

Box 262

Animal Department reports, June 1913-September 1914

Box 263

Animal Department reports, October 1914-December 1915, January 1942-July 1942

Box 264

Animal Department reports, August 1942-December 1943

Box 265

Animal Department reports, January 1944-April 1945

Box 266

Animal Department reports, May 1945-August 1946

Box 267

Animal Department reports, September 1946-December 1947

Box 268

Animal Department reports, January 1948-April 1949

Box 269

Animal Department reports, May 1949-July 1950

Box 270

Animal Department reports, August 1950-May 1952

Box 271

Animal Department reports, June 1952-February 1954

Box 272

Animal Department reports, March 1954-January 1956

Box 273

Animal Department reports, February 1956-December 1957

Box 274

Animal Department reports, January 1958-July 1959

Box 275

Animal Department reports, August 1959-December 1960

Box 276

Animal Department reports, January 1961-June 1962

Box 277

Animal Department reports, July 1962-June  
1964

Box 278

Animal Department reports, July 1964-June  
1966

SERIES 16.

TIME ROLL, JANUARY 1890-SEPTEMBER 1892.

This series consists of two bound volumes containing time and attendance information for the Department of Living Animals, United States National Museum and the National Zoological Park. The animals that were housed and sheltered by the Department of Living Animals behind the Smithsonian Building became the original inhabitants of the NZP collection, and William T. Hornaday, curator of the Department, became the NZP's first superintendent. These volumes include attendance records and salaries earned by staff of both administrative bodies.

Box 279

Folders 1-2            Time roll, 1890-1892

SERIES 17.

NATIONAL ZOOLOGICAL PARK PAY ROLL AND TIME ROLL  
1891-1921, 1927-1932. ARRANGED CHRONOLOGICALLY.

Box 279 (cont'd)

Folders 3-12      Pay roll and time roll, 1891-1900

Box 280

Pay roll and time roll, 1901-1910

Box 281

Pay roll and time roll, 1911-1921

Box 282

Pay roll and time roll, 1927-1932



SERIES 18.

REQUISITIONS FOR PLANTING, REPAIRS AND ALTERATIONS, 1904-1942  
ORDERS FOR PLANTING, REPAIRS AND ALTERATIONS, 1904-1942  
SHOP REQUESTS, 1960-1966. ARRANGED BY SUBJECT  
AND CHRONOLOGICALLY THEREUNDER.

Box 283

Requisitions for planting, 1904-1942, and  
orders for planting, 1904-1927

Box 284

Orders for planting, 1928-1942, and shop  
requests, 1960-1966

SERIES 19.

SCRAPBOOKS, 1887-1931.

These scrapbooks contain mostly newspaper articles, along with occasional congressional and Smithsonian documents pertaining to the development and growth of the National Zoological Park. Four volumes are partially indexed.

Box 285

Scrapbooks, 1887-1900. Includes photographs taken from one newspaper article in the scrapbook.

Box 286

Scrapbooks, 1888-1907

Box 287

Scrapbooks, 1900-1919

Box 288

Folder 1

Scrapbooks, 1917-1931

SERIES 20.

MISCELLANEOUS,  
CIRCA 1890-CIRCA 1918, AND UNDATED.

Box 288 (cont'd)

Folders 2-3

Miscellaneous, circa 1890-circa 1918, and undated. Includes original sketches and drawings of fish and reptiles used to identify specimens housed in the National Zoological Park Aquarium and Reptile House, undated, and samples of color identification plates brought to the United States from Germany by William M. Mann, undated. Also included are NZP postcards and a sample of correspondence index cards, circa 1890-circa 1918, pertaining especially to series 6-13. Apparently, NZP maintained a card index for incoming correspondence, all of which, except for this sample, has been lost.

ADDED ACCESSION.

NATIONAL ZOOLOGICAL PARK COMMISSION RECORDS,  
1888-1891.

The following records were added to this record unit after the original contents had been processed and the finding aid was completed. Researchers should consult series 4 in this finding aid for similar material.

Box 288 (cont'd)

Folder 4            National Zoological Park Commission.  
Executive Committee meeting minutes, 1891.

Box 289

Folder 1            National Zoological Park Commission. Meeting  
minutes, July 1890.

Folder 2            Journal of the National Zoological Park  
Commission, 1889-1890

Folder 3            National Zoological Park Commission. Samuel  
P. Langley notes on the history of the NZP.  
Also includes Olmsted discussion and  
congressional bills, 1888-1890, and undated.

Folder 4            National Zoological Park Commission.  
Expenditures, 1889-1890.

Folder 5            National Zoological Park Commission. Samuel  
P. Langley's outgoing letterpress book, 1889-  
1890.

Folder 6            National Zoological Park Commission.  
Contains a form used by the Commission  
requesting landowners to submit a price for  
the purchase of their land and a review of  
the powers of the Commission by the Attorney  
General, 1889.

Box 289 (cont'd)

- Folder 7            National Zoological Park Commission. Real estate material maintained by William T. Hornaday. Folder is missing.
- Folder 8            National Zoological Park Commission. Real estate record book kept by William T. Hornaday, 1889.

## APPENDIX

### Index to Names and Subjects

To locate material on a given name or topic, search for that item in the first column, alphabetically, then move to the fourth column to locate the series, box, and folder(s) that are pertinent. Then turn to those series within the body of the guide, using the table of contents at the front, and search among the folders for the name(s) and topic(s) you want.

Users are reminded that the index is not exhaustive. Not every document was examined for the presence of the names and topics listed, and other names and topics, not listed, may appear in the collection. Only the more obvious and important names and topics are listed.

Users are invited to consult the master index (a compendium of all individual guide indices, arranged alphabetically by names and topics) that is available in the main reading room of the Smithsonian Archives. At the request of distant researchers, the staff will perform limited preliminary searches of this index to identify potential sources of research material.









## S M I T H S O N I A N I N S T I T U T I O N A R C H I V E S

## INDEX BY RECORD UNIT AND NAME TO ARCHIVES AND MANUSCRIPT HOLDINGS

	DATE	RECORD UNIT	LOCATION
BARTELS, WILLIAM	1887- 1965	SI A74	
BARTELS, WILLIAM	1897- 1900	SI A74	S12. B34. F8-9
BARTELS, WILLIAM	1890- 1892	SI A74	S12. B34. F10
BARTLEMAN, R. M.	1948- 1952	SI A74	S14. B170. F7
BASEL ZOOLOGISCHER GARTEN	1895- 1899	SI A74	S12. B44. F8
BEACH, LANSING H.	1892- 1898	SI A74	S12. B34. F11
BEAN, TARLETON HOFFMAN	1894- 1896	SI A74	S12. B44. F8
BEAN, TARLETON HOFFMAN	1900- 1930	SI A74	S13. B57. F3-16
BEARS	1900- 1922	SI A74	S13. F17-18
BEAVERS	1951- 1959	SI A74	S14. B170. F8
BERLIN ZOOLOGICAL GARDEN	1930- 1937	SI A74	S14. B254. F2-5
BIOLOGICAL SOCIETY OF WASHINGTON	1887- 1965	SI A74	S13. B58. F1-6
BIOLOGICAL SOCIETY OF WASHINGTON, D. C.	1940- 1951	SI A74	S14. B152. F6-7
BIRDS	1957- 1958	SI A74	S14. B170. F9
BIRMINGHAM ZOOLOGICAL PARK	1949- 1951	SI A74	S14. B170. F10
BIRTHDAY PARK ZOO (NASHVILLE, TENNESSEE)	1899- 1900	SI A74	S12. B34. F12
BISHOP, HENRY	1887- 1965	SI A74	
BLACKBURN, WILLIAM H.	1890- 1899	SI A74	S12. B44. F9
BLACKBURN, WILLIAM H.	1890- 1900	SI A74	S12. B34. F13
BLACKBURN, WILLIAM H.	1890- 1899	SI A74	S12. B35. F1
BLACKBURN, WILLIAM H.	1950- 1958	SI A74	S14. B163-164
BLOOMFORD, EUGENE G.	1901- 1911	SI A74	S13. B58. F7
BLOOD, REGGIE	1901- 1930	SI A74	S13. B84. F7-11
BOARS, WILD	1896	SI A74	S12. B35. F3
BOBCATS	1899	SI A74	S12. B35. F3
BRADY, WILLIAM A.	1953- 1959	SI A74	S14. B170. F11
BRISTOL, CHARLES L.	1890	SI A74	S12. B41. F17
BROOKFIELD ZOOLOGICAL PARK	1890- 1899	SI A74	S12. B44. F12
BROWN, ARTHUR ERWIN	1891	SI A74	S12. B42. F13
BROWN, ARTHUR ERWIN	1891- 1900	SI A74	S12. B35. F4
BROWN, ARTHUR ERWIN	1891- 1899	SI A74	S12. B42. F1
BROWN, ARTHUR ERWIN	1894- 1900	SI A74	S12. B11. F13
BROWN, GLENN	1894- 1896	SI A74	S12. B35. F6
BROWN, GLENN	1898- 1929	SI A74	S13. B58-59
BUCKINGHAM, D. E.	1902	SI A74	S13. B98-99
BUFFALO	1899- 1929	SI A74	S13. B58-59
BUFFALO CENSUS	1887- 1965	SI A74	
BUFFALO CENSUS (1902, 1905)	1943- 1959	SI A74	S14. B170. F12
BUFFALO CENSUS (1902-1905)	1890	SI A74	S12. B35. F6
BUFFALO ZOOLOGICAL GARDENS	1900- 1930	SI A74	S13. B55. F1-4
BUTLER, CYRUS W.	1951- 1959	SI A74	S14. B170. F13
CAITMAN	1887- 1965	SI A74	
CALGARY ZOOLOGICAL SOCIETY	1912- 1930	SI A74	S13. B79. F22
CANADA	1887- 1965	SI A74	
NZP ANIMALS ACQUIRED FROM (1916-1928)	1895- 1960	SI A74	S14. B170. F14
CARIBOU	1897- 1965	SI A74	
CARMICHAEL, LEONARD	1887- 1898	SI A74	S12. B35. F6
CASSELL, WILLIAM H.	1902- 1919	SI A74	S13. B59. F7
CASSOWARY	1901- 1930	SI A74	S13. B84. F7-11
CATAMOUNTS	1901- 1930	SI A74	S13. B59. F8
CHAMOIS	1953- 1960	SI A74	
CHEYENNE MOUNTAIN ZOO			



## S M I T H S O N I A N I N S T I T U T I O N A R C H I V E S

## INDEX BY RECORD UNIT AND NAME TO ARCHIVES AND MANUSCRIPT HOLDINGS

	RECORD UNIT	DATE	LOCATION
CHILDREN'S ROOM OF THE SMITHSONIAN INSTITUTION (1900-1902)	CHINCHILLA	1887- 1965	SI14.74
	CHRISTIAN, WILLIAM H.	1902- 1925	SI14.74
	CINCINNATI ZOOLOGICAL SOCIETY	-1896- 1897	S13.B59.F9
	CIVIL WORKS ADMINISTRATION	1947- 1959	S12.B35.F9
CLEVELAND ZOOLOGICAL PARK CONSTRUCTION	NATIONAL ZOOLOGICAL PARK	1887- 1965	S14.B170.F15
	COCKATOOS	1947- 1959	SI14.74
COLUMBUS ZOOLOGICAL PARK	CONCEPCION ZOOLOGICAL GARDENS	1891- 1895	S14.B170.F16-17
	CONDORS	1890- 1896	S13.B79.F3-8
CONKLIN, E.	CONKLIN, WILLIAM A.	1891- 1895	S14.B170.F18
	CONKLIN, WILLIAM A.	1890- 1896	S14.B171.F1-2
COOLIDGE, DAVID	COOLIDGE, HAROLD J. JR.	1900- 1928	S13.B59.F10-16
	CORNING, JOHN HERBERT	1891- 1895	S12.B35.F11
COUSERS	COVILLE, FEDERICK VERNON	1890- 1895	S12.B45.F2
	COX, WILLIAM V.	1890- 1896	S12.B45.F1
COYOTES	COX, WILLIAM V.	1898- 1899	S12.B35.F12
	CRANES	1887- 1965	SI14.74
CRANDON ZOOLOGICAL PARK	CRANES	1901- 1924	S12.B42.F3
	CRANES	1952- 1959	S13.B78-79
CRAWFORD, WILLIAM WINLOCK	CRANES	1901- 1924	S12.B45.F4
	CRIBLER, THOMAS W.	1900- 1927	S12.B49.F18
CROCODILES	CROCODILES	1889- 1899	SI14.74
	CROCODILES	1888	S12.B35.F13
CROCODILES	CROCODILES	1901- 1924	SI14.74
	CROCODILES	1952- 1959	S13.B60.F1-2
CURTIS, WILLIAM E.	CURTIS, WILLIAM E.	1900- 1927	S14.B171.F4
	DALLAS ZOOLOGICAL PARK	1900- 1927	S13.B84.F1-2
DEER	DEER	1902- 1919	S13.B60.F3
	DEER	1887- 1965	SI14.74
DENGLER, WILLIAM	DEER	1887- 1965	S12.B35.F14
	DETROIT ZOOLOGICAL GARDENS	1899	S13.B55.F1-4
DETROIT ZOOLOGICAL GARDENS	DETROIT ZOOLOGICAL GARDENS	1900- 1930	SI14.74
	DINGDOES	1900- 1930	S13.B55.F1-4
DOGS	DOGS	1900- 1930	S13.B55.F1-4
	DOGS	1900- 1930	S13.B55.F1-4
DUCKS	DUCKS	1900- 1930	SI14.74
	DUCKS	1900- 1930	S13.B55.F1-4
DUNN, LESLIE CLARENCE	DUNN, LESLIE CLARENCE	1890- 1892	S12.B36.F1
	DUNN, LESLIE CLARENCE	1890- 1892	S12.B36.F1
EAGLES	DUNN, LESLIE CLARENCE	1952- 1959	S14.B171.F5
	EAGLES	1898- 1929	S13.B60.F4-11
EASTMAN, C. A.	EASTMAN, C. A.	1898- 1929	SI14.74
	EASTMAN, C. A.	1898- 1929	S12.B36.F3
EATON, HOWARD	EATON, HOWARD	1896- 1898	SI14.74
	EATON, HOWARD	1896- 1898	S14.B171.F6
EDDY, JOHN R.	EDDY, JOHN R.	1901- 1925	SI14.74
	EDDY, JOHN R.	1899- 1924	S13.B60.F12
EDINBURGH ZOOLOGICAL PARK	EDINBURGH ZOOLOGICAL PARK	1900- 1926	SI14.74
	EDINBURGH ZOOLOGICAL PARK	1900- 1926	S13.B60.F13
EGYPT	EGYPT	1900- 1926	SI14.74
	EGYPT	1887- 1965	S13.B60.F14-16
ELEPHANTS	EGYPT	1887- 1965	SI14.74
	EGYPT	1887- 1965	S14.B252.F6
EMERGENCY RELIEF ADMINISTRATION	EMERGENCY RELIEF ADMINISTRATION	1928- 1931	SI14.74
	EMERGENCY RELIEF ADMINISTRATION	1899- 1930	S13.B60-61
NATIONAL ZOOLOGICAL PARK CONSTRUCTION	EMERGENCY RELIEF ADMINISTRATION	1891- 1892	S12.B36.F5
	EMERGENCY RELIEF ADMINISTRATION	1891- 1892	S12.B36.F6
NATIONAL ZOOLOGICAL PARK CONSTRUCTION	EMERGENCY RELIEF ADMINISTRATION	1880- 1899	SI14.74
	EMERGENCY RELIEF ADMINISTRATION	1887- 1899	S12.-B45.F11
NATIONAL ZOOLOGICAL PARK CONSTRUCTION	EMERGENCY RELIEF ADMINISTRATION	1887- 1899	S12.B42.F15
	EMERGENCY RELIEF ADMINISTRATION	1956	S14.B174.F7
NATIONAL ZOOLOGICAL PARK CONSTRUCTION	EMERGENCY RELIEF ADMINISTRATION	1887- 1965	SI14.74
	EMERGENCY RELIEF ADMINISTRATION	1887- 1965	SI14.74
NATIONAL ZOOLOGICAL PARK CONSTRUCTION	EMERGENCY RELIEF ADMINISTRATION	1900- 1928	S13.B61.F6-8
	EMERGENCY RELIEF ADMINISTRATION	1900- 1928	S13.B61.F9-17
NATIONAL ZOOLOGICAL PARK CONSTRUCTION	EMERGENCY RELIEF ADMINISTRATION	1887- 1965	SI14.74
	EMERGENCY RELIEF ADMINISTRATION	1887- 1965	SI14.74



## INDEX BY RECORD UNIT AND NAME TO ARCHIVES AND MANUSCRIPT HOLDINGS

	RECORD UNIT	LOCATION
EMERSON, WILLIAM RALPH	1890	S12.B42.F16
EMERSON, WILLIAM RALPH	1890	S12.B45.F12
EMERSON, WILLIAM RALPH	1890-1899	S12.B45.F12
EMERSON, WILLIAM RALPH	1890-1899	S12.B42.F4
EMMET, RICHARD S.	1888-1900	S12.B45.F13
EMPEROR VALLEY ZOOLOGICAL PARK (TRINIDAD)	1954-1958	S14.B174.F14
ENGLAND		
NZP ANIMALS ACQUIRED FROM (1916)	1887-1965	S13.B62.F1
ENGLISH WILD CATTLE	1901	S1A74
ETHIOPIA		
ALSO SEE ABYSSINIA		
EXLEY, EDWIN S.	1887-1965	S1A74
EXLEY, EDWIN S.	1891	S12.B42.F5
FRANKLIN PARK ZOO (BOSTON, MASSACHUSETTS)	1941-1961	S14.B171.F11
FERROW, B. E.	1896-1898	S12.-B42.F17
FIRESTONE-SMITHSONIAN EXPEDITION (1940-1943)	1887-1965	S1A74
FISHERS	1902-1908	S13.B62.F2
FLAMINGOS	1900-1909	S13.B62.F3
FOREIGN ZOOLOGICAL PARKS		
CORRESPONDENCE WITH	1887-1965	S1A74
SURVEY RECORDING BUFFALO CENSUS	1887-1966	S1A74
FORT WORTH ZOOLOGICAL PARK	1892-1958	S1A74
FOXES	1899-1919	S1A74
FOXES	1901-1922	S1A74
FOXES	1952	S1A74
FRANKFURT ZOOLOGICAL PARK	1949-1953	S1A74
FRESNO ZOOLOGICAL SOCIETY		
GERMANY		
ZOOLOGICAL PARKS		
GILA MONSTERS	1900-1925	S14.B171.F8
GILBERT, GROVE KARL	1893-1895	S13.B62.F4-9
GILBERT, GROVE KARL	1901-1928	S13.F17.18
GNU	1902	S14.B171.F10
GOATS	1899-1916	S14.B171.F14
GOODE, GEORGE BROWN	1887-1965	S1A74
GOODE, GEORGE BROWN	1889-1896	S14.B171.F15
GOODE, GEORGE BROWN	1928-1930	S13.B75.F5
GORILLAS	1939-1952	S12.B36.F10
GORILLAS	1899-1900	S13.B75.F6-7
GRAHAM, W. H.	1889	S13.B75.F8
GREENOUGH, EDWIN A.	1890	S13.B75.F9-11
GREENOUGH, EDWIN A.	1900-1927	S12.B50.F1-9
GRINELL, GEORGE BIRD	1897-1898	S13.B75.F12
GRINELL, GEORGE BIRD	1955-1959	S14.B152-153
GUANACO	1938-1954	S12.B36.F12
GUINEA PIGS	1891	S12.B45.F18
HAGENBECK, CARL	1951-1963	S12.B42.F18
HAGENBECK, CARL	1890-1892	S12.B36.F12
HAGENBECK, LORENZ	1899	S12.B45.F18
HAGUE, ARNOLD	1901-1930	S12.B80.F9
HAGUE ZOOLOGICAL PARK, THE	1900-1927	S1A74
HAGUE ZOOLOGICAL PARK, THE	1897-1898	S13.B75.F13
HALLOCK, CHARLES	1955-1959	S12.B36.F13
HALLOCK, CHARLES	1938-1954	S14.B158.F17
HANDMAN, JOHN D.	1891	S14.B158.F16
HANDMAN, JOHN D.	1890-1892	S12.-B46.F1
HARDMAN, J. F.	1949-1958	S14.B171.F17-18
HARDMAN, J. F.	1895-1899	S12.B36.F13
HARDMAN, J. F.		S12.B46.F1
HARDMAN, J. F.		S14.B186-159
HARDMAN, J. F.		S12.B36.F14



	DATE	RECORD UNIT	LOCATION
HARES	1901- 1927	SI A74	S12.879.F19
HASSALL, ALBERT	1891- 1897	SI A74	S12.836.F14
HAWKS	1900- 1919	SI A74	S13.875.F14
HAYDEN, EVERETT	1888- 1895	SI A74	S12.846.F2
HEDGE HOGS	1902- 1907	SI A74	S13.875.F15
HERONS	1901- 1927	SI A74	S14.B172.F1
HILL CITY ZOOLOGICAL PAR (RAPID CITY, SOUTH DAKOTA)	1947- 1954	SI A74	S12.837.F3-4
HOFER, ELWOOD	1887- 1965	SI A74	S12.846.F5
HOFER, ELWOOD	1893- 1900	SI A74	S14.B172.F2
HOFER, ELWOOD	1895- 1899	SI A74	
HOGLE ZOOLOGICAL GARDEN (SALT LAKE CITY, UTAH)	1948- 1954	SI A74	
HOLLISTER, NED	1887- 1965	SI A74	
HOLMES, WILLIAM HENRY	1895- 1896	SI A74	
HOLT HOUSE			
RESTORATION OF			
HONOLULU ZOOLOGICAL PARK	1887- 1965	SI A74	S14.B172.F3
HORNADAY, WILLIAM TEMPLE	1951- 1952	SI A74	
HORNADAY, WILLIAM TEMPLE	1887- 1965	SI A74	
HORNADAY, WILLIAM TEMPLE	1888- 1890	SI A74	S12.850.F10
HORNADAY, WILLIAM TEMPLE	1888- 1899	SI A74	S12.846.F7
HORNADAY, WILLIAM TEMPLE	1891- 1899	SI A74	S12.837.F6
HORNADAY, WILLIAM TEMPLE	1899- 1900	SI A74	S12.842.F6
HORNBLOWER AND MARSHALL	1954- 1959	SI A74	S14.B172.F4
HOUSTON ZOOLOGICAL GARDENS	1887- 1965	SI A74	
HOWELL, D. J.	1886- 1895	SI A74	S12.846.F9
HOWELL, D. J.	1890- 1893	SI A74	S12.842.F7
HOWELL, D. J.	1890- 1893	SI A74	S12.843.F2-4
HOWELL, D. J.	1899	SI A74	S12.837.F9
HUTCHINSON, F. B.	1896- 1898	SI A74	S12.837.F9
HUTCHINSON, W. F.	1887- 1965	SI A74	
HUXLEY, JULIAN S.	1887- 1965	SI A74	
HUXLEY, JULIAN S.			
TO WILLIAM M. MANN CONCERNING FORMATION OF THE INTERNATIONAL ASSOCIATION OF DIRECTORS OF ZOOLOGICAL GARDENS	10/01/1935	SI A74	S14.8252.F9
HYEMAS	1902- 1919	SI A74	S13.B76.F1
INDIA			
NZP CORRESPONDENCE	1950- 1959	SI A74	S14.B159.F9-14
INGLING, JOHN C.	1890- 1896	SI A74	S12.837.F10
INTERNATIONAL ASSOCIATION OF DIRECTORS OF ZOOLOGICAL GARDENS	1935- 1938	SI A74	S14.8252.F9
INTERNATIONAL ZOOLOGICAL CONGRESS (1899-1930)	1887- 1965	SI A74	
JABINGAN, J. EUGENE	1897- 1899	SI A74	S12.837.F11
JAYS	1901- 1924	SI A74	S13.876.F2
KANGAROOS	1899- 1928	SI A74	S13.876.F3
KARR, WILLIAM W.	1891- 1898	SI A74	S12.850.-51
KING, W. A.	1931- 1952	SI A74	S14.B160.F7-8
LANGDALE, JOHN W.	1891	SI A74	S12.843.F6
LANGLEY, SAMUEL P.	1887- 1965	SI A74	
LANGLEY, SAMUEL P.	1889- 1900	SI A74	S12.851-53
LANGLEY, SAMUEL P.	1899- 1906	SI A74	S13.898-99
LANGLEY, SAMUEL P.	1900- 1907	SI A74	S8.B31
LANGLEY, SAMUEL P.	1887- 1965	SI A74	
LANGLEY, SAMUEL P.	1940- 1959	SI A74	S14.B172.F5
EXPERIMENTS ON THE FLIGHT OF BIRDS.			
LANGLEY, SAMUEL P.			
LIERS, EMIL E.			
LINCOLN PARK ZOO			









## S M I T H S O N I A N I N S T I T U T I O N A R C H I V E S

## INDEX BY RECORD UNIT AND NAME TO ARCHIVES AND MANUSCRIPT HOLDINGS

	RECORD UNIT	LOCATION
ACQUISITION OF		
ANIMALS	1887- 1965 SIA74	
BOUNDARIES	1887- 1965 SIA74	
BUDGET	1887- 1965 SIA74	
CONSTRUCTION	1887- 1965 SIA74	
DIRECTOR'S DIARIES	1887- 1965 SIA74	
DIRECTOR'S OFFICIAL OUTGOING CORRESPONDENCE	1895- 1930 SIA74	S 1. B1-3
DIRECTOR'S OUTGOING CORRESPONDENCE WITH SI ADMINISTRATORS	1889- 1927 SIA74	S6. B7-27
HISTORY	1900- 1931 SIA74	S7. B27-30
LANDSCAPE ARCHITECTURE	1887- 1965 SIA74	
MAPS	1887- 1965 SIA74	
PHOTOGRAPHS	1887- 1965 SIA74	
PLATS	1887- 1965 SIA74	
POLICE REPORTS	1887- 1965 SIA74	
PUBLICATIONS	1887- 1965 SIA74	
PUBLICITY	1887- 1965 SIA74	
RECORDS	1887- 1965 SIA74	
RESEARCH	1887- 1965 SIA74	
NEW DEAL		
NZP CONSTRUCTION PROGRAMS ADMINISTERED UNDER DEVELOPMENT OF	1887- 1965 SIA74	S 14. B172-173
MAP	1887- 1965 SIA74	
NEW YORK ZOOLOGICAL SOCIETY	1887- 1965 SIA74	S 12. B47. F14
NEW ZEALAND		
NZP ANIMALS ACQUIRED FROM ( 1908- 1926 )	1887- 1965 SIA74	S 12. B38. F9-12
NICHOLSON, A. M.	1891- 1900 SIA74	S 12. B47. F14
NOBLE, JOHN W.	1890- 1891 SIA74	S 14. B173. F3
NORFOLK ZOOLOGICAL PARK	1953- 1959 SIA74	S 13. B78. F2
OCELOT	1902- 1904 SIA74	
OLMSTED, FREDERICK LAW	1887- 1965 SIA74	
OLMSTED, FREDERICK LAW JR.	1887- 1965 SIA74	
OLMSTED, JOHN CHARLES	1887- 1965 SIA74	
OLMSTED, OLIMSTED AND ELIOT	1887- 1965 SIA74	
OLMSTED AND COMPANY, FREDERICK LAW	1887- 1965 SIA74	S 12. B42. F10
OLMSTED AND COMPANY, FREDERICK LAW	1890- 1891 SIA74	S 12. B43. F8-13
OLMSTED AND COMPANY, FREDERICK LAW	1890- 1900 SIA74	S 12. B47. F15
OLMSTED AND COMPANY, FREDERICK LAW	1902- 1928 SIA74	S 13. B78. F3
OPLOSSOM	1890- 1891 SIA74	S 12. B38. F14
ORCUTT, CHARLES RUSSELL	1900- 1925 SIA74	S 13. B78. F4
OSTRICHES	1900- 1925 SIA74	S 13. B78. F5-9
OTTERS	1901- 1922 SIA74	S 13. F17-18
OWLS	1901- 1922 SIA74	S 13. B78. F10-14
PACAS	1901- 1909 SIA74	S 13. B78. F15
PACKRATS	1901- 1924 SIA74	S 13. B76. F2
PAGE, J. WALLACE	1890- 1899 SIA74	S 12. B47. F15
PAGE, J. WALLACE	1890- 1899 SIA74	S 12. B43. F14



## SMITHSONIAN INSTITUTION ARCHIVES

## INDEX BY RECORD UNIT AND NAME TO ARCHIVES AND MANUSCRIPT HOLDINGS

	RECORD UNIT	LOCATION
PALMER, THEODORE SHERMAN	1891-1899	SI2.B38.F15
PANTHERS	1901-1924	SI3.B78-F9
PARASITOLOGY	1887-1965	SI3.B79.F3-8
PARROTS	1900-1929	SI2.B38.F16
PATHOLOGY	1887-1965	SI3.B79.F9-11
PAYNE, CHARLES	1893-1899	SI3.B79.F12
PEAFOWL	1899-1929	SI3.B79.F13
PECCARIES	1902	SI4.B153.F5
PELICANS	1919-1929	SI2.B48.F1
PENGUINS	1956-1957	SI3.B79.F14-15
PERIODICALS	1887-1965	SI4.B173.F4-6
AUTHOR'S CORRESPONDENCE WITH		
PETTIGREW, JOHN A.	1887-1928	SI3.B79.F16
PHEASANTS	1898	SI2.B48.F1
PHILADELPHIA ZOOLOGICAL PARK	1940-1957	SI4.B173.F7
PHILIPPINE ISLANDS	1901-1928	SI3.B79.F17
NZP ANIMALS ACQUIRED FROM (1900-1926)	1943-1959	SI3.B79.F17
PIGDEGS	1895-1896	SI4.B173.F8
PINCHOT, GIFFORD	1900-1918	SI2.B48.F15
PITTSBURGH ZOOLOGICAL PARK	1887-1965	SI3.B79.F18
PORCUPINES	1901-1927	SI3.B79.F19
PORTLAND ZOOLOGICAL PARK	1899-1927	SI3.B79.F20
POWELL, CHARLES F.	1946-1961	SI4.B162.F7-10
PRARIE DOGS	1887-1965	SI2.B39.F5
PSITTACOSIS	1890-1899	SI2.B39.F5
RABBITS	1900-1907	SI2.B39.F5
RACCOONS	1895-1899	SI2.B48.F5
RARE BIRD FARM, INC.	1900-1919	SI3.B79.F21
RATHBUN, RICHARD	1887-1965	SI3.B79.F22
RATHBUN, RICHARD	1912-1930	SI4.B153-F154
RATHBUN, RICHARD	1940-1960	SI2.B54.F1
RATHBUN, RICHARD	1895-1897	SI2.B54.F1
RATHBUN, RICHARD	1892-1896	SI2.B39.F6
RAVENEL, WILLIAM DE C.	1892-1894	SI2.B39.F6
RAVENEL, WILLIAM DE C.	1897-1898	SI2.B39.F6
RAVENEL, WILLIAM DE C.	1897-1898	SI3.B80-82
RAVENS	1898-1929	SI4.B173.F9
REED, THEODORE H.	1949-1952	SI2.B39.F8
REINDEER	1891-1896	SI2.B39.F10-11
REPTILES	1891-1899	SI2.B39.F10-11
RICHMOND, CHARLES WALLACE	1867-1965	SI4.B173.F10
RIDGWAY, ROBERT	1948-1950	SI4.B171.F7
RILEY, CHARLES VALENTINE	1947-1950	SI4.B174.F8
RINGLING BROTHERS	1944-1951	SI2.B39.F13
ROCKY MOUNTAIN SHEEP	1890-1897	
ROME ZOOLOGICAL GARDENS		
ROMEYN, HENRY		
ROTH, W. H.		
ROTH, W. T.		
ROTTERDAM ZOOLOGICAL GARDENS		
ROYAL ZOOLOGICAL SOCIETY (DUBLIN, IRELAND)		
ROYAL ZOOLOGICAL SOCIETY (DUBLIN, IRELAND)		
ROYAL ZOOLOGICAL SOCIETY (SCOTLAND)		
RUHE, LOUIS		









## INDEX BY RECORD UNIT AND NAME TO ARCHIVES AND MANUSCRIPT HOLDINGS

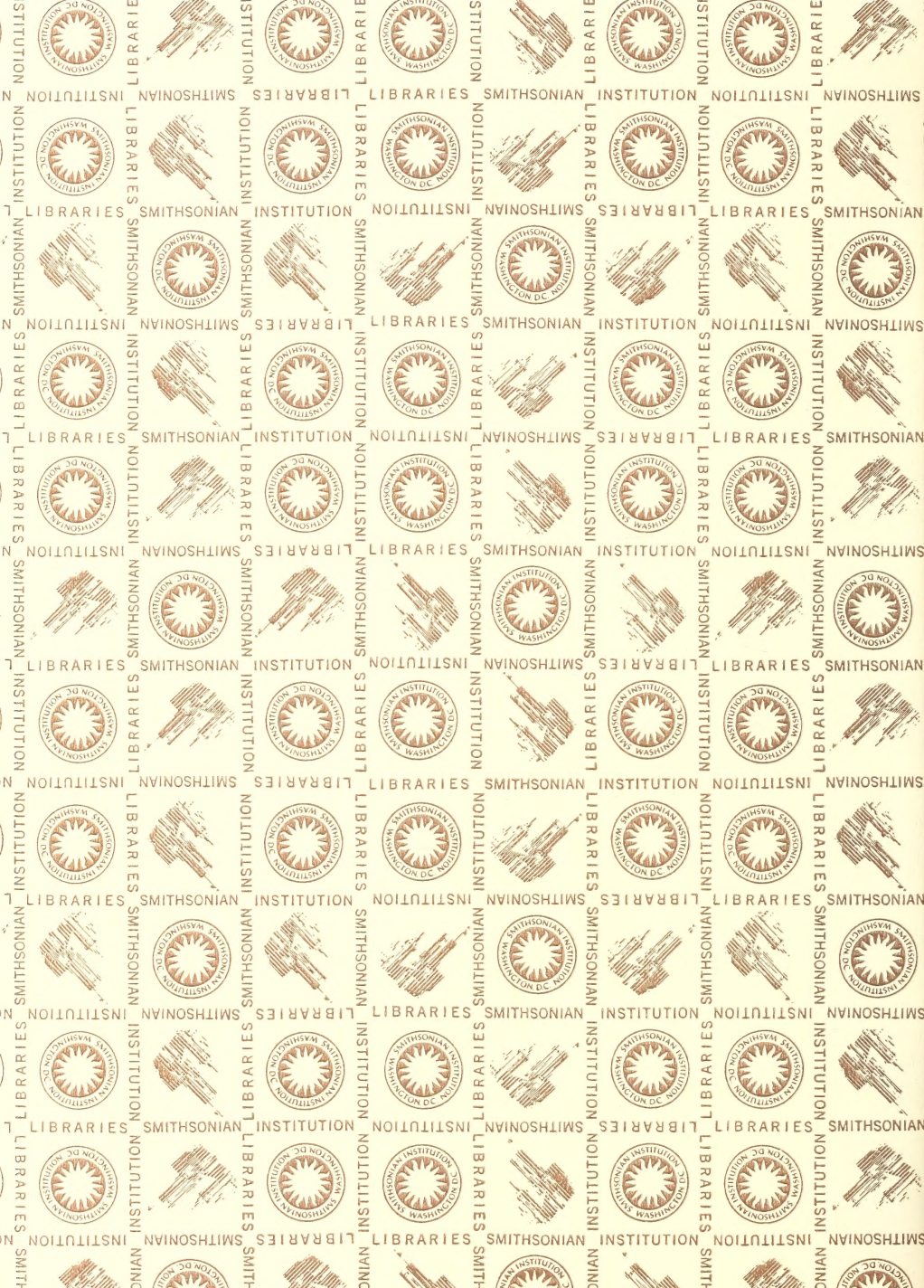
	DATE	RECORD UNIT	LOCATION
TRUE, FREDERICK WILLIAM	1890-1900	SI A74	S12.B54.F4-12
TULSA ZOOLOGICAL PARK	1950	SI A74	S14.B174.F15
TURKEYS	1900-1923	SI A74	S13.B84.F6
TURNER, D. C.	1887-1965	SI A74	S12.B40.F6
UNITED STATES DEPARTMENT OF STATE	1887-1965	SI A74	
UNITED STATES ZOOLOGICAL PARKS	1887-1965	SI A74	
BUFFALO SURVEY	1887-1965	SI A74	
CORRESPONDENCE WITH	1887-1965	SI A74	
SURVEYS OF	1887-1965	SI A74	
VETERINARIAN	1887-1965	SI A74	
UNITED STATES	1887-1965	SI A74	
QUARANTINE PROCEDURE	1887-1965	SI A74	
SENATE DOCUMENTATION ON CONDEMNATION OF LAND FOR	1887-1965	SI A74	
NzP	1887-1965	SI A74	S12.B49.F6
WALBRIDGE, HEMAN D.	1889-1897	SI A74	
WALCOTT, CHARLES D.	1887-1965	SI A74	
WALCOTT, CHARLES D.	1897-1898	SI A74	S12.B54.F13
WALCOTT, CHARLES D.	1900-1907	SI A74	S8.B31
WALKER, ERNEST PILLSBURY	1887-1965	SI A74	
WASHINGTON PARK ZOOLOGICAL GARDEN (MILWAUKEE, WISCONSIN)	1952-1959	SI A74	S14.B174.F16
WATMAN, G. TURNER	1891-1896	SI A74	S12.B40.F18
WEBB, WILLIAM B.	1887-1965	SI A74	
WELLS, ROGER JR.	1889-1891	SI A74	S12.B49.F8
WESLEY, WILLIAM	1891-1892	SI A74	S12.B40.F19
WETMORE, ALEXANDER	1891-1900	SI A74	S12.B49.F9
WHIPPSNADE PARK (LONDON, ENGLAND)	1887-1965	SI A74	
WILDCATS	1952	SI A74	S14.B172.F6
WILSON, JOHN M.	1901-1930	SI A74	S13.B84.F7-11
WINLOCK, WILLIAM CRAWFORD	1894-1895	SI A74	S12.B41.F2
WOLVERINES	1890-1896	SI A74	S12.B54.F15-18
WOLVES	1900-1928	SI A74	S13.B84-85
WORK PROJECTS ADMINISTRATION	1900-1928	SI A74	S13.B84-85
NzP CONSTRUCTION	1887-1965	SI A74	
WORKS PROGRESS ADMINISTRATION	1887-1965	SI A74	
NzP CONSTRUCTION	1887-1965	SI A74	
WRIGHT, JAMES F.	1900-1916	SI A74	S13.B85.F2
YAKS	1900-1916	SI A74	
YELLOWSTONE NATIONAL PARK	1887-1965	SI A74	
NzP ANIMALS ACQUIRED FROM	1905-1929	SI A74	S13.B85.F3-4
(1890-1917)	1947	SI A74	S14.B165.F12
ZEBRAS	1887-1965	SI A74	
ZETEK, JAMES	1950-1959	SI A74	S14.B171.F12-13
ZOOLOGICAL PARKS	1938-1952	SI A74	S14.B172.F7-8
FOREIGN	1948-1952	SI A74	S14.B171.F3
ZOOLOGICAL SOCIETY OF LONDON			
ZOOLOGISK HAVE (COPENHAGEN, DENMARK)			



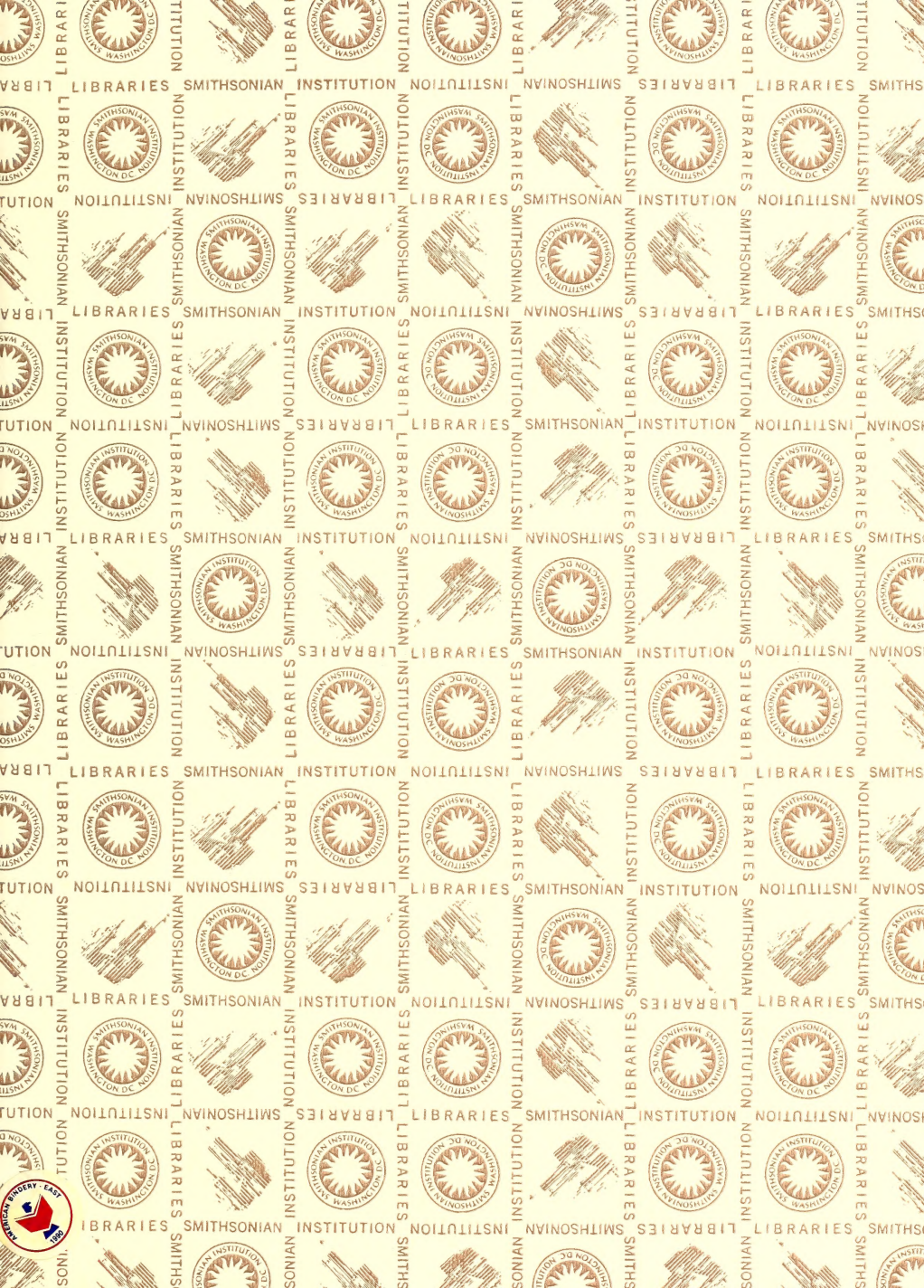


#25  
30











SMITHSONIAN INSTITUTION LIBRARIES



3 9088 00616 3018