

The
Hanoverian
1936

DEEP WOODS

NO PARKING

CITY LIMITS

SCOTTS HILL AND POINTS EAST

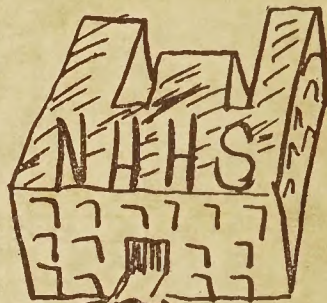
SUBURBS

LOTS FOR SALE

CREEK

CEMETARY

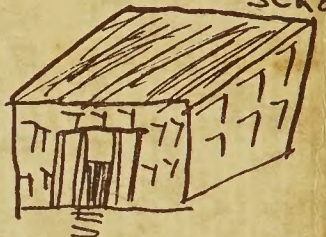
LOTS FOR SALE



SENIOR STEPS

17th STREET

ISAAC BEA School



CORNELIUS HARNETT School



HENNEWAY School



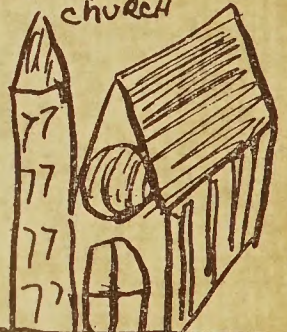
WILLISTON School

ST JAMES Church



PLAYGROUND

FIRST PRESBYTERIAN Church



ROAD TO AIRPORT AND ALL POINTS NORTH

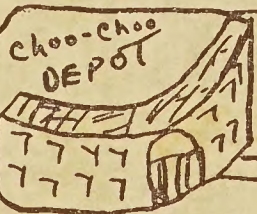


CITY HALL & LIBRARY



COURT HOUSE

THIRD STREET



choo-choo DEPOT



P.O.

FRONT



MURCHISON BUILDING



CUSTOMS HOUSE

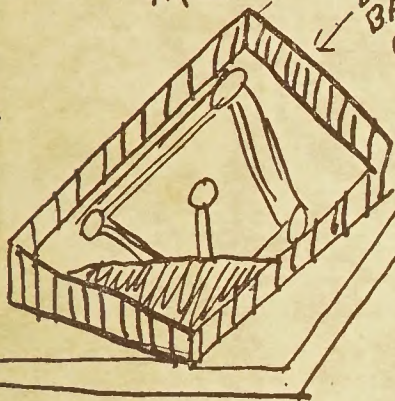
CAPE

BRIDGE

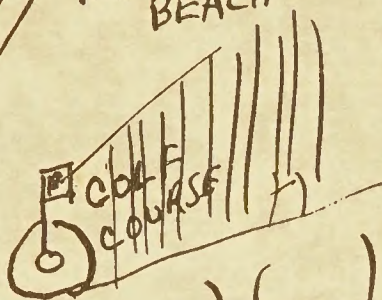
ROADS

BELLAMY PARK

BASE BALL



TO WRIGHTSVILLE BEACH



WILMINGTON NORTH CAROLINA

THERE IS NO SCALE! SO WHAT!

By Perry Dawson & Bernard S. Solomon

CITY(?) LIMITS

WOODS

LOTS FOR SALE

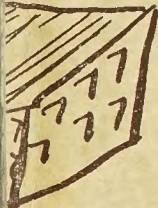
MORE LOTS FOR SALE

BUY THIS HOME SITE ONE OR 1,000,000 ACRES

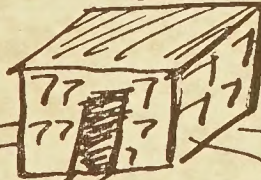
SCENIC DRIVE

NO PARKING

ESTON SCHOOL



WILLIAM HOOPER SCHOOL



GREENFIELD SCENIC DRIVE

GREENFIELD LAKE

SWAMPS

LOTS FOR SALE

REET

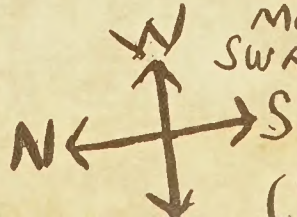
REET

MORE SWAMP

TO CAROLINA BEACH

LOTS MORE SWAMP

R RIVER





Digitized by the Internet Archive
in 2020 with funding from
North Carolina Digital Heritage Center

Leroy C. Robertson III

**THE
HANOVERIAN**

VOLUME ONE

1936

Published by
Senior Class of New Hanover High School
Wilmington, North Carolina

PRINTED BY
WILMINGTON STAMP & PRINTING COMPANY
WILMINGTON, NORTH CAROLINA

Foreword

IN THIS, THE FIRST VOLUME OF THE HANOVERIAN, WE HAVE WRITTEN THE STORY OF OUR HIGH SCHOOL ACTIVITIES AND HAVE TRIED TO INTERPRET WHAT WE BELIEVE TO BE THE SPIRIT OF WILMINGTON AND THE NEW HANOVER HIGH SCHOOL. IF, IN FUTURE YEARS, THIS BOOK SHALL RECALL TO YOU PLEASANT SCHOOL DAYS AT NEW HANOVER HIGH, AND SHALL HELP TO KEEP ALIVE A RESPECT AND LOVE FOR YOUR COMMUNITY AND SCHOOL, THEN WE SHALL HAVE ACCOMPLISHED OUR PURPOSE.

Table of Contents

- | | |
|------------------------|--------------------|
| 1. Foreword | 6. Organizations |
| 2. Dedication | 7. Publications |
| 3. The School | 8. Athletics |
| 4. Historic Wilmington | 9. Features |
| 5. The Classes | 10. Advertisements |



To
Miss Sarah Love

WHOSE LOFTY IDEALS, PROGRESSIVE SPIRIT, SYMPATHETIC UNDERSTANDING, AND FORCEFUL LEADERSHIP HAVE EVER BEEN A SOURCE OF INSPIRATION, WE GRATEFULLY DEDICATE THIS, THE 1936 VOLUME OF THE HANOVERIAN.

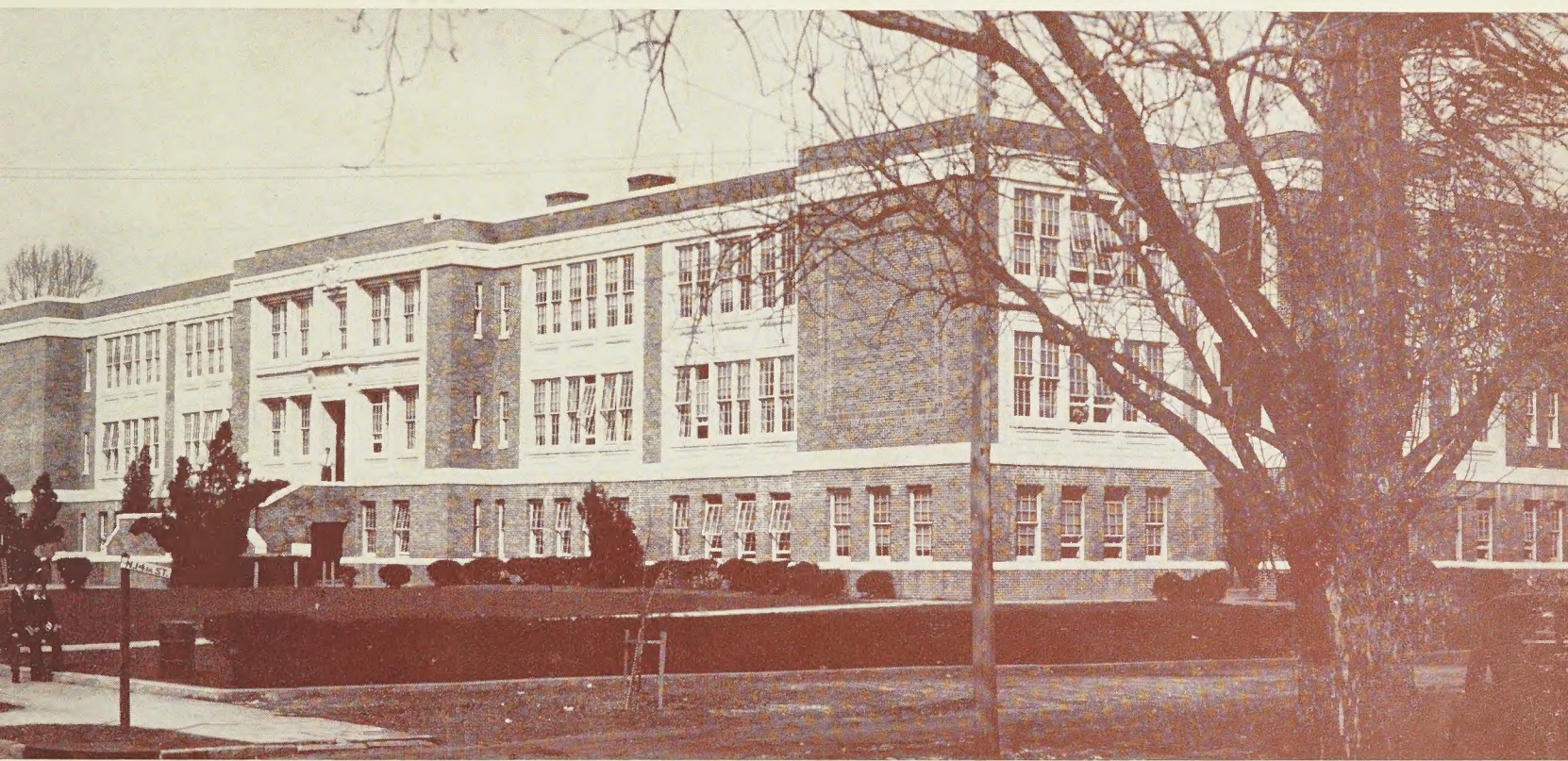
This volume of THE HANOVERIAN, published under the direction of the Senior Class of New Hanover High School of Wilmington, North Carolina, is a book dedicated to the Spirit of Progress, and the staff has attempted to carry out this idea, as represented by Wilmington, in every possible detail.

In keeping with this idea, we have changed the name of the annual from WILDCAT to THE HANOVERIAN. We feel that our two publications, the paper and the annual, should not have identical names. In choosing THE HANOVERIAN as the title for the year book, we considered the appropriateness of such a title both from the standpoint of the past and the future. The name Hanover has played a prominent part in the history of our community; at the same time it will well fit into the future.

There is much of the past in this book, represented by old pictures, some of them dating back to the 19th century, and the hand drawings of historic buildings in Wilmington.

The present is represented by pictures of our High School and its activities and by the striking air view of 1935 Wilmington. There is no touch of the future, but we believe that Wilmington will not let pass the heritage which has been handed her, but will build ever toward a greater Wilmington.

The Staff of the HANOVERIAN wishes to take this opportunity to express its appreciation to Miss Fannie O'Keef, Miss Sarah Love, Mr. Claude Howell, Mr. Bernard S. Solomon and others for their valued assistance in the preparation of this book.



NEW HANOVER HIGH SCHOOL, 1936



Mr. Thomas T. Hamilton, Jr.

IN MR. THOMAS T. HAMILTON, JR., OUR PRINCIPAL, WE FEEL THAT WE HAVE FOUND A CAPABLE EXECUTIVE, A LIBERAL EDUCATOR, AND A TRUE FRIEND.



Josie Y. Brock

Josephine

Le Grand

Faculty

MYRA BARRON
 HANNAH BOYLAN
 MRS. JOSIE BROCK
 IDA CARDWELL
 ELIZABETH CLARKE
 ELIZA COLLINS
 BERNICE DOMINICK
 DAVID DOWD
 ADELE FINKELSTEIN
 MRS. HELEN GRISE
 MRS. ELIZABETH HARTZOG
 HENRIETTA HAY
 JOSEPHINE HINTON
 ADLENE JONES
 MRS. MARY KEITH
 MARY LATHROP

Henrietta Hay

PAULINE LEVIN
 EMMA LOSSEN
 SARAH LOVE
 HOWARD McDONALD
 ROBERTA MCKENZIE
 ELIZABETH MONTGOMERY
 MRS. ELIZABETH MYERS
 JAMES MYERS
 REBA MYERS
 FANNIE O'KEEF
 REBA RUSS
 MAIE SANDERS
 IDA SCHNIREL
 HERBERT SLACK
 HATTIE LOU SMITH
 MRS. NETTIE SMITH

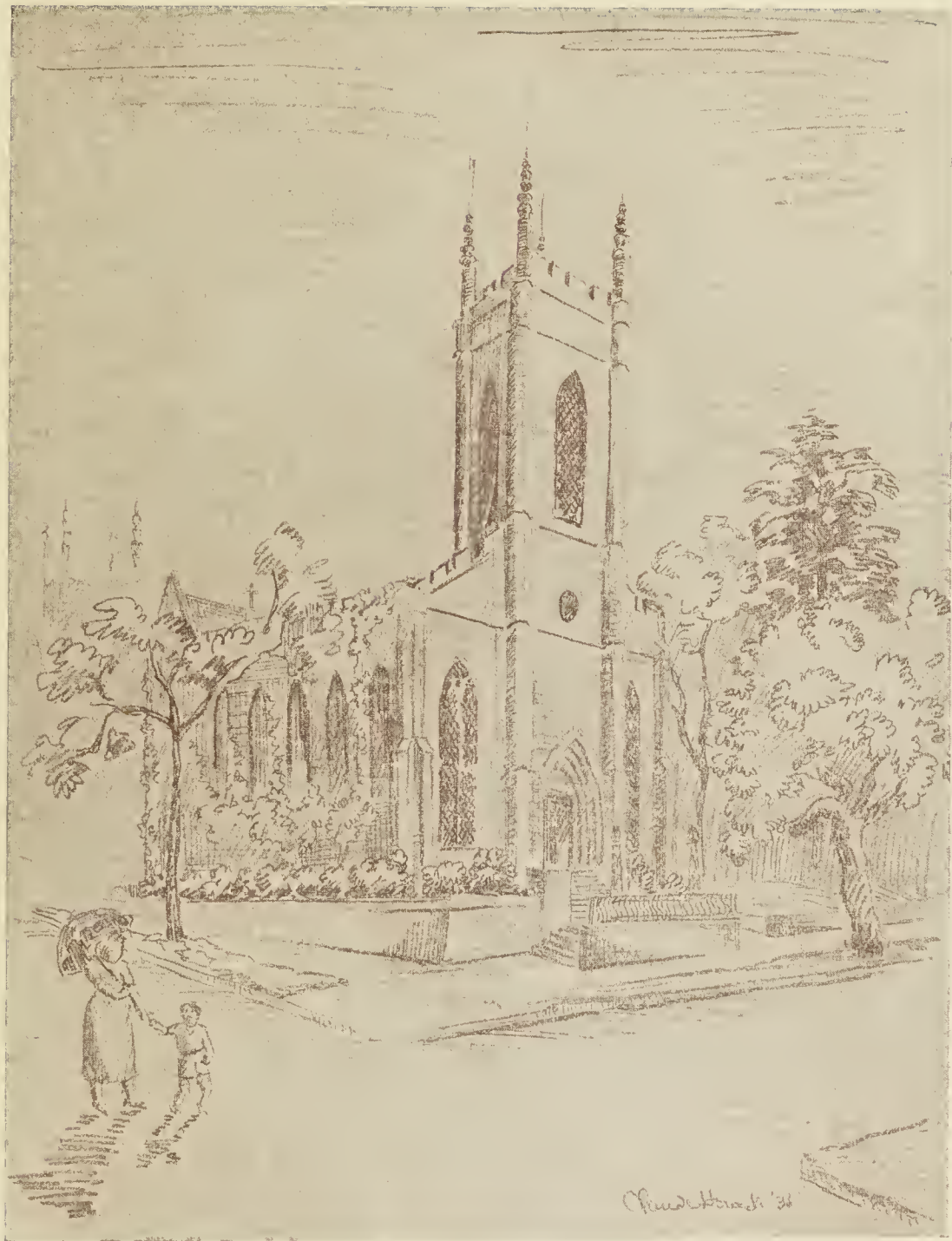
DALE SPENCER
 MARTHA STACK
 NORMA STORY
 MRS. JEAN TILLET
 VIRGINIA WALSH
 MARY WARREN
 MARGARET WILLIAMS
 REBECCA WRIGHT
 FRANCES FORMY-DUVAL
 SALLY HARRISON
 MRS. MARGARET JONES
 ANNIE ROYAL SAUNDERS
 HESTER STRUTHERS
 MADELINE TRASK
 MRS. ^{R.H.} KATIE WILLIAMS
 MRS. GEORGE LEGRAND

Congratulations Mrs. W.

Frances Formy Duval

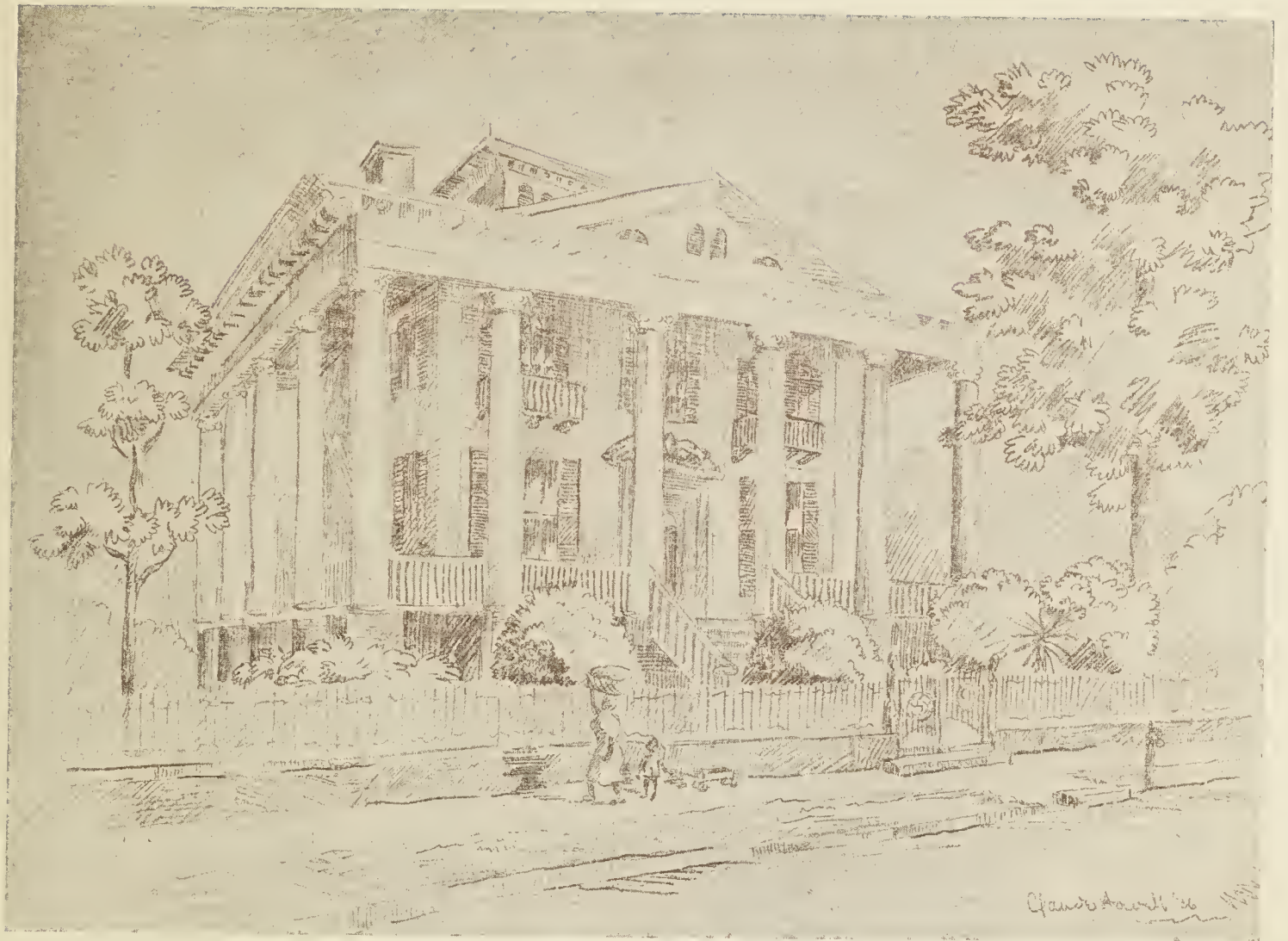


City Hall Building

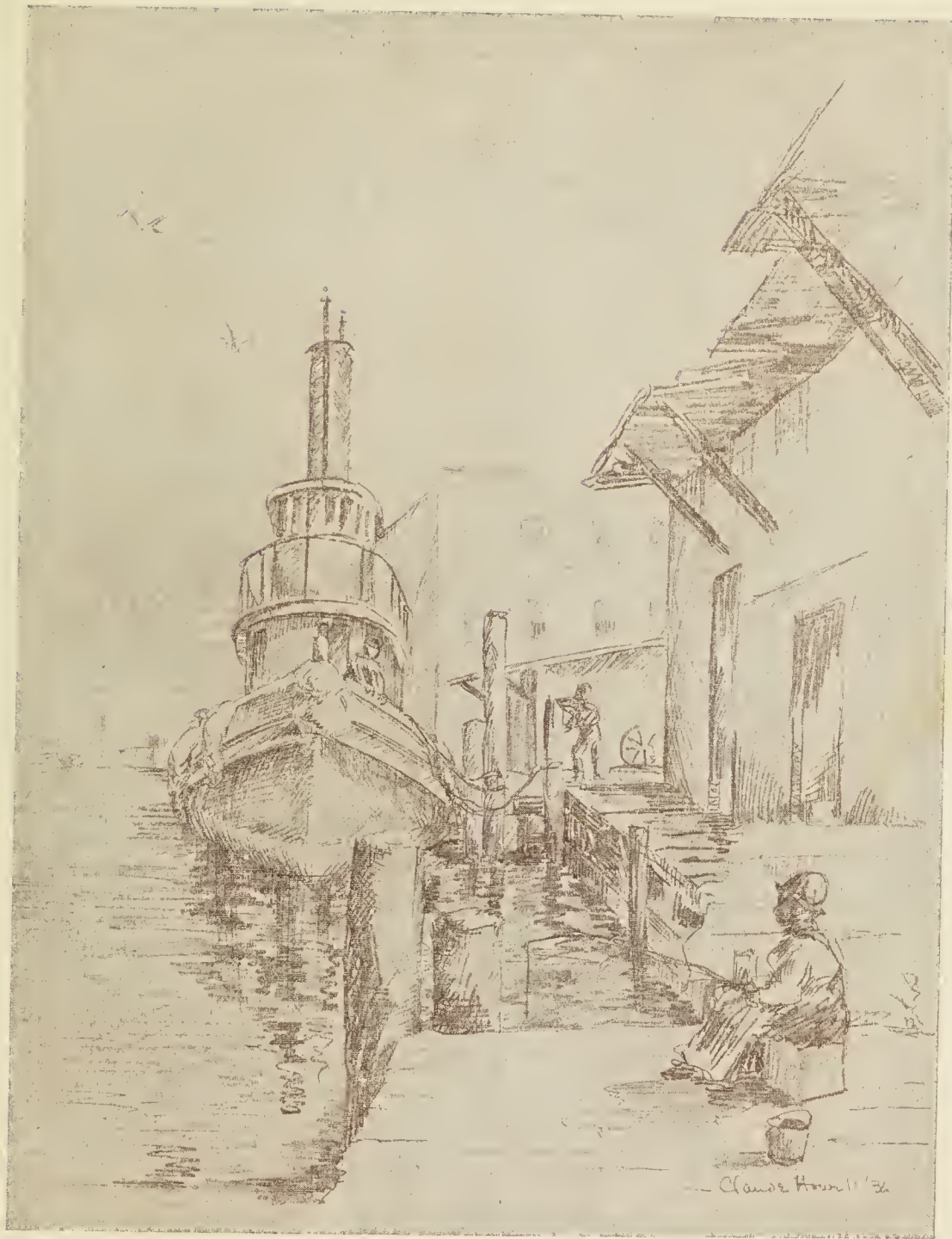


Chandler '36

St. James Episcopal Church



The Bellamy Home



On the Wharf



WILMINGTON HIGH SCHOOL, 1871-1910

CLASSES

Class Poem

When the last school bell has sounded,
 and the books are put away;
When the last high school assignment
 has given place to play;
We shall laugh, and think we shall like it
 to rest from studies new;
But little we know that our school days here
 shall then seem all too few.

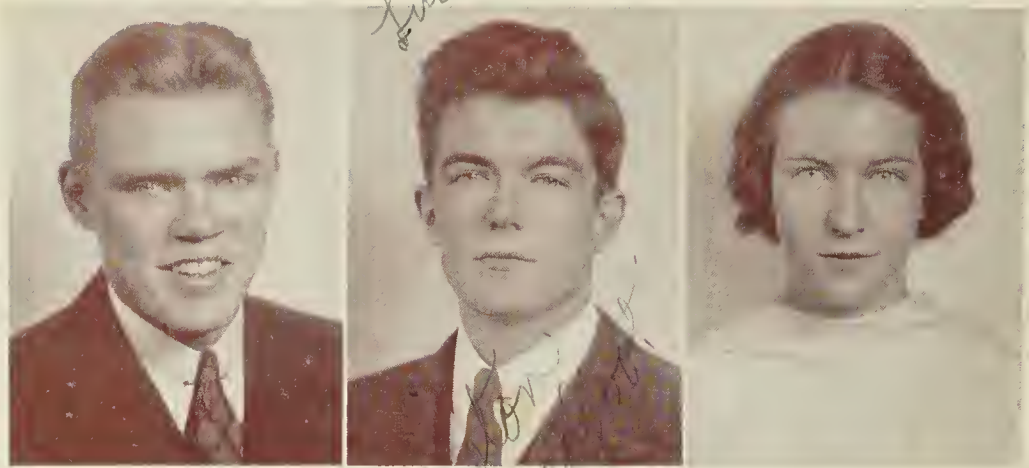
And those who have worked among us,
 will continue their upward ways;
They will think of the time they have studied
 and find that it always pays.
And all who have worked here together
 will think of the school with delight,
With assurance they'll work at the task that's ahead
 striving to do it aright.

So we shall remember each student,
 whether lazy or careless or smart;
And the long happy days in our high school
 will be a bright spot in each heart;
And as we launch out on life's high seas,
 whether student or teacher, I'll wean
We will think of the days spent in high school
 as the happiest days ever seen!

(Apologies to Kipling.)



Seniors



Senior Class Officers

WINSTON BROADFOOT, *President*

WARD ANDREWS, *Vice-President*

ALICE TALLEY, *Secretary*

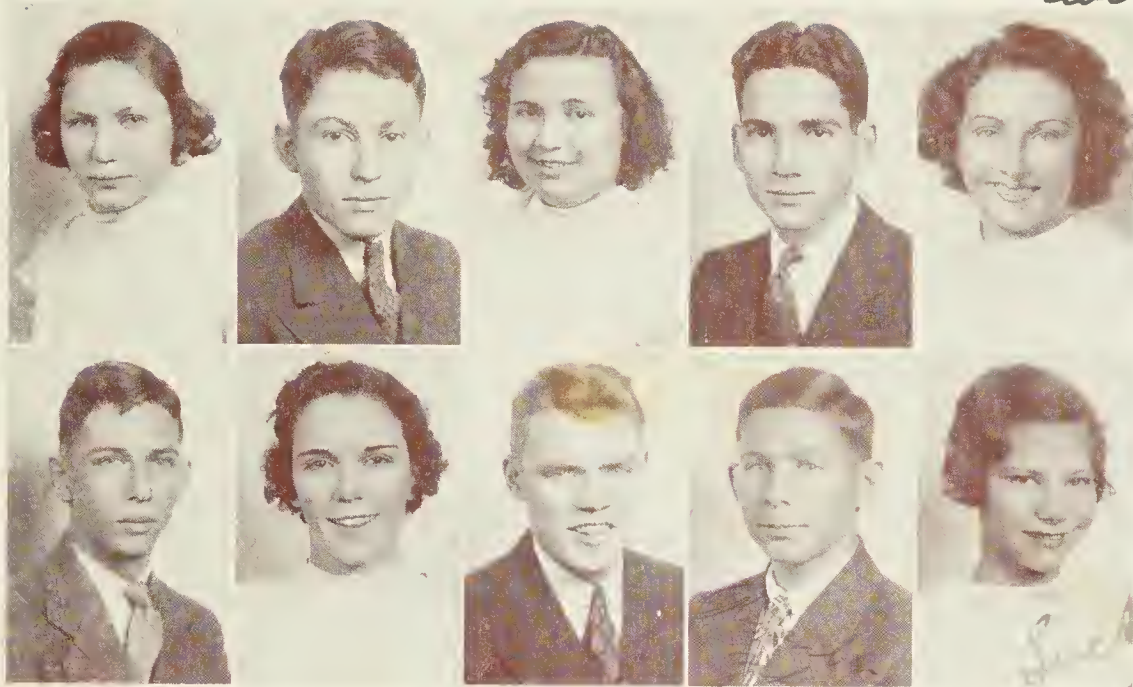
Student Council Representatives

LLOYD HOLLINGSWORTH

RENA DAVIS

Class Motto: "United we stand; divided we fall."

Class Colors: Blue and White.



*Very best wishes
Hala*

ANNA ABEL

Latin Club, 1, 2; Home Room Chairman, 2; O. Henry Society, 1, 2, 4; Dramatic Club, 3; Honor Society, 3; Scribblers' Club, 2.

Anna is our most bashful student but she will be remembered by her classmates because she always speaks a good word for everybody.

BERNARD ABRAMS

Bernard is an easy going guy who seems to be on good terms with the world, and is never a grouch.

MARGARET AINSWORTH

Margaret is a girl whom we all like and admire. She has been a wonderful asset to our class. We wish her much success and happiness.

ALLISON GRAHAM ALLEN

Traffic Squad, 1; Chemistry Club, (Vice-President 3); Science Club, (Vice-President) 4; Hi-Y (Treasurer) 4; Cotillion Club, 4; Boxing Tournament, 3, 4.

Graham is a prize-winner in good looks; has lots of friends and is always making more; he aspires to be a heart smasher.

HALA GLYN ALLEN

Latin Club, 1, 2; Chemistry Club, 3.

Hala believes that silence never betrays anyone and through her quiet ways she has made many friends.

LLOYD ALLEN

Lloyd is one of those boys who trusts in Lady Luck because he never studies and he always gets by in all his lessons.

HELEN MARJORIE ANDREWS

Glee Club, 1; Home Arts Club, 3.

We will all remember Helen because she is so good natured and seems always to be on good terms with the world.

JAMES WARD ANDREWS

Home Room Chairman, 1; Latin Club, 1; Hi-Y, 2, 3, 4, 5; Football, 4, 5; Basketball, 4, 5; Baseball, 5; Boxing Tournament, 4, 5; Cotillion Club, 5; Invitations Committee; Vice-President Senior Class.

Ward is an all round student, athlete, and good egg, one of our mainstays in class athletics.

JAMES APPLEWHITE

Chemistry Club, 3; Science Club, 4; Aviation Club, 3.

James is a quiet but ever sincere and true friend who will be remembered by his classmates forever.

MARY AUSLEY

Student Council, 2, 3; O. Henry, 1, 2, 3; Marionette Club, (President) 3; Latin Club, 1, 2; Glee Club, 1.

Mary is one of the best we have, and one of the kind who works for what she gets but it stays with her.



MARGARET BAILEY

Margaret is always full of pep and seems to be ready to do anything that will help her friends in any way.

GEORGE BALTZEGAR

George is a good humored wise cracker who always puts in a good word for everyone and never seems to be on the "outs" with his classmates.

FRED BANCK

Latin Club, 1, 2; German Club, 3, 4.

Fred believes that nothing is impossible and we wish him luck in life because he will try until he makes a success.

LYNWOOD BATSON

Lynwood is a loyal, just and upright friend who accepts fate as it comes and never fusses over anything.

JOE BAUGH

Chemistry Club, 3, 4; Spanish, 1, 2, 3.

It is reported that he was once caught studying, but we can't believe it. We wish Joe good luck.

MARTHA BEALL

Spanish Club, 1; Math Club, 1; Dramatic Club, 3.

Martha is another case where the best things come in small packages. Quiet as she is, she has made many friends.

EVELYN ELIZARETH BERRY

Latin Club, 1, 2, 3; Dramatic Club, 1, 3; Library Club, 3, 4; Glee Club, 1, 2; Home Room Chairman, 3; Junior Ring Committee, 3; O. Henry, 1, 2, 3, 4, (Vice-President, 4); Home Arts Club, 3; Honor Society, 4.

"Pete" is a good fellow, a good pal and a good student.

CHARLES FULLWOOD BELL

French Club, 2; O. Henry Literary Society, 3; Art Club, 3, 4, (President, 4); Chemistry Club, 3; Reporter.

Charles is a scholar, yes; a genius, yes; and more, a gentleman; and so we wish him happiness in the future.

WILLIAM FOREST BELL

Glee Club, 3; Marionette, 3.

Although he doesn't need to, Billy sticks close to his books and is one of our solid men.

GEORGE BELLAMY

Orchestra, 1, 2; Traffic Squad, 1, 2, 3; Dramatic Club, 3; Junior Birdmen of the Air, 3; Science Club, 4; "Wildcat" Staff, 4; Library Club, 1.

George is an efficient worker who thinks that common sense is the backbone of the universe.

THOMAS J. BEST

Chemistry Club, 3; Math Club, 1; Aviation Club, 3.

Although small of stature Thomas is one of the most promising classmates and we wish him much success and many friends.

KATHERINE BETHEA

Girl Reserves, 1; Home Arts Club, 3.

Katherine thinks much but speaks little as she believes that silence never betrays anyone.

GWENDOLYN RAE BLACKHAM

Girl Reserves, 1, 3; Orchestra, 1, 2, 3; Basketball, 4.

Gwendolyn is a true friend and is ever true to her friends.

ANTHONY ADRIN BLAKE

Glee Club; Orchestra; Traffic Squad.

Anthony thinks that life is worth while if but to smile and if he is once a friend he is always a friend.

OTILIA BLAKE

Glee Club, 1, 2, 3, 4; Girl Reserves, 1, 2, 3; French Club, 2.

Otilia can always be depended on as she has been through her 12 school years without an absence or a tardy.

ETHEL RUTH BLANTON

Home Arts Club, 3.

Ruth knows that actions speak louder than words and hard work is the secret of her success.

MAE BLANTON

Mae will always be remembered for her blonde hair and her flirtatious ways.

JOAN BLUETHENTHAL

President of Class, 1; Student Council, 1; Latin Club, 1, 2, 3; Glee Club, 1, 2; Snappy Six, 3; Dizzy Dozen, 4; Hi-Y, 3, 4; Chemistry Club, 4; Tennis Club, 4; Senior Play.

Joan will be remembered always because she is friendly, crazy, and brainy all in one.

ANN BOATWRIGHT

Hi-Y, 3, 4; Snappy Six, 3; Dizzy Dozen, (President) 4; French Club, 3; Home Room Chairman, 3; Glee Club, 1, 3, (President, 3).

Ann will always be remembered as the cutest girl in the class of '36. She is an enthusiastic supporter of all school activities and always takes a leading part.

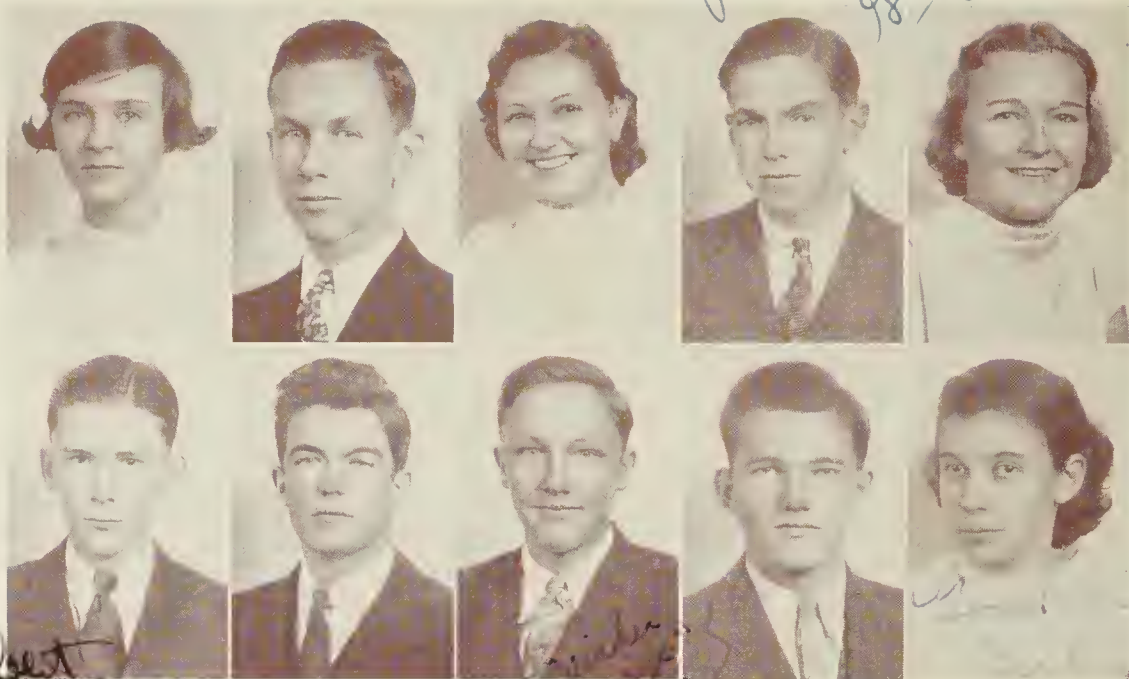
MARY MILLER BOATWRIGHT

Hi-Y, 3, 4 (President, 3); Tennis Club, 3, 4; Latin Club, 1, 2; Student Council, 1, 3; Vice-President of Class, 2; Judicial Committee, 4; Corresponding Secretary of Student Body, 3; "Wildcat" Staff, 3, 4; Annual Staff, 4; Library, 1, 2, (President, 2); National Honor Society, 4; Junior Play; Booster's Club, 4.

Mary should be rated "personality plus." Because of her friendly manner, dependability, and interest in all school activities, she is the outstanding girl of our class.

Thomas B.





CATHERINE BOEGLI

O. Henry, 1, 2; Art Club, 1; Latin Club, 1, 2.
Catherine is a quiet and unassuming student who is congenial and good-natured to all.

LESLIE BONEY

Latin Club, 1, 2, 3; Tennis Club, 2, 3, 4; Tennis Team, 2, 3, 4; Hi-Y, 3, 4; Cotillion Club, 4; Girls' Hi-Y Play, 4; Student Council, 4; "Wildcat" Staff, 3, 4; Glee Club, 1; Junior Play, 3; Play Committee, 3.
Leslie—the nonchalant indifferent guy who always manages to put things over.

MAUDEL BORDEAUX

French Club, 2; Dramatic Club, 3.
Everyone likes her; what more can be said about Maudel?

GEORGE S. BOYLAN

Student Council, 1, 4, (President, 4); Judicial Committee, 3, 4; President Student Body, 4; Chemistry Club (President), 3; O. Henry, 4; Declamation Medal, 1; Marionette Club, 3; Junior Play, 3; Senior Play, 3; Hi-Y Play, 4; Hi-Y, 3, 4; State Student Council, 4; Science Club, 4; Traffic Squad, 3, 4; Cotillion Club, 4.
George is the reliable "school spirit" guy who is made of the real stuff.

FEMIA M. BRAAK

Girl Reserves, 1; Dramatic Arts Club, 3; Chemistry Club, 1.
Femia has been a shy senior but a smart one whose grades are above the average.

ROBERT BRIDGERS

Latin Club, 1, 2; Math Club, 1; Paper Staff, 3, 4; Business Manager, 4; Hi-Y, 4; Science Club, 4; Delegate to State Hi-Y Congress, 4.
Nowhere is there a better business man than Bobby. He is a great guy with lots of ability and we wish him luck.

WINSTON BROADFOOT

"Wildcat" Staff, (Editor) 4; Vice-President of Class, 3; Latin Club, 1; O. Henry, 2; Class President, 4; Judicial Committee, 3; Student Council 4; Hi-Y, 3, 4.
Winston's good will and congeniality have won him many friends. He is also very popular with the fairer sex although interested in no one in particular.

HERBERT CODINGTON BROOKS

Traffic Squad, 3; Boxing, 3; Chemistry Club, 4.
Herbert is one of the finest boys we have ever met. During his years at N. H. H. S. he has made many friends.

DONALD BROWN

Student Council 4; Judicial Committee, 4; Traffic Squad, 3, 4. (Assistant Captain 3; Captain, 4); German Club, 3, 4, (Treasurer, 3; President, 4); Hi-Y, 4; Nature Club, 3, (Secretary-Treasurer); Latin Club, 1, 2.
Instead of studying Donald is usually found with a certain young lady. He will succeed in life we know, because of his ability to make friends.

GERTRUDE BROWN

Chemistry Club, 3; Home Arts Club, 3.
Gertrude will succeed in life we know because she believes in a friendly attitude to all and thinks that deeds make the man.

MARY NELLIE BROWN

Latin Club, 2, 4; Traffic Squad, 3; Home Arts Club, 3.

Mary Nellie is always smiling and we wish her luck in the future as she has the ability and the desire to carry things through.

NINA RUTH BROWN

Nina Ruth is always obliging and never refuses to do a favor for anyone whether friend or stranger.

ROSA LEE BROWN

Math Club, 1; Latin Club, 3; French Club, 3; O. Henry, 3.

Rosa Lee is one of our more conservative students and though she speaks little it is always profitable to listen when she does.

VIRGINIA BRYAN

Latin Club, 4; Scribblers' Club, 4; Home Room Chairman, 2.

Virginia is studious and just the type to become successful in later life. We wish her luck and happiness.

MARY KATHERINE BURNETT

Girl Reserves, 1; Home Arts Club, 3.

Kitty's lovely brown eyes and quiet ways make her the boys' idol and the girls' envy.

MARY HELEN BURRIS

None could be sweeter, more obliging than Mary Helen; she is always in a good humor and therefore has many friends who wish her unlimited success.

MARY FRANCES BYRD

Latin Club, 1, 2; O. Henry, 1, 3, 4; Tennis Club, 1, 2, 3, 4; Girl Reserves, 1; Honor Society, 3, 4; German Club, 3, 4, (Vice-President, 4); Recording Secretary Student Body, 3; Judicial Committee (Secretary) 3; Student Council, 1, 3, (Secretary, 3); Assistant Business Manager of Annual, 4.

Mary Frances is a hard working conscientious type of student and as a result has been among those who lead her class each year.

HUGH CALDER

Math Club, 1; O. Henry, 2; Student Council, 3; Hi-Y, 3, 4; German Club, 3, 4; Glee Club, 3; Chemistry Club, 3; "Wildcat" Staff, 4; Home Room Chairman, 4; Nominating Committee, 1; Ways and Means, 3; Invitations Committee, 1; Invitations, (Chairman) 4; Latin Club, 3; Hi-Y Convention, 3; Senior Play; Hi-Y Executive Committee.

Hugh believes in studying just enough to pass his work, and enjoys life the rest of the time.

RAY CALHOUN

Glee Club, 1, 2; Art Club, 1; Chemistry Club, 3; Traffic Squad, (Secretary-Treasurer) 3; O. Henry, 4; Publicity Chairman of Edison Science Club, 4.

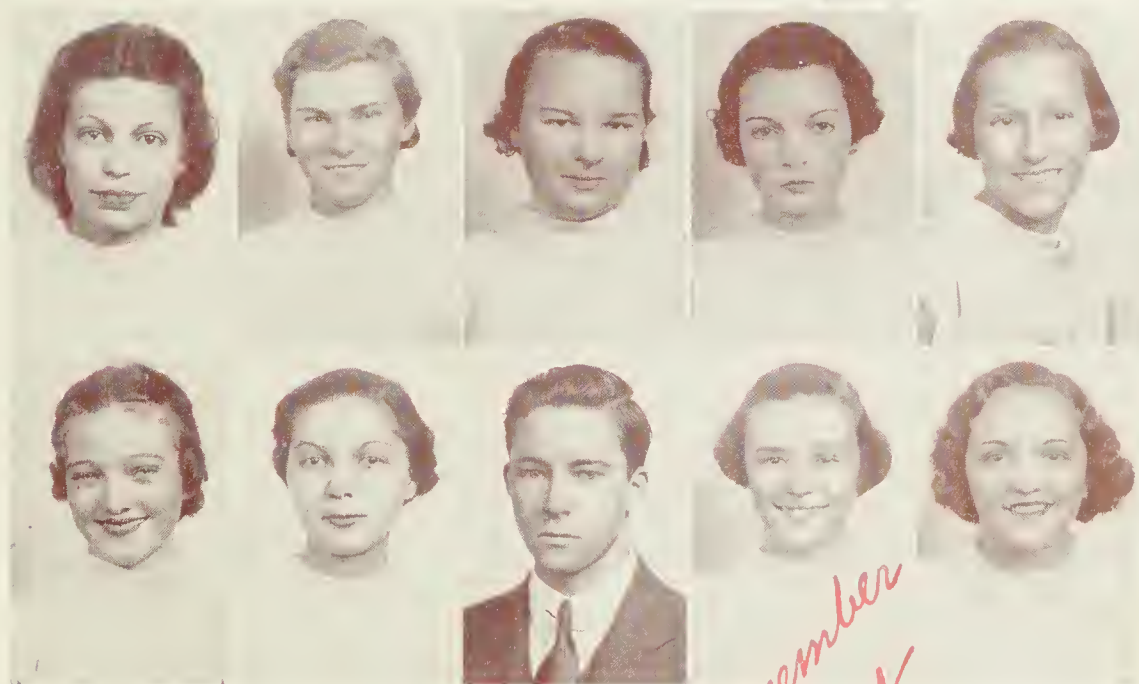
Ray is quiet and hard working. She never says much but when she does she speaks a good word for everybody.

NANCY CAMPBELL

Hi-Y, 3, 4; Dizzy Dozen, 4.

Nancy has the reputation of being the laziest girl in High School but she is popular with all and deservedly so.

*Looks of
luck in future*



*Remember
Ray*

" Luck to Larry
remember 220



ELOISE CAMPFIELD

Glee Club, 1; Girl Reserves, 1; Chemistry Club, 3; Library Monitor, 3, 4.
Eloise always looks well pleased with life and if we knew her secret of happiness we would be that way too.

LOIS CANADY

Dramatic Club, 3; Home Arts Club, 3.
When it comes right down to hard work, combined with common sense, Lois is hard to beat.

EVELYN CAPPS

Glee Club, 1, 2, 3, 4; O. Henry Literary Society, 1, 2; Traffic Squad, 2, 3; Latin Club, 1, 2.
Evelyn is quiet and dignified and we shall remember her forever because she practices the proverb, "To be rather than seem to be."

MILDRED LOUISE CARNEY

Mildred has lots of friends and is always making more as she is a good mixer and very companionable.

JOHN CARTER

John is one of those boys with a cheerful word for everyone. No wonder he has made many friends at N. H. H. S. We wish him luck and success.

AUSTIN CASHWELL

Traffic Squad, 2; Kiwi Aviation Club, 2; Art Club, 4
Austin is a quiet boy whom we all admire. He is a real friend to everyone.

ROBERT RONXLEY CHRISTIE, JR.

Football, 2, 3, 4; Basketball, 2; Glee Club, 1, 2, 3, 4; Home Room Chairman, 1; Latin Club, 1; Chemistry Club, 3; Traffic Squad, 2, 3.
Bobby is always in a good humor, easy to get acquainted with and smiles every day of the week.

CHARLES CLARK

Chemistry Club, 3; Latin Club, 1.
Charles is always busy and pleasant—he is a good fellow and everyone likes him.

MARVIN CLARK

Home Room Chairman, 2.
Marvin has a habit of smiling at you, at himself, and at the world as he is marked by a sense of humor.

A. B. COLEMAN

Boxing; Football.
A. B. is one of our most athletic students. The class of '36 shall long remember him as one of its loyal sons.

MARY COLEY

French Club, 2; Dramatic Club, 3.

Mary is one of the best in our Class and has managed to be amiable at all times.

JOHN COLWELL

Hi-Y, 3, 4; Tennis Club, 3, 4; Chemistry Club, 3; Home Room Chairman, 2; Math Club, 1; Dramatic Club, 1; Cotillion Club, 4; Aviation Club, 3.

John is a good tennis player, a good boy, a good pal—in fact, just good in general.

FLOSSIE MAE COMBS

Chemistry Club, 3; Girl Reserves, 3; O. Henry, 1.

Although quiet and unobtrusive, Flossie Mae is very good natured and congenial with everyone.

ALICE INEZ COOKE

Inez is one of our luckier students as she won \$140 all in one night—she will be remembered by the class of '36 because of her personality and pep.

SUSAN ELIZABETH COOPER

Latin Club, 1, 2; Glee Club, 1; Home Arts Club, 3.

Susan—the most optimistic Senior who is always seen smiling, will make a success at any undertaking and we wish her the best of luck.

DONALD CRAIG

We will always remember Donald for his easy-going ways and we hope that life will always smile on him.

MELVIN THOMAS CRAIG

Melvin has a wonderful disposition and a very pleasing personality which we know will follow him through life.

JAMES V. CREASY

Math Club, 1; Latin Club, 2, 3; Dramatic Club, 3.

James is a true friend at all times and can always be depended on. We wish him much luck in the future.

HELEN CROOM

Girl Reserves, 1, 4; French Club, 2; Dramatic Club, 2.

Everyone who has ever met Helen likes her a great deal and because she is our friendliest senior we wish her happiness in her later career.

CLARENCE LINDSEY CURTIS

Nature Club, 3.

Lindsey is a good fellow whom we all admire and like a great deal. He is always sincere in his actions.



Handwritten notes in ink are present on the page. One note is written over the middle photo of the top row. Another note is written vertically over the bottom row of photos. A large, cursive note is written on the right side of the page, partially overlapping the bottom row of photos.



FLORENCE MARSDEN DAVIS

Home Room Chairman, 1; Latin Club, 1, 2; Orchestra, 1; Girl Reserves, 1; Dramatic Club, 3; Boosters Club, 4; O. Henry Club, 1, 2, 3.

Florence is a reliable person and a friend worth having. We sincerely hope that her future life is full of happiness.

KATIE DAVIS

Latin Club, 1, 3; Dramatic Club, 2, 3; Glee Club, 4.

Katie is a faithful member of the class of '36. She has made many friends at N. H. H. S.—a good trait to carry through life.

LEE OTHA DAVIS

Kiwi Aviation Club, 3

Lee Otha is a good fellow, whom we all admire and like a great deal. We know that whatever he does will always be a success.

RENA DAVIS

O. Henry Club, 1; Glee Club, 1; Latin Club, 1; Declamation Contest, 1, 2; Dramatic Club, 1, 3; Junior Play; Student Council, 4; Home Room Chairman, 4; "Wildcat" Staff, 4; Hi-Y, 4; Dizzy Dozen; Library Monitor, 3, 4; Play Committee, 4; Handbook Committee, 3.

Rena is one of our outstanding students. She is a hard and conscientious worker and is certain to have happiness and success in her future career.

PERRY DAWSON

Aviation Club, 3; Chemistry Club, 3; "Wildcat" Staff, 4; Boxing Team, 4; Annual Staff, 4.

Perry is one of the few members of our class with artistic ability. We know he will succeed if his other abilities are equal to his art.

LETHA MAE DIXON

Letha Mae has a charming personality which causes her to have many friends who will regret parting with her. We wish her much success and happiness.

WILLIAM LEE DIXSON, JR.

Printers Club, 1; Architect's Circle, 1; Dramatic Club, 2; Senate, 1, 2; Home Room Chairman, 1, 2; Football, 2; Physics Club, 4; Cotillion Club, 4; Boxing, 4.

Bill is a quiet lad with a host of real friends.

EVELYN D'LUGIN

O. Henry Club, 1, 2; Dramatic Club, 1, 3, (Secretary, 3); Dizzy Dozen, (Secretary) 4; Latin Club, 1; Home Room Chairman, 4; Glee Club, 1; Senior Play.

Evelyn is certainly one of the best dressed, best looking and best liked girls in the class of '36.

MARY LOUISE DONNELLY

Snappy Six, 3; Dizzy Dozen, 4; Traffic Squad, 4.

Mary Louise is the type of girl who makes N. H. H. S. such a fine school. We wish her success and happiness in years to come.

JACK DUNCAN

Many days may pass, but it will be a long time before we are able to forget such a good boy as Jack.

JOHN JAMES EAKINS

Chemistry Club, 3.
John is a sincere friend at all times and one of the nicest boys our class has produced.

FRED WILEY EARNHARDT

Fred has been one of the loyal sons of N. H. H. S. and we will always remember his quiet and helpful ways.

PELTON ELLIS

Junior-Freshman Aviation Club; Chemistry Club, 3; Edison Science Club—Radio Division.
The class of '36 will long remember Pelton because he has been such a valuable asset.

FRANKLIN HARPER ELMORE

Home Room Chairman, 1; Latin Club, 1, 2; Chemistry Club, 3; Science Club, 4; Traffic Squad, 3, 4; Aviation Club, 3.
Franklin has made many friends at school and we know his congeniality will follow him through life.

HAYWOOD CLARK EMERSON

Latin Club, 1, 2; Annual Staff, (Business Manager) 4; Paper Staff, (Assistant Feature Editor 3, Feature Editor, 4); Cotillion Club, 4; Ways and Means Committee, 3; Chairman Junior-Senior Entertainment; Tennis Club, 3, 4; Science Club, 4; Hi-Y Club, 4.
Haywood is one of those boys who is just different and because of his winning personality he has won many friends in old N. H. H. S.

CHARLES ENGLISH

Orchestra, 1, 2, 3, 4; Latin Club, 1, 2.
May Dame Fortune follow Charles through life as his quiet unassuming ways have made many friends for him.

NADINE JUNE EPWORTH

Girl Reserves, 2; Glee Club, 1; Home Arts, 2.
Nadine is one of the best students we have and we are sure that good luck will follow her always.

HERMAN JOHN EVERETT

Aviation Club, 3; Home Room Chairman, 2.
Herman is a boy we all know and like and his friends in High School will regret losing him.

JEAN ELIZABETH EVERETT

Girl Reserves, 1, 2; Latin Club, 3; Chemistry Club, 4.
Jean is plenty sweet and although quiet she can always be depended on.

MARGARET N. FARMER

Girls Hi-Y, 3, 4; Latin Club, 1, 2; Marionette Club, 3, (Secretary-Treasurer); Tennis Club, 1, 2, 4.
Margaret is one of the sweetest girls whom we have ever known. We have been lucky to have known her and wish her much success.

"Luck to you John"

Ms - Ellis



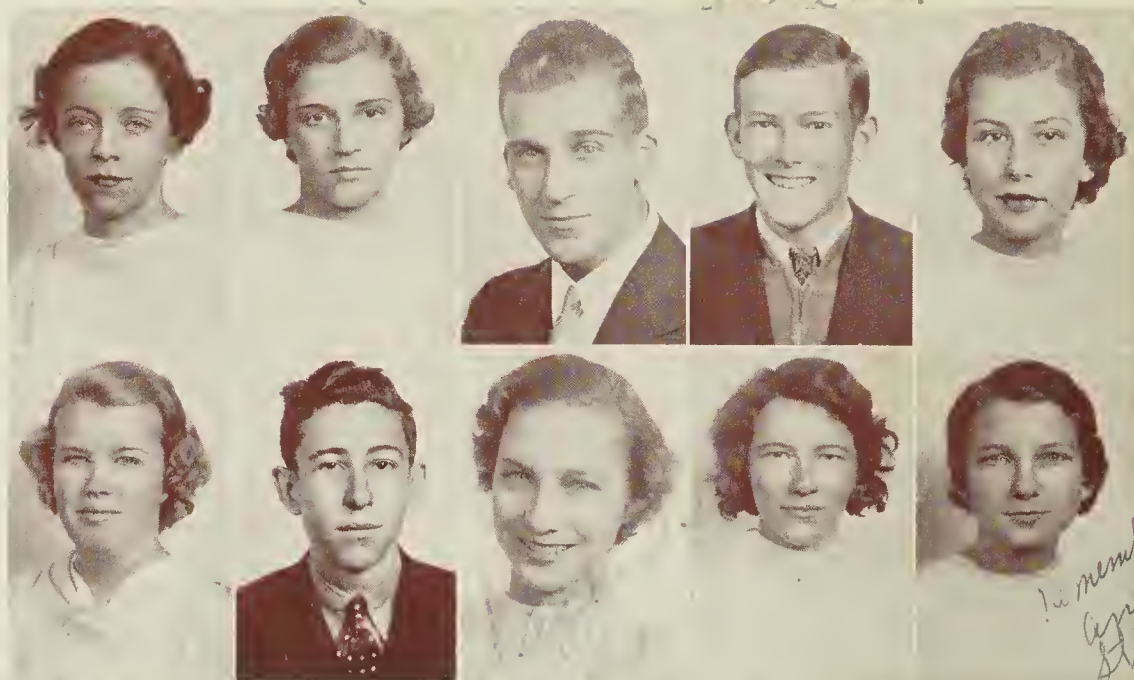
"A number 'Miss B' rocks"
Charles English



*You are small too
she I guess - I wish
you gave I wish
I could I wish
ship*

*Best of luck
Herman*

*Luck to you
Margaret!*



*! a member Math IV
 Good Miss
 Struthers!
 Elsie*

CAROLINE FARRAR

Glee Club, 1, 2; Latin Club, 1, 2; Spanish Club, 3; Basketball, 1, 2, 3, 4; Tennis Club, 4; Home Room Chairman, 2; National Honor Society, 3, 4.

Caroline is our outstanding girl athlete as well as one of the most studious of our classmates.

FLORENCE OLIVIA FICK

Glee Club, 1, 2, 3, 5; Latin Club, 1, 2; Math Club, 1; Art Club, (President) 4; Chemistry Club, 5; Library Monitor, 4; Traffic Squad, 1; Girl Reserves, 1.

If Florence makes as many friends in life as she has made at school we'll be very proud of her.

OWEN FILLYAW

Football, 1, 2, 4; Art Club, 5; Traffic Squad, 2; Home Room Chairman, 2.

Owen is another of our outstanding athletes—an easy going, friendly sort of a fellow, who seems never to be serious.

ARCHIE DON FOUNTAIN

Chemistry Club, 3; Thomas Edison Club, 4.

Those who know Archie, like him and find him a true and pleasant companion.

MARY FRADY

Home Room Chairman, 2; President Home Economics Club, 3; National Honor Society, 4.

Mary's sunny smile and disposition as well as her scholastic ability will make a success of her life.

ADNA ROBBINS FREDERICKS

Glee Club, 1; Home Arts Club, 3.

Adna is kind, considerate, and friendly in every way and we will never forget her.

J. L. FROST

We will always remember J. L. as one of our true friends. We wish you luck, J. L.

MARIAN CATHERINE FRYAR

Glee Club, 1, 2; Latin Club, 1, 2; Dramatic Club, 3; O. Henry' Society, 4; Honor Society, 4.

Marian has been a great asset to the class of '36. Her sweet disposition has won her a host of friends.

JULIA FRYE

Hattiesburg High School, 1, 2; Latin Club, 3, 4; Honor Society, 4; Archery Club, 3, 4; O. Henry Literary Society, 3, 4.

Julia showed her brilliance when she graduated at mid-term and we all miss her.

ELSIE FUSSELL

French Club, 2; Home Arts Club, 3; O. Henry Literary Society, 4.

Elsie is known for her wealth of knowledge and her humble charm. We wish her much success after she leaves N. H. H. S.

ARTA GERTRUDE FUTRELLE

Cheerio Club, 3, 4; Commercial Club, 3, 4.

Arta is always ready to lend a helping hand, and that makes up the quality of a friend.

ELIZABETH ANN GARRABRANT

Clee Club, 1, 2; Latin Club, 2, 3; Girl's Hi-Y, 3, 4, (Vice-President, 4); Hi-Y Play, 4; Dizzy Dozen, 4. Betty will be remembered for her personality and pep and more than ever for her flirtatious ways.

KENNETH GAYLOR

We are proud to have known Kenneth and will remember him always because of his pleasing disposition.

MARGARET HELEN GILLIARD

Girl Reserves, 1; Glee Club, 1.

Margaret is a girl whom we all like and admire; we are pulling for her success in the future.

ALBERT PAUL GLOD

Latin Club, 1; Orchestra, 1, 2; Aviation Club, 3, (Vice-President); Chemistry Club, 3; Science Club, 4; Declamation Contest, 2, 3.

Albert is a fine boy, easy going and good natured who will be remembered forever by the class of '36.

WALTER JOSEPH GLOD

Orchestra, 1, 2; Aviation Club, 3; Chemistry Club, 4; Honor Society, 4.

Walter is a sincere friend at all times and he is one of the nicest boys we have ever known. May he do as well in life.

EDWARD PERCY GODWIN

Latin Club, 1, 2; Chemistry Club, 3.

Edward is very nonchalant and easy going and we are glad he is a member of our class of '36.

BETSY GRAHAM

O. Henry Club, 1, 2; Latin Club, 1, 2, 3, 4, (President, 4); Secretary of Sophomore Class; Student Council, 2; Library Club, 2, 3, (President, 3); Hi-Y, 3, 4, (President, 4, Treasurer, 3); Honor Society, (Vice-President, 4); Manager of Hi-Y Play 4.

Betsy has been an ideal student at N. H. H. S. We feel sure that her influence has meant much.

CHARLES F. GREEN, JR.

Hi-Y Club, 4; Tennis Club, 3, 4; Chemistry Club, (Reporter) 4; Latin Club, 2.

The school is losing a worthy student and a good natured friend in Charles.

ELIZABETH HAGOOD

Library Club, 1, 2; Latin Club, 1, 2; Girl Reserves, 1, 2; Traffic Club, 3; Dramatic Arts Club, 2; Glee Club, 1.

Elizabeth always has a cheery word everywhere for life is just one happy adventure for her. She will certainly succeed with this trait.

Good Luck Elizabeth

Best wishes on your journey - W. Lowell - "Wells"



*More Power to you Leroy!
Charles Green*

Best of luck
Mary



MARY VIOLETA HAGOOD

Latin Club, 1; Library Monitor, 4.

Mary is just the right kind of girl and her happy nature, plus many more good traits, will bring her success.

HELEN ELEANOR HALE

Spanish Club, 1; Math Club, 1.

Helen has been an ideal student at N. H. H. S. and a true companion. What more could be said?

MARIE ALMA HANSON

Home Room Chairman, 1; French Club, 2; Glee Club, 3, 4.

Marie is a capable person, level headed in school and out. To know her is to like her.

RUTH HARDISON

Ruth is the kind of friend worth knowing but best of all she is the kind who may always be depended on.

NATHAN HARRIS

French Club, 2; Chemistry Club, 3; Tennis Club, 3, 4; Traffic Squad, 3; Physics Club, 4.

"Tubby"—the biggest flirt, the craziest, the most mischievous, will get much out of life as he believes in putting everything into it.

HAZEL ELIZABETH HARRISON

Latin Club, 4; French Club, 2; Girl Reserves, 1.

We are truly fortunate in having a girl like Hazel as our friend and classmate. We will miss her and wish her much happiness.

LOIS F. HARTLEY

Lois has made friends here who sincerely wish that she will remember them in later life for she is an ideal friend.

ELEANOR J. HASKETT

French Club, 2; Dramatic Club, 3; O. Henry Club, 3, 4; Scribblers' Club, 4.

Eleanor is a mixture of sweetness, modesty, and smiles which will carry her far in life.

NATHAN S. HASKETT, JR.

Science Club, 4.

Happy-go-lucky Nathan who has never been known to study will always be remembered by everyone, especially by Miss Struthers and the fourth period Mathematics Class!

JOHN KENCHEN HEAD

Latin Club, 1, 2; Tennis Team, 1, 2, 3, 4, (Manager, 2, Captain, 3); Chemistry Club, 2.

Because John is our most optimistic boy we are sure he will succeed in any undertaking. Where there's a will, there's a way.

WILLIAM THOMAS HEAD

Latin Club, 1; Chemistry Club, 3; Glee Club, 1, 2, 3; Tennis Club, 1, 2, 3.

Thomas is a good sport and is full of fun. We won't forget him and we hope he will remember the class of '36.

EDWARD HEMBY

Edward is not studious but he always gets by; he will be remembered for his good-nature and happy ways.

JAMES G. HENDERSON

Math Club, 1; Football, 1, 2, 3, 4; Basketball, 3, 4; Intra-mural Boxing, 3, 4; Nature Club, 3; Track, 1; Baseball, 4.

James certainly helped out the class athletic scores and because of his school spirit and loyal help we will remember him always.

ANSON HEWETT

Anson is a boy to be relied upon—a friend of whom to be proud. We wish him luck and success in the years to come.

ANNE HIERS

Although Anne just came to us this year we have seen enough of her to find that she is a cheerful friend—everyone likes her a great deal.

MARY VIRGINIA HIGHSMITH

Math Club, 1; Home Room Chairman, 1; Girl Reserves, 1, 2; Chemistry Club, 3; Traffic Squad, 4; O. Henry, 4; Astronomy Club, (Chairman, 4); Senior Play, 4.

Virginia seems to get along at school wonderfully and we are sure she will do as well in later life.

EDITH MAE HILL

Girl Reserves, 1; Spanish Club, 1; Basketball, 4; Dramatic Club, 3; Home Arts Club, 3.

Edith is one girl in our class that we will always remember because she is a true and loyal friend to all who know her.

EDWARD LEE HOBBS

Baseball, 4.

Ed is one of the nicest and best liked of our class and we wish him much luck and success in all his later pursuits.

ISAAC HOBBS

Orchestra, 1, 2; Harmonica Club, 3; Glee Club, 1, 2; Chemistry Club, 3; Edison Science Club, (Chairman of Radio Committee) 4.

Isaac has a friendly attitude toward everyone and everything in general and the class of '36 wishes him the best of luck.

R. B. HODGES

Radio Club, (President) 3; Science Club, (President) 4; Glee Club, 1, 2; Latin Club, 1.

Every student who knows R. B. likes him and because of his ability to make friends he will climb high on the ladder of success.



Handwritten signature: "Clayton" with "1936" written below it.



LLOYD DIXON HOLLINGSWORTH

Student Council, 4; School Store, 3; Traffic Squad, 3; Orchestra, 1; Manager Basketball Team, 3; Basketball Team, 4; Chemistry Club (Vice-President) 4; Intra-mural Boxing (Semi-Finals) 3, 4; Tennis Club, 1, 2, 3; Tennis Team, 2, 3; Hi-Y Club, 2, 3, 4, (Secretary, 3, President, 4); Home Room Chairman, 2, 4, (Secretary-Treasurer, 4); Cotillion Club, 4; Senior Class Play Committee.
Lloyd is one of the best seniors and will be remembered for his personality and pep; he was also a great help to the basketball team.

LOUISE HORTON

Glee Club, 3; Boosters' Club, 4.
Louise is just a swell all-round girl who will never be forgotten and we hope she will remember us too.

RALPH TERRELL HORTON

Traffic Squad, 2, 4; Baseball, 1, 2, 3, (Manager, 1); Basketball, 1, 2, 3, 4; Football, 1, 2, 3; Glee Club, 3; Student Council, 3; Track, 1, 2; Home Room Chairman, 2.
Ralph is not only an athlete but incidentally our handsomest boy. Don't you agree?

J. D. HUFHAM

Aviation Club, 3; Boxing, 3; Boxing Team, 4; Baseball, 3, 4; Traffic Squad, 4.
J. D.'s easy going, pleasing ways cause him to have many friends in and out of school. We wish him luck.

MAURICE HUFHAM

Football, 3, 4, 5; Basketball, 2, 4, 5; Intra-mural Boxing, 4, 5; Baseball, 2, 4, 5; Track, 2, 3, 5; Home Room Chairman, 1; Harmonica Club, 3; Aviation Club, 3; Radio Club, 3, 4; O. Henry, 1; Glee Club, 1, 2.
Maurice never stops joking and believes in enjoying life always.

ERNEST J. IRVING

Orchestra, 1, 2; Glee Club, 2; Art Club, 3; Chemistry Club, 3; Radio Club, 4; Science Club, 5; Aviation Club, 4.
Ernest is a good pal and we hope he will always keep his bright outlook on life.

ALICE MAYBELLE JACKSON

Art Club, 2; Math Club, 1; Home Arts, 3; O. Henry, 4.
Everyone knows Maybelle and we all like her and are proud to have her as a member of the class of '36.

EDWIN BELL JACKSON

Tennis Club, 1, 2, 3, 4; Tennis Team, 2, 3, 4.
Eddie proved a valuable addition to our class as he has won many a tennis game for the glory of our school.

ALICE HAUGHTON JAMES

Latin Club, 1, 2; Glee Club, 1; Student Council, 3; Snappy Six, 3; Dizzy Dozen, 4; Paper Staff, 3; Annual Staff, 4; O. Henry, 3; Hi-Y, 3, 4.
Alice is one of Beauty's daughters who has personality plus and everything else that counts.

RAYMOND JENNE

German Club, 3, 4; Latin Club, 2; Traffic Squad, 2.
Raymond is the quiet business like boy who has always been loyal and faithful to the class of '36 and we will always remember him.

ELIZABETH ANN JEWELL

Glee Club; Home Arts; Basketball.

Elizabeth is always full of life and fun and we wish her all the success and happiness possible.

F. G. JOHNSON

F. G. has made many friends during his years at N. H. H. S. We wish him much luck and success.

LOUISA GRANT JONES

Latin Club, 1, 2, 3, 4, (Secretary-Treasurer, 4); Dramatic Club, 3; Junior Play Committee, 3; Invitations Committee, 4; Honor Society, 4.

Grant is one of our studious students who makes friends easily and is full of "school spirit."

JAMES FRANK KELLY

Latin Club, 1, 2; Student Council, 2, 3; Chemistry Club, 3; Hi-Y Club, 3, 4; Marionette Club, 3; Traffic Squad, (Assistant Captain) 4; Cotillion Club, (Secretary) 4; O Henry, 3.

James will always be remembered by his classmates because of his ready smile and good words which are always a help to his fellow-students.

ROBERT KENNEDY

Chemistry, 3.

Robert is a likable boy. We all appreciate the loyal support given to his class as well as to his school in general.

CLARENCE GRAHAM KERR

Orchestra, 1.

Though quiet and unassuming Graham is a very smart student who believes in doing everything correctly and without delay. These traits will all help him in the future.

ROBERT M. KERMON, JR.

Latin Club, 1, 2, 3; Chemistry Club, 3; Traffic Squad, 4.

R. M. is a real friend to everyone he meets and we like his quiet ways.

GEORGE KERTRULAS

French Club, 2; Aviation Club, (Secretary-Treasurer) 3; Nominating Committee for Senior Officers, 3; Basketball, 4; Chemistry Club, 4.

George has never been known to criticize anyone and we find nothing to criticize about him. Good luck to him.

IRMA VIRGINIA KING

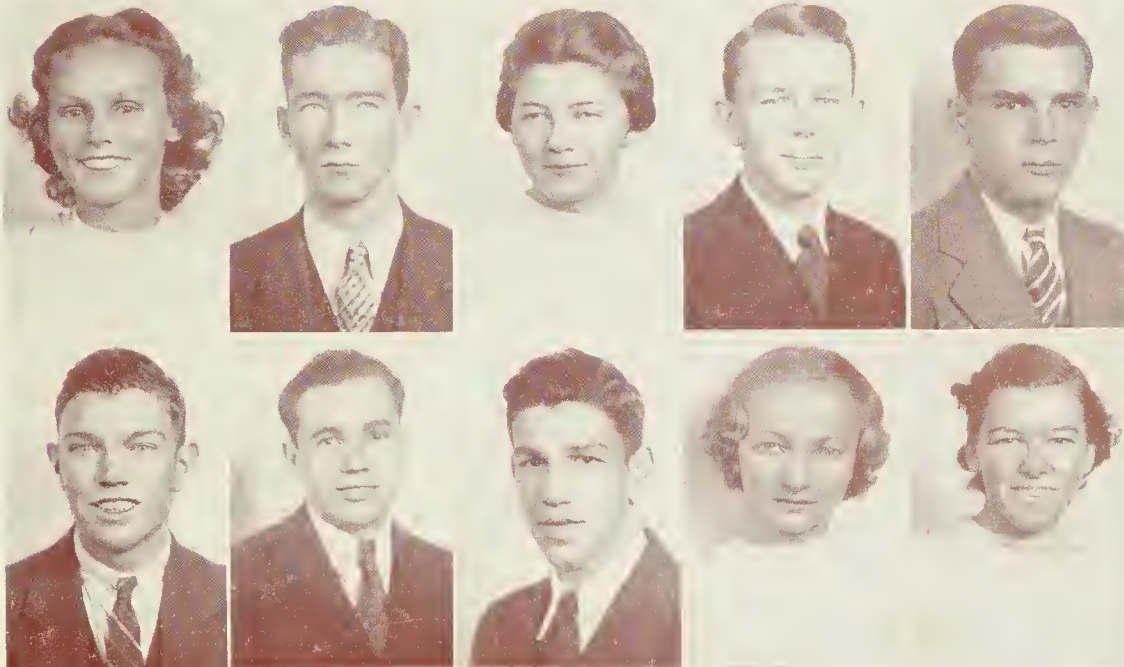
Glee Club, 1.

Irma is calm, unhurried, and serene, and we hope she succeeds in later life.

VIRGINIA RUTH KLANDER

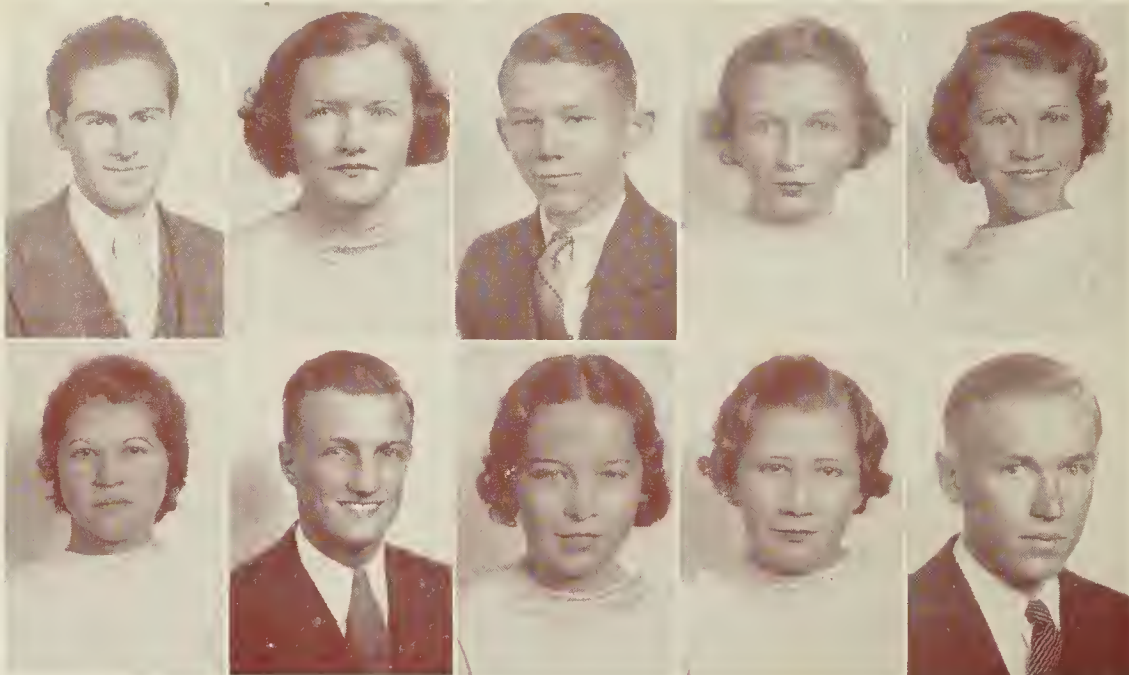
Ruth is kind, patient, and willing to help—all this and more.

*Good luck to
Robert Kermon*



*Joan
my
June*

Luck always,
Mary Janice



EARL KLUTZ

Kiwi Aviation Club, 3; Boxing Tournament, 3.
Earl is a loyal supporter of our class and we hope he has much success in his future career.

MILDRED KOONCE

Latin Club, 1, 2; German Club, 1, 2; Glee Club, 1.
Mildred possesses a charming disposition and she is sincere in all she undertakes. Therefore we know that life holds much for her!

ALBERT KORNEGAY

Latin Club, 1.
Albert has been a swell pal and one to be remembered by the class of '36. Loads of success is due him.

MARY JANICE LACY

Latin Club, 1, 2; Dramatic Club, 1, 2, 3; Tennis Club, 2, 3; O. Henry, 3; Home Room Chairman, 1; Girl Reserves, 1; Boosters' Club, 4.
Mary Janice is both friendly and modest. She also possesses a good-natured disposition—a trait that will surely lead her to success.

DANESE LANGSTON

Glee Club, 2; Paper Staff, 4.
We just can't tell them apart—Danese and Dorothy. Not only do they look alike but both aided the annual and paper by preparing all material in typewritten form.

DOROTHY LANGSTON

Glee Club, 2; Paper Staff, 4.
Dorothy is both dependable and capable. We wish Danese and her happiness and success in future years.

JOHN HARDY LEGWIN

President Math Club, 1; Hi-Y, 2, 3, 4, (Vice-President, 3, President, 4); (Executive Committee, 3, 4); Student Council, 2, 3, 4; Judicial Committee, 3; Home Room Chairman, 2, 3, (President, 3); Chemistry Club, 3; Edison Club, 4; President State Student Council, 4; President Aviation Club, 3; Junior-Senior Entertainment Committee, 3; Chairman Ways and Means Committee of Senior Class, 4; Vice-President Student Body, 4; Secretary-Treasurer Junior Class, 3; "Wildcat" Staff, 4; Latin Club, 1, 2; Cotillion Club, (President) 4; Student Cabinet, 1; Sate Student Council Delegate, 3; Honor Society, 4.
Jack is recognized as one of our class leaders. His activities and superlative honors speak for themselves.

THERESA LEONARD

Latin Club, 1, 2; German Club, 3, 4; Girl Reserves, 1, 3, 4; Dramatic Club, 3.
Theresa is the type of girl we hate to part with, but we feel sure that she will find success in anything she tries. We wish her luck and happiness.

HELEN LEWANDOWSKI

Girl Reserves, 4; Latin Club, 1.
Helen is a good pal and a good friend. She is always able to see the bright side of life. We wish her much success.

JOSEPH ALLEN LEWIS

Hi-Y Club, 3, 4, (Vice-President, 4); Tennis Club, 3, 4; Cotillion Club, 4; Spanish Club, 1; Aviation Club, 3; Chemistry Club, 3; Traffic Squad, 3; Cheerleader, 3, 4.
Because of his personality and pep, Allen has made a dandy cheer-leader. With these traits he is certain to meet success in later life.

LEO ANDREW LOREK

Leo is a fine fellow whom we all like. He always does his best in anything he undertakes. This will help him win his place in life.

GEORGE GREEN LYNCH, JR.

Football, 2, 3; Hi-Y Club, 2, 3, 4, (President, 4); Astronomy Club, 3; Senior Play; Hi-Y Play.
We just can't help laughing at George's witty remarks; he will always be remembered for his excellent acting in the Senior Play. We wish him all success.

ANTHONY LOUISE MALLARD

Latin Club, 1; Honor Society, 4.
Nowhere can we find a better girl than Louise. She has certainly been a wonderful aid to our class and we won't forget her.

DOROTHY MALLARD

Dramatic Arts Club, 1; Basketball, 1; Glee Club, 4.
To know Dorothy is to like her; she has been a valuable help to the class of '36 and we wish her much success.

KATHLEEN ESTELLE MALLARD

Girl Reserves, 3, 4, (Program Chairman, 4); Home Economics Club, 3.
Kathleen is always full of fun; she is the kind of girl everyone admires and likes to be with.

WOODROW MALLARD

Our class is lucky in having a boy like Woodrow as one of its members. We know that success will follow him throughout life.

CLARENCE MARSHBURN

Basketball, 4; Baseball, 3.
Although quiet most of the time Clarence is an all-round good fellow whom we all admire a great deal.

DOROTHY MARSHBURN

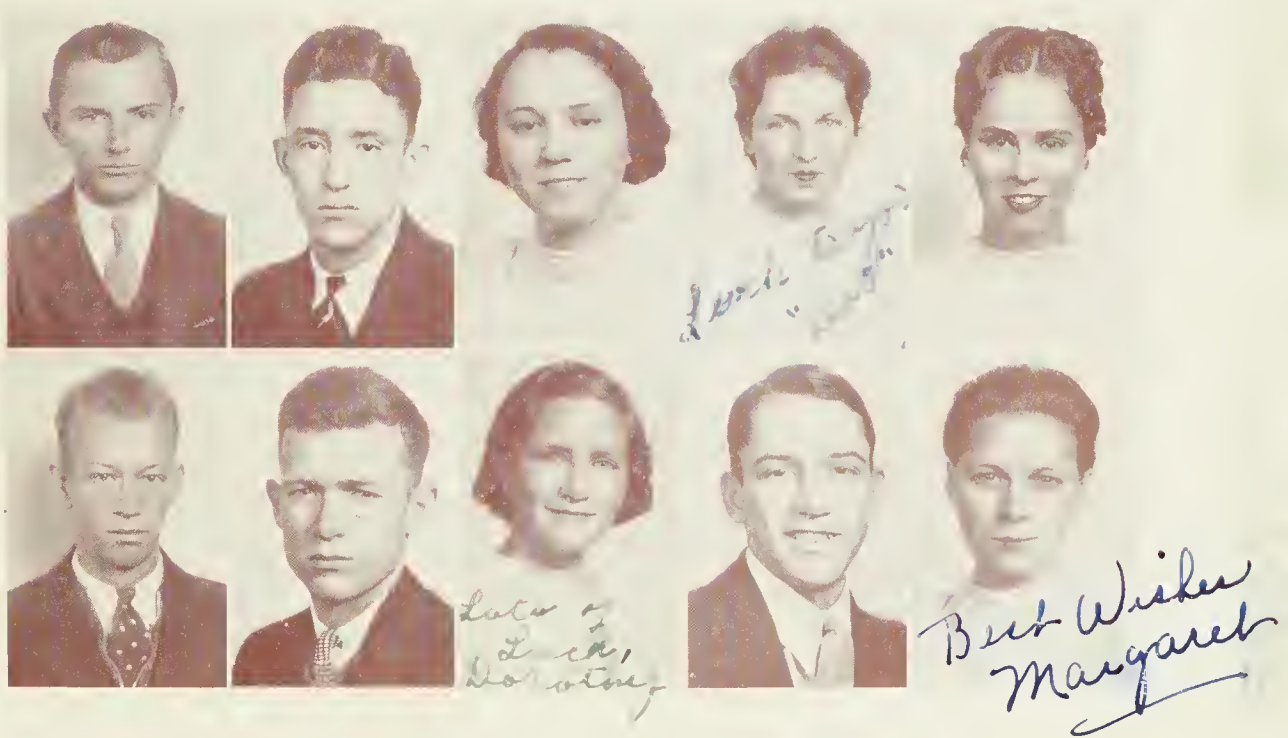
Latin Club, 1, 2; Girl Reserves, 1, 2, 4; German Club, 3, 4.
Dorothy has a friendly greeting and a cheerful smile for all and that is why we will miss her and hope she won't forget us.

HUGH MARSHBURN

Hugh never seems to worry over anything and hasn't a care in the world. We hope his bright attitude will go with him through life.

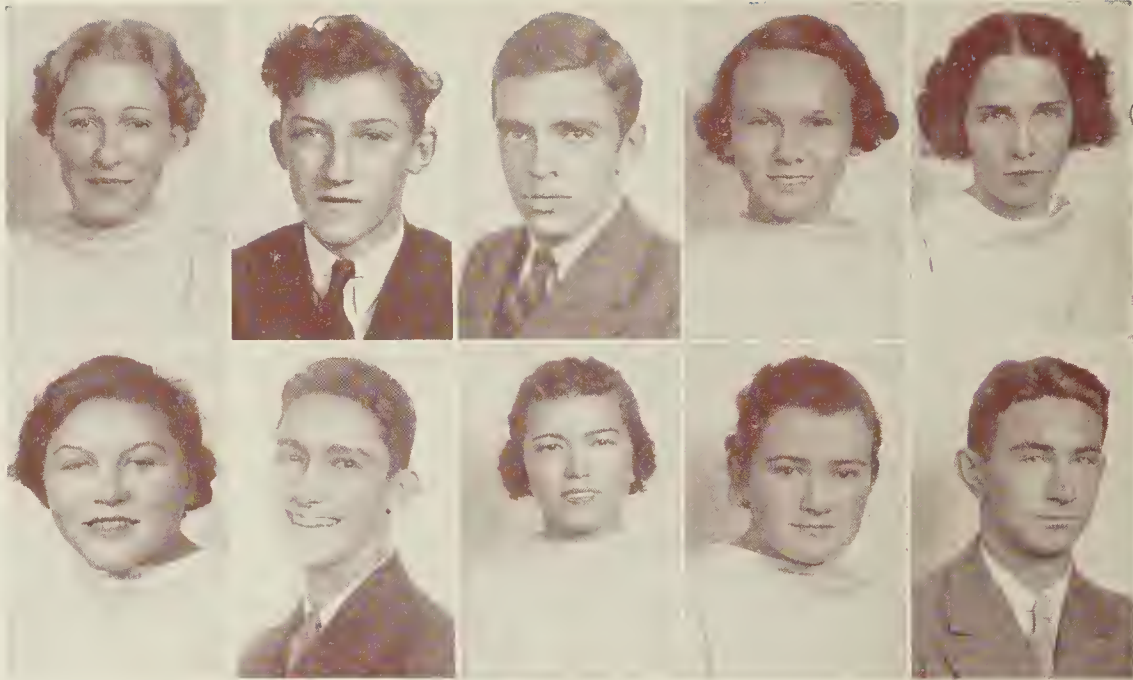
MARGARET MARSHBURN

Spanish Club, 1; Home Arts Club, 1.
This shy senior has made many friends during her school life and because of her willing ways we know she will make many friends in life.



*Luck in everything
many*

*Best of luck
Always,
Dot*



DOROTHY MASON

Spanish Club, 1, 2.
Dorothy will get much out of life because she has put hard work and a helpful hand into all her undertakings.

JOHN MATHIS

Nature Club, 3.
John is a sincere friend and a willing helper at all times. He is always agreeable and we wish him untold good fortune in the future.

TOMMY MAULTSBY

Latin Club, 1, 2; Aviation Club, 3; Traffic Squad, 1, 4.
We admit Tommy doesn't study much but he is well liked by his fellow-students and he will be missed a great deal. We wish him much success.

MARY WRIGHT McCRAW

Latin Club, 1, 2; Dramatic Club, 3; Tennis Club, 2, 3, 4.
What would the Tennis Club have done without Mary; in fact, the class of '36 could not have done without her. Good luck to her.

DOROTHY McEWEN

Math Club, 1, 2; Chemistry Club, 3; Dramatic Club.
Dot is a swell girl as the class of '36 soon found out. We hope she won't forget us and wish her much happiness and success in the future.

VIRGINIA MAE McFADYEN

Girl Reserves, 1, 2, 3, 4; Latin Club, 1, 2; Glee Club, 1; German Club, 4.
Virginia doesn't ever have much to say, but what she says is well worth your attention.

ROY CLEVE McGOWAN

Latin Club, 1, 2; Art Club, 1; Hi-Y Club, 2, 3, 4, (Executive Committee, 4, Treasurer, 4); Student Council, 4, (Treasurer, 4); Glee Club, 1, 2, 3, 4, (President, 3, 4); School Store, 3, (Manager, 4); Science Club, 4; Hi-Y Conference, 4; Greensboro Contest, 2, 3, 4.
Cleve has certainly proven his worth through his capable leadership and excellent voice. The Glee Club will certainly miss him.

RUTH McGOWAN

Nowhere will we find a better girl than Ruth. She has been a wonderful asset to our class.

VIRGINIA McKENZIE

O. Henry, 1, 4; Chemistry Club, 4; Science Club, 2.
Virginia is the kind of friend worth having but best of all she is the kind that makes everyone happy. Success is due her.

JAMES McKEITHAN

Hi-Y Club, 2, 3, 4; Football, 4; Basketball, 3, 4; Home Room Chairman, 2, 4; Chemistry Club, 3; Intra-mural Boxing, 3, 4; Latin Club, 1; Glee Club, 3, 4.
James is a true and loyal friend at all times and he is one of the nicest boys we know.

RACHEL MEADOWS

Rachel seems to get along with her fellow students at school wonderfully and we are sure she will do as well in later life.

LUCILE HARRIET MILLER

O. Henry, 1, 2, 3, 4, (Assistant Program Chairman 3, President, 4); Latin Club, 1, 2; Dramatic Club, 1, 2, (Program Chairman, 3); Library Club, 2, 3, 4, (Secretary-Treasurer, 3, President, 4); Glee Club, 1; Senior Play; Honor Society, 4.

Lucile is a reliable person and a friend of worth; she has been an ideal student at N. H. S. and we will always remember her.

EDNA EARLE MINTZ

Glee Club, 1, 2; Spanish Club, 1, 2; Home Arts Club, 3; Home Room Chairman, 1.

Edna Earle is a true friend. She has personality, looks, and everything that counts. Best of luck to her.

GEORGE LINWOOD MITCHELL, JR.

Orchestra, 1, 2, 3, 4; Concert Master, 3, 4; Latin Club, 1; Glee Club, 4; Hi-Y, 3, 4; 3rd place for violin solo in State Contest in Greensboro, N. C., 3; President Orchestra, 4.

George has certainly helped out our orchestra and he also won honors for himself and for his class.

ANNA BELLE MOHR

French Club, 2.

Anna Belle is a student whom we shall never forget and we only hope she will remember us. Best wishes to her always.

LOIS MONTFORD

Girl Reserves, 1; Latin Club, 2; Traffic Squad, 4.

Lois has certainly been a faithful member of the class of '36. We will always remember her and wish her much success.

CLYDE MOORE

Clyde is a boy whom we all like. He never studies but he always gets by. Luck to you, Clyde.

NELL MOORE

Home Room Chairman, 1; Student Council, 1; Latin Club, 1, 2; O. Henry, 3, 4; "Wildcat" Staff, 4; President of National Honor Society, 4; Invitations Committee; Junior Play Committee.

Nell has been one of our class leaders and although she is our class pessimist, she need not fear because she will make a success in any undertaking.

CHARLES MORRILL

Charles is always ready to help with his willing smile which seems to accompany him everywhere. Good luck to him.

MARIAN ELIZABETH MORRIS

French Club, 2; Glee Club, 3, (Librarian); Honor Society.

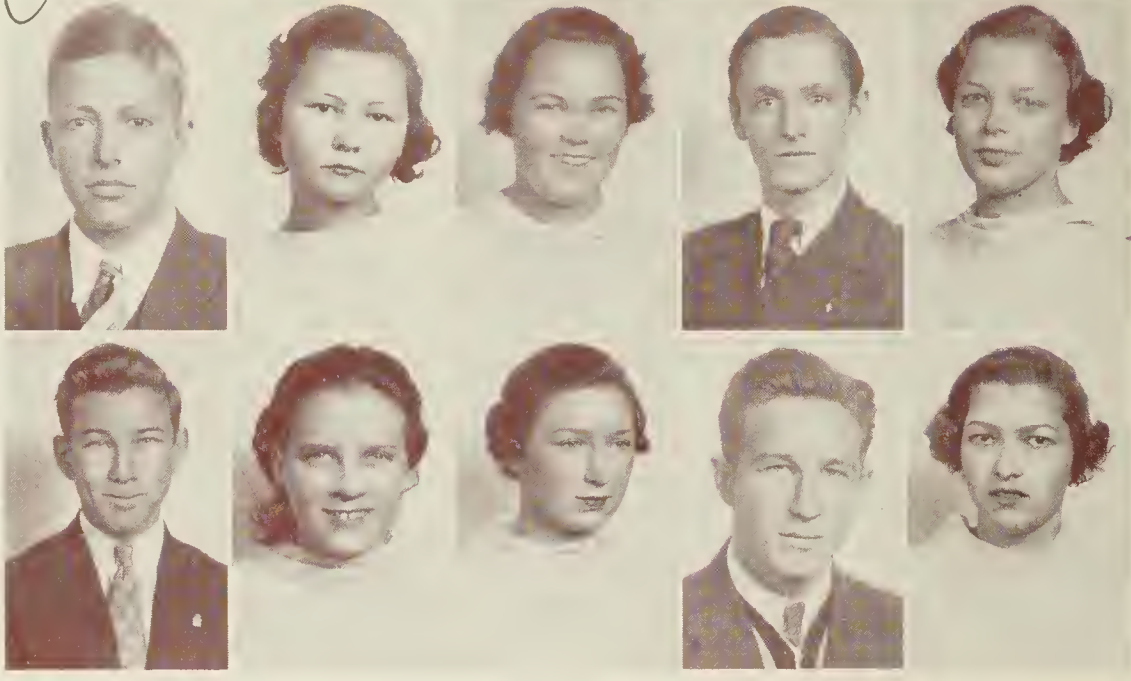
Elizabeth is a good pal and certainly one who can be depended on. May she never forget the class of '36.

George Mitchell



May the
best of life be
yours, pal
Clark Murphy

with
black & white
summer



Basel
Harris N.

CORNELIUS CLARK MURPHY

Latin Club, 1, 2; O. Henry, 3, 4; Traffic Squad, 4; Home Room Chairman, 2.
"C. C." will always be remembered by our class as he has made many friends and no enemies.
We wish him success.

EVA MURRAY

Latin Club, 2.
Eva is very quiet at all times and through her winning nature she has become a friend to all who know her.

MARY MURRAY

Spanish Club, 1, 2; Girl Reserves, 1.
Mary is always happy and has the reputation of being the craziest girl in High School. We will always remember her and wish her luck.

FRED MUSIAL

Fred is a very quiet boy. We are glad to have him in the class of '36. Much luck to him in the future.

VIRGINIA NESBITT

O. Henry Society, 1, 2; Chemistry Club, 3; Dramatic Club, 1, 3; Latin Club, 2; Science Club, 4; Boosters' Club, 4.
Virginia is very attractive and has a swell personality. We wish her a happy farewell and lots of luck.

HARRIS NEWBER

Harris is a person you like to count among your friends. He has a sunny disposition and an ever-present smile. We wish him luck and success.

LUELLA O'BEIRNE

Girl Reserves, 1, 2, (High Point); Varsity Basketball, 1, 2, (High Point); Glee Club, 1, 2, (High Point), 3, 4, (Wilmington); Orchestra, 1, 2, (High Point), 3, (Wilmington); Varsity Baseball and Track Team, 1, 2, (High Point).
We will always remember Luella for her sweet disposition which has won her many friends. We wish her the best of luck.

EILEEN O'CROWLEY

Glee Club, 1, 2; Tennis Club, 3; French Club, 2; O. Henry, 3; Art Club, 3; Boosters' Club, (President) 4.
Because of her charm and personality, Eileen will long be remembered as an outstanding girl of the class of '36. We wish her success and happiness.

WILLIAM PALMER

Latin Club, 1, 2; Boxing Team, 5.
Bill never studies and always passes and we are sure he will succeed. He will long be in our memories.

MILDRED OLIVIA PARKER

Latin Club, 1, 4; Traffic Squad, 3; Marionette Club, 3; Girl Reserves, 3; O. Henry, 4; Declamation Contest, 3, 4; Science Club, 4.
Mildred is quiet, industrious, and reserved; with these and other traits we are sure she will get much out of life.

JUNE PAYNE

Latin Club, 1.
June is always agreeable and willing to help. She will never be forgotten by her fellow-classmates and we wish her much happiness.

ANNIE PEPPAR

Spanish Club, 2; Traffic Squad, 3; Glee Club, 2.
Annie has been a true standby for the class of '36. She is a girl whom we all like and admire.

WILLIAM EDGAR PERDEW

Hi-Y Club, 2, 3, 4, (Secretary, 4, President, 4); German Club, 3, 4, (Vice-President, 3, Treasurer 4); National Honor Society, (Scholastic Chairman); Latin Club, 1, 2; Glee Club, 3; Nominating Committee, 1; Chairman of Junior Play; Chairman of Senior Play; Feature Editor of Annual; Cotillion Club, 4, (Vice-President); Home Room Chairman, 1, 2, 3.
Bill is well liked by both faculty and students; he is one of our class leaders; we shall never forget how he put over our class plays for us.

JAMES PERRIN

Hi-Y Club, 3, 4; Tennis Club, 3, 4; Chemistry Club, 4; Latin Club, 1, 2, 3; Aviation Club, 3.
James is quite studious although he doesn't have to study to make good grades. He is in truth a perfect gentleman and will long be remembered.

DORIS ORETIS PETERSON

Home Arts Club, 3; Paper Staff, 4.
Doris is an ideal friend as she never speaks a cross word about anyone. She has shown her worth in our class and we won't forget her.

LUCILLE PUCKETT

Home Room Chairman, 1.
Lucille is a classmate worth knowing and she is a friend to all who know her and we wish her the best of luck.

FANNIE COY RANKIN

O. Henry Society, 1, 2; Glee Club, 1, 2; Latin Club, 1, 2; Math Club, 1; Student Council, 2, 3; President Sophomore Class Traffic Squad, 2; Dramatic Club, 2; Honor Society, 4; Junior Play Committee, 3; Senior Play Committee, 4; Home Arts Club, 3; Tennis Club, 4; "Wildcat" Staff; Library Club, 3.
Coy was chosen the second most outstanding student in North Carolina and she is quite worthy of filling this position. Life holds much for her and we wish her luck.

BRADFORD REYNOLDS, JR.

Latin Club, 1, 2, 4; Paper Staff, 3; Golf Tournament, 3; Chemistry Club, 3; Hi-Y Club, 3, 4; Aviation Club, 3; Boxing Tournament, 3.
"Square" is one of the loyal sons of N. H. H. S. and we hope he has much happiness in the future. We wish him the best of luck.

LOUISE CAROL RIESZ

Girl Reserves, 1; Home Arts Club, 3; O. Henry Society, 4; Dramatic Club, 3.
Carol is one of the nicest and best liked girls in our class. We sincerely hope that her future life is full of happiness.

ANDREW JACOB RITTER

Glee Club, 1.
We shall remember Andrew as a true friend and a classmate whom we always like to have around.

*Best Wishes
 June*

*As
 much
 as
 possible*



*Remember to
 include*

*Luck to you always,
Kathryn*



*P. W. of
Kathryn
Robbins.*

HARRY RIVENBARK

We cannot picture Harry as being very studious but we all like him just as he is. We predict that he will always succeed in life.

FLOSSIE MAE ROBBINS

Literary Society, 3, 4.
Flossie is a girl you cannot help liking. She is courteous and kind to everyone and we'll never forget her.

LEROY C. ROBERTSON

Physics Club, 4; Orchestra, 1, 4.
Leroy certainly helped our orchestra and it as well as many of his classmates will miss him.

CECIL ROBINSON

Hi-Y Club, 2, 3, 4, 5; Spanish Club, 1, 2; Chemistry Club, 3; Dramatic Club, 4; Glee Club, 5; Baseball, 1, 2, 4, 5; Boxing, 4, 5; Football, 1, 2, 3, 4, 5, (Captain, 4, 5); Basketball, 3, 4, 5; Traffic Squad, 4.
Cecil, better known as "Mullet", participated in all athletics at High School. He is an all-round good sport; so is there any wonder that he is our most athletic Senior?

MARJORIE LEE ROBINSON

Glee Club, 1.
Marjorie is a girl whom everybody likes. She is a friend to everyone. We wish you luck, Marjorie.

KATHRYN LOLA ROETHLINGER

Glee Club, 1, 2; O. Henry Society, 1, 2, 4; Basketball, (2nd team), 3; Math Club, 1.
Kathryn is small of stature but possesses high ideals. We wish her all the happiness that life can hold.

ERNESTINE ROGERS

Girl Reserves, 1.
Ernestine is a member of our class whom we shall not forget and for whom we wish much success. We hope that life will bring her happy days.

MARY ELIZABETH ROSEBOROUGH

Girl Reserves, 1, 2.
Mary is quiet but she is also fond of a good time. She fully deserves all the happiness and success which are sure to follow her through life.

NANCY LILLIAN ROYAL

Traffic Squad, 3; Girl Reserves, 3, 4.
A life of the best things will surely be Lillian's lot and we hope she will remember her class of '36.

SIDNEY RUBIN

Spanish Club, 1; Math Club, 1; Traffic Squad, 2; French Club, 2.
Success is certain to attend Sidney because he possesses the true quality of perseverance.

RODGER RUSSELL, JR.

Chemistry Club, 3; Science Club, 4; Traffic Squad, 3.

Rodger is not often serious but we like him just the same. His many friends wish him luck.

MARIE SALEEM

Glee Club, 1; French Club, 2; Dramatic Club, 3.

Marie possesses the traits of character which win the admiration of many. We wish the best of happiness to her.

PAUL SAMMONS

Paul is a true gentleman. What more can we say? He has a fine and admirable character. We know a truly happy life will attend him.

NANNIE SANDERLIN

Latin Club, 1.

Nannie's quiet but happy spirit is but one of her many characteristics by which she has endeared herself to her classmates.

EDNA EARL SAUNDERS

Basketball, 2, 3, 4; Dramatic Club, 3.

Edna Earl is athletic, friendly and a willing worker; she possesses all the traits which make her an ideal person to know.

HELEN SAVAGE

Spanish Club, 2, (Secretary); Math Club, 1, (Secretary); Glee Club, Pianist, 1, 2, 3, 4; German Club, 3; French Club, 2, (Pianist); Art Club, 2; Traffic Squad, 3; Scribblers' Club, 3, 4; O. Henry Society, 3; Honor Society, 4, (Secretary); Library Club, 4.

Helen is one of our most dependable students; she never goes back on her word, is very smart, and may be relied on for anything.

EDNA LEE SCHULKEN

Girl Reserves, 1; Home Arts Club, 3.

Edna has many friends because she has such a congenial nature and is always happy. We know life has many good things in store for her.

OLIVE SEITTER

Glee Club, 3.

Beneath the shy quietness and modesty of Olive we have found a true friend. She is sure to succeed in life.

WILHELMINA ELSIE SEITTER

Spanish Club, 1, 2; Orchestra, 1, 2, 3, (Secretary, 2, 3); Girl Reserves, 2, 3, 4, (President, 4); Glee Club, 4.

Polly has shown herself a very efficient worker and a capable student. We forecast for her a sunny and successful life.

HENRY HAROLD SELLERS, JR.

Glee Club, 1.

Henry is a true friend at all times, and the class of '36 wishes him much happiness and success.



Handwritten note: Thank you

Handwritten note: Best wishes Edna



BETTY SIBLEY

Glee Club, 1; Student Council, 2; Latin Club, 1, 2; Dizzy Dozen; Honor Society.
We will always remember Betty as the dignified and sophisticated lady. Good luck and success.

ANNE KAY SIMON

Home Room Chairman, 1, 2, 3; Library.
Anne is the type of person who is always ready to join in the fun. Life has much happiness for her.

NANCY SINCLAIR

Girl Reserves, 1; Home Economics Club, 3.
Nancy will be remembered always by her classmates for her sunny smile and cheerful disposition.

EDWARD SMITH

Edward is another fellow student whom we will all remember because of his sincere manner.

JEAN DUNCAN SMITH

Dramatic Club, 3; Tennis Team, 4.
Jean is always in a good humor and that is probably why we all like her. She is a loyal pal in school and out and we hate to lose her.

MARGUERITE SMITH

Orchestra, 2.
Marguerite appears quiet and at times timid but when you know her she is a congenial friend. Much success is wished her.

WILLIAM EARL SMITH

Aviation Club, (Secretary) 3; Traffic Squad, 3; Astronomy Club, 3; Boxing, 3, 4; Football, 4; Paper Staff, 4; Assistant Editor of Annual.
Billy is one of our boxing heroes. He is a fine fellow at all times and we hope that he will keep his cute ways!

RALPH W. SOVEREL, JR.

Latin Club, 1; Glee Club, 1, 2, 3; Student Council, 1, 4; O. Henry Society, 3; Traffic Squad, 3; President Home Room; Chairman, 4; Judicial Committee, 4; "Wildcat" Staff, 4; Junior Play; State Music Contest, 3; Hi-Y, 4; Cotillion Club, 4.
Ralph possesses charm, looks, and personality. He is quite a ladies man and we wish him all due success in the future.

MARION SPENCER

Latin Club, 2, (Treasurer); Aviation Club, 3; Hi-Y Club, 4; Baseball, 3; Annual Staff, 4, (Editor-in-Chief); Honor Society, 4.
Marion is quiet and studious, but by no means a book-worm. Because of his good looks and pleasing ways he will long be remembered.

LEROY STANDLAND

Chemistry Club, 3; Baseball.
Leroy is a sincere friend and one who may be depended on as he is always ready to help in time of need. We'll never forget him.

CATHERINE HARMON STANTON

Girl Reserves, 1; Latin Club, 2; Traffic Squad, 4.

Catherine is liked by everyone and wherever she is there is bound to be a good time. We'll miss her a whole lot.

HULDA A. STEWART

Hulda is quite a happy person and spreads sunshine wherever she goes. We know she will keep up this good work in her future.

LOUISE STOWELL

St. Joseph's High School, 1, 2, 3; Glee Club, 2, 3, 4, (President, 3); Tri-Sigma, 2, 3, 4; Volleyball, 1, 2, 3; Basketball, 1, 2, 3, (Captain, 3); Operetta Style Show, 1, 2; Student Council.

Although with us a short time, Louise has shown her value and we shall regret parting with her.

HARRY HOWARD TABB

Harry never seems to exert himself to any extent; in fact he is our laziest student, but you can never catch him when he isn't in an amiable humor.

ALICE TALLEY

Student Council, 1; Home Room Chairman, 2; Secretary Sophomore Class; Latin Club, 1, 2; "Wild-cat" Assistant Business Manager, 3, 4; Hi-Y, (Secretary, 3, President, 4); Snappy Six; Dizzy Dozen; Cheerleader, 3, 4; Secretary-Treasurer Senior Class; Junior Play; Senior Play; Library Club, 3.

Alice is our most attractive girl and she possesses good looks and pep as well. She is a class leader and we shall long remember her.

LEON THOMAS

Football, 3, 4; Boxing Team, (Captain) 3, 4; State Championship Boxing, 4; Home Room Chairman, 3, 4; Chemistry Club, 3.

Leon is the Senior who won the State Boxing Championship for us and we are proud to call him our classmate.

JOSEPHINE THOMPSON

Archery Club, 3.

Josephine is one of those girls whom you cannot help liking upon sight. We are mighty glad she is in our class.

JAMES GOODLETT THORNTON, JR.

Hi-Y Club, 3, 4; Cotillion Club, 4; Latin Club, 1, 2; Traffic Squad, 3, 4, (Assistant Captain, 4).

Jimmy is always full of life and fun and enjoys having a good time. We wish him the best of success.

HELEN AGATHA TODD

Home Arts Club, 3; Boosters' Club, 4.

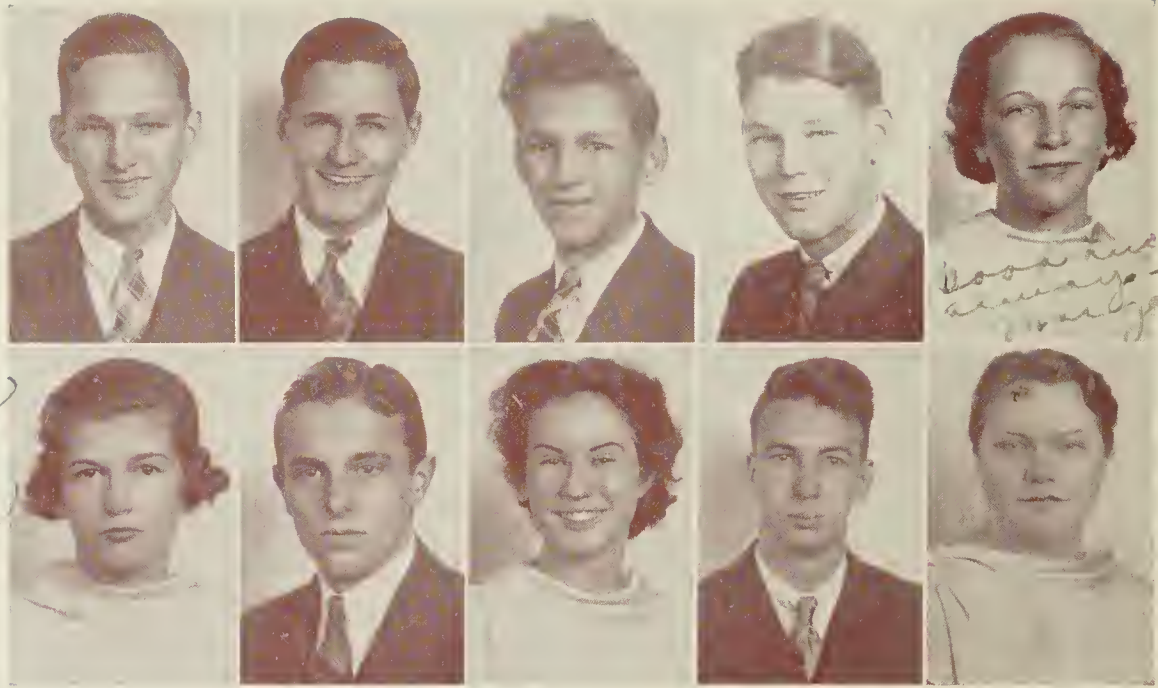
Helen's cheerful ways and willing hand will never be forgotten and for her we wish the best that success can offer.

ROY VANN

Glee Club, 2, 4; Radio Club, 2, 3; Tennis Club, 3; Art Club, 1, 3; Boxing, 3, 4

Roy is a typical all-round good fellow. He is admired by all who know him and is quite a ladies' man.





JACK VEREEN

O. Henry Society, 2; Latin Club, 1; Algebra Club, 1.

Jack will always be remembered by the class of '36 because of his good nature.

ALLEN LEE WALKER

Latin Club, 1, 2; Student Council, 2; Tennis Club, 3, 4; Chemistry Club, 3; Hi-Y Club, 3, 4, (Treasurer, 4); Honor Society, 3, 4; Home Room Chairman, 4; Annual Staff, 4.

Allen is a loyal supporter of all school activities. He is studious and at the same time has a personality which has netted him many friends.

HERBERT LESLIE WALKER, JR.

Glee Club, 2; Spanish Club, 1; Harmonica Club, 3; Chemistry Club, 4.

Leslie possesses much school spirit and will not be forgotten by his fellow-students.

WILLIAM THOMAS WALKER

Home Room Chairman, 1; Glee Club, 1; Latin Club, 2; Traffic Squad, 2, 3, 4; Math Club, 1.

Thomas is a fine boy and our class has been proud to know him. We wish him all luck and success.

MARGARET WALTON

Glee Club, 1; Latin Club, 2, 3; Basketball, 3; Spanish Club, 1; Domestic Art Club, 3.

Margaret is a faithful member of our class and is always ready to do her share. Success is certain for her.

LOUISE WASHBURN

Glee Club, 1; Latin Club, 2; Hi-Y, 3, 4, (Secretary, 3, Vice-President, 4); Junior Play; O. Henry Society, 3; Ways and Means Committee, 3; "Wildcat" Staff, 4; Dizzy Dozen, 4; Hi-Y Play, 4; Invitations Committee, 4.

Louise is popular and well-liked among both sexes. With her combination of wit and nonchalance she will have a successful future.

CARLTON GUNTER WATKINS

Physics Club, 4; Latin Club, 1, 2, 3, 4; O. Henry Society, 3; Student Council, 2, 4; President of Junior Class; Hi-Y, 3, 4; Glee Club, 3; Aviation Club, 3.

Carlton is known by all of us and although he is a pessimist we are sure he will reach a high goal because of his business ability.

MAIE WATTERS

Latin Club, 1; Glee Club, 1.

Maie is quiet and unobtrusive but because of her many fine traits we are sure that the future has much in store for her.

FRANK WEAVER

Chemistry Club, 3; Science Club, 4; Basketball, 4; Traffic Squad, 4.

Frank is quite friendly and is always on good terms with the world in general. We wish him the best.

HELEN WENBERG

Girl Reserves, 2, 3; Dramatic Club, 3; Home Arts Club, 3.

Helen is reserved and quiet and we are sure she will have a future filled with the best things of life.

CHARLES HEYWOOD WHEATLEY

Hi-Y. (Secretary) 4; Cotillion Club, 4; Science Club, (Secretary) 4; Intra-mural Boxing, 4.

We don't know anyone who doesn't like Charles and everyone knows him; so what more can be said! With his many pleasing qualities success is sure.

EDWARD B. WHITE

Student Council, 1; Home Room Chairman, 2; Latin Club, 1, 2; Tennis Club, 2, 3, 4; Tennis Team, 2, 3, 4; Captain Tennis Team, 4.

Ed has won many tennis meets for us and we would have been at a loss without him. We hope he will play the game of life as well as he has played tennis.

MARGARET WHITE

Glee Club, 1; Snappy Six, 3; Dizzy Dozen, 4; Ways and Means Committee, 3; Hi-Y Club, 3, 4.

Margaret has good looks and a radiant personality. Such an attractive person is sure to go far in life.

ROBERT J. WHITE

Math Club, 1; Track, 1; Glee Club, 1, 2; Science Club, 1; Traffic Squad, 1, 2; Aviation Club, 3; Chemistry Club, 3; Basketball, 4; Baseball, 3; Physics Club, 4.

Robert is a true classmate. To know him is to know a faithful and pleasant friend. May success attend him.

ELVERA WILLET

Elvera has been a good student in our class. If she continues with her numerous good traits she will get much from life.

RALPH BERTRAM WILLIAMS

Latin Club, 1, 2, (Pin Committee); O. Henry Society, 1; Chemistry Club, 3; Astronomy Club, 3; Glee Club, 3, 4; State Music Contest, 3; Honor Society, 4.

Ralph has been one of the most studious pupils in our class. He is an excellent example of a perfect gentleman.

WAYNE WILLIAMSON

Chemistry Club, 3; Astronomy Club, 3; Physics Club, 4; Boxing Tournament, 3.

Wayne is a quiet fellow whom we all admire and like. We wish him the best life can give.

CHARLES WILLIFORD

Charles is the picture of nonchalance. He will always be remembered as the best dressed of the boys of '36.

ED WILSON

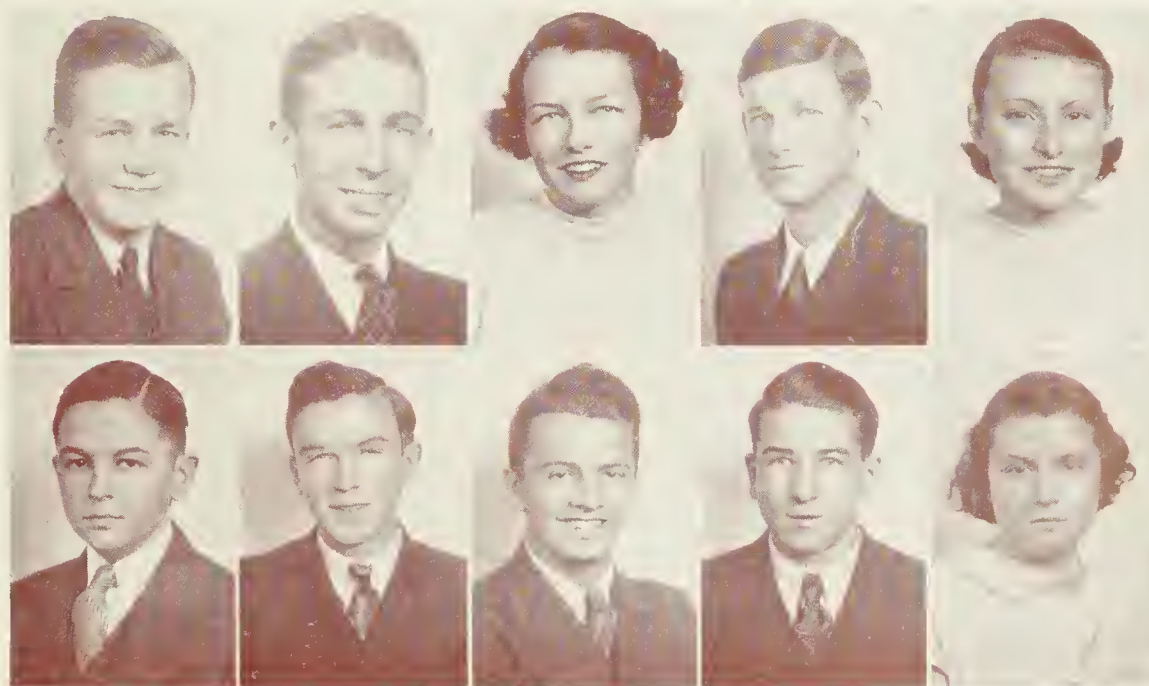
Intra-mural Boxing, 4.

Ed is a loyal and faithful class member and wherever he goes we will remember him and hope he doesn't forget us.

MARTHA WILSON

Glee Club, 1, 3; Latin Club, 3, 4; French Club, 2; Dramatic Club, 4.

Martha is one of the finest girls we know. We have been lucky to have her in the class of '36.



Wheatley
White
White
White
Willet
Williams
Williamson
Williford
Wilson
Wilson



ELEANOR WOOD

Glee Club, 1; Library Club, 1; O. Henry Society, 1, 2; Dramatic Club, 3; Junior Play; Boosters' Club, 4; Latin Club, 1, 2; Home Room Chairman, 3.

Eleanor is another one of our good-looking girls. She has a special charm and has endeared herself to all our class by her quiet and polite ways.

MARGARET S. WYCKOFF

Latin Club, 1; Glee Club, 1, 4; Math Club, 1; Home Economics, 3.

Margaret is liked by every member of the class. She is dependable and sincere. We wish her much success in future years.

BESSIE XANTHOS

Dramatic Club, 3; Spanish Club, 1.

Bessie is quiet in appearance, and always neat and kind. We wish her much happiness and the best of luck in the future.

RENA XANTHOS

Dramatic Club, 2, 3; French Club, 1, 2; Glee Club, 2, 3; Girl Reserves, 3, 4; Chemistry Club, 3.

Rena is a quiet girl with an air of dignity which we admire and praise as it will carry her a long way in the future.

HELEN ZELLERS

Spanish Club, 1.

Helen is last but not least among our Seniors and we know she will succeed because of her ability to acquire friends.



Juniors



*Here's to you!
Mildred*

Junior Class Officers

MILDRED SNEEDEN, *President*

BILLY SUTHERLAND, *Vice-President*

JULIA MEIGS, *Secretary-Treasurer*

Student Council Representatives

JANE ELLEN BALDWIN

WHIT BENTON

Class Motto: "Our strength lies in unity."

Class Colors: Blue and Gold.



WM. AINSWORTH
 BARBARA ALLEN
 BILLY ALLEN
 VEE VEE ALLEN
 HELEN ANDREWS
 ESTHER AUSTIN
 JANE BALDWIN
 ROBERT BAME
 BUCK BARDEN
 PEARL BELL
 ALMA BLAKE
 BOBBY BLECKER
 HARRY BOWDEN

MILDRED BOWEN
 LOIS BROTHERS
 JEAN BROUN
 NORMA LEE BROWN
 EARNEST BULLUCK
 ROY BURNETT
 ALICE CALDER
 NELL CARPENTER
 MARY CARR
 GERALDINE CARROLL
 ESTHER CHERRY
 MARY Z. CLARKE
 HERBERT CODINGTON
 MARIE CONLY

ALMERIA CONWAY
 EVELYN CONWAY
 RICHARD COOK
 C. K. COUNCIL
 ROBERT CRAIG
 EDWIN DAVIS
 FLORENCE DAVIS
 CHARLES DOMNER
 ELLEN DUNCAN
 BOBBY DYKES
 DOROTHY EAGLE
 PURNELL EGGLESTON
 JANE EMERSON



Handwritten notes:
 1st row
 2nd row
 3rd row

MARGARET EVERETT
 CLELL FARMER
 EUGENIA FARMER
 TROY FISHER
 LILA FOUNTAIN
 MAUD FRYE
 SOPHIE GMYTRUK
 JIM F. HACKLER
 MARTHA HALL
 SYLVIA HALL
 LOUISE HARRELL
 VIVIAN HARRELL
 DOROTHY HARRISS

JAMES HEARN
 CARRIE HENDERSON
 DOROTHY HEWETT
 VIVIAN HIERS
 SUSANNE HOGUE
 KITTY HOLTON
 EVELYN HORNE
 T. H. HOUSTON
 MARY HOUSTON
 MARY HOWELL
 SUZELLE HOWES
 CARLTON HUBAND
 HUBERT HUFHAM
 ELIZABETH HUGGINS

HARRY JAMES
 JAMES JOHNSON
 KATHALEEN JOHNSTON
 DORIS KENAN
 ANNA KING
 CLARICE KING
 CLYDE KING
 MARGARET KING
 THOMAS KING
 WM. KRAFT
 MARY LEE
 JANE LEGRAND
 CARLETTA LENNON



MIRIAM LEWIS
 TOM LYNCH
 HARRIET MARSHBURN
 MARY MCARTHUR
 BESSIE McDONALD
 GERALD MEDD
 JULIA MEIGS
 LLOYD MEMORY
 ALLIE MOORE
 JANE MURPHY
 EMORY MURRAY
 RHODA MURRAY
 LURA MYERS

LILLIAN NICHOLS
 BESS ORRELL
 ESTELLE OWENS
 ANNA PADRICK
 EUNICE PATTON
 WALTER PARSLEY
 OSCAR PECK
 NINA PETERSON
 MARGARET PICARD
 MARGARET PIGFORD
 JOE PINER
 LOUIS POISSON
 MYRTIS POLK
 KATHLEEN PRIDGEN

JENNIE SUE RAYNOR
 MARIE REGISTER
 FRANK REYNOLDS
 EDITH RHODES
 MABEL ROGERS
 THEONE ROPER
 ADELAIDE ROSBOROUGH
 JOHN RUGAN
 DOCK RUSHING
 ESTELLE SELLARS
 RUTH SHARP
 GRADY SHEALY
 OWEN SHEETZ



*From Wishes
Catherine W. Cook*

WALTER SHEFFIELD
HELEN SKIPPER
GRACE SLAUGHTER
MARY SLOCUM
MARY SMITH
NANCY SMITH
RUTHADELLE SMITH
DOROTHY SNEEDEN
MILDRED SNEEDEN
THOMAS SNEEDEN
PEGGY SNOW

MIRIAM SOLOMON
ALICE SPENCER
WESSELL SPOONER
THOMAS STEWART
BOBBY STRANGE
LOUISE STRUTHERS
BUSTER STURGIS
BILLY SUTHERLAND
LOUISE TOOT
HALLIE TOWNES
✓ CORNELIA WALKER

HELEN WATERS
JANE WEATHERSBY
KATHERINE WELCH
MARGARET WESCOTT
BETSY WEST
BRUCE WILLIAMS
DOLORES WILLIS
MARY WILSON
JOE WOLFF
FLORENCE WOODBURY

*Wishes
Catherine W. Cook*



Sophomores



Sophomore Class Officers

HUGH SPRUNT, *President*

MARTHA MCCAIG, *Vice-President*

DORIS ANDREWS, *Secretary*

VASHTI GORNTO, *Treasurer*

Class Motto: "Labor conquers all."

Class Colors: Green and Gold.



Freshmen



The Freshman Class

GRACE SPARROW, *President*

JERRY NEWBOLD, *Vice-President*

BUREN SIDBURY, *Secretary*

Student Council Representatives

WINIFRED BAGWELL

STEVE PECK

Class Colors: Blue and White.



WILMINGTON HIGH SCHOOL GLEE CLUB, 1910

ORGANIZATIONS



The Student Council

GEORGE BOYLAN, *President*

ROBERT STRANGE, *Corresponding Secretary*

JACK LEGWIN, *Vice-President*

DAISY LEE WOODBURY, *Recording Secretary*

MEMBERS

WINIFRED BAGWELL

RENA DAVIS

STEVE PECK

JANE ELLEN BALDWIN

VASHTI GORNTO

MILDRED SNEEDEN

WHIT BENTON

LLOYD HOLLINGSWORTH

RALPH SOVEREL

GEORGE BOYLAN

JACK LEGWIN

HUGH SPRUNT

WINSTON BROADFOOT

CLEVE MCGOWAN

ROBERT STRANGE

DONALD BROUN

JACK NEUER

DAISY LEE WOODBURY

JERRY NEWBOLD

Faculty Advisers:

MISS FRANCES FORMY-DUVAL

MR. DALE K. SPENCER

History of Student Government

The Student Government Movement started in our High School in 1925. Then a constitutional committee was appointed with a boy and a girl representing each class. This committee framed the first constitution for a Student Government Association in the Wilmington High School.

A Student Council was formed. This council had twenty members, twelve of these elected by the four classes. The faculty adviser was selected by a vote of the council. This council then elected its officers, who also served as officers for the student body.

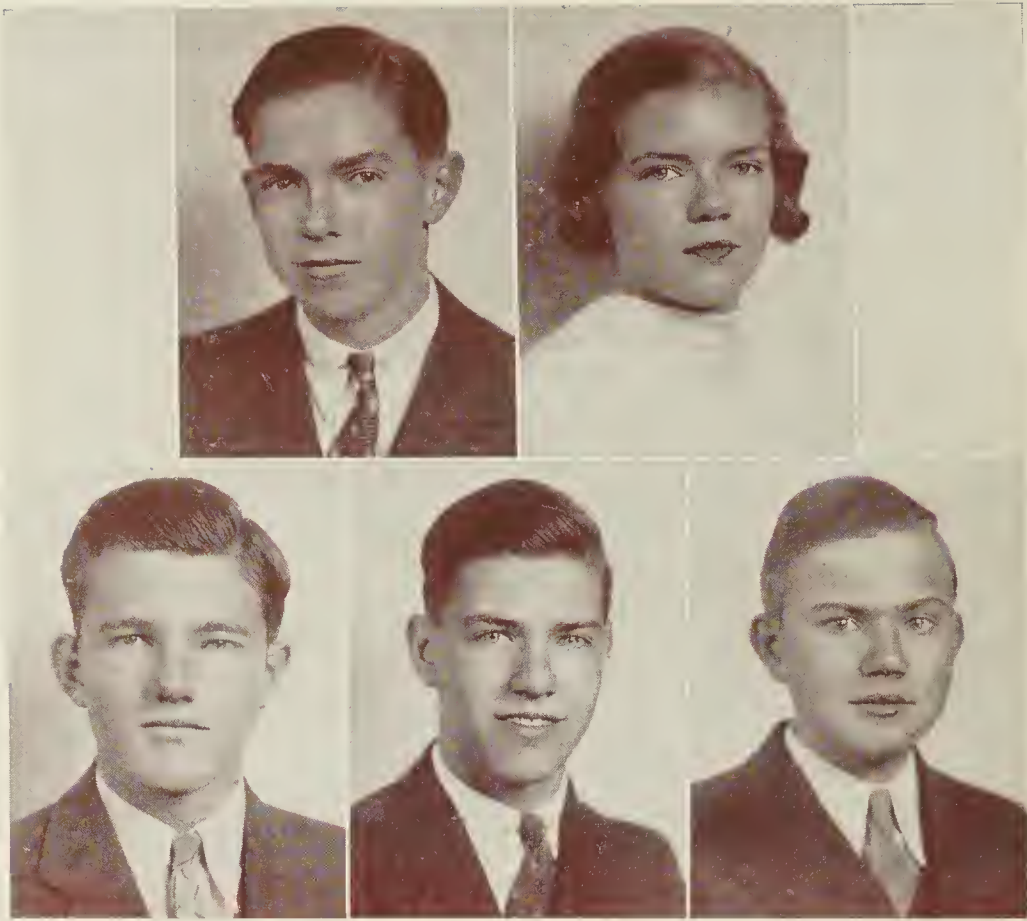
The constitution also established a Home Room Organization. This group was composed of a representative from each Home Room. The purpose of this organization is to maintain order and promote higher moral standards in the school.

Under this constitution each class elected a president, vice-president, secretary, and treasurer. Candidates were proposed by a nominating committee, and elections were held at the close of each year.

The constitution was changed for the first time in 1929. Student Council representatives were elected twice a year, six from a class. Student mass meetings were held every two months. The minutes of the council were published in the school paper. The following year the constitution was again changed. Gradually the students gained power. The Traffic Squad was formed. Various changes were made in the constitution until the students had complete control of the government outside of the classroom.

The student body adopted a new constitution in 1934. The Student Cabinet was abolished and the Student Council was given its duties. The Judicial Committee was given full control of disciplinary matters.

Student government has made much progress in the last few years. At present the student government of New Hanover High School is one of the most powerful in the state.



Judicial Committee

GEORGE BOYLAN, *Chairman*

MARY BOATWRIGHT

DONALD BROUN

PURNELL EGGLESTON

RALPH SOVEREL

DAISY LEE WOODBURY

Advisers:

MISS FRANCES FORMY-DUVAL

MR. DALE K. SPENCER



Home Room Organization

RALPH SOVEREL, JR., *President*

LLOYD HOLLINGSWORTH, *Secretary-Treasurer*

MISS FRANCES FORMY-DUVAL, *Faculty Adviser*

MEMBERS OF ORGANIZATION

ANNETTE ABELOVITZ

DAVIS HOLMES

FRANK SCHOCH

LOUISE ANDERSON

BILLY HOLLY

BUREN SIDBURY

DORIS ANDREWS

MIRIAM LEWIS

NELSON SIMON

ROBERT AUTRY

TOM LYNCH

MARY SLOCUMB

WILLIE BOYKIN

DONALD MERRITT

JEAN SMITH

BILLY BROWN

KITTY MCKOY

RALPH SOVEREL

ALICE CALDER

JERRY NEWBOLD

JACK STILLMAN

HUGH CALDER

GREY PARKER

LEON THOMAS

RENA DAVIS

STEVE PECK

RUTH THOMAS

EVELYN D'LUGIN

MARY PETERSON

MARIAN VICK

DONALD FISHER

ROBERT PRIDGEN

BEN WASHBURN

BETTY FOWLER

MARIE REGISTER

ALLEN WALKER

ROBERT GRISSOM

ROBERT RISLEY

JANE WEATHERSBEE

LLOYD HOLLINGSWORTH

MATTIE RUSS

DAISY LEE WOODBURY

VERNE MAE SAUNDERS



Traffic Squad

DONALD BROUN, *Captain*

JOE PINER AND JAMES KELLY, *Assistant Captains*

VIRGINIA HIGHSMITH, *Secretary*

MRS. JOSIE BROCK and MISS HESTER STRUTHERS, *Faculty Advisers*

MEMBERS OF THE SQUAD

ANNIE MAE BOWDEN	EDWARD HOBBS	CLARK MURPHY
DORIS BRITTAIN	L. H. HOUSTON	RALPH SHIMER
MARION BROOKS	CARLTON HUBAND	RUTH STANLEY
FRANK BROWN	TROY JOHNSON	MALON SMITH
JAY CASTEEN	ADRIANA HOUTRIET	JOHN THIGPEN
MARY LOUISE DONNELLY	ELIZABETH JURGENSON	GERARD VERZAAL
BOBBY DYKES	R. M. KERMON	MARION VICK
FRANKLIN ELMORE	CECIL LEE	DEMPSEY WATTS
EDWARD FLORA	JOHN MATHIS	MARSDEN WARD
JOHN GRIFFITH	LENA MELTON	BRUCE WALTON
JAMES HENDERSON	THOMAS MAULTSBY	FRANK WEAVER
	WINIFRED MINCEY	



National Honor Society

Purpose: To develop character, scholarship, leadership and service.

OFFICERS

NELL MOORE, *President*

HELEN SAVAGE, *Secretary*

BETSY GRAHAM, *Vice-President*

MARY FRADY, *Treasurer*

MEMBERS

ANNA ABEL

MARY AUSLEY

EVELYN BEERY

CHARLES BELL

JOAN BLUETHENTHAL

MARY BOATWRIGHT

MARY FRANCES BYRD

CAROLINE FARRAR

MARY FRADY

MARIAN FRYAR

WALTER GLOD

BETSY GRAHAM

GRANT JONES

JACK LEGWIN

LOUISE MALLARD

LUCILE MILLER

NELL MOORE

ELIZABETH MORRIS

BILL PERDEW

COY RANKIN

HELEN SAVAGE

BETTY SIBLEY

MARION SPENCER

ALICE TALLEY

ALLEN WALKER

BERTRAM WILLIAMS

MRS. R. H. WILLIAMS, MRS. W. L. HARTZOG, *Faculty Advisers*



Hi-Y

Purpose: To create, maintain, and extend throughout the school and community high standards of Christian character.

FIRST SEMESTER OFFICERS

Minora Chapter

JACK LEGWIN, *President*

WARD ANDREWS, *Vice-President*

BILL PERDEW, *Secretary*

ALLEN WALKER, *Treasurer*

Alpha Chapter

LLOYD HOLLINGSWORTH, *President*

GEORGE LYNCH, *Vice-President*

JAMES THORNTON, *Secretary*

CLEVE MCGOWAN, *Treasurer*

SECOND SEMESTER OFFICERS

Minora Chapter

BILL PERDEW, *President*

ALLEN LEWIS, *Vice-President*

LEWIS COLEMAN, *Secretary*

HUGH SPRUNT, *Treasurer*

Alpha Chapter

GEORGE LYNCH, *President*

CHARLES GREEN, *Vice-President*

CHARLES WHEATLEY, *Secretary*

GRAHAM ALLEN, *Treasurer*

ADVISERS

ED. HUMPHREYS, DALE K. SPENCER, JAMES MYERS

Hi-Y Club

MEMBERS

Minora Chapter

BILLY ALLEN	HERBERT CODINGTON	JAMES PERRIN
WARD ANDREWS	LEWIS COLEMAN	BRADFORD REYNOLDS
WHIT BENTON	JOHN COLWELL	RALPH SOVEREL
GEORGE BOYLAN	CYRUS HOGUE	MARION SPENCER
WINSTON BROADFOOT	BILLY KING	HUGH SPRUNT
DONALD BROUN	JACK LEGWIN	BOBBY STRANGE
HUGH CALDER	ALLEN LEWIS	ALLEN WALKER
DAN CAMERON	MORRIS MERRITT	BILLY WALKER
	BILL PERDEW	

Alpha Chapter

GRAHAM ALLEN	JOE HOOPER	CLARENCE MYERS
LESLIE BONEY	HARRY JAMES	OSCAR PECK
BOBBY BRIDGERS	JAMES KELLY	CECIL ROBINSON
CHARLES DAVIS	GEORGE LYNCH	BILLY SUTHERLAND
HAYWOOD EMERSON	TOM LYNCH	JAMES THORNTON
NED FROWNFELTER	CLEVE MCGOWAN	CARLTON WATKINS
CHARLES GREEN	JAMES MCKEITHAN	CHARLES WHEATLEY
LLOYD HOLLINGSWORTH	GEORGE MITCHELL	

EXECUTIVE COMMITTEE

JACK LEGWIN	LLOYD HOLLINGSWORTH
WARD ANDREWS	GEORGE LYNCH
WINSTON BROADFOOT	CLEVE MCGOWAN
GEORGE BOYLAN	JAMES THORNTON
BILL PERDEW	ROBERT BRIDGERS
ALLEN LEWIS	CHARLES GREEN
ALLEN WALKER	JAMES KELLY
JAMES PERRIN	

The Hi-Y Club had one of its most successful seasons during the year 1935-1936. It has carried out successfully its many objectives, including a few which heretofore have not been attempted in Hi-Y.

The regular weekly devotional talks by ministers and outstanding men of the community proved very helpful and beneficial to all members of the club.

Delegates were sent to the annual North and South Carolina Convention which met in Durham. The delegates were: Robert Bridgers, Hugh Sprunt and Lloyd Hollingsworth.

The annual Hi-Y Minstrel was very successful this year, and the proceeds went to the World Brotherhood Movement which is sponsored by the Y. M. C. A. Much of the credit is due the directors—Walter Coleman and Charles Taylor.



Girls' Hi-Y

SIGMA CHAPTER:

First Semester

ALICE TALLEY, President

MARY SLOCUM, Vice-President

EUGIE WATERS, Secretary

BETSY GRAHAM, Treasurer

Second Semester

BETSY GRAHAM, President

LOUISE WASHBURN, 1st Vice-President

BETTY GARRABRANT, 2nd Vice-President

SUSANNE HOGUE, Secretary

MILDRED SNEEDEN, Treasurer

Advisers: MISS ROSE GRANT, MISS SARAH LOVE

Girls' Hi-Y Club

MEMBERS

JANE ELLEN BALDWIN	BETTY GARRABRANT	BETTY SIBLEY
JOAN BLUETHENTHAL	BETSY GRAHAM	BETH SLOCUM
ANN BOATWRIGHT	DOTTY HARRISS	MARY SLOCUM
MARY BOATWRIGHT	SUSANNE HOGUE	MILDRED SNEEDEN
ALICE CALDER	ALICE JAMES	ALICE TALLEY
NANCY CAMPBELL	JANE LEGRAND	LOSSIE TAYLOR
SUSAN COOPER	EMILY MCCALL	LOUISE WASHBURN
RENA DAVIS	NELL MOORE	EUGIE WATTERS
JANE EMERSON	PEGGY MOORE	MARGARET WHITE
MARGARET FARMER	ROSALIE OLIVER	DAISY LEE WOODBURY
	EUNICE PATTEN	

Purpose: To create, maintain, and extend throughout the school and community high standards of Christian character.

Slogan: Clean speech, clean scholarship, clean athletics and clean living.

Motto: Character through service.



O. Henry Literary Society

Object: To promote interest in and improve spoken English.

OFFICERS

LUCILE MILLER, *President*

EVELYN BEERY, *Vice-President*

PURNELL EGGLESTON, *Secretary-Treasurer*

HELEN SAVAGE, *Program Chairman*

MEMBERS

ANNA ABEL

JOYCE DUNHAM

SUSANNE HOGUE

BARBARA ALLEN

PURNELL EGGLESTON

SUZELLE HOWES

JANE ELLEN BALDWIN

HORTENSE FINKELSTEIN

MAYBELL JACKSON

EVELYN BEERY

ELSIE FUSSELL

MARY KING

CATHARINE BRADSHAW

RAY FUNDERBURK

HARRIET MARSHBURN

JEAN BROUN

VASHTI GORNTO

JACK MARSHBURN

MARY BRYAN

MARTHA HALL

JULIA MEIGS

MARY FRANCES BYRD

KATHARINE HANSON

LUCILE MILLER

ELSIE BRIGGS

ROBERT HARDWICK

NELL MOORE

ALICE CALDER

HARRIET HARRINGTON

CLARK MURPHY

RAY CALHOUN

DOTTY HARRISS

LURA MYERS

LUCY CLARK

CATHARINE HEWETT

BETSY WEST

MARIE CONLY

VIRGINIA HIGHSMITH

MARY WHEELER

MARION DARDEN

RUTH HOLMES

MARY PALMER WILSON

EVELYN HORNE

MRS. BURROWS SMITH AND MISS FANNIE O'KEEF, *Faculty Advisers*



Der Deutsche Verein

Motto: "Gemütlichkeit."

DONALD BROUN, *President*

MARY FRANCES BYRD, *Vice-President*

HELEN SAVAGE, *Secretary*

JEAN BROUN, *Program Chairman*

BILL PERDEW, *Treasurer*

MEMBERS

JAMES ALDERIDGE

FRED BANCK

BILLY BELLOIS

JOHANNA BOET

ETHEL BOTESKIE

J. T. BROWN

ALFRED BRUNJES

HUGH CALDER

ROWENA CRAIG

MYRTLE CROOM

LOUISE DAVIS

MACK EDWARDS

DOROTHY EVERETT

MARGARET EVERETT

BARRY HINNANT

ALEX JANICKI

DOROTHY JENNE

RAYMOND JENNE

ELIZABETH JURGENSON

MILDRED KOONCE

THERESA LEONARD

MARGARET MAHLER

DOROTHY MARSHBURN

JACK MARSHBURN

GERALD MEDD

ALLIE MOORE

SHELTON MOORE

CLIFF MORRIS

JANICE PICKARD

MARGARET PICKARD

MONTRE RICH

THEONE ROPER

EMILY SEITER

CARLYLE SMITH

LOUISE STRUTHERS

BEVERLY WALTON

Faculty Adviser: MISS IDA SCHNIREL

Mascot: HESTER COX STRUTHERS, II.

Roscoe Cole

Tom Lynch



Chemistry Club

Purpose: To create interest in and broaden our knowledge of Chemistry.

BILLY SUTHERLAND, *President*

LLOYD HOLLINGSWORTH, *Vice-President*

MARY ELIZABETH HOUSTON, *Secretary*

JOAN BLUETHENTHAL, *Critic*

CHARLES GREEN, *Paper Reporter*

Program Committee:

LLOYD HOLLINGSWORTH

TOM LYNCH

WHIT BENTON

Membership: A student must be studying and passing Chemistry to be eligible for membership.

MEMBERS

WILLIAM AINSWORTH
SAM CHINNIS
BILLY ALLEN
ROSCOE COLE
CECIL APPLEBURY
BOBBY DYKES
MARGARET BANGAS
JACK ELLIS
JOE BAUGH
FLORENCE FICK
WHIT BENTON
BOBBY BLEECKER
JOAN BLUETHENTHAL
HERBERT BROOKS
ROY BURNETT
FEMIA BRAAK
DAVID BRITTAIN
GERALDINE CARROLL

NED FROWNFELTER
JOHN KING
TOM GAUSE
DAVID LEWIS
WALTER GLOD
THOMAS LYNCH
CHARLES F. GREEN
CARLETTA LENNON
SOPHIE GMYTRUK
ISRAEL LIPTON
HELEN HART
LLOYD HOLLINGSWORTH
MARY ELIZABETH HOUSTON
CARLTON HUBAND
ROBERT JONES
ANNA KING
DORIS KENAN
GEORGE KERTRULAS

VIRGINIA MCKENZIE
MARTIN WILLARD
GEORGE A. MOORE
CATHERINE WELSH
DUDLEY MOTE
LESLIE WALKER
JULIAN MCKEITHAN
JOE WOLFF
JAMES PERRIN
DONALD RIVENBARK
IVEY SUTTON
THOMAS STEWART
BILLY SUTHERLAND
PEGGY SNOW
JACOB TINGA
LOUISE TOOT
GENE TRASK

MRS. R. H. WILLIAMS, *Adviser*



*Best wishes
John King*

Edison Science Club

Purpose: To create a greater interest in Science in New Hanover High School.

OFFICERS

R. B. HODGES, *President*

GRAHAM ALLEN, *Vice-President*

CHARLES WHEATLEY, *Secretary-Treasurer*

MEMBERS

BILL DIXSON

LEROY ROBERTSON

RAY CALHOUN

PERRY DAWSON

GRAHAM ALLEN

VIRGINIA NESBITT

ALBERT GLOD

ROGER RUSSELL

NATHAN HARRIS

NATHAN HASKETT

ERNEST IRVING

FRANKLIN ELMORE

GEORGE BELLAMY

FRANK WEAVER

CLEVE MCGOWAN

ISAAC COOPER

VIRGINIA HIGHSMITH

BRADFORD REYNOLDS

CHARLES WHEATLEY

JACK LEGWIN

ALLEN LEWIS

PELTON ELLIS

GEORGE BOYLAN

HAYWOOD EMERSON

EDWARD GODWIN

JAMES APPLEWHITE

HUGH CALDER

ARCHIE FOUNTAIN

ISAAC HOBBS

ROBERT WHITE

WAYNE WILLIAMSON

CARLTON WATKINS

JOHN KING

R. B. HODGES

MR. HERBERT SLACK, *Faculty Adviser*



Library Club

LUCILE MILLER, *President*

MARY ELIZABETH HOUSTON, *Vice-President*

MARY SLOCUM, *Secretary-Treasurer*

MRS. J. W. GRISE, *Librarian*

MEMBERS

BARBARA ALLEN
VEE VEE ALLEN
EVELYN BEERY
JEANETTE BUSH
LEOLA EDWARDS

BETTY HENDERSON
MARY ELIZABETH HOUSTON
SUZELLE HOWES
MARGARET HUNT
HARRIET MARSHBURN
MARTHA McCAIG

LUCILE MILLER
ADELAIDE ROSBOROUGH
MARY SLOCUM
MARY WHEELER
HAROLD WILLIAMS

MONITORS

RAY SAINT AMAND
ELOISE BLACKWOOD
MIRIAM BLANTON
CATHARINE BRADSHAW
JOSEPHINE BROWN
ALICE CALDER
ELOISE CAMPFIELD
SUSAN COOPER
HELEN CROOM
JOSEPHINE CORBETT
MARY CORBETT
MABEL DEMPSEY
FRANCES DEVANE
JANET DIEHL

ALICE DILLON
DOROTHY EVERETT
HORTENSE FINKELSTEIN
MAUD FRYE
VASHTI GORNTO
ROBERT HARDWICK
SUSANNE HOGUE
ELIZABETH JONES
GRANT JONES
EVELYN KESTER
MARY KING
REBA LYELL
KATHLEEN LEWIS
LAVESE MILLER
VIRGINIA McFADYEN

PHYLLIS McENTEE
VIRGINIA MORRIS
RHODA MURRAY
ANNA PADRICK
JANICE PICKARD
MARGARET PICKARD
EMILY SEITTER
HELEN SAVAGE
LOUISE STRUTHERS
RUTH THOMAS
ELEANOR WESTBROOK
BETSY WEST
EUGIE WATTERS
MARGARET WRIGHT



Dizzy Dozen and Snappy Six

ANN BOATWRIGHT, *President*

ALICE JAMES, *Vice-President*

JOAN BLUETHENTHAL, *Secretary-Treasurer*

MISS IDA SCHNIREL, *Sponsor*

Dizzy Dozen

JOAN BLUETHENTHAL

BETTY GARRABRANT

ANN BOATWRIGHT

ALICE JAMES

NANCY CAMPBELL

BETTY SIBLEY

RENA DAVIS

ALICE TALLEY

EVELYN D'LUGIN

LOUISE WASHBURN

LOUISE DONNELLY

MARGARET WHITE

Snappy Six

MARY ZILLA CLARKE

MATTIE PARKER

DOTTY HARRISS

LOSSIE TAYLOR

SUSANNE HOGUE

DAISY LEE WOODBURY



Glee Club

MR. ALBERT BROWN, *Director*

EVELYN CAPPS, *Secretary-Treasurer*

CLEVE MCGOWAN, *President*

HELEN SAVAGE, *Pianist*

MEMBERS

IONA BONEY
 INEZ BAGGETT
 DOROTHY BUNN
 ANNIE BOET
 ELSIE MAY BRIGGS
 JEAN BROUN
 LUCY CORBETT
 MARJORIE DAVIS
 KATIE DAVIS
 BERNICE ELLIS
 FLORENCE FICK
 HORTENSE FINKELSTEIN
 ADDIE BUTLER
 BETTY HINTON
 MARION DARDEN
 MARY JACKSON
 LOLA MAE JOHNSON
 HAZEL KING
 JEANETTE BUSH
 REBA LYELL
 CATHERINE LEWIS

CLARA McLEAN
 MIRIAM McINTIRE
 LILLY MAY BLAKE
 ETHEL BOTESKI
 CATHERINE HEWLETT
 ELSIE O'BIERNE
 LUELLE O'BIERNE
 MARY BRYAN
 SILVY ANN PRESSON
 EUNICE PATTEN
 MARY C. RICH
 BETH HIGHSMITH
 CAROLINE TUSCH
 MADELINE SOUTHERLAND
 EMMY LOU SMITH
 LOUISE STOWELL
 MARGARET WYCKOFF
 KATHERINE PRIDGEN
 FLORENCE WOODBURY
 TOM BAKER
 BUCK BARDEN
 BILLY BEST

DONALD BRITT
 BILLY BROWN
 J. D. CLARK
 ARTHUR CRAIG
 ROBERT HARDWICK
 JACK HOLMES
 OWEN JONES
 LEWIS KERMON
 BILLY PARKER
 JULIAN McKEITHAN
 JAMES McKEITHAN
 GEORGE MITCHELL
 DUDLEY MOTE
 TRUMAN MCGILL
 ROY VANN
 JAMES ROBERTSON
 BRADLEY ROEBUCK
 JACOB TINGA
 RUPERT WORTHINGTON
 BEMEN NORMENT
 LAMONTE MILLER



Latin Club

BETSY GRAHAM, *President*

RUTH HOLMES, *Vice-President*

GRANT JONES, *Secretary-Treasurer*

Sponsors for Club

MISS MARTHA STACK AND MISS MARY LATHROP

MEMBERS

JANE ELLEN BALDWIN
 JEAN BERTRAM
 WILLIAM BOLES
 MARIE BOSWELL
 ELIZABETH BOWDEN
 HELEN BRIDGERS
 BILLY BROWN
 JOSEPHINE BROWN
 VIRGINIA BRYAN
 JEANNETTE BUSH
 ALICE CALDER
 NELL CARPENTER
 GERALDINE CARROLL
 LUCY CLARK
 LULA COLE
 MARY CORBETT
 FRANCES COUGHENOUR
 JANET DIEHL
 JOYCE DUNHAM
 MAUD FRYE
 INEZ FULBRIGHT
 MARY CATHERINE GORMAN

BETSY GRAHAM
 MARTHA HALL
 KATHERINE HANSON
 HAZEL HARRISON
 BARBARA HEBRON
 BETTY HENDERSON
 BETTY HINTON
 CYRUS HOGUE
 RUTH HOLMES
 EVELYN HORNE
 SUZELLE HOWES
 GRANT JONES
 EVELYN KESTER
 BILLY KING
 KATHLEEN LEWIS
 NANCY LYNCH
 MARTHA MCCAIG
 EMILY MCCALL
 BILLY McCLAMMY
 RACHEL PEARSALL
 LOUIS POISSON
 MAY PRICE

LOUISE ROBESON
 RUBY ROGERS
 ADELAIDE ROSBOROUGH
 JOHN RUGAN
 GRACE SLOAN
 JAMES SLOAN
 BETH SLOCUM
 GRACE SLOCUM
 MARY SLOCUM
 JEAN SMITH
 PEGGY SNOW
 MARY SOUTHERLAND
 ESTELLE STOKLEY
 WALTER SHEFFIELD
 LOUISE TOOT
 THELMA WARTERS
 HELEN WEATHERSBEE
 CATHERINE WELSH
 BETSY WEST
 MARTHA WILSON
 DOROTHY WYCKOFF

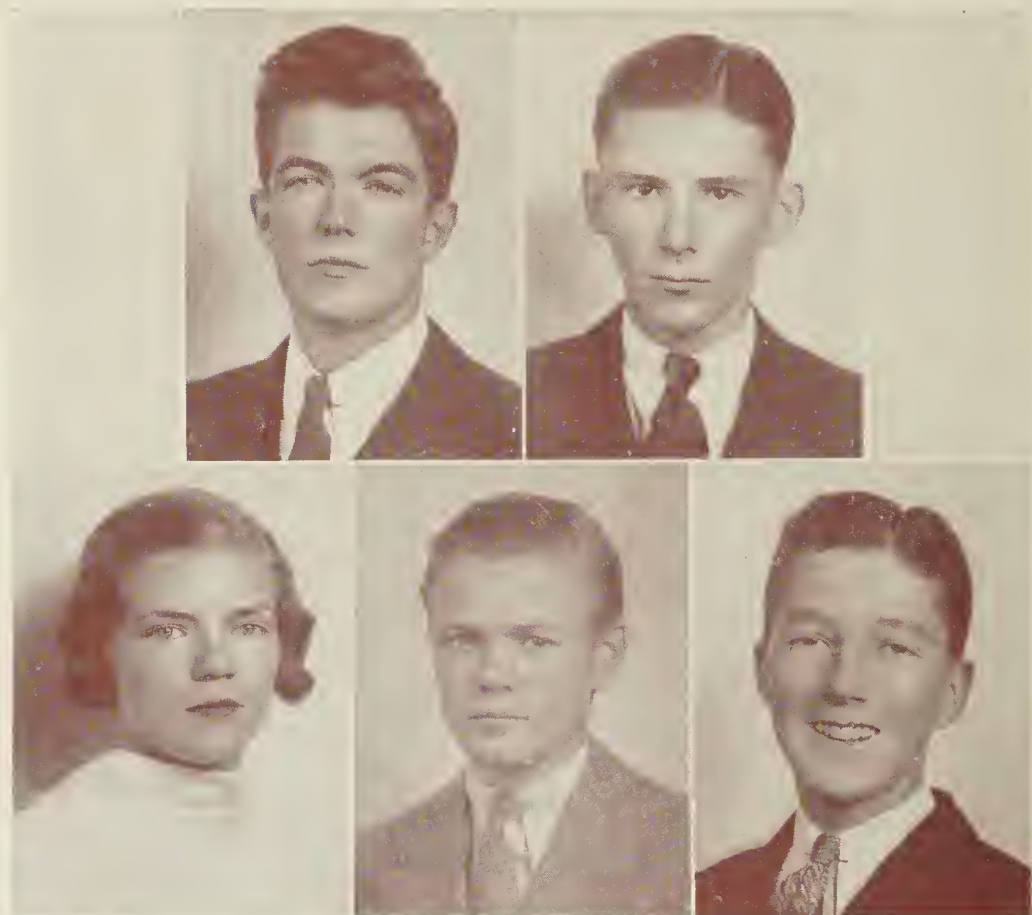
Index of Clubs and Presidents

<i>Art Club</i>	CHARLES BELL
<i>Chemistry Club</i>	BILLY SUTHERLAND
<i>Der Deutsche Verein</i>	DONALD BROWN
<i>Dizzy Dozen and Snappy Six</i>	ANN BOATWRIGHT
<i>Edison Science Club</i>	R. B. HODGES
<i>Glee Club</i>	CLEVE MCGOWAN
<i>Boys' Hi-Y</i>	L. HOLLINGSWORTH, J. LEGWIN
<i>Girls' Hi-Y</i>	A. TALLEY, B. GRAHAM
<i>Home Room Organization</i>	RALPH SOVEREL
<i>Judicial Committee</i>	GEORGE BOYLAN
<i>Latin Club</i>	BETSY GRAHAM
<i>Library Club</i>	LUCILE MILLER
<i>The National Honor Society</i>	NELL MOORE
<i>O. Henry Literary Society</i>	LUCILE MILLER
<i>Scribblers' Club</i>	HELEN SAVAGE
<i>Student Government Association</i>	GEORGE BOYLAN
<i>Tennis Club</i>	ED WHITE
<i>Traffic Club</i>	DONALD BROWN



CITY HALL

Publications



The Wildcat

EDITORIAL BOARD

Editor-in-Chief.....WINSTON BROADFOOT

Business Manager.....ROBERT BRIDGERS

Assistant Editor.....MARY BOATWRIGHT

Sports Editor.....ROBERT STRANGE

Feature Editor.....HAYWOOD EMERSON



The Wildcat

EDITORIAL STAFF

WINSTON BROADFOOT, *Editor-in-Chief*

MARY BOATWRIGHT, *Assistant Editor*

HAYWOOD EMERSON, *Feature Editor*

JAMES F. HACKLER, *Asst. Feature Editor*

ROBERT STRANGE, *Sports Editor*

LOUISE WASHBURN, *Club Editor*

LESLIE BONEY, *Asst. Club Editor*

PERRY DAWSON, *Art Editor*

RALPH SOVEREL, *Asst. Art Editor*

HUGH CALDER, *Exchange Editor*

MIRIAM SOLOMON, *Asst. Sports Editor*

REPORTERS

RENA DAVIS

NELL MOORE

SUSANNE HOGUE

DAN CAMERON

HOUSTON MEARES

EDNA BALES

JACK LEGWIN

TYPISTS

DOROTHY LANGSTON

DORIS PETERSON

DANESE LANGSTON

BUSINESS STAFF

ROBERT BRIDGERS - - - - - *Business Manager*

ALICE TALLEY - - - - - *Assistant Business Manager*

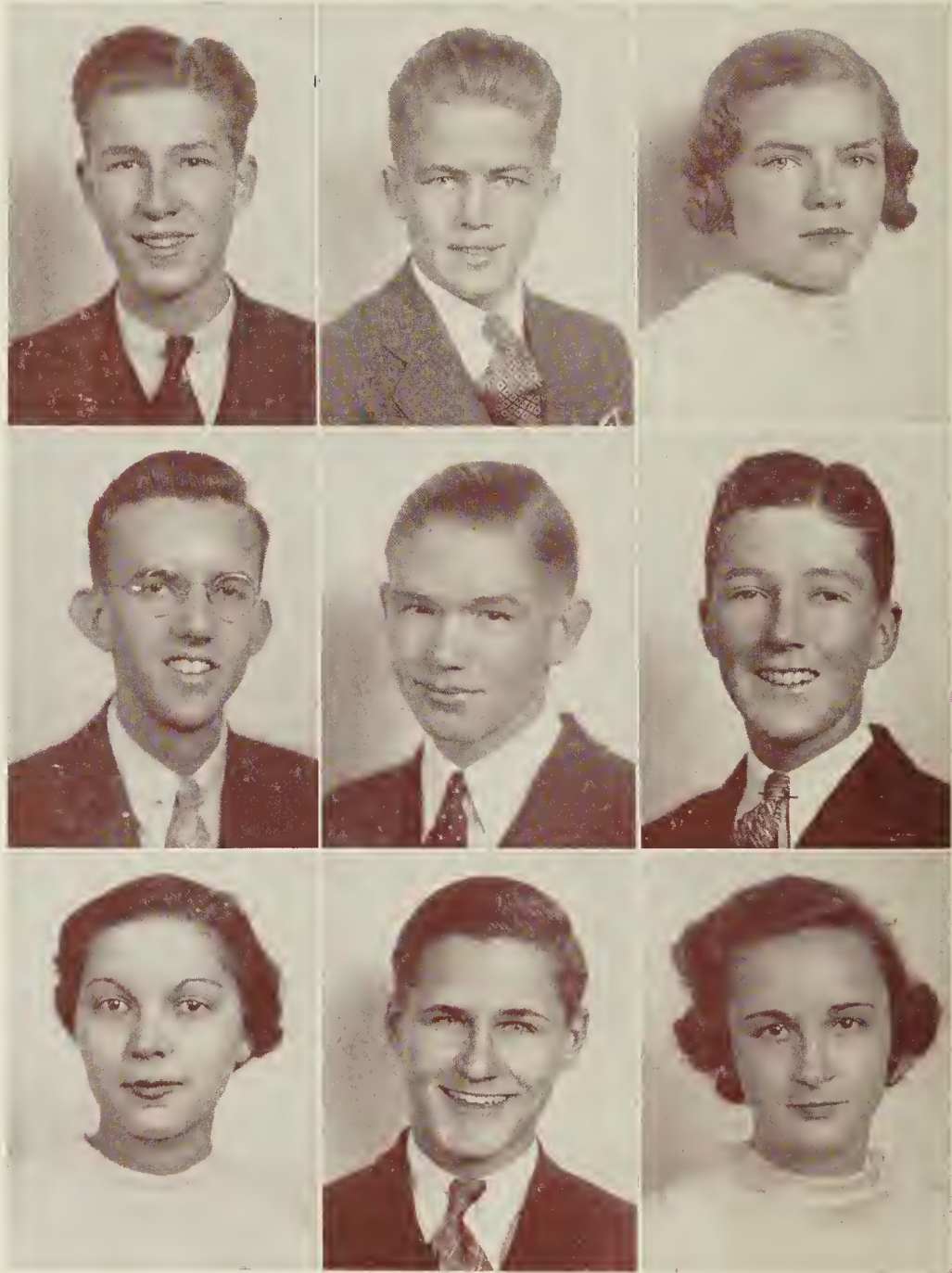
COY RANKIN - - - - - *Associate Manager*

CARLTON WATKINS - - - - - *Associate Manager*

BILLY ALLEN - - - - - *Associate Manager*

BILLY SMITH - - *Circulation Manager*

MISS SARAH LOVE, *Faculty Adviser*



The Hanoverian

EDITORIAL STAFF

MARION SPENCER, *Editor-in-Chief* BILLY SMITH, *Assistant Editor*
MARY BOATWRIGHT, BILL PERDEW, *Feature Editors*
PERRY DAWSON, *Art Editor* ALLEN WALKER, *Assistant Art Editor*

BUSINESS STAFF

HAYWOOD EMERSON, *Bus. Mgr.* MARY FRANCES BYRD, *Asst. Bus. Mgr.*
ALICE JAMES ALLEN WALKER



WILMINGTON HIGH SCHOOL FOOTBALL TEAM—1898

Athletics



Tennis Teams

BOYS

E. WHITE, J. HEAD, E. JACKSON, J. COLWELL, L. BONEY, D. MOTE AND A. LEWIS

GIRLS

E. LEE, D. BRITIAN, M. LEWIS, B. LEWIS, C. FARRAR AND M. BYRD

GLENWARD BLOMME, *Coach*

Football



Ends: MCKEITHAN, MURRAY, ANDREWS AND MERRITT.

Tackles: EDENS, FILLYAW AND HENDERSON.

Guards: HUFHAM, COLEMAN, MOTE AND SHEFFIELD.

Center: QUARLES.

Backs: ROBINSON, HORTON, THOMAS, JENKINS, GOLDBERG, HOUSTON,
BURNETT AND SMITH.

Managers: WOMBLE AND UNDERWOOD.

Coach: E. TARRALL.

Boxing



THOMAS, MERRITT, HARPER, DANIELS, DIXSON, SMITH, RUSHING, VICK,
PALMER, HARPER, PECK AND DAWSON.

Manager: VANN.

Coaches: P. H. McDONALD AND J. M. MYERS.

Girls' Basketball



PIGFORD, FARRAR, SANDERS, BRIDGERS, CARROLL, EDWARDS, HART,
SAUNDERS, BLACKHAM AND LEE.

Manager: MARY BETHEA.

Coach: MRS. J. TILLET.

Boys' Basketball



ANDREWS, HORTON, McKEITHAN, HOLLINGSWORTH, HENDERSON,
E. WHITE, R. WHITE AND KERTRULAS.

Manager: UNDERWOOD.

Coach: TARRALL.



(Courtesy, McLaughlin Aerial Surveys, Inc.)

FEATURE



RALPH HORTON
ALICE TALLEY



ROBERT BRIDGERS
BETSY GRAHAM



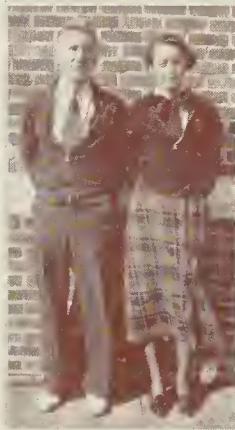
BILL PERDEW
NELL MOORE



GEORGE LYNCH
LOUISE WASHBURN



JACK LE GWIN
HELEN CROOM



CECIL ROBINSON
CAROLINE FARRAR



JACK LE GWIN
MARY BOATWRIGHT



HARRY TABB
KATHERINE ROTHLINGER



CHAS. WILLIFORD
EVELYN D'LUGIN



JACK LE GWIN
MARY BOATWRIGHT



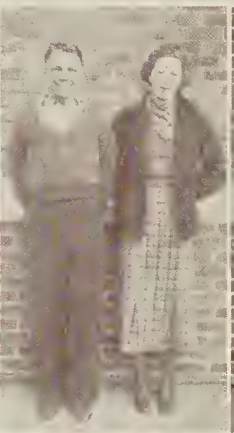
MARY BOATWRIGHT
GEORGE BOYLAN



JACK LE GWIN
MARY BOATWRIGHT



HARRY TABB
NANCY CAMPBELL



NATHAN HARRIS
BETTY GARRABRANDT



RALPH HORTON
EVELYN D'LUGIN

Superlatives



JOHN HEAD
SUSAN COOPER



CARLTON WATKINS
NELL MOORE



CHARLES BELL
RAY CALHOUN



HELEN SAVAGE
BOBBY BRIDGERS



MARY BOATWRIGHT
HAYWOOD EMERSON



ANN BOATWRIGHT
BILLY SMITH



CHAS WILLIFORD
BETTY SIBLEY



MARION SPENCER
ANNA ABEL



LESLIE BONEY
LOUISE WASHBURN



NATHAN HARRIS
MARY MURRAY



BILL PERDUE
BETTY SIBLEY



NATHAN HARRIS
ANN SIMON



JACK LE GWIN
MARY BOATWRIGHT



WINSTON BROADFOOT
MARY BOATWRIGHT

Superlatives

Superlatives

<i>Most Attractive:</i>	RALPH HORTON	ALICE TALLEY
<i>Most Intellectual:</i>	ROBERT BRIDGERS	BETSY GRAHAM
<i>Most Studious:</i>	BILL PERDEW	NELL MOORE
<i>Wittiest:</i>	GEORGE LYNCH	LOUISE WASHBURN
<i>Friendliest:</i>	JACK LEGWIN	HELEN CROOM
<i>Most Athletic:</i>	CECIL ROBINSON	CAROLINE FARRAR
<i>Most Popular:</i>	JACK LEGWIN	MARY BOATWRIGHT
<i>Biggest Baby:</i>	HARRY TABB	KATHRYN ROETHLINGER
<i>Best Dressed:</i>	CHARLES WILLIFORD	EVELYN D'LUGIN
<i>Most Outstanding:</i>	JACK LEGWIN	MARY BOATWRIGHT
<i>Most Dependable:</i>	GEORGE BOYLAN	MARY BOATWRIGHT
<i>Most Influential:</i>	JACK LEGWIN	MARY BOATWRIGHT
<i>Laziest:</i>	HARRY TABB	NANCY CAMPBELL
<i>Biggest Flirt:</i>	NATHAN HARRIS	BETTY GARRABRANT
<i>Best Looking:</i>	RALPH HORTON	EVELYN D'LUGIN
<i>Most Optimistic:</i>	JOHN HEAD	SUSAN COOPER
<i>Most Pessimistic:</i>	CARLTON WATKINS	NELL MOORE
<i>Most Original:</i>	CHARLES BELL	RAY CALHOUN
<i>Most Ambitious:</i>	ROBERT BRIDGERS	HELEN SAVAGE
<i>Biggest Politician:</i>	HAYWOOD EMERSON	MARY BOATWRIGHT
<i>Cutest:</i>	BILLY SMITH	ANN BOATWRIGHT
<i>Most Sophisticated:</i>	CHARLES WILLIFORD	BETTY SIBLEY
<i>Most Bashful:</i>	MARION SPENCER	ANNA ABEL
<i>Most Nonchalant:</i>	LESLIE BONEY	LOUISE WASHBURN
<i>Best Natured:</i>	JACK LEGWIN	MARY BYRD
<i>Most Mischievous:</i>	NATHAN HARRIS	MARY MURRAY
<i>Most Dignified:</i>	BILL PERDEW	BETTY SIBLEY
<i>Craziest:</i>	NATHAN HARRIS	ANN F. SIMON
<i>Best All-Round:</i>	JACK LEGWIN	MARY BOATWRIGHT
<i>Most Independent:</i>	WINSTON BROADFOOT	MARY BOATWRIGHT

Class History

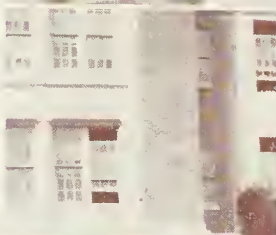
Life is a continuous process, but somehow at this stage we feel that some part of our life will definitely end as we turn our backs on our high school days. All progress implies much that must be left behind, but it is with a sigh and many fond recollections that we leave this school of our heart. Yet we may put what we have already accomplished behind us and look forward with determination to that which lies ahead. As our last gesture toward the "glory and the dream" that represents our days in New Hanover High, even the most practical will grant us this last written reminiscence—our history.

It seems only yesterday that we were lowly freshmen lorded over by the Sophomores and Juniors and totally ignored by the high and mighty Seniors. We were of practically no importance in the life of the school. The only important events happening during our first year were the election of Joan Bluethenthal as president of our class, the unfortunate death of Sherman Schulken, our classmate, and our mid-term and final exams. We were all looking forward to our summer vacation and to the beginning of our Sophomore year.

We fully lived up to the age-old sophomore tradition of feeling our own importance. We made life unpleasant for the incoming Freshman class, forgetting that only the year before we were as green and as ridiculous in the eyes of the upper classmen as they now appeared to us. We elected as our new president, Coy Rankin, one of the most studious members of our class. We began to take an important part in the activities of the school and were intrusted with many important tasks. We were really getting prepared for our last two years when we were to be the leaders in all the school activities.

At the end of our Sophomore year our entire school system seemed to be on the brink of disaster. Our school term was reduced to eight months. Financial support had been so reduced that school authorities felt that we could no longer carry on in our usual splendid manner. We lost our beloved friend, Doctor W. O. Hampton, who resigned as principal of N. H. H. S. after three successful years in which he endeared himself to all who came in contact with him.

Our first four months vacation passed quickly. Many unfavorable rumors regarding changes in our school administration were quickly dispelled by the appearance of our new principal, Mr. Fred W. Green. Mr. Green quickly won our co-operation and confidence by his winning personality and radiant smile. All our administrative worries were over; we could now settle down and seriously begin the task of preparing ourselves for our Senior year. But Fate was to deal New Hanover High another serious blow. In December one of our most beloved teachers, Miss Emma Martin, passed away. As





Juniors we had never been in Miss Martin's classes but her Christian influence was felt by every high school student.

As Juniors we were becoming more and more important in the outside activities of the school. Many of us were well enough known to be recognized by a nod or a word from some Senior. It became somewhat of a habit, when a leader for some new school enterprise was needed, to take him from our class. We were unusually well represented in the school clubs, school publications, and school athletics. Our false feeling of importance was replaced by a new feeling of added responsibility. Carlton Watkins was chosen to lead us during this year and was ably supported by the other elected executives. Because of our capable executives and the teamwork of the rest of the class, the class of 1936 became financially the most stable Junior class in the history of our school. We won honors elsewhere; many began, however to study harder in order to win a place in the National Honor Society. Many of our classmates were rewarded because of their good grades and fine character by being elected to membership in the local Hi-Y Club. Many of these newly elected members contributed materially towards making the annual Hi-Y Minstrel the great success that it was. Our Junior Play, "So You're From Missouri," was a great financial as well as a dramatic success. What might be termed our first Senior privilege was the acquisition of our Senior rings during the latter part of the year. Again we were looking forward to our summer vacation, the summer before our final year in high school!

The administration of our school was again changed, when Mr. T. T. Hamilton became our principal upon the resignation of Mr. Green. Mr. Green was sorely missed but Mr. Hamilton proved a capable and beloved successor.

After three years of patient waiting our greatest ambition was realized when we walked up the Senior Steps for the first time. Never again will the thrill be as great as that first time. Thus our Senior year began.

Because the whole school depends so much on the example and leadership of the Seniors, we began the task of choosing our leaders at once. Our class officers: Winston Broadfoot, president; Ward Andrews, vice-president, and Alice Talley, secretary and treasurer, were among the first to be chosen. Winston Broadfoot and Bobby Bridgers, editor and business manager of our school paper, at once began to assemble a capable staff so that "The Wildcat" would be the best newspaper ever to represent New Hanover High School.

Interest in high school athletics was far below the high standard set the year before. Bad weather at some of the biggest games played havoc with the gate receipts. Although our teams were not an outstanding success as far as games won is concerned, it was not

because our boys were not trying and out on the field fighting every minute. Our football team produced in Capt. "Mullet" Robinson, Ralph Horton and Charles Edens, three of the outstanding players in the conference. The boys' basketball team was forced to drop out of the conference because of financial difficulties. The girls' basketball team had a very poor season, not winning a game. In the state tournament the boxing team was very successful, placing third. Entering only three men, they produced two state champions, Leon Thomas and Morris Merritt, and a semi-finalist, Billy Smith.

Our Senior Play, "The Yellow Shadow", was a great success from every standpoint. With expert direction and an excellent cast this success was made possible. The Junior Play and the Hi-Y Minstrel were other major dramatic successes during our Senior year.

In dedicating the first volume of "The Hanoverian" to Miss Love, we tried in some small measure to express to her our love and gratitude for what she has meant to us. Her unflagging interest in us and our work on "The Hanoverian" and "The Wildcat" has endeared her to all of those who worked on the staffs. Those of us who have been influenced by her in the classroom or through other activities are deeply grateful for our association with her. It was with sincerity and satisfaction that we dedicated the year book to her. To the other members of the faculty who have manifested their interest in us in innumerable ways, we take this opportunity to express our deepest appreciation. We will try our best to repay them for all they have done for us by going out into the world with their ideals always before us.

And then came those last happy, though hectic, weeks of our Senior year. Invitations had to be bought, diplomas engraved, caps and gowns rented, and commencement plans made. During those last few days we smiled and pretended we were glad it was about all over, but deep in our hearts we felt we were leaving behind something that could never be recaptured. We heard the baccalaureate sermon; we held our class day exercises, and then the day of days was upon us. Never was a Greek athlete prouder of his laurel wreath than we were of those diplomas we had won, not without effort and hard work.

And now as a class we shall meet no more, but with the inspiration gained through contact with our teachers in New Hanover High School we go out to take our places in the world whose demands upon our training and intelligence shall be met in full measure.





Class Prophecy

Ladies and Gentlemen, this is shortwave television station D E L C O , located in the RENA DAVIS hotel, in Delco, N. C. We now take pleasure in presenting the international news correspondent, ALBERT GLOD, who will give you the program schedule for tomorrow.

Mr. Glod. How do you do ladies and gentlemen, how do you do? At the sound of the gong it will be exactly twelve o'clock starting the day February 28, 1956. I will now read you the program for today:

6:00—Getting up exercises by Doctors JAMES PERRIN and OWEN SMITH with the music by LUCILE MILLER and her "Kitten Band."

7:00—Piano recital by HELEN SAVAGE and her class consisting of BERTRAM WILLIAMS, RUTH KLANDER, HAZEL HARRISON and IRMA KING who have studied abroad.

8:00—Morning Devotions by Rev. JOHN COLWELL.

8:15—"Beauty Culture"—by EVELYN D'LUGIN.

8:30—SIDNEY RUBIN Shoe Repair Shop Hour featuring LESLIE WALKER and his Rubin Ramblers with ISAAC COOPER, HARRY RIVENBARK, LOIS HARTLEY, and ELSIE FUSSELL.

9:00—Your Daily Menu by FLORENCE FICK.

9:30—U. S. Marine Band directed by General LEROY ROBERTSON.

10:00—Cuckoo Hour with RALPH SOVEREL in charge, featuring HELEN HALE and her Blues Singers.

10:30—Lesson on Horticulture by CHARLES WHEATLEY.

10:45—Early News Flashes brought to you by ED HEMBY with the compliments of the ROBERT WHITE Soap Company.

11:00—Daily Forum; speakers: MARTHA WILSON, GRANT JONES, WOODROW MALLARD and CLARK MURPHY. The subject for today is, "Should Bachelors Be Made to Marry at Fifty?"

11:30—Tennis match between ED WHITE and JOHN HEAD for world championship, MAURICE HUFHAM, announcer.

12:00—Luncheon Music by MARY McCRAW and her Orchestra. EVELYN CAPPS, featured soloist.

12:30—Baseball game between New Hanover High School and Burgaw High. ED HOBBS, announcer.

2:00—Fashion Parade with JOAN BLUETHENTHAL, MAIE WATTERS and EVELYN BEERY.

2:30—Stock Market Quotations by ED MARSHBURN.

2:45—Gubernatorial speech by Candidate HAYWOOD EMERSON. Topic, "Why I Should Not Be Governor."

3:00—GEORGE KERTRULAS Confectionery Hour featuring the one man lover, MARY FRADY.

3:15—Speeches by candidates for Commissioner: SUSAN COOPER, ELOISE CAMPFIELD, JACK VEREEN and HARRIS NEWBER.



3:45—Talk on "The Superficial Aspects of Extraterritoriality" by Senator JACK LEGWIN.

4:00—Late News Flashes from Little America by RAY CALHOUN through the courtesy of the ELEANOR WOOD Shoe Polish Company.

4:14½—Time; ANDREW RITTER.

4:15—Comic Skit; CHARLES CLARK, hero, and MARGARET WHITE, heroine.

4:30—MARY ROSBOROUGH Revue with ARTA FUTRELLE, MARGARET GILLIARD, FLORENCE DAVIS and MARGARET FARMER. Special dance on hands and feet by BILLY HELMS.

4:45—Harmony Sisters: ELIZABETH and MARY HAGOOD singing, "Love Without a Lover," composed by FRANCES RUSSELL.

5:00—One Hundred and One Ways of not studying Algebra, by Professor J. D. HUFHAM.

5:15—Talk on the discovery of the painless corn remover by Dr. E. J. IRVING.

5:30—GEORGE MITCHELL and his violin brought to you by the makers of HERBERT BROOKS Dandruff Remover.

6:00—Bed Time Stories by "UNCLE OWEN FILLYAW."

6:15—The BELL Twins, BILLY and CHARLES; Modern Pic and Pat, brought to you by the VIRGINIA NESBITT Cheese Company, mostly limburger.

6:30—World's Championship Boxing Match; Battling BILL DIXSON versus Punching JAMES HENDERSON.

7:00—Theatre of the Air. NATHAN HARRIS and BETTY GARRABRANT in their modern version of "Romeo and Juliet," accompanied by CHARLES ENGLISH and his Orchestra.

7:30—"Day Dreaming," with astrologer WAYNE WILLIAMSON and his Star Gazers Club.

8:00—HALA ALLEN Coffee Hour with INEZ COOKE, JOHNNIE FROST, EDITH BRIDGES and LLOYD HOLLINGSWORTH; the Cooke Harmony Family.

8:30—"Relation of Man to Bacterian Microbes," by Professor ISAAC HOBBS.

8:45—JOHN EAKINS Fertilizer Company presents, "The Hears All, Sees All, Knows Nothing, NATHAN HASKETT.

9:00—FRED BANCK Hair Grower Company presents, "Bald Crime Clues," with Inspector JIMMY CREASY, Tough Egg BOBBIE CHRISTIE, Sheriff CARLTON WATKINS, "by cracky," NANNIE SANDERLIN and FLOSSIE ROBBINS. The Hair Grow is guaranteed to grow hair on a bald rock.

9:30—RACHEL MEADOWS' Night Club with HENRY SELLERS' Orchestra.

10:00—Direct Broadcast from London of the crowning of ELIZABETH MORRIS as poet laureate.

11:00—Lesson on "How to Play Chess," by KATHLEEN MALLARD, instructor.

11:30—Direct Broadcast from Norway of the Olympic ice skating meet. The American contestants are CECIL ROBINSON, CAROLINE FARRAR, MILDRED CARNEY and BILLY SMITH.

12:00—We come to the end of our broadcast for today.

I now take pleasure in presenting your News Correspondent, HAYWOOD EMERSON, brought to you by the ADNA FREDERICK Face Powder Company. Mr. Emerson.

Thanks Mr. Glod. Flash! Flash! WINSTON BROADFOOT elected president of Australia. One of the planks in his platform was, "To Reduce the Kangaroo Population of Australia." Flash!



Flash! ANNE HIERS admitted into Hollywood. Her first picture will be, "Love and a Nickel," with LEROY STANLAND and JAMES THORNTON. Flash! Flash! ROBERT BRIDGERS discovers new element "Radium X. Z." Scientist Bridgers is president of the International School of Science. Flash! Flash! LYNWOOD BATSON, long lost army pilot in Ethiopian jungles reached civilization today. He was found by a searching party consisting of Lieutenant LESLIE BONEY, General GEORGE BOYLAN, Pilot LLOYD ALLEN and Co-pilot MARY COLEY. Flash! Flash! The NED BRASWELL Limited broke the world record for trains with the speed of 874.5 miles an hour. PELTON ELLIS was at the throttle. Flash! Flash! Mayor GRAHAM ALLEN of Wilmington unveils monument to those who served in the Italian-Ethiopian War. Flash! Flash! MARY BOATWRIGHT and MARY FRANCES BYRD appointed ministers to China and Japan respectively. And so we come to the end of our news for today. Thanks for listening. The mike is yours, Mr. Glod.

The time now is exactly one o'clock at the sound of the musical note. We have here in the studio a man who has done a lot of traveling and I will ask him to tell us of his recent visit to Wilmington, N. C., Mr. R. B. HODGES.

Thank you. How do you do folks. I know you will be interested in what I have to tell you of my encounter with many of your friends. I drove into Wilmington over the PERRY DAWSON Memorial Bridge and proceeded down Third Street to the ALICE JAMES Hotel. As I pulled up beside the hotel, three bell boys rushed to meet me. They were no other than MELVIN CRAIG, GEORGE BALTZEGAR and HERMAN EVERETT. I gave them my bags and proceeded toward the door of the hotel, but was stopped by DONALD BROUN, who was selling EDITH HILL Wallace Gazette. I purchased one and went into the hotel. As I walked to the desk to register, I was met by LOIS CANADY and LEE OTHA DAVIS, who said that they had just returned from India. They told me that CHARLES RUARK was elected president of India. I walked up to the desk and whom do you think I found as the clerk? None other than ELIZABETH JEWELL. I rented a room and proceeded up on the elevator. The elevator was run by LOUISE MALLARD who told me that JOHN CARTER had just been appointed president of the MARIE HANSON Aspirin Company. I went to the room and began reading the newspaper while AUSTIN CASHWELL unpacked my bags. My eyes at once caught the blazing headlines which read, "EDWARD GODWIN and TOM HEAD RETURN FROM MARS." Reading further I saw that ANSON HEWETT was suing CLYDE MOORE for damages his cow made on his farm. I saw that R. M. KERMON was attorney for the defendant and ANTHONY BLAKE for the plaintiff. I turned to the society page and saw that DOROTHY MALLARD, MARY JANICE LACY, EDNA EARLE MINTZ and FRANCES HELMS had returned from Paris where they were attending the annual fashion meet. Since it was time for dinner, I put the paper down and went to the dining-room; I was met at the door by the head waiter, DONALD CRAIG, who escorted me to a table. I seated myself and began looking over the menu. I noticed that today's main dish was THERESA LEONARD'S stewed guinea pigs. I noticed many of my friends in the dining-room; among them were, HELEN LEWANDOSKI, representative of the OTTILIA BLAKE Dress Shop; MAE BLANTON, president of the Daughters of the Ethiopian War; LETHA MAE DIXON, reporter for the ANN BOATWRIGHT Culture Magazine; and HELEN CROOM, who had just returned from a GOOD WILL TOUR in Brazil.



As I was not hungry, I only ordered a two pound LINDSEY CURTIS' steak and a bottle of ERNESTINE ROGERS' Champagne. I finished dinner and went to pay my check to the cashier, KATHRYN ROETHLINGER. I paid my check and went over to the cigar counter and purchased some EDWARD ELKS Perfectos. I then decided to take in a show before retiring. As I walked to the theatre I saw V. J. BROWN, huckster, selling cabbage and tomatoes. I went on to the RUTH McGOWAN Theatre and bought a ticket from ANNIE PEPPAR. I walked in and was shown to my seat by Usher FRANK WEAVER. The main attraction was ALICE TALLEY and DWIGHT SCOGGINS in "Fifty Million Frenchmen Minus Ten." After the main attraction there was a JOE BAUGH comedy with RODGER RUSSELL, ED SMITH and KATHLEEN MALLARD. The show was over and I started back to my hotel and lost my way. Policeman THOMAS WALKER came to my assistance and I found the hotel. Immediately I went to my room and went to bed.

In the morning I was awakened by ED WILSON, who came to clean up my room. I dressed and went to breakfast. At breakfast I met HENRY WILSON, LOIS MONTFORD and LOUISE DONNELLY. After breakfast I decided to take a ride around town. Of course the first place I would want to visit was New Hanover High School. I drove out to the high school; as I entered, I saw Principal ALLEN WALKER in the office. I had a little chat with him and then started to look around in the different departments. In the Home Economics Department I saw DOROTHY MARSHBURN teaching cooking and ANNA BELL MOHR sewing. Next I went to the Science Department and found NELL MOORE teaching Biology; ALLEN LEWIS, Physics, (of course the class was showing him how to work the problems); VIRGINIA HIGHSMITH, Chemistry, and GEORGE BELLAMY, Astronomy. I then proceeded to the English Department of which FRANKLIN ELMORE was head. The other English teachers were JAMES APPLEWHITE, MARGARET MARSHBURN, RUTH HARDISON and FRED EARNHARDT. These were only Senior English teachers. As I was walking toward the Math Department, I met Janitor MARVIN CLARK. In the Math Department I found BETSY GRAHAM teaching Solid Geometry; BILL PERDEW, Plane Geometry, and VIRGINIA BRYAN, Advanced Algebra. I next went to the Typing and Commercial Department and there were the LANGSTON twins (DANESE and DOROTHY) teaching typing, MAYBELLE JACKSON, bookkeeping and EVA MURRAY and ROY VANN teaching Stenography.

The History Department interested me next. There I found LOUISE HORTON teaching American Democracy, DOROTHY McEWEN, United States History, and CAROL RIESZ Ancient History. The other history teachers included WARD ANDREWS (Coach of the football team), JACK DUNCAN and HUGH CALDER. The head of the history department was ANNA ABEL. I then proceeded to the gymnasium where I found MARY MURRAY teaching swimming. They had a pool of course.

In the "Extra Curricula" section I found JAMES KELLY, head of the Hi-Y; GRAHAM KERR head of the GEORGE LYNCH Dramatic Society; COY RANKIN adviser for the International Honor Society; LUCILLE PUCKETT, tennis coach; LEON THOMAS and JAMES McKEITHAN boxing coaches; and JOSEPHINE THOMPSON, archery instructor.

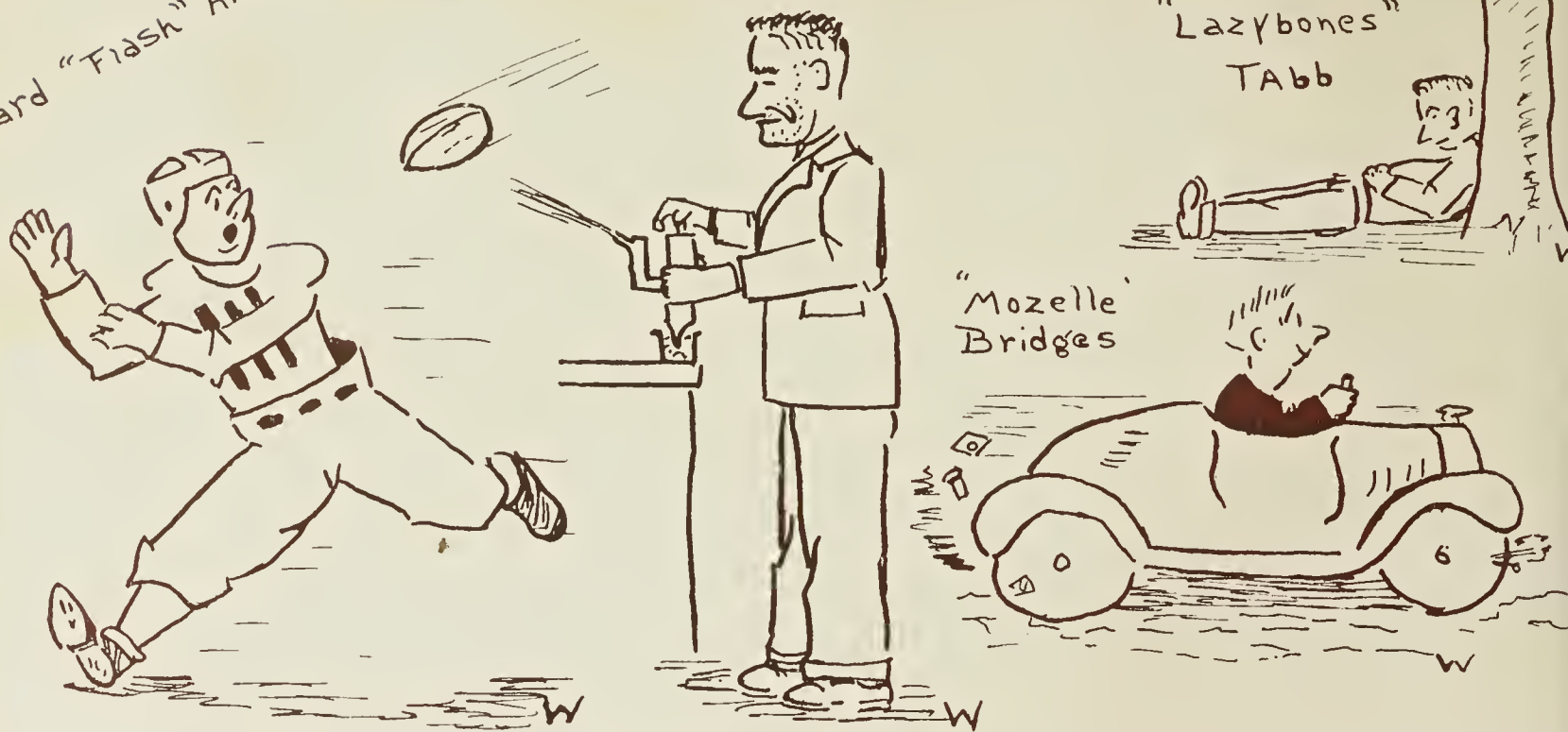
Mr. Walker met me in the Language Department, of which HULDA STEWART was head, and asked me if I cared to visit the Agriculture and Journalism Departments. In the Agriculture Department, I found JUNE PAYNE and FRED MUSIAL explaining the principal of growing

Ward "Flash" Andrews

Prof. Slacks

"Lazybones" Tabb

"Mozelle" Bridges



sweet potatoes. The Journalism Department was most interesting. The teachers were: JEAN SMITH, head; EUGIE WATTERS, instructor on writing satirical criticism; and CHARLES GREEN and LEO LOREK, type setting.

The trip to the school was most interesting and after a little chat with JOHN KING, assistant janitor, I left. I never thought that we would have so many teachers out of our class.

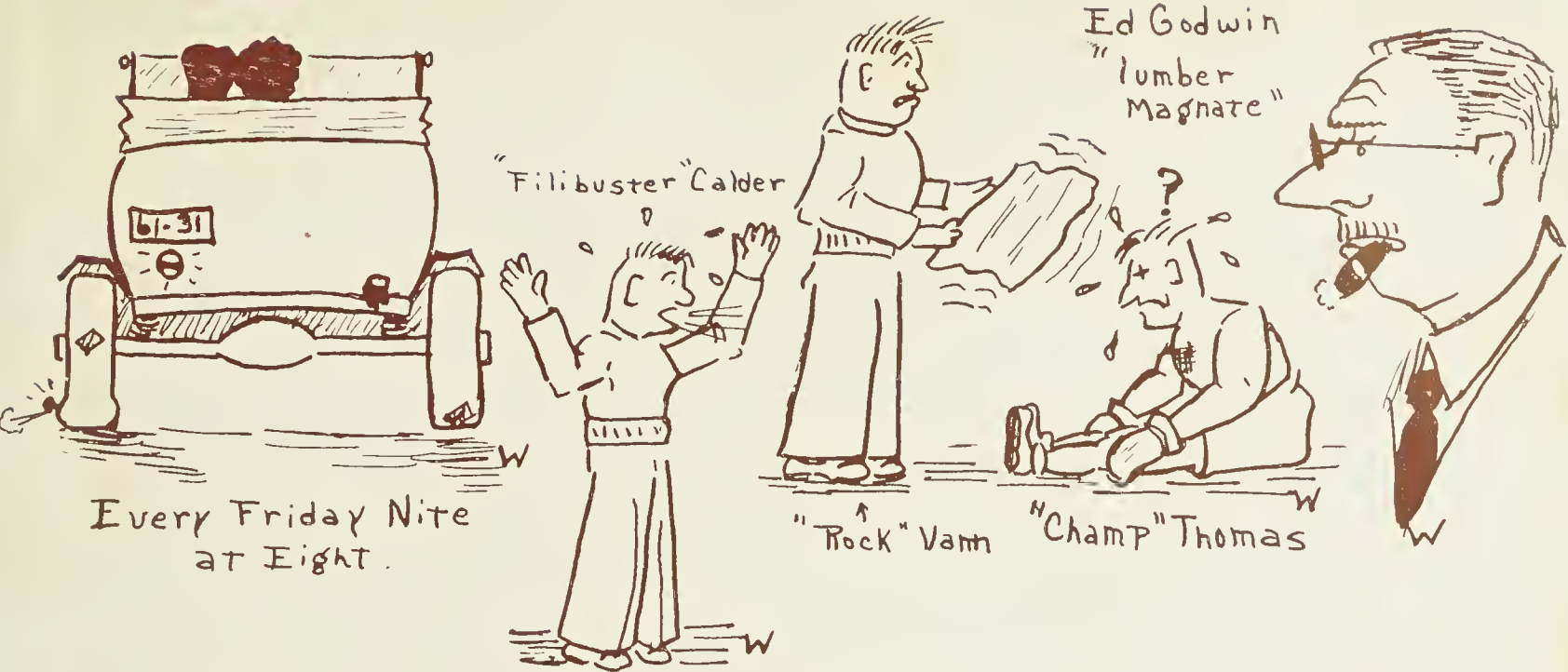
I got in my car and found that two of my tires were flat. I hailed an ALBERT KORNEGAY taxi, driven by ROBERT KENNEDY, and went to the JOHN MATHIS Service Station. LEON RAYNOR sold me two "PAUL SAMMONS Bang Proof Tires," and accompanied by JOHN REHDER, mechanic, I rode back to my disabled car.

When the tires were on, I decided to take a trip to the new CHARLES WILLIFORD Airport. As I pulled in, the WILLIAM PALMER Russian Clipper was landing. I walked out to the plane and who do you think got out but MARJORIE ROBINSON and MARGARET WALTON who had just returned from Spain. They had been attending the KENNETH GAYLOR University of Foreign Customs. Upon questioning, I found that JUNIOR GARNER was the pilot, POLLY SEITTER, Co-pilot and NADINE EPWORTH, Stewardess. On the field was a squadron of the newly built BRADFORD REYNOLDS bombers. The bombers were making a stop-over on their trip to the LILLIAN ROYAL Airport in Miami, from the CLEVE MCGOWAN Field in New York. Upon leaving the field, I met HAROLD HAYWORTH, the superintendent of the field, who told me that the LOIS HARTLEY Stratosphere plane was leaving in a few minutes for an half hour flight in the stratosphere. He asked me if I cared to go. I said that I would like to go, and in a few minutes I was stepping into the huge ship. I found out that it was piloted by Pilots ELEANOR HASKETT and ROSA LEE BROWN. There were some familiar faces on the ship, among them MILDRED PARKER, OLIVE SEITTER, JEAN EVERETT, RALPH HORTON and WILLIAM BRUNJES. We were off in a second and remained in the stratosphere for about forty-eight minutes. On coming down JEAN EVERETT fainted. When we were landing I saw a plane writing with smoke in the air, "Eat BETTY SIBLEY'S Toasted Potato Chips." Upon landing I found out that the plane belonged to the TOM MAULTSBY Sky Advertising Club, piloted by KATIE DAVIS. Before leaving the field I drank a soda, made by the ROBERT JENKINS Cola Company and bought from MILDRED KOONCE a bag of CHARLES MORRILL Brazil Nuts, toasted in Brazil.

From the field I drove back to Wilmington and left my car in the ARCHIE FOUNTAIN Storage Company. As I walked down the street, I was stopped by MAUDELL BORDEAUX, who was giving away MARY AUSLEY Chewing Gum dollars. I didn't have any gum; so I didn't get a dollar.

I saw that my money was running low, so I walked into the EARL KLUTZ Farm Bank and cashed a check from the HUGH MARSHBURN Rubber Stock Company. I was handed the money by Cashier NANCY CAMPBELL. I later found out that the directors of this bank were CATHERINE BOEGLI, BERNARD ABRAMS, MARY HELEN BURRIS and LETHA MAE DIXON.

I then walked to the hotel, not getting lost this time, and found a JENNE (RAYMOND) Wireless telegram waiting for me. It was from the CLARENCE MARSHBURN Mustard Company asking me to please send them an autograph to be used on their mustard. They stated that they would pay me twenty thousand dollars for this. I took the offer and wrote out a letter and carried it to



the post office. I bought a stamp from GWENDOLYN BLACKHAM and handed the letter to MARIAN FRYAR for mailing.

On my way from the post office, I was met by VIRGINIA McFADYEN and MARTHA BEAL, who were selling tags for NINA RUTH BROWN Missionary Society. Going further, my eye caught a sign on top of the MARGARET BRANDON Taxi Building which read, "Eat EDNA SCHULKEN'S Untoasted Peanuts and Drink NANCY SINCLAIR'S Russian Mineral Oil for Health."

When I reached the hotel, I found ANNE SIMON waiting to give me an interview. She was assisted by VIRGINIA McKENZIE. After the interview, I met some of my friends; ELVERA WILLET, representative of the BESSIE XANTHOS Peanut Butter Company; HELEN ZELLERS from the EDNA EARL SAUNDERS Beauty Emporium for Cats and Dogs; and GERHARDT JOHNSTON, dishwasher and chief at the DOROTHY MASON Moonlight Cafe de Paris.

After I chatted a while with these friends, I went up to the roof garden of the hotel where the FLOSSIE MAE COMBS School of Acrobatic Dancing was giving a show. From the roof, I saw numerous advertising signs. Some of them read like this: "Feed Your Chicks the RUTH BLANTON Growena Mash"; "Use the MARGARET AINSWORTH and CATHERINE BETHEA Beauty Facial Cream, Guaranteed to Bring Back the 1936 School Girl Complexion."

On the river I saw the MARGARET BAILEY Floating Theatre. On the east side of town I could see the HELEN ANDREWS Laundry, and on the west, the MARY NELLIE BROWN Foot Powder Company. I could also see the MARGARET WYCKOFF Fruit Market and the MARIE SALEEM Shoe Shop. In the distance I could see the EILEEN O'CROWLEY School of Dancing Building. The tallest building that I saw was the LUELLA O'BEIRNE Salvation Army Building. By the way, MISS O'BEIRNE was recently elected president of the National Order.

After staying on the roof for a while, I went down into the lobby and talked with ED JACKSON, MARY WATERS and LOUISE WASHBURN. They told me that LOUISE STOWELL received a contract from the HELEN TODD Yeast Company to laugh on their program. You know her laugh. I turned on the radio and heard a debate on "Uniform Divorce Laws." The speakers on the affirmative were A. B. COLEMAN and MARGUERITE SMITH. RENA XANTHOS and THOMAS BEST upheld the negative. I listened to the debate, and then went to my room and packed up to leave. I went to the storage, took my car, and drove it to the hotel. The bags were put in my car and as I started off from the hotel, I saw FEMIA BRAAK and KITTY BURNETT coming out of the CATHERINE STANTON Hair Brush Company. Thus my visit in Wilmington was ended. I hope you have enjoyed my talk, and hope I can be back with you again, soon. Thank you.

Thank you MR. HODGES. And so, Ladies and Gentlemen, we come to the end of our midnight broadcast. Hope you have enjoyed it and will tune in tomorrow. We leave the air now to return at six o'clock with the Getting-up Exercises. This is station D E L C O in Delco, N. C., located in the RENA DAVIS Hotel. ALBERT GLOD speaking----Good-bye.

ALBERT GLOD.



The Yellow Shadow

A MYSTERY-COMEDY IN THREE ACTS

BY

CLARK WILLARD

CAST OF CHARACTERS

(In the Order in Which They Speak)

NELL TRAVIS—Housekeeper at Viewcrest	<i>Virginia Highsmith</i>
GILBERT WRIGHT—Attorney for the late Maxwell Marvin	<i>Hugh Calder</i>
ALICE PERKINS—Mildred's Chum	<i>Evelyn D'Lugin</i>
MILDRED MARVIN—She has inherited the estate of Maxwell Marvin, her uncle	<i>Joan Bluthenthal</i>
HAZEL WAYNE—Mildred's Cousin	<i>Alice Talley</i>
JED TRAVIS—Who appears to believe in gillylouis	<i>George Lynch</i>
HERBERT MARVIN—He has lived in Singapore	<i>Robert Bridgers</i>
SHERIFF MACKLIN—He has taken a "detchekative" course	<i>Carlton Watkins</i>
J. STEEL—The Coroner	<i>Lucile Miller</i>
WONG SONG—His past is unknown	<i>George Boylan</i>

SYNOPSIS

PLACE: Livingroom in Viewcrest Lodge, on Puget Sound.

TIME: The Present.

NOTE: The action begins a few minutes before the curtain rises.

ACT. I.—The Livingroom of Viewcrest Lodge, Puget Sound.

ACT. II.—The same, three minutes later.

ACT. III.—The same, five minutes later.

Last Will and Testament

On this the twenty-first day of May, nineteen hundred and thirty-six, we, the Senior Class of New Hanover High School, of the city of Wilmington, North Carolina, being of very sound mind, but considering the certainty of our departure, do hereby testify to the following articles which we sincerely, but sadly bequeath to those whom we leave behind.

We, the class of '36, do hereby bequeath to the class of '37 our great co-operative ability and financial success, feeling that there is great need of this.

We, the Senior Class, leave to the Sophomore Class our great talents of leadership and scholarship and our trait of being able to do any and everything better than anyone else.

We, the graduating class, leave to the Freshmen our excellent powers of organization and our reputation of being the most intelligent class in the history of our school.

We, also leave to the Freshman-class-to-be our best wishes in hopes that they will at some time become dignified Seniors.

I, Haywood Emerson, leave my political policies and "party boss" ways to Billy Allen.

I, George Lynch, leave my power to act (especially as a crazy man) to Billy Sutherland believing that he will use it frequently.

I, Leslie Boney, leave my quiet, bashful, and unassuming ways to Jane LeGrand knowing that she lacks all three.

I, Alice Talley, leave my vim, vigor and vitality to Mary Zilla Clarke.

I, Leon Thomas, leave the power in my fists to the entire boxing team realizing that they would be at a loss without it.

I, Bobby Bridgers, leave my business tact and efficiency to the paper staff of next year believing that they will need this force.

I, "Cotton" Lewis, leave my talent as an excellent cheerleader to Louis Davis and Mattie Parker knowing that this power will be quite useful.

I, Donald Broun, leave my most humble heart and willing hand to Miss Marjorie Lancaster to have and to hold.

I, Carlton Watkins, leave my original, eccentric and unique ways to Harold Alexius hoping he will acquire as large a reputation as I have.

I, Winston Broadfoot, leave my big feet to Walter Sheffield knowing that he will need them when he strides up the Senior steps.

I, Joe Baugh, leave my art of falling asleep in the classrooms to Jim Frank Hackler realizing that he will often need sleep.

We, Hugh Calder, Bill Dixson and Graham Allen, leave our manly beards to Louis Herman.

We, Harry Tabb and Nancy Campbell, leave our energetic and active career behind to anyone who is as alert and lively as we.

We, "Tubby" Harris and Betty Garrabrant, leave our sentimental and flirtatious ways to Harry James and Dotty Harriss hoping they will profit by all our mistakes.

We, the Senior Class, leave to Miss Love and Miss Formy-Duval our promise to write them of our major success in college English.

We, the Senior Class, leave to Miss Struthers, Bobby Goldberg in trust for one year ending May 21st, 1937.

We, the Senior Class, leave to N. H. H. S. our vow to use her name and her ever present high standards all through our later life and we promise to remember her forever.

We hereby constitute and appoint Mr. T. T. Hamilton, Jr., our lawful executor, to execute this, our last will and testament according to the intent and meaning of the same, and every part and clause thereof, hereby revoking and declaring utterly void all other wills and testaments by us heretofore made.

In witness whereof, I, President of said Class, do hereunto set my hand and seal this 21st day of May, 1936.

Signed: THE SENIOR CLASS OF
NEW HANOVER HIGH SCHOOL,

Witnesses:

GEORGE BELLAMY,
GEORGE BOYLAN,
SUSAN COOPER.

By: WINSTON BROADFOOT, *President.*

We have in this Annual, shown our belief in a progressive Wilmington. To gain and maintain the progressive spirit Wilmington needs citizens who support their home merchants. We believe that every dollar spent in Wilmington pays big dividends in increased business and increased spending power of its citizens. In every instance the staff has given its business to Wilmington merchants. We ask our subscribers to patronize the advertisers who have made the success of the Annual possible.



ADVERTISING

Harcourt & Co.

Incorporated

Manufacturing

Stationers-Engravers-Jewelers

Louisville, Kentucky

FOR MANY YEARS

**K R E S S
S T O R E S**

Have Specialized in Exclusive
School Requirements

BIG VALUES - - -Little Prices

“WATCH KRESS
WINDOWS”

H O M E S

Attractive and
Comfortable
Cost Less Than Rent

Unusually Favorable Opportunities
for Building and Owning a Home

**WRIGHTSVILLE
BEACH,
OLEANDER,
AUDUBON**

For Information Call or See

Hugh MacRae & Co.

Phone 841

Never A Compromise

With Quality

Julien K Taylor
WILMINGTON N.C.

Good Clothes

Correct Haberdashery

Alexander Sprunt
& Son,
Inc.

Wilmington, N.C.

Founded 1876

THE WILMINGTON STAR-NEWS

MORNING, EVENING AND SUNDAY

COMPLETE STATE AND NATIONAL NEWS

—OVER THE—

Full Leased Wires of The Associated Press

WATCH THE STAR-NEWS

—FOR—

HIGH SCHOOL SPORT NEWS

REDDY SAYS:

REDDY KILOWATT



Your Electrical Servant

(Copyrighted)

"Quite possibly the greatest electrical wonders are not yet discovered—nor has the possibility of what I can do to make your home more livable and attractive even begun to be appreciated!"

"If the younger generation has acquired a knowledge of what the use of electricity can accomplish even now at a trifling cost, we can be sure that the application of this information will insure happier homes and more complete living in the future."

TIDE WATER POWER COMPANY

HUGHES BROS.

BROADFOOT IRON
WORKS

Incorporated

"Always on the Job"

E. W. Godwin's Sons

Manufacturers of

LUMBER

DEALERS IN BUILDERS' SUPPLIES

EVERYTHING TO BUILD THE HOUSE

767 — Phones — 768

Benjamin Moore & Co.

— PAINTS —

Hyman Supply Co.

Distributors

Block's

SHIRTS

SOUTHLAND
MANUFACTURING CO.

Wilmington, N. C.

PHOTOGRAPHS

LIVE FOREVER

ADAM'S
STUDIO

209 N. Second St.

CAROLINA
ROYAL & BIJOU
THEATRES

*Fulfilling Every Entertainment
Need of the Wilmington Public
With An Appeal to All Classes*

FOR REAL SERVICE WITH
ECONOMY, SEE

ROSE ICE CO.

ICE - - COAL - - WOOD

Sunshine Laundry,
Inc.

M. G. VOLK, *Mgr.*

"Let a Little Sunshine In"

White's
PASTEURIZED

Dairy Products

Sweet Milk - Buttermilk - Chocolate

Milk - Acidophilus Milk - Lactic

Acid Milk - Sweet Milk

FROZEN SUNSHINE

VITAMIN "D"

ICE CREAM

WHITE ICE CREAM AND
MILK CO.

Phone 680

SAMUEL BEAR
SR. & SONS

Wholesale
Grocers

Est. 1853

T H E
SPRINGER COAL CO.

Automatic Heat
With
Whiting Stoker

CONGRATULATIONS

Class of '36

ROYAL BAKERY,
Inc.

Just Across the Street

CONGRATULATIONS



Featuring Exclusive
Departments for
Boys and Girls

E. C. MOORE & CO.

Wholesale School Supplies
Notions and Novelties

Full Line Bathing Suits and
Beach Novelties

313 N. Front St.

AUTHENTIC
STYLES

Lewis J. Stein

MEN'S WEAR

SAUNDERS' DRUG
STORE

108 North Front St.

Taylor's Beauty
Shoppe



BEAUTY CULTURE

All Work Guaranteed

Call 407

108 Princess St.

Efird's
DEPARTMENT STORE

Extends to You Her

Compliments and Best Wishes for the Future

We Have at Your Disposal a

Complete Line of Merchandise

—May We Serve You in the Future?—

“Where Your Children's Children Will Do Their Shopping”

FOY, ROE & CO.

Distributors of

DEPENDABLE

MERCHANDISE

SNEEDEN'S
WILMINGTON CYCLE
COMPANY

Since 1914

114 Market Street

Keith Brothers, Inc.

WHOLESALE
PILLSBURY FLOUR
LARRO FEEDS
GRAINS
CARTS - FARM IMPLEMENTS
WAGONS - COAL
FERTILIZERS
WILMINGTON, NORTH CAROLINA

CITY LAUNDRY CO.

The Home of
Zoric Dry Cleaning



Phone 249 22-26 N. 2nd St.

For Fun and Healthful Play

SPORTING GOODS

A Complete Line at
SEARS, ROEBUCK & CO.

DIXIE

CAFE and GRILL

"Where Friends Meet"

FOUNTAIN SERVICE

ISABELL'S
BEAUTY SALON

The Shop for Discriminating
Women

APPOINTMENTS

820 Market St. Phone 1607

C. B. Parmele & Co.
Inc.

INSURANCE

242 Princess St.

WILMINGTON, N. C.

HIGH GRADE SEEDS FOR
EVERY PURPOSE

T. W. Wood & Sons

Seedsman

104-106 S. Front St. Phone 780

EVERYTHING FOR THE
SPORTSMAN

QUEEN
CITY
CYCLE
COMPANY

PICKARD'S

Echo Farm Dairy

Safe Milk

Phone 4302

HARRY E. PAYNE & SON

306 N. Front St.

NEWS DEALERS

FOUNTAIN SERVICE

GRADUATION IS BUT A STEP IN THE LADDER

OF SUCCESS

and a door to opportunities. The CAROLINA, through its systematic plans of investment or mortgage repayment loans, offers an opportunity to help one achieve his ambitions.

THE MILLION DOLLAR

Carolina Building & Loan Association

"Member Federal Home Loan Bank"

E. T. TAYLOR, *Pres.*

W. D. JONES, *Asst. Sec.-Treas.*

W. A. FONVIELLE, *Sec.-Treas.*

C. M. BUTLER, *Vice-Pres.*

J. O. CARR, *Atty.*

Compliments of

O' CROWLEY'S
CLEANERS

8th & Princess Streets

Phones 554-555

F. P. O'CROWLEY, Proprietor

For Anything in the Way of
Flowers

WILL REHDER

Florist

Oldest and Largest in
Eastern Carolina

CONGRATULATIONS

and

Every Good Wish for Your Continued Success

NORTH CAROLINA LINE, Inc.

WILMINGTON - - - NORFOLK - - - BALTIMORE

DEVELOPING NORTH CAROLINA WATERWAYS

and

THE PORT OF WILMINGTON

PEARSALL & CO.

SELL BEST GRADE

FERTILIZERS

FOR ALL CROPS

Snappy Styles That Will

Appeal to All

At Popular Prices

Merit Shoe Co., Inc.

106 No. Front St.

"The Friendly Shoe Store"

THE
DAVID J. MOLLOY
PLANT

2857 North Weston Avenue

CHICAGO, ILLINOIS

Makers of Fine Annual Covers

LOUIE E. WOODBURY,
JUNIOR

Insurance

Phone 84

814 Murchison Bldg.

PRINTING
IS THE INSEPARABLE
COMPANION OF
ACHIEVEMENT



*The Better the Printing
The More Achieved*

*Wilmington
Stamp and Printing Company*

Wilmington, North Carolina

Proas (9m.) W. Cooper

J. v. ...

A. W. ...

Edward ...

John ...
Ed ...



DEEP WOODS

NO PARKING

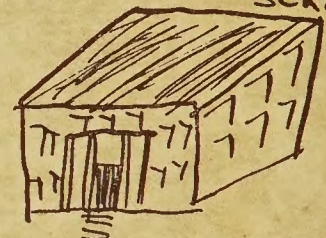
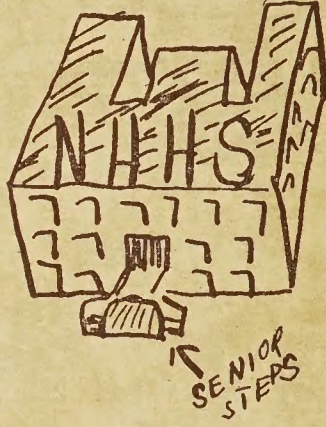
CITY LIMITS

SCOTTS HILL AND POINTS EAST

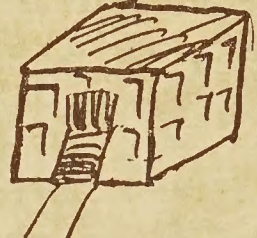
SUBURBS

LOTS FOR SALE

CREEK



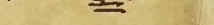
CORNELIUS HARNETT SCHOOL



HENENWAY SCHOOL



WILLISTON School

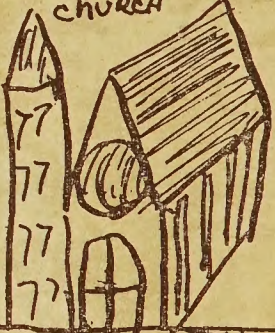


ST JAMES Church

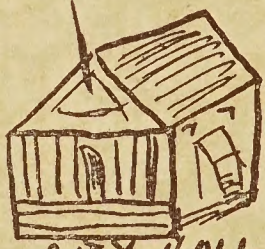


PLAYGROUND

FIRST PRESBYTERIAN CHURCH



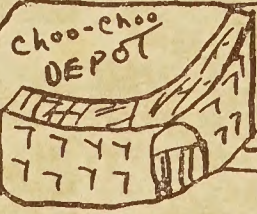
ROAD TO AIRPORT AND ALL POINTS NORTH



CITY HALL & LIBRARY



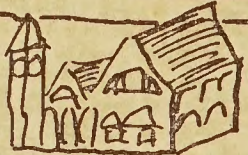
COURT HOUSE



Choo-choo DEPOT



MURCHISON BUILDING



P.O.



CUSTOMS HOUSE

BRIDGE

FRONT

CAPE

ROADS

MARKET STREET

17th STREET

THIRD

BELLAMY PARK

BASE BALL

TO WRIGHTSVILLE BEACH

WILMINGTON NORTH CAROLINA

THERE IS NO SCALE! SO WHAT!

By Perry Dawson & Bernard S. Solomon

FOOT COURSE

CITY(?) LIMITS

WOODS

LOTS FOR SALE

MORE LOTS FOR SALE

BUY THIS HOME SITE ONE OR 1,000,000 ACRES

NO PARKING

SCENIC DRIVE

GREENFIELD LAKE

GREENFIELD SCENIC DRIVE

GREENFIELD PARK

SWAMP

LOTS FOR SALE

LESTON SCHOOL

WILLIAM HOOPER SCHOOL

STREET

STREET

MORE SWAMP

TO CAROLINA BEACH

LOTS MORE SWAMP

RIVER

