





ALLIE TOWNES

Ex Libris






Digitized by the Internet Archive
in 2020 with funding from
North Carolina Digital Heritage Center

The Hanoverian

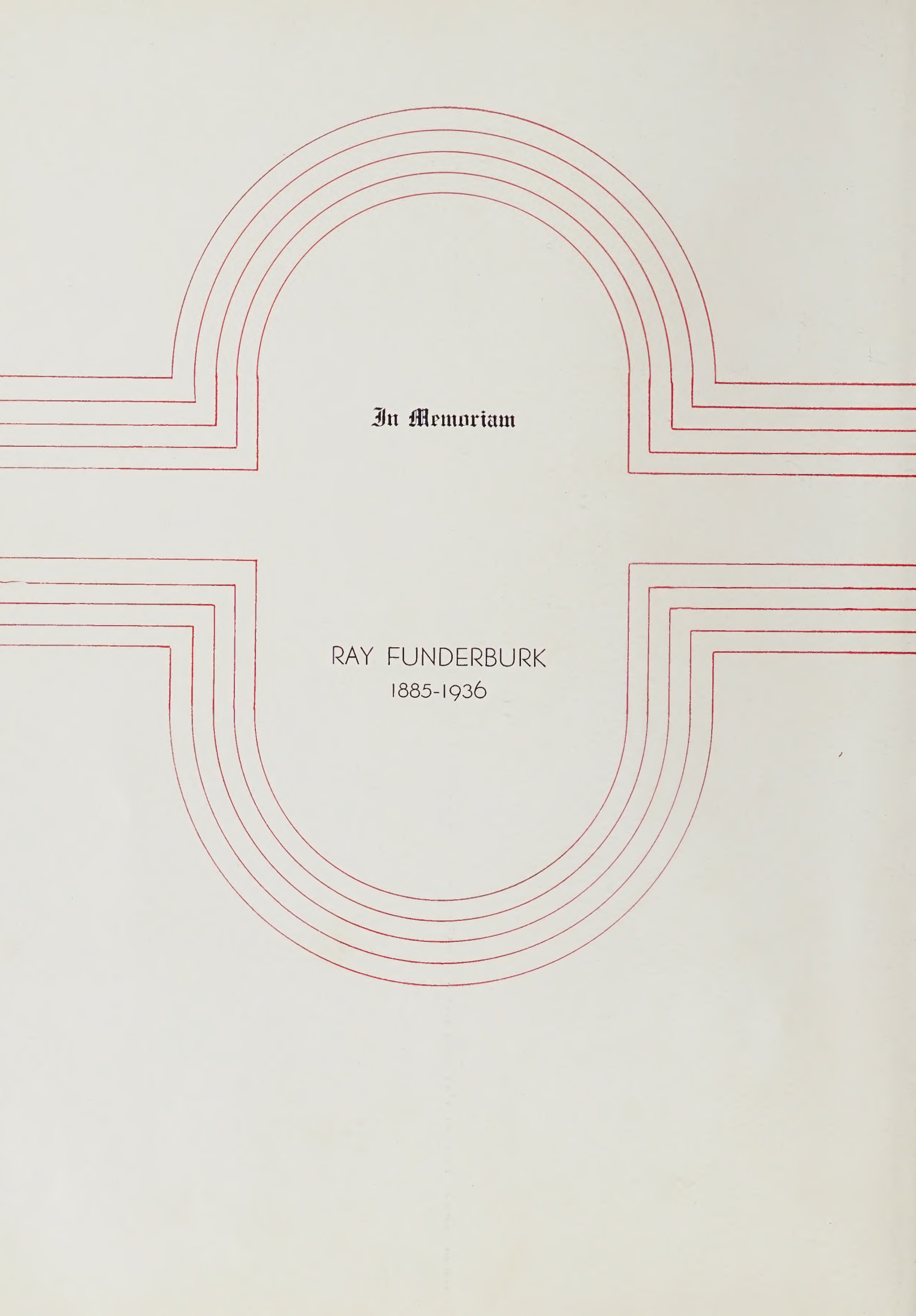
VOLUME TWO

1937



Published by
SENIOR CLASS
NEW HANOVER HIGH SCHOOL
Wilmington, North Carolina

PRINTED BY
WILMINGTON STAMP AND PRINTING COMPANY
WILMINGTON, N. C.



In Memoriam

RAY FUNDERBURK
1885-1936



TO MISS EMMA L. LOSSEN

BECAUSE HER LABOR FOR THE CULTURE OF THE MIND AND SPIRIT, HER HIGH IDEALS, HER LOYAL FRIENDSHIP, AND HER GENUINENESS HAVE EVER BEEN AN INSPIRATION, AND BECAUSE HER SYMPATHETIC UNDERSTANDING HAS BEEN OURS THROUGH THE YEARS, WE PROUDLY AND AFFECTIONATELY DEDICATE THIS SECOND VOLUME OF "THE HANOVERIAN."

Foreword

IN AN AGE OF DOUBT, WHEN WISE MEN STOP TO PONDER WHETHER PROGRESS IS REAL OR A MYTH AND WHETHER TRUTH AND JUSTICE ARE MEANT FOR MEN TO KNOW—

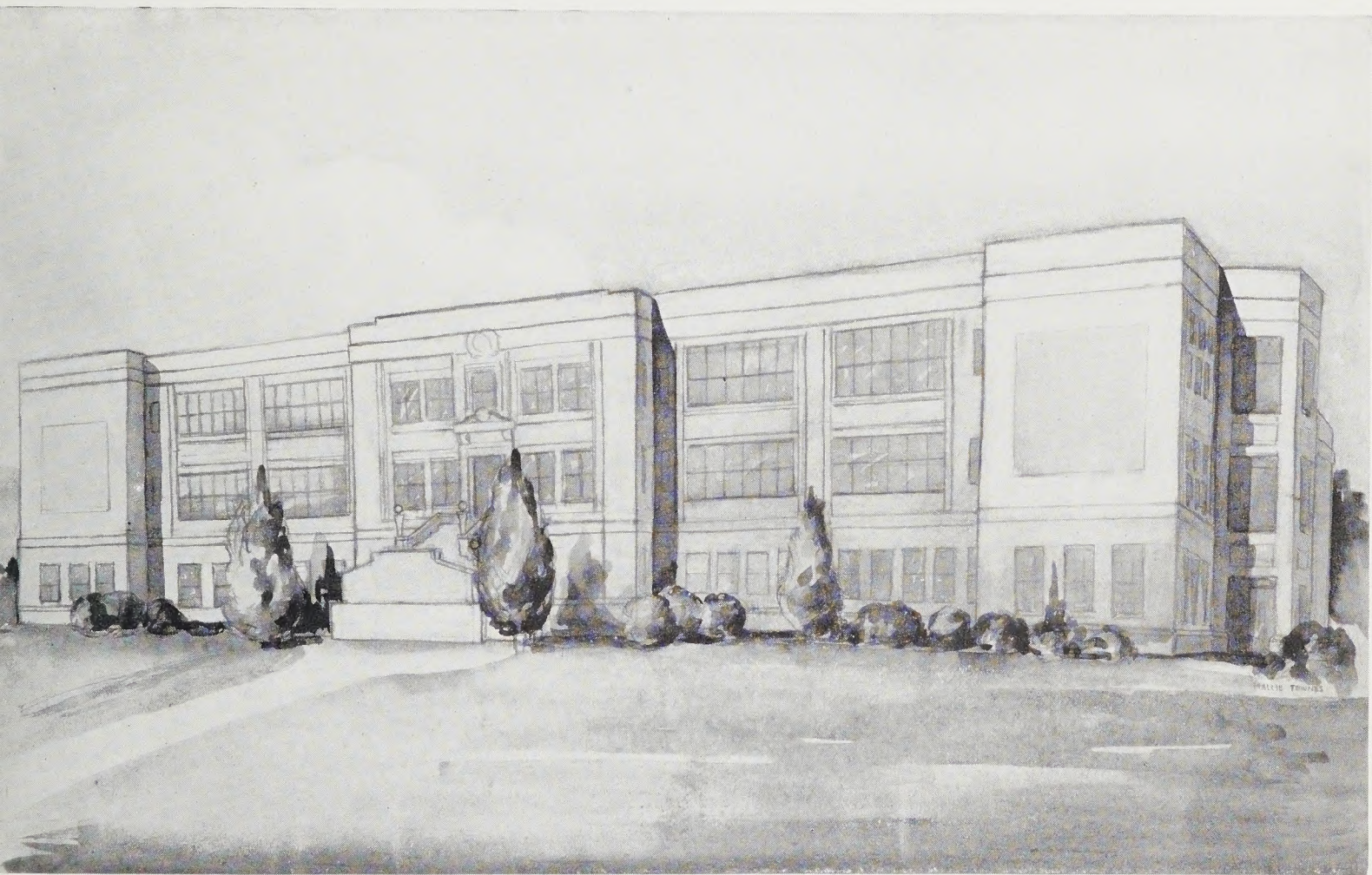
IN AN AGE OF CHANGING VALUES, WHEN THE DESIRES OF TODAY ARE THE AVERSIONS OF TOMORROW, AND WHEN THE CONDITIONS OF THE FLEETING PRESENT ARE CONSTANTLY OUTMODDED BY THE RUSH OF AN ONCOMING FUTURE—

IN AN AGE OF SPEED, WHEN MORE THAN EVER BEFORE, HE WHO HESITATES IS LOST—

WE, WHO GO INTO THE WORLD FOR OUR SECOND BIRTH AND COME A STEP CLOSER TO GRIPS WITH LIFE, HAVE ATTEMPTED TO STREAM-LINE THE SECOND VOLUME OF "THE HANOVERIAN" AS A SYMBOL OF ADVANCEMENT IN A SWIFTLY MOVING AGE.

Contents

- IN MEMORIAM
- DEDICATION
- FOREWORD
- PRINCIPAL
- FACULTY
- CLASSES
- CLASS POEM
- FEATURES
- ADVERTISING



NEW HANOVER HIGH SCHOOL



MR. THOMAS T. HAMILTON, Jr.
Principal, Executive, Educator, Friend

THE FACULTY

T. T. HAMILTON, JR., *Principal*

Wake Forest, Columbia University, University of Illinois, A. B., A. M.

MISS HENRIETTA HAY, *Secretary*

MISS JOSEPHINE HINTON, *Secretary*



ANDERSON, DOROTHY . . . Duke University, A.B.
 BARRON, MYRA . . . Winthrop College, A.B.
 BROCK, MRS. JOSIE . . . Chowan College
 CARDWELL, IDA . . . W. C. U. N. C., A.B.
 CARPENTER, MRS. AUSTIN . . . Durham Col. of Commerce, B.C.S.
 CARRUTH, JAMES W. . . . South Ga. Teachers' College, B.S.
 CLARKE, ELIZABETH . . . Duke University, A.B.
 COLLINS, ELIZA . . . W. C. U. N. C., A.B.
 DAVIS, RUTH . . . Greensboro College, A.B.
 DOMINICK, BERNICE . . . Winthrop College, B.S.
 DOWD, D. J. . . . Wake Forest, A.B.
 EAKER, BARBARA . . . W. C. U. N. C., A.B.
 FORMY-DUVAL, FRANCES . . . Greensboro College, A.B.
 GRISE, MRS. HELEN . . . University of Arkansas, L.I.
 GRUBBS, MRS. NORMA . . . Bowling Green Col. of Com., A.B.
 HARTZOG, MRS. ELIZABETH . . . Queens College, A.B.
 JONES, ADLENE . . . Anderson College, A.B.
 JUDISH, FRANK . . . Stout Institute, B.S.
 KEITH, MRS. MARY . . . W. C. U. N. C., B.S.
 LATHROP, MARY . . . W. C. U. N. C., A.B.
 LEGRAND, MRS. LUA BROYLES . . . Mississippi State College, A.B.
 LEVIN, PAULINE . . . Winthrop College, A.B.
 LOSSEN, EMMA . . . W. C. U. N. C., A.B.
 MACKENZIE, ROBERTA . . . Flora MacDonald College, A.B.
 McDONALD, HOWARD . . . U. N. C., A.B.
 McINTIRE, RUTH . . . Fredericksburg State College, B.S.
 MILLER, MIRIAM . . . W. C. U. N. C., B.S., S.A.
 MONTGOMERY, ELIZABETH . . . Duke University, A.B.
 MYERS, JAMES . . . U. N. C., A.B.
 MYERS, REBA . . . U. N. C.
 MYERS, MRS. B. K. . . . Randolph Macon Woman's Col., A.B.
 O'KEEF, FANNIE . . . Duke University, A.B.
 ROBINSON, R. . . . Furman University, B.S.
 RUSS, REBECCA . . . Salem College, B.S.
 SANDERS, MAIE . . . W. C. U. N. C., A.B.
 SAUNDERS, ANNIE ROYAL . . . W. C. U. N. C., A.B.
 SCHNIREL, IDA E. . . . Cornell University, A.B.
 SMITH, MRS. BURROWS . . . W. C. U. N. C., A.B.
 SMITH, HATTIE LOU . . . Flora MacDonald College, A.B.
 SMITH, OCTAVIA . . . W. C. U. N. C., A.B.
 SPENCER, DALE K. . . . Davidson College, A.B.
 STACK, MARTHA . . . W. C. U. N. C., A.B.
 STRUTHERS, HESTER C. . . . U. N. C., A.B.
 TILLET, MRS. E. G. . . . W. C. U. N. C., A.B.
 TARRELL, ELMER . . . Duke University, A.B.
 TRASK, MADELINE . . . W. C. U. N. C., B.S.
 TUCKER, GLENN M. . . . Wake Forest College, B.S.
 WALSH, VIRGINIA . . . W. C. U. N. C., A.B.
 WARREN, MARY CLINE . . . Salem College, A.B.
 WARREN, MRS. RUTH V. . . . W. C. U. N. C., A.B.
 WEST, GEORGE H. . . . Ohio University, B.S.
 WEST, MRS. MABEL H. . . . Boston University, New York Univ.
 WILLIAMS, MARGARET . . . W. C. U. N. C., A.B.
 WILLIAMS, MRS. R. H. . . . W. C. U. N. C., A.B.; U. N. C., A.M.
 WILLIS, MRS. JANE DILL . . . W. C. U. N. C., A.B.
 WRIGHT, REBECCA . . . Randolph Macon Woman's Col., A.B.

A red graphic design on a white background. It features a large, rounded rectangle on the left side, with a vertical line extending upwards and downwards from its top and bottom edges. A horizontal line extends to the right from the right side of the rounded rectangle. The word "LASSES" is printed in a bold, red, sans-serif font, positioned to the right of the rounded rectangle and above the horizontal line.

LASSES

1931



CLASS POEM

O school, glorious in zealous desire,
The time has come at last
When we must part, with memories
Of pleasant days now past.

Humbleness, faith, and simple intention,
And eternal thoughts of purity,
Honor, love, wisdom and truth
Are our ideals of security.

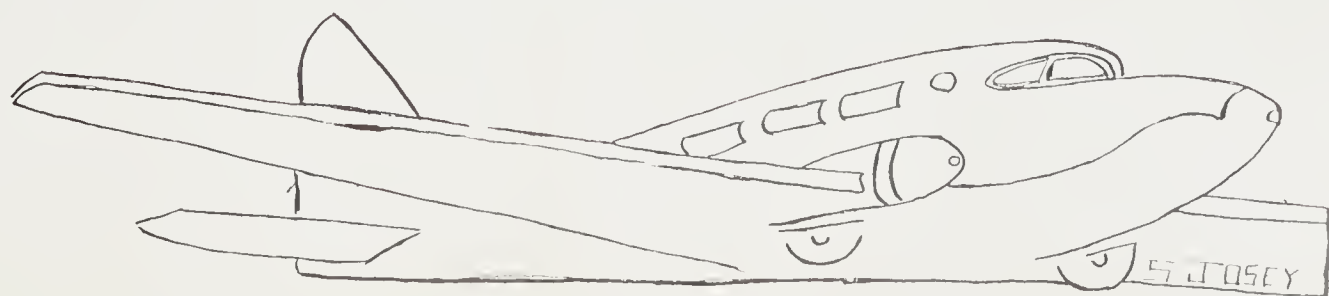
Hardships, sorrow — happiness and success,
We'll find in the path of life;
But the high ideals of our dear school
Will help us in our strife.

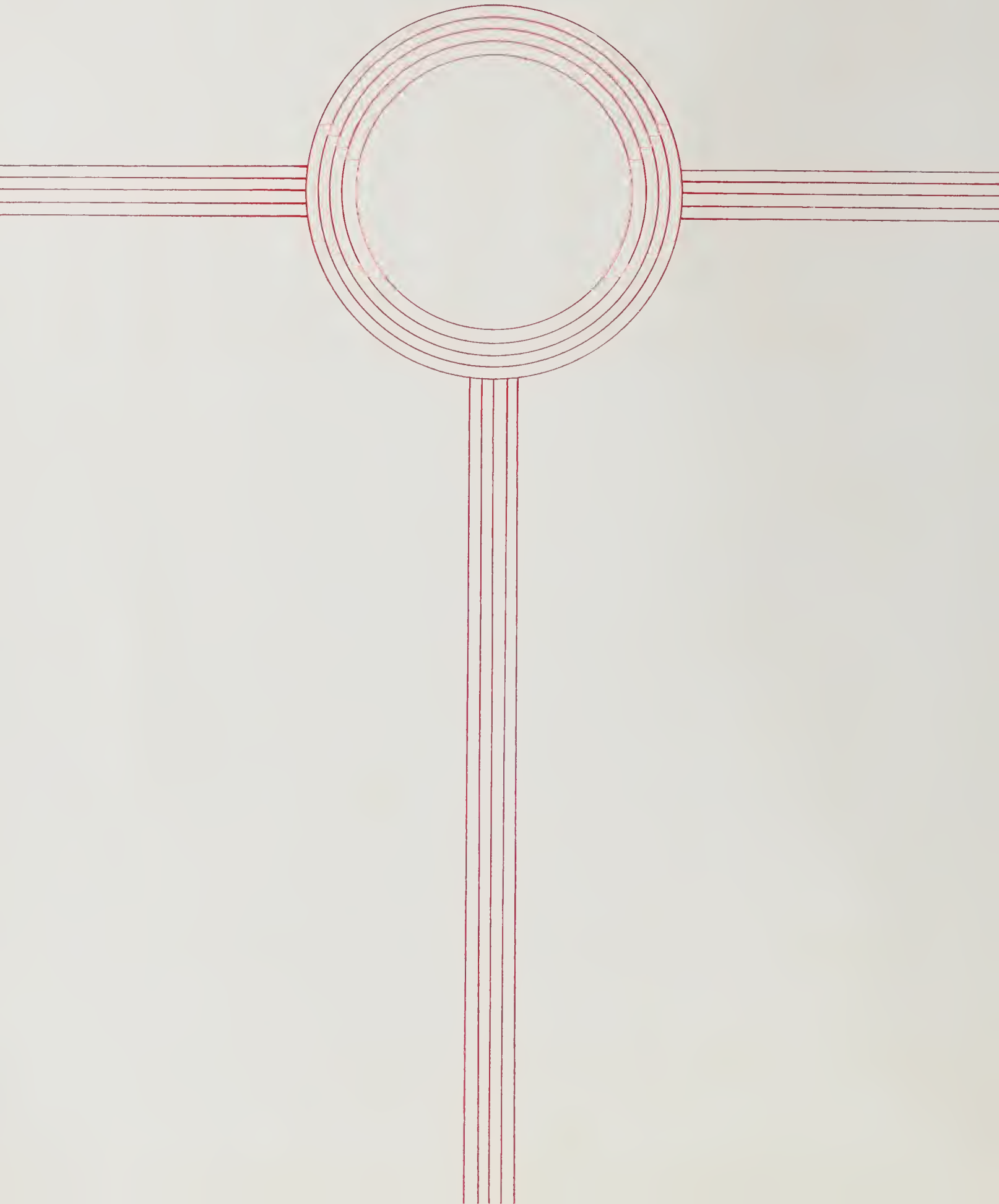
In those bright rooms where happiness
Was found in class and game,
Your work goes on, O Alma Mater,
In eternal joy and fame.

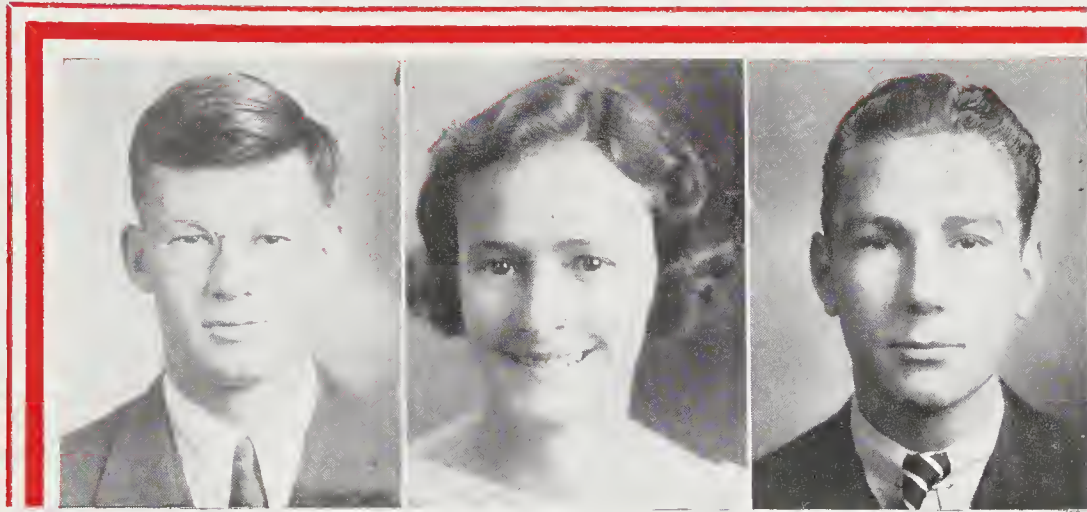
—JEAN BROUN.



JENNY







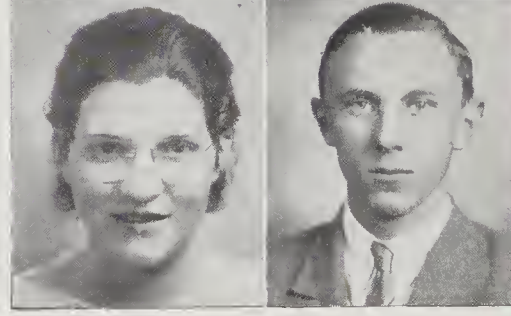
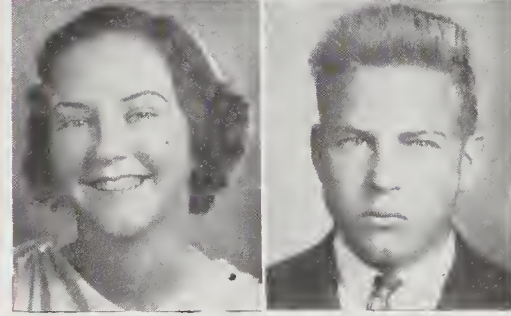
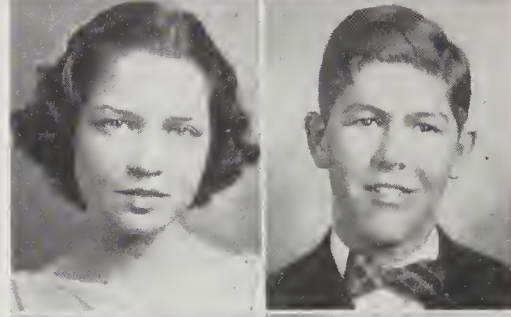
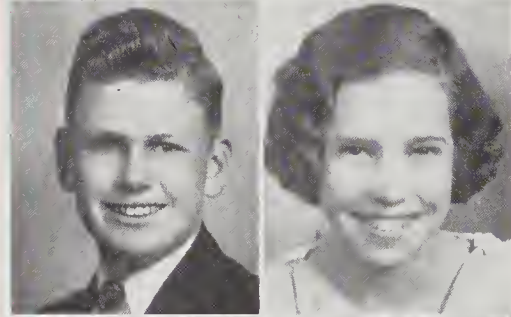
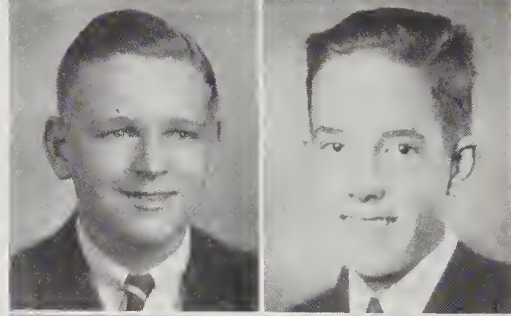
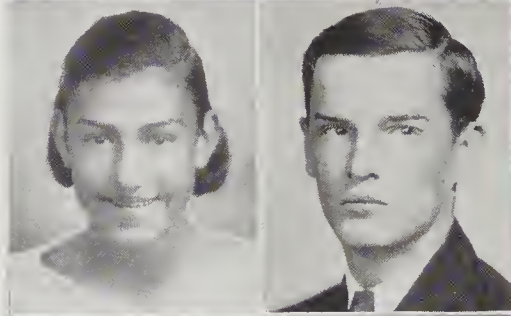
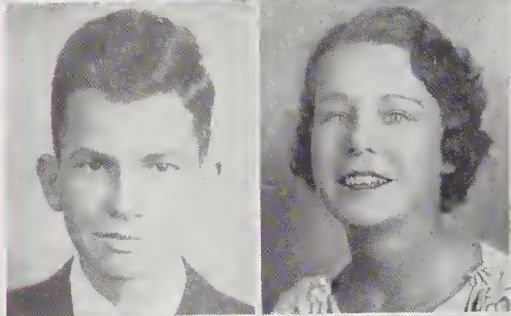
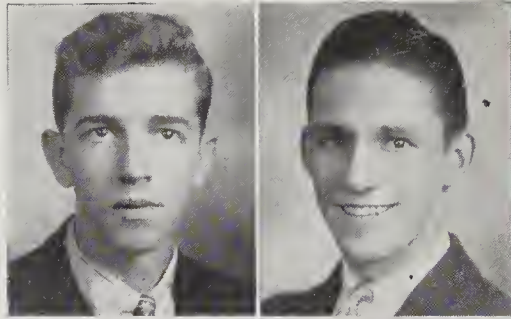
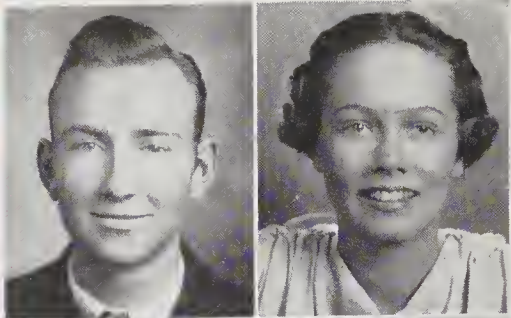
SENIOR CLASS OFFICERS

FRANK REYNOLDS, *President*

WALTER SHEFFIELD, *Vice-President*

EVELYN HORNE, *Secretary-Treasurer*

≡≡≡ 1937 ≡≡≡



WILLIAM ARTHUR AINSWORTH, JR.

Good nature is always a success.

Chemistry Club 3; Traffic 1.

BARBARA ANN ALLEN

Vaccinated with a Victrola needle.

O. Henry 2, 3, 4; Latin Club 1, 2; Home Arts Club 2; Boosters Club 3; Hi-Y 3, 4; Library Club 2, 3; Debating Club 4, (Secretary-Treasurer 4); Annual Staff 4; Chemistry Club 4; Hi-Y Play 4.

LLOYD WILLIAM ALLEN

Let any man speak long enough, and he will get believers.

Manager Boxing Team 2; Manager Track Team 1; French Club 2; Hi-Y Club 3, 4; "The Wildcat" 3, 4, (Assistant Business Manager 3; Business Manager 4); Business Manager Junior Play 3; Chemistry Club 3; Basketball 3; Junior Prom Dance Committee 3; Student Council 4; Vice-Chairman North Carolina Scholastic Press Institute 4; Girls' Hi-Y Play 4.

MARGARET FRANCES ALLEN

Faithfulness and sincerity first of all.

Glee Club 1; Math Club 1; French Club 2; Home Room Chairman.

VIVIAN LENALYN ALLEN

*Happy am I, from care I am free,
Why aren't they all contented like me?*

Latin Club 1; Tennis Club 3, (Manager Girls' Tennis Team); Debating Club 4; National Honor Society 3, 4; O. Henry 3; Boosters Club 3; Archery Club 2, 3, (President 3); Library Science Club 3, 4, (President 4).

MARY HELEN ANDREWS

Determination makes dreams come true.

French Club 2; Girl Reserves 2; Glee Club 4; Dramatic Club 4, (Vice-President); Tennis Club 4; Senior Play; Dramatic Play.

CECIL APPLEBERRY

Wit and humor belong to genius alone.

ESTHER J. AUSTIN

Best things come in little packages.

Latin Club 1, 3; Home Economics Club 4; Junior Play.

JANE ELLEN BALDWIN

*A smile for all, a greeting glad; an amiable,
jolly way she had.*

Latin Club 1, 2, 3; Library Club 2; Scribblers' Club 2; Handbook Committee 2; O. Henry 2, 3, 4; Student Council 3; Ways and Means Committee 3; Junior Play; Boosters Club 3; National Honor Society 3, 4; Hi-Y 3, 4; Dizzy Dozen 4, Annual Staff, (Assistant Feature Editor); Junior Play; Hi-Y Play 4.

LAWSON HUGH BALLARD

He is a good man, and is just.

ROBERT LEE BAME

Good looks—oh girls—be careful.

Glee Club 2; Radio Club 2; Intra-mural Boxing 2.

RALPH BUCKNER BARDEN

A soul of joy, and a heart of song.

Glee Club 2, 3, 4, (President 4); Chemistry Club 4; Boosters Club 4, (President); Head Cheer Leader 4.

EDITH VIVIAN BEDSOLE

A soul sincere.

PRESTON BELLAMY

Well-timed silence hath more eloquence than speech.

WILLIAM BERNHARD BELLOIS

Like unto a river—largest at its mouth.

Latin Club 1; Home Room Chairman 2; Nature Club 2, (Vice-President); German Club 3, 4, (Treasurer 4); Chemistry Club 4.

WHIT TAYLOR BENTON, JR.

Follow your honest convictions and be strong.

Boy's Hi-Y Club 2, 3, 4; Student Council 3; Judicial Committee 4; Paper Staff 4; Latin Club 1, 2; Edison Science Club 4; Chemistry Club 3; Junior Play Committee 3; Handbook Committee 4; Ways and Means Committee 4; Editor-in-Chief of Annual 4.

ALMA EVOLIA BLAKE

Cupid, cute, cunning, and coy.

Dramatic Club 2; O. Henry Literary Society 2.

ROBERT FREDERICK BLEECKER

A little nonsense now and then is relished by the best of men.

Chemistry Club 3; Debating Club 4; Intra-mural Boxing 2, 3; Traffic Squad 1, 2, 3; Vice-President Student Body 4; Student Council 4.

KATHERINE BOYETTE BLOSSOM

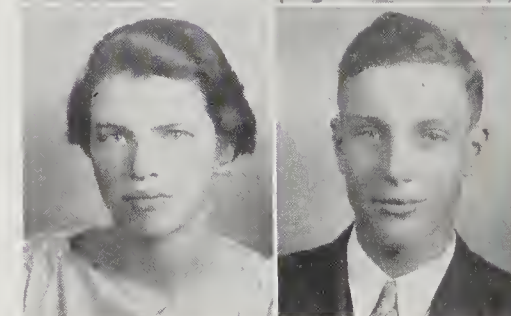
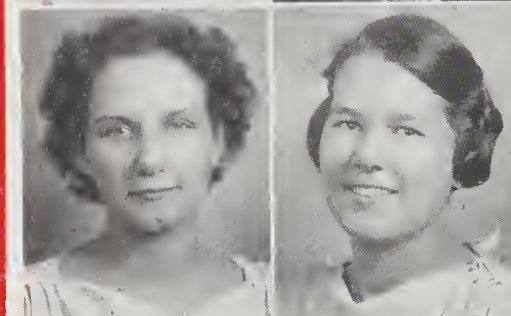
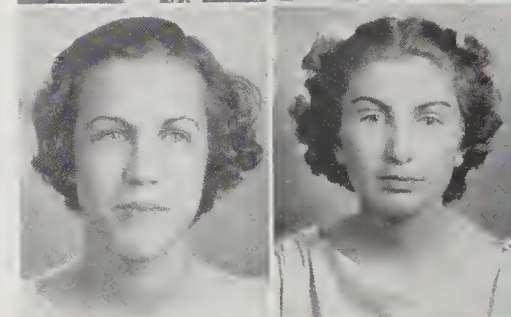
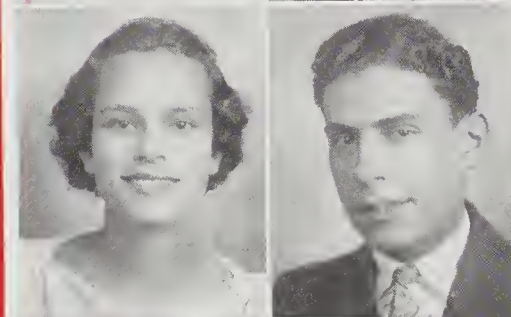
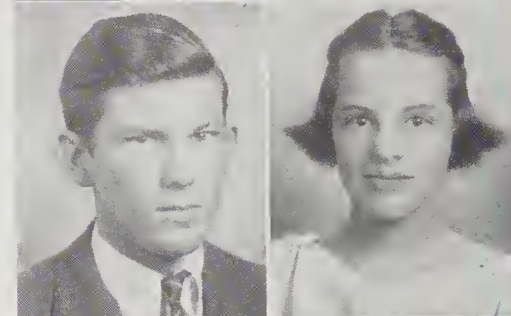
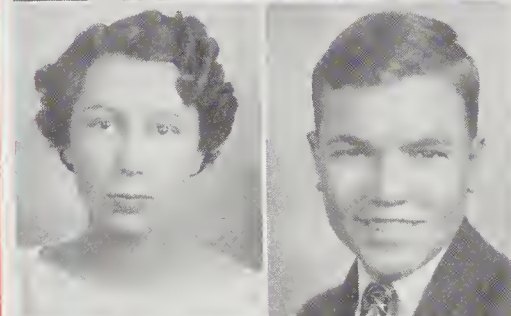
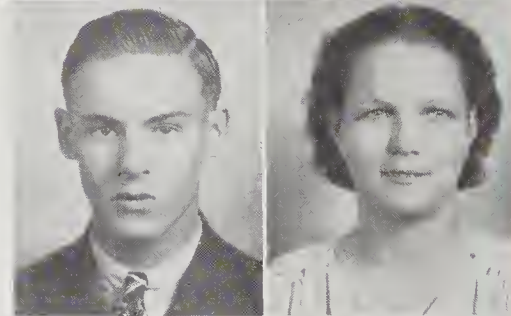
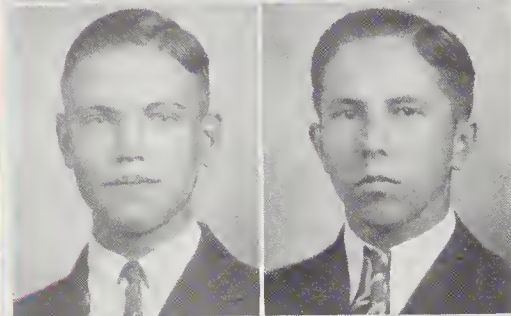
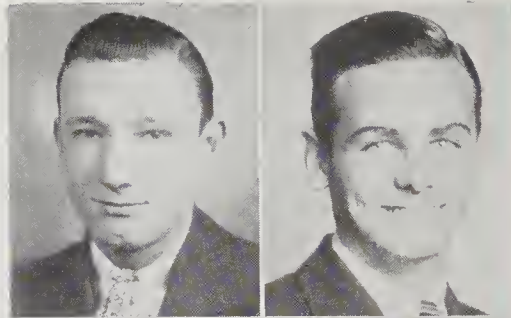
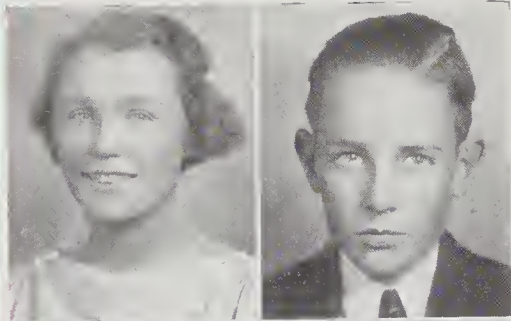
Modesty is a great virtue.

Domestic Arts.

HERMANN BOEMANN

A merry heart maketh a cheerful countenance.

Seniors



JOHANNA GERTRUDE BOET

True to your work, your word, and your friends.

Latin Club 1, 2; German Club 3, 4; National Honor Society 4; O. Henry Literary Society 1, 2, 3; Glee Club 2, 3, 4, (Secretary 4); Edison Science Club 4; Chemistry Club 3.

WILLIAM B. BOLES

A man of inches, and every inch a man.

Intra-mural Boxing 2, 3; Glee Club 2; Radio Club 2; Latin Club 2; Debating Club 4.

J. HERBERT BOST, JR.

Good humor witty.

VANCE BOUNDS, JR.

Life, what art thou without love?

Traffic Squad 1, 3.

MILDRED LOUISE BOWEN

A poise and stature to be admired.

Latin Club 1; Glee Club 1, 2.

MAUDE MEBANE BREEDEN

All must be earnest in a world like ours.

EDITH RAE BRIDGES

The youthful charm of tweed skirts and sport sweaters.

Basketball 3, 4.

SAMUEL BRISKEN

Knowledge comes but wisdom lingers.

O. Henry 1, 2; Latin Club 1, 2; National Honor Society 3, 4; Chemistry Club 4; Glee Club 4

LOIS FAYE BROTHERS

Quiet, gentle, sedate, and calm.

Latin Club 1, 4; Girl Reserves 2; Tennis Club 2.

JEAN HARRIMAN BROWN

Success will crown her efforts.

Latin Club 1; German Club 2, 3, 4; Art Club 2; Glee Club 3, 4; Scribblers' Club 3; O. Henry Literary Society 3, 4.

DALLY RAY BROWN

Who cares about studying, anyhow?

KEDAR BRYAN BROWN

Love is so different with us men.

DAVID ERNEST BULLOCK

A man of character.

Latin Club 1, 2; Tennis Club 3, 4; Kiwi Aviation Club 2; Hi-Y Club 4; Debating Club 4.

SOPHIA MAE BURGESS

Silence is my eternal duty.

CLARENCE W. BURTON

Exceeding in human sympathies.

ALICE CALDER

The truth is always the strongest argument.

Paper Staff 4; Triangular Debate 4; Latin Club 1, 3, 4; Hi-Y Club 3, 4, (Executive Committee 4); O. Henry 1, 2, 3, 4; Scribblers' Club 1, 2, 3, 4, (Secretary-Treasurer 3; President 4); Tennis Club 3, 4; Debating Club 4; Chemistry Club 4, (Reporter); National Honor Society 3, 4; Home Room Chairman 2, 3, 4, (Vice-President 3); Library Club 3; Hi-Y Play Committee 4.

ANNELL NADANE CARPENTER

*She loves to laugh, she loves to walk.
And—oh my heart! She loves to talk!*

Archery Club 2; Latin Club 3; Boosters Club 3

MARY DANIEL CARR

A nature of laughter, friendliness, and wit.

Latin Club 1; Junior Play 3.

GERALDINE CARROLL

Smart—oh my.

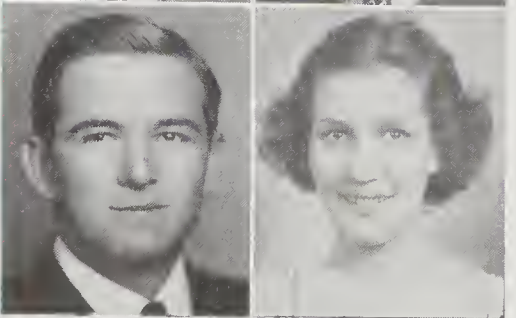
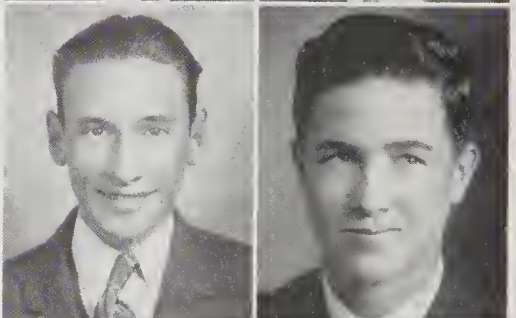
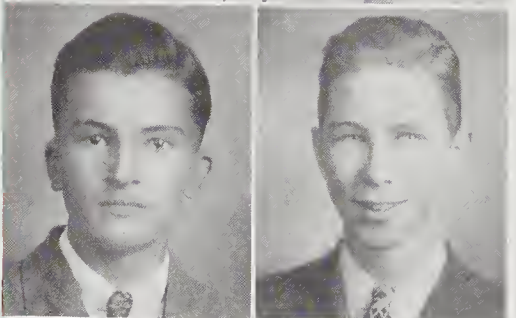
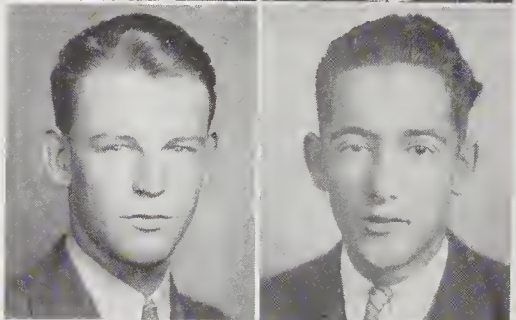
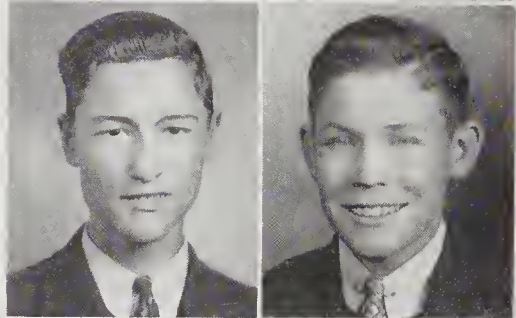
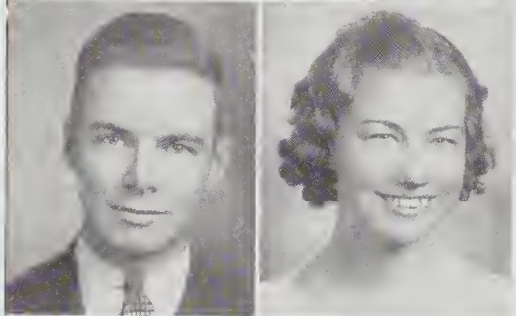
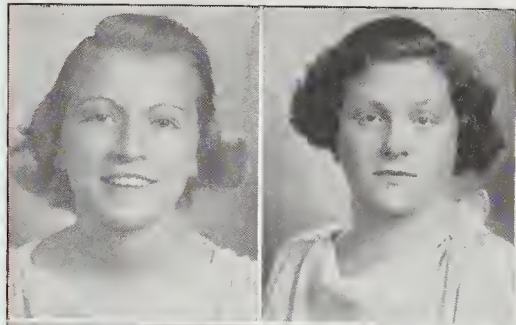
Scribblers' Club 1, 2, 3; Glee Club 1; Basketball 2, 3; French Club 2; Latin Club 4, (Secretary-Treasurer 4); O. Henry 4; National Honor Society, (Judicial Committee); Chemistry Club 3.

WOODUS A. CARTER

The greatest strength and wealth is self-control.

Edison Science Club 4; Chemistry Club 3.

Seniors



ESTHER RAE CHERRY

Why gentlemen prefer blondes.

O. Henry 1, 2, 3; Home Arts Club 2; Glee Club 1.

IRIS LOUISE CHERRY

Laugh and grow fat; for why should one be slim?

SAM R. CHINNIS, JR.

Gladness of heart is the life of man.

Home Room Chairman 2; Dramatic Club 2; Chemistry 3; Swimming 3, 4.

EVELYN KARLA CHRISTIANSEN

She looks for the good and lets the bad take care of itself.

Dramatic Club; O. Henry; Debating Club.

ELEANOR HUSTON CLARK

What should one do but be merry?

Domestic Arts Club 1; Latin Club 2, 3; Dramatic Club 2; Junior Play; Girl Reserves 1, 2, 3.

BONNIE MYRTLE CLEMENSEN

Quiet, demure, and small.

Latin Club 2, 3.

HERBERT AUGUSTUS CODINGTON, JR.

As near perfect as any.

Hi-Y Club 3, 4, (President 4); Paper Staff 4, O. Henry.

ROSCOE ANDREW'S COLE, JR.

Very fast—is how he drives his car.

Latin Club 1, 2; Chemistry Club 3; O. Henry 3; Edison Science Club 4, (Vice-President); Hi-Y Club 4, (Vice-President Alpha Chapter); Debating Club 4; School Store 4; Paper Staff 4.

LEWIS WILLIAM COLEMAN

None but himself can be his parallel.

Latin Club 1; School Store 2, 3, 4, (Manager 4); Hi-Y Club 2, 3, 4, (Secretary 2, President 4); Chairman Invitation Committee 4; Student Council 4, (Treasurer 4).

MARIE LOUISE CONLY

As noble as sunlight through stained glass windows.

Scribblers' Club 1, 2; Dramatic Club 3; Latin Club 1; O. Henry Literary Society 3, 4; Tennis Club 2; Debating Club 4; National Honor Society 3, 4; Chemistry Club 4; Art Club 4.

EVELYN VIRGINIA CONAWAY

A crystal-clear intelligence.

Latin Club 1, 2, 3; Dramatic Club 2; Debating Club 4; National Honor Society.

ALMERIA EILEEN CONWAY

The quietness of breezes in a pine cathedral.

Glee Club 2, 3.

RICHARD A. COOK

Leave silence to the saints; I am but human.

EDWARD O. COTTON, JR.

Inches do not make the man.

CECIL KNOX COUNCIL, JR.

He needs no eulogy; he speaks for himself. (Words! Words! Words!)

Latin Club 1, 2.

GREER B. CRAIG, JR.

A smile for all; not the least bit tall.

ROBERT JENE CRAIG

Deeds are fruits; words are leaves.

Latin 1, 2; Aviation Club 3; Chemistry Club 3; Debating Club 4; Tennis Club 4; Science Club 4; Hi-Y Club 4; Triangular Debate.

CLAUDE THOMAS DAVIS

The gift of fascination.

Hi-Y Club 4; Football 4; Basketball 4.

EDWIN T. DAVIS

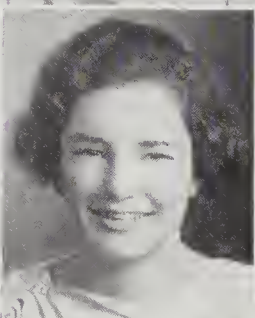
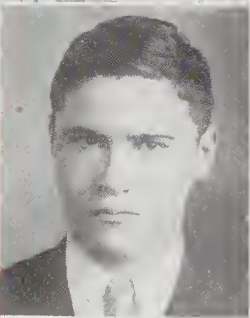
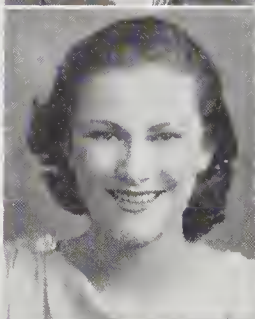
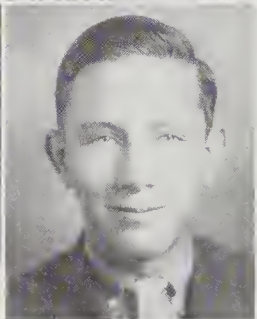
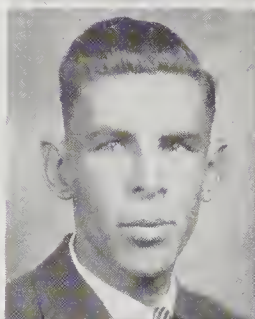
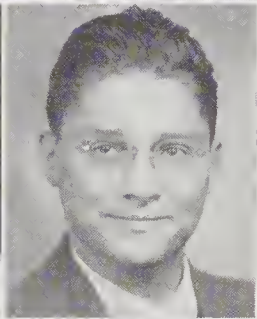
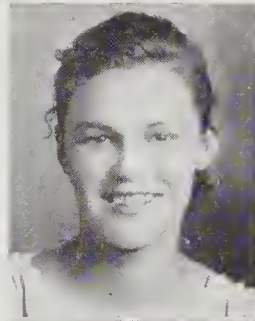
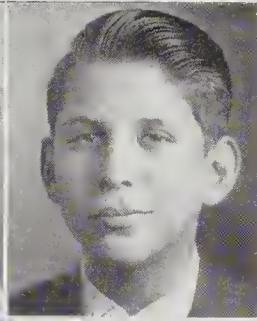
Few things are impossible to diligence and skill.

ALICE MARTIN DILLON

The poise and charm of a perfect hostess.

Latin Club 1, 2; Library Monitor 4; Junior Play; Hi-Y 3, 4; Dizzy Dozen; Chemistry Club 4; "Wildcat" Staff 4; Assistant Business Manager Annual; Home Room Chairman 1.

Seniors



EDNA MAE DIXON

Honor Society—efficient—likable.

Girl Reserves 1, 2; Chemistry Club 3; National Honor Society.

BENNIE LEONARD DLUGIN

The noise of many waters.

Basketball 2; Dramatic Club 3; Tennis 2; Typist School Paper 4.

ELLEN ROSE DUNCAN

Always the same and ever sincere.

ROBERT DYKE

His aim is never to offend.

DOROTHY RAE EAGLE

One of the best you'll ever meet.

French Club 2.

CHARLES EDWARD EDENS

Speech is great, but silence is greater.

LEOLA EDWARDS

Is there anything this girl can't do?

National Honor Society 4, (Treasurer 4); French Club 2; Scribblers' Club 2; Basketball 2, 3, (Manager 4); Chemistry Club 4.

JACK ELLIS

For even though vanquished, he could argue still.

NORMAN EVENSON

Things are bound to happen—why worry?

MARGARET LOUISE EVERETT

She smiles and smiles and never sighs.

German Club 1, 2; Home Arts Club 2.

ANNA EUGENIA FARMER

Life is just one "Whoopie" after another.

Student Council 1; Latin Club 1, 2; Library Club 2, 4; Glee Club 4; Boosters Club 3, 4.

MARY CLELL FARMER

Be silent and safe—silence never betrays you.

French Club 2.

LOTTIE MAE FARROW

Success is sure to come to one so faithful as she.

TROY PAGE FISHER

As friendly as a crackling fire on a frosty winter evening.

EDWARD C. FLORA

To be strong is to be happy.

ROSA ISABELL FOSTER

Her voice was ever soft and gentle; an excellent thing in a woman.

Home Arts Club.

LILA BELLE FOUNTAIN

Filled to the brim with personality.

Glee Club 1; National Honor Society.

NED W. FROWNFELTER

Why not be gay while you can?

Hi-Y Club 2, 3; Chemistry Club 3; Swimming Team 3, 4; Cheer Leader 4; Football 3; Home Room Chairman 1, 3; French Club 2.

MAUDE MILLICENT FRYE

As friendly as a basket of puppies.

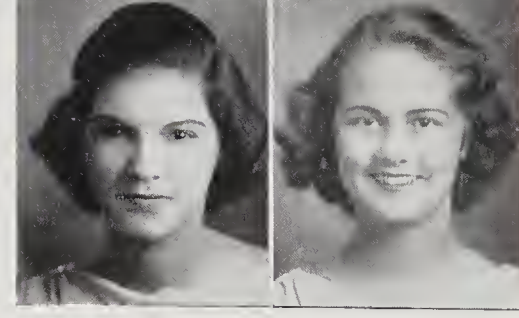
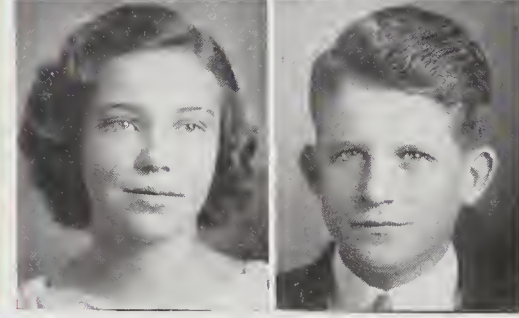
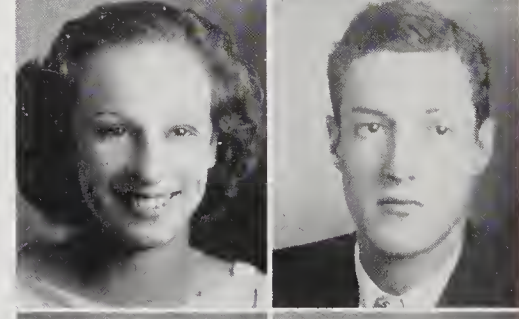
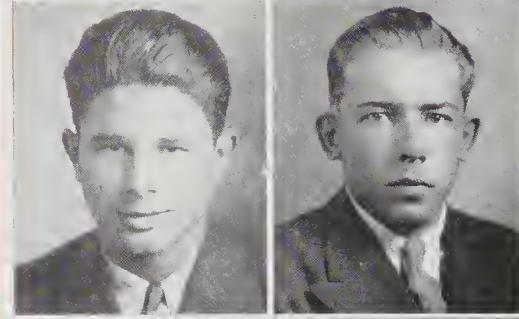
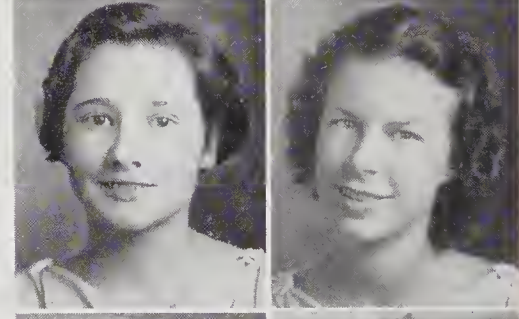
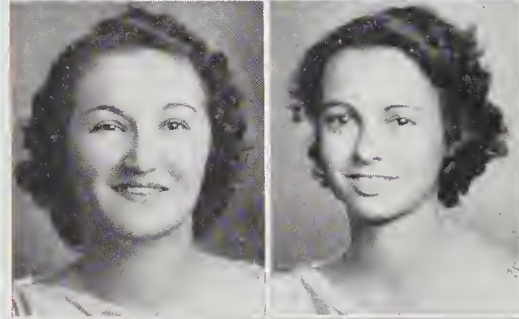
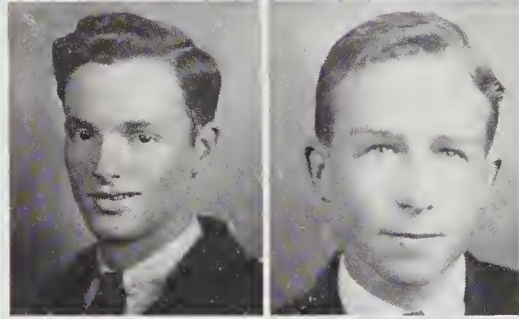
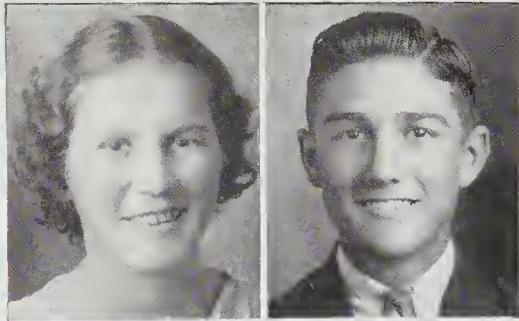
Archery Club 2, 3, 4, (President 4, Vice-President 3); Latin Club 2, 3; Traffic Squad 3; Chemistry Club 4; Dramatic Club 4.

MABEL ELIZABETH GARRIS

The sturdiness of a Puritan maid on a New England Sunday.

French Club 2; Latin Club 3.

Seniors



SOPHIA MARY GMYTRUK

Congeniality plus wisdom.

Home Arts 2; Chemistry Club 3; National Honor Society.

ROBERT AARON GOLDBERG

Tall, dark and handsome—oooh!

Secretary-Treasurer Class 2; O. Henry 1; Latin Club 1; "Wildcat" Staff 2; Intra-mural Boxing 3; Football 2, 3; Junior Play; Senior Play; President Student Body 4; Boxing Team 4.

EUBON L. GORDY

That innocent blush.

VICTOR SANFORD GORE

Whatever there be of sorrow, I'll put it off 'til tomorrow.

Spanish Club 1; Baseball 1, 2; Harmonica Club 2; O. Henry Literary Society 1.

JUNE ELIZABETH GREEN

Kind words are the music of the world.

Library Club 1; Girl Reserves 1, 2; Glee Club 1.

MARY LEE GREER

Contentment surpasses riches.

JOHN WILLIAM GRIEFITH, JR.

He's a boy we all admire.

GEORGE THADDEUS GROTTGEN, JR.

Let there be blondes.

VIRGINIA KATHERINE GROTTGEN

Here's hoping success will be her lot.

Girl Reserves 1; Chemistry Club 4.

JAMES FRANK HACKLER, JR.

A happy-go-lucky fellow—at teasing he is grand.

Latin Club 1, 2; Student Council 2, 4; Aviation Club 2; President Sophomore Class; Traffic Squad 2, 3; Chemistry Club 4; Golf 1, 2, 3, 4; "Wildcat" Staff 3; Judicial Committee 4; Homeroom Organization 4, (President 4).

MARTHA HALL

A lady through and through.

National Honor Society; Archery Club 4; O. Henry 3; Latin Club 1, 2, 3; Home Arts Club 2; Tennis Club 2, 3, 4.

SYLVIA AMELIA HALL

A student that we won't forget.

Scribblers' Club 1, 2, 3, 4, (Vice-President 3, Secretary-Treasurer 4); Dramatic Club 4; Debating Club 4; "Wildcat" Staff 4.

BETTY LEONORA HARPER

Great thoughts like great deeds need no trumpet.

LILLIE MIDDLETON HARRELL

Decidedly unique—her special way.

O. Henry 1; Latin Club 2, 3.

VIVIAN LE DORA HARRELL

Gentle of speech, and beneficent of mind.

Latin Club; Home Economics Club; O. Henry; Chemistry Club; National Honor Society; Basketball.

DOROTHY AMES HARRISS

Buzzing here and buzzing there; to find her quiet is something rare.

Girl's Hi-Y 2, 3, 4; Art Club 2; O. Henry 1, 2, 3, 4; Student Council 2; Latin Club 1, 2; Dramatic Club 4; Dizzy Dozen and Snappy Six 3, 4, (President 4); Junior Play; Hi-Y Play 3; Senior Play; Feature Editor "Wildcat" 4; National Honor Society 3, 4; Library Monitor 4; Debating Club 4; Tennis Club 4.

HELYN E. HART

Men, men, how I adore them.

Basketball 2, 3, 4; French Club 2; O. Henry Literary Society 1; Glee Club 1, 2, 3; Scribblers' Club 1, 2; Homeroom Chairman 1, 2; "Wildcat" Staff 2; Art Club 2, 3; Girl Reserves 1, 2; Traffic Squad 2, 3; Student Council.

JAMES ERNEST HEARN

Everything ends in song.

Tennis Club; Physics Club 4; Chemistry Club 3; Glee Club.

CARRIE MAE HENDERSON

Serene amidst alarm.

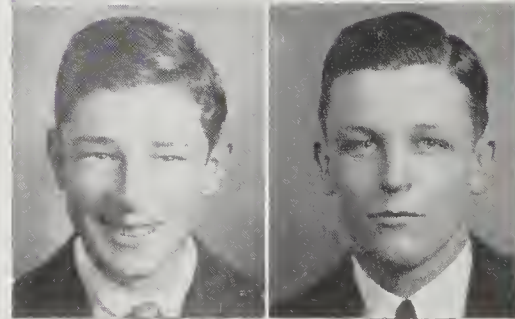
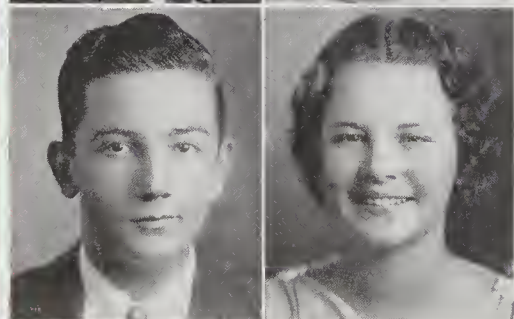
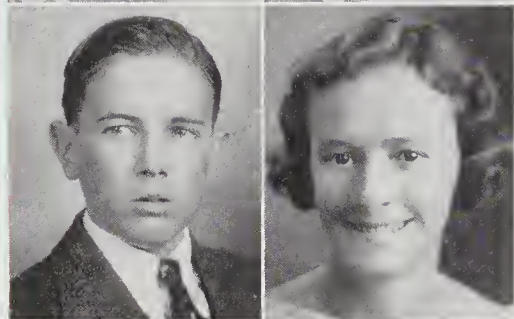
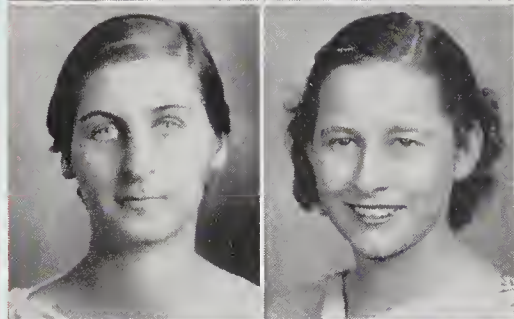
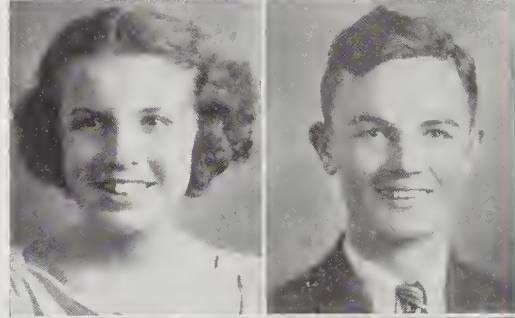
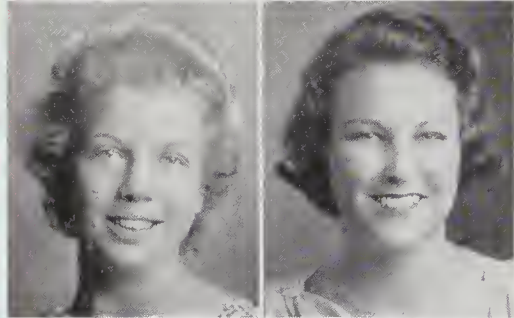
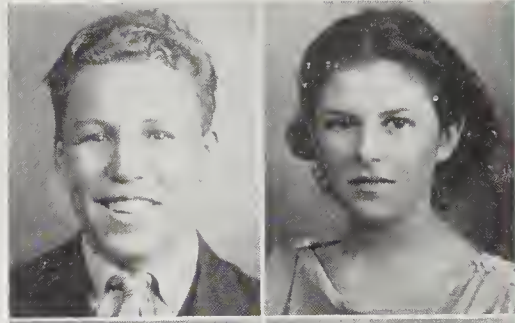
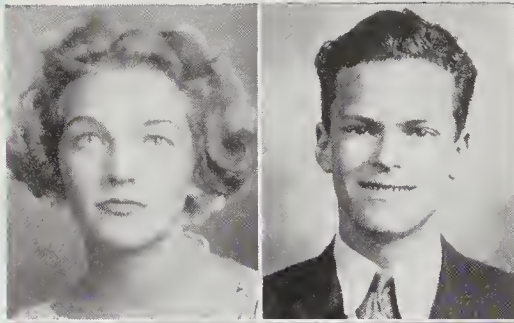
Orchestra 1; Basketball 3, 4; Dramatic Club 2.

DOROTHY PEARL HEWETT

Beauty is its own excuse for being.

Latin Club 1; Debating Club 4.

Seniors



VIVIAN HIERS

She moves a goddess, she looks a queen.

Hi-Y Club 3, 4, (Vice-President 4); Debating Club 4; Scribblers' Club 3; Chemistry Club 4; National Honor Society; Dizzy Dozen 4; Annual Staff 4; Paper Staff 4.

JAMES BRYANT HINNANT, JR.

Everything comes to him who waits—why hurry?

Latin Club 1, 2; German Club 1, 2; Harmonica Club 3; Chemistry Club 4.

MYRTLE ELIZABETH HOBBS

Life is what you make it.

DORCAS SUSANNE HOGUE

The world can't twirl without an attractive girl.

Student Council 1, 2; O. Henry 1, 2; Latin Club 1, 2; Hi-Y Club 2, 3, 4, (Secretary 4); "Wildcat" Staff 3, 4; Hi-Y Play 3; Senior Play; National Honor Society; Dizzy Dozen and Snappy Six 3, 4; Library Club 3.

HELEN HOLMES

As friendly as an old house full of memories.

Latin Club 1, 2; Glee Club 2; O. Henry 4; Chemistry Club 4.

KITTY LEWIS HOLTON

She's a girl with a smile worth while.

Art Club 1; Girl Reserves 1, 2; Chemistry Club 2.

JOSEPH WARD HOOPER, JR.

With volleys of eternal bubble.

Hi-Y Club 2, 3, 4, (Treasurer 4); Latin Club 1, 2; Student Council 1, 2; Dramatic Club 2; Traffic Squad 2.

EVELYN LOUISE HORNE

She toots her own Horne.

Secretary-Treasurer Senior Class; Scribblers' Club 1, 2; Dramatic Club 2, 3, 4; Latin Club 2, 3; O. Henry 1, 2, 3; Girl Reserves 1, 2, 3, (Vice-President 3); Debating Club 4, (Vice-President 4); National Honor Society; Chemistry Club 1; Triangular Debate 4.

ARTHUR WILBUR HORRFL

Always striving to do his best.

MARY ELIZABETH HOUSTON

The earnestness of a school girl eager for her books.

O. Henry 1, 2; Library Club 2, 3, 4, (Vice-President 3); Tennis Club 2, 3, (Tennis Team 2); Archery Club 2, 3; Chemistry Club 3; Debating Club 4; Latin Club 1, 2; Junior Play; National Honor Society.

JAMES FOXY HOWARD, JR.

Life's treasure lies in action.

MARY ETHEL HOWELL

A woman's natural quality is to attract.

Home Arts Club 1; Glee Club 4.

SUZELLE ERANCE HOWES

Talent rules without a sceptre.

Tennis Club; Dramatic Club; Latin Club; Library Club; O. Henry; Chemistry Club; Art Club 4, (President).

EARL CARLTON HUBAND, JR.

Silence—more musical than song.

Chemistry Club 3.

DORIS MAE HUFFHAM

Better not be at all, than not be noble.

.

HUBERT STRATTON HUEHAM

As he thinketh in his heart, so he is.

Swimming Team 3, 4; Harmonica Club 2; History Club 1.

ELIZABETH HUGGINS

A soft answer turneth away wrath.

Glee Club 1, 2, 3; Girl Reserves 1, 2; Spanish Club 1; Traffic Squad 3.

SARAH KATHERINE HUGGINS

Seldom serious, often gay.

Latin Club 1; Girl Reserves 2.

CECIL EUGENE HUNT

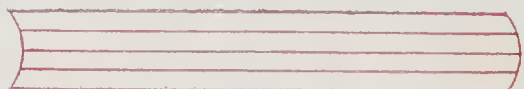
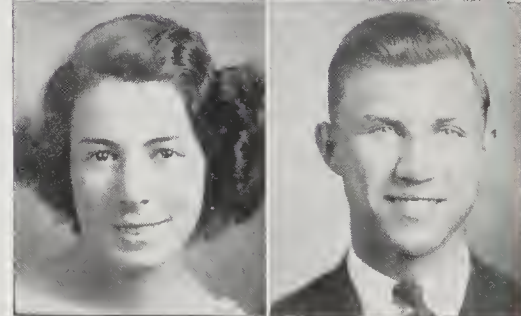
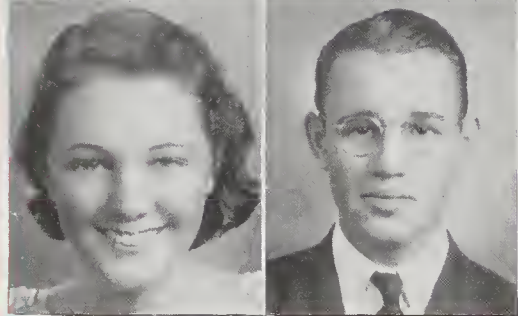
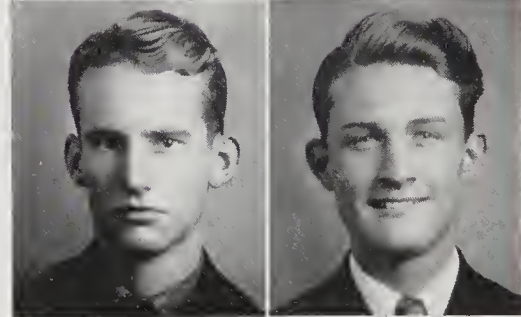
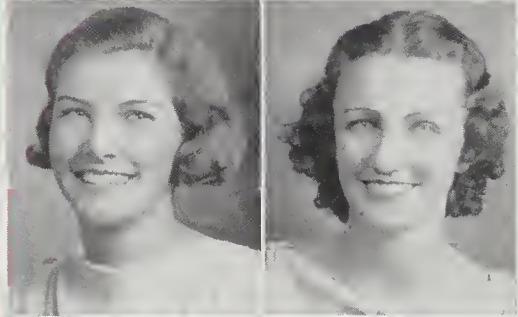
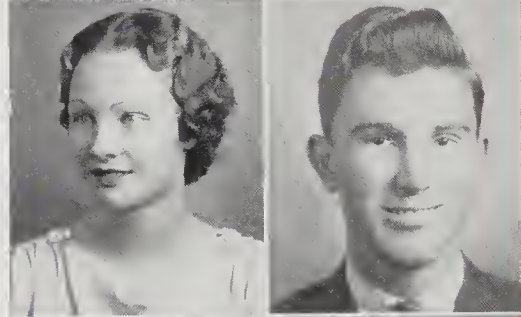
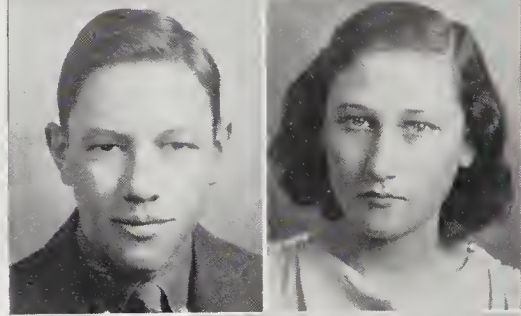
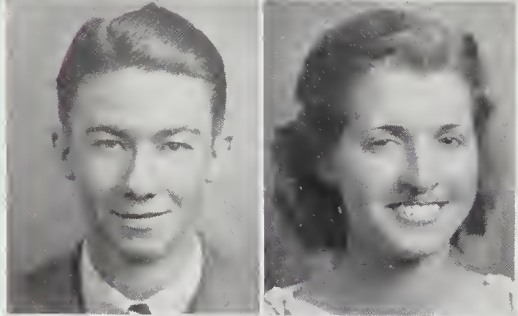
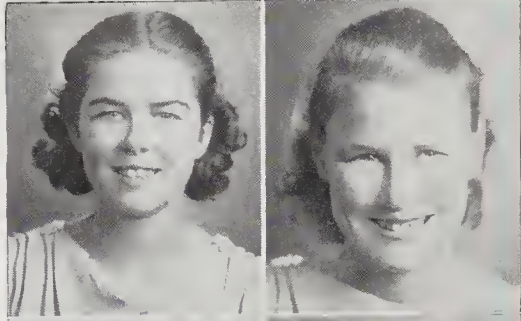
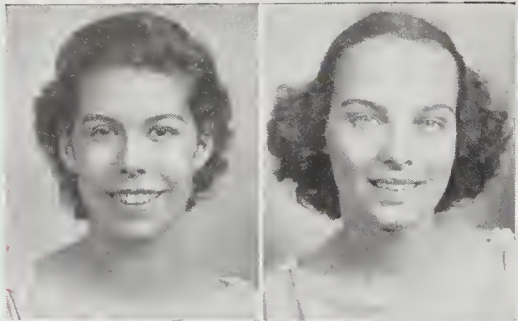
An honest man is the noblest work of God.

HARRY COPP JAMES

He'll find a way.

Annual Staff 3, 4, (Business Manager 4); Junior Class Representative 3; Traffic Squad 3; Hi-Y Club 3, 4, (Vice-President 4); Home Room Organization 4, (Vice-President); Tennis Club 2, 3; Kiwi Aviation Club 2; "Wildcat" Staff 3, 4, (Assistant Business Manager 4).

Seniors



MILDRED LUCILLE JARROTT

Virtue how frail it is—friendship how rare.

DOROTHY MARGARET JENNE

Sweet—friendly.

German Club 2, 3; Home Arts Club 2.

JAMES TROY JOHNSON

So much is a man worth as he esteems himself.

Glee Club 2; Traffic Squad 2, 3; Spanish Club 1.

ELLA KATHALEEN JOHNSTON

How forceful are right words.

Dramatic Club 2.

CAROL LOUISE JONES

All the loveliness of a Chopin prelude.

Glee Club 4; Dramatic Club 4; Tennis Club 4;
"Wildcat" Staff 4.

EMMA CAROLYN JORDAN

Ever loyal, ever true.

Debating Club 2, 3, (Whiteville High School);
Dramatic Club 2, 3; Basketball 2, 3.

SALLYE SPEARS JOSEY

She's merry, she's jolly. We like her, by golly!

Secretary-Treasurer of Freshman Class; Tennis
Club 2; Hi-Y 4; Treasurer of Hi-Y 4; Art
Editor of Annual.

DAISY GRAHAM KELLY

As gay as a robin's song.

LAURA DORIS KENAN

The charm of a child star-gazing.

LOUIS TODD KERMON

A man of might—is a man of right.

Orchestra 1, 2, 3; Glee Club 3, 4; Chemistry 4.

EVELYN GRACE KESTER

*Two of the fairest stars in all the heavens—
her eyes.*

Glee Club 1, 2; Library Club 1; Latin Club 3;
Chemistry Club 4; Archery Club 4; Tennis Club 4.

ANNA EUGENIA KING

*As charming as the grace of slender fingers in
gold hair.*

Chemistry Club 3; Library Club 4

CLYDE EVERETT KING

Grit is the grain of character.

Radio Club 1; Science Club 1, 2.

FRANCES ANN KING

Given to hospitality.

Dramatic Club.

HESTER CLARICE KING

Ever charming, ever new.

Glee Club 1, 2; Latin Club.

OSCAR R. KING

A better pal is hard to find.

Football 4.

THOMAS F. KING

They who think they can, can conquer.

WILLIAM EDWARD KRAFT

Love is and was my lord and king.

Track Team 1; Radio Club 1; Intra-mural Box-
ing 1.

MARJORIE HALLIE LANCASTER

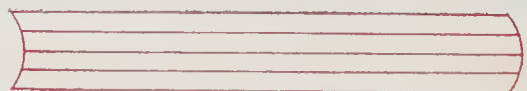
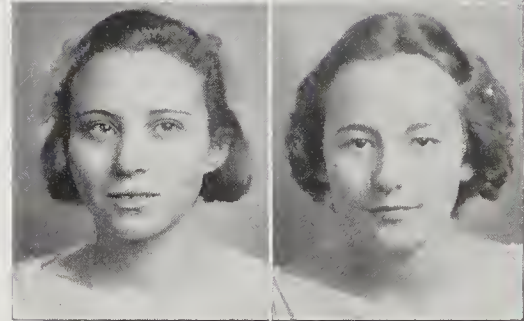
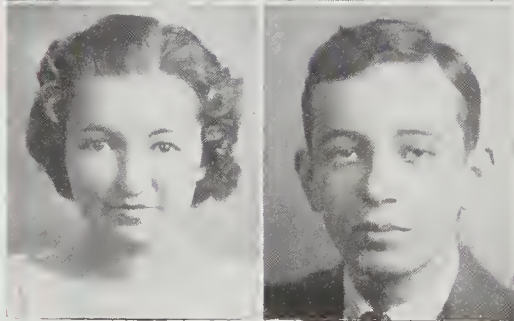
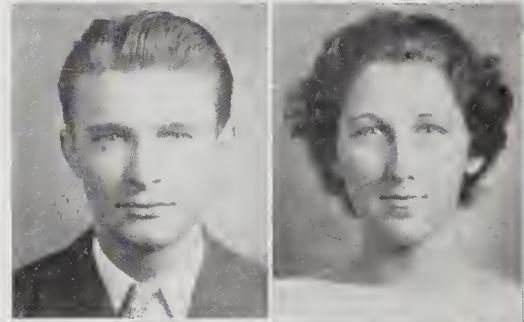
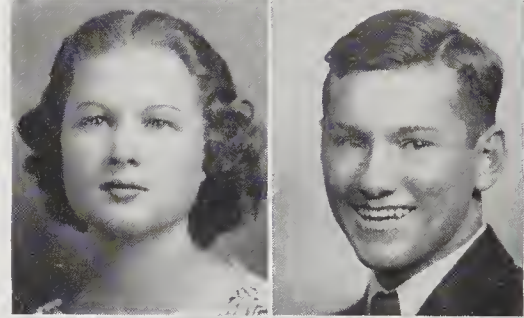
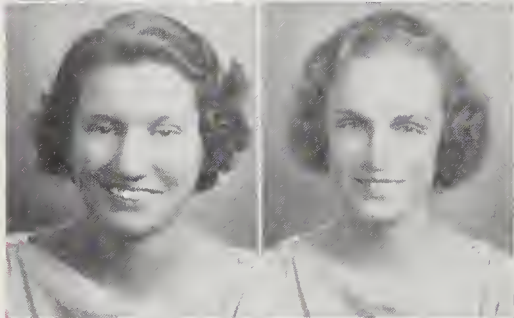
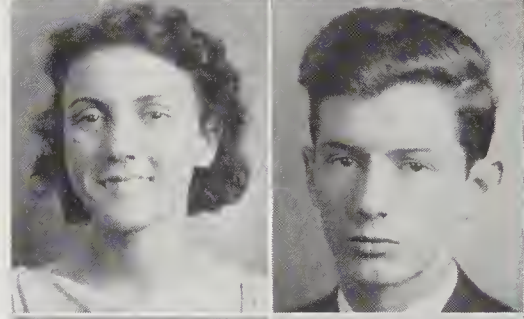
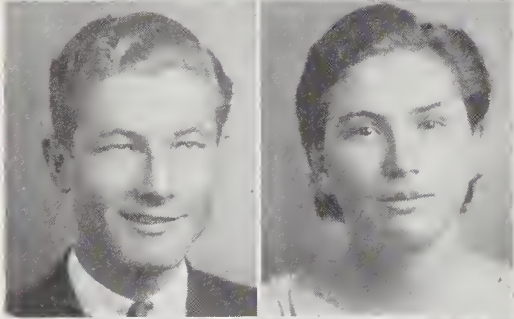
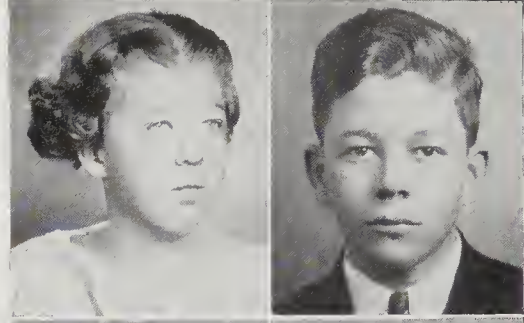
The glass of fashion.

Dizzy Dozen 4.

AUGUSTUS WILLIAM LAND, JR.

I have a heart with room for every joy.

Seniors



ANNA MAE LANIER

A golden heart is better than a silver tongue.

LUCILLE PEACE LARKINS

In her tongue is the law of kindness.

Library Club 4.

GEORGE V. LARSON, JR.

Thoughts are mightier than strength of hand.

EMILY ANN LEE

Just being happy is a fine thing to do.

Tennis Team 1, 2, 3, 4; Basketball Squad 2, 3, 4;
Tennis Club 1, 2, 3, 4, (Captain 1); Single
Championship 3.

MARY LILLY LEE

Do your duty and do it well.

Art Club 2.

JANE LIPPITT LeGRAND

The dashing spirit of a "laughing cavalier."

O. Henry 1; Hi-Y 2, 3, 4; Library Club 2, 3;
Tennis Club 3; Dizzy Dozen 4; "Wildcat" Staff 4.

CARLETTA LENNON

Virtue alone affords continual joy.

Chemistry Club 3; Glee Club 2; Girl Reserves' 2;
Library Club 4.

ROSA LEE LEONARD

Never shirking, always working.

Dramatic Club 3; Glee Club 4; Traffic Squad 4;
National Honor Society 4.

MIRIAM FRANCES LEWIS

A good disposition I prefer to gold.

Student Council 1; Home Room Chairman 3;
Tennis Team 1, 2, 3, 4; Basketball Squad 2, 3;
Latin Club 1, 2; "Wildcat" Staff 4.

ROBERT ISRAEL LIPTON

Clothed and in his right mind.

O. Henry 1, 2; French Club 2; National Honor
Society 3, 4; Debating Club 4; Edison Science
Club 4; Spanish Club 1, 2; Chemistry Club 3;
Annual Staff 4.

MARY BORDEN LYNCH

None knew her but to love her.

Art Club 2; Home Arts 2.

THOMAS GREEN LYNCH

Great thoughts come from the heart.

Hi-Y Club 3, 4, (Secretary 4); Home Room
Chairman 3, 4; Edison Science Club 4; Debating
Club 4; Latin Club 1, 2; "Wildcat" Staff 4,
(Managing Editor); Chemistry Club 3.

MARY KATHRYN McARTHUR

Love, sweetness, goodness in her person shin'd.

Chemistry Club 4.

EDDIE F. MATHIS, JR.

A loyal, just, and upright gentleman.

PHYLLIS MEREDITH McENTEE

The power to charm.

GEORGE McFARLANE

He's a sure card.

CARL WRIGHT McGOWAN

To act natural is to act right.

Art Club 4; Orchestra 1; Chemistry Club 3;
Glee Club 5.

MIRIAM CAROLINE McINTIRE

A disposition as bright as the sun.

Glee Club 2, 3, 4; Traffic Squad 3; Boosters'
Club 3, 1; Cheer Leader 4; Dramatic Club 4;
History Club 1; French Club 2.

VERA MANNING

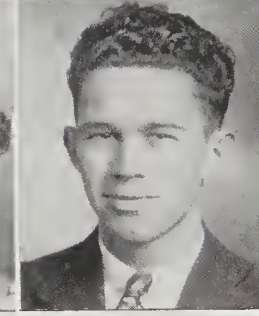
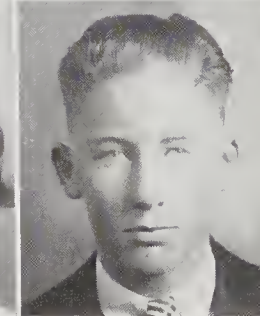
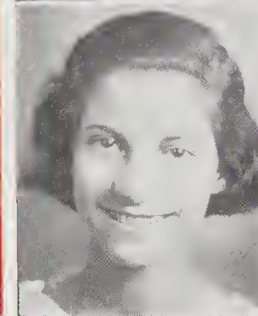
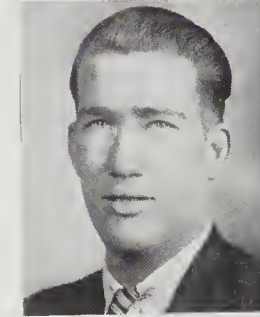
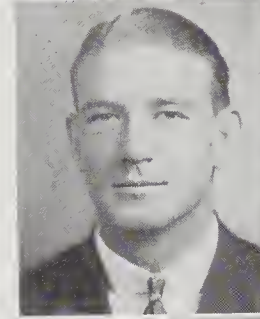
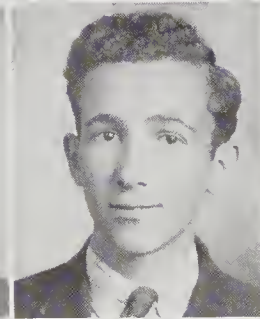
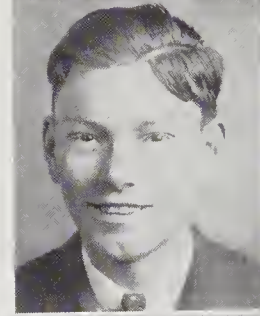
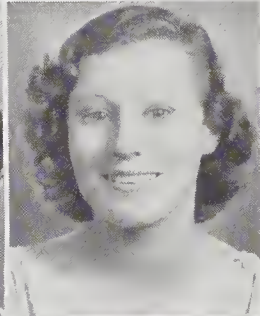
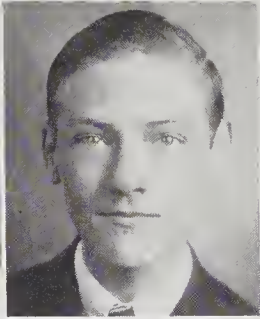
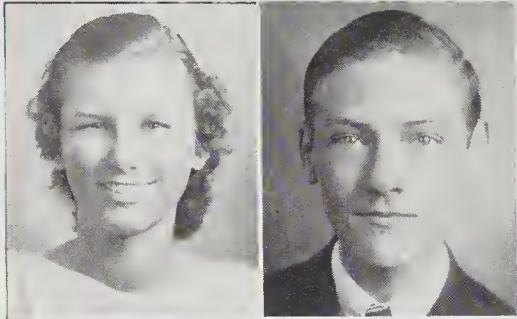
A sweet, attractive kind of grace.

HARRIET ANNE MARSHBURN

God made her—then lost the pattern.

O. Henry 2, 3, 4; Latin Club 1; Boosters Club 3;
Archery Club 3; Home Arts Club 2, 3; Debating
Club 2, 3; Dramatic Club 4; National Honor
Society 4.

Seniors



ELIZABETH TERESA MAZUR

Knowledge is power.

National Honor Society 3, 4; Typist for "Wildcat" 3, 4.

GERALD RICKMAN MEDD

Nothing endures but personal qualities.

German Club 2, 3, 4; Kiwi Aviation Club 2; Chemistry Club.

JULIA ELIZABETH MEIGS

Steadfast, energetic, but full of giggles.

Latin Club 1, 2; O. Henry 1, 2, 3, 4; Library Club 2; Debating Club 4; Home Arts Club 2, 3; Girl's Hi-Y 3, 4; National Honor Society 4; "Wildcat" Staff 4.

ANNA CLARA MELTON

Lips where smiles went out and in.

ROBERT LEE MELVIN

We must be young to do great things.

CHARLES LLOYD MEMORY

Be thou faithful unto death.

WINIFRED WARE MINCY

As gay as toy balloons.

Latin Club 1, 2; Traffic Squad 3; Boosters Club 3, 4; Chemistry Club 4; Cheer Leader 4.

BESSIE PEARL MINTZ

Diligence is the mother of good fortune.

EVELYN MINTZ

The mildest manner and the gentlest heart.

Art Club 2.

JOHN HENRY MINTZ

A friend in need is a friend indeed.

ALLAN BOSTON MOORE

Difficulties are things that show what men are.

Chemistry Club (Vice-President 4); Latin Club 1, 2; Glee Club 4; Aviation Club 2.

GEORGE ALLIE MOORE, JR.

Good nature is more powerful than education.

Nature Club 2; Chemistry Club 3; German Club 3, 4, (President 4); Boxing 2.

CLIFF MORRIS, JR.

Hail, fellow, well met.

ESTHER EMMA MORTON

Kind hearts are more than coronets.

Glee Club 2.

THOMAS DUDLEY MOTE

He proved the best man on the field.

Football 5, 6; Tennis Team 1, 2, 3, 4, 5, 6, (Captain 3); Tennis Club 3, 4, 5; Glee Club 1, 2, 5, 6; Home Room Chairman 4; Ring Committee 3; Chemistry Club 5; Library Club 1, 2, 3, 4; Senior Play 6; Traffic Squad 2; Boxing, (Assistant Manager 5).

JEAN BEATTY MURPHY

A noble woman is a storhouse of virtue.

Latin Club 1; Tennis Club 4.

RAYMOND MITCHELL MURRAY

Saying is one thing; doing is another.

RHODA ELIZABETH MURRAY

Self-confidence is the first requisite to great undertakings.

Girl Reserves 2; Traffic Squad 2; Library Club 3.

LURA PIGOTT MYERS

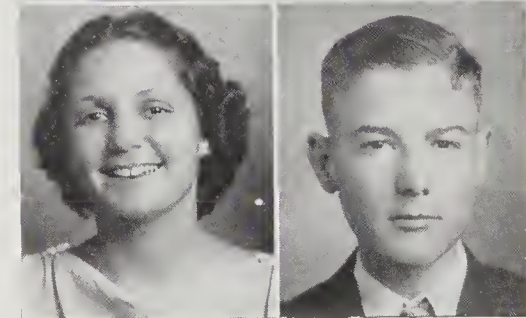
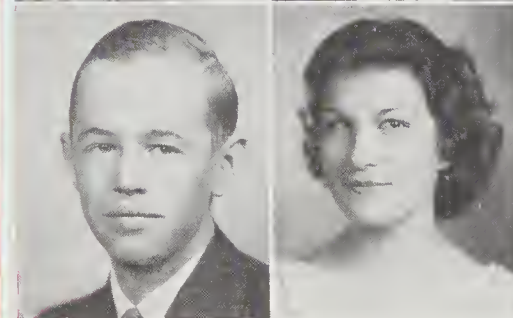
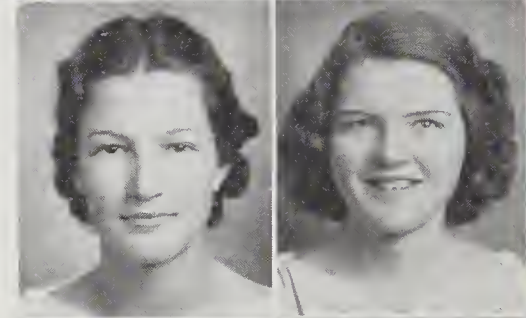
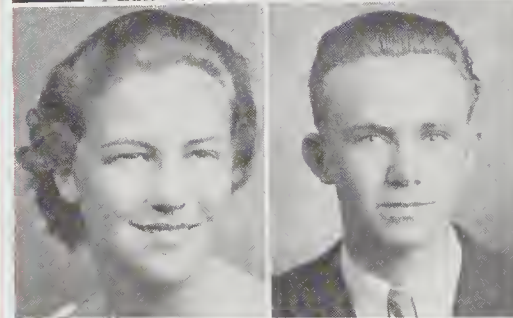
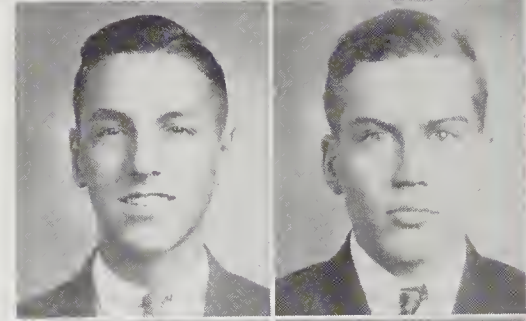
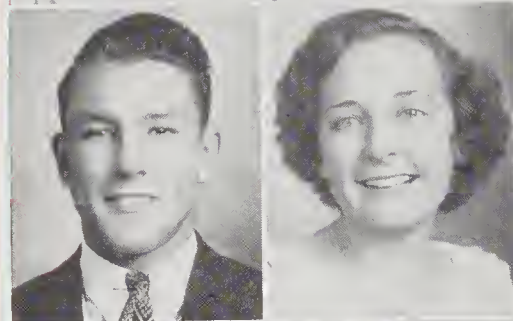
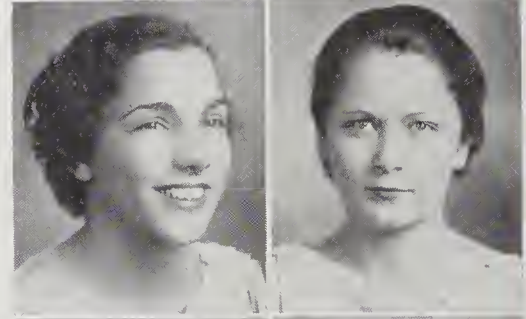
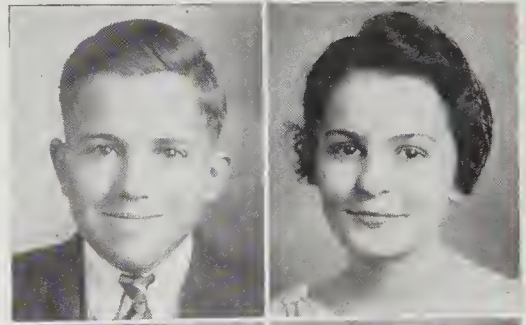
There is no wisdom like frankness.

Dramatic Club 2; O. Henry 2, 3; Archery Club 3; Boosters Club 3; Chemistry Club 4; Debating Club 4.

JAMES M. NEWLAND

Fortune favors the brave.

Seniors



LILLIAN MARIE NICHOLS

The charm of old silver.

Glee Club 2.

ROSALIE WALKER OLIVER

A perfect lady.

Hi-Y 2, 3, 4.

ESTELLE AUGUSTA OWEN

A joyous maiden.

Girl Reserves 1; Chemistry Club 4.

ANNA LAURA PADRICK

A merry heart maketh a cheerful countenance.

Home Arts Club 2.

ARNOLD E. PADRICK

When duty calls, he never fails.

ELOUISE PADRICK

A silent woman is wise—a talker must be.

Home Arts Club 2; Domestic Art Club 2.

MATTIE FRANCES PARKER

The gaiety of nasturtiums in copper bowls.

Latin Club 1; Glee Club 1; Boosters Club 3, 4;
Cheer Leader 3, 4; Snappy Six 3; Dizzy Dozen 4,
(Vice-President).

FREDERICK LEON PARNELL

A man's character is by his speech betrayed.

WALTER L. PARSLEY, JR.

Great deeds need great preparation.

Radio Club 2; French Club 2; Boxing Tournament 3; Hi-Y Club 4; Baseball Team 2.

EUNICE PATTEN

Live away sorrow, laugh away care.

Fayetteville High School 1, 2; Glee Club 3; Dramatic Club 4; Hi-Y 3, 4; Debating Club 4; Annual Staff 4; Junior Play 3; Senior Play 4; Art Club (Secretary 4); National Honor Society 4.

OSCAR PARSLEY PECK

Speak every man truth of his neighbor.

Hi-Y Club 2, 3, 4, (Treasurer 4); Annual Staff 4; Edison Science Club 4; "Wildcat" 4.

NINA DORINE PETERSON

Always generous, always true.

MARGARET LOIS PICKARD

Oh, how this girl can draw!

German Club 2, 3, 4; Art Club 1; Library Club 2, 3, 4.

MAGGIE WELLS PIGFORD

Great is truth and all powerful.

Basketball 3, 4

JOSEPH E. PINER

Good cheer is no hindrance to a good life.

Captain of Traffic Squad 4.

LOUIS JULIEN POISSON, JR.

A good name is better than precious ointments.

Hi-Y Latin Club 1, 2, 3, 4; Dramatic Club 2;
Radio 2; Debating Club; Traffic Squad 2; "Wildcat" Staff.

MYRTIS INEZ POLK

Tall and slender; quiet and tender.

Girl Reserves 2.

KATHLEEN KORNEGAY PRIDGEN

She attracts daily with her gentle virtues.

Latin Club 1, 2; Glee Club 2, 3.

JENNIE SUE RAYNOR

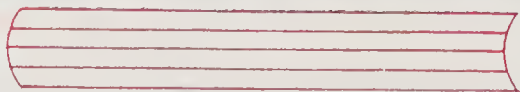
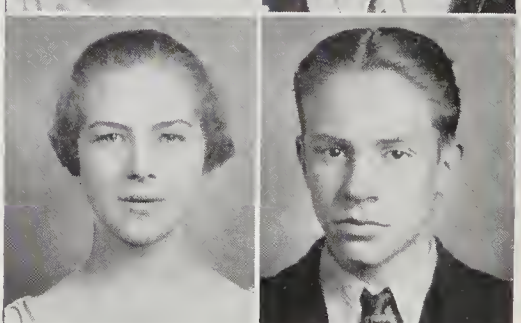
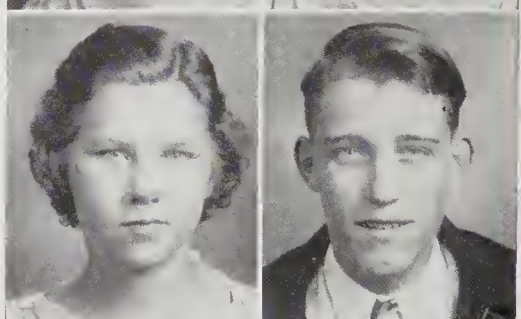
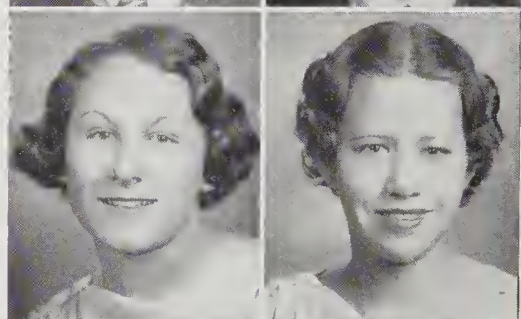
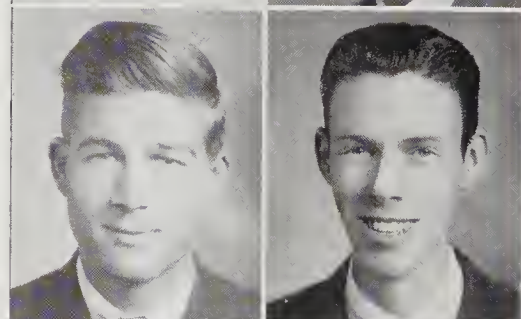
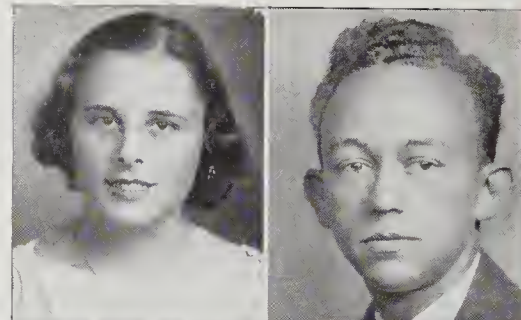
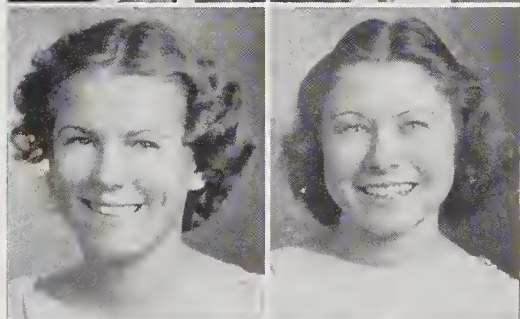
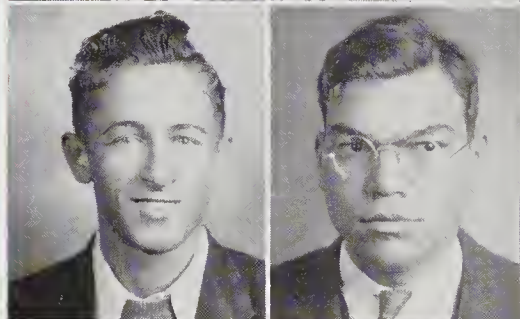
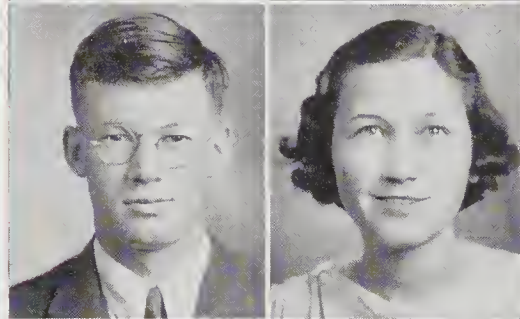
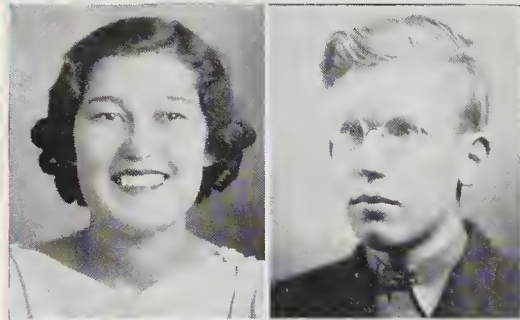
Always wound up and going.

Glee Club.

EDWARD BEAMAN REGISTER

An ounce of mirth is worth a pound of sorrow.

Seniors



MARIE ELIZABETH REGISTER

Oh, what's the use?

Glee Club 1, 4; Debating Club 4; Orchestra 1, 2;
Home Room Chairman 3.

JOHN AUGUSTUS REHDER

Congenial and good natured.

Aviation Club 2.

FRANK RUSSELL REYNOLDS

The office shows the man.

Latin Club 1, 2; O. Henry 3, 4, (President 4);
Chemistry Club 4; Student Council 4; Debating
Club 4; President Senior Class; Hi-Y 4; "Wild-
cat" Staff 4.

EDITH LOUISE RHODES

*The sturdiness of Irish linen and old-fashion
tattling.*

GEORGE THOMAS RICH

Friendly and a good pal.

DONALD GABRIEL RIVENBARK

Ready for service.

Edison Science Club 4; Chemistry Club 3; Glee
Club.

FRANCES HAZEL RIVENBARK

Modesty is a candle to my merit.

Latin Club 2, 3; Dramatic Club, Girl Reserves.

HELEN CLAIRE ROBINSON

No life but a good life is to be chiefly valued.

Tennis Club 4.

MABLE IRENE ROGERS

A mind second only to her friendliness.

Art Club 1, Latin Club 2, 3; O. Henry 4; Library
Club 4.

THEONE BURMA ROPER

Moderation is the pleasure of the wise.

ADELAIDE MARGARET ROSBOROUGH

Pearls among fields of black velvet.

Glee Club 2, 3; O. Henry 1, 2, 3, 4; Dramatic
Club 4; Library 1, 2, 3, 4; Debating 4; "Wild-
cat" Staff 4; Junior Play 3; Dramatic Play 4;
Latin Club 1, 2.

CHARLES RUARK

Courage never to submit or yield.

Traffic Squad 4; Tennis Club 3; Hi-Y Club 4;
Chemistry Club 4.

DOCK LESTER RUSHING, JR.

The great end of life is knowledge and action.

Boxing 2, 3; Traffic Squad 3, 4.

GRAHAM HOMER RUSS

All princely virtues that attend the good.

Art Club 1, 2; Debating Club 4; Triangular
Debate.

RAY SAINT AMAND

A small spark makes a great fire.

Tennis Club 1, 2, 3; Library Club 2, 3, 4.

VERNA MAE SANDERS

Fair was she to behold.

Girl Reserves 1, (Finance Chairman); Dramatic
Club 2; Basketball 2, 3, 4; Spanish Club 1;
Home Room Chairman 3.

MARY ELIZABETH SHIPP

Simple truth her greatest skill.

Home Economics Club 2.

DEWITT JEFFREY SCOTT

A boy's will is the wind's will.

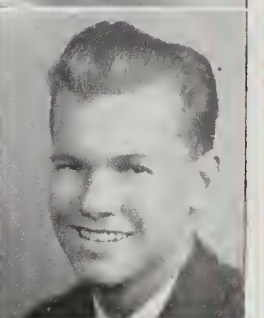
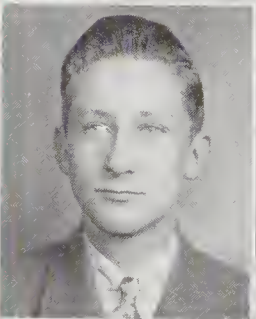
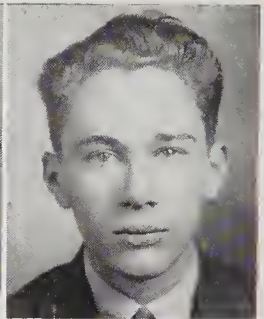
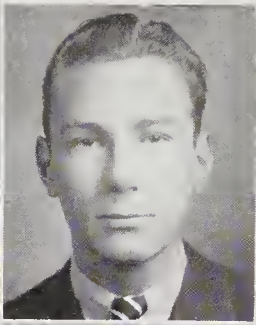
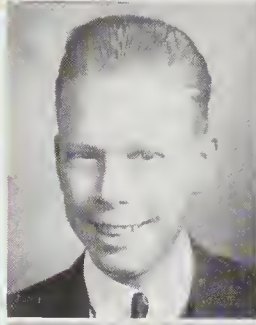
RUTH MARIE SHARPE

A life that moves to gracious ends.

GRADY E. SHEALLY

Oh, why should life all labor be?

Seniors



OWEN SHEETZ

It talks, ye gods, it talks!

WALTER L. SHEFFIELD, JR.

Such popularity must be deserved.

Vice-President Senior Class; Hi-Y Club 4, (Vice-President 4); President Chemistry Club 4; "Wildcat" Staff 4; Football 2, 3, 4; Home Room Chairman 4; Latin Club 3; Intra-mural Boxing 3.

HELON ELIZABETH SKIPPER

As calm as willows in summer twilight.

Latin Club 1, 2; O. Henry 1, 2.

GRACE WILSON SLAUGHTER

Dependability should have been her middle name.

MARY EVELYN SLOCUM

Dignity is the sweetness of womanhood.

Vice-President Freshman and Sophomore Class; Student Council 1; Home Room Chairman 2, 3; Hi-Y 2, 3, 4, (President 4, Vice-President 3); O. Henry 2, 3, 4; National Honor Society 3, 4; Latin Club 1, 2, 3, 4, (President 4); Chairman Junior Play Committee; Junior Play; Chemistry Club 4; Library Club 3, (Secretary); Director Hi-Y Play 4.

ARLENE SMITH

Wisdom is better than rubics.

French Club.

C. G. SMITH, JR.

A nice, unparticular man.

O. Henry Literary Society 1, 2; Latin Club 1, 2; Traffic Squad 3, 4; Boxing Squad 1, 2.

MARY ALLEN SMITH

A good heart is better than all the heads in the world.

French Club.

NANCY SMITH

As rare as an unmatched pearl.

Home Room Chairman 1; Latin Club 1; O. Henry 2, 3, 4, (Vice-President 4); National Honor Society; Chemistry Club 4.

RUTH ADELLE SMITH

With the spirit of a sport she goes her way.

Art Club 2.

THELMA SMITH

Lovable and sweet.

Latin Club 2, 3; Chemistry Club 4.

WYATT LAMONT SMITH, JR.

All the world loves a lover.

DOROTHY RAE SNEEDEN

If ever she had an evil thought, she spoke no evil word.

O. Henry 1, 3, 4; Art Club 1; Home Room Chairman 1; Debating Club 4; Chemistry Club 4; Library Club 4.

GAYLOCK ETHRIDGE SNEEDEN

Can you possibly find better?

MILDRED PAYNE SNEEDEN

She is herself the collection of best things.

Home Room Chairman 1, 2; Student Council 2, 3, 4; Ring Committee 2; Dramatic Club 2; O. Henry 1, 2, 3, 4, (Secretary-Treasurer 4); Latin Club 2; Chemistry Club 4; Dizzy Dozen 4; President Junior Class; State Student Council Delegate 3, (Vice-President State Student Council Congress 4); Hi-Y 3, 4, (Treasurer 3, Vice-President 4); Delegate State Hi-Y Conference, (Treasurer State Hi-Y); Chairman Handbook Committee 3; Chairman Ways and Means Committee Senior Class; National Honor Society; "Wildcat" Staff; Chairman Invitations Committee 4; Hi-Y Play 4.

ELIZABETH MAY SNOW

She is the girl who is all complete.

Home Arts Club 2; O. Henry 2, 3, 4; Latin Club 3; Tennis Club 3; Chemistry Club 3; Hi-Y 4; Edison Science Club 4; National Honor Society, (President).

MIRIAM SOLOMON

Full of laughter, full of pep; never quiet; that's her rep.

Latin Club 1; Tennis Club 2, 3; Scribblers' Club 3; National Honor Society; Student Council 4; Manager Girl's Basketball Team 2; Dizzy Dozen 4; "Wildcat" Staff 3, 4; Home Room Chairman 2.

MADELYN LUCILLE SOUTHERLAND

Good nature, good sense are ever joined.

Glee Club 2, 3, 4; Traffic Squad 3; History Club 1; Boosters Club 3; French Club 2.

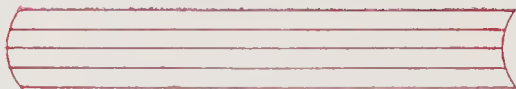
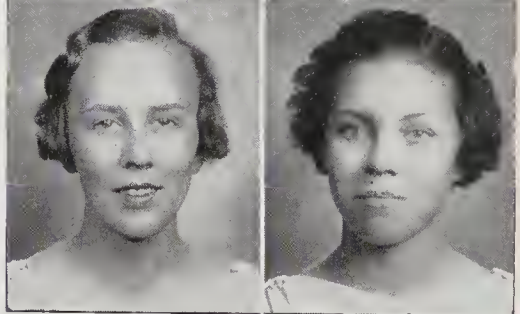
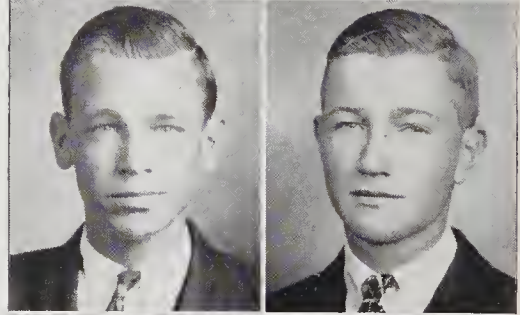
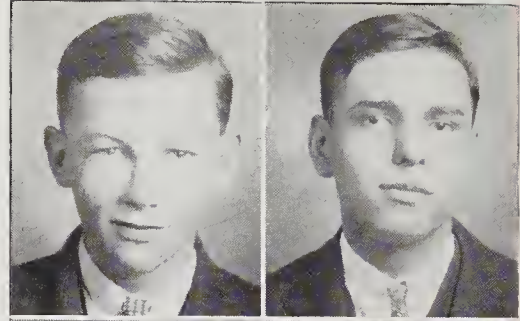
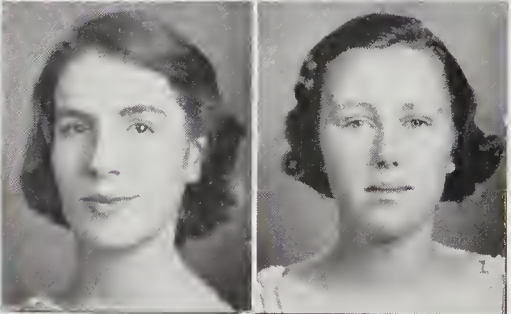
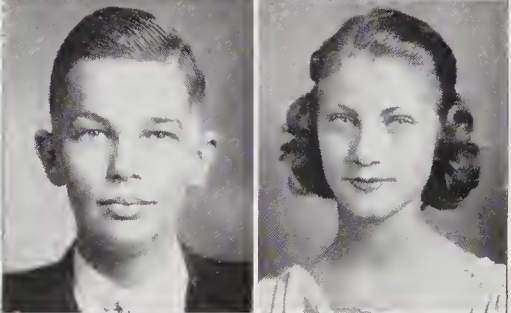
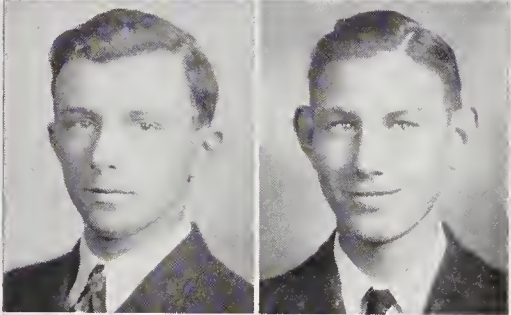
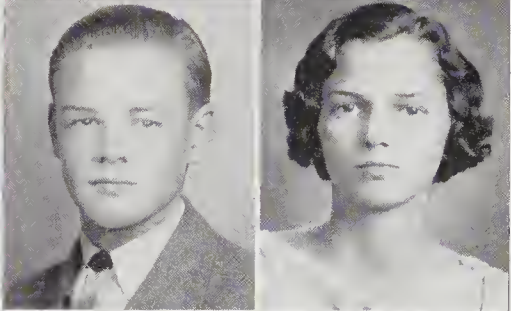
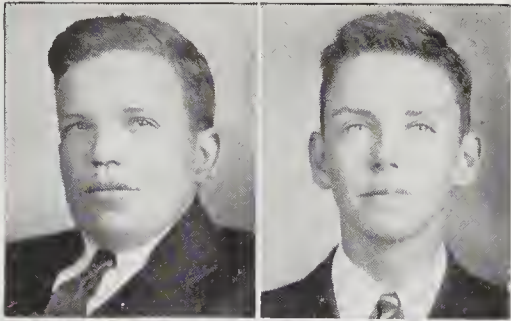
ALICE RUBELL SPENCER

By the work one knows the workman.

JOHN WESSELL SPOONER

He's made of real stuff.

Seniors



GEORGE THOMAS STEWART

No man can climb out beyond the limitations of his own character.

Chemistry Club; Nature Club.

MICHAEL CORBETT STOVALL

Humor is one of the elements of genius.

Football 2; Cotillion Club 2, 3; Golf 2, 3, 4.

ROBERT STRANGE, JR.

A smile with the intent to do mischief.

Latin Club 1, 2; French Club 2; Golf 1, 2, 3, 4; Hi-Y Club 2, 3, 4; Ring Committee 2; Student Council 3; Corresponding Secretary Student Council 3; "Wildcat" Staff 3; Chemistry Club 4, (Critic 4); Debating Club 4; Cotillion Club 3.

LOUISE VOLLERS STRUTHERS

A better pupil there could not be.

Latin Club 1; Home Room Chairman 1; German Club 2, 3, 4; Hi-Y 4.

WILLIAM O. S. SUTHERLAND, JR.

For they can conquer who believe they can.

Hi-Y 3, (President 4); Editor "Wildcat" 4; Debating Club 4; Dramatic Club 4; Edison Science Club 4; O. Henry 3; Chemistry Club (President 3); Vice-President Class 3; Tennis Club 3; Latin Club 1, 2; Home Room Chairman 4; Junior Play 3; Dramatic Club Play 4.

BONNER HAVENS THOMASON, JR.

It's great life—goo'ness me, pal!

Hi-Y Club 4; Latin Club 1.

JACOB HINNES TINGA

Daddy Longlegs, long and thin; but sense within.

Home Room Chairman 1, 2; Glee Club 2, 3, 4; Orchestra 1, 2; Hi-Y Club 4; Debating Club 4; Chemistry 2; French Club 2; Annual Staff 4; Nature Club 2; President of Alpha Chapter of Hi-Y Club 4; Debating Team 4; O. Henry 4

ALINE IRMA TODD

Dependable as a pioneer woman of early history.

LOUISE BUNTING TOOT

Very quiet and studious is she.

O. Henry 3, 4; Latin Club 1, 2, 3; Chemistry Club 3; Glee Club 1; Basketball 1; Library Club 4.

HALLIE RUTLAND TOWNES

Best way to have a friend is to be one.

Latin Club 1, 2; Scribblers' Club 2, 3, 4; Tennis Club 3; National Honor Society 3, 4; Hi-Y Club 4; Annual Staff 4.

HAROLD EUGENE TRASK

Nonchalant and indifferent, but how he puts it over.

Home Room Chairman 1; Student Council 1, 2; Chemistry Club 3; National Honor Society 3, 4.

VICTOR DELMER VALENTINE

We are all proud to know him.

Latin Club 1; German Club 1.

BENJAMIN DEAN WALKER, JR.

Better a witty fool than a foolish wit.

Kiwi Aviation Club 2.

CORNELIA B. WALKER

She gave her tongue no moments rest.

Glee Club 2; Library Monitor 4.

JIMMY L. WALKER

He lets every man mind his own business.

CAREY JAMES WALTON, JR.

Let thy speech be better than silence, or be silent.

BERNARD JEROME WARSHAUER

It is a friendly heart that has plenty of friends.

Art Club 2; Dramatic Club 4; Debating Club 4; Junior Play; Senior Play; Dramatic Club Play 4.

HELEN MARGARET WARTERS

Few persons have the courage to appear as good as they really are.

MARY LOUISE WARTERS

A merry light gleams from her eyes.

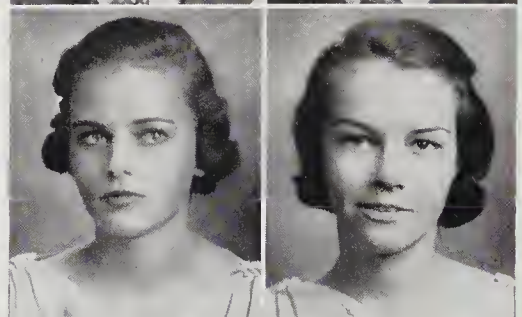
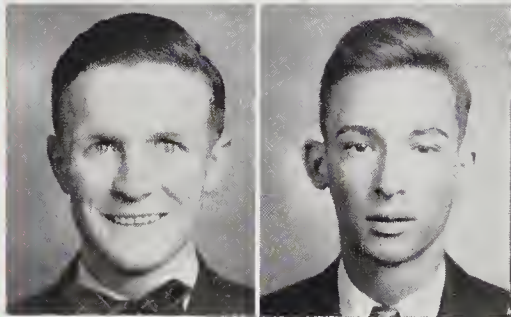
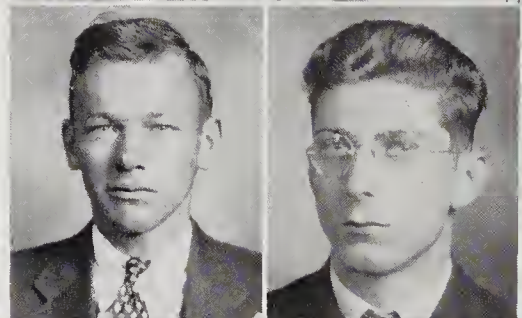
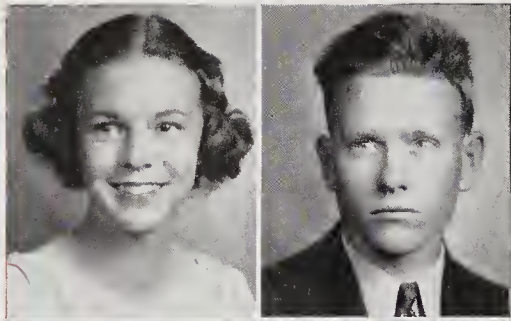
Math Club 1; Boosters Club 2; Girl Reserves 1, 2, 3; Home Arts Club 2.

EVA MAE WATSON

The enthusiastic and pleasing illusions of youth.

Latin Club 2, 3; Chemistry Club 4.

Seniors



JANE WEATHERSBEE

The blush is beautiful, but sometimes inconvenient.

Glee Club 1; Home Room Chairman 1; Tennis Club 1, 2, 3; Boosters' Club 3; Latin Club 1, 2, 3; Tennis Ladder 3; Dramatic Club 3.

HOMER F. WEBB

Simplicity of character is no hindrance to subtlety of intellect.

Aviation Club 2; Intra-mural Boxing 2.

CATHERINE WELSH

Her equal you'll rarely find.

Archery Club 3, 4; Latin Club 1, 2, 3, 4; Library Club 2, 3, 4; Chemistry Club 3.

BETSY WALLACE WEST

Knowledge comes but wisdom lingers.

O. Henry 1, 2, 3, 4; Latin Club 1, 2, 3; Honor Society 3, 4; Debating Club 4; Chemistry Club 4; Glee Club 2; Library Club 2, 3.

RUSSELL M. WESTMORELAND

A well-bred man is always sociable.

HENRY RUDOLPH WILLIAMS, JR.

A good man possesses a kingdom.

Glee Club 1, 2, 3; Traffic Squad 2, 3, 4; Swimming Team 5.

DOLORES WILLIS

She walks in beauty.

O. Henry Literary Society 4; Archery Club 4; Tennis Club 3, 4; Chemistry Club 4; Glee Club 2; Girl Reserves 2; Latin Club 2, 3.

MARY PALMER WILSON

Beauty is rare, and should be prized.

Glee Club 1; O. Henry Literary Society 1, 2, 3, 4; Latin Club 1, 2; National Honor Society 3, 4, (Secretary 4); Home Room Organization 1; Knitting Club 2.

JOSEPH ANDERSON WOLFF

A wise man never loses anything if he has himself.

Traffic Squad 2, 3, 4; Chemistry Club 3.

JAMES WOMMACK

Rich in good works.

President of Aviation Club 2; Chemistry Club 3; School Paper Staff 4; Junior Play; Student Council 4.

DAISY LEE WOODBURY

Cute and small—she's loved by all.

Latin Club 1; O. Henry 1, 2; Student Council 2, 3, (Secretary 3); Judicial Committee 3; Hi-Y Club 2, 3, 4, (President 4); Devotion Chairman of Hi-Y 2, 4; Paper Staff 2, 3, 4; Feature Editor of Annual 4; Executive Committee Hi-Y Club 2, 3, 4; Home Room Chairman 3; Library Monitor 3; Assistant Director of Hi-Y Play 4; Dizzy Dozen and Snappy Six 3, 4, (Treasurer 4); Honor Society 4; Delegate to State Hi-Y Conference 3.

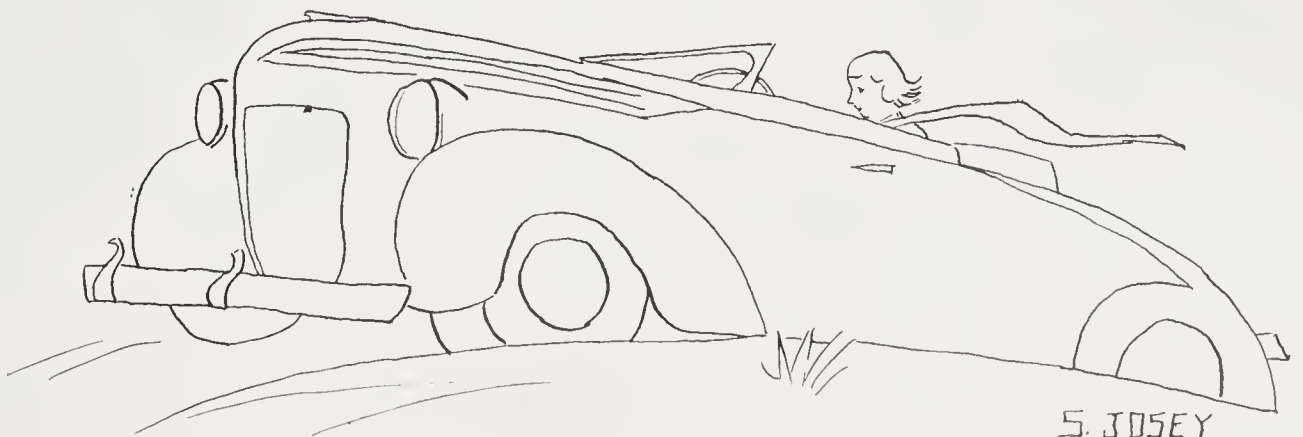
ELIZA YONGE WOOTTEN

Patience is the greatest of all virtues.

High Point High 1, 3; Fayetteville High 2; Girl's Hi-Y Club 4; Debating Club 4; Scribblers' Club 4; Archery Club 4; Dizzy Dozen 4; Library Club 4.

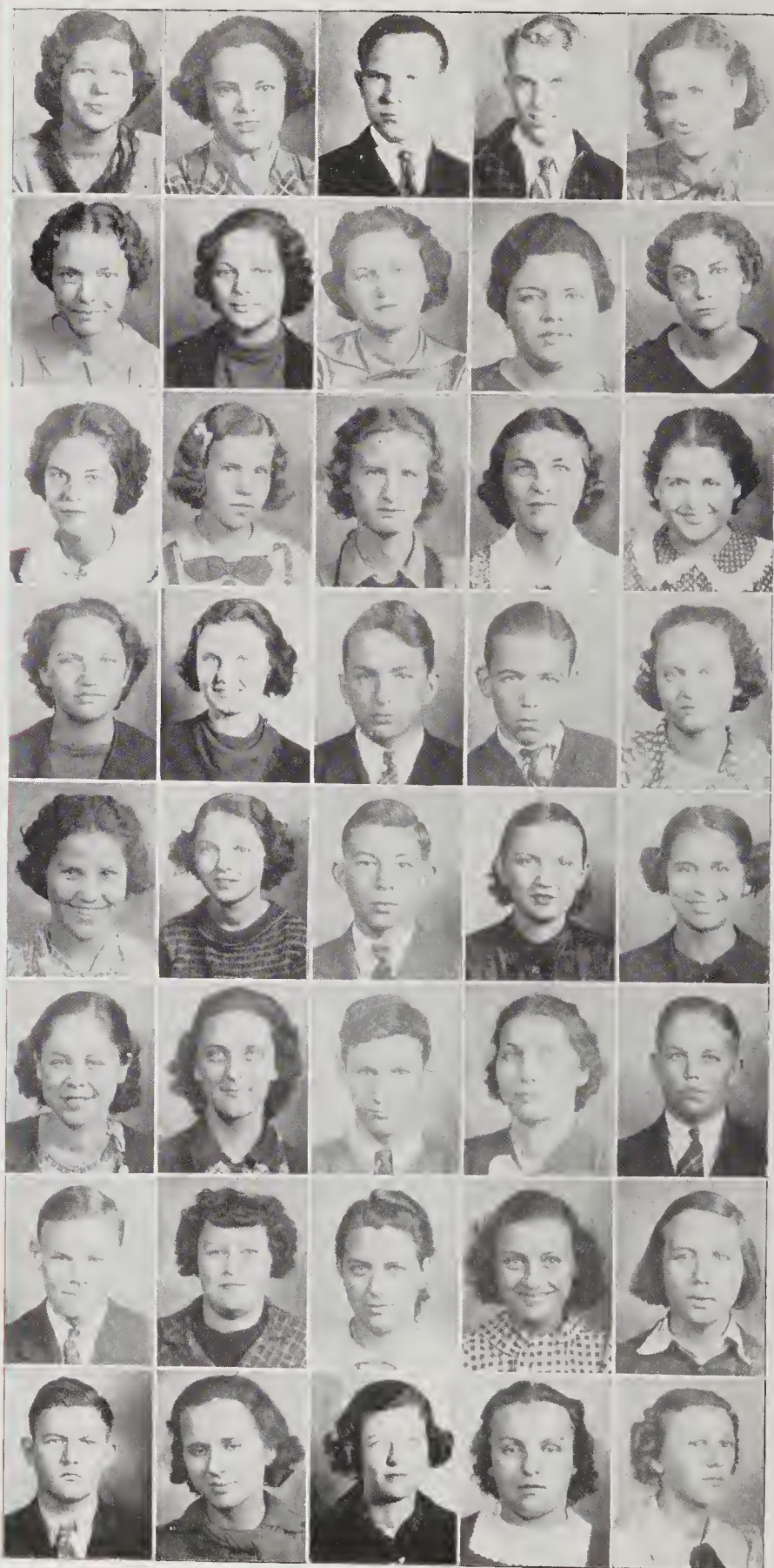
Seniors

JUNIOR



S. JOSEY

ANNETTE ABELOVITZ
 DORIS ANDREWS
 LEON ANDREWS
 ROBERT ANDREWS
 INEZ BAGGETTE
 NETTIE BAKER
 EDNA BALES
 DORIS BATSON
 ESTELLE BATT
 JEAN BERTRAM
 MARY ALICE BLACKHAM
 MIRIAM BLANTON
 ANNIE MAE BOWDEN
 ELIZABETH BOWDEN
 PATSY BOWERS
 LIB BOWMAN
 CATHARINE BRADSHAW
 BILLY BROWN
 DEWITT BROWN
 MARGARET BROWN
 ELIZABETH BROWNING
 BETTY BRUCE
 WILBUR BRYANT
 JUNE BUCK
 ELLA MAE BULLARD
 ADDIE BUTLER
 ELSIE CANADY
 FRANCIS CAPLAN
 ALMA CARTER
 GEORGE CHADWICK
 RUSSELL CHINNIS
 HARRIET CLARK
 LILY MAE CLARK
 MARGARET CLEMMONS
 BETTY CONWAY
 JOHN CONWAY
 JOSEPHINE CORBETT
 MARY CORBETT
 CATHERINE COSTELLO
 FRANCES COUGHENOUR



Juniors



NORMA CROOM
 BONNIE DAVIS
 IDA DAVIS
 MARIA DAVIS
 RUTH DAVIS
 MABEL DEMPSEY
 MATTIE DUKE
 CATHERINE EAGLE
 ADELE EDWARDS
 DOROTHY EVERETT
 RACHEL FARRAR
 HARRY FERRELL
 HORTENSE FINKELSTEIN
 LILA MAE FISHER
 GENE FONVIELLE
 LILLIAN FOWLER
 KATHLEEN FRAZIER
 INEZ FULBRIGHT
 RAY FUNDERBURK
 BENJAMEN FUSSELL
 HARRY FUTCH
 DOROTHY FUTRELLE
 DOROTHY GAINES
 RUTH GHOLSON
 JULIAN GODWIN
 WALTER GODWIN
 MARY CATHERINE GORMAN
 VASHTI GORNTO
 DOUGLAS GOWER
 ROBERT GRISSOM
 KATHERINE HANSON
 ELIZABETH HARDWICK
 ROBERT HARDWICK
 LOUISE HARPER
 CONSTANCE HARRELL
 ANNA HARRISON
 JAMES HLIDT
 BETTY HENDERSON
 ELIZABETH HEWLETT
 CYRUS HOGUE

Juniors

RUTH HOLMES
 ELOISE HONNET
 L. H. HOUSTON
 ALLAN HUBAND
 BETTY HUNT
 WALTER JAMES
 FRANCES JEWELL
 KELLY JEWELL
 CAROLINA JOHNSTON
 PEGGY JONES
 MARY ELIZABETH JONES
 SHIRLEY JONES
 ELIZABETH JURGENSON
 ROSA MAE KAMINSKY
 BILLY KING
 GERALDINE KING
 MARGARET KING
 MILDRED LAND
 BERNICE LEVINE
 KATHLEEN LEWIS
 ISABEL LOREK
 REBA LYELL
 NANCY LYNCH
 MARTHA MCCAIG
 EMILY MCCALL
 CLARA MCLEAN
 LOUISE MCCRARY
 ALEX MCINTIRE
 LOUISE MELTON
 MORRIS MERRITT
 ELIZABETH MILLER
 LANESE MILLER
 ROBERT MILLIS
 VICTOR MINTZ
 MARY BELL MAHN
 ELIZABETH MOORE
 MARY KATHERINE MORSE
 ROSALIND MURRAY
 JACK NEUER
 CAROLINE NEWBOLD



Juniors



MARY NURNBERGER
 NELL OLIVER
 BOBBY PAGE
 MARIAN PAGE
 ALICE PARKER
 BILLY PARKER
 RACHELL PEARSALL
 JANICE PICKARD
 HELEN PIEPER
 MAY PRICE
 LAURAH RAYNOR
 MILDRED RAYNOR
 LAURA REGISTER
 MYRTLE RIVENBARK
 JAMES ROBERTSON
 MARY ROBERTSON
 LOUISE ROBESON
 BEATRICE ROGERS
 ERNEST ROGERS
 RUBY ROGERS
 DOROTHY ROLAND
 BETSY ROPER
 LAWRENCE ROSE
 DORIS ROSS
 ELIZABETH ROUSE
 MARIE ROUSE
 ANELL SANDLIN
 EMILY SEITTER
 MARY B. SELL
 MARY NASH SELLERS
 HERBERT SHAIN
 DORIS SHEW
 THOMAS SKIPPER
 JAMES SLOAN
 JOHN SMALLBONES
 CLIFF SMITH
 JEAN SMITH
 MAYLON SMITH
 AGNES SOUTHERLAND
 MARY SOUTHERLAND

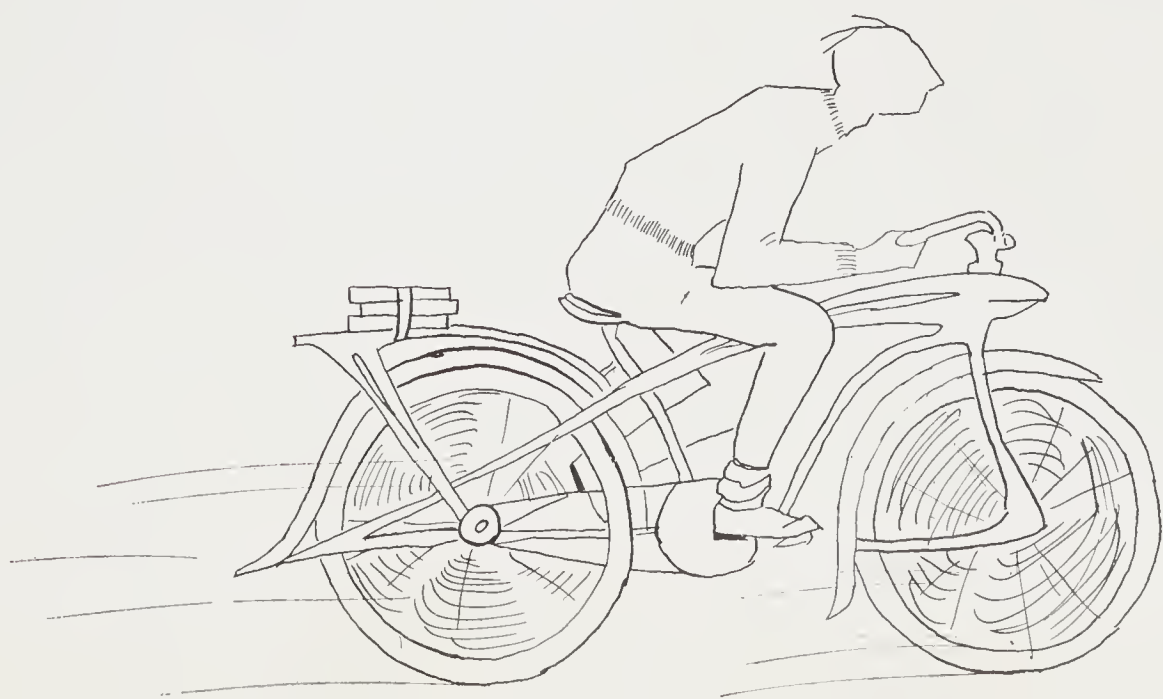
Juniors

RUTH STANLEY
 THOMAS SWAIN
 FRANCES TAYLOR
 RUTH THOMAS
 PEYTON TOWNES
 STEELE TRAIL
 THOMAS UNDERWOOD
 MARY VAN NES
 GERARD VERZAAL
 MARIAN VICK
 RANSEY WEATHERSBEE
 HAROLD WELLS
 JEAN WENDT
 ELEANOR WESTBROOK
 MARION WESTBROOK
 MARY B. WILLIAMS
 MARY PARSLEY WILLIAMS
 JIMMIE WILLIAMSON
 FRANCES WITHENGELDS
 MARY WHEELER
 ANNIE WOOD
 FLORENCE WOODBURY
 JOHN WREDE
 MARGARET WRIGHT
 DOROTHY WYCHOFF
 ARTHUR XANTHOS
 VERNELL CAIN



Juniors

СВАХИМОР





SOPHOMORE CLASS

Officers:

STEVE PECK, *President*

GLADYS SNEEDEN, *Vice-President*

HARRIET HARRINGTON, *Secretary-Treasurer*

ROBERT CALDER, GRACE SLOCUM, *Student Council Representatives*

COLLIERMAN





FRESHMAN CLASS

Officers:

MARIGN WOODBURY, *President*

LOUISE HOOPER, *Vice-President*

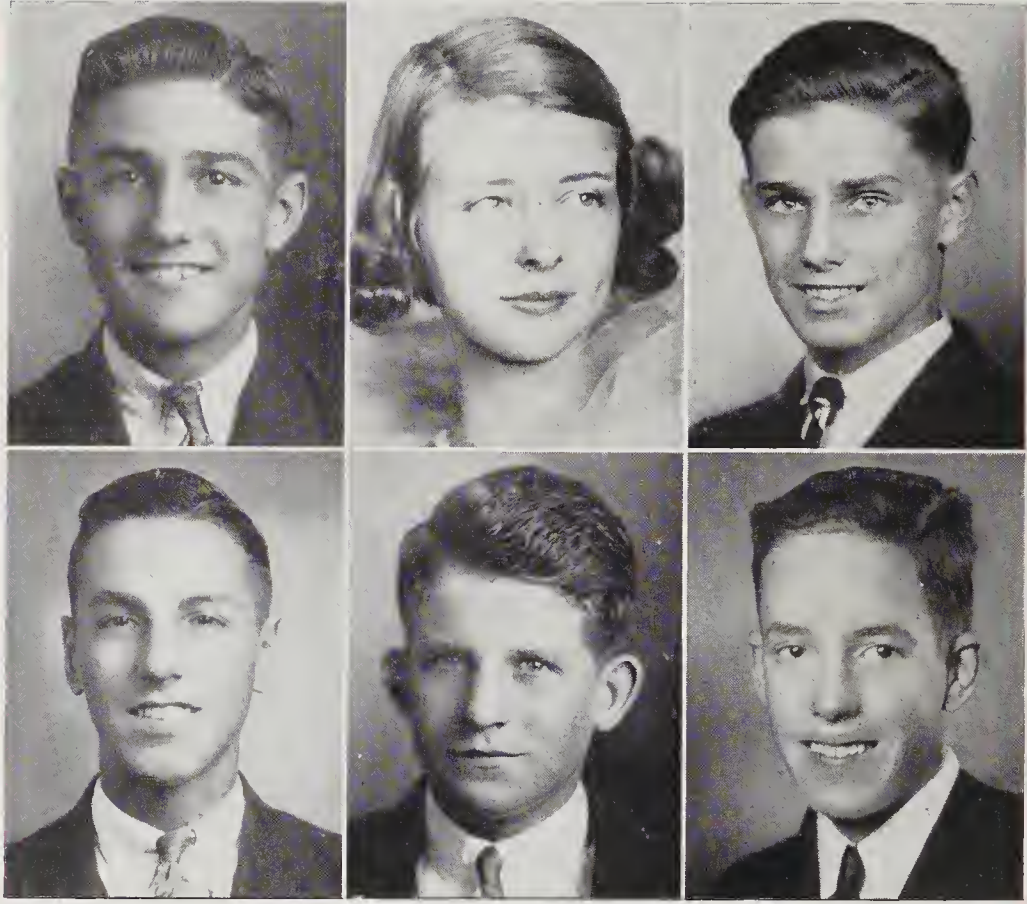
ALLEN STRANGE, *Secretary-Treasurer*

JANE KING, JOHN WOOD, *Student Council Representatives*



ORGANIZATIONS





JUDICIAL COMMITTEE

Advisers:

MISS FRANCES FORMY-DUVAL, MISS ELIZABETH MONTGOMERY, MRS. GEORGE LEGRAND

Members:

BOBBY GOLDBERG	<i>President of Student Body</i>
CYRUS HOGUE	<i>Recording Secretary</i>
JOE PINER	<i>Captain Traffic Squad</i>
JIM FRANK HACKLER	<i>Home Room Organization President</i>
WHIT BENTON	<i>Senior Representative</i>
VASHTI GORNT0	<i>Junior Representative</i>



STUDENT COUNCIL

Officers:

BOBBY GOLDBERG	<i>President of Student Body</i>
BOBBY BLEECKER	<i>Vice-President of Student Body</i>
CYRUS HOGUE	<i>Recording Secretary</i>
BILLY BROWN	<i>Corresponding Secretary</i>
LEWIS COLEMAN	<i>Treasurer</i>

Senior Representatives:

FRANK REYNOLDS, *President*

MIRIAM SOLOMON

LOUIS POISSON

Junior Representatives:

BILLY BROWN, *President*

BILLY PARKER

BETH SLOCUM

Sophomore Representatives:

STEVE PECK, *President*

ROBERT CALDER

GRACE SLOCUM

Freshman Representatives:

MARION WOODBURY, *President*

JANE KING

JOHN WOOD

MILDRED SNEEDEN, *Vice-President of State Student Council*

JOE PINER, *Captain of Traffic Squad*

JIM FRANK HACKLER, *President of Home Room Organization*



HOME ROOM ORGANIZATION

Officers:

JIM FRANK HACKLER *President*
 HARRY JAMES *Vice-President*
 VASHTI GORNT0 *Secretary-Treasurer*

Members:

AUGUSTA BANCK
 BILLY BEERY
 SAM BEHRANDS
 JEAN BERTRAM
 ELOISE BETHELI
 ANNIE MAE BOWDEN
 ALICE CALDER
 FRANCES CASTEEN
 BILLY CLENDENIN
 NORMA CROOM
 MARIA DAVIS
 LEON FUTRELL
 VASHTI GORNT0
 KATHERINE GRAY
 JIM FRANK HACKLER
 BETTY HINTON

ELOISE HONNETT
 LOUISE HOOPER
 L. H. HOUSTON
 HARRY JAMES
 WILLIAM JENKINS
 WILLIE JONES
 SAM JOSENHANS
 ROGER KIRK
 PETE KNIGHT
 TOM LYNCH
 BETTE LYTTON
 KITTY MCKOY
 JACK MARSHBURN
 JEAN MOYLAN
 JERRY NEWBOLD
 BILLY PARKER

STEVE PECK
 JANICE PICKARD
 DOUGLAS PREVATT
 CATHERINE RICHTER
 WALTER SHEFFIELD
 GWENDOLYN SIDBURY
 GRACE SLOCUM
 HAZEL SMITH
 LEON STEIN
 BILLY SUTHERLAND
 BETTY SWAIN
 BILLY THORNTON
 ALEX TRASK
 GERARD VERZAAL
 JAMES WALTON



TRAFFIC SQUAD

Advisers:

MISS VIRGINIA WALSH, MISS MYRA BARRON

Officers:

JOE PINER *Captain*
 JAY CASTEEN, JAMES WALTON *Assistant Captains*

Members:

STAFFORD BARR
 INEZ BORNEMAN
 HARRY BOWDEN
 ROBERT BUCK
 HARRIS BULLARD
 ALINE CARROLL
 ROBERT CARTER
 HELEN CURRY
 MABEL DEMPSEY
 ADELL EDWARDS
 ED FLORA
 ROBERT GRISSOM
 DALMAS HELMS

ERTLE HEWETT
 HERBERT HOUSTON
 L. H. HOUSTON
 MIKE JACOBS
 TRUETT KESTER
 ROBERT KING
 ANNIE MAE LANIER
 ROSA LEE LEONARD
 VERA MANNING
 JOHN MATHIS
 LAMAR MCIVER
 LENA MELTON
 EVELYN MINTZ
 JOHN MURRAY

TOM SKIPPER
 CHARLES RUARK
 C. G. SMITH
 FRED SMITH
 AGNES SOUTHERLAND
 NAOMI SOUTHERLAND
 RALPH WALTON
 JAMES VEREEN
 MARSDEN WARD
 DEMPSEY WATTS
 FRED WENBERG
 LILLIE BELLE WILKINS
 DELMA WILLIAMSON
 JOE WOLFE



LIBRARY CLUB

Officers:

VIVIAN ALLEN *President*
 MARY WHEELER *Vice-President*
 LEOLA EDWARDS *Secretary and Treasurer*

Advisers:

MRS. J. W. GRISE, MISS BARBARA EAKER

Members:

VIVIAN ALLEN	JANE GULLY	MARGARET PICKARD
MIRIAM BLANTON	MARY ELIZABETH HOUSTON	ADELAIDE ROSEBOROUGH
CATHERINE BRADSHAW	MARGARET HUNT	JEAN SMITH
JEANETTE BUSH	BERNICE LEVIN	MARY WHEELER
LEOLA EDWARDS	KATHLEEN LEWIS	HAROLD WILLIAMS

Library Monitors:

RAY ST. AMAND	DOROTHY GAYLOR	MARY ANN MCKEE
INEZ BAGGETT	DOROTHY HARRISS	MAY PRICE
JEAN BERTRAM	RUTH HOLMES	LOUISE ROBESON
LOTTIE HARRIS BRADLEY	MARY LONDON JAMES	MABEL ROGERS
JEAN BROUN	EVELYN KESTER	DOROTHY SNEEDEN
BETTY BRUCE	ANNA KING	JULIE SPRUNT
JUNE BUCK	LUCILLE LARKINS	CATHERINE TOOT
ELLA MAE BULLARD	CARLETTA LENNON	LOUISE TOOT
NORMA CROOM	REBA LYELL	CATHERINE WELSH
		ELIZA WOOTEN



N. H. H. S. DEBATING CLUB

Motto:

"Your Side, My Side, Both Sides."

Officers:

HARRY BOWDEN	<i>President</i>
EVELYN HORNE	<i>Vice-President</i>
BARBARA ALLEN	<i>Secretary-Treasurer</i>

Advisers:

MISS E. LOSSEN, MRS. T. T. HAMILTON, JR.

Members:

BARBARA ALLEN	EVELYN CONAWAY	EUNICE PATTEN
VEE VEE ALLEN	MARIE CONLY	LOUIS POISSON
CECIL APPLEBERRY	ROBERT CRAIG	FRANK REYNOLDS
JANE ELLEN BALDWIN	SYLVIA HALL	ADELAIDE ROSBOROUGH
BOBBY BLEECKER	DOROTHY HARRIS	GRAHAM RUSS
BILL BOLES	VIVIAN HIERS	DOROTHY SNEEDEN
HARRY BOWDEN	EVELYN HORNE	BILLY SUTHERLAND
ERNEST BULLUCK	ISRAEL LIPTON	JACOB TINGA
JEANNETTE BUSH	TOM LYNCH	BERNARD WARSHAUTR
ALICE CALDER	HARRIET MARSHBURN	BETSEY WEST
ROSCOE COLL	JULIA MEIGS	ELIZA WOOTEN
LEWIS COLEMAN	LURA MYERS	



CHEMISTRY CLUB

Purpose: To create interest in and broaden the knowledge of Chemistry.

Officers: WALTER SHEFFIELD, ALLAN MOORE, EDWIN DAVIS, BETTE LYTTON,
BOBBY STRANGE, ALICE CALDER

Adviser: MRS. R. H. WILLIAMS

Members:

BARBARA ALLEN	ROBERT HARDWICK	WINKIE MINCY	BETH SLOCUM
LAURENCE ANDREWS	VIVIAN HARRELL	ALLEN MOORE	MARY SLOCUM
INEZ BAGGETTE	JAMES HEIDT	SHELTON MOORE	MALON SMITH
ALVIS BALLARD	BETTY HENDERSON	EMILY MURRAY	NANCY SMITH
BUCK BARDEN	VIVIAN HIERS	LURA MYERS	THELMA SMITH
DORIS BATSON	BARRY HINNANT	JACK NEUER	DOROTHY SNEEDEN
BILLY BELLOIS	HELEN HOLMES	CAROLINE NEWBOLD	MILDRED SNEEDEN
TOM BRIGGS	EVELYN HORNE	JAMES NEWLAND	RUTH STANLY
SAMUEL BRISKIN	FOXY HOWARD	FRED O'KEEF	ERNEST STARNES
BILLY BROWN	EVELYN HOWE	ROSALIE OLIVER	BOBBY STRANGE
MARGARET BROWN	SUZELLE HOWES	ESTELLE OWEN	TOMMY SWAIN
WILBUR BRYANT	ALLAN HUBAND	JANICE PICKARD	HARRY SYMMES
ALICE CALDER	ALEX JANICKI	HEYWARD PIERCE	MARY THOMPSON
BETTY CONAWAY	LOUIS KERMON	MAY PRICE	PEYTON TOWNES
MARIE CONLY	EVELYN KESTER	FRANK REYNOLDS	JULIAN TUSH
FRANCES COUGHENOUR	BILLY KING	MARY ROBERTSON	TOM UNDERWOOD
EDWIN DAVIS	GERALDINE KING	EVELYN ROBINSON	GERARD VERZAAL
MABEL DEMPSEY	ROGER KIRK	ERNEST ROGERS	MARSDEN WARD
ALICE DILLON	ROSA LEE LEONARD	DOROTHY ROLAND	EVA WATSON
LEOLA EDWARDS	JACK LOUGHLIN	BETSEY ROPER	BILLY WEAKS
JOHN EVANS	AVERY LOWE	LAWRENCE ROSE	RANSEY WEATHERSBEE
GENE FONVIELLE	BETTY LYTTON	CHARLES RUARK	HAROLD WELLS
MAUDE FRYE	EDWARD MAXWELL	MARY B. SELL	BETSEY WEST
RAY FUNDERBURK	MARY MCARTHUR	WALTER SHEFFIELD	MARION WESTBROOK
JULIAN GODWIN	GEORGE MCFARLAND	RALPH SHIMER	JIMMIE WILLIAMSON
DOUGLAS GOWER	GERALD MEDD	DAVID SIDBURY	DOLORES WILLIS
VIRGINIA GROTTGEN	MORRIS MERRITT	JAMES SIMMONS	JOHN WREDE
JIM FRANK HACKLER	MARIAN MILLER	JAMES SISTRUNK	



GLEE CLUB

Director:

MR. ALBERT BROWN

Officers:

BUCK BARDEN	<i>President</i>
BILLY PARKER	<i>Vice-President</i>
ANNIL BOET	<i>Secretary-Treasurer</i>

Members:

CECIL APPLEBERRY
 BUCK BARDEN
 MARGARET BECKER
 LILY MAE BLAKE
 ANNIE BOET
 ELSIE MAE BRIGGS
 HELEN BRINSON
 BILLY BROWN
 HORTENSE BROWN
 RAY BROWN
 JUNE BUCK
 HARRISS BULLARD
 JEANETTE BUSH
 JACK CANADY
 EVELYN CAPPS
 ARTHUR CRAIG
 STEPHEN CROWLEY
 MARION DARDEN
 FLORENCE DAVIS
 MARTHA DOSHER
 JOHN EVANS

VALYNE FALES
 HORTENSE FINKELSTEIN
 DONALD FISHER
 ELIZABETH HARDWICK
 ROBERT HARDWICK
 JAMES HEIDT
 BETH HIGHSMITH
 MARY ETHEL HOWELL
 JACK HOLMES
 MARY JACKSON
 BILLY JENKINS
 CAROL JONES
 OWEN JONES
 KATHERINE KELLY
 LOUIS KERMON
 HAZEL KING
 JANE KING
 MIRIAM MCINTIRE
 JULIEN MCKEITHAN
 TRUMAN MAGILL
 LEMOUNTTE MLIER

GEORGE MITCHELL
 ELEANOR MOORE
 DUDLEY MOTE
 MARVIN MURPHY
 BEAMAN NORMENT
 BILLY PARKER
 BETTY PERDUE
 JOE PINER
 VIVIAN PITTMAN
 ROBERT PRIDGEN
 JENNIE SUE RAYNOR
 MARIE REGISTER
 MAE CLAIRE RICH
 JAMES ROBERTSON
 AGNES SOUTHERLAND
 MADFLYN SOUTHERLAND
 SARAH STANTON
 BRADFORD TILLERY
 JACOB TINGA
 CAROLYN TUSCH
 JEANNETTE WETTIG



VOCATIONAL CLASSES

Instructors:

FRANK JUDISH

GEORGE W. WEST



INDUSTRIAL EDUCATION

Two courses in industrial education were offered at New Hanover High School this year. One is to prepare for entrance into the different woodworking trades, the other for the metal trades.


In the woodworking course the fundamental tool processes used in carpentry, mill practice, maintenance mechanic, and furniture making were presented. Boys were instructed in the building of tables and cabinets, some for individual use, others on production basis. In the making of these projects boys developed construction skill, learned to read plans, computed the cost of materials and learned to operate wood-working machinery.

In metal work, boys made clamps, hammers, punches, Jack screws, chisels, bolts, metal containers, and cornice work. In the making of these projects they learned such construction skills as forging, lathe practice, cutting of threads, grinding, drilling, filing, sawing, riveting, shaping and soldering. They learned to make pattern layouts, to interpret and follow plans, and to estimate cost of materials.

These courses were very definitely vocational in nature. Specific trade skills were developed. It was purposely planned to present skills and trade knowledge that can be used as an entrance to many trades rather than for a single trade. When a boy finishes this course he will not be a journeyman worker, but he will have received instruction which will make it easier to secure entrance to the trade of his choice. Because of this skill and knowledge acquired, he will be more likely to succeed after employment.

Each course was planned so that a boy could complete the work offered in two years. Each class was run daily for three hours.

For the mechanical minded boy these courses offer a wonderful opportunity. Every minute spent in one of these classes proved to be interesting and profitable.





DER DEUTSCHE VEREIN

Motto: Gemutlichkeit

Adviser:

MISS IDA SCHNIREL

Officers:

ALLIE MOORE	<i>President</i>
JAMES ALDRIDGE	<i>Vice-President</i>
BILLY BELLOIS	<i>Treasurer</i>
MARGARET MAHLER	<i>Secretary</i>

Mascot:

HESTER COX STRUTHERS, II

Members:

JAMES ALDRIDGE
 BILLY BELLOIS
 JOHANNA BOET
 JEAN BROUN
 BILL BROWN
 J. T. BROWN
 EMMA DUNLEA
 McLaurin EDWARDS
 JOHN FUNDERBURG
 BETTY HARPER

ELIZABETH JURGENSEN
 AVERY LOW
 MARGARET MAHLER
 MORRIS MAHN
 JACK MARSHBURN
 GERALD MEDD
 ALLIE MOORE
 CLIFF MORRIS
 BILLY PARKER
 JANICE PICKARD

VIVIAN PITTMAN
 THEONE ROPER
 EMILY SEITTER
 CARLYLE SMITH
 LOUISE STRUTHERS
 TOM UNDERWOOD
 VICTOR VALENTINE
 BEVERLY WALTON
 LOUIS WELLS
 CONRAD WESSELL
 GLENWOOD YOPP



NATIONAL HONOR SOCIETY

Purpose:

To develop character, scholarship, leadership, and service.

Officers:

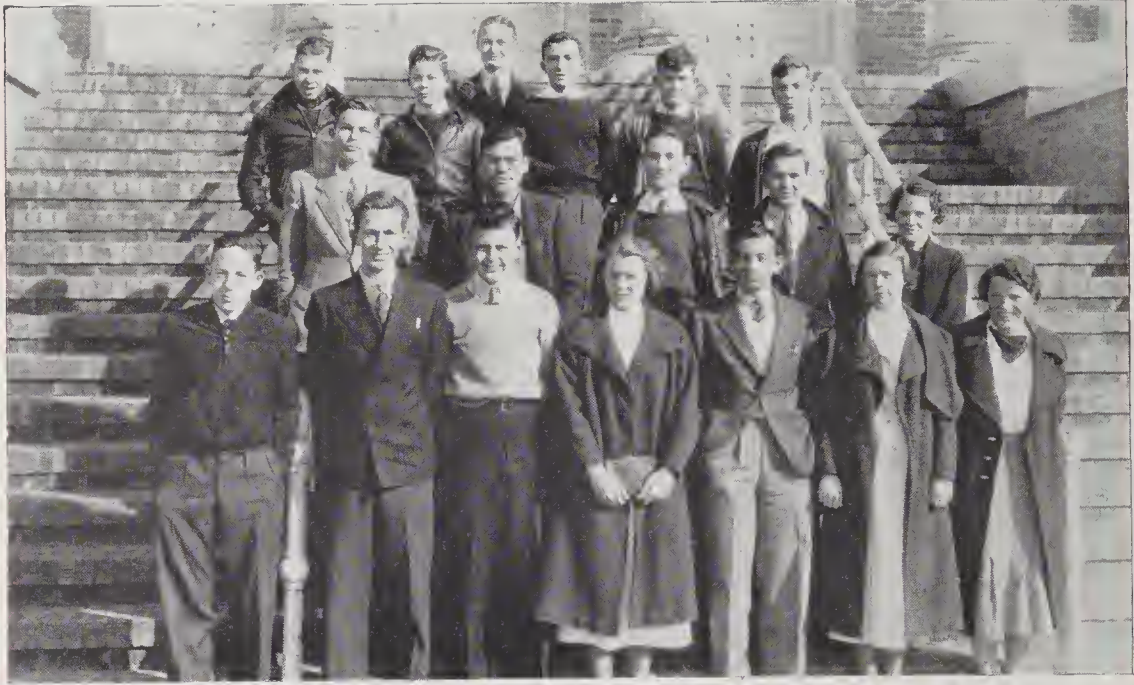
PEGGY SNOW	<i>President</i>
MILDRED SNEEDEN	<i>Vice-President</i>
MARY PALMER WILSON	<i>Secretary</i>
LEOLA EDWARDS	<i>Treasurer</i>

Advisers:

Mrs. R. H. WILLIAMS, Mrs. ELIZABETH HARTZOG

Members:

VEE VEE ALLEN	SYLVIA HALL	EUNICE PATTEN
JANE ELLEN BALDWIN	VIVIAN HARRALL	FRANK REYNOLDS
JOHANNA BOET	DOROTHY HARRISS	MABEL ROGERS
SAMUEL BRISKIN	DOROTHY HEWETT	MARY SLOCUM
ALICE CALDER	VIVIAN HIERS	NANCY SMITH
GERALDINE CARROLL	SUSANNE HOGUE	DOROTHY SNEEDEN
HERBERT CODINGTON	EVELYN HORNE	MILDRED SNEEDEN
MARIE CONLY	MARY ELIZABETH HOUSTON	PEGGY SNOW
EVELYN CONAWAY	KATHLEEN JOHNSTON	MIRIAM SOLOMON
EDNA DIXON	ROSALIE LEONARD	HALLIE TOWNES
LEOLA EDWARDS	ISRAEL LIPTON	GENE TRASK
LILA BELLE FOUNTAIN	HARRIET MARSHBURN	BETSY WEST
SOPHIE GMYTRUCK	ELIZABETH MAZUR	MARY PALMER WILSON
MARTHA HALL	JULIA MEIGS	DAISY LEE WOODBURY



EDISON SCIENCE CLUB

Officers:

LOUIS CARROLL *President*
 ROSCOE COLE *Vice-President*
 GERALDINE CARROLL *Secretary-Treasurer*

Adviser:

MRS. T. T. HAMILTON, JR.

Members:

CECIL APPLEBERRY
 WHIT BENTON
 JOHANNA BOET
 GERALDINE CARROLL
 LOUIS CARROLL

WOODUS CARTER
 ROSCOE COLE
 LEWIS COLEMAN
 ROBERT CRAIG
 BOBBY JONES
 ISRAEL LIPTON

TOM LYNCH
 DONALD RIVENBARK
 DAVID SIDBURY
 PEGGY SNOW
 BILLY SUTHERLAND
 JACOB TINGA



O. HENRY LITERARY SOCIETY

Aim:

To improve English and to encourage good reading.

Officers:

FRANK REYNOLDS	<i>President</i>
NANCY SMITH	<i>Vice-President</i>
MILDRED SNEEDEN	<i>Secretary-Treasurer</i>
JULIA MEIGS	<i>Program Chairman</i>

Advisers:

MISS HATTIE LOU SMITH, MRS. JANE DILL WILLIS

Members:

BARBARA ALLEN	MARGARET HAYNIE	MARY SLOCUM
AUGUSTA BANCK	HELEN HOLMES	DOROTHY SNEEDEN
JANE ELLEN BALDWIN	RUTH HOLMES	MILDRED SNEEDEN
SIGMUND BEAR	ALINE HUFHAM	JEAN SMITH
BETTY BOGLI	JANE LEWIS	NANCY SMITH
JEAN BROUN	KATHLEEN LEWIS	PEGGY SNOW
ALICE CALDER	HARRIET MARSHBURN	MILLER SNOW
FRANCIS CAPLAN	MARTHA McCAIG	LILLIAN SOUTHERLAND
EVELYN CHRISTENSEN	JULIA MEIGS	MARY CARR SOUTHERLAND
MARIE CONLY	NELL OLIVER	WAYNE SPENCER
BILLY CRAIG	FRANK REYNOLDS	ESTELLE STOKELY
EUGENIA CRAFT	DAN RETCHIN	JACOB TINGA
MARIA DAVIS	MABEL ROGERS	LOUISE TOOT
JOYCE DUNHAM	DOROTHY ROLAND	HELEN WEATHERSBEE
MARGARET EDDINGS	ADELAIDE ROSBOROUGH	BETSEY WEST
INEZ FULBRIGHT	FRED SCHERR	SUSANNE WESTBROOK
RAY FUNDERBURK	EMILY SEITTER	DELORES WILLIS
ROBERT HARDWICK	KATHLEEN SKIPPER	MARY PALMER WILSON
DOTTY HARRISS	GRACE SLOAN	SOPHIE XANTHOS



LATIN CLUB

Officers:

MARY SLOCUM *President*
GRACE SLOCUM *Vice-President*
LOUIS POISSON, JR. *Secretary-Treasurer*

Advisers:

MISS MARY LATHROP, MISS MARTHA STACK



NATURE CLUB

Purpose:

To increase knowledge in the scientific world.

Officers:

GLADYS SNEEDEN *President*
 STEVE PECK *Vice-President*
 RAY BRINDELL *Secretary-Treasurer*

Advisers:

MRS. ELIZABETH HARTZOG, MISS REBECCA WRIGHT

Members:

RAY BRINDELL	BETH HIGSMITH	STANLEY REHDER
STAFFORD BARR	ELIZABETH JONES	CATHERINE RICHTER
MARIE BURQUIN	LOUISE JACKSON	JAMES RANEY
MAUDE BULLUCK	MARY KING	JAMES STOKELY
ELISE MAY BRIGGS	ELLA MAE KETCHUM	GRACE SLOCUM
ELIZABETH BLAND	CLYDE LEONARD	GRACE SLOAN
MARY CHRISTIAN	BETTY LEWIS	BUREN SIDBURY
LULA COLE	LE MOUNTTE MEIER	BLANCHE STANLEY
ARTHUR CRAIG	JACK MARSHBURN	ESTELLE STOKELY
MYRTLE CROOM	BILLY McCLAMMY	GLADYS SNEEDEN
ROBERT CALDER	KITTY McKoy	HELEN SAUNDERS
JOYCE DUNHAM	ED McCONNELL	CLYDE STROUP
BILLY DAVIS	JESSE NEWBOLD	LOUIS SHRIER
JAMES DAVIS	JERRY NEWBOLD	WILLIAM SCHWARTZ
ALTON FALES	ANN PRESSON	MARGARET SINCLAIR
JOHN GORMAN	NICK PONUS	KATHERINE TOOT
FRANCIS HEARN	DOUGLAS PREVATT	CAROLINE TUSH
BETTY HINTON	STEVE PECK	ELISE TRULOVE
ALINE HUFHAM	EDGAR PINER	CONRAD WESSELL
CHARLES HILL	MARY ELIZABETH PADRICK	RUPERT WORTHINGTON
EDNA HUCKS	ELIZABETH ROGERS	HELEN WEATHERSBEE
		NATHAN XANTHOS



DIZZY DOZEN AND SNAPPY SIX

Adviser:

MISS IDA SCHNIREL

Officers:

DOROTHY HARRISS	<i>President</i>
MATTIE PARKER	<i>Vice-President</i>
SUSANNE HOGUE	<i>Secretary</i>
DAISY LEE WOODBURY	<i>Treasurer</i>

Members:

DIZZY DOZEN

JANE ELLEN BALDWIN
 ALICE DILLON
 DOROTHY HARRISS
 VIVIAN HIERS

SUSANNE HOGUE
 MARJORIE LANCASTER
 JANE LEGRAND
 MATTIE PARKER

MILDRED SNEEDEN
 MIRIAM SOLOMON
 DAISY LEE WOODBURY
 ELIZA WOOTEN

SNAPPY SIX

ELIZABETH BOWDEN
 MARY CORBETT

VASHTI GORNTO
 BETTY HENDERSON

BETTE LYTTON
 EMILY MCCALL



DRAMATIC CLUB

Adviser:

MISS RUTH DAVIS

Officers:

EDNA BALES	<i>President</i>
HELEN ANDREWS	<i>Vice-President</i>
CAROL JONES	<i>Secretary</i>
DORIS ANDREWS	<i>Treasurer</i>
BETTY PERDUE	<i>Historian</i>

Members:

ANNETTE ABELOVITZ	SYLVIA HALL	DOUGLAS PREVATT
DORIS ANDREWS	DOROTHY HARRISS	ADELAIDE ROSEBOROUGH
HELEN ANDREWS	PEARL HORNE	BUREN SIDBURY
CECIL APPLEBERRY	CAROL JONES	WESSEL SPOONER
INEZ BAGGETTE	FRANCES KING	BILLY SUTHERLAND
WINIFRED BAGWELL	VIRGINIA KINGSBURY	WALFORD THOMPSON
EDNA BALES	MIRIAM MCINTIRE	CAROLYN TUSCH
ANNIE MAE BOWDEN	EUNICE PATTEN	BEVERLY WALTON
MAUDE FRYE	BETTY PERDUE	ARTHUR XANTHOS
JANE GULLEY	SYLVIA ANN PRESSON	



Officers:

First Semester

DAISY LEE WOODBURY
 MILDRED SNEEDEN
 EMILY MCCALL
 BETH SLOCUM

President
Vice-President
Secretary
Treasurer

Second Semester

MARY SLOCUM
 VIVIAN HIERS
 MARTHA MCCAIG
 SALLYE JOSEY

Purpose:

To create, maintain and extend throughout the school and community high standards of Christian character.

Slogan:

Clean speech, clean scholarship, clean athletics, clean living.

Motto:

Character through service.

Members:

BARBARA ALLEN
 JANE ELLEN BALDWIN
 ALICE CALDER
 MARY CORBETT
 MARIA DAVIS
 ALICE DILLON
 VASHTI GORNTO
 DOROTHY HARRISS
 BETTY HENDERSON
 VIVIAN HIERS

SUSANNE HOGUE
 SALLYE JOSEY
 MARY KING
 JANE LEGRAND
 NANCY LYNCH
 MARTHA MCCAIG
 EMILY MCCALL
 JULIA MEIGS
 CAROLINE NEWBOLD
 EUNICE PATTEN

MARY ROBERTSON
 BETH SLOCUM
 MARY SLOCUM
 MILDRED SNEEDEN
 PEGGY SNOW
 LOUISE STRUTHERS
 HALLIE TOWNES
 DAISY LEE WOODBURY
 ELIZA WOOTEN



BOYS' HI-Y

Purpose:

To create, maintain, and extend throughout the school and community high standards of Christian character.

Members:

ALPHA CHAPTER

PRESTON BELLAMY
 BILLY BROWN
 KEDAR BROWN
 WILBUR BRYANT
 ERNEST BULLOCK
 ROBERT CALDER

ROSCOE COLE
 ROBERT CRAIG
 CLAUDE DAVIS
 JOE HOOPER
 HARRY JAMES
 TOM LYNCH

BILLY PARKER
 OSCAR PECK
 LOUIS POISSON
 BILLY SUTHERLAND
 BILLY THORNTON
 JACOB TINGA
 RANSEY WEATHERSBEE

MINORA CHAPTER

BILLY ALLEN
 WHIT BENTON
 DAN CAMERON
 HERBERT CODINGTON
 LEWIS COLEMAN
 RAY FUNDERBURK
 CYRUS HOGUE

WALTER JAMES
 MORRIS MERRITT
 WALTER PARSLEY
 STEVE PECK
 FRANK REYNOLDS
 CHARLES RUARK
 WALTER SHEFFIELD

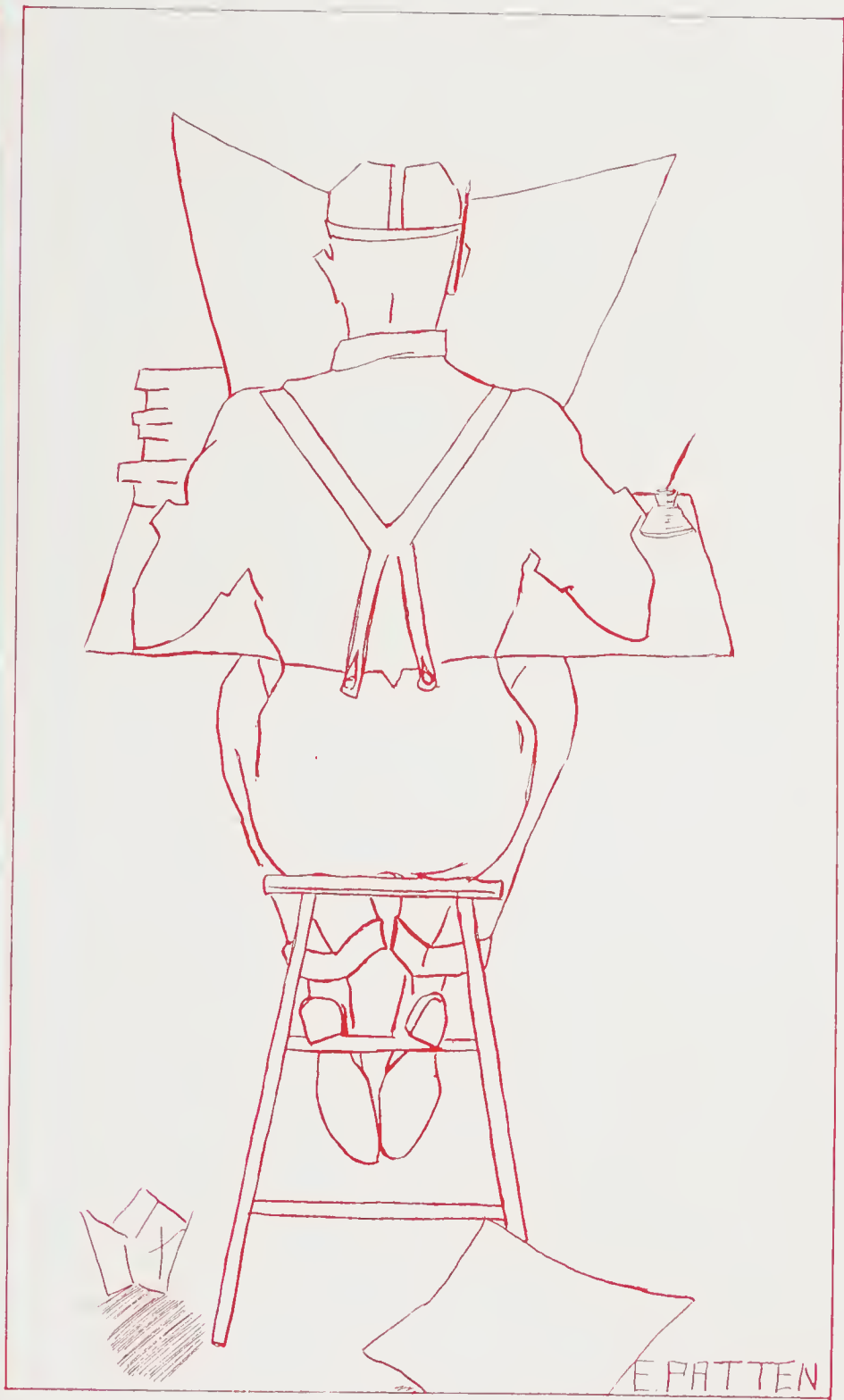
BUREN SIDBURY
 BOBBY STRANGE
 HARRY SYMMES
 BONNER THOMASON
 DAN THOMASON
 PEYTON TOWNES



ARCHERY CLUB



SCRIBBLERS' CLUB



PUBLICATIONS



THE WILDCAT

Editorial Staff:

BILLY SUTHERLAND, JR.	Editor-in-Chief
TOM LYNCH	Managing Editor
DOROTHY HARRISS	Feature Editor
JULIA MEIGS	Assistant Feature Editor
WALTER SHEFFIELD	Sports Editor
MIRIAM LEWIS	Assistant Sports Editor
SUSANNE HOGUE	Exchange Editor
LOUIS POISSON	Club Editor
HERBERT CODINGTON	Art Editor
ALICE CALDER	Proof Reader
BOBBY STRANGE	Alumni Editor
JIMMY WOMMACK	Photographer

Reporters:

ALLISON ALDERMAN	ROBERT CALDER	RAYMOND MURRAY
CECIL APPLEBERRY	VASHTI GORNTA	ROSALIE OLIVER
EDNA BALES	ANNE M. GREEN	MILDRED SNEEDEN
SAM BEHRENDIS	JANE LEWIS	HARRY SYMMES

Publications



THE WILDCAT

Business Staff:

BILLY ALLEN *Business Manager*
 RANSEY WEATHERSBEE *Assistant Business Manager*
 PEYTON TOWNES *Advertising Manager*
 ROSCOE COLE *Circulation Manager*

FRANCES COUGHENOUR SILVEY ANN PRESSON ADELAIDE ROSEBOROUGH
 JANICE PICKARD MARGARET PICKARD

Advisers:

MISS IDA CARDWELL, MISS ANNIE ROYAL SAUNDERS

Publications



THE HANOVERIAN

Editorial Staff:

WHIT BENTON	<i>Editor-in-Chief</i>
JACOB TINGA	<i>Assistant Editor</i>
EUNICE PATTEN	<i>Assistant Editor</i>
BARBARA ALLEN	<i>Assistant Editor</i>
DAISY LEE WOODBURY	<i>Feature Editor</i>
JANE ELLEN BALDWIN	<i>Assistant Feature Editor</i>
VIVIAN HIERS	<i>Assistant Feature Editor</i>
SALLYE JOSEY	<i>Art Editor</i>
HALLIE TOWNES	<i>Assistant Art Editor</i>

Publications



THE HANOVERIAN

Business Staff:

HARRY JAMES	<i>Business Manager</i>
ALLICE DILLON	<i>Assistant Business Manager</i>
ISRAEL LIPTON	<i>Assistant Business Manager</i>
OSCAR PECK	<i>Assistant Business Manager</i>
WALTER JAMES	<i>Junior Class Representative</i>

Publications

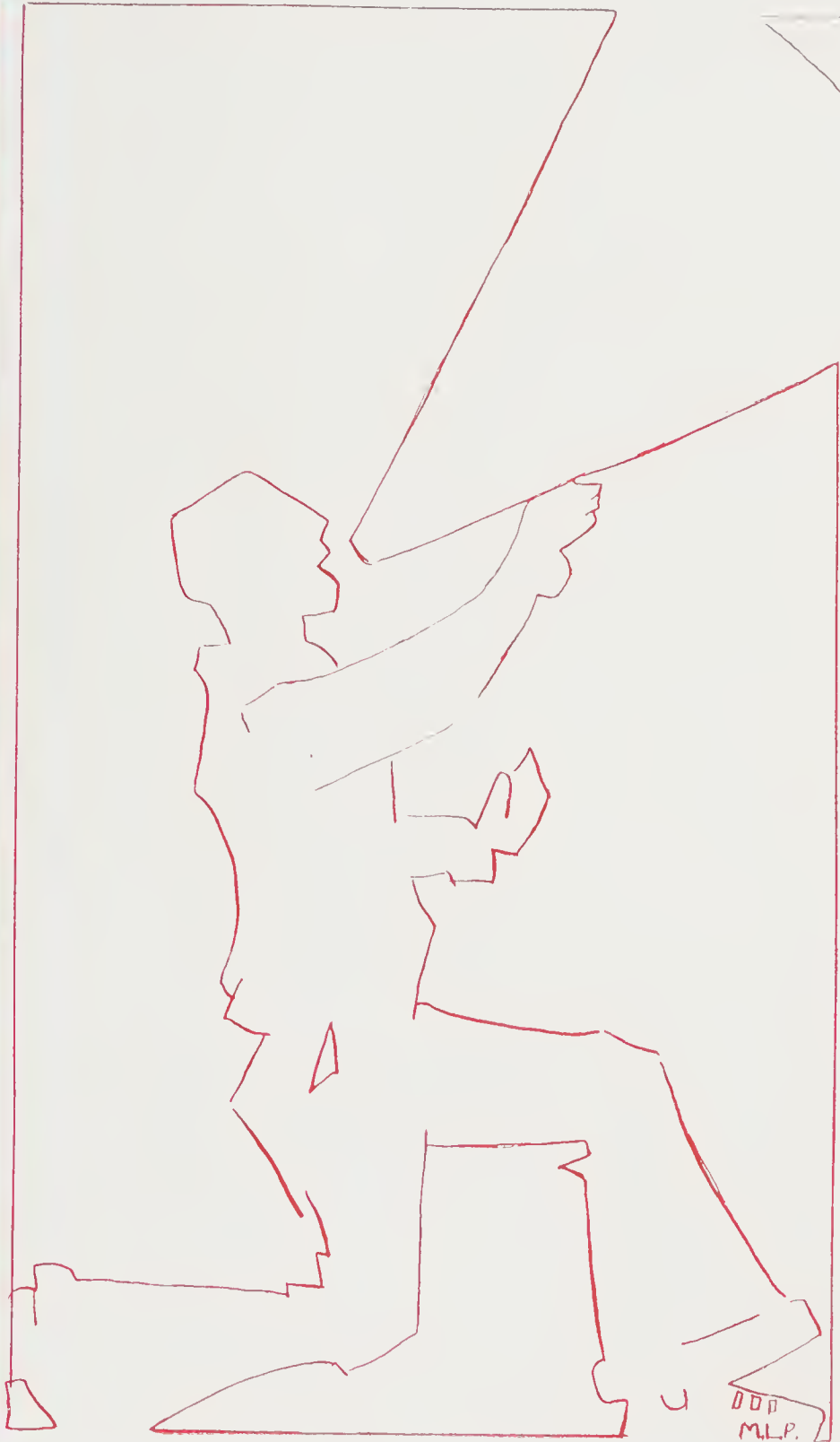
BELIEVE IT OR NOT



HANOVERIAN STAFF FIFTEEN YEARS AGO

Reading left to right, Hallie Townes, Harry James, Daisy Lee Woodbury, Barbara Allen, Jacob Tinga, Eunice Patten, Vivian Hiers, Whit Benton, Alice Dillon, Jane Ellen Baldwin

A THLETICS



BASKETBALL

GIRLS

MAGGIE PIGFORD . . . *Captain*

Coaches

MISS RUTH MCINTIRE

MRS. E. G. TILLET

Team:

EDITH BRIDGES
GERALDINE CARROLL
LEOLA EDWARDS
HELEN HART
CARRIE MAE HENDERSON
NORMA HENDERSON
MYRTLE HORTON
EDNA HUCKS
ALINE HUFHAM
EMILY LEE
MAGGIE PIGFORD
JOSIE ROMEO
VERNA MAE SANDERS
LOUISE SHAUL
PAULINE TIENKEN
MARY WILLIAMSON



BOYS

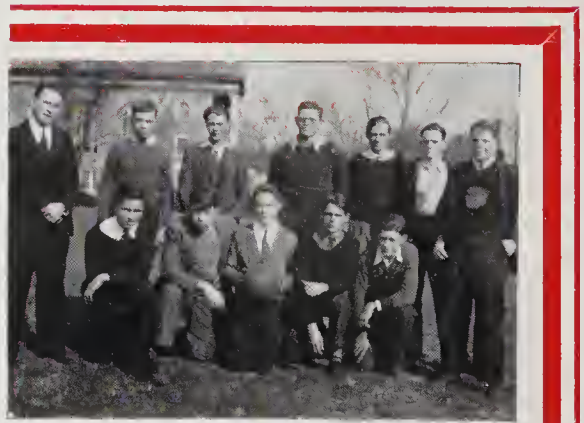
RAY BLAND *Captain*

TOM UNDERWOOD . . *Manager*

R. ROBINSON *Coach*

Team:

RAY BLAND
WARREN BRASWELL
R. A. BURNETT
CLAUDE DAVIS
JOHNNIE EDENS
JULIAN MCKEITHAN
JOHN MERRITT
HAYWOOD PIERCE
NORMAN WOODCOCK



Athletics

BOXING TEAM

MORRIS MERRITT . . . *Captain*
CHARLES MURRAY . . . *Manager*
ELMER TARRELL . . . *Coach*

Team

MALCOLM BRYAN
BLN DANIELS
HAROLD DANILLS
CHARLES EDENS
ED FLORA
BOBBY GOLDBERG
JACK GRIFFITH
L. H. HOUSTON
FOXY HOWARD
BILLY LAND
MORRIS MERRITT
JIMMY SHIMER
CARLYLE SMITH
EDWIN SNIPES
ROBERT STROUP
JIMMY WALKER
JOE WALKER
DELMA WILLIAMSON



FOOTBALL TEAM

MORRIS MERRITT . . . *Captain*

Managers:

CHARLES MURRAY
TOM UNDERWOOD

Coaches:

E. TARRELL
R. ROBINSON

Members:

WARREN BRASWELL
R. A. BURNETT
FRANCIS CAPLAN
CLAUDE DAVIS
CHARLIE EDENS
JOHNNIE EDENS
BOBBY GOLDBERG
GILLIAM HORTON
L. H. HOUSTON
OSCAR KING
MORRIS MERRITT
DUDLEY MOTE
ADRIEN RHODES
A. B. RIGGS
CHARLES RUARK
WALTER SHEFFIELD
JIMMY SHIMER
RALPH SHIMER
EDWARD SNIPES
LOUISE WELLS
DELMA WILLIAMSON



Athletics

GIRLS' TENNIS TEAM

EMILY LEE *Captain*
MARY E. ROBINSON . . *Manager*
GLENWOOD BLOMME . . *Coach*
DORIS BRITTAIN, 5
MAUDE BULLOCK, 6
MARY ELIZABETH JOHNSON, 3
EMILY LEE, 2
BETTY LEWIS, 1
MIRIAM LEWIS, 4



BOYS' TENNIS TEAM

HAROLD WELLS *Captain*
JERRY NEWBOLD . . . *Manager*
GLENWOOD BLOMME . . *Coach*
ROBERT AUTRY, 6
GENE FONVIELLE, 5
BEN JACKSON, 4
WALTER JAMES, 1
JAMES SLOAN, 3
HAROLD WELLS, 2



Athletics

GYM CLASS

Instructor:

MRS. E. G. TILLET



ROSA MAE BUCK
ELLA MAE BULLARD
PHARESE CARR
CHRISTINE CARTER
DOROTHY GAYLOR
NAN GRENIER
CARRIE MAE HENDERSON
NORMA HENDERSON
ESSIE HOLDEN
MYRTLE HORTON
EDNA HUCKS
CAROLINE JOHNSON
EDNA KLUTZ
BETTE LYTTON
KITTY MCKOY
MARGARET MAHLER
SABRE REECE
KATHERINE RICE
JOSIE ROMEO
NANCY SEAWELL
LOUISE SHAUL
IRIS SLY
PAULINE TIENKEN
DORIS WHITLEY
MARY WINNER

CHEER LEADERS



BUCK BARDEN
NED FROWNFELTER
BOBBY JONES
BETTE LYTTON
MIRIAM MCINTIRE
WINIFRED MINCY
LEONA PARKER
MATTIE PARKER

Athletics

COACHES



MISS RUTH McINTIRE
MRS. E. G. TILLET
MR. RELMAN ROBINSON

MR. ELMER TARRELL
MR. GLENWOOD BLOMME
MR. HOWARD McDONALD

EATUARES



SUPERLATIVES



Most Original
SALLYE JOSEY
TOM LYNCH



Friendliest
MAUDE FRYE
WALTER SHEFFIELD



Most Athletic
EMILY LEE
DUDLEY MOTE



Laziest
MARIE REGISTER
CORBETT STOVALL



Craziest
JANE LE GRAND
BOBBY BLEECKER



Most Optimistic
BILLY SUTHERLAND
ALICE CALDER



Biggest Flirt
DOROTHY HARRISS
PETER KNIGHT



Most Nonchalant
MARJORIE LANCASTER
GENE TRASK



Most Bashful
ROSALIE OLIVER
EDDIE MATHIS



Most Attractive
SUSANNE HOGUE
WALTER SHEFFIELD



Cutest
DAISY LEE WOODBURY
CLAUDE DAVIS



Most Outstanding
BOBBY GOLDBERG
MILDRED SNEEDEN



Best Dressed
MARJORIE LANCASTER
ISRAEL LIPTON

SUPERLATIVES



Best Looking
DOLORES WILLIS
BOBBY GOLDBERG



Most Popular
LILA BELLE FOUNTAIN
WALTER SHEFFIELD



Best All-Round
MILDRED SNEEDEN
WALTER SHEFFIELD



Most Intellectual
PEGGY SNOW
ISRAEL LIPTON



Class Baby
ESTHER AUSTIN
BILL BOLES



Most Influential
MILDRED SNEEDEN
HARRY JAMES



Wittiest
MIRIAM McINTIRE
BOBBY BLEECKER



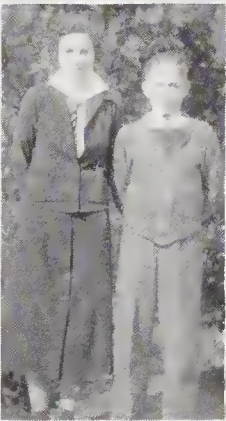
Best Natured
BOBBY BLEECKER
MAUDE FRYE



Most Dependable
MILDRED SNEEDEN
HARRY JAMES



Most Dignified
MARY SLOCUM
LEWIS COLEMAN



Most Mischievous
MAUDE FRYE
BILL BOLES



Biggest Politician
MIRIAM SOLOMON
BILLY ALLEN



Most Independent
MILDRED SNEEDEN
BILLY ALLEN





S. JOSEPH

CLASS HISTORY

Graduation from high school marks the end of one period in a person's life and the beginning of another. As we finish high school, we realize that this is the end of a part of our lives. But we must turn from reminiscing and look with eager eyes toward the future. As we approach graduation from this school, which has been the center of our lives for four years—four short years—we like to look back and think what has been done. This class history will be a record of those things that we have accomplished.

As I think of it now, the day we entered high school as freshmen doesn't seem more than a week ago. So many memories crowd my mind as I think of our freshman year. Our most important job was to keep out of the way of the upper-classmen and not to ask too often, "Where is room 118?" We were just little fish in a big pond those days. We realized, however, that each year we would gain recognition, and that our time for leadership would come. We elected Warren Quarles president of the class and he proved to be an able leader. We just sat by, watched, listened, and waited for the time when we would be sophomores. Toward the end of our first year, our beloved principal, Dr. W. O. Hampton, resigned. Many questions arose in our minds concerning the new principal. We could hardly wait for the summer vacation to be over, we were so desirous of seeing him. If we had had any fears, Mr. Fred W. Greene dispelled them on the very first day of our sophomore year.

The next year found us with a genuine case of "Sophomoritis". We became very conscious of our increasing importance. We elected Jim Frank Hackler to lead us that year. We began to be represented in the clubs and our members were on programs in chapel from time to time. We were given tasks that no mere freshman would have been assigned. As time went on, we were not the only ones who thought well of the sophomores; the other classes began to notice us. The only clouds over the bright horizon of our sophomore year were the deaths of Miss Emma Martin, a beloved English teacher and founder of the O. Henry Literary Society, and Eleanor Wilson, our classmate. At the end of our sophomore year, Mr. Greene resigned. Our new principal, Mr. T. T. Hamilton, Jr., has proved himself a capable and popular successor.

We really began to count in school life when we became juniors. We elected Mildred Sneden, the only girl president we had, to lead us that year. By that time the seniors





called us by name, asked us to work on committees, and were real friends to us. We not only felt important then, but we also felt a new responsibility for our school. We entered into school athletics and had many members in attendance at all the games. Many of our classmates entered the sports and we had outstanding members of the football, basketball, tennis, and boxing teams. We presented a junior play entitled "The Hoodoo" which was a great success both as to production and finances. Shortly thereafter, we had the Junior-Senior Prom in honor of the seniors. We believe that everyone who attended that affair will hold it in memory for years to come. Several of our members had positions on the paper staff that year and carried their assignments well. Last but not least, the climax to a very successful year came when twenty-nine of our members were elected to the National Honor Society.

The vacation between the junior and senior years was the longest that we experienced. At last it was over and the day finally came when we could go up the front steps. We will never forget the day. That was the grandest privilege a senior ever had.

During our senior year, we gave a play called "The Patsy" which was as great a success as the junior play had been. In the month of February, the National Honor Society selected thirteen more seniors to membership, making forty-two seniors in all. At the end of the year, the juniors gave us a prom that was as gay and unforgettable as the one the year before had been. Although graduation is the climax of high school life, it is the other events that linger in our minds. The proms, plays, class day, honor day, and all the other joyous activities stand out as "red letter" days in our high school life.

This last year, our members have dominated the club memberships. At the beginning of our senior year, we were told that we were the outstanding class of the school and that we were to set the example for the other classes. With Frank Reynolds as our president, we accepted the challenge seriously, and we hope that we have served well.

All the seniors were glad and proud the day the annual was dedicated to Miss Emma Lossen, a popular history teacher whose interest in the pupils has manifested itself in many ways and whose class room manner has always been the friendliest. We wish to express our love and appreciation not only to Miss Lossen, but to all our teachers and to Mr. Hamilton who has been our guide and friend along the paths of learning.



PROPHECY

Hello, everybody! This is your announcer, BILLY SUTHERLAND, speaking from station A-I-R in the new zeppelin, ALMERIA CONWAY. We will now switch on our television sets, and ROSALIE OLIVER will give you a glimpse of some old friends encountered on her recent trip.

Presto! We are now in Paris, France, where I, ROSALIE, am at the moment. It is time, however, for me to catch my plane, so I hail a taxi, only to find that the genial driver is none other than FOXY HOWARD. Racing through the streets of Paris, I am surprised when I catch a glimpse of a familiar face. Upon slowing down, I recognize CECIL APPLEBERRY, the renowned scientist who lives in an attic overlooking the Seine. Then, looking across the street at the WALTER PARSLEY clinic, I cannot believe my eyes when Dr. FRANK REYNOLDS saunters down the walk. He is talking earnestly to his assistant, Dr. HERBERT CODINGTON, who seems to think FRANK "has got something there" by the way he listens. But look! Who should come tripping down the steps of the clinic but the much-in-demand nurses, MARY SLOCUM, ELEANOR CLARK, and FRANCES KING.

At a word, FOXY and I are off again, turning down the new HUBERT HUFHAM Avenue and then into the GERALD MEDD airport. Clutching my MARGIE LANCASTER-LOUISE STRUTHERS fashion magazine, I step out of the taxi among a group of handsome porters who are none other than WILLIAM AINSWORTH, MEBANE BREEDEN, BILLY BOLES, and CLARENCE BURTON, while GREER CRAIG, ROBERT DYKE, WILBUR HARRELL, EUBON GORDY, EDWARD FLORA and NORMAN EVENSEN dash up to take the luggage of SOPHIA GYMTRUK, the glamorous movie star.

Relieved of my bags, I make my way over to the plane, THE C. K. COUNCIL. I am greeted by the charming stewardess, SUSANNE HOGUE, who, they say, makes this particular plane thrice popular.

I wade through the crowd as hastily as possible and suddenly come face to face with the pilot, NATHAN HASKETT, who is nonchalantly smoking one of the new CLYDE KING cigars. On turning, I experienced a thrill when I see the co-pilot, JIMMIE WOMMACK, who is the designer of our plane, and near him a distinguished passenger, CHEMIST ALICE CALDER.

Upon taking my assigned seat in the ship, I glance over into the opposite one and recognize DOROTHY HEWETT, the ace buyer for the ISRAEL LIPTON-BERNARD WARSHAUER Department Store in New York.

The trip is a comfortable one, what with the Super-Swell VICTOR VALENTINE heaters, and the JIMMY WALKER Sublime Soft Seats at our disposal, to say nothing of the delicious JANE WEATHERSBEE caramels, which are passed.

Our ship lands at the WESSEL SPOONER airport in Vienna, Austria, and it is a relief to indulge in a few B. D. WALKER spiced cigarettes to give us a lift.

I get into a taxi and motor over to my hotel, the MARY DANIEL CARR. As I walk into the lobby, down "Peacock Alley", and over to the desk, with all the

dignity I can muster, what is my surprise when more of the genius of the class of '37 pops up! Oh, do I wilt! Standing before me with a flashy smile is BOBBY GOLDBERG, the owner and host of the hotel, and behind him, BENNY DLUGIN, EDWIN DAVIS, THAD GROTTGEN, and VERNON HILL, all suave members of the Staff of Directors. But that isn't all; as I turn, LOUIS KERMON and GEORGE McFARLANE join forces to take my baggage to the lift, and stepping on it, I perceive that OSCAR KING is at the controls. At the door of my room there is an imposing welcoming committee, composed of NINA PETERSON, THEONE ROPER, ELIZABETH SCHIPP, and SARAH KATHERINE HUGGINS. Whew! Finally settled in my room, I commence to contend myself with the restful vista, when suddenly HARRY JAMES, VIRGINIA GROTTGEN, PETER KNIGHT, and ELLEN ROSE DUNCAN come rushing in to ask if I'd like to buy one of the new RUDOLPH WILLIAMS motorcycles, streamlined by MAGGIE PIGFORD.

At dinner that night I recognize the head cigarette girl as NELL CARPENTER, with ALMA BLAKE and SOPHIA BURGESS "doing their stuff" as her assistants. Later on in the floor show, I am in a dither when IRIS CHERRY sings the old favorite, "When the Moon Comes Over the Mountain." I clap without restraint when VIVIEN HIERS and EUNICE PATTEN do a dance and song number with EUNICE singing "Pardon My Southern Accent, Pardon My Southern Drawl."

The next day I take the LESLIE CARTER Limited for Marseilles. When ALLIE MOORE takes my ticket, I am surprised, but when SAM CHENNIS follows, calling out stops, I AM surprised.

I board my ship, the BONNIE CLEMENSON, at Marseilles, and with some of the smart MARY ELIZABETH HOUSTON creations in my trunk, I am bound for the good old U. S. A.

Is it a thrill or is it when I meet MARTHA HALL, VIVIAN HARRELL, RAYMOND MURRAY, and ROBERT BAME on shipboard? It seems that RAYMOND is writing a new book called "The Taming of TROY FISHER and ROSCOE COLE", while MARTHA has just been touring Europe with the OSCAR PECK-JOHN RICH Flea Circus. More fun! But, unfortunately, I am compelled by a feeling of seasickness to rush to my stateroom when I bump into JENNIE SUE RAYNOR, MYRTIS POLK, and ELOISE PADRICK, all likewise afflicted. We forget our discomfort, however, when we strike up a heated discussion on the advisability of the new GRAHAM RUSS-CHARLES RUARK Television Restrictive Area Bill, and the DOCK RUSHING-JOHN REHDER Airline-Highway Bill. Finding myself unable to "add anything more to what has already been said," I tear myself away to read my new DOROTHY HARRISS Personality magazine, one of the publications of the JANE ELLEN BALDWIN-LEOLA EDWARDS Company.

On the first page an advertisement reminds me that I must get some of that wonderful HERBERT BOST tooth paste to go with my new JOHN MATHIS toothbrush. The next advertisement informs me how fast the EDITH BRIDGES Swing Frocks are being sold. It is remarkable the way the HERMANN BOEMANN-SBUCK BARDEN Company is simply giving away its SAM BRISKIN Sports clothes





and its RICHARD COOK hardware products! But in spite of these enthralling advertisements, I am delighted to turn to a short story by SYLVIA HALL, entitled, "CLAUDE DAVIS Comes Home," and to find that the heroine of the story is none other than little CATHERINE WELSH. I am none the less delighted when I come across the outcome of a huge DAVID SIDBURY soap contest in which everyone has been competing. ADELE SMITH wins a lovely little WYATT SMITH Round-about Plane, while ELBERT SYKES and ALENE TODD both receive a charming ED COTTON television set put out by the JOHANNA BOET Television Company.

But here we are in the New York harbor! In the excitement of seeing land, I do not notice at first that there are many passengers who have not appeared on deck before. Among these exclusives is the famous actress, HELEN ANDREWS, who causes my gaze to be detoured from the land to her. She is gorgeous in her JEAN BROUN Especially Dyed Furs; and by the way, her curly, dark hair glistens, I feel sure she must use that effective MARGARET EVERETT Shampoo Preparation. Her nails, too, are beautifully done in the new ALENE HEWETT tangerine shade of MYRTLE HOBBS nail enamel.

What a thrill it is to traipse down the gang-plank wearing orchids sent by the DONALD RIVENBARK-THOMAS RICH Clothiers Company, and to have ESTHER CHERRY and DALLY RAY BROWN meet me in a KITTY HOLTEN limousine, chauffeured by JOHN GRIFFITH! It is no less a treat, however, to arrive at Hotel CARRIE MAE HENDERSON and to find a MABEL ROGERS Triple Powered Auto-Plane at my disposal. With a joyous step, something like the new LILLIE HARRELL-HERMAN EVERETT dance step, I get into it, and speed down to the huge EVELYN HORNE Girl Scout Building, where MAUD FRYE is Head Director. After seeing MAUD, BETTY HARPER, MABEL GARRIS, and MARY GREER, I am "wore out" and am making a bee-line for my hotel before we (or they) can "gab" any more.

Walking along on the new VANCE BOUNDS Guaranteed Cork Sidewalks the next day, I am surprised to hear a sudden, loud, and distinct guffaw, followed by a real royal rumpus. Looking across the street and up on the ROBERT CRAIG Roof Garden, which is just above the LEWIS COLEMAN Booterie, I perceive DUDLEY MOTE, LLOYD MEMORY, and JAMES NEWLAND singing at the top of their lungs for the enjoyment (?) of the lady guests. Their song is the popular "Helen Hart Harmony" by TROY JOHNSON, the clever song-writer of the century.

Wondering at the taste of some people, I meander on, only to be confronted with another familiar face around the corner. The face is that of DOROTHY JENNE, who is the efficient secretary of President FREDERICK PARNELL of the ARNOLD PADRICK-CLIFF MORRIS Cellophane Company. Leaving DOROTHY on the threshold of the MARY GUYTON-HELEN HOLMES Insurance Company, I hurry on down the street until I come to a policeman, of whom I want to ask a question. The policeman, however, turns out to be none other than our old friend JOE HOOPER (you remember the guy who knew all the answers?! After learning from JOE where the new C. G. SMITH-JAMES WALTON Art Gallery is, I scoot



LAST WILL AND TESTAMENT

We, the members of the Senior Class of New Hanover High School of Wilmington, North Carolina, most of whom we think are of a sound mind, on this, the fifth day of June, nineteen hundred and thirty-seven, A. D., do herewith, hereby, and hereunder set forth our last will and testament:

To those that may follow in our footsteps there is little that we may offer other than our good wishes; we might presume to say that we leave OPPORTUNITY; but opportunity was ours, was for those who sent before us, and will be for those who come after us; so little need we say to you concerning opportunity. We might bequeath to thee a heritage of advice, but as we in our years of near maturity look back, we find that little of advice have we heeded. In passing, this we do know: we have had great opportunity; we have had worthy advice. A little of both we have grasped and heeded. We only wish that we might have taken more of both. In this closing chapter of our efforts at New Hanover High School we depart, not however, with feeling of regret, but rather with aspirations to get out into the world and use this basic training and experience in our future endeavors, whether they be in higher education, business, or home life.

Passing members have appeared and offered codicils as follows:

I, Billy Allen, do bequeath to thee, Cyrus Hogue, my political ability.

I, James Wommack, leave my photographic ability to Nelson Calhoun, my faithful stooge.

I, Hallie Townes, do will my sweet, loving, and gentle ways to Mary Robertson, in the hope that she will eventually become the dignified Senior that I took such pleasure in being.

I, Dorothy Harriss, bequeath my famed flirtatious ways to thee, Edna Bales, who in addition to your own talent, should soon become the siren of the school.

I, Mattie Parker, leave my pep, poise, and personality to Betty Lytton.

I, Robert Goldberg, leave to Billy Brown my executive ability, feeling confident that it will not be abused.

I, Harry Copp James, will my carefree, happy-go-lucky nature to Walter James.

I, Dudley Mote, leave my deepest sympathies to Ned Frownfelter and hope that he, too, will graduate from this institute of learning after six years.

I, Marjorie Lancaster, bequeath my sophistication to Mary Corbett.

We, Joe Hooper and Barbara Allen, leave our talkative ways to Lucy Clark and Martha McCaig and our sympathies to their teachers.

In witness whereof, I, the President of the Class of 1937 do approve of and subscribe to the last will and testament as set forth above.

Signed: THE SENIOR CLASS
NEW HANOVER HIGH SCHOOL

By: FRANK REYNOLDS, *President*

Witnesses:

VIVIAN HIERS,
DAISY LEE WOODBURY,
HARRY C. JAMES,
WHIT BENTON.



The Patsy

BY

BARRY CONNERS

Produced by special arrangement with Samuel French

Characters

Bill Harrington	Lewis Coleman
Mrs. Wm. Harrington	Helen Andrews
Grace Harrington	Susanne Hogue
Patricia Harrington	Dottie Harriss
Billy Caldwell	Bobby Goldberg
Tony Anderson	Dudley Mote
Sadie Buchanan	Eunice Patten
Francis Patrick O'Flaherty	Louis Poisson
"Trip" Busty	Bernard Warshauer

Synopsis of Scenes

- Act I: Livingroom of the Harrington Home. Evening.
 Act II: Same—Next Monday Evening.
 Act III: Same—The Friday Night Following.

Properties: Courtesy of Wilmington Furniture Co.
 Directors: Misses Eaker, Lathrop, Jones, Mr. Dowd.

AN APPRECIATION

The staff of THE HANOVERIAN wishes to take this opportunity to express its appreciation to Mr. Bernard Solomon of the Wilmington Stamp and Printing Company and to Lila Belle Fountain and Cornelia Walker for their valued assistance in the preparation of this second volume.

The staff also wishes to thank Mr. T. T. Hamilton, Jr., for his cooperation which has made the editing of this annual possible.



ADVERTISING



Harcourt & Co.

Incorporated

Manufacturing

Stationers - Engravers - Jewelers

Louisville, Kentucky

We Specialize in All Lines of
High Class Photography

For Portrait Miniatures, or
Copies, Call On Us

"Photographs Live Forever"

Adams' Studio

Phone 190

209 N. 2nd Street

CONGRATULATIONS



Featuring Exclusive

Departments for

Boys and Girls

NEVER A COMPROMISE
WITH QUALITY

Julien K. Jaylor
WILMINGTON N.C.

GOOD CLOTHES

Correct Haberdashery



THE INSURED
**Peoples Building &
Loan Association**

112 Princess Street

Offices Foster-Hill Realty Co.

Wm. M. HILL, Sec.-Treas.

"Established 1906"

E. W. Godwin's Sons

Manufacturers of

LUMBER

DEALERS IN BUILDERS' SUPPLIES

EVERYTHING TO BUILD THE HOUSE

Phones 562 - 563 - 564



Sweet Milk - Buttermilk - Chocolate Milk - Acidophilus Milk
Lactic Acid Milk

FROZEN SUNSHINE
VITAMIN "D"
ICE CREAM

White Ice Cream and
Milk Co.

Phone 680

H O M E S

Attractive and
Comfortable
Cost Less Than Rent

Unusually Favorable Opportunities
for Building and Owning a Home

WRIGHTSVILLE
BEACH,
OLEANDER,
AUDUBON

For Information Call or See

Hugh MacRae & Co.

Phone 841

SNEEDEN'S
Wilmington Cycle
Company

Since 1914
114 Market Street

Rubin's
SHOE SHOPS

Rubinize Means "Economize"

Telephone Connections

CONGRATULATIONS

SENIOR CLASS OF 1937

Ideal Laundry & Dry Cleaners

"All the Name Implies"

Phones 29-30

202-04 South Front Street



Gregg Bros.
DISTRIBUTORS

Dixie Cafe and Grill

"Where Friends Meet"

FOUNTAIN SERVICE

JOHNS-MANVILLE PRODUCTS

Paints
Building Supplies
Stokers
Coal - Wood

North-Smith Coal
Company

Sunshine Laundry

Incorporated

M. G. VOLK, Mgr.

"Let a Little Sunshine In"

Foy, Roe & Co.

Distributors of

DEPENDABLE
MERCHANDISE

Saunders' Drug
Store

108 North Front Street

CAROLINA
ROYAL & BIJOU
THEATRES

Fulfilling Every Entertainment Need
of the Wilmington Public With
An Appeal to All Classes

Independent Ice
Company

Coal and Ice

Phones 68 and 94

Wilmington Iron
Works

Engineers, Founders, Machinists
and Boilermakers

Gray Iron, Brass and Semi-Steel
Castings

Electric and Acetylene Welding

Marine and Mill Supplies

To the Graduating Class of 1937
We Wish Every Success

Nitrate Agencies
Company

FERTILIZERS

Wilmington, N. C.

Wilmington Cold
Storage Corp.

COMPLIMENTS OF
The Grocerteria

—THREE STORES—

GRADUATION IS BUT A GATEWAY TO
LIFE'S OPPORTUNITIES

Good habits, determination, willingness to work, with thrifty
ambitions assure success. A good rule to follow: Join

THE MILLION DOLLAR
Carolina Building and Loan Association

"Member Federal Home Loan Bank"

C. M. Butler, Pres.

W. A. Fonvielle, Sec.-Treas.

W. D. Jones, Asst. Sec.-Treas.

Roger Moore, Vice-Pres.

J. O. Carr, Atty.

Pearsall & Company

Sell Best Grade
Fertilizers
For All Crops

Hughes Bros.



Extends to You Her Compliments and
Best Wishes for the Future

We Have at Your Disposal a Complete
Line of Merchandise—May
We Serve You in the Future?

*“Where Your Children’s Children
Will Do Their Shopping”*

High Grade Seeds for
Every Purpose

T. W. Wood & Sons
SEEDSMEN

317-319 North Front Street

Phone 780

Spirittine Chemical
Company

Louis Hanson, President

Wilmington, N. C.

Sole Manufacturers of

“Spirittine Insecticides”
and “Termite Extermination”

57 Years of Continuous Operation

P. O. Box 233

Phone 2078

Block's

S H I R T S

Southland
Manufacturing Co.

Wilmington, N. C.

FOR MANY YEARS

K R E S S

STORES

Have Specialized in Exclusive
School Requirements

BIG VALUES - - - Little Prices

“WATCH KRESS
WINDOWS”

Everything for the
Sportsman

Queen City Cycle
Company

PICKARD'S

E. C. Moore & Co.

WHOLESALE SCHOOL SUPPLIES
NOTIONS AND NOVELTIES

Full Line Bathing Suits and Beach
Novelties

313 North Front Street

Alexander Sprunt & Son, Inc.

Wilmington, N. C.

Lipton's Department Store

Wilmington, N. C.

Hotel Cape Fear

Offers Attractive Rates
to

New Hanover High School
Students for

Luncheons

Dinners

Banquets

PHONE 2720

For Real Service With
Economy, See

Rose Ice Co.

ICE - - COAL - - WOOD

Keith Brothers, Inc.

WHOLESALE

Pillsbury Flour

Larro Feeds

Grains

Carts - Farm Implements - Wagons

Coal - Fertilizers

Wilmington, North Carolina

For Fun and Healthful Play
SPORTING GOODS

A Complete Line at
**Sears, Roebuck
& Co.**

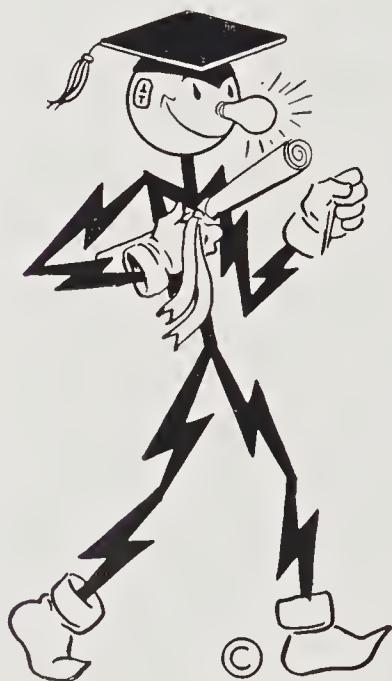
JOHN DEERE

Power and Horse Drawn
Machinery

Sold By

**Hall, Foy Farm
Implement Co.**

17 S. Second Street
Wilmington, N. C.



Electricity has an increasingly important part in your success. If you wish to succeed you must make use of electricity—it is so important that in most cases the cost of electric energy scarcely enters into the question because nothing else will do the work at all. Even where costs must be considered, electricity is, in general, less expensive.

“How you make use of my services affects your success in life to a far greater degree than most any other factor!” says

REDDY KILOWATT

Tide Water Power Company

**CONGRATULATIONS
CLASS OF '37**

Royal Bakery
Incorporated

Just Across the Street

Echo Farm Dairy

SAFE MILK

Phone 4302

Albert F. Perry

INSURANCE - - BONDS

Orton Building

**Snow's
Esso Servicenter**

3rd and Market Sts. Phone 9207

ONE STOP

Esso Products and Service

Atlas Tires and Batteries

Complete Line of Accessories

Founded 1876

THE WILMINGTON STAR-NEWS

Morning, Evening and Sunday

COMPLETE STATE AND NATIONAL NEWS

—Over the—

FULL LEASED WIRES OF THE ASSOCIATED PRESS

Watch The Star-News

—For—

High School Sport News

**Broadfoot Iron
Works**

Incorporated

"Always On the Job"

**MacMillan Buick
Company**

Wilmington, N. C.

BUICK - - PONTIAC

For Anything in the Way of Flowers

Will Rehder

FLORIST

Oldest and Largest in Eastern
Carolina

**Atlantic Tobacco
Co., Inc.**

315 Nutt Street

Wilmington, N. C.

CONGRATULATIONS

And Every Good Wish for Your Continued Success

NORTH CAROLINA LINE, Inc.

WILMINGTON - NORFOLK - BALTIMORE

DEVELOPING NORTH CAROLINA WATERWAYS

AND

THE PORT OF WILMINGTON

**The Springer Coal
Company**

Whiting Stoker

Burns Coal Automatically

**Success
To the Class of '37**

Tinga Nursery

Castle Hayne



THIS ANNUAL

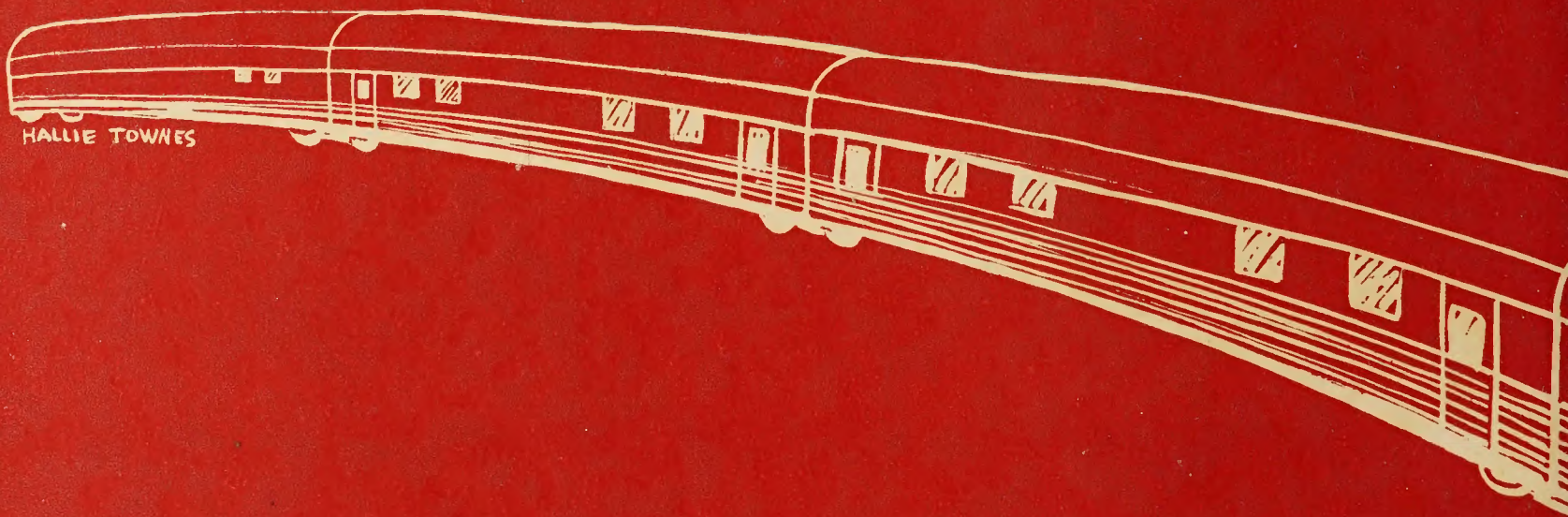
Completely produced in our Plant.

It is a practical example of our
ability to handle fine quality work.

Wilmington Stamp & Printing Company

The Home of *Good* Printing

Wilmington, North Carolina



HALLIE TOWNES

107.13
Ex Libris



