

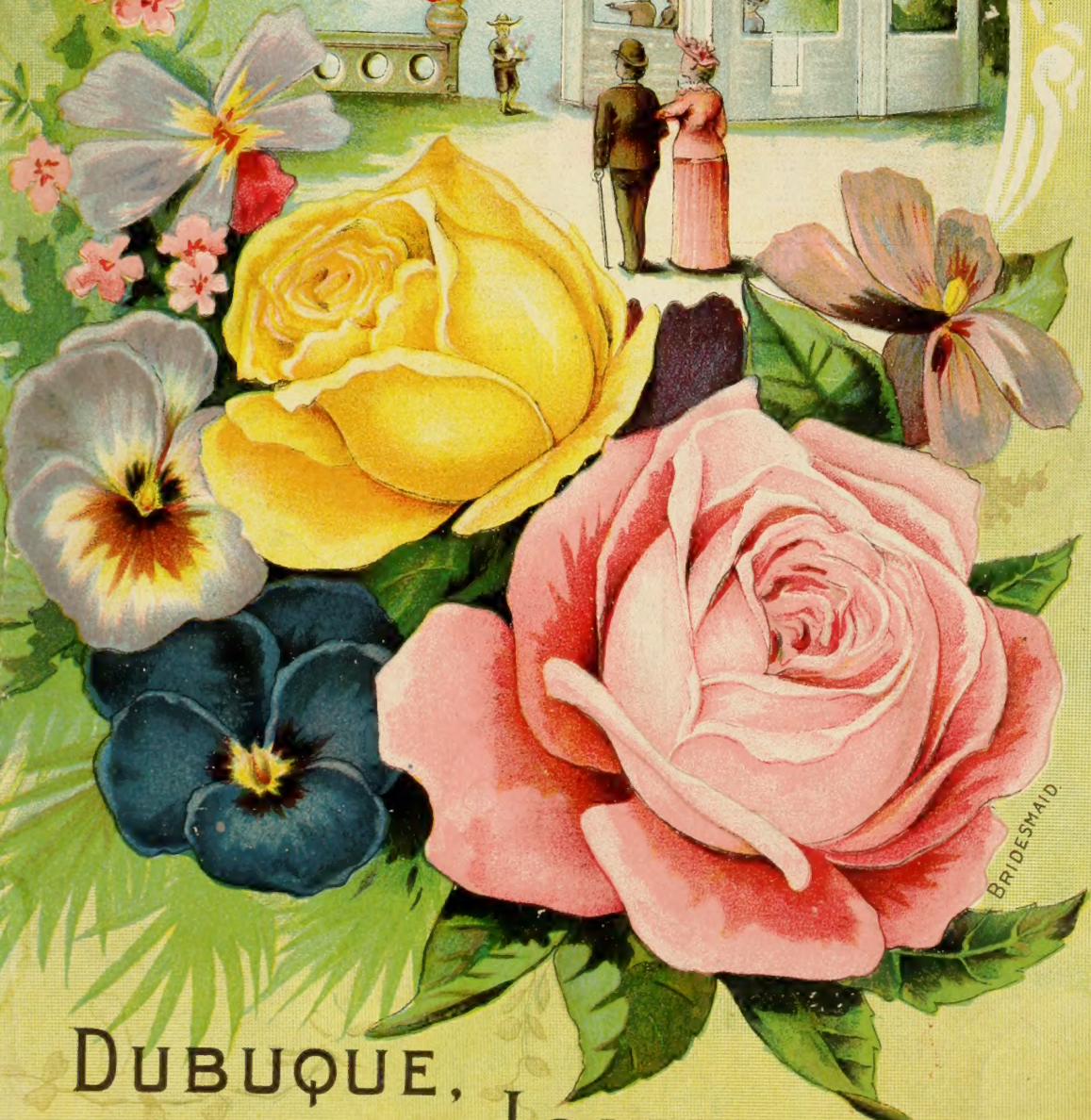
Historic, archived document

Do not assume content reflects current scientific knowledge, policies, or practices.

62.27
ANNALS, MAY '95 11/2/06

HARKETT'S FLORAL NURSERY!

1894



BRIDESMAID

DUBUQUE,
IOWA.

SPECIAL OFFER.

Five Grand New (1893) Cannas for	\$ 1.00
Four Elegant New (1893-4) Roses for	1.00
Six Magnificent New (1893) Chrysanthemums, including the "Queen" for	1.00
Six New "Bruant" Geraniums for	1.00
Twelve New (1893-4) Double and Single Geraniums for	2.00
One "Bridesmaid" Rose, one "Sunset" Rose, and one "Madam Crozy" Canna for50
(See Colored Plates on Outside of Cover.)	
Two Sets of Same and One Chrysanthemum for	1.00

INDEX.

How to Order, Terms, Etc.	Page 8	General Collection	Pages 9 to 46
Liberal Inducements to Clubs	" 8	Plant Novelties and Specialties for 1894	" 1 to 7
Dollar Collections	" 7	Cut Flowers and Floral Designs	" 48

	PAGE.		PAGE.		PAGE.
Azalea	9	Datura Cornucopia	24	Montbretia	38
Achania	9	Dahlias	24	Musa	38
Acalyphia	9	Deutzia	24	Musk	38
Amaryllis	9	Dracæna	24	Nasturtium	38
Agæthea	9	Euonymus	24	Nierembergia	38
Ageratum	10	Echeverias	25	Oxalis	39
Ampelopsis	10	Eucharis	25	Oxalis, Ortgiesii	39
Alternanthera	10	Eulalia Japonica	25	Oleander	39
Abutilon	10-11	Euphorbia	25	Otaheite Orange	39
Aloysia	11	Epiphyllum	14	Palms	39
Agave	11	Ferns	25	Pandanus	39
Agapanthus	11	Farfugium	25	Pæonies	39
Apios Tuberosa	11	Feverfew	25	Passiflora	39
Aspidistra	11	Ficus	25	Pepperoma	39
Anthericum	12	Freesia Alba	25	Petunias, Double	40
Akebia	12	Fuchsias, Double	26	Phlox	40
Ackyanthus	12	Fuchsias, Single	27	Pilea	40
Asparagus	12	Fuchsias, New	5-6	Primula Obconica	40
Astilbe	12	Funkia	33	Primrose	40
Aristolochia	12	Gloxinia	27	Primrose, Mexican	40
Alyssum	12	Geraniums, New	6	Pansies	41
Altheas	47	Double	28-30	Plumbago	41
Begonia, Rex	12	Single	30-31	Roses, New	6
Begonia, Flowering	13	Double Ivy-Leaved	31-32	Roses, Everblooming	42-44
Begonia, Hybrid Rex	14	New Hybrid Ivy-Leaved	32	Noisette	44
Begonia, New Hybrid Rex	14	Gold and Silver-Leaved	32	Polyantha	44
Begonia, Tuberos Rooted	14	Bronze	32	Hybrid Perpetual	44-45
Begonia, New Bedding	14	Scented	32	Hardy Climbing	45
Bignonia	14	Tri-Color	32	Moss	45
Brugmansia	14	Lady Washington	32	Richardia	45
Cannas	1-3	Gladiolus, General Collection	33	Reineckia	45
Cannas, New	1-2	Gladiolus, LeMoines	33	Russelia	45
Cactus	14	Heliotrope	34	Sambucus	45
Cineraria Hybrida	14	Hibiscus, Chinese	34	Saxifraga	45
Cissus Discolor	14	Hibiscus, Hardy	34	Salvias	45
Cobea	14	Helianthus, Sunflower	35	Scilla	45
Calla Lily	15	Hydrangea	35	Sansviera	46
Calla, Dwarf	15	Honeysuckle	36	Spider Lily	46
Calla, Spotted	15	Hyacinthus, Candidans	36	Tigridia	46
Calla, Black	15	Hyacinth, Water	36	Tradescantia	46
Cestrum, Night Bloom. Jasmine	15	Ivy, English or Irish	36	Tritoma	46
Caladium	16	Imantophyllum	36	Tuberose, Double	45
Caladium, Fancy	16	Impatiens	36	Violets	46
Carnations	16-17	Impatiens, New	36	Verbenas	46
Carnations, New	6	Jasmine	36	Vinca	46
Coreopsis Lanceolata	17	Jasmine, Night Blooming	36	Valotta	46
Cycus Revoluta	17	Lantana	36	Wigelia, Variegated-Leaved	46
Cyclamen	17	Linum	36	Wistaria	46
Cuphea, Cigar Plant	17	Lilies	37	Yucca, Hardy	46
Cyperus	17	Lily of the Valley	37	Yucca, Tender	46
Chrysanthemums	18-21	Lilacs	37	Bedding Plants	47
Chrysanthemums, New	4-5	Lobelia	37	Summer Bulbs and Tubers	47
Coleus	22	Lycopodiums	38	Fall Bulbs	47
Coleus, New	22	Madeira Vine	38	Hardy Shrubs	47
Clematis	23	Marguerite	38	Hardy Climbers	47
Clematis Paniculata	23	Milla Biflora	38	Hardy Plants, Bulbs and Tubers	47
Cinnamon Vine	23	Moon Flower	38		

CHOICE PREMIUM PLANTS.

WITH EVERY \$2.00 ORDER,

A Beautiful Japanese Chrysanthemum or Canna.

WITH EVERY \$3.00 ORDER,

A New Chrysanthemum or New Rose.

WITH EVERY \$5.00 ORDER,

A New Crozy Canna and a New Rose.

WITH EVERY \$10.00 ORDER,

Two New Cannas, two New Roses, two New Chrysanthemums.

All other orders in proportion.

Ten per cent. discount on cash orders over \$1.00 received before April 10th.

Reference: First National Bank, of Dubuque.

LOWER EXPRESS RATES—A reduction of 20 Per Cent. is now in force on Plants, Bulbs, Etc.

ERRATA—Manettia Vine, 10c each. Hardy Orange (Tri-Foliata) 25c each.



New French Large Flowering OR CROZY CANNAS.

COLUMBIAN MEDAL COLLECTION.

The following splendid varieties were Medal Winners at the World's Fair.

Average height of most of the varieties is given.

Alphonse Bouvier—(5 to 7 feet)—One of the grandest Cannas yet introduced. A luxuriant grower in rich ground, attaining a height of 6 to 7 feet. In color it is a rich, brilliant crimson, approaching scarlet when first opening, changing to a deep, dazzling crimson as the flowers develop. It has a peculiar habit of drooping the flower cluster as the second flowering shoot pushes above the first, and the shoot blooms three or four times in succession; a large plant frequently having thirty to forty large brilliant clusters at one time. Foliage rich, deep green. 25c each; \$2.50 per dozen.

Capitaine P. de Suzoigne—Of the finest yellow spotted varieties yet introduced. Its flowers are very large, with broad rounded petals produced in large heavy spikes. The ground color is of a rich, canary yellow, while the entire flower is faintly spotted with cinnamon red in such a manner as to intensify the yellow. Its habit of growth is entirely distinct from all others, the foliage being very similar to that of the Abyssinian Banana, and of a light green color. It attains a height of about 5 feet. So far the best yellow to contrast with the deeper shades in the Crozy Cannas. 25c each; \$2.50 per dozen.

Explorateur Crampbell—Flowers very large and finely formed; color rich crimson, faintly splashed with a deeper shade. One of the very best dark flowers. Vigorous grower. 30c each; \$3.00 per dozen.

Egandale—This is another of last season's introductions, and is especially valuable as a bedding variety, having dark bronzy foliage similar to the old Indica varieties, but with large, bright, cherry red flowers of good shape and substance. It is of compact uniform growth, attaining a height of 4 feet, and is considered one of the very best dark foliage varieties. 35c each; \$3.50 per dozen.

Florence Vaughan—Undoubtedly the finest yellow spotted variety yet sent out; in color it is of a bright rich golden yellow, spotted with bright red; the flowers, which are of the largest size, of great substance and of perfect form, are borne in large heads and in the greatest profusion; the foliage is massive and of a rich green color; the plants rarely exceed 4 to 5 feet in height. 50c each.

J. D. Cabos—Flowers very large, of a rich orange and apricot color; the color is bright and novel and attracts attention at once; the flowers are produced very freely on stout stems, and the plant is a vigorous grower. The foliage is bronzy purple with a metallic lustre; height, 4½ to 5 feet. 25c each; \$2.50 per dozen.

Madam Crozy—A magnificent variety with large, dazzling scarlet flowers, and each flower bordered with a deep golden yellow band. The flowers are produced in immense heads or clusters in the greatest profusion. The foliage is massive and of a rich

green; the growth is vigorous, yet dwarf, and every shoot will bear a fine bunch of bloom. Small plants will bloom soon after being set out and continue till fall and may then be taken up and potted or set in boxes and continue to bloom. It may also be grown in pots the year round which makes it more dwarf and compact for window culture. The large brilliant flowers, fine foliage and habit make this one of the finest plants in existence for outdoor, conservatory or window gardening. 3 to 4 feet. 20c each; 6 for \$1.00; \$2.00 per dozen.

Paul Bruant—One of the freest flowering varieties, throwing its large heads of bloom well above the foliage; in color it is of the most intense shade of orange scarlet, with a peculiar satiny surface; foliage dark green with purple edge. 4½ feet. 50c each.

Paul Marquant—Another grand variety, and one of the most pleasing and beautiful on account of its large size and entirely distinct and novel color. The flowers, which are larger than in any other variety, stand out from the spike separately in such a manner as to attract special attention. Its color, which is difficult to describe, and which is frequently compared in softness to an Orchid, is of a bright salmon scarlet, passing to a rosy carmine with a peculiar silvery lustre, which lights up the salmon very brightly. The foliage is of a dark green, and its habit very dwarf, growing from 3 to 3½ feet in height. 25c each; \$2.50 per dozen.

The above Columbian Medal collection of nine varieties for \$2.00.

..GENERAL . COLLECTION..

Large Flowered French Cannas.

Comte Horace de Choiseul—Flowers large in fine spikes; color rich Majenta crimson; foliage deep green; habit compact and free-blooming; fine for bedding or pot culture. 20c each; \$2.00 per dozen.

Chas. Henderson—('93)—Flowers large, in compact spikes; color bright crimson, the center of flowers penciled with golden yellow; plant dwarf but with massive foliage. 50c each.

Duchess de Montenard—Flowers large with broad well rounded petals; color bright yellow dotted and splashed with crimson; foliage broad and massive and of a rich green. Free grower and fine bloomer. 20c each; \$2.00 per dozen.

Geoffrey St. Hillaire—Fine flowers of deep glowing orange with chocolate colored foliage. A splendid bedder. 20c. \$2.00 per dozen.

Gustave Sennholz—('93)—Flowers very large, of bright orange shaded salmon, passing to a soft rosy carmine, doubtless identical with 'Paul Marquant' but sent out by a different firm. Foliage green; habit dwarf and free flowering. 3 to 3½ feet in height. 25c each; \$2.50 per dozen.



MADAM CROZY.

Geo. W. Childs—('93)—In the style of "Madam Crozy," but the plant more dwarf and with flowers one-third smaller; there is more yellow in the throat and the red is of a deeper shade. A very pretty variety but lacks the size and vigor of "Madam Crozy." 30c each.

Henry L. Vilmorin—An entirely distinct variety—the center of the flower is brownish-red, shading to a bright yellow at the outer edge; foliage pea green. 4 feet. 20c each.

J. C. Vaughan—('93)—Color a deep vermilion orange, much deeper than "J. D. Cabos," with a satiny lustre; flowers large and well formed; foliage rich bronzy purple. A good grower, free bloomer and one of very best bronze-leaved sorts. 50c.

Miss Sarah Hill—('93)—A beautiful crimson-lake, tinted carmine, with symmetrical heads of flowers. Plant of fine habit, with bright green foliage; height 4 to 4½ feet. 25c.

Mlle Crullion—Flowers large, of light yellow shading to terra cotta, with green foliage. 3½ feet. 25c each; \$2.50 per dozen.

President Carnot—Deep purplish bronze foliage, with rich carmine-scarlet flowers of large size, fine form and

Measles 3

freely produced. Both the foliage and the flowers are magnificent. A splendid bed may be had, using this for the center and "Madam Crozy" outside. 4 feet. 25c each; \$2.50 per dozen.

Secretary Stewart—(1893)—Flowers of good size, of rich garnet in large spikes; habit dwarf but stout, with green foliage. 25c.

Secretaire Nicolas—Flowers bright red, finely formed; green foliage; dwarf habit. 30c each.

Star of '91—Resembles "Madam Crozy." Scarlet, faintly bordered with yellow, but flowers not as large nor as bright as "Madam Crozy," which has proved much finer than '91 in every way; very dwarf grower. 20c each.

Trocadero—Bright crimson scarlet, overlaid with orange; foliage dark green; vigorous and free; 4 to 5 feet. 25c each.

Tonkin—A remarkably free bloomer with large yellow flowers, lightly spotted with carmine. This makes a splendid border plant for a bed of Cannas, as it is very dwarf and a grand bloomer. 20c each; \$1.80 per dozen.

Twelve fine distinct sorts for \$2.25.

VARIEGATED-LEAVED CANNA.

Brenningsii—Leaves green, striped and blotched with creamy white. Very free grower, but dwarf and compact; a fine distinct variety. 20c each, six for \$1.00.

Canna Ehemannii—Very broad, massive, banana-like foliage; plant of very vigorous growth; flowers large and of deep carmine red on long whip-like stems. 20c each; \$1.75 per dozen.

NEW GIANT CROZY CANNA.

Sophie Buchner—The strongest growing Canna of the Crozy type yet introduced; foliage rich green, large and massive, like the Abyssinian Banana. Flowers bright scarlet, overlaid with orange; produced in heavy, bold, compact spikes; plants ready end of March. \$1.00 each.

NEW YELLOW BEDDING CANNA.

Nellie Bowden—Flowers clear golden yellow, on strong well-branched stems; not as large as in the Crozy varieties, but it will make a good border plant for them, or where a mass of yellow color is wanted. 30c each; \$3.00 per dozen.



DATURA CORNUCOPIA.

(Horn of Plenty.)

A splendid new species recently found in South America. The flowers are of immense size, being eight to ten inches long and five to seven inches wide, and double, there being really three flowers, one within the other. The color is a delicate French white on the upper side, marbled with royal purple on the outside; it is very fragrant and remarkably free blooming for so large a flower, a single plant producing 200 to 300 of its large, beautiful and fragrant blossoms in one season. The gigantic size, striking colors and pleasing fragrance, make this one of the most valuable novelties of the year.

The plant is a robust grower and of the easiest culture; it can be used as a center for beds, borders, masses or as a single specimen in the garden or lawn. Plant in the open ground in any good, rich garden soil, about the end of May.

Price 25c each, 3 for 60c, 6 for \$1.00.

New Chrysanthemums for 1894.

UNEQUALLED COLUMBIAN MEDAL COLLECTION.

All Prize Winners at the World's Fair Chrysanthemum Show.

OUR CHRYSANTHEMUMS have been very carefully selected this season, even fine sorts like "Mrs. A. Hardy," "W. A. Manda," "Mrs. E. D. Adams," "Waban," "Canning," "Tuxedo," "Mermaid," "Mrs. Laughton," and many others are dropped to make room for others with more good points. This is becoming more necessary every year as there are so many fine new ones being introduced.

Mrs. E. G. Hill—A magnificent pink, 7 to 8 inches in diameter, 3 to 4 deep; extra early; bright, clear, pearl pink, form full to center; a grand incurving sphere, stems stiff; blooms cut October 20th; were exhibited at Philadelphia November 8th; awarded Columbian Medal at Chicago; certificates at Indianapolis and Philadelphia. 75c each.

Eugene Dailedouze—Large, full double glowing, bright yellow, with magnificent foliage; free and easy grower, nothing brighter or clearer among yellows; center petals folded and closed as in Kiota, outer ones broad and of great substance. Winner of Rockwood Vase at Indianapolis; Columbian Medal, Chicago; Blanc Prize, Philadelphia; first premium at New York; certificate at Toronto. 75c each.

Beau Ideal—A bright rosy pink, without lavender shadings; form somewhat flat, incurved center; outer petals showing the bright pink, the incurving center shading lighter; petals broad; and of great substance; large flower, borne on stiff stems, with good foliage. In perfection last of October. \$1.00 each.

Challenge—A late variety, being in full perfection toward the end of November, although in grand condition and ready for cutting three weeks earlier; the shape being a perfect globe of brightest gold, depth and width being equal; very strong stem and good foliage; somewhat dwarf in habit. \$1.00 premium at Chicago; prizes at Indianapolis, New York, Toronto and Denver. \$1.00 each.

Charles Davis—(Imported.)—Golden sport from the immensely popular "Vivian Morel;" light yellow, most brilliantly suffused rich apricot yellow; a grand variety of immense size; a perfect counterpart of the parent, has all its good qualities of size, health and form, etc. 75c each.

Inter Ocean—Grand novelty of the V. Morel type, from which it is a seedling; color, glistening pearly-white, suffused with pink, petals of great substance; recurving, forming a flower one-third larger than V.

Morel; stiff stems, handsome foliage carried up close to the flowers. First premium at Chicago for best of any color. \$1.00 each. Stock limited.

I' Enfant des Deux Mondes—(Imported "Crozy.")—Magnificent white sport from "I. Boehmer," partaking of all its good qualities; pure snow white, strong stems; flowers very large and finely plumed. This will take the place of "Mrs. A. Hardy," and "Annie Manda" in this class, it being a free grower and perfects its immense flowers readily; habit perfect. 50c each.

Major Bonnafon—Soft, clear, incurving yellow; color much lighter than "Eugene Dailedouze," and entirely distinct; full to the center; 6 to 7 inches in diameter, and nearly as deep; in perfect form and finish, like "Ivory" at its best; habit dwarf; keeping qualities excellent; foliage well up to the flower; stem stiff; an ideal variety. Bound to be one of the Chrysanthemums necessary to every fine collection. Awarded a Columbian Medal. 75c.

Mrs. George Iis—A magnificent white variety, raised in California. It is an ivory white, very massive in build, recurving, and petals interlacing. This variety was cut twelve days before the Chicago show, and reached there in fine condition, being awarded a special Columbian Medal. It is one of the very finest, most distinct and serviceable novelties of the year; a delightful surprise for those who have not seen it. \$1.00 each.

Fitcher & Manda—Reflexed Japanese, not deep, but solid and of large diameter; the outer five or six rows are creamy white and of Dahlia-like form; the center is bright yellow, the two colors being sharply defined; one of the most distinct novelties of the year, and particularly valuable as being a most decided break in a new direction; a vigorous grower. Received numerous certificates. 75c each.

The above collection of ten unequalled magnificent sorts for \$6.00, or we will add "The Queen," "Mrs. Craig Lippincott," and "Geo. W. Childs," best crimson scarlet, for \$6.50.

✦ The Best New Chrysanthemums ✦

OF 1892-3.

The Queen—(Raised by Walz, of Cincinnati).—This novelty is undoubtedly the finest white variety up to date; it excels all in purity; extra large size, of half globular form with broad incurved shapely petals, of great substance; growth robust, with large, smooth, heavy, deep green foliage; carries flower erect on stiff stem; it is a grand show flower and promises to be a very profitable variety for commercial purposes; opens about October 25th. An extra good keeper as a cut-flower. Winner of the Prize at Madison Square Garden flower show; also the Storer Prize (silver cup) at Cincinnati; first premium and Columbian Medal for BEST WHITE at the "World's Fair" Chrysanthemum show. We have a fine stock and offer it at the very low price of 25c each. (Last Spring it sold for \$1.25.)

Mrs. Craige Lippincott—(Winner at the "World's Fair for best yellow introduced in 1893).—A very rich yellow in color; flower eight inches through; the petals are long, large and incurving; the growth is strong, foliage large, the flower very bright and finely formed; undoubtedly the finest yellow yet introduced. A very early bloomer. Silver medal at Philadelphia, 1892. 25c each; \$2 50 per dozen.

W. B. Smith—Fine golden bronze. 20c.

Ed. Hatch—Lemon tinted pink, or A. T. Ewing, similar. 20c.

Good Gracious—Immense delicate pink. 20c.

Geo. W. Childs—Best red, (crimson scarlet.) 20c.

Golden Wedding—Very deep yellow. 20c.

Gettysburgh—Deep maroon crimson. 20c.

Mrs. J. W. Crouch—Best purple shade. 20c.

Mrs. A. J. Drexel—Crimson lake. 20c.

Pres. W. E. Smith—Beautiful flesh pink. 20c.

W. N. Rudd—Lavender pink.

Above twelve grand sorts of 1892-3 for \$2.00 For description see pages 19 to 21.

Twelve Splendid Chrysanthemums,

Distinct Sorts for \$1.00.

E. G. Hill—Fine bronze yellow. 10c.

Geo. W. Childs—Best bright red. 20c.

Gettysburgh—Crimson maroon. 20c.

Harry Balsely—Pearl pink. 10c.

Ivory—Best dwarf white. 10c.

Lizzie Cartledge—Large deep pink. 10c.

Mount Shasta—Immense white. 10c.

Mrs. Whillden—Very early yellow. 10c.

Mrs. Robt. Craig—Best white Chinese. 10c.

Vivian Morel—Immense reflexed pink. 10c.

Wm. Falconer—Rosy blush, "Ostrich Plume." 10c.

W. H. Lincoln—Deep yellow. 10c.

A gem dollar collection. For description see pages 19 and 20.

Three Finest White Chrysanthemums

ever raised, all distinct types and all new for 60c. Viz: "The Queen," "Niveus," and "W. G. Newett." For description see page 21.

Three Best Chrysanthemums

in three colors yet introduced (excepting our 1894 set) for 50c. "The Queen," best white; "Mrs. Craige Lippincott," best yellow; "Geo. W. Childs," best red.

The above are unequalled in their colors. For description see pages 19 to 21.

Fifty fine sorts for \$6.00.



NEW DWARF CALLA.

Little Gem.

A very dwarf variety of the old Calla, growing from 12 to 15 inches in height, or about one-half the size of the old species. It is very free flowering and fine for pot culture. Fine plants, 25c each.

New and Select Double Fuchsias.

Abbe Garnier—Corolla violet blue, marked with bright rose, with dark red sepals; compact grower and free bloomer. 20c each.

Jupiter—The finest of its color in cultivation. The flowers are very large, sepals bright deep scarlet, corolla of the richest royal purple. The plant is a vigorous grower of fine habit. 20c each, 3 for 50c.

Molesworth—(1893)—Double White. This is a much improved "Storm King," being a much better grower and the corolla a purer white and very double. 10c each, 6 for 50c.

Rosains Patrie—(1892)—Another splendid double white with rosy carmine sepals; habit equal to the very best dark sorts. 10c; 6 for 50c.

The above four sorts for 50c.

NEW SINGLE FUCHSIAS.

- Celine Montaland**—Corolla rosy white veined carmine, with large light carmine sepals. 20c each.
- Constancy**—(1893)—Corolla rich carmine, sepals white, well reflexed; flowers very large and beautiful. 10c each.
- Dr. Topinard**—One of the finest of the newer varieties, sepals large, rich cherry red; corolla large pure white marked with rose. 15c each.

New Variegated Trailing Fuchsia.

A beautiful addition to the list of trailing or drooping plants; the leaves are variegated with white and blush pink on a light green ground; the variegation extends to the flowers also, the corolla of which is purple naturally. It is an easy grower and makes a fine plant for Hanging Baskets, Vases, Etc. 25c each.

For General Collection see Pages 26 and 27.

NEW CARNATIONS.

- Bouton d' Or**—An ideal yellow Carnation, the finest of this color yet introduced; a deep canary yellow, lightly edged and feathered with carmine; an extra good grower with fine foliage and a free bloomer. 30c each.
- Dr. Smart**—Flowers pinkish cream, striped with crimson; a strong healthy grower and continuous blooming; a lovely variegated Carnation and admired by all who have seen it. 20c.
- Edna Craig**—A very large and beautiful flower, with broad heavily-fringed petals; in color a lovely shade of soft clear light pink; a healthy vigorous grower and constant bloomer. 20c each.
- Gov. Russell**—Flowers pure white, very fragrant, of large size and borne on fine stems; a strong grower and free bloomer. 20c each.
- Hawaii**—A very pretty, fancy variety; the ground color is yellow laced and striped with carmine; entirely distinct from anything sent out before; a strong grower and profuse bloomer. 20c each.
- Madam Albertini**—Flowers very large, the center round and full; color a delicate flesh pink with a rich clove fragrance; strong cup, shaped calyx; stout stems; a vigorous grower and constant bloomer. 20c each.
- New Jersey**—Growth vigorous and free blooming; flowers very large on stout stems; color brilliant scarlet; a sterling new sort. 20c each.
- Wm. Scott**—Fine large flowers of a rich even "Wildier" pink color; stems strong, holding the flowers erect; stout grower and free bloomer. 20c each.

Above 8 new sorts for \$1.30.

6 Sorts for \$1.00.

GERANIUMS.

- 6 New Bruant Geraniums for \$1.00.
12 Fine new Double and Single Geraniums for \$2.00.

NEW ROSES

- American Belle**—A pink colored sport from the "American Beauty," but distinct from it in both flower and foliage. The color of the flower is a deep, clear pink, without the slightest tinge of blue as in the "Beauty," but the pink grows deeper with age; it possesses the same delightful fragrance as the "Beauty;" the foliage is deep green. The "Belle" has carried off first honors at New York, Philadelphia, Boston, Chicago, and wherever shown. 40c each.
- Augustine Guinoisseau**—(White "La France.")—A distinct sport from that popular variety "La France" with which it seems to be identical in habit, form and vigor, but in color it is a delicate blush at the center, growing lighter and lighter until along the edges it is almost a pure white; an exquisite variety. 25c each.
- Bridesmaid**—Identical with "Catherine Mermet" in size and form of bud, but of much deeper color; a clear dark pink; a valuable addition to the Mermet type of roses and will be universally grown. 25c each.
- Climbing La France**—Identical with "La France" in every respect except in style of growth, which in this variety is of a strong climbing habit, making it an excellent pillar or porch rose. It is a sport of "La France," and retains the charming peach pink color and the exquisite fragrance which have made "La France" a favorite. 35c.
- Kaiserin Empress, Augustin Victoria**—(1893)—H. T.—A deliciously fragrant New White Hybrid Tea, with very large flowers; the color is pure white and the center tinted with glossy cream; it produces magnificent buds with a rich magnolia fragrance. 25c each; extra strong plants, 50c each.
- Madam Caroline Testout**—(1893)—H. T.—An improved "La France." This is saying a good deal as "La France" is one of the best in cultivation. The flowers are larger and of finer color; a brilliant satiny pink, deepening to red at the center; the flowers are as large as the H. P. Rose "Baroness Rothschild" and as free flowering as "La France." 25c and 50c each.
- Madam Veyssett**—(Striped "La France," 1893.)—H. T.—A magnificent new rose, similar to "La France," except that it is a stronger grower and the flowers are striped with white; the coloring is exquisite and the buds and flowers very large and fine. 25c each; extra large, 50c.
- Marion Dingee**—(Tea)—A splendid new red Tea Rose, and one of the finest additions to our list of bedding roses we have had in years; flowers of good size, nicely cup shaped, and borne in wonderful profusion all through the growing season. Color deep crimson, changing to carmine in the matured flowers; particularly bright and pretty, and one of the best for either pots or bedding purposes. 25c.
- Senator McNaughton**—A grand new forcing or cut flower variety; a sport of Perle des Jardins, with which it is identical in every respect except color. It has the same rich glossy foliage, sturdy habit of growth and free blooming qualities. The flowers are very large and full, with excellent, well shaped buds. Color, a delicate creamy white. A valuable acquisition both for summer and winter blooming. 40c each.

The above set for \$2.25.

OUR POPULAR

DOLLAR COLLECTIONS.

Our Dollar Collections Give Great Satisfaction Because We Use Only Good Stock
in Filling Them.

\$1.00 For the convenience of those who have not the time or inclination to make their selections, we make the following low priced list. We believe these collections to be really the best for the money yet offered; we propagate the best varieties in greatest quantities, and can afford to sell many at low rates in these special collections, but the selection of varieties must be left to us. Special varieties will be charged at Regular Catalogue Rates.

In Ordering These Sets Give the Number Only. Time is valuable to us in the Spring, and to facilitate our work, give nothing but the Number of the Collection wanted, and please write order separately from the body of the letter.

All plants are correctly labeled, and no two sent alike where possible. They are also sent out well rooted and established, whether by Mail or Express. We send larger plants by Express and add extra plants to help pay Express charges. Heavy bulbs and roots sent by Express only.

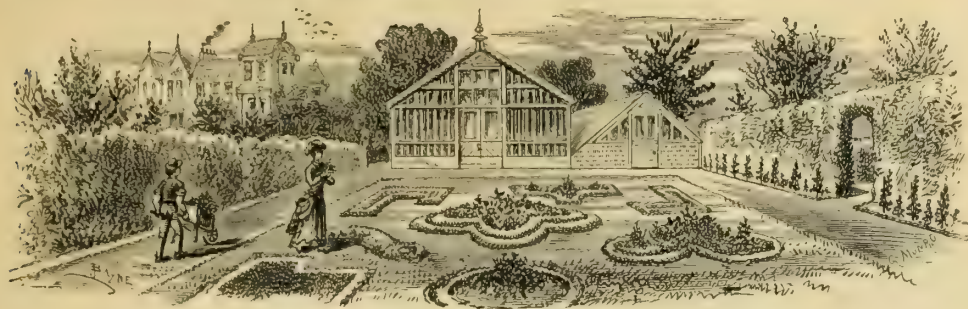
☛ A purchaser may take one-half of two Collections for \$1.00, but no further division can be made.

SPECIAL DOLLAR COLLECTIONS.

- | | |
|--|--|
| <p>1-8 CANNAS, best older sorts and including one of the newer French.</p> <p>2-6 CANNAS, newer Everblooming French, including one "Madam Crozy."</p> <p>3-14 CHRYSANTHEMUMS, of best standard sorts.</p> <p>4-10 CHRYSANTHEMUMS, fine cut-flower sorts.</p> <p>5-10 CHRYSANTHEMUMS, fine exhibition sorts.</p> <p>6-6 CHRYSANTHEMUMS, new 1893 sorts.</p> <p>7-10 GERANIUMS, fine Bruant.</p> <p>8-14 GERANIUMS, finest double in fourteen sorts.</p> <p>9-14 GERANIUMS, finest double, for bedding.</p> <p>10-14 GERANIUMS, finest single, for bedding.</p> <p>11-14 GERANIUMS, finest single, in fourteen sorts.</p> <p>12-12 GERANIUMS, bronze leaved, silver edged, scented and ivy leaved.</p> <p>13-14 EVERBLOOMING ROSES, best standard sorts.</p> <p>14-12 ROSES, including 4 Hybrids and 8 Everblooming.</p> <p>15-10 HARDY ROSES, including Hybrids and Climbers.</p> <p>16-16 COLEUS, assorted fancy varieties.</p> <p>17-18 COLEUS, best bedders, in 2 or more sorts.</p> <p>18-16 ALTERNANTHERA, in 1 to 3 sorts.</p> <p>19-16 COLEUS AND ALTERNANTHERA, assorted.</p> <p>20-15 CARNATIONS AND EVERBLOOMING ROSES, in assorted colors.</p> <p>21-10 PETUNIAS, fine double sorts.</p> <p>22-6 TUBEROUS BEGONIAS, assorted colors, for pots or bedding.</p> <p>23-12 BEGONIAS, flowering, assorted.</p> <p>24-25 GLADIOLUS, fine mixed colors.</p> <p>25-12 GLADIOLUS, fine named sorts.</p> <p>26-16 TUBEROSE, "PEARL," the best double.</p> <p>27-16 VERBENAS, assorted colors, including the "Mammoth" sorts.</p> | <p>28-12 VINES AND PLANTS, suitable for baskets, vases, etc.</p> <p>29-25 SPLENDID PANSIES, including the new Giant sorts.</p> <p>30-14 HELIOTROPE AND AGERATUM, assorted.</p> <p>31-12 MARGUERITES AND SALVIAS.</p> <p>32-10 DOUBLE SUNFLOWER AND COREOPSIS LANCEOLATA, both hardy.</p> <p>33-12 PLANTS AND VINES, for window culture.</p> <p>34-6 GLOXINAS AND TUBEROUS BEGONIAS, assorted.</p> <p>35-8 HARDY PHLOX, assorted colors.</p> <p>36-8 PLANTS, suitable for wardian case.</p> <p>37-3 ROSES, 2 PETUNIAS, 2 GERANIUMS, 2 HELIOTROPE, 6 PANSIES.</p> <p>38-4 CHRYSANTHEMUMS, 2 ROSES, 2 GERANIUMS, 2 HELIOTROPE, 2 CARNATIONS.</p> <p>39-2 CALLAS, 2 CHRYSANTHEMUMS, 2 ROSES, 2 HELIOTROPE, 2 MARGUERITES.</p> <p>40-6 GERANIUMS, 2 HELIOTROPE, 4 PANSIES, 4 VERBENAS.</p> <p>41-2 IVIES, 2 VINCAS, 1 PASSIFLORA, 1 MANETTIA, 1 SMILAX, 1 LONICERA, 2 COBEA, 1 MOONFLOWER.</p> <p>42-2 ROSES, 2 CARNATIONS, 2 GERANIUMS, 2 CUPHEAS, 2 HELIOTROPE, 2 GLADIOLUS, 2 TUBEROSES.</p> <p>43-2 DAHLIAS, 1 CALADIUM, 2 CANNAS, 1 MONTBRETIA, 4 GLADIOLUS, 3 TIGRIDIAS.</p> <p>44-6 GERANIUMS, 4 ROSES, 6 PANSIES.</p> <p>45-1 CANNA, 6 COLEUS, 12 ALTERNANTHERA, for small bed.</p> <p>46-10 FINE HARDY HERBACEOUS PLANTS.</p> <p>47-8 HARDY SHRUBS AND CLIMBERS.</p> <p>48-14 ASSORTED FLOWERING AND FOLIAGE PLANTS.</p> |
|--|--|

RATES ON ABOVE COLLECTIONS WHEN SENT BY EXPRESS.

Any Six Collections for..... \$ 5.00
Any Thirteen Collections for..... 10.00



GENERAL COLLECTION.



CHINESE AZALEAS.

The most showy and one of the most easily grown plants for the window or conservatory, producing great quantities of large, handsome blossoms, in many colors, from the purest white, pink, rose, orange red to crimson and purple crimson shades, some beautifully spotted, blotched and variegated, with beautiful evergreen foliage and neat, compact, shrubby habit. Pot firm in good porous soil and keep moist. They are almost hardy and do well in a moderate temperature.

FINE STRONG PLANTS, with well shaped heads, at 75c, \$1.50, \$1.25 and \$1.50 each, according to size and variety.

FINEST DOUBLE SORTS, \$1.00, \$1.25 and \$1.50 each. We do not offer small plants, but strong, shapely, well branched and well budded plants now ready to bloom.

ACALYPHIA.

A beautiful plant for the conservatory, window or garden, with large brilliant foliage; grows freely and becomes more brilliant under the hottest sun.

Macafeana—Leaves large and bright, blotched with bronzy crimson. 20c and 30c.

Marginata—Large olive-bronze foliage, with a bright margin of orange-pink. 15c and 25c.

Musiaca—Large, handsome leaves of bronzy green, variegated with orange and brilliant red. 20c and 30c.

ACHANIA—(Bishop's Mitre.)

Malvavisca—A well-known, free blooming plant, with bright red flowers. 15c.

AGATHEA—(Blue Daisy.)

Coelestis—Blue, with yellow disc; blooms from November to April. 10c and 20c.



AMARYLLIS.

Johnsonii—Splendid bulbous plants with large crimson flowers, striped with white; for the parlor or greenhouse; easily grown. 50c, 75c and \$1.00 each.

Rosea—(Zephrantes.)—Flowers large, of an exquisite shade of pink; may be grown outdoors in summer or window garden in winter. 10c each, \$1.00 per dozen.

Treata—(Zephrantes.)—Pure white trumpet shaped, sweet-scented flowers; easily grown in pots or in the garden. 10c.

Vallotta Purpurea—(Palestine Lily.)—A most desirable plant, producing spikes of large crimson flowers, shaded with orange. 25c and 50c.



(Veitchii.)

AMPELOPSIS.

Veitchii—(Called "Boston Ivy" and "Japan Ivy.")—This is the most deservedly popular of all hardy climbing plants, being entirely hardy in the most exposed places, attaining a height of 40 to 50 feet in two or three years, clinging to stone, brick and woodwork with the greatest tenacity. During the summer the leaves, which are of a rich shade of green, lap over each other like a coat of mail, but in the fall it shows its most exquisite beauty, the leaves then changing to the brightest tints of scarlet, crimson and orange, so dazzling as to be seen at a great distance. 20c each, 6 for \$1.00; large plants, 35c and 50c each.

Virginica—(American Ivy.)—Fine hardy climber for walls, trees, etc.; leaves change in fall to light and dark shades of crimson; very rapid grower. 15c and 25c.

AGERATUM.

A very useful class for cut-flowers in summer and winter; also fine bedders, of easy culture and profuse bloomers.

John Douglas—Fine compact habit, with bright, blue flowers in great profusion; a splendid bedder.

White Cap—The finest white Ageratum, of dwarf habit, free blooming and good sized truss well above the foliage; a fine variety for cut-flowers or bedding.

First size, 10c each; 75c per dozen.

ALTERNANTHERA.

This class of foliage plants (from their dwarf, compact habit) are especially adapted for "edging of beds," "carpet bedding," "ribbon lines," "borders," "mounds," etc.

Aurea Nana—Foliage of a bright go den color, which it retains throughout the season; it is dwarf and compact, making it the finest yellow bedding plant extant.

Parychoides Major—(Rainbow Plant)—Color, bright carmine, crimson and rose; very brilliant and showy. 10c each; 75c per dozen; \$5.00 per 100.

Rosea Nana—Of similar compact habit to "Aurea Nana," with bright rose-tinted carmine foliage. \$1.00 per dozen.

ABUTILON.

An excellent free-growing class of plants producing beautiful bell-shaped flowers, suitable for window or garden; may be planted out in summer and potted in fall, when they will continue blooming through the winter.

Boule de Nieve—A fine white variety, of good habit, a free bloomer, with large, pure white flowers.

Eclipse—A beautiful new variegated-leaved variety of the trailing class and a grand improvement on other variegated forms, the colors being decided and constant. It is of well-branched habit, with scarlet flowers and a yellow calyx; a splendid plant for baskets, vases, bedding or pot culture.



ABUTILON—(Eclipse.)

Erecta—Pink, tinted orange, with flowers erect instead of pendant.

Frazierii—Rich orange scarlet, shaded crimson, of a glossy metallic lustre; extra fine.

Golden Fleece—A bright golden yellow variety of stout, vigorous habit, equal to the best dark sorts; it combines large size, fine form and richness of color, and much the best yellow we have had.



ABUTILON.—(Golden Fleece.)

Thomsonii Plena—A new variety, with double flowers, in color rich deep orange, shaded and veined with crimson. 15c.

Violet Queen—Flowers violet, tinted rose, of good size and freely produced.

First size, 10c each; \$1.00 per dozen.

Second size, extra strong plants, 20c each.

AGAPANTHUS.—(Lavender Lily.)

Flowers in immense clusters of a beautiful lavender blue, lasting a long time; foliage like "Amaryllis." 50c, 75c and \$1.00 each.

ALOYSIA.

(Lemon-Scented Verbena.)

Much esteemed for the refreshing fragrance of its lemon-scented foliage; a general favorite. 10c and 20c.

APIOS TUBEROSA.

A hardy tuberous-rooted climber, with deep purple flowers having a strong violet fragrance. Plant near trellis, tree, fence or anywhere you want a good climber. It grows to a great height and blooms profusely; roots live out all winter. 1c each.



AGAVE.

(Century Plant or Great American Aloe.)

Americana—A splendid plant for window and conservatory decoration in winter and for lawn and garden in summer; also an elegant vase plant. 25c to 50c. Large plants, \$1.00 to \$5.00. [See cut.]

Americana Variegata—A beautiful variety of above with a broad yellow margin to leaves; very handsome. 50c, \$1.00, \$2.00 to \$5.00 each.

Hiawatha Lingua—"DEER'S TONGUE ALOE"—Dwarf habit, leaves thick and shaped like a deer's tongue; very free bloomer. 25c, 50c and \$1.00 each.

Margaritifera—"PEARL ALOE."—Very dwarf; free bloomer. 25c and 50c.



ASPIDISTRA.

One of the most valuable house plants for the parlor, hall or conservatory, bearing the dry atmosphere and dust of the rooms and may be easily sponged without injuring the stout, glossy foliage.

Lurida—Large oval, olive-green leaves, very ornamental and of the best hardy house plants. Very curious wax-like flowers. 20c and 30c; large plants, 50c.

Lurida Variegata—Leaves large, oval, dark glossy green, striped with large bands of white; easily grown and ornamental. 30c and 50c.



ANTHERICUM.—(Vittata.)

A beautiful *Dracæna*-like ornamental plant, with long graceful leaves bordered with yellow; fine for pots, baskets or vases. 15c and 25c.

ACKRYANTHUS.

A beautiful ornamental foliage plant, suitable for planting in masses or lines in ribbon gardening, for baskets, vases, etc., standing the sun well.

Biemulleri—Foliage deep red, shaded rosy carmine, dwarf grower and one of the best of bedders. 10c each; \$1.00 per dozen.



DOUBLE SWEET ALYSSUM.

The Sweet Alyssum is one of the most useful fine white flowers for cut-flower work, as well as for bedding purposes; always in bloom.

Gem—The best variegated-leaved sort; flowers double white.

New Double White—Flowers double, a free bloomer, vigorous grower and splendid bedder, standing the hot sun well.

First size, 10c each; \$1.00 per dozen.

AKEBIA.

—(Quinata.)

Hardy Climber.

A perfectly hardy and beautiful evergreen climbing plant, growing 20 feet high, with five parted leaves and dark brown fragrant flowers; one of the best hardy climbers. 20c, 30c and 50c each.

ARISTOLOCHIA.

Elegans—One of the most beautiful summer climbers, of rapid growth and bearing elegant blossoms of a rich, dark purple, ornamented with creamy white marking. The flowers have a yellow eye, surrounded with velvety purple. 50c each.

Sipho—"DUTCHMAN'S PIPE."—A magnificent hardy climber, with large heart-shaped leaves and brownish flowers, formed like a miniature pipe. 30c, 50c and \$1.00.

ASPARAGUS.

Tenuissimus—A beautiful house or greenhouse climber, with filmy fern-like foliage; also valuable for cut-flower work, the vines remaining fresh long after being cut. 15c and 25c each.

Plumosus Nanus—"LACE FERN."—The leaves are bright green, arranged in flat sprays, and more delicate and graceful than the Maiden-Hair Ferns. It is of climbing habit, easily grown and the plant will last for years. 50c and \$1.00 each.

ASTILBE.

Japonica—One of the best hardy garden plants, with large feathery spikes of pure white flowers; valuable for the garden or the cemetery, also for winter blooming; strong roots. 20c

BEGONIAS.

One of the most useful classes of plants in cultivation, both for the amateur and professional florist. Being mostly quick, thrifty growers, they soon make fine specimens, which, together with the beauty of their foliage, graceful flowers and free blooming qualities, make them one of the most popular and desirable plants grown.



REX BEGONIAS.

This class of Begonias are noted for their large handsome leaves, which are beautifully colored and finely formed. A better idea of them can be had by the above cut than by description. They delight in rich, open soil, rich loam, rotted leaves, or very old manure, wood earths, etc., with plenty of sharp sand to secure good drainage. They should be slightly shaded in summer. Many fine varieties, including Rex, Louis Chretien, Queen of Hanover, Duchess de Brabant, Lucy Closson, Perle Humfeld, Countess of Erdody, and many others. 20c each; six distinct sorts, \$1.00. Extra large plants, 30c and 50c each.



BEGONIA.==(Alba Picta.)

Alba Picta—A very distinct variety, of compact, well-branched shrubby habit; the leaves are of deep glossy green, richly spotted with silvery white. 10c.

Argentea Guttata—A very handsome spotted-leaved variety of compact habit with purplish bronze leaves, spotted silvery white. 10c.

Gloire de Sceaux—Of shrubby habit, with rich plum colored foliage and beautiful soft clear pink flowers. 20c.



BEGONIA==(Diadema.)

Diadema—(Diadem Begonia)—Large palmate leaves of a rich olive-green, beautifully spotted with silvery white; the lobes are deeply cut, which gives the plant a very graceful appearance. 15c and 25c.

Macbethii—A beautiful white flowering variety, with finely cut foliage and compact free blooming habit; one of the very best for cut-flowers.

Matalica—A beautiful sort, with large velvety leaves of deep bronze, veined with crimson; flowers very beautifully shaded pink and white.

Paul Bruant—A quick-growing variety, assuming a bushy tree form. It is a profuse bloomer, with large rosy pink and white flowers, on long graceful stems. 20c.

Pictaviensis—(New.)—A vigorous growing variety of fine habit. The leaves are large, of purplish red on the under side and bronzy green on the upper. The flowers are rosy white in very large clusters; one of the finest flowering Begonias yet introduced. 25c and 50c each.

Ricinifolia—Very large, handsome palmate leaves and showy flowers; a fine grower and very effective. 20c

Rubella—A beautiful new species from India, leaves large like "Ricinifolia," but distinctly blotched with deep red. 15c and 25c.

Rubra—(Angel Wings)—A grand variety for bedding or pot culture; leaves of a rich dark green, of good size; large glossy scarlet wax-like flowers, in immense clusters, freely produced; a good winter bloomer.

Semperflorens Gigantea Rosea—One of the finest new Begonias, of erect, vigorous growth, with very large flowers of a clear cardinal-red, on stout stems; foliage thick and glossy, and the plant of fine shrubby habit. 15c and 25c.

Saundersii—Coral-scarlet flowers, free-blooming variety, glossy foliage.

Sutton's Perfection—The finest white flowering Begonia we have; always in bloom and a fine close grower.

First size, 10c each; \$1.00 per dozen.

Second size, 20c each; \$2.00 per dozen.



BEGONIA==(Argentea Guttata.)



HYBRID REX BEGONIA.

Clementina—Leaves almost palmate, upper side bronze, ornamented with silvery spots and marking; under side bronzy red; a good grower of graceful habit. 15c and 25c.

NEW HYBRID REX BEGONIA.

Bertha McGregor—Leaves nearly palmate, the body being of solid silver color, with dark-bronze palmate center corresponding with outline of the leaf, and the entire leaf bordered with dark bronze; under side bright bronzy crimson; an excellent grower and finely colored variety. 25c and 50c each.

TUBEROUS ROOTED BEGONIAS.

The flowers are of immense size, brilliant colors, and of wax-like substance, the foliage stout and stands the sun well, making it one of the finest plants for bedding out-doors, and a magnificent window and conservatory plant. Roots may be stored in cellar over winter like potatoes.

Fine sorts, named colors. 20c each, \$2.00 per doz.
Mixed colors, selected bulbs, 15c each, \$1.50 per doz.
Large plants in pots, 30c and 50c.

NEW BEDDING BEGONIA.

Vernon—A new variety of unusual merit. It is of very free-blooming habit, standing the hot sun well and flowering profusely in pots or bedded out till frost. The flowers on opening are bright red, changing to rosy carmine with yellow centers in the staminate flowers. The foliage is a glossy metallic-green, changing to a bright bronzy red in the sun.
Fine plants, 10c each; \$1.00 per dozen.

BIGNONIA.

(Trumpet Vine.)

Radicans—Trumpet Flower—Strong grower, hardy out-door climber, large orange-scented flowers in large clusters. 25c each; extra strong, 50c.

BRUGMANSIA.

Knightii—A stout, free-growing shrubby plant, producing large trumpet-shaped double white fragrant flowers; a splendid plant for the lawn or conservatory. 25c and 50c.

CACTUS.



GROUP OF CACTUS.

Cereus Grandiflora—Flowers very large (about twelve inches across and fourteen inches long) center petals white, outer petals tinted pink, with numerous beautiful stamens. Blooms in July and August, flowers opening at dusk. 20c, 30c, 50c and \$1.00. [See large flower in above cut.] Large specimens, \$2.00 to \$5.00 each.

Cereus Speciosa—Brilliant scarlet flowers, very large and showy and freely produced; splendid; an early bloomer. 25c.

Cereus McDonaldii—(New)—Night blooming variety; immense flowers. 20c, 30c, 50c and \$1.00.

Epiphyllum Truncatum—(LOBSTER CACTUS)—20c.

Phyllocactus Latifrons—Broad flat leaves on stout stems, and very large white flowers, outer petals pink; night bloomer. 25c and 50c.

Stapelia Serpentina—Strictly not a cactus, but resembles them in form and habits. 15c and 25c. [See star-shaped flower in cut.]

CINERARIA HYBRIDA.

New Dwarf Prize.

One of the most beautiful and profuse blooming plants for spring decoration for the window or conservatory; the flowers are of white, blue, crimson, purple, and violet shades, and the plants are almost covered with a mass of bloom lasting a long time. Fine plants, 25c, \$2.50 per dozen. Extra large, in bud or bloom, 35c and 50c each.

CISSUS DISCOLOR.

A beautiful tender climber, with finely colored foliage. Fine for pots, baskets, etc. 25c.

COBEA—(Climber.)

Scandens—An elegant rapid-growing vine, with large purple bell-shaped flowers, for the veranda or conservatory. 15 to 20 feet, 15c; \$1.50 per doz.

CALLAS.



CALLA LILY.

Or *Lily of the Nile.*

An excellent well-known plant with large, pure white trumpet-shaped flowers. We have a splendid lot of fine large plants in bud and bloom at 50c each. Fine plants not in bloom, 25c and 35c each; small plants, 15c each.



NEW DWARF CALLA.

Little Gem.

A very dwarf variety of the old Calla, growing from 12 to 15 inches in height, or, about one-half the size of the old species. It is very free flowering and fine for pot culture. 25c and 35c each.

SPOTTED CALLA.

A dwarf species with bright green leaves, thickly spotted and splashed with white. The flowers are pure white, with a purple blotch in the center. 20c and 30c each.



BLACK CALLA.

Arum Sanctum.

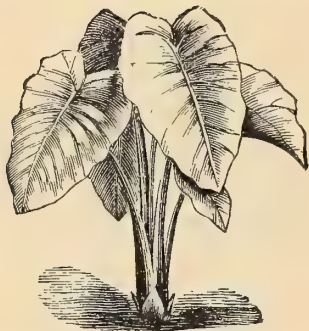
Foliage and habit resemble the White Calla, but the flower is very different, being over a foot in length and four to six inches across, and the spadix or spike ten inches long; the color is rich, dark purplish maroon on the upper side, and a bright mossy green on the under side. 30c and 50c each.



CESTRUM.==(Parqui.)

Night-Blooming Jasmine.

This beautiful and popular plant is grown for its delightfully fragrant flowers which it produces in immense quantities, filling the atmosphere with its pleasing perfume. 10c and 20c each.



CALADIUM--(Alocassia.)

Esculentum—Very large shield-like leaves; a valuable plant for bedding, garden, lawn or center of beds; etc. Large bulbs, 20c each; \$2.00 per dozen; smaller bulbs, 15c; \$1.50 per dozen.



FANCY CALADIUM.

The beautiful, richly colored foliage of the fancy leaved Caladium make it one of the finest summer plants for the window-box, green-house or conservatory, and also for bedding in moist shady position; the bulbs may be stored away in sand or dry soil in a warm cellar or closet for the winter; fine named sorts. 30c each; 6 for \$1.50.



CROZY CANNAS.

(See New and Rare Plants, pages 1 to 8.)

CARNATIONS.



The Carnation flower stands next to the Rose in popular favor. Its rich spicy fragrance is delightful, which, combined with its beautiful shades of color, give it a foremost place among flowering plants. They are easily grown and bloom freely in summer and winter. Planted in April and May they flower early in summer and continue till frost. If intended for winter, they should be pinched back every three or four weeks till the middle of August, lifted and potted before the first of October, put in a cool shady place a few days, then in the window or conservatory; a moderately cool treatment is best for them. 10c each; \$1.00 per dozen, except noted.

American Flag—A strong compact grower with stout shoots producing several blooms on each; color scarlet striped with white.

Buttercup—Rich deep yellow like the "Marechal Neil" Rose, with a few streaks of clear carmine; flowers large and double, dwarf grower.

Daybreak—(New.)—Flowers very large and full of heavy texture; color a delicate clear flesh pink; with long stout stems; a free grower and bloomer. Extra good.

Fred. Dorner—(New.)—A very large bright scarlet flower, full and finely fringed; a stout grower and good bloomer.

Fred. Creighton—(New.)—Flowers large and full, of soft clear pink; a very vigorous grower.

Golden Gate—Bright golden yellow flowers of the largest size; a splendid healthy grower and free bloomer.

Golden Triumph—A new yellow that has been highly recommended, but with us not nearly as good as "Golden Gate." May do better in some localities.

Grace Wilder—A beautiful soft carmine pink, nicely fringed; early and free; still the most popular pink variety for cut-flowers.

Hector—(New.)—Intense scarlet, flowers of large size and finely fringed; vigorous grower and free bloomer.



STRIPED CARNATION.

Lizzie McGowan—Flowers very large, pure white, on long stems; very fragrant and a good bloomer.

Portia—Intense bright scarlet, of dwarf, stout, free flowering habit; flowers of large size, well formed and finely colored.

Puritan—(New.)—Very vigorous but compact grower, flowers pure white, large and full and of good substance.

Silver Spray—Flowers large, perfectly formed, finely fringed, pure white, very fragrant and free blooming, with nearly all the flowers on good long stems; a splendid white variety.

Thos. Cartledge—A fine dark pink, with large flowers on stout stems, very strong grower.

Tidal Wave—Rich carmine pink, flowers large and full, habit compact, but a vigorous grower and fine bloomer

10c each, except noted: large plants of most sorts 25c each.

COREOPSIS LANCEOLATA.

A beautiful bright yellow flowering hardy perennial growing 15 to 18 inches high, blooming the entire season in great profusion. Make a fine cut-flower of good size with long stems. 15c, \$1.50 per dozen.

CYCUS REVOLUTA.

Sago Palm.

One of the most beautiful and durable decorative plants grown, their heavy, glossy fern-like fronds withstanding the dust, gas, etc., to which they may be exposed. Small plants, 50c to \$1.00 each; large plants with good stems, \$5.00 to \$15.00.



CYCLAMEN.

Persicum and Giganteum—Beautiful Winter and Spring blooming plants, with bulb-like root, with white, pink, purple and red shades; flowers and foliage handsome, 20c, 30c and 50c each.

CUPHEA.

(Cigar Plant.)

Platycentra—Flowers tubular, scarlet tipped with white, free and showy; nearly always in bloom. First size, 10c each; \$1.00 per dozen.

New Tricolor Cuphea—This remarkable variety combines three distinct colors, scarlet, purple and white. The flowers are tubular, one and one-half to two inches long, with two bright scarlet wings at the end of each flower. The tube of the flower is pea green, covered with fine crimson hair like a moss rose; the flowers are tipped with purple and the stamens pure white, far superior to the old sorts and constantly in bloom. 10c and 20c each.

CYPERUS.

(Water Plants.)

Alternifolius—(Chinese Umbrella Plant)—Stems one to two feet, surmounted by tufts or whorls of leaves; very graceful habit; a splendid plant for center of baskets, vases, etc., and not excelled as a water plant for aquariums, fish-globes, etc. 15c and 25c each.



CHRYSANTHEMUMS.

CULTURE.—To grow fine specimens treat as follows: Plant early in good rich garden soil, in a sunny position; or in large pots, wooden pails, tubs or boxes, well drained. If very large bushy plants are wanted set three plants in a pot or box; pinch back when about six inches high; allow four shoots to grow from this and when they are about four inches high, pinch the top out and allow three branches to grow from each of these limbs; allow these branches to grow six inches and then pinch out the tops for the last time—this not later than August 1; then allow to grow undisturbed. If extra large flowers are wanted, thin out flower buds freely as soon as can be seen, leaving but one on a branch. If wanted for indoor blooming, they should be lifted before October 1—(better a few days earlier in this latitude)—and potted. Give a thorough watering and shade a few days; then grow in full light in a cool temperature—45 or 50 degrees at night being better than higher—especially with artificial heat. They also do well grown in pots when shifted in larger sizes as they advance and are carefully watered. Pinch back and thin buds as recommended above and remove all superfluous shoots. Liquid manure once or twice a week after buds appear will greatly benefit.

The sorts named in the following pages are selected after thorough trial by us, and their well known records by other growers, and can be relied upon as first-class. It don't pay to waste time and room on poor varieties.

≡ CHRYSANTHEMUMS ≡

The following are chiefly large flowering JAPANESE, with a few of the very best CHINESE varieties.

10c each, except noted.

Annie Manda—Ostrich Plume variety.—Improved "Mrs. A. Hardy." Flowers large and full, pure white, well covered with plume-like glands and sweet-scented. 15c each.

Col. W. B. Smith—(1892)—Immense flower with high center; color of bright golden yellow, tinted bronze. 20c.

Domination—A fine, creamy white, very large and full; early bloomer; an extra good standard sort.

E. Hitzeroth—(1892)—Flowers large; bright lemon yellow, broad petals peculiarly arranged and completely filling the center. 20c.

E. G. Hill—Very bright yellow, sometimes tinted bronze on the under side, flowers large, full and finely formed, an immense bloomer, a variety for everybody; an extra good cut flower or pot plant.

Ed. Hatch—(1892)—A large, full and finely formed flower of soft lemon tinted pink, on stout stems. 20c.

Elmer D. Smith—A rich, deep cardinal red, with reverse side of chamois yellow, flowers very large and fine.

Geo. W. Childs—Flowers large and massive with broad reflexed petals of a rich velvety crimson, the flowers are borne on stout stems with fine dark foliage growing close up to the bloom; the finest crimson to date.

Golden Gate—Old gold and tawny yellow, very large spreading flowers, slightly whorled, on stout stems.

Harry E. Widener—A splendidly yellow of the largest size and finely formed, incurved and full to the center; a fine flower but weak grower. 15c.

Harry May—Flowers very large and double, with broad thick petals of deep golden yellow, occasionally tinted red. 20c.

Harry Balsley—Pearl pink shading to mermet pink, of the "V. H. Hallock" type; fine for pots or cut flowers.

Ivory—Flowers large, pure white, and very double plant, dwarf but sturdy; good for any purpose; one of the very best.



Jos. H. White—Large white, upright petals; a round ball.

Leopard—Deep carmine pink, spotted pure white, a remarkable and distinct sort, dwarf habit. 20c.

Lilian Bird—A beautiful shrimp pink color with quilled petals; flowers large and distinct.

Lilian Russell—(1892)—A beautiful broad-petaled silvery pink, incurved and forming an immense ball.

Louis Boehmer—The "PINK OSTRICH PLUME."—An exquisite shade of silvery pink with the feathery or plume-like petals of the "Mrs. Alpheus Hardy."

Lizzie Cartledge—Flowers large and full, of bright rose pink, incurved except lower petals which are reflexed; very strong grower.

Miss Kate Brown—An extra early bloomer; flowers clear white; the best very early white.

Miss Helyett—(1892)—Flowers a very pleasing shade of violet amaranth, the reverse of petals being of a lighter tint. 20c.

Mrs. Maria Simpson—(1892)—A beautiful large flower of soft chrome yellow, with finely incurved broad petals; a fine grower with stout stems. 20c.

- Miss Minnie Wanamaker**—A perfectly double incurved; snow white; very large and full. 20c.
- Mrs. J. W. Morrissey**—(1892)—An immense flower of silvery pink, with the inner surface of petals bright rose. 20c.
- Mrs. A. J. Drexel**—(1892)—Flowers very large; of a rich crimson lake color; the petals are so arranged that the color is shown to best advantage; a distinct and striking variety. 20c.
- Mrs. Robert Craig**—(1892)—A pure white incurved very double, forming a perfect sphere. Like the "Mrs. L. C. Madeira," except in color.
- Mrs. L. C. Madeira**—A golden ball of thick wax-like pointed petals; flowers of large size and great substance; a distinct and striking variety. 20c.
- Mrs. Jerome Jones**—Large creamy white, broad petals finely incurved; high rounded flower of the finest type; an extra fine variety of the greatest value for cut-flowers or specimens. 20c.
- Mrs. J. G. Willdin**—A handsome yellow variety of large size and fine form; one of the finest early yellow sorts yet offered and grown in large quantities for cut-flowers.
- Mount Shasta**—An immense double white with broad wavy petals, thoroughly distinct from "Shasta," a grand white of stout growth.
- O. P. Bassett**—Crimson scarlet, large and double and of great substance; color like "Cullingfordii," but the flowers are much larger. 20c.
- Potter Palmer**—Pure white, very large and double; a late bloomer and fine keeper.
- Eoslyn**—A superb clear mermet pink, petals thick and heavy. Flowers cup shaped and solid to the center, flowers on stiff stems; fine foliage and splendid habit.
- Shenandoah**—Deep chestnut crimson, fine large flowers with broad petals. 20c.
- Vivian Morel**—An immense flower with full high center of a beautiful tender rose color; extra large and fine.
- Wm. Falconer**—A light rosy blush, "Louis Boehmer," of the most delicate shade, and like the parent, a profuse bloomer and free grower.
- W. H. Lincoln**—An immense full double flower of rich golden yellow; fine habit in growth; an extra variety 10c each; \$1.00 per dozen, except as noted. Fourteen for \$1.00 of our selection. Strong plants in fall of many sorts, 25c, 35c, 50c each.



New Chrysanthemums of 1893.

The following are selected as the best in their class, from the various raisers and importers:

- Emily Ladenburg**—Of the deepest crimson, approaching to black; flowers very large and full with high center; a winner of cups, medals and prizes. 20c.
- Enfant des du Mondes**—A greatly improved "Mrs. A. Hardy," and a fine healthy grower—(a valuable quality lacking in Mrs. A. Hardy.) The flowers are very



large, pure white, and the petals well covered with the plumy glands peculiar to their class. Splendid blooms of it were shown at the "Worlds Fair" Chrysanthemum show. Imported variety from France. 50c each.

Flora Harkett—A beautiful large Japanese flower, of clear, bright, canary yellow, the reverse side of petals being of silvery yellow; the petals are broad and finely incurved. The habit of the plant is unexcelled, being similar to its parent, "Lady T. Lawrence," but of even stouter growth and with larger blooms. 20c.

Golden Wedding—Flowers deep golden yellow, of very large size, with long and broad petals which are channeled lengthwise and incurved, the lower petals drooping gracefully; a Japanese variety of fine form, size and color. 20c.

Good Gracious—A beautiful peach pink in color, with flowers of extra large size; the petals are irregularly incurved and twisted, giving it a pretty informal appearance; imported Japanese variety. 20c.

Gettysburg—A rich, deep, velvety crimson flower, with the outer petals reflexed, the general shape being of broad, flattened form, showing the color to advantage. 20c.

Joey Hill—Of the very grandest size; we know of nothing larger in the entire family. Color, deep cardinal red of beautiful shade, faced with old gold; the outer petals are flat, showing the color to good advantage; the center is an immense mass of closely



"Ostrich Plume" Chrysanthemum.

packed petals, no room for another one apparently. Very strong in growth. An entire new departure in reds. First Premium for the best red at Indianapolis. 50c.

Maud Dean—An extra large flowered variety, petals broad and incurving, perfectly double and of great substance; color pink, almost rose, a shade not found in any other variety. A model variety for cut flower purposes in form, size, color, and stem. Silver Cup at Indianapolis for prize novelty of '91, not yet disseminated. First-class Certificate at Cincinnati and Boston. 25c.

Mrs. Craige Lippincott—A very rich yellow in color; flower eight inches through; the petals are long, large and incurving; the growth is strong, foliage large, the flower very bright and finely formed; undoubtedly the finest yellow yet introduced. A very early bloomer. Silver medal at Philadelphia, 1892. 25c each; 2.50 per dozen.

Mrs. Jessie Knox—A white "Kioto" without the latter's fault—a weak stem. The petals are whorled closely, the flowers of good size, and the plant of fine habit; an early bloomer. 25c each.

Mrs. J. W. Crouch—The nearest approach to a self purple yet seen; flowers of globular Japanese style, very large size and with broad petals of heavy texture; a strong free grower. 20c.

Niveus—A grand snow-white flower with the center petals irregularly incurved, the outer petals reflexed nearly to the stem, giving it an almost globular appearance; a strong grower with fine foliage; a great prize winner for best white at the fall shows. 20c.

Pres. W. E. Smith—A pure self pink flower like "Day-break" carnation, of great substance, on stiff stems; the form of the flower is very beautiful in all stages, the center petals incurving and the outer petals reflexed; it is perfectly double and fine for cut flowers or exhibition. 20c.

Robt. McInnes—The best of the golden bronze type, color bright scarlet, faced with old gold; flowers fully double and of grand size form and color. 30c.

The Queen—This novelty is undoubtedly the finest white variety up to date; it excels all in purity, extra large in size, of beautiful half globular form with broad incurved shapely petals, of great substance; growth robust, with large, smooth, heavy, deep green foliage; carries flower erect on stiff stem; it is a grand show flower and promises to be a very profitable variety for commercial purposes; opens about October 25th. Winner of the Prize at Madison Square Garden flower show; also the Storer Prize (silver cup) at Cincinnati, where shown. First premium and Columbian Medal for BEST WHITE at the "Worlds Fair" Chrysanthemum show. We have a fine stock and offer it at the very low price of 25c each. (Last spring it sold for \$1.25.)

W. G. Hewitt—Pure white with long drooping petals from the outer rows, centre petals upright; very informal in arrangement, of large size and fully double, the foliage extends up the stem quite to the receptacle and acts as a support for the reflexed petals broadening the flower very much in effect. Certificate at Indianapolis and New York. 25c.

W. N. Eudd—Color pale lavender pink of pleasing shade. The petals are very long, the outer ones drooping, and all are of the curiously notched formation seen in Elkshorn; of more than medium size and of most exquisite finish; a good free grower and perfectly double; a fine cut flower variety. First Premium at Chicago for best pink; winner of the Blanc Prize at Philadelphia. 25c.

12 fine 1893 Sorts for \$2.00.

New Chrysanthemums for 1894....

See New Plants
Pages 1 to 8

COLEUS.

This is at once the most beautiful and cheapest foliage plant for bedding or pot culture. The colors have been so much improved that they are really wonderful. The following are selected as the best and most distinct yet offered and include the cream of both the new and old sorts:

Beckwith's Gem—Center of leaves crimson and scarlet with broad margin of green and yellow. Variable in color.

Black Diamond—Leaves large and fine of maroon black, stout erect grower.

Crescent—Rich dark maroon, with bright rose center and green border.

F. P. Dilger—The finest of the striped leaved or flake section; leaves large of bronzy red, flaked with yellow maroon and rose.

Fireman—Center bright carmine-crimson with green edge; dwarf grower.

Firebrand—A grand bedding Coleus, always high colored; color, crimson shaded garnet.

Glory of Autumn—Deep glowing crimson and gold.

Golden Bedder—clear golden yellow, with good dwarf bushy habit.

Golden Verschaffeltii—We quote the introducers in regard to this useful and beautiful variety: "In this grand Coleus we have at last succeeded in procuring a pure yellow variety, which, unlike Golden Bedder and others of the same color, may be depended upon to grow evenly and vigorously. Planted side by side with the well known Crimson Verschaffeltii in our grounds, it held its grand golden color the entire season."

Garnet—Fine large leaf of Garnet, shaded bronze; base of leaf bright violet.

Harry Harold—Handsome deeply serrated foliage, finely colored with crimson, maroon, yellow and brown, with a narrow margin of bright green.

Her Majesty—Crimson foliage, bordered with yellow; plant of dwarf habit.

Hero—Glossy black foliage, a fine bedder to contrast the light-colored sorts.

Ideal—Very large, handsome, leaves of rich maroon red, heavily marked with rose and cream.

Mad Jamain—Crimson and yellow with green edge.

President Cleveland—A very finely colored sort, center of leaf bright carmine, then deep bronzy crimson with narrow green border.

Rag Carpet—Carmine-red, with a very broad border of deep chocolate red; fine and distinct.



Ruby—A beautiful pale green leaf, with deeply serrated edges, having a large Ruby blotch in center with broad veins of same merging into lemon and white.

Rainbow—Deep crimson-maroon with bright yellow border; the fine contrast in the colors and compact habit make it very attractive

Shylock—Very rich dark maroon leaves, tinted purple with bright crimson center; very fine and distinct.

Topaz—Body of leaf golden yellow, blotched with emerald; edge of deep purple and the center appears as if a spray of crimson purple had been laid on it.

Vesuvius—The most brilliant flame red, deeper toward the edges and shading to the richest yellow in center; leaves large and finely formed; a grand variety.

Valiant—Rich violet-maroon, with finely serrated border.

Verschaffeltii—The well-known indispensable bedder; color, rich velvety crimson; deeply fringed.

Also many other varieties.

10c each; 75c per dozen; \$5 00 per 100.

NEW COLEUS.

A fine collection of carefully selected varieties.
20c each; 6 for \$1.00.

CLEMATIS.

(HARDY CLIMBERS.)

The most beautiful hardy flowering climber for covering pillars, trellises, old trees, fences, bedding, etc. Entirely hardy, with large showy flowers of the most graceful outline and great variety of color. A well known grower compares the flowers to "huge butterflies hovering among the green leaves," when swayed by the breeze. The colors include white, lavender, mauve, plum, scarlet, blue, light and dark velvety purple with many combinations of the most beautiful tints. In November apply liberally some old rotted manure to the plants and you will be rewarded with an extra fine show of flowers, increasing in quantity every season. Our plants are strong and mostly grown in pots so they can be planted any time from frost till end of June at the north or later if freely watered till well established. In fall plant from end of September till heavy frost. We have plenty of extra strong plants for immediate effect at \$1.00 Three for \$2.50.

Duchess of Edinburgh—The finest double white yet offered; a vigorous grower and very free flowering. 60c. and \$1.00.

Hybrida Sieboldi—(Lavender Queen)—Large handsome flowers of a beautiful lavender color. 60c; extra strong, \$1.00.

Henryii—A splendid white, with large, handsome flowers, and a vigorous grower. 60c and \$1.00

Jackmanii—Flowers very large, 4 to 6 inches in diameter, of rich velvety purple; vigorous and free. 50c.

Lady Caroline Neville—French white, with mauve bars, very large flowers.

Lucy Iemoine—Large double white flowers with bright yellow anthers.

Madam Von Houtte—French white, vigorous and free.

Miss Bateman—White, with chocolate red anthers; very dwarf habit.

Star of India—Reddish plum color, with red bars.

Viticella Kermesina—(New)—Red flowering; a rapid grower producing a sheet of bloom of bright wine-red color; the most prolific bloomer on the list.

Vit Rubra Grandiflora—Bright claret red, large flowers and free blooming.

Viticella Venosa—Reddish purple distinctly veined, one of the finest.

Fine plants 60c each, 6 for \$3.00, 12 for \$5.00; extra strong, mostly 3-year-old plants \$1.00 each, 3 for \$2.50, 6 for \$4.50.



CLEMATIS.

(Hardy American Species.)

Coccinea—Flowers medium size, bell-shaped, of bright coral-red, blooming till frost; foliage very distinct and pretty. 25c and 50c.

Crispa—A beautiful and distinct species, bearing an abundance of pretty bell-shaped flowers of lavender and white; flowering till frost. 25c and 50c.

CLEMATIS PANICULATA.

New Sweet-Scented Clematis from Japan.

A very free-growing species with panicles or clusters of white star-shaped flowers, which have a most pleasing and penetrating fragrance. It will cover trellises, porches, arbors, etc., twenty feet or more in height. It is remarkably free-flowering and will be a most valuable addition to our list of hardy climbers. Strong roots \$1.00 each.

CINNAMON VINE.

A rapid and beautiful climber, with long tuberous roots. 10c.

DATURA CORNUCOPIA.

A splendid new species recently found in South America. The flowers are of immense size being eight to ten inches long and five to seven inches wide, and double, there being really three flowers, one within the other. The color is a delicate French white, marbled with royal purple on the outside; it is also very fragrant and remarkably free blooming for so large a flower, a single plant producing 200 to 300 of its large, beautiful and fragrant blossoms in one season. The gigantic size, striking colors and pleasing fragrance make this one of the most valuable novelties of the year. Price 25c; extra large 50c.

DAHLIAS.

One of the grandest and most showy of summer and autumn flowers; for bedding out unequaled from August till severe frost, and in its glory when other flowers are fading, and includes the most brilliant shades of color, from the purest white to the darkest maroon. A splendid collection of choice named double sorts in all colors, 15c. each; \$1.50 per doz. New double "Cactus," flowering, 25c each; \$2.50 per dozen.



DEUTZIA.
(Double Deutzia.)

A beautiful genus of hardy shrubs from Japan, flowering in the spring and producing racemes four to six inches long.



Crenata Flore Pleno—(Double Flowering Deutzia)—Flowers double white, tinted rose; one of the best hardy shrubs in cultivation. Fine plants, 20c and 30c.

Gracilis—A charming species of dwarf habit, with pure white flowers in great profusion; fine for the garden, cemetery or pot culture; will force freely in winter. 15c each; large plants, 25c.

DRACÆNA.

Indivisa—Long narrow leaves of green and bronze radiating from a straight stem and gracefully recurving. A splendid plant for specimens or center of baskets, vases, in or outdoors. 25c and 50c.

Terminalis—Very handsome erect-growing plant with spreading leaves, color bronzy crimson, pink and white; a beautiful plant for baskets, pots, etc., in the house or conservatory. 25c and 50c.

EUONYMUS.

Radicans Variegata—Leaves bright green, edged with white; a good plant for bedding, baskets, vases, etc., and valuable as a hardy climber; it will attach itself to walls, fences, buildings, etc. 15c, 25c and 50c.



ECHEVERIAS.

Secunda Glauca—Very interesting succulent plants for bedding, etc. 10c each; \$1.00 per dozen.

EUCHARIS.

Amazonica—(Amazon Lily.)—Pure white, large star-shaped flowers; very fragrant. Fine bulbs, 50c each.

EULALIA JAPONICA.

Zebrina—One of the most beautiful and distinct hardy plants in cultivation. Unlike other variegated plants, this has its striping or marking across the leaf instead of longitudinally. It grows from five to seven feet in height, forming a most striking and graceful plant. The expanded flower spike is very showy, and when dried will last for years; plant entirely hardy; whether used as a single plant or for groups on lawns, it has no equal. 20c each; 6 for \$1.00.

Variegata—A hardy perennial from Japan with long narrow leaves striped with green and white. In style of growth and shape of flower it is exactly like the Zebrina. The dried flowers of both varieties are valuable for parlor ornaments. 20c each; 6 for \$1.00.

EUPHORBIA.

Splendens—(Called "Crown of Thorns" Plant)—Beautiful greenhouse or parlor plant, blooming in winter, with brilliant vermilion-scarlet flowers and curious cactus-like stem. 15c and 25c.

FERNS.

We have some of the prettiest and most useful Ferns in cultivation and of easy culture. Use porous soil and drain with sharp sand, or, better, if easily obtained, broken charcoal with soil and sand. Keep roots moist and grow in a shady position in or outdoors. 2c to 30c each; \$2.00 to \$3.00 per doz. 6 fine sorts for \$1.25.



FARFUGIUM, =(Grande.)

(Leopard Plant.)

A valuable foliage plant for shady positions; beautiful large dark green leaves, with large deep yellow spots. 25c.



(Little Gem.)

FEVERFEW.

Little Gem—The great value of the old dwarf Feverfew for cut-flowers in summer, fall and winter, is well known, but this excels it, the flowers being larger and more perfect and of the purest white, and the plant generally attaining a height of only twelve to eighteen inches.

First size, 10c each; \$1 00 per dozen.

Second size, strong plants, 20c each; \$2 00 per dozen.

FICUS.

Rubber Plants.

Elastica—(India Rubber)—Fine large ornamental leaves with crimson bracts on stout erect stems. 50c each; large plants \$1.00, \$2.00 and \$5.00.

Nitida—Dwarf, compact habit. 25c.

Parcellii—Large and beautiful variegated foliage, the bright green being heavily blotched with white; very fine. 50c and \$1.00.

Repens—Entirely distinct from the foregoing species, having small dense foliage and creeping habit, making a fine plant for baskets, vases or shaded rockeries, pots, etc., and will attach itself to brick or woodwork. 15c and 25c.

FREEZIA ALBA.

A beautiful bulbous plant with racemes of pure white flowers, which are delightfully fragrant and valuable for cut-flower work. Dry bulbs from August to November. 5c each, 50c per dozen.

FUCHSIAS.



One of the most elegant and graceful flowers we have, easily grown and flowering in the greatest profusion. They are splendid window or greenhouse plants. Also fine bedders in light shade. When bedded, sink pots in the ground to cover the rim and water freely. Remove to the house before frost and they will (many sorts) flower freely in winter. A few of each class, double and single, will make a grand display.

10c each, except noted.



DOUBLE WHITE FUCHSIA.

DOUBLE FUCHSIAS.

Abbe Garnier—Sepals red, corolla of violet blue, marked bright rose, short and double. 20c.

Joseph Rosain—Corolla very large and double, color deep violet striped with scarlet, with scarlet tube and sepals; very free flowering and of fine habit.

Jupiter—(New)—Flowers double, of enormous size and the plant a vigorous grower. The sepals are deep crimson, the corolla a beautiful shade of purple with dark crimson veins. 20c each.

Mrs. E. G. Hill—The tube and sepals are of a rich, bright, reddish-crimson color, the corolla extra large, full and double, of the purest white. It is of robust, upright growth, not coarse, but compact and symmetrical.

Molesworth—An excellent new double white variety of free-blooming habit somewhat like "Storm King," but a much better grower and of purer color.

Nancy—A splendid double variety, of fine habit and producing flowers of the largest size, rivaling the celebrated variety, "Phenomenal." The sepals are large, of bright coral red, the corolla deep violet-blue.

Paris Murcie—Another fine double variety of good habit, with bright red tube and sepals and large double white corolla.

Phenomenal—Flowers very large; tube and sepals crimson, the corolla a beautiful shade of violet, flaked with crimson, and the largest Fuchsia ever offered, and may be grown twice as large as the flowers shown in cut in first column of this page.

President Carnot—Plant dwarf, with well-branched free-blooming habit, corolla double violet, sepals wine-red. 15c.

President Grevy—Flowers large and double, of a novel, delicate shade of soft rosy salmon, sepals of fine form and well reflexed.

Rosains Patrie—One of the finest and earliest bloomers in the doubles; corolla pure white, with rosy carmine sepals.

White Giant—A large double white variety, with bright red sepals and pure white corolla; fine in every respect.

First size, 10c each; \$1.00 per dozen.

Second size, 15c each; \$1.50 per dozen.

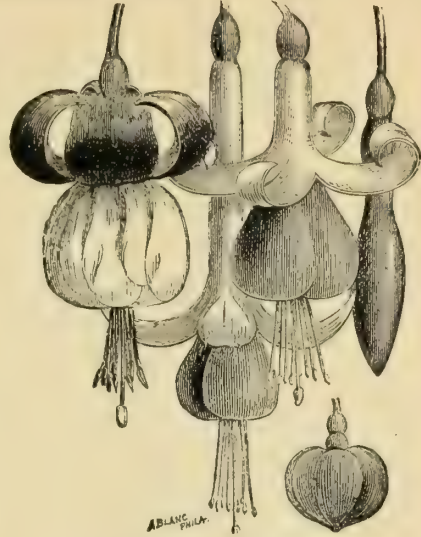
Third size, 25c each; extra large.



DOUBLE FUCHSIA.



DOUBLE DARK FUCHSIA.



GROUP OF FUCHSIAS.

GLOXINIA.

New Hybrid Crassifoli.—Most beautiful summer flowering bulbs; the flowers are large and extremely rich in coloring, including the most lovely shades of rose, crimson, scarlet, violet, purple, etc., many having a pure white throat, then intensely rich coloring, and this shading to a very delicate color at the edges. Others are of nearly solid color, spotted and penciled, pure white, etc., but all exceedingly beautiful. They do best in light, rich, well-drained soil, in a slightly shaded place in the house or conservatory, or planted in shaded frame outdoors. Set bulbs away in dry soil in a moderately warm place over winter. Fine strong bulbs in mixed colors, 25c each; 5 for \$1.00. Fine plants started in pots from March till fall, 35c and 50c each.

Single .. Fuchsias.

- Aurora Superba**—Rich salmon sepals, with orange-scarlet corolla; very distinct and fine.
- Black Prince**—Carmine sepals with reddish-rose corolla; free, fine and distinct; immense bloomer.
- Carl Halt**—Sepals white, corolla scarlet, striped with white; fine and distinct.
- Constancy**—Corolla rich carmine, with white sepals; flowers very large and beautiful.
- Ernest Renan**—Large rosy-pink corolla, with tinted white sepals; an early and free bloomer.
- Flocon de Neige**—Tube and sepals soft coral-scarlet, with large bell-shaped pure white corolla.
- Lord Lyons**—A finely colored variety, with rich purple corolla and bright crimson sepals. 20c.
- Mrs. Marshall**—Rosy-carmine corolla, with white sepals; very early and free; graceful drooping habit.
- Speciosa**—Blush sepals and rosy-scarlet corolla; best winter bloomer.
- Sunray**—The foliage of this beautiful variety is variegated crimson, rose, white and green, like the tri-color Geraniums with flowers like the "Black Prince." Elegant.
 First size, 10c each; \$1.00 per dozen; 14 of our selection double or single, for \$1.00.
 Second size, 15c each; \$1.50 per dozen.
 Extra large plants, 25c each.

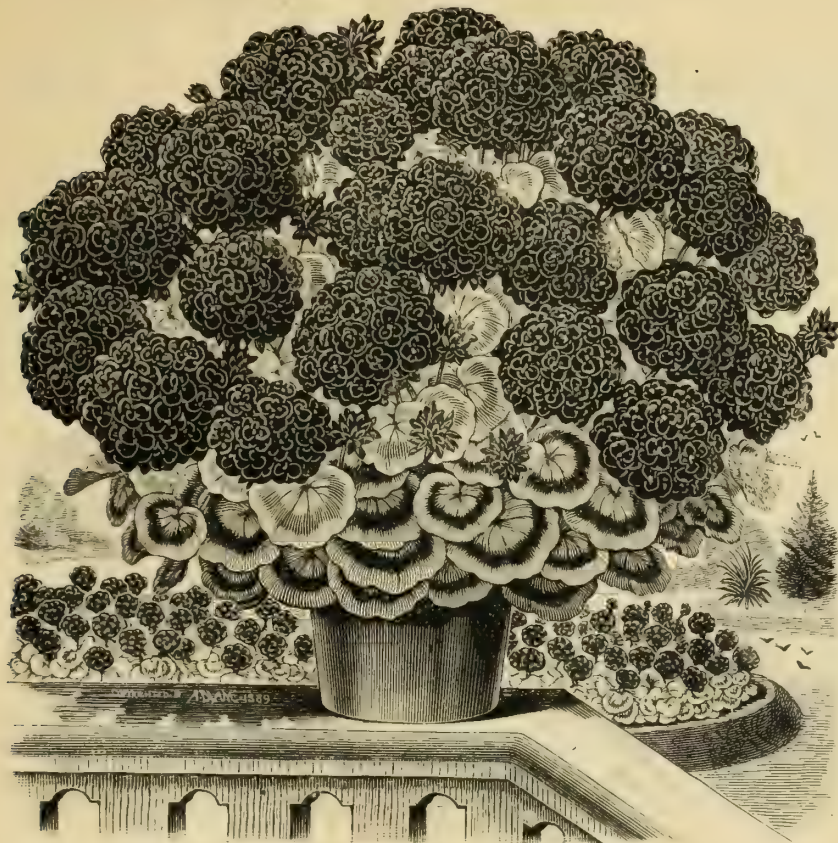


GERANIUMS.



GERANIUMS are a class of flowers that are always in demand, and therefore we have given particular attention to the same. In the following pages we offer you collections unexcelled in quality and which have been selected after thorough trial from the best older sorts—new Imported and American-raised varieties, and cannot fail to give satisfaction.

We call your especial attention to the varieties marked "BRUANT," after the name. (See Cut on next page.) They are of stouter growth and finer foliage than the old sorts and stand the hot dry seasons remarkably well.



BRUANT GERANIUM.--(Double Gen. Grant.)

Double Geraniums.

- Acteon**—(Bruant)—Immense flowers of brilliant scarlet tinted rosy lilac in the upper petals; very vigorous habit.
- Alfred Tennyson**—(Bruant)—(New)—Large semi-double flowers; in extra large trusses on stout foot-stalk; color bright orange-scarlet; upper petals tinted lilac.
- Attraction**—(New)—Bright deep salmon flower of large size, in fine tresses, compact free-blooming habit.
- Beaute Poitevine**—(Bruant)—Flowers very large, of beautiful form and borne in immense trusses; color a brilliant salmon, brighter at the edges; a splendid variety for the window or bedding purposes; the finest double salmon ever offered. 20c.
- Bruantii**—(Bruant)—A fine rich scarlet of the Double Gen. Grant type, but of a deeper shade, and like it, a splendid plant for bedding and bed culture; exceedingly fine.
- Chaplin**—(Bruant)—(New)—Habit semi-dwarf, with nicely zoned foliage, flowers large, semi-double; color brilliant scarlet with large white eye. 15c.
- Double Gen. Grant**—(Bruant)—One of the finest and most remarkable bedding variety in the double class, with immense trusses of large brilliant orange-scarlet flowers; plant stout, with distinct finely zoned foliage; also a fine pot and vase plant.
- Dr. Cleret**—(Bruant)—Brilliant capucine scarlet, plant of fine compact habit and a free bloomer.
- Emil de Girardin**—Flowers large, double rose pink; good habit and free; fine bedder.
- Gen. Billot**—Large truss and florets of rich lake-red tinted with purple.
- Gloire de France**—Large round wax-like florets, each petal being white, edged with carmine, with deep carmine center; an extra fine pot plant and grand bedder.
- Golden Dawn**—The nearest approach to a pure yellow; flowers large and double and finely formed, of splendid habit and a free bloomer.
- Grand Chancellor**—A splendid rich dark crimson-maroon, with fine large trusses.



DOUBLE WHITE GERANIUM.

Ingénieur Parlier—(New)—Flowers very large and full, on long stout stems; color rich currant red, shaded violet, upper petals orange-red. 15c.

La Favorite—Trusses large, with florets of the purest white and well-formed; a fine grower and one of the best whites ever offered.

Mme. Ayme Chevaliers—A new double white with large trusses, well above the foliage; habit compact and free.

Montesquin—Soft lavender pink of rosette form; foliage finely zoned, plant of good habit and a free bloomer; a fine improvement in this color. 15c.

Princess d' Anhalt—A grand new double white, stout grower, and the foliage does not burn; an excellent bloomer and fine variety for bedding or pot culture.

Ruy Blas—Splendid trusses of large finely formed florets; color flaming salmon bordered with rosy peach. 15c.

S. A. Nutt—Rich dark crimson; flowers of perfect shape in large trusses; a fine bedder and perfect pot plant.

Sultana—A beautiful double pink of a very rich shade. The flowers are finely formed in large trusses; foliage nicely zoned and the plant near perfection in habit; fine for bedding or pot culture.

Tour Eiffel—(Bruant type)—This variety much resembles the variety "Bruant" in form of truss and florets, but of an orange-scarlet shade. 15c.

White Swan—A perfectly double pure white variety of compact habit and remarkably free-flowering, being literally covered with its snow-white blossoms

Wilhelm Pfitzer—Bright apricot, tinted salmon, shading to white at edge of petals; of fine habit and distinct color.

William Kelway—(New)—Habit of plant like the "Univers" single, with large trusses of fiery scarlet, double flowers. 25c.

Fine healthy plants at 10c each.

\$1.00 per dozen; \$6.50 per hundred.

Second size, 15c each.

\$1.50 per dozen; \$10.00 per 100.

Third size, 25c each.

\$2.50 per dozen; fine large plants.

Extra large plants of most sorts at 35c and 50c each.

Fourteen fine sorts, our selection, for \$1.00.

Best bedding sorts of our selection, \$6.00 per 100.

Single .. Geraniums.

Admiration—Flowers pure white with a large rosy salmon center, of fine habit and a valuable addition to the light colored section. 15c.

Alphonse Daudet—Reddish salmon, with darker center; flowers of good shape in fine trusses.

Belle of Dubuque—A rich and beautiful shade of salmon, the lower half of each petal being bright vermilion; flowers very large and well formed in immense trusses. 15c.

Benjamin Constant—(New)—A very fine single scarlet in the style of the "Univers," with splendid trusses of the most brilliant color. 25c.

Comte de Blacas—(Bruant)—A new color in the "Bruant" type, and valuable for bedding; flowers brilliant orange salmon with large white eye in fine trusses. 25c.

- Comtesse de Pot**—Flowers very large, of delicate salmon, shading to white at the edges.
- F. Becker**—(New)—A beautiful peach pink, shading to carmine at the center, with white eye.
- Gen. Wolseley**—Large rich deep glossy scarlet of a very brilliant shade, with large pure white eye.
- Gloire Poetvine**—(Bruant)—Large florets with trusses of immense size; color rich red shaded orange, with white eye.
- Joan of Arc**—A beautiful new variety of the "Souvenir de Mirande" type, of deeper color and even more distinct than that excellent sort; the color is soft rich scarlet, with the inner half of top petals pure white, and the lower petals are marked with white and flushed with violet.
- La Lorraine**—Delicate silvery flesh, shaded lavender; trusses large and fine.
- L' Immortel**—Rose color shaded lavender, with darker markings; plant dwarf and bushy, strikingly distinct and a very free bloomer.
- Madonna**—A beautiful soft pink with large well arranged flowers in handsome trusses. 30c.
- Marguerite de Layrus**—A most beautiful pure white finely formed variety; a grand bedder and the finest white yet offered for a pot or window plant; the flowers are very large, in splendid trusses; the finest white to date.
- M. Alfred Mame**—(Bruant)—Flowers very large, of soft rosy scarlet shading to salmon in the center, which is deeply veined with crimson. 20c.
- M. P. Olombel**—(Bruant)—(New)—Rich vermilion scarlet with orange shadings; immense trusses of finely formed florets; very attractive and showy; one of the finest bedders or pot plants in existence.
- Mrs. E. G. Hill**—(Bruant)—In color a soft light salmon, bordered with rosy salmon and veined with a deeper shade; flowers very large, in fine trusses. 15c.
- Mrs. J. M. Gaar**—(New)—A splendid new white bedding variety of semi-dwarf habit, and producing a mass of bloom all summer. 15c.
- Mrs. Keim**—Pearly white, with vermilion zone and large white eye; flowers large and finely formed; an elegant variety.
- Mrs. Winsor**—Light salmon, with dark center sharply defined.
- Panache de Nancy**—(New)—Light orange-scarlet with white stripes and very free-flowering; a distinct and striking variety. 20c.
- Port Royal**—Bright rosy salmon with orange center and white eye, outer edges shading to silvery white, a most beautiful variety.
- Poet National**—One of the most beautiful light-colored Geraniums, of a lovely shade of silvery rose, with deeper markings. 15c.
- Queen Olga**—Rich pink, base of petals white; large truss and free-flowering; a fine variety.
- Reflector**—Very bright vermilion-scarlet, with large pure white eye; flowers in large trusses; plant very free-flowering, with nicely zoned foliage.

- Renaissance**—(New)—Greyish rose center, with upper petals flamed with orange; good foliage and compact habit.
- Rev. Atkinson**—Bright rich crimson with large trusses; an old variety, but still one of the best of this color.
- Royalty**—Rich purple tinted carmine, in style of "Ralph," with broader petals, richer color, and more abundant bloomer; fine color for bedding.
- Souvenir de Mirande**—In this grand and beautiful Geranium we have an entirely new type. The unique arrangement of its colors, finely formed florets, good habit and freedom of bloom, make it one of the most valuable and popular varieties ever offered to the public. The trusses are large and well formed, and the florets round; upper petals pure white, with a delicate border of rosy carmine; lower petals bright coral shaded carmine, with large white blotch in center. (See cut on page 28).
- Starlight**—A beautiful variety of the oculated section; the color is white with bright salmon-red center and white eye; florets and trusses large and fine; an excellent grower and free bloomer. 15c.
- Univers**—Rich crimson-scarlet of a very brilliant shade; florets in very large and fine trusses; a splendid sort for bedding or pots.
- Van Dael**—(Bruant)—Another new shade in this type; center of florets bright silvery rose, bordered with white; flowers large, in immense trusses. 25c.
- Victorien Sardou**—Violet-currant color, with upper petals marked capucine-red in the style of the old "Dr. Denny," but much better grower than that variety.
- Wm. C. Bryant**—Rich dark scarlet flowers of fine form; habit dwarf and free; fine bedder.
- First size, 10c each; \$1.00 per dozen; \$6.50 per 100.
 Second size, 15c each; \$1.50 per dozen; \$10.00 per 100.
 Third size, 25c each; \$2.50 per dozen; fine large plants.
 Extra large plants of many sorts, 35c and 50c.
 14 fine single or double sorts, our selection, \$1.00.

DOUBLE IVY-LEAVED GERANIUMS.

A graceful and elegant class of Geraniums, of climbing or drooping habit of growth, well adapted for baskets, trellises, vases for cemetery, bedding and other decorations; producing very handsome trusses of flowers. The following new double sorts are especially fine:

- Camille Flammarion**—(New)—In the same style but deeper color than "Galilee;" a very free bloomer.
- Chas. Turner**—(New)—The finest double variety yet introduced; color, light scarlet of a soft rosy tint, upper petals veined crimson-maroon, flowers very large in immense trusses; a free grower and profuse bloomer; one of the most valuable plants for baskets, vases and windows ever offered.
- Comte Horace de Choiseul**—Flowers large and double in fine trusses; color bright orange-salmon tipped with white.
- Joan d' Arc**—Large double blossoms of the purest white; very free-flowering and good habit; extra fine.

La Rosiere—Large double flowers of a rich satin-rose color; flowers very fine and freely produced.

First size, 15c each; \$1.50 per dozen, except noted.
Extra large plants, 25c each.

NEW HYBRID IVY-LEAVED GERANIUM.

Paul Crozy—This variety is a cross between the zonal Geranium and the ivy-leaved, obtained by Mr. Crozy, who has been so successful in producing the "Dwarf Everblooming Cannas." The flowers are brilliant scarlet in large trusses, with individual florets two inches in diameter. 25c.



GOLD AND SILVER-LEAVED GERANIUMS.

HANDSOME FOLIAGE VARIETIES FOR POTS OR
BEDDING.

Distinction—Leaves regularly serrated, with a narrow black zone near the edge. 10c.

Freak of Nature—A very unique and attractive variety in the way of "Happy Thought," having dark green leaves with a pure white center. (See above cut) 15c.

Happy Thought—Leaves creamy white, with rich green border and purple flowers. 10c.

Madam Salleroi—Leaves dark green, edged with pure white; makes a pretty round plant one foot high and wide; a splendid bedder; the finest white-edged Geranium for bedding purposes. \$6.00 per 100.

Mountain of Snow—Green-edged with pure white; a splendid bedding variety and fine compact grower. 10c.

Mr. Parker—A "Mountain of Snow" with fine double pink flowers; the leaves are broadly bordered with white, and the plant a stouter grower than any other white-edged variety. 15c.

First size, 10c each; \$1.00 per dozen; \$7.00 per 100, except noted.

Extra large plants, 25c each.



BRONZE GERANIUMS.

These are of free growth with handsome foliage, and fine for parlor or conservatory, and especially for ribbon lines and other bedding purposes. The following are the very best varieties:

Chieftain—(New)—Best bedding bronze; golden yellow with chocolate zone.

Earl Roslyn—A bronzy red zone on a fine yellow ground.

Marshal MacMahon—Large, handsome golden yellow leaves, with a beautiful, bronzy red zone.

Zulu—Bright yellow leaf, with deep chocolate zone.

First size, 10c each; \$1.00 per dozen.

Second size, 15c each; \$1.50 per dozen.

Third size, extra large, 25c each.

SCENTED GERANIUMS.

Mrs. Taylor—The scarlet flowering Rose Geranium. 25c.

Prince of Orange—Very fragrant, lemon scented leaves with large white flowers, blotched maroon, like the "Lady Washington" Geranium. 15c.

Rose—An excellent well known variety.

Shrubland Pet—An excellent variety with close compact growth and crimson flowers.

Transit—An elegant variety of the Rose Geranium, with gracefully cut foliage and very fragrant.

10c each, except noted; extra large plants 15c and 25c

TRI-COLOR GERANIUMS.

These are especially desirable for the beauty of their foliage, which embrace in color from rich rose and crimson to dark maroon, with green, orange-yellow and white ground and edges.

A few of the best sorts at 20c each; 6 for \$1.00.

LADY WASHINGTON GERANIUMS.

(Pelargoniums.)

The most beautiful class of the Geranium family, the flowers being marked and blotched in the most beautiful colors; the colors running from white through the many shades of pink, red, crimson, maroon, etc., in endless tints, making one of the finest window plants extant.

25c each; \$2.50 per dozen.



GLADIOLUS.

THE GLADIOLUS are the most brilliant and showy of summer flowering bulbs, embracing nearly every shade of color, including brilliant scarlet, crimson, creamy white, rose, pink, purple, striped, blotched, spotted and veined in the most curious manner. In order to secure a constant succession of bloom during the summer it is only necessary to plant at intervals of about two weeks, beginning at the 15th of April till the 15th of June. By so doing a continuous display of flowers may be obtained from July till frost. The Gladiolus require no special care in cultivation. Plant the roots about three or four inches deep and six to nine inches apart in any good garden soil and keep the earth stirred and free from weeds. After the first frost the bulbs should be taken up and stored away in a dry cellar free from frost, where they can remain until time for planting the following spring.

GENERAL COLLECTION GLADIOLUS.

Fine Named Sorts—7c each; 75c per dozen.

Extra Fine Named Sorts—10c each; \$1.00 per dozen.

New and Scarce Sorts—20c each; \$2.00 per dozen.

Snow White—(The best Gladiolus grown.)—15c each.

Fine Mixed Scarlet Shades—5c each; 50c per dozen; \$3.00 per 100.

Fine Mixed Light Shades—6c each; 60c per dozen; \$4.00 per 100.

Fine Mixed All Colors—5c each; 50c per dozen; \$3.50 per 100.

Our mixtures are named sorts without labels and not common seedlings as many offer in mixtures. Planted either in masses or borders or mixed with other plants they are handsome and effective.

LE MOINES NEW GLADIOLUS.

Le Moines Hybrids—(Butterfly Gladiolus)—These remarkable varieties are very handsome and quite distinct from the older types, being beautifully spotted and blotched with crimson, maroon and other shades on white, yellow, pale rose and other light grounds, making them very striking and effective. 10c each; \$1.00 per dozen.

FUNKIA.

FINE HARDY PLANTS OF THE EASIEST CULTIVATION.

Lanceolata—Leaves small lance shaped, with blue flowers. 25c.

Subcordata—The "White Day Lily;" flowers large, pure white and fragrant, with large handsome cordate foliage. 25c and 50c.



A. BLANC COPYRIGHTED 1895

LE MOINES NEW GLADIOLUS.

HELIOTROPE.

Splendid pot or bedding plants, universally admired for their fragrance and delicately tinted flowers. The following are the very best yet offered:

White Lady—A splendid new white, with large flowers and trusses; stout, compact grower and free bloomer; the best of the whites.

Le Glain—A splendid dark sort with panicles of bloom of the largest size, individual florets large, of a beautiful deep blue with white center, similar in size of bloom and habit to "White Lady;" a compact grower and splendid bloomer. Everybody should have this and "White Lady."

Countess de Montmarte—Very free flowering and sweet; florets deep blue with white eye, in fine trusses.

Souvenir—Habit of plant dwarf, with very large trusses; large florets of bright lilac with white center.

First size, 10c each; \$1.00 per dozen.

Second size, 15c each; \$1.50 per dozen; large plants, 25c.



HELIOTROPE.



CHINESE HIBISCUS.

One of the most beautiful greenhouse, parlor or bedding plants, with evergreen foliage, bearing large and beautiful showy flowers, often 4 to 6 inches in diameter; in bloom almost the entire year, with fine stout glossy foliage. Excellent for summer planting out-

doors, bearing the hot sun well and producing an abundance of flowers. One of the most easily managed plants and may be kept for years.

Aurantiaca—Deep orange flowers; large and full.

Cruentus—Dark rosy crimson, with maroon center; fine.

Cooperii Tricolor—Beautifully variegated foliage of many colors, with crimson and rose colored flowers.

Denisonii—Almost a pure white, slightly tinged with rose; a large and beautiful single flower. 20c.

Pulgidus—Flowers large, single, of a rich, deep carmine scarlet color.

Grandiflorus—Flowers large, rosy crimson.

Lutea Plena—Double, orange yellow with maroon center; very fine and free-flowering; best of this color.

Miniata Semi-Plena—Very large flowers of bright crimson; petals wavy and recurved; a very fine double variety and very free; large, full and very handsome.

Rosea Plena—Rosy flesh color; double; dwarf habit and free-flowering.

Eubra Plena—Double; dark red with crimson-maroon center; very free.

Subviolaceous—(New Double)—Enormous flowers of bright crimson-carmine, tinted scarlet; the largest flower in the class; an extra good bloomer.

Versicolor—Splendid large flowers of bright rose and crimson; very showy; vigorous and free; one of the very best in the class.

First size, 15c each; \$1.50 per dozen.

Second size, 25c each; \$2.50 per dozen.

Extra large, 35c and 50c each.

HARDY HIBISCUS—(Perennial.)

Flowers very large—six to eight inches in diameter, blooming very freely from July till fall. The colors vary from pure white to deep rose, the flowers forming dense bushes five to seven feet or more in height. Strong roots, 25c each; very large plants 40c each.



DWARF HARDY DOUBLE SUNFLOWER.

HELIANTHUS MULTIFLORUS.

(Double Sunflower.)

A Double, Perennial Sunflower. This is a great addition to our hardy herbaceous plants. Its golden-yellow color is both fashionable and beautiful for cut-flowers. It grows from three to five feet in height, and small plants will bloom freely the first season. This is not like the common Sunflower, as it is entirely distinct in bloom and habit, and has proved one of the best yellow cut-flowers we have, and a grand, showy bedder. It is a hardy perennial, coming up from the roots from year to year. The flowers are fully as double and about the size of a good Chrysanthemum, three to four inches in diameter, and grown on long, light, stiff stems. It is remarkably free flowering and last in bloom a long time, (till heavy frost,) and may be planted in rows, clumps or masses. At the North, cover roots a little in fall. 10c each; 12 for \$1.00.

HYDRANGEA.

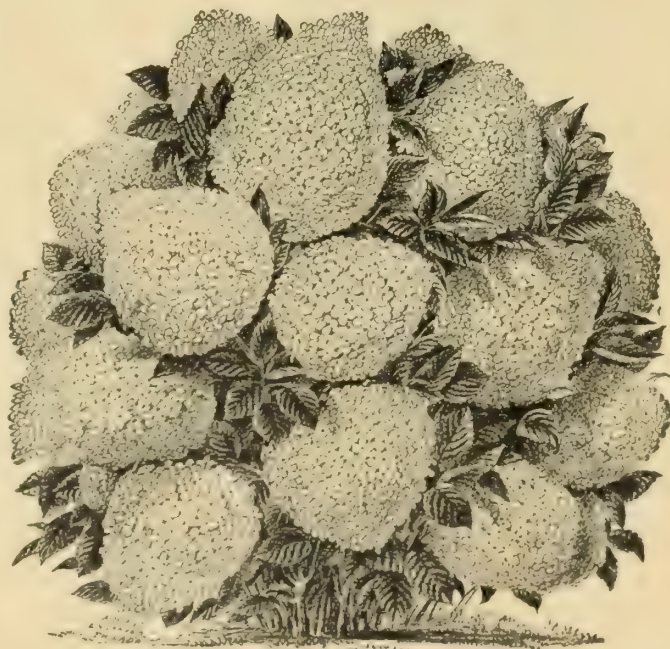
The Hydrangeas are remarkable and valuable from the fact that their immense heads of bloom last all summer, and do not fade quickly as many other plants, and this makes them not only one of the most durable, but one of the most showy flowering plants grown.

Hortensea—An excellent house plant, producing immense heads of rosy pink. 20c and 30c.

Otaska—Similar to "Hortensea," but with larger flowers of a rich rosy carmine color. 20c, 30c and 50c; also a few very large plants, \$1.00 to \$2.00 each.

Paniculata Grandiflora—The most popular and the finest hardy shrub grown, with large panicles of white flowers, changing to rosy white late in the season; suitable for garden, lawn and cemetery planting; hardy as an oak, and one of the best garden plants in cultivation. See cut. 20c, 30c and 50c each, according to size; the larger plants 2½ to 3 feet in height.

Thomas Hogg—Pure white flowering; valuable as a house plant, or for garden, lawn or cemetery decoration. 20c, 30c and 50c.



HYDRANGEA PANICULATA GRANDIFLORA.

HONEYSUCKLE—(Lonicera.)**(Hardy Climbers.)**

Well known beautiful climbers for covering verandas, trellises, trees, etc. The first two sorts are also well adapted for baskets, vases, etc.

Aurea Reticulata—[Golden-leaved Japan Honeysuckle.]—Foliage beautifully variegated with golden yellow. 15c and 25c.

Halliana—Flowers white, changing to yellow; very fragrant. 15 and 25c.

Monthly Fragrant—Flowers large and very fragrant; color red and yellow; rapid grower and constant bloomer. 25c.

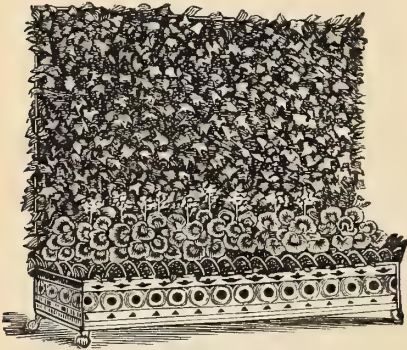
Scarlet Trumpet—Bright red trumpet-shaped flowers. 25c.

HYACINTHUS CANDIDANS.

A beautiful bulbous plant, with flower stems three to four feet high, with twenty to thirty pure white bell-shaped flowers. 10c each; 75c per dozen.

WATER HYACINTH.==(Pontedera.)

This interesting plant may be grown in a glass bowl or vessel of water, (looks very pretty with gravel, shells, or sand,) in the window in winter and out doors in summer. The orchid-like flowers are about 2½ inches in diameter, of lavender blue, shaded rose, with an orange spot on the upper petals, in large spikes. 25c each.

ENGLISH OR IRISH IVY.**English Ivy Screen.**

The Ivy is an excellent climbing plant for the parlor or conservatory, as a pot or basket plant, and for covering trellises, walls, trees, buildings, vases, etc. 10c, 20c, 30c and 50c each.

Algerienses—Leaves large and handsome; strong grower.

Aurea Maculata—(Gold Blotched)—Fine large deep green leaves, blotched with yellow. 20c.

Helix—Large leaves, handsome and rapid grower. [See cut.]

Latifolia Maculata—Leaves large, marbled with creamy white.

Mamorata Elegans—Leaves medium size, elegantly marbled with silvery white; the young growth is almost all white. 10c, 20c, 30c and 50c, according to size.

IMANTOPHYLLUM.

Fine dark stout foliage, similar to "Amaryllis" in shape, but of much stouter substance, with immense clusters of large and beautiful orange and red lily-like flowers; very handsome and easily grown. 50c, \$1.00, \$1.50, \$2.00.

IMPATIENS.==(Sultan's Balsam.)

Sultanii—This beautiful dwarf balsam is one of the best house plants and a magnificent bedder; it is always in bloom and a perfect mass of rosy scarlet flowers. 10c each, \$1.00 per dozen.

NEW IMPATIENS.

The Queen—A new and distinct color of this beautiful plant, of a delicate shell pink, tinted salmon, with a beautiful silvery sheen. 15c each.

**JASMINE.**

Grandiflora—Fine white star-shaped flower; very fragrant; splendid Summer and Winter flowering. 10c, 20c and 30c.

Grand Duke—Large double white; very fragrant; shrubby habit. 30c and 50c.

LANTANA.

A very free flowering class of plants, useful for bedding or pots, standing the hot sun well and blooming the entire year. The following are the best in their colors:

Alba Grandiflora—Fine white; profuse bloomer.

Harkett's Perfection—Foliage beautifully variegated with golden yellow and dark green, with rose and orange flowers.

Le Patriot—Yellow, changing to fiery red; free flowering.

McMahon—Rich deep crimson, with orange-yellow center.

Flue d' Or—Flowers pure deep yellow; plant dwarf and bushy and a fine bedder.

San Francine—Dwarf grower with bright rosy-lilac flowers.

First size, 10c each; \$1.00 per dozen.

LINUM.

Flavum—Half shrubby greenhouse plant, blooming in Winter, with large, perfectly formed golden yellow flowers. 15c and 25c.

LILIES.

These beautiful hardy bulbs should have a place in every garden; they require little care and make a grand display from Spring till late Summer. Get dry bulbs in Fall or early in Spring and plant deep in well drained ground. For late Spring planting get bulbs started in pots. ("Harrisii" can be had in pots from August till end of May; "Candidum Auratum," and "Lancifolium" varieties from very early Spring until June.) They also make fine plants for blooming in pots.

The following are the most popular and useful sorts:

Lilium Harrisii—(Bermuda or Easter Lily)—This beautiful Lily, introduced from Bermuda, has become immensely popular, and deservedly so, as it has many good qualities to commend it. The flowers are very large, trumpet-shaped, pure waxy white and delightfully fragrant, and may almost be called an "ever-blooming" Lily, as it will often bloom twice in succession without rest. It sometimes produces twenty to thirty flowers on a single plant. It may be grown in the house as a pot plant or planted in the garden. Get dry bulbs of "Harrisii" in August, September and October; later started in pots. Splendid bulbs, 20c each; 6 for \$1.00; smaller size, 15c each; \$1.50 per dozen. Strong plants, well grown in pots, 30c to 50c each.



LILIUM AURATUM.

Lilium Auratum—Gold Banded Lily of Japan—The most magnificent of all Lilies. Flowers very large, pure white, with a broad band of golden yellow running through the center of each petal, studded with crimson spots. Flowers delightfully fragrant. Fine bulbs, 20c and 30c each; started in pots, 40c. [See cut.]



LILIUM CANDIDUM.—St. Joseph's Lily.

Lilium Candidum—A beautiful, large snow-white flowering variety, with many flowers on a spike, which are very fragrant. One of the best and most popular Lilies. Strong bulbs, 15c each; \$1.50 per dozen. Large plants grown in pots, 30c to 40c. [See cut.]

Lancifolium Roseum—White and rose; 20c; in pots, 35c.

Lancifolium Eubrum—White and crimson; 20c; in pots, 35c.

Lancifolium Album—Pure white, 30c; started, 40c.

Tenuifolium—(New)—Red "Siberian" Lily; dwarf habit. 20c.

LILY OF THE VALLEY.

One of the most charming and popular hardy Spring flowers, with its tiny white fragrant bells.

Single pips, 5c; 35c per dozen.

LILACS.

Hardy Shrubs.

Grandiflora Alba—Flowers large, pure white, of great substance; makes a fine stout bush; fine plants, 20c, 30c and 50c.

Eubra d' Morny—A fine variety, with reddish-purple flowers; fine plants, 20c, 30c and 50c.

Persian—Light purple; 20c and 30c.

LOBELIA.—(Trailing.)

The Lobelia is one of the best and prettiest blue flowering pot, vase and basket plants; also fine bedders in moist ground.

Best blue sorts, first size, 10c each; \$1.00 per dozen.

LYCOPODIUMS.

(Mosses.)

Elegant plants for fernery, wardian case, bell glass or any shady place where they can be kept moist. 15c each.

MADEIRA VINE.

One of the best plants for covering trellises, verandas, baskets, etc; sweet scented flowers.

Strong roots, 10c each; 50c per dozen.

MARGUERITE.

(Paris Daisy)

Flowers large and pure white, with yellow disc; very popular and free blooming; a beautiful and fashionable cut-flower. 10c each; \$1.00 per dozen.

MILLA BIFLORA.

Beautiful bulbous plants, with large, wavy white flowers borne in clusters of two to five on stalks from twelve to eighteen inches high. One bulb will produce as many as six stalks in a season. 10c each; 75c per dozen.



MOON FLOWER.

Ipoffea Noctiflora—(Evening Glory)—A beautiful and rapid climber, growing thirty to forty feet high in one season, and unexcelled for covering verandas, trellises, arbors, fences, poles, trees, buildings, or anywhere it has anything to cling to, if given string, wire, etc., to run on, and may be planted anytime after May 15th in this latitude. The flowers are very large—five to six inches in diameter—pure lily-white, and have a rich Jasmine fragrance. They open toward evening and close before noon the next day. They also open during cloudy days. A good sized plant covered with its large handsome flowers is a grand sight. Our stock is true, being raised from cuttings of large flowering plants, not seeds. Good plants at 10c each; \$1.00 per dozen; extra large, 20c each; \$2.00 per dozen.

MONTBRETIA.

Crocsmiefolia—Flowers of a rich orange shade, beautifully formed and arranged on the spike like some species of Orchids, each spike having ten or twelve florets, with several spikes to each plant; does well in the open ground and the flowers are very brilliant; leaves and bulbs like Gladiolus. 10c each; 75c per dozen.

MUSA.—(Banana.)

The finest of ornamental foliage plants for bedding purposes, the leaves being very large, of fine form, having a rich tropical luxuriance and succeed in any good garden soil.

Cavendishii—Tall, handsome grower. \$1.00 each.

Ensete—(Abyssinian Banana)—Very vigorous growth; the largest of all Bananas. Fine for specimens; best for center of beds, etc. 50c and \$1.00.

Mamorata—Dwarf habit, with broad green foliage; blotched with dark chocolate. A fine plant for the window garden. \$1.00 to \$3.00.

Martinii—A beautiful and distinct new variety. 50c and \$1.00 each.

MUSK.—(Mimulus.)

Moschatus—Musk plant, very fragrant foliage and yellow flowers, 10c.

New Double Flowering—20c.



DWARF NASTURTIUM.

We offer a few of the best named sorts and colors for bedding, vases, etc., the best scarlet, yellow, crimson, rose, orange, red, and other shades. Fine plants in separate colors, 10c each; 75c per dozen.

NIEREMBERGIA.

Grandiflora—Flowers white with lilac-blue center. A splendid, free blooming plant for the window, vase, basket, or bedding, producing a mass of flowers the entire season. 10c each; \$1.00 per dozen.

OXALIS.

The Oxalis are dwarf, free-flowering bulbous plants, for pots, baskets, rockeries, borders, etc.

Floribunda Alba—Pure white. 10c.

Floribunda Rosea—Bright pink. 10c.

Bowei—Large, rosy carmine flowers. 10c.

Above three sorts for 20c.

OXALIS ORTGIESII.

(Golden Star.)

A beautiful and distinct variety of shrubby habit, with bronze upper side of leaves and a red shade on the reverse; flowers bright yellow, star-shaped, and very freely produced. 10c each; large size, 20c.

OLEANDER.

Double Red—25c.

Double White—25c.

OTAHEITE ORANGE.

Dwarf Habit.

These beautiful little trees make fine pot plants, blooming (when only six inches high) freely and fruiting when very small. The fruit is about one-half the size of the ordinary orange and very sweet. The flowers are wax-like and very fragrant. 25c to 50c each.



PALMS.

Many varieties of the Palm are very easily grown in the hall or window as well as the conservatory, and make one of the most attractive and suitable plants for the purpose, the leaves being stout and glossy are easily washed without injury, and bear the dust, dry atmosphere and shade of the room well. Fine for center of large baskets, vases and specimen pot plants. The fol-

lowing are some of the best sorts and most easily cultivated:

Areca Lutescens—50c; \$1.00 to \$2.00.

Chamerops Excelsa—Dwarf, fan leaf. 75c, \$1.00, \$2.00 and \$3.00.

Cycas Revoluta—(Sago Palm)—50c to \$1.00 each; large plants, \$5.00 to \$15.00.

Dracæna Indivisa—25c to 50c each.

Kentia Balmorena—Very beautiful. 50c, \$1.00, \$2.50, \$3.50 to \$10.00 each.

Latania Borbonica—Fan leaf Palm. Strong plants, 50c to \$1.00; large, \$2.50, \$3.50, \$5.00 to \$10.00 each.

Pandanus Utilis—Fine plants, 50c to \$1.50; large, \$2.50 to \$5.00 each.

Pandanus Veitchii—Variegated striped leaves; handsome. 50c to \$1.50; large plants, \$2.50 to \$5.00 each.

Phoenix—(Date Palm)—50c and \$1.00.

Zamia Integrifolia—A beautiful Palm much like the Sago. 50c and \$1.00 each.

PANDANUS.

(Screw Pine.)

Very beautiful and easily grown Palms. Elegant plants for parlor or conservatory.

Utilis—Foliage green with bronzy-red shading; fine plant for window or conservatory, center of large baskets, vases, etc. 50c to \$5.00.

Vietchii—Beautiful foliage, striped with white; rare. Fine plants. 50c to \$5.00.

PÆONIES.—(Double.)

Hardy.

White, Rose, Pink, Crimson, Etc.—In the finest named sorts. Strong roots, 25c each; 5 for \$1.00.

PASSIFLORA.

(Passion Flower.)

A beautiful and interesting class of climbers for the garden, parlor or greenhouse. A splendid plant for covering walls, trellises, verandas, etc.

Cœrula—Blue, very rapid climber, with neat foliage. 15c.

Constance Elliott—(New)—A beautiful seedling of "Cœrula," with white flowers. 20c.

Pfordti—Purple and white; a free and early bloomer; a splendid sort with large flowers. 20c and 30c.

PEPPEROMA.

Beautiful wax-like foliage, well adapted for the terrery, warden case, or shady window.

Magnifolia—Very large and beautiful, thick glossy wax-like leaves. 15c.

Maculata—Pretty variegated wax-like leaves. 15c.

FRINGED DOUBLE PETUNIAS.

The Petunia is one of the handsomest and best bedding plants for massing, mixed beds, borders, vases, etc., and a most showy and satisfactory plant for the window and conservatory.

The recent great improvement both in the habit of the plant and the beauty of the flowers, together with its very long season of bloom, have made it one of the most popular plants we grow.

We have a large stock of the finest New Fringed Double varieties, in all colors, including Double White, Pink, Crimson, Purple, blotched and variegated, in the greatest variety.

First size, 15c each; \$1.50 per dozen.

Second size, 25c each; \$2.50 per dozen.

First size, our selection, 10c each.



DOUBLE PETUNIA.

PHLOX.

(Hardy Perennial.)

This is one of our best hardy plants, producing very beautiful flowers and continuing in bloom a long time. The following are a few of the latest, best and most distinct yet offered:

Charles Turner—Cerise-violet of a coppery shade.

Cross of Honor—Rosy mauve, with large trusses; dwarf habit.

Lothair—(New)—Most brilliant rosy red.

Madame de Vatismenil—Rosy white, with a large dark rose center; splendid.

Prime Minister—(New)—Finest oculated.

Richard Wallace—Pure white, with a large colored eye; one of the finest.

Virgo Marie—Pure white; early.

White Queen—Pure white; fine large panicles.

Price, 15c each; \$1.50 per dozen.

Large clumps, 25c to 50c each.

PILEA.

(Artillery Plant.)

Arborea—A beautiful fern-like plant, producing large quantities of minute white flowers which burst and scatter, the white pollen resembling puffs of smoke. 10c each.

PRIMULA OBCONICA.

A beautiful ever-blooming Primrose, bearing heads containing ten to fifteen flowers on long stems. It thrives in a cool house, and will grow in favor with those desiring plants that will grow with the least care. The flowers are white, shading to Lilac, and have the true Primrose fragrance. In bloom nearly all the year round. 15c and 25c.



PRIMROSE.

(Chinese.)

One of the very best house plants, blooming from October till July; thriving in a moderate temperature, **White, Pink, Carmine, Crimson, and other shades,** 15c and 25c.

New Primrose—(Holborn Blue)—A splendid new sort with lavender-blue flowers. 15c and 25c.

MEXICAN PRIMROSE.

A low growing plant of trailing habit, spreading over the ground or drooping over the sides of the pot, basket or box it may be growing in; the flowers are about two inches in diameter; in color, clear pink veined with scarlet, with a white center. Almost constantly in bloom. 10c each; \$1.00 per dozen.

PANSIES.



PANSY PLANT.

THESE lovely and charming favorites have been wonderfully improved by the leading specialists both in the old and the new world and have attained very large size with the most varied and beautiful colors and forms. Give them good soil and plenty of water and you will have plenty of fine blooms.

Pansies make splendid bedding plants and are very effective, whether grown in masses, ribbon lines, or borders, etc., by themselves or mixed with other plants. They are also well adapted for pot culture, (or boxes,) in the window or conservatory during the winter and spring months.

Our stock contains the magnificent new prize-winning strains of the best Pansy specialties of Europe and includes the NEW GIANT varieties, in all their colors as well as the greatest advances in the older classes, and no better can be obtained to date. We have grown an immense supply for spring planting and send fine plants on all orders.

PANSIES.

Selections of the finest sorts, 10c each;
60c per dozen; 50 for \$2.00; 100 for \$3.50.

Or we will send 25 fine plants, as-
sorted colors, for \$1.00.

Extra large plants, later in spring,
\$5.00 per 10c.

PLUMBAGO.

Capensis—Fine pot plant for the window or conservatory, and a good bedder for large or mixed beds. Beautiful lavender blue. 15c and 25c.

Capensis Alba—(New)—A beautiful new variety of the above and similar in all respects except color, which is pure white and very free flowering. 15c and 25c.



GIANT PANSY BLOSSOM.



ROSES

EVERBLOOMING.

These are the most desirable for their constant flowering, and make splendid bedders as well as pot plants. Better plant in separate beds when convenient to do so, than mix up with other plants. One or two nice beds will produce a constant supply of beautiful and fragrant flowers till frost.

10c each, except noted.

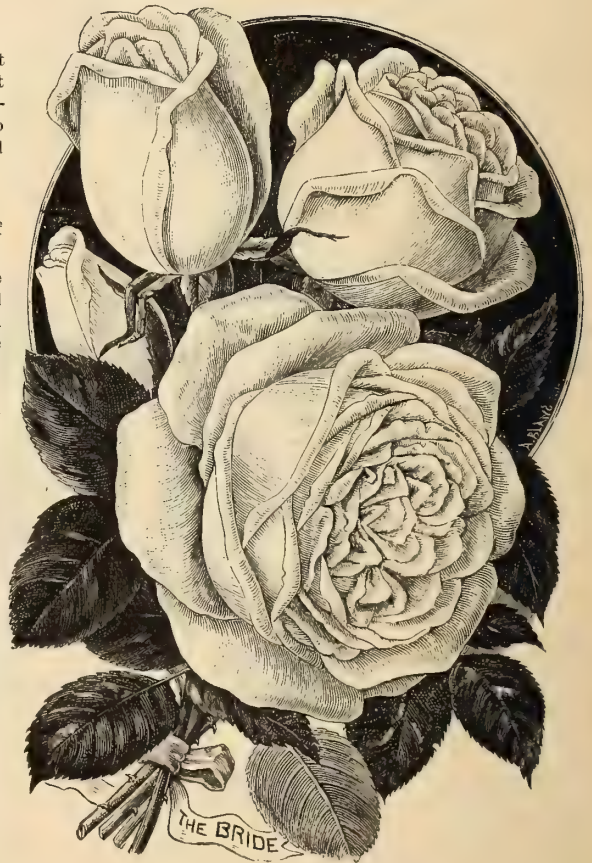
Agrippina—Rich velvety crimson, very free and of good color.

The Bride—The finest white Everblooming Rose known, it being a sport from the world-renowned "Catherine Mermet," and similar to it except in color, which is pure ivory white. It is of the largest size, great substance and fruitless form. The buds are long and pointed and very double, the petals gracefully recurved at the ends, and lasts a long time after being cut. It is a fine stout grower and free bloomer both in summer and winter. (See cut on this page.)

Bridesmaid—Identical with "Catherine Mermet" in size and form of bud, but of much deeper color; a clear dark pink; a valuable addition to the Mermet type of roses and will be universally grown. Three sizes; 20c, 30c and 50c.

Catherine Mermet—A most beautiful Rose, and the finest of its color. The buds are very large and globular, the petals being recurved show the lovely, bright pink center, shading to a delicate silvery pink. A strong grower and a good bloomer.

Clothilde Soupert—To the general public this is by far the most important of the newer roses that has been offered for a long time. It is a dwarf, yet vigorous grower, a constant and profuse bloomer, and the flowers large and extremely double and very fragrant. Its color is pleasing, the outer petals being pearly white, shading to rosy carmine at the center. A valuable rose for bedding and the best of all for a pot or window plant. 10c, 20c, 30c and 50c sizes.



EVERBLOOMING ROSE.

Duchess de Brabant—A beautiful shade of rose, tinted amber, very free and fragrant.

Duchess of Albany—(Red La France)—A grand sort, resembling the always popular "La France" in everything but color, which is rich deep pink; flowers very large and fragrant; plant of good habit, a vigorous grower and remarkably free bloomer.

Etoile de Lyon—A beautiful canary-yellow; flowers large and double; a fine summer rose.

Edouard Littaye—(1893)—A new Tea Rose from France, producing large double, long buds of rosy carmine, tinted with pink; a strong, vigorous grower and free bloomer; good plants, 25c and 50c.

Hermosa—Bright rosy-pink, flowers large and full; a profuse bloomer and very hardy; makes a good pot plant and a fine bedder.

Kaiserin Victoria—(1893)—A new white Hybrid Tea Rose of great merit; the flowers are large and full, with magnificent buds of great substance. The color is a fine white, delicately tinted cream; the stems are long and stout, with handsome foliage and altogether this is one of the best white roses ever offered. 20c, 30c and 50c.

La France—Flowers large and very double, of a rich, satiny pink, shaded with rose, and of superb form. It blooms continuously throughout the season and is very fragrant.

Meteor—(Hybrid Tea)—A rich, dark velvety-crimson rose of vigorous growth; flowers large and full, and one of the finest dark roses in this class. 15c.

Madam Cousin—Purple rose, tinted lemon-white; very distinct; flowers large and full.

Madam Schwaller—(Hybrid Tea)—Flowers large, of same form and finish as the H. P. Roses; deep rosy flesh, with the fragrance of "La France."

Madame Joseph Schwartz—A white "Duchess de Brabant." Flowers pearly white, full; well formed and fragrant.

Madame de Wattville—Flowers white, shaded salmon; outer petals edged with bright rose; flowers large, of fine shape.

Marie Guillot—Pure white, large and very double, and imbricated like a Camelia; a splendid summer rose.

Madam Hoste—A lovely new Tea, with large flowers and petals of great substance; in color shading from pure white to clear pale lemon; a fine grower and very free flowering.

Madam Piere Guillot—One of the most beautiful roses introduced for years. In growth and foliage it resembles "Madame de Wattville," but the flower is more beautiful, a delicate shade of peach yellow at the base, changing to bright pink at the outer edge of the petals and deeper in the center, giving the flower an elegant finish.

Madam C. Testont—(1893)—A grand new French Hybrid Tea of the La France type, but larger and of better color. A large rose grower says of it: "Here is a rose which I think the best Hybrid Tea up to date. It is a clear pink in color and the flower is as large as the Baroness Rothschild, (H. P.), and as free as La France. Fine plants, 20c, 30c and 50c.

Madam A. Veyasset—(1893)—Or "Striped La France." (Hybrid Tea.) A magnificent new rose, identical in every respect with its parent, La France, except that it is of much stronger growth and the flowers pink striped and shaded with a delicate tinted white; the coloring is exquisite and the buds and flowers very large and fine; a free bloomer and forces freely in winter. 20c, 30c and 50c.

Niphetos—An elegant pure white Tea with long pointed buds of large size and very double; flowers deliciously fragrant, and one of the best bloomers; much esteemed for its buds.

Perle des Jardins—This is undoubtedly the finest yellow rose for winter or summer blooming; the flowers are very large and double, of perfect form, of the richest golden yellow and deliciously fragrant, and one of the best bloomers; much esteemed for its lovely buds.



LA FRANCE.

Papa Gontier—A magnificent red Tea, in style of the "Duchess of Edinburgh," but much more vigorous and a better bloomer; flowers large of a vivid rosy red, tinted yellow, reverse side of petal crimson; a free grower and a profuse bloomer; has displaced that old favorite, "Bon Silene," being much larger and finer.

Rainbow—(New Striped Tea)—This variety is a sport from the beautiful tea, "Papa Gontier," and originated in California. It is like the parent in every respect except color, being delicate yellow at base of petals changing to pink outwardly, striped or flaked with red and silvery white, making it very attractive. 15c.

Souvenir de Malmaison—Very large double white, shaded salmon; fragrant and free; a stout grower; 15c.

Souvenir de Wootton—(Hybrid Tea)—A valuable red rose for summer flowering as well as winter, every shoot bearing one or more buds, which are very large and double, and of a fine deep red or crimson color and deliciously fragrant.

Sunset—A beautiful new rose of a rich shade of saffron and orange. The size of flower and habit of plant are similar to "Perle des Jardins," but the young foliage and shoots are shaded with crimson; a splendid variety.

The Queen—A pure white sport from the old time pink favorite, "Souvenir d'Un Ami," it freely produces finely formed buds which are quite double, showing center but slightly when fully open; a very sweet and desirable rose. 15c.

Triumph de Pernet Pere—(New Hybrid Tea of 1892)—A fine rose of strong constitution and splendid habit; flowers large and double and of heavy texture, buds long and pointed; the color is bright red sometimes passing to deep crimson. The flowers have a delightful tea fragrance and are produced on long stems. A fine variety for bedding out or cut flowers. 20c, 30c and 50c.

Viscountess Folkestone—An immense creamy white flower tinted with delicate salmon-pink; a stout grower, and for its size a remarkably free bloomer, in the style of "La France."

White La France—(A. Guinnoisseau)—A light colored sport of "La France" which it resembles except in color, this is creamy white faintly flushed with pink; the buds and half open flowers are very beautiful and the plant a strong vigorous grower and free bloomer.

First size, 10c each; \$1.00 per dozen.

Second size, 20c each; \$2.00 per dozen.

Third size, 30c each; \$3.00 per dozen.

Extra strong of leading sorts, 50c each.

Fine young Everblooming Roses for bedding, \$7.50 and \$10.00 per 100.

NOISETTE ROSES.

Become splendid climbers in the South (or conservatory); North more dwarf and bloom till frost.

Gloire de Dijon—Fawn, tinted salmon, large, double and free, 15c and 25c.

Marechal Neil—Deep golden yellow; a splendid rose with magnificent buds. 15c and 25c.

Reine Marie Henriette—(Red Gloire de Dijon)—Habit of "Gloire de Dijon," with beautiful large red flowers and long pointed buds. 20c, 30c and 50c.

Climbing Niphetos—(New)—Identical with old, Niphetos except in habit. 25c.

Climbing Perle de Jardins—(New)—Flowers similar to Perle but of vigorous climbing habit. 20c.

POLYANTHA ROSES.

A beautiful new class of dwarf roses, valuable as bedding and pot plants, producing their blossoms in large clusters; all free bloomers.

Clothilde Soupert—(Polyantha Tea)—This grand variety is the finest everblooming rose for the amateur, either for the window or bedding; flowers of large size for its class, of perfect form, very double and sweet. As to color, the outer petals are pearly white, shading to rosy carmine in the center. It is a constant bloomer and very fragrant. The plant is well branched, forming a handsome bush fifteen to eighteen inches high, and its fine flowers and free-blooming qualities will popularize it as a pot plant and for bedding purposes. 10c, 20c and 30c.

Mignonette—One of the most beautiful miniature roses imaginable. The flowers are perfectly double and borne in large clusters. Color, clear pink, changing to white, tinged with rose. A constant and profuse bloomer. 10c and 20c.

Parquerette—Flowers pure white, of perfect shape, about one and one-half inches in diameter, flowering in clusters of from five to thirty flowers each. It literally covers itself with its pretty little flowers. 10c and 20c.

HYBRID PERPETUAL ROSES.



Gen. Jacquiminot.

The Hybrid Perpetual Roses are a very popular class, admirably suited to the formation of permanent beds and plantations, where hardy plants are required. They range in color from pure white to dark purplish-crimson. Mulch in fall with leaves or straw manure, and dig same under in the spring. Prune the weak shoots close to about three buds, and then the strong canes to a convenient height. The following includes the cream of the class:

American Beauty—(Probably a true H. P.)—One of the finest introductions of late years. The flowers are large and of perfect shape. In size it equals the finest Hybrid Perpetuals; in color, a rich deep shade of rosy-crimson, and its fragrance is delightful, resembling that of "La France." 20c, 30c and 50c.

Alfred Colomb—Brilliant carmine, shaded crimson; large double globular flowers.

Anna de Diesbach—(Gloire de Paris)—Bright clear rose, large and full, of deep cup form.

Anna Alexiff—A beautiful shade of rose color; flowers large and full and plant of fine habit.

Baroness Rothschild—Light rose or flesh color with beautiful shell-like petals; one of the most perfect and beautiful of roses. 25c.

Boule de Nieve—(Ball of Snow)—Pure white flowers of perfect form and very free flowering.

Charles Lefebvre—Bright crimson; shaded purple in center; full and double

Coquette des Alps—One of the finest white hardy roses; the flowers are large, full and well formed, sometimes faintly tinted blush; a free grower and profuse bloomer.

Countess of Oxford—Flowers large, of a bright carmine red, of perfect form and very sweet; an everblooming Hybrid Perpetual.

Dinsmore—Bright crimson, shaded purple; large and full; dwarf, bushy habit; similar if not identical with "Madame Chas. Wood." Very free.

Duke of Edinburgh—Bright crimson-scarlet; flowers large and double; a vigorous grower and fine large plants.

Duke of Connaught—Flowers velvety crimson flushed with bright red; large plants only. 50c.

Duchess of Albany—A deeply colored "La France" of which it is a sport.

Earl of Dufferin—Flowers large and full, of rich deep crimson; strong grower and a good fall bloomer. 20c.

Gustave Figaneau—(New)—Flowers large and perfectly double; of clear, bright red without any violet shading; a splendid grower and one of the finest in the class. 25c.

Gen. Jacquiminot—Rich dark crimson, magnificent buds and a splendid rose; most popular of the dark roses. (See cut.)

Gen. Washington—Brilliant light crimson; a splendid flower and one of the best.

Glory Lyonnais—Creamy yellow, the nearest approach to yellow in this class. 40c.

Gloire de Margottin—A fine new brilliant scarlet, with very little purple shading and promises to become one of the best standard sorts.

Henrich Schlutheis—Delicate rosy pink color, very fragrant and free blooming.

John Hopper—Bright rose with carmine center; flowers large and full.

La France—Fine satin-pink, large and globular; very fragrant; as free blooming as many of the Teas and ranks as the queen among roses.

Louis Van Houtte—Rich deep crimson, shaded maroon.

Merveille de Lyon—An extra large white, tinted blush; similar to Baroness Rothschild except in color. 25c.

Madam Gabriel Luizet—Flowers of a delicate pink color and cupped form; very fragrant and free.

Madam Chas. Wood—Crimson-purple; flowers large and double; habit dwarf and free.

Madam Masson—Rich deep velvety-crimson; very large and double; very free and fine.

Madam Plantier—Pure white, very double and fragrant; extremely hardy and covered with flowers in Spring. 25c and 50c.

Mrs. John Laing—A vigorous grower, with large bright silvery pink flowers of fine form.

Paul Neyron—Very large, rich rosy-pink; one of the best.

Princess Camille de Rohan—Deep velvety crimson.

Ulrich Bruner—Bright cherry-red; very large and full; a strong grower.

15c each; \$1.50 per dozen, except noted.
Extra large plants, 25c, 35c and 50c each.

HARDY CLIMBING ROSES.

This class is largely used for covering trellises, walls, pillars, old trees, etc. Of rapid growth and very hardy, with beautiful foliage, and produce immense clusters of flowers. The following are the best varieties:

Baltimore Belle—Blush, changing to white; full and free-flowering.

Greville, or Seven Sisters—Flowers in large clusters and vary in color from crimson to white.

Prairie Queen—Rosy-crimson; the most popular of this class.

First size, 20c each; second size, 30c each,
Extra large, 60c.

DOUBLE TUBEROSE.--(Pearl.)

This splendid variety produces magnificent spikes of large and double pure white flowers, which are very fragrant, on stout stems not over two and one-half to three feet high—a great advantage over the old Double Italian which more often reaches five feet, and is liable to break down.

Strong glowering bulbs, 7c each; 75c per dozen.
Extra strong, 10c each; \$1.00 per dozen.
Started in pots, 25c each; \$2.50 per dozen.

MOSS ROSES.

White, Pink and Crimson—Fine plants, 25c to 50c each.

RICHARDIA.--(Maculata.)

(Spotted Calla.)

A beautiful variety of the Calla with foliage thickly spotted with white; flowers pure white, with purple blotch in center. 20c, 30c and 50c.

REINECKIA.

Carnea—Good basket or pot plant, with spikes of small lily-like flowers. 10c.

Variegata—Excellent for fernery, pot or basket. Leaves striped white. 15c.

RUSSELIA.

Juncea—Fine rush-like foliage with crimson flowers; suitable for pot, vase or basket. 15c and 25c.

SAMBUCUS.

(Hardy Shrub.)

Nigra Variegata—Leaves green, deeply margined with yellow. Makes a very handsome pot plant or hardy shrub for the garden. Strong plants, 20c and 30c.

SAXIFRAGA.

Sarmentosa—(Aaron's Beard)—An elegant basket plant with thick fleshy leaves and graceful spikes of small white flowers and long drooping runners. 10c.

SALVIAS.

Excellent free growing and perpetual blooming bedding plants.

M. Issanchon—Creamy white flowers evenly variegated with scarlet; plant dwarf and free flowering. The best striped sort.

Entilans—Apple scented. Immense quantities of fine spikes of Majenta flowers; foliage graceful and having a very agreeable pine-apple fragrance.

Splendens—(Scarlet Sage)—Very brilliant scarlet in long sprays. A fine bedder and a most valuable and popular variety.

First size, 10c each; \$1.00 per dozen.

SCILLA.--(Maritima.)

(Sea Onion)

Large onion-like bulbs and long spikes of star-shaped flowers. 15c, 25c and 50c.

SANSVIERA.—(Zebra Plant.)

Zebrina—A very ornamental plant with stout leaves transversely banded with gray and white; very easily grown. 20c.

SPIDER LILY.

(Pancratium Carribbeum.)

A bulbous plant belonging to the Amaryllis family; of easy culture and bearing large clusters of pure white flowers very freely, giving a succession of bloom all summer. It is delightfully fragrant and much valued for cut flowers. Fine large bulbs, 25c.

TIGRIDIA.

Very showy summer flowering bulbs; in fall the bulbs may be stored in the cellar like the "Gladiolus."

Conchiflora—Yellow and orange, with dark spots. 5c each; 50c per dozen.

Grandiflora Alba—(New)—Flowers white, marked at base with reddish brown spots on yellow ground. 5c each; 50c per dozen.

Pavonia—Red, tinted and spotted with yellow. 5c each; 50c per dozen.

TRADESCANTIA.

Very rapid growing plant for pots, baskets, vases, etc., and one of the best to grow in water.

Multicolor—A splendid new variety of "Zebrina," marked with white, pink and other shades. 10c each; \$1.00 per dozen.

Zebrina—Silver, rose and green foliage. 10c each; 60c per dozen.

TRITOMA.—(Hot Poker Plant.)

Grandiflora Major—A splendid half-hardy summer and fall flowering plant, with large spikes of rich orange and scarlet flowers. Cover well out doors in fall or put in cold cellar or pit for the winter. 25c each.

**VIOLETS.**

Double Russian—Deep blue; very hardy. 15c.

Marie Louise—Best double dark blue. 10c each; \$1.00 per dozen.

Swanley White—In this we have a double pure white violet as valuable as the purple variety "Marie Louise," its flowers being of the same size and as freely produced as in that variety, and exquisitely fragrant. Elegant for bridal bouquets and other fine floral work. First size, 10c each; \$1.00 per dozen.

VERBENAS.

One of the most popular flowering plants for bedding purposes, giving a wide range of color and blooming profusely from spring till frost. The "New Mammoth" sorts give great satisfaction, and we offer them at the same price as the older varieties, in assortments.

We offer a choice collection of the best older and "New Mammoth" sorts in white, pink, scarlet, crimson, purple, oculated, striped and variegated in great variety of color of the finest named sorts.

Splendid plants, 10c each; 75c per dozen. \$5.00 per 100.

VINCA.

(Running Myrtle.)

Neat growing drooping plants for baskets, pots, vases, rockeries, etc.

Elegantissima—Foliage green, deeply margined with creamy white; blue flowers. 10c and 20c.

Harrisonii—Foliage marked with light yellow and green. Beautiful. Flowers blue, 10c and 20c.

Minor—(Double flowering)—Fine for cemetery and borders. Neat, glossy foliage, with double blue flowers. 10c.

VALOTTA.

Beautiful summer flowering bulbs. (See Amaryllis.) 25c and 50c.

VARIEGATED-LEAVED WIGELIA.

The Wigelias are one of the best dwarf hardy shrubs, blooming freely in the spring months.

Rosea—Bright rose; very free. 15c and 25c.

Variegated-Leaved—Leaves broadly margined with creamy white; flowers rose-colored. An elegant shrub. 10c, 30c and 50c.

WISTARIA.

Fine hardy climber with beautiful large grape-like clusters of purple flowers. 20c, 30c and 50c.

YUCCA.—(Hardy.)

Filamentosa—One of the grandest hardy plants we have, producing stout flower stems with hundreds of waxy white lily-like flowers. Strong plants, 25c and 50c each.

YUCCA.—(Tender.)

Alcfolia—Large, dark-green pointed leaves, with beautiful bell-shaped white lily-like flowers; fine for pots, tubs, vases, etc. 50c and \$1.00 each.

Alcfolia Quadricolor—Long pointed leaves of dark green, striped with yellow and pink and shaded purple; rare. \$1.00, \$2.00 to \$5.00 each.

THE BEST BEDDING PLANTS

Bulbs, Tubers, Hardy Perennials, Etc.,

For Garden, Lawn and Cemetery Planting.

CHEAP BEDDING PLANTS.

The following are well known and tested varieties of the leading plants used for "Ribbon Lines," "Carpet Beds," "Massing," "Borders," and "General Bedding." These we grow in large quantities and offer at low rates per hundred. The Single and Dozen rates will be found under their respective classes throughout the Catalogue.

50 PLANTS AT 100 RATES.

	Per 100
Alternanthera —Three best colors.....	\$ 5 00
Argeratum —Best white and blue sorts.....	5 00
Alyssum —Double.....	6 00
Ackyranthus —Best red.....	5 00
Coleus —Golden Bedder—Golden Verschaffeltii.....	5 00
Firebrand, Verschaffeltii.....	5 00
Best Assorted Colors.....	5 00
Cannas —Light and Dark Sorts.....	\$10 00 and 15 00
Cannas—New Sorts. See page 2.....	
Caladium Esculentum	\$10 00 to 12 00
Echeverias	8 00
Feverfew —Double White.....	6 50
Geraniums —Double Scarlet and Crimson.....	6 50
Double Pink, Double White.....	6 50
Double Assorted Colors.....	6 50
Single Scarlet and Crimson.....	6 50
Single Pink, Single White.....	7 00
Single Assorted Colors.....	6 50
Silver-leaved Mountain of Snow.....	7 00
Madam Salleroi.....	6 00
Larger sizes of all above.....	\$10 00 and 15 00
Lobelias	5 00
Marguerites —Single White.....	6 00
Pansies —Best New Giant Sorts.....	4 00
Best New and Old Assorted.....	3 50
Petunias —Best Double Sorts—50 for \$5.00.....	9 00
Roses —Best Bedding Sorts.....	\$7 50, \$10 00 and 15 00
Salvias —Two Sorts.....	6 00
Verbenas —Separate Colors.....	5 00

For other plants suitable for Mixed Beds and Borders such as **Heliotrope, Gladiolus, Hibiscus, Lantanas, Cupheas, Tuberoses, Marguerites, Dahlias, Etc.** See General Collection.

Summer Flowering Bulbs and Tubers.

Amaryllis Atamasco —Rosy White Flowers.....	15 and 25c
Cannas —Best Older Sorts.....	15 and 20c
New Large Flowering French—See page 2.....	
Caladium Esculentum	15 and 25c
Cinnamon Vine	10c
Dahlia Double	15c
Freezia Alba	5c
Gladiolus —Assorted.....	5 and 10c
Snow White.....	15c
Le Moines Hybrid.....	10c
Hyacinths Candidans	10c
Lilies —See page 37.....	15 to 25c
Milla Biflora	8c
Maderia Vine	6c
Montbretias	10c
Panacratium —Spider Lily.....	25c
Tigridia	5c
Tuberoses	7 to 10c

Best Hardy Shrubs.

Descriptions of most of these will be found under their respective heads.

Altheas —Best Sorts.....	25c
Calycanthus —(Sweet Shrub).....	20 to 25c
Dentzias —Two Best Sorts.....	15 to 25c
Hydrangea —Paniculata Grandiflora.....	25, 30 and 50c
Japan Quince	25c
Lilac —White and Purple.....	15, 25 and 50c

Snowballs	15, 25 and 50c
Syringias —Double.....	25c
Spiraeas	15 and 25c
Tartarian Honeysuckle —Bush Honeysuckle.....	20 to 50c
Wigelias	15, 25 and 50c
Exochordia	25 and 50c
Sambucus Variegata	25 and 50c
Hardy Hibiscus	25 to 50c

Best Hardy Climbers.

Akebia Quinata	15, 25 and 50c
Apios Tuberosa	10c
Ampelopsis —Two Sorts.....	20, 30 and 50c
Aristolochia —(Dutchman's Pipe)—Strong.....	30 to 50c
Bignonia —(Trumpet Vine).....	20, 30 and 50c
Clematis —Best Sorts. See page 15.....	25c, 60c and \$1.00
Honeysuckle —Four Best Sorts.....	15, 25 and 50c
Roses —Climbing.....	20 to 50c
Wistaria	20, 30 and 50c

Hardy Perennial Plants, Bulbs, Tubers.

(For description see body of Catalogue.)

Anemome —Japonica, Alba, White.....	20c
Astilbe —Japonica, White.....	15 and 25c
Apios —Tuberosa.....	10c
Cinnamon Vine	10c
Coreopsis Lanceolata	15c
Eulalia —Japonica and Zebrina.....	20c
Funkia —Subcordata, White Day Lily.....	35c
Lanceolata—Blue Day Lily.....	25c
Hemerocallis —Fulva, (Day Lily).....	15c
Fulva, Flore, Pleno, Double.....	25c
Flava, Yellow.....	15c
Helianthus —Multiflorus Plenus.....	10c
Lilies —Auratum, Gold Banded.....	20 and 30c
Harrisii, Bermuda Lily.....	15 and 20c
Candidum, (St. Joseph's Lily).....	15c
Roseum.....	20c
Rubrum.....	20c
Tenuifolium	25c
Lily of the Valley —Single Pips.....	5c each; per dozen 35c
Phlox —Perennial, Six Fine Sorts.....	25c
Paeonies —Six Fine Sorts.....	25c
Tritoma —Grandiflora Major.....	25c
Violets —Four Best Sorts.....	10c
Vinca —Minor, Double Blue, Flowered.....	10c
Yucca —Filamentosa.....	25 and 50c

BULBS FOR FALL PLANTING.

(Approximate Prices.)

We shall offer first-class Bulbs only, of the following and other leading sorts:

Hyacinths —Large flowering in all colors, choice named sorts, 15 to 20c; \$1.50 to \$2.00 per dozen. If by mail add 20c per dozen for postage.
Hyacinths —Improved Early White Roman, 7c each; 75c per dozen.
Single Pink Roman, 7c each; 75c per dozen.
Double Pink Roman, 75c per dozen.
Double and Single Sorts of Daffodills —5c to 8c each; 50c to 75c per dozen.
Narcissus —Polyanthus (many flowered,) most single 8c to 10c each; 75c to \$1.00 per dozen.
Chinese Sacred Lily —Immense bulbs, to grow in water or soil as required. 15c each; \$1.50 per dozen.
Tulips —(Double and Single)—Early choice named sorts. 40c, 50c, 60c and 75c per dozen.
Tulips —Late Double and Single. 40c to 75c per dozen.
Crocus —Splendid assorted colors. 25c per dozen.
For Hyacinths by mail add 20c per dozen for postage.
For Narcissus by mail add 20c per dozen for postage.
For Tulips by mail add 20c per dozen for postage.
Lilies —(See page 37.)



Floral . Designs

FOR FUNERALS

Filled with Fresh Flowers.

SENT BY EXPRESS ONLY.

The taste for these Beautiful Emblems has increased so much that they are now used at Nearly all Funerals where they can be Obtained.

Fine Bunches of Choice Flowers, well arranged..... \$ 1.50 to \$ 10.00.
 Choice Flowers, with Palm Leaves, well arranged..... 6.00 to 10.00.

APPROXIMATE PRICE LIST OF DESIGNS:

The following are the leading designs, but we can get up any others wanted:

WREATHS—(On base \$1.00 to \$3.00 extra).....	\$ 2.50	\$ 3.50	\$ 5.00	\$ 6.50	\$ 8.00	\$10.00	\$12.50
CROSSES—(On base \$1.00 to \$2.50 extra).....	2.00	3.00	4.00	5.00	6.50	8.00	10.00
CASKET CROSSES—(Of beautiful design).....	5.00	6.50	8.00	10.00	12.50	15.00 to	25.00
ANCHORS—(On base \$1.00 to \$3.00 extra).....	3.50	5.00	6.50	8.00	10.00	12.00	15.00
PILLOWS—(With motto or not, as required).....	\$ 5.50	7.50	10.00	12.50	15.00	18.00	21.00
HARPS—(On base \$1.00 to \$3.00 extra. Makes design showy).....		4.00	6.00	8.00	10.00	13.00	16.00
LYRES—(On base \$1.00 to \$3.00 extra. A very beautiful design).....		4.00	6.00	8.00	10.00	13.00	16.00
STARS—(On base \$1.00 to \$2.50 extra).....		2.50	3.00	4.00	5.00	7.50	11.00
STAR AND CRESCENT—(Standing on base only).....					7.50	10.00	13.00
SICKLES—(Flat).....			3.00	4.00	5.00	6.50	8.50
SICKLE AND SHEAF ON EASEL—(An elegant design).....					5.50	7.50	10.00
CROWN—(Flat).....			3.50	5.00	6.50	8.00	10.00
CROWN—(Half round).....					9.00	12.00	15.00
CROSS AND CROWN—(Standing. Very handsome).....				10.00	12.00	15.00	20.00
CRESCENTS.....				3.00	4.00	5.00	7.00
BROKEN WHEEL—(A large and beautiful design).....		8.00	10.00	12.50	15.00	18.00	25.00
BROKEN COLUMN.....				11.00	15.00	20.00	25.00
BROKEN CIRCLE—(On stand \$2.00 to \$3.00 extra).....					5.00	7.00	9.00
FAITH, HOPE AND CHARITY.....			7.00	10.00	15.00	20.00	25.00
HEARTS—(Filled in white or colors).....				3.50	5.00	6.00	8.00
CRESCENT WREATH—(Flat).....		3.50	5.00	6.50	8.00	10.00	12.50
CRESCENT WREATH—(Mounted on stand. Large and showy).....				8.00	10.00	12.50	15.00
GATES AJAR.....		10.00	12.50	16.00	20.00	25.00 to	35.00
OPEN BOOK OR BIBLE.....					10.00	15.00	20.00
LAST PAGE—(Book).....					10.00	15.00	20.00
SICKLE AND BROKEN CROSS—(Very handsome).....					10.00	12.00	15.00
HOUR GLASS.....						13.00	16.00
MALTESE CROSS—(On stand \$2.00 to \$3.00 extra).....				4.00	6.00	8.00	10.00
SQUARE AND COMPASS—(On base \$1.00 to \$3.00 extra).....				6.00	8.00	10.00	15.00
THREE LINKS—(Odd Fellows' design. On base \$1.00 to \$3.00 extra).....						8.00	10.00
KNIGHTS OF PYTHIAS DESIGN—(Triangle with K. P.).....				5.00	7.00	10.00 to	25.00
KNIGHTS TEMPLAR DESIGN—(One size only).....							25.00
KNIGHTS OF LABOR DESIGN—(Triangle and Wreath combined).....					8.00	10.00	14.00
MODERN WOODMEN DESIGN.....						5.00	10.00
SOLID SHIELDS—Large sizes.....						6.00 to	25.00
WHEAT SHEAF—(Of fine Italian wheat. Filled with flowers).....				3.50	5.00	7.50	
WHEAT SHEAF—(Round, solid wheat).....		1.50	2.00	3.00	4.00	5.00	
WHEAT SHEAF—(Flat, solid wheat).....		.75	1.00	1.50	2.00	3.00	
WHITE DOVES—(Stuffed.) Used on many designs. As per style and quality.....				2.50	3.00	4.00	

Also combined designs, such as Wreath with Cross, Wreath with Star, Heart, Rest, etc., Cross with Anchor, Crown, etc., Pillow with Star, Crown, etc., and many other combinations.

Combined and Special Designs to order. Also Flat Designs mounted on base from \$1.00 to \$3.00 extra.

ORDERS BY TELEGRAPH.—It often happens, especially in case of funerals, when there is no time to write, that a "Telegram," (or Telephone from towns near us,) will reach us in good time, be delivered to us by Telephone immediately, and receive prompt attention.

If you prefer, send amount you wish to expend, stating for what purpose intended, and leave the selection to us; we will do our best for the money. Or we can send C. O. D.

☎ To Visitors: Electric Cars reach the Nursery in three minutes from 8th and Main Sts.

✉ Address and make all orders payable to

HARKETT'S FLORAL NURSERY,

DUBUQUE, IOWA.

