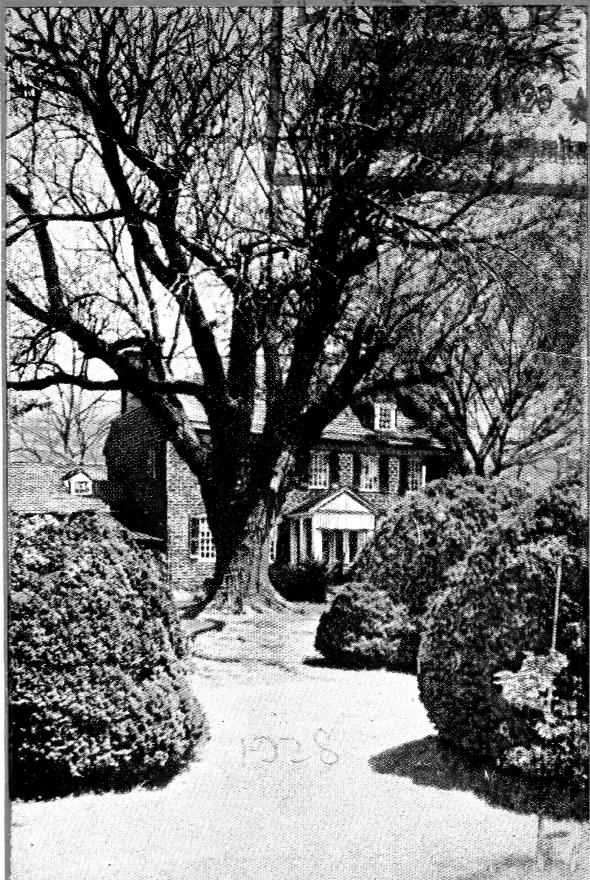


Historic, archived document

Do not assume content reflects current scientific knowledge, policies, or practices.



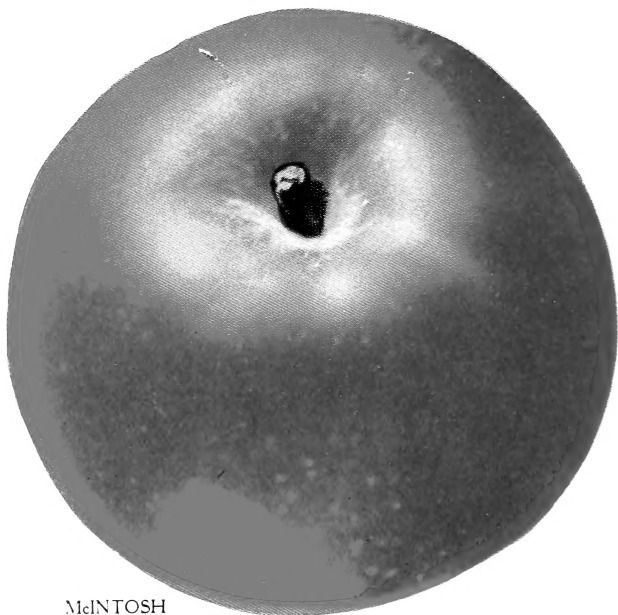
Ratcliffe Manor



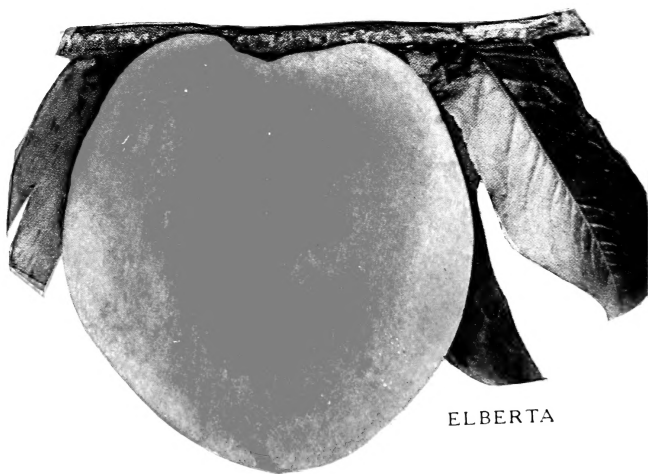
Harrison's
J. G. HARRISON & SONS, Proprs.
NURSERIES



BERLIN, MARYLAND



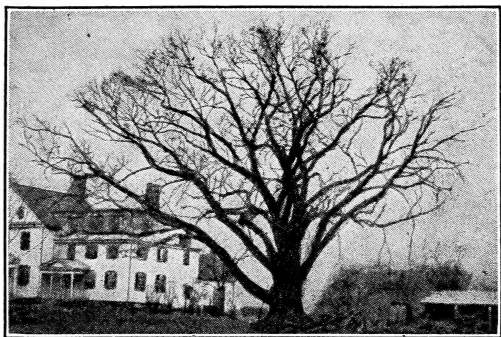
McINTOSH



ELBERTA



When buying from Harrison's Nurseries you are dealing with an old, reliable firm of three generations of Harrisons.



Largest Elm in America.
Overlooking Harrison's Nurseries, Berlin, Maryland.

Beautify Your Home Grounds

•••

WHAT is more pleasing than a proper planting of Shrubbery, Evergreens and Shade Trees around a home. They beautify and make it more attractive. Have you not noticed the shrubbery and evergreens around the homes of a number of your friends, how they add to the appearance, and how you were attracted to them.

Note Our Complete Assortment.

HARRISON GROWN SHADE TREES



Typical Town Home in Lower Delaware

MAPLES

NORWAY Maple for lining the sides of lanes and roads, for the lawn, for streets, for protecting the house from sun and weather and for real permanent worth in landscape planting, there are no other trees so thoroughly valuable as the Norway Maples. They are at home in almost any situation, without regard to soil or climate. The Norway Maples in our nursery have straight trunks, with well-rounded and symmetrical heads. They have been properly cared for by cultivation and by pruning, and are superior in every way.

5% off for cash with order.

All Shade Trees Are Freshly Dug at Shipping Time.

SHADE TREES—(Continued)

Norway Maples (Acer platanoidés)

			1 to 9 Trees	10 to 29 Trees	30 to 299 Trees
1	to 1¼	in. cal. 7 to 8 ft.	\$2.25	\$2.00	\$1.75 each
1¼	to 1½	in. cal. 8 to 9 ft.	3.00	2.75	2.50 each
1¾	to 2	in. cal. 9 to 10 ft.	4.00	3.50	3.00 each
2	to 2½	in. cal. 10 to 12 ft.	5.50	5.00	4.50 each
2½	to 3	in. cal. 12 to 14 ft.	7.00	6.50	6.00 each
3	to 3½	in. cal. 14 to 16 ft.	10.00	9.00	8.00 each
3½	to 4	in. cal. 16 to 18 ft.	12.00	11.00	10.00 each
4	to 5	in. cal. 18 to 20 ft.	15.00	14.00	13.00 each
5	to 6	in. cal. 20 feet	20.00	18.00	16.00 each

Large Size Norway Maples

6 to 7 in. cal.	\$25.00 each
7 to 8 in. cal.	30.00 each
8 to 9 in. cal.	35.00 each
9 to 10 in. cal.	40.00 each

Sugar Maples (Acer saccharum)

5 to 6 ft.	\$1.50	\$1.25 each
7 to 8 ft.	2.00	1.75 each
8 to 10 ft.	2.50	2.25 each

Ash Leaf Maple (Acer Negundo)

8 to 10 ft.	\$1.00	\$0.90 each
10 to 12 ft.	1.50	1.25 each

Silver Maples (acer. Dasycarpum)

3 to 4 ft.	\$0.60	\$0.50	\$0.40 each
4 to 5 ft.	.70	.60	.50 each
5 to 6 ft.	.75	.70	.60 each
6 to 7 ft.	.85	.80	.70 each
7 to 8 ft.	1.00	.90	.80 each
8 to 9 ft.	1.25	1.00	.90 each
9 to 10 ft.	2.50	2.25	2.15 each
10 to 12 ft.	3.00	2.75	2.50 each
12 to 15 ft.	3.50	3.00	2.75 each
15 to 18 ft.	4.00	3.75	3.50 each

PLANE TREES

Oriental Plane (Platanus orientalis)

5 to 6 ft.	\$1.25	\$1.00	\$0.90 each
6 to 7 ft.	1.50	1.40	1.25 each
7 to 8 ft.	1.75	1.60	1.50 each

American Plane (Platanus Occidentalis)

5 to 6 ft.	\$1.25	\$1.00 each
6 to 7 ft.	1.50	1.40 each
7 to 8 ft.	1.75	1.60 each
8 to 10 ft.	2.25	2.00 each

POPLAR TREES

Lombardy Poplars (Populus nigra italica)

4 to 5 ft.	\$0.50	\$0.40 each
5 to 6 ft.	.60	.50 each
6 to 8 ft.	.85	.75 each
8 to 10 ft.	1.00	.90 each

SHADE TREES—(Continued)

Bolleana Poplar (Silver Leaf)

	1 to 9 Trees	10 to 20 Trees
6 to 8 ft.....	\$1.50	\$1.25 each
8 to 10 ft.....	2.00	1.75 each
10 to 12 ft.....	2.50	2.00 each

Carolina Poplars (Populus eugenei)

8 to 10 ft.....	\$0.60	\$0.50 each
10 to 12 ft.....	.80	.70 each
12 to 14 ft.....	1.00	.90 each
14 to 16 ft.....	1.25	1.10 each
2½ to 3 in. cal.....	1.75	1.50 each
3 to 3½ in. cal.....	2.25	2.00 each

OAKS

Pin Oaks (Quercus palustris)

	1 to 9 Trees	10 to 29 Trees
2 to 3 ft.....	\$0.75	\$0.65 each
3 to 4 ft.....	1.00	.90 each
4 to 5 ft.....	1.25	1.10 each
5 to 6 ft.....	1.75	1.50 each
6 to 8 ft.....	2.50	2.25 each
1¾ to 2 in. cal.....	5.00	4.50 each
2 to 2½ in. cal.....	6.00	5.50 each
2½ to 3 in. cal.....	8.00	7.25 each

Red Oak (Quercus Rubra)

2 to 3 ft.....	\$0.75	\$0.65 each
3 to 4 ft.....	1.00	.90 each
4 to 5 ft.....	1.25	1.10 each
5 to 6 ft.....	1.75	1.50 each
6 to 8 ft.....	2.50	2.25 each
1¾ to 2 in. cal.....	5.00	4.50 each
2 to 2½ in. cal.....	6.00	5.50 each
2½ to 3 in. cal.....	8.00	7.25 each
3 to 3½ in. cal.....	10.00	9.00 each
3½ to 4 in. cal.....	12.00	11.00 each
4 to 5 in. cal.....	15.00	14.00 each

White Oaks (Quercus Alba)

3 to 3½ in. cal.....	\$10.00	\$9.00 each
3½ to 4 in. cal.....	12.00	11.00 each
4 to 5 in. cal.....	15.00	14.00 each
5 to 6 in. cal.....	20.00	18.00 each

European Linden (Tilia platyphyllos)

7 to 8 ft.....	\$2.00	\$1.75 each
8 to 10 ft.....	2.25	2.00 each

American Linden (Tilia americana)

3 to 3½ in. cal.....	\$10.00	\$9.00 each
3½ to 4 in. cal.....	12.00	11.00 each
4 to 5 in. cal.....	15.00	14.00 each
5 to 6 in. cal.....	20.00	18.00 each

Let Us Landscape Your Home.

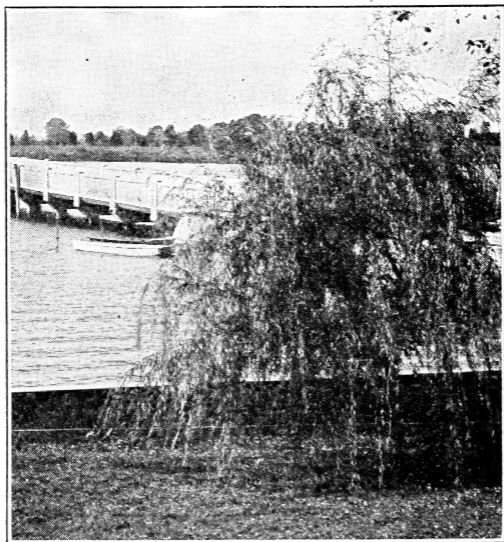
SHADE TREES—(Continued)

		1 to 9 Trees	10 to 29 Trees
Locust (Gleditsia triacanthos)			
3 to 4 ft.	\$0.40	\$0.30 each
4 to 5 ft.60	.50 each
5 to 6 ft.75	.65 each
6 to 7 ft.90	.80 each
7 to 8 ft.	1.00	.90 each
8 to 10 ft.	1.25	1.10 each
10 to 12 ft.	1.50	1.25 each
Tulip Tree (Liriodendron tulipifera)			
8 to 10 ft.	\$1.50	\$1.25 each
10 to 12 ft.	2.00	1.75 each
12 to 14 ft.	2.50	2.25 each
14 to 16 ft.	3.00	2.75 each
2½ to 3 in. cal.	3.50	3.00 each
3 to 3½ in. cal.	4.00	3.50 each
3½ to 4 in. cal.	5.00	4.50 each
Catalpa Bungeii (Umbrella Trees)			
4 to 5 ft. stems, 2 yr. heads.	\$1.50	\$1.25 each
5 to 6 ft. stems, 2 and 3 yr. heads.	1.75	1.50 each
Western Catalpa (Catalpa Speciosa)			
3 to 4 ft.	\$0.25	\$0.20 each
4 to 5 ft.40	.35 each
5 to 6 ft.60	.50 each
6 to 8 ft.75	.65 each
8 to 10 ft.	1.00	.90 each
10 to 12 ft.	1.50	1.25 each
12 to 14 ft.	2.00	1.75 each
Red Bud (Cercis canadensis)			
3 to 4 ft.	\$1.50	\$1.25 each
Sweet Gum (Liquidambar styraciflua)			
3 to 4 ft.	\$1.50	\$1.25 each
4 to 5 ft.	2.00	1.75 each
American Elm (Ulmus Americana)			
3 to 4 ft.	\$0.50	\$0.40 each
4 to 5 ft.60	.50 each
5 to 6 ft.75	.60 each
6 to 7 ft.	1.00	.75 each
7 to 8 ft.	1.50	1.25 each
8 to 10 ft.	2.50	2.25 each
12 to 16 ft.	3.50	3.25 each
16 to 20 ft.	5.00	
Moline Elm (Budded on American Elms)			
3 to 4 ft.	\$1.25	\$1.00 each
4 to 5 ft.	1.75	1.50 each
Black Ash (Fraxinus nigra)			
8 to 10 ft.	\$1.00	\$0.90 each
10 to 12 ft.	1.25	1.10 each
12 to 14 ft.	1.75	1.50 each
14 to 16 ft.	2.50	2.25 each
2½ to 3 in. cal.	3.00	2.75 each
3 to 3½ in. cal.	4.00	3.75 each

This Catalog is the Only Agent We Employ.

SHADE TREES—(Continued)

Maidenhair Tree (<i>Ginkgo biloba</i> or <i>Salisburia adiantifolia</i>)	1 to 9 Trees	10 to 29 Trees
18 to 24 in.....	\$0.40	\$0.35 each
4 to 5 ft.....	1.00	.90 each
5 to 6 ft.....	1.50	1.25 each
6 to 7 ft.....	2.00	1.75 each
7 to 8 ft.....	2.50	2.25 each
Pussy Willow (<i>Salix discolor</i>)		
1 to 2 ft.....	\$0.25	\$0.20 each
2 to 3 ft.....	.35	.30 each
3 to 4 ft.....	.45	.40 each
4 to 5 ft.....	.60	.50 each
5 to 6 ft.....	.75	.65 each
6 to 7 ft.....	.90	.80 each
7 to 8 ft.....	1.00	.90 each
8 to 10 ft.....	1.25	1.10 each
Judas Tree (<i>Cercis siliquastrum</i>)		
3 to 4 ft.....	\$1.50	\$1.25 each



Miles River Bridge, Eastern Shore

*Harrisons' Nurseries Have Been Leaders for
43 Years.*

SHADE TREES—(Continued)

GREEN WILLOW (Salix Veridis)

	1 to 9 Trees	10 to 29 Trees
3 to 4 ft.....	\$0.60	\$0.50 each
4 to 5 ft.....	.75	.60 each

RED BRANCHED PUSSY WILLOW

3 to 4 ft.....	\$0.60	\$0.50 each
4 to 5 ft.....	.75	.60 each

**WILLOW, Golden-barked, Weeping
(Salix vitallina aurea)**

3 to 4 ft.....	.60	.50 each
4 to 5 ft.....	.75	.60 each
5 to 6 ft.....	1.00	.80 each
6 to 7 ft.....	1.25	1.00 each
7 to 8 ft.....	1.50	1.25 each

LAUREL WILLOW (Salix Pentandra)

3 to 4 ft.....	\$0.60	\$0.50 each
4 to 5 ft.....	.75	.60 each

HARRISON GROWN EVERGREENS

ARBORVITAE

American Arborvitae (Thuja occidentalis)

	1 to 9 Ever- greens	10 to 29 Ever- greens
12 to 18 in.....	\$1.00	\$0.90 each
18 to 24 in.....	1.40	1.25 each
2 to 3 ft.....	1.75	1.50 each
3 to 4 ft.....	2.00	1.75 each
4 to 5 ft.....	3.00	2.75 each
5 to 5½ ft.....	4.00	

Chinese Arborvitae (Biota orientalis)

12 to 18 in.....	\$1.25	\$1.00 each
18 to 24 in.....	1.50	1.25 each
2 to 3 ft.....	2.00	1.75 each
3 to 4 ft.....	3.00	2.75 each
4 to 5 ft.....	4.00	3.75 each
5 to 5½ ft.....	5.00	

**Berkman's Golden Arborvitae (Biota
aurea nana)**

6 to 8 in.....	\$1.00	\$0.90 each
8 to 10 in.....	1.50	1.25 each
10 to 12 in.....	2.00	1.75 each
12 to 15 in.....	2.50	2.25 each
15 to 18 in.....	3.00	2.75 each
18 to 24 in.....	4.00	3.75 each

**Compact Arborvitae (Thuja occidentalis
compacta)**

12 to 18 in.....	\$2.75	\$2.50 each
18 to 24 in.....	3.50	3.25 each
2 to 3 ft.....	4.50	4.25 each

*Buy Direct From the Growers. Save the
Agent's Commission.*

ARBORVITAE—(Continued)

Ellwangers or Tom Thumb Arborvitae		
(<i>Thuja occidentalis ellwangeriana</i>)	1 to 9	10 to 29
	Ever-	Ever-
	greens	greens
12 to 18 in.....	\$1.25	\$1.00 each
18 to 24 in.....	1.75	1.50 each
2 to 3 ft.....	2.25	2.00 each
3 to 4 ft.....	3.25	3.00 each
George Peabody Arborvitae (<i>Thuja occidentalis lutea</i>)		
12 to 18 in.....	\$2.25	\$2.00 each
18 to 24 in.....	3.00	2.75 each
2 to 3 ft.....	4.00	3.75 each
Globular Arborvitae (<i>Thuja globosa</i>)		
12 to 18 in.....	\$2.50	\$2.25 each
18 to 24 in.....	3.00	2.75 each
2 to 3 ft.....	4.00	3.75 each
Pyramidal Arborvitae (<i>Thuja pyramidalis</i>)		
12 to 18 in.....	\$2.00	\$1.75 each
18 to 24 in.....	2.50	2.25 each
2 to 3 ft.....	3.50	3.25 each
3 to 4 ft.....	5.00	4.50 each
4 to 5 ft.....	6.00	5.50 each
Siberian Arborvitae (<i>Thuja occidentalis sibirica</i>)		
18 to 24 in.....	\$3.00	\$2.75 each
2 to 3 ft.....	4.00	3.75 each
3 to 4 ft.....	5.00	4.50 each
Rosenthal's Arborvitae (<i>Thuja occidentalis rosenthalis</i>)		
12 to 18 in.....	2.25	2.00 each
18 to 24 in.....	3.00	2.75 each
Fernlike Arborvitae (<i>Thuja filicoides</i>)		
18 to 24 in.....	\$3.00	\$2.75 each
2 to 3 ft.....	4.00	3.75 each
3 to 4 ft.....	5.00	4.75 each
Vervaeveana Arborvitae (<i>Thuja vervaeneana</i>)		
18 to 24 in.....	\$3.00	\$2.75 each
2 to 3 ft.....	4.00	3.75 each

CEDAR

Red Cedar (<i>Juniperus virginiana</i>)		
18 to 24 in.....	\$2.00	\$1.75 each
2 to 3 ft.....	3.00	2.75 each
3 to 4 ft.....	4.00	3.75 each
4 to 5 ft.....	5.00	4.75 each
5 to 6 ft.....	6.00	5.75 each
Indian Cedar (<i>Cedrus deodora</i>)		
8 to 12 in.....	\$1.50	\$1.25 each
12 to 15 in.....	2.00	1.75 each
Virginia Blue (<i>Juniperus virginiana glauca</i>)		
12 to 18 in.....	\$3.00	\$2.75 each
18 to 24 in.....	4.00	3.75 each
2 to 3 ft.....	5.00	4.50 each
3 to 4 ft.....	6.00	5.50 each
4 to 5 ft.....	8.00	7.00 each
5 to 6 ft.....	10.00	9.00 each

FIR

Balsam Fir (<i>Abies balsamea</i>)	1 to 9	10 to 29
	Ever-	Ever-
	greens	greens
8 to 12 in.....	\$1.25	\$1.00 each
12 to 18 in.....	2.00	1.75 each
18 to 24 in.....	3.00	2.75 each
2 to 3 ft.....	4.00	3.75 each

JUNIPERS

Irish Juniper (<i>Juniperus communis</i> <i>hibernica</i>)		
12 to 18 in.....	\$1.25	\$1.00 each
18 to 24 in.....	1.75	1.50 each
2 to 3 ft.....	2.50	2.25 each
Tamarix Savin or Gray Carpet Juniper (<i>Juniperus sabina tamariscifolia</i>)		
12 to 15 in.....	\$1.50	\$1.25 each
15 to 18 in.....	2.00	1.75 each
Waukegan Juniper (<i>Juniperus horizontalis</i> <i>douglasi</i>)		
12 to 18 in.....	\$2.00	\$1.75 each
18 to 24 in.....	2.50	2.25 each
2 to 3 ft.....	3.00	2.75 each
White Leaf Chinese Juniper (<i>Juniperus</i> <i>Chinensis alba variegata</i>)		
12 to 18 in.....	\$3.00	\$2.75 each
18 to 24 in.....	4.00	3.75 each
2 to 3 ft.....	5.00	4.75 each
Spiny Greek Juniper (<i>Juniperus excelsa</i> <i>stricta</i>)		
8 to 12 in.....	\$2.00	\$1.75 each
12 to 18 in.....	3.00	2.75 each
18 to 24 in.....	4.00	3.75 each
2 to 3 ft.....	5.00	4.75 each
Pfizers Juniper (<i>Juniperus pfitzeriana</i>)		
12 to 18 in.....	\$2.00	\$1.75 each
18 to 24 in.....	3.00	2.75 each
2 to 3 ft.....	4.00	3.75 each
Savin Juniper (<i>Juniperus sabina</i>)		
12 to 18 in.....	\$2.00	1.75 each
18 to 24 in.....	3.00	2.75 each
2 to 3 ft.....	4.00	3.75 each
Horizontal Juniper (<i>Juniperus horizontalis</i> <i>prostrata</i>)		
18 to 24 in.....	\$2.00	\$1.75 each
2 to 3 ft.....	3.00	2.75 each
4 to 5 ft.....	5.00	4.75 each
Golden Juniper (<i>Juniperus communis</i> <i>aurea</i>)		
8 to 12 in.....	\$1.50	\$1.25 each
12 to 15 in.....	2.00	1.75 each
15 to 18 in.....	2.50	2.25 each

*Our Climate and Soil With Our Growing
Methods Produce America's Finest
Evergreens.*

RETINOSPORAS (Chamaecyparis)

Veitch's Japanese Retinospora (Retinospora squarrosa veitchi)

	1 to 9 Ever- greens	10 to 29 Ever- greens
8 to 12 in.....	\$1.00	\$0.90 each
12 to 15 in.....	1.50	1.25 each
15 to 18 in.....	1.75	1.50 each
18 to 24 in.....	2.00	1.75 each
2 to 3 ft.....	2.50	2.25 each
3 to 4 ft.....	3.50	3.25 each
4 to 5 ft.....	4.50	4.25 each
5 to 6 ft.....	6.00	5.50 each

Japanese Plume-like Retinospora (Retinospora Plumosa)

8 to 12 in.....	\$1.00	\$0.90 each
12 to 15 in.....	1.50	1.25 each
15 to 18 in.....	1.75	1.50 each
18 to 24 in.....	2.00	1.75 each
2 to 3 ft.....	2.50	2.25 each
3 to 4 ft.....	3.50	3.25 each
4 to 5 ft.....	4.50	4.25 each
5 to 6 ft.....	6.00	5.50 each

Japanese Golden Plume-like Retinospora (Retinospora plumosa aurea)

8 to 12 in.....	\$1.00	\$0.90 each
12 to 15 in.....	1.50	1.25 each
15 to 18 in.....	1.75	1.50 each
18 to 24 in.....	2.00	1.75 each
2 to 3 ft.....	2.75	2.50 each
3 to 4 ft.....	3.75	3.50 each

Japanese Golden Sawara Retinospora (Retinospora pisifera aurea)

8 to 12 in.....	\$1.50	\$1.25 each
12 to 15 in.....	2.00	1.75 each
15 to 18 in.....	2.50	2.25 each
18 to 24 in.....	3.00	2.75 each
2 to 3 ft.....	4.00	3.75 each

Japanese Sawara Retinospora (Retinospora Pisifera)

8 to 12 in.....	\$1.50	\$1.25 each
12 to 15 in.....	2.00	1.75 each
15 to 18 in.....	2.50	2.25 each
18 to 24 in.....	3.00	2.75 each
2 to 3 ft.....	4.00	3.75 each

Japanese Yellow Sawara Retinospora (Retinospora pisiferas sulphurea)

8 to 12 in.....	\$1.50	\$1.25 each
12 to 15 in.....	2.00	1.75 each

No Planting Is Complete Without Evergreens.

Harrisons' Nurseries - Berlin, Maryland

Japanese Slender Hinoki Retinospora (Retinospora obtusa gracilis)

	1 to 9 Ever- greens	10 to 29 Ever- greens
12 to 15 in.....	\$2.50	\$2.25 each
15 to 18 in.....	3.00	2.75 each
18 to 24 in.....	3.50	3.25 each
2 to 3 ft.....	4.50	4.25 each
3 to 4 ft.....	6.00	5.50 each

Japanese Golden Slender Hinoki Retinospora (Retinospora obtusa gracilis aurea)

12 to 15 in.....	\$2.50	\$2.25 each
15 to 18 in.....	3.00	2.75 each
18 to 24 in.....	3.50	3.25 each
2 to 3 ft.....	4.50	4.25 each
3 to 4 ft.....	6.00	5.50 each

Japanese Silvertip Retinospora (Retinospora pisifera plumosa argentea)

8 to 12 in.....	\$2.00	\$1.75 each
12 to 15 in.....	2.50	2.25 each
15 to 18 in.....	3.00	2.75 each

Japanese Thread-like Retinospora (Retinospora filifera)

12 to 15 in.....	\$2.50	\$2.25 each
15 to 18 in.....	3.00	2.75 each
18 to 24 in.....	3.50	3.25 each

SPRUCE

Douglas Spruce (Pseudotsuga douglasi)

8 to 12 in.....	\$1.00	\$0.90 each
12 to 15 in.....	1.50	1.25 each
15 to 18 in.....	2.00	1.75 each
18 to 24 in.....	2.50	2.25 each
2 to 3 ft.....	3.50	3.25 each
3 to 4 ft.....	4.50	4.25 each

Norway Spruce (Picea excelsa)

8 to 12 in.....	\$0.50	\$0.45 each
12 to 15 in.....	.65	.55 each
15 to 18 in.....	.80	.70 each
18 to 24 in.....	1.00	.90 each
2 to 3 ft.....	1.75	1.50 each
3 to 4 ft.....	2.50	2.25 each
4 to 5 ft.....	3.00	2.75 each

*Come to Berlin and Select the Evergreens in
the Nursery Rows. We Will Dig and Ship
or Deliver to Your Truck or Car
the Same Day.*

CYPRESS

Glory of Boskoop Cypress (<i>Chamaecyparis lawsoniana</i> Triomphe de Boskoop)		
	1 to 9	10 to 29
	Ever-	Ever-
	greens	greens
12 to 18 in.....	\$2.50	\$2.25 each
18 to 24 in.....	3.50	3.25 each
Columnar Italian Cypress (<i>Cupressus Sempervirens fastigiata</i>)		
8 to 12 in.....	\$2.00	\$1.75 each
12 to 18 in.....	2.50	2.25 each
Lawson Cypress (<i>Chamaecyparis lawsoniana</i>)		
8 to 12 in.....	\$2.00	\$1.75 each
12 to 15 in.....	2.50	2.25 each

HEMLOCK

Canadian Hemlock (<i>Tsuga Canadensis</i>)		
8 to 12 in.....	\$1.25	\$1.00 each
12 to 18 in.....	2.00	1.75 each
18 to 24 in.....	2.50	2.25 each
2 to 3 ft.....	3.50	3.25 each
3 to 4 ft.....	5.00	4.75 each
4 to 5 ft.....	7.00	6.50 each

YEWS

English Yew (<i>Taxus baccata</i>)		
8 to 12 in.....	\$1.75	\$1.50 each
12 to 15 in.....	2.25	2.00 each
Spreading English Yew (<i>Taxus baccata repanda</i>)		
8 to 12 in.....	\$1.75	\$1.50 each
12 to 15 in.....	2.25	2.00 each
15 to 18 in.....	2.75	2.50 each
18 to 24 in.....	3.50	3.25 each
2 to 3 ft.....	5.00	4.75 each
Japanese Spreading Yew (<i>Taxus Cuspidata</i>)		
8 to 12 in.....	\$1.75	\$1.50 each
12 to 15 in.....	2.25	2.00 each
15 to 18 in.....	2.75	2.50 each
18 to 24 in.....	3.50	3.25 each
2 to 3 ft.....	5.00	4.75 each
Upright Japanese Yew (<i>Taxus cuspidata capitata</i>)		
8 to 12 in.....	\$3.00	\$2.75 each

All Evergreens Are Freshly Dug Same Day as Shipped. Roots Are Balled and Burlapped.



Bush Arbutus.

Very attractive blooming Evergreen Shrub.

**HARRISON-GROWN BROAD-LEAVED
EVERGREEN SHRUBS AND
TREES**

American Holly (Ilex opaca)		
	1 to 9	10 to 29
12 to 18 in.....	\$2.00	\$1.75 each
Bush Arbutus (Abelia grandiflora)		
12 to 18 in.....	\$1.25	\$1.00 each
18 to 24 in.....	1.50	1.25 each
2 to 2½ ft.....	2.00	1.75 each
Cherry Laurel (Laurocerasus)		
12 to 15 in.....	\$1.50	\$1.25 each
CORK BARK EUONYMUS (Winged)		
(Euonymus Alatus)		
8 to 12 in.....	\$0.90	\$0.80 each
12 to 18 in.....	1.50	1.25 each
18 to 24 in.....	2.25	2.00 each

This Catalog Is Our Only Salesman.

BROAD LEAF EVERGREENS—(Continued)

Euonymus Japonica (Green Euonymus)		
	1 to 9	10 to 29
12 to 18 in.....	\$1.50	\$1.25 each
18 to 24 in.....	2.25	2.00 each
Euonymus Japonicus Arbovariegatus (Silverspot Burningbush)		
8 to 10 inch.....	\$0.90	\$0.80 each
EUONYMUS EUROPEUS (European Euonymus)		
12 to 18 in.....	\$1.50	\$1.25 each
18 to 24 in.....	2.25	2.00 each
GOLDEN LEAF EUONYMUS (Euonymus Japonica Aurea)		
12 in.....	\$1.50	\$1.25 each
Holly-leaved Maronia (Mahonia Aquifolium)		
12 to 18 in.....	\$2.25	\$2.00 each
Japanese Holly (Ilex crenata)		
12 to 18 in.....	\$2.00	\$1.75 each
MOUNTAIN LAUREL (Kalmia latifolia)		
18 to 24 in.....	\$1.00	\$0.75 each
2 to 3 ft.....	1.50	1.25 each
3 to 4 ft.....	2.00	1.75 each
4 to 5 ft.....	2.50	2.25 each
5 to 6 ft.....	3.00	2.75 each
MAGNOLIA GRANDIFLORA		
12 to 18 in.....	\$2.00	\$1.75 each
Yucca Filamentosa (Adam Needles)		
2-year-old plants.....	\$0.50	\$0.40 each
Gold Dust Aucuba (Aucuba japonica variegata)		
6 to 8 in.....	\$1.50	\$1.25 each
8 to 12 in.....	2.50	2.25 each
Lucidum Broad Leaf Evergreen (Ligustrum lucidum)		
12 to 18 in.....	\$2.50	\$2.25 each
18 to 24 in.....	3.00	2.75 each
2 to 3 ft.....	4.00	3.75 each

HARDY AZALEAS

Azalea Amoena		
6 to 8 in.....	\$2.50	\$2.25 each
8 to 10 in.....	3.00	2.75 each
Azalea Hinodegeri		
6 to 8 in.....	\$2.50	\$2.25 each
8 to 10 in.....	3.00	2.75 each
Azalea Kurume		
6 to 8 in.....	\$2.50	\$2.25 each
8 to 10 in.....	3.00	2.75 each
Azalea Kaempferi (Torch Azalea)		
6 to 8 in.....	\$2.50	\$2.25 each
8 to 10 in.....	3.00	2.75 each

Visit Our Green Houses.

**BROAD LEAVED EVERGREENS—(Con.)
FLOWERING RHODODENDRONS**

RHODODENDRON, Carolinianum	1 to 9 Plants	10 to 29 Plants
8 to 12 in.....	\$1.25	\$1.00 each
RHODODENDRON, Catawbiense		
9 to 12 in.....	\$1.25	\$1.00 each
12 to 15 in.....	1.50	1.25 each
15 to 20 in.....	2.00	1.75 each
RHODODENDRON, Maximum		
8 to 12 in.....	\$1.25	\$1.00 each
12 to 15 in.....	1.50	1.25 each
15 to 20 in.....	2.00	1.75 each



Boxwood at Ratcliffe Manor

We grow acres of Boxwood.
These prices cover bush form, pyramidal form,
and globe form.

HARRISON GROWN BOXWOOD

Boxwood (Buxus Sempervirens)	1 to 9 Plants	10 to 29 Plants
4 to 6 in.....	\$0.30	\$0.20 each
6 to 8 in.....	.50	.40 each
8 to 10 in.....	.75	.60 each
10 to 12 in.....	1.00	.90 each
12 to 15 in.....	1.50	1.25 each
18 to 24 in.....	3.50	3.25 each
2 to 2½ ft.....	4.50	4.25 each
2½ to 3 ft.....	6.00	5.75 each
Dwarf English Boxwood (Buxus Sempervirens suffruticosa)		
4 to 6 in.....	\$0.40	\$0.35 each
6 to 8 in.....	.60	.55 each

**HARRISON GROWN
ORNAMENTAL HEDGE PLANTS**



California Privet and Catalpa Bungeii (Umbrella Tree).
Prices for Catalpa Bungeii on page 6.

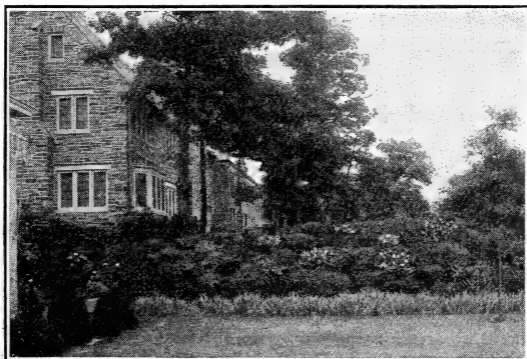
NOTE OUR NEW LOW PRICES.

California Privet (Ligustrum ovalifolium)
(Heavily branched)

	1 to 9	10 to 29	30 to 299	300 to 1000
8 to 12 in.....		\$0.04	\$0.03	\$0.02 each
12 to 18 in.....		.05	.04	.03 each
18 to 24 in.....		.07	.05	.04 each
2 to 3 ft.....		.10	.07	.05 each
3 to 4 ft.....		.15	.10	.07 each
4 to 5 ft.....		.20	.15	.10 each
5 to 6 ft.....		.25	.20	.15 each
California Privet (Pruned ball shape)	1 to 9	10 to 29		
18 to 24 in. Balls.....		\$0.50		\$0.40 each
2 to 3 ft. Balls.....		.75		.65 each
3 to 4 ft. Balls.....		1.00		.90 each
4 to 5 ft. Balls.....		1.25		1.15 each
5 to 6 ft. Balls.....		1.50		1.25 each
6 to 7 ft. Balls.....		2.00		1.75 each

ORNAMENTAL HEDGE PLANTS—(Con.)

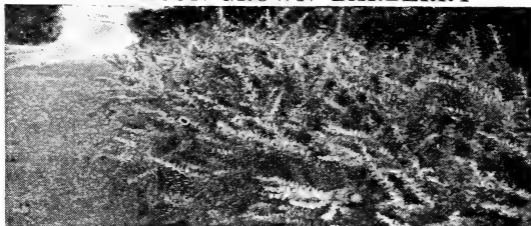
	1 to 9 Plants	10 to 29 Plants
Ibota Privet		
5 to 7 ft.....	\$0.50	\$0.40 each
Regals Privet		
3 to 4 ft.....	\$0.15	\$0.10 each
4 to 5 ft.....	.20	.15 each
5 to 6 ft.....	.30	.25 each
6 to 7 ft.....	.50	.40 each
Lodense Privet		
12 to 18 in.....	\$0.30	\$0.20 each
18 to 24 in.....	.40	.30 each
Japanese Evergreen Privet (Ligustrum japonicum)		
2 to 3 ft. well branched.....	\$1.00	\$0.90 each
3 to 4 ft. well branched.....	1.50	1.25 each
Golden Privet (Ligustrum ovalifolium variegatum)		
4 to 6 in.....	\$0.20	\$0.15 each
6 to 8 in.....	.25	.20 each
8 to 12 in.....	.30	.25 each
Amoor River Privet (Ligustrum amurense)		
2 to 3 ft.....	\$0.25	\$0.20 each
3 to 4 ft.....	.30	.25 each
4 to 5 ft.....	.40	.35 each



TERRACE PLANTING

Arranged and planted by Harrisons' Nurseries

HARRISON-GROWN BARBERRY



Japanese Barberry makes the best Hedge. Our volume production has enabled us to reduce the price on Barberry Hedge.

Japanese Barberry (Berberis thunbergi)

	1 to 9 Plants	10 to 29 Plants	30 to 299 Plants	300 to 1000 Plants
6 to 9 in.....	\$0.08	\$0.06	\$0.05	\$0.04 each
9 to 12 in.....	.13	.10	.08	.07 each
12 to 18 in.....	.18	.14	.11	.09 each
18 to 24 in., bushy	.23	.20	.17	.15 each
2 to 2½ ft. bushy	.35	.30	.25	.20 each
2½ to 3 ft., bushy	.40	.35	.30	.25 each
3 to 3½ ft., bushy	.50	.45	.40	.35 each
3½ to 4 ft., bushy	.55	.50	.45	.40 each

New Red Leaved Barberry (Berberis Thunbergi Atropurpurea)

	1 to 9 Plants	10 to 29 Plants
8 to 10 in.....	\$0.75	\$0.35 each

Box Barberry (Dwarf)

8 to 10 in.....	\$0.40	\$0.60 each
-----------------	--------	-------------



Assorted Evergreens and Barberry

FLOWERING SHRUBS



HYDRANGEA (*Paniculata Grandiflora*)

ALTHEA (<i>Rose of Sharon</i>)	1 to 9	10 to 29
(<i>Althea frutex</i> or <i>Hibiscus syriacus</i>)	Shrubs	Shrubs
Double Pink	2 to 3 ft.....\$0.50	\$0.40 each
	3 to 4 ft..... .60	.50 each
Double Red	4 to 5 ft..... .70	.60 each
	5 to 6 ft..... .80	.70 each
Double White	6 to 7 ft..... 1.00	.90 each
ARALIA PENTAPHYLLA		
2 to 3 ft.....	\$0.60	\$0.50 each
ARROW WOOD (<i>Viburnum Dentatum</i>)		
18 to 24 in.....	\$0.60	\$0.50 each
BUCKTHORN (<i>Rhamnus cathartica</i>)		
2 to 3 ft.....	\$0.60	\$0.50 each
BUTTON BUSH (<i>Cephalanthus occidentalis</i>)		
18 to 24 in.....	\$0.60	\$0.50 each
BAYBERRY OR WAX MYRTLE		
(<i>Myrica ceriferao</i>)		
18 to 24 in.....	\$0.75	\$0.65 each
2 to 3 ft.....	1.00	.90 each
BUTTERFLY BUSH (<i>Buddelia Magnifica</i>)		
3 to 4 ft.....	\$0.60	\$0.50 each
GOLDEN CHAIN (<i>Laburnum vulgare</i> or <i>cytiscus laburnum</i>)		
3 to 4 ft.....	\$1.50	\$1.25 each
MOUNTAIN CURRANT (<i>Ribes alpinum</i>)		
12 to 18 in.....	\$0.75	\$0.60 each
INDIAN CURRANT OR CORAL BERRY		
(<i>Symphoricarpos vulgaris</i>)		
2 to 3 ft.....	\$0.35	\$0.30 each
3 to 4 ft.....	\$0.50	\$0.40 each

FLOWERING SHRUBS—(Continued)

HIGH BUSH CRANBERRY (Viburnum		1 to 9	10 to 29
Americinum)		Shrubs	Shrubs
18 to 24 in.....		\$0.75	\$0.65 each
CHINESE BEAUTYBERRY (Callicarpa purpurea)			
18 to 24 in.....		\$0.60	\$0.50 each
CHOKEBERRY ARONIA (Red) (Pyrus arbutifolia)			
2 to 3 ft.....		\$1.00	\$0.90 each
COMMON WINTERBERRY OR BLACK ALDER (Ilex Verticillata)			
18 to 24 in.....		\$1.00	\$0.90 each
COMMON DWARF JUNE BERRY (Amelanchier canadensis) (Botryapium)			
18 to 24 in.....		\$0.60	\$0.50 each
CAROLINA ALLSPICE (Calycanthus floridus)			
5 to 6 ft.....		\$0.50	\$0.40 each
CREPE MYRTLE (Pink) (Lagerstoemia Indica)			
12 to 18 in.....		\$1.25	\$1.00 each
18 to 24 in.....		1.50	1.25 each
2 to 3 ft.....		2.00	1.75 each
DESMODIUM PENDULIFLORUM (Lespedeza Sieboldi)			
18 to 24 in.....		\$0.70	\$0.60 each
DEUTZIA LEMOINEI			
18 to 24 in.....		\$0.60	\$0.50 each
DEUTZIA SCABA CANDISSIMA			
18 to 24 in.....		\$0.60	\$0.50 each
DEUTZIA CRENATA PLENA			
18 to 24 in.....		\$0.60	\$0.50 each
DEUTZIA CANDIDISSIMA			
18 to 24 in.....		\$0.60	\$0.50 each
DEUTZIA CRENATA			
18 to 24 in.....		\$0.60	\$0.50 each
DEUTZIA WATERERI			
18 to 24 in.....		\$0.60	\$0.50 each
DEUTZIA CRENATA ROSEA			
18 to 24 in.....		\$0.60	\$0.50 each
DEUTZIA MAGNIFICATA			
18 to 24 in.....		\$0.60	\$0.50 each
DWARF DEUTZIA (Gracilis)			
12 to 18 in.....		\$0.30	\$0.20 each
18 to 24 in.....		.40	.30 each
2 to 3 ft.....		.50	.40 each
DEUTZIA, Pride of Rochester			
18 to 24 in.....		\$0.30	\$0.20 each
2 to 3 ft.....		.40	.30 each
3 to 4 ft.....		.50	.40 each
4 to 5 ft.....		.60	.50 each
5 to 6 ft.....		.70	.60 each
6 to 7 ft.....		.80	.70 each

Our Nursery Stock Is Freshly Dug at Shipping Time.

FLOWERING SHRUBS—(Continued)

	1 to 9 Shrubs	10 to 29 Shrubs
Dogwood, Red-branched (<i>Cornus siberica</i>)		
2 to 3 ft.....	\$0.40	\$0.30 each
3 to 4 ft.....	.60	.50 each
4 to 5 ft.....	1.00	.90 each
GRAY DOGWOOD (<i>Cornus racemosa</i> <i>paniculata</i>)		
2 to 3 ft.....	\$0.75	\$0.65 each
BLOOD-TWIG DOGWOOD (<i>Cornus</i> <i>sanguinea</i>)		
2 to 3 ft.....	\$0.60	\$0.50 each
RED FLOWERING DOGWOOD (<i>Cornus</i> <i>florida rubra</i>)		
18 to 24 in.....	\$2.50	\$2.25 each
RED OSIER DOGWOOD (<i>Cornus stolo-</i> <i>nifera</i>)		
2 to 3 ft.....	\$0.75	\$0.65 each
WHITE FLOWERING DOGWOOD (<i>Cornus florida</i>)		
2 to 3 ft.....	\$0.50	\$0.40 each
YELLOW BARK DOGWOOD (<i>Cornus</i> <i>flaviramea aurea</i>)		
2 to 3 ft.....	\$1.00	\$0.90 each
CORAL DOGWOOD (<i>Cornus sibirica alba</i>)		
2 to 3 ft.....	\$0.75	\$0.65 each
CORNELIAN CHERRY DOGWOOD (<i>Cornus mascula</i>)		
2 to 3 ft.....	\$1.00	\$0.90 each
AMERICAN ELDER (<i>Sambucus</i> <i>Canadensis</i>)		
2 to 3 ft.....	\$0.70	\$0.60 each
FORSYTHIA INTERMEDIA (Golden Bell)		
2 to 3 ft.....	\$0.60	\$0.50 each
3 to 4 ft.....	.70	.60 each
FORSYTHIA VIRDISSIMA		
2 to 3 ft.....	\$0.60	\$0.50 each
3 to 4 ft.....	.70	.60 each
FORSYTHIA FORTUNEI		
2 to 3 ft.....	\$0.60	\$0.50 each
3 to 4 ft.....	.70	.60 each
FORSYTHIA SUSPENSА		
2 to 3 ft.....	\$0.60	\$0.50 each
3 to 4 ft.....	.70	.60 each
FORSYTHIA SPECTABILIS		
2 to 3 ft.....	\$0.60	\$0.50 each
FORSYTHIA SIEBOLDII		
2 to 3 ft.....	\$0.60	\$0.50 each
FALSE INDIGO BUSH (<i>Amorpha</i> <i>fruticosa</i>)		
2 to 3 ft.....	\$0.50	\$0.40 each
3 to 4 ft.....	.65	.55 each
4 to 5 ft.....	.80	.70 each
WHITE FRINGE (<i>Chionanthus virginica</i>)		
18 to 24 in.....	\$1.50	\$1.25 each

FLOWERING SHRUBS—(Continued)

PURPLE FRINGE OR SMOKE TREE (Rhus cotinus)	1 to 9 Shrubs	10 to 29 Shrubs
2 to 3 ft.....	\$1.00	\$0.90 each
SWEET FERN (Comptonia asphenifolia)		
12 to 18 in.....	\$0.75	\$0.65 each
GOLD FLOWER (Hypericum Moserianum)		
8 to 12 in.....	\$0.50	\$0.40 each
GLOBE FLOWER (Kerria Japonica florepleno)		
2 to 3 ft.....	\$1.00	\$0.90 each
GROUNDSEL TREE (Baccharis halimifolia)		
18 to 24 in.....	\$0.75	\$0.65 each
BRIDE HONEYSUCKLE (Lonicera Tartarica Grandiflora)		
3 to 4 ft.....	\$0.60	\$0.50 each
JAPANESE BUSH HONEYSUCKLE (Lonicera Morrowii)		
2 to 3 ft.....	\$0.60	\$0.50 each
3 to 4 ft.....	.70	.60 each
TARTARIAN HONEYSUCKLE (Lonicera Tartarica)		
2 to 3 ft.....	\$0.60	\$0.50 each
3 to 4 ft.....	.70	.60 each
FRAGRANT HONEYSUCKLE (Lonicera fragrantissima)		
2 to 3 ft.....	\$0.60	\$0.50 each
PINK TARTARIAN HONEYSUCKLE (Lonicera Grandiflora Rosea)		
2 to 3 ft.....	\$0.60	\$0.50 each
3 to 4 ft.....	\$0.70	\$0.60 each
BLUEBERRY OR SWAMP HUCKLEBERRY (Vaccinium Corymbosum)		
18 to 24 in.....	\$2.00	\$1.75 each
HYDRANGEA, Mrs. Moulerre		
12 to 18 in.....	\$0.50	\$0.40 each
18 to 24 in.....	.75	.65 each
HYDRANGEA, Thomas Hogg		
12 to 18 in.....	\$0.50	\$0.40 each
18 to 24 in.....	.75	.65 each
HYDRANGEA (Arborescens grandiflora) (Hills of Snow)		
12 to 18 in.....	\$0.40	\$0.30 each
18 to 24 in.....	.50	.40 each
2 to 3 ft.....	.60	.50 each
3 to 4 ft.....	.75	.65 each
HYDRANGEA (Otaksa), Pink and Blue,		
18 to 24 in.....	\$1.00	\$0.90 each
HYDRANGEA (Paniculata grandiflora) (Pee Gee), (Large flowered)		
12 to 18 in.....	\$0.40	\$0.30 each
18 to 24 in.....	.50	.40 each
2 to 3 ft.....	.60	.50 each
3 to 4 ft.....	.75	.60 each
WHITE KERRIA (Rhodotypus Kerrioides)		
2 to 3 ft.....	\$0.80	\$0.70 each

LILACS

COMMON PURPLE LILAC (<i>Syringa vulgaris</i>)	1 to 9	10 to 29
	Shrubs	Shrubs
2 to 3 ft.....	\$0.75	\$0.65 each
COMMON WHITE LILAC (<i>Syringa Alba</i>)		
2 to 3 ft.....	\$0.75	\$0.65 each
SOUV. DE LUDWIG SPAETH LILAC		
2 to 3 ft.....	\$1.00	\$0.90 each
MME. LEMOINE LILAC		
2 to 3 ft.....	\$1.00	\$0.90 each
MARIE LEGRAYE LILAC		
2 to 3 ft.....	\$1.00	\$0.90 each
PRESIDENT GREVY LILAC		
2 to 3 ft.....	\$1.00	\$0.90 each
GARLAND MOCK ORANGE (<i>Philadelphus coronarius</i>)		
18 to 24 in.....	\$0.40	\$0.30 each
2 to 3 ft.....	.50	.40 each
3 to 4 ft.....	.60	.50 each
VIRGINALIS MOCK ORANGE (<i>Philadelphus Virginal</i>)		
18 to 24 in.....	\$1.00	\$0.90 each
LARGE FLOWERED MOCK ORANGE (<i>Philadelphus grandiflorus</i>)		
2 to 3 ft.....	\$0.60	\$0.50 each
MEMORIAL ROSE (<i>Rosa Wichuraiana</i>)	\$0.75	\$0.65 each
JAPANESE BLOODLEAF MAPLE (<i>Acer palmatum atropurpureum</i>)		
15 to 18 in.....	\$5.00	each
NINE BARK (<i>Opulaster opulifolius</i> or <i>spirea opulifolia</i>)		
2 to 3 ft.....	\$0.75	\$0.65 each
PEARL BUSH (<i>Exochorda Grandiflora</i>)		
2 to 3 ft.....	\$0.80	\$0.70 each
SIBERIAN PEA TREE (<i>Caragana Arboretscens</i>)		
18 to 24 in.....	\$0.75	\$0.65 each
SWEET PEPPER BUSH OR SUMMER SWEET (<i>Clethra Alnifolia</i>)		
18 to 24 in.....	\$0.80	\$0.70 each
SWEET SCENTED SHRUB OR CAROLINA ALLSPICE (<i>Calycanthus Floridus</i>)		
18 to 24 in.....	\$0.60	\$0.50 each
2 to 3 ft.....	.75	.65 each
3 to 4 ft.....	1.00	.90 each
4 to 5 ft.....	1.25	1.00 each
5 to 6 ft.....	1.50	1.25 each
SNOWBERRY (<i>Symphoricarpos racemosus</i>)		
2 to 3 ft.....	\$0.70	\$0.60 each
ROSA RUGOSA	\$0.60	\$0.50 each
SCOTCH BROOM (<i>Cytisus Genista scoparius</i>)		
3 to 4 ft.....	\$0.35	\$0.30 each
4 to 5 ft.....	.50	.40 each

Beautify the Grounds Surrounding Your Home.

SNOWBALLS

SNOWBALL OR GUILDER ROSE (Viburnum Sterilis)	1 to 9 Shrubs	10 to 29 Shrubs
18 to 24 in.....	\$0.85	\$0.75 each
SINGLE JAPANESE SNOWBALL (Virburnum Tomentosum)		
18 to 24 in.....	\$0.85	\$0.75 each
SIEBOLD'S SNOWBALL (Viburnum Sieboldi)		
18 to 24 in.....	\$0.85	\$0.75 each
JAPANESE SNOWBALL (Viburnum Plicatum)		
18 to 24 in.....	\$0.85	\$0.75 each
JAPANESE VIBURNUM (Viburnum japonicum)		
2 to 3 ft.....	\$1.00	\$0.90 each
FRAGRANT SNOWBALL (Viburnum Carlesh)		
12 to 18 in.....	\$2.25	\$2.00 each
WAYFARING TREE (Viburnum Lantana)		
18 to 24 in.....	\$0.75	\$0.65 each

SPIREAS

SPIREA, Anthony Waterer		
12 to 18 in.....	\$0.40	\$0.30 each
18 to 24 in.....	.50	.40 each
BUMALD'S DWARF PINK SPIREA (Spirea Bumalda)		
18 to 24 in.....	\$0.75	\$0.65 each
FORTUNE'S DWARF WHITE SPIREA (Spirea Callosa Alba)		
18 to 24 in.....	\$0.75	\$0.65 each
FROBELS PINK DWARF SPIREA (Spirea Callosa Froebeli)		
18 to 24 in.....	\$0.75	\$0.65 each
SNOW GARLAND SPIREA (Spirea Arguta Multiflora)		
18 to 24 in.....	\$0.75	\$0.65 each
DOUGLAS PINK FLOWERING SPIREA (Spirea Donglasi rosea)		
18 to 24 in.....	\$0.60	\$0.50 each
LIGHT PINK DWARF SPIREA (Spirea Margaritae)		
18 to 24 in.....	\$0.75	\$0.65 each
GOLDEN LEAVED NINEBARK OR SPIREA (Spirea Opulifolia Aurea)		
18 to 24 in.....	\$0.60	\$0.50 each
TRUE BRIDAL WREATH (Spirea Pruni- folia flore pleno)		
18 to 24 in.....	\$0.60	\$0.50 each
DOUBLE REEVES SPIREA (Spirea Reevisiana flore pler.o)		
18 to 24 in.....	\$0.50	\$0.40 each
WILLOW LEAVED WHITE FLOWER- ING SPIREA (Spirea Salicifolia)		
18 to 24 in.....	\$0.60	\$0.50 each
THUNBERG'S DWARF SPIREA (Spirea Thunbergi)		
18 to 24 in.....	\$0.50	\$0.40 each

SPIREAS—(Continued)

ELM LEAVED WHITE SPIREA (<i>Spirea</i> 1 to 9 10 to 29 <i>Ulmifolia</i>)	Shrubs	Shrubs
18 to 24 in.....	\$0.75	\$0.65 each
BILLARD'S PINK SPIREA (<i>Spirea</i> <i>Billiardi</i>)		
18 to 24 in.....	\$0.60	\$0.50 each
PINE MEADOW SPIREA (<i>Spirea</i> <i>Bethlehemits</i>)		
18 to 24 in.....	\$0.75	\$0.65 each
CRISP LEAVED SPIREA (<i>Spirea crispi-</i> <i>folia</i>)		
18 to 24 in.....	\$0.75	\$0.65 each
SPIREA VANHOUTTEI		
12 to 18 in.....	\$0.20	\$0.15 each
18 to 24 in.....	.35	.25 each
2 to 3 ft.....	.50	.40 each
3 to 4 ft.....	.60	.50 each
4 to 5 ft.....	.70	.60 each
BILLARD'S SPIREA (<i>Spirea billardi</i>)		
18 to 24 in.....	\$0.40	\$0.30 each
2 to 3 ft.....	.50	.40 each
3 to 4 ft.....	.60	.50 each
BLUE SPIREA (<i>Caryopteris Mastacanthus</i>)		
12 to 18 in.....	\$0.50	\$0.40 each
GOLDEN SPIREA		
18 to 24 in.....	\$0.40	\$0.30 each
2 to 3 ft.....	.50	.40 each
3 to 4 ft.....	.60	.50 each
PINK SUMMER SPIREA (<i>Spirea Men-</i> <i>ziesi</i>)		
18 to 24 in.....	\$0.75	\$0.65 each
ROUND LEAVED WHITE SPIREA (<i>Spirea Rotundifolia flora alba</i>)		
18 to 24 in.....	\$0.75	\$0.65 each

WEIGELAS (Diervilla)

WEIGELA, Rosea		
3 to 4 ft.....	\$0.60	\$0.50 each
4 to 5 ft.....	.70	.60 each
VARIEGATED LEAVED WEIGELIA (<i>Weigela Rosea nana variegata</i>)		
18 to 24 in.....	\$0.50	\$0.40 each
2 to 3 ft.....	.60	.50 each
3 to 4 ft.....	.75	.65 each
WEIGELA HENDERSONI		
18 to 24 in.....	\$0.60	\$0.50 each
WEIGELA VAN HOUTTE		
18 to 24 in.....	\$0.60	\$0.50 each
WEIGELA DESBOSI		
18 to 24 in.....	\$0.60	\$0.50 each
WEIGELA, Eva Rathke		
2 to 3 ft.....	\$0.60	\$0.50 each
WEIGELA, Floribunda		
3 to 4 ft.....	\$0.60	\$0.50 each
4 to 5 ft.....	.70	.60 each

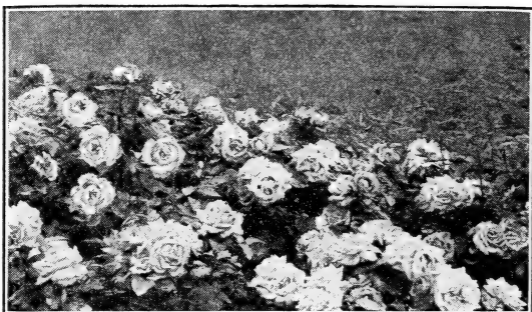
FLOWERING SHRUBS (Continued)

FERN-LEAVED STAGHORN SUMAC	1 to 9	10 to 29
(<i>Rhus laciniata</i>)	Shrubs	Shrubs
2 to 3 ft.....	\$1.00	\$0.90 each
SILVER BELL TREE (<i>Halesia Tetra-</i> <i>tera</i>)		
2 to 3 ft.....	\$1.00	\$0.90 each
BLADDER SENNA (<i>Colutea arborescens</i>)		
18 to 24 in.....	\$0.60	\$0.50 each
TAMARIX AFRICANA		
3 to 4 ft.....	\$0.60	\$0.50 each
4 to 5 ft.....	.75	.60 each
5 to 6 ft.....	1.00	.90 each
6 to 7 ft.....	1.25	1.00 each
JAPANESE QUINCE (<i>Cydonia Japonica</i>)		
2 to 3 ft.....	\$1.00	\$0.90 each
3 to 4 ft.....	1.25	1.00 each
4 to 5 ft.....	1.50	1.25 each

FLOWERING ORNAMENTAL TREES

DOUBLE WHITE FLOWERING PEACH		
(<i>Prunus persica flore albo-plena</i>)		
2 to 3 ft.....	\$0.40	\$0.30 each
3 to 4 ft.....	.50	.40 each
4 to 5 ft.....	.60	.50 each
DOUBLE PINK FLOWERING PEACH		
(<i>Prunus persica rosea flore-pleno</i>)		
2 to 3 ft.....	\$0.40	\$0.30 each
3 to 4 ft.....	.50	.40 each
4 to 5 ft.....	.60	.50 each
DOUBLE RED FLOWERING PEACH		
(<i>Prunus persica flore rubro-pleno</i>)		
2 to 3 ft.....	\$0.40	\$0.30 each
3 to 4 ft.....	.50	.40 each
4 to 5 ft.....	.60	.50 each
BETCHELS DOUBLE FLOWERING CRAB		
(<i>Malus ioensis Bechteli</i>)		
1 to 2 ft.....	\$0.75	\$0.65 each
2 to 3 ft.....	1.25	1.00 each
3 to 4 ft.....	2.00	1.75 each
SIBERIAN FLOWERING CRAB (<i>malus</i> <i>baccata</i>)		
1 to 2 ft.....	\$0.75	\$0.65 each
2 to 3 ft.....	1.25	1.00 each
3 to 4 ft.....	2.00	1.75 each
4 to 5 ft.....	3.00	2.50 each
ELEYI RED FLOWERING CRAB		
(<i>Malus Eleyi</i>), the finest Red Flow- ering Crab recently introduced with wine red flowers, dark wood and foliage.		
1 to 2 ft.....	\$1.50	\$1.40 each
2 to 3 ft.....	3.00	2.75 each
3 to 4 ft.....	4.00	3.75 each
4 to 5 ft.....	5.00	4.75 each
SEMI-DOUBLE PINK FLOWERING		
PLUM (<i>Prunus triloba</i>)		
2 to 3 ft.....	\$1.25	\$1.00 each

FLOWERING ORNAMENTAL TREES—(Con.)		
PURPLE-LEAVED PLUM (<i>Prunus</i>	1 to 9	10 to 29
<i>Pissardi</i>)	Trees	Trees
2 to 3 ft.....	\$0.75	\$0.65 each
3 to 4 ft.....	1.00	.90 each
JAPANESE DOUBLE FLOWERING CHERRY		
(<i>Prunus cerasus</i>)		
1 to 2 ft.....	\$1.25	\$1.00 each
2 to 3 ft.....	2.00	1.75 each
DOUBLE WHITE FLOWERING ALMOND		
(<i>Prunus glandulosa glabra albiplena</i> or <i>Amygdalus chinensis albo-plena</i>)		
2 to 3 ft.....	\$0.70	\$0.60 each
DOUBLE PINK FLOWERING ALMOND		
(<i>Prunus trichostyla sinensis</i> or <i>Amygdalus chinensis rosea plena</i>)		
2 to 3 ft.....	\$0.70	\$0.60 each
PAUL'S DOUBLE SCARLET THORN		
(<i>Crataegus Paulii</i>)		
3 to 4 ft.....	\$3.00	\$2.50 each
MULBERRY, Teas' Weeping		
(<i>Morus alba pendula</i>)		
4 to 6 ft. stems, 2 year heads.....	\$3.50	\$3.00 each
HARDY ORNAMENTAL CLIMBING VINES		
AKEBIA QUINATA	\$1.00	\$0.90 each
BOSTON OR JAPANESE IVY		
(<i>Ampelopsis Veitchii</i>).....	\$0.65	\$0.55 each
COMMON TRUMPET VINE (<i>Bignonia</i>		
<i>Radicans</i>)	\$0.90	\$0.80 each
CLEMATIS JACKMANII	\$1.00	\$0.90 each
CLEMATIS PANICULATA	\$0.75	\$0.65 each
CHINESE MATRIMONY VINE (<i>Lycium</i>		
<i>Chinense</i>)	\$0.85	\$0.75 each
CHINESE BLUE WISTERIA (<i>Wisteria</i>		
<i>Chinensis</i> or <i>Sinensis</i>).....	\$0.75	\$0.65 each
DUTCHMAN'S PIPE (<i>Aristolochia</i>		
<i>Sipho</i>)	\$1.00	\$0.90 each
ENONYMUS RADICANS (Evergreen		
vine)	\$0.75	\$0.65 each
ENGLISH IVY (<i>Hedera Helix</i>) ..	\$0.75	\$0.65 each
FALSE BITTERSWEET (<i>Celastrus</i>		
<i>scandens</i>)	\$1.00	\$0.90 each
GOLDEN LEAVED HONEYSUCKLE		
(<i>Lonicera Aurea Reticulata</i>).....	\$0.60	\$0.50 each
HALL'S JAPANESE HONEYSUCKLE		
(<i>Lonicera Halliana</i>).....	\$0.50	\$0.40 each
JAPANESE HONEYSUCKLE		
(<i>Lonicera japonica</i>).....	\$0.60	\$0.50 each
KUDZU VINE (<i>Pueraria Thunbergiana</i>)..	\$0.75	\$0.65 each
LAVENDER PURPLE WISTERIA		
(<i>Wisteria Magnifica</i>).....	\$1.00	\$0.90 each
SILVER LACE VINE (<i>Polygonium Au-</i>		
<i>berti</i>)	\$1.00	\$0.90 each
SILK VINE (<i>Periploca graeca</i>).....	\$1.25	\$1.00 each
VIRGINIA CREEPER OR AMERICAN		
IVY (<i>Ampelopsis quinquefolia</i>).....	\$0.65	\$0.55 each
WHITE WISTERIA (<i>Wisteria Alba</i>).....	\$1.00	\$0.90 each
YELLOW JASMINE (<i>Jasminum nudi-</i>		
<i>florum</i>)	\$1.00	\$0.90 each



FIELD GROWN ROSES

PARCEL POST PRICES: Should you desire us to ship by parcel post, add three cents for each plant when remitting.

Hybrid Perpetual or June Roses

2 Year Field Grown

1 to 9 bushes, 80c each; 10 to 29 bushes, 70c each.

Anna de Diesbach. Carmine pink.

Captain Christy. Flesh color.

Captain Hayward. Carmine.

Clio. Delicate Pink.

Frau Karl Druschki. White.

General Jacqueminot. Crimson.

Hugh Dickson. Crimson

Magna Charta. Pink.

Margaret Dickson. White.

Mrs. John Laing. Pink.

Paul Neyron. Pink.

Ulrich Brunner. Pink.

Tea and Everblooming Hybrid Tea Roses

2 Year Field Grown

1 to 9 bushes, \$1.00 each; 10 to 29 bushes, 90c each.

Caroline Testout. Pink.

Gruss an Teplitz. Scarlet.

Kaiserin Augusta Victoria. White.

Killarney. Pale Pink.

La France. Silvery Rose.

Sunburst. Coppery Yellow.

Columbia. Bright Rose Pink.

Double White Killarney.

Duchesse of Wellington. Orange Pink.

J. L. Mock. Cherry Pink.

Laurent Carle. Velvety Carmine.

Los Angeles. Coral Pink and Gold.

Mad. Edouard Herriot. Coppery Terra Cotta.
Mrs. Aaron Ward. Orange and Cream.
Radiance. Bright Pink.
Wm. F. Dreer. Gilded Flesh Pink.
Red Radiance. Brilliant Crimson.
Mrs. W. C. Miller. Salmon Pink.

Climber and Rambler Roses

1 to 9 bushes, 80c each; 10 to 29 bushes, 70c each.

American Pillar. Rosy Pink.
Crimson Rambler. Crimson.
Dorothy Perkins. Light Pink.
Baby Rambler. Pink.
Doctor Van Fleet. Flesh White.
Tausendschon. First Pink, later Rose.
Aviateur Bleriot. Apricot Yellow.
Elcelsa. Blood Red Clusters.
Mary Wallace. Rose Pink.
Roserie. Deep Pink.

DAHLIAS

Adlivoni (Show Pink)
Bessie Boston (Show Red)
Dinedictus (Peony Bronze)
Breule O. Day (Cactus Cream)
Creme Century (Single)
Dress White (Show Quilled White)
Dress Yellow (Show Quilled Yellow)
Easton (Decorative Turkey Red)
Emily (Show Lavender)
Fakle (Peony Salmon)
Flamingo (Decorative Pink)
George Brinkman (Pompom White)
Golden Gate (Large Cactus)
Jack Rose (Decorative Rose)
Katherine Duer (Decorative Rose)
Klim Dornatier (Pompom Salmon)
Liabella (Cactus Lavender)
Lyndlums (Decorative Scarlet)
Madame H. Cayenx (Cactus Pink)
Niebilmgenhort (Cactus Rose)
Oregon Beauty (Decorative Large Bright Red)
Red Cross (Cactus Large Red and Pink)
Snow Clad (Pompom White)
South Pole (Peony White)
Vater Rhine (Cactus Pink)
Warspite (Pompom Scarlet)

Prices on all varieties, 35c each; 10 to 29 tubers (root division), 30c each; 30 to 299 tubers, 25c each.

HARRISON-GROWN DAHLIAS IN MIXTURE

An assortment of some of the choicest specimens varieties of Show, Fancy, Cactus, Pompon, Decorative, Single and Peony flowered classes, in their varying types and colors.

1 to 9 tubers (root division), 20c each; 10 to 29 tubers, 15c each; 30 to 299 tubers, 10c each; 300 to 1000 tubers, 8c each.

GLADIOLUS

Mammoth size bulbs.

20c each; 10 to 29 bulbs, 15c each; 30 to 299 bulbs, 11c each.

America, Large (Lavender, Pink)

Flora (Yellow extra)

Halley (Salmon Pink)

Hereda (Mauve)

Le Marechal Foch (Appleblossom Pink)

Mrs. Francis King (Rose and Scarlet Blothe)

Mrs. Frank Pendleton (Bright Rose, Crimson Blotch)

Odin (Salmon Rose)

Panama (Deep Rose)

Peace (White)

Rose Pearl (Soft Rose)

Sword Lily

Schwaben (Yellow)

Vesta Tilley (White and Lavender)

White City (Largest White)

Wildrink (Light Pink)

EXTRA RAINBOW MIXTURE (all colors),
10c each; 80c per 10; \$7.00 per 100.



Shade and comfort, Maryland and Delaware roads.

CANNAS

CLEOPATRA—Crimsoned red.

FAIRY QUEEN—Brilliant pink with creamy base, center spattered with gold and coral red.

GOLDEN GATE—Parti-colored which opens gold but soon becomes rayed with orange.

KING HUMBERT—Orange scarlet flecked with carmine, rose tinted at margin and base.

KING MIDAS—Yellow.

STATUE OF LIBERTY—Red.

THE AMBASSADOR—Scarlet.

THE PRESIDENT—Scarlet Red.

VICTORY—Dwarf type—Creamy toned with shell pink.

VULCAN—Garnet Red.

ALL VARIETIES—1 to 9 Cannas, 30c each; 10 to 29 Cannas, 25c each; 30 to 299 Cannas, 20c each.

MIXED VARIETIES OF CANNAS—1 to 9 Cannas, 20c each; 10 to 29 Cannas, 15c each; 30 to 299 Cannas, 10c each.

PEONIES

Double Flowered Herbaceous Type.



PARCEL POST—Add five cents for each plant.

Strong 3 to 5 Eye Divisions.

Prices: 50c each; 10 to 29, 45c; 30 to 299 roots, 40c each.

DUCHESS DE NEMOURS—A magnificent flower, white crown, creamy collar, free from spots or flecks of other color. Blooms large, double, and produces freely. Desirable for massing. Fragrant.

EDULIS SUPERBA—Rosy pink, sometimes striped carmine. Very early.

FELIX CROUSSE—A brilliant red peony. Large blooms, typical bomb shape, and quite fragrant. Plants strong and bloom freely.

PEONIES—(Continued)

FESTIVA MAXIMA—Probably the most popular peony in existence. Center white, with here and there a fleck of crimson. Large and fragrant. Vigorous and free bloomer.

MADAME DE VERNEVILLE—Blush when opening, changes to pure white, with many distinct carmine flecks. Blooms large and full, produces freely, and delicately fragrant.

UMBELLATA ROSEA—Earliest light Pink. Fragrant and fine.

HARDY PERENNIALS

COLUMBINES	1 to 9 Plants	10 to 29 Plants
American Columbine (Red and Yellow) (Aquilegia Canadensis)	\$0.25	\$0.20 each
Colorado Columbine (Blue) (Aquilegia Caerulea)25	.20 each
Snow Queen Columbine (White).....	.25	.20 each

BLUE GEM ASTER

Robert Parker Aster (Lavender).....	0.25	\$0.20 each
Perry's White Aster.....	.25	.20 each

ASTILBE OR SPIREA (Meadow Sweet)

Gladstone (White) (Astilbe japonica)..	\$0.60	\$0.50 each
America (Pink).....	.60	.50 each
Queen Alexandria (Light Pink).....	.60	.50 each

BLEEDING HEART (Dicentra specta-
bilis)

.....	\$0.60	\$0.50 each
-------	--------	-------------

CARNATIONS—Choice mixed.....

.....	\$0.25	\$0.20 each
-------	--------	-------------

HARDHEADS OR KNAPROUD (Cen-
taurea)

Montana Blue (Mountain Blue).....	\$0.25	\$0.20 each
-----------------------------------	--------	-------------

BELLFLOWERS (Campanula)

Alliariaefolia (White).....	\$0.35	\$0.30 each
Carpathian Bellflower (Blue) (Campa- nula Carpatica).....	.35	.30 each
Chimney Bellflower (Mixed).....	.35	.30 each

LARKSPUR (Delphinium)

Delphinium Belladonna (Light Blue)....	\$0.25	\$0.20 each
Delphinium (Mixed Colors).....	.25	.20 each

FROST-DEFING CHRYSANTHEMUMS

Angelo (Pink).....	\$0.25	\$0.20 each
Harvest Home (Yellow).....	.25	.20 each
Boston (Bronze).....	.25	.20 each

HARDY PERENNIALS—(Continued)

THE HARDY PINKS (Dianthus)

	1 to 9 Plants	10 to 29 Plants
Annie Laurie (Orchid Color).....	\$0.25	\$0.20 each
Her Majesty (White).....	.25	.20 each

SWEET WILLIAM (Dianthus barbatus)

Sutton Pink Beauty.....	\$0.25	\$0.20 each
Sutton Scarlet.....	.25	.20 each
Sutton Mixed.....	.25	.20 each

FOX GLOVE (Digitalis)

Digitalis Ambigua (Yellow).....	\$0.30	\$0.25 each
Digitalis Purpurea (Lavender).....	.30	.25 each
Mixed Fox Glove.....	.30	.25 each

PLANTAIN LILY (Funkia) OR HORTA

Funkia Cacri lea (Blue).....	\$0.35	\$0.30 each
Funkia Variegata (Variegated leaves)	.35	.30 each

BLANKET FLOWER (Gaillardia

grandiflora)	\$0.25	\$0.20 each
--------------------	--------	-------------

BABY'S BREATH (Gypsophila panicu-

lata)	\$0.25	\$0.20 each
-------------	--------	-------------

FALSE SUNFLOWER (Helenium)

Mollis (Blue).....	\$0.35	\$0.30 each
Multiflorus (Clear Yellow).....	.35	.30 each

PERENNIAL SUNFLOWER (Helianthus)

Album Plenum (Double White).....	\$0.30	\$0.25 each
Fire Ball (Red).....	.30	.25 each
Choice Mixed Sunflowers.....	.30	.25 each

THE DAY LILIES (Hemerocallis)

Flava (Lemon Lily) (Yellow).....	\$0.35	\$0.30 each
Japanese Day Lily (Hemerocallis thun- bergi) (Light Yellow).....	.35	.30 each

MALLOW MARVELS (Hibiscus) (Pink

and White).....	\$0.35	\$0.30 each
-----------------	--------	-------------

HOLLYHOCKS (Althea rosea) (Colors:

Red, Pink, Yellow and White).....	\$0.35	\$0.30 each
-----------------------------------	--------	-------------

IRIS (Fleur-de-lis)

Japanese Iris (Iris Kaempferi)

Azure (Blue)	\$0.60	\$0.55 each
Patrocle (Dark Red Violet).....	.60	.55 each
Mixed Colors Japanese Iris (Choice varieties)	\$0.40	\$0.35 each

German Iris (Iris germanica)

Fairy (White and Blue).....	\$0.50	\$0.45 each
Loreley (Yellow).....	\$0.50	\$0.45 each
Nibelungen (Yellow and Bronze).....	.50	.45 each
Mixed German Iris.....	\$0.25	\$0.20 each



Iris

HARDY PERENNIALS—(Continued)

TUPINS	1 to 9 Plants	10 to 29 Plants
Polyphyllus (Blue).....	\$0.40	\$0.35 each
Mixed Tupins.....	.30	.25 each
POPPY OR POPOVER		
Orientalis (Red).....	\$0.50	\$0.45 each
PHLOX		
Elizabeth Campbell (Pink).....	\$0.50	\$0.45 each
Rynstroon (Pink)50	.45 each
Rinelanders (Salmon Pink).....	.50	.45 each
PERSIAN OR PAINTED DAISY (Py- rethrum)		
Finest Mixed, Double and Single Va- rieties	\$0.50	\$0.45 each
CLASS PIN CUSHION FLOWER (Scal- icosa)		
Caucasica (Blue Bonnet).....	\$0.50	\$0.45 each
Japonica50	.45 each
MEADOW RUE (Thalictrum)		
Aquilegifolium (White)	\$0.50	\$0.45 each
Diptesgarpum (Lilac Mauve).....	.50	.45 each
GLOBE FLOWER (Trellins)		
Choice Seedlings (Pale Yellow and Orange)	\$0.75	\$0.70 each
RED HOT POKER (Tritoma)		
Pfitzeri (the everblooming flame flower)	\$0.75	\$0.70 each
UVARIA GRANDIFLORA (Salmon Pink)		
.....	\$0.75	\$0.70 each

DUTCH BULBS

"RAINBOW" DUTCH HYACINTHS

- L'Innocence—Snow White (Single).
King of the Blues—Deep Blue (Single).
City of Haarlem—Rich Yellow (Single).
Gigantea—Soft Blush Pink (Single).
President Roosevelt—Rose Pink (Double).
La Grandesse—Pure White (Double).
Blokberg—Light Blue (Double).
Sunflower—Buff Yellow (Double).

1 to 9 bulbs, 30c each; 10 to 29 bulbs, 25c each;
30 to 299 bulbs, 20c each.

DARWIN TULIPS

Twelve Darwin Tulips to Beautify Your Home Garden

- Bartigon—Fine Fiery Crimson Scarlet.
Clara Butt—Salmon Pink.
Centenaire—Beautiful Deep Rose, Light Blue Center.
Farnecombe Sanders—Rich Rosy Scarlet.
Baron De La Tonnaye—Rose Pink, Margined Blush.
King Harold—Dark Mahogany Red.
Rev. Ewbank—Silvery Heliotrope, Edged Lavender.
Nauticus—Rose, Blue Green Center.
Pride of Haarlem—Brilliant Deep Rosy Red.
Margaret (Gretchen)—Blush White.
Inglescombe Yellow—Mayflowering Yellow Darwin
The Sultan—Glossy Maroon Black.

1 to 9 bulbs, 20c each; 10 to 29 bulbs, 15c each;
30 to 299 bulbs, 10c each.



Group planting of Evergreens

MONTBRETIA (Tritonia)

(Spring Delivery.)

20c each; \$1.60 per 10; \$13.00 per 100.

California (Golden Yellow)
Crocsmiaeflora (Scarlet Yellow)
Mixture (all colors)

LILY OF THE VALLEY

30c each; \$2.50 per 10; \$20.00 per 100.

TUBEROSES

20c each; \$1.60 per 10; \$13.00 per 100.

The Pearl, double
Mexican, single

We extend an invitation to the public to visit our large Nurseries and Commercial Bearing Orchards at any time.

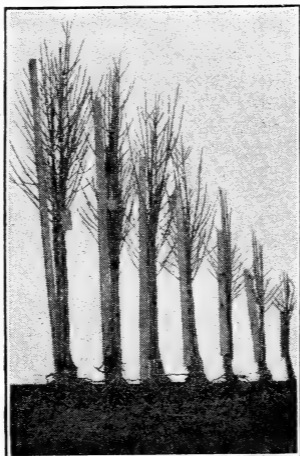
We make a specialty of Car-Load Shipments.

LET US LANDSCAPE YOUR HOME.

**Terms F. O. B. Berlin, Maryland.
We allow 5% discount for cash
with order or prior to date of
shipment. Otherwise terms net.**

HARRISON GROWN PEACH TREES

Buds
Cut
From
Bearing
Commer-
cial
Orchards.



America's
Largest
Growers
of
Peach
Trees.

Peach Trees—Graded, Ready to Pack and Ship.

BELLE (Belle of Georgia), for some time, has been recognized as the best all-around white peach on the market. It is easily the best shipping white peach of its season, ranking almost with Elberta in this respect. Because of its many desirable qualities it has become standard in the large commercial orchards, and you can find few growers of any importance who do not have a good block of Belle in their orchards.

NOTE OUR NEW LOW PRICES.

	1 to 9 Trees	10 to 29 Trees	30 to 299 Trees	300 to 599 Trees	600 to 3000 Trees
1 to 1½ ft.	\$0.10	\$0.09	\$0.07	\$0.06	\$0.05 each
1½ to 2 ft.	.15	.12	.10	.08	.07 each
2 to 3 ft.	.22	.17	.15	.12	.10 each
3 to 4 ft.	.30	.25	.20	.17	.14 each
4 to 5 ft.	.35	.30	.25	.22	.18 each
5 to 6 ft.	.40	.35	.30	.27	.24 each

Parcel Post, 1 to 4 ft., add 4c a tree; over 4 ft. high, 8c.

SEE REDUCED PRICES FOR 600 TO 3000 TREES.

OVER 3000 TREES WRITE FOR SPECIAL PRICES.

CAN BE ASSORTED PEACHES, APPLES, CHERRIES, OR OTHER FRUIT TREES.

FARM BUREAU AND CO-OPERATIVE
ORGANIZATION ORDERS SOLICITED.

ELBERTA



Ripens middle of August. Yellow skin, with deep red cheek. Flesh is golden yellow, red at the pit, firm and juicy. Size runs from large to extra large. Freestone.

There is no peach so widely known as Elberta. It has been the standard for all other peaches almost since the date of its introduction. As a commercial peach it is without a peer. You would experience real difficulty if you attempted to find a large peach orchard without a block of Elberta.

FRUIT IS LARGE

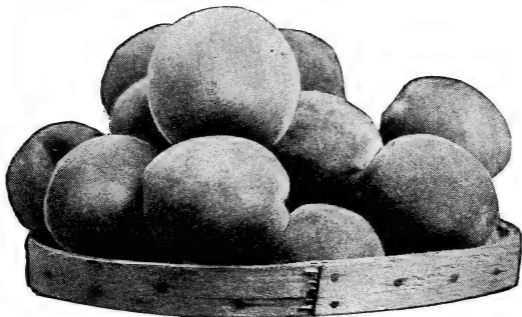
In most localities it will rank as extra large. But its desirability is not based upon the size alone. The coloring of Elberta is practically perfect. The rich yellow skin is almost entirely covered with dark blush upon the sunny side. This appearance and the uniform size serve to sell it almost on sight. The flesh is juicy and tender, yet firm enough to hold its shape well when canned.

THE BEST COMMERCIAL PEACH

It has long been considered by experts the one best peach for growers, because, in addition to the merits mentioned above, it ships well and is comparatively free from rot. This means that it can be picked, boxed and shipped without spoilage, and that on the fruit-stand it will look as though it was picked the same morning. That is the real test of a commercial peach; it should not only grow and look well, but it should have stamina enough to still look its best when it reaches the retail agent.

Elberta may be picked a short time before it is entirely ripe, as it has the faculty of some apples in ripening after it has been picked.

HILEY



Ripens last of July. Yellowish white skin with deep red cheek. Flesh is white and very juicy. Large size. Freestone.

Hiley follows Carman in order of ripening, and will be about ready to pick when Carman is well off the trees. As you are doubtless aware, the best system for orcharding peaches is to plant a number of varieties, so that your picking force can move from one variety to another without undue haste or loss of time. Hiley will fit in this scheme perfectly; the crop ripens evenly on the trees and a considerable portion of it may be easily removed at one picking.

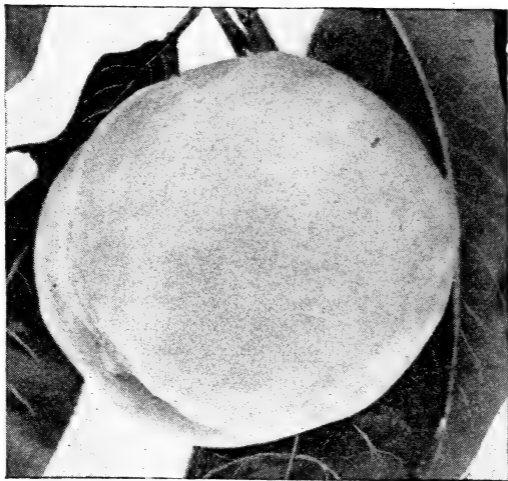
ONE OF THE BEST SHIPPERS

among the early peaches. Hiley will reach the market in good condition, and bring high prices. You may grow fine peaches of the "melt-in-your-mouth" variety, but if you cannot get them to the markets in good shape, your care and attention are all of no account. Peaches should be packed with great care; it is true that most losses in shipping are due to improper methods of packing, but some varieties will spoil in spite of all your efforts, while others will survive hard knocks and rough treatment and come up smiling. Hiley is of the latter sort, and you should have little trouble with low prices for fruit spoiled while in transit.

HILEY IS HARDY

Few peaches are more hardy than Hiley—it will please you in this respect. The tree is large and vigorous, grows almost as fast as Belle, with buds which are seldom affected by chilly snaps in the spring. One of its great points lies in its productiveness; it produces great quantities of easily salable fruit. Comes into bearing the third or fourth year. Equally as good for the home as it is for commercial planting.

This Catalog Is Our Only Salesman.



BRACKETT

Ripens after Elberta. Orange-yellow skin, tinged with carmine. Flesh is deep yellow, highly flavored. Size is large to very large. Freestone.

BRACKETT A THREE-POINT WINNER—IN COLOR, IN SIZE, IN QUALITY

Brackett ripens in our big commercial orchards a few days after Elberta. The fruit is rich yellow, with dark carmine cheek. The size runs fully as large or larger than Elberta, and fruits weighing 5 to 6 ounces are common. Flesh is deep yellow, extremely juicy, and is absolutely freestone. In every case the Brackett has proved the equal of Elberta, and in many cases the Georgia growers consider it a more profitable sort. One Southern peach grower claims that Brackett averages 50 cents a bushel higher than other varieties.

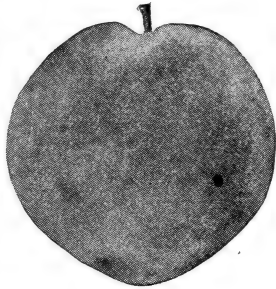
Brackett was propagated from buds cut in our own bearing orchards: therefore we know the trees are absolutely true to name. The commercial grower or the home orchardist who plants the Brackett will make no mistake either from the standpoints of production or profit.

5% off for cash with order.

We Select Our Buds from Our Own Bearing Orchards.

PEACHES—(Continued)

J. H. HALE—Yellow. Very large in size, and globular in shape. Skin is thick, smooth and without fuzz. Flesh deep yellow, fine grain, firm, excellent quality. Good shipper. Ripens immediately after Elberta.



J. H. Hale

CARMAN—Ripens third week in July. Yellowish white skin with creamy white flesh, slightly tinged with red.

CHAMPION—Ripens first of August. Freestone. Fruits creamy white with red cheek.

EARLY WHEELER (Red Bird Cling)—Very early, high colored peach, good size, firm, excellent shipper. White.

FOX—Ripens middle of September. Skin and flesh white. Freestone. The fruit is of unusually large size.

FRANCES—Ripens from August 25 to September 1. Skin yellow with white and yellow flesh.

GREENSBORO—Ripens June 15 to July 10. Skin yellow-white with a crimson cheek. Flesh white.

HEATH (White Heath Cling)—Ripens from September 1 to 25. Skin and flesh white, with tinge of crimson.

KRUMMEL—Ripens September 10 to 25. Skin yellow, crimson blush. Freestone. Fruit is quite large.

LATE CRAWFORD—Ripens few days after Elberta. Superb in size and shape. Flesh deep yellow.

MAMIE ROSS—White; freestone; ripens last of July.

RAY—Ripens August 10 to 20. Creamy white skin, splotted with deep crimson and yellow. Flesh white and firm. Size large. Freestone.

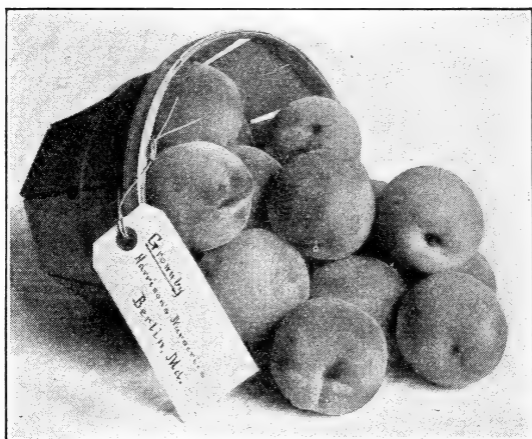
ROCHESTER—This is a new early yellow flesh of Crawford type. High quality.

SALWAY—Ripens September 10 to 25. Skin yellow, overlaid with chocolate red. Freestone.

SLAPPEY—Ripens July 12 to 25. Skin and flesh yellow. Freestone. One of the finest early varieties.

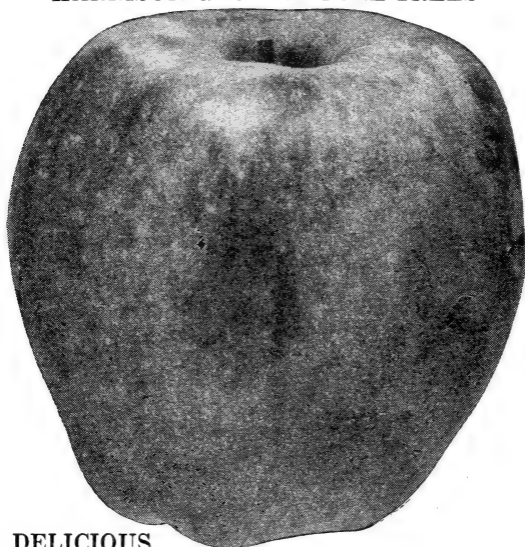
Come to Berlin and Select Your Own Trees.

WILMA



ALEXANDER—Early White
BEER SMOCK—Late Yellow
BARNARD—Late Yellow
BERKS FAVORITE
CAPT. EDE—Pale Yellow
CRAWFORD EARLY—Mid Season Yellow
EARLY ELBERTA—Mid Season Yellow
ENGLE'S MAMMOTH—Yellow
EARLY ROSE—High Color Early White
FITZGERALD—Yellow Late
HILLS CHILI—Late Yellow
IRON MOUNTAIN—Late White
KALAMAZOO—Medium Season Yellow
LEMON CLING—Yellow, a Fine Canning Peach
LEMON FREE—Yellow Late
MAYFLOWER—Early Yellow
MATHEWS BEAUTY—Yellow
MUIR—Yellow California Canning Peach
MOUNTAIN ROSE—Early White
NEW PROLIFIC—Yellow
NIAGARA—Medium Yellow
OLD MIXON FREE—Medium White
PHILLIPS CLING—Yellow
SALBERTA—Yellow New
TRIUMPH—Early Yellow
YELLOW—ST. JOHN—Early Yellow
WILMA—Late Yellow

HARRISON GROWN APPLE TREES



DELICIOUS

Winter. Brilliant dark red, shading to yellow at the blossom end. Flesh white and tender. Large size. Of comparatively recent introduction, ranks with the best.

PRICES FOR ALL APPLE TREES

	1 to 9 Trees	10 to 29 Trees	30 to 299 Trees	300 to 599 Trees	600 to 3000 Trees
1 to 2 ft.	\$0.20	\$0.17	\$0.15	\$0.13	\$0.10 each
2 to 3 ft.	.30	.25	.20	.18	.15 each
3 to 4 ft.	.35	.30	.25	.22	.20 each
4 to 5 ft.	.40	.35	.30	.27	.25 each
5 to 6 ft.	.60	.50	.40	.35	.32 each

BUDS CUT FROM BEARING COMMERCIAL ORCHARDS, BUDDED ON FRENCH ROOTS.

Parcel Post, 1 to 4 ft., add 4c a tree; over 4 ft. high, 8c.

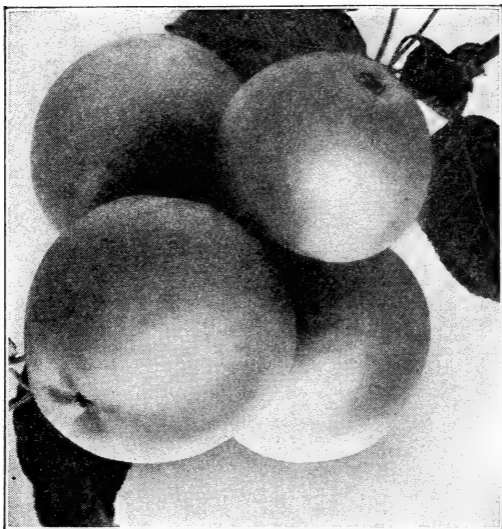
SEE REDUCED PRICES FOR 600 TO 3000 TREES. OVER 3000 TREES WRITE FOR SPECIAL PRICES.

CAN BE ASSORTED APPLES, PEACHES, CHERRIES, OR OTHER FRUIT TREES.

FARM BUREAU AND CO-OPERATIVE ORGANIZATION ORDERS SOLICITED.

5% off for cash with order.

YELLOW TRANSPARENT



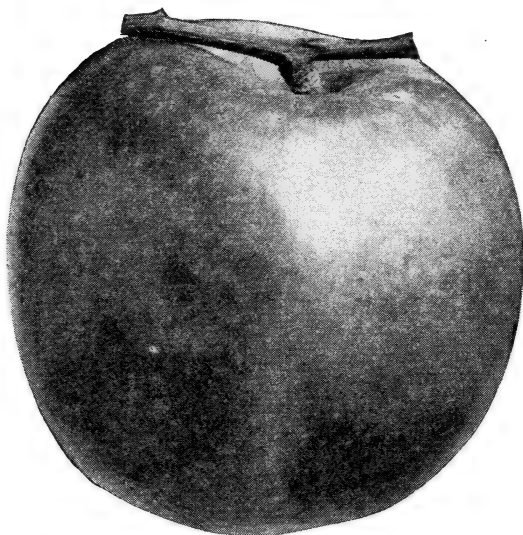
Ripens extremely early. Skin clear yellow. Flesh white. The flavor, while slightly acid, is excellent. Should be shipped under refrigeration. Size medium to large.

This apple is a favorite sort for all growers who are able to dispose of the crop in nearby markets. It bruises readily and must be handled very carefully. For that reason it should not be used if your market necessitates a long carry unless you use refrigerator cars, in which case, if they are carefully handled, they will carry alright.

YELLOW TRANSPARENT FIRST ON THE MARKET as it ripens early in July, making excellent eating apples, and selling without difficulty. There is almost no competition at this time; Yellow Transparent leads the field, and is eagerly sought for by those people who find their "apple appetites" impatient.

YELLOW TRANSPARENT TREES BEAR EARLY and produce nearly every season. They are rather dwarf growers, and may be planted a little closer than most other varieties.

GRIMES



**Ripens fairly late. Skin golden yellow. Flesh yellow.
Flavor rich and spicy; slightly acid.**

Usually known as "Grimes Golden," this apple holds a reputation away ahead of most fall apples because of its appearance and flavor. It is not unusual for Grimes to bring from 50 to 75 cents more per bushel than other apples.

THE FLAVOR IS EXCELLENT

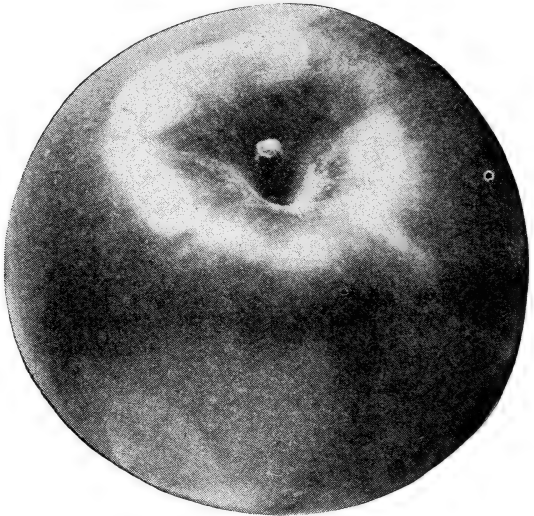
and many people feel about this apple as others do about Golden Bantam corn: "It's worth the difference at any price." The result is that it brings higher prices, which means more money in your pocket.

In the vicinity of Philadelphia, Grimes will be ready for use some time in September, but unless prices are exceptional it should be left on trees until somewhat later, as the flavor will be considerably improved.

USE GRIMES AS A FILLER

It comes into bearing before most of the permanent trees and will help to bear the orchard expenses before the other trees produce any fruit.

McINTOSH



Winter. Color bright deep red.

Flesh white, with slight pinkish tinge. Medium to large.

McIntosh has certain qualities which have served to make it more popular each year. It has the fine flavor that everyone desires, a splendid appearance which sells it on sight, and in addition, it

CAN BE STORED FOR SEVERAL MONTHS

which means that, with proper care—and it needs no special attention or conditions of storage—you can have apples for sale or for use about the home. McIntosh is slightly acid, mellow, and fit for use from the time of picking until early the following year.

AN EARLY BEARER

You won't be forced to wait many years for results, as McIntosh usually bears very early. The early-bearing varieties are extremely desirable for fillers, and McIntosh is no exception. You can get, possibly, ten or twelve crops from the trees before they have to be removed. It is the only way to keep your ground working all the time, and it means a profit in your pocket which otherwise wouldn't be there.

STAYMAN WINESAP



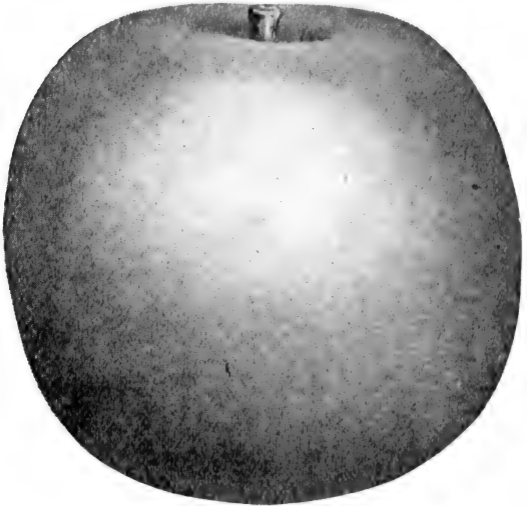
One Year Apple Trees.

Winter. Dark red skin, tinged with yellow.
Flesh yellow. Medium to large.

It really doesn't seem necessary to describe this variety, as the Winesap is known favorably wherever apples are sold. You can find people in every locality who will buy nothing else. Stayman Winesap is larger than the original Winesap and somewhat later. It is also more prolific.

One of the most desirable points about this tree is that it does not require rich soil; in fact, it seems to do best on land that is dry and hard. Many apples will do well on ordinarily good soil, but there are only a few varieties of winter apples which show

YORK IMPERIAL



**Winter. Greenish yellow, overlaid with red stripes.
Flesh juicy, slightly coarse. Medium size.**

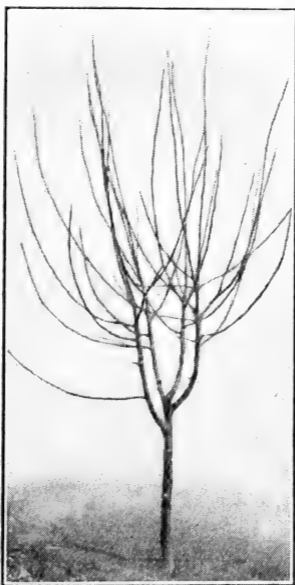
York Imperial has been planted from the East to the West, and, so far as we have heard, has never failed to give satisfaction.

The shape is chunky and somewhat irregular, which makes it a little difficult to pack, and renders it unsuitable for paring machines, but you'll find many people - lots of them orchardists - planting the York Imperial year after year. There are good reasons for this. First of all,

YORK IMPERIAL KEEPS WELL

and if properly stored will be in good condition late next spring; can be laid away in the ordinary cellar, and, if it is handled right, will be in good shape until late May. Unlike many winter apples, York Imperial can be ripened shortly after picking if not stored to prevent it.

The York Imperial is largely used for export, and has come into fine favor with foreign trade. Shipments abroad are snapped up at good prices. Very productive.

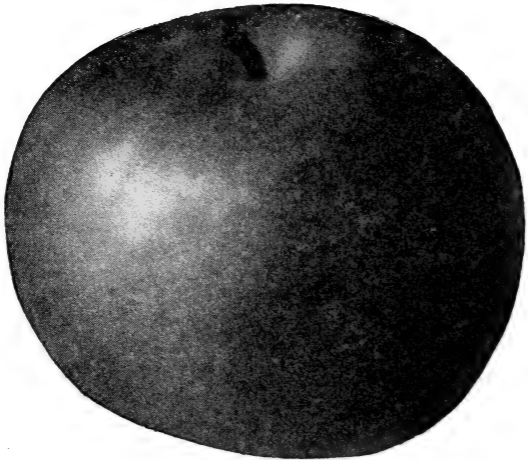


One Year Apple Trees—two years transplanted from the Nursery Row to Orchard.

OTHER VARIETIES NOT DESCRIBED

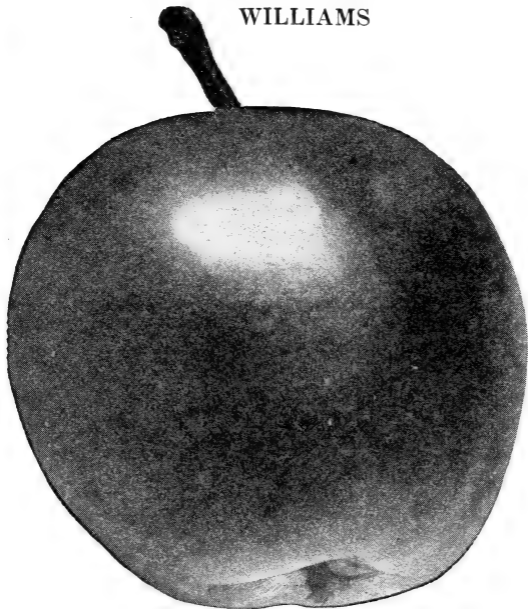
- | | |
|----------------------------|------------------------|
| ALEXANDER | H. W. PEARMEAN |
| BENONI | RAMBO |
| CANADA RED | RED JUNE |
| CORTLAND | RED GRAVENSTEIN |
| ENSEE | STAR |
| EARLY HARVEST | SPITZENBURG (Esopus) |
| FAMEUSE | SPOKANE BEAUTY |
| HUBBARDSTON NONE-
SUCH | TRANSCENDENT CRAB |
| GRAVENSTEIN | TWENTY OUNCE |
| KING DAVID | VIRGINIA BEAUTY |
| KING OF TOMPKINS
COUNTY | WINTER BANANA |
| LOWRY | WILSON RED JUNE |
| MARTHA CRAB | WAGNER |
| | YELLOW BELLE
FLOWER |

BALDWIN



BALDWIN—Winter. Bright red. Trees are rapid growers and attain a large size. A good late keeper when grown in the North. Standard in the section from New England to West Virginia and west to Michigan. Fruit large, round, red all over; rich subacid; splendid shipper. Quick and large grower; yields big crops, but does not bear until six or eight years old. We recommend it highly for Northern Pennsylvania, New York, all of New England and similar country. Good care will make Baldwin trees bear when six years old, if proper cross-pollination with other varieties is secured. One acre of Baldwin trees in Massachusetts (50 trees) produced 227 barrels, or 681 bushels. A well-cared-for orchard of Baldwins should produce every year ten times the money that corn or wheat will yield on the same acreage, and with little more work. Every Apple-eater knows Baldwin, the old reliable. It will sell when you can't give away some other sorts; and the buyer is ready to pay a fair price, for he knows it.

WILLIAMS



Very early. Skin a dark, rich red. Flesh white, juicy, slightly tart. Size large.

Stands head and shoulders above its fellows. Can be placed on the market shortly after Yellow Transparent. Has an advantage of coloring which appeals to many people.

WILLIAMS IS LARGE IN SIZE

Will get customers because of color and size. Incredible as it may seem, there are some people who believe that red is the only color for a good apple, naturally, they do not purchase summer apples until Williams makes its appearance.

WILLIAMS STANDS SHIPPING WELL

May be successfully sent long distances, which enables growers to get top prices from large cities. Demand is brisk, and brings good prices for good fruit.

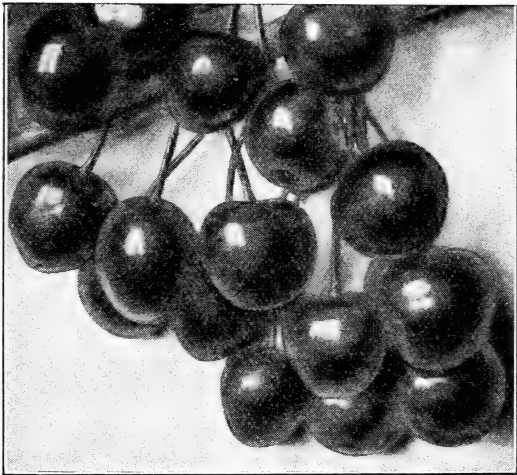
Successfully grown from New York to Virginia. Many growers plant both Williams and Yellow Transparent to fortify themselves against the prejudice of customers and markets.

OTHER RELIABLE VARIETIES

- BEN DAVIS**—Red all over. Size medium to large. Flesh white. Tree is strong-growing and very productive. Fruit will keep until late in the season.
- GANO**—Skin bright red. Flesh white. Recommended especially for commercial orchards on account of its fine appearance, keeping quality and productiveness. Size medium to large.
- JONATHAN**—Late fall. Skin is brilliant red. Flesh white, juicy and fine grained. Size medium to large.
- LIVELAND (Lowland Raspberry)**—Wax white surface covered by blush and stripes of pinkish red. Early.
- MAIDEN BLUSH**—Pale yellow, with red cheek. Flesh white, but not particularly high flavored. Free bearer.
- NERO**—Deep red, with handsome shading; above medium size; of good quality and excellent flavor; one of the longest keepers; mellows for use in the fall if kept in a warm place, but if stored is fine in May and June.
- NORTHERN SPY**—Bright scarlet, with yellow markings. Flesh juicy and highly flavored. Tree a strong, erect grower and free producer. The blooms are produced late in the spring, thus escaping the frosts.
- NORTHWESTERN GREENING** is an exceedingly hardy apple. When used as a cooking apple it has a fine yellow color which renders it remarkably attractive.
- OLDENBURG**—(Duchess of Oldenburg) Early. Yellow streaked with red. Flesh white and juicy. Medium size. Excellent for fillers.
- PARAGON**—(Mammoth Black Twig). Skin quite smooth; Yellow, covered with deep red. Flesh highly tinged with yellow, sub-acid. Trees are vigorous, healthy, and yield quite freely. Prefers low elevations.
- RHODE ISLAND GREENING**—Greenish yellow; somewhat flattened. Flesh clear white, crisp, juicy, and slightly acid. It is a good variety for market.
- ROME BEAUTY**—Winter. Yellow overlaid with stripes. Quality excellent. Late bloomer. Fruit keeps well.
- WEALTHY**—Fall. Skin almost solid red. Flesh white or little stained, juicy and crisp. Size medium. Trees are very hardy.
- WINESAP**—Winter. Bright red skin. Flesh yellow. Medium to large. Bears regularly.
- WINTER BANANA**—Yellow with reddish blush. Fruit large or extra large. Trees are very free growers.
- YELLOW NEWTOWN**—(Newtown Pippin). Yellow skin, with pure white flesh.
- CRAB APPLES**—Hyslop. Crab of large size; deep crimson.

Visit Our Large Commercial Apple Orchards.

HARRISON GROWN CHERRY TREES



Montmorency Cherries
Sour Cherries

ENGLISH MORELLO—Dark red, almost black, juicy, tender and very acid. Tree is rather a slow grower, does not get very large.

MONTMORENCY, Large—Ripens early in June. Fruit bright red, with solid, juicy flesh, richly flavored. One of the largest of the sour varieties. The tree is hardy, healthy, and extremely prolific, bearing full crops even in unfavorable seasons.

**DYEHOUSE
MAY DUKE**

CHERRY TREES

	1 to 9	10 to 29	30 to 299	300 to 599	600 to 2000	Trees
1 to 2 ft.....	\$0.40	\$0.35	\$0.30	\$0.25	\$0.20	each
2 to 3 ft.....	.45	.40	.35	.30	.25	each
3 to 4 ft.....	.50	.45	.40	.35	.30	each
4 to 5 ft.....	.60	.50	.45	.40	.35	each

Parcel Post, 1 to 4 ft., add 4c a tree; over 4 ft. high, 8c.

5% off for cash with order.

RICHMOND (Kentish Virginia)—Ripens from middle to latter part of May. Fruit light red, of medium size, and very sour. Every landowner should have a few Richmond trees in his orchard. They seem to be at home in almost every section, are thrifty, healthy, and free bearers. For early market, Richmond is the best.

Sweet Cherries

BING—Dark brown or black. Good for the home garden.

BLACK TARTARIAN—June. The largest of the Sweet Cherries and one of the very best for dessert. The fruit is purplish black, with juicy, sweet, mild, pleasant, tender flesh. The tree is strong growing and vigorous and produces immense crops every year, the fruit growing in huge clusters, making it easy to pick. This variety is one of the most profitable to grow; it is always in demand and brings the best prices.

GOV. WOOD—End of June. Fruit light red, larger than most varieties, with rich, sweet flavor; hangs well on the tree. Trees are reasonably strong growers and free bearers.

NAPOLEON (Royal Anne)—Yellow, large, prolific bearer.

YELLOW SPANISH—June. An inch in diameter; pale yellow; delicious. One of the finest for canning, and makes a beautiful appearance in jars. The tree is a thrifty and vigorous grower, yielding abundant crops annually. It is, without exception, the best Heart Cherry grown, and most profitable to the commercial orchardist.

WINDSOR

HARRISON GROWN APRICOT TREES

	1 to 9	10 to 29	30 to 299	} Trees
2 to 3 ft.....	\$0.40	\$0.35	\$0.30	
3 to 4 ft.....	.60	.50	.40	each
4 to 5 ft.....	.80	.70	.60	each

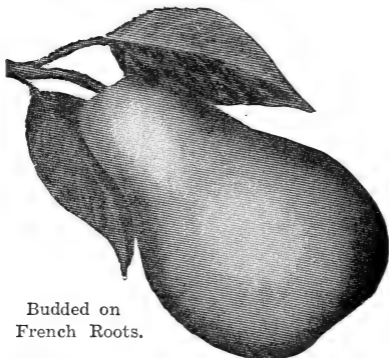
Parcel Post, 1 to 4 ft., add 4c a tree; over 4 ft. high, 8c.
Alexander Moorpark

	1 to 9	10 to 29	} Trees
2 to 3 ft.....	\$1.25	\$1.00	

FOR LARGER QUANTITIES WRITE FOR QUOTATIONS. CAN BE ASSORTED CHERRIES, APPLES, PEACHES OR OTHER FRUIT TREES.

5% off for cash with order.

BARTLETT PEARS



Budded on
French Roots.

PEAR TREES

	1 to 9	10 to 29	30 to 299	300 to 599	600 to 3000	} Trees
1 to 2 ft.....	\$0.30	\$0.25	\$0.20	\$0.15	\$0.13	
2 to 3 ft.....	.35	.30	.25	.20	.18	each
3 to 4 ft.....	.40	.35	.30	.25	.22	each
4 to 5 ft.....	.50	.40	.35	.30	.27	each
5 to 6 ft.....	.60	.50	.40	.35	.32	each

Parcel Post, 1 to 4 ft., add 4c a tree; over 4 ft. high, 8c.

BARTLETT mellow and is excellent for eating very early. Flavor delicious and musky; flesh buttery, rich and juicy. One of the finest pears that grows to eat raw.

ANJOU (Buerre d'Anjou)—Color greenish yellow, with clear white flesh. The tree is a vigorous grower and bears freely.

CLAPP'S FAVORITE—Large, fine grained and juicy.

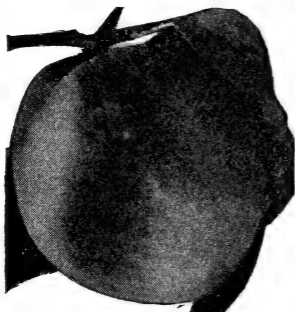
DUCHESS (Duchess d'Angouleme)—Ripens in October. Fruit large and of exceptional quality.

LE CONTE—Fruit large, with a smooth yellow skin. Considered desirable to use as a pollenizer for Kieffer.

SECKEL—Late September. Fruits medium in size, the finest flavored pear on the market.

KIEFFER—Winter. Fruit large to very large; skin yellow, with light vermillion cheek. Flesh brittle, very juicy. Most popular canning pear. Keeps well.

HARRISON GROWN PLUMS



Abundance Plums

ABUNDANCE—
Ripens in mid-July.

Skin light amber-color, turning to bright cherry-red. Flesh is light yellow and very juicy. One of the best of the Japanese varieties.

BRADSHAW (Red)—
Very large fine early plum, dark reddish purple, juicy and good. Trees hardy and vigorous and very productive.

BURBANK—Ripens in late August and early September. Skin nearly red. Flesh deep yellow, sweet, and of a peculiar flavor. A hybrid Japanese variety.

ITALIAN PRUNE—One of the best varieties for drying, cooking or dessert.

RED JUNE—Ripens about mid-August. Skin vermillion-red. Light yellow flesh. Fruit medium to large, size ranging in quality with the best of the Japanese Plums.

SHROPSHIRE DAMSON—Ripens in September. Fruit dark purple, of medium size, and highly recommended for preserving. A variety that is one of the best for the North and succeeds well in the South.

GERMAN PRUNE WICKSON

PLUM TREES

	1	10	30	300	600	} Trees
	to	to	to	to	to	
	9	29	299	599	3000	
	9	29	299	599	3000	
1 to 2 ft.....	\$0.30	\$0.25	\$0.20	\$0.15	\$0.13	each
2 to 3 ft.....	.35	.30	.25	.20	.18	each
3 to 4 ft.....	.40	.35	.30	.25	.22	each
4 to 5 ft.....	.50	.40	.35	.30	.27	each
5 to 6 ft.....	.60	.50	.40	.35	.32	each

Parcel Post, 1 to 4 ft., add 4c a tree; over 4 ft. high, 8c.

QUINCE TREES

	1	10	} Trees
	to	to	
	9	29	
	9	29	
2 to 3 ft.....	\$0.50	\$0.40	each
3 to 4 ft.....	.70	.60	each
4 to 5 ft.....	.90	.80	each

Parcel Post, 1 to 4 ft., add 4c a tree; over 4 ft. high, 8c.
Champion Orange

NUT TREES

AMERICAN SWEET CHESTNUT		
(Castanea dentata)	1 to 9 Trees	10 to 29 Trees
2 to 3 ft.....	\$1.50	\$1.25 each
3 to 4 ft.....	2.00	1.75 each
SPANISH CHESTNUT (Castanea Sativa)		
2 to 3 ft.....	\$1.50	\$1.25 each
3 to 4 ft.....	2.00	1.75 each
HORSE CHESTNUT (Aesculus hippo- castanum)		
18 to 24 in.....	\$0.60	\$0.50 each
2 to 3 ft.....	1.00	.90 each
BUTTERNUT (Juglans Cinerea)		
2 to 3 ft.....	\$1.50	\$1.25 each
3 to 4 ft.....	2.00	1.75 each
AMERICAN FILBERT (American Hazel Nut) Corylus Americana		
2 to 3 ft.....	\$1.50	\$1.25 each
PECAN (Hicoria pecan), Seedlings from selected Nuts		
8 to 12 in.....	\$0.25	\$0.20 each
12 to 18 in.....	.35	.30 each
5 to 6 ft.....	3.00	2.50 each
7 to 8 ft.....	4.00	3.50 each
8 to 10 ft.....	5.00	4.50 each
INDIANA PECAN, Budded or Grafted		
2 to 3 ft.....	\$2.50	\$2.25 each
3 to 4 ft.....	3.50	3.00 each
BLACK WALNUTS (Juglans Nigra)		
2 to 3 ft.....	\$1.00	\$0.90 each
3 to 4 ft.....	1.50	1.25 each
10 to 12 ft.....	5.00	4.50 each
ENGLISH WALNUTS (Juglans Regia)		
2 to 3 ft.....	\$1.50	\$1.25 each
3 to 4 ft.....	2.00	1.75 each
MAYETTE ENGLISH WALNUTS		
Budded or Grafted		
2 to 3 ft.....	\$2.50	\$2.25 each
3 to 4 ft.....	3.50	3.00 each
JAPANESE WALNUT (Juglans siebol- diana)		
2 to 3 ft.....	\$1.50	\$1.25 each
3 to 4 ft.....	2.00	1.75 each

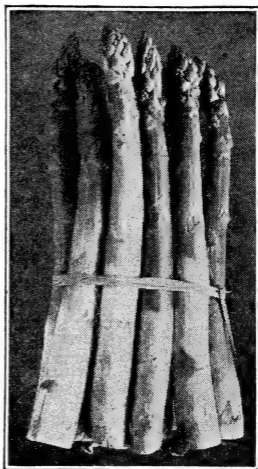
*Nut Trees Are Ornamental and Profitable.
Visit Our Nurseries and Orchards Once,
and You Will Be Convinced.*

*We Allow 5% Discount For Cash.
Order Early.*

HARRISON GROWN ASPARAGUS

The preparation of the bed should be made in a most thorough manner, as it is to last for a number of years. A deep, sandy loam with an abundance of decayed organic matter is the best soil.

Planting is best done in the spring as early as the soil can be worked in good condition. Run furrows with plow and clean out with shovel to a depth of 1 foot. Place well-rotted stable manure thickly in the trench, then just a slight covering with the soil, on top of which place the crowns about 2 feet apart; spread out the roots and cover them very shallow. After the plants start to grow, work the soil to them gradually until it becomes level. The plants should be frequently cultivated and kept clean.



Palmetto Asparagus

The dead tops should be mown off in the fall and furrows should be thrown on the rows from each side, and the middles cleaned out. This will cause the bed to warm up early in the spring.

MARY WASHINGTON—60c for 10, \$2.50 for 100, \$12.00 per M.; 2,000 to 5,000, \$11.00 per M.; 5,000 to 25,000, \$10.00 per M.

(Mary Washington is the best and latest strain of Washington Rust Resistant Asparagus development. Grown from selected strains direct from Dr. Norton and Crocker.)

BARR'S MAMMOTH.

CONOVER'S COLOSSAL—A rapid growing variety and often ready for cutting the second year.

GIANT ARGENTEUIL.

PALMETTO—Ten days to two weeks earlier than most other varieties. The stalks vary from dark to light green, are quite large and of exceptionally good quality.

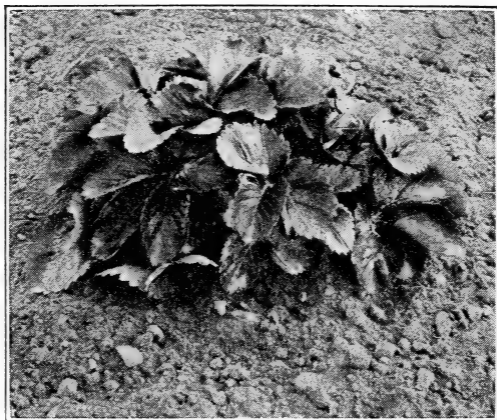
WASHINGTON—Rust resistant.

PRICES—TWO YEAR GROWN

50c for 10, \$2.00 for 100, \$10.00 per 1,000; 2,000 to 5,000 at \$9.00 per 1,000; 5,000 to 25,000 at \$8.00 per 1,000.

Plant Asparagus By the Acre.

HARRISON GROWN STRAWBERRIES



Specimen Plant of Mastadon Everbearing.

No home garden is complete without a collection of Strawberries.

Parcel post, add ten cents for each 100 plants.

EVERBEARING

Progressive	25	100	500	1000
(perfect bloom).....	\$0.50	\$1.30	\$5.00	\$8.00
Mastadon	1.00	3.00	10.00	

STANDARD

Gandy (Per), Klondyke (Per), Missionary (Per).....	25	100	500	1000
	\$0.25	\$0.70	\$2.50	\$4.00
All other varieties.....	0.35	0.75	3.00	5.00

- | | |
|---------------------|----------------------|
| Aroma (Per) | New York (Per) |
| Big Joe (Per) | Parsons Beauty (Per) |
| Bubach (Imp) | Premier (Per) |
| Campbell's E. (Per) | Prize (Imp) |
| Chesapeake (Per) | Senator Dunlap (Per) |
| Gibson (Per) | Sharpless (Per) |
| Glen Mary (Per) | The Best (Per) |
| Haverland (Imp) | Warfield (Imp) |
| Lupton (Per) | Wm. Belt (Per) |
| Marshall (Per) | Sample (Per) |

To obtain best results, alternate each two rows of Perfect Bloom with other varieties.

EVERBEARING STRAWBERRIES

PROGRESSIVE—Pre-eminently a home garden berry, fruit may be shipped short distances if properly packed. Method of raising is same as for the other sorts, excepting for the first season all blossoms that come before the first or middle of July should be cut off.

EARLY STRAWBERRIES

CAMPBELL'S EARLY—Has "made a hit" with growers in New Jersey, productive and profitable.

KLONDYKE—Uniform, shapely, rich dark red, mild and delicious, juicy, and handsome; sell quickly. Plants are tall, compact, stalks strong; leaves light green. Abundant runners. Yields are wonderful. Blossoms are perfect but do not fully fertilize themselves and need other sorts near. Name is suggestive of results—often a gold mine. Our best-paying early berry.

PREMIER—Extra early. Fruit large, deep red clear through to the center. For home use and markets.

MIDSEASON STRAWBERRIES

BIG VALLEY—Its high quality recommends it as a home garden berry. Size of fruit and general characteristics similar to New York.

BUBACH—Large size and handsome color are its most valuable characteristics. Color is a beautiful bright red.

GLEN MARY—Strong, upright, large, dark green foliage. Produces remarkable crops when planted in rich ground.

HAVERLAND—Medium-early variety, fine appearance. Berries are medium to large, rich, bright red.

LUPTON—In favor with northern markets; good size; bright color.

MISSIONARY—Early. Medium size; good color, fine flavor.

NEW YORK—Popular for home gardens and nearby markets; large; few seeds; very sweet.

PARSONS—Begin to ripen at mid-season and continue until Gandy comes in. Dark red, thick, blunt, mild.

WARFIELD—Early. Rampant grower, with many runners. Berries glossy, dark red, rich, exceedingly juicy, very firm.

LATE STRAWBERRIES

GANDY—One of the latest Strawberries. Brings the very highest prices, and yields tremendous crops of a quality that leaves nothing to be desired in flavor, texture, color and keeping qualities. Bright red, smooth surface. Foliage broad and dark green. Borne on long, upright stems, well above the leaves and dirt.

AROMA—Late. Strong, sturdy plants; abundant crops nearly always, even if weather and soil are unfavorable.

BIG JOE—Brilliant red, with bright green calyx; flavor delicious: splendid for table or preserving.

CHESAPEAKE—Late. Fruit uniformly large, firm, and without green tips; does best in rich damp land.

Strawberries Are a Profitable Crop.

HARRISON GROWN GRAPES

Grape vines thrive almost anywhere, and grow so freely that every garden should have at least half-a-dozen plants. The vines can be trained over a trellis, along a fence, or on wires strung from post to post. The important thing is to have the vines. They succeed in all parts of the country, in highland or in lowland, asking only that they have reasonably good drainage. A newly planted vine should be mulched heavily for about 2 feet around the roots. If well-rotted manure is not available, use a good commercial fertilizer.

1-YEAR GRAPE VINES

	1 to 9	10 to 29	30 to 299	300 to 599	600 to 3000	} Vines
Concord	\$0.15	\$0.10	\$0.07	\$0.05	\$0.04	
Moore's Early	.20	.15	.10	.07	.06	each

2-YEAR GRAPE VINES

	1 to 9	10 to 29	30 to 299	300 to 599	600 to 3000	} Vines
Concord	\$0.20	\$0.15	0.10	\$0.09	\$0.07	
Catawba30	.25	.20	each
Delaware.....	.30	.25	.20	each
Moore's						
Early30	.25	.20	.15	.12	each
Niagara30	.25	.20	.15	.12	each
Worden30	.25	.20	each
Agawam.....	.30	.25	.20	each

For a larger quantity, write for prices.

PARCEL POST, add two cents for each vine.

5% off for cash with order.

All Grapes Are Freshly Dug at Shipping Time.



Concord Grape Clusters

STANDARD VARIETY OF GRAPES

CONCORD—Too well known to need much description, as Concord's grown in almost every home garden and vineyard. Probably it is the most popular variety and has an unusual wide range of territory. The big dark purple bunches are most enticing and sell on sight.

DELAWARE—Bunches medium size, full of large red berries, which are sweet and of extra good quality. Ripens after Concord.

MOORE'S EARLY—Extremely dark purple, almost black. Bunches medium size, but the berries are large. The skin is thick, so that the bunches can be handled and shipped without serious damage. Early August.

NIAGARA—The best of the standard, light colored Grapes. The berries are greenish white, changing to pale yellow when fully ripe.

Plant Grapes for Profit.

RASPBERRIES

10 to 29 plants, 6c each; 30 to 299 plants, 4c each; 300 to 1000 plants, 3c each.

PARCEL POST PRICES: Parcel post, add two cents for each plant.

ST. REGIS RED—Fruit ripens very early, bears extremely heavy crops that sell for fancy prices, being so early; then in summer, until frost, gives fair to good pickings, dependent in part on the season. Extremely hardy and vigorous and free from disease.

CUMBERLAND—Ripens mid-season. Fruit jet-black, large and handsome. Plants healthy and productive.

PLUM FARMER—Early Black.

CUTHBERT—Late. Fruit medium large, deep rich crimson. Leading red variety, when quality, productiveness and general hardiness is considered.

KING—Probably the earliest red variety. Plants are strong growers and productive for so early a sort.

COLUMBIAN—Purple.



St. Regis Raspberry

DEWBERRIES

MAYES (Austin)—Black berries, large size, excellent flavor, produced in large quantity.

LUCRETIA—Fruit jet-black, larger than other varieties. By many growers is considered one of the best. Plant a stronger grower and bears enormous crops.

10 to 29 plants, 5c each; 30 to 299 plants, 3½c each; 300 to 1000 plants, 2½c each.

PARCEL POST PRICES: Parcel post, add two cents for each plant.

Every Garden Should Include Small Fruits.

BLACKBERRIES

10 to 29 plants, 6c each; 30 to 299 plants, 4c each; 300 to 1,000 plants, 3c each.

PARCEL POST PRICES: Parcel post, add two cents for each plant.

ELDORADO—Berries of enormous size and shiny, jet-black. Vines are strong, vigorous, and rarely fail to produce abundant crops.

EARLY HARVEST — Very early berry, ripening from 10 days to two weeks before any other. Bears full every year. Excellent quality, good size, a valuable berry for early market. Sells at fancy prices.



Blowers

Mersereau

Snyder

CURRANTS

Fay (Red) Wilder (Red)

1 to 9 plants, 25c each; 10 to 29 plants, 20c each; 30 to 299 plants, 15c each.

PARCEL POST PRICES: Parcel post, add three cents for each plant.

GOOSEBERRIES

DOWNING

HOUGHTON

1 to 9 plants, 25c each; 10 to 29 plants, 20c each; 30 to 299 plants, 15c each.

PARCEL POST PRICES: Parcel post, add three cents for each plant.

TERMS F. O. B.

BERLIN, MARYLAND

We allow 5% discount for cash with order or prior to date of shipment. Otherwise terms net.

This Catalog Is Our Only Salesman.



