

Historic, archived document

Do not assume content reflects current scientific knowledge, policies, or practices.

INDEXED

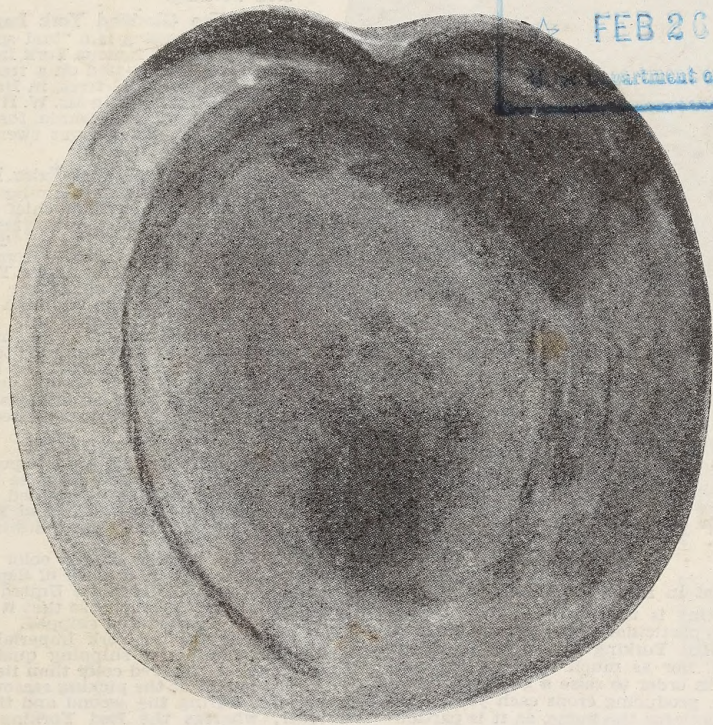
62:37

HARRISONS' PLANTERS GUIDE

1936

Superior Fruits and Ornamentals

LIBRARY
RECEIVED
★ FEB 20 1936 ★
Department of Agriculture.



RIO OSO GEM
WORLD'S LARGEST PEACH
GRANTED UNITED STATES PLANT PATENT

HARRISONS' NURSERIES, Inc.

ESTABLISHED
1884

BERLIN • MARYLAND

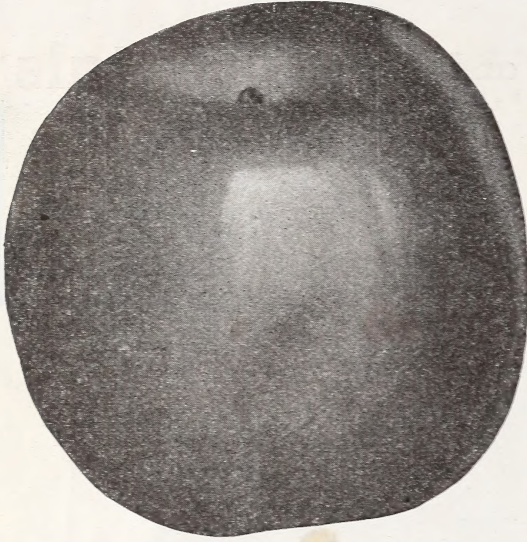
OVER 5000
ACRES PLANTED

WORLD'S LARGEST GROWERS OF FRUIT TREES

RED YORKING APPLE

U. S. Plant Patent Number 125, May 28, 1935

Sensational New Triple Red York Imperial A SUPREME HORTICULTURAL ACHIEVEMENT



U. S. PLANT PATENT NO. 125, MAY 28, 1935

"RED YORKING"

Excellent Cold Storage Keeper

The Red Yorking keeps in cold storage, as well as common storage, very much better than the York Imperial—this is due to the fact that the Red Yorking's skin is thicker and that it has a solid cherry red color. The Red Yorking does not scald in cold storage.

Plant in Home Orchards

The Red Yorking is the easiest variety of any to grow and it is particularly adapted to the home orchard. The Red Yorking does not require as much attention, nor as much spraying as many other varieties, in order to raise a good crop—it is a prolific bearer, producing crops each year. It is a wonderful variety for the home, as it is particularly adapted for cooking and also good for eating when fully ripe.

Harrisons' Nurseries, Inc., have over 1,750 acres planted to commercial apple and peach orchards. We planted an orchard of the Red Yorking last year, as we have faith in this variety, therefore we will plant another orchard of the Red Yorking this spring, and we highly recommend you to plant this new "sport" variety in your commercial or home orchard.

WARNING! It is unlawful for anyone to propagate and sell Red Yorking, United States Plant Patent No. 125, apple trees without obtaining written permission from the owners. The Government has protected the owners of the Red Yorking against infringements by the U. S. Plant Patent Laws for a period of seventeen years.

Undoubtedly there will be others who will offer so-called improved York Imperial under various names, therefore beware of bogus strains. There is only one genuine, being the original strain of the "bud sport" Red Yorking, U. S. Plant Patent No. 125, which can only be bought from the owners.

The Red Yorking apple is the utopian variety which growers have long wished for in the York Imperial producing sections. The York Imperial has been most extensively planted and has gained its greatest prestige in Pennsylvania, Maryland, Virginia, West Virginia and Delaware and is generally considered in those states as the best average money maker, consequently this second largest commercial apple district of the Nation has been startled and amazed as to the unusual merits of the new "bud sport" variety "Red Yorking."

The Glorified York Imperial

The Red Yorking is a "bud sport," being a mutation of the famous York Imperial. This "bud sport" originated on a tree, grown with other York Imperial trees, in Harrisons' Nurseries and later sold to Mr. W. H. Allison, near Shippensburg, Pennsylvania, for use in planting a large orchard about twenty-four years ago.

Earlier Coloring—More Extra Fancy Fruits

The "Red Yorking" is similar to its parent in size and shape but its chief distinction is that it has very much better red color, being mostly 100% bright red color. The Red Yorking takes on high red color from three to five weeks earlier in the fall than York Imperial, which is a distinct advantage in selling, as the earliness in season and high red color will command much higher prices.

The "Red Yorking" is a more vigorous grower and a heavier producer than York Imperial. The York Imperial has been the outstanding apple in certain districts for several decades, but it will soon be replaced in prominence by its off-spring, the "Red Yorking."

Best Export Apple

All apples which are shipped Export up to November 15th of each season must be United States No. 1 grade, Government inspected with Federal Export Form Certificates. The Red Yorking is the best export apple, due to the following important features:

- (1) It starts to take on red color during early August, and by the first week of September there is sufficient red color for the United States No. 1 grade with proper maturity so that it can be safely and profitably picked and shipped.
- (2) It is similar to York Imperial in size and shape, but has better shipping qualities, on account of the higher red color than its parent.
- (3) The height of the picking season of the York Imperial is during the second and third weeks of October, whereas the Red Yorking is about a month earlier.
- (4) It is a recognized fact that every year the earliest cars in the season picked and shipped bring handsome cash premiums.

RED YORKING Apple

U. S. Plant Patent
No. 125

Prices on Red Yorking Apple Trees

	1 to 9 trees	10 to 49 trees	50 or more trees
2 yr. 6-7 ft.....	\$1.50	\$1.25	\$1.10
2 yr. 5-6 ft.....	1.25	1.10	.95
2 yr. 4-5 ft.....	1.00	.90	.80
1 yr. 5-6 ft.....	1.25	1.10	.95
1 yr. 4-5 ft.....	1.00	.90	.80
1 yr. 3-4 ft.....	.80	.70	.60
1 yr. 2-3 ft.....	.60	.50	.45
1 yr. 1-2 ft.....	.45	.40	.35

Prices apply only to quantities of "Red Yorking" apple trees ordered and cannot be assorted varieties of other apples and other fruits.

PROFITS IN FRUIT GROWING

Little Orchards Make More Money Than Big Farms



PLANT HARRISONS' SUPER-STRAIN SELECTED TREES

About a half century ago Harrisons started planting orchards so that they could carefully select the strongest, most vigorous, exceedingly healthy, highest colored and the most productive strains for propagation purposes, thereby insuring our customers of fruit trees true to name and of the best types available of each variety.

The utmost care was exercised in selecting the budding wood during the summer and early fall

while the fruit was on the trees, which was in turn budded in our fruit tree nurseries. By honestly practicing this method of propagation, we unconsciously developed in a practical manner "bud selection." The laws of heredity are as fully operative in plant life as in the animal kingdom. Harrisons were the first nurserymen to practice "bud selection" which has revolutionized the industry of growing high quality, true to name fruit trees.

TRUE TO NAME—EARLIER TO BEAR

As years passed along, our sales of fruit trees greatly advanced, consequently from year to year we have been planting additional commercial orchards, until at this time Harrisons' Nurseries, Inc., have more than 1,750 acres in orchards in the vicinity of Berlin, Maryland. We also found that

by propagating direct from bearing trees of superior merits, that we were able to produce fruit trees, not only true to name and of the best types, but trees which would come into bearing at the earliest known age for the respective varieties—and trees known to produce bumper crops.

YIELD GREATER PROFITS

If fruit trees are continuously propagated from the nursery rows, which is the practice that a very large percentage of the nurserymen in America pursue, on account of the facts that it is much cheaper and that they do not have their own orchards from which to propagate, consequently fruit trees begin to degenerate—and if the original was a poor type, then the nurseryman without knowing it, would continue to reproduce poor, undesirable, small type, low yielding fruit trees,

which in many instances would take many years to come into bearing and never produce bumper crops. Incidentally, in case there was a mixture in the nursery rows, the nurseryman would continue to propagate, thereby selling trees untrue to name.

The only known scientific method is "bud selection" which has not only developed better and new fruits, but has prevented and eliminated the propagating of degenerate types.

HIGHEST QUALITY FRUIT TREES AT THE LOWEST POSSIBLE PRICES

It is very expensive to propagate fruit trees by "bud selection" method, but it has been on this basis that Harrisons have won an enviable reputation for the highest quality fruit trees, being true to name which can be found in America, but by our large volume of production we have been able to hold down the selling prices to a reasonable and attractive basis for the commercial orchardists as well as the home owner—by necessity, however, our prices naturally must be higher than certain of those nurserymen who practice the worn out and obsolete method.

No matter where you buy trees, or what price you pay, there is a distinct financial loss unless they make good in the orchard. It's mighty unfortunate that many people forget this fact and innocently buy trees because they think they are saving a few cents. We can prove that our trees are larger than most other trees; tests of more than fifty-two years show they are as hearty and adaptable as trees grown in any part of the country, generally hardier; the wood is well ripened and it goes without saying, that they are first class quality, being clean and free from diseases.

NO AGENTS—YOU SAVE THE COMMISSION

RIO OSO GEM

WORLD'S LARGEST PEACH

Granted Plant Patent No. 84 on Nov. 28, 1933 by the United States Government.



RIO OSO GEM PEACH

A TREMENDOUS MONEY MAKER FOR GROWERS

Commercially speaking, Elberta just about ends the peach deal each year, consequently growers for several generations have been anxiously looking for a late ripening, yellow, freestone peach of large size, high red color and good flavor, to extend their shipping season, and have eventually found it in the newly discovered marvelous Rio Oso Gem. This new variety has been awarded U. S. Plant Patent No. 84 of the U. S. Patent Office.

LARGER THAN J. H. HALE

The Rio Oso Gem is a perfect freestone, form is globular, slightly elongated, of extremely large size, averaging in diameter from $2\frac{3}{4}$ to $3\frac{3}{4}$ inches, deep yellow flesh, very fine grain, firm texture, with very excellent flavor, being rich, juicy, sweet and slightly spicy.

The coloring is unique, being a beautiful dark crimson red, running out to lighter crimson and into a rich mottle of crimson over the orange-yellow ground color. It is a good transcontinental shipper.

Harrisons', Being the Largest Commercial Peach Orchardists in the East, Highly Recommend You to Plant Rio Oso Gem as We Have Done

BEARS HEAVIER THAN ELBERTA

Rio Oso Gem is an extremely heavy bearer and on account of its prolific set of fruit, it is necessary to practice extremely heavy thinning. It has hardy, vigorous fruit buds, which insure it being a heavy annual bearer. The tree bears young.

PROTECTED BY U. S. PLANT PATENT No. 84

The Rio Oso Gem has been protected by the Government against infringements by U. S. Plant Patent laws for a period of seventeen years from the date Patent was granted, being November 28, 1933. It is unlawful for anyone to propagate and sell the Rio Oso Gem, U. S. Plant Patent No. 84, peach trees without obtaining written permission from the owner.

RIPENS 2 WEEKS LATER THAN ELBERTA

The Rio Oso Gem would be a peach of commercial importance when ripening at any time during the peach season, but it is very fortunate that it ripens two weeks later than Elberta, which puts it at a time when there is no other variety of commercial importance as a competitor, and fills a long looked for gap in commercial production, ripening when the markets are clamoring for peaches—this variety has sold at very much higher prices than Elberta and J. H. Hale. To prolong your peach shipping season, we highly recommend to you planting the Rio Oso Gem. Harrisons have planted several thousand Rio Oso Gem in their own famous orchards. We have the utmost faith in the Rio Oso Gem, and we will also make future plantings of this remarkable peach.

Harrisons' Nurseries, Inc. Berlin, Maryland, have the exclusive propagating and sales rights of the Rio Oso Gem, U. S. Plant Patent No. 84, peach trees for the following States:

Alabama, Connecticut, Delaware, District of Columbia, Florida, Georgia, Kentucky, Maryland, Maine, Massachusetts, Mississippi, New Hampshire, New Jersey, New York, North Carolina, Pennsylvania, Rhode Island, South Carolina, Tennessee, Vermont, Virginia and West Virginia.

PRICES OF HARRISON GROWN RIO OSO GEM PEACH TREES

	U. S. Plant Patent No. 84		
	1 to 9 trees	10 to 49 trees	50 or more trees
One year 5 to 6 feet.....	\$0.90	\$0.75	\$0.60
One year 4 to 5 feet.....	.80	.65	.50
One year 3 to 4 feet.....	.75	.60	.45
One year 2 to 3 feet.....	.70	.55	.40

Prices apply only to the quantities of Rio Oso Gem peach trees ordered and cannot be assorted varieties of other peaches and other fruits.

Supply of Rio Oso Gem Peach Trees Is Limited

PLANT PEACHES FOR LARGE PROFITS

It Pays to Plant the Best Trees

Harrisons' "bud selection" of propagating direct from bearing trees of known sturdy ancestry, superior strains, being the highest coloring of fruit, with extra heavy bearing habits, has made the greatest contribution in directing and fixing the characteristics of the yield; of perfecting color; increasing the size of the fruit and the volume, as well as regularity of the crop.

Our favorable climatic conditions, being located only eight miles from the Atlantic Ocean with our rich soils of various types, coupled with the latest scientific and practical methods, as well as an unusually large number of experienced nurserymen, with ample facilities, enables Harrisons to grow America's foremost, finest and best quality, true to name fruit trees, with superior merits and extra heavy annual bearing habits, which we guarantee, with proper care, will produce bumper crops in any fruit growing section of the United States.

The peach grower has a bright and profitable cash future—we advise you to



HARRISONS' SELECTED STRAINS OF PEACHES
YIELD LARGER AND BETTER CROPS

plant a peach orchard this spring, as the number of peach trees in bearing is the smallest of any time during the past fifty years. Harrisons are the largest commercial peach orchardists in the East, and we will plant additional peach orchards this spring.

PRICES OF HARRISON GROWN PEACH TREES

One Year Extra Fine Quality—True to Name.

	1 to 9 trees	10 to 49 trees	50 to 299 trees	300 to 599 trees	600 or more trees
4 to 5 feet.....	\$0.40	\$0.35	\$0.30	\$0.27	\$0.25
5 to 6 feet.....	.50	.40	.35	.32	.30
6 to 7 feet.....	.60	.50	.40	.37	.35

Can be assorted Apples, Peaches, Cherries, Pears, Plums or other fruit trees.

VERY EARLY VARIETIES

EARLY ROSE. White, cling, medium size, red blush, sweet flavor. Tree is an average grower but bears young and a prolific bearer, an outstanding very early commercial variety.

Greensboro. White, freestone, extra large for such an early peach, one of the handsomest, being a large, yellowish white with crimson cheek; flesh is white and of average quality. Exceedingly hardy, being an extra heavy, prolific bearer and adapted for wide variations in peach regions.

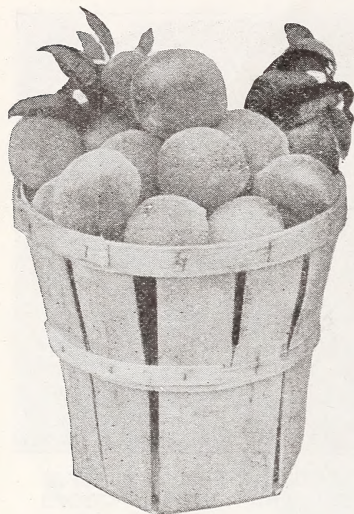
June Elberta. Yellow, semi-freestone, big, handsome peach, high red color, delicious flavor and a good shipper—a new variety, being the earliest of all yellow peaches.

Mayflower. White, cling, small size with red all over.

Red Bird Cling. White, cling, extra large with a bright red blush, the first peach of large size to ripen; the greatest very early money maker. We highly recommend your planting Red Bird Cling which will thrive in any peach growing district.

GOLDEN JUBILEE

The Best Early Yellow Freestone Peach



Golden Jubilee—
sensational new variety

A Proven Money Maker

Last summer was a Banner Year for the Golden Jubilee as it bore huge crops of fancy fruit which sold at premium prices on the markets throughout the United States. Many fruitgrowers never saw the Golden Jubilee until last summer on the City markets and all spoke of it with great praise and pronounced it as the most outstanding and the most profitable peach for the early season group of yellow, freestone fruit.

RECOMMENDED BY HARRISONS'

Harrisons were the first nurserymen to give Golden Jubilee wide publicity among the fruit growers of America. We recommend to every peach grower North and West of North Carolina to plant this variety. We, ourselves, have planted several thousand trees in our

own orchards and feel confident that you will be satisfied by planting the Golden Jubilee for home use or commercial plantings. Our strain of Golden Jubilee is the original strain being originated and introduced by the New Jersey Experimental Station.

OTHER EARLY VARIETIES

Carman. Semi-freestone, medium size, being remarkably attractive and luscious peach, oval shaped, yellowish white with bright red cheek; flesh creamy white, spicy and good flavor. Tree is very hardy, strong grower and the heaviest producer of the earliest varieties, also a sure cropper.

Cumberland. White, semi-freestone, new variety introduced by the New Jersey Experimental Station.

Eclipse. Yellow, freestone, new variety introduced by the New Jersey Experimental Station.

HILEY (Hiley Belle). White, freestone, medium size, high red color, very firm, beautiful red cheek; flesh is white, fine, tender, very juicy, highest flavor and an excellent shipper.

Tree is a strong grower, very healthy and an extra heavy bearer—you can depend on Hiley to bear heavy crops year after year. The marvelous color and wonderful flavor have made it extremely popular on the markets. Hiley has the stamina to withstand long hauls under refrigeration in cars better than any other white peach.

Commercial peach orchardists for a Century have been looking for an early peach of high quality, fine flavor, yellow, freestone, attractive color, firm texture and a good shipper, and eventually they have found it in the marvelous Golden Jubilee. This variety is a sensation of recent introduction of new varieties and is by far better than any variety of commercial importance which has been introduced since the Brackett.

Golden Jubilee ripens about four or five days ahead of Carman, the latter variety at one time was of commercial importance, but in recent years it has only been grown in a limited way commercially and is quickly fading away in view of the competition from Mamie Ross.

Tried and Proven

There are numerous bearing Golden Jubilee peach orchards throughout the United States and the variety has been tested by practical fruit men who have unani- mously pronounced it as a worthy member of the preferred commercial list. It has been planted by tens of thousands in every peach producing region and has given good results, therefore we all must congratulate the New Jersey Experimental Station, New Brunswick, N. J., for breeding and originating the Golden Jubilee.

Fruit Is of Good Size

In most localities the fruit of the Golden Jubilee will attain extra good size for an early peach. One of its most remarkable features is that it is very hardy in fruit bud and withstood the bitter cold weather of last winter as good as any other variety known. It is a cross between the famous Elberta, and the hardy Greensboro, which is a very early variety. Golden Jubilee, fortunately through the cross, inherited the finest qualities of both the Elberta and Greensboro.

For planting in orchards South of Pennsylvania we can unhesitatingly recommend planting Hiley—it is the best money making peach that has ever been grown in the South. Hiley has been very extensively planted, being among the five leading commercial peaches of the United States and in the South is next in importance to Elberta. HARRISONS SUPER-STRAIN OF HILEY is a bud selection improvement from the original strain.

Mamie Ross. White, freestone, large, covered with a beautiful delicate carmine—red blush; firm, juicy, good flavor, excellent shipper. Mamie Ross is about one-third larger and ripens two days later than Carman, which it is replacing, as it is far superior.

SOUTH HAVEN. Yellow, freestone, large, handsome, uniform size, delicate flavor, ripens about 15 to 18 days ahead of Elberta. Tree is very hardy, good grower and a consistent heavy bearer, adapted to cold climates but will produce bumper crops in mild climates. A new variety which has been tested and proven and which we recommend you to plant.

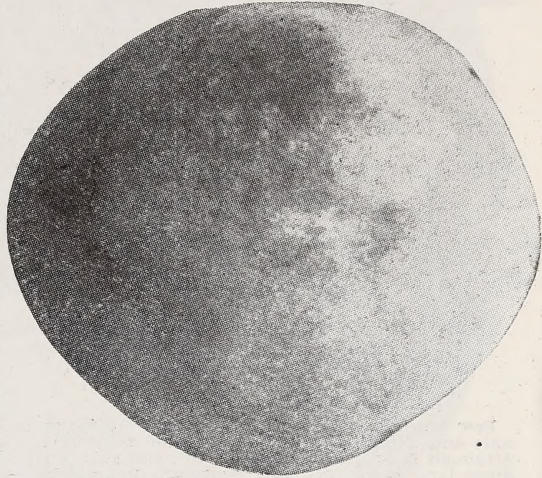
EARLY MIDSEASON VARIETIES

EARLY ELBERTA

Yellow, freestone, large, lemon yellow with a dark cast, blush with vivid red, beautiful appearance, high quality, being somewhat similar to Elberta, although a trifle better flavor; rich golden tender flesh, yet firm and has a delightful flavor; excellent for canning. Hardier in fruit bud than Elberta, tree is a good grower, bears very young and a heavy producer, ripens about a week or ten days earlier than Elberta and is being planted quite extensively in commercial orchards; excellent home orchard peach. Due to its earliness, and being Elberta type of peach, it brings high prices on the leading markets.

HALE-HAVEN. Yellow, freestone, large, high red color, firm, good flavor, it takes on red color early and the peaches show good red color several days before ripening, which gives it a distinct advantage for marketing. Very hardy in fruit bud and a heavy bearer, ripens about two weeks before Elberta. Hale-Haven is a new variety, being a cross between the famous J. H. Hale and the well known new variety, South Haven, being originated by the Michigan Experimental Station. 5c per tree extra.

Champion. White, freestone, very large, creamy white with red cheek, sweet, juicy; very high flavor. Champion has lost its past commercial importance because it will not carry satisfactorily under refrigeration, but as a home garden or a roadside peach, it is one of the best. Tree is hardy, large grower and productive.



EARLY ELBERTA

Crawford's Early. Yellow, freestone, large size, juicy, sweet flavored, highly prized for canning. Tree strong grower and prolific bearer. One of the old-time commercial varieties, which has been extensively planted in years past, but now mainly a home market fruit.

Fitzgerald. Yellow, freestone, large, good.

Mountain Rose. White, freestone, large, round, white with much red in several shades, juicy, rich, tender, sweet. Old-time favorite.

ROCHESTER. Yellow, freestone, large, covered with mottled red blush; fresh yellow stained with red at pit, very good quality, prolific bearer. One of the best early mid-season yellow freestone peaches for nearby markets, and highly desirable for canning. Our buds came direct from the original tree from Mr. A. H. Heberle of Rochester, New York, the originator. Popular in Western New York and Michigan.

SLAPPEY. Yellow, freestone, medium to large size, beautifully red colored, rich, juicy and extra good flavor. Good commercial variety for nearby markets and one of the best early yellow freestone peaches.



Harrison Quality peach trees in the nursery rows—propagated from carefully Bud Selected strains

BELLE OF GEORGIA (Belle)



Belle of Georgia—best white peach—marvelous flavor—
heavy cropper—dependable—popular

Prosperes North and South

Few peaches are as well adapted to different soils and climatic conditions as Belle of Georgia. Although it originated in the South and still produces large crops for many Southern Orchardists, it has been equally successful in the North and West, and we highly recommend it as a profitable variety.

Withstands Coldest Winters

The tree is a strong grower with an open top; very vigorous. Bears heavy crops when very young, even at three years. Tree is very hardy in fruit bud and will bear a bumper crop of peaches when other varieties will fail, after going through a severe winter.

Plant Harrison's Super-Strain Belle of Georgia Trees

Harrison's, in their commercial peach orchards over a long period of years, have grown a larger number of carloads and truck loads of Belle of Georgia peaches than any other orchardist in the Nation. Through the process of "bud selection" Harrison's, over a period of many years, have been able to aid Nature, consequently have developed from the original strain which we received from Mr. L. A. Rumph, Marshallville, Georgia, originator of this famous variety, insuring in our famous Harrison's Super-Strain Belle of Georgia peach trees, which is the finest type, the hardest and the most productive available. Elicit praise from all who know it because of the great beauty of its fruit at its best—it is one of the glories of the Peach World.

Finest Flavored Peach

Belle of Georgia excels all other varieties in its supreme flavor for fresh eating at the time of picking from the tree. The Belle of Georgia is the most popular and preferred variety on account of its exquisite flavor. For canning purposes the Belle of Georgia is the best variety known, even though it is a white peach—as the general consensus of opinion among housewives is that you can only can a yellow peach. We suggest that you try canning Belle of Georgia and compare it with other varieties—and in the future you will demand Belle of Georgia for your canning operations.

MIDSEASON

Belle of Georgia (Belle). Ripens early in August. Color creamy white with red cheek. Flesh is white with some red near pit. Size large, freestone. Belle of Georgia, for some time, has been recognized as the best all-around white peach on the market. It is easily the best shipping white peach of its season, ranking almost with Elberta in this respect. Because of its many desirable qualities, it has become standard in the large commercial orchards, and you can find few orchardists of any importance who do not have a block of Belle in their orchards. These men know from experience just what varieties pay best.

Bears Bumper Crops Every Year

The tree is an exceedingly strong grower and has established heavy producing records throughout the East. It withstands sub-zero temperature much better than most varieties in its season. By bearing heavy crops when other varieties were light, it has made its growers large profits in the past years.

Best Peach for Home Gardens

Unlike certain varieties of peaches which are desirable more because of their shipping qualities than their taste, Belle of Georgia is known to be excellent for home use. As it brings better prices in the large markets because of its large size, handsome appearance and its unexcelled flavor, you will appreciate those qualities in your home.

If you grow peaches for market purposes, or if you wish several peach trees in the garden plot near your home, you will find Belle of Georgia the best peach for this purpose. To the commercial grower it offers a white peach maturing before Elberta, which ships well and brings good prices. To the man with a home orchard it means big, luscious, white peaches—peaches you can be proud to show your neighbors. There is only one best argument for the Belle of Georgia—eat one, and you'll know immediately what it is.

Best All Around White Peach

During the past three years numerous orchardists in the sections which were visited by the bitter sub-zero winters of more or less duration, found in several cases that Belle of Georgia was the only variety of peach which came through the winter with sufficient number of live fruit-buds to insure a commercial crop. These orchardists were lucky in having Belle of Georgia as they received high prices for their peaches, making Belle of Georgia a good cash profitable variety, whereas many other varieties were a failure.

Plant Belle of Georgia as an insurance that you will have peaches every year, irrespective of the winter and early spring weather conditions.

The Belle of Georgia is well known on the leading commercial markets and all who have eaten this marvelous peach are highly enthusiastic about its flavor. Whether you are planting one tree in your home orchard, or a large commercial orchard, we certainly recommend you to plant the phenomenal variety, Belle of Georgia.

OTHER MIDSEASON VARIETIES

Old Mixon Free. White, freestone, large with bright red cheek, tender, rich, excellent flavor.

Ray. White, freestone, large, most attractive red blush of delicate shade, juicy, delicious, tender and excellent flavor. Trees are exceedingly

strong growers, shapely and symmetrical, a regular bearer of big crops and generally considered as the heaviest, most consistent cropper known. Plant Ray for nearby markets and roadside stands, as its fine, attractive appearance and high flavor sell it on sight.

ELBERTA—Midseason

The World's Greatest and Best Money-Making Peach

Yellow freestone, Midseason. Fruit is large to extra large; golden yellow with brilliant shades of red; firm, juicy, rich, sweet and good flavor. Elberta has the greatest international reputation of any peach. It has been the standard for all other peaches almost since the date of its introduction. The coloring of Elberta is practically perfect. The rich, yellow skin is almost entirely covered with dark red blush upon the sunny side. This attractive appearance and the uniform large size serve to sell it almost on sight.

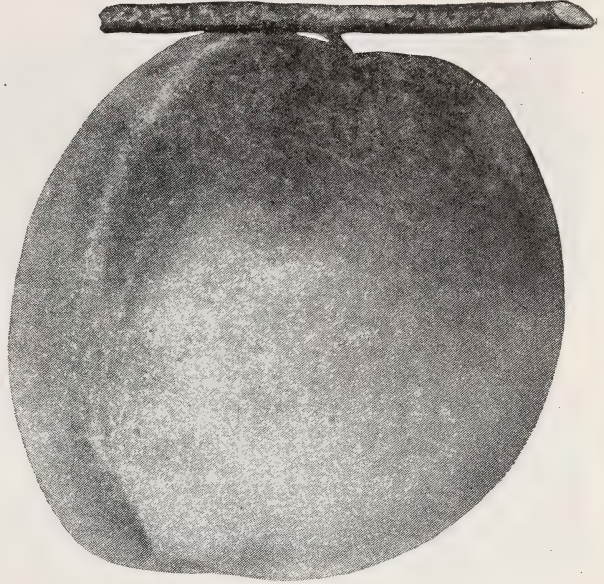
The Best Commercial Variety

Tree is vigorous, very hardy, sturdy, thrives in widely different localities. Elberta is hardier in bud than most varieties, and is a uniform prolific bearer. You can always depend on Elberta as a sure cropper.

Elberta Is the Best Long-Distance Shipper

The large fruit, being uniform in size and shape, along with its high attractive red color and firmness, also its ability to stand shipments of three thousand or more miles under refrigeration in cars for two or three weeks before being consumed, but with stamina enough to still look its best, has won Elberta the reputation of being a peach without a peer and the variety which is always in favor and strong demand with the buying public, therefore demanding the highest possible market prices. Elberta is by far the best canning peach.

We believe that we have the best strain of



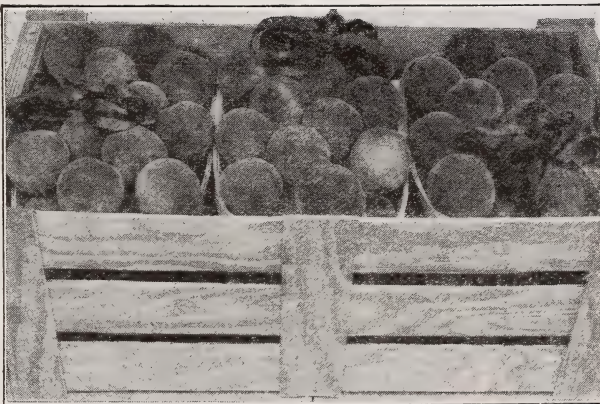
Elberta—The World's best peach—champion long distance shipper. Marvelous money maker

Elberta obtainable. In our own commercial orchards we have tens of thousands of this strain, it was obtained from the late Samuel H. Rumph of Marshallville, Georgia, the originator of Elberta, from the original tree and budded in our nurseries.

There are many different types of Elberta, and the "Best Strain" is the cheapest and most profitable in the long-time investment.

Recommend planting thirty-five per cent of your commercial orchard to Elberta.

Plant Harrison's Superior Strain of Elberta and reap the huge gold profits.



Elberta peaches packed in crates. World's best peach for commercial orchards

PRUNING NEWLY PLANTED FRUIT TREES

The limbs of fruit trees should be cut back approximately two-thirds when planted. Remove all surplus branches from the trees leaving three to five main branches as a basis for the head. Always prune to an outside bud thus insuring outward growth. By cutting back severely as mentioned it will cause the trees to put out a dense growth the first year and will result in a much more satisfactory tree. Trees that do not have any side branches should be cut back to a height of approximately 2 to 2½ feet from the ground. With trees that do have side branches, these branches should be cut back to approximately two buds per stem.

J. H. HALE—Midseason

EXTRA LARGE SIZE

Yellow, freestone, extra large, beautiful red coloring, firm and of the highest quality and enticing flavor. J. H. Hale ripens about two or three days prior to Elberta.

Hales are too large to properly pack in six-gallon carriers, but they make the most attractive and commanding appearance when packed ring-faced in bushel and half-bushel baskets. The Hale quickly made a national reputation and is a strong competitor of the Elberta, being just about as good a shipper as Elberta.

BRINGS HIGHEST MARKET PRICES

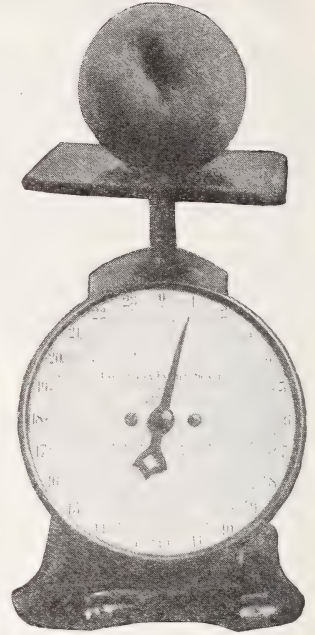
Prices on J. H. Hale and Elberta with a large national crop are about the same, but on a short crop year Hales usually sell from 25c to 50c and sometimes 75c more per bushel on large wholesale markets.

ORIGINAL STRAIN J. H. HALE

Our Hales are propagated direct from the original strain, the variety being originated by the late J. H. Hale of South Glastonbury, Connecticut and Fort Valley, Georgia, who at one time was the Peach King of America. There are many types and strains of J. H. Hale grown, but the only one worthy of commercial importance is the original strain, which is the extra large, round, highly colored peach. The original strain necessitates cross-pollenization and it is necessary, for proper results, to plant a few Belle of Georgia or Hiley along with Hale for cross-pollenization.

The tree is somewhat dwarf, a moderate grower and should be planted on the richest, best, well drained soil available. The Hale needs more cultivation and fertilization than most varieties.

Hale is the second most extensively planted yellow peach, only being surpassed by Elberta. Hale is a ranking member of the five greatest peaches in America.



J. H. Hale peaches often weigh one pound. Large size commercial peach always commanding highest market prices



J. H. Hale—packed in different style packages. Plant Harrison's original strain of J. H. Hale peaches for gold profits

**Greatest Scarcity of
Fruit Trees in Nurseries
Throughout the United
States in Forty Years.
To Be Sure of getting
what you want Buy
Now**

MIDSEASON LATE VARIETIES

CRAWFORD LATE. Yellow, freestone, superb in size and shape; splendid yellow, with broad dark red cheek; flesh deep yellow, juicy and melting, rich, winy flavor. One of the best late sorts. Tree vigorous, hardy and sure bearing, coming at a time when the midseason peaches are over, this variety is eagerly bought up for canning and preserving, and brings highest prices. Being such a remarkably good shipper, it reaches the market in first class condition. An old commercial favorite.

Frances. Yellow, freestone, medium to large size; good quality.

Roberta (Augbert). A comparatively new variety of great merit. Resembles the Elberta in many respects, but ripens about a week to ten days later. An excellent sort to prolong the Elberta season.

Shippers' Late Red. Yellow, freestone, large, round, bulkier than Elberta, with an attractive red coloring which is catchy to the eye. Flesh is yellow, juicy, sweet and pleasing flavor. Trees are very hardy, good growers, bear young, sure croppers, and prolific bearers. Promising new late commercial variety and excellent home sort.

Wilma. Yellow, freestone, large, good red color, somewhat similar to its parent, Elberta.

BRACKETT—Midseason Late

Brackett is a comparatively new commercial peach in some sections but wherever tried it has given uniformly good results. During the past twenty years we have planted many thousands of this variety in our own orchards and they have given good results.

Brackett Is a Three-Point Winner—In Color, In Size, In Quality

The fruit is rich yellow, with dark carmine cheek. The size runs fully as large or larger than Elberta and fruits weighing five to six ounces are common. Flesh is deep yellow, extremely juicy and is absolutely freestone. The fruit is much better flavored than Elberta.

Popular on the Markets

Brackett commands the highest price on the markets and often outsells Elberta twenty-five to fifty cents per bushel. We believe the grower who needs a peach that



Brackett—proven to be best peach grown to extend Elberta shipping season

ripens slightly later than Elberta will make no mistake in planting Brackett.

Plant Harrison's Original Strain

HARRISONS were the first to popularize this great variety and distribute throughout the peach growing sections. We offer trees that are propagated direct from the original strain and they are sure to produce results.

LATE VARIETIES

Beer's Smock. Yellow, freestone, large, oval, skin orange-yellow mottled with red; high flavor.

Berk's Favorite. White, freestone; new variety.

Fox Seedling (Fox). White, freestone, large; white with whole side red, melting, sweet, high quality and high flavor. Good for roadside market and canning.

Gold Drop. Yellow, freestone, medium size, fine flavor, heavy bearer, very hardy. Generally planted in Michigan.

Iron Mountain. White, freestone, large, generally planted in New Jersey.

Salberta. Yellow, freestone, large, being a satisfactory cross between Elberta and Salwey. Salberta inherited the size, quality and productiveness of Elberta, and inherited the lateness in season of Salwey, making a fine combination for a profitable late peach. This new variety is being planted commercially more or less in Ohio and Michigan.

VERY LATE VARIETIES

KRUMMEL'S (Krummel's Late October). Yellow, freestone, extra large, round, deep yellow with a blush of carmine on the sunny side—fine flavor. Good shipper, and ripens so late in the season that it has not real competition on the market, generally bringing satisfactory prices. If you desire a real late peach, of good quality, then there is none better than Krummel's.

Salwey. Yellow, freestone, large, beautifully mottled with red and a brownish cheek; the flesh is

yellow, firm, rich, juicy and sugary, and particularly fine for canning and preserving. Generally grown in the mountain districts, good shipper, desirable for the fancy trade.

WHITE HEATH CLING (Heath). White, sometimes called Mammoth Heath Cling, extra large, round, with red blush, flesh is firm, white, exceedingly juicy, and ripens fully to the pit. Favorite for canning and pickling. Be sure to include in your family orchard.

JUNE BUDDED PEACH TREES ESPECIALLY FOR SOUTHERN PLANTERS

We are offering fine quality June Budded peach trees, being extra strong, sturdy, extra heavy caliper in proportion to height, mostly

branched tops, being budded on whole roots, insuring large fibrous, well developed root systems.

	1 to 9 trees	10 to 49 trees	50 to 299 trees	300 to 599 trees	600 or more trees
3 to 6 inches.....	\$0.17	\$0.12	\$0.08	\$0.06	\$0.05
6 to 12 inches.....	.20	.15	.10	.08	.06
12 to 18 inches.....	.22	.17	.12	.10	.08
18 to 24 inches.....	.25	.20	.15	.12	.10

Can supply June Buds for Winter and Spring 1936 shipments only in the following varieties:

Belle of Georgia, Brackett, Carman, Crawford Early, Champion, Crawford Late, Elberta, Eclipse, Early Elberta, Early Rose, Frances, Greensboro, Golden Jubilee, Hiley, Iron Moun-

tain, Krummels, Mayflower, Roberta (Augbert), Rochester, Red Bird Cling, Shippers' Late Red, South Haven, Uneeda and White Heath Cling.

APPLES



One year budded apple trees are favorites with commercial orchardists

The apple is the King of all fruits. Apples are grown in every fruit section of the North American Continent, as a matter of fact, are grown in every State of the United States.

Many of the wealthiest farmers all over this Nation are fruit growers, what they have done you can do yourself by adhering to certain general principles in growing apples.

Happy is the man or woman who has a hobby that contributes to health, thrift, pleasure and profit. An orchard, even though it consists of but a few trees in one's back yard, is a delightful addition to any home.

Apple growing pays profits, but in order to get these profits, it is necessary to start with the best trees and the most desirable varieties. Harrisons' Nurseries have been, and are still growing, at Berlin, Maryland, the finest and best apple trees of superior merits it is possible to produce. Harrison grown apple trees are propagated on whole root stock, insuring an unusually large root system which is the base of plant growth. Our apple trees are scientifically budded and grafted from selected heavy bearing strain trees of the variety desired, using the bud selection system.



Harrison apple trees are noted for their early bearing characteristics

There is a drastic shortage of fruit trees, especially of apples and peaches, throughout the nurseries of the United States, as a matter of fact, the smallest supply available for Spring 1936 and Fall 1936 orchard plantings that there has been any time during the past forty years.

Today we believe that we have more of the improved and best strains of apples in our nursery than any other nursery concern in America.

Do not allow a few cents per tree to keep you from buying Harrison grown apple trees, being the finest and by far the best quality produced on the North American Continent.

A NATIONAL SCARCITY OF FRUIT TREES

PRICES OF HARRISON GROWN ONE YEAR APPLE TREES— TRUE TO NAME—

	1 to 9 trees	10 to 49 trees	50 to 299 trees	300 to 599 trees	600 or more trees
1 to 2 feet.....	\$0.30	\$0.25	\$0.22	\$0.18	\$0.15
2 to 3 feet.....	.35	.30	.25	.22	.20
3 to 4 feet.....	.40	.35	.30	.27	.25
4 to 5 feet.....	.50	.45	.40	.35	.30

PRICES OF HARRISON GROWN TWO YEAR APPLE TREES— TRUE TO NAME—

	1 to 9 trees	10 to 49 trees	50 to 299 trees	300 to 599 trees	600 or more trees
5 to 6 feet.....	\$0.60	\$0.50	\$0.45	\$0.40	\$0.35
6 to 7 feet.....	.70	.60	.50	.45	.40

Can be assorted Apples, Peaches, Cherries, Pears, Plums or other fruit trees.

SUMMER VARIETY APPLES

YELLOW TRANSPARENT

Ripens extremely early. Skin clear yellow. Flesh white. The flavor, while slightly acid, is excellent. Size medium.

This is the most popular early green apple grown and has proven a profit maker in a large number of apple districts. The Yellow Transparent tree is very hardy, healthy and somewhat of a dwarf grower, bears when very young and makes an excellent filler. We believe there is a big future for the grower who plants this variety, we ourselves anticipate planting several hundred trees of Yellow Transparent this year.

Yellow Transparent First on the Market

as it ripens early in July, making excellent eating apples and selling without difficulty. There is almost no competition at this time; Yellow Transparent leads the field, and is eagerly sought for by those people who find their "apple appetites" impatient.

Yellow Transparent Trees Bear Early

and produce nearly every season. They are rather dwarf growers, and may be planted a little closer than most other varieties. A fine soil is not necessary, or even desirable, as the trees seem to grow best on rather poor ground, such as hillsides and uplands.



Yellow Transparent—Most profitable summer apple grown

Adaptability Is an Additional Advantage

It thrives just as well in the South as it does in the North. Most varieties are particularly well adapted to a certain region, and, while they may be grown elsewhere, are only at their best when grown in the prescribed region. Yellow Transparent is extremely successful in Georgia, and does equally well in Canada.

OTHER SUMMER VARIETIES

Benoni. Orange-yellow—lively red, productive.

DUCHESS (Duchess of Oldenburg). Medium size, red striped, flesh white, juicy and good flavor. Unusually heavy bearer, very dependable cropper. You can depend on the Duchess to yield apples you can sell for good prices. Trees are natural dwarf growers and make fine fillers; require small root and branch space.

Early Harvest. Very early, not a good keeper; fruit medium size, pale yellow, tender, juicy, sub-acid. Fine for home orchard because of its merit as a cooking and dessert fruit. Tree is a vigorous grower and bears early and regularly.

Early McIntosh. Red, attractive, good size; flesh white, fine, tender, juicy and fine flavor, being similar to McIntosh Red. Tree vigorous, hardy, healthy and productive.

Liveland Raspberry. Large, waxy white, marbled with crimson, flesh white stained with red, tender, poor quality. Tree vigorous, early bearer.

Milton—A very handsome new apple of the McIntosh type. Fruit a beautiful pinkish red with tender, crisp, white flesh of excellent flavor. Trees hardy and vigorous. Ripens a month ahead of McIntosh. Red (small 1 yr. trees only).

Red Astrachan. Medium size, yellow with dark red patches; flesh decidedly acid and juicy; excellent for cooking, satisfactory for home plantings, but on account of its poor shipping qualities and irregular

bearing not advisable for commercial orchards. Tree very hardy, vigorous and a good heavy bearer every other year.

Red June (Carolina Red June). Medium size, conical, dark red, juicy, fairly good flavor, very productive.

Starr. Large, attractive with bright yellowish smooth skin; sometimes marked with a faint blush and numerous russet dots; flesh yellow, fine, very tender, crisp, juicy, aromatic and of extra fine quality, bringing highest prices. Recommended to those with nearby markets, but a poor long distance shipper. Popular in Southern New Jersey.

Sweet Bough. Large, pale yellow; tender, sweet.

Summer Rambo. Large, yellowish green, splashed with red, crisp and tender. Very good.

Wilson Red June. Fairly large, red; good quality. Popular in New Jersey.

WILLIAMS EARLY RED. Medium to large size, bright, rich red; flesh is crisp, tender, juicy and sub-acid; good quality. Its bright, attractive red coloring, with satisfactory size and firmness, makes the Williams Early Red the most popular summer variety grown, and always in strong demand with exceedingly high prices. It is ready for market just about the time people are growing hungry for new apples and are willing to pay a handsome premium for real fruit. Fine for a filler or permanent tree, being hardy, and can be successfully grown in New England States and Canada. All commercial orchards should include Williams Early Red.

AUTUMN VARIETY APPLES

GRIMES GOLDEN



Grimes Golden—the best yellow apple

Use Grimes as a Filler

It comes into bearing before most of the permanent trees and will help to bear the orchard expenses before the other trees produce any fruit. Blossoming rather late in the spring, the late frosts seldom do any harm, and the tree is able to set fruit nearly every year.

If the fruit is carefully packed in boxes, instead of barrels, the sale will be greatly increased, as the customer will find the golden color and attractive aroma too tempting to pass by. The smaller package helps the sale, as it is easy to say "Send home a box," whereas if they are packed in a barrel, there is some indecision on the part of the buyer as to just how many apples he needs.

Ripens fairly late. Skin golden yellow. Flesh yellow. Flavor rich and spicy; slightly acid.

Grimes Golden holds a reputation away ahead of most fall apples because of its appearance and flavor. It is not unusual for Grimes to bring from 50 to 75 cents more per bushel than other apples.

The Flavor Is Excellent

and many people feel about this apple as others do about Golden Bantam corn: "It's worth the difference at any price." The result is that it brings higher prices, which means more money in your pocket.

In the vicinity of Philadelphia, Grimes will be ready for use some time in September, but unless

prices are exceptional it should be left on the trees until somewhat later, as the flavor will be considerably improved.

A Home and Market Variety

Grimes has the great advantage of being as good for the home as it is when intended for long shipment. It cannot be surpassed for cooking or table use. The keeping qualities are good; the quality of the fruit will be found unimpaired in January and February. It makes no difference whether you are after a strictly high-class market trade or desire just a few trees for your garden, you should plant Grimes.

OTHER AUTUMN VARIETIES

Gravenstein. Extra large, perfect in form and handsome in coloring—orange-yellow overlaid with broken stripes of light and dark red; flesh is yellowish, firm, crisp, tender, juicy, fine flavor. Good for cooking, extra vigorous tree, comes into bearing rather early and bears profuse crops regularly. Grown most extensively in California and commands good price.

King David. A beautiful deep dark red apple, resembling Jonathan as to size and shape, but not quite as good flavor. Splendid shipper and keeper. Tree hardy, and comes into bearing young.

King (King of Tompkins County). Extra large, very red, with a tint of yellow, flesh yellow, crisp,

juicy, sub-acid, good quality. Tree slow grower and not a big producer. Generally planted in New York.

Lobo. This variety has come into prominence in a number of fruit districts due to the fact that it is very highly colored and has many McIntosh characteristics. While not equal to McIntosh in quality, the quality is good. The season of Lobo begins a little earlier than McIntosh, but it keeps about as long. The earlier coloring enables growers to pick Lobo in advance of McIntosh. It hangs on the tree better than McIntosh.

Maiden's Blush. One of the most beautiful; pale lemon and crimson cheek; flesh white, tender and crisp. Tree vigorous and good bearer.

McINTOSH RED

An early winter variety in New York, Michigan and New England States. An exceedingly valuable hardy, attractive apple; medium large size; nearly covered with red. Flesh white, fine, tender, juicy, sub-acid and refreshing, and generally considered as the highest and best flavored apple grown; splendid appearance, which sells it on sight. Demand always exceeds the supply of McIntosh Red and commands the highest prices of any apple on the leading American markets. The best box and bushel apple grown, and a good shipper. McIntosh Red is a Canadian apple, keeps long, but is mellow and good to use from the time it is picked and if kept in cold storage until the next crop comes.



McIntosh Red—Highest flavored variety grown—always popular

Tree is exceedingly hardy, vigorous, a very prolific bearer, consistent bumper crop producer, a sure annual cropper. Comes into fruiting early. This splendid apple can be grown from Nova Scotia to North Carolina. Growers in New York, New England, Michigan and Canada have long grown McIntosh Red for big profits. Ask any experienced apple grower, if you are not acquainted with

the McIntosh red, and he will praise it as highly as we do. Visit our own bearing commercial orchards of McIntosh Red at Berlin. Plant this variety for the big gold profits.

Harrisons' Strain of McIntosh Red is 100% red color when ripe.

Harrisons' Improved Strain is very hardy and produces bumper crops each year.

McINTOSH RED IS AMERICA'S HIGHEST PRICE APPLE

Great Demand for McIntosh Red Trees—We Can Only Supply One Year
3 to 4 Feet; 2 to 3 Feet and 1 to 2 Feet Sizes in McIntosh Red.

OTHER AUTUMN VARIETIES

NORTHWESTERN GREENING. Large, round, greenish yellow; juicy, firm, good quality; splendid keeper, ships well. Attractive apple when packed in bushels, demands good prices, excellent baking apple. Should not be planted extensively, because crops are not so certain, due to blossoming early. Trees are extremely hardy, vigorous, bear very young.

RED GRAVENSTEIN. This red sport is more attractive than Gravenstein. It differs from Gravenstein only in the solid dark red fruit.

SMOKEHOUSE. Large apple of super-fine flavor, excellent for eating, yellowish green

mottled with dull red and with many russet dots; flesh firm, crisp, juicy and aromatic. Tree large, vigorous and reliably productive.

WEALTHY. Medium to large size; round almost solid red; flesh white or a little stained; tender, crisp, juicy, fine grained, aromatic and very good flavor. Relative good keeper. One of the most profitable commercial apples. Tree is very hardy, withstanding unusually cold climates, vigorous, fruits at early age, bears regular and abundant crops. Tree somewhat dwarf, making a fine filler.

JONATHAN

Late Fall

Skin is brilliant red. Flesh white, juicy and fine grained. Size runs medium to large.

Jonathan is well able to hold its name high among the different varieties which ripen at about the same time. Its taste is exceptional; very few apples are able to approach it in this respect, and, in addition, you will find that

Jonathan Stands Shipping Well

Many apples are excellent to the eye and to the taste, but fail to stand up under the handling which they must get, and therefore do not enjoy real commercial success. Jonathan in this sense is exceptional, for it seems able to stand much handling without ill effects. The skin is thin but tough.



Jonathan—A marvelous money maker . . .
Superior red strain

Keeping Qualities Are Good

Without much care, Jonathan may be kept until February, or possibly a bit later. When particular care has been paid to the packing and selection of perfect fruits, it will be found a most desirable variety for the Holiday season. The deep red skin which verges upon the purple where it has been tanned by the sun, shows up to advantage in attractive baskets. Perhaps because of its splendid coloring, it makes a special appeal. In any event, it has proven most popular.

Trees Are Long Lived

although they bear fruit quite young. Jonathan is more consistent with its crops from year to year than many other varieties, as it will produce good crops practically every year. In the West, Jonathan has long been a standard commercial variety and has proven itself to be one of the leading commercial varieties of the East. Harrisons' super-strain of Jonathan has been produced by "bud selection," being a very high, brilliant red color.

We highly recommend you to plant Jonathan in a commercial orchard as well as your home orchard.

YELLOW DELICIOUS

A golden-yellow apple with characteristics and shape of the well known Delicious apple. This apple has a remarkably good flavor and is popular during the fall and early winter for fresh eating. The flavor and condition of the fruit is at its best between late September and January. To many people the exquisite flavor of the Yellow Delicious is considered even better than that of the famous Delicious—the fruit of the Yellow Delicious averages in size as large as the Delicious.

Bears Bumper Crops Even at Young Age

The Yellow Delicious tree is very thrifty, hardy, strong, vigorous grower and is specially renowned for its heavy bearing at a very young age. It is a prolific cropper and is dependable as a good bearer each year. The Yellow Delicious bears heavier and larger crops annually than Delicious. On

account of its early bearing habits, we recommend planting Yellow Delicious as a filler variety along with other varieties in your orchard of permanent trees. Of course, you can plant the Yellow Delicious as a permanent tree in your orchard, as evidently this variety has the general appearance of being long-lived.

Harrisons' Recommend You to Plant Now

The Yellow Delicious has been planted in every apple district and its fruits are known on the commercial markets where they bring good prices.

The Yellow Delicious has proven itself worthy as a commercial, as well as a good home variety. We recommend your planting Yellow Delicious on account of its high quality, being an extra heavy bearer, and produces crops at an early age, thereby making it a good money maker.

**BRILLIANT
CRIMSON
RED
LARGE
SIZE**



**GRADES
MORE
EXTRA
FANCY
FRUIT**

**Harrisons' Red Delicious—best red strain developed from
Bud Selection. Dependable—plant for better cash profits**

HARRISONS' RED DELICIOUS

This apple was introduced by us several seasons ago and since introduced it has been bought by the tens of thousands by leading fruit growers throughout the country. It is a bud sport found on a tree located in one of our famous Delicious orchards.

Colors Much Earlier Than Ordinary Delicious

Harrisons' Red Delicious colors up weeks earlier than the ordinary strain. By coloring earlier the fruit can be picked while it is firm and it keeps better in storage.

Size and Taste

Size is all anyone could desire, as it runs from large to extra large. The large size, solid red color and characteristic five knob end make it attract buyers in every market.

Taste will be found on a par with its other points of advantage. The flavor is rich, slightly sub-acid, with an individuality which makes the palate call for more. You'll have no trouble with repeat sales for this variety.

Ships and Keeps Well

Harrisons' Red Delicious ships without bruising. In fact it ships better than the ordinary Delicious because its earlier coloring permits it to be picked when the fruit is more firm. Its large size makes it easy to pack attractively and the uniformity of size guarantees a good appearance.

Large Profit Maker

The ordinary Delicious is a proven profit maker and our Harrisons' Red Delicious is destined to outclass its predecessor due to the fact that it will produce more highly colored fruit and as most every fruit grower knows color plays an important part in the price the fruit sells for.

Ideal for Home or Commercial Orchard

Harrisons' Red Delicious is not only a commercial apple but it is every bit as well adapted to the home grounds. Whether you wish to plant a thousand or if you have room for only one tree, Harrisons' Red Delicious will give full value.

Starts Red Coloring During Early August

One of the unique features of our "bud sport" selected strain of Harrisons' Red Delicious is that it starts to take on bright red color during early August and has sufficient color for United States #1 grade for picking and shipment on the domestic markets, as well as export, several weeks earlier than Delicious.

The Harrisons' Red Delicious is comparable, if not superior, to any of the other several new strains of Delicious as introduced, such as, Star-king, Richard Delicious, Shotwell Red Delicious and others. For several years we have sold Harrisons' Red Delicious trees at premium prices, but this year we are giving our customers the benefit and are selling at the same prices as other varieties of apples.

STAYMAN WINESAP



Stayman Winesap—the leader—best red apple grown. Superior strain is a bright red type, almost 100% attractive. Red color when properly grown. A huge money maker

Eastern Growers Plant It Largely

in the new orchards, and they are men who know what tree value is. They realize that this apple will produce as good results as many others, and do it on poorer ground. Naturally, not so much capital is required for the investment.

With the old Winesap, the fruit tends to decrease in size as the tree ages; with the Stayman it is generally as large and attractive as ever. It is a strong grower, comes into bearing early, and is reasonably certain to produce good crops every year.

Stayman Winesap Is Always Dependable

Many varieties of apple trees have a good year and an "off year"; that is, they will give a large crop one year and next season produce very little. While conduct of this sort cannot always be blamed upon the variety, since climate, temperature and other causes enter into the question, yet Stayman Winesap seems to ripen a more uniform crop than many of the others, and letters from our customers inform us that the regularity of crop is remarkable. This is naturally a valuable qualification, and, in part, accounts for the choice of many Eastern orchardists. The taste and appearance tell the rest of the story. For a pollenizer plant Grimes Golden,

Winter. Dark red skin. Flesh yellow. Medium to large.

It really doesn't seem necessary to describe this variety, as the Winesap is known favorably wherever apples are sold. You can find people in every locality who will buy nothing else. Stayman Winesap is larger than the original Winesap and somewhat later. It is also more prolific.

One of the most desirable points about this tree is that it does not require rich soil; in fact, it seems to do best on land that is dry and hard. Many apples will do well on ordinarily good soil, but there are only a few varieties of winter apples which show

A Real Preference for Poor Soil

If you have a patch of land which does not produce according to your expectations, and if your land suffers from dry spells which do not permit grain and vegetables to mature, try an acre of Stayman Winesaps. They will convince you that your land has a decided value—but it must be planted to the right crop.

Harrisons' Superior Strain Is Best

We have in our own commercial orchards several thousand trees of Stayman Winesap and we have selected for our parent trees the finest, deepest colored, being annual bearing trees. We feel confident that our select super strain is far superior to several new strains that are being offered by some nurserymen. Play safe—plant Harrisons' time-tried and proven strain of Stayman Winesap.

Stayman Winesap Is the Most Popular Eastern Apple

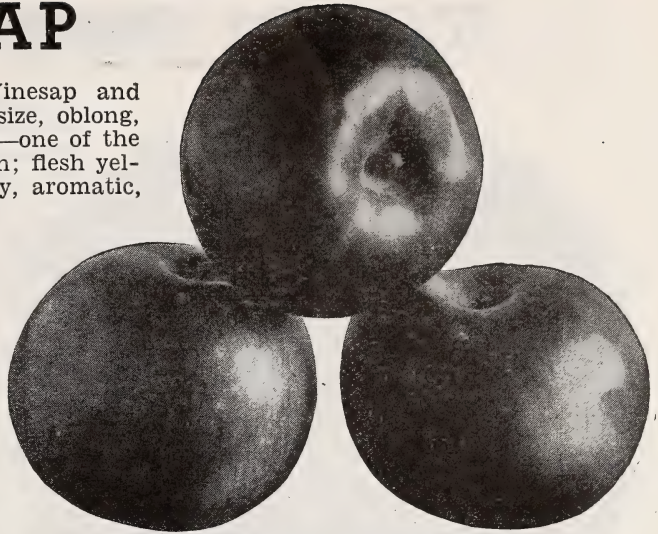
During the past ten years the popularity of the Stayman winesap has risen by leaps and bounds, and the buying public has now realized that this is a premier variety of par excellence.

Stayman Winesap is the best general purpose apple grown in any apple district. You can always sell Stayman for good prices and there is always a buyer for this famous variety. The general average selling price for Stayman Winesap during the past ten years has been very high, practically at the top.

Stayman Winesap will always reap handsome cash profits.

WINESAP

Sometimes called Old Winesap and Virginia Winesap; medium size, oblong, smooth, and a fine dark red—one of the best red colored apples grown; flesh yellow, crisp, tender, very juicy, aromatic, firm and excellent flavor. Very long keeper and considered the best cold storage variety, keeping until July. A strong grower; comes into bearing early and is remarkable for its regular and abundant crops. Grimes should be planted with Winesap for proper pollenization. Winesap has the reputation, being a leader for many years; the name is familiar to everyone. Best box apple grown, which has made it famous in Oregon and Washington; also a wonderful bushel and barrel apple, being extensively grown in Virginia for export and domestic trade. Supply of Winesap is always



Winesap—Best known international variety.
Always a gold profit maker.

limited, with heavy demand from the fancy markets, causing Winesap to be one of the highest average priced apples commercially grown.

OTHER WINTER VARIETIES

Albemarle Pippin. See Yellow Newtown for description.

BALDWIN. Large, round, bright red, crisp, juicy and rich; good late keeper, esteemed as an eating apple and for cooking. Quick and large grower; yields big crops. A wonderful shipper, standing long distances very successfully. The best northern apple for packing in barrels, fine cold storage apple, strong demand for carload shipments of Baldwins to European and South American markets. Brings high prices on foreign markets; also popular on the New England and Northern States markets. Grows to perfection in New England, New York, Pennsylvania, Michigan and Canada, but should not be planted south of the Mason-Dixon line. Baldwin is the leading commercial variety in the Northern States. (Small 1 year trees only.)

Ben Davis. Fine looking, large, round; yellow with red stripes; flesh white, juicy, sub-acid, coarse. Good for cooking, but on account of poor flavor not desirable for fresh eating. Finest keeper known. Can be kept in cold storage until July. Excellent shipper, usually packed in barrels. Best known export apple, always in good demand by European, South American and Asiatic buyers; highest prices. Grow Ben Davis on a commercial scale for export trade. Tree is a rapid grower, healthy, vigorous, bears at an early age, heavy cropper and a sure bearer.

Cortland. A promising new variety resulting from cross pollenization of McIntosh Red and Ben Davis, and inheriting the good qualities of each parent. Beautiful red apple, approximately the same size and fine flavor of the McIntosh, but ripens about three weeks or a month later. Good keeper. Our buds were cut direct from the

bearing Cortland in a prominent orchard at Kinderhook, New York. (Small 1 year trees only.)

Ensee. Dull red, suggesting its Rome Beauty strain in size and shape; crisp, tender, yellow flesh and good flavor.

DELICIOUS. Of peculiar and distinctive shape; brilliant dark red, flesh fine grained, juicy, crisp and melting, flavor sweet, with a slight acid taste, with a delightful aroma, very highest quality. Excellent for eating, and the most popular fruit stand apple. Packs well in boxes and bushels, always bringing high prices on the leading markets, and in strong demand by the best trade. Being a good shipper, along with its high red color and fine flavor, has placed the Delicious among the topnotchers. Tree is hard, vigorous grower and a good, dependable cropper when properly pollenized. Suggest planting Grimes Golden and Jonathans as pollenizers with Delicious.

Gallia Beauty. A Rome Beauty type of apple identical in every respect, except its earlier coloring qualities, recommended for commercial planting. (1 year trees only.)

GANO (Black Ben). A handsome, large apple of perfect shape, with a smooth, glossy, brilliant deep red skin; flesh is white, slightly tinged with yellow, firm, rather coarse, crisp, mild, sub-acid, fair flavor. Gano is one of the most popular export apples, being bought by South American trade at a premium in prices to others. Excellent keeper, standing long shipments as well as any other variety, usually packed in barrels. Tree is a strong, vigorous grower, with somewhat drooping branches, and comes into bearing young, producing regular and abundant crops. A sure money-maker for the export trade.

YORK IMPERIAL



York Imperial

Ideal Variety to Plant for
Top-Working Other Varieties

Medium to large size, round irregular, greenish yellow overlaid with bright red; flesh tender, firm, crisp, and high flavor; wonderful keeper; can be kept in cold storage until June. Tree is a vigorous grower, strong and healthy; an unusually heavy bearer. Other varieties may fail to set fruit and suffer from off years, but York Imperial, with proper culture methods, will bear consistently from year to year. York Imperial is the most popular winter variety for cooking; also good for eating; has a national reputation as a strong leader, and favorable demand with average good prices. York Imperial is a wonderful apple for packing in bushels for the domestic trade; is possibly the largest and best selling variety packed in barrels for the export trade, especially European and South American markets. Its long keeping, long distance shipping qualities, attractive color, and being a heavy cropper established York Imperial the leading commercial apple for Southern Pennsylvania, Maryland, West Virginia and Virginia, and generally considered as the best average money maker.

OTHER WINTER VARIETIES

Hubbardston (Hubbardston None-Such). Large, red striped, strong grower, bears well every year.

Lowry. Beautiful mahogany red, good, medium size, round oval shape, nearly sweet, mild sub-acid; excellent flavor, good shipper, long keeper, and sells at fancy prices in export as well as domestic markets. New popular commercial variety in Virginia.

MAMMOTH BLACK TWIG (Paragon). Extra large in size and round; skin smooth, yellowish covered with deep red, the general effect being dark red; flesh tender, tinged with yellow, crisp sub-acid, aromatic, fine flavor, of excellent quality in every way. Very long keeper of great value. An important commercial variety in the East and a good money maker. Tree is vigorous and healthy, yields big crops, but it is necessary to plant Delicious or Jonathan as a pollinizer.

Macoun. Similar quality and texture as McIntosh Red, although it ripens two to three weeks later than Cortland. (Small 1 yr. trees only.)

NERO. Here is an apple possessing great merit which has received far too little attention from planters of Eastern orchards. Deep red, with handsome shading; medium large size, of good quality and excellent flavor; one of the longest keepers, one of the best cold storage apples. Apples are graded and packed easily, do not show bruises and hold up well in storage, sell for good prices on the markets. Trees are hardy, extra strong growers, healthy and very productive, as well as sure croppers.

NORTHERN SPY. Large, bright scarlet-red, with yellow markings. Flesh juicy, rich, crisp, tender, aromatic and highly flavored. Tree a strong,

erect grower, very healthy, extremely hardy and free producer. Blossoms are produced late in the spring, thus escaping frosts. Trees are slow in coming into bearing, but the quality of the fruit largely overbalances this difficulty. Popular old commercial variety in the Northern States, and brings good prices on the Eastern markets. Should not be planted south of Southern Pennsylvania. Northern Spy is one of the best varieties on which to top bud or top graft certain weaker growing varieties.

Opalescent. Very handsome dark crimson apple. (Small 1 yr. trees only.)

Paragon. For description see Mammoth Black Twig.

Red Spy. A new red sport identical with Northern Spy except that the fruit is a solid bright red. Much handsomer than its parent.

ROME BEAUTY. Large, round; mottled and striped in different shades of red; flavor and quality way above the average; appearance and size are its valuable points; always in strong demand and brings highest prices. Keeps in good condition until May and June. With an established reputation due to real merit, Rome Beauty is a variety Eastern orchardists should plant. Good, hardy, strong grower; blooms late; bears heavily every year; is adapted to a wide range of soils, elevations and conditions. Reliability, due to being frostproof, strong growing, sure bearing, unusual demand, with high prices on the leading markets, especially from the chain stores, make it a favorite with the growers. Fine quality and long keeping for use and for handling make it popular with consumers and dealers. Most attractive when packed in boxes and bushels. (1-year trees only.)

RED ROME BEAUTY

An improved Rome Beauty, identical in vigor and production. Color of fruit much darker and solid red. Produces much higher percentage of fancy apples and also superior in quality than the ordinary strain of Rome Beauty. Red Rome Beauty is renowned for bearing at a very young age, producing bumper crops. The tree being a vigorous, strong grower, exceedingly hardy.

Harrisons' strain of Red Rome Beauty is the best of all Rome Beauty types and because of its improved and early high red color characteristics, will eventually replace the Rome Beauty. Already the Red Rome Beauty is a star among the leading commercial varieties of winter apples.

We strongly recommend your planting Harrisons' Superior Strain of Red Rome Beauty. (1-year trees only.)



Red Rome Beauty—Best red strain of all Rome types.
ideal commercial variety

Roxbury Russet. Large, firm, moderately tender, juicy, sub-acid, good flavor. Skin almost smooth, but covered with greenish to yellowish brown russet; long keeper. Most popular russet apple, tree hardy, strong grower, and a prolific bearer.

RHODE ISLAND GREENING. Large, greenish yellow, flesh crisp, juicy, quite acid, firm, fine grained, tender, and of very fine flavor and quality. This large and superior Northern winter apple is famous and is highly prized for eating and cooking; also valuable commercial variety, an excellent keeper, and a popular barrel apple; always brings good prices. Generally planted in New England, New York, Michigan and Canada, but not advisable to plant south of the Mason-Dixon line. (1-year trees only.)

STARK. Long keeper and a reliable commercial sort. Fruit large, round, greenish yellow, with red stripes; flesh yellow, crisp and mildly acid; valuable as a keeper. Excellent baking apple and always sought by the larger baking concerns and hotels; brings premium prices. A good variety for the commercial orchard because the tree is hardy, thrifty, healthy, one of the strongest growers, a regular bearer; very productive. Desirable trees to top work other sorts on.

Turley. A seedling of the Winesap which it somewhat resembles. Fruit rounded conical in shape, much larger than the Winesap, smoother skinned and deeper and richer in color; juicy and rich flavor. Tree very hardy and comes into bearing early. (Small 1 year trees only.)

Twenty Ounce. Very large, yellow striped with red; fine quality; good keeper. (Small 1 year trees only.)

Wolf River. Exceedingly large, handsome, bright yellow, skin mottled and blushed with deep red and broad stripes of bright carmine, fair quality, long keeper and excellent for cooking. (Small 1 year trees only.)

Winter Rambo. Medium size, greenish yellow color; thick skin. (Small 1 year trees only.)

Wagener. A superior large apple of beautiful bright red; fine texture, high flavor and excellent quality. Tree bears early, and is a reliable cropper.

Winter Banana. Extra large, golden yellow, and beautifully shaded with bright crimson red; firm, fine grained, rich, sub-acid. The name suggests the high flavor. Tree thrives nearly everywhere. Should be packed in bushels or boxes and sold soon after picking.

Yellow Bellflower. Large, yellow, good flavor.

CRAB APPLES

Hyslop. Deep crimson, large size, sub-acid and of good quality. Fine for all kinds of preserving, canning, etc., and good to eat fresh. Tree handsome.

Transcendent. Yellow striped with red; good for eating fresh and fine for preserving. Best of all crab apples. Tree large; quick grower.

PLUMS—APRICOTS—NECTARINES

Extra Good Fruits for the Home Orchard



Burbank Plum

PLUMS

Plums are easy to grow, few people realize how easy it is to grow luscious, edible plums. They thrive and bear readily on most any land that is not too wet. Below is a selected list of varieties chosen for their size, appearance and flavor of their fruit, as well as hardiness and strong growing characteristics of the trees.

We have some exceptionally good plum trees to offer this year, all budded on whole root seedlings. With our low prices it will pay you to set out a few.

BURBANK. Midseason, large cherry red with thin lilac bloom. Flesh amber-yellow with rich sugary flavor; high quality and very productive. A product of Burbank the master plant breeder. Should be in every orchard.

BRADSHAW. Midseason, large, dark violet-red, juicy, excellent flavor. One of the best for home orchards.

German Prune. Late, large, dark purple, sweet. Good for canning and drying.

Italian Prune (Fellenberg). Late, medium size, dark purple, delicious. Fine for drying.

RED JUNE. Very early, medium size, deep vermilion-red. The best early variety.

Shropshire Damson. Late, medium size, dark purple, the popular old fashioned Damson variety.

PRICES OF PLUMS—APRICOTS—NECTARINES

	1 to 9 trees	10 to 49 trees	50 or more trees
5 to 6 feet....	\$0.60	\$0.50	\$0.45
4 to 5 feet....	.50	.45	.40
3 to 4 feet....	.40	.35	.30
2 to 3 feet....	.35	.30	.25

Can be assorted Apples, Peaches, Cherries, Pears, Plums or other fruit trees.

APRICOTS

The apricot is one of the most delightfully luscious fruits grown, when eaten fully ripe and fresh from the tree. It is remarkable that such a rich and beautiful, golden, sweet fruit is not planted more, especially since it ripens just after the early cherries and before the best early peaches.

ALEXANDER. Early, prolific, freestone, orange with red blush; very juicy and sweet flavor.

A large prolific bearer that will withstand adverse weather conditions. This variety deserves greater popularity.

Early Golden. Small, pale orange in color, good flavor.

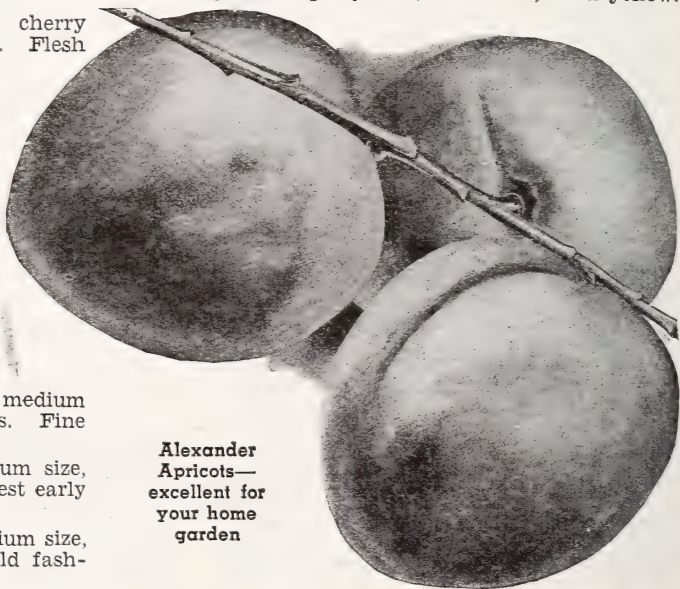
SUPERB. Medium size, light salmon-colored fruit. Hardy.

NECTARINES

There is a mistaken idea that the nectarine is a cross between the peach and something else, while it is really nothing more or less than a smooth skinned peach. The melting, juicy texture of the nectarine and its delicious flavor furnishes one of the most delightful fruits for eating during the summer. Plant a few trees in your home orchard this year.

Red Roman. Greenish yellow, red cheek, flesh golden.

Boston. Bright yellow, red cheek; flesh yellow.



Alexander Apricots—excellent for your home garden

HARRISON GROWN CHERRIES

Easier to Grow Than Any Other Tree Fruit



Large Montmorency—greatest sour cherry

SOUR CHERRIES

For Home and Market

A good cherry orchard is a very profitable investment, on account of the rapidly increasing demand for fruit juices, there is a great outlook for the cherry grower. Cherries are easy to grow and are very heavy annual bearers. We have a good supply of the leading varieties and they are priced in the reach of every grower.

MONTMORENCY (Large Montmorency). Midseason, sour, large, sound and red, slightly acid; flesh is very tender and unusually good quality, being by far the best variety of sour cherry grown. The best shipper of all sour, which with its wonderful carrying ability for long distance shipments, along with its handsome, appetizing appearance and large size, has made Montmorency in a class by itself, always commanding the highest market prices, either on the city markets or from the commercial canneries. Montmorency is famous in Wisconsin, Michigan, New York and West Virginia for canneries.

Dyehouse. Very early summer, ripening ten days prior to Early Richmond; medium size, sour, good keeper, fine quality, heavy bearer.

EARLY RICHMOND. Early summer. Very sour, medium size, bright red, being one of the most valuable and popular cherries, unsurpassed for cooking purposes. A good old variety which yields such marvelously heavy crops. Tree is the most hardy of all cherries, being uninjured by the coldest winters; slender in growth, with a roundish, spreading head, being a sure cropper and very productive.

English Morello. Midseason. Fruit sour, large elongated almost blackish red when fully ripe; very rich, acid, juicy and good.

May Duke. Very early. Sour, large, red, juicy, rich, its acidity pleasantly tempered to the advantage of sensitive teeth; superior quality, very productive.

PRICES OF HARRISONS' SOUR CHERRY TREES

	1 to 9 trees	10 to 49 trees	50 to 299 trees	300 or more trees
5 to 6 feet...	\$0.60	\$0.50	\$0.45	\$0.40
4 to 5 feet...	.50	.45	.40	.35
3 to 4 feet...	.40	.35	.30	.27
2 to 3 feet...	.35	.30	.25	.22
1 to 2 feet...	.30	.25	.22	.18

Can be assorted Apples, Peaches, Cherries, Pears, Plums or other fruit trees.

SWEET CHERRIES

What fruit is more pleasing than a sweet cherry? The ideal fruit to plant in the backyard. We have a good supply of first class trees in the following varieties:

Bing. Very large, dark brown, almost black; flesh firm, sweet, rich and delicious.

BLACK TARTARIAN. Very large, sweet, purplish black color, juicy, rich flavor, heavy bearer and most profitable sweet variety grown.

GOVERNOR WOOD. Large, light yellow, marked with red, sweet flavor.

Lambert. Extra large, sweet, jet black, high flavor, enormous crops, good shipper. Popular commercial variety.

NAPOLEON (Royal Anne). Large, pale yellow with bright red cheek, sweet excellent flavor, prolific bearer. Famous canning variety of the Pacific Coast.

Schmidt (Schmidt's Bigarreau). Large, sweet, deep black, tender, fine flavor.

Windsor. Large, sweet, almost black, fine quality. Valuable late variety.

YELLOW SPANISH. Large, sweet, yellow with red tinge. One of the most beautiful and popular of the light colored cherries. Heavy bearer.

PRICES OF HARRISONS' SWEET CHERRY TREES

	1 to 9 trees	10 to 49 trees	50 to 299 trees	300 or more trees
5 to 6 feet	.70	.60	.55	.50
4 to 5 feet	.60	.55	.50	.45
3 to 4 feet	.55	.50	.45	.40

Can be assorted Apples, Peaches, Cherries, Pears, Plums or other fruit trees.



Black Tartarian—outstanding sweet cherry

PEARS

Bear Large Crops of Delicious Fruit



Bartlett—best pear grown, always popular—most popular variety

BARTLETT

Finest Pear Grown

For home, for canning, for market, the best. A golden-colored pear, with a red cheek on most specimens. Bartlett mellows and is excellent for eating very early in the fall, yet when picked a week before it is ripe and properly stored, will keep till late. Flavor delicious and musky; flesh buttery, rich and juicy. One of the finest pears that grows to eat raw. A mingling of the flavor of Bartlett Pear and quince gives about the finest taste of any food this world's folks have.

Bears Early

Bartlett trees bear early, produce enormous crops, and are not nearly so subject to damage by insects and disease as some other sorts. The trees do especially well with high culture.

Fancy Fruits—Bring Highest Prices

Bartlett pears always sell on the market even when other sorts are not in great demand. The fruit is so handsome and appealing that it pays to pack it in fancy containers. Bushels or bushel boxes are best adapted. The fruit ought to be carefully sorted and graded, wrapped in tissue paper, and arranged in the container practically the same way that you pack apples. Pears are sometimes packed in peach carriers, and sell to good advantage. Plain fruit can be sold without wrapping, in small baskets or boxes.

SECKEL. A beautiful and delicious little pear, known everywhere and an old-time favorite; skin yellowish brown with deep brownish red cheek; flesh very fine grained, sweet; one of the richest and highest flavored pears grown. Tree rather dwarf, slow, but stout and erect, bears prolific crops.

Duchess (Duchess d'Angouleme). Very large, dull greenish yellow, spotted russet, flesh white, rich, buttery, juicy; excellent flavor. Tree somewhat dwarf, but a most dependable bearer. Profitable commercial pear.

KIEFFER. Fruit large to very large; skin yellow, with light vermilion cheek. Flesh brittle, very juicy. Most popular canning pear. Keeps well.

Worden-Seckel. A seedling of Seckel, equal in quality and productiveness, but decidedly superior in size, color and form.

Clapp's Favorite (Clapp). Very large, long, lemon-yellow with brown dots; richly flushed with russet-red on sunny side; fine texture, melting, buttery, juicy, with a rich, sweet, delicate, vinous flavor. Thrives where other varieties fail. Tree hardy and very productive.

PRICES OF HARRISONS' PEAR TREES

	1 to 9 trees	10 to 49 trees	50 or more trees
4 to 5 feet.....	\$0.75	\$0.65	\$0.60
3 to 4 feet.....	.60	.50	.45
2 to 3 feet.....	.50	.45	.35

Can be assorted Apples, Peaches, Cherries, Pears, Plums or other fruit trees.

QUINCES

The fruit is much sought after for canning, preserving and for jellies. It gives a delicious flavor to the apple, cooking in any manner. They should be planted ten to sixteen feet apart on deep, rich soil.

Champion. Late, very large fine quality, long keeper.

Orange. Late, large, bright yellow, excellent flavor, productive, and rarely fails to produce a crop. Best canning variety. Popular Wayne County (New York) strain.

4 to 5 ft. \$1.00 each, 10 for \$9.00

FIGS

Brown Turkey. Medium to large size; copper brown skin, flesh white. Not hardy North.

PRICES

2 to 3 feet..... 75c each, 10 for \$6.50

NUT TREES

Are Ornamental and Profitable

Paper Shell Pecan. Medium to large nuts; oblong, thin shell, rich flavor. Good grower. The best type pecan grown.

	1 to 9 trees	10 to 50 trees
2 to 3 feet.....	\$1.00	\$0.90

BLACK WALNUT (Juglans nigra). Rapid grower, spreading branches, large, delicious nuts, prolific bearer.

	1 to 9 trees	10 to 50 trees
6 to 8 feet.....	\$2.00	\$1.75

ENGLISH WALNUT (Juglans regia). Thin shelled, large, delicious nuts, producing heavy crops and demanding good prices. Most popular walnut grown.

	1 to 9 trees	10 to 50 trees
2 to 3 feet.....	\$1.25	\$1.10

OPPORTUNITY IN GRAPE GROWING

Grape vine production has long been a specialty with us and many of the largest and most profitable vineyards in the country were planted with vines grown in our nurseries. The soil on which our vines are grown is especially adapted to root growth. Our propagating stock is selected from healthy, vigorous, heavy bearing vines. This results in a vine that will give 100 per cent satisfaction in your vineyards.

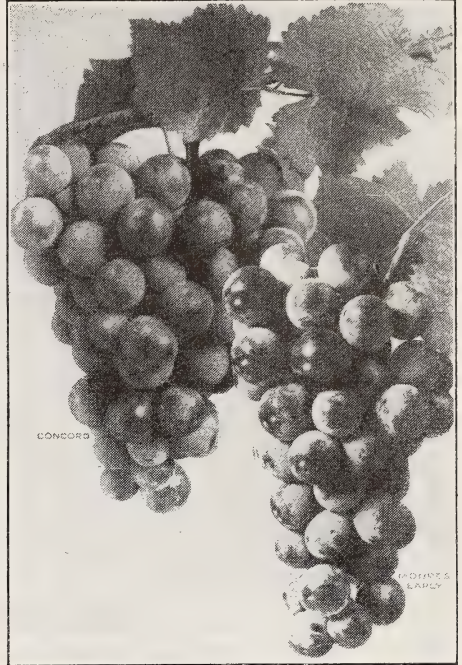
GRAPE VINES ARE PROFITABLE

The increasing demand for grape juice and other extracts makes this a big money crop for the farmers. Get your vineyard started now and be ready for the increased demand for grapes. For commercial vineyard Concord is by far the best.

CONCORD

MOST POPULAR GRAPE GROWN

It adapts itself to varying conditions and is grown in most every State in the Union. Large compact bunches of dark purplish black colored berries. The berries are covered with a rich bloom, skin is tender, but is sufficiently firm to carry to distant markets; flesh is juicy, sweet and tender.



Concord—Moore's Early

EXCEPTIONALLY HEAVY YIELDS

Concord is a very vigorous grower, hardy and very productive. It will live and grow and bear large crops of fine quality in almost every section of the United States. It ripens during midseason and is rated as the best money making commercial variety. For home use it is unsurpassed by any other variety.

OTHER VARIETIES

Agawam. Large, dark red or brown berries, thick skin, aromatic flavor. The vine is a strong rank grower, hardy and productive. Ripens with Concord.

Caco. A comparatively new grape that is outstanding in flavor. It is a healthy grower and bears abundantly in all sorts of climate and soil. The grapes are large in size and have a wine red over amber color. Ripens just before Concord. A very worthwhile variety to plant in the home garden.

Catawba. Large bunches of dark red berries, flesh pulpy with rich vinous flavor. Best quality for table use. Late.

Delaware. Bunches medium size, full of large berries, which are sweet and of extra good quality. Late.

Moore's Early. Extremely dark purple, almost black. Bunches medium size, but berries are large. Flavor and quality are very much like Concord but ripens much earlier.

NIAGARA. The best of the standard, light colored grapes. Bunches of large greenish white berries, changing to a pale yellow when fully ripe. Ripens about the same time as Concord or a little earlier.

Worden. Large bunches of black colored berries, very highly flavored and of large size, excellent for table use. Ripens five to ten days earlier than Concord.

PRICES OF HARRISON'S' QUALITY GRAPE VINES

	1 to 9 Grapes	10 to 49 Grapes	50 to 299 Grapes	300 to 599 Grapes	600 or more Grapes
AGAWAM 1 yr. No. 1.....	\$0.20	\$0.15	\$0.10	\$0.08	\$0.06
CACO 1 yr. No. 1.....	.35	.30	.25	.20	
CATAWBA 1 yr. No. 1.....	.20	.15	.10	.08	.06
CONCORD 1 yr. No. 1.....	.15	.12	.08	.06	.04
CONCORD 2 yr. No. 1.....	.20	.15	.10	.08	.06
DELAWARE 1 yr. No. 1.....	.20	.15	.10	.08	.07
MOORE'S EARLY 1 yr. No. 1.....	.20	.15	.10	.08	.06
NIAGARA 1 yr. No. 1.....	.15	.12	.09	.07	.05
WORDEN 1 yr. No. 1.....	.20	.15	.10	.08	.06

Our grapes are grown in a very fertile soil and our one year vines are larger than many two year vines. You will be well satisfied with the results of our vigorous one year grapes.

PLANT RASPBERRIES for Quick Profits



Latham

LATHAM

THE BEST RED RASPBERRY GROWN

Although this is a comparatively new variety it is entirely past the experimental stage, and we unhesitatingly give Latham to Harrison's customers as one of the very best Raspberries ever grown. This variety originated at the Minnesota State Fruit Breeding Farm and is being grown extensively in raspberry producing regions. The sensational yields of this variety have attracted the attention of growers everywhere, and everyone who has given it a trial are praising the many unusual features they have found in Latham. After thoroughly testing Latham we find it a remarkable variety in every respect and you will be both delighted and surprised after giving it a trial.

Tremendously Productive—Large Berries

Latham is a tall, vigorous grower, the canes are extra heavy, well able to support the tremendous load of fruit. The foliage is a healthy dark green, tough and leathery, highly resistant to insects. Latham ripens with Cuthbert and is immensely productive. Covers a longer fruiting season than any other Raspberry. The berries are beauties and will cause a sensation wherever they are shown. Many of them are over an inch in diameter and they hold this size to the end of the season. Color a dark rich red, quality of the best with full raspberry flavor.

OTHER RED RASPBERRIES

CHIEF. A new red raspberry that is destined to challenge the supremacy of Latham. This berry was originated by the Minnesota State Breeding Farm and has been given rigid tests over a wide area. It has proven hardy, resistant to disease, a heavy cropper of large excellent quality berries that will withstand shipments to market.

St. Regis. This variety is by far the best fall bearing type. There is a big demand for this fine fruit in the late summer and fall, and many growers make exceptionally large profits when grown for markets. However, if you do not grow them for market by all means plant a few bushes for home use and enjoy this delicious fruit all summer and fall. St. Regis produces a big crop of fruit during the regular season and then continues bearing all summer and fall on the new canes.

CUMBERLAND

MOST POPULAR BLACK RASPBERRY

Midseason to late. This is the most popular Blackcap at the present time, because of its great size, firmness, and productiveness. The fruit is the largest of the Raspberry family, and is of such handsome appearance that it is sure to bring the top prices on the market.

A Big Crop Every Year

Cumberland has never been known to fail to produce a big crop every year. This variety is perfectly hardy and tremendously productive, the bushes are vigorous, upright and healthy. Berries are glossy black in color, not equalled by any other variety in quality, flavor and appearance. It's good to eat and good to sell.

OTHER BLACK RASPBERRIES

NEW LOGAN. Is an outstanding new Black Raspberry variety; probably its two most noteworthy characteristics are that it ripens about a week earlier and is more resistant to the virus diseases. A very productive variety and fruit of good size and quality. If an early berry is desired it is one of the best. It does not crumble.

Plum Farmer. This variety is very popular with many growers on account of its earliness of ripening. Plum Farmer has the ability to mature its customary big yield in a very short time, generally 15 to 20 days. The plants are healthy, canes strong growing. Berries are produced in clusters and are large, well colored and of first quality. The fruit ripens a week earlier than Cumberland.



Cumberland Raspberries

HARRISONS' Dependable SMALL FRUITS

ELDORADO

The Heavy Yielding Blackberry

The heavy producing quality of Eldorado has placed it first among blackberries. Every good quality possessed by other blackberries is emphasized in Eldorado. Its berries are of enormous size, shiny jet black, sweet pleasing flavor.

For Home or Commercial Planting

It is valuable for all purposes, both home and commercial, being so firm that it will remain in good condition for three and four days, and can be sent to distant markets where it always commands the highest price. This variety is making big money for other growers and it will do the same for you.

OTHER BLACKBERRIES

ALFRED. A comparatively new blackberry that has given good results wherever planted. Immense sized berries practically coreless, heavy producers and very hardy. Worthy new commercial variety, ripens over a long period of time.

Early Harvest. Black, very early, excellent quality, good size, ripens 10 days to two weeks before any other. Favorite commercial berry in Middle Atlantic States.

Mersereau. Brilliant black, late, very large berries, extra good quality. Heavy producer, extra strong grower.

DEWBERRIES

LUCRETIA. Long, mammoth blackberries, recognized by horticulturists everywhere as the leading variety. Each plump berry is a morsel of delight. Incomparably better in every way than any blackberry you ever have seen or tasted. Lucretia is a very early bearer, ripening from a week to ten days before even the earliest blackberries. This, together with the fact that they are unquestionably the finest looking berry of their kind and of such big uniform size makes them topnotchers on price in any market. For real profits be sure to plant Lucretia. For home and commercial growing Lucretia is the only variety of importance.



Eldorado Blackberries

CURRANTS

WILDER. This variety is a big money-maker and is very easy to grow. The bunch and berries are very large, bright attractive red color, even when dead ripe. They are always in demand for making jellies, jams, preserves, etc. Every home garden should contain a dozen or more. Wilder is the best variety for either home or commercial planting.

GOOSEBERRIES

DOWNING. Large handsome, pale green of splendid quality for both cooking and table use. Bush is entirely hardy and very vigorous growing, enormously productive. Every garden should have a few gooseberry plants.

PRICES OF CURRANTS AND GOOSEBERRIES

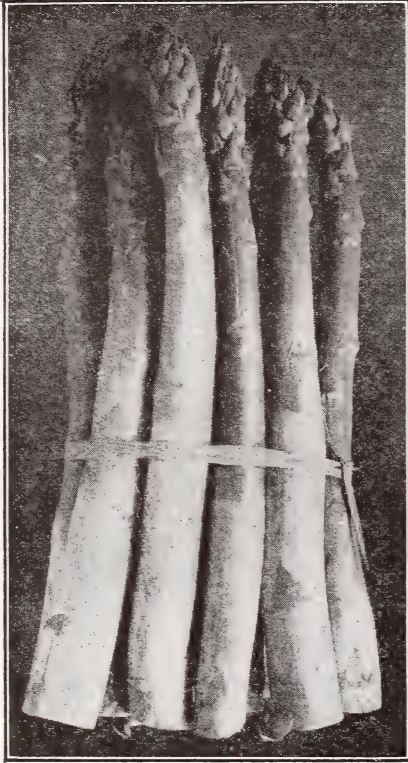
	No. 1 Plants
1 to 9 plants.....	\$0.25 each
10 to 49 plants.....	.20 each
50 or more plants.....	.15 each

PRICES OF SELECTED RASPBERRIES, BLACKBERRIES AND DEWBERRIES

	25 plants	50 plants	100 plants	250 plants	500 plants	1000 plants
RED RASPBERRIES						
CHIEF	\$1.00	\$1.75	\$3.00	\$5.50	\$10.00	\$19.00
LATHAM	1.00	1.75	3.00	5.50	10.00	19.00
ST. REGIS	1.10	1.85	3.15	5.75	10.50	20.00
BLACK RASPBERRIES						
CUMBERLAND85	1.40	2.50	4.75	8.50	16.00
NEW LOGAN90	1.50	2.60	5.00	9.00	17.00
PLUM FARMER90	1.50	2.60	5.00	9.00	17.00
BLACKBERRIES						
ALFRED	1.25	2.00	3.25	6.00	11.00	21.00
ELDORADO	1.10	1.85	3.15	5.75	10.50	20.00
EARLY HARVEST	1.25	2.00	3.25	6.00	11.00	21.00
MERSEREAU	1.25	2.00	3.25	6.00	11.00	21.00
DEWBERRIES						
LUCRETIA75	1.40	2.50	4.50	8.00	15.00

SMALL SHIPMENTS CAN GO BY PARCEL POST AT 10% ADDITIONAL

ASPARAGUS IS A PROFITABLE CROP



Mary Washington Asparagus—sensational new variety which has greatly outclassed all others

How to Grow Asparagus

Asparagus is easy to grow and should be in every garden because it thrives everywhere. Spring is the best time to plant as soon as the soil can be worked into good condition. Dig or plow a trench ten inches deep, place the plants in this trench and spread the roots, then cover with two inches of soil, when the new growth comes through fill in two more inches and continue until trench is full. For garden culture Asparagus may be planted eighteen inches apart each way, but for field culture plant two feet apart in the row with the rows four feet apart. Cultivate and hoe frequently.

Commercial Planters Prefer 1-Year Roots

The majority of commercial growers of asparagus prefer one-year roots, they cost less and are much easier to plant. By liberal application of fertilizer and manure heavy yields of asparagus can be had after one or two years.

PRICES OF GENUINE PEDIGREED MARY WASHINGTON ASPARAGUS ROOTS

	25	50	100	250	500	1000	5000
	plants	plants	plants	plants	plants	plants	plants
1-year No. 1.....	\$0.40	\$0.60	\$1.00	\$2.00	\$3.50	\$6.00	\$27.50
2-year No. 1.....	.60	.90	1.50	3.00	5.00	9.00	

SMALL SHIPMENTS CAN BE SENT BY PARCEL POST AT 10% ADDITIONAL

Being the first vegetable to come in the spring it always brings a high price on the markets. Stocks being delicious and very healthful, every garden should have a generous supply and when properly set and cared for will last a lifetime.

The Famous Mary Washington—Plant This Pedigreed Strain

There is no variety of Asparagus as good as Mary Washington and whether you are growing for home use only or for market you cannot afford to grow any other. This wonderful new Asparagus was developed and introduced by the U. S. Department of Agriculture and although it is just a recent introduction it has become famous the country over.

Rust Resistant—Profitable

Growers everywhere are discarding all other varieties in favor of the famous Mary Washington, because it is earlier, the stalks are larger, more tender and more productive than any other variety and more highly immune to rust, which means that one planting will produce profitable crops for many years.

Large—Early—Tender—Juicy

Asparagus buyers now demand Mary Washington and are willing to pay fancy prices to get it. The demand for Mary Washington is tremendous because when it is once eaten, no other variety will give satisfaction. The stalks are purplish green color, large, tender and juicy. A very rapid grower which means many cuttings.

Plant Harrisons' Pedigreed Roots

We have made a specialty of growing asparagus roots for over forty years and have supplied plants for some of the finest asparagus beds in the Country. The growing, handling and shipping of millions of asparagus roots has taught us many things and today we are in position to supply you with quality roots at low cost. All our crowns were grown direct from the original strain of seed.

We Recommend Two-Year Roots for Home Gardens

Experience has taught us that two-year roots give better results for garden planting than one-year roots. The two-year roots are much larger and have more stored food stored up which causes them to make more growth and yield larger crops of asparagus sooner than the one-year roots.

STRAWBERRIES PAY

Harrisons' Plants Give Big Yields of Fancy Fruits

DORSETT

Most Outstanding Early Strawberry
Ever Introduced

A product of the master plant breeders of the U. S. Dept. of Agriculture. Although only introduced a few years it has been widely planted in every strawberry producing region in the country and proven to be an outstanding variety. Ripens same time as Premier.

Large Fruit—Vigorous Grower
—Heavy Crops

Dorsett berries average large size, considerably larger than the Premier, in fact their size is comparative with Chesapeake which is the outstanding late berry. Plant growth is exceedingly vigorous being far more vigorous than most other varieties. Dorsett yields large crops of fancy light red berries, far superior to any other variety ever introduced.

Good Shipper—A Proven Profit Maker

Firm berries mean a good shipper and Dorsett has the ability to stand up when shipped long distances. This variety has a superb quality which is equalled only by Fairfax. Better quality means bigger markets. Already Dor-



DORSETT

sett is outselling other varieties on the city markets and soon as the buying public becomes better acquainted with its qualities other varieties will go wanting for a buyer.

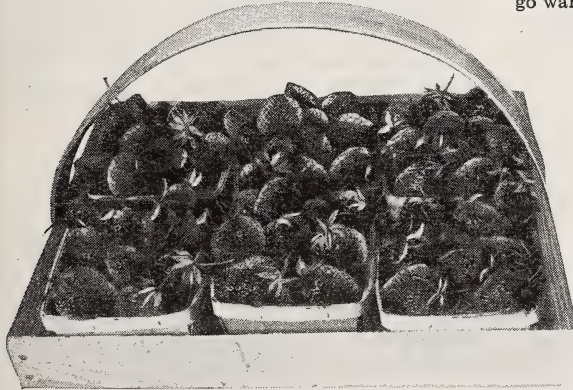
PREMIER

King of the Early Berries

Too well known to need much description. The standard early berry by which all other varieties are judged. Holds all records for Big Crops and Big Profits. Premier has filled more crates, made more dollars and brought joy to more strawberry growers than any other variety ever grown.

Adapted to All Soils—Heavy Yields

It thrives on most any type of soil and is a rampant plant maker. Premier fruits extra early when berries are selling at a high price. It is a big yielder of big bright red berries of fine flavor. For home garden, local market, or for shipping moderate distances it has out-classed all the older varieties.



PREMIER

PRICES OF HARRISSONS' STRAWBERRY PLANTS

	25 plants	50 plants	100 plants	250 plants	500 plants	1000 plants	5000 plants
EARLY							
Blakemore.....	\$0.25	\$0.40	\$0.65	1.30	2.10	4.00	17.50
DORSETT30	.45	.70	1.40	2.30	4.50	20.00
FAIRFAX30	.45	.75	1.50	2.60	5.00	22.50
PREMIER25	.40	.65	1.30	2.10	4.00	17.50
Sen. Dunlap.....	.25	.40	.65	1.30	2.10	4.00	17.50
MIDSEASON							
Aberdeen.....	.25	.40	.65	1.30	2.10	4.00	17.50
BIG JOE25	.40	.65	1.30	2.10	4.00	17.50
CATSKILL40	.60	1.00	2.00	3.60	7.00	32.50
LATE							
Aroma.....	.25	.40	.65	1.30	2.10	4.00	17.50
CHESAPEAKE30	.45	.75	1.50	2.60	5.00	22.50
Gandy.....	.25	.40	.65	1.30	2.10	4.00	17.50
Lupton.....	.25	.40	.65	1.30	2.10	4.00	17.50
Wm. Belt.....	.25	.40	.70	1.40	2.30	4.50	20.00
EVERBEARING							
GEM40	.60	1.10	2.30	3.90	7.50	32.50
MASTODON40	.60	1.00	2.00	3.60	7.00	30.00

No cash discount on Strawberry Plants. Small shipments can be sent by parcel post at 10% additional.



FAIRFAX

BIG JOE

Ideal Midseason Berry

It is a worthy companion for Dorsett, Fairfax and Premier, the best early berries, and Chesapeake the best late. When grown for local or nearby markets where the shipping distance is not too great, Big Joe is one of the best moneymakers.

Large Yield—Fancy Fruit

Big Joe is a heavy producer of large brilliant red berries of extra fine flavor and is firm enough to withstand long shipments. The plants are good growers and heavy yielders. This variety succeeds on all types of soil but does extra well when given good care and fertility. Be sure to include some Big Joe in your planting this spring.

CATSKILL

It Climaxes All Midseason Varieties

This remarkable new variety is a scientific cross between Premier and Marshall originated by the New York Experiment Station. During the past few years it has been thoroughly tested in most of the eastern states and growers are highly enthusiastic about it. It ranks with Premier in regards to its adaptability over a wide area.

Vigorous Grower—Highly Productive

Catskill is a very vigorous grower and produces well matted beds of healthy plants. In production of berries it ranks at the top of the list. One grower in our section last year picked over 32,000 quarts off three acres. With yields like this it is sure that the grower will make large profits.

FAIRFAX

Dependable New Early Variety

Originated by the United States Department of Agriculture and is destined to become a favorite berry after it is better known. Those who have had the privilege of eating this berry are wildly enthusiastic about it and say its eating qualities are far superior to any other strawberry. Ripens same time as Premier.

Produces Bumper Crops

Fairfax is a heavy plant maker and produces bumper crops of large berries. It is one of the most productive strawberries grown and is establishing a record-breaking sale in the markets.

Supreme In Quality

Color is a deep full red, its rich sweet flavor brings buyers back for more. Fairfax berries are exceptionally firm, making it an ideal shipper. Superior to all for home use, equal to any for commercial planting.

OTHER EARLY VARIETIES

Blakemore. The new early shipping berry that was developed by the United States Department of Agriculture. It has been thoroughly tested in nearly all the strawberry producing centers and is rated as the best new berry in many years. Blakemore is a scientific cross between Premier and Missionary, it makes an even more vigorous growth than Missionary. We believe it is the coming early berry to plant in those sections which are distant from the markets.

Senator Dunlap. Big, uniformly shaped berries of handsome dark red color. Suitable for home use or market.

OTHER MIDSEASON VARIETIES

Aberdeen. Midseason. A strong, vigorous grower, under favorable conditions a very heavy yielder. Fruit is only of fair quality, being somewhat acid. Berry is larger than average, and fruit is light in color which makes up a very attractive crate.

Large Attractive Berries

The berries of the Catskill are large to very large size; they average just as large as the well known Big Joe, but are produced in much larger quantity. The color is somewhat lighter than Big Joe, but the dark green cap makes it more attractive in its package. The quality of the berry is very good, much superior to other sorts in its season.

Large Profit Maker

We advise every grower to try out the Catskill and see just how it performs on his own particular soil. We believe this new variety will replace all the older midseason varieties after it gets better known. With its tremendous yield of fancy fruits the grower who plants Catskill will make a good profit from his berry crop.

For prices of plants see page 29

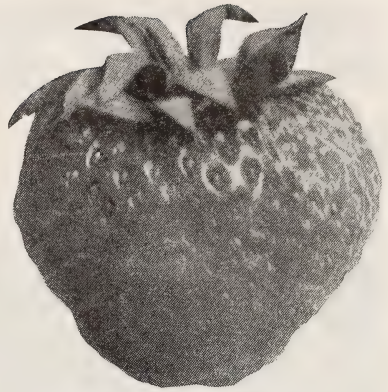
CHESAPEAKE

The Favorite Late Berry

All growers seem to make money on this variety, especially when grown under conditions suitable for it. Chesapeake grows to perfection on most any highly manured soil.

Very Large Berries of Supreme Quality

It is a good producer of very large berries that hold their shape well until the end of the season. It does not yield as many berries per acre as some of the early varieties but the size and quality of its fruit enables it to sell for a much better price which offsets this disadvantage. The berries are firm enough to ship to distant markets and to arrive in first class condition. An exceedingly valuable commercial berry but equally adapted for home planting.



CHESAPEAKE—greatest money maker for a late variety

MASTODON

The Supreme Everbearer

No other everbearing strawberry grown is as good as Mastodon. This variety is a proven success and has fruited berries continuously throughout the season for hundreds of thousands of strawberry lovers.

Loads of Big Berries in Three Months

Unlike the other varieties Mastodon begins to bear big luscious berries three months after planting and bears three big crops in eighteen months. Customers have reported yields as high as three quarts per plant the first fall.

Why Wait A Whole Year

Plant Mastodon this spring and grow your own berries this summer and fall instead of buying them. If you have more than you can use they are easily disposed of in the nearby community where they will always bring top prices.

LATE STRAWBERRIES

Aroma. Clean, healthy, hardy growing plants, does well on most soils. Fruit large, deep red, excellent quality for home use or market.

Gandy. The favorite late berry in many localities. Large size and handsome appearance make it command highest prices on the market. Not quite as productive as some of the other berries, but its appearance and quality offset this. Good for either home use or commercial plantings.

LUPTON. A good late variety, large, handsome, attractive berry commanding good prices on the markets. It is similar to Chesapeake in many ways and is not quite so particular about its soil requirements. A favorite in many localities.

Wm. Belt. An extra good quality late berry for home use or market. Its flavor is extraordinarily good, the berries are medium to large size, ideal for home use.



MASTODON EVERBEARER

GEM

The New Everbearing Sensation

This new variety was introduced a couple of seasons ago and has been planted in almost every section in the East. It is Mastodon's great rival and will yield more in certain localities. Gem is a vigorous grower and its berries are large in size.

Quick Profits With Gem

Gem will start to bear the first season planted and will bear large crops until frost. These berries bring the highest prices in the markets or on a roadside stand. There is a great opportunity for making money by planting Gem. Get your patch started this season, they will give you enough berries for your own family and some to sell to your neighbors or ship to the city markets.

For prices of plants see page 29

NOTE—All the varieties of strawberries which we offer are self-fruitful and do not require other varieties to pollinate them.

Improve the Appearance of Your Home Grounds With HARRISON GROWN ORNAMENTALS



A well planted home

Quality Stock At Lowest Prices

With one of the finest growing seasons and prices lower than in years, landscape architects and garden lovers are taking advantage of the "America Beautiful" spirit by purchasing their planting material now.

As in all buying, it pays to know what you are getting in buying nursery stock—you can't afford to take chances. When you buy from Harrison's Nurseries you know that a strong, established organization with over fifty successful years of experience is behind every transaction. Harrison's stand back of the quality of every plant they send out.

Every home that is built needs a finishing touch in the way of flowers, shrubs or trees. These give the final touch to the outside appearance of the grounds surrounding the home.

Nursery Stock A Good Investment

Is there any other thing about your home that grows in value, interest and beauty each succeeding year like trees and plants? Most other things are wearing out with use and age and constantly depreciating in value. That is why we say our nursery stock is a permanent and accumulative investment. What is that shade tree that cost you two or three dollars a few years ago now worth to your place? If you are contemplating a planting, not for years have you had such an unusual opportunity to secure plants of Harrison's quality at such low prices.

HARRISON'S EVERGREENS

Truly the aristocrats of freedom, lending year around beauty to your home surroundings. We have an unusual assortment this season of evergreens in green, golden and silver, which make the most attractive combination for planting as a foundation planting in groups or as specimen trees.

Evergreens Reasonably Priced

You pay no more for Harrison's super-grade Evergreens, all of which are selected individually as to shape and foliage, than you do for second grade stock, that is dug up in the nursery row, regardless of the development.

All our Evergreens are balled and burlapped in the fertile soil in which they are grown, thereby assuring healthy and vigorous growth for all time.

Freight is the most satisfactory way to ship Evergreens.

ARBOR-VITAE

ELLWANGER'S OR TOM THUMB ARBORVITAE (*Thuja occidentalis ellwangeriana*). A low, broad pyramidal form of evergreen with slender branches and feathery foliage. 12 to 15 in., 40c each; 15 to 18 in., 55c each; 18 to 21 in., 75c each; 2 to 2½ ft., \$1.50 each.

GEORGE PEABODY ARBORVITAE (*Thuja occidentalis lutea*). A beautiful variety, the gold marking diffusing more deeply into the foliage than in any other tall growing evergreens. Fine as a specimen or to produce color contrast with other evergreens. 1 to 1½ ft., 50c each; 1½ to 2 ft., 70c each; 2 to 3 ft., \$1.00 each; 3 to 4 ft., \$1.50 each.



Make your home grounds more attractive

ARBORVITAE

AMERICAN ARBORVITAE (*Thuja occidentalis*). Probably no evergreen is more admired than the American Arborvitae with its beautifully carved foliage of deep green, its graceful, refined habits and its artistic shape. These features make it indispensable in the home foundation groups and in the lawn and garden plantings. This evergreen is easy to transplant and grows under adverse weather conditions. 15 to 18 in., 40c each; 1½ to 2 ft., 60c each; 2 to 3 ft., 80c each; 3 to 4 ft., \$1.15 each; 4 to 5 ft., \$2.00 each; 5 to 6 ft., \$3.00 each; 6 to 8 ft., \$5.00 each.

BERCKMAN'S GOLDEN ARBORVITAE (*Biota aurea nana*). This evergreen is the best golden form grown. The clear, golden yellow color is very rich and striking and makes a delightful contrast when planted with other evergreens. It is a dwarf growing form and is very ornamental when planted in a foundation group. 12 to 15 in., 50c each; 15 to 18 in., 75c each; 18 to 21 in., \$1.00 each; 21 to 24 in., \$1.25 each.

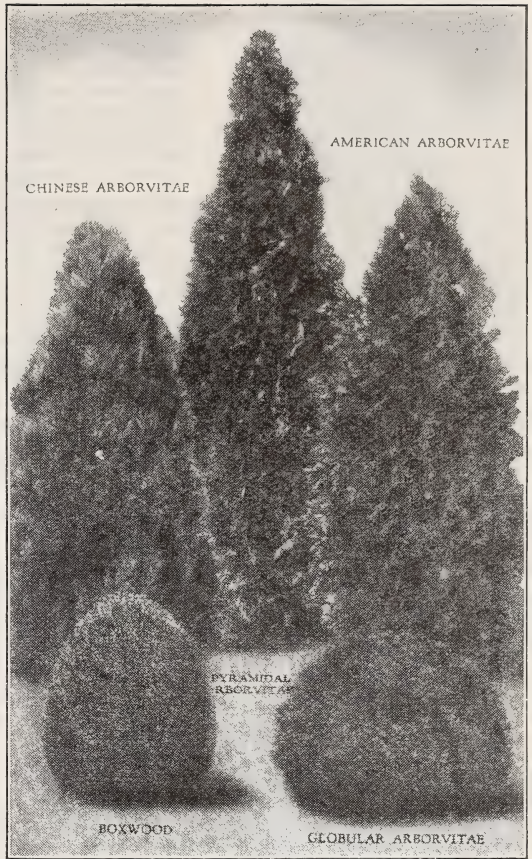
CHINESE ARBORVITAE (*Biota orientalis*). An attractive, upright evergreen, rapid grower with bright green foliage. When young it is compact and rather pyramidal in form, as it becomes older it assumes the habit of a rather loose growing Red Cedar. Very useful to use for screening purposes because of its rapid growth. 1½ to 2 ft., 50c each; 2 to 3 ft., 75c each; 3 to 4 ft., \$1.15 each; 4 to 5 ft., \$1.75 each; 5 to 6 ft., \$2.75 each; 6 to 8 ft., \$4.00 each.

COMPACT GLOBULAR ARBORVITAE (*Thuja occidentalis compacta*). Natural compact, globe shaped, dark green foliage. The ideal low-growing plant for massing against the taller evergreens in foundation plantings. 12 to 15 in., 40c each; 15 to 18 in., 55c each; 18 to 21 in., 75c each; 21 to 24 in., \$1.10 each; 2 to 2½ ft., \$1.50 each.

GOLDSPIRE ARBORVITAE (*Thuja orientalis aurea conspicua*). Conical plant of fast growth; attractive golden hue, becoming bronze tipped in winter. 2 to 3 ft., \$1.00 each; 3 to 4 ft., \$1.50 each; 4 to 5 ft., \$2.25 each.

LEE GOLDEN ARBORVITAE (*Thuja occidentalis elegantissima*). Compact, pyramidal plant; golden green foliage; dependable, hardy and vigorous in growth. 12 to 18 inch, 50c each; 1½ to 2 ft., 60c each; 2 to 3 ft., 80c each; 3 to 4 ft., \$1.25 each; 4 to 5 ft., \$2.00 each.

PYRAMIDAL ARBORVITAE (*Thuja occidentalis pyramidalis*). A really beautiful evergreen that should be included in every planting. It grows tall and narrow, requires no trimming and retains its bright green color throughout the whole year. A pair of them placed at the entrance or at the corner of a home makes a superb showing. Our Pyramidal Arborvitae are grown with extreme care and each one is a specimen. 15 to 18 in., 40c each; 1½ to 2 ft., 60c each; 2 to 3 ft., 80c each; 3 to 4 ft., \$1.25 each; 4 to 5 ft., \$2.00 each.



SIBERIAN ARBORVITAE (*Thuja occidentalis siberica*). Dark green color, broadly pyramidal, very hardy and holds green color during the winter. 2 to 2½ ft., \$1.50 each.

CEDARS

INDIAN CEDAR (*Cedrus deodara*). Feathery blue-green foliage, graceful drooping branches, tall growing. Ideal to use as a specimen in the corners of lawns. 1½ to 2 ft., \$1.00 each; 2 to 3 ft., \$1.50 each; 3 to 4 ft., \$2.25 each; 4 to 5 ft., \$3.25 each. Write for prices on larger sizes.

JAPANESE CEDAR (*Cryptomeria japonica lobbii*). A very picturesque looking evergreen; grows tall and narrow and is very rapid growing. Everyone who sees this variety is very enthusiastic about it. 2 to 3 ft., \$2.50 each; 3 to 4 ft., \$3.50 each; 4 to 5 ft., \$4.50 each; 5 to 6 ft., \$5.50 each.

HEMLOCK

CANADIAN HEMLOCK (*Tsuga canadensis*). An elegant pyramidal tree with drooping branches and delicate dark green foliage. Excellent for lawn purposes, also suited for hedges. 3 to 4 ft., \$3.00 each; 4 to 5 ft., \$4.00 each; 5 to 6 ft., \$5.50 each.

If Interested in Large Quantities or Larger Sizes, Write Us for Prices.



Irish Juniper

JUNIPERS

ANDORRA JUNIPER (*Juniperus communis depressa plumosa*). A low-spreading Juniper of an unusually good color. During spring and summer it is a bright green, turning to a rich purple-bronze color in fall and winter. Unusually good for planting along slopes and places where grass will not grow. 15 to 18 in. spread, 75c each; 1½ to 2 ft. spread, \$1.00 each; 2 to 2½ ft. spread, \$1.50 each.

GOLDEN SPREADING JUNIPER (*Juniperus communis aurea*). Low-spreading habit, bright golden foliage in the spring and summer. Useful for adding color in a foundation planting. 15 to 18 in. spread, 75c each; 1½ to 2 ft. spread, \$1.00 each; 2 to 2½ ft. spread, \$1.50 each.

IRISH JUNIPER (*Juniperus communis hibernica*). Forms a narrow and dense column, compact, bluish green foliage. Most attractive when planted around the foundation of a home, at corners and entrances. Widely used in formal gardens. 1 to 1½ ft., 35c each; 1½ to 2 ft., 55c each; 2 to 3 ft., 75c each; 3 to 4 ft., \$1.15 each; 4 to 5 ft., \$1.75 each; 5 to 6 ft., \$2.75 each.

PFITZER'S JUNIPER (*Juniperus chinensis pfitzeriana*). The most popular of all spreading evergreens. Its peculiarly graceful, distinctive manner, plus an unusually hardy nature, makes it particularly fascinating and desirable for foundation planting. 15 to 18 in. spread, 75c each; 1½ to 2 ft. spread, \$1.00 each; 2 to 2½ ft. spread, \$1.50 each.

SAVIN JUNIPER (*Juniperus sabina*). Handsome, dark green foliage, spreading branches forming irregular vase-shaped bush. One of the most attractive spreading evergreens grown. The ideal plant to use for low foundation plantings. Can be kept trimmed to any desired height. 15 to 18 in. spread, 75c each; 1½ to 2 ft. spread, \$1.00 each; 2 to 2½ ft. spread, \$1.50 each.

SPINY GREEK JUNIPER (*Juniperus excelsa stricta*). A tall grower of upright columnar habit and bluish green foliage. The growth is so slow that the tree is well adapted for foundation plantings and other situations requiring dwarf trees. 12 to 15 in., 50c each; 15 to 18 in., 75c each; 18 to 24 in., \$1.10 each; 2 to 3 ft., \$1.50 each.

SWEDISH JUNIPER (*Juniperus communis suecica*). Tall, columnar habit, dense fairly broad foliage, drooping tips. Resembles the Irish Juniper, but is somewhat slower growing and lighter in color. 15 to 18 in., 40c each; 1½ to 2 ft., 60c each; 2 to 3 ft., 80c each; 3 to 4 ft., \$1.25 each.

COLUMN CHINESE JUNIPER (*Juniperus chinensis columnaris*). Dense growing pyramidal type; deep blue green color both winter and summer. Very hardy in any location. 1 to 1½ ft., 75c each; 1½ to 2 ft., \$1.25 each.

VIRGINIA BLUE JUNIPER. Broadly conical form and beautiful glaucous blue foliage make it one of the choicest evergreens. 2 to 3 ft., \$1.50 each; 3 to 4 ft., \$2.25 each.

CANNART JUNIPER (*Juniperus virginiana cannartii*). Handsome, compact columnar habit, with rich dark green foliage and bluish, bloomy fruits. 1 to 1½ ft., 75c each; 1½ to 2 ft., \$1.25 each.

GOLDTIP JUNIPER (*Juniperus virginiana elegantissima*). Columnar, with side shoots curving over effectively, the tips bright yellow, turning bronze in winter. 1 to 1½ ft., 75c each; 1½ to 2 ft., \$1.25 each.

VARIEGATED SPINY GREEK JUNIPER. Identical with the Spiny Greek Juniper in color and shape except this variety has patches of golden colored twigs, very ornamental and attractive. 12 to 15 in., 50c each; 15 to 18 in., 75c each; 18 to 24 in., \$1.10 each; 2 to 3 ft., \$1.50 each.

SPRUCES

BLACK HILLS SPRUCE (*Picea canadensis albertiana*). Of conical shape and symmetrical outline; foliage bluish green. A Western variety, compact and hardy, rapidly winning favor in the East. 12 to 15 in., 60c each.

COLORADO BLUE SPRUCE (*Picea pungens glauca*). Foliage blue and sage-green, that distinct color which is so rare in the East. As a specimen tree on the lawn or planted in groups in front of darker colored evergreens, the Blue Spruce is at its best. No planting of evergreens can be effective without this splendid variety. 15 to 18 in., \$2.00 each.

KOSTER'S BLUE SPRUCE (*Picea pungens glauca kosteri*). Foliage intense silvery blue and very dense on the branch ends. 12 to 15 in., \$3.00 ea.; 15 to 18 in., \$4.25 ea.; 18 to 24 in., \$6.00 ea.

NORWAY SPRUCE (*Picea excelsa*). A lofty, noble tree of open, pyramidal habit. Very popular and effective in evergreen groups and one of the best evergreens for hedges. Its color is normally a good, rich, dark green but when the new spring growth lights up the branches, the tips are silver-blue. 15 to 18 in., 40c ea.; 1½ to 2 ft., 60c ea.; 2 to 3 ft., 80c ea.; 3 to 4 ft., \$1.25 ea.; 4 to 5 ft., \$2.00 ea.; 5 to 6 ft., \$3.00 each.

SUPER QUALITY EVERGREENS

Harrisons' evergreens are the finest that can be produced, each one is a specimen plant and adds immediate beauty to your planting.

RETINOSPORA— CHAMAECYPARIS

JAPANESE PLUME-LIKE RETINOSPORA (*Retinospora plumosa*). A handsome evergreen from Japan, with feathery, light green foliage, more beautiful than a fern. Excellent for foundation plantings; can be kept pruned to any desired height. 15 to 18 in., 50c each; 1½ to 2 ft., 75c each; 2 to 3 ft., \$1.00 each; 3 to 4 ft., \$1.50 each; 4 to 5 ft., \$2.50 each.

JAPANESE GOLDEN PLUME-LIKE RETINOSPORA (*Retinospora plumosa aurea*). Golden yellow color throughout the summer compact habit of growth, similar to the Japanese Plume-like Retinospora except in color. Makes an ideal background plant in foundation planting. 15 to 18 in., 50c each; 1½ to 2 ft., 75c each; 2 to 3 ft., \$1.00 each; 3 to 4 ft., \$1.50 each; 4 to 5 ft., \$2.50 each.

JAPANESE SAWARA RETINOSPORA (*Retinospora pisifera*). Light green, lacy-like foliage, bluish beneath. Quick grower, loosely pyramidal. 1½ to 2 ft., 75c each; 2 to 3 ft., \$1.00 each; 3 to 4 ft., \$1.50 each.

JAPANESE GOLDEN SAWARA RETINOSPORA (*Retinospora pisifera aurea*). Habit of growth like the Sawara Retinospora but its color is bright golden. 15 to 18 in., 50c each; 1½ to 2 ft., 75c each; 2 to 3 ft., \$1.00 each; 3 to 4 ft., \$1.50 each.

JAPANESE HINOKI RETINOSPORA (*Retinospora obtusa*). Compact; pyramidal form, slightly drooping tips, beautiful dark green, flat foliage. 15 to 18 in., 50c each; 1½ to 2 ft., 75c each; 2 to 3 ft., \$1.00 each; 3 to 4 ft., \$1.50 each; 4 to 5 ft., \$2.50 each.

JAPANESE SULPHUR-TINTED RETINOSPORA (*Retinospora plumosa sulphurea*). Light yellow tips with feathery, silver-blue background. Dwarf grower, suitable for planting in front of taller evergreens. 1 to 1½ ft. spread, \$1.00 each.

JAPANESE THREAD-LIKE RETINOSPORA (*Retinospora filifera*). Has long, stringy, droopy branches, bright green foliage; slow grower, very attractive. 1 to 1½ ft., 50c each; 1½ to 2 ft., 75c each.

VEITCH'S JAPANESE RETINOSPORA (*Retinospora squarrosa veitchii*). Foliage silvery blue, feathery and dense, giving a soft woolly appearance. Broad pyramidal outline, can be kept to any height by trimming. One of the best Retinosporas. 15 to 18 in., 50c each; 1½ to 2 ft., 75c each.

PINES

MUGHO DWARF PINE (*Pinus montana mughus*).

A picturesque dwarf pine that forms a bushy, compact ball growing as broad as it does tall, seldom reaching a height of four feet. Foliage is dark, rich green; needles long and stiff, 12 to 18 in. spread, 75c each; 18 to 24 in. spread, \$1.00 each.

SCOTCH PINE (*Pinus sylvestris*). Of rapid growth with strong branches and short stiff bluish green foliage. Develops into a tall, round-headed tree.



Upright English Yew

YEWS—TAXUS

IRISH YEW (*Taxus baccata hibernica*). This evergreen is the aristocratic member of the yew family. It grows tall and narrow with stout, crowded branches and spirally arranged leaves which are dark green in color. Fortunately, we have some specimen plants in our nurseries from which we were able to propagate. 12 to 15 in., \$1.00 each; 15 to 18 in., \$1.55 each; 18 to 21 in., \$1.80 each; 21 to 24 in., \$2.25 each.

JAPANESE SPREADING YEW (*Taxus cuspidata*). The beautiful Yew of moderate bushy growth, the upright spreading branches densely clothed with short leaves of dull green. Hardest of all Yews, grows in semi-shady locations. 12 to 15 in. spread, 75c each; 15 to 18 in. spread, \$1.25 each; 1½ to 2 ft. spread, \$2.00 each.

SPREADING ENGLISH YEW (*Taxus baccata repandens*). Low spreading dwarf grower, with dark, glossy green foliage. 12 to 15 in. spread, 75c each; 15 to 18 in. spread, \$1.25 each; 1½ to 2 ft. spread, \$2.00 each.

UPRIGHT ENGLISH YEW (*Taxus baccata capitata*). Upright grower, dense, green foliage, makes a most attractive specimen plant when fully matured. 12 to 15 in., 75c each; 15 to 18 in., \$1.25 each; 1½ to 2 ft., \$2.00 each.



Plume-like Retinospora

BALLED IN RICH SOIL

Harrisons' evergreens are grown wide apart in rich heavy soil. For shipment we carefully dig the evergreens with a large ball of earth and encase same in burlap. This method of digging prevents any of the roots from drying out and our evergreens will live and grow satisfactorily when planted on your grounds.

HARRISONS' MAGNIFICENT AZALEAS

Most Showy Spring Blooming Plants



Azalea hinodegiri

HOLLY

AMERICAN HOLLY (*Ilex opaca*). The Christmas Holly. Its bright green, spiny leaves and brilliant red berries make it one of our handsomest plants. We offer the Howard strain grown from grafts. 12 to 18 inch, \$1.00 each; 18 to 24 inch, \$1.50 each; 2 to 3 feet, \$2.00 each.

JAPANESE HOLLY (*Ilex crenata*). A much branched evergreen shrub with oval crenate leaves. Clusters of black berries form during the fall. Makes a splendid specimen plant. We offer two types small or large leaf. 12 to 15 inch, 75c each; 15 to 18 inch, \$1.00 each; 18 to 24 inch, \$1.50 each.

BOXWOOD

Buxus Sempervirens

America's Favorite Evergreen Shrub

Possibly no other evergreen shrub has been so much used for marking the boundaries of formal gardens, to outline flower beds, for low hedges, and for other ornamental purposes. The plants will adapt themselves to almost any situation and climate, and by judicious pruning can be trained to many forms.

Our Boxwood has deep glossy green leaves. They are dense, compact specimens, having been sheared many times. The leaves on this variety are small and resemble the dwarf English Boxwood. This variety is a dwarf grower, but it makes much faster growth than the English Boxwood. For those who want large Boxwood plants in a few years this is the best variety to plant.

	1 to 9 plants	10 to 49 plants	50 to 300 plants
8 to 10 in.	\$0.40	\$0.35	\$0.30 each
10 to 12 in.50	.45	.40 each
12 to 15 in.60	.55	.50 each
15 to 18 in.75	.70	.65 each
18 to 21 in.	1.00	.90	.85 each
21 to 24 in.	1.30	1.20	1.15 each
24 to 30 in.	1.75	1.50	1.40 each

AZALEA HINODEGIRI

Plant *Azalea hinodegiri* this spring and a few weeks after planting it will be a blaze of color. No other hardy evergreen plant can compare with the color produced by this remarkable variety. *Azalea hinodegiri* will be a rare delight to your friends.

Deep Carmine Pink Blooms

Everyone who sees this superb variety is highly enthusiastic about its color, in comparison with other *Azalea* varieties it is far superior. In addition to its superb bloom it also has evergreen foliage which makes it so attractive when it is out of bloom.

More Blooms Each Season

Azalea hinodegiri is a dwarf grower and is ideally suited for planting around the foundation of homes or adding color in front of evergreens. As each season goes by the plant gets larger and larger. More than one thousand flowers have been counted on a single plant.

	1 to 9 plants	10 to 49 plants
6 to 8 inch spread B & B....	\$0.40	\$0.30
8 to 10 inch spread B & B....	.60	.50
10 to 12 inch spread B & B....	.80	.70
12 to 15 inch spread B & B....	1.00	.90
15 to 18 inch spread B & B....	1.40	1.25

Azalea amoena. A dense, dwarf-growing shrub with slender branches and semi-double flowers of a bright, rosy purple color. Blooms in early spring and retains its foliage all year. 6 to 8 in. spread, 35c each; 8 to 10 in. spread, 45c each; 10 to 12 in. spread, 60c each; 12 to 15 in. spread, 80c each; 15 to 18 in., \$1.25 each; 18 to 24 in., \$1.75 each.

Azalea Macrantha. Large single salmon red flowers. Blooms very late in the season. A very compact, flat, quick grower with dark green, glossy leaves. 6 to 8 in. spread, 40c each.



Boxwood

DWARF ENGLISH BOXWOOD

(*BUXUS SEMPERVIRENS SUFFRUTICOSA*)

A widely known and popular form of dwarf boxwood. It has small deep green dense leaves which hold their bright color throughout the winter months. Suitable for very low hedges and edgings, can be trimmed in various forms.

Easy to Grow

Dwarf English Boxwood is very easy to grow and will thrive in most every type of soil. After this plant once becomes established it does not require any particular attention. It is practically immune from all diseases and insects. Can be planted in the full sunlight as well as semi-shady locations.

Large Specimen Plants Sell at High Prices

Dwarf English Boxwood has been called the "Century" plant by many people due to its ability to live and grow for a hundred years or more. A few years ago large plants were eagerly purchased by estate owners at fabulous prices, some plants selling for hundreds of dollars. We have some extra good plants to offer this season and we believe it would be a good investment to plant out a few on your home grounds.

	1 to 9 plants	10 to 49 plants	50 or more plants
4 to 6 inch....	\$0.30	\$0.25	\$0.20
6 to 8 inch....	.45	.40	.35
8 to 10 inch....	.60	.55	.50
10 to 12 inch....	.80	.75	.70
12 to 15 inch....	1.10	1.05	1.00

Bush Arbutus (*Abelia grandiflora*). One of our most beautiful, popular and satisfactory Broad-Leaved Evergreens. The graceful, drooping stems and branches are covered with dark, glossy leaves, which in winter assume a metallic sheen. From the middle of June until frost, this plant produces an immense quantity of tubular-shaped white flowers tinged with pink, about an inch long, which are borne in clusters. For



Bush Arbutus (*Abelia grandiflora*)



Plant some Dwarf English Boxwood as an investment

single specimen, for groups or for a hedge, we cannot too strongly recommend this plant. Grows satisfactorily under shady locations. 1 to 1½ ft., 40c each; 1½ to 2 ft., 55c each; 2 to 3 ft., 75c each.

JAPANESE EUONYMUS (*Euonymus japonica*). Columnar upright grower, glossy evergreen foliage. Thrives under adverse soil conditions. Ideal for planting at seashores. We offer two kinds, green leaves or leaves variegated with a golden color. 12 to 18 inch, 35c each; 18 to 24 inch, 50c each.

LIGUSTRUM LUCIDUM. Large, thick, shiny dark green leaves; white flowers, black berries in winter. Will thrive in shady locations. 15 to 18 inch, 50c each; 18 to 24 inch, 75c each; 2 to 3 feet, \$1.10 each.

COTONEASTER HORIZONTALIS. A low shrub with almost horizontal branches. Leaves dark green, pinkish white flowers followed by red berries. 15 to 18 inch, \$1.00 each; 18 to 24 inch, \$1.50 each.

Southern Magnolia (*Magnolia grandiflora*). Greatest of all Southern ornamental trees. Large, glossy leaves, handsome white flowers. 2 to 3 ft., \$1.25 each; 3 to 4 ft., \$1.75 each; 4 to 5 ft., \$2.50 each.

Shipka Cherry Laurel. A valuable shrub of great vigor, beautiful broad, shining rich green foliage. Much harder than the Cherry Laurels found in the South. 1 to 1½ ft., 60c each; 1½ to 2 ft., 80c each; 2 to 3 ft., \$1.25 each.

Holly Leaved Mahonia (*Mahonia aquifolium*). Bright, glossy green, holly like leaves, turning rich red and bronze in autumn. Clustered racemes of attractive yellow flowers in spring. 12 to 18 in., 50c each; 18 to 24 in., 75c each.

Leatherleaf Viburnum (*Virburnum rhytidophyllum*). Large oblong, crinkled, deep green leaves. Flower yellowish white, berries deep red. 12 to 15 inch, 50c each.

Mountain Laurel (*Kalmia latifolia*). Most effective in June, when the clusters of pink flowers open. Good foliage, likes shady locations. 2 to 3 ft., \$1.00 each.

HARRISONS'

SHADE AND FLOWERING TREES



Norway Maple—the most popular shade tree

MAPLES

NORWAY MAPLES (*Acer platanoides*). Typical Maple leaves, large and bright green, fading to gold in the fall. Trunk and branches are sturdy and strong, lending an effect of ruggedness. Growth is fast. Branches and foliage are thick and compact, and the head, which is round-topped, begins to branch not far above the ground. The tree is large—towering 50 feet high when fully grown. Splendid trees, most beautiful and desirable. For lining the sides of lanes and roads, for a lawn, to protect the house from sun and weather, for shade, for beauty and satisfaction, and for real permanent worth in all landscape planting there are no other trees in its class. Norway Maples are at home in the mountains, but will thrive at any elevation, and in nearly any soil to be found in this country.

	1 to 9 trees	10 to 50 trees
6 to 8 ft.....	\$1.25	\$1.10 each
8 to 10 ft.....	1.65	1.50 each
10 to 12 ft.....	2.25	1.90 each
12 to 14 ft.....	3.00	2.65 each

SCHWEDLER'S RED-LEAVED MAPLE (*Acer platanoides schwedleri*). Very similar to the Norway Maple except in spring the leaves are purple and crimson, in summer months dark green, and when fall comes the leaves change to a brown-reddish color. 6 to 8 ft., \$1.50 each.

JAPANESE BLOODLEAF MAPLE (*Acer palmatum atropurpureum*). A very picturesque maple for use in landscape schemes, as an individual specimen or to add color to your planting. Very conspicuous, medium size bush or tree with blood red foliage. A wonderful addition to any lawn. Best color in sunny locations. 12 to 15 inch, 65c each; 15 to 18 inch, 90c each; 18 to 24 inch, \$1.15 each; 2 to 3 ft., \$1.50 each.

Shade Trees Our Specialty

We have undoubtedly more Shade Trees in salable sizes, growing in our nursery now, than any other nursery in the country. All our specimen trees are carefully selected before digging, and can be shipped either by freight or express to any destination.

The shade trees we supply are grown here at Berlin the same as our fruit trees, and will live and grow anywhere, North or South, under any fair chances. They received the best of care in cultivation and pruning; they are fine specimens; their roots are extra good; they are graded liberally, which means that you get good, big trees for your money. You can beautify your home grounds with Harrison's Shade Trees without great expense, and the sooner you begin the sooner you will enjoy the pleasure of owning a beautiful home.

For quantities greater than 50 trees write for special prices.

FLOWERING CRAB APPLES

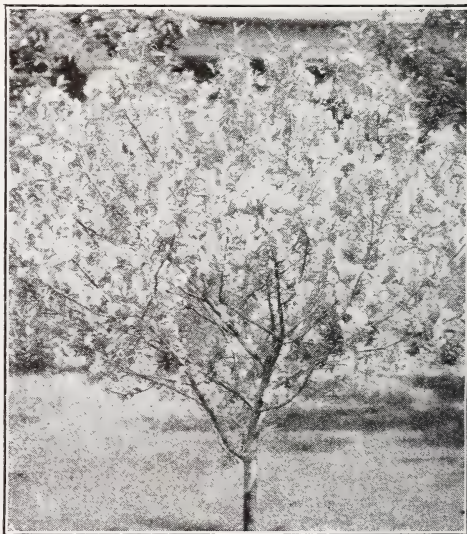
Rounded, compact, small trees, largely used in lawn groups and high shrub borders. They are noted for their profuse early bloom of varying colors, their dense glossy handsome foliage, and their ornamental fruits.

BECHTEL'S. The only genuine double-flowered Crab, when in bloom appears to be covered with delicate pink, perfectly double small roses of delicious fragrance.

ELEYI. Purple to red foliage, wine-colored bloom The best red leaf sort.

PRICES OF FLOWERING CRAB APPLE

3 to 4 ft.....	50c each	5 to 6 ft.....	75c each
	4 to 5 ft.....		60c each



Bechtel's Flowering Crab Apple

SILVER MAPLE (*Acer dasycarpum*). The name comes from the color of leaves. Underneath, these are the same shade as new, bright silver; on top they are light green. Many of them are carried on their edges, and when wind blows the trees are alive with silver and green flashes. In the fall the leaves fade to pale yellow. Growth is faster than that of any other Maple, and probably faster than that of any other shade tree. Branches are slim and dainty rather than heavy, and the form of growth is spreading. Gets very large eventually—as high as 120 feet sometimes—and does well over nearly all the United States. Makes splendid quick screens or quick shade. On streets and in parks is extensively planted, and is very fine.



Silver Maple

	1 to 9 trees	10 to 50 trees
6 to 8 ft.	\$0.70	\$0.60 each
8 to 10 ft.90	.80 each
10 to 12 ft.	1.35	1.25 each
12 to 14 ft.	2.00	1.75 each

DOGWOODS

RED FLOWERING DOGWOOD (*Cornus florida rubra*). One of the most popular small ornamental trees. Handsome red flowers in early spring. Makes an attractive lawn specimen. 3 to 4 ft., \$1.25 each; 4 to 5 ft., \$1.50 each; 5 to 6 ft., \$1.75 each; 6 to 7 ft., \$2.00 each.

WHITE FLOWERING DOGWOOD (*Cornus florida*). One of the native spring flowering small trees, with white flowers and bright red berries in fall. 2 to 3 ft., 50c each; 3 to 4 ft., 75c each; 4 to 5 ft., \$1.00 each; 5 to 6 ft., \$1.25 each; 6 to 8 ft., \$1.50 each.

Japanese Double Flowering Cherry. A profusion of double white blooms in early spring. 3 to 4 ft., \$1.00 each.

PURPLE-LEAVED OTHELLO PLUM. Upright grower, foliage brilliant, reddish purple, holding its color throughout season. Prolific bearer, with crimson fruit producing ornamental effect. 4 to 5 ft., 60c each.

Flowering Peach. Very beautiful, large double blooms in the spring time. The ideal low-priced flowering tree. We can supply the flowering peach in two colors—White or pink. 3 to 4 ft., 40c each; 4 to 5 ft., 50c each; 5 to 6 ft., 60c each.

FLOWERING ALMOND. Showy double flowers in spring; a beautiful specimen when in bloom. We can supply it in white color only. 1½ to 2 ft., 40¢ each; 2 to 3 ft., 55¢ each.

Garden lovers everywhere are yearly enjoying the beauty and colorful bloom of our selected flowering trees. As a specimen on the lawn or planted in groups to shield an unsightly view, there is nothing quite so enjoyable as planting a few of these trees.

ELMS

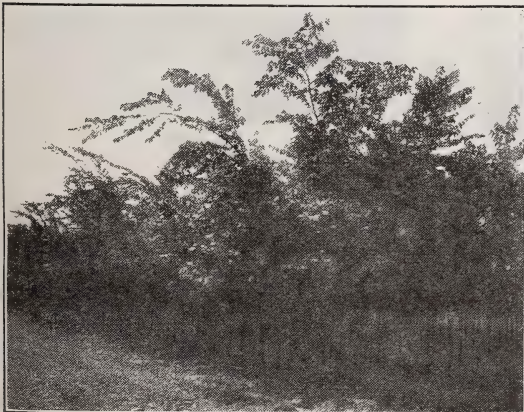
AMERICAN ELM (*Ulmus americana*). A noble native tree of great size, wide spreading, gracefully curving branches, growing up in a form like the outline of long-stemmed flowers in a tall vase. The handsomest American tree for lawns, avenues and parks.

	1 to 9 trees	10 to 50 trees
6 to 8 ft.	\$0.75	\$0.65 each
8 to 10 ft.	1.00	.90 each
10 to 12 ft.	1.50	1.35 each
12 to 14 ft.	2.00	1.75 each

MOLINE ELM. Grows into a dense conical specimen. 6 to 8 ft., \$1.25 each; 8 to 10 ft., \$1.65 each.

CHINESE ELM (*Ulmus pumila*). This tree is of recent introduction in this country. It is a very rapid grower, typical elm-like foliage, adaptable to most every kind of soil and condition. It develops into a splendid shade tree, its vigorous growth making it very desirable where quick shade is desired. Order early as our stock on this variety is somewhat limited.

	1 to 9 trees	10
6 to 8 ft.	\$1.25	
8 to 10 ft.	1.65	
10 to 12 ft.	2.25	
12 to 14 ft.	3.00	



American Elms in nursery row

HARRISONS' FLOWERING SHRUBS



Althea—Rose of Sharon

Any house without its setting of shrubbery or flowers is unattractive, and any house, no matter how unattractive it may be, can be made attractive and pleasing with a proper planting. Many people forego the pleasure of a beautiful exterior because it is so expensive that they cannot afford the layout. This year probably offers the best opportunity to purchase shrubs, at low prices. Make your selection from the varieties offered in this catalog, the cost of which is so little in comparison to the floral beauty and satisfaction you will enjoy.

All our shrubs are strong field specimens, and grown under the ideal conditions on the Eastern Shore of Maryland.

DOGWOODS

GOLDEN TWIG DOGWOOD (*Cornus stolonifera flaviramea*). Dwarf grower, branches are golden in color; most attractive in winter. 1 to 1½ ft., 25c each; 1½ to 2 ft., 35c each.

RED BRANCHED OR CORAL DOGWOOD (*Cornus alba sibirica*). Bright red bark, white flowers, blue fruit; rapid grower; beautiful winter effect. 1½ to 2 ft., 30c each; 2 to 3 ft., 35c each; 3 to 4 ft., 45c each.

JAPANESE QUINCE (*Cydonia japonica*). Scarlet flowers in April and May. No doubt one of the most attractive spring blooming shrubs. 1½ to 2 ft., 25c each; 2 to 3 ft., 40c each.

FORSYTHIA

GOLDEN BELL (*Forsythia*). Vigorous, upright grower; profusion of yellow flowers in early spring. One of our best early blooming shrubs. 1½ to 2 ft., 25c each; 2 to 3 ft., 30c each; 3 to 4 ft., 35c each.

GOLDEN BELL, WEEPING (*Forsythia suspensa*). Very long, curving branches, superbly adapted to covering arches and trellises; yellow flowers in early spring. 1½ to 2 ft., 30c each; 2 to 3 ft., 40c each.

BUSH HONEYSUCKLES

The upright honeysuckles have pretty bright flowers, and later showy berries throughout the fall. Should be used in shrub groups.

FRAGRANT HONEYSUCKLE (*Lonicera fragrantissima*). Fragrant white flowers, sometimes bursting into bloom in January. Holds green leaves into winter. 1 to 1½ ft., 25c each.

JAPANESE BUSH HONEYSUCKLE (*Lonicera Morrowi*). Early white flowers, followed by red berries. 1½ to 2 ft., 25c each; 2 to 3 ft., 30c each.

TARTARIAN HONEYSUCKLE (*Lonicera tartarica*). Very attractive in blossom, producing an abundance of flowers followed by red fruit. Endures partial shade. We offer pink and white varieties. 1½ to 2 ft., 25c each; 2 to 3 ft., 30c each.

ALTHEA OR ROSE OF SHARON (*Hibiscus syriacus*). A tall shrub with upright or slightly spreading branches. The double and single flowers are formed in varying colors. We can supply double red and semi-double white with crimson center.

	1 to 9 shrubs	10 to 50 shrubs
1½ to 2 ft.....	\$0.25	\$0.20 each
2 to 3 ft.....	.35	.30 each

AFRICAN TAMARISK. Feathery, gray-green foliage; effective near water. Thrives at seashore. 1½ to 2 ft., 25c each; 2 to 3 ft., 35c each; 3 to 4 ft., 45c each.

BUTTERFLY BUSH (*Buddleia magnifica*). Bushes grow from 3 to 4 ft. tall and are crowned with long racemes of lilac-colored flowers in midsummer. Its honeyed fragrance attracts the butterflies. Tops die back during winter. 2 yr. plants, 25c each.

CREPE MYRTLE (*Lagerstroemia indica*). Small, green, glossy leaves; very beautiful showy flowers during midsummer to fall; noticeable object in any landscape. Not hardy North of Mason-Dixon line, but most popular Southern shrub. Pink and red varieties. 1½ to 2 ft., \$1.00 each; 2 to 3 ft., \$1.50 each.

DEUTZIAS

PRIDE OF ROCHESTER. Double white flowers, which are slightly tinged with rose; appear in mid-June. 1½ to 2 ft., 20c each; 2 to 3 ft., 25c each; 3 to 4 ft., 35c each.

HYDRANGEAS

Among the best and most popular shrubs; valuable for their wealth of late summer blooms. Thrives at seashores as well as other locations.

HYDRANGEA PEE GEE (*Hydrangea paniculata grandiflora*). Large flowers; first snowy white, then pink changing to reddish bronze in the fall. Blooms from middle of summer until fall. Best selling variety of hydrangeas grown. 1½ to 2 ft., 25c each; 2 to 3 ft., 35c each.

PINK OR BLUE HYDRANGEA (*Hydrangea otaksa*). Old favorite Southern hydrangea. When winters are severe we suggest heeling in. Large balls of pink or blue flowers; very attractive large leaves. Color depends on acidity of soil. 2 year field grown, 50c each.



Hydrangea P. G.

LILACS

COMMON PURPLE LILAC (*Syringa vulgaris*). Old-fashioned variety so familiar in old gardens. 1½ to 2 ft., 35c each.

PERSIAN PURPLE LILAC (*Syringa persica*). A tall-growing shrub with slender branches; bloom in May and June. 1½ to 2 ft., 35c each; 2 to 3 ft., 45c each.

FRENCH HYBRID LILACS

These named lilacs are marvels of beauty and elegance, far superior to the older varieties. The following varieties are considered to be the very best of their respective colors.

BELLE DE NANCY. Satiny rose colored flowers in large clusters.

CHARLES JOLY. Double dark purplish red flowers. Can supply 1 to 1½ ft. size only.

CHARLES X. Single, purplish red flowers.

HUGO KOSTER. Purple flowers; best one of all purple lilacs.

LUDWIG SPAETH. Single, very rich dark purplish red.

LAVELLIENSIS. Light blue.

MARLEYENSIS. Red.

MICHAEL BUCHNER. Dwarf, double, beautiful trusses of pale lilac color.

PRESIDENT GREVY. Double, bright blue.

ROTHOMAGENSIS. Dark red flowers in large panicles.

RUBRA DE MARLEY. Single flowers of light red.

	1 to 9 shrubs	10 to 50 shrubs
1 to 1½ ft.....	\$0.30	\$0.25 each
1½ to 2 ft.....	.40	.35 each

VILLOSA LILAC. Fragrant purplish white blooms; valuable for its lateness of bloom. 1 to 1½ ft., 30c each; 1½ to 2 ft., 40c each

MOCK ORANGE

GARLAND OR SWEET MOCK ORANGE (*Philadelphus coronarius*). Of upright habit, and produces in June a wealth of white fragrant flowers. 1½ to 2 ft., 25c each; 2 to 3 ft., 30c each; 3 to 4 ft., 35c each.

SPIREAS

ANTHONY WATERER SPIREA. Dwarf grower, bright pink flowers in June and July. Very valuable for edging in front of other shrubbery. 1 to 1½ ft., 25c each.

BILLARDI SPIREA. Long spikes of white flowers in mid-summer. 1½ to 2 ft., 20c each; 2 to 3 ft., 25c each.

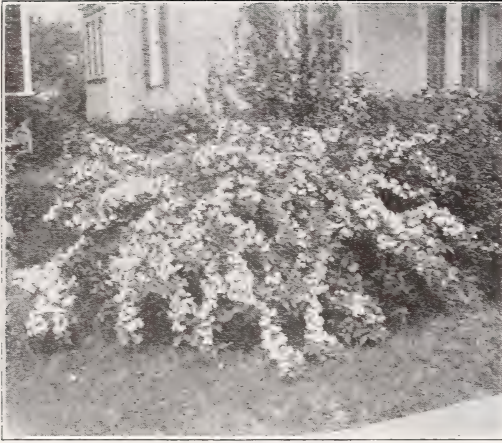
THUNBERG'S SPIREA (*Spirea thunbergii*). White flowers in early spring, against a background of feathery yellowish green foliage. Most attractive. 1½ to 2 ft., 30c each.

VAN HOUTTEI SPIREA. The most popular shrub. It is valuable as a specimen in groups, in border planting and for hedges. The branches are slender, drooping, covered with white flowers in April or early May. It grows six to eight feet, and is unsurpassed in gracefulness and beauty.

	1 to 9 shrubs	10 to 50 shrubs
1½ to 2 ft.....	\$0.15	\$0.12 each
2 to 3 ft.....	.20	.15 each



Spirea Van Houttei



Pink Weigela (*Weigela rosea*)

WEIGELAS

Beautiful shrubs that bloom in June and July. The flowers are produced in so great profusion that they almost entirely hide the foliage. They are very desirable for border or for grouping, and as specimen plants for the lawn.

EVA RATHKE WEIGELA. Very attractive deep carmine-red flowers, making a very showy shrub. 1½ to 2 ft., 40¢ each; 2 to 3 ft., 50¢ each.

PINK WEIGELA (*Weigela rosea*). The most popular Weigela sold today. Its delicate, pink, bell-shaped flowers are borne in great profusion along arching branches. 1½ to 2 ft., 25¢ each; 2 to 3 ft., 35¢ each; 3 to 4 ft., 45¢ each.

FRAGRANT SNOWBALL (*Viburnum carlesii*). The fragrant, spicy flowers are borne in May and June. Buds before opening are an attractive pink, developing to pure white flowers. 15 to 18 in., 75¢ each.

FRENCH PUSSY WILLOW (*Salix caprea*). A very interesting shrub or dwarf tree, producing many furlike catkins, one to two inches long, up and down upright stems. Quite often these pearl-gray catkins have a touch of pink, and are delightful in winter bouquets. The branches can be cut any time in December, January or February; then, if placed indoors in a vase of water, they will quickly burst forth into bloom. Remove from the water when in full bloom, and they will retain their loveliness for months. 6 to 10 feet at maturity. 1½ to 2 feet, 15¢ each; 10 for \$1.25; 2 to 3 feet, 20¢ each; 10 for \$1.50.

NANDINA DOMESTICA. A beautiful upright growing shrub with numerous reed-like stems springing from the same root. Leaves deep, glossy green, when young tinged with red, in winter beautiful coppery tones are assumed. White flowers produced in long panicles are followed by masses of small bright red berries which are retained all winter. 1½ to 2 feet, 75¢ each; 2 to 3 feet, \$1.25 each.

LALAND FIRE THORN—A beautiful shrub covered with a profusion of white flowers in early spring, followed by bright orange berries which hang on all winter. 1 to 1½ feet, 50¢ each; 1½ to 2 feet, 75¢ each; 2 to 3 feet, \$1.00 each.

DOUBLE FLOWERING PLUM (*Prunus triloba plena*). A very hardy and vigorous growing flowering tree. Early in the spring before the leaves appear it is entirely enveloped in a fleecy cloud of double pinkish flowers. Foliage is delicate, making the shrub attractive even after the flowers have disappeared. 1½ to 2 feet, 25¢ each; 2 to 3 feet, 35¢ each.

PEONY COLLECTION

A collection consisting of five of the finest peonies obtainable. Mixed colors. Special offer 5 peonies for \$1.00. A real bargain, order today.

ORNAMENTAL VINES

ENGLISH IVY (*Hedera helix*). The most popular evergreen vine; large, deep, green glossy foliage. Excellent for covering walls. Useful for shady locations. 2 year plants, 25¢ each; \$2.00 per 10.

BOSTON OR JAPANESE IVY (*Ampelopsis veitchii*). A popular climber, clinging firmly to brick, stone or other material. Deep, glossy, green, ivy-shaped foliage which turns to cream and gold color in autumn. Strong 2 year plants, 30¢ each; \$2.50 per 10 plants.



English Ivy

CHINESE WISTERIA. A rampant growing, clinging vine. Blue flowers in large, drooping clusters, during May and June. Strong 2 year plants, 40¢ each; \$3.50 per 10.

HALL'S JAPANESE HONEYSUCKLE. Dark, glossy green foliage; fragrant flowers from July to fall. Strong 2-year plants, 30¢ each; \$2.50 per 10.

SCARLET TRUMPET HONEYSUCKLE. Beautiful clusters of large trumpet-shaped scarlet flowers in July and August have made this a very popular vine. Hardy, vigorous grower and a fine climber, excellent for porches and trellises. Strong 2-yr. plants, 40¢ each; \$3.50 per 10.

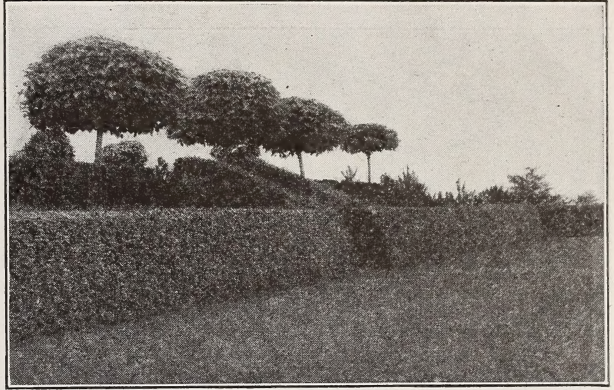
SWEET AUTUMN CLEMATIS (*Clematis paniculata*). A splendid climber for covering porches and trellises. Flowers snowy white; produced in immense quantities during late summer and autumn. Strong 2-year plants 40¢ each; \$3.50 per 10.

HEDGE PLANTS

Harrison-grown Hedge Plants for Utility and Beauty

CALIFORNIA PRIVET

This is the universal hedge in the East, a fact proving that Privet has greater merit under ordinary conditions for this purpose than any other plant. For live fences at village, town and country homes it is the very best of all materials. On public grounds of all kinds, in parks and cemeteries, along roads and paths, on factory grounds, and on newly subdivided areas near towns, nothing else can be used in its place and in this place it is indispensable. It is the best of all hardy hedge plants. Can be easily kept at any height desired; has glossy, deep green leaves, and holds them until late fall. Its strong, quick, upright growth makes it useful for screening out unsightly objects.



Hedge of California Privet

	1 to 9 plants	10 to 49 plants	50 to 299 plants	300 to 1000 plants
8 to 12 in.	\$.04	\$.03	\$.02	\$0.01½ each
1 to 1½ ft.05	.04	.03	.02½ each
1½ to 2 ft.07	.05	.04	.03½ each
2 to 3 ft.10	.07	.06	.05 each

JAPANESE BARBERRY

(BERBERIS THUNBERGI)

For a low hedge Japanese Barberry stands at the head of the list. The leaves are small, light green, and toward fall turn to various colors which produce a very pleasing aspect. In fall this handsome plant bears a profusion of bright red berries which remain through the winter. This Barberry is without doubt one of the best hedge plants and one that requires no attention, as it can be pruned or not at the owner's discretion. Barberry is absolutely hardy. You need not fear that it will winter-kill at all. It will stand trimming, but does not need it even for wonderfully fine hedges, unless your space is very small. Along a walk, driveway, or even as a boundary hedge, Barberry can be used to great advantage, whether you trim it or permit it to grow as nature intended. On account of the dense and horizontal-growing branches, the plants make a thick hedge.

JAPANESE BARBERRY PRICES

	1 to 9	10 to 49	50 to 299	300 to 1000
9 to 12 in.	\$.02	\$0.07	\$0.05	\$0.04 each
12 to 15 in.15	.09	.07	.06 each
15 to 18 in.20	.13	.10	.09 each

RED LEAVED BARBERRY

(BERBERIS THUNBERGI ATROPURPUREA)

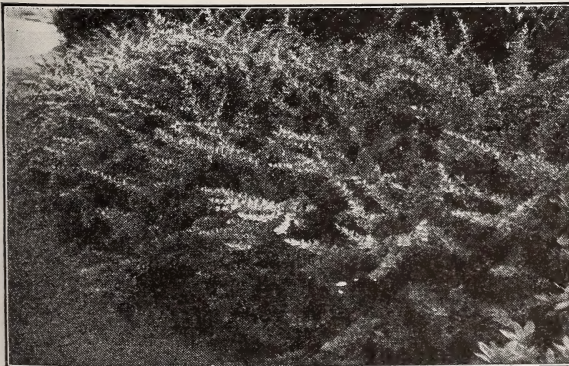
A highly important introduction among shrubs, giving us for the first time a practical easily grown shrub of medium height, with good, distinctly red foliage. This must prove a boon to all types of landscaping, where studied contrasts are to be worked out with the shrub foliage depended on for colors. Red leaved Barberry is an exact reproduction of the Japanese variety in every way—habit, leaf-formation and fruiting, but—whereas the original is a deep green from spring until fall, this variety starts off in its first foliage a warm bronzy red; the heat of summer intensifying its red brilliancy; autumn adding other tints to its richness. The abundant scarlet berries persist throughout the winter along the spiny twigs. A sunny exposure is necessary to bring out and retain its full red color.

	1 to 9 plants	10 to 49 plants	50 to 300 plants
9 to 12 in.	\$.28	\$.23	\$0.17 each
12 to 15 in.32	.27	.20 each
15 to 18 in.35	.30	.25 each
1½ to 2 ft.40	.35	.30 each
2 to 3 ft.45	.40	.35 each

SPIREA VAN HOUTTEI

Beautiful in our out of bloom, and the medium tall, broad, compact screen it makes is protective as well as ornamental. It is always hardy growing anywhere and will do well in partial shade. Even when trimmed and kept low, it is a splendid hedge, dense to the ground. For complete description see page 43.

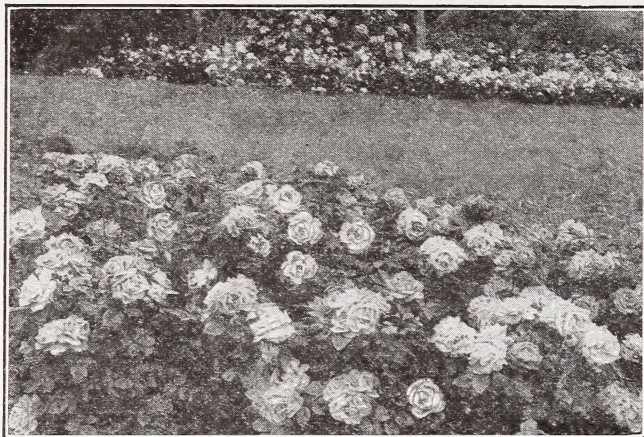
	1 to 9 plants	10 to 49 plants	50 to 299 plants	300 to 1000 plants
12 to 18 in.	\$0.10	\$0.07	\$0.06	\$0.05 ea.
18 to 24 in.15	.12	.10	.08 ea.
2 to 3 ft.20	.15	.12	.10 ea.
3 to 4 ft.25	.20	.15	.12 ea.



Hedge of Japanese Barberry

HARRISONS' "SUPREME" ROSES

Hardy Field Grown Plants That Have Bloomed
In Our Nursery



Plant a Bed of Harrisons' Roses this year

EVERBLOOMING HYBRID TEAS

This is the class of roses that bloom continuously throughout the season. They can be had in a complete range of color, plant them freely in groups close together, so that a dash of color and fragrance can be had even in the smallest garden.

AMERICAN BEAUTY. Dark pink, shaded carmine.

BETTY UPRICHARD. Shining salmon pink inside, deepened outside with copper, spicy fragrance, always in bloom, one of the best.

CALEDONIA. Opens ivory, changing to pure white.

CHAS. P. KILHAM. Red veiled with a mist of orange

COLUMBIA. A well-known pink rose.

DAME EDITH HELEN. Pure glowing pink without shading.

EDEL. Large globular buds opening into large, full double blooms of white with cast of ivory, fragrant.

EDITH NELLIE PERKINS. Salmon pink with golden base.

EDITOR MC FARLAND. A very brilliant pink rose.

E. G. HILL. It constantly produces beautiful buds on long stems which open into large full, fragrant blooms of velvety crimson.

ETOILE DE FRANCE. Of clean red to velvety crimson. Flowers borne on long stems. One of the most charming of red roses.

ETOILE DE HOLLANDE. Large, brilliant crimson flowers on long stems, ideal for cutting.

FRANCIS SCOTT KEY. Large extremely double flowers of rich crimson.

GRUSS AN TEPLITZ. Dazzling scarlet, always in bloom, a great bedder.

INDEPENDENCE DAY. A brilliant orange-copper rose that is always in bloom.

JOANNA HILL. A lovely golden yellow cutting rose.

KAISERIN AUGUSTE VICTORIA. Soft, pearly white color, shading to cream. Most popular white rose.

LOS ANGELES. Luminous, flame-pink color; washed with gold at the base; fragrant.

MARGARET MC GREDY. Always in bloom, the lovely flowers are brilliant orange scarlet, one of the best.

MEV. G. A. VAN ROSSEM. Orange and bronze, beautifully veined.

MME. BUTTERFLY. A harmony of bright pink, apricot and gold.

MME. EDOUARD HERRIOT. Long-pointed, deep, coral-red buds, changing to a pleasing orange pink color.

MRS. AARON WARD. Pointed buds of a rich yellow color, changing to a creamy yellow color after opening.

MRS. CHAS. BELL. Soft shell pink tinged salmon, like a pearl. Strong vigorous grower, always in bloom, a very fine rose. Fragrant.

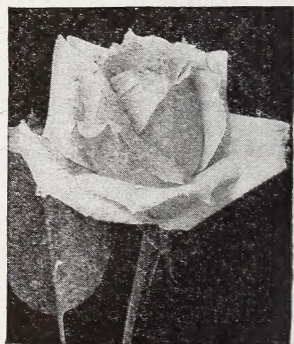
MRS. PIERRE S. DUPONT. A mass of blooms of rich golden yellow color. Outstanding.

PRES. HERBERT HOOVER. A glorious rose of vivid cerise-red toned with yellow, orange and scarlet, richly perfumed and free flowering.

RADIANCE. Large fragrant, long-stemmed, brilliant rose - pink flowers; most popular pink rose in America.

RAPTURE. Glowing pink, fine for cutting.

RED RADIANCE. Identical with Radi-



Radiance—best Pink

PRICES OF ALL ROSES

Finest Two-Year Plants

40c each — 3 for \$1.10

6 for \$2.00—12 for \$3.60

Varieties Alike or Assorted
on pages 46 and 47;
Your Choice



Kaiserin Auguste Victoria

EVERBLOOMING HYBRID TEAS

(Continued)

ance, except flowers are of a deep red color.

REV. F. PAGE ROBERTS. Marvelously colored rose of golden yellow, stained with carmine.

ROSLYN. Orange buds, full golden yellow flowers.

SUNBURST. Yellow shaded orange.

TALISMAN. Brilliant red and gold buds, opening to well shaped blooms of scarlet orange and rich yellow.

HYBRID PERPETUAL OR JUNE ROSES

These roses get their name from the time which they bloom, which is generally in June. The flowers of this class of roses are large to extremely large and are very much easier to grow than the everblooming type. Most of the varieties of this class will bloom during the late summer in this vicinity.

FRAU KARL DRUSCHKI. Enormous pure white flowers.

GENERAL JACQUEMINOT. The rose for the millions. Fragrant perfectly formed blossoms come early on long strong stems and are a brilliant scarlet-crimson.

MAGNA CHARTA. A rosy pink full rounded globular rose of marked fragrance.

MRS. JOHN LAING. Soft pink, beautiful formed large double blossoms.

PAUL NEYRON. Blooms are clear pink shaded soft rose.

ULRICH BRUNNER. Brilliant scarlet-crimson.

CLIMBING AND RAMBLER ROSES

There are so many uses for Climbing and Rambler roses that they should be given serious consideration in your planting. Aside from the fact that they produce a wealth of bloom during May and June their foliage and growth make them much more attractive than many other vines that are used in plantings. Order a few this year to train on posts, fences or against walls. The beauty of their bloom and foliage will repay you many times.

AMERICAN PILLAR. Large clusters of single rosy pink flowers, with yellow shadings. Rank climber.

BABY RAMBLER. Dwarf grower; clusters of crimson flowers.

CLIMBING AMERICAN BEAUTY. Large, rosy crimson bloom. One of the best climbing roses.

DOROTHY PERKINS. Full, double, shell-pink flowers in large clusters; very attractive climber.

DR. W. VAN FLEET. Light, shell-pink to silver flesh-color blooms; double climber.

FLOWERS OF FAIRFIELD. Rich red flowers, profuse bloomer.

GARDENIA. Small yellow buds, opening to creamy white; very fragrant climber.

GOLDEN SALMON. Polyantha type, scarlet orange overlaid gold.

HARRISON'S YELLOW. Bright golden yellow, very hardy.

IDEAL. Polyantha type, dark red, free bloomer.

MARY WALLACE. Semi-double, rose-pink blooms; salmon at base of petals; most attractive climber.

MME. GREGOIRE STAEHELIN. A fine pink climbing rose.

PAUL'S SCARLET CLIMBER. Large intense scarlet-colored blooms; freely produced. It is strong, and perfectly hardy. The most popular climbing rose.

PRIMROSE. A hardy, unfading primrose yellow climbing rose, double flowers. Vigorous.

Our Liberal Guarantee

Our nursery stock is guaranteed to reach the customer in good condition. Accept shipment on arrival, examine and count stock and same will be promptly corrected. Also notify the transportation company should stock appear to have been damaged in transit. We do not guarantee continued growth. A tree, shrub, or plant is a living organism—it breathes, drinks and feeds and is liable to attacks of disease and insects after being transplanted to the customer's grounds. Our selling prices are very low and we cannot guarantee growth or be responsible for the nursery stock after delivery to our customers in good condition.

—HARRISON'S NURSERIES, Inc.

Non-Warranty

In the event that any nursery stock sold by us should prove untrue to name under which it is sold, we hereby agree, on proper proof of such untruthness to name to replace the original order or to refund the purchase price. Except for such liability, and in respect to all nursery stock sold by us, we give no warranty, expressed or implied, as to description, quality, productiveness or any other matter.

—HARRISON'S NURSERIES, Inc.

TERMS: F. O. B. BERLIN, WORCESTER COUNTY, MARYLAND

We allow 5% discount for cash with order or prior to date of shipment (except strawberry plants)

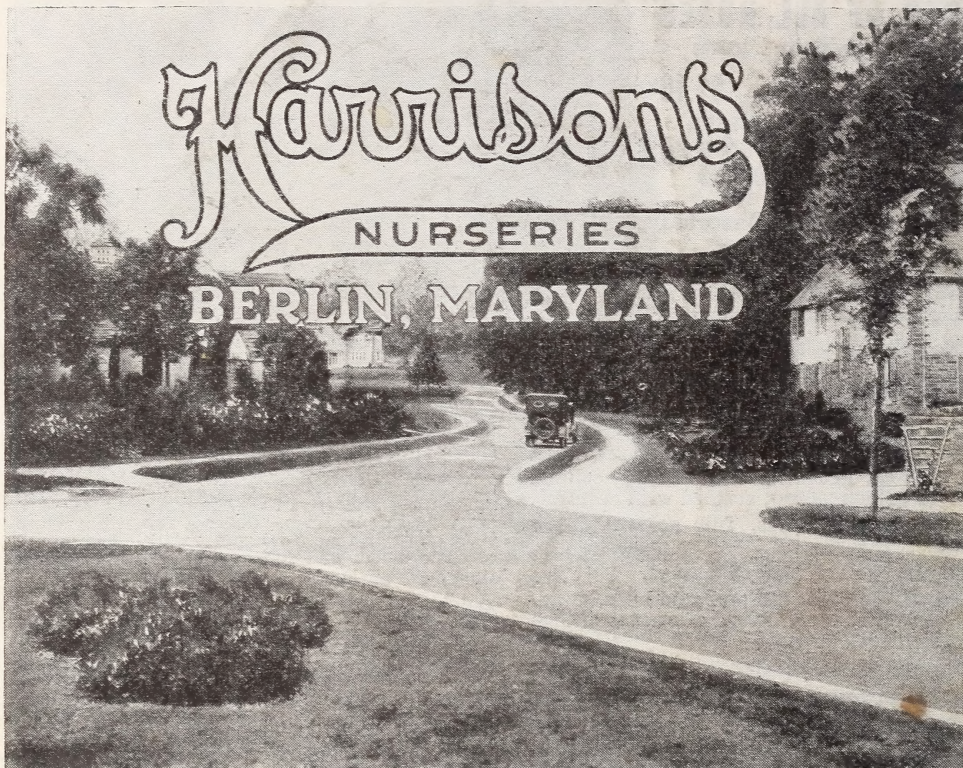
OTHERWISE TERMS NET

IF SHIPMENT IS DESIRED BY PARCEL POST ADD 10% TO YOUR REMITTANCE

Harrison's

NURSERIES

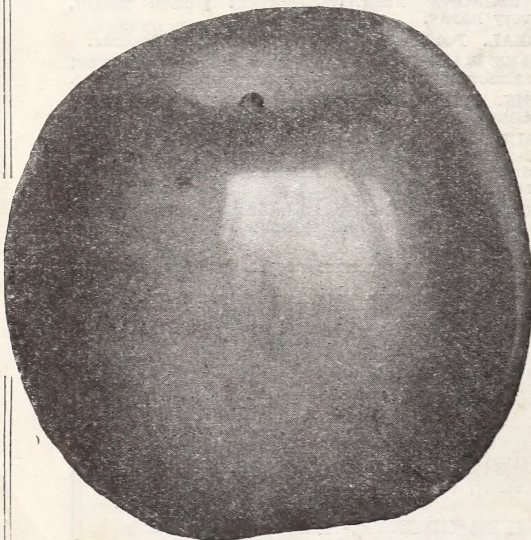
BERLIN, MARYLAND



GROWERS OF HIGH QUALITY NURSERY PRODUCTS

SPECIALTIES

FRUIT TREES—SHADE TREES—EVERGREENS—AZALEAS—FLOWERING SHRUBS—ROSES—
HEDGE PLANTS—FLOWERING TREES—ASPARAGUS—STRAWBERRIES AND GRAPES



RED YORKING APPLE
Triple Red Month Earlier
Granted United States Plant Patent



YORK IMPERIAL APPLE
Old Time Favorite
Big Yields—Famous Money Maker