



S. C. Ball, (right) Zulmady Wilson (left)
Lindsay Daland, 1923.

2 - 4 - 11 - 23

Donald R. Dickey,
514 Lester Avenue,
Pasadena, Calif.



Hawaii, 1923.

7-5-21-23.

838

Donald R. Dickey,
514 ~~Lester~~ Avenue,
Pasadena, Calif.

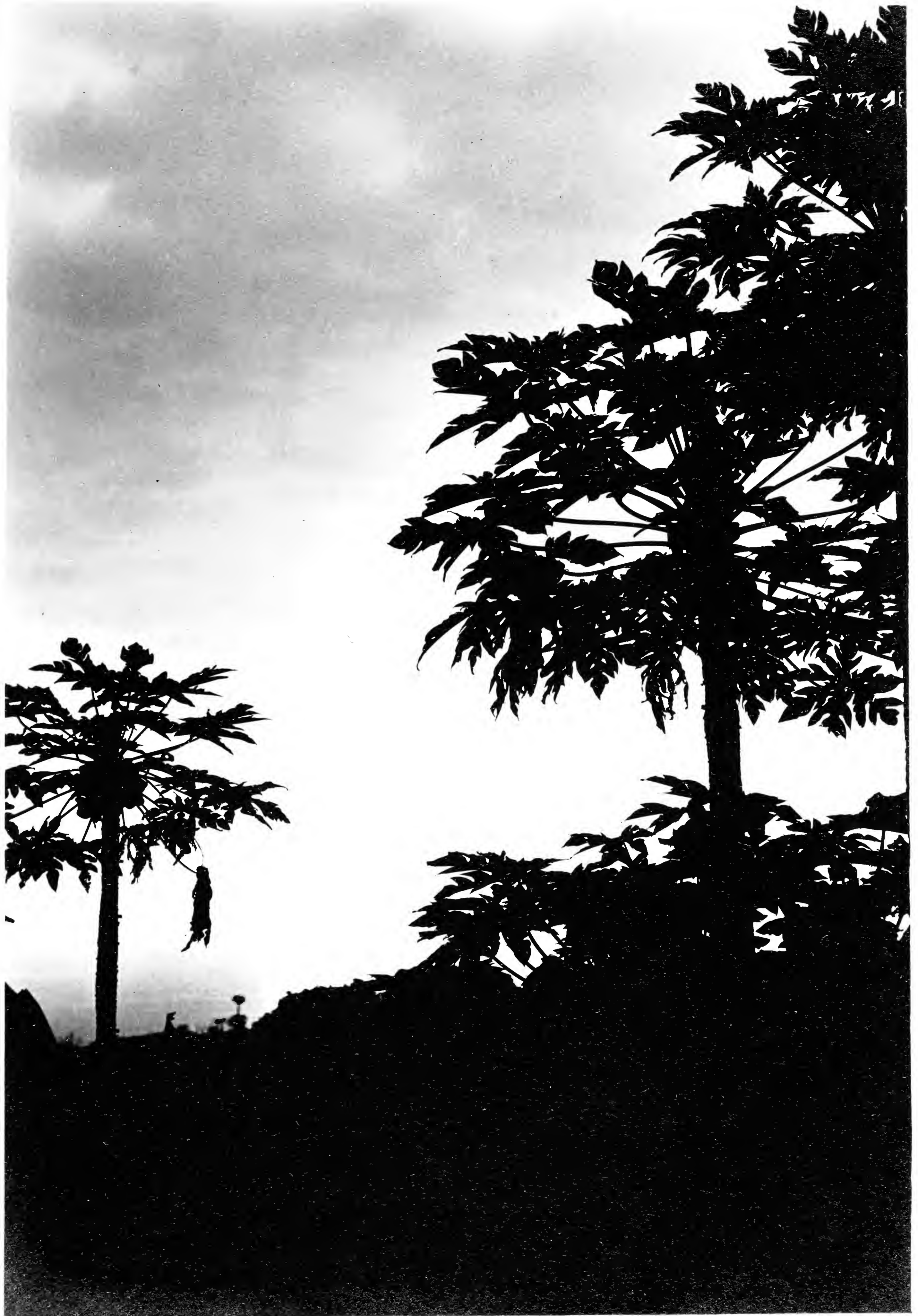


Papeae, Hawaii, 1923

Donald R. Dickey,
514 Lester Avenue,
Pasadena, Calif.

2-5-18-23

3
221



Papayas by moonlight,
Hawaii, 1923.

Donald R. Dickey,
514 Lester Avenue,
Pasadena, Calif.

8-5-18-23



Outrigger boat,
Hawaii, 1923.

Donald R. Dickey,
514 Lester Avenue,
Pasadena, Calif.

4 - 5 - 18 - 23

3821



Hawaii, 1923.

Donald R. Dickey,
514 L. St. Avenue,
Pasadena, Calif.

4-5-21-23



Hawaii

Donald R. Dickey,
514 Lester Avenue,
Pasadena, Calif.

3-5-20-23

3821

3

VELOX

VELOX

VELOX

VELOX

VELOX

VELOX



Laysan Island, 1923.

Donald R. Dickey,
514 Lester Avenue,
Pasadena, Calif.

28-4-28-23



Laysan Island, 1923

Donald R. Dickey,
514 Lester Avenue,
Pasadena, Calif.

21 - 4 - 28 - 23



3

Laysan Island,
1923

Donald R. Dickey,
514 Lester Avenue,
Pasadena, Calif.

37-4-28-23



Laysan Island, 1923.

Donald R. Dickey,
514 Lester Avenue,
Pasadena, Calif.

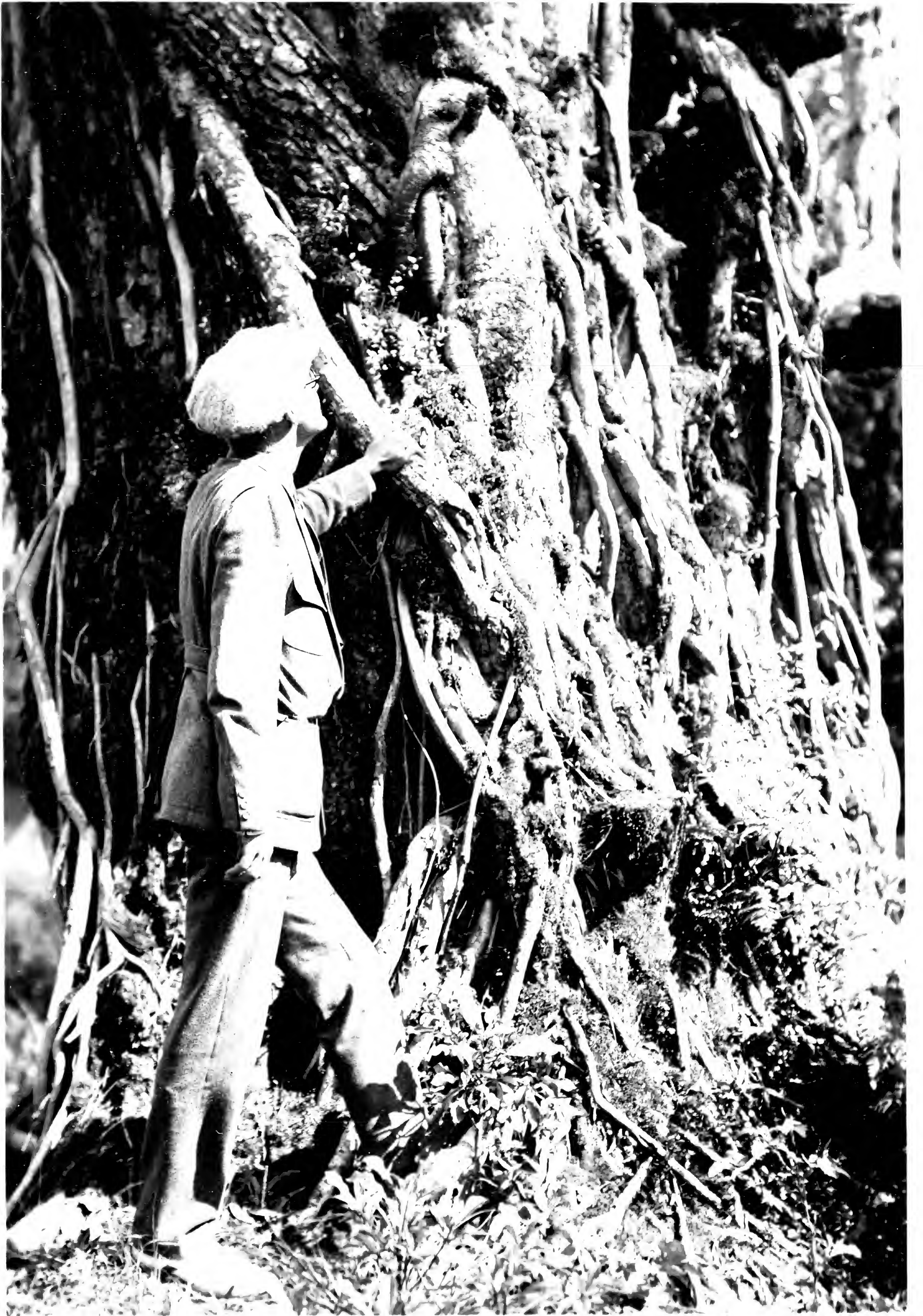
3 - 4 - 20 - 23



Laysan Island, 1923.

Donald R. Dickey,
514 Lester Avenue,
Pasadena, Calif.

1-4-20-23



Donald R. Dickey,
514 Lester Avenue,
Pasadena, Calif.

6-5-16-23

D. R. Dickey, 1923.

3



Part of crew of "Tanagra"; 1923.

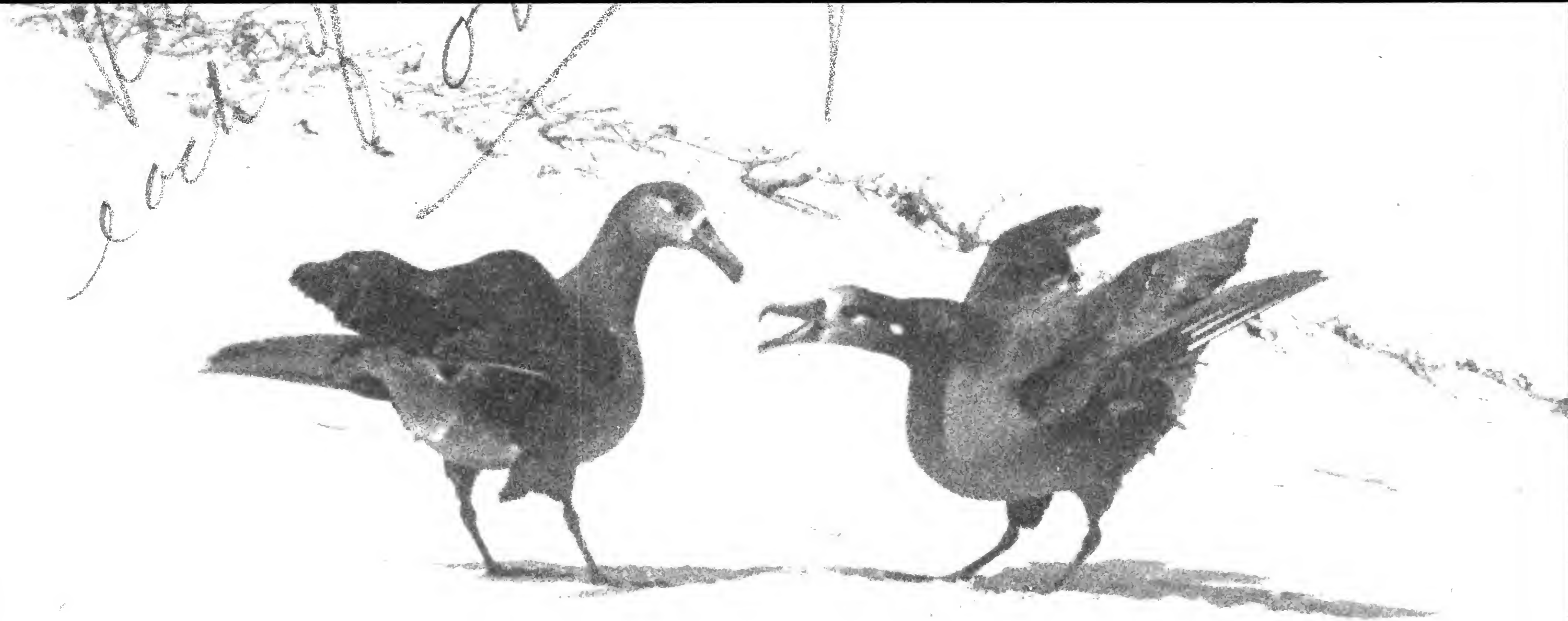
Donald R. Dickey,
514 Lester Avenue,
Pasadena, Calif.



Donald R. Dickey,
514 Lester Avenue,
Pasadena, Calif.

26-14-28-23

*Donald R. Dickey,
Leipzig, Germany,
1923.*



Leach's

Copyright 1924 D. R. Dickey.

411A



Hawaii, 1923.

Donald R. Dickey,
514 L. ... Ave.,
Pasadena, Calif.

1-5-18-23

3821



1-5-20-23

Hawaii, 1923.

Donald R. Dickey,
514 Lester Avenue,
Pasadena, Calif.



Hawaii

Donald R. Dickey,
514 Lester Avenue,
Pasadena, Calif.

5-5-21-23

9821

5



M

Paepae, Hawaii, 1923.

Donald R. Dickey,
514 Lester Avenue,
Pasadena, Calif.

3-5-18-23

3821



Hawaii, 1923.

Donald R. Dickey,
514 Lester Avenue,
Pasadena, Calif.

1-5-21-23

W



Donald R. Dickey,
514 Lester Avenue,
Pasadena, Calif.

5 - 5 - 16 - 23

Hawaii, 1923

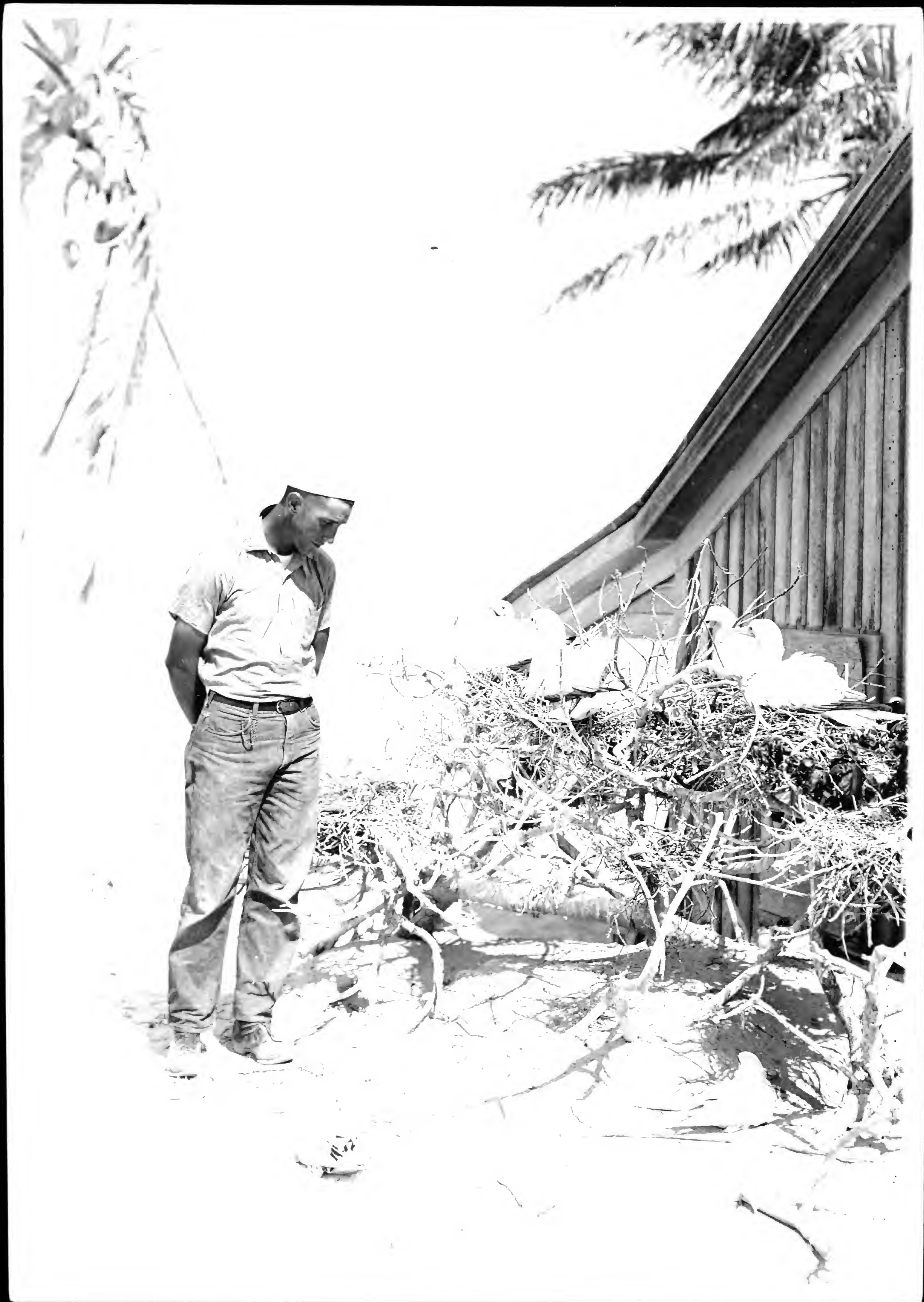


Hawaii, 1923.

2 - 5 - 20 - 23

Donald R. Dickey,
514 Lester Avenue,
Pasadena, Calif.

3821

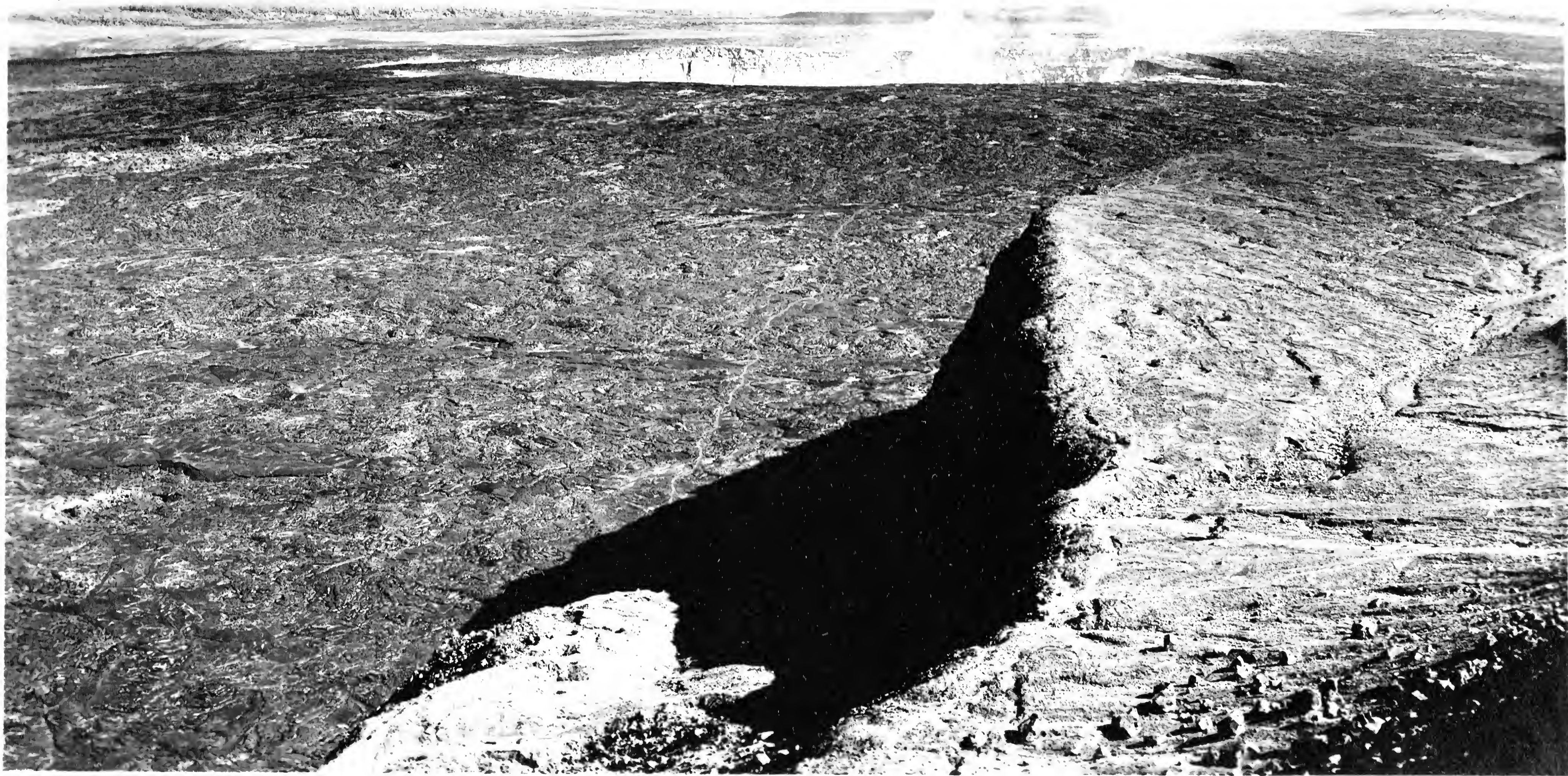




Donald R. Dickey,
514 Lester Avenue,
Pasadena, Calif.

Pt of *Palauia*, 1923

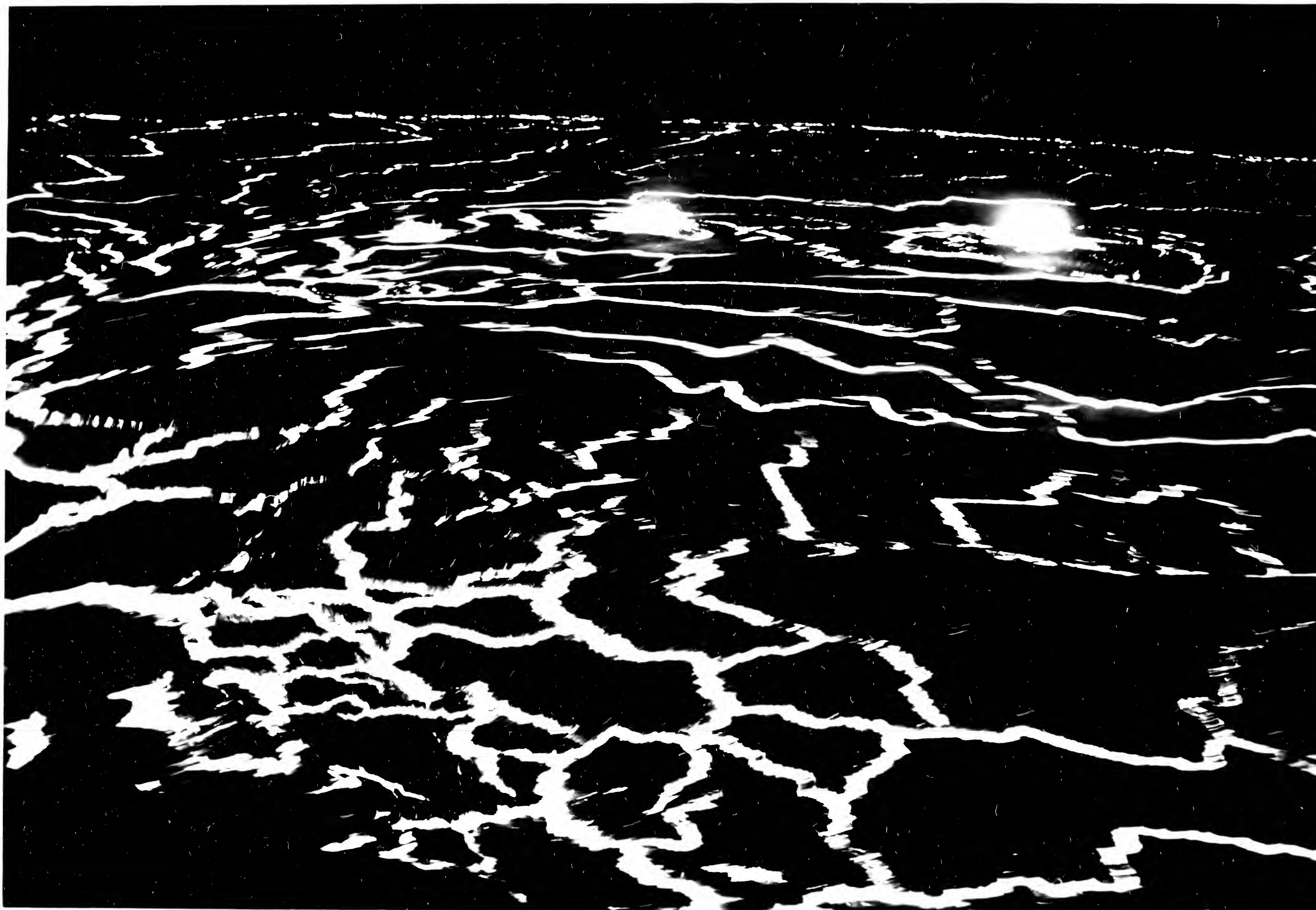
1 - 5 - 16 - 23



Pit of Kilauea, 1923.

Donald R. Dickey,
514 Lester Avenue,
Pasadena, Calif.

41-5-16-23

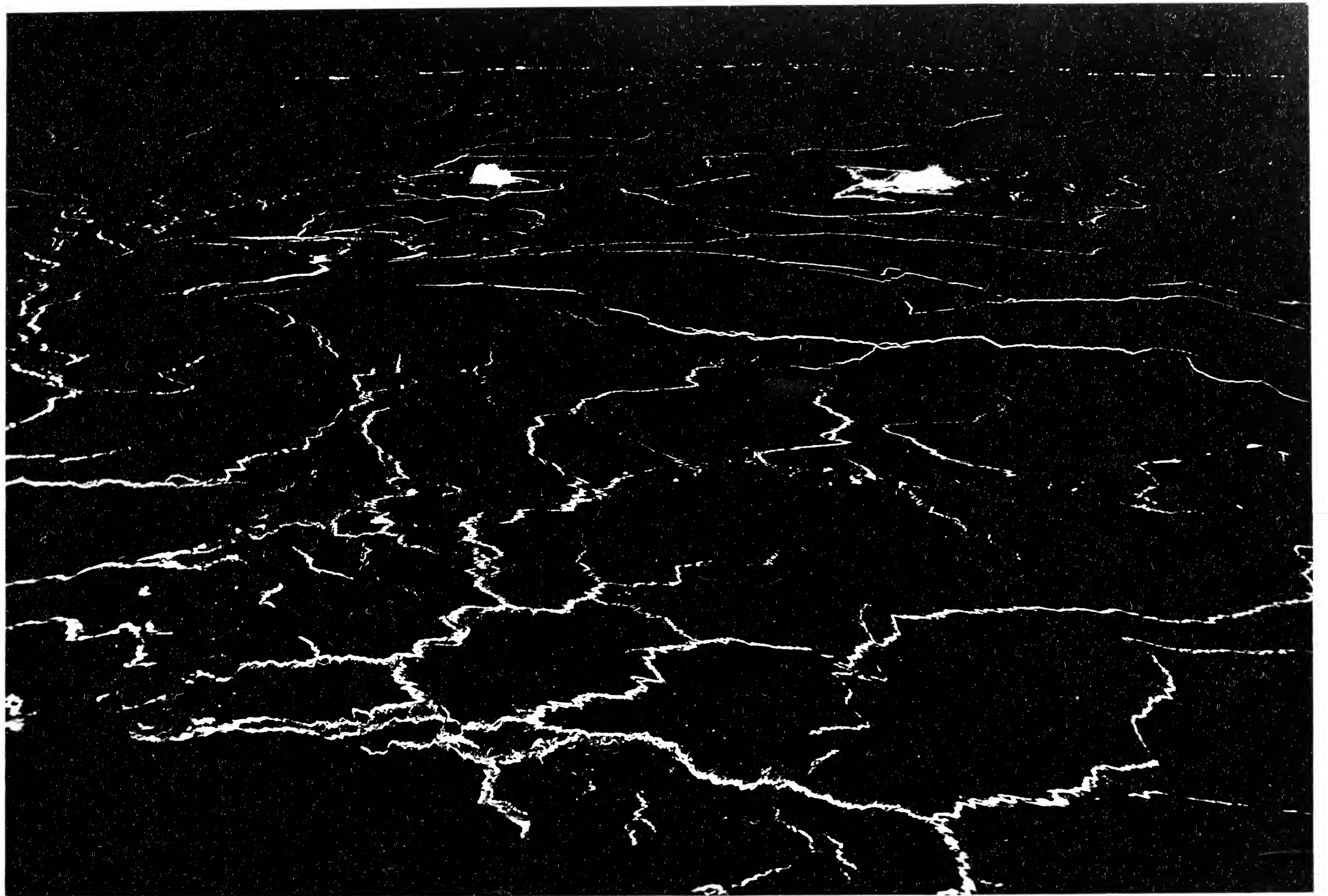


Pit of Kilauea by night,
1923.

Donald R. Dickey,
514 Lister Avenue,
Pasadena, Calif.

8-5-16-23

382154



Pit of Kilauea, 1923

Donald R. Dickey,
514 Lester Avenue,
Pasadena, Calif.

7-15-16-25

~~98221~~

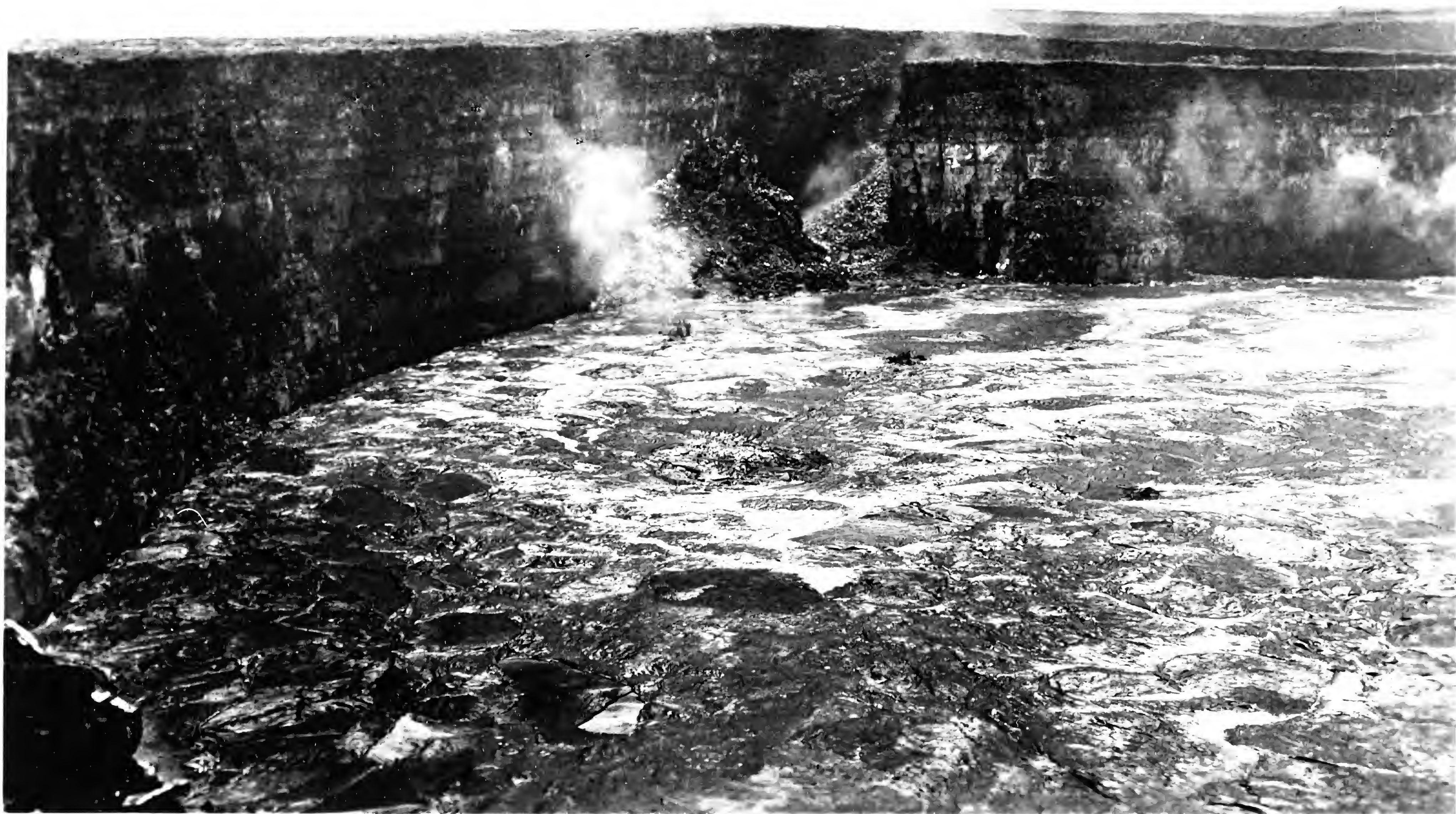
5



3-5-16-23.

Kilauea, 1923

Donald R. Dickey,
514 Lester Avenue,
Pasadena, Calif.



Pit of Kilauea, 1923.

Donald R. Dickey,
514 Lester Avenue,
Pasadena, Calif.

2-5-16-23.

3



Hawaii, 1923.

Donald R. Dickey,
514 Lester Avenue,
Pasadena, Calif.

3 - 5 - 21 - 23

W



2-5-21-23.

Near Hills, 1923.

Donald R. Dickey,
514 Lester Avenue,
Pasadena, Calif.



Hawaii, 1923.

Donald R. Dickey,
514 Lester Avenue,
Pasadena, Calif.

5-5-18-23

3821



Near the pond

Laysan Island, May, 1902,

A. Wetmore



I-5

General view of inner basin,
Seawinn patch in distance

Laysan Island, April 11, 1923

A. Wetmore.



The pond showing some
Anas laysonensis on the water
looking in the general
direction of "settlement".

Laysan Island, May, 1902,

A. Wetmore



BS 25865

Laysan Albatross and Wedge-tailed Shearwaters

Laysan Island.

May 5, 1923 A. W.

13252892 0067





1655.

Workshop of Japanese feather proaches,
Peak Island, Wake Islands.

July 27, 1923



1655.

Workshop of Japanese feather pouches.

Peak Island, Wake Islands.

July 27, 1923

1921 W.A. G. 2201



1921

1123



B.S. 25848

Bons of birds destroyed by Japanese preachers
(Peak Island) Wake Island

July 27, 1923 A.W.



B.S. 25848

Birds of birds destroyed by Japanese frackus
(Peak Island) Wake Island.

July 27, 1923 A.W.

1900 84825 20





B. S. 25951

Wedge-tailed Shearwaters; a siesta

Laysan Island.

April 12, 1953 Q. W.

B.2.52823 [copy]





B.S. 25847. Hooks for drying bird skins at old
Japanese feather processing camp on Peah Island
Wake Island July 30, 1923 A.W.



BS 25847 Racks for drying bird skins at old
Japanese feather poachers camp, on Peah Island,
Wake Island

July 30, 1923 A.W

1907 14825 28





BS. 25846

SKinning table for birds used by Japanese poachers
on Peah Island, Wake Islands
July 30, 1923 R.W.



B.S. 25846.

Skinning lot for birds used by Japanese
practise on Peale Island, Wake Islands.

July 30, 1923 A. W.



1900 24825 28



B.S. 26019-

Colony of Red-footed boobies in vine-wood
(Casuarina) tree Laysan Island.

May 9, 1923-

2900

B.2.5918





Young *Procalstema saxatilis*

Nihoa

E. Cann





E. Caum.

Nihoa Finches attack egg of

Shearwater

95



Handla

The photo at No 7-20

Corner - (High House on
the coast)

Edward J. Lamm,
August, 1932.



Kanaka

The Heart Horn

Edward J. Cairns,
August, 1932.



Kawla
The Book Room

Edward J. Cummings,
August, 1932.



Wanda
Grand He North end

Edward J. Lamm,
August, 1932.



Kanaka
The Cook Horn

Edward J. Cassin,
August, 1932.



Canada

The Cook Corn

Blount & Co
August, 1932.



Mentha

Heavy vegetation

Parium pedatum

Polula or Larrea

" of Cassini's Bush

Sticks of wood

Edward J. Cunn,
Nuyves, 1932.



Wanda

Member of Team

Edward J. Quinn,
August, 1932.



Hunter

Hunter D. Tom

Edward L. Cunn,
August, 1932.



Parula

The prothorax - more
a than well, probably
a windbreak or shelter
of some kind - most
probably not a temple
or enclosure

Edward J. Cairns.
August, 1932.



Kanaka

Sooty Terns - travelling
the pass for the Cannons

Edward & F. Cairns,
August, 1932.



Harold

Parulae

Edward
August,

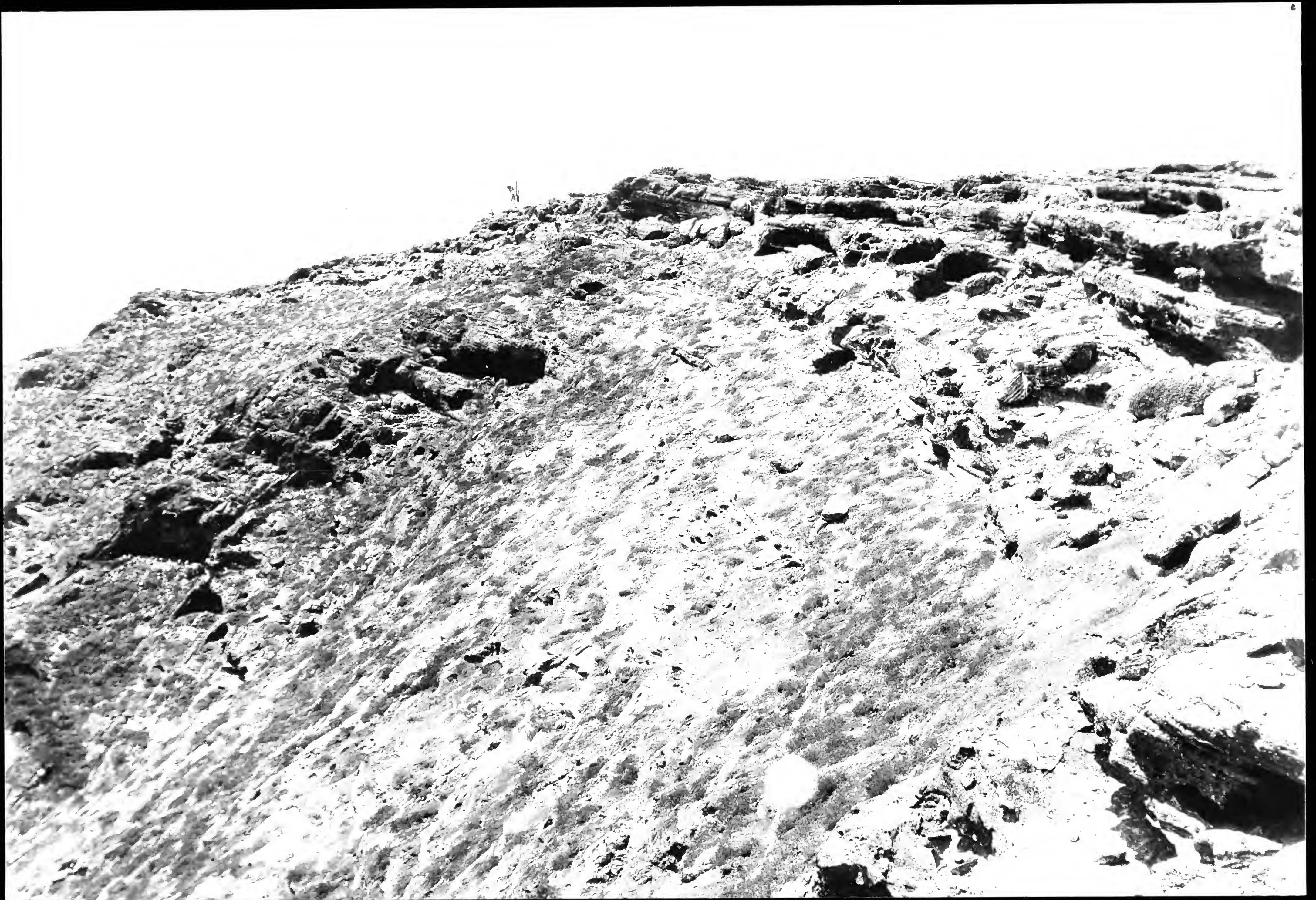
1932

J. C. Cunn,



E. L. Capps
August, 1932

Wanda
The best corn from
near the high prairie.



15 miles -

The summer slope

(on the S/Sy line is the
Appl. (down))

Edward J. Cavan -
August, 1932.



11/20/32

Sample of grass vegetation

This is all *Poa trivialis*

Arthur J. J. J.

Edward J. J. J.
August, 1932.



Waukegan

Opuntia missouriensis
Fallm. Byers - No. 264
Plant on the island - 3 or
over 20" high

Edward L. Cress,
August, 1932.

Photographs.

Film I. Laysan Id., April 11, 1923

- 1-3. Resting pair of *Diomedea nigripes*. (one with yg.)
- 4. *Puffinus nativitatis* pair
- 5. General view of inner basin. (See wing patch)
- 6. *Diomedea immutabilis*

Film 2. Laysan Id. April 11, 1923

- 1. A group of *Puffinus cuneatus*
- 2. Laysan Albatross - a siesta
- 3-4 *Sula cyanops* on nest.
- n.g. 5. Turnstones at border of lagoon.
- 6. Brith-thighed Curlew feeding on decayed albatross egg.

Film 3. Laysan Island, April 12, 1923.

- 1-6. *Puffinus cuneatus* illustrating pairs and groups at nesting burrows, sleeping and a general view of a "colony".

Film 4. Laysan Island, April 12, 1923.

- 1. Eastern beach of Laysan Island. (A.J. Ker)
- 2. Breeding ground of *Sterna lunata* on western beach.
- 3-5. View in colony of *Diomedea nigripes*
- 6. A group of Frigate-birds.

5. Laysan Island, April 12, 1923.

- 1. Eastern Shore of Laysan.
- 2-3 *Phaeopus tuberculoides*
- 4. Colony of *D. nigripes*, north end of island.
- 5. Group *Puffinus cuneatus*
- 6. Frigate-bird colony.

6.

- 1- Camp at Laysan Island, April 12, 1923
- 2. C.E. Reno, A.J. Ker.
- 3. Janagu at anchor
- 4. *Sterna lunata* colony April 13, ..
- 5-6. Nest & Egg of *Sterna lunata*

7.

1. Camp at Laysan Island, April 13, 1923.
- 2-6. Monachus Ocean Island April 16, 1923.

8.

- 1-2 Camp at Ocean Island, April 16, 1923
- 3-5 Seal " " " 17, "
6. Skinning seal on beach " " " "

9.

Ocean Island 4/19/23

1. Colony of Black-footed Albatross, Ocean Id.
- 2-4 Yearling seal
- 5-6. Seal pup 4-5 days old!

10.

- 1-3 Female seal with young 4-5 days old. Ocean Id. 4/19/23
4. Group of *Diomedea nigripes* " 4/20/23
5. ~~Western~~ Eastern side of Ocean Island "
6. Pair of mated seals. "

11. Ocean Id. April 20, 1923.

- 1-2 Pair of mated seals. Ocean Id.
3. Seal.
4. Furrow dug by seal to provide early resting place
5. Dance of *D. nigripes*
6. Eastern side of Ocean Island.

12.

Ocean Island, April 20, 1923

- 1-4. Seals on beach
5. *Scaevola lobelia*
6. Woody stemmed plant

13.

Ocean Island.

1. Young *Diomedea nigripes* April 20, 1923
- 2-3 Red-tailed tropic bird on nest & with egg "
- 4-6 Open meadow April 21, 1923.
(Commander King & Dr. Wilson)

14. Ocean Island, April 21, 1923

- 1-2 Open meadow honey-combed with burrows of *Pterodroma hypoleuca*. (Common King, Dr. Wilson)
- 3-5. growth of *Scaevola lobelia* (*Sula piscator*)
6. *D. nigripes* feeding.

15. Eastern Is., Midway, April 23, 1923

- 1-3 Laysan albatross.
4. Colony of black-footed albatross.
- 5-6. Colony of sooty and gray-backed terns.

16. Sand Is., Midway, April 24, 1923

- 1-2. *Diomedea nigripes* feeding young.
3. Skinning birds on beach
- 4-5. The cable station.
6. Boat house that served as work quarters.

17. Southeast Is., Pearl & Hermes Reef 4/26/23.

1. Landing in the surf boat.
2. Exposed coral rock. Seal in foreground.
3. Two seals.
- 4-5 grass clumps.

18. Grass Is., Pearl and Hermes Reef 4/27/23.

- 1-2 Seal.
3. Seal sucking pup.
4. young *Pterodroma hypoleuca*.
5. Colony of *Diomedea nigripes*.
6. Grass island, General View.

19. Seal Is., Pearl and Hermes Reef 4/27/23

1. Seals lying among young albatross.
2. hunch time
3. Blue-faced booby.
4. *Sula cyanops* with egg under water still incubating
5. Colony of frigate birds.
6. Western portion of Seal Is.

20 Laysan Island, May 2, 1923

1. Southwest shore of Laysan. Curlew in center is searching for terns' eggs.
- 2-3 Pair of *Bulweria* taken from rock crevice at left (Eric Schlemmer).
- 4-6. *Bulweria bulwerii*.

21. Laysan Island May 2, 1923

1. Beach below blowhole.
2. Bones of birds in the sand.
3. Red-tailed Tropicbird.
- 4-6. Frigate birds ♂♂ with gular sacs, ^{fully} inflated. Bird with large sac is mating. Other has begun to incubate. Sacs distended to fullest capacity.

22. Laysan Island, May 3, 1923

- 1-2. Young *Diomedea nigripes* ashup.
- 3-4 " " " " in nest.
- 5 Adult approaching young to careen it.

23. Laysan Island, May 3, 1923.

1. young black-footed Albatross teasing for food.
- 2-3 breakfast on the way
- 4-6 breakfast arrives.

24. Laysan Island. May 3, 1923.

- 1-2. Turtle on beach (Eric Schlemmer).
3. Laysan albatross with young.
4. Group of Frigate birds on nest
- 5 ♂ Frigate ashup on nest.
- 6 ♀ Frigate on nest.

25. Laysan Island. May 3, 1923

- 1-2 Surf on South Beach.
3. Group of black-footed albatross with young.
- 4-6. *Gygis alba*.

26 Laysan Island, May 3, 1923

- 1-2 Pair of *Gygis alba* at nest site
- 2-4 *Sula cyanoptera* with young.
5. *Puffinus cuneatus* beginning excavation of burrow
6. Laysan seal in center amid many *Puffinus cuneatus*. May 4, 1923.

27. Laysan Island May 5, 1923

1. Colony of *Puffinus cuneatus*.
2. *Diomedea immutabilis*.
- 3-5 Dance of *D. immutabilis*
6. Wetmore & Schlemmer return from a forest field

28. Laysan Island, May 9, 1923

- 1-2 *Megalopterus hawaiiensis* on nests.
3. Nest of *Megalopterus*
4. Colony of Laysan albatross
5. Frigate bird seizing squid regurgitated by Tropic bird.
6. Colony of *Sula piscator* in ironwood.

29. Laysan Island, May 10, 1923.

- 1-5 Red-footed boobies
6. *Telespiza cantans*.

30. Laysan Island, May 10, 1923

- 1-2 Dance of *Diomedea immutabilis*
- 3-4. young of
5. *Puffinus cuneatus* at burrow. note tracks in sand.
6. egg of *Puffinus nativitatis*.

31. Laysan Island, May 10, 1923

1. Laysan albatross.
2. " " with young
3. Pair of Laysan albatross.
- 4-6. Laysan albatross (G. Wetmore)

32. Laysan Island, May 10, 1923

1. C. E. Row

2-6. Laysan albatross (A. Wetmore)

33. Laysan Island, May 13, 1923.

1. Puffins *cumata* at entrance of burrow.

2. *Anous stolidus*

3. *Megalopterus hawaiiensis* at nest

4. Blowhole.

5. The tobacco patch.

6. young *Diomedea immutabilis*

34. Lisiansky Island, May 18, 1923.

1-3. General view of island.

4. Wedge-tailed Shearwaters at burrow

5-6 young *Diomedea immutabilis*

35. Lisiansky Island May 18, 1923

1. Colony of Black-footed albatross

2. Edge of grass plot

3. Nearer view of grass plot.

4-6. Turtle on its back on beach.

36. Lisiansky Island, May 18, 1923.

1. View of grass plot

2-3 Blue faced booby on nest.

4-6 Blue faced booby with young.

37. Lisiansky Island, May 18, 1923

1. A view of grass grown area.

2-3 Nest and egg of frigate-bird.

4. young *Diomedea nigripes*

5. Eggs! (Eric Schlemmer).

6. *D. Thaumum*.

38. Lisiansky Island, May 18, 1923

1-2 Male Frigate-bird on nest.

3. Young Frigate-bird newly hatched.

4-5 *Sterna fuscata*

39. hisiansty Island, May 18, 1923

1. *Sula fasciata* on nest on low clump of grass.
2. Nest of *Sula fasciata* in grass.
3. Pair of *Sula cyanoptera*.
4. *Sula leucogastera* at nest.
- 5-6 young *Sterna lunata*.

40. hisiansty Island, May 19, 1923.

1. Nest and egg of *Anous stolidus*
2. young Laysan Albatross.
- 3-4 Ruins of old building
- 5-6 inner basin of island.

41. hisiansty Island, May 19, 1923.

- 1-3, young *Diomedea immutabilis*
- 4-6. *Puffinus nativitatis*.

42. hisiansty Island, May 19, 1923.

1. Nest and egg of *Anous stolidus*
2. View of inner basin of island. camp in distance.
- 3-4 Blue-faced booby and nest.
5. Eastern shore of island.

43. hisiansty Island, May 19, 1923.

1. Nest and eggs of *Sula leucogastera*
- 2-3. Noddies on nesting sites.
- 4-5. Eastern side of island.
6. Turtle on beach.

44. hisiansty Island, May 19, 1923

- 1-2 Turtle.
- 3 *Sula leucogastera*
4. Colony of *Sterna fasciata*
- 5-6. Shell of female turtle.

45. Lisiansky Island, May 19, 1923.

- 1-2 Camp
- 3 ~~4~~ Preparing skins, left to right, Schlemmer, Rees, Capt. Dugan
4. Standing left to right Captain Dugan, Comm. King
- 5-6 Shell of *S. sturli*

46. Gardner Island, May 22, 1923.

1. Landing from surf-boat
2. Small rock.
3. Peak of island.
- 4-5 Blue-faced boobies.

47. Gardner Island, May 22, 1923

1. Young Laysan Albatross.
- 2-3 Small rock at Gardner.
4. Leaving island
- 5-6 Gardner Island.

48. Gardner Island May 22, 1923

- 1-3 Gardner Island.
4. Washing the ward room dishes
5. right to left Schlemmer, Rees, Moore, ?
6. left to right " " Jim Huntley, Merritt.

49

1-6 Nihoa Island, May 24, 1923.

50. Mt. Tantalus, Oahu June 6, 1923

1. Diamond head from ^{near} summit of Tantalus.
2. Moana Valley from Nuuanu ridge.
3. Valley below summit of Tantalus
4. Tantalus - Nuuanu ridge, forest of Kaha,
+ Koa.
- 5-6. G. P. Wilder.

51.

1-2 Tantalus. Nuuanu Ridge, Oahu, June 6, 1923.

Guava, hehua, Koa.

3. Gerrit P. Wilder, June 6, 1923, Tantalus. Nuuanu Ridge

4-5 Bishop Museum, Honolulu June 7, 1923

6. Offices and laboratories, Bishop Museum.

52. Nihoa Island, June 11, 1923.

1-3 Landing camp equipment at Wilder's landing.

4-5. Shores of Adams Bay.

6. Miller's Peak.

53. Nihoa Island, June 11, 1923.

1. young *Sula leucogastra*.

2. *Sula piscator* on nest.

3. " " and young.

4. *Sula cyanops* shading sleeping young.

5-6 *Pritchardia remota* in eastern valley.

54. Nihoa Island, June 11, 1923

1. Western end of island.

2-4. Stone platforms.

5-6. Palms.

55. Nihoa Island, June 11, 1923.

1-4 Nihoa Finch.

5. Platforms in eastern valley.

6. Palms.

56. Nihoa Island. June 11, 1923.

1. Red-footed booby.

2. *Puffinus cuneatus* on nest.

3. Nest of *P. cuneatus*.

4. Platforms in eastern valley.

5. Platforms & palms in eastern valley.

6. Work quarters.

57. Nihoa Island, June 12, 1923

1. Nest & egg of *Puffinus Lunnatus*
2. " " " " *Anous stolidus*
3. " " " " *Bulweria Bulweri*
4. Palm grove.
- 5-6. young Frigate-bird.

58. Nihoa Island, June 12, 1923.

1. Kauleokauka (Kaulenanahoa) Pinnacle rock.
2. Head of Western valley below Millers Peak.
3. Eastern portion of island.
4. Nest and egg of noddy.
- 5-6. male Frigate-bird on nest.

59. Nihoa Island, June 12, 1923.

- ~~5~~-1 Red-footed booby on nest.
2. Frigate-bird with young.
- 3-5 Palms.
6. Camp site above Adams Bay.

60. Nihoa Island.

1. Camp site above Adams Bay. 6/12/23
- 2-3 chick of *Procelsterna saxatilis* "
4. Tropic-bird. "
5. Mouth of walled cave 6/13/23
6. northern gale "

61. Nihoa Island 6/13/23

1. young *Sula leucogastra*
2. Adams Bay from summit of Central Valley.
3. Western slopes above Adams Bay
4. Summit of slopes above central valley.
5. Northern face of Millers Peak.
6. Millers Peak from East.

62. Nihoa Island, June 13, 1923

1-5 young Frigate birds.

6. Upright stones on house platform.

63. Nihoa Island.

1. Frigate bird shading young 6/13/23.

2. Clump of palms.

3-5 *Procelsterna saxatilis*

6 Old Japanese camp. 6/14/23

64. Nihoa Island. 6/14/23

1-2 *Puffinus nativitatis*

3. *Sterna fuscata* first plumage

4. Flat at over 800 feet on Miller's Peak occupied by albatross.

5. Western end of Nihoa from Miller's Peak.

6. Easter

65. Nihoa Island June 14, 1923.

1-2 Flat at over 800 feet near summit of Miller's Peak occupied by albatross. (*D. nigripes*)

3. Stone platform on western summit of Miller's Peak.

4. Surface of stone platform on eastern summit Miller's Peak

5. young Christmas Island Shearwater.

6. *Procelsterna saxatilis*.

66. Necker Island, June 17, 1923

1-4 Landing.

5. "U.S.S. Tanager" at anchor

6. left to right upper row, W. G. Anderson, A. L. C. Atkinson, T. Wilson, M. Cooke, C. Grant; below. Stacker, Havemann, E. C. Bryan

67. Necker Island, June 18, 1923

1-5 *Anous s. julietus*

68. Necker Island, June 18, 1923.

- 1-2 Heians.
3. young *Sterna lunata*.
4. *Sula cyanops* with young.
5. young *Diomedea nigripes*
6. " " *immutabilis*

69. Necker Island, June 18, 1923

1. Heian
2. nest + egg of *Bulweria bulweri*
3. *Sula cyanops* with young.
- 4-6 immature *Sterna lunata*

70. Necker Island, June 18, 1923

- 1-3 young *Sterna fuscata*.
4. Western end of Necker, north side.
5. Eastern " " " "

71. Necker Island.

1. Western end of Necker, south side. 6/18/23
- 2-3 Camp site on the cliffs "
4. Red-footed booby with young 6/19/23
5. Common booby "
6. Colony of *Fregata* "

72. Necker Island, June 19, 1923.

- 1-4. Large heian second hill.
- 5-6 single stone on temple site.

73. Necker Island, June 19, 1923

1. Large heian.
- 2-3 young *Diomedea immutabilis*
- 4-5 *Diomedea immutabilis* with grown young.
6. Immature *Sula piscator*.

74. Necker Island June 19, 1923

1. Bay at western end (north side)
2. Eastern end of id.
3. Frigate bird with young.
4. Young *Sula leucogastra*.
- 5-6 *Gygis alba*.

75. Necker Island June 20, 1923

- 1-3 *Gygis alba*.

76. Necker Island, June 20, 1923

- 1-2 *Heiars*.
- 3-4 young *Diomedea ~~innotabilis~~ nigripes*.
5. young *D. nigripes* practicing flight.
6. group of yg. *D. nigripes*

77. Necker Island, June 20, 1923

1. Red-tailed Tropic-bird.
- 2-3 *Bulweria bulweri* on nest.
4. young Laysan albatross.
5. Red-footed booby on nest.

78. Necker Island, June 20, 1923

1. Western end of island (north side)
2. Young *Sterna fuscata*.
3. Young *Diomedea immutabilis*
- 4 *Bulweria bulweri* & nest.
- 5-6 *Gygis alba*.

79. Necker Island June 21, 1923

- 1-2 Northern side, east end.
- 3 * eastern end of ~~the~~
- 4 Northern side of island.
- 5-6 Eastern end.

80. Necker Island, June 21, 1923

- 1-2 Camp site on cliffs
3. East Bay
- 4 Lt. Commander S. W. King
5. Surf-boat.
6. Tanager at anchor

80a. Necker Island, June 21, 1923

1. Western cliffs.
- 2-4 *Gygis alba*
- 5-6 *Proculiterma sacralis*

80b. Necker Island, June 21, 1923

1. Red-tailed Tropic-bird.

81. ^{French Frigates Shoal} ~~Necker Island~~, June 22, 1923

1. Noddies, ~~East~~ ^{Round} Island.
2. Black-footed albatross, blue-faced boobies ~~East~~ ^{Round} Island
4. Motor-sailer landing at small sandspit.
5. Sandspit north of East Island.
6. " east of " " "

82. French Frigates Shoal, June 23, 1923

- 1-2 East Island.
3. young red-tailed tropic-bird. East Id.
- 4 immatures *Diomedea immutabilis* "
- *5-6 Newly hatched *Anous s. pibentus* "

83. French Frigates Shoal, June 23, 1923

- 1-2 Red-tailed Tropic-bird. East Island.
3. Noddy at rest. "
- 4 young Noddy. "
- 5-6 Camp on East Island.

84

Hawk?

85. French Frigates Shoal, June 23, 1923

1-4 Noddy at East East Island.

5. *Diomedea immutabilis* with young.

6. Blue faced booby with young

86. French Frigates Shoal.

1-2. Wedge-tailed Shearwater, Blue faced booby East Id, 6/23/23

3-4. Anderson with turtle. Gin Island 6/24/23

5-6 Gin Island

87 French Frigates Shoal. 6/24/23

1. Gin Island.

2. Bird colony on little Gin Island.

3. Nest and egg of Noddy "

4-6 *Diomedea nigripes*.

88. French Frigates Shoal, June 25, 1923

1-2. Landing party at Tern Island.

3-4. Camp site of ship wrecked Japanese Tern Island.

5-6. young *Sterna fuscata*

89. French Frigates Shoal, June 25, 1923

1-4 *Sterna fuscata*.

5. Anous *S. fuscatus*

90. French Frigates Shoal, June

1-2. Shark Island 6/25/23

3. young Sooty terns. Tern Island 6/26/23

4. Noddy and nest.

5-6 Anderson with moi.

91. French Frigates Shoal, June 26, 1923.

1. Camp on Tern Island

2-3 Noddy and nest.

4-6. Sooty tern colony.

92. French Frigates Shoal, June 26, 1923

1-2 Trig Island.

3. *Diomedea nigripes*, *Sula cyanops*. Trig Island.

4-6 Sooty tern.

93. French Frigates Shoals, June 26, 1923
- 1-3 Skate Island
 4. Whale Island
 5. young frigate-bird shading head.
 6. Frigate bird and nest.

94. French Frigates Shoal, June 26, 1923
- 1-2 Whale Island.
 3. Laysan albatross.
 - 4-5. Frigate bird nest.
 6. Red-footed booby.

95. French Frigates Shoal, June 27, 1923
- 1-3 La Perouse Rock, from north
 - 4 " " " " from west
 - 5-6 " " " " " " south

96. ~~French~~ Necker Island, June 29, 1923
- 1-2 young *Diomedea immutabilis* practicing flight
 3. young *D. immutabilis*
 - 4-5 Immature Sooty tern.
 6. Blue-faced booby with runt egg.

- 96a Necker Island, June 29, 1923.
- 1-4 Heiau.
 - 5-6. Sing stones in heiau.

97. Kaula Island, July 1, 1923
- 1-4 From north.
 - 5 From northeast
 6. Cave. *Kui moana*

98. Kaula Island, July 1, 1923
1. From northeast.
 - 2-5 from east.
 6. King and Dugham on bridge.

96b see next page

(out of numerical order)

96b Necker Island, June 29, 1923

1. Colony of red-footed boobies.
- 2-3 Blue-faced booby with runt egg.
- 4 *Gygis alba*.
- 5 Immature *Sterna fuscata*.
6. left to right E. Bryan, Geo Higgs, W.G. Anderson, E. Cairns, H. Palmer, E. Schlemmer, Red Dofflesmeier, B. Cartwright, C. Judd.

99. Johnston Island July 11, 1923

1. Rock ledge north side.
- 2-3 yg *Bulweria bulwerii*

100, Johnston Island, July 12, 1923.

1. immature Frigate-bird.
- 2-3 " *Diomedea immutabilis*.
- 4-5 Nest + egg of *Sula piscator*.
6. Hydroplum Wood camp

101. Johnston Island, July 12, 1923

- 1-4 Sooty terns.
- 5-6 Blue-faced booby with nest.

102. Johnston Island, July 12, 1923.

1. Hill slope.
2. Johnston Island from hill.
3. Sand Island from hill.
- 4-5 Eastern beach
6. Frigate-birds.

103. Johnston Island, July 12, 1923

1. Eastern beach.
2. Anderson with an albatross
- 3-6 Frigate-birds (and Anderson).

104. Johnston Island, July 12, 1923

- 1-4 Frigate birds.
5. Anderson with throat.
6. left to right. W. G. Anderson, E. Schlemmer, C. Edmondson, (Geo Higgs behind Edmondson), C. Grant.

105. Johnston Island.

- 1-2 Red-footed boobies at night (flashlight) 7/12/23
- 3 Blue faced " " " " " "
- 4-5. Remains of terns and other birds killed by poachers. 7/13/23

106. Johnston Island. July 13, 1923

1. Eroded rock, north east end of Johnston.
2. Noddies.
- 3-4 Noddy nest.
- 5-6 Frigate-birds.

107. Johnston Island, July

1. North side. 7/13/23
2. Noddy nest. " "
- 3-4 Bulweria bulweri. " "
5. Camp. 7/14/23

108. Johnston Island.

1. an eel. (Anderson) 7/14/23
2. Johnston from Sand Island. 7/15/23
3. East side Sand Island. " "
- 4-5 young Puffins nativitatis.

109. Johnston Island. July 15, 1923.

1. Eastern peninsula of Sand Island.
2. South side Sand Island.
3. a group of noddies. " "
4. upward slope of beach strata East end Sand Island
5. west side Sand Island.
6. guano pile.

110 Johnston Island.

1. Skinning birds, Sand Island 7/15/23
2. Left to right. E. Schlemmer, Dr. J. B. Pollock 7/15.
- 3-4 Sand Island
5. Left to right. W. G. Anderson, E. Edmondson, C. Grant 7/16/23
6. Johnston Island. 7/16/23.

111. Johnston Island. July 16, 1923

- 1-4. Sula leucogaster.
- 5-6 young noddy.

112. Johnston Island, July 16, 1923

- 1-6 Noddies.

113. Johnston Island, July 16, 1923

1. Egg of Noddy.
2. young Frigate bird.
- 3-4 immature tropic-bird. (P. rubricauda)
- 5-6 Noddies.

114 Johnston Island, July 19, 1923.

- 1-2 Northwest end.
- 3-5 camp.
6. Rigging a sail.

115. Johnston Island, 19

- 1-2 Johnston Island, July 20, 1923
3. Sand Id. Peaked Id.
4. egg of gygis, Wake Islands 7/27/23. Peaked Id.
5. Workshop of Peachers. Peaked Id.
6. Bird bones behind workshop

116. Wake Islands

1. ~~Rail~~ landing at camp. Wake Island July 27, 1923.
2. Pampis. Wake Island
- 3-5. domes beach in lagoon
6. Rail. Peaked Id, 7/30/23.

117. Wake Islands, July 30, 1923

1. Skiff with sail, Schlemmer & Wetmore, Wake Id.
- 2-3. Old poachers camp, Peale Island.
- 4-6. *Journefortia argentea* ..

118, Wake Islands, Peale Id, 7/30/23

1. Opening in *Journefortia*. Shearwater burrows.
2. North beach ~~to~~ windward side
3. Jangle of vines
4. Nest of noddy.
5. Egg of *Gygis*.
6. Hermit crabs. (Rail?)

119. Wake Island, Peale Id, 7/30/23

- 1-6. Windward Shore.

120, Wake Island, Peale Id, 7/30/23

1. Work bench used by poachers.
2. Rack for holding drying skins, poachers camp.
3. Round coral formation.
4. Lagoon side.
5. Sooty tern colony.
6. Hermit crabs.

120a. Wake Islands.

1. Old poachers camp, Peale Id 7/30/23.
2. Work-bench used by poachers .. "
- 3-4 View south across lagoon .. "
5. Leeward beach, Wilkes Id. "
6. Camp.

121. Wake Islands ^{Wilkes Id.} July 31, 1923

1. Red-footed boobies.
- 2-3 *Pemphis*.
- 4-5. Shore line.
6. Looking north across lagoon.

122. Wake islands, Wake id, 7/31/23
1-6. Old Japanese Shrine.

123, Wake islands. Wake id, Aug. 1, 1923

1. *Journefortia argentea* on beach.

2-4. Rock exposures on beach.

5. Whale meat thrown on beach.

124. Wake islands, Wake id, Aug. 1, 1923.

1-3 *Journefortia argentea*.

4-6 Eastern end.

125, Wake islands, 8/1/23

1. Block of coral rock cast on beach, Wake id. 8/1/23

2-5. Lagoon shore

6. Hermit crabs caught in rat traps.

126 Wake Island, 8/2/23

1. Eastern end of lagoon, Wake id.

2 North beach.

3. *Cordia*.

4. Shrub with orange flowers.

5. Red-footed booby.

6. Egg of gygis.

127, Wake island,

1. Red footed booby

Wake island 8/2/23

2. Vegetation.

3. Camp

4. Tanager opposite camp.

5-6. *Sesuvium*

8/3/23

128. Wake island. (Wake island) 8/3/23

1-2. Land rail.

3-4 *Sesuvium*.

5. *Journefortia*.

~~129~~ 129. Wake Island, Aug. 3, 1923.

1. large rock cast up on beach.
- 2-3 *Gygis alba*.
4. Camp, left to right Bryan, Schlemmer, Palmer, Pollock.
5. left to right: Palmer, Bryan, Schlemmer, Anderson, Pollock.
6. C. Edmondson.

^{southern} 130. Wake Island, Aug. 4, 1923

- 1-2 Channel into lagoon at low tide.
3. ^{old} channel
4. Beach.
5. Young frigate bird.
6. Hermit crab.

131. Wake Island, Aug. 5, 1923.

- 1-2 Boat channel into lagoon.
3. Remains of boat at old Japanese camp.
4. *Zuripha*
5. left to right: Schlemmer, Bryan, Thamm.
6. Pollock, Schlemmer, Nigg.

132.

1-4 Wake Island, Aug. 5, 1923.

5. Captain Ingraham.
6. quarter deck on the Danager.

133. ~~Popoia Island~~ 8/20/23

1. Popoia Island (Bruce Cartwright in boat) 8/20/23

2-3 Vegetation ^{Popoia Id.} *Sesuvium* & *Hibiscus tiliaceus*

4-6 *Puffinus cuneatus* Popoia Island.

7. Rockledge Popoia 8/20/23.

8. Manana Island at left. 8/21/23.

9-10 Old crater on Manana Id. "

11. left to right B. Cartwright, C. Judd.

12. " S.C. Ball, Wetmore, Judd.

PHOTOGRAPHS BY ALEXANDER WETMORE

- ✓ BS 25669.....From ^{the} northeast. Kaula Island, ~~Hawaii~~, July 1, 1923.
- ✓ BS 25670.....From north. Note cave of Kui Moana, reputed home of largest shark god of the Islands. His fin may be seen (turned to stone) at left of ~~entrance~~. ^{entrance} Kaula Island ~~Hawaii~~, July 1, 1923.
- ✓ BS 25671.....From northeast. Landing may be made, with wind from south or west, at left hand point where access to the top of island is possible. ~~Kaula~~ ^{Kaula} Island ~~Hawaii~~, July 1, 1923.
- ✓ BS 25673.....Western side, cliff 900 feet high, ^{on} Nihoa Island, ~~Hawaii~~, May 24, 1923.
- ✓ BS 25675.....Southern side at Adams Bay, Nihoa Island, ~~Hawaii~~, May 24, 1923.
- ✓ BS 25676.....Landing rock with boat approaching. Nihoa Island, ~~Hawaii~~, June 11, 1923.
- ✓ BS 25677.....Preparing to disembark supplies. Nihoa Island, ~~Hawaii~~, June 11, 1923.
- ✓ BS 25678.....Throwing supplies ashore at landing rock. ~~Published in the National Geographic Magazine, p. 76, Vol. XLVIII, No. 1, July, 1925 (Not released generally)~~. Nihoa Island, ~~Hawaii~~, June 11, 1923.
- ✓ BS 25679.....Adams Bay, Nihoa Island, ~~Hawaii~~. June 11, 1923.
- ✓ BS 25680.....Miller's Peak from shore of Adams Bay, Nihoa Island, ~~Hawaii~~, June 11, 1923.
- ✓ BS 25682.....Miller's Peak (a pali 900 feet high) - View of northern face. Nihoa Island, ~~Hawaii~~, June 13, 1923.
- ✓ BS 25683.....Stone platform on western summit of Miller's Peak, apparently an aboriginal watch tower. Nihoa Island, ~~Hawaii~~, June 14, 1923.
- ✓ BS 25686.....Eastern end of Island from Miller's Peak. ~~Nihoa~~ ^{Nihoa} Island, ~~Hawaii~~, June 14, 1923
- ✓ BS 25687.....Western end of Island from Miller's Peak, ~~Nihoa~~ ^{Nihoa} Island, ~~Hawaii~~, June 14, 1923
- ✓ BS 25688.....Pinnacle rock known as Kaulenanahoa or Kauleokauka. Nihoa Island, ~~Hawaii~~, June 12, 1923.
- ✓ BS 25689.....Cave showing signs of Japanese habitation. Nihoa Island, ~~Hawaii~~, June 14, 1923.
- ✓ BS 25690.....A steeply sloping valley at western end, ~~Nihoa~~ ^{Nihoa} Island, ~~Hawaii~~, June 12, 1923.
- ✓ BS 25691.....Tern, booby and albatross colonies at altitude of over 800 feet. ~~Nihoa~~ ^{Nihoa} Island, ~~Hawaii~~, June 14, 1923.
- ✓ BS 25693.....Grove of Nihoa palms, Pritchardia ^eremota. Nihoa Island, ~~Hawaii~~, June 11, 1923.
- ✓ BS 25694.....Grove of Nihoa Palms, Pritchardia ^eremota. Nihoa Island ~~Hawaii~~, June 13, 1923.
- ✓ BS 25698.....Ancient stone platforms for houses of aboriginal inhabitants. Nihoa Island, ~~Hawaii~~, June 11, 1923.

- ✓ BS 25699.....Ancient house platforms in eastern valley. Nihoa Island, ~~Hawaii~~, June 11, 1923.
- ✓ BS 25700.....U. S. S. Tanager at anchor ~~Ship used as means of transportation,~~ Necker Island, ~~Hawaii~~, June 21, 1923. ~~Published in the National Geographic Magazine, p. 78, Vol. XLVIII, No. I, July, 1925, (Not released generally).~~
- ✓ BS 25701.....View of northern side of island. Necker Island, ~~Hawaii~~, June 21, 1923.
- ✓ BS 25704.....Eastern end of Necker Island, ~~Hawaii~~, June 21, 1923.
- ✓ BS 25706.....The landing at Necker. ~~Necker~~ Island, ~~Hawaii~~, June 17, 1923.
- ✓ BS 25707.....The landing at Necker. ~~Necker~~ Island, ~~Hawaii~~, June 17, 1923.
- ✓ BS 25708.....Camp on the cliffs. Necker Island, ~~Hawaii~~, June 21, 1923. ~~Published in the National Geographic Magazine, p. 80, Vol. XLVIII, No. I, July, 1925 (Not released generally).~~
- ✓ BS 25709.....Western end of Island. Necker Island, ~~Hawaii~~, June 20, 1923.
- ✓ BS 25711.....Eastern end of Island. Necker Island, ~~Hawaii~~, June 18, 1923.
- ✓ BS 25713.....Western end of Island (southern face). Necker Island, ~~Hawaii~~, June 18, 1923.
- ✓ BS 25715.....Ancient temple platform or Heiau. Necker Island, ~~Hawaii~~, June 19, 1923.
- ✓ BS 25717.....Ancient temple platform or heiau. Necker Island, ~~Hawaii~~, June 19, 1923.
- ✓ BS 25720.....Ancient temple platform or heiau. Necker Island, ~~Hawaii~~, June 20, 1923.
- ✓ BS 25721.....Upright stones in old heiau. Necker Island, ~~Hawaii~~, June 29, 1923. ~~Published in the National Geographic Magazine, p. 80, Vol. XLVIII, No. I, July 1925 (Not released generally).~~
- ✓ BS 25722.....Upright stones in old heiau. Necker Island, ~~Hawaii~~, June 29, 1923.
- ✓ BS 25723.....Single upright stone from ancient temple platform. Necker Island, ~~Hawaii~~, June 19, 1923.
- ✓ BS 25724.....Upright stone in old heiau. Necker Island, ~~Hawaii~~, June 29, 1923.
- ✓ BS 25725.....Sooty tern colony on Trig Island, French Frigates Shoal, ~~Hawaii~~, June 26, 1923.
- ✓ BS 25726.....View of Skate Island, French Frigates Shoal, ~~Hawaii~~, June 26, 1923.
- ✓ BS 25727.....View of Skate Island, French Frigates Shoal, ~~Hawaii~~, June 26, 1923.
- ✓ BS 25728.....View of Skate Island, End of Whale Island in distance. French Frigates Shoal, ~~Hawaii~~, June 26, 1923.
- ✓ BS 25729.....Whale Island, French Frigates Shoal, ~~Hawaii~~, June 26, 1923.
- ✓ BS 25730.....View of Whale Island, French Frigates Shoal, ~~Hawaii~~, June 26, 1923.

- ✓ BS 25731.....View of Whale Island, French Frigates Shoal, ~~Hawaii~~, June 26, 1923.
- ✓ BS 25732.....View of Shark Island, French Frigates Shoal, ~~Hawaii~~, June 25, 1923.
- ✓ BS 25733.....Bird colony on Little Gin Island, French Frigates Shoal, ~~Hawaii~~, June 24, 1923.
- ✓ BS 25734.....A view of East Island, French Frigates Shoal, ~~Hawaii~~, June 23, 1923.
- ✓ BS 25736.....A sand spit typical of ~~this group of islands~~. French Frigates ~~Island~~ Shoal, ~~Hawaii~~, June 22, 1923.
- ✓ BS 25737.....Landing on a small sand island. French Frigates Shoal, ~~Hawaii~~, June 22, 1923.
- ✓ BS 25738.....Group of young black-footed albatross and boobies. French Frigates Shoal, ~~Hawaii~~, June 22, 1923.
- ✓ BS 25739.....View of Shark Island, French Frigates Shoal, ~~Hawaii~~, June 25, 1923.
- ✓ BS 25740.....Cache from a shipwrecked sampan on Tern Island, French Frigates Shoal, ~~Hawaii~~, June 25, 1923.
- ✓ BS 25741.....Camp on East Island, French Frigates Shoal, ~~Hawaii~~, June 23, 1923.
- ✓ BS 25742.....La Perouse Rock, north side. French Frigates Shoal, ~~Hawaii~~, June 27, 1923.
- ✓ BS 25743.....La Perouse Rock, south side. French Frigates Shoal, ~~Hawaii~~, June 27, 1923. ~~Released for use of Prof. W. M. Davis (See letter from A. Wetmore, dated December 17, 1926).~~
- ✓ BS 25745.....La Perouse Rock, from west. French Frigates Shoal, ~~Hawaii~~, June 27, 1923. ~~Released for use of Prof. W. M. Davis (see letter from Alex. Wetmore dated December 17, 1926).~~
- + BS 25748.....Main island. Gardner Island, ~~Hawaii~~, May 22, 1923.
- * BS 25749.....Landing from surf boat. Note fall of surf on rocky island in background. Gardner Island, ~~Hawaii~~, May 22, 1923. ~~Published in the National Geographic Magazine, p. 81, Vol. XLVIII, No. 1, July, 1925 (Not released generally).~~
- + BS 25750.....View of small rocky island. Gardner Island, ~~Hawaii~~, May 22, 1923.
- * BS 25751.....Camp at Laysan Island. ~~Laysan Island, Hawaii~~, Apr. 12, 1923.
- + BS 25752.....Old buildings of Guano Co. ^{Company} Coconut trees were planted in 1895 from nuts from Jaluit, in the Marshall Islands. Laysan Island, ~~Hawaii~~, Apr. 13, 1923.
- * BS 25753.....Eastern shore of Laysan Island. ~~Laysan Island, Hawaii~~, Apr. 12, 1923.
- BS 25754.....General view of inner basin of Laysan, wholly denuded of vegetation by rabbits except for the dark patch at left centre which indicates a patch of Sesuvium and Portulaca. ~~Laysan Island, Hawaii~~, Apr. 11, 1923.
- BS 25755.....Bird colonies at the "Tobacco Patch". Laysan Island, ~~Hawaii~~, May 13, 1923.

16

3305

- BS 25756.....The "Blowhole" at Laysan. ~~Laysan Island, Hawaii~~, May 13, 1923.
- X BS 25757.....Surf breaking on south beach, Laysan Island, ~~Hawaii~~, May 3, 1923.
- X BS 25758.....Bones scattered over the sand - characteristic of almost the entire surface of Laysan. ~~Laysan Island, Hawaii~~, May 2, 1923.
- X BS 25759.....General view near beach, Lisianski Island, ~~Hawaii~~, May 18, 1923.
- X BS 25761.....View of grass grown area. This is only extensive vegetation on island. Lisianski Island, ~~Hawaii~~, May 18, 1923.
- BS 25762.....Eastern shore of ~~Island~~. Lisianski Island, ~~Hawaii~~, May 19, 1923.
- X BS 25764.....Camp, ~~Lisianski Island, Hawaii~~, May 19, 1923.
- X BS 25765.....Ruins of old building, Lisianski Island, ~~Hawaii~~, May 19, 1923.
- X BS 25766.....View across island. Camp in distance. Lisianski Island, ~~Hawaii~~, May 19, 1923.
- X BS 25768.....View of grass growth, southeast island, Pearl and Hermes Reef, ~~Hawaii~~, Apr. 26, 1923.
- X BS 25771.....Cable station on Sand Island, Midway Islands, ~~Hawaii~~, Apr. 24, 1923.
- X BS 25772.....Eastern face of Ocean Island, ~~Ocean Island, Hawaii~~, Apr. 20, 1923.
- X BS 25775.....Open meadow, home of petrels and boobies. Ocean Island, ~~Hawaii~~, Apr. 21, 1923.
- ✓ BS 25776.....Growth of Scaevola lobelia which covers most of island. Ocean Island, ~~Hawaii~~, Apr. 21, 1923.
- ✓ BS 25778.....Plant of Boerhaavia. Ocean Island, ~~Hawaii~~, Apr. 20, 1923.
- ✓ BS 25779.....View of Johnston Island. ~~Johnston Island, Hawaii~~, Jul. 20, 1923.
- ✓ BS 25781.....View of Johnston Island from Sand Island. ~~Johnston Island, Hawaii~~, July 15, 1923.
- ✓ BS 25782.....View of camp. Johnston Island, ~~Hawaii~~, July 19, 1923. ~~Published in the National Geographic Magazine, p. 108, Vol. XLVIII, No. I, July 1925 (Not released generally).~~
- ✓ BS 25783.....View of camp, Johnston Island, ~~Hawaii~~, July 19, 1923.
- ✓ BS 25784.....Northwestern end of island. Johnston Island, ~~Hawaii~~, July 19, 1923.
- ✓ BS 25785.....Northwestern end of island. Johnston Island, ~~Hawaii~~, July 19, 1923.
- ✓ BS 25787.....North side of island. Johnston Island, ~~Hawaii~~, July 13, 1923.
- ✓ BS 25788.....Eroded limestone on north shore, Johnston Island, ~~Hawaii~~, July 13, 1923.
- ✓ BS 25789.....Eastern beach, Johnston Island, ~~Hawaii~~, July 12, 1923.

- ✓ BS 25791.....Hill slope of interior of island. Johnston Island, Hawaii, July 12, 1923.
- ✓ BS 25792.....Masses of bones, left by poachers who raided the tern and shearwater colonies here. Johnston Island, Hawaii, July 13, 1923.
- ✓ BS 25794.....Pile of guano or phosphate rock in tern colony (Sand Island). Johnston Island, Hawaii, July 15, 1923.
- ✓ BS 25795.....Beach rock east end of Sand Island. Johnston Island, Hawaii, July 15, 1923.
- ✓ BS 25797.....Eastern peninsula of Sand Island. Johnston Island, Hawaii, July 15, 1923.
- ✓ BS 25799.....U. S. S. Tanager standing ^{off camp on Wilkes Island,} by unable to anchor because of deep water. Wake Island, August 2, 1923.
- ✓ BS 25800.....A landing party, ^{approaching camp on Wilkes Island,} Wake Island, July 27, 1923.
- ✓ BS 25801.....View of Wake Island ^(south side) from ship. Wake Island, Aug. 5, 1923.
- ✓ BS 25803.....View of beach (Wake Island). Wake Island, Aug. 1, 1923.
- ✓ BS 25804.....Leeward beach near camp, ^{on Wilkes Island.} Wake Island, July 30, 1923.
- ✓ BS 25805.....Shore of lagoon. ^(Wake Island) Wake Island, Aug. 1, 1923.
- ✓ BS 25807.....Shore line of lagoon. ^(Wake Island) Wake Island, July 31, 1923.
- ✓ BS 25808.....Shore line of lagoon. ^(Wake Island) Wake Island, Aug. 1, 1923.
- ✓ BS 25809.....Mass of coral rock cast on beach by storms. ^(Southern shore of Wake Island) Wake Island, Aug. 1, 1923.
- ✓ BS 25810.....Rock exposure on beach (Wake Island). Wake Island, Aug. 1, 1923.
- ✓ BS 25813.....Drift and coral heads washed onto island by storms. ^(Wilkes Island) Wake Island, July 31, 1923.
- ✓ BS 25815.....Sesuvium and the shrub Pamphis. ^(Wake Island) Wake Island, Aug. 3, 1923.
- ✓ BS 25817.....Growth of Pamphis. ^(Wake Island) Wake Island, Aug. 1, 1923.
- ✓ BS 25818.....Growth of Sesuvium. ^(Wake Island) Wake Island, Aug. 3, 1923.
- ✓ BS 25820.....Southern channel into lagoon. Practicable for small boats at high tide. Wake Island, Aug. 5, 1923.
- ✓ BS 25823.....Shore line of lagoon. ^{eastern end of} ^{on Wake Island} Wake Island, Aug. 2, 1923.
- ✓ BS 25825.....Shrubbery ^{Wake} on island (Pamphis). Wake Island, July 27, 1923.
- ✓ BS 25826.....Eastern end of Wake Island, U. S. S. Tanager in distance. Wake Island, Aug. 1, 1923.
- ✓ BS 25828.....Tournefortia argentea near beach. ^{on Wake Island} Wake Island, Aug. 1, 1923.
- ✓ BS 25831.....Typical shrubbery, Tournefortia argentea. ^{on Pearl Island} Wake Island, July 30, 1923.

- ✓ BS 25832.....View of open growth of Tournefortia argentea. ^{on Wake Island} Wake Island, Aug. 2, 1923.
- ✓ BS 25834.....Mass of coral rock cast on beach. ^{of Wake Island} Wake Island, Aug. 3, 1923.
- ✓ BS 25835.....Tree trunks and coral heads washed by storms over ^{Wake} island. Wake Island, Aug. 2, 1923.
- ✓ BS 25838.....View ^{from Peale Island} toward channel leading in ^{to} lagoon. Wake Island, July 30, 1923.
- ✓ BS 25839.....Steep beach on windward side. ^{of Peale Island} Wake Island, July 30, 1923.
- ✓ BS 25840.....Windward beach. ^{of Peale Island} Wake Island, July 30, 1923.
- ✓ BS 25842.....Japanese shrine, ~~see notes~~. ^{on Wilkes Island} Wake Island, July 31, 1923.
- ✓ BS 25843.....Old camp of Japanese bird poachers. ^{on Peale Island} Wake Island, July 30, 1923.
- ✓ BS 25844.....Work shop where birds were prepared. Old camp of Japanese bird poachers. ^{on Peale Island} Wake Island, July 30, 1923.
- ✓ BS 25846.....Skinning table for birds used by Japanese poachers. ^{on Peale Island} Wake Island, July 30, 1923.
- ✓ BS 25847.....Racks for drying bird skins at old Japanese poachers camp. ^{on Peale Island} Wake Island, July 30, 1923.
- ✓ BS 25848.....Bones of birds destroyed by Japanese poachers. ^(Peale Island) Wake Island, July 27, 1923.
- ✓ BS 25849.....Camp scene. ^{on Wilkes Island} Wake Island, Aug. 2, 1923.
- ✓ BS 25850.....Hermit crab. Wake Island, Aug. 4, 1923.
- ✓ BS 25851.....Tantalus-Nuuanu Ridge. Growths of Guava, Lehua and Koa. Oahu, ^{Island} ~~Hawaii~~, June 6, 1923.
- ✓ BS 25852.....Forest of Lehua and Koa, Nuuanu Ridge. Oahu, ~~Hawaii~~, June 6, 1923.
- ✓ BS 25854.....Moana Valley from Nuuanu Ridge. Oahu, ~~Hawaii~~, June 6, 1923.
- ✓ BS 25855.....Diamond Head from Mt. Tantalus. ^{above} Honolulu, Oahu, ~~Hawaii~~, June 6, 1923.
- ✓ BS 25856.....G. P. Wilder, Warden, Hawaiian Bird Reservation, ^{in hills back of Honolulu} Oahu, ~~Hawaii~~, June 6, 1923.
- ✓ BS 25857.....Bernice Pauahi Bishop Museum. Honolulu, Hawaii, June 7, 1923.
- ✓ BS 25859.....Only locality where Rattus hawaiiensis is known. Popoia Island, Oahu, ~~Hawaii~~, Aug. 20, 1923.
- ✓ BS 25860.....View of rock ledge on shore. Popoia Island, Oahu, ~~Hawaii~~, Aug. 20, 1923.
- ✓ BS 25861.....View on Popoia Island where Rattus hawaiiensis is found. Popoia Island, Oahu, ~~Hawaii~~, Aug. 20, 1923.
- ✓ BS 25862.....Manana Island, at left. ^{off} Oahu, ~~Hawaii~~, Aug. 21, 1923.

- ✓ BS 25863.....View of old crater. Rabbits introduced here. Manana Island, Oahu, ~~Hawaii~~, Aug. 21, 1923.
- ✓ BS 25864.....View of old crater. Manana Island, Oahu, ~~Hawaii~~, Aug. 21, 1923.
- ✓ BS 25865.....Laysan albatross and wedge-tailed Shearwaters. Laysan Island, ~~Hawaii~~, May 5, 1923.
- ✓ BS 25867.....Group of Laysan albatross. Laysan Island, ~~Hawaii~~, Apr. 11, 1923.
- ✓ BS 25869.....Laysan albatross, beginning of dance. Laysan Island, ~~Hawaii~~, May 5, 1923.
- ✓ BS 25870.....Laysan albatross, one step in the dance. Laysan Island, ~~Hawaii~~, May 10, 1923.
- ✓ BS 25871.....Laysan albatross, one step in dance. Laysan Island, ~~Hawaii~~, May 5, 1923.
- ✓ BS 25872.....Laysan albatross, one step in dance. Laysan Island, ~~Hawaii~~, May 5, 1923.
- ✓ BS 25873.....Laysan albatross, final step in the dance. Laysan Island, ~~Hawaii~~, May 10, 1923.
- ✓ BS 25874.....A pair of Laysan albatross. Laysan Island, ~~Hawaii~~, May 10, 1923.
- ✓ BS 25876.....Laysan albatross. Laysan Island, ~~Hawaii~~, May 10, 1923.
- ✓ BS 25879.....Group of Laysan albatross. Laysan Island, ~~Hawaii~~, May 3, 1923.
- ✓ BS 25880.....Laysan albatross with young. Laysan Island, ~~Hawaii~~, May 10, 1923.
- ✓ BS 25885.....Young Laysan albatross. Laysan Island, ~~Hawaii~~, May 13, 1923.
- ✓ BS 25886.....Young Laysan albatross, Diomedea immutabilis. ~~Kryx~~ Lisianski Island, ~~Hawaii~~, May 19, 1923.
- ✓ BS 25890.....Laysan albatross (young), Diomedea immutabilis. Necker Island, ~~Hawaii~~, June 20, 1923.
- ✓ BS 25894....."Is it loaded?" (young Laysan albatross). French Frigates Shoal, ~~Hawaii~~, June 26, 1923.
- ✓ BS 25896.....Young Laysan albatross, Diomedea immutabilis. French Frigates Shoal, ~~Hawaii~~, June 23, 1923.
- ✓ BS 25897.....Laysan albatross feeding young. Necker Island, ~~Hawaii~~, June 19, 1923.
- ✓ BS 25898.....Laysan albatross caressing young. Necker Island, ~~Hawaii~~, June 19, 1923.
- ✓ BS 25899.....Laysan albatross about to feed young. French Frigates Shoal, ~~Hawaii~~, June 23, 1923.
- ✓ BS 25901.....Young Laysan albatross practising flight. Necker Island, ~~Hawaii~~, June 29, 1923.
- ✓ BS 25902.....Dance of Black-footed albatross, Ocean Island, ~~Hawaii~~, Apr. 20, 1923.

- ✓ BS 25904.....Black-footed albatross, Diomedea nigripes. Laysan Island, Hawaii,
April 11, 1923.
- ✓ BS 25906.....Colony of Black-footed albatross, adult and young. Ocean Island, Hawaii,
April 19, 1923.
- ✓ BS 25908.....Group of Black-footed albatross with one young. Laysan Island, Hawaii,
May 3, 1923.
- ✓ BS 25909.....Young Black-footed albatross. Ocean Island, Hawaii, April 20, 1923.
- ✓ BS 25910.....Young Black-footed albatross asleep. Laysan Island, Hawaii, May 3, 1923.
- ✓ BS 25912.....Young Black-footed albatross, Diomedea nigripes. Lisianski Island,
Hawaii, May 18, 1923.
- ✓ BS 25914.....Young Black-footed albatross begging for food. Laysan Island, Hawaii,
May 3, 1923.
- ✓ BS 25915.....Adult Black-footed albatross preparing to feed. Laysan Island, Hawaii,
May 3, 1923.
- ✓ BS 25916.....Adult Black-footed albatross preparing to feed young. Laysan Island,
Hawaii, May 3, 1923.
- ✓ BS 25918.....Black-footed albatross feeding young by regurgitation. Laysan Island,
Hawaii, May 3, 1923. ~~Published in the National Geographic Magazine, p. 82,
Vol. XLVIII, No. I, July, 1925 (Not released generally).~~
- ✓ BS 25919.....Black-footed albatross about to feed young (1) ^{Sand Island} Midway Islands, Hawaii,
Apr. 24, 1923.
- ✓ BS 25920.....Black-footed albatross feeding young by regurgitation (2) ^{Sand Island} Midway Islands,
Hawaii, Apr. 24, 1923.
- ✓ BS 25921.....Colony of albatross at over 800 feet altitude below Miller's Peak. Nihoa
Island, Hawaii, June 14, 1923.
- ✓ BS 25922.....Young Black-footed albatross, Diomedea nigripes. Necker Island, Hawaii,
June 20, 1923.
- ✓ BS 25924.....Group of young black-footed albatross. Necker Island, Hawaii, June 20, 1923.
- ✓ BS 25928.....Young black-footed albatross practising flight. Necker Island, Hawaii,
June 20, 1923.
- ✓ BS 25930.....Bulwer's Petrel, Bulweria bulweri. Laysan Island, Hawaii, May 2, 1923.
- ✓ BS 25932.....Bulwer's petrel, Bulweria bulweri. Necker Island, Hawaii, June 20, 1923.
- ✓ BS 25933.....Bulwer's petrel. Johnston Island, Hawaii, July 13, 1923.
- ✓ BS 25934.....Southwest shore. Gray-backed terns on rocks. Laysan Island, Hawaii,
May 2, 1923.

- ✓ BS 25935.....Pair of Bulwer's petrels taken from nest site in rock crevice at left. Laysan Island, ~~Hawaii~~, May 2, 1923.
- ✓ BS 25936.....Bulwer's petrel at nest. Necker Island, ~~Hawaii~~, June 20, 1923.
- ✓ BS 25938.....Young Bulwer's petrel, Bulweria bulweri. Johnston Island, ~~Hawaii~~, July 11, 1923.
- ✓ BS 25940.....Downy young of Bonin Island Petrel, Pterodroma hypoleuca. Pearl and Hermes Reef, ~~Hawaii~~, April 27, 1923.
- ✓ BS 25941.....Christmas Island Shearwater, Puffinus nativitatis. Laysan Island, ~~Hawaii~~, April 11, 1923.
- ✓ BS 25943.....Christmas Island Shearwater, Puffinus nativitatis. Lisianski Island, ~~Hawaii~~, May 19, 1923.
- ✓ BS 25944.....Christmas Island Shearwater, Puffinus nativitatis. Nihoa Island, ~~Hawaii~~, June 14, 1923.
- ✓ BS 25946.....Young Christmas Island Shearwater, Puffinus nativitatis. Johnston Island, ~~Hawaii~~, July 15, 1923.
- ✓ BS 25947.....Laysan Teal (in center) amid many wedge-tailed Shearwaters. Laysan Island, ~~Hawaii~~, May 4, 1923.
- ✓ BS 25948.....A colony of wedge-tailed Shearwaters. Laysan Island, ~~Hawaii~~, May 5, 1923.
- ✓ BS 25949.....Flashlight photo of wedge-tailed shearwaters and Blue-faced boobies. French Frigates Shoal, ~~Hawaii~~, June 23, 1923.
- ✓ BS 25950.....Wedge-Tailed Shearwaters. Laysan Island, ~~Hawaii~~, April 12, 1923.
- ✓ BS 25951.....Wedge-tailed Shearwaters; a siesta. Laysan Island, ~~Hawaii~~, April 12, 1923.
- ✓ BS 25953.....Wedge-tailed Shearwaters, near nesting burrow. Laysan Island, ~~Hawaii~~, April 12, 1923.
- ✓ BS 25955.....Wedge-tailed Shearwater beginning excavation of a nesting burrow. Laysan Island, ~~Hawaii~~, May 3, 1923.
- ✓ BS 25957.....Pair of Wedge-tailed Shearwaters at nesting burrow. Lisianski Island, ~~Hawaii~~, May 18, 1923.
- ✓ BS 25959.....Wedge-tailed Shearwater at entrance of nesting burrow. Laysan Island, ~~Hawaii~~, May 13, 1923.
- ✓ BS 25960.....Wedge-tailed Shearwater on open nest. Nihoa Island, ~~Hawaii~~, June 11, 1923.
- ✓ BS 25962.....Open nest, with egg, of Wedge-tailed Shearwater. Nihoa Island, ~~Hawaii~~, June 11, 1923.
- ✓ BS 25963.....Young Wedge-tailed Shearwater. Popoia Island, Oahu, ~~Hawaii~~, Aug. 20, 1923.
- ✓ BS 25964.....Young Wedge-tailed Shearwater at nesting hole. Popoia Island, Oahu, ~~Hawaii~~, Aug. 20, 1923.

- ✓ BS 25966.....Frigate birds. Johnston Island, ~~Hawaii~~, July 13, 1923.
- ✓ BS 25967.....Colony of frigate birds. Necker Island, ~~Hawaii~~, June 19, 1923.
- ✓ BS 25968.....Colony of Frigate birds, Laysan Island, ~~Hawaii~~, May 3, 1923.
- ✓ BS 25970.....^{Male} Frigate birds (←) with throat sac inflated. Bird on left is past breeding and sac has begun to shrink. Laysan Island, ~~Hawaii~~, May 2, 1923.
- ✓ BS 25971.....Immature Frigate bird. Johnston Island, ~~Hawaii~~, July 12, 1923.
- ✓ BS 25972.....Frigate birds stooping at fish tossed in air. Johnston Island, ~~Hawaii~~, July 12, 1923.
- ✓ BS 25973.....Tossing a fish for sport of the Frigate birds. Johnston Island, ~~Hawaii~~, July 12, 1923. Published in the National Geographic Magazine, p. 83, Vol. XLVIII, No. 1, July, 1923 (Not released generally). Sept. 11, 1939, Released, A. Wetmore.
- ✓ BS 25974.....Feeding a Frigate bird. Johnston Island, ~~Hawaii~~, July 12, 1923.
- ✓ BS 25975.....Frigate birds stooping at dead fish. Johnston Island, ~~Hawaii~~, July 12, 1923.
- ✓ BS 25978.....Nest and egg of Frigate bird. Lisianski Island, ~~Hawaii~~, May 18, 1923.
- ✓ BS 25980.....Frigate bird on nest nearly three feet tall. French Frigates Shoal, ~~Hawaii~~, June 26, 1923.
- ✓ BS 25983.....Male Frigate bird on nest. Nihoa Island, ~~Hawaii~~, June 12, 1923.
- ✓ BS 25984.....Frigate bird with young. Necker Island, ~~Hawaii~~, June 19, 1923.
- ✓ BS 25988.....Young Frigate bird. Nihoa Island, ~~Hawaii~~, June 13, 1923.
- ✓ BS 25989.....Young Frigate bird. Nihoa Island, ~~Hawaii~~, June 12, 1923.
- ✓ BS 25991.....Young Frigate bird. Nihoa Island, ~~Hawaii~~, June 13, 1923.
- ✓ BS 25993.....Young Frigate bird. Johnston Island, ~~Hawaii~~, July 16, 1923.
- ✓ BS 25994.....Young Frigate bird with wing^s spread to afford shade for head. French Frigates Shoal, ~~Hawaii~~, June 26, 1923.
- ✓ BS 25995.....Young Frigate bird in nest. Wake Island, ~~Hawaii~~, Aug. 4, 1923.
- ✓ BS 25996.....Group of Blue-faced boobies. Gardner Island, ~~Hawaii~~, May 22, 1923.
- ✓ BS 25997.....Flashlight of a group of Blue-faced boobies. Johnston Island, ~~Hawaii~~, July 12, 1923.
- ✓ BS 25998.....Pair of Blue-faced boobies. Lisianski Island, ~~Hawaii~~, May 18, 1923.
- ✓ BS 26000.....Blue-faced booby on nest. Laysan Island, ~~Hawaii~~, April 11, 1923.
- ✓ BS 26002.....Blue-faced booby incubating egg submerged to the depth of an inch by exceptionally high tide. ^(Seal Island) Pearl and Hermes Reef, ~~Hawaii~~, April 27, 1923.

- ✓ BS 26004.....Blue-faced booby and nest. Johnston Island, ~~Hawaii~~, July 12, 1923.
- ✓ BS 26006.....Blue-faced booby and nest. Lisianski Island, ~~Hawaii~~, May 19, 1923.
- ✓ BS 26007.....Blue-faced booby with runt egg. Necker Island, ~~Hawaii~~, June 29, 1923.
- ✓ BS 26009.....Blue-faced booby on nest. Lisianski Island, ~~Hawaii~~, May 18, 1923.
- ✓ BS 26010.....Blue-faced booby with runt egg. Necker Island, ~~Hawaii~~, June 29, 1923.
- ✓ BS 26011.....Blue-faced booby with young. Lisianski Island, ~~Hawaii~~, May 18, 1923.
- ✓ BS 26012.....Blue-faced booby with young. Lisianski Island, ~~Hawaii~~, May 18, 1923.
- ✓ BS 26014.....Blue-faced booby shading young from intense sun. French Frigates Shoal, ~~Hawaii~~, June 23, 1923.
- ✓ BS 26015.....Blue-faced booby and young. Necker Island, ~~Hawaii~~, June 18, 1923.
- ✓ BS 26016.....Blue-faced boobies with young. Nihoa Island, ~~Hawaii~~, June 11, 1923.
- ✓ BS 26017.....Blue-faced booby, Sula cyanops, with young. Laysan Island, ~~Hawaii~~, May 3, 1923.
- ✓ BS 26018.....Blue-faced booby, Sula cyanops, with young. Laysan Island, ~~Hawaii~~, May 3, 1923.
- ✓ BS 26019.....Colony of red-footed boobies in iron-wood (Casuarina) tree. Laysan Island, ~~Hawaii~~, May 9, 1923.
- ✓ BS 26021.....Group of Red-footed boobies. Wake Island, July 31, 1923.
- ✓ BS 26022.....Flashlight of a group of Red-footed boobies and a Frigate bird. Johnston Island, ~~Hawaii~~, July 12, 1923.
- ✓ BS 26024.....Red-footed booby. Wake Island, Aug. 2, 1923.
- ✓ BS 26025.....Red-footed booby on nest. Nihoa Island, ~~Hawaii~~, June 11, 1923.
- ✓ BS 26026.....Red-footed booby on nest. Necker Island, ~~Hawaii~~, June 20, 1923.
- ✓ BS 26027.....Nest of Red-footed booby in Nihoa palm. Nihoa Island, ~~Hawaii~~, June 11, 1923.
- ✓ BS 26028.....Red-footed booby on nest built on low clump of grass. Lisianski Island, ~~Hawaii~~, May 18, 1923.
- ✓ BS 26029.....Red-footed booby on nest. Nihoa Island, ~~Hawaii~~, June 12, 1923.
- ✓ BS 26031.....Red-footed booby on nest. Laysan Island, ~~Hawaii~~, May 10, 1923.
- ✓ BS 26032.....Red-footed booby on nest. Laysan Island, ~~Hawaii~~, May 10, 1923.
- ✓ BS 26033.....Nest of Red-footed booby on low grass clump. Lisianski Island, ~~Hawaii~~, May 18, 1923.
- ✓ BS 26034.....Red-footed booby with young. Nihoa Island, ~~Hawaii~~, June 11, 1923.

- ✓ BS 26036.....Red-footed boobies. Necker Island, Hawaii, June 19, 1923.
- ✓ BS 26037.....A red-footed booby alight^{ed} on the shoulder of George, the cook. ^{Tern Island,} French Frigates Shoal, Hawaii, June 26, 1923.
- ✓ BS 26038.....Common booby, Sula leucogastra. Laysan Island, Hawaii, May, 1923.
- ✓ BS 26040.....Nest and eggs of booby, Sula leucogastra. Lisianski Island, Hawaii, May 19, 1923.
- ✓ BS 26042.....Booby with young, Sula leucogastra. Johnston Island, Hawaii, July 16, 1923.
- ✓ BS 26043.....Booby with young, Sula leucogastra. Johnston Island, Hawaii, July 16, 1923.
- ✓ BS 26044.....Booby with young. Sula leucogastra. Johnston Island, Hawaii, July 16, 1923.
Published in the National Geographic Magazine, p. 107, Vol. XLVIII, No. I, July, 1925 (Not released generally).
- ✓ BS 26045.....Booby with young, Sula leucogastra. Johnston Island, Hawaii, July 16, 1923.
- ✓ BS 26046.....Young booby, Sula leucogastra. Nihoa Island, Hawaii, June 11, 1923.
- ✓ BS 26047.....Young booby, Sula leucogastra. Necker Island, Hawaii, June 19, 1923.
- ✓ BS 26048.....Young booby asleep, Sula leucogastra. Necker Island, Hawaii, June 19, 1923.
- ✓ BS 26049.....Young booby, Sula leucogastra. Nihoa Island, Hawaii, June 13, 1923.
- ✓ BS 26050.....Red-tailed Tropic bird, Phaethon rubricaudus. Laysan Island, Hawaii, May 2, 1923.
- ✓ BS 26052.....Red-tailed tropic bird. Necker Island, Hawaii. June 20, 1923.
- ✓ BS 26053.....Red-tailed tropic bird. Ocean Island, Hawaii, April 20, 1923.
- ✓ BS 26054.....Young Red-tailed tropic bird. ^{East Island,} French Frigates Shoal, Hawaii, June 23, 1923.
- ✓ BS 26055.....Young Red-tailed tropic bird. ^{East Island,} French Frigates Shoal, Hawaii, June 23, 1923.
- ✓ BS 26057.....Hawaiian terns on nests. Megalopterus hawaiiensis. Laysan Island, Hawaii, May 9, 1923.
- ✓ BS 26058.....Hawaiian tern at nest. Megalopterus hawaiiensis. Laysan Island, Hawaii, May 13, 1923.
- ✓ BS 26059.....Nest of Hawaiian tern, Megalopterus hawaiiensis. Laysan Island, Hawaii, May 9, 1923.
- ✓ BS 26060.....Colony of Noddies at nest. Necker Island, Hawaii, June 18, 1923.
- ✓ BS 26061.....Colony of Noddies. Johnston Island, Hawaii. July 13, 1923.
- ✓ BS 26062.....A group of Noddies. Johnston Island, Hawaii. July 15, 1923.
- ✓ BS 26063.....Group of Noddy terns on beach. Wedge-tailed Shearwater in foreground. Laysan Island, Hawaii, May 13, 1923.

- ✓ BS 26065.....Noddy and nest. Johnston Island, ~~Hawaii~~, July 16, 1923.
- ✓ BS 26066.....Male noddies at selected nest sites. Lisianski Island, ~~Hawaii~~, May 19, 1923.
- ✓ BS 26067.....Noddy on nest. French Frigates Shoal, ~~Hawaii~~, June 26, 1923.
- ✓ BS 26072.....Noddy and nest. French Frigates Shoal, ~~Hawaii~~, June 26, 1923.
- ✓ BS 26073.....Noddy on nest. French Frigates Shoal, ~~Hawaii~~, June 26, 1923.
- ✓ BS 26074.....Nest and egg of noddy. Note bones gathered for nest material. Lisianski Island, ~~Hawaii~~, May 19, 1923.
- ✓ BS 26076.....Nest and egg of noddy. Note bones, etc., gathered about nest. Johnston Island, ~~Hawaii~~, July 13, 1923.
- ✓ BS 26078.....Nest and egg of noddy. Johnston Island, ~~Hawaii~~, July 13, 1923.
- ✓ BS 26079.....Nest of Noddy in tree. ^{Peale Island} Wake Island, July 30, 1923.
- ✓ BS 26080.....Young Noddy, light phase. ^{East Island} French Frigates Shoal, Hawaii, June 23, 1923.
- ✓ BS 26082.....Young Noddy (light phase). Johnston Island, ~~Hawaii~~, July 16, 1923.
- ✓ BS 26083.....Young Noddy (light phase). Johnston Island, ~~Hawaii~~, July 16, 1923.
- ✓ BS 26084.....Young Noddy (light phase). Necker Island, ~~Hawaii~~, June 18, 1923.
- ✓ BS 26085.....Young Noddy, dark phase. Necker Island, ~~Hawaii~~, June 18, 1923.
- ✓ BS 26087.....Young Noddy, dark phase. ^{East Island} French Frigates Shoal, ~~Hawaii~~, June 23, 1923.
- ✓ BS 26088.....Young Noddy. French Frigates Shoal, ~~Hawaii~~, June 25, 1923.
- ✓ BS 26089.....Young Noddy. Johnston Island, ~~Hawaii~~, July 16, 1923.
- ✓ BS 26092.....Young Noddy. Johnston Island, ~~Hawaii~~, July 16, 1923.
- ✓ BS 26094.....Colony of Sooty and gray-backed terns. Eastern Island, Midway Islands, ~~Hawaii~~, April 23, 1923.
- ✓ BS 26095.....Gray-backed tern (Sterna lunata). Laysan Island, ~~Hawaii~~, April 13, 1923.
- ✓ BS 26096.....Breeding ground of gray-backed tern (Sterna lunata) on west beach. Laysan Island, ~~Hawaii~~, April 12, 1923.
- ✓ BS 26097.....Nest and egg of gray-backed tern (Sterna lunata). Laysan Island, ~~Hawaii~~, April 13, 1923.
- ✓ BS 26099.....Young gray-backed tern, Sterna lunata. Lisianski Island, ~~Hawaii~~, May 18, 1923.
- ✓ BS 26101.....Young gray-backed tern, Sterna lunata. Necker Island, ~~Hawaii~~, June 18, 1923.
- ✓ BS 26102.....Young gray-backed tern, Sterna lunata. Necker Island, ~~Hawaii~~, June 18, 1923.

- ✓ BS 26104.....Young gray-backed tern, Sterna lunata. Necker Island, ~~Hawaii~~, June 18, 1923.
- ✓ BS 26105.....Colony of sooty terns and a few Noddies, Tern Island, French Frigates Shoal, ~~Hawaii~~, June 26, 1923.
- ✓ BS 26107.....Colony of Sooty terns on Tern Island. French Frigates Shoal, ~~Hawaii~~, June 26, 1923.
- ✓ BS 26108.....Colony of Sooty terns, Sterna fuscata. Lisianski, Island, ~~Hawaii~~, May 19, 1923.
- ✓ BS 26109.....Sooty terns. French Frigates Shoal, ~~Hawaii~~, June 25, 1923.
- ✓ BS 26110.....Sooty terns. French Frigates Shoal, ~~Hawaii~~, June 25, 1923.
- ✓ BS 26111.....Sooty tern. Lisianski Island, ~~Hawaii~~, May 18, 1923.
- ✓ BS 26112.....Sooty tern. Lisianski Island, ~~Hawaii~~, May 18, 1923.
- ✓ BS 26113.....Sooty terns. French Frigates Shoal, ~~Hawaii~~, June 26, 1923.
- ✓ BS 26114.....Sooty tern with egg. French Frigates Shoal, ~~Hawaii~~, June 26, 1923.
- ✓ BS 26115.....Sooty tern. French Frigates Shoal, ~~Hawaii~~, June 26, 1923.
- ✓ BS 26118.....Young sooty terns. French Frigates Shoal, ~~Hawaii~~, June 25, 1923.
- ✓ BS 26119.....Young sooty terns. French Frigates Shoal, ~~Hawaii~~, June 25, 1923.
- ✓ BS 26122.....Young sooty tern in juvenal plumage. Nihoa Island, ~~Hawaii~~, June 14, 1923.
- ✓ BS 26123.....Sooty tern in juvenal plumage. Necker Island, ~~Hawaii~~, June 29, 1923.
- ✓ BS 26124.....Young sooty tern. Johnston Island, ~~Hawaii~~, July 12, 1923.
- ✓ BS 26126.....Adult and immature Sterna fuscata. Johnston Island, ~~Hawaii~~, July 12, 1923.
- ✓ BS 26127.....Group of adult and immature sooty terns. Johnston Island, ~~Hawaii~~, July 12, 1923.
- ✓ BS 26129.....Necker Island tern. Procelsterna saxatilis. ^{Necker Island} ~~French Frigates Shoal,~~ ~~Hawaii~~, June 21, 1923.
- ✓ BS 26130.....Necker Island tern. Procelsterna saxatilis. ^{Necker Island} ~~French Frigates Shoal,~~ ~~Hawaii~~, June 21, 1923.
- ✓ BS 26131.....Young Necker Island tern, Procelsterna saxatilis. Nihoa Island, ~~Hawaii~~, June 14, 1923.
- ✓ BS 26133.....Pair of ^{or fairy} white terns, Gygis alba. Laysan Island, ~~Hawaii~~, May 3, 1923.
- ✓ BS 26135.....Love bird, ^{or} white tern. Gygis alba. Necker Island, ~~Hawaii~~, June 20, 1923.
- ✓ BS 26136.....^{Fairy} white tern, Gygis alba. Laysan Island, ~~Hawaii~~, May 3, 1923.
- ✓ BS 26137.....^{Fairy} white tern, or love bird, Gygis alba. Laysan Island, ~~Hawaii~~, May 3, 1923.

- ✓ BS 26140.....White tern or love bird, Gygis alba. Necker Island, ~~Hawaii~~, June 19, 1923.
- ✓ BS 26141.....White tern or love bird, Gygis alba. Laysan Island, ~~Hawaii~~, May 3, 1923.
- ✓ BS 26142.....Egg of white tern, Gygis alba, laid on bare limb of tree. Wake Island, Aug. 2, 1923.
- ✓ BS 26143.....Egg of white tern, Gygis alba, laid on limb of tree. Wake Island, July 30, 1923.
- ✓ BS 26144.....Young white tern, Gygis alba. Necker Island, ~~Hawaii~~, June 20, 1923.
- ✓ BS 26145.....Young white tern, Gygis alba. Wake Island, August 3, 1923.
- ✓ BS 26146.....Young white tern, Gygis alba. Wake Island, August 3, 1923.
- ✓ BS 26147.....Bristle-thighed curlew feeding on decayed albatross egg. Laysan Island, ~~Hawaii~~, April 11, 1923.
- ✓ BS 26148.....Bristle-thighed curlew. Laysan Island, ~~Hawaii~~, April 12, 1923.
- ✓ BS 26149.....Laysan Finch, Telespyza ^{cantans} ~~ultima~~. Laysan Island, ~~Hawaii~~, May 10, 1923.
- ✓ BS 26150.....Nihoa Finch, Telespyza ^{cantans} ~~ultima~~. Nihoa Island, ~~Hawaii~~, June 11, 1923.
- ✓ BS 26151.....Turtles asleep on beach. Lisianski Island, ~~Hawaii~~, May 19, 1923.
- ✓ BS 26152.....Green turtles. Laysan Island, ~~Hawaii~~. May, 1923.
- ✓ BS 26153.....Turtle asleep on beach, Laysan Island, ~~Hawaii~~, May 3, 1923. Published in ~~National Geographic Magazine, p. 97, Vol. XLVIII, No. 1, July, 1925.~~
- ✓ BS 26154.....Turtle asleep on beach. Lisianski Island, ~~Hawaii~~, May 19, 1923.
- ✓ BS 26155.....Turtle turned on back to be killed for food. Lisianski Island, ~~Hawaii~~, May 18, 1923.
- ✓ BS 26156.....Turtle turned on back on beach to be killed for food. Lisianski Island, ~~Hawaii~~, May 18, 1923.
- ✓ BS 26157.....Turning a turtle (Eric Schlemmer). Laysan Island, ~~Hawaii~~, May 3, 1923.
- ✓ BS 26158.....Hawaiian seals. Ocean Island, ~~Hawaii~~, April 20, 1923. ~~Dr. Wetmore has personal slide of this no.~~
- ✓ BS 26159.....Hawaiian seal lying up among young albatross. ^{Seal Island,} Pearl and Hermes Reef, ~~Hawaii~~, April 27, 1923. ~~Dr. Wetmore has personal slide of this number.~~
- ✓ BS 26161.....Mated Hawaiian seals. Ocean Island, ~~Hawaii~~, April 20, 1923. ~~Dr. Wetmore has personal slide of this number.~~
- ✓ BS 26162.....Mated Hawaiian seals. Ocean Island, ~~Hawaii~~, April 20, 1923. ~~Dr. Wetmore has personal slide of this number.~~
- ✓ BS 26163.....Female Hawaiian seal. Note 4 mammae arranged about umbilicus. Ocean Island, ~~Hawaii~~, April 20, 1923. ~~Dr. Wetmore has personal slide of this number.~~

- ✓ BS 26164.....Hawaiian seal in shelter of Scaevola bushes. Ocean Island, Hawaii, April 16, 1923. ~~Dr. Wetmore has personal slide of this number.~~
- ✓ BS 26165.....Hawaiian seal. Pearl and Hermes Reef, Hawaii, April 27, 1923. ~~Dr. Wetmore has personal slide of this number.~~
- ✓ BS 26166.....Hawaiian seal. Pearl and Hermes Reef, Hawaii, April 27, 1923. ~~Dr. Wetmore has personal slide of this number.~~
- ✓ BS 26167.....Hawaiian ^{seal} ~~Island~~ (Monachus schauinslandi). Ocean Island, Hawaii, April 16, 1923. Released to Dr. Nelson, 4/22/29.
- ✓ BS 26168.....Hawaiian seal. Ocean Island, Hawaii, April 16, 1923.
- ✓ BS 26169.....Hawaiian seal. Ocean Island, Hawaii, April 16, 1923.
- ✓ BS 26170.....Furrow dug in sand by seal to provide a comfortable resting place. Ocean Island, Hawaii, April 20, 1923. ~~Dr. Wetmore has personal slide of this number.~~
- ✓ BS 26171.....Hawaiian seal showing method of progression. Ocean Island, Hawaii, April 20, 1923. ~~Dr. Wetmore has personal slide of this number.~~
- ✓ BS 26172.....Hawaiian seal entering water. Ocean Island, Hawaii, April 20, 1923. ~~Dr. Wetmore has personal slide of this number.~~
- BS 26173.....Hawaiian seal, Monachus schauinslandi. Ocean Island, Hawaii, Apr. 17, 1923.
- ✓ BS 26174.....Yearling Hawaiian seal. Ocean Island, Hawaii, April 19, 1923.
- ✓ BS 26175.....Yearling Hawaiian seal. Ocean Island, Hawaii, April 19, 1923. ~~Dr. Wetmore has personal slide of this number.~~
- ✓ BS 26177.....Seal pup 5-7 days old. ~~Hawaiian seal.~~ Ocean Island, Hawaii, April 19, 1923. ~~Dr. Wetmore has personal slide of this number.~~
- ✓ BS 26178.....Hawaiian seal suckling pup. ^{Grass Island} Pearl and Hermes Reef, Hawaii, April 27, 1923. ~~Dr. Wetmore has personal slide of this number.~~
- ✓ BS 26179.....Mother seal and pup in surf. Hawaiian seal. Ocean Island, Hawaii, April 19, 1923. ~~Dr. Wetmore has personal slide of this number.~~
- ✓ BS 26180.....Hawaiian seal. Mother seal and young, 5-7 days old. Ocean Island, Hawaii, April 19, 1923. ~~Dr. Wetmore has personal slide of this number.~~

Hawaii

| | | | | | |
|-------|-------|-------|-------|-------|-------|
| 25669 | | 25737 | 25771 | 25807 | 25847 |
| 25670 | 25706 | 25738 | 772 | 808 | 848 |
| 25671 | 25707 | 25739 | 775 | 809 | 849 |
| 25673 | 25708 | 25741 | 776 | 810 | 850 |
| 25675 | 25709 | 25742 | 778 | 813 | 851 |
| 25676 | 25711 | 25743 | 779 | 814 | 852 |
| 25677 | 25713 | 25745 | 781 | 817 | 854 |
| 25678 | 25715 | 25748 | 783 | 818 | 855 |
| 25679 | 25717 | 25749 | 784 | 820 | 856 |
| 25680 | 25721 | 25750 | 785 | 823 | 857 |
| 25682 | 720 | 751 | 787 | 823 | 859 |
| 25683 | 722 | 752 | 788 | 826 | 860 |
| 25686 | 723 | 753 | 789 | 828 | 861 |
| 25687 | 724 | 754 | 791 | 831 | 862 |
| 25688 | 725 | 755 | 792 | 832 | 863 |
| 25690 | 726 | 756 | 794 | 834 | 864 |
| 25691 | 727 | 757 | 795 | 835 | 865 |
| 25693 | 728 | 758 | 797 | 838 | 867 |
| 25694 | 729 | 759 | 799 | 839 | 869 |
| 25698 | 731 | 761 | 800 | 840 | 870 |
| 25699 | 732 | 762 | 801 | 842 | 871 |
| 25700 | 733 | 764 | 802 | 843 | 872 |
| 25701 | 734 | 765 | 804 | 844 | 873 |
| 25704 | 736 | 768 | 805 | 846 | 874 |

| | | | | | | |
|-------|-------|-------|-------|-------|-------|-------|
| 25876 | 25921 | 25960 | 26000 | 26032 | 26061 | 26097 |
| 879 | 922 | 962 | 2 | 33 | 62 | 99 |
| 880 | 924 | 963 | 4 | 34 | 63 | 101 |
| 885 | 928 | 964 | 6 | 36 | 65 | 102 |
| 886 | 930 | 966 | 7 | 37 | 66 | 104 |
| 890 | 932 | 967 | 9 | 38 | 67 | 105 |
| 894 | 933 | 970 | 10 | 40 | 72 | 107 |
| 896 | 934 | 971 | 11 | 42 | 73 | 109 |
| 897 | 935 | 972 | 12 | 43 | 74 | 110 |
| 898 | 936 | 973 | 14 | 44 | 76 | 111 |
| 899 | 938 | 974 | 15 | 45 | 78 | 112 |
| 901 | 940 | 975 | 16 | 46 | 79 | 113 |
| 902 | 941 | 978 | 17 | 47 | 80 | 114 |
| 904 | 943 | 980 | 18 | 48 | 82 | 115 |
| 906 | 944 | 983 | 19 | 49 | 83 | 118 |
| 908 | 946 | 984 | 21 | 50 | 84 | 119 |
| 909 | 947 | 988 | 22 | 52 | 85 | 122 |
| 910 | 948 | 991 | 24 | 53 | 87 | 123 |
| 912 | 949 | 993 | 25 | 54 | 88 | 124 |
| 914 | 951 | 994 | 26 | 55 | 89 | 126 |
| 915 | 953 | 995 | 27 | 57 | 92 | 127 |
| 916 | 955 | 996 | 28 | 58 | 94 | 129 |
| 918 | 957 | 997 | 29 | 59 | 95 | 130 |
| 919 | 959 | 998 | 31 | 60 | 96 | 131 |
| 920 | | | | | | |

| | |
|-------|-------|
| 26133 | 26161 |
| 135 | 162 |
| 136 | 163 |
| 137 | 164 |
| 140 | 165 |
| 141 | 166 |
| 142 | 167 |
| 143 | 168 |
| 144 | 169 |
| 145 | 170 |
| 146 | 171 |
| 147 | 172 |
| 148 | 173 |
| 149 | 174 |
| 150 | 175 |
| 151 | 177 |
| 152 | 178 |
| 153 | 179 |
| 154 | 180 |
| 155 | |
| 156 | |
| 157 | |
| 158 | |
| 159 | |

| | | | | | | | |
|-----------------------------------|---|------------------------------|-------------------------------|--------------------------|---------------------|---------|---|
| 1-4 | (25941) | 1.27-5 | (25872) | 1 48-6 ^v | 5 76-4 | (25922) | 1 |
| 2-3 | (26001) | 2.27-6 ^v | | 10 49-3 (25673) | 8 76-5 | (25928) | 1 |
| 33-5 2-5 | (25755) | 1.28-6 | (26019) | (50-5) 2 50-6 (25856) | 1 76-6 | (25924) | 1 |
| 2-6 | (26147) | 1.29-6 | (26149) | 1 52-1 (25676) | 8 79-3 | (25703) | 5 |
| 6-1 | (25751) | 1.30-2 | (25873) | 1 52-2 (25677) | 2 80-1 | (25705) | 2 |
| 6-2 ^v | | 2.31-2 | (25880) | 7 52-3 (25678) | 2 80-4 ^v | | 2 |
| 6-3 ^v | | 2.31-6 | (25876) | 10 52-6 (25680) | 2 80-5 ^v | | 9 |
| 6-4 | (26095) | 1.32-1 ^v | (26063) | 1 56-5 ^v | 2 80-6 | (25700) | 1 |
| 7-1 | (25752) | 3.33-2 | (26063) | 1.56-6 ^v | 2 80a-6 | (26129) | 2 |
| 10-6 | (26160) | 6.33-3 | (26058) | 2 58-1 (25688) | 2 81-3 | (25738) | 5 |
| (14-2) 14-1 | (25774) | (26058) 1.33-4 | (25756) (25958) | 2 58-3 ^v | 1 81-4 ^v | | 6 |
| 16-2 | (25920) | 4 34-3 | (25759) | 1 59-6 ^v | 2 81-6 | (25737) | 1 |
| 17-1 ^v | (25935) | 5 34-4 | (25957) | 1 60-6 ^v | 1 82-2 | (25735) | 1 |
| 19-2 ^v | | 6 37-5 ^v | (26039) | 1 61-5 (25682) | 1 82-3 | (26054) | 1 |
| 20-3 | (25935) | 2 39-4 | (26039) | 2 61-6 (25684) | 2 82-5 | (26081) | 1 |
| 21-3 | (26050) | 10 40-3 | (25765) | 4 63-2 (25694) | 1 83-2 | (26055) | 1 |
| ^{omit} [22-4] | | 1 43-6 | (26151) | 4 64-5 (25687) | 1 86-5 ^v | | 2 |
| 22-5 | (25913) | 1 44-1 | (26154) | 3 64-6 (25686) | 1 86-6 ^v | | 2 |
| (23-4) 23-5 | (25918) | 1 45-1 | (25764) | 2 66-2 (25707) | 1 88-3 | (25710) | 1 |
| 24-4 | (25968) | 2 45-3 ^v | | 2 66-3 ^v | 8 90-2 | (25732) | 1 |
| 25-1 | (25757) | 2.45-4 ^v | | 4 66-5 ^v | 8 90-5 ^v | | 5 |
| 25-3 | (25908) | 1 46-2 ^v | | 2 66-6 ^v | 3 91-1 ^v | | 5 |
| 25-4 | (26137) | 5 47-4 ^v | | 9 68-11 | 3 91-2 | (26067) | 1 |
| 26-6 | (^{Cont find this} 25865) | 1 48-3 | (25747) | 4 68-2 | 1 91-3 | (26073) | 1 |
| 27-2 | (25865) | 2 48-4 ^v | | 1 72-3 (25715) | 1 91-5 | (26105) | 1 |
| 27-4 | (25871) | 1 48-5 ^v | | 5 74-5 (26140) | 1 92-2 ^v | | 1 |

| | | | | | |
|-----------------|--------------------|----|---------------------------------------|---------|----|
| 92-5 | (26113) | 2 | 125-1 | (25809) | 2 |
| 93-4 | (25729) | 3 | 126-3 | (25832) | 1 |
| 94-2 | (25730) | 2 | 127-3 | (25849) | 2 |
| 94-6 | (26037) | 4 | 127-4 | (25799) | 10 |
| 95-3 | (25743) | 3 | 129-4 ✓ | | 3 |
| 95-1 | | | | | |
| 96a-2 | (25721) | 1 | 129-5 ✓ | | 5 |
| 96a-3 | (25722) | 1 | 130-6 ^{cant find} | | 1 |
| 96a-4 ✓ | | 1 | 131-1 | (25820) | 1 |
| 96a-5 | (25724) | 1 | 131-3 ✓ | | 1 |
| 96b-5 | (26125) | 1 | 131-5 ✓ | | 5 |
| 96b-6 ✓ | | 10 | 131-6 ✓ | | 4 |
| | | | | | 24 |
| 97-1 | (25670) | 1 | | | |
| 97-5 | (25671) | 6 | | | |
| 97-6 ✓ | | 5 | | | |
| 98-1 | (25669) | 1 | | | |
| 98-2 ✓ | | 1 | | | |
| 98-6 ✓ | | 8 | | | |
| 108-1 ✓ | | 3 | | | |
| 109-4 | (25795) | 1 | | | |
| 110-2 | (25780) | 2 | | | |
| 110-6 | (25780) | 4 | | | |
| 114-8 ✓ | | 6 | | | |
| 117-1 ✓ | | 3 | | | |
| 117-2 | (25843) | 2 | | | |
| 120a-5 | (25804) | 3 | | | |
| 122-4 | (25842) | 1 | | | |

34
 76
 65
 83
 70
 60
 386
 18
 38

| King | Dingham | Carroll Heil | Forest Merritt Horton |
|--------------------------|--------------|---------------------------|-----------------------------|
| 97.5 | +108-1 +43-6 | +97.5 +47.3 | |
| +97.5 | +90-5 +44-1 | +49.3 +31-6 | +97-6 |
| +49-3 | +27-6 +10-6 | +68-1 +16-2 | +52-1 52-2 |
| +52-1 52-2 | +117-1 | +91-1 +31-2 | +81-3 |
| +58-1 | +131-6 | +90-2 +21-3 | +47-4 |
| +56-5 | +81-4 | +93-4 +25-4 | +114-5 |
| +68-1 | +129-5 | +95-1 +44-1 | +127-4 |
| +91-1 | +131-5 | +48-3 +10-6 | +27-6 |
| +88-3 | +66-5 | +47-4 | 81-4 17-1 |
| +95-1 | +88-5 | +6-3 | +66-5 |
| +48-3 | +66-3 | +45-4 | +80-5 |
| +47-4 | +19-2 | +10-6 | +66-3 |
| +46-2 | +98-6 | +127-4 | +19-2 |
| +48-3 | +966-6 | 127-4 | +98-6 |
| +45-4 | +31-6 | +108-1 | +966-6 |
| +14-1 | +16-2 | +90-5 | +31-6 |
| +110-6 | +27-2 | +27-6 | +16-2 |
| +114-5 | +31-2 | +131-6 | +31-2 |
| +127-4 | +21-3 | +81-4 | +21-3 |
| +131-1 | +83-2 | +124-5 | +25-4 |
| +125-1 | +2-3 | +131-5 | +43-6 |
| +127-3 | +39-4 | +66-5 | +10-6 |
| +126-3 | +28-6 | +70-5 | |
| +117-2 | +24-4 | +66-3 | |
| +130-6 | +33-3 | +78-6 | |
| +122-4 | +25-4 | +966-6 | |

| Thaamun | Palmer | Cheatham | M. Cooke |
|-----------------------|----------|----------|----------|
| + 90-5 + 86-5 | + 90-5 | + 92-5 | + 52-1 |
| + 82.3 + 97-6 | + 87-6 | + 80a-6 | + 52-2 |
| + 80-6 + 94-6 | + 94-2 | + 110-6 | + 52-3 |
| + 96 a-2 8 | + 86-6 | + 114-5 | + 61-6 |
| + 91-3 | + 93-4 | + 127-4 | + 63.2 |
| + 66-2 | + 97-2 | + 131-5 | + 58-1 |
| + 96 a-5 | + 97-1 | + 129-5 | |
| + 82-5 | + 98-2 | + 31-6 | |
| + 76-5 | + 98-1 | + 21-3 | |
| + 76-4 | + 86-5 | | |
| + 76-6 | + 96 b-6 | | |
| + 86-6 | + 97-6 | | |
| + 96 a-3 | + 94-6 | | |
| + 93-4 | + 129-5 | | |
| + 91-1 | + 129-4 | | |
| + 96 a-4 | + 117-1 | | |
| + 68-2 | + 109-4 | | |
| + 72-3 | + 61-6 | | |
| + 82-2 | + 58-3 | | |
| + 96 b-6 | + 61-5 | | |
| + 66-6 | + 52-3 | | |
| + 80-4 | + 64-6 | | |
| + 94-3 | + 52-6 | | |
| + 74-5 | + 60-6 | | |
| + 80a-6 | + 64-5 | | |
| + 96 b-5 | | | |

Reno.

Schlemmer

George

| | | | | |
|-----------------|---------------|---------|----------|---------|
| + 47-4 | + 25-3 + 10-6 | + 97-5 | + 131-3 | + 114-5 |
| + 48-3 | + 22-4 | + 97-6 | + 108-1 | + 49-3 |
| + 7-1 | + 22-5 | + 49-3 | + 90-5 | + 52-1 |
| + 6-1 | + 23-5 | + 52-2 | + 94-6 | + 59-6 |
| + 6-3 | + 27-2 | + 59-6 | + 27-6 | + 79-3 |
| + 25-1 | + 27-4 | + 56-6 | + 117-1 | + 88-1 |
| + 33-4 | + 27-5 | + 52-6 | + 131-6 | + 91-1 |
| + 2-5 | + 30-2 | + 79-3 | + 37-5 | + 7-1 |
| + 34-3 | + 31-2 | + 88-1 | + 32-1 | + 45-1 |
| + 56-6 | | | | |
| 42-2 | + 21-3 | + 68-1 | + 110-2 | + 45-4 |
| + 45-4 | + 2-3 | + 56-5 | + 129-5 | + 127-4 |
| + 27-6 | + 39-4 | + 91-1 | + 129-4 | + 94-6 |
| + 32-1 | + 28-6 | + 95-1 | + 131-5 | + 27-6 |
| + 50-6 | + 24-4 | + 48-3 | + 66-5 | + 131-6 |
| + 66-5 | + 33-3 | + 47-4 | + 48-5 | + 32-1 |
| + 48-5 | + 33-2 | + 46-2 | + 48-6 | + 131-5 |
| + 48-4 | + 91-2 | + 7-1 | + 6-2 | + 66-5 |
| + 48-6 | + 25-7 | + 25-1 | + 80-5 | + 7-5 |
| + 6-2 | + 91-5 | + 33-4 | + 66-3 | + 31-6 |
| + 80-4 | + 92-5 | + 45-1 | + 45-3 | + 21-3 |
| + 45-3 | + 6-4 | + 110-6 | + 96-5-6 | |
| + 98-6 | + 26-6 | + 114-5 | + 110-2 | |
| + 31-6 | + 2-6 | + 127-4 | + 31-6 | |
| + 20-3 | + 29-6 | + 125-1 | + 20-3 | |
| + 1-4 | + 43-6 | + 127-3 | + 10-6 | |
| + 34-4 | + 44-1 | + 117-2 | | |



Midway Id.



Hermit Crabs at Wake Island.

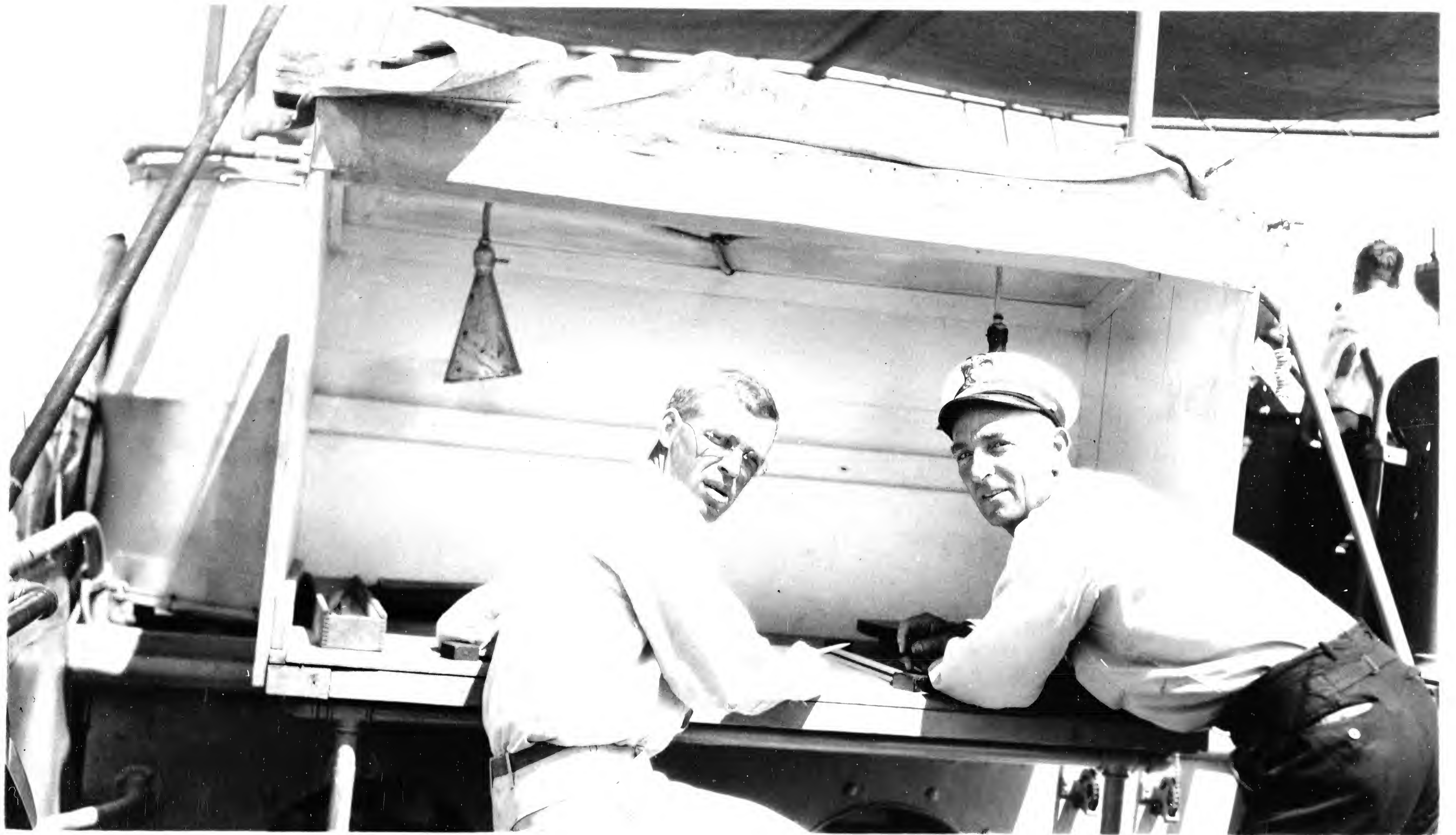
H. S. Palmer

021



Travel in the motor-sailer at
French Frigate Shoals.

135
H. S. Palmer



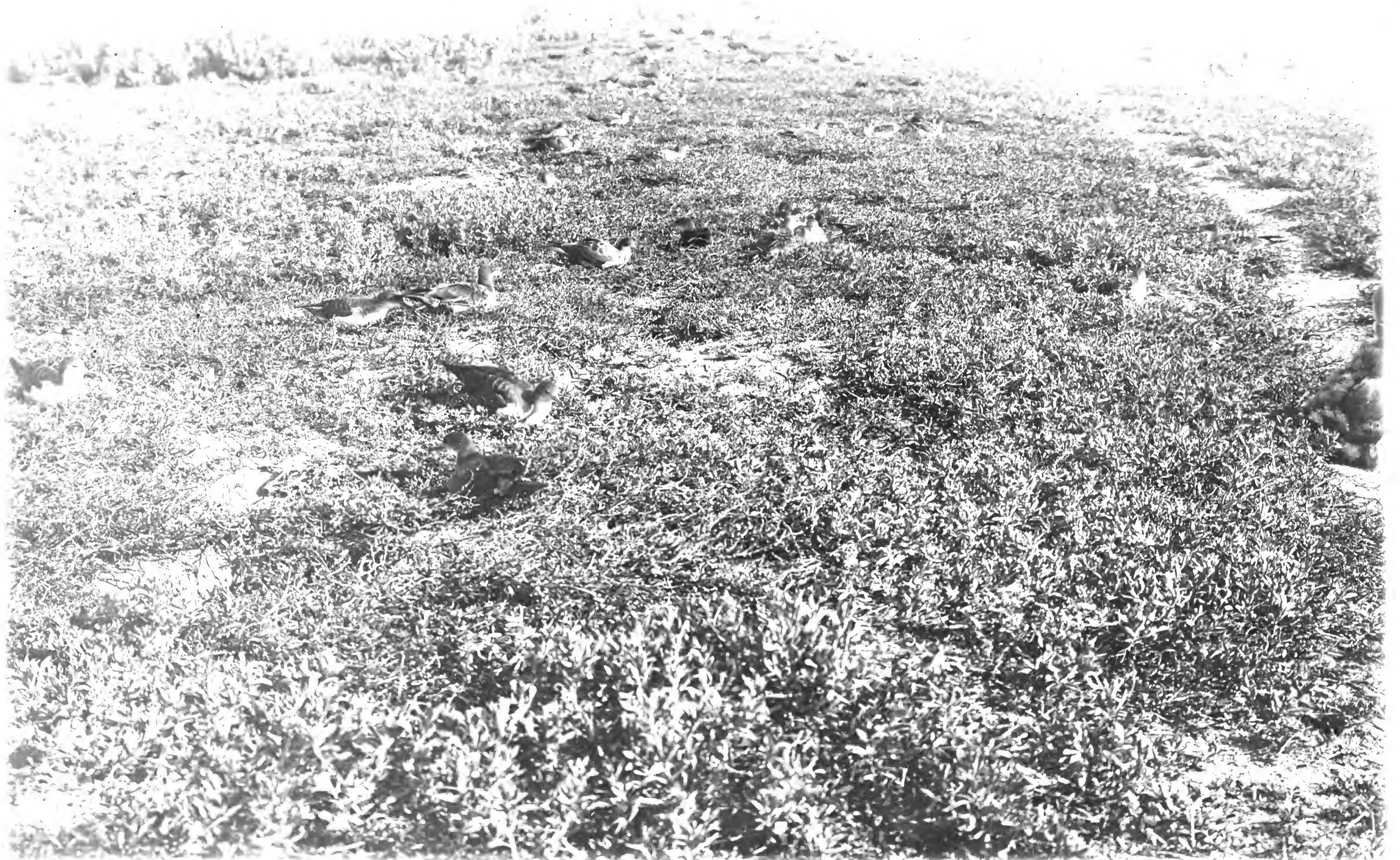
Lt. Comdr King and J. B. Mann
aboard U. S. S. Tanager

H. S. Palmer



Laysan Island, May, 1902,

W. K. Fisher



Near lagoon - *Puffinus annectus*

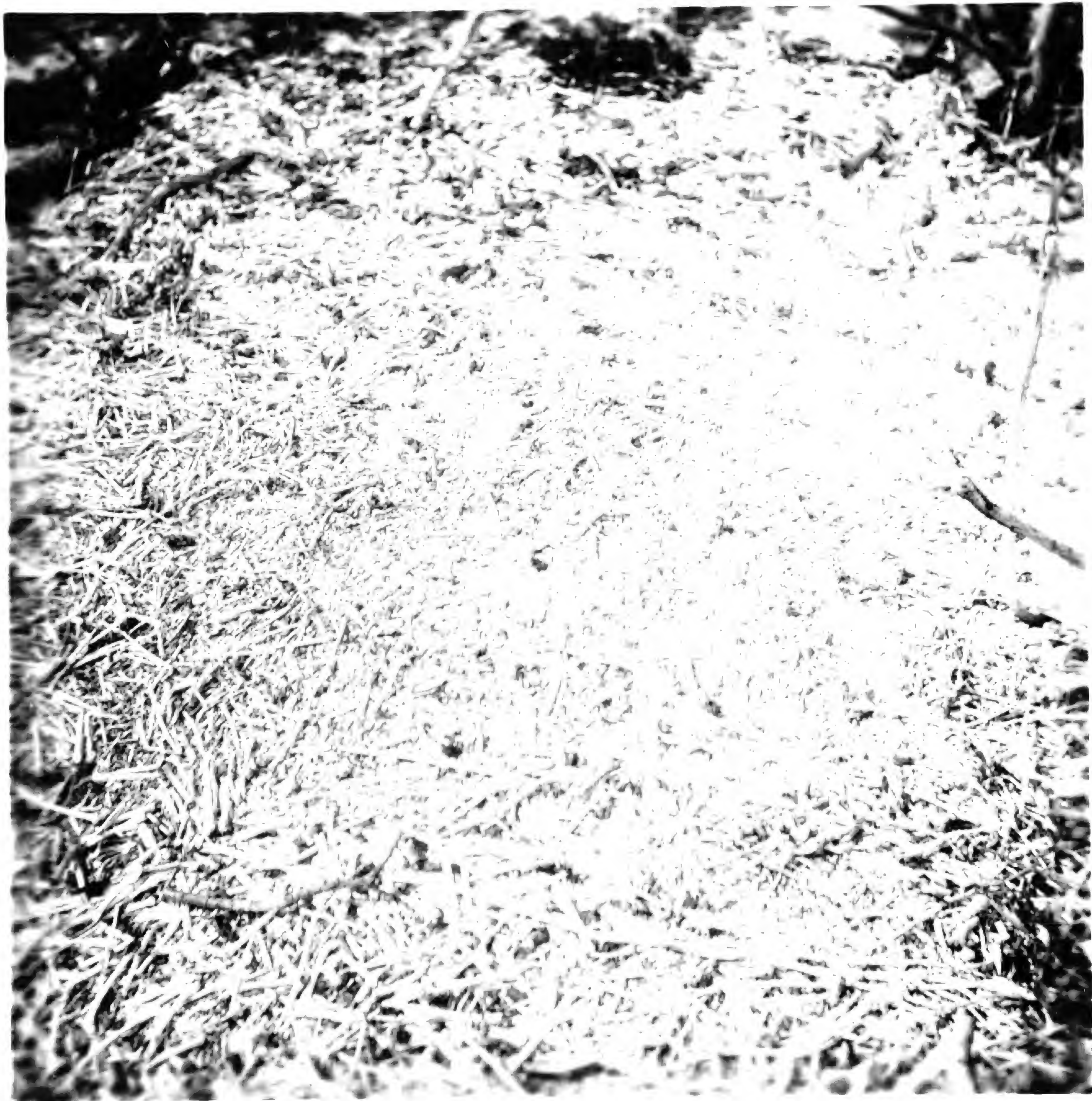
Laysan Island, May, 1902,

W. H. Fisher



Cheesepodium "chaparral"

Laysan Island, May, 1902,
W. K. Fisher



Bones of terns

Wahki Island

W. G. Anderson.



Laysan Island, May, 1902

W. K. Fisher



Party Looey. Linn colony

Hayson Island, May, 1902,

W. H. Fisher.



31



Not very far from the houses
near the bare flats bordering
Lagoon. In this area a good
many rails nested.

Laysan Island, May, 1902

W. H. Fisher