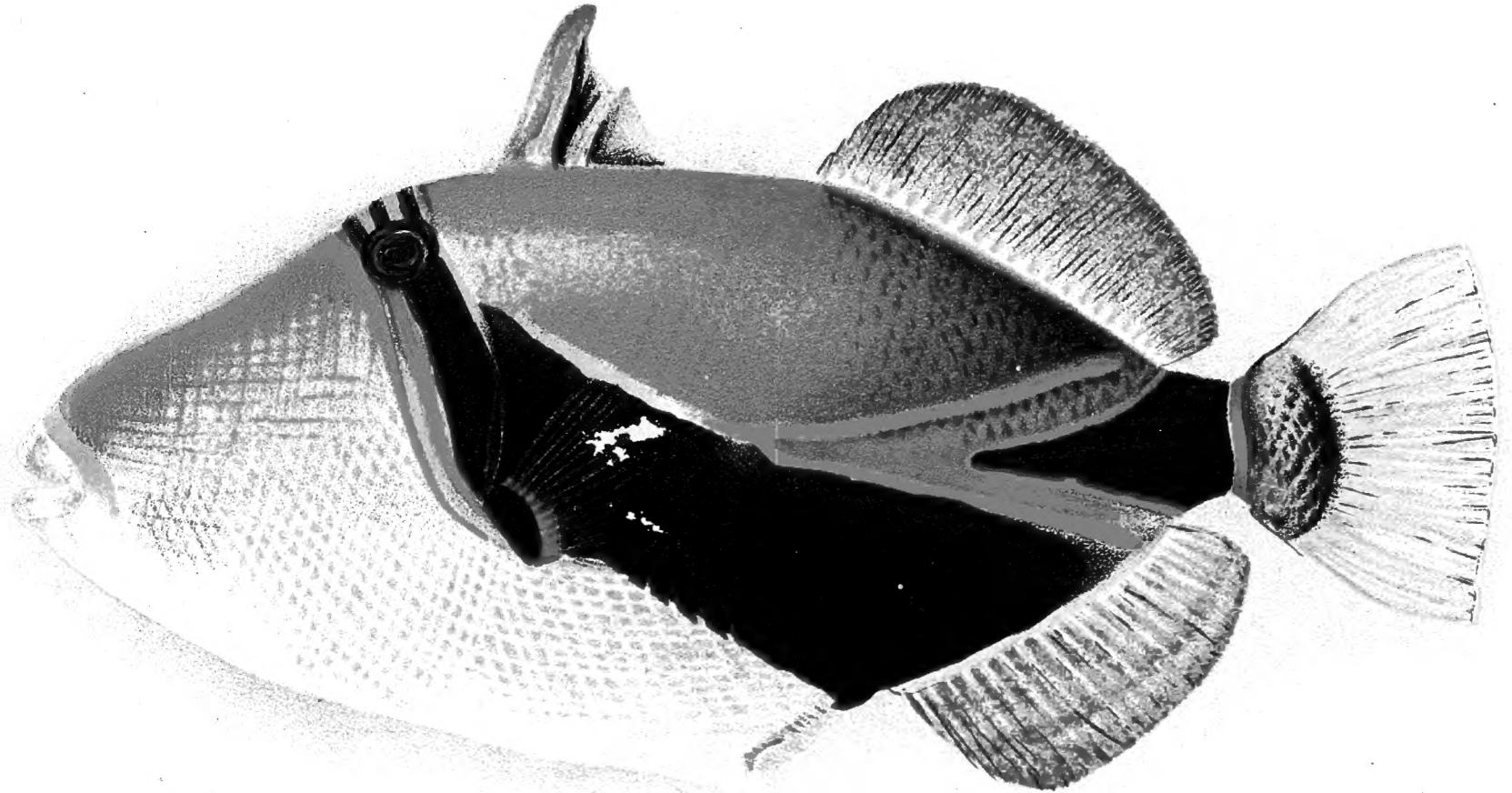
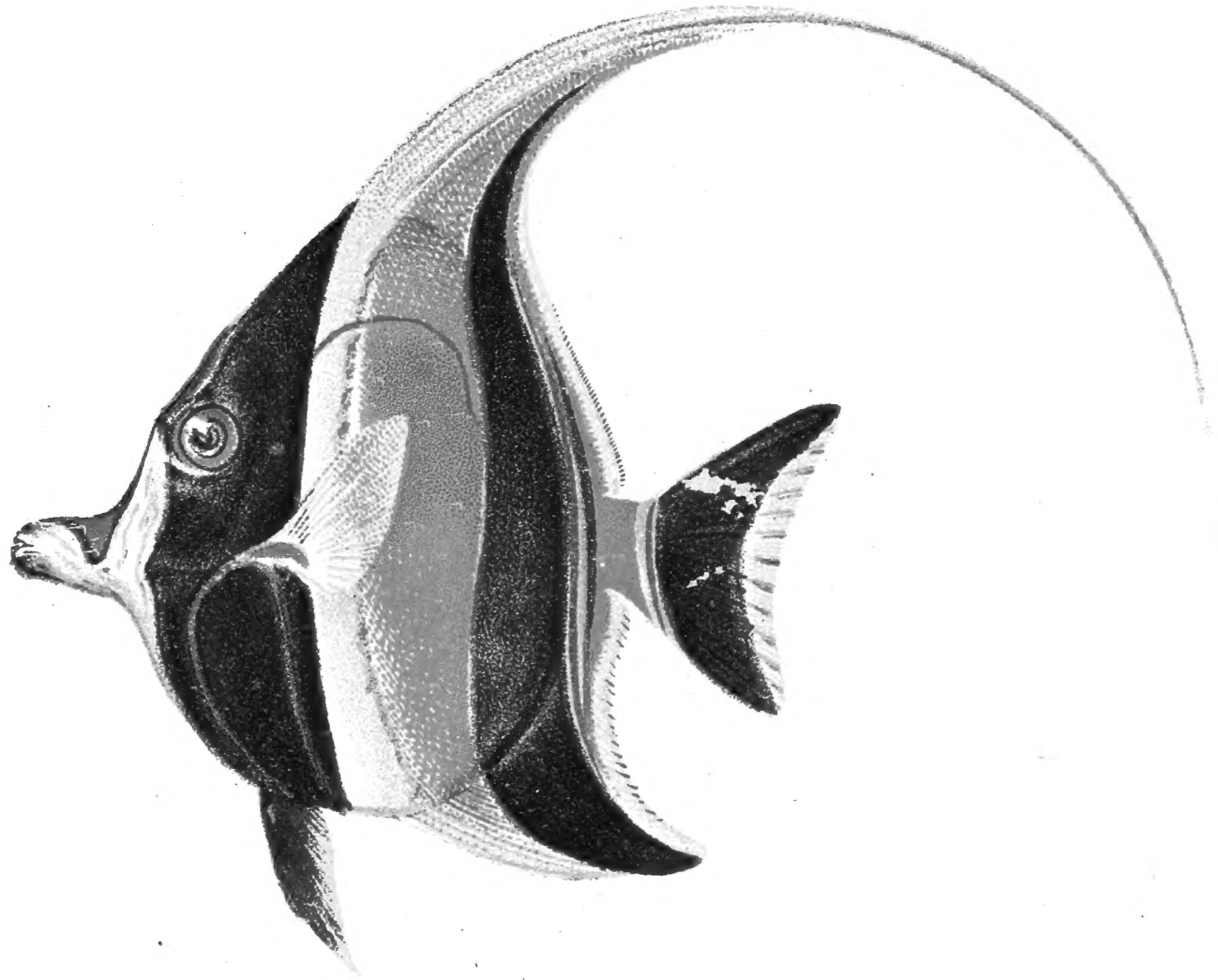


HAWAIIAN
FISHES.

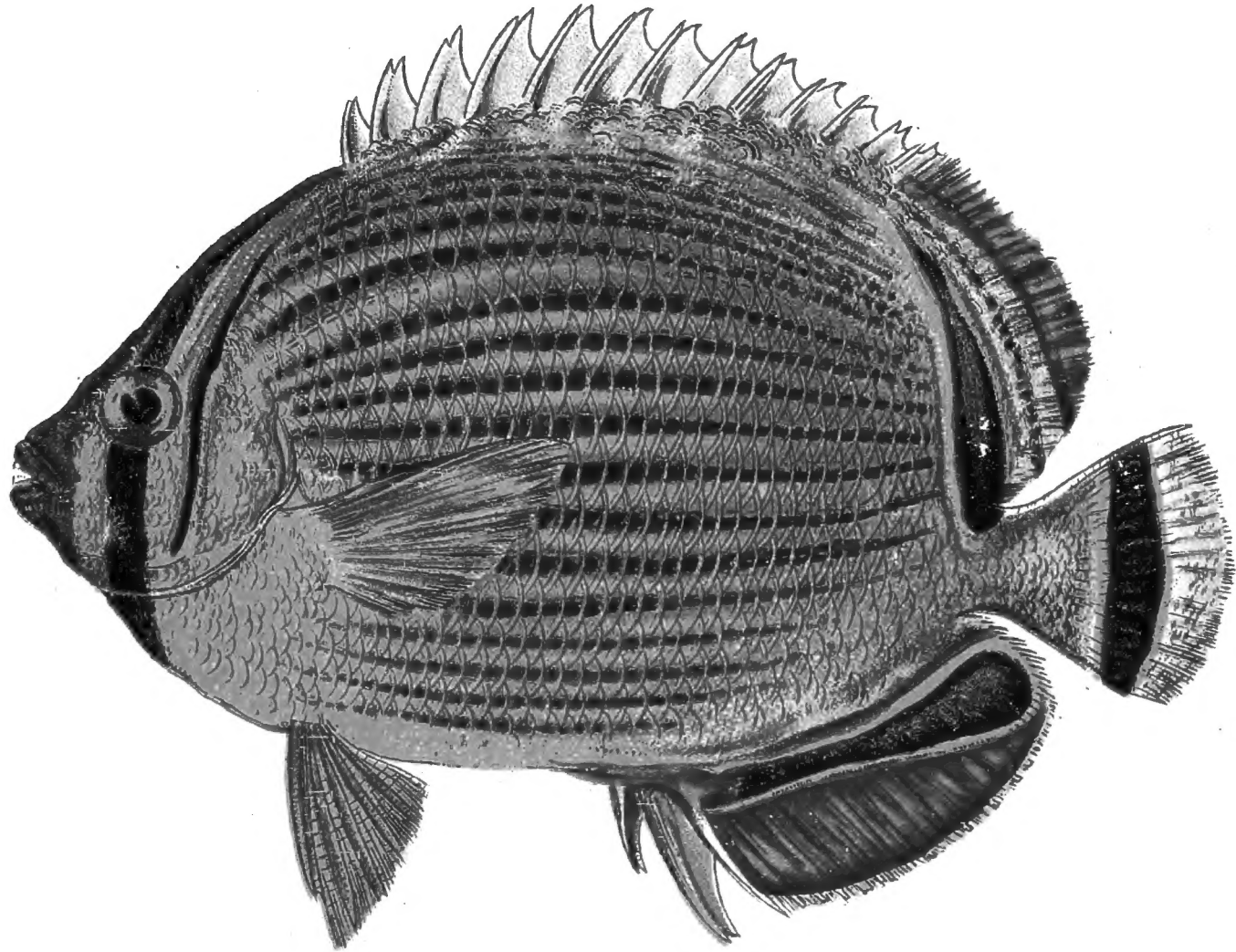




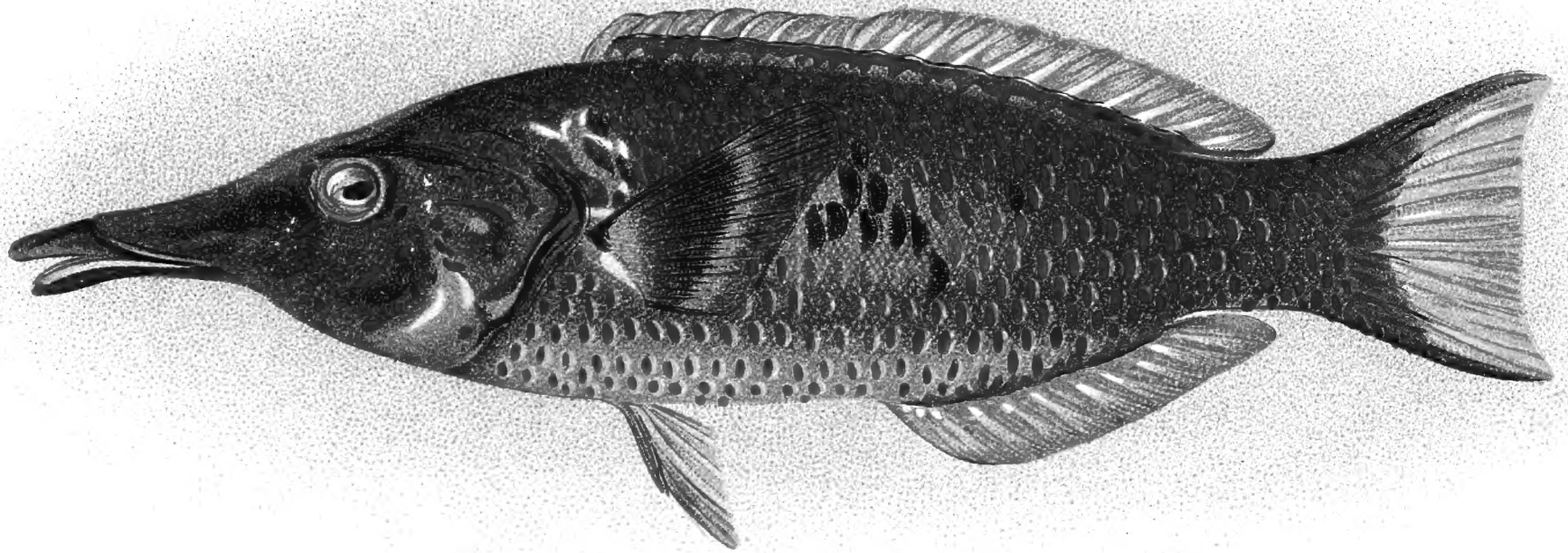
Hawaiian Fish Humuhumu.



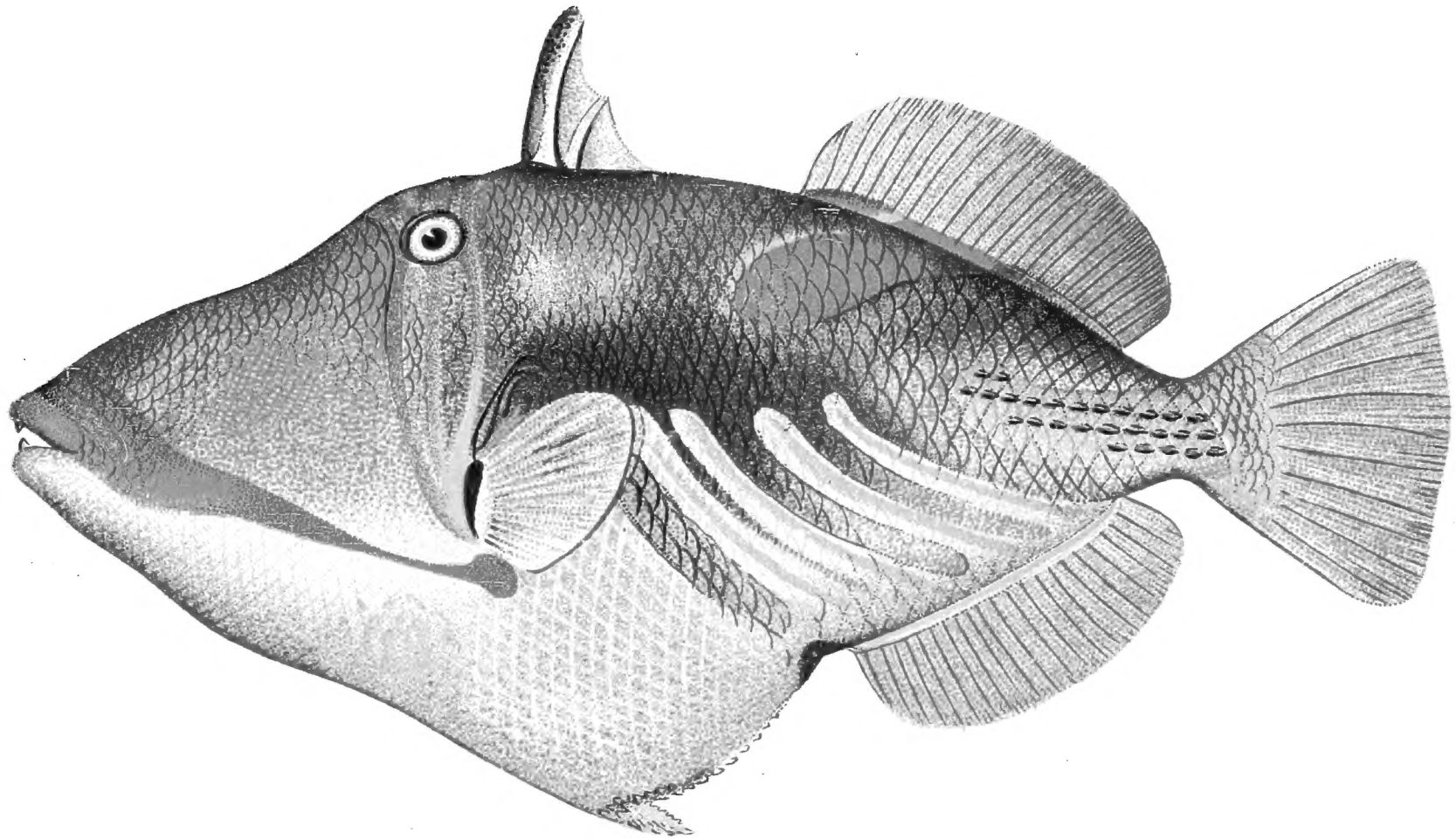
Hawaiian Fish Kihikihi.



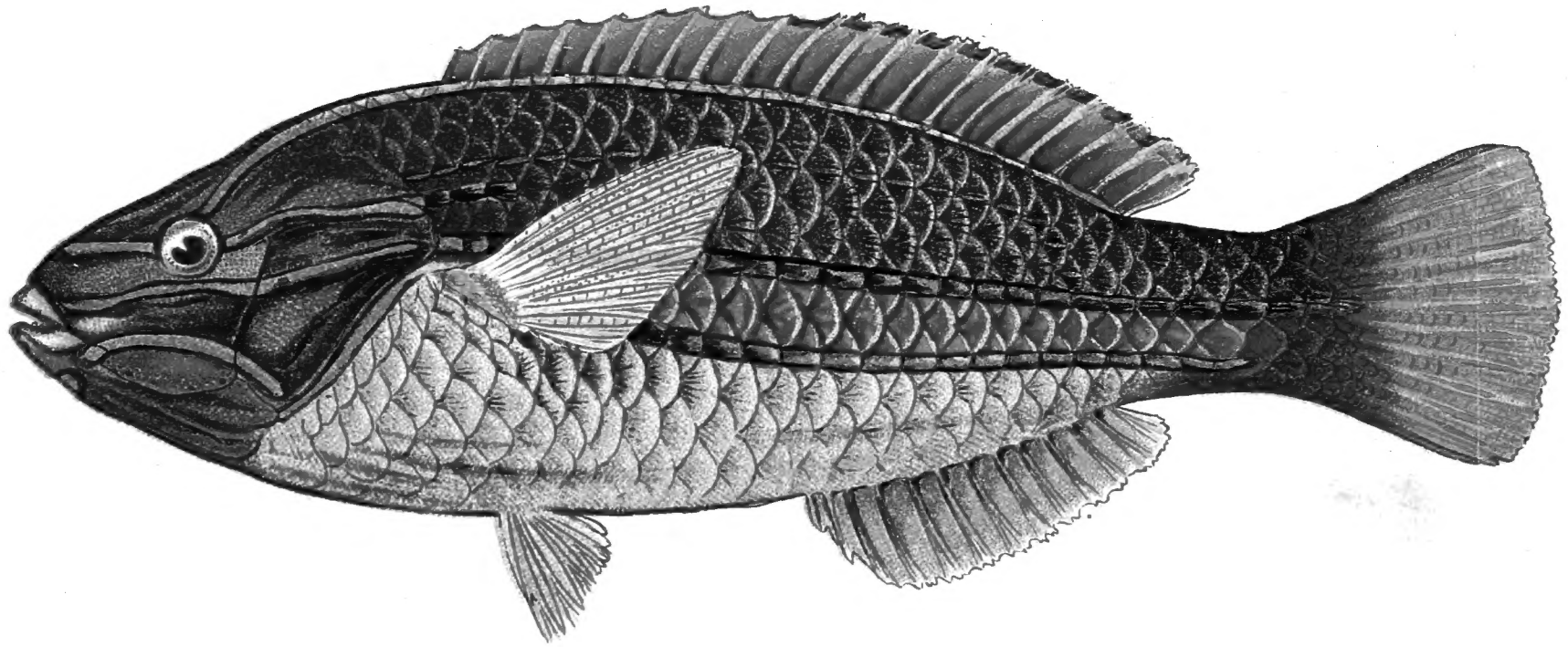
Hawaiian Fish Kapuhili.



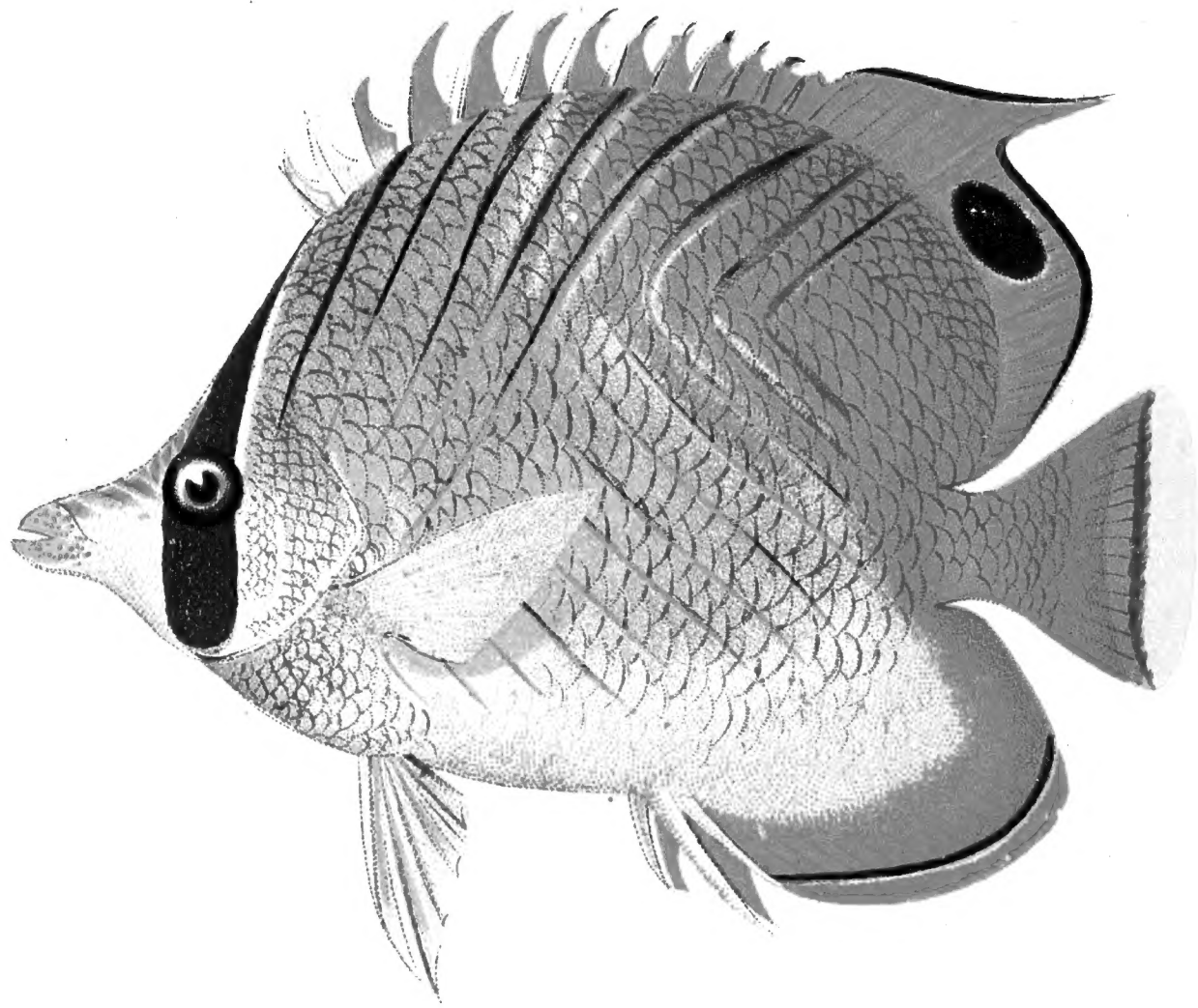
Hawaiian Fish Hinalea.



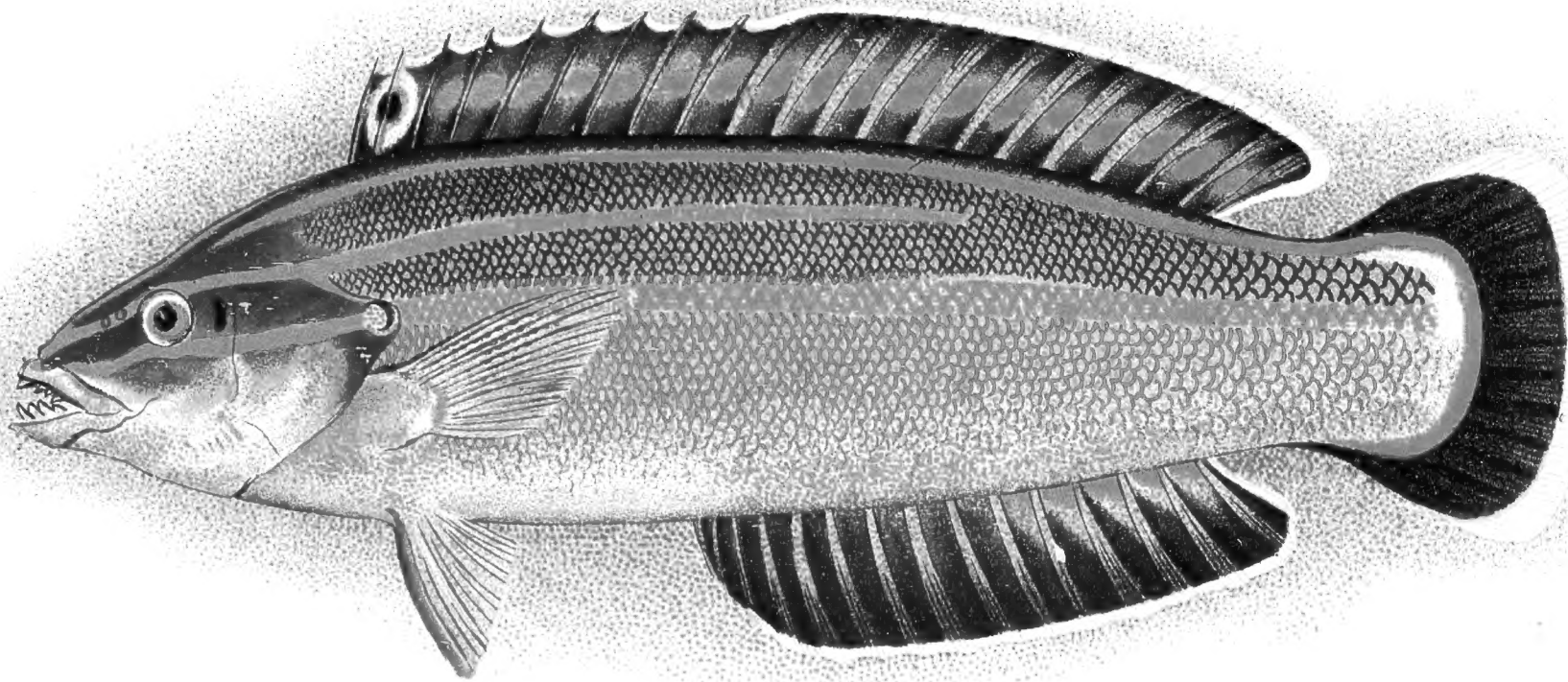
Hawaiian Fish Nakunuku.



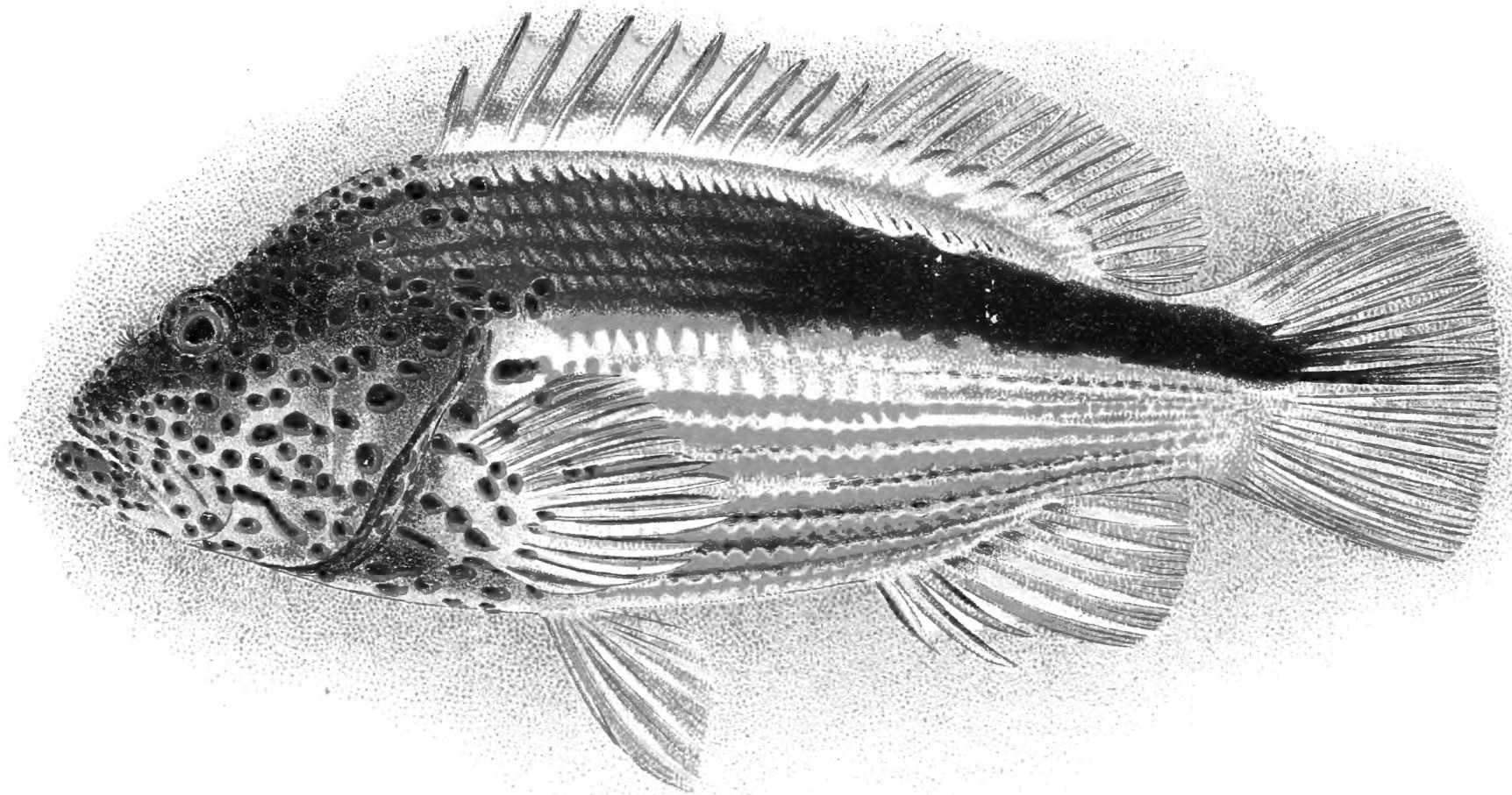
Hawaiian Fish Ohua.



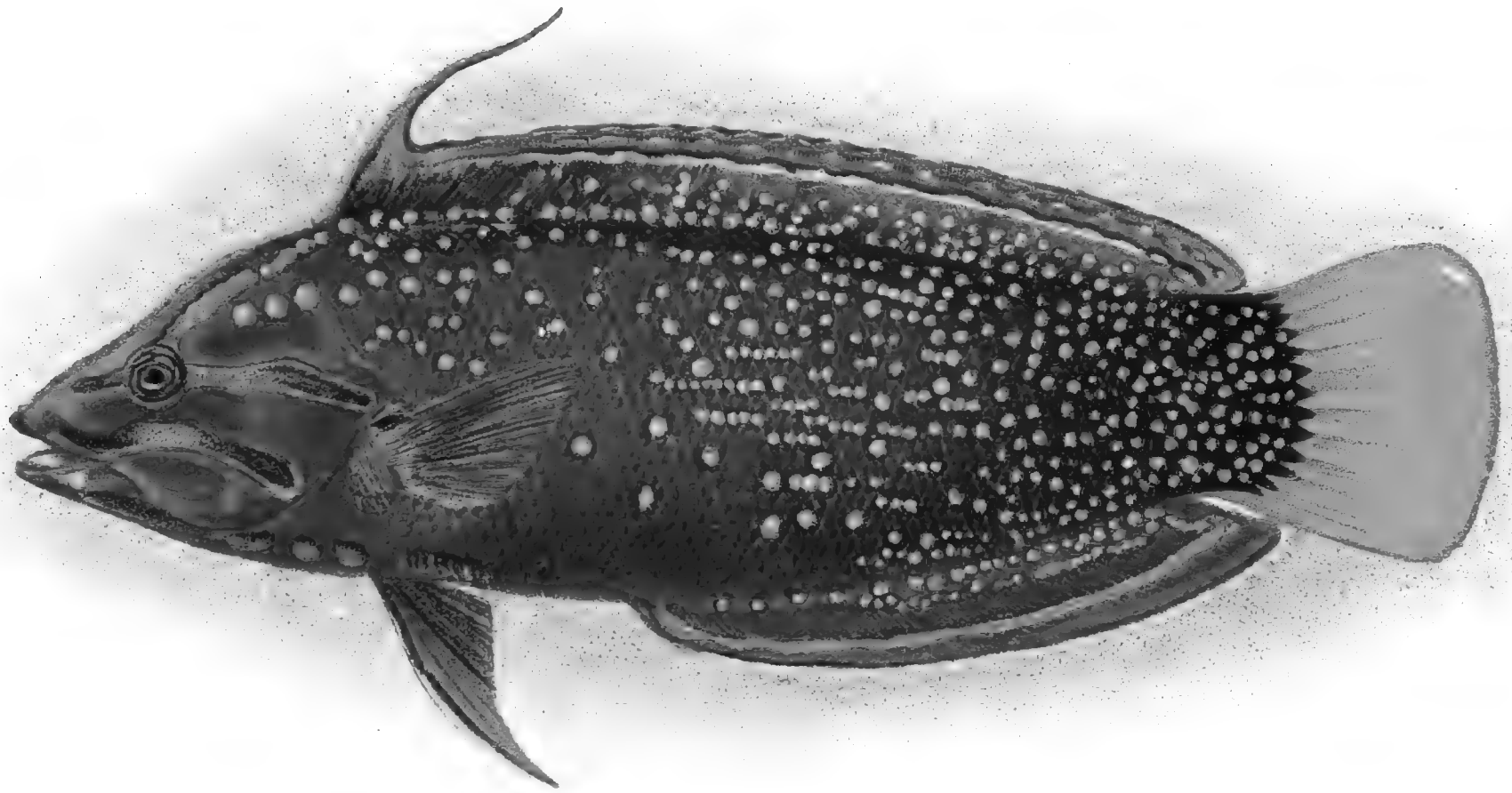
Hawaiian Fish Chaetodon.



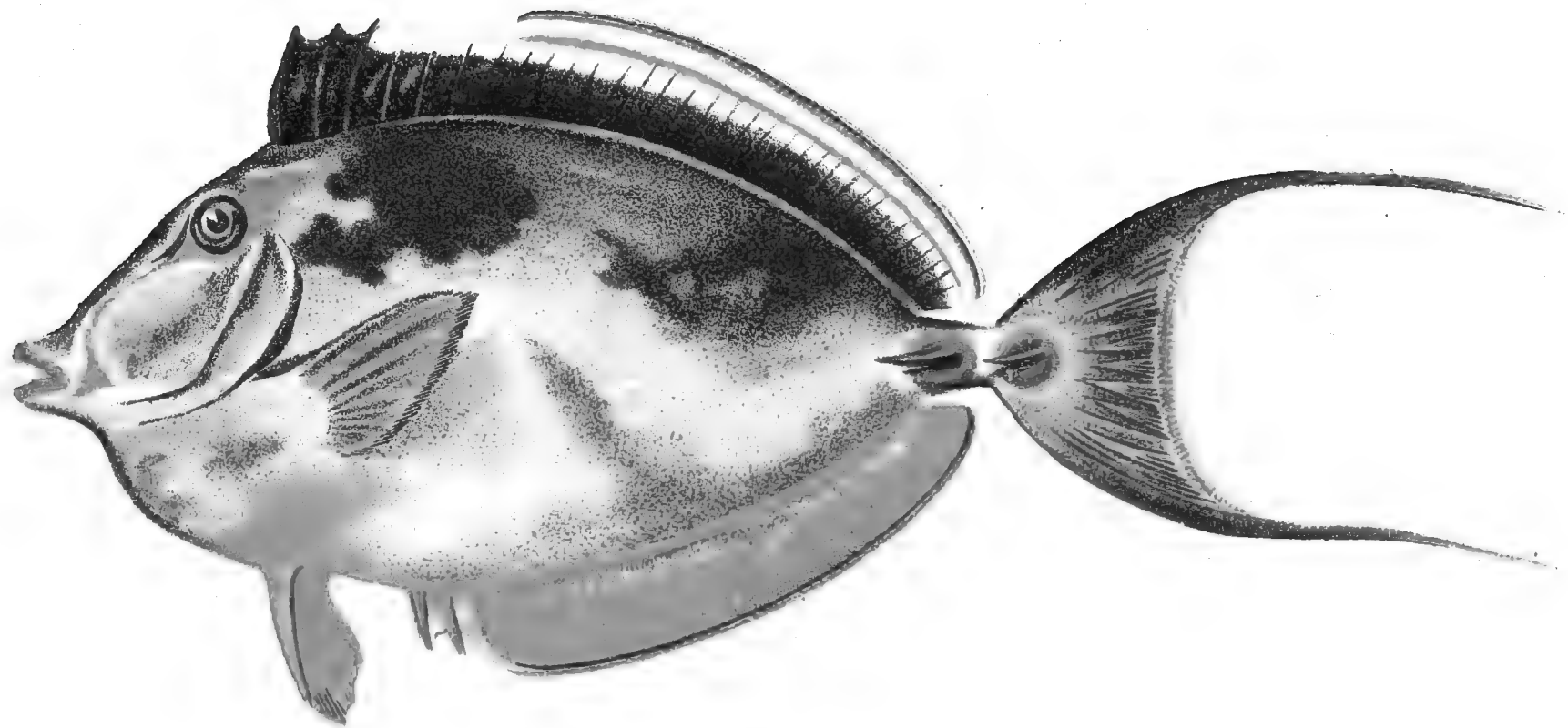
Hawaiian Fish *Julis Eydouxi*.



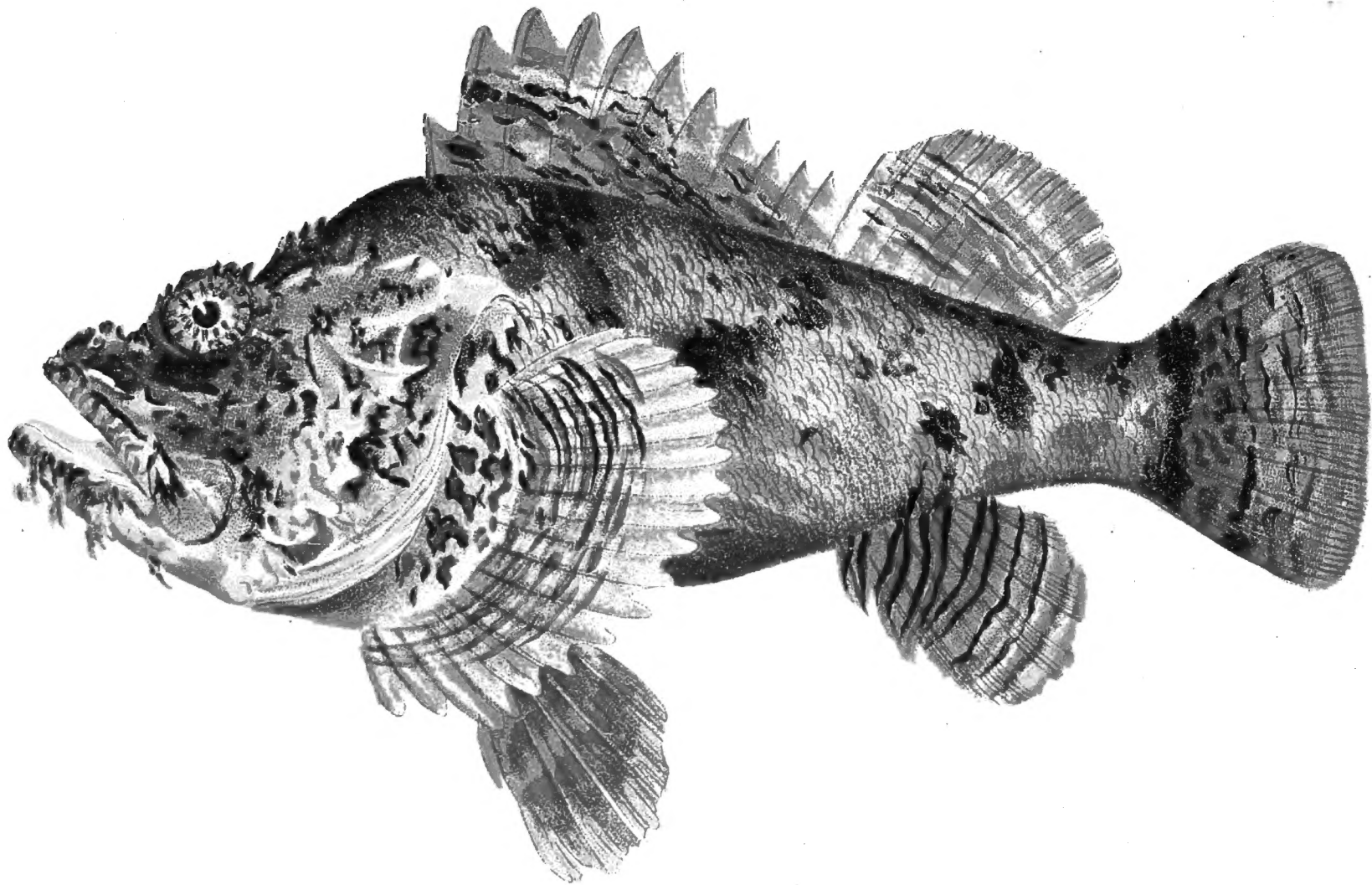
Hawaiian Fish Hilupilikoa.



Hawaiian Fish Akilolo.



Hawaiian Fish Kala.



Hawaiian Fish Nohu.
Odd Shapes and bright Colors are peculiar to Island Fishes.

SMITHSONIAN INSTITUTION LIBRARIES



3 9088 01500 6653

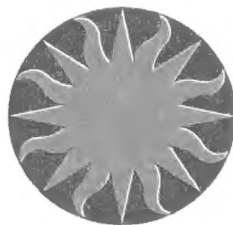
DSI

QL
036.5
H3439
1905
SCN483

THE H



The exhibit is mo
the finest collection of f
"Language cannot
here. The fish are odd
a brush, and yet no pair
The Aquarium was
pose by Mr. James B. C
pany. The plant has cos
throughout the week. A
enlarging and improving



Smithsonian
Institution
Libraries

Gift of

DR. BRUCE CARLSON

AQUARIUM

M is located in
aikiki Beach, five
pass the entrance.
wailian waters. Of these
olor. The most brilliant
imaginable combinations
ifferences in shape and
or scheme.
n, from 600 to 1000 fishes
the pictures published
mens shown in the Hono-
persons annually. It is
rtray what one has seen
ts are laid on as if with
ail to see the Aquarium".
land donated for the pur-
lulu Rapid Transit Com-
a time to time. It is open
are devoted to operating,

