

Historic, archived document

Do not assume content reflects current scientific knowledge, policies, or practices.

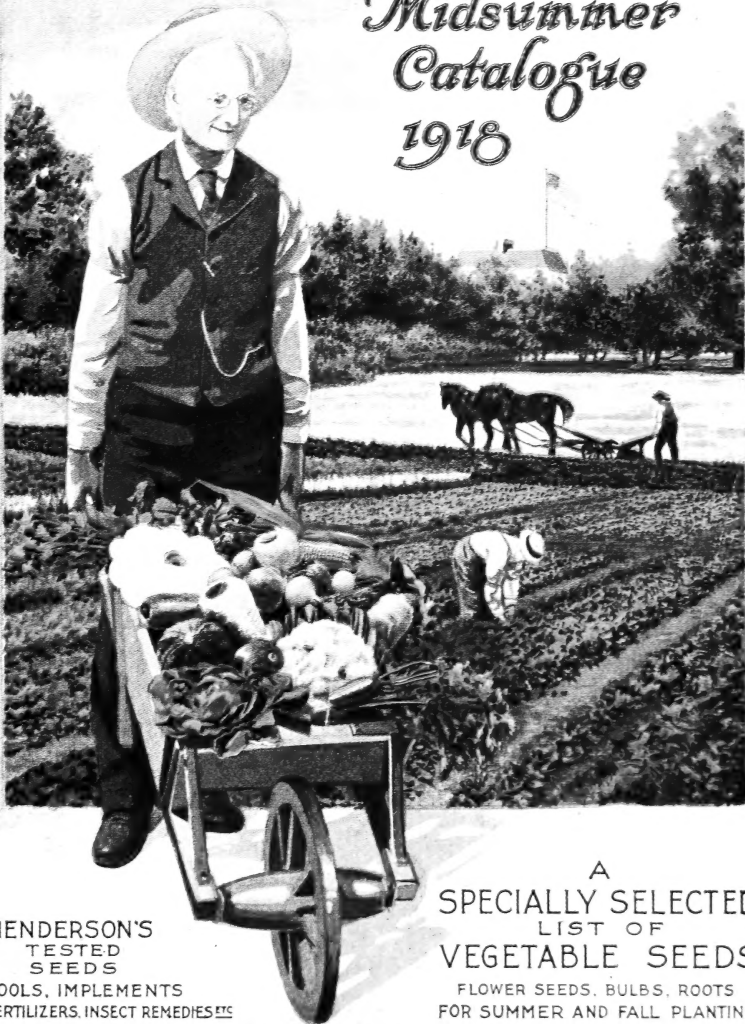
★ JUN 1 1920

U. S. Department of

DUPLICATE?

REPRODUCTION

Henderson's Midsummer Catalogue 1918



HENDERSON'S
TESTED
SEEDS
TOOLS, IMPLEMENTS
FERTILIZERS, INSECT REMEDIES ^{ETC}

A
SPECIALLY SELECTED
LIST OF
VEGETABLE SEEDS

FLOWER SEEDS, BULBS, ROOTS
FOR SUMMER AND FALL PLANTING

PETER HENDERSON & CO., NEW YORK.

Copyright 1918 Peter Henderson & Co., N. Y.

BUSINESS RULES, ETC.

FREE DELIVERY FOR CERTAIN QUANTITIES OF SEEDS.—WE DELIVER FREE IN THE UNITED STATES BY PARCEL POST OR EXPRESS TO ANY EXPRESS OFFICE, AT OUR OPTION, ALL VEGETABLE AND FLOWER SEEDS BY THE PACKET, OUNCE, ¼ POUND AND POUND.

Purchasers pay transit charges on larger quantities of seeds, and other merchandise, unless otherwise provided. When goods are wanted by Parcel Post add postage, for those we do not deliver free (see Zone Rates on this page.)

For tools, and accessories, odorless fertilizers, insecticides and fungicides (fluids and poisons excluded)—we have given the packed Parcel Post weight so that extra for postage must be remitted according to Zone distances. In most instances the charge by freight and express on greater weights will be found more economical, hence we only give weights up to 10 lbs.

We make no charge for packing or cartage of goods to any railroad station, steamship line or express office in New York City.

CLOTH BAGS only we charge for, and these at cost, viz.: 1 peck, 15c.; ½ bushel, 20c. 1 bushel, 25c.; 2 bushels, 45c. ALL GRASS SEED BAGS excepting bags for Timothy and Clover, are furnished free.

ACCOUNTS.—Parties having no account with us—who order goods without remittance—must furnish satisfactory reference. New York City reference preferred on account of the shorter delay pending investigation.

REMITTANCES may be made by Express Money Order, P. O. Money Order or Bank Draft; if stamps or cash send in a Registered Letter. We must decline sending goods C. O. D. unless 25% of their value accompanies the order.

WE DO NOT SUPPLY DEALERS, therefore our Seeds, etc., can only be procured by sending orders direct to us.

THE PRICES QUOTED IN THIS CATALOGUE ARE NET.—We offer no premiums, discounts nor gratuities. We reserve the right to advance prices without notice should current conditions require it.

PETER HENDERSON & Co. give no warranty express or implied, as to description, quality productiveness, or any other matter of any Seeds, Bulbs or Roots they send out and they will not be in any way responsible for the crop. If the purchaser does not accept the goods on these terms, they are at once to be returned.

United States Food Administration License
No. G. 31720

HENDERSON'S

Garden Guide and Record

IS SENT FREE

With every order amounting to \$2.00 or over.

HENDERSON'S GARDEN GUIDE AND RECORD treats concisely, but sufficiently about vegetable gardening in all its branches. It contains articles on the following subjects and others.

- Preparing Garden Ground: Fertilizing, Draining, Cultivating.
- Vegetable Planting Time Table: Distance, Depth to Sow, When Ready to Use, etc.
- Vegetables for Winter Use: What to Grow and How to Store.
- Hot Beds and Cold Frames: How to Make and Maintain.
- Cold Frame Vegetables: What and How to Grow for Winter Use.
- Insects and Plant Diseases: Latest Methods of Treatment and Remedies.
- Fertilizing: A guide to what fertilizer and lime the land requires.
- Canning Vegetables, etc.: Saving the Garden Surplus with Home Cannery.
- Culinary Herbs: Culture and Preparation.
- And much other valuable information.

PARCEL POST ZONES AND RATES.

Weight in Pounds	Local	1st	2nd	3rd	4th	5th	6th	7th	8th
		Up to 50 miles from New York	50 to 150 miles from New York	150 to 300 miles from New York	300 to 600 miles from New York	600 to 1000 miles from New York	1000 to 1400 miles from New York	1400 to 1800 miles from New York	1800 miles from New York
1	\$0.05	\$0.05	\$0.05	\$0.06	\$0.07	\$0.08	\$0.09	\$0.11	\$0.12
2	.06	.06	.06	.08	.11	.14	.17	.21	.24
3	.06	.07	.07	.10	.15	.20	.25	.31	.36
4	.07	.08	.08	.12	.19	.26	.33	.41	.48
5	.07	.09	.09	.14	.23	.32	.41	.51	.60
6	.08	.10	.10	.16	.27	.38	.49	.61	.72
7	.08	.11	.11	.18	.31	.44	.57	.71	.84
8	.09	.12	.12	.20	.35	.50	.65	.81	.95
9	.09	.13	.13	.22	.39	.56	.73	.91	1.08
10	.10	.14	.14	.24	.43	.62	.81	1.01	1.20
11	.10	.15	.15	.26	.47	.68	.89	1.11	1.32
12	.11	.16	.16	.28	.51	.74	.97	1.21	1.44
13	.11	.17	.17	.30	.55	.80	1.05	1.31	1.56
14	.12	.18	.18	.32	.59	.86	1.13	1.41	1.68
15	.12	.19	.19	.34	.63	.92	1.21	1.51	1.80
16	.13	.20	.20	.36	.67	.98	1.29	1.61	1.92
17	.13	.21	.21	.38	.71	1.04	1.37	1.71	2.04
18	.14	.22	.22	.40	.75	1.10	1.45	1.81	2.16
19	.14	.23	.23	.42	.79	1.16	1.53	1.91	2.28
20	.15	.24	.24	.44	.83	1.22	1.61	2.01	2.40
21	.15	.25	.25	.46	.87	1.28	1.69	2.11	2.52
22	.16	.26	.26	.48	.91	1.34	1.77	2.21	2.64
23	.16	.27	.27	.50	.95	1.40	1.85	2.31	2.76
24	.17	.28	.28	.52	.99	1.46	1.93	2.41	2.88
25	.17	.29	.29	.54	1.03	1.52	2.01	2.51	3.00
26	.18	.30	.30	.56	1.07	1.58	2.09	2.61	3.12
27	.18	.31	.31	.58	1.11	1.64	2.17	2.71	3.24
28	.19	.32	.32	.60	1.15	1.70	2.25	2.81	3.36
29	.19	.33	.33	.62	1.19	1.76	2.33	2.91	3.48
30	.20	.34	.34	.64	1.23	1.82	2.41	3.01	3.60
31	.20	.35	.35	.66	1.27	1.88	2.49	3.11	3.72
32	.21	.36	.36	.68	1.31	1.94	2.57	3.21	3.84
33	.21	.37	.37	.70	1.35	2.00	2.65	3.31	3.96
34	.22	.38	.38	.72	1.39	2.06	2.73	3.41	4.08
35	.22	.39	.39	.74	1.43	2.12	2.81	3.51	4.20
36	.23	.40	.40	.76	1.47	2.18	2.89	3.61	4.32
37	.23	.41	.41	.78	1.51	2.24	2.97	3.71	4.44
38	.24	.42	.42	.80	1.55	2.30	3.05	3.81	4.56
39	.24	.43	.43	.82	1.59	2.36	3.13	3.91	4.68
40	.25	.44	.44	.84	1.63	2.42	3.21	4.01	4.80
41	.25	.45	.45	.86	1.67	2.48	3.29	4.11	4.92
42	.26	.46	.46	.88	1.71	2.54	3.37	4.21	5.04
43	.26	.47	.47	.90	1.75	2.60	3.45	4.31	5.16
44	.27	.48	.48	.92	1.79	2.66	3.53	4.41	5.28
45	.27	.49	.49	.94	1.83	2.72	3.61	4.51	5.40
46	.28	.50	.50	.96	1.87	2.78	3.69	4.61	5.52
47	.28	.51	.51	.98	1.91	2.84	3.77	4.71	5.64
48	.29	.52	.52	1.00	1.95	2.90	3.85	4.81	5.76
49	.29	.53	.53	1.02	1.99	2.96	3.93	4.91	5.88
50	.30	.54	.54	1.04	2.03	3.02	4.01	5.01	6.00
51	.30	.55	.55	1.06					
52	.31	.56	.56	1.08					
53	.31	.57	.57	1.10					
54	.32	.58	.58	1.12					
55	.32	.59	.59	1.14					
56	.33	.60	.60	1.16					
57	.33	.61	.61	1.18					
58	.34	.62	.62	1.20					
59	.34	.63	.63	1.22					
60	.35	.64	.64	1.24					
61	.35	.65	.65	1.26					
62	.36	.66	.66	1.28					
63	.36	.67	.67	1.30					
64	.37	.68	.68	1.32					
65	.37	.69	.69	1.34					
66	.38	.70	.70	1.36					
67	.38	.71	.71	1.38					
68	.39	.72	.72	1.40					
69	.39	.73	.73	1.42					
70	.40	.74	.74	1.44					

PARCEL POST WEIGHT LIMIT (NOTE EXTENSION)

The weight limit within the Local 1st, 2nd and 3rd Zones is seventy (70) pounds, within the other Zones the weight limit is fifty (50) pounds and the size limit eighty-four (84) inches for combined length and largest girth. In this catalogue we give the weight packed up to ten (10) pounds on Implements, Insecticides and Fertilizers.

Packages weighing 8 oz. or less can be forwarded anywhere in the U. S. at a cost of one cent for each two ounces, or fraction thereof.

From.....

P. O.....

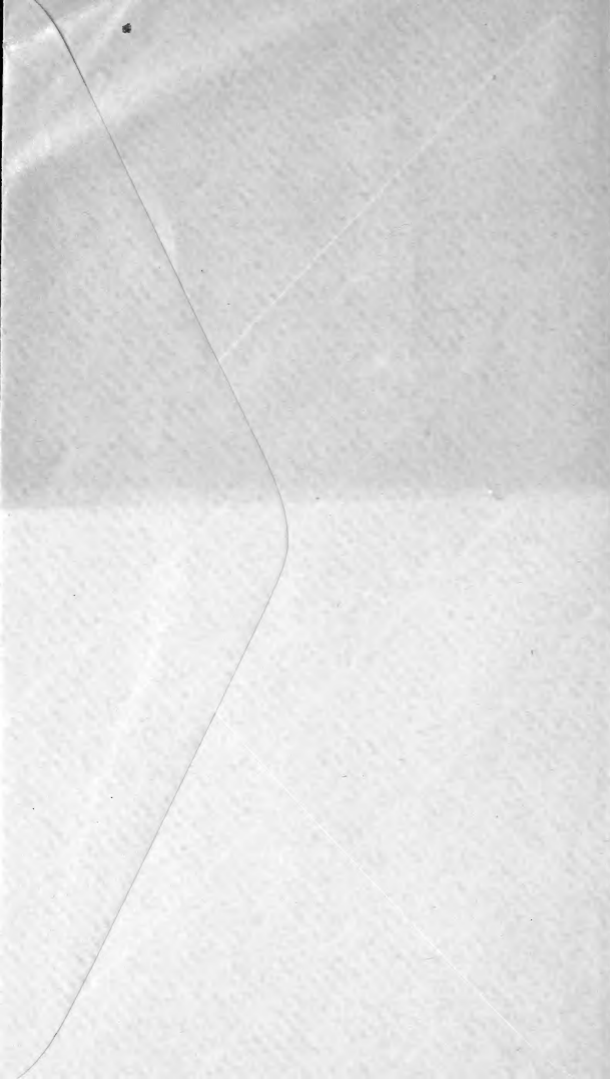
State.....

Peter Henderson & Co.,

35 and 37 Cortlandt Street,

NEW YORK.

**DO NOT
FORGET
POSTAGE
STAMP**



HENDERSON'S TESTED VEGETABLE SEEDS

Home gardeners throughout America can contribute to victory by raising, as far as may be possible, supplies of vegetables foods for the use of their families. As this food will be raised right on the spot, it will lessen the strain on the means of transportation, already taxed to the utmost limit. One result of the call to arms last year was that millions of Americans were transformed into gardeners, with the happy result that fully \$350,000,000 additional were added to our national wealth.

The possibilities of your vegetable garden have not been by any means exhausted when you have raised one crop of vegetables, and on the pages following will be found a list of seeds specially selected for summer sowing. **THE FACT IS, YOU CAN DOUBLE THE OUTPUT OF YOUR GARDEN AND RAISE A HOST OF GOOD THINGS FOR THE TABLE FROM NOW ONWARDS UNTIL FROST ENDS GARDEN OPERATIONS.** It has been noted by a keen observer who travels much in New York, Pennsylvania, New Jersey, Massachusetts and Connecticut, that some of the thriftiest vegetable gardens are planted after June 1st. Many varieties of vegetables yield larger crops from summer sown seed, than from spring sown seed, because the weather prevailing at the time the young plants attain any size is exactly suited to their requirements, and they are able to grow and complete their development without check. Keep on sowing rows of Beets until August, as they are always welcome on the table, and store well for winter.

Plant Bush Beans now and at other times up to the 1st of September, and you will reap additional harvests of sweet, tender pods. You can plant beans as late as July 25th and make the first pickings on Sept. 20th. Sow Sweet Corn every two weeks until July 15th. The early part of June is the time to sow Cabbage seeds for plants to set out for winter crop.

Now is the best time in all the year to sow seeds of root crops, such as Carrot, Beet, Turnip and Ruta Baga. Sow Ruta Baga in June and Carrot and Turnip in July. The young plants attain their true leaves when the weather is favorable to them, and grow right on without a check, consequently they are tender and palatable.

For your health's sake; do not omit to put in more rows of Lettuce, indispensable and necessary in every home. Sow up to Aug. 15th. Black Seeded Simpson and the curled varieties are the best to plant as they are great heat resisters. Don't waste any ground, but in odd corners sow radishes. White Summer Turnip Radish and Early White Tipped Scarlet Turnip Radish succeed well at this time. Besides the varieties specially mentioned there are many other seeds which may be sown during the summer with every assurance of reaping bountiful crops and they are listed in the following pages of this catalogue. The varieties marked "early" should be chosen for late plantings, because they mature more quickly than the varieties designated as "late."

LIST OF VEGETABLES OF WHICH ADDITIONAL SOWINGS MAY BE MADE JUNE 1st AND ONWARDS.

VARIETIES.	Dates up to which they may be sown.
Beans Dwarf or Bush	Every two weeks until Aug.
Beets	June to August 15th.
Brussels Sprouts	June (in seed bed).
Cabbage	Early June.
Cauliflower	Early June.
Carrot	July to August 15th.
Corn, sweet	Every two weeks until July 15th.
Cress, Garden	Every two weeks until September.
" Water	August.
Cucumber	July 15th.
Endive	July to August 1st.
Kale	June.

VARIETIES.	Dates up to which they may be sown.
Kohl-Rabi	July 15th.
Lettuce	August 15th.
Mustard	Every two weeks until September.
Peas	July to August 15th.
Pumpkin	June.
Radish	Every two weeks until September.
" Winter	August.
Ruta Baga	June.
Spinach	August to September 15th.
Swiss Chard	Every four weeks until September.
Turnip	July 1st to August 25th.

Our Booklet, "GARDEN CULTURE OF ROOT CROPS," sent free if requested when ordering.

HENDERSON'S TESTED VEGETABLE SEEDS.

FOR SUMMER SOWING.

Henderson's Black Valentine.

GREEN-PODDED BUSH BEAN.

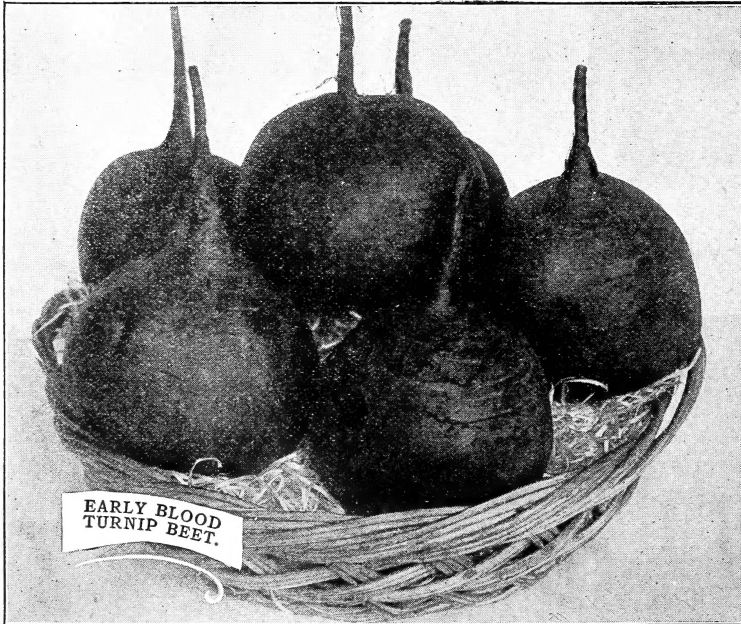
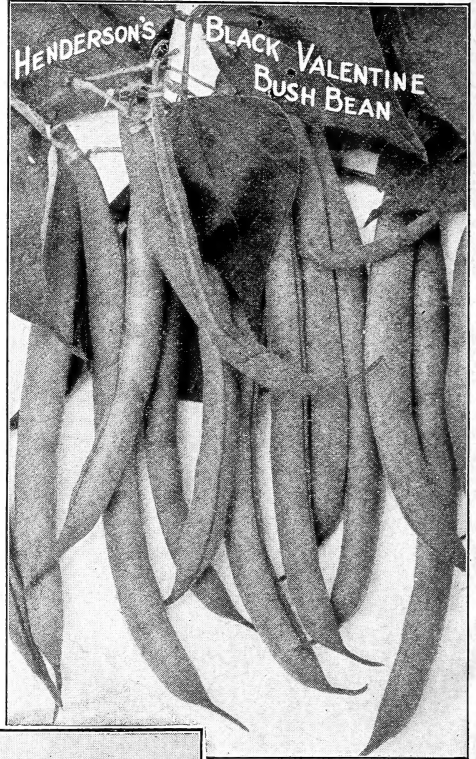
Possesses all the merits of our old favorite Red Valentine, and the pod is fully one-third longer. In addition it has other valuable points. The pods are extra long, round, straight and tender, and of a beautiful soft green color. It is also equally early, but has another advantage in that it is more suitable for late planting. In a test of the Extra Early Refugee, Henderson's Earliest Red Valentine and Black Valentine, conducted in the fall, we found that Black Valentine was fully as useful as Extra Early Refugee, being equally as hardy in every respect as the Refugee, while the beans were produced in enormous quantities. For any purpose, or at any time of the year, the bean will be found exceedingly valuable to all classes of growers. (See engraving.) Price, 15c. pkt., 45c. pt., 80c. qt., \$3.00 for 4 qts.

"I claim that Henderson's Black Valentine Bean is the champion of all the dwarf green-podded snap beans, for I have tested all the good varieties. The Black Valentine is the best for both early and late planting and will stand wet, cold weather. It is of the finest quality, easy to pick, and is the most productive bean on the market today, but they must be gathered at the right time."

S. E. THURSTON, New Canaan, Conn.

Detroit Dark Red Beet.

Probably the best of the larger sorts. It succeeds equally well at all seasons, and is one of the best to sow in early spring, to succeed the extra early and medium crop sorts. It may be sown about August 1st (in this vicinity) for a crop to store for winter. The flesh is solid, always tender, of good flavor and excellent color. Price, 10c. pkt., 35c. oz., \$1.20 ¼ lb., \$4.00 lb.



HENDERSON'S Early Blood Turnip Beet.

This is a great improvement upon the old standard variety, Early Blood Turnip Beet. It is a great favorite with many gardeners and is very attractive in appearance, the roots being smooth and uniform, and the color deep blood red. The flesh is tender and sweet, and it is an excellent variety for canning.

This variety should be sown for a late crop on account of its quickness in maturing. For winter storage it is unexcelled. (See engraving.)

Price, 10c. pkt., 35c. oz., \$1.20 ¼ lb., \$4.00 lb.

HENDERSON'S SELECTED Half Long Danvers Carrot.

A handsome, stump-rooted Carrot of a rich, dark orange color. It grows to a large size; is smooth, and the flesh very close in texture with very little core. It is a first-class Carrot for all soils and has yielded 25 to 30 tons per acre, with the smallest length of root of any now grown. It is excellent to store for winter. (See engraving).

Price, 10c. pkt., 35c. oz., \$1.20 $\frac{1}{2}$ lb., \$4.00 lb.

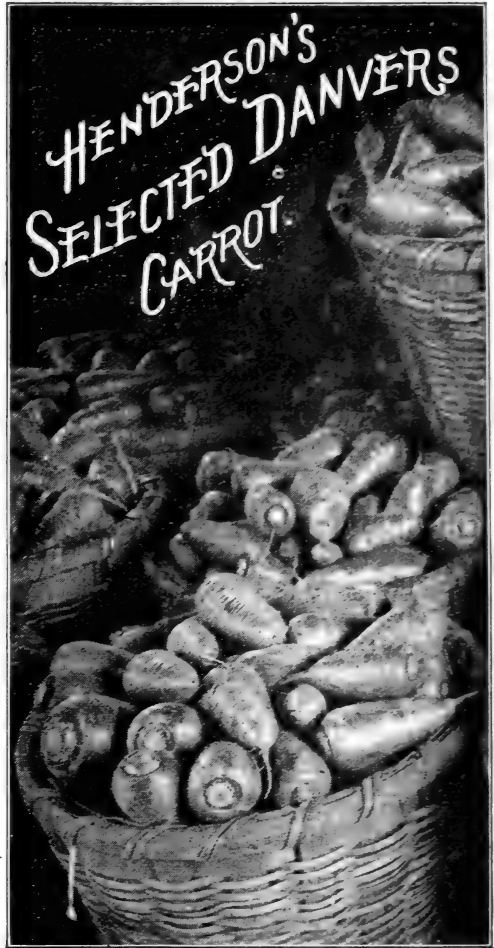
HENDERSON'S Big Boston Lettuce.

A GRAND, LARGE, CABBAGE LETTUCE.

Big, Compact, Tender and Crisp, Creamy-White Heads.

This grand variety, introduced into cultivation by us, is now more extensively grown than any other kind of Lettuce, whether grown in the open ground for early summer and fall use, in frames for spring, or forced cool in greenhouses for winter. It gives both grower and consumer the utmost satisfaction, producing, under ordinarily favorable conditions, splendid, large, creamy-white heads, packed with thoroughly blanched leaves, crisp, tender and sweet, delighting both the palate and the eye. This grand variety makes a handsome plant, with but few outside leaves, and stands long before bolting to seed. Big Boston is one of the best large-heading Lettuces, and, while it succeeds at all seasons, except during the very hottest months, it is peculiarly adapted for late fall culture. Large areas of it may be seen in the vicinity of New York as late as Nov. 15th; a slight covering of salt marsh hay amply protecting the plants from hard frosts, which when cut for market are as fresh, bright and untinged as at any season. Thousands of acres of it are grown during the winter in Florida and other Southern States. (See engraving).

Price, 10c. pkt., 30c. oz., 75c. $\frac{1}{2}$ lb., \$2.50 lb.



Chinese Cabbage. (Pe Tsai.)

This is quite distinct from ordinary cabbage, and somewhat resembles Cos Lettuce; in fact, it is called by some "Celery Lettuce."

It was introduced to this country from the province of Shantung, China, and has become popular in some sections. The heart is used in various ways; such as for making Salads, Cold Slaw, &c., &c., and having a mild and delicate flavor, it is much enjoyed when eaten raw. Pe Tsai may also be cooked in the same manner as cabbage, but being very tender the boiling must be done quickly. The plants grow best in a rather moist soil, which should be enriched as much as possible, but they will succeed in any good garden ground.

Late sowing of seed is necessary, as the plants grow rapidly, and are apt to run to seed in hot weather. For a fall or winter crop sow seed outside in drills in July. The rows should be 20 inches apart and the plants thinned out to 18 inches apart in the rows. Water frequently, cultivate same as cabbage and if the weather is warm at the time of heading up, tie up the plants in the same way as Endive is tied. The heads may be stored for the winter by covering with straw and enough earth to keep out the frost.

Price, 10c. pkt., 50c. oz., \$1.75 $\frac{1}{2}$ lb.

ROOT CROPS SHOULD RECEIVE THE SPECIAL ATTENTION OF HOME GARDENERS because by storing them in cellars, or in pits outside, a bountiful supply of vegetable foods for the winter may be secured.

Henderson's Superior MUSHROOM SPAWN.

Mushrooms may be grown by anyone having a supply of fresh horse manure and a shed or cellar or a space under a greenhouse bench where a temperature of 50 to 60 degrees is evenly maintained. They make a most profitable crop when successfully grown, and our superior Spawn, has given splendid results. It is sold in bricks weighing about 1½ pounds, enough when broken into two inch pieces to "spawn" a bed of about 9 square feet.

American "Pure Culture" Mushroom Spawn.

It is now possible to reproduce mushrooms for individual specimens, applying the same principles as used in the selection of other plants. The Spawn we offer is grown from spores taken from specimens of good form and may be relied on to produce a similar crop. It is sold in flat bricks about 1½ inches thick. One brick may be broken into two inch pieces and placed 12 inches apart, to spawn an area of nine square feet. (See engraving). Price per brick 30c., 10 bricks for \$2.75, 100 bricks for \$25.00. Purchaser paying carriage.



Purple Top White Globe Turnip.

This is a large, globe-shaped variety, white flesh, fine grained, tender and sweet. It is a true table Turnip and one of the best and is extensively grown and pitted for fall and winter, being a good keeper. The best crops of turnips are grown from summer sown seed. Sow 1 oz. for 100 feet of drill, 1½ to 2 pounds in drills per acre. (See engraving.)

Price, 5c. pkt., 20c. oz., 70c. ¼ lb., \$2.50 lb.

HENDERSON'S SELECTED

Ruta Bagas

FOR TABLE USE.

Sow 1 oz. for 100 feet of drill, 2 or 3 lbs. per acre in drills.

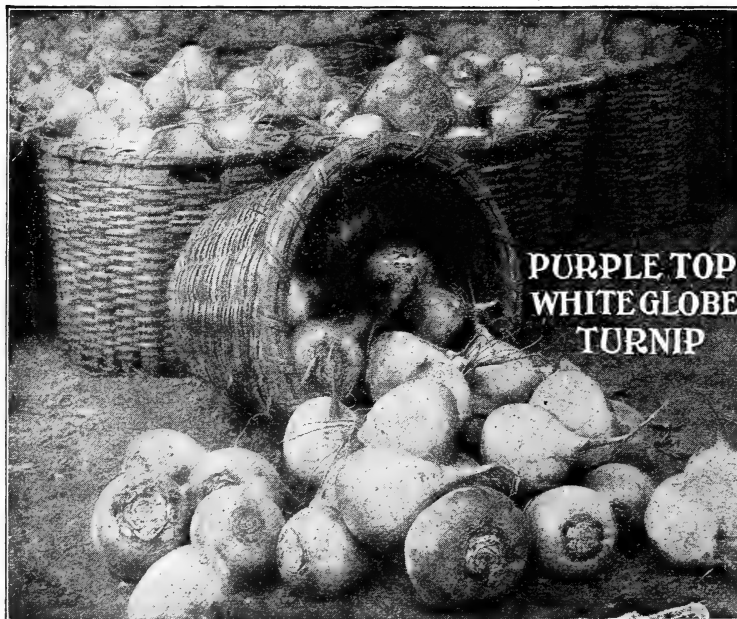
Henderson's Long Island Improved Ruta Baga.

It is very large, has no neck, and is a remarkably good keeper; the flesh is rich yellow, of fine quality. Price, 5c. pkt., 25c. oz., 85c. ¼ lb., \$3.00 lb.

Improved American Purple Top Ruta Baga.

Considered the standard American Ruta Baga by the best posted farmers. Very popular, both for stock feeding and home consumption. The flesh is yellow, it is hardy, productive and a good keeper.

Price, 5c. pkt., 25c. oz., 85c. ¼ lb., \$3.00 lb.



HENDERSON'S

TESTED VEGETABLE SEEDS FOR SUMMER SOWING.

Vegetable seeds of all kinds purchased in packets, ounces, quarter pounds and pounds are mailed free. Purchaser pays transportation on Beans, Peas and Corn by the pint and over. Postal weight 1 lb. per pint.

Weight limit.—The weight limit within the 1st 2nd and 3rd Zones is now seventy (70) pounds, within the other Zones the weight limit is fifty (50) pounds and the size limit eighty-four (84) inches for combined length and largest girth.

IMPORTANT.—In remitting postage always add it to the foot of the order as a separate item—this will help to avoid mistakes. Your local postmaster will inform you what Zone you are in from New York City, if you are in doubt, and you can add for postage accordingly.

BEANS. (1 quart to 100 feet of drill, 1 bushel per acre in drills) PRICES

Beans (except packets) are not delivered free. For Parcel Post Zone Rate see page 2 of cover. Postal weight 1 lb. per pt.

Pkt.	Pt.	Qt.	4 Qts.
------	-----	-----	--------

DWARF or BUSH, GREEN PODDED.

- Black Valentine.** A heavy yielder. Ready for picking in 45 days after planting. Stringless and the best round green podded bean in existence. (See also page 2.) 15 45 80 3.00
- Refugee or 1,000 to 1.** The most popular bean for a late crop. Does remarkably well in the fall. (See engraving.) 15 45 80 3.00

Delivered free in the U. S. (excepting otherwise noted.)

BEEF. (1 oz. to 50 feet of drill; 5 lbs per acre in drills.) Pkt. Oz. ¼ lb. Lb.

- Detroit Dark Red.** Best for summer sowing, and for winter use. (See engraving.) 10 35 1 20 4.00
- Dewey's Improved Blood Turnip.** Handsome, smooth and round. 5 25 85 3.00
- Early Blood, Henderson's.** A great improvement on the standard variety. (See also page 2) ... 10 35 1 20 4.00
- Edmand's.** A handsome, round, uniform, turnip-shaped Beet, very smooth and of good size; tops small, flesh red and of excellent quality; fine for late crop. 5 25 85 3.00
- Half Long, Henderson's.** Free from woody fibre. 10 25 85 3.00
- Long Smooth Blood-Red** An excellent late variety 5 25 85 3.00

CABBAGE. (1 oz. produces 2,000 plants; ½ lb. to transplant for an acre.)

Autumn King, Henderson's. (Crop failed.)

Charleston Wakefield Henderson's. A larger variety of Early Jersey Wakefield but not as early as the original stock. The pointed-head Cabbages are preferable to the larger flat kinds. When used fresh from the garden they are of excellent quality, quite free from the coarse rankness so commonly associated with Cabbage. Henderson's Charleston Wakefield is larger, but fully equal in quality to any of its class and admirably suited to succeed the very early sorts. 20 1.50 5.00

Early Spring, Henderson's. Earliest flat headed cabbage; produces excellent heads early in the season. 15 1.00 3.50

Early Summer, Henderson's. The standard. It is fit for use right after the extra early sorts. It forms large solid flat heads weighing 8 to 10 lbs. each. (See engraving.) 20 1.50 5.00

Succession, Henderson's. Best for general use. The heads are enormous in size, extremely solid, and it grows well at any season. 20 1.50 5.00

Late Flat Dutch, Henderson's Selected. A well known variety; forms large solid heads, and winters well. A description seems unnecessary, when most of our patrons know it so well. It is just a good Cabbage in every respect. Grows easily, cooks easily, tastes good, and will for many years to come be highly esteemed. Our stock is just as good as ever and we are sure it will please. 20 1.50 5.00

Premium Flat Dutch. A Standard and excellent variety, developing earlier than most late sorts but not so good a winter keeper. For fall use it is tender and of superior flavor. Premium Flat Dutch Cabbage has a short stem, large outer leaves and is a very sure heading variety. The heads are uniformly large and solid, and it is preferred by many as the ideal large late Cabbage. 20 1.50 5.00

CHINESE CABBAGE or PE-TSAI.

Culture same as large Cabbage. Sow seed in July. (See also page 3) 10 50 1.75



REFUGEE OR 1000 TO 1 BEAN.

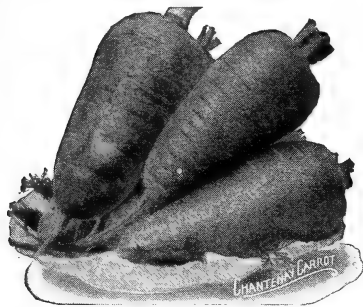


DETROIT DARK RED BEET.

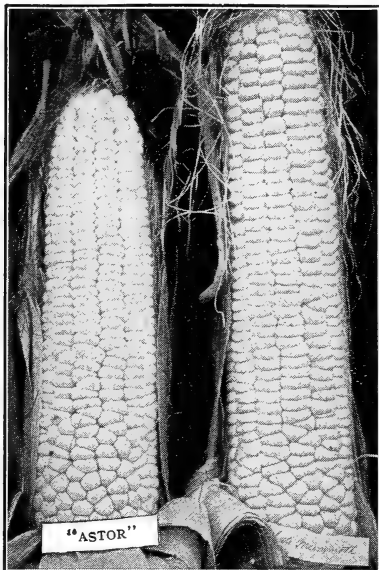


HENDERSON'S EARLY SUMMER CABBAGE.

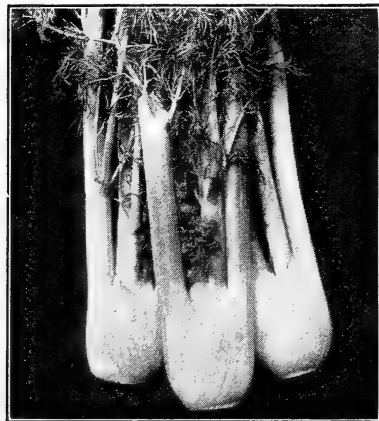
HENDERSON'S TESTED VEGETABLE SEEDS FOR SUMMER SOWING.



CHANTENAY CARROT



HENDERSON'S "ASTOR". THE "HENDERSON"



FINOCCHIO OR FLORENCE FENNEL.

Our pamphlet "Garden Culture of Root Crops" sent free if requested.

	PRICES			
	Delivered free in the U. S. (excepting otherwise noted.)			
	Pkt.	Oz.	¼ Lb.	Lb.
CARROT. (1 oz. for about 125 feet of drill; 4 lbs. for an acre.)				
Chantenay Half Long Scarlet. Blunt rooted, tender and free from core. (See engraving)	10	35	1.20	4.00
Danvers, Half-Long. (Henderson's Selected) (See also page 3)	10	35	1.20	4.00
Early Scarlet Horn. A popular variety. When pulled young it is excellent for soups.	05	35	1.20	4.00
Half-Long Red, Stump-Rooted. Best for summer	05	35	1.20	4.00

CORN, SWEET or SUGAR. (1 qt. for 200 hills 8 to 10 qts. in hills for an acre.) *Corn (except packets) is not delivered free. See Parcel Post Zone Rates on page 2 of cover. Postal weight 1 lb. per pint.*

	Pkt.	Pt.	Qt.	4 Qts.	Pk.
Henderson's "Astor" Sweet Corn. Briefly, this is a smaller and earlier strain of White Cob Cory. The plant is from 4 to 5 feet high; sturdy in habit and bearing two ears set 18 inches from the ground. These have from eight to twelve rows of creamy-white grains, arranged in rows so compactly set together that there is no space between. (See engraving)	15	45	80	3.00	
Pocahontas. Early sweet flavored.	15	45	80	3.00	
Crosby's Early. A second-early; ears 7 inches long; fine quality.	15	45	80	3.00	
The "Henderson" . The best second early. The "Henderson" Corn produces uniformly large, thick ears, compactly filled from butt to tip with long, milky white kernels of luscious tenderness. The plant is luxuriant, healthy and vigorous. (See engraving)	15	35	60	2.25	
Stowell's Evergreen. A standard variety both for home use and market, and a general favorite. The ears are of a large size, grains deep, exceptionally tender and sugary, and have the advantage of remaining longer in the green state than any other.	15	45	80	3.00	

Delivered free in the U. S. (excepting otherwise noted.)

CORN SALAD.

Large-Leaved, Feticus, or "Lamb's Lettuce." Grown for the late fall, winter and spring use

5 20 60 2.00

CRESS, or PEPPER GRASS.

Extra Curled. Crisp, pungent leaves

5 15 50 1.50

Upland. Flavor somewhat resembles Water Cress

succeeds in dry soils

10 50 1.50

Water Cress. Esteemed for salads and garnishing

10

CUCUMBER. (1 oz. for 60 hills; 2 to 3 lbs. in hills for an acre.)

Cool and Crisp, Henderson's. Extra early

10 25 85 3.00

Early Cluster. An early, short green variety

5 20 70 2.50

Early White Spine. A popular standard variety for family use

5 20 70 2.50

Everbearing. Bears fruit until frost

5 20 70 2.50

Extra Early Green Prolific. Ideal for pickling.

5 20 70 2.50

The "Henderson" White Spine. The standard extra early, prolific, best for slicing

10 25 85 3.00

West India Gherkin. Used for pickles

10 25 85 3.00

Livingston's Evergreen. Wonderfully prolific

5 20 70 2.50

ENDIVE. (1 oz. for 100 feet of drill.) "Escarolle" and "Chicoree." One of the best salads, especially when blanched; if boiled makes fine "greens."

Broad-Leaved Batavian. Has large, thick, broad leaves; and forms large hearts

10 30 85 3.00

French Moss Curled. A compact-growing variety

10 50

Green Curled. Best for general use

10 30 85 3.00

White Curled. Finely cut leaves, almost white; can be used without blanching

10 50

Finocchio, or Florence Fennel. A delicious vegetable which should be largely grown. It is extensively used in Italy as a salad, and also may be served boiled. When the leaf stalk, at base of stem, is about the size of a hen's egg it should be earthed up so as to cover half of it, and in about ten days cutting may be commenced and continued as the plants increase in growth. The flavor is somewhat like celery, with a sweet taste and delicate odor. (See engraving)

5 20 60

KALE, or BORECOLE. (1 oz. for 150 feet of drill.) Largely grown for supplying "greens" during the fall, winter and spring; used small, like Spinach; frost improves the quality.

Dwarf Green Curled Scotch. Sow during June, and transplant for use in fall

5 35 1.20 4.00

Siberian. Green curly leaves; tender and of delicate flavor

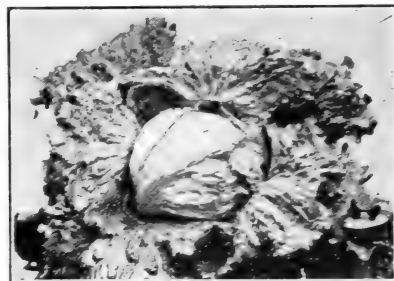
5 35 1.20 4.00

OUR LEAFLET "THE CULTIVATION OF SWEET CORN" SENT FREE IF ASKED FOR.

HENDERSON'S TESTED VEGETABLE SEEDS FOR SUMMER SOWING.

Delivered free in the U. S. (excepting otherwise noted.)

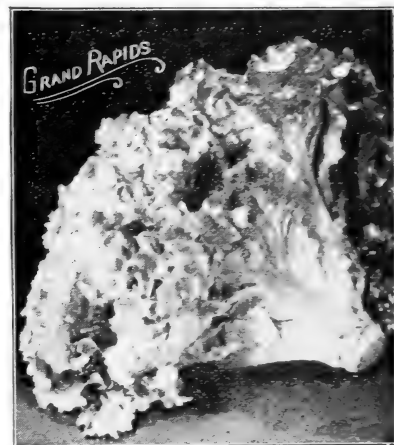
	Pkt.	Oz.	¼Lb.	Lb.
LETTUCE. (1 oz. for 3000 plants.)				
Big Boston, Henderson's. The best head lettuce on earth. (See also page 3)	10	30	70	2.50
Boston Market, or White-Seeded Tennis Ball. A popular, early, small, compact-heading variety.	5	20	60	2.00
Golden Queen, Henderson's. A very desirable first-early variety, and second to none for forcing.	10	30	75	2.50
Mammoth Black-Seeded Butter. Similar to, but larger than Black-Seeded Butter, enormous heads tender, sweet and crisp.	10	30	75	2.50
New York, Henderson's. Immense heads as solid as a cabbage. (See engraving)	10	30	75	2.50
Black-Seeded Simpson. It stands the summer heat splendidly, and is practically everbearing.	10	20	60	2.00
Early Curled Simpson. Earlier than head Lettuce; grown in cold frames and the open ground.	5	20	60	2.00
Grand Rapids. Beautifully crumpled and curled. (See engraving.)	10	30	75	2.50
Trianon Cos. Self-folding inner leaves are self-blanching.	10	30	75	2.50



HENDERSON'S NEW YORK LETTUCE

Purchaser pays transportation on Mushroom Spawn

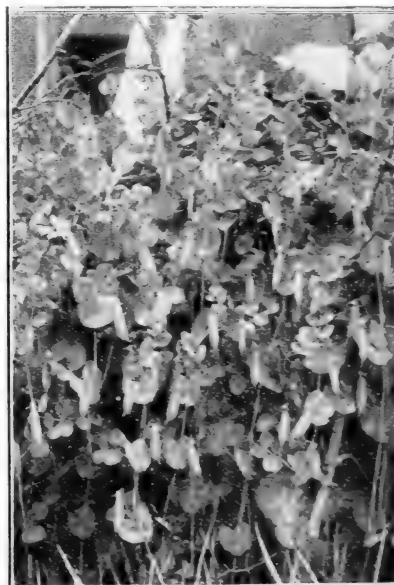
	1	10	100
	brick	bricks	bricks
MUSHROOM SPAWN. (See also page 4)			
American Pure Culture. This is sold in flat bricks 1½ inches thick, weighing about 1¼ pounds. One brick may be broken into nine pieces which set 12 in. apart will spawn an area of 9 square feet	30	2.75	25.00
ONION. (1 oz. for 100 feet of drill; 5 to 6 lbs. in drills for an acre.)			
Round Yellow Danvers. Similar to Yellow Globe except being flatter.	5	50	1.85 7.00
Bermuda, Red. Large flat; light red-skinned Onions of mild flavor.	10	40	1.40 5.00
Bermuda, White. Flat, grows very quickly exceedingly mild in flavor.	10	45	1.60 6.00
PARSLEY. (1 oz. for 150 feet of drill.)			
Champion Moss Curled. Densely crimped and curled, dark green leaves.	5	15	40 1.25
Emerald Henderson's. Finely cut mossy leaves.	10	25	80 3.00
Extra Double Curled. A popular fine dwarf, beautifully curled sort.	5	15	35 1.20



GRAND RAPIDS LETTUCE

Peas (except in packets) are not delivered free. For Parcel Post Zone Rates see page 2 of cover. Postal weight 1 lb. per pint.

	Pkt.	Pt.	Qt.	4 Qts.	Pk.
PEAS. (1 quart to 100 feet of drill; 2 to 3 bushels for an acre.)					
Alaska Height, 2 ft. A wonderfully early, smooth, blue Pea; pods are filled with smooth blue-green Peas. (See engraving)	10	35	60	2.30	4.50
First of All, Henderson's. Height, 2½ feet. The earliest pea grown.	15	45	80	3.00	5.50
Prosperity, Henderson's. Height 2½ feet. The quickest growing wrinkled pea.	15	45	80	3.00	5.50
The Ameer. (or "Mammoth Alaska" Pea). This new early variety—often called the "Mammoth Alaska"—is rapidly growing in favor. It resembles Alaska, the vine being more vigorous, a little taller or about 3 feet in height and the pods and peas are fully one-third larger. It is a heavy producer of handsome dark green pods containing from 5 to 7 large blue-green round peas of excellent quality. The crop ripens about three days later than Alaska.	10	35	60	2.30	4.50



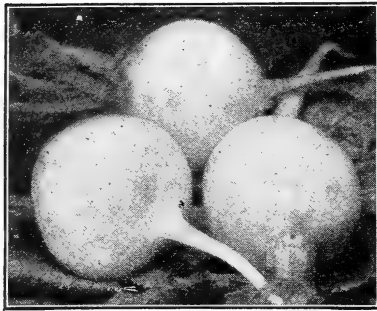
ALASKA PEA

Delivered free in the U.S. (excepting otherwise noted.)

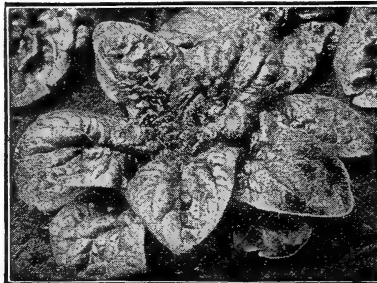
	Pkt.	Oz.	¼Lb.	Lb.
PUMPKIN. (1 oz. for 30 to 50 hills.)				
Cheese. The most popular for pies and table use; large, flat-round; creamy-yellow skin; thick, orange flesh of fine quality; a splendid keeper.	5	15	55	2.00
Connecticut Field. A productive, large, orange colored, field Pumpkin.	5	15	45	1.50
RADISH. (1 oz. for 100 feet of drill; 9 to 10 lbs. in drills for an acre.)				
Early White-Tipped Scarlet Turnip.	5	15	55	2.00
Rapid Forcing. Small, round, bright scarlet, with white tip; grows quickly.	10	25	85	3.00
Red Forcing. Extra-early, maturing in 21 days; round, bright red, very mild.	10	25	85	3.00
French Breakfast. A favorite oval-shaped, bright scarlet Radish, with white tip.	5	15	55	2.00
Scarlet Olive-Shaped. An oval-shaped variety, maturing in 25 days; Flesh-white, crisp and mild.	5	15	55	2.00

Our Pamphlet "SALADS—GROWING AND BLANCHING" sent with order if requested.

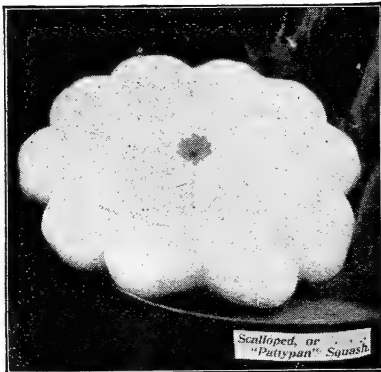
HENDERSON'S TESTED VEGETABLE SEEDS FOR SUMMER SOWING



WHITE SUMMER TURNIP RADISH.



HENDERSON'S THICK-LEAVED SPINACH.



Scalloped, or "Pattypan" Squash



SWISS CHARD.

RADISH (Continued).

	Delivered free in the U. S. (excepting otherwise noted.)			
	Pkt.	Oz.	¼Lb.	Lb.
Long Scarlet Short Top. White mild flesh; grows 6 inches in length; matures in 25 days.	5	15	55	2.00
Long White Vienna, or Lady Finger. Tapering shape, about four inches long, mild and tender; matures in about 25 days.	5	15	55	2.00
White Summer Turnip. A flat-round, early summer Radish 2 inches in diameter; white and tender; ready to use in 30 days. (See engraving)	5	15	55	2.00
Chartier. A summer Radish, long and handsome top crimson fading to white at tip.	5	15	55	2.00
Celestial, or White Chinese. Grows to an enormous size; flesh firm, mild and crisp.	10	20	70	2.50
Half-Long Black Spanish. Flesh-white, compact and the mildest flavored of this type; good keeper.	10	20	70	2.50

RUTA BAGAS. For Table Use. (See also page 4). Sow 1 oz. for 100 feet of drill, 2 or 3 lbs. per acre in drills.

Henderson's Long Island Improved Ruta Baga. It is very large, has no neck, and is a remarkably good keeper, the flesh is rich yellow, and of fine quality.	5	25	85	3.00
Improved American Purple Top. Considered the standard American Ruta Baga by most growers. Very popular both for stock or table use.	5	25	85	3.00

SPINACH. (1 oz. for 100 feet of drill; 10 to 12 lbs. in drills for an acre.) Varieties marked * may be sown in the fall in latitude of New York for spring crop.)

Long Season, Henderson's. Very slow in running to seed.	5	20	70	2.50
Long Standing. An excellent, compact variety; thick, fleshy, dark green leaves.	5	20	70	2.50
Norfolk, Savoy-Leaved. The best for early fall.	5	20	70	2.50
Round-Leaved or Dutch. A standard variety.	5	20	70	2.50
*Thick-Leaved, Henderson's. Produces large, thick crumpled leaves of fine quality. (See engraving.)	5	20	70	2.50
Victoria. Stands in prime condition long after other varieties have bolted to seed.	5	20	70	2.50
*Viroflay, Large Round-Leaved. Very hardy.	5	20	70	2.50

SQUASH. Summer Varieties.

(Bush varieties, 1 oz. for 50 hills; 5 to 6 lbs. per acre.)

Vegetable Marrow Bush. An English variety, oblong, yellow fruits 10 to 15 inches in length; flesh, tender, marrowy and delicious.	10	35	1.20	4.00
White Bush Scalloped. The white "Patty Pan"; free cropper. (See engraving.)	5	20	60	2.00
Yellow Bush Summer Crookneck. A bush variety, early and prolific; densely warted.	5	15	45	1.50

SWISS CHARD. The "cut and come again" vegetable. (See engraving.)

10 30 1.00

TURNIP. (1 oz. for 150 feet of drill or 2 lbs. in drills per acre.)

Early Purple Top Milan. The earliest Turnip in cultivation.	10	30	1.00	3.50
Early Red Top Strap Leaf. A popular variety of quick growth; flesh white and of excellent quality.	5	20	70	2.50
Early White Flat Dutch. An excellent early, white, flat Turnip; flesh mild.	5	20	70	2.50
Long White, or Cowhorn. A long, white-fleshed Turnip growing half above ground; it is of fine quality.	5	20	70	2.50
White Egg. An oval or egg-shaped variety, with smooth, thin, white skin and snowy-white flesh; firm, mild and sweet.	5	20	70	2.50
Purple Top White Globe. A large globe-shaped variety; white flesh, fine-grained, tender and sweet. (See also page 4).	5	20	70	2.50
Purple Top Yellow Aberdeen. A large, globe-shaped Turnip, with yellow flesh of fine quality; a good keeper; popular for table or stock.	5	20	70	2.50

Our Leaflet "GARDEN CULTURE OF ROOT CROPS" sent free if asked for.

A SELECTED LIST OF

FARM SEEDS

FOR SUMMER SOWING

Prices of Farm Seeds are subject to change without notice.

Purchaser pays transportation on Farm Seeds. If wanted by Parcel Post add postage according to Zone rates on page 2 of cover.

MANGEL WURZEL and SUGAR BEETS.

The best soil for Mangels is friable loam deeply plowed and in such soil the yield is from 20 to 30 tons per acre. The ground should be well enriched and the seed sown in drills 24 inches apart in light soil, and 30 inches apart in strong rich land. Thin out the plants to 9 inches apart in the former and 12 inches apart in the latter. Sow 6 to 8 pounds of seed per acre if sown with a drill, or double that quantity if sown by hand.

Colossal Long Red (Henderson's). A valuable improved and distinct variety. Extra large, long roots; very nutritious. Price, $\frac{1}{4}$ lb., 75c.; lb., \$2.00; 10 lbs., at \$1.90 lb. **Champion Yellow Globe** (Henderson's). Smooth large, round roots; yellow flesh. Price, $\frac{1}{4}$ lb., 75c.; lb., \$2.00; 10 lbs., at \$1.90 lb.

Giant Intermediate (Henderson's). Big yielder; handsome, large ovoid roots. Price, $\frac{1}{4}$ lb., 75c.; lb. \$2.00; 10 lbs., at \$1.90 lb.

Golden Tankard Flesh yellow, thus differing from other varieties; sheep prefer it; heavy yielder. Price, $\frac{1}{4}$ lb., 75c.; lb., \$2.00; 10 lbs. at \$1.90 lb.

Long Red. Largely grown; large roots of excellent quality. Price, $\frac{1}{4}$ lb., 75c.; lb., \$2.00; 10 lbs. at \$1.90 lb.

Long Yellow. Differs from the Long Red only in color. Price, $\frac{1}{4}$ lb., 75c.; lb., \$2.00; 10 lbs., at \$1.90 lb.

Yellow Globe. Large globular roots; good keeper. Price, $\frac{1}{4}$ lb., 75c.; lb., \$2.00; 10 lbs. at \$1.90 lb.

NEW HALF SUGAR MANGEL.

As seed of the different varieties of sugar beet is almost unobtainable this season, we would recommend planting for stock feeding the improved breed of New Sugar Mangel offered below.

This is distinctly a new variety of Mangel, and is the result of careful interbreeding between White Sugar Beet and Colossal Long Red Mangel. It certainly approaches nearer to a Sugar Beet than any other known variety of Mangel, and by analysis it has been shown that it is very rich in saccharine matter. Its growth is very rapid, so that it matures much more quickly than other varieties, and on that account it may be sown at a later date. The bulb is very uniform, of good shape, and has a single taproot. When singling it may be left much more closer in the rows, than larger growing Mangels, and it will yield remarkably heavy crops. Half Sugar Red, per $\frac{1}{4}$ lb., 75c.; lb., \$2.00; 10 lbs., \$1.90 lb. Half Sugar White, per $\frac{1}{4}$ lb., 75c.; lb., \$2.00; 10 lbs., \$1.90 lb.

RUTA BAGA, RUSSIAN OR SWEDISH TURNIPS

The Ruta Baga is important for stock feeding purposes and can be sown quite late. It grows very rapidly and yields from 25 to 35 tons per acre, in good rich deep soil, with proper cultivation. The Ruta Baga proper should be sown in this latitude from May 25 to June 25. If sown then, it should be in rows, 30 inches apart, and the plants thinned with a hoe to 12 or 14 inches apart, but if sown a month later, the distances between the rows and between the plants may be 8 inches. Sow 2 or 3 lbs. per acre.

Long Island Improved Purple-Top. It is perfectly hardy, and produces almost twice the weight per acre of any other variety. \$3.00 per lb.

Improved American (Purple-Top). Very hardy and productive; flesh yellow, solid, sweet and fine-flavored; equally good for stock or table use. \$2.50 per lb.

Large White French. Flesh firm, white and solid; large size, and has a very rich flavor. \$2.50 per lb.

MILLET FOR SUMMER SOWING.

Millets are valuable as "catch" or "stolen" crops, especially in seasons when the hay crop is short. They are annuals and grow rapidly, usually being ready for cutting in six weeks from seed sowing. They withstand severe droughts, when other crops are parched up. If cut when in blossom, millets cure into excellent hay; if allowed to ripen they become too woody. Sow from May 1st to August 1st.

Hungarian Millet. Is the quickest of catch crops for hay, and may be sown any time up to middle of August; it is invaluable for overcoming a shortage of the regular hay crop. Many farmers now occupy their land with other crops, and for their hay depend entirely on Hungarian Grass, which they can sow after other crops have been harvested. Sow 1 bushel per acre. Price \$6.00 bushel of 48 lbs.; 10 bushels and upwards, \$5.90.

Golden Millet. This variety is considerably larger than Hungarian and yields a much heavier crop, but is later and not so quick growing, consequently cannot be sown after the fourth of July in this latitude. Our seed is specially selected. Sow one bushel per acre. \$6.00 bushel of 50 lbs.; 10-bushels and upwards, \$5.90 bush. (See engraving.)

Japanese Millet. Entirely distinct from any other Millet, grows 6 to 8 feet high and produces an enormous crop, yielding 10 to 12 tons green fodder per acre. When cured it

makes excellent hay, and is much relished by all kinds of stock, whether green or cured. Cure as you would a heavy crop of clover. This Millet does not endure drought well, but north of Washington we confidently recommend its general cultivation.

Sow from the middle of May to the 1st of July, broadcast at the rate of 15 lbs. per acre, but it is better to sow it in drills, 12 to 18 inches apart, using 10 to 12 lbs. per acre, and hoe between the rows to keep down all weeds, until the plant attains a height of 12 to 18 inches, when its rapid growth will smother all weeds. Price, 15c. lb., 10 lbs. \$1.20, 100 lbs. \$10.00.

SAND OR WINTER VETCH. *Vicia Villosa*. Is perfectly hardy, remaining green all winter. It should be sown during August and September, mixed with Rye, which serves as a support for the plants, or in Spring with Oats or Barley.

It grows to a height of 4 to 5 feet and is the earliest crop for cutting, being a month earlier than Scarlet Clover, and a full crop can be taken off the land in time for planting Spring crops. It is exceedingly nutritious, and may be fed with safety to all kinds of stock.

Sow one bushel per acre with one-half bushel of Rye or Wheat. Price, 40c. lb., \$21.75 bushel of 60 lbs. 100 lbs. \$35.00.

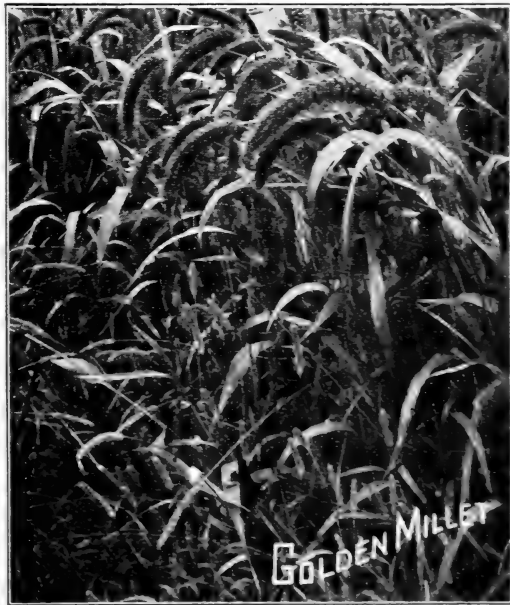
JAPANESE BUCKWHEAT.

Introduced into cultivation by us in 1887. Japanese has superseded all others and is now almost universally grown in preference to the common black and Silver Hull varieties. Flour made from it is greater in quantity and equal in quality, if not superior to that of any other Buckwheat. It ripens a week earlier than Silver Hull and yields two or three times as much. Price, \$1.25 a peck, \$4.00 per bushel of 48 lbs., 10 bushel lots, \$3.90 per bushel.

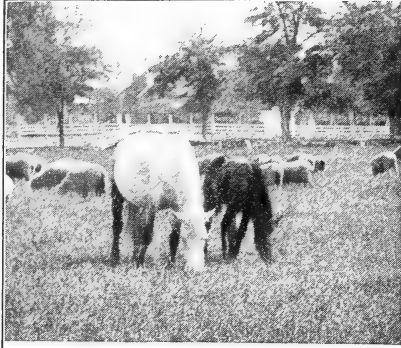
HENDERSON'S RECLEANED CRIMSON OR SCARLET CLOVER FOR SUMMER SOWING

All lands from which crops have been harvested during the Summer and Fall should be sown with Scarlet Clover, plowing under the following Spring. Authorities who have made a careful estimate, state that plowing under a good crop of Scarlet Clover is equivalent to 20 tons of stable manure per acre.

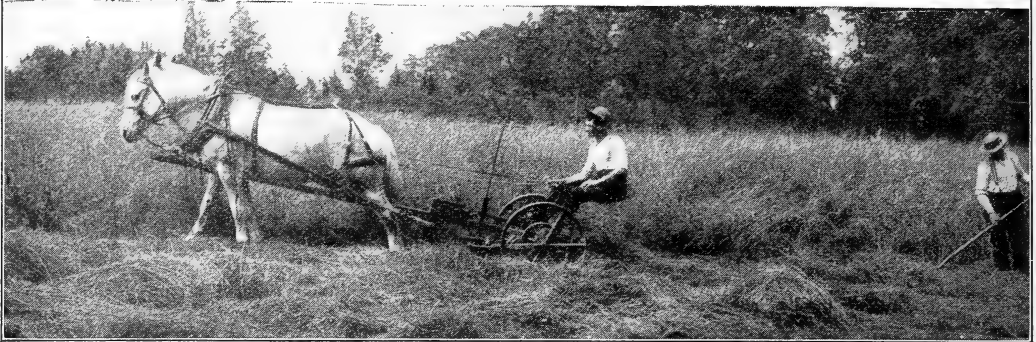
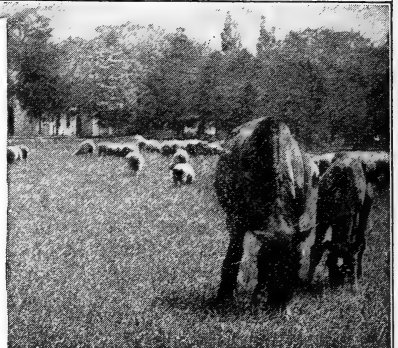
It may be sown among corn, tomatoes, turnips, etc., at time of last hoeing, or after potatoes, melons, cucumbers have been harvested, or on grain stubble and harrowed in. When sown in July and early in August, it has proved hardy as far North as Michigan and Canada. In the latitude of New York, time of sowing may extend from July 15 to September 1st, and further South even later. Sow 15 lbs. per acre. Price, choice recleaned highest quality, new crop seed 35c. lb., \$18.75 bush. of 60 lbs.; \$30.00 per 100 lbs.



For a complete list of Farm Seeds See Henderson's Farmers Manual sent post free.



HENDERSON'S
SPECIAL
GRASS SEED
MIXTURE
FOR HAY
AND
PERMANENT
PASTURE



The fall season is especially favorable to the growth of young grass, for at that season the seeds have the benefit of thoroughly warmed ground and a copious rainfall, which hastens germination and enables the grass to become firmly established before winter sets in. Then, on the opening of spring, the grass immediately recommences its growth and taking full possession of the ground, prevents weeds from obtaining a foothold.

Henderson's Special Grass Seed Mixture FOR HAY AND PERMANENT PASTURE.

It Produces Wonderful Hay Crops and Luxuriant Pasture Maintaining Its Cropping Qualities Twenty Years or More.

This famous mixture has seeded thousands of acres of meadow and pasture land for progressive farmers and stock raisers in various parts of the United States, with most gratifying results. It is a well-balanced combination of a number of native and acclimated foreign Grasses and Clovers, blended and improved upon during exhaustive trials under widely varied conditions, soils and localities for several years, until practically perfect, our aim being to produce, under the extremes of the American climate of heat, drought and cold, a PERMANENT, dense and deep-rooting turf that would yield year after year the maximum quantity of forage. These Grasses are of superior quality, inviting, sweet and nourishing, whether used as hay or pasture. That we have been successful is attested by the numerous letters of praise for these special Grass mixtures that we have received from the users, and the tributes to their merits published in many of the agricultural journals. See *Henderson's Farmer's Manual for testimonials. It is sent post free on request.*

In preparing these mixtures the greatest care is exercised in selecting such varieties as are suited to the soil to be sown, and to realize the object in view. Therefore a description of the soil and climate, and the purpose for which sown, and if with or without a grain crop, should accompany each order. Sow 3 bushels per acre. Full directions for sowing enclosed in every bag. (See engraving.)

Price (purchaser paying carriage), **\$2.75 per bu. of 14 lbs.; 50-bu. lots, \$2.65 per bu.; 100-bu. lots, \$2.60 per bu.**

WE ALSO OFFER

Henderson's Special Grass Mixture for Permanent Pasture
Henderson's Special Grass Mixture for Permanent Hay
Henderson's Renovating Mixture for Improving
Old Pastures

Henderson's Special Grass Mixture for Woodland Pastures
Sow 3 bushels per acre

Price (purchaser paying carriage), **\$2.75 per bu. of 14 lbs.; 50-bu. lots, \$2.65 per bu.; 100-bu. lots, \$2.60 per bu.**

REGARDING CLOVERS.

Do not omit to sow Clovers with the Grasses, as they add to the yield of hay and pasture, and by their ability to collect atmospheric nitrogen and store it in the root nodules, assist the growth of the Grasses and are of considerable benefit to subsequent crops.

Mixed Permanent Clovers, on account of their greater weight, should be sown separately, but at the same time as the Grasses. This Mixed Clover comprises White, Mammoth Perennial or Cow Grass, Alsike, etc. Sow 10 pounds per acre. Price, **55c. per lb.; 10 lbs., \$5.25; 100 lbs., \$50.00.**

Henderson's Northern Grown Alfalfa Seed.

ALFALFA, or LUCERNE. (*Medicago sativa*.) A Clover-like leguminous plant of great importance as a hay and forage crop, nutritious and rich in protein elements. It grows 2 to 5 feet high and sends roots 5, 10, 20, and sometimes 30 feet into the subsoil. It needs one season to become established, after which it yields enormous crops annually for many years. 3 or 4 cuttings per season, aggregating 4 to 6 tons cured hay per acre, are harvested, according to conditions and locality. It does well on all good rich soils (except heavy clay), if well drained, or overlying a permeable subsoil; on calcareous soil it thrives especially well. Sow in the Northern States during June, July or August, 30 to 40 lbs. of seed per acre if broadcasted, or 25 to 30 lbs. if drilled. In the South sow in February or September. Price, **35c. lb.; \$18.75 bushel of 60 lbs.; \$30.00, 100 lbs.**

For complete descriptions of these celebrated mixtures see *Henderson's Farmers' Manual* mailed free on application.

THE HENDERSON SELF-ADJUSTING BALL-BEARING LAWN MOWER.

THE KING OF LAWN MOWERS. LIGHT RUNNING, NOISELESS—DURABLE.

SELF ADJUSTING, DRAW CUT. ALWAYS SHARP. DOES NOT PULL THE GRASS.

Leaves the Lawn Smooth and Free from Corrugation.

THE HENDERSON BALL-BEARING LAWN MOWER is made without regard to cost—to be the best, most durable, and the easiest-working Mower on the market, and while the prices are necessarily a little higher than those of Mowers simply made to sell, yet in the end our Mower will prove much cheaper, aside from annoying delays and repairs experienced with cheap Mowers.

THE HENDERSON BALL-BEARING MOWER has high drive wheels, large, open non-clogging cylinder. The spiral of the knives is correctly proportioned to give a continuous cut, leaving the lawn as smooth as if shaved entirely free from the corrugated surface left by other Mowers. The handles are braced and reinforced to prevent twisting and breaking when one side of the Mower is held off the ground, and besides the handle is equipped with improved "grips" which keeps the hands in a natural position, gives more power, and is less tiresome than a continued grasp, with wrists twisted, on a horizontal grip. (See engraving.)



PRICES FOR THE HENDERSON BALL-BEARING LAWN MOWERS.

	Five Bladed	Eight Bladed	Grass Catcher
16-inch cut. \$12.00	\$12.00	\$14.00	Extra, \$3.00
18-inch cut. 13.00	13.00	16.00	Extra, 3.25
21-inch cut. 14.00	14.00	18.00	Extra, 3.50

Note.—We can supply these mowers either with five or eight blades, but always send the five-bladed mower unless otherwise ordered. The eight-bladed mower cuts finer, can be set to mow close to ground, and is extensively used on putting-greens, but it runs a little harder than the five-bladed mower.

GRASS CATCHERS for the Henderson "Ball-Bearing" Lawn Mowers of superior heavy duck; bottom of galvanized iron that will not sag or drag on the ground when filled; they are quickly attached, removed or dumped. (For prices, see above.)

THE HENDERSON LAWN MOWER WITH GRASS CATCHER.

Henderson's Border and Terrace Mower.

Especially designed to cut the grass on borders—the narrow strips of sod sometimes only a few inches wide—between flower beds and walks where a side-wheel mower would have one wheel down in the gutter, and in consequence the mower would cut into the sod. In our Border Mower a large light cylinder extends the full width of the mower and keeps the machine level with the surface and does perfect work. This machine is also useful for regular lawn work. It is very light running, and will give thorough satisfaction.

10-inch cut.....	12.50	16-inch cut.....	17.00
12- " ".....	14.00	18- " ".....	18.50
14-inch cut.....	15.50		

The Philadelphia "All-Steel" Lawn Mower.

This all-steel, Style A, Philadelphia mower is about the last word in lawn mower construction. The frame, being made of steel in place of cast iron, is much lighter, stronger and not liable to break any place. The drive wheels, 10 in. in diameter, gives great traction power and spin the 4-bladed 6½-in. revolving cutter with great speed, thus leaving a smoothly cut surface. The train of three gears keeps the cutters down to their work and prevents "bobbing up" in high grass.

15-inch cut	\$18.50	Grass Catcher extra.	\$2.25
17- " " "	21.00	" " " "	2.50
19- " " "	23.50	" " " "	2.75
21- " " "	26.00	" " " "	3.00

"Runaway" High Wheel Lawn Mower.

A first class high-wheel lawn mower, at a popular price; the four revolving knives gives a continuous cut; made of best materials, easy running and fully warranted.

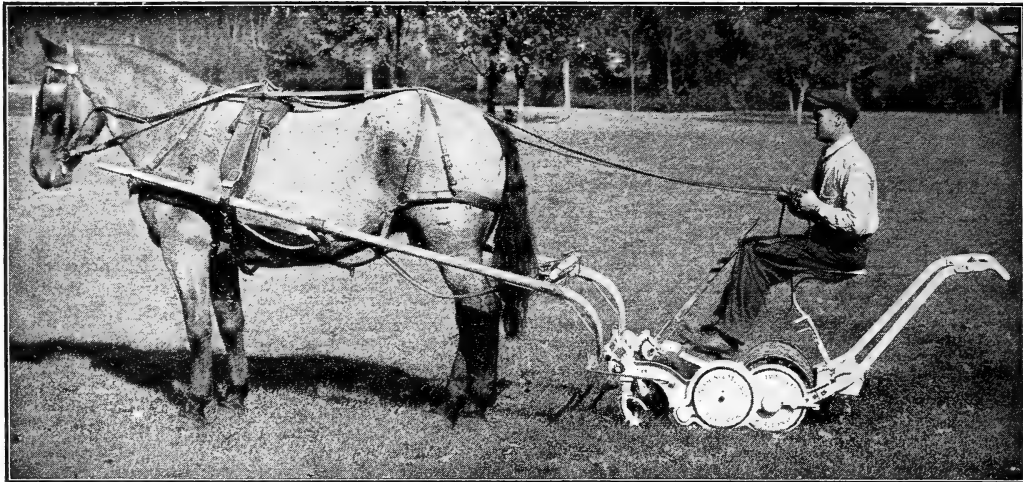
12-inch cut.....	7.00	20-inch cut.....	9.00
14- " ".....	7.50	Metal Bottom Grass	
16- " ".....	8.00	Catcher for any size	
18- " ".....	8.50	"Runaway" Mower	
		(extra).....	1.75

Excelsior Roller Lawn Mower

An old reliable lawn mower for those preferring a roller mower which, of course has some advantages over side-wheel mowers, as in mowing new lawns where the ground is still soft and impressionable, cutting narrow borders, where a side-wheel machine will run off the edge, rolling down worm casts, ant hills, etc.; but to offset these merits, roller mowers do push a little harder. Excelsior Roller Mowers are durably made with best crucible steel knives and the adjustments are simple and with the 4-bladed revolving cutter is adapted for all lawn cutting. The 6-bladed cutter is for extra fine work and for golf courses, tennis courts, etc., but runs harder.

12-inch cut with 4-bladed cutter.....	18.00
14- " " " ".....	20.00
16- " " " ".....	22.00
18- " " " ".....	24.00

If 6-bladed cutter is desired, include \$2.00 extra any size; Grass Catcher and Deflector \$3.00, extra, any size.



The New Improved Henderson Horse Lawn Mower.

IT IS A HORSE LAWN MOWER AND ROLLER COMBINED

We consider this to be the best horse power Lawn Mower on the market. It is simple in construction and very durable, the best steel and iron being used in its manufacture, and it is finished in the most perfect manner.

A lever beside the driver enables him to cut grass any height, high or low from the ground and to easily and quickly raise the blades over stones or other obstruction without stopping the horse or leaving his seat. A slight movement of a small lever throws the mower in or out of gear without stopping. The side draft rod is attached to the left side of the mower keeping the horse on the cut grass, and preventing the trampling down of the grass which is to be cut. The revolving knives, five in number, are "high speeded," making a continuous cut and leaving the surface of the lawn as smooth as velvet. The rollers, three in number, 15 inches in diameter, with triple pawls in each roll make the most powerful and instantaneous drawing mechanism ever put in a lawn mower. This feature maintains the motion of the blades even when turning sharp corners, a great advantage over other double roll mowers whose knives have no motion when turning corners. The self-aligning journal boxes are a very valuable improvement and prevent cramping of the journals, a very common and dangerous fault in many horse mowers. The foot rest is spacious and prevents cramping of limbs and accidents through the feet slipping into the revolving cutters.

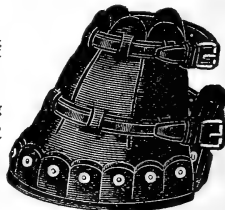
These mowers will weigh, including shafts and driver, 600 to 700 pounds, thereby rolling the lawn at the same time it is cutting; or the cutter may be thrown out of gear, and the machine used for rolling alone.

Prices for the New Improved Henderson Horse Lawn Mower and Roller combined, complete with Tool Box, Seat, Shafts, and side Draft Attachment:

30-inch cut, net weight 485 lbs., packed weight 625 lbs.....	\$95.00
35-inch cut, net weight 505 lbs., packed weight 665 lbs.....	110.00
40-inch cut, net weight 520 lbs., packed weight 695 lbs.....	125.00

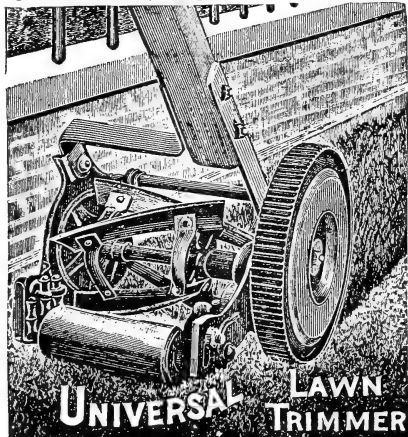
HENDERSON'S IMPROVED HORSE BOOTS.

Prevent horses' hoofs from cutting into soft lawns. Made of superior leather with improved double thick riveted soles and strap around the hoof. In ordering send outline of hoof. Per set of four, \$15.00.



THE UNIVERSAL LAWN TRIMMER.

The latest and best machine for trimming grass close up to the fence or wall, thus reducing hand work with shears to a minimum. It will also be found handy for trimming up around trees, under bushes, etc. It cuts 6 inches in width. This Lawn Trimmer is a high-grade machine in every respect with self-adjusting ball bearings. Price, \$6.50.



THE PENNSYLVANIA

ROTARY LAWN RAKE.

This is virtually a revolving lawn comb, having flexible steel wire teeth which go between the blades of grass and comb out all dead grass, crab grass, leaves, sticks and other rubbish. It leaves the grass standing upright. The action of the three revolving rakes raises up the creeping crab grass and other low growing weeds so the lawn mower can cut them before going to seed, thus effectually ridding the lawn of annual weeds. It has a dumpable collecting box. Price, 24-in. machine, \$24.00; 36 in., \$35.00.

THE MOST BEAUTIFUL LAWNS IN AMERICA ARE MADE BY SOWING THE "HENDERSON" LAWN GRASS SEED.

THE "HENDERSON" LAWN GRASS SEED produces a perfect and enduring lawn of luxuriant richness, with closely interwoven, firm, elastic turf, and is often "ready for mowing four weeks from sowing." This celebrated Lawn Grass is composed of fine-leaved deep-rooting grasses of interweaving habit, that flourish under our varied conditions, so that a deep green, smooth, and velvety sward, free from clumps, is maintained from snow to snow, year after year, and without burning brown in summer.

THE QUANTITY REQUIRED for making new lawns is 5 bushels per acre, or for renovating old lawns, 1 to 2 bushels. For a plot 15x20, or 300 square feet, 1 quart is required for new, or 1 pint for renovating old lawns. Full instructions in every package and bag.

Price of the "Henderson" Lawn Grass Seed, delivered free in the U. S., 30c. quart; \$1.00 for 4 quarts; \$1.75 peck; \$6.00 per bushel of 20 lbs.

The McIntosh Lawn Cultivator.

A new and splendid invention for improving and repairing lawns, putting greens, grass tennis courts, etc. It pushes as easily as a lawn mower, cutting narrow almost invisible grooves in the turf $\frac{3}{4}$ of an inch apart (or by removing every other knife $1\frac{1}{2}$ inches apart) and $\frac{3}{4}$ to 2 inches deep as set over a 12-inch strip as fast as a man can walk. This enables seed broadcasted either before or after it to be brushed or rolled in to the loosened soil in the grooves where the grass can germinate and get a root hold and not be dried out, washed or blown away as too often is the case when grass seed is merely broadcasted over a non-scarified turf. There are 16 knives, $5\frac{1}{2}$ inches long made of the finest Sheffield steel. They are perfectly straight, easily removed for sharpening and adjustable to take up the wear until only 2 or 3 inches long when they may be quickly replaced by a new set. These knives slant backwards making a draw cut which does not disturb thin sod nor tear it up and expose the roots as often happens when a scarifying rake is used.

It is not necessary to cut into the turf deeply, just enough pressure should be given to cut through the grass mat. Price \$25.00.

"Please send at once one more McIntosh Lawn Cultivator. Have used the one purchased this spring with great success and think they are indispensable for use on lawns and greens."

BERT KROOSTAD,

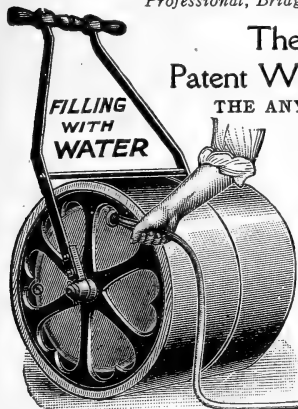
Professional, Bridgewater Golf Club, Chicago, Ill.



THE MCINTOSH LAWN CULTIVATOR

The Henderson Patent Water Ballast Roller.

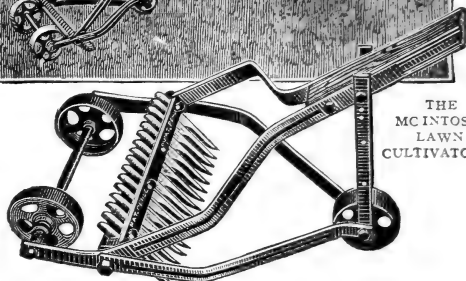
THE ANYWEIGHT ROLLER.



THE HENDERSON PATENT WATER BALLAST ROLLER

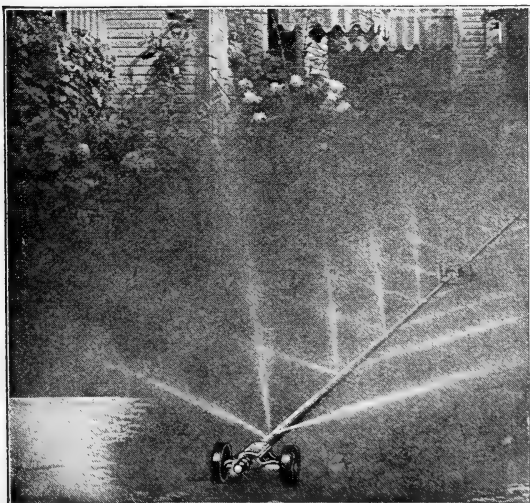
The advantages of a roller, the weight of which can be increased or lightened at pleasure, are apparent to everybody. Often on light or sandy soil, or on newly made lawns, or in early spring when the ground is moist, or after a rain spell, a lighter-weight roller is a necessity; then on thick sward or on hard soil, on walks and roads, a heavy roller is needed. With a Henderson Water Ballast Roller one can secure any weight desired, between minimum and maximum, by simply removing a thumb-cap from each end and filing the two hollow sections with as much water or sand as may be needed, which is easily and quickly done with a hose or through a funnel; and the roller is as quickly emptied. The inside being heavily galvanized, it will last for years. These are perfect rollers, and do perfect work on lawns, tennis courts, golf grounds, roads, walks, etc.

The Henderson Patent Water Ballast Roller, for man power. Weighs 300 lbs.; loads up to 600 lbs.; tracks, 24 inches, diameter of drums, 24 inches; counterbalanced handle, stands erect when not in use. Price, \$45.00.



The Skinner "Lawn Mist" Irrigator.

This is virtually the famous "Skinner Irrigation System" moved anywhere on the lawn or in the garden where it can be

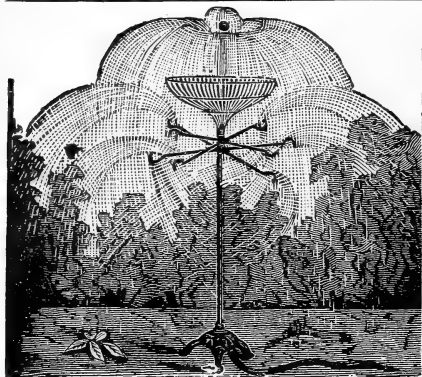


THE SKINNER "LAWN MIST" IRRIGATOR.

on wheels. It is therefore portable and may be placed and connected to the garden hose. It waters a large area with but little attention and the water is distributed evenly and gently in a fine spray. The Skinner Lawn Mist Irrigator is a length of galvanized pipe in which are fitted about every three feet apart, clusters of small spray nozzles so arranged that the distribution of water is entirely uniform the entire length of the pipe—and over a width of from 16 to 20 feet according to the volume and pressure of the water supply. A 12 foot section of pipe is fitted to 5 sets of nozzles, an 18 foot section to 6 sets of spraying nozzles. A 15 foot length operating under a 30 lb. pressure will distribute about 5 gallons of water per minute, other lengths in proportion. The Skinner "Lawn Mist" Irrigator works best with a water pressure of 30 lbs. or more though very satisfactory results are given with pressure as low as 20 lbs. Each section is fitted to a neat 2-wheel truck at one end and a shoe runner at the opposite end. Coupled for $\frac{3}{4}$ hose. Price, per 15 foot section, \$13.50; 18 foot section, \$15.00. Flexible coupling to connect two sections, 75c. each.

The Kinney Liquid Manure Pump.

For applying liquid manure these pumps have no equal. Being made entirely of brass and nickel plated, they are not corroded by chemicals and do not wear out. The water pressure does the pumping and the flow of liquid fertilizer through the hose, is even and continuous as long as liquid is reasonably clear. It will apply from 5 to 15 gallons of liquid fertilizer a minute without waste. You screw the pump to the faucet, put the end of the suction hose into a barrel or tank of clear liquid manure, attach the three-fourths inch discharge hose, open the faucet, and go to the end of the hose. The liquid manure follows, and will keep coming until the supply is exhausted. Price, \$2.00. (Add extra for Parcel Post; weight, 1 lb.)



HENDERSON'S 4- AND 8-ARM SPRINKLER

ly over a circular area of 25 to 40 feet diameter. It works more satisfactorily with a very low pressure of water than any sprinkler we know of. (See engraving.)

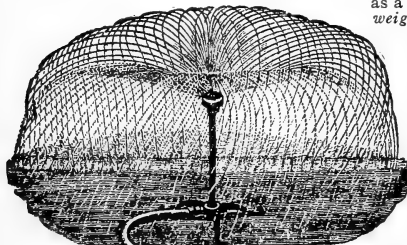
Price, without stand, (i.e., with spur to stick in the ground, 50c. each; (Add extra for Parcel Post: weight 1 lb.).

Price, with stand, \$1.20 each. (Add extra for Parcel Post weight 3 lb.)

The "Shower" Lawn Sprinkler.

It is very simple—no parts to revolve, squeak, clog, wear or get out of order. It is a round box-like affair—about 3 in. in diameter by 1 in. in depth with a turbine arrangement inside which gives the water passing through a swirl causing it to pass through the single opening and be distributed in a fine rain over a circular area 25 feet or more in diameter according to the water pressure. (See engraving.)

Price, on stand \$2.75 (mail weight 4 lb.); without stand, to be used as a nozzle, \$1.25 (mail weight 1 lb.).



SHOWER LAWN SPRINKLER.

Campbell

Automatic Sprinkler

is constructed of brass, with the exception of the ball bearings which are of bell metal and bronze.

The machine has two discharge tubes, and the water being forced under pressure from the stand pipe through the sprinkler is projected a great distance in a circle of 50 to 60 feet in diameter. (See engraving.)

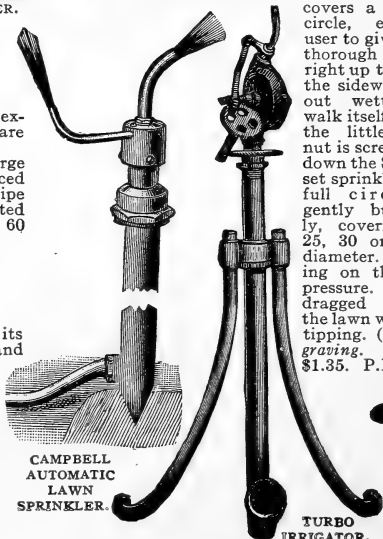
Price, \$3.50.

The Turbo Irrigator.

This sprinkler, mounted on its tripod, may be placed anywhere and coupled to garden hose. Will water a circle of 50 to 100 feet in diameter, according to the water pressure.

A single stream, broken into a rain of drops and spray is thrown from the nozzle, so that every portion of the ground covered is thoroughly and evenly watered from center to circumference. (See engraving.)

Price, \$18.00.



CAMPBELL AUTOMATIC LAWN SPRINKLER.

TURBO IRRIGATOR.

HENDERSON'S 4-ARM and 8-ARM LAWN SPRINKLERS.

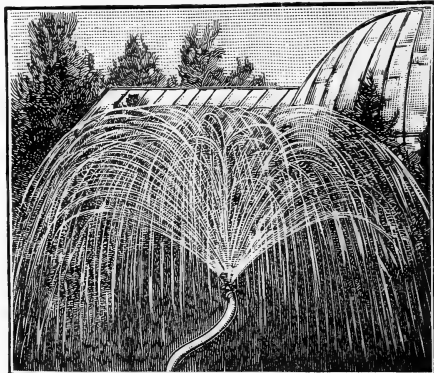
This is the best lawn sprinkler made. It can be attached to hose and placed anywhere on the lawn where it serves the double purpose of a beautiful fountain and of thoroughly saturating the grass or garden. The water is distributed in fine drops over an area of 60 to 100 feet in circumference, according to the water pressure. An ornamental standard, about four feet high, is surmounted with long perforated arms, which revolve, so the beautiful sprays are constantly changing. (See engraving.)

Prices, 4-arm sprinkler, \$4.00; 8-arm, \$4.50;

Ball and Basket Attachment, extra, \$4.00. This fits on the top of the Henderson sprinkler and the stream of water keeps the silvered ball dancing on its summit up in the air. When the ball falls the basket catches it, and it rolls into the center and is again raised by the water.

The "Water Witch" Lawn Sprinklers.

An effective device for sprinkling lawns, gardens or flower beds. The water is divided and deflected by the two lips of the swivel piece, which causes it to revolve rapidly, scattering the water in fine drops and even-



WATER WITCH SPRINKLER ON SPUR.

"Columbia" Three-Arm Lawn Sprinkler.

This fills the want for a low-priced arm Sprinkler; it is compactly and strongly made with phosphor-bronze bearing and will cover a space 48 feet in diameter with suitable pressure of water. The top and arms are brass, stand and legs of iron handsomely japanned. The water flows freely through an unobstructed channel—it stands 12 inches high. (See engraving.)

Price, \$1.60 P. P. 3 lb.

The Sunset Full Circle and Sprinkler

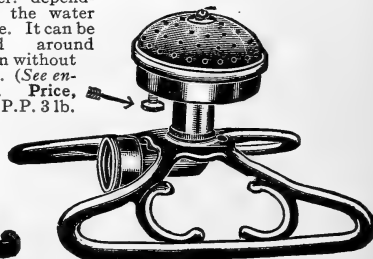
Half Circle

Does the work of two sprinklers. When the little thumb nut is screwed up the Sunset covers a perfect half circle, enabling the user to give his lawns a thorough drenching right up to the edge of the sidewalk without wetting the walk itself. When the little thumb nut is screwed down the Sunset sprinkles a full circle.

gently but thoroughly, covering an area 25, 30 or 35 feet in diameter, depending on the water pressure. It can be dragged around the lawn without tipping. (See engraving.) Price, \$1.35. P.P. 3 lb.



COLUMBIA LAWN SPKINKLER.



THE SUNSET SPRINKLER.

Electric Garden Hose.



Electric Garden Hose isn't a "duck wrapped" hose, but built up from the inside in the wrapper in such a way as to insure maximum service. Electric Hose will not burst, crack or split. Is made of seamless seine twine jackets and rubber tubes. Prices including couplings. (See engraving.)

Bore	Length	Price
3/4"	25 ft.	\$ 6.00
3/4"	50 ft.	11.00
1 in.	25 ft.	9.00
1 in.	50 ft.	17.50

Henderson's "BEST PARA" RUBBER HOSE.

This is the highest grade of garden hose, being made entirely from Best Para Rubber, and will outlast cheap hose three times over. We guarantee it to stand a 300-pound water pressure, and it will be as resilient in three or four years' time as when new, while cheap hose of that age will be hard and rotten. Every length of Henderson's "Best Para" Hose is fitted with the new water-tight couplings, without extra charge. (See engraving.) (Hose is furnished only in 25-foot and 50-foot lengths; the sizes 3/4 and 1 inch refer to the internal diameter of the bore.)
 3/4-inch bore Para, per 25-foot length, \$5.50; per 50-foot length, \$10.50
 1-inch bore Para, per 25-foot length, \$8.00; per 50-foot length, \$15.50.



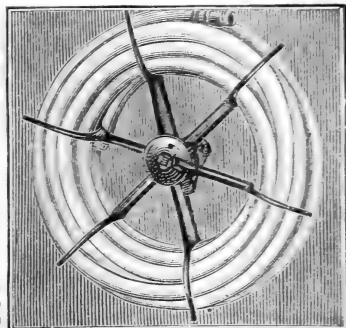
"Standard Quality" Rubber Hose.

This is a grade that is often sold as the "best." It is a good hose and will stand a 100-lb. pressure. Each length is fitted with the regular couplings, without extra charge. For 1/2-in. Spray Pump Hose and Tubing see page 18.

3/4-inch Standard, per 25-foot length, \$4.00; per 50-foot length, \$7.50.
 1-inch Standard, per 25-foot length, \$6.25; per 50-foot length, \$12.00.

SIMPLEX HOSE REEL.

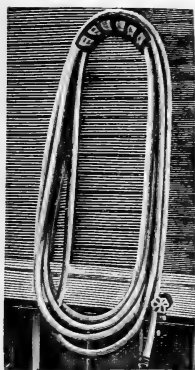
A stationary reel to be attached to wall or side of a building or fence in any convenient place. Just the thing for small gardens where a portable reel is in the way and where only 25 to 50 feet of hose is used. The smallest diameter of the arms is 12 inches, and when filled with 50 feet of 3/4-inch hose, the outside diameter is about 22 inches. The Simplex reel is shipped "knocked down" with all necessary parts and screws to put together and fasten up. Mail weight, 6 lbs. Price, \$1.75.



ALL IRON HOSE REEL.

The All Iron Hose Reels are constructed entirely of iron, and are indestructible; light in weight, frictionless, and the wheels being high make it easily manipulated; these reels cannot tip over when unreeing and there is no weight of hose to carry on the handle. (See engraving.)

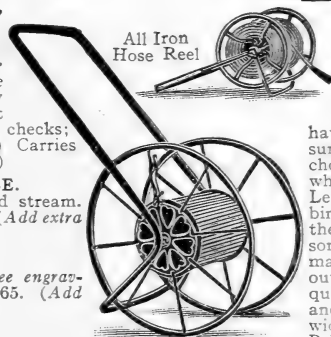
No. 10, 21-in. wheels, holds 100 ft. 3/4-in. hose... \$4.00
 No. 20, 24 " " " 150 " " 4.50
 No. 30, 30 " " " 500 " " 6.50



"HOLE-PROOF" HOSE HANGERS.

"Hole-Proof" Hose Hangers.

"Hole-proof" Hose Hangers drain, dry and protect your hose when in use; preserve it when stored; insure it against holes, cracks and checks; double its life and usefulness. (See engraving.) Carries 100 ft. hose, 85c. (Add extra for Parcel Post 5 lb.)



All Iron Hose Reel

All Iron Hose Reel

THE "GRADUATING" SPRAY NOZZLE.
 Will throw a coarse or a fine spray or a solid stream. (See engraving.) Price, 3/4 in., 75c.; 1 in., \$1.00. (Add extra for Parcel Post, weight 1 lb.)

BRASS HOSE NOZZLE.
 With stop cock spray hose and stream. (See engraving.) Prices, for 3/4 in. hose, \$1.35, for 1 in., \$1.65. (Add extra for Parcel Post, weight 1 lb.)

GEM NOZZLE HOLDER.
 For watering lawns, flower beds, etc. The hose is held firmly and can be adjusted to any elevation. Price, 30c. (See engraving.) (Add extra for Parcel Post, weight 1 lb.)

WIDE FACE HOSE SPRINKLER.
 The holes are small and numerous, so that a copious yet gentle shower is given without washing or packing the soil. (See engraving.) Price, for 3/4-in. hose, 3 in. face, \$1.10; 4-in. face, \$1.40. (Add extra for Parcel Post, weight 1 lb.)

HUDSON'S HOSE MENDER.
 Practical, simple, perfect Box of 6 tubes 20 bands and pliers, 85c. (Add extra for Parcel Post weight 1 lb.) (Give size of Hose.) Tubes, 3/4-in., 4c.; 1 in., 5c. each. Bands, 20c. per doz. Pliers, 35c. (Add extra for Parcel Post, weight 1 lb.) (See engraving.)

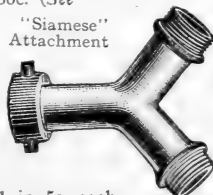
THE SURE SHUT HOSE MENDER.
 The simplest, strongest and best device on the market for repairing leaky hose. No tools necessary to attach it. Makes an absolute water-tight connection. Made entirely of brass and will not rust. Price, for 3/4-inch hose, 20c. each, \$2.00 per doz. P.P. 2 lbs.

HOSE REDUCER.
 For connecting hose of 1 in. bore with 3/4-in. (mailed free), 40c. (See engraving.)

BIRD NETTING

To Protect Fruits, Vegetables, Etc.

What is more exasperating than to anticipate a liberal picking of some fruit to find when you reach the garden that your bird neighbors have been there before you and consumed or destroyed the ripest and choicest berries, grapes or cherries, of which some birds are voraciously fond. Lettuce and peas are often ravaged by birds, even flowers are not immune from their attacks, and they revel among some plants' ripening seeds. All this may be obviated by shutting the birds out with bird netting. This is a good quality cotton netting of 1 inch mesh and comes in 20 foot and 30 foot widths and of any reasonable length. Price, \$1.75 per 100 sq. ft.; P. P. 1 lb.



"Siamese" Attachment



The "Graduating" Spray Nozzle

Hose Reducer

Brass Hose Nozzle



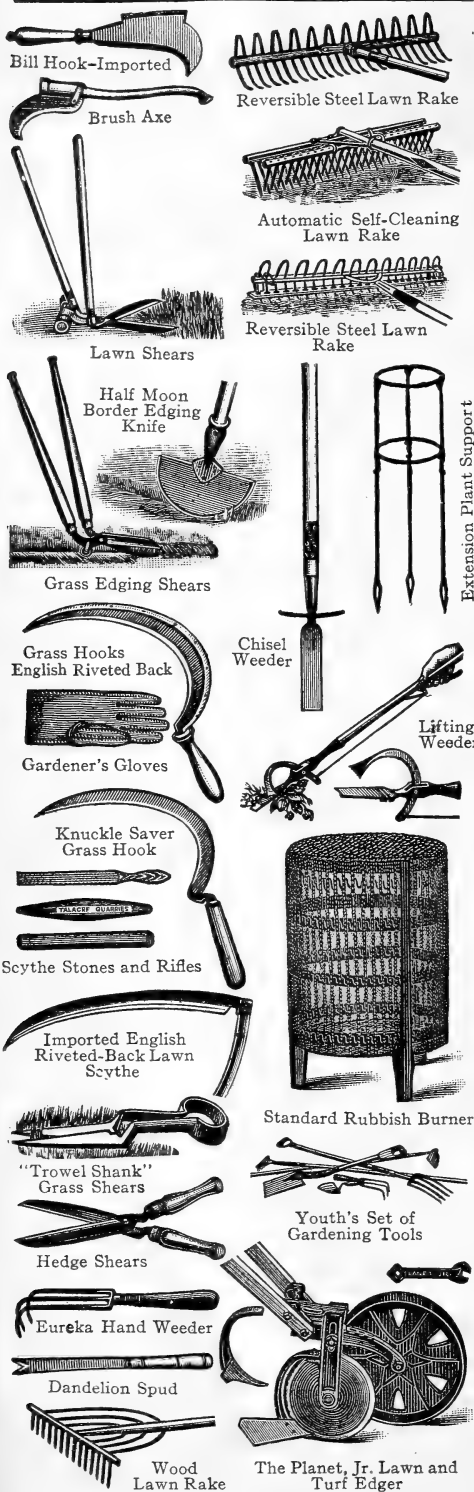
Wide Face Hose Sprinkler



Gem Nozzle Holder

Cooper Hose Mender

"SIAMESE AT TACHMENT."
 For connecting 2 leads of hose. Price, 3/4-in. 85c.; 1-in. \$1.15 (Add extra for Parcel Post, weight 1 lb. each.) (See engraving.)



BEST QUALITY HAND TOOLS.

(See illustrations in adjoining column.)

BILL HOOK—IMPORTED. For trimming shrubbery, hedges, etc., where a long-handled hook cannot be used. **Price, \$2.50.**

BRUSH AXE. This is an excellent tool for trimming out underbrush, cutting down hedges, etc. **Price, handled, \$2.00.**

DANDELION AND PLANTAIN SPUD. A handy tool for cutting dandelions, plantain and other weeds out of the lawn. Also useful when out botanizing. **Price, 45c. (Add extra for Parcel Post; weight, 1 lb.)**

GARDENER'S GLOVES. For protecting the hands, handling thorny plants, etc. Cordovan Horse Hide, per pair, **\$2.00. (Add Extra for P. P.; weight, 1 lb.)**

Rubber Gardening Gloves. With gauntlets. Men's sizes, **\$2.00; Ladies' size, \$1.75. (Add extra for P. P. 1 lb.)**

GRASS CUTTING SHEARS—Grass Edging or Border Shears. For trimming the grass around the edges of walks, etc. **Price, 9-inch blades, \$3.75 or with wheel, \$4.50.**

Lawn Shears. For cutting grass under shrubs, fences, etc. **Price, with two wheels, 9 inch blades \$5.00.**

"Trowel Shank" Grass Shears. Solid steel, of finest quality and temper; 7-inch blades. The raised, trowel-like handles keep the knuckles off the ground and allow smooth cutting. **\$1.15. (Add extra for Parcel Post; weight 2 lb.)**

GRASS HOOKS—English Riveted Back. Thin sharp blades, strengthened by a riveted back, light and rapidly handled. Small size, 60c.; medium size, 70c.; large size, 80c.

Knuckle Saver Grass Hook. The handle is raised from the blade, making it possible to cut close without bruising or skinning the knuckles. **Price, 60c.**

Popular Grass Hook. Low in price but of very good edge holding quality. **Price, 35c. each.**

HALF MOON BORDER EDGING KNIFE. For trimming sod around walks, etc. **Price, with handle, 75c. each.**

HEDGE SHEARS. For both trimming hedges and cutting grass under fences, bushes, etc. The "Notch" at the heel of the blade is for cutting branches.

English Hedge Shears. 8-inch blades **\$2.00; with notch \$2.25; 9-in. blades \$2.25; with notch, \$2.50; 10-in. blades, \$2.50; with notch, \$2.75.**

Swedish Hedge Shears. The very highest quality manufactured. 8-in. blades with notch, **\$3.00; 9-in. blades with notch, \$3.50; 10-in. blades with notch, \$4.00. Mail weight 8 and 9 inch, 4 lbs. each; 10-inch 5 lbs.**

IMPORTED ENGLISH RIVETED-BACK LAWN SCYTHE. Light and thin broad blades, with a riveted back. **Price, 32 inch, \$1.90; 34 inch, \$2.00; 36 inch, \$2.25; 38 inch, \$2.50.**

LAWN RAKES—Reversible Steel Lawn Rake. Heavily tinned steel teeth. The arched teeth for leaves and litter and the opposite side for fine cut grass. Twenty-four teeth closely set in a 21-inch head. **Price, 75c. ea.**

Reversible Steel Lawn Rake with Teeth Cleaner. This is the reversible Steel Lawn Rake described above with an extra iron bar—which slides up and down, quickly cleaning the rake when clogged. **Price, with handle, \$1.15 each.**

Wood Lawn Rake. Our wood rakes are of superior grade; selected wood; 3 bow. **Wood Hay, 12 teeth, 60c. ea., \$6.50 doz. Wood Lawn, 24 teeth, 60c. ea., \$6.50 doz.**

Automatic Self-Cleaning Lawn Rake. A backward motion of the rake will clean teeth at once. Best hickory. 26 teeth **\$1.00; 38 teeth, \$1.25; 52 teeth, \$2.25 each.**

PLANET, JR. LAWN AND TURF EDGER. This very handy and desirable little tool trims the turf around the edges of the flower beds, walks, roads, etc., and is invaluable in giving a finished appearance to the lawn. The revolving cutter does perfect work, either on a curved or straight border, edging accurately at just the correct angle and at the speed of a mile an hour, while the hoe cleans the bottom of walk. The hoe can be removed if desired. The small tooth is for cement and stone walks. **Price, complete, \$8.00.**

SCYTHE STONES AND RIFLES. American Talacre; round taper ends, 25c. each, **\$2.75 doz. "Ohio-Red end," flat stone, 10c. each; \$1.00 doz. Rifles, quadruple emery-coated, 45c. each, \$5.25 doz.**

STANDARD RUBBISH BURNER. A very convenient basket-like arrangement, made of galvanized wire with heavy iron supports, for burning leaves, rubbish, etc., in the open air. **Price, Small size, 15 in. dia., 24 in. high, \$4.00 Large " 20 in. dia., 35 in. high, \$7.00**

WEEDING TOOLS—Eureka Hand Weeder. Our choice of the finger weeders; the prongs, being of solid forged steel, are thin and long, and do good work in loosening soil. Short handle, 45c. each, **\$5.00 doz. (Add extra for Parcel Post; weight, 2 lbs.) Long handle, 55c. each \$6.00 doz.**

Chisel Blade Weed Cutter. Long handled with foot rest so it can be pressed into the soil, cutting off roots or weeds without marring the lawn. **Price, 85c. ea.**

Lifting Weeder. Chisel blade cuts off the weeds; the trigger holds them so they can be pulled out. **Price, 85c. ea.**

YOUTH'S SET OF GARDENING TOOLS. These are of first-class quality; not toys. The set consists of digging fork, shovel, hoe, rake, trowel and weeder. **Price, \$4.00 per set.**

PRICES OF TOOLS, IMPLEMENTS, FERTILIZERS ARE SUBJECT TO CHANGE WITHOUT NOTICE.

"EL-FLO" HOME CANNING OUTFITS.

Preserve the Surplus Products of Your Garden in Half the Usual Time.

Every home should possess a canning outfit, it means the preservation of surplus vegetables and fruits for winter use, that otherwise go to waste. With an "El-Flo" outfit, canning is a work of pleasure and is accomplished in half the time. A 50c. Book of Instructions, with proper receipts for canning vegetables and fruits furnished free with every canner.

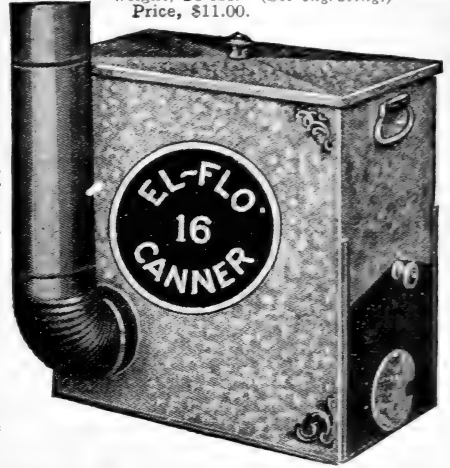
"El-Flo" One-Hole Kitchen Canner, No. 14. Round boiler 14 inches wide by 12 inches high, with accessories for canning in tin or glass; holds 14 No. 3 (1-lb.) cans or 7 quart jars. May be used on any coal or wood cook stove. Capacity, 80 to 150 cans or 93 quart glass jars per day; weight, 15 lbs. (See engraving.) Price, \$5.25.



"El-Flo" Two-Hole Kitchen Canner, No. 24. Nearly double the capacity of the above. Oblong boiler 19x14 inches by 12 inches high. May be used on any coal or wood cook stove. The No. 24 holds 24 No. 3 cans, or 12 quart glass jars. Capacity, 125 to 200 cans or 160 glass quarts per day; weight, 20 lbs. Price, complete, with all accessories for canning in tin or glass, \$6.00.

"El-Flo" Large Family Outdoor Canner, No. 30. A complete canner with firebox that burns either coal or wood, and can be placed anywhere outdoors. The oblong boiler measuring 14 x 23 inches by 23 inches high; holds 30 No. 3 (1-lb.)

"El-Flo" Small Family Outdoor Canner, No. 16. A complete canner with firebox, which burns either coal or wood. It can be placed anywhere outdoors and keeps the "canning muss" out of the kitchen. It holds 16 No. 3 (1-lb.) cans or 8 glass quart jars; capacity, 275 to 350 No. 3 cans or 306 glass quart jars per day; boiler oblong, 10x18 inches by 18 inches high furnished complete with two lengths of pipe, also all accessories for canning in tins or glass. Weight, 28 lbs. (See engraving.) Price, \$11.00.



tins or 15 glass quart jars. Will put up 400 to 600 No. 3 cans or 594 glass quarts per day. Furnished complete with all accessories for canning in tins or glass, and with two joints of pipe; weight, 55 lbs. Price, \$16.00.

EL FLO CONTINUOUS HEATING CAPPING STEEL.



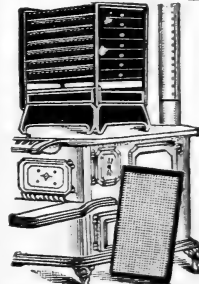
EL FLO CAPPING STEEL

The solution to sealing problems. To the defective sealing by improperly heated tools is attributed the greater per cent. of loss in canned goods—thus the ever-ready, evenly heated capping steel will insure you against chance. Five cents worth of gasoline will run the EL-FLO heater a whole day—sealing more than 1,000 cans—limited only by the speed of the operator.

A blue flame plays continuously on the steel, keeping a nice uniform heat the whole day through. It is light, neatly finished, compact, convenient and never requires any "tinning" or "fluxing". Perfectly safe, and is as simple and easily operated as a lamp. No experience whatever is needed to do perfect and rapid sealing from the beginning. Three styles and made in all sizes. The heat is applied on either side, top or interior of steel.

EL-FLO continuous Heater, with capping steel "tinned," key and pump, any size, \$5.00.

COOK STOVE FRUIT DRYER OR EVAPORATOR.



COOK STOVE FRUIT DRYER.

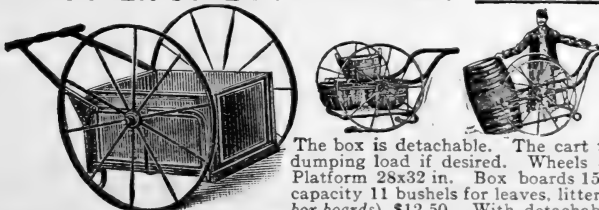
This is the latest, cheapest and best machine of its kind on the market. It can be used on any kind of stove. Its dimensions are: Base, 22x16 inches; height, 26 inches. Containing eight galvanized wire-cloth trays. Weight, 25 lbs. No extra fire is required. It is easily set off and on the stove, as needed, whether empty or filled with fruit.

With it you can evaporate all kinds of fruits, berries, and vegetables. Price, \$7.50.

WOODEN PLANT STAKES.

Stakes—Round Green Tapering			Square Green Tapering		Round Dahlia Poles Green, White Tops		
Length	Doz.	100	Doz.	100	Length	Doz.	100
2 feet.....	\$0.45	\$2.50	\$0.40	\$2.25	2 feet.....	\$0.60	\$4.00
3 ".....	.75	5.00	.75	5.50	3 ".....	.85	6.00
4 ".....	1.00	7.50	1.10	7.50	4 ".....	1.25	8.00
5 ".....	1.25	9.00	1.35	10.00	5 ".....	1.50	11.00
6 ".....	2.25	15.00	1.60	12.00	6 ".....	1.80	13.00

BUTLER STEEL HAND CART WITH BOX AND HOPPER.



The box is detachable. The cart turns clear over for dumping load if desired. Wheels 36 inches high; from out to out of hubs, 42 in. Platform 28x32 in. Box boards 15 in. high. Flaring Hopper 12 in. above box makes capacity 11 bushels for leaves, litter, etc. Prices.—(Wheels 2 1/2 in. tire), plain (without box boards), \$12.50. With detachable Box boards, \$16.50. With detachable Boxboards and Flaring Hopper, \$21.50. (Wheels with 3-in. tire, \$3.50 extra).

Fruit, Wine and Jelly Press.



Superior, simple, easily operated, saves all rehandling, as it extracts the juice and ejects the skins and seeds in one operation; it can be used for many purposes, including the making of wine, jellies, fruit butters from grapes, currants, quinces pineapples, tomato catsup, etc.

Price, family size, capacity 1 qt., \$5.00.

REMEDIES FOR INSECTS AND FUNGUS CONTACT AND STOMACHIC

Insects that Suck the Juices from Plants, Foliage, etc., such as lice, green, black and white aphids or fly, mealy bug, red spider and scale, thrust their proboscis into the leaf or stem, and are not affected by stomach poisons; so they must be destroyed by contact insecticides. Those in powder form kill by closing the breathing pores in the insect's skin; or in fluid form by being absorbed through these pores. The best contact insecticides in powder form are Bug Death, Hellebore, Slug Shot and Tobacco Dust. The best in fluid form are Aphine, Black Leaf 40, Fish (Whale) Oil Soap, Nicotene (Tobacco Extract), Kerosene Miscible Oil and Lemon Oil.

Insects that Eat Plants, Foliage, Vegetables, Fruits Flowers, etc., whether bugs, beetles, worms, caterpillars or slugs, are more quickly and effectually destroyed with a poisonous stomachic insecticide such as Arsenate of Lead, Paris Green or Hellebore. These if applied according to directions are so diluted as to be harmless to vegetation and to animal life. Less poisonous stomachic and contact insecticide are Bug Death, Kerosene Emulsion, Slug Shot, etc.

APHINE. Very powerful, soluble in water applied as a spray, wash or dipping solution. It kills aphids, thrip, red spider, slugs, ants, mealy bug, scale. Price, 1 gill, 25c.; ½ pint, 40c.; pint, 65c.; quart, \$1.00; gallon, \$2.50.

APHIS PUNK is a wood-pulp paper, in 6x33-inch sheets, saturated with 22½ per cent. nicotine, rolled and dried. When lighted it burns slowly and is a cleanly, convenient and effectual remedy for "smoking" conservatories, etc., for green and black fly thrip, etc. Price, per carton of 12 rolls, 60c. (mail weight, 1 lb.); per case of 12 cartons, \$6.50.

ANT DESTROYER (non-poisonous), Designed Especially for Use on Lawns, Tennis Courts and Putting Greens. This product was used successively for two years on the grounds of one of the most famous Golf Clubs in America before being offered to the public. One quart, 60c.; one gallon, \$1.50; five-gallon can, \$7.00.

ANT-I-CIDE. A powder with a repellent odor, effective against ants and crawling insects that infest lawns. Strew so the surface infested will be thoroughly covered. One pound will dress about 300 square feet. Price, 1-lb. package, 25c.; 5-lb. bag, \$1.00; 25-lb. drum, \$4.50.

ARSENATE OF LEAD—PASTE. A poison taking the place of Paris Green. Its advantages are that it adheres to foliage, does not readily wash off by rain and does not injure tender foliage. It is white in color and shows just where it has been applied. Price, 1-lb. tin, 40c.; 5-lb. tin, \$1.75; 12½-lb. pail, \$3.50; 25-lb. bucket, \$6.50; 50-lb. bucket, \$12.50; 100-lb. keg, \$24.00.

ARSENATE OF LEAD, POWDERED. May be used either as a dust diluted with hydrated lime, plaster or road dust, or as a liquid spray with water, lime-sulphur, solution or Bordeaux, only half the weight is needed as of the paste form. Price, 1 lb., 60c.; 5 lbs., \$2.75; 10 lbs., \$5.25; 25-lb., \$12.00.

"BLACK-LEAF 40." Very effective for sucking insects such as plant lice, red spider, leaf hopper, thrip, etc., sprayed on. Dilute 2 teaspoonfuls to a gallon of water. It also forms a splendid spray for both insects and fungus with Bordeaux. Price, 1-oz. bottle, 25c.; ¼-lb. tin, 75c.; 2-lb. tin, \$2.50; 10-lb. can, \$10.75.

BORDEAUX & ARSENATE OF LEAD. A combination in proper proportions of these standard insecticide and fungicide remedies, killing insects and plant diseases at one spraying and in half the time required to spray on separately. Quantity required, 1 to 2 lbs. in 10 gallons water. Price, 1 lb., 35c.; 5 lbs., \$1.50; 10 lbs., \$2.75; 25 lbs., \$6.00; 50 lbs., \$11.00; 100-lb. keg, \$21.00.

BORDEAUX—LIQUID. Ready for use by simply adding 1 part to 50 of water. An indispensable fungicide, curing and preventing black rot, mildew, blight, rust, scab, and all fungoid diseases on fruits and plants. Price, 1 pint, 30c.; 1 quart, 50c.; 1 gallon, \$1.25; 5 gallons, \$5.00.

BORDEAUX, POWDERED. Requires 1 to 1½ lbs. to 10 gallons of water as fungicide spray. Price, 1 lb. 45c.; 5 lbs., \$2.00; 10 lbs., \$3.50.

BOROWAX. A complete protection against tree borers. Use half to one pint to a tree according to size. Price, quart, 35c.; half gallon, 60c.; gallon can (boxed), \$1.00; 6 gallons (boxed), \$5.00; half-barrel, \$20.00; barrel, \$35.00.

BUG DEATH. A non-poisonous insect-killing powder, for worms, bugs and caterpillars. Apply with a duster, bellows or powder-gun, at the rate of about 12 lbs. per acre. Mail weight, 1½ lbs., per lb. Price 20c. per lb.; 3 lbs., 45c.; 5 lbs., 60c.; 12½ lbs., \$1.35; 100 lbs., \$9.25.

BUG SHAKER for applying above, 40c.

CATTLE COMFORT. Protects horses, cattle, dogs, etc., from flies, gnats, mosquitoes, horse-fly and other insects, is healing to sores, destroys head lice on fowl, etc. Price, 1 quart, 60c.; 1 gallon, \$1.75; 5 gallons, \$7.00.

COPPER SOLUTION, AMMONIATED. A fungicide, for spraying when fruits are nearing maturity, or plants in bloom. One quart is sufficient for 25 gallons of spray. Price, 1 quart, 90c.; 1 gallon, \$2.75.

CORN OIL—ANTI-CROW. Protects newly planted corn from crows. Keeps the birds from damaging your crops by preventive measures. Price, per pint, 25c.; per quart, 40c.

CUT WORM KILLER. It has an enticing odor and attracts worms. One pound is sufficient for 175 plants in hills, or 100 feet when in rows. Price, 1-lb. sprinkler box, 25c. (mail weight 2 lbs.); 5-lb. tins, \$1.00 (mail weight, 6 lbs.); 25-lb. drum, \$4.00; 100-lb. bag, \$12.00.

FISH OIL SOAP. (Whale Oil Soap.) A wash for insects and eggs on the bark, and for smearing the trunks of trees to prevent worms from crawling up. Price, 25c. per lb. (mail weight 2 lbs.); 5 lbs., \$1.00 (mail weight 6 lbs.); 10 lbs., \$1.75; 25 lbs., \$4.00.

FORMALDEHYDE. A preventive of fungoid diseases as potato scab, smuts, musty corn, damping off of seedlings, club root, etc. The dilution is 1 lb. (1 pint) to 15 or 20 gallons of water and 1 to 2 gallons of this dilution is required for the treatment of a bushel of seed. Price (40 volume %), 1-lb. bottle, 50c.; 5-lb. bottle, at 45c. lb.; 10-lb. bottle, at 40c. lb.; 50-lb. demijohn, at 32c. lb.; 132-lb. carboy, at 28c. lb.

FUNGINE. An effective sulphurated spraying remedy for mildew, rust and other blights. Does not stain the foliage. Price, half pint, 40c.; pint, 65c.; quart, \$1.00; gallon, \$3.50.

HELLEBORE, Powdered White. Less poisonous than Paris Green and Arsenate of Lead, and safer to use when fruits or vegetables are nearly ripe. Can be used as a powder or dissolved, 1 ounce in 3 gallons of water. Price, 70c. per lb.; 5 lbs., \$3.25 (mail weight, 1½ lbs. per lb.).

KEROSENE MISCIBLE OIL. Better than Kerosene Emulsion. Is especially valuable against all soft bodied insects. Can be used in place of Nicotine. Contains 80% Kerosene. Dilute 1 part Oil to 16 parts water. Tender plants 1 part to 36 parts water. Price, 1 pint, 30c.; 1 quart, 50c.; 1 gallon, \$1.25c.; 5 gallons, \$5.00.

LEMNON OIL. Efficient for all sucking insects and soft scales. Apply as a spray or wash. Price, ½ pint, 30c.; 1 pint, 50c.; quart, 90c.; ½ gallon, \$1.50; 1 gallon, \$2.50.

LIME SULPHUR SOLUTION. For scale insects on trees and such fungus bark diseases as can be treated in winter. Diluted and apply with a spray pump while trees are dormant, in fall, winter or spring. Can be used strong during mid-winter, but earlier or later dilute it 1 gallon to 40 to 60 of water. Price, quart can, 45c.; gallon, 90c.; 5-gallon can, \$3.35; barrel of 50 gallons, \$15.00.

NICOTINE. A remedy for spraying, containing 30 per cent. nicotine. Dilute two teaspoonfuls to a gallon of water. For fumigating greenhouses, etc., use a scant tablespoonful to 1½ pints of water, for each pan, vaporize by placing a hot iron in it. This is enough for 600 square feet of floor space. Price, 8-lb. bottle, \$10.00; 4-lb. bottle, \$5.00; 1-lb. bottle, \$1.50; ½-lb. bottle, 85c.; ¼-oz. bottle, 40c.

NICO-FUME. Suspended and lighted, it is the best method of fumigating conservatories for aphids and all insects that succumb to tobacco. One sheet is sufficient for 2000 cubic feet of space. Price, air-tight cans of two dozen sheets, 85c. (mail weight, 1 lb.) 1 gross sheets, \$4.00 (mail weight, 4 lbs.); 2 gross sheets, \$7.50 (mail weight, 7 lbs.).

PARIS GREEN. An insoluble, poisonous powder for potato bugs, codling moth, worms, caterpillars, slugs and bugs. Applied as a powder it should be mixed with plaster or flour, 100 parts to 1 part of Paris Green; in solution mix 1 lb. in 200 to 300 gallons of water. Price, ½ lb., package, 40c.; 1-lb. package, 90c.; 5-lb. package, \$4.00.

PYROX. An insecticide and fungicide for eating insects, blights and fungus. Mix with water to apply. Price, 1-lb. bottle, 40c.; 5-lb. crock, \$1.50; 10-lb. crock, \$2.75; 25-lb. crock, \$6.00; 50-lb. keg, \$11.00; 100-lb. keg, \$21.00.

SCALECIDE. The best spray for San Jose scale, cottony maple scale, &c. It is not poisonous, being a preparation of petroleum that mixes with cold water and is ready to apply. 1 gallon to 20 gallons of water sprayed on trees and bushes will kill every scale that it reaches without injury to tree or fruit if applied while foliage is off. Price, 1 quart, 55c.; 1-gallon can, \$1.35; 5-gallon can, \$5.75; 10-gallon can, \$9.85; 30-gallon barrel, \$22.00.

SCOTCH SOFT COAL SOOT. Used in onion drills, radish beds, cabbage grounds, etc., it checks the attacks of grubs or cut worms, and drives away insects that hide in the ground and lay their eggs near the roots. Price, 50-lb. bag, \$2.75; 100-lb. bag, \$5.00.

INSECTICIDES—Continued.

SLUG SHOT. A non-poisonous powder insecticide; it requires no mixing or preparation, easily applied and not injurious to the person applying it, or fruits and vegetables. Destroys potato bugs, beetles, green flies, slugs, worms, etc. Price, per keg of 125 lbs. net, \$11.25; per barrel of 250 lbs. net \$20.00; 10-lb. package, 95c. (mail weight, 1½ lbs. per lb.); 5-lb. package, 50c.; in tin canister with perforated top for applying, 35c. each (mail weight, 2 lbs.).

STICKY TREE CORD. Tack one end to the tree, pass around it and tack on every 18 inches. In the furrows of rough barked trees, it will prevent caterpillars, etc., from crawling up; lasts all summer. In tubes containing 30 feet. Price, 25c. or \$2.50 per doz. (mail weight, 1½ lbs. each.)

SULPHUR, FLOWERS OF. Price, 15c. per lb. (mail weight, 2 lbs.); 10 lbs., 90c.; 25 lbs. and over, at 9c. per lb. (mail weight, 1½ lbs. per lb.).

THYMO-CRESOL or ENGLISH COLD WATER SHEEP DIP. A gallon makes a hundred gallons for most uses. A world-famous dip, and remedy for wounds and skin diseases, killing animal parasites, mixing with whitewash for chickenhouses, kennels, etc. Price, quart can, 80c.; 1-gallon can, \$2.25; 5-gallon can, \$7.50.

TOBACCO DUST, FINE. For green and black aphid, flea-beetles, etc. Splendid fertilizer and preventative for insects in the ground and around roots. Price, 15c. per lb. (mail weight, 1½ lbs. per lb.); 5 lbs., 50c.; 10 lbs., 80c.; 25-lb. bag, \$1.25; 50-lb. bag, \$2.00; 100-lb. bag, \$3.50.

TOBACCO POWDER, FUMIGATING. Extra strong dust for fumigating. Price, 25-lb. bag, \$2.00; 50-lb. bag, \$3.50; 100-lb. bag, \$6.00.

TOBACCO STEMS. For fumigating greenhouses. Price, 100-lb. bale, \$1.75; per ton of 2,000 lbs., \$30.00.

TREE TANGLEFOOT. No crawling insect can pass a band of tree tanglefoot. Apply early in the spring—and again in the fall if troubled with the fall canker worm. One pound for 6-foot band 4 inches wide, 1½ inch thick. Price, 1-lb. can, 50c.; 3-lb. can, \$1.45; 10-lb. can, \$4.50; 20-lb. can, \$8.75. (mail weight, 1½ lbs. per lb.).

HENDERSON'S FERTILIZERS. PRICES SUBJECT TO CHANGE WITHOUT NOTICE.

BONE FERTILIZERS

Decompose slowly in the soil; form permanent improvement. With bone there is no danger of burning the plants. Excellent for top-dressing grass and for garden and field crops.

Quantity Required. For lawns, pasture and mowing lands, ½ to 1 ton per acre. For trees and vines, 2 to 4 quarts each. For field and garden crops, ¼ to 1 ton broadcasted and harrowed in. For rose beds, pot plants, etc., one part to about fifty of soil.

Raw Bone Meal. This is ground very fine, decomposes rapidly in the soil and is more quickly beneficial.

Price, 1-lb. package, 15c. (mail weight 2 lbs.); 5-lb. package, 40c.; 10-lb. package, 75c.; 25-lb. bag, \$1.50; 50-lb. bag, \$2.75; 100-lb. bag, \$4.50; per ton of 2,000 lbs., \$75.00.

Raw Ground Bone. Particularly adapted for general fertilizing; the finer particles are immediately beneficial.

Price, per 100-lb. bag, \$4.50; per ton of 2,000-lb., \$75.00.

BLOOD AND BONE

A very high grade fertilizer of exceptional value for garden crops, grasses, fruit trees, grape vines.

Quantity Required. When broadcasted use from ½ to 1 ton per acre. For garden crops drill in 300 to 500 lbs. per acre.

Price, per 100-lb. bag, \$4.50; per ton of 2,000 lbs., \$75.00.

IMPORTED ENGLISH FERTILIZERS.

Thomson's Vine, Plant and Vegetable Manure. Price, 28-lb. bag, \$3.00; 56-lb. bag, \$5.50; 112-lb. bag, \$10.00.

Thomson's Special Chrysanthemum and Top-Dressing Manure, 28-lb. bag, \$4.25; 56-lb. bag, \$8.00.

HENDERSON'S GARDEN FERTILIZER.

Easily applied by sprinkling over the surface of the soil and raking in. Two or three additional applications, at intervals, will produce magnificent results. A 10-lb. package is sufficient for a space 15x20 ft. for one application, or 500 to 600 lbs. per acre. Instructions on each package.

Price, 5-lb. package, 40c.; (mail weight 6 lbs.) 10-lb. package 75c.; (mail weight 11 lbs.) 25-lb. bag, \$1.75; 50-lb. bag, \$2.75; 100-lb. bag, \$4.50; per ton, \$80.00.

HENDERSON'S HOUSE PLANT FERTILIZER

A safe, clean and high-grade fertilizer, free from disagreeable odor, prepared especially for feeding plants grown in pots. Detailed directions on each package.

Price, 12-oz. package, sufficient for 25 ordinary-sized plants for one year, 25c. (mail weight 1 lb.)

TREE WOUND PAINT is an insurance against decay, having penetrating, antiseptic and elastic waterproofing qualities. Sun and rain cannot cause the coating to break from the treated wood. Price, quart, 60c.; gallon, \$1.50; 5 gallons, \$7.00.

VERMINE. Kills underground insects. Use 1 part vermine to 400 parts water, thoroughly saturating the ground. Price, pill 25c.; half pint, 40c.; pint, 65c.; quart, \$1.00 gallon, \$3.00.

HENDERSON'S WORM-KILLING GRASS FOOD

Stimulates the grass into rich green growth and quickly eliminates the earth or angle worms that burrow in the turf in unbelieveable quantities. We advise all whose grass is not good to apply it at the rate of ½ pound to a square yard during rainy weather or else water in thoroughly with a hose. The worms will then come to the surface and die. It is a non-poisonous powder not injurious to animal life and can safely be applied at any season of the year. Use one pound for each two square yards.

Price of Henderson's Worm-Killing Grass Food (F.O.B.N.Y.):
5 1/2 pkg (Mail wt. 6 lbs.) \$0.85 50 bag \$4.00
10 " (Mail wt. 11 lbs.) 1.50 100 " 7.00
25 " " " " " " 2.50

HENDERSON'S FLUID WEED DESTROYER

Destroys all weeds, on brick walks, roads etc. It is mixed with water and applied with a watering can or sprinkling cart. If the ground is dry it should first be sprinkled with water, so the Weed Destroyer will not soak away too quickly. Where large weeds and docks are to be destroyed chop off the tops first. Full directions for use with each package.
Quart Can \$0.60 Dishes with 30 to 40 Gallon Can 1.75 parts of water, 1 quart
5-Gallon Keg 7.00 makes 7 to 10 gallons.
50-Gallon Barrels 47.50 (Not Mailable.)

"CLIMAX" LAWN SAND

A non-poisonous, dried chemical, which if evenly distributed 4 ounces per square yard kills weeds by adhering to their broad flat leaves, but falls clear to the roots of grass, and fertilizes the soil.

It is marvelous how quickly the grass improves. Price, 3½ lbs., 75c. (Mail weight 4 lbs.); 7 lbs., \$1.35 (mail weight 8 lbs.); will dress about 25 square yards; 14 lbs., \$2.00. 28 lbs., \$3.50; 56 lbs., \$6.00; 1 cwt., \$10.00.

PURE ANIMAL MANURES

Quantity Required. For garden and field crops, 1 to 2 tons per acre—½ before plowing, the balance before harrowing. For top-dressing, use 1 ton per acre in fall or early spring.

Sheep Manure Pulverized. Price, 50-lb. bag, \$2.00; 100-lb. bag, \$3.50; per ton of 2,000 lbs., \$60. in packages of 2 lbs., 20c. (mail weight 3 lbs.); 5 lbs., 40c.; (mail weight 6 lbs.) 10 lbs., 75c.

Horse Manure Dried. Price, per 100-lb. bag, \$3.00; per ton of 2,000 lbs., \$50.00.

Cattle Manure Dried. \$2.75 per 100-lb. bag; \$45.00 per ton. Ashes, Canada Hard Wood. Indispensable for all crops requiring potash; very beneficial for garden and field crops, grass lands and lawns. Apply 1 to 2 tons per acre.

Price, per 100-lb. bag, \$2.50; per bbl. of about 200 lbs., \$4.00; per ton of 2,000 lbs., in bbls., \$35.00.

LAND PLASTER OR GYPSUM. Valuable for soils requiring lime and sulphate; also good on grasslands and sour soils. Price, 100-lb. bag, \$1.50; \$25.00 per ton. Quantity required. One to two tons per acre.

HYDRATED LIME. Price, 100-lb. bag, \$1.35; per ton of 2,000 lbs., \$20.00.

GROUND LIME STONE. Price, 100-lb. bag, \$1.00; \$15.00 per ton.

COMMERCIAL FERTILIZERS

	Price per 100 lbs.	2,000 lbs.
Potato Manure.....	\$4.50	\$80.00
Corn Manure.....	4.00	70.00
Special Truck Manure for vegetable crops	6.00	100.00
General Crop Compound.....	3.00	50.00
Complete Manure.....	3.50	55.00

THE "HENDERSON'S" LAWN ENRICHER

The Henderson Lawn Enricher is clean and odorless. It should be sown broadcast in the spring or fall.

Quantity Required. For a new lawn a 10-pound package is sufficient for an area of 300 square feet or 1,000 to 1,500 pounds per acre, or half quantity for renovating an old lawn. Apply if possible just before rain. If applied during the summer use half the quantity, and water in thoroughly with a hose.

PRICES.—(purchaser paying transit charges.)

5-lb. package (mail wt. 6 lbs.)	.40	50-pound bag..	2.50
10-lb. package (mail wt. 11 lbs.)	.75	100 " "	4.00
25-pound bag.....	1.50	Per ton of 2,000 lbs.	70.00

A SELECTED LIST FOR SUMMER SOWING, OF HENDERSON'S PERENNIAL FLOWER SEEDS.

Hardy gardening is becoming more popular in America every year. To meet the increasing demand for seeds of perennial plants we append a list of the leading sorts, which if sown this summer will produce plants that will flower next season. Biennials grow from seed one year, bloom and die the next. Perennials last for several years, blooming annually from seed after the first season. Cultural directions are printed on each packet.



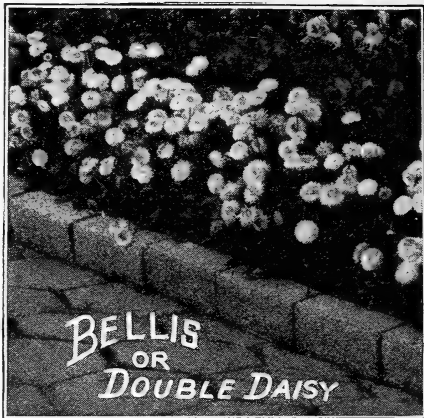
	PKT	PKT
ACHILLEA, The Pearl. A greatly improved variety of this old, hardy garden favorite <i>A. Ptarmica fl. pl.</i> The Pearl produces larger double pure white flowers in clusters on long stems from spring until frost. Splendid cut flower; 2 feet.	10	
ALYSSUM, Saxatile Compacta. A beautiful dwarf hardy perennial for spring beds or edging a flower border. The flowers are produced in large clusters and are of a deep pure yellow; ¾ foot.	10	
AMPELOPSIS Veitchii. Boston or Japanese Ivy, valuable hardy climber, clinging to wood, stone or brick walls; dense ivy-green foliage, changing to red in autumn; 30 feet.	10	
ANCHUSA Italica (Dropmore). A fine, large, hardy herbaceous plant; 4 to 5 feet-high, with flowers of lovely Gentian blue.	15	
ANEMONES (A. St. Brigid.) These beautiful Irish Poppy-flowered varieties produce in abundance large single, semi-double and double flowers 3 to 5 inches across, in an endless variety of colors, from maroon and brightest scarlet to flesh-pink and from lilac to purple. For cutting they are unsurpassed, and in the garden they flower until after frost; hardy perennials flowering from seed the second year and thereafter.	10	
ANTIRRHINUM, Giant Flowering. These improved "Snapdragons" form brilliant garden beds, flowering profusely and continuously during the summer and fall. They grow about 2 feet high. The flowers are nearly double the size of the older sorts.		
Tall Giant-Flowering		
Yellow Queen. Pure yellow.	10	
Orange-Scarlet. White throat.	10	
Blood-Red.	10	
Venus. Delicate rosy pink and blush.	10	
White. Pure snow-white.	10	
Cottage Maid. Coral-pink, with a white throat.	10	
Mixed Colors.	10	
Collection, 1 pkt. each of above 6 separate colors.	45	
Semi-Dwarf Giant-Flowering. These semi-dwarf varieties produce flowers as large as the tall sorts, while the plants are of compact, bushy growth, only a foot high, and are completely covered with flowers throughout summer and fall.		
Albino. Cream flushed pink.	10	
Picturatum. Blotched and spotted.	10	
The Bride. Pure white.	10	
Scarlet.	10	
Yellow.	10	
Coral-Rose.	10	
Mixed Colors.	10	
Collection, 1 pkt. each of above 6 separate colors.	45	
AQUILEGIA (Columbine.) Hardy garden perennials. Very effective when grown in beds or the herbaceous border. Height 1½ to 3 feet.		
Henderson's American Hybrid Columbine. The plants are robust; the flower stems, often 40 inches in height, carry clusters of immense long-spurred, single flowers. The colors are superb.	15	
Single, Large-Flowering, Mixed colors.	05	
AQUILEGIA—Continued.		
Double-Flowering, Long Spurred Hybrids. Beautiful long-spurred, large, double flowers.	25	
Bell-Flowered Columbine. (<i>Aquilegia Clematiquilla</i> .) A beautiful new spurless type producing large open bell-shaped flowers of many colors, shades and combinations, including sky blue, pink, deep blue, purple, violet, lavender, white, flesh, rose, maroon, salmon, etc., in mixture.	25	
Chrysantha. The beautiful long-spurred yellow.	10	
Coerulea Hybrida. Rocky Mountain variety, long-spurred flowers of white and blue.	10	
ARISTOLOCHIA Siphon. Dutchman's Pipe Vine. Hardy climber; has large leaves, making dense shade; flowers mottled yellow and brown 30 feet.	10	
ASPARAGUS Verticillatus. Hardy climber, with feathery foliage and scarlet berries; 10 ft.	10	
ASTER, Hardy, New Large Flowering.		
These "Michaelmas Daisies" are splendid subjects for permanent positions in the herbaceous border where they form large bushy clumps, 1½ to 2 feet high, and are covered with clusters of large single flowers during the late summer months.		
White Queen. Pure white single flowers.	15	
Alpinus Goliath. Lilac with yellow center.	15	
Hardy Asters, Mixed Colors. New Hybrids.	10	
BELLIS, or Double Daisy. Greatly improved varieties of the popular "Double Daisies." Admirably adapted for edgings, borders and low beds. It is preferable to sow the plants in cold frames in fall and winter; ½ foot.		
Longfellow. Extra large double rose-pink flowers.	10	
Snowball. Large, double, pure white flowers.	10	
Red. Densely double flowers, glowing rosy red.	10	
Mixed Colors.	10	
Monstrosa. These new "Double" daisies surpass all strains of this popular hardy plant in strong robust growth and abundance of large bloom. Each plant produces 12 to 15 flowers that measure two inches across, carried on long strong stems.		
Monstrosa Double White.	20	
" Double Rose.	20	
" Double Mixed.	20	
BIGNONIA Grandiflora. The hardy trumpet Creeper, clusters of large orange-red flowers picturesquely effective on arbors, old trees, etc.; 40 to 50 feet.	10	
BOLTONIA Asteroides. Hardy perennial, growing 6 feet in height, producing single white Marguerite-like flowers during summer and autumn.	10	
CAMPANULA Bell-Flower.		
Campanula Persicaefolia grandiflora. (Peach leaved Bell-Flowers), handsome, hardy perennials, throwing up spikes 2 or 3 feet high; bearing during summer large, bell-shaped blossoms of blue or white.	10	
White.	10	
Blue.	10	
Campanula pyramidalis. Mixed Colors. The favorite "Chimney Bell-Flower," a hardy biennial—tall spikes of bell-shaped blossoms in shades of blue and white; height, 4 to 5 feet.	10	

Cultural Instructions are printed on all packets of Henderson's Flower Seeds.



PERENNIAL FLOWER SEEDS

FOR
SUMMER
SOWING
(Continued)



CAMPANULA Bell Flower—Continued. Pkt.

Campanula pyramidalis compacta. Mixed Colors. Dwarfier and more compact in growth than the old pyramidalis—attaining a height of only 2 to 3 feet. They bloom freely and the flowers are equally as large; colors, various shades of blue and white. . . . 10

CANDYTUFT, Hardy. Compact-growing, hardy perennial plants, admirably adapted for permanent front rows of borders or for low clumps or beds.

Gibraltarica. Showy, large-growing, red and rosy-white; 1 to 2 feet. . . . 10

Sempervirens. Completely covered with heads of white flowers in spring; 1 foot. . . . 15

CANTERBURY BELLS. Hardy biennial, 2½ feet high producing large, bell-shaped flowers of exquisite colors. The "Cup and Saucer" varieties (*Campanula Calycanthema*) produce beautiful single flowers 3 in. in length, saucers 3 to 4 inches across

Calycanthema Mixed 10

 " Rose 10

 " White 10

 " Blue 10

 " Striped 10

Single Mixed 05

Double Mixed 10

 " Blue 10

 " White 10

 " Rose 10

 " Striped 10

CERASTIUM Tomentosum (Snow in Summer). A procumbent, hardy perennial, having white foliage and a profusion of small white flowers. Very pretty as an edging plant. 15

CARNATION, Hardy Garden. Double Mixed. Will produce large clumps that will stand out over winter and bloom throughout the following summer and fall. Extra fine strain. Per 1,000 seeds, 75c. . . . 10

CHRYSANTHEMUM Single Hardy. The large flowering single white hardy Daisy—*Chrysanthemum leucanthemum maximum*—long considered one of our finest hardy perennials for garden decoration.

Princess Henry forms a bushy, plant 18 inches high, producing, during late summer and fall, magnificent large white flowers, 3 to 4 inches across 10

Little Gem. A new dwarf variety, only 15 to 18 inches high, of even bushy growth; blooming very early, and bearing large, white flowers on long stems. Splendid for herbaceous borders. 25

Shasta Daisy. Produces pure white flowers 4 inches or more across, on stems 1½ to 2 feet in length. Plants, 2 to 2½ feet in height. 15

CLEMATIS Paniculata. One of the finest hardy perennial climbers. Covered from the ground to the summit with pure white fragrant flowers. 12 feet. . 10

Flammula. Fragrant feathery white flowers in clusters, climbing 25 to 30 feet. 05

Large-Flowering, Mixed (Jackman's). Flowers 3 to 4 inches across of charming shades of blue, white, purple, lavender, etc.; 10 to 12 feet. . 10

COREOPSIS Harvest Moon. One of the finest hardy garden plants grown, forming large clumps 2 to 3 feet high. It produces immense, long-stemmed, rich yellow flowers, shaded with orange, flowering in profusion for a long period. 10

COREOPSIS—Continued. Pkt.

El Dorado. The long-lasting flowers are simply perfect, measuring 3 inches and over in diameter, and are borne on stalks 15 to 18 inches in length. Color, brilliant golden yellow. Compact, bushy plants—about 2 feet high—blooming abundantly during summer and fall. 10

COWSLIP. (*Primula veris*). This beautiful spring-flowering dwarf hardy perennial bears clusters of fragrant flowers of various colors, as yellow-brown, edged yellow, etc. They are particularly pretty when grown in good sized colonies in partially shaded situations. Height, 6 inches. 10

DELPHINIUM, or Hardy Larkspur.

Giant Single and Double Superb Hybrids. A splendid race of these popular hardy garden plants. The blossoms are of immense size, single, semi-double and double, dressing the graceful, towering spikes for from 2 to 5 feet of their length. The colors range from white and lavender through every shade of blue from azure to indigo and purple, several shades being blended in some of the varieties. The plants grow from 6 to 10 feet in height and are very desirable and valuable in the garden during the spring and early summer. These improved hybrids should, to get the best effect, be planted in groups dotted here and there at intervals in the herbaceous border. The lighter colors look particularly well when planted in front of shrubbery where they will be thrown into strong relief. Delphiniums are also very beautiful for house decoration shown in vases. By cutting off the spikes immediately after flowering, these Delphiniums may be had in bloom for several months. **Mixed Colors.** Per 1000 seeds \$1.00 25

Hybridum Belladonna Fanny Stormonth. A greatly improved variety of the "Belladonna" Larkspur; early and continuous blooming, light azure-blue color, flowers larger, on stems 5 to 7 feet high. . . . 15

Formosum. Deep blue, white centre; 2 to 3 feet. . . . 05

Single, Fine Mixed Colors. 05

DIANTHUS, Hardy, Grass or Spice Pinks.

Dwarf Large Double-Flowering Grass or Spice Pinks. (*Dianthus Plumarius Nanus, fl. pl.*) In these new Pinks the color refers to the center of the flowers, the remainder being white or blush with a band of color near the margin; the colors include blood-red, rose, maroon, purple, pink, blush, spotted, laced, variegated, etc. They are perennial garden plants, about 1 foot high, vigorous, hardy, and flower profusely during spring and early summer. The flowers are large, double, beautifully fringed, and emit a clove-like perfume. **Mixed colors.** 20

Perfection Pinks. A superb strain of the hardy Grass Pink—*Dianthus Plumarius*—bearing enormous double flowers of perfect form. Smooth round petals of pure white, edged with deep crimson, very fragrant. . 15

Crown "Grass" Pinks. A new race with branching flower stalks 10 to 12 inches high, carrying large fragrant single, and semi-double flowers with fringed petals; colors, white, carmine, rose lilac, etc. Each flower marked in the centre with a crimson or purple crown. They flower from May to July. 15

We deliver FREE all Flower Seeds or Vegetable Seeds by the pkt., oz., ¼-lb. and pound.

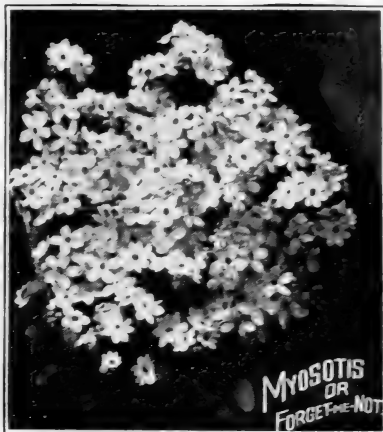


LUPINUS

PERENNIAL FLOWER SEEDS

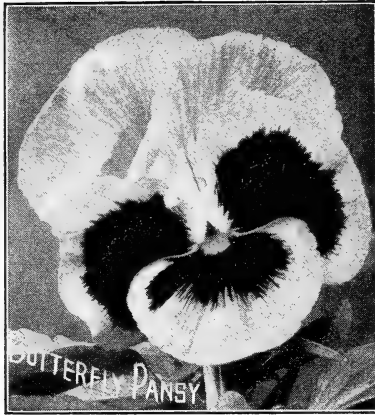
FOR
SUMMER
SOWING

(Continued)



MYOSOTIS—RUTH FISCHER

<p>DIANTHUS, Hardy, Grass or Spice Pinks—Continued. Maiden Pinks. <i>Dianthus deltoides</i>. A dwarf type of hardy Pinks. Colors red, rose and white, all adorned with a central zone of crimson. 10 Plumarius, double mixed. The favorite Pheasant's Eye or Grass Pinks 1 foot. 10 DIGITALIS or Foxglove. Gloxinia-Flowered. These improved Foxgloves are very showy, hardy plants; they are easy to grow and produce freely, spikes, 4 to 5 feet high, well furnished with large Gloxinia-like flowers of various colors, including white, cream, rose, red and other shades. White, spotted. 10 Purple, spotted. 10 Lilac, spotted. 10 Rose, spotted. 10 Mixed colors. (Gloxinoids). 10 Grandiflora. Yellow. Very charming flowers of soft chrome-yellow on 3-foot spikes. 10 Monstrosa. Long spikes of large flowers, many of which are beautifully spotted, etc., but the striking feature of this strain is the enormous bell-shaped blossom that tops each spike of flowers. Mixed colors 15 GAILLARDIA Giant Hardy Hybrid. The flowers often 4 to 5 inches across, and very highly colored, as scarlet with gold edge, blood-red with yellow edge, yellow with orange disk, golden with scarlet border pure yellow, fiery-crimson and many others. These magnificent Gaillardias are hardy perennials, compact in growth and produce a constance succession of flowers summer and fall. Mixed colors. 10 GYPSOPHILA "Paris Market." An improved large-flowering variety of <i>G. elegans</i>. It forms branching plants about 2 feet high, fairly smothered all summer long with graceful clusters of snow-white flowers half an inch across. A pretty garden annual, and of great value for bouquets, vases, etc. 10 Double-flowering (<i>G. paniculata fl. pl.</i>). A new type bearing racemes of double white flowers which last long in perfection; 50% will come double, the balance single-flowering plants. 25 HOLLYHOCK Hardy Double. Grand summer and autumn flowering plants, bearing long spikes of double flowers 3 to 4 inches across. They are old inhabitants of our gardens, but are now so improved in doubleness and enlarged in size, as to be revelations of beauty to those who have not seen these improved sorts. Hardy biennials 5 to 8 ft. high. 10 Double Canary-yellow. 10 "Crimson. 10 Double Maroon. 10 "Deep Rose. 10 "Pink. 10 "Lavender. 10 "Purple. 10 "Black. 10 "White. 10 "White Violet Center. 10 "Palling Belle." A very fine form of Hollyhock bearing large double flowers of a charming shade of silvery-pink. 30 Extra Choice Double Mixed. From named varieties. 1000 seeds, 75c. 10 Imported Collections of Double Hardy Hollyhocks. 6 separate colors, 40c.; 12 separate colors 75c. Single-flowering Hollyhocks, mixed colors, 1000 seeds, 50c. 05 Allegheny Hollyhocks. Mixed colors. Semi-double fringed flowers. 1000 seeds, 60c. 10</p>	<p>HIBISCUS, Hardy Varieties (Marsh Mallows). These are showy hardy bushy plants, 3 feet high, bearing immense bowl-like flowers often 6 inches across. Rose-pink with white base. 10 Giant Yellow. Yellow, garnet throat. 10 INCARVILLEA Delavayi. Beautiful plant with long, flexible branches, strong flower stalks 3 ft. high, bearing large tubular flowers of rosy carmine, spotted yellow; throat brown. 15 KUDZU VINE, Pueraria Thunbergiana. A twining vine making a growth of 40 to 50 feet in one season hardy, though the vine dies down every winter in the North. Purple pea-shaped flowers in clusters, borne late in the season. 10 LATHYRUS Latifolius, Hardy Everlasting Peas. These climb 6 to 8 feet high when trained on a trellis; the flowers are borne in large clusters. They are adapted to rough places, to scramble over rocks and bushes; splendid cut flowers. Red. 10 White Pearl. Large pure white flowers. 15 Mixed colors. 10 LAVENDER. Well-known hardy perennial, bearing long spikes of fragrant blue flowers; 1 to 2 feet. 05 LUNARIA Biennis or "Honesty." Hardy biennial especially useful in shady, damp places; the flowers of purple, crimson or white are followed by silvery transparent seed pods; height, 2 feet. Mixed colors. 10 LOBELIA, Hardy. Tall, hardy perennials with long spikes of brilliant flowers. Fine for permanent beds and borders. They thrive in shady situations; 2 to 4 feet. Mixed colors. 10 Cardinalis. (Cardinal Flower.) Long spikes of intense scarlet flowers. 10 LUPINUS, New Hardy Hybrids. Shows, hardy perennials 3 to 4 feet in height producing during summer, long racemes of pea-like flowers in a variety of colors (See engraving) 10 LYCHNIS Chalcedonica. The scarlet Lychnis, an old favorite bearing heads of bright scarlet flowers; very hardy; 3 to 4 feet. 05 MYOSOTIS or Forget-Me-Nots. Well known perennials. "Blue Eyes" (Novelty). A robust-growing variety of fine constitution, exceedingly free-flowering and bears its flowers well on the top. It is 12 inches high, upright and compact in growth, each plant making a bouquet of Forget-Me-Nots. The color is a telling bright blue and when seen in the mass, as a bed, or in rows, is particularly effective. 25 Ruth Fischer. The plant is compact with glossy dark green foliage, above which are carried large clusters of immense pure Forget-me-not blue flowers, larger than those of any other known Forget-me-not. 15 Triumph. A large-flowering Forget-me-not. The flowers are large and borne in clusters on long stems. Color, bright turquoise-blue with yellow eye. 10 Palustris, Large-flowering. Dark-blue; 1 foot. 10 Mixed colors. 10 Victoria. Grand "Forget-me-nots" forming round, compact bushes about 8 inches high. Blue. 10 Mixed colors. 10</p>
--	---



PERENNIAL FLOWER SEEDS

FOR
FALL AND
SUMMER
SOWING

(Continued)



SELECTED STRAINS OF PANSY SEEDS FOR FALL SOWING.

HENDERSON'S MAMMOTH BUTTERFLY PANSIES

Have been famous many years for their superior size, perfection of form, marvelous diversity of colorings, superb markings as well as for robust plant growth—deep rooting frost and heat resisting qualities and freedom of bloom. (See engraving). Mixed Colors, 15c. per pkt., 2 pkts. for 25c. 60c. per 1000 seeds.

HENDERSON'S GIANT RUFFLED PANSIES.

A remarkable strain of Giant Pansies, the flowers of which are so large and full that the broad petals seem to be "gathered" to the stem, causing them to be undulated and fluted from center to circumference, not unlike "frilled" velvet. They are nearly all five-blotched and contain rich combinations of coloring. Mixed Colors. Pkt. 15c. 2 pkts. for 25c. Per 1,000 seeds, 60c.

HENDERSON'S MAMMOTH PARISIAN PANSIES.

Distinguished by magnificent and varied colors and strong markings. There is usually a large "blotch" on each of the five petals, with a surrounding band of some strikingly contrasting color, over which is thrown a cobweb-like netting of yet another hue. The combinations are composed of shades of cinnamon, violet, canary, orange-yellow, black, garnet, light blue, indigo, cream, etc. Mixed Colors. Pkt. 15c. 2 pkts. for 25c. Per 1,000 seeds, 60c.

HENDERSON'S GIANT MOTTLED PANSIES

The flowers well-grown measure 3 to 3½ inches across—and of most gorgeous effects, blotched, spotted, marbled, veined, striped and blended, colors passing through reds, rose, pink, white, purple in beautiful and indescribable variegation. Mixed Colors. Pkt., 15c. 2 pkts. for 25c. Per 1,000 seeds, 60c.

VARIOUS POPULAR STRAINS OF PANSIES

	Per 1,000 seeds Pkt.	
Bedding. Finest mixed.....	.25	.05
Cassier's 5 Blotched Odier. Mixed.....	.60	.15
Bugnot's Large Strained French. Mixed.....	.60	.15
English Choicest Show. Mixed.....	.75	.25

HENDERSON'S SUPERIOR GIANT TRIMARDEAU PANSIES.

Years of scientific culture, hybridization and selection in raising Pansies have gradually evolved a superior race of luxuriant, robust growth and deep-rooting, drought-withstanding qualities; the flowers have also correspondingly improved in size, substance, form and colors.
Customer's selection of any three 10c. pkts. for 25c.

	Per 1,000 seeds Pkt.	
Giant Atropurpurea. Velvety royal-purple.....	.50	.10
" Canary Bird. Pure, spotless yellow.....	.50	.10
" Emperor William. Indigo-blue, blotched black.....	.50	.10
" King of the Blacks. Lustrous jet-black.....	.50	.10
" Lord Beaconsfield. Lavender, heliotrope and purple.....	.50	.10
" President Carnot. White with large vio- let blotches.....	.50	.10
" Prince Bismark. Golden-bronze.....	.50	.10

TRIMARDEAU PANSIES—Continued. Per 1000 seeds. Pkt.

" Snow Queen. Spotless, snow-white.....	.50	.10
" Striped. White, blue, violet and chocolate.....	.50	.10
" Victoria. Oxblood red.....	.50	.10
" White Treasure. White with three violet blotches.....	.50	.10
" Yellow. Golden-yellow, three maroon blotches.....	.50	.10
" Trimardeau. Mixed Colors.....	.50	.10

HENDERSON'S COLLECTION OF 12 GIANT PANSIES

This collection contains one packet each of 12 large and beautiful Pansies. Price, 75c.

WORLD RECORD PANSIES. Hardy Early-Flowering.

This new race of pansies promises to be an important introduction on account of the extreme hardiness of the plants and in consequence their earliness in flowering. With slight protection, such as meadow hay, straw or similar material, full grown plants winter over in the open ground—even in very cold latitudes—and commence flowering in early spring with the Snowdrop and Crocus, or from four to six weeks earlier than other pansies. In fact, we gathered flowers several times during the past winter by lifting the snow-covered hay. They are sweetly perfumed. Pkt.

Celestial Queen. Bright sky-blue, tinted lavender, small yellow eye.....	.25
Ice King. Silvery white, with deep blue blotch on lower petals.....	.25
March Beauty. Rich velvety violet-purple, with yellow eye.....	.25
Winter Sun. Golden Yellow with maroon blotch on lower petals. (See engraving).....	.25
World Record Pansies, Mixed Colors.....	.25
Customer's Selection. Any two pkts. for 40c. or the collection of 5 pkts. for \$1.00	

PENTSTEMON. "Sensation." The graceful spikes, about 2 feet high, are bedecked with flowers, two inches across, from July until frost. The colors vary from pink to scarlet and maroon, all beautifully blotched and veined; large white throats..... 10

Hartwegii Albus. A fine new variety and the first pure white Pentstemon. It is remarkably early and long-blooming variety..... 20

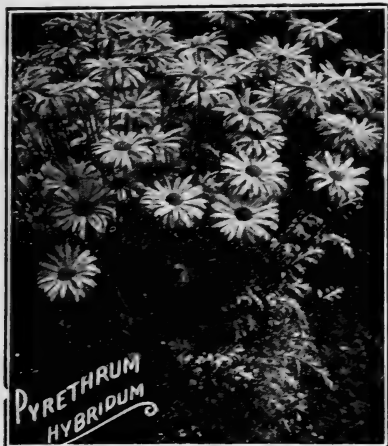
Rocky Mountain Pentstemon (P. Cyananthus). A lovely and showy species. Compact spikes of lovely azure-blue flowers..... 15

PLATYCODON Grandiflora. Chinese Bell Flower. Hardy perennials, bearing large bell-shaped white or blue flowers; very handsome for garden decoration; 1½ feet. The *Nana Compacta* type form sturdy little bushes about 12 inches high.

Grandiflora. Mixed colors. Blue and white..... 10

Nana Compacta. Mixed colors. Blue and white.... 10

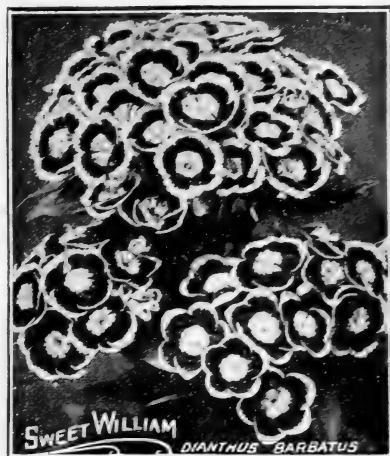
Free to Customers: Henderson's Leaflet "How to Grow Pansies to Perfection."



PERENNIAL FLOWER SEEDS

FOR
SUMMER
SOWING

(Continued)



- | | |
|--|--|
| <p>POLYANTHUS Primula Elatior. An early-blooming Primrose for spring flower beds or pot culture; the large umbels of flowers edged and laced are borne on stalks 8 inches tall. Mixed colors..... 10</p> <p>POPPY GIANT ORIENTAL. These hold an unrivaled position for effectiveness in hardy borders; height 2 to 3 feet; flowers immense, often 6 inches across.</p> <p>Colosseum. Flowers 8 inches across. Dark scarlet, with a black spot at the base of each petal..... 15</p> <p>Beauty of Livermere. Crimson with black blotch..... 15</p> <p>Princess Victoria Louise Salmon-scarlet..... 15</p> <p>Salmon Queen. Salmon-yellow..... 15</p> <p>Rembrandt. Orange-scarlet..... 15</p> <p>Dark Scarlet...... 15</p> <p>Mixed Colors. Per 1,000 seeds, 50c..... 10</p> <p>POPPY ICELAND (Papaver Nudicaule). The fragrant, crushed satin-like flowers are produced in never-ceasing succession from the beginning of June to October; fine for cutting</p> <p>Yellow..... 10 White..... 10</p> <p>Scarlet..... 10 Gold tinged red..... 10</p> <p>Mixed Colors. Per 1,000 seeds, 50c..... 10</p> <p>Storrie's New Iceland Poppies. This new strain contains many new colors and shades, including blush, salmon, coral-pink, orange-rose, white, lemon, orange, striped, flecked, edged blended, etc.</p> <p>Mixed Colors. Per 1,000 seeds, 75c..... 15</p> <p>HARDY BLUE PRIMROSE—Primula Acaulis
A beautiful blue-flowered type of the popular old English yellow Primrose. Equally as hardy, and a fitting companion for naturalizing among shrubs, in turf or the herbaceous border..... 25</p> <p>PRIMULA JAPONICA HYBRIDS. These grand, new Japan Primroses are perfectly hardy—forming stately, robust plants that carry large trusses of bloom. The colors range from pure white through shades of pink to deep crimson..... 25</p> <p>PYRETHRUM Hybridum. Hardy herbaceous plants, flowers 3 to 4 inches across, of rose, flesh, pink, white crimson, etc.; borne on stems 2 feet high.</p> <p>Single, Large-flowering. Mixed colors..... 10</p> <p>Double, Large-flowering. Mixed colors..... 25</p> <p>SCABIOSA Hardy Varieties.</p> <p>Caucasica Perfecta. Dense, spreading plants 2 or 3 feet high. Semi-double flowers, 3 to 4 inches across poised on stalks 1½ to 2 feet long. The coloring is a beautiful lilac-blue..... 15</p> <p>Caucasica Alba. A large, pure white variety; counterpart of the above; beautiful; the flowers, 3 to 4 inches across, on long stems, are exquisite for vases, lasting a long time in water, and they are borne freely like those of its blue-colored parent from early summer to late fall..... 25</p> <p>Japonica. New Scabious from Japan, 2½ feet in height and breadth, with elegant light green foliage. Flowers 2 inches across, on long wiry stems 15 inches in length, of a beautiful mauve blue..... 10</p> | <p>PKT.</p> <p>STOKESIA, The Hardy Cornflower. The plants grow from 18 to 24 inches high and begin flowering in July, continuing without interruption till late in October. The flowers, 4 to 5 inches across, on long stems, are valuable for cutting</p> <p>Cyanea Blue. Lavender-blue..... 10</p> <p>Cyanea Alba. New; pure white flowers..... 10</p> <p>Hybrids, Mixed Colors, include some charming shades of blue, lavender, violet, white, and a new pink variety..... 15</p> <p>SWEET ROCKET or Dames Violet. Favorite, hardy, herbaceous perennials—for the garden border. The plants form clumps 2 to 3 feet in height covered with showy terminal spikes of flowers resembling Stocks. The colors range from white through lilac to pink and purple; very productive of bloom and splendid for cut flowers. Mixed Colors..... 10</p> <p>SWEET WILLIAM (Dianthus barbatus). One of the finest of our hardy garden plants, of easy culture, thriving in any good garden soil. The plants grow about 1 foot high and form fine clumps</p> <p>Henderson's Perfection. Our improved Perfection strains produce in great profusion large florets in a great variety of extremely rich colors</p> <p>Extra choice Single varieties mixed..... 10</p> <p>Double large-flowering mixed. Extra choice..... 15</p> <p>Pink Beauty. Large single flowers of pure pink..... 15</p> <p>Scarlet Beauty. Large single scarlet flowers..... 15</p> <p>Harlequin. Large flowers of several colors produced on one plant. Some heads will be all crimson, others all pink, white, etc., but usually florets of different colors will be borne in one head..... 15</p> <p>TRITOMA UVARIA. "Red Hot Poker Plant." Splendid hardy perennial plants, for clumps on lawn or among shrubbery, where the tall spikes of orange red flowers make an effective display from August until November. 4 to 5 feet..... 10</p> <p>New Hybrid Tritomas. Showy, hardy plants, producing the brightest flowers of the autumn garden. They grow from seed and flower well the second year commencing in May and continuing through the summer and fall. They range in color through shades of yellow to orange and from salmon-pink, coral red, etc., to crimson. The plants vary in height from 18 inches to 6 feet..... 25</p> <p>PANSY-VIOLETS, Tufted or Bedding. (<i>Viola cornuta grandiflora hybrida</i>.) Pansy-like blossoms, 2 to 2½ inches across, of great substance and brilliant colors. The plants are hardy, forming tufted clumps, with myriads of flowers from spring until cold weather. Many are scented. Mixed colors..... 15</p> <p>WALL FLOWER. These perennials make nice bushy plants, 1½ feet high, bearing in the spring long spikes of fragrant flowers of various colors, crimson, purple, yellow apricot, mahogany, pink, etc.</p> <p>Large Double. Mixed colors..... 15</p> <p>Large Single. Mixed colors..... 10</p> <p>Collection of 6 separate Double Wall Flowers..... 50</p> <p>WISTARIA, Chinese. Of luxuriant and rapid growth, bearing in the spring immense panicles of flowers produced in great profusion, 75 feet. Blue..... 10</p> |
|--|--|

New Giant ^{Early Flowering} Spencer Sweet Peas.

Bloom 4 Weeks Earlier than the Late Spencers, and Under Congenial Conditions Flower Continuously for 4 months.

The plants of this new race are of strong constitution, vigorous growth, profuse and bloom continuous for about four months, grown under congenial conditions. Grown in the open ground they begin flowering in about 106 days from seed sowing or fully four weeks sooner than late flowering Sweet Peas sown at the same time, and they continue to flower in profusion for fully 4 months. It is predicted by Sweet Pea authorities that this race will supplant all other early and late flowering Sweet Peas for winter flowering under glass, and also for open ground culture in our Southern States—sown preferably in fall or winter. Condensed cultural instructions for both garden culture under northern and southern conditions and for winter flowering under glass are given in Henderson's leaflet "How to Grow Sweet Peas to Perfection" free to customers.

VARIETIES OF NEW GIANT EARLY FLOWERING SPENCER SWEET PEAS	Per Pkt.	Per Oz.
Early Morning Star. Deep orange-scarlet or flame color with rich orange-pink wings	.25	1.25
Early Song Bird. A soft shade of pale pink similar to the late varieties "Florence Morse" and "Lady Evelyn Eyre"	.25	1.25
Early Melody. A deep shade of rose pink. Closely resembling the late flowering "Countess Spencer"	.25	1.25
Early Spring Maid. An exquisite light cream-pink that is a soft pink over a cream ground color	.25	1.25
Early Snowflake. Pure white and the best white early flowering white seeded Spencer	.25	1.25
Early Heather Bell. A rich mauve-lavender	.25	1.25
Early Red Spencer. A rich bright crimson, similar in coloring, form, and size of flower to King Edward Spencer	.15	1.00
Early Shell Pink Spencer. Charming shell-pink of a little warmer tone than Countess Spencer; very large waved flowers	.15	1.00
Early Apricot Pink Spencer. A rich apricot pink or salmon colored flower; large long stemmed flowers	.15	1.00
Early Rose Spencer. Bright carmine-rose, similar in coloring, size and form of flower to John Ingman	.15	1.00
Early White Spencer. White seeded, large waved pure white flowers	.15	1.00
Early Duplex White Spencer. Black seeded, pure white waved flowers, many of which come double	.15	1.00
Early Lavender Pink Spencer. Large waved flowers of exquisite pinkish lavender	.15	1.00
Early Flowering Spencer Mixed	.15	1.00

"YARRAWA."

This variety from Australia has proven its adaptability to American conditions. In our trials it commenced flowering freely two weeks before other large waved Sweet Peas and three to four weeks earlier than some varieties, all given the same cultural treatment, and "Yarrowa" continued in flower, holding its large size and phenomenal floriferousness for weeks after all other Sweet Peas had passed their best. The flowers are large of round waved Spencer form and colored bright rose pink with lighter pink wings. 15 1.00

Giant Spencer Sweet Peas.

Henderson's Packets of Named Sweet Peas contain 40 to 50 seeds (except those noted)	PRICE	
	Pkt.	Oz.
Afterglow. Banner, rosy-amethyst tinted ultramarine-violet at base; wings, peacock and electric blues	10c.	25c.
America Spencer (Mrs. Wilcox; Yankee). Striped and flaked brilliant carmine-red over white; very large	10c.	25c.
Apple Blossom Spencer (Arthur Unwin; Colleen). Banner bright rose color; wings creamy-blush; a very robust, profuse and large flowering "Bicolor"	10c.	25c.
Asta Ohn (Masterpiece; Mrs. Charles Foster). An exquisite rosy-lavender; flowers large and well waved	10c.	25c.
Aurora Spencer (Peter Blair). Strongly flaked and striped bright orange-rose on white; large waved flowers	10c.	25c.

Giant Spencer Sweet Peas—Continued.

Henderson's Packets of Named Sweet Peas contain 40 to 50 seeds (except those specially noted)	PRICE	
	Pkt.	Oz.
Captain of the Blues Spencer (Waverly Spencer; Mrs. Walter Wright Spencer). Banner maroon-purple; wings magenta-purple; very large flowers	10c.	25c.
Charm (Agricola). Very daintily colored blush-white, flushed with rosy-lilac	10c.	25c.
Clara Curtis (Isobel Malcolm; Paradise Cream, etc). The best primrose-yellow	10c.	25c.
Constance Hinton. A fine, large, dark seeded, white sometimes flushed when opening. (30 seeds to pkt.)	10c.	50c.
Constance Oliver (Holdfast Beauty; Nell Gwynne). Rich, bright "cream-pink"; vigorous grower	10c.	25c.
Countess Spencer (Enchantress; Pink Pearl). A re-selected strain of this grand original "pink Spencer"	10c.	25c.
Dainty Spencer (Elsie Herbert; E. J. Deal; Picotee). Blush-white; distinctly picotee edged with carmine-rose	10c.	25c.
Dazzler (Edna Unwin; Prince of Orange; Kitty Clive). Banner glowing cerise-orange; wings rose-orange; very profuse	10c.	25c.
Edith Taylor (Mrs. Jessopp). Extra fine flowers of rich salmon-rose or cerise; a very lively warm color	10c.	35c.
Empress Eugenie (Improved Juanita Spencer). The latest and best "lavender striped"; very light blue and lavender flakes and stripes on silvery-white	10c.	30c.
Ethel Roosevelt. Large creamy-buff colored flowers flushed and flaked with pale rose-pink	10c.	25c.
Etta Dyke (White Spencer; Purity; Freda; Paradise White; Money-maker, etc.) A superior strain of "White Spencer" larger, whiter and better frilled	10c.	25c.
Fiery Cross. Fiery orange-scarlet—fine large waved flowers that do not sunburn. (Pkt. of 30 seeds)	10c.	50c.
Flora Norton Spencer (Kathleen MacGowan; Anglian Blue; Zephyr). Beautiful azure or pale blue flowers of medium size but profusely produced	10c.	25c.
Florence Morse (Bobby K.; Princess Victoria). Soft blush-pink flushed towards edge with deeper pink	10c.	25c.
George Herbert. Bright carmine-rose—large fine waved flowers	10c.	25c.
Helen Pierce Spencer. A ground color white rippled and penciled with bright blue	10c.	40c.
Jean Ireland. A grand new "yellow picotee." Coloring primrose-buff, edged and suffused carmine-rose	15c.	60c.
John Ingman (Mrs. Wm. King; Paradise Carmine) Rich carmine-rose, very large and fine waved form	10c.	25c.
King Edward Spencer (Crimson Giant; The King). Rich crimson-scarlet; large open, waved flowers	10c.	25c.
King Manoel. Rich glossy deep maroon, with purplish maroon wings; big wide open waved flowers	10c.	35c.
King White. Hailed as King of Whites, pure white large waved flowers	10c.	40c.
Lady Evelyn Eyre (Mrs. Hardcastle Sykes). Immense long-stemmed flowers of exquisite rosy-blush opening with a lemon flush	10c.	25c.
Marie Corelli (Marjorie Willis; Prince of Wales Spencer). Brilliant rose-red; fine, large beautifully waved flowers	10c.	25c.
Mrs. Routzahn (Juliet; Mrs. Henry Bell; Queen Mary). A favorite "cream-pink"; a blending of straw color, tinted blush-pink and rosy-apricot	10c.	25c.
Mrs. Townsend (Blue Picotee). The best picotee edged blue on white	10c.	35c.
Scarlet Emperor (George Stark; Scarlet Monarch; Scarlet Empress). A brilliant scarlet self of surpassing coloring, size, form, and profusion of bloom	10c.	35c.

Henderson's Superior Blend of Mixed Giant Spencer Sweet Peas.

An unsurpassable mixture. Composed exclusively of Giant Waved Spencer varieties, blended in proper proportions of bright colors and including several new hybrids of exquisite colors and shades, many of which, when sufficiently tried up, will be introduced as new-named varieties. Price, per pkt, (75 to 100 seeds), 10c.; three pkts., 25c.; per oz. (400 to 500 seeds), 20c.; per ½ lb., 60c., per lb., \$2.00 postpaid.

ANNOUNCEMENT

From present indications, due to war conditions, the chances of receiving any flowering bulbs from Europe this year are very remote. If we have assurance that they will arrive, we will issue our Autumn catalogue about Sept. 1st containing our offers of them. We can deliver all the Bulbs and Roots offered in this catalogue at the proper season for planting, as they are American grown.

CALLA LILIES.

If by Parcel Post add postage at Zone Rates on page 2 of cover. Weight 2 lbs. per doz. Single Bulbs mailed free.

Calla Aethopica, or Lily of the Nile. The old favorite White Calla Lily. We offer dry roots, as they are superior for winter-flowering. Extra large dormant roots, 30c. each, \$3.00 per doz.

The Godfrey Everblooming Calla. This new hybrid is a true ever-blooming variety. It produces quantities of large, snow-white, fragrant flowers. The plant is about 18 inches high. Dormant roots, 30c. each, \$3.00 per doz.

Yellow Calla, Elliottianna. The finest yellow Calla; large rich golden flowers 4 to 5 inches across at the mouth; leaves spotted white. Dormant roots, 50c. each, \$5.00 per doz.

Spotted Leaf Calla. (Richardia Alba Maculata.) Dark green leaves spotted with white; flowers similar to the old favorite white Calla, but smaller. Large bulbs, 15c. each, \$1.50 per doz.



CALLA LILIES

DIELYTRA, or "Bleeding Heart."

One of the most ornamental of hardy spring-flowering plants, with elegant green foliage and long drooping racemes of heart-shaped pink and white flowers. This is deemed one of the finest of all hardy garden plants. If potted in November, left outside till it has formed new roots and then brought into a gentle heat, it may be had in flower in the greenhouse in February and March. (Ready in November.)

Dielytra Spectabilis. Large roots. 20c. each; \$2.00 per doz. *If by Parcel Post add postage at Zone Rates on page 2 of cover. Packed weight 1/2 lb. each; 6 lbs. per doz.*

OXALIS.

Charming little half-trailing or bushy plants particularly adapted for pot culture and hanging baskets, the foliage alone is very attractive and when in flower they are exceedingly pretty.

Bermuda Buttercup. This is one of the finest winter-flowering plants for pot culture, it is a strong luxuriant grower, and the great profusion of bloom produced in uninterrupted abundance for weeks is astonishing. The flowers are of the purest bright buttercup yellow. 5c. each, 50c. per doz.; \$2.50 per 100. Mailed free.

Grand Duchess. California varieties of great beauty; of dwarf sturdy growth throwing large, exquisite flowers well above the foliage. Extremely free-flowering, from November till June. Price for either White, Pink, or Lavender, 5c. each; 50c. doz.; \$2.50 per 100.

Henderson's Superior Freesias.

If by Parcel Post add postage at Zone Rates on page 2 of cover. Weight 1 lb. per 100; dozens mailed free.

Freesias are most popular for pot culture, flowering in the winter and spring in the conservatory, or window garden; 6 to 8 bulbs should be planted in a 4-inch pot. They force readily and can be had in bloom by Christmas if desired; the flowers are produced 6 to 8 on stems about 9 inches high.

Purity. A distinct and greatly improved type producing large sprays of purest snow white flowers of immense size and deliciously fragrant; it is very free blooming and of great value for forcing for cut flowers. (See engraving.) Extra Size Bulbs, 40c. per doz.; \$2.75 per 100; \$25.00 per 1000.

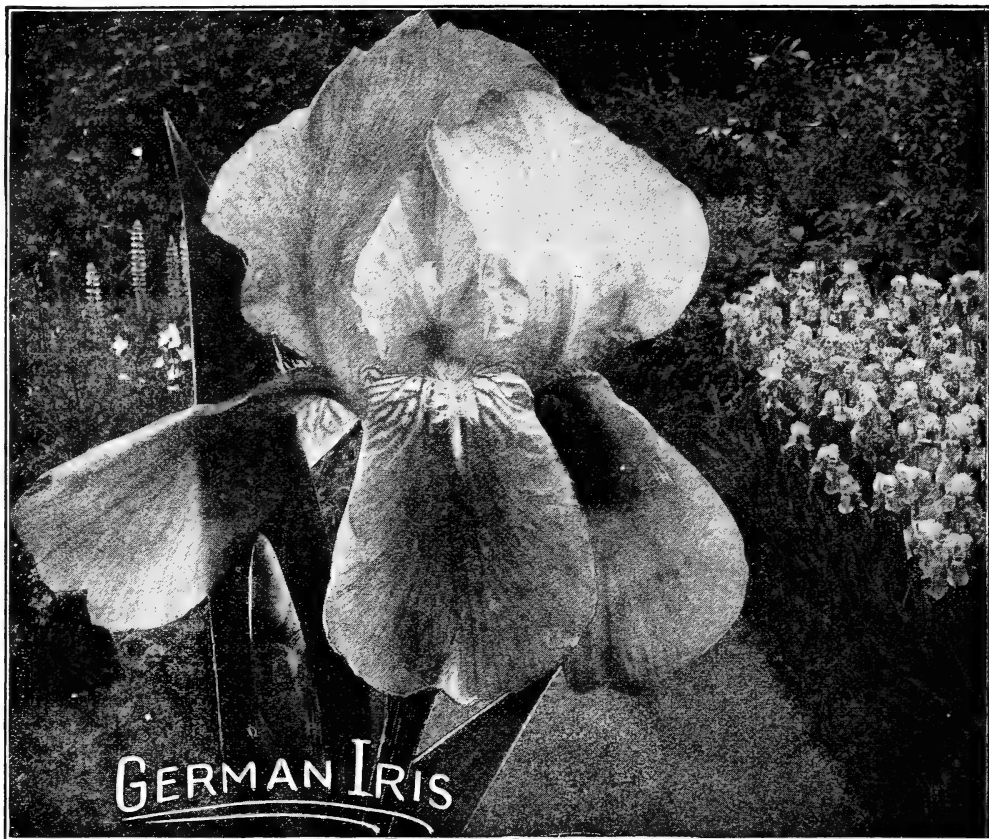
THE Fardel Colored Freesias.

These beautiful novelties are rapidly winning favor on account of their lovely and unique colorings viz., shades of pink, mauve, purple, violet, blue, yellow and orange. Very fragrant and free flowering. Each principal spike usually carries 7 to 9 flowers—while the side spikes of which each bulb produces several usually bear 5 to 6 flowers. Their culture differs in no way from that of the white Freesia. (Weight 1 lb. per 100.)

Mixed Hybrids. 12c. each; \$1.25 per doz.; \$8.00 per 100.



FREESIA PURITY



GERMAN IRIS. (*Iris Germanica*.)

Our collection contains many new and choice varieties, and we are confident they will prove revelations of beauty to Iris lovers. The roots should be divided and replanted every fourth year—in September as the plants are then dormant. The roots are ready for shipment from Sept. 15 to Nov. 15.

If wanted by Parcel Post add postage at Zone Rates on page 2 of cover. Packed Weight 2 lbs. per dozen. Single roots mailed free.

In addition to the colors described all varieties have golden beards.

	Each	Doz.	100		Each	Doz.	100
Admiral Togo. White tinged lavender, lightly edged purple.....	.12	1.25	9.00	Pallida Dalmatica. Extra large and fine, clear lavender.....	.25	2.50	18.00
Aurea. Pure rich chrome-yellow.....	.30	3.00	—	Pallida Speciosa. The great "purple flag;" dark blue with purple falls....	.20	2.00	15.00
Candicans. Light lavender, falls reddish purple.....	.12	1.25	9.00	Parkmani. Pure lemon, falls white, veined purple.....	.12	1.25	9.00
Flavescens. Pure light yellow throughout.....	.12	1.25	9.00	Pauline. Sky-blue; falls deeper blue....	.12	1.25	9.00
Florentina Alba. Ivory white tinged lilac (the Orris root of Commerce)....	.15	1.50	12.00	Perfection. Magnificent velvety mauve and deep violet.....	.35	3.50	—
Florentina Blue. Deep dark-blue.....	.15	1.50	12.00	Pres. Thiers. Smoky mauve penciled brown; falls purple marked white and brown at base.....	.12	1.25	9.00
Gertrude. Rich violet blue throughout.	.12	1.25	9.00	Princess Victoria Louise. Yellow, plum and cream.....	.35	3.50	—
Gracchus. Clear yellow; falls marked red and netted white.....	.15	1.50	12.00	Queen of May. Light rosy-wine. A rare and beautiful color.....	.20	2.00	15.00
Harlequin Melanais. White and violet blue distinctly blotched.....	.25	2.50	18.00	Rheine Nix. Snowy white; falls violet blue edged white; inner petals ivory; grand.....	.50	5.00	—
Herant. Bright blue, falls darker violet-blue.....	.12	1.25	9.00	Sappho. White; frilled and veined lilac.	.20	2.00	15.00
Her Majesty. Rose pink; falls crimson tinged.....	.25	2.50	18.00	Velveteen. Yellowish buff; falls intense plum purple.....	.12	1.25	9.00
L'African. Deep rosy mauve, falls darker veined white at base.....	.20	2.00	15.00	Mixed German Iris—including many beautiful varieties.....	.07	.75	6.00
Mad. Chereau. Pure white edged azure blue; falls lightly penciled blue.....	.12	1.25	9.00				
Mrs. H. Darwin. Pure white; falls slightly netted violet at base.....	.20	2.00	15.00				

JAPAN IRIS. (*Iris Kaempferi*.)

These comparatively new Iris are magnificent. They differ from the German group in possessing fibrous roots, much more slender parallel leaves, and flat expanded flowers, which are minus the crest of hair or beard seen on the German Iris.

The flowers average 8 to 10 inches across and flash like watered silk in the sunlight. The prevailing colors are white, crimson, lilac, lavender, violet and blue; each flower usually possessing several shades of its particular color, and a golden yellow blotch encircled by a halo of blue or violet at the base of the petals much intensifies the colorings. There are very few denizens of the flower garden that can compare with the Japan Iris for brilliancy, and it is worthy of a prominent place in every garden.

The Japan Iris besides being very free flowering is perfectly hardy and grows readily in almost any situation, either sunny or partially shady; but the soil should be moist and the plants well supplied with water when flowering. They bloom in great profusion in June and throughout July, coming into bloom when other Irises are faded and gone, which to most flower lovers is an additional recommendation. The Iris plant is usually propagated by division of the roots, and this should be done in the fall of the year, so that the plants may be well established before winter. After the ground freezes over a light mulch of litter or manure will prevent heaving of the ground and a consequent loss of plants. Ready September to November.

Price—for any of the following named varieties—30c. each; \$3.00 per doz. \$22.00 per 100.

If by Parcel Post add postage at Zone Rates on page 2 of cover. Packed weight, 3 lbs. per doz. Single roots mailed free.

LARGE DOUBLE OR 6 PETALLED VARIETIES.

- Blue Belle.** Blue, veined white, center, white edged blue.
- Delice.** Delicate lavender, shaded pink, yellow blotches.
- Gold Bound.** Pure white, large gold bands.
- Mahogany.** Deep mahogany red.
- Mount Fell.** White, lightly veined blue.
- Mount Hood.** Deep blue with yellow ribs
- Oriole.** Purplish crimson, veined purple.
- Othello.** Very dark blue.
- Prince Chamille de Rohan.** Dark purplish blue.
- Pyramid.** Light violet blue with light veins.

Spotted Beauty. Pale lavender, dotted purple.

Victor. Lilac white, pencilled blue.

LARGE SINGLE OR 3 PETALLED VARIETIES.

- Apollo.** Pure white, pink center.
- Blue Wing.** Deep indigo blue shaded purple, flaked white.
- Caprice.** Lavender blue, striped and mottled.
- H. V. Siebold.** Red amaranth, white center.
- Mirage.** Delicate pink, veined with purple.
- Plume.** Lavender, tinted with blue.
- Toledo.** Delicate lilac white.

Japan Iris. Seedlings. Containing many new and beautiful single and double varieties. 15c. each \$1.50 doz.; \$12.00 per 100.

If by Parcel Post add postage at Zone Rates on page 2 of cover. Packed weight 3 lbs. per doz. Single roots mailed free.

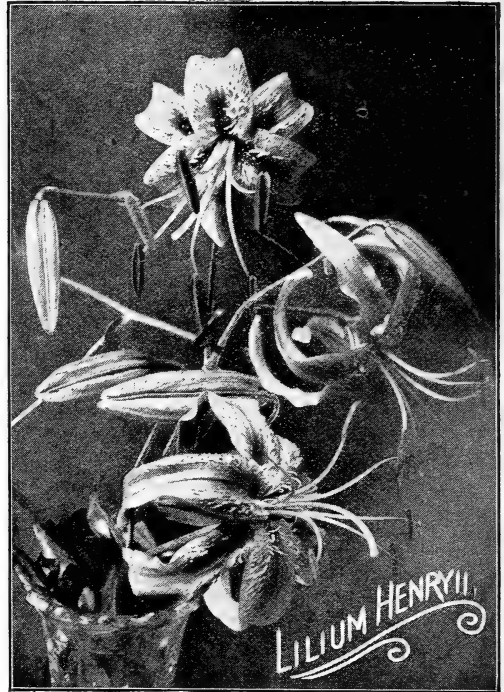
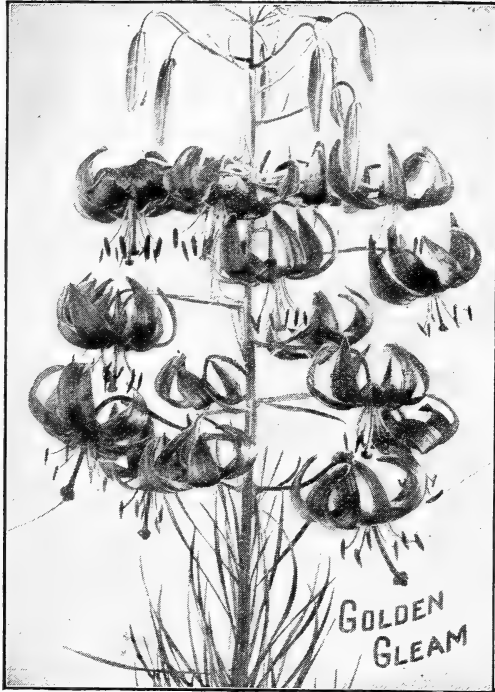


ANNOUNCEMENT

Owing to war conditions, the chances of receiving any flowering bulbs from Europe this year are very remote. If we have assurance that they will arrive, we will issue our Autumn catalogue about Sept. 1st, containing our offers of them. We can deliver all the bulbs and roots offered in this catalogue at the proper time for planting as they are American grown.

JAPAN IRIS

Improve your grounds by ^{making} permanent plantings this Fall of Henderson's Selected Japan and German Iris.



GENERAL LIST OF HARDY LILIES.

Most Lily Bulbs, being of late maturity, are not ready before October and November (the best time to plant them). Where the ground is liable to freeze up before the late lilies arrive it should be mulched with 6 or 8 inches of leaves or manure so that the bulbs may be planted on arrival.

Batemanni. Three to four feet high with 5 to 10 flowers of reddish orange color. Blooms in July or August. (Weight 1 lb. per doz.)	Each	Doz.		
	.30	3.00		
Canadense. Our native Canadian Lily. Bright yellow marked with copious spots of red; blooms in June and July. 2 to 3 feet high. (Mailed free.)	.18	1.75		
Canadense Flavum. A pure yellow selection of the above. (Mailed free.)	.18	1.75		
Canadense Rubrum. Crimson with dark spots. (Mailed free.)	.18	1.75		
Davuricum. A Siberian lily; bright scarlet flowers dotted black, height 2 to 3 feet.	.25	2.50		
Davuricum, Pure Yellow. A pure yellow variety of above. (Mailed free.)	.30	3.00		
Elegans Erectum Robustum. Flowers large, erect and borne in clusters; orange, spotted maroon; 1½ feet, blooms in June and July. (Mailed free.)	.18	1.75		
Elegans Leonard Joerg. Rich apricot spotted. (Mailed free.)	.20	2.00		
Golden Gleam. This new yellow sport of L. Tenuifolium resembles its parent in habit of growth, freedom of bloom, hardiness and ease of culture—excepting that the flowers are of pure golden yellow and very beautiful; height 18 in. (Mailed free.)	.50	5.00		
Hansoni. (The True Japanese Yellow Martagon.) This is one of the best of the Martagon group, unsurpassed in vigor of growth and beauty. The flowers are large of a bright yellow tinged orange and spotted maroon, with thick wax-like petals. Very robust and free. (Weight, 1 lb. per doz.)	.75	7.50		
Henry. (The Yellow Speciosum.) A new and very beautiful Lily from China. It is very hardy, a strong healthy grower, and one of the best Lilies for garden culture. The flower stalks 3 to 5 feet high, carry 5 to 8 large flowers each. The color; a rich apricot-yellow, lightly spotted with brown, and the shape and size of the flowers has suggested the name "Yellow Speciosum." (Weight 3 lbs. per doz.)	.75	7.50		
Myriophyllum. A new lily from China. It is absolutely hardy, a good doer, and excellent for forcing. It has been predicted that this will become the Easter Lily of the future. The flowers are white, slightly suffused with pink and with a beautiful tint of canary yellow at the throat. It is delightfully perfumed. Blooms out-of-doors early in July. 2 to 3 feet high, 4 to 7 flowers to a stem. (Weight, 3 lbs. per doz.)	1.50	15.00		
Superbum. (Turk's Cap Lily.) One of our native species. Grown in good, rich soil, it will produce upwards of 50 beautiful orange, tipped red, spotted flowers in a pyramidal cluster. 3 to 5 feet high. Blooms in July. (Mailed free.)	.18	1.75		
Tenuifolium. A miniature Lily having slender stems, 18 inches high, bearing 12 to 20 fiery-scarlet flowers. Easily grown in pots or in warm, dry border; early. Mailed free.	.18	1.75		
Tigrinum Splendens. (Improved Tiger Lily.) The grandest of the Tigers, black polished stem. Very large pyramids of flowers, orange red, spotted with black, 3 to 5 feet high. Blooms in August. (Weight, 1 lb. per doz.) \$10.00 per 100.	.18	1.75		
Tigrinum Flora Plena. (Double Tiger Lily.) This is a plant of stately habit, growing from 4 to 6 feet high, bearing an immense number of double bright orange-red flowers spotted with black. Blooms in August. (Weight, 1 lb. per doz.) \$10.00 per 100.	.15	1.50		
Umbellatum. One of the very best classes of the hardy garden Lilies; strong sturdy habit, growing from 2 to 3 feet high, having large showy flowers in clusters. They are of easy culture, flowering in June to July. The colors range through all shades of red from rose to blackish-crimson, yellow, buff, apricot, orange, etc., many being spotted.	.15	1.50		
Mixed colors. (Weight, 1½ lbs. per doz.)	.15	1.50		
Wallacei. This Lily is very floriferous, each bulb throwing up from 4 to 6 flower stems, each one of which is crowned with 8 to 10 beautiful upright blossoms of a delicate, bright apricot color. It is very perfect in form and a most delicate sort. Autumn flowering. (Weight, 1 lb. per doz.)	.18	1.75		

If by Parcel Post add postage at Zone Rates.

HENDERSON'S MODERN HERBACEOUS PEONIES.

A SELECTION FROM THE WORLD'S NEWEST AND BEST VARIETIES.

(See illustration opposite page 32.)

OUR DEPARTURE IN OFFERING PEONIES: It is the rule among most sellers of Peonies to send out divided roots, that is older plants cut into several 3 to 5 crowned roots. These of course can be sold at a lower price, but all Peony purchasers should know that normal flowers of maximum size will not be produced on these divided roots for two or three years. As most of our customers prefer to pay a little more and get older undivided roots therefore we are offering roots of 1, 2, and 3 years growth from the divided stage. These according to age, will give a greater quantity of bloom the succeeding summer if planted between September 1st and November 1st.

(PRICE EACH (purchaser paying expressage). For shipment September 1st to November 15th.

If by Parcel Post add postage at Zone Rates on page 2 of cover. Packed weight 1 yr. old, 1 lb.; 2 yr. old, 2 lbs.; 3 yr. old, 4 lbs.

WHITE

	1 year old	2 year old	3 year old
Duchesse De Nemours (<i>Calot</i>). Medium size, cup-shaped bloom, pure white, fragrant. Very vigorous, free bloomer. Early.....	\$.75	\$ 1.10	\$ 1.50
Alba Sulphurea (<i>Calot</i>). Large, globular, cream white with center slightly flecked red. Odor pleasant. Tall, erect. Midseason.....	.75	1.10	1.50
Couronne D'or (<i>Calot</i>). Large, flat, rose type, pure white tipped carmine. Medium tall, good, free bloomer. Late midseason.....	.75	1.10	1.50
Madame Crousse (<i>Calot</i>). Large, crown type, pure, white with faint crimson spots in center, fragrant, medium height. Late midseason.....	.75	1.10	1.50
Marie Lemoine (<i>Calot</i>). Large, very compact, rose type, pure white with cream white center. Odor pleasant. Medium height extra strong stems. Late.....	.75	1.10	1.50

WHITE SUFFUSED WITH YELLOW

La Roziere (<i>Crousse</i>). Pure white shading to cream in center. Large flat semi-double; medium height. Midseason.....	1.10	1.50	2.25
Prolifera Tricolor (<i>Lemon</i>). Medium size, very loose, anemone type, white tinted pink with sulphur yellow center, fragrant. Medium height. Late midseason.....	.75	1.10	1.50
Marie (<i>Calot</i>). Medium size, flat, compact, rose type, lilac white fading to milk white, fragrant. Very tall. Late.....	.75	1.10	1.50

WHITE WITH CRIMSON MARKINGS

Festiva Maxima (<i>Mielliez</i>). Very large, full rose type, pure white with crimson spots in center. Very tall strong, stiff stems. Early.....	.75	1.10	1.50
Madame De Verneville (<i>Crousse</i>). Very large, full perfect bomb-shaped bloom, pure white with center petals blush tipped carmine, fragrant. Extra strong growing plant, medium height. Midseason.....	.75	1.10	1.50
Avalanche (<i>Crousse</i>). Large, compact, crown type, creamy white flecked carmine, fragrant. Strong grower. Late midseason.....	1.10	1.50	2.25
La Tulipe (<i>Calot</i>). Large, flat rose type, lilac white with outer petals striped crimson fragrant. Very tall and strong grower. Late.....	.75	1.10	1.50

FLESH PINK FADING TO WHITE

Achille (<i>Calot</i>). Large, rose type bloom, shell pink fading to lilac white. Odor pleasant. Erect, tall. Early.....	.75	1.10	1.50
Alfred de Musset (<i>Crousse</i>). Milk white, blush center, crimson flecks. Large compact flower, medium height. Late.....	.75	1.00	1.50
Baroness Schroeder (<i>Kelway</i>). Flesh white fading to milk white. Globular flower, rose type; very fragrant. Tall, strong grower. Midseason.....	1.10	1.50	2.25
Charlemagne (<i>Crousse</i>). Lilac-white with blush center. Large globular flower; very compact; fragrant, strong growth. Late.....	.75	1.10	1.50
Octave Demay (<i>Calot</i>). Very large, flat, crown type, pale hydrangea pink with collar almost white, fragrant. Very dwarf plant with strong stout stems. Early.....	1.10	1.50	2.25
Madame Calot (<i>Mielliez</i>). Very large, rose type, very pale pink with center shaded darker silver tint, very fragrant. Tall, strong, upright. Midseason.....	.75	1.10	1.50
James Kelway (<i>Kelway</i>). Very large, loose, rose type, rosy white changing to milk white, tinged yellow at base of petals, fragrant. Strong grower, tall. Late midseason.....	1.10	1.50	2.25

SHELL PINK

La Perle (<i>Crousse</i>). Very light pink, blush center flecked carmine, very large, compact globular flower, fragrant; strong upright grower. Midseason.....	1.10	1.50	2.25
Rose d'Amour (<i>Calot</i>). Delicate flesh-pink.....	.75	1.10	1.50
Princess Ellen (<i>Terry</i>). Uniform pale lilac-pink. Medium size, crown type; fragrant, tall, medium strength. Late.....	1.10	1.50	2.25
Delicatissima . Large, rose type, very pale lilac rose. Odor pleasant. Very strong and vigorous. Midseason.....	.75	1.10	1.50
Albert Crousse (<i>Crousse</i>). Large, compact, bomb shape, very fresh salmon pink, fragrant. Erect, medium height. Late midseason.....	1.10	1.50	2.25

ROSE PINK

Lamartine (<i>Calot</i>). Very large, rose type, pale lilac rose with darker center, very sweet-scented. Tall. Early.....	1.10	1.50	2.25
Madame Ducl (<i>Mechin</i>). Large, perfect globe, bomb shape, light rose with silvery reflex, fragrant. Medium height, very strong grower. Early.....	.75	1.10	1.50
Mons. Jules Elie (<i>Crousse</i>). Very large, compact, high crown globular, pale lilac rose with silvery reflex, very fragrant. Tall, strong grower. Early.....	1.10	1.50	2.25
Dr. Brittonneau (<i>Verdier</i>). Medium to large, bomb shape, pale lilac rose with some crimson flecks. Odor pleasant. Vigorous grower. Midseason.....	.75	1.10	1.50

HENDERSON'S MODERN HERBACEOUS PEONIES—Continued.

(See illustration on opposite page.)

ROSE PINK—Continued

	1 year old	2 year old	3 year old
Souvenir De L'Exposition Universelle (<i>Calot</i>). Very large flat rose type, clear cherry pink with silvery reflex, fragrant. Medium height, free bloomer. Late midseason.....	.75	\$1.10	\$1.50
Mme. Chauny (<i>Calot</i>). Pale lilac-rose; center slightly darker. Medium size, very compact rose-shaped type, very free. Medium height. Midseason.....	.75	1.10	1.50
Livingstone (<i>Crousse</i>). Pale lilac-rose, silver tipped, carmine spots. Large compact rose type; tall, very strong stems. Late.....	.75	1.10	1.50

DARK PINK

General Bertrand (<i>Guerin</i>). Large, compact, globular, broad collar, dark pink with silvery center, fragrant. Tall, strong upright grower. Midseason.....	.75	1.10	1.50
Mme. Levon (<i>Calot</i>). Showy cherry-pink to aniline red, medium to large flower, very compact rose type, pleasing fragrance, strong growth. Late.....	.75	1.10	1.50
Naemie Demay (<i>Calot</i>). Dark pink, collar almost white. Very large, flat crown type, fragrant. Very dwarf plant with strong thick stems. Early.....	.75	1.10	1.50
Pulcherrima (<i>Guerin</i>). Pink with cream reflex flecked with crimson. Large bomb shape; fragrant, medium height, extra strong growth. Midseason.....	.75	1.10	1.50

TRICOLOR. SHOWING THREE DISTINCT COLORS

Madame Coste (<i>Calot</i>). Medium size, crown type, pale hydrangea pink with cream white collar, center flecked crimson. Medium height, very free bloomer. Early.....	.75	1.10	1.50
Jeanne d'Arc (<i>Calot</i>). Pale lilac-rose, cream-white center, pink crown. Medium to large, crown shape, fragrant, strong, early.....	.75	1.10	1.50

PINK TINTED WITH YELLOW OR RED

Alexander Dumas (<i>Guerin</i>). Large, crown shape, rose interspersed with salmon and chamois. Odor pleasant. Medium height, free bloomer. Early.....	.75	1.10	1.50
Compte De Paris (<i>Guerin</i>). Medium size, globular, crown type, light pink with amber white center flecked with crimson. Odor pleasant. Strong, vigorous grower. Midseason.....	.75	1.10	1.50
Duke of Clarence (<i>Kelway</i>). Violet-rose collar, cream white center flecked with crimson, crown type, very large, fragrant, tall and erect. Midseason.....	.75	1.10	1.50
L'Coquette (<i>Guerin</i>). Large, globular, high crown type, guards and crown of light pink with center rose white. Late midseason.....	.75	1.10	1.50

RED

Augustin D'Hour (<i>Calot</i>). Large, bomb-shaped, showy bloom of dark, brilliant solferino red with slight silvery reflex. Strong, vigorous grower, medium height. Early.....	1.10	1.50	2.25
Constant Devred (<i>Calot</i>). Very large and full rose type flower, dark carmine red, very fragrant, strong erect stems of medium height. Very late.....	1.10	1.50	2.25
Felix Crousse (<i>Crousse</i>). Medium to large, globular, typical bomb-shaped bloom of very brilliant red, fragrant. Strong vigorous grower, medium height. Midseason.....	.75	1.10	1.50
Marechal Vaillant (<i>Calot</i>). Large, compact, globular, rose-type bloom of aniline red. Very tall, coarse, stout stems. Late midseason.....	.75	1.10	1.50
Victorie de l'Alma (<i>Calot</i>). Purplish scarlet, medium size; rose type, medium height, good strong growth. Late midseason.....	.75	1.10	1.50

RED WITH PURPLISH REFLEX

Rubra Triumphans (<i>Guerin</i>). Large, loose, semi-double, very dark crimson. Medium height, strong grower. Early.....	.75	1.10	1.50
Mons. Paul Du Ribert (<i>Calot</i>). Large, bomb-shaped bloom of uniform carmine purple. Odor pleasant. Medium height.....	.75	1.10	1.50
Dr. Caillot (<i>Verdier</i>). Very large, rose type bloom of brilliant tyrian rose, fragrant. Good grower. Late midseason.....	.75	1.10	1.50
De Candolle (<i>Crousse</i>). Very large, full, rose type bloom of bright lilac purple, without odor. Medium height, strong, erect grower. Late.....	.75	1.10	1.50

CRIMSON

Prince Imperial (<i>Calot</i>). Large, well formed, brilliant scarlet bloom on long strong wiry stems; habit vigorous, erect and compact; very free bloomer. Late midseason.....	.75	1.10	1.50
Empereur Nicholas (<i>Crousse</i>). Medium size, loose, rose type bloom of dark carmine. Tall, strong grower. Midseason.....	.75	1.10	1.50
Delachei (<i>Delache</i>). Medium size, fairly compact, rose type bloom of violet crimson. Strong, vigorous, erect grower. Late midseason.....	.75	1.10	1.50
Louis Van Houtte (<i>Delache</i>). Large, semi-double, loose, very dark red. Medium height, compact bush. Late.....	.75	1.10	1.50

DARK RED, GARNET, ETC.

Adolph Rousseau (<i>Dessert and Mechin</i>). Purplish garnet, one of the darkest, very large, semi-double, very tall. Early.....	1.50	3.00	4.50
Armandine Mechin . Violet-crimson, very dark, large, fairly compact, rather flat; spreading growth. Midseason.....	1.10	1.50	2.25
Francois Ortegat (<i>Parmentier</i>). Dark amaranth-red. Large rose type; loose. Medium height. Midseason.....	.75		
Pierre Dessert (<i>Dessert and Mechin</i>). Very large, medium compact, rose type bloom of dark purplish crimson. Tall grower. Midseason.....	1.10	1.50	2.25
Raphael (<i>Mechin</i>). Dark purple-garnet. Medium size, globular, loose, semi-rose type; dwarf plant; very free. Early.....	1.10	1.50	2.25

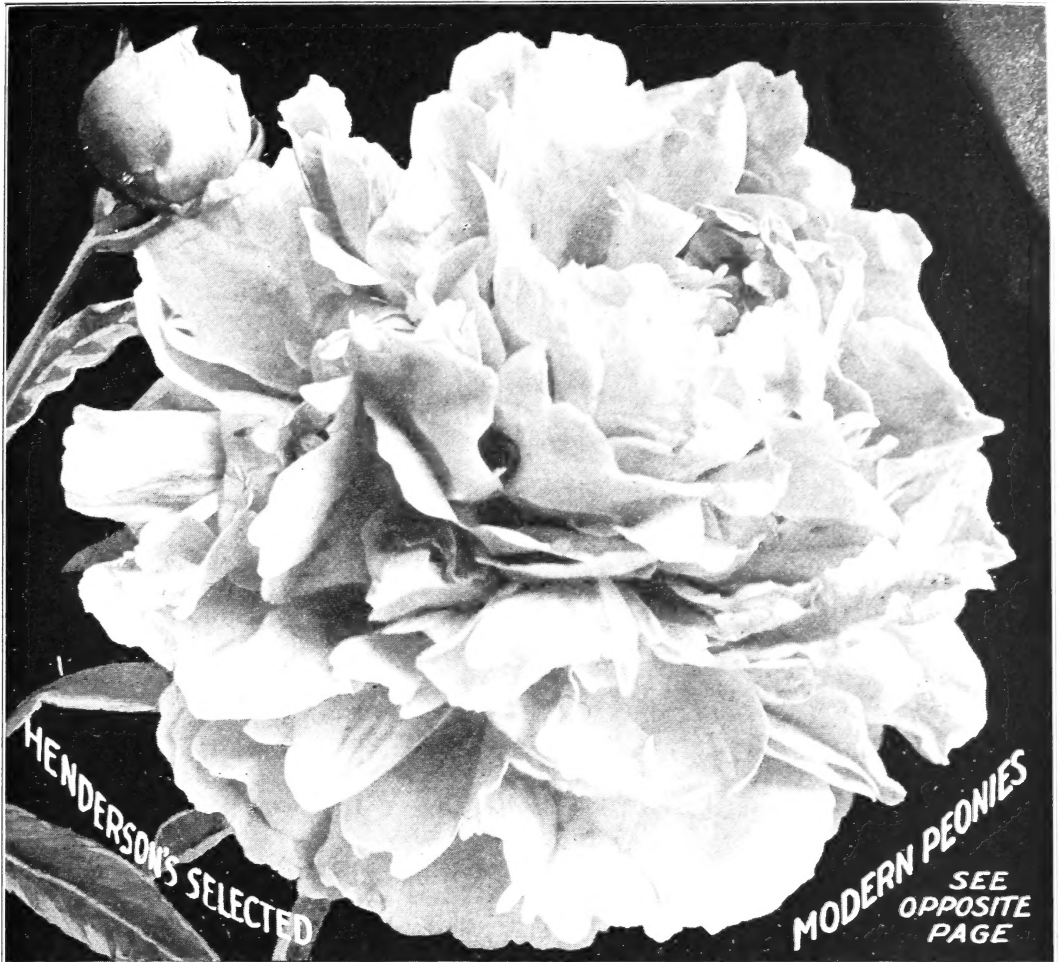
MIXED PEONIES and PEONIES TO COLOR.—Without Names. We offer these only in strong 3 to 5 crown divided roots at 25c. ea.; \$2.50 per doz., \$18.00 per 100. Weight $\frac{1}{2}$ lb. ea., 5 lbs. per doz.

Double White

Double Crimson

Double Rose Pink

Double Mixed Colors



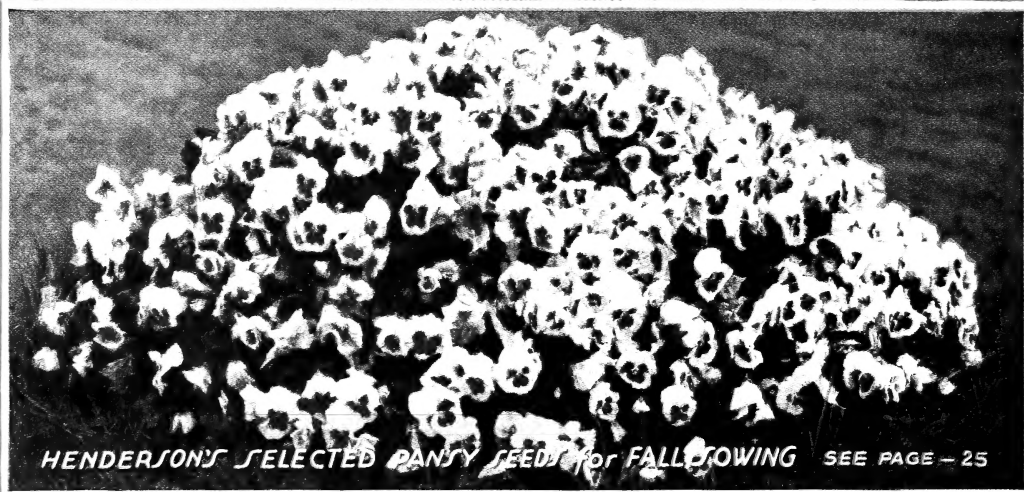


HENDERSON'S
SUPERB NEW HYBRID DELPHINIUMS SEE PAGE 22



DIGITALIS, HARDY CARNATIONS, Etc. SEE PAGE 23-24

HENDERSON'S PERENNIAL FLOWER SEEDS for SUMMER SOWING



HENDERSON'S SELECTED PANSY SEEDS for FALL SOWING SEE PAGE - 25