

Historic, archived document

Do not assume content reflects current scientific knowledge, policies, or practices.

FALL 1910 EDITION

HENDERSON'S WHOLESALE CATALOGUE.



SEEDS



IMPLEMENTS FERTILIZERS INSECTICIDES &c.
FOR MARKET GARDENERS AND TRUCKERS.



Peter Henderson & Co.

35 & 37 CORTLANDT ST., NEW YORK.

PETER HENDERSON & CO.

35 & 37 CORTLANDT STREET, NEW YORK.

IMPORTANT NOTICE.

The prices herein quoted on vegetable seeds are based on customers paying delivery charges when sent either by express or freight, but here is a plan whereby it rests with you whether we pay the freight or you. On purchases of vegetable seeds from this list to the value of \$10.00 and upwards, **WE WILL DELIVER FREE**, by freight or express at our option, to any railroad station in the United States, PROVIDED that at least half of the order is composed of small seeds, that is, any vegetable seeds in the List other than Peas, Beans, Corn, Onion Sets and Potatoes. If your order does not amount to \$10.00, you can avail yourself of this offer by combining your order with one or more of your neighbors. When seeds are desired by mail, postage must be added at the rate of 8c. per lb. On Peas, Beans and Corn, 10c. per quart. Packets, ounces and quarter pounds are mailed free. Half a pound will be supplied at pound rates, half a peck at peck rates; half a bushel at bushel rates. When packets are wanted and they are not here priced, we will furnish at Retail Catalogue prices, subject to a discount of twenty-five per cent.

....THIS....

MARKET GARDENERS' WHOLESALE CATALOGUE of Vegetable Seeds

Offers in more condensed form and at much lower prices the varieties of Vegetable Seeds, etc., both new and old which are to be found described in our retail catalogue of "Everything for the Garden," and those desiring fuller descriptions of the various sorts are referred to that catalogue. We were, we think, the first seed house to recognize the justice of giving Market Gardeners lower prices than those who simply grew for their own use or amusement, and as the tendency the last few years has been for lower prices on nearly all seeds, the prices given this season will be found satisfactory.

WHEN WE EXECUTE ORDERS.

Every order is filled immediately on arrival, or is acknowledged if, under rare circumstances, its shipment is likely to be delayed for a day or two. If goods, notification of shipment or acknowledgment of order is not received by the customer after a reasonable lapse of time, it may be assumed that the order has miscarried, or that the name or address was omitted from the order. We will, where notified of such a case, use our best efforts to trace it without delay.

We fill orders of all values from the smallest to the largest, and all receive the same careful and prompt attention.

About

PACKING AND SHIPPING.

No charge made.

We make no charge for packing, cases, baskets, packages or barrels, and pack as lightly as possible, consistent with safety, so as to reduce the cost of carriage. In fact, we assume extra expense in supplying light strong cases, and, where possible, we pack in baskets covered with waterproof covers, which greatly reduces weight.

Cloth Bags only we charge for, and these at cost, viz.: 1 peck, 10c.; $\frac{1}{2}$ bush., 12c.; 1 bush., 15c.; 2 bush., 20c. All grass seed bags, excepting bags for Timothy and Clover, are furnished free.

We make no charge for cartage or delivery of goods to any railroad station, steamship line or express office in New York City.

The safe arrival is guaranteed of all goods sent by express to any part of the United States or Canada. We ship plants at all seasons of the year, even in the coldest weather.

The advantage that we possess in shipping from New York is pronounced on account of the many different routes by which we can ship, and the consequent competition in speed and trans-

portation rates, thereby securing for our customers quick delivery at the lowest cost. In most instances customers can get their goods more quickly and cheaply from us than when ordered nearer home.

HOW BEST TO ORDER.

By writing out your order on the order sheet which accompanies this catalogue you will greatly facilitate our work. When goods are ordered from both seed and greenhouse establishments, we always combine the orders where practicable, and make one shipment.

Be sure to sign your name and give your address. Many orders reach us lacking either or both; customers when writing about unsigned orders will aid us in identification by mentioning some of the articles ordered.

Give full shipping instructions on each and every order you send. To avoid chance of error, never write letters on the same sheet as your order.

HOW BEST TO REMIT.

Remittances should be made either in the form of an Express Money Order, P. O. Money Order, Bank Draft or Registered Letter.

Customers can also shop by express, as all express companies have purchasing departments in all their offices. If you wish to order goods from us to be sent by express, ask for a Purchasing Order Blank at any express office and it will be supplied and forwarded without charge other than usual rates for returning goods.

If goods are wanted C. O. D., 25 per cent. of the amount must accompany the order. Compliance with this will avoid delay in filling order.

Orders from unknown correspondents, not accompanied by a remittance, should send New York City reference to save delay.

PETER HENDERSON & CO.,
35 & 37 Cortlandt Street, New York.

PETER HENDERSON & CO., give no warranty, express or implied, as to description, quality, productiveness, or any other matter of any Seeds, Bulbs, or Plants, they send out, and they will not be in any way responsible for the crop. If the purchaser does not accept the goods on these terms they are at once to be returned.

MARKET GARDENERS' ORDER SHEET.

PETER HENDERSON & CO., 35 & 37 Gortlandt St., NEW YORK.

SEND BY

State if wanted by Mail; Express [and Company]; Freight [and Route]; Steamer [and Line].

Date 1910

AMOUNT ENCLOSED

To (Name)

P. O. Box, Street or Rural Delivery

\$ (State whether Cash, Draft, P. O. Order, Express Money Order or Stamps.)
(If goods are wanted by express, C. O. D., 25 per cent of the amount must accompany the order.)

Post Office

RECORDED

and entered for following Catalogues.

County _____; State _____

R _____ and _____

Station or Exp. Office

(Only if different from P. O.)

by _____

IMPORTANT NOTICE.—The prices herein quoted on vegetable seeds are based on customers paying delivery charges when sent either by express or freight, but here is a plan whereby it rests with you whether *WE* pay the freight or *YOU*. If you send the order to us direct *WE WILL, on purchases of vegetable seeds from this list to the value of \$10.00 and upwards, DELIVER FREE by freight or express, at our option, to any railroad station in the United States, PROVIDED that at least half of the order is composed of small seeds*—that is, any vegetable seeds in the list other than Peas, Beans, Corn, Onion Sets and Potatoes. If your own order does not amount to \$10.00 you can avail yourself of this offer by combining your order with one or more of your neighbors. **WHEN SEEDS ARE DESIRED BY MAIL**, postage must be added at the rate of 8c. per lb. On Peas, Beans, and Corn, 10c. per quart. Packets, ounces and quarter pounds are **mailed free**. Half pounds will be supplied at pound rates; half pecks at peck rates; half bushels at bushel rates. We allow 25% off packet prices, but prices of all other quantities are not

QUANTITY.	ARTICLES.	PRICE.

HENDERSON'S SUPERIOR VEGETABLE SEEDS

IMPORTANT NOTICE.

HENDERSON'S SUPERIOR SEEDS, to be genuine, must be purchased from us direct. We were obliged to discontinue distributing our seeds through storekeepers to protect many customers who were having other seeds foisted upon them as "Henderson's." As there are now no "middleman's" profits to protect we are able to supply you direct at lower prices than ever.



HENDERSON'S "PALMETTO" ASPARAGUS.

Palmetto Asparagus Roots.

(Ready in November for the South, in March and April for the North.)

The Palmetto is much earlier, is a better yielder and is more even and regular in its growth than Conover's Colossal. The Palmetto has now been planted in all parts of the country, and the reports prove that it is equally well adapted for all sections, North and South, although it was originally a variety of southern origin. Its quality is even better than the Colossal. (See cut.)

Price of two-year-old roots, \$1.00 per 100, \$6.00 per 1000 (500 at 1000 rates).

Conover's Colossal Asparagus Roots.

Price of two-year-old roots, 75c. per 100, \$4.50 per 1000. (500 at 1000 rates.) (For Asparagus Seed, see page 9.)

Egyptian Beet.

This variety has been grown for a great many years and has successfully held its place as the best all round early sort. Appreciating the importance of purity of stock, we have been more than usually careful to save seed from the finest roots only.

Roots flat, dark outer color; flesh rich, dark crimson. Though tops are short, its upright slim habit makes it one of the easiest to bunch. No sort is more attractive in appearance. Our stock is admirably selected to shape and color of roots and evenness of tops. 15c. $\frac{1}{4}$ lb.; 50c. lb.; (25 lb. lots 45c. lb.).

Crosby's Egyptian Beet.

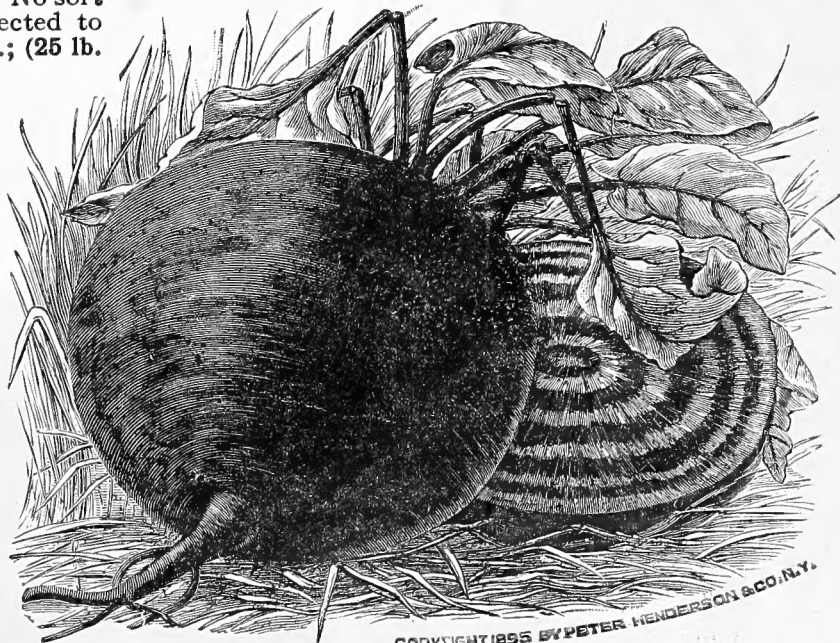
An excellent first early variety, making marketable roots before any other sort. It is rounder in shape than the old Egyptian and roots are a little larger though not so dark or uniform in color of flesh. It is an excellent variety, and is very largely used in all sections, particularly in the east. 20c. $\frac{1}{4}$ lb., 60c. lb. (25 lb. lots 55c. lb.)

Detroit Dark Red Beet.

Though not a new variety, we have found by repeated trials that it is fine in every respect. It has proven to be very valuable for Market Gardeners' use, because of its wonderful uniformity in character. Our cut gives a good idea of its shape; it is medium in size, always smooth and very free from small roots. The tops are 18 inches in height and of most attractive color. The flesh is tender, fine grained, and remains so long after many sorts have become woody. It is admirable for early or late marketing, whether in bunches or otherwise; it always finds a ready sale. (See cut.) 20c. $\frac{1}{4}$ lb., 65c. lb.; 25 lb. lots, 60c. lb.

ECLIPSE BEET.

This popular variety follows immediately after Egyptian in season, has equally small tops, and being almost round in shape, makes a very attractive bunch. We have a finely selected stock which matures very uniformly, grown especially to meet the requirements of the Market Gardener, and can be thoroughly relied on for main crop. 15c. $\frac{1}{4}$ lb., 50c. lb. (25 lb. lots, 45c. lb.)



COPYRIGHT 1895 BY PETER HENDERSON & CO. N.Y.

DETROIT DARK RED BEET.

BEANS,
Dwarf or Bush
GREEN PODDED.

HENDERSON'S
Earliest
Red Valentine

The Standard Green Podded Dwarf Snap Bean.

For years the standard green pod snap bean planted for the New York Markets. This is the earliest, hardiest and most uniform selection of Early Red Valentine Beans on the market. For these reasons it has become so popular among the truckers as to need no further description. (See cut.) 25c. qt., \$1.50 pk., \$5.25 bush.

HENDERSON'S
EARLIEST RED VALENTINE
BEAN.

COPYRIGHT 1891 BY PETER HENDERSON & CO.

REFUGEE, OR 1,000 TO 1.

An exceedingly productive variety with very dense foliage which makes it especially desirable for planting in the far South. The young pods are tender and of fine flavor while the color is distinct, being of a silvery green. In shape the pods are round and slim. This type of Bean is the most popular in the markets of all the large cities, and our strain of this variety was never finer or truer than it is to-day. 25c. qt., \$1.50 peck, \$5.50 bushel.

EXTRA EARLY REFUGEE.

This has become one of the standard green pod varieties for the market gardener. It is as early as the Red Valentine, being from ten days to two weeks earlier than Refugee or 1000 to 1. The plant resembles the Valentine. The pods are true round, curved, and darker in color than the refugee or 1000 to 1. It is enormously prolific, of vigorous growth, yielding good crops in unfavorable seasons. It will be found a good sort for those who ship long distances. (See cut.) 25c. qt., \$1.50 peck, \$5.50 bushel.

CURRIE'S RUST PROOF WAX

This is the earliest, hardiest and one of the most prolific of the flat wax pod sorts. The plants are robust and are furnished with an abundance of leaves, which afford ample protection to the pods, so that they are always of a clear wax color. They are long, straight and quite uniform in size, and always most attractive in appearance.

Price, 25c. qt., \$1.70 pk., \$6.00 bush.

DAVIS' KIDNEY WAX.

One of the very best varieties for the market gardener. Pods are 6 inches long, flat, generally straight, very attractive in color and holds up in shipping better than any other variety.

Price, 25c. qt., \$1.70 pk., \$6.00 bush.

WARDWELL'S DWARF KIDNEY WAX.

This variety is very hardy, and both pod and plants are more robust than usual for a Wax Bean. The shape of the beans is distinct from most other Wax varieties, being of a perfect kidney shape. It produces a heavy crop of purely Wax pods, which are very long, flat, showy, and not liable to rust or blister. Very early. 25c. qt., \$1.70 peck, \$6.00 bushel.



EXTRA EARLY REFUGEE BEAN.

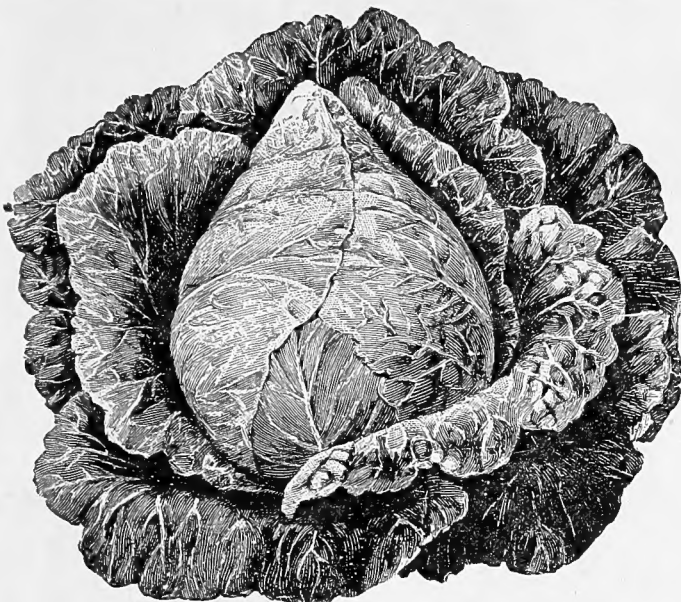
HENDERSON'S SELECTED EARLY JERSEY WAKEFIELD CABBAGE.

The first notoriety that this variety received was when our Mr. Peter Henderson extolled it in his book, "Gardening for Profit." That was some thirty years ago, and since then it has deservedly taken the first place as an early market variety. To most growers the merits and characteristics of this variety are so well-known as to hardly need repeating here but for the benefit of those who may not be familiar with it, we would say that it is universally admitted to be the earliest cabbage in cultivation. Among its merits may be mentioned its large head for such an early sort, small outside foliage, and its uniformity in producing a crop. The heads are pyramidal in shape, having a blunted or rounded peak. (See cut.) 35c. per oz., 90c. per $\frac{1}{4}$ lb., \$3.25 per lb. (25 lb. and up, \$3.00 per lb.)

THE "CHARLESTON" or Large Type of WAKEFIELD.

The Largest and Best "First Early" Cabbage.

Some of our customers in the South requested us to procure for them, if possible, a Cabbage which had all the characteristics of the Early Jersey Wakefield, but of a greater size. With this in view, we carefully selected from one of our best stocks of Wakefield a larger type, which is now fixed, and we offer it with confidence to truckers desiring a cabbage of this kind; this selection will average about 50 per cent. larger in size than the old type, and is only two or three days later. 30c. oz., 90c. $\frac{1}{4}$ lb., \$3.25 lb. (25 lb. and up, \$3.00 lb.)



HENDERSON'S EARLY JERSEY WAKEFIELD CABBAGE.

YOUNG'S ISLAND, S. C.
You have the greatest advertisement in the world right here and at Martin's Point, S. C., with Mr. Towles. Cabbage from seed supplied by—are heading up not as large as your single fist, 200 to 250 to the barrel, the farmers having to put 5 laths instead of four on the side of the crate to keep the cabbage from falling through the slats. Against this petty showing for—cabbage, I have planted right alongside the railroad track and spurs, 225 acres of your Large Type Wakefield, your Early Spring and Succession, making heads that will run 25 to 40 to the barrel crate.
W. C. GERATY.

HENDERSON'S EARLY SUMMER CABBAGE.

This peerless Cabbage was named and first offered for sale by us in 1874, and every year since we have used the utmost care in the selection of heads for seed purposes, and have so improved the variety that to-day we are selling a far better strain of the Early Summer than we sent out in the year of its introduction. This variety is about ten days later than the Jersey Wakefield, but being over double the size, it may be classed as the best second early Cabbage. 25c. oz., 80c. $\frac{1}{4}$ lb., \$2.75 lb.

HENDERSON'S EARLY SPRING CABBAGE.

"Earliest Flat Heading Variety."

"As Early as the Large Wakefield."

Beware of Many Spurious Varieties Sold as Early Spring.

Introduced by us in 1895 is now acknowledged to be the earliest flat-heading variety known. Its great value is its extreme earliness, coming in as it does with the large Wakefield, and at the same time producing heads but little smaller than our well known Early Summer. It is a sure solid header, always producing a crop of large uniform heads which seldom "burst." Its short stem, together with the few outside leaves, make it possible to be planted very close together. It is very extensively grown in all sections of the country, and is always pronounced a great success. Every trucker will do well to give this a thorough trial. Do not confound our Early Spring with many other so-called varieties sold by other seedsmen. The genuine can only be procured from us direct; we do not sell to dealers. (See cut.) 30c. oz., \$1.00 $\frac{1}{4}$ lb., \$3.50 lb.



HENDERSON'S EARLY SPRING CABBAGE.



HENDERSON'S SUCCESSION CABBAGE.

HENDERSON'S SUCCESSION CABBAGE.

"The Most Celebrated Second Early"

"The Grandest Cabbage in Existence"

This variety introduced by us several years ago has gained an unparalleled reputation as a second early and late. While it matures a little later than our Early Summer, it produces a solid head and a very uniform crop. We can say without exaggeration that it is the finest cabbage in existence to-day; whether for medium early, main crop or late use, it has no equal. It is so finely bred and so true to type that in a field of twenty acres every head appears alike.

It is a very sure header and seldom "bursts" or shoots to seed. It has been grown extensively for years by the most critical truckers, hence it is too well known to need an elaborate description. Our stock is very carefully grown from selected heads only, and will be found fully as good now as it has been in past years. (See cut.) 30c. oz., 90c. $\frac{1}{4}$ lb., \$3.25 lb.



COPYRIGHT 1897 BY PETER HENDERSON & CO.

HENDERSON'S FAMOUS SNOWBALL CAULIFLOWER,

A DELICIOUS
VEGETABLE.

BEYOND QUESTION

THE BEST CAULIFLOWER FOR (Either Early or Late, Family or Market Garden Forcing or Cold Frames.)

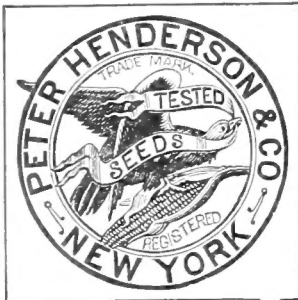
IT HEADS WHERE OTHERS FAIL.

HENDERSON'S SNOWBALL.

Those who have never succeeded before should grow

THE CROPS IT HAS PRODUCED!
HENDERSON'S EARLY SNOWBALL CAULIFLOWER

Has produced many a good crop since we first launched it upon the sea of popular favor, but it has also raised a crop of another kind, not originally contemplated by us. We refer to the swarm of imitators who have been tempted to offer various imitations of this famous variety. We wish further to say that we took the trouble five years ago to procure nearly a dozen samples of so-called Early Snowball Cauliflower from other seedsmen, which we tested and found that not one was true, and some grew nearly three feet high without any tendency to head.



BWARE OF "IMITATIONS."
We have always controlled Henderson's Early Snowball Cauliflower, any statement to the contrary notwithstanding, and unless the seed is bought directly from us, in packages sealed with our Trade-Mark, reproduced herewith, you do not get the genuine, as we do not supply it to dealers.

It is hardly necessary for us to describe this variety at all, as its name has now become a household word wherever this delicious vegetable is grown. Snowball Cauliflower is the standard everywhere for quality with the seedsman, the market gardener, and the amateur. While originally recommended and used as an early variety, it has not only supplanted all other sorts for early spring planting, but it has largely driven out the large late sorts for fall use, being much finer in quality, and the only Cauliflower that is absolutely certain to head when the conditions are right, forming a perfect snow-white head, averaging nine inches in diameter. HENDERSON'S EARLY SNOWBALL CAULIFLOWER is superior to all others. It is the earliest of all Cauliflowers. Its close-growing, compact habit enables one-third more to be planted on the same space of ground than can be done with any other variety. For forcing under glass during winter and spring, this Early Snowball variety is peculiarly well adapted, from its dwarf growth and short outer leaves, and for this purpose no other Cauliflower is now so largely grown. (See cut.)

\$3.00 oz., \$11.00 1/4 lb., \$44.00 lb.

"Please send me 2 lbs. of Henderson's Snowball Cauliflower as promptly as possible. I am a market gardener, and would like to say that I have several times tried other so-called 'Snowballs' alongside of yours, and while some of these samples had not a single specimen true to name, yours produced 100% good heads."

JAMES BARRATT, Winnipeg, Manitoba.

"From one ounce of your Snowball Cauliflower seed I raised 3,500 plants. I have tried Cauliflower seed from several seedsmen, but never have had any success except with the true Henderson Snowball."

ARTHUR L. MILLER, Edelia, Pa.

THIS MAN HAS GROWN

HENDERSON'S SNOWBALL AND OTHER EARLY SNOWBALLS.

"Henderson's Early Snowball Cauliflower, I am sure, is the best kind in existence, no matter how loud and strong this and that seed-house is praising theirs, claiming them as the best in the world. By my own experience, I know yours is far ahead of all others; yours is not only the earliest but the surest heading Cauliflower, while other much-lauded kinds were of no value."

A. KATZWINKEL, Market Gardener, Mendota, Ills.

IT HEADS WHERE OTHERS FAIL.



ARLINGTON WHITE SPINE CUCUMBER.

ARLINGTON WHITE SPINE CUCUMBER.

This is one of the best all round selections of the White Spine type, and has gained an enviable reputation wherever grown. It is shipped in enormous quantities to the markets of all the great cities; and always gives satisfactory returns to the grower. It has every good quality necessary to produce a handsome and uniform crop of good fruits. (See cut.) 10c. oz., 30c. $\frac{1}{4}$ lb., 90c. lb.

The "Henderson" Perfected White Spine Cucumber.

This is a variety of our own introduction, which we have been growing for several years. It is, as the name implies, a perfect White Spine Cucumber; nothing has ever equalled it in color, which remains with it even when quite old; the shape is uniform, clean cut and attractive. It has a vigorous vine, and produces an enormous crop with very few culls. 15c. oz., 45c. $\frac{1}{4}$ lb., \$1.40 lb.

Large Leaved Corn Salad or Fetticus.

We offer nothing but the hardy, large leaved strain, which is the only variety suitable for the Market Gardener. 10c. oz 20c. $\frac{1}{4}$ lb., 50c. lb., 25 lbs. and up, 45c. lb.

GREEN CURLED ENDIVE.

Our strain is the long standing type. It is large, hardy and practically all heart, requiring but little aid in blanching it. 15c. oz., 50c. $\frac{1}{4}$ lb., \$1.50 lb.

BROAD LEAVED BATAVIAN ENDIVE or ESCAROLLE.

Leaves large and broad, usually marketed without blanching. Is in great demand in all sections, especially by the French and Italians. 15c. oz., 50c. $\frac{1}{4}$ lb., \$1.50 lb.

This is the Time to Start...

HENDERSON'S SUPERIOR MUSHROOM SPAWN.

We shall be pleased to mail free to all purchasers of Spawn our leaflet on "Mushroom Culture," if requested.

Mushrooms produce a most profitable crop, when successfully grown, and the American market is the best in the world for this most delicious of foods.

The Spawn we offer is made specially for us three or four times each season, and is always fresh and in proper condition for planting.

ENGLISH. 10c. lb., 50 lbs. \$3.75, 100 lbs. \$7.00. (If by mail, add 8c. per lb. for postage.)

FRENCH VIRGIN MUSHROOM SPAWN is sold in compressed tablets measuring $3\frac{1}{2} \times 2\frac{1}{2} \times 1\frac{1}{2}$ inches, to be split into four portions, each portion to be planted ten to twelve inches apart.

Price of tablets, 10c. each, \$1.10 doz., \$7.50 per 100, including delivery



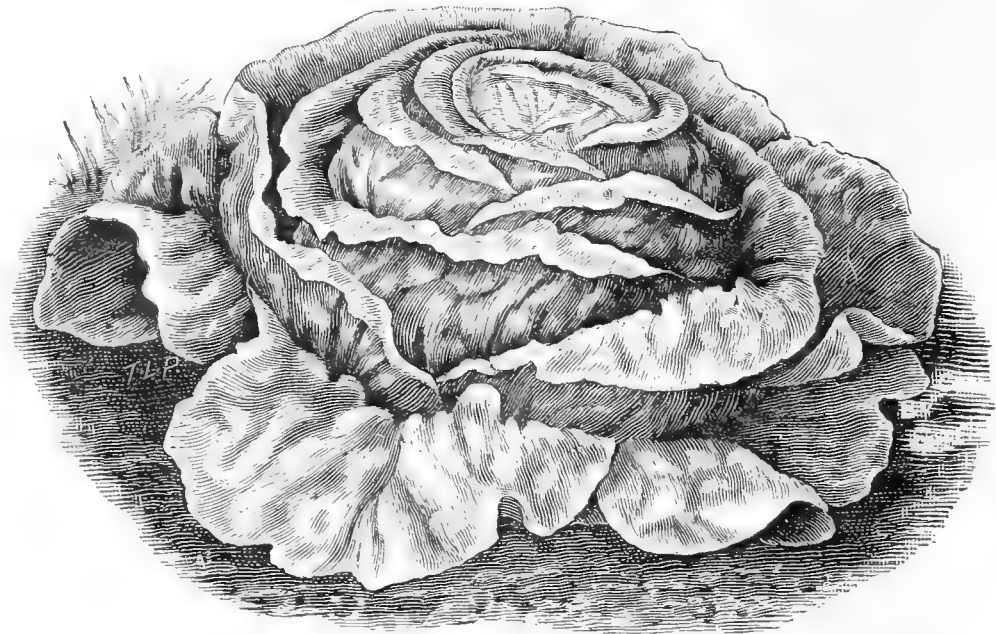
EGG PLANT, IMPROVED NEW YORK SPINELESS.

THE BEST EGG PLANT IMPROVED NEW YORK SPINELESS.

The New York Improved Egg Plant has been the standard variety for years, but this selection is vastly superior in every respect. The habit of the plant is low and branching, and is quite free from spines. It is extremely early. (See cut.) 40c. oz., \$1.25 $\frac{1}{4}$ lb., \$4.00 lb.

HENDERSON'S BIG BOSTON LETTUCE.

THIS popular variety was introduced by us a few years ago and to-day is better known and more generally grown than any other sort. It must not be confounded with "Boston Market," "Large Boston," etc. It is twice the size of Boston Market and altogether different in character. The head is large and attractive in appearance, and therefore always commands a ready sale at good prices. It is unsurpassed for growing in a low temperature, such as in cold frames for fall, winter or spring markets. In the southern states it is grown outside almost exclusively during the fall and winter months, owing to its ability to form, large solid marketable heads during great variations in temperature. Its ability to head in the cold autumn is marvellous. We do not recommend it for heading in July and August because it will not usually form salable heads in extreme hot weather. It is a perfect sort for growing in cold frames or houses of moderate temperature. It will not, however, stand quick forcing. We wish to warn our patrons that many inferior strains are being offered that are full of wild spreading plants that do not form heads. We were the introducers and use every means to keep our stock the best. (See cut.)



BIG BOSTON LETTUCE.

Mammoth Black Seeded Butter Lettuce. This is a very large pale green variety with broad, slightly undulated leaves, almost smooth. It is especially adapted to early spring and late fall heading—forming in these seasons fine solid heads requiring only about 30 heads to fill a barrel. It resists early frosts remarkably well and is grown in large quantities around New York and Eastern cities in the open ground in August for late Autumn. 15c. oz., 40c. $\frac{1}{4}$ lb., \$1.25 lb.

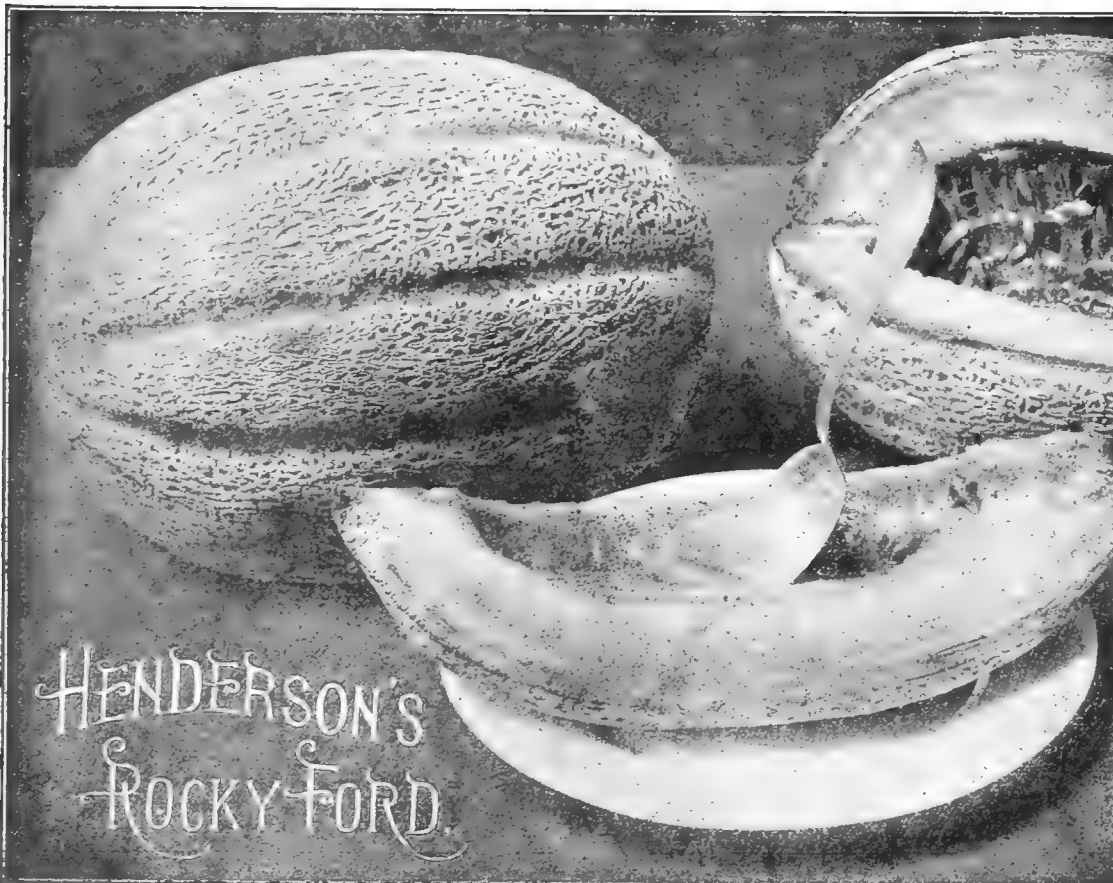
Salamander Lettuce. Extra Selected Market Gardener's Stock. This is one of the standard vegetables introduced by us. Since its introduction the demand for it has steadily increased until to-day it is one of the leading sorts grown by market gardeners. Its chief value is for summer heading, as it will produce better heads in hot weather than any other variety. It is also recommended for July planting so as to form heads in early autumn. 20c. oz., 50c. $\frac{1}{4}$ lb., \$1.50 lb.

Black-Seeded Simpson Lettuce. One of the best curled varieties for forcing or sowing outside. 15c. oz., 35c. $\frac{1}{4}$ lb., \$1.00 lb.

Boston Market Lettuce. Is well adapted for forcing in greenhouses and hotbeds. It grows very compact and forms fair-sized heads, slightly tinged with red on the edge of the leaves. It is also one of the best early varieties for outdoor use. 15c. oz., 35c. $\frac{1}{4}$ lb., \$1.00 lb.

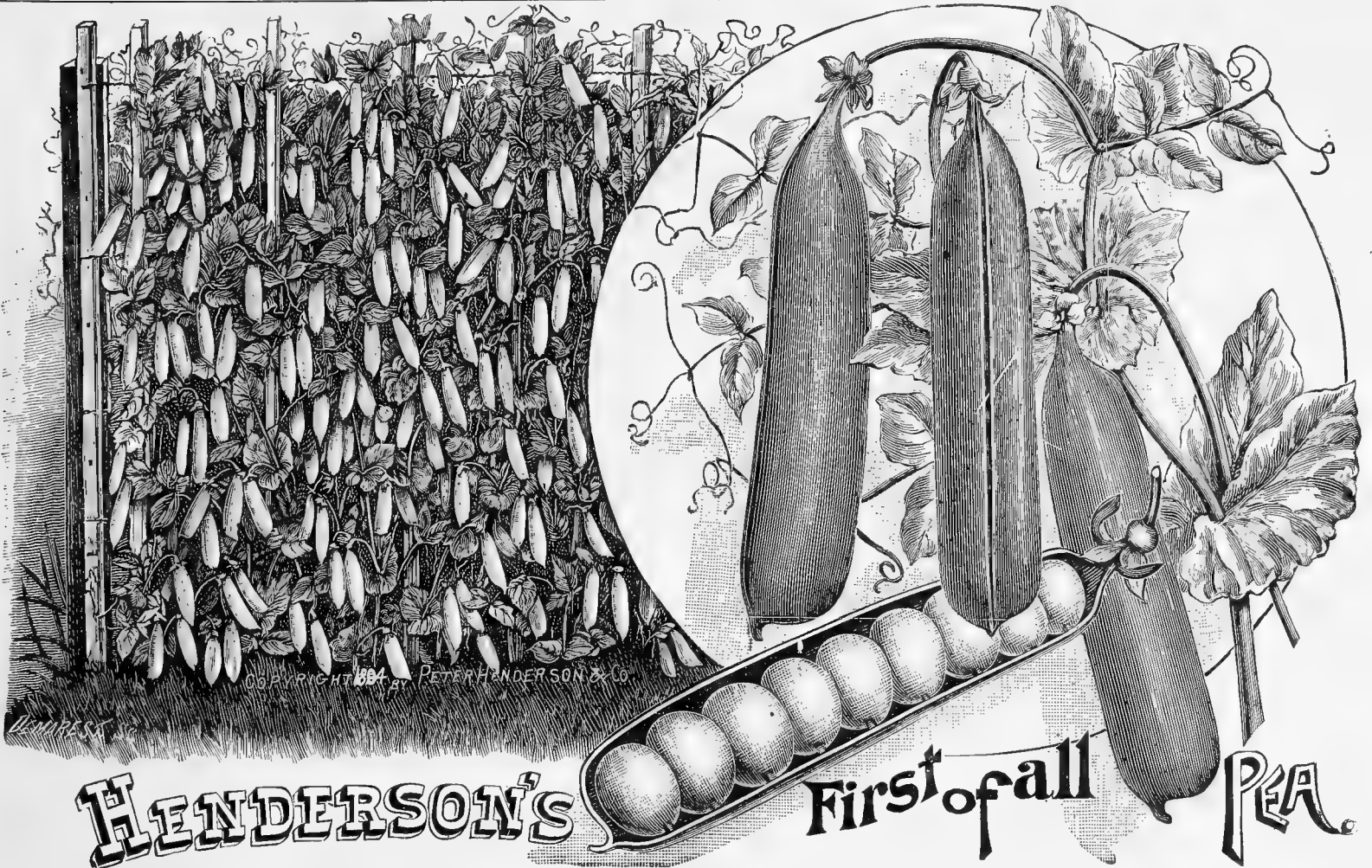
Grand Rapids Lettuce. The best "curled" variety for greenhouse forcing. It is of quick growth, rots but little and stands several days after being fit to cut. It grows upright, has yellowish green leaves and will stand shipping for long distances. 15c. oz., 40c. $\frac{1}{4}$ lb., \$1.25 lb.

HENDERSON'S GENUINE ROCKY FORD MUSK MELON.



A SWEET, LUSCIOUS MELON THAT
HAS BECOME WORLD-FAMOUS
FOR ITS CAPTIVATING FLAVOR.

"**ROCKY FORD**" has proven to be a most valuable Musk Melon; its size, shape and quality exactly suit melon epicures. It somewhat resembles the old "Netted Gem," but is more oval in shape. The vines are exceedingly healthy and vigorous, bearing an enormous quantity of fruits during the entire season. It is safe to say that no melon has ever come into the New York markets which has sold so readily and at such high prices as the "Rocky Ford," often to the exclusion of other varieties. The color of the skin is of a rich greenish-gold; the netting is prominent and light in color; appearance very attractive. The flesh is very deep, ripening clear to the rind, and it has an exceedingly small seed cavity. It is very sweet and luscious in flavor, and is entirely devoid of any stringy character. Our seed was specially grown for us by a careful grower at Rocky Ford, and is the best type of the genuine "Rocky Ford" Musk Melon. It has been used in many sections and is pronounced by melon growers a very superior strain. (See cut.) Price, 10c. oz., 25c. $\frac{1}{4}$ lb., 70c. lb. 25 lb. lots and up, 65c. lb.



THE TRUCKER'S FAVORITE.

HENDERSON'S FIRST OF ALL PEA.

THE FINEST FIRST EARLY EXTANT.
A HEAVY CROPPER.

THE MOST UNIFORM IN RIPENING.
A MONEY MAKER FOR THE TRUCKER.

Few vegetables have held their place in the public esteem for so many years as our **First of all Pea**. It stands to-day unrivalled, either as a first early or main crop pea; indeed we do not think we are wrong in claiming that it is used to a greater extent than any other variety in any of the seasons in which peas can be obtained. It is the only type of pea which can safely be used at all seasons, and there is none approaching it which can be used in such a variety of climes and over so great a latitude; it has grown with equal success in the coldest and warmest climates, apparently having the power to resist extreme climatic conditions possessed by no other type. Since we sent this out there have been many attempts at imitating it, but the enormous increase of sales gives silent testimony to the acknowledged superiority of **Henderson's First of All** over all would-be competitors, and it stands to-day a **money-maker for the trucker** and the delight of the amateur.

Its first important feature is its extreme earliness. It comes into bearing a few days ahead of any other variety, thus ensuring to the trucker the advantage of marketing his produce so much earlier than those who do not grow it. It is also **exceedingly productive**, the sketch which we here show being no stretch of the imagination, but was taken from a photograph of a crop which is by no means uncommon. The vines are vigorous and dwarf, never exceeding 2½ feet in height, so that no brushing or staking is necessary, though in private cultivation it is a decided help, and, of course, greatly economizes space. Another very important feature for the trucker is the fact that **the entire crop can be gathered at one picking**, and every trucker will realize at once the economy in labor in growing such a pea. Moreover, the stock which we are sending out to-day is superior, owing to constant and watchful selection by which we have been able to eliminate from it every undesirable feature, such as small double pods, irregularity in height, and weak spindling habit, which forms so large a part of the crop of many so-called First Earlys. (See cut.)

Price, in sealed bags, 30c. quart, \$2.25 peck, \$8.00 bush.

ALASKA PEA.

The earliest blue Pea. The dark green color of the pods makes it extremely desirable, as it can be carried long distances with out losing color, which quality combined with its earliness and uniformity of ripening, makes it a most desirable Pea for the southern market gardeners. Height, 2 ft. 30c. qt., \$2.00 peck, \$7.50 bush.

HENDERSON'S FAMOUS

PROSPERITY PEA.

The earliest large wrinkled or marrow Pea grown.

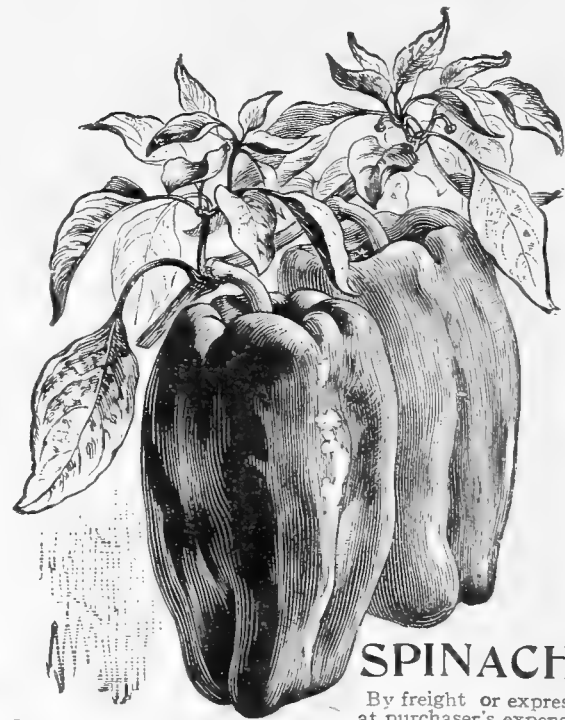
This extra early, large-podded wrinkled marrow Pea—introduced into America by us in 1897—has each year increased in popular favor. The distinctive merits of **Henderson's Prosperity Pea** over any other variety are its extreme earliness combined with its abundant production of immense pods, each filled with from 6 to 10 large, wrinkled marrow peas of the most delicious flavor. The vine of **Prosperity** is of vigorous, robust growth, about 2½ feet high, with luxuriant, healthy foliage; it bears uniformly large, handsome pods of large and luscious peas, and although it commences bearing so very early it continues for a long time. 40c. qt., \$3.00 pk., \$11.00 bush.

PEPPER.

RUBY KING. Is the largest and handsomest variety known. The fruits are often $4\frac{1}{2}$ to 6 inches long, and 9 to 12 inches in circumference. It is the most desirable sort to grow for Northern markets. (See cut.) 30c. oz., \$1.00 $\frac{1}{4}$ lb., \$3.00 lb.

SWEET MOUNTAIN OR MAMMOTH. Similar to the Bull Nose, but larger and milder in flavor. Used to make stuffed "Mango" pickles. 25c. oz., 75c. $\frac{1}{4}$ lb., \$2.50 lb.

LARGE BELL OR BULL NOSE. An early variety of mild flavor, a favorite for pickling and for use in the natural state. 25c. oz., 75c. $\frac{1}{4}$ lb., \$2.50 lb.



RUBY KING PEPPER

SPINACH

By freight or express at purchaser's expense
The Best Varieties for Fall Sowing

HENDERSON'S NORFOLK SAVOY LEAVED.

We wish to especially draw the attention of our patrons to our superior strain of Savoy Spinach. It is longer standing than the ordinary strains, is darker in color and is almost entirely free from the worthless wild smooth growing mixture so common in this variety. We do not hesitate to say that our strain is unexcelled when viewed from the market gardener's standpoint. (See cut.)

25 lbs. at 100 lb. rates.

16 c. lb., 100 lbs. \$14.00.

HENDERSON'S THICK-LEAVED. One of the best market sorts. It

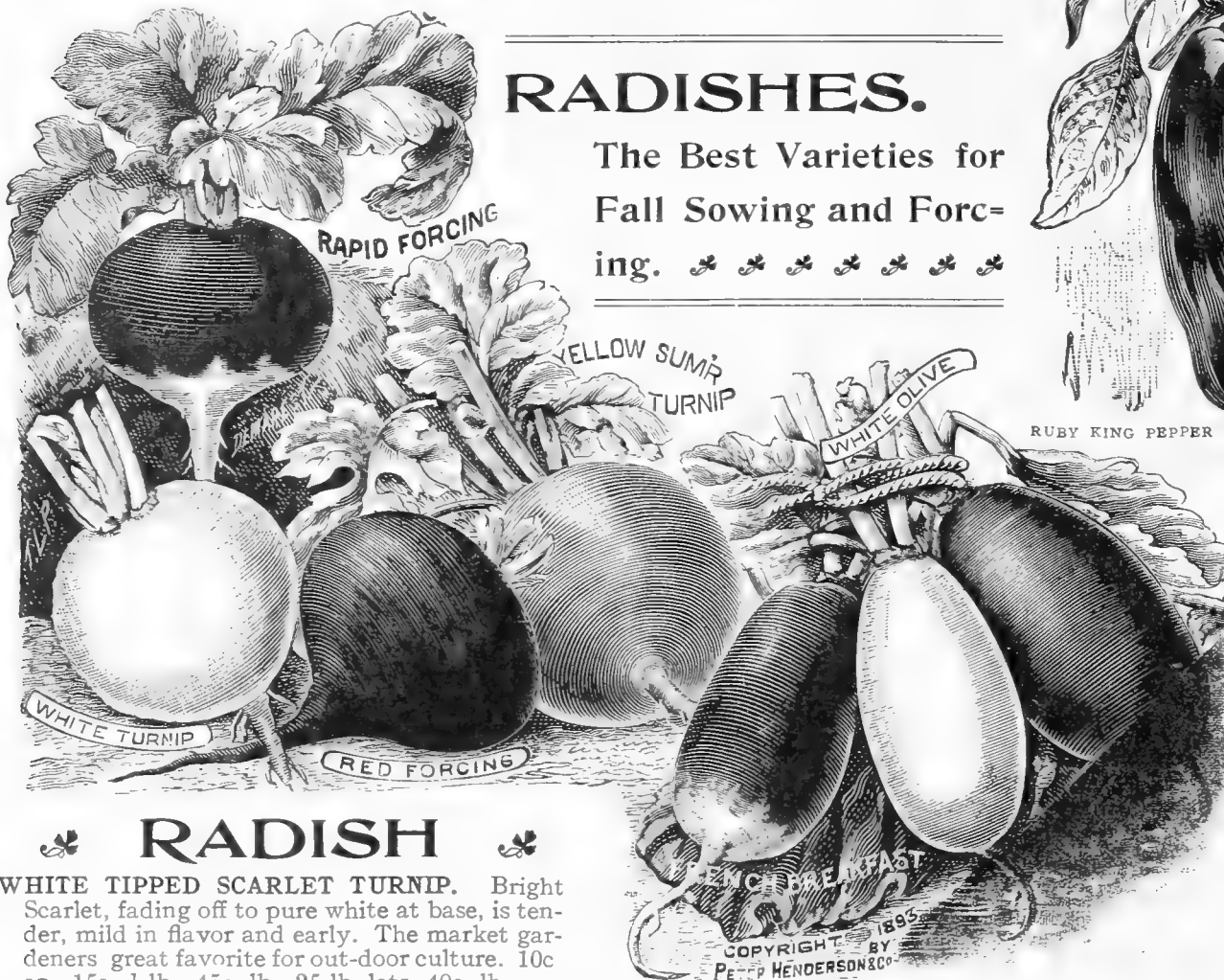
produces a large, thick, strong, green leaf somewhat crumpled, and possesses the valuable quality of standing a long time before running to seed. 25 lbs. at 100 lb. rates. 16c. lb., 100 lbs. \$14.00



HENDERSON'S NORFOLK SAVOY-LEAVED SPINACH

RADISHES.

The Best Varieties for
Fall Sowing and Forcing. * * * * *



RADISH

WHITE TIPPED SCARLET TURNIP. Bright Scarlet, fading off to pure white at base, is tender, mild in flavor and early. The market gardeners' great favorite for out-door culture. 10c. oz., 15c. $\frac{1}{4}$ lb., 45c. lb., 25 lb. lots, 40c. lb.

EARLY SCARLET GLOBE. A small, globular, very bright red, early variety, especially adapted to growing in cold frame or greenhouse. 10c. oz., 20c. $\frac{1}{4}$ lb., 55c. lb., 25 lbs. and upward, 50c. lb.

EARLY SCARLET TURNIP. An old variety, well liked by market gardeners as an out-door sort. It has a bright solid color and makes a handsome bunch—very desirable. 10c. oz., 15c. $\frac{1}{4}$ lb., 45c. lb.

HENDERSON'S ROSE TURNIP. Beautiful rose color, very early, maturing in 23 days, remarkably attractive and of delicious flavor. 10c. oz., 20c. $\frac{1}{4}$ lb., 60c. lb.

FRENCH BREAKFAST. A variety of quick growth, mild and tender, and one of the best for forcing. Oval form, scarlet tipped with white. (See cut.) 10c. oz., 15c. $\frac{1}{4}$ lb., 45c. lb.

LONG SCARLET SHORT TOP. This variety is largely grown, as its shape (when tied up in bunches) is the best to ship. 10c. oz., 15c. $\frac{1}{4}$ lb., 45c. lb.

WHITE STRASBURG. It is of a tapering shape, skin and flesh both white. It is an excellent summer variety, being tender, crisp, and of fine flavor, and a quick grower. 10c. oz., 15c. $\frac{1}{4}$ lb., 45c. lb.

LONG WHITE VIENNA, or LADY FINGER. Pure white in color, of long tapering shape; very attractive in appearance; sweet, mild and delicious. Matures in about 25 days. 10c. oz., 15c. $\frac{1}{4}$ lb., 45c. lb.

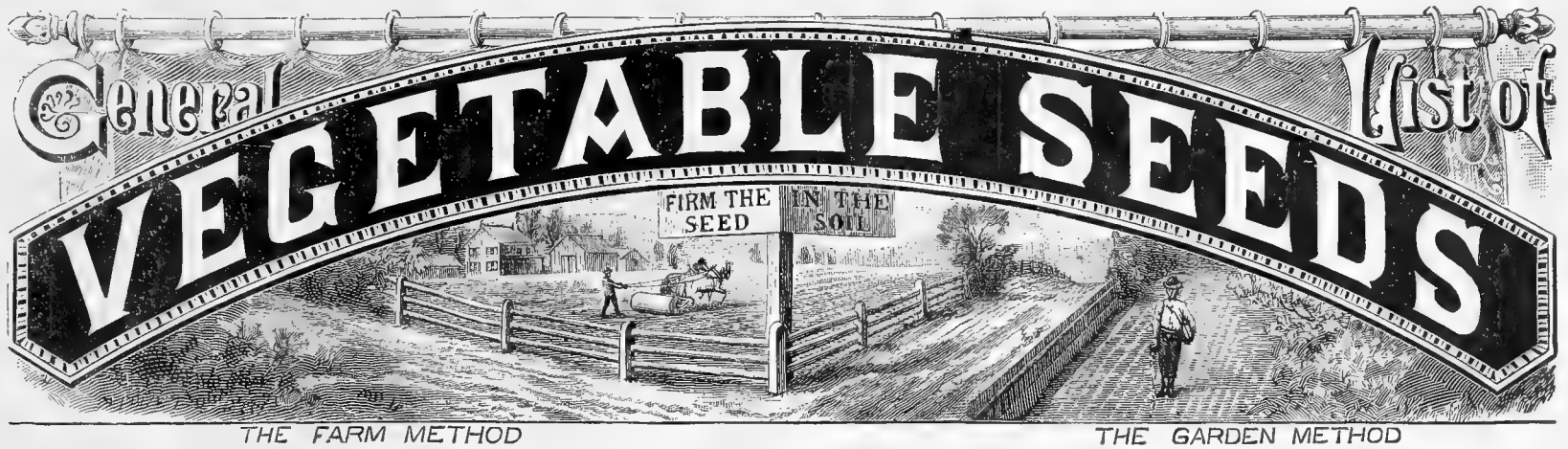
GIANT WHITE STUTTGART. Medium, early, large and heavy pure white throughout; very tender and of delicious flavor. 10c. oz., 20c. $\frac{1}{4}$ lb., 55c. lb.

RADISH.—Continued.

RED FORCING TURNIP. This variety has a peculiar value to market gardeners, in the fact that the tops are exceedingly small and short, rendering it most useful for forcing either in the greenhouse or in frames. The tops are smaller than we have ever met with in any variety of radish, in all other respects, however, it is identical with our Early Round Dark Red, which has proved so valuable for forcing. (See cut.) 10c. oz., 20c. $\frac{1}{4}$ lb., 55c. lb.

RAPID FORCING.

Our illustration gives a good idea of this fine variety. It resembles the White Tipped, Scarlet Turnip variety, but is much earlier, coming to maturity in 22 days from time of sowing, and having very small tops, will prove to be the radish for forcing purposes. (See cut) 10c. oz., 20c. $\frac{1}{4}$ lb., 60c. lb.



THIS LIST CANCELS ALL PREVIOUS OFFERS

OCTOBER, 1910.

IMPORTANT NOTICE.

The prices herein quoted on vegetable seeds are based on customers paying delivery charges when sent either by express or freight, but here is a plan whereby it rests with you whether we pay the freight or you.—On purchases of vegetable seeds from this List to the value of \$10.00 and upwards, WE WILL DELIVER FREE (by freight or express at our option), to any railroad station in the United States, PROVIDED that at least half of the order is composed of small seeds, that is, any vegetable seeds in the List other than Peas, Beans, Corn, Onion Sets and Potatoes. If your order does not amount to \$10.00, you can avail yourself of this offer by combining your order with one or more of your neighbors.

When seeds are desired by mail, postage must be added at the rate of 8c. per lb., and on Peas, Beans and Corn, 10c. per quart. Packets, ounces and quarter pounds are mailed free.

Half a pound will be supplied at pound rates; half a peck at peck rates; half a bushel at bushel rates. When packets are wanted and they are not priced, we will furnish at Retail Catalogue prices subject to a discount of twenty-five per cent.

	pkt.	oz.	¼ lb.	lb.		qt.	pk.	bush	
ARTICHOKE.					BEANS, Bush Limas.				
Large Globe.....	.10	.30	\$1.00	\$3.50	Henderson's Bush Lima.....	.30	\$2.00	\$7.00	
ASPARAGUS, SEED. For roots, see page 1.					Improved Henderson's.....	.35	2.25	8.00	
The Palmetto.....	.10	.10	.20	.50	Burpee's Bush Lima.....	.30	2.00	7.50	
Colossal.....	.05	.10	.15	.35	Dreer's Bush Lima.....	.30	2.00	7.50	
BEANS, DWARF or BUSH. Green Podded.		qt.	pk.	bush.	BEANS, Pole or Running. —Prices on Ap-				
(See page 2)					plication.				
Black Valentine, Henderson's.....	.30	1.75	6.50		BEET. (See page 1)	pkt.	oz.	¼ lb.	lb.
Earliest Red Valentine, Henderson's....	.25	1.50	5.25		Crimson Globe, Henderson's.....	.10	.10	\$.25	\$.70
Stringless Green Pod, Burpee's.....	.25	1.70	6.00		Early Model.....	.10	.10	.30	1.00
Bountiful, Henderson's.....	.25	1.50	5.50		Egyptian Turnip. 25 lbs. and up at 45c.				
Extra Early Refugee.....	.25	1.50	5.50		per lb.....	.05	.10	.15	.50
Early French Cholet.....	.30	1.75	6.50		Eclipse. 25 lbs. and up at 45c. per lb..	.05	.10	.15	.50
Full Measure.....	.30	1.75	6.50		Detroit Dark Red. (25 lbs. and up, 60c.				
Longfellow.....	.25	1.50	5.50		per lb.....	.05	.10	.20	.65
Early Mohawk.....	.25	1.40	5.00		Electric.....	.10	.10	.30	1.00
Dwarf Horticultural.....	.25	1.70	6.00		Henderson's Half Long.....	.10	.10	.20	.70
Refugee, or Thousand to One.....	.25	1.50	5.50		Crosby's Improved Egyptian. 25 lbs.				
Large White Kidney.....	.20	1.20	4.00		at 55c.....	.05	.10	.20	.60
White Marrow.....	.20	1.20	4.00		Arlington.....	.10	.10	.20	.55
Burlingame Medium.....	.20	1.20	4.00		Edmand's Blood Turnip.....	.05	.10	.20	.55
Boston Small Pea.....	.20	1.20	4.00		Dewing's Improved Blood Turnip.....	.05	.10	.15	.50
Red Kidney.....	.20	1.20	4.00		Early Blood Turnip.....	.05	.10	.15	.50
BEANS, DWARF. Wax Podded.					Long Smooth Blood Red.....	.05	.10	.15	.50
(See page 2)					Early Yellow Turnip.....	.05	.10	.15	.50
Keeney's Rustless Golden Wax.....	.25	1.50	5.50		Swiss Chard, Silver or Sea-Kale.....	.05	.10	.15	.50
Hodson Long Pod Wax.....	.25	1.70	6.00		MANGEL WURZEL and SUGAR BEET.				
Improved Golden Wax.....	.25	1.70	6.00		Henderson's Colossal Long Red.....		.15	.40	
Improved Black Wax.....	.25	1.70	6.00		Henderson's Giant Intermediate.....		.15	.35	
Golden Scimitar, Henderson's.....	.30	1.70	6.00		Henderson's Champion Yellow Globe.....		.15	.40	
Market Wax, Henderson's.....	.25	1.70	6.00		Golden Tankard.....		.15	.35	
Yosemite Mammoth Wax.....	.35	2.25	8.00		Henderson's Red Globe.....		.15	.35	
Golden-Eyed Wax.....	.25	1.50	5.50		White Sugar Beet.....		.10	.30	
Refugee Wax.....	.25	1.60	5.75		Vilmorin's Improved White Sugar Beet.		.15	.35	
Curries' Rust Proof Wax.....	.25	1.70	6.00		Lane's Imperial Sugar Beet.....		.15	.35	
California Rust Proof Wax.....	.25	1.70	6.00		BROCCOLI.				
Davis Kidney Wax.....	.25	1.70	6.00		White Cape.....	.15	.50	1.50	
Flageolet Wax.....	.30	1.80	6.50						
Wardwell's Dwarf Kidney Wax.....	.25	1.70	6.00						

We furnish Florists and Market Gardeners for their own planting our RETAIL packets of Vegetable and Flower Seeds at 25 per cent. off the retail prices. (Under no circumstances do we supply our seeds to be sold again.)

	pkt.	oz.	¼ lb.	lb.		pkt.	oz.	¼ lb.	lb.
BRUSSELS SPROUTS.					CHERVIL.				
Dalkeith.....	.10	.20	\$.60	\$2.00	Curled.....	.05	.10	\$.30	\$1.00
Long Island Strain. Specially grown for Market Gardeners.....	.10	.40	1.00	3.00	COLLARDS.				
					True Georgia.....	.05	.10	.30	.80
CABBAGE. (See page 3)					CORN SALAD OR FETTICUS.				
Early Spring, Henderson's.....	.10	.30	1.00	3.50	(25 lbs. and up, at 45c. per lb.).....	.05	.10	.20	.50
Early Jersey Wakefield, Henderson's.....	.10	.30	.90	3.25	CRESS OR PEPPER GRASS.				
Charleston or large Wakefield.....	.10	.30	.90	3.25	Upland.....	.10	.40	1.25	
Early Summer, Henderson's.....	.10	.25	.80	2.75	Extra Curled.....	.05	.10	.15	.40
Succession, Henderson's.....	.10	.30	.90	3.25	CRESS, WATER.				
Early Winnigstadt.....	.05	.20	.50	1.5010	.30	.90	3.00
Early York.....	.05	.20	.50	1.50	CUCUMBER. (See page 5)				
Fottler's Improved Brunswick.....	.05	.20	.50	1.50	The "Henderson" Perfected White Spine.....	.10	.15	.45	1.40
St. John's Day Early Drumhead.....	.05	.25	.70	2.00	Henderson's Cool and Crisp.....	.10	.15	.40	1.10
Late Flat Dutch, Henderson's Selected.....	.05	.25	.75	2.50	Arlington White Spine.....	.05	.10	.30	.90
Autumn King.....	.10	.30	.90	3.25	Everbearing.....	.05	.10	.30	.90
Holland or Danish Ballhead.....	.10	.30	1.00	3.25	Livingston's Evergreen.....	.05	.10	.30	1.00
Premium Flat Dutch.....	.05	.20	.60	1.75	Extra Early Green Prolific.....	.05	.10	.35	1.00
Mammoth Rock Red.....	.10	.25	.80	2.75	Improved Early White Spine.....	.05	.10	.30	.90
Red Dutch.....	.05	.20	.60	2.00	Extra Long White Spine.....	.05	.10	.35	1.00
Netted Savoy.....	.05	.20	.60	2.00	Early Cluster.....	.05	.10	.30	.90
American Drumhead Savoy.....	.10	.25	.70	2.25	Green Prolific.....	.05	.10	.30	.90
					Long Green.....	.05	.15	.40	1.10
CARDOON.					Short Green or Gherkin.....	.05	.10	.30	.90
Large Spanish.....	.10	.30	.90	3.00	West India Gherkin or Burr.....	.10	.20	.50	1.75
					English Frame Cucumbers, 6 varieties, each.....	.25			
CARROT.					DANDELION.				
New York Market, Henderson's.....	.10	.10	.25	.85	Common.....	.10	.20	.50	1.75
Early French Forcing.....	.05	.10	.30	1.00	Large Leaved.....	.15	.50	1.75	6.00
Early Scarlet Horn.....	.05	.10	.25	.80	EGG PLANT. (See page 5)				
Half Long Red. (Stump Rooted.).....	.05	.10	.25	.75	New York Improved Spineless.....	.10	.40	1.25	4.00
Intermediate Red, Henderson's.....	.10	.10	.25	.80	Early Long Purple.....	.05	.25	.75	2.50
Ox-Heart or Guerande. (Stump Rooted).....	.05	.10	.25	.85	Black Pekin.....	.10	.40	1.25	4.00
Chantenay (Stump Rooted).....	.05	.10	.25	.85	Black Beauty.....	.10	.45	1.40	4.50
Early Half Long Scarlet Carentan.....	.05	.10	.25	.80	ENDIVE. (See page 5)				
Long Orange Improved.....	.05	.10	.25	.80	Green Curled (Winter).....	.05	.15	.50	1.50
Danvers.....	.05	.10	.25	.85	French Moss Curled.....	.05	.15	.50	1.75
Danvers, Henderson's Selected.....	.10	.15	.35	1.00	White Curled.....	.05	.15	.50	1.75
Large White Belgian.....	.05	.10	.20	.60	Broad Leaved Batavian.....	.05	.15	.50	1.50
Yellow Belgian.....	.05	.10	.20	.60	KALE or BORECOLE.				
White Vosges.....	.05	.10	.20	.60	Siberian, German Greens or "Sprouts".....	.05	.10	.15	.40
					Dwarf Green Curled Scotch.....	.05	.10	.20	.60
CAULIFLOWER. (See page 4)					Brown German Curled.....	.05	.10	.30	.80
Early Snowball, Henderson's.....	.25	3.00	11.00	44.00	KOHL RABI.				
Extra Early Dwarf Erfurt.....	.15	2.00	7.00	28.00	Improved Early White Vienna.....	.05	.25	.75	2.50
Extra Early Paris.....	.05	.65	2.25	8.00	Improved Early Purple Vienna.....	.05	.20	.65	2.25
Large Late Algiers.....	.10	.70	2.25	8.00	Earliest Short-Leaved White Vienna, for frames.....	.10	.30	.90	3.00
Veitch's Autumn Giant.....	.05	.50	1.75	6.50	LEEK.				
					Improved American Flag. (Selected).....	.10	.20	.50	1.60
CELERY.					Musselburgh.....	.05	.20	.50	1.60
Silver Self-Blanching, Henderson's.....	.15	.60	1.75	6.00	Large Rouen.....	.05	.20	.50	1.60
Golden Rose, Henderson's.....	.10	.35	1.25	4.00	Carentan.....	.05	.20	.50	1.60
White Plume, Henderson's.....	.10	.30	1.00	3.50	LETTUCE. (See page 6)				
Golden Self Blanching.....	.10	.85	2.75	9.00	Henderson's New York.....	.10	.15	.45	1.50
New Rose, Henderson's.....	.10	.30	.75	2.50	Golden Queen.....	.10	.20	.55	1.75
Giant Pascal.....	.10	.30	.90	3.00	Mignonette.....	.10	.20	.50	1.50
Golden Dwarf, Henderson's.....	.10	.20	.90	3.00	Big Boston—25 lbs. and up, \$1.35 per lb.....	.10	.20	.50	1.50
Winter Queen.....	.10	.35	1.00	3.25	Grand Rapids.....	.05	.15	.40	1.25
Dwarf White, Henderson's.....	.05	.25	.75	2.50	Early Curled Simpson.....	.05	.10	.30	.90
Giant White Solid.....	.05	.20	.50	1.75	Black Seeded Simpson.....	.10	.15	.35	1.00
Boston Market.....	.05	.25	.75	2.50	CELERIC or TURNIP-ROOTED Celery.				
White Solid, for Soup Greens.....	.15	.30	1.00		Erfurt Giant.....	.05	.15	.50	1.75
Soup Celery (old seed for flavoring)30		Large Smooth Prague.....	.10	.20	.60	2.00
					CHICORY.				
					Large Rooted Magdeburg.....	.05	.10	.30	.80

LETTUCE.—Continued. (See page 6)

	pkt.	oz.	¼ lb.	lb.
Salamander. Selected stock.....	.10	.20	.50	\$1.50
Mammoth Black Seeded Butter.....	.10	.15	.40	1.25
Market Gardener's Private Stock.....	.05	.15	.40	1.25
Yellow Seeded Butter.....	.05	.10	.30	.90
Sensation.....	.10	.15	.35	1.00
Immensity.....	.10	.15	.40	1.25
Tenderheart, Henderson's.....	.10	.25	.75	2.50
California Cream Butter.....	.05	.15	.35	1.00
Tennis Ball, Black Seeded.....	.05	.10	.30	.90
Black Seeded Butter.....	.05	.10	.30	.90
Boston Market. (Selected stock).....	.05	.15	.35	1.00
Long Island.....	.10	.25	.55	1.75
Hanson.....	.05	.15	.35	1.00
Trionon Cos or Celery Lettuce.....	.10	.15	.40	1.20
Express Cos.....	.10	.15	.40	1.25

MARTYNIA Proboscidea..... .10 .25 .75 2.75

MELON, MUSK. (See page 6)

	pkt.	oz.	¼ lb.	lb.
Rocky Ford.....	.10	.10	.25	.70
Newport.....	.10	.10	.30	1.00
Early Hackensack.....	.10	.15	.35	1.10
Emerald Gem.....	.10	.20	.50	1.50
Miller's Cream or Red Fleshed Osage.....	.05	.15	.45	1.40
Montreal Market.....	.10	.20	.65	2.00
Nutmeg.....	.05	.10	.30	.90
Hackensack.....	.05	.10	.35	1.00
Netted Gem or Golden Jenny.....	.05	.10	.25	.70
Jenny Lind.....	.05	.10	.30	1.00
Paul Rose.....	.10	.15	.45	1.40

MELON, WATER.

	pkt.	oz.	¼ lb.	lb.
Sweet Siberian.....	.10	.10	.30	1.00
Cole's Early.....	.10	.10	.30	.80
Sweet Heart.....	.05	.10	.25	.70
Mammoth Ironclad.....	.05	.10	.20	.60
Florida Favorite.....	.05	.10	.25	.70
Mountain Sweet.....	.05	.10	.20	.60
Kolb's Gem.....	.05	.10	.20	.50
Ice Cream (White Seeded).....	.05	.10	.20	.60
True Georgia Rattlesnake or Gypsy.....	.05	.10	.25	.70
Cuban Queen.....	.05	.10	.25	.80
Citron for Preserving.....	.05	.10	.25	.75

MUSHROOM SPAWN. (See page 5)

English, 10c. lb.; \$3.75 50 lb.; \$7.00 100 lb.....				
American Pure Culture, 18c. lb.; 8 lbs. \$1.15; \$12.50 per 100 lbs.....				
New Virgin, tablets 10c. each; \$1.10 doz. \$7.50 per 100.....				

MUSTARD.

	pkt.	oz.	¼ lb.	lb.
White London.....	.05	.10	.25	
Chinese.....	.05	.10	.20	.60
Giant Southern Curled.....	.05	.10	.20	.55

NASTURTIUM or INDIAN CRESS.

	pkt.	oz.	¼ lb.	lb.
Tall.....	.05	.10	.20	.50
Dwarf.....	.05	.10	.20	.60

ONION.

Prizetaker.....	.10	.20	.50	1.70
Extra Early Flat Red.....	.05	.20	.50	1.65

ONION.—Continued.

	pkt.	oz.	¼ lb.	lb.
Wethersfield Large Red.....	.05	.15	.50	\$1.60
Yellow Globe Danvers.....	.05	.15	.45	1.40
Flat or Round Yellow Danvers.....	.05	.15	.40	1.30
Yellow Dutch, or Strasburg.....	.05	.15	.40	1.30
White Portugal.....	.10	.25	.75	2.60
Southport White Globe (Conn. grown).....	.10	.25	.85	3.00
Southport Red Globe (Conn. grown).....	.10	.20	.55	1.75
Southport Yellow Globe (Conn. grown).....	.10	.20	.50	1.60
White Bunch.....	.05	.15	.50	1.70
Adriatic Barletta.....	.10	.15	.50	1.60
Mammoth Pompeii or Red Garganus.....	.10	.15	.50	1.50
Queen.....	.05	.15	.50	1.50
Silver King or Giant White Garganus.....	.10	.15	.45	1.40
Red Bermuda.....				
White Bermuda.....	.10	.25	.70	2.50
Crystal Wax Bermuda.....	.10	.30	.85	3.00

ONION SETS.—Prices on application.

PARSNIP.

	pkt.	oz.	¼ lb.	lb.
Long Smooth.....	.05	.10	.15	.35
Henderson's Hollow Crown.....	.05	.10	.15	.40

PARSLEY.

Henderson's Emerald.....	.10	.10	.20	.60
Extra Double Curled, 25 lb. and over, at 45c. lb.....	.05	.10	.20	.50
Champion Moss Curled.....	.05	.10	.20	.55
Plain.....	.05	.10	.15	.40
Fern Leaved.....	.05	.10	.25	.80
Hamburg or Turnip Rooted.....	.05	.10	.20	.60

PEAS.

	qt.	pk.	bush.
Extra Early Varieties. (See page 7)			
Henderson's First of All. <i>The best extra early</i>30	\$2.25	\$8.00
Henderson's Prosperity.....	.40	3.00	11.00
Alaska.....	.30	2.00	7.50
First and Best.....	.35	2.00	7.50
American Wonder.....	.35	2.25	8.50
Chelsea.....	.35	2.50	9.00
Nonpareil.....	.30	2.00	7.50
Improved Daniel O'Rourke.....	.30	2.00	7.50
Philadelphia Extra Early.....	.30	2.00	7.50
Nott's Excelsior.....	.35	2.25	8.50
Extra Early Premium Gem.....	.30	2.25	8.00
Thomas Laxton.....	.40	2.80	10.50

PEAS.—Second Early Varieties.

Heroine.....	.30	2.25	8.00
Horsford's Market Garden.....	.30	2.25	8.00
McLean's Little Gem.....	.30	2.25	8.00
Juno.....	.30	2.25	8.00
McLean's Advancer.....	.30	2.25	8.00

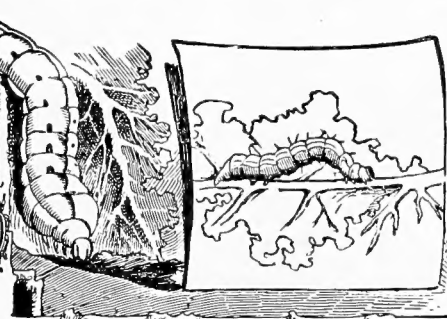
PEAS.—For General Crop.

Bliss' Abundance.....	.30	2.25	8.00
Bliss' Everbearing.....	.30	2.00	7.50
American Champion.....	.35	2.50	9.00
Champion of England.....	.30	2.25	8.00
Telephone.....	.35	2.50	9.00
Shropshire Hero.....	.30	2.25	8.00
White Marrowfat.....	.20	1.25	4.50
Black Eyed Marrowfat.....	.20	1.25	4.50
Melting Sugar.....			

We furnish Florists and Market Gardeners for their own planting our RETAIL packets of Vegetable and Flower Seeds at 25 per cent. off the retail prices. (Under no circumstances do we supply our seeds to be sold again.)

REMEDIES for

- Ant Destroyer, 1/2 lb. can, 35c.; 1 lb. can 60
- Arsenate of Lead, lb., 19c.; 5 lb., 85c.; 100 lb. @ 16c. lb.
- Bordeaux Mixture, (standard formulae, 1 gal. makes 50 of spray), 1 pt., 22c.; qt., 35c.; gal., 90c.; 5 gals. 4.00
- Cattle Comfort, 1 qt., 40c.; gal., \$1.20; 5 gals. 4.50
- Copper Solution, Ammoniated (1 qt. is sufficient for 25 gals. spray) 1 qt., 45c.; 1 gal. 1.35
- Fir Tree Oil, per 1/2 pt., 35c.; pt., 65c.; qt., \$1.10; 1 gal. 3.75
- Fir Tree Oil Soap, 1/2 lb. tin, 22c.; 2 lb., 70c.; 5 lb., \$1.50; 10 lb. ... 3.00
- Flowers of Sulphur, per lb., 8c.; 10 lbs., 55c.; 25 lbs., and over at 4 1/2c. lb.
- Formaldehyde (40% volume) 1 lb. bottle, 35c.; 5 lb. bottle @ 32c. lb., 10 lb. @ 27c. lb. 50 lb. demijohn @ 23c. lb.; 132 lb. carboy @ 21c. lb.; 410 lb. bbl. @ 18c. lb.
- Hellebore, 18c. lb.; 5 lb., 85c.; 10 lbs., \$1.60; 25 lbs. and over at 15c. lb.
- Kerosene Emulsion, qt., 35c.; gal., 90c.; 5 gals. 4.00
- Scalegide, 1 gal. can, \$1.00; 5 gal. can, \$3.25; 10 gal. can, \$6.00; 50 gal. Bbl. \$25.00.
- Lime Sulphur Solution, qt can, 30c.; gal. 70c.; 5 gals. \$3.25; bbl. of 45 gals. @ 40c. gal.
- Nico-Fume. Airtight cans of 2 doz. sheets, 70c.; or by mail, 85c.; 1 gross sheets, \$3.25; 2 gross, \$6.00.
- "Nicoticide," 1/2 pt., \$1.25; 1 pt., \$2.50;gallon 18.00
- Nicoteen, pt. bottle. 1.40
- Paris Green, 1/2 lb., 20c.; 1 lb., 35c.; 5 lb., \$1.65; 28 lb. bucket, \$8.25; 100 lb. keg 28.00
- Henderson's X. L. Powder, for dogs and poultry, 1 lb., 23c; \$2.25 per doz.
- Persian Powder, 1 lb., 45c.; 5 lb., \$2.00; 10 lb. and over at38
- Slug Shot, 5 lb. pkg., 25c.; 10 lb. pkg.45
- in kegs of 125 lbs. net. 4.75
- in barrels of 235 lbs. net in bulk 8.50
- in canisters holding lb. each22
- Soft Coal Soot (Imported), 100 lb. bags only. 3.75
- "Thymo Cresol," pt., 45c.; qt., 75c.; gal., \$2.00; 5 gal. 7.00
- Tobacco Dust, per lb., 8c.; 5 lb. pkg., 25c.; 10 lb. pkg., 45c.; per 100 lb. bag 2.25
- Tobacco Stems, 50 lb. bale, 75c.; 100 lb. bale \$1.25; per ton 2,000 lbs. ... 18.00
- Weed Destroyer, qt can. 45c.; gal., \$1.15; 5 gal. 4.50
- Whale Oil Soap, 1 lb. box, 12c.; 2 lb. box, 20c.; 5 lb. box 45c.; 25 lbs. and over, 7c. per lb.



ABOUT MAILING.

Powders and Soaps (those offered by the pounds)—non-poisonous—can be sent by mail, if 15c. per lb. is added to the prices, to pay postage. Fluids (those offered by the quart, etc.) and poisonous powders are not mailable.

INSECTS & FUNGUS

Rose Leaf EXTRACT OF TOBACCO. Insecticide.

This insecticide has been now most thoroughly tested, and has been proved one of the most effectual articles ever used for the destruction of all insects and scale on plants, that did not injure in some degree the affected plants. Rose Leaf Insecticide is a perfectly pure, highly concentrated extract of tobacco, always of uniform strength of nicotine. It can be applied in various ways, either spraying through a spraying bellows or syringe with spray nozzle, after it has been diluted with from 30 to 150 parts of water, according to the delicacy of the plants to be treated; it can also be used as a vapor, by boiling on small kerosene stoves or in "Evaporating Pans" attached to the pipes, or by dropping red hot iron in diluted extracts, or by painting the pipes. Send for pamphlet giving full instructions for using. Also testimonials from many leading florists. Price, pint can, 25c.; quart can, 50c.; one gallon can, \$1.25; five gallon can, \$4.25.



BUG DEATH.

Bug Death is a non-poisonous dry powder insecticide and fungicide. It can be used with safety on all garden and field vegetables, fruits, etc. Used on potatoes in connection with Bordeaux Mixture, very pleasing results are obtained. It can be used safely on cabbage for the cabbage worm, and will impart no taste to the vegetable. On cabbage it is best used dry. The extra yield in all cases where Bug Death is applied more than pays the entire cost of applying. Prices, 1 lb. pkg., 15c.; 3 lb. pkg., 35c.; 5 lb. pkg., 50c.; 12 1/2 lb. pkg., \$1.00; 100 lbs., \$7.00; shaker for applying, 25c.



HENDERSON'S FERTILIZERS.	100 lb. bags	200 lb. bag.	Ton of 2000 lbs.
Henderson's Lawn Enricher, 5 lb., 20c.; 10 lb., 40c.; 25 lb. bag, 90c.; 50 lb. bag, \$1.60	\$2.75	\$4.50	\$42.00
Henderson's Plant Food Tablets, per box of 16 tablets, 20c.; doz., \$1.75			
Henderson's Garden Fertilizer, for flowers and vegetables 5 lb. pkg., 20c.; 10 lb., 40c.; 25 lb. bag, 90c.; 50 lb. bag, \$1.60	2.75	4.50	43.00
Bone Meal, raw ground, pure 1 lb. pkg., 8c.; 5 lb., 25c. 10 lb., 45c.; 25 lb., 90c.; 50 lb., \$1.25	2.50	4.25	40.00
Ground Bone, raw ground pure	2.50	4.50	44.00
Crushed Bone, raw, pure	3.00	5.00	45.00
Blood and Bone	2.25	4.25	37.00
Sheep Manure, pulverized, 2 lb., 12c.; 10 lb., 45c.	1.75	3.00	28.00
Ashes, Canada hard wood, unleached		2.25	22.50
Nitrate of Soda, 5 lb. pkg., 25c.; 10 lb., 45c.; 25 lb., \$1.15; 50 lb., \$1.80	3.25	6.25	apply
Muriate of Potash, 50% actual potash	3.25	5.75	50.00
Bone Black (Dissolved), 16 to 18% available phosphoric acid.	2.00	3.50	28.00
Kainit, 12 1/2% actual potash and 33% common salt	1.50	2.25	18.00
Dried Blood, 12% ammonia	3.00	5.50	50.00
Cotton Seed Meal, 7% nitrogen	2.50	4.25	38.00
Land Plaster, 250 lb. barrel, net weight, \$1.75			14.00

HENDERSON'S SPECIAL FERTILIZERS.

Strictly high grade—only the best ingredients are used. Soluble and easily assimilated by the crops. Full description and analyses given in our Implementation Catalogue. Mailed free on request.

	Prices f.o.b. N. Y.				
	25 lb. bag.	50 lb. bag.	100 lb. bag.	200 lb. bag.	Ton 2000 lbs.
Henderson's Corn Fertilizer	\$1.00	\$1.50	\$2.50	\$4.25	\$36.00
Henderson's Cabbage and Cauliflower Fertilizer	1.00	1.60	2.80	4.75	41.00
Henderson's Potato Fertilizer	1.00	1.60	2.80	4.75	41.00
Henderson's Universal Superphosphate, good for all garden and farm crops, grass and grain	.90	1.35	2.25	4.00	34.00

Clay's Fertilizer, Imported, per bag of 14 lbs., \$1.15; 28 lb. bag, \$2.10; 56 lb \$3.75; 112 lb. \$6.50.



HENDERSON'S SUPERIOR SEEDS

WE MAKE A
SPECIALTY
OF
BEST
STRAINS
FOR
MARKET
GARDENERS

BITS OF TESTIMONY

We have thousands more

"I have had excellent success in every instance with your seeds. They always give me satisfaction. I had your White Plume Celery, 3 feet tall and splendid goods. Your Golden Self-Blanching, 30 inches high and 5 inches through. Had I sufficient crop, I could sell 50 dozen Celery a day."

HARRY KING, Tracyton, Wash.

"Your seeds were fine. I raised some heads of Cauliflower weighing 10 and 11 pounds each and from your seed, I raised the finest Cabbage I ever saw, and from your Big Boston I raised Lettuce weighing 5 pounds cut off the ground. I never expect in my life to get better seeds than Henderson's."

HARRY O. BEST, Sugar Ward, Salt Lake City, Utah.

"We have great faith in your seeds. Others may be as good but in my experience of 25 years have not been able to find it out."

J. H. McMILLEN, Grower of Vegetables, Logansport, Ind.

"I can buy lower priced seeds, but deem yours far cheaper in the end, having used them for the last 10 years with great satisfaction—and shall continue to use them as long as I raise truck for market."

JOHN KOLBERT, Mankato, Minn.

"I know you will appreciate knowing how your seeds turned out. We had the best crop of Celery in this district, running 20 to 28 pounds to the dozen by the carload. The Lettuce was also fine. We shipped over 60 cars of Celery and Lettuce this season and our superior stock gave us the lead in the Philadelphia market."

AARON R. NILES, Wellsboro, Pa.

FAMOUS THE
WORLD
OVER
FOR
MORE
THAN
HALF
A CENTURY

Peter Henderson & Co

35 & 37 CORTLANDT ST. NEW YORK.