

HIGHLANDER



1 9 5 4





Wyzost le wyzost le wyzost

Wyzost le wyzost le wyzost

Wyzost le wyzost le

Wyzost le wyzost le wyzost

Wyzost le wyzost le wyzost

Wyzost le wyzost le wyzost

Wyzost le wyzost le wyzost

THE HIGHLANDER

Nineteen Hundred and and Fifty-Four

VOLUME V

Published by

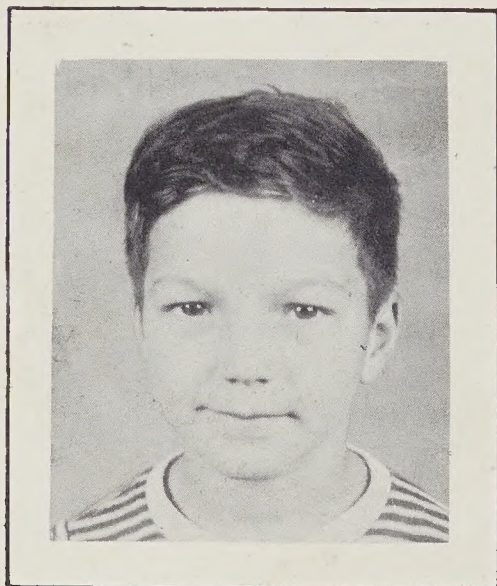
THE ANNUAL STAFF OF
CRABTREE - IRON DUFF HIGH SCHOOL

DEDICATION

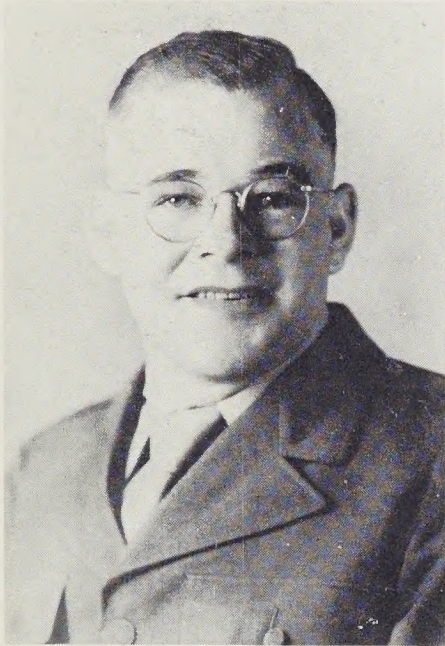
IN MEMORIAM

We, the living, dedicate this year's Highlander to one who, through no wish of his own, left us. God's angel of death came suddenly and unexpectedly and carried him away when we were in the sixth grade.

Though he is no longer with us, as we have left the grades and come into high school and into senior activities, we have never forgotten him and feel that foremost in our minds is the dedication of this, our yearbook, to the memory of a dear friend and classmate--J. V. Parks.



ADMINISTRATION



REX MESSER
School Committeeman

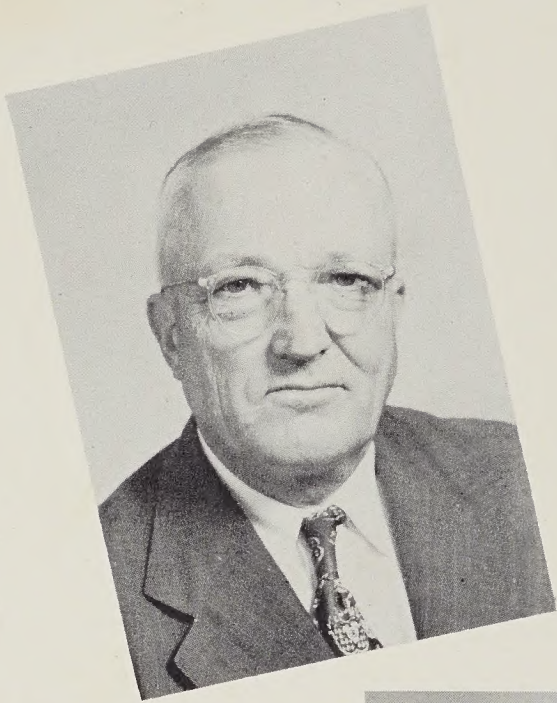


LAWARENCE LEATHERWOOD
County Superintendent



SCHOOL COMMITTEEMEN
Left to right: Edwin Hill, Jack Chambers, Ray Milner, Marshall Kirkpatrick.

Faculty



Mr. Fred L. Safford, Principal



First row: Mrs. O. L. Yates, Senior class; Mrs. Glenn Noland, Junior class; Mr. B. F. Nesbitt, Junior class; Mrs. Frank Kirkpatrick, Sophomore class. Second row: Mrs. Kenneth Hannah, Freshman class; Mr. Glenn Noland, Eighth grade; Mrs. Arnold Terrell, Seventh grade; Mr. Frank Kirkpatrick, Sixth grade. Third row: Mrs. Phillip Chase, Fifth grade; Mrs. J. R. Caldwell, Fourth grade; Mrs. Edith Plemmons, Third grade; Mrs. Hugh Noland, First grade.

Class History

After eight years of drilling and training we twenty-five sailors were judged capable and fit to launch our ship on a four year voyage that would complete our training and prepare us to take up life for ourselves. (Our crew had decreased by fifty-three members since the fall of 1942.) Our captain that year was Mrs. Glenn Noland with Sybil Bradshaw, Jewel Dotson, and Doris Kinsland serving as officers under her. The first thrilling event of our journey came when we were able to attend the F.H.A. and F.F.A. Banquets.

The second year of our journey found us better trained seamen and feeling more dignified. We entered into more social affairs than we did the year before. Our captain was the same as the year before, and Jewel Dotson, Roy Pope, and Harrison Caldwell helped her to keep the ship steady.

The tide was high when we began our third year voyage. Mrs. Frank Kirkpatrick was at the tiller this year with Sybil Bradshaw, Billy Best, and Jewel Dee Ferguson to help her direct the course. Three of our members had abandoned the ship and two new members had come on board. The excitement began to rise. We ordered our rings to properly identify us as third year seamen. We Juniors were apparently a headache to the faculty, for we were far more interested in the Junior-Senior Banquet, "Hitch Your Wagon to a Star," and our Junior play, "Grandpa's Twin Sister," than in our studies. We were sorry to see the seniors before us go, but we were thrilled at the thought of taking their places.

In the fall of 1953 our ship was entering the last year of its journey. Mrs. O. L. Yates was our captain with Billy Best, Harrison Caldwell, Roy Pope, and Jewel Dee Ferguson to help her drop anchor at the end of the way. (Two members had jumped the ship.) The first thing to think about was the annual, followed by the choosing of invitations, presentation of the class play, the Junior-Senior Banquet, where we were the honored ones, and graduation preparations. All too soon, we left our beloved ship, dear ole Crabtree-Iron Duff, that has trained us for bigger and better futures.

Thus ends the history of our class-
The class of '54;
May our happy days be remembered-
By each of us and many more.

Valaree Henderson,
Historian



Last Will And Testament

We, the Senior Class of Nineteen Hundred and Fifty-Four, of Crabtree-Iron Duff School, in the county of Haywood, the State of North Carolina, being of sound mind and realizing our impending departure from this school, do hereby declare and make this our last will and testament.

Article I.

To Mr. Safford, we wish to express our many thanks for the interest and leadership he has shown us during the past years. To our teachers, we leave our deepest appreciation for their efforts toward increasing our wisdom.

Article II.

To the buildings and buses we leave our deepest sympathy after the care we gave them for the past twelve years.

Article III.

To the undergraduates: To the Juniors we leave the job of issuing the two great publications: the "Crabtree Hi-Life" and the "Highlander."

To the Sophomores and Freshmen, we leave our hopes that before long they will occupy the position that we now occupy.

Article IV.

Individual bequests: During our years of school we have accumulated some well-known articles which we would like to bestow upon specific underclassmen. They are as follows:

Betty Arrington leaves her inability to make decisions to Elizabeth Ann James. Eugene Arrington wills his love for the Clyde girls to Bobby Brown. Billy Best leaves his corn patch to anyone who wants to be a state winner in the 4-H Club. Mark Brown wills his slow motions to Kathleen Hoglen. Edwin Bryson wills his ability to get out of class to Palmer Caldwell. Harrison Caldwell wills his basketball suit to Steven Walker in hopes that he will get as much pleasure out of wearing it as he did. Jewel Clarke leaves her good personality to Frances Sanford hoping she will be able to use it. Thad Crawford wills his bus to Johnny Crawford in hopes that he will soon get rich. Jewel Dotson leaves her typing ability to Claudia Sue Ferguson in hopes that she can get more than twenty words a minute. Jewel Dee Ferguson wills her Algebra book to anyone who wants it. Also her love for diamonds to Jean Bradshaw. Valaree Henderson leaves her Latin book to anyone who thinks they will need Latin as much as she will! Also her love for Fines Creek. Eddie Hill leaves her seat in English to Edith Cogdill hoping that she will learn more than she did. Shirldean Hoglen wills her freckles to Lorraine Sanford. Bonnie Sue Justice wills her basketball suit, comb, brush, and mirror to Polly McElroy in hopes that she will comb the kinks out of a few basketball teams. Doris Kinsland wills her 22 inch waist line to Bobbie Joan Parks. Roy Pope wills his tickets for speeding to Don Chambers. Helen Price wills her place as assistant librarian to Jean Crawford in hopes that she won't have as hard a time keeping the books in order as she did. Robert Sutton wills his love for Fines Creek to Carroll Smith. Shirley Smith leaves her art work on the school paper to Jack Bishop hoping that he will have a successful job. Floyd Stevenson wills his mischievous ways to Charles Parks. David Tate leaves all his innocent flirtations to Jack Kinsland. I, Sybil Bradshaw, will my ability to laugh at nothing to R. A. Gillett.

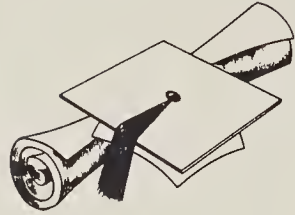
Sybil Bradshaw,
Testator



SENIORS



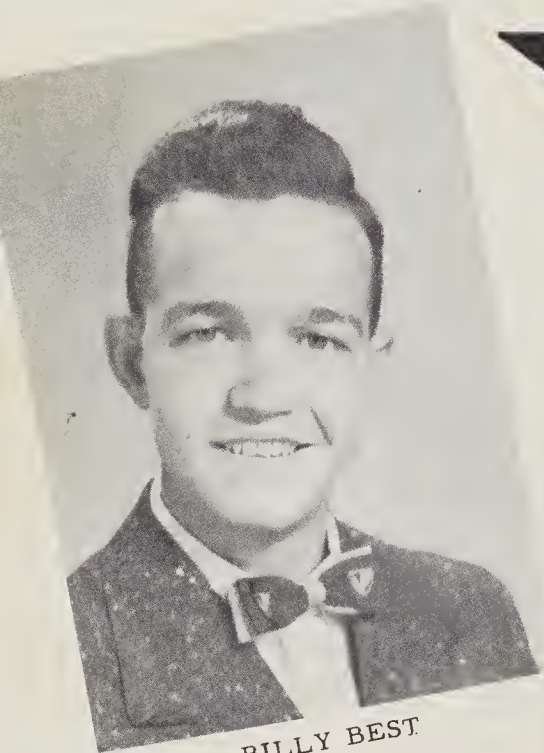
Seniors



BETTY JEAN ARRINGTON



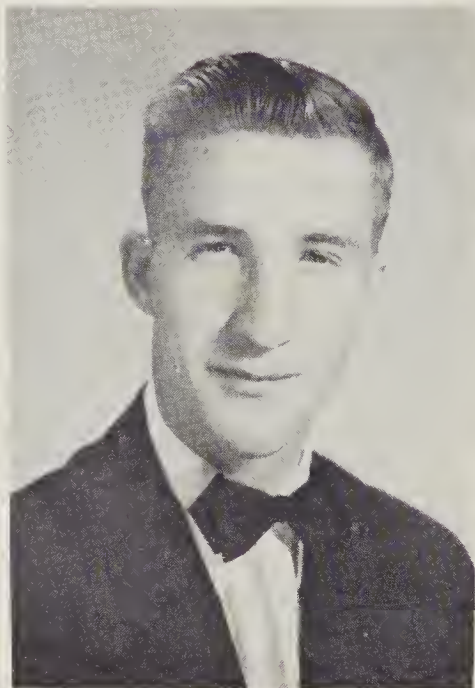
EUGENE ARRINGTON



BILLY BEST



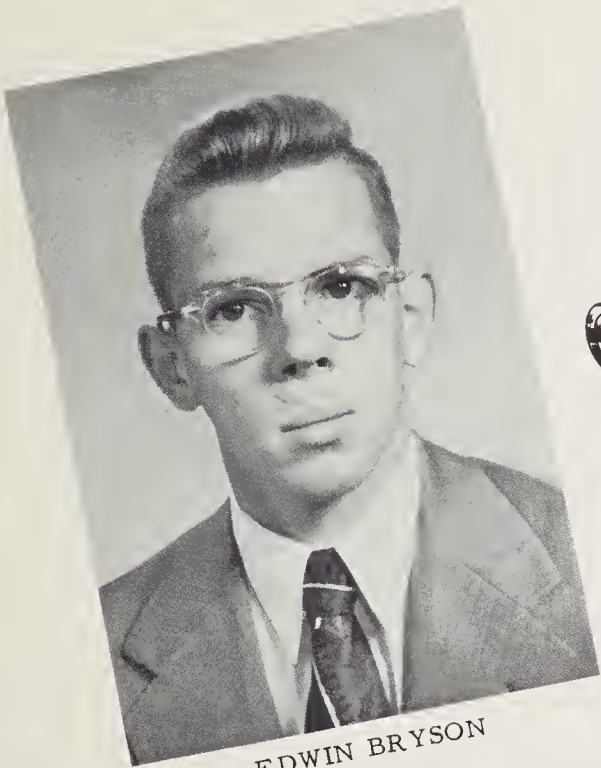
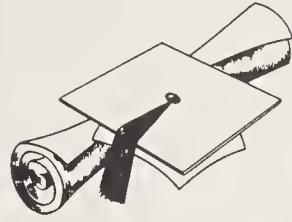
SYBIL JEAN BRADSHAW



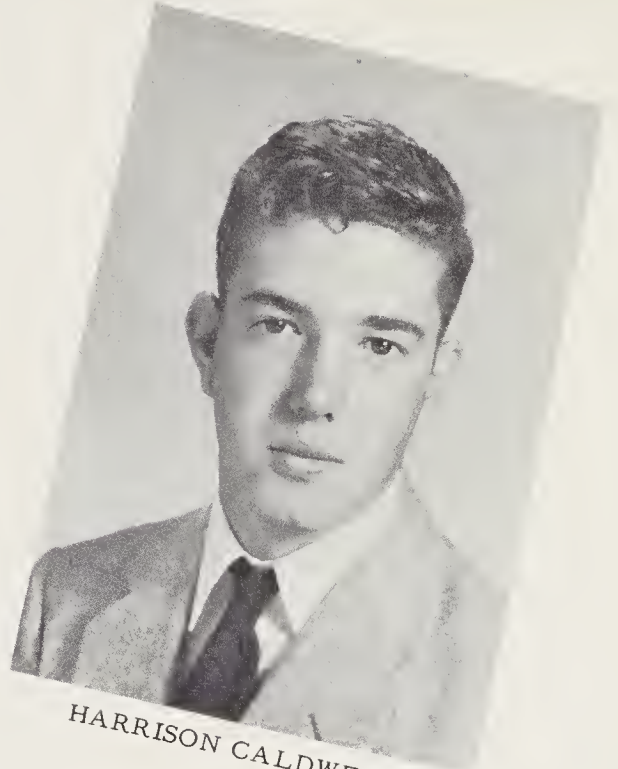
MARK BROWN



Seniors



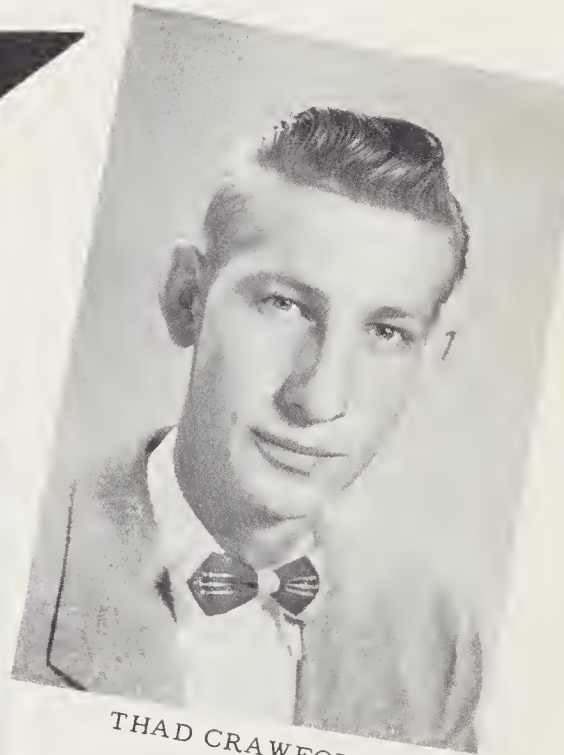
EDWIN BRYSON



HARRISON CALDWELL



FRANCES JEWEL CLARKE



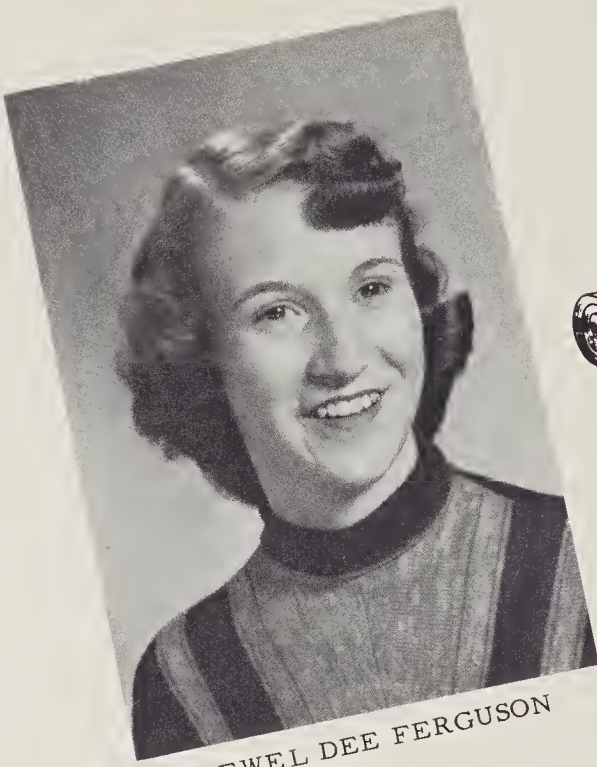
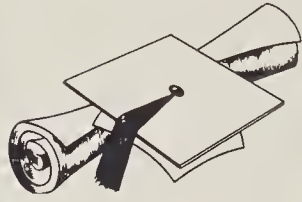
THAD CRAWFORD



SHIRLEY JEWEL DOTSON



Seniors



JEWEL DEE FERGUSON



EMILY VALAREE HENDERSON



EDDIE LOUISE HILL



SHIRLDEAN HOGLEN



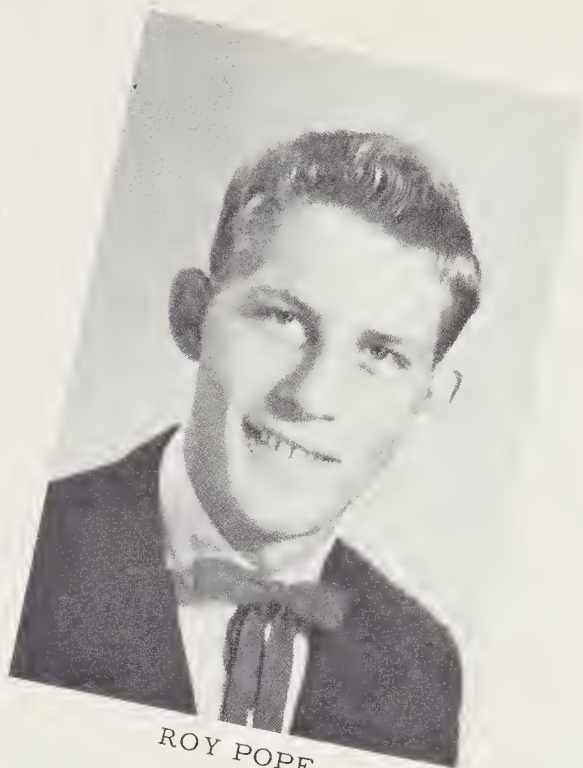
BONNIE SUE JUSTICE



Seniors



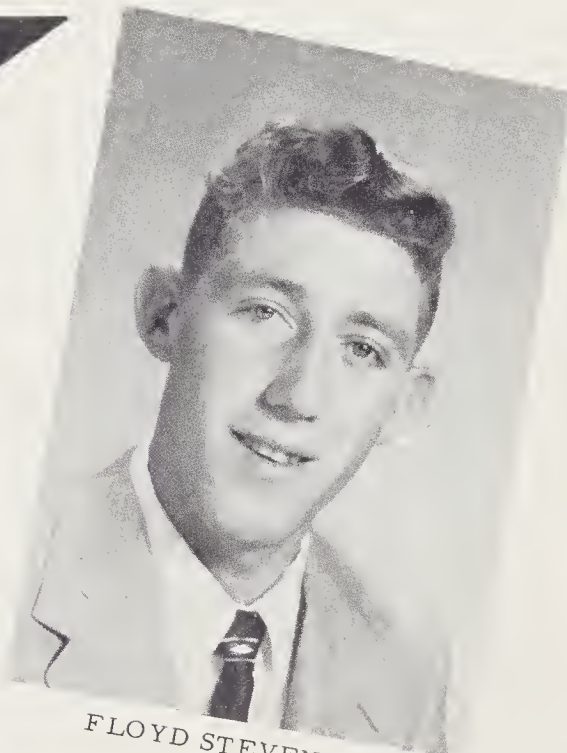
DORIS JEAN KINSLAND



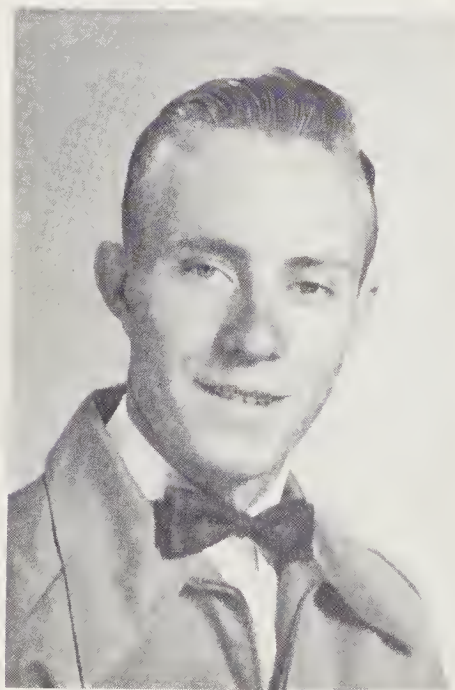
ROY POPE



HELEN JANE PRICE



FLOYD STEVENSON



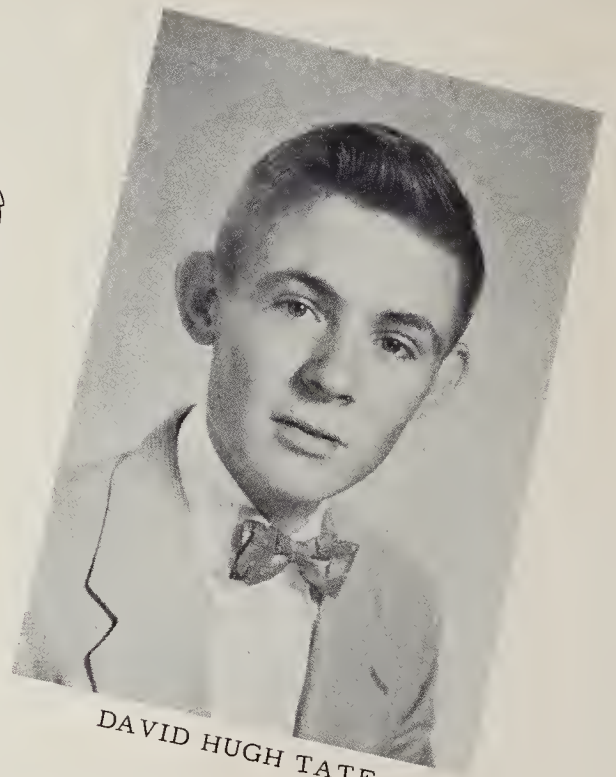
ROBERT SUTTON



Seniors



SHIRLEY JOSEPHINE SMITH



DAVID HUGH TATE



HILDA DAVIS
MASCOT



MARTIN SUTTON
MASCOT



MRS. O. L. YATES
SPONSOR

Senior Statistics

BETTY JEAN ARRINGTON

| | |
|---------------------------------------|------------|
| Glee Club | 1 |
| F. H. A. Club | 1, 2, 3, 4 |
| 4-H Club | 1, 2, 3 |
| F. H. A. Decorating Committee | 1, 2, 3 |
| Served at Junior-Senior Banquet | 2 |
| Dress Revue Winner | 2 |
| "Grandpa's Twin Sister" | 3 |
| Devotional Leader | 4 |

BILLY BEST

| | |
|-------------------------------------|------------|
| Marshal | 1 |
| F. F. A. Club | 1, 2, 3, 4 |
| 4-H Club | 1, 2, 3, 4 |
| 4-H County Winner | 8 times |
| 4-H District Winner | 3 times |
| 4-H State Winner | 1 time |
| Glee Club | 3, 4 |
| Vice-president | |
| Senior 4-H Club | 3 |
| Vice-president | |
| Junior Class | 3 |
| "Grandpa's Twin Sister" | 3 |
| President Senior Class | 4 |
| Secretary F. F. A. Club | 4 |
| Reporter Senior 4-H Club | 4 |
| Sports Editor "Hi-Life" | 4 |
| Business Manager "Highlander" | 4 |
| Beta Club | 4 |
| State Corn Champion | 2 |

EDWIN BRYSON

| | |
|--|------------|
| F. F. A. Club | 1, 2, 3, 4 |
| 4-H Club | 1, 2, 3, 4 |
| Basketball | 1, 2, 3, 4 |
| F. F. A. Club Treasurer | 4 |
| 4-H Club President | 4 |
| F. F. A. Club Program Committee | 3 |
| 4-H Club Program Committee | 3 |
| "Grandpa's Twin Sister" | 3 |
| Art Editor "Highlander" | 4 |
| Circulation Manager "Hi-Life" | 4 |
| Glee Club | 3, 4 |
| 4-H State Winner | 3 |
| 4-H District Winner | 2 times |
| Sentinel of Nantahala Federation | 4 |

EUGENE ARRINGTON

| | |
|---------------------|------------|
| F. F. A. Club | 1, 2, 3, 4 |
| 4-H Club | 1 |
| Glee Club | 1 |

SYBIL JEAN BRADSHAW

| | |
|--|------------|
| President Freshmen Class | 1 |
| Song Leader | 2 |
| Marshal | 2 |
| Class President | 3 |
| Class Reporter | 4 |
| 4-H Club | 1, 2, 3, 4 |
| F. H. A. Club | 1, 2, 3, 4 |
| Basketball | 1, 2, 3, 4 |
| Secretary F. H. A. Club | 1, 3 |
| Devotional Leader, F. H. A. Club | 4 |
| Winner County F. H. A. Dress Revue | 1, 2 |
| "Grandpa's Twin Sister" | 3 |
| Decorating Committee F. H. A. Banquet .. | 1, 2, 3 |
| Glee Club | 1, 2, 3, 4 |
| Assistant Editor "Highlander" | 4 |
| Class Reporter "Hi-Life" | 4 |
| Beta Club | 4 |
| Art Editor "Hi-Life" | 3 |

MARK BROWN

| | |
|----------------------------|------------|
| F. F. A. Club | 1, 2, 3, 4 |
| 4-H Club | 1 |
| Glee Club | 3, 4 |
| Usher at Junior Play | 3 |

FRANCES JEWEL CLARKE

| | |
|--|------------|
| F. H. A. Club | 1, 2, 3, 4 |
| Beta Club | 4 |
| Business Manager "Hi-Life" | 4 |
| Usher at Junior Play | 3 |
| Finance Committee F. H. A. Banquet | 3 |



Senior Statistics

HARRISON CALDWELL

| | |
|---|------------|
| Basketball | 1, 2, 3, 4 |
| F. F. A. Club | 1, 2, 3, 4 |
| 4-H Club | 1, 2, 3, 4 |
| F. F. A. Club Vice-president..... | 2, 4 |
| Glee Club | 3 |
| Class Vice-president..... | 2, 4 |
| Chairman of F. F. A. Club Program Committee..... | 3 |
| "Grandpa's Twin Sister" | 3 |
| Business Manager "Highlander" | 4 |

SHIRLEY JEWEL DOTSON

| | |
|---------------------------------------|------------|
| F. H. A. Club | 1, 2, 3, 4 |
| F. H. A. Decorating Committee | 1, 2, 3 |
| Served at Junior-Senior Banquet | 2 |
| Class President..... | 2 |
| Class Vice-president | 1 |
| Class Reporter..... | 3 |
| 4-H Club | 1, 2 |
| Glee Club | 1 |
| Editor-in-chief "Hi-Life"..... | 4 |
| Art Editor "Highlander"..... | 4 |

EMILY VALAREE HENDERSON

| | |
|--|------------|
| F. H. A. Club | 1, 2, 3, 4 |
| F. H. A. Club Reporter..... | 4 |
| 4-H Club | 1 |
| F. H. A. Club Decorating Committee..... | 1, 3 |
| County F. H. A. Club Dress Revue Winner | 1, 2 |
| Marshal..... | 2, 3 |
| "Grandpa's Twin Sister"..... | 3 |
| "Highlander" Staff | 4 |
| Historian..... | 4 |

SHIRLDEAN HOGLEN

| | |
|--|------------|
| F. H. A. Club | 1, 2, 3, 4 |
| County F. H. A. Club Dress Revue Winner | 1 |
| School F. H. A. Club Dress Revue Winner | 2 |
| Usher for Junior Play..... | 3 |
| "Highlander" staff | 4 |

THAD CRAWFORD

| | |
|---------------------------------------|------------|
| Basketball | 1, 2, 3, 4 |
| F. F. A. Club | 1, 2, 3, 4 |
| 4-H Club | 1, 2, 3 |
| Glee Club | 3, 4 |
| "Grandpa's Twin Sister" | 3 |
| Advertising Manager "Hi-Life"..... | 4 |
| F. F. A. Club Program Committee | 4 |

JEWEL DEE FERGUSON

| | |
|--|------------|
| F. H. A. Club | 1, 2, 3, 4 |
| 4-H Club | 1, 2, 3, 4 |
| County F. H. A. Club Secretary | 1, 2, 3, 4 |
| County F. H. A. Club Dress Revue Winner | 1 |
| Marshal..... | 1, 3 |
| Band..... | 1, 2, 3, 4 |
| Glee Club..... | 1, 2, 3, 4 |
| Class Secretary..... | 3 |
| F. H. A. Club Secretary..... | 2 |
| F. H. A. Club Devotional Leader | 3 |
| "Grandpa's Twin Sister"..... | 3 |
| Beta Club..... | 4 |
| Editor-in-chief "Highlander"..... | 4 |
| Society Editor "Hi-Life"..... | 4 |
| Class Treasurer..... | 4 |
| F. H. A. Club President..... | 4 |

EDDIE LOUISE HILL

| | |
|---|------------|
| F. H. A. Club | 1, 2, 3, 4 |
| 4-H Club | 1, 2, 3, 4 |
| Glee Club | 1, 2, 3, 4 |
| Basketball..... | 3, 4 |
| "Hi-Life" Reporter | 3 |
| F. H. A. Club Decorating Committee..... | 2 |
| Usher for Junior Play..... | 3 |
| F. H. A. Banquet Program..... | 4 |

SHIRLEY JOSEPHINE SMITH

| | |
|---|------------|
| F. H. A. Club..... | 1, 2, 3, 4 |
| Finance Committee F. H. A. Club Banquet..... | 3 |
| Usher for Junior Play..... | 3 |
| Art Editor "Hi-Life"..... | 4 |



Senior Statistics

BONNIE SUE JUSTICE

| | |
|--|------------|
| F. H. A. Club | 1, 2, 3, 4 |
| 4-H Club | 1, 2, 3, 4 |
| Beta Club | 4 |
| County 4-H Club Winner | 4 |
| Basketball | 1, 2, 3, 4 |
| Basketball Captain | 4 |
| Class Songleader | 3, 4 |
| 4-H Club Songleader | 4 |
| Assistant Librarian | 1 |
| Glee Club | 1, 2, 3, 4 |
| "Grandpa's Twin Sister" | 3 |
| Beta Club President | 4 |
| Cheer Leader | 4 |
| F. H. A. Club Songleader | 4 |
| Tobacco Queen | 2 |
| F. H. A. Club County Dress Revue Winner | 2 |
| All Tournament Basketball Winner | 3 |
| Kiwanis Improvement Award | 3 |

ROY WAYNE POPE

| | |
|---------------------------|------------|
| F. F. A. Club | 1, 2, 3, 4 |
| Basketball | 1, 2, 3, 4 |
| 4-H Club | 1, 2, 3 |
| Glee Club | 2, 3, 4 |
| F. F. A. Club Secretary | 3 |
| Class Secretary | 4 |
| Class Treasurer | 3 |
| "Grandpa's Twin Sister" | 3 |
| Kiwanis Improvement Award | 3 |
| F. F. A. Club President | 4 |

ROBERT SUTTON

| | |
|---------------|------------|
| F. F. A. Club | 1, 2, 3, 4 |
| 4-H Club | 1 |
| Glee Club | 1 |

DORIS JEAN KINSLAND

| | |
|--------------------------------------|------------|
| F. H. A. Club | 1, 2, 3, 4 |
| 4-H Club | 1, 2, 3 |
| Glee Club | 1 |
| Basketball | 3 |
| F. H. A. Club Finance Committee | 2, 3 |
| Class Reporter | 2 |
| County Dress Revue Winner | 3 |
| Class Secretary | 1 |
| Assistant Editor "Hi-Life" | 4 |
| Advertising Manager for "Highlander" | 4 |

HELEN JANE PRICE

| | |
|------------------------------------|------------|
| 4-H Club | 1, 2, 3, 4 |
| F. H. A. Club | 2, 3, 4 |
| Folklore Club | 1 |
| Basketball | 3, 4 |
| Glee Club | 3, 4 |
| Assistant Librarian | 4 |
| Cheer Leader | 4 |
| Vice-president Beta Club | 4 |
| F. H. A. Club Decorating Committee | 2 |
| Class Devotional Leader | 3 |

DAVID HUGH TATE

| | |
|------------------------|------------|
| Basketball | 1, 2, 3, 4 |
| F. F. A. Club | 1, 2, 3, 4 |
| 4-H Club | 1, 2, 3, 4 |
| Glee Club | 1, 2 |
| County 4-H Club Winner | 4 |

FLOYD STEVENSON

| | |
|---------------|------------|
| F. F. A. Club | 1, 2, 3, 4 |
| 4-H Club | 1, 2 |



Class Prophecy

Ten years have passed since the senior class of '54 have all been together. As I sit here in the lobby of a California Hotel, now owned by Roy Pope, I think of the good times we had back at Crabtree - Iron Duff High. Isn't it surprising about Mark Brown and Eugene Arrington working for Roy? I always thought Mark would settle down at The Champion Paper and Fibre Company. Seeing these boys makes me wonder what became of the rest of the class.

What is all that noise outside? Why it is no other than Thad Crawford, chauffeuring beauty contestants! I always knew Thad was good at driving a bus, but I never knew he would be a chauffeur for beauty contestants.

Who are those girls in the car? Why it is Bonnie Sue Justice, Doris Kinsland, Betty Arrington and Helen Price! Bonnie Sue has just been named "Miss America."

Did you say that this is Valaree Henderson's last year in college? She was such a studious person in school. She will receive her nurse's degree in June.

Am I hearing things? Yes, Billy Best is the county agent of Haywood County, North Carolina. Haywood is sure to win everything with Billy as their agent.

Sybil Bradshaw is teaching the first grade at Crabtree - Iron Duff. She will probably be a millionaire someday.

Shirley Smith is the Home Agent of Haywood County. She was always interested in home making.

They say Edwin Bryson is president of The First National Bank in Waynesville, North Carolina. Edwin was always interested in money.

David Hugh Tate is now champion of the National Stock Car Race. He was always well supplied with stock cars.

Robert Sutton and Floyd Stevenson are first rank officers in the army.

Jewel Dotson is employed with the Enka Corporation. I know she is one of their best employees. She was so particular with her work in school.

Jewel Clarke is the secretary at The Champion Paper and Fibre Company. She was always good at typing.

Harrison Caldwell is serving in the Navy. I always wondered why he was so interested in taking Geometry. I guess you make a better sailor when you have Geometry.

Eddie Hill is a telephone operator in Charlotte, North Carolina. She should like her work since all of her cousins are working there.

Gee! is it that late? I must be hurrying along since I have an appointment at five o'clock at my beauty shop on Fifth Avenue with Miss Shirldean Hoglen, one of my classmates. She was always so interested in everyone's hair.

It doesn't seem real that so much could happen in just ten years, but you can see that each senior who graduated from Crabtree - Iron Duff in '54 is doing fine. Let's hope each one reaches his desired goal. I remain the prophetess of the senior class,

Jewel Dee Ferguson,
Prophetess

Snapshots

The "Jewels"

Jewel Clarke
Jewel Dotson
Jewel Ferguson





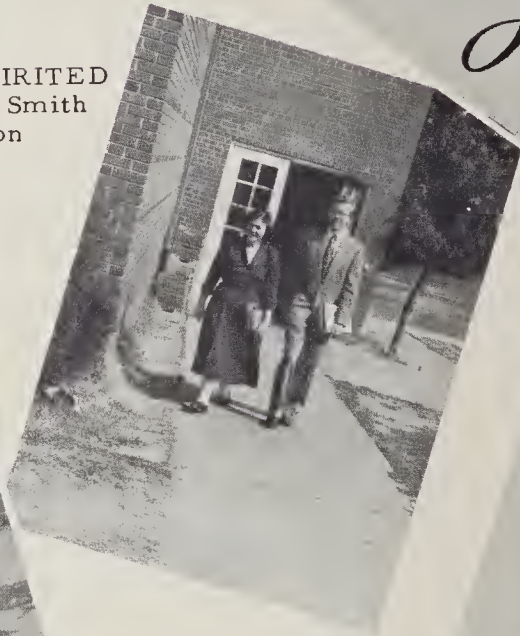
MOST ATHLETIC
Bonnie Sue Justice
Harrison Caldwell



PRETTIEST AND BEST LOOKING
Jewel Dee Ferguson
Harrison Caldwell

BEST SCHOOL SPIRITED
Shirley Josephine Smith
Edwin Bryson

Super



WITTIEST
Helen Jane Price
Floyd Stevenson



BEST ALL AROUND
Sybil Jean Bradshaw
Edwin Bryson





BEST PERSONALITY
Frances Jewel Clarke
Mark Brown



BEST DRESSED
Sybil Jean Bradshaw
Thad Crawford

atives



MOST SINCERE
Frances Jewel Clarke
Eugene Arrington

MOST STUDIOUS
Shirldean Hoglen
Billy Best



BEST SPORTS
Sybil Jean Bradshaw
Harrison Caldwell





CLASS PESTS
Doris Jean Kinsland
Robert Sutton



MOST BASHFUL
Shirley Josephine Smith
Eugene Arrington

MOST TALENTED
David Hugh Tate
Shirley Josephine Smith



Super



CUTEST
Bonnie Sue Justice
Roy Wayne Pope



FRIENDLIEST
Betty Jean Arrington
Eugene Arrington





MOST MUSICAL
Jewel Dee Ferguson
Billy Best



NEATEST
Shirley Jewel Dotson
Thad Crawford

atives



QUIETEST
Shirley Jewel Dotson
Robert Sutton



CLASS BABIES
Eddie Louise Hill
Roy Wayne Pope

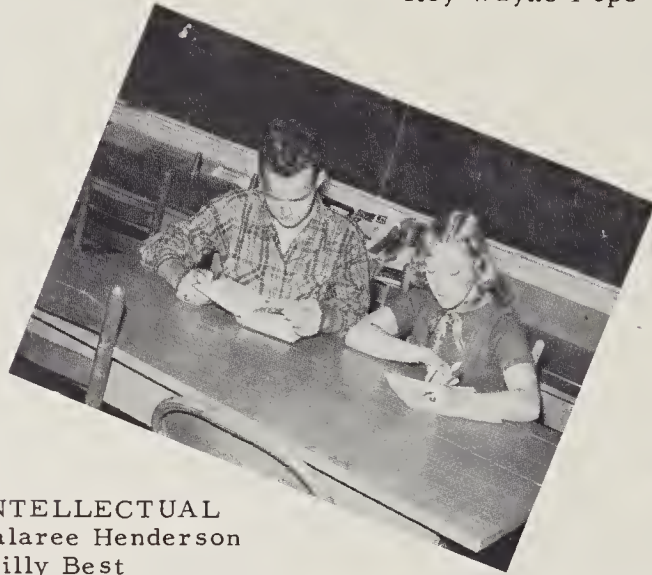


CLASS TWINS
Betty Jean Arrington
Eugene Arrington



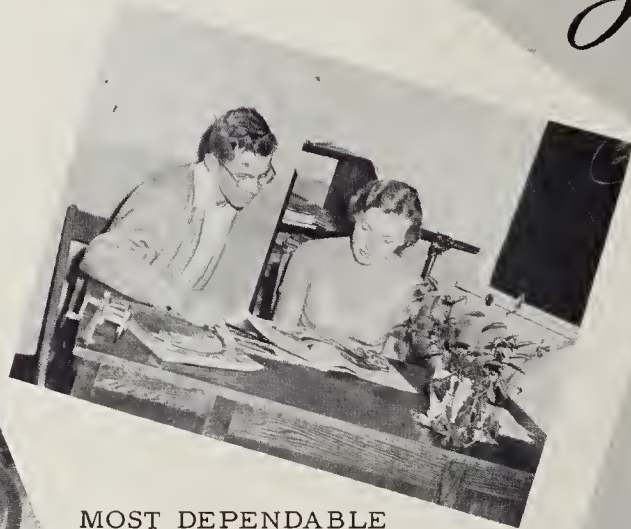


MOST LIKELY TO SUCCEED
Betty Jean Arrington
Roy Wayne Pope



MOST INTELLECTUAL
Emily Valaree Henderson
Billy Best

Super



MOST DEPENDABLE
Shirldean Hoglen
Edwin Bryson



BIGGEST FLIRTS
Emily Valaree Henderson
Roy Wayne Pope

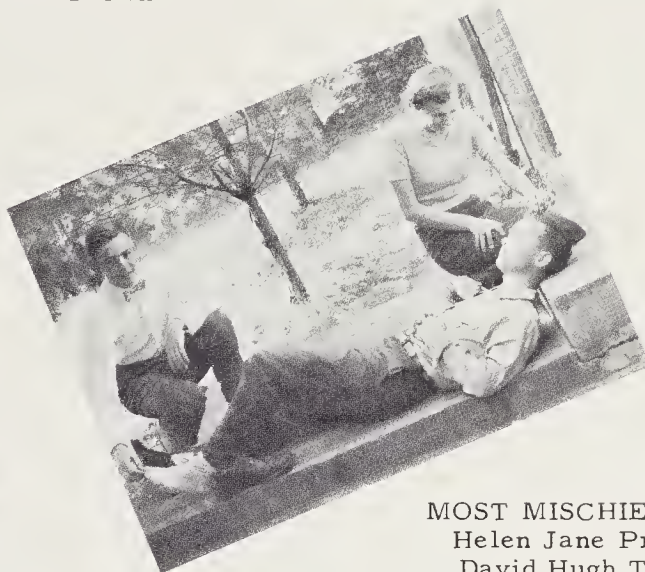


MOST ORIGINAL
Doris Jean Kinsland
Thad Crawford





CLASS GRUMBLER
Doris Jean Kinsland
Mark Brown



MOST MISCHIEVOUS
Helen Jane Price
David Hugh Tate

atives



MOST COURTEOUS
Eddie Louise Hill
Robert Sutton



CLASS PETS
Sybil Jean Bradshaw
Harrison Caldwell



MOST POPULAR
Betty Jean Arrington
Edwin Bryson





Senior Class Officers

President Billy Best
 Vice-President Harrison Caldwell
 Secretary Roy Pope
 Treasurer Jewel Ferguson
 Devotional
 Leader Betty Arrington
 Reporter Sybil Bradshaw
 Song-Leader Bonnie Justice

Newspaper Staff

Editor-In-Chief Jewel Dotson
 Assistant Editor Doris Kinsland
 Society Editor Jewel Dee Ferguson
 Class Editor Sybil Bradshaw
 Sports Editor Billy Best
 Business Manager Jewel Clarke
 Circulation Manager ... Edwin Bryson
 Advertising Manager... Thad Crawford
 Art Editor Shirley Smith
 Rex-O-Graph Operators..... Roy Pope
 and
 Harrison Caldwell



Annual Staff

Editor-In-Chief... Jewel Dee Ferguson
 Associate Editor Sybil Bradshaw
 Business Manager Billy Best
 Sports Editor Roy Pope
 Art Editors Jewel Dotson
 and
 Edwin Bryson
 Advertising Manager .. Doris Kinsland
 Circulation Manager, Harrison Caldwell

JUNIORS



Junior Class

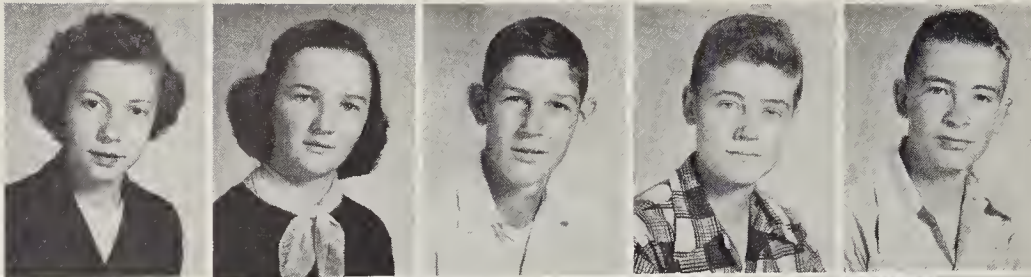


First row: Jack Bishop, Jean Bradshaw, Bobby Brown, David Brown, Palmer Caldwell, and Don Chambers. Second row: Edith Cogdill, Johnny Crawford, Claudia Ferguson, R. A. Gillett, Billy Greene, and Clarine Greene. Third row: Kathleen Hoglen, Elizabeth James, Ray James, Eugene Jones, Jack Kinsland, and Martha Mathews. Fourth row: Polly Kay McElroy, Shirley McElroy, Margaret Jane Morrow, Kenneth Parks, Kenneth Earl Parks, and Frances Sanford. Fifth row: Lorraine Sanford, Carrol Smith, Mary Ann Sutton, Steven Walker, and Frances Emma Yates.

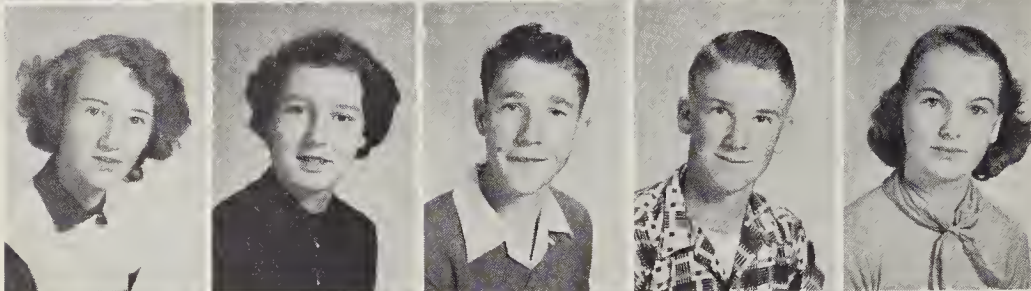
SOPHOMORES



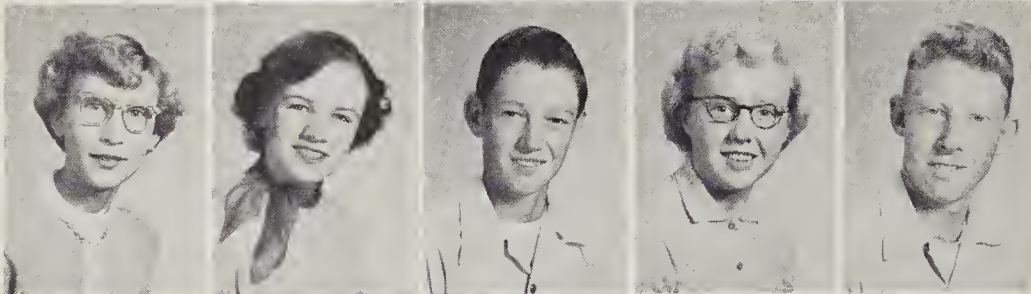
Sophomore Class



Dorothy Arrington
Adeline Best
Autry Best
Jimmy Lee Best
Grover Bradshaw



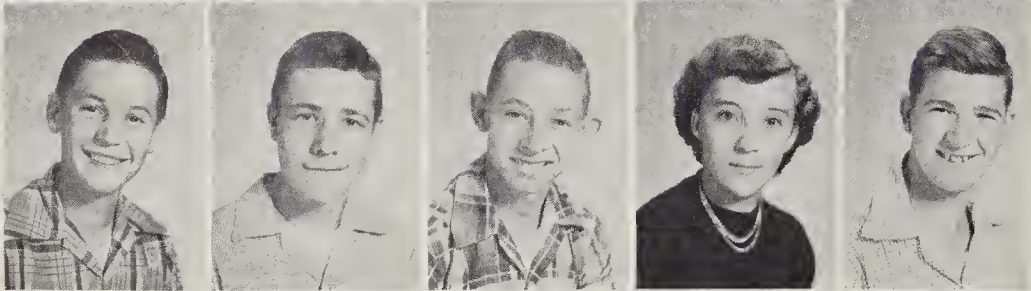
Louise Best
Carolyn Bryson
Doyle Brown
Harley Caldwell
Martha Caldwell



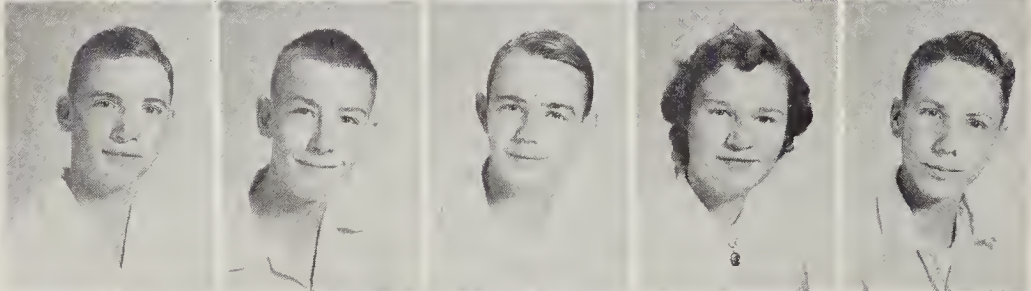
Barbara Crawford
Jean Crawford
Boyd Fisher
Annetta Ferguson
Charles Hannah



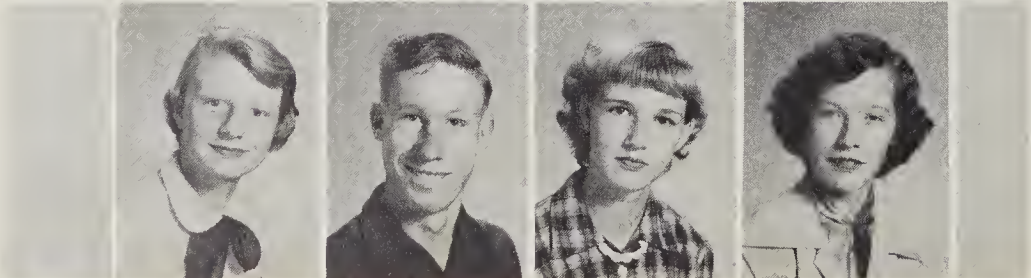
Tommy Hannah
Ernest Hoglan
Peggy Green
Way Kinsland
George Kirkpatrick



Tommy Kirkpatrick
Billy Joe Lowe
Henry Earl Massie
Doris Messer
Alvin Matthews



Virgil Matthews
Roger McElroy
Spencer McCracken
Bobbie Parks
Gene Parks



Shirley Plemmons
Lester Phillips
Louise Presnell
Barbara Smith

FRESHMEN

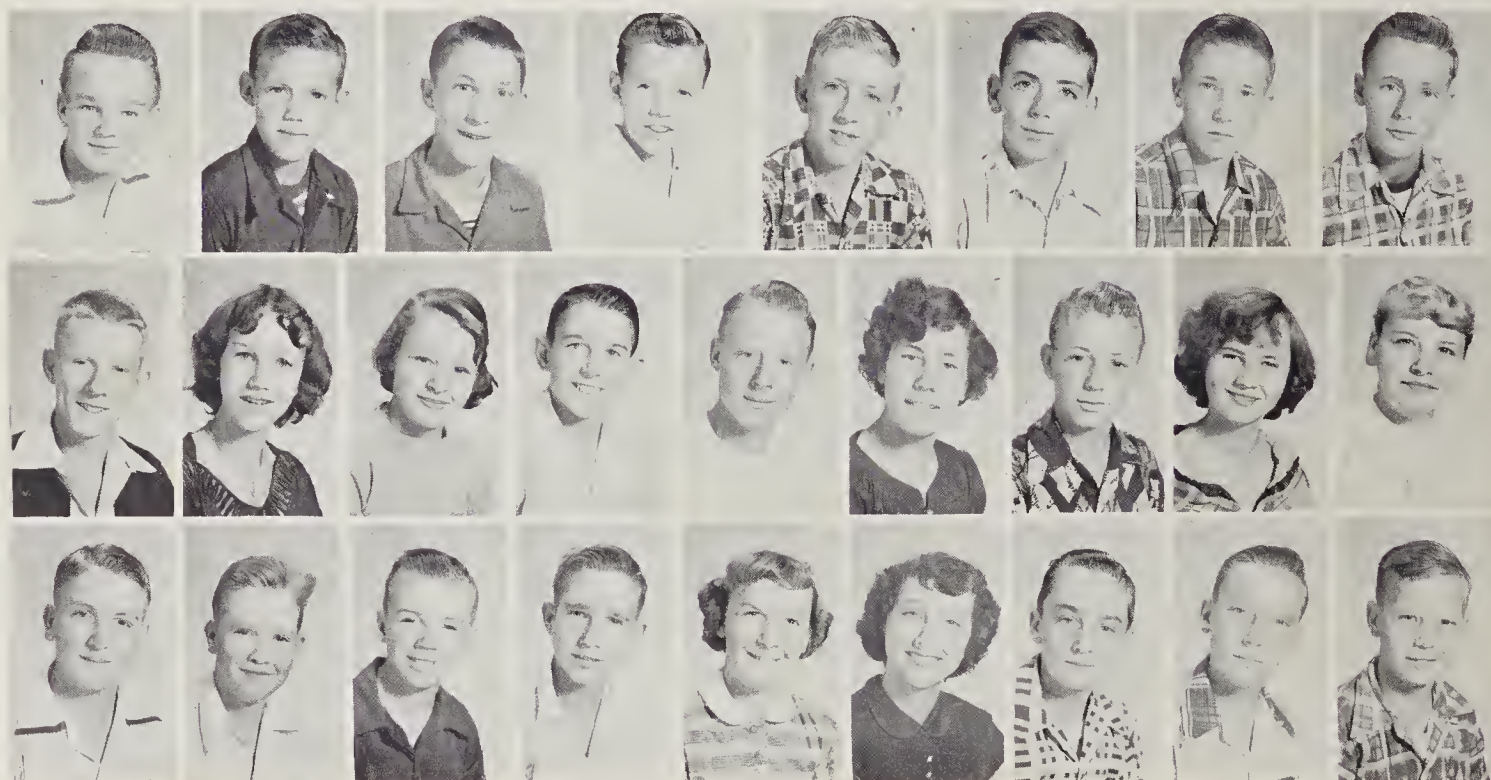


Freshman Class



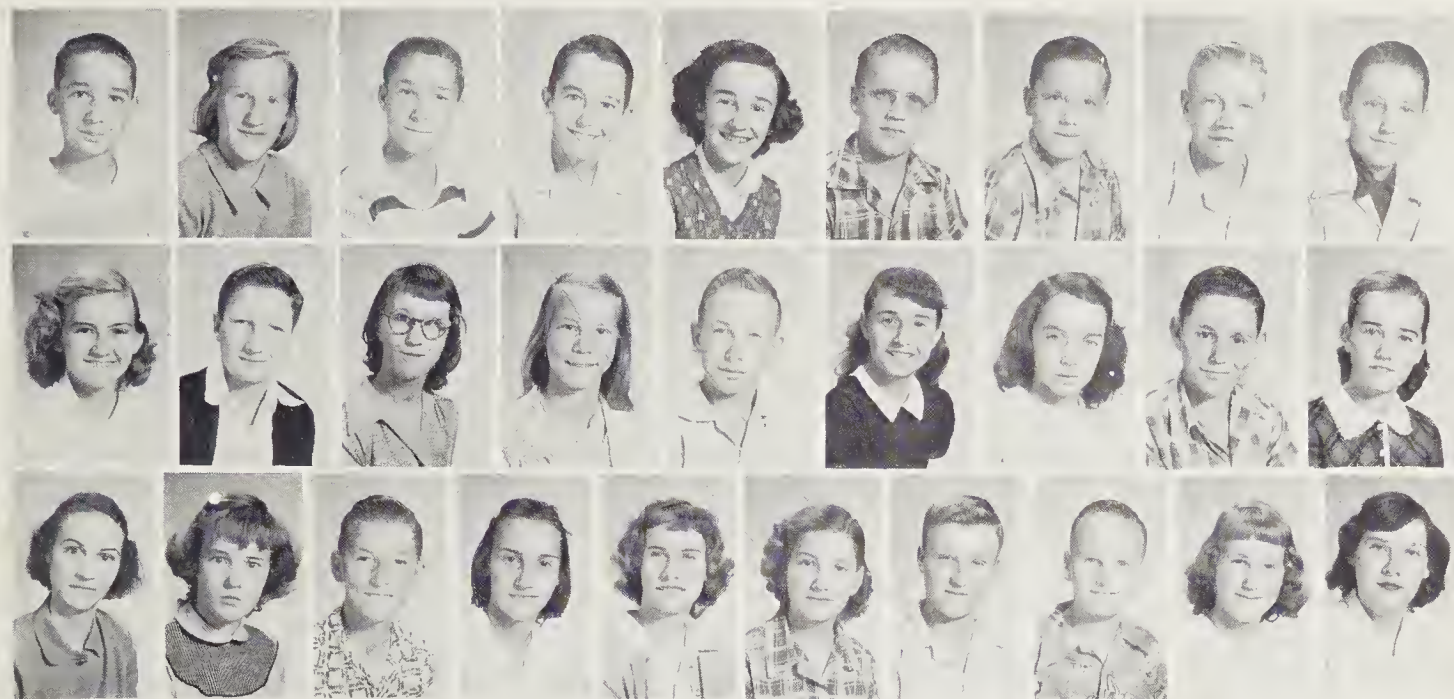
First row: Ruth Gillett, Dallas Greene, Kyle Hannah, Betty Sue James, Stella James, Commodore Jolly, Barbara Jones, A. L. Mathews. Second row: Azalee McCracken, Shelby McElroy, Patricia Messer, Ray Messer, Charles Parks, Jeanette Smith. Third row: June Smith, Mable Stevenson, Hilda Rector, Mary Sue McCracken, Cicil Mathews.

Eighth Grade



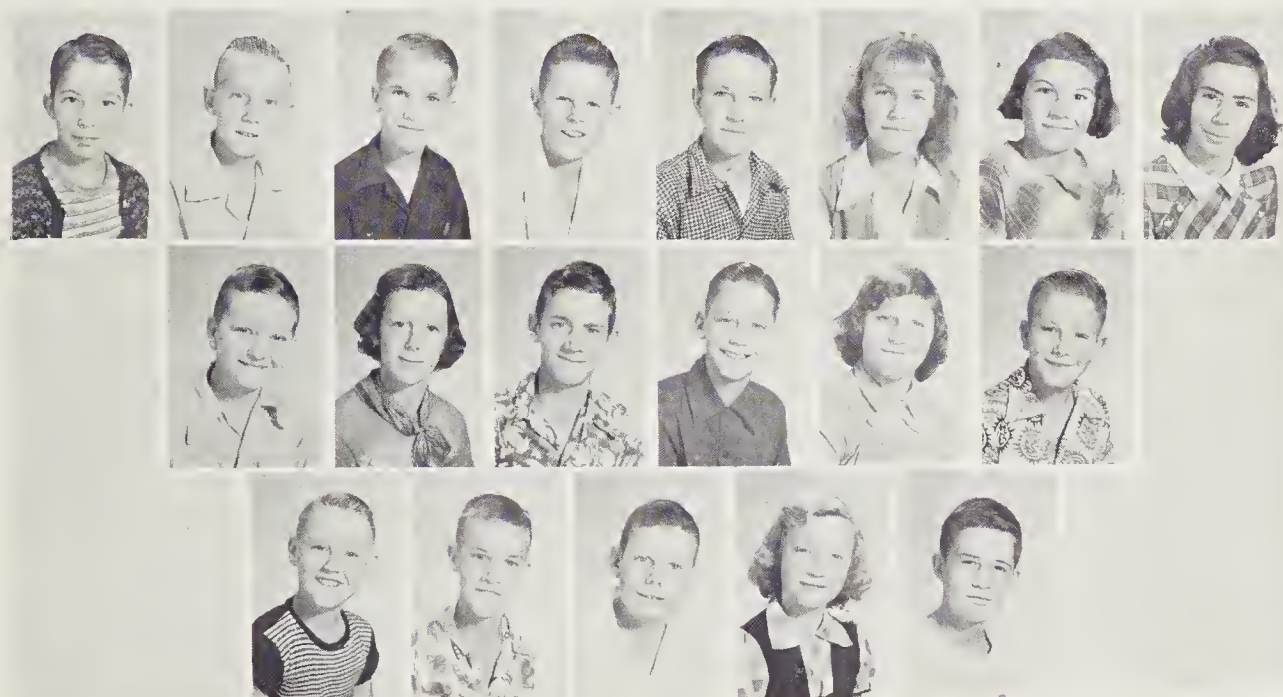
First Row: Kenneth Beasley, Henry Best, Jerry Brown, Duane Bryson, Sam Burgess, Earl Clarke, Robert Ray Clarke, Eugene Clarke. Second Row: Ned Crawford, Peggy Ferguson, Peggy Sue Gaddis, Earl Greene, Bobby Hannah, Mildred Hill, Arthur Hoglen, Joan Inman, Sarah Ellen Jones. Third Row: Bud Kirkpatrick, Harold Mathews, Carl McCracken, Harold Parks, Kathryn Rathbone, Hilda Sanford, Frank Smart, Tommy Wood, Max Sanford.

Seventh Grade



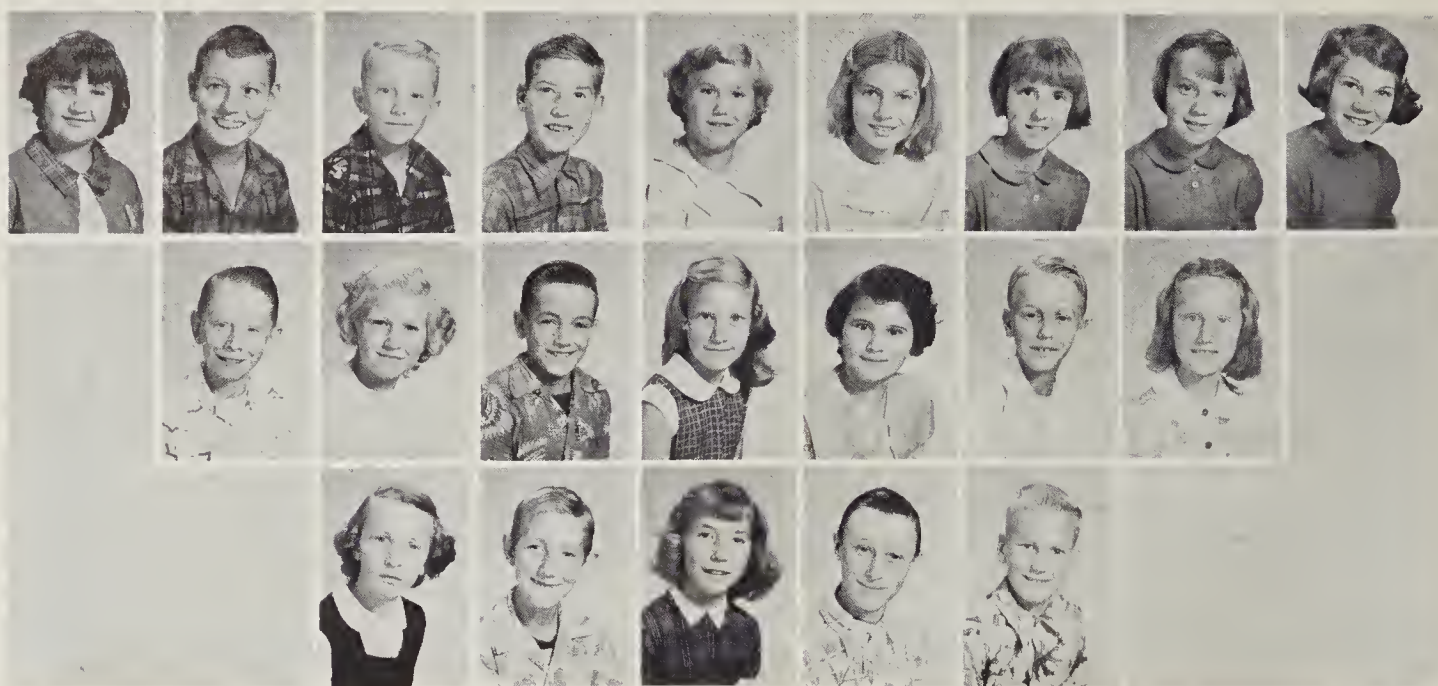
First row: Dan Best, Betty Jo Brown, Jack Brown, Johnnie Caldwell, Beverly Chambers, Joe Chambers, Charles Clark, Jerry Crawford, Philip Davis. Second row: Vivian Downs, Gerald Ferguson, Jean Franklin, Pirgie Frady, Johnnie Hill, Wilma Sue Kinsland, Hazel Green, Jerry Parks, Freda Ann Hill. Third row: Lucille Justice, Elizabeth Morrow, Dewayne Sanford, Judy Parks, Betty Sue Price, Marie Shetley, Louis Stevenson, Charles Stephenson, Christine Stephenson, Earline Woodward.

Sixth Grade



First row: Kenneth Caldwell, Carlyle Ferguson, Martin Ferguson, Gene Glance, J. E. Hill, Betty Jean Justice, Mary Etta Justice, Wilma Sue King. Second row: Henry Long, Jane McElroy, Vaughn McCracken, Harold Messer, Frankie Mae Overman, J. T. Parks. Third row: Elbert Presnell, Kenneth Rector, Jimmy Smith, Eva Stevenson, Tommy Williamson.

Fifth Grade



First row: Audrey Allen, William Beasley, Ronny Bradshaw, Hobert Brown, Carolyn Clarke, Louise Downs, Maxine Ferguson, Irene Ferguson, Phyllis Gaddis. Second row: Harold Hannah, Jo Ann Haynes, Walker Hill, Nancy Jones, Hilda Matthews, Ralph McCracken, Patsy Messer. Third row: Bernice Plemmons, Orville Rathbone, Sue Sanford, James Southerland, Virgil Stephens.

Fourth Grade



First row: Joyce Beck, Doris Best, Ethel Caldwell, Neal Clarke, Patsy Crawford, Minnie R. Downs Ruby Ruth Downs, Theresa Ferguson, James Gaddis. Second row: Anna Jean Green, Betty Jo Hoglen, Hilda Hoglen, Jo Ann Justice, Helen Kirkpatrick, Brice Long, Jimmy McClure, Sara Lee Messer, Bennie Mae Noland. Third row: Pat Noland, Hilda Parks, Gerald Parker, Jerry Rector, Johnny Rogers, Charles Price. Fourth row: Nancy Smith, Doyle Smith, Hazel Southerland, Glenn Stevenson, O. L. Yates.

Third Grade



First row: Carolyn Beasley, Johnny Bradshaw, Richard Crawford, Deanna Crawford, Leona Frady, Billy Glance, Lois Greene, Melba Greene, Jimmy Haynes. Second row: Donnell Henson, Fred Inman, Keyondious Inman, Paula Jones, Wilma Jones, Barbara King, Robert King, Ruth McCracken, Bruce McElroy. Third row: R. L. Overman, Leo Frady, Freida Sanford, Dallas Smith, Johnny Stephenson, Vicky Rogers, Marie Wood, Cheryl Sutton, Johnny Caldwell.

Second Grade

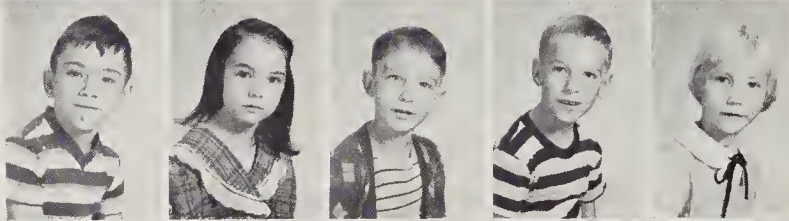


First row: Elise Brown, Frances Davis, J. D. Downs, Johnny Downs, Jackie Ferguson, Bobbie Gaddis, Linda Henson, Roger Hoglen, Nina Gail James. Second row: Lynette Jones, Lula Justice, Bobby McClure, Regenia Milner, Joe Bob Nesbitt, Walter Noland, Grovene Parks, Larry Parton, Charles Putman. Third row: Ronny Ray, Charles Brian Rector, Jackie Rector, Jim Bob Reeves, Sandra Sauceman, Phyllis Shetly, Bobby Southerland. Fourth row: Carroll Stephenson, Shirley Stevenson, Charles Williamson, Wayne Woodard, Sandra Wood.

First Grade



Linda Allen
Charles Best
Phyllis Best
Carol Bramlett
Jack Brown



W. E. Burchfield
Carolyn Burchfield
Clifford Caldwell
Gene Clark
Gail Crawford



Judy Crawford
Kenneth Downs
Roger Ferguson
David Franklin
Morris Hannah



Teddy Haynes
Wayne Hawkins
Jerry Woodard
Mildred Hughes
Ned Inman



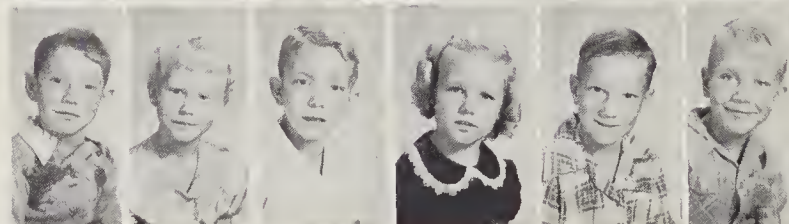
Jake Justice
Sandra Justice
Deanna Leming
Brenda McCracken
Joyce McElory



Neal McElory
Edwin Messer
Billy Messer
Coleen Overman
Nolan Palmer



Jack Parker
Doris Plemmons
Elain Rogers
R. D. Price
Earl Putnam



Harold Sanford
Alline Smith
Bruce Sutton
Mary Jane Terrell
Edward Woods
Sammy Woodard

ACTIVITIES



King And Queen

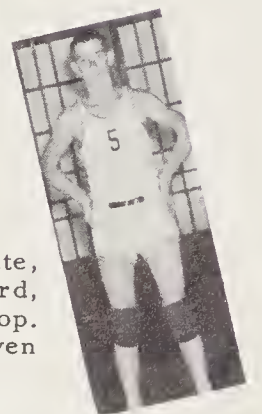
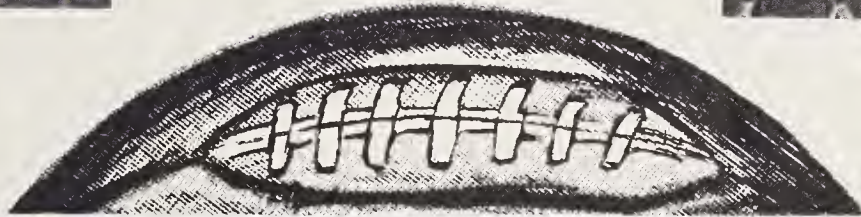
HARRISON CALDWELL AND JEWEL DEE FERGUSON

Girls' Basketball



Seated, First row: Louise Best, Lorraine Sanford, Eddie Hill, Polly Kay McElroy, and Jean Crawford. Second row: Sybil Bradshaw, Helen Price, Barbara Smith, Elizabeth James, Helen Hill, Annetta Ferguson and Bonnie Sue Justice. Standing: Barbara Crawford, Jean Bradshaw, Kathaleen Hoglen, Azalee McCracken, Louise Presnell, Caryl Bryson, Mary Ann Sutton, and Fred L. Safford, Coach.

Boys' Basketball



Seated, First row: Way Kinsland, Henry Earl Massie, David Tate, Grover Bradshaw and Doyle Brown. Second row: Johnny Crawford, Harrison Caldwell, Ernest Hoglen, Autry Best, and Jack Bishop. Standing: Edwin Bryson, Carrol Smith, Thad Crawford, Steven Walker, Roy Pope and Coach, Mr. Safford.

ACTIVITIES



F.H.A. Club

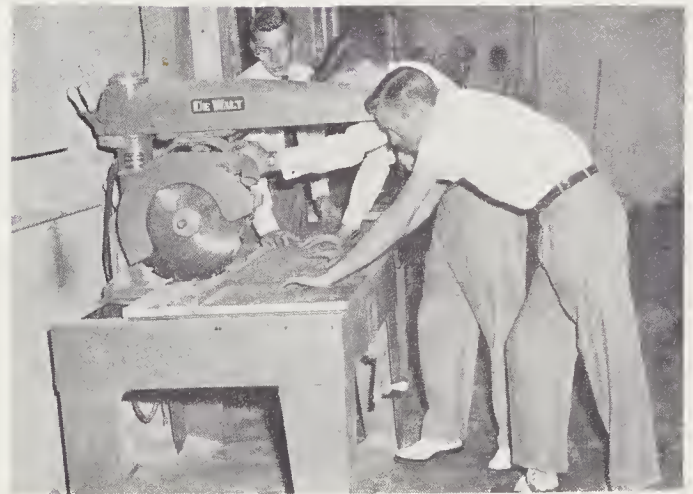


ACTIVITIES

F. F. A. Officers



F. F. A. Club



Glee Club



MRS. PHILLIP CHASE,
DIRECTOR



Library Club

Band



ACTIVITIES

Senior 4 H Club



Junior 4 H Club



Cooks



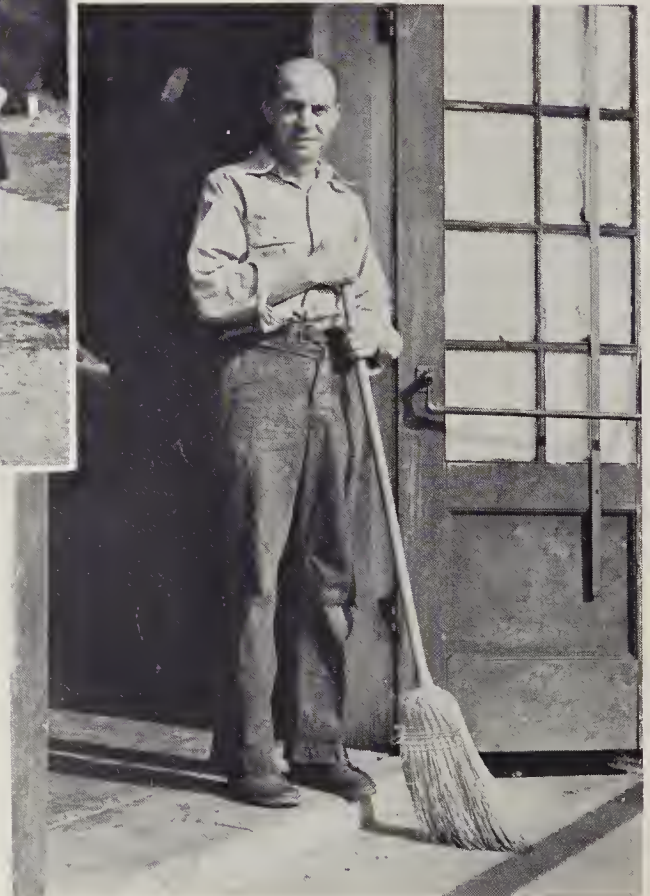
Mrs. Marguerete Noland
Mrs. Mergyl James

Bus Drivers



Left to right: Thad Crawford, Carlyle James, Johnny Crawford, "Doug" Beasley, Paul Sanford.

Janitor



Elmer Gillett

BETA

CLUB



First row: Billy Best. Second row: Sybil Bradshaw, Jewel Clarke, Jewel Ferguson, Shirldean Hoglen. Third row: Bonnie Sue Justice, Polly Kay McElroy, Helen Price. Fourth row: Frances Emma Yates.



Spanish Class

Mrs. Yates, Teacher

Latin Class

Mr. Safford, Teacher



Typing Class



THE CHAMPION PAPER AND FIBRE COMPANY



CAROLINA DIVISION

Canton

North Carolina

THE FIRST NATIONAL BANK

of

Waynesville, North Carolina

The Friendly Bank

"Since 1920"

We believe in the young people of

CRABTREE IRON-DUFF

Member Federal Deposit Insurance Corporation

Member Federal Reserve System

GRADUATION DAY... AND EVERY DAY

is always

PET ICE CREAM DAY!

Pet Ice Cream is rich, creamy and velvety smooth... with flavor that's always delightful! And, Pet Ice Cream is made only of daily fresh whole milk, daily fresh sweet cream and the choicest natural flavorings!

Have some Pet Ice Cream today... and every day! In any one of the popular standard flavors... or, the feature flavor of the month... you'll always agree, Pet Ice Cream is the finest, most delicious Ice Cream you've ever tasted!



KETNERS

Feeds
Seeds
Groceries
Fertilizers
Local Produce

Phone G1-6-6000
Highway 19

Lake Junaluska North Carolina

Your 1-Stop Shopping Center
For the Entire Family

RAY'S
DEPARTMENT STORE
AND
SUPER MARKET

“Congratulations”

JOE'S STUDIO

Commercial and Portrait Photography

Hazelwood

North Carolina

Compliments of

CLYDE RAY'S FLOWER SHOP

Flowers For All Occasions
Also We Give Telegraph Service
Phone Gl 6-5375

Waynesville

North Carolina

JUNALUSKA SUPPLY COMPANY

Lumber
General Store
Machine Shop
Planing Mill
Filling Station

Jerry Liner, Mgr.

Phone GL 6-5341

MEHAFFY ESSO SERVICE

Phone Gl 6-9172

Main St.

Waynesville

North Carolina

Compliments of

CLINE-BRADLEY CO.

Purina Chows

Hotpoint Appliances

Hardware - Feed - Seed - Fertilizers - Paint

Phone Gl 6-3181

Hazelwood

North Carolina

Compliments of

BRYSON AND HARRELL MOTOR SALES

Home of Better Used Cars

Phone Gl 6-4922

Asheville Road

TURNER'S STORE

W. L. Turner, Owner

“Never Buy Before You Try Turner's”

Dial Gl 6-3040

Main St.

Waynesville

North Carolina

Compliments of

FREEL FURNITURE CO.

Canton

North Carolina

Compliments of

CHARLIE'S **CHARLIE'S**
GOOD EATS **TEXACO STATION**

Phone Gl 6-9115
Waynesville

Open 24 hours

Phone Gl 6-4971
North Carolina

Compliments and best wishes to the class of 1954

WATKINS CHEVROLET COMPANY

Waynesville

Telephone Gl 6-3595

North Carolina

Congratulations to the Class of 1954

RIGGINS & LEATHERWOOD GULF SERVICE

(at the intersection of 19 & 23)

C. S. Riggins and J. H. Leatherwood, Owners and Operators
Phone Gl 6-9162

Lake Junaluska

North Carolina

Compliments of

S. E. CONNATSER

Jefferson Standard Life Insurance Company
District Manager: 215 Main Street
Gl 6-4212

Waynesville

North Carolina

BALLANTINE'S SUPERETTE

Branner Avenue
Phone G1 6-4961

Waynesville

North Carolina



Waynesville

Compliments of
RELIABLE JEWELERS

Main Street

North Carolina

Compliments of

TIMBES' TAVERN

Breakfast and regular meals
Short Orders and Sandwiches

Main Street

Telephone G1 6-3301

GARRETT'S FUNERAL HOME

Main Street

Phone G1 6-4656

Waynesville

North Carolina

Best Wishes!
CLASS OF 1954

FARMERS' EXCHANGE

Phone G1 6-5335

Asheville Road

Compliments of
McCRACKEN'S JEWELERS

134 Main Street
Canton

Phone -3410
North Carolina

Compliments of
BRANSON MOTOR COMPANY

Dodge and Plymouth Cars

Canton

North Carolina

Compliments of
SILVER MOON

Highway 19

Clyde

North Carolina

McCRACKEN'S FURNITURE CO.

Robert H. Owen, Owner
Complete Home Furnishings
"Your Frigidaire Dealer"
20 Park Street

Canton

North Carolina

FIRESTONE HOME & AUTO SUPPLIES

Firestone Tires & Firestone Factory Recapping

W. M. (Bill) Cobb, Owner
Phone G1 6-3511

Waynesville

North Carolina

Compliments of
HAYWOOD CAFE

Asheville Road

Canton

North Carolina

Compliments of
FARMERS FEDERATION

Quality Farm Supplies

Phone Gl 6-5361

Waynesville

North Carolina

Congratulations, Class of '54

RICHLAND SUPPLY COMPANY

Feed - Seeds - Fertilizers - Coal

Phone Gl 6-3271

242 Commerce Street

**MEDFORD AND BURGIN
FURNITURE COMPANY**

O. O. Burgin

C. B. Medford

Phone Gl 6-4161

411 Depot Street

SIMS' COMPANY

Asheville Road

Phone Gl 6-4921

Waynesville

North Carolina

**PATRONIZE OUR
ADVERTISERS**

ROGERS ELECTRIC COMPANY
Sales and Service
Phone Gl 6-6351
Waynesville North Carolina

PALMERS ESSO
SERVICE
Maggie North Carolina

Compliments of
KAISER'S BOOK STORE
Office Equipment & Supplies
Phone G-6-3691

Congratulations Class of '54
WAYNESVILLE AUTO PARTS
405 Depot St.
Phone Gl 6-5321
Waynesville North Carolina

CAGLE FURNITURE COMPANY
Hotpoint - Maytag - Seigler
Duo-Therm
"The Home of fine furniture"
Dial 3379
Clyde North Carolina

CHAMPION MOTOR COMPANY
Sales  Service
Dial 2137
Canton North Carolina

Compliments of
GREGORY SUPER ESSO SERVICE
Road Service Phone 9712
Canton North Carolina

CRAWFORD FUNERAL HOME

Waynesville, N. C.
Dial G1 6-3535

Canton, N. C.
Dial 3535

Compliments of
HAYWOOD TIRE COMPANY
RECAPPING -- VULCANIZING
M. R. (Cotton) Ketner, Owner
N. Main St.
Dial G1 6-4821
Waynesville North Carolina

Compliments of
H. S. WARD
J. I. CASE MACHINERY
Gulf Station

Lake Junaluska North Carolina

THE TOGGERY
"Every Thing To Wear"
Shoes for the family

Waynesville North Carolina

Compliments of
HUDSON'S DEPT. STORE
"Home of Better Values"

Canton North Carolina

Compliments of
HAYWOOD BUILDER'S SUPPLY Co.
"Where There is a Material
Difference"
DIAL GL 6-6051

Waynesville North Carolina

Compliments of
WINNER'S
Department Store

Canton North Carolina

Compliments of
LEATHERWOOD & FRANCIS ESSO
Asheville Road
Dial GL 6-9163

East Waynesville North Carolina

SMITH'S DRUG STORE

"Your Rexall Dealer"

Main Street

Waynesville North Carolina

Compliments of

MASSIE'S DEPARTMENT STORE

C. J. Reece

Main Street

Waynesville North Carolina

SHEPPE'S

"Fashions at Your Price"

Phone Gl 6-4981

Waynesville North Carolina

Compliments of

MASSIE'S FURNITURE CO.

"Better Values in Furniture
Since 1920"

Phone Gl 6-3311

Waynesville North Carolina

PARTON FEED STORE

Feed, Seed, and Fertilizers

"The best is always cheapest"

Compliments of

THE FARMERS CO-OPERATIVE

Main Street

Waynesville North Carolina

Compliments of

JAMES SHELL SERVICE STATION

North Main

Phone Gl 6-6361

Waynesville North Carolina

Compliments of

JUNALUSKA SHELL SERVICE

Compliments of
SELLARS JEWELERS

Canton North Carolina

Compliments of
BUCHANAN'S
131 Main Street

Canton North Carolina

Compliments of
GOODSON PONTIAC CO.
125 Park Street
Tel. 2146

Canton North Carolina

CHAMPION DRUG STORE
The Rexall Store
"You save safely"
Phone 2892

Canton North Carolina

Compliments of
THE CLOTH SHOP

Waynesville North Carolina

GOLD DOT FOODS

Mayonnaise
Salad Dressing

Canton North Carolina

Compliments of
WAYNESVILLE CANDY COMPANY

Dial G1 6-3612

TOM'S TRUCK SERVICE
J. B. Palmer, Owner
Phone Glendale 6-5491

Lake Junaluska North Carolina

Compliments of
SMATHERS' MARKET

Canton North Carolina

Compliments of
POWELL LUMBER CO.

Canton North Carolina

Compliments of
PARRIS & KEYLON
Esso Service

Canton North Carolina

Compliments of
C. T. FERGUSON
General Merchandise
Rt. #1

Clyde North Carolina

BEST OF WISHES
JAMES PURE OIL
Service Station
Phone G1 6-5011

Waynesville North Carolina

Compliments of
WAYNESVILLE RESTAURANT

Waynesville North Carolina

PATTON & MORGAN INSURANCE
AGENCY
Medical Building
Phone 2632

Canton North Carolina

Compliments of
MEDFORD FARM
Service Station

Friends of the School:

THE CLYDE STORE
CLYDE PHARMACY
HOMER JUSTICE
RALPH'S CASH GROCERY

Compliments of

GARRETT FURNITURE CO.

The Home of Fine Furniture

Main Street
Phone Gl 6-5325
Waynesville North Carolina

Congratulations Class of '54

WAYNESVILLE AUTO PARTS

Phone GL 6-5321

Waynesville North Carolina

CENTRAL CLEANERS

Superior cleaning - pressing

Church Street
Phone GL 6-3671

Waynesville North Carolina

Compliments of

WHITMAN'S BAKERY

"Let Us Bake for You"

Main Street
Phone Gl 6-4271

Waynesville North Carolina

Compliments of

TAYLOR MOTOR COMPANY

Waynesville North Carolina

HARRELL'S

Cleaners - Launderers
AUTOMATIC LAUNDRY

Press While You Wait
"Your approval is our success"

204 Depot St.
Gl 6-4391

Waynesville North Carolina

HYATT PLUMBING COMPANY

Waynesville North Carolina

Compliments of
CHAMPION SHOE SHOP

Waynesville North Carolina

Compliments of
RAIFF'S

Canton North Carolina

CANTON ELECTRIC APPLIANCE
COMPANY

Canton North Carolina

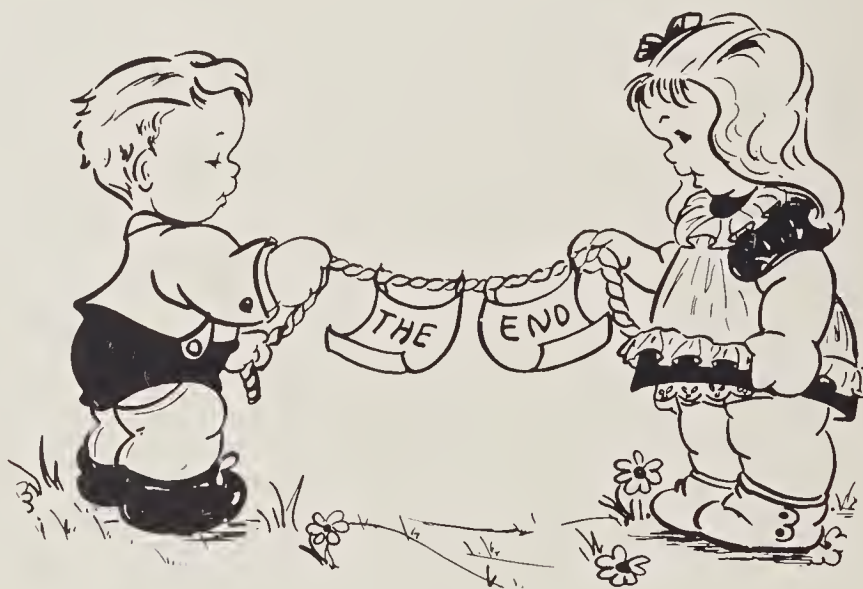
CAROLINA CLEANERS
Pick Up and Delivery Service

Canton North Carolina

CHEVROLET PLACE

Canton North Carolina

**PATRONIZE OUR
ADVERTISERS**



hand hold in

hand hold in

hand hold in

hand hold in

hand hold in

hand hold in

Wyosville Wyosville

Wyosville Wyosville

Wyosville Wyosville

Wyosville Wyosville

Wyosville Wyosville

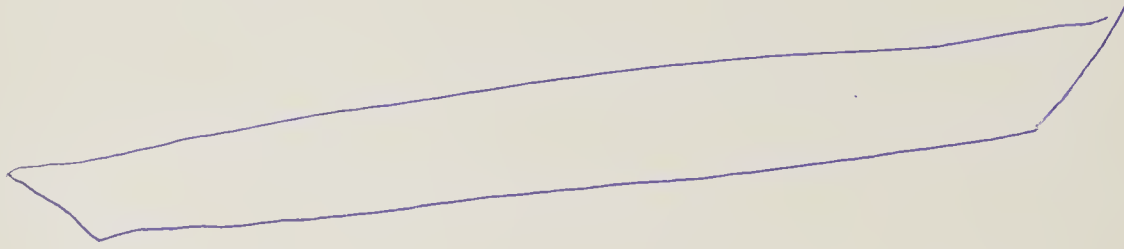
Wyosville Wyosville

Wyosville Wyosville

Wyosville Wyosville

Elizabeth Margaret Jones

To Johnny Deel



Wynne Wynne

Elizabeth Ann Mendenhall





HAYWOOD COUNTY PUBLIC LIBRARY
33115007664939

