

OCK

89

06

NY

II

OUT OF SEQUENCE

<u>Coll. Nos.</u>	<u>Page</u>
1 - 29	1-4
30 - 100(not used)	
101 - 109	5
110 - 199	23-35
201 - 215	6
216 - 300	36-41
301 - 335	7-10
336 - 341	14
342 - 400	47-56
401 - 406	11
407 - 500	57-67
501 - 509	13
510 - 549 (not used)	
550 - 599	15-20
600 - 625	68-70

896

PLANTS OF FLORIDA.

Panicum
 platewood prairie
 Myers
 As Hitchcock April 12, 1906

Grass collections 1905
(not sets)

- 1 *Hemalocucurus*
Orangeburg, S.C. Aug 17
- 2 *Panicum*
same
not cited Aug 18
- 3 *Panicum*
same
not cited Aug 18
- 4 *Panicum* ^{*mitidum Lam*} ~~*sub baculatum*~~ ^{W.H.}
same Aug 17
- 5 *Panicum*
same
not cited Aug 17
- 6 *Panicum* *padanense* Ashe
same Aug 16
- 7 *Panicum* ^{*philadelphicum*} ~~*munimur*~~ ^{Bush} (Aug)
same S.M. Aug 16
- 8 *Panicum*
same
not cited Aug 16
- 9 *Panicum*
rasping rough, Orangeburg 8/18

1905

- 10 *Panicum* ~~albicaule Ashe~~ ^{auburne Ashe}
sandy pine woods
Orangeburg S.C. Aug 19
collected
- 11 *Panicum*
"seems different from At-
lanticum. only 2-3 culms
& these prostrate. Low
pine woods.
same locality Aug 19
- 12 *Panicum* ~~virgatum Nash~~
not same prostrate Aug 19
- 13 *Panicum* ~~virgatum Nash~~
not same prostrate Aug 19
- 14 *Panicum* ~~virgatum Nash~~
same Aug 19
- 15 *Panicum* ~~virgatum Nash~~ ^{sub nitidum Lam}
same Aug 19
- 16 *Panicum* ~~virgatum Nash~~ ^{longiligulatum}
" Aug 19

1905

- 17 *Panicum aciculare* Desv
Orangeburg, S.C. Aug 19
- 18 *Paspalum distichum*
Aug 16
- 19 *Panicum fasci* Pan
Aug 16
- 20 *Panicum oligosanthos* Schult
Aug 18
- 21 *Panicum commutatum*
not cut. Schult
Aug 18
- 22 ~~*Panicum* ^{397 Ad} ~~virgatum Nash~~ ^{atlanticum Nash}
= N+C 147 villosissimum Aug 19~~
- 23 *Panicum*
note "is this the same as yesterday
from open ground?" Aug 19
- 24 ~~*Panicum*
set = N+C~~ Aug 19

1905

25 *Panicum flavovirens* Nash
~~strifolium~~ Bald
Orangeburg Aug 17

26 *Panicum sphaerocarpon* (L.) Hitchc
~~inflatum~~ 8/19

27 " *sphaerocarpon* but looks
note very like ~~sphaerocarpon~~
~~inflatum~~!

28 *Panicum lindheimeri* Nash
note low sandy ground
Orangeburg S.C. Aug 19

29 *Pasp. floridanum*
(30) Orangeburg SC
Aug 18, 1905

128 *Axonopus furcatus*
Orangeburg SC Aug 15, 1905

1905

Isle of Palms S.C. 5

101 *Spartina*

102 *Panicum ashei* Pears Aug 22
like *patentifolium* but Aug 22
spikelets pubescent

103 *Panicum manatum* Aug 22
nodes geminate

104 *Panicum rhizonatum*
~~concoloratum~~ Aug 22

105 *Panicum*
note Aug 22

106 *Panicum sphaerocarpon* Ell
8/22

107 *Pan. citiferum* Nash
note Ell Aug 22

108 *Pan arenicoloides* Ashe
Ormond Fla Apr 1903

109 *Pan. newanthum* Griseb
Miami Fla Mar 1903

see after 599

1905
Stone Mt., Ga.

201 *Panicum bicknellii* Nash
Aug 24

202 *Panicum*
note
Aug 24

203
Aug 24

204 *Eragrostis*
Aug 25

205 *Agrastis perennans*
Aug 25

206 *Paspalum*
Aug 25

207 *Panicum sphaerocarpon*
~~*inflatum*~~ note
Aug 25

216 $\frac{1}{2}$ *P. fascii* Poir
not cit
Aug 25

215 *Panicum scoparium* Lam.
see Miss. Coll
Aug 25

1905
Wilmington, N.C.
savanna

301 *Panicum longiligulatum* Nash
note "with small *Nashtanum*
single culms" 8/28

302 *Panicum pauciciliatum* Ashe
note 8/28

303 *Panicum longifolium* Torr.
note 8/28

304 *Panicum Wrightianum*
note drained swamp 8/28

305 *Panicum addisonii* Nash
note sand 8/29

306 *Panicum arenicoloides*
note ~~with *phyllon*~~ sandy live oak woods 8/29

307 *Panicum Walteri*
8/29

no number *Pan. anbarne* Ashe 8/28

308 *Panicum*
note 8/29

1905
Wilmington, N.C.

- 309 Eragrostis Aug 29
- 310 Panicum rhizomatium Noe 8/29
- 311 Panicum verrucosum note 8/29
- 312 Paspalum 8/29
- 313 Elymus 8/29
- 314 Panicum note 8/29
- 315 Panicum note in grass in low prairie 8/29
- 316 Panicum wilmingtorensis note in grass in low prairie 8/29

1905
Wilmington, N.C.

- 317 Panicum note Aug 29
- 318 Panicum longifolium Torr note 8/29
- 319 Panicum longiligulatum Nash note " wrightianum mixed in 8/29
- 320 Panicum communis Ashe note said 8/29
- 321 Agrostis peruviana 8/29
- 322 Calamovilfa 8/29
- 323 Aristida 8/29
- 324 Panicum note 8/30
- 325 Panicum note 8/30

Wilmington 1905
W.C.

326 *Panicum communissimum* Link
sand 8/30

327 *Panicum*
note 8/30

328 *Panicum ovale* Ell
note 8/30

329 *Panicum ritidum* Lam
nc 8/30

330 *Panicum ~~relacuum~~ aciculare* Desf.
nc 8/30

331 *Panicum ciliatum*
nc 8/30

332 *Panicum trifolium* Nash
in old sandy field 8/30

333 *Panicum sphaerocarpon* Muhl
nc 8/30

334 *Panicum inflatum* Desf 8/30

335 " *addisonii* Nash 8/30
same see misc coll

1905
Norfolk - Cape Henry, Va

401 *Panicum*
note Lynn Haven 9/2

402 *Panicum addisonii* Nash
note Lynn Haven,
dry sand 9/2

403 *Panicum oligoanthes* Schult
note same 9/2

404 *Eragrostis ~~scabra~~*
same 9/2

405 *Panicum patulum* (S.M.)
note ~~at~~ ^{sp. in woods} ~~at~~ ^{Walden}
spikelets pubescent. same 9/2

406 *Panicum ~~stolonifera~~ thuricum* N.C.
note ^{sandy} Lynn Haven col'd 9/2

400's continued for
sets - following 399

1905

1905

II

501 *Panicum*
note sterile wooded hillside 9/10
Mt Pleasant DC

502 *Panicum* ~~peruvianum~~ *400*
note Pine Mill Run Va 9/13

503 *Panicum* ~~boreale~~ *ashii* Pears
sterile wooded hillside
Mt Pleasant DC Sept 10.

504 *Panicum lanuginosum* Ell
note Mt Pleasant, DC 9/14

505 *Panicum tenuescens* Ashe
Mt Pleasant DC 9/14

506 *Panicum lanuginosum* Ell
same
branch
leaves nearly glabrous above.

507

508

509 *Panicum*
note Arlington, Va 9/15
open low ground.

Miss coll. sets

336 *Pan. ~~ooale~~ Ell.* Wilmington NC
(= 217 H+C) ^{common in ash}
Aug 30, 1905

~~217 *Pan. ooale* Ell. Stone Mt. Ga.
= 301 H+C~~

337 *Pan. flavovirens* Nash
Wilmington NC
(= 195 H+C) among sphagnum
August 1905

338 *Pan. chamaelauche* Trin.
Wilmington NC ^{Aug 30}
(= 225 H+C) not set 1905
savanna

339 *Pan. chamaelauche* Trin
Wilmington NC ^{Aug 30}
(= 216 H+C) 1905

340 *Pan. depauperatum* Muhl
Mt Pleasant SC 5-21-05
(= 7 H+C)

341 *Pan. depauperatum* Muhl
W. Cherry Chase, Md
June 3 1905 (= 24 H+C)
see last half book

Miss. coll.

550 *Pan. ~~ciliiferum~~ Nash*
^{ooale Ell}
Lake City Fla
April 16, 1906

551 *Pan. ludheimeri* Nash
Poteau, Okla. 1903

552 *Pan. ludheimeri* Nash
St Louis Mo 1904

553 *Pan. spretum* Schult
Lewes, Del June 18, 1905

554 *Pan. leucothrix* Nash
Herradura Cuba Mar 16, 1906

555 *Pan. ~~terre~~ Muhl*
^{albamariginatum Nash}
Herradura Cuba Mar 16, 1906

556 *Panicum addisonii* Nash
Virginia Beach Va June 1904

557 *Panicum addisonii* Nash
Orangeburg SC Aug 18, 1905

558 *Pan. oricola* H & C
Nantucket Mass July 1902

559 *Pan leucothrix* Nash
note *Herradura* Cuba Mar 6, 1906
spikelets 1.4-1.5 mm

560 same same
note branching form

561 *Pan sphaerocarpum* Ell
note Leaves Del June 18, 1905

562 *Pan sphaerocarpum*
Stillwater Okla 1903

563 *Pan patentifolium* Nash
30
42
Ormond Fla Mar 1903

564 *Pan. ashei* Pearson
Plummers Island June 19, 1906

565 *Pan ashei* Pearson
Lenoir, N C Aug 2, 1905

566 *Pan ashei* Pearson
Aiken S.C. May 9, 1901.

567 *Pan ashei*
Stone Mt, Ga Aug 23, 1905

568 *Pan ashei*
woods, Mt Pleasant DC
Sept 14, 1905

569 *Pan commutatum* Schult
dry woods, Mt. Pleasant DC
June 10, 1906

570 *Pan commutatum* Schult.
Biltmore NC. Aug 10, 1905

571 *Pan commutatum* Schult.
Biltmore, N.C. Aug 10, 1905

572 *Pan commutatum* Schult
rich hammock, Lake
City, Fla April 16, 1905.

573 *Pan mutabile* Scribn & Sm.
Wilmington N C Aug 30, 1905

574 *Pan equilaterale* Scribn ^{early}
30
Miami Fla Mar 1903

575 *Pan. equilaterale* Scribn
Orlando Fla Mar 1903
sandy woods

576 *Pan. jorii* Vasey
Miami Fla Mar 1903

577 *Pan. jorii* Vasey
Thehau, Ala 1904

578 *Pan. malacophyllum* Nash
Wister 1903

579 *Pan. oligosanthos* Schult.
Sumter S.C. Apr 1903

580 *Pan. oligosanthos* Schult
Aiken S.C. May 9, 1901

581 *Pan. oligosanthos* Schult
Va. Beach June 1904

582 *P. oligosanthos* Schult
Lewis Del. June 18, 1905

583 *Panicum clandestinum* L
South Manchester, Conn July 1902

584 *Pan. clandestinum* L
Morgantown W. Va July 1902

585 *Pan. clandestinum* L
Stone Mt, Ga. Aug 2, 1905

586 *Pan. latifolium* L. the Gorge,
ascent of Roan Mt. Tenn
July 25, 1905

587 *Pan. latifolium* L. shady oak
woods, opp. Plummers Isl.
Fairfax Co. Va. June 19, 1906

588 *Pan. latifolium* L
Rittmore NC Aug 6-10, 1905

589 *Pan. latifolium* L
on rocks, Lenoirville NC
July 30, 1905

590 *Pan. bascii* Pair
Plummers Isl. Md
June 19, 1905

- 591 *Pan boscii* Pan
Biltmore N.C. Aug 6-10. 1905
- 592 *Pan boscii malle* (Vas) H & C
Newark Del. 11/2/00
- 593 *Pan scoparium* Lam
Virginia Beach Va Aug 1902
- 594 *Pan scoparium* Lam
Mobile Ala Aug 7. 1904
- 595 *Pan scabriusculum* Ell
Wilmington N.C. Aug 1905
- 596 *Pan. microcarpum* Muhl
woods, Piney Branch, Mt
Pleasant, DC. June 26. 1904
- 597 *Pan linearifolium* Scribn
Plummer's Island, Md
June 19. 1906.
- 598 *Panicum linearifolium*
verruca
Burlington, Vt Aug 1902
- 599 *Pan trachusa silvicola* H & C
St. Louis Mo 1904

Key West 1906 begins
at 600

II

22

- 110 *Pan xalapense* HBK
Lake Charles La. 1903
- 111 *Pan laxiflorum* Lam
Ormond Fla Mar 1903
sandy woods
- 112 *Pan polycaulon* Nash
Miami Fla Mar 1903
- 113 *Pan angustifolium* Ell
note Chehaw Ala 1904
- 114⁽²⁰⁾ *Pan fusiforme* Hitchc
H.C.428 Ormond Fla Apr 1903
- 115 *Pan polycaulon* Nash
Herradura Cuba Mar 16, 1906
- 116 *Pan chrysopsidifolium* Nash
Herradura, Cuba Mar 16, 1906
- 117 *Pan fusiforme* Hitchc
Herradura Cuba Mar 16, 1906

118 *Pan bicknellii* Nash
Plummers Isl. Md
June 19, 1906

119 *Pan nitidum* Lam
Va. Beach Va Aug 1902

120 *Pan. boreale* Nash
Jaffrey, N.H.

121 *Pan boreale* Nash
White Mts, N.H July 1902

122 *Pan dichotomum* L
DC 1906

123 *Pan barbulatum* Mx
Mt Pleasant DC 6/1906

124 *Pan barbulatum* Mx
~~Fairfax Co~~
Burlington Va 1902

125 *Pan barbulatum* Mx
Mt Pleasant DC 10/7/06

126 *Pan albenmarlense* Ashe
Piney branch road
Mt Pleasant DC June 16, 1906

127 *Pan implicatum* Scribn
Jaffrey N.H July 1902

128 *Panicum sloanai*
San Antonio Cuba Dec. 18, 06

129 *Pan agrostoides* Spreng
South Manchester Conn July 1902

130 *Pan implicatum* Scribn
White Mts, N.H July 1902

131 *Pan. Gricbaelinii*
San Antonio ^{Calif} Aug 20 1906

132 *Pan implicatum* Scribn
Burlington Vt. Aug 1902

133 *Pan trachucaea*
Burlington Vt Aug 1902

- 134 *Pan. tsugetorum* Nash
South Manchester Conn 1902
- 135 *Pan. tsugetorum* Nash
Harpers Ferry W. Va 1905
- 136 *Pan. huachucae silvicola* H & C
Fairmount W Va July 1902
- 137 *Pan. huachucae silvicola* H & C
Morgantown W. Va July 1902
- 138 *Pan. tennesseense* Ashe
Md. 1906
- 139 *Pan. tennesseense* Ashe
Arlington, Va Fairfax Co 1906

Cuba

- 140 *Pan. (comophyllum) acuminatum* Sw
Herradura Cuba 1906
- 141 *Pan. utowanum* Scudder
Triscornia Mar 23, 1906 Cuba
- 142 *Pan. geminatum*
Batabanoo, Cuba Mar 15-20. 1906
- 143 *Pan. geminatum*
swamp west of Santiago de
las Vegas. Mar 15-20, 1906
- 144 *Pan. distantiflorum* Rich
Playa de Cajumar Cuba
Mar 15-20 1906
- 145 *Pan. reptans* L
San Antonio Cuba Mar 19.
- 146 *Pan. reptans* L
weed in Botanical garden
Havana Cuba Mar 26

~~Herradura~~ Cuba 1906

147 *Panicum adpersum* Trin
note Santiago de las Vegas Mar 15-20, 1906

148 *Panicum adpersum* Trin
note weed in lawn + garden, Exp. Sta
same Mar 18

149 *Pan dichotomiflorum* Mx
note Batabano Cuba Mar 15-20, 1906

150 *Pan dichotomiflorum* Mx
Batabano, Mar 15-20, 1906

151 *Pan dichotomiflorum* Mx
Santiago de las Vegas

152 *Pan elephantipes* Nees
San Antonio Mar 19, 1906

153 *Pan virgatum cubense* Griseb
Batabano Mar 15-20 1906

154 *Pan tenerum* Beyr.
Herradura Mar 16, 1906

stenoades

155 *Pan caricoides* Nees
Herradura Mar 16, 1906

157 *Panicum maximum* Jacq. 1906
Santiago de las Vegas Mar 15-20

156 *Pan maximum* Jacq
Herradura Mar 16, 1906

158 *Pan diuonictum*
Tricornium Mar 23, 1906

159 *Panicum adpersum* Trin
note Tricornium, Cuba Mar 23, 1906

160 *Pan. ovale* Ell
Ormond Fla April 1903

161 *Panicum villosissimum* Nash
Leves Del 1905

36
162 *Panicum firpicolum* V. C.
Sarita, Tex. Aug 7. 1904

162 *Panicum fasciculatum* chartagin-
ense (Sw) Doell. San Antonio
Tex 1903

163 *Panicum texanum* Buckl
Corpus Christi Tex Aug 7 1904

164 *Panicum verrucosum* Muhl
Virginia Beach Va Aug 1902

165 *Panicum philadelphicum* Bernh
Bluff City Tenn. July 22, 1905

166 *Panicum philadelphicum* Bernh
4-mile Run Va 9/04.

167 *Panicum gattingeri* Nash
DC Sept. 1904

37
168 *Panicum amarulum* Ell & C
Virginia Beach Va
Aug 1902

169 *Panicum amarulum* Ell
~~*amarulum*~~ S. M.
Virginia Beach Va.
Aug 1902

170 *Panicum virgatum* L
Newport. R.I. July 1902

171 *Panicum virgatum* L
Virginia Beach Va Aug 1902

172 *Panicum condensum* Nash
Miami Fla Mar 1903

173 *Panicum stipitatum* Nash
note Isle of Palms SC Aug 27
1905

174 Pan {condensum Nash
agrostoides
Virginia Beach, Va Aug 1902

175 Pan rhizomatum H. & L.
Lynn Haven Sept 2 1905

176 Pan rugellii
San Antonio Cuba 3/20/06

177 Pan. lappaceum Sw
Herradura Cuba 3/16/06

178 Pan luteum Sw
Santiago de la Vega 3/15/06

179 Pan. squiflorum
Herradura, Mar. 16, 1906

180 Pan. millegrana Poir
Pan. Sellowii
Herradura Cuba 3/16/06

181 Pan. parvifolium
Herradura 3/16/06.

182 Pan villosissimum!
Orangeburg SC Aug 19/05
note not by hand

183 Pan. wrightianum Scribn
Orangeburg SC Aug 19
note

184 Pan. trifolium Nash
note Orangeburg SC, Aug 19
05

185 Pan. leucum
note low pine woods
Wilmington NC
8/30/05

186 *Chloris paraguayensis* Steud
Miami Fla
8/1903

~~186 *Panicum* ...
Miami Fla
8/1903~~

187 *Panicum equilaterale* Scribn
note Miami Mar 1903
sandy woods

188 *Valota insularis* (L) Chase
glades Miami Fla
Mar 1903

189 *Panicum xalapense* HBK
note sandy pine woods
Sumter, SC Apr 1903

190 *Panicum dichotomiflorum* Max
note Miami Fla Mar 1903

191 *Panicum albomarginatum* Nash
note flatwoods Miami
Mar 1903 Fla

192 *Panicum laucearum* Trin
note pine woods Ormond
April 1903 Fla

193 *Sporobolus indicus*
coral rock, Miami Mar 1903

144 *Lasiacis divaricata*
hammock border, Miami
Mar 1903 Fla

145 *Panicum aciculare* Desv
note Orangeburg 8-15-05.

146 *Panicum*
note Orangeburg SC Aug 15 05

147 *Panicum laucearium* app.
note sandy pine woods
Wilmington NC 8-30-05

148 *Panicum coccineum* Kth
note low pine woods, Va Beach
6-27-05 Va

149 *Missetum cubense* Chase
Herradura Cuba Mar 1906

see Stone Mt

- 216 *Pan. verrucosum*
Stone Mt Ga Aug 1905
- 217 *Pan dichotomiflorum* Mx
Va Beach Va Aug 1902
- 218 *Pan capillarioides* Vasey
Corpus Christi to Brownsville, Tex Aug 7, 1904.
- 219 *Pan hallii* Vasey
San Antonio Tex 1903
- 220 *Pan filipes* Scribn
Brownsville Tex
Aug 7, 1904
- 221 *Pan hallii* Vasey
~~*Pan filipes* Scribn~~
Corpus Christi to Brownsville
Tex Aug 7, 1904
- 222 *Pan bosonii* Poir
Stone Mt Ga Aug 1905

- 223 *Pan. fortis*
not cit low ground near Biscayne Bay
Mar 1903
- 224 *Panicum*
Wilmington NC Aug 1905
- 225 *Pan stipitatum* Nash
unusually loosely flowered,
Isle of Palms S.C. Aug 2, 1905
- 226 *Pan virgatum* L
Isle of Palms S.C. Aug 2, 1905
- 227 *Pan. amarum* Ell
~~*Pan. amaroides* Scribn~~
Levesdele Nov 2, 1903
- 228 *Panicum anceps* Mx
Virginia Beach Va Aug 1902
- 229 *Pan anceps* Mx
Bristol Tenn July 20, 1905

230 *Panicum anceps* Nutt
Stone Mt Ga Aug 1905

Cuba - 1906

- 231 *Aristida aciculata*
- 232 *Aristida cokeri*
- 233 " "
- 234 *Sporobolus angustatus*
- 235 " *argutus*
- 236 " "
- 237 *S. ciliatus*
- 238 *Chloris petraea*
- 239 " *cruciatifolia*
- 240 " "
- 241 *C. clausenoides*
- 242 " "
- 243 " "
- 244 " "
- 245 " *ciliata*
- 246 " "
- 247 " *parviflorum*
- 248 " "
- 249 " *virgata*
- 250 *Leptochloa piliformis*
- 251 " *fasciculata*

- 252 *Leptochloa virgata*
- 253 " "
- 254 *Pappophorum slovicerasoides*
- 255 *Erigeron annuus*
- 256 *calceolaria*
- 257 *pterosperma*
- 258 " "
- 259 " "
- 260 " *elliottii*
- 261 " "
- 262 *Leptochloa bahamensis*
- 263 *Syntherisma spicata*
- 264 *Eragrostis - Paula Ressa, Fla, 1900.*
- 265 *Allopolypogon paniciformis*
- 266 " "
- 267 " "
- 268 " "
- 269 *Eragrostis [decumbens] Scribn, Texas in 1904*
- 270 *Cyperus strigosus*
- 271 " "
- 272 " "
- 273 " "
- 274 " "
- 275 " "
- 276 " "

- 277
- 278
- 279
- 280
- 281
- 282
- 283
- 284
- 285
- 286
- 287
- 288
- 289
- 290
- 291
- 292
- 293
- 294
- 295
- 296
- 297
- ~~298~~
- ~~299~~
- ~~300~~

Pasp. dilatatum, Shreveport
La
1903

- 300 *Pasp. setaceum*
Sandy pine woods
Orangeburg S.C. Aug 15, 1905
- 299 *Casipalm pubescens*
Pittsboro NC Aug 1905
- 298 *Pasp. pubescens*
Stone Mt Ga Aug 1905

30
122
H.C.

II

113

113

II

II

14

15

5

5

Hoc sets of 30

342 *Pan ciliatum* Ell
Orangeburg S.C. Aug 19, 1905
(= 154 Hoc)

343 *Pan xalapense* HBK
beyond N.W. District line Md
Sept 16, 1905 (= 28 Hoc)

344 *Pan aciculare* Desv.
Wilmington N.C.
Aug 28, 1905 (= 193 Hoc)

345 *Pan aciculare* Desv.
Lynn Haven Va 9-2-05
(= 230 Hoc)

346 *Pan aciculare* Desv.
Orangeburg S.C. 8-15-1905
(= 124 Hoc)

347 *Pan aciculare* Desv.
Va Beach Va 6-27-1905
(= 80 Hoc)

348 *Pan. angustifolium* Ell
Lynn Haven Va 9-2-05
(= 149 H.C.)

349 *Pan. angustifolium* Ell
Orangeburg Sc 8-18-140
(= 149 H.C.)

350 *Pan. arenicoloides* Ashe
^{sandy woods}
Wilmington NC 8-28-05
(196 H.C.)

351 *Pan. arenicoloides* Ashe
Isle of Palms S.C. 8-22-1905
(= 171 H.C.)

352 *Pan. arenicoloides* Ashe
Orangeburg Sc 8-18-0
(= 148 H.C.)

353 *Pan. beckerellii* Nash
Mt Pleasant Sc 9-14-05 note
(= 272 H.C.)
see extra pkg

354 *Pan. ~~angustifolium~~ ~~angustifolium~~!*
among grass in slough,
strictly erect, Wilmington
NC Aug 28, 1905
(-199 ~~H.C.~~ + 299 H.C.)

355 *Pan. lindheimeri* Nash
moist ground, wood
border, W. Cherry Chase
Md
6-3-1905

356 *Pan. caeruleus* Nash
Lynn Haven Va 9-2-05
(= 226 H.C.)

357 *Pan. dichotomum* L
Mt Pleasant Sc 9-10-05
(= 259 H.C.)

358 *Pan. dichotomum* L
4-mile Run Va 6-1-05
(= 18 H.C.)

359 *Pan barbulatorum* Mx
Stone Mt Ga 8-23-1905
(183 Hrc)

360 *Pan barbulatorum* Mx
Orangeburg S.C. 8-19-1905
(309 Hrc)

361 *Pan yadkinense* Ashe
W. Cherry Chase Md 6-11-05
(34 Hrc)

362 *Pan lucidum* Ashe
Baltimore Md Aug 1905
(172 Hrc)

363 *Pan lucidum* Ashe
Orangeburg SC
8-18-1905 (= 143 Hrc)

364 *Pan lucidum* Ashe
not 30 Lynn Haven Va (= 306 Hrc)
low wet sandy meadow

365 *Pan lucidum* Ashe
not 30 Wilmington NC 8-28-05
(197 Hrc)

366 *Pan lucidum* Ashe
Orangeburg S.C. 8-19-05
(308 Hrc)

367 *Pan lucidum* Ashe
Wilmington NC 8-30-05
(244 Hrc)

368 *Pan leucidum* Ashe
Wilmington NC
Aug 30, 1905. (248 Hrc)

369 *Pan lucidum* Ashe
not 30 Wilmington NC Aug 28, 1905
(205 Hrc)

370 *Pan microcarpon* Muhl
Bennings DC 6-10-05
(= 31 Hrc)

371 *Pan cryptanthum* Ashe
~~not 30~~ ^{not 30} ~~Wilmington NC~~ ^{Wilmington NC} Aug 28, 1905
(= 209 Hrc)

372 *Pan longiligulatum* Nash
~~not 30~~ ^{not 30} Wilmington NC 8-28-05
(= 209 Hrc) Mixture

373 *Pan wrightianum* Scribn
~~not 30~~ ^{not 30} mixed with 372.

374 *Pan. wrightianum* Scribn
Wilmington NC Aug 30, 1905
(= 225 Hrc)

375 *Pan longiligulatum* Nash
Stone Mt Ga 8-25-05
(= 300 Hrc)

376 *Pan leucothrix* Nash
Orangeburg SC 8-19-05
(152 Hrc)

377 *Pan leucothrix* Nash
Wilmington NC Aug 30, 1909
(= 246 Hrc)

378 *Pan spretum* Schult
Lynn Haven Va 9-2-05
(= 228 Hrc)

379 *Pan spretum* Schult
Lynn Haven Va 9-2-05
(= 233 Hrc)

380 *Pan lindheimeri* Nash
Bennettsville 6-10-05
(= 29 Hrc)

381 *Pan lindheimeri* Nash
Stone Mt Ga 8-23-05
(182 Hrc)

382 *Pan huachucae silvicola* Hrc
~~not c~~ ^{not c} 4-mile Run Va 6-1-05
(19 Hrc)

383 *Pan huach. silvicola* Hrc
~~not c~~ ^{not c} 4-mile Run 9-13-05
(268 Hrc)

- 384 *Pan meridionalis* Ashe
Deerwood DC 9-9-05
(=256 Hrc)
- 385 *Pan meridionalis* Ashe
Stone Mt Ga 8-23-05
(186 Hrc)
- 386 *Pan languosum* Ell
Isle of Palms SC. 8-22-05
(=167 Hrc)
- 387 *Pan languosum* Ell
Lewis Del 6-18-05 ASH
(54 Hrc) not set 30.
- 388 *Pan languosum* Ell
not c Wilmington NC 8-28-05
(203 Hrc)
- 389 *Pan languosum* Ell
8-18-05 Orangeburg SC
(=137 Hrc)

- 390 *Pan languosum* Ell
not 30 Orangeburg SC 9-19-05
(=155 Hrc)
- 391 *Pan villosissimum* Nash
4 mile Run Va 6-1-05
(20 Hrc)
- 392 *Pan villosissimum* Nash
Orangeburg SC 8-14-05
(147 Hrc)
- 393 *Pan villosissimum* Nash
Mt Pleasant DC 9-14-05
(274 Hrc)
- 394 *Pan villosissimum* Nash
Wilmington NC 8-30-05
(=224 Hrc)
- 395 *Pan villosissimum* Nash
Lenoir NC. Aug 4 1905
(=109 Hrc)

396 *Pan villosissimum* Nash
Stone Mt Ga 8-23-05
~~376~~ (179 H.C.)

397 *Pan pseudopubescentis* Nash
Stone Mt Ga Aug 23 1905
(301 H.C.)

398 *Pan pseudopubescentis* Nash
Orangeburg SC 8-19-05
(153 H.C.)

399 *Pan addisani* Nash
Wilmington NC Aug 30, 1905
(222 H.C.)

30
400 *Pasp. Mitchellianum*
(N.C. 224) / Wilmington
Aug 28 1905

407 *Pan communianum* Ashe
Lynn Haven Va 9-2-05
(231 H.C.)

408 *Pan communianum* Ashe
Leves Del 6-18-05
(48 H.C.)

~~409~~
47 *Pan oricola* H.C.
Leves Del 6-18-05
(47 H.C.) so published must remain

410 *Pan polyanthes* Schult
Norfolk Va 6-28-05
(84 H.C.)

411 *Pan erectifolium* Nash
Wilmington NC 8-30-05
(219 H.C.) not set 30

412 *Pan flavovirens* Nash
Wilmington NC 8-28-05
(195 H.C.) flatwoods
came as 337 A 84

~~Flavescens~~
413 Pan patulum (S.M.) Helche
Isle of Palms S.C. 8-22-1905
(170 H.C.)! 413 in cited as patulum!

414 Pan pauciciliatum Ashe
Wilmington NC Aug 30, 1905
(221 H.C.) Mixture
414 is cited pauciciliatum

415

~~part of 416~~
416 Pan pauciciliatum Ashe
Wilmington NC 8-28-05
(207 H.C.)
not 30

417 Pan oligosanthes Schult
Stone Mt Ga 8-25-1905
(192 H.C.)

418 Pan oligosanthes Schult
Wilmington NC 8-28-05
(211 H.C.)

419 Pan oligosanthes Schult
Lewis Del 6-18-05
(43 H.C.)

420 Pan ravenelii S.M.
Wilmington NC 8-29-05
(214 H.C.)

421 Pan equilaterale Scribn
Isle of Palms SC 8-22-05
(166 H.C.)

422 Pan ashei Pearson
Mt Pleasant SC 6-4-05
(27 H.C.)

423 Pan ashei Pearson
Stone Mt Ga Aug 23 1905
(181 H.C.)

424 Pan ashei Pearin
Wilmington NC 8-29-05
(215 H.C.)

425 *Pan ashei* Peas
Mt Pleasant SC 9-10-05
(261 Hrc)

426 *Pan commutatum* Schult
Mt Pleasant SC 9-14-05
(273 Hrc)

427 *Pan commutatum*
Stone Mt Ga Aug 23 1905
(184 Hrc)

428 *Pan commutatum* Schult
Lenoir NC 8-20-05
(108 Hrc)

429 *Pan mutabile* S+S
Cape Henry Va 9-2-05
(229 Hrc)

430 *Pan mutabile* S+S
Stone Mt Ga 8-23-05
(298 Hrc)

431 *Pan clandestinum* L
Mt Pleasant SC 6-4-05
(26 Hrc)

432 *Pan clandestinum* L
W. Chevy Chase Md 9-24-05
(289 Hrc)

433 *Pan latifolium* L
Grandfather Mt NC 7-30-05
(106 Hrc)

434 *Pan bosci* moll (Vas) Helcke
4 mile Run Va 8-1-05
(21 Hrc)

435 *Pan bosci* moll (Vas) Helcke
Mt Pleasant SC 5-21-05
(6 Hrc)

436 *Pan bosci* moll (Vas) Helcke
4 mile Run Va 9-13-05
(269 Hrc)

- 437 *Pan scoparium* Lam
Orangeburg SC 8-18-1905
(138 H.C.)
- 438 *Pan scabrunculum* Ell
Orangeburg SC 8-19-1905
(156 H.C.)
- 439 *Pan philadelphicum* Bernh.
Stone Mt Ga Aug 23, 1905
(= 185 H.C.)
- 440 *Pan amarulum* Ell N.C.
In sand Lynnhaven Va
Sept 2, 1905
(= 234 H.C.)
- 441 *Pan amarulum* Ell
~~*Pan amarulum* Ell~~
Wilmington NC Aug 28, 1905
(= 208 H.C.)
- 442 *Pan virgatum* L
Chesapeake Beach Md
Oct 1, 1905
(= 294 H.C.)

- 443 *Pan virgatum cubense* Griseb
note Orangeburg S.C. Aug 19, 1905
(= 157 H.C.)
- 444 *Pan condensum* Nash
Wilmington N.C. Aug 30, 1905
(= 243 H.C.)
- 445 *Pan agrostoides* Sprung
Orangeburg SC Aug 15, 1905
(= 127 H.C.)
- 446 *Pan longifolium* Torr
Cape Henry, Va. June 27, 1905
(= 82 H.C.)
- 447 *Panicum longifolium* Torr
Wilmington NC Aug 30, 1905
(= 223 H.C.)
- 448 *Pan anceps* Mx
Orangeburg SC Aug 18, 1905
(= 146 H.C.)

449 *Pan. acutifolium* Nutt
Orangeburg SC Aug 16, 1905
(= 134 H+C)

450 *Pan. rhizomatium* H+C
Orangeburg SC Aug 16, 1905
(= 136 H+C)

451 *Pan. hians* Ell
Orangeburg SC Aug 15, 1905
(= 125 H+C)

452 *Paspalum* ...
3/23/05

453 *Paspalum distachnum* L.
Batabano, in 1906

454 *Paspalum notatum*
Herradura in 1906

455 *Paspalum pumilum* " "
Herradura

456 *Paspalum plinatum* Sw.

457 *Paspalum plicatulum*

458 *Paspalum* ...

459 *Paspalum calcarium*

460 *Bouteloua junifolia*
Playa de Cojimar Cuba
Mar 15-20

461 *Paspalum calcarium*

462 *Paspalum caudatum*

463 *Paspalum Lindenianum*

464 *Paspalum calcarium*

465 " "

466 " "

467 " "

Cuba

- 468
- 469
- 470
- 471
- 472 " multicaulis
- 473 " conjugata
- 474 " "
- 475
- 476 Cact. laminata
- 477
- 478
- 479 Androp. ...
- 480 And. ...
- 481 And. ...
- 482 Lophocarpum ...
- 483 Synterisma ...
- 484 " "
- 485 Mesopitum ...
- 486 Aponotax ...
- 487 ...
- 488 Apteris ...

- 489 Equisetum ...
- 490 Edmonstonea ...
- 491 Cladostemon ...
- 492 Cudrania ...
- 493 C. ...
- 494 ...
- 495 ...
- 496 ...
- 497 ...
- 498 ...
- 499 ...
- 500 ...

Don't go beyond 500

Plantes

Nov 27

600 *Panicum* ...
in ...
...

601 *Panicum* ...
...

602 *Digitaria* ...
...

603 *Cucumis* ...

604 ...
...

61

606 Sparus ...
in clumps ...
common.

607 Populus ...
in open ...

608 ...
in ...

609 ...
in ...

610 Chaetochloa ...
in ...

611 Pan ...
as 610? ...

612 ...
in ...

613 Pan ...
in ...

614 ...
in ...

615 ...
in ...

623 St. John's of the River
 ✓ June 2nd ...
 ...
 ✓ July 1st ...
 ...

71

II

II

Stop at 499

II

II

St. Louis, Missouri

... ..
... ..
... ..

... ..

627 *Panicum*
... ..

627 *Panicum virgatum* L.
... ..

628 *Panicum*
... ..

629 *Panicum webberianum* Nash
... ..

630 *Panicum*
... ..

631 *Panicum*
... ..

632 *Panicum equilaterale* Scribn.
... ..

633 *Panicum*
... ..

634 *Eriochloa*
... ..

630 *Passer. ...* *foorii* *Nas*
... ..
... ..
... ..
... ..

639 *Pass. albicaudatus* *Nas*
... ..
... ..
... ..
... ..

640 *... ..*
... ..
... ..
... ..
... ..

641 *... ..*
... ..
... ..

642 *... ..*
... ..

643 *... ..*
... ..
... ..

644 *... ..*
... ..

645 *... ..*
... ..
... ..
... ..

646 *... ..*
... ..
... ..

647 *... ..*
... ..

648 *... ..*
... ..

649 *... ..*
... ..
not c

876
877
878
879
880
881

marginatum Nash

Xalapence Nash
josii Vas

ovale Ell
lancaerium Trin

gibbum Nash

876 Pan
877 Pan
878 Pan
879 Pan
880 Pan
881 Pan

882
883
884
885
886
887

nitidum Lam

882
883
884
885
886
887
888
889
890

ovale Ell

Panicum polycaulon Nash

- 687 *Pan. caeruleus* Hack
- 688 *Pan. glaberrimum* nobc
- 692 *Pan. albomarginatum* Hack
- 693 *Pan. ...* nobc
- 694 *Pan. ...* nobc
- 695 *Pan. ...* nobc
- 696 *Pan. ...* nobc
- 697 *Pan. ...* nobc
- 698 *Pan. ...* nobc
- 699 *Pan. ...* nobc
- 700 *Pan. ...* nobc
- 701 *Pan. ...* nobc
- 702 *Pan. ...* nobc
- 703 *Pan. ...* nobc
- 704 *Pan. ...* nobc
- 705 *Pan. ...* nobc
- 706 *Pan. ...* nobc
- 707 *Pan. ...* nobc
- 708 *Pan. ...* nobc
- 709 *Pan. ...* nobc
- 710 *Pan. ...* nobc

- 703 *Pan. ...* Gladst. in Ternetes
- 704 *Pan. ...* Gladst.
- 705 *Pan. ...* Gladst.
- 706 *Pan. ...* Gladst.
- 707 *Pan. ...* Gladst.
- 708 *Pan. ...* Gladst.
- 709 *Pan. ...* Gladst.
- 710 *Pan. ...* Gladst.
- 711 *Pan. ...* Gladst.
- 712 *Pan. ...* Gladst.
- 713 *Pan. ...* Gladst.
- 714 *Pan. ...* Gladst.
- 715 *Pan. ...* Gladst.
- 716 *Pan. ...* Gladst.
- 717 *Pan. ...* Gladst.
- 718 *Pan. ...* Gladst.
- 719 *Pan. ...* Gladst.
- 720 *Pan. ...* Gladst.

April 4

717

nitidum Lam

719

ovale Ell

720

albomarginatum Nash

721

polycarpon Nash

722

Clavellia

724

Pan ovale Ell

727

More specimens. Panicle always
erect slender, appressed

730

Arachis specimen, a wet mass -
very like spec. over from a rock
below.

727

Gibberis

725

repens subsp. *laetiflora*
var. *repens* - small specimen,
almost all tubers except apical

724

His spring in the valley of the
and nearby by the T. P. station
Same locality

725

repens - erect, very dense
mass - seen for the first time above

728

repens - *repens* - *repens* - *repens*
same locality - specimens, common
here but not in flower, small

panicle erect & pendulous, small
in flower, the small seed large
abundant.

725 *P. webberianum* Nash

726 *P. webberianum* Nash

727 *Panicum*

728 *Panicum*

729 *Panicum*

730 *Panicum*

731 *Panicum*

732 *Panicum*

733 *Panicum*

734 *Panicum*

735 *Panicum*

736 *Panicum*

cubense Griseb

hermitanum Schult

Panicum webberianum Nash

737 *Panicum*

738 *Panicum*

739 *Panicum*

740 *Panicum*

741 *Panicum*

742 *Panicum*

743 *Panicum*

744 *Panicum*

765 $\frac{1}{2}$ Pan webberianum Nash

patulum (S.M.) Hitchc

laucareum Trin

766 $\frac{1}{2}$ Pan webberianum Nash

Nash

766 $\frac{1}{2}$

767

767 $\frac{1}{2}$

$\frac{1}{2}$

62 $\frac{1}{2}$

763 $\frac{1}{2}$

61 $\frac{1}{2}$

65 $\frac{1}{2}$

66 $\frac{1}{2}$

767 $\frac{1}{2}$

Hammonia yuccifolia

Hammonia baldensis

ciliatum

Hammonia

Hammonia

flavovirens Nash

Nash

Chamaelaurche Trin

laucareum Trin

muchos

771 *Polypodium* *Nash*
 772 *Polypodium* *Nash*
 773 *Polypodium* *Nash*
 774 *Polypodium* *Nash*
 775 *Polypodium* *Nash*
 776 *Polypodium* *Nash*
 777 *Polypodium* *Nash*
 778 *Polypodium* *Nash*

779 *Polypodium* *Nash*
 780 *Polypodium* *Nash*
 781 *Polypodium* *Nash*
 782 *Polypodium* *Nash*
 783 *Polypodium* *Nash*
 784 *Polypodium* *Nash*
 785 *Polypodium* *Nash*
 786 *Polypodium* *Nash*
 787 *Polypodium* *Nash*
 788 *Polypodium* *Nash*
 789 *Polypodium* *Nash*
 790 *Polypodium* *Nash*

800

see 767!
Uche

801

Uche

802

Nach

803

Chamaelouche Trin

807

Pan. chamaelouche Trin

near by a marsh and along the
bank of the

see 767

of 11

Uche
along

versatile Hoc

P. patentifolium Nash
from swamps

Slip -
erect,
Pan. ...
small, much 2-3
erect, ...

P. ...
part. growing ...
erect or decumbent at
base, ...
lower leaves, culm ...
branches of panicle ...

817 *Chamaelauche* Trin
 - Nach

819 *Chamaelauche* Trin
 - Aske

820 *Chamaelauche* Trin
 - ovate ell
 20 may 1904
 more hairy than 813 + panicle
 more irregularly ascending as
 in 813. I have put no
 = 813 gathered at same place
 think they are different

Santalod (4th)

821 *Laucurium* Trin
 - paniculatum
 20 may 1904
 more hairy than 813 + panicle
 more irregularly ascending as
 in 813. I have put no
 = 813 gathered at same place
 think they are different

822 *Laucurium* Trin
 - paniculatum
 20 may 1904

823 *Laucurium* Trin
 - paniculatum
 20 may 1904

824 *Laucurium* Trin
 - paniculatum
 20 may 1904

825 *Laucurium* Trin
 - paniculatum
 20 may 1904

826 *Laucurium* Trin
 - paniculatum
 20 may 1904

827 *Laucurium* Trin
 - paniculatum
 20 may 1904

828 *Chamaelauche* Trin
 - paniculatum
 20 may 1904

831
832
833

ovale Ell

834

fusiforme Hitchc

835

crispifolium Ell

836

polycaulon Nash

837

fusiforme Hitchc

837 but long on lower part
along with 835 - 836, but
plant is quite pubescent throughout

838
839
840

838 Pinus ... Nash ...

839 Pinus ... Nash ...

840 Pinus ... Nash ...

841 Pinus ... Nash ...

842 Pinus ... Nash ...

843 Pinus ... Nash ...

844 Pinus ... Nash ...

845 Pinus ... Nash ...

ovale Ell

857 *Panicum ciliiferum* Nash

858 *Panicum* ——— Nash

laevigatum Trin

fusiforme Hitchc

859 *Pan. ciliiferum* Ell

860

861

862

Panicum webberianum Nash

culm. 3/4 long

863 *Panicum potentilliforme* Nash Arcadia

864 *Panicum* ———

865 *Panicum baldyanae* notated

866 *Panicum* ——— notated

ovale Ell

867

868

869

870

871

872

873

874

875

876

877

878

879

880

881

882

883

884

885

886

887

888

889

890

891

892

893

894

895

896

Panicum ———

Panicum ———

Panicum ———

Panicum ———

Panicum ———

Panicum ———

Panicum ———

Panicum ———

Panicum ———

Panicum ———

Panicum ———

Panicum ———

Panicum ———

Panicum ———

Panicum ———

Panicum ———

Panicum ———

Panicum ———

Panicum ———

Panicum ———

Panicum ———

Panicum ———

Panicum ———

Panicum ———

Panicum ———

Panicum ———

Panicum ———

Panicum ———

Panicum ———

Panicum ———

870 1/2

871 *Panicum chauchaclouche* Trin
872 Ell
873

874
875
876
877
878
879
880
881
882
883
884
885
886
887
888
889
890
891
892
893
894
895
896
897
898
899
900

Panicum longiligulatum Nash
bluish green
Abt. bright green
darker to blackish
no hair
also bluish green
Panicum *argenteum* Nash
puber. 470
fusiforme Hitchc
all bluish green
leaf sheath
of white
flowers

901
902
903
904
905
906
907
908
909
910
911
912
913
914
915
916
917
918
919
920
921
922
923
924
925
926
927
928
929
930
931
932
933
934
935
936
937
938
939
940
941
942
943
944
945
946
947
948
949
950
951
952
953
954
955
956
957
958
959
960
961
962
963
964
965
966
967
968
969
970
971
972
973
974
975
976
977
978
979
980
981
982
983
984
985
986
987
988
989
990
991
992
993
994
995
996
997
998
999
1000

Apr 12

870
871
872
873
874
875
876
877
878
879
880
881
882
883
884
885
886
887
888
889
890
891
892
893
894
895
896
897
898
899
900

Panicum longiligulatum Nash
bluish green
Abt. bright green
darker to blackish
no hair
also bluish green
Panicum *argenteum* Nash
puber. 470
fusiforme Hitchc
all bluish green
leaf sheath
of white
flowers

Panicum albo-marginatum Nash
bluish green
Abt. bright green
darker to blackish
no hair
also bluish green
Panicum *argenteum* Nash
puber. 470
fusiforme Hitchc
all bluish green
leaf sheath
of white
flowers

Panicum chauchaclouche Trin
bluish green
Abt. bright green
darker to blackish
no hair
also bluish green
Panicum *argenteum* Nash
puber. 470
fusiforme Hitchc
all bluish green
leaf sheath
of white
flowers

874 *Poa albo-marginata* Nees

875 *Poa chamaelanchae* Trin

876 *Poa lanceolata* Trin

877 *Poa paniculata* Nees

878 *Poa triflorum* Nees

879 *Poa ...*

880 *Poa ...*

881 *Poa ...*

882 *Poa ...* an blouf ...

883 *Poa chamaelanchae* Trin

884 *Poa ...*

885 *Poa ...*

886 *Poa ...*

887 *Poa ...*

888 *Poa ...*

889 *Poa ...*

899

Poa fusiformis Hitchc

Poa ...

Poa ...

Poa ...

Poa ...

Poa ...

Poa ...

Poa ...

Poa ...

Poa ...

Poa ...

Poa ...

Poa ...

Poa ...

Poa ...

Poa ...

Poa ...

Poa ...

Poa ...

901

Poa ...

902

Poa ...

903

Poa ...

904

Poa ...

905

Poa ...

906

Poa ...

907

Poa ...

908

Poa ...

909

Poa ...

910

Poa ...

911

Poa ...

912

Poa ...

913

Poa ...

914

Poa ...

915

Poa ...

916

Poa ...

917

Poa ...

4-12-06

915 1/2 Pan patentifolium Nash

caerulescens Hack

5
5
5

an chamaelauche Trin

918

webberianum Nash

918 1/2 ->

915

Ashe

trifolium Nash

921

Pan trifolium Nash

922

Pan patulum (S.M.) Hitchc

923

fusiforme Hitchc

924

chamaelauche Trin

925

not

926

Py trad

Tampa Apr 3

Xalapense HBK

chamaelauche Trin

laucanum Trin

930 1/2

patentifolium Nash

Pan vemale H.C.

laucanum Trin

polycaulon Nash

chamaelauche Trin

Xalapense HBK

vemale H.C.

937

laucanum Trin

trifolium Nash

938 1/2

transversale Ashe

rostrata Ashe

Pan trifolium Nash } ditto

" vemale H.C.

" " " " }

polycaulon Nash

chamaelauche Trin

Pan patulum (S.M.) Hitchc

an patulum (S.M.) Hitchc

transversale Ashe

947 *Pan. junci* Vase
948 *Pan. ...*
949 *Pan. ...*
950 *Pan. ...*
951 *Pan. ...*

952 *Pan. chaumae* Trin
Pan. chaumae
953 *Pan. trifolium* Nash
954 *P. chaumae* Trin

955 *Pan. lanceolatum* Trin
an *longiligulatum* Nash
956 *Pan. ...*
957 *Pan. ...*

958 $\frac{1}{2}$ *P. versale* H. & C
9 *an versale* H. & C
Pan. versale H. & C
Pan. nitidum Lam
Pan. trifolium Nash
P. ... *... rgnatum* Nash

970 *Panicum fusiforme* Hitchc

971 *Panicum caeruleum* Nash

972 *Panicum* Nash

973 *Panicum*

974 *Panicum* E. A.

975 *Panicum* Nash

976 *Panicum patentifolium* Nash

977 *Panicum patentifolium* Nash

978 *Panicum webberianum* Nash

979 *Panicum chamaelouchei* Trin

980 *Panicum chamaelouchei* Trin

981 *Panicum* Vase

982 *Panicum laucearicum* Trin

983 *Panicum* Nash

984 *Panicum* Nash

985 *Panicum fusiforme* Hitchc

986 *Panicum*

987 *Panicum* E. A.

988 *Panicum chamaelouchei* Trin

989 *Panicum*

consanguineum Kth

987
988
989
990
991
992
993
994
995
996
997
998
999

roanokeense Ashe

longiligulatum Nash

aciculare Desv.

albomarginatum Nash

ciliatum Ell

pauciciliatum Ashe

pauciciliatum Ell

laucarium Trin

977
978
979
980
981
982
983
984
985
986
987
988
989
990
991
992
993
994
995
996
997
998
999

trifolium Nash

roanokeense Ashe

consanguineum Kth

ciliatum Ell

laucarium Trin

vernale H & C

longiligulatum Nash

shretium Spr.

1000
1001
1002
1003
1004
1005
1006
1007
1008
1009
1010
1011
1012
1013
1014
1015
1016
1017
1018
1019
1020
1021
1022
1023
1024
1025
1026
1027
1028
1029
1030
1031
1032
1033
1034
1035
1036
1037
1038
1039
1040
1041
1042
1043
1044
1045
1046
1047
1048
1049
1050

note

note

Nash

along road in flat woods.

in fruit

Coxiflorum Lam

~~pubifolium 10104 P. baccis molle (Voss) Hillebr
ravenelii S.M.~~

10110 *an foaria* var. *occidentale*

012 *P. arenicola* Ashby

ovale Ell

10131 *P. pseudopuberescens* Nash
oligocanthis S.M.

mutabile S.M.

lan lancearium Trin

mutabile S.M. note

Folio *gemma* ...

striatum Ell
 var. *versatile* N. & C. type
 var. *albomarginatum* Nash
 var. *trifolium* Nash
 var. *laucearicum* Trin
 var. *lucidum* Ashe
 var. *dracaenulae* Trin
 var. *laucearicum* Trin
 var. *coloni*
 var. *lyrata*

laucigerum Ell
 var. *trifolium* Nash
 var. *laucearicum* Trin
 var. *mirabile* J. & S.

4-17-06

1032 *P. ciliatum* Ell
an *chamaelaurum* Trin
trifolium Nash

1034 1/2 *P. lancea* *quadrifida* *angustifolia*
in *ciliatum* Ell

1034 *versatile* H & C
trifolium Nash

1035 *strigosum* Muhl

1037 *not* *Stachys* *not* *var.* *ell.*

1038 *P. villosissimum* with some *parvum*

1039 "*parvum* all *var.* *ell.*

1040 "*pseudopuberum* *ell.*

1041 *commutatum*

1042 *trifolium*

1043 *var.*

1044 *P. ...* *Ell* *var.* *ell.*

trifolium Nash

fusiforme Helms

1055 *P. oligosperum* Schult

1056 *P. ...* *not* *ell.*

1057 *P. ...*

1058 *P. ...*

1059 *P. curtifolium*

1060 *lucidum* Ashe

1061 *P. ...*

1062 *P. ...*

1063 *P. ciliatum* Ell

1064 *P. ...*

1065 *P. ...*

1066 *P. ...*

1067 *P. ...* *not* *ell.*

1068 *P. ...*

1069 *P. ...*

versale H.C.

Pan ensifolium Bald

longiligulatum Nash

Kth

Pan concavum Kth

7 *trifolium* Nash

1073

Xalapense Kth

1074

1075

1076

1077

1077 1/2

1078

1079

1080

Aruncoloides Ash
of an ...
...
...

Aruncoloides Ash
...
...

Aruncoloides Ash
...
...

Favosium Smith
...
...

Sphaerocarpon Ell
...
...

Sphaerocarpon Ell
...
...

Pan pseudo-hubacense Nash
...
...

200 100

12 *Pan nitidum* Lam

sciculare Desv.

Pan concaequium Kth

107 *Pan sphaerocarpon* Ell

108 *Pan angustifolium* Ell

109 *Pan trifolium* Nash

110 *Pan trifolium* Nash

111 *Pan trifolium* Nash

9 *Pan trifolium* Nash

leafy, small, slender, prostrate, stems many in grass, flowers white, petals yellow, anthers yellow, style white, stigma yellow.

1080 *Pan pseudopubescens* Nash

1081 *Pan trifolium* Nash

1082 *Pan trifolium* Nash

1083 *Pan lancearium* Trin.

1084 *Pan curtifolium* Nash

1085 *Pan sphaerocarpon* Ell

1086 *Pan sphaerocarpon* Ell

1087 *Pan pseudopubescens* Nash

1088 *Pan pseudopubescens* Nash

1089 *Pan pseudopubescens* Nash

1090 *Pan pseudopubescens* Nash

1091 *Pan pseudopubescens* Nash

1092 *Pan pseudopubescens* Nash

1093 *Pan pseudopubescens* Nash

1094 *Pan pseudopubescens* Nash

1100 *Pan trifolium* Nash

1101 *Polypodium Nash*
an *sphaerocarpon* Ell

1102 *Polypodium* *Solms*

Pan comunitatum Schult

1105 *Pan angustifolium* Ell

1106 *Pan anthes* Schult

1107 *Pan comunitatum* Schult

1109 *Sereno villosissimum* Nash

1110 *Polypodium* not cited

1111 *Polypodium* Nash

1112 *Pan pseudopubescens* Nash

1113 *Pan pauciciliatum* Schult

1114 *Chamaechaete* Trin

1115 *Pan* Ell

Panicum

1116 *Panicum* Ell

1117 *Panicum* Ell

1118 *Panicum* Ell

1119 *Panicum* Ell

1120 *Panicum* Ell

1121 *Panicum* Ell

1122 *Panicum* Ell

Letter Charles, Apr 21

1123 *Panicum* Ell

1124 *Panicum* Ell

Xalapensis HBK

sphaerocarpon Ell

an aciculare Desf.

Pan nitidum Lam

laevigatum Ell

P. triplicatum Kuhn

an ovatum Smith

Pan sphaerocarpon Ell

mans Ell

Pan sphaerocarpon Ell

Pan. laevigatum Ell

Pan. lindheimeri Nash

Pan sphaerocarpon Ell

Pan. lindheimeri Kuhn

conjugatum Kuhn

aciculare Desf.

P. aciculare Desf.

P. ovatum L.

P. ovatum L.

4-21
Sida sp. ...

...
...
...

1142 *P. foaria* Vasey

...
...
...
...
...

1143 *P. nitidum* Lam

...
...

1144 *P. roanokeense* Ashe

...
...

1145 *P. ...*

...
...

1146 *P. trifolium* Nash

...
...

1147 *P. lanuginosum* Ell

...
...
...
...
...

1148 *P. nitidum* Lam

...
...

1149 *P. ...*

...
...

1150 *P. ...*

...
...

1151 *P. angustifolium* Ell

...
...

1152 *P. lanuginosum* Ell

...
...

...
...

Handwritten title or header at the top of the left page.

1120
 1121
 1122
 1123
 1124
 1125
 1126
 1127
 1128
 1129
 1130
 1131
 1132
 1133
 1134
 1135
 1136
 1137
 1138
 1139
 1140
 1141
 1142
 1143
 1144
 1145
 1146
 1147
 1148
 1149
 1150
 1151
 1152
 1153
 1154
 1155
 1156
 1157
 1158
 1159
 1160
 1161
 1162
 1163
 1164
 1165
 1166
 1167
 1168
 1169
 1170
 1171
 1172
 1173
 1174
 1175
 1176
 1177
 1178
 1179
 1180
 1181
 1182
 1183
 1184
 1185
 1186
 1187
 1188
 1189
 1190
 1191
 1192
 1193
 1194
 1195
 1196
 1197
 1198
 1199
 1200

1132 Pan ovatum L. f. ...
 1133 P. belleri Mack. ...
 1134 ...
 1135 ...
 1136 ...
 1137 ...
 1138 ...
 1139 ...
 1140 ...
 1141 ...
 1142 ...
 1143 ...
 1144 ...
 1145 ...
 1146 ...
 1147 ...
 1148 ...
 1149 ...
 1150 ...
 1151 ...
 1152 ...
 1153 ...
 1154 ...
 1155 ...
 1156 ...
 1157 ...
 1158 ...
 1159 ...
 1160 ...
 1161 ...
 1162 ...
 1163 ...
 1164 ...
 1165 ...
 1166 ...
 1167 ...
 1168 ...
 1169 ...
 1170 ...
 1171 ...
 1172 ...
 1173 ...
 1174 ...
 1175 ...
 1176 ...
 1177 ...
 1178 ...
 1179 ...
 1180 ...
 1181 ...
 1182 ...
 1183 ...
 1184 ...
 1185 ...
 1186 ...
 1187 ...
 1188 ...
 1189 ...
 1190 ...
 1191 ...
 1192 ...
 1193 ...
 1194 ...
 1195 ...
 1196 ...
 1197 ...
 1198 ...
 1199 ...
 1200 ...

1170
 1171
 1172
 1173
 1174
 1175
 1176
 1177
 1178
 1179
 1180
 1181
 1182
 1183
 1184
 1185
 1186
 1187
 1188
 1189
 1190
 1191
 1192
 1193
 1194
 1195
 1196
 1197
 1198
 1199
 1200

- 1180 *Par. ...*
- 1181 *Par. sphaerocarpan* Ell
- 1182 *Par. xalapense* Nash
- 1183 *Par. ...*
- 1184 *Par. ...*
- 1185 *Par. ...*
- 1186 *Par. ...*
- 1187 *Par. ...*
- 1188 *Par. ...*
- 1189 *Par. sphaerocarpan* Ell
- 1190 *Par. ...*
- 1191 *Par. ...*
- 1192 *Par. ...* according to the ...
out woods also in ...
type loc
- 1193 *Par. angustifolium* Ell

- 1194 *Par. ...*
- 1195 *Par. ...*
- 1196 *Par. ...*
- 1197 *Par. ...*
- 1198 *Par. ...*
- 1199 *Par. ...*
- 1200 *Par. ...*
- 1201 *Par. ...*
- 1202 *Par. ...*
- 1203 *Par. lindheimeri* Nash
- 1204 *Par. ...*

1207

1207

Panicum jovicii Vas

1208

1209

Panicum ovinum S. & S.

1211

1213

1214

1215

1216

Panicum sphaerocarpon S. & S.

Panicum huachucae silvicola H. & C.

Panicum lindheimeri Nash

Panicum sphaerocarpon S. & S.

in glabrous low open ground
erect. in the same 1213

1217

1218

1219

1220

1221

1222

1223

1224

1225

Bromus unioloides, postum
in woods near creek

Paspalum conjugatum Willd.

Poa annua, Willd.

Echinochloa Willd.

Panicum angustifolium S. & S. This species
mentioned in 1207. This species
was first seen near San Antonio
Texas in 1855. It is
a grass of the subgenus *Panicum*
in the tribe *Panicum*.

Panicum ovinum S. & S.

This species is much common
in the prairie near San Antonio
Texas. It is a grass of the
tribe *Panicum*.

Panicum sphaerocarpon S. & S.
fruits not it.

Panicum sphaerocarpon S. & S.
not it - 1207

Panicum aciculare Desf.

This species is much common
in the prairie near San Antonio
Texas. It is a grass of the
tribe *Panicum*.

Panicum sphaerocarpon S. & S.
fruits not it.

1227 1/2 stepia

- 1228 *Panicum* ...
- 1229 *Panicum* ...
- 1230 *Panicum* ...
- 1231 *Panicum* ...
- 1232 *Panicum* ...
- 1233 *Panicum* ...
- 1234 *Panicum* ...
- 1235 *Panicum* ...
- 1236 *Panicum* ...
- 1237 *Panicum* ...
- 1238 *Panicum* ...
- 1239 *Panicum* ...
- 1240 *Panicum* ...
- 1241 *Panicum* ...
- 1242 *Panicum* ...
- 1243 *Panicum* ...
- 1244 *Panicum* ...
- 1245 *Panicum* ...
- 1246 *Panicum* ...
- 1247 *Panicum* ...
- 1248 *Panicum* ...
- 1249 *Panicum* ...
- 1250 *Panicum* ...

- 1251 *Panicum* ...
- 1252 *Panicum* ...
- 1253 *Panicum* ...
- 1254 *Panicum* ...
- 1255 *Panicum* ...
- 1256 *Panicum* ...
- 1257 *Panicum* ...
- 1258 *Panicum* ...
- 1259 *Panicum* ...
- 1260 *Panicum* ...
- 1261 *Panicum* ...
- 1262 *Panicum* ...
- 1263 *Panicum* ...
- 1264 *Panicum* ...
- 1265 *Panicum* ...
- 1266 *Panicum* ...
- 1267 *Panicum* ...
- 1268 *Panicum* ...
- 1269 *Panicum* ...
- 1270 *Panicum* ...
- 1271 *Panicum* ...
- 1272 *Panicum* ...
- 1273 *Panicum* ...
- 1274 *Panicum* ...
- 1275 *Panicum* ...
- 1276 *Panicum* ...
- 1277 *Panicum* ...
- 1278 *Panicum* ...
- 1279 *Panicum* ...
- 1280 *Panicum* ...

Panicum ...

125 1/2 *Panicum* not at
125 *Panicum lanuginosum* Ell
at 125 1/2
at 125 1/2

125 1/2 *Panicum*

Panicum villosissimum Nash
Panicum xalapense HBK.

61 Ell
at 125 1/2
at 125 1/2

Panicum L
Schult
at 125 1/2

Panicum angustifolium Ell 126
not at
at 125 1/2

126
126 1/2 *Panicum trifolium* Nash
at 125 1/2

Panicum commutatum Schult
at 125 1/2
at 125 1/2

69 *Panicum angustifolium* Ell
at 125 1/2

Panicum Schult
at 125 1/2

Panicum baccii Poir
at 125 1/2

Panicum commutatum Schult
at 125 1/2

127 1/2 *Panicum* Schult
75 *Panicum villosissimum* Nash

Panicum
at 125 1/2

Panicum trifolium Nash
Panicum lindheimeri Nash

at 125 1/2
at 125 1/2

1257 *Panicum* not at

1258 *Panicum* Ell
var *boschii* Muhl (Vas)

1259 *Panicum* Ell
P. riparium Hitchc
var *commutatum* Schult

1260 *Panicum* Muhl
1261 *Panicum* Muhl
1262 *Panicum* Muhl
1263 *Panicum* Muhl
1264 *Panicum* Muhl
1265 *Panicum* Muhl
1266 *Panicum* Muhl
1267 *Panicum* Muhl
1268 *Panicum* Muhl
1269 *Panicum* Muhl
1270 *Panicum* Muhl
1271 *Panicum* Muhl
1272 *Panicum* Muhl
1273 *Panicum* Muhl
1274 *Panicum* Muhl
1275 *Panicum* Muhl
1276 *Panicum* Muhl
1277 *Panicum* Muhl
1278 *Panicum* Muhl
1279 *Panicum* Muhl
1280 *Panicum* Muhl
1281 *Panicum* Muhl
1282 *Panicum* Muhl
1283 *Panicum* Muhl
1284 *Panicum* Muhl
1285 *Panicum* Muhl
1286 *Panicum* Muhl
1287 *Panicum* Muhl
1288 *Panicum* Muhl
1289 *Panicum* Muhl
1290 *Panicum* Muhl
1291 *Panicum* Muhl
1292 *Panicum* Muhl
1293 *Panicum* Muhl
1294 *Panicum* Muhl
1295 *Panicum* Muhl
1296 *Panicum* Muhl
1297 *Panicum* Muhl
1298 *Panicum* Muhl
1299 *Panicum* Muhl
1300 *Panicum* Muhl

1270 *Panicum* *Xalapense strictum* N+C

1291 *Panicum* *commutatum* Schult

1292 *Panicum* *velutonium* L

1293 *Panicum* *poli-paethes* Schult

Panicum

1301 *Panicum* *canadense* Michx
var *scribnerianum* Nash

1302 *Panicum* *scribnerianum* Nash

1303 *Panicum* *canadense* Ell

1304 *Panicum* *canadense* Ell

1305 *Panicum* *villosissimum* Nash

1306 *Panicum* *boschii* Pair

1307 *Panicum* *boschii* Muhl (Vas) Hitchc

1308 *Panicum* *capitatum* Muhl

1309 *Panicum* *capitatum* Muhl

1310 *Panicum* *capitatum* Muhl

1311 *Panicum* *capitatum* Muhl

1312 *Panicum* *capitatum* Muhl not at

1313 *Panicum* *capitatum* Muhl

1314 *Panicum* *capitatum* Muhl

1315 *Panicum* *capitatum* Muhl
1316 *Panicum* *capitatum* Muhl
1317 *Panicum* *capitatum* Muhl
1318 *Panicum* *capitatum* Muhl
1319 *Panicum* *capitatum* Muhl
1320 *Panicum* *capitatum* Muhl
1321 *Panicum* *capitatum* Muhl
1322 *Panicum* *capitatum* Muhl
1323 *Panicum* *capitatum* Muhl
1324 *Panicum* *capitatum* Muhl
1325 *Panicum* *capitatum* Muhl
1326 *Panicum* *capitatum* Muhl
1327 *Panicum* *capitatum* Muhl
1328 *Panicum* *capitatum* Muhl
1329 *Panicum* *capitatum* Muhl
1330 *Panicum* *capitatum* Muhl

920

Panicum ...

1312
1313
1314
1315
1316
1317
1318
1319
1320
1321
1322
1323
1324
1325
1326
1327
1328
1329
1330
1331
1332
1333
1334
1335
1336
1337
1338
1339
1340
1341
1342
1343
1344
1345
1346
1347
1348
1349
1350
1351
1352
1353
1354
1355
1356
1357
1358
1359
1360
1361
1362
1363
1364
1365
1366
1367
1368
1369
1370
1371
1372
1373
1374
1375
1376
1377
1378
1379
1380
1381
1382
1383
1384
1385
1386
1387
1388
1389
1390
1391
1392
1393
1394
1395
1396
1397
1398
1399
1400

an *boscii* Poit
" *commutatum*
an *boscii molle* (Vas) Hitchc

not at

1336 1/2 Dautbonia

an *wilmingtonense* Ashe
325
326 not at
327
328
329
330
331
332
333
334
335
336
337
338
339
340
341
342
343
344
345
346
347
348
349
350
351
352
353
354
355
356
357
358
359
360
361
362
363
364
365
366
367
368
369
370
371
372
373
374
375
376
377
378
379
380
381
382
383
384
385
386
387
388
389
390
391
392
393
394
395
396
397
398
399
400

1388 *Arceuthobium* Along grass
from New York
The

1389 *Pan comunitatum* Schult
The

1390 *Pan angustifolium* Ell
41 The

1391 *Pan microcarpum* Muhl
The

an boccia nolle (Vas/Hilche) *not*

The *not*

1392 *Pan comunitatum* Schult
The

1393 *Pan comunitatum* Schult
The
Muhl

1394 *Pan comunitatum* Schult *not*

1395 *Pan comunitatum* Schult *not*

1396 *Pan comunitatum* Schult *not*

1397 *Pan comunitatum* Schult *not*

1398 *Pan comunitatum* Schult *not*

1399 *Pan comunitatum* Schult *not*

1400 *Pan comunitatum* Schult *not*

1401 *Pan comunitatum* Schult *not*

1402 *Pan comunitatum* Schult *not*

1403 *Pan comunitatum* Schult *not*
On a steep
slope of the ...

Pan. dichotomum L

Paris
1348
1349

1350
1351
not
cit

1352
Pan pseudo pubescens Nash
1353
Pan pseudo pubescens Nash

1354
1355
1356
1357
1358
1359
1360

1361
1362
1363
1364
1365
1366
1367
1368
1369
1370
1371
1372
1373
1374
1375
1376
1377
1378
1379
1380
1381
1382
1383
1384
1385
1386
1387
1388
1389
1390
1391
1392
1393
1394
1395
1396
1397
1398
1399
1400

1401
1402
1403
1404
1405
1406
1407
1408
1409
1410
1411
1412
1413
1414
1415
1416
1417
1418
1419
1420
1421
1422
1423
1424
1425
1426
1427
1428
1429
1430
1431
1432
1433
1434
1435
1436
1437
1438
1439
1440
1441
1442
1443
1444
1445
1446
1447
1448
1449
1450
1451
1452
1453
1454
1455
1456
1457
1458
1459
1460
1461
1462
1463
1464
1465
1466
1467
1468
1469
1470
1471
1472
1473
1474
1475
1476
1477
1478
1479
1480
1481
1482
1483
1484
1485
1486
1487
1488
1489
1490
1491
1492
1493
1494
1495
1496
1497
1498
1499
1500

arr. ... Kth

1375

75 *an aciculare Desv*

[Faint handwritten notes]

1376 *an nitidum Lam*

1377 *an cryptanthum Ashe*

1378 *an ... & dett*

1379

an ... Bald

1380

an pseudopubescent Nash
[Faint notes]

1381

an ... Ell dett

1382

Cousanguineum Kth

1383

an pseudopubescent Nash

1377

[Faint handwritten notes]

an villosissimum Nash

5

notat

an the Nash

Pears

an nitidum Lam

1

an *liisom*

xalapense HBK

an nitidum Lam

93

Pan microcarpum Muhl

Pan pseudopubescens Nash

lanuginosum Ell

brachyactis Ell

microcarpum

microcarpum

microcarpum

microcarpum

microcarpum

The leaves appear glabrous above

with closely appressed hairs

7/10/1909 - 1390 - 1398
also 1399 - 1400
1390 - 1398 leaves
also 1399 - 1400
leaves are

an *microcarpum* Muhl
an *pseudopubescens* Nash
an *lanuginosum* Ell
an *brachyactis* Ell

an *microcarpum* Muhl
an *pseudopubescens* Nash
an *lanuginosum* Ell
an *brachyactis* Ell

an *microcarpum* Muhl
an *pseudopubescens* Nash
an *lanuginosum* Ell
an *brachyactis* Ell

an *microcarpum* Muhl
an *pseudopubescens* Nash
an *lanuginosum* Ell
an *brachyactis* Ell

1398 *an* *leucatherix* Nash
an *microcarpum* Muhl
an *pseudopubescens* Nash
an *lanuginosum* Ell
an *brachyactis* Ell

1399 *an* *microcarpum* Muhl
an *pseudopubescens* Nash
an *lanuginosum* Ell
an *brachyactis* Ell

1401 *an* *pseudopubescens* Nash
an *microcarpum* Muhl
an *lanuginosum* Ell
an *brachyactis* Ell

1402 *an* *pseudopubescens* Nash
an *microcarpum* Muhl
an *lanuginosum* Ell
an *brachyactis* Ell
brownish aff. *P. ovale* & *ovum*

Pan. [faint]
[faint notes]

Pan. stromium L.

04 *Pan. aciculare Desv.*

1405 *Pan. arcifolium Bald.*
1406 *Pan. ashei Pears.*

1407 *Pan. ashei Pears.*

Pan. angustifolium Ell.

1409 *Pan. [faint]*

1410 *Pan. [faint] Schult.*

1411 *Pan. microcarpon Michx.*

1412 *Pan. baccii Pair.*

1413 *Pan. [faint] Schult.*

1416 1/2 Pan yadkinense Ashe

Pan conmutatum Schult

[Faint handwritten notes, possibly describing specimens or locations]

~~palapense HBK~~
~~gracilis H. & A.~~
barbilatum Nit

[Faint handwritten notes, possibly describing specimens or locations]

~~Pan microcarpum Nash~~

9 Pan microcarpum Mull

1420 Pan nitidum Lam

1421 Pan nitidum Lam

[Faint handwritten notes related to entry 1421]

1422 Pan nitidum Lam

1423 Pan nitidum Lam

1424 Pan xalapense HBK

Willowden May 8

1425 Pan ... *[faint]*

1426 Pan ... *[faint]*

1427 Pan charaeloche Trin

1428 Pan albocarpum Nash

1429 Pan albocarpum Nash

1430 Pan ciliatum Ell

1431 Pan lancearium Trin

1432 Pan ... *[faint]*

1433 Pan webberianum Nash

1434 Pan ... *[faint]*

1435 Pan albocarpum Nash

1436 Pan charaeloche Trin

1437 Pan ... *[faint]*

1438 Pan charaeloche Trin

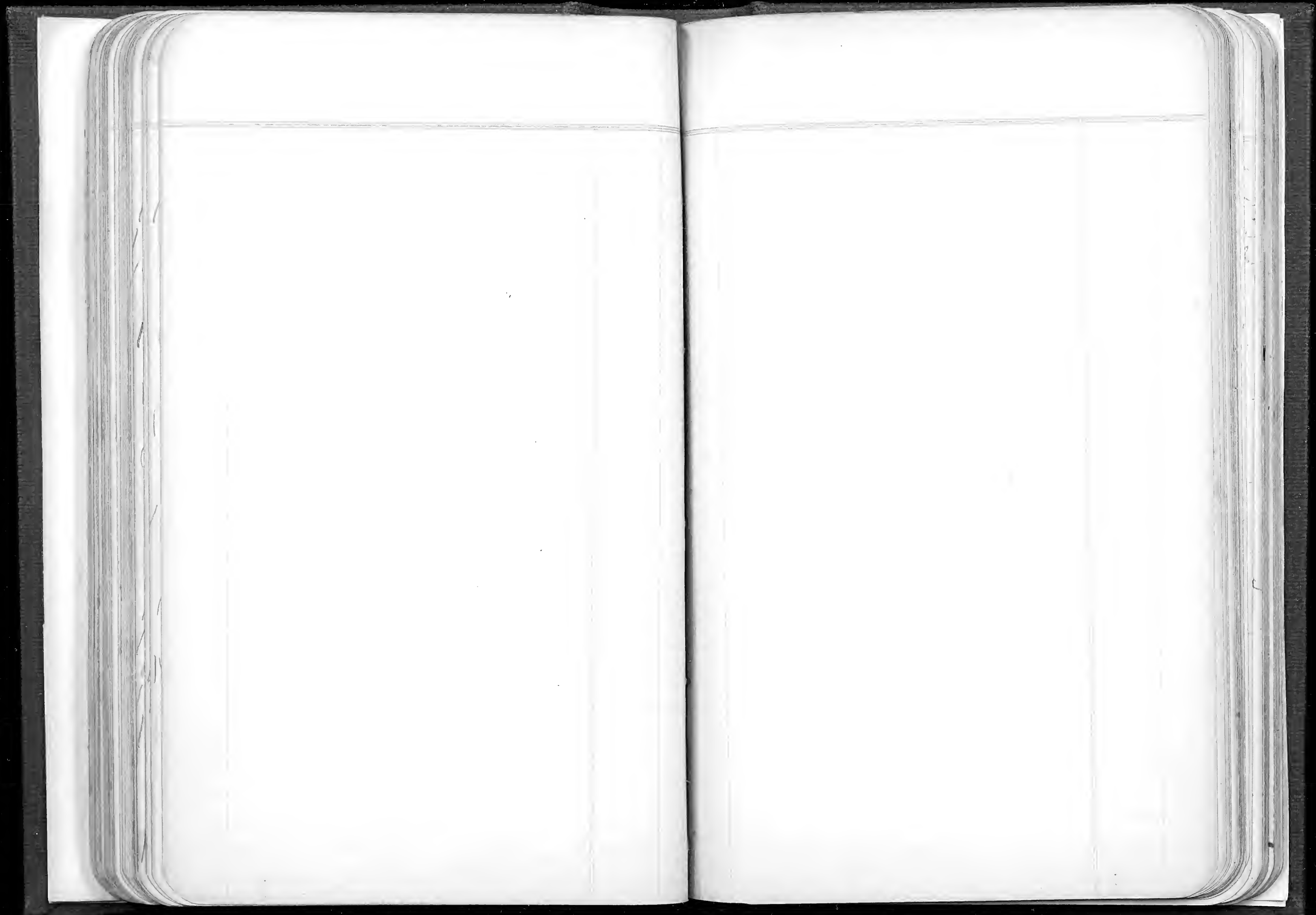
1436 1/2 Pan unifolium Bald

- to be sent so much done on ...
 1437 Pan pectinatum Michx.
 1438 P. lanceolatum Michx.
 1439 Pan unifolium Bald
 1440 ...
 1441 ...
 1442 P. lucidum Michx. ...
 1443 P. rubescens swamp not at
 1444 P. ... swamp " "
 1445 P. ... swamp " "
 1446 P. ... swamp " "
 1447 Pan acicularis ...
 1448 ...
 1449 ...
 1450 ...
 1451 ...
 1452 ...
 1453 ...
 1454 ...
 1455 ...
 1456 ...
 1457 ...
 1458 ...
 1459 ...
 1460 ...
 1461 ...
 1462 ...
 1463 ...

- 1437 Pan ...
 1438 ...
 1439 ...
 1440 ...
 1441 ...
 1442 ...
 1443 ...
 1444 ...
 1445 ...
 1446 ...
 1447 ...
 1448 ...
 1449 ...
 1450 ...
 1451 ...
 1452 ...
 1453 ...
 1454 ...
 1455 ...
 1456 ...
 1457 ...
 1458 ...
 1459 ...
 1460 ...
 1461 ...
 1462 ...
 1463 ...

1807 *Panicum* ...
 not
 cit
 1808 *Panicum* ...
 1809 *Panicum* ...
 1810 *Panicum* ...
 1811 *Panicum* ...
 1812 *Panicum* ...
 1813 *Panicum* ...
 1814 *Panicum* ...
 1815 *Panicum* ...
 1816 *Panicum* ...
 1817 *Panicum* ...
 1818 *Panicum* ...
 1819 *Panicum* ...
 1820 *Panicum* ...
 1821 *Panicum* ...
 1822 *Panicum* ...
 1823 *Panicum* ...
 1824 *Panicum* ...
 1825 *Panicum* ...
 1826 *Panicum* ...
 1827 *Panicum* ...
 1828 *Panicum* ...
 1829 *Panicum* ...
 1830 *Panicum* ...

1889 *Panicum* ...
 1890 *Panicum* ...
 1891 *Panicum* ...
 1892 *Panicum* ...
 1893 *Panicum* ...
 1894 *Panicum* ...
 1895 *Panicum* ...
 1896 *Panicum* ...
 1897 *Panicum* ...
 1898 *Panicum* ...
 1899 *Panicum* ...
 1900 *Panicum* ...



A. S. Hitchcock
Dept Apiculture
Washington
D.C.

III

1906

Chesapeake Bay June 23

1600 Festuca myuros. Sandy soil
along marsh near beach. In W.

1601 Deschampsia flexuosa. Woods near beach

1602 Bromus hordeaceus Gallica
Wine woods

1603 Dan lindheimeri Nash

1604 Dan baccii Pair

1605 Dan sphaerocarpon Ell
Woods near beach

1606 Dan microcarpon Muhl
Woods near beach

1607 Dan ellipticus Ell

1608 Pan villosissimum Nash
Woods near beach

1609 Pan polycaulis Schult
Woods near beach

1610 Pan microcarpon Muhl
Woods near beach

1611 Pan albertianum Schult
Woods near beach

1612 Pan albertianum Schult
Woods near beach

1613 Pan albertianum Schult
Woods near beach

1413 Pan. lanuginosum Ell.

1414 Pan. sphaerocarpan Ell.

~~1415 Pan. longitarum Nash?~~
Pan. addisonii Nash

1415 Pan. sphaerocarpan inflatum (S.P.) Hitchc.

1419 Pan. villosissimum Nash
not very tall, about 10 ft

1420 Pan. huachucae silvicola N+C

1421 Pan. lindheimeri Nash

1422 Pan. villosissimum Nash

1423 Pan. huachucae silvicola N+C

1424 Pan. ... Ell.

1425 Pan. villosissimum Nash

1426 Pan. albertmarlense Ell.

1427 Pan. meridionale Ashe

1428 Pan. huachucae silvicola N+C

1429 Pan. villosissimum Nash

1430 Pan. columbianum Scribn.

1431 Fruticosa

1432 Pan. robust

1433 Pan. villosissimum Nash

1434 Pan. meridionale Ashe

1435 P. ... Ell. of 17

1436 Pan. lanuginosum Ell.

1437 P. ... Ell. of 13

1438 P. ... Pear

- 1641 *Poa barbulatorum* Mx
Poa gracilis H & C
 not at
 1643 *Poa villosissimum* Nash
 at
 1644 *Poa villosissimum* Nash
 at
 1645 *Poa villosissimum* Nash

Colorado - Pike Peak

1646 *Poa longiflorus* Nutt. Open
 gravelly soil. Halfway camp. Small
 bunches, mostly of one flower.
 Culm a few inches. These little
 bunches are covered by root hairs
 as much as 10 cm long. Culm
 erect. Panicle branched. Culm
 Pan. Tawny white. Base of bunch
 white or tawny not purple. Leaves
 confluent. Tawny white. Smooth.

- 1647 *Poa villosissimum* ditto near
 half way camp. Culm
 nodules, slender, 2-3 cm long, a few
 shrubs in at first. Culm erect, leaning
 slightly. Culm branched. Panicle
 Pan. Sluff, nearly erect. Pan. of culm
 not purple. Lower part of
 culm not purple. Culm
 smooth. Culm branched. Culm
 nodules. Pan. nodules. Culm
 1648 *Poa villosissimum* ditto
 near, Culm, no nodules. Culm
 smooth. Culm branched. Culm
 nodules. Culm branched. Culm
 below panicle. Culm branched. Culm
 nodules. Culm branched. Culm
 leaves narrow & ascending. Culm
 1649 *Deschampsia caespitosa* (Lam.)
 (Lam.) Deschampsia caespitosa (Lam.)
 Culm nodules. Culm branched. Culm
 nodules. Culm branched. Culm
 light green
 1650 *Poa* — open gravelly soil near
 camp at Halfway. Culm erect.
 nodules slender, culm light green.
 leaves flat.

1051 *Poa* - common along road
upper leaf

1052 *Poa* - upper leaf
upper leaf

1053 *Poa* - upper leaf
upper leaf

1054 *Poa* - upper leaf
upper leaf

1055 *Poa* - upper leaf
upper leaf

1056 *Poa* - upper leaf
upper leaf

1057 *Poa* - upper leaf
upper leaf

1058 *Poa* - upper leaf
upper leaf

1059 *Poa* - upper leaf
upper leaf

1060 *Poa* - upper leaf
upper leaf

1061 *Poa* - upper leaf
upper leaf

1062 *Poa* - upper leaf
upper leaf

1063 *Poa* - upper leaf
upper leaf

1064 *Poa* - upper leaf
upper leaf

1065 *Poa* - upper leaf
upper leaf

1066 *Poa* - upper leaf
upper leaf

1067 *Poa* - upper leaf
upper leaf

1068 *Poa* - upper leaf
upper leaf

Halfway to Mt View

- ✓ 1085 *...*
- ✓ 1086 *...*
- ✓ 1087 *...*
- ✓ 1088 *...*
- ✓ 1089 *...*

- ✓ 1090 *...*
- ✓ 1091 *...*
- ✓ 1092 *...*
- ✓ 1093 *...*
- ✓ 1094 *...*
- ✓ 1095 *...*
- ✓ 1096 *...*
- ✓ 1097 *...*

- ✓ 702
- ✓ 703
- ✓ 704
- ✓ 705
- ✓ 706
- ✓ 707
- ✓ 708
- ✓ 709
- ✓ 710
- ✓ 711
- ✓ 712
- ✓ 713
- ✓ 714
- ✓ 715
- ✓ 716
- ✓ 717

- ✓ 718
- ✓ 719
- ✓ 720
- ✓ 721
- ✓ 722
- ✓ 723
- ✓ 724
- ✓ 725
- ✓ 726
- ✓ 727
- ✓ 728
- ✓ 729
- ✓ 730
- ✓ 731
- ✓ 732
- ✓ 733
- ✓ 734
- ✓ 735
- ✓ 736
- ✓ 737
- ✓ 738
- ✓ 739
- ✓ 740
- ✓ 741
- ✓ 742
- ✓ 743
- ✓ 744
- ✓ 745
- ✓ 746
- ✓ 747
- ✓ 748
- ✓ 749
- ✓ 750

- ✓ 1729 *Avena americana* Scribn
- ✓ 1730 *Alfalfa*
- ✓ 1731 *Alfalfa*
- ✓ 1732 *Alfalfa*
- ✓ 1733 *Alfalfa*
- ✓ 1734 *Poa*
- ✓ 1735 *Alfalfa*
- ✓ 1736 *Poa*
- ✓ 1737 *Alfalfa*
- ✓ 1738 *Alfalfa*
- ✓ 1739 *Alfalfa*
- ✓ 1740 *Alfalfa*
- ✓ 1741 *Alfalfa*

- ✓ 1742 *Alfalfa*
- ✓ 1743 *Alfalfa*
- ✓ 1744 *Alfalfa*
- ✓ 1745 *Alfalfa*
- ✓ 1746 *Alfalfa*
- ✓ 1747 *Alfalfa*
- ✓ 1748 *Alfalfa*
- ✓ 1749 *Alfalfa*
- ✓ 1750 *Alfalfa*
- ✓ 1751 *Alfalfa*
- ✓ 1752 *Alfalfa*
- ✓ 1753 *Alfalfa*
- ✓ 1754 *Alfalfa*
- ✓ 1755 *Alfalfa*
- ✓ 1756 *Alfalfa*
- ✓ 1757 *Alfalfa*
- ✓ 1758 *Alfalfa*
- ✓ 1759 *Alfalfa*
- ✓ 1760 *Alfalfa*
- ✓ 1761 *Alfalfa*
- ✓ 1762 *Alfalfa*
- ✓ 1763 *Alfalfa*
- ✓ 1764 *Alfalfa*
- ✓ 1765 *Alfalfa*
- ✓ 1766 *Alfalfa*
- ✓ 1767 *Alfalfa*
- ✓ 1768 *Alfalfa*
- ✓ 1769 *Alfalfa*
- ✓ 1770 *Alfalfa*
- ✓ 1771 *Alfalfa*
- ✓ 1772 *Alfalfa*
- ✓ 1773 *Alfalfa*
- ✓ 1774 *Alfalfa*
- ✓ 1775 *Alfalfa*
- ✓ 1776 *Alfalfa*
- ✓ 1777 *Alfalfa*
- ✓ 1778 *Alfalfa*
- ✓ 1779 *Alfalfa*
- ✓ 1780 *Alfalfa*
- ✓ 1781 *Alfalfa*
- ✓ 1782 *Alfalfa*
- ✓ 1783 *Alfalfa*
- ✓ 1784 *Alfalfa*
- ✓ 1785 *Alfalfa*
- ✓ 1786 *Alfalfa*
- ✓ 1787 *Alfalfa*
- ✓ 1788 *Alfalfa*
- ✓ 1789 *Alfalfa*
- ✓ 1790 *Alfalfa*
- ✓ 1791 *Alfalfa*
- ✓ 1792 *Alfalfa*
- ✓ 1793 *Alfalfa*
- ✓ 1794 *Alfalfa*
- ✓ 1795 *Alfalfa*
- ✓ 1796 *Alfalfa*
- ✓ 1797 *Alfalfa*
- ✓ 1798 *Alfalfa*
- ✓ 1799 *Alfalfa*
- ✓ 1800 *Alfalfa*

✓ 1778 ...
 ✓ 1779 ...
 ✓ 1780 ...
 ✓ 1781 ...
 ✓ 1782 ...
 ✓ 1783 ...
 ✓ 1784 ...
 ✓ 1785 ...
 ✓ 1786 ...
 ✓ 1787 ...
 ✓ 1788 ...
 ✓ 1789 ...
 ✓ 1790 ...
 ✓ 1791 ...
 ✓ 1792 ...
 ✓ 1793 ...
 ✓ 1794 ...
 ✓ 1795 ...
 ✓ 1796 ...
 ✓ 1797 ...
 ✓ 1798 ...
 ✓ 1799 ...
 ✓ 1800 ...

✓ 1780 ...
 ✓ 1781 ...
 ✓ 1782 ...
 ✓ 1783 ...
 ✓ 1784 ...
 ✓ 1785 ...
 ✓ 1786 ...
 ✓ 1787 ...
 ✓ 1788 ...
 ✓ 1789 ...
 ✓ 1790 ...
 ✓ 1791 ...
 ✓ 1792 ...
 ✓ 1793 ...
 ✓ 1794 ...
 ✓ 1795 ...
 ✓ 1796 ...
 ✓ 1797 ...
 ✓ 1798 ...
 ✓ 1799 ...
 ✓ 1800 ...

Eleymus robustus

- ✓ 1001 *Eleymus robustus* ...
- ✓ 1002 *Eleymus robustus* ...
- ✓ 1003 *Eleymus robustus* ...
- ✓ 1004 *Eleymus robustus* ...
- ✓ 1005 *Eleymus robustus* ...
- ✓ 1006 *Eleymus robustus* ...
- ✓ 1007 *Eleymus robustus* ...
- ✓ 1008 *Eleymus robustus* ...
- ✓ 1009 *Eleymus robustus* ...
- ✓ 1010 *Eleymus robustus* ...
- ✓ 1011 *Eleymus robustus* ...
- ✓ 1012 *Eleymus robustus* ...
- ✓ 1013 *Eleymus robustus* ...
- ✓ 1014 *Eleymus robustus* ...
- ✓ 1015 *Eleymus robustus* ...
- ✓ 1016 *Eleymus robustus* ...
- ✓ 1017 *Eleymus robustus* ...
- ✓ 1018 *Eleymus robustus* ...
- ✓ 1019 *Eleymus robustus* ...
- ✓ 1020 *Eleymus robustus* ...

Sage Lake City July 20

- ✓ 1007 *Eleymus robustus* ...
- ✓ 1008 *Eleymus robustus* ...
- ✓ 1009 *Eleymus robustus* ...
- ✓ 1010 *Eleymus robustus* ...
- ✓ 1011 *Eleymus robustus* ...
- ✓ 1012 *Eleymus robustus* ...
- ✓ 1013 *Eleymus robustus* ...
- ✓ 1014 *Eleymus robustus* ...
- ✓ 1015 *Eleymus robustus* ...
- ✓ 1016 *Eleymus robustus* ...
- ✓ 1017 *Eleymus robustus* ...
- ✓ 1018 *Eleymus robustus* ...
- ✓ 1019 *Eleymus robustus* ...
- ✓ 1020 *Eleymus robustus* ...

- ✓ 1021 *Eleymus robustus* ...
- ✓ 1022 *Eleymus robustus* ...
- ✓ 1023 *Eleymus robustus* ...
- ✓ 1024 *Eleymus robustus* ...
- ✓ 1025 *Eleymus robustus* ...
- ✓ 1026 *Eleymus robustus* ...
- ✓ 1027 *Eleymus robustus* ...
- ✓ 1028 *Eleymus robustus* ...
- ✓ 1029 *Eleymus robustus* ...
- ✓ 1030 *Eleymus robustus* ...
- ✓ 1031 *Eleymus robustus* ...
- ✓ 1032 *Eleymus robustus* ...
- ✓ 1033 *Eleymus robustus* ...
- ✓ 1034 *Eleymus robustus* ...
- ✓ 1035 *Eleymus robustus* ...
- ✓ 1036 *Eleymus robustus* ...
- ✓ 1037 *Eleymus robustus* ...
- ✓ 1038 *Eleymus robustus* ...
- ✓ 1039 *Eleymus robustus* ...
- ✓ 1040 *Eleymus robustus* ...

✓ 150 - *Alfalfa* ... along bank
✓ 151 - 07 -

✓ 152 - *Alfalfa* ... hills ...
along ridge ...
along hill ...
are ...
along the stream ...
abundant

✓ 153 - *Poa* ...
✓ 154 - *Poa* ...
✓ 155 - *Poa* ...
✓ 156 - *Poa* ...
✓ 157 - *Poa* ...

✓ 158 - *Poa* ...
✓ 159 - *Poa* ...
✓ 160 - *Poa* ...

✓ 161 - *Poa* ...
✓ 162 - *Poa* ...
✓ 163 - *Poa* ...

✓ 164 - *Poa* ...
✓ 165 - *Poa* ...
✓ 166 - *Poa* ...
✓ 167 - *Poa* ...
✓ 168 - *Poa* ...
✓ 169 - *Poa* ...
✓ 170 - *Poa* ...

✓ 171 - *Poa* ...
✓ 172 - *Poa* ...
✓ 173 - *Poa* ...
✓ 174 - *Poa* ...
✓ 175 - *Poa* ...
✓ 176 - *Poa* ...
✓ 177 - *Poa* ...
✓ 178 - *Poa* ...
✓ 179 - *Poa* ...
✓ 180 - *Poa* ...

Poa

✓ 181 - *Poa* ...
✓ 182 - *Poa* ...
✓ 183 - *Poa* ...

✓ 184 - *Poa* ...
✓ 185 - *Poa* ...
✓ 186 - *Poa* ...

✓ 187 - *Poa* ...
✓ 188 - *Poa* ...
✓ 189 - *Poa* ...
✓ 190 - *Poa* ...

✓ 191 - *Poa* ...
✓ 192 - *Poa* ...
✓ 193 - *Poa* ...

✓ 194 - *Poa* ...
✓ 195 - *Poa* ...
✓ 196 - *Poa* ...

✓ 197 - *Poa* ...
✓ 198 - *Poa* ...
✓ 199 - *Poa* ...

✓ 200 - *Poa* ...
✓ 201 - *Poa* ...
✓ 202 - *Poa* ...
✓ 203 - *Poa* ...
✓ 204 - *Poa* ...
✓ 205 - *Poa* ...
✓ 206 - *Poa* ...
✓ 207 - *Poa* ...
✓ 208 - *Poa* ...
✓ 209 - *Poa* ...
✓ 210 - *Poa* ...

1042

1043

1044

1045

1046

1047

1048

1049

1050

1051

1052

1053

1054

1055

1056

1057

1058

1059

1060

1061

1062

1063

1064

1065

[Faint handwritten notes, possibly describing plant specimens or field observations.]

1042 *Calceolifera* - *[illegible]*
 1043 *[illegible]*
 1044 *[illegible]*
 1045 *[illegible]*
 1046 *[illegible]*
 1047 *[illegible]*
 1048 *[illegible]*
 1049 *[illegible]*
 1050 *[illegible]*
 1051 *[illegible]*
 1052 *[illegible]*
 1053 *[illegible]*
 1054 *[illegible]*
 1055 *[illegible]*
 1056 *[illegible]*
 1057 *[illegible]*
 1058 *[illegible]*
 1059 *[illegible]*
 1060 *[illegible]*
 1061 *[illegible]*
 1062 *[illegible]*
 1063 *[illegible]*
 1064 *[illegible]*
 1065 *[illegible]*

1042 *Paricupum* - *[illegible]*
 1043 *[illegible]*
 1044 *[illegible]*
 1045 *[illegible]*
 1046 *[illegible]*
 1047 *[illegible]*
 1048 *[illegible]*
 1049 *[illegible]*
 1050 *[illegible]*
 1051 *[illegible]*
 1052 *[illegible]*
 1053 *[illegible]*
 1054 *[illegible]*
 1055 *[illegible]*
 1056 *[illegible]*
 1057 *[illegible]*
 1058 *[illegible]*
 1059 *[illegible]*
 1060 *[illegible]*
 1061 *[illegible]*
 1062 *[illegible]*
 1063 *[illegible]*
 1064 *[illegible]*
 1065 *[illegible]*

1860 *Agrostis* ...
 1861 *Agrostis* ...
 1862 *Agrostis* ...
 1863 *Agrostis* ...
 1864 *Agrostis* ...
 1865 *Agrostis* ...
 1866 *Agrostis* ...
 1867 *Agrostis* ...
 1868 *Agrostis* ...
 1869 *Agrostis* ...
 1870 *Agrostis* ...
 1871 *Agrostis* ...

1872 *Agrostis* ...
 1873 *Agrostis* ...
 1874 *Agrostis* ...
 1875 *Agrostis* ...
 1876 *Agrostis* ...
 1877 *Agrostis* ...
 1878 *Agrostis* ...
 1879 *Agrostis* ...

- 7500 ...
- 7501 ...
- 7502 ...
- 7503 ...
- 7504 ...
- 7505 ...
- 7506 *Spartina* - ...
- 7507 ...
- 7508 ...
- 7509 ...
- 7510 ...
- 7511 ...
- 7512 ...
- 7513 ...
- 7514 ...
- 7515 ...
- 7516 ...
- 7517 ...
- 7518 ...
- 7519 ...
- 7520 ...
- 7521 ...
- 7522 ...
- 7523 ...
- 7524 ...
- 7525 ...
- 7526 ...
- 7527 ...
- 7528 ...
- 7529 ...
- 7530 ...
- 7531 ...
- 7532 ...
- 7533 ...
- 7534 ...
- 7535 ...
- 7536 ...
- 7537 ...
- 7538 ...
- 7539 ...
- 7540 ...
- 7541 ...
- 7542 ...
- 7543 ...
- 7544 ...
- 7545 ...
- 7546 ...
- 7547 ...
- 7548 ...
- 7549 ...
- 7550 ...
- 7551 ...
- 7552 ...
- 7553 ...
- 7554 ...
- 7555 ...
- 7556 ...
- 7557 ...
- 7558 ...
- 7559 ...
- 7560 ...
- 7561 ...
- 7562 ...
- 7563 ...
- 7564 ...
- 7565 ...
- 7566 ...
- 7567 ...
- 7568 ...
- 7569 ...
- 7570 ...
- 7571 ...
- 7572 ...
- 7573 ...
- 7574 ...
- 7575 ...
- 7576 ...
- 7577 ...
- 7578 ...
- 7579 ...
- 7580 ...
- 7581 ...
- 7582 ...
- 7583 ...
- 7584 ...
- 7585 ...
- 7586 ...
- 7587 ...
- 7588 ...
- 7589 ...
- 7590 ...
- 7591 ...
- 7592 ...
- 7593 ...
- 7594 ...
- 7595 ...
- 7596 ...
- 7597 ...
- 7598 ...
- 7599 ...
- 7600 ...

Trinaria

- 7500 ...
- 7501 ...
- 7502 ...
- 7503 ...
- 7504 ...
- 7505 ...
- 7506 ...
- 7507 ...
- 7508 ...
- 7509 ...
- 7510 ...
- 7511 ...
- 7512 ...
- 7513 ...
- 7514 ...
- 7515 ...
- 7516 ...
- 7517 ...
- 7518 ...
- 7519 ...
- 7520 ...
- 7521 ...
- 7522 ...
- 7523 ...
- 7524 ...
- 7525 ...
- 7526 ...
- 7527 ...
- 7528 ...
- 7529 ...
- 7530 ...
- 7531 ...
- 7532 ...
- 7533 ...
- 7534 ...
- 7535 ...
- 7536 ...
- 7537 ...
- 7538 ...
- 7539 ...
- 7540 ...
- 7541 ...
- 7542 ...
- 7543 ...
- 7544 ...
- 7545 ...
- 7546 ...
- 7547 ...
- 7548 ...
- 7549 ...
- 7550 ...
- 7551 ...
- 7552 ...
- 7553 ...
- 7554 ...
- 7555 ...
- 7556 ...
- 7557 ...
- 7558 ...
- 7559 ...
- 7560 ...
- 7561 ...
- 7562 ...
- 7563 ...
- 7564 ...
- 7565 ...
- 7566 ...
- 7567 ...
- 7568 ...
- 7569 ...
- 7570 ...
- 7571 ...
- 7572 ...
- 7573 ...
- 7574 ...
- 7575 ...
- 7576 ...
- 7577 ...
- 7578 ...
- 7579 ...
- 7580 ...
- 7581 ...
- 7582 ...
- 7583 ...
- 7584 ...
- 7585 ...
- 7586 ...
- 7587 ...
- 7588 ...
- 7589 ...
- 7590 ...
- 7591 ...
- 7592 ...
- 7593 ...
- 7594 ...
- 7595 ...
- 7596 ...
- 7597 ...
- 7598 ...
- 7599 ...
- 7600 ...

- 4898 *Passiflora* narrow

 4899 *Passiflora*

 4900 *Passiflora*
 open across ground
 4901 *Passiflora*

 4902 *Passiflora*

 4903 *Passiflora*
 oblong panicle, drooping, along

 4904 *Passiflora*

 along ...

Passiflora

- 4905 *Passiflora*

 4906 *Passiflora*

 4907 *Passiflora*

 4908 *Passiflora*

 4909 *Passiflora*

 4910 *Passiflora*

 4911 *Passiflora*

 4912 *Passiflora*

 4913 *Passiflora*
 a double
 around
 July 31 //

- 7914 *Hesperis* ...
- 7915 *Hesperis* ...
- 7916 *Hesperis* ...
- 7917 *Hesperis* ...
- 7918 *Hesperis* ...
- 7919 *Hesperis* ...
- 7920 *Hesperis* ...
- 7921 *Hesperis* ...
- 7922 *Hesperis* ...

- 7923 *Hesperis* ...
- 7924 *Hesperis* ...
- 7925 *Hesperis* ...
- 7926 *Hesperis* ...
- 7927 *Hesperis* ...
- 7928 *Hesperis* ...

1929 Agropyron

✓ 1930 ...
1931 ...

1932 ...
1933 ...

1934 ...

1935 ...
1936 ...

1937 ...

1938 ...

1930

1930 ...

1931 ...

1932 ...

1933 ...

1934 ...

1935 ...

1936 ...

1937 ...

1938 ...

1939 ...

1940 ...

1941 ...

4948 *Chrysomelidae* ...
 4949 *Chrysomelidae* ...
 4950 *Chrysomelidae* ...
 4951 *Chrysomelidae* ...
 4952 *Chrysomelidae* ...
 4953 *Chrysomelidae* ...
 4954 *Chrysomelidae* ...
 4955 *Chrysomelidae* ...
 4956 *Chrysomelidae* ...
 4957 *Chrysomelidae* ...
 4958 *Chrysomelidae* ...
 4959 *Chrysomelidae* ...
 4960 *Chrysomelidae* ...

4961 *Chrysomelidae* ...
 4962 *Chrysomelidae* ...
 4963 *Chrysomelidae* ...
 4964 *Chrysomelidae* ...
 4965 *Chrysomelidae* ...
 4966 *Chrysomelidae* ...
 4967 *Chrysomelidae* ...
 4968 *Chrysomelidae* ...
 4969 *Chrysomelidae* ...
 4970 *Chrysomelidae* ...

7 1/2
 Mammoth Hot Springs

- 4970 ...
- 4971 ...
- 4972 ...
- 4973 ...
- 4974 ...
- 4975 ...
- 4976 ...
- 4977 ...
- 4978 ...
- 4979 ...
- 4980 ...
- 4981 ...
- 4982 ...
- 4983 ...
- 4984 ...
- 4985 ...
- 4986 ...
- 4987 ...
- 4988 ...
- 4989 ...
- 4990 ...
- 4991 ...
- 4992 ...
- 4993 ...
- 4994 ...
- 4995 ...
- 4996 ...
- 4997 ...
- 4998 ...
- 4999 ...

see ...

- 4970 ...
- 4971 ...
- 4972 ...
- 4973 ...
- 4974 ...
- 4975 ...
- 4976 ...
- 4977 ...
- 4978 ...
- 4979 ...
- 4980 ...
- 4981 ...
- 4982 ...
- 4983 ...
- 4984 ...
- 4985 ...
- 4986 ...
- 4987 ...
- 4988 ...
- 4989 ...
- 4990 ...
- 4991 ...
- 4992 ...
- 4993 ...
- 4994 ...
- 4995 ...
- 4996 ...
- 4997 ...
- 4998 ...
- 4999 ...

about timber line on
 Electric Peak Aug 5

- 4970 ...
- 4971 ...
- 4972 ...
- 4973 ...
- 4974 ...
- 4975 ...
- 4976 ...
- 4977 ...
- 4978 ...
- 4979 ...
- 4980 ...
- 4981 ...
- 4982 ...
- 4983 ...
- 4984 ...
- 4985 ...
- 4986 ...
- 4987 ...
- 4988 ...
- 4989 ...
- 4990 ...
- 4991 ...
- 4992 ...
- 4993 ...
- 4994 ...
- 4995 ...
- 4996 ...
- 4997 ...
- 4998 ...
- 4999 ...

✓ 1970
✓ 1971
✓ 1972
✓ 1973
✓ 1974
✓ 1975
✓ 1976
✓ 1977
✓ 1978
✓ 1979

✓ 1980
✓ 1981
✓ 1982
✓ 1983
✓ 1984
✓ 1985
✓ 1986
✓ 1987
✓ 1988
✓ 1989
✓ 1990
✓ 1991
✓ 1992
✓ 1993
✓ 1994
✓ 1995
✓ 1996
✓ 1997
✓ 1998
✓ 1999
✓ 2000

✓ 2001
✓ 2002
✓ 2003
✓ 2004
✓ 2005
✓ 2006
✓ 2007
✓ 2008
✓ 2009
✓ 2010
✓ 2011
✓ 2012
✓ 2013
✓ 2014
✓ 2015
✓ 2016
✓ 2017
✓ 2018
✓ 2019
✓ 2020
✓ 2021
✓ 2022
✓ 2023
✓ 2024
✓ 2025
✓ 2026
✓ 2027
✓ 2028
✓ 2029
✓ 2030

✓ 2031
✓ 2032
✓ 2033
✓ 2034
✓ 2035
✓ 2036
✓ 2037
✓ 2038
✓ 2039
✓ 2040
✓ 2041
✓ 2042
✓ 2043
✓ 2044
✓ 2045
✓ 2046
✓ 2047
✓ 2048
✓ 2049
✓ 2050

of Electric peak

2051
2052
2053
2054
2055
2056
2057
2058
2059
2060

2061
2062
2063
2064
2065
2066
2067
2068
2069
2070
2071
2072
2073
2074
2075
2076
2077
2078
2079
2080

2081
2082
2083
2084
2085
2086
2087
2088
2089
2090
2091
2092
2093
2094
2095
2096
2097
2098
2099
2100

2101
2102
2103
2104
2105
2106
2107
2108
2109
2110
2111
2112
2113
2114
2115
2116
2117
2118
2119
2120

near Yancey's

- 2031
 - 2032
 - 2033
 - 2034
 - 2035
 - 2036
 - 2037
 - 2038
 - 2039
 - 2040
 - 2041
 - 2042
 - 2043
 - 2044
- Tower Falls Aug 8.
- Mount Washburn
- 2036
- 2037
- 2038
- 2039
- 2040
- 2041
- 2042
- 2043
- 2044

- 2045
 - 2046
 - 2047
 - 2048
 - 2049
 - 2050
 - 2051
 - 2052
 - 2053
 - 2054
 - 2055
 - 2056
 - 2057
 - 2058
 - 2059
- 2045
- 2046
- 2047
- 2048
- 2049
- 2050
- 2051
- 2052
- 2053
- 2054
- 2055
- 2056
- 2057
- 2058
- 2059

2060 Washburn
Colared

2061 Washburn
Colared

2062 Washburn
Colared

2063 Washburn
Colared

2064 Washburn
Colared

2065 Washburn
Colared

2066 Washburn
Colared

2067 Washburn
Colared

2068 Washburn
Colared

2069 Washburn
Colared

2070 Washburn
Colared

2071 Washburn
Colared

2072 Washburn
Colared

2073 Washburn
Colared

This with some of the other
 Collected in the woods with
 a sample of which I inclosed with
 this. Both forms growing together
 here. 2073 has a more shrubby

2074 Washburn
Colared

2075 Washburn
Colared

2076 Washburn
Colared

2077 Washburn
Colared

2078 Washburn
Colared

2079 Washburn
Colared

2080 Washburn
Colared

2081 Washburn
Colared

2082 Washburn
Colared

2083 Washburn
Colared

2084 Washburn
Colared

2085 Washburn
Colared

2086 Washburn
Colared

2087 Washburn
Colared

2088 Washburn
Colared

2089 Washburn
Colared

2090 Washburn
Colared

2091 Washburn
Colared

2092 Washburn
Colared

2093 Washburn
Colared

2094 Washburn
Colared

2095 Washburn
Colared

2096 Washburn
Colared

2097 Washburn
Colared

2098 Washburn
Colared

2099 Washburn
Colared

2100 Washburn
Colared

2080 Poland 1000 ft. north of

2081 Poland 1000 ft. north of

2092 Poland 1000 ft. north of

2093 Poland 1000 ft. north of

2095 Poland 1000 ft. north of

2082 Poland 1000 ft. north of

2083 Poland 1000 ft. north of

2084 Poland 1000 ft. north of

2085 Poland 1000 ft. north of

2086 Poland 1000 ft. north of

which are all good. But not
 a few flowers. numbers some
 with leaves below wood and
 some more. ditto.

2136 *Halimolobos*? Spring point ditto

2137 *Trichostema* on wall of road
 Duell's Aug 19

2138 *Asplenium* - like woods ditto

2139 *Asp.* After woods ditto

2140 *Calamagrostis* ditto ditto

2141 *Poa* ditto ditto

2142 *Alphacoma* woods ditto ditto

2143 *Asplenium* - ditto

2144 *Asp.* woods ditto

2145 *Asp.* woods ditto

2146 *Asp.* woods ditto

2147 *Asp.* woods ditto

2148 *Asp.* woods ditto

2149 *Asp.* woods ditto

2150 *Asp.* woods ditto

all the same

2149 *Sporobolus* - along ditch in woods ditto

Buller's woods Aug 22

2150 *Poa* - Dry hills woods ditto

2151 *Poa* woods ditto

2152 *Sisymbrium*

2153 *Asp.* woods ditto

2154 *Calamagrostis*

2155 *Muhlenbergia*

2156 *Asp.* woods ditto

2157 *Sclera*

2158 *Asp.* woods ditto

2159 *Poa* woods ditto

2160 *Poa*

2161 *Festuca*

2162 *Calamagrostis* - 2140 ditto

2163 *Asp.* woods ditto

2164 *Calamagrostis* - ?

Woods of Allen Aug 23

2165 *Asp.* low land along ditch

2166 *Poa* ditto ditto

any change *P. melanocarpa*

but it appears to be short
 root stock, not leaf described

2170 *Trifolium* ...
 ...
 ...
 ...

2171 *Trifolium pacificum* H. & C.
 ...
 ...
 ...

2172 *Trifolium* ...
 ...
 ...
 ...

2173 *Trifolium* ...
 ...
 ...
 ...

2174 *Trifolium* ...
 ...
 ...
 ...

2175 *Trifolium* ...
 ...
 ...

2176 *Trifolium* ...
 ...
 ...

2177 *Trifolium* ...
 ...
 ...

2178 *Trifolium* ...
 ...
 ...

2179 *Trifolium* ...
 ...
 ...

2180 *Trifolium* ...
 ...
 ...

2181 *Trifolium* ...
 ...
 ...

2182 *Trifolium* ...
 ...
 ...

2183 *Trifolium* ...
 ...
 ...

Quincy

above Box Canyon

- 2203 *...*
- 2204 *...*
- 2205 *...*
- 2206 *...*
- 2207 *...*
- 2208 *...*
- 2209 *...*
- 2210 *...*
- 2211 *...*
- 2212 *...*
- 2213 *...*
- 2214 *...*
- 2215 *...*
- 2216 *...*
- 2217 *...*
- 2218 *...*
- 2219 *...*
- 2220 *...*
- 2221 *...*
- 2222 *...*
- 2223 *...*
- 2224 *...*
- 2225 *...*
- 2226 *...*
- 2227 *...*
- 2228 *...*
- 2229 *...*
- 2230 *...*
- 2231 *...*
- 2232 *...*
- 2233 *...*
- 2234 *...*
- 2235 *...*
- 2236 *...*
- 2237 *...*
- 2238 *...*
- 2239 *...*
- 2240 *...*
- 2241 *...*
- 2242 *...*
- 2243 *...*
- 2244 *...*
- 2245 *...*
- 2246 *...*
- 2247 *...*
- 2248 *...*
- 2249 *...*
- 2250 *...*
- 2251 *...*
- 2252 *...*
- 2253 *...*
- 2254 *...*
- 2255 *...*
- 2256 *...*
- 2257 *...*
- 2258 *...*
- 2259 *...*
- 2260 *...*
- 2261 *...*
- 2262 *...*
- 2263 *...*
- 2264 *...*
- 2265 *...*
- 2266 *...*
- 2267 *...*
- 2268 *...*
- 2269 *...*
- 2270 *...*
- 2271 *...*
- 2272 *...*
- 2273 *...*
- 2274 *...*
- 2275 *...*
- 2276 *...*
- 2277 *...*
- 2278 *...*
- 2279 *...*
- 2280 *...*
- 2281 *...*
- 2282 *...*
- 2283 *...*
- 2284 *...*
- 2285 *...*
- 2286 *...*
- 2287 *...*
- 2288 *...*
- 2289 *...*
- 2290 *...*
- 2291 *...*
- 2292 *...*
- 2293 *...*
- 2294 *...*
- 2295 *...*
- 2296 *...*
- 2297 *...*
- 2298 *...*
- 2299 *...*
- 2300 *...*

Quincy

- 2200 *...*
- 2201 *...*
- 2202 *...*
- 2203 *...*
- 2204 *...*
- 2205 *...*
- 2206 *...*
- 2207 *...*
- 2208 *...*
- 2209 *...*
- 2210 *...*
- 2211 *...*
- 2212 *...*
- 2213 *...*
- 2214 *...*
- 2215 *...*
- 2216 *...*
- 2217 *...*
- 2218 *...*
- 2219 *...*
- 2220 *...*
- 2221 *...*
- 2222 *...*
- 2223 *...*
- 2224 *...*
- 2225 *...*
- 2226 *...*
- 2227 *...*
- 2228 *...*
- 2229 *...*
- 2230 *...*
- 2231 *...*
- 2232 *...*
- 2233 *...*
- 2234 *...*
- 2235 *...*
- 2236 *...*
- 2237 *...*
- 2238 *...*
- 2239 *...*
- 2240 *...*
- 2241 *...*
- 2242 *...*
- 2243 *...*
- 2244 *...*
- 2245 *...*
- 2246 *...*
- 2247 *...*
- 2248 *...*
- 2249 *...*
- 2250 *...*
- 2251 *...*
- 2252 *...*
- 2253 *...*
- 2254 *...*
- 2255 *...*
- 2256 *...*
- 2257 *...*
- 2258 *...*
- 2259 *...*
- 2260 *...*
- 2261 *...*
- 2262 *...*
- 2263 *...*
- 2264 *...*
- 2265 *...*
- 2266 *...*
- 2267 *...*
- 2268 *...*
- 2269 *...*
- 2270 *...*
- 2271 *...*
- 2272 *...*
- 2273 *...*
- 2274 *...*
- 2275 *...*
- 2276 *...*
- 2277 *...*
- 2278 *...*
- 2279 *...*
- 2280 *...*
- 2281 *...*
- 2282 *...*
- 2283 *...*
- 2284 *...*
- 2285 *...*
- 2286 *...*
- 2287 *...*
- 2288 *...*
- 2289 *...*
- 2290 *...*
- 2291 *...*
- 2292 *...*
- 2293 *...*
- 2294 *...*
- 2295 *...*
- 2296 *...*
- 2297 *...*
- 2298 *...*
- 2299 *...*
- 2300 *...*

Owens

- ✓ 2268 Poa - dille
- ✓ 2269 Poa - dille
- ✓ 2270 Poa - dille
- 2271 Poa - dille
- ✓ 2272 Poa - dille
- ✓ 2273 Poa - dille
- ✓ 2274 Poa - dille
- ✓ 2275 Poa - dille
- ✓ 2276 Poa - dille
- ✓ 2277 Poa - dille
- ✓ 2278 Poa - dille
- ✓ 2279 Poa - dille
- ✓ 2280 Poa - dille
- ✓ 2281 Poa - dille
- ✓ 2282 Poa - dille
- ✓ 2283 Poa - dille
- ✓ 2284 Poa - dille
- ✓ 2285 Poa - dille
- ✓ 2286 Poa - dille
- ✓ 2287 Poa - dille
- ✓ 2288 Poa - dille
- ✓ 2289 Poa - dille
- ✓ 2290 Poa - dille

Owens

- 2200 Poa - dille
- 2279 Poa - dille
- 2280 Poa - dille
- 2281 Poa - dille
- 2282 Poa - dille
- 2283 Poa - dille
- 2284 Poa - dille
- 2285 Poa - dille
- 2286 Poa - dille
- 2287 Poa - dille
- 2288 Poa - dille
- 2289 Poa - dille
- 2290 Poa - dille

2257
2258
7

Sept 2

2259
2260
2261
2262
2263
2264
2265
2266
2267
2268
2269
2270
2271
2272
2273
2274
2275
2276
2277
2278
2279
2280
2281
2282
2283
2284
2285
2286
2287
2288
2289
2290
2291
2292
2293
2294
2295
2296
2297
2298
2299
2300

2301
2302
2303
2304
2305
2306
2307
2308
2309
2310
2311
2312
2313
2314
2315
2316
2317
2318
2319
2320
2321
2322
2323
2324
2325
2326
2327
2328
2329
2330
2331
2332
2333
2334
2335
2336
2337
2338
2339
2340
2341
2342
2343
2344
2345
2346
2347
2348
2349
2350

2321
 2322
 2323
 2324
 2325
 2326
 2327
 2328

Sept 3
 2329 *Agrop. cum* samples showing
var. alba. - Around Mumbale
 2330 *Trisetum* delle & Dudley Occident
 in the same place as mallee
 2331 *Poa* delle
 2332 *Poa* near Lake Lugger Wandy
 Plant

2333 *Trisetum subsp. (leher. deto*
 2334 *Agrostis* - delle Mumbale as
 seen at the same place as
 all the flowers
 2335 *Agrop. realuana* but seems
 different
 2336 *Poa* delle
 2337 *Poa* delle
 2338 *Trisetum* delle
 2339 *Poa*
 2340 *Trisetum* - looked like *Trisetum*
 Mumbale. Yellow
 2341 *Poa*
 2342 *Poa*
 2343 *Poa*
 2344 *Poa*
 2345 *Agrostis* - *Agrostis* *Agrostis*
 2346 *Poa* - yellow
 2347 *Poa* - *Agrostis* *Agrostis*
 2348 *Poa* - *Agrostis* *Agrostis*
 2349 *Agrostis mortuaria* Scribn
 Agrostis *Agrostis*
 2350 *Poa* (*Agrostis*) delle
 2351 *Poa* - delle
 2352 *Agrostis* delle

2353 *Fenest.* *del.*
 2354 *Arctost.* *del.*
 2355 *Arctost.* *del.*
 2356 *Arctost.* *del.*
 2357 *Arctost.* *del.*
 2358 *Arctost.* *del.*
 2359 *Poa* *del.*
 2360 *Arctost.* *del.*
 2361 *Arctost.* *del.*
 2362 *Arctost.* *del.*
 2363 *Arctost.* *del.*
 2364 *Arctost.* *del.*
 2365 *Arctost.* *del.*
 2366 *Arctost.* *del.*
 2367 *Muhlenb.* *del.*
 2368 *Poa* *del.*
 2369 *Setaria* *del.*
 2370 *Elymus* *del.*
 2371 *Muhlenb.* *del.*
 2372 *Muhlenb.* *del.*
 2373 *Arctost.* *del.*

2374 *barbifoloviratum* *Wack*
 2375 *Poa* *del.*
 2376 *Muhlenb.* *del.*
 2377 *Arctost.* *del.*
 2378 *Arctost.* *del.*
 2379 *Arctost.* *del.*

2380 *capillare* *L.*
 2381 *Poa* *del.*
 2382 *Arctost.* *del.*
 2383 *Arctost.* *del.*
 2384 *Arctost.* *del.*

See A.C.'s field book
 1906-7
 for 2385 - 2418

1908 book begins anew at
 2500

1907

see AC's book for ASH
 1907 Collections (after no. 3836)
 ↓ transferred June 1966

- 2385 *Spartina (caespitosa ?)*
 Along track near south end of Y at Chesapeake
 Beach not far from edge of draw among *Sp.*
polystachya, *Scirpus robustus*, etc. Culms
 erect, blade folded or slightly folded when
 fresh. Sept. 7
- 2386. *Spartina glabra*. Delta near bank of draw.
- 2387 *Spartina juncea*. Delta in the open sand,
 middle of Y. Bunches with rhizome.

↓ Typed copy



ASH *Paspalum*
 collected before 1906
 with track no.

9/7-07

- 3832 *Panicum* ...
 2388 and ...
- 3833 *Panicum* ...
 2389 ... Fla
- 3834 *Panicum* ...
 2390 ...
- 3835 *Panicum* ...
 2391 *Panicum virgatum* L
 Chesapeake Jct.
- 3836 *Panicum* ...
 2392 ...
- 3837 *Panicum* ...
 2393 ...

205
 Fla

1907

Lanham 9/21

2394

2395 Pan meridionale Ashe

2396

not at

2397

not at

2398

Agrostoides Nash

2399

Schult

2400

2401

Panicum purpurascens

as H Paspalum
collected before 1906
without no.

2402

2403

villosissimum Nash

2404

Schult

1905

Fla

2405

not at

2406

not at

2407

Pan columbianum Nash

2408

2409

Panicum sphaerocarpon Ell

Panicum sphaerocarpon Ell

Panicum sphaerocarpon Ell

1907

- 2410 *Paspalum*
- 2411 *barbatulum* Michx
- 2412 *inflatum* (S. H. H. H.)
- 2413 *columbianum*
- 2414 *villosissimum* Nash
- 2415
- 2416 *open shrub hill, near ...* Sept 17
- 2417 *open hill ...* Nash
- 2418 *open hill ...* Scribn

as *H Paspalum*
collected before 1906
without no.

- 2419 *Pasp. buckleyanum*; *Carpis*
Christe Tex Aug 7, 1904
- 2420 *Pasp longepedunculatum* L
Stone Mt Ga Aug 1905
- 2421 *Pasp longeped*
Elizabethton Tenn July 26-7 1905
- 2422 *Pasp longeped* Marco Fla
July-Aug 1900
- 2423 *Pasp longeped* Miami Fla
Mar 1903
- 2424 *Pasp setaceum* Michx
Virginia Beach Aug 31, 1902
- 2425 *Pasp setaceum* Wilmington
NC
Aug 8, 1905

2426 *Pasp retaceum* Orangeburg Aug 1905
89 14 10
483

2427 *Pasp retaceum* Valley Forge Tenn July 22, 1905

2428 *Pasp retaceum* Stone Mt Ga Aug 1905

2429 *Pasp debile* near Fort Myers
flatwoods Apr 11, 1906

2430 *Pasp debile* near
Sarita Tex Aug 7, 1904

2431 *Pasp distichum* Stone Mt Ga
1905

2432 " " Samibel Fla in 1900

2433 *Pasp superuum* Wilmington NC Aug 30 1905
171 H.C.
30

2434 *Pasp superuum* Orangeburg SC Aug 15 1905

2435 *Pasp superuum* Jacksonville Fla 1900

2436 *Pasp superuum* Ft Myers 1900

2437 *Pasp stramineum*, Smith 1904

2438 *Pasp stramineum*, Stillwater Okla 1903

2439 *Pasp pubescens* Capt. ...
Colum Bridge Va Sep 1904

2440 *Pasp pubescens* Columbia Mo 1904

2441 *Pasp pubescens* Carrollton Mo 1904

2442 *Pasp pubescens* Biltmore NC Aug 1905

30-178 H.C.

2443 *Pasp pubescens* Orangeburg SC Aug 15 1905

ret 171 H.C. in part

- 2444 *Pasp pubescens* Lake Charles La
- 2445 " " Winter Okla 1903
- 2446 " " (exceptional) Wilmington NC Aug 1905
- 2447 " *rigidifolium* Chehawilla
- 2448 " *ciliatifolium* Galveston Tex
exceptional, pubescent 1903
- 2449 *Pasp ciliatifolium* Wilmington NC
Aug 1905
- 2450 " " Orangeburg SC
130111C
30
Aug 16, 1905
- 2451 " " " " 19, 1905
~~at Charlotte~~
- 2452 " " Isle of Palms SC
Aug 22, 1905
- 2453 " " Punta Rassa Fla 1900
- 2454 " " Sarribel " 1900
- 2455 " " Marco " 1900
- 2456 " " Mobile Ala 1904
- 2457 " " Santa Tex 1904

- 2458 *Pasp propinquum* Miami March
in 1903
- 2459 " *monostachyum* Ft Myers 1900
- 2460 " " Galveston Tex
1903
- 2461 " *laugii* San Antonio Tex
1903
- 2462 " *blodgettii* Miami Mar 1903
49911C
30
- 2463 " *caespitosum* Key Largo Fla 1903
- 2464 " " Miami Fla Mar 1903
- 2465 " *vaghiatum* Jacksonville Fla 1900
- 2466 " " Sarribel " 1900
- 2467 " " Brownsville Tex in 1904
- 2468 " *pubiflorum* Choctaw Texas in 1904
- 2469 " " N. Galveston in 1903

H's numbers
begin again
at 2470
(see 6 pages
further on)

0

1

2

3

4

5

2

24

24



2
2

2470 *Pasp. supinum* Lake City Fla 1898

2471 *Pasp. ciliatifolium* Palm Beach Fla 1896

2472

2473 Pasp ciliatiformis Eustis Fla 1894

2474

2476 Pasp ciliatiformis Eustis Fla 1894

2477 Pasp ciliatiformis Palm Beach Jan 1896

2478 " " Levy Co 1898

2479 Pasp ciliatiformis Palm Beach Jan 1896

2480

2481 Pasp superium Eustis Fla 1894

2482 " " " " "

2483 Pasp superium Jefferson Co Fla 1898

2484 Pasp superium Suwanee Co Fla 1898

2485 Pasp superium Lake City Fla 1898

2486 Pasp setaceum Lake City June-July 1898

2487 " " Madison Co " " "

2488 " " Suwanee Co " " "

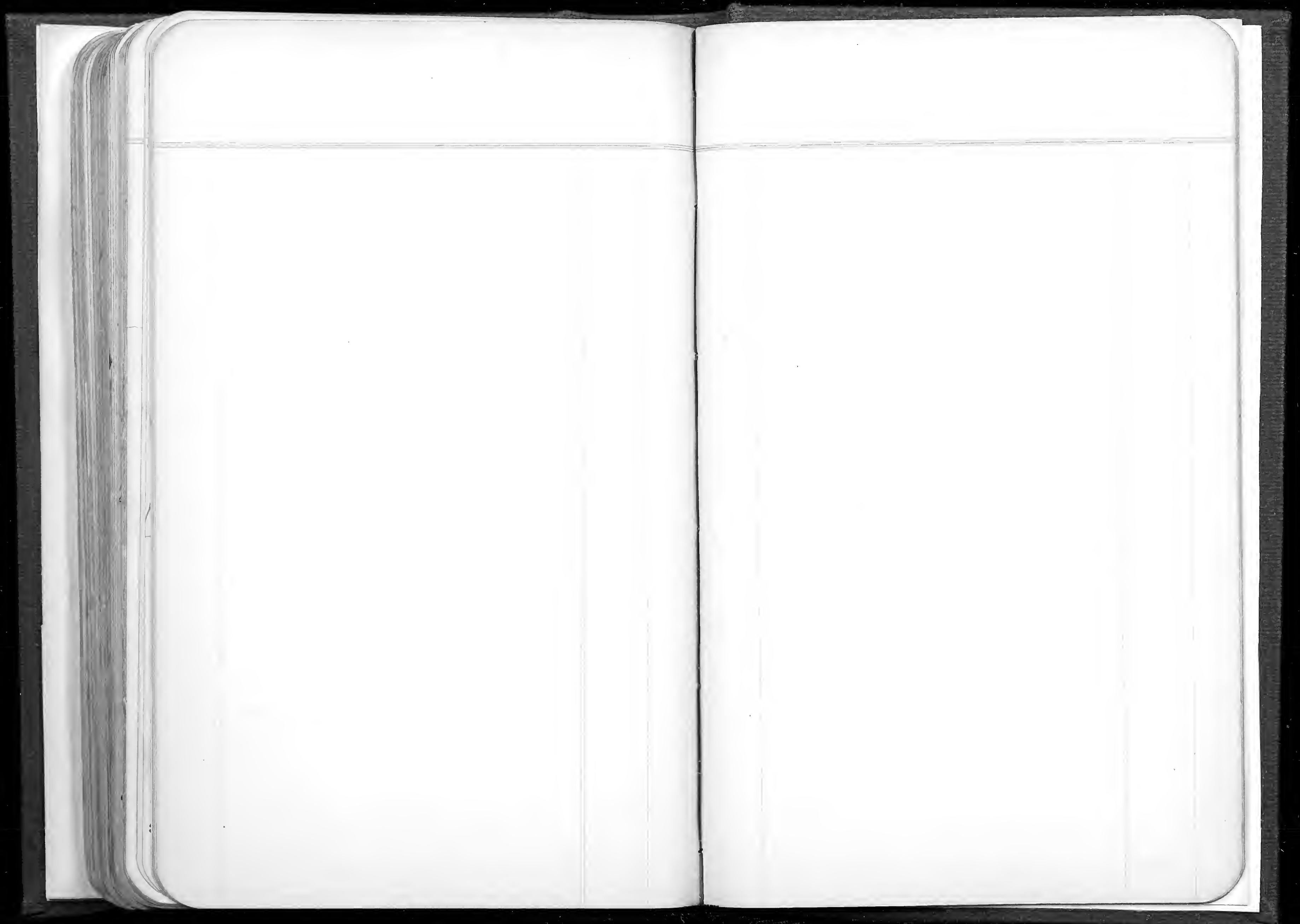
2489 " rigidifolium Eustis Fla 1894

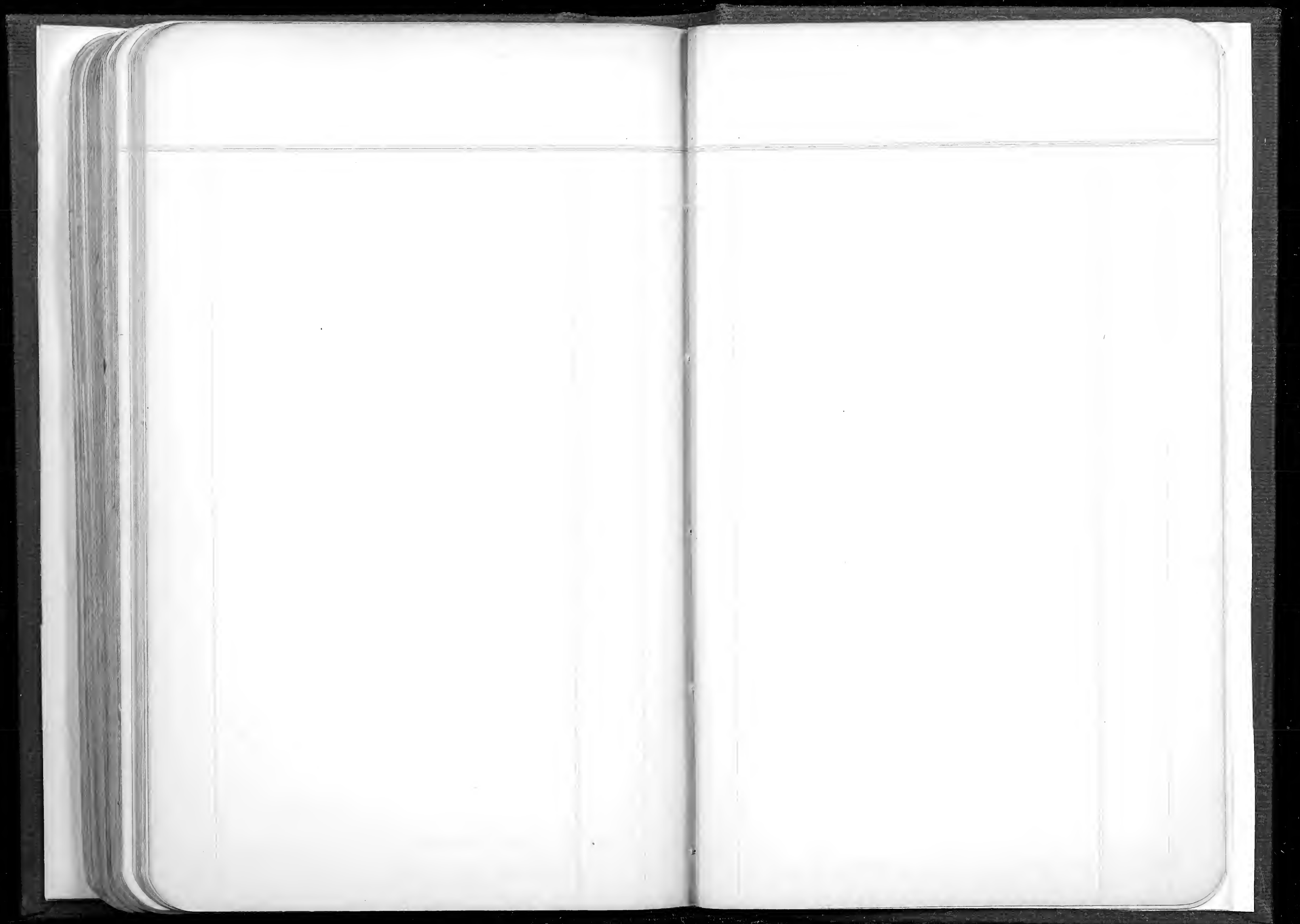
2490 Pasp ~~setaceum~~ ^{longipedunculatum} Palm Beach, 37 Jack-
sonville Dec 1895 - Jan 96

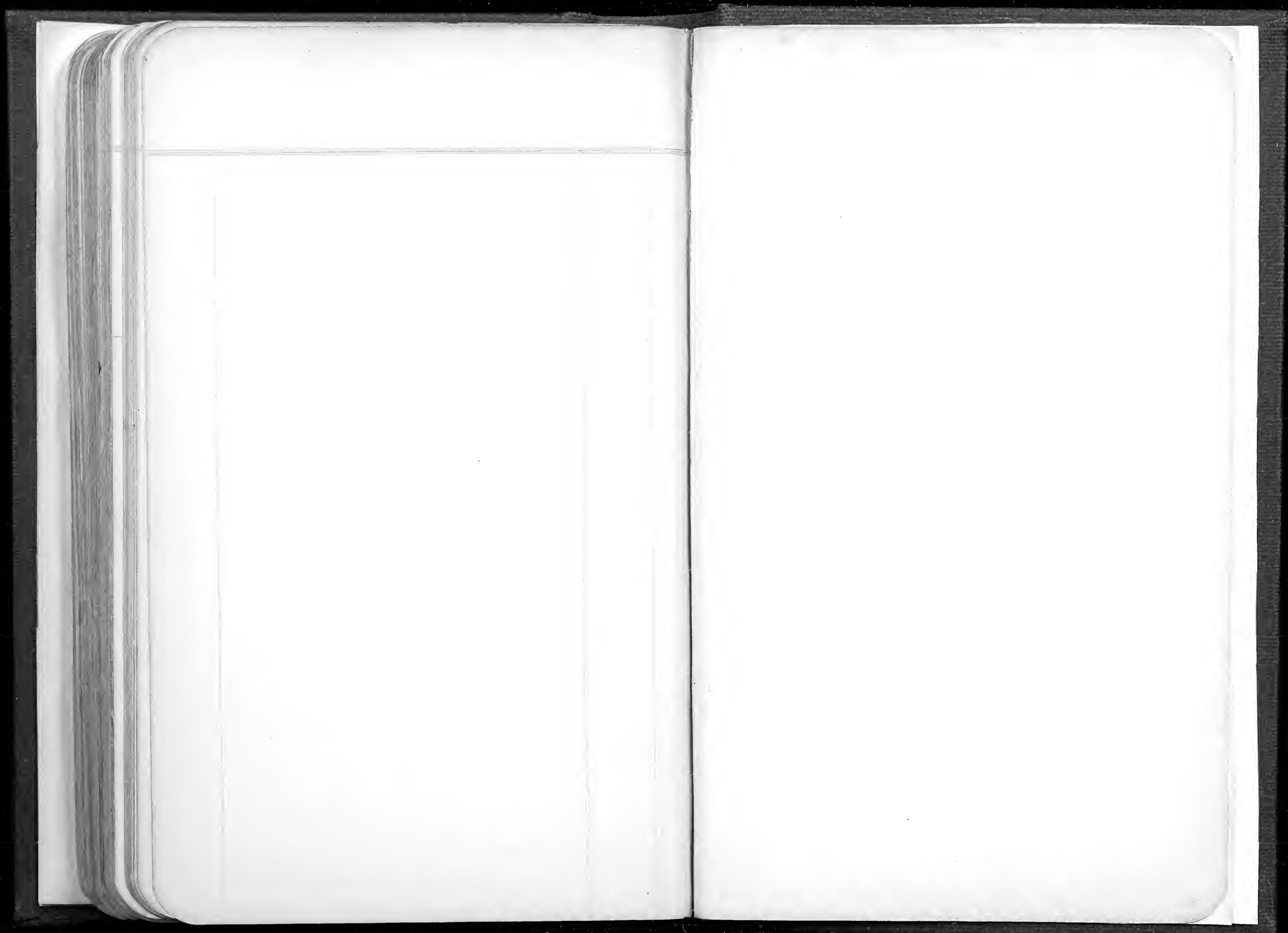
2491 " setaceum Levy Co. July-1898

Fla Pl 2492 Pasp longiped New River Fla
Dec 26 1895 - Jan 1896

Fla Pl 2493 Pasp longiped Eustis July 1894







6468

