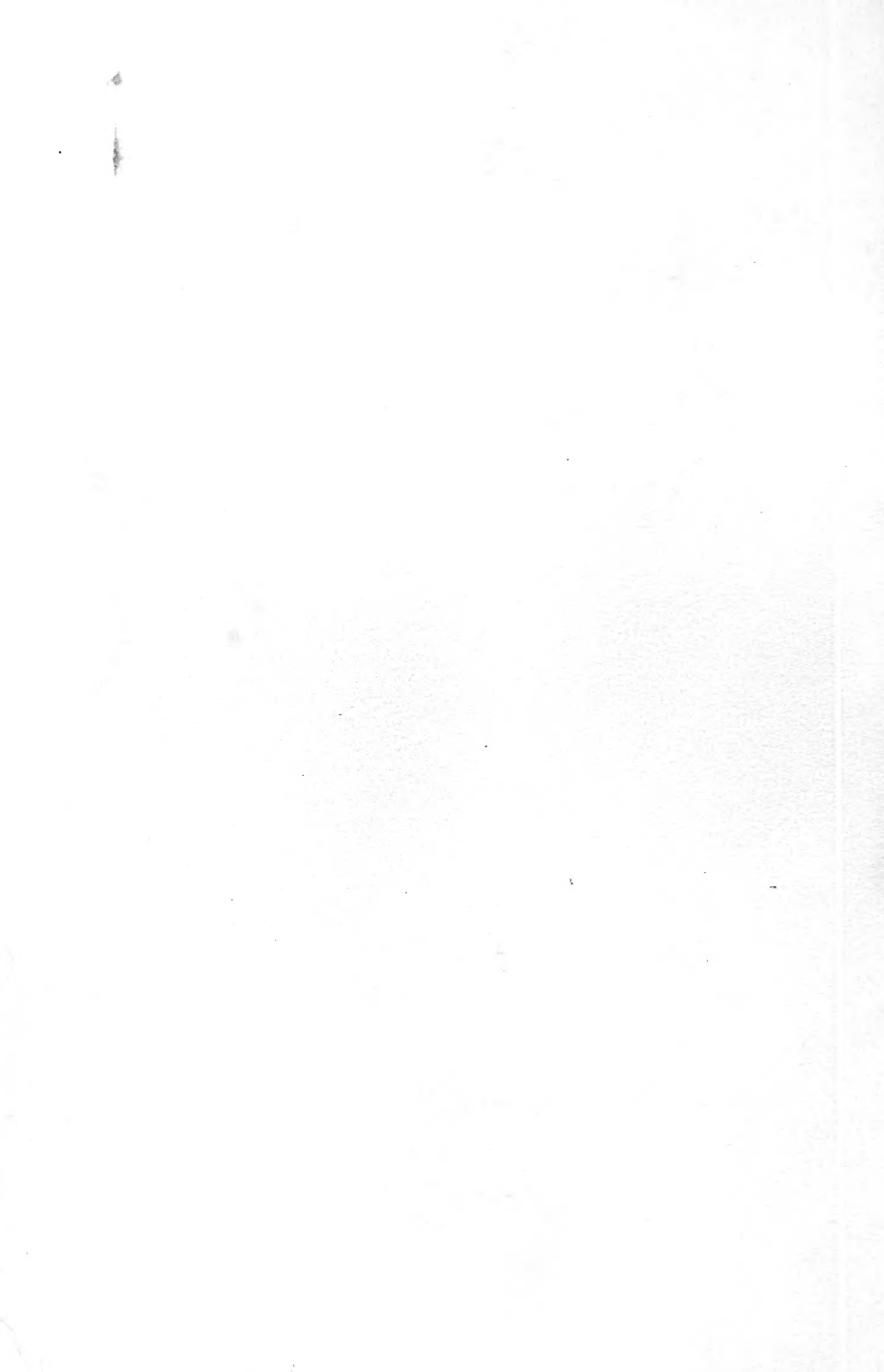


Historic, archived document

Do not assume content reflects current scientific knowledge, policies, or practices.



62.87

LIBRARY
FEB 29 1952
U. S. Department of Agriculture

HORSFORD'S *Special List* for Spring Planting

● This folder features combinations of plants and bulbs made up of newer varieties and old favorites that are especially suited to spring planting. Add to your garden now these bargain collections of Hardy Chrysanthemums, Japanese Anemones, Hardy Phlox, Hemerocallis and Hardy Ferns so that they can become established before winter. It is the surest guarantee against winter losses. Our Vermont grown stock cannot be equaled in iron-clad hardiness.

If you are interested in Evergreens, Roses, Vines, Shrubs and Trees which are usually sold here at the Nursery, write for List.

ALL PRICES ARE NET

On all plants or bulbs we will prepay postage or express, as you prefer, if 15 per cent is added to the price of the plants and bulbs in your order. Add 30 per cent for points west of the Mississippi. This covers both shipping cost and special packing. If no shipping method is specified, we will ship Express Collect.

EARLY BLOOMING

Hardy Chrysanthemums

- ALGONQUIN. Double yellow.
- DEAN LADD. Large, double, reddish-bronze.
- EARLY BRONZE. Especially hardy variety.
- GLACIER. Double. Extra large pure white.
- PINK CUSHION. Mounds of lavender pink.
- REDWOOD. Semi-double. Carmine to oxblood.

Any of the above 35c each, 3 of one kind for 90c, \$3.00 per doz. Collection of two each of the above \$5.00.

NEW

Giant Hemerocallis

- CHENGTU. Red and yellow. 3 ft. July-Aug.
- DAUNTLESS. Pale yellow. 2½ ft. July.
- HYPERION. Pale yellow. 3½ ft. July-Aug.
- MATADOR. Mahogany red. 3 ft. July-Aug.
- PINK CHARM. Soft, ochre-red. 4 ft. Aug.
- ROSALIE. Yellow shaded rose pink. 3-4 ft. July.

Any of above \$1.00 each. Collection of one each of above \$4.50.



Perennial Border

REGAL Plants
and Bulbs

F. H. HORSFORD
CHARLOTTE, VERMONT

1952 Spring
List

HORSFORD'S *Lilies for Spring Planting*



Green Mountain Hybrids

While our list of the hardy lilies is not as large as that offered by some dealers, we make special efforts to ensure a clean, healthy stock from which we can fill our orders. Our list is mostly of varieties that can be produced from seed.

We can offer the following varieties in healthy stock and we give complete cultural directions with every order.

AMABILE. A rare Korean of interesting shape. Grenadine-red, freely spotted black. July. 3 to 4 ft. 75c each, \$7.50 per doz.

CANADENSE. We're sorry we can't guarantee the color of this wild Lily, but everything else about it is all right. May be a brick-red, or a clear golden yellow. June, July. 2 to 5 ft. 25c each, \$2.50 per doz.

CENTIFOLIUM. This variety is called a giant among lilies, with long, trumpet-shaped white flowers, streaked outside with brown and flushed inside with yellow at the base of the trumpet. July. Strong, flowering size bulbs, \$1.00 each.

CONCOLOR. Handsome little variety only 18 in. high with striking upright star-shaped flowers of a deep crimson shade with darker spots. It will stand full sun, lime soil and is suitable for rockeries. Base rooting and is best set only 4 in. deep. June-July. 50c each, \$5.00 per doz.

CORONATION. New. Vigorous stems 3 ft. high bearing numerous recurved blooms of a clear primuline yellow, lightly spotted brown inside. Outside of petals is a beautiful pale yellow. July. \$2.75 each.

DAVIDII. A very vigorous and dependable Lily of Turk's Cap type. Numerous red flowers. July-August. 4 to 6 ft. 60c each, \$6.00 per doz.

GREEN MOUNTAIN HYBRIDS. Large trumpets of white with yellow or green coloring in the throats. Three to 5 ft. high with a three- to four-week flowering season in mid-summer. 75c each, \$7.50 per doz.

HANSONII. Its nodding flowers, with their thick waxy petals, will bring you their delicate fragrance; the earliest of all lilies. Six to ten reddish orange blooms in a cluster. June. 3 to 4 ft. \$1.00 each.

HENRYI. Given heights will vary with soil and growing conditions, but we've honestly seen this Lily 9

ft. high. Very easy to grow, too. Graceful sprays of brilliant apricot-yellow. August, September. 75c each, \$7.50 per doz.

PHILIPPINENSE FORMOSANUM. A variety of refined and graceful appearance, with long, grassy foliage. It reaches 4 ft. with long trumpet flowers, pure white. August-September. 45c each, \$4.50 per doz.

PRIDE OF CHARLOTTE. This stately offspring of *L. sargentiae* is more rugged than its parent. Long, white funnel-shaped flowers with yellow throat and sometimes marked externally a deep reddish brown. 3 to 4 ft. July. 75c each, \$7.50 per doz.

REGALE. A truly Regal beauty, and the best behaved queen of the lot. Parade her before a royal curtain of Delphinium to show her off to best advantage. White, slightly suffused with pink, shading to beautiful shade of canary yellow at the throat. July. 3 to 5 ft. 50c each, \$5.00 per doz.

SUPERBUM. America's handsomest native Lily, in our opinion, with its immense, pyramidal cluster of blooms right up high where you can admire them. Brilliant orange-red shading to yellow and spotted with brown. July. 4 to 6 ft. 35c each, \$3.50 per doz.

TENUIFOLIUM. A small slender growing Lily, not more than eighteen inches tall, with bright scarlet flowers and recurved petals. One of the prettiest little lilies in cultivation. Early June. 12 to 18 in. 25c each, \$2.50 per doz.

TENUIFOLIUM. Var. **Golden Gleam.** A fine type of *L. tenuifolium* with flowers of a beautiful apricot shade. A free and vigorous grower. 30c each, \$3.00 per doz.

TIGRINUM. Var. **Splendens.** By far the best form of Tiger Lily we have had. It is taller, with handsome, large flowers and a much healthier plant. 25c each, \$2.50 per doz.

EASY-TO-GROW FERNS

For Shady or Difficult Locations

FOR THE OPEN BORDER

Mostly tall Ferns with bold, broad foliage, and imposing appearance. They are adapted to sunshine but need the shelter of adjacent plants about the base of the fronds. Plant them in mixed groups among low shrubs.

- 6 *Osmunda claytoniana*. 2-3 ft.
- 6 *Onoclea struthiopteris*. 3-4 ft.
- 18 *Dicksonia punctilobula*. 1-2 ft.
- 6 *Asplenium felix-foemina*. 1-3 ft.

36 Ferns for \$6.00

FOR WET, OPEN GROUND

No trouble at all to find ordinary plants for wet, open ground but not many Ferns are adapted to the sunshine. Use rushes or flowering plants freely in such situations.

- 12 *Onoclea sensibilis*. 1 ft.
- 12 *Osmunda regalis*. 2-3 ft.

24 Ferns for \$4.50



Asplenium felix-foemina

FOR DRY, ROCKY LEDGE

Some of the choicest little Ferns are found in such places in nature. Mostly they are dwarf—frequently half evergreen—but always charming in outline, texture and aspect.

- 12 *Asplenium trichomanes*. 3-6 in.
- 12 *Woodsia obtusa*. 6-12 in.
- 12 *Polypodium vulgare*. 6 in.
- 12 *Woodsia ilvensis*. 6 in.

48 Ferns for \$8.50

FOR MOIST, SHADY PLACES

The wealth of plants which will flourish in moist, shady places is embarrassing. Ferns are no exception. Choose those of relatively low stature, among which to mingle blooming plants such as bog orchids.

- 6 *Adiantum pedatum*. 1-1½ ft.
- 6 *Aspidium cristatum*. 1 ft.
- 6 *Polystichum acrostichoides*. 1 ft.
- 6 *Aspidium spinulosum*. 1½-2 ft.
- 6 *Aspidium marginale*. 1½-2 ft.
- 6 *Asplenium acrostichoides*. 3 ft.
- 6 *Asplenium felix-foemina*. 1-3 ft.
- 6 *Phegopteris hexagonoptera*. 1 ft.
- 6 *Asplenium angustifolium*. 2-3 ft.

54 Ferns for \$9.00

FOR DRY, SHADY PLACES

Under trees, in the shade of buildings where the soil is too dry for blooming plants, these Ferns may adapt themselves or if not all, some may. Dry shade is one of the gardener's hardest problems.

- 9 *Aspidium marginale*. 1½-2 ft.
- 9 *Dicksonia punctilobula*. 1-2 ft.
- 9 *Osmunda claytonia*. 2-3 ft.
- 9 *Polystichum acrostichoides*. 1 ft.

36 Ferns for \$6.00

Any of the above Ferns 25c each, 6 for \$1.25, \$2.50 per doz.

35 cts. each, 3 of the same kind for 90 cts., \$3.00 per doz., except as otherwise noted.

Variety	Common Name	Color	Ht. Feet	Flowering Season
INCARVILLEA delavayi.	Hardy Gloxinia	Rose-pink	1½	June, July
IRIS sibirica.	Siberian Iris	Blue	2-3	June
sibirica, Emperor		Deep violet	3-4	June
sibirica, Snow Queen		White	3-4	June
sibirica, Thelma Perry		Light blue	3-4	June
*KAEMPFERI.	Japanese Iris	Mixed	2-3	July
*kaempferi, Agnes Reed		Mulberry purple royal blue halo	2-3	July
*kaempferi, Gold Bound		Double; white	2-3	July
*kaempferi, Kuro Komo		Purple yellow blotch	2-3	July
*kaempferi, Mars		Reddish purple	2-3	July
*kaempferi, Pyramid		Violet-blue	2-3	July
*kaempferi, Ruffled Monster		Double; blue	2-3	July
*kaempferi, Wister's Favorite		Gray blue	2-3	July
*LAVANDULA vera, Munstead (r)		Blue	½-1	July
LIATRIS pycnostachya.	Gayfeather	Rose-purple	4-5	Aug.
scariosa		Rose-purple	3-4	Sept.
spicata		Purple	1-1½	Aug.
LOBELIA cardinalis.	Cardinal Flower	Deep scarlet	3-4	Aug.
LUPINUS polyphyllus.	Lupine	Blue	2-3	June
polyphyllus albus		White	2-3	June
polyphyllus roseus		Pink	2-3	June
*Russell Lupines		Mixed	2-3	June
LYCHNIS chalconica.	Maltese Cross	Scarlet	3	June
LYTHRUM salicaria roseum.	Rosy Loosestrife	Rose-purple	3-4	July
MERTENSIA virginica.	Virginia Bluebells	Blue	1-2	May
MONARDA didyma.	Oswego Bee Balm	Cardinal-red	3	July
Cerise Queen		Cerise-pink	3	July
Lavender		Lavender	3	July
Salmon-Pink		Salmon-pink	3	July
OENOTHERA missouriensis.	Ozark Sundrops	Yellow	½-1	July, Aug.
PACHYSANDRA terminalis.	Japanese Spurge	White	½	May, June
PAPAVER nudicaule.	Iceland Poppy	White, yellow, orange	1-1½	May-Oct.
orientale.	Oriental Poppy	Orange-scarlet	2	May, June
*orientale, Enchantress		Soft rose	2	May, June
*orientale, Helen Elizabeth		Pink	2	May, June
*orientale, Henry Cayeux		Old rose	2	May, June
*orientale, Jean Mawson		Geranium-pink	2	May, June
orientale, Joyce		Cerise	2	May, June
*orientale, Mahony		Carmine-purple	2	May, June
orientale, Orange Beauty		Orange	2	May, June
orientale, Perry's White (75c each)		White	2	May, June
*orientale, Salmon Glow		Light-orange	2	May, June
*orientale, Sass Pink		Pure soft pink	2	May, June
PHLOX paniculata.	Hybrid Phloxes.			
Comus		Orange-scarlet	1½-2	Aug.
Daily Sketch		Light salmon-pink	2-3	Aug., Sept.
*Dr. Klemm		Lavender	1½-2	July-Aug.
Eva Forester		Clear pink	2-2½	Aug.
Frau Anton Buchner		Pure white	2-3	Aug.
George Stipp		Deep salmon	2½-3	Aug.
*Mary Louise		Pure white	2-2½	Aug.
Morganrood		Bright rose	2-3	Aug.
Paul Hoffman		Carmine	2½	Aug.
Prof. Virchow		Orange and carmine	2-2½	Aug.
Sir Edwin Landseer		Bright crimson	2-2½	Aug.
Von Hochburg		Brilliant red	2½	Aug.
Von Lassburg		White	2-2½	Aug.
*suffruticosa, Miss Lingard		White	2-3	July
PHYSOSTEGIA (False Dragonhead) virginiana grandiflora,		Bright mauve-pink	1½-2	Sept., Oct.
Vivid				
PLATYCODON grandiflorum.	Balloon Flower	Blue	1½-2	Aug., Sept.
grandiflorum album		White	1½-2	Aug., Sept.
POLEMONIUM reptans (r).	Greek Valerian	Blue	1½-2	Aug., Sept.

* These varieties 50 cts. each, 3 for \$1.25, \$5.00 per doz. (r) Variety suitable for rock garden.

35 cts. each, 3 of the same kind for 90 cts., \$3.00 per doz., except as otherwise noted.

Variety	Common Name	Color	Ht. Feet	Flowering Season
PRIMULA				
elatior.	Ox-lip Primrose	Light yellow	1½	May
japonica.	Japanese Primrose	White, pink, red	1	May
veris (r).	Common Primrose	Yellow	1½	May
PYRETHRUM hybridum.	Painted Daisy	Red, white, pink	2	June
RUDBECKIA.	Golden Glow	Yellow	5-6	Aug.-Sept.
*James Kelway		Scarlet	2	June
SCABIOSA caucasica.	Caucasian Scabiosa	Blue	1½	June-Aug.
caucasica alba.	White Caucasian Scabiosa	White	1½	June-Aug.
STATICE latifolia.	Sea Lavender	Light blue	2	Aug., Sept.
STOKESIA cyanea.	Stokes Aster	Azure-blue	1-1½	Aug.
THERMOPSIS caroliniana		Bright yellow	3-4	July
TRILLIUM erectum.	Purple Trillium	Purple	1	May
grandiflorum.	Wake-Robin. 15c each; \$1.50 per doz.	White	1	May
undulatum.	Painted Trillium	Pink	1	May
* TROLLIUS europaeus.	Globe Flower	Pale yellow	1-1½	May-Aug.
*Iedebouri		Bright yellow	2-3	June
UVULARIA grandiflora.	Merrybells	Pale yellow	1-1½	May
VALERIANA officinalis.	Hardy Heliotrope	White	3-4	June
* VERONICA subsessilis.	Clump Speedwell	Deep blue	2	July
spicata.	Spike Speedwell	Bright Blue	1½	July
VIOLA canadensis.	Canadian Violet	White	1	June
*cornuta, Jersey Gem		Violet-blue	1½	May-Oct.
*cornuta, Royal Purple		Violet-blue	1½	May-Oct.
palмата cucullata.	Hooded Violet	Blue	½	June
pubescens.	Downy Yellow Violet	Yellow	½	June

* These varieties 50 cts. each, 3 for \$1.25, \$5.00 per doz. (r) Variety suitable for rock garden.



Gaillardia



Platycodon

If you are interested in Evergreens, Roses, Vines, Shrubs and Trees which are usually sold here at the Nursery, write for List.

GENERAL LIST OF HARDY PERENNIALS

35 cts. each, 3 of the same kind for 90 cts., \$3.00 per doz., except as otherwise noted.

Variety	Common Name	Color	Ht. Feet	Flowering Season
ACHILLEA (Yarrow)	<i>millefolium roseum</i>	Bright red-pink	2	July, Aug.
	<i>Parmica, Perry's White</i>	Pure white	2	June-Sept.
*ACONITUM (Monkshood)	<i>fischeri</i>	Bright glossy-blue	2-3	Sept., Oct.
	<i>*napellus</i>	Rich dark blue	3-4	July, Aug.
	<i>*Spark's Variety</i>	Dark blue	5-6	July-Aug.
ACTAEA (Baneberry)	<i>alba</i>	White	2	May-Sept.
	<i>rubra</i>	White. Red berries	2	May-Sept.
ANCHUSA (Bugloss)	<i>barbelieri</i>	Dark blue	2-3	May
	<i>italica, Dropmore</i>	Gentian-blue	3-4	June
	<i>*myosotidiflora</i>	Blue	1½	May
ANTHEMIS (Camomile)	<i>tinctoria, Perry's Variety</i>	Bright golden yellow	1½-2	June, July
AQUILEGIA (Columbine)	<i>alpina</i>	Blue	1	May
	<i>caerulea</i>	Blue and white	2	May, June
	<i>chrysantha</i>	Yellow	3-2½	June
	Long-spurred Hybrids	Mixed colors	2-2½	June
ARABIS alpina nana (r)		White	½	May
ARISAEMA triphyllum. Jack-in-the-Pulpit		White	3	May
ARTEMISIA (Mugwort)	<i>vulgaris lactiflora</i>	Creamy white	3-4	Aug., Sept.
	<i>*Silver King</i>	Silver-gray foliage	2-3	June-Sept.
ARUNCUS sylvester. Goat's Beard		White	4-5	July, Aug.
ASCLEPIAS tuberosa. Butterfly-Weed		Orange-yellow	1½	Aug.
ASTER novae-angliae. New England Aster		Violet-purple	4-5	Sept., Oct.
	<i>novae-angliae roseus</i>	Rosy pink	4-5	Sept., Oct.
ASTILBE. Spirea. Gladstone		White	1½-2	July
	<i>Granat</i>	Crimson	2	July
AUBRIETIA deltoidea (r)		Purple	½	May, June
BOCCONIA cordata. Plume Poppy		Buff	5-6	Aug.
BOLTONIA asteroides		White	5-6	Sept.
	<i>latisquama</i>	Lavender-pink	5-6	Sept.
CALTHA palustris. Cowslip		Yellow	1	May
CAMPANULA. Bellflower.				
	<i>carpatica (r)</i>	Blue	½	June-Aug.
	<i>carpatica alba (r)</i>	White	½	June-Aug.
	<i>persicifolia</i>	Blue	2	June
	<i>persicifolia alba</i>	White	2	June
	<i>persicifolia, Telham Beauty</i>	Soft lavender-blue	2	June
CENTAUREA dealbata		Reddish pink	1-1½	July
	<i>montana</i>	Blue	1-1½	July
CHELONE lyoni. Pink Turtlehead		Purple red	3-4	Aug., Sept.
CHRYSANTHEMUM arcticum		White	1	Sept., Oct.
	<i>Maximum, Shasta Daisy</i>	White	2-3	July, Aug.
CHRYSANTHEMUMS, HARDY.				
	<i>Algonquin</i>	Double yellow	1½	Sept.
	<i>Alice Howel</i>	Orange-yellow	2-3	Oct.
	<i>Amelia</i>	Red	1½	Sept.
	<i>Astrid</i>	Single salmon-rose	1½	Oct.
	<i>Clara Curtis</i>	Pink	1-1½	Sept.
	<i>Dean Kay</i>	Deep pink	1½	Sept.
	<i>Harmony</i>	Red	1½	Sept.
	<i>Lillian Doty</i>	Shell-pink	2	Oct.
	<i>My Lady</i>	Orange-yellow	1½-2	Aug.
	<i>Normandie</i>	Light pink	1½-2	Sept.
	<i>Polar Ice</i>	White	1½-2	Sept.
	<i>Pygmy Gold</i>	Double golden-yellow	1½	Sept.
	<i>Redgold</i>	Scarlet	2	Aug.
	<i>Robert Brydon</i>	Garnet-red	1½	Sept.
	<i>Ruth Cumming</i>	Reddish-bronze	2	Oct.
	<i>Yellow Cushion</i>	Yellow mounds	1½	Sept.
	<i>Yellow Normandie</i>	Yellow	1½-2	Sept.
	<i>Pink Cushion</i>	Pink	1½	Sept.
	<i>King Cushion</i>	Reddish-bronze	1½	Sept.
	<i>Queen Cushion</i>	White to lavender	1½	Sept.

* These varieties 50 cts. each, 3 for \$1.25, \$5.00 per doz. (r) Variety suitable for rock garden.

35 cts. each, 3 of the same kind for 90 cts., \$3.00 per doz., except as otherwise noted.

Variety	Common Name	Color	Ht. Feet	Flowering Season
CIMICIFUGA racemosa.	Bugbane	White	5-6	July, Aug.
CONVALLARIA majalis.	Lily-of-the-Valley	White	1-1½	May, June
*rosea		Flesh-pink	1-1½	May
COREOPSIS lanceolata		Yellow	2	June-Sept.
DELPHINIUM belladonna		Turquoise-blue	5-6	June
bellamosum		Deep blue	5-6	June
grandiflorum chinense		Dark blue	1½	June
grandiflorum chinense album		White	1½	June
grandiflorum chinense, Azure Fairy		Cambridge-blue	1½	June
*Pacific Hybrids		Mixed colors	5-6	June
*Summer Cloud		White	5-6	June
DIANTHUS caesius.	Cheddar Pink	Delicate rose	½	June
deltoides (r)		Rose-pink	½	June
plumarius.	Pheasant's Eye Pink	Pink and red	1	June
DICENTRA canadensis.	Squirrel-corn	Light pink	½	May
cucullaria.	Dutchman's Breeches	White	½	May
*eximia (r).	Fringed Bleeding-Heart	Reddish purple	1	May-Aug.
spectabilis.	Bleeding-Heart. 60c each	Crimson	2	May, June
*DICTAMNUS rubra.	Gas Plant	Reddish purple	2	June
DIGITALIS ambigua.	Yellow Foxglove	Yellow	2-3	June
DORONICUM clusi		Yellow	1-1½	May
plantagineum (excelsum)	Leopard's-Bane	Yellow	2	May
ECHINACEA purpurea.	Purple Coneflower	Purple	4	July, Aug.
ECHINOPS ritro.	Globe-Thistle	Blue	4-6	Aug., Sept.
ERYNGIUM amethystinum.	Sea-Holly	Blue	3-4	July, Aug.
EUPHORBIA corollata.	Flowering Spurge	White	1½-2	July, Aug.
mysinites (r)	Dwarf Spurge	Yellow	½	May
FUNKIA lancifolia.	Plantain Lily	Pale lilac	1	Aug.
lancifolia variegata.	Lanceleaf Plantain Lily	Purple lilac	1	Aug.
*subcordata.	White Plantain Lily	White	1½	Sept.
GAILLARDIA grandiflora maxima		Yellow and red	3	July-Sept.
*Mr. Sherbrooke		Light-yellow	2-2½	July-Sept.
GENTIANA andrewsi.	Closed Gentian	Purplish blue	1	Aug., Sept.
GYPSOPHILA paniculata.	Baby's-Breath	White	2	July
*Bristol Fairy		White	2	July, Aug.
*repens Rosenschleier		Light-pink	½-1	June-July
HELENIUM autumnale.	Sneezeweed	Yellow	4-5	Sept.
Riverton Beauty		Yellow, dark cone	4	Aug., Sept.
Riverton Gem		Yellow and red	5	Aug., Sept.
HEMEROCALLIS flava.	Lemon Day Lily	Pale yellow	2	June
Amaryllis		Light-yellow	3	July
*Autumn Pioneer		Peach	3-4	Sept.
Bagdad		Reddish-brown	4	July
Cinnabar		Bronzy-red	2½	June
fulva Kwanso.	Double Orange Day Lily	Orange	3	July, Aug.
Imperator		Orange, buff, copper	3-4	July-Aug.
Margaret Perry		Red and yellow	3-4	July-Aug.
Ochroleuca		Citron-yellow	2-3	July
Rajah		Orange and brown	2-3	June-July
thumbergi		Lemon-yellow	2	July, Aug.
Vesta		Orange-yellow	2	July-Aug.
BETSCHER HYBRIDS				
Bay State		Deep-yellow	2-3	July-Aug.
D. D. Wyman		Golden-yellow	3	July-Aug.
Goldeni		Deep golden orange	3	July
J. A. Crawford		Apricot-yellow	4	June, July
Lemona		Lemon-yellow	4-5	June
*Mrs. W. H. Wyman		Clear yellow	3	Aug.
HEPATICA acutiloba (r).	Liverleaf	Light pink	½	April
triloba (r)		Light pink	½	April
*HEUCHERA sanguinea.	Coral Bells	Coral-red	1½	June-Aug.
HIBISCUS moscheutos.	Rose-Mallow	Pink	4-5	Aug., Sept.
IBERIS sempervirens (r).	Candytuft	White	½	June

* These varieties 50 cts. each, 3 for \$1.25, \$5.00 per doz. (r) Variety suitable for rock garden.

Japanese Anemones

(*Anemone japonica*)

These old-fashioned favorites are too well known to need description. They like lime soil and will repay extra care in fertilizing and watering through dry spells with a glorious display of flowers in September.

ALBA. Single white.

GEANTE BLANCHE. Double white.

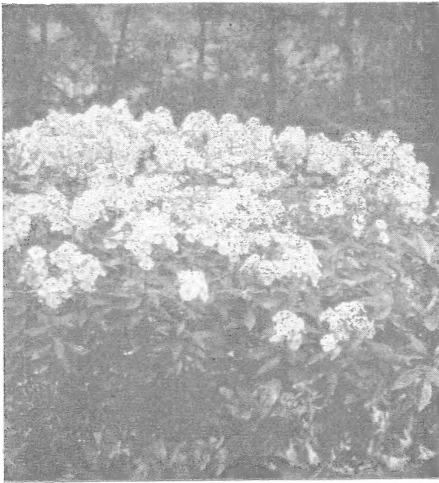
HUPEHENSIS. Rose pink.

QUEEN CHARLOTTE. Double pink.

ROSEA. Single pink.

RUBRA. Red.

Any of the above 35c each, 3 for 90c, \$3.00 per doz. Collection of 3 each of above varieties (18 plants in all) \$3.50.



Hardy Phlox

Hardy Phlox

Phlox are the most dependable and showy of the mid-summer perennials. Our list contains some of the newer introductions.

ALBERT LEO SCHLAGETER. Bright red.

EUROPA. White, red center.

HANS VOLMULLER. Soft lavender.

HARVEST FIRE. Fiery salmon-orange.

LILLIAN. Soft pink.

MIA RUYLS. Pure white.

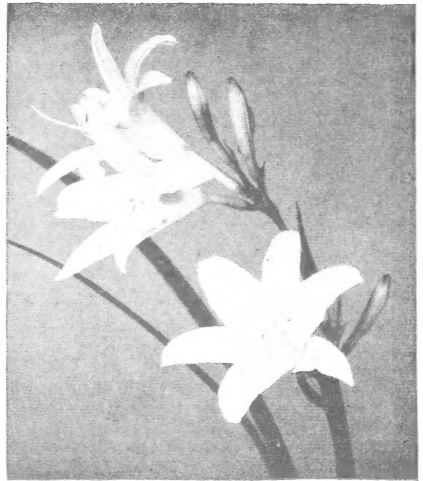
ORANGE QUEEN. Orange-red.

PAINTED LADY. Silvery pink with cherry red eye.

PROGRESS. Light blue.

SALADIN. Scarlet.

Any of the above 50c each, 3 for \$1.25, \$5.00 per doz. Collection of 3 each of any 6 varieties (18 plants in all) \$6.00.



Hemerocallis

DWARF

Hybrid Asters

LADY HENRY MADDOCK. Clear pink.

MARJORIE. Bright rose-pink.

NIOBE. White with yellow center.

VICTOR. Clear lavender-blue.

Any of the above 50c each, 3 for \$1.25, \$5.00 per doz.

OTHER NEW HARDY ASTERS

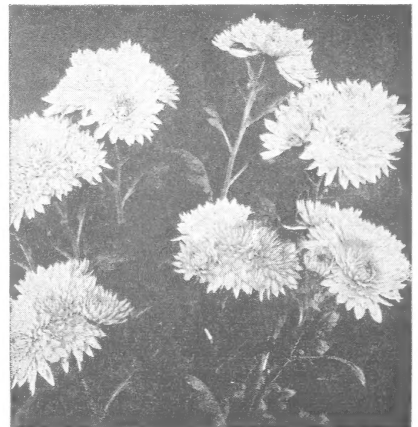
HARRINGTON'S PINK. A truly pink hardy aster.

PROSPERITY. Large, deep rosy-pink flowers.

SKYLANDS QUEEN. A splendid pale blue.

VIOLETTE. The finest dark blue aster.

Any of the above 50c each, 3 for \$1.25, \$5.00 per doz.



Hardy Chrysanthemums