

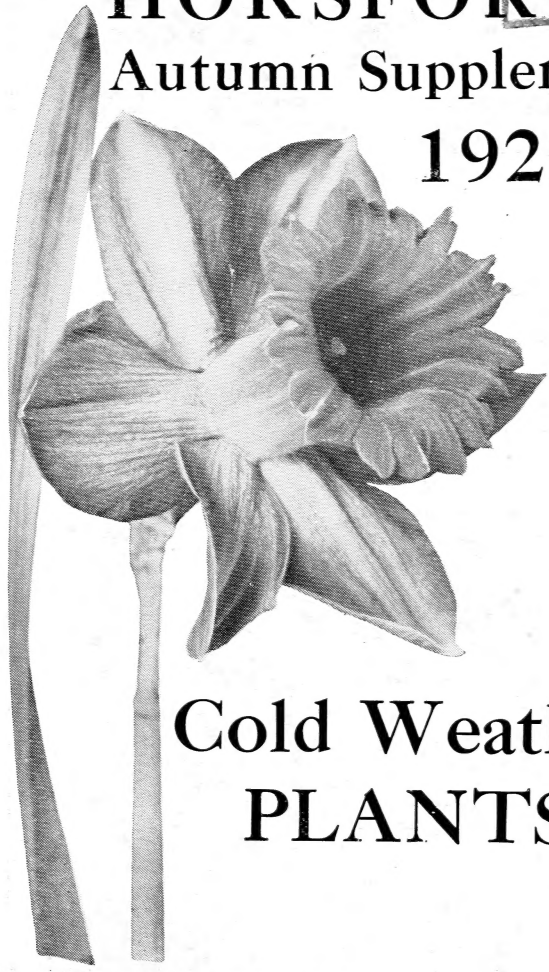
Historic, archived document

Do not assume content reflects current scientific knowledge, policies, or practices.

62.87

LIBRARY
RECEIVED
★ OCT 22 1923 ★
U. S. Department of Agriculture.

HORSFORD'S
Autumn Supplement
1922



Cold Weather
PLANTS

FRED'K H. HORSFORD
Charlotte, Vermont



LILIUM CANDIDUM

(Madonna Lily) Large Bulbs, 25 Cents Each, \$2.50 per Doz.

INTRODUCTION

In handing you my Autumn Supplement I wish to say that it is simply to go with my 1922 Annual and does not contain a full list of my stock. It is designed to bring to your attention such plants and bulbs as are best set in the fall and also such new plants as we have tested this season and decided to offer, with a few varieties omitted before through lack of stock.

In case you have mislaid your copy of my 1922 Annual, another will be gladly sent upon receipt of your request.

Autumn planting is all right if done at the right time and the plants properly cared for. Perennials can be safely cut back and sent the first week in September, Iris and peonies late in August if preferred. Shrubs, roses, vines and trees should not be moved until all growth for the season is past, which is not usually until after the middle of October. For transplanting evergreens late August and first part of September seems to be best for fall.

The prices do not include postage or express, but are simply for bulbs boxed and delivered to my nearest express office.

PROTECTING PLANTS

A little protection is essential for nearly all the hardy plants in winter; not a protection so much against frost, for this is natural to them, but a protection against mild winter weather. Plants that are hardy enough for the severest winter weather may be killed by alternate freezing and thawing. Nature often provides protection in the dead foliage falling about the plants but we should protect with three or four inches of marsh hay or straw put on in early November, with a little brush to prevent this covering being blown off. Shrubs and roses set out in the fall are helped by a banking of earth for several inches above level of the ground. A foot or more of this banking is not too much for roses.

LILIES

Most of the lilies of this list may be sent in September, a few, however, like *Auratum*, *Speciosum*, *Henryi*, and the beautiful *Sargentiae* do not ripen until late September or early October.

Lilium Candidum makes a green leaved growth in the fall and needs to be in the ground in time to get this growth. My bulbs of *Candidum* from Northern France are due and promised for the middle of September. Set the bulbs of *Candidum*s two and one-half inches under and place a covering of straw mulch over them just before winter. All other lily bulbs are planted five to six inches under, and protected for winter with either straw or coarse strawy horse manure, put over the tops of beds just before hard freezing in the fall.

	EACH	DOZ.
Lilium Auratum	\$.60	\$6.00
Lilium Auratum , a few small bulbs30	3.00
Brownii (<i>L. japonicum</i> , var. <i>Brownii</i>). Bears three or four flowers, 7 to 8 inches long, partly drooping, chocolate purple outside and white within. A very showy and desirable kind which is nice for cutting, or in any place. It is a durable one with me. July	2.00	
L. Canadense (<i>Meadow Lily</i>) (per 100 \$8.00).....	.15	1.50
L. Canadense var. <i>Rubrum</i>25	2.50
L. Candidum (<i>Madonna Lily</i>). Should be set out early to insure full growth.....	.25	2.50
L. Croceum . Golden yellow; closely follows <i>L. Dahuricum</i> in blooming. My bulbs of this are extra fine.....	.30	3.00
L. Concolor . This charming lily is one of the best for garden culture. Grows one to two feet high, of slender stem, and bears one to three flowers of bright, unspotted scarlet, flowering in June. Well-drained soils suit this lily best.....	1.00	
L. Dahuricum . One of the most reliable and hardy lilies. The flowers are reddish yellow and of good size, and the plant with age attains a height of three to four feet in good soil.....	.25	
L. Elegans , var. Fulgens (<i>L. Batemannia</i>). A strong variety, about 2½ feet high; deep apricot flowers...	.40	4.00
L. Elegans . Orange . A strong form of <i>elegans</i> with orange flowers.....	.20	2.00
L. Elegans Thunbergianum . It is a very hardy and permanent Lily when grown in good garden soil....	.20	2.00
L. Elegans Umbellatum . A strong, hardy and permanent form which makes a fine showing when massed.....	.20	2.00

	EACH	DOZ.
L. Grayi. A striking plant, 4 to 5 feet high, with dark red flowers, 1 to 5 on a stalk.....	.40	
L. Hansoni. See <i>L. maculatum</i>60	6.00
L. Henryi. In form resembles the <i>Speciosums</i> , a splendid and healthy lily from the mountains of China. It grows, when established, four to five feet high, flowers orange yellow, banded with green. One of the easiest lilies to grow.....	.45	4.50
L. Maculatum (Hansoni). One of the most permanent.....	.60	6.00
L. Maximowiczii (<i>L. Leichtlinii</i>), var. Reddish Yellow. This is a later-blooming species than most of the red or yellow kinds, and stronger than the yellow variety.....	.40	4.00
L. Martagon. EUROPEAN TURK'S CAP LILY. This variety has light spotted purple flowers. It is a fine species when once established.....	1.00	
L. Monadelphum (<i>L. colchicum</i>). A fine early creamy yellow Lily. Flowers tipped with wine-color at base.....	2.00	
L. Philadelphicum. A fine native lily which is found growing on sandy soil and usually in partial shade. It demands good drainage and seldom thrives on heavy soil.....	.15	1.50
L. Regale. A magnificent new lily from China, with a vigorous constitution, medium height, bearing one to several handsome, white, fragrant flowers; slightly shaded pink outside and the lower inner surface primrose-yellow. It is a hardy lily and I consider it one of the finest novelties offered in many years. It seems to thrive on any good soil not too wet. Every one who sees a <i>Lilium Regale</i> bed in bloom admires it. 1st size bulbs. (Per 100 \$48.00).....	.60	6.00
Lilium Sargentiae. This beautiful lily, a native of Thibet and local in its distribution, grows taller than <i>Regale</i> with its flowers in a cluster at the summit. Its white flowers have a chocolate shading outside. It doesn't seem to like much moisture in winter and well drained soils suit it best. The stock of this lily is very limited.....	4.00	
L. Willmottiae. This new and rare lily was discovered by Mr. Wilson in the Province of Hupeh, China. It is a very floriferous and hardy lily, in shape like the <i>speciosum</i> , but the flowers much smaller. Color as described by A. Grove: "In color it is a beautiful shade, but we have no word that exactly expresses it, one must refer to the color		

EACH DOZ.

vaguely as a shade of orange. Technically it is that of Rouge Saturne." As many as forty-eight blooms have been counted here on one stalk. This gives an extended flowering season, since all do not open at the same time. It flowers with Regale, and seems to be quite as hardy, as it has stood our winters here without protection. The available stock of this new and rare lily is limited.....

1.00 10.00

The *Lilium Speciosum*s are desirable for color and bloom in the garden after the phlox and other bright colored flowers are past. The delicate form and color make them useful for cut flowers.

L. Speciosum Album60	6.00
L. Speciosum Roseum50	5.00
L. Speciosum Rubrum50	5.00
L. Speciosum var. <i>Magnificum</i> and <i>Melpomene</i>50	5.00
L. Tenuifolium. SIBERIAN CORAL LILY. \$12. per 100	.20	2.00
L. Tigrinum splendens. \$10. per 100.....	.15	1.50
L. Superbum. AMERICAN TURK'S CAP LILY.....	.20	2.00

SPRING FLOWERING BULBS

Planting

A good time to plant Tulips, Narcissi, Hyacinths and Crocuses is during October and early November, before the earth freezes.

These bulbs will thrive in any well-drained garden soil, but the addition of bonemeal will assure you extra fine flowers.

And it will help them if you place a handful of clean gritty sand under each bulb when planting. This is especially helpful in heavy or wet soil.

How deep to plant bulbs is a question that is sometimes a worry, especially since bulbs of the same varieties often vary in size.

A fairly accurate rule is to cover the bulb to a depth of about twice its height. That is—a bulb 2 inches high would be planted 4 inches deep, from the top of the bulb to the level of the soil.

Plant the bulbs with a pointed stick, or dibber, which may be notched to indicate the various depths. Be sure to cover the bulbs closely and firmly with earth.

For naturalizing, or planting in sod, turn back the sod in small sections, work in a little bonemeal, plant the bulbs and put the sod back.

Tulips: Plant early varieties 4 to 5 inches apart, 5 inches deep. Darwins and Breeder Tulips, 5 to 6 inches apart, 6 inches deep.

Narcissi: Plant smaller sorts 4 to 6 inches apart; larger, 6 to 8 inches apart, 4 to 6 inches deep.

Hyacinths: Plant 6 to 8 or 10 in. apart, and 3 to 5 in. deep.

Crocuses: Plant 2 to 3 inches apart (usually scattered irregularly), 3 to 4 inches deep.

DAFFODILS or NARCISSI

Early flowering bulbs, coming before tulips and after crocuses. Fine for cutting; hardy and easy of culture. Though any good garden soil suits, they prefer rather stiff, deep soil and if the situation is such that they are shaded from the sun a third or half the time so much the better. It is well to cover these bulbs to keep out the frost during the first of the winter when setting is done late.

	EACH	DOZ
Narcissus bicolor Empress. Very large flowers, white perianth rich yellow trumpet. Double nose bulbs.....	.06	.60
N. bicolor Victoria. Large, erect flowers. Perianth creamy white, trumpet rich yellow; per hundred \$5.00. Double nose bulbs.08	.70
N. Emperor. Large flowers, primrose petals and deep yellow trumpet. A magnificent variety; per 100 \$5.00. Double nose bulbs.....	.08	.70
N. Mme. de Graaff. White.....	.06	.60
N. Golden Spur. Golden yellow, early. Double Nose	.08	.70
N. King Alfred. This giant stands high above others for size and deep yellow flowers on long stems.....	.15	1.50
N. Princeps. Yellow.....	.05	.50
N. Leedsii var. Mrs. Langtry. Broad white petals, large white cup, edged yellow.....	.06	.60
Poeticus. PHEASANT'S EYE.....	.05	.50
Poeticus ornatus. One of the earliest of Poet's Narcissi; a free bloomer.....	.05	.50
Von Sion. Double, large, golden yellow. 1st size..	.05	.50
Mixed Daffodils. To naturalize in meadows, etc.; a first class mixture, comprising many of the best herein listed.....	.05	.50

TULIPS

Single Early Tulips

	DOZ.	100
Artus. This fine red tulip is one of the best for cutting or bedding; it comes early and lasts well.....	.50	4.00
Yellow Prince50	4.00
Cottage Maid. Fine rose, flushed white, one of the best pink tulips.....	.60	4.50
Keizerskroon, red and yellow, large flower.....	.60	4.50
La Reine, white, pink shaded.....	.60	4.50

Double Early Tulips

	DOZ.	100
Couronne d'Or. Orange yellow, good forcer.....	.70	5.00
Salvator rose. Deep rose, early forcer.....	.70	5.00
Murillo. White, shaded delicate rose pink.....	.45	3.00
Rubra Maxima. Bright deep red.....	.45	3.00

Breeder Tulips

Bronze Queen (Clio, Bisquit), soft buff, inside tinged golden bronze.....	.60	4.50
Card. Manning (Goliath, Kingscourt), dull wine red, flushed rosy brown.....	.60	4.50

Darwin Tulips

Clara Butt. Soft salmon rose, inside much darker. One of the most beautiful and useful of all varieties.....	.50	3.50
Farncombe Sanders, fiery scarlet.....	.60	4.50
La Tulipe Noire (THE BLACK TULIP), very large....	.60	4.50
Rev. Ewbank. Vivid heliotrope-lilac.....	.50	4.00
Mixed Darwin Tulips. These are later flowering tulips, and contain many new and beautiful shades; flowers borne on long stems. Recommended for massing in shrubbery, or very decorative in the flower garden. Good mixture of all colors.....	.45	3.25

CROCUS

The ordinary spring-flowering Crocus will thrive in nearly all soils and positions. They do better planted in September than they do later or they may be set in August.

	DOZ.	100
Mixed Crocus. All colors.....	.25	1.00
" Striped and Variegated.....	.25	1.00
" White.....	.25	1.00
" Blue and Purple.....	.25	1.00

HYACINTHS

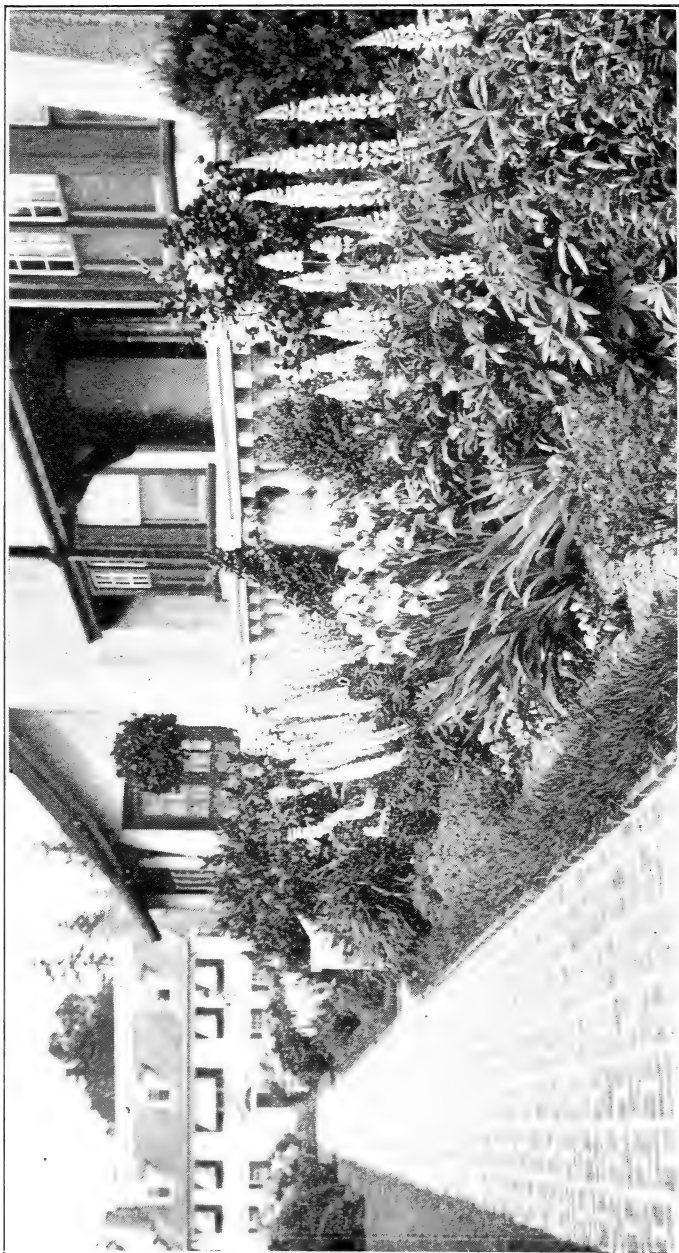
First Size Bulbs

	EACH	DOZ.
King of the Blues. Rich dark blue.....	.15	1.50
Gertrude. Deep rose pink.....	.15	1.50
L'Innocence. Pure white, erect spike, very popular..	.15	1.50
Yellow Hammer. Pure Yellow.....	.15	1.50

IRIS

There have been developed in the past few years so many new Iris, that to list all, or even the best of all, is a task for a specialist. We have, however cut from our list varieties that are no longer standard and are adding the best of the newer ones, in our judgment, as fast as we can obtain sufficient stock, true to name. For our complete list see our 1922 Annual.

	EACH	DOZ.
Kochii. Purple.....	\$.30	\$3.00
Darius. Yellow standards, falls lilac margined white	.30	3.00
Dorothea. Soft blue-early.....	.30	3.00
Halfdan. Creamy white-early.....	.35	3.50
Ingeborg. Large white.....	.50	5.00
Caprice. Standards rosy red; falls shading to a deeper red. Dwarf in habit and very free.....	.50	5.00
Candelabra. Standards lavender-blue, dotted and reticulated dark blue; falls deep indigo-blue, with white markings. The flowers are large and are carried on strong stems. Growth vigorous. Very distinct and desirable.....	.50	5.00
Iroquois. Standards smoky lavender, dotted brown; falls dark maroon, reticulated white at the base. Vigorous and erect in growth.....	.60	6.00
Quaker Lady. Smoky lavender standards, shaded with pretty yellow tones; falls bright ageratum-blue and bronzy gold; stigmas and beard yellow. A fine addition.....	.75	7.50
Mrs. H. Darwin. Clear white standards; falls slightly veined violet at the base. Very free and beautiful.....	.50	5.00
Violacea grandiflora. Standards clear lavender; falls violet-blue. A beautiful variety.....	.50	5.00
Monsignor. Standards rich, satiny violet; falls overlaid rich purple-crimson, with lighter margin. Fine large flower.....	.50	5.00
Purple King. Early; large flowers and one of the darkest purples.....	.20	2.00
Lady Stanhope. A tall, bold Iris, with exquisite laveder flowers; falls a little darker than the up-rights. Flowers large, on stalks often three feet high.....	.15	1.50
Madame Chereau. Tall, with high standards; white with blue margins.....	.15	1.50
Plumeri. Flowers deep, dark copper.....	.15	1.50
Queen of May. A choice kind with mauve-purple flowers, somewhat resembling Her Majesty, though distinct from that variety.....	.20	2.00



BORDER PLANTING OF LUPINES AND IRIS

MAKE YOURS A REGAL GARDEN

Those who have followed the English horticultural papers in the past few years have seen much praise bestowed upon a wonderful new strain of perennial Lupines, developed by John Harkness, one of the leading English hardy plant specialists, and by him called "REGAL LUPINS." We have obtained from him seed of three mixed strains, and several named varieties also. These have flowered in our nursery and have proved in every way worthy of their name. There are creamy shades, amber, coppery orange and almost canary yellow, mingled with bronze, bright rose, terra-cotta, slate and lavender blue. Some are distinctly bi-colored, having wings or standards of one solid color and keel of another, while in some the whole flower is suffused and overlaid with a glossy sheen of rose or copper over a groundwork of pale yellow or amber. The named strains have been rogued, and though not thoroughly true, the colors in general are quite distinct.

	EACH	DOZ.
Regal Strain35	3.50
Firefly Strain50	5.00
Yellow, Copper, and Bronze shades50	5.00

The following named varieties @ \$1.00 each.

Bronze Beauty. Bronze red keel; wings red, overlaid yellow.

John Harkness. Distinct reddish pink throughout; wings darker.

Sensation. Dark rosy red keel; standard maroon.

Charm. Shell pink keel; dark pink wings, overlaid yellow.

Misty Morning. Keel blue; wings dark purple.

Brilliance. Yellow, suffused pink.

The Regal Lily

The Regal Lily, though now common in many gardens, is still worthy of much attention and more general planting. It is truly "Regal" and a fit garden companion for the Regal Lupins. See page

Regal Delphinium

For the third member of your regal garden, we have obtained a magnificent strain of Hybrid Delphinium. Comparison with other well known strains has shown their high class, and as the seed comes from a wonderful collection of named varieties, and has had careful reselection by a noted specialist, their worth is unquestioned. Originally called Regal Strain, we considered the name appropriate, and believe them to be the final touch necessary to "Make Yours a Regal Garden." Strong plants, 35c each, \$3.50 per doz.

Paeonies

We are adding each year to our collection of standard named varieties and are listing four additions this autumn. For our complete list see our 1922 Annual.

	EACH	DOZ.
Baroness Schroeder. Very large, globular, rose Flesh-white fading to milk-white. Tall, strong growth, very free bloomer. One of the finest grown. Mid-season. 2-yr.....	1.50	
Edulis superba. Large, loose, flat crown. A splen- did shade of bright mauve-pink, narrow petals at the collar shaded lilac. Early-blooming and of strong, upright growth. One of the best kinds for cutting and a satisfactory Peony for any purpose. 2-yr.....	1.00	
Madame de Verneville. Large, very full, bomb. Pure white, center blush when first open, fading to pure white; prominent carmine flecks. Med- ium height, extra free bloomer. Extra good. 2-yr.	1.25	
Triomphe de l'Exposition de Lille. Semi-rose type. Pale hydrangea-pink, splashed with violet tints, guard petals fading to nearly white. Very large, compact bloom, and a free-flowering, strong, vigorous grower. Midseason. Useful for cutting or mass planting. 2-yr.....	1.00	
Felix Crousse. Bomb type. One of the very best in the red section. Fine, large, globular flowers, bril- liant red in color. Strong, vigorous growth; med- ium in height and very free. Fine as a cut-flower or for garden effect. 3 year.....	1.25	12.00
Baron James de Rothschild. Crown type. Pale lilac-rose, inter-mingled with cream. Medium sized flowers, but very free and fragrant. Vigor- ous growth. 3 year.....	1.25	12.00

Single Paeonies

Single paeonies are receiving much attention as they are of great value for color effects in massed plantings. The buds in opening greatly resemble buds of roses.

	EACH	DOZ.
Single Tyrian Rose. 2-yr.....	.75	\$7.50
Single Dark Rose. 2-yr.....	.50	5.00
Single Light Rose. 2-yr.....	.50	5.00
Single Red. 2 yr.....	.50	5.00

Hardy Biennials Best Set in the Fall

These Hardy Biennials are among the most satisfactory plants for color and effect that we have. For pure color nothing can equal solid beds of Violas, or the striking color schemes of Pansies. For cutting or for large color effects, Canterbury Bells are best, while for dignity and grace the Hollyhocks hold first choice. Sweet William combines bold color with delightful fragrance, and the charm of the Foxgloves is too well known to need mention here.

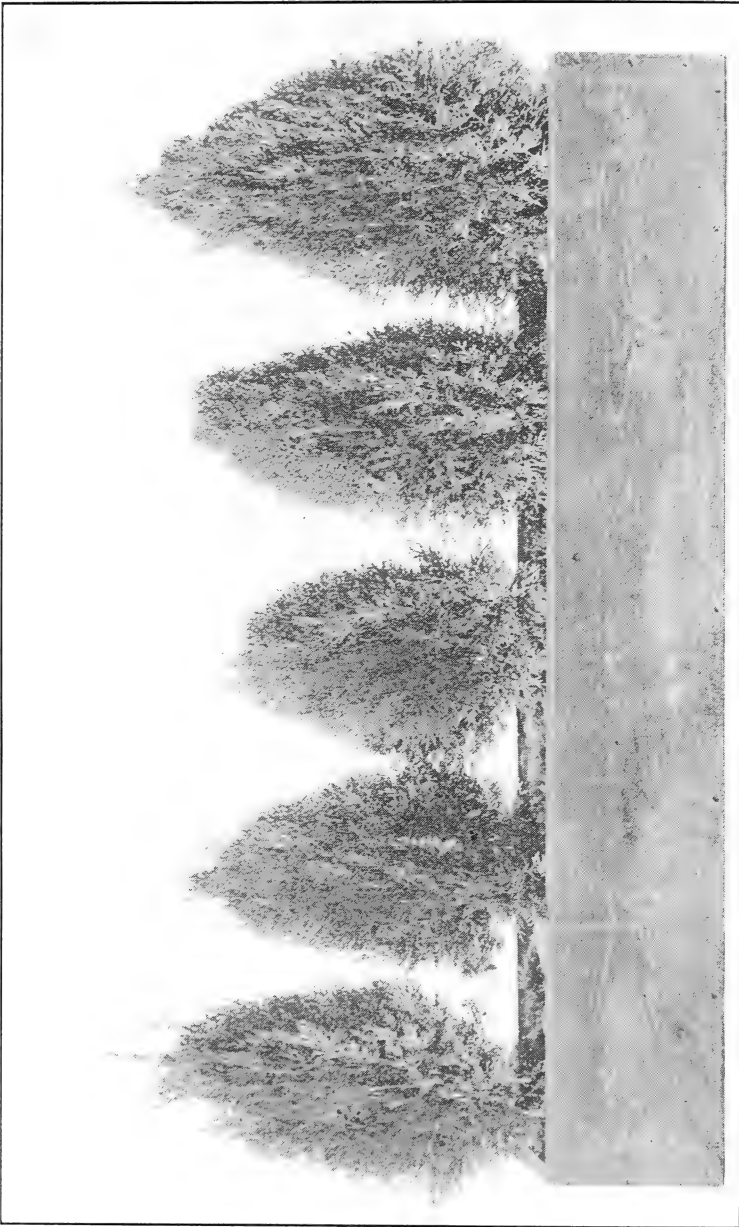
It is most unsatisfactory to buy plants in colors only to have a great part "something else." We are well aware of this, and have used every care not only to keep our plants apart, but also to buy only the very best seed obtainable. Our Hollyhocks, Canterbury Bells, and Sweet William are from English growers, our Violas from Carter, and our Pansies are Steele's Mastodon strain. This has increased the cost somewhat but results will repay us amply. Prices are the same as other seasons.

Bellis Perennis. ENGLISH DAISY.—	EACH	DOZ.
Giant Red.....	.15	1.50
Giant White.....	.15	1.50
Giant Pink.....	.15	1.50
Giant Mixed.....	.15	1.50
Campanula Medium. CANTERBURY BELLS—		
Single Blue.....	.20	2.00
Single White.....	.20	2.00
Single Pink.....	.20	2.00
Single Reddish Purple.....	.20	2.00
Double Blue.....	.20	2.00
Double White.....	.20	2.00
Double Pink.....	.20	2.00
Calycanthema (CUP AND SAUCER) Blue.....	.20	2.00
Calycanthema White.....	.20	2.00
Calycanthema Pink.....	.20	2.00
Campanula Medium Mixed.....	.15	1.50
Digitalis Gloxiniaeflora. (FOXGLOVES).....	.20	2.00
White.....	.20	2.00
Purple.....	.20	2.00
Rose.....	.20	2.00
Digitalis Gloxiniaeflora. THE SHIRLEY. This novelty is from the garden at Shirley, England, in which originated the Shirley Poppy. It is a strong growing strain of great beauty, flowers enormous in size, frilled, and ranging in color from white to deep rose and blotched dark maroon, crimson and chocolate.....	.25	2.50

	EACH	DOZ.
HOLLYHOCKS—		
Single Mixed.....	.15	1.50
Double White.....	.15	1.50
Double Yellow.....	.20	2.00
Double Crimson.....	.20	2.00
Double Pink.....	.20	2.00
Dr. Faust. Almost black.....	.20	2.00
Newport Pink. Very popular.....	.20	2.00
“Alleghany.” Mammoth flowers, wonderfully formed of loosely arranged fringed petals which look as if made from the finest China silk. The colors vary from the palest shrimp-pink to deep red. The plants are of strong growth, sending up spikes 6 to 7 feet high.....	.20	2.00
Exquisite. The flowers of this new Hollyhock are very large, extremely double, and possess the charming new feature that every petal, both of the circumference and centre, is exquisitely curled and fringed. Each white margined petal is adorned with a large blotch, and the range of color at present includes rose, carmine rose, violet, and dark purple.....	.25	2.50
SWEET WILLIAM—		
White.....	.15	1.50
Scarlet.....	.15	1.50
Dark Red.....	.15	1.50
Newport Pink.....	.15	1.50
Pheasants Eye.....	.15	1.50
Mixed Double.....	.15	1.50
VIOLAS—		
English Bedding Violas.....	.15	1.50
Blue.....	.15	1.50
White.....	.15	1.50
Yellow.....	.15	1.50
Viola Ardwell Gem. Primrose yellow.....	.20	2.00
Viola Admirabilis. Dark purple and yellow.....	.20	2.00
Viola Admiration. Very fine. Glistening dark blue.....	.20	2.00
Viola Blue Perfection. Very large. Light blue... ..	.20	2.00
Viola Mauve Queen. Mauve.....	.20	2.00
Viola Papilio. An old favorite.....	.20	2.00
Viola Sensation. Glistening reddish purple. Very fine.....	.20	2.00

A Few Additions to the List of Perennials Offered in Our 1922 Annual.

	EACH	DOZ.
Pansies. Steele's Mastodon strain. Considered the finest in this country.....	.20	2.00
Achillea Perry's Variety. White. Better than "The Pearl".....	.25	2.50
Acanthus Latifolius. A plant with very ornamental foliage.....	.15	1.50
Anemone Pulsatilla. An early British species, with handsome violet purple flowers.....	.20	2.00
Aster Climax. Strong growing, heavily branched; in bloom from August on. The finest hardy blue aster.....	.25	2.50
Chrysanthemum Robinsoni. A fine new Shasta Daisy.....	.25	2.50
Chrysanthemum Nipponicum. Japanese Tree Daisy.....	.25	2.50
Dianthus Gladys Granfield. Described as the finest pink single Dianthus.....	.20	2.00
Dianthus Latifolius Atrococcineus Fl. Pl. Brilliant Scarlet.....	.20	2.00
Echinops Sphaero Cephalus. Grey form of the Globe Thistle.....	.20	2.00
Eryngium Alpinum. Rich metallic blue.....	.20	2.00
Gaillardia Grandiflora Maxima. An extra choice strain in many new colors.....	.25	2.50
Helianthemum Vulgare. ROCK ROSE. Dwarf, fine yellow. An excellent ground cover.....	.20	2.00
Heuchera Sanguinea Alba. Graceful white bells....	.25	2.50
Hypericum Ascyron. Two to five feet high with large, bright yellow flowers.....	.20	2.00
Hypochoeris Uniflora. Strong double flowers like the dandelion, but twice its size.....		
Incarvilla Delwayi. HARDY GLOXINIA. Very attractive.....	.25	2.50
Leontopodium Sibericum. EDELWEISS.....	.25	2.50
Lychnis Haageana. Very large heads of brilliant red flowers.....	.25	2.50



ARBOR VITAE FOR OUTDOOR WINDOW BOXES

Strong bushy plants, 10 to 15 in., 40c each, \$4.00 per doz.: 15 to 18 in., 50c each \$5.00 per doz.

	EACH	DOZ.
Lychnis Arkwrightii. Like the above variety but with salmon shades predominating.....	.25	2.50
Lychnis Viscaria Splendens. Fine rose pink flowers on good stems for cutting.....	.25	2.50
Pachysandra Terminalis. EVERGREEN SPURGE. Fine for deep shade or as a ground cover in locations difficult to make grass grow.....	.20	2.00
Papaver Princess Victoria Louise. Large, soft salmon rose form of the Oriental Poppy.....	.50	5.00
Phlox Jules Sandeau. Very large individual flowers; splendid truss; a clear shade of rose.....	.25	2.50
Phlox Anton Buchner. Finest white phlox.....	.25	2.50
Phlox La Vague. Medium; pure mauve, with aniline-red eye.....	.20	2.00
Phlox Professor Virchow. Bright carmine, overlaid with orange-scarlet.....	.20	2.00
Primula Polyanthus. An old garden favorite. Several shades of yellow and red.....	.20	2.00
Primula Polyanthus, CARTER'S GOLD LACED. An improved English strain.....	.25	2.50
Pyrethrum Hybridum. PAINTED DAISY. A fine strain, including some doubles.....	.20	2.00
Pyrethrum Uliginosum. GIANT DAISY.....	.20	2.00
Rudbeckii Newmanni. Dark orange yellow flowers with deep purple cone. Good, stiff stems for cutting.....	.20	2.00
Saponaria Acynoides. Trailing vine, which is completely covered with rosy pink flowers from May to July.....	.25	2.50
Silene Shafta. AUTUMN CATCH FLY. Rosy flowers from June to October.....	.25	2.50
Silene Orientalis. Two feet high with rose colored flowers. Easily grown.....	.20	2.00
Silene Virginica. A form from the South, one to two feet high, with large crimson or scarlet flowers....	.20	2.00
Thalictrum Adiantifolium. Leaves are much like those of the maidenhair fern, the flowers white. A form much admired.....	.20	2.00
Thalictrum Dipterocarpum. A new form from China with rose purple flowers.....	.20	2.00
Trollius Caucasianus. A rich orange colored form of the Globe Flower.....	.30	3.00

	EACH	DOZ.
Trollius Yunnamiensis. A trailing variety.....	.25	2.50
Veronica Longifolia Blue Ridge. An excellent new variety of longifolia, a handsome dark blue and a distinct variety. Larger and taller than the sub-sellis.....	.50	5.00
Viola Cornuta Rosea. A small flowered sort, distinctly shaded pink, like the "Johnny Jump-up".....	.20	2.00

**Our List of Vines, Roses, Ferns, Orchids, Shrubs and
Trees will be found in our 1922 Anual.**



LILIUM TIGRINUM SPLENDENS

An improved form of the well known old-fashioned Tiger Lily.



HOLLYHOCK DOUBLE "EXQUISITE"
(See Page 12)