

Historic, archived document

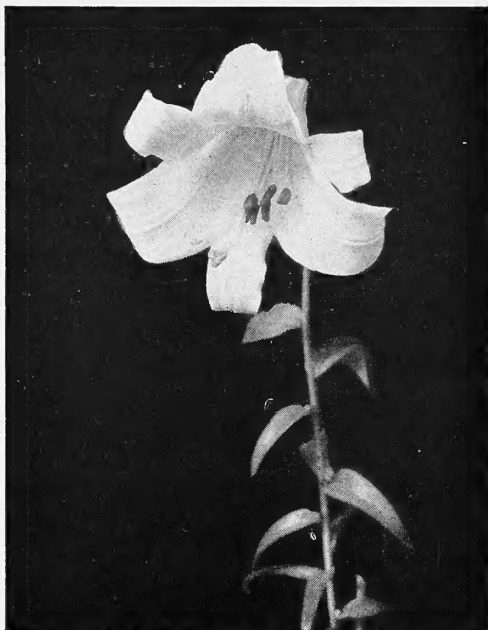
Do not assume content reflects current scientific knowledge, policies, or practices.



62.87

Horsford's Lilies for Fall Planting

LIBRARY RECEIVED
 AUG 25 1949
 U. S. Department of Agriculture



Pride of Charlotte

While our list of the hardy lilies is not as large as that offered by some dealers, we make special efforts to ensure a clean, healthy stock from which we can fill our orders. Our list is mostly of varieties that can be produced from seed.

We can offer the following varieties in healthy stock and we give complete cultural directions with every order.

Very easy to grow, too. Graceful sprays of brilliant apricot-yellow. August, September. 75c each, \$7.50 per doz.

Pride of Charlotte. This stately offspring of *L. sargentiae* is more rugged than its parent. Long, white funnel-shaped flowers with yellow throat and sometimes marked externally a deep reddish brown. 3 to 4 ft. July. 75c each, \$7.50 per doz.

Regale. A truly Regal beauty, and the best behaved queen of the lot. Parade her before a royal curtain of Delphinium to show her off to best advantage. White, slightly suffused with pink, shading to beautiful shade of canary-yellow at the throat. July. 3 to 5 ft. 50c each, \$5.00 per doz.

Superbum. America's handsomest native Lily, in our opinion, with its immense, pyramidal cluster of blooms right up high where you can admire them. Brilliant orange-red shading to yellow and spotted with brown. July. 4 to 6 feet. 35c each, \$3.50 per doz.

Tenuifolium. A small slender growing lily, not more than eighteen inches tall, with bright scarlet flowers and recurved petals. One of the prettiest little lilies in cultivation. Early June. 12 to 18 in. 25c each, \$2.50 per doz.

Tenuifolium. Var. *Golden Gleam.* A fine type of *L. tenuifolium* with flowers of a beautiful apricot shade. A free and vigorous grower. 30c each, \$3.00 per doz.

Tigrinum. Var. *Splendens.* By far the best form of Tiger Lily we have had. It is taller, with handsome, large flowers and a much healthier plant. 45c each, \$4.50 per doz.

Willmottiae. This is a very floriferous and hardy Lily; as many as 28 blooms have been borne on a single plant. In color it is like a shade of orange, or technically it is that of rouge saturne. It blooms with the Regale and seems to be quite hardy. 45c each, \$4.50 per doz.

Amabile. A rare Korean of interesting shape. Grenadine-red, freely spotted black. July. 3 to 4 ft. 40c each, \$4.00 per doz.

Canadense. We're sorry we can't guarantee the color of this wild Lily, but everything else about it is all right. May be a brick-red, or a clear golden yellow. June, July. 2 to 5 ft. 15c each, \$1.50 per doz.

Centifolium. This variety is called a giant among lilies, with long, trumpet-shaped white flowers, streaked outside with brown and flushed inside with yellow at the base of the trumpet. July. Strong, flowering size bulbs, \$1.00 each.

Concolor. Handsome little variety only 18 in. high with striking upright star-shaped flowers of a deep crimson shade with darker spots. It will stand full sun, lime soil and is suitable for rockeries. Base rooting and is best set only 4 in. deep. June-July. 40c each, \$4.00 per doz.

Davidii. A very vigorous and dependable Lily of Turk's Cap type. Numerous red flowers. July-August. 4 to 6 ft. 80c each. \$8.00 per doz.

Hansonii. Its nodding flowers, with their thick waxen petals, will bring you their delicate fragrance; the earliest of all lilies. Six to ten reddish orange blooms in a cluster. June. 3 to 4 ft. 60c each, \$6.00 per doz.

Henryi. Given heights will vary with soil and growing conditions, but we've honestly seen this Lily 9 feet high.

REGAL Plants
and Bulbs

F. H. HORSFORD
CHARLOTTE - VERMONT

1949 Autumn
Supplement

Plant Horsford's Hardy Perennials

for a Colorful, ALL-SEASON Garden

Nowhere in the whole plant kingdom can one find such variety of shape, size, color, and habit of growth with which to paint the garden picture as in the perennial group. Fall is the ideal time to plant perennials. In late August or early September, the Spring-and-Summer-blooming plants are making root-growth for next year's flowering.

Achillea will just fit that spot in every garden that is forever dry—perhaps from a rock too close to the surface or from thin soil. Their pure white flowers make bouquet highspots in the house.

Aconitum is mighty useful. It blooms from August to October, and, with its variety of blues, can be used to duplicate the spring effect of massed Larkspur.

Aquilegia. Call it Columbine or Honeysuckle—look for it in reds, yellows, blue, or white—wish it were 1 foot or 3 feet high—and this versatile perennial can provide the answer. Its spurred form is unique among flowers.

Campanula. Its perennial and biennial forms are cousins. The perennial single white and blue Bellflowers give great support to the early borders of the garden.

Coreopsis and the proper use of a pair of scissors will give you a profusion of bold, golden yellow saucer-like blooms all through the summer.

Delphinium. One of the five dominant perennials of the border. Its stately spikes make a superb background for such lilies as Regal and our own carefully developed Pacific Hybrids have an unusually stunning variety of colors.

Dictamnus. You won't like its pungent gaseous odor, but you will enjoy its interesting reddish purple flowers.

Digitalis. The venerable Foxglove is usually a biennial, but there is one strictly perennial yellow variety that is worth growing. Try *D. ambigua*.

Doronicum. Most of the early spring flowers are whites and blues, but here's one that is a gorgeous yellow, and has moderate height, too.

Echinacea. Everything recommends this daisy-like flower—its strong growth, its 4-foot stems, and its reddish purple blooms set off with a true orange cone. Mighty handy to have in July and August for cutting, because it lasts especially well.

Gaillardia. Our Regal Plants have been selected for both vigor and brilliant color.

Hemerocallis. Surely no flower in the garden works so faithfully to justify your selection of it! Though their gay Lilies last only for a day, other buds force themselves along to be ready for their orange or yellow blooms each morning.

Liatris is a rough-and-ready grower. Its foot-long spikes (with their perverse habit of blooming from the top down!) make an almost solid rose-purple tube.

Lupinus. Our own Russell Hybrids are truly breath-taking in their range of colors. They make a dazzling display in your early border, and, too, we seem to have been able to give them a vigor that carries them successfully through the difficult first year of transplanting.

Lychnis. Here is another group of bright, cherry perennials, in various shades of pink and red, that are invaluable to the June garden.

Mertensia is the true Bluebell of Virginia. It's best to mass it for an effect. Choose a location where its dark green foliage will be helpful after the loose panicles of blue-purple flowers have passed their spring-blooming period.



Pyrethrum Hybridum

Get Full Bloom a Whole Year Sooner

Save from 25 to 50 Per Cent — with Fall Planting

The plants listed in this folder are the very same ones we will be shipping next Spring (with the exception of the Peonies and Spring bulbs, which must be planted now). In your garden through the Fall and over the Winter they can be storing up energy, spreading out their roots, getting firmly established, ready to pay you extra dividends of bloom and fragrance as a result.

Summer and Fall are ideal for planting, too, because you can plan for your garden with it spread out before you in full growth. There's no question of "remembering" what you need—you can actually see the holes that need filling or the pictures that need completing.



Gaillardia Grandiflora

Monarda really belongs to the Mint family, but don't turn it down for that reason. For its showy flowers, with their sprawly petals of pink, cerise, or carmine, are unique in both shape and color, come along all through summer, and last a week or more in the house.

Oenothera. This homely name conceals the delightful Evening Primrose, with its free-flowering habit and cheery yellow flowers that pop open suddenly after lunch or in midafternoon.

Phlox is another "dominant perennial," noble, long-lived, dependable. You may have almost any color you wish,

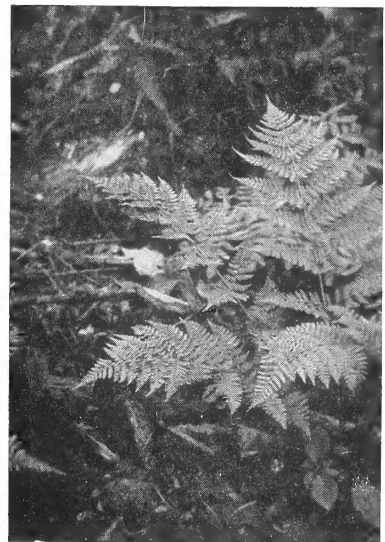
but please plant them in masses of a single color together. They look so much better that way.

Primula. These are the true hardy Primroses, low-growing, deep green foliage, and a profusion of cheery blossoms for your spring border.

Pyrethrum is a chrysanthemum cousin, although limited in color-range to the pinks, and crimsons. Best of all, they're just as sturdy and nearly as good cut-flowers as the main branch of their family.

Shasta Daisy. These give steady summer bloom of long-stemmed Marguerite-like flowers that are invaluable for cutting.

Statice, though entirely different in flower-form, is as useful as Gypsophila in the way it makes charming combinations with the yellows and oranges of other flowers.



Asplenium felix-fœmina

(See page 5)

Perennial Beauty Comes With Perennials

FALL PRICES ARE LOWER

We offer many collections in the Fall at prices that can save many dollars in building or maintaining your garden. It is not simply that digging the plants is easier and better—everything about Fall shipping saves us money.

The season is longer, we are not so rushed. It is actually easier to ship. Our stock is usually complete on all varieties. Frequently we have a surplus of some varieties that we offer at extra-special savings. (See the prices on our Peony Collections this year.)

We reflect all those savings in the prices in this list. And **this year** we believe prices are lower for our plants and bulbs than we will be able to make them for many years to come.

THIS FALL SUPPLEMENT

This Fall Supplement is not a full list of our stock. It is designed to call your attention to such plants and bulbs as are best set in autumn.

ALL PRICES ARE NET

On all plants or bulbs we will prepay postage, if you prefer, if 10 per cent is added to the price of the plants and bulbs in your order. Add 20 per cent for points west of the Mississippi. This covers both shipping cost and special packing. If no shipping method is specified, we will ship Express Collect. Lilacs by Express only.

TWO REGAL PERENNIAL COLLECTIONS OF RARE VALUE

Fall is the ideal time to plant perennials. In late August or early September, the Spring-and-Summer-blooming plants are making root-growth for next year's flowering. These two selections are true "pictures," chosen for their range of color, height, and form. Bought singly, they would be 50 per cent more expensive. No substitutions, please, at these special prices.

EARLY-BLOOMING COLLECTION

Aquilegia, mixed colors
Mertensia virginica
Delphinium chinense
Dictamnus rubra
Digitalis ambigua
Doronicum plantagineum (excelsum)
Hemerocallis flava
Campanula carpatica
Lupinus, mixed
Lychnis chalconica
Pyrethrum hybridum
Primula veris

SUMMER-BLOOMING COLLECTION

Achillea ptarmica, Perry's
Liatris spicata
Shasta Daisy
Coreopsis lanceolata
Echinacea purpurea
Gaillardia grandiflora
Hemerocallis thunbergi
Statice latifolia
Oenothera missouriensis
Phlox, Daily Sketch
Monarda pink, cerise, or carmine
Aconitum fischeri

36 HARDY PLANTS **\$8.50**
(3 each of above varieties) Value \$11.50

36 HARDY PLANTS **\$8.50**
(3 each of above varieties) Value \$11.50

If you wish to purchase any of the above perennials in separate varieties they may be had at 35 cts. each, three of one kind for 90 cts., or \$3.00 per doz., except for Dictamnus rubra and Aconitum fischeri which are 50 cts. each, three for \$1.25, or \$5.00 per doz.

PROTECTING PLANTS

A little protection is essential for nearly all the hardy plants in winter; not a protection so much against frost, for this is natural to them, but a protection against mild winter weather. Plants that are hardy enough for the severest winter weather may be killed by alternate freezing and thawing. Nature often provides protection in the dead foliage falling about the plant but we should protect them with three or four inches of marsh hay or straw put on in early November, with a little brush to prevent this covering being blown off.

HEMEROCALLIS

The Dependable Perennial

The new improved Hemerocallis (Daylilies) are among the most satisfactory of the more easily grown perennials and by using different varieties a long succession of bloom may be obtained in the garden.

NEW GIANT HEMEROCALLIS

Autumn Pioneer. Very late. Peach orange flushed. \$1.25 each.

Bagdad. Rich brown red tones. June-July. 4 ft. \$1.00 each.

Cinnabar. Light bronzy red suffused with gold. June. 2½ ft. 50c each.

Dauntless. Pale cadmium yellow, greenish throat, fulvus touch on each petal. July. 2½ ft. \$1.00 each.

Hyperion. Immense pale yellow flowers. July-August. 3½ ft. 75c each.

Rajah. Delicate orange, eye zone of garnet brown. June-July. \$1.00 each.

Collection of one each of above varieties \$4.50.

SPECIAL HYBRID HEMEROCALLIS

Bay State. A stately tall pure deep yellow of fine form. Blooms mid-July. 35 cts. each, three for 90 cts.

Latest. Large clear yellow flowers providing a wealth of bloom in August. 35 cts. each, three for 90 cts., \$3 per dozen.

Lemona. Large lemon-yellow flowers coming in June and carrying on into July. 50 cts. each, three for \$1.25.

Margaret Perry. Brilliant orange red lined soft yellow. July-August. 35 cts. each, three for 90 cts., \$3 per dozen.

Mikado. Large, rich orange flowers marked with purple-red. June-July. 2½ ft. 35 cts. each, three for 90 cts.

Collection of three each of special Hybrid Hemerocallis (fifteen plants in all), \$3.50 (Value \$4.85)

EASY-TO-GROW FERNS

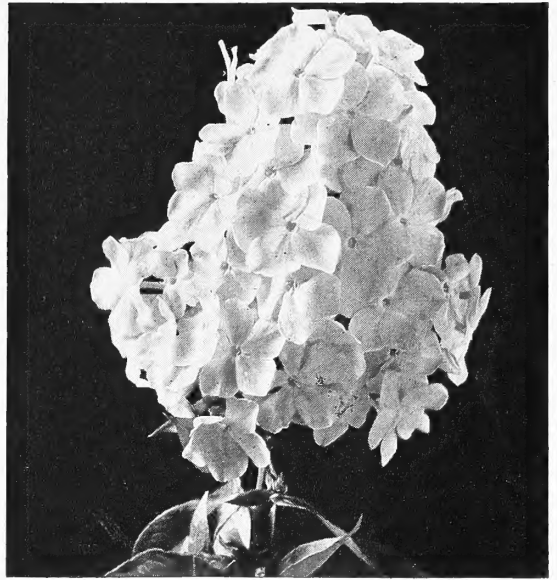
For Moist, Shady Places

The wealth of plants which will flourish in moist, shady places is embarrassing. Ferns are no exception. Choose those of relatively low stature, among which to mingle blooming plants such as bog orchids.

- 6 Adiantum pedatum. 1-1½ ft.
- 6 Aspidium cristatum. 1 ft.
- 6 Polystichum acrostichoides. 1 ft.
- 6 Aspidium spinulosum. 1½-2 ft.
- 6 Aspidium marginale. 1½-2 ft.
- 6 Asplenium acrostichoides. 3 ft.
- 6 Asplenium felix-fœmina. 1-3 ft.
- 6 Phegopteris hexagonoptera. 1 ft.
- 6 Asplenium angustifolium. 2-3 ft.

54 Ferns for \$5.00

HARDY PHLOX



Phlox are the most dependable and showy of the mid-summer perennials. Our list contains some of the newer introductions.

- Cherry Ripe.** Scarlet rose.
- Daily Sketch.** Rose and salmon.
- E. I. Farrington.** Soft salmon.
- Eva Forester.** Clear pink.
- Europa.** White, red band.
- Hans Volmuller.** Soft lavender.
- Orange Queen.** Orange-red.
- Prof. Virchow.** Orange and carmine.
- Ruth May.** Flesh pink.
- Sir Edwin Landseer.** Bright crimson.
- Von Lassburg.** Pure white.

Any of the above 35c each, three for 90c, \$3.00 per doz. Collection of three each of any eight varieties (twenty-four plants in all), \$4.50.



Echinacea Purpurea

These hardy plants and bulbs will bring you the

REGAL PEONIES Ready to Grow and Bloom for You Next June

Somehow the idea has gained acceptance that Peonies require a lot of special care, a thought that always amazes us when we hear it. True, they don't like fresh manure around their roots, and they are particular about how deep you plant them, but beyond that their smash of bloom is ready for anyone willing to give them an ordinary Winter "blanket," and their fair share of fertilizer.

A lot of trouble probably comes from the use of tiny divisions instead of full-grown plants (at least a year old), such as our Regal Peonies are. And, certainly, no other plant can give such masses of brilliant green and such smashes of whites, pinks, and reds to repay you for the comparatively little care they require. Full, yet simple, instructions accompany every shipment of Regal Peonies.



Oriental Poppies

The Oriental Poppies form a striking set of perennial plants. Their immense blooms and their striking colors make a wonderful display. The following varieties can be supplied in field-grown plants dormant in August and September. They require almost no care, are completely hardy, and usually "steal the show" for two weeks in June.

Collection 1 each of 7 varieties **\$2.75**

Name	Color	Each	Doz.
Sass Pink	Flesh-pink	\$.50	\$5.00
Joyce	Cerise-pink	.35	3.00
Orange Beauty	Orange	.35	3.00
Perry's White	Pure white	.75	7.50
Henry Cayeux	Old rose	.50	5.00
Helen Elizabeth	La-France pink without dark spots	.50	5.00
Jeanne Mawson	Geranium pink	.50	5.00

Name	Color	Each	Doz.
Albatre	White	\$.75	\$7.50
Albert Crousse	Pink	.50	5.00
Alsace Lorraine	White	1.00	
Arlequin	Pink	1.00	
Asa Gray	Lilac-pink	.75	7.50
Auguste Dessert	Rose-red	1.00	
Baroness Schroeder	White	1.00	10.00
Cherry Hill	Red	1.00	10.00
Chestine Gowdy	Pink	1.00	
Claire Dubois	Pink	1.00	
Eugenie Verdier	Light pink	1.00	10.00
Faribault	Deep rose	1.00	
Felix Crousse	Bright red	1.00	10.00
Festiva Maxima	White	1.00	
Georgiana Shaylor	Pink	1.00	
Germaine Bigot	Pink	1.00	
Gismonda	Flesh-pink	.75	
Hazel Kinney	Pink	2.00	
Karl Rosenfield	Crimson	1.00	
Kelway's Glorious	White	3.00	
Kelway's Queen	Pink	2.00	
Lady Alexandra Duff	Light pink	1.00	
La Fee	Pink	1.00	
Le Cygne	White	3.00	
Livingstone	Lilac-rose	.75	7.50
Lord Kitchener	Cherry-red	1.00	
Madelon	Silvery pink, new	1.00	
Marguerite Gaudichau	White	1.00	
Marie Jaquin	White water lily	1.00	
Martha Bulloch	Soft pink	1.50	
Mary Brand	Red	1.50	
Mme. Auguste Dessert	Pink	1.00	
Mme. de Verneville	White	1.00	10.00
Mme. Emile Galle	White; late	1.00	10.00
Mme. Emile Lemoine	White	1.00	10.00
Mme. Gaudichau	Dark crimson	1.50	
Mme. Jules Dessert	Pale rose	1.00	
Mons. Jules Elie	Pale rose	1.00	10.00
Mons. M. Cahuzac	Dark red	2.50	
Mrs. R. B. Ware	Flesh-pink	2.00	
Philippe Rivoire	Dark crimson	2.00	
Raoul Dessert	Creamy yellow	1.50	
Richard Carvel	Crimson	1.50	
Solange	White	1.00	
Souvenir de Louis Bigot	Pink	1.50	
Therese	Rich violet-rose	2.00	
Tourangelle	Salmon-pink	1.00	
Triomphe de Lille	Pale pink	.75	7.50
Victoire de la Marne	Dark crimson	1.50	
Victor Lemoine	Dark red	.75	7.50
Winnifred Domme	Scarlet-red	1.00	
Officinalis mutabilis	Soft pink	.50	5.00
Officinalis rosea plena	Rose-pink	.50	5.00
Officinalis rubra plena	Red	1.50	

SINGLE PEONIES

Petit Louis	Deep red	.50	5.00
Mikado	Dark red	1.00	
Single Tyrian Rose	Dark rose	.75	

joy of their color and fragrance next Spring

Thirty-Three IRIS Selected for Your Garden

There are literally thousands of Iris varieties grown today. Many of them vary so slightly that none but the veriest professional can distinguish between them. We cannot grow them all, and we make no pretense of attempting to grow more than a truly representative list of types.

This is our selection of the best of each color pattern. Many of them may be purchased at a considerable saving in a collection.



Border of Iris

Name	Color	Each	Three Doz.
Aubanel	Shrimp-pink	\$.75	\$2.00
Blue Shimmer	Blue and white	2.00	5.00
Brunhilde	Violet-blue	.50	1.25
Castalia	Blue	.25	.60
Cheerio	Brilliant red	.35	.90
Chief Poking Fire	Red	1.25	3.00
China Lady	Ivory and gold	1.00	2.50
China Maid	Pink	.75	2.00
Christabel	Red	.50	1.25
Chromylla	Yellow	.25	.60 \$2.00
Claret Velvet	Claret	.50	1.25
Coronet	Tan and rose	.25	.60 2.00
Crystal Beauty	White	.25	.60 2.00
Daybreak	Pink and gold	1.50	3.50
Eros	Pink	.25	.60
Folkwang	Pink and white	.25	.60 2.00
Frank Adams	Red	.50	1.25
Garden Magic	Red	1.00	2.50
Gay Senorita	Brown and yellow	2.00	5.00
Golden Majesty	Golden yellow	.75	2.00
Grand Canyon	Copper and plum	1.00	2.50
Happy Days	Light yellow	.35	.90 3.00
Imperator	Red	.25	.60 2.00
Indian Chief	Red	.25	.60 2.00
Junaluska	Copper and gold	.40	1.00
Lucerne	Deep blue	.75	2.00
Marisha	Pink and gold	.75	2.00
Matterhorn	White	.75	2.00
Matula	Pink and old-rose	.50	1.25
Melitza	Pink and orange	.75	2.00
Midgard	Pink and yellow	.25	.60 2.00
Morocco Rose	Rose pink	.60	1.50
Narain	Indigo-blue	.35	.90
Old Rose	Old rose	1.00	2.50
Pink Imperial	Orchid pink	.50	1.25
Pluie d'Or	Golden yellow	.25	.60 2.00
Regency Rose	Striking pink	.75	2.00
Royal Coach	Yellow and brown	.50	1.25
Sable	Dark violet	1.00	2.50
Sonrisa	Coppery pink	2.00	5.00
Tea Rose	Pink and amber	2.00	5.00
Television	Blue	.35	.90

REGAL IRIS Give You Color, Variety

There's a whole rainbow of color in the collections below. Just keep their feet dry (good drainage) and this selection of Iris and the more extensive list on this page will assure you of just about any Spring color scheme you wish. If you are an "Iris fan," you may want other combinations than these, which have been selected for their universal popularity and harmonious blending of colors.

Connoisseur's Collection

We offer a collection of this type each year. It contains the best of the newer varieties.

- | | |
|---------------------|----------------|
| 1 Sable | 1 Grand Canyon |
| 1 Chief Poking Fire | 1 Garden Magic |
| 1 Melitza | 1 China Maid |
| 1 Lucerne | 1 Old Rose |

8 Choice Roots \$5.00
(VALUE \$7.50)

Variety Collection

Most good growers can furnish these varieties, but like all our other offerings, these are Regal quality, and we believe the price is really unusual.

- | | |
|----------------|-------------------|
| 2 Brunhilde | 2 Claret Velvet |
| 2 Happy Days | 2 Narain |
| 2 China Lady | 2 Royal Coach |
| 2 Morocco Rose | 2 Television Blue |

16 FINE ROOTS \$5.00
(VALUE \$8.30)

Bargain Collection

Many people like to add a few new vigorous bulbs of these standard varieties each year to their perennial border, especially at the price of only a few cents each.

- | | |
|-------------|--------------|
| 3 Coronet | 3 Midgard |
| 3 Folkwang | 3 Pluie d'Or |
| 3 Imperator | 3 Castalia |
| 3 Chromylla | 3 Eros |

24 Hardy Plants \$3.00
(VALUE \$4.80)

For Your REGAL Garden

Add Russell Lupines and Pacific Hybrid Delphiniums to the Regal Lily (Lilium Regale)—there is a garden picture!

The Lilies contribute their white while Delphiniums add their giant spikes of mostly double flowers from the pink shades through to dark blue. And the Lupines bring their varied shades, even to yellows, bronzes, and the bicolors.

	Each	Doz.
Russell Lupines	\$.50	\$5.00
Pacific Hybrid Delphiniums	.50	5.00
Regal Lilies	.50	5.00

12 Plants of Each \$12.00
(36 plants in all)

Three Peony Collections at about One-Half Price

Our Peonies were gorgeous this year, great smashing masses of colorful bloom that almost made one's eyes ache with their brilliance in the full sun. We took orders for hundreds of plants during the blooming season.

These collections have been Fall "favorites" for many years (by name). Each year we bring them up to date, discarding and adding a few varieties where the change will increase their value. (See Peony list for descriptions.)

Collection Superb

Choice varieties. Each Regal plant can be a high-spot in your garden. (See descriptions inside.)

- 1 Baroness Schroeder
- 1 Hazel Kinney
- 1 Mrs. R. B. Ware
- 1 Philippe Rivoire
- 1 Richard Carvel
- 1 Solange

6 CHOICE PEONY ROOTS
for **\$7.50**
(VALUE \$9.50)



For sheer display peonies are supreme

Everyman's Collection

Selected to give long blooming period, color-range, and economy.

- 1 Felix Crousse
- 1 Festiva Maxima
- 1 Karl Rosenfield
- 1 Mme. Auguste Dessert
- 1 Mme. Emile Lemoine
- 1 Mons. Jules Elie

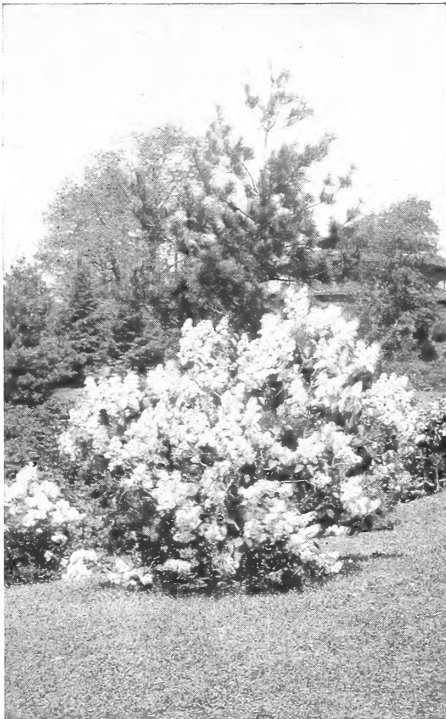
6 CHOICE PEONY ROOTS
for **\$4.50**
(VALUE \$6.00)

Bargain Collection

Our stock is a little over-balanced on these varieties, and we're willing to make this sacrifice price this Fall.

- 1 Albatre
- 1 Claire Dubois
- 1 Gismonda
- 1 Livingstone
- 1 Lord Kitchener
- 1 Winnifred Domme

6
Choice Peonies
for **\$3.00**
(VALUE \$5.25)



Hybrid Lilac

OWN-ROOT LILACS will bloom next Spring

And they are so different from the common Lilac (*Syringa vulgaris*). Flowers are both double and single, colors are interesting, and the shrub doesn't get out of control. Try these five. The prices are a "give away" for own-root plants.

- Charles X. Single; reddish purple.
- Mme Casimir-Perier. Double; white.
- President Grevy. Double; blue.
- President Poincare. Double; deep pink; reddish purple buds.
- Hugo Koster. Single; reddish blue.

Single plants, 2 to 3 ft., \$1.00 each

COLLECTION { One each of above varieties } 2 to 3 ft. plants **\$4.50**

Other Standard Varieties Now Available in Own-root Stock

- Charles Joly. Double; purple red.
- Lamartine. Single; mauve-pink.
- Vestale. Single; white.

Any of the three last named varieties in 2 to 3 ft. plants at **\$1.00** each.