

Historic, archived document

Do not assume content reflects current scientific knowledge, policies, or practices.



62
1925
21925
★ FEB 16 1925
U.S. Department of Agriculture

Horsford's Nurseries Charlotte, Vermont



*Lilium
Willmottiae*

DIRECTIONS TO CUSTOMERS

HOLLAND BULBS. TULIPS, HYACINTHS, NARCISSI, CROCUS, IRIS, as well as LILIES and other PLANTS, SHRUBS, and TREES, are offered in the Autumn Supplement which is ready early in August.

CANADIAN CUSTOMERS will please remember that shrubs, trees, and vines are not admitted from the States at all seasons. They are admitted in spring, commencing March 15, until May 15, and in the fall, commencing September 26, until December 1. Postage to Canada, 12 cts. per lb.

About Forwarding Plants by Parcel Post, Express or Freight

Parcels of six to eight pounds can often go to the second or third zone cheaper by parcel post. When our customers wish us to send in this way, we will do so and charge the postage to those who give good reference. Plants can be sent with better roots, as all the soil can be left on that is necessary, better packed, safer, quicker and usually cheaper, by express. The new rates of express companies are much lower than heretofore.

IF IN GOOD CONDITION WHEN RECEIVED, OUR RESPONSIBILITY CEASES; if not in good condition, complaint must be made at once. We cannot be held responsible for **CULTURAL FAILURES.**

Hardy shrubs, vines and roses can be safely sent, when dormant, by freight. Unless the shipment is a large one, express is often better, insuring delivery without delay, and often cheaper, as freight is charged by the one hundred rate, even if the weight is very light. Plants with green tops, if sent by freight, and the weather is warm, if unduly delayed, are liable to decay; therefore, plants sent otherwise than by express are entirely at the risk of the purchaser.

MY PRICES include boxing, packing—except in the case of trees and shrubs (see instructions under that department)—and delivery to my nearest freight office, post office or express office.

I SHALL ALWAYS ENDEAVOR to give each customer full money value, whether the order is large or small, and in all cases where the customers feel that they have reason to complain, I shall thank them to inform me of it. If the fault lies with me, I shall be glad to make matters right.

IT MUST BE DISTINCTLY UNDERSTOOD by the purchaser of these goods that, while I use my utmost care to have all plants of strong and healthy growth, and seeds of germinating quality, and both true to name, I will not, in any way, be responsible for the failure of any, and if they cannot be accepted on these terms, they must be returned within five days. So much depends upon the care such plants have, and the season following the planting, that I feel that my responsibility must end when the plants have reached the purchaser in good, healthy condition. Thousands of plants die each year for want of proper setting and care until established. A little extra pains in preparing the soil, shading and watering the plants until the roots get established, is worth all it costs.

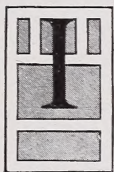
REMITTANCE may be sent at my risk by post-office order on Charlotte, Vermont, by draft, check or registered letter. Half a dozen plants will be furnished at dozen rates. To those who wish to purchase in large quantities, lower prices will be given, if my stock is sufficient.

FRED'K H. HORSFORD
Charlotte, Vermont

HORSFORD'S HARDY PLANTS

LILY BULBS, FERNS TREES, SHRUBS, ETC.

THIS LIST CANCELS ALL PREVIOUS OFFERS



IN SENDING out my spring, 1920, Annual, I wish to thank my many customers who have so generously ordered from the spring, 1918, edition during the past year. The splendid manner in

which customers, who have given orders for many years, remembered me the past season, and were kind enough to buy from the catalog of the previous year, has encouraged and cheered me. It is with real pleasure that I send out this season's spring greeting, calling special attention to my Lily Bulbs, Hardy Perennials, Shrubs, Trees, etc.

My nursery is located in the beautiful Champlain Valley, twelve miles south of Burlington, Vt., on the Rutland Railroad. There is not much of interest in the nursery until the first week in June, when the German Iris are in bloom, with other early-flowering

perennials, like Poppies, Lupines, Dianthus, etc.; then, later in the month, Peonies. Early-blooming Lilies and Japan Iris are in flower in July and are followed by Phlox and later-flowering perennials. In August the later Lilies, like Auratum and Henryi, can be seen and, in early September, the late-flowering Speciosums.

I shall be glad to give desired information regarding hardiness of plants for certain locations, or selection of plants or shrubs and the time of planting, providing the questions are of such a character that they can be briefly answered.

I realize my success can only be permanent when orders prove entirely satisfactory to customers, and I aim to give prompt and careful attention to every order, no matter how small or how large, and to do all in my power to merit a continuance of their kind patronage.



HARDY PERENNIALS

ACHILLEA. YARROW: MILFOIL.

A. Millefolium, var. roseum. This handsome form of the common Yarrow has rose-colored or almost crimson flowers in August. It is an attractive plant when in bloom and comes when the flower crop begins to wane. It is propagated by division. 25 cts. each.

A.—, var. Pink Form. This is quite distinct from the others, having paler pink flowers. 25 cts. each.

A. Ptarmica, var. The Pearl. A fine garden plant with full double white flowers, fine for cutting. 20 cts. each, \$2 per doz.

A. filipendulina (A. Eupatorium). This fine plant from the shores of the Caspian Sea grows 2 to 3 feet high; flowers bright yellow, in flat heads, and with lace-like foliage. June to September. Nice to plant among shrubbery, evergreens, or for back border. 25 cts. each. Seeds 10 cts. per pkt.

A. tomentosa. A very charming yellow-flowered plant blooming in June. It will do in the rocky or in any part of the border. While it grows naturally on dry, rocky soil, it has done finely on lower and more moist levels. 25 cts. each.

ACONITUM. MONKSHOOD. An interesting group of plants, but the roots are very poisonous when eaten and are dangerous when planted near vegetables or where children are liable to get

Aconitum, continued

them. They are easily grown in common garden soil and do well in shade of deciduous trees.

A. Napellus. Probably the best and most reliable Monkshood, flowering the last of June. Its flowers are blue or nearly white. 25 cts. each.

A.—, var. bicolor. Blue-and-white, attractive flowers and is easily grown. 25c. each.

A. Storkianum. A very striking form on account of its dark navy-blue flowers. 25c. each.

ACORUS Calamus. SWEET FLAG. This bog-plant will grow in ordinary garden soil. The long, light green leaves are pretty, but the plant is principally cultivated for its aromatic root. 10 cts. each, 80 cts. per doz.

ACTÆA alba. WHITE BANEERRY. Grows about 2 feet high, bearing short heads of white flowers in spring and white berries in autumn. Native of rich woods and useful to plant in shady corners. 20 cts. each.

A. rubra. RED BANEERRY. Grows 1 to 2 feet high, with short spikes of small, white flowers; red berries in late summer. Useful for rockery and wild garden. 20 cts. each.

ADONIS vernalis. PHEASANT'S-EYE. One of the most attractive early-blooming plants. Flowers bright yellow, 2 to 3 inches wide. It forms tufts 8 to 12 inches high, and has finely divided and attractive foliage. Likes a light, sandy soil,

Adonis vernalis, continued

where it should be left undisturbed when once established. Particularly fine for growing in front of shrubby or higher-growing perennials, where it will increase rapidly. 25 cts. each. Seeds 10 cts. per pkt.

AJUGA genevensis. Flowers bright blue, in long dense spikes which nearly hide the foliage. Useful in the shade or the rockery. 15 cts. each.

ALTHEA rosea. SINGLE HOLLYHOCKS. This distinctive old-fashioned flower is more permanent than the double kinds and of late it is much more of a favorite. It is fine among shrubby and quite permanent when once established.

A.—, Single, Mixed. 15 cts. each, \$1.50 per doz. Seeds 10 cts. per pkt.

A.—, Double Pink Hollyhocks. 20 cts. each, \$2 per doz. Seeds, 8 cts. per pkt.

Seeds only of the following Single Hollyhocks: **Single White, Maroon, Sulphur-Yellow, and Dark Red,** 10 cts. per pkt.

ALYSSUM saxatile, var. compactum. MADWORT. A handsome yellow-flowered perennial which comes in May and is a very useful plant for the early border. It is useful for wall gardens or in any place where early spring flowers are desired. It grows about a foot high. 20 cts. each, \$2 per doz.

AMSONIA Tabernæmontana. A rather good perennial, with terminal bluish flowers in May; very permanent plant when once established. The foliage is good and the flower-panicles attractive. 20 cts. each. Seeds, 8 cts. per pkt.

ANCHUSA italica. An interesting border plant 3 to 4 feet high with pretty blue flowers in June; fine among shrubs. 20 cts. each. Seeds, 6 cts. per pkt.

A.—, Dropmore Variety. This form with gentian-blue flowers is a favorite with all who see it. I have had it several years and I consider it a better plant than the preceding. 20 cts. each, \$2 per doz. Seeds, 8 cts. per pkt.

ANEMONE canadensis (A. Pennsylvanica). This white-flowered Anemone comes in June. It likes a rather heavy damp soil and soon spreads and forms good clumps. 10 cts. each, \$1 per doz.

A. nemorosa. COMMON WINDFLOWER; WOOD ANEMONE. 10 cts. each, \$1 per doz.

ANEMONELLA thalictroides. A pretty white spring flower about the size of the wood anemones and usually found in partial shade. 10c. each, \$1 per doz.

ANTHEMIS tinctoria. CHAMOMILE. This old flower is a very good and reliable garden plant which attains a height of about a foot. It is somewhat spreading and bears many handsome daisy-shaped yellow flowers which are fine for cutting. It may be grown in any good garden soil and is not difficult to manage. 15 cts. each, \$1.50 per doz. Seeds, 5 cts. per pkt.

A.—, var. Kelwayi. Has flowers of various shades; otherwise it is much like the type. 20 cts. each. Seeds, 6 cts. per pkt.

ANTHERICUM Liliago. ST. BERNARD'S LILY. Attains a height of 15 inches. Flowers pure white in May and June. 15 cts. each, \$1.50 per doz. Seeds, 8 cts. per pkt.

AQUILEGIA. COLUMBINE. Alpine plants of many colors and sizes. A few are inclined to be biennial in cultivation; others are longer lived, while still others are permanent perennials. They bear a profusion of blooms on long, slender stems and present a most graceful aspect.

A. cærulea. This blue-and-white Rocky Mountain flower is one of the most charming of the Columbines. While not as long lived as some, it may be made to last longer by not allowing the seeds to mature. The flowers are on stems often 2 feet or more high and are useful in cutting. 20 cts. each.

A. canadensis. AMERICAN WILD COLUMBINE; HONEYSUCKLE. It flowers early, next after the Oxysypala, and few of our wild flowers are better suited to the rock garden than this. Flowers an inch or more long, red and yellow are borne in abundance. Very graceful and attractive plant. It seems to do well in any garden soil both in sun and shade. 12 cts. each, \$1.20 per doz. Seeds, 6 cts. per pkt.



Anchusa. Dropmore Variety. Gentian-blue flowers



Aruncus sylvester

Aquilegia chrysantha. GOLDEN-SPURRED COLUMBINE. A hardy Rocky Mountain plant of great worth in the flower border. It is vigorous in habit and a long time in bloom. When given sufficient room, it is rather bushy in habit and attains 2 feet and more in height. The flowers are on long stems and keep well in water. Blooms in summer. 20 cts. each, \$2 per doz.

A. flabellata. A fine Japanese species with pale or nearly white flowers. Hardy. 15 cts. each, \$1.50 per doz. Seeds, 8 cts. per pkt.

A. oxypala. This native of Siberia is the first to bloom, and is quite hardy and more permanent than some. Flowers blue with some white and yellow tints. 25 cts. each.

A. sibirica. Flowers in May; mostly purple; useful for cutting. 20 cts. each.

A. vulgaris. A reliable old variety that has escaped from gardens in some localities and grows wild; hardy and of easy culture. One of the best and has many colors. May and June. 15 cts. each, \$1.50 per doz. Seeds, 5 cts. per pkt.

A.—, var. alba. Has white flowers and is very handsome and useful for cutting. 20 cts. each. Seeds, 10 cts. per pkt.

ARABIS albid. Low, pubescent, early-flowering plant. Fragrant white flowers in loose racemes in early spring. A good plant for the rockery, for the border, or for covering steep banks where it will spread and form a veritable carpet. 20 cts. each, \$2 per doz. Seeds, 10 cts. per pkt.

ARMERIA alpina. ALPINE THRIFT. Flowers are pale pink or rose, 8 or 10 inches high. 20 cts. each.

A. maritima. Low growing, with pale pink or rose flowers. 20 cts. each, \$2 per doz. Seeds, 6 cts. per pkt.

A. plantaginea. SEA PINK. Taller than either of the preceding. Flowers on long, naked stems, pale pink or nearly white. Of easy culture and a good garden plant. 20 cts. each, \$2 per doz. Seeds, 6 cts. per pkt.

ARISEMA triphyllum. JACK-IN-THE-PULPIT; INDIAN TURNIP. One of the interesting hardy bulbous plants; suited to shade or rockwork if moisture is given. It selects a rich, moist soil. May. 15 cts. each, \$1.50 per doz.

ARUNCUS sylvester. GOAT'S BEARD. Desirable border plant 2 to 4 feet high. Flowers nearly white in panicle, plume-like spikes, borne quite profusely. Nice among low shrubs and quite hardy. 25 cts. each.

ASARUM canadense. SNAKEROOT; GINGERROOT. Only 3 to 5 inches high. Large, dark green, kidney-shaped leaves. Flowers early, hidden among the leaves. Nice for shady corner or shaded rockwork. 15 cts. each.

ASCLEPIAS tuberosa. SWALLOWWORT; BUTTERFLY WEED. A very attractive plant when in flower. Grows about 18 inches high, and in time forms good-sized clumps which are very showy when the mass of orange-yellow flowers appears. It is suited to sunny portions of rockwork or to any well-drained soil. 25 cts. each.

ASTERS. MICHELMA'S DAISIES; PERENNIAL ASTERS. Late-blooming plants which flower after the first frosts. They are fine in the hardy garden and prolong the flower season, giving much color after most of the hardy flowers are past. The blooms are borne in such profusion that at a distance the bush seems a solid mass of color.

A. laevis. Has handsome, hardy, permanent, sky-blue flowers in late September and early October. A showy plant and nice for cutting. 20 cts. each, \$2 per doz.

A. Nova-Angliae. NEW ENGLAND ASTER. A very hardy, strong, and beautiful species with stout stems 3 to 6 feet high and a profusion of large flower-heads with beautiful violet-purple flowers in large corymbs in September and October. One of the best Asters. Strong plants, 20 cts. each, \$1.75 per doz.

A.—, var. roseus. Has rose-colored flowers much like the type in height and size. 25 cts. each.

A., Robert Parker. Two to 3 feet high; flowers lavender-blue, an inch wide. A very handsome and healthy sort. 20 cts. each.

Aster tataricus. This is the latest bloomer of the kinds I have grown. It spreads fast from the root and a few plants soon make a good colony. Flowers bluish purple. 12c. each, \$1.20 per doz.

A., White Queen. Hardy; 2 or more feet high with an abundance of white flowers an inch wide. 25 cts. each.

ASTILBE japonica (*Spiræa japonica*). One to 3 feet high; white flowers in racemose panicles. 25 cts. each.

A. chinensis. Handsome pink flowers. 30 cts. each.

A., Kriemhilde. A new variety with feathered spikes of salmon-pink flowers. Nice for cutting and very attractive in the garden. 25 cts. each.

A., Rosa Pearl. Pale pink flowers at the beginning of August. One of the more attractive. Forms a dense pyramidal truss 2 feet or more high. Was given reward of merit from the Royal Horticultural Society in 1908. 25 cts. each.

BAPTISIA australis. This is a very permanent plant which, once established, lasts indefinitely. It has blue pea-like flowers and dark green foliage. A single plant will form a good-sized clump in time, sending up more shoots each year. The foliage is good the season through. 20 cts. each, \$2 per doz. Seeds, 5 cts. per pkt.

BELLIS perennis. ENGLISH DAISY. Very pretty little plant 3 or 4 inches high, which bears handsome, double, daisy-like flowers of various shades. Nice for marking beds. 20 cts. each.

BOCCONIA cordata. PLUMED POPPY. In rich soil often grows 8 feet high, bearing large, terminal, buff-colored flowers in summer, followed by the almost equally ornamental fruit. Nice for planting among shrubs. It is a persistent plant and rather difficult to eradicate when once established. 15 cts. each, \$1.50 per doz.

BOLTONIA asteroides. Useful in late summer and autumn when flowers begin to be scarce. The flowers are pure white and borne in large masses 8 feet high, in rich soil. 15 cts. each, \$1.50 per doz.

B. latisquama. Flowers rosy pink to lavender in large heads. A fine aster-like plant which blooms even later than the preceding and is fine for cutting. This plant has stood the first severe frosts without apparent injury. 20 cts. each, \$2 per doz.

BRAUNERIA purpurea. PURPLE CONE-FLOWER. Two to 3 feet high, with rosy purple flowers 2 to 3 inches wide. A striking plant for the back border and better suited for this purpose than for cutting. At close range the plant is a little coarse for cutting. 25 cts. each.

CALTHA palustris. MARSH MARIGOLD; COW-SLIPS. A fine yellow-flowered, early plant for wet ground. In a natural situation it makes a lavish show in early spring. It forces well in pots. 12c. each, \$1.20 per doz.

CAMPANULA. BELLFLOWER. A remarkable genus for the hardy garden. It comprises many of the choicest gems our gardens afford. Some are especially suited to the rockery while others are better in the border. Most of those I offer are perennial.

C. alliarifolia. One to 2 feet, branching at the top; leaves heart-shaped; flowers white, about 2 inches long, borne in racemes. Native to Asia Minor. 20c. each, \$2 per doz. Seeds, 8c. per pkt.

C. carpatica. A charming tufted plant 6 to 8 inches high with handsome blue flowers an inch wide. Summer. 20c. each. Seeds, 8c. per pkt.

C.—, var. alba. The white form of this plant is very attractive. 20c. each. Seeds, 8c. per pkt.



Boltonia latisquama



Campanula persicifolia

Campanula glomerata. Stems 1 to 2 feet high; blue flowers clustered at summit. 20 cts. each. Seeds, 6 cts. per pkt.

C. latiloba (C. grandis). Twelve to 18 inches high; flowers blue and often 2 inches wide. 20 cts. each. Seeds, 6 cts. per pkt.

C. Medium. CANTERBURY BELLS. The most popular biennial of the garden flowers. Of various shades—blue, purple, rose or pink, white, and sometimes double. June. 15 cts. each, \$1.50 per doz. Seeds, 5 cts. per pkt.

C.—, White. 15 cts. each. Seeds, 10 cts. per pkt.

C.—, Purple or Blue. 15 cts. each, \$1.50 per doz.

C.—, Cup and Saucer, Rose form. 20 cts. each, \$2 per doz.

C.—, Single, White. 15 cts. each, \$1.50 per doz.

C.—, Rose. 15 cts. each. Seeds, 10 cts. per pkt.

C. persicifolia, var. alba. One of the favorites of this genus. Flowers white, very showy, and on good stems for cutting. 25 cts. each, \$2.50 per doz. Seeds, 6 cts. per pkt.

C.—, var. cærulea. 25c. each, \$2.50 per doz.

C. punctata, var. Marian Gehring. We have many good reports from this plant. It seems to give best results when planted in a mass of half a dozen or more. A new perennial Canterbury Bell. Grows from 2 to 3 feet high, one to many stems from a single plant. Lower leaves round, heart-shaped, strongly toothed, 4 to 6 inches wide, on petioles 4 to 7 inches long. It spreads from subterranean stolons and does not bear seed. A single plant will form a strong clump 2 feet or more in diameter, and the flowers are produced in loose racemes in great profusion. The color of the flowers is pale lavender, and in size they are nearly as large as those of the Canterbury Bell, though more graceful. The flowering season extends over a period of from

C. punctata, continued

four to six weeks, after which there is a more straggling succession of bloom until frost. This form originated in the garden of Dr. J. G. Gehring of Bethel, Maine, and was found growing near a colony of *Campanula punctata*, near which one solitary specimen of a Canterbury Bell (*Campanula Medium*) was in bloom. Since it produces no seed, and has some of the characteristics of both the above species, it is reasonable to suppose it a natural hybrid between the two plants. Offer plants at 40 cts. each, \$4 per doz.

C. rhomboidalis. Somewhat like the little Harebell and grows about as high. Flowers blue. Nice for the rockery. 20 cts. each. Seeds, 6 cts. per pkt.

C. rotundifolia. HAREBELL; BLUE BELLS OF SCOTLAND. Attains a height of 6 to 12 inches, forming dense tufts. Useful for the rock garden; will do well in partial shade or in open border. 15 cts. each, \$1.50 per doz. Seeds, 6 cts. per pkt.

CASSIA Marilandica. AMERICAN SENNA. Graceful and hardy; 3 to 5 feet high, with numerous acacia-like leaves and many clusters of yellow flowers. Makes a good showing after it is well established as a midsummer hedge plant. Fine among shrubbery. 20 cts. each.

CENTAUREA dealbata. This plant from Asia Minor has reddish flowers and grows from 8 to 24 inches high. The seeds attract the birds so that we have sometimes to cover the whole plant in order to save any seed. 25 cts. each. Seeds, 6 cts. per pkt.

C. montana. Has large blue flowers in May. 25 cts. each.

C. macrocephala. A very hardy species from the Caucasus. Numerous large decurrent leaves and large yellow flower-heads in July. 20 cts. each. Seeds, 5 cts. per pkt.

CERASTIUM tomentosum. A low, creeping plant with the upper surface of the leaves light in color and woolly; it bears a profusion of pretty white flowers. Much used for edging, also to plant in crevices of walls or rockwork, where it keeps up a succession of bloom all summer. 20 cts. each, \$2 per doz. Seeds, 6 cts. per pkt.

CHRYSANTHEMUM coccineum (Pyrethrum hybridum). Very charming daisy-like flowers on long stems; fine for cutting. June. 20 cts. each, \$2 per doz.

C. maximum. Flowers like the common white daisy, but twice as large. Handsome when in flower, and the flowers have good stems for cutting. Hardy and easily grown in full sun. Summer. 20 cts. each, \$2 per doz. Seeds, 5c. per pkt.

C. sp., var. Shasta Daisy. White flowers. Summer. 20c. each, \$2 per doz. Seeds, 6c. per pkt.

C.—, Alaska Daisy. This is the largest of the Daisies we have tried here and the flowers are very fine. They are produced in great profusion and the season is a long one. 15 cts. each, \$1.50 per doz. Seeds, 8 cts. per pkt.

C. uliginosum. GIANT DAISY. One of the latest of the Hardy Chrysanthemums. Grows 3 to 5 feet high with many handsome, white, daisy-like flowers. Useful because it is so late and a good flower for cutting. 20 cts. each, \$2 per doz.

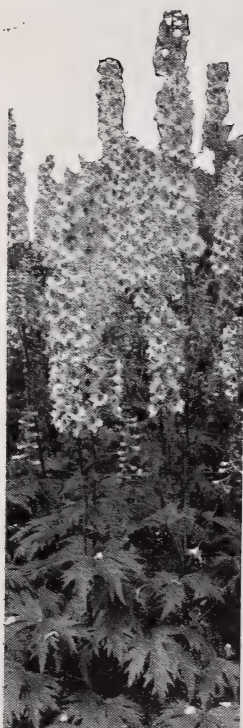
CIMICIFUGA racemosa. BLACK SNAKEROOT; BLACK COHOSH; BUGBANE. Grows 4 to 8 feet high, with white flowers in feathery drooping racemes. A stately plant, suited to moist and shaded situations, though it will do fairly well in full sun. July and August. 25 cts. each.

CLEMATIS integrifolia. This is not commonly known. It is a very pretty plant with deep blue nodding flowers. 25 cts. each.

C. recta. A very attractive bush Clematis 2 to 3 feet high, with large clusters of pretty white flowers from June to August. It is a very permanent plant and should last years when once established. A very desirable variety. 20 cts. each, \$2 per doz.

COREOPSIS lanceolata. Of the best of the garden plants, nice for cutting, and has very pretty yellow flowers. Should be in every collection. Hardy, easily grown, and a favorite with all who know it. 15c. each, \$1.50 per doz. Seeds, 5 cts. per pkt.

C. verticillata. Very floriferous, with yellow flowers a little smaller and later than *Lanceolata*. 15 cts. ea. \$1.50 per doz.



Delphinium (Larkspur)

CORONILLA varia. CROWN VETCH. A plant belonging to the natural order of Leguminosæ, with pink-and-white flowers. 12 cts. each, \$1.20 per doz.

CONVALLARIA majalis. LILY-OF-THE-VALLEY. A plant of the lily family, too well known to need detailed description. It likes a little shade and moisture, and does finely under shaded walls. Spring. Clumps, 20 cts. each, \$2 per doz.

DELPHINIUM. LARKSPUR. Thrives to a certain extent in any good garden soil with proper care, but, for the best results, special care should be given. Work the soil deep, with plenty of finely composted manure mixed in. An old favorite that supplies the blue needed to complete the color scheme of the garden.

D. Belladonna. Medium in height, with soft sky-blue flowers. A very pleasing tint for a Larkspur. 20 cts. each, \$2 per doz. Seeds, 8 cts. per pkt.

Delphinium Caucasicum. Tall, with handsome blue flowers. 15 cts. each, \$1.50 per doz. Seeds, 8 cts. per pkt.

D. elatum. BEE LARKSPUR. Tall, if not the tallest-growing species. Flowers very fine, dark to pale blue. 20 cts. each, \$2 per doz. Seeds, 8 cts. per pkt.

D. formosum, var. coelestinum. This form has large, pale blue flowers, borne profusely in fine shapes. 20 cts. each, \$2 per doz.

D. grandiflorum (D. Chinense). SIBERIAN LARKSPUR. One of the lower-growing kinds having variously tinted flowers, from deep blue to white, all very delicately shaded and of good size. One of the best. July and August. 20 cts. each, \$2 per doz. Seeds, 6 cts. per pkt.

D.—, var. album. 20 cts. each.

D. hybridum, Mixed. 20 cts. each, \$2 per doz.

D.—, Seedling from Herman Sterger. These seedlings are not now like the original stock. They are stronger, taller, and vary in color from nearly white to dark blue. 15 cts. each, \$1.50 per doz. Seeds, 6 cts. per pkt.

D., Kelway's Selection. This is one of the best flowers; variable and very showy. 20 cts. each.

D., King of the Blues. This is a medium-sized form, with very deep blue flowers, and seems to hold to color better than most Larkspurs. I found it growing in the nursery and it is probably a chance hybrid. 25 cts. each. Seeds, 15 cts. per pkt.

D. Maackianum. A Siberian species of medium height, with blue flowers in loose panicles. 15c. each, \$1.50 per doz. Seeds, 6 cts. per pkt.



Shasta Daisies (see page 6)

DIANTHUS barbatus. SWEET WILLIAM. An old-fashioned garden flower too well known to require detailed description. 12 cts. each, \$1.20 per doz. Seeds, 5 cts. per pkt.

D.—, **White.** 20 cts. each.

D.—, **Pink Beauty.** 20 cts. each.

D.—, **Newport Pink.** 20 cts. each. Seeds, 10 cts. per pkt.

D. **deltoides.** MAIDEN PINK. Plant about 6 inches high; flowers rose in summer. One of the prettiest border Pinks. 12 cts. each. Seeds, 5 cts. per pkt.

D.— **alba.** 20 cts. each.

D. **superbus.** Flowers pale pink or white. A handsome single Pink. 15 cts. each, \$1.30 per doz. Seeds, 5 cts. per pkt.

Hardy Garden Pinks

Dianthus plumarius

The following are clove-scented and flower in great profusion during May and June. Fine for edge of the hardy border and also for cutting.

Dianthus, Her Majesty. A fine, double, white, hardy, fragrant Pink. Summer. 25 cts.



Hardy Garden Pinks

Dianthus, var. Grass or Clove Pink. VERMONT PINK. Old, double, sweet-scented Pink; a favorite with all who know it. I sell it by the hundred for bordering beds and walks. It never has produced seed here, and we have to grow it from cuttings. It is very permanent when established, and the double, rosy pink flowers are borne on rather short stems. One of the most enticing plants for the old-time garden. 20 cts. each, \$2 per doz.

D., **Snow Queen.** Fine pure white. 20 cts. each.

D., **White Reserve.** One of the best Hardy Garden Pinks, being an everblooming pure white. 20 cts. each.

DICTAMNUS albus (*D. Fraxinella*). FRAXINELLA; GAS-PLANT. Bears large, loose clusters of white flowers in May and June. 20 cts. each.

D.—, **var. ruber.** It is a good-sized, hardy perennial of much worth, from eastern Europe. Its pale purple flowers are much better and more numerous after it has become well established. Too much should not be expected of this plant the first year after setting. It is easy of culture, but a dry soil suits it best. Fine when well established. May and June. 20 cts. each.

D. **Dahuricus.** This is a larger plant than either of the foregoing. The clusters of flowers are larger and of a purplish red shade and there is much more fragrance to the flowers. 20 cts. each, \$2 per doz.

DICENTRA canadensis. SQUIRREL CORN. A rather nice, little, early-flowering bulbous plant, native to rich woods in shade, and useful for shady parts of the wild garden. It wants rich, black soil that is not too dry. Flowers white, tipped with rose, and finely cut; foliage delicate. This and *D. Cucullaria* both die down to the bulb early in summer. 12 cts. each, \$1 per doz.

D. **Cucullaria.** DUTCHMAN'S BREECHES. Bears a profusion of quaint white flowers in long racemes. 15 cts. each.

D. **eximia.** Handsome, reddish purple flowers and delicate foliage. Plant about 1 foot high. May to August. 30 cts. each.

D. **spectabilis.** BLEEDING HEART; SEAL FLOWER. One of the best old-fashioned garden plants. Hardy in every sense; fine for the border or margins of shrubbery, being quite distinct. May and June. 30 cts. each.

DIGITALIS. FOXGLOVE. An interesting genus of plants whose culture is very simple, and will keep up a continuous succession of bloom all summer.

D. **ambigua** (*D. grandiflora*). Has yellowish flowers and is quite pretty. It is a perennial, hardy and of easy culture. Middle of June. 20 cts. each, \$2 per doz. Seeds, 8c. per pkt.

D. **lanata.** WOOLLY FOXGLOVE. A biennial, 3 feet high. For best effect, should be massed. Its compound racemes of white and purplish flowers have an orchidaceous appearance. Eastern Europe. Summer. 20 cts. each. Seeds, 5 cts. per pkt.

Digitalis purpurea, var. **gloxiniæflora**.

Has a great variety of colors, but in growing them separately I have had much difficulty to keep the colors separate. A tall, majestic plant, bearing long spikes of tubular flowers most beautifully spotted and marked like a gloxinia. It is very impressive when grown in mass. My strain is one of the very best. Good, strong clumps of this charming flower. Blooms in June. 20 cts. each, \$2 per doz. Seeds, 5 cts. per pkt.

D.—, var. **alba**. 20 cts. each. Seeds, 8 cts. per pkt.

D.—, var. **Rose or Pink**. 20 cts. each. Seeds, 8 cts. per pkt.

D. **Sibirica**. **SIBERIAN FOXGLOVE**. A permanent kind with small, creamy colored flowers, borne in splendid, erect spikes, in great profusion. 20 cts. each, \$2 per doz.

DORONICUM magnificum. A plant of the composite family, with large yellow flowers somewhat like a single sunflower, and coming in early summer. Fine for cutting. 25 cts. each.

DRACOCEPHALUM grandiflorum

(*D. Allaiense*). **DRAGON'S HEAD**. Siberian; 6 to 9 inches high, bearing handsome spikes of dainty blue, odd-shaped flowers about an inch long. Blooms in June and July and is a valuable addition to the garden blues. 25 cts. each.



Digitalis lanata. Photograph taken in our Nursery

ECHINOPS Ritro. **GLOBE THISTLE**. This is the best species of this genus for cultivation. The dark blue, globular heads are very showy and useful for cutting. 20 cts. each. Seeds, 10 cts. per pkt.

ERIGERON glaucus. **FLEABANE**. Comes from western North America. It is a fine, handsome perennial, apparently quite hardy, and bears plenty of good-sized heads of flowers, color light lilac, with yellow daisy-like center. Fine for cutting. 20 cts. each. Seeds, 5 cts. per pkt.

EUPATORIUM urticæfolium. **WHITE SNAKE-ROOT**. Three to 4 feet high, with good-sized heads of white flowers; does well in shade. 20 cts. each.

EUPHORBIA corollata. **FLOWERING SPURGE**. Is a native, 2 to 3 feet high, branching and bearing many white bracts around the true flowers, which give it a floriferous appearance and make it one of the most delicate and attractive little natives. Very useful for cutting or for the border. Summer. 20 cts. each.

FUNKIA. **PLANTAIN LILY; DAY LILY**. A genus of hardy herbaceous perennials, with good foliage and often handsome flowers. Well suited to decorate the lawn, or for planting in the borders of shrubbery, or in rockwork. Before planting, mix in a supply of manure to a good depth.

F. Fortunei. A low-growing variety, with large, glaucous green leaves and mauve flowers. Very attractive for border planting. 25 cts. each.

F. lancifolia. A Japanese plant, with pale lilac flowers and lance-shaped leaves. Makes a very pretty show and is a most desirable addition to any planting. August. 20 cts. each.



Eupatorium urticæfolium

Funkia lancifolia, var. *variegata*. This has crinkled foliage, variegated with white; flowers purplish lilac, a little paler than Thomas Hogg. 20 cts. each.

F. Sieboldiana. Rather low-growing with thick, bluish green foliage and pure white flowers. Very distinct form. 25 cts. each.

F. subcordata. WHITE PLANTAIN LILY. Blooms late in autumn, and is valuable on this account. 25 cts. each.

GAILLARDIA aristata (*G. grandiflora*). BLANKET FLOWER. A fine, hardy plant, admired by all. The daisy-shaped flowers are red and yellow inside, of good size, and on long stems. In bloom longer than most plants and provides a gorgeous display of color. 20 cts. each, \$2 per doz. Seeds, 6 cts. per pkt.

Perennial Gaillardias may be propagated in spring by root-division and root-cuttings.

GENTIANA Andrewsii. CLOSED or BOTTLE GENTIAN. Stems 8 to 15 inches high; flowers purplish blue, in Aug. and Sept. 25 cts. each.

GERANIUM. CRANESBILL.

G. Ibericum, var. *platypetalum*. Large and branching; of variable colors in June. 20 cts. each.



Funkia subcordata

GYPSOPHILA paniculata. BABY'S BREATH. A native of Europe. Has much to recommend it. Its flowers, produced during the summer, are very numerous, so much so that to a casual observer they seem almost inseparable. They are nearly white, borne in panicles, and give a very charming effect, either in the border or when used in bouquets. It is an airy, graceful plant that grows in any good garden soil and is sure to be prized by all who try it. Its graceful, feathery foliage is very effective when used in bouquet work with other flowers. 20 cts. each, \$2 per doz. Seeds, 5 cts. per pkt.

HELENIUM autumnale. SNEEZE-WEED. This handsome native perennial attains a height of 3 to 5 feet. It branches at the top and bears many large yellow flowers in autumn. 20 cts. each, \$2 per doz.

H., var. *magnificum*. Lower-growing, with flowers as fine as any, and three weeks earlier. 20 cts. each.

H., var. *rubrum*. Bright terra-cotta-red flowers. 20 cts. each.

H. Hoopesii. Charming yellow flowers, fine for cutting. Hardy and interesting. Spreads from root-division. Flowers about June. 20 cts. each.

HELIANTHUS laetiflorus. This plant is much shorter than Maximilianii, and its flowers are a brighter yellow. It is early, compared to most species. It soon spreads to good-sized clumps; flowers very handsome and borne in great profusion. Summer. 12 cts. each, \$1.20 per doz.



Hemerocallis fulva, var. *Kwanso* (see page 11)



Hepatica triloba

Helianthus Maximilianii. Tall and late-blooming species from the Middle West. 25 cts. each.

H. mollis. Grows about 4 feet high. Flowers 3 inches wide, yellow, coming in August. 20 cts. each, \$2 per doz.

H. orgyalis (*H. salicifolius*). GRACEFUL SUNFLOWER. One of the most valuable perennial Sunflowers. Attains a height of 6 to 10 feet in good soil, and soon forms large clumps. Its narrow, drooping foliage gives a mass of it a very attractive appearance most of the summer, and when finally the large, handsome, yellow flowers appear in great profusion, just before frost and endure after some of the first hard freezings, we have to acknowledge it to be one of the finest of its class in cultivation. Late autumn. 20 cts. each.

HELIOPSIS lævis, var. **Pitcheriana**, is a better plant than *H. lævis*; not so tall, very floriferous and the flowers are deeper yellow. 20 cts. each. Seeds, 5 cts. per pkt.

HELLEBORUS niger. CHRISTMAS ROSE. Grows about a foot high, producing large, nearly white flowers an inch wide; does finely in moist garden soil, though a rich, well-drained, moist loam is better. Use a good top-dressing of well-composted manure as a dressing after flowering. 20 cts. each.

HELONIAS bullata. SWAMP PINK. Is found growing in dense shade and will grow in sun. It is one of the best bog-plants. Beautiful pink flowers. 20 cts. each.

HEMEROCALLIS Dumortieri. DAY LILY. This form has brownish orange-colored flowers which are very attractive in June. Grows about 18 inches high with an abundance of flowers which are fine for cutting. Japan and Siberia. 20 cts. each, \$2 per doz. Seeds, 8 cts. per pkt.

H. flava. LEMON DAY LILY. Fragrant yellow flowers in June. Grows 2 feet high with flowers on long stems for cutting. Siberia and Japan. 20 cts. each, \$2 per doz.

H. fulva. ORANGE DAY LILY. This old-fashioned flower is one of the hardiest. It will do in full sun or in the shade of deciduous trees, and is not particular as to soil if not too wet. 15 cts. each, \$1.50 per doz.

H.—, var. Kwanso. A form of the Orange Lily with double reddish flowers. It is an interesting plant both for cutting and for the border. Will do well under the same conditions as the type. 20 cts. each, \$2 per doz.

H. minor. This plant resembles a small form of *Dumortieri* and the smaller flowers are very attractive. 20 cts. each.

H. Middendorffii. A profuse bloomer over a long season. Flowers deep golden yellow, three to five in a terminal head. Two to 3 feet high. 20 cts. each.

H. Thunbergii. This plant is much like the Lemon Lily except that it is taller and flowers after the earlier one has bloomed, or in August and September. It makes a good companion to the first, as it prolongs the season so much. It is easily grown in any good garden soil. 20 cts. each, \$2 per doz.

HEPATICA acutiloba. LIVERLEAF. The variously tinted flowers appear as soon as the snow is off the ground. 15 cts. each, \$1.50 per doz.

H. triloba. Resembles the preceding closely, but has round-lobed leaves. It flowers very early and is nice to plant in front of shrubbery. 15 cts. each, \$1.50 per doz.

HESPERIS matronalis. ROCKET; DAME'S ROCKET. Two to 3 feet high; various flowered; sweet scented at night. South Europe and Asia. 12 cts. each, \$1.20 per doz. Seeds, 5 cts. per pkt.



Hibiscus Moscheutos

HEUCHERA sanguinea. ALUM ROOT; CORAL BELLS; CRIMSON BELLS. One of the best plants for the hardy border, keeping up a succession of bloom during July and August. Its delicate spikes of coral-red bells are most charming, especially in a large bed or a mass. Nice for table or other decoration. 20 cts. each.

HIBISCUS, Meehan's Marvels. The flowers are immense in size and of the most brilliant colors. While the various shades are pretty, I consider the one color, deep cerise-red, to be the most desirable. I offer only this one form. 25 cts. each.

H. Moscheutos. MARSH MALLOW. This is a most attractive member of the Hollyhock family, bearing flowers often 6 inches wide and of various colors. Fine for bogs, though quite at home in good garden soil. Summer. 20 cts. each, \$2 per doz.

H. oculroseus. CRIMSON EYE. White, with crimson center. Very striking and has been widely advertised. It is commonly called Hibiscus Crimson Eye. 20 cts. each, \$2 per doz.

HOLLYHOCK. See *Althæa*.

HYACINTHUS candicans. See *Galtonia candicans*, in Tender Plants.

IBERIS Tenoreana. CANDYTUFT. Has an abundance of almost white flowers which last over a long period. 20 cts. each.

IRIS (Flag)

This is a grand family with many varieties. The flowers are among the most glorious in the hardy garden, and, by a proper selection, they may be had in bloom several weeks.

IRIS Cengialti. This species attains a height of about 6 inches, with numerous good-sized lilac flowers, and not only has the habit of blooming profusely in summer, but in late autumn a few plants usually flower. A hardy kind, much like the lower forms of *Germanica*. 15 cts. each, \$1.20 per doz.

I. cristata. CRESTED IRIS. Comes from North Carolina, and has handsome light blue flowers, with short, thick green foliage. One of the best dwarf kinds. It soon spreads so as to form good-sized clumps, and seems entirely hardy. May. 20 cts. each.

I. Florentina alba. ORRIS ROOT. Fine early Iris; white, tinged with lavender. 15 cts. each, \$1.55 per doz.

IRIS Germanica. GERMAN IRIS; FLOWER-DE-LUCE. The great Bearded Iris.

Atropurpurea grandiflora. Large, dark blue uprights and deep blue falls striped with white at base. 15 cts. each, \$1.50 per doz.

Aurea. A fine, all-yellow form. 25 cts. each.

Black Prince. Early; large flowers and one of the darkest purples. 20 cts. each, \$2 per doz.

Camellia. Uprights white stained blue, falls creamy white with few purplish stripes. A fine light variety. 25 cts. each.

Edina. Low; uprights pale blue, falls blue and striped above. 20 cts. each.

Iris flavescens, or Canary-Bird. One of the best; conspicuous from a long distance when planted in a mass. Uprights soft creamy yellow, falls paler cream color, with striped base. A most



Clump of Iris Germanica



Iris Germanica in the foreground of a perennial planting

Iris flavescens, continued

striking and valuable variety. Last of May. 20 cts. each.

Fragrans, or Storm King. White, with violet veins. 20 cts. each.

Gracchus. Beautiful and large, creamy yellow uprights, falls velvet-purple and yellow striped. A very strong and early form. 20 cts. each.

Her Majesty. Fine, with reddish purple flowers. 25 cts. each.

Honorable. Upright portion of the flower clear yellow; lower portions yellow with purple veins. Early. 20 cts. each, \$2 per doz.

Lady Stanhope. A tall, bold Iris, with exquisite lavender flowers; falls a little darker than the uprights. Flowers large, on stalks often 3 feet high. 15 cts. each, \$1.50 per doz.

Madame Chereau. Tall, with high standards; white with blue margins. 15c. ea., \$1.55 per doz.

Mrs. Woodhouse. Pale coppery yellow flowers; very attractive. 20 cts. each.

Germanica neglecta. One of the tallest and earliest of the German type, producing large, blue flowers. A striking and handsome Iris. 20 cts. each, \$2 per doz.

Nimrod. Pale and dark purple. 15 cts. each, \$1.50 per doz.

Princess Louise. This new Iris is a very charming form with rose-purple flowers. 25 cts. each.

Iris, Purple Blush. A showy form, with rose-purple striped flowers. 15c. each, \$1.50 per doz.

Queen of Gypsies. A little taller than the average; uprights light mulberry, falls velvety purple with white stripes. A strong form with ample stems. 15 cts. each, \$1.50 per doz.

Queen of May. A new and choice kind with mauve-purple flowers, somewhat resembling Her Majesty, though distinct from that variety. June 1. 20 cts. each, \$2 per doz.

Roi des Belges. Purple falls, lighter than the standards. 15 cts. each, \$1.50 per doz.

Socrates. Standards clear yellow, falls dark purple; large. Very rich and effective color combination. 15 cts. each, \$1.50 per doz.

Stylosa. Tall; standards white, tinged blue; falls purple with white stripes. Flowers large. 15 cts. each, \$1.50 per doz.

Sylvia. Pale blue and purplish blue. 15 cts. each, \$1.50 per doz.

Velveteen. Pale yellow standards; dark, velvety purple falls. 15 cts. each, \$1.50 per doz.

Walter Scott. Standards coppery yellow; falls dark, velvety purple; strong growing; flowers June 10. 15 cts. each, \$1.50 per doz.

In Various Colors, Mixed. The flowers show a variation in form and delicacy of coloring not excelled by many expensive and tender orchids. June. 10 cts. each, \$1 per doz.



Iris pumila

Iris longipetala. A species from Oregon, with blue flowers. A very pretty and effective variety that should be largely planted. 15 cts. each.

I. pallida Dalmatica. Tall, with finest lavender flowers. One of the handsomest of all Irises and most majestic in appearance as it carries its very large flowers in clusters of four or five on long stems. 25 cts. each.

I. Pseudacorus. YELLOW FLAG. This is a strong-growing sort, 2 to 3 feet high, with clusters of good-sized yellow flowers. While it will do well in any ordinary garden soil, it seems to like moisture, and thrives best along the wet margins of brooks, where it soon forms good, large clumps. This is one of the taller, rank-growing kinds. 20 cts. each, \$2 per doz.

I. pumila. A very pretty dwarf species, fine for edging; lilac-purple. April. 15 cts. each, \$1.50 per doz.

I.—. Rose-purple. 15 cts. each, \$1.50 per doz.

I.—. Hybrid. Purple flowers; early. 15 cts. each, \$1.50 per doz.

I.—. Hybrid. Yellow; a very fine new Iris, with yellow flowers. 20 cts. each, \$2 per doz.

Iris Sibirica. From Siberia. Perfectly hardy. A profusion of light blue flowers. June. 15 cts. each, \$1.50 per doz. Seeds, 5 cts. per pkt.

I.—. var. **White-flowered.** Produces white flowers of great beauty. 15 cts. each, \$1.50 per doz.

I.—. var. **Snow Queen.** One of the best white Irises, and apparently as hardy as any of the Siberian Irises. 15 cts. each, \$1.50 per doz.

I.—. var. **orientalis.** One of the best hardy blue sorts. 15 cts. each, \$1.50 per doz.

I. versicolor. COMMON BLUE FLAG. Is the common Blue Flag of our brook-sides and wet meadows. It grows naturally in moist places, but will thrive in any good garden soil when in cultivation. One of the best bog varieties, giving much bright color in its season, and blooms profusely in long spikes. June. 15 cts. each, \$1.50 per doz.

I. lævigata (I. Kaempferi). JAPAN IRIS. This is one of the most popular of all the Irises, when grown on the right kind of soil. It comes in after the more common kinds are past bloom, and gives a great variety of color. It prefers a rather heavy, moist soil and will stand considerable enrichment. A few named kinds, strong plants, 30 cts. each, \$3 per doz. Fine mixed, 20 cts. each, \$2 per doz.



Iris lævigata (Japan Iris)



Lilium auratum



Lilium Henryi



Lilium maculatum

LILIES • LILIUM

THOSE of you who have grown Lilies, and grown them well, know what great satisfaction there is in having a collection of this flower. It requires more attention in planting and caring for than many of the garden plants, and should not be left without attention as many others are when once they are planted.

The majority of species are hardy when once well established, yet by experience we find that a little covering is good to protect from sudden changes in winter. In light soils this can be remedied by deep planting, but I have found that deep planting in heavy soils is not so well as a more shallow setting with good winter protection. When the bulbs are once frozen in for the winter and a long warm spell comes which thaws them out entirely, they are liable to injury. But with a covering of hay, leaves, or straw manure, an ordinary winter's thaw does not reach them.

Like most other plants, fall planting will give best results if the frost is not allowed to reach the bulbs the first winter; but, on the other hand, spring setting is safer when there is danger that frost will reach the bulbs. Lilies, like most other garden flowers here in the North, stand much more cold after being well established.

I find this bulb stands much more enrichment than has been supposed. Under Auratums, Speciosums, and Candidums I have had good success in putting a thin layer of sphagnum moss. I never set Auratums in the nursery without this sphagnum under them. It protects the bottom of the bulbs from the enriched soil and seems to stimulate their growth. Sphagnum moss is used in packing our bulbs, and can be used for this purpose.

Lilies, like the hollyhock and potato, are liable in certain wet seasons to blight. When once it gets hold, as with the potato blight, spraying with bordeaux does not seem to be of much benefit, but, when the spraying is done before the blight comes, it is likely to prevent it and seems also to stimulate the growth of the plant.

In light loamy soils, in cold climates, 8 inches deep is not too much in the North. This depth seems to protect against drought as well as frost.

Lilies like good drainage as well as plenty of moisture during the blooming season. In heavy soils that are not well drained they seldom succeed.

Not rarely some Lilies do not appear above ground the first year after setting, but seem to go through a season of recuperation and come up strong and good the second spring. I have had *L. Brownii* and others do this, especially where imported bulbs were



Lilium rubellum



Lilium speciosum



Lilium superbum

LILIES, continued

used which had become dry and the outer scales shrunken. When bulbs are stored in a cellar in tight boxes and in soil which is not allowed to become too dry, they will often winter in fine condition.

Many Lilies not only bear roots at the bottom of the bulb, but from where the stem joins the bulb to near the surface of the bed have a large root growth. The Auratum is especially noted for this. It is well, therefore, to have plenty of well-composted manure worked in the soil to a good depth so that not only the ground under the bulb is enriched but near the surface also, so that the roots above the bulb are stimulated.

At the time of making up this catalogue I am unable to quote fixed prices on Japanese Lilies, owing to unsettled conditions. The prices prevailing at time of shipment will be charged.

BROWNII (*L. japonicum*, var. *Brownii*). Bears three or four flowers, 7 to 8 inches long, partly drooping, chocolate-purple outside and white within. A very showy and desirable kind which is nice for cutting, or in any place. It is a durable one with me. July. \$1 each.

CANADENSE. WILD YELLOW LILY. Flowers vary in color—red and yellow. Grows 2 to 5 feet high and is a most hardy species. Nice to plant among shrubbery, and does quite well in shade. June and July. 15 cts. each, \$1.50 per doz.

CANDIDUM. ASCENSION or MADONNA LILY. Handsome, large, fragrant, pure white flowers. Easy of culture; does best when left undisturbed after planting. These are grown in the North of France; during, and following the war, this last fall, these bulbs did not get over in time for best results, and stock was not quite up to the usual standard. We are promised good quality this year, however; and an early enough delivery to insure good fall growth. I can quote only prices prevailing at time of shipment in September. Fall supplement in August, will probably give price of Candidums.

CROCEUM. Golden yellow; closely follows *L. Dahuricum* in blooming. 20 cts. each.

ELEGANS, var. **INCOMPARABILE**. Deep red; one of the best easy growers. 20 cts. each, \$2 per doz.

ELEGANS, var. **ORANGE**. A very vigorous and healthy form. 20 cts. each, \$2 per doz.

ELEGANS, var. **THUNBERGIANUM**. Flowers pale scarlet. June. Japan. 20 cts. each.

ELEGANS, var. **UMBELLATUM**. One of the more common forms and a rather strong grower. 20 cts. each, \$2 per doz.

GRAYI. This species has a bulb of about the same shape as *Canadense*, but smaller. The flowers are dark orange-red, fine for cutting to go with white flowers. 40 cts. each.

HANSONII. See *L. maculatum*.

HENRYI. This is a splendid Lily from China, the most vigorous I have ever seen. Flowers closely resemble those of *L. speciosum* in shape, but are a handsome deep orange-yellow, banded with green. Where soil, moisture and other conditions were favorable, I have known this Lily to grow and thrive ten or more years



Lilium tenuifolium



Lilium tigrinum



Lilium regale

LILIES, continued

Henryi, continued

without any special care, sending out taller flower-stalks each season until fully matured, bearing magnificent clusters of its beautiful flowers in the greatest profusion. I consider it as healthy and permanent as any kind I have known. Like most other Lilies of the Speciosum class, it is well to cover it a little during the winter. 40 cts. each, \$4 per doz.

KRAMERI. See *L. japonicum*, var. *roseum*.

LEICHTLINII. See *L. Maximowiczii*.

LONGIFLORUM. A grand Lily, with pure white, funnel-shaped flowers, often 7 inches long. Often used for forcing for Easter to take the place of the more tender Bermuda Lily. 30 cts. each, \$3 per doz.

MACULATUM (*L. Hansonii*). Under favorable conditions attains a height of 3 feet. The flowers of this species are reddish orange, six to ten in a cluster; petals thick and durable. A rare Japanese Lily that is rather high in price, but so permanent and healthy has it been with me that I consider it one of the cheapest. I have never lost a bulb after it was once established, and I have bulbs which have bloomed every year for years. 75c. each.

REGALE. Vigorous constitution, medium in height, bearing one to several handsome, white, fragrant flowers; slightly shaded pink outside and the lower inner surface primrose-yellow. It is a hardy Lily and I consider it one of the finest novelties offered in many years. It seems to thrive on any good soil not too wet. One customer from New Hampshire writes: "These of last fall did so very well. I find it one of the easiest Lilies to grow." Everyone who sees a *L. Regale* bed in bloom admires it. Blooms about the same time as *L. candidum*. First-size bulbs, 90 cts. each, \$9 per doz; smaller bulbs, 75 cts. each, \$7.50 per doz.

SARGENTIÆ. This beautiful Lily, a native of Thibet and local in its distribution, grows taller than Regale, with its flowers in a cluster at the summit. Its white flowers have a chocolate shading outside. Too much moisture is not suited to this bulb nor too dry soil. My stock of this is too small to offer until October, when plenty of sizable bulbs will be ready.

SUPERBUM. AMERICAN TURK'S CAP LILY. This native Lily is one of the finest and most hardy of all. It often attains a height of 6 feet and produces a large number of flowers. Its flowers are bright orange in color, with dark spots. 20 cts. each, \$2 per doz.

TENUIFOLIUM. SIBERIAN CORAL LILY. One of the most delicate and charming species. One to 2 feet high, with one to fifteen or more nodding, rich scarlet flowers. 20 cts. each. Seeds, 10 cts. per pkt.

TIGRINUM, var. **SPLENDENS.** By far the best form of Tiger Lily I have had. It is taller, with handsome, large flowers and a much healthier plant. 15 cts. each, \$1.50 per doz.

WILLMOTTIÆ. This new and rare Lily was discovered by Mr. Wilson in the Province of Hupeh, China. It is a very floriferous and hardy Lily, as many as 28 blooms have been borne here on a single plant. In color it is like a shade of orange, or technically, it is that of rouge saturne. It is still very rare in cultivation. It blooms with the Regale and seems to be quite as hardy. \$4 each.

Japanese Lilies

AURATUM. GOLD-BANDED JAPAN LILY. This is the most popular Lily grown. No species ever had so much general favor. It is a very variable species in the size, color, etc., of its flowers, and also in the time of flowering. A



Lilium speciosum

LILIES, continued

Auratum, continued

bed of one hundred Auratums will produce flowers over a longer time than a hundred of any other Lily species. Flowers white, with a central band and numerous deep purple spots. Height 2 to 6 feet, not rarely bearing twenty large, fragrant flowers 8 to 12 inches across, with a fragrance so strong that a bouquet will fill a large church with their odor. A clump makes a glorious show. July and September. First-sized bulbs.

ELEGANS, var. **FULGENS** (*L. Batemanniae*).

A strong variety, about 2½ feet high; deep apricot flowers.

JAPONICUM, var. **ROSEUM** (*L. Kramerii*).

All who see this Lily in flower admire it, and it is often thought to be the most delicately tinted of all. The flowers vary from pure white

Japonicum, continued

in a few to a deep reddish pink. They are of fairly good size, but of a most delicate structure, quite in keeping with the color. It is a little difficult to grow on account of the fall rains getting into the center of the bulb and rotting it. It is said that the Japanese often plant this Lily on its side, so that its scale will shed the rains, and to prevent the water from entering the center of the bulb. There seems to be little difficulty in having them live when fresh bulbs are set in spring.

MAXIMOWICZII (*L. Leichlinii*), var. **RED-DISH YELLOW**. This is a later-blooming species than most of the red or yellow kinds, and stronger than the yellow variety.

RUBELLUM. I consider this the earliest Lily in my collection. The delicate pink flowers are showy and last well. While it is not so robust and durable as *L. speciosum*, it is a longer-lived species than *L. Kramerii*.

SPECIOSUM, var. **ALBUM**. About the same as the well-known *L. speciosum rubrum*, except that the flowers are white. It is a more expensive Lily. August and September.

SPECIOSUM, var. **MAGNIFICUM** and **MEL-POMENE** are sub-varieties of *L. speciosum rubrum* and will be supplied at the same price as Rubrum as long as stocks last.

SPECIOSUM, var. **ROSEUM**. White, shaded and spotted with rose.

SPECIOSUM, var. **RUBRUM**. This fine, late-blooming plant from Japan is one of the most showy of Lilies; of medium height, and not difficult to grow. Blooms in August and September. Good flowering bulbs.

Prices prevailing at time of delivery will be charged



Lilium tigrinum



Lupinus polyphyllus

LATHYRUS latifolius. PERENNIAL PEA; EVER-LASTING PEA. A very desirable perennial, and, though the flowers are not fragrant, like the sweet pea, they are very handsome and well worth growing. 15 cts. each. Seeds, 10 cts. per pkt.

L.—, var. White Pearl. A fine white variety with large, purest white flowers. 30 cts. each.

LIATRIS. GAY FEATHER; BUTTON SNAKEROOT. A group of plants of the composite family, with purple or nearly white flower-heads. Fine for the border. *Liatris* are easily grown from seed, bloom continuously and last for years.

L. pycnostachya. PRAIRIE OF KANSAS GAY FEATHER. Long spikes of rose-purple flower-heads. 20c. each, \$2 per doz. Seeds 6c. per pkt.

L. scariosa. This is a much showier form than is usually sent out for this plant. It has large, showy, purple heads and flowers much later than the others. A very imposing form. 25 cts. each. Seeds, 10 cts. per pkt.

L. spicata. Has spikes of good-sized purplish flower-heads, 6 to 15 inches in length. Blooms profusely. August. 20 cts. each, \$2 per doz.

LINUM austriacum. AUSTRALIAN FLAX. Has pale blue flowers in June and July. It is a pretty border plant and remains for a long time in bloom. June. 15 cts. each, \$1.50 per doz. Seeds, 5 cts. per pkt.

L. flavum. Is rather low in growth, with many branches, which terminate in a great number of bright yellow flowers. One of the best hardy perennials with yellow flowers. June and July. 15 cts. each. Seeds, 5 cts. per pkt.

LOBELIA cardinalis. CARDINAL FLOWER. The Cardinal Flower of our swamps and brooksides. Is one of the most striking of our wild flowers; often 4 feet high. Its elongated spikes of deep scarlet flowers attract attention in any place. Though naturally found in moist or boggy soil, it takes kindly to cultivation, and may be grown with success in any good garden soil. August. The Cardinal Flower may be naturalized by sowing the seed in moist places where the surface is always damp, and even in partial shade, where it will grow without care. It is like the fringed gentian in this respect, but will do with more shade than the gentian. It should be shaded for three to four days after transplanting. 15 cts. each, \$1.40 per doz. Seeds, 8c. per pkt.

LUPINUS polyphyllus. Has good-sized spikes of handsome blue flowers in June; attains a height of 3 feet and is a desirable plant for the border, or to grow among shrubbery. 15 cts. each, \$1.50 per doz. Seeds, 6 cts. per pkt.

L.—, var. albus. A white variety of the preceding and makes a lovely combination when planted with it. 25 cts. each.

LYCHNIS. A showy class.

L. alpina. Has pink flowers, in close, compact heads half an inch wide. Plant about 6 inches high. A native of the Alps. May. 20 cts. each, \$2 per doz. Seeds, 5 cts. per pkt.

L. Chalcedonica. MALTESE CROSS; JERUSALEM CROSS; SCARLET LIGHTNING. Two to 3 feet high, with white or scarlet flowers in good-sized corymbose heads. Give it a rich soil and it will bloom all summer. June. 20 cts. each, \$2 per doz. Seeds, 6 cts. per pkt.



Malva moschata

Lychnis Coronaria. MULLEIN PINK; ROSE CAMPION. Flowers red; showy in June. 15 cts. each, \$1.50 per doz. Seeds, 6 cts. per pkt.

L., Flos-Jovis. Grows 12 to 18 inches high making a clump. Flowers in a rather dense umbel. Individual flowers half an inch wide or less. 25 cts. each. Seeds, 6 cts. per pkt.

LYTHRUM Salicaria, var. roseum superbum. ROSY STRIFE. A rose-colored form of *L. Salicaria*, a native of England, where it is found growing on the margins of lakes and streams. Height 3 to 5 feet, bearing leafy spikes of rose-purple flowers. 15 cts. each, \$1.50 per doz. Seeds, 8 cts. per pkt.

MALVA moschata. MUSK MALLOW. Flowers rose or white, about 2 inches wide, in terminal axillary clusters; height about 2 feet; branching. A handsome perennial native of Britain. 15 cts. each, \$1.50 per doz. Seeds, 5 cts. per pkt.

MITELLA diphylla. BISHOP'S CAP; MITERWORT. The plant is a low and slender one with pretty, small, white flowers in racemes 6 to 8 inches long. Nice for the rocky and likes partial shade. 15 cts. each. Seeds, 8 cts. per pkt.

MONARDA didyma. OSWEGO TEA; BEE BALM; FRAGRANT BALM. Cardinal-red flowers in large, showy heads 2 or more inches across, on leafy, angled stems about 3 feet high, and when massed for distinct effects against a dark background, its brilliant flowers give bright, semitropic garden pictures in summer. 20 cts. each, \$2 per doz.

MYOSOTIS. FORGET-ME-NOT.

M. alpestris, Victoria. 20 cts. each, \$2 per doz. Seeds, 5 cts. per pkt.

M. scorpioides, var. semperflorens (M. palustris). TRUE FORGET-ME-NOT. A fine plant for gardens and for moist or wet grounds. 20 cts. each. Seeds, 5 cts. per pkt.

ÆNOTHERA. EVENING PRIMROSE.

Æ. Missouriensis. A low, caulescent perennial with decumbent stems and bearing many large, axillary, yellow flowers. A very permanent plant in well-drained, sandy or gravelly soil, but not difficult to establish in any good garden soil. 20 cts. each.



Lythrum Salicaria



Pæonia, Festiva Maxima

PÆONIA albiflora (*P. chinensis*). CHINESE

PEONIES. Among the many popular herbaceous plants it would be hard to find one that fits into any position in the garden or grounds like the Peony. The gorgeous display of flowers in their season is very effective, while the dark green foliage is at all times attractive. What better frontage for shrubs or, in fact, for any large or small plantation, than Peonies? They are also well suited to massing in beds by themselves. While Peonies may be planted with good results in spring or fall, there is probably no better time than from August 20 to the middle of September. Give the borders or beds a deep and thorough spading; yes, trench the ground, working in a liberal supply of the best decomposed manure, and again a top-dressing of the same in the spring. Avoid planting too deep; a couple of inches of earth over the buds is sufficient. Don't expect too much of them the first year. They are a little slow in their growth, but after a couple of seasons, if they have been well cared for, you will have no reason for regretting the extra pains in setting. They bloom in June.

Albert Crousse. A very large, flat, and compact bloom; rose-white, flecked crimson; fragrant. Tall, erect, and a very free bloomer. An extra-fine variety. \$1.50 each.

August Miellez. Pale red and blush. 55 cts. each.

Charles Russela. Double; red. 60 cts. each.

Crimson Queen. 40 cts. each.

Duchess of Orleans. Pale red and blush. A charming variety. 65 cts. each.



Pæonia officinalis rubra-plena (see page 22)

Papaver nudicaule



PAPAVER nudicaule. ICELAND POPPY. White, reddish orange or common golden yellow flowers. Very hardy and a permanent perennial when established in congenial soil. May to November. 15 cts. each, \$1.50 per doz. Seeds, 5 cts. per pkt.

LARGE ORIENTAL POPPIES

Papaver orientale

Mrs. Perry. A fine salmon-rose. One of the best of the large Poppies.

Perry's White. A valuable addition to the list of perennials. The flowers being a pure satiny white, with a crimson-maroon blotch at the base of each petal.

Gerald Perry. One of the most attractive of the Oriental Poppies yet seen. Large flowers of a uniform shade of apricot-pink, conspicuously blotched crimson.

Any of the above, 50 cts. each

Papaver orientale. ORIENTAL POPPY. A most attractive plant, easy of culture, and with me one of the most permanent of perennials. A loamy or slaty soil with good drainage is right for it. 15 cts. each.

P.—, var. Mahony. The darkest carmine-purple. 30 cts. each.



Oriental Poppies

Paeonia albiflora, continued

Festiva Maxima. One of the finest early white Peonies; flowers very large and double, splashed with clear carmine spots on edges of center petals; foliage good and flowers fragrant. 70 cts. each.

Golden Harvest. Medium size, crown-shaped; pale lilac-rose and cream-white center, crown pink; fragrant; medium height. 70 cts. each.

Glory of Erfurt. Double; white. 70 cts. each.

Lutitiana. Pale pink, yellow center. 60 cts. ea.

Mary Tudor. Flower semi-double; rose, creamy center. 40 cts. each.

Mme. Lebon. Bright cherry-red. 60 cts. each.

Mutabilis. Pale pink. 75 cts. each.

Professor Morren. Pale pink. 55 cts. each.

Reevesii. Fine; full-double; pink. 75 cts. each.

Rose de Gendbrugg. Pale rose. 55 cts. each.

Rosy Dawn. A fine, large, single rose-colored Peony. 70 cts. each.

Rubra plenissima. Pale pink. 45 cts. each.

Sappho. Dark rose. 45 cts. each.

Semi-Double Red. A new seedling of much merit. 50 cts. each.

Teas' No. 1. A large, full-double, blush-pink flower, delicately fragrant and a most exquisite shade. 65 cts. each.

Teas' No. 3. A fine double; red. 55 cts. each.

The Bride. Large; double; white, touched with pink. \$1 each.

Venus. A fine double, white form. 65 cts. each.

Victor Lemoine. Double; crimson. 50 cts. each.

P. officinalis, var. rosea-plena. 55 cts. each.

P.—, var. rubra-plena. 50 cts. each.

P. tenuifolia, var. fl.-pl. An early, double Peony with deep scarlet flowers, but not so large as the ordinary sorts. 75 cts. each.

Mixed Seedlings. 15 cts. each, \$1.50 per doz.

PANSIES. See *Viola tricolor*.

Papaver orientale, var. **Royal Scarlet**.

It is a fine hardy perennial, having great red flowers with dark center. 25 cts. each, \$2.50 per doz. Seeds, 6 cts. per pkt.

P. pilosum. Flowers about 3 inches in diameter, reddish yellow, with pale spot at base of petals. 15 cts. each. Seeds, 6 cts. per pkt.

PENTSTEMON. **BEARD-TONGUE**. This genus comprises a large number of variously colored flowers. Few genera among the popular hardy perennials afford a greater number that are so attractive. Their natural gracefulness, variety of colors, and great abundance of flowers make them useful in many places. They like a sandy soil, with leaf-mold intermixed, and plenty of moisture in summer, but in winter good drainage is essential. Though hardy as a rule, too much frost with an excess of moisture in winter seems to be fatal to most of this genus.

P. acuminatus. Lilac or violet flowers in July. Stems erect, about a foot high. A very attractive flower and nice for cutting. 20 cts. each, \$2 per doz.



Phlox paniculata

Pentstemon barbatus, var. **Torreyi**. About 2 feet high showy flowers; red or scarlet. One of the most attractive. 25 cts. each, \$2.50 per doz. Seeds, 6 cts. per pkt.

P. grandiflorus. One of the showiest, with thick, leathery leaves at base of stem and long, one-sided spikes of large, showy, lilac or purple flowers. 25 cts. each.

P. lævigatus (*P. Digitalis*). Common on moist grounds in the West. Though not so showy as some, its flowers are quite abundant, nearly white; a trifle more than an inch in length. Moist, sandy soil is its choice. June. 15 cts. each, \$1.50 per doz.

PHLOX paniculata. **HYBRID PHLOXES**. Many of the best hardy perennials are of this genus. Dwarf species, like *P. subulata* and its varieties, are useful in rockwork. The taller sorts, *P. paniculata* and *P. maculata*, give some most delicate and varied colors, and are prized as among the most staple garden perennials.

Following named Phlox varieties at 20 cts. each, \$2 per doz., except where otherwise noted.

Anna Crozy. An old-time favorite and one of the best whites.

Arataxis. Pink and white.

Bridesmaid. White with large crimson-carmine eye.

Eclairer. One of the best of the rosy magentas, with flowers of thicker material than most other varieties.

General Chanzy. A very attractive color; bright pink, tinted salmon.

Hanny Pfeiderer. Large; white, with cherry-red center.

Independence. Large; pure white.



Pentstemon lævigatus



Planting of Hardy Phlox

Phlox paniculata, continued

Jeanne d'Arc. Medium tall; white; late.

Jordan. A large-petaled, soft dark rose with darker eye.

Mme. Paul Dutrie. Delicate lilac-rose; flowers large and borne in large panicles.

Pantheon. Large, dark pink flowers; very fine.

Richard Wallace. White, violet center.

Rijnstroom (Rhine Stream). A grand new Phlox, resembling Pantheon, but with larger flower-heads. A soft, clear pink; medium height and strong grower. 25 cts. each.

R. P. Struthers. Rosy carmine with claret-red eye.

The Pearl. One of the best white Phloxes. Medium tall and an excellent variety.

Von Lassburg. Handsome pure white with very large individual flowers.

Tapis Blanc. Rather dwarf with beautiful heads of large white flowers. One of the best dwarf whites.

The Queen. A fine, tall, white variety.

W. C. Egan. Delicate, soft shade of lilac. 25 cts. each.

Wm. Robinson. Salmon, with rosy center; large flowering.

P. suffruticosa, Miss Lingard. A fine, free-blooming Phlox, coming into flower much earlier than other kinds and continuing in bloom through the season. 20 cts. each, \$2 per doz.

P. amoena. A low species, native to dry hills and barrens. Flowers pink, purple and, occasionally, white. This form is pink. 20 cts. each, \$2 per doz.

Phlox paniculata, continued

P. stolonifera (reptans). A handsome, low-growing species, forming dense beds which, when in bloom, display a solid sheet of red flowers. May to June. 20 cts. each.

P. subulata. Moss PINK. Creeping and tufted, forming broad mats. Flowers pure white to rosy red. May and June. 15 cts. each, \$1.50 per doz.

P.—, var. alba. 15 cts. each, \$1.50 per doz.

P.—, var. Alice Wilson. The flowers of this are violet-blue. 20 cts. each.

PHYSOSTEGIA virginica. FALSE DRAGON-HEAD. Flowers about an inch long, varying in color from purplish red to pink and white. 15 cts. each, \$1.50 per doz.

P.—, var. alba. The white form of this plant is very pretty and fine for cutting. 20 cts. each.

PLATYCODON grandiflorum. JAPANESE BELL-FLOWER. Six to 15 inches high. Large, solitary, white or blue flowers at the ends of the branches. China and Japan. Summer. 15 cts. each, \$1.50 per doz. Seeds, 5 cts. per pkt.

P.—, var. album. 20c. each. Seeds, 8c. per pkt.

P.—, var. Mariesii. Not so tall as the typical Grandiflorum, but with large blue flowers in great profusion. 20 cts. each, \$2 per doz.

PODOPHYLLUM peltatum. MANDRAKE; MAY APPLE. A good plant for shade. The flower is pure white or nearly so, of good size, but often hidden by the foliage. It has large, round, lobed, peltate leaves. 20 cts. each.

POLEMONIUM Van Bruntia (*P. caeruleum*). JACOB'S LADDER. A fine border plant, with handsome blue flowers in early summer. May and June. 20 cts. each. Seeds, 8 cts. per pkt.

Polemonium reptans. GREEK VALERIAN. Loose-panicked corymbs of blue or sometimes white flowers. Plant 6 inches high, blooming in spring. 20 cts. each.

POLYGONATUM multiflorum. DAVID'S HARP; LADY'S SEAL. One to 3 feet high, with small white flowers. A nice plant for the wild garden. Last of May. 15 cts. each, \$1.50 per doz.

POLYGONUM amplexicaule. MOUNTAIN FLEECE. Strong-growing plant, 3 to 5 feet high. Flowers nearly white, borne very profusely. Makes a brilliant display in the garden. Needs a little covering in Vermont, as it is somewhat tender. 15 cts. each, \$1.50 per doz.

POTENTILLA rupestris. Flowers white, borne on long stems; a fine plant for dry places. 12 cts. each, \$1 per doz. Seeds, 5 cts. per pkt.

PRIMULA officinalis (*P. veris* of Lehman and of Linnæus in part). COWSLIP; PALSYWORT. Plant in rich, well-drained soil, in the border or in the rockery. Also attractive when used as an edge for a flower-bed. Flowers vary from a clear yellow to pleasing shades of yellow and maroon. 20 cts. each, \$2 per doz.

RUDBECKIA Newmanii. Flowers large; yellow with dark purple centers. Grows 1 to 3 feet high. 20 cts. each, \$2 per doz.

SALVIA azurea, var. grandiflora. SAGE. A most charming species, with delicate blue flowers in August. A permanent plant of easy culture, adding a much-needed touch of blue to the garden when yellow seems to be predominant. 20 cts. each, \$2 per doz.

SANGUINARIA canadensis. BLOODROOT. Has very pretty white flowers in early spring, an



Sanguinaria canadensis

Sanguinaria canadensis, continued
inch or two wide, followed by large, heart-shaped leaves, which remain until autumn. It will do well in shade, and on this account is one of the most valuable for the shady corner. 12 cts. each, \$1 per doz., \$6 per 100.



Platycodon grandiflorum



Sedum spectabile

SAPONARIA officinalis. COMMON SOAPWORT; BOUNCING BET. Will grow in the poorest soil. 12 cts. each. Seeds, 5 cts. per pkt.

SEDUM. STONECROP. A very large genus, comprising more than a hundred species of plants, mostly hardy, and natives of temperate or frigid regions. Their flowers are mostly white or yellow, sometimes pink or blue.

S. acre. WALL PEPPER; MOSSY STONECROP. A pretty species for rockwork; well known and considerably used. 10 cts. each, \$1 per doz.

S. Aizoon (*S. Maximowiczii*). Flowers yellow, opening in a dense, flat, spreading cyme in late summer. About a foot high. Japan. 15 cts. each, \$1.50 per doz. Seeds, 5 cts. per pkt.

S. hybridum. A low, creeping plant, forming compact tufts, 4 to 5 inches high, with handsome yellow flowers in umbellate cymes, 2 to 3 inches across. A native of Siberia and flowers in summer. Does well in dry, rocky places. 12 cts. each, \$1.25 per doz., \$6 per 100. Seeds, 6 cts. per pkt.

S. maximum. A stout, bushy plant, 2 feet high or less. Flowers whitish with red spots toward the tips. 20 cts. each.

S. pallidum, var. roseum. 15 cts. each, \$1.50 per doz.

S. reflexum. Flowering stems, 8 to 10 inches high; flowers yellow, three-fourths of an inch wide. 15 cts. each, \$1.50 per doz. Seeds 6 cts. per pkt.

S. spectabile, var. purpureum. This form is much better than the type, having larger and darker purple flowers and larger cymes. 20 cts. each, \$2 per doz.

S.—, var. Brilliant. This form has still deeper rose flowers, and is an improvement on the Purpureum. 20 cts. each.

Sedum spurium coccineum. Rose-purple flowers; low-growing; nice for rocks. 12 cts. each, \$1.20 per doz.

S. stoloniferum. A species from Asia Minor, with pink or white flowers. 12 cts. each, \$1.20 per doz.

S. Telephium. The common LIVE FOREVER of our meadows. Good for rocky, barren situations. 10 cts. each, \$1 per doz.

S. ternatum. Stems spreading; 3 to 6 inches high. 15 cts. each.

SILENE alpestris. ALPINE CATCHFLY. A low, perennial, white-flowered plant, 5 to 6 inches high, forming tufts. A fine plant for the low border as well as for rockwork. 20 cts. each. Seeds, 8 cts. per pkt.

SPIRÆA Aruncus. See Aruncus, page 4.

S. Filipendula. See Ulmaria, page 27.

STACHYS lanata. WOOLLY WOUNDWORT. The blooms are striped, in whorls; leaves thick, soft and woolly.

A fine border plant blooming in June and July. 12 cts. each, \$1.20 per doz. Seeds, 5 cts. per pkt.

STATICE latifolia. SEA

LAVENDER.

A handsome

plant, 2 feet

high, from a

deep root.

Scape much

branched,

panicle large

and spreading,

flowers blue,

mid-

summer. As

useful in cutting

as the

Gypsophila.

A hardy and

permanent

plant, which

should be

given a deep

soil, sunny

position and

left undisturbed.

Its color gives

a most desirable

touch to the

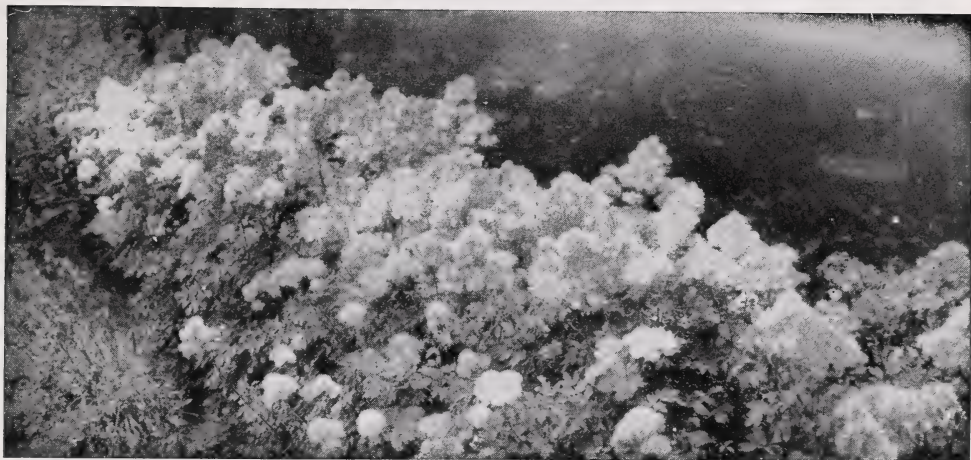
hardy border.

20c.



Stachys lanata

STOKESIA cyanea. STOKES' ASTER. A rare, hardy plant of the Aster family; 12 to 18 inches high, and very thrifty. Of surpassing beauty, with blue flowers in August. Leaves are rich green. 25 cts. each, \$2 per doz.



Thalictrum

TANACETUM vulgare, var. crispum, is the cut-leaved form of the common Tansy. It is interesting, both for the foliage and for its flowers. 12 cts. each, \$1.25 per doz.

THALICTRUM dasycarpum. PURPLE MEADOW RUE. Two to 4 feet high; purplish stem; flowers greenish and purple. Grows naturally in dry uplands. 20 cts. each.

T. dioicum. EARLY MEADOW RUE. One to 2 feet high; flowers purplish and greenish in ample panicles, dioecious, coming in April and May. Nice for planting in shade. 15 cts. each.

T. minus. A somewhat variable species 1 to 2 feet high; blooms in summer. 15 cts. each, \$1.50 per doz.

T. polygamum. TALL MEADOW RUE. Stately plant, when grown in rich, moist soil. Flowers white; foliage good. 15 cts. each, \$1.50 per doz.

THERMOPSIS caroliniana. Grows 4 feet high, with bright yellow flowers. 25 cts. each. Seeds, 6 cts. per pkt.

TIARELLA cordifolia. FALSE MITERWORT; FOAM FLOWER. Handsome in leaf and flower; quite hardy; easily increased, and at home in any moist, sandy soil. Fine for the shady corner, shady or sunny portions of the rockery, or, if not too dry, in full sun. Creamy white flowers, star-shaped, massed on stems above the foliage. May. 15 cts. each, \$1.50 per doz. Seeds, 10 cts. per pkt.

TRADESCANTIA virginiana. SPIDERWORT. A good plant for decorative purposes among shrubbery or along the margins of woodland walks. After a time it forms fine, large clumps, 10 to 18 inches high, with numerous terminal umbels of large, light blue flowers. 15 cts. each.

T.—, var. alba. 20 cts. each.

TRILLIUM. WOOD LILY; WAKE ROBIN. Early-flowering bulbous plants, which are generally fond of shade. Large, handsome, dark green

Trillium, continued

leaves, which continue for a long time after the flower. If planted in spring, it should be done early. Autumn or late summer is the best time to transplant them. Clumps of Trilliums interspersed amongst the shrubbery make a most interesting feature of the garden. They bloom profusely in spring.

T. cernuum. NODDING TRILLIUM. About a foot high, bearing three leaves with a nodding white flower. 20 cts. each.

T. erectum. The common purple-flowered kind; one of the first in bloom. 12 cts. each, \$1.10 per doz.

T. grandiflorum. Generally considered the best, and probably a thousand of it are sold to a hundred of any other kind. A very charming plant, blooming in early spring and liking shade. Very hardy and increases rapidly. 10 cts. each, 75 cts. per doz.

T. undulatum (*T. erythrocarpum*). PAINTED TRILLIUM. This native of cold damp woods is more difficult to grow than some. It needs leaf-mold and deeper setting, but will amply repay the extra care when established. 12 cts. each, \$1.25 per doz.

TROLLIUS europæus. COMMON GLOBE FLOWER. Stems 6 to 20 inches high, bearing pale yellow flowers an inch or more wide. A very interesting plant with handsome flowers. June to August. 25 cts. each.

TUNICA Saxifraga. Has small pink flowers in the greatest profusion. Nice for the low border or for rockwork; blooms profusely. 15 cts. each, \$1.50 per doz. Seeds, 5 cts. per pkt.

ULMARIA Filipendula (*Spiræa Filipendula*). MEADOW SWEET; DROPWORT. Flowers white or rose outside; stem 2 to 3 feet high, grooved, erect, with a few small leaves. Tuberos-rooted, herbaceous perennial. June and July. A native of Europe. 15 cts. each, \$1.50 per doz.



Viola cornuta, var. *alba*

Ulmaria purpurea. One of the finest of Meadow Sweets. 2 to 4 feet high. 15 cts. each.

U. rubra, var. **venusta.** Sometimes called PRINCE'S FEATHER. Two to 3 feet high. Flowers deep peach-blossom color, in splendid compound feathery panicles. Fine for cutting. 20 cts. each, \$2 per doz.

UVULARIA grandiflora. BELLWORT. Ten to 13 inches high, forking above numerous light green leaves and pale yellow flowers. Spring. 12 cts. each, \$1.20 per doz.

VALERIANA coccinea. Showy heads of reddish flowers, June to October. 2 feet. 20 cts. each, \$2 per doz.

VERONICA gentianoides. About 2 feet high, with pale blue flowers borne in profusion. 15c. each.

V. longifolia. Two feet high; lilac flowers. 12 cts. each, \$1.20 per doz. Seeds, 6 cts. per pkt.

V.—, var. **subsessilis.** By far the finest of the hardy Veronicas. The flowers are large, and of an intense blue. A very decorative plant; quite permanent. 25 cts. each.

Veronica spicata. Handsome bright blue flowers in a dense spike; blooms profusely. Europe. 12 cts. each, \$1.20 per doz.

VERBASCUM nigrum. MULLEIN. Handsome, bright yellow or white flowers in June. Plant 2 feet high and very stately; most effective in the border. Western Asia. 20 cts. each. Seeds, 8 cts. per pkt.

VIOLA. VIOLET.

V. canadensis. CANADIAN WHITE VIOLET. One of the best of wild Violets. Not rarely 18 inches high, branching and bearing numerous white-and-purple flowers. 12 cts. each, \$1.25 per doz.

V. cornuta. HORNED PANSY; TUFTED PANSY. The recently added varieties of this charming plant have greatly enhanced its value as a class, which is distinct from the common Pansy. Partial to moist soil; comes readily from seeds. 12 cts. each, \$1.20 per doz.

V.—, var. **alba.** Like the preceding except the flowers are pure white. One of the daintiest. 12 cts. each, \$1.20 per doz.

V. odorata, var. **alba.** 20 cts. each.

V. pubescens. DOWNY YELLOW VIOLET. Six to 12 inches high, with broadly heart-shaped leaves and yellow flowers. 15 cts. each, \$1.50 per doz.

V. palmata, var. **cucullata.** HOODED VIOLET. Blue flowers. 12 cts. each, \$1.20 per doz.

V. tricolor. PANSY. Very popular. The flowers are borne profusely on long stems. It prefers a cool, moist bottom. 7 cts. each, 65 cts. per doz. Mixed seeds, 10 cts. per pkt.

YUCCA angustifolia, var. **recurvifolia.** 25c. ea.

Y. filamentosa. ADAM'S NEEDLE. Leaves about an inch wide. Pyramids of white, bell-shaped flowers in July. 4 to 8 feet high. 25 cts. each.



Trillium grandiflorum (see page 27)



Cypripedium hirsutum (spectabile)

HARDY TERRESTRIAL ORCHIDS

This charming hardy group contains some of the most showy hardy plants in cultivation. They are very easy to manage, and exceedingly attractive when in flower. No class of plants has more admirers, and all who have had the pleasure of seeing them growing have doubtless been struck with the lovely and varied coloring of some of this family. To see them growing in their habitat is a treat which comparatively few can enjoy, but with a little trouble we may have the pleasure of their flowers at home in our garden.

APLECTRUM hyemale. PUTTY-ROOT; ADAM AND EVE. Flower-stalks 10 to 15 inches high with about ten flowers which are yellowish, tinged with madder-purple. By the time the flowers are fully developed, the single leaf at the base of the stem has faded and soon disappears, to come up again in October. Very odd and attractive. 30 cts. each.

CYPRIPEDIUM parviflorum. SMALL YELLOW LADY'S SLIPPER. One of the best native orchids; 6 to 15 inches high, with one or more bright yellow flowers. The brown-purple spiral petals contrast nicely with the yellow lip; fragrant. Does well in sandy soil, with a mixture of peat or leaf-mold; likes some shade. May and June. 25 cts. each.

C.—, var. pubescens. LARGE YELLOW LADY'S SLIPPER. Resembles *C. parviflorum*, but is larger. Does well in almost any soil; likes some shade. One of the easiest to manage, and one of the most permanent when well set. It should be in every collection of hardy plants for it adds distinction to any planting. May and June. 25 cts. each, \$2.50 per doz.

C. acaule. COMMON LADY'S SLIPPER. This is another handsome native, beautiful, rose-colored flower 2 inches in length. Suited to well-drained fissures of rockwork. 20 cts. each.

Cypripedium hirsutum (spectabile). SHOWY LADY'S SLIPPER. The grandest of all terrestrial orchids. The flowers are borne on leafy stems 2 feet or more high. The pouch is much inflated, of a deep rose-purple or almost white, while sepals or petals are white. May be forced in peat or grown outside. It likes a considerable amount of moisture, but no stagnant soil will suit. Strong, single-budded plants, 25 cts. each; plants with two flowering buds, 50 cts. each. A few larger plants, with 3, 5, 6 or more buds at 25 cts. a bud. (See illustration on cover.)

EPIPACTIS pubescens (Goodyera pubescens). RATTLESNAKE PLANTAIN. Reticulated leaves which are very pretty, are clustered at the base from which springs a stalk 12 to 18 inches high, terminating in a close spike of white flowers. The flowers of this plant are pretty enough in their season, but the leaves, lasting fresh through the winter, are very attractive. Needs shade and peat or leaf-mold. 15 cts. each, \$1.50 per doz.

ORCHIS spectabilis (Galeorchis spectabilis). SHOWY ORCHIS. Grows 4 to 7 inches high, with two oblong leaves at the base; short, loose spikes of pink-purple flowers in May. Native to rich woods, 20 cts. each.

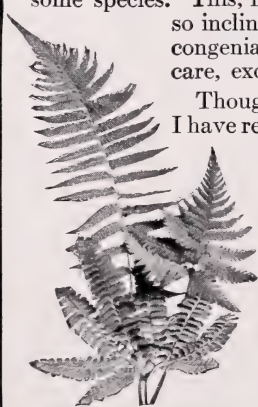
The most of these Orchids are quite permanent when established in the right soils. I have seen one or two of the Lady's Slipper planted where they lasted five years; in one case, sixteen years.



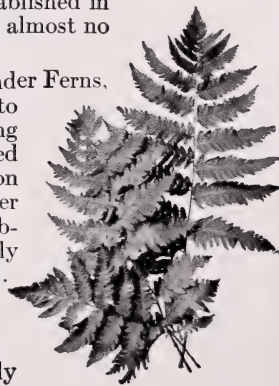
HARDY FERNS

IN the last 20 years Hardy Ferns have gained much in popularity in America. They seem so well fitted for shady locations, where little else would succeed, that large numbers are often used to fill space which seems suited to them alone. I believe it is usually understood that the right sort of enrichment for Ferns is decayed peat or good leaf-mold, also well-decomposed chip dirt. The dark soils of our deep woods are suited to these shade-loving plants. I say "shade-loving," because the majority are found only in shade in their natural homes, though a few thrive in very dry and sunny situations. As a rule, they are easy to grow. In fact, in some soils a few are inclined to spread and become weeds. We have hilly moist pastures in Vermont which are almost entirely given up to some species. This, however, is in only a few favored places and not many species are so inclined to spread. When they become well established in congenial soils, they are quite permanent and need almost no care, except to be let alone.

Though I have never tried barnyard manures under Ferns, I have read so often that manures are not congenial to them that I feel warranted in not advising their use. It may be that well-composted manures, where no further decomposition is possible, can be used sparingly under Ferns, if no leaf-mold or similar soil is obtainable, but it should be used sparingly and never when the leaf-mold is at hand. Some locations which are in the shade are not good for Ferns. The ground under maple trees is often so sapped of all moisture and enrichment that hardly anything else can live there.



Various fronds



Aspidium cristatum

Adiantum

PEDATUM. MAIDENHAIR FERN. One of the most popular species of hardy sorts. It makes a good pot-plant, and is at home in almost any good garden soil where sufficient moisture is near, and drainage as well. It grows naturally in shade and also in the sun. The chief characteristics of this Fern are its airy poise and delicate frond texture. 15 cts. each, \$1.50 per doz., \$6 per 100.

Aspidium

CRISTATUM. A small, narrow-fronded plant which grows in moist meadows and swamps, but more commonly around old stumps and decayed trees in open meadows and pastures. It makes one of the best plants in cultivation. 20 cts. each, \$2 per doz.

CLINTONIANUM. A much larger plant than the true type of *A. cristatum*; attains a height of 4 feet when grown under the most favorable conditions. It is usually found in shade, and is fine for the north side of the house. 25 cts. each, \$2.50 per doz.

GOLDIEANUM. Not rarely attains a height of 4 feet in its natural home. It is one of the finest Aspidiums. Moist, well-drained, loamy soil is good for it. 25 cts. each.

MARGINALE. Quite common on rocky hillsides. Its large, light green fronds have a bluish tinge and are very durable; cut specimens will keep a long time. A valuable Fern for rocky or shaded slopes, or, in fact, for any place where it may be grown. 20 cts. each, \$2 per doz.

NOVEBORACENSE. Of medium size and more delicate structure than most of the larger Ferns. Its height in favorable locations is a little more than a foot. 20c. each, \$2 per doz.

SPINULOSUM.

Makes a fine plant for any corner where it may be made to grow. Its fronds are 1½ feet high, by 4 and 5 inches wide, and so delicately constructed as to be very handsome. Is worth any amount of care and trouble to make it grow. 20 cts. each, \$2 per doz.

THELYPTERIS.

Varies much on different soils. Fronds are about 2 feet high, long and narrow. Fine for giving variety to the front bed. 15 cts. each.



Aspidiums are beautiful planted in masses

Asplenium

ACROSTICHOIDES (*A. thelypteroides*). SILVER SPLEENWORT. Attains a height of 3 feet and has fronds 3 to 5 inches wide. It is one of the Ferns which grow alone in good, moist soil. 20 cts. each, \$2 per doz.

ANGUSTIFOLIUM. SPLEENWORT. A fine, tall Spleenwort, growing in moist ravines, and often 3 feet high. Needs shade and a moist, rich soil. 25 cts. each, \$2.50 per doz.

FILIX-FEMINA. LADY FERN. Has a larger number of cultivated forms in Europe than any other of our common Ferns. One to 3 feet high, with fine, delicate fronds, and very hardy. Shade and sun are alike congenial, if soil is sufficiently rich and moist. Grows vigorously. 20 cts. each, \$2 per doz.

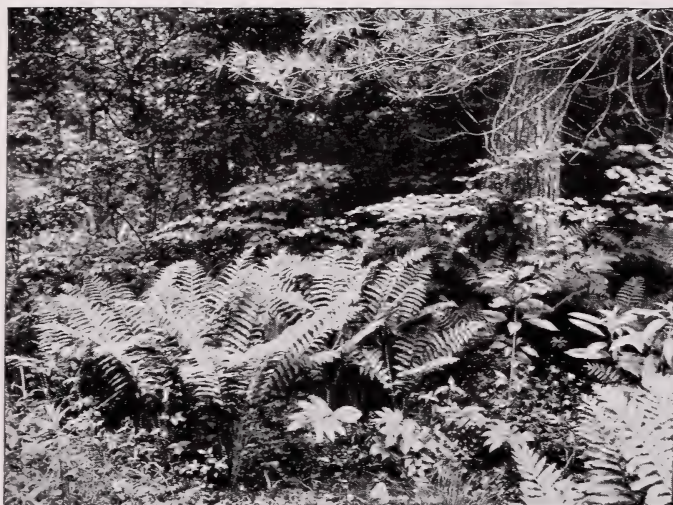
PLATYNEURON (*A. ebeneum*). Usually 9 to 15 inches high when fairly established. A fine little Fern, with narrow, ever-green fronds, which are very handsome. Found on rocky soil. 20 cts. each, \$2 per doz.



Dicksonia punctilobula



Aspidium marginale



Osmunda cinnamomea (Cinnamon Fern)

ASPLENIUM, continued

TRICHOMANES. MAIDENHAIR SPLEENWORT. This does well in shaded rockwork and will grow on shaded cliffs if moist. 20 cts. each, \$2 per doz.

Camptosorus

RHIZOPHYLLUS. WALKING-LEAF. Is found on the margins of shaded cliffs or rocks, where the leaf-mold has formed a good black soil, and is always shaded. Where such locations can be imitated, it is a good plant and will prove a very effective addition indeed where plants are needed for a shady place. 25 cts. each.

Cystopteris

BULBIFERA. BLADDER FERN. Its fronds are not rarely 2 feet long, but quite narrow. They are widest at the bottom and taper to a narrow point at the top. Exceptionally useful on damp, rocky banks. A most interesting Fern. 15 cts. each, \$1.50 per doz.



Polystichum fronds

FRAGILIS. This is a variable Fern, growing over a wide area. It is smaller and more fragile than the

Fragilis, continued

Bulbifera. It makes a nice plant for rockwork. It is found in partial shade or full sun. 15 cts each, \$1.50 per doz.

Dicksonia

PUNCTILOBULA (*D. pilosiuscula*). HAY-SCENTED FERN. Very abundant in the mountain pastures of New England. Delicate and easy of culture, it is one of the best. 20 cts. each, \$2 per doz.

Onoclea

STRUTHIOPTERIS. OSTRICH FERN. One of the most stately and one of the best for cultivation. Not rarely over 4 feet high, with handsome dark,

green fronds growing in a circle, forming in outline a handsome vase. It is not evergreen, but lasts until frost kills the fronds. It likes to be shaded part of the day and will stand considerable moisture. 20 cts. each, \$2 per doz.

SENSIBILIS. SENSITIVE FERN. A common plant in moist ground; though nice to establish in some places, I do not consider it so good as many others. 12 cts. each, \$1.20 per doz., \$6 per 100.

Osmunda

Flowering Fern

The Osmundas are a grand group of large, tall-growing Ferns, which when established in right soils and locations, make fine plants. *O. regalis* and *O. cinnamomea* grow in more moisture, as a rule, than *O. Claytoniana*; but with good treatment and intelligent selection of location, the three may be grown together. It will not be the first or second year that the full benefit comes from the planting of these species; after they have become established, much handsome fronds appear.



Polystichum plant



OSMUNDA, continued

CINNAMOMEA. CINNAMON FERN. 20 cts. each, \$2 per doz.

CLAYTONIANA. CLAYTON'S FLOWERING FERN. 20 cts. each, \$2 per doz.

REGALIS. ROYAL FERN; BUCKTHORN BRAKE. 20 cts. each, \$2 per doz.

Phegopteris, Cliff Brake

HEXAGONOPTERA (*Polypodium hexagonopterum*). HEXAGON BEECH FERN. Broader fronds; very delicate and pretty. Grows in any good, moist soil, where it will not get too dry and still have drainage. 15 cts. each, \$1.50 per doz.

POLYPODIOIDES. 5 to 8 inches high. A very delicate little Fern which will grow in rockwork or level culture in partial shade. 15 cts. each, \$1.50 per doz.

Polystichum

BRAUNII. SHIELD FERN. Comes from the shaded brooksides of the higher mountains of New England. A very handsome Fern, though not so common as most of the hardy sorts. 20 cts. each, \$2 per doz.

ACROSTICHOIDES (*Aspidium acrostichoides*). DAGGER FERN; CHRISTMAS FERN. A widely known species; its fronds are used by the trade in bouquets. One of the easiest to manage, and about the best evergreen hardy Fern we have. It grows on rocky, half-shaded hillsides and in swamps. Is fine for forming an undergrowth among shrubbery. 20 cts. each, \$2 per doz.

Polypodium

VULGARE. POLYPODY. A fine evergreen Fern for rockwork in shade. 15 cts. each, \$1.50 per doz.

Woodsia

ILVENSIS. RUSTY WOODSIA. Grows on dry, exposed rocks, forming large tufts, and is a pretty Fern. 5 to 6 inches high. 15 cts. each, \$1.50 per doz.

OBTUSA. Fronds a little wider than *W. Ilvensis*. Easily managed. 15 cts. each, \$1.50 per doz.



Foundation Planting of Ferns

TENDER PLANTS

Suited to spring planting. They are lifted in autumn just after frost, and, after being well dried, the bulbs are stored in a warm, dry place. The flowers of nearly all are brilliant and showy.

Cannas

Austria. One of the best yellow-flowering Cannas. Flowers of large size, of a very clear canary-yellow, inside slightly dotted brown; wonderfully fine. A tall-growing variety; green foliage. 25 cts. each.

Charles Henderson. Of uniform, compact habit, growing about $3\frac{1}{2}$ feet high; flowers a deep crimson with yellow flame at the throat; green foliage. 15 cts. each.

Eastern Beauty. Light salmon; bronze foliage. 20 cts. each.

Mont Blanc. Almost pure white. 30 cts. each.

King Humbert. King of the Bronze-leaved Cannas. A brilliant orange-scarlet variety of large size; leaves broad and massive. Height 5 feet. 20 cts. each, \$2 per doz.

Tritonia (Montbretia)

Crocsmæflora. One of the most floriferous of summer-flowering bulbs. Flowers orange-scarlet; very pretty. August and September. 12 cts. each, 60 cts. per doz., \$3 per 100.



Gladiolus

Galtonia

Candicans (*Hyacinthus candicans*). SUMMER HYACINTH. I have placed this plant in former years among the hardy sorts, and it is as hardy as many of the Japan lilies, but without protection it kills out in open winters in Vermont. It is as easily wintered in soil in the cellar as a gladiolus. It has large, pure white, pendent, funnel-shaped flowers in long racemes. They are fragrant, and the whole raceme is not out at one time. South Africa. 15 cts. each, \$1.50 per doz.

Gladioli

This is a very useful class of bulbs for spring planting, from the fact that the flowers are not only among the most showy in their season, but also because, by making a succession of plantings, the season may be prolonged until frost. Some of the later hybrid sorts are exquisitely delicate in their rich tints. They are most effective when massed among plants of similar character. They like a deep, rich soil and sheltered position. Plenty of manure should be worked into the soil, but not allowed, in its fresh state, to come in contact with the bulbs, as it causes decay. August.

America. Beautiful flesh-pink; large flowers; one of the best ever produced. 6 cts. each, 50 cts. per doz.

Canary-Bird. Fine canary-yellow. 20 cts. each, \$2 per doz.

May. Almost pure white, markings of bright rose-crimson. 10 cts. each, \$1 per doz.

Charmer. Large, broad-petaled flowers of soft mauve-pink, blending off lighter in the throat, which is penciled carmine-lake with a large blotch on the lower petal. 15 cts. each, \$1.50 per doz.

Gladioli Mixtures

White and Light Varieties. Mixed. Superb. 7 cts. each, 80 cts. per doz.

Scarlet and Red. Extra-fine scarlet and red shades. 8 cts. each, 65 cts. per doz.

Yellow and Orange. Best yellow shades. 9 cts. each, 95 cts. per doz.

Striped and Variegated. 7 cts. each, 55 cts. per doz.

Scarlet and Variegated. Extra-fine selection. 7 cts. each, 55 cts. per doz.

Pink and White Mixture. A fine selection, especially for cut-flowers. Some of the best pinks and whites used. 9 cts. each, 95 cts. per doz.

Fine Mixed, All Shades. Some of the showy kinds, with many of the most delicate colors. 10 cts. each, 80 cts. per doz.; \$4 per 100.



Dorothy Perkins Roses (see page 36)

ROSES

Roses like a good, rich, deep loam. There is little danger of getting the soil too rich. Shallow, sandy or gravelly soils are not suited to them. When it is necessary to plant in such soils as these, artificial compost should be made by taking out a foot and a half of this natural soil, and filling in with rich, heavy loam. In cold climates, Roses may be grown by banking up a foot or 18 inches just before winter. In spring this should be removed and the plants cut back as far as they are killed. Even the tender greenhouse Roses may be grown outside in this way.

Group I—Species

ROSA carolina. The well-known wild Rose. 15 cts. each, \$1.50 per doz.

R. lucida. 15 cts. each, \$1.50 per doz.

R. rubiginosa. SWEETBRIER, or EGLANTINE. Handsome, single flowers. Both flowers and leaves very fragrant. 2 to 3 feet. 30 cts. each.

R. rugosa. RUSSIAN ROSE. A very desirable and hardy species, with large, solitary, red, or sometimes white, flowers, coming in long succession. It is not rare to see ripe fruit and flowers at the same time. Fruit large, orange-red to red; handsome in autumn. 40 cts. each, \$4 per doz.

R.—, var. alba is a single white form. 60 cts.

R. setigera. PRAIRIE ROSE. One of the best single Roses; delightful pink; hardy and very charming in a mass; height about 6 feet in rich soil. 45 cts. each.

Rosa Wichuraiana. CEMETERY OF MEMORIAL ROSE. A Japanese trailing species. Foliage firm and glossy green; a good bloomer. A splendid Rose for growing where it will receive no care. Flowers single, white, and borne in profusion. 45 cts. each, \$4.50 per doz.

Mixed Hybrids. These mixed Memorial Roses are very fine. Some are double and some single. 45 cts. each.

Group II—Horticultural

Anna de Diesbach. Large, brilliant crimson, fragrant flowers; of good habit and vigor. 65c. each.

Baby Rambler, or Dwarf Crimson Rambler.

It is claimed to be perfectly hardy and free from disease. It will outclass any other Rose in the length of its blooming season, being constantly in flower from early spring until frost. A first-class bedding plant not over 18 inches high, with good-sized trusses of crimson flowers much like Crimson Rambler. 75 cts. each.



Paul Neyron Roses

Crimson Rambler. This vigorous grower attains a height of 10 to 20 feet in favored situations. The flowers are borne in good-sized clusters, of a brilliant crimson color; in fact, a single cluster is a bouquet of itself. It has been quite hardy here, seldom killing back, except a little in the most trying winters. 75 cts. each.

Dorothy Perkins. This new climbing Rose has stood Vermont winters and seems quite hardy. I have seldom seen a more desirable climber. The flowers are a beautiful, clear shell-pink, borne in clusters of ten to twenty each, and over an inch wide. They have a delicious fragrance and are very durable. For arches and pergolas there is no finer Rose among the climbers. 60 cts. each.

Frau Karl Druschki. This charming new Rose is among the best of the double whites. If it has any fault yet seen, it is that it is too free in blooming. I would suggest thinning out the buds a little that larger blooms might be had, though the flowers are very large and of splendid form. 75 cts. each.

General Jacqueminot. Fragrant, large, very showy flowers of bright, velvety crimson. An old favorite that should be in every rose-garden. 75 cts. each.

Killarney. One of the best Roses with fragrant pink flowers. While it is not the hardiest Rose we have it is as hardy as most of them, and if you bank it up a foot in late fall, you will have plenty of good wood if it should kill back to the ground. 85 cts. each.

Hugh Dickson. A free, fragrant bloomer, with bright crimson-shaded scarlet flowers. 75 cts. ea.

Madame Plantier. This choice, full-double, pure white Rose is hardy here, and, though it flowers at one time only, produces its blooms in the greatest profusion. One of the best Roses that we know of to plant where it has to take care of itself, as in cemetery planting. 75 cts. each.

Blanc de Coubert. Large, double white. 75 cts. ea.

Magna Charta. Hardy. Handsome pink flowers in June, on long stems. Exceedingly fragrant. 75 cts. each.

Margaret Dickson. Soft creamy white. Very large and fine. 75 cts. each.

Mrs. John Laing. Soft pink; of good form; fragrant and free flowering. One of the finest June Roses. 75 cts. each.

Paul Neyron. The flowers are very large, clear, deep rose and very double; the largest Rose in cultivation, being borne on long stems, and very fragrant. 75 cts. each.

Persian Yellow. Rather small flowers and foliage; bright yellow, nearly full flowers; very hardy. A fine Rose for growing in the shrubby border; the bush is very hardy. 85 cts. each.

Semi-Double Scotch Rose. This old Rose has long been established in some of our Vermont homes. It is very hardy, and produces plenty of good-sized yellow flowers. \$1.25 each.

Ulrich Brunner. Bright cherry-red. Stems long, light green and almost smooth. Free flowering. 75 cts. each.

VINES, TRAILERS AND CLIMBERS

MUST BE SENT BY FREIGHT OR EXPRESS

ARISTOLOCHIA macrophylla. DUTCHMAN'S PIPE. Fine climber; large, dark green leaves; small, quaint flowers, shaped like a pipe, purple and green. \$1 each.

CELASTRUS scandens. BITTERSWEET. A handsome, twining shrub, with dark green foliage and handsome orange-colored fruit. For covering old walls or stone-heaps. 50 cts. each.

C. orbiculatus. JAPAN BITTERSWEET. A vigorous grower bearing a profusion of orange-yellow fruit with crimson seeds. 50 cts. each.

CLEMATIS lanuginosa, var. Jackmanii. Very handsome, large, dark purple flowers. The showiest and handsomest of all the Clematis.

C., Mme. Edouard Andre. Crimson.

Either of the above two in strong two-year-old plants, 75 cts. each

C. orientalis (C. graveolens). A small, hardy climbing species from Chinese Tartary. Flowers pale yellow, solitary, of medium size; the only yellow-flowered Clematis. 45 cts. each.

C. paniculata. One of the handsomest in cultivation; of strong, climbing habit, often 12 feet high, and covered with fragrant white flowers as if with a mantle. A fine species; a native of Japan, and quite hardy. 50 cts. each.

C. virginiana. VIRGIN'S BOWER; OLD MAN'S BEARD. One of the hardiest, though not so free from blight as *C. paniculata*. Has quaint, hairy seed-pods. 40 cts. each.

C. Vitalba. TRAVELER'S JOY. A hardy, single, white-flowered sort. 45 cts. each.

HUMULUS Lupulus. COMMON HOP VINE. Very useful for covering bowers, or any place where the covering is not necessary for winter. It can be planted to run among shrubbery. Exceedingly fast grower, covering a large trellis in a short time. Heat, drought or insects do not trouble it. Leaves are large and rough. 15 cts. each, \$1.50 per doz.

LONICERA flava. Very handsome with its red fruit. 2 feet. 15 cts. each, \$1.50 per doz.

L. glauca. 25 cts. each, \$2.50 per doz.

L. Periclymenum (L. belgica on earlier lists). DUTCH HONEYSUCKLE. A very hardy species. Fragrant, yellowish white flowers. 30 cts. each.

L.—, var. belgica. SCARLET HONEYSUCKLE. A very fine, red-flowered form; almost shrubby. It is also quite hardy. 35 cts. each.

L. Sullivantii. Bears scarlet berries in the axils of veined leaves. 20 cts. each.

LYCIUM chinense. MATRIMONY VINE. Hardy climber; very handsome when covered with its scarlet fruit in autumn. 45 cts. each.

MENISPERMUM canadense. MOONSEED. 25 cts. each.



Wistaria chinensis

PSEDERA (Ampelopsis) quinquefolia. VIRGINIA CREEPER; AMERICAN WOODBINE. Hardy; a quick grower. Fine for covering trellises or stone walls. Its beautiful green foliage turns to a charming dark red in autumn. It likes a rich, peaty soil. 20 cts. each, \$2 per doz.

P. (Ampelopsis)—, var. Engelmannii. A form which clings to rocks, and may be used where the Boston Ivy would not be hardy. 35 cts. each.

P. (Ampelopsis) tricuspidata (A. Veitchii). BOSTON IVY. Clings closely to wood or stonework; colors beautifully in autumn. 25 cts. each, \$2.50 per doz.

TECOMA radicans (Bignonia radicans). TRUMPET CREEPER. Orange-scarlet, trumpet-shaped, showy flowers. A tall climber. 25 cts. each.

VINCA minor cærulea. For shady places; fine clumps. 10 cts. each, \$1 per doz.

WISTARIA. KIDNEY BEAN. Form thick, woody stems and climb high. Their spring bloom is produced in rich cascades, and they flower at intervals all summer.

W. chinensis. Flowers large, not odorous, produced in great profusion on established plants. Native of China. Flowers purple. 45 cts. each.

W. chinensis alba. 18 to 24 inches. 40 cts. each.

W. frutescens. Flowers purple. 45 cts. each.

SHRUBS AND TREES

In handling shrubs and trees it is very important that the roots do not become dry. When they are unpacked if they are not set out permanently at once, they should be heeled-in in moist soil or placed where they can not dry out. We make a practice of dipping the roots of those we send out in a clay mud which keeps the roots from the air. We believe this is very beneficial in preserving their vitality. Where shrubs and trees are over 3 feet, we charge the cost of box or bale. When we can bale them, the parcel is lighter and express not so much. Bales of over 3 feet cost from 15 to 75 cents according to size. A few shrubs and trees do not carry well unless boxed.

Trees or shrubs sent with roots done in balls of earth in burlap cost more by express, on account of this extra weight, but are surer to live. We can ball any of the shrubs or small trees for 5 to 10 cents extra, according to size, if customers order them sent this way. All shrubs or trees with ball of earth must be boxed. All are good, healthy, nursery-grown stock. We furnish certificates of inspection of stock to those who desire them. I am inclined to believe that shrubs and trees of the deciduous class may be transplanted with success much earlier in autumn than is generally supposed. I do not advise transplanting before the growth has ceased, but as soon as all growth is done, and before the leaves fall, I think transplanting can be done, and I do not consider it necessary to remove all the leaves. In fact, I believe that a part of the foliage left on the shrubs or trees is beneficial, and will aid them in making a root-growth, which would not occur after they are removed. I have had quite as good reports from this class of plants shipped with foliage all on as when sent late, after all leaves had been removed by frost.

ABIES balsamea. COMMON BALSAM. Plants, 2 to 3 feet high, 75 cts. each.

A. concolor. A large tree in its natural habitat growing 150 feet or more in height, with trunk 4 to 6 feet in diameter; foliage pale blue or glaucous. Plants, 12 to 18 inches, 80 cts. each.

ACANTHOPANAX pentaphyllum. Shrub 5 to 10 feet high, branches long and slender with few compressed prickles. Graceful shrub with arching branches and bright shining foliage. Nice for rocky banks and slopes. Plants, 4 to 5 feet, 50 cts. each, \$5 per doz.

ACER Ginnala. Small tree, or large shrub, with handsome foliage, turning scarlet in autumn. Much like the Japanese Maples in general

Acer Ginnala, continued

effect. It makes a good, tall shrub to give a touch of color in any border or bed of shrubbery. No better shrub could be found for shutting out unsightly objects. May be trimmed back, if desired. Plants, 5 to 8 feet high, \$1 each; 2 to 3 feet, 25 cts. each, \$2.50 per doz.

A. Negundo. BOX MAPLE; BOX ELDER. A quick grower and makes a good shade tree of good size, with handsome foliage. Plants, 8 to 10 feet high, \$1.40 each.

A. pennsylvanicum. MOOSEWOOD, STRIPED MAPLE. This is a small and slender tree, with light green striped bark. Winter effect very handsome. Plants 3 to 5 feet, 45 cts. each.

A. platanoides. NORWAY MAPLE. A very ornamental and hardy species; attains a height of 50 feet; rapid in growth; needs good drainage. One of the finest of the Maples. 6 to 8 feet, \$1.30 each; 10 to 12 feet, \$1.75 each.

A.—, var. Schwedleri. A form with purplish foliage. Plants, 5 to 7 feet, \$1.50 each.

A. pseudoplatanus. SYCAMORE MAPLE. Tree 70 feet high, of vigorous growth, with spreading head, native to Europe in the Caucasus Mountains. Plants, 5 to 6 feet, 60 cts. each, \$6 per doz.

A. rubrum. RED MAPLE. Usually a small tree, but it sometimes attains a large size. Native to swamps and moist woods. A quick grower, handsome in flower, and adapted to moist ground. Its foliage often turns scarlet in autumn. 7 to 9 feet. \$1.45 each.

A. saccharinum. WHITE or SILVER MAPLE. This fine, ornamental tree is found growing along river-banks, and in moist clay is a rapid grower. It will thrive in more places than the Sugar Maple. 6 to 8 feet, 85 cts. each.

A. spicatum. MOUNTAIN MAPLE. 3 to 4 feet, 75 cts. each.

A.—, var. Wieri laciniatum. WIER'S CUT-LEAVED MAPLE. Ornamental. 6 to 8 feet, \$1.75.

A. saccharum. SUGAR MAPLE. For decorative purposes or shade. 6 to 9 feet, 90 cts. each.



Acer platanoides



Cornus florida (Flowering Dogwood) (see page 40)

ÆSCULUS Hippocastanum. HORSE-CHESTNUT. 6 to 7 feet, \$1.25 each.

AILANTHUS glandulosa. TREE OF HEAVEN. 4 to 5 feet, 70 cts. each.

AMELANCHIER canadensis. SHAD BUSH. 2 to 3 feet, 50 cts. each.

AMORPHA canescens. LEAD PLANT. Low shrub, 1 to 3 feet high, densely white-canescent. Flowers blue, spikes crowded into terminal panicles. 15 cts. each, \$1.50 per doz.

A. fruticosa. BASTARD INDIGO. Shrub grows 5 to 20 feet high. Native from Wisconsin south. Spreading habit, fine feathery foliage. Dark violet-purple flowers. 45 cts. each.

AMYGDALUS. FLOWERING ALMOND.

Double Rose. A delightful little tree for the lawn. 2 to 3 feet, 75 cts. each.

Double White. 75 cts. each.

BERBERIS Thunbergii. This makes a fine plant for low hedges or for the shrub border. The red berries which come so abundantly on mature plants and the handsome scarlet foliage it usually has in the fall make it one of the most attractive shrubs. It is a plant easily established and, if set in fall or spring at the right time, seldom fails. Plants, 12 to 18 inches high, 20 cts. each, \$2 per doz.; 18 to 24 inches high, 25 cts. each, \$2.50 per doz.; 24 to 30 inches high, 35 cts. each, \$3.50 per doz.

B. vulgaris. COMMON BARBERRY. 2 to 3 feet, 45 cts. each.

B.—, var. atropurpurea. Purple-leaved form. 3 to 4 feet high, 55 cts. each, \$5.50 per doz.

BETULA alba. EUROPEAN WHITE BIRCH. This tree is a very beautiful one on account of its white bark as well as its dark green foliage. Plants, 6 to 8 feet high, 75 cts. each.

B. alba. PAPER, CANOE or WHITE BIRCH. A native of rocky upland woods, with white bark. When young the bark is usually yellow, but after it attains size and age it turns white. Plants, 3 to 5 feet high, 30 cts. each, \$3 per doz.

B.—, var. Lenta. CHERRY, SWEET or BLACK BIRCH. Plants, 7 to 9 feet high. 80 cts. each.

B.—, var. pendula laciniata. CUT-LEAVED WEEPING BIRCH. Makes an effective lawn tree. 8 to 10 feet, \$1.65 each.

B.— populifolia. WHITE, GRAY or OLDFIELD BIRCH. Common on poor, sandy, or rocky soil. Plants, 4 to 6 feet, 30 cts. each.

CALYCANTHUS floridus. SWEET-SCENTED SHRUB; CAROLINA ALLSPICE. 2 feet, 50 cts. each.

CARAGANA arborescens. PEA TREE. An interesting shrub, with fine, dark green, locust-like foliage and yellow, pea-shaped flowers. 3 to 5 feet, 35 cts. each, \$3.50 per doz.

CASTANEA dentata. AMERICAN CHESTNUT. The common Chestnut as sold in our markets. Plants, 3 to 6 feet high, 40 cts. each.

CATALPA speciosa. CATAWBA TREE; CIGAR TREE. A large, tall tree, with thick bark, and large, heart-shaped leaves. It produces good-sized clusters of showy flowers in June. 6 to 7 feet, 75 cts. each.



Forsythia suspensa (see page 41)

- CEANOTHUS americanus.** NEW JERSEY TEA. Grows about 3 feet high, bearing terminal and axillary panicles of pretty white flowers. While it will grow in considerably moist ground, it is found usually growing naturally in rather dry places. Plants, 24 inches high, 30 cts. each, \$3 per doz.
- CEPHALANTHUS occidentalis.** BUTTON BUSH. Native to swamps and along streams. Plants about 2 feet high, 30 cts. each.
- CHIONANTHUS virginica.** WHITE FRINGE. Large shrub or slender tree sometimes 30 feet high. It makes a fine show when in full flower. Plants 3 to 4 feet. \$1 each.
- CLETHRA alnifolia.** SWEET PEPPER BUSH; WHITE ALDER. A shrub 3 to 10 feet high, growing near the coast from Maine to Virginia and southward, bearing an abundance of handsome, fragrant flowers in summer. 2 to 3 feet, 50 cts. each, \$4 per doz.
- CORNUS.** DOGWOOD; CORNELL.
- C. alba, var. sibirica.** The bright coral-red branches make this a very pretty shrub in winter when the foliage is gone. Plants, about 2 to 3 feet, 35 cts. each, \$3.50 per doz.
- C.—, var. sibirica, variegata.** Grows 8 to 10 feet high with purplish red branches and beautiful silver variegated foliage. Plants 2 to 3 feet, 60 cts. each, \$5 per doz.

Cornus circinata. ROUND-LEAVED DOGWOOD. This is the largest-leaved Dogwood we have, I think. It grows in dry woods and will thrive in drier places than most shrubs. Plants, 2 to 3 feet high, 50 cts. each.

C. Amomum. SILKY CORNELL. Shrub 3 to 10 feet high, with purple branches and round dark green leaves. Fruit blue or bluish white. Plants 3 to 4 feet, 35 cts. each.

C. florida. FLOWERING DOGWOOD. This is the showiest of the genus; a shrub or small tree with spreading branches; 10 to 15 feet high; flowers white. A native from Massachusetts to Florida. Plants 2½ feet high, 60 cts. each.

C. sanguinea. Shrub sometimes 12 feet high with purple or dark red branches. Native of Europe. Plants, 30 to 40 inches high, 35 cts. each.

C. stolonifera. RED OSIER. With red bark. 3 feet, branching, 40 cts. each, \$4 per doz.

C.—, var. aurea. Yellow bark. 55 cts. each.

C. paniculata. Shrub 6 to 15 feet, with gray branches and white flowers. The white fruit and red peduncles are very pretty in the fall and the foliage often turns a pretty color in autumn. It looks best when planted in a mass. Plants, 3 to 5 feet, 35 cts. each, \$3 per doz.

COTONEASTER horizontalis. About 18 inches high, with small, dark, shiny green leaves. Fine for edging shrubbery. 30 cts. each, \$3 per doz.

CRATÆGUS Oxyacantha. ENGLISH HAWTHORN. A charming bush when in flower or when full of its dark red fruit. Plants, 2 to 3 feet, 45 cts. each.

C. Crus-galli. COCKSPUR THORN. Shrub or tree with wide-spreading branches having numerous slender spines and shiny dark green foliage. It is a decorative species, handsome in bloom and with showy red fruit in autumn. Plants 3 to 5 feet, 55 cts. each.

CYDONIA japonica. JAPANESE QUINCE. This shrub when in flower makes a good hedge plant or is nice among other shrubbery. Flowers red. Plants, 2 feet high, 40 cts. each.

DEUTZIA gracilis. Shrub which attains a height of 3 feet and bears an abundance of pure white flowers in June. Plants, 2 feet, 35 cts. each, \$3.50 per doz.

D. Lemoinei. 1½ to 2 feet, with white flowers. This is as hardy here as any of the Deutzias and a handsome shapely shrub. 35 cts. each.

DIERVILLA amabilis. Pale pink flowers. Plants, 18-24 inches high, 45 cts. each, \$4.50 per doz.

D. candida. Flowers white, of good size, and very handsome. 4 feet, 55 cts. each.

D., Eva Rathke. Crimson. 2 to 3 feet, 65 cts. ea.

D. florida (Weigela rosea). A handsome Chinese shrub, with pink-and-white variegated flowers in June. 55 cts. each.

D. trifida. A low shrub with yellow flowers and oblong-ovate leaves. Native from Newfoundland to South Carolina. 20c. ea., \$2 per doz.

FAGUS sylvatica, var. **purpurea**. PURPLE-LEAVED BEECH. Three to 4 feet (trees this size are much more likely to live than larger ones), \$2.

FORSYTHIA suspensa. GOLDEN BELL. Shrubs 5 to 8 feet high; branches often drooping and not rarely rooting when they are on the ground; flowers golden yellow, appearing before the leaves. Plants, 3 to 5 feet, 50 cts. each.

F.—, var. **Fortunei**. This makes a more vigorous growth and has more upright or arching branches than the preceding variety. Plants, 2 to 4 feet, 45 cts. each, \$4.50 per doz.

GENISTA tinctoria. DYER'S BROOM; GREEN WEED. Flowers yellow, in spicate racemes. Plants 2 feet high with round, erect branches, and smooth, lance-shaped leaves. Europe and northwest Asia. 25 cts. each, \$2.50 per doz.

GINKGO biloba. MAIDENHAIR FERN TREE. A tall-growing, hardy tree, with horizontal branches. Has curious maidenhair-like leaves. Plants, 5 to 6 feet. \$1.25 each.

HALESIA carolinianum. SILVER BELL TREE; SNOWDROP TREE. Handsome, with snowy white flowers. Plants, 2 to 3 feet high, 75 cts. each.

HAMAMELIS virginiana. WITCH HAZEL. A fine, tall shrub, which blooms just before winter. Flowers yellowish. Good plants, 2 to 3 feet high, 60 cts. each.

HYDRANGEA arborescens, var. **sterilis**. HILLS-OF-SNOW. This is a very pretty shrub when in bloom, and the flowers remain fresh a long time. It grows rather slowly, but blooms freely when only 2 feet high. It makes a showy hedge. Plants 18 to 24 inches high, 40 cts. each, \$4 per doz.

H. **paniculata**, var. **grandiflora**. It is a fine decorative plant, either grown as a shrub or trained into tree form, when it sometimes reaches a height of 8 to 10 feet. 2 to 3 feet, 35 cts. each, \$3.50 per doz.; tree form, \$1 each.

ILEX verticillata. WINTERBERRY; BLACK ALDER. A pretty shrub, 4 to 5 feet high, bearing brilliant red fruits, which last after the leaves are off, and often nearly all winter. Plants, 18 to 24 inches, 35 cts. each, \$3.50 per doz.

JUNIPERUS virginiana. RED CEDAR. OR SAVIN. A handsome pyramidal evergreen 30 to 60 feet high, with shreddy bark and heartwood red and aromatic. Plants, 2 to 3 feet 45 cts. each.

KALMIA latifolia. MOUNTAIN LAUREL; CALICO BUSH. One of the most desirable evergreen shrubs, growing 4 to 8 feet high, bearing in May and June a profusion of large, showy, deep rose or nearly white flowers. Plants, 12 to 18 inches in clumps, 35 cts. each; 1 foot, 50 cts.

LARIX decidua. EUROPEAN LARCH. This is a more shapely and more handsome tree than the American. It is a fast-growing tree and one that should be used more. Plants, 3 to 5 feet, 75 cts. each.

L. laricina. AMERICAN OR BLACK LARCH; TAMARACK; HACKMATAK. Native of cold swamps or moist uplands. A slender tree, 25 to 100 feet high, with hard and resinous wood. Plants, 4 to 6 feet, 65 cts. each.

LIGUSTRUM Ibota. Hardy in Vermont; nice for hedges. Plants, 3 ft. high, 20c. each, \$2 per doz.

LONICERA Morrowii. Shrub with wide-spreading branches and flowers pure white at first, blooming in May and June. Very decorative, with its bright red fruit from August until late in fall. 2 to 3 feet, 30 cts. each, \$3 per doz.

L. oblongifolia. SWAMP FLY HONEYSUCKLE. Two to 3 feet, with cream-colored flowers, light green oblong leaves and reddish purple berries. A splendid variety in any planting. 35 cts. each.

L. dioica (glauca). A hardy kind, native to rocky ground from Maine to Manitoba. Smooth, with glabrous and glaucous leaves; greenish yellow or purplish flowers. A very desirable sort. 25 cts. each.

L. tatarica. TARTARIAN HONEYSUCKLE. A vigorous grower with dark green foliage and crimson flowers in May and June. Plants, 2 to 3 feet, stocky, 55 cts. each.



Hydrangea arborescens, var. *sterilis*

MORUS alba. WHITE MULBERRY. The fruit when ripe attracts birds. This is the Mulberry which has been grown to feed the silkworm, and the leading fruit-bearing varieties of North America are from this species. Plants, 6 to 7 feet, 50 cts. each.

MYRICA cerifera. BAYBERRY; WAX MYRTLE; CANDLEBERRY. An interesting shrub, with fragrant foliage, the crushed leaves emitting a very pleasing odor. Plants, 18 to 24 inches, 35 cts. each, \$3.50 per doz.

M. Gale. SWEET GALE. 15 cts. each.

NEGUNDO aceroides. See *Acer Negundo*.

PHILADELPHUS aureus. GOLDEN SYRINGA. The color of this shrub is very attractive during the early summer. Plants, 18 to 24 inches high, 60 cts. each.

P. coronarius. MOCK ORANGE; SYRINGA. Grows from 2 to 10 feet high. A handsome species from the south of Europe. Plants, 2 to 3 feet, stocky, 40 cts. each, \$4 per doz.

P. Lemoinei. Very fragrant, white flowers in short racemes, literally covering the branches. 2 to 3 feet, 50 cts. each, \$5 per doz.

P. pubescens (*P. grandiflorus*). The flowers of this are a little larger than those of *P. coronarius*. 18 to 24 inches, 30 cts. each, \$3 per doz.

PHYSOCARPUS aureus. GOLDEN SPIREA. 2 to 3 feet, 40 cts. each.

P. opulifolius. NINEBARK. A fine, native shrub, 5 to 10 feet high, with umbel-like heads of white flowers in June. Plants, 4 to 5 feet high, 30 cts. each.

PICEA alba. WHITE OR CAT SPRUCE. A handsome tree 40 to 100 feet high, somewhat resembling the Balsam in aspect. Plants, 18 to 24 inches, 45 cts. each, \$4.50 per doz.

P. Engelmannii. A pyramidal tree of compact growth and having attractive bluish foliage. Very desirable variety. Plants 18 to 20 inches high, \$1.35 each, balled.

P. excelsa (*Abies excelsa*). NORWAY SPRUCE. Largely used in cultivation as a shade tree and now established in several places in Connecticut. Its dark green, glossy foliage makes it a desirable evergreen and, though it does not grow in fine shape like some kinds, it is good for at least 25 years before it gets unsightly. Rather quick in growth, quite hardy, and very ornamental for the first 20 to 30 years. Plants, 2 to 3 feet high, 75 cts. each, \$7.50 per doz.

P. pungens, var. Kosteriana. KOSTER'S BLUE SPRUCE. 18 to 24 inches, with ball of earth, \$3.70 each.

P. rubra. RED OR GREEN MOUNTAIN SPRUCE. Attains a height of 80 feet or more. Foliage dark or bright green. Needs a cool and moist situation and will not stand drought as well as some. Plants, 18 to 24 inches high, 75 cts. each; 3 to 4 feet, \$2; 4 to 6 feet, \$3.50 each.

PINUS flexilis. LIMBER PINE. Tree grows in time to 50 to 80 feet high. Native from Alberta to California and New Mexico. Plants, 18 to 24 inches high, 50 cts. each, balled.

P. Laricio, var. austriaca. AUSTRIAN PINE. A tall tree with broadly ovate head and dark green, rigid foliage. Plants, 18 to 24 inches high, \$1.25 each, balled.



Planting of Rhododendrons

Pinus Mughus. DWARF PINE. Plants, 15 to 18 inch spread, \$1.35 each, balled.

P. Strobus. WHITE PINE. Plants, 2 to 3 feet high. 55 cts. each, \$5.50 per doz.

PLATANUS orientalis. ORIENTAL PLANE TREE. Grows 50 to 80 feet with usually broad and round head on comparatively short trunk; bark dull grayish or greenish white color. Young plants, 5 to 7 feet, 60 cts. each.

POPULUS deltoides, var. carolinensis. CAROLINA POPLAR. Forms a straight, upright or pyramidal head. Distinct. Nice plants, 8 to 10 feet, 70 cts. each, \$7 per doz.; 10 to 12 feet, \$1 each.

P. Bolleana. 8 to 12 feet, 90 cts. each.

P. nigra, var. italica. LOMBARDY or ITALIAN POPLAR. Plants, 10 to 12 feet, 65 cts. each, \$6.50 per doz.; 5 to 6 feet, 30 cts. each, \$3 per doz.

PYRUS Aucuparia. EUROPEAN MOUNTAIN-ASH. 6 to 8 feet. \$1.35 each.

QUERCUS rubra. RED OAK. 6 feet, \$2 each.

RHODODENDRON maximum. ROSE BAY; GREAT LAUREL. This handsome shrub grows naturally in Vermont and New Hampshire, but never attains the large size here that it does in the South. Flowers pale rose or white, showy; leaves thick, 4 to 8 inches long, deep green. Plants, 2 to 3 feet high, \$1.75 each; 1 foot \$1 each.

R. catawbiense. Plants 8 to 10 inches high, 80 cts. each.

R. arborecens (Azalea arborecens). Deciduous leaves and pale rose-colored flowers in June. One of the brightest shrubs of early spring. 85 cts. each.

R. punctatum. This has proven quite hardy here and its white or pale pink flowers are very fine. One of the best. Plants, 1 to 2 feet high, \$1.50 each.

R. viscosum. SWAMP PINK; WHITE HONEY-SUCKLE. 4 to 10 feet high; white flowers in May. Good plants, 18 to 24 inches high, 75 cts. each.

RHUS canadensis (R. aromatica). FRAGRANT SUMAC. A straggling shrub, 3 to 5 feet high. Especially adapted to dry, rocky banks. Plants, 2 to 3 feet, 55 cts. each.

R. cotinoides. SMOKE TREE. Shrub bearing delicate fringe-like flowers, which, when in full bloom, produce the appearance of a cloud of smoke. 3 to 4 feet, 90 cts. each.

R. typhina. STAGHORN SUMAC. The coloring of the foliage in autumn is very fine. Useful to plant in groups about rocky corners, with other shrubbery, or to screen unsightly objects. Good collected plants, 15 cts. each, \$1.30 per doz.

R.—, var. laciniata. A very attractive form, with finely divided foliage and turning to a handsome orange-red in autumn. 45 cts. each.



Rhus cotinoides

ROBINIA hispida. ROSE ACACIA. A shrub 3 to 8 feet high, with bristly branches and stalks and large deep rose-colored flowers in May and June, 35 cts. each, \$3 per doz.

RUBUS odoratus. PURPLE-FLOWERING RASPBERRY. Attains a height of 3 to 5 feet, and bears large, showy, rose-purple flowers in summer. 2-foot collected plants, 15c. each, \$1.50 per doz.

SALIX pentandra (S. laurifolia). BAY-LEAF; LAUREL-LEAF WILLOW. Grows 8 to 20 feet, with shining, lanceolate, dark green leaves. Makes a nice screen for any unsightly object. Plants, 2 to 3 feet, 45 cts. each, \$4.50 per doz.; 6 to 8 feet, \$1 each.

SAMBUCUS canadensis. COMMON ELDER. Collected plants only, 15 cts. each, \$1.20 per doz.

S.—, var. aurea. GOLDEN ELDER. Plants, 2 to 3 feet, 75 cts. each.

S. racemosa. RED-BERRIED ELDER. On account of the fine clusters of dark red fruit and dark green foliage, this makes a fine showing among other tall shrubs. The fruit stays on well. Plants, 20 to 36 inches, 35c. ea., \$3.50 per doz.

SORBARIA sorbifolia (Spiræa sorbifolia). Flowers white, in panicles. July and August. Grows 3 to 6 feet high, and is a native of Siberia. Plants, 2 to 3 feet, 55 cts. each.

SPIRÆA. MEADOWSWEET.

S. arguta. This is one of the finest of hardy shrubs, ranking with Van Houttei and Thunbergii for beauty. Plants, 2 to 3 feet high, 55 cts. each, \$5.50 per doz.; 4 feet, 60 cts. each.

S. Billiardii. Grows about 6 feet. Flowers bright pink in 5 to 8-inch panicles. July and August. Plants 3 to 4 feet, 30 cts. each.

S. Bumalda. Shrub about 2 feet high with pinkish flowers in July and August. Plants, 2 feet, 55 cts. each.



Spiræa Bumalda, var. **Anthony Waterer**. A free-flowering and compact shrub with bright crimson flowers in July and August. 55 cts.

S. japonica (*S. callosa alba*). DWARF SPIRÆA. 2 to 3 feet. Flowers white. July to September. 18 to 36 inches, 65 cts. each.

S. Margaritæ. Shrub, 4 to 5 feet. Flowers bright pink in broad corymbs. July and August. 45 cts. each, \$4.50 per doz.

S. opulifolia. NINEBARK. See **Physocarpus**.

S. prunifolia fl.-pl. A rather good plant with its button-shaped double white flowers. The foliage turns in autumn to a lovely tint of orange. Plants, 20 to 30 inches high, 55 cts. each.

S. trilobata. Sometimes 4 feet high with slender spreading branches. Flowers pure white in many-flowered umbels. May and June. 50 cts.

S. Thunbergii. One of the handsomest. Branching, with many delicate white flowers and handsome foliage. 2 to 3 feet, 65 cts. each.

S. Van Houttei. BRIDAL WREATH. A beautiful hardy shrub, with a profusion of white flowers in June. 3 to 4 feet, 50 cts. each, \$5 per doz.

STAPHYLEA trifolia. AMERICAN BLADDERNUT. An upright, rather stout shrub which grows 6 to 15 feet high; flowers in nodding panicles; sepals greenish white, petals white; capsules much inflated and borne in profusion. Strong fruiting plants, 4 to 6-foot clumps, 40 cts. each.

SYMPHORICARPOS orbiculatus. INDIAN CURRANT; CORAL BERRY. Flowers tinged with rose, in short axillary clusters, followed by red berries. 35 cts. each.

S. racemosus. SNOWBERRY. A pretty shrub, with rose flowers, which are followed in autumn by handsome snow-white fruit. Quite hardy. Plants 2 to 3 feet high, 35 cts. each.

SYRINGA. LILAC

S., Belle de Nancy. Double, satiny pink flowers. Plants, 2 to 3 feet, 70 cts. each.

S., Charles X. Violaceous red. Plants, 2 to 3½ feet, 65 cts. each.

S. vulgaris. COMMON PURPLE LILAC. Plants, 2 feet, 35 cts. each.

Syringa, var. **alba**. COMMON WHITE LILAC. Plants, 18 to 24 inches, 45 cts. each.

S.—, var. **Mme. Casimir Perier**. Double, pearly white flowers. 24 inches, 55 cts. each.

S.—, var. **Marie Legraye**. White flowers. Plants, 2 to 3 feet, 75 cts. each.

S. Josikæa. Late; bluish purple flowers. Plants, 3 to 4 feet, 55 cts. each.

S. persica. PERSIAN LILAC. White. Plants 2 to 3 feet, 75 cts. each.

TAXUS cuspidata. A pretty Japanese evergreen which has stood our Vermont winters. Plants, 15 to 20 inches high, \$1.50 each.

TSUGA canadensis. COMMON HEMLOCK. Fine for hedges, a beautiful boundary tree or in any position you may place it. Plants, 18 to 24 inches high, 40 cts. each, \$4 per doz.; 24 to 30 inches high, 50 cts. each, \$5 per doz. All good, transplanted stock.

THUYA occidentalis. AMERICAN ARBORVITÆ; WHITE CEDAR. 1½ to 2 feet, 35 cts. each, \$3.50 per doz.; 2 to 3 feet, 40 cts. each, \$4 per doz.

ULMUS americana. WHITE ELM. 5 to 7 feet, 70 cts. each.

VIBURNUM acerifolium. DOCKMACKIE. Attains 5 feet, with upright branches. Flowers yellowish white, in long peduncled cymes, in May and June. Grows pretty well in dry situations under trees. The foliage turns a handsome dark purple in autumn. Fruit a dark berry and quite persistent in autumn. Plants, 3 feet or more, in good clumps, 65 cts. each.

V. dentatum. ARROW-WOOD. 5 to 15 feet high; white flowers, dark purple fruits. The foliage is very good, being a bright, shining green. Plants, 2 feet high, 40 cts. each, \$4 per doz.

V. Lantana. WAYFARING TREE. This shrub or low tree sometimes attains a height of 20 feet. Flowers in white, dense cymes. Nice for dry places and limestone soil. Plants, 2 to 3 feet high, 65 cts. each.

V. Lentago. SHEEPBERRY; NANNY-BERRY. Shrub or small tree, sometimes 30 feet high. Flowers white in sessile cymes 2 to 5 inches wide. The fruit is oval and bluish black. Blooms in May and June. Foliage often colors a fine purplish red in autumn. Plants, 4 to 6 feet, 45 cts. each, \$4.50 per doz.

V. Opulus. CRANBERRY-BUSH; HIGH CRANBERRY. Shrub often 12 feet high, with rather smooth, light gray branches. Flowers white in peduncled cymes 3 to 4 inches wide. The handsome, persistent clusters of red fruit make this a most beautiful shrub in autumn. Fruit begins to color at the end of July. Plants, 2 to 3 feet, 40 cts. each, \$4 per doz.

V.—, var. **flore-pleno**. COMMON SNOWBALL. A very hardy shrub and handsome in flower. 2 to 3 feet, 45 cts. each.

V. tomentosum, var. **plicatum**. JAPANESE SNOWBALL. Has all flowers sterile, forming large globose balls. Plants, 2 to 3 feet, 60 cts. each.

WEIGELA. See **Diervilla**.

SELECT LIST OF FRUITS

BLACKBERRIES

These respond to good treatment and, seeming to prefer a sandy soil, will grow and fruit almost everywhere.

Eldorado. Very hardy and very sweet.

Snyder. A popular, hardy and prolific sort. It often gives a good picking where others fail.

75 cts. per doz., \$4 per 100

GOOSEBERRIES

Need rich soil, good culture and heavy manure mulch in the heat of summer to prevent mildew.

The Pearl. Fruit large, pale green and of good quality, either as dessert fruit or for cooking.

Red Jacket. An American seedling of good size. It is smooth, prolific and hardy.

35 cts. each, \$3.50 per doz.

CURRANTS

These may be grown in partial shade, but need rich soil and good culture.

Red Dutch.

Fay's Prolific. Rich red.

White Grape. A fine white variety.

15 cts. each, \$1.50 per doz., \$10.50 per 100

HARDY GRAPES

Agawam. Large; deep red; sweet.

Concord. Prolific; black; succeeds everywhere.

Campbell's Early. Improved Concord. Very early.

Catawba. Red; sweet and rich.

Niagara. Very large bunches of pale yellow fruit and very delicious. Occupies the same place among the White Grapes as Concord does among the blacks. Makes a particularly fine wine.

Delaware. A well-known kind with red fruit. Bunches small and compact; fine for eating.

45 cts. each, \$4.50 per doz.

RASPBERRIES

Any soil that will grow good corn is suitable for Raspberries. Cut out the old wood as soon as the crop is harvested if best results are desired. This enables the young canes to get more vigor for the next crop.

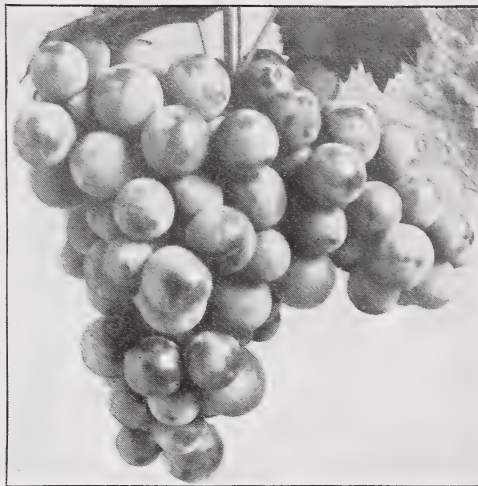
Columbian. Purple; strong grower and unexcelled for productiveness. 80 cts. per doz., \$6 per 100.

Cumberland. Large; black; a healthy, vigorous grower and prolific. The finest of all black Raspberries.

Golden Queen. A hardy kind with yellow fruit.

Marlboro. Bright crimson. The plant is strong-growing and very prolific.

75 cts. per doz., \$5 per 100, unless noted



Catawba Grape

DWARF APPLES

Red Astrachan.

Duchess of Oldenburg.

Fameuse, or Snow.

65 cts. each

APPLES

Baldwin. Fine for cooking. A standard winter Apple with red or reddish skin.

Banana. Fine, vigorous grower, large healthy foliage; early bearer. Fruit medium to large, smooth and handsome, golden yellow usually shaded bright crimson; flesh fine-grained, rich, subacid, aromatic, highest quality. One of the best dessert apples. Ripens in December, lasts until April.

Early Harvest. A tart, early summer Apple; light color and flesh.

Fall Pippin. A large yellowish green Apple. Subacid flavor; good for culinary use and ships well. A popular variety and tree a strong grower. Ripens in October.

Fameuse, or Snow Apple. One of the most desirable dessert Apples for fall use. Its season extends from October to the holidays. A handsome, small, deep red Apple, with white flesh and delicious flavor.

McIntosh Red. A hardy red variety of medium size; flesh white, tender, fine, juicy; good annual bearer. Very desirable for fancy trade; begins bearing young and is a good yielder. A delicious red late fall Apple. 90 cts. each.

75 cts. each, \$7.50 per doz., unless noted

APPLES, continued

Northern Spy. One of the best winter Apples. Fruit large and attractive, being of a bright red color, overspread with a delicate bloom. Very juicy, crisp; in flavor and quality ranks among the best. It has a well-established reputation because of its size, beauty, fine flavor, and high quality, and often sells for more than the average price in market.

Rhode Island Greening. A fine cooking and prolific winter Apple.

Sweet Bough. A universal favorite for the home-orchard. Fruit large, medium; firm, crisp and tender, juicy and sweet. Tree vigorous and long-lived. Season August to early September.

Wealthy. This fine bright red Apple is a very hardy kind and the fruit sells well. Fruit large; crisp, tender, juicy, agreeable and sub-acid. Ripens in October and lasts until January.

King (Tompkins King). A fine, large, reddish winter Apple, crisp, tender, sub-acid. Good in October; lasts until January.

Pound Sweet. A choice winter sweet; excellent for baking, canning, etc. Ripens in October and lasts until January.

Transcendent Crab-Apple. Yellow with red blush.

Wolf River. Fruit very large; attractive red or striped; coarse in texture; medium to good in quality; more suitable for culinary than dessert use.

Yellow Bellflower. The fruit is oblong or roundish oblong. Flesh nearly white, aromatic, juicy, mildly sub-acid in flavor. Good for eating or cooking from late fall into the spring.

75 cts. each, \$7.50 per doz.

CHERRIES

Early Richmond. The leading Sour Cherry for the North. Hardy, fruiting early.

Governor Wood. A rich and delicious large Sweet Cherry. The fruit is a beautiful yellowish white, tinted with shades of crimson and russet dots. Fine variety for eating. One of the varieties that has made Cherry-growing popular.

CHERRIES, continued

Montmorency. Large, bright, shining, red fruit; rather late and productive. One of the best Sour Cherries for the market and for canning. When fully matured it is good for eating if one likes a Sour Cherry.

Windor. One of the best Sweet Cherries; later than some; fruit very dark and firm and stands shipping well.

85 cts. each

PLUMS

Abundance. Large, showy; amber, turning cherry-red.

Burbank. One of the best of the Japanese class. Fruit large, reddish purple.

Bradshaw. Large; early; dark violet-red.

Lombard. Hardy and productive. The tree adapts itself to almost any locality, produces good crops where many others fail and, while the quality is not equal to some, it is exceedingly productive. A handsome reddish Plum with yellow flesh.

Wickson. Fruit very handsome, large, long, heart-shaped, deep maroon-red covered with white bloom. Flesh firm and meaty, yellow, rich, and aromatic.

Yellow Egg.

90 cts. each

PEARS

Bartlett. Delicious for eating and one of the best for canning.

Beurre d'Anjou. A large handsome winter Pear, buttery and melting with fine flavor. Keeps into midwinter.

Clapp's Favorite. A fine early sort.

Flemish Beauty. A large and juicy kind.

Seckel. Fruit small size; yellowish russet color; flavor fine.

Sheldon. This fine autumn Pear is of excellent quality; large, round; russet and red; melting, rich, delicious. Season October and November.

70 cts. each, \$7 per doz.

VEGETABLE PLANTS AND ROOTS

ASPARAGUS, Conover's Colossal. 2-year roots, \$1.20 per 100. A few 3-year roots, \$3 per 100.

Palmetto. 2-year roots, \$1.25 per 100. A few 3-year roots, \$3 per 100.

Argenteuil. 2-year roots, \$1.25 per 100. A few 3-year roots, \$3 per 100.

RHUBARB, Victoria. 20 cts. each.

SULPHO-TOBACCO SOAP (Insecticide and Fertilizer)

On flowers and plants in windows, flower- and vegetable-gardens, shrubs, small fruits, trees, etc., it is used as a spray for all plant lice and insects. 3-oz. cake (makes 1½ gallons prepared solution), 12 cts.; 8-oz. cake (makes 4 gallons solution), 22 cts. Easy to use. Dissolves in water and can be applied with atomizer.

HAZELTINE'S HAND WEEDER

My men like this better than any other weeder we have tried here. It is useful in thinning out. See illustration. 25 cts. each.

Postage on each, 5 cts. for first two zones and 1 ct. additional for each extra zone



INDEX


	PAGE		PAGE		PAGE		PAGE
Abies	38, 42	Bloodroot	25	Deutzia	40	Helianthus	10, 11
Acacia, Rose	43	Blue Bells of Scotland	6	Dianthus	8	Heliopsis	11
Acanthopanax	38	Bocconia	5	Dicentra	8	Helleborus	11
Acer	38	Boltonia	5	Dicksonia	32	Hemerocallis	11
Achillea	2	Bouncing Bet.	26	Dictamnus	8	Hemlock	44
Aconitum	2	Brake, Buckthorn	33	Diervilla	40	Hepatica	11
Acorus	2	Brake, Cliff	33	Digitalis	8, 9	Hesperis	11
Actaea	2	Brauneria	5	Dockmackie	44	Heuchera	12
Adam's Needle	28	Bridal Wreath	44	Dogwood	40	Hibiscus	12
Adiantum	31	Broom, Dyer's	41	Doronicum	9	Hollyhocks	3
Adonis	2, 3	Bugbane	7	Dracocephalum	9	Honeysuckle	37, 41, 43
Æsculus	39	Butterfly Weed	4	Dragonhead	9	Honeysuckle, Wild	3
Ailanthus	39	Button Bush	40	Dragonhead, False	24	Hop Vine	37
Ajuga	3	Calico Bush	41	Dropwort	27	Horse-Chestnut	39
Alder, Black	41	Caltha	5	Dutchman's Breeches	8	Humulus	37
Alder, White	40	Calyceanthus	39	Dutchman's Pipe	37	Hyacinth, Summer	34
Allspice, Carolina	39	Campanula	5, 6	Echinops	9	Hyacinthus	34
Almond, Flowering	39	Campion, Rose	20	Elder	43	Hydrangea	41
Althaa	3	Camptosorus	32	Elder, Box	38	Iberis	12
Alum Root	12	Candytuft	12	Elm	44	Ilex	41
Alyssum	3	Cannas	34	Epipactis	29	Indigo, Bastard	39
Amelanchier	39	Canterbury Bells	6	Erigeron	9	Iris	12-14
Amorpha	39	Caragana	39	Eupatorium	9	Ivy, Boston	37
Amsonia	3	Cardinal Flower	19	Euphorbia	9	Jack-in-the-Pulpit	4
Amygdalus	39	Cassia	6	Fagus	41	Jacob's Ladder	24
Anchusa	3	Castanea	39	Fern, Bladder	32	Jerusalem Cross	19
Anemone	3	Catalpa	39	Fern, Christmas	33	Juniperus	41
Anemonella	3	Catawba Tree	39	Fern, Cinnamon	32	Kalmia	41
Anthemis	3	Catchfly, Alpine	26	Fern, Dagger	33	Lady's Seal	25
Anthericum	3	Ceanothus	40	Fern, Flowering	32, 33	Lady's Slipper	29
Aplectrum	29	Cedar, Red	41	Fern, Hay-scented	32	Larch	41
Apples	45, 46	Cedar, White	44	Fern, Hegan Beach	33	Larix	41
Aquilegia	3, 4	Celastrus	37	Fern, Lady	31	Larkspur	7
Arabis	4	Centaurea	6	Fern, Maidenhair	31	Lathyrus	19
Arborvita	44	Cephalanthus	40	Fern, Ostrich	32	Laurel, Great	43
Arisaema	4	Cerastium	6	Fern, Royal	33	Laurel, Mountain	41
Aristolochia	37	Chamomile	3	Ferns	30-33	Lavender, Sea	26
Arneria	4	Cherries	46	Fern, Sensitive	32	Lead Plant	39
Arrow-wood	44	Chestnut	39	Fern, Shield	33	Liatris	19
Aruncus	4	Chionanthus	40	Flag	12-14	Ligustrum	41
Asarum	4	Chrysanthemum	6	Flag, Sweet	2	Lilac	44
Asclepias	4	Cigar Tree	39	Flax, Australian	19	Lilies	15-18
Ash, Mountain	43	Cimicifuga	7	Fleabane	9	Lilium	15-18
Aspidium	31, 33	Clematis	7, 37	Forget-me-not	20	Lily, Day	9, 10, 11
Asplenium	31, 32	Clethra	40	Forsythia	41	Lily, Lemon Day	11
Asters	4, 5	Cohosh, Black	7	Foxglove	8, 9	Lily-of-the-Valley	7
Aster, Stokes	26	Columbine	3, 4	Fraxinella	8	Lily, Orange Day	11
Astilbe	5	Coneflower	5	Fringe, White	40	Lily, Plantain	9, 10
Azalea	43	Convallaria	7	Fruits	45, 46	Lily, St. Bernard's	3
Baby's Breath	10	Coral Bells	12	Funkia	9	Lily, Wood	27
Balm, Bee	20	Coralberry	44	Gaillardia	10	Linum	19
Balm, Fragrant	30	Coreopsis	7	Gale, Sweet	42	Live Forever	26
Balsam	38	Cornel	40	Galtonia	34	Liverleaf	11
Baneberry	2	Corn, Squirrel	8	Gas-Plant	8	Lobelia	19
Baptisia	5	Cornus	40	Gay Feather	19	Lonicera	37, 41
Barberry	39	Coronilla	7	Genista	41	Lupinus	19
Bayberry	42	Cotoneaster	40	Gentiana	10	Lychnis	19, 20
Bay, Rose	43	Eowslip	5, 25	Gentian, Closed	10	Lycium	37
Bean, Kidney	37	Cranberry, High	44	Geranium	10	Lythrum	20
Beard-Tongue	23	Cranesbill	10	Ginger-root	4	Madwort	3
Bee Balm	20	Crataegus	40	Ginkgo	41	Maidenhair Fern Tree	41
Beech	41	Crimson Bells	12	Gladioli	34	Mallow, Marsh	12
Bellflower	5, 6	Crimson Eye	12	Globe Flower	27	Mallow, Musk	20
Bellflower, Japanese	24	Currant, Indian	44	Goat's Beard	4	Maltese Cross	19
Bellis	5	Currants	45	Golden Bell	41	Malva	20
Bellwort	28	Cydonia	40	Gooseberries	45	Mandrake	24
Berberis	39	Cypripedium	29	Grapes	45	Maple	38
Betula	39	Cystopteris	32	Green Weed	41	Marigold, Marsh	5
Birch	39	Daisy, Alaska	6	Gypsophila	10	Matrimony Vine	37
Bishop's Cap	20	Daisy, English	5	Hackmatack	41	May Apple	24
Bittersweet	37	Daisy, Giant	6	Halesia	41	Meadowsweet	27, 43, 44
Bladdernut	44	Daisy, Michaelmas	4, 5	Hamamelis	41	Menispermum	37
Blackberries	45	Daisy, Shasta	6	Harebell	6	Milfoil	2
Blanket Flower	10	David's Harp	25	Hawthorn	40	Mitella	20
Bleeding Heart	8	Delphinium	7	Helenium	10	Miterwort	20

	PAGE		PAGE		PAGE		PAGE
Miterwort, False.....	27	Pink, Sea.....	4	Saponaria.....	26	Thistle, Globe.....	9
Monarda.....	20	Pink, Swamp.....	11, 43	Savin.....	41	Thorn.....	40
Monkshood.....	2	Pink, Vermont.....	8	Scarlet Lightning.....	19	Thrift, Alpine.....	4
Montbretia.....	34	Pinus.....	42, 43	Seal Flower.....	8	Thuja.....	44
Moontseed.....	37	Plane Tree.....	43	Sedum.....	26	Tiarella.....	27
Morus.....	42	Plantain, Rattlesnake.....	29	Senna, American.....	6	Tradescantia.....	27
Mountain Fleece.....	25	Platanus.....	43	Shad Bush.....	39	Traveler's Joy.....	37
Mulberry.....	42	Platycodon.....	24	Sheepberry.....	44	Tree of Heaven.....	39
Mullein.....	28	Plums.....	46	Shrubs and Trees.....	38-44	Trillium.....	27
Myosotis.....	20	Podophyllum.....	24	Silene.....	26	Tritonia.....	34
Myrica.....	42	Polemonium.....	24, 25	Silver Bell Tree.....	41	Trolius.....	27
Myrtle, Wax.....	42	Polygonatum.....	25	Smoke Tree.....	43	Trumpet Creeper.....	37
Nanny-berry.....	44	Polygonum.....	25	Snakeroot.....	4	Tsuga.....	44
Ninebark.....	42	Polypodium.....	33	Snakeroot, Black.....	7	Tunica.....	27
Oak.....	43	Polypody.....	33	Snakeroot, Button.....	19	Ulmaria.....	27, 28
Önothera.....	20	Polystichum.....	33	Snakeroot, White.....	9	Ulmus.....	44
Old Man's Beard.....	37	Poplar.....	43	Sneezeweed.....	10	Uvularia.....	28
Onclea.....	32	Poppy, Iceland.....	22	Snowball.....	44	Valeriana.....	28
Orange, Mock.....	42	Poppy, Oriental.....	22, 23	Snowberry.....	44	Valerian, Cat's.....	29
Orchids.....	29	Poppy, Plumed.....	5	Soap, Sulpho-Tobacco.....	46	Valerian, Greek.....	25
Orchids.....	29	Populus.....	43	Soapwort.....	26	Vegetable Plants and Roots.....	46
Osier.....	40	Potentilla.....	25	Sorbaria.....	43	Verbascum.....	28
Osmunda.....	32, 33	Primrose, Evening.....	20	Spiderwort.....	27	Veronica.....	28
Peonia.....	21, 22	Primula.....	25	Spiræa.....	5, 27, 42, 43, 44	Vetch, Crown.....	7
Pansy.....	28	Prince's Feather.....	28	Spleenwort.....	31, 32	Viburnum.....	44
Pansy, Tufted.....	28	Psedera.....	37	Spruce.....	42	Vinca.....	37
Palsywort.....	25	Pyrethrum.....	6	Spruce, Flowering.....	9	Vines, Trailers and Climbers.....	37
Papaver.....	22, 23	Pyrus.....	43	Stachys.....	26	Viola.....	28
Pea, Everlasting.....	19	Quercus.....	43	Staphylea.....	44	Violet.....	28
Pea, Perennial.....	19	Quince, Japanese.....	40	Static.....	26	Virginia Creeper.....	37
Pea Tree.....	39	Raspberries.....	45	Stokesia.....	26	Virgin's Bower.....	37
Pears.....	46	Raspberry, Purple-flower- ing.....	43	Stonecrop.....	26	Wake Robin.....	27
Pentstemon.....	23	Rhododendron.....	43	Stonecrop, Mossy.....	26	Walking Leaf.....	32
Peony.....	21, 22	Rhus.....	43	Sumac.....	43	Wayfaring Tree.....	44
Pepper Bush, Sweet.....	40	Robinia.....	43	Sunflower.....	10, 11	Weeder, Hazeltine's Hand.....	46
Pepper, Wall.....	26	Rocket.....	11	Swallowwort.....	4	Weigela.....	40
Pheasant's Eye.....	2, 3	Rocket, Dame's.....	11	Sweet-scented Shrub.....	39	Willow.....	43
Phegopteris.....	33	Rose, Christmas.....	11	Sweet William.....	8	Windflower.....	3
Philadelphus.....	42	Roses.....	35, 36	Symphoricarpos.....	44	Winterberry.....	41
Phlox.....	23, 24	Rosy Strife.....	20	Syringa.....	42	Wistaria.....	37
Physocarpus.....	42	Rubus.....	43	Tamarack.....	41	Witch Hazel.....	41
Physostegia.....	24	Rudbeckia.....	25	Tanacetum.....	27	Woodbine, American.....	37
Picea.....	42	Rue, Meadow.....	27	Taxus.....	44	Woodsia.....	33
Pine.....	42, 43	Sage.....	25	Tea, New Jersey.....	40	Woundwort, Woolly.....	26
Pink, Clove.....	8	Salix.....	43	Tea, Oswego.....	20	Yarrow.....	2
Pink, Grass.....	8	Salvia.....	25	Tecoma.....	37	Yucca.....	28
Pink, Maiden.....	8	Sambucus.....	43	Tender Plants.....	34		
Pink, Moss.....	24	Sanguinaria.....	25	Thalictrum.....	27		
Pink, Mullein.....	20			Thermopsis.....	27		





Campanula Medium



Horsford's
Nurseries
Charlotte
Vermont

Cypripedium
hirsutum
(*spectabile*)