

DEC 26 1928

71,531

ALPHEUS

Stenomacrus Amphibiorum

Kielsen, F.C. 1835 Icones Amphibiorum

f

HARVARD UNIVERSITY.



LIBRARY

OF THE

MUSEUM OF COMPARATIVE ZOOLOGY

71,531

LIBRARY OF

SAMUEL GARMAN

December 26, 1928.

Icones
Amphibiorum.

Indicem systematicum

addit

F. C. Kielsen,

quondam in schola metropolitana magister primarius.

Hafniae 1835.

Sumptibus *Christiani Steen*, bibliopolae et chartopratis hafniensis;
typis *Bianco Luno & Schneider*.

In hoc *Amphibiorum* indice systematico immortalem *Linnaeum* (editionem XIII^{am} ejus Systematis Naturae comparata) omnino sumus secuti. Species, parenthesi inclusae, in Systemate Linn. desiderantur; quare eas servavimus, quibus usus est auctor in textu danico, aeneas hujus operis tabulas illustraturo. Has etiam adjecimus, ubi differunt a Linnaeanis.

Classis III. *Amphibia.*

Ordo I. *Reptilia.*

	Tab.	Fig.
1. <i>Testudo imbricata</i>	36.	=
— <i>Mydas</i>	37.	2.
— <i>orbicularis</i>	38.	1.
— <i>membranacea</i>	37.	1.
— <i>carolina</i>	38.	2.
— <i>gracca</i>	13.	1.
— <i>geometrica</i>	—	2.
2. <i>Rana</i> Pipa	14.	1.
— Bufo	40.	1.
— — β . (<i>portentosa</i>)	16.	3.
— Bombina	15.	1.
— <i>cornuta</i>	14.	2.
— <i>ocellata</i>	39.	1.
— <i>temporaria</i>	16.	9.
— <i>esculenta</i>	—	1-7.
— <i>arborea</i>	15.	2-3.
— <i>paradoxa</i>	39.	2.
5. <i>Draco volans</i> (<i>Lacerta volans</i>)	6.	2.
4. <i>Lacerta</i> Crocodylus	17.	1-2.
— <i>gangetica</i>	13.	2.
— Alligator	—	1.
— Monitor	5.	1.
— Cordylus	20.	2.
— Stellio	21.	1.
— <i>azurea</i>	19.	2.
— <i>orbicularis</i>	21.	2.
— Basiliscus	6.	1.
— Igvana	40.	2.
— <i>palustris</i>	9.	1-3.
— <i>lacustris</i>	41.	1-4.
— <i>aquatica</i> (L. Salamandra)	3.	1-4.
— Salamandra	11.	3-4.
— <i>strumosa</i>	—	2.
— Gekko	5.	2.

IV

	Tab.	Fig.
4. <i>Lacerta</i> <i>Chamaeleon</i>	19.	1.
— <i>agilis</i>	10.	1-3.
— (<i>platura</i>)	7.	1.
— <i>Seps</i>	—	2.
— <i>bullaris</i>	11.	1.
— <i>Scincus</i> (<i>L. stinens</i>)	20.	1.
— <i>Chalcides</i>	7.	3.

Ordo II. *Serpentes.*

3. <i>Crotalus</i> <i>horridus</i>	22.	:
6. <i>Boa</i> <i>canina</i>	23.	:
— <i>Constrictor</i>	1.	:
7. <i>Coluber</i> <i>Vipera</i>	24.	:
— <i>Cerastes</i>	42.	1.
— <i>Berus</i>	30.	:
— <i>Prester</i>	31.	:
— <i>coccineus</i>	27.	2.
— <i>Aesculapii</i>	29.	1.
— <i>Natrix</i>	25.	:
— <i>Naja</i>	2.	:
— <i>ocellatus</i>	28.	2.
— <i>Argus</i>	27.	1.
— (<i>communis</i>)	32.	1.
— (<i>nasicornis</i>)	26.	:
— <i>porphyraceus</i>	23.	1.
— <i>quadristriatus</i>	29.	2.
8. <i>Anguis</i> <i>fragilis</i>	33.	1.
— <i>ventralis</i>	—	2.
— <i>platuross</i> (<i>A. platura</i>)	34.	1.
— <i>ater</i>	3.	1.
— <i>Eryx</i>	32.	2.
— <i>coerulca</i>	3.	2.
— <i>niger</i>	35.	:
— <i>variegata</i>	34.	2.
— (<i>Vipera nigra</i>)	42.	:
9. <i>Amphisbaena</i> <i>alba</i>	4.	2.
— <i>fuliginosa</i>	—	1.
10. <i>Caccilia</i> <i>tentaculata</i>	42.	2.

Ordo II. *Hemiptera.*

		Tab.	Fig.
56.	<i>Blatta americana</i>	12.	1.
	— <i>orientalis</i>	—	2.
	— <i>lapponica</i>	—	4.
	— <i>germanica</i>	—	3.
	— <i>Heteroclitia</i>	75.	5.
57.	<i>Mantis Gigas</i>	51.	1.
	— <i>Gongylodes</i>	50.	3.
	— <i>religiosa</i>	15.	5.
	— <i>strumaria</i>	5.	1.
58.	<i>Gryllus Gryllotalpa</i>	8.	2.
	— <i>domesticus</i>	7.	2.3.
	— <i>campestris</i>	76.	1.
	— <i>viridissimus</i>	50.	1.
	— <i>verrucivorus</i>	53.	1.
	— <i>eristatus</i>	7.	1.
	— <i>morbillosus</i>	16.	1.
	— <i>migratorius</i>	76.	2.
	— <i>stridulus</i>	50.	2.
59.	<i>Fulgora laternaria</i>	52.	2.
	— <i>candelaria</i>	5.	2.
	— <i>europaea</i>	—	3.
40.	<i>Cicada cornuta</i>	77.	2.
	— <i>plebeja</i>	51.	1.
	— <i>orni</i>	—	3.
	— <i>sanguinolenta</i>	77.	3.
	— <i>spumaria</i>	—	4.
41.	<i>Notonecta glauca</i>	73.	1.
42.	<i>Nepa cinerea</i>	—	2.
	— <i>cimicoides</i>	—	3.
	— (<i>plana</i>)	—	4.
45.	<i>Cimex lectularius</i>	16.	2.3.
	— <i>corticalis</i>	79.	1.
	— <i>haecarum</i>	—	2.
	— <i>personatus</i>	—	3.
44.	<i>Aphis ribis</i>	97.	1.
	— <i>ulmi</i>	—	2.
3.1	— <i>sambuci</i>	—	3.
3.2	— <i>bursaria</i>	79.	4.

	Tab.	Fig.
44. <i>Aphis rosae</i>	17.	1-4.
45. <i>Chermes buxi</i>	30.	1.
— <i>alni</i>	—	2.
46. <i>Coccus Hesperidum</i>	—	3.
— <i>ilicis</i>	13.	1-5.
— <i>ficus</i> (C. <i>Lacca</i>)	93.	1.
— <i>polonicus</i>	97.	4.
— <i>cacti</i>	19.	1-5.
47. <i>Thrips Physapus</i>	91.	1.

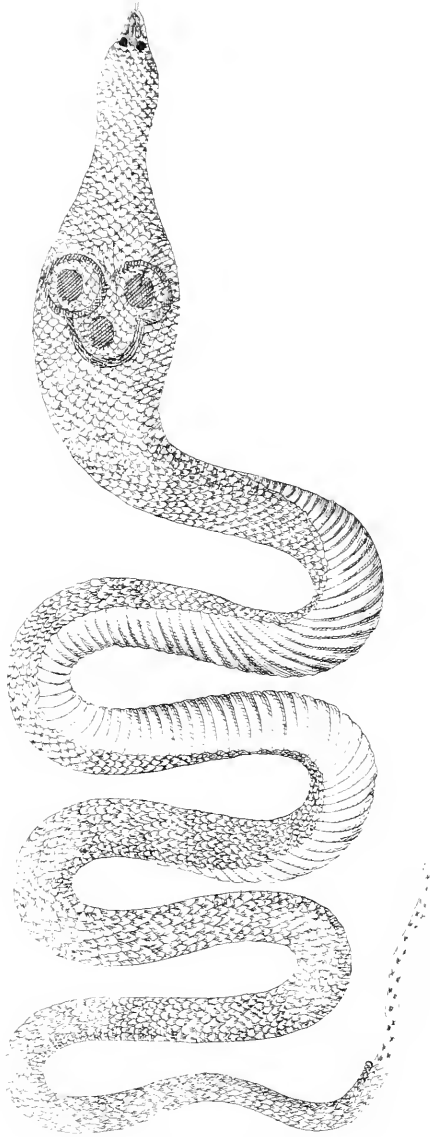
Ordo III. *Lepidoptera.*

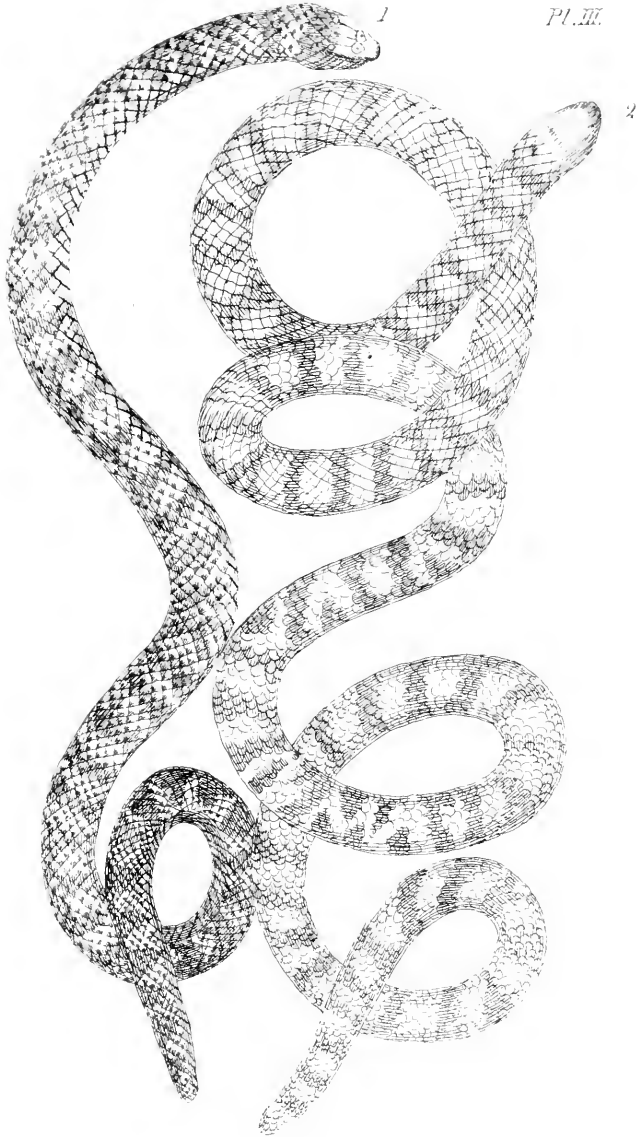
48. <i>Papilio Priamus</i>	81.	=
— <i>Sarpedon</i>	2.	1.
— <i>Ulysses</i>	82.	=
— <i>Machaon</i>	20.	1-3.
— <i>Podalirius</i>	—	4-6.
— <i>Melpomene</i>	4.	2.
— <i>Apollo</i> (<i>Heliconius</i>)	21.	1-4.
— <i>crataegi</i>	1.	1-3.
— <i>brassicac</i>	6.	1.
— <i>rapae</i>	—	2.
— <i>napi</i>	83.	1.
— <i>cardamines</i>	21.	5-7.
— <i>Phileia</i>	4.	1.
— <i>rhamni</i>	54.	1 a. b.
— <i>Hyperanthus</i>	83.	2.
— <i>Jo</i>	22.	1-3.
— <i>Galathica</i>	55.	1.
— <i>cardui</i>	22.	4-6.
— <i>Iris</i>	23.	4-6.
— <i>Antiopa</i>	—	1-3.
— <i>Polychloros</i>	56.	1-3.
— <i>urticae</i>	24.	1-3.
— <i>C album</i>	—	4-6.
— <i>Atalanta</i>	—	7-10.
— <i>Paphia</i>	57.	1-3.
— <i>Aglaia</i>	58.	4-4.
— <i>pruni</i>	59.	1.
— <i>Cyllarus</i>	55.	1-6.
— <i>Adonis</i>	41.	5-6.

Pl. I.

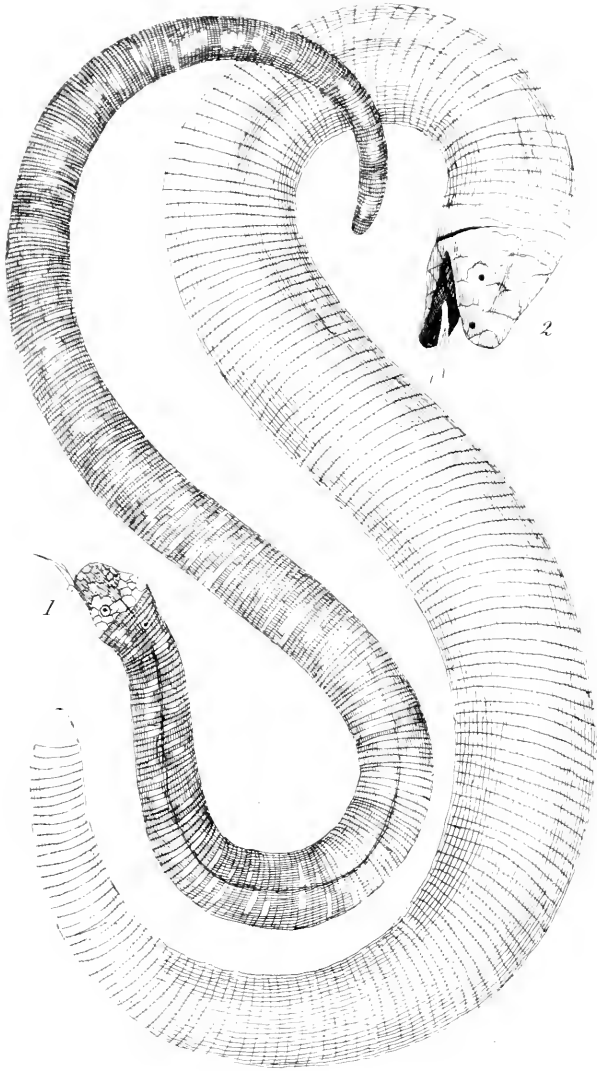




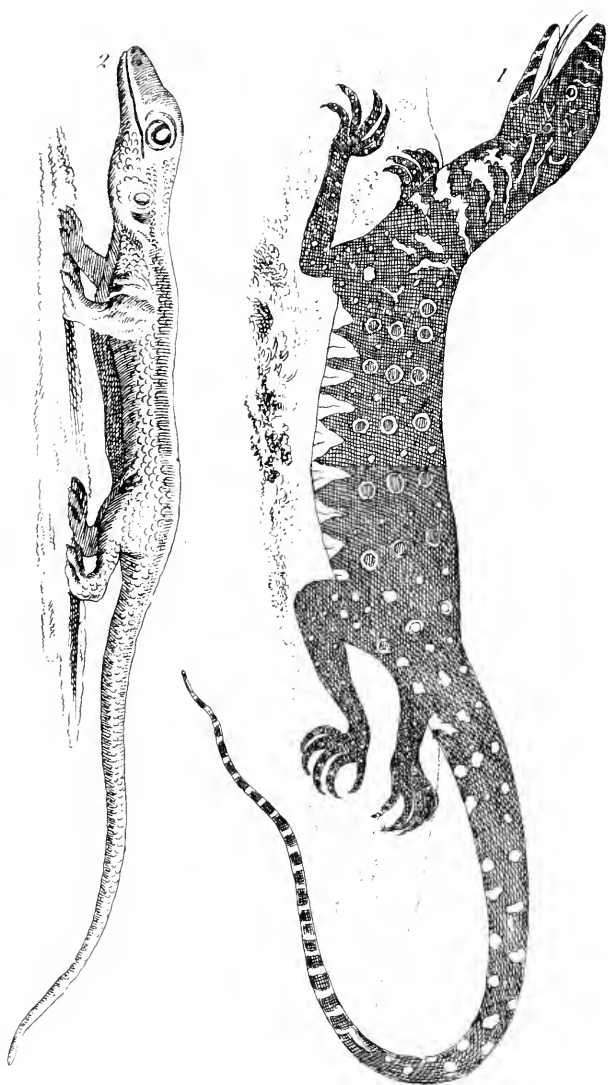


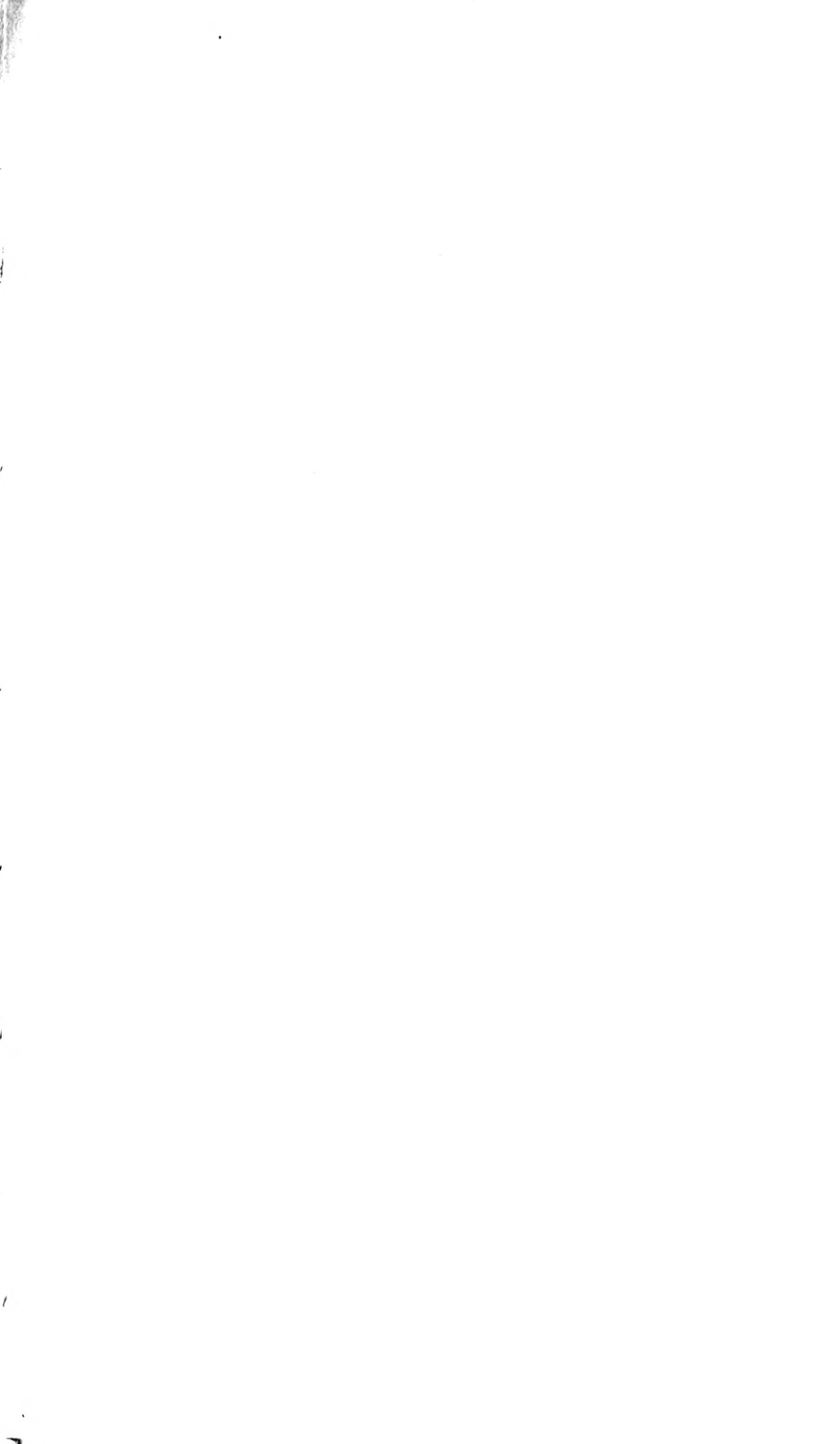


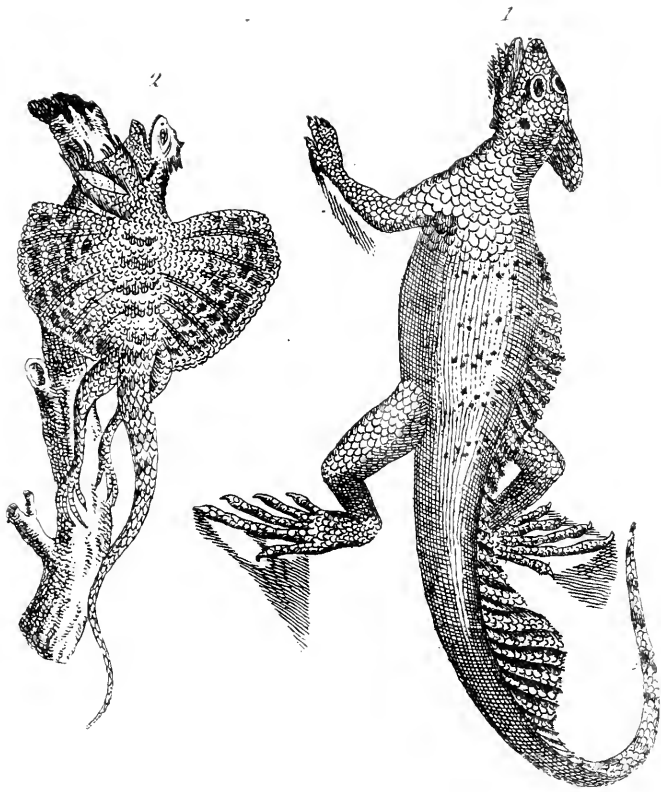


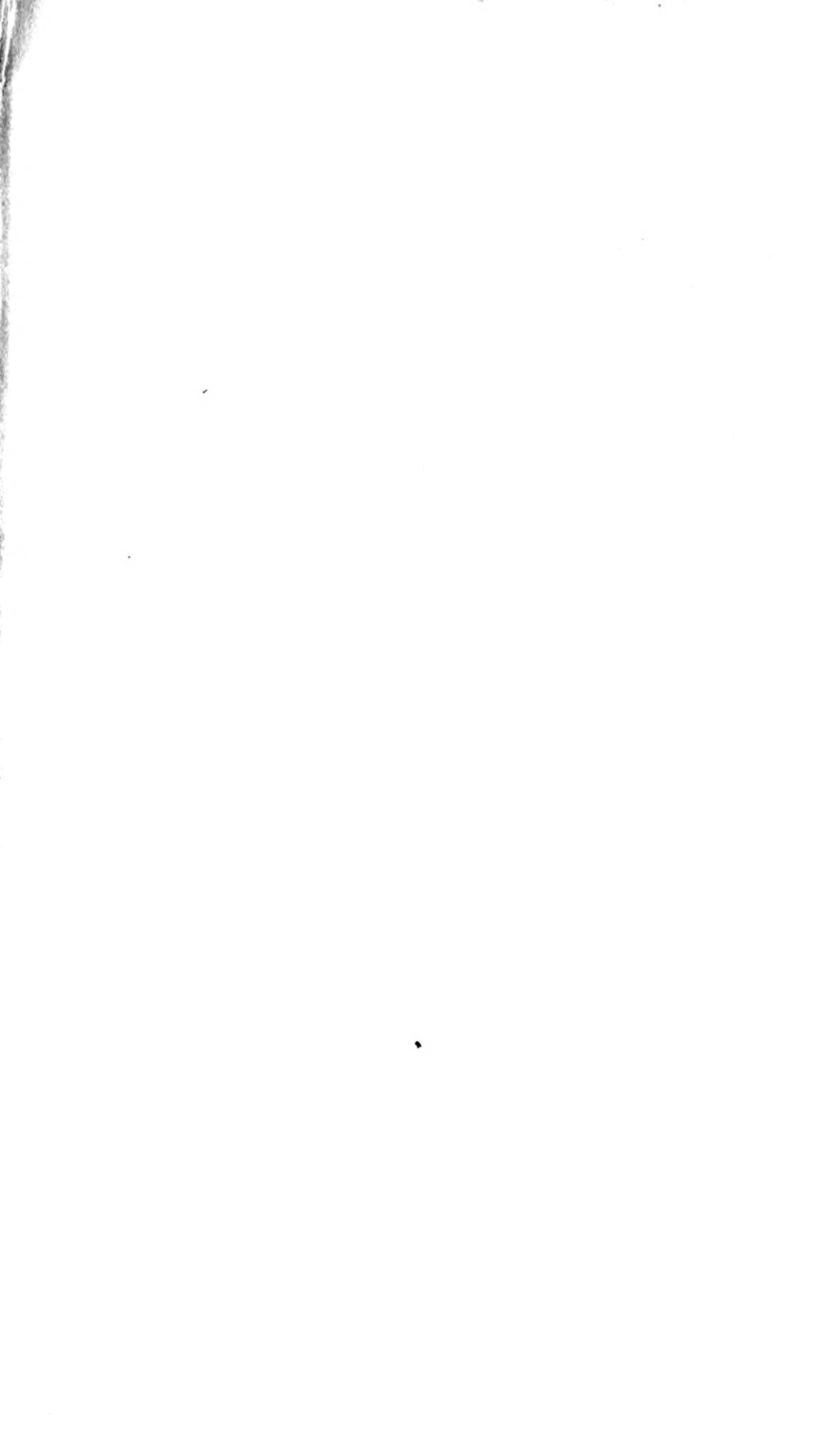


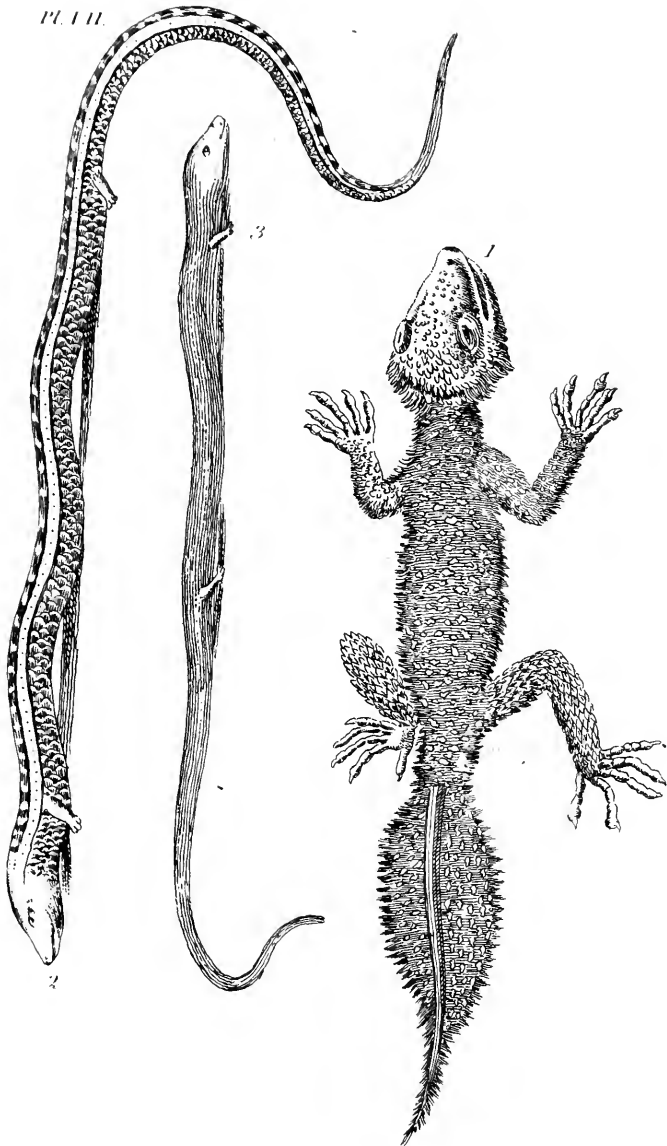




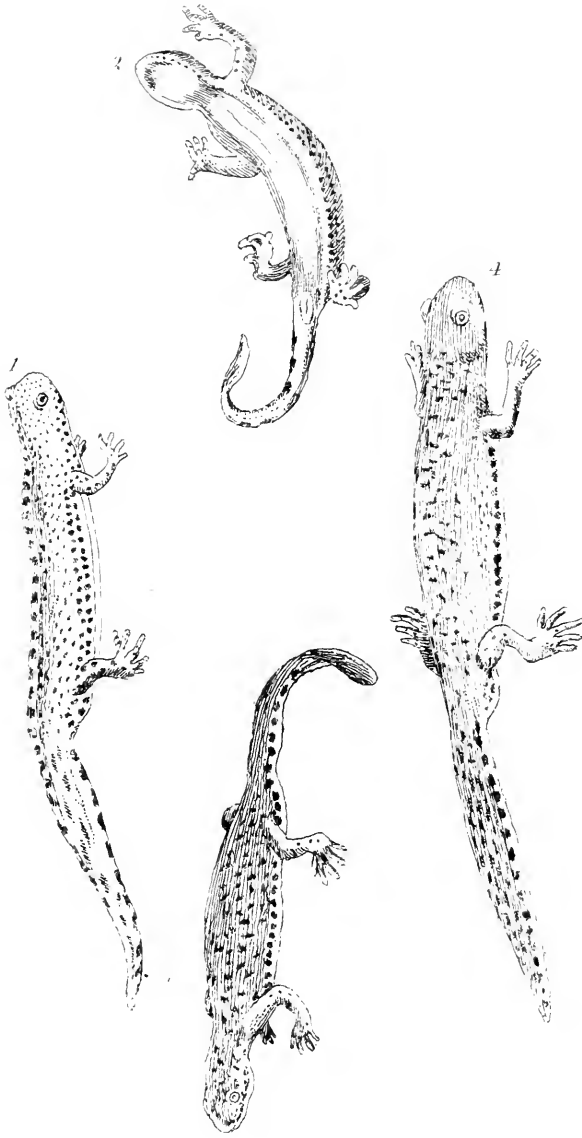


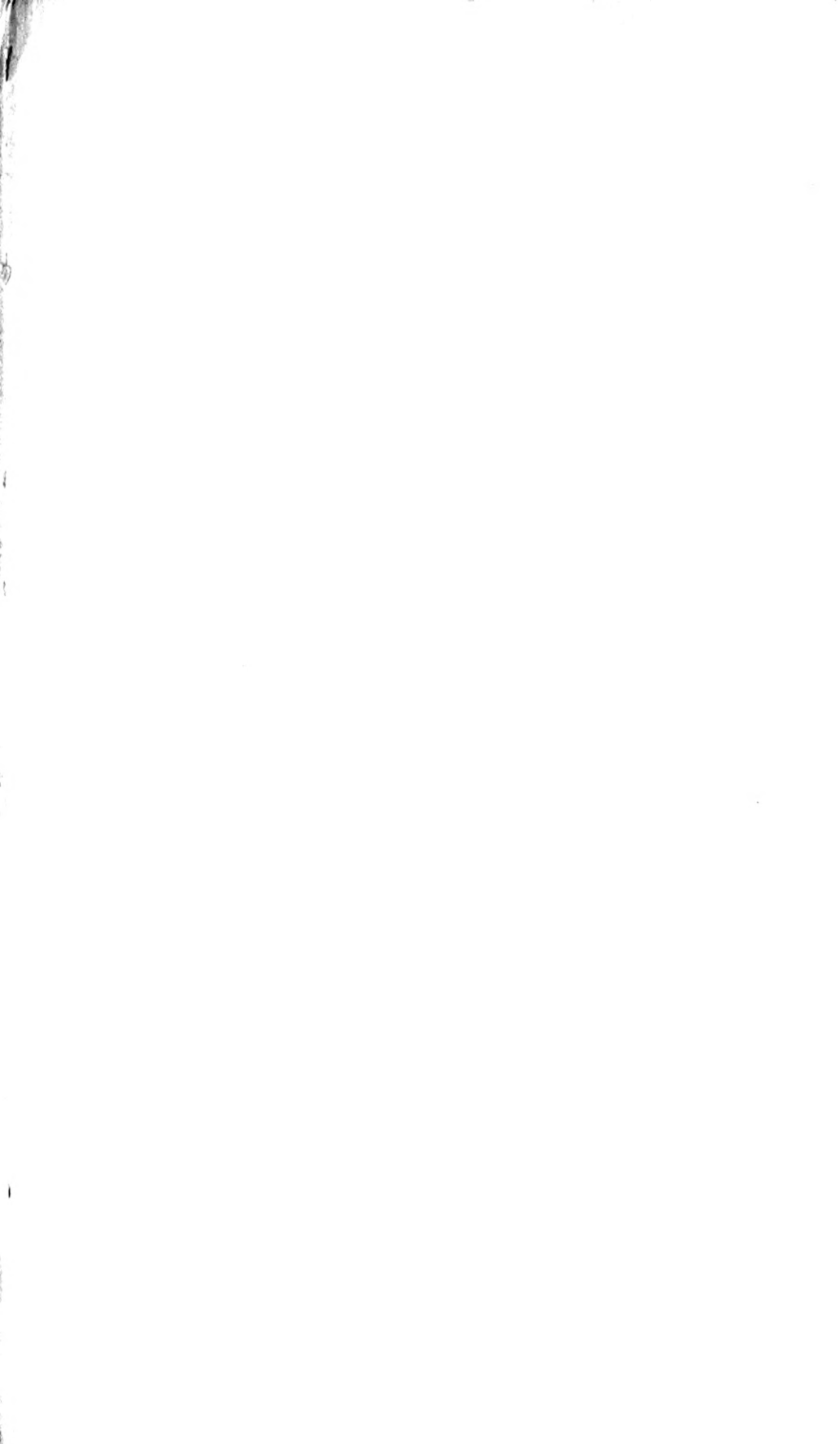


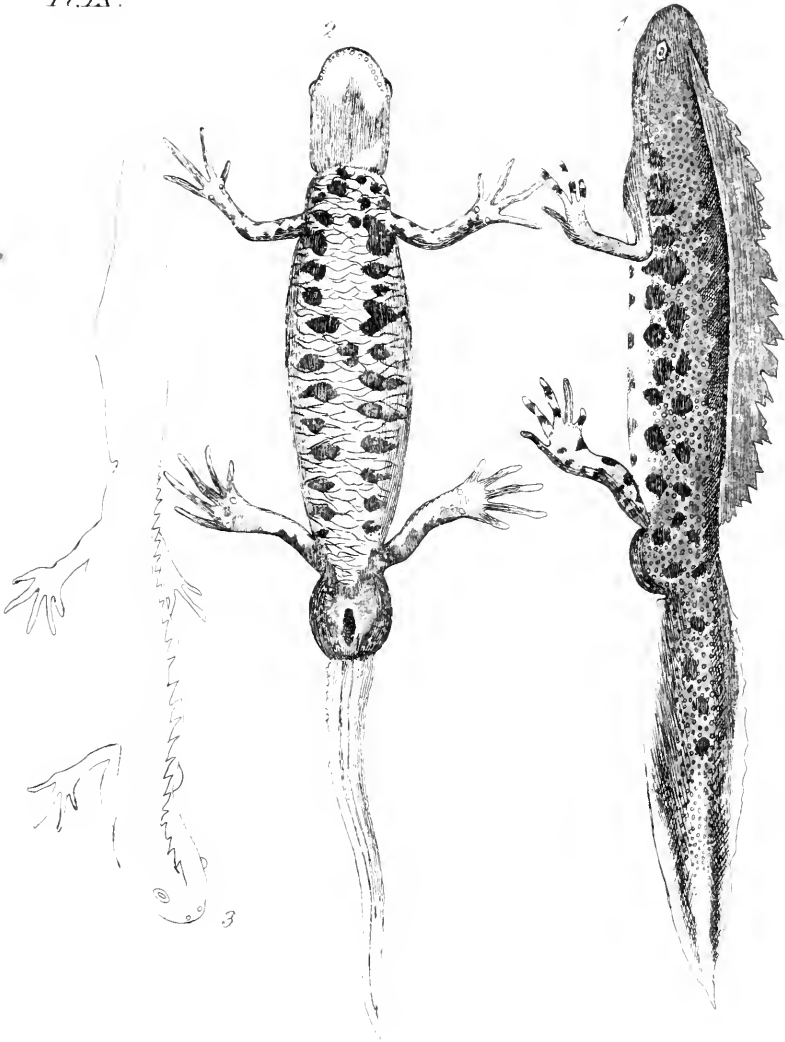






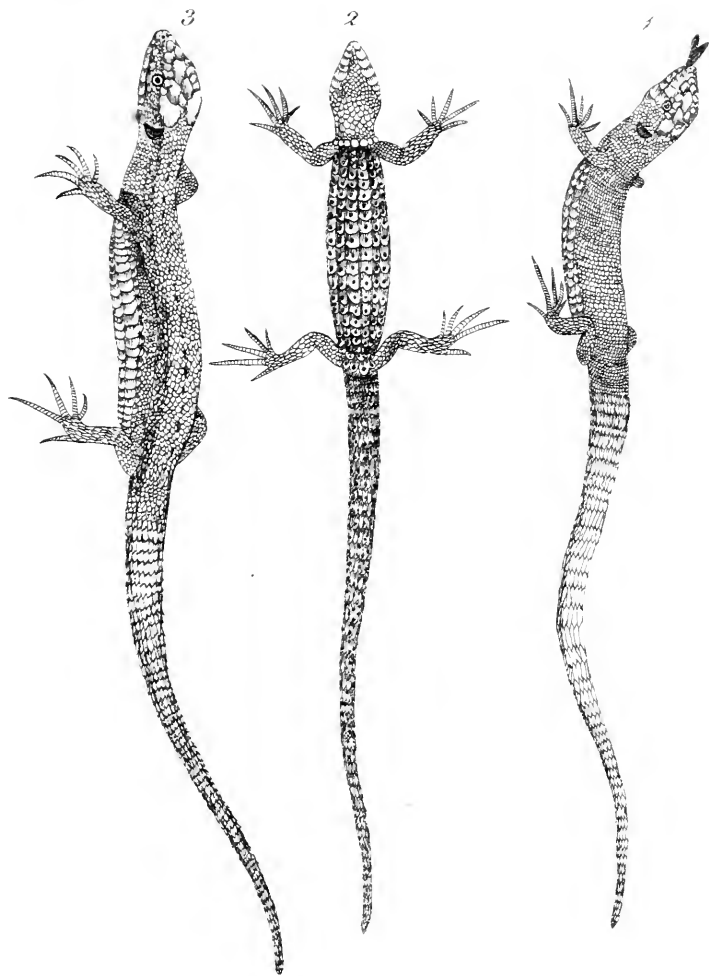


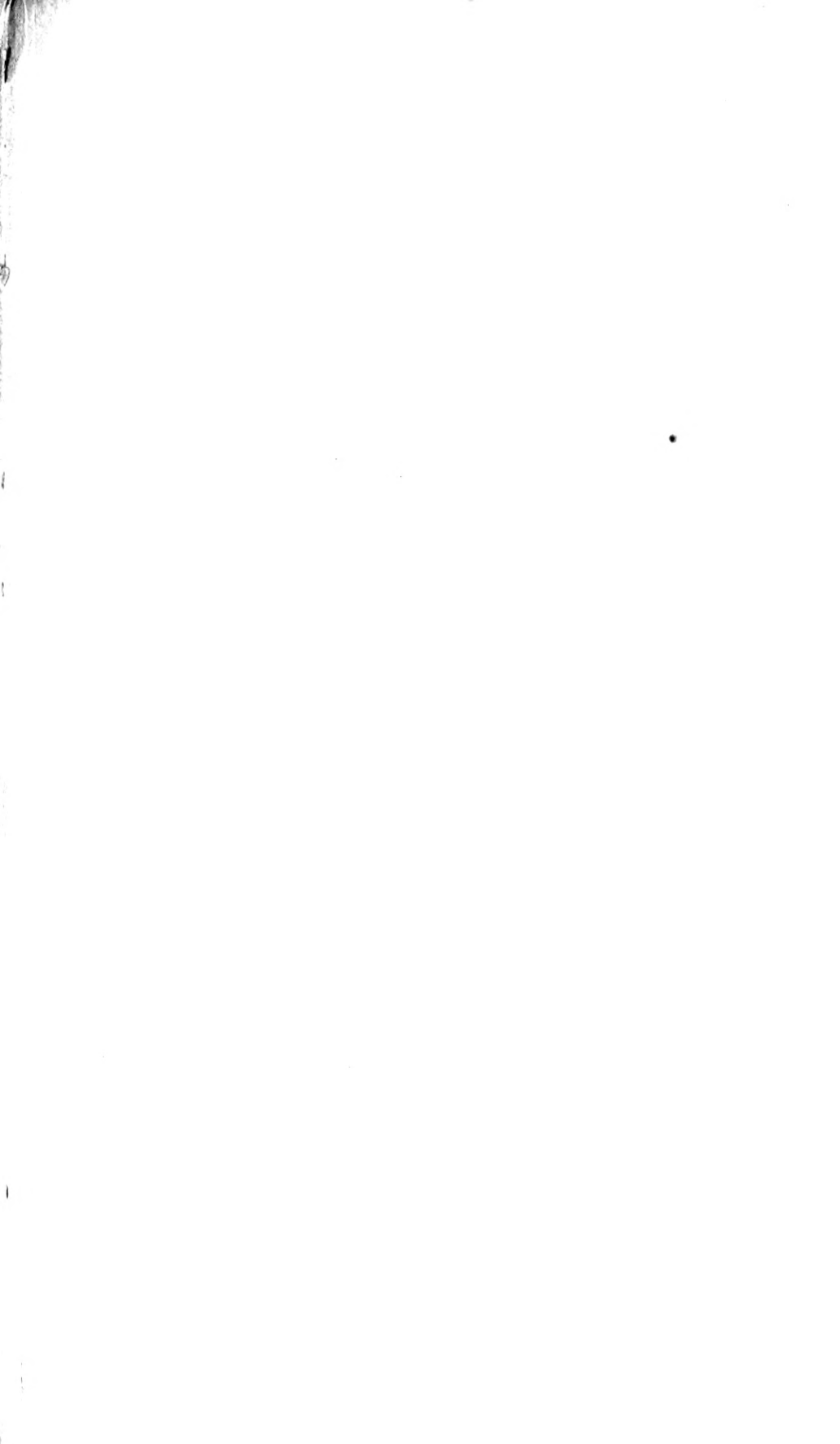




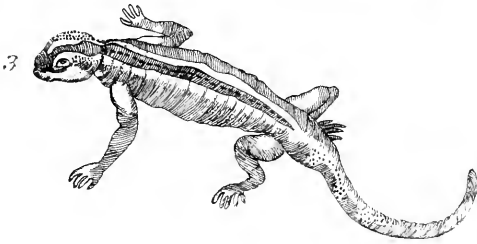
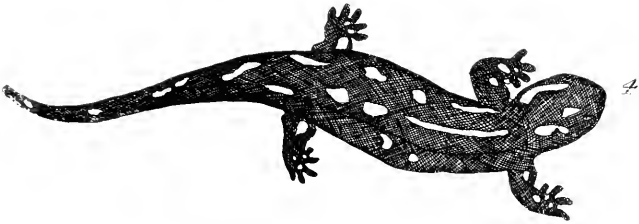


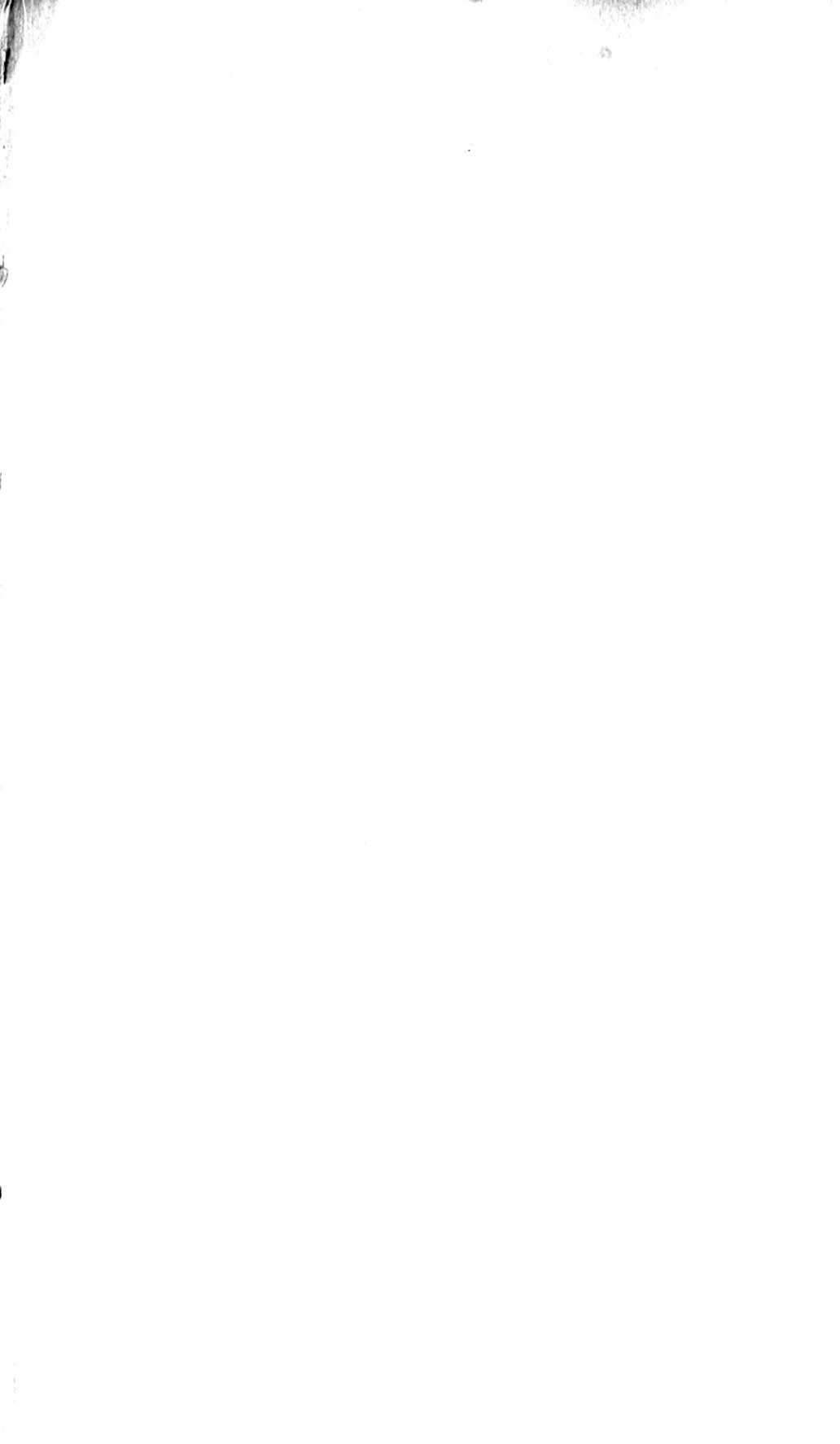
P.L.



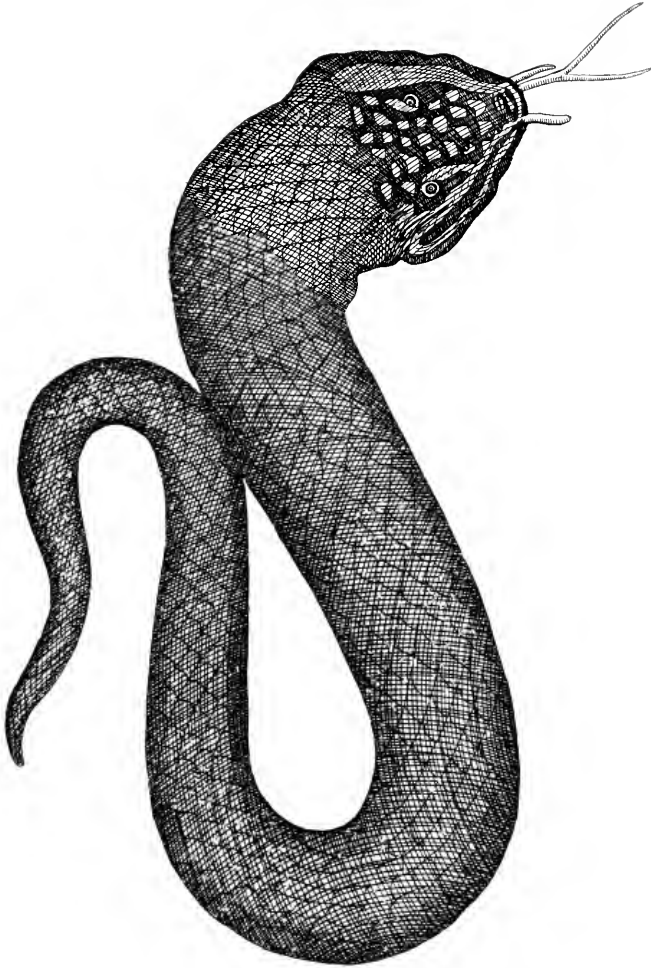


Pl. XI.

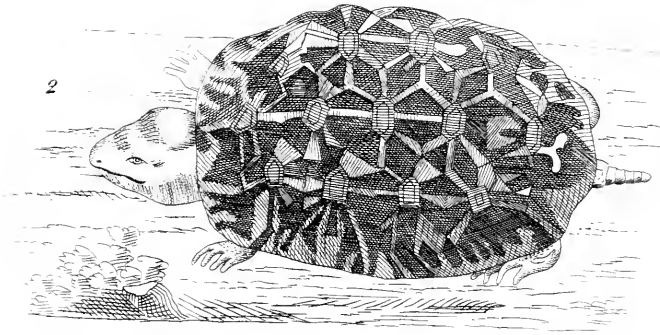
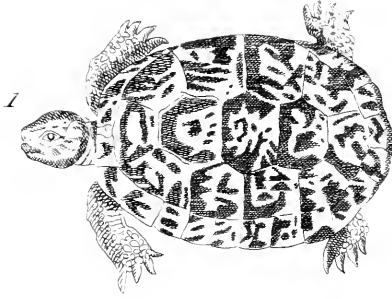


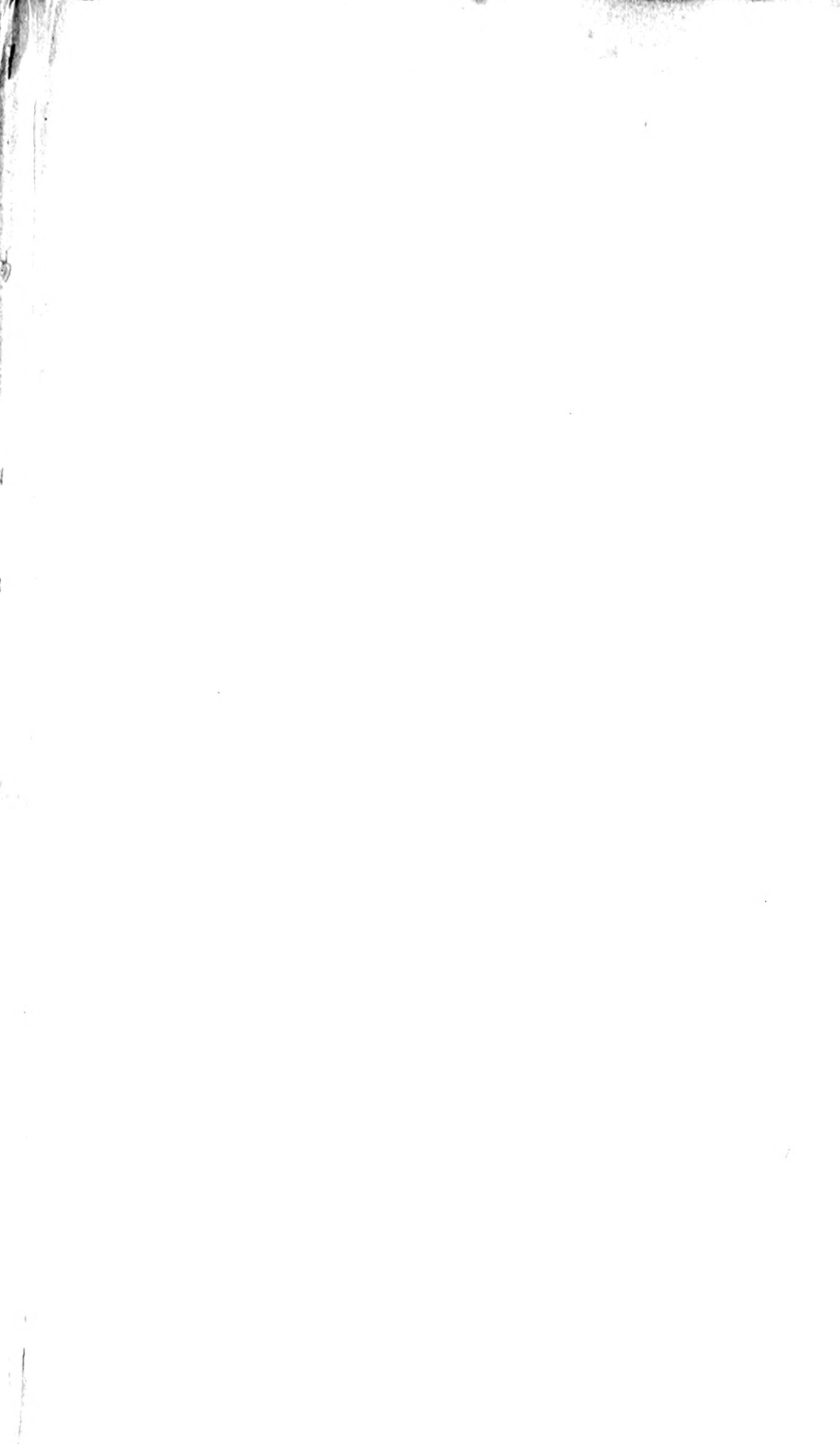


Pl. XII.

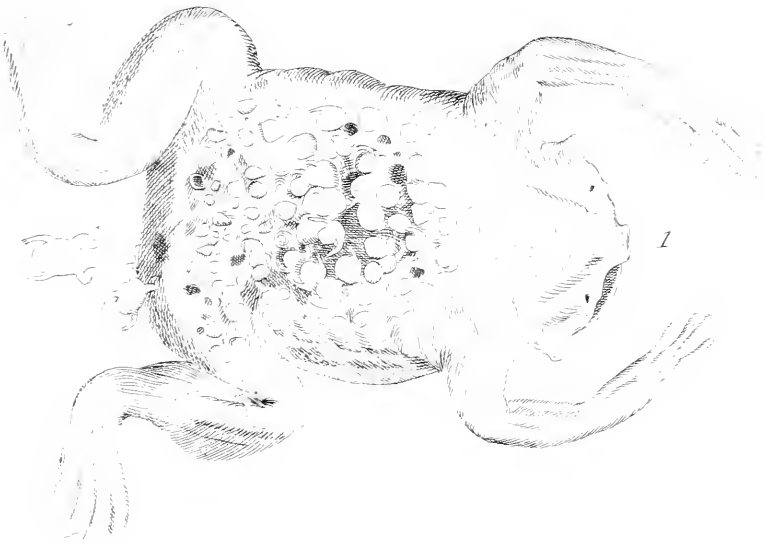
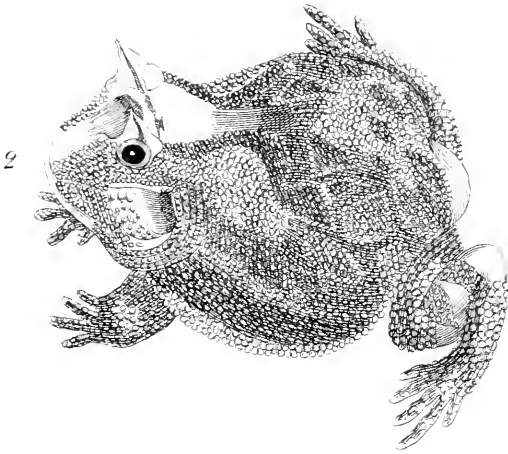




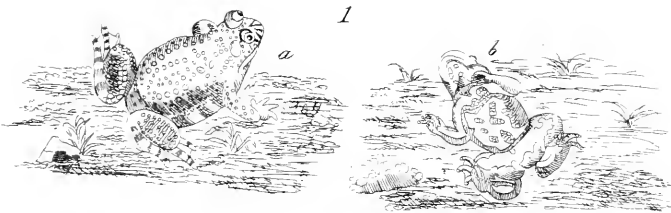
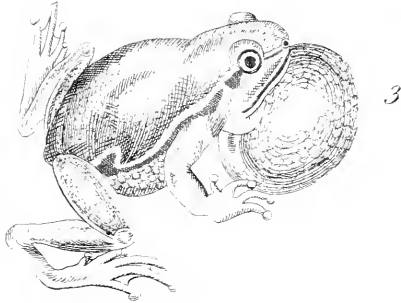
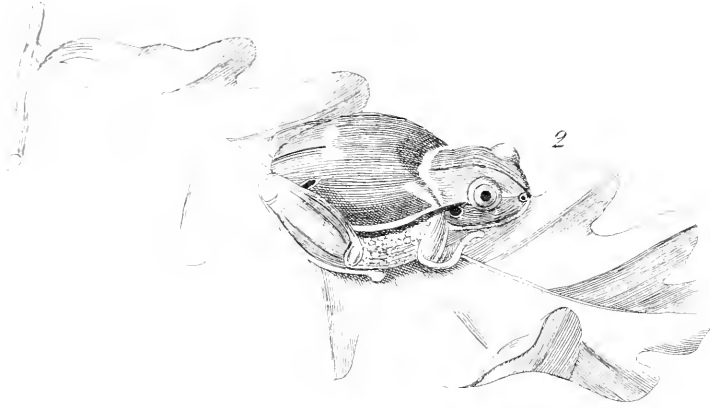




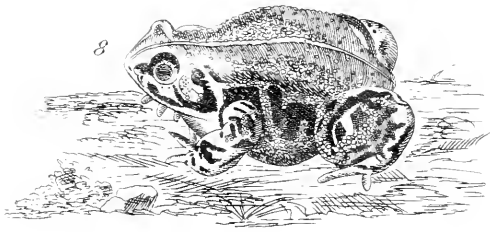
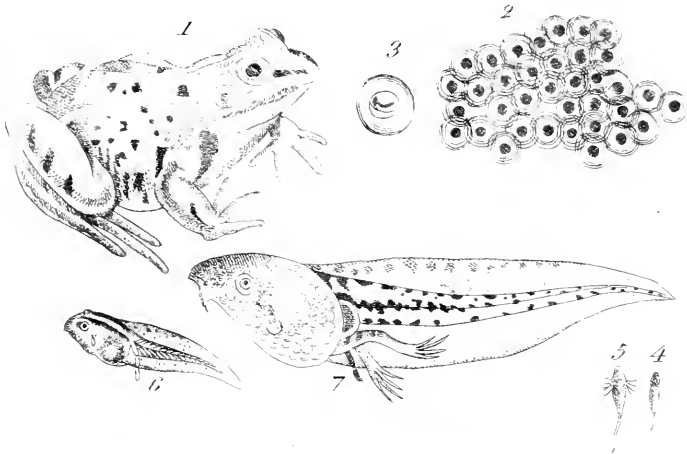
Pl. XII.

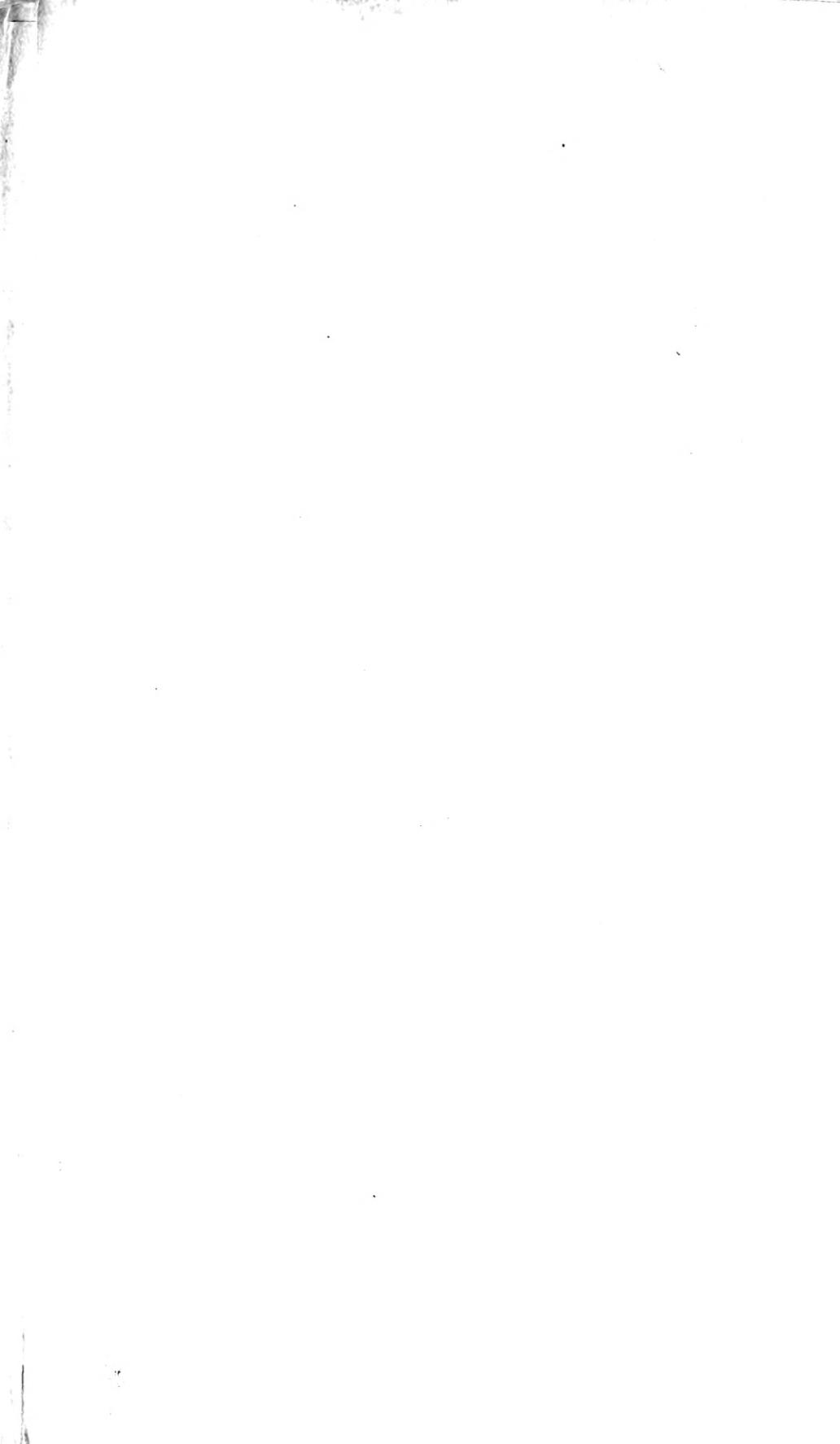




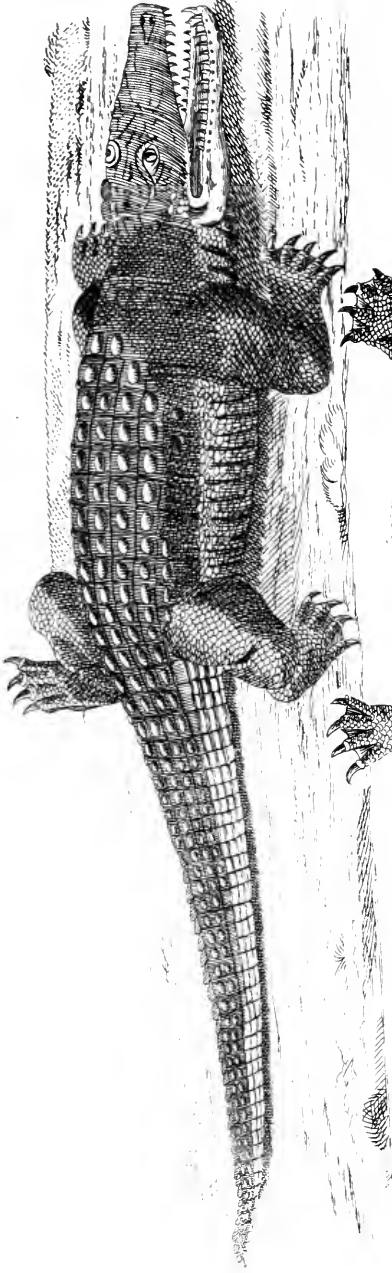




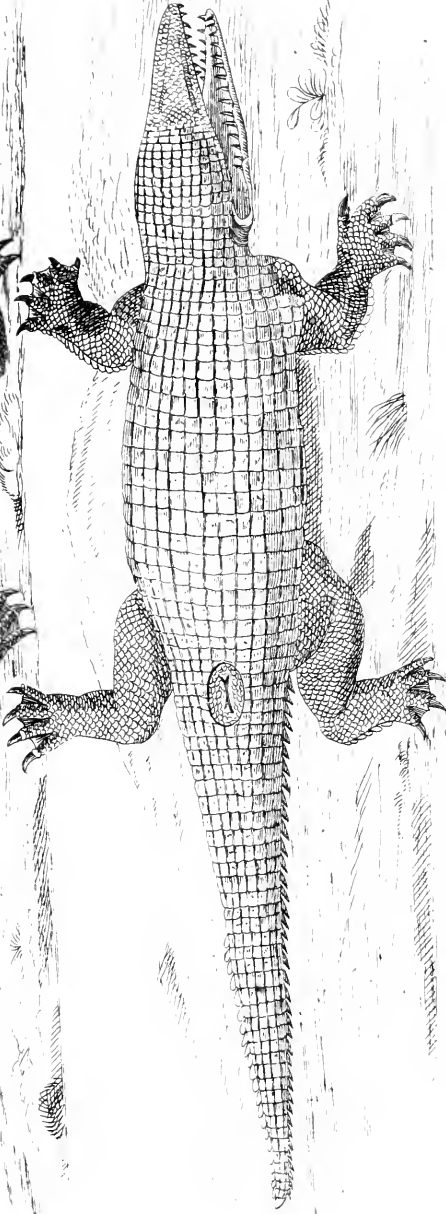


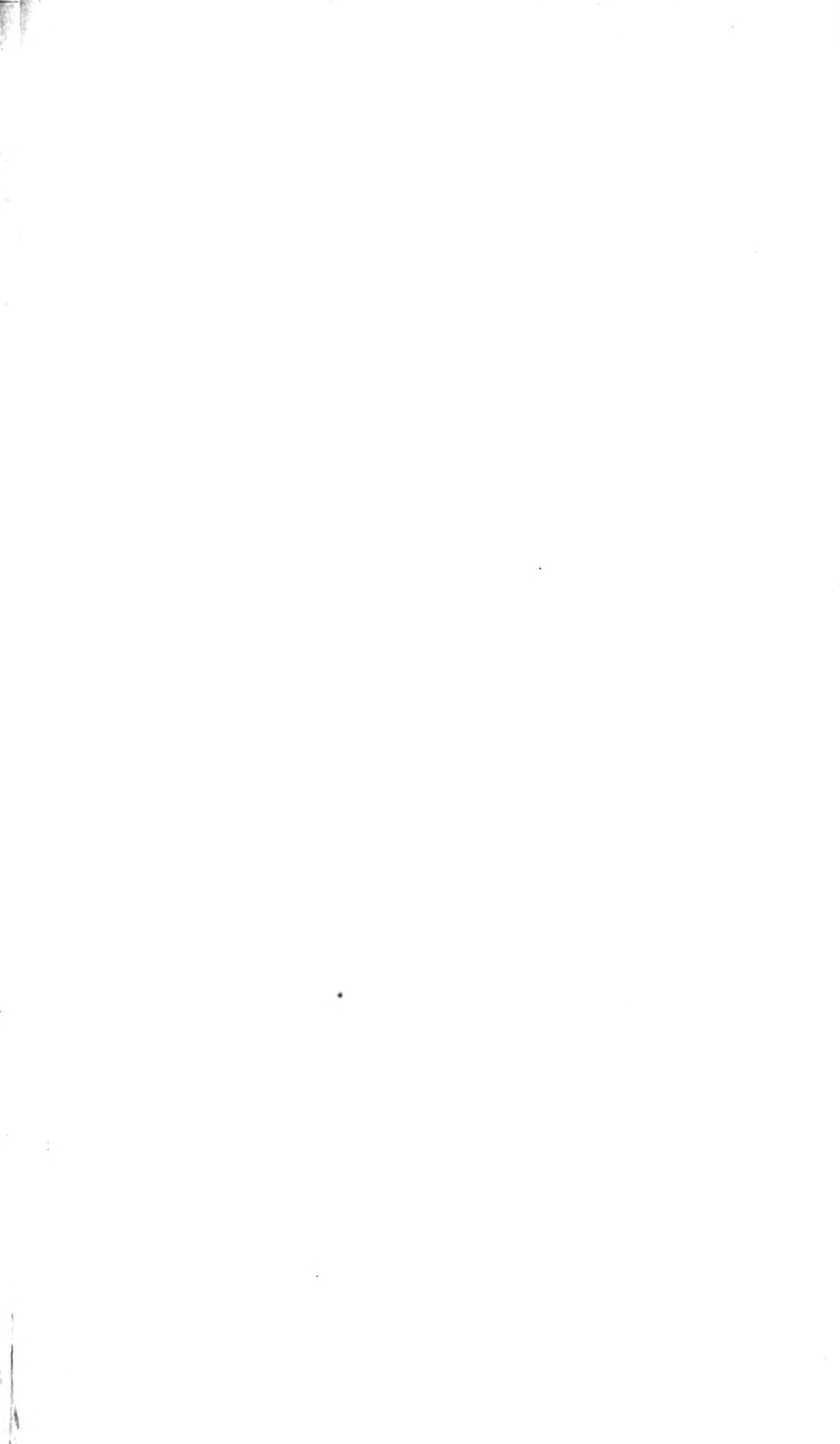


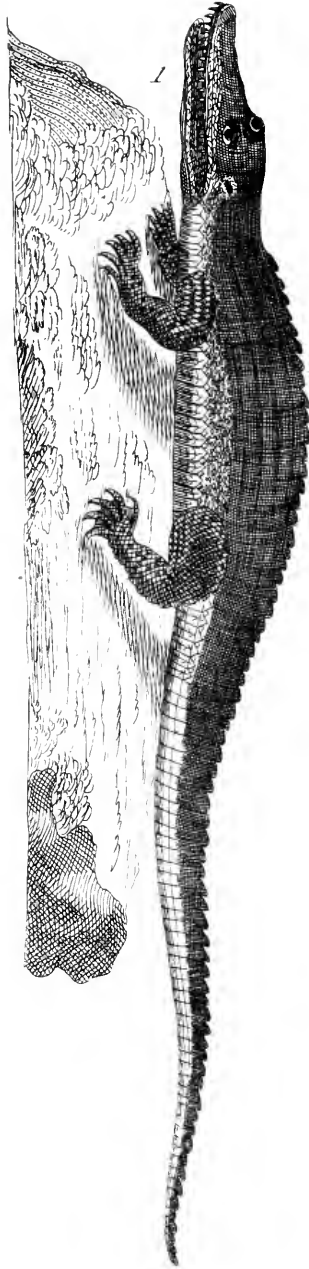
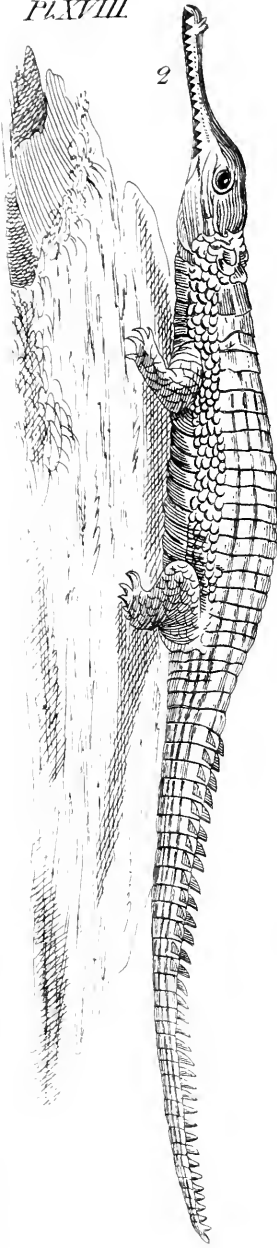
1

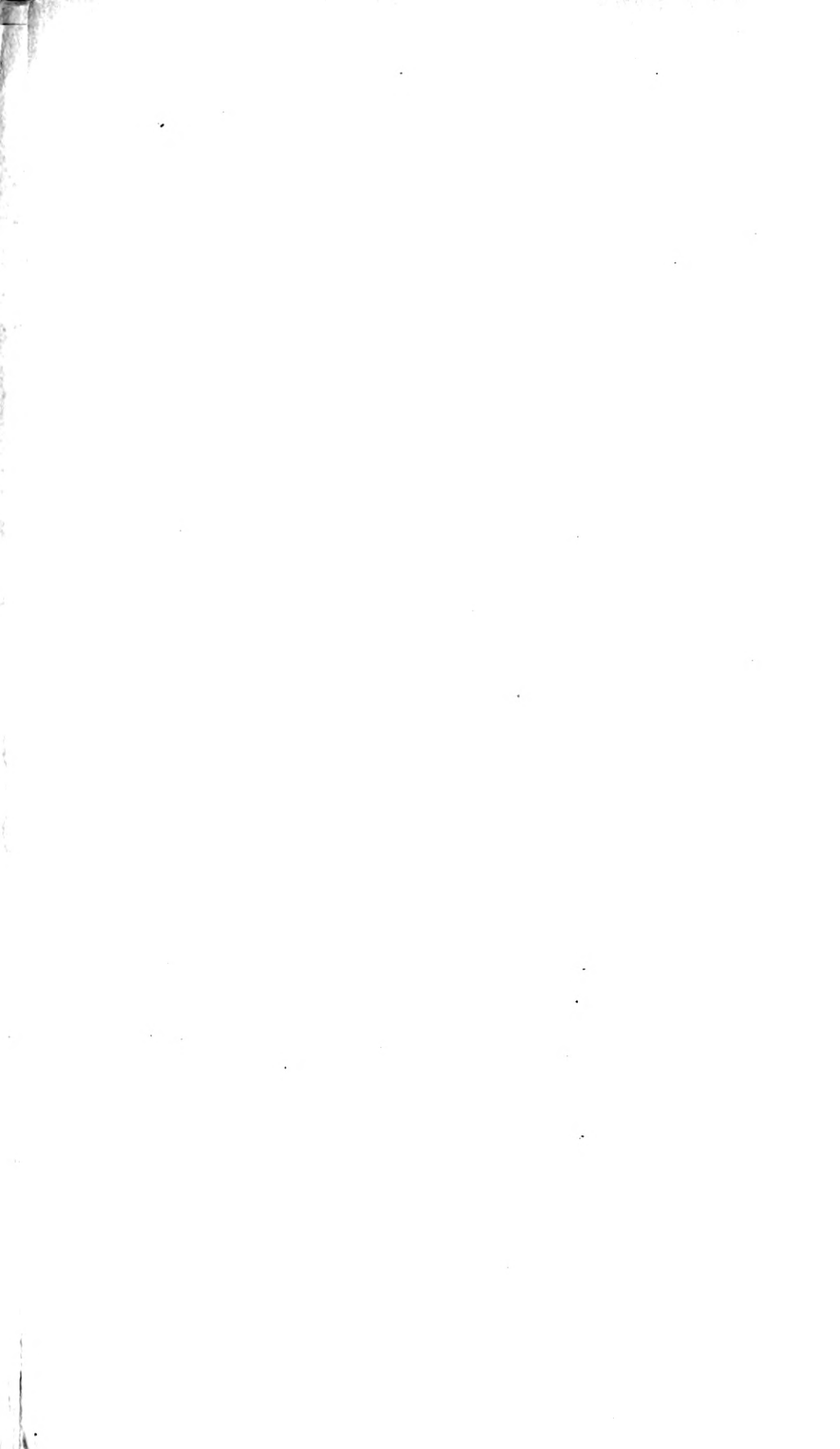


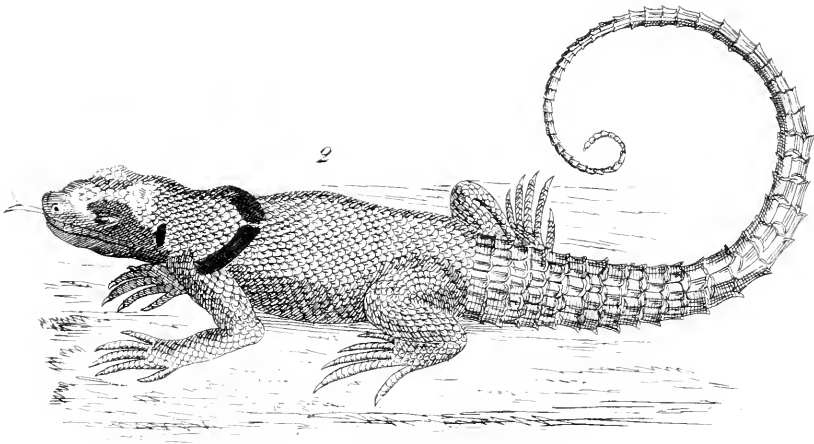
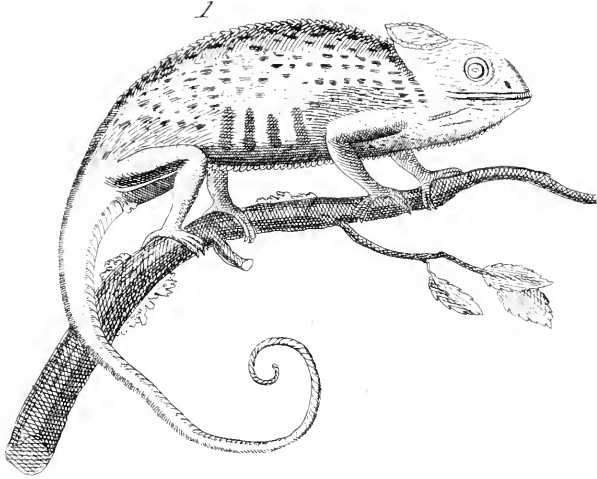
2





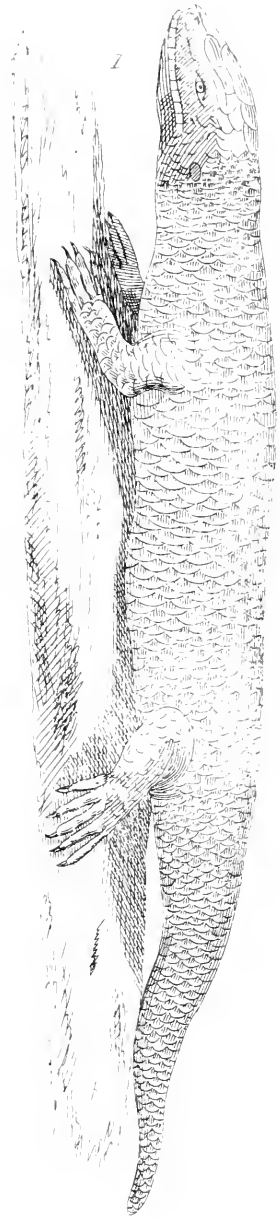
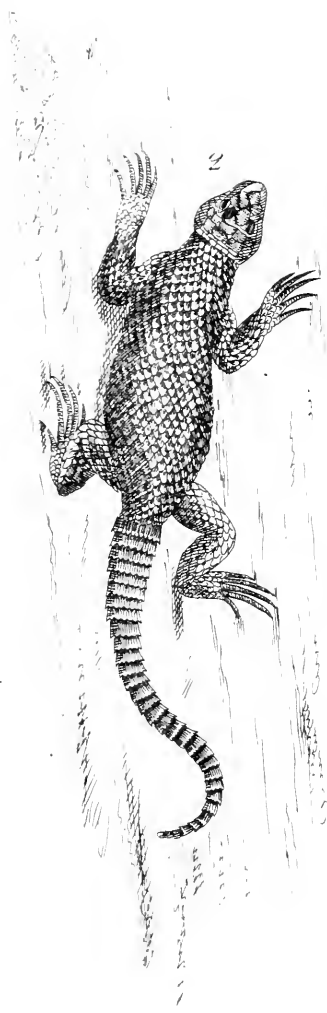






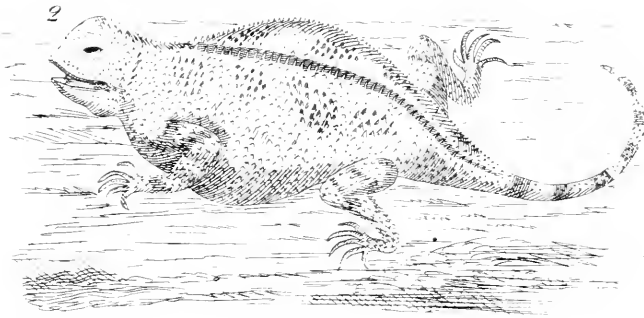
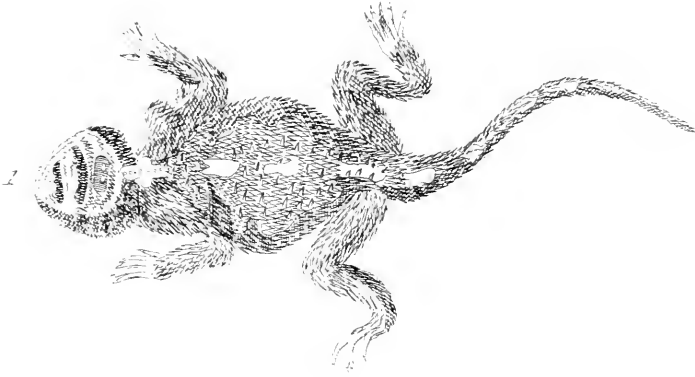


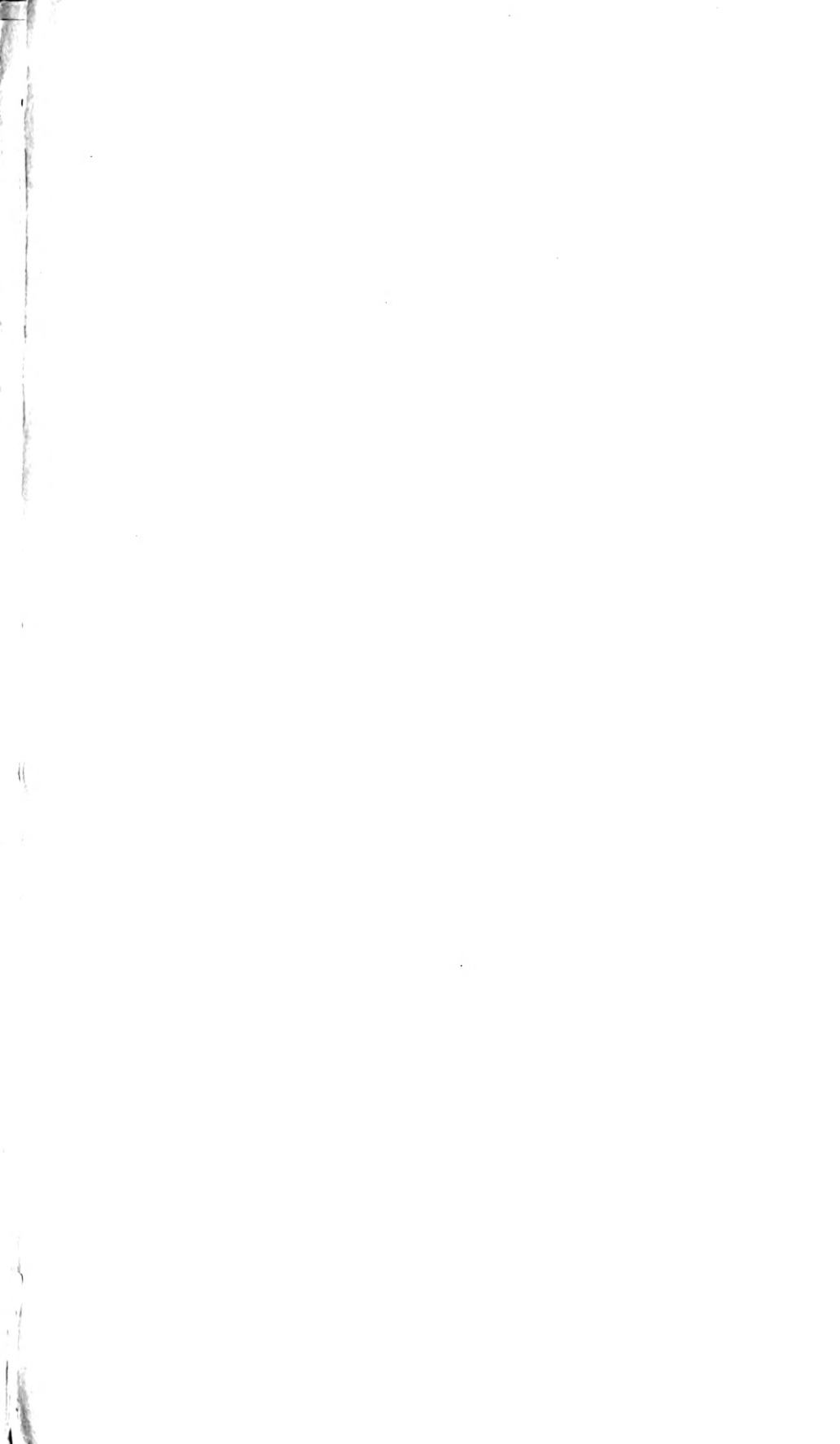
Pl. II.



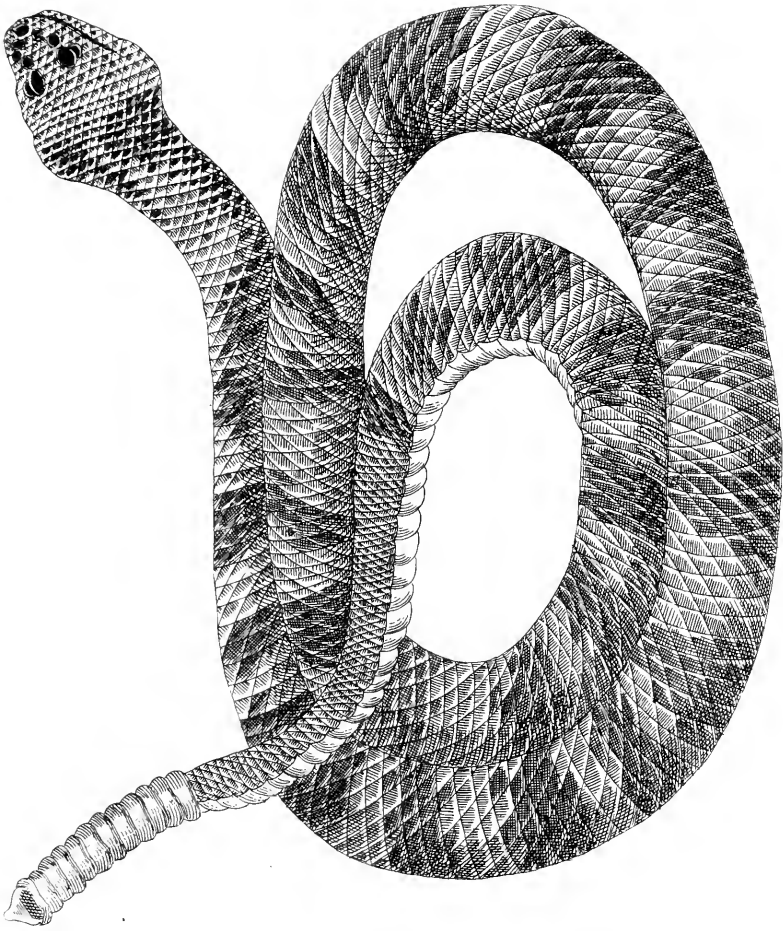


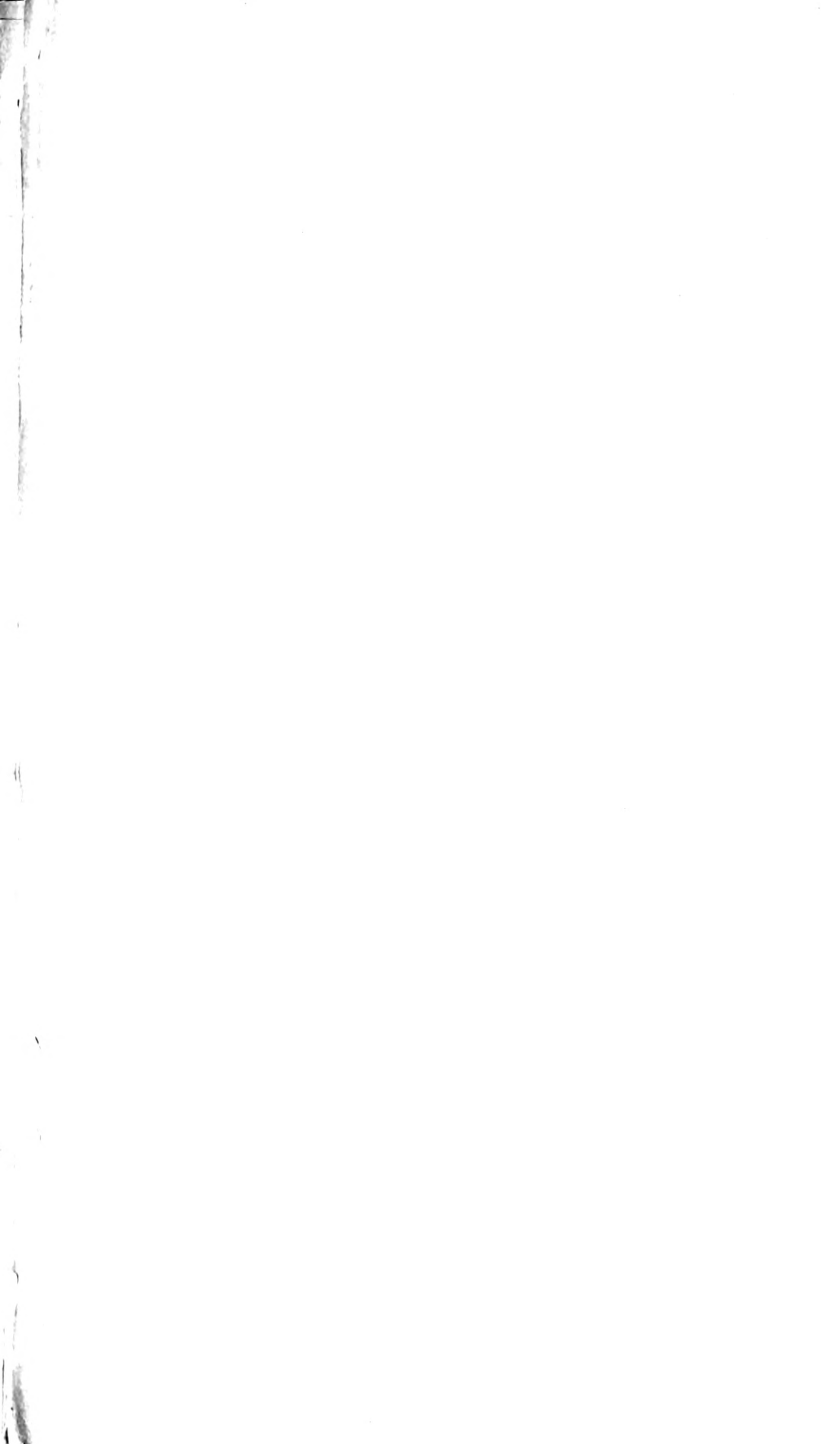
PL. XIV



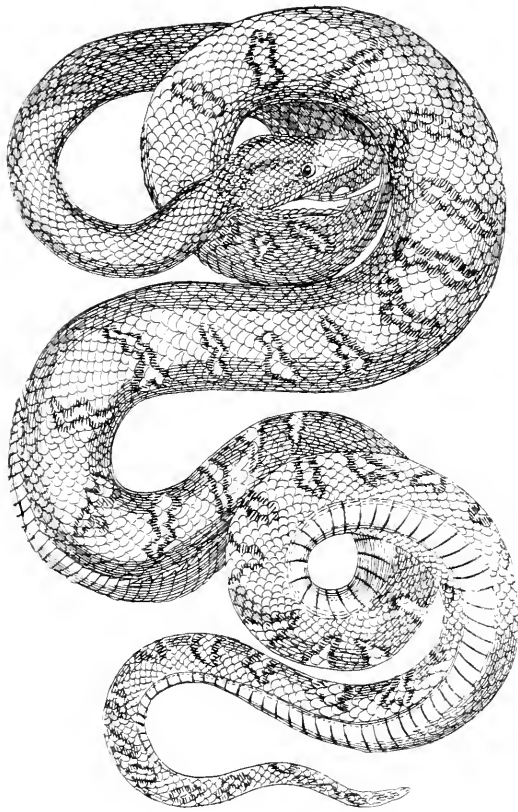


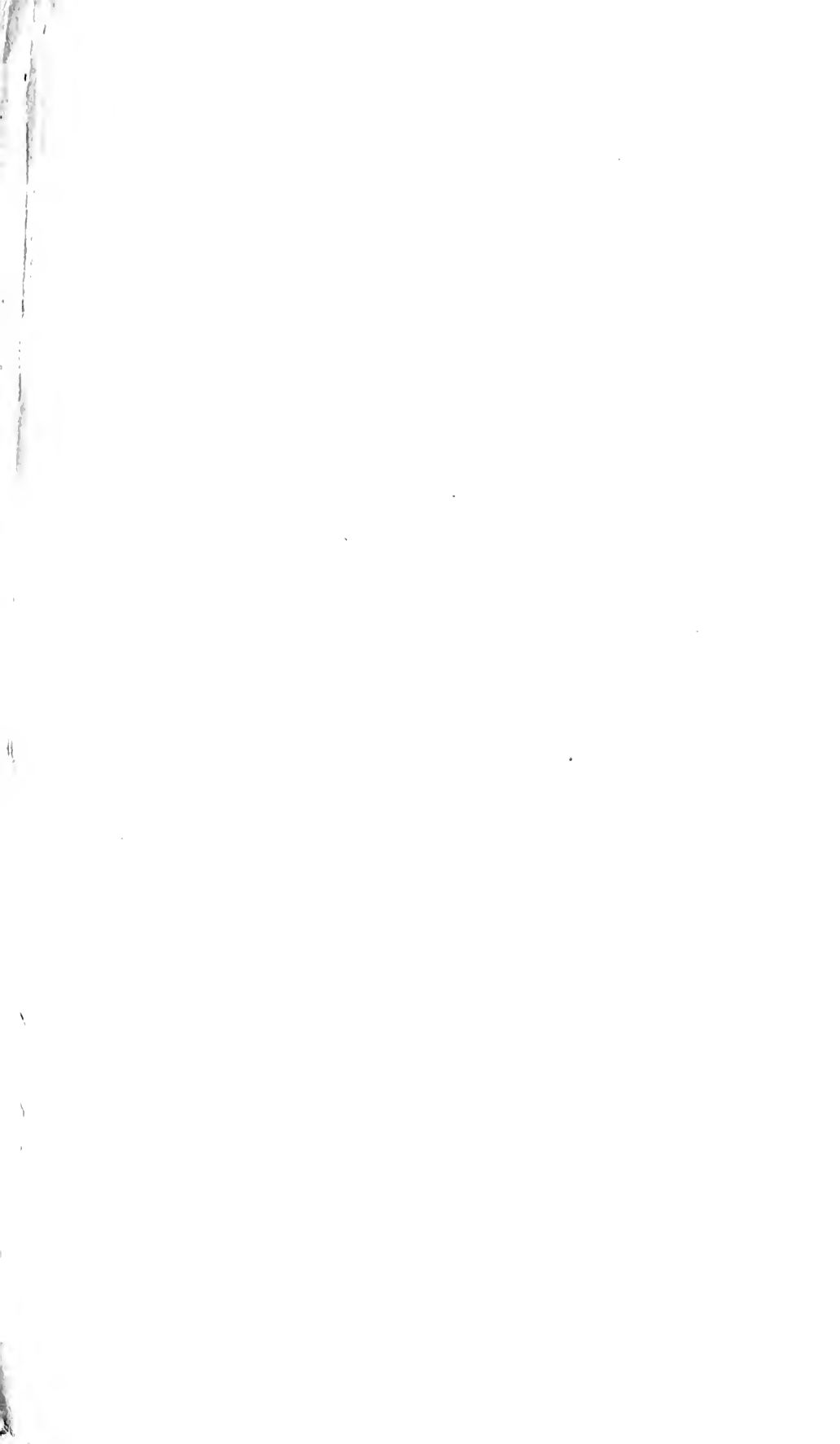
PL. CIV.



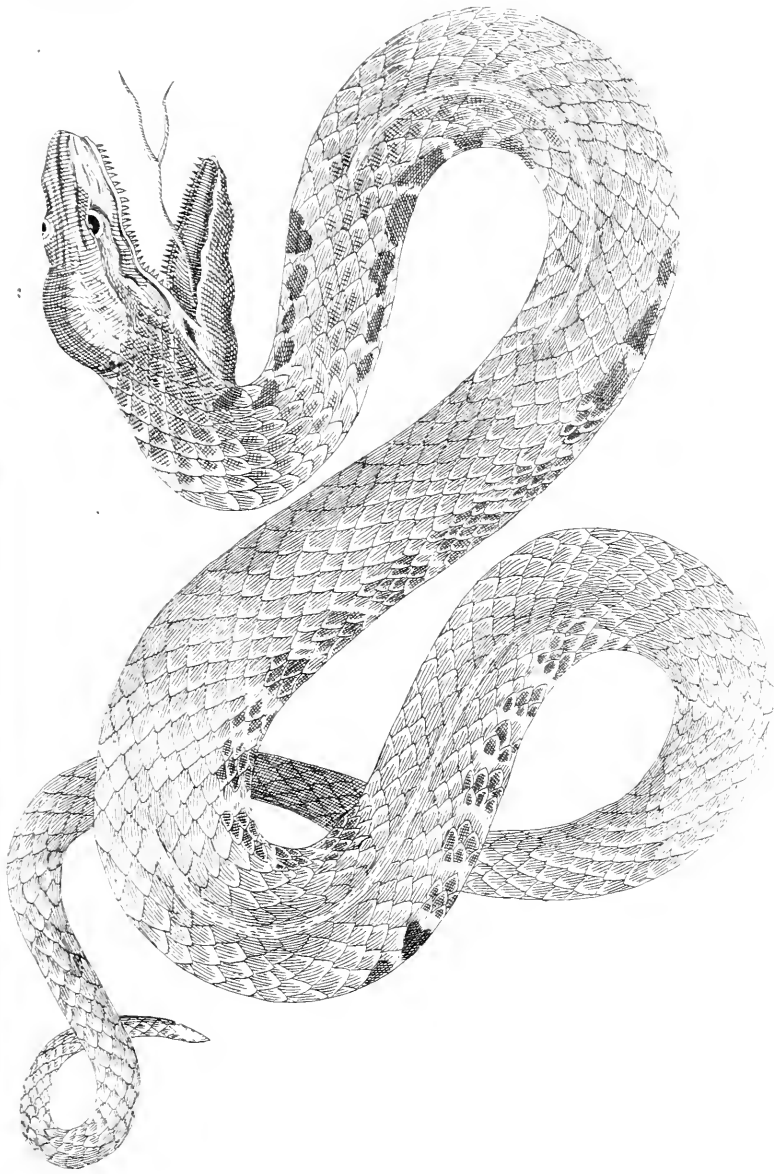


Pl. XVIII.





PL. XVII.





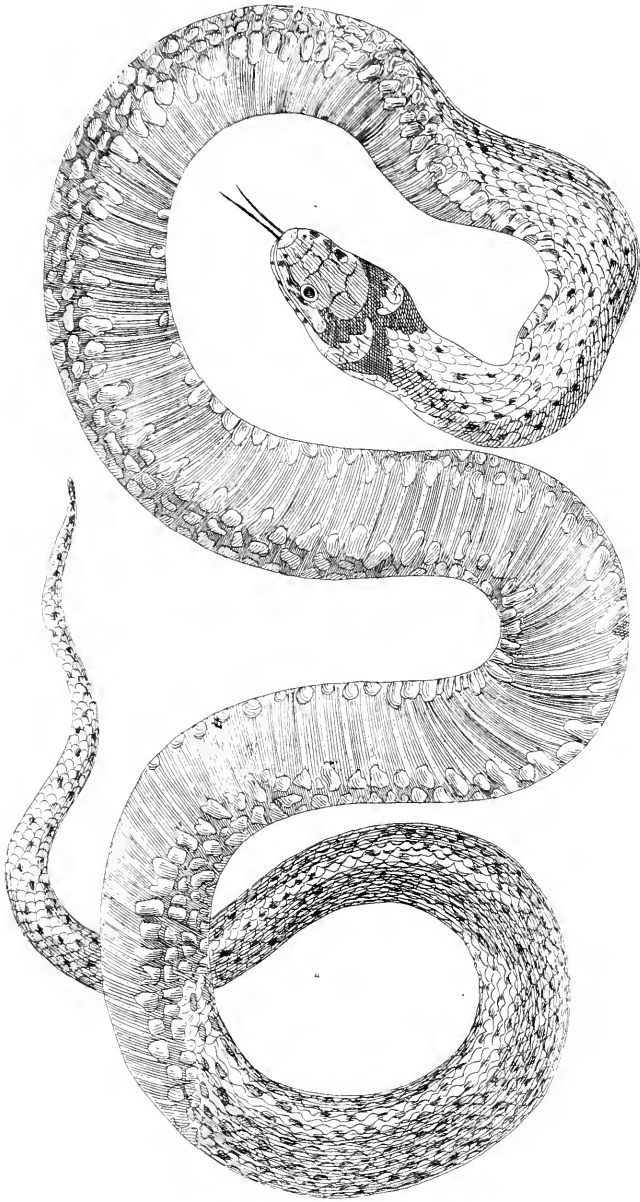
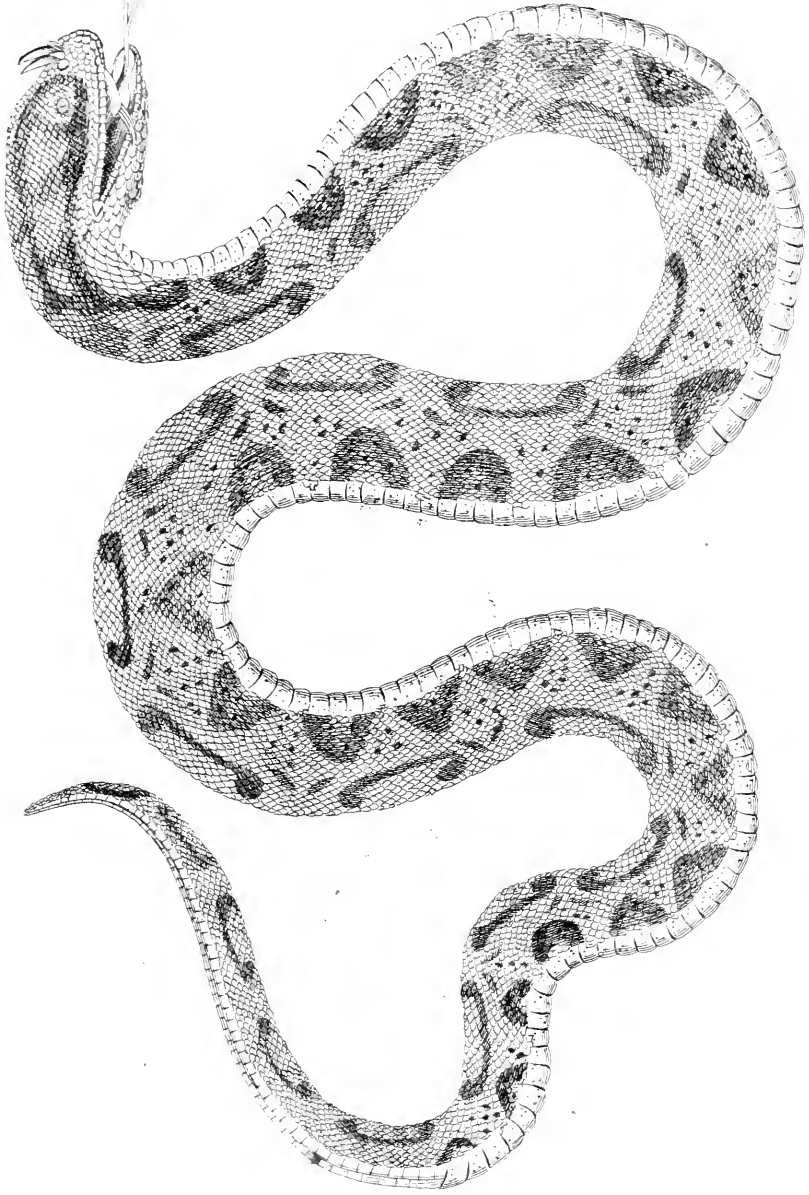
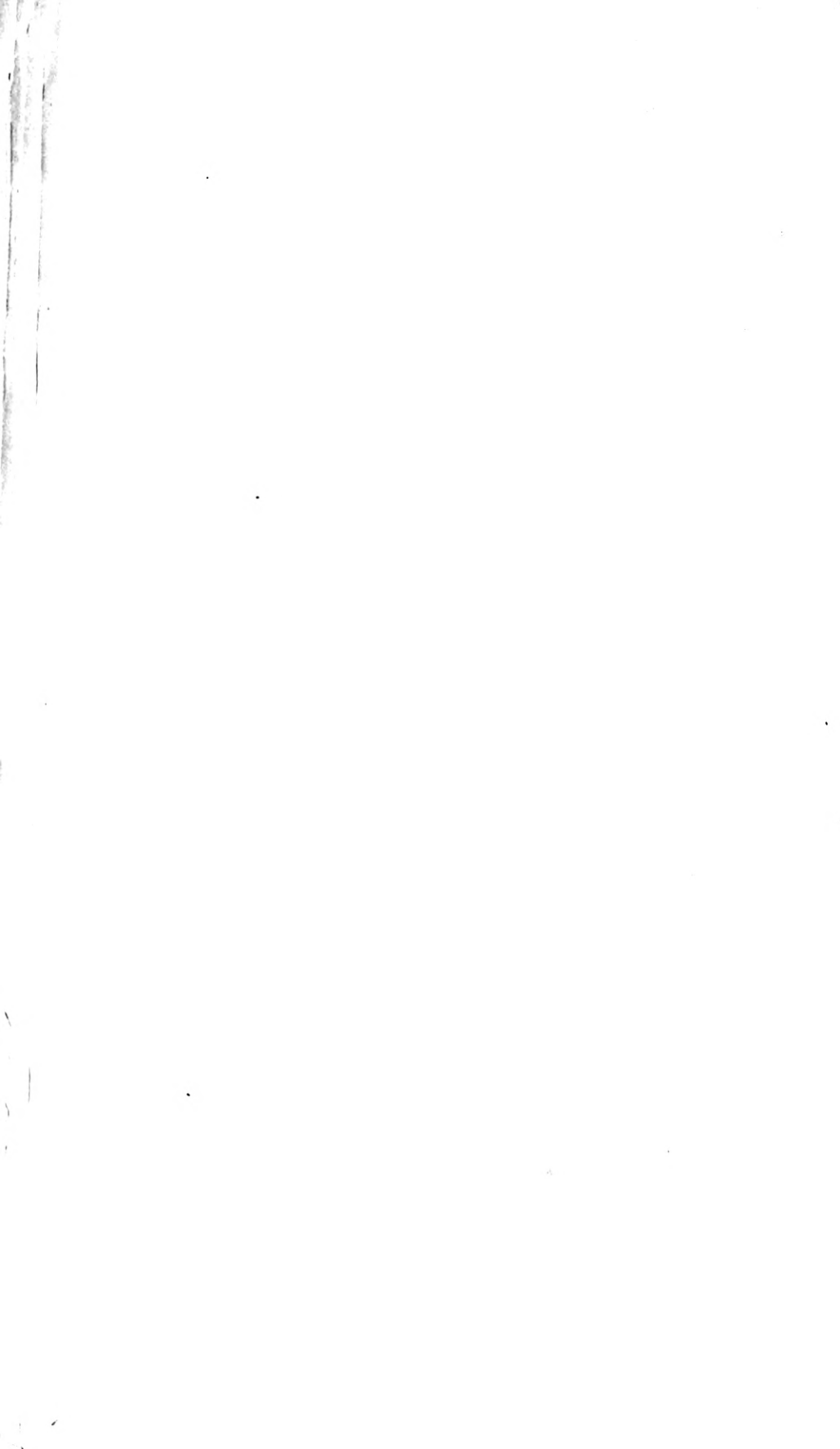
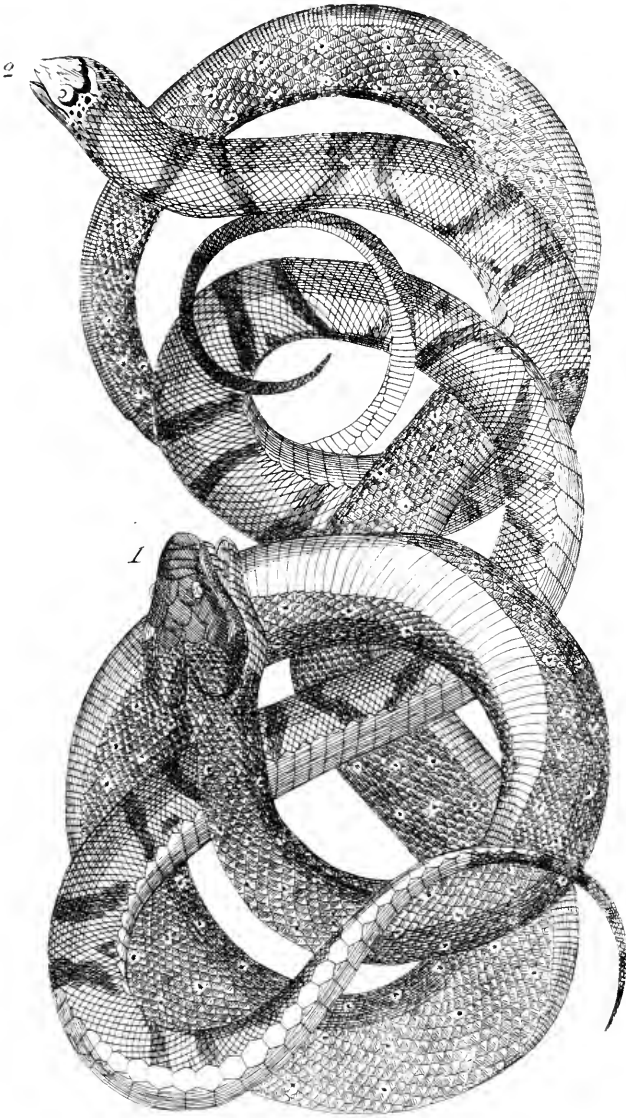




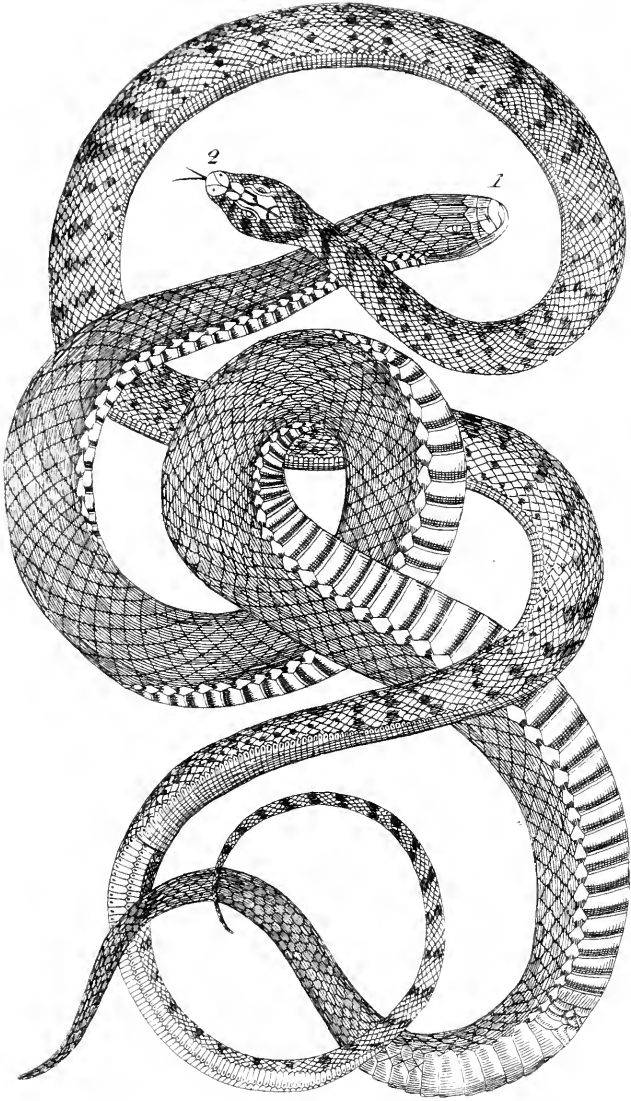
PLATE 177



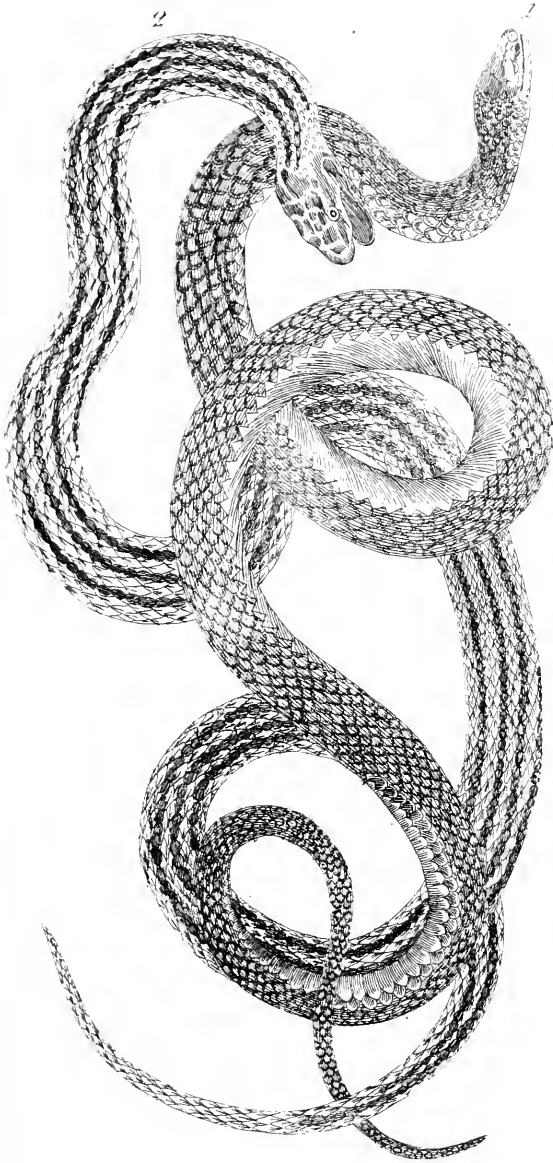


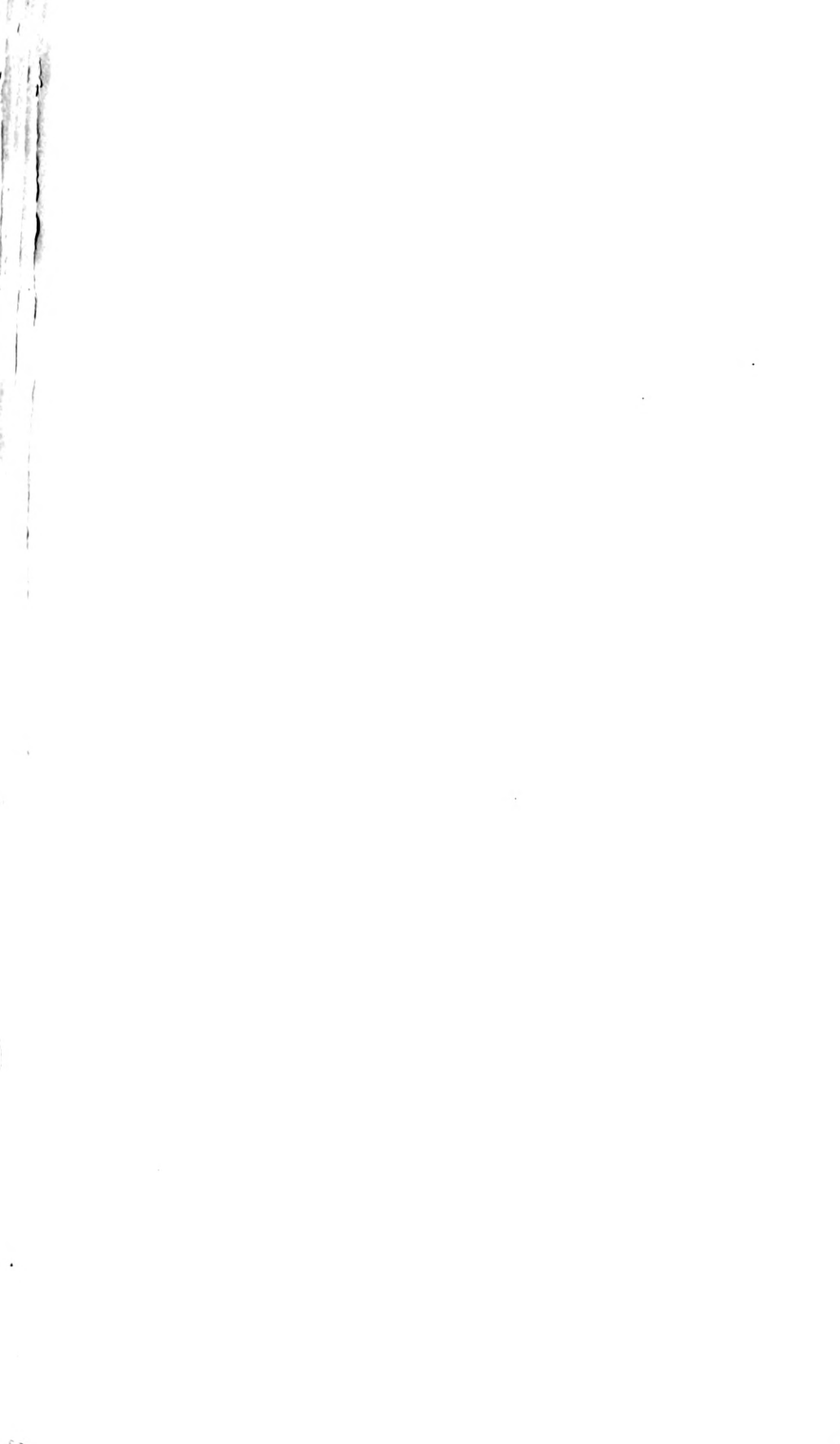


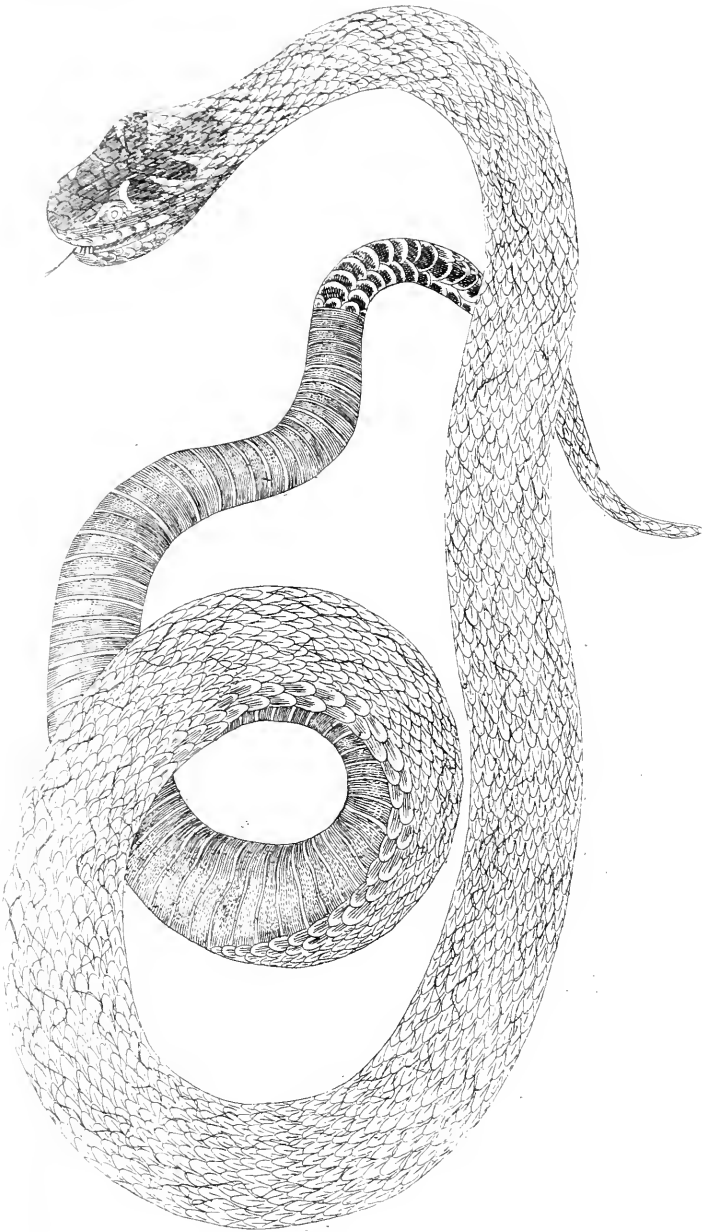


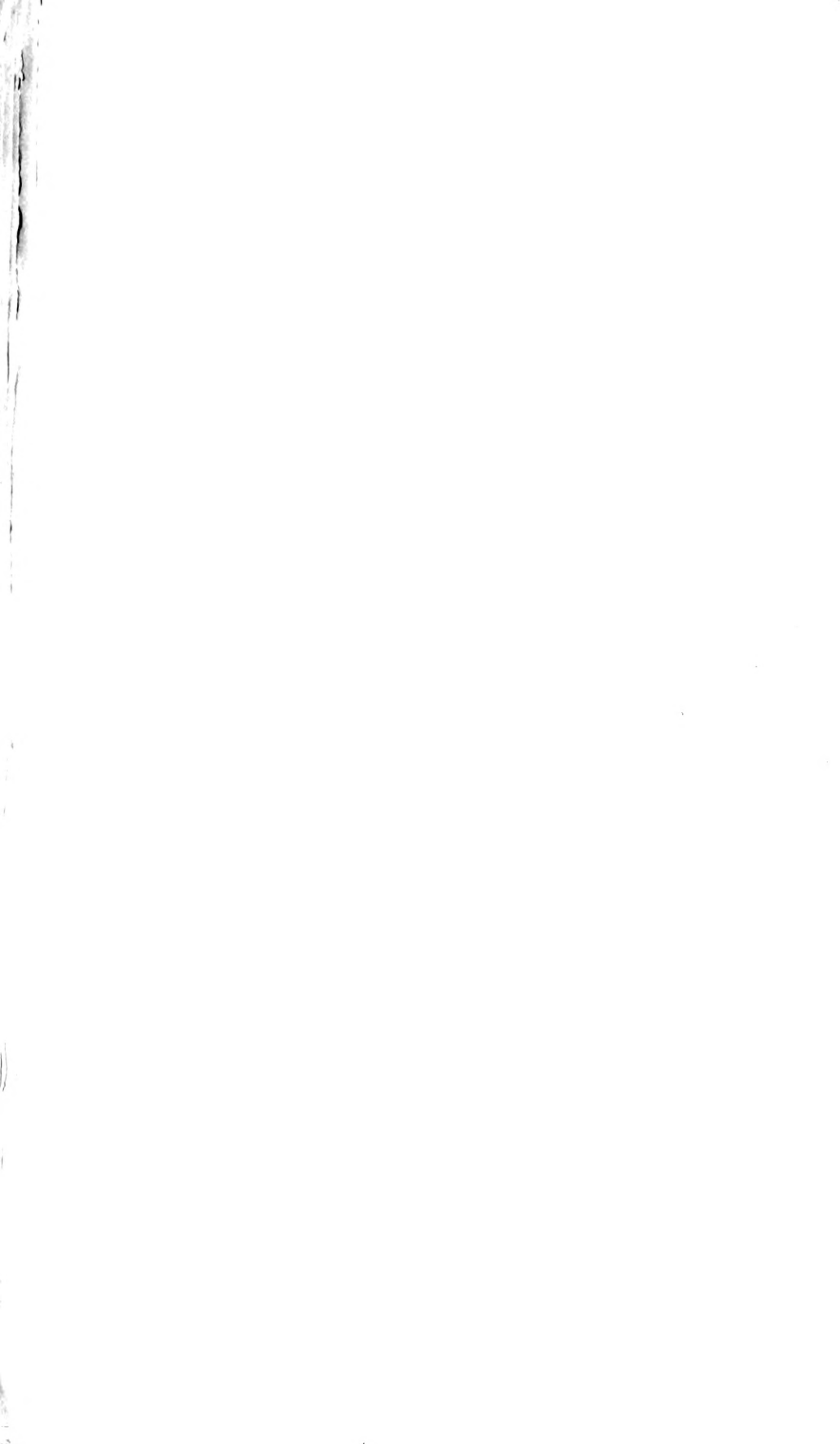




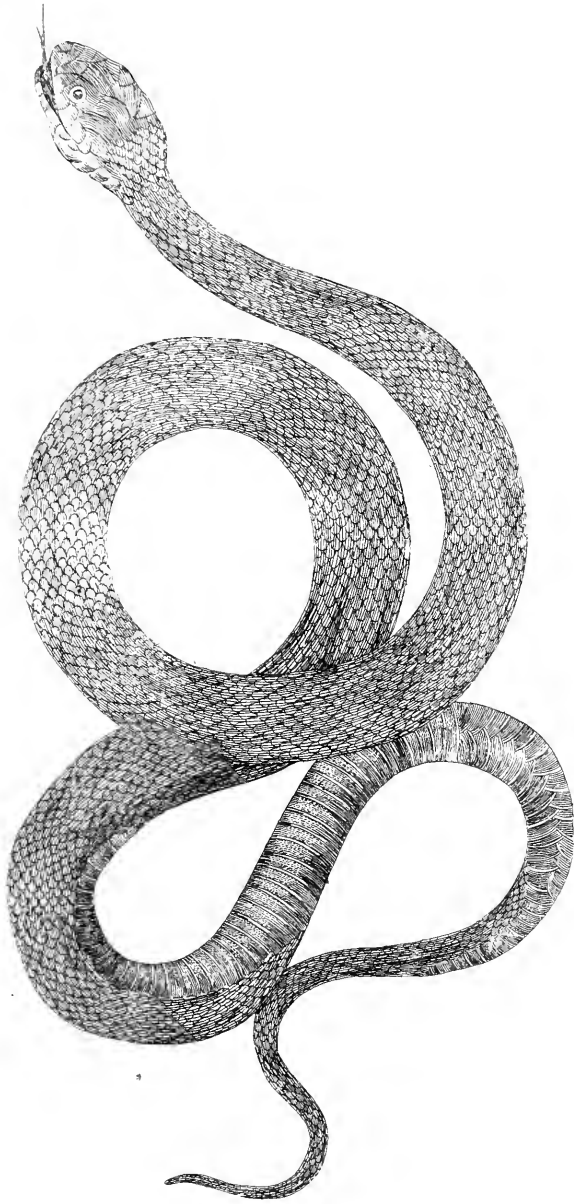






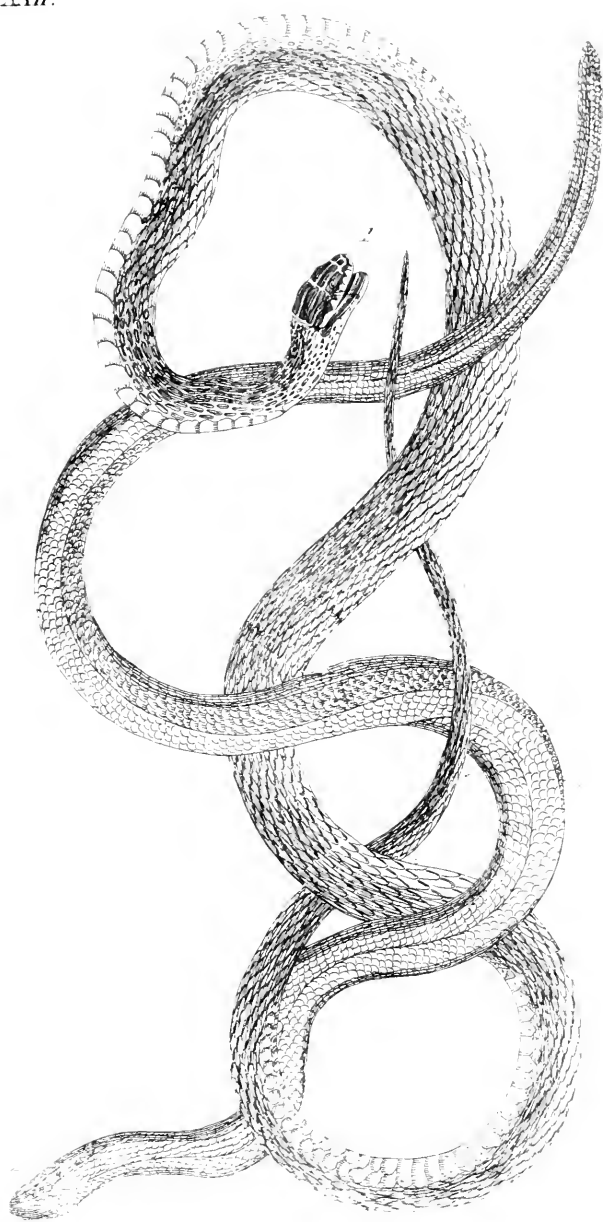


PL. XIV.

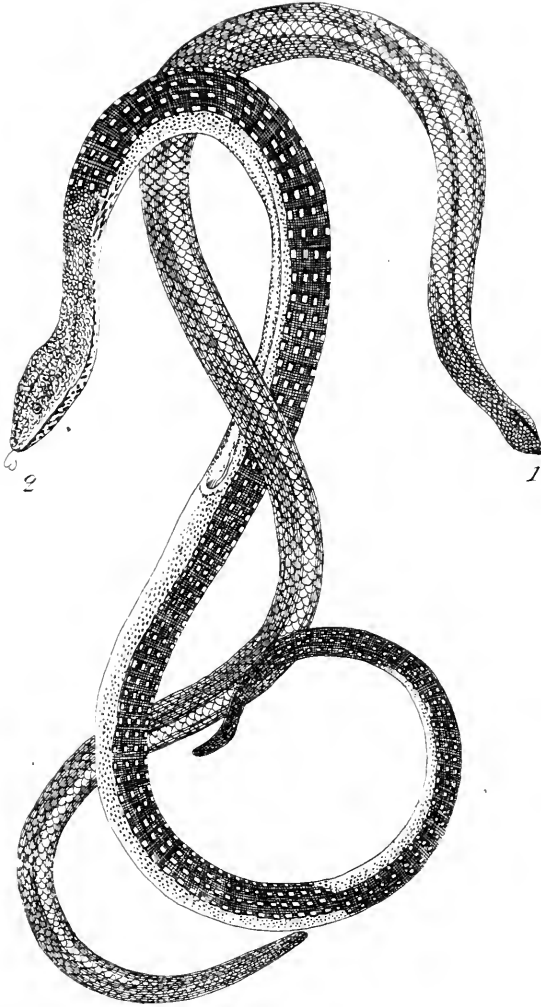




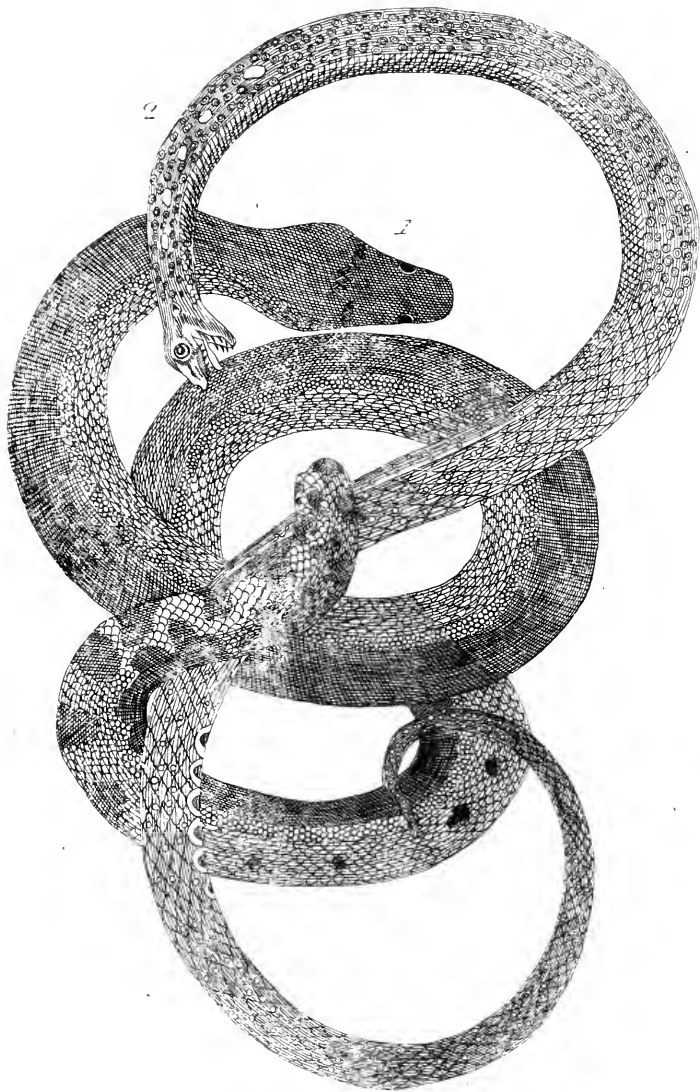
P. XIV.





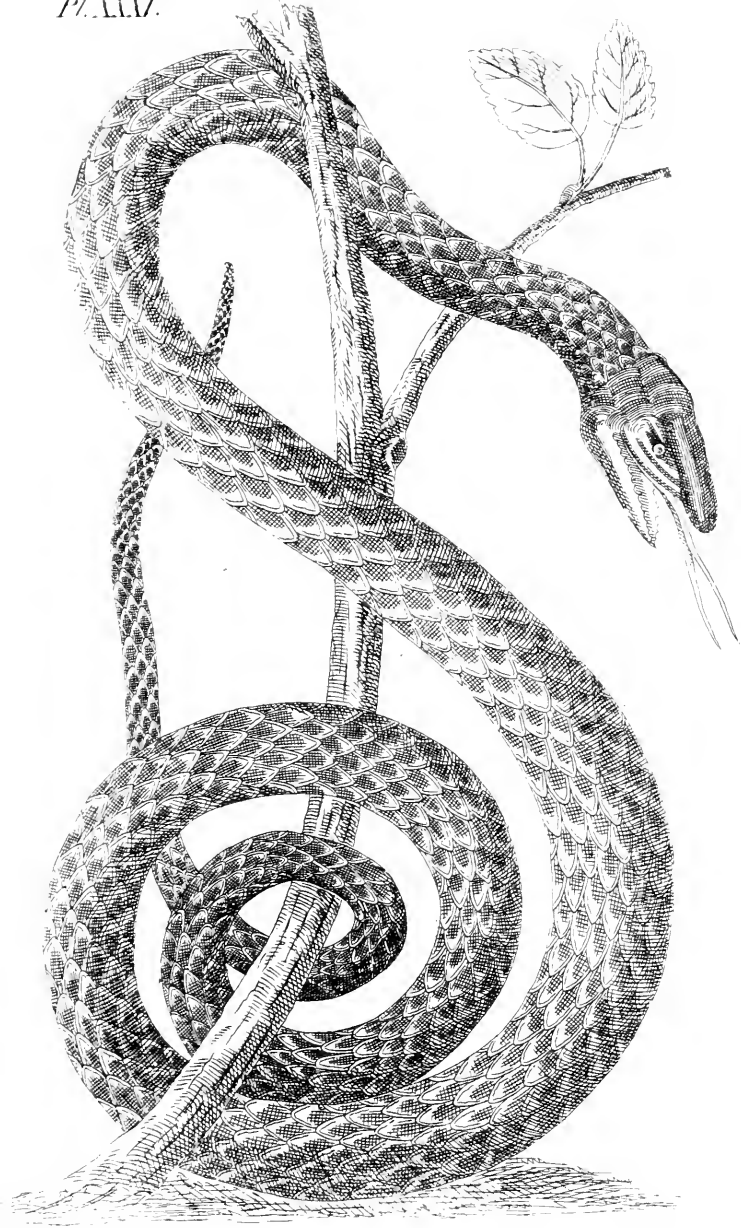






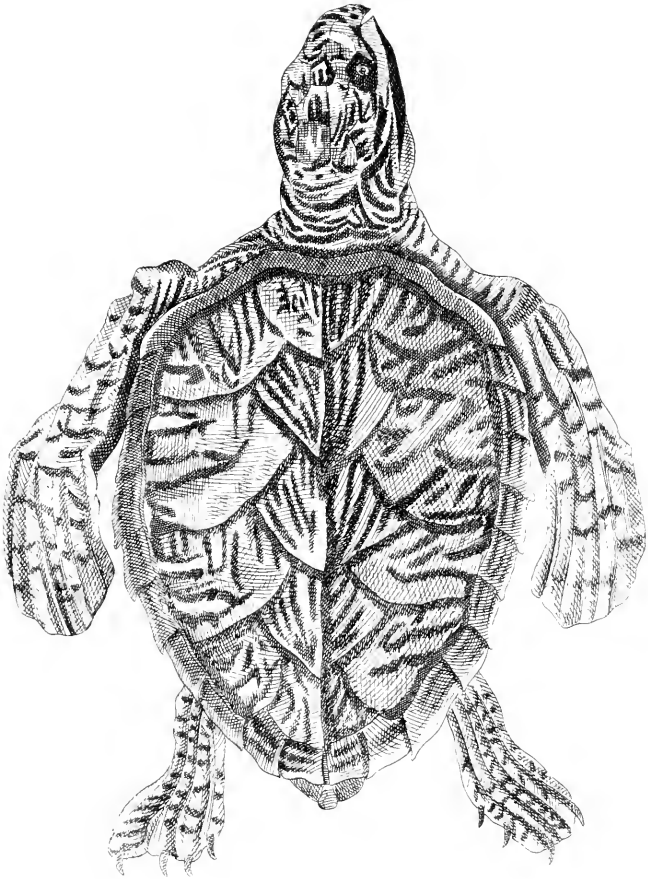


PL. XLV.



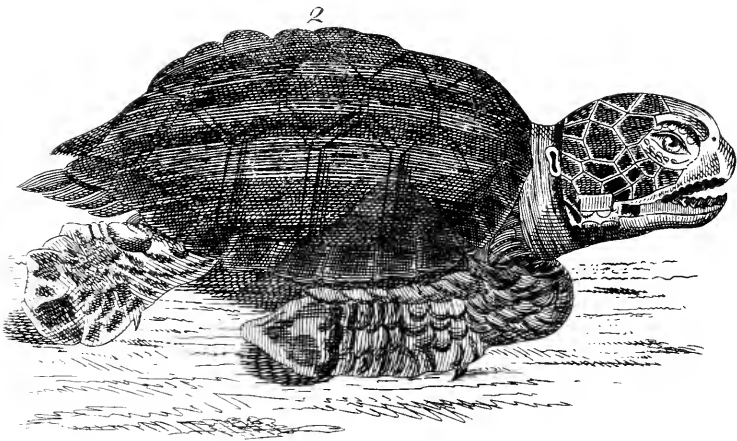
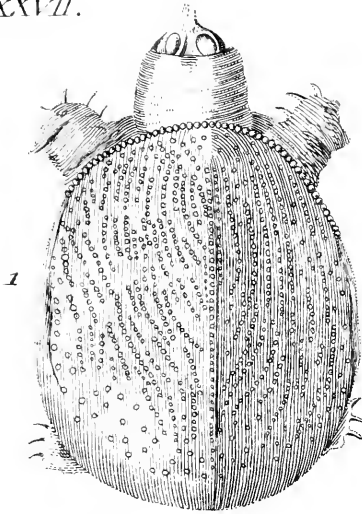


P. XXVII.



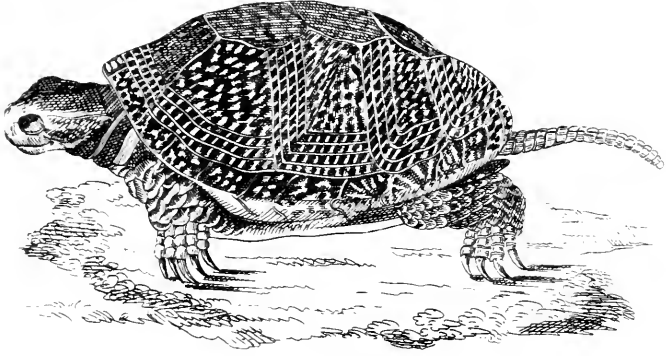


Pl. XXXVII.

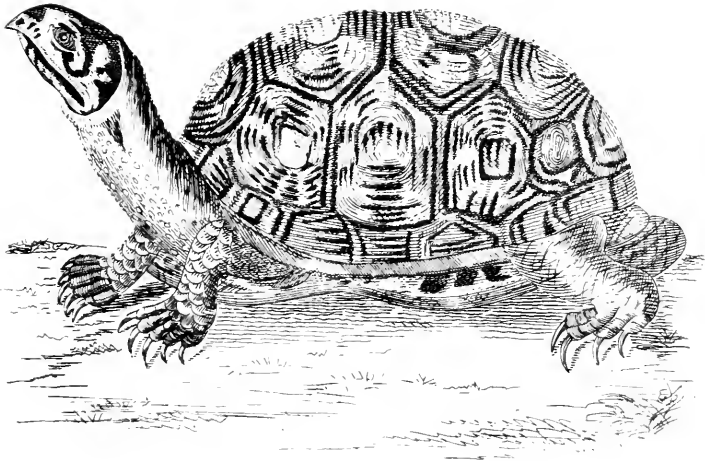


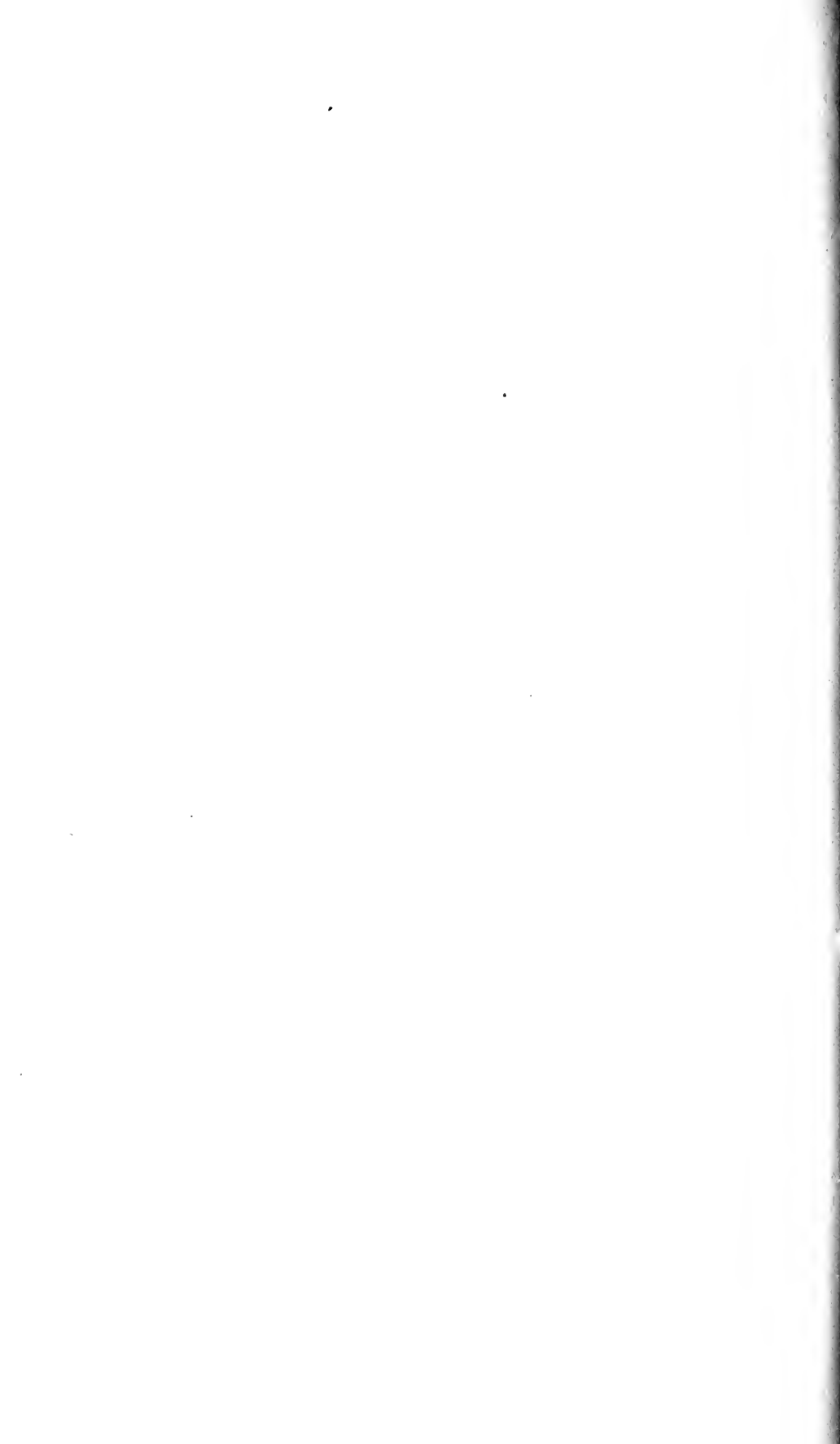
Pl. XXXVIII.

1

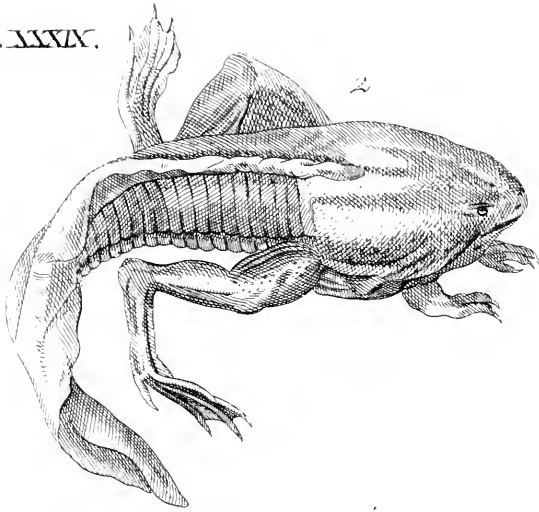


2



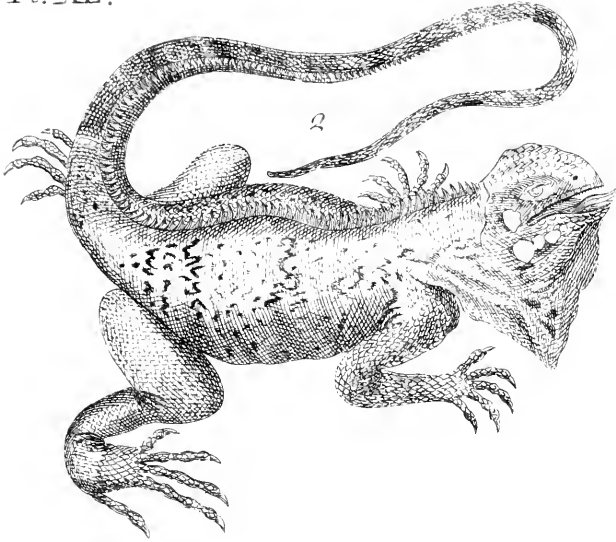


Pl. XXXIX.

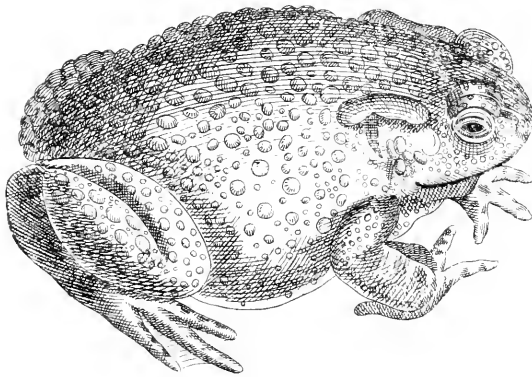




Pl. XL.

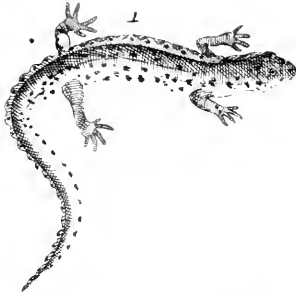


1





Pl. XL.



PL. XLIII.

