

ILLUSTRATIONS
OF
NORTH AMERICAN LEPIDOPTERA,
SPHINGIDÆ.

BY

J. W. WEIDEMEYER, S. CALVERLEY

PLATE

AND

W. H. EDWARDS.

PHILADELPHIA,
THE AMERICAN ENTOMOLOGICAL SOCIETY,
1903.



Fourteen copies published of which this is No. 11

PREFACE.

The American Entomological Society purchased the plates of this work from Mr. W. H. Edwards, and I considered them of sufficient importance to ask this Society to undertake their publication. We possess one copy colored and thirteen plain. Mr. Edwards speaks of twenty-eight (?) plates, but our sets run to twenty-seven only. There is one copy of the plates in the library of Cornell University, and one copy in the American Museum of Natural History in New York City, those I believe are both colored. The Brooklyn Institute of Arts and Sciences owns twenty-five to thirty sets, of which two are colored. Many of the figures are excellent, and some, as Mr. Edwards states, very poor. There are one hundred and thirty-two figures. I have given a list of the species in accordance with Kirby's Catalogue of the Heterocera, Vol. I, 1902.

HENRY SKINNER.

I am asked by Dr. Skinner to tell what I know concerning the making of these plates of the American Sphingidae. The winter of 1862-1863 I spent in New York, and found that John W. Weidemeyer and Stephen Calverley had begun a work that was intended to give illustrations of all the known species of the Sphingidae found either in North or South America, and Plate I had already issued. On that Plate may be seen the names of the two gentlemen. I found that a German lithograph artist by name of Walo had made the drawings on the stone from life, and had colored one plate for each of the parties interested. Also each had fifty or seventy-five plain plates struck off for himself. I asked that I might join in the project, and was admitted on equal terms with the others. My name was put on Plate III, and is on all that followed. The insects were provided from the collections of one or other of the projectors. I, myself, furnished the example of *allo* figured. It was taken in my father's house, at Hunter Village, in the Catskills, on the night of September, 11, 1865. It was perfectly fresh, and apparently on its first flight. It seemed therefore to have come from a larva that had lived in the neighborhood. So far as I now recollect the species had never been seen within hundreds of miles so far north. No letter press was printed with the plates. It was understood that Mr.

Weidemeyer was to attend to that at a future convenient time, but he never made a beginning. The first plates were all drawn from life, but at Plate IX or X Mr. Weidemeyer began to copy figures from books—Cramer, Herbst and others. I objected to this, but was overruled. All those old figures are coarse, and many quite unrecognizable.

As there were some American species in the collection of the British Museum that had never been figured, I was authorized to secure plates of them if possible. I wrote Mr. Francis Walker, head of the Entomological Section of the Museum, and he very kindly undertook to find an artist and have the species figured. These are upon Plates XVI, XVII and XVIII. Our series went as far as Plate XXVIII(?), and suddenly was stopped by Mr. Weidemeyer. He never told me why; but he sold his whole collection of insects, and gave up the study. About ten years ago I applied to him to know if he would sell me his plates, and the reply was that they were utterly lost, he knew not how. The plates now edited by Dr. Skinner are those which belonged to me.

WM. H. EDWARDS.

Coalburgh, West Virginia, March 26, 1903.

NORTH AMERICAN LEPIDOPTERA, SPHINGIDÆ.

BY

J. W. WEIDEMEYER, S. CALVERLY

AND

W. H. EDWARDS.

TAB. 1.

- Fig. 1. *Sphinx chersis* *Hubn.*
cinerea *Harr.*
" 2. *Ceratomia amyntor* *Hubn.*
quadricornis *Harr.*
" 3. *Sphæcodina abbottii* *Sacalis.*
" 4. *Eusmerinthus geminatus* *Say.*
" 5. *Gargantua eremitus* *Hubn.*
sordida *Harr.*

TAB. 2.

- Fig. 1. *Gargantua luscitiosa* *Clem.*
" 2. " " "
" 3. *Hylœicus plebeia* *Fabr.*
" 4. *Dilophonota obscura* *Fabr.*
" 5. *Everyx myron* *Cram.*
pampinatricis *Abb. and*
Smith.
" 6. *Everyx cherilus* *Cram.*

TAB. 3.

- Fig. 1. *Deidamia inscriptum* *Harr.*
" 2. *Amphion nessus* *Cram.*
" 3. *Marumba modesta* *Harr.*
" 4. *Darapsa versicolor* *Harr.*
" 5. " " "

TAB. 4.

- Fig. 1. *Dupo vitis* *Linna.*
" 2. *Hemaris thysbe* *Fabr.*
" 3. " *diffinis* *Boisd.*
" 4. *Paonias excæcata* *Abb. and Sm.*
" 5. *Deilephila gallii* *Rott.*
" 6. *Triptogon lugubris* *Linna.*

TAB. 5.

- Fig. 1. *Sphinx kalinite* *Abb. and Smith.*
" 2. *Dolba hylæus* *Dru.*
" 3. *Gargantua gordius* *Cram.*
" 4. *Deilephila lineata* *Fabr.*
daucus *Cram.*
" 5. *Cressonia juglandis* *Abb. and Sm.*
" 6. " " "

TAB. 6.

- Fig. 1. *Pholus achemon* *Dru.*
" 2. *Philampelus satellitia* *Linna.*
" 3. *Theretra tersa* *Linna.*
" 4. *Ellema harrisii* *Clem.*

TAB. 7.

- Fig. 1. *Diludia brontes* *Dru.*
" 2. *Phlegethontius cingulata* *Edw.*

* This probably represents *D. linnei* Grote and Rob.

† May be *Darocma undulosa* Walk. *brontes* Boisd.

NORTH AMERICAN LEPIDOPTERA, SPHINGIDÆ.

- Fig. 3. *Phlegethontius sexta* *Joh.*
carolina *Linn.*
 " 4. *Phlegethontius* *quinquemaculatus* *Haw.*

TAB. 8.

- Fig. 1. *Calasymbolus astylus* *Dru.*
 " 2. " " "
 " 3. *Sphinx drupiferarum* *Abb.* and *Smith.*
 " 4. *Eusmerinthus myops* *Abb.* and *Smith.*
 " 5. *Chlænogramma jasminearum* *Guer.*

TAB. 9.

- Fig. 1. *Aellopos tantalus* *Linn.*
 " 2. *Smerinthus ophthalmicus* *Boisd.*
 " 3. *Phlegethontius rustica* *Fabr.*
 " 4. *Pterogon gauræ* *Abb.* and *Smith.*
 " 5. *Perigonia lusca* *Fabr.*
 " 6. *Phlegethontius pellenia* *Herr.-Schäff.*

TAB. 10.

- Fig. 1. *Phlegethontius oclus* *Klug.*
 " 2. *Cocytius antæus* *Dru.*
 " 3. *Diludia florestan* *Stoll.*

TAB. 11.

- Fig. 1. *Pachylia ficus* *Linn.*
 " 2. *Dupo thypon* *Klug.*
 " 3. *Pachylia syces* *Hubn.*
inornata *Clem.*

TAB. 12.

- Fig. 1. *Ellema coniferarum* *Abb.* and *Sm.*
 " 2. *Eupyrhroglossum ceculus* *Cram.*
 " 3. *Argens labruscæ* *Linn.*
 " 4. *Eupyrhroglossum sagra* *Pocp.*
 " 5. *Dupo vitis* *Linn.*

* Looks very little like *clarkie*.

TAB. 13.

- Fig. 1. *Ambulyx strigilis* *Linn.*
 " 2. *Anceryx alope* *Dru.*
 " 3. *Dieneces clarkie* *Boisd.**
 " 4. *Theretra chiron* *Dru.*
 " 5. *Euproserpinus phaëton* *Grote* and *Rob.*

TAB. 14.

- Fig. 1. *Unzela japix* *Cram.*
 " 2. *Theretra drancus* *Cram.*
 " 3. *Cocytius cluentius* *Cram.*
 " 4. *Everyx pholus* *Cram.*
 " 5. *Phryxus caicus* *Cram.*

TAB. 15.

- Fig. 1. *Triptogon camertus* *Cram.*
 " 2. *Phlegethontius paphus* *Stoll.*
 " 3. *Pseudophinx tetrio* *Linn.*
hasdrubal *Stoll.*
 " 4. *Isognathus scyron* *Stoll.*
 " 5. *Calliomma licastus* *Stoll.*

TAB. 16.

- Fig. 1. *Dilophonota omphaleæ* *Boisd.*
wnotrus *Grote.*
 " 2. " *ello* *Linn.*
 " 3. *Ambulyx gannascus* *Stoll.*

TAB. 17.

- Fig. 1. *Pachygonia subhamata* *Walk.*
 " 2. *Perigonia restituta* *Walk.*
 " 3. *Hemaris thysbe* *Fabr.*
 " 4. *Perigonia glaucescens* *Walk.*
 " 5. *Himantoides undata* *Walk.*
 " 6. *Lepisesia flavofasciata* *Walk.*

TAB. 18.

- Fig. 1. *Diludia brontes* *Dru.*
 " 2. *Theretra falco* *Walk.*
 " 3. *Darapsa rhodocera* *Walk.*
 " 4. *Pachylia resmimens* *Walk.*

NORTH AMERICAN LEPIDOPTERA, SPHINGIDÆ.

TAB. 19.

- Fig. 1. *Ellema bombycoides* *Walk.*
 " 2. *Dilophonota guttularis* *Walk.*
 " 3. *Pachylia inconspicua* *Walk.*
 " 4. *Cautethia noctuiformis* *Walk.*
 " 5. *Arctonotus lucidus* *Boisd.*

TAB. 20.

- Fig. 1. *Philampelus auchemolus* *Cram.*
 " 2. *Calliomma pluto* *Fabr.*
 thorates *Hubn.*
 " 3. *Aluron chloroptera* *Perty.*
 " 4. *Phlegethontius hamibal* *Stoll.*

TAB. 21.

- Fig. 1. *Aellopos tantalus* *Linn.*
 " 2. *Triptogon gorgon* *Cram.*
 " 3. *Eusmerinthus cerisii* *Kirby.*
 " 4. " " " "

TAB. 22.

- Fig. 1. *Darapsa porcus* *Hubn.*
 " 2. *Everyx irrorata* *Grote.*
 " 3. *Theretra nechus* *Cram.*
 " 4. *Darapsa gundlachi* *Herr.-Schäff.*
 " 5. *Thereta robinsonii* *Grote.*
 " 6. *Deilephila calverleyi* *Grote.*

TAB. 23.

- Fig. 1. *Dilophonota œnotrus* *Stoll.*
 " 2. " *melancholica* *Grote.*
 " 3. " " " "
 " 4. " *ello* *Linn.*
 " 5. *Isognathus congratulans* *Grote.*
 " 6. " *rimosus* *Grote.*

TAB. 24.

- Fig. 1. *Perigonia lusca* *Fabr.*
 " 2. " *lefebvrei* *Luc.*
 " 3. *Syzygia afflicta* *Grote and Rob.*
 " 4. *Diludia brontes* *Dru.*
 " 5. *Pseudosphinx tetrio* *Linn.*
 " 6. *Hyloicus poeyi* *Grote.*

TAB. 25.

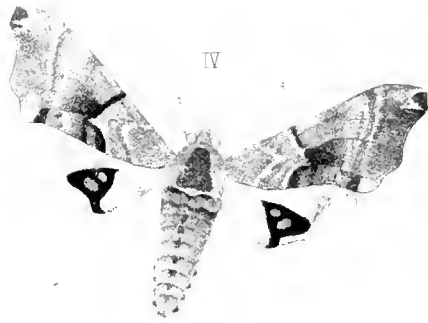
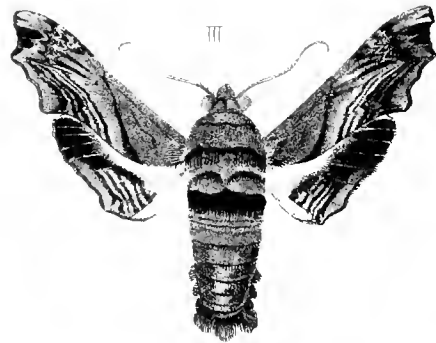
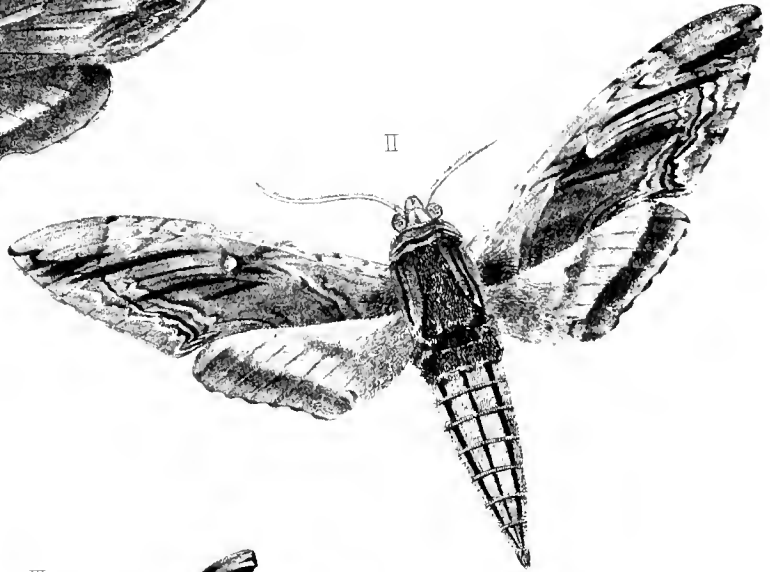
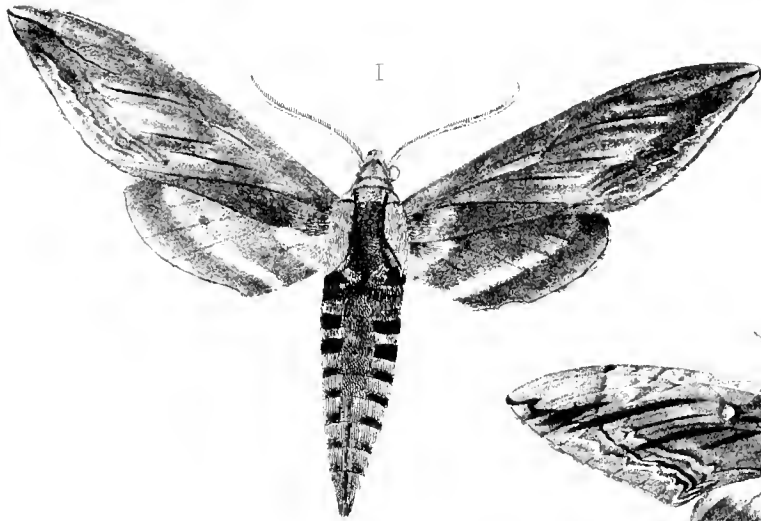
- Fig. 1. *Amphionyx anteus* *Dru.*
 " 2. " *duponchellii* *Pocq.*
 " 3. *Phlegethontius cingulata* *Fabr.*
 " 4. *Hemeroplanes pseudothyreus* *Gr.*
 " 5. *Triptogon ocypte* *Linn.*
 darium *Cram.*

TAB. 26.

- Fig. 1. *Philampelus licæon* *Cram.*
 " 2. *Hemaris gracilis* *Grote and Rob.*
 " 3. *Perigonia divisa* *Grote.*
 " 4. *Theretra nitidula* *Chm.* var. *lævis* *Grote and Rob.*
 " 5. *Theretra ceratomioides* *Grote and Rob.*
 " 6. *Dilophonota pallida* *Grote.*

TAB. 27.

- Fig. 1. *Tatoglossum caricæ* *Linn.*
 " 2. *Syzygia afflicta* *Grote and Rob.*
 " 3. *Aellopos blainii* *Herr.-Schäff.*
 " 4. *Dupo strenua* *Mün.*



SPHYNX CINEBEA ♀

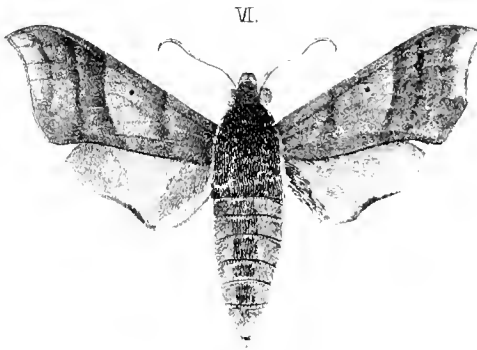
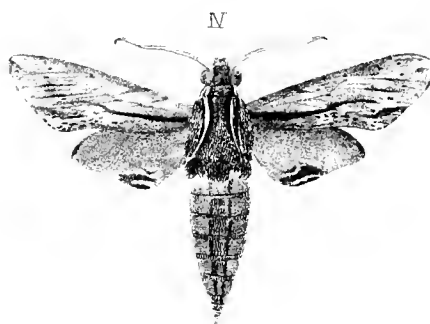
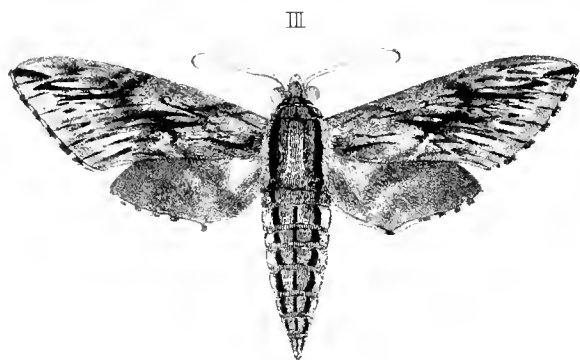
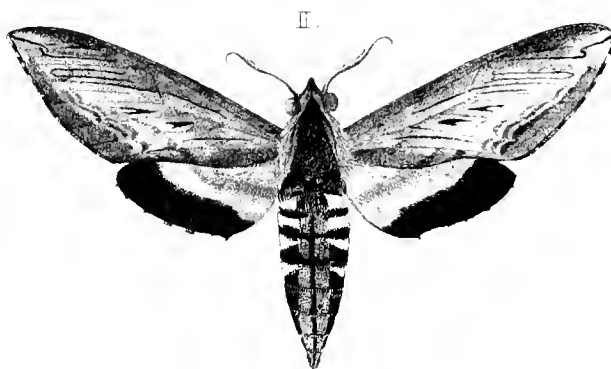
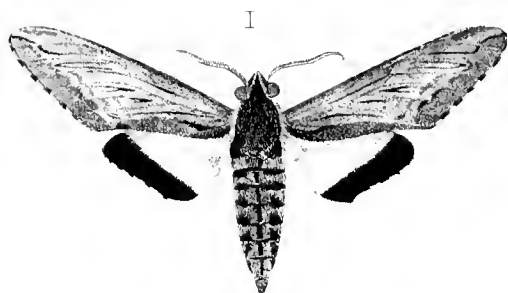
DEFATOMIA QUADRIVERNIS ♀

SPHYNX BORDIVA ♂

III *THYREUS LEOGTHUS* ♂

IV *SMEBINTHUS GREGMINATUS* ♀

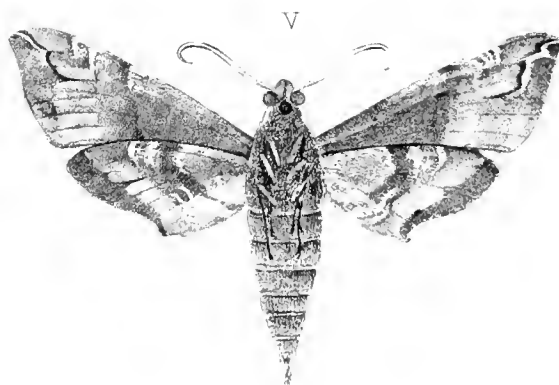
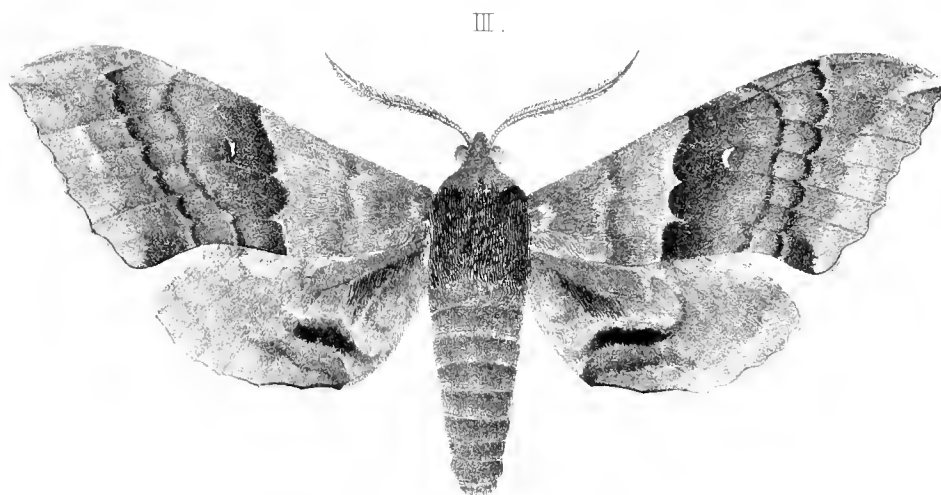
North American Lepidoptera.



I SPHYNX LUSCITOSA ♂
 II ——— DO ——— ♀
 III ——— PLEBEJA ♀

IV SPHYNX OBSCURA ♂
 V CHAEROCAMPA PAMPINATRIX ♀
 VI ——— CHAERILUS ♀

North American Lepidoptera.



I. PTEROGON INSCRIPTUM ♀

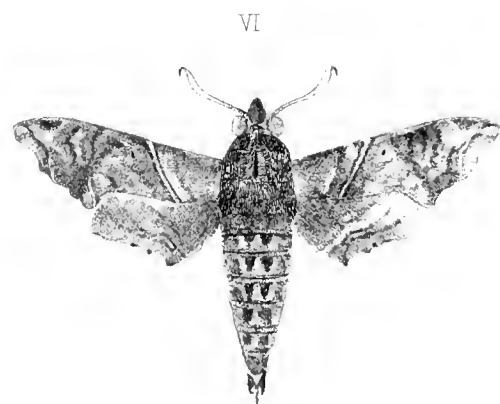
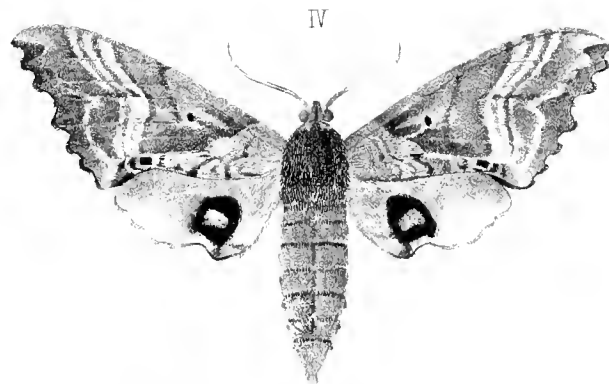
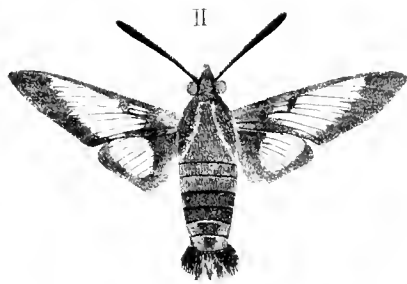
II. THYREUS NESSUS ♂

III. SMERINTHUS MODESTA ♂

VI. CHAEROCAMPA VEREICOLOR ♀

V. DO DO — 2000 1

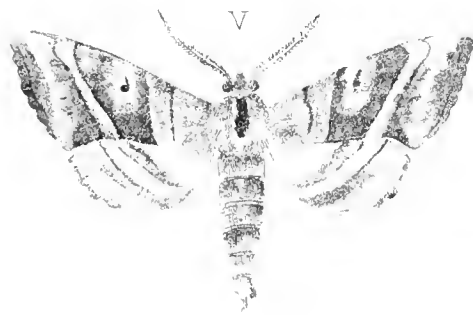
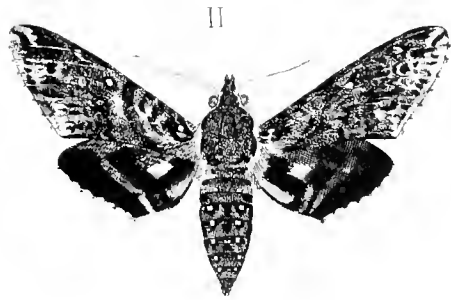
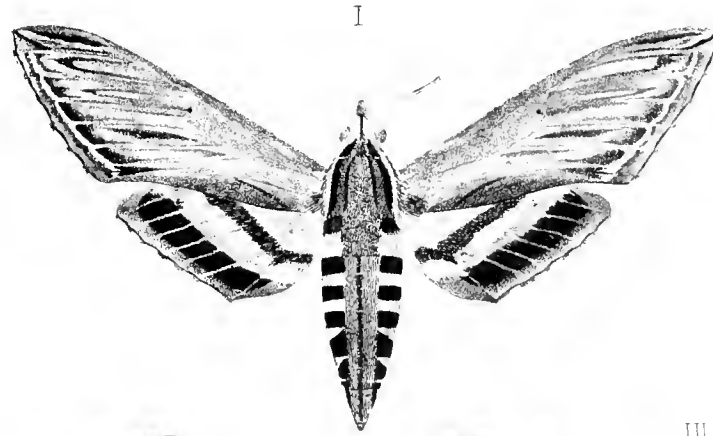
North American Lepidoptera.



I PHILAMPELUS VITIS ♀
 II SESIA THYSBE ♂
 III DO DIFFINIS ♀

IV SMERNITIS BAYANA ♀
 V ENYOLIMA NIGRICINCTA ♀
 VI DEILEPHILA LINEATA ♀

North American Lepidoptera.



I SPHYNX PALMIÆ ♀
II DOLBA HYLÆU. ♂
III SPHYNX GORDIUS ♂

IV DEILEPHILA DAUCUS ♀
V SMERINTHUS JUSLANDI ♂
VI DO DO DO ♀

Published by J.W. WEIDEMEYER,
and J. CALVERTLEY, New York
and W.H. EDWARDS

North American Lepidoptera.



I AMPELUS ACHEMON ♀
 II DO SATELLITIA ♀

III CHAEROCAMPA TER. ♀
 IV ELLEMA HARRISII ♀

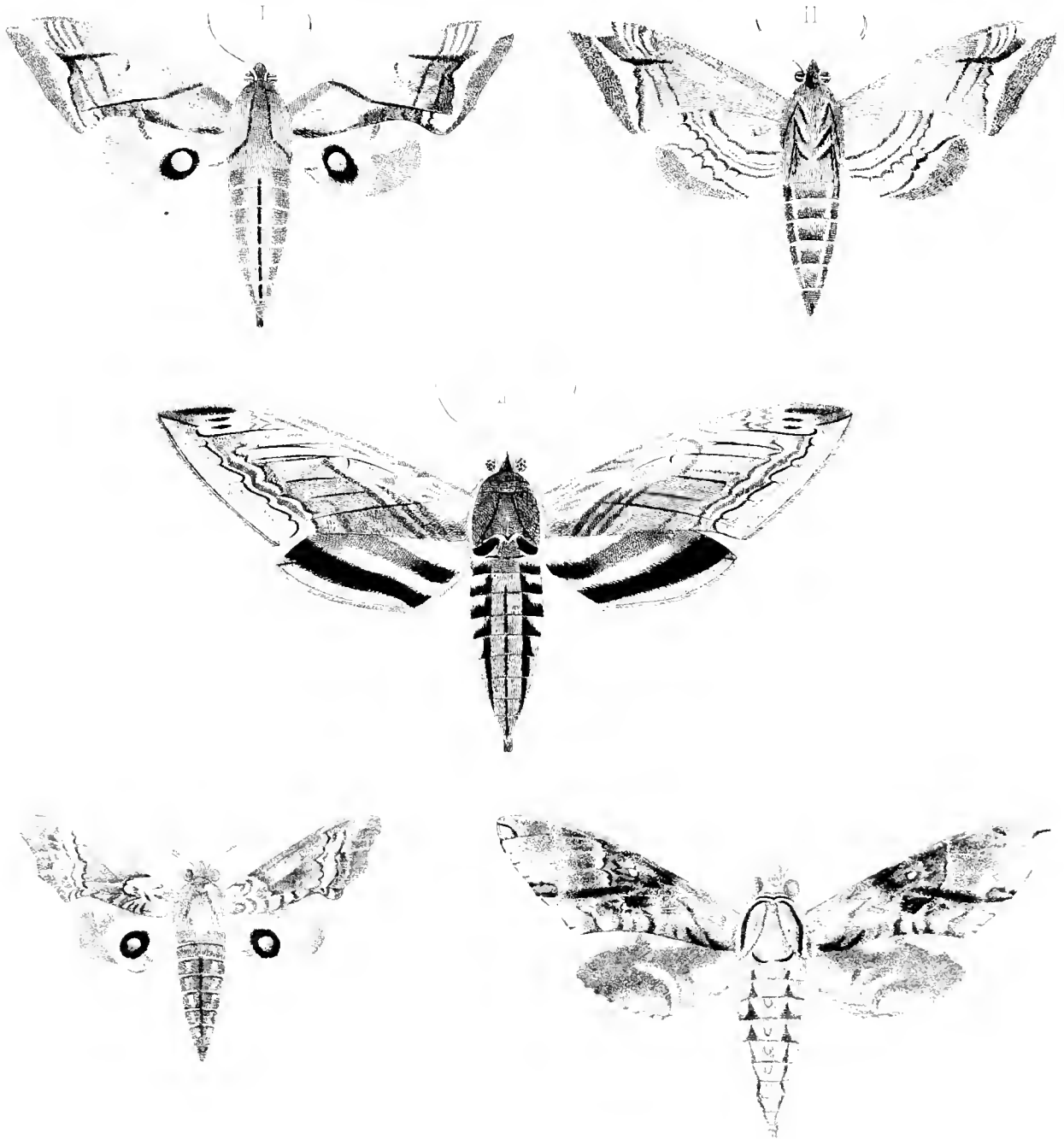
Published by J W WEIDEMEYER,
 and S CALVERLEY, } New York
 ans. W H EDWARDS.

North American Lepidoptera.



I CERAT ME...
 II PHY...
 III DO...
 IV ...

North American Lepidoptera.



I EMERINTHUS ASTYLUS ♀

II DO DO ♂

III PHIZI PUPIFERALUM -

IV STASIS HYPERBOLICA ♀

V PHIZI PUPIFERALUM ♂

Illustrated by W. WIEDEMAYER

and F. ALVELEY

and W. H. EDWARDS

Pl. 14

North American Lepidoptera.

PLATE IX



I. MACROGLYSSA TANTALUS ♂
 II. MERINTHUS OPHTHALMISUS ♀
 III. MACPODIA RUBRICA ♂

IV. PROSERPINUS GAURAE ♂
 V. PERIGONIA TUSCA ♂
 VI. CHAEROCAMPA PELLELIA ♀

Published by J. W. WEIDEMEYER,
 and C. ALVERLEY,
 and W. H. EDWARDS } New York

Dr. W. H. Edwards



I MACROSILA DICHUS ♂

II MACROSILA ANTAEUS ♀

III MACROSILA FLORESTAN ♀

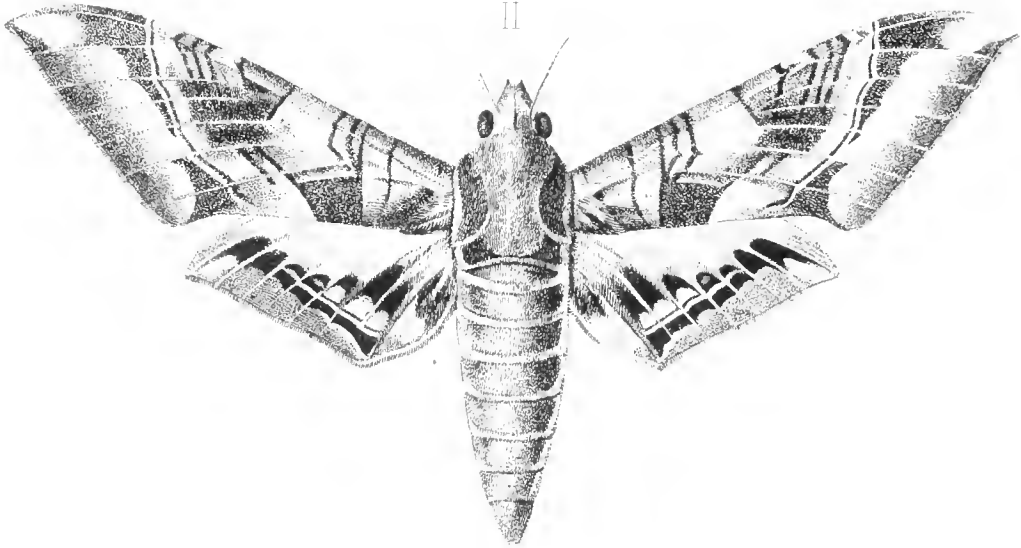
Printed by A. WEIDENMEYER } New York
and CALVERTLEY }
at the office of J. H. EDWARDS

North American Lepidoptera.

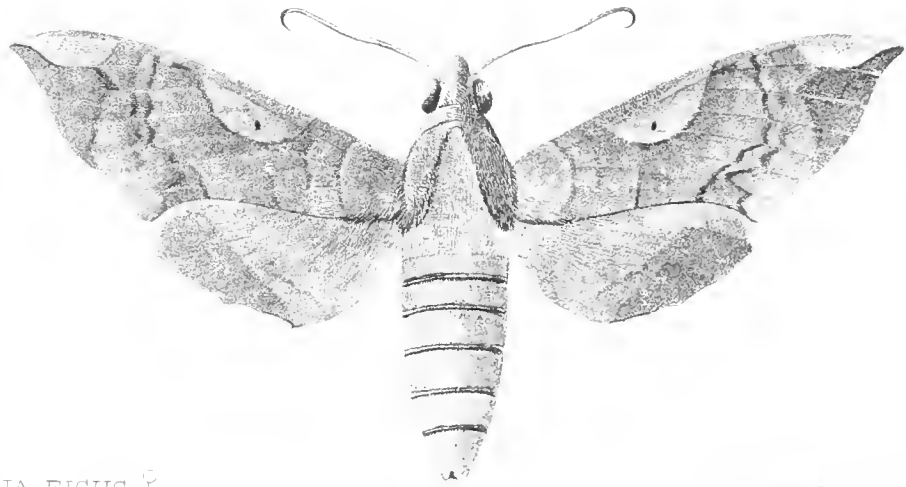
PLATE 21



II



III

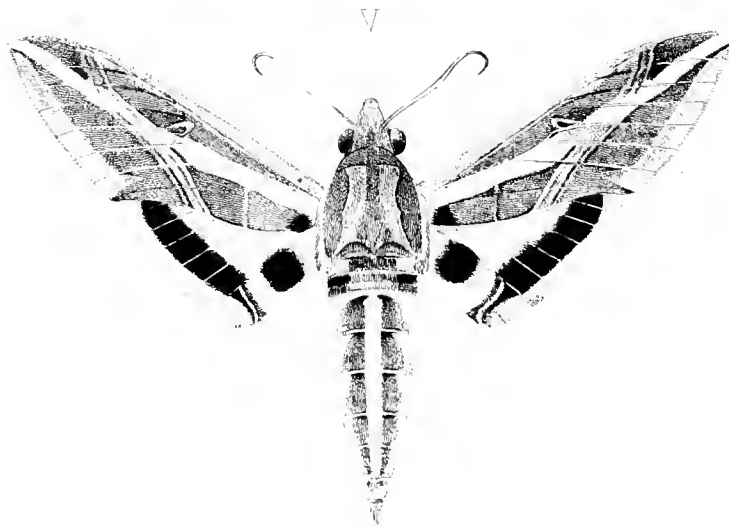
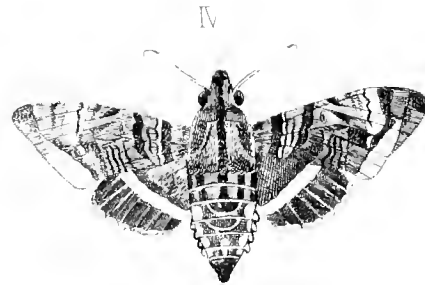
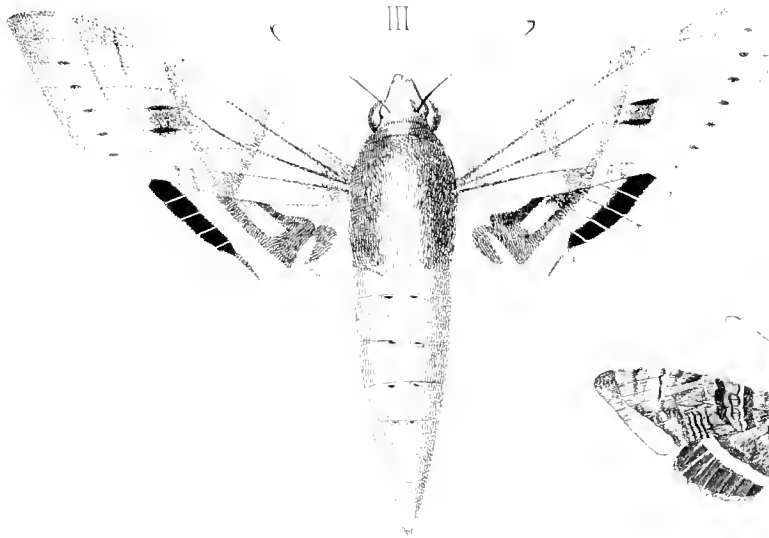
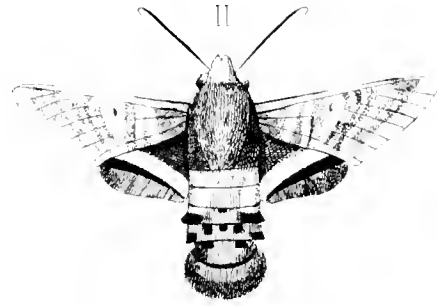
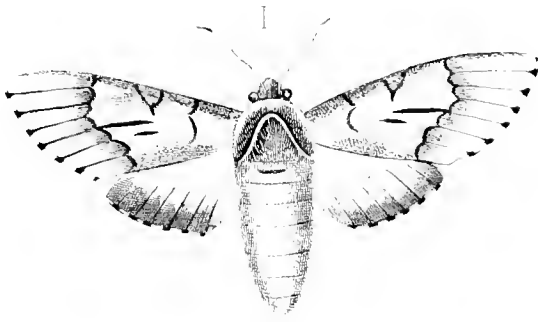


I PACHYLIA FIGUS ♀

III PHYLACAMPA INORNATA ♀

II PHYLACAMPA TYPHON ♀

North American Lepidoptera .

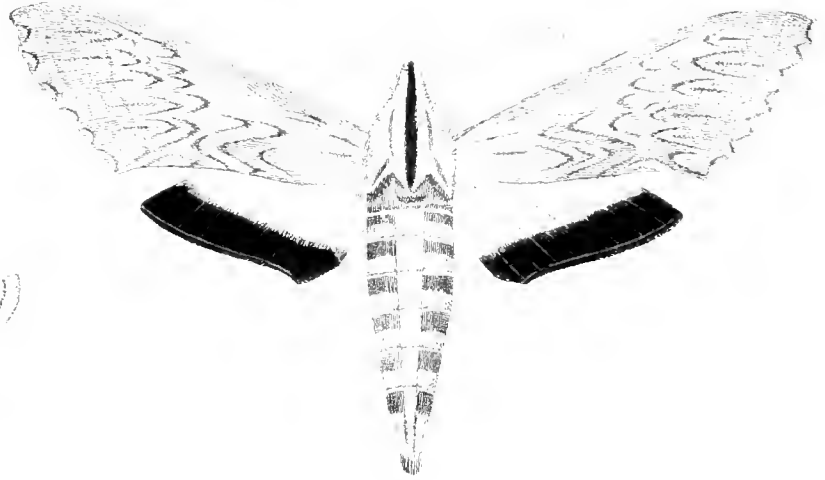
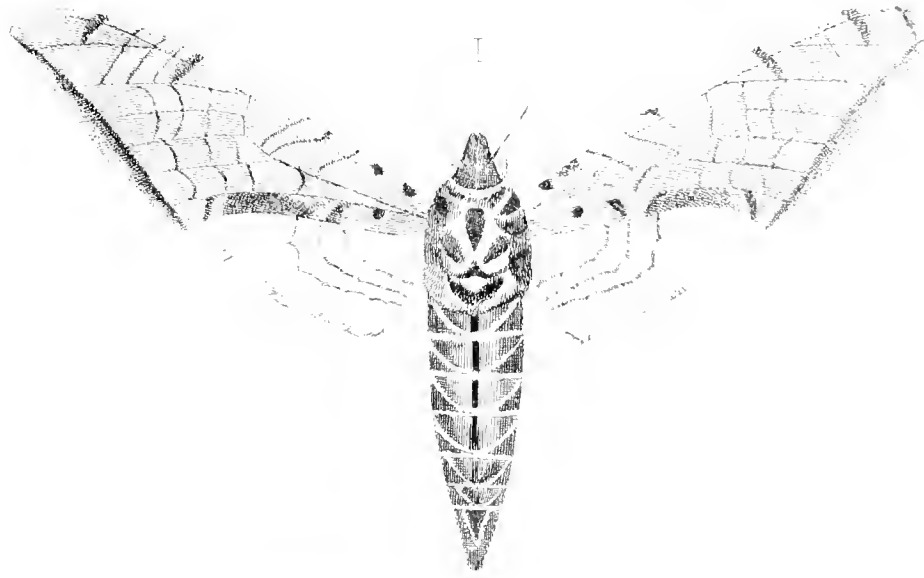


I PINCELYX CONIFERARUM ♂
 II MACROGLOSSA CECULUS ♂

V PHILAMPELUS VITIS ♂

III PHILAMPELUS LABRUSCARI ♀
 IV MACROGLOSSA SAEPAL ♂

North American Lepidoptera.



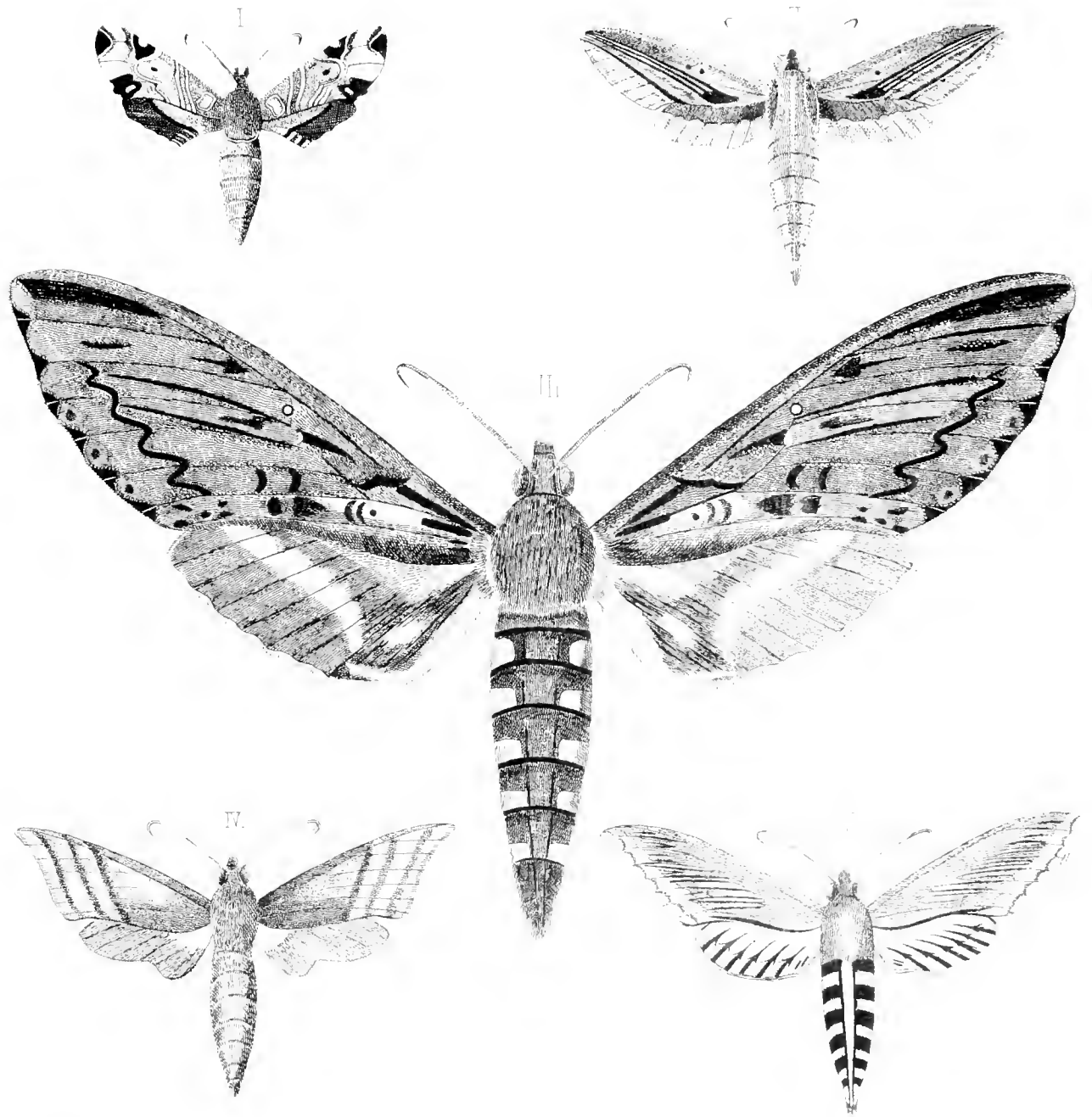
I AMBULYX STRIGILIS ♀
 II ANGERYX ALOPE ♂

VI PROSERPINUS PHAETON ♂

III PROSERPINUS AFRICAE ♂
 IV CHABROCAMPA SHIRAZ ♀

Published by J. W. WEIDEMEYER
 and E. CALVERTLEY
 and W. H. EDWARDS } New York

North American Lepidoptera.



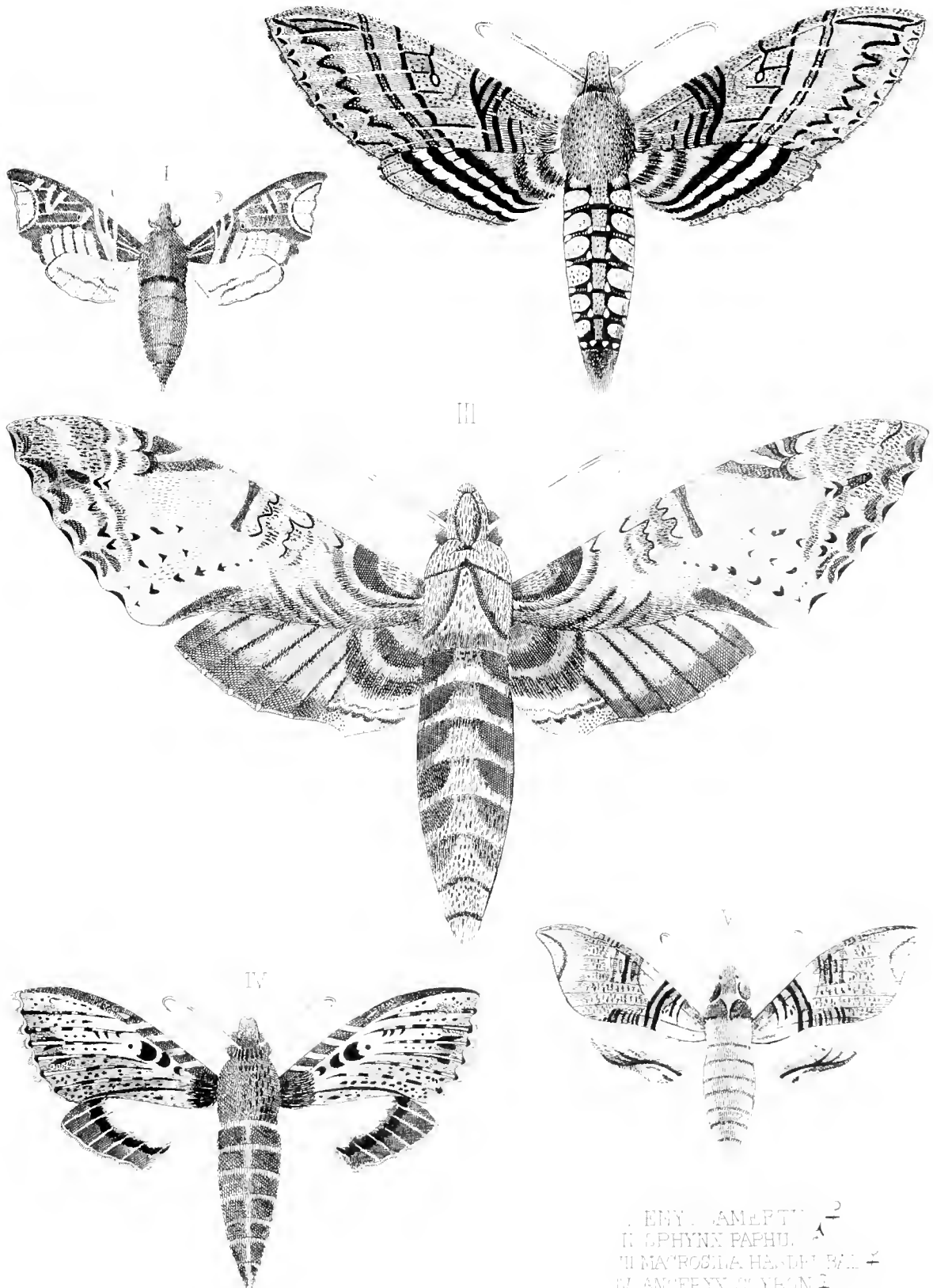
I. *PHENACIA JAPIC* ?
 II. *PHENACIA DRANCUS* ?

III. *PHENACIA* ?

IV. *PHENACIA* ?
 V. *PHENACIA* ?

1874 W. WEIDEMEYER
 1884 S. CALVELEY
 and W. EDWARDS } New York

North American Lepidoptera.



I. EPYX AMERTUS ♂
 II. SPHYNX PAPHU. ♂
 III. MACROSIA HENDLERI ♀
 IV. AN'EPYX CYDON ♂
 V. CALLIONNA LYCASTUS ♀

Published by J. W. WEIDEMEYER,
 and S. CALVERLEY, New York
 and W. H. EDWARDS

North American Lepidoptera.

PLATE XVI



I ANCERYX OENOTRUS ♀

III. AMBULYX FANASCUS ♂

II ANCERYX ELLO ♀

Pub by J W WEIDEMEYER |
and S CALVERLEY | New York
" W HEDWARDS |

North American Lepidoptera.

PLATE XVII

I



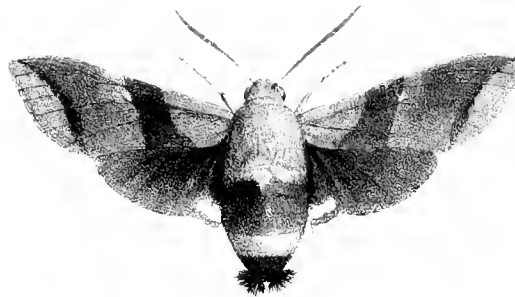
II



III



IV



V



VI

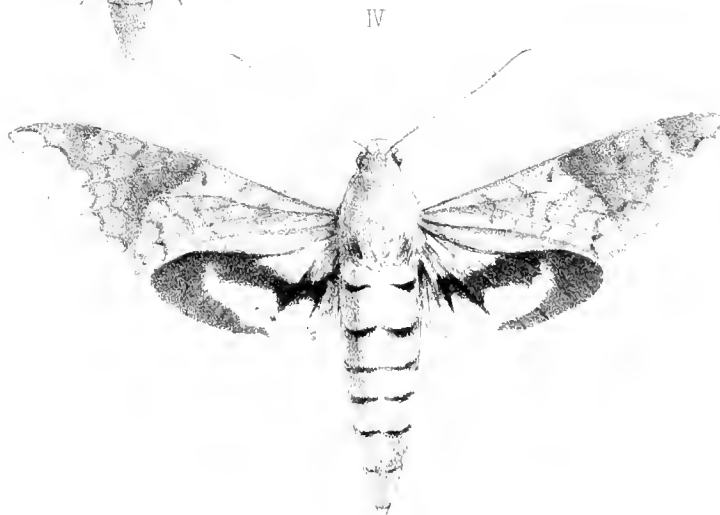
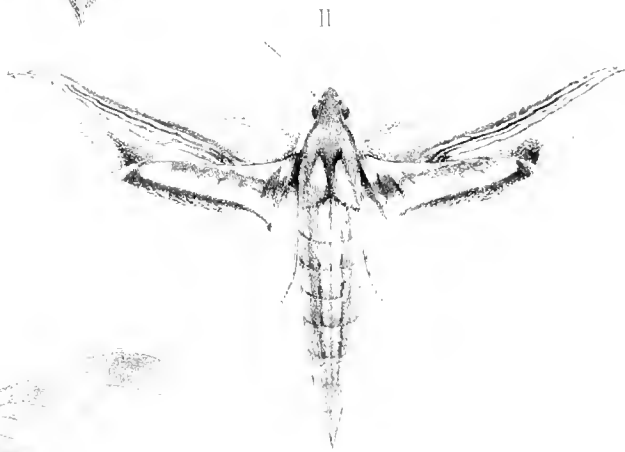
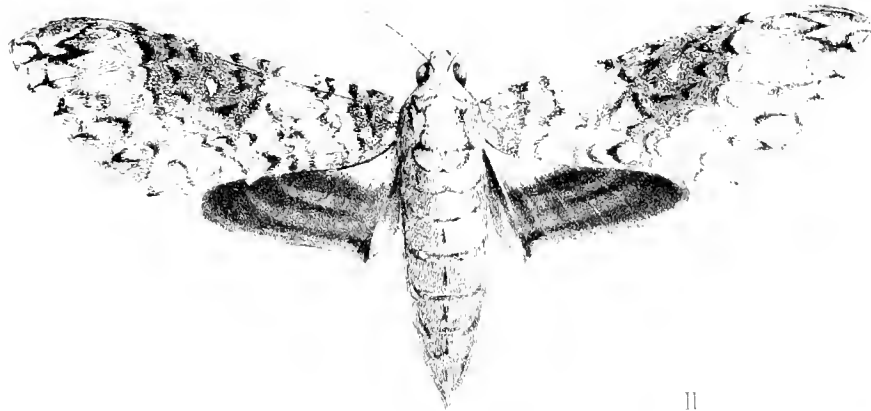


I PERIGONIA SUBHAMATA.
II PERIGONIA RESTITUTA
III SESIA FUSCICAUDIS

IV. PERIGONIA GLAUDESCENS
V PERIGONIA UNDATA
VI MACROGLOSSA FLAVOFASCIATA

North American Lepidoptera.

PLATE XVIII



I MACROSILA COLLARIS
II CHAROCAMPA FALCO
III DARAPSA RHODOCERA
IV PACHYLIA RESUMPTIS

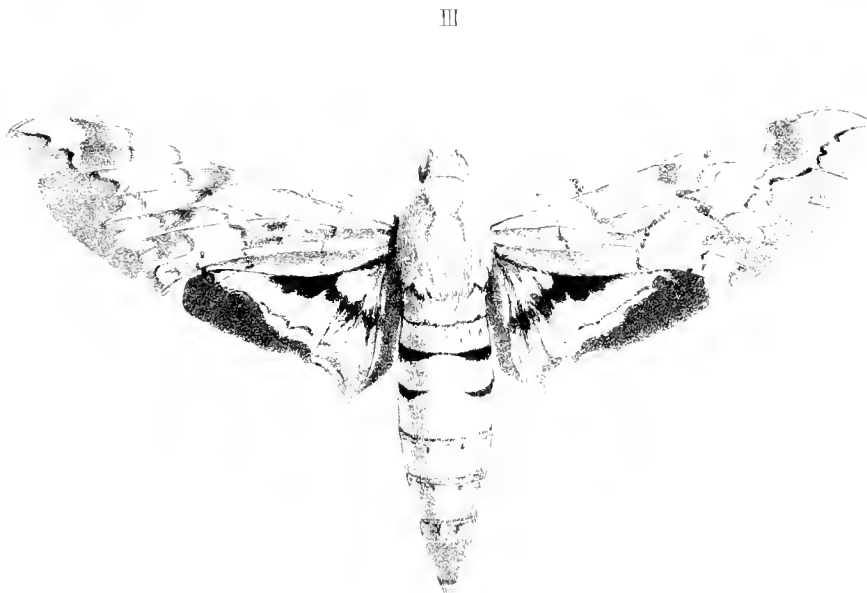
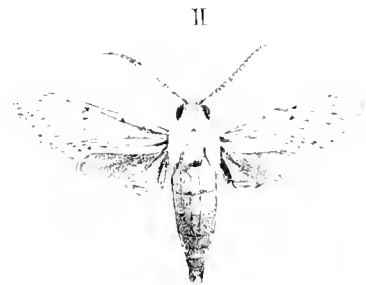
F. W. Robinson del.

W. W. Phelps sculp.

Published by W. W. PHELPS, FIFTY
AND S. C. CALVERT, NEW YORK.
TRADE W. B. DOWMAN'S

North American Lepidoptera.

PLATE XIX

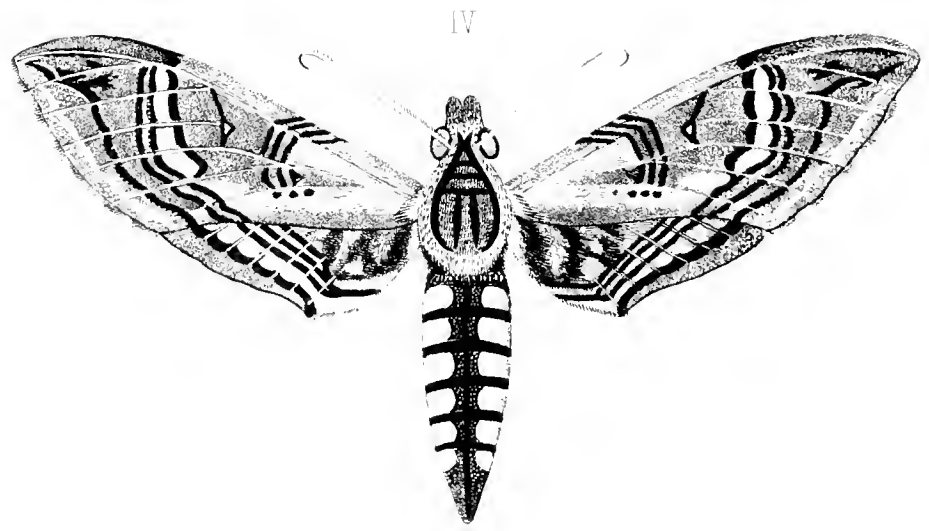
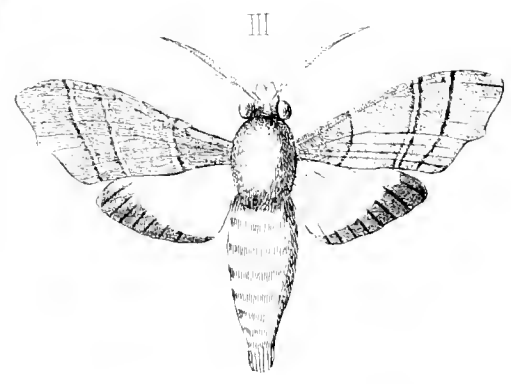
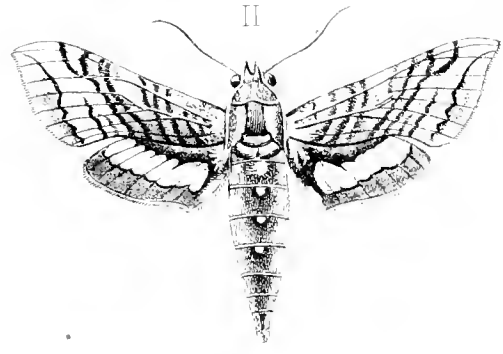
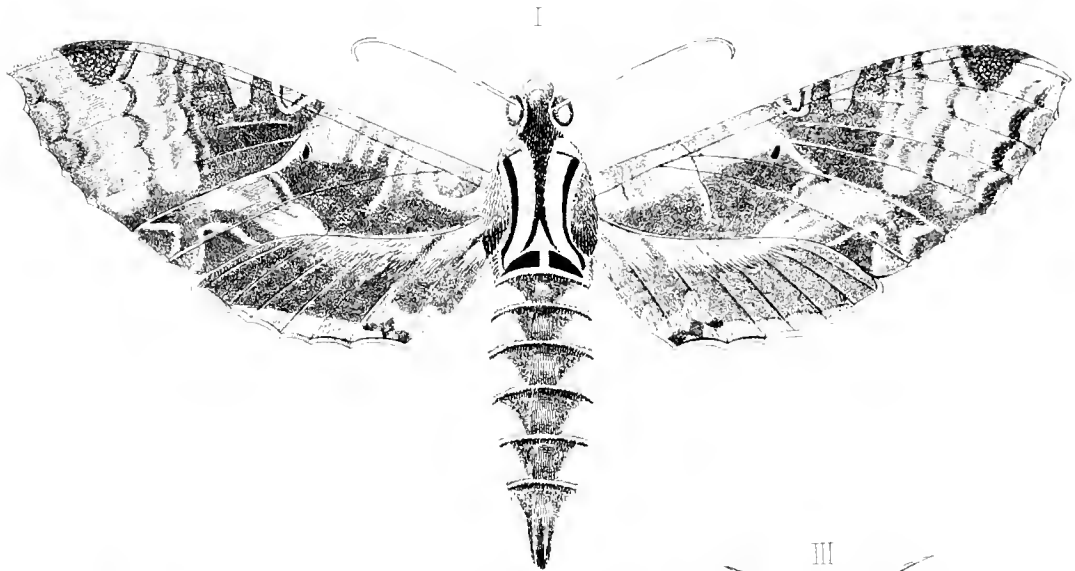


I LAPARA BOMBYCOIDES | III EUCHAËLIA INCONSPICUA
II ANCERYX GUTTULARIS | IV CTENOSANIA NOCTUIFORMIS
V ARCTONOTUS LUCIDUS

F. W. Fisk. sculp.

Published by J. W. WELLS & M. YERGEN
and S. C. V. HILF } New York
and W. H. EDWARDS }

North American Lepidoptera.



I PHILAMPELUS ANCHEMOLUS ♀
 II PERGESA THORATES

III ENYO CHLOROPTERA ♀
 IV PHYNX HANNIBAL

Published by J. W. WEIDENMEYER,
 and S. CALVEPLEY,
 and W. H. EDWARDS } New York

North American Lepidoptera.



I. MACROGLOSSA TANTALUS ♂
 II ENYO GORGON ♀

III SMERINTHUS CERISYI ♂
 IV DO WINGS ENLARGED

Published by J.W. WEIDENFELDER
 and C. CALVERLEY } New York
 W.H. EDWARDS

North American Lepidoptera.

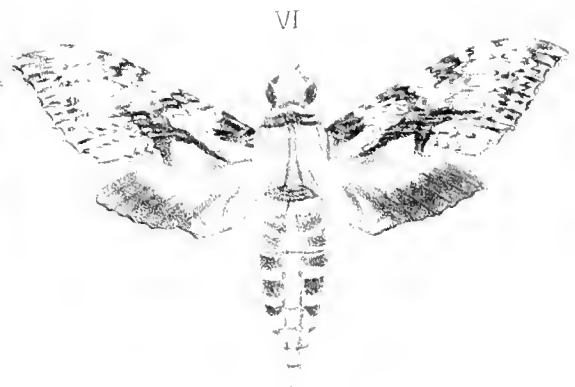
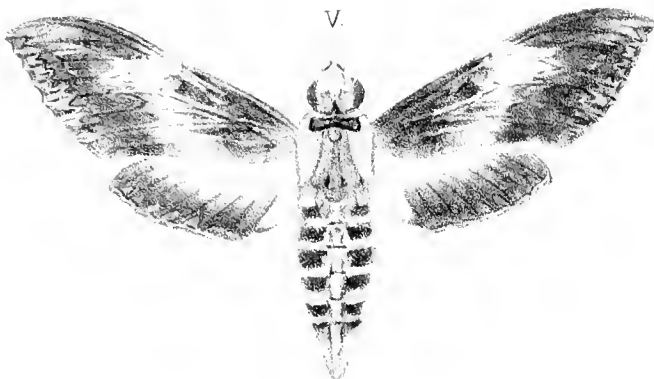
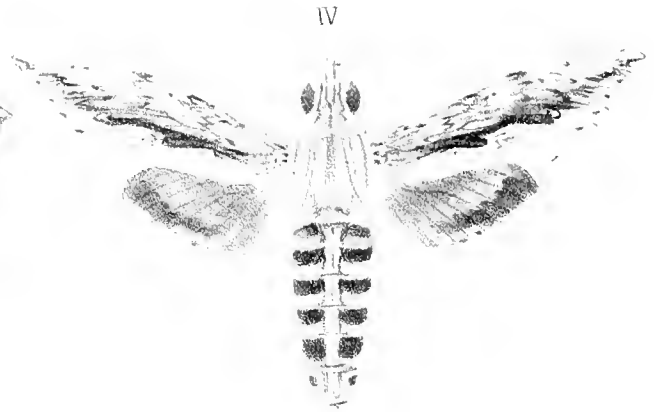
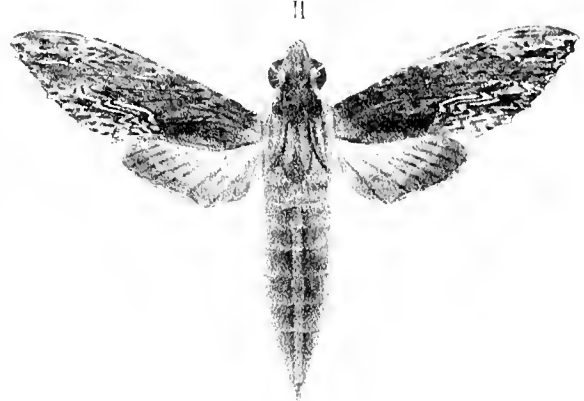


I CHÆROCAMPA PORCUS.
II CHÆROCAMPA IRRORATA.
III CHÆROCAMPA NECHUS.

IV CHÆROCAMPA GUNDLACHII.
V CHÆROCAMPA ROBINSONII.
VI VIDEILEPHILA CALVERLEYI.

Published by J.W. WEIDEMEYER
and S. CALVERLEY
and W.H. EDWARDS } New York

North American Lepidoptera.



I. ERINNYIS OENOTRUS, ♀
 II ERINNYIS MELANCHOLICA, ♂
 III ERINNYIS — — — — —

IV. ERINNYIS ELLO, ♂.
 V. ERINNYIS CONGRATULANS, ♀
 VI ERINNYIS RIMOSA, ♂

Published by J.W. WEIDEMEYER
 and S. CALVERLEY
 and W.H. EDWARDS } New York.



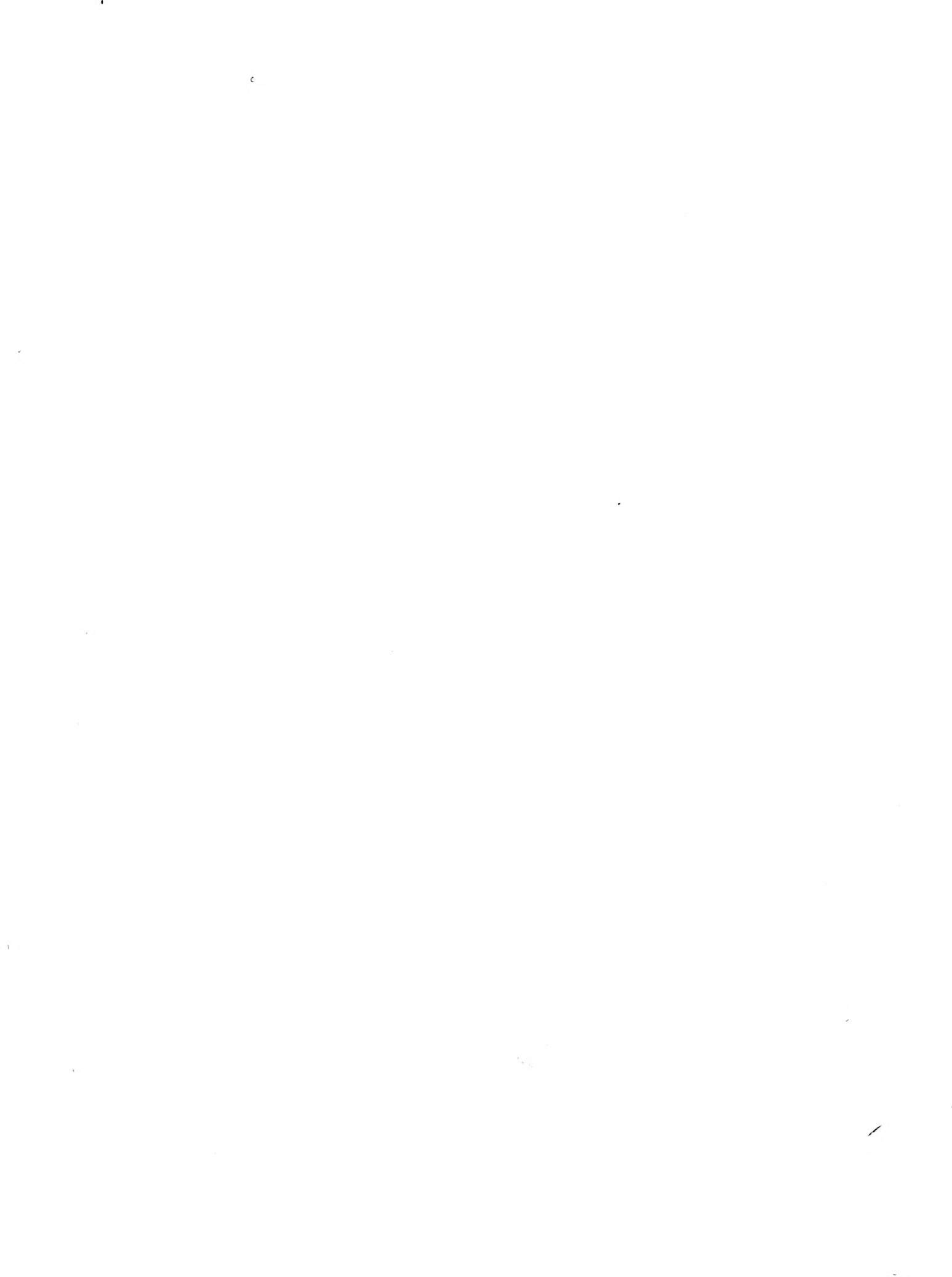
North American Lepidoptera.



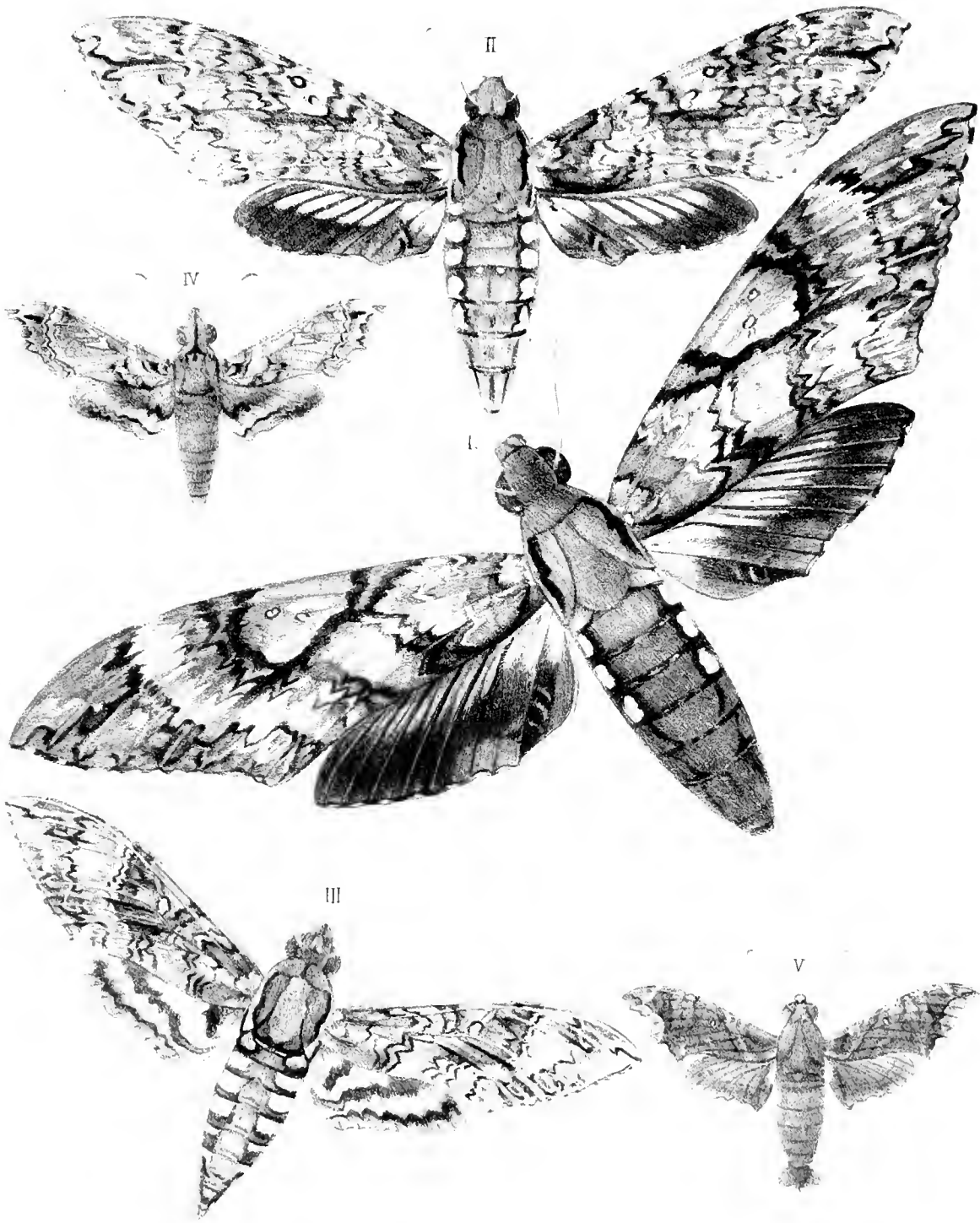
I. PERIGONIA LUSCA, ♂
II PERIGONIA LEFEBVRII, ♂.
III. SYZYGIA AFFLICTA, ♂.

IV DILUDIA BRONTES, ♀.
V. PSEUDOSPHERIX TETRIO, ♂.
VI. HYLOICUS POEYL,

Published by J W WEIDEMEYER }
and S CALVERLEY } New York.
and W H EDWARDS }



North American Lepidoptera.



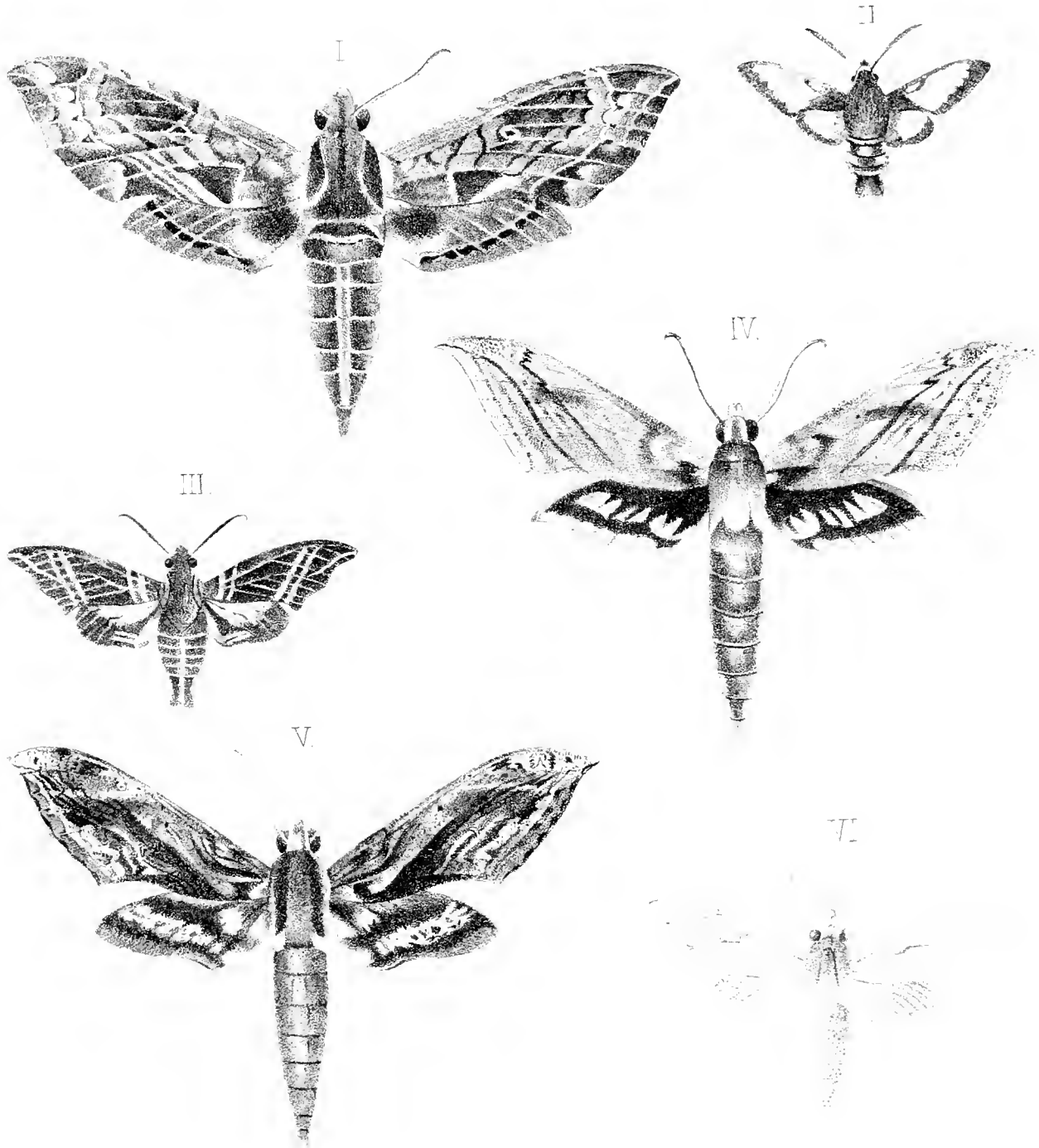
I AMPHONYX ANTÆUS, ♀
 II AMPHONYX DUPONCHEL, ♀

III SPHINX CINGULATA, ♂
 IV HEMEROPLANES PSEUDOTHYREUS, ♂

V ENYO DANUM, ♀

Published by J.W. WEIDEMEYER
 and S. CALVEPLEY } New York.
 and W.H. EDWARDS }

North American Lepidoptera.

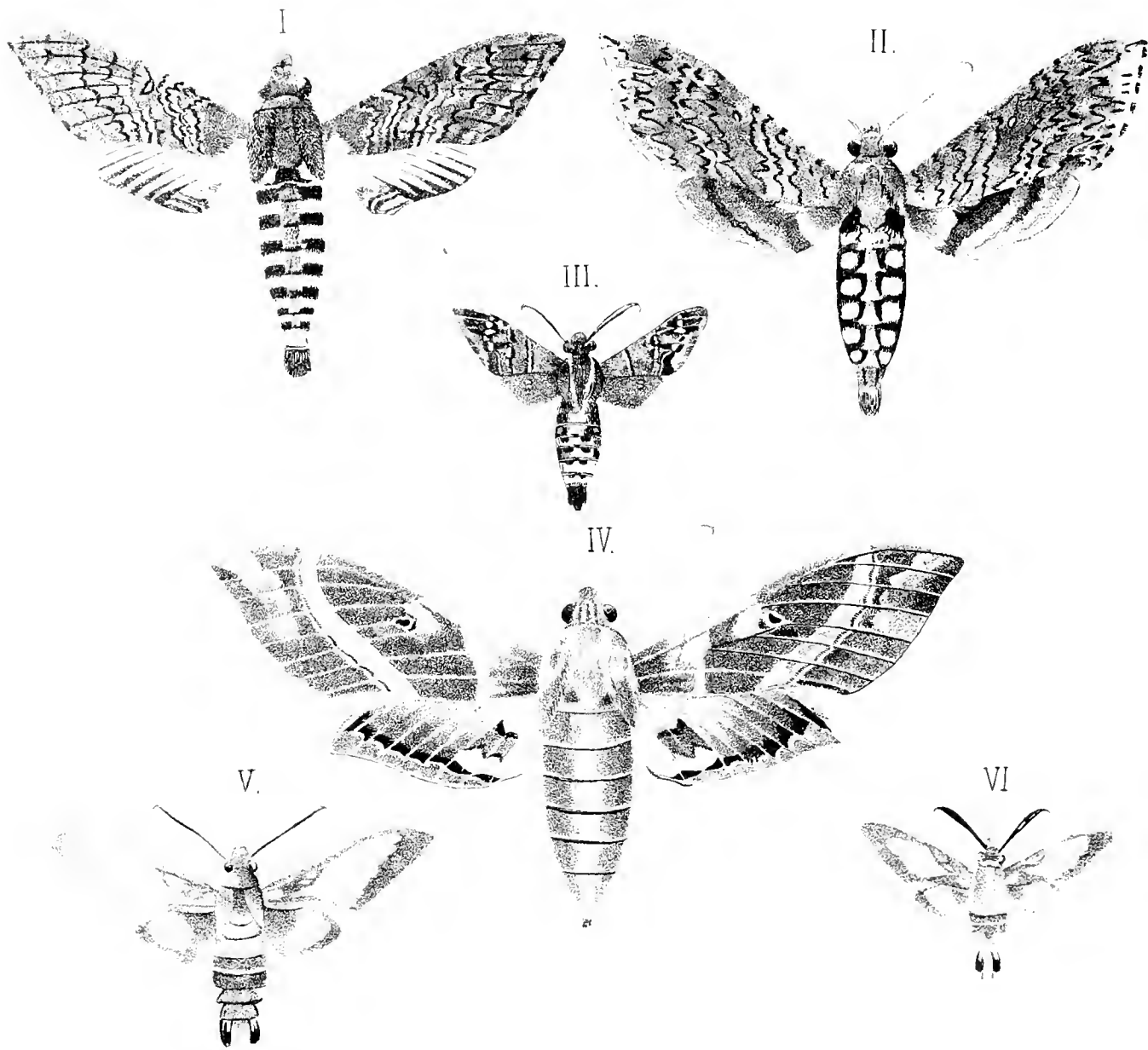


I PHALANX NIGRA ♀
 II HÆMORRHAGIA SPAGNOLA ♂
 III PERIGONIA URUSA ♂

IV PHALANX SCAMPANA ♂
 V PERIGONIA SPAGNOLA ♀
 VI ERINNYIS PALLIDA ♀

Published by J. W. WILDERMAYER
 and S. GAINREY } New York
 W. H. EDWARDS }

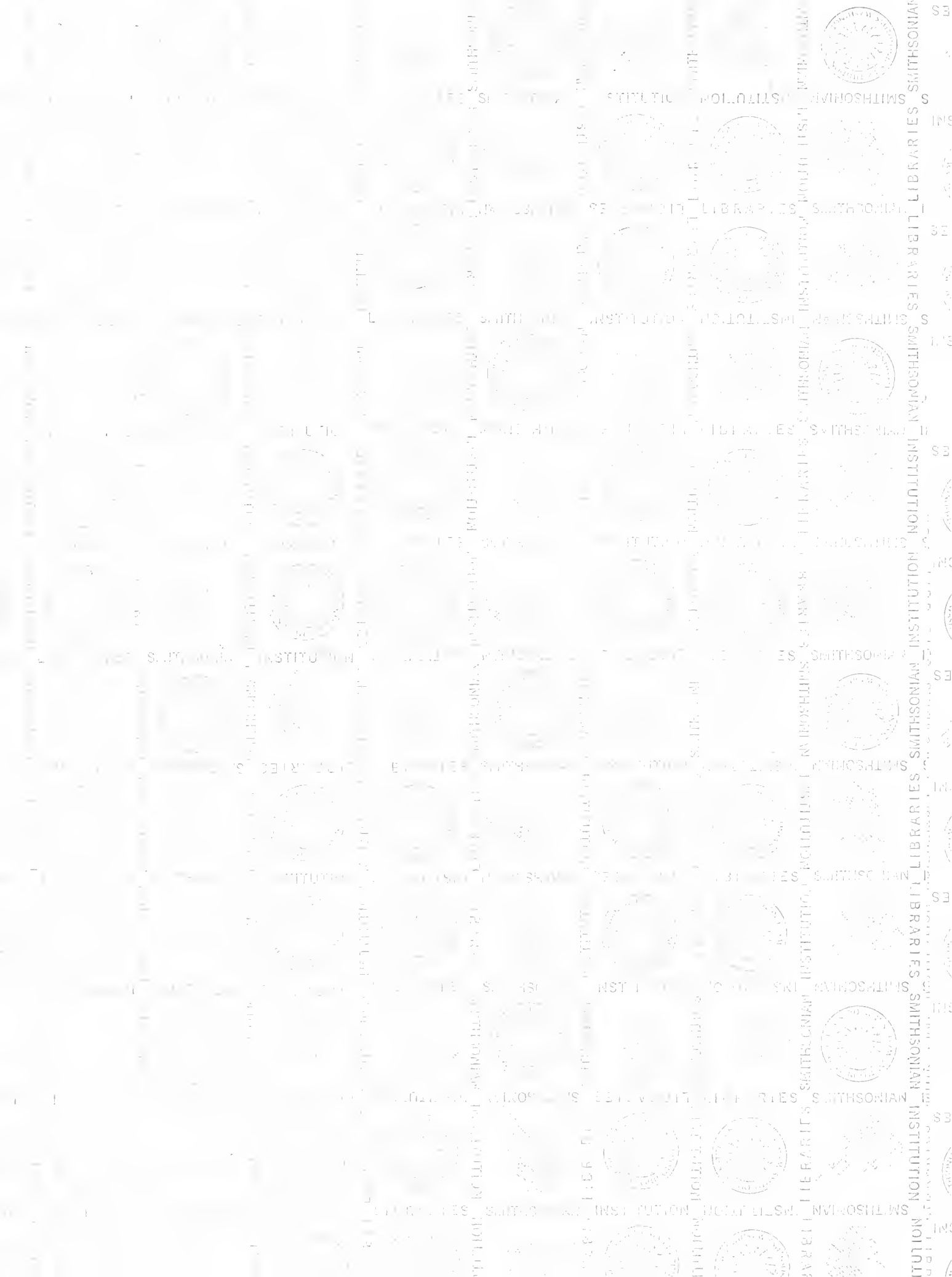
North American Lepidoptera.



I DILOPHOROTA CARICAE ♀
 II MACROSILA AFFLICTA ♀
 III AELLOPOS BLANI ♂

IV CHAEROCAMPA STRENUA ♀
 V HAEMORRHAGIA BUFFALOENSIS ♂
 VI FLORIDENSIS ♂

Published by J.W. WEIDEMEYER
 and S. CALVERLEY
 and W.H. EDWARDS } New York.



c q QL
548
W4
Ent.

Weidemeyer, John W.
Illustrations of
North American Lepidop-
tera, Sphingidae.

qQL
548
W4
Ent.



SMITHSONIAN INSTITUTION LIBRARIES
3 9088 00331483 8
nhent qQL548 W4
Illustrations of North American Lepidopt