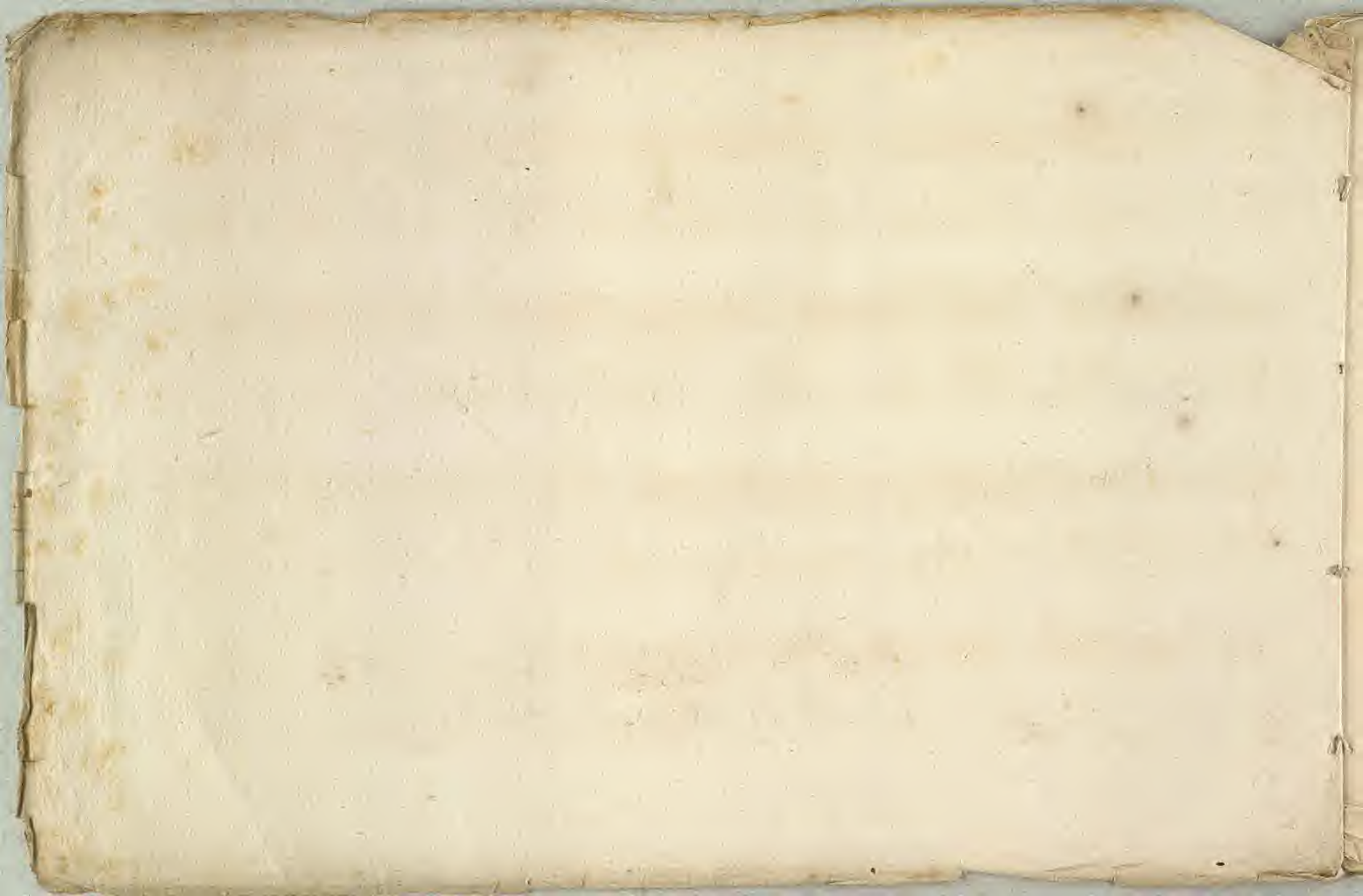


C, I, 112.

ms 7502. 1737





III. Theil. 12. Praludia, vor die Orgel, oder Cembalo. di Sigr: Binder.  
aus Fugen, und ausgeführten Choralen bestehend.

1453

*Andante.*

Handwritten musical notation for the first system, consisting of two staves. The upper staff contains a complex melodic line with many trills and ornaments, while the lower staff provides a harmonic accompaniment. The tempo marking *Andante* is written to the left of the first staff.

Handwritten musical notation for the second system, consisting of two staves. The upper staff continues the melodic line with trills, and the lower staff continues the accompaniment. The notation is dense and characteristic of Baroque keyboard music.

Handwritten musical notation for the third system, consisting of two staves. The upper staff features a series of trills and melodic runs, and the lower staff provides a steady accompaniment.

Handwritten musical notation for the fourth system, consisting of two staves. The upper staff concludes with a final cadence, and the lower staff ends with a double bar line. The tempo marking *con Ped.* is written below the first staff of this system.





2. Praludium II.

*Andante.*

The first system of the manuscript features two staves. The upper staff is written in treble clef with a key signature of one sharp (F#) and a common time signature (C). It contains a melodic line with various note values, including eighth and sixteenth notes, and rests. The lower staff is written in bass clef with a common time signature (C) and contains a bass line with similar rhythmic values. The notation is in an older style, with some notes having stems that cross the staff lines.

The second system continues the piece with two staves. The upper staff maintains the treble clef and one-sharp key signature, showing a continuation of the melodic development. The lower staff remains in the bass clef, providing harmonic support. The handwriting is consistent with the first system, showing clear note heads and stems.

The third system consists of two staves. The upper staff continues the melodic line with some more complex rhythmic patterns. The lower staff continues the bass line, with some chords and single notes. The overall texture is that of a simple two-part setting.

The fourth system is the final one on the page, consisting of two staves. The upper staff concludes the melodic phrase with a final cadence. The lower staff concludes the bass line with a final note and a fermata. The piece ends with a clear sense of resolution.



Handwritten musical notation on two staves. The upper staff contains a complex melodic line with many accidentals (sharps and naturals) and slurs. The lower staff contains a bass line with fewer notes and some rests. A small number '3.' is written at the end of the upper staff.

Handwritten musical notation on two staves. The upper staff continues the melodic line with many accidentals and slurs. The lower staff contains a bass line with rests and some notes. The text "con Ped:" is written below the first few notes of the lower staff.

Handwritten musical notation on two staves. The upper staff begins with a few notes and a slur, followed by a double bar line and the word "Ad libitum" written in cursive. The lower staff begins with a few notes and a double bar line, followed by the word "Ad libitum" written in cursive.

Two empty musical staves, each consisting of five horizontal lines.



4. Præludium. III. Mein Besti dem die Seraphinen

*Fuga*



*Alligro.*



*con Ped:*



*senza Ped:*



*con Ped:*





Handwritten musical notation on two staves. The upper staff contains a melodic line with various note values, including eighth and sixteenth notes, and rests. The lower staff contains a bass line with notes and rests, including a measure with a double bar line and a fermata.

Handwritten musical notation on two staves. The upper staff continues the melodic line with more complex rhythmic patterns. The lower staff continues the bass line with notes and rests.

Handwritten musical notation on two staves. The upper staff begins with a few notes and rests, followed by a double bar line and a fermata. The lower staff begins with notes and rests, followed by a double bar line and a fermata.

Four empty musical staves at the bottom of the page, consisting of two pairs of blank five-line staves.



6. Praludium. IV. Gelobet seyst du Jesu Christ.

*Allegro.*

The first system of the handwritten musical score consists of two staves. The upper staff contains a complex melodic line with many sixteenth and thirty-second notes, including trills and grace notes. The lower staff provides a rhythmic accompaniment with a steady eighth-note pattern.

The second system continues the piece and features two staves. The upper staff has a melodic line with several measures of whole notes, each marked with a 'tr' (trill) above it. The lower staff continues the accompaniment. The word 'Choral' is written in the center of the system, and 'Prael' is written at the end of the system.

The third system consists of two staves. The upper staff has a melodic line with several measures of whole notes, each marked with a 'tr' (trill) above it. The lower staff continues the accompaniment. The word 'Choral' is written in the center of the system, and 'Prael' is written at the end of the system.

The fourth system consists of two staves. The upper staff has a melodic line with several measures of whole notes, each marked with a 'tr' (trill) above it. The lower staff continues the accompaniment. The word 'Choral' is written in the center of the system, and 'Prael' is written at the end of the system.



7.

Choral

Prael

Choral

Prael

con Ped.



*S. Præludium. V. Streu dich sehr o meine Seele,*

*Fuga*

*Andante.*   
*con Ped.* *senza Ped.*

  
*s. Ped.* *c. Ped.* *s. Ped.* *c. Ped.*



*s. Ped:*      *con Ped:*

|| *tr*



100 Praludium VI. Menschen sind merck eben, das Gottes Sohn ist kommen

Allabreve Choral

Pral Choral

Pral Choral Pral

Choral Pral



11.

Choral Prah

Choral

Prah

con Ped:



12. *Præludium VII.* Ich weiß mein Gott, daß all mein Thun

*Fuga*  
*Andante*



*c. Ped.* *s. Ped.* *c. Ped.*

*senza Ped.* *con Ped.*



14. Præludium, VIII. Befiehl du deine Wege, oder. Wie soll ich dich empfangen?

*Allegro.*

*con Ped.* *senza Ped.*

*Choral* *Præl.*

*c. Ped.* *s. Ped.*

*Choral* *1. Præl.* *2. Præl.*

*con Ped.* *s. Ped.*

*Choral* *Præl.*

*con Ped.* *s. Ped.*



Choral Pral  
con Ped. s. Ped.

Choral Pral  
con Ped. s. Ped.

Choral Pral

con Ped.



16. Praludium. IX. Herr wie du wilt, so schickts mit mir

*Fuga*  
*Andante*  
con Ped.

senza Ped.

con Ped.

senza Ped.



Handwritten musical notation for the first system. The top staff is a treble clef with a key signature of two sharps (F# and C#). It contains a complex melodic line with many sixteenth and thirty-second notes. The bottom staff is a bass clef with a key signature of two sharps, containing mostly whole and half notes. The instruction "con Ped:" is written below the bass staff.

Handwritten musical notation for the second system. The top staff is a treble clef with a key signature of two sharps, continuing the melodic line from the first system. The bottom staff is a bass clef with a key signature of two sharps, containing mostly whole and half notes.

Handwritten musical notation for the third system. The top staff is a treble clef with a key signature of two sharps, ending with a fermata. The bottom staff is a bass clef with a key signature of two sharps, containing mostly whole notes. Both staves end with a double bar line and a wavy line indicating a repeat or continuation.

Four empty musical staves at the bottom of the page, consisting of two pairs of five-line staves.



18. Præludium. X. Was soll ich fliehen kein

Allegro.

This page contains a handwritten musical score for a piece titled "18. Præludium. X. Was soll ich fliehen kein". The score is written on four systems of two staves each. The first system begins with the tempo marking "Allegro." and a treble clef. The music is written in a style characteristic of 17th or 18th-century manuscript notation, featuring various note values, rests, and accidentals. The piece is divided into sections labeled "Præl." and "Choral". The "Præl." sections are marked with a treble clef and a common time signature, while the "Choral" sections are marked with a bass clef and a common time signature. The notation includes many accidentals, particularly sharps and naturals, and some sections have a "tr" (trill) marking above the notes. The handwriting is in dark ink on aged, slightly yellowed paper.



Choral

Præl

Choral

Præl

con Ped:

senza Ped:

c. Ped:



20. Proeludium XI. Wenn wir in höchsten Nothen seyn

*Fuga*  
*Alligro.*



Handwritten musical notation on two staves. The top staff begins with a treble clef and a key signature of one sharp (F#). It contains a melodic line with eighth and sixteenth notes, including a double bar line with a '2' above it. The bottom staff contains a bass line with whole and half notes. The system concludes with a double bar line and a fermata over the final note.

Handwritten musical notation on two staves. The top staff continues the melodic line with various rhythmic values and accidentals. The bottom staff continues the bass line with sustained notes. The system ends with a double bar line and a fermata.

Handwritten musical notation on two staves. The top staff features a melodic line with a fermata at the end. The bottom staff has a bass line with a fermata at the end. The system concludes with a double bar line and a fermata.

Four empty musical staves at the bottom of the page, consisting of two pairs of blank five-line staves.



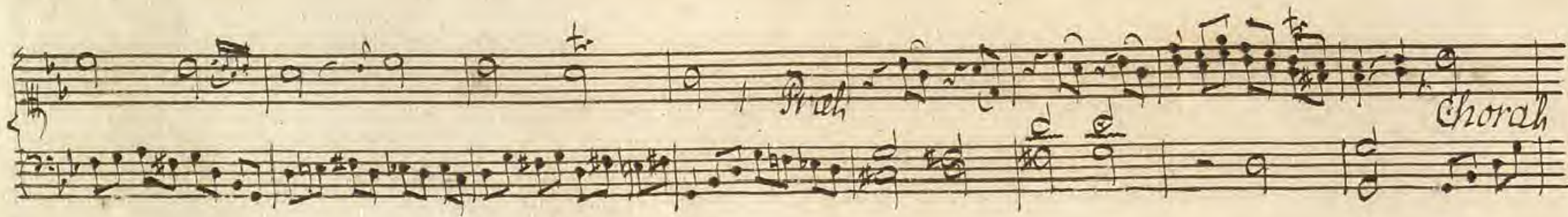
22. *Praeludium. XII* Herr Jesu Christ du höchstes Gütth, Vox humana,

*Un poco*  *Choral*

*Allegro* 

*Prah*  *Choral*

*Prael*  *Choral*

*Prah*  *Choral*



Handwritten musical notation on two staves. The upper staff contains a melodic line with various note values and rests. The lower staff contains a bass line with chords and single notes. The word "Præl" is written above the first measure of the lower staff, and "Choral" is written above the final measure of the lower staff.

Handwritten musical notation on two staves. The upper staff features a melodic line with trills marked with a 'tr' symbol. The lower staff contains a bass line with chords. The word "Præl" is written above the middle of the lower staff, and "con. Ped." is written below the lower staff towards the end.

Handwritten musical notation on two staves. The upper staff has a melodic line with trills. The lower staff contains a bass line with chords. The words "s. Ped." and "c. Ped." are written below the beginning of the lower staff.

Handwritten musical notation on two staves. The upper staff has a melodic line with trills. The lower staff contains a bass line with chords. The word "Finis" is written below the end of the lower staff.





