

## **Historic, archived document**

Do not assume content reflects current scientific knowledge, policies, or practices.

Year	1910	1911	1912	1913	1914	1915	1916	1917	1918	1919	1920	1921	1922	1923	1924	1925	1926	1927	1928	1929	1930	
...	...	...	...	...	...	...	...	...	...	...	...	...	...	...	...	...	...	...	...	...	...	...

...

...

...

...

...

...

...

LIBRARY  
RECEIVED

☆ JUN 30 1949 ☆

J. S. DEPARTMENT OF AGRICULTURE  
BELTSVILLE BRANCH

# THE PLANT DISEASE REPORTER

Issued By

## THE PLANT DISEASE SURVEY

Division of Mycology and Disease Survey

BUREAU OF PLANT INDUSTRY, SOILS, AND AGRICULTURAL ENGINEERING

AGRICULTURAL RESEARCH ADMINISTRATION

UNITED STATES DEPARTMENT OF AGRICULTURE

SUPPLEMENT 179

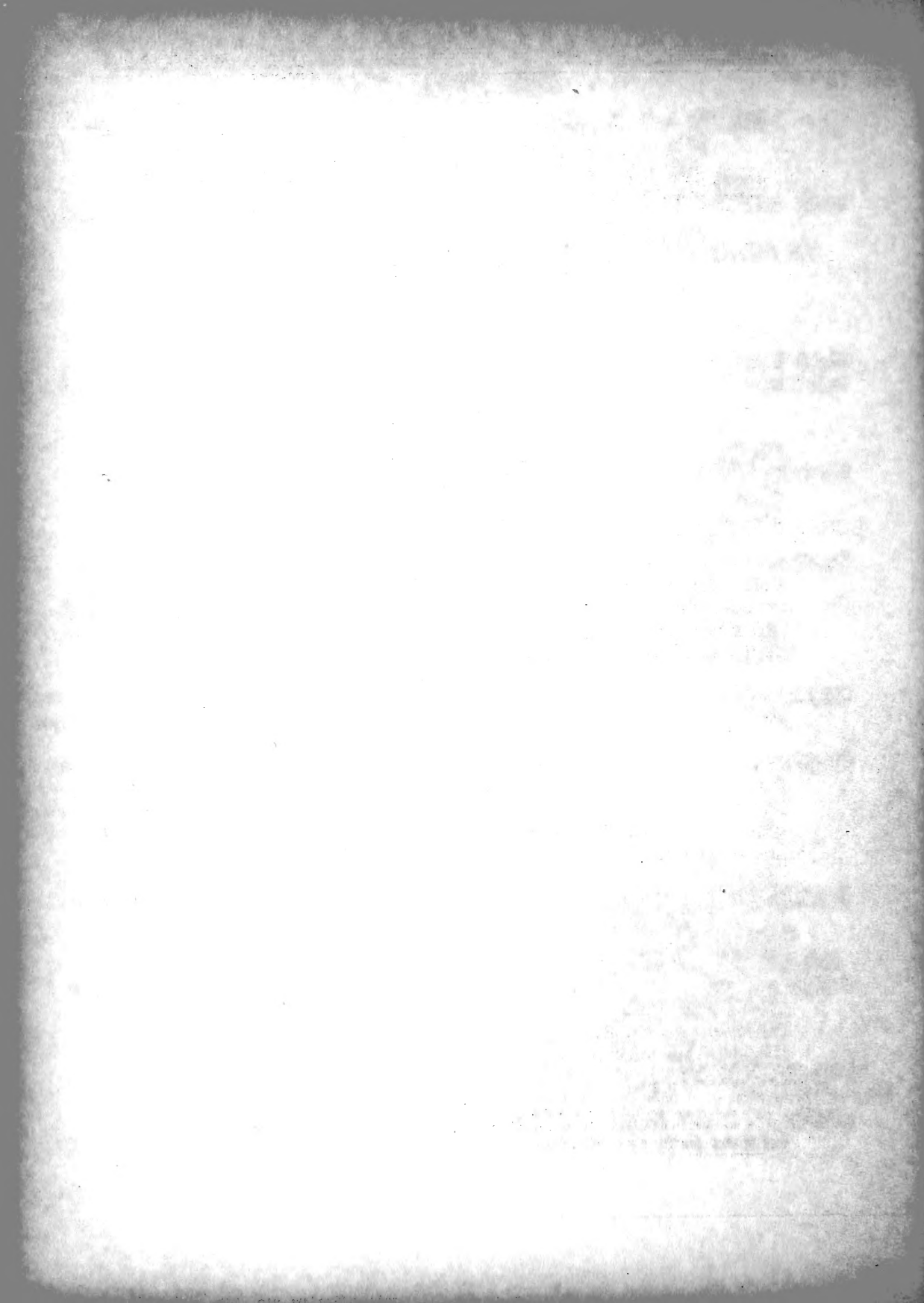
INDEX TO SUPPLEMENTS 173-178, 1948

Supplement 179

Issued June 15, 1949



The Plant Disease Reporter is issued as a service to plant pathologists throughout the United States. It contains reports, summaries, observations, and comments submitted voluntarily by qualified observers. These reports often are in the form of suggestions, queries, and opinions, frequently purely tentative, offered for consideration or discussion rather than as matters of established fact. In accepting and publishing this material the Division of Mycology and Disease Survey serves merely as an informational clearing house. It does not assume responsibility for the subject matter.



PLANT DISEASE REPORTER SUPPLEMENT

Issued by

THE PLANT DISEASE SURVEY  
DIVISION OF MYCOLOGY AND DISEASE SURVEY

Plant Industry Station

Beltsville, Maryland

INDEX TO PLANT DISEASE REPORTER  
SUPPLEMENTS 173-178, 1948

Compiled by Nellie W. Nance

Plant Disease Reporter  
Supplement 179

Index to Supplements  
1948

LIST OF SUPPLEMENTS

- Supplement 173. Host index of the parasitic fungi of Szechwan, China. pp. 1-38. January 15, 1948. By Lee Ling. Genera of hosts are listed below.
- Supplement 174. Report of the Special Committee on the coordination of field tests with new fungicidal sprays and dusts, with reference to results obtained in 1947. pp. 39-86. March 1, 1948. Foreword and crop fungicide tests by various authors; see its table of contents and author index below.
- Supplement 175. Summary of cooperative tests of cotton seed treatments -- 1947. pp. 87-94. May 1, 1948. Cooperators, see author index below.
- Supplement 176. 1947 Fungicide Tests: A summation of nation-wide results with newer fungicides. pp. 95-142. May 15, 1948. Compiled by the Fungicide Committee of the American Phytopathological Society: Subcommittee on "Summation of the Performance of Newer Fungicides". See its table of contents and author index below.
- Supplement 177. Some unusual or outstanding plant disease developments in the United States in 1947. pp. 143-169. October 15, 1948. Compiled by Nellie W. Nance.
- Supplement 178. The warning service in 1948: tobacco blue mold, potato and tomato late blight, cucurbit downy mildew. pp. 171-291. December 30, 1948. By Paul R. Miller and Muriel O'Brien. State reports by various authors; see its index pp. 289-291 and author index below.
- Supplement 179. INDEX to Supplements 173 to 178. pp. 293-309 (Issued June 15, 1949).

AUTHOR INDEX

- ANDERSON, P. J., 248  
 ARNDT, C. H., (37)  
 BAIN, DOUGLAS F., 234  
 BARSS, H. P., (95)  
 BIRD, J. J., (212),(243),(253),(267)  
 BISHOP, C. F., 214,245,260  
 BLANK, L. M., (87)  
 BORDERS, H. I., 225  
 BOYD, O. C., 199,230,254,263  
 BRENTZEL, W. E., 205,240  
 BUCHHOLTZ, W. F., 63,197,228  
 BURKE, C. D. (207)  
 CALLBECK, L. C., 185  
 CLAYTON, E. C., (95)  
 COOK, HAROLD T., 217  
 COX, C. E., 199,228,253,262  
 CUNNINGHAM, H. S., 202,236,264  
 DIMOCK, A. W., 61  
 EIDE, CARL J., 200,234,255  
 ELLIS, D. E., 239,264  
 EPPS, J. M., (87)  
 EPPS, WILLIAM M., 209,242,266  
 FELIX, E. J., 212,258,267,343  
 FEMME, S. B., (244),(259),(268)  
 FERNOW, K. H., 203,237,264  
 GAINES, J. G., 251  
 GARRISS, HOWARD R., 255  
 GODFREY, G. H., 212,243,259,268  
 GOLDSWORTHY, M. C., (95)  
 GRAHAM, T. W., 256  
 HAENSELER, C. M., 202,235  
 HAMILTON, J. M., 45  
 HARRISON, A. L., 213, 268  
 HARRISON, K. A., 185, 220  
 HASKELL, R. J., (95)  
 HAWKINS, B. S., (87)  
 HEGGESTAD, H. E., 258  
 HENDERSON, R. G., (244),(259),(268)  
 HEUBERGER, J. W., (95),192,222,261  
 HILLEBORN, M. T., 199,228  
 HOOTON, D. R., (87)  
 HOWATT, J. L., 183  
 HUGHES, MCRRIIS B., (266)  
 KINCAID, R. R., 250  
 KIRBY, R. S., 207,241,256,265  
 KOCH, L. W., 247  
 LEHMAN, S. G., (87)  
 LEUKEL, R. W., (95)  
 LING, LEE, 1  
 LINN, M. B., 81  
 MACHACEK, J. E., 183  
 MacLACHLAN, J. D., 188,221  
 McCLELLAN, W. D., (95)  
 MILLER, PAUL R., (95),171  
 NAGEL, C. M., 210,243  
 NANCE, MELLIE W., 143  
 NEAL, D. C., (87)  
 NEWHALL, A. G., 49  
 NIELSEN, L. W., 204  
 NUGENT, T. J., 213,244,269  
 O'BRIEN, MURIEL, (171)  
 PERRAULT, C., 190,221  
 PRESLEY, J. T., (87)  
 RAY, W. W., (87)  
 REINKING, OTTO A., 237  
 RICH, SAUL, 190,222  
 RICHARDS, M. C., 201,235  
 RICHARDSON, L. T., 188,221  
 ROGERS, C. H., (87)  
 ROWELL, J. B., 208,242,266  
 RUEHLE, GEORGE D., 194,225,262  
 SAMSON, R. W., 195,228  
 SIMPSON, D. M., (87)  
 SMITH, A. L., (87)  
 STEVENS, R. F., (192),(222),(261)  
 STODDARD, DAVID L., 192,222,249,261  
 STRONG, M. C., 231



- TEHON, L. R., 195,226  
 VALLEAU, W. D., 228,252,262  
 VAUGHAN, R. E., 215,246,269  
 WEBER, GEORGE F., 194,224,262  
 WILSON, COYT, 182,220  
 WILSON, J. D., 41,(49),(81),206,  
 240  
 WINGARD, S. A., 244,259,268  
 WINTER, H. F., 73  
 YOUNG, V. H., (87)

SUBJECT INDEX

- Abies delavayi*: *Lophodermium nervisequum*, 4  
*Abutilon avicennae*: diseases in China, 4  
*Acer* spp.: diseases in China, 4  
 --- *platanoides*: anthracnose, 132  
*Achyranthes bidentata*: diseases in China, 4  
*Aesculus hippocastanum*: leaf blotch, 131  
*Agaricus campestris*: vert-de-gris, 159  
*Agave americana*, *Coniothyrium agaves*, 4  
*Agropyron* spp.: diseases in China, 4  
 --- *repens*: *Physoderma* sp. new in Wis. and 1st rept. in North Amer., 152  
 Alabama, 97, 150, 159, 168, 169  
*Alangium platanifolium*: diseases in China, 4  
 Alberta, 97  
*Albizia julibrissin*: *Fusarium* wilt distribution, 168; *Ravenelia japonica*, 4  
*Aleurites fordii*: diseases in China, 5; *Septobasidium pseudopedicellatum* in La., 1st rept. on this host, 159  
*Allium* spp.: diseases in China, 5  
*Alnus cremastogene*: diseases in China, 5  
*Alopecurus japonicus*: diseases in China, 5  
*Alternanthera sessilis*: *Albugo bliti*, 5  
*Alternaria*, on cabbage, 126  
 --- leaf spot, of cabbage, 125  
 (*Alternaria*) *solani*, see early blight of potato and tomato  
*Althaea rosea*: diseases in China, 5  
*Amaranthus* spp.: diseases in China, 5  
*Andropogon annulatus*: *Puccinia cesatii*, 5  
*Anemone* spp.: diseases in China, 6  
 Another mold, of *Trifolium repens* var. *Ladino*, 151  
 Anthracnose, fungicide tests for control of, on *Acer platanoides* 132, *Antirrhinum majus* 131, bean 124, 126, cotton 139, cucurbits 57, 126, *Platanus occidentalis* 132, raspberry 115, *Sassafras albidum* 132, tomato 82, 119, 120; of *Lupinus angustifolius*, 150; oats, 146; peach, 164  
*Antirrhinum majus*: anthracnose, fungicide tests for control of, 131; diseases in China, 6; rust 130, fungicide tests for control of, 61  
*Aphelenchoides ritzema-bosi*, 167  
*Apium graveolens*: diseases in China, 6  
 Apple: fungicides for control of-- black rot 47, 111, blotch 47, 111 Brook's fruit spot 47, 111, rust 110, scab 47, 109  
 Apple rust, of *Juniperus* spp., 169  
 Apricot: *Sclerotinia sclerotiorum*, in South Africa, 163  
*Arachis hypogaea*: *Cercospora personata*, 6  
*Aralia chinensis*: *Aecidium* sp., 6

- Arasan, 44  
 Arkansas, 97, 146, 148, 154, 165  
 Artemisia spp.: diseases in China, 6  
 Arthroxon hispidus: diseases in China, 6  
 Arundinella anomala: diseases in China, 6  
 Ascochyta gossypii, 159  
 Aspergillus sp., on rice, 148  
 Aster indicus: diseases in China, 6  
 Astilbe chinensis: Sphaerotheca humuli, 7  
 Astragalus spp.: diseases in China, 7  
 Atlantic Coastal States, 153  
 Avena sativa: diseases in China, 7  
 Avocado: Dothiorella rot, 115  
 Azalea: petal blight, 166; root rot, 166
- Bacterial blight, of bean, 157; Corylus sp., 166; Juglans regia, 166  
 Bacterial canker, of Vigna sinensis, 152  
 Bacterial leaf spot, of Begonia sp., 166  
 Bacterial spot, of Japanese plum, 165; peach, 112, 165  
 Bacterial twig and blossom blight, of raspberry, 165  
 Bacterial wilt, of bean, 157; of Medicago sativa, 150; tomato, 154  
 Bacteriosis, of walnut, 114  
 Bacterium solanacearum, 154  
 Bambusa spp.: diseases in China, 7  
 Barley: covered smut, 139; loose smut, 147; powdery mildew, 147; scald, 1st rept. from W. Va. and Pa., 147  
 Bean: anthracnose, fungicide tests for control of, 124, 126; bacterial blight, 157; bacterial wilt, 157; black root (virus), 157; greasy pod (virus), 157; mosaic (virus) 157; root knot, fungicide tests for control of, (Bean) 136; white mold, 157; yellow bean mosaic (virus), 157  
 Bean, lima: insect injury, 156; Nematosporea phaseoli 1st rept. from La., 156; stem anthracnose, fungicide tests for control of, 123  
 Beet: downy mildew, fungicide tests for control of, 125, 126  
 Beet, sugar: root knot, fungicide tests for control of, 135; sugar beet nematode, fungicide tests for control of, 135  
 Begonia sp.: bacterial leaf spot, 166  
 Berberis spp.: diseases in China, 7  
 Beta vulgaris: diseases in China, 7  
 Betula spp.: dieback (virus), 169  
 Eidens spp.: diseases in China, 7, 8  
 Bioquin 1, 44  
 Bioquin 100, 44  
 Eischofia trifoliata: Uncinula ehetiae, 8  
 Bismuth subsalicylate, 44  
 Bitter rot, of sour cherry, 164  
 Blackberry: cane rust, 165  
 Blackleg, of cabbage, 153  
 Black root rot, of tobacco, 162  
 Black rot, of apple, fungicide tests for control of, 47, 111; of cabbage, 153; cucurbits, fungicide test for control of, 57  
 Black rot, of grape, fungicide tests for control of, 79, 113, of squash 123  
 Black-shank, of tobacco, 162  
 Black sheath rot, of rice, 148  
 Black spot, of Rosa, fungicide tests for control of, 130  
 Blast, fungicide tests for control of, on Citrus 114, on onion 49  
 Blight, of peach, 164  
 Blossom drop, of tomato, 156  
 Blossom-end rot, of squash, fungicide tests for control of, 123  
 Blossom rot, of cucurbits, fungicide tests for control of, 57  
 Blotch, of apple, fungicide tests for control of, 47, 111



- Blue mold, of *Nicotiana repanda* in Tex., 162; of tobacco, 160, fungicide tests for control of 133, in warning service area see index to Suppl. 178, pp. 289-291
- Bordeaux injury, of peach, 164
- Bordeaux mixture, 44
- Bothriochloa pertusa*: diseases in China, 8
- Bothriospermum kusnezowii*: *Peronospora bothriospermi*, 8
- Botrytis, of *Citrus*, fungicide tests for control of, 114
- anthophila, on *Trifolium repens* var. Ladino, in Oregon, 151
- blight, of potato, fungicide tests for control of, 66
- elliptica, 167
- Brassica* spp.: diseases in China, 8, 9
- Brazil, 150
- Brown rot, fungicide tests for control of, on cherry 112, *Citrus* 114, peach 74, 112
- Brown rot blossom blight, of peach, 164
- Brook's fruit spot, of apple, fungicide tests for control of, 47, 111
- Broussonetia papyrifera*: diseases in China, 9
- Bunt, of wheat, 140
- Cabbage: *Alternaria*, fungicide tests for control of, 125, 126; blackleg in Puget Sound seed, 153; blackrot, 153; downy mildew, fungicide tests for control of, 125, 126, 133
- Calamagrostis* sp.: *Puccinia coronata*, 9
- Calendula arvensis*: *Sclerotinia sclerotiorum*, 9
- officinalis: rust, 167
- California, 61, 97, 154, 155, 168
- Callistephus chinensis*: *Septoria callistephi*, 9
- Calogreen, 44
- Calystegia hederacea*: diseases in China, 9
- Camellia japonica*: diseases in China, 9
- --- *Sclerotinia sclerotiorum* in Chile, 168
- Campanula medium*: *Sclerotinia sclerotiorum*, 9
- Camptotheca acuminata*: diseases in China, 9
- Canarium album*: diseases in China, 9
- Cane rust, of blackberry, 165
- Canker stain, of *Platanus acerifolia*, 169
- Canna indica*: [*Macrosporium*] *bulbotrichum*, 9
- Cantaloupe: downy mildew, fungicide tests for control of, 55, 122
- Capillipedium parviflorum*: diseases in China, 9
- Capsella bursa-pastoris*: diseases in China, 9
- Capsicum annuum*: diseases in China, 10
- Caragana microphylla*: *Microsphaera pseudoloniceræ*, 10
- Cardamine flexuosa* subsp. *debilis*: diseases in China, 10
- Carex* spp.: diseases in China, 10
- Carpesium* spp.: diseases in China, 10
- Carrot: diseases, fungicide tests for control of, 49; root knot control, 136
- Carya* spp.: leaf spot, fungicide test for control of, 131
- Castanea mollissima*: diseases in China, 10
- Castanopsis* sp.: *Erysiphe japonica*, 11
- Cedrella macrocarpa*: *Phyllactinia corylea*, 11
- Celery: fungicide tests for control of *Cercospora*, 53, 124, 126; mosaic (virus) 152
- Celosia cristata*: diseases in China, 11
- Celtis* spp.: diseases in China, 11
- Centella asiatica*: *Septoria centellæ*, 11

- Cerastium* sp.: *Melampsorella caryophyllacearum*, 11  
*Ceratophorum setosum*, on *Lupinus angustifolius*, (Ca.) 1st rept. from U. S., 150  
*Cercospora* blight, of celery, fungicide tests for control of, 53, 124, 126  
 Ceresan, 44  
 Ceresan-M, 87  
 Ceylon, 150  
*Chenopodium album*: diseases in China, 11  
 Cherry: fungicide tests for control of brown rot and leaf spot, 111; little cherry disease (virus), 163; ring spot, 111  
 ---, sour: bitter rot, 1st rept. from W. Va., 164; X-disease (virus), 164  
 ---, sweet: virus diseases in Montana, 163  
 China, 1  
*Choanephora cucurbitarum*, 57  
 Chokecherry: X-disease (virus), 164  
*Chrysanthemum* spp.: diseases in China, 11; leaf spot (foliar nematode), 167; *Septoria* leaf spot fungicide tests for control of, 62, 129  
*Cinnamomum* sp.: *Puccinia cinnamomi*, 11  
*Cirsium* spp.: diseases in China, 11, 12  
*Citrullus vulgaris*: *Fusarium bulbigenum* var. *niveum*, 12  
 Citrus: diseases in China, 12; fungicide tests for control of blast, *Botrytis*, brown rot, melanose and *Septoria* spot, 114; *Sclerotinia sclerotiorum*, 168  
*Cleistogenes serotina*: *Puccinia diplachnicola*, 13  
*Clematis montana*: *Coleosporium clematidis*, 13  
*Clitocybe tabescens*, 167  
*Coccomyces hiemalis*, 76  
 COC-S, 44, 65  
*Coix lachryma-jobi*: diseases in China, 13  
*Colchicum autumnale*: leaf rot and spot, 167  
*Colletotrichum* sp., on *Lupinus angustifolius*, 150  
 --- *antirrhini*, 131  
 --- *gossypii*, 88  
 --- *graminicolum*, 146  
 --- *lagenarium*, 57  
 --- *phomoides*, 82  
*Colocasia esculenta*: diseases in China, 13  
 Colorado, 97, 149, 156, 158  
*Commelina longicaulis*: carrier of mosaic virus, 153  
 Connecticut, 63, 71, 81, 97  
 Cooperators, 1947 Fungicide tests, 41, 97  
 Copper A, 44  
 Copper spot, of bent turf, 132  
 Copper zinc chromate, 44  
*Coriaria sinica*: diseases in China, 13  
 Corn: seedling blights, fungicide tests for control of, 141  
*Cornus florida*: twig blight, fungicide tests for control of, 131  
*Corylus* sp.: bacterial blight, 166  
 --- *heterophylla*: *Microsphaera coryli*, 13  
*Corynebacterium flaccumfaciens*, 157  
 --- *insidiosum*, 150  
*Coryneum carpophilum*, 164  
 Cotton: anthracnose, seed treatment tests, 88; fungicide tests for control of anthracnose 139, damping-off 139, *Fusarium* wilt 135, meadow nematode 135, root knot 135; *Phymatotrichum* root rot in La., 1st rept., 159; *Rhizoctonia solani*, 89; seed treatment tests 1947, Suppl. 175, pp. 87-94; *Verticillium* wilt, 1st rept. in N. C., 160; "wet weather canker", 159  
 Covered smut, fungicide tests for control of; on barley 139, oats 140

- Cranberry: fruit rots, fungicide tests for control of, 113
- Crataegus mollis*: hawthorn rust, 169
- *oxyacantha*: leaf blight, fungicide tests for control of, 131
- *pinnatifida*: diseases in China, 13
- Crepis japonicus*: diseases in China, 13
- Crown rust, of oats, 147
- Cucumber, see under Cucurbits
- Cucurbits: anthracnose, 126; diseases in China, 13; downy mildew, 122, 126, 127, 153; fungicide tests for control of diseases, 55, in warning service area see index to Suppl. 178, pp. 289-291; mosaic (cantaloupe mosaic virus), 154
- Cudrania tricuspidata*: *Uncinula miyabei*, 14
- Cunninghamia lanceolata*: diseases in China, 14
- Cupressus funebris*: *Gymnosporangium cupressi-funebris*, 14
- Cupro K, 44
- Cuprocide, 44
- Curvularia lunata*, on *Gladiolus* spp., new host, in Fla. and Ala., 168
- Cycas revoluta*: *Coniothyrium olivaceum*, 14
- Cydonia* spp.: diseases in China, 14
- Cymbidium virescens*: *Colletotrichum orchidearum*, 14
- Cynodon dactylon*: diseases in China, 14
- Daffodil, see *Narcissus pseudo-narcissus*
- Dahlia variabilis*: diseases in China, 14
- Damping-off, of cotton, fungicide tests for control of, 139
- Datura alba*: diseases in China, 14
- Daucus carota*: diseases in China, 14
- DDT, 63
- Delaware, 45, 53, 55, 63, 71, 73, 81, 97, 154
- Dianthus* spp.: diseases in China, 14
- Diaporthe phaseolorum* var. *sojae*, 151
- Dichrocephala latifolia*: *Sphaerotheca fuliginea*, 14
- Dieback, of peach, 164
- Digitaria sanguinalis*: diseases in China, 15
- Diospyros kaki*: *Cercospora kaki*, 15
- Disporum pullum*: *Aecidium dispori*, 15
- Distribution, of vegetation and crops in Szechwan, China, vertical zonation of climate, 2
- Dithane, 44
- Dogwood, see *Cornus florida*
- Dolichos lablab*: diseases in China, 15
- Dollar spot, of bent turf, fungicide tests for control of, 132
- Dothiorella* rot, of avocado, fungicide tests for control of, 115
- Dow 9B, 87
- Dowicide 98, 44
- Downy mildew, fungicide tests for the control of, on beet, 125, 126, on cabbage 125, 126, 133, on cantaloupe 122, on cucurbits 55, 126, 127, on grape 113, on onion 49, 51, 125, 126, on spinach 124, 126, on tobacco 133, on watermelon 123; of cucurbits 153, in warning service area, see index to Suppl. 178, pp. 289-291; grape 166, *Medicago sativa* 150; oats, 147; onion 152; shallot 152; wheat 149
- Early blight, of potato, fungicide tests for control of, 66, 118, 119, 126, 127; of tomato, fungicide tests for control of, 82, 120, 126, 127
- Echinochloa crus-galli*: diseases in China, 15
- Eclipta alba*: *Sclerotinia sclerotiorum*, 15
- Ehretia macrophylla*: *Uredo ehretiae*, 15
- Elaeagnus pungens*: *aecidium elaeagni*, 15
- Eleusine indica*: *Helminthosporium nodulosum*, 15

- Elscholtzia* sp.: *Erysiphe galeop-*  
*sidis*, 15  
*Endoconidiophora* sp., on *Platanus*  
*acerifolia*, 169  
 England, 167  
*Enkianthus chinensis*: *Aecidium*  
*enkianthi*, 15  
*Entomosporium thuemenii*, 131  
*Epimedium pubescens*: *Puccinia*  
*epimedii*, 15  
*Eragrostis* spp.: diseases in China,  
 16  
*Erigeron* spp.: diseases in China,  
 16  
*Eriobotrya japonica*: diseases in  
 China, 16  
*Erwinia amylovora*, 165  
 --- aroideae, 160  
 --- carotovora, 158  
*Erysiphe cichoreacearum*, 58  
 --- graminis, 147  
 --- graminis var. *tritici*, 148  
*Euphorbia* sp.: *Cercospora euphor-*  
*biae*, 16  
 Europe, 150  
*Evodia* spp.: diseases in China, 16  
*Evonymus japonicus*: diseases in  
 China, 16  
  
 Fermate, 44  
*Ficus elastica* (see also fig) mush-  
 room root rot, 167  
 Fig (see also *Ficus*) mosaic (virus),  
 163; *Sclerotinia sclerotiorum*,  
 168  
 Fireblight, of pear, 165  
*Firmiana simplex*: *Phyllactinia*  
*corylea*, 16  
 Flax: improving stands, 140  
 Florida, 97, 150, 152, 158, 162, 167,  
 168, 169  
*Forsythia viridissima*: twig blight,  
 1st rept. from N. C., 167  
*Fragaria* spp.: diseases in China,  
 16  
*Fraxinus* spp.: diseases in China,  
 16, 17  
 Fruit rots, of cranberry, fungi-  
 cide tests for control of, 113  
  
 Fruits: fungicides for control of  
 diseases, 109  
 Fungicide tests, cooperators in  
 1947, 41, 97; results with newer  
 fungicides 1947, Suppl. 174, pp.  
 39-86, Suppl. 176, pp. 95-142  
 Fungicides used in 1947 tests, 102  
 Fungicides, newer, for seed treat-  
 ment, 142  
*Fusarium* sp., on rice, 148; tomato,  
 155  
 --- basal rot, of *Narcissus pseudo-*  
*narcissus*, fungicide tests for  
 control of, 129  
 --- brown rot, of *Gladiolus*, fungi-  
 cide tests for control of, 129  
 --- oxysporum f. *perniciosum*, 168  
 --- wilt, fungicide tests for con-  
 trol of, on cotton 135, on sweet-  
 potato, 141  
 --- yellows, of *Gladiolus*, fungicide  
 tests for control of, 129  
  
*Galium aparine*: diseases in China,  
 17  
*Galla australiensis*, 155  
*Gardenia angusta*: *Gloeosporium* sp.,  
 17  
 Georgia, 97, 146, 150, 159, 161, 163, 169  
*Gibberella zeae*, 148  
*Ginkgo biloba*: diseases in China,  
 17  
*Gladiolus*: *Curvularia* spot, new  
 host in Fla. & Ala., 168; fungi-  
 cide tests for control of *Fusar-*  
*ium brown rot*, and F. yellows,  
 129  
*Gleditschia sinensis*: *Phyllactinia*  
*corylea*, 17  
*Gloeosporium apocryptum*, 132  
 --- fructigenum, 132  
*Glomerella cingulata*, 150, 164; on  
*Magnolia grandiflora*, 169; sour  
 cherry in W. Va., 164  
*Glycine* spp.: diseases in China,  
 17  
 Glyoxalidine (341 A, B, or C), 44  
*Gnaphalium luteoalbum*: diseases in  
 China, 17

- Gnomonia ovata*, 131  
*Gossypium* spp. (see also cotton):  
 diseases in China, 18  
 Gramineae: *Rhizoctonia solani*,  
 152  
 Grape: fungicide tests for control  
 of black rot and downy mildew,  
 113, 166  
 Gray leaf spot, of tomato, fungi-  
 cide tests for control of 121,  
 156  
 Guayule: *Sclerotinia sclerotiorum*  
 in Calif., 168  
*Guignardia aesculi*, 131  
 --- *bidwellii*, 79  
*Gymnosporangium clavipes*, 132  
 --- *globosum*, 169  
 --- *juniperi-virginianae*, 169  
 Hawaii, 98  
 Hawthorn, see *Crataegus*  
 Hawthorn rust, of *Crataegus mol-*  
*lis*, 169; *Juniperus* spp., 169  
*Hedera napalensis* var. *sinica*;  
*Phyllosticta hederacea*, 18  
*Helianthus annuus*: diseases in  
 China, 19  
*Helminthosporium*, on wheat, fungi-  
 cide tests for control of, 140  
 --- *avenae*, 146  
 --- leaf spot, of oats, 146  
 --- *victoriae* 140, in W. Va., 146  
*Hemarthria compressa*: diseases in  
 China, 19  
*Heterodera marioni* (see also root  
 knot), 135, 136, 151, 165  
*Heteropogon contortus*: diseases  
 in China, 19  
*Hibiscus mutabilis*: *Sphaerotheca*  
*fuliginea*, 19  
 Hickory, see *Carya*  
 Hollow stalk, of tobacco, 160  
 Honeydew melon diseases: fungi-  
 cide tests for the control of,  
 58  
*Hordeum sativum* var. *vulgare*: dis-  
 eases in China, 19  
 Host index of parasitic fungi,  
 China. Suppl. 173, pp. 1-38  
*Hovenia dulcis*: *Septobasidium pedi-*  
*cellatum*, 19  
*Humulus japonicus*: diseases in China,  
 19  
*Hypericum chinense*: *Oidium* sp., 19  
 Idaho, 156, 157  
 Illinois, 45, 61, 73, 81, 98, 146, 166  
*Impatiens* spp.: diseases in China,  
 19, 20  
*Imperata cylindrica*: *Puccinia rufi-*  
*pes*, 20  
 Index to fungicides and crops in  
 various tests, 44  
 Index to Supplement 178, 289-291  
 Indiana, 45, 63, 72, 98, 146, 156, 160  
*Indigofera* sp.: diseases in China,  
 20  
 Insect injuries: lima bean, 156  
 Iowa, 63, 72, 81, 98, 146, 169  
*Ipomoea* spp.: diseases in China,  
 20  
*Iris japonicus*: diseases in China,  
 20  
*Juglans nigra*: *Marssonina* leaf  
 spot, 131  
 --- *regia*: bacterial blight, 166  
*Juniperus* spp.: apple rust, 169;  
 hawthorn rust, 169  
 --- *chinensis*: diseases in China,  
 20  
 --- *virginiana*: quince rust, 132  
*Justicia* sp.: *Cercospora justiciae-*  
*cola*, 20  
*Kalopanax* spp.: diseases in China,  
 21  
 Kansas, 98, 146, 148, 149  
 Kentucky, 162, 427  
*Kuehneola uredinis*, 165  
*Kyllinga brevifolia* var. *gracillima*:  
*Puccinia kyllingae-brevifoliae*, 21  
*Lactuca* spp.: diseases in China, 21  
*Lagerstroemia indica*: *Uncinula aus-*  
*traliana*, 21  
 Late blight (see also *Phytophthora*  
*infestans*, tomato, potato), fungi-



- (Late blight) -cide tests for control of, on potato 63, 117, 119, 126, 127, on tomato 82, 120, 126, 127; of potato 158; of *Solanum dulcamara* 158; in warning service area, see index to Suppl. 178, pp. 289-291
- Lathyrus odoratus*: *Erysiphe polygoni*, 21
- Leaf blight, of *Crataegus oxyacantha*, fungicide tests for control of, 131
- Leaf blotch, of *Aesculus hippocastanum*, fungicide tests for control of, 131
- Leaf curl, of peach, fungicide tests for control of, 113; 164
- Leaf diseases, of raspberry, fungicide tests for control of, 115
- Leaf rot and spot, of *Colchicum autumnale*, 167
- Leaf rust, of wheat, 148
- Leaf spot, of carrot, fungicide tests for control of, 52; of *Carya* spp., fungicide tests for control of, 131; cherry, 111, fungicide tests for control of, 76; *Rosa* spp., 168; *Soja max*, 151
- Leaf spot (foliar nematode), of *Chrysanthemum* spp., 167
- Leersia japonica*: diseases in China, 21
- Leonurus* sp.: *Erysiphe galeopsidis*, 21
- Lepidium virginicum*: *Erysiphe polygoni*, 21
- Lettuce: root knot, 136
- Leucas mollissima* var. *chinensis*: *Oidium leucas-javanicae*, 21
- Ligularia hodgsoni*: *Sphaerotheca fuliginea* 21
- Ligustrum lucidum*: *Cercospora ligustricola*, 22
- Lindera* sp.: *Uncinula fraxini*, 22
- Linum usitatissimum*: diseases in China, 22
- Liriope graminifolia*: *Vermicularia ophiopogonis*, 22
- Litsea populifolia*: *Aecidium* sp., 22
- Lotus corniculatus* var. *japonicus*: *Erysiphe graminis*, 22
- Louisiana, 51, 98, 147, 152, 156, 159, 169
- Luffa cylindrica*: diseases in China, 22
- Lupinus angustifolius*: anthracnose, threat to seed crop, 150; *Ceratophorum setosum* in Ga. 1st rept. from U. S., 150
- Lycium chinense*: diseases in China, 22
- Lycopersicum esculentum*: diseases in China, 22
- Lysimachia* sp.: *Puccinia dieteliana*, 23
- Lysol, 44
- Machilus* sp.: diseases in China, 23
- Macrosporium blight, of onion, fungicide tests for control of, 49
- Magnolia grandiflora*: *Glomerella* leaf spot, 169
- Mahonia fortunei*: *Puccinia graminis*, 23
- Maine, 45, 63, 71, 98, 158, 165, 169
- Malus* spp.: diseases in China, 23
- Malva sylvestris*: diseases in China, 23
- Manganese ethylene ethylene bis, 44
- Manitoba, 98
- Maps: distribution of--cucurbit downy mildew in 1948, 176; potato late blight in 1948, between 172-173; tobacco blue mold in 1947, 161, in 1948, 174; tomato late blight in 1948, between 172-173
- Marssonina leaf spot, of *Juglans nigra*, fungicide tests for control of, 131
- Maryland, 45, 55, 61, 81, 98, 154, 158, 162, 165, 166, 168
- Massachusetts, 45, 55, 99, 162
- Mazus stachydifolius*: diseases in China, 23
- Medicago* spp.: diseases in China, 23, 24



- (*Medicago*) *sativa*: bacterial wilt, 150; downy mildew, 150; stem rot, 150; winter injury, 150
- Melanose, of *Citrus*, fungicide tests for control of, 114
- Melia azedarach*: diseases in China, 24
- Melilotus* sp.: yellow bean mosaic (virus), 158
- *indica*: diseases in China, 24
- Mentha* spp.: *Verticillium* wilt, 160
- *spicata*: rust, 160
- Michigan, 55, 63, 72, 73, 81, 99, 160, 164
- Minnesota, 45, 63, 72, 81, 99, 149
- Miscanthus* spp.: diseases in China, 24
- Mississippi, 99, 155, 169
- Missouri, 45, 99, 151, 166, 169
- Momordica charantia*: diseases in China, 24
- Monilinia fructicola*, 74, 156, 157, 164
- Morus* spp.: diseases in China, 24
- Mosla lanceolata*: *Coleosporium perillae*, 24
- "Multiplier" trouble of strawberry, see "witches'-broom"
- Mushroom root rot, of *Ficus elastica*, 167
- Myceliophthora lutea*, 159
- Mycosphaerella citrullina*, 57
- *rosigena*, 168
- Myxosporium* sp., on *Cornus florida*, fungicide tests for control of, 131
- Narcissus pseudo-narcissus*: *Fusarium* basal rot, 129
- *tazetta* var. *chinensis*: *Sclerotium ambiguum*, 24
- Nebraska, 99, 146, 169
- Nematode, meadow, on cotton and tobacco, fungicide tests for control of, 135
- , root knot, on cotton, sugar beet and tobacco, fungicide tests for control of, 135
- Nematospora phaseoli*, on lima bean in La., 156
- New distribution: bacterial canker on *Vigna sinensis* in Ill., 152; barley scald in Pa. and W. Va., 147; *Ceratophorum setosum* (Ga.) 1st rept. from U. S., 150; clover anther mold on *Trifolium repens* var. *Ladino* in Oreg. (new host), 151; *Curvularia* spot, on *Gladiolus* spp., in Fla. and Ala., 168; downy mildew of oats in La., 147; downy mildew of wheat in N. Y., 149; *Glomerella cingulata* on sour cherry from W. Va., 164; gray leaf spot of tomato in Ind., 156; *Helminthosporium* blight of oats in W. Va., 146; *Nematospora phaseoli* on lima bean in La., 156; *Phymatotrichum* root rot on cotton in La., 159; *Physoderma* sp. on *Agropyron repens* (Wis.) 1st rept. in North Amer. 152; *Septobasidium pseudo-pedicellatum*, on *Aleurites fordii* in La., new host, 159; stripe smut of *Phleum pratense* in N. H., 151; twig blight, of *Forsythia viridissima*, 167; *Verticillium albo-atrum* on cotton, in N. C., 160
- New Hampshire, 45, 73, 99, 151
- New Jersey, 45, 63, 72, 81, 99
- New Mexico, 99, 153, 160
- New York, 45, 50, 53, 61, 63, 71, 73, 81, 99, 149, 154, 164
- Nicotiana repanda* (see also tobacco): blue mold in Tex., 162
- *tabacum*: diseases in China, 25
- North Carolina, 45, 55, 87, 99, 160, 162, 165, 167, 168
- North Dakota, 63, 72, 81, 100, 146, 149
- Nova Scotia, 100
- Nyssa sylvatica*: twig blight, 132
- Oats: anthracnose, 146; covered smut, 140; crown rust, 147; downy mildew 1st rept. from La., 147; *Helminthosporium* blight 1st rept. from W. Va., 146; *Helmin-*

- (Oats:) -thosporium leaf spot, 146;  
 Helminthosporium victoriae, 140;  
 winter killing, 147
- Oenanthe stolonifera: Puccinia  
 oenanthes, 25
- Oenothera sp.: Cercospora lingi,  
 25
- Ohio, 45, 51, 53, 55, 61, 63, 71, 73,  
 81, 100, 151
- Oklahoma, 73, 100, 148
- Okra: root knot, 136
- Onion: downy mildew, 125, 126, 152;  
 fungicide tests for the control  
 of diseases, 49
- Ontario, 100
- Ophiobolus oryzae, 148
- Oplismenus undulatifolius: Puccinia  
 sp., 25
- Oregon, 100, 151, 156, 157, 160, 164, 166
- Ornamentals: fungicide tests for  
 control of diseases, 61, 129
- Oryza sativa: diseases in China, 25
- Oryzopsis obtusa: Uredo sp., 26
- Osmanthus fragrans: diseases in  
 China, 26
- Ovulinia azaleae, 166
- Oxalis corniculata: Puccinia  
 sorghi, 26
- Pachyrhizus tuberosus: diseases in  
 China, 26
- Paeonia spp.: diseases in China,  
 26
- Paliurus ramosissimus: diseases in  
 China, 26
- Parzate, 44
- Paspalum scrobiculatum: Ephelis  
 japonica, 26
- Paulownia fargesii: Phyllactinia  
 imperialis, 26
- Peach: anthracnose, 164; bacter-  
 ial spot, 112, 165; blight, 164;  
 Bordeaux injury, 164; brown rot,  
 112; brown rot blossom blight,  
 164; dieback, 164; leaf curl,  
 113, 164; root knot, 165;  
 winter injury, 165
- Pear: fireblight, 165; scab, 111
- Pecan: scab, 115
- Pennisetum alopecuroides: diseases  
 in China, 26  
 --- sinense: Claviceps purpurea,  
 26
- Pennsylvania, 45, 63, 71, 81, 100, 147,  
 154, 156, 158, 159
- Pepper, chile: Phytophthora blight,  
 153
- P.E.P.S., 44
- Perilla spp.: Coleosporium perillae,  
 26
- Peronospora destructor (see also  
 downy mildew), 152  
 --- tabacina (see also blue mold),  
 160, 171  
 --- trifoliorum (see also downy  
 mildew), 150
- Petal blight, of Azalea, 166
- Phaenospisma globosa: Puccinia sp.,  
 27
- Phaseolus spp.: diseases in China,  
 27
- Phleum pratense: flag smut, 1st  
 rept. in N. H., 151
- Phoma lingam, 153
- Phomopsis sp.? , on Nyssa sylv-  
 tica, 132
- Phragmites vulgaris: diseases in  
 China, 27
- Phygon, 44
- Phyllostachys sp.: diseases in  
 China, 27
- Phyllosticta glycineum, 151
- Phymatotrichum omnivorum, on  
 cotton in La., 159
- Physoderma sp., on Agropyron repens,  
 new in Wis. and 1st rept. in  
 North Amer., 152
- Phytomonas begoniae, 166
- Phytophthora capsici, 153  
 --- cinnamomi, 166  
 --- infestans (see also late blight),  
 82, 117, 119, 120, 126, 127, 153, 289-  
 291; forecasting in S. C. 217,  
 in Va., 156; fungicide tests for  
 control in the warning service  
 area, 270, 277, in 14 States, 63

- (Phytophthora) parasitica var. nicotianae, 162  
 Pilea sp.: Cercospora pileae, 27  
 Pink patch, of bent turf, 132  
 Pinus massoniana: Cronartium quercuum, 27  
 --- nigra: tip blight, 131  
 Pisum sativum: diseases in China, 27, 28  
 Plant disease developments in U.S. in 1947, Suppl. 177, pp. 143-169  
 Plantago major: diseases in China, 28  
 Plasmopara viticola, 166  
 Platanus acerifolia: canker stain, 169  
 --- occidentalis: anthracnose, 132  
 Plectranthus amethystoides: Plasmodium plectranthi, 28  
 --- nervosus: Coleosporium plectranthi, 28  
 Plum, Japanese: bacterial spot, 165  
 PMAS, 44  
 Poa annua: Puccinia poae-sudeticae, 28  
 Pod and stem blight, of Soja max, 151  
 Polygonum spp.: diseases in China, 28  
 Populus tomentosa: Phyllactinia corylea, 28  
 Portugal, 167  
 Portulaca oleracea: Albugo portulacae, 29  
 Potato: early blight, 66, 118, 119, 126, 127; late blight, 63, 117, 119, 126, 127, 158, in warning service area see index to Suppl. 178, pp. 289-291; Pythium rot, 158; root knot, 136; scab, 158; soft rot, 158  
 Powdery mildew, of barley, 147; cucurbits, fungicide tests for control of, 58; squash, 123; tomato, 126; wheat, 148  
 Prince Edward Island, 100  
 Prunus spp.: diseases in China, 29  
 Pseudomonas phaseolicola, 157  
 --- viridifaciens, 157  
 Pseudoperonospora cubensis, 153, 171  
 Pterocarya stenoptera: Phyllactinia corylea, 30  
 Puccinia coronata, 147  
 --- flaveriae, 167  
 --- menthae, 160  
 --- rubigo-vera var. tritici, 148  
 Pulsatilla cernua: Tranzschelia suffusca, 30  
 Punica granatum: diseases in China, 30  
 Puratized, 44  
 Purple blotch, of onion, fungicide tests for control of, 49  
 Pyracantha sp.: Phyllactinia corylea, 30  
 Pyrenophora avenae, 146  
 Pyrus spp.: diseases in China, 30  
 Pythium rot, of potato, 158  
 Quercus spp.: diseases in China, 30, 31; twig blight, 132  
 Quince rust, of Juniperus virginiana, 132  
 Races (see also strains) of Phytophthora infestans in Pa., 158  
 Ranunculus cationiensis: diseases in China, 31  
 Raphanus sativus: diseases in China, 31  
 Raspberry: anthracnose, 115; bacterial twig and blossom blight, 165; leaf diseases, 115  
 ---, black: mild streak (virus), 166  
 Rhamnus leptophyllus: diseases in China, 31  
 Rhizoctonia solani, 88, 152, 158; on Tulipa sp. var. William Pitt, 168  
 Rhode Island, 45, 63, 71, 100  
 Rhododendron spp.: diseases in

- (*Rhododendron* spp.): - China, 31  
*Rhus* spp.: diseases in China, 31  
*Rhynchosporium secalis*, in Pa. and W. Va., 147  
 Rice: *Aspergillus* sp., 148; black sheath rot, 148; *Fusarium* sp., 148  
*Ricinus communis*: diseases in China, 31  
 Ring spot, of cherry, 111  
*Robinia pseudo-acacia*: *Microsphaera baeunleri*, 31  
 Root knot, fungicide tests for control of, on bean 136, carrot 136, cotton 135, lettuce 136, okra 136, potato 136, *Rosa* 136, sugar beet 135, tobacco 135, tomato 136; of peach 165; of *Trifolium pratense* 151  
 Root rot, of *Azalea*, 166  
*Rorippa montana*: *Sclerotinia sclerotiorum*, 31  
*Rosa*: blackspot, 130; diseases in China, 31, 32; leaf spot, 168; root knot, 136  
*Rubus* spp.: diseases in China, 32  
*Rumex* spp.: diseases in China, 32  
 Rust, of *Antirrhinum majus*, 130; apple, 110; *Calendula officinalis*, 167; *Mentha spicata*, 160; wheat, 149  
 Rusts, of vegetables, Zerlate for control of, 126  
*Saccharum* spp.: diseases in China, 32  
*Sagittaria sagittifolia*: *Doassansiosis sagittariae*, 32  
*Salix* spp.: diseases in China, 32  
*Sambucus* spp.: diseases in China, 33  
*Sapindus mukurosis*; diseases in China, 33  
 Saskatchewan, 100  
*Sassafras albidum*: anthracnose, 132  
*Saussurea affinis*: *Bremia saussureae*, 33  
 Scab, of apple, 45, 109; pear, 111; pecan, 115; potato, 158; wheat, 148;  
 Scald, of barley, 147  
*Schisandra sphenanthera*: *Aecidium* sp., 33  
*Scleria hebecarpa*: *Ustilaginoidea flavonigrescens*, 33  
*Sclerospora macrospora* on oats in La., 147; wheat in New York, 149  
*Sclerotinia sclerotiorum*, 157  
 --- *sclerotiorum*, 1st rept. in N. C., 167; distribution, 168  
 --- *trifoliorum*, 150  
 Scurf, of sweetpotato, 141  
*Secale cereale*: *Puccinia dispersa*, 33  
 Seed treatments, for control of diseases, 139  
 Seedling blights, of corn, 141; sorghum, 140  
 Seedox, 87  
*Senecio densiflorus*: *Coleosporium senecionis*, 33  
*Septobasidium pseudopedicellatum*, on *Aleurites fordii*, in La., 159  
*Septoria*, on tomato, 121, 126  
 --- blight, of celery, fungicide tests for control of, 53  
 --- leaf spot, of *Chrysanthemum*, 129; fungicide tests for control of, 62; of tomato, fungicide tests for control of, 82  
 --- *lycopersici*, 82  
 --- spot, of *Citrus*, 114  
 --- *tritici*, 149  
*Sesamum orientale*: *Cercospora sesami*, 33  
*Setaria* spp.: diseases in China, 33  
 Shallot: downy mildew, 152  
*Sinocalamus affinis*: diseases in China, 34  
*Smilax* spp.: diseases in China, 34  
 Smut, flag, of *Phleum pratense*, 151  
 ---, kernel, of sorghum, 140  
 ---, loose, of barley, 147; wheat, 149  
 Snapdragon: see *Antirrhinum majus*

- Soft rot, of potato, 158  
 Soil sterilization and fumigation, for control of diseases, 135  
 Soja max: leaf spot, 151; pod and stem blight, 151  
 Solanum spp.: diseases in China, 34  
 --- dulcamara: late blight, 158  
 Sonchus oleraceus: Bremia lactucae f. sonchicola, 34  
 Sophora spp.: diseases in China, 34, 35  
 Sorghum: kernel smuts, 140; seedling blight, 140  
 --- vulgare: diseases in China, 35  
 South Carolina, 55, 81, 87, 100, 154, 162, 169  
 South Dakota, 63, 72, 81, 149  
 Speckled leaf blotch, of wheat, 149  
 Spergon, 83  
 Sphaeropsis sp., on Quercus spp., 132  
 --- ellisii, 131  
 Spinach: diseases in China, 35; downy mildew, 124, 126  
 Spodiopogon colutifer: Puccinia miyoshiana, 35  
 Sporobolus indicus: diseases in China, 35  
 Squash: black rot, 123; blossom-end rot, 123; powdery mildew, 123; fungicide tests for the control of diseases, 58  
 Stauntonia sp.: Aecidium sp., 35  
 Stellaria spp.: diseases in China, 35  
 Stem rot, of Medicago sativa, 150  
 Stemphylium solani, in Ind., 156  
 Stone and small fruit diseases, fungicides for control of, 73  
 Strains (see also races), of oats in Tex., 147; Kuehneola uredinis, 165; Phytophthora infestans, 155, in Ind. and Idaho, 158, in warning service area, 171  
 Strains of wheat, discarding of, new races of rust, 148  
 Strawberry: "witches broom" (virus), 163  
 Sulfurs--various, 44  
 Sweetpotato: Fusarium wilt, 141; internal cork (virus), 154; scurf, 141  
 Taphrina deformans, 165  
 Taraxacum mongolicum: diseases in China, 35  
 Tenn. 26, 44  
 Tenn. 34, 44  
 Tennessee, 101  
 Texas, 49, 147, 148, 162, 166 ff.  
 Thea sinensis: diseases in China, 35  
 Themedra triandra: diseases in China, 36  
 Thielaviopsis basicola, 162  
 Thuja orientalis: diseases in China, 36  
 Thyrocarpus sampsonii: Peronospora thyrocarpii, 36  
 Tip blight, of Pinus nigra, 131  
 Tobacco: black root rot, 162; black-shank, 162; blue mold, 133, 160, in warning service area see index to Suppl. 178, pp. 289-291; hollow stalk, 160; meadow nematode, 135; root knot, 135  
 Tomato: anthracnose, 119, 120; bacterial wilt, 154; big bud (virus), 155; blossom drop, 156; early blight, 82, 120, 126, 127; Fusarium wilt, 155; gray leaf spot, 121, 1st rept. from Ind. 156; late blight, 120, 126, 127, late blight warning service, 155, in warning service area see index to Suppl. 178, pp. 289-291; mosaic (virus), 156; powdery mildew, 126; root knot, 136; Septoria, 121, 126  
 Trachycarpus excelsa: diseases in China, 36  
 Tribasic, 44



- Trifolium: *Brachysporium trifolii*, 36; winter injury, 151  
 --- pratense: root knot, 151  
 --- repens var. Ladino: clover anther mold in Oregon, 1st rept. on this host, 151  
*Trigonotis peduncularis*: *Peronospora trigonotidis*, 36  
*Trisetum macranthum*: *Puccinia triseti*, 36  
 --- aestivum: diseases in China, 36  
*Tulipa* sp., var. William Pitt: top rot bulb infection, 168  
 Turf, bent: copper spot, 132; dollar spot, 132; pink patch, 132  
 Twig blight, of *Cornus florida*, 131; *Forsythia viridissima*, 167; *Nyssa sylvatica*, 132; *Quercus* spp., 132  
  
*Ulmus americana*: phloem necrosis (virus), 169  
*Urocystis agropyri*, 151  
*Ustilago nuda*, 147  
 --- tritici, 149  
 Utah, 101, 156, 157  
  
 Vegetables: anthracnose diseases, 127; fungicides for control of diseases, 117, 126; powdery mildew diseases, 127; rusts, 127  
 Vermont, 151  
*Veronica* spp.: diseases in China, 36  
*Vert-de-gris*, of *Agaricus campestris*, 159  
*Verticillium aboatrum*, on cotton in N. C., 160  
 --- wilt, of *Mentha* spp., 160  
*Viburnum* sp.: *Cercospora* sp., 37  
*Vicia* spp.: diseases in China, 37  
*Vigna sinensis*: bacterial canker, first rept. from Ill., 152; diseases in China, 37  
*Viola* spp.: diseases in China, 37  
 (*Viola*) *tricolor hortensis*: seedling decay, 137  
 Virginia, 45, 101, 147 ff., 154, 156, 160, 162, 166  
 Virus diseases: big bud of tomato, 155; black root of bean, 157; die-back of birch, 169; greasy pod of bean, 157; internal cork of sweet-potato, 154; little cherry (Western X-disease) of cherry, 163; mild streak of black raspberry, 166; mosaic of bean 157, celery 152, *Commelina longicaulis*, 153, cucurbits 154, fig 163, tomato 156, wheat 149; phloem necrosis of *Ulmus americana*, 169; sweet cherry, 163; "witches broom" of strawberry, 163; X-disease of choke-cherry 164, sour cherry 164; yellow bean mosaic of bean 157, of *Melilotus* sp. 158  
*Vitis* spp.: diseases in China, 38  
  
 Walnut: bacteriosis, 114  
 Warning Service, for late blight, 155, see also index to Suppl. 178, pp. 289-291  
 Washington, 153, 156, 160, 163, 165 ff.  
 Watermelon: downy mildew, 123  
 Weather 1947: average annual precipitation, 144; mean temperature, 143; normal precipitation for growing season, 145  
 Weather injuries: winter injury to *Medicago sativa* 150, peach 165, to *Trifolium* spp. 151; winter killing of oats, 147  
 West Virginia, 45, 73, 101, 146, 147, 164  
 "Wet weather canker", of cotton, 159  
 Wheat: bunt, 140; downy mildew, 1st rept. in N. Y., 149; leaf rust, 148; loose smut, 149; mosaic (virus), 149; powdery mildew, 148; scab, 148; speckled leaf blotch, 149; stem rust, 149  
 White mold, of bean, 157  
 Winter injury, of *Trifolium* spp., 151



Wisconsin, 45,73,101,146,152,160,  
163

Wyoming, 101, 156, 157

*Xanthomonas campestris*, 153

--- *corylina*, 166

--- *juglandis*, 166

--- *phaseoli*, 157

--- *pruni*, 165

--- *vignicola*, on *Vigna sinensis*  
in Ill., 152

*Xylosma racemosum* var. *pubescens*,  
diseases in China, 38

*Zanthoxylum simulans*: *Septobasidium*  
*pedicellatum*, 38

*Zea mays*: diseases in China, 38

Zerlate, 44, 88

*Zinnia elegans*: *Cercospora zinniae*, 38

*Zizania latifolia*: diseases in China,  
38

*Zizyphus jujube*: diseases in China, 38

Faint, illegible text at the top left of the page, possibly bleed-through from the reverse side.

Faint, illegible text at the top right of the page, possibly bleed-through from the reverse side.

