

THE INDIAN ECHO
1958









Presenting



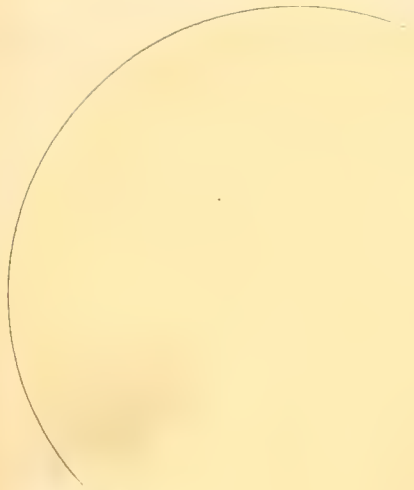
THE
INDIAN ECHO

1953

Published by the
THE SENIOR CLASS
of
COOLEEMEE HIGH SCHOOL
Cooleemee, North Carolina

Copyright 1953

FOREWORD



Friends --- fun --- work. All are memories.

In the hope that as we turn these pages, only happy memories and deep pride in our High School and what it has meant to us will endure, we, the Senior Class of 1953, publish the INDIAN ECHO. May these memories bum bright in your heart and life.

THE ANNUAL STAFF

THE INDIAN ECHO STAFF



Edward Carter.....Assaciate Editar
 Charles Waffard.....Business Manager
 Sammy Cape.....Editar-in-Chief



Seated, left ta right: Betty Braaks, Secretary-Treasurer; Delares Jordan, Art Editar; Peggy Grubb, Class Editar; Sammy Cape, Editar; Ruby Shaaf, Typist; Nancy Veach, Typist; Kay Messick, Snapshats Editar; Patsy Shaver, Girls' Sparts Editar. Standing: Dayle Spry, Bays' Sparts Editar; Edward Carter, Assaciate Editar; James Barber, Assistant Business Manager; Miss Katherine Mullis, Spansar; Charles Waffard, Business Manager; Clara Hepler, Typist; Letty Wagner, Phatagraphic Editar; Kenneth Sales, Circulation Manager.

DEDICATION

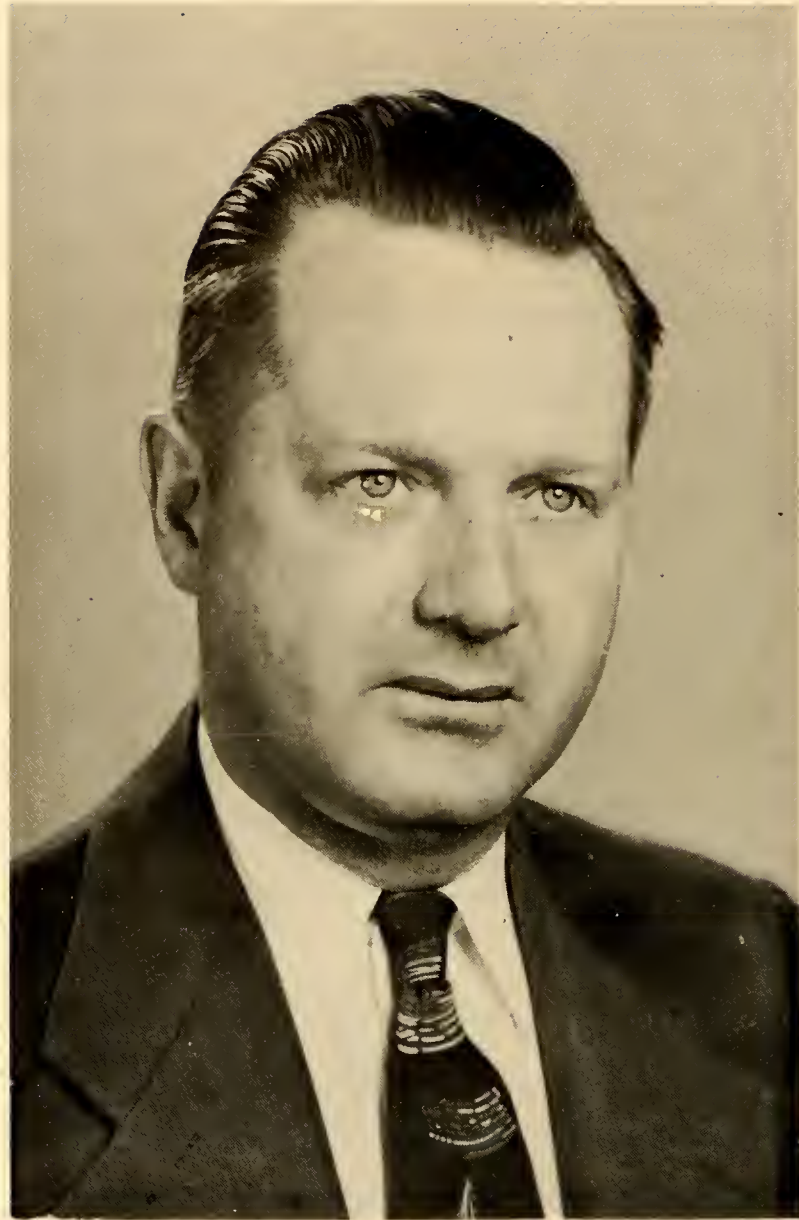


In grateful acknowledgement of her untiring efforts, help, and understanding, we, the class of 1953, proudly dedicate this volume of The Indian Echo to Miss Katherine Mullis.



Faculty

OUR PRINCIPAL



MR. V. G. PRIM

A. B. Degree, Guilford College
M. A. Degree, A. S. T. C.

HIGH
SCHOOL



JUNE M. HICKS

B.S., W.C.T.C.
MA Univ. of N.C.
Eng. Sac. Stud. Guid.
Senior Class Advisor



KATHERINE MULLIS

Catawba College
A.B., Commercial Education
Junior Class Advisor



NANCY ROTHROCK

W.C.U.N.C.
B.S., Home Economics
Junior Class Advisor



J. E. SINK

High Point College
B.S., Science
Sophomore Class Advisor

Not Pictured:

ANNIE G. BOST
Roanoke College
A.B., Math & Foreign Languages
Freshman Advisor



ROBERT YOUNG

Appalachian State Teachers College
B.S., Social Science & Physical Education
Freshman Advisor

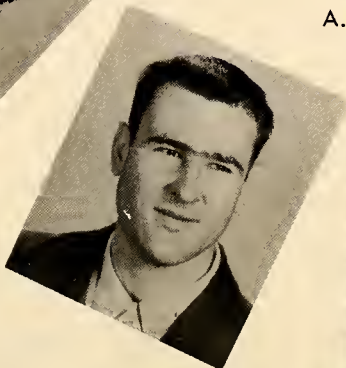
BILL PRICE

East Carolina College
B.S., Industrial Arts & Social Studies



JACK WARD

Catawba College
A.B., Physical Education
Eighth Grade



THOMAS L. RIDENHOUR

High Point College
B.S., Physical Education
Seventh Grade



FACULTY

SNAPSHOTS



THE TEAM?



LOVERS!



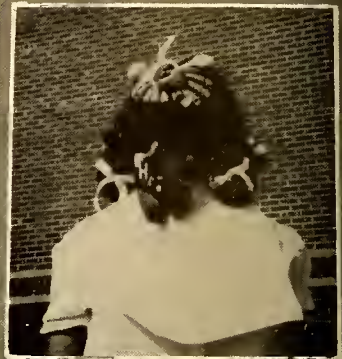
More fun!



Big Game!



"STRAINED RELATIONS"



You name it!



Watermelon Time!



TEACHER'S PET!



OH! Brother!



Seniors



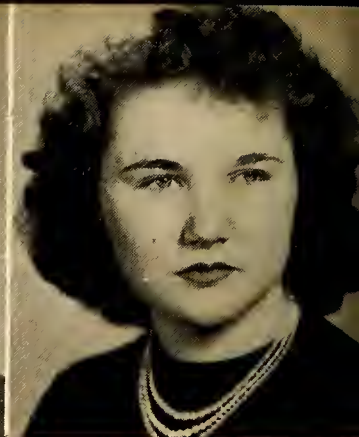
DOYLE SPRY
President



PATSY SHAVER
Vice-President



KAY MESSICK
Secretary



NANCY HOFFMAN
Treasurer

SENIOR OFFICERS

MASCOTS



FRANCES WEBB



JOHNNY VEACH

CLASS DAY OFFICERS

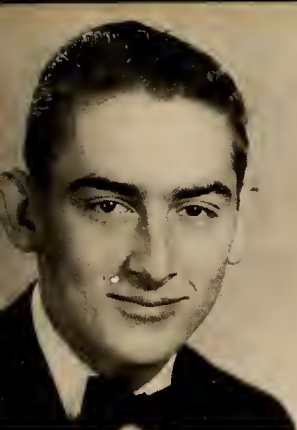
BETTY BROOKS
Historion

KAY MESSICK
Prophet

RUBY SHOAF
Poetess

KENNETH SALES
Lawyer





JAMES ELMER BARBER
"Barber"

Goad-looking, money-crazy, neat; Football 11, 12; Basketball B. Team 10, 11; Varsity 12; Baseball 11, 12; 4-H Club 9, 10, 11; Glee Club 9, 10, 11, 12; Library Staff 11, Annual Staff 12; Class Officer 10, 11; Superlative 12; Junior Play 11; Senior Play 12.

JANET ELIZABETH BOWERS
"Liz"

Dignified, quiet, cute; School Store 11, 12; Library Staff 11, 12; Glee Club 12; 4-H Club 9, 10; Superlative 12.

SENIORS



BETTY SPRY BROOKS
"Bet"

Pretty, married, studious; Glee Club 9, 10, 11, 12; F. H. A. Club 9, 10, 11, 12; 4-H Club 9, 10, 11, 12; Basketball 9, 10; School Store 9; Junior Play 11; Class Officer 11; Superlative 12.



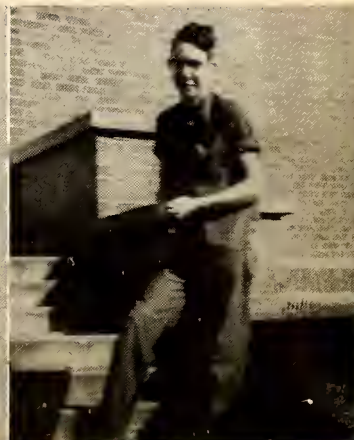
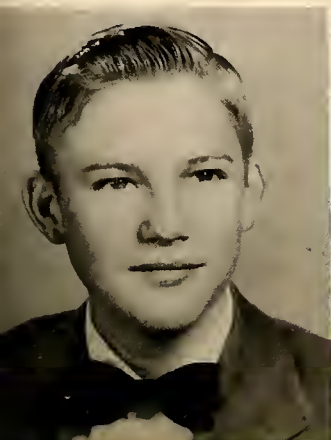
1953

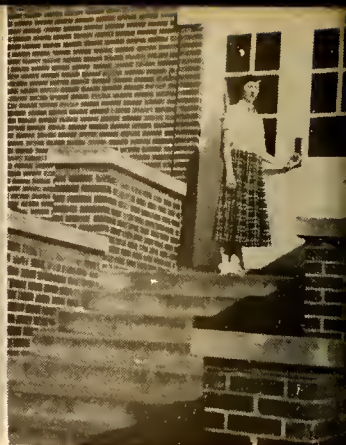
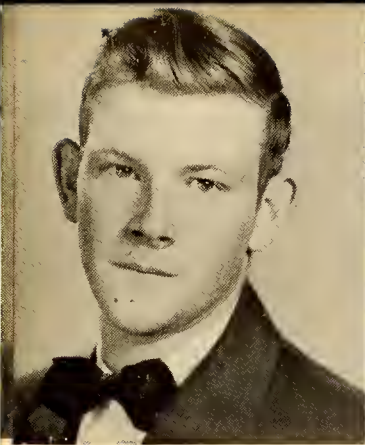
EDWARD LEE CARTER
"Ed"

Quiet, Friendly, Intelligent; Glee Club 9, 10, 11, 12; 4-H Club 9, 10, 11; 4-H Club Officer 12; School Store 11; Library 10; Marshal 11; Junior-Senior Banquet Speaker 11; Junior Play 11; Senior Play 12; Annual Staff 12; Superlative 12; Bus Driver 12.

BEN BREWER CHILDERS
"Ben"

Witty, studious, friendly; Baseball 11, 12; Baseball Manager 9, 10; Football 11; Superlative 12; Glee Club 12; School Store 12.





SAMUEL LORAINE COPE
"Sam"

DOROTHY LOUISE DEDMON
"Dat"

Nice, ambitious, intelligent; Glee Club 9; Glee Club Pianist 10, 11, 12; Library 10; School Store 11, 12; Junior Play 11; Chief Marshal 11; Senior Play 12; Annual Staff 12; Superlative 12.

Studious, easy-going, cute, 4-H Club 9, 10, 11, 12; Glee Club 9, 10, 11, 12; F. H. A. 9, 10, 11, 12; School Store 9; Library Staff 10, 12; Assistant Play Director 12.

SENIORS



PEGGIE SMITH GRUBB
"Peg"

Good-looking, intelligent, dependable; Basketball 10, 12; Library 10, 12; Annual Staff 12; Glee Club 9, 10, 11, 12; F. H. A. 9, 10, 11, 12; 4-H Club 9, 10, 11, 12; School Store 9; Junior-Senior Banquet Speaker 11; Class Play 12; Office Staff 12; F. H. A. Officer 10, 12; 4-H Officer 9, 12; Football Queen Attendant 10, 11, 12; Marshal 11; Assistant Play Director 11.



1953

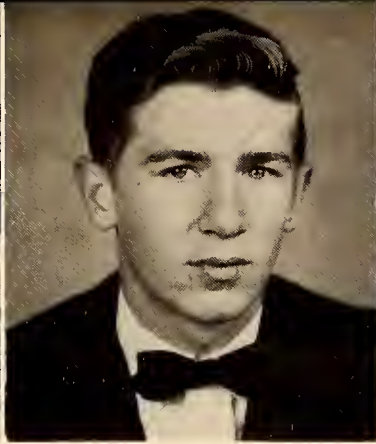
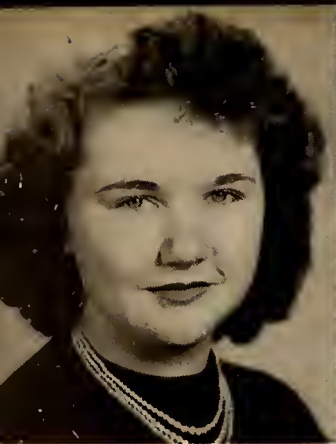
BETTY JEAN HAMILTON
"Red"

Good-looking, friendly, likeable; 4-H Club 9, 10, 11, 12; Glee Club 9, 10, 11, 12; Library Staff 11, 12; F. H. A. 9, 10, 11, 12; Senior Play 12; Superlative 12.

CLARA ELVARA HEPLER
"Clara"

Studious, likeable, co-operative; 4-H Club 9, 10; Elementary Library 11, 12; Superlative 12.





NANCY ANN HOFFMAN
"Nancy"

Studios, dependable, well-liked; High School Library 11; School Store 11, 12; Class Officer 12; Superlative 12.

ROSCOE JONES, JR.
"Buck"

Married, easy-going, athletic; Football 9, 10, 11, 12; Baseball 9, 10, 11, 12; Basketball 10, 11; B. Team 9; Glee Club 9, 10, 11, 12; 4-H Club 9, 10, 11; Superlative 12; Halloween King 9.

SENIORS

DELORES COOK JORDAN
"Cookie"

Married, talented, cute; Basketball 9, 10, 11; Glee Club 9, 10, 11, 12; F. H. A. Club 9, 10, 11, 12; F. H. A. Club Officer 10, 11, 12; 4-H Club 9, 10, 11, 12; Junior Play 11; Office Staff 11; Marshal 11; Glee Club Secretary 11; Lunchroom Cashier 11; Superlative 12, Annual Staff 12.



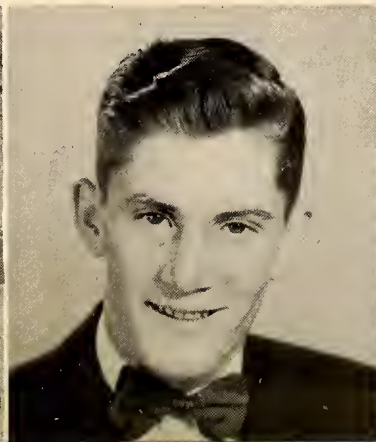
1953

ESTHER MAE LAGLE
"Esther"

Dependable, studious, sensible; 4-H Club 9, 10; High School Library 10, 11; Elementary Library 12; Superlative 12; School Store 11.

WILLIAM HOYLE LIVENGOOD
"Livey"

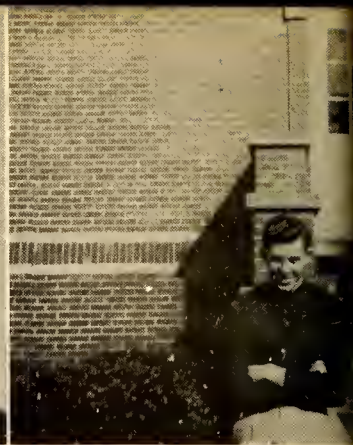
Good-looking, well-dressed, pest; Football 11, 12; Glee Club 9, 10, 11, 12; 4-H Club 9, 10, 11; Basketball B. Team 10; Superlative 12.





BETTY JANE LONG
"Betty"

Cute, likeable, helpful; Glee Club 9, 10; Cheerleader 12; 4-H Club 9, 10, 11; Library Staff 11, 12; Officer 10, 11; School Store 11.



LARRY EUGENE McCULLOUGH
"Color"

Pest, athletic, easy-going; Football 11, 12; Basketball B. Team 10, 11; 4-H Club 9, 10, 11, 12; Glee Club 9, 10, 11, 12; Junior Play 11; Senior Play 12; Substitute bus driver 12; School Store 11, 12; Library Staff 11; Superlative 12.

SENIORS



GLORIA KAY MESSICK
"Kay"

Cute, friendly, much-admired; Glee Club 9, 10, 12; F. H. A. 9, 10, 11, 12; Library Staff 11; Class Plays 11, 12; Annual Staff 12; Superlative 12; Class Day Officer 12.



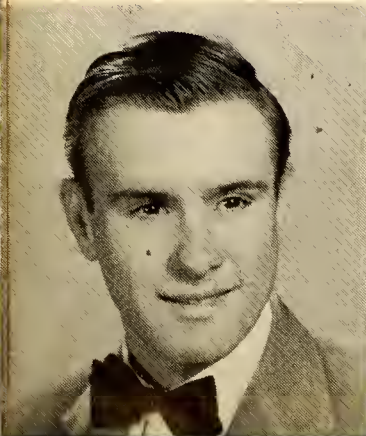
1953

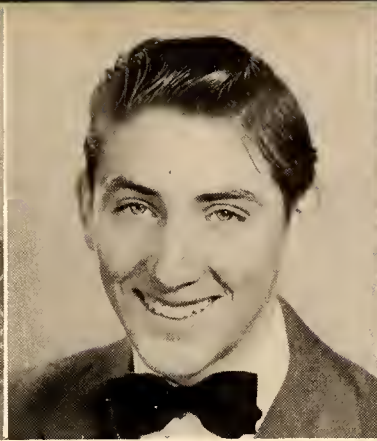
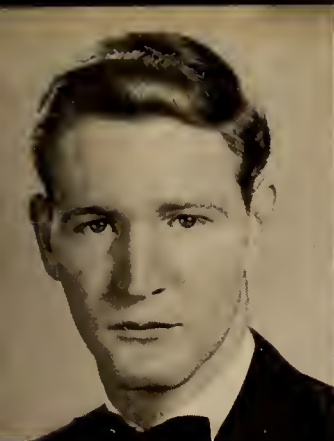
DANIEL BOONE MILLER, JR.
"Danny"

Pest, friendly, talkative; 4-H Club 9, 10, 11, 12; Glee Club 9, 10, 11, 12; Substitute Bus Driver 11; School Store 11; Library 10, 11; Class Play 11, 12; Superlative 12; Bus Driver 12; Banquet Speaker 11.

DONALD DOUGLAS NICHOLS
"Nick"

Speed-crazy, original, married; Football 11; Glee Club 11, 12; 4-H Club 9, 10; Superlative 12.





KENNETH GRAY SALES
"Red Tap"

Athletic, cute, dependable; Football 9, 10, 11, 12; Basketball 10, 11, 12; Annual Staff 12; Superlative 12; Glee Club 9, 10, 11, 12; Football Co-Captain 12; 4-H Club 9, 10, 11; Class Day Officer 12.

JACK COYATTE SEAMON
"Sleepy"

Bashful, pest, laud; 4-H Club 9, 10, 11; Glee Club 9; Superlative 12.

SENIORS

PATSY ANN SHAVER
"Patsy"

Athletic, dependable, cute; Basketball 9, 10, 11, 12; 4-H Club 9, 11, 12; Junior Play 11; Superlative 12; Annual Staff 12; F. H. A. 9, 10, 11, 12; Class Officer 12; School Store 11, 12; Library Staff 11; Glee Club 9, 10, 12; Assistant Play Director 12; Co-Captain Basketball 12.

1953

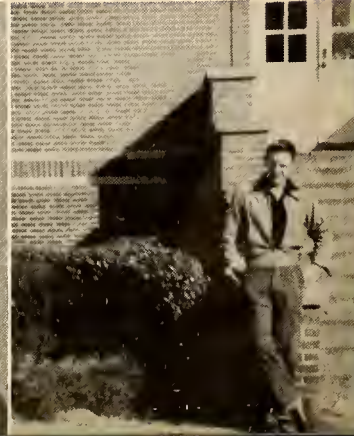
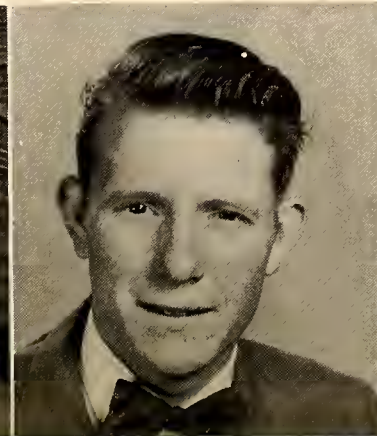


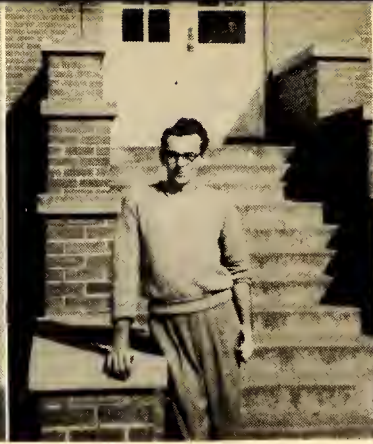
RUBY KATHLEEN SHOAF
"Babe"

Paetic, co-operative, well-liked; Glee Club 9, 10, 11, 12; 4-H Club 9, 10, 11, 12; F. H. A. Officer 12; F. H. A. 10, 11; Annual Staff 12; Library Staff 11, 12; Class Officer 9; Superlative 12.

DOCK LEWIS SPILLMAN
"Dac"

Bashful, dignified, indifferent; 4-H Club 9, 10, 11, 12; Junior Play 11; Superlative 12.





ARNOLD GRAY SPRY
"Arnie"

Dependable, athletic, dignified; Cool Springs: Basketball 9, 10, 11; Football 10, 11; Baseball 10, 11; Junior Play 11; President, Public Speaking Class 11; Glee Club 10, 11; President, Manogram Club 11; Transfer: Football 12; Basketball 12; Baseball 12; Glee Club 12; Senior Play 12.

DOYLE EUGENE SPRY
"Tub"

Athletic, cute, unpredictable; Basketball 9, 10, 11, 12; B. Team Captain 10; Baseball 10, 11, 12; Football 11, 12; Class Officer 9, 10, 11, 12; Glee Club 11, 12; Superlative 12; Banquet Speaker 11, 12; Office Staff 12; Marshal 11; Annual Staff 12.

SENIORS



PEGGY JOAN SPRY
"Peg"

Athletic, likeable, cute; Glee Club 9, 10, 11, 12; 4-H Club 9, 10, 11, 12; F. H. A. Club 10, 11, 12; Library Staff 12; Office Staff 11, 12; Basketball 9, 10, 11, Co-Captain 12; Senior Play 12; Assistant Play Director 11; Superlative 12.



1953

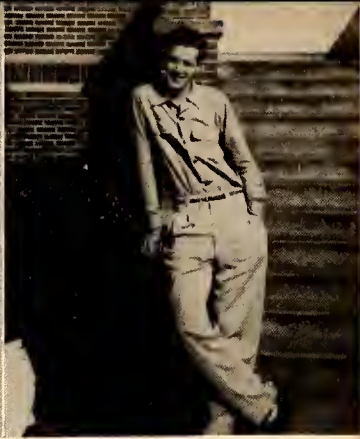
NANCY ANN VEACH
"Pickle"

Witty, cute, cheerful; Glee Club 9, 10, 11, 12; 4-H Club 9, 10, 11, 12; School Store 9; F. H. A. 9, 10, 11, 12; Junior Play 11; Senior Play 12; Basketball "B" Team 9; Office 12; Annual Staff 12; Class Officer 9; Superlative 12.

LETTY MAE WAGNER
"Letty"

Pretty, dependable, likeable; Glee Club 9, 10, 11, 12; 4-H Club 9, 10, 11, 12; F. H. A. Club 9, 10, 11, 12; F. H. A. Officer 11; Class Officer 11; Library Staff 11, 12; Annual Staff 12; Superlative 12.





JESSIE RUTH WHITAKER
"Jessie Ruth"

Tiny, dependable, likeable; 4-H Club 9, 10; School Store 11; Library Staff 11, 12; Superlative 12.

CHARLES DELANO WOFFORD
"Waf Wof"

Cute, red hair, dependable; Football 10, 11, 12; Basketball 9, 10, 11, 12; Baseball 11, 12; Superlative 12; Glee Club 9, 10, 11, 12; Annual Staff 12; Office Staff 12; 4-H Club 9, 10, 11; Class Officer 9; Co-Captain, Football 11, 12; Co-Captain, Basketball 11; Captain, Basketball 12.

SENIORS

CLASS MOTTO

Always Building, Never Yielding

CLASS COLORS

Blue and White

CLASS FLOWER

Red Rose

CLASS POEM

To our dear schaal, ole Caaleemee High,
We give our praise ta thee,
For knowledge, caurage, and hanor, taa,
For truth that makes men free.

For twelve lang years you've been, dear schaal,
A teacher, friend, and guide;
And for the help you've given us
Our hearts are filled with pride.

Hardships we've had, though few they were;
We've faught the battle bald
Ta build our lives for things ta come --
The future to unfold.

Classmates are filled with jay and glee
Because success is wan;
Some goals are reached, some aims achieved,
Some tasks in life begun.

Though time and life must come and go,
As memories linger nigh
Our thoughts will hold them dear to us --
The days at Coaleemee High.

Our hearts are filled with layalty
As praise we give to thee;
Dear Caaleemee Schaal, you gave your best
To the class of '53.

CLASS POETESS

Ruby Shoaf

CLASS HISTORY

Four years ago, in 1949, approximately fifty-three eager boys and girls, leaving the dear grammar grades behind, entered the walls of Cooleemee High School to spend four of the happiest and most eventful years of life's journey.

Miss Purcell was stuck with the girls, and Mrs. Bost had the boys to cope with. Until we really got use to our new surroundings, we had quite a time finding our way around. Had it not been for the guidance of our advisors and other high school members, we couldn't have gotten along. The officers for the Freshman girls were: Vice-President, Rilla Hilliard; President, Nancy Veach; Secretary, Ruby Shoaf, and for the boys: President, Doyle Spry; Vice-President, Donald Wall; Secretary, Charles Wofford. This was our first chance to participate in sports so we were very proud of the fact that Donald Wall made the football team, and later became a star. We were happy when three of our girls made the basketball team: Patsy Shaver, Delores Jordan, and Virginia Petty, and Merlyne Moore became a cheerleader. A surprisingly number of the class joined the various clubs. Realizing that the school year was drawing to a close and that we had accomplished, what we thought, a lot, we made plans to carry forward.

After a full school year and a short summer, we became Sophomores. Mrs. Dameron and Mr. Young were our advisors. We were gaining more confidence that year; we also welcomed a newcomer, Charles Moore, to our class. That year we had three girls and one boy to make the basketball teams, three boys made the football team, and one, the baseball team. Two successful events of the year were our hayride and Christmas party. The honor of being an attendant to the Homecoming Queen was bestowed upon a classmate, Peggy Grubb. We were sorry when Mrs. Dameron left us. She was replaced by Mr. Collins, and through his guidance and understanding we continued our work.

Then came our Junior year! Mrs. Lester was our advisor. The class officers were elected as follows: President, Doyle Spry; Vice-President, Betty Brooks; Secretary, Letty Wagner; Treasurer, James Barber. This proved to be a very exciting year. Our Junior play, "Strained Relations," was very successful. We were very proud of the fact that two of our girls made the cheerleading squad, ten boys made the football team, five boys and three girls made the basketball teams. That year two of our girls served as attendants to the Homecoming Queen.

The most colorful and exciting event of that year was the Junior-Senior Banquet at the Robert E. Lee Hotel in Winston-Salem, North Carolina. The theme of the Banquet--St. Patrick's Day--was carried out through the entire program. We were greatly honored when five of the Juniors acted as Marshals and the remaining Juniors acted as ushers for the Seniors at the Commencement Exercises. After this we heaved a sigh of relief and settled down to summer.

Almost sooner than we had expected, our Senior year was here. Our class had dwindled to thirty-two. Under the direction of Mrs. June Hicks, we gave a three act comedy, "A Hen pecked Husband." The class officers were: President, Doyle Spry; Vice-President, Patsy Shaver; Secretary, Kay Messick; Treasurer, Nancy Hoffman. Again we were represented by both boy and girls in sports, and Betty Long was cheerleader. We gained two new members--Arnold Spry and Ben Childers.

We are looking forward to our trip to Washington, the Junior-Senior Banquet, in which we will be the honored guests, and the greatest event of all--our Commencement Exercises.

Now as we look back over the twelve years of work and play; we feel a great sense of achievement. We realize that this is our last year of High School, but really only the beginning of a new life. With uplifted faces, we silently breathe a prayer that God will help us use the knowledge and training that we have gained to the making of a better nation in which to live.

HISTORIAN
Betty Spry Brooks

CLASS PROPHECY

Only three minutes more. Then all of a sudden! Clang! Clang! Came the loud three o'clock school bell. Slam! Bang! Books falling from desks. Restless children were running from every direction, yelling and rejoicing at the tap of their voice. School dismissed until Monday. What a relief! My head ached, but I was happy with the work that I had chosen as my life's work. A teacher in a small country school.

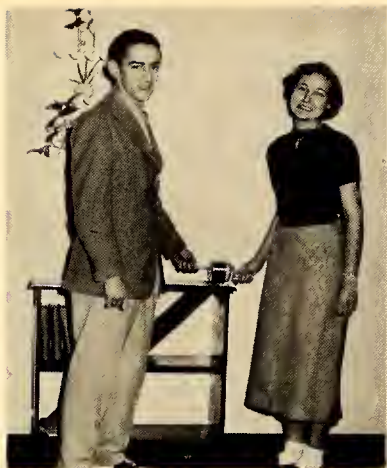
Then when I was alone, I sat down at my desk and looked across the empty school room. Then I began to think about my old room at Caaleemee School and the Class of '53. As I sat there I could see each of my fellow students at the work that they had chosen as their career. First of all I saw Kenneth Sales, who is the owner of the world's largest dance club, "The-Lase-Your-Blues Club." He told me that Sammy Cope was his bandleader and that Arnold Spry was star vocalist. Arnold Spry finally got Peggie Grubb to say "yes", and now they are happily married. I then saw Charles Wafford, who is now a star on Dick Groat's all-star team. Dayle Spry is also on the team; he plays guard. Dayle and Charles were star athletes at Caaleemee.

Next there was Patsy Shaver and Peggy Spry. They always liked basketball and are now coaches. Patsy at Cleveland and Peggy at Macksville. Delores Jordan and Betty Braaks, who both married during school, are now the mothers of twin boys. Dorothy Dedman, Letty Wagner, and Betty Jean Hamilton are now private secretaries at the Erwin Mills. Daniel Miller and Edward Carter are now partners in the world's largest trucking firm, CARTER AND MILLER, INC. Clara Hepler and Esther Lagle are now the shorthand champions of the world--- 140 words a minute.

I then saw a hospital, so I guessed that some of my schoolmates were working in there. As quick as I walked in the door, I heard over the loud speaker, "Dr. Childers and Dr. Barber needed in the emergency room." I just held my breath because I felt that I knew Dr. Childers and Dr. Barber. I did know them---Ben Childers and James Barber. If James Barber was a doctor it was because of the pretty nurses. They turned out to be Nancy Veach and Ruby Shoaf.

I still kept wondering what had happened to Jessie Whitaker and Nancy Haffman. Then I saw them, trying to get the boys to say "yes." I ask about Betty Long and they told me that she had finally married a sailor. They also told me that Larry McCullaugh and William Livengood were "done in the game of love" and were now stock car drivers. Dan Nichols was their mechanic. Then I saw a sign, "The Man Who Broke the Record of Sleeping the Mast." It turned out to be Jack "Sleepy" Seaman. His manager was Dack Spillman. Rascoe Jones is now the owner of a chain of gracer stores. Then I awake! I ran quickly next door to tell Janet Bawers what had happened. Janet is also a school teacher. She and I enjoyed the remainder of the afternoon recalling our "yes-ter years."

CLASS PROPHETESS
Kay Messick



BEST LOOKING PRETTIEST

James Barber Letty Wagner



MOST TALENTED

Kay Messick
Kenneth Sales



CUTEST

Betty Brooks
Roscoe Jones



MOST ATHLETIC

Peggy Spry
Roscoe Jones



MOST POPULAR

Koy Messick
Doyle Spry

SENIOR
SUPERLATIVES



MOST ORIGINAL

Peggy Grubb
Charles Wofford



MOST INTELLECTUAL

Nancy Hoffmon
Ben Childers



BIGGEST FLIRT

Potsy Shaver
Lorry McCullough



FRIENDLIEST

Betty Hamilton
Edward Carter



BEST ALL AROUND

Clara Hepler
Donald Nichols



MOST LIKELY TO SUCCEED

Ruby Shoaf
Sammy Cope

SENIOR

SUPERLATIVES



MOST DIGNIFIED

Janet Bowers
Dock Spillman



MOST DEPENDABLE

Esther Lagle
Kenneth Sales



MOST BASHFUL

Jessie Ruth Whitaker
Jack Seaman



BEST DRESSED

Delores Jordan
William Livengood



WITTIEST

Nancy Veach
Daniel Miller

LAST WILL AND TESTAMENT

STATE OF NORTH CAROLINA
COUNTY OF DAVIE
TOWN OF COOLEEMEE

We, the Senior Class of Cooleemee High School, city of Cooleemee, County of Davie, and State of North Carolina, being of sound mind and having the spirit to go forward, do hereby make, publish and declare this to be our last will and testament in manner and form as follows:

ITEM I

To our Parents, we leave our love and thanks for making our school career a happy one.
To the School, we leave our thanks and appreciation for the many privileges shown us during our school days.
To our Principal, Mr. Prim, we leave our admiration for the way he has helped us solve our problems, and our gratitude for his understanding.
To the Faculty, we leave our appreciation for the manner in which they have tried to make all our subjects interesting and understandable.
To the Juniors, we leave our Wisdom, our Dignity, our Knowledge, our Importance, and all our Unfinished Business.
To the Sophomores, we leave our ability to calm down a little before they get to be Seniors. A tip, Sophomores, "To be a success, play cool and work together."
To the Freshmen, we leave our wishes for a happy journey through school and the warning "Start on the right foot, and end up in the right place."

ITEM II

I, Nancy Hoffman, will to Maxine Fleming my good ole sewing machine. It's pretty new, so don't tear it up.
I, Ruby Shoaf, will to Bill Jarvis my Underwood Typewriter. Take care of it, Bill.
I, Roscoe Jones, will to Jim Holt my football jersey, good ole No. 18.
I, Dock Spillman, will to Clarence Spillman my favorite seat in twelfth grade homeroom.
I, Don Nichols, will to Don Daniels my ability to drive safely at school.
I, Jack Seamon, will to Eugene Cornatzer my ability to sleep during English.
I, Edward Carter, will to C. H. Nolley my ability to become a "Senior."
I, Arnold Spry, will to Bud Ridenhour my ability to walk the girls to class.
I, Delores Jordan, will to Erickson Huske my ability to be best dressed in the Senior Class.
I, Betty Jean Hamilton, will to Claudette Boger my favorite seat in Study Hall.
I, Larry McCullough, will to Freddie Call my ability to pester the girls.
I, Charles Wofford, will to Bill Garwood my basketball and football jerseys, nos. 4 and 22.
I, Daniel Miller, will to Medford Shoof my ability to come to school without shaving.
I, Kay Messick, will to my sister, Jayce, my ability to get good grades under Mrs. Bost.
I, Kenneth Sales, will to Jim Osborne my football jersey No. 13 and position as fullback.
I, Peggy Spry, will to Norma Jean Jordan my basketball suit No. 9.
I, Betty Jane Long, will to Jannette Stiller my ability to get excuses to get out of class.
I, William Livengood, will to Sidney Hall my position at left end on the football squad.
I, Jesse Ruth Whitaker, will to my brother, Jack, my ability to get along with Mrs. Bost.
I, Janet Bowers, will to Mary Lynn Templeton my ability to be an expert typist.
I, James Borber, will to Terry Dedmon my position on Football Squad.
I, Esther Lagle, will to Rilla Lowder my favorite typewriter. Take care of it, Rilla.
I, Clara Hepler, will to Betty Lou McCullough my ability to type.
I, Ben Childers, will to my brother, Joe, my ability to get along with classmates.
I, Sammy Cope, will to Roberta Shepherd my position as Glee Club Pianist. You and Mrs. Hicks take it easy.
I, Doyle Spry, will to Aaron Spry my jersey No. 9 and a guard position on the basketball team.
I, Patsy Shaver, will to Marlene Canupp and Tenny Nichols my ability to play basketball. I hope you don't foul out as much as I did.
I, Betty Brooks, will to Norma Ruth Brown my favorite typewriter. Hope you can get as much out of it as I did.
I, Dorothy Dedmon, will to Bud Ridenhour my ability to come to school every day.
I, Peggy Grubb, will to Douglas Grubb my desk in the office.
I, Nancy Veach, will to my sister, Sue Veach, my ability to get along with my teachers.

WITNESSES:

June Hicks, Advisor
V. G. Prim, Principal

TESTATOR:

Kenneth Sales

SENIOR STATISTICS

Actor.....	Van Johnson
Actress.....	Jane Russell
Age of class.....	548 years
Average age of class.....	17.35 years
Beverage.....	Coke
Birth Place.....	Davie County
Car.....	Ford
Color.....	Blue
Color of complexion.....	Fair
Color of eyes.....	Blue
Color of hair.....	Brown
Comedians.....	Martin & Lewis
Dislikes.....	Being picked at & Getting up in the morning
Height of class.....	174 feet
Average height of boys.....	5' 8 1/2"
Average height of girls.....	5' 4 1/4"
Favorite food.....	Steak
Likes.....	Reading, eating and loafing
Magazine.....	Look
Movie.....	Sailor Beware
Pastime.....	Dating
Pet peaves.....	Scratching blackboard
Radio program.....	W.C.K.Y. Jamboree
Singer.....	Pattie Page
Song.....	Don't let the Stars get in Your Eyes
Sport.....	Football
Television program.....	I Love Lucy
Weight of class.....	4,957 pounds
Average weight of boys.....	153 pounds
Average weight of girls.....	112 pounds

STATISTICIAN
Ben Childers



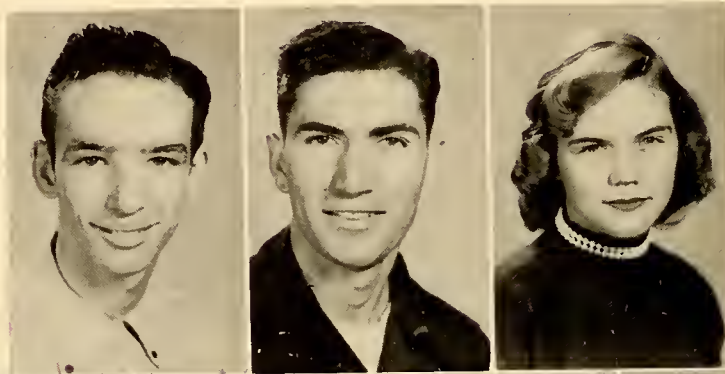
Underclassmen

JUNIORS

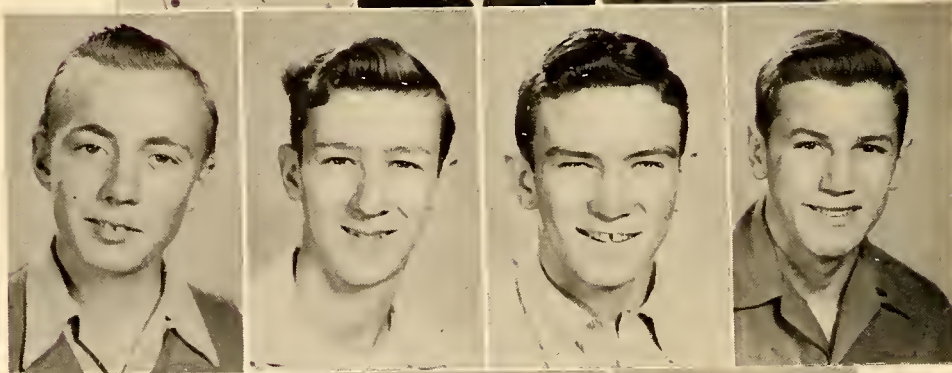


CLASS OFFICERS

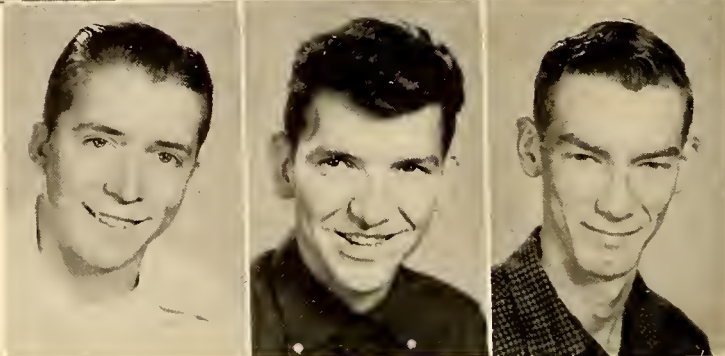
Bud Ridenhour.....	President
Margie Wagner.....	Vice-President
Marlene Canupp.....	Secretary
Linda Bivens.....	Treasurer



Jack Athey
 Claude Beck
 Claudette Boger



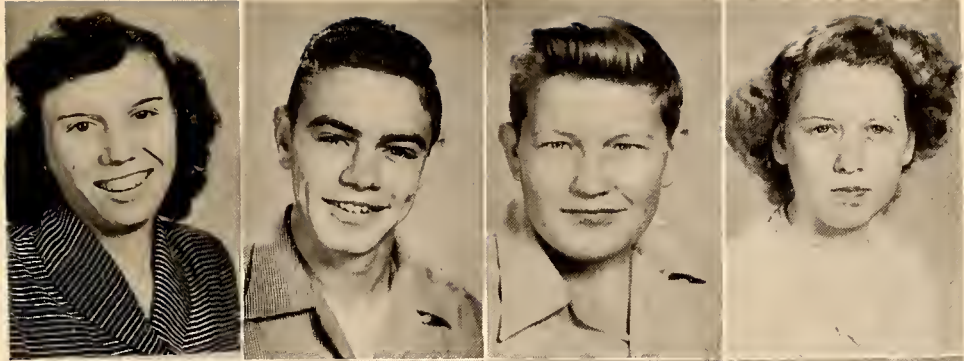
Norman Bowles
 Freddie Call
 Eugene Carnatzer
 Don Daniels



Terry Dedman
 Robert Dudley
 Rannie Grubb

JUNIORS

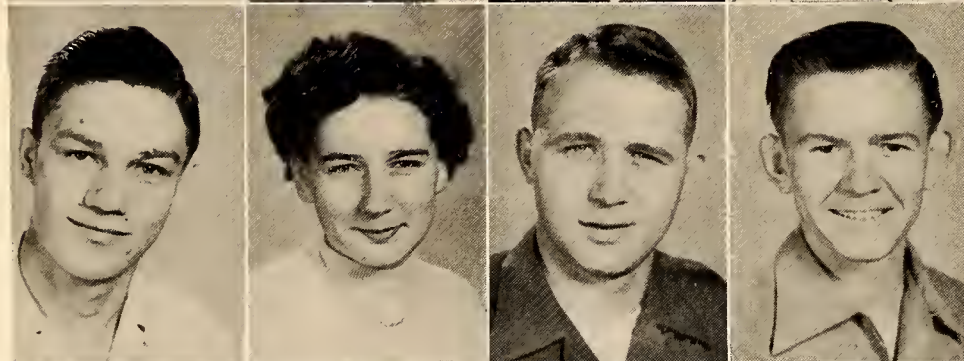
Ann Hepler
Jimmy Holt
Billy Jarvis
Rilla Lowder



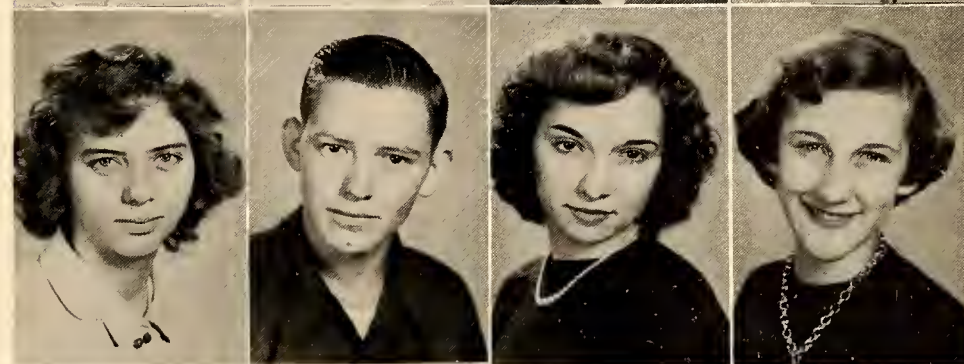
Mary McClannon
Rillo Nichols
Jimmy Osborne
Mason Owens



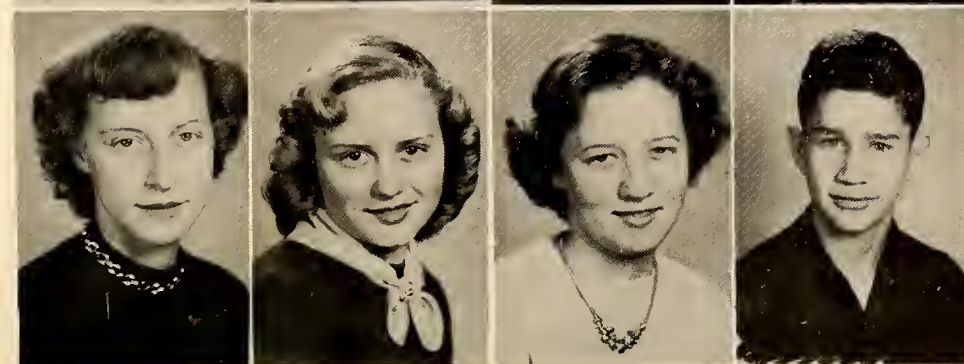
Earl Seamon
Roberta Shepherd
Medford Shoaf
Bob Shore



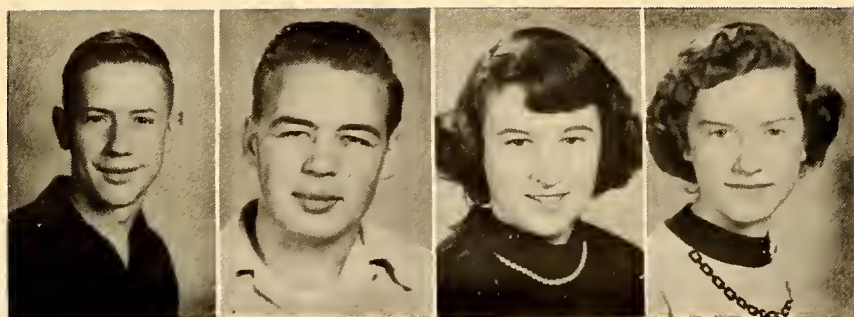
Nancy Shore
Clarence Spillman
Janette Stiller
Ellen Tatum



Mary Templeton
Burlie Wagner
Mory Tutterow
Alvin Shaver

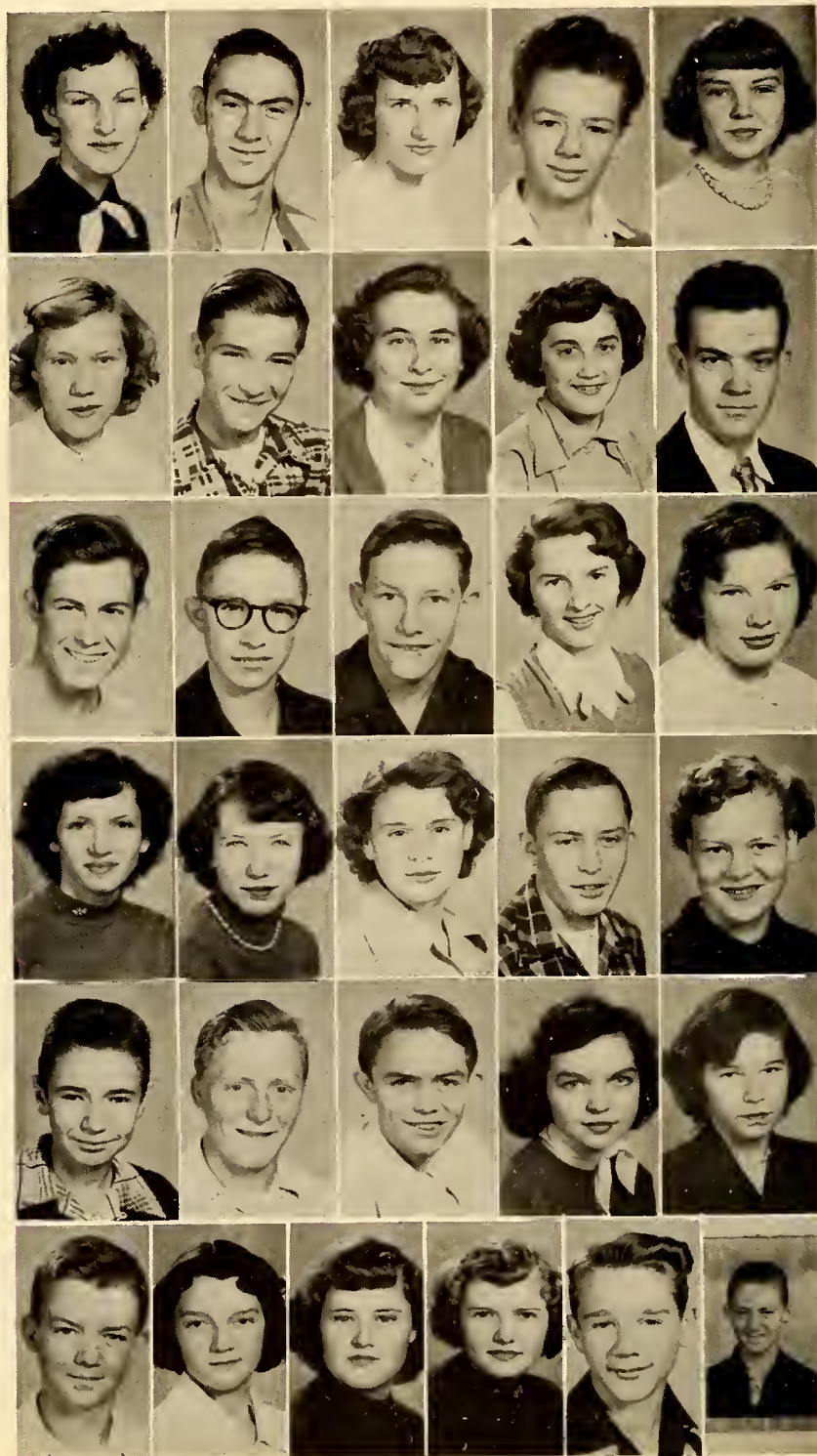


SOPHOMORES



CLASS OFFICERS

Douglas Grubb.....President
 Bobby Cook.....Vice-President
 Jeanette Williams.....Secretary
 Barbara Gregory....Treasurer



Jeanette Beck
 Norman Bowers
 Norma Ruth Brown
 Jerry Call
 Jean Carter

Alice Clawson
 Edward Cook
 Marilyn Everette
 Nancy Foster
 George Foster

Thomas Frye
 Ralph Graves
 Walter Head
 Erickson Huske
 Glenda Ijames

Ethel Lanier
 Doris Lewis
 Gloria Miller
 Delano McCullough
 Shelby Nail

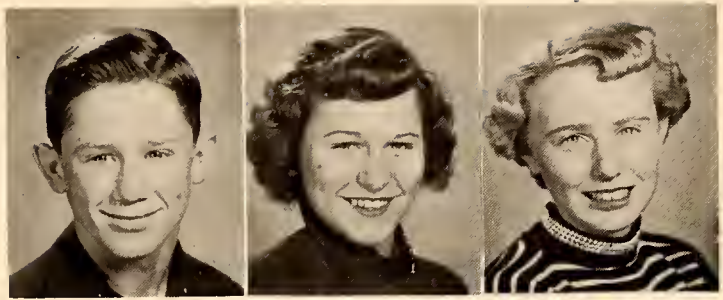
Howard Phelps
 Delano Spillman
 Aaron Spry
 Shelby Spry
 Sylvia Spry

Joe Swicegood
 Sue Veach
 Colene Wagner
 Lorene Wagner
 Johnny Williams
 Paul Swink

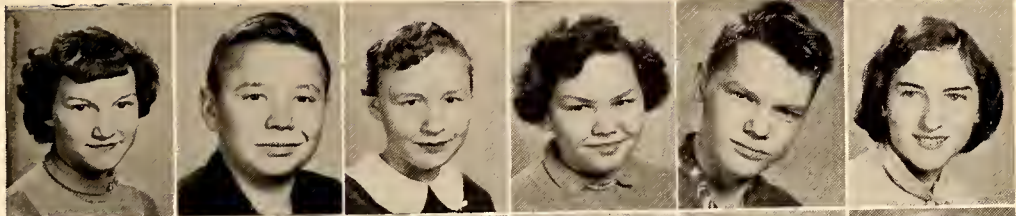
FRESHMEN

CLASS OFFICERS

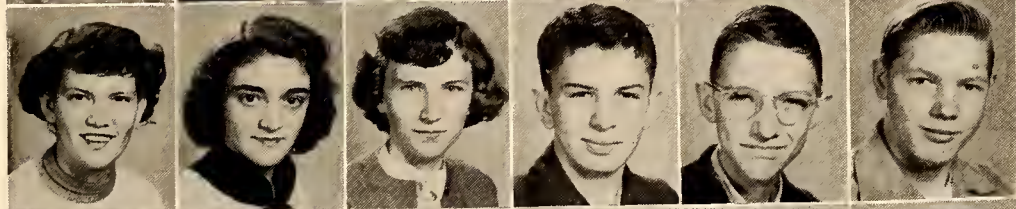
Gerald Canupp.....President
 Betty McCullough.....Vice-President
 Shelby Foster.....Secretary-Treasurer



Norma Jean Beck
 Arnold Bowles
 Ruby Bowles
 Ruby Campbell
 Joe Childers
 Shelby Everhart



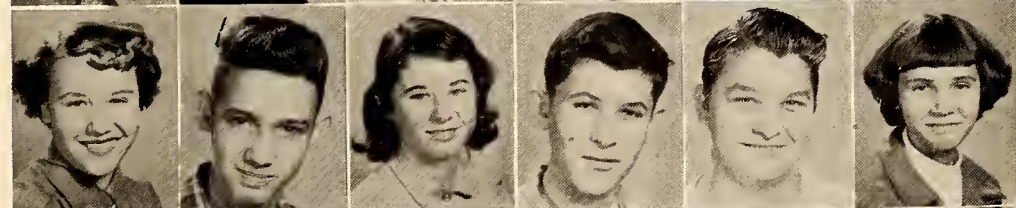
Maxine Fleming
 Joyce Fields
 Phyllis Freeman
 Bill Garwood
 Hayward Graves
 Sidney Hall



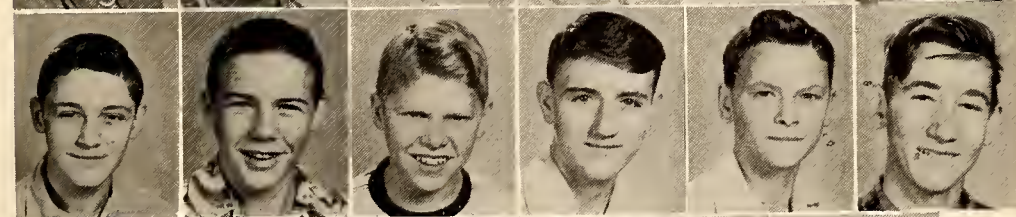
Merlene Head
 Jo Ann James
 Patricia Jacobs
 Shelva Ann Jones
 Carolyn Klein
 Hamp Lagle



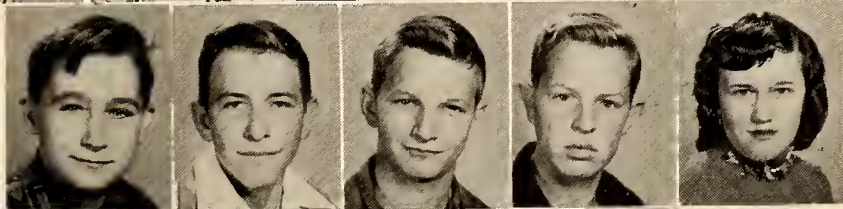
Janet Link
 Taft Martin
 Janet Mauldin
 Joe McCullough
 Ted McCullough
 Joyce Messick



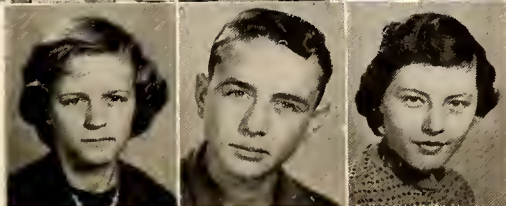
Teddy Moore
 Hayden Myers
 Hubert Nolley, Jr.
 Ronnie Smith
 Allen Snipes
 Billy Taylor



Douglas Taylor
 Charles Templeton
 Donald Tucker
 Edward Wagner
 Geraldine Wagner



Mary Frances Webb
 Jack Whitaker
 Joyce Whitlock



EIGHTH GRADE





Activities

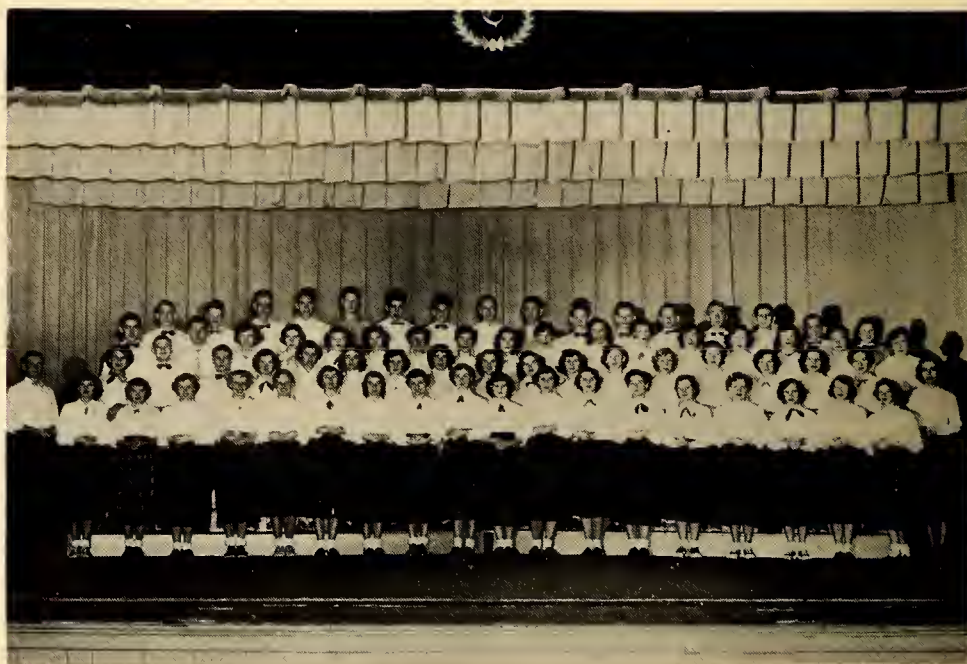
ACTIVITIES



FOUR-H CLUB

President, Edward Carter; Vice-President, Ellen Tatum; Secretary, Peggy Grubb; Treasurer, Claude Beck.

GLEE CLUB



Director, Mrs. June Hicks; Accompanist, Sammy Cope; Secretary, Roberta Shepherd.

ACTIVITIES

F. H. A. CLUB



President, Delores Jordan; Vice-President, Ellen Tatum; Secretary, Glenda Ijames; Treasurer, Berlie Wagner; Advisor, Miss Nancy Rothrock.



BUS DRIVERS

Standing, left to right: Medford Shoaf, Daniel Miller, Claude Beck, Bill Lagle. Seated: Mason Owens, Edward Carter.

ACTIVITIES



LIBRARY STAFF

Seated, left to right: Billy Jorvis, Ruby Shoaf, Janet Bowers, Jessie Whitaker, Betty Long, Dorothy Dedmon, Jonette Williams. Standing: Bobora Gregory, Lorene Wagner, Nancy Foster, Cloro Hepler, Jonette Beck, Sue Veach, Normo Brown, Betty Homilton, Peggy Grubb, Shelby Nail, Moson Owens.



OFFICE STAFF

Morlene Conupp, Roberto Shepherd, Peggy Grubb, Mr. Prim, Doyle Spry, Charles Wofford, Freddy Coll. Not Pictured: Nancy Veach

ACTIVITIES

SENIOR PLAY



"A HENPECKED HUSBAND"

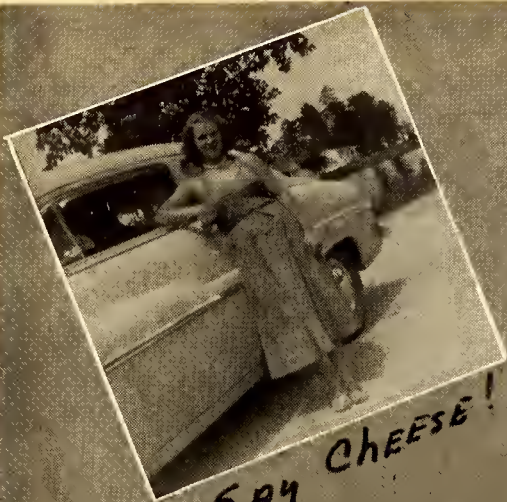
James Barber, Peggy Spry, Daniel Miller, Edward Carter, Peggy Grubb, Betty Jean Hamilton, Larry McCullough, Kay Messick, Nancy Veach, Arnold Spry, Sammy Cope, Betty Jane Long.



JUNIOR PLAY

"STRAINED RELATIONS"

Edward Carter, Nancy Veach, Larry McCullough, Dock Spillman, James Barber, Betty Jean Brooks, Betty Jane Long, Patsy Shaver, Daniel Miller, Kay Messick, Delores Jordan, Sammy Cope.



SAY CHEESE!



DON'T FROWN!



TRAVELING?



THREE'S A CROWD



THREE STOOGES!



WHERE'S THE GIRLS?



MONKEY?



"GEEZ," KIDS



WHAT'S UP, KIDS?



Athletics

ATHLETICS



CHEERLEADERS

Left to right: Barboro Soin, Nency Foster, Ruby Bowles, Carolyn Klein, Lindo Bivens, Chief;
Johnny Williams, Jeonette Williams, Roberto Shepherd, Betty Long, Morgie Wogner.
Not Pictured: Jerry Coll

When you're up, you're up,
When you're down, you're down,
When you're up ogoinst Cooleemee,
You're up-side down.

ATHLETICS



FOOTBALL TEAM

First Row: Jimmie Osborne, Jock Athey, Edward Cook, Bill Garwood, Jimmie Holt, Hayden Myers, Delano McCullough. Second Row: Terry Dedmon, Roscoe Jones, Doyle Spry, James Barber, Kenneth Sales, Alvin Shaver, Sidney Holl. Third Row: Coach Jack Ward, Charles Wofford, Eugene Cornatzer, Bud Ridenhour, Larry McCullough, Teddy Moore, Ted McCullough, William Livengood.



BASEBALL TEAM

First Row: Botboy, Bill Garwood; Doyle Spry, Freddy Hellard, James Barber, Jim Holt, David Jacobs, Roscoe Jones, Botboy, John Kavanagh. Second Row: Charles Moore, Jimmie Osborne, Charles Wofford, Bud Ridenhour, Donald Woll, Dean Nichols, Coach Jack Ward, Denny Creason.

ATHLETICS



BOYS' BASKETBALL TEAM

Hayden Myers, Doyle Spry, Bill Garwood, James Barber, Kenneth Sales, Jimmie Osborne, Arnold Spry, Eugene Comatzer, Charles Wofford, Bud Ridenhour, Coach Jack Ward.



GIRLS' BASKETBALL TEAM

Marlene Canupp, Jean Carter, Co-Captains, Patsy Shaver, Peggy Spry; Doris Lewis, Rilla Nichols, Peggy Grubb, Shelby Foster, Merlene Head, Coach Tom Ridenhour, Phyllis Freeman, Joyce Ann Fields, Shelby Everhart.

ELEMENTARY FACULTY



- | | |
|---|------------------|
| Mrs. Pauline B. Bohnsan | Seventh |
| Mrs. Frances Hannah..... | Third and Fourth |
| Mrs. Creala Y. Wilsan | First |
| Mr. James W. Wall | Eighth |
| Mrs. V. G. Prim..... | First |
| Mrs. Lucille Burke | Fourth |
| Mrs. Gearge Apperson..... | Sixth |
| Mrs. Nellie R. Mansees..... | Fourth |
| Miss Eula Reavis..... | Fifth |
| Mrs. Ruth Bessent | Sixth |
| Mrs. Troy S. Boose..... | First |
| Miss Mariala Crawford..... | Third |
| Mrs. Mary Wall Sextan | Third |
| Mrs. Lauise C. Compbell..... | Secand |
| Mr. Jack Ward..... | Eighth |
| Miss Emma Slaan | Secand |
| Mr. Thomas L. Ridenhaur | Seventh |
| Miss Sarah Bryson(absent from picture)..... | Fifth and Sixth. |
| Mrs. Darothy Rebhan(absent from picture)..... | Fifth |

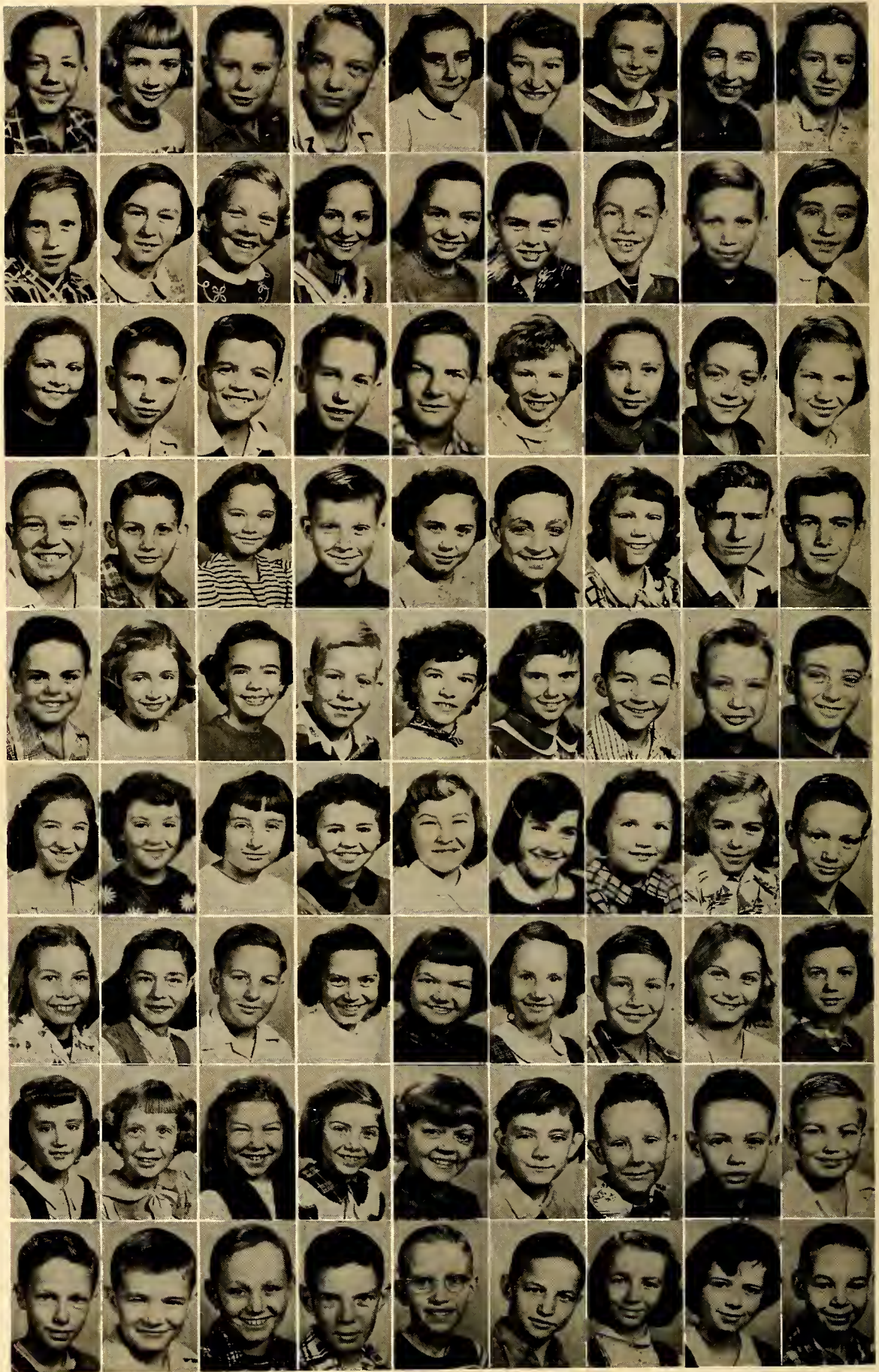
SEVENTH GRADE



SIXTH GRADE



FIFTH GRADE



FOURTH GRADE



THIRD GRADE



SECOND GRADE



FIRST GRADE





Advertisements

Compliments of
FOSTER'S WATCH SHOP

WATCHES, DIAMONDS
EXPERT WATCH REPAIR

Court Square
Mocksville, N. C.

THE COOLEEMEE JOURNAL

Published Since 1906
FOR THE BENEFIT OF COOLEEMEE
AND COMMUNITY

Subscribe For It!

HODGSON BARBER SHOP

Vonder Hodgson
and
Dwight Williams
North Cooleemee, N. C.

**STARRETTE TYPEWRITER
SERVICE**

Phone 6161
UNDERWOOD TYPEWRITERS
108 W. Front Street
Stotesville, N. C.

**NORTH COOLEEMEE
SERVICE STATION**

Ellis ond Hege, Proprietors
AUTO ACCESSORIES AND TIRES
On Instollment
Cooleemee, N. C.

Compliments of
U STOP N GRILL

Lowrence Driver, Proprietor

DURHAM BANK AND TRUST COMPANY

Cooleemee, N. C.

Get the Habit—Trade at Home

THE J. N. LEDFORD COMPANY

"The Best for Less Since 1901"

COOLEEMEE DRUG COMPANY

The Rexall Store

Compliments of

ROCKY KNOLL SHOP

We Specialize in Cloth of all Kinds
Notions, Crystals, Chinas, and
Baby Items

Mrs. M. H. Ridenhour, Prop.

STOP AND SHOP GROCERY

Better Meats and
Fresher Vegetables
At a Better Price
Cooleemee, N. C.

Compliments of

TEXACO SERVICE STATION

Cooleemee, N. C.

Compliments of

MOCKSVILLE GRILL

"Meet Your Friends Here"
"Pet" Wilborn

NIGHT HAWK

GRILLED HAMBURGERS
FOOT LONG HOT DOG
Albert (Al) Boulus, Prop.
Salisbury, N. C.

FOR FINE JEWELRY
AT LOW PRICES
See

WAGNER'S JEWELRY

Cooleemee, N. C.

Compliments of

RE-NU CLEANERS

"Davie County's Largest and Best"
Phone Mocksville 11-F-13

Compliments of

**VETERAN'S GREASE
AND TALLOW CO.**

"We Pick Up Dead Cows, Mules,
Horses and Dogs"
Phone Mocksville 221

Compliments of
SHELL SERVICE STATION

Robert and Junior Creason, Proprietors

CALL AND BOOE

FRESH MEATS AND GROCERIES
HOTPOINT APPLIANCES — GENERAL ELECTRIC TV
Cooleemee, N. C.

R. L. FOSTER'S STORE

PHONE 64
North Cooleemee, N. C.

Trade Where You Save
ELLIS CASH GROCERY

MEATS, GROCERIES, FLOUR, FEED
SHELL GAS & OIL
Mocksville, N. C., R.F.D. 4

PET ICE CREAM

"A HEALTH FOOD"

Salisbury, N. C.

DAVIE PACKING COMPANY

PACKERS OF BEEF AND PORK

BOX 3

Mocksville, North Carolina

Compliments of

SOUTH END

"Home of Good Eats"

C. Ward & Leon Beck, Proprietors

Mocksville, N. C.

STUDENTS WHOSE INDIVIDUAL PICTURES DO NOT APPEAR IN

THE INDIAN ECHO

Tenth: M. L. Hamilton, Barbara Sain.

Ninth: Sue Clawson, Glenn Cornatzer, Archie Faster, Phyllis Foster, Donald Hinkle, Betty Sue Pope, Sue Ridenhour, Bill Russell.

Eighth: Robert Atwood, Ronnie Bivens, Clifford Brown, Felix Williams, Patti Funderburk, Barbara Mauldin, Bobby Shaver, Shirley Spry, Robert Taylor, Bill Wail, Dwight Wooten.

Seventh: Arnel Atwood, Linda James, Shirley McLemore, Richard McSwain, Carolyn Munday, Joan Pierce.

Fifth: Ray Allyson, Judy Hampton, Keith Snipes, Johnnie Thunderburt.

Fourth: Wayne Atwood, William Broadway, Betty Lou McLemore, Dwight Robbins, Jerry Whitaker.

Second: Mary Funderburk, Jackie Hellard, Danny Nunn, Norman Woodard.

First: Edward Atwood, Hazel Barnes, Bobby Cartner, Thomas Eller, Bobby Foster, Sharan Hege, Richard Link, Shirley Presnell, Joyce Ridenhour, Kenneth Russell, Lawrence Whitaker, Robert Williams.

AUTOGRAPHS

AUTOGRAPHS

