



*Indianhead*

*1951*

Cage  
LD  
4481  
P4625  
I5  
v.6

LIVERMORE LIBRARY - PEMBROKE STATE



3 3511 0014426 U

Pembroke State College  
Library

Cage  
LD  
4481  
P4625  
I5  
v.6

20971

Copy 1  
20,977





# THE INDIANHEAD

of

1951  
20,971

LUCY BELLE OXENDINE  
*Editor*

JAMES B. LOCKLEAR  
*Business Manager*

**Pembroke State College  
Library**

Vol. VI

*Published by*  
the  
SENIOR CLASS

PEMBROKE STATE COLLEGE  
Pembroke, North Carolina

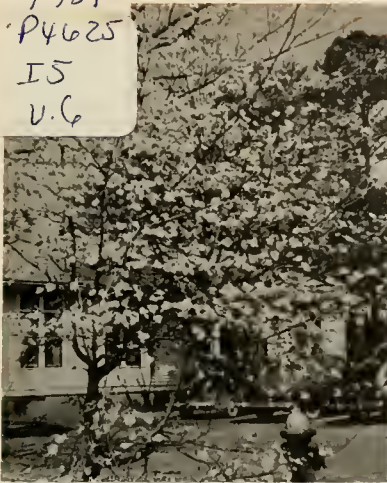


*Gift  
20,971 acc. 7/5/51*



SNOW SCENES 1950

Cage  
LD  
4481  
P4625  
I5  
U.C



SPRING AT P.S.C.

## **“YOU CAME TO PEMBROKE STATE COLLEGE”**

Years from now when you look back upon your college days you will remember that morning in September when you first entered P.S.C. Your heart seemed to burst with joy. Birds were singing although it was not spring. Through all the years of your life you will never again experience the joy and thrill that came with coming to college.

It was a new life for you freshmen. Many of you will long remember how bewildered you were at the thought of meeting strangers. You had heard of Dr. Ralph Weltons but yet your spirits soared as you saw him walk across the campus. His friendly smile and cheerful manner put you at ease. You knew that college would be a wonderful experience.

You soon discovered that there was little time to think—your life was filled with meeting new teachers, finding your way around the campus, registering, to say nothing of all the cards one had to fill out, (without errors).

You were a college student. Remember the day your boy friend said “So you’re in college”! You will remember those days as days filled with studying. You studied for a biology exam, a history exam, and last, but not least, an English exam. Work! Work! Work!

Remember the first party? The Wesley Foundation and Baptist Student Union invited you as their special guests. Can anyone forget chapel programs? This was the period at P.S.C. for worship. It was here that you learned more about the true meaning of life—how to live.

You upper-classmen—it would be harder to describe your true feelings in returning to P.S.C. There was something different and yet there wasn’t. What was it? Many of your old friends were gone. Your first days were filled with registration; jam sessions in Miss Livermore’s room, where there were long discussions as to who dates whom now, how pretty the freshmen girls were and how much you enjoyed the fall retreat. You began dreading those eight o’clock’s and those long afternoon classes—when the P.S.C. football team played E.M.I. Lou dreaded those exams under Dr. Swan. You stored memories as those golden days passed, of football games, Emeritan and Pontiac society parties, waiting in line at the Esso station, cokes and sundaes at the Old Foundry, dinner at Blue’s Cafeteria, the W.F. weiner roast, the Thanksgiving Banquet, the social club on Thursday night, the first Sadie Hawkins Day, the pep rally for the game with Campbell, the Athletic Banquet and the peace and joy in your heart after Religious Emphasis week.

Those golden days passed quickly and as they passed you dimly realized, especially you seniors, that this was one of the most beautiful phases of your life. You had learned to live. Too soon, it is a thing of the past and each will go a separate way.





### **THE PRESIDENT'S MESSAGE**

The attempt to record the activities of any event or series of events is always interesting. The records placed in a college yearbook are especially interesting because they are filled, not with mere activities, but with life itself.

It gives me pleasure to compliment the 1951 INDIANHEAD Staff, because they have been able to give themselves so whole-heartedly to the recording of the exciting events of 1950-51. May this annual issue be the means of preserving the enthusiasm, the creativity, and the peculiar sense of responsibility that has characterized the student body of this year.

DR. RALPH D. WELLONS.



MISS MARJORIE KANABLE

### **DEDICATION**

As a visible evidence of the friendship and kindly assistance in the true Christian spirit which we have seen and known during our years here at P.S.C., we dedicate the 1951 INDIANHEAD to Miss Marjorie Kanable, our dear librarian. Thy personality is a thing of beauty, "A joy forever."

## FACULTY



J. WOODWARD BYARS, B.S., M.S., *Home Economics*. B.S., University of Tennessee; M.S., Iowa State College.

BERTHA L. W. DUNN, B.S., *Commerce*. B.S., University of Alabama Business Education.

RAYBORN F. HINSHAW, B.S., *Agriculture*. B.S., Agricultural Engineering North Carolina State College.

JAMES A. JACOBS, B.S., M.Ed., *Registrar*, Mathematics. B.S., Murray State Teachers College; M.Ed., Duke University.

MARJORIE KANABLE, A.B., B.S., M.A., *Libra-*

*rian*. A.B., Ohio Wesleyan University; B.S., M.A., University of Denver.

HAROLD W. KENNEDY, B.S., M.A., Ph.D., *Psychology and Education*. B.S., M.A., Ph.D., Ohio State University.

MARY LIVERMORE, A.B., *Dean of Women, Religion*. A.B., Adelphia College.

IRA PATE LOWRY, B.S., M.S., *Music*. B.S., Dakota Wesleyan University; M.A., Ohio State University.

REBA MILSAPS LOWRY, A.B., M.A., *French, Spanish, Expression*. A.B., Maryville College; M.A., University of Tennessee.

## FACULTY



ROBERT PRICE MARSH, B.S., M.S., Ph.D.,  
Science. B.S., New York University; M.S.,  
Ph.D., Rutgers University.

CLIFTON OXENDINE, A.B., M.A., Dean, *History*,  
*Social Science*. McKendree College; M.A.,  
George Peabody College for Teachers.

ANGELIKA RECKENDORF, A.B., M.A., *Art*.  
Zeichenlehrerinnenzamen, Kunstgewerbeschule,  
Munich, Germany; Gewerbelehrerinnen-  
seminar, Potsdam, Germany; B.A., M.A.,  
University of North Carolina.

JAMES T. SAMPSON, B.S., M.A., *Physical Edu-*  
*cation*. B.S., M.A., Fort Hays Kansas State  
College.

MARY SHARPE, A.B., M.A., *Primary Critic*  
*Teacher*. A.B., Winthrop College; M.A.,  
Columbia University.

FRANCES STINEBRING, B.S., M.A., *English*. B.S.,  
Kent State University; M.A., Ohio State  
University.

GEORGE R. SWANN, B.A., M.A., B.D., Th.M.,  
Ph.D., *English*. B.A., Furman University;  
M.A., University of Virginia; B.D., Union  
Theological Seminary; Th.M., Crozier Theo-  
logical Seminary; Ph.D., University of  
Pennsylvania.

HERBERT H. TODD, A.B., Ph.D., *History*, *Social*  
*Science*. A.B., Ohio University; M.A.,  
George Peabody College; Ph.D., Vanderbilt  
University.

J. BOYD WILLIAMS, A.B., M.A., M.S., *Science*.  
A.B., Morehead State Teachers College;  
M.A., College of William and Mary; M.S.,  
Virginia Polytechnic Institute.



## SENIOR CLASS

### OFFICERS

*President*.....HILTON LOCKLEAR  
*Secretary*..... ARTIE MAE EMANUEL  
*Treasurer*..... JAMES B. LOCKLEAR  
*Faculty Adviser*.....HAROLD W. KENNEDY



**JIMMY BRYANT**

*Specialty, Grammar Grade*

Pontiac Society 1947-'51; W.F. 1947-'51; Army 4½ yrs.; Secretary of Sophomore Class 1948-'49



**SPYRGON BULLARD**

*Major, Science*

Football; 1946-'48; Basketball 1946-'48; B. S. U. 1948-'49; Vice-President Senior Class 1950-'51; United States Marines; 1944-'46.



**ARTIE MAE EMANUEL**

*Major, Home Economics*

Glee Club, 1948-'49; President of Emeritan Society 1949-'50; Football Queen 1949-'50; Senior Class Representative Student Council 1950-'51; Baptist Student Union 1948-'51; Emeritan Society 1948-'51.

## SENIORS



**DORIS HAMMONDS**

*Specialty, Grammar Grades*

Alpha Psi Omega 1948-'51, President 1949-'50; B. S. U. 1947-'51 Emeritan Society 1947-'51, President 1950-'51; Basketball 1947-'51; Cheerleader 1949-'50; Marshal 1947-'48; Assistant Chief Marshal 1948-'49; Chief Marshal 1949-'51; Student Council 1950-'51; Social Club 1947-'51, President 1950-'51; Football Queen Attendant 1949-'50.

**ETHEL LEE LOCKLEAR**

*Specialty, Grammar Grade*

Pontiac Society 1947-'51; Alpha Psi Omega 1949-'51; B. S. U. 1947-'51.



**HILTON LOCKLEAR**

*Major, Science. Minor, Math.*

Pontiac Society 1947-'51; Athletic Rep. Student Council 1950-'51; President of Senior Class 1950-'51; Coast Guard 18 months.

**JAMES B. LOCKLEAR**

*Major, Social Science. Minor, Science and English*

Army 1½ years; Pontiac Society 1942-'43; B. S. U. 1942-'43; Business Manager of INDIANHEAD 1950-'51; Basketball 1942-'43; Veterans Club 1950-'51.



**THURMON LOCKLEAR**

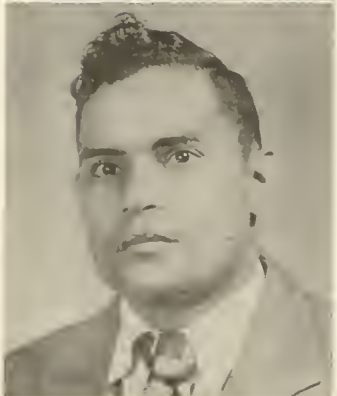
*Major, Social Studies. Minor, English*

Emeritan Society 1949-'51; W.F. 1949-'51. Army 4 years.

**VERNON LOCKLEAR**

*Major, Social Studies. Minor, English*

Veterans Club 1947-'51; Basketball 1947-'51; B. S. U. 1947-'51; Pontiac Society 1947-'51.



Doris Hammonds  
Ethel Lee Locklear  
Hilton Locklear

James B. Locklear  
Thurmon Locklear  
Vernon Locklear

## SENIORS

### MONROE LOWRY

*Major, Science. Minor, Math.*  
Navy 2 years; Pontiac Society 1947-'49, Secretary 1947-'48; Football 1947-'49; Basketball 1947-'49; Veterans Club 1949-'51; Math Club 1949-'51.

### LUCY OXENDINE

*Major, English. Minor, Music*  
Editor of INDIANHEAD 1950-'51; Editor of P.S.C. News 1949-'50; Wesley Foundation 1947-'51, President 1949-'50; Emeritan Society 1947-'51; Vice-President of Student Council 1950-'51; Sophomore Rep. to Student Council 1948-'49; Basketball 1947-'49; Marshal 1949-'51; *Who's Who in American Colleges and Universities* 1949-'51.

### NEWMAN OXENDINE

*Specialty, Grammar Grade*  
President of Junior Class 1949-'50; Pontiac Society 1949-'51; Veterans Club 1949-'51; B. S. U. 1949-'51; Army.

### HENRY W. SMITH

*Major, Science. Minor Physical Education*

Advertising Manager of INDIANHEAD 1950-'51; *Who's Who in American Colleges and Universities* 1950-'51; Wesley Foundation 1946-'51, 1950-'51; Emeritan Society 1946-'47, 1950-'51; President of Student Council 1950-'51; Football 1946-'48; Basketball 1946-'48.

### FRANCES STEWART

*Major, Home Economics. Minor, General Science*

Vice-President of W.F. 1949-'50; Assistant Editor INDIANHEAD 1950-'51; Social Club 1947-'51; Wesley Foundation 1947-'51; Chairman of Community Activities; Home Economics Club, Vice-President 1950-'51; Marshal 1948-'49.



Henry W. Smith  
Frances Stewart

Monroe Lowry  
Lucy Oxendine  
Newman Oxendine



## JUNIOR CLASS

### OFFICERS

HARVEY LOWRY.....	<i>President</i>
EMAE LOCKLEAR.....	<i>Treasurer</i>
JOYCE JACOBS.....	<i>Social Chairman</i>
ROBERT EARL JACOBS.....	<i>Secretary</i>
JOSEPHUS LOCKLEAR.....	<i>Vice-President</i>
LINDBERGH MARTIN.....	<i>Reporter</i>
Class Adviser.....	MRS. REBA M. LOWRY



Maggie Lois Brooks



Ward Clark



Wilton R. Cummings





Eula Mae Dial



James C. Dial



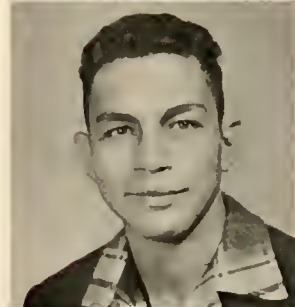
Maitland Dimery



Ray Elk



Ellen Joyce Jacobs



Robert Earl Jacobs



Daphne L. Jones



Gloria Jones

## JUNIORS



Herbert Hoover Lloyd



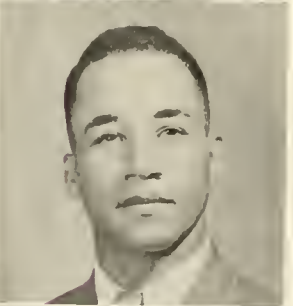
Leslie Locklear



Emae B. Locklear



Sara Catherine Locklear



Johnnie Allen Locklear



Steve Locklear



Josephus Locklear



Harvey Lowry

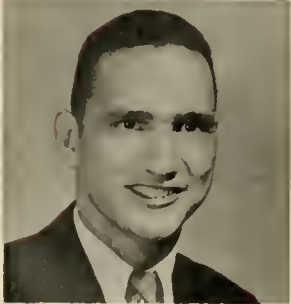
## JUNIORS



Henry F. Lowry



Eleanor Revels



Tolbert Lowry



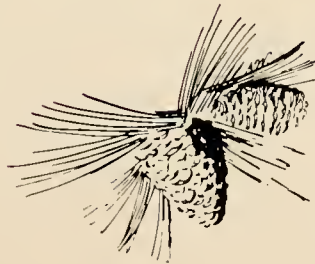
Estelle Sampson



Lindbergh Martin



Moland Strickland



## SOPHOMORES



Irleen Bell  
George E. Chavis  
Reedy Chavis

Bernice Brooks  
Hilton C. Chavis  
Rosa Dial

William D. Bryant  
Lucille Doris Chavis  
Martin L. Jacobs

## SOPHOMORES



Katie L. Jones  
Currency Locklear  
Ponell Locklear

Johnnie Lee  
Etta B. Locklear  
Reese Locklear

Adelaide Locklear  
Marie Locklear  
Sallie D. Locklear

## SOPHOMORES



Thetis R. Locklear  
Pattie Oxendine

Fannie Lou Maynor  
Thadis Oxendine

Charles W. Oxendine  
John W. Sampson

Leon D. Oxendine  
Walter M. Scott

*Not Pictured:*

James A. Oxendine  
James R. Wynne



## FRESHMAN CLASS

### OFFICERS

*President*..... ELERY LOCKLEAR  
*Vice-President*..... RONALD SAMPSON  
*Secretary-Treasurer*..... MARY E. REVELS  
*Faculty Adviser*..... MISS FRANCES STINEBRING



Joyce Brooks



Burney Bullard



Adrene Carter



Edna Louise Chavis



Lorraine Chavis

## FRESHMEN



*Top row:*

Georgie Ann Clarke  
 Hardy Deese  
 Grace Dial  
 Elmer Hunt

*Second row:*

William Jennings Jacobs  
 Pauline Jones  
 Bertha Lois Locklear  
 Edsel Locklear

*Third row:*

Elier Mae Locklear  
 Elrie Locklear  
 John Bracy Locklear  
 Lela Locklear

*Fourth row:*

Ludalia Locklear  
 Roza Mae Locklear  
 Verdia Locklear  
 Jacqueline Lowery



## FRESHMEN



*Top row:*

Adeline Lowry  
Hughes Dulin Lowry  
Lois Mitchell  
Emma Mabel Moore

*Second row:*

Annie Lois Oxendine  
Deola Oxendine  
George W. Oxendine  
Plummer Oxendine

*Third row:*

Vanzetta Oxendine  
Marvin Ransom  
Clois Maudena Revels  
Mary Elizabeth Revels

*Fourth row:*

Oscar Ronald Sampson  
Sue Sanderson

*Not Photographed:*

Zora Cummings  
Waltz Maynor  
Madge Lowry



**COLLEGE QUEEN AND ATTENDANTS**

ESTELLE SAMPSON—*Queen*

*Attendants:* Daphne Jones, Dortha Locklear, Lee Ellen Sanderson.

# RED SPRINGS FESTIVAL SCENES



## MARSHALS



*Chief Marshal—DORIS HAMMONDS*

*Assistant Chief—JOYCE JACOBS*

Daphne Jones, Joyce Jacobs, Tolbert Lowry, Charles Oxendine.

# FACULTY AND STUDENT SNAPS



# B.S.U. AND W.F. FALL RETREAT







**JUNIOR AND SENIOR RECEPTION**





**JUNIOR-SENIOR RECEPTION**



Left to right: Steve Locklear, Lucy B. Oxendine, Johnnie A. Locklear, Henry Smith, Reedy Chavis, Hilton Locklear, Josephus Locklear, Artie Mae Emanuel.

## STUDENT COUNCIL

### OFFICERS

President.....	HENRY SMITH	Athletic Rep.....	HILTON LOCKLEAR
Sec. and Treas.....	JOHNNIE A. LOCKLEAR	Vice-President.....	LUCY B. OXENDINE
Junior Rep.....	STEVE LOCKLEAR	Social Rep.....	DORIS HAMMONDS
Freshman Rep.....	MARVIN RANSOM	Religious Rep.....	JOSEPHUS LOCKLEAR
	Not Photographed	Sophomore Rep.....	REEDY CHAVIS
	Senior Rep.....		ARTIE MAE EMANUEL

The student council at P.S.C. was organized in 1948-1949 for the purpose of giving the students an organized voice in campus activities. Each year they have assumed more and more of the details of setting social policies and helping to carry out these policies. This year, they have sponsored many social activities; consulted with the faculty discipline committee and in many other ways, have shown their willingness to help in promoting the general welfare of students and the college.

Much credit for this expanded program of activity is due the President, Henry Smith, who has had the enthusiastic backing of the council, students and faculty of the college.

## EMERITAN SOCIETY

*First row, left to right:* Lorraine Chavis, Adrine Carter, Sue Sanderson, Roza Locklear, Joyce Brooks, Artie M. Emanuel, Frances Stewart. *Second row:* Grace Dial, Ellen Joyce Jacobs, Ireen Bell, Lucy B. Oxendine, Lela Locklear, Lucille Chavis, Rosa Dial, Fannie L. Maynor, Miss Frances Stinebring, Edna L. Chavis, Ellery Locklear, Grace Locklear, Robert E. Jacobs, Adelaide Locklear, Georgie Ann Clarke, Dortha Locklear, Lois Mitchell. *Third row:* Doris Hammonds, Johnnie A. Locklear, Pornell Locklear, Bertha L. Locklear, Mrs. Reba M. Lowry, Elier Locklear, Ludalia Locklear, Deola Oxendine, Wilton Cummings, Herbert H. Lloyd, Estelle Sampson, Sally Dale Locklear, Ethel Locklear, Cloris M. Revels, Annie R. Jacobs, Ronald Sampson, Eleanor Revels, Pauline Jones, Annie L. Oxendine. *Fourth row:* Charles W. Oxendine, James Dial, Reedy Chavis, John W. Sampson, William J. Jacobs, Gloria Jones, Daphne L. Jones, Henry Smith, Lindbergh Martin, Maitland Demery, Eula Dial, Adeline Lowry.



## PONTIAC SOCIETY

*First row, left to right:* William D. Bryant, Vanzetta Oxendine, George Oxendine, Ethel Harris, Emae B. Locklear, Steve Locklear, President. *Second row:* Josephus Locklear, Marie Locklear, Etta B. Locklear, Sara Catherine Locklear, Hilton Locklear, Jacqueline Lowry, Monroe Lowry, Emma Mabel Moore, Ward Clark. *Third row:* Jimmie Bryant, Elmer Hunt, George Chavis, Miss Mary Sharpe, James B. Locklear, Newman Oxendine, Guney Bullard, Hardy Deese.

## B.S.U.

*First row, left to right:* Rev. Harvey Brewington, Bernice Brooks, George Oxendine, Joyce Brooks, Sally Dale Locklear, Plummer Oxendine, Doris Hammonds, Lucille Chavis, Lela Locklear, Deola Oxendine, Edna L. Chavis, Georgia Clarke, Bertha L. Locklear, Irleen Bell, Adelaide Locklear, Grace Locklear, Lorraine Chavis, Ellery Locklear. *Second row:* Ned Sampson, Josephus Locklear, Johnnie A. Locklear, Mary E. Revels, Jacqueline Lowry, Adeline Lowry, Cloris M. Revels, Emae B. Locklear, Etha M. Harris, Elier Locklear, Ludalia Locklear, Adrine Carter, Eula Dial, Daphne L. Jones, Gloria Jones, Roza Locklear, Robert Jacobs. *Third row:* Lindbergh Martin, William J. Jacobs, Hardy Deese, Dortha Locklear, Eleanor Revels, Maitland Demery, Herbert H. Lloyd, Estelle Sampson, George Chavis, Etta B. Locklear, Gurney Sampson, Maggie L. Brooks, Artie M. Emanuel.



## B.S.U. COUNCIL

*Left to right:* Lindbergh Martin, First V.-Pres.; Emae Brooks, Sec. and Treas.; Estelle Sampson, Corresponding Secretary; Doris Hammonds, Social Chairman; Ellery Locklear, Pres.; Maggie Lois Brooks, Pianist; Daphne Jones, Choirist, Eula Mae Dial, Y.W.A. representative; Johnny Allen Locklear, Publicity director; Josephus Locklear, Third Vice-Pres.; Rev. Harvey Brewington, Religious Adviser.

## WESLEY FOUNDATION

*First row, left to right: Mr. Hinshaw, Rev. Linwood Blackburn, Francis Stewart, Ellen Joyce Jacobs, Henry Smith, Rose Dial, Lois Mitchell, Thetis Rae Locklear, Miss Kanable, Annie Lois Oxendine. Second row: Steve Locklear, Annie Ruth Jacobs, Ronald Sampson, Ward Clark, Gurney Bullard, William Bryant, Reese Locklear, Miss Reckendorf, Lucy Oxendine, Pauline Jones. Third row: Mabel Moore, Wilton Cummings, Hilton Locklear, James T. Sampson, Charles Oxendine, Talbert Lowry, Thadis Oxendine, Dr. Robert Marsh.*



### W. F. COUNCIL

*President, Ellen Joyce Jacobs; Vice-President, Tolbert Lowry; Secretary, Thetis R. Locklear; Treasurer, Steve Locklear; Devotion Chairman, Ward Clarke, Jr.; Program Chairman, Charles Oxendine; Social Chairman, Henry Smith; Publicity Chairman, Annie R. Jacobs; Reporter, Sara C. Locklear; Community Service Chairman, Frances Stewart; Child Welfare Representative, Lucy Oxendine; International Relations Chairman, Hilton Locklear; Music Chairmen, Rosa Dial, Jimmie Bryant; Personnel Chairman, Zeb Lowry, Jr.; Sponsor, Miss Marjorie Kanable; Co-sponsor, Rev. Linwood Blackburn.*

Pembroke State College  
Library

## **HISTORY OF THE W.F.**

The Wesley Foundation was first organized November 27, 1947 when Dr. Owens Brown was President of the Pembroke State College. Since that time it has been working here on the campus and in the community to promote better Christian ideas and living.

The W.F. takes pride in making and carrying out plans for the school term. Every year, in order to make these plans, a Fall Retreat of the W.F. and B.S.U. is held. For the year 1950-51 it was held at Melvin's Beach. The Retreat proves to be a successful event. All have fun, fellowship and find time to make plans for the coming year.

With a set up calendar, the W.F. starts the school year with the first big event—a party for it's new members. This is usually a joint party of the B.S.U. and W.F.

The programs of the Wesley Foundation vary according to the needs of the students as the program committee see fit. There are many types including movies, plays, forums, and discussions. All take an active part in carrying out these programs.

Special events that all W.F.'ers look forward to are the conferences which members attend. The Methodist Student Movement Conference was held in High Point, N. C. this year. Those attending came back with many new ideas and memories of happy experiences. Each year we look forward to deputation programs with North Carolina State College.

The Wesley Foundation with the Methodist Church and other Churches of the community are at work on the campus and in the community. Our aim is to help provide for the spiritual, moral, and social needs of our students on the campus.

## **THE BAPTIST STUDENT UNION**

The B.S.U. is a religious organization on the campus, which caters to the Baptist students of the College.

The B.S.U. functions under the leadership of a president and a Council elected from the Baptist students, and a faculty adviser.

A calendar of events such as programs, both on the campus and exchange programs are participated in by members of the B.S.U.

The aims of the B.S.U. are to encourage students to keep up their religious activities while in college—to develop the student spiritually as well as physically and mentally.

## SOCIAL CLUB

*Left to right:* Ludalia Locklear, Eleir Locklear, Roza Locklear, Lorraine Chavis, Marie Locklear, Adrine Carter, Fannie L. Maynor, Frances Stewart, Artie M. Emanuel, Bertha L. Locklear, Henry Smith, Moland Strickland, Hughes D. Lowry, James B. Locklear, William J. Jacobs, Sally Dale Locklear, Doris Hammonds, John W. Sampson, Josephus Locklear, Hilton Locklear, Estelle Sampson, Cloris Revels, Leslie Locklear, Ellen Joyce Jacobs, Pauline Jones, Monroe Lowry, Joyce Brooks, Adeline Lowry, Georgie Clarke, Lois Mitchell, Mary E. Revels, Dortha Locklear, Edna L. Chavis, Sue Sanderson, Gloria Jones, Maggie L. Brooks.



## VETERAN'S CLUB

*First row, left to right:* Elmer Hunt, Hilton Locklear, Marvin Ransom, James B. Locklear, Leslie Locklear, Ellery Locklear, Monroe Lowry, Johnnie Lee, John Bracy Locklear, Walter Scott, Thadis Oxendine. *Second row:* Jay P. Demery, Thurmond Locklear, James A. Oxendine, Reddy Chavis, Newman Oxendine, Henry W. Smith, Farce Oxendine, Harvey Lowry, Edsel Locklear, George Chavis, Jimmie Bryant, James R. Wynne.

## Y.W.A.

*First row, left to right: Roza Mae Locklear, Pauline Jones, Annie Ruth Jacobs, Emae B. Locklear, Adeline Lowry, Dortha Locklear, Cloris M. Revels, Maitland Demery. Second row: Grace Locklear, Adelaide Locklear, Irleen Bell, Lois Mitchell, Sara C. Locklear, Edna L. Chavis, Adrine Carter, Bertha Lois Locklear. Third row: Eula Dial, Annie L. Oxendine, Mary E. Revels, Sue Sanderson, Ludalia Locklear, Elier Locklear, Georgie Clarke, Lorraine Chavis.*



## Y.W.A. OFFICERS

*Left to right: Lorraine Chavis, Chairman of Social Committee; Maitland Demery, Chairman of Library; Sue Sanderson, Chairman of Stewardship; Annie R. Jacobs, Sara C. Locklear, Publicity Chairmen; Eula M. Dial, President; Bertha L. Locklear, Chairman of Mission Study; Adrine Carter, Treasurer and Music Chairman; Dortha Locklear, Secretary; Irleen Bell, Chairman of Program Committee; Adeline Lowry, Vice-President; Georgie Ann Clarke, Personnel Service Committee.*



## DRAMATICS

*Left to right: Reese Locklear, Rose Dial, Bernice Brooks, Artie M. Emanuel, Mrs. Reba M. Lowry, Sally Dale Locklear, Lindbergh Martin, Doris Hammonds, George E. Chavis, Johnnie A. Locklear, Reedy Chavis, Josephus Locklear, Estelle Sampson, Ethel Lee Locklear, Charles Oxendine, Joyce Brooks, Frances Stewart, Lucy Bell Oxendine, Irleen Bell.*



## HOME ECONOMICS CLUB

*Left to right: Annie Lois Oxendine, Treasurer; Bernice Brooks, Secretary; Artie M. Emanuel, President; Miss J. Woodward Byars, Sponsor; Sally Dale Locklear, Charter Member; Frances Stewart, Vice-President.*

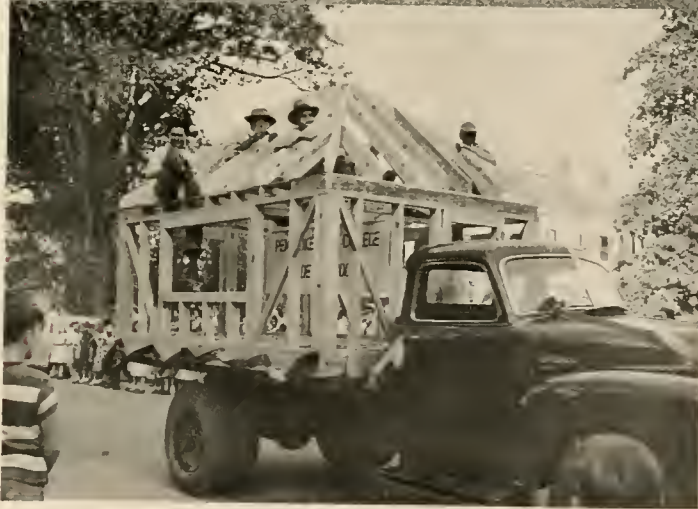
## LIBRARY



## LIBRARY STAFF

*Left to right:* Maitland Demery, Robert Earl Jacobs, Lucy Oxendine, Joyce Jacobs, Miss Marjorie Kanable, Charles Oxendine, Miss Carrie Lee Jacobs.

## TRADE SCHOOL BOYS AND PARADE



## GIRLS' BASKETBALL



Left to right: Doris Hammonds, Sally Dale Locklear, Rose Dial, Louise Chavis, Verdie Locklear, Etta B. Locklear, Roza M. Locklear, Lois Mitchell, Katie Jones, Bernice Brooks, Thetis R. Locklear, Lucy Oxendine, Dortha Locklear, Ludalia Locklear, Adrien Carter. Coach, James T. Sampson. Not pictured; Pauline Jones, Girls Manager.

Pembroke State College girls' basketball squad finished with one of their most successful seasons in the College's athletic program throughout the years; the squad slammed home 11 games and dropped 5 games.

The squad is composed mostly of freshmen, and sophomores. In the Ellerbee Lions Invitational Women's Tournament, the sextet dropped a heart breaker in the finals and returned with the second place trophy, Katie Jones P.S.C. Forward, and Thetis Ray Locklear, guard, were placed on the all Tourney team.

### P.S.C. GIRLS' BASKETBALL SCHEDULE 1950-51

P.S.C.....38	Prospect .....19	P.S.C.....34	Candor.....26
P.S.C.....30	P.H.S. ....25	P.S.C.....28	Sanford .....39
P.S.C.....41	Candor .....31	P.S.C.....44	Magnolia .....41
P.S.C.....24	Campbell College.....34	<b>ELLERBEE TOURNAMENT</b>	
P.S.C.....38	P.H.S. ....38	P.S.C.....38	Candor.....27
P.S.C.....38	Campbell College.....53	P.S.C.....38	Troy .....30
P.S.C.....46	Fairmont .....28	<b>CHAMPIONSHIP</b>	
P.S.C.....33	P.H.S. ....34	Albemarle.....44	P.S.C. ....41
P.S.C.....35	Green Grove.....30		
P.S.C.....45	P.H.S. ....46		

## BOYS' BASKETBALL

The Braves of P.S.C. again completed another successful basketball season, as they returned with 14 victory scalps, and dragged eight of their games to superior forces, especially to service teams.

In the Ellerbee Lions Tournament the Braves captured the championship, and brought to their campus the first athletic trophy in the College's history. Braves center Ned Sampson and guard Farce Oxendine were selected on the all tourney team.

### BRAVES' SCHEDULE—1950-51

P.S.C.....71	Ellerbee.....63	P.S.C.....40	Pope Air Force Base...33
P.S.C.....64	Louisburg College.....57	P.S.C.....85	Candor.....52
P.S.C.....73	Candor.....48	P.S.C.....57	Laurel Hill.....63
P.S.C.....78	Raeford.....38	P.S.C.....68	Sanford.....63
P.S.C.....56	Louisburg College.....59	P.S.C.....58	14th Q.M. Ft. Bragg.....69
P.S.C.....54	Ellerbee.....63	P.S.C.....66	Sanford A.S.....99
P.S.C.....74	Campbell College.....42	P.S.C.....53	14th Q.M. Ft. Bragg.....96
P.S.C.....60	Laurel Hill.....48	<b>ELLERBEE LIONS TOURNEY</b>	
P.S.C.....72	Campbell College.....62	P.S.C.....56	Lilesville.....52
P.S.C.....44	325th Ft. Bragg.....43	P.S.C.....66	Troy.....42
P.S.C.....48	Shaw Air Force Base...56	<b>CHAMPIONSHIP</b>	
P.S.C.....62	Ellerbee.....46	P.S.C.....62	Ellerbee.....51
P.S.C.....60	Laurel Hill.....62		



First row, left to right: Zeb Lowry, Reese Locklear, Waltz Maynor, Walter Scott, Ronald Sampson. Second row: James T. Sampson, Coach; Farce Oxendine, Ned Sampson, William J. Jacobs, Lindbergh Martin, Leslie Locklear, Tolbert Lowry. John Bracy Locklear, Manager.

## ACTION SHOTS



Leslie Locklear (10) shoots another basket while Farce Oxendine (5) looks on.

Tolbert Lowry (11) pushes one in. Farce Oxendine (5) looks on.



Ned Sampson (12) makes a long shot. Other Braves are Tolbert Lowry (11) and Farce Oxendine (5).

## ACTION SHOTS

Ned Sampson (12) shoots one without much effort while Farce Oxendine looks on.



Reese Locklear (8) shoots a long goal although his guard tries to block the shot. Other Braves are Ned Sampson (12), Leslie Locklear (10), Tolbert Lowry (11) and Farce Oxendine (5).



Hoover Lloyd flips in a crisp shot.

## FOOTBALL SQUAD



*Back row:* Coach, J. T. Sampson; H. Smith, M. Strickland, J. Sampson, Harvey Lowry, E. Locklear, Henry Lowry, L. Locklear, F. Oxendine, H. Lloyd, Mgr. *Middle row:* T. Lowry, S. Bullard, W. Jacobs, H. Chavis, L. Oxendine, H. Deese, J. Locklear, Z. Lowry, Jr. *Front row:* J. Dial, D. Lowry, J. Williamson, R. Locklear, R. Sampson, V. Oxendine, W. Scott.



Reese Carries the ball





## VALENTINE QUEEN

*Queen:* Miss Adeline Lowry

*King:* John Bracy Locklear

*Crown Bearers:* Barbara Lynne Lowry, Ronald Terry Jacobs.

*Attendants, Left to right:* Lois Mitchell, Hilton Locklear, Thetis Ray Locklear, Waltz Maynor, Etta B. Locklear, Tolbert Lowry, Spyrgon Bullard, Pauline Jones.

One of the highlights of the college year was the Valentine Queen and King Party held in the gym. Much credit is due Mrs. Dunn, Miss Byers and Miss Doris Hammonds for the great success of this party.



**FACULTY AND STUDENTS**



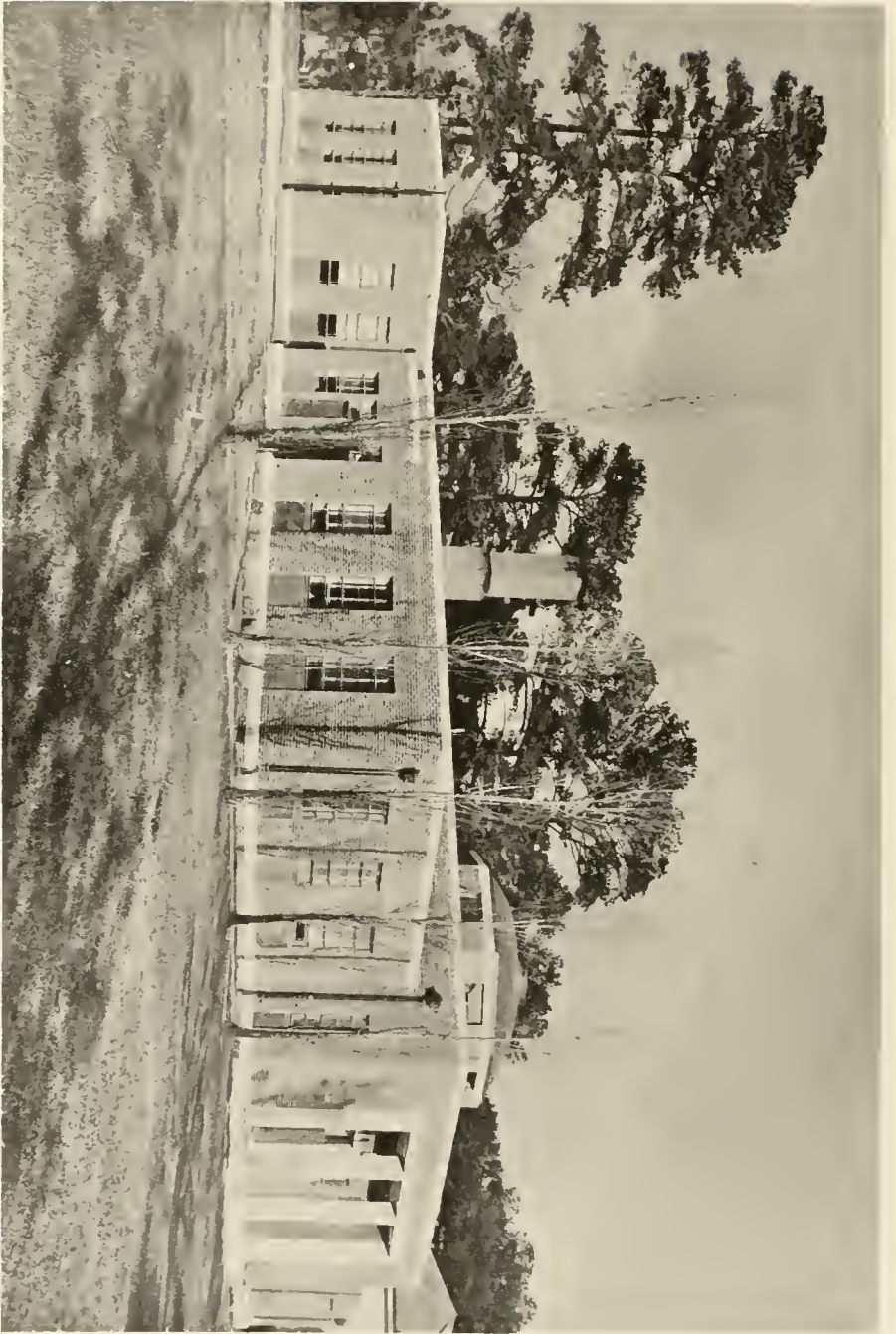
**FACULTY AND STUDENTS**



Close Up of New Arts Building and View of Arts Building looking East Across the North End of the Campus.



Front View, Locklear Hall—(Science and Agriculture).



Sampson Hall—Administration and Library.



### COLLEGE ASSISTANTS

CARRIE LEE JACOBS

*Assistant Secretary, Assistant Librarian.  
Assistant Secretary,  
Assistant Librarian.*

TIMOTHY STRICKLAND

*Custodian.*

WALTER PINCHBECK

*Superintendent of Buildings and Grounds.*



ANNIE RUTH JACOBS

ETHA MAE HARRIS

### SPECIAL STUDENTS

## ANNUAL STAFF



LUCY BELLE OXENDINE  
*Editor*

FRANCES STEWART  
*Assistant Editor*



JAMES B. LOCKLEAR  
*Business Manager*

HENRY W. SMITH  
*Advertising Manager*



*Not Photographed:*  
MISS ELLEN JOYCE JACOBS  
*Typist*



DR. HAROLD W. KENNEDY  
*Adviser*



*Compliments of*

# *The Scottish Bank*

---

LUMBERTON

Salemburg      Pembroke      St. Pauls

Red Springs      Garland

Fairbluff      China Grove

For Convenience — Eight Branches

---

*Deposits Insured Up to \$10,000 by Federal*

*Deposit Insurance Corporation*

*Compliments of*  
**PEMBROKE IMPLEMENT CO., INC.**

*We Strive to Please*

YOUR ALLIS-CHALMERS  
FARM MACHINERY DEALER  
BUCKEYE AND SILENT FLAME TOBACCO CURERS  
COMPLETE GARAGE SERVICE  
*Wrecker Service*

Phone 5601

FRANK S. WHITE, *Manager*

R. L. LITTLETON, *Sales Manager*

CARL STUBBS, *Shop Manager*

PEMBROKE, N. C.

We extend greetings to the members of the graduating class of Pembroke State College. *The Robesonian* deeply appreciates the work you are doing in the field of education and is always glad to cooperate with you.



## **THE ROBESONIAN**

*Member Associated Press*

PUBLISHED DAILY, MONDAY THROUGH FRIDAY  
LUMBERTON, NORTH CAROLINA

*Compliments of*

**PEMBROKE  
FURNITURE CO.**

---

WESTINGHOUSE  
*and*  
PHILCO RADIOS *and* APPLIANCES  
COMPLETE HOME FURNISHINGS

PEMBROKE, N. C.

*Compliments of*

**BELK-HENSDALE  
COMPANY**

*"Your Home of Better  
Values"*

LUMBERTON, N. C.  
RED SPRINGS, N. C.

## YOUR FRIEND - always

Whether you become a business man — a farmer or enter the professions, or become a housewife — your electric service will always be your friend — making your work easier — your time more productive — your life better.

**CAROLINA POWER & LIGHT COMPANY**

*Compliments of*

**SCARBOROUGH  
BUILDERS  
SUPPLY CO.**

=====  
**COMPLETE  
BUILDING SERVICE**

=====  
**LUMBERTON, N. C.**

*Compliments of*

**LUMBER RIVER  
DISCOUNT COMPANY**  
AUTO LOANS  
*Quick Cash*

102 South Elm Street  
LUMBERTON, N. C.

*Compliments of*

**LINDSEY OIL CO.**

*Distributor of*  
**SHELL PETROLEUM  
PRODUCTS**

**LUMBERTON, N. C.**

*Compliments of*

## **PATE'S SUPPLY AUCTION SALE**

**SALES EVERY FRIDAY, 2:30 P.M.**

*We Buy Top Hogs Daily*

**CATTLE . . . HOGS**

*and*

**OTHER ITEMS YOU WISH TO DISPOSE OF**

*We Carry on Hand At All Times*

**MISSOURI MULES and HACKNEY WAGONS**

**FRANK S. WHITE, Manager**  
**PATES, NORTH CAROLINA**

---

## **THE LUMBERTON MUSIC STORE**

412 Chestnut Street

LUMBERTON, NORTH CAROLINA

### **THE HOUSE OF BALDWIN**

*Exclusive Dealers in Baldwin Pianos and Electronic Organs*

We also maintain staff of Experienced, Qualified Piano Tuners and Technicians — All Repair Work and Tuning Guaranteed.

**THE PEMBROKE STATE COLLEGE USES  
BALDWIN PIANOS EXCLUSIVELY**

*Call on, write or phone us for complete Piano Sales and Service*

### **THE LUMBERTON MUSIC STORE**

412 Chestnut Street

LUMBERTON, NORTH CAROLINA

PHONE 3730

*Compliments of*  
**OXENDINE JEWELRY  
SHOP**

EXPERT WATCH REPAIR

Telephone 5661  
PEMBROKE, N. C.

*Compliments of*  
**FREEMAN PRINTING CO.**

*Commercial Printers and  
Stationers*

Phone 3925  
D. T. LAMBETH, Mgr. - Established 1896  
LUMBERTON, N. C.

*Compliments of*  
**M. & S. MOTOR CO.**

CHRYSLER and  
PLYMOUTH CARS  
*Sales and Service*

RED SPRINGS, N. C.

*Compliments of*  
**Jack Pait Furniture Co.**

FURNITURE, RADIOS and  
RADIO SERVICE

Chestnut Street Telephone 572  
LUMBERTON, N. C.

*Compliments of*  
**PEMBROKE  
MOTOR  
COMPANY**

=====  
**FORD**  
*Sales and Service*

=====  
Phone 5511  
PEMBROKE, N. C.

*Compliments of*  
**SINGLETON AND  
McMILLAN, Inc.**

=====  
**PONTIAC-STUDEBAKER  
INTERNATIONAL  
HARVESTER**

*Sales and Service*

=====  
Phone 3971  
RED SPRINGS, N. C.

*Compliments of*

**BAXLEY & JOHNSON**

CHEVROLET  
*Sales and Service*

RED SPRINGS, N. C.

*Compliments of*

**LARKINS-DORSET'S  
CLOTHING CO.**

*Clothing for the Entire Family  
on Easy Credit Terms*

116 W. Fourth Street  
LUMBERTON, N. C.

*Compliments of*

**Colonial Frozen Foods, Inc.**

LOCKERS RENTALS

*Beef and Pork, Processing  
Pork Curing — Storage*

Telephone 4331  
RED SPRINGS, N. C.

**WEBSTER'S PHARMACY**  
"YOUR DRUGGIST"

Phone 6331  
FAIRMONT, N. C.

**SAMPSON'S  
DRY CLEANERS**

24-Hour Dry Cleaning Service  
Laundry Shirt Service

Phone 2581  
PEMBROKE, N. C.

**MODERN GAS CO., INC.**  
BUTANE and PROPANE GAS

*Commercial and Domestic  
Gas Appliances*

J. P. CHANCE, *Mgr.*  
410 E. 2nd Street Phone 583-W  
LUMBERTON, N. C.

*Compliments of*

**Robeson Auto Finance Corporation**

AUTO LOANS  
FINANCING  
RE-FINANCING

TRUCK LOANS  
SALES FINANCED  
REPAIRS FINANCED

LUMBERTON, NORTH CAROLINA  
Dial 6748 118 West 3rd Street

# YOUR LOCAL F.C.X. SERVICE

PEMBROKE, N. C.

WE SPECIALIZE IN QUALITY

QUALITY SEEDS. FEEDS. FERTILIZER

FARM MACHINERY

ELECTRICAL APPLIANCES

FENCING

BUILDING MATERIALS. AND BABY CHICKS

*Farmer Owned and Controlled*

Telephone 5791

*Compliments of*

## SUGAR'S MEN'S SHOP

Nunn Bush Shoes - Interwoven Socks  
Dobbs Hats - Arrow Shirts  
Griffon Clothes

Telephone 4786  
Fourth and Elm Streets  
LUMBERTON, N. C.

*Compliments of*

## HOME FURNITURE COMPANY, INC.

RED SPRINGS, N. C.

*Compliments of*

## OLD FOUNDRY CAFE

REGULAR DINNERS  
*Private Dining Rooms*  
Telephone 9117

## MOTOR COMPANY

NEW AND USED CARS

*Wrecker Service*

Phone 1364-M      LUMBERTON, N. C.

## Robeson Office Supplies, Inc.

STATIONERS - OFFICE OUTFITTERS  
PRINTERS

Phone 6916  
South Elm Street

STUART HATCHELL      BILLY FRENCH  
LUMBERTON, N. C.



*Compliments of*  
**ROGERS  
DRUG STORE**

*The Rexall Store*

**WHERE EVERYBODY  
IS WELCOME**

---

*Prescriptions Compounded by  
Registered Druggist*

---

PEMBROKE, N. C.

*Compliments of*  
**COLLINS  
DEPARTMENT  
STORE**

LUMBERTON, N. C.

---

*Compare Our Prices  
Anywhere*

---

HAROLD A. COLLINS, *Owner*

*Compliments of*  
**Culbreth  
Jewelry Company**

**DIAMONDS - WATCHES  
SILVERWARE - CRYSTAL**  
*Expert Watch Repairing*

---

*Your Home Town  
Jeweler*

---

PHONE 5241  
PEMBROKE, N. C.

**General Auto Sales, Inc.**

OLDSMOBILE CARS  
GMC TRUCKS  
*Sales and Service*

**GUARANTEED USED CARS**

Telephone 238-1  
RED SPRINGS, N. C.

---

**RAYLASS  
DEPARTMENT STORES**

*Shop Where Your Dollar Buys Most*

**EVERYTHING TO WEAR  
FOR THE ENTIRE FAMILY  
AT LOWER PRICES**

LUMBERTON, N. C.

*Compliments of*  
**RED SPRINGS  
SUPPLY CO., INC.**

*The Friendly Store*

Office Phone 3271  
Store 3701  
RED SPRINGS, N. C.

*Compliments of*  
**Norment Motor Co., Inc.**

COMPLETE AUTO REPAIRS  
24-HOUR WRECKER SERVICE

Telephone 90 120 W. 5th Street  
LUMBERTON, N. C.

**W. LEE FLOWERS AND COMPANY**

WHOLESALE GROCERS  
BUILDERS SUPPLIES AND HARDWARE

21st Street

LUMBERTON, N. C.

Phones 6061 & 6063

**PEMBROKE FUNERAL HOME**

AMBULANCE SERVICE

DAY PHONES 2631 AND 3251

NIGHT PHONES 3181 AND 3641

PEMBROKE, NORTH CAROLINA

*Compliments of*  
**ROWLAND  
MOTOR CO.**

"RED" JOHNSON

**CHEVROLET**  
*Sales and Service*

**FIRESTONE HOME AND  
AUTO SUPPLIES**

**LIVE STOCK**

**ROWLAND, N. C.**

*Compliments of*  
**TOWNSEND'S  
PHARMACY**

*Rexall Store*

=====  
We Fill All Doctors'  
**PRESCRIPTIONS**  
Carefully and Promptly

=====  
Phone 2631  
**RED SPRINGS, N. C.**

**MAYNORS BARBER AND BEAUTY SHOP**

CONGRATULATIONS TO THE PRESIDENT, FACULTY, SENIORS AND OTHER  
CLASSES ON THEIR SPLENDID EFFORT

*Visit With Us Often*

PEMBROKE, N. C.

Call 5451

***Best Wishes From WEST SIDE THEATRE***

ENTERTAINMENT IS OUR BUSINESS

*Come and Bring Your Friends*

PEMBROKE, NORTH CAROLINA

**McNEILL'S CLEANERS**

23 YEARS OF  
DEPENDABLE SERVICE

Phone 2941

RED SPRINGS, N. C.

**FREEMAN MOTOR CO.**

*Sales — PACKARD — Service*

Telephone 3224

2nd and Chestnut Streets

LUMBERTON, N. C.

"RED" FREEMAN

COBLE WILSON

*Compliments of*

**FLEISHMAN'S**

*The Ladies' Shop of*

*Lumberton, N. C.*

*Compliments of*

**B. C. MOORE  
and SON**

*We Feature*

**CURLEE CLOTHES**

*For the Men Who Care*

REGULAR, SHORTS  
and STOUTS

Phone 2436

RED SPRINGS, N. C.

*Compliments of*

**RED SPRINGS  
DRUG CO.**

*Prescription Specialists*

RED SPRINGS, N. C.

*Compliments of*

**PATES SUPPLY COMPANY, INC.**

HARDWARE  
GROCERIES  
DRY GOODS  
ELECTRICAL APPLIANCES  
COTTON and FERTILIZERS

---

*"Everything for the Farm and Home"*

---

PEMBROKE, NORTH CAROLINA

*Compliments of*

**A. WEINSTEIN  
AND SONS**

Established 1897

---

*"Outfitters for the Entire  
Family"*

---

Telephone 46  
Corner Fourth and Elm Streets  
LUMBERTON, N. C.

**D. W. BIGGS**

*Owner of*  
**BIGGS FURNITURE STORE**

Chestnut 3rd Street  
DIAL 4903

---

**BIGGS FUNERAL HOME**

Third Street

**Funeral Directors**

DIAL 4211  
LUMBERTON, N. C.

R. E. WILKINS

FRANK WHITE

*Compliments of*

# LIBERTY WAREHOUSES

LUMBERTON, NORTH CAROLINA

H. D. GOODE

R. H. LIVERMORE, JR.

*Good Clean Sports and Fun  
for All is Our  
Business*

**LOWRY**  
**BILLIARDS, BOWLING**  
**and**  
**SANDWICHES**

**Pemboke Recreation Hall**

**Blenheim Ginger Ale**  
AND OTHER  
SOFT DRINKS

**Earl Fisher Distributor**  
Phone 3811  
FAIRMONT, N. C.

*Compliments  
We Serve to Serve Again*

**JAKIE'S GROCERY**  
*A Full Line of*  
GROCERIES

West Side of Town on Highway 74-A  
PEMBROKE, N. C.

*Compliments of the*

## **LUMBERTON TOBACCO MARKET**

*"The Heart of the Border Belt"*



LUMBERTON TOBACCO BOARD OF TRADE, Inc.  
LUMBERTON, N. C.

### **AMERICAN SERVICE CENTER**

*We Serve to Satisfy*

REGULAR MEALS  
FOUNTAIN SERVICE  
AMOCO GAS AND OIL

FULLY EQUIPPED FOR MINOR  
AUTO REPAIRS

*Our Specialty!*

External and Internal  
AUTO CLEANING

Phone 2451  
PEMBROKE, N. C.

### **DIXIE WAREHOUSES NOS. 1 & 2**

FOR THE SALE OF  
LEAF TOBACCO

McKEITHEN, BIGGS AND KINLAW  
*Proprietors*

LUMBERTON, N. C.

### **USE V-C FERTILIZERS**

*For And  
Better Crops Bigger Profits*

### **HARRY W. LOCKLEAR**

PEMBROKE, N. C.

*Agent for*  
Virginia-Carolina Chemical Corp.

*Greetings from Fairmont, the Old Reliable*

## THE BIG TOBACCO CENTER OF THE BORDER BELT

DAY BY DAY — WEEK BY WEEK — MONTH BY MONTH  
YEAR BY YEAR — FAIRMONT SELLS TOBACCO HIGHEST!

<i>Season Sales</i>	<i>Pounds</i>	<i>Average</i>
1946	51,957,870	\$51.29
1947	47,855,698	\$43.71
1948	43,087,266	\$52.91
1949	48,500,000	\$53.64
1950	49,349,708	\$57.61

## FAIRMONT TOBACCO MARKET

C. B. STAFFORD, *Sales Supervisor*

*In Appreciation of Our  
Indian Friends*

**SQUARE DEAL  
WAREHOUSES 1 & 2**  
FAIRMONT, NORTH CAROLINA

*For a Square Deal  
Sell nt Sqnre Deal*

*Compliments of*

**Mitchell & Caudell, Inc.**  
*Prescription Druggists*

*Quick Delivery - Personal Service*  
Phone 3541 FAIRMONT, N. C.

*"Welcome"*

*Compliments of*

**The Waccamaw  
Bank and  
Trust Company**



FAIRMONT, N. C.

*Compliments of*  
**SERVICE OIL COMPANY**

*Distributors of*  
**GREASE OIL  
AND GASOLINE PRODUCTS**

---

*"Patronize Your Nearest Esso Dealer"*

---

**LAURINBURG. NORTH CAROLINA**

---

*Compliments of*  
**LUMBERTON COCA-COLA**

***Coca-Cola***  
TRADE MARK

**BOTTLING COMPANY**  
**LUMBERTON. NORTH CAROLINA**  
**PHONE 4364**



*Compliments of*  
**The National Bank  
of Lumberton**

**We Pay Two Per Cent  
Interest on Savings**

*Member Federal Reserve System*  
All Deposits Insured up to \$10,000.00

LUMBERTON, N. C.

*Compliments of*  
**PEMBROKE JUNK CO.**  
PEMBROKE, N. C.

**TYNER OIL COMPANY**  
TED R. TYNER



DIAL 2841  
PEMBROKE, N. C.

**B. & B. FEED STORE**  
*"Your Friendly Grocer"*  
PEMBROKE, N. C.

**CAROLINA CASUALTY  
INSURANCE**  
PEMBROKE, N. C.

**JUDDY'S GARAGE**  
FOR ALL REPAIR WORK  
AND PARTS

*We serve the public with a smile*

Phone 5701  
PEMBROKE, N. C.

*Compliments of*  
**D. M. McMILLAN CO.**  
*Your FORD Dealer  
Sales and Service*  
RED SPRINGS, N. C.

**Photos  
by  
GILLESPIE**

LUMBERTON, N. C.

*Compliments of*  
**LOCKLEAR'S  
GROCERY STORE**

J. L. LOCKLEAR, *Prop.*  
PEMBROKE, N. C.

*Compliments of*  
**THE COLLEGE  
ESSO  
SERVICE STATION**

**OIL, GAS AND SERVICE  
AUTO REPAIR  
QUICK LUNCH AND  
CONFECTIONS**

Phone Pembroke 2431  
EARL A. THOMAS, *Prop.*  
PEMBROKE, N. C.

**Patronize  
Our  
Advertisers**

**EDWARDS & BROUGHTON COMPANY**

Established in 1871  
Raleigh, North Carolina

**Printers of the 1951 INDIANHEAD**

---

Write for our representative to call at your  
school. . . . Estimates gladly submitted on  
Printed or Lithographed Annuals.

---

**THE LARGEST ANNUAL PRINTERS IN  
NORTH CAROLINA.**

AUTOGRAPHS

AUTOGRAPHS



Pembroke State College  
Library

Pembroke State College  
Library

EDWARDS & BROTHERS  
15, ABchurch Lane  
LONDON, E.C. 4  
ENGLAND