



# Indianhead

1952

Cage  
LD  
4481  
P4625  
I5  
v. 7

Dr. Robert Marsh

024.231

LIVERMORE LIBRARY - PEMBROKE STATE



3 3511 0014428 W

Cage  
LD  
4481  
.P4625  
I5  
v.7

24231

Pembroke State College Library

Presented by

*Dr. Robert F. Mack*



# *The 1952 Indianhead*

ELLEN JOYCE JACOBS  
*Editor*

JOHNNIE A. LOCKLEAR  
*Business Manager*

Volume VII

*Published by the*

SENIOR CLASS

PEMBROKE STATE COLLEGE

Pembroke, North Carolina



24, 231



OLD MAIN

Cage  
LD  
4481  
P4625  
IS  
U.1



SAMPSON HALL



READING ROOM

Dr. H. H. H. 24, 231 Acc. 5-20-54



LOCKLEAR HALL



GYMNASIUM



ARTS BUILDING



COOKING LABORATORY



## *President's Message*

The members of the staff of the 1952 INDIANHEAD have enjoyed the unique privilege of editing the yearbook for the year in which the college "became of age."

The members of the staff are the historians whose records of this significant year reflect the worthiness of the institution to which signal recognition has been paid by the Southern Association of Colleges when, in December, 1951, it formally admitted Pembroke State College to membership.

Faithful and loyal effort has been put forth in order that this volume might present a true picture of the college in 1951-52. Long hours of tedious and painstaking work have gone into this volume. We commend such meritorious service to those who in the future may set forth to record the virtues of the college that will be built eventually on these foundations.

DR. RALPH D. WELLONS

## Faculty



*First row, left to right:* J. WOODWARD BYARS, B.S., M.S., *Home Economics*. B.S., University of Tennessee; M.S., Iowa State College. BELLE WHYTE COLE, A.B., *Education*. Winthrop College, Rock Hill, South Carolina. M.R.E. and additional work in Religious Education at Southwestern Baptist Theological Seminary, Fort Worth, Texas. BERTHA DUNN, B.S., *Commerce*. University of Alabama; M.A., Northwestern University.

*Second row:* VERNON FELTON, B.S., N. C. State College, Emory and Henry College, Northwestern University, Chicago, Ill., B.S., Appalachian State Teachers' College, Graduate School University N. C. and A.S.T.C. JAMES A. JACOBS, B.S., M.Ed., *Registrar, Mathematics*. B.S., Murray State Teachers' College; M.Ed., Duke University. MARJORIE KANABLE, A.B., B.S., M.A., *Librarian*. A.B., Ohio Wesleyan University; B.S., M.A., University of Denver.

*Third row:* HAROLD W. KENNEDY, B.S., M.A., Ph.D., *Psychology and Education*. B.S., M.A., Ph.D., Ohio State University. IRA PATE LOWRY, B.S., M.S., *Music*. B.S., Dakota Wesleyan University; M.A., Ohio State University. REBA MILSAPS LOWRY, A.B., M.A., *French, Spanish, Expression*. A.B., Maryville College; M.A., University of Tennessee.

# Faculty



*First row, left to right:* ROBERT PRICE MARSH, B.S., M.S., Ph.D., *Science*. B.S., New York University; M.S., Ph.D., Rutgers University. GRADY ALLEN MARTIN, B.S., *Agriculture* B.S., *Agronomy*, M.S., North Carolina State College. CLIFTON OXENDINE, A.B., M.A., *Dean, History, Social Science*. A.B., McKendree College; M.A., George Peabody College for Teachers.

*Second row:* ANGELIKA RECKENDORF, A.B., M.A., *Art*. Zeichenlehreinnenzamen, Kunstgew erbeschule, Munich, Germany; Gewer beoberlehrerinnenenezamen, Gewerbelehrerinnenseminar, Potsdam, Germany; B.A., M.A., University of North Carolina. MARY SHARPE, A.B., M.A., *Primary Critic Teacher*. A.B., Winthrop College; M.A., Columbia University. B. V. SMAWLEY, B.S., M.A., *Athletic Director and Coach*. B.S., M.A., Appalachian State Teachers' College, Graduate School, George Peabody College.

*Third row:* FRANCES STINEBRING, B.S., M.A., *English*. B.S., Kent State University; M.A., Ohio State University. GEORGE R. SWANN, B.A., M.A., B.D., Th.M., Ph.D., *English*. B.A., Furman University; M.A., University of Virginia; B.D., Union Theological Seminary; Th.M., Crozer Theological Seminary; Ph.D., University of Pennsylvania. HERBERT H. TODD, A.B., M.A., Ph.D., *History, Social Science*. A.B., Ohio University; M.A., George Peabody College; Ph.D., Vanderbilt University.

## *College Assistants*



INEZ FREEMAN  
*Bookkeeper*



JUANITA OXENDINE  
*Secretary to Librarian*



WALTER PINCHBECK  
*Superintendent of Buildings  
and Grounds*



MERLIN LOWRY  
*Special Student*

*Custodians not photographed:* Timothy Stricklin, Joe Cummings, Joseph Jacobs.

## *Dedicated*

TO MISS MARY LIVERMORE

In recognition of one who gave her services so untiringly and unselfishly, we, the senior class of 1952, gratefully dedicate this INDIANHEAD to our friend and benefactor.

Her leadership ever inspires one to higher and nobler endeavors. Her ardent Christian character has always had a definite influence upon all who have come in contact with her.

Miss Livermore began her work here on the campus of Pembroke State College in 1941, serving as Head of the Department of Religious Education and Dean of Women. Resigning at the end of 1951, she was appointed as Dean of Women Emeritus.

Her interest in, and devotion to, our college serves as a guiding light.

## *A Real Friend*



MISS MARY LIVERMORE

*To One and All . . .*

## *Board of Trustees*

REV. L. W. JACOBS  
*Chairman*

J. OLIN BROOKS

D. F. LOWRY

J. A. SAMPSON

C. L. MAYNOR

GEORGE EMANUEL

A. G. LOWRY

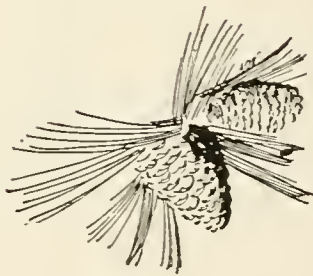
LESTER BULLARD

HARRY W. LOCKLEAR

HARDY W. LOCKLEAR

JOHN L. CARTER  
*Secretary*

JAMES E. HILLMAN, Ph.D.  
*State Department of Education, Director*



# *Classes*





Left to right: Ellen Joyce Jacobs, Dr. Harold Kennedy, Lindbergh Martin, Josephus Locklear, Maitland Dimery, Emae B. Locklear.

## *Senior Class Officers*

<i>President</i> .....	LINDBERGH MARTIN
<i>Secretary</i> .....	EMAE LOCKLEAR
<i>Treasurer</i> .....	HARVEY LOWRY
<i>Vice-President</i> .....	JOSEPHUS LOCKLEAR
<i>Social Chairman</i> .....	ELLEN JOYCE JACOBS
<i>Historian</i> .....	MAITLAND DIMERY
<i>Sponsor</i> .....	DR. HAROLD KENNEDY

# Seniors



*Left to right:*

MAGGIE LOIS BROOKS, A.B.

*Major—Music*

B.S.U. 1, 2, 3, 4; Piano 1, 2, 3, 4; Emeritan Society 1, 2, 3, 4; Y.W.A. 3; Band 3, 4; Glee Club 3, 4; Newspaper Staff 4.

GEORGE CHAVIS, B.S.

*Specialty—Grammar Grades*

WARD CLARK, B.S.

*Specialty—Grammar Grades*



BEULAH CORMIER, B.S.

*Specialty—Grammar Grades*

WILTON CUMMINGS, B.S.

*Major—Math*

W.F. 1, 2, 3, 4; W.F. Council 3; Emeritan Society 1, 2, 3, 4.

## Seniors



*Left to right:*

EULA MAE DIAL, B.S.

*Specialty—Primary*

B.S.U. 1, 2, 3, 4; B.S.U. Council 1, 2, 3, 4; Emeritan Society 1, 2, 3, 4; Y.W.A. President 2, 3, 4; Senior Representative to Student Council 4; Newspaper Staff 4; Class Treasurer 2.

RAY H. ELK, B.S.

*Specialty—Grammar Grades*

Air Force Veteran; Sports Editor P.S.C.; News 2; P.S.C. Art Editor 1; Editor of P.S.C. 4; Area Representative Air Force Association; Member of the Association of American Indians.

THELMA HAMMONDS, B.S.

*Specialty—Grammar Grades*

ELLEN JOYCE JACOBS, A.B.

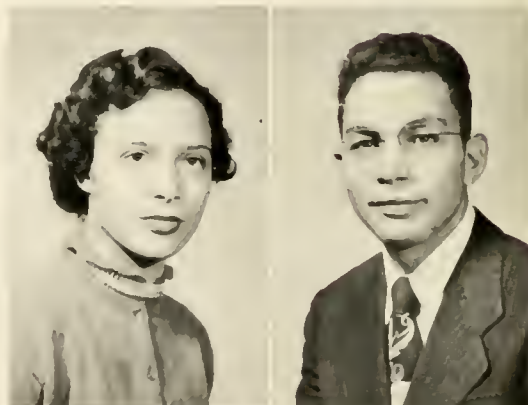
*Major, English, Minor Commerce*

Wesley Foundation Devotional Chairman 1; Wesley Foundation Secretary 2; Secretary Emeritan Society 2; Secretary Student Council 2; Marshal 1; Assistant Marshal 2; Chief Marshal 3; President of Wesley Foundation 3; Class Social Chairman 3, 4; *P.S.C. News Staff* 2, 3; Vice-President W.F. 4; Editor of *INDIAN-HEAD* 4; *Who's Who Among Students in American Colleges and Universities*.

ROBERT EARL JACOBS

*Specialty—Grammar Grades*

B.S.U. 1, 2, 3, 4; Class Secretary 1, 3; Emeritan Society 3, 4; Marshal 3.



# Seniors



*Left to right:*

DAPHNE L. JONES, A.B.

*Major—Music*

Emeritan Society 1, 2, 3, 4; B.S.U. 1, 2, 3, 4; Glee Club 2, 4; Band 3, 4; Home Economics Club 4; Marshal 3; Assistant Business Manager of Yearbook.

GLORIA JONES, B.S.

*Specialty—Primary Grades*

B.S.U. 1, 2, 3, 4; Emeritan Society 1, 2, 3, 4; Y.W.A. 3; Band 2; Glee Club 2; Assistant Editor of *P.S.C. News* 4.

CURT LOCKLEAR, B.S.

*Major—Science*



EMAE LOCKLEAR, B.S.

*Specialty—Primary*

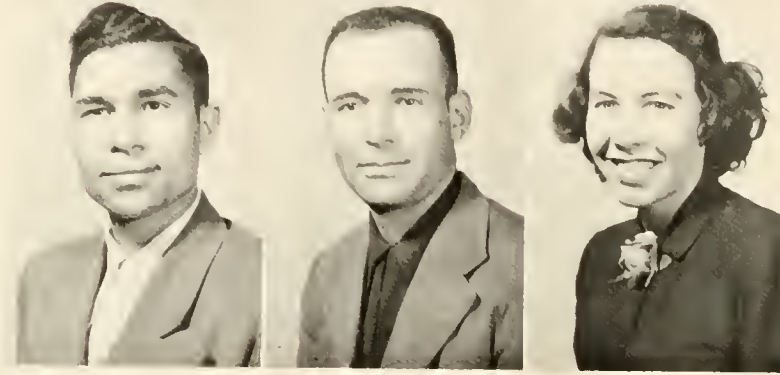
Emeritan Society 1, 2; Pontiac Society 3, 4; B.S.U. 1, 2, 3, 4; Council 3, 4; Class Officer 3, 4; Y.W.A. President 3.

JOHNNIE A. LOCKLEAR, A.B.

*Major—English, Minor—Social Studies*

Emeritan Society 1, 2, 3, 4; Secretary 3; B.S.U. 1, 2, 3, 4; Council 1, 2, 3, 4; Secretary-Treasurer Student Council 3; P.S.C. News 2, 3, 4; Business Manager INDIANHEAD 4.

## Seniors



*Left to right:*

JOSEPHUS LOCKLEAR, B.S.

*Specialty—Grammar Grades*

Pontiac Society 1, 2, 3, 4; Secretary of Pontiac Society 3; Champion 2; B.S.U. 1, 2, 3, 4; S.S. Representative of B.S.U. 2; Third Vice-President 3; First Vice-President 4; Vice-President of senior class 4; Band 3, 4; Marshal 4; Production Manager of *P.S.C. News* 4; Religious Representative of the Student Council 3.

LESLIE LOCKLEAR, B.S.

*Social Science*

Football 1, 2; Basketball 1, 2, 3.

SALLIE DALE LOCKLEAR, B.S.

*Major—Home Economics*

Emeritan Society 1, 2, 3, 4; B.S.U. 1, 2, 3, 4; Home Economics Club 1, 2, 3, 4; Glee Club 1; Basketball 1, 2, 3, 4.

SARA CATHERINE LOCKLEAR, B.S.

*Specialty—Primary*

Secretary of Class 1; Publicity Chairman of W.F. 2; Reporter 3; Personal Chairman 4; Pontiac Society 1, 2, 3, 4; Pontiac Treasurer 4; Y.W.A. 1, 2, 3, 4.

STEVE LOCKLEAR, B.S.

*Specialty—Grammar Grades*

President Pontiac Society 1, 2, 3; Treasurer of W.F. 2, 3; Social Representative to Student Council 3, 4; Band 2, 3, 4.



# Seniors



*Left to right:*

HARVEY LOWRY, A.B.

*Major—English, Minor—Mathematics*

Football 1, 2, 3; Basketball 1; Baseball 1, 2; Student Council 2, 4; Class President 2, 3; P.S.C. News Staff 2; Vice-President Emeritan Society 2; W.F. 1, 2, 3, 4; Assistant Editor INDIANHEAD 4; Class Treasurer 4.

HENRY FORD LOWRY, B.S.

*Major—Mathematics*

Football 1, 2.

HAROLD LINDBERGH MARTIN, A.B.

*History*

Emeritan Society 1, 2, 3, 4; B.S.U. 1, 2, 3, 4; Publicity Director 1; President 2; Enlistment Vice-President 3; Third Vice-President 4; Vice-President of the N. C. B.S.U. 3; President of N. C. B.S.U. 4; Football 1, 2, 3; Basketball 1, 2, 3; Editor of P.S.C. News 2; President of Senior Class 4; *Who's Who* 4; Ridgcrest Staff 1, 2, 3.



JAMES A. OXENDINE, B.S.

*Degree Specialty—Grammar Grade*

Band 3, 4.

MOLON STRICKLIN, B.S.

*Social Studies*

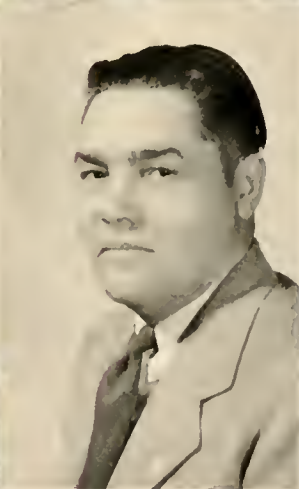
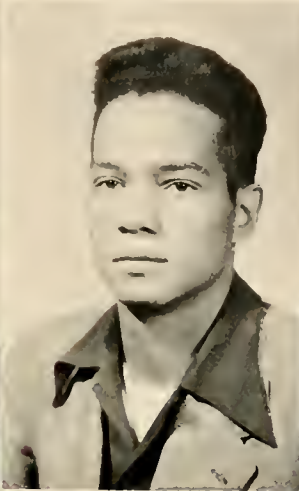
Football 1, 2, 3; Basketball 1.

## *Junior Class Officers*

<i>President</i> . . . . .	ELRIE LOCKLEAR
<i>Vice-President</i> . . . . .	WALTER SCOTT
<i>Secretary</i> . . . . .	PONELL LOCKLEAR
<i>Treasurer</i> . . . . .	MARIE LOCKLEAR
<i>Reporter</i> . . . . .	CARLIE OXENDINE
<i>Sponsor</i> . . . . .	MRS. REBA LOWRY



## *Juniors*

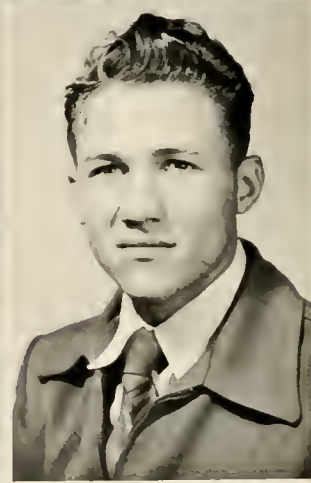


BERNICE BROOKS  
LUCILLE DORIS CHAVIS

WILLIAM D. BRYANT  
REEDY CHAVIS

HILTON C. CHAVIS  
LOCKY DEESE

## *Juniors*



ROSA UNA DIAL  
ETTA B. LOCKLEAR

ADELAIDE LOCKLEAR  
PONELL LOCKLEAR

ELRIE J. LOCKLEAR  
REESE LOCKLEAR

## *Juniors*



THETIS RAYE LOCKLEAR  
FANNIE LOU MAYNOR

WILLIAM PRICE LOCKLEAR  
CARLIE OXENDINE

EVA LOWRY  
CHARLES W. OXENDINE, JR.

## *Juniors*



FARCE OXENDINE

PATTIE OXENDINE

THADIS OXENDINE

EARL BOWMAN SAMPSON

WALTER M. SCOTT

## *Sophomore Class Officers*



*Left to right:* Mabel Moore, Mrs. B. Dunn, George Oxendine, Marvin Ransom, Hardy Deese.

<i>President</i> .....	GEORGE OXENDINE
<i>Vice-President</i> .....	HARDY DEESE
<i>Secretary and Treasurer</i> .....	MABEL MOORE
<i>Student Council Representative</i> .....	MARVIN RANSOM
<i>Reporter</i> .....	ELMER HUNT

## *Sophomores*

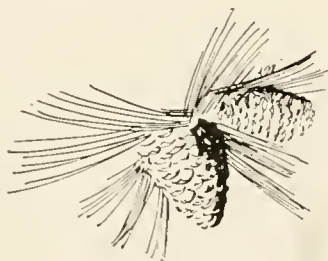


GURNEY BULLARD  
GEORGIE ANN CLARK

ADERINE CARTER  
LOUISE CHAVIS

LORRAINE CHAVIS  
HARDY DEESE

SHERMAN CHAVIS  
GRACE DIAL



## *Sophomores*

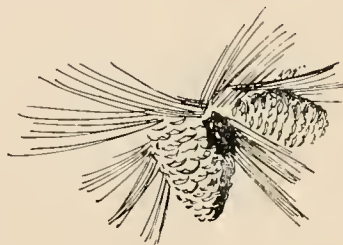


ELMER HUNT  
ELIER LOCKLEAR

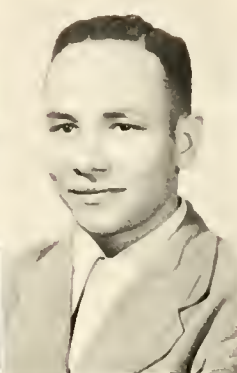
KATIE JONES  
JOHN LOCKLEAR

BERTHA LOCKLEAR  
LUDALIA LOCKLEAR

DOROTHY LOCKLEAR  
VERDIA LOCKLEAR



## *Sophomores*

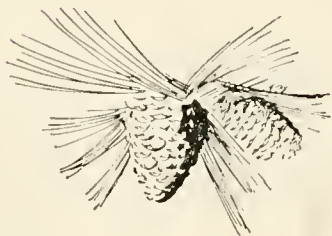


ADELINE LOWRY  
MABEL MOORE

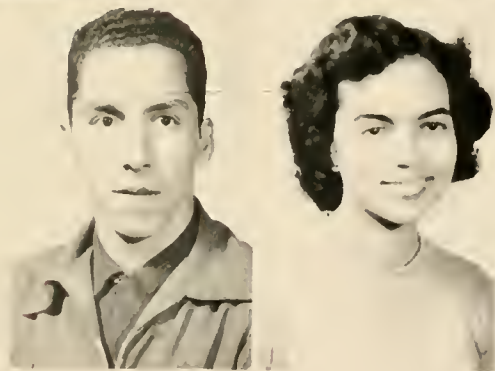
DULIN LOWRY  
ANNIE L. OXENDINE

JACQUELINE LOWRY  
GEORGE W. OXENDINE

LOIS M. LOWRY  
PLUMMER OXENDINE



## *Sophomores*



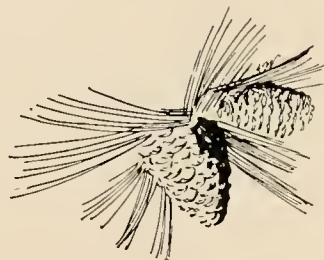
EYRTLE RANSOM

MARVIN RANSOM

JOHN H. SAMPSON

OSCAR SAMPSON

SUE SANDERSON





*Left to right:* Miss Frances Stinebring, Priestly Lowry, Denford Oxendine, Ralph Hunt, Norma Thompson.

## *Freshman Class Officers*

<i>President</i> .....	DENFORD OXENDINE
<i>Secretary</i> .....	NORMA THOMPSON
<i>Treasurer</i> .....	PRIESTLY LOWRY
<i>Vice-President</i> .....	RALPH HUNT
<i>Sponsor</i> .....	MISS FRANCES STINEBRING

## *Freshmen*

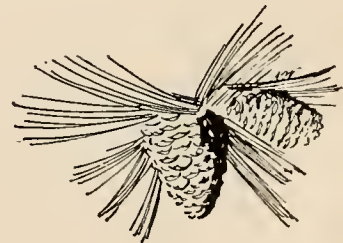


ADOLPH BLUE  
PATRICIA CLARK

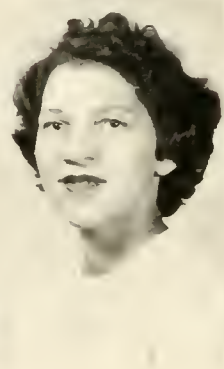
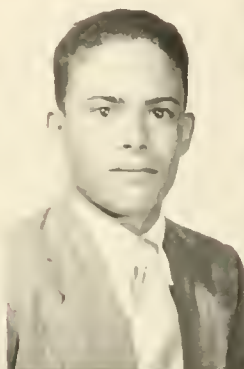
DOROTHY BROOKS  
MARY CUMMINGS

MILSIE BULLARD  
ISA DEESE

CHARSTIE CHAVIS  
JOHN DEESE



## *Freshmen*

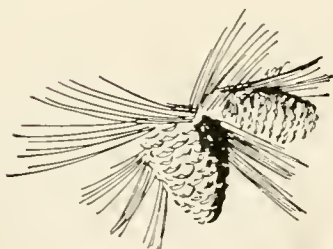


DOSHIE HAMMONDS  
BILL R. LOCKLEAR

KATIE KATHERINE HUNT  
EVA MAE LOCKLEAR

RALPH HUNT  
KATRINA LOCKLEAR

BLOSSIE MAE LAMBERT  
MARY SUE LOCKLEAR



## *Freshmen*

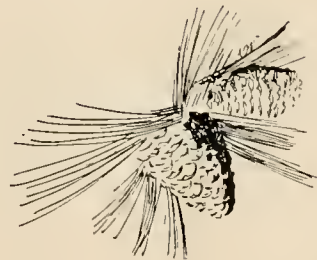


ALTA LOWRY  
DENFORD OXENDINE

LOU HENRY LOWRY  
EVA OXENDINE

MARVIN LOWRY  
EVIE OXENDINE

PRIESTLY LOWRY  
LOLETA OXENDINE



24, 231

## *Freshmen*

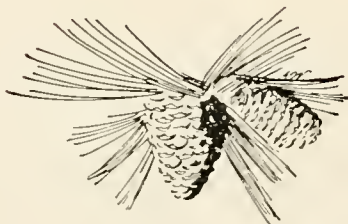


MIRA OXENDINE  
MARGARET STRICKLAND

RONNIE OXENDINE  
LILLIAN THOMAS

THADYS OXENDINE  
NORMA THOMPSON

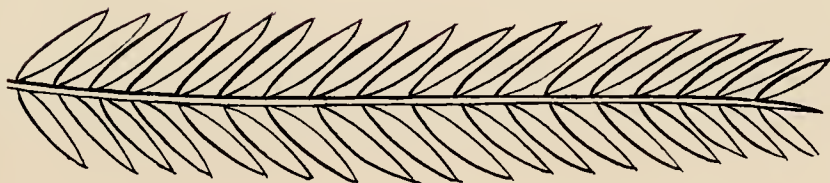
EARL SCOTT  
JACOB WEST



*Athletics*

*Societies*

*Clubs*



# *Annual Staff*



ELLEN JOYCE JACOBS  
*Editor*



JOHNNIE A. LOCKLEAR  
*Business Manager*



HENRY FORD LOWRY  
*Advertising Manager*



HARVEY LOWRY  
*Assistant Editor*



DAPHNE L. JONES  
*Assistant Business Manager*



DR. HAROLD KENNEDY  
*Adviser*

# P. S. C. News



RAY H. ELK  
*Editor-in-Chief*



GLORIA JONES  
*Assistant Editor*



ELMER HUNT  
*Business Manager*

## P.S.C. EDITORIAL STAFF

*Editor-in-Chief*.....RAY H. ELK  
*Assistant Editor*.....GLORIA JONES  
*Sports Editor*.....GEORGE OXENDINE  
*News and Feature Editor*.....STEVE LOCKLEAR  
*Social Editor*.....EULA M. DIAL  
*Alumni Editor*.....ELRIE LOCKLEAR  
*Production Manager*.....JOSEPHUS LOCKLEAR  
*Assistant Production Manager*.....CHARLES OXENDINE  
*Art Editor*.....WALTER SCOTT

*Assistant Art Editor*.....PLUMMER OXENDINE  
*Typists:* ADELINE LOWRY, THADYS OXENDINE,  
MAGGIE L. BROOKS, DULIN LOWRY

## P.S.C. NEWS BUSINESS STAFF

*Business Manager*.....ELMER HUNT  
*Assistant Business Manager*.....ERYTLE RANSOM  
*Advertising Manager*.....CARLIE OXENDINE  
*Circulation Manager*.....RONALD SAMPSON

One of the busiest offices on the campus this year was the haven of the college journalists. The office of the *P.S.C. News* is located in the Locklear Hall. It is the last office to be vacated when the college day is completed, as the student journalists keep arranging and pounding the typewriters in the process of newspaper publication.

All the students on the staff are volunteers who, besides their studies, take their extra time to produce the latest news for the student-body week after week during the college year.

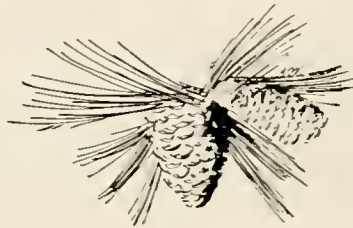


*Seated, left to right:* Gloria Jones, Adeline Lowry, Eula Mae Dial.  
*Back row:* Elmer Hunt, Carlisle Oxendine, Ronald Sampson, Steve Locklear, Josephus Locklear, Thadys Oxendine.

## *Student Council*



*Left to right:* Miss Belle Cole, Dean Clifton Oxendine, Bernice Brooks, Steve Locklear, Thadis Oxendine, Marvin Ransom, Farce Oxendine, Eula Mae Dial, Elrie Locklear.



## *Emeritan Society*



Bernice Brooks, Dorothy Brooks, Maggie L. Brooks, Adolph Blue, Milsie Mae Bullard, Adrene Carter, Charstie L. Chavis, Lorraine Chavis, Louise Chavis, Lucille Chavis, Reedy Chavis, Mary Louise Cummings, Wilton Cummings, Hardy Deese, Isa P. Deese, Eula Mae Dial, Grace Dial, Rosa Dial, Maitland Dimery, Mrs. Bertha Dunn, Doshie M. Hammonds, Joyce Jacobs, Robert E. Jacobs, Gloria Jones, Katie Jones, Blossie Lambert, Adelaide Locklear, Clearcie Locklear, Dorothy Locklear, Elrie Locklear, Johnnie A. Locklear, Katrina Locklear, Bertha L. Locklear, Ludalia Locklear, Ponell Locklear, Sallie Locklear, Mary Sue Locklear, Thetis Locklear, Adeline Lowry, Eva Lowry, Lou Henry Lowry, Marvin Lowry, Priestly Lowry, Reba Lowry, Lindbergh Martin, Lois Mitchell, Carlie Oxendine, Charles Oxendine, Denford Oxendine, Evie L. Oxendine, Loleta Oxendine, Mira L. Oxendine, Pattie Oxendine, Thadys Oxendine, Thadis Oxendine, Eyrtle Ransom, Marvin Ransom, Ronald Sampson, Sue Sanderson, Frances Stinebring.



## *Pontiac Society*

William Bryant, Gurney Bullard, Sherman Chavis, Georgia A. Clark, Patricia Clark, Beulah Cormier, Lockey Deese, Joyce Dimery, Thelma Hammond, Katie Hunt, Bill Locklear, Etta B. Locklear, Eva M. Locklear, Josephus Locklear, Marie Locklear, Sara Locklear, Steve Locklear, Verdie Locklear, Altha Lowry, Jackie Lowry, Fannie L. Maynor, Mabel Moore, Eva M. Oxendine Farce Oxendine, George Oxendine, Ronnie Oxendine, John H. Sampson, Earl Scott, Mary Sharpe, Lillian Thomas, Dr. Herbert Todd, Jacob West.



## *B. S. U. Council*

*Left to right, first row:* Bernice Brooks, Emae Locklear, Lindbergh Martin, Georgia A. Clark, Bertha Lois Locklear. *Second row:* Miss Belle Cole, Thadys Oxendine, Maggie L. Brooks, Johnnie A. Locklear, Adrine Carter, Josephus Locklear, Eula Mac Dial, Elrie Locklear.

## *B. S. U. Group*



Bernice Brooks, Maggie L. Brooks, Dorothy E. Brooks, Milsie M. Bullard, Adrine Carter, George Chavis, Lorraine Chavis, Lucille Chavis, Louise Chavis, Georgia A. Clark, Patricia Clark, Miss Belle Cole, Louise Cummings, Garner Deese, Isa P. Deese, Locky Deese, Hardy Deese, Elmer Hunt, Katie Hunt, Ralph Hunt, Robert E. Jacobs, Daphne L. Jones, Katie L. Jones, Blossie M. Lambert, Adelaide Locklear, Emae Locklear, Dorothy Locklear, Johnnie A. Locklear, Josephus Locklear, Katrina Locklear, Elrie Locklear, Sallie D. Locklear, Elmer Locklear, Bertha Lois Locklear, Ludalia Locklear, Sue Locklear, Adeline Lowry, Altha Lowry, Jackie Lowry, Lindbergh Martin, Plummer Oxendine, Thadys Oxendine, George Oxendine, Juanita Oxendine, John H. Sampson, Margaret Stricklin.

# Wesley Foundation



COUNCIL: *Seated, left to right:* Rosa Dial, Grace Dial, Thadis Oxendine, Charles Oxendine, Ward Clark, Jr., Sue Sanderson, Pattie Oxendine. *Standing:* Rev.-Linwood Blackburn, Lois M. Lowry, Joyce Jacobs, Steve Locklear, Ponell Locklear, Loleta Oxendine, Annie L. Oxendine, Miss Majorie Kanable, Marie Locklear, Sarah Catherine Locklear.



GROUP: Rev. Linwood Blackburn, Adolph Blue, William D. Bryant, Gurney Bullard, Reedy Chavis, Ward Clark, Jr., Beulah Cormier, Wilton Cummings, Grace Dial, Rosa Dial, Joyce Dimery, Mrs. Bertha M. Dunn, Thelma Hammonds, Joyce Jacobs, Miss M. Kanable, Bill R. Locklear, Clearcie Locklear, Etta B. Locklear, Eva Locklear, Marie Locklear, Ponell Locklear, Reese Locklear, Sarah C. Locklear, Steve Locklear, Thetis R. Locklear, Verdine Locklear, Eva Lowry, Priestly Lowry, Isa Perkins, Reba Lowry, Robert P. Marsh, Lois Mitchell, Mabel Moore, Annie L. Oxendine, Carlie Oxendine, Charles W. Oxendine, Denford A. Oxendine, Eva Mae Oxendine, Evie L. Oxendine, Farce Oxendine, Loleta Oxendine, Lou Henry Oxendine, Pattie Oxendine, Thadis Oxendine, Angelika Reckendorf, Ronald Sampson, Sue Sanderson, Jacob West.



## Spanish Club

*First row, left to right:* Doshie M. Hammonds, Faye Thomas, *Second row:* Loleta Oxendine, Joyce Dimery, Beulah Cormier, Lindberg Martin, Joyce Jacobs. *Third row:* Grace Dial, Ludalia Locklear, Lucille Chavis, Blossie M. Lambert, Eyrle Ransom. *Fourth row:* Isa P. Deese, Plummer Oxendine, Elmer Hunt, Mrs. R. Lowry, Clearcie Locklear, Marvin Ransom, Walter Scott

## Social Club



Dorothy E. Brooks, Maggie L. Brooks, Adrine Carter, Charstie Chavis, Lorraine Chavis, Louise Chavis, Georgia A. Clark, Patricia Clark, Beulah Cormier, Locky Deese, Eula Mae Dial, Maitland Dimery, Thelma Hammonds, Katie K. Hunt, Joyce Jacobs, Robert E. Jacobs, Gloria Jones, Katie Jones, Blossie Lambert, Adelaide Locklear, Clearcie Locklear, Dorothy Locklear, Emae Locklear, Katrina Locklear, Lois Locklear, Ludalia Locklear, Sallie D. Locklear, Sarah C. Locklear, Steve Locklear, Sue Locklear, Thetis Locklear, Adeline Lowry, Altha Lowry, Eva Lowry, Jackie Lowry, Priestly Lowry, Lois Mitchell, Denford Oxendine, Eva Oxendine, Eva M. Oxendine, Farce Oxendine, George Oxendine, Ronnie Oxendine, Thadys Oxendine, Sue Sanderson, Earl Scott, Margaret Strickland, Jacob West.

## *Veteran's Club*



*First row:* Thadis Oxendine, Marvin Ransom, Sherman Chavis, Elric Locklear, John B. Locklear,  
*Second row:* Ray Elk, Walter Scott, Reedy Chavis, John H. Sampson, Elmer Hunt.



## *Home Economics Club*

Miss J. Woodward Byars, Charstie L. Chavis, Lucille Chavis, Ray Elk, Doshie M. Hammonds,  
Bertha Lois Locklear, Eva Locklear, John B. Locklear, Katrina Locklear, Mary Sue Locklear,  
Sallie Dale Locklear, Verdie Locklear, Lindbergh Martin, Annie L. Oxendine.



## *Alpha Psi Omega*

*First row, left to right:* Carlie Oxendine, Emae Locklear, Elrie Locklear, Rosa Dial, Reese Locklear, Johnnie A. Locklear. *Second row:* Adeline Lowry, Mrs. R. Lowry, Bernice Brooks, Charles Oxendine, Reedy Chavis, Lindbergh Martin.

## *Dramatics*



Bernice Brooks, Charstie L. Chavis, Reedy Chavis, George Chavis, Eula M. Dial, Rosa Dial, Katie Jones, Elrie Locklear, Emae Locklear, John B. Locklear, Johnnie A. Locklear, Katrina Locklear, Sallie Dale Locklear, Sarah C. Locklear, Verdine Locklear, Adeline Lowry, Jackie Lowry, Lindbergh Martin, Carlie Oxendine, Charles Oxendine, Thadis Oxendine, Molon Stricklin, Mrs. Reba Lowry.

## *Library Staff*



*Left to right:* Miss Marjorie Kanable, Maitland Dimery, Josephus Locklear, Robert Earl Jacobs, Juanita Oxendine.



Side View of Sampson Hall



*Y. W. A.*

*Seated, left to right:* Bertha L. Locklear, Lorraine Chavis, Adrine Carter, Thadys Oxendine, Miss Belle Cole. *Standing:* Blossie M. Lambert, Louise Chavis, Patricia Clark, Margaret Strickland, Sue Sanderson, Emae Locklear, Adelaide Locklear, Sarah C. Locklear, Eula Mae Dial, Maitland Dimery, Georgia A. Clark, Thetis R. Locklear, Charstie L. Chavis, Katrina Locklear.

## *Marshals*



*First row, left to right:* Lois M. Lowry, Ellen Joyce Jacobs, chief; Annie Lois Oxendine. *Second row:* Josephus Locklear, Thadis Oxendine, assistant chief; Walter Scott, Robert Earl Jacobs.

## *Glee Club*



*First row, left to right:* Lorraine Chavis, Adrine Carter, Mira L. Oxendine, Thetis R. Locklear, Dorothy Locklear, Elrie Locklear, Fannie L. Maynor. *Second row:* Emac Locklear, Bernice Brooks, Thadys Oxendine, Lois Mitchell, Robert E. Jacobs, Carlie Oxendine. *Third row:* Marvin Ransom, John H. Sampson, Charles Oxendine, Reedy Chavis, Merlin Lowry, Elmer Hunt.



## *Band*

Bernice Brooks, Maggie L. Brooks, Adrine Carter, Grace Dial, Rosa Dial, Maitland Dimery, Robert E. Jacobs, Daphne L. Jones, Adelaide Locklear, Elrie Locklear, Etta B. Locklear, Josephus Locklear, Ludalia Locklear, Marie Locklear, Ponell Locklear, Reese Locklear, Steve Locklear, Verdie Locklear, Fannie L. Maynor, Lois Mitchell, Annie L. Oxendine, Charles W. Oxendine, James A. Oxendine, Thadis Oxendine, Mira Lee Oxendine, Ira Pate Lowry.



*Left to right:* George Oxendine, Adolph Blue, Earl Scott, Ned Sampson, Farce Oxendine, Reese Locklear, Denford Oxendine.

### BRAVE'S CAGE COACHES

After former coach Smawley returned to pro-basketball, Coach Felton replaced him (Smawley is on leave of absence) and guided the scalping Braves through a successful season. Both Coach Felton and Coach Smawley are graduates and former star athletes of Appalachian State Teacher's College.



Vernon Felton

### P.S.C. WARPATH

Pembroke State College has advanced to higher standards in education. The past year it was admitted as a member to the Southern Association of Colleges, and this year 1952, it became a member of the Association of American Colleges, but that is not all. It revised its athletic program under two new coaches. Belus Smawley, who with the mediocre Braves basketball crew lost its first five games, was called back to pro-basketball to play with the Baltimore Bullets. In his place, Vernon Felton, ex-Appalachian State Teachers' College athlete, took over the reins and developed a dominative Brave crew which hung up twelve victory scalps while losing ten games during the season.

This is the first time in the college's history the Athletic Department has scheduled a full slate, and the 1951-52 Braves squad, although lacking sufficient height, will be remembered as an outstanding college team. Among the Braves' victims during the season were: The towering Appalachian State Teachers' College Mountaineers, Chowan College, Charlotte College, Louisburg College, Edwards Military Institute, Pfeiffer College, High Point College, and Presbyterian College.

1951-52  
BASKETBALL RECORD

(Won 12    Lost 10)

Players that created much ado throughout the season were Captain Ned Sampson, Farce Oxendine, and a newcomer, Earl Scott. Sampson totaled 535 points in 22 games. Oxendine, the ace Brave center, followed with 446 points in 19 games. Scott, Freshie forward, who has developed into a jumping-jack, has continuously set up many of the Braves scoring plays and surprised the P.S.C. fans with his unique style of shooting.

Among the charges of Coach Felton were other capable players, too, such as Reese Locklear, George Oxendine, Ralph Hunt, Adolph Blue, Denford Oxendine, and the wounded veteran Marvin Lowry. Due to a leg injury in the Korean War, Marvin was forced to the sideline halfway through the season depriving the Braves of one of their best defensive men.

Opp.	Opponent	P.S.C.
71	Campbell College	39
78	Wingate College	59
81	Louisburg College	59
75	Campbell College	63
81	Wingate College	68
62	Pfeiffer College	64
39	Chowan College	67
62	Pfeiffer College	70
63	Charlotte College	81
65	Appalachian State	81
58	Chowan College	73
61	Louisburg College	62
66	Charlotte College	58
70	Presbyterian College	73
59	High Point College	63
50	Edward Military Institute	82
64	Wilmington College	55
44	Edwards Military Institute	53
58	Presbyterian College	71
83	Appalachian State	43
79	High Point College	74
104	Wilmington College	83
Total: 1,473		1,441

Court Ballet



Frog Men



Farce hits again

Scott plunking it in



*Kneeling, left to right:* Katrina Locklear, Ludalia Locklear, Louise Chavi Adrine Carter, Sue Locklear. *Standing:* Sallie Dale Locklear, Thetis Locklear, Katie Jones, Elric Locklear, Bernice Brooks, Dorothy Locklear.

## P.S.C. CO-ED BASKETBALL RECORD

Prospect	23	P.S.C.	38
Campbell	27	P.S.C.	18
Pfeiffer	16	P.S.C.	20
Campbell	55	P.S.C.	28
Pfeiffer	41	P.S.C.	26
Lumberton	10	P.S.C.	37

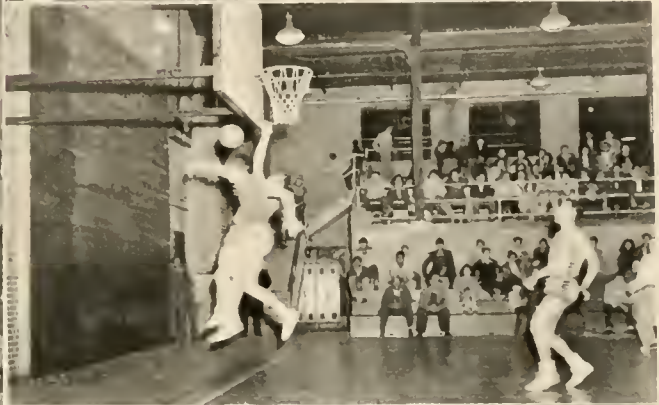
## *Intramural Program*

Due to a late start, the girls' basketball team of P.S.C. played only six games which ended with three wins and three losses. Coach Felton set up an intramural program where the co-eds formed teams, and at the present time the league is still going strong.

### Action Shots



## Action Shots



*Who's Who Among Students in*



HAROLD LINDBERGH MARTIN

*American Colleges and Universities*



ELLEN JOYCE JACOBS



*Around the Campus*



## *Sadie Hawkins Day*



1. Grim determination, 2. The Race begins, 3. Who's the lucky girl? 4. No effort to escape, 5. Caught in the inner land, 6. Not in the race, 7. Just for fun, 8. Prize Winner! 9. Bashful Sadies, 10. Examining the catch, 11. Square and the prize winners, 12. Check those legs! 13. Tired three-some, 14. Was he caught? 15. Satisfied with catch, 16. Weary and worn.

## *Valentine Party*



KING AND QUEEN

GRACE DIAL

REESE LOCKLEAR

KING, QUEEN AND ATTENDANTS



*Left to right:* Ronald Sampson, Katie L. Jones, Robert E. Jacobs, Margaret Strickland, Grace Dial, Reese Locklear, Gloria Jones, Adolph Bluc, Lorraine Chavis, George Oxendine

*Compliments of*

# *The Scottish Bank*

---

LUMBERTON

Salemburg      Pembroke      St. Pauls

Red Springs      Garland

Fair Bluff      China Grove      Salisbury

For Convenience—Nine Branches

---

*Deposits Insured Up to \$10,000 by Federal*

*Deposit Insurance Corporation*

*Compliments of*

# PEMBROKE FURNITURE CO.

WESTINGHOUSE  
*and*  
PHILCO RADIOS *and* APPLIANCES  
COMPLETE HOME FURNISHINGS

PEMBROKE, N. C.

**TYNER OIL COMPANY**  
TED R. TYNER

GAS : KEROSENE  
FUEL OIL

Dial 2841  
PEMBROKE, N. C.

*Compliments of*

**QUALITY CLEANERS**

William X. Oxendine, Prop.

CLEANING : PRESSING : DYEING  
ALTERING : HAT BLOCKING

PEMBROKE, N. C.  
Phone Pembroke 3911

**B. & B. FEED STORE**

*"Your Friendly Grocer"*

PEMBROKE, N. C.

**Pembroke Hardware Co.**

*Complete Stock of Shelf Hardware  
Electrical Appliances*

P. O. Box 133 Pembroke, N. C.

**MAYNORS BARBER AND BEAUTY SHOP**

CONGRATULATIONS TO THE PRESIDENT, FACULTY, SENIORS AND OTHER  
CLASSES ON THEIR SPLENDID EFFORT

*Visit With Us Often*

PEMBROKE, N. C.

Call 5451

*Compliments of*  
**SERVICE OIL COMPANY**

*Distributors of*  
**GREASE                      OIL**  
**AND GASOLINE PRODUCTS**

---

*"Patronize Your Nearest Esso Dealer"*

---

**LAURINBURG, NORTH CAROLINA**

*Compliments of*  
**OXENDINE WATCH SHOP**  
  
**EXPERT WATCH REPAIR**  
  
**PEMBROKE, N. C.**

---

*Compliments of*  
**MAYNOR'S BROTHERS**

*Dealers in TIMBER*  
*Buying and Manufacturing*  
  
Vance & 2nd Street      Phone 6511  
**PEMBROKE, N. C.**

*Compliments of*  
**THE COLLEGE**  
**ESSO**  
**SERVICE STATION**

**OIL, GAS AND SERVICE**  
**AUTO REPAIR**

**QUICK LUNCH AND**  
**CONFECTIONS**

Phone Pembroke 2431  
**CHARLIE CHAVIS, Prop.**  
**PEMBROKE, N. C.**

## THE LUMBERTON MUSIC STORE

412 Chestnut Street  
LUMBERTON, NORTH CAROLINA

### THE HOUSE OF BALDWIN

*Exclusive Dealers in Baldwin Pianos and Electronic Organs*  
We also maintain staff of Experienced, Qualified Piano Tuners and Technicians — All Repair Work and Tuning Guaranteed.

THE PEMBROKE STATE COLLEGE USES  
BALDWIN PIANOS EXCLUSIVELY

*Call on, write or phone us for complete Piano Sales and Service*

## THE LUMBERTON MUSIC STORE

412 Chestnut Street  
LUMBERTON, NORTH CAROLINA  
PHONE 3730

*Good Clean Sports and Fun  
for All is Our  
Business*

**LOWRY**  
**BILLIARDS, BOWLING**  
**and**  
**SANDWICHES**

Pembroke Recreation Hall

### **SAMPSON'S DRY CLEANERS**

24-Hour Dry Cleaning Service  
*Complete Laundry Service*

PEMBROKE, N. C.

### **MAYNORS BARBER & BEAUTY SHOP**

*Congratulates the Faculty, Seniors  
and Other Classes on Their  
Splendid Effort*

VISIT WITH US OFTEN

PEMBROKE, N. C.

*Compliments of*

**PATES SUPPLY COMPANY, INC.**

HARDWARE  
GROCERIES  
DRY GOODS  
ELECTRICAL APPLIANCES  
COTTON and FERTILIZERS

*"Everything for the Farm and Home"*

PEMBROKE, NORTH CAROLINA

R. E. WILKINS

FRANK WHITE

*Compliments of*

**LIBERTY WAREHOUSES**

LUMBERTON, NORTH CAROLINA

H. D. GOODE

R. H. LIVERMORE, JR.

We extend greetings to the members of the graduating class of Pembroke State College. *The Robesonian* deeply appreciates the work you are doing in the field of education and is always glad to cooperate with you.



# THE ROBESONIAN

*Member Associated Press*

PUBLISHED DAILY, MONDAY THROUGH FRIDAY

LUMBERTON, NORTH CAROLINA

*Compliments of*

**PEMBROKE IMPLEMENT CO., INC.**

*We Strive to Please*

YOUR ALLIS-CHALMERS  
FARM MACHINERY DEALER

BUCKEYE AND SILENT FLAME TOBACCO CURERS

COMPLETE GARAGE SERVICE

*Wrecker Service*

Phone 5601

FRANK S. WHITE, *Manager*

R. L. LITTLETON, *Sales Manager*

CARL STUBBS, *Shop Manager*

PEMBROKE, N. C.

*Compliments of*

## **PATE'S SUPPLY AUCTION SALE**

SALES EVERY FRIDAY, 2:30 P.M.

*We Buy Top Hogs Daily*

CATTLE . . . HOGS

*and*

OTHER ITEMS YOU WISH TO DISPOSE OF

*We Carry on Hand At All Times*

MISSOURI MULES and HACKNEY WAGONS

FRANK S. WHITE, *Manager*

PATES, NORTH CAROLINA

## **YOUR LOCAL F.C.X. SERVICE**

PEMBROKE, N. C.

**WE SPECIALIZE IN QUALITY**

QUALITY SEEDS, FEEDS, FERTILIZER

FARM MACHINERY

ELECTRICAL APPLIANCES

FENCING

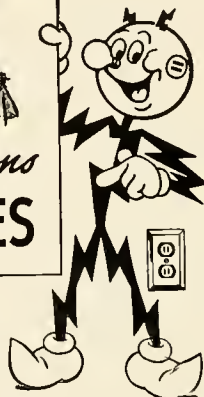
BUILDING MATERIALS, AND BABY CHICKS

*Farmer Owned and Controlled*

Telephone 5791



**CAROLINA  
POWER & LIGHT  
COMPANY**



*Compliments of*  
**The National Bank  
of Lumberton**

**WE PAY TWO PER CENT  
INTEREST ON SAVINGS**

*Member Federal Reserve System*  
All Deposits Insured up to \$10,000.00

**LUMBERTON, N. C.**

*Compliments of*  
**RED SPRINGS  
SUPPLY CO., INC.**

**THE FRIENDLY STORE**

Office Phone 3271  
Store 3701  
**RED SPRINGS, N. C.**

*Compliments of*  
**RED SPRINGS  
DRUG CO.**

*Prescription Specialists*

**RED SPRINGS, N. C.**

*Compliments of*  
**BAXLEY & JOHNSON**

**CHEVROLET**  
*Sales and Service*

**RED SPRINGS, N. C.**

### OLD FOUNDRY CAFE

*The Place for Your Parties  
Large or Small*

Dial 5726  
LUMBERTON, N. C.  
Hubert Oxendine, *Mgr.*

### Old Foundry Motor Company USED CARS

Body Shop    Wrecker Service  
*New and Used Parts*

DIAL 4780 or 5726  
LUMBERTON, N. C.  
Hilton Oxendine, *Mgr.*

### CARTER FLORIST *Flowers for All Occasions*

Phones

DAY 6731

NIGHT 3931

*Compliments of*

### LUMBERTON SALES COMPANY, Inc.

ALLIS-CHALMERS FARM EQUIPMENT, CUSHMAN MOTOR SCOOTERS  
EVINRUDE OUTBOARD MOTORS, U.S. ROYAL TIRES : LUMBERTON, N. C.

*Compliments of*

### TOWNSEND'S PHARMACY

*Rexall Store*

=====

We Fill All Doctors'  
P R E S C R I P T I O N S  
Carefully and Promptly

=====

Phone 2631  
RED SPRINGS, N. C.

*Compliments of*

### SINGLETON AND McMILLAN, Inc.

=====

PONTIAC-STUDEBAKER

INTERNATIONAL  
HARVESTER

*Sales and Service*

=====

Phone 3971  
RED SPRINGS, N. C.

*Compliments of*

**B. C. MOORE  
and SON**

*We Feature  
CURLEE CLOTHES  
For the Men Who Care*

REGULAR, SHORTS  
and STOUTS

Phone 2436  
RED SPRINGS, N. C.

*Compliments of*

**HOME FURNITURE  
COMPANY, INC.**

RED SPRINGS, N. C.

*Compliments of*

**PEMBROKE MOTOR CO.**

FORD Sales and Service  
Phone 5511 Pembroke, N. C.

*Compliments,*

BETTER YIELDS BEGIN WITH  
**V. C. FERTILIZERS**  
HARRY W. LOCKLEAR, Agent

**MODERN MOTORS  
Inc.**

*Authorized  
LINCOLN  
and  
MERCURY  
Dealer*

LUMBERTON, N. C.

**HENDRIX SAFEWAY  
GROCERY & MARKET**

PLAIN and FANCY GROCERIES  
"Pleasing You Pleases Us"  
Phone 2591 Pembroke, N. C.  
Raymond Hendrix, Owner

**PATRONIZE  
OUR  
ADVERTISERS**

# AMERICAN SERVICE CENTER

*We Serve to Satisfy*

REGULAR MEALS : FOUNTAIN SERVICE  
AMOCO GAS AND OIL

FULLY EQUIPPED FOR MINOR AUTO REPAIRS

*Our Specialty!*

External and Internal AUTO CLEANING

T. B. SANDERSON, Prop.

PHONE 2451

PEMBROKE, NORTH CAROLINA

## McNEILL'S CLEANERS

24 YEARS OF  
DEPENDABLE SERVICE

Phone 2941  
RED SPRINGS, N. C.

## CITY MARKET

*"Home of Better Foods"*

FRESH MEATS  
VEGETABLES : FRUITS

Allen McGirt, Prop.  
Phone 3251 - Pembroke

## Pembroke Mutual Burial Association, Inc.

Dial 3181—Day or Night

*"We Are Waiting to Serve You"*

**Pembroke Funeral Home**  
PEMBROKE, N. C.

## FREEMAN MOTOR CO.

*Sales — PACKARD — Service*

Telephone 3224  
2nd and Chestnut Streets  
LUMBERTON, N. C.

"RED" FREEMAN

COBLE WILSON

*Compliments of*  
**ROGERS  
DRUG STORE**

*The Rexall Store*  
**WHERE EVERYBODY IS WELCOME**

**PRESCRIPTIONS COMPOUNDED BY  
REGISTERED DRUGGIST**

**PEMBROKE, NORTH CAROLINA**

---

*Compliments of*  
**JONES FOOD STORE**  
PHONE 2441 PEMBROKE, N. C.

---

**EDWARDS & BROUGHTON COMPANY**  
**Printers of the 1952 INDIANHEAD**

*Write for our Representative  
to call at your school.*

Established in 1871  
**RALEIGH, NORTH CAROLINA**







OWENS & MERRITT CO.  
LONDON  
NEW YORK  
NEWCASTLE