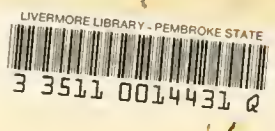


Cage
LD
4481
P4625
I5
v.9
c.2

024,414



Cage
LD
4481
.P4625
I5
v.9
c.2

24414

(1954)





"Like thy dancing waves in sunlight,
Make me glad and free,
Like the straightness of the pine trees,
Let me upright be."

Hail To P. S. C.

Reba M. Lowry, 1954

Ira Pate Lowry, 1954.


Where Caro-Li-nd's Loft-y Pine trees Pierce the South-ern blue,

Proud-Ly stands our Al-ma Ma-ter Cou-ra-geous, strong and true,

Black and gold float on for- ever, Sym-bol of Loy- al ty,

Pem-broke State, our Al-ma Ma-ter, Hail to P. S. C.!

2. Hail to thee, our Alma Mater!
Guardian of our youth
Ever lead thy children onward
Into light and truth;
Unborn youth will take our places
To praise thee endlessly,
Pembroke State, our Alma Mater,
Hail to P. S. C. !
3. 'Neath thy ever verdant pine trees
We rally to thy call,
Ever loyal sons and daughters-
Ambassadors, we all-
Bound by ties of love and service
Friendship and loyalty,
Pembroke State, our Alma Mater,
Hail to P. S. C. !
4. Raise the chorus, blend the voices,
Let the echoes ring
To our loving foster parent
Loudly praises sing;
Swell the chorus 'till it reaches
On through eternity
Pembroke State, our Alma Mater,
Hail to P. S. C. !



PEMBROKE STATE COLLEGE

34.417
OUR ALMA MATER



Many shall run to and
fro, and knowledge shall
be increased."

THE

1954

INDIANHEAD

Volume IX



MARTIN L. LOWRY, JR.
Editor

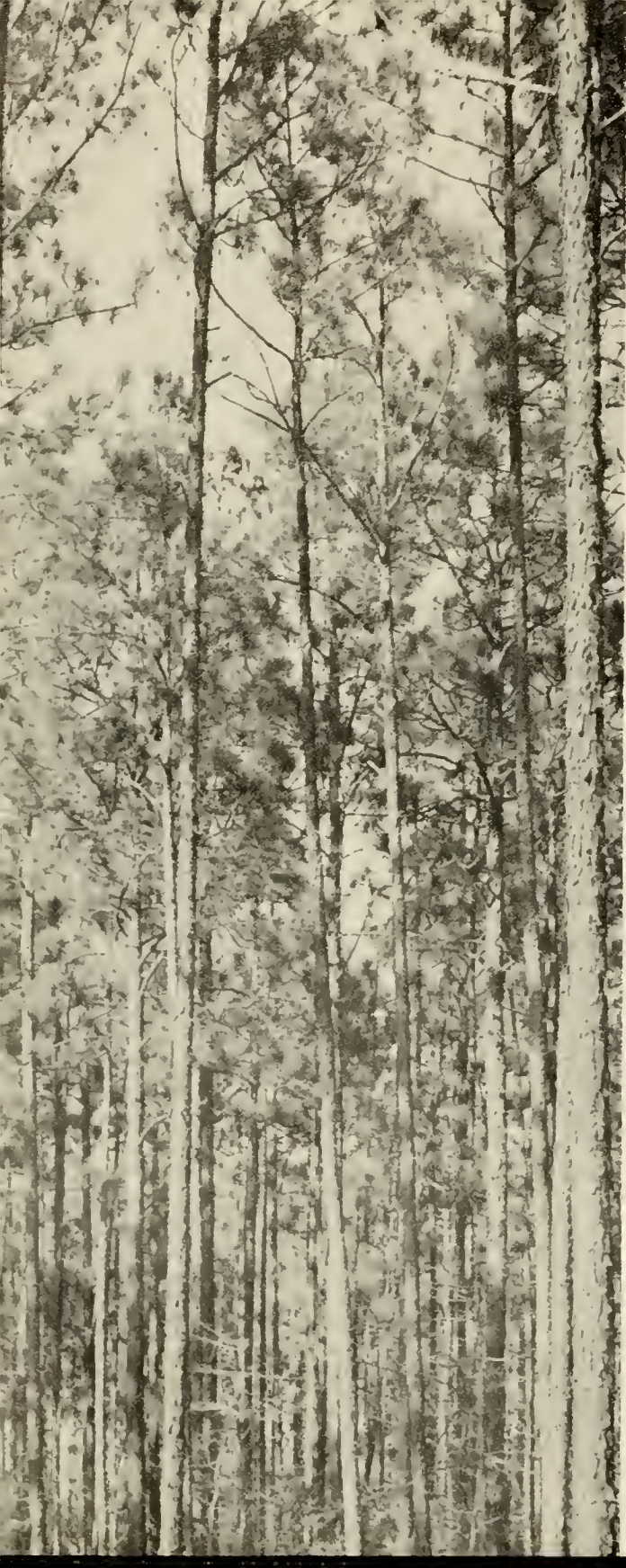


EYRTLE RANSOM
Business Manager

Pembroke State College

24, 414

Pembroke, N. C.



The Pine

The elm lets fall its leaves before the frost,

The very oak grows shivering and sere,

The trees are barren when the summer's lost;

But one tree keeps its goodness all the year.

Green pine, unchanging as the days go by,

Thou art thyself beneath whatever sky;

My shelter from all winds, my own strong pine,

'Tis spring, 'tis summer, still, while thou

art mine.

Augusta Webster.

Aspect of the Pines

Tall, somber, grim, against the morning sky

They rise, scarce touched by melancholy airs,
Which stir the fadeless foliage dreamfully,
As if from realms of mystical despairs.

Tall, somber, grim, they stand with dusky gleams

Brightening to gold within the woodland's core,
Beneath the gracious noontide's tranquil beams -
But the weird winds of morning sigh no more.

A stillness, strange, divine, ineffable,

Broods round and o'er them in the wind's sucease,
And on each tinted copse and shimmering dell
Rests the mute rapture of deep bearted peace.

Last, sunset comes - the solemn joy and might

Borne from the west where cloudless day declines -
Low, flute-like breezes sweep the waves of light,
And, lifting dark green tresses of the pines.

Till every lock is luminous, gently float,

Fraught with hale odors up the heavens afar
To faint when twilight on her virginal throat
Wears for a gem the tremendous vesper star.

Paul Hamilton Hayne.

Cage

LD

4481

'P4625

IS

V. 9

C. 2 ord

The Senior Class of 1954 presents this, the ninth volume of the Indianhead, to the students, faculty, alumni, and friends of Pembroke State College. We leave this book as a pictorial diary of the friendships, the play, and the work which have made up this college year, in the hope that the memories of these golden days will never be lost to those who have lived them.

The stately pines, dotting our campus, have made such an impression on us that we feel it quite fitting that The Pines should be chosen as our 1954 theme.

Could we but understand the language of these plumed pines, the past history of our college would be revealed to us. But since their tongue has not yet been translated, we must content ourselves with the year-by-year account in these books. It is with a consciousness of our part in this vast chain of history that we present the pages of this book.

In addition to its historical importance and its being a definite part of our campus, the pine is significant in that it has many characteristics worthy of being emulated in our lives, such as:

The upward look and the outward reach, well-rounded and well-balanced growth throughout life, constancy and consistency, beauty in simplicity, well-groundedness that will give strength and stability through storm and sunshine, ever readiness for service, heart in the right place, the contributing to the lives of others, the drinking deep of life's values, ceaseless activity, the living intimately with nature, the needling out of opportunities for service, steadfastness, and the capacity for continued service or usefulness after death.

It is our hope that you, dear reader, in turning the pages of this book, may not only grasp the past history and experience nostalgic memories, but also may catch from the towering pines the vision needed to attain greater heights.



24, 414
light





Dr. Ralph D. Wellons

President

Pembroke State College







Greetings From The President

Have you noticed that the pine differs from other trees in that it has a main central root that drives straight down into the ground? It seems to have a "purpose" which holds it true to its course. Neither the food near the surface, nor the warmth and moisture of the air above, detracts it from its drive to the depths. And what is to be found there in the depths of the earth? Security? Yes, not so much for the root as for the great tree which it supports.

We greet The Pines and we wish it well as it sends its tap roots down deep into the soil, not so much that it may itself survive, but that the college which it supports may be strong. Because, down deep is to be found the truth on which education and life depend.



Dedication



TO

Robert Price Marsh, B. S., M. S., Ph. D.

Because we love the man. We love him as a teacher for his kind intellect, his radiant personality, his kindness, devotion and ability; as a gentleman for his sense of sincerity, fair play, justice and honor; as a man for his spirit of understanding which endears him to all of us; and as a friend for his ability to counsel, to inspire confidence and courage.

IN APPRECIATION

FOR ALL HE HAS

MEANT TO US

THIS

1954

INDIANHEAD



Dr. Robert Price Marsh

In Memoriam

We are both grieved and grateful as we pay homage to the memory of our beloved teacher and friend Miss Frances Stinebring.

We are filled with grief at the thought that we shall not see her again physically in our midst with her cheerful smile, her friendly greeting, her bounteous energy and enthusiasm, her zest for life and the sunshine in her soul which made her a delightful teacher, companion, and friend.

We are grateful for her eighteen years of effective and fruitful service at P. S. C., for the lives she has brightened with her kindly counsel and words of encouragement, the hearts she has made happy through her genuine fellowship, her gracious and winning personality, her unselfish devotion to duty, her kindly word, her leadership and instruction, her cheerful disposition, her ever readiness to assist and guide students and her noble example of what each one of us should strive to be as a genuine person.

So thorough and sincere was her teaching and so far reaching her influence, that the high intellectual and moral standards, worthy ideals and lofty ambitions which Miss Stinebring instilled in the students will live on in the hearts and minds of all those who have been in her classes at P. S. C. or who have had the privilege of associating with her. Her exemplary life will be a constant inspiration to all of us.

Let us say of "Miss Stiney", as she was affectionately called, with John Lockey McCrerry as he wrote these lines:

"There is no death! The stars go down
To rise upon some other shore,
And bright in heaven's jeweled crown
They shine forevermore.

"There is no death! The forest leaves
convert to life the viewless air;
The rocks disorganize to feed
The hungry moss they bear.

"There is no death! The dust we tread
Shall change, beneath the summer showers,
To golden grain or mellow fruit
Or rainbow-tinted flowers.

"And ever near us, though unseen,
The dear immortal spirits tread;
For all the boundless universe
Is life -- there are no dead."





In Memoriam

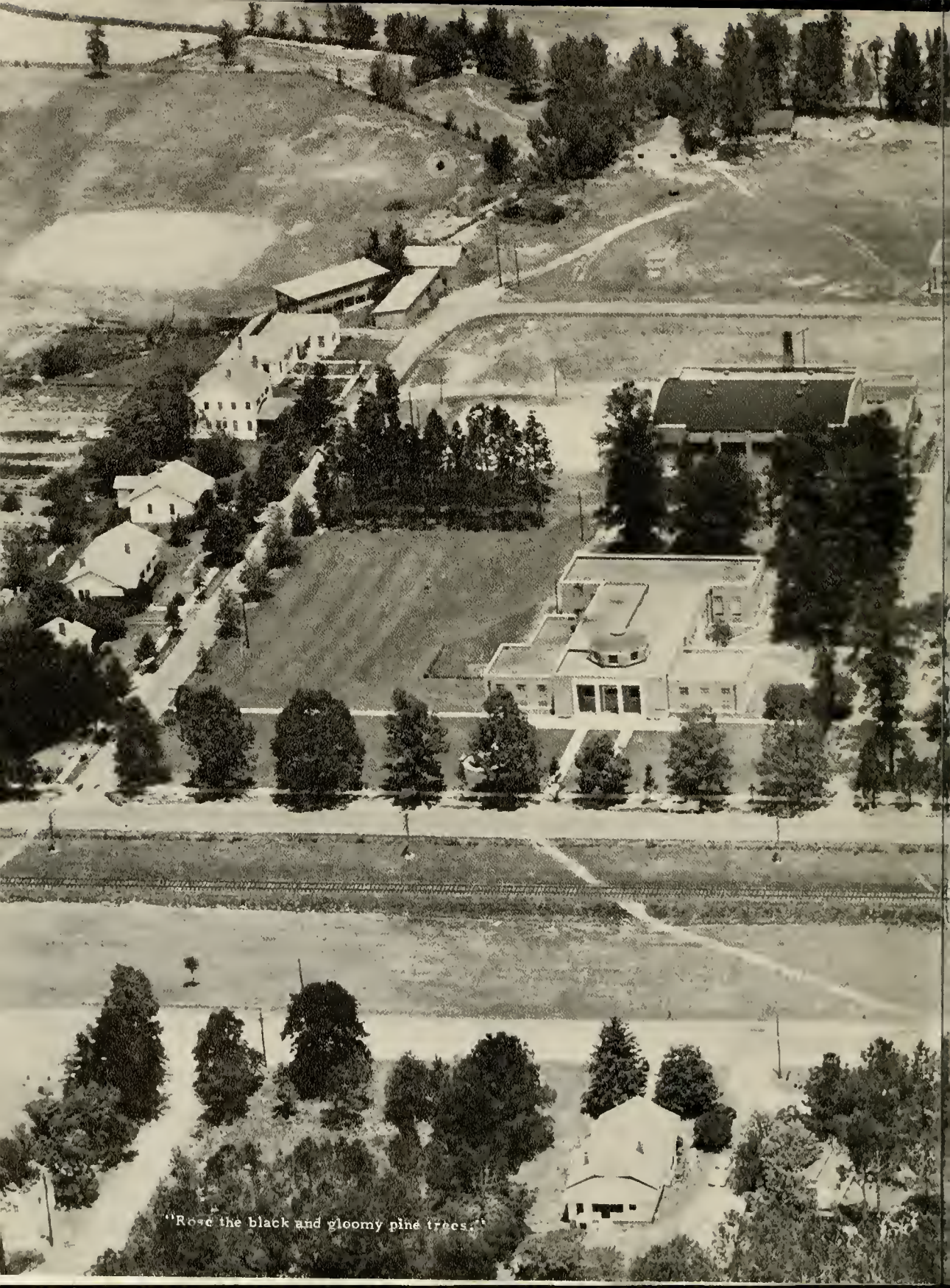
MRS. KATE GARLAND MARSH

"Weep not; O friends, we should not weep;
Our friend of friends lies full of rest;
No sorrow rankles in her breast,
Fallen fast asleep.

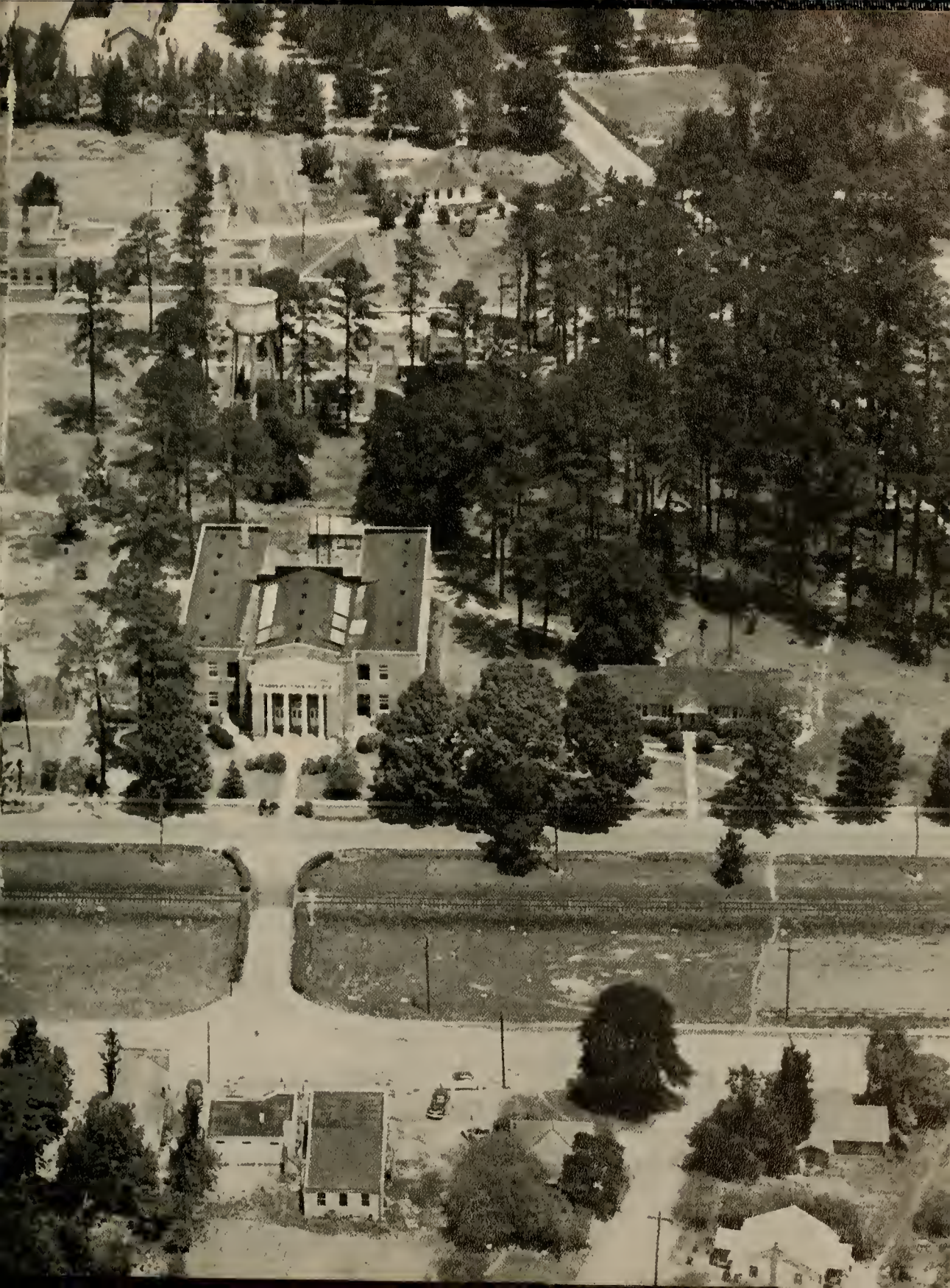
She sleeps below,
She wakes and laughs above;
To-day, as she walked, let us walk in love;
Tomorrow follow so."

BARK

Ah, to build, to build!
This is the noblest of all the arts.



"Rose the black and gloomy pine trees."







SAMPSON HALL





PEMBRO

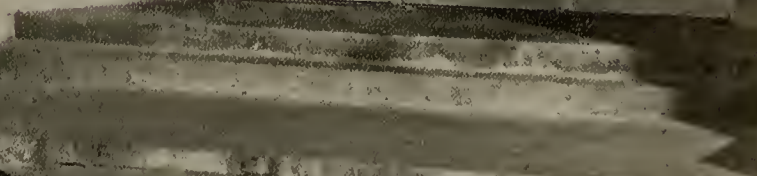
OLD MAIN

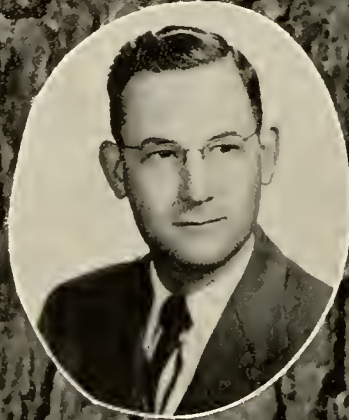




ARTS

[Illegible text grid covering the left side of the image]







LOCKLEAR HALL



Gymnasium



Youth Learns to Live Abundantly





PORTALS OF

These windows give light
For scientific discovery.



TOMORROW

These friendly doors open wide
To the growing artist.

Maintenance Staff



TIMOTHY STRICKLAND



WALTER J. PINGBECK
Superintendent Of Building And Grounds

JOSEPH JACOBS
JOSEPH DIMERY





DATE OF
ACTIVITY

MISS I. RUTH MARTIN
Matron of

Girls Dormitory

Dormitory Girls



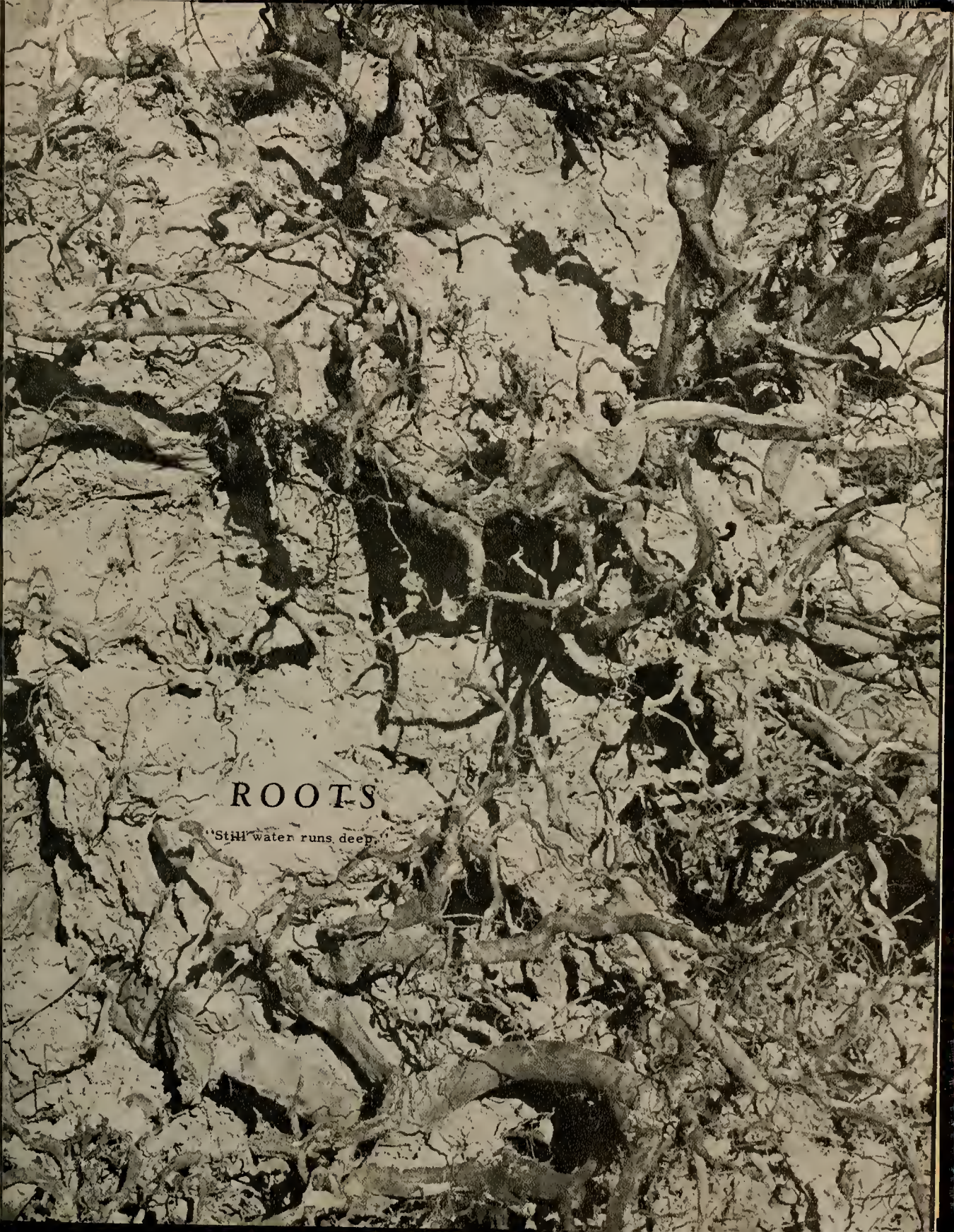


Musical, Mrs. Martin, Adlene, Sally, Betty, Mary Frances, Suzanne,
Girls' Dorm



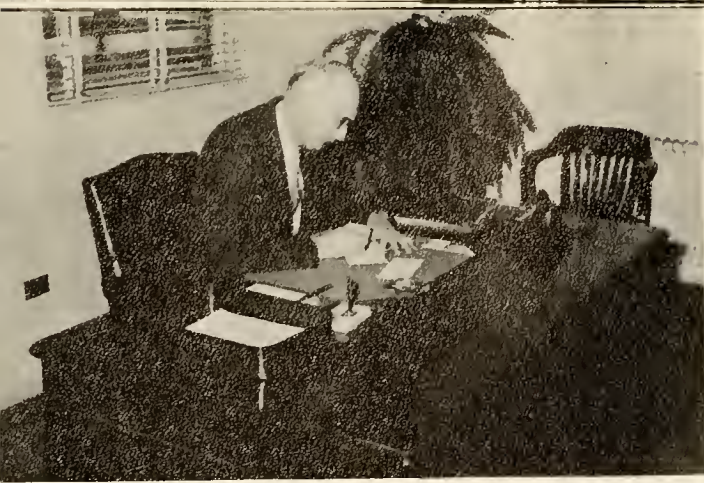


"It is the lofty pine that by the storm
Is oftener tossed; towers high with
heavier crash
Which higher soar".



ROOTS

"Still water runs deep."



DR. RALPH DILLINGHAM WELLONS
President

Philosophy

MISS I. RUTH MARTIN
Dean Of Women

Religious Education and Journalism



MRS. BERTEEN PRINE

Secretary to The President



MR. CLIFTON OXENDINE
Dean Of Men

History and Sociology



MR. JAMES A. JACOBS

Registrar
Mathematics



MRS. INEZ FREEMAN

Bookkeeper

DR. LOUIS MARDER

English



MR. GEORGE W. POLEHEMUS

English



MRS. REBA LOWRY

French, Spanish, Dramatics



DR. HERBERT H. TODD

Education and Psychology



DR. HERBERT G. OXENDINE

History and Social Studies

MISS MARY SHARPE

Education



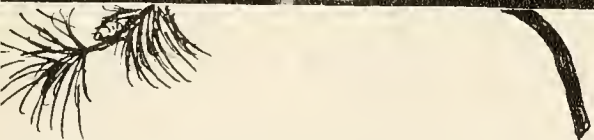
MRS. BERTHA W. DUNN

Business Education



MISS MARJORIE KANABLE

Librarian and Library Science



MISS JUANITA OXENDINE

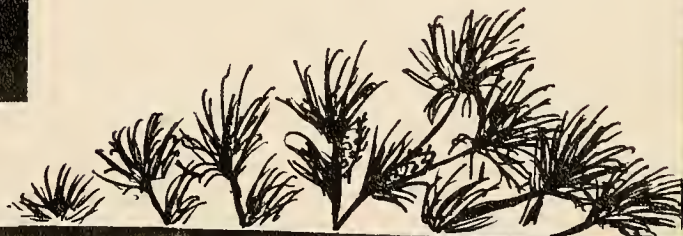
Secretary to The Librarian.





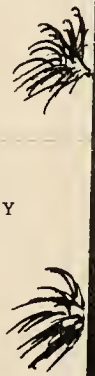
MISS WOODWARD BYARS

Home Economics.



MR. IRA PATE LOWRY

Music

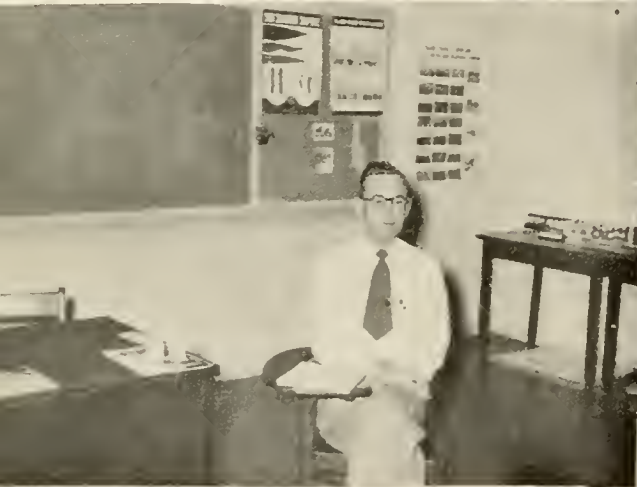
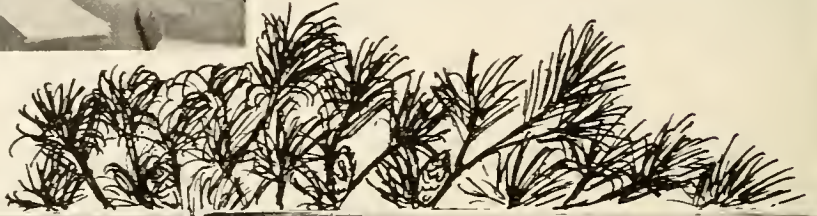


MISS ANGELIKA RECKENDORF

Art

DR. ROBERT P. MARSH

Biology



MR. DEWEY M. CORN

Agriculture



MR. B. V. SMAWLEY

Physical Education

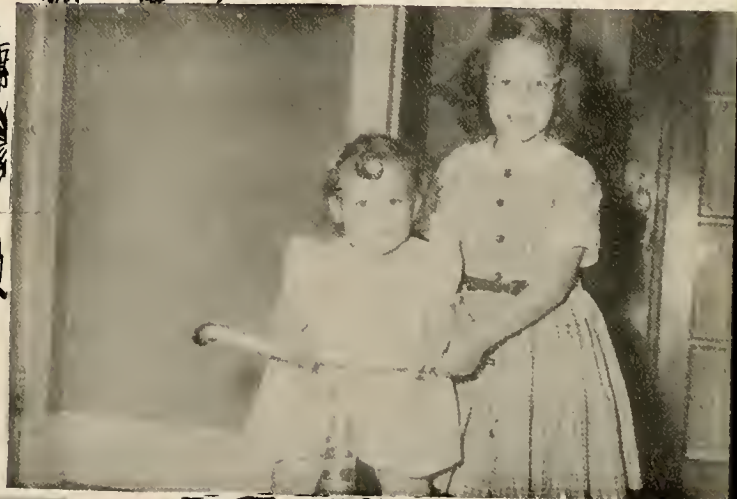
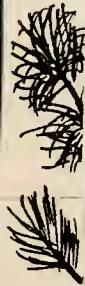
MR. M. J. WESTMORELAND
Chemistry and Physics





ROBERT VANN SMAWLEY

ARLITA LINDA LOWRY



MIRIAM and LINDA CORN



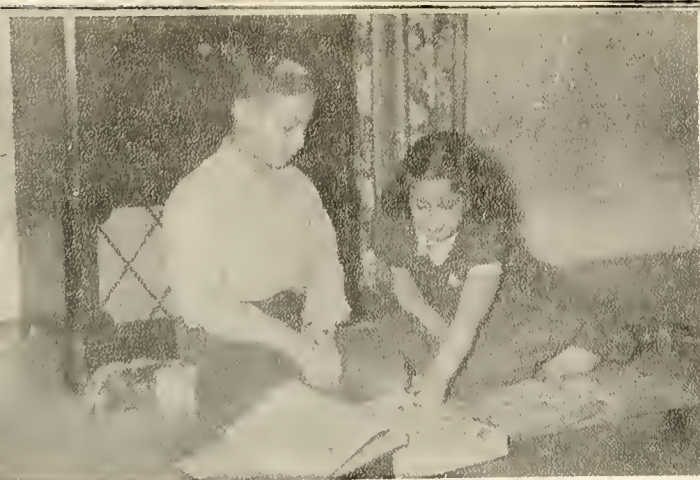
Faculty Chips



SHEILA and JEANETTE BREWINGTON



RICHARD, MIRIAM and LINDA OXENDINE



DANNY and DIANNA MARDER



JERRY CLIFTON and BETTY JANE OXENDINE



FRANCIS, JIMMY, SANDRA, BUDDY,
MARY ALICE and HELENA PINCHBECK

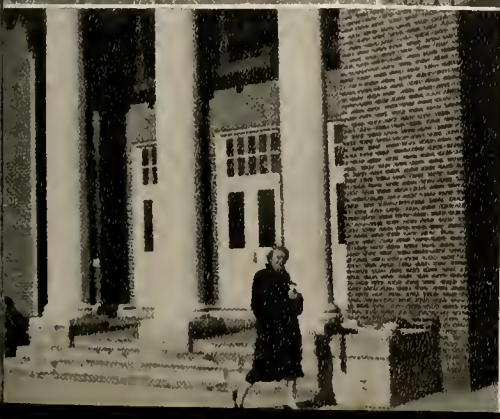
Faculty Chips

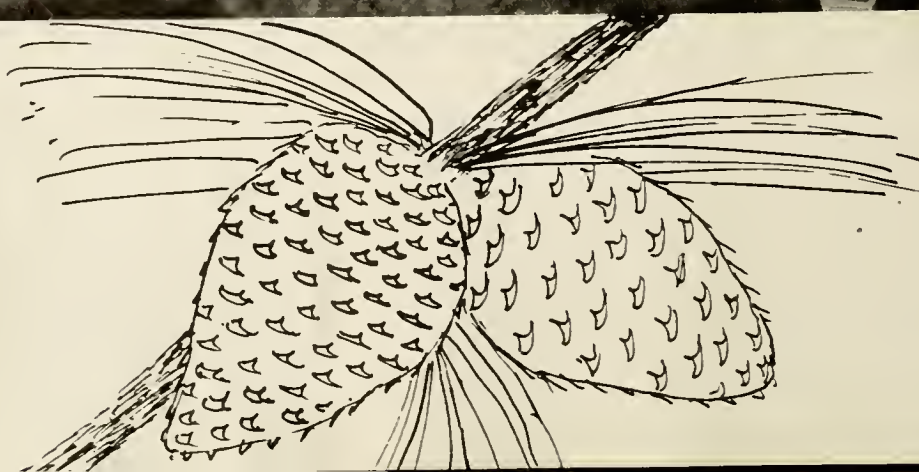
PHILIP and CHRIS WELLONS
MR. ALFRED WELLONS
MRS. R. D. WELLONS



JIMMY PINCHBECK
dressed in the costume
which he designed to be
used in his teaching of
Indian lore at Camp
Steere in Charlotte, North
Carolina, Summer of
1954.









Body

The worth of a state, in the long run,
is the worth of the individual com-
posing it.



SENIORS



Seniors

President..... Delton Ray Locklear
 Vice-President Eyrtille Ransom
 Secretary-Treasurer Emma Mabel Moore
 Class Adviser Reba M. Lowry

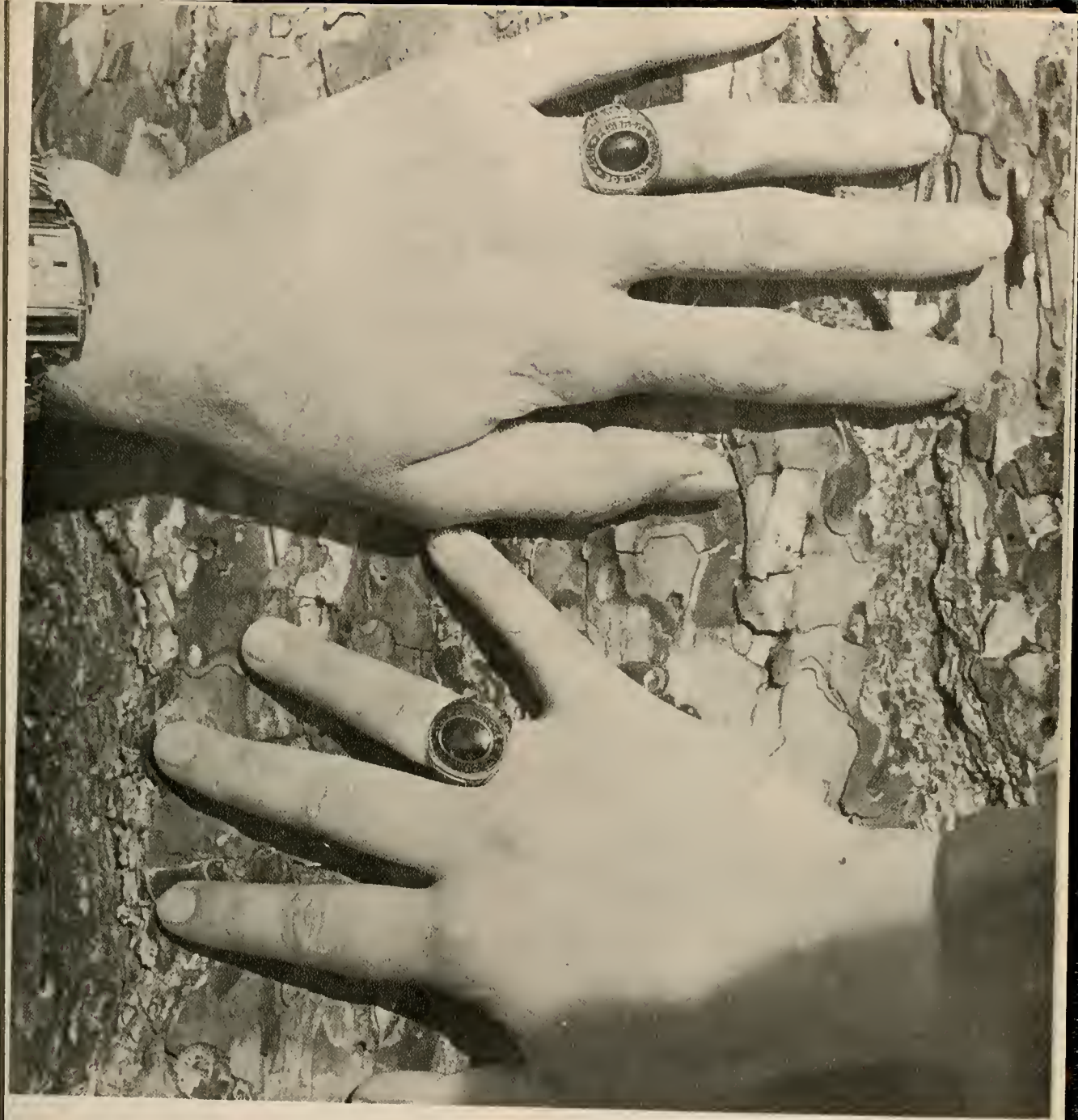


DELTON RAY LOCKLEAR
 President



WALTER J. PINCHBECK
 Sponsored By
 THE SENIOR CLASS





Symbols of Learning



GRACE DIAL

- FRESHMAN: Band, W. F., Emeritan Society.
 SOPHOMORE: Band, W. F., Emeritan Society, El Arco Iris, Glee Club.
 JUNIOR: Band, W. F., Emeritan Society, Alpha Psi Omega, Glee Club, Angel in "Spirit of Peace", Carol in "Inner Willy", "Class Queen".
 SENIOR: Music Chairman of W. F., Emeritan Society, Alpha Psi Omega, Associate Editor of Indianhead, Marshal, "Miss Personality", "Popularity Queen", "Class Queen", "Queen of the Float".

Grace is a girl of winning personality, charming disposition, extensive abilities, and high ideals. We could go on and give countless other qualities but 'tis best expressed by saying -

Her creed is this:

"Give me the thrill of the task,
 The joy of the battle and strife,
 Of being of use, and I'll ask
 No greater reward from this life."

Here's to you, Grace, may a bounteous portion of the world's rewards be yours.

MARTIN L. LOWRY, JR.

- FRESHMAN: W. F., Emeritan Society, Band, Basketball, Baseball.
 SOPHOMORE: W. F., Emeritan Society, Band, Basketball, Baseball.
 JUNIOR: W. F., Emeritan Society, Veterans' Club, Band, Baseball, Class President, Willie in "Inner Willy", A King in "Spirit of Peace".
 SENIOR: W. F., Emeritan Society, President Student Council, Veterans' Club, Band, Swing Band, Baseball, College Quartet, Chief Marshal, Editor of Indianhead, Alpha Psi Omega, WHO'S WHO IN AMERICAN SCHOOLS AND COLLEGES, Father in Christmas Play, "Best Leader".

M. L. is one of the most popular men in the class and he is a real leader. He has an unusual combination of a happy disposition and a head full of common sense. We are certain of his success as a teacher. He is an all-around fellow and one of our best.

"It's the songs ye sing,
 And the smiles ye wear,
 That's a makin' the sunshine everywhere."





ADELINE LOWRY

- FRESHMAN: Alpha Psi Omega, Emeritan Society, El Arco Iris, Social Club, Pembroke Playmakers, Y. W. A., Vice-President of B. S. U.
- SOPHOMORE: Alpha Psi Omega, Emeritan Society, Social Club, Pembroke Playmakers, B. S. U., "Take Care Of My Little Girl".
- JUNIOR: Alpha Psi Omega, Emeritan Society, Pembroke Playmakers, B. S. U., Maid in "Inner Willy", Angel in "Spirit of Peace", Mother in "A Christmas Blessing".
- SENIOR: Alpha Psi Omega, Emeritan Society, Chairman of Social Club, Student Council, Annual Staff, B. S. U., Pembroke Playmakers.

No more pep and life could possibly be stored up in one person than we find in our own Adeline. To make it short, Adeline is a good sport and a true friend.

"Impulsive, earnest, quick to act

And make her generous thought a fact."

Adeline never lacks for something to say, such a vocabulary would silence Webster.

"She hath a heart to conceive, an understanding to direct,

A tongue to persuade, and hands to execute!"

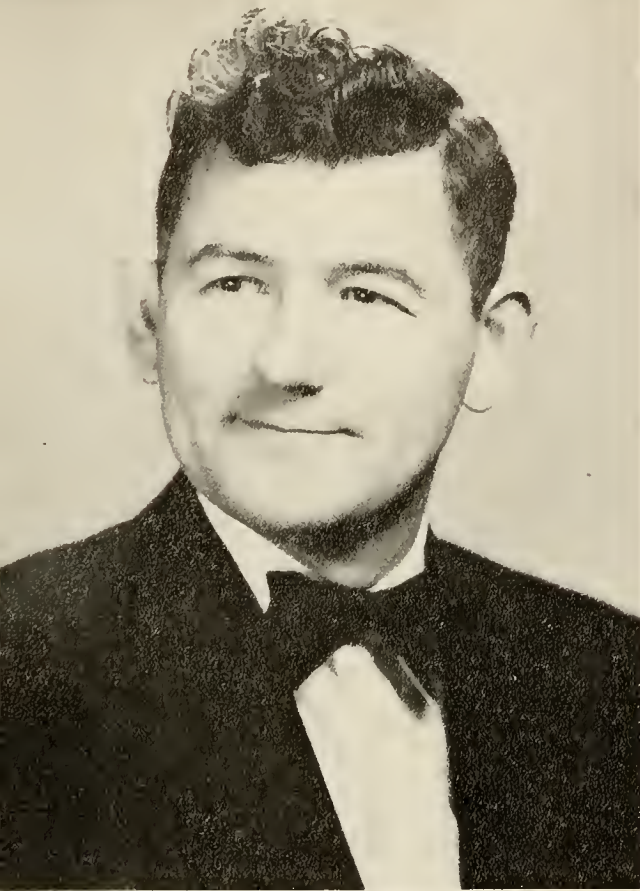
EYRTLE RANSOM

- FRESHMAN: Emeritan Society, Glee Club, W. F., Football.
- SOPHOMORE: Glee Club, W. F., Emeritan Society, Sam in "Take Care Of My Little Girl".
- JUNIOR: Emeritan Society, W. F., Class Treasurer, Inner Willy in "Inner Willy", Stage Manager of "The Green Vine".
- SENIOR: Emeritan Society, Vice-President of W. F., Vice-President of Class, College Quartet, Manager of College Bookstore, Business Manager of Indianhead, President of Alpha Psi Omega, Dean's Honor Roll, Band. "Most Versatile".

Who is the wit of the class? Eyrtele, of course. Who spends most time in the bookstore? Who "plays" with the stage lights? Who is the real "Inner Willy"? Who is the clown in the quartet? Eyrtele! In addition to his prominence in many activities, Eyrtele has always maintained a high average in scholarship.

"He smiles and then another smiles, and soon There are miles and miles of smiles."





CHRISTIAN WHITE
 FRESHMAN: Wilmington College: Honor Roll.
 SOPHOMORE: Wilmington College: Vice-President
 of Class, Honor Roll, "Most Likely
 To Succeed", President's Medal of
 Achievement.
 JUNIOR: Transcript from Wilmington College,
 Honor Roll, Delegate of W. F. to
 Christian Citizen Seminar, Shepherd
 in "Spirit of Peace".
 SENIOR: Dean's Honor Roll, Student Council,
 Annual Staff, "WHO'S WHO IN AMER-
 ICAN COLLEGES AND UNIVERSITIES",
 "Best All-Around Student", Vice-
 President of Alpha Psi Omega.

"He openeth his mouth with wisdom;
 And the law of teaching is on his tongue."

"Chris" is another member of our class of whom
 we are truly proud. His high scholastic standing shows
 us that he has superior intellectual ability, and he not
 only has ability, he applies it. He never does anything
 halfway. Along with his scholastic achievements, he
 is a full time minister.

Since he came here two years ago "Chris" has
 entered sincerely in the P. S. C. spirit.

ADRENE CARTER
 FRESHMAN: Basketball, Emeritan Society, Y. W. A.,
 B. S. U., Glee Club, Social Club.
 SOPHOMORE: Basketball, Emeritan Society, Band,
 B. S. U., Y. W. A., Glee Club, Social
 Club, Merry in "Take Care Of My
 Little Girl".
 JUNIOR: Emeritan Society, Band, Secretary of
 Y. W. A., President of B. S. U., Glee
 Club, College Trio, El Arco Iris,
 Social Club, Janet in "Inner Willy",
 Pembroke Playmakers.
 SENIOR: Y. W. A., Emeritan Society, Band,
 B. S. U., College Quartet, College
 Pianist, Social Club, Dormitory Presi-
 dent, "Most Versatile".

"Music! Oh, how faint, how weak,
 Language fails before thy spell!
 Why should feeling ever speak,
 When thou canst breathe her soul so
 well?"

Adrene is the type of girl who gets things done.
 She is small in stature but not in heart. She has ex-
 celled in sports, dramatics, music and in leadership.
 If Adrene continues as she has started, people knowing
 her shall say with Henry Ward Beecher:

"Blessed are the happiness wakers,
 Blessed are they who know how to shine
 on one's gloom with their cheer."





LORRAINE CHAVIS

- FRESHMAN: B. S. U., Emeritan Society, Program Chairman of Y. W. A., Home Economics Club.
- SOPHOMORE: B. S. U., Emeritan Society, Y. W. A., Glee Club.
- JUNIOR: B. S. U. Council, Program Chairman of Y. W. A., Glee Club, Poster Chairman of Emeritan Society, Pembroke Playmakers, El Arco Iris, Band, "Spirit of Peace", Trudy in "Inner Willy", Peggy in "The Green Vine".
- SENIOR: B. S. U. Council, Emeritan Society, Secretary of Y. W. A., Pembroke Playmakers, Annual Staff, Alpha Psi Omega.

"She puts all her troubles in the bottom of her heart and then sits on the lid and smiles."

You never would believe it possible that so much wisdom, business ability and dependability could be wrapped up in so small a package of humanity. Her diligent work in the Dramatic department has proved this to us. But we find all this seriousness flavored with just the right amount of fun.

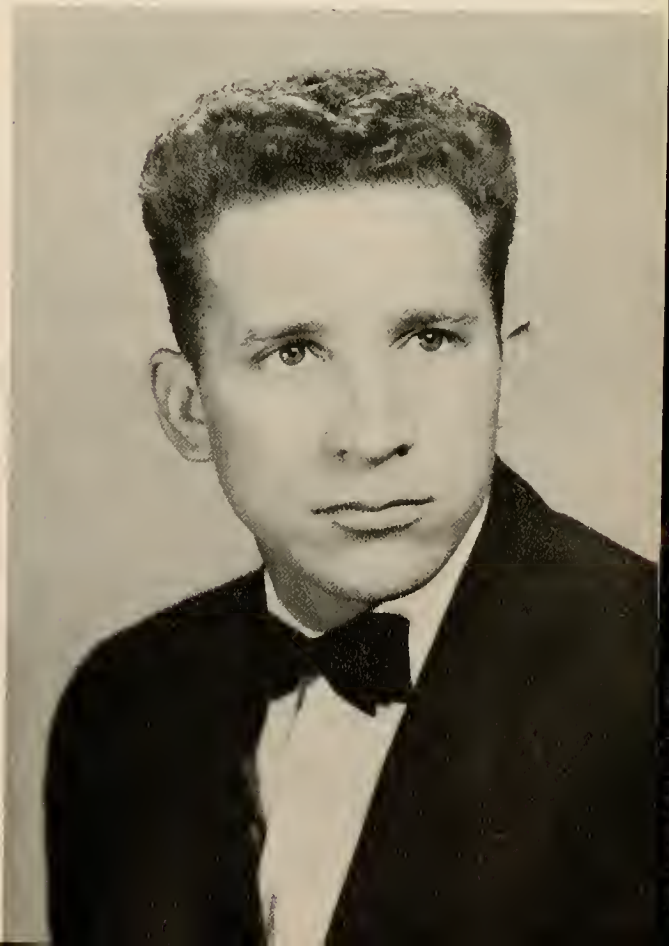
"She's alike to all and liked by all."

DELTON RAY LOCKLEAR

- FRESHMAN: B. S. U., Emeritan Society, Basketball, Baseball, Football, Social Club.
- SOPHOMORE: Emeritan Society, B. S. U., Baseball, Basketball, Football, Social Club.
- JUNIOR: Emeritan Society, B. S. U., Social Club, Baseball, Basketball, Stanley in "Inner Willy", "The Spirit of Peace".
- SENIOR: B. S. U., Emeritan Society, President of Class, Social Club, Annual Staff, Alpha Psi Omega.

There is so much we could say about our president that it is difficult to draw the line. There is one thing, however, on which we all agree and that is, the class of '54 would not have been the class it is without Delton as our leader. And, too, we wonder just what the Braves will do without him in the games. But we're sure, Delton, you'll meet the same success in everything you undertake and we wish you the best of luck.

"Rare compound of quality, noble and true,
With plenty of sense, and good humor, too."





LESLIE LOCKLEAR

- FRESHMAN:** Baseball, Basketball, Emeritan Society, President of Class, Veterans' Club.
SOPHOMORE: Baseball, Basketball, Football, Emeritan Society.
JUNIOR: Baseball, Basketball, Football, Emeritan Society.
SENIOR: Baseball, Basketball, Emeritan Society.

Leslie became a member of our class this year. We are very proud of the contribution that he has made to P.S.C. in athletics. He vies with Eyrle for the title of the "Clown of the Class". He seems to have mastered the fine art of studying since he seems to have an abundance of leisure time.

MABEL MOORE

- FRESHMAN:** W. F., Pontiac Society.
SOPHOMORE: W. F., Pontiac Society, Secretary-Treasurer of Class.
JUNIOR: International Relations Chairman of W. F., Pontiac Society, Secretary of Class, Louise in "Inner Willy", President of Home Economics Club, Delegate to N. C. H. E. A.
SENIOR: Secretary of W. F., Emeritan Society, President of Home Economics Club, Secretary-Treasurer of Class, Secretary-Treasurer of Student Council, Annual Staff, Delegate to Student Legislative Assembly.

Mabel is sweet and friendly to all. It is her manner to be thoughtful of others, and we only wish there were many more like her on whom we could depend. Her dependability has been displayed in her class where she has been a faithful secretary during the four years. We do not hesitate to say that she will have a bright and successful future.

"All her excellencies stand in her so silently as if they had stolen upon her without her knowledge."





ANNIE LOIS OXENDINE

FRESHMAN: Emeritan Society, Band, W. F., Marshal.
SOPHOMORE: Band, W. F. Council, Emeritan Society.
JUNIOR: Home Economics Club, W. F. Council,
Emeritan Society, Band.
SENIOR: W. F. Council, Emeritan Society,
Home Economics Club, Social Club,
Annual Staff.

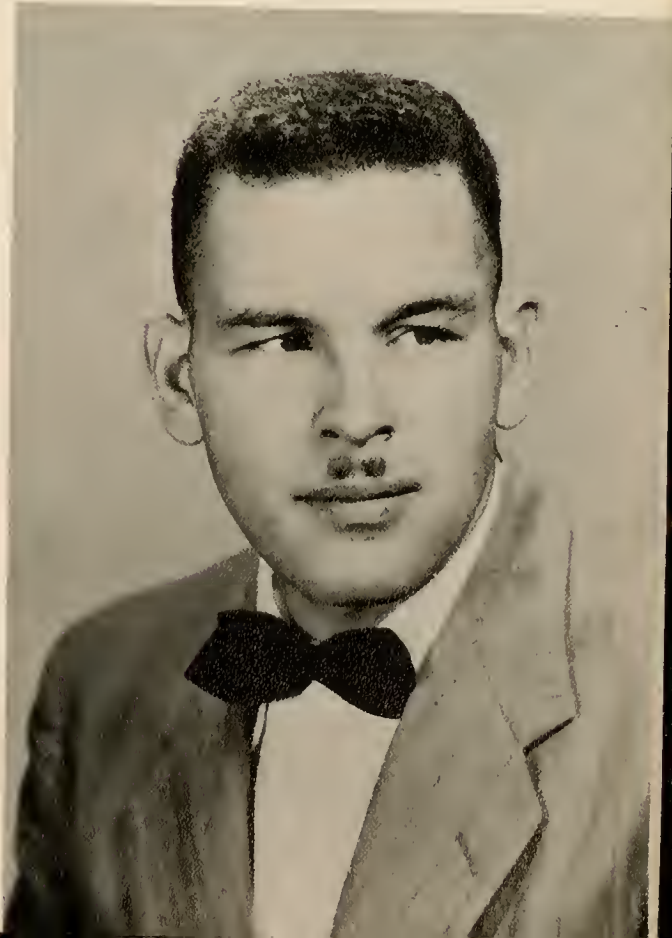
If you say domestic skill, that expresses Anna Lois. Although there are many other complimentary phrases that might be used in describing her we feel that this one is the highest compliment that can be paid to any woman.

"Whatever she did was done with much ease,
In her alone 'twas natural to please."

MARVIN LOWRY

Everybody likes Marvin. He is a friendly sort of chap who has a smile for everyone. Vivaciousness, untiring energy, and a sparkling personality combine with tremendous athletic ability to form a fellow who has earned the admiration of his many P. S. C. friends. His faculty for making friends and getting along with people will carry Marvin far on the road to success.

"Honest men esteem and value nothing so much in the world as a real friend."





LOIS M. LOWRY

- FRESHMAN: Basketball, Band, W. F., Y. W. A., Pembroke Playmakers, Emeritan Society, Home Economics Club, Social Club, Dean's Honor Roll.
- SOPHOMORE: W. F., President of Emeritan Society, Home Economics Club, Band, Social Club, Marshal, Pembroke Playmakers, Glee Club.
- JUNIOR: Emeritan Society, Dean's Honor Roll, Social Club, Band, Y. W. A., W. F., Pembroke Playmakers, Angel in "Spirit of Peace".
- SENIOR: W. F., Emeritan Society, Band, Y. W. A., Social Club.

Queenly dignity, combined with cheerfulness, characterizes Lois. Whether there is work to be done or fun to be made, she furnishes her supply. Lois accepted not only a husband, but also, a teaching position before her graduation. We wish for her the very best in life.

To those who know her best:

"Her aim, her manners, have admired,
Courteous, though coy, and gentle though
retired;
The joy of youth and health her eyes
displayed,
And ease of heart her every look conveyed."

JOYCE DIMERY

- FRESHMAN: Pontiac Society, Y. W. A., W. F.
- SOPHOMORE: Pontiac Society, W. F., Y. W. A.
- JUNIOR: Emeritan Society, President of El Arco Iris, Social Club, Glee Club, Y. W. A., Community Service Chairman of W. F., Library Helper.
- SENIOR: President of El Arco Iris, Reporter for W. F., Glee Club, Emeritan Society, Social Club, Vice-President of Y. W. A., Annual Staff, Library Helper.

Yes, Joyce is one of those interesting people who proves to be a delightful surprise when you really know her. To most people she is just sweet and smiley, but to a few, she reveals herself as unusually entertaining and witty. She is a good sport too.

"Loyal hearted, strong of mind,
A finer girl you'll nowhere find."



GENEVA SANDERSON

- FRESHMAN: W. F., Emeritan Society, Social Club,
Y. W. A.
- SOPHOMORE: Personnel Chairman of W. F., Emeritan
Society, El Arco Iris, Social Club.
- JUNIOR: Secretary of W. F., Emeritan Society,
Home Economics Club, Pembroke
Playmakers, Marybelle in "Inner
Willy", Social Club.
- SENIOR: Treasurer of W. F., Social Club, Home
Economics Club, Y. W. A., Annual
Staff, Pine Needle Staff, Emeritan
Society.

"Still water runs deep". "Sue" has won a place in the esteem of everyone by her quiet and unassuming manner. This petite miss is one of those people who can wave her hand and call forth such dainties as would delight the fancies of kings. However, it takes skill to apply this wand which is generally in the form of an egg beater or a spoon. Her diligence in applying herself has won her this skill.

"We doubt not that for one so true
There must be a noble work to do."



SALLY BROOKS

A teacher in the public schools.

She is quiet, modest, warm-hearted and generous. All these characteristics are true of Sally. She has not been with us long, but it did not take us long to realize what we've been missing all the time she has not been here. Sally, we know you are a successful teacher, because you have the ability to put it across.

It may easily be said of her:

"There is no friend like a friend
Who will stand by you to the end."



MARSHALL W. LOCKLEAR

Teacher in the public schools.

Marshall, ambitious and conscientious, has certainly won the recognition of being one of the top students of the class. It would have been a great joy to have had him with us during the four years but he had to "sweat out" many of his courses during summer school. Through his perseverance and cleverness he will succeed in everything which he undertakes in the years ahead.

"Literature is the thought of thinking souls."

JAMES C. DIAL

(Not Shown)

James claims the distinction of being the only young man in our class who has evaded matrimony. This bachelorhood, however, does not seem to concern him seriously. The following lines aptly fit him:

"An easy, modest, sort of grace,
 With depth of thought upon his face,
 With depth of soul within him, too
 And you'll always find him just as true."

OTHER GRADUATES NOT SHOWN ARE:

- Lockey L. Deese "Loyal be to loyal friends".
- Mary Margaret Hunt "Quiet, steadfast and faithful".
- Lucy S. Locklear "Mirth is like a flash of lightning that breaks through a gloom of clouds".
- Sanford Locklear "Silence is one of the virtues of the wise".
- Harold Lowry "An ounce of wit is worth a million in gold".
- Theodore McLain Lowry "The man of wisdom is the man of worth".
- Mackeley S. Oxendine "True to her work, her word, her friend".
- Prebble L. Oxendine "A valiant spirit surely hath its reward".



FAYE, BARBARA, DAVID and
MRS. CHRISTIAN WHITE



MRS. DELTON R. LOCKLEAR
(Deceased)



DAVID RYAN LOCKLEAR

Senior Chips

SHERRY, JANET and
MRS. EYRTLE RANSOM



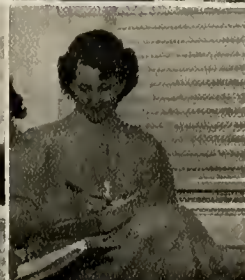
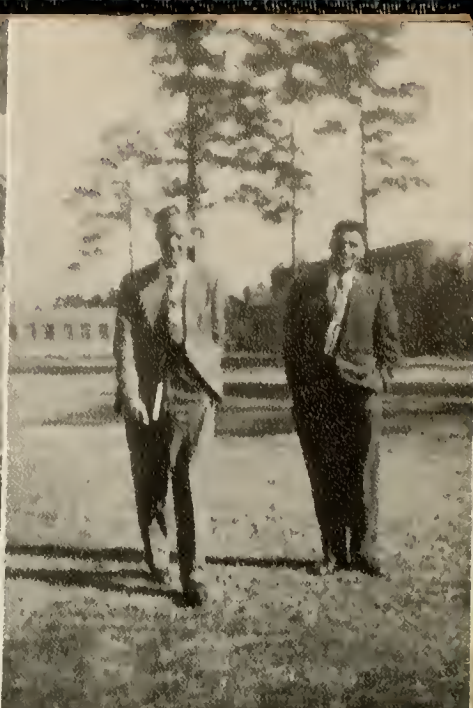
CRAIG, DEBRA and
MRS. MARTIN LUTHER LOWRY, JR.





Seniors Select Invitations







JUNIORS



Juniors

Clearcie Locklear..... Social Representative
 Patricia Clark Student Council Representative
 Katrina Locklear..... Secretary-Treasurer
 Ralph Hunt Vice-President
 Marvin Ransom..... President
 Ira Pate Lowry Class Adviser

IRA PATE LOWRY
 Sponsored By
 JUNIOR CLASS



Juniors

LOU HENRY LOWRY

"A hearty, a mischievous smile, make for her a life worth-while."



DOROTHY L. BLUE

"Good humor is the health of the soul".

SHERMAN CHAVIS

"I love work; it fascinates me; I could sit and look at it for hours."



PATRICIA CLARK

"Sweet, quiet, with rare qualities possessed."

MARVIN RANSOM

"True to his work, his word, his friends."



RALPH HUNT

"Not too serious, not too gay, But a rare good sport in every way."



Juniors

MARY LOUISE CUMMINGS

"Give to the world the best that you have, And
the best will come back to you!"

PAULINE LOCKLEAR

"A gay laughing face, a friendly heart."

PRESTLEY LOWRY

"To make a jest, to cause a laugh, Brings happi-
ness to our lives."

SARA NEIL BULLARD

"It is a friendly heart that has plenty of
friends."

ALTHA LOWRY

"A gentle mind by gentle deeds is known."

HELEN E. HAMMONDS

"Smooth runs the water where the water is
deep."



SOPHOMORES

Sophomores

CLASS OFFICERS

Vice-President..... William Hammonds
Secretary..... Jolly Lucille Locklear
President..... Samuel Locklear

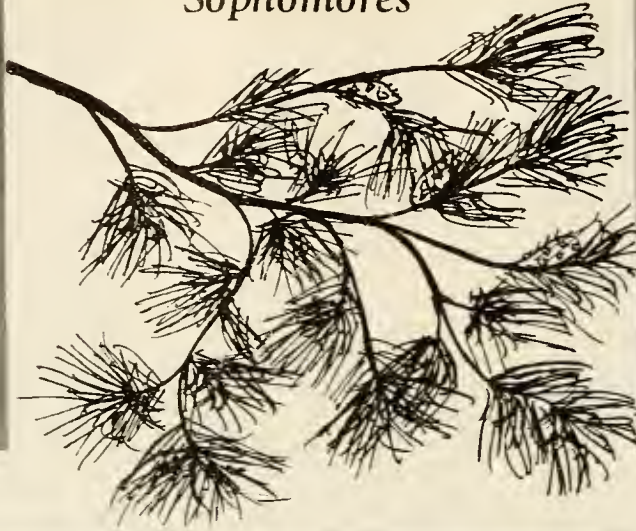
MISS FRANCES STINEBRING
(Deceased)
Sponsored By
THE SOPHOMORES



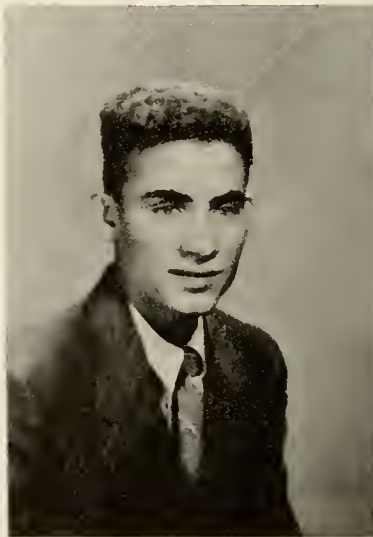
Sophomores



BERTHA MAE MARTIN



BERTHA LOCKLEAR



WILLIAM HAMMONDS



ARMINDA LOWRY



KATRINA LOCKLEAR



OTHNIEL THOMPSON

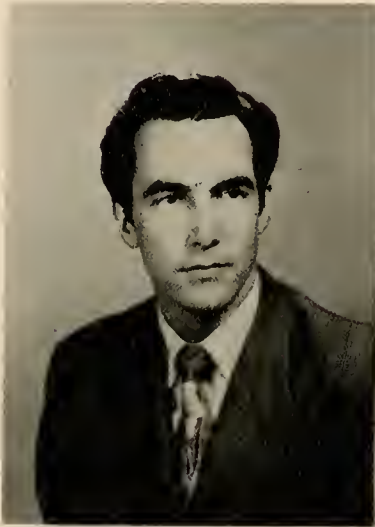
Sophomores



HELEN BELL



LILLIAN THOMAS LOCKLEAR



SAMUEL LOCKLEAR



EARLENE LOCKLEAR



JOLLEY LUCILLE LOCKLEAR

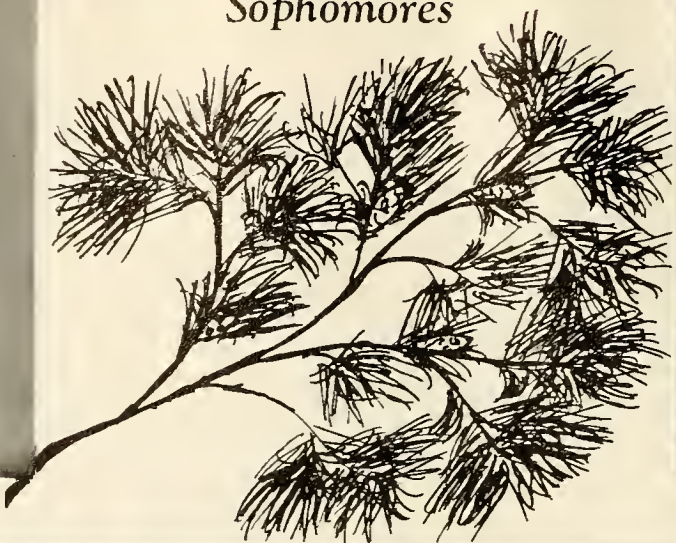


JAMES WALTER SAMPSON

Sophomores



MARGARET LOIS STRICKLAND



LOLETA BLANKS



JAMES HOWARD LOCKLEAR



LEVI HUNT, JR.



MARGIE LLOYD

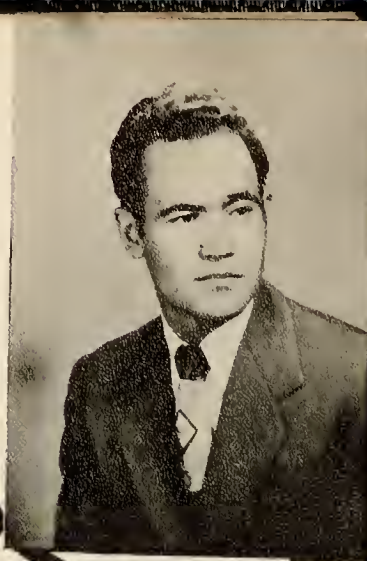


QUESSIE MAE CUMMINGS

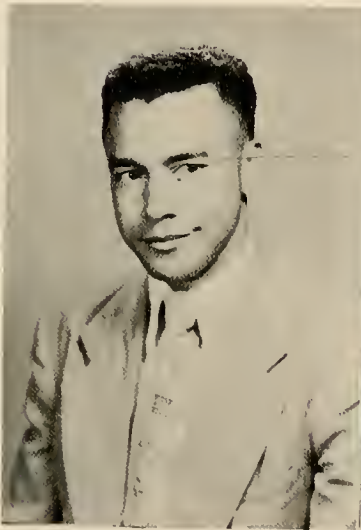
Sophomores



EVIE L. OXENDINE



EARL C. BROOKS



BILL R. LOCKLEAR



BETTY RAYE HAMMOND



NAOMI DIAL



CLEARCIE LOCKLEAR



FRESHMEN

"There are more
men ennobled
by study than by
nature."



Freshmen

Clara O'Phelia Hammonds.....	Treasurer
Kenneth Ray Maynor.....	Sergeant-At-Arms
Sallie Lowry.....	Secretary
Purnell Swett.....	Vice-President
Alton Bruce Jones.....	President
Dr. Herbert Oxendine.....	Class Adviser

DR. HERBERT OXENDINE
Sponsored By
THE JUNIOR CLASS

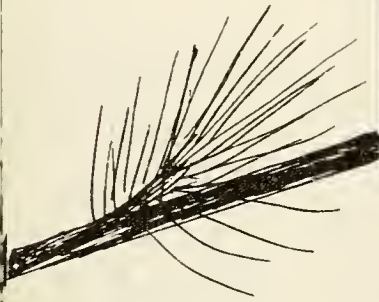
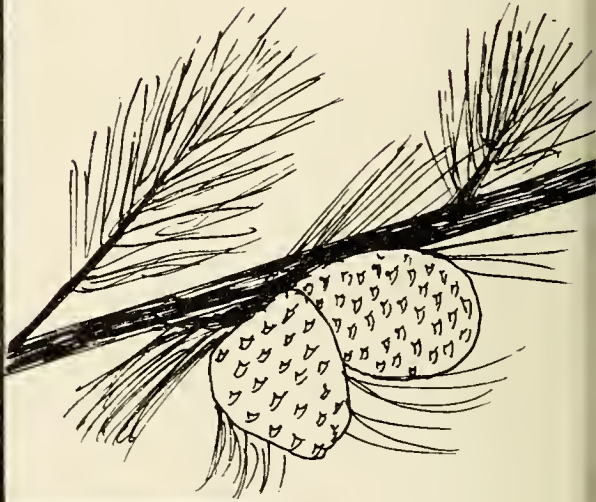




MARY FRANCES FIELDS



ALTON BRUCE JONES



PURNELL SWETT

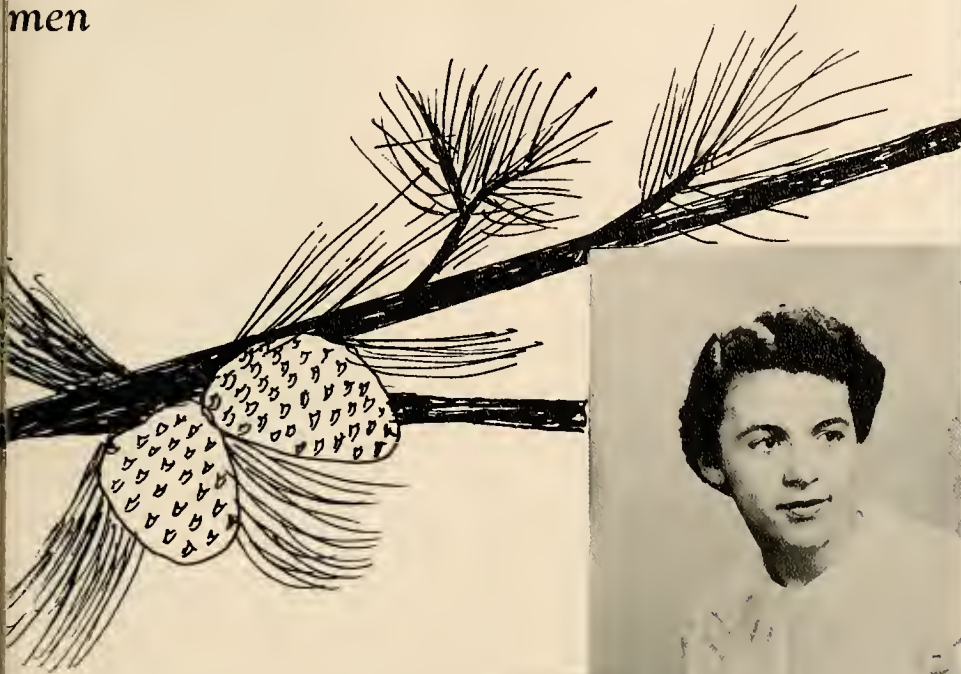


VERGIE MAE JONES

JOYCE S. SMAWLEY



men



SALLIE LOWRY



NARVA LOWRY



DOROTHY MAY OXENDINE



SALLIE ANN OXENDINE



SARAH JANE OXENDINE



LYCUROUS LOWRY



MAZELENE CARTER



CHRISTENE CORN



PANDORA LOCKLEAR



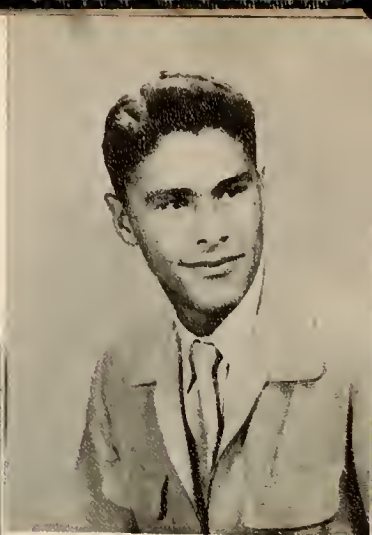
BILLY RAY CHAVIS



LIBBIE DALE SPAULDING



JAMES BRANSON CHAVIS



CHARLES REECE WARWICK



ESSIE MYRTLE DIAL



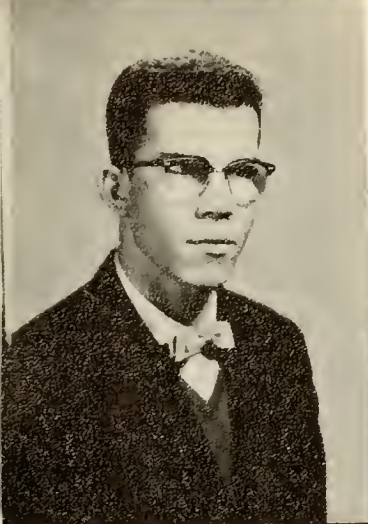
AMBROSE CHAVIS, JR.

MARY FRANCES CHAVIS



ELWOOD LOCKLEAR





JOSEPH ALLEN MCGIRT



PAULINE WOODS



CHRISTENE CARTER



GLEND A F. CHAVIS



CLARENCE WOODS



PAULINE SUTTON



MARY JEANETTE WILKINS



LUDAHLIA JACOBS



CLARA O. PHELIA
HAMMOND



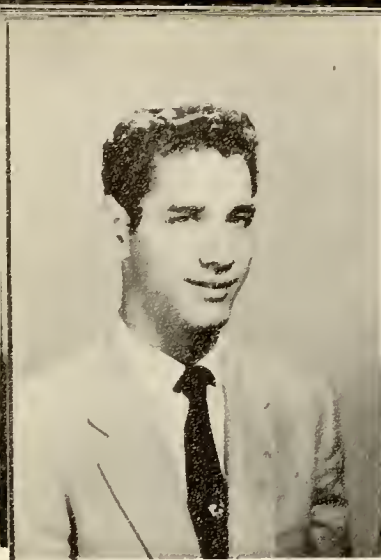
HERMAN HUNT



KENNETH RAY MAYNOR



FRED JOHNSON, JR.



JACK LOWRY



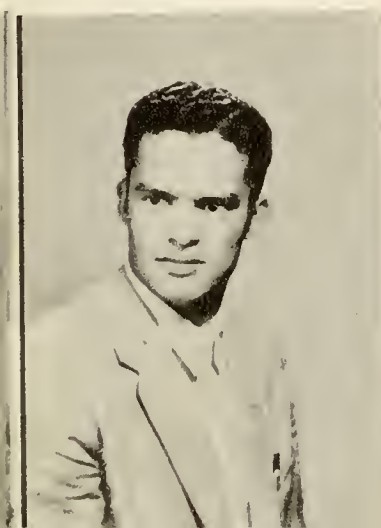
MARY ELIZABETH WILKINS



SALLY WILKINS



NELVIA BARNES



EDMUND LOCKLEAR, JR.



DON DELANO BLUE



GLENN JACOBS



GERALDEON JACOBS
CLARK



MARGARET BREWER



RUTH WARWICK

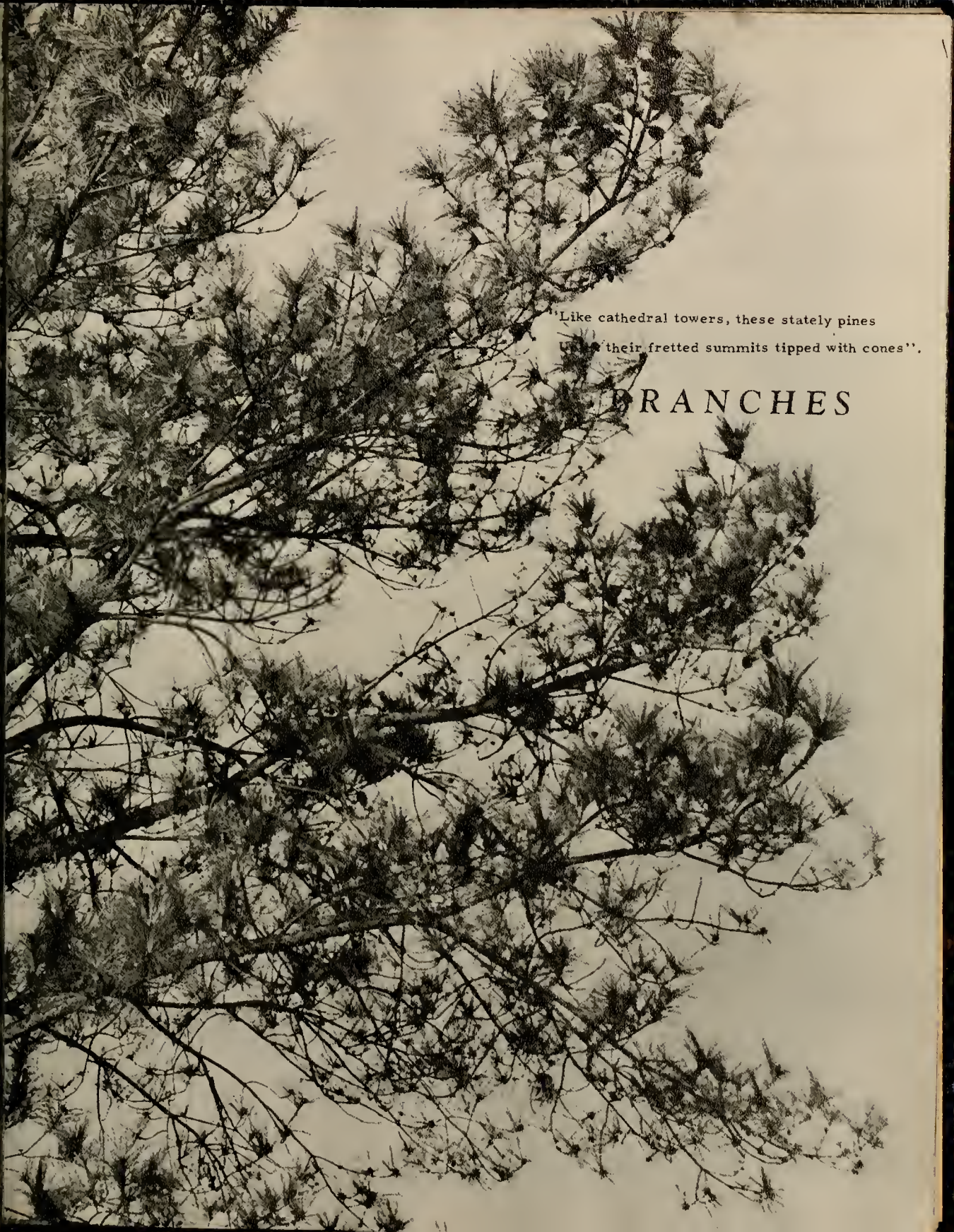


SAMUEL BULLARD



CORA SUE REVELS





"Like cathedral towers, these stately pines
up to their fretted summits tipped with cones".

BRANCHES

P. S. C. Library

Pembroke State College Library contains 21,932 volumes and there are some two hundred subscriptions to magazines, periodicals and daily newspapers.

Miss Marjorie Kanable is librarian; Miss Juanita Oxendine is assistant librarian.

Loleta Blanks and Pauline Locklear in the stack room.



"I always think the cover of
A book is like a door
Which opens into someone's house
Where I've not been before."



"I never know what sort of folks
Will be within, you see,
And that's why reading always is
So interesting to me."





P. S. C. Band

THE BAND PERFORMING AT

P. O. W. PARADE

IN PEMBROKE.





P. S. C. Swingsters

Professor Ira Pate Lowry, Samuel Locklear, Joseph McGirt, Levi Hunt, Jr., Martin L. Lowry, Jr.

The P. S. C. Swingsters were organized in 1952-53 under the direction of Professor Lowry, with the following charter members: Murray Leiber, Samuel Locklear, Martin L. Lowry, Jr., and Professor Lowry, with Miss Lillian Faye Thomas, vocalist.

Since their organization, the Swingsters have had a very prominent place in the activities of both the college and the community.



"Music is well said
to be the speech of
angels."

Adrene Carter...College Pianist

College Quartet

MR. IRA PATE LOWRY, DIRECTOR

MARTIN L. LOWRY, JR., TENOR

LILLIAN F. LOCKLEAR, SOPRANO

EYRTLE RANSOM, BASS





Meet Me In St. Louis





Inner Willy

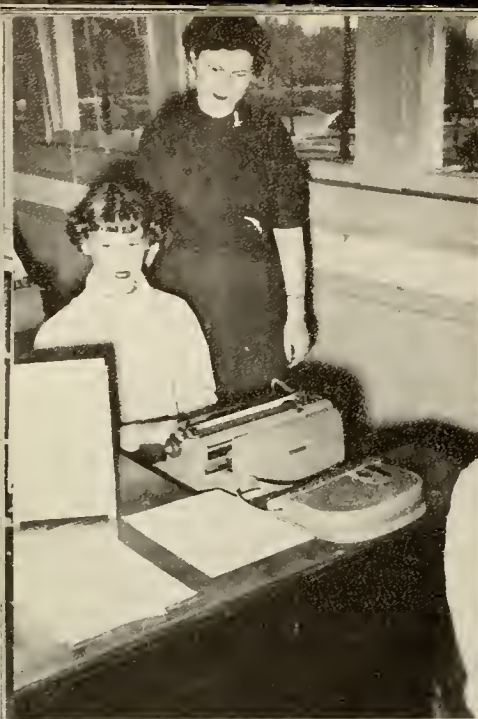




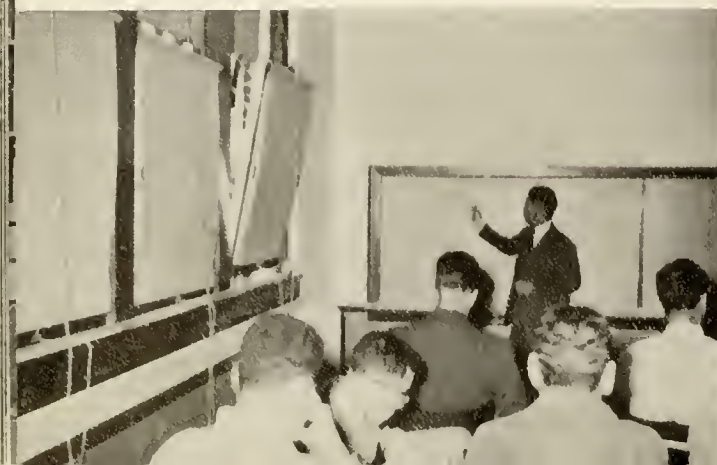
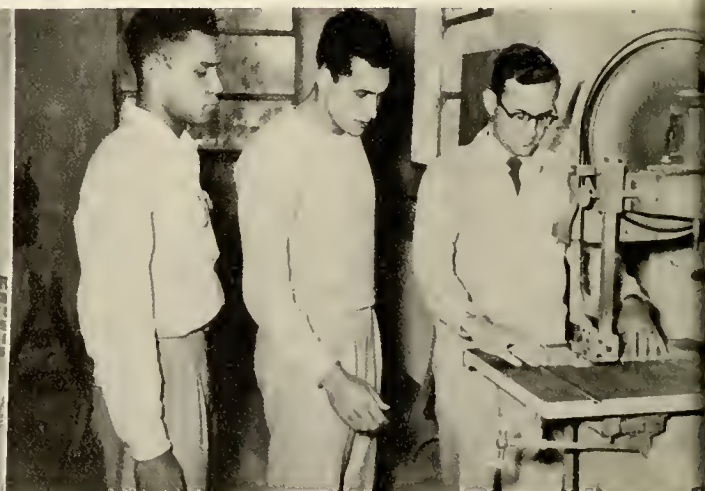
The Green Vine

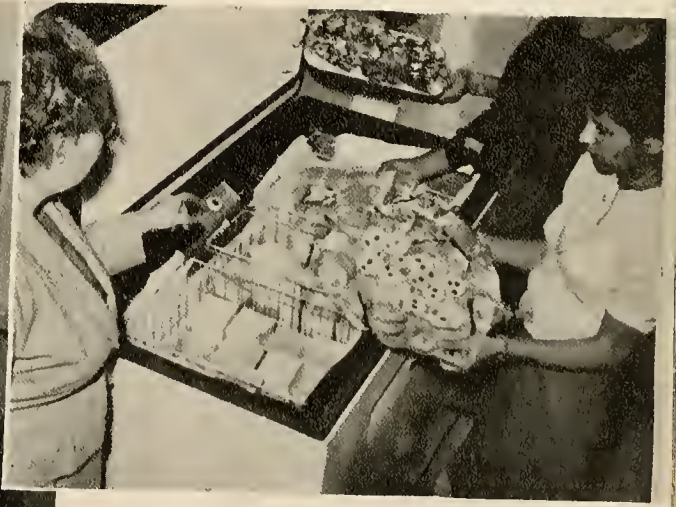


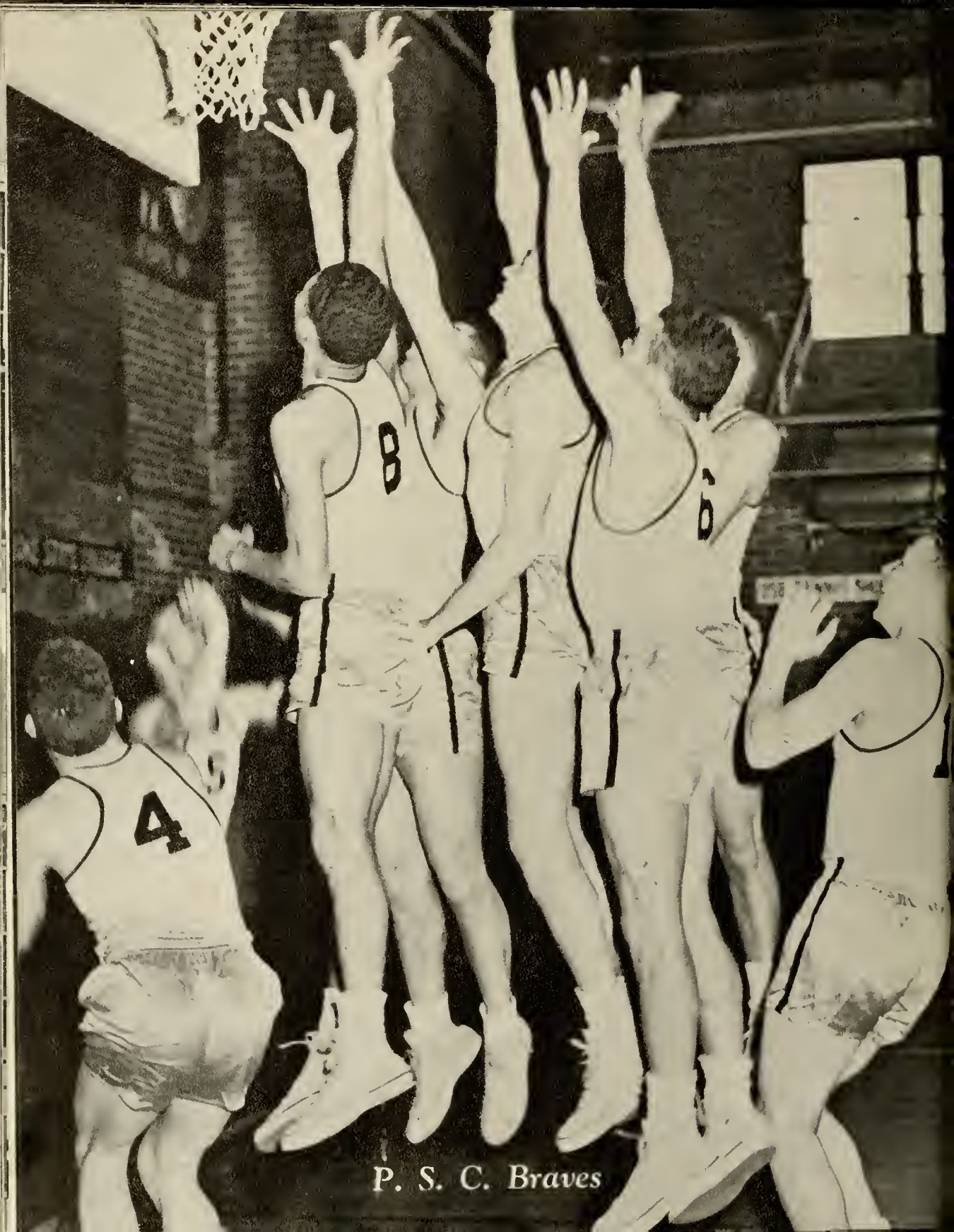




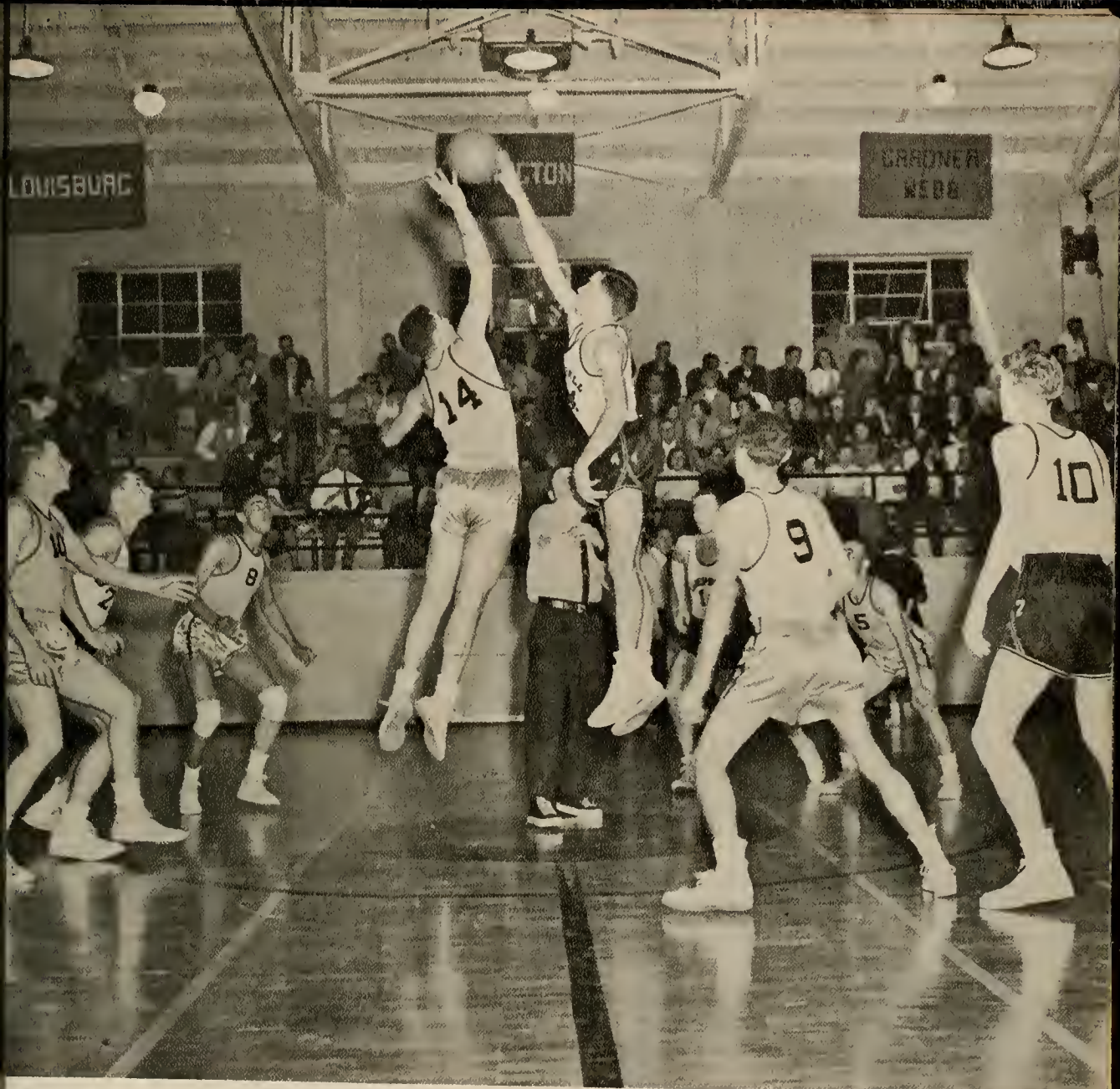
Departmental Activities







P. S. C. Braves



The Braves

Howard Locklear
Kenneth Maynor
Reese Warwick
Walter Lowry
Purnell Swett
Clarence Woods

James A. Jacobs
Leslie Locklear
Delton Ray Locklear
Bill R. Locklear
William Hammonds
Ralph Hunt

B. V. SMAWLEY, COACH



*Young Men's
Physical Education Class*





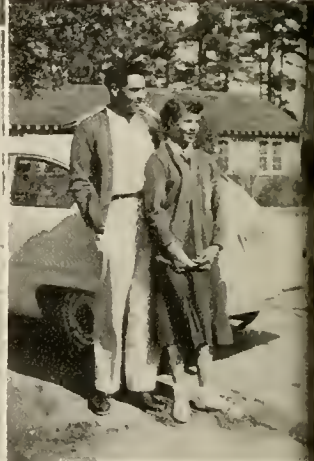
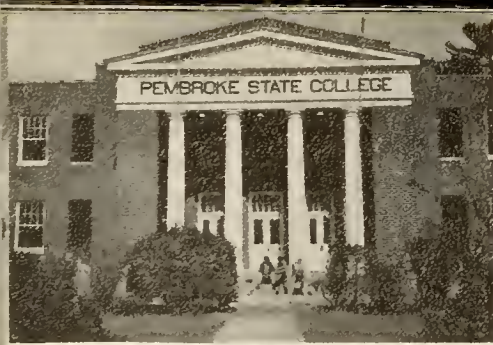
The Bravettes



The Bravettes

Narva Lowry	Forward
Mazalene Carter	Forward
Mary Frances Chavis	Forward
Arminda Lowry	Forward
Libby Dale Spaulding	Forward
Pauline Sutton	Forward-Guard
Betty Raye Hammonds	Forward-Guard
Vergie Jones	Guard
Sara Neil Bullard	Guard
Helen Bell	Guard
Margaret Brewer	Guard
Mary Frances Fields	Guard
DR. HERBERT OXENDINE	COACH







What matters is not how long we live, but how

NEEDLES



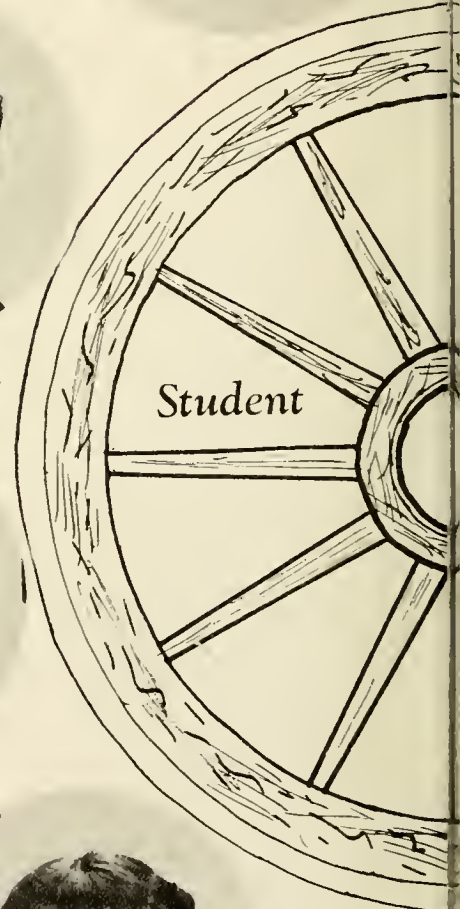
MARTIN L. LOWRY, JR.
President



PATRICIA CLARK
Junior Representative



ARMINDA LOWRY
Sophomore Representative



The Student Council was organized in the spring of 1948 when representatives of the faculty and student body met to draw up the Constitution and By-Laws. The organization was completed with the adoption of the Constitution and By-Laws in the fall session of the same year.

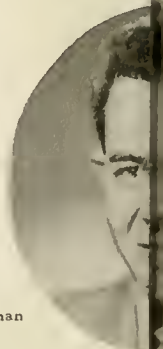
Past presidents have been: Fred Lowry, Cleo Maynor, Barto Clark, Henry Smith, Thadis Oxendine, and Elrie Locklear.



CHRISTIAN WHITE
Senior Representative




ADELINE LOWRY
Social Chairman




GLENN
Freshman


The purpose of the Student Council is to encourage and promote the development of personal honor, integrity, scholarly achievement, and a genuine sense of civic responsibility in all those who matriculate at P. S. C.



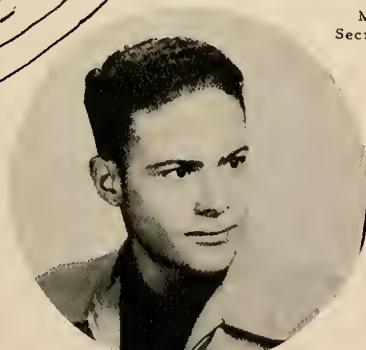
MARTIN L. LOWRY, JR.
President




BERTHA MARTIN
Religious Representative



MABEL MOORE
Secretary-Treasurer



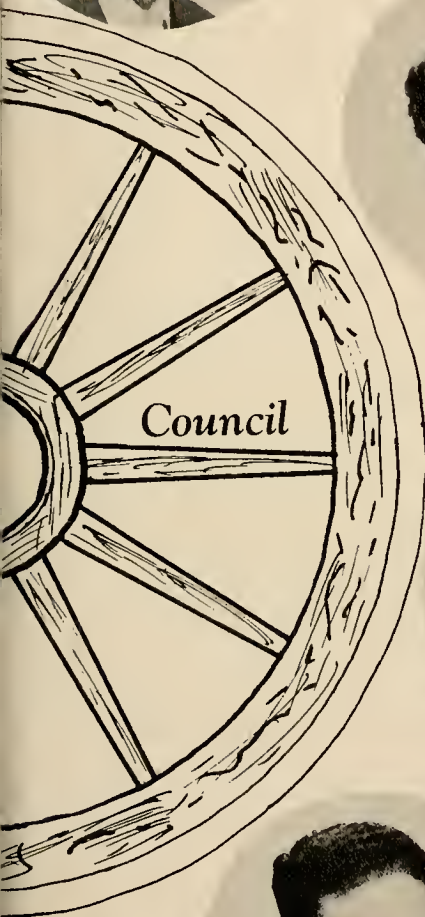
RALPH HUNT
Athletic Representative



JACOBS
Representative



DEAN CLIFTON OXENDINE
Advisor





Y. W. A.

FRONT ROW: Lorraine Chavis, Secretary-Treasurer; Mary Louise Cummings, Program Chairman; Patricia Clark, President.
SECOND ROW: Clearcie Locklear, Adrene Carter, Pianist; Earline Locklear, News Reporter; Bertha Mae Martin, Chorister.
(Not in Picture) Joyce Dimery, Vice-President; Mabel Moore, Community Mission Chairman; Mrs. Clifton Oxendine and Miss Mary Sharpe, Advisers.

MRS. CLIFTON OXENDINE
Sponsored By
Y. W. A.





Young Woman's Auxiliary

FRONT ROW: Pandora Locklear, Evie L. Oxendine, Margaret Strickland, Lorraine Chavis.
 SECOND ROW: Grace Dial, Margaret Brewer, Erlene Locklear, Adrene Carter, Essie M. Dial, Patricia Hunt, Clearcie Locklear.
 THIRD ROW: Helen Hammonds, Lou Henry Lowry, Mary Louise Cummings, Miss Mary Sharpe, Sponsor; Bertha Mae Martin, Mrs. Clifton Oxendine, Sponsor.

Y. W. A. offers college women an opportunity to broaden their knowledge of national and international questions through the study of mission programs and study courses as well as the chance to practice missions through service in the local community.

The Young Woman's Auxiliary was organized in the fall of 1941 through the inspiration and unceasing effort of Miss Mary Livermore who was director of Religious Education at the college. Clara Chavis was the first representative from the organization who was sent to Ridgecrest.

Over this period of twelve years, Y. W. A. members have sponsored on the campus, vespers, mission study courses, and engaged returned missionaries as speakers. They have also been leaders in their home church organizations.



Alpha Psi Omega Officers

CHRISTIAN WHITE
Vice-President

GRACE DIAL
Secretary

EYTTLE RANSOM
President



EYRTLE RANSOM
President



REBA M. LOWRY
Sponsored By
ALPHA PSI OMEGA



Alpha Psi Omega

Lillian Faye Locklear, Reba Lowry, Eyrhle Ransom, Lorraine Chavis, Adrene Carter, Delton Ray Locklear, Grace Dial, Christian White, Adeline Lowry, Martin L. Lowry, Jr., Lolita Blanks (Not in Picture).



Dramatic Club

KNEELING: Glenn Jacobs, Eyrtle Ransom, Ambrose Chavis, Jr., Fred Johnson, Don Blue, Christian White.

STANDING: Mazelene Carter, Herman Hunt, Adeline Lowry, Bertha Mae Martin, Patricia Clark, Delton Locklear, Emma Mabel Moore, Essie Myrtle Dial, Lorraine Chavis, Grace Dial, Helen Hammonds, Adrene Carter, Arminda Lowry, Martin L. Lowry, Jr., Loleta Planks, Reba M. Lowry, Sponsor; Lou Henry Lowry, Louise Cummings.

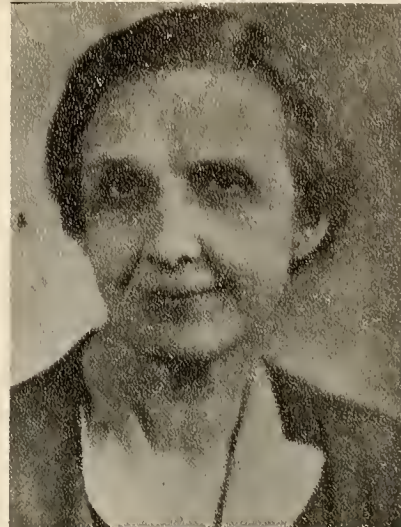




BERTHA MARTIN
President

The purpose of the Baptist Student Union is to form a link between the college, church, and home and to develop the spiritual life of students by participation in the various activities carried on during the school year. It seeks to help students find God's will and lead them to know Christ as Savior, and to extend His kingdom on earth.

Lorraine Chavis, Sunday School Representative; Mary Louise Cummings, Devotional Vice-President; Funnell Swett, Enlistment Vice-President; Adrene Carter, Pianist; Patricia Clark, Secretary-Treasurer; Bertha Martin, President; William Hammonds, Poster Chairman; Reverend Harvey L. Brewington, Adult Director; Betty Ray Hammonds, Magazine Representative; Earlene Locklear, Y. W. A.; Ralph Hunt, Publicity Chairman.



MISS MARY LIVERMORE
Sponsored By
BAPTIST STUDENT UNION





BAPTIST



STUDENT UNION



OTHNEIL THOMPSON
President

MISS MARJORIE KANABLE
Sponsored By
W. F.



Wesley Fellowship

SEATED: Evie Lee Oxendine, International Relations Chairman; Loleta O. Blanks, Personnel Chairman; Clearcie Locklear, Publicity Chairman; Prestly Lowry, Social Chairman; Annie Lois Oxendine, Program Chairman.
STANDING: Mabel Moore, Secretary; Miss Marjorie Kanable, Sponsor; Joyce Dimery, Reporter; Sue Sanderson, Treasurer; Bertha Locklear, Devotional Chairman; Othneil Thompson, President; Grace Dial, Music Chairman; Reverend Christian White, Sponsor.



W. F.

SEATED: Don Blue, Sherman Chavis, Sue Sanderson, Naomi Dial, Pauline I ocklear, Mary Frances Chavis, Grace Dial, Vergie Jones, Nelvia Earnes, Pauline Woods, Clearcie Locklear, Lou Henry Lowry, Prestly Lowry.

STANDING: Mrs. Reba Lowry, Miss Kanable, Sponsor; Annie Lois Oxendine, Margie Lloyd, Mabel Moore, Mary E. Wilkins, Joyce Dimery, Evie Lea Oxendine, Bertha Locklear, Margaret Brewer, Sara Neil Bullard, Loleta Blanks, M. L. Lowry, Jr., Othneil Thompson, Reverend Christian White.



MISS MARY SHARPE
Sponsored By
PONTIAC SOCIETY

Pontiac Society

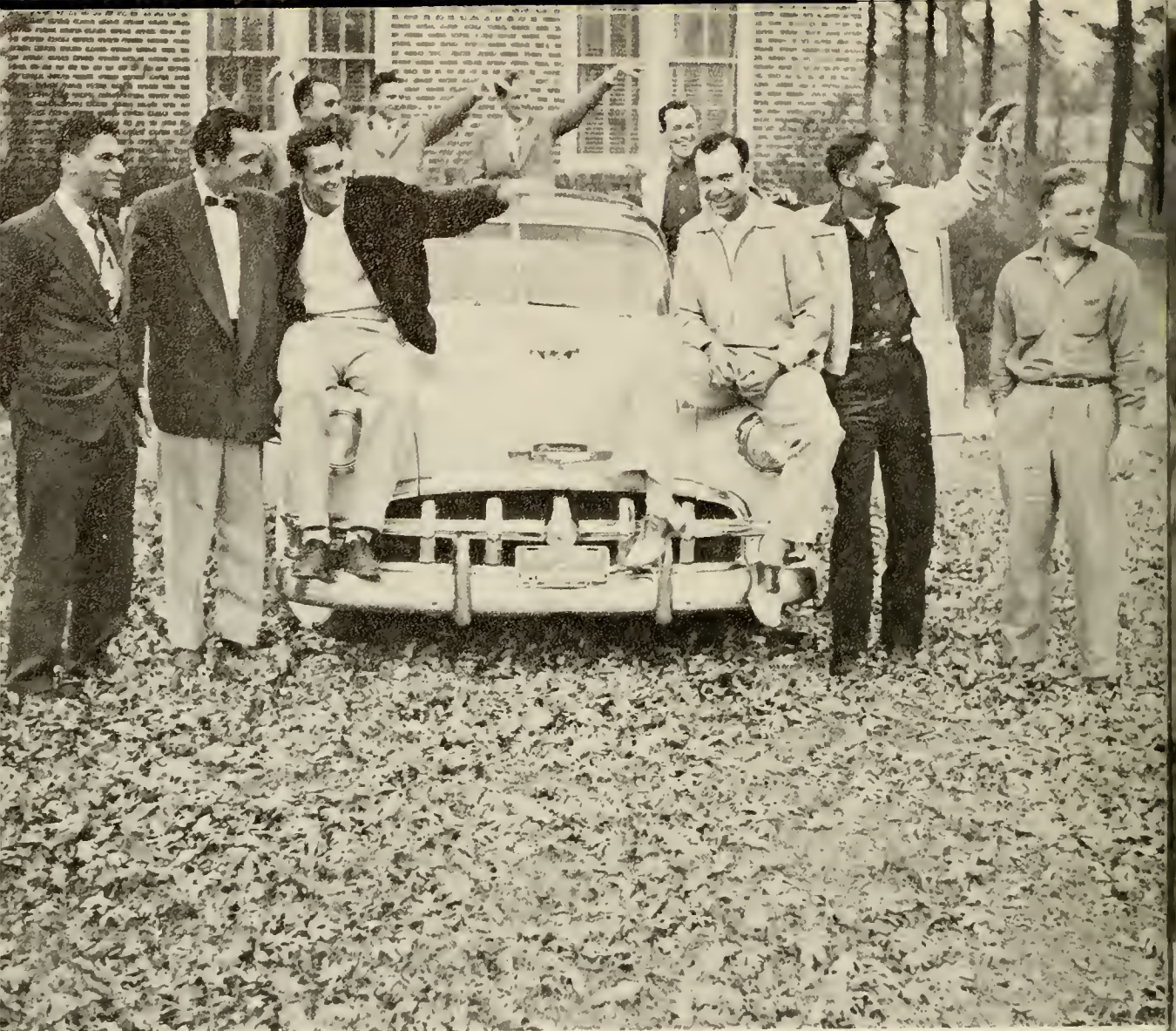
SITTING: Patricia Hunt, Vice-President; Helen Bell, Program Chairman.
STANDING: Betty Raye Hammonds, Secretary and Treasurer; Ralph Hunt, President.
(Not in Picture) Sara Neil Bullard, Social Chairman; Dewey M. Corn and Dr. H. H. Todd, Sponsors.





Pontiac Society

Dr. Herbert Todd, Sponsor; Betty Raye Hammond, Sara Neil Bullard, Patricia Clark, Bill R. Locklear, Marvin Ransom, Sherman Chavis, Altha Lowry, Helen Bell, Ralph Hunt.



Veterans' Club

James C. Dial, Samuel Locklear, Bruce Jones, Marvin Ransom, Ambrose Chavis, Jr., Martin L. Lowry, Jr., Glenn Jacobs, Leslie Locklear, Reece Warwick, Prestly Lowry.



SGT. PAUL ELLIS CLARK
Sponsored By
EMERITAN SOCIETY

SAMUEL LOCKLEAR
President



Emeritan Society

- Prestley Lowry Poster Chairman
- Ambrose Chavis Social Vice-Chairman
- Reba M. Lowry..... Sponsor
- Samuel Locklear..... President
- Katrina Locklear..... Secretary
- Bertha Martin..... Social Chairman
- Purnell Swett..... Vice-President
- Grace Dial (Not in Picture)..... Treasurer
- Mrs. Bertha Dunn (Not in Picture)..... Sponsor

The purpose of the Emeritan Society is to develop leadership.

The meetings each month afford opportunities for training in public speaking, dramatics, creative writing, and parliamentary procedure.





EMERITAN



LITERARY SOCIETY



MABEL MOORE
President

Home Ec. Club

- Miss Woodward Byars.....Sponsor
- Jolly Lucille Locklear.....Secretary-Treasurer
- Helen Bell.....Vice-President
- Mabel Moore.....President



MISS J. WOODWARD BYARS
Sponsored By
HOME EC. CLUB





SITTING: Cora Sue Revels, Narva Lowry, Mary Frances Fields, Geraldene Jacobs, Katrina Locklear, Sallie Oxendine, Bertha Locklear.

STANDING: Emma Mabel Moore, Margie Lloyd, Annie L. Oxendine, Pauline Sutton, Mazelene Carter, Dorothy Oxendine, Sara Jane Oxendine, Glenda F. Chavis.

Home Ec. Club Party



El Arco Iris

JOYCE DIMERY
President

MRS. JONES
In Hespulco, Mexico
November, 1953

MRS. DAPHNE JONES
Sponsored By
EL ARCO IRIS





Math Club

Varser Sanderson, James C. Dial, Kenneth Maynor, Ralph Hunt, President; Stanford Lowry, Altha Lowry, Bruce Jones, Jack Lowry, Othneil Thompson, James C. Chavis, Lorraine Chavis, Funnell Swett, James A. Jacobs, Adviser. (Not In Picture) Lycurous Lowry, Vice-President; Pauline Locklear, Secretary.

RALPH HUNT
President

JAMES A. JACOBS
Sponsored By
MATH. CLUB



THE PINE NEEDLE

PEMBROKE STATE COLLEGE

February 11, 1954



PSC BASEBALL FIELD TO GET UPLIFTING

EDMUND LOCKLEAR, JR.
Editor

DR. LOUIS MARDER
Sponsored By
NEWSPAPER STAFF

PSC Baseball Field is soon to get a new look in appearance as well as efficiency. The new grandstand is going to be installed, and the old grandstand has long been in poor condition. The new grandstand and showers, dressing rooms, and restrooms will be installed for players and spectators.

The legislature has appropriated the money and provided the college with the necessary funds. The college will take approximately \$100,000 and have them installed. A committee will be appointed to work with the program for the next few months. Mr. James

The college has selected a committee to raise the money. The program is scheduled for March 19th. The speaker will be Dr. Meredith College in Raleigh. Dr. Campbell is president of the Southern Association of Colleges in which PSC holds membership.

College classes will also get a chance to contribute to the fund raising.

According to Coach Smawley, who has a big interest in the field because of the coming baseball season, an architect is expected to arrive any day to draw up plans for the grandstand. If the work starts very soon, the coach believes the field will be ready for the first game of the season.

The Pine Needle Staff

Christian White Reporter
Edmund Locklear, Jr. Editor
Prestley Lowry Art Editor
Fred Johnson Reporter
Annie Lois Oxendine Associate Editor
Bertha Mae Martin Managing Editor
(Not In Picture)
Sue Sanderson Reporter
Miss I. Ruth Martin Faculty Adviser
Dr. Louis Marder Faculty Representative





Business Staff

1954 INDIANHEAD

Business Manager

Eyrtle Ransom

Advertising Managers

Adeline Lowry
James C. Dial



Editorial Staff of Indianhead

Mrs. Reba Lowry, Senior Sponsor; Martin Luther Lowry, Jr., Editor; Grace Dial, Associate Editor; Mabel Moore, Assistant Editor; Christian White, Organization and Club Editor. (Pictures Not Shown) Joyce Dimery, Class Editor; Lorraine Chavis, Typist; Levi Hunt, Jr., Student Photographer; Edmund Locklear, Jr., Student Photographer.

ELMER HUNT
Sponsored By
THE INDIANHEAD STAFF



Marshals



MARTIN - BERTHA - ADELINE - GRACE - BRUCE
Chief
Marshal



The College Bookstore

EYRTLE RANSOM, MANAGER

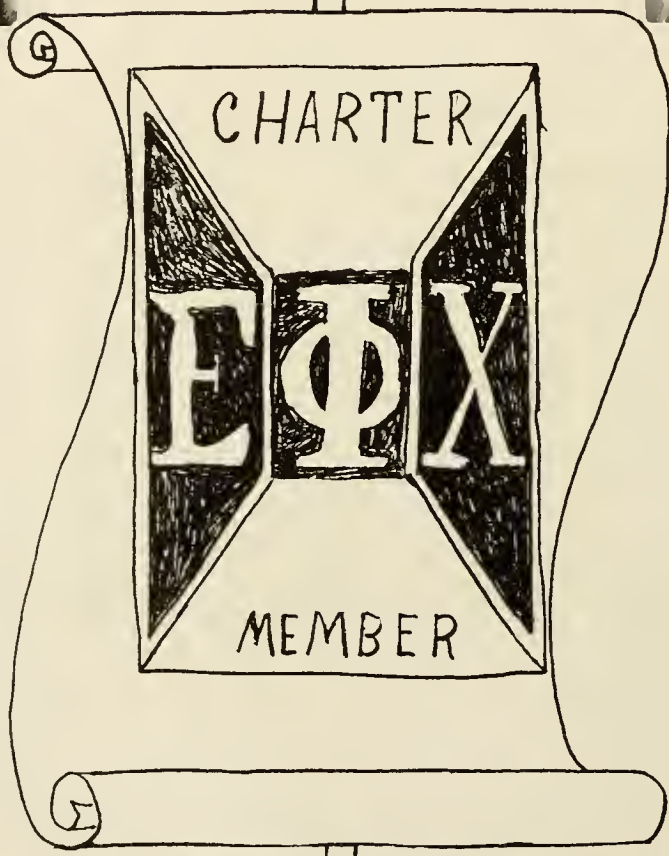


HENRY FORD LOWRY '52
BETTY LOU BELL '48



BARTO CLARK '50
JOYCE JACOBS '52

Phi Epsilon Chi



PHI EPSILON CHI, scholastic honorary society, carries out the thought of knowledge, character and wisdom.

Pictured here are charter members. (A. G. Spaulding, another charter member, is not shown).

FRED LOWRY '49

HARVEY LOWRY '52

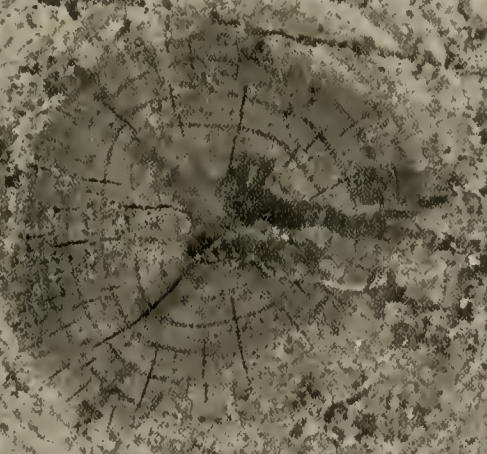
RAYMOND CLARK '49

DR. R. D. WELLONS
Counselor



HEART

"Where your treasure is, there will your
heart be also."



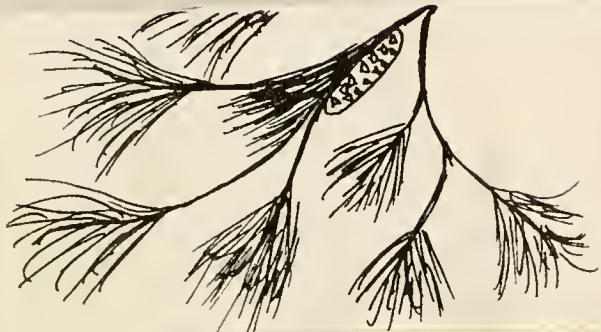


GRACE DIAL
Senior Queen



BERTHA LOCKLEAR
Sophomore Queen





SARA NEIL BULLARD
Junior Queen



MARY FRANCES FIELDS
Freshman Queen





LORRAINE CHAVIS
P. S. C. Queen

SELECTED BY LAVERGNE STUDIO



DELTON RAY LOCKLEAR

P. S. C. King

SELECTED BY LAVERGNE STUDIO



MARTIN L. LOWRY, JR.



REVEREND CHRISTIAN WHITE



Most Versatile

ADRENE CARTER - EYRTLE RANSOM



Most Talented

SAMUEL R. LOCKLEAR - LILLIAN THOMAS LOCKLEAR



Best Looking

OLGA & SHELLA HAMMONDS - ALTON BRUCE JONES

Most Likely to Succeed

CHRISTINE CARTER - EDMUND LOCKLEAR, JR.





Wittiest

VERGIE MAE JONES - JACK LOWRY



Most Athletic

SARA NEIL BULLARD - JAMES HOWARD LOCKLEAR



Best Leaders

BERTHA M. MARTIN - MARTIN L. LOWRY, JR.



Best All-Round

CHRISTIAN WHITE - JOYCE S. SMAWLEY



Most Studious

ALTHA LOWRY - RALPH HUNT



Mr. and Miss Personality

GRACE DIAL - AMBROSE CHAVIS, JR.

Dean's List-Fall Quarter

(IN PICTURE)

Eyrtle Ransome, 2.53 Average
Joyce Smawley, 3.00 Average

Christian White, 2.88 Average
Altha Lowry, 2.65 Average

Ralph Hunt, 2.78 Average
James Dial, 2.56 Average

Dean's List-Winter Quarter

(NOT IN PICTURE)

FRESHMEN: Joyce Smawley, 3.00 Average; Essie Myrtle Dial, 2.71 Average; Christene Carter, 2.47 Average

SOPHOMORES: Loleta Blanks, 2.76 Average; Bertha Locklear, 2.68 Average; Lillian Faye Locklear, 2.55 Average

JUNIOR: Ralph Hunt, 2.63 Average

SENIORS: Christian White, 2.94 Average; Geneva Sanderson, 2.+ Average
Eyrtle Ransom, 2.44 Average





By their fruits ye shall know them.

LONE



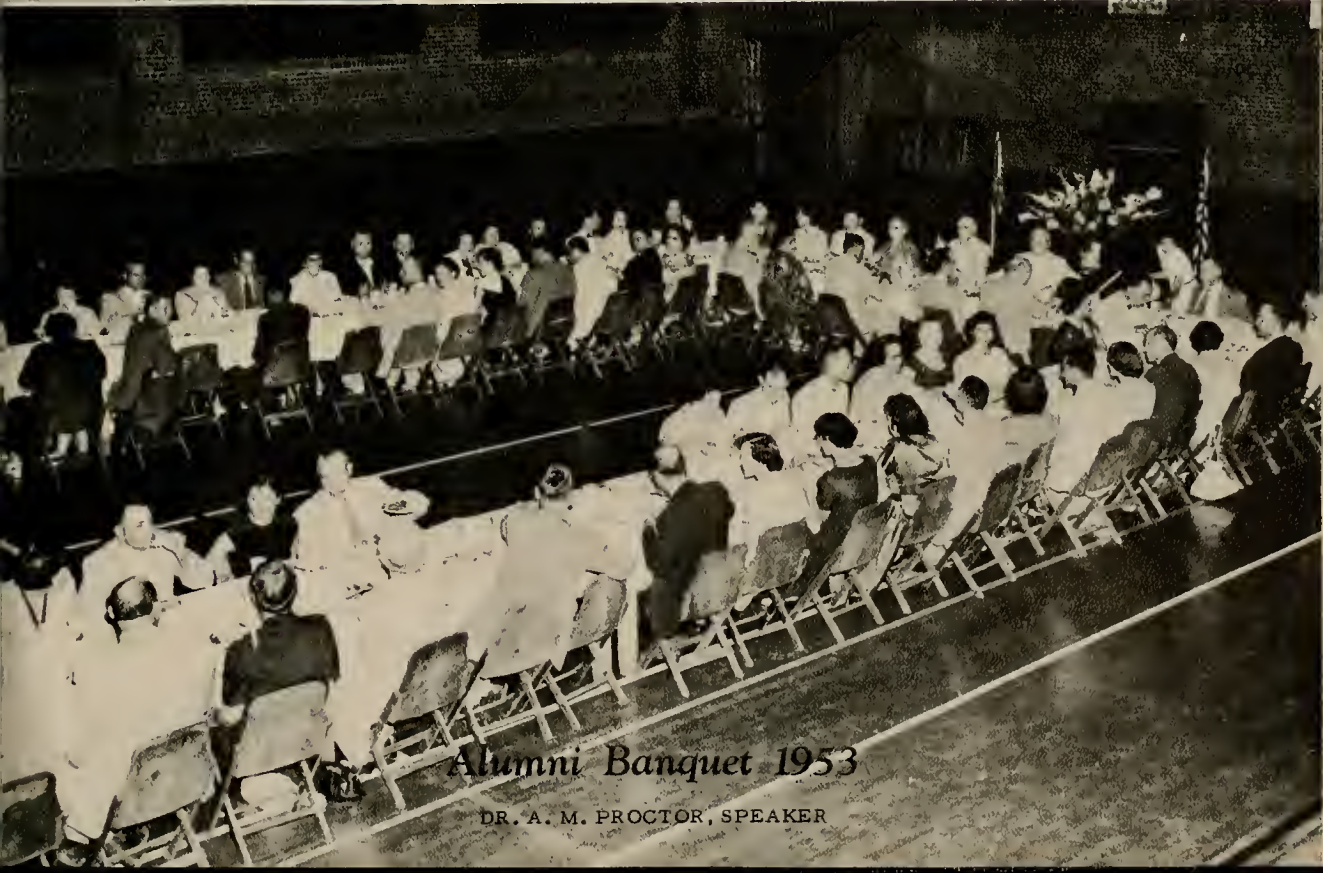
Field Day





Field Day

The first county-wide Field Day was held on the P. S. C. campus on April 24, 1953. High school and grammar school students from all over Robeson County participated in this event.



Alumni Banquet 1953

DR. A. M. PROCTOR, SPEAKER

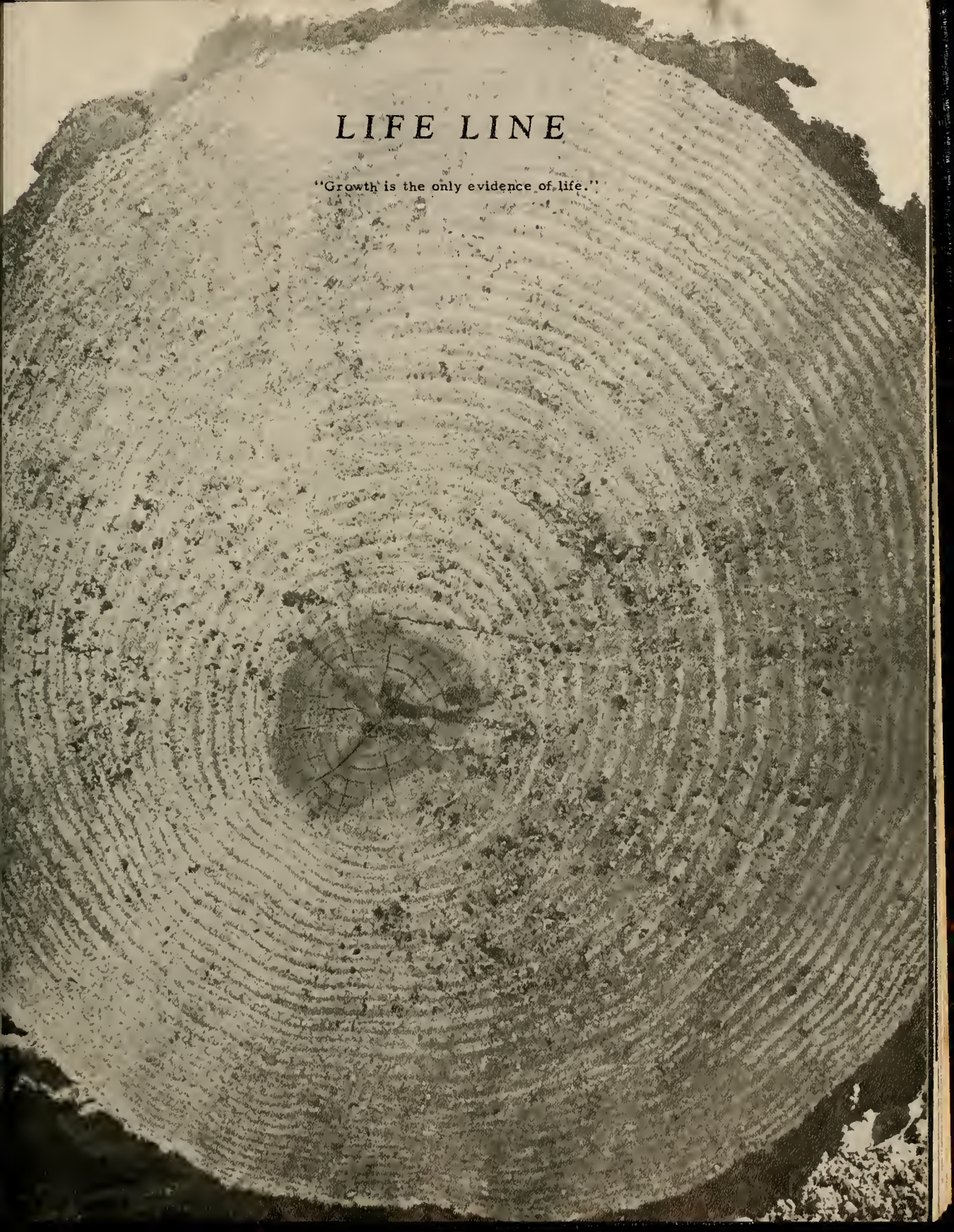


*Board of Trustees
of
Pembroke State College*

FRONT ROW: Mr. J. O. Brooks, Fairmont, North Carolina; Mr. Z. A. Lowry, Pembroke, North Carolina; Mr. C. L. Maynor, Pembroke, North Carolina; Reverend L. W. Jacobs, Pembroke, North Carolina.

BACK ROW: Dr. R. D. Wellons, President of Pembroke State College; Mr. Steve Hammonds, Jr., Lumberton, North Carolina; Mr. A. G. Lowry, Rowland, North Carolina; Mr. James A. Sampson, Pembroke, North Carolina; Mr. John L. Carter, Pembroke, North Carolina.

NOT IN PICTURE: Mr. Lacy Cummings, Rowland, North Carolina; Mr. Lester Bullard, Maxton, North Carolina; Reverend D. F. Lowry, Pembroke, North Carolina.



LIFE LINE

"Growth is the only evidence of life."



All's well that ends well in the glittering climax of William Shakespeare's giddy comedy, "The Two Gentlemen of Verona". Left to right: Peggy Collins, Lauren Farr, William Alspaugh, David Cross, Kay Kendall and Jerry Oddo.

Artists Series



Jerry Oddo as Proteus and Lauren Farr as Valentine, two merry, madcap gentlemen of Verona, in William Shakespeare's comedy, "The Two Gentlemen of Verona", which the world famous Barter Theatre of Virginia presented February 25, 1954 in the Old Main Auditorium.

They Saw Shakespeare





Apollo Boys' Choir

COLEMAN COOPER, DIRECTOR

Program Presented at P.S.C.

April 22, 1954

Artist Series

THE PRESIDENT'S RECEPTION HELD IN THE HOME OF
DR. AND MRS. R. D. WELLONS.







Happy Moments

Junior-Senior Banquet

1952-'53

Dr. E. Norfleet Gardner

Speaker





Junior-Senior Hawaiian Banquet

at

H. B. Revel's Tavern





PEMBROKE STATE COLLEGE

P. S. C. Float

PLAY LIFE..... Narva Lowry, Sara Neil Bullard.
STUDY LIFE..... Cora Sue Revels, Nelvia Barnes.
SOCIAL LIFE Lorraine Chavis, Bertha Martin.
SPIRITUAL LIFE Grace Dial.





High School Senior Day



HIGH SCHOOL SENIORS IN THE PEMBROKE ROOM

The Pembroke Room

The Pembroke Room houses articles and documents of historic interest pertaining to our college and community.



One of the highlights of Senior Day is
the picnic lunch served on the College Campus.



Food

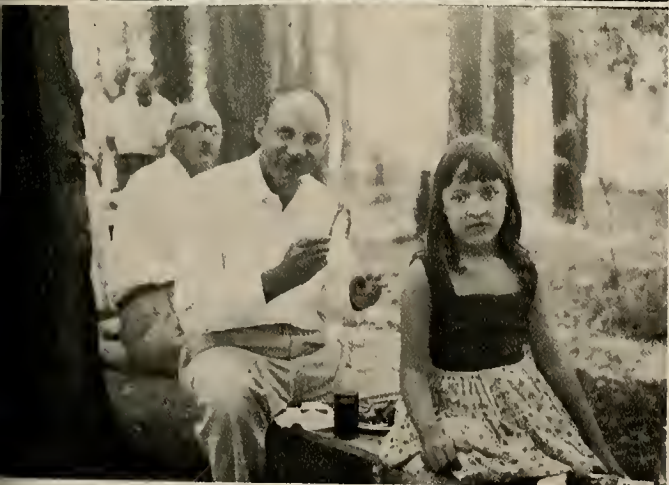
Fun

Fellowship



El Arco Iris Party on College Picnic Grounds





Summer School Picnic



Sadie



Hawkins



Day





Social Hour





P. S. C. Popularity Queen





Santa Visits Pembroke





Final 1953 Senior Party given in honor of Walter Scott and Family of Colorado.



Graduates of 1953



MR. ALFRED WELLONS

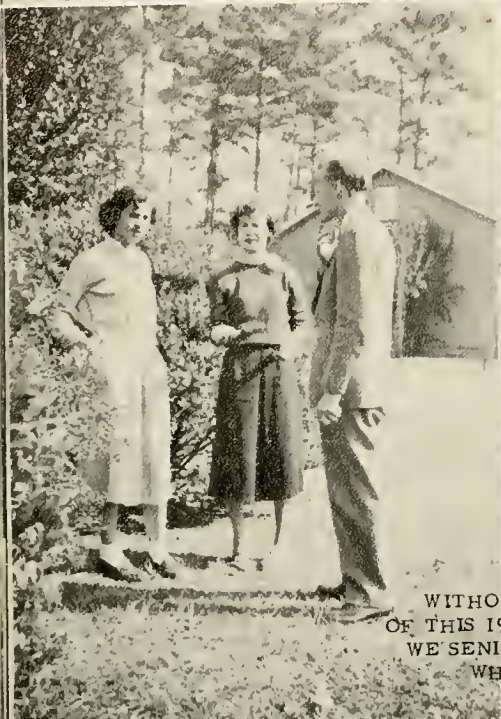


DR. R. D. WELLONS
REVEREND C. A. BARCLIFT

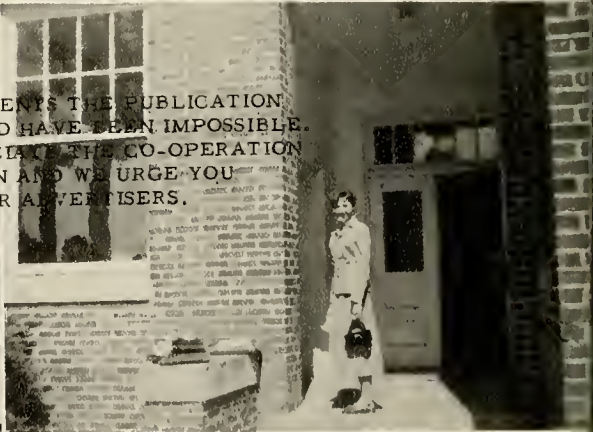


Inspirationalists





WITHOUT THE ADVERTISEMENTS THE PUBLICATION
 OF THIS 1954 YEARBOOK WOULD HAVE BEEN IMPOSSIBLE.
 WE SENIORS DEEPLY APPRECIATE THE CO-OPERATION
 WHICH HAS BEEN SHOWN AND WE URGE YOU
 TO PATRONIZE OUR ADVERTISERS.





"Nurture your mind with great thoughts,

To believe in the heroic makes heroes".

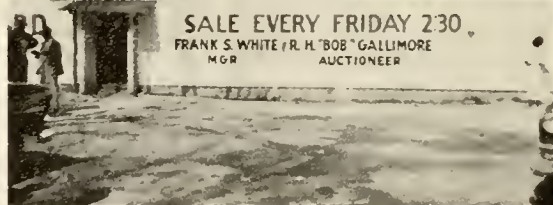
NUTRITION

We Buy Top Hogs Daily

CATTLE -- HOGS

and

Other Items You Wish To Dispose of



We Carry On Hand At All Times

MISSOURI MULES & HACKNEY
WAGONS

FRANK S. WHITE, Manager

PATES, NORTH CAROLINA

Pates Stockyard

American Service Center

Washing - Waxing - Lubrication
Lunches - Sandwiches - Soda Fountain

Phone 2451

Pembroke, N.C.

Compliments of

SCARBOROUGH BUILDER'S
SUPPLY CO.

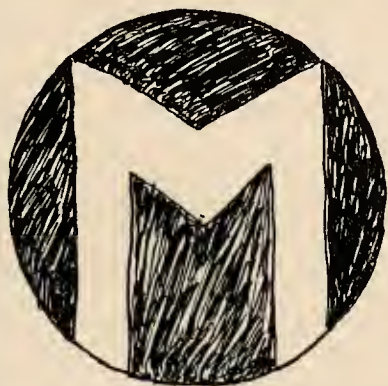
Complete
Building Service

Lumberton, N. C.

JACK PAIT FURNITURE CO.

"It is easy to pay.
The Jack Pate Way."

Lumberton, N. C.



Master Chemical Corporation

PHONE 611 — FAIRMONT, N. C.

Manufacturers of
HIGH GRADE FERTILIZERS



Compliments of

*The Waccamow Bank and
Trust Company*

Fairmont, N. C.

MERRIMAC MUSIC CO.

"Everything In Music"

Lester, Betsy Ross, Weaver & Livingston
Pianos - Conn, Pan American, Holton,
Wm. Frank Band Instruments

Records - Sheet Music

410 Chestnut St. Phone 4047
Lumberton, N. C.

PEMBROKE MOTOR CO.

—FORD—

Sales & Service

Phone 5511 Pembroke, N. C.

Compliments of

Old Foundry Restaurant

Regular Dinners

Private Dining Room

Efficient Curb Service

Phone No. 5726

Hubert Oxendine, Manager



Locklear & Son Funeral Home

Offers You As Much As \$700.00 Burial Insurance

24 Hour Ambulance Service

Dial 2991 - Day or Night

Pembroke, N. C.

Compliments of

**PEMBROKE POLICE
DEPARTMENT**

HENDRIX SAFEWAY GROCERIES & MARKET

Phone 2591

Pembroke, N. C.

Plain & Fancy Groceries · Meats & Produce

Feeds and Seeds

Pleasing You Pleases Us

Give Us A Try - We Aim To Satisfy

ROBESON MUTUAL TRADING CO., INC.

Fresh Meats, Vegetables, Fruits

Seeds and Feeds

Phone 3251

Allen McGirt, Mgr.

Pembroke, N. C.

RED SPRINGS SUPPLY CO., INC.

The Friendly Store

Office Phone 3271

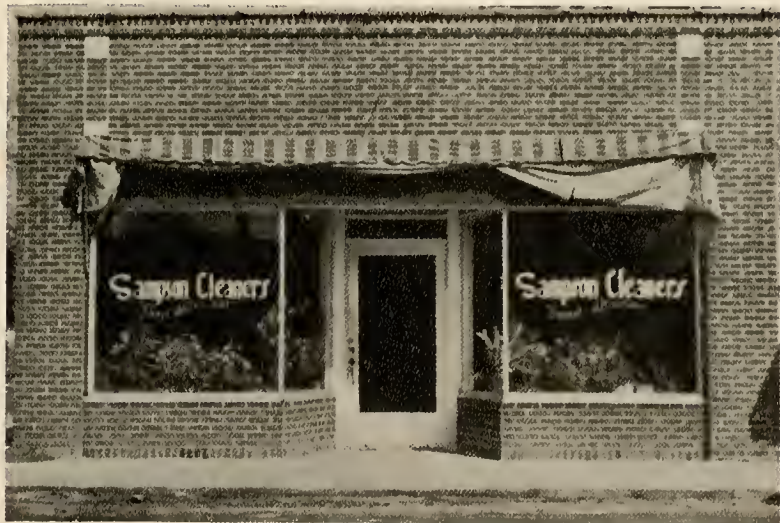
Store 3701

Red Springs, N. C.



**24-Hour
Dry Cleaning
Service**

**Complete
Laundry
Service**



Sampson's Dry Cleaners

Pembroke, N. C.

Compliments of

RED SPRINGS DRUG CO.

Prescription Specialists

Red Springs, N. C.

MOORE'S DEPT. STORE

Clothes for the Entire Family

Red Springs, N. C.

Phone 4516

Lowry Plumbing Co.

Plumbing Contractors

Installations - Repairs

Seavie Lowry, Owner

Phone 3851

Pembroke, N. C.



We Specialize In
Quality Seeds, Feeds,
Fertilizer, Fencing
Farm Machinery
Electrical Appliances
Building Materials
& Baby Chicks

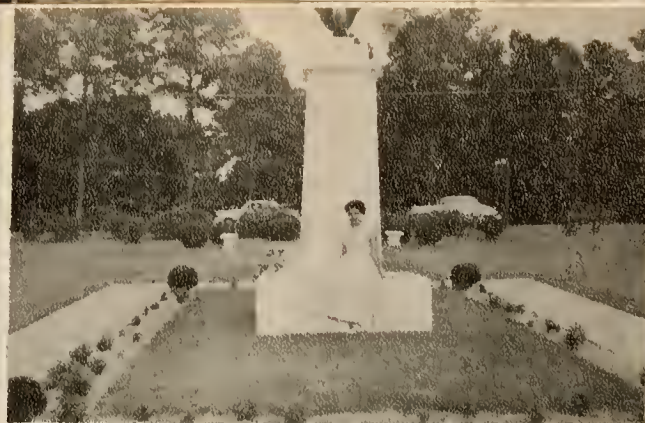
YOUR LOCAL

F. C. X. Service

FARMER OWNED & CONTROLLED

TELEPHONE 5792

PEMBROKE, N. C.



McLAURIN-McARTHUR CHEVROLET CO.

Chevrolet & Oldsmobile - Sales & Service

Laurinburg, N. C.

Congratulations
Class
1954

OXEDINE'S
JEWELRY
SHOP

Pembroke
N. C.



WHERE ARE YOU GOING?

In only a few years now you will be establishing your Own home—somewhere.

Will you settle somewhere else or come back home?

Before you decide, be sure to look around carefully at the advantages of the Carolinas—the opportunities for a full and profitable life—the chance to live and work in a growing and progressive area and to help build an even Finer Carolina in the years ahead!

Carolina Power & Light Co.

WESTINGHOUSE
AND
PHILCO RADIOS AND
APPLIANCES
COMPLETE HOME
FURNISHINGS
PEMBROKE, N. C.



Pembroke Furniture Co.

M. & S. Motor Co.

Chrysler and Plymouth
Cars

Red Springs, N. C.

Townsend's Pharmacy

The Rexall Store

Prescriptions

Drugs and Sundries

Phone 2631

Red Springs, N. C.

B. C. Moore and Son

We Feature

Curlee Clothes

For the Men Who Care

Regular, Shorts,
& Stouts

Phone 6211

Red Springs, N.C.

THE ROBESONIAN, INC.

Publisher of the Robesonian
Daily Except Saturday & Sunday

THE LUMBERTON MUSIC STORE

Lumberton, N. C.
Home of Baldwin Pianos and
Electric Organs

Compliments of

HOME FURNITURE CO., INC.

Dealers In Furniture, Carpets
Stoves, Ranges, Radios
G.E. Appliances - Luggage

Phone 277-1

Red Springs, N. C.



Camel Flour

distributed
by

**HAMMOND GROCERY
COMPANY, INC.**

Wholesale Grocers

Laurinburg, N. C.



The College Esso Service Station

Oil, Gas & Service

Auto Repair

Quick Lunch - Confections

Charlie Chavis, Prop.

Phone 2431

Pembroke, N. C.

Pembroke Hardware

Shelf Hardware

Appliances

V. C. Fertilizers

Call 2191

Pembroke, N. C.

Compliments of
JONES FOOD & APPLIANCE STORE
Phone 2441 Pembroke, N. C.

Compliments of
FLEISHMAN'S
Lumberton, N. C.

Compliments of
THATCHER'S GARAGE
Pembroke, N. C.





Compliments of
The State Bank
Laurinburg Maxton
Member F.D.I.C.

SERVICE TRADING CO., INC.

R. H. Livermore, Pres., G. E. Bracey, Vice-Pres.
M. P. James, Secy-Treas.,
W. G. Peele, Asst. Secy-Treas. & Mgr.

Maxton, N. C.

MAYNOR'S BARBER & BEAUTY SHOP

Congratulations to the President, Faculty,
Seniors and Other Classes on
Their Splendid Effort

Call 5451 Pembroke, N. C.

CARTER'S FLORIST

Flowers for All Occasions
Phones

Day 6731

Night 3931



Compliments of

BLUE'S CAFE

MAXTON HARDWARE CO.

Hardware - Paints & Varnishes

Builders Supplies

Phone 88

Maxton, N. C.

MAYNOR BROTHERS

Dealers in Timber

Buying and Manufacturing

Vance & 2nd Street

Phone 6511

Pembroke, N. C.

Compliments of

Tyner Oil Company

Bill Tyner

Phone 5111

Red Springs, N.C.

Gas, Oil & Fuel Oil

Save 3 cents per gallon on gas.

"The Best For Less"

Tire Recapping

All Work Guaranteed

"Best Prices On New Tires"

Compliments of

Lumberton Trading Co.

Lumberton, N. C.





Pates Supply Company, Inc.

HARDWARE

ELECTRICAL APPLIANCES

GROCERIES

COTTON & FERTILIZERS

DRY GOODS

"EVERYTHING FOR THE FARM & HOME"

PEMBROKE, NORTH CAROLINA





COMPLIMENTS OF

LUMBERTON COCA-COLA

Coca-Cola
REG. U.S. PAT. OFF.

BOTTLING COMPANY

LUMBERTON, NORTH CAROLINA

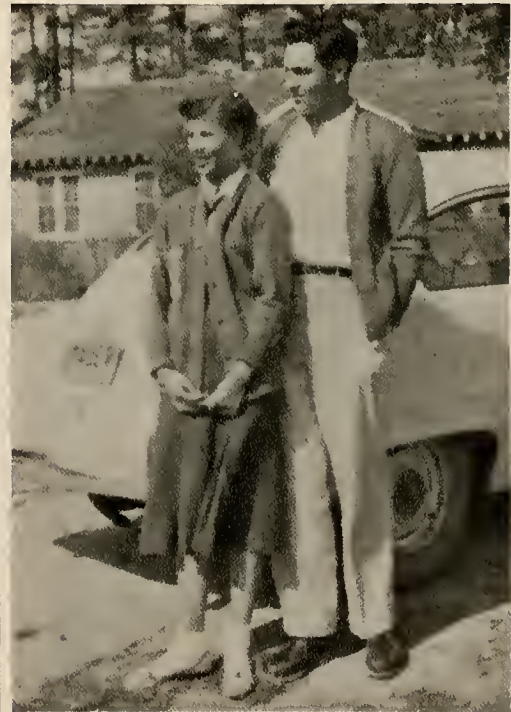
PHONE 4364

Singleton and McMillan,

Pontiac - Studebaker
International Harvester
Sales and Service

Phone 3971

Red Springs, N. C.



Maxton Supply Co.

FARM SUPPLIES HARDWARE GROCERIES

SEEDS FERTILIZERS

SEED CLEANED & TREATED

COTTON GIN

MAXTON, NORTH CAROLINA



FRANK WHITE

R. E. WILKINS

H. D. GOODE

R. H. LIVERMOORE, JR.

Liberty Warehouses

LUMBERTON, NORTH CAROLINA

We Strive To Please
Complete Garage Service
Wrecker Service
Fuel Oil Dealer
Wholesale & Retail



YOUR ALLIS-CHALMERS FARM MACHINERY DEALER
BUCKEYE & SILENT FLAME TOBACCO CURERS
SILENT FLAME TOBACCO HARVESTERS

Pembroke Implement Co., Inc.

PHONE 5601

PEMBROKE, N. C.

Frank S. White, Manager - R. L. Littleton, Sales Manager
Carl Stubbs, Shop Manager

"Treat Your Land to

D I X I E

Brand"

Top Quality Fertilizer

It's Worth the Difference - - -

You Cannot Buy Better

Fertilizer

See Your Dixie Dealer

Dixie Guano Co.

Laurinburg, N. C.

Phone 63 - 66

Robeson Office Supplies

Remington

Rand

Authorized

Sales & Service

Agency

Lumberton, N. C.

Pembroke State College

A STANDARD FOUR-YEAR LIBERAL ARTS COLLEGE OFFERS COURSES
LEADING TO BACHELOR OF SCIENCE AND
BACHELOR OF ARTS DEGREE

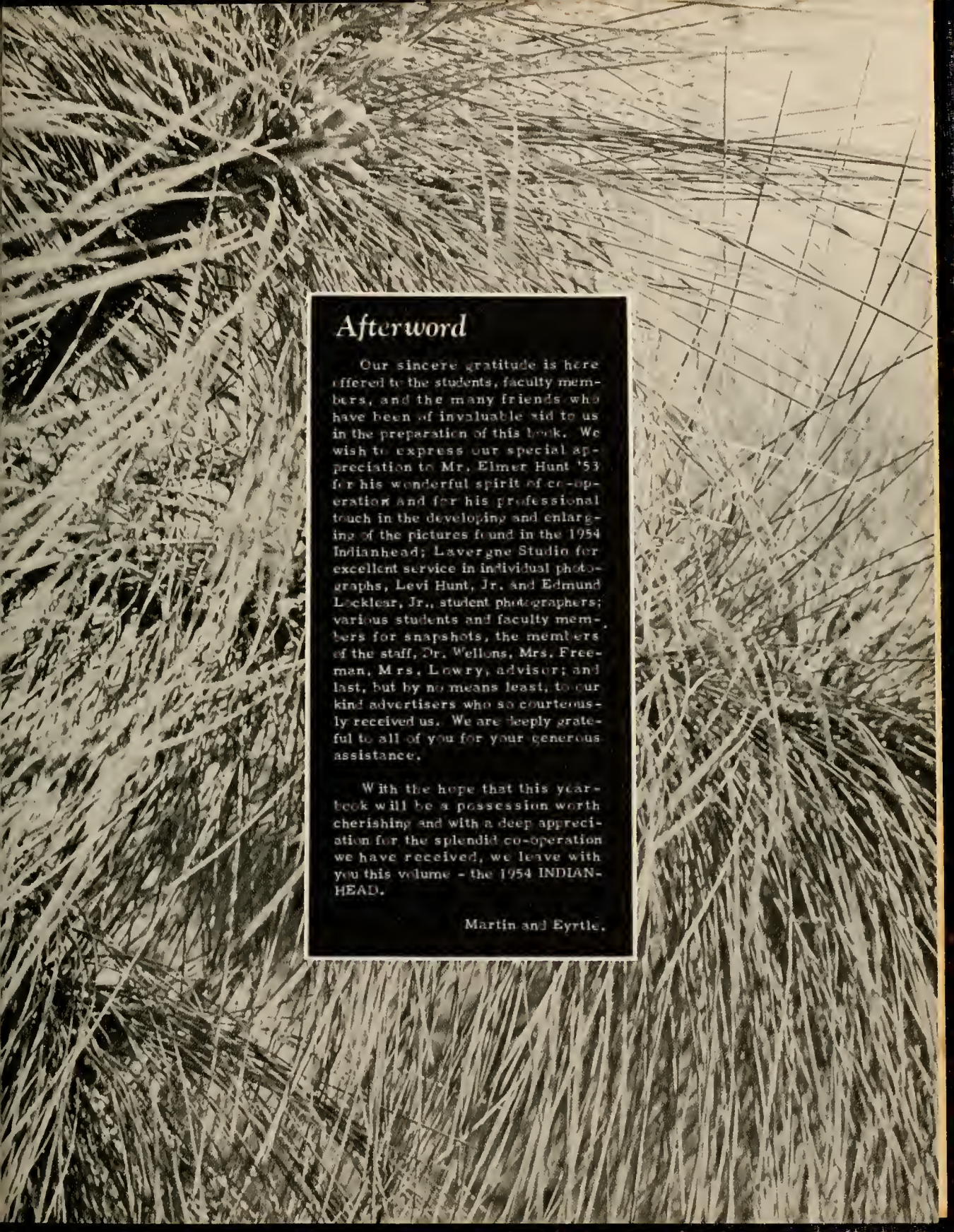
OPPORTUNITIES GIVEN FOR

Specializing in Art, Music, Home Economics, Agriculture,
Physical Education, as well as English, Social
Sciences, Languages, Biology, Chemistry,
Physics and Mathematics

A GROWING LIBRARY NOW CONTAINS
OVER TWENTY THOUSAND BOOKS

MEMBER OF THE SOUTHERN ASSOCIATION OF COLLEGES AND
SECONDARY SCHOOLS OF THE ASSOCIATION OF
AMERICAN COLLEGES

PEMBROKE, NORTH CAROLINA

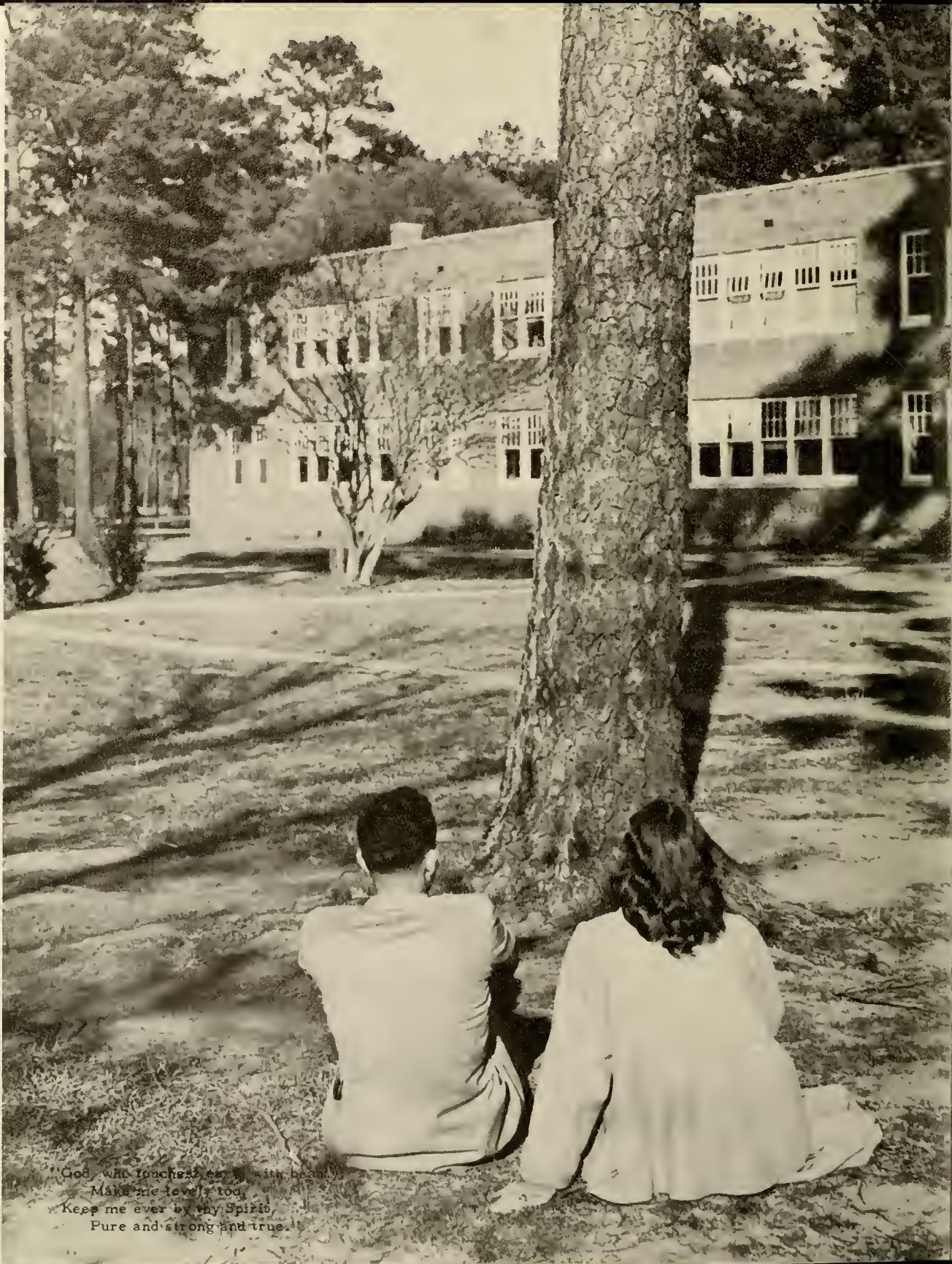


Afterword

Our sincere gratitude is here offered to the students, faculty members, and the many friends who have been of invaluable aid to us in the preparation of this book. We wish to express our special appreciation to Mr. Elmer Hunt '53 for his wonderful spirit of co-operation and for his professional touch in the developing and enlarging of the pictures found in the 1954 Indianhead; Lavergne Studio for excellent service in individual photographs, Levi Hunt, Jr. and Edmund Locklear, Jr., student photographers; various students and faculty members for snapshots, the members of the staff, Dr. Wellons, Mrs. Freeman, Mrs. Lowry, advisor; and last, but by no means least, to our kind advertisers who so courteously received us. We are deeply grateful to all of you for your generous assistance.

With the hope that this yearbook will be a possession worth cherishing and with a deep appreciation for the splendid co-operation we have received, we leave with you this volume - the 1954 INDIAN-HEAD.

Martin and Eyrte.



God, who touches earth with beauty,
Make me lovely too,
Keep me ever by thy Spirit,
Pure and strong and true.

