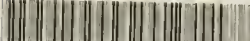


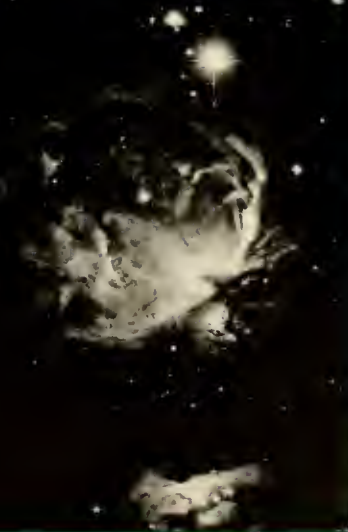


INDIANHEAD 74

LIVERMORE LIBRARY - PEMBROKE STATE



3 3511 0014399 \$





INDIANHEAD 74



**VOLUME 29
PEMBROKE STATE
UNIVERSITY
PEMBROKE, NC**



FEATURES 10
HONORS 38
ATHLETICS 50
ORGANIZATIONS . . 82
ACADEMICS 130
CLASSES 168

CONTENTS



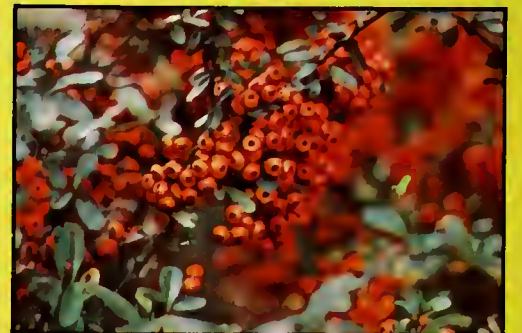
1974. Another year has elapsed in the life of the Pembroke State University student. Whether he is now to move on to a new life as a graduate or will be returning this fall for another bout with the Pembroke experience, we may all rest assured that the events of the past twelve months have done their share in the molding of that ingenious little creature we so casually refer to as the mind. And after all, isn't that what it's all about.

The Watergate affair, Spiro's descent, Nixon's campaign contributions and United States wheat sales, all seemed to substantiate the existence of a true "credibility gap" within our national political system. Mysterious erasures found on key Watergate tapes left our own inimitable Senator Sam Ervin and investigating committee wondering as to how much our President did know about the Republican Party's shenanigans during the presidential reelection campaign of '72. Spiro Agnew's manipulation of campaign contributions ultimately led to his resignation from the vice-presidency.

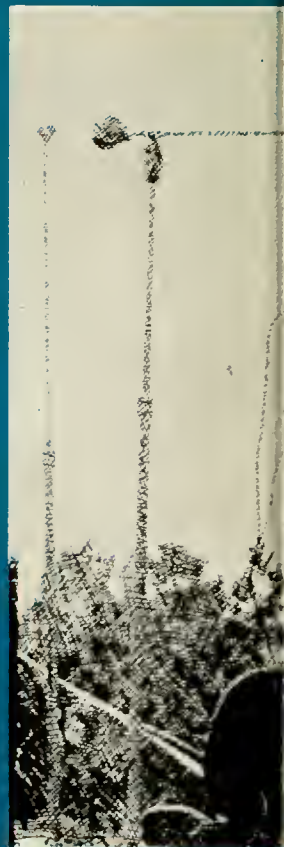
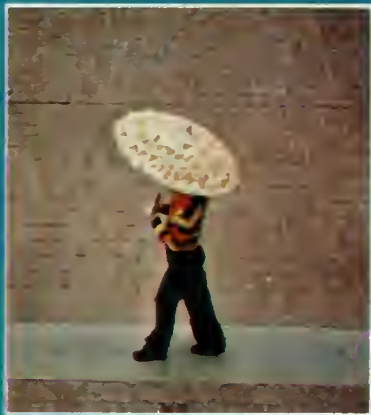
089580

Our own Student Government Association apparently was not to be outdone by the big leagues. The Coleman administration became involved in its own "Watergate"-like atmosphere as probing student senators fervently sought the what, why, and wheres on executive policy and expenditure. Our own version of the Washington Post, i.e. the "Pine Needle", intimidated Colemanites at every turn, hoping to bring, as they saw it, reform to our governmental system. Undaunted, Coleman succeeded in introducing to Pembroke State University such innovations as mealtime music in the cafeteria, casual movie nights in the Student Center, and Student Government Association subsidized inebriations at participating fraternity houses.

As in past years, the SGA was not the sole recipient of student wrath. Campus parking again ranked high on the list of student grievances, possibly being outdone only by the perennial student pain, SAGA food service. But this year our meal managers had their reasons. Decreasing student support and food prices were two commonly used explanations for the much criticized menus.









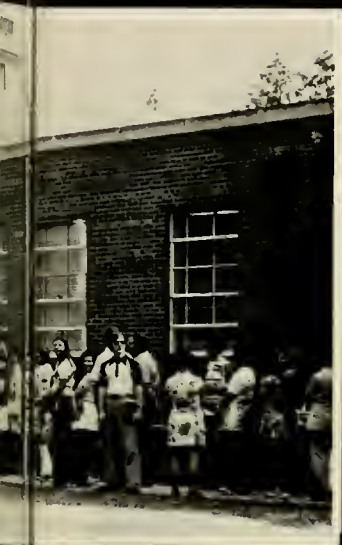
Food prices were plaguing our folks as well, with the Beef Crisis doubling the price of hamburger in just a few months. Lettuce reportedly sold for seventy-five cents a head in the North-East part of our country, while bread threatened to reach one dollar a loaf, thanks to the United States' untimely sale of bulk wheat to the Russians less than a year ago.

Oil soon followed the crew up the spiraling price ramp. With gas prices pushing toward one dollar per gallon, many of us are trading those hot rods we've cherished since high school for a more austere approach to cruising, like a VW.

In the field of entertainment, we saw much transpire on both the national and campus level. The cinematic world was stimulated to new heights as lovely Linda Lovelace's oral interpretation in the controversial "Deep Throat" reached a new depth here-to-for unseen in the film medium. And Liz and Richard Burton had columnists reeling with a temporary split in their million dollar love affair.

Musically, the rock stage went theatrical with such glitterists as David Bowie, Alice Cooper, and Todd Rundgren gyrating in ways in which Mr. Presley never dreamed.





On campus we had our share of entertainment with regional groups frequenting our Student Center with a variety of sounds. The Lyceum Series established a new approach to intellectual enlightenment by presenting Buffalo Rob and Company. Also a diverse movie schedule of both current hits and all time classics brought frequent relief from the doldrums of academia.

Sports continued this year to be a growing national pastime with television coverage of sporting events reaching record proportions. An estimated 40 million people saw Billy Jean King defeat Bobby Riggs in what was billed as the "tennis match of the century". The Oakland A's defeated the New York Mets in a spectacular world series, while in the world of football the Miami Dolphins carried their record to 32-2 with a resounding defeat over the Minnesota Vikings in Super Bowl VIII. The Athletics Department at Pembroke State University turned out its share of champions with all the varsity teams turning in noteworthy performances.

And so it was, yet another year has elapsed in the life of P'SUers. Its events spanned the spectacular to the trivial, but none the less it was an experience, a learning experience, and after all, that is what it's all about.



INDIANHEAD CITATIONS

Albert Dunavan

Through endless hours of preparation, rehearsals and productions, Mr. Al Dunavan has dedicated himself to student involvement and enjoyment. The numerous dramatic productions under his direction have opened an avenue of creativity and self-expression for aspiring actors.





Ed Watkins

The multi-faceted Human Service Center's director has dedicated himself to several student-oriented programs designed to provide opportunities for field work training in various aspects of educational areas. Mr. Watkins' coordination of Earth Day activities and work with Zero Population Growth has awakened much of the university to prominent social and ecological problems.

Dr. Chang H. Cho

Head of the Political Science Department since 1970, Dr. Cho has been internationally known through his work with the Institute of Asian Studies in Washington, D.C. and through his publications ranging from his editorship of the ASIAN FORUM and the Association of Korean Political Scientist Newsletter to the writing of two books dealing with government and politics in foreign nations. Dr. Cho is presently serving as Executive-Secretary of the Association of Korean Political Scientists.



On the northern end of the campus, construction began on the university's new auditorium. Throughout the year the burned-out shell of Old Main remained where it has stood since 1923. The building which once housed the first all-Indian College in the United States was seriously gutted by flames on March 19, 1973 following area Indian demonstrations. Old Main made newspaper headlines, was one of the top ten local news stories of the year, was visited by the governor, and has received thousands of dollars for research into its rebuilding. In spite of it all the building's future remained shrouded in indecision.

OLD MAIN





DORM LIFE

North, South, West and Wellons halls offered on-campus environment for less than one-third of the student body. This number had the unique opportunity of hearing ten stories at one time, crawling downstairs at four-thirty to let a roommate in a locked door, or the chance to get to know so many people so well.

To some of the residents, development of visitation policies seemed to move at a snail's pace,

with only the womens dormitories offering the privilege, while others were completely satisfied and content with the rules and regulations.

As usual, vocal gripes filled the halls: "the damn elevator breaks all the time", "those drink machines are thieves", and "the open door is rather silly", but the convenience and security offered by the buildings continued to lure residents.





ON THE
ROAD

WITH
THE
COMMUTER



Their days began deep in darkness, in the early hours of morning. To some this was not the most preferable time to begin a school day even before the initiation of daylight-saving time. But to others, more than half the enrollment at Pembroke, commuting was a way of life, and seemed to indicate that its advantages outweighed or at least balanced the obvious disadvantages.

In many ways commuting was cheaper and many riders preferred living at home with their families rather than the sometimes less personal life of the dorm. Some students just wanted to be near the slightly larger cities of Fayetteville, Rockingham, Raeford and Lumberton.

Throughout the year though, the disadvantages remained obvious and were greatly increased by



the lessened supply of gasoline. The long hours, dinner everyday at Hardees, bad weather and road conditions, and isolation from campus events all seemed to have little affect on the transit student. Their contributions were sometimes questioned, but their perseverance deserved credit.



Fall Festival







Above — Shortly after the crowning, co-emcees Beth Bingham, left, and Van Coleman congratulate the queen and her court. **Bottom** — Martha Blalock performs in her final evening as the retiring Miss PSU.



Cynthia Brown reigns over Pembroke



As a climax of Fall Festival week, Miss Cynthia Brown was crowned Miss P.S.U. The junior psychology major from Lumber Bridge, N.C. was chosen from among eight contestants in the Autumn Leaves pageant. The SGA sponsored event packed Moore Hall auditorium as the campus lovelies entertained the audience. Sue Enzor and Cathy Lopez were named first and second runners-up, respectively.



IS CERTIFICATION

THE NAME OF THE GAME





For two hundred and fifty seniors, the college experience did not end with triumphant final exams or last semester coasting. Instead, student-teaching rounded out undergraduate education, fulfilling the final requirements for teacher certification.

Beginning with the four week block of methods and education courses, the program gave its participants a glimpse of the outside world and the view from the other side of the desk.

Despite the shortage of teaching positions in the past few years, the curriculum was thriving as students were assigned to seventeen different administrative units in the area.



Norman Macleod Poet-in-residence

Norman MacLeod is a teacher, poet in residence, winner of the Horace Gregory award, and editor of the *Pembroke Magazine*.

A resume of his work and personal accomplishments would fill pages of single spaced typed copy. He has taught in more than twenty three various schools throughout the United States and in such places as the University of Baghdad, Baghdad, Iraq.

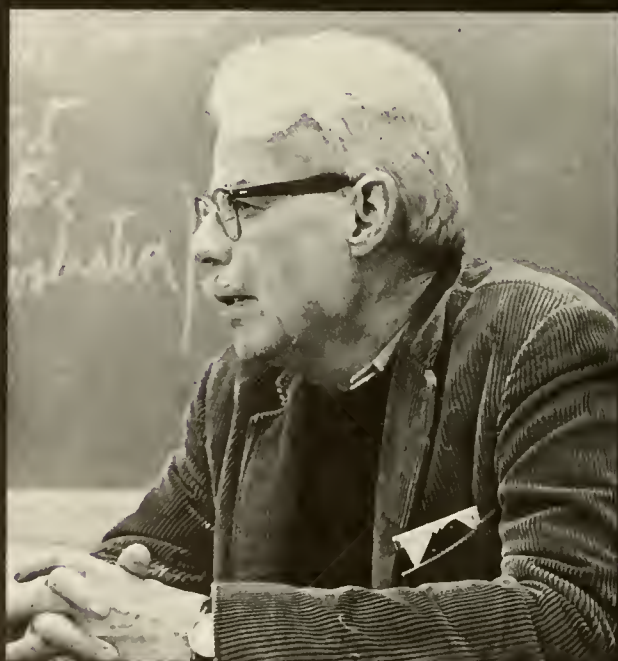
He has edited several magazines: 1930-32, American editor of the first tri-lingual literary magazine in the world, *FRONT* (Amsterdam, Holland); American editor of the *MORADA* (Lago di Garda, Italy); 1942-44, Editorial Director of the *MARYLAND QUARTERLY* (University of Maryland, College Park, Maryland); 1944-47, *INTERNATIONAL LITERARY REVIEW* (Briarcliff Junior College, Briarcliff Manor, New York); Guest Editor of *CRONOS* (Ohio State University, Columbus); and from 1969 to pre-

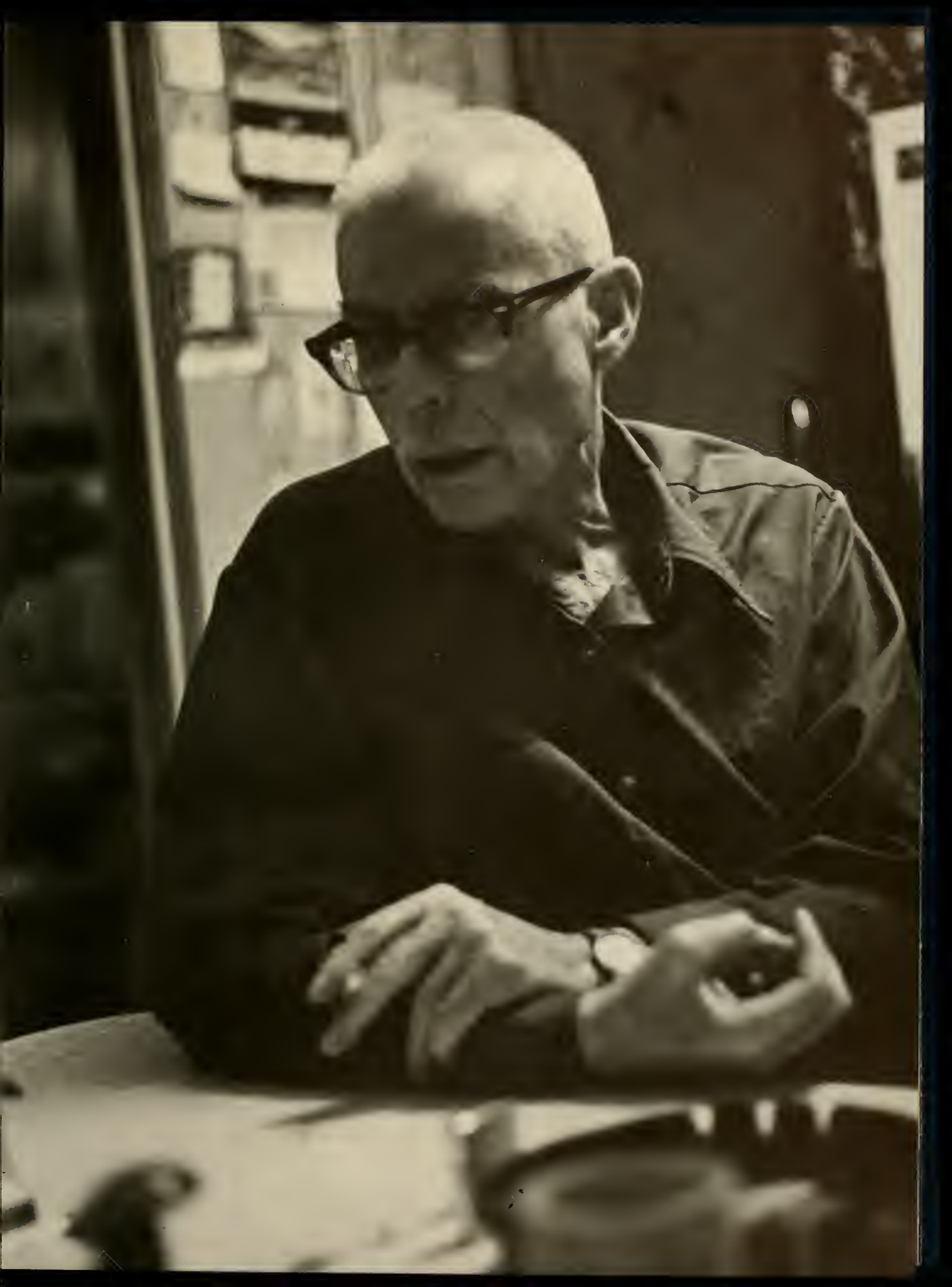
sent Editor of the *Pembroke Magazine* which is known internationally.

In addition to the number of literary magazines Norman MacLeod has been a part of during the past forty years and the teaching he has accomplished, he has managed to write and have published two novels and five volumes of poetry.

The papers of Norman MacLeod are housed in the Yale Collection of American Literature. He is included in the 1969 Edition of the *Directory of American Scholars*. MacLeod's reading of his poetry has been recorded on sixteen 12-inch discs for the archives of the Division of Music, Library of Congress, and his work is praised in *Literary History of the United States*.

MacLeod, who is completing his seventh year at P.S.U., and is approaching his 68th birthday, has no plans to retire. As he said, "a writer never retires."





Players Present Wide Variety

Anticipating the completion of a new theatre, the Players continued to draw audiences in Moore Hall. Under the direction of Al Dunavan and Don Dalton the drama department filled the stage with varying moods and plots.

The musical comedy "Once Upon a Mattress" was the last production of the spring semester of 1973. Director Dunavan, facing the problem of a small stage and large cast, succeeded in making the medieval fairy tale an enjoyable presentation.

A standing ovation awaited the curtain on opening night of "Of Mice and Men". The John Steinbeck classic was the first production of the season. The timeless story of migrant farm workers offered emotional relief to those wishing to see serious drama. Director Dalton skillfully combined the constructivistic set and mood lighting to enhance what one critic called "one of the most ambitious productions yet of the Players of Pembroke State University, but one in which the dramatic gauntlet was lowered and the challenge met successfully."

Right — Sandy Hancock and Gary Smith played the romantic leads of Lady Larkin and Sir Harry in "Once Upon a Mattress". **Below** — On stage with "Of Mice and Men".





Above — In the opening scene of "Once Upon a Mattress" a young seeker of the prince's hand is questioned by the Court Wizard. Left — Genie, portrayed by Dwight Watson, relives the fantasies of "living off the fat of the land", with Lennie, played by Charles Hannibal.





Top Left — Despite just having returned from a weekend ski trip, Alan Baker, played by James Culler, and Peggy Evans played by Iva Rountree, find themselves, in a romantic mood, in "Come Blow Your Horn". **Top Right** — Paul Szumelda, Alan's fledgling brother Buddy Baker, finds the wordy script deserves backstage rehearsal. **Bottom Left and Right** — Dwight Watson portrayed detective Mark Bonner in the mystery "Laura", and found it necessary to question both Waldo Lydecker, played by Scott Baker, left, and Laura, played by Kim Rabun.





Neil Simon's "Come Blow Your Horn" filled the stage with comedy for the second production of the season. Al Dunavan guided the riotous New York family through their brotherly antics and parental hang-ups.

The mood shifted to mystery for the Players presentation of "Laura". Complete with murder, mistaken identity and romantic detective, it had all the makings for a successful "who-done-it".



Below — With a touch of nostalgia, Buffalo Bob Smith re-created the old Howdy Doody Show through film and song. Right — The gospel music songfest received an overflowing audience. Bottom — Before they were finished the Preservation Hall Jazz Band had the crowd up dancing through their finale of "When the Saints Go Marching In".





Lyceum Series Draws Enthusiastic Attendance

In a new and dynamic approach, the Lyceum Series afforded both campus and community with cultural and popular entertainment. The Lyceum Series events have met with enthusiastic support heralded as the best ever. This year's presentations have included Buffalo Bob and the old Howdy Doody Show, The Preservation Hall Jazz Band, National Players' version of "Tartuffe", and the opera "School for Lovers". Sybil Leek, self proclaimed astrologer and witch was different but disappointing to a sell-out audience. With "Spirit and Substance", a joint effort sponsoring seven Indian Happenings, the students and community experienced Indian art and culture.



Top — To jazz lovers and newcomers alike, the symbol of the Preservation Jazz Hall Band brought enjoyment to the Old Gym stage. **Bottom** — Moliere's classic comedy "Tartuffe" was the medium for a superb performance by the National Players.



Greek Week 1973

In March of 1973 the Interfraternity and Panhellenic Councils held their annual Greek Week. With all sororities and fraternities participating, the week's events included parties at the Stable, picnics, concerts, and competition races. The Greek Week trophies were awarded to Kappa Delta and Pi Kappa Alpha, after they emerged from a tie with Tau Kappa Epsilon.





099580

Wanda Phillips





Homecoming 74

Wanda Phillips was chosen as 1974 Homecoming Queen. The crowning of the senior from Fayetteville, North Carolina came midway through Homecoming week activities. Events of the week included three dances, the annual downtown parade, and a basketball victory over the University of North Carolina at Wilmington.



Pre-Dawn Float Construction Halted

The annual Homecoming Parade proceeded this year in a somewhat incomplete manner. As in the past all campus organizations gathered for their all-night float decoration. This year's festivities encountered some rather difficult moments when several non-students arrived attempting to completely destroy floats undergoing construction. When the dust settled students were faced with the impossible task of repairing their floats. Many floats entered the parade with obvious battle scars still remaining.

Because of the previous night's turmoil the SGA was forced to relocate their pre-dawn dance, being previously scheduled outside of town, it was transferred closer to campus for security reasons.







HONORS



Who's Who in American Colleges and Universities



Alphonzo McKae



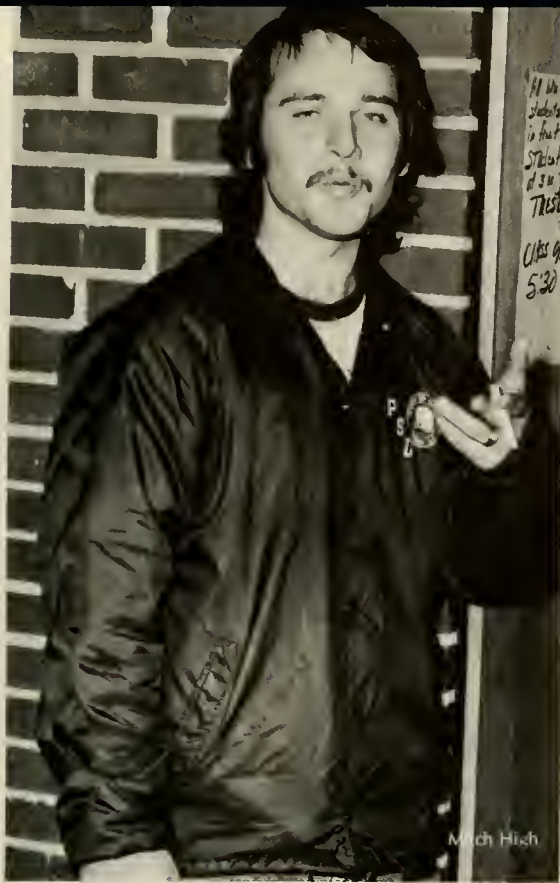
Ann Darby



Gail Schalm



Fred McDaniel



Mich High



Robin Alexander



Venus Jacobs



Ronnie Rudd



Caroline Wilson



Linda Lloyd



Jannie Jo Bell

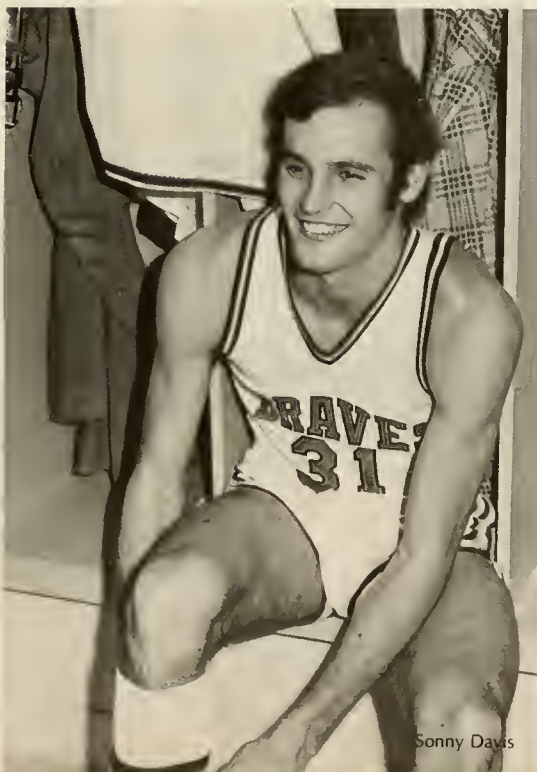
Who's Who



Doug Eller



Roland Varsons



Sonny Davis

Who's Who



Eva De...ort



Eva Sampson



Dave Callahan



James Hardin



Jonny Elkins



Emma McCown



Brian Beaumont



Linda Pittman



Emily Kusko



Tom Hall



Keith Locklear

Who's Who



John Stullent



Curt Locklear



John Pinkster



David Brooks

Alpha Theta Honorary Historical Fraternity



Front — Diane English, Bruce Tanner, Melody Nobles, Barbara Page, **Middle** — Kenny Jacobs, Sue White, Suzanne Brown, Joyce Culbreth, **Back** — Watson Sanders, James Sproles, Mitch High

Alpha

Odena Lowry, Alice Garner, Sandra B. Hunt, Christine Sides, Martha Blalock, Candace Lynch, Patrisse Locklear, Susan Kelly, Valorie McCoy, not pictured.



Phi Mu Alpha Sinfonia



Omega

Phi Mu Alpha, Albert Norwood, Teddy Ray, Chris Morgan, Milton Smith, Harold Jacobs, Vince Winnies





ATHLETICS



All-Americans





Elk

All-Americans



Hudkins



Right — Gail Locklear, Daphne Lassiter, Sue Enzor, Gail Sanford, Janice Luquer, Dorinda Lusk.



Cheerleaders Sponsor Spirit Award

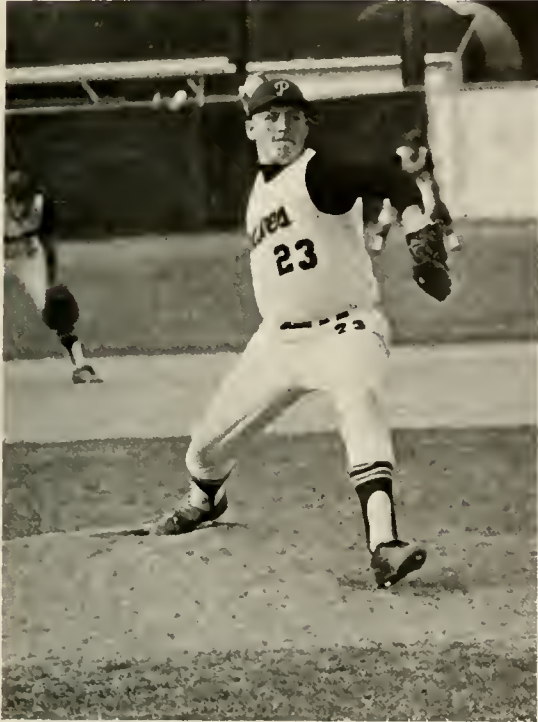


The Cheerleaders incorporated a new idea into their routine this year, that of the "Spirit Award". This award was presented at each athletic event to the campus organization displaying the most school spirit. The overall award winner was Tau Kappa Epsilon Fraternity.

Year after year the Cheerleaders seem to fight an endless battle. This year was no different. In efforts to involve students, our cheerleaders worked energetically to promote enthusiasm within the crowds, but more often than not failed to do so. This fault cannot be attributed to the Cheerleaders but to the apathetic student body of the school.





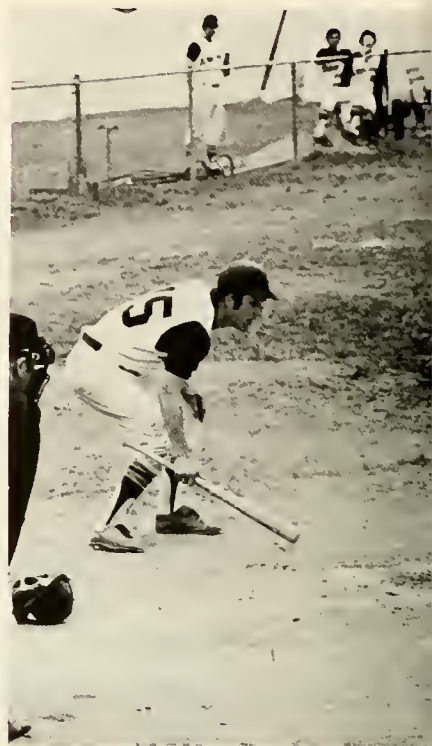
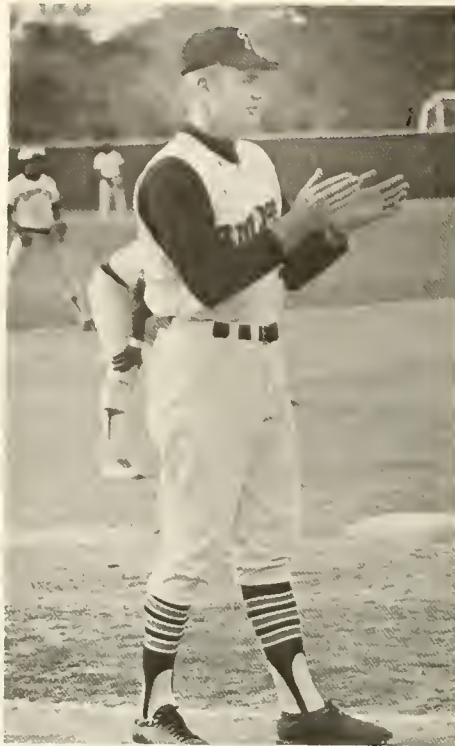


'73 Baseball finishes Fifth in Nation

In the Spring of 1973 behind the pitching of Ron Norman, the Baseball team finished fifth in the nation. Last season Norman pitched eight shut-outs and compiled a record of twelve wins and only one loss. The All-American set a school record of twenty-one strike outs in one game and finished the season with two hundred strike outs, a national record. Behind Norman was Ronnie Rudd, a Gene Walden Award winner and also an Academic All-American pitcher. His record last season was eight wins and no losses. Team leader in batting was Rudy Rudacille with an average of .368. Rudacille, an All-American Honorable Mention, signed with the Chicago White Sox at the end of the season. All-District players included Buz Dunlap, Ron Norman, Rudy Rudacille, and Ronnie Rudd.

Front Row — Terry Oxendine, Jerry Walters, Dave Callahan, Ron Norman, Rick Rickman, Tim Hawkes, Ronnie Rudd. **Middle Row** — Nelson Swift, James Jordan, Pete Preston, Wayne Pyrtle, Mike Johnson, Steve Welborn, Steve Powell, Gary Webster. **Back Row** — Coach Ellen, Darrell Arrington, Randy Ledford, Wayne Cisco, Randy Myers, Tommy Anderson, Fred Formichello, David Rudd, Herby Russ, Forace Oxendine.







Complete Pitching Staff Returns

Returning this season was the complete pitching staff, with the addition of Steve Powell, a transfer from Campbell. Mike Johnson and Steve Welburn shared the catching position and at first base was Wayne Pyrtle, the most valuable player of the Summer League program. At second base was Nelson Swift and Jerry Walters. Returning to shortstop was Dave Callahan. Darrell Arrington, a transfer from Sandhills Community College, was at third base. Outfielders included Pete Preston in left field, Terry Oxendine in center, and Tim Hawks in right field. The team gained experience from last season and looked forward to a return trip to the national championship.



Cross Country Captures Fourth Title

A perennial powerhouse in District 29 competition, the Pembroke squad captured their fifth title in the past six years. In the District 29 championship meet, Victor Elk paved the way by setting a new District record of 24:48. In winning, the Braves compiled a perfect record of fifteen, over all opponents.

Other titles bestowed upon this championship team were winner of the Stone Mountain Road Race, which consisted of competition among nineteen schools; winner of the PSU invitational, in which eight schools participated; and with a powerful performance finished third in the State Championships behind Duke and the University of North Carolina.

Veterans Marion Craddock, Victor Elk, Bill Farrell, Rod Lattie, and Craig Callio were named All-District runners.

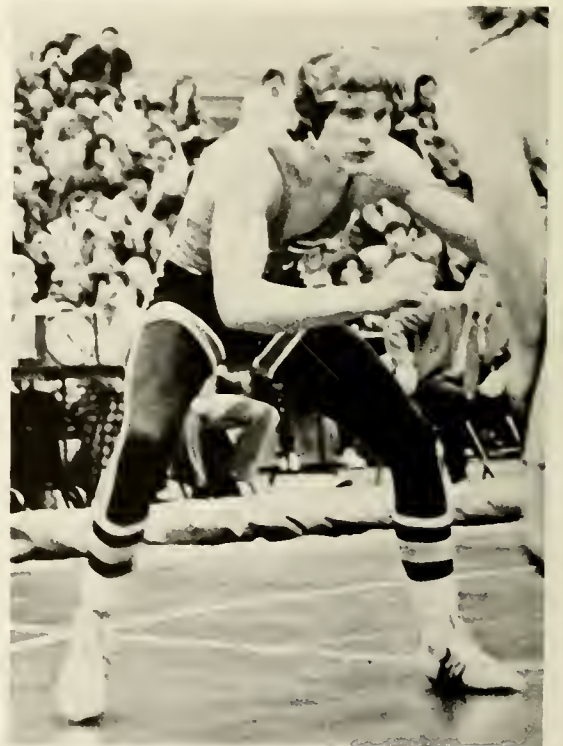
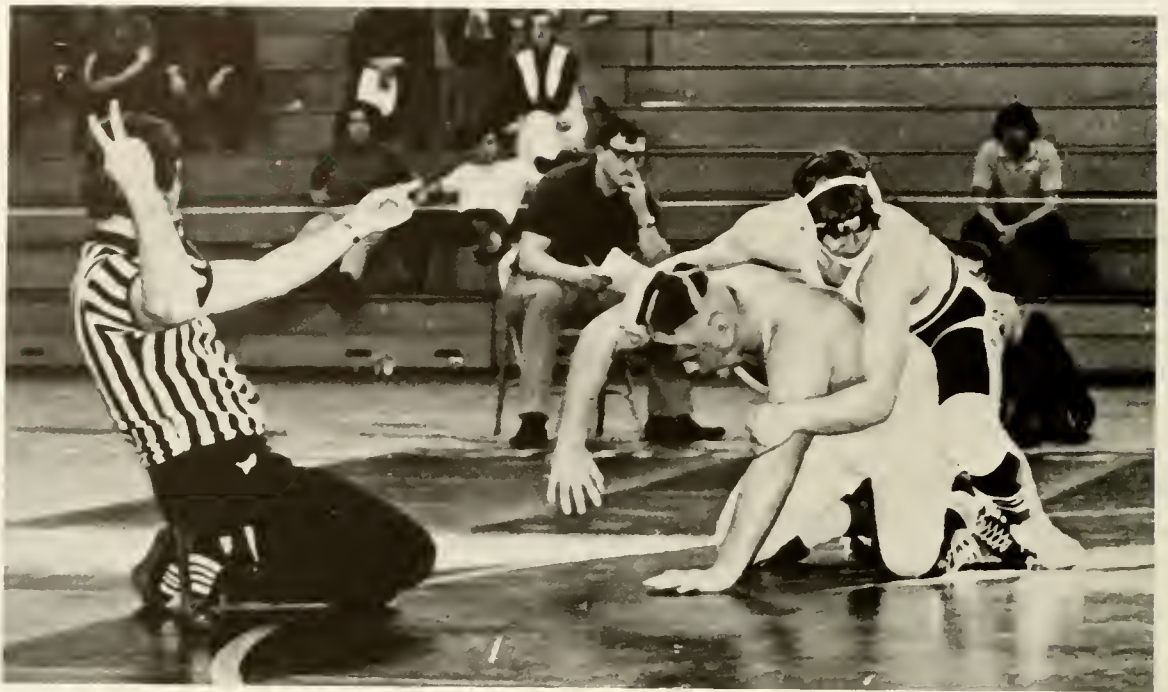
In the NAIA National Championships at Salina, Kansas, Victor Elk finished ninth in a field of 450 runners. His ninth place finish on a tough course at 24:25 earned him first-team All-American honors.



District 29 Champs — Steve Carney, Rod Lattie, Pat Newbill, Craig Callio, Marion Craddock, Jeff Cushing, Jim Fitzgerald, Bill Farrell, Victor Elk









Wrestlers Take Braves Invitational

For the wrestlers the highlight of their season was winning the Braves Invitational Tournament. This event was held January 26 in Jones Health and Physical Education Building. There were eight teams participating: Campbell, Elon, Catawba, Winston Salem, Citadel, North Carolina A&T, Elizabeth City State and Pembroke State. The Braves finished with four first places, three second places and one fourth place. Taking first place were Matt Lynch, George McFadyen, Mike Edwards and Bob Hudkins. Matt Lynch was voted outstanding wrestler in the tournament.

The Grapplers opened their season by winning the Old Dominion Thanksgiving Tournament. The tournament began a series of wins for the Braves. The first defeat for the Braves was a hard fought match with Appalachian.

Although the Area Tournament has been expanded this year to include 14 teams, the Braves anticipate a first place finish.

The best records are held by captains Larry Bridgewater, 23-4-1 and Bob Hudkins 19-4.



Front — Larry Bridgewater, Mike Edwards, Bob Hudkins, Greg Frey, Brian Beasmore, Jack Christie, **Middle** — Tom Foltz, Bobby Rayle, Larry Boyer, Matt Lynch, Guerry Beatson,

Bob Kaine, Don Bryson. **Back** — Coach Mile Olson, Billy Starks, Rick Liss, Jack Troy, Joe Bridgewater, Steve LaPrad, George McFadyen, Shane Kiger, Ken Taylor, and Bob Lambert





Track and Field Championship Captured again

Track and field Championships are habitual at Pembroke State University. Last spring the 1973 squad won their sixth district title in the past eight years. Pembroke's team was led by all-Americans Dave Phillips and Victor Elk plus fourteen all-district performers.

School records were set last year by Dennis Graham in the long jump, Dave Phillips in the high jump, Victor Elk in the mile, 3 mile and 6 mile, and Larry Rodgers in the high hurdles and 440 yard hurdles.







Front — Woody Doye, Larry Martin, Jerry Stancil, John Battle, Les Freeman, Rod Lattie, Victor Elk, Larry McMillen, Dennis Graham, Jim Fitzgerald, Craig Callio, Larry Hunt. **Back** — Don Riddle, Richard Finger, Wayne Douthit, Jeff Cushing, Jim Smith, Tom Nielsen, Bruce Wolfe, Donald Stockton, Tom Grey, Dennis Jones, Jeff Fish, Bill Ferrel, Steve Carney.







Front — Gary Dwyer, Mike Kelley, Fred Umberger, Van Coleman, Tim Kinlaw, Bob Bradley, Soochul Kim, Ronnie Thompson, Roland Parsons, Middle — Eric Ricioppo, Joseph Stanish, Larry Kelley, Ed Yager, Paul Verdi, Mike Coward, Mel Fairchild, Bob Fowler, Ron Holtsford, Pete Brayda, Back — Coach Olson, Steve Thompson, Lenny Plummer, John Student, Danny Evans, Ricky Ray, Larry Boyer, Robert Lambert



Soccer Team Finishes in Strong Position

Behind outstanding play by John Student, the Braves finished their season with a 5-6 won-loss record and 4-3 District record, tying for third place.

John Student, All-District selection, shared the scoring honors with teammates Gary Dwyer and Eric Ricioppo with six each. Student also finished as the team leader in scoring assists, with five.

Individual honors went to Mike Coward as Best Defense, Gary Dwyer as Best Offense, and Mike Kelly as Most Improved.

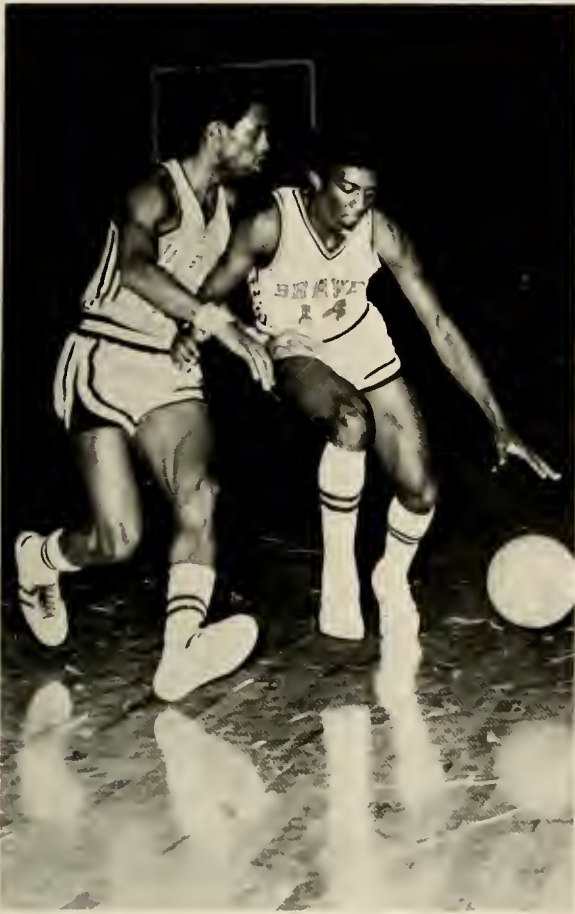
Under the direction of head coach Mike Olsen, the Pembroke Soccer team showed a distinct improvement over the past years, with John Student capturing All-District honors and Tim Kinlaw named second team goalie in the District.



Pembroke Takes Tip-Off Tournament

The Pembroke State University Braves made a repeat performance in capturing their second consecutive Tip-Off Tournament in the Cumberland Memorial Auditorium. In as many years the Braves have received the most Valuable Player Award, with this year's selection going to Al McRae, who paced Pembroke with a 25 point performance in each outing. Al McRae and Everett Hambric were named to the All-Tournament Team.



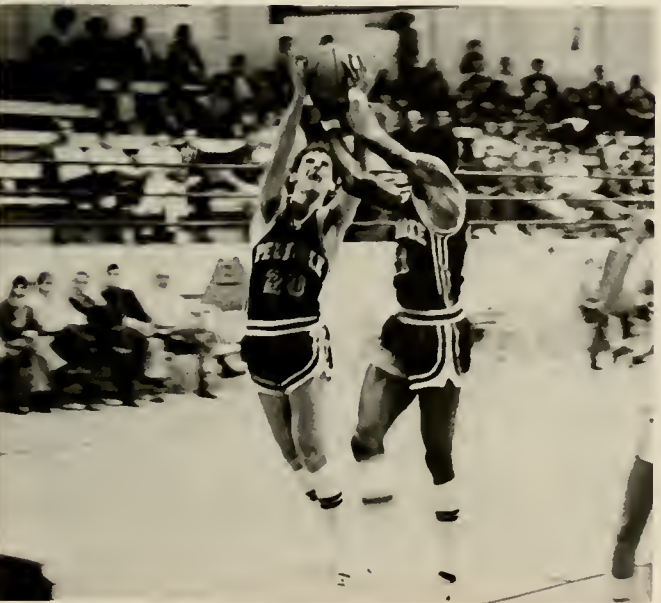
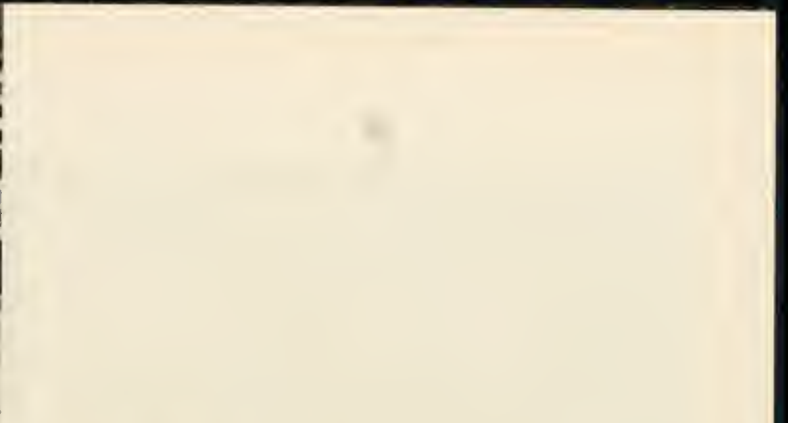


Braves Continue Winning Ways

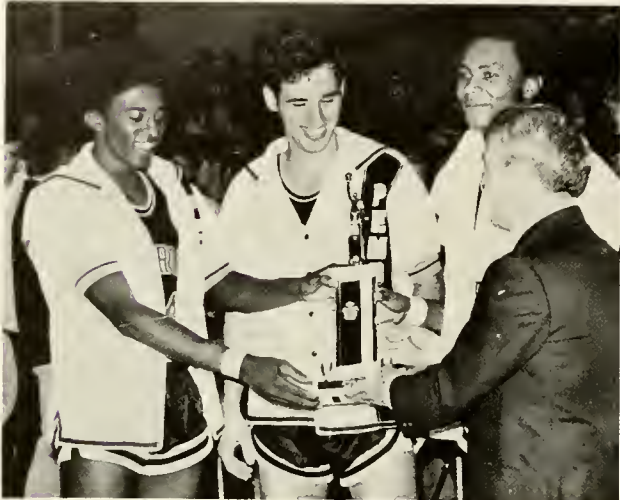
After a long and tough season the Braves emerged with their second consecutive District 29 championship. Finishing their regular season with a 22-6 record, the Braves entered District Tournament play on a positive note after winning their third straight game with rival Campbell College. This year's team was led by high scorer Alphonzo McRae, scoring at a rate of twenty points per game.

Rebounding strength was provided by Sonny Davis, Everett Hambric and Howard MacLeod. A Freshman standout, Tom Gardner, proved to be a valuable asset to the team throughout the season. Games ranged from easy victories over St. Andrews to disappointing losses such as to UNC Asheville. After the smoke cleared, the Braves came out the victor over UNC Wilmington 71-70, in one of the hardest fought games of the season.





Below — **Front Row** — Sonny Davis, Everett Hambric, Alphonzo McRae, Barry O'Brien, Howard McLeod, Jesse Preddy.
Back — Earl Baldwin, John Rodden, Tony Dellinger, Tom Gardner, Bobby Dole, Larry Nader, John Battle







Women's Sports experience growth

For the first time in the history of Pembroke State University, women received a taste of inter-collegiate sports. A volleyball team was formed and the girls basketball team began their first official season. The girls demonstrated their sport with much enthusiasm. They lacked only in experience.

Early in the season, the volleyball team hosted the State Volleyball Tournament, won by Western Carolina. The volleyball team started the season with losses but towards the end of the season defeated Guilford College. The Basketball team launched their season with a victory over St. Andrews but were unsuccessful in their remaining games.

Both teams worked remarkably well together and displayed a marked improvement by the end of the season. With all starters returning, next season should hold more promising results.

Above: Front — Dee Conn, Debbie Godwin, Phyllis Fields, Debbie Ducharme. **Back** — Hilda Shefflet, Sylvia Hayes, Carol Bullard, Pam Poston, Susam McFayden, Karen Sampson.





Front — Inez Wall, Ann Bolton, Debbie Godwin, Sally Hall, Dee Conn, Back — Susan McFayden, Debbi Bailey, Lynn Evans, Tricia Townsend, Karen Culbreth, Carol Taylor, Lise Overby

Tennis Team Hot in Pre-Season play

The 1973 Tennis team boasted the best record ever in the history of the school. They finished the season with an outstanding 7-4 record, but were set back in tournament play by the toughest team on their schedule, East Carolina.

The Braves were outstanding in '74 preseason by out-scoring Francis Marion, NAIA rival, twice with a score of 7-2.

In the number one spot is captain Doug Eller. Sonny Garner also played an active role in the team's fine performance. With four experienced juniors in top positions, Coach Johnson feels he will have a most successful season.



Front to Back — Doug Eller, Mark Boyles, Sonny Garner, Reed Hoisington, Chris Crinkle, Randy Reese, Gary Carter, Bobby Stewart.





Golf

Kurt Bennett, Phil Woodruff, Frank Huntley, Steve Ficklin, Jeff Tedder, Mike Rochelle





ATO's place three in Who's Who

Alpha Omega Upsilon, a colony of Alpha Tau Omega, named three brothers to Who's Who; John Student, all-District Soccer, David Callahan, captain baseball and Brian Beasmore, all-District Wrestling.

Alpha Tau Omega's biggest event of this year was the acquisition of a Fraternity lodge. This spacious building supplies the brothers with many good times and is reminiscent of home life.

Three brothers of Alpha Tau Omega received awards during soccer season: Captain Gary Dwyer was chosen as Best Offensive Player, Mike Coward was selected as Best Defense and Mike Kelly was chosen as Most Improved.

During Christmas vacation the brothers of Alpha Tau Omega donated eight hundred dollars in food to needy families.



Above — A new house in Red Springs offered Mike Kelly an opportunity to clean the porch. **Right** — Members of Alpha Omega Upsilon are: Van Coleman, Gary Dwyer, Mike Kelly, Soochul Kim, Eddie Yeager, Jim Turner, Eddie Bolton, Bill Miller, Ray Lockamy, Freddie Umberger, John Student, Dana Bixby, Steve Thompson, Mike Coward, Jack Christie, John Yeager, Gary Riddle, Robert Lamberth, Larry Kelly





Upper left — All-South soccer performer John Student warms up before a match. **Upper right** — Alpha Omega Upsilon's house. **Above** — During pledging Larry Kelly lounges in the student center with Mike Kelly and Fran Parnell.



Upper — Pi Kappa Alpha members are: Billy Faircloth, Boyd Williamson, Ashley Royal, Frankie Barrett, Bud Osbourne, Danny Layton, Ricky Ray, David Lawrence, Brent Hattestad, Bill Miller, Fred Formicello, Tim Moore, Jerry Domenick, Billy Roy, Russel Regenhardt, Allen Royal, Richard Gaddis, Roger Odom, Melvin Fairchild, Bobby Cassevah. Above — Brothers Tim Moore and Allen Royal served as varsity basketball managers. Right — Ricky Ray Clowns it up at Pika Party.





Pika's dwell on service

Pi Kappa Alpha conducted more service projects than any previous year of their campus existence. They included a donation of two hundred dollars to the Odum Home, money to the Cerebral Palsy fund, and sponsoring needy families at Thanksgiving. The brothers further expressed their desire to serve by donating blood to Frank White, a member of the North Carolina House of Representatives.

Jerry Domenick, Russel Regenhardt, and Frankie Barret attended Pi Kappa Alpha's Leadership Academy in Memphis, Tennessee. Eight members also attended their Pyramid Conference in Atlanta, Georgia.

An important addition to the fraternity was the organization of Little Sisters.

Left — Pi Kappa Alpha member Allen Royal prepares for the chariot race during '73 Greek Week. **Below** — During a Halloween costume contest Danny Layton, Billy Roy, and David Browder clown it up with Carol Taylor and Judy Womack.



Pi Kaps work for foster children

Pi Kappa Phi highlighted their year by collecting funds for the foster children of Lumberton. Also, in the order of fund-raising, the brothers helped in the purchasing of artifacts for the Religion Department.

Four members of the local chapter attended Pi Kappa Phi college, a seminar discussing chapter management and rushing.

Two brothers, Danny Elkins and Ronnie Rudd, were selected to Who's Who. Rudd was also selected as a scholastic All-American and as the recipient of the Gene Waldren Award. Ron Norman was chosen as a first team all-American in baseball and was also selected to participate in the Pan-Am games held in Managua, Nicaragua.



Upper right — Culminating Pi Kappa Phi's spring tuition raffle, Dean James B. Chavis draws the winning ticket. **Above** — John Martin, Phil Woodruff, Randy Myers, Regan Lewis and James Ballance pass time at the fraternity house. **Right** — The brothers practice for the pyramid race event of Greek Week.



Above — Pi Kappa Phi members are; Kenny Taylor, Kenny Chester, Julian McIntosh, Danny Wilson, Jim McIntosh, Randy Ledford, Mike Vermillion, Randy Coppedge, Ronnie Rudd, Rick Rickman, David Goodyear, Don Dailey, Mike Bryant, Ron Norman, Sweetheart Wanda Phillips, Kurt Bennett, David Elliot, John Thompson, Mark Cabral, Danny Elkins, Frank Davis, Bruce Tanner. Left — The Gene Waldren award winner Ronnie Rudd concentrates on his next pitch.



Right — Still soaking from water sprayed trying to douse the Old Main Fire, Charlie Speller and Peter Brayda rest after a long morning's work. **Below** — Joe Stanton and Lex Smith team up for a game of fussball in the New Teke Party room. **Bottom** — Brothers of Tau Kappa Epsilon are: Warren Baker, Jimmy Howard, Ollie Angel, Marty Williford, Young Jess Preddy, Mike McMullen, Tom Warren, Ellis Jones, Tommy Hutchins, Frank Sheppard, Cumin Brittenham, Pete Brayda, Doug Hancock, Barry O'Brien, Ted Blount, Howard Hall, Graham Fox, David Butler, Wayne Lythacum, Lorne Hargis, Mike Cafaro, Robin Alexander and Frank King.





Tekes add to fraternity house

Tau Kappa Epsilon completed the addition of an entertainment and game room, doubling the size of their Fraternity House.

Service projects of Omicron Delta chapter involved their annual Christmas Toy Drive. This function is conducted in cooperation with WFMO radio station of Fairmont to provide a merry Christmas for needy families. Throughout the basketball season the Fraternity continued to publish and distribute programs for each home game.

TKE excelled in athletics as Bob Hudkins garnered All-American honors and Larry Bridgewater placed seventh in the nation in the 1973 NAIA Wrestling Finals. Sonny Davis, Jesse Preddy, and Barry O'Brien held starting positions in basketball. Bob Bradley (Captain) and Pete Brayda were members of the Soccer team. Robin Alexander, Indianhead editor and Sonny Davis, Junior Class President were selected to Who's Who.

Upper left — Billy Faile and Tommy Hutchins tense for the start of the Greek Week Chariot Race. **Upper right** — When many hands were needed for raising the rafters, the brothers were there. **Above** — At the first annual Red Carnation Ball, Marty Brown was crowned Tau Kappa Epsilon Sweetheart.



Tau Sigma Nu serves community

Tau Sigma Nu's number one project of the year was that of clearing the grounds of the North Carolina Cancer Institute located in Lumberton, North Carolina. Another venture of the fraternity was sponsoring needy families during Thanksgiving and Christmas.

During the summer the brothers participated in an athletic program by sponsoring a little league baseball team.

Two members of Tau Sigma Nu were varsity athletes on the soccer team, Ron Thompson and Lenny Plumber. Ron Thompson also won karate titles in the Brown Belt Division, Tri-State champ, District two, and the Southeastern title.



Left: Mike Bone, Lenny Plummer, Preston Page, Gerry Melton, Larry Cooke, Ronnie Thompson. **Below:** Tau Sigma Nu brother Lenny Plummer takes time for conversation in North Hall parking lot. **Bottom:** An attempted dunking backfires for Preston Page, left, as he tried to heave Larry Cooke into the pool following their picture taking.



Zeta's work with Odum Home

Zeta Tau Alpha sorority gained much recognition through organizing and participating in a Water Safety Program, consisting of demonstrating to young children the values of water safety. A tremendous amount of time also was spent on the teaching of fundamental swimming skills.

Zeta Tau Alpha again proved their capabilities by aiding the Lumberton Jr. Women's Club during Monte Carlo night in soliciting funds for the construction of a new public park.

Zeta's Debbie Wiseman and Ida Kivett attended the international workshop held in Knoxville, Tennessee. This workshop dealt with leadership, chapter management and rush.

Caroline Wilson was selected to Who's Who in American Colleges and Universities.



Upper Center — Zeta Tau Alpha President Debbie Wiseman addressed installation banquet, among whose guests was Chancellor English E. Jones, Right. **Above** — The many faceted water safety program included back floating, as demonstrated by Cindy Goins.



Left — Debbie Blackburn finds hospitality at the Pi Kappa Phi fraternity house. Below — Sisters find time for posing in their fifth floor residence in North Hall. Bottom — Zeta Tau Alpha members are: Caroline Wilson, Debbie Wiseman, Debra Taylor, Rachel Russel, Ida Kivett, Christine Sides, Cindy Goins, Jan Palmer, Debbie Blackburn, Pam Huff, Debbie Radford, Judy Autry Wood.



Below — Brenda Britt and Toni Roberts at November Rush party. Right — Kappa Delta members are: Toni Roberts, Debbie Rich, Judy Mumau, Dorinda Lusk, Carol Butler, Linda Jamison, Pat Musslewhite, Kathy Paine, Kathy Goodnight, Cathy Tyson, Wanda Phillips, Karen Jackson, Fran Parnell, Debi Bailey, Margaret Hodges, Denise Butler, Marty Brown



KD's work to aid the blind

Kappa Delta's major activity of the year was the White Cane Drive. This project is conducted in conjunction with the Lion's Club in raising money to aid the blind. Also, each month Kappa Delta sponsored special activities with profits going to their National Philanthropic Project. At the onset of the fall semester Kappa Delta donated money

to scholarship funds for deserving students.

One sister was named to Who's Who, Miss Jeannie Jo Bell. Four sisters reigned as Fraternity sweethearts. They are Marty Brown, Tau Kappa Epsilon; Toni Roberts, Pi Kappa Alpha; Wanda Phillips, Pi Kappa Phi; and Sue Enzor, Alpha Tau Omega.





Left — Maggie Hodges and Brenda Britt take some much needed rest during a KD installation degree. **Below** — Upon completion of degrees the installation banquet was held. **Bottom** — Pledges perform for the crowd during 1973 Greek Week.





Tri Sig stages Mr. Homecoming

During the 1974 Homecoming festivities, Sigma Sigma Sigma offered a lighter moment to spectators and participants by staging a Mr. Homecoming pageant. All clubs and organizations were eligible to enter contestants.

As a service to students, Tri-Sigs offered themselves as advisors to freshmen and transfers. The sisters also worked as guides of tours for high school students.

Bake sales were conducted each month with the proceeds going to the Robbie Page Memorial Fund, their national philanthropic project.

Above right — Carolyn Rice leads parade during Greek Week. **Right** — A dorm room provided the surroundings for a Sigma Sigma Sigma planning session with Suzanne Brown and Jane Lancaster. **Below** — Participants of the 1973 Mr. Homecoming Pageant line up before the alumni crowd.





Upper right — Suzanne Brown points out a new name and perspective under Tri Sig. **Above** — The sisters of Sigma Sigma Sigma include: Libby Atkins, Melody Nobles, Carolyn Rice, Suzanne Brown, Joyce Culbreth, Jeanne Green, Rose Marie McMillan, Sandra Allen, Jane Lancaster, Sylvia Hayes, Marie Thrower, Pam Poston, Gwen Blackwell, Jo Hudson, Sue White.



Phi Mu Sisters include; Vickie West, Dee Dee Hunter, Linda Pittman, Joy Wrench, Pam Ballard, Beverly Weeks, Susan Boyette, Linda Record, Kay Pasko, Marsha West.





Phi Mu sponsors '73 May Day

Phi Mu, through sponsoring their annual May Day celebration, raised three hundred dollars for the fight against Cerebral Palsy. The festivities included the crowning of the May Queen and an outdoor supper. In support of their National Project 'Hope', Phi Mu conducted several bake sales.

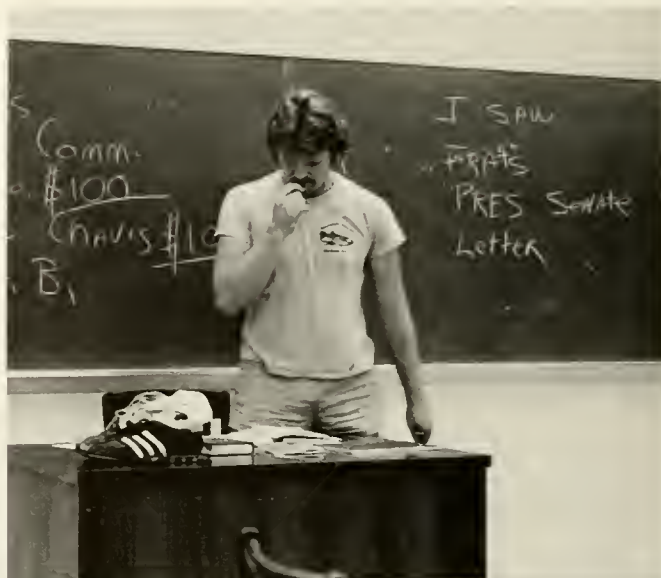
In the spring of the year the sisters showed their support of the track and field athletes, offering refreshments and encouraging spectators.





Left to right — Van Coleman, Mike Coward, Dana Bixby, Lenny Plummer, Larry Cook, Gary Smith, Lorne Hargis, Boyd Williamson, Frankie Barret, Mike Bryant

Interfraternity Council





Left to Right — Debbie Wiseman, Rachel Russel, Janice Luquer, Cathy Payne, Sylvia Hayes, Jo Hudson, Libby Atkins

Panhellenic Council



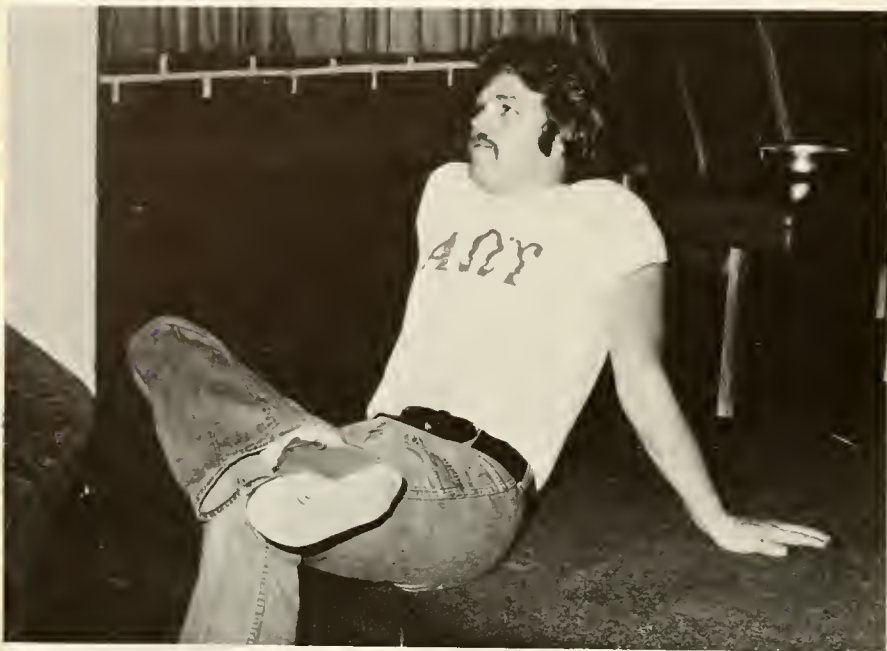


With the beginning of his term as Student Government President, Van Coleman's main goal was that of "reform". He proposed a program of progressive reform that involved different and new types of entertainment for the student body. His office provided a new P.A. system to the student union with such features as student-oriented WQDR, a Raleigh FM radio station. Further accomplishments included that of an athletic equipment check-out system which provided students the opportunity to obtain various types of equipment. This innovation was of considerable importance for in the past students had to provide their own. Weekend entertainment was projected as a goal of his administration but failed to fully materialize. In order to bring the "flavor of the real cinema" to campus, he moved movies from Moore Hall to the student center. Because of a very limited budget, entertainment features such as well-known groups were unobtainable. In order to compensate for this misfortune, a program of SGA-organization co-sponsored parties was initiated. At conception this idea was well-received, but eventually it was realized that only a small faction of students benefited from this program and it was abandoned.

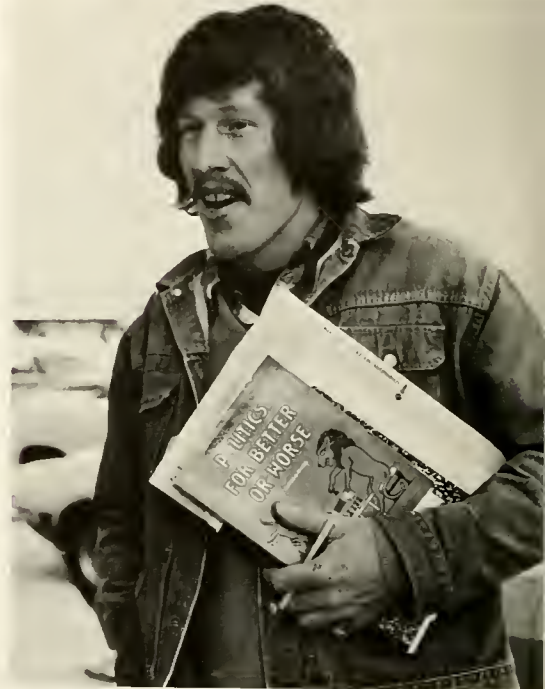
In the latter part of the fall semester the Student Senate established an Audit Advisory Committee with the sole purpose of ascertaining whether misuse of student government funds had occurred. After a long and diligent search, the committee reported several violations on the part of SGA Executive office.

What subsequently followed was the president's removal from office. Gary Murry stepped up to fill the vacancy of the Presidency with Warren Baker moving up to the Vice-Presidency. With this sudden promotion the executive branch introduced a new idea for campus dwellers, "The Coffee House". This event met with enthusiastic support with student talent, both musical and dramatic, holding the spotlight.

Student Government Association Operates Under Controversy



Top Left — Van Coleman, President, Bottom Left — Ellis Jones, Treasurer. Below — Gary Murry, Vice-President and President. Below Right — Jan Lowery, Secretary.



SGA Senate members include: Henry Oxendine, Ramona Locklear, Barry Richardson, Larry Revels, David Graham, Darlene Streeter, Gary Murry, Toni Roberts, Danny Elkins, Belinda Bunce, Cheryl Lima, Warren Baker, Deheava Drake, and Mike Bryant.





Top Left — Again the SGA sponsored a refrigerator rental service to campus dwellers, with distribution centering from West Hall, and Junior Berry handling the rental contracts held by Steve Autry. **Above** — Senators Darlene Streeter, Danny Elkins and Cheryl Lima consider the next item on the meeting agenda, that of restructuring the budget.



American Indian Student Association

Left to Right: Henry Ward Oxendine, President, Albert Hardin, Linda Clark, Berry Richardson, David Earl Brooks, Sonya Allen, Ramona Locklear, Helen Revels, Fannie Sue Dial, Secretary, Keith Locklear, Larry N. Revels, Curt Locklear Jr. **Second Row:** Rudolph Coronado, Karonhiawakon, David Graham, Harold Dial, Ronald Richardson, Rudy Paul, Delton Jones.

Psychology Club

Front Arlene Locklear, Marie Waites, Meredith Wallace. **Second Row:** Juanita Mishoe, Debbie Rich, Carolyn Coronado, Vickie Jane West, Cynthia LaRue Brown. **Back:** Jim Caulder, Don Wilson, Stephen McCordale, John Britt, John Everlove, Gordon Lee, Charles M. Hester, Bill D. Brown, Douglas McMillen, Wayne Cisco.





History Club

Front — Joyce Culbreth, Joanne Sanders, Sue White, Linda Pittman, Bunny Brannon, Debbie Radford, Suzanne Brown, Annette Abdalla, Kay Pasko, Diane English, Karen Culbreth, Wanda Phillips, Mr. Jerome McDuffie, Congressman Charles Rose. Back — Ricky Reeves, Watson Sanders, David Shelley, Danny Wilson, Richard Locklear, David Birchfield, Howard Hall, Alfred Parnell, Gary Murry

Warren Taylor, Ed Raynor, Larry Hewett, Rocky Wilson, Larry McElreath, Donald Hall, Keith Ballard, Larry Cribb, John Dawson, Russ Riverbark, John Sweet (Not Pictured)

Circle K



Political Science

Front — Gary Murry, Dianne English, Lynn Griggs, Tommy Martin. Back — Mr. Triebwasser, Meg Chappell, Belinda Bunce, Jim Pittman, Debra Pate, David P. Dorman, W. Jeffrey Roven, Dr. M.C. Ku, Dr. C.H. Cho (Not Pictured), Dr. Gibson Gray (Not Pictured)





Louise Strickland, Dorothy Urban, Libby Atkins, Dalahia Wade, Susan Settlemyer, Jill McMillan, Linda Chavis, Linda Thompson, Trudy Strickland, Debbie Grubbs, Pam Ballard, Willa Sarvis, Carolyn Spaulding, Glenda Chavis, Dave Lasker, Carolyn Cox, Blanche Brown, Faye Pace, Jane Lancaster, Gloria Stanton.

Home Economics



Little Sisters of Pi Kappa Alpha

Mary Ruth Gibson, Jane Williams, Judy Womack, Darlene Streater, Beth Little, Debbie Cain, Gwen Broome, Linda Locklear, Pam Simmons, Sally Myatt, Debi Bailey

Odena Lowry, Valerie McCoy, Sandra Bonita Hunt, Max George, Candace Lynch, Janet Watkins, Susan Kelly, Christine Sides, Harold Jacobs, John Martin Anderson, Albert Norwood, Teddy Ray, Chris Morgan, Andy McKay, Richard Wilson

Music Educators National Conference





Carol Taylor, Debie Bailey, Jan Palmer, Jean Stone, Phyllis Fields, Eva Davenport, Elvis Grady, Rick Rickman, Tony Kiger, Ron Holtsford, Bill Meier, Bill Trivette, Lenny Plummer, Danny Evans, David Rudd, Rudy Paul

Physical Education Majors and Minors

Little Sisters of Pi Kappa Phi

Wanda Phillips, Dorinda Lusk, Dahlia Wade, Linda Thompson, Lynne Clark, Terri Stanley, Norene Sealey, Cheryl Lima





Math Club

Joan Baker, Cheryl Locklear, Mike Caudill, David Ballard, Dr. Charles Bass, Larry Revels, David Lasker, Anna McCown, Bill Ferrell

Front — Emily Gail Kosak, Libby Lowry, Brownie Louise Speros, Walter Cargile. Back — Raul Cidillo, Reba Lowry, Judy Lockey, Jeff Collins, Kim Rabun, Sylvia Hayes, Gene Chancey Chavis

Spanish Club





Front — Mike Vermillion — Pres, Jim Beard, Mike Hobbs, John Shields, Mr. Pejack, Dr. Scheele, Jerry Domenick, Harvey Williamson, James Simon. Middle — James Hunt, Frank Huntley, Mark Cabral, Dale Arnette, Francis Daniels, David Goodyear, Gloria Sweet, Robert Wilkins, Jeff Tetter. Back — John Radcliffe, Charles Elliott, John Thompson, Bill Spade, Ron Winstead, Rex Rheinhardt, Sam Burney.

Business Fraternity

Young Democrats

David Shelly, Annette Abdalla, Bonnie Brown, Blanche Brown, Don Hall, Barbara Autry





Biology Club

John Smith, Charles Kossow, Mrs. Linda B. Oxendine, Beverly Watkins, Mike Ford, Barbara Vernon, Ragen Lewis, James Balanger, Preston Page

Methodist Student Movement

Don Hall, Rod Lattie, Rev. Jay Juren, Dixie Hunt, John Dawson, Victor Elk, Perry Johnson



Baptist Student Union

Front — Marsha Chadwick, Dale Luther, Debbie Smith, Donnie Edwards, Teresa Britt, Gay Simmons, Tim Thompson, Debbie Godwin, Bonnie Cox, Faye Pace, Willa Sarvis, Julie Purcell. Back — Steven Autry, Cheryl Benoy, Larry McElreath, Steve Barbee, Ellis Jones, Marty Williford, Jody Crowe, Becky Wood, Hal Poije, Don Hall, Gene Parker, Anne Lee Hayes, Jimmy Howard, Cheryl Rogers





Front — Dale Luther, Gene Parker, Gene Beasley, Larry Hewett, Max George, Renee George, Larry Cribb. **Bottom** — Larry McElreath, Don Hall, Kim Rabun, David West, Vicki Shell, Martha Blalock, John Dawson

JOY



Student National Education Association

S.N.E.A. Officers: Pres. — Sue Enzor, V. Pres. — Joyce Gooden, Sec. Tres. — Pat MacNeil, Sponsor — Dr. Rhoda Collins

Association for Childhood Education International

A.C.E.I. Officers: Pres. — Lynn Brisson, V. Pres. — Joyce Cutler, Ass't. — Denise Coleman, Sec. — Susan McPhail, Ass't. — Jackie Allen, Tres. — Jeanne Greene, Ass't. Vicki Hammond, Sponsor — Dr. Ruth Nixon



Concert Choir

University Choir Members: Harold Allen, James Allen, Edwin Ayers, Eugene Beasley, Jane Bennett, Martha Blalock, Lettie Clark, Carolyn Coronado, Sandra Culler, Robert Cummings, Deheava Drake, Bob Eason, Susan Gamble, Alice Garner, James Godwin, Nancy Hall, Bill Hart, Pam Huff, Sandra Hunt, Patricia Huntley, Cecile Ingram, Arreida Jacobs, Harold Jacobs, Phylis Jones, Susan Kelly, Heidi Locklear, Patrisse Locklear, Rudy Locklear, Catherine Lopez, Odena Lowry, Skye MacLeod, Valorie McCoy, Andrew McKay, Joyce Mason, Chris Morgan, Maria Musgrove, Gail Nazarchyk, Albert Norwood, Belinda Oxendine, Steve Pate, Teddy Ray, Tom Ray, Ed Raynor, Lee Schob, Christine Sides, Ed Singletary, Deborah Smallwood, Milton Smith, Michael Smith, Cherri Standlev, James Taylor, Susie Taylor, Gary Threatt, Janet Watkins, Kelly West, Vickie West, William West, Richard Wilson, Jane Williams, Caroline Wilson, JoAnn Sanderson, Sylvia Taylor.





University Band Members: Angela Walters, Deborah Davis, Laura Ausbau, Odena Lowry, Forrent Ray, Milton Smith, Albert Norwood, Lee Ann Brown, Candace Lynch, Harold Jacobs, Christine Sides, Chris Morgan, Kelly Rogers, Sandra Allen, Patrisse Locklear, Karen Sampson, Heidi Locklear, Bonnie Brown, Tom Ray, Kent White, Margaret Lewis, Max George, James Taylor, Richard Wilson, E.C. Shaw, Ed Singletary, Susan Kelly, Sandra Hunt, Ellen Honeycutt, Alice Garner, Andrew McKay, David Yandle, David Harris, Steve Simmons, John Sanderson, Michael Rayle, Harold Allen, Charles Sattlewhite, Rose Marie Lowry, Frankie Yandle, Vince Winnies.

University Band



Swingers include, Andy McKay, Teddy Ray, Vince Winnies, Chris Morgan, Tom Ray, Charles Saddlewhite, Richard Wilson, Max George.

Swingers





Singers

The Singers are Caroline Wilson, Albert Norwood, Valerie McCoy, Joe Allen, Christine Sides, James Taylor, Janet Watkins, Harold Allen, Debbie Smallwood, Badger Godwin





Pine Needle

Jerry Devos, Don Hall, Charles Hannibal, Gary Chadwell,
Scott Hinkle, David Shelley



Players

James Culler, Charlene Culler, Lee Schob, Christine Sides, Vickie Wiggs, Al Dunavan, Tommy Wainwright, Don Dalton, Iva Rountree, Kim Rabun, Bob Johnson, Pete Bundy, Dwight Watson, Charles Hannibal, Robin Alexander





Chancellor of
the University
English E. Jones



Debra Prime
Secretary to the Chancellor



James B. Chavis
Dean of Student Affairs



Faye Jones
Associate Dean



Student Affairs



Charles R. Griffith
Associate Dean and Director of Housing

Academic Affairs

Carl M. Fisher
Vice Chancellor for Academic Affairs
and Dean of Faculty





Richard C. Pisano
Associate Dean



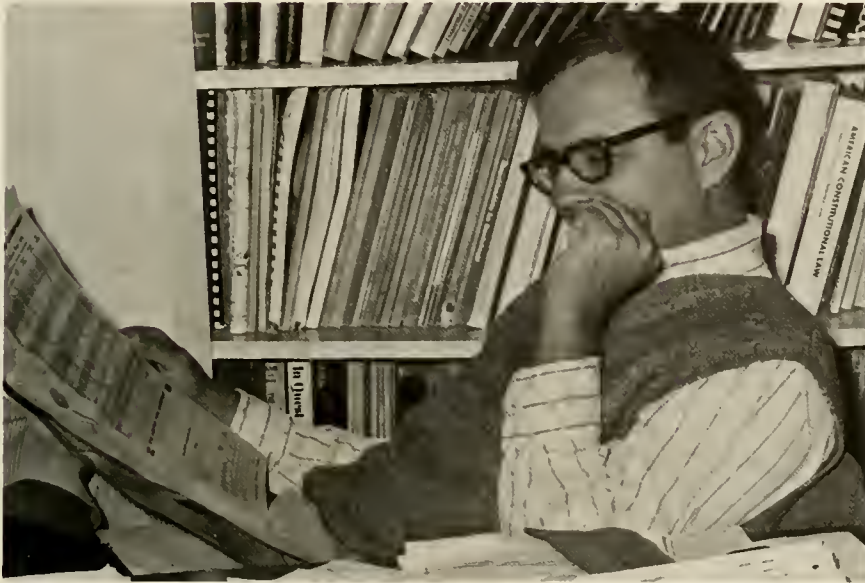
Daniel E. Todd
Assistant to the Vice Chancellor



William S. Mason, Jr.
Business Manager



Tommy D. Swett
Assistant to the Chancellor
Director of Alumni Affairs



Terry R. Hutchins
Director of Institutional Research



Gene Warren
Director of Public Information



Norma J. Thompson
Dean of Admissions and Registration



John L. Carter
Registrar



Jason Lowry
Director of Admissions



Esther D. Maynor
Financial Aid Officer

Human Services Center

Jesse Bey, Ed Watkins, Lisa Osborne





Warren Love, Rosa Ann Sampson, Dr. James G. Bloodworth

Media Center



Above Front — Rebecca Black, Rosa Sampson, Patty Deese, Christine Locklear, Back row — Judy Fox, Kate Locklear, Ruth Tidwell, Paulette Dial, Patricia Locklear

Administrative Secretaries

Right — Barbara Locklear, Maureen Regan, Katie Sampson





Above Front — Mary J. Poorboy, Faye Hodge, Darlene Jacobs, Joyce Cox, **Back** — Carroll Alford, Joann Pearsen, Ruby Neill Smith, Halene Lloyd, Brenda Lowry





Library Services

David Little, Walter Musgrove, Juanita Locklear, Billy Evans,
Thomas Logan, Dr. Miles Raisig



Infirmary

Lessie McBryde, Vivian Locklear, Rosa Locklear, Glenda Byrd, Sarah Oxendine, Eva Sampson. **Below** — Dr. Mark H. Huckerriede





Departmental Secretaries

Carol Paul, Florence McAleer, Anne Pearl Cummings, Mary Hendrix, Shirley Rodgers, Helen Alston, Brenda Jacobs

Marion Craddock, Reggie Strickland, Chris Bartley, Pat Demery, Joel Lancaster, Linda Hammond, Charlie Joyner

Student Center



FACULTYFACULTYFACULTYFACULTYFACULTYFAC

Dr. John S. Wallingford, Head



Dr. Harold J. Teague



Physical Science



Gerald C. Borland



Andrew Ransom



Dr. Howard D. Tyner

Not pictured, Dr. Ernest L. Madson

Paul Van Zandt, Head



Robert E. Kershaw, Jr.

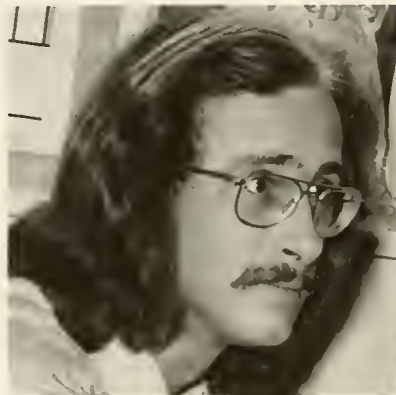


Art

Larry Dale Hefner



John F. Flynn, Jr.



Tom S. Speck

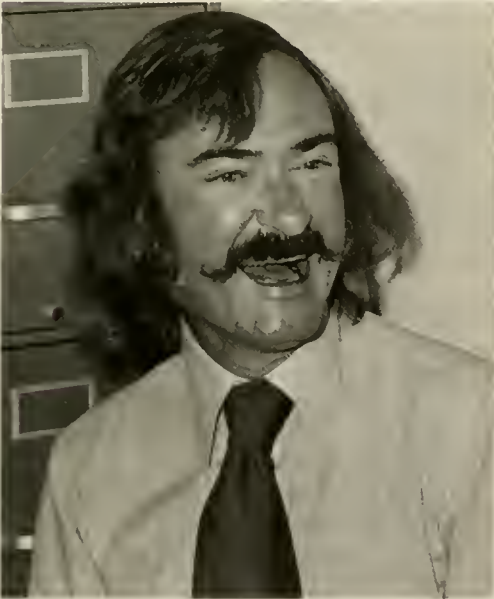
Ray Von Beatty



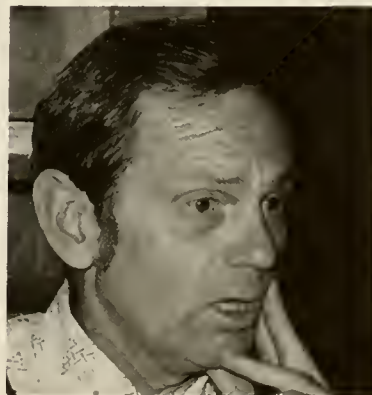
Dr. Kathryn K. Raleigh, Head



Psychology



Dr. David L. Easley



James F. Hubbard

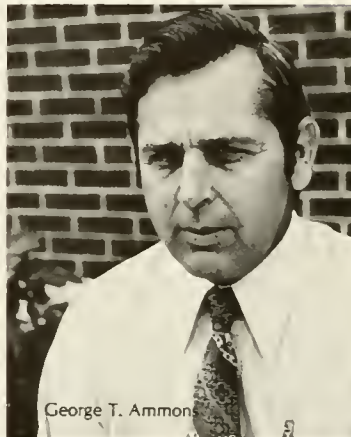
**Business
Administration**

Dr. Karl A. Scheele, Head

Magnolia O. Griffith



Gloria J. Sweet



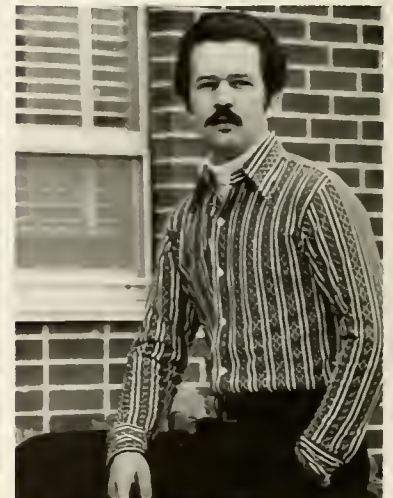
George T. Ammons



Annie Hazel Crafts



Albert J. Pejack, Jr.



Robert David Maynor

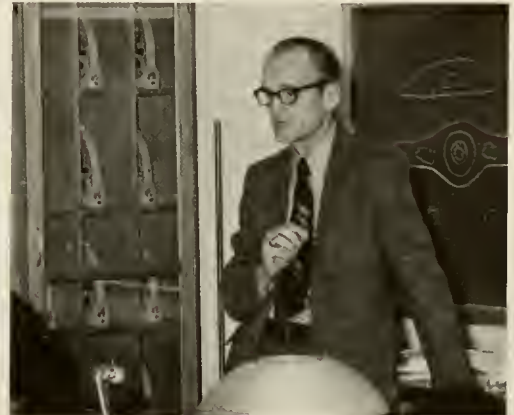
Dr. Robert F. Britt, Head



Dr. David K. Kuo

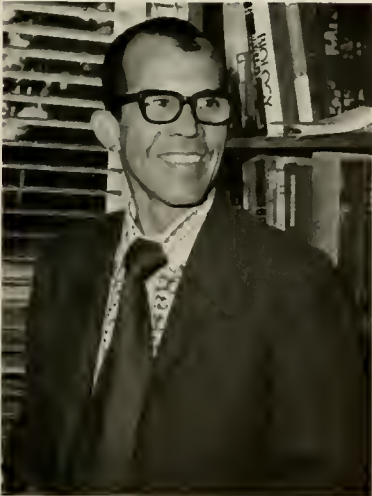


Biology



Linda B. Oxendine

James B. Ebert



Joseph A. McGirt

Communicative Arts

Dr. Donald Lee Steiner



Dr. Raymond J. Rundus, Head



Grace E. Gibson



Dr. Richard H. Baum



Donald Blair Dalton



Rudy D. Williams

Josef L. Mandel



Albert D. Dunavan



Bertha B. Mathews



George W. Polhemus



James S. Farmer



Dr. Robert W. Reising



Lois B. Lewis



Sharon K. Shaw

Dr. Wilton G. Joyner, Head



Dr. Jesse M. Lamm



Education



Gerald D. Maynor



Robert W. Birchfield, Jr.



Dr. John T. Russell

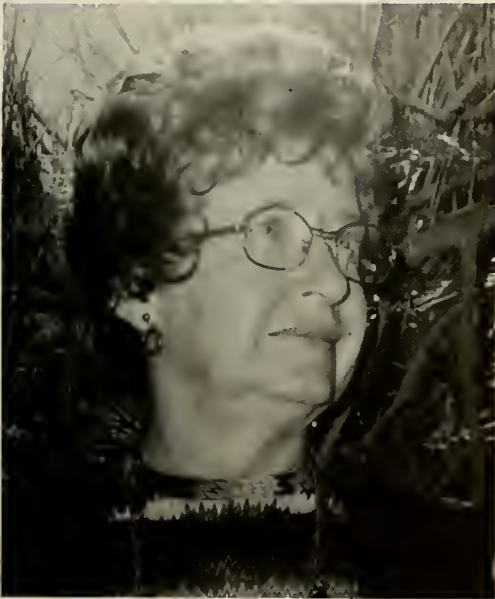


Dr. Rhoda P. Collins

William H. Dean



Dr. James G. Bloodsworth



Dr. Ruth H. Nixon



Dr. L.L. Murray



Dr. Janie B. Silver



Dr. Calvinia Switzer

**Sociology and
Geography**

Dr. John Rimberg, Head



Edward D. Watkins



Dr. Clemens Bartollas



Elizabeth King



James E. Ricklefs



Jessie M. Bell



Dr. Frank S. Pokrass



Dr. David A. McLean

Maude Ann Webb



Dr. Kenneth P. Johnson



Edwin W. Crain



**Health, Physical
Education and Recreation**



Harold M. Olson



Dr. Andre J. Nadeau



Raymond E. Pennington, He



Harold T. Ellen



Ellen Jane Bryan



Lacey E. Gane

History

Loren L. Butler II



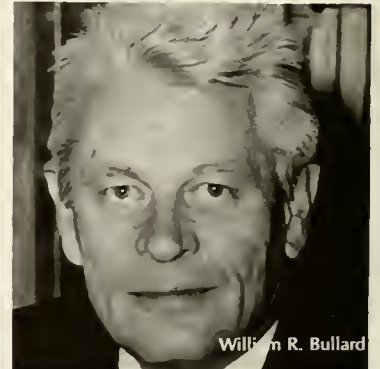
Dr. John Chay, Head



David K. Eliades



Dr. Paul K. Freiwirth



William R. Bullard



Dr. Avery John Butters

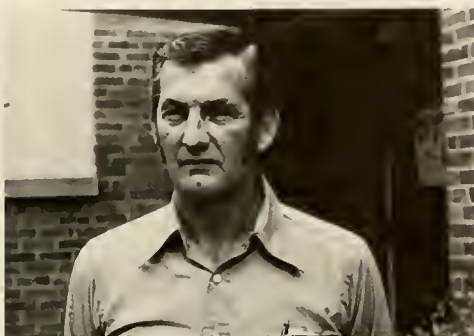


Jerome A. McDuffie

Dr. Francis L. Pfeifer



Robert T. Fleming



Music



Lois Johnson



Elma Kinsch



Jerry Coker



George R. Walter



Dr. Harold C. Slagle, Head

Home Economics

Annie Merle W. Elam, Head



I. Ruth Martin



Agnes O. Greene

**Philosophy
and Religion**



Dr. Robert K. Gustafson, Head

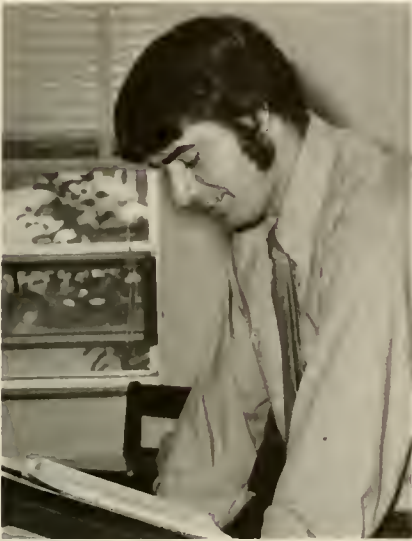


Dr. Thomas H. Guerry



Dr. Albert Stuckhard

Leonard E. Osborne



Victor W. Wolf, Head



Economics

Dr. James R. Krabill, Head



James A. Jacobs



Dr. Keyhang Keem



Mathematics



Dr. Henry Tramer



Gilbert L. Sampson



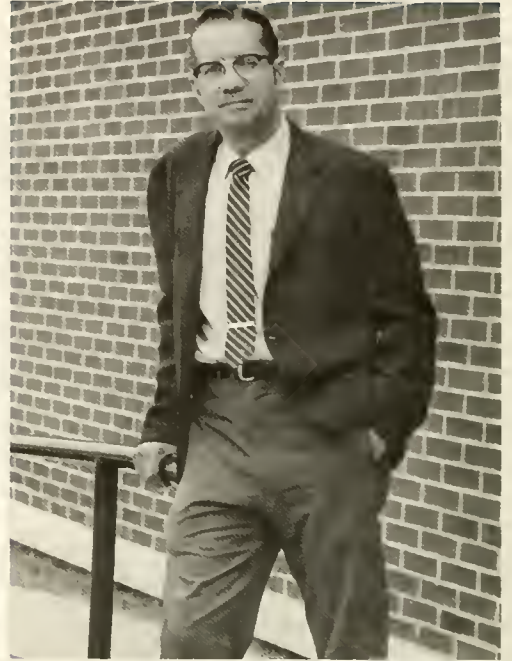
Dr. Charles D. Bass

Political Science

Dr. Chang H. Cho, Head



Dr. Gibson H. Gray



Marc A. Triebwasser



Dr. Min-chuan Ku

David K. Eliades



Dr. David A. McLean



**American
Indian Studies**



Dr. Robert W. Reising

Officers . . . 170. Seniors . . . 172. Juniors . . . 200. Sophomores . . . 212. Freshmen . . . 222.

CLASSES





Class Officers

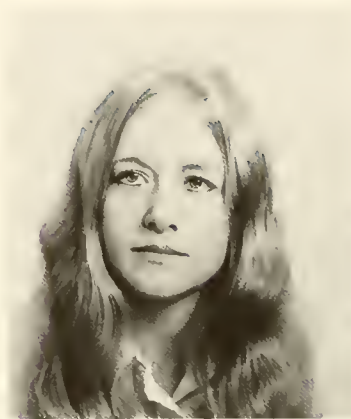
Right — Senior Officers — David Graham — Vice President, Larry Bridgewater — President. Below — Junior Officers — Warren Baker — Vice President, Sonny Davis — President.





Above — **Sophomore Officers** — Annette Rice — Secretary-Treasurer, Tommy Hutchins — President, Pam Simmons — Vice President. Left — **Freshmen Officers** — Larry Nader — Treasurer, Debbie Godwin — Secretary, Bob Johnson — Vice President, Ken Kennedy — President.

SENIORS



WANDA ANN AGUIRRE
English Education
Lumberton



GAYLE ANDERSON
Elementary Education
Fair Bluff



ERNEST HARDY ANDREWS
Art Education
Laurinburg



ROBERT WADE ANTONE
Business Administration
Lumberton



EVELYN HOPKINS ATKINSON
Art Education
Fayetteville



EDWIN WHITE AYERS, III
Sociology
Anywhere, USA



JOAN MARGO BAKER
Mathematics
Maxton



JANYCE CHENIER BARNES
Elementary Education, 4-9
Chadbourn



CHERYL BENOY
Home Economics
Hamlet



GWENDOLYN DEROTHA
BLACKWELL
Elementary Education, 4-9
Cerro Gordo



FRANCES ATKINSON BLAKE
Elementary Education, K-3
Whiteville



MARTHA FRANCES BLALOCK
Music Eduation - Voice
Fayetteville



FREDERICK DAVID BOEGE
Business Administration
Whiteville



MICHAEL LEE BONE
Art Education
Clayton



FAYE TYNDALL BOONE
Home Economics
Lumberton



FRANCES GAYLE BORDEAUX
Elementary Education
Elizabethtown



ROBERT SCOTT McISAAC
BRADLEY
Psychology
Sanford



KATHY F. BRANCH
Elementary Education, 4-9
Maxton



ANNE MCDANIEL BRANTLEY
Early Childhood Education, K-3
Elizabethtown



LARRY ALLEN BRIDGEWATER
Physical Education
Waterford, Mich.



LYNN SIMMONS BRISSON
Elementary Education, K-3
Dublin



CAROLYN BARNES BRITT
Elementary Education K-3
Orrum



JASON ALLEN BRITT
Elementary Education
Biscoe



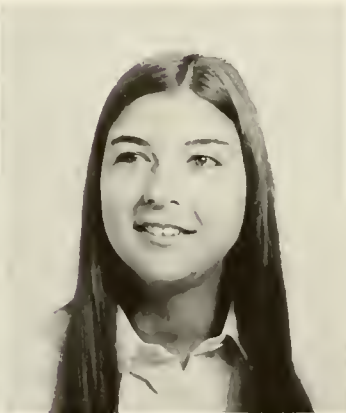
CYNTHIA LARUE BROWN
Psychology
Lumber Bridge



JERRY WAYNE BROWN
Business Administration
Bladenboro



MARTHA JO BROWN
English
Hamlet



MONA FAYE BROWN
Art Education
Fayetteville



SUZANNE BROWN
History
Parkton



MICHAEL GENE BRYANT
Political Science
Hope Mills



CARLA KAY BULLARD
Elementary Education 4-9
Maxton



CAROL ANN BULLARD
Elementary Education 4-9
Maxton



DANNY HAROLD BULLOCK
Math
Chadbourn



PETER THOMAS BUNDY
History
Fayetteville



TRUDY ESTELLE BURRIS
Home Economics
New London



FRANCES KAY BUTLER
Biology
Dublin



SHARRON BARNES BYRD
Elementary Education, K-3
Fairmont



CHARLOTTE A. CALDWELL
Elementary Education, K-3
Fayetteville



DAVID GARY CALLAHAN
Physical Education
Greensboro



OLLIE LINWOOD CANADAY
Physical Education
Four Oaks



SHIRLEY ROSE CARLYLE
Elementary Education
Bladenboro



LINDA SUE CARTERET
Elementary Education, 4-9
Chadbourn



PAUL DOUGLAS CAUDILL
Physical Education
Fayetteville



MARSHA KAY CHADWICK
English and Sociology
Fayetteville



JAMES MICHAEL CHANDLER
Business Administration
Whiteville



CAROL ELLERBE CHAPPELL
Elementary Education
Ellerbe



GLEND A CHAVIS
Home Economics
Maxton



MARY STRICKLAND CHAVIS
Elementary Education
Lumberton



JEWELL CARTER CHEWNING
Early Childhood Education, K-3
Wadesboro



VAN DOUGLAS COLEMAN
Drama and History
Durham



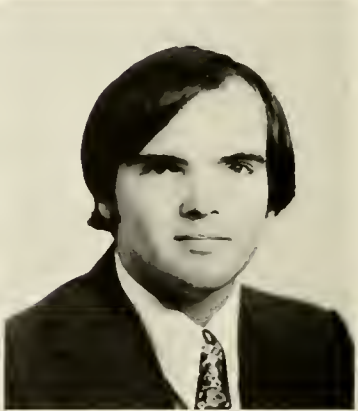
ANN P. COLLINS
Elementary Education, K-3
St. Pauls



LARRY ALLEN COOK
Business Management
Fayetteville



CAROLYN J. COOPER
Business Education
Fayetteville



ROBERT MATTHEW
COTTINGHAM
Biology
Gibson



BETTY BETHEA
Psychology
Rowland



MARVIN COX
Elementary Education, 4-9
St. Pauls



WALLACE DIXON COX
Sociology
Lumberton



KAREN STANLEY CULBRETH
History
Fayetteville



JAMES D. CULLER
Dramatic Literature
Pembroke



CHARLES CUMMINGS
History
Pembroke



SHEILA ANN CUSHMAN
Primary Education
Jacksonville



GORDON DON DAILEY
Sociology
Hampton, Va.



MARVIN FRANCIS DANIEL
Business
Elizabethtown



FREIDA ANN DIAL
Biology
Maxton



VICTOR HERBERT ELK
History and Political Science
Pembroke



DAVID JOHNSON ELLIOTT
Biology
Winston-Salem



SAMUEL BISHOP ENZOR
History
Fair Bluff



SUE B. ENZOR
Home Economics
Raleigh



THOMAS KEITH EVANS
Sociology
Clemmons



JOHN ALAN EVERLOVE
Psychology
Lumberton



WILLIAM DAVID
FAIRCLOTH, JR.
Business Administration
Hope Mills



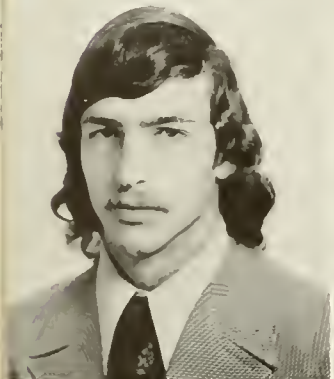
ANNIE L. FAIRLEY
Elementary Education, K-3
Laurinburg



MICHAEL GENE FARRELL
Business Administration
Fayetteville



TIM MICHAEL FERGUSON
Business Administration
St. Pauls



WILLIAM FRANK FERRELL
Math
Raleigh



RETHA ANN FLETCHER
History
Lumberton



WILLIAM LYNN FLOYD
Biology
Fairmont



BLEARY PERNEL FORD
Biology
Lumberton



MICHAEL RAY FORD
Biology
Maxton



RICHARD WALTER FRASIER
Business Administration
Hague, New York



JACKIE FORMYDUVAL
FREEMAN
Home Economics
Bolton



ADDIE MAE FRINK
Elementary Education
Shalotte



DEBBIE GAIL FRYE
Elementary Education, 4-9
Rockingham



CARL EDWARD FULLER
Sociology
Lumberton



DONALD NEAL GARVER
Elementary Education, 4-9
Kannapolis



ELEANOR STEWART GENTRY
Elementary Education
Raeford



JOHN MAX GEORGE
Music
Pembroke



RENEE ABERNATHY GEORGE
Sociology
Dullas



RONALD MARSHALL GIBSON
Business Administration
Laurel Hill



CARSON EUGENE GILMORE
Business Administration
Carthage



JOYCE C. GOODEN
Elementary Education, 4-9
Elizabethtown



KATHERINE PATE GOODMAN
Elementary Education, 4-9
Hamlet



MARY KATHY GOODNIGHT
Elementary Education, K-3
Kannapolis



KAREN LYNNE GORE
Business Education
Lumberton



HARRIET ELIZABETH
GOWANS
Elementary Education
Cerro Gordo



CHARLES VINSON GRAHAM
Health and Physical Education
Pembroke



DAVID NEAL GRAHAM
Sociology
Pembroke



SHARON ANNETTE GRAHAM
Sociology
Pembroke



JEANNE GAIL GREENE
Elementary Education, K-3
Cerro Gordo



LINDA E. GREENE
Early Childhood Education
Aberdeen



DEBRA JOHNSON GRUBBS
Home Economics
Laurinburg



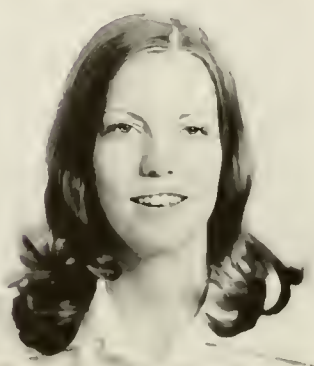
SANDRA ANNE GUITON
Elementary Education, K-3
Whiteville



DONALD WAYNE HALL
English
Aberdeen



EVERETT B. HAMBRIC
Physical Education
Troy



VERMA SMITH HARDEE
Elementary Education, K-3
Shalotte



RICHARD DALE HARFORD, JR.
History
Fayetteville



DEBRA DIAN HARRIS
Art Education
Elizabethtown



MARY SUSAN HAWKINS
Elementary Education, K-3
Rockingham



EDDIE WAYNE HAWKS
Biology
Shannon



DIANE S. HEDGPETH
Elementary Education, K-3
Lumberton



GERALDINE GRAVES HERRING
English
Lumberton



CHARLES S. HESTER
Business
Fayetteville



JEANNE DALE HESTER
Elementary Education
Dublin



MITCHELE EVANS HIGH
History
Fayetteville



GENE OSBORNE HILL
Chemistry
Cerro Gordo



SHELBY JEAN HILL
Elementary Education, K-3
Cerro Gordo



STANLEY WAYNE HINSON
Business Management
Wilmington



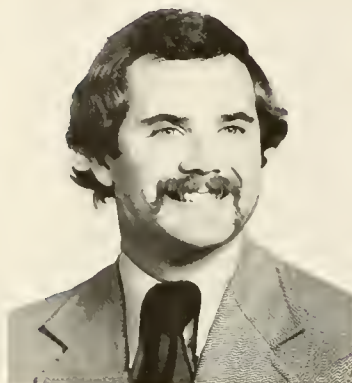
MIKE L. HOBBS
Sociology
Laurinburg



MARGARET ALLEN HODGES
Elementary Education
Mullins, South Carolina



YVONNE STOKES HOLT
Elementary Education, K-3
Princeton



DAVID LESLIE HOYLE
History
Greensboro



SYLVIA ANN HUBBARD
Business Education
Bennettsville, S.C.



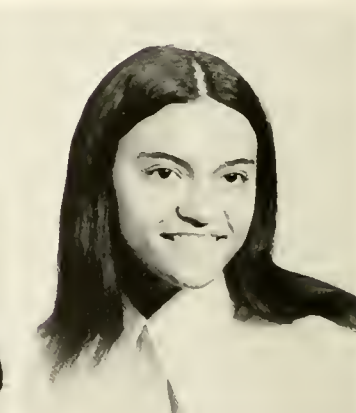
ROBERT DANIEL HUDKINS
Elementary Education
Fayetteville



PEGGY JEAN HUGGINS
English
Lumberton



SARA CHRISTINE HUGUELET
Elementary Education
Hamlet



JACKIE LEE HUNT
Biology
St. Pauls



JO ANN HUNT
Elementary Education, 4-9
Lumberton



LINDA M. HUNT
Elementary Education, K-3
Pembroke



FRANK LITTLE HUNTLEY, III
Business Management
Morven



CUMIN RAY BRITTENHAM
Sociology
Aulander



PATRICIA COALSON HUNTLEY
Music — Voice
Morven



KATHY ADELE HYATT
Elementary Education, K-3
Dillon, South Carolina



ROBERT DAVID INMAN
Sociology
Rowland



KATHERINE WEBB INSCOE
Home Economics
Elizabethtown



EMMA BROWN IVEY
English Education
Evergreen



CHRISTINE JACOBS
Elementary Education, K-3
Pembroke



JAMES WILLIAM JACOBS
Business Management
Pembroke



LOU LINDA JAMISON
Elementary Education, K-3
Lumberton



ELIZABETH WILLIFORD
JERRIGAN
Elementary Education, K-3
Erwin



PAULETTE HENTON JOHNSON
Sociology
Hope Mills



JANICE GRIFFIN JOHNSON
Elementary Education, K-3
Asheboro



MICHAEL ALAN JOHNSON
Physical Education
Asheboro



ALFRED JONES
Accounting
Maxton



RONALD GLENN JONES
Biology
Kenly



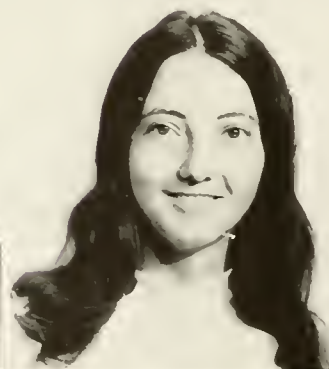
FRANCES SEAL KIMERY
Elementary Education 4-9
Whiteville



BETTY JANE KING
Art Education
Bladenboro



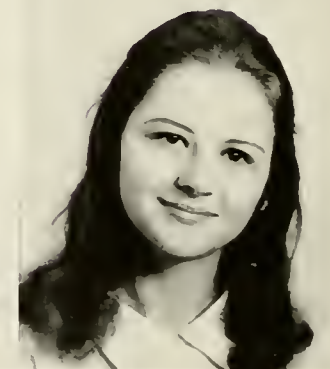
FRANK HOWARD KING
Physical Education
Falls Church, Virginia



FREIDA DIANNE KINLAW
Home Economics
Lumberton



MARY CARLTON KINLAW
Business Education
St. Pauls



EMILY GAIL KOSAK
Sociology
Laurel Hill



CHRISTOPHER YORK LAMB
Sociology
Lumberton



ROBERT RAY LAMBERTH
Physical Education
Reidsville



CHERYL D. LAMPLEY
Elementary Education
Rockingham



DANIEL LANE LATON
Business Administration
Jackson Springs



CHARLENE FRANCES LAWSON
Physical Education
Durham



BOYCE MALCOLM LEAR
Biology
Cordova



GLORIA L. LEE
Elementary Education
Fayetteville



KENNETH WAITUS LEE
Sociology
Dunn



GAYLE PHILLIPS LEWIS
Elementary Education, 4-9
Lumberton



LINDA ANN LLOYD
Sociology
Raleigh



JUDITH RABUN LOCKIE
Sociology and Spanish
Fayetteville



ROSALYN LOCKLEAR
Elementary Education, K-3
Pembroke



KATHAN D. LOCKLEAR
Elementary Education, K-3
Maxton



VIVIAN THOMAS LOCKLEAR
Elementary Education
Lumberton



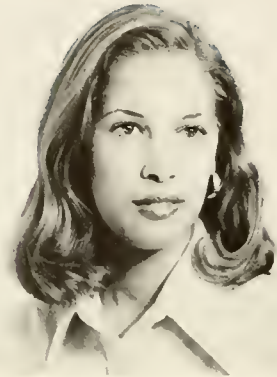
VON SAVASTION LOCKLEAR
Sociology
Maxton



YVONNE BARNES LOCKLEAR
English
Lumberton



JUNELLA LONG
Home Economics
Nakina



CATHERINE ANNE LOPEZ
Psychology
Fayetteville



MARY JO LOVETTE
Home Economics
Raeford



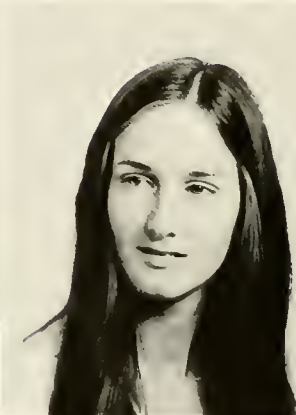
IRENE GRAHAM LOWERY
Home Economics
Maxton



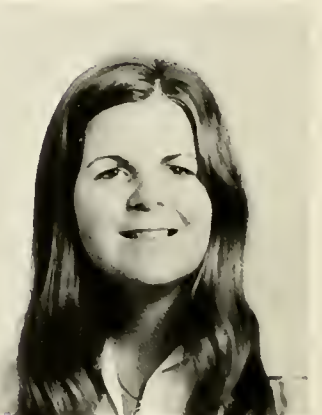
PATRICIA ANN LOWRY
Sociology
Pembroke



KENNETH BYRON LUPO
Economics
Cary



DORINDA JOYCE LUSK
Biology
Greensboro



ANN SCOTT LYNCH
Elementary Education, K-3
Carthage



SWAN BASHFORD MABREY
Home Economics
Lumberton



WALTER RICHARD MABREY, JR.
Business Administration
Lumberton



DOROTHY J. MAREKA
Psychology
Lumberton



JOHN EDWARD MARTIN
Management
Rockingham



LEON MAYNOR
Elementary Education
Lumberton



PATRICIA FRANCE MACNEILL
Elementary Education 4-9
Maxton



STEPHEN DOUGLAS MCBRYDE
Business
Maxton



CATHY HAYES
MCCORQUODALE
Elementary Education
Hope Mills



PI WU ANNA MCCOWN
Math
Fayetteville



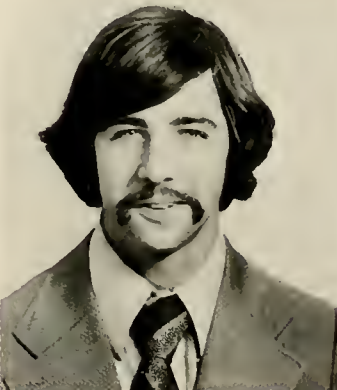
VALORIE SUE MCCOY
Music
Hamlet



ROLAND FRED MCDANIEL
Physical Education
Laurinburg



DAVID AUTRY MCDOWELL
Art
Elizabethtown



JOHN PHILIP MCEACHERN
Elementary Education
Laurinburg



THOMAS JAMES
MCINTOSH III
Asheboro



KENNETH H. MCKENZIE
Sociology
Hope Mills



JAMES EDWARD MCKINNON
Business Administration
Rockingham



NATHAN RUSSELL
McLAURIN
Business
Fayetteville



CLYDE ALEXANDER McLEOD
History
Maxton



HOWARD ELLIOTT McLEOD
Physical Education
Laurinburg



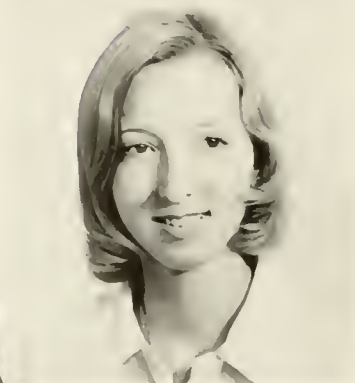
JEAN H. McMANUS
Spanish
Red Springs



JILL TRACY McMILLAN
Home Economics
Morehead



RONNIE KELLY McNEILL
Business Administration
Sanford



SUSAN GREGG McPHAIL
Elementary Education
Rowland



ALPHONZO McRAE
Physical Education
Lumberton



EUGENE BOYLE McRAE, JR.
History
Hamlet



MELVA HAWKINS MILLER
Spanish
Pembroke



JAN RIK MOORE
Business
Lumberton



JEANNETTE MOORE
Home Economics
Maxton



GORDAN CHRISTOPHER
MORGAN
Music
Dunn



JUDY LYNN MUMAU
Elementary Education,
Fayetteville



GARY WAYNE MURRY
Political Science, History
Maiden



RANDALL LYNN MYERS
Physical Education
Trinity



JESSE ROLAND MYRICK
Physical Education
Aberdeen



PAMELA ELAINE NAVY
Elementary Education, K-3
Thomasville



GAIL SMALLWOOD
NAZARCHYK
Music
Fayetteville



WILLIAM CALVIN NEWMAN
Biology
Hamlet



JAMES HOWARD NOBLES
Elementary Education
Cerro Gordo



MELODY ANNE NOBLES
History
Chadbourn



ALBERT NORWOOD
Music
Roxboro



JANE BYRD ODOM
Elementary Education, K-3
Fayetteville



ANTHONY OXENDINE
Math
Red Springs



CONNIE OXENDINE
Elementary Education, 4-9
Maxton



DELORIS PATE OXENDINE
Business Administration
Pembroke



KATRINA MAYNOR OXENDINE
Elementary Education, 4-9
Shannon



MARILYN OXENDINE
Business Education
Maxton



WANDA SUE OXENDINE
Elementary Education
Red Springs



RONNIE OXENDINE
Biology
Maxton



GLORIA FAYE PACE
Home Economics
Nichols, South Carolina



BARBARA VERNON PAGE
English Education
Pembroke



PRESTON HENRY PAGE
Political Science
Selma



EMMA KING PARKER
Business Education
Fair Bluff



ALFRED PARNELL, JR.
History
Lumberton



FRAN MARIE PARNELL
Home Economics
Fairmont



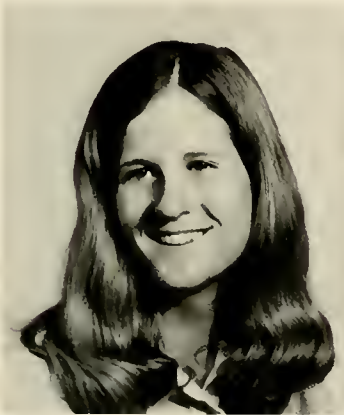
ROLAND GENE PARSONS
Physical Education
Raeford



STEPHEN VERNON PATE
Business
Fayetteville



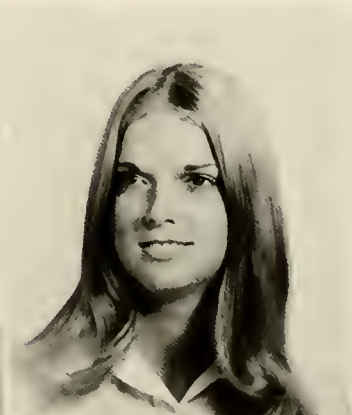
MARY HELEN PATTERSON
Sociology
Red Springs



VICKI LEIGH PERRY
Elementary Education K-3
Fayetteville



MELLONEE JOYCE PHIFER
Home Economics
Hamlet



WANDA IRLENE PHILLIPS
Elementary Education K-3
Wade



JOHN WILLIAM PINKSTON
Physical Education
Fayetteville



LINDA FAYE PITTMAN
Sociology
Lumberton



ROBERT HARRIS PRESTON
Physical Education
Summerfield



ALEENE BLOUNT PREVATTE
Comm. Arts and Sociology
White Lake



GAYLA MARIA PRICE
Physical Education
Pembroke



ANN FRAZIER PRIDGEN
English and Sociology
Laurinburg



JACQUELINE ROSE PRIDGEN
History
Lumberton



DOLL INSCOE PRIEST
Elementary Education, 4-9
Elizabethtown



CONSTANCE ROSE PURDUE
Early Childhood Ed., K-3
Fayetteville



RICHARD GILISSON QUICK
Business Administration
Red Springs



DOROTHY LINDA QUINN
Home Economics
Fayetteville



ELEANOR ELIZABETH RABANO
Elementary Education
Fayetteville



BELINDA KAY RANAGER
Elementary Education
Lumberton



JANET FAYE RANSOM
Chemistry
Rowland



MARSHA VICTORIA RANSOM
Sociology
Pembroke



JOHN LARRY RATCLIFFE
Business
Laurinburg



MICHAEL THOMAS RAY
Music
Southern Pines



VANCE RICH, III
Music
Wallace



BEVERLY SUE RICHARDSON
English
Morganton



GARY HAROLD RIDDLE
Business Administration
Fayetteville



PATRICIA ROBINSON
History
Chadbourn



ALAN DEAN ROBSON
Accounting
Rockingham



CAROLE PLUMMER ROGERS
Elementary Education
Lumberton



JOYCE H. ROGERS
Elementary Education, 4-9
Elizabethtown



WILLIAM THOMAS ROLLINS
Business
Maxton



WILLIAM HOUSTON ROY, JR.
Sociology
Leland



CAREY PRESTON ROZIER
Math
Lumberton



JAMES RONALD RUDD
History
Greensboro



BARRY KENTON RUSSELL
Physical Education
Troy



RACHEL ANN RUSSELL
Psychology
Hamlet



LEWIS CHISTOPHER SALOME
Business Administration
Laurinburg



DIANNE SAMPSON
Elementary Education, K-3
Lumberton



JAMES LAWTON SANDERSON, JR.
Physical Education
Lumberton



WILLA DOVE SARVIS
Home Economics
Tabor City



GAIL BOYES SCHALMO
Psychology
Lumberton



ANDRENA DEESE SCOTT
Business Education
Pembroke



VICKIE JOE SHAW
Physical Education
Evergreen



FRANK EDWARD SHEPPARD
Physical Education
Candor



DEBORAH FORMYDUVAL SIMMONS
Elementary Education, K-3
Ash



JAMES D. SKIPPER
Physical Education
Durham



JOY WHITE SMITH
English
Boone



LOIS MCKAY SMITH
Marston



MILTON WAYNE SMITH
Music
Bladenboro



NANCI CAROL SMITH
History
Pembroke



ROBERT PAUL SMYNTEK
Art
Fayetteville



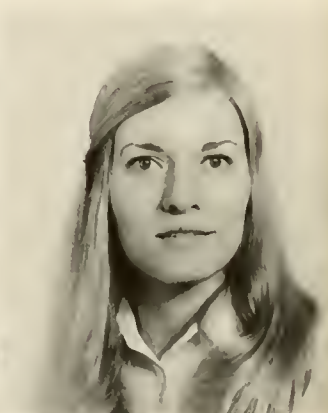
JAMES WILSON SPROLES, IV
History
Spring Hill, Florida



CHERRIL ELIZABETH STANDLEY
Music Education
Clayton



TERRIE LOU STANLEY
Psychology
Fayetteville



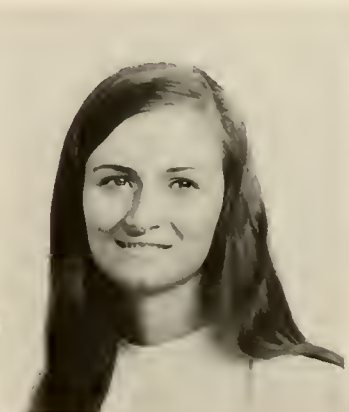
GLORIA JEAN STANTON
Home Economics
Maxton



HOMER EVANS STANTON, JR.
Physical Education
Pembroke



DEBORAH FAYE STEWART
Elementary Education
Hamlet



MARY ANN STRICKLAND
Home Economics
Tabor City



TRUDI WIGGS STRICKLAND
Home Economics
Lumberton



STEPHANIE NICASTRO STULL
English
Pembroke



DEBRA FAYE SUTTON
Early Childhood, K-3
Lumberton



JOHN FLOYD SWEET
Business Administration
Hutchinson, Kansas



JUDY ELAINE SYKES
Home Economics
Fayetteville



GLORIA WALTER TATUM
Communicative Arts
Lumberton



DEBRA LYNN TAYLOR
Kindergarten - 3
Spring Lake



NORMA EAST THACKER
Early Childhood Education
Wadesboro



MICHAEL EDWARD THOMAS
Chemistry
Rockingham



RONNIE GERALD
THOMPSON
Physical Education
Fayetteville



STEVE LEWIS THOMPSON
Physical Education
Durham



RICHARD DOUGLAS
THOMPSON
English
Rockingham



ANNE MARIE THROWER
Business
Bladenboro



PATRICIA KIRK THROWER
Elementary Education, K-3
Hamlet



WILLIAM GURNEY TRIVETTE JR.
Physical Education
Union Grove



JAMES SHERWOOD TURNER
Sociology
Reidsville



MARY C. TYSON
Elementary Education, K-3
Durham



FRED PHILLIP UMBERGER
Art
Burlington



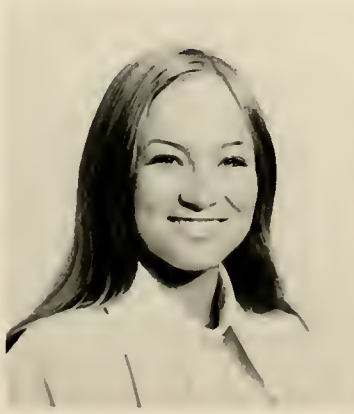
MARGARET MILLER WADDELL
Elementary Education, K-3
Wadesboro



THOMAS EDWARD
WAINRIGHT
History
Autryville



BEVERLY ANN WALLACE
Art
Fayetteville



ANGELA DORIS WALTERS
Elementary Education, K-3
Lumberton



GLORIA PREVATTE WALTERS
Elementary Education
St. Pauls



GAIL CARTERET WARD
Elementary Education, 4-9
Clarendon



MARY BOGGAN WARNOCK
Business Education
Hamlet



JANET MUSICK WATKINS
Music Education
Springfield, Missouri



DOROTHY S. WATSON
Elementary Education
Raeford



DWIGHT EUGENE WATSON
Dramatic Literature and Perform.
Sociology
Burlington



BEVERLEY ELAINE WEEKS
Elementary Education, K-3
Dunn



JOHN PHILLIP WEMYSS
History
Fayetteville



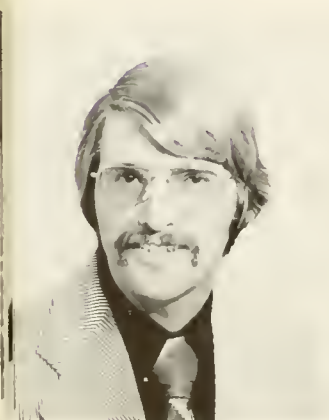
VICKIE JANE WEST
Psychology
Lumberton



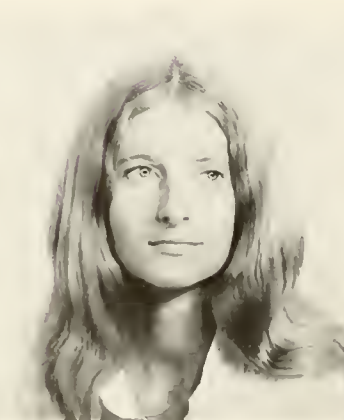
VICKIE JO WEST
Business Education
Bunnlevel



WILLIAM LENNETT WEST
Political Science
Asheboro



HOWARD RAY WHITE
History
Lumberton



CHRISTA S. WICKHAM
French
Red Springs



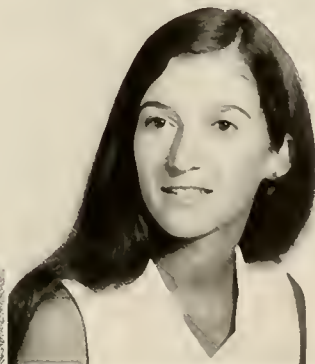
ERWIN THOMAS WILLIAMS, JR.
Business
Fairmont



HARVEY LEO WILLIAMSON
Business Administration
Lumberton



CHARLES HAGUE
WILLIFORD, JR.
Accounting
Fayetteville



ANN BAKER WILSON
Elementary Education, 4-9
Lumberton



DONALD ARCHIE WILSON
Psychology
Lumberton



LINDA FITZSIMONS WILSON
Sociology
Raeford



RACHEL DIANE WILSON
Elementary Education
Ellerbe



REBECCA SUE WOOD
Elementary Education
White Oak



DIANE JOHNSON WORLEY
Elementary Education
Fairmont



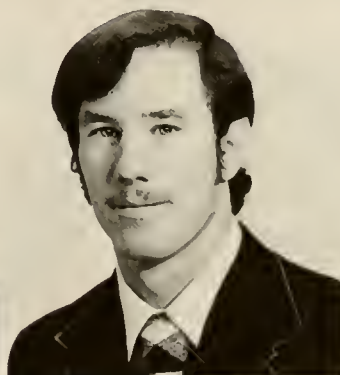
JO ANN WORRIAX
Business Education
Pembroke



JUDY LYNN WYNNE
Sociology
Burgaw



LEE GLENN ZACARIAS
Biology
Lumberton



DANIEL ANTHONY ZIELINSKI
Physical Education
Fayetteville



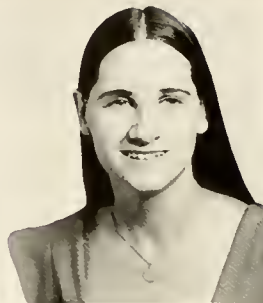
CATHERINE TEW CULBRETH
English
Fayetteville



Robin Roy Alexander



James Joseph Allen



Sandra Amelia Allen



Kirby Carnell Ammons



Katherine Boothe Andrews



Elizabeth Anne Atkins



Barbara Ann Autry



Steven McDonald Autry



Debi Jane Bailey



Pamella Ann Ballard



Steven Thomas Barbee



Debbie K. Barber



Barbara Floyd Barnes



Suanra Jean Barnes



Barbara Ann Barnett

JUNIORS



Brian Wayne Beasmore



Jeannie Jo Bell



Jane Andrea Bennett



Mary Madden Black



Christopher Bontselis



Kenneth Dale Boyd



Larry Edward Boyer



Susan Rene Boyette



Gloria Jean Branch



David Earl Brooks



Blanche Duval Brown



Howard Kenneth Bryan



Rebecca Ann Bullard



Susan Louise Butler



Mark A. Cabral



Craig Frederick Callio



Robert Leon Carroll



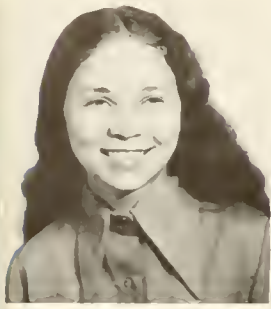
Dennie Ray Carter



Bobby Cassevah



Jimmy Earl Caulder



Barbara Ann Chavis



Herman Chavis



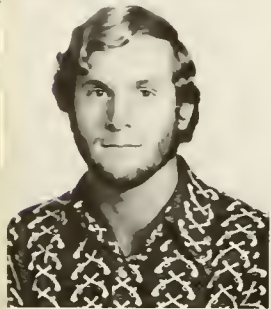
Lawrence Prince Chavis



Linda Faye Chavis



Wanda Chavis



Jackie Carlos Christie



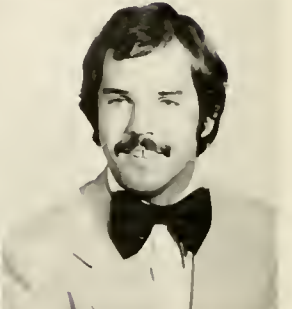
Betty Susan Clark



Betty Denise Coleman



Martha Floyd Collins



David Harold Corn



Carolyn Coronado



Marion Lee Craddock



Larry O'Neil Cribb



Sandra Charlene Culler



Kathy Dae Cummings



Michael Cummings



Jeffray D. Cushing



Joyce Ann Cutler



Eva Craddock Davenport



Donna Davis



James Harold Dawkins



Patricia Demery



Dale Edward Denson



James Ervin DeVane



Fannie Sue Dial



Nancy Ann Doby



David Paul Dorman



Graham Galen Edge



Michael B. Edwards



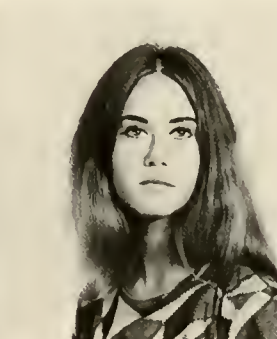
Daniel Robert Elkins



Douglas Franklin Eller



Richard Luffman Elmore



Sharon Dianne English



Oscar Frank Everitte



John Lennard Evers



Melvin Fairchild



James Michael Fitzgerald



Iris Marie Floyd



John Randall Foley



Mary Ellen Freeman



Anita Jane Gamble



David Boyd Goodyear



Joseph Grady, Jr.



Bryanna Gayle Gregoire



Reginald Clark Griffin



Howard Rexford Hall



Nancy Rose Hall



Thomas Neil Hannah



Lorne Thomas Hargis, Jr.



James B. Harris



Jane Marilyn Harris



Roger Arnold Harwood



Anna Lee Hayes



Larry Luth Hayes



Sylvia Diann Hayes



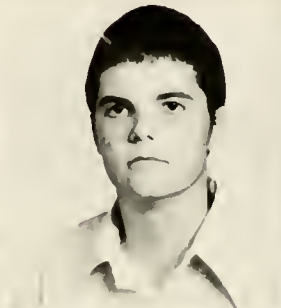
Susan Christine Herring



Charles M. Hester



Evelyn B. Hester



Van Owen Hester



Patricia Rouse Hill



Audrey Roger Holcomb, Jr.



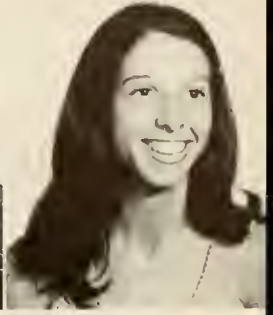
Bennie Sue Holloman



Dixie Theresa Hunt



Johnny Lee Huggins



Pamela Jo Hundson



Sandra Bonita Hunt



Bonnie Sue Ivey



Wanda Jacobs



Glenda Ann Jarrell



Lazora Vidrene Johnson



Linda Faye Johnson



Beneva L. Jones



Ellis Baggett Jones



Phillip Van Jones



Charlie Earl Joyner, Jr.



Clifton L. Kelley



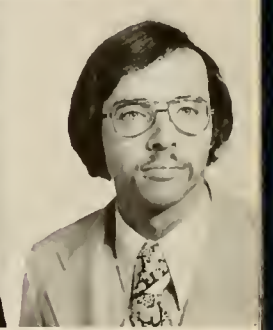
Robert Anthony Kiger



Susan McMillan Kelly



Flora Jeanette Kinlaw



Robert Hugh Kossoff



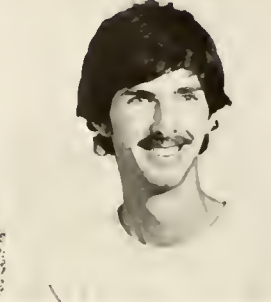
Kim Kwangsuk



Bonne Lee Lambeth



Sallie Jane Lancaster



Leonard David Lasker



Roslyn Levon Leach



Bart Regan Lewis



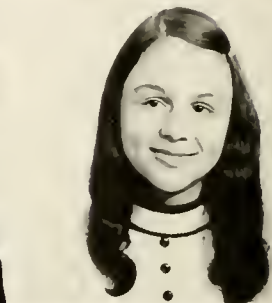
Thomas Lee Lewis



Jean Taylor Lipps



Arlene Locklear



Cheryl Ransom Locklear



Curt Locklear, Jr.



Della O. Locklear



Delores Jane Locklear



Eddie Lee Locklear



Glenda Gail Locklear



Katy J. Locklear



Keith Locklear



Mitchell Wayne Locklear



Rhonda Iris Locklear



Libbie Sue Lowery



Rose Marie Lowry

Jimmy Larue Lupo

Candace E. Lynch

David Charles Marks

Alton Larry Martin



Ashford Evans Matthews

Iris Yvonne McCartney

Janice Cheryl McEachin

Larry Ray McElreath

Mary Susan McFadyen



Barbara H. McInnis

Judy Lynn McIntyre

Julie Elizabeth McLean

Michael Evans McMinis

Gary Steve McNeill



James David McRae

Teresa Patrick Meacham

Gerry Thomas Melton

Juanita Mishoe

Patricia Musselwhite



Terry Howard Myers



Patrick Stewart Newbill



Jerry Lee Newton



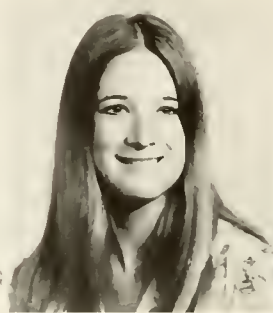
Dickie Nye



James Alton Oxendine



Tony Oxendine



Janette J. Palmer



Rudy Dean Paul



William Earl Peele



Leonard Bennett Plummer



Patricia Susan Poche



Pamela Denise Poston



Linda Sue Reckerd



Glinda Revels



Joyce D. Revels



William Nathan Rhyne



Vickie Sue Rogers



Doris Bell Sampson



Norman Woodward Sampson



Ursula Kaye Sampson



Rhonda Gail Sanford



William Hilton Schmidt



Norene Sealey



Sandra Deloris Seals



Sara Elizabeth Sellers



Susan Ellen Settlemyre



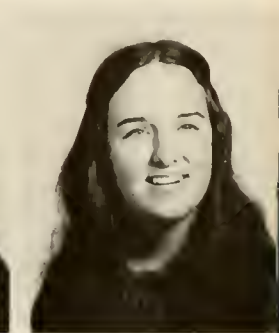
David Bryan Shelley



John Vernon Shields, Jr.



Christine Elizabeth Sides



Cindy Mary Simetich



Linda T. Skipper



Carlton Wesley Smith



Charles Kenneth Smith



Edward Douglas Smith



Richard Bruce Smith



Peggy Hardie Stanley



Nathaniel Stephenson



Jean Hall Stone



Darlene G. Streater



John Michael Student



Nelson Thomas Suitt

Barbara Rowena Tarlton

Clarence Gleamon Tart, Jr.

Billy Marshall Thompson

Doris Jean Thompson



John Samuel Thompson

Karen McCormick Thompson

Richard Douglas Thompson

Timothy Vernon Thompson

Gary Hill Threat



Patricia Joy Thrower

Mary Ann Tusai

Toni Vigoletti

Gilbert Lavern Vereer

Dahlia Rosemary Wade



Edna Marie Waites

Meredith A. Wallace

Robin Eleanor Wallace

James H. Walters

Jerry Lane Walters



Suzanne McKeown Walton



Wanda Gayle Ward



Jack Russell Warner



Thomas D. Warren



La Verna Warriax



Beverly Brackston Watkins



Gary Thomas Webster



Kelly David West



Linda Marie West



Marilyn Rose Wilcox



Jane Ray Williams



Edward Martin Williford



Caroline Wilson



Preston Daniel Wilson, Jr.



Deborah Lee Wiseman



Joy Carol Wrench

SOPHOMORES



Jacklyn Ruth Allen



Sonya Lee Allen



Doris Elaine Autry



Judy Marie Autry



Angie Porter Baker



Levin Davy Ballard



Keith Wayne Ballard



Kathy Locklear Barton



John E. Battle



Eugene Thomas Beasley



Donald Carey Bedsole



Tommy Ray Belch



Philip Dexter Bell



Murchison Bolton Biggs



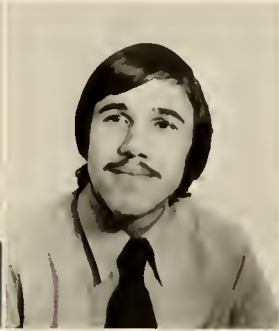
Dana A. Bixby



Deborah Elaine Blackburn



Steve Theodore Blount



Jimmy Blue



Samuel Robert Boyette



Brenda Joyce Britt



Debbie Rhyne Britt



Rebecca Lee Bryan



Donald Edward Bryson



Terrie Ann Bullard



Belinda Ann Bunce



David Burchfield



Samuel Ritchie Burney



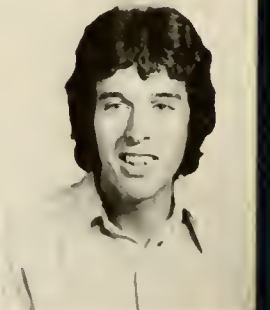
Stanford Burns



Carol McRae Butler



Denise Renee Butler



Stephen John Carney



John Louis Carter, III



Mary Overman Carter



Elfreda Chavis



John Preston Clark, III



Lettie Lynne Clark



Jeff Collins



Beverly Jones Cook



William Randolph Coppedge



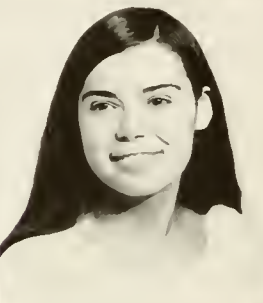
Robert David Coughlin



Naomi Gwendolyn Couley



Barbara Freeman Cox



Linda Sue Cox



Elisha Jackson Cromer



William Sessoms Culbreth



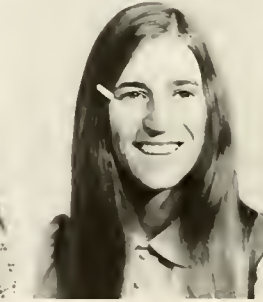
Naomi Elaine Dagg



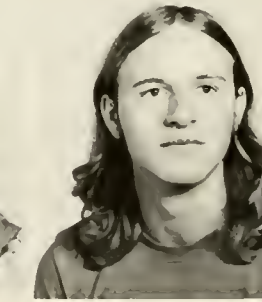
Carolyn Sue Davis



Ellen A. Davis



Katie Ruth Dees



Jerry Paul Devos



Allen G. Dial



Wayne C. Douthit



Brenda Bullard Dowd



Helen Drake



Donald David Dumas



Brenda Kay Edwards



Madelin Kay Evans



Richard Danny Evans



Deborah Parker Foster



Kenneth Freeman



Greg Alan Frey



Richard Edward Gaddis



Alice Marie Garner



Nancy Campbell Garner



Margaret Louise Gibson



Virginia C. Gibson



James Badger Godwin



Cynthia Ann Goins



Cynthia Darlene Graham



Thomas Edward Gray



James Edward Hall, III



Odessa Hall



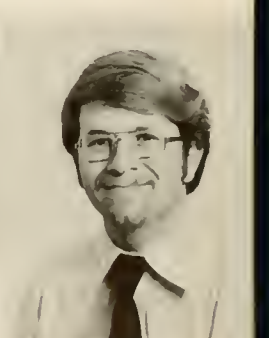
Pamela L. Hammonds



Vickie Lynn Hammond



Douglas Maurice Hancock



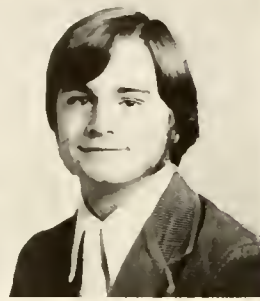
William Monroe Hart



Vickie Carol Hill



Joseph Scott Hinkle



James Corbitt Howard



Robert Steve Hubbard, Jr.



Pamela Marie Huff



Cecile Diane Ingram



Daniel Michael Ivy



Karen Gail Jackson



Robert Charles Jackson



Stanley Jackson



Harold Dean Jacobs



Fran Beth Johnson



Delton Ray Jones



Perry Martin Johnson



Myron Douglas Johnson



Phyllis Donna Jones



Debbie Jeane Kennedy



Ida Rebecca Kivett



David Lynn Lawrence



Marilyn Sher-ill Layton



Betsey I. Lewis



Della Rose Lewis



Kathy Lee Lewis



Margaret Fay Lewis



Cheryl Ann Lima



Kila Denise Lima



Gilbert Lewis Lindsay



Rowena Elizabeth Little



Arlene Dayle Locklear



Cathy Locklear



Craig Allen Locklear



Deloris Ann Locklear



James Anthony Locklear



Paul Locklear, Jr.



Rudy Locklear



Stephen Locklear



Vicky Locklear



Conrad Ernest Lopes



Jan Marie Lowery



Charles Sheldon Lowry



Ernie Vincent Lowry



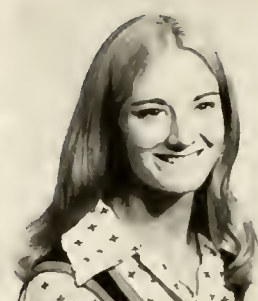
Odena Lowry



Tulula Locklear Lowry



Vickie Hill Luck



Janice Marie Luquer



Matthew Lynch



Douglas Ronald McLeod



Larry Eugene McMillan



Joyce Mae Mason



Robert Allen McDow



Mary Elizabeth McKenzie



Lenna M. McLean



Elizabeth Ann McNair



Walter Philip McRae



Emily Jean Miller



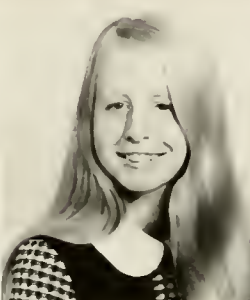
Teresa Louise Miller



Adair Robertson Moody



Doris Evelyn Moore



Martha Jane Moore



Roger Howard Odom



Judy Collins Ormsby



Carol Smith Oxendine



Emilio Pagan



Carl Timothy Parnell



Margaret Lewis Parrish



Catherine E. Pasko



Alec Kent Patrick



Kathy Susan Payne



Millard Norman Pratt



David M. Prescott



Phillis Sue Quinn



Debra Kay Radford



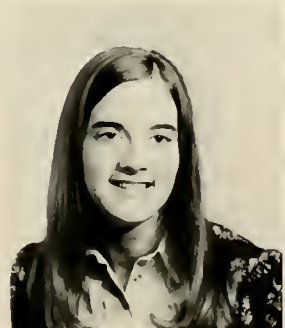
Richard Lloyd Ray



Jimmy Lee Reese



Cathy L. Reynolds



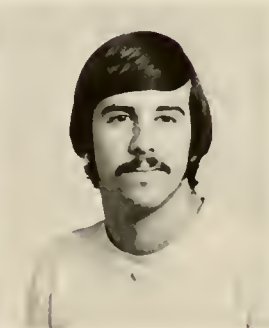
Annette Louise Rice



Reece Carolyn Rice



Deborah Kaye Rich



Martin Lyle Rickman



Terri Lee Riggs



Thelma Ann Robbins



Cheryl Jeanne Rogers



Kelly Wayne Rogers



Iva Rose Rountree



Willard David Rudd, Jr.



Ernest Wayne Sampson



Nancy Lynn Scarboro



Karen Elaine Sedberry



Nancy Carol Seymour



Donna Glaesner Simmons



Pamela Blair Simmons



Carol Miranda Singletary



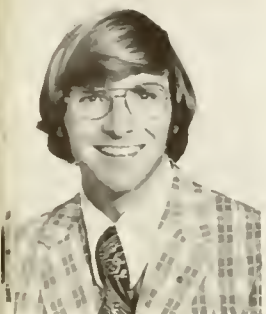
Deborah Joyce Smallwood



Carolyn A. Spaulding



Charles Bradley Speller



Arthur Jackson Spillers



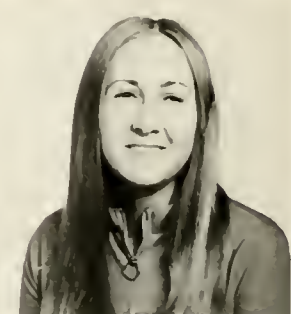
Jerry Lee Stancil



T. Louise Strickland



Vivian Marie Sutton



Carol Jane Taylor



Kenny Harris Taylor



Jeffrey Hilton Tedder



Betty Carlette Thames



Ronald Russell Thompson



Nancy McRae Thompson



Stephen Van Thorndyke



John P. Wall



Margaret McRae Wall



Mitchell Grant Walters



Marsha Diana West



Sharon Peck Wheeler



Susan Carol White



Vicki Gil Wiggs



Dwayne Griffin Wilder



Nancy Jobe Wilkie



Bruce R. Wilkinson



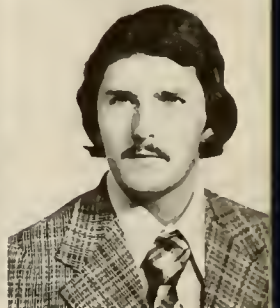
Ruby Paullette Willetts



Boyd Carroll Williamson



Hampton Vernon Williams



Ronnie Delano Wright

FRESHMEN



Thomas Louis Abdalla



Rose Marie Aiken



James Anthony Anderson



Laura Lynne Ausban



Mary Ann Austin



Pamela Baker



Debora Ann Billingsley



Diane Dee Blackwell



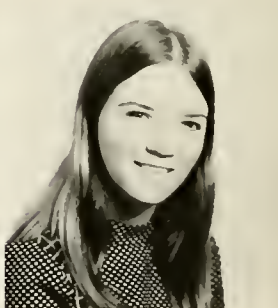
Leamon Boney Brice



John Joseph Bridgewater



Sheila Britcher



Teresa Ann Britt



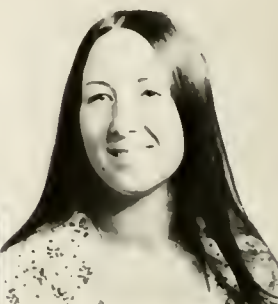
Frankie Gwen Broome



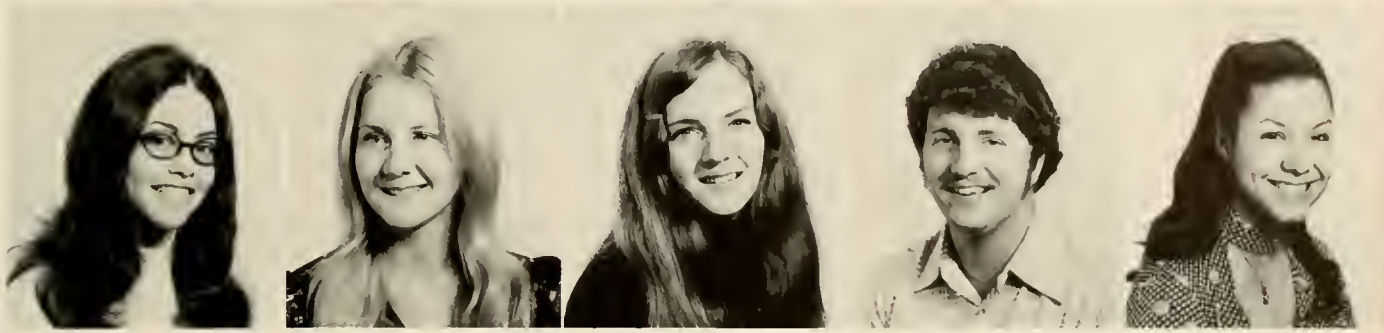
Bonnie Irene Brown



Lawrence Melton Brown



Lee Anne Brown



Vernisia Ann Bryant

Debra Lynn Cain

Eva Jean Canady

John Boyce Canady

Francine Chavis



Marco Wynn Clark

Jennifer Chavis

Roy Dean Chavis

Pansy Lee Clark

Jane Oxendine Chavis



Nancy Elizabeth Cobb

Rudolph Kin Coronado, Jr.

Mitch Covington

James Barnum Crowe

Teresa Grenell Cummings



Betsy Claire Daniel

Deborah Rae Davis

Everett Holland Davis, Jr.

Melanie Elizabeth Davis

Robert Dale Davis



Tony Alfred Dillinger



Pamela Derensis



Robert W. Dole, Jr.



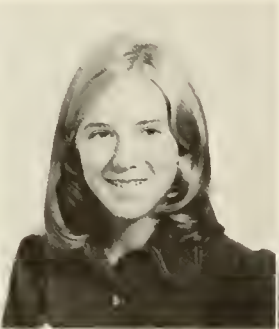
Dehaeva Marie Drake



Nancy Lewis Ebert



James D. Edwards



Deborah Ann Eidson



Carol Sue Faircloth



Geoffrey Paul Fish



Janet Diane Fisher



Tom E. Foltz



Thomas G. Gardner



Fronda Sue Gatewood



Mary Ruth Gibson



Jan Marie Gillis



Debra June Godwin



Mitchell Sherrell Grier



Patricia Lorraine Haggler



Sally L. Hall



William Pressly Hall



James David Hammock, Jr.



Berkley Goal Hardee, Jr.



Ricky Earl Harden



Barbara Ann Hickman



Patsy Marie Hollar



Mary Ellen Honeycutt



Carol Elaine Hughes



Marilyn Faye Hunt



Glenda Hope Ingram



Carol Elizabeth Jackson



Arreida Jacobs



Shelia Ann Jacobs



Shelia Jacobs



Gretchen Johnson



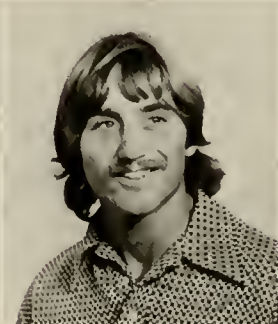
Robert Lee Johnson, Jr.



Edward Nicholas Jones



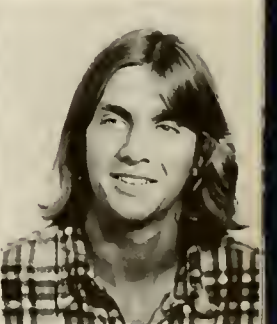
William John Joseph



Kenneth Ray Kennedy



Shane Wesley Kiger



Dennis B. Knox



Steve Laprad



Laura Lynn Lindsay



Joanne Denise Locklear



Judy Locklear



Linda Gail Locklear



Mary Faye Locklear



Regina Locklear



Sonya Rose Locklear



Theresa Lynn Locklear



Pam Yvonne Long



Susan Kay Long



Eric Dale Luther



Thomas Charles Martin



Ricardo Martinez



Vicky Levonne Matthews



Vicky Lynne Maynor



Melvin McAllister, Jr.



Charles A. McClellan



Edwin Ross McConeghy



Maylon Edward McDonald



Becky Lou McGirt



Thomas Neill McMillan



Paul Edward McMillan



Arthur Aaron Melvin, Jr.



John Robert Middleton, Jr.



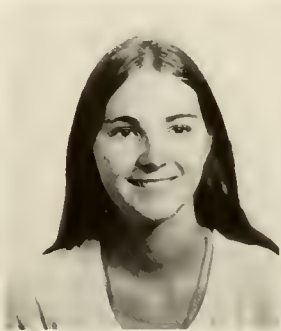
Diane Little Miller



Lorraine Dianne Miller



Alexis Street Mitchell



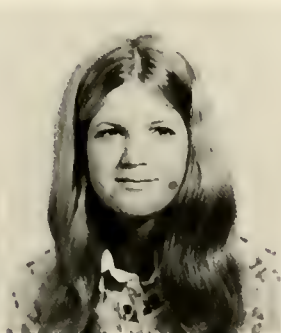
Vera Molnar



June Inez Montgomery



Sadie Evelyn Moore



Sally Scarboro Mvatt



Larry Nader



Gary Wayne Norris



Lisa Grey Overby



Belinda Carol Oxendine



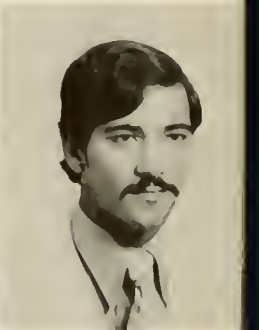
Brenda Faye Oxendine



Forace Oxendine, Jr.



Joanne Oxendine



Larry Delton Oxendine



Teresa Ann Oxendine



Clarence Eugene Parker



Debora Kaye Pate



Sarah Louise Pfeifer



Robert Stephen Pittman



James Ellis Powers



Herbert Martin Rainer Jr.



Arthur Randy Reese



Joan G. Revels



Larry Nelson Revels



Barry McCray Richardson



Eric Ricioppo



Donald Michael Riddle



Joseph Russell Rivenbark



Toni Lee Roberts



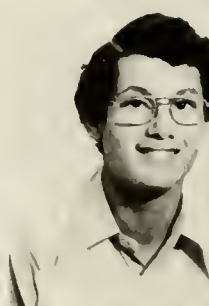
Benton Keith Rogers



Herby Lynn Russ



Karen Gail Sampson



John Martin Sanderson



Kathryn Schwarz



Lynn Patricia Schwarze



Robert Lee Sessoms



Edward Clarence Shaw



Gaye Millicent Simmons



Steven Gregory Simmons



Edward Brate Singletary



Randy Lee Sink



Michael Frank Slaughter



Debra Carol Smith



Michael O'Neil Smith



Joseph Albert Stanish



Cecelia Richardson Steed



Claudia Ruth Stewart



Jutta Margarete Street



Anita Strickland



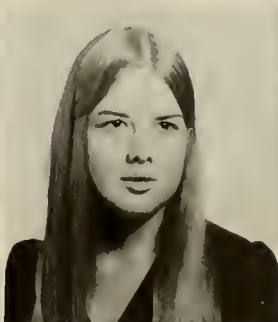
Miriam Sue Sumner



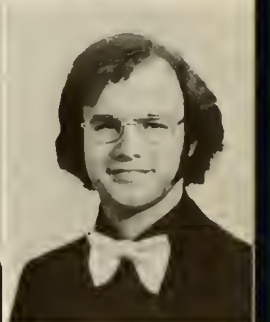
Nancy Jean Sumner



Karen Sue Taylor



Sara Kendyl Taylor



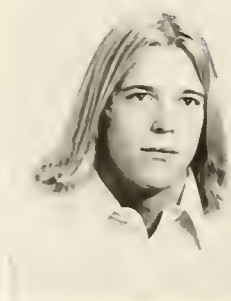
Warren Douglas Taylor



Youlander D. Thompson



Deborah Areta Todd



John Joseph Troy



Felicia Wilkins Turner



Patricia Ann Wade



Inez Liles Wall



Stan Wayne Walters



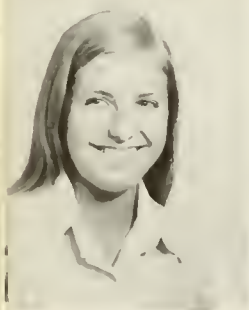
Allen Daryl Westbrook



Judy Laura Wilkins



Violet Rose Wilkins



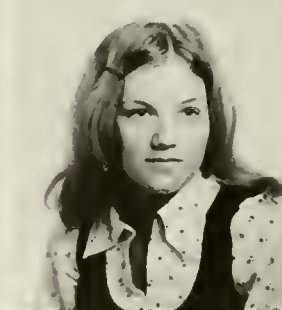
Gail Anne Williamson



Stephen Lamont Wilson



Gloria Wolinski



Judith Lynn Womack




Linda Faye Worix



Margaret Wynne



William Graham Young

A sepia-toned photograph of a bird perched on a branch, with the text 'In Memoriam' overlaid.

In Memoriam

**David Haney
Stephen Thorndike**

- Aguiree, Wanda Ann; Lumberton; B.S. English Education
- Anderson, Gayla; Fair Bluff
- Andrews, Ernest Hardy; Laurinburg; B.A. Art Education, Art Club
- Antone, Robert Wade; Lumberton
- Atkinson, Evelyn Hopkins; Fayetteville; B.A. Art Education
- Ayers, Edwin White, III; Anywhere, USA; B.A. Sociology, Phi Mu Alpha, Band, Chorus
- Baker, Joan Margo; Maxton; B.S. Math
- Barnes, Janyce Chenier; Chadbourn; B.S. Elementary Education 4-9, Phi Epsilon Chi, Dean's List, SNEA, NCAE, ACEI
- Benoy, Cheryl Anne; Charlotte; B.S. Home Economics, Baptist Student Union, Secretary, Intramural Volleyball
- Blackwell, Gwendolyn Derotha; Cerro Gordo; B.S. Elementary Education 4-9, Tau Delta Rho Sorority
- Blake, Frances Atkinson; Whiteville; B.S. Elementary Education K-3, Dean's List, ACEI, SNEA
- Blalock, Martha Frances; Fayetteville; B.A. Music Education — Voice, Singers, Pembroke Players, J.O.Y. group, MENC National Chapter, "Miss Pembroke State University" 1973, "Phi Mu Alpha Sinfonia Sweetheart" 1973
- Boege, Frederick David; Whiteville; B.A. Business Administration and Economics
- Bone, Michael Lee; Clayton; B.A. Art Education, Tau Sigma Nu, Vice President, IFC Representative, Vice President, Art Club, Intramurals: football, soccer, basketball, volleyball, softball, Tau Sigma Nu's athletic award
- Boone, Faye Tyndall; Lumberton; B.S. Home Economics
- Bordeaux, Frances Gayle; Elizabethtown; B.S. Elementary Education, SNEA
- Bradley, Robert Scott McIsaac; Sanford; B.S. Psychology, Soccer, Co-Captain, Senior Senator, Tau Kappa Epsilon, Chairman Alumni Relations, Circle K, Concert Choir
- Branch, Kathy F.; Maxton; B.S. Elementary Education 4-9
- Brantley, Anne McDaniel; Elizabethtown; B.S. Elementary Education K-3
- Bridgewater, Larry Allen; Waterford, Michigan; B.S., Physical Education, Wrestling, Tau Kappa Epsilon
- Brisson, Lynn Simmons; Dublin; B.S. Elementary Education K-3, ACEI
- Britt, Carolyn Barnes; Orrum; B.S. Elementary Education K-3, Dean's List, ACEI
- Britt, Jason Allen; Briscoe; B.S. Elementary Education, Photo Club, Science Club, Pi Kappa Phi, President, food services
- Brown, Cynthia LaRue; Lumber Bridge; B.S. Psychology, Phi Epsilon Chi, Psychology Club
- Brown, Jerry Wayne; Bladenboro; B.S. Business Administration, Management Club
- Brown, Martha Jo; Hamlet; B.A. English, Concert Choir, Kappa Delta Sorority, Dormitory Representative, Intramurals
- Brown, Mona Faye; Fayetteville; B.A. Art Education
- Brown, Suzanne; Parkton; B.A. History, Tau Delta Rho Sorority, History Club
- Bryant, Michael Gene; Hope Mills; B.A. Political Science, Pi Kappa Phi, Political Science Club, SGA Senator, Intramurals
- Bullard, Carla Kay; Maxton; B.S. Elementary Education 4-9, Intercollegiate Volleyball, Volleyball Intramurals, American Indian Association
- Bullard, Carol Ann; Maxton; B.S. Elementary Education 4-9, Volleyball Team, Intramural Volleyball League, American Indian Association
- Bullock, Danny Harold; Chadbourn; B.A. Math, Math Club, Young Democrats Club
- Bundy, Peter Thomas; Fayetteville; B.A. History, Intramural Soccer, Pembroke Players, History Club, Chess Club
- Burris, Trudy Estelle; New London, B.S. Home Economics, Kappa Delta Sorority, Home Economics Club
- Butler, Frances Kay; Dublin; B.S. Biology Education, Republican Club, Vice President Sophomore Class, Biology Club, Snea
- Byrd, Sharron Barnes; Fairmont; B.S. Elementary Education K-3, Dean's List, ACEI
- Chadwell, Charlotte A.; Fayetteville; B.S. Elementary Education K-3
- Callahan, David Gary; Greensboro; B.S. Physical Education, Baseball, Intramurals, Outstanding College Athlete, Who's Who in American Colleges and Universities
- Canaday, Ollie Linwood; Four Oaks; B.S. Physical Education
- Carlyle, Shirley Rose; Bladenboro; B.S. Elementary Education, Mat Maid, Head, Bat Girl Intramurals
- Carteret, Linda Sue; Chadbourn; B.S. Elementary Education, 4-9, ACEI, SNEA, Phi Theta Kappa
- Caudill, Paul Douglas; Fayetteville; B.S. Physical Education
- Chadwick, Marsha Kay; Fayetteville; B.A. English and Sociology, English Club, Baptist Student Union
- Chandler, James Michael; Whiteville; B.S. Business Administration
- Chappee, Carol Ellebe; Ellerbe
- Chavis, Glenda; Maxton; B.S. Home Economics, SNEA
- Chavis, Mary Strickland; Lumberton; B.S. Elementary Education
- Chewing, Jewell Carter; Wadesboro; B.S. Elementary Education K-3
- Coleman, Van Douglas; Durham; B.A. Drama and History, Secretary IFC, Alpha Omega Upsilon, Pembroke Players, President SGA, IFC, Alpha Omega Upsilon, Chairman Greek Week, Chairman Senate Committee #4, Soccer, Intramurals
- Collins, Ann P.; St. Pauls; B.S. Elementary Education K-3, Dean's List, ACEI
- Cook, Larry Allen; Fayetteville; B.S. Business Management, Tau Sigma Nu, treasurer, IFC, Intramurals
- Cooper, Carolyn J.; Fayetteville; B.S. Business Education, Dean's List
- Cottingham, Robert Matthew; Gibson; B.S. Biology
- Cottrell, Betty Bethea; Rowland; B.S. Psychology, Concert Choir, Psychology Club, Dean's List, Honorary Society
- Cox, Marvin; St. Pauls, B.S. Elementary Education 4-9, SNEA
- Cox, Wallace Dixon; Lumberton; B.A. Sociology
- Culbreth, Catherine Tew; Fayetteville; B.A. English Education, Communicative Arts Department Committee
- Culbreth, Karen Stanley; Fayetteville; B.A. History, History Club
- Culler, James D.; Pembroke; B.A. Dramatic Literature and Performance, Pembroke Players
- Cummings, Charles E.; Pembroke, B.A. History
- Cushman, Sheila Ann; Jacksonville; B.S. Elementary Education, Pom Pom Girl, Miss Alpha Theta
- Mu, Women's Tennis Team, Intramurals
- Dailey, Gordon Don; Hampton, Virginia; B.A. Sociology, Pi Kappa Phi, Baseball
- Daniel, Marvin Francis; Elizabethtown
- Dial, Freida Ann; Maxton; B.S. Biology American Indian Association
- Elk, Victor Herbert; Pemroke; B.A. History and Political Science, Track and Field.
- Elliott, David Johnson; Winston Salem; B.S. Biology, Pi Kappa Phi, Biology
- Enzor, Samuel Bishop; Fair Bluff; B.A. History
- Enzor, B. Sue; Raleigh; B.S. Home Economics, Treasurer of Kappa Delta Sorority, President of SNEA, Cheerleader, Soccer Girl, May Day Court
- Evans, Thomas Keith; Clemmons
- Everlove, John Alan; Lumberton; B.S. Psychology, President Psychology Club
- Faircloth, William David, Jr.; Hope Mills; B.S. Business Administration, Business Management Club
- Fairley, Annie L.; Laurinburg; B.S. Elementary Education K-3
- Farrell, Michael Gene; Fayetteville; B.S. Business Administration
- Ferguson, Tim Michael; St. Pauls; B.S. Business Administration, President of Business Club
- Ferrell, William Frank; Raleigh; B.S. Math, Track, Cross Country, Scuba Diving, Intramurals
- Fletcher, Retha Ann; Lumberton; B.A. History, History Club, Human Services Center
- Floyd, William Lynn; Fairmont; B.S. Biology, Methodist Student Movement, Intramurals
- Ford, Bleary Pernel; Lumberton; B.S. Biology
- Ford, Michael Ray; Maxton; B.S. Biology, Pi Kappa Phi
- Frasier, Richard Walter; Hague, New York; B.S. Accounting, Business Club
- Freeman, Jackie Formyduval; Bolton; B.S. Home Economics, Home Economics Club, Dean's List, Marshal
- Frink, Addie Mae; Shallotte; B.S. Elementary Education
- Frye, Debbie Gail; Rockingham; Elementary Education 4-9, Intramurals
- Fuller, Carl Edward; Lumberton; B.A. Sociology
- Garver, Donald Neal; Kannapolis; B.S. Elementary Education 4-9, Tau Kappa Epsilon, SNEA
- Gentry, Eleanor Stewart; Raeford; B.S. Elementary Education
- George, John Max; Pembroke; B.S. Music Education, Singers, Swingers, Band, J.O.Y., Phi Mu Alpha, MENC
- George, Renee Abernathy; Dullas; B.A. Sociology, J.O.Y.
- Gibson, Ronald Marshall; Laurel Hill; B.S. Business Administration
- Gilmore, Carson, Eugene; Carthage; B.S. Business Administration
- Gooden, Joyce C.; Elizabethtown; B.S. Elementary Education 4-9, Phi Theta Kappa, SNEA
- Goodman, Katherine Pate; Hamlet; B.S. Elementary Education 4-9
- Goodnight, Mary Kathy; Kannapolis; B.S. Elementary Education K-3, Art Club, Republican Club, Pine Needle, Soccer Girl, SNEA, Kappa Delta Vice President, May Day Court, Senior Senator, Vice President of Senate, Intramurals
- Gore, Karen Lynne; Lumberton; B.S. Business Education, Indiahead Staff, Dean's Business Club, Treasurer, SNEA
- Gowans, Harriet Elizabeth; Cerro Gordo; B.S. Elementary Education
- Graham, Charles Vinson; Pembroke; B.S. Physi-

DIRECTORY

cal Education, Intramurals, PEMM Club

Graham, David Neal; Pembroke; B.A. Sociology Vice President American Indian Student Association, Senior Senator, Baptist Student Union, BSU State Interaction Committee, Color Guard Marching Band, Chairman of Senate Standing Committee

Graham, Sharon Annette; Pembroke; B.A. Sociology

Greene, Jeanne Gail; Cerro Gordo; B.S. Elementary Education, Tau Delta Sorority

Greene, Linda E.; Aberdeen; B.S. Elementary Education

Grubbs, Debra Johnson; Laurinburg; B.S. Home Economics

Guiton, Sandra Anne; Whiteville; B.S. Elementary Education K-3

Hall, Donald Wayne; Aberdeen; B.A. English, Circle K, Intramurals, Baptist Student Union, Young Democrats Club, Methodist Student Movement

Hambric, Everett B.; Troy

Hardee, Verma Smith; Shallotte; B.S. Elementary Education K-3, ACEI

Harford, Richard Dale, Jr.; Fayetteville; B.A. History, Intramurals

Harris, Debra Dian; Elizabethtown; B.S. Art Education, Vice President Freshman Class, Dean's List

Hawkins, Mary Susan; Rockingham; B.S. Elementary Education K-3

Hawks, Eddie Wayne; Shannon

Hedgepeth, Diane S.; Lumberton; B.S. Elementary Education K-3

Herring, Geraldine Graves; Lumberton; B.A. English Education

Hester, Charles S.; Fayetteville

Hester, Jeanne Dale; Dublin; B.S. Elementary Education, NEA

High, Mitchele Evans; Fayetteville; B.A. History, Secretary of Student Affairs, Member of Campus Hearing Board, Tau Sigma Nu, President and Historian, Member of Student Affairs Committee, Pine Needle

Hill, Gene Osborne; Cerro Gordo

Hill, Shelby Jean; Cerro Gordo; B.S. Elementary Education K-3, ACEI

Hinson, Stanley Wayne; Wilmington; B.S. Business Management, LEAP Advisory Board, SGA, Business Club, Sports Car Ralleye Club

Hobbs, Mike L.; Laurinburg

Huntley, Frank Little, III; Morven; B.S. Business Management, Business Management Club, Golf Team

Hodges, Margaret Allen; Mullins, S.C.; B.S. Elementary Education

Holt, Yvonne Stokes; Princeton; B.S. Elementary Education K-3, Young Democrats Club, Pom Pom Girl, Yearbook staff

Hoyle, David Leslie; Greensboro; B.A. History

Hubbard, Sylvia Ann; Bennettsville, S.C. B.S. Business Education, Business Club

Hudkins, Robert Daniel; Fayetteville; B.S. Elementary Education, Student Senate, Tau Kappa Epsilon, Intermurals, Braves Club, Wrestling

Huggins, Peggy Jean; Lumberton; B.A. English Education

Huguelet, Sara Christine; Hamlet; B.S. Elementary Education K-3

Hunt, Jackie Lee; St. Pauls; B.S. Biology, Dean's List SNEA, Intramurals, Upward Bound

Hunt, Jo Ann; Lumberton; B.S. Elementary Education 4-9, SNEA, Lumbree Association

Hunt, Linda M.; Pembroke; B.S. Elementary Education K-3

Huntley, Patricia Coalson; Morven; B.A. Music, Choir, Singers and Swingers, MENC

Hyatt, Kathy Adele; Dillon, South Carolina; B.S. Elementary Education K-3, Hall Counselor, Baptist Student Union

Inman, Robert David; Rowland; B.A. Sociology
Inscoe, Katherine Webb; Elizabethtown; B.S. Home Economics

Ivey, Emma Brown; Evergreen; B.A. English Education, Dean's List, Phi Epsilon Chi

Jacobs, Christine; Pembroke; B.S. Elementary Education K-3, Lumbree Student Association, SNEA

Jacobs, James William; Pembroke; B.S. Business Management, Management Club

Jamison, Linda Lou; Lumberton; Elementary Education K-3, Kappa Delta Sorority, Rush Chairman, SNEA, ACEI, Intramurals

Jernigan, Elizabeth Williford; Erwin; B.S. Elementary Education, SNEA

Johnson, Henton Paulette; Hope Mills; B.S. Sociology, Young Democrats Club, Annual Staff, ZPG

Johnson, Janice Griffin; Chadburn; B.S. Elementary Education K-3

Jones, Alfred; Maxton; B.S. Accounting, Black Student Organization

Jones, Ronald Glenn; Kenly; B.S. Biology, SGA, Dorm Recreation Committee, Intramurals, Swimming, Dating

Kimery, Frances Seal; Whiteville; B.S. Elementary Education 4-9, NEA

King, Betty Jane; Bladenboro; B.S. Art Education

King, Frank Howard; Falls Church, Virginia; B.S. Physical Education, Sophomore Class Treasurer, Intramurals, PEM Club, Tau Kappa Epsilon, President

Kinlaw, Freida Dianne; Lumberton; B.S. Home Economics, SNEA

Kinlaw, Mary Carlton; St. Pauls; B.S. Business Education

Kosak, Emily Gail; Laurel Hill; B.A. Sociology, SOURCE, Intern Probation Office

Lamb, Christopher York; Lumberton

Lamberth, Robert Ray; Reidsville; B.S. Physical Education, Alpha Omega Upsilon, Manager of Soccer Team, PEM Club

Lampley, Cheryl D.; Rockingham

Laton, Daniel Lane; Jackson Springs; B.S. Business Administration, Pi Kappa Alpha, Circle K

Lawson, Charlene Frances; Durham; B.S. Physical Education, Pineneedle, Pom Pom Girl, Secretary of Alumni Affairs, Baptist Student Union, Secretary of Women's Recreation Association and Sophomore Class, PEMM Club, Extramural Volleyball Team

Lear, Boyce Malcolm; Cordova; B.S. Biology, Golf Team

Lee, Gloria L.; Fayetteville; B.S. Elementary Education

Lee, Kenneth Waitus; Dunn; B.S. Sociology

Lewis, Gayle Phillips; Lumberton; B.S. Elementary Education 4-9, SNEA, ACEI

Lloyd, Linda Ann; Pembroke; Bravettes, Young Democrats Club, University Student Volunteers, Representative Inter Club Council, Newman Club — President, Psi Gamma Nu Sorority — President and Corresponding Secretary, Pineneedle, Psychology Club

Lockie, Judith Rabun; Fayetteville; B.A. Sociology, Methodist Student Movement, Spanish Club,

Campus Resident's Recreation Committee

Locklear, Katha D.; Maxton; B.S. Elementary Education K-3, ACEI

Rosalyn, Locklear; Pembroke; B.S. Elementary Education K-3

Locklear, Vivian Thomas; Lumberton; B.S. Elementary Education, ACE, SVA

Locklear Von Sevastian; Maxton; B.A. Sociology, Methodist Student Movement — Vice President, Young Democrats Club — Vice President, American Indian Student Association, J.O.Y.

Locklear, Yvonne Barnes; Lumberton; B.A. English Education, NCTE, Lumbree Association

Long, Junella; Nakina; B.S. Home Economics Education

Lopez, Catherine Anne; Fayetteville; B.S. Psychology, Newman Club, Psychology Club, Choir

Lovette, Mary Jo; Raeford, B.S. Home Economics, Home Economics Club

Lowery, Irene Graham; Maxton; B.S. Home Economics, Home Economics Club

Lowry, Patricia Ann; Pembroke; B.A. Sociology, Human Services Center

Lupo, Kenneth Byron; Carey; B.A. Political Science and Economics

Lusk, Dorinda Joyce; Greensboro; B.A. Sociology and Biology, Kappa Delta Sorority Young Democrats Club, Yearbook Staff, Bat Girl, Cheerleader, Little Sister of Pi Kappa Phi Fraternity

Lynch, Ann Scott; Carthage; B.S. Elementary Education K-3, ACEI, NCEA

Mabrey, Dwan Bashford; Lumberton; B.S. Home Economics, Dean's List

Mabrey, Walter Richard, Jr.; Lumberton; B.S. Business Administration, Young Democrats Club

Mareka, Dorothy J.; Lumberton; B.S. Psychology and Sociology, Who's Who, Dean's List, Vice President of SGA, Senator, Kappa Delta, Marshal, President of Pi Kappa Phi Little Sisters, Sweetheart of Pi Kappa Phi (2 years)

Martin, John Edward; Rockingham; B.S. Management, Business Club, Intramurals, Pi Kappa Phi

Maynor, Leon; Lumberton;

McBryde, Stephen Douglas; Maxton

McCorquodale, Cathy Hayes; Hope Mills

McCown, Pi Wu Anna; Fayetteville; B.S. Math, President of Euclidian Math Club, Dean's List, Psi Gamma Nu Sorority, Student Tutor

McCoy, Valerie Sue; Hamlet; B.A. Music, Singers, Choir, Alpha Omega Sorority

McDaniel, Roland Fred; Laurinburg; B.S. Physical Education, Baseball, Braves Club, Intramurals, Dean's List

McDowell, David Autry; Elizabethtown; B.A. Art

McEachern, John Philip; Laurinburg

McIntosh, Thomas James, III; Asheboro; B.S. Biology, Pi Kappa Phi, Wrestling, Intramurals

McKenzie, Kenneth H.; Hope Mills; B.A. Sociology, Dean's List

McKinnon, James Edward; Rockingham; B.S. Business Administration

McLaurin, Nathan Russell; Fayetteville; B.S. Business Administration

McLeod, Clyde Alexander; Maxton; B.A. History

McLeod, Howard Elliott; Laurinburg, Black Student Organization, Basketball, Braves Club

McManus, Jean H.; Red Springs

McMillan, Jill Tracy; Morehead City; B.S. Home Economics Education, Home Economics Club, Pembroke Players

SENIOR

- McNeill, Patricia France; Maxton; B.S. Elementary Education 4-9, ACEI, Dean's List
- McNeill, Ronnie Kelly; Sanford; B.S. Business Administration
- McPhail, Susan Gregg; Rowland; B.S. Elementary Education
- McRae, Alphonzo; Lumberton; Basketball, Braves Club, Black Student Organization
- McRae, Eugene Boyle, Jr.; Hamlet; B.A. History, Intramurals, Dean's List, Scuba Diving
- Miller, Melva Hawkins; Pembroke
- Moore, Jan Rik; Lumberton
- Moore, Jeannette; Maxton; B.S. Home Economics
- Morgan, Gordan Christopher; Dunn; B.A. and B.S. Math and Music, Band, Concert Choir, Swingers, Phi Mu Alpha
- Mumau, Judy Lynn; Fayetteville; B.S. Elementary Education 4-9, Kappa Delta Sorority, Intramurals
- Murry, Gary Wayne; Maiden; B.A. History and Political Science, Management Club, Political Science Club, History Club, Senate, Vice President of SGA, President of Senate, Intramurals, Freshman Advisor, Dorm Counselor
- Myers, Randall Lynn; Trinity; B.S. Physical Education, Baseball, Player of the Week, Braves Club, Pi Kappa Phi
- Myrick, Jesse Roland; Aberdeen; B.S. Physical Education, Intramurals, Photo Club, Track
- Navy, Pamela Elaine; Thomasville; B.S. Elementary Education K-3, NCEA, Pom Pom Squad
- Nazarchyk, Gail Smallwood; Fayetteville; B.S. Music Education, Chorus, President of Concert Choir, Dean's List Singers and Swingers, Music Education National Conference Member, Band
- Newman, William Calvin; Hamlet
- Nobles, James Howard; Cerro Gordo; B.S. Elementary Education 4-9
- Nobles, Melody Anne; Chadbourn; B.S. American History, Tau Delta Rho Sorority, History Club
- Norwood, Albert; Roxboro; B.A. Music, Chief Twirler, Drum Major, Singers and Swingers, MENC — Vice President, Phi Mu Alpha — President, Band — President, Choir
- Odum, Jane Byrd; Fayetteville; B.S. Elementary Education K-3, Dean's List
- Oxendine, Anthony; Red Springs; B.S. Math, Math Club, Intramurals, Student Tutor
- Oxendine, Connie; Maxton; Dean's List
- Oxendine, Deloris Pate; Pembroke; B.S. Accounting, Business Club
- Oxendine, Katrina Maynor; Shannon; B.S. Elementary Education 4-9, Intramurals
- Oxendine, Marilyn; Maxton; B.S. Business Education, American Indian Association
- Oxendine, Ronnie; Maxton; B.S. Biology
- Oxendine, Wanda Sue; Red Springs; B.S. Elementary Education
- Pace, Gloria Faye; Nichols, South Carolina; B.S. Home Economics, Baptist Student Union, Dorm Representative, Home Economics Club
- Page, Barbara Vernon; Pembroke; B.A. English, Upward Bound, History Club, Tau Delta Sorority
- Page, Preston Henry; Pembroke; Tau Sigma Nu, Biology Club — Vice President, Political Science Club, Young Democrats Club
- Parker, Emma King; Fair Bluff; B.S. Business Education, Business Club, Phi Theta Kappa
- Parnell, Alfred, Jr.; Lumberton; B.A. History, Intramurals
- Parnell, Fran Marie; Fairmont; B.S. Home Economics, Kappa Delta Sorority, Home Economics Club
- Parsons, Roland Gene; Raeford; B.S. Physical Education, Soccer Team, Dean's List, Marshal, Member Executive Cabinet of SGA, Letterman's Club
- Pate, Stephen Vernon; Fayetteville; Phi Mu Alpha Sinfonia, Concert Choir, Dean's List
- Patterson, Mary Helen; Red Springs
- Perry, Vicki Leigh; Fayetteville; B.S. Elementary Education, Dean's List, Assistant Chief Marshal, Student Senate — Secretary, Faculty Committee on Curriculum, Sweetheart of Tau Kappa Epsilon, Kappa Delta Sorority — Vice President and Historian, Who's Who in American Colleges and Universities, National Student Register
- Phifer, Mellonee Joyce; Hamlet; B.S. Home Economics, Home Economics Club, Intramurals
- Phillips, Wanda Irlene; Wade; Elementary Education K-3, Kappa Delta Sorority, Pi Kappa Phi Little Sister
- Pinkston, John William; Fayetteville; B.S. Physical Education
- Pitman, Linda Faye; Lumberton; B.S. Sociology, Upward Bound Tutor, Phi Mu Sorority — Vice President, Panhellenic Council, Pembroke Players, Student Representative of the Sociology Department, Member of SOURCE
- Preston, Robert Harris; Summerfield; B.S. Physical Education, Baseball
- Prevatte, Aleene Blount; White Lake; B.A. Communicative Arts and Sociology, Pineneedle
- Price, Gayla Maria; Pembroke; B.S. Physical Education, PEMM Club, Intramurals
- Pridgen, Ann Frazier; Laurinburg; B.S. English and Sociology, Phi Epsilon Chi
- Pridgen, Jacqueline Rose; Lumberton; B.S. History, Dean's List
- Priest, Doll Inscoc; Elizabethtown; B.S. Elementary Education 4-9, Band, Majorette, Majorette Scholarship to Pembroke, Dean's List, N.C. Prospective Teacher's Scholarship Loan Recipient
- Purdue, Constance Rose; Fayetteville; B.S. Elementary Education K-3
- Quick, Richard Glisson; Red Springs; B.S. Business Administration, Business Club, Tennis
- Quinn, Dorothy Linda; Fayetteville; B.S. Home Economics, Women's Residence Council, Dorm Supervisor, Intramurals, Home Economics Club — Secretary and Vice President
- Rabano, Eleanor Elizabeth; Fayetteville; B.S. Elementary Education, Annual Staff, Psi Gamma Nu, Wrestling Maid, Bravettes, YDC, Panhellenic Council, ACEI
- Ranager, Belinda Kay; Lumberton; B.S. Elementary Education K-3, NCEA
- Ransom, Janet Faye; Rowland; B.S. Chemistry, Dean's List
- Ransom, Marsha Victoria; Pembroke; B.A. Sociology, Bat Girls, Chorus, May Queen — 1972, College Republican Club, Phi Mu Alpha Sweetheart, Pi Kappa Phi Little Sister
- Ratcliffe, John Larry; Laurinburg; B.A. Business Administration
- Ray, Michael Thomas; Southern Pines; Concert Choir, Concert Band, Marching Band, Dean's List, Summa Cum Laude
- Rich, Vance, III; Wallace; B.A. Music, Singers, Swingers, Concert Choir, Concert Band, Phi Mu Alpha — Secretary, MENC, Marshal
- Richardson, Beverly Sue; Morganton
- Riddle, Gary Harold; Fayetteville; B.S. Business Administration, Alpha Tau Omega, IFC
- Robinson, Patricia; Chadbourn; B.S. History
- Robson, Alan Dean; Rockingham; B.S. Accounting, Management Club, Dean's List
- Rogers, Carole Plummer; Lumberton; B.S. Elementary Education 4-9, SNEA, ACEI
- Rogers, Joyce H.; Elizabethtown; B.S. Elementary Education 4-9, NCEA
- Rollins, William Thomas; Maxton; B.S. Business Administration
- Roy, William Houston, Jr.; Leland; B.S. Sociology, Pi Kappa Alpha, IFC, Soccer, Choir
- Royia, Carey Preston; Lumberton; B.S. Math, Math Club, YDC
- Rudd, James Ronald; Greensboro; B.S. History, Baseball, Marshal, Pi Kappa Phi
- Russell, Barry Kenton; Troy; B.S. Physical Education, PEMM Club
- Russell, Rachel Ann; Hamlet; B.S. Psychology, Psychology Club, Dean's List, Zeta Tau Alpha, Panhellenic Council
- Salome, Lewis Christopher; Laurinburg; B.S. Business Administration
- Sampson, Dianne; Lumberton; B.S. Elementary Education K-3
- Sanderson, James Lawton, Jr.; Lumberton; B.S. Physical Education
- Sarvis, Willa Dove; Tabor City; B.S. Home Economics, Baptist Student Union, Home Economics Club
- Schalmo, Gail Boyes; Lumberton; B.S. Psychology, Psychology Club, Phi Epsilon Chi
- Scott, Andrena Deese; Pembroke; B.S. Business Education
- Shaw, Vickie Jae; Evergreen; B.S. Physical Education
- Sheppard, Frank Edward; Candor; B.S. Physical Education, Intramurals
- Simmons, Deborah Formyduval; Ash; B.S. Elementary Education K-3, Dean's List, ACEI
- Skipper, James D.; Durham; B.S. Physical Education, Assistant Wrestling Manager
- Smith, Joy White; Boone; B.A. English, Assistant Editor 1973 Indianhead, Young Republican Club, Phi Mu Sorority, SNEA, Jr. Member of National Council of Teachers, Student Government Projectionist, Dean's List, Intramurals, Panhellenic Council — Treasurer and Vice President
- Smith, Lois McKay; Marston
- Smith, Milton Wayne; Bladenboro
- Smith, Nanci Carol; Pembroke; B.A. History
- Smytek, Robert Paul; Fayetteville
- Sproles, James Wilson, IV; Spring Hill, Florida; B.A. History, History Club, Intramurals
- Standley, Cherri Elizabeth; Clayton; B.S. Music Education, Alpha Omega Music Sorority, Hall Representative, Concert Choir, MENC, Pembroke Players
- Stanley, Terrie Lou; Fayetteville; B.S. Psychology, Bravettes
- Stanton, Gloria Jean; Maxton; B.S. Home Economics, Home Economics Club — President, Dean's List
- Stanton, Homer Evans, Jr.; Pembroke
- Stewart, Deborah Faye; Hamlet
- Strickland, Mary Ann; Tabor City; B.S. Home Economics, Home Economics Club
- Strickland, Trudi Wiggs; Lumberton; B.S. Home Economics, Annual Staff, Intramurals, Women's Dormitory Hearing Board
- Stull, Stephanie Nicastro; Pembroke; B.A. English, Marshal, Phi Epsilon Chi, Spanish Club, Student Member of Basic Studies Committee, Communicative Arts Department, Who's Who in American Colleges and Universities
- Sutton, Debra Faye; Lumberton; B.S. Elementary Education K-3

DIRECTORY

Sweet, John Floyd; Hutchinson, Kansas; B.S. Business Administration, Student Dormitory Council, Circle K — President

Sykes, Judy Alaine; Fayetteville; B.S. Home Economics

Tatum, Gloria Walter; Lumberton; B.A. Communicative Arts and History, Literary Magazine, History Newsletter, Communicative Arts Club

Taylor, Debra Lynn; Spring Lake; B.S. Elementary Education K-3, Student Government, Mat Maid, Zeta Tau Alpha Sorority, Panhellenic Council, SNEA, Pembroke Players

Thacker, Norma East; Wadesboro; B.S. Elementary Education K-3

Thomas, Michael Edward; Rockingham; B.S. Chemistry, Karate Club

Thompson, Ronnie Gerald; Fayetteville; B.S. Physical Education, Soccer, Braves Club, Karate Club, Dean's List, Tau Sigma Nu, Secretary of Public Relations, PEMM Club

Thompson, Steve Lewis; Durham; B.S. Physical Education, Alpha Omega Upsilon, Soccer, PEMM Club, Braves Club, Intramurals

Thrower, Anne Marie; Rockingham; B.A. English; Dean's List, Debate Team, Pi Kappa Phi Sweetheart, Tau Delta Rho Sorority, Pembroke Players, Phi Epsilon Chi

Thrower, Patricia Kirk; Hamlet

Trivette, William Gurney, Jr.; Union Grove; B.S. Physical Education, Soccer — Manager, PEMM Club — Secretary, Intramural Director

Turner, James Sherwood; Reidsville; B.A. Sociology, Two Time District 29# 177 pounds Wrestling Champion, Captain, Alpha Omega Upsilon, "Outstanding College Athletes of America" 1972

Tyson, Mary C.; Durham; B.S. Elementary Education K-3, Kappa Delta Sorority, Panhellenic Council, Soccer Girl

Umberger, Fred Phillip; Burlington

Waddell, Margaret Miller; Wadesboro; B.S. Elementary Education K-3

Wainright, Thomas Edward; Autryville; B.A. History, Chess Club, 3rd Place Chess Tournament, Pembroke Players

Wallace, Beverly Ann; Fayetteville; B.A. Art, Art Club

Walters, Angela Doris; Lumberton; B.S. Elementary Education K-3, Band, Majorette, Zeta Tau Alpha — Vice President, SGA — Chairman of Standing Committee, Senator

Walters, Gloria Prevatte; St. Pauls

Ward, Gail Carteret; Clarendon; B.S. Elementary Education 4-9, Phi Theta Kappa, ACEI, SNEA

Warnock, Mary Boggan; Hamlet; B.S. Business Education

Watkins, Janet Musick; Springfield, Mo.; B.S. Music Education, Concert Choir, Singers, MENC, Secretary of Concert Choir

Watson, Dorothy S.; Radford

Watson, Dwight Eugene; Burlington; B.A. Dramatic Literature and Performance and Sociology, Pembroke Players

Weeks, Beverley Elaine; Dunn; B.S. Elementary Education K-3, Phi Mu Sorority, Women's Hearing Board, Advisory Council to Dean Chavis, Intramurals, Young Republican's Club

Wemyss, John Phillip; Fayetteville; B.A. History, PEMM Club

West, Vickie Jane; Lumberton; B.S. Psychology, Young Republican Club, Choir, Psychology Club

West, Vickie Jo; Bunnlevel; B.S. Business Education, Phi Mu Sorority — Historian, Pembroke Players, Yearbook Staff, Panhellenic Council,

Alpha Psi Omega Committee, Business Club

West, William Lennett; Asheboro; B.A. Political Science, Political Science Club

White, Howard Ray; Lumberton; B.A. History, Business Club, American Marketing Association

Wickham, Christa S.; Red Springs; B.A. French

Williams, Erwin Thompson, Jr.; Fairmont

Williamson, Harvey Leo; Lumberton; B.S. Business Administration, Business Club

Williford, Charles Hague, Jr.; Fayetteville; B.S. Accounting, Dean's List, Business Club

Wilson, Ann Baker; Lumberton; B.S. Elementary Education 4-9, SGA

Wilson, Donald Archie; Lumberton; B.S. Psychology, Upward Bound

Wilson, Linda Fitzsimons; Raeford; B.A. Sociology

Wilson, Rachel Diane; Ellerbe; B.S. Elementary Education 4-9, SNEA

Wood, Rebecca Sue; White Oak

Worley, Diane Johnson; Fairmont; B.S. Elementary Education 4-9, Greek Week Queen, Tau Delta Rho Sorority, Secretary, Panhellenic Council

Worriax, JoAnn; Pembroke; B.S. Business Education

Wynne, Judy Lynn; Burgaw, B.A. Sociology

Zacarias, Lee Glenn; Lumberton; B.S. Biology

Zielinski, Daniel Anthony; Fayetteville; B.S. Physical Education



INDEX

- Abdalla, Thomas Louis 222
 Aguirre, Wanda Ann 172
 Aiken, Rose Marie 222
 Alexander, Robin Roy 200
All Americans 52
 Allen, Jacklyn Ruth 212
 Allen, James Joseph 200
 Allen, Sandra Amelia 200
 Allen, Sonya Lee 212
Alpha Tau Omega 84
 Ammons, George T. 154
 Ammons, Kirby Carnell 200
 Anderson, Gayle 172
 Anderson, James Anthony 222
 Andrews, Ernest Hardy 172
 Andrews, Katherine Booths 200
 Antone, Robert Wade 172
 Atkins, Elizabeth Anne 200
 Atkinson, Evelyn Hopkins 172
 Autry, Barbara Ann 200
 Autry, Doris Elaine 212
 Autry, Judy Maria 212
 Autry, Steven McDonald 200
 Ausban, Laura Lynne 222
 Austin, Mary Ann 222
 Ayers, III Edwin White 172
 Bailey, Debi Jane 200
 Baker, Angie Porter 212
 Baker, Joan Margo 172
 Baker, Pamela 222
 Ballard, Keith Wayne 212
 Ballard, Levin Davy 212
 Ballard, Pamella Ann 200
 Barbee, Steven Thomas 200
 Barber, Debbie K. 200
 Barnes, Barbara Floyd 200
 Barnes, Janyce Chenier 172
 Barnes, Sandra Jean 200
 Bamett, Barbara Ann 200
 Bartollas, Clemens 160
 Banton, Kathy Locklear 212
Baseball 56
Basketball 72
 Bass, Charles D. 165
 Battle, John E. 212
 Baum, Richard H. 156
 Beasley, Eugene Thomas 212
 Beasmore, Brian Wayne 201
 Beckerdite Jr., Fred W. 155
 Bedsole, Donald Carey 212
 Belch, Tommy Ray 212
 Bell, Jeannie Jo 201
 Bell, Philip Dexter 212
 Bennett, Jane Andrea 201
 Benoy, Cheryl Anne 172
 Bey, Jessie M. 160
 Biggs, Murchison Bolton 212
 Billingsley, Debora Ann 222
 Birchfield, Jr., Robert W. 158
 Bixby, Dana A. 212
 Black, Mary Madden 201
 Blackburn, Deborah Elaine 212
 Blackwell, Diane Dee 173
 Blackwell, Gwendolyn Derotha 173
 Blake, Frances Atkinson 173
 Bialock, Martha Frances 173
 Bloodworth, James G. 159
 Blount, Steve Theodore 213
 Blue, Jimmy 213
 Boege, Frederick David 173
 Bone, Michael Lee 173
 Bontselis, Christopher 201
 Boone, Faye Tyndall 173
 Bordeaux, Frances Gayle 173
 Boyd, Kenneth Dale 201
 Boyer, Larry Edward 201
 Boyette, Samuel Robert 213
 Boyette, Susan Rene 201
 Bradley, Robert Scott McIsaac 173
 Branch, Gloria Jean 201
 Branch, Kathy F. 173
 Brantley, Anne McDaniel 173
 Brice, Leamon Boney 222
 Bridgewater, John Joseph 222
 Bridgewater, Larry Allen 173
 Brissou, Lynn Simmons 173
 Britcher, Sheila 222
 Britt, Brenda Joyce 213
 Britt, Carolyn Barnes 174
 Britt, Debbie Rhyne 213
 Britt, Jason Allen 174
 Britt, Robert F. 155
 Britt, Teresa Ann 222
 Brooks, David Earl 201
 Broome, Frankie Gwen 222
 Brown, Blanche DuVal 201
 Brown, Bonnie Irene 222
 Brown, Cynthia Larue 174
 Brown, Jerry Wayne 174
 Brown, Lawrence Melton 222
 Brown, Lee Anne 222
 Brown, Martha Jo 174
 Brown, Mona Faye 174
 Brown, Suzanne 174
 Bryan, Ellen Jane 161
 Bryan, Howard Kenneth 201
 Bryan, Rebecca Lee 213
 Bryant, Michael Gene 174
 Bryant, Vernesia Ann 222
 Bryson, Donald Edward 213
 Bullard, Carla Kay 174
 Bullard, Carol Ann 174
 Bullard, Rebecca Ann 201
 Bullard, Terrie Ann 213
 Bullard, William R. 162
 Bullock, Danny Harold 174
 Bunce, Belinda Ann 213
 Bundy, Peter Thomas 174
 Burchfield, David 213
 Burney, Samuel Ritchie 213
 Burns, Stanford 213
 Burris, Trudy Estelle
 Butler, Carol McRae
 Butler, Denise Renee 213
 Butler, Frances Kay 175
 Butler II, Loren L. 162
 Butler, Susan Louise 201
 Butters, Avery John 162
 Byrd, Sharron Barnes 175
 Cabral, Mark A. 201
 Cain, Debra Lynn 222
 Caldwell, Charlotte A. 175
 Callahan, David Gary 175
 Callio, Craig Frederick 201
 Canady, Eva Jean 222
 Canady, John Boyce 222
 Canaday, Ollie Linwood 175
 Carlyle, Shirley Rose 175
 Carney, Stephen John 213
 Carroll, Robert Leon 201
 Carter, Dennis Ray 201
 Carter, John L. 136
 Carter, III John Louis 213
 Carter, Mary Overman 213
 Carteret, Linda Sue 175
 Cassevah, Bobby 201
 Caudill, Paul Douglas 175
 Caulder, Jimmy Earl 201
 Chadwick, Marsha Kay 175
 Chancellor English E. Jones 132
 Chandler, James Michael 175
 Chappell, Carol Ellerbe 175
 Chavis, Barbara Ann 202
 Chavis, Elfreda 213
 Chavis, Francine 222
 Chavis, Glenda 176
 Chavis, Herman 202
 Chavis, James B. 134
 Chavis, Jane Oxendine 222
 Chavis, Jennifer 222
 Chavis, Lawrence Prince 202
 Chavis, Linda Faye 202
 Chavis, Mary Strickland 176
 Chavis, Roy Dean 222
 Chavis, Wanda 202
 Chay, John 162
Cheerleaders 54
 Chewing, Jewell Carter 176
 Cho, Chang H. 166
 Christie, Jackie Carlos 202
 Clark, Betty Susan 202
 Clark III, John Preston 213
 Clark, Lettie Lynne 213
 Clark, Marco Wynn 222
 Clark, Pansy Lee 222
Class Officers 170
 Coates, Annie Hazel 154
 Cobb, Nancy Elizabeth 222
 Coleman, Betty Denise 202
 Coleman, Van Douglas 176
 Collins, Ann P. 176
 Collins, Jeff 214
 Collins, Martha Floyd 202
 Collins, Rhoda P. 158
 Coker, Jerry 163
Commuter 16
 Cook, Beverly Jones 214
 Cook, Larry Allen 176
 Cooley, Naomi Gwendolyn 214
 Cooper, Carolyn Jr. 176
 Coppedge, William Randolph 214
 Corn, David Harold 202
 Coronado, Carolyn 202
 Coronado, Rudolph Kin Jr. 222
 Cottingham, Robert Matthew 176
 Cottrell, Betty Bethea 176



Coughlin, Robert David 214
 Covington, Mitch 222
 Cox, Barbara Freeman 214
 Cox, Linda Sue 214
 Cox, Marvin 176
 Cox, Wallace Dixon 176
 Craddock, Marion Lee 202
 Crain, Edwin W. 161
 Cribb, Larry O'Neill 202
 Cromer, Elsha Jackson 214
Cross Country 60
 Crowe, James Barnum 222
 Culbreth, Catherine Tew 176
 Culbreth, Karen Stanley 176
 Culbreth Jr., William Sessoms 214
 Culler, James D. 177
 Culler, Sandra Charlene 202
 Cummings, Charles E. 177
 Cummings, Kathy Dae 202
 Cummings, Michael 202
 Cummings, Teresa Grenell 222
 Cushing, Jeffray D. 202
 Cushman, Sheila Ann 177
 Cutler, Joyce Ann 202
 Daggs, Naomi Elaine 214
 Dailey, Gordon Don 177
 Dalton, Donald Blair 156
 Daniel, Betsy Claire 222
 Daniel, Marvin Francis 177
 Davenport, Eva Craddock 202
 Davis, Carolyn Sue 214
 Dean, William H. 159
 Davis, Deborah Rae 222
 Davis, Donna 202
 Davis, Ellen A. 214
 Davis, Everett Holland Jr. 222
 Davis, Melanie Elizabeth 222
 Davis, Robert Dale 222
 Dawkins, Jr. James Harold 203
 Dees, Katie Ruth 214
 Dellinger, Tony Alfred 222
 Demery, Patricia 203
 Denson, Dale Edward 203
 De Rensis, Pamela 222
 DeVane, James Ervin 214
 DeVos, Jerry Paul 214
 Dial, Allen G. 214
 Dial, Fannie Sue 203
 Dial, Freida Ann 177
 Doby, Nancy Ann 203
 Dole, Robert W. Jr. 222
Dorm Life 14
 Dorman, David Paul 203
 Douthit, Wayne C. 214
 Dowd, Brenda Bullard 214
 Drake, Dehaeva Marie 222
 Drake, Helen 214
 Dumas, Donald David 214
 Dunavan, Albert D. 157
 Easley, David L. 153
 Ebert, James B. 155
 Ebert, Nancy Lewis 222
 Edge, Graham Galen 203
 Edwards, Brenda Kay 214
 Edwards, James D. 222
 Edwards, Michael B. 203
 Eidson, Deborah Ann 222
 Elam, Annie Merle W. 164
 Eliades, David K. 162
 Eliades, David K. 167
 Elk, Victor Herbert 177
 Elkins, Daniel Robert 203



Ellen, Harold T. 161
 Eller, Douglas Franklin 203
 Elliott, David Johnson 177
 Elmore, Richard Luffman 203
 English, Sharon Dianne 203
 Enzor, B. Sue 177
 Enzor, Samuel Bishop 177
 Evans, Madelin Kay 215
 Evans, Richard Danny 215
 Evans, Thomas Keith 177
 Everette, Jr. Oscar Frank 203
 Everlove, John Alan 177
 Evers, John Lennard 203
Faculty 150
 Fairchild, Melvin 203
 Faircloth, Carol Sue 222
 Faircloth, Jr. William David 178
 Fairley, Annie L. 178
Fall Festival 18
 Farmer, James S. 157
 Farmer, Marjorie L. 157
 Farrell, Michael Gene 178
 Ferguson, Tim Michael 178
 Ferrell, William Frank 178
 Fish, Geoffrey Paul 222
 Fisher, Carl M. 134
 Fisher, Janet Diane 222
 Fitzgerald, James Michael 403
 Fleming, Robert T. 163
 Fletcher, Retha Ann 178
 Floyd, Iris Marie 203
 Floyd, William Lynn 178
 Flynn, Jr. John F. 152
 Foley, John Randall 203
 Foltz, Tom E. 222

Ford, Bleary Pernel 178
 Ford, Michael Ray 178
 Foster, Deborah Parker 215
 Frasier, Richard Walter 178
 Freeman, Kenneth 215
 Freeman, Jackie Formyduval 178
 Freeman, Mary Ellen 203
 Freiwirth, Paul K. 162
Freshmen 222
 Frey, Greg Alan 215
 Frink, Addie Mae 178
 Frye, Debbie Gail 179
 Fuller, Carl Edward 179
 Gaddis, Richard Edward 215
 Gamble, Anita Jane 204
 Gane, Lacey E. 161
 Gardner, Thomas G. 222
 Garner, Alice Marie 215
 Garner, Nancy Campbell 215
 Garver, Donald Neal 179
 Gatewood, Fronda Sue 222
 Gentry, Eleanor Stewart 179
 George, John Max 179
 George, Renis Abernathy 179
 Gibson, Grace E. 156
 Gibson, Margaret Louise 215
 Gibson, Mary Ruth 222
 Gibson, Ronald Marshall 179
 Gibson, Virginia C. 215
 Gillis, Jan Marie 222
 Gilmore, Carson Eugene 179
 Godwin, Debra June 222
 Godwin, James Badger 215
 Goins, Cynthia Ann 215
Golf 81

Gooden, Joyce C. 179
 Goodman, Katherine Pate 179
 Goodnight, Mary Kathy 179
 Goodyear, David Boyd 204
 Gore, Karen Lynne 179
 Gowans, Harriet Elizabeth 180
 Graham, Charles Vinson 180
 Graham, Cynthia Darlene 215
 Gray, Gibson H. 166
 Graham, David Neal 180
 Graham, Sharon Annette 180
 Grady, Joseph Jr. 204
 Gray, Thomas Edward 215
Greek Week 32
 Greene, Agnes O. 164
 Greene, Jeanne Gail 180
 Greene, Linda E. 180
 Gregoire, Bryanna Gayle 204
 Grier, Mitchell Sherrell 222
 Griffith, Charles R. 136
 Griffith, Magnolia O. 154
 Griffin, Reginald Clark 204
 Grubbs, Debra Johnson 180
 Guerry, Thomas H. 164
 Guiton, Sandra Anne 180
 Gustafson, Robert K. 164
 Haggler, Patricia Lorraine 222
 Hall, Donald Wayne 180
 Hall, Howard Rexford 204
 Hall, James Edward III, 215
 Hall, Nancy Rose 204
 Hall, Odessa 215
 Hall, Sally L. 222
 Hall, William Pressly 222
 Hambric, Everett B. 180

Hammock, James David Jr. 222
 Hammonds, Pamela L. 215
 Hammond, Vickie Lynn 215
 Hancock, Douglas Maurice 215
 Hannah, Thomas Neil 204
 Hardee, Jr. Berkley Goal 222
 Hardee, Verma Smith 180
 Harden, Ricky Earl 222
 Harford, Richard Dale Jr. 180
 Hargis, Jr. Lorne Thomas 204
 Harris, Debra Dian 181
 Harris, James B. 204
 Harris, Jane Marilyn 204
 Hart, William Monroe 215
 Harwood, Roger Arnold 204
 Hawkins, Mary Susan 181
 Hawks, Eddie Wayne 181
 Hayes, Anna Lee 204
 Hayes, Larry Luth 204
 Hayes, Sylvia Diann 204
 Hedgepeth, Diane S. 181
 Hefner, Larry Dale 152
 Herring, Geraldine Graves 181
 Herring, Susan Christine 204
 Hester, Charles M. 204
 Hester, Charles S. 181
 Hester, Evelyn B. 204
 Hester, Jeanne Dale 181
 Hester, Van Owen 204
 Hickman, Barbara Ann 222
 High, Mitchele Evans 181
 Hill, Gene Osborne 181
 Hill, Patricia Rouse 204
 Hill, Shelby Jean 181
 Hill, Vickie Carol 216
 Hinkle, Joseph Scott 216
 Hinson, Stanley Wayne 181
 Hobbs, Mike L. 181
 Hodges, Margaret Allen 182
 Holcomb, Jr. Audrey Roger 205
 Hollar, Patsy Marie 222
 Holloman, Bennie Sue 205
 Holt, Yvonne Stokes 182
Homecoming 34
 Honeycutt, Mary Ellen 222
Honoraries 48
 Howard, James Corbitt 216
 Hoyle, David Leslie 182
 Hubbard, James F. 153
 Hubbard, Robert Steve, Jr. 216
 Hubbard, Sulvia Ann 182
 Hudkins, Robert Daniel 182
 Hudson, Pamela Jo 205
 Huff, Pamela Marie 216
 Huggins, Johnny Lee 205
 Huggins, Peggy Jean 182
 Hughes, Carol Elaine 222
 Huguélet, Sara Christine 182
 Hunt, Dixie Theresa 205
 Hunt, Jackie Lee 182
 Hunt, Jo Ann 182
 Hunt, Linda M. 182
 Hunt, Marilyn Faye 222
 Hunt, Sandra Bonita 205
 Huntley III, Frank Little 182
 Huntley, Patricia Coalson 182
 Hutchins, Terry R. 134
 Hyatt, Kathy Adele 182
Indianhead Citations 10
Indianhead Staff 246
 Ingram, Cecile Diane 216
 Ingram, Glenda Hope 222

Inman, Robert David 182
 Inscoc, Katherine Webb 43
Intrafraternity Council 102
 Ivey, Bonnie Sue 205
 Ivey, Emma Brown 183
 Ivy, Daniel Michael 216
 Jacobs, Aneidia 222
 Jacobs, Christine 183
 Jacobs, Harold Dean 216
 Jacobs, James A. 165
 Jacobs, James William 183
 Jacobs, Shelia 222
 Jacobs, Shelia Ann 222
 Jacobs, Wanda 205
 Jackson, Carol Elizabeth 222
 Jackson, Karen Gail 216
 Jackson, Robert Charles 216
 Jackson, Stanley 216
 Jamison, Linda Lou 183
 Jarrell, Glenda Ann 205
 Jernigan, Elizabeth Williford 183
 Jones, Delton Ray 216
 Jones, Faye 136

Johnson, Doris 163
 Johnson, Fran Beth 216
 Johnson, Gretcher 222
 Johnson, Hehton Paulette 183
 Johnson, Janice Griffin 183
 Johnson, Kenneth P. 161
 Johnson, LaZora Vidrene 205
 Johnson, Linda Faye 205
 Johnson, Michael Alan 184
 Johnson, Myron Douglas 216
 Johnson, Perry Martin 216
 Johnson, Jr. Robert Lee 222
 Jones, Alfred 184
 Jones, Beneva L. 205
 Jones, Edward Nicholas 222
 Jones, Ellis Baggett 205
 Jones, Robert Charles 216
 Jones, Phyllis Donna 216
 Jones, Ronald Glenn 186
 Joseph, William John 222
 Joyner, Jr. Charlie Earl 205
 Joyner, Wilton G. 158
Juniors 200

Kappa Delta 96
 Keem, Keyhang 165
 Kelley, Clifton L. 205
 Kelly, Susan McMillan 205
 Kershaw, Robert Jr. 152
 Kennedy, Debbie Jeane 216
 Kennedy, Kenneth Ray 222
 Kiger, Robert Anthony 205
 Kiger, Shane Wesley 222
 Killian, Paul W. 153
 Kinery, Frances Seal 184
 King, Betty Jane 184
 King, Frank Howard 184
 Kinlaw, Flora Jeanette 205
 Kinlaw, Freida Dianne 184
 Kinlaw, Mary Carlton 184
 Kivett, Ida Rebecca 216
 Knox, Dennis B. 222
 Kosak, Emily Gail 184
 Kossoff, Robert Hugh 205
 Krabill, James R. 165
 Ku, Min-chuan 166
 Kuo, David K. 155



Kuo, Elizabeth 160
 Kim, Kwangsuk 206
 Lamb, Chrisopher York 184
 Lambeth, Bonne Lee 206
 Lamberth, Robert Ray 184
 Lampley, Cheryl D. 184
 Lamm, Jesse M. 158
 Lancaster, Sallie Jane 206
 LaPrad, Steve 226
 Lasken, Leonard David 206

Laton, Daniel Lane 184
 Lawrence, David Lynn 216
 Lawson, Charlene Frances 185
 Lavton, Marilyn Sherrill 216
 Leach, Roslyn Levon 206
 Lear, Boyce Malcolm 185
 Lee, Gloria L. 185
 Lee, Kenneth Waito 185
 Lewis, Bart Regan 206
 Lewis, Della Rose 217

Lewis, Betsy I. 206
 Lewis, Gayle Phillips 185
 Lewis, Kathy Lee 217
 Lewis, Lois B. 157
 Lewis, Margaret Faye 217
 Lewis, Thomas Lee 206
 Lima, Cheryl Ann 217
 Lima, Kila Denise 217
 Lindsay, Gilbert Lewis 217
 Lindsay, Laura Lynn 227

Lipps, Jean Taylor 206
 Little, Ravena Elizabeth 217
 Lloyd, Linda Ann 185
 Lockie, Judith Rabun 185
 Lowry, Reba M. 156
 Locklear, Arlene 206
 Locklear, Arlene Dayle 217
 Locklear, Cathy 217
 Locklear, Cheryl Ranson 206
 Locklear, Craig Allen 217
 Locklear, Curt Jr. 206
 Locklear, Della O. 206
 Locklear, Delores Jane 206
 Locklear, Deloris Ann 217
 Locklear, Eddie Lee 206
 Locklear, Glenda Gail 206
 Locklear, James Anthony 217
 Locklear, Joanne Denise 227
 Locklear, Judy 227
 Locklear, Kathan D. 185
 Locklear, Katy J. 206
 Locklear, Keith 206
 Locklear, Linda Gail 227

Locklear, Vicky 217
 Locklear, Vivian Thomas 185
 Locklear, Von Sevastion 185
 Locklear, Yvonne Barnes 185
 Long, Junella 186
 Long, Pam Yvonne 228
 Long, Susan Kay 222
 Lopes, Conrad Ernest 217
 Lopez, Catherine Anne 186
 Lovette, Mary Jo 186
 Lowery, Irene Graham 186
 Lowery, Jan Marie 222
 Lowery, Liffie Sue 206
 Lowry, Charles Sheldon 217
 Lowry, Ernie Vincent 218
 Lowry, Jason 136
 Lowry, Odena 218
 Lowry, Patricia Ann 186
 Lowry, Rose Marie 207
 Lowry, Tulula Locklear 218
 Lupo, Jimmy Larue 207
 Lupo, Kenneth Byron 186
 Luck, Vickie Hill 218
 Luquer, Janice Marie 218
 Lusk, Dorinda Joyce 186
 Luther, Eric Dale 218
Lyceum Series 30
 Lynch, Ann Scott 186
 Lynch, Candace E. 207
 Lynch, Matthew 218
 McAllister, Melvin Wiseman 222
 McBryde, Stephen Douglas 187
 McCartney, Iris Yvonne 207
 McClellan, Charles A. 222
 McConeGhy, Edwin R. 222
 McCorquodale, Cathy H. 187
 McCown, Pi Wu Anna 187
 McCoy, Valorie Sue 187
 McDaniel, Roland Fred 187
 McDonald, Maylon Edward 222
 McDow, Robert Allen 218
 McDowell, David Autry 187
 McDuffie, Jerome A. 162
 McEachin, Janice Cheryl 207
 McEachern, John P. 187
 McElreath, Larry Ray 207
 McFadyen, Mary Susan 207
 McGirt, Becky Lou 222
 McGirt, Joseph A. 155
 McInnis, Barbara H. 207
 McIntosh III, Thomas J. 187
 McIntyre, Judy Lynn 207
 McKenzie, Kenneth H. 187
 McKenzie, Mary Elizabeth 218
 McKinnon, James Edward 187
 McLaurin, Nathan Russell 188
 McLean, Julie Elizabeth 207
 McLean, David A. 160
 McLean, David A. 167
 McLean, Lenna M. 218
 McLeod, Clyde Alexander 188
 McLeod, Douglas Ronald 218
 McLeod, Howard Elliott 188
 McManus, Jean H. 188
 McMillan, Jill Tracy 188
 McMillan, Larry Eugene 218
 McMillan, Paul Edward 222
 McMillan, Thomas Neill 222
 McMinis, Michael Evans 207
 McNair, Elizabeth Ann 218
 McNeill, Gary Steve 207
 MacNeill, Patricia France 188

McNeill, Ronnie Kelly 188
 McPhail, Susan Gregg 188
 McRae, Alphonzo 188
 McRae, Eugene Boyle, Jr. 188
 McRae, James Davis 207
 McRae, Walter Philip 281
 Mabrey, Dwan Bashford 186
 Mabrey, Jr. Walter Richard 186
 Maclead, Norman 24
 Mandel, Josef L. 157
 Mareka, Dorothy J. 186
 Marks, David Charles 207
 Martin, Alton Larry 207
 Martin, I. Ruth 164
 Martin, John Edward 186
 Martine, Ricardo 222
 Martin, Thomas Charles 222
 Mason, Joyce Mae 218
 Mason, William S. 134
 Matthews, Ashford Evans 207
 Matthews, Bertha B. 157
 Matthews, Vicky Levonne 222
 Maynor, Gerald Dean 158
 Maynor, Leon 187
 Maynor, Esther D. 136
 Maynor, Robert Davis 154
 Maynor, Vicky Lynne 222
 Meacham, Teresa Patrick 207
 Melton, Gerry Thomas 207
 Melvin, Jr., Arthur Aaron 222
 Middleton, John Robert, Jr. 222
 Miller, Diane Littel 222
 Miller, Emily Miller 218
 Miller, Lorraine Dianne 222
 Miller, Melva Hawkins 188
 Miller, Teresa Louise 218
 Mishoe, Juanita 207
Miss PSU 20
 Mitchell, Alexis Street 222
 Molnar, Vera 222
 Montgomery, June Inez 222
 Moody, Adair Robertson 218
 Moore, Doris Evelyn 218
 Moore, Jan Rid 188
 Moore, Jeannette 188
 Moore, Martha Jane 218
 Moore, Sadie Evelyn 222
 Morgan, Gordon Christopher 189
 Mumau, Judy Lynn 189
 Murry, Gary Wayne 189
 Murray, L.L. 159
 Musselwhite, Patricia 207
 Myatt, Sally Scarboro 222
 Myers, Randall Lynn 189
 Myers, Terry Howard 208
 Myrick, Jesse Roland 189
 Nadeau, Andre J. 161
 Nader, Larry 222
 Navy, Pamela Elaine 189
 Nazarchuk, Gail 189
 Newbill, Patrick Stewart 208
 Newman, William Calvin 189
 Newton, Jerry Lee 208
 Nixon, Ruth H. 159
 Nobles, James Howard 189
 Nobles, Melody Anne 189
 Norris, Gary Wayne 222
 Norwood, Albert 189
 Nye, Dickie 208
 Odom, Jane Byrd 189
 Odom, Roger Howard 218
Old Main 12

Olson, Harold M. 161
 Osborne, Leonard E. 165
 Ormsby, Judy Collins 219
 Oxendine, Anthony 198
 Oxendine, Belinda Carol 222
 Oxendine, Brenda Faye 222
 Oxendine, Carol Smith 219
 Oxendine, Connie 190
 Oxendine, Deloris Pate 190
 Oxendine, Forace Jr. 228
 Oxendine, James Alton 208
 Oxendine, Joanne
 Oxendine, Katrina Maynor 190
 Oxendine, Larry Delton 228
 Oxendine, Linda B. 155
 Oxendine, Marilyn 190
 Oxendine, Ronnie 190
 Oxendine, Teresa Ann 228
 Oxendine, Tony 208
 Oxendine, Wanda Sue 190
 Pace, Gloria Faye 190
 Pagan, Emilio 228
 Page, Barbara Vernon 190
 Page, Preston Henry 190
 Palmer, Janette J. 208
 Parker, Clarence Eugene 228
 Phanellenic Council 103
 Parker, Emma King 190
 Parnell, Alfred Jr. 190
 Parnell, Carl Timothy 219
 Parnell, Fran Marie 191
 Parrish, Margaret Lewis 219
 Parsons, Roland Gene 191
 Pasko, Catherine E. 219
 Pate, Debora Kaye 229
 Pate, Stephen Vernon 191
 Patrick, Alec Kent 219
 Patterson, Mary Helen 191
 Paul, Rudy Dean 208
 Payne, Kathy Susan 219
 Peele, William Earl 208
 Pejack, Albert J., Jr. 154
 Pennington, Raymond B. 161
 Perry, Vicki Leigh 191
 Pfeifer, Francis L. 163
 Pfeifer, Sarah Louise 228
Pi Kappa Alpha 86
Pi Kappa Phi 88
 Phifer, Mellonee Joyce 191
 Phillips, Wanda Irlene 191
Phi Mu 100
 Pinkston, John William 191
 Pisano, Richard C. 134
 Pittman, Linda Faye 191
 Pittman, Robert Stephen 229
Players 26
 Plummer, Leonard Bennett 208
 Poche, Patricia Susan 208
 Pokrass, Frank S. 160
 Polhemus, George W. 157
 Poston, Pamela Denise 208
 Powers, James Ellis 229
 Pratt, Millard Norman 219
 Prescott, David M. 219
 Preston, Robert Harris 191
 Prevatte, Aleene Blout 191
 Price, Gayla Maria 191
 Pridgen, Ann Frazier 192
 Pridgen, Jacqueline Rose 192
 Priest, Doll Inscoc 192
 Purdue, Constance Rose 192
 Quick, Richard Glisson 192



Locklear, Mary Faye 227
 Locklear, Mitchell Wayne 206
 Locklear, Paul Jr. 217
 Locklear, Regina 227
 Locklear, Rhonda Iris 206
 Locklear, Rosalyn 185
 Locklear, Rudy 217
 Locklear, Sonya Rose 227
 Locklear, Stephen 217
 Locklear, Theresa Lynn 227



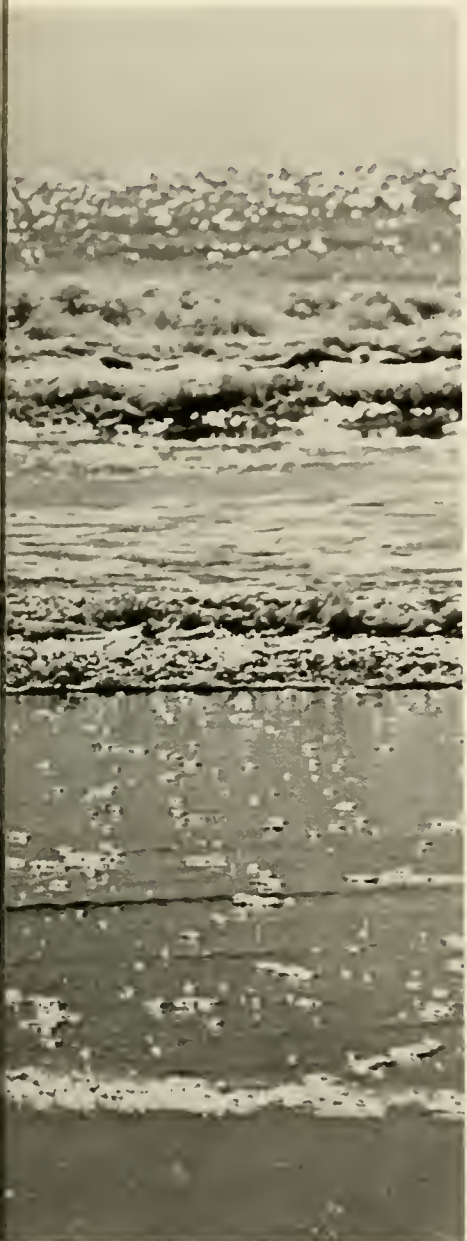
- Quinn, Dorothy Linda 192
 Quinn, Phillis Sue 220
 Rabano, Eleanor Elizabeth 192
 Radford, Debra Kay 220
 Rainer, Herbert Martin 229
 Ranager, Belinda Kay 192
 Ransom, Janet Faye 192
 Ransom, Marsha Victoria 192
 Ratcliffe, John Larry 192
 Ray, Michael Thomas 192
 Ray, Richard Lloyd 229
 Reckerd, Linda Sue 208
 Reese, Arthur Randy 229
 Reising, Robert W. 157
 Reising, Robert W. 167
 Reese, Jimmy Lee 228
 Revels, Glinda 208
 Revels, Joan G. 228
 Revels, Joyce D. 208
 Revels, Larry Nelson 228
 Reynolds, Cathy L. 219
 Rhyne, William Nathan 208
 Rice, Annette Louise 219
 Rice, Reece Carolyn 219
 Rich, Deborah Kaye 219
 Rich III, Vance 193
 Richardson, Barry McCray 229
 Richardson, Beverly Sue 193
 Ricklefs, James E. 160
 Ricioppo, Eric 229
 Rickman, Martin Lyle 219
 Riddle, Donald Michael 229
 Riddle, Gary Harold 193
 Riggs, Terri Lee 219
 Rileigh, Kathryn K. 153
 Rimberg, John 160
 Rivenbark, Joseph Russell 229
 Robbins, Thelma Ann 219
 Roberts, Toni Lee 229
 Robinson, Patricia 193
 Robson, Alan Dean 193
 Rogers, Benton Keith 229
 Rogers, Carole Plummer 193
 Rogers, Cheryl Jeanne 219
 Rogers, Joyce H. 193
 Rogers, Kelly Wayne 219
 Rogers, Vickie Sue 208
 Rollins, William Thomas 193
 Rountree, Iva Rose 219
 Roy, William Houston 193
 Rozier, Carey Preston 193
 Rudd, James Ronald 193
 Rudd, William David 219
 Rundus, Raymond 156
 Russ, Herby Lynn 229
 Russell, Barry Kenton 193
 Russell, John T. 158
 Russell, Rachel Ann 194
 Salome, Lewis Christopher 194
 Sampson, Dianne 194
 Sampson, Doris Bell 208
 Sampson, Ernest Wayne 220
 Sampson, Gilbert L. 165
 Sampson, Karen Gail 229
 Sampson, Norman Woodward 208
 Sampson, Ursula Kaye 208
 Sanderson Jr., James Lawton 194
 Sanderson, John Martin 229
 Sanford, Rhonda Gail 209
 Sarvis, Willa Dove 194
 Scarboro, Nancy Lynn 229
 Schalmo, Gail Boyes 194
 Schmidt, William Hilton 209
 Scheele, Karl A. 154
 Schwarz, Kathryn 230
 Schwarze, Lynn Patricia 230
- Scott, Andrena Deese 194
 Sealey, Norene 209
 Sedberry, Karen Elaine 220
 Seals, Sandra Deloris 209
 Sellers, Sara Elizabeth 209
Seniors 172
Senior Directory 232
 Sessoms, Robert Lee 229
 Settlemyre, Susan Ellen 209
 Seymour, Nancy Carol 220
 Shaw, Edward Clarence 229
 Shaw, Sharon K. 157
 Shaw, Vickie Jane 194
 Shelley, David Bryan 209
 Sheppard, Frank Edward 194
 Shields, Jr., John Vernon 209
 Sides, Christine Elizabeth 209
Sigma Sigma Sigma 98
 Silver, Janie B. 159
 Simetich, Cindy Mary 209
 Simmons, Deborah Formyduval 194
 Simmons, Donna Glaesner 220
 Simmons, Gaye Millicent 230
 Simmons, Pamela Blair 220
 Simmons, Steven Gregory 230
 Singletary, Carol Miranda 220
 Singletary, Edward Brate 230
 Sink, Randy Lee 230
 Skipper, James D. 194
 Skipper, Linda T. 209
 Slagle, Harold C. 163
 Slaughter, Michael Frank 230
 Smallwood, Deborah Joyce 220
 Smith, Carlton Wesley 209
 Smith, Charles Kenneth 209
 Smith, Debra Carol 230
 Smith, Edward Douglas 209
 Smith, Joy White 194
 Smith, Lois McKay 195
 Smith, Michael O'Neil 230
 Smith, Milton Wayne 195
 Smith, Nanci Carol 195
 Smith, Richard Bruce 209
 Smyntek, Robert Paul 195
Soccer 70
Sophomores 212
 Spaulding, Carolyn A. 220
 Speck, Tom S. 152
 Sproles, James Wilson 195
 Speller, Charles Bradley 220
 Spillers, Arthur Jackson
 Stancil, Jerry Lee 220
 Standley, Cherri Elizabeth 195
 Stanish, Joseph Albert 230
 Stanley, Peggy Hardie 209
 Stanley, Terrie Lou 195
 Stanton, Gloria Jean 195
 Stanton, Homer Evans 195
 Steed, Cecelia Richardson 230
 Steiner, Donald Lee 156
 Stephenson, Nathaniel Rand 209
 Stewart, Claudia Ruth 230
 Stewart, Deborah Faye 195
 Street, Jutton Margarete 230
 Strickland, Anita 230
 Strickland, Mary Ann 195
 Strickland, T. Louise 220
 Strickland, Trudi Wiggs 195
 Stone, Jean Hall 209
 Streater, Darlene G. 209
 Studdard, Albert 164
Student Government Association
 104
 Student, John Michael 209
Student Teaching 22
 Stull, Stephanie Nicastro 196
- Surt, Nelson Thomas 210
 Summer, Miriam Sue 230
 Sumner, Nancy Jean 230
 Sutton, Debra Faye 196
 Sutton, Vivian Marie 220
 Sweet, Gloria J. 154
 Sweet, John Floyd 196
 Swett, Tommy D. 134
 Switzer, Calvinia 159
 Sykes, Judy Elaine 196
 Tarlton, Barbara Rowena 210
 Tart, Jr., Clarence Gleamon 210
 Tatum, Gloria Walter 196
Tau Kappa Epsilon 90
 Taylor, Carol Jane 221
 Taylor, Debra Lynn 196
 Taylor, Karen Sue 230
 Taylor, Kenny Harris 221
 Taylor, Sara Kendyl 230
 Taylor, Warren Douglas 230
 Tedder, Jeffrey Hilton 221
Tennis 80
 Thacker, Norma East 196
 Tramer, Henry 165
 Thames, Betty Carlette 221
 Thomas, Michael Edward 196
 Thompson, Billy Marshall 210
 Thompson, Doris Jean 210
 Thompson, John Samuel 210
 Thompson, Karen McCormick 210
 Thompson, Nancy McKrae 221
 Thompson, Norma J. 136
 Thompson, Richard Douglas 210
 Thompson, Ronald Russell 221
 Thompson, Ronnie Gerald 196
 Thompson, Steve Lewis 196
 Thompson, Timothy Vernon 210
 Thompson, Youlander Denise 230
 Thorndyke, Stephen Van 221
 Threatt, Gary Hill 210
 Thrower, Anne Marie 196
 Thrower, Patricia Joy 210
 Thrower, Patricia Kirk 197
 Todd, Daniel E. 134
 Todd, Deborah Aneta 230
Track and Field 66
 Triebwasser, Marc A. 166
 Trivette, William Gurney 197
 Troy, John Joseph 230
 Turner, Felicia Wilkins 230
 Turner, James Sherwood 197
 Tsai, Mary Ann 210
 Tyson, Mary C. 197
 Urban, Dorothy Ann 164
 Umberger, Fred Phillip 197
 Van Zandt, Paul 152
 Vereer, Gilbert Levern 210
 Vigoletti, Toni 210
 Von Beatty, Ray 153
 Waddell, Margaret Miller 197
 Wade, Dahlia Rosemary 210
 Wade, Patricia Ann 230
 Wainright, Thomas Edward 197
 Waites, Edna Marie 210
 Wall, Inez Liles 230
 Wall, John P. 221
 Wall, Margaret McKrae 221
 Wallace, Beverly Ann 197
 Wallace, Meredith A. 210
 Wallace, Robin Eleanor 210
 Walters, Angela Doris 197
 Walter, George R. 163
 Walters, Gloria Prevatte 197
 Walters, James H. 210
 Walters, Jerry Lane 210
 Walters, Mitchell Grant 221
- Walters, Stan Wayne 230
 Walton, Suzanne McKeown 211
 Ward, Gail Carteret 197
 Ward, Wanda Gayle 211
 Warner, Jack Russell 211
 Warnock, Mary Boggan 197
 Warren, Gene 136
 Warren, Thomas D. 211
 Warriax, La Verna 211
 Watkins, Beverly Brackston 211
 Watkins, Edward D. 160
 Watkins, Janet Musick 198
 Watson, Dorothy S. 198
 Watson, Dwight Eugene 198
 Webb, Maude Ann 161
 Webster, Gary Thomas 211
 Weeks, Beverley Elaine 198
 Wells, Ann F. 156
 Wemyss, John Phillip 198
 West, Kelly David 211
 West, Marsha Diana 220
 West, Linda Marie 211
 West, Vickie Jane 198
 West, Vickie Jo 198
 West, William Lennett
 Westbrook, Allen Daryl 230
 Wheeler, Sharon Peck 220
 White, Howard Ray 109
 White, Susan Carol 220
Who's Who 40
 Wickham, Christa S. 198
 Wiggs, Vicki Gil 220
 Wilcox, Marilyn Rose 211
 Wilder, Dwayne Griffen 211
 Wilkie, Nancy Jobe 221
 Wilkins, Judy Laura 230
 Wilkins, Violet Rose 230
 Wilkinson, Bruce R. 221
 Willetts, Ruby Poullette 221
 Williams, Erwin Thompson 198
 Williams, Rudy D. 156
 Williams, Hampton Vernon 221
 Williams, Jane Ray 211
 Williamson, Boyd Carroll 221
 Williamson, Gail Anne 230
 Williamson, Harvey Leo 198
 Williford, Charles Hague 199
 Williford, Edward Martin 211
 Wilson, Ann Baker 199
 Wilson, Caroline 211
 Wilson, Donald Archie 199
 Wilson, Linda Fitzsimons 199
 Wilson Jr., Preston Daniel 211
 Wilson, Rachel Diane 199
 Wilson, Stephen Lamont 230
 Wiseman, Deborah Lee 211
 Wolf, Victor 165
 Wolinski, Gloria 230
 Womack, Judith Lynn 230
Womens Sports 78
 Wood, Rebecca Sue 199
 Worriax, Linda Faye 230
 Worley, Diane Johnson 199
 Worriax, Jo Ann 199
Wrestling 62
 Wright, Ronnie Delano 221
 Wynne, Judy Lynn 199
 Wynne, Margaret 211
 Wrench, Joy Carol 230
 Young, William Graham 230
 Zacarias, Lee Glenn 199
Zeta Tau Alpha 94
 Zielinski, Daniel Anthony 199







19741974197419741974197419741974



Nostalgia . . . Campus Cops . . . rotary engines . . . Visitation . . .
Bette Middler . . . Stevie Wonder . . . Jim Croce . . . grand jury . . .
John Sirica . . . energy czar . . . Ehrlichman and Haldeman . . .
John and Martha . . . the plumbers . . . watergate . . . privacy . . .
EPA . . . inflation . . . wheat deal . . . Salvador Allende . . . Ar-
chibald Cox . . . Alexander Solzhenitsyn . . . Rudy's Restaurant . . .
Old Main . . . One Way . . . strike . . . 2:30 a.m. . . . deadlines
. . . Jesus Freaks . . . Miami Dolphins . . . Liza Minnelli . . .
WQDR . . . Hank Aaron . . . 714 . . . ditties from heaven . . .
climax . . . Maharaji Ji . . . vamps . . . slide guitar . . . special audit
advisory committee . . . Libel . . . Kung Fu . . . Jonathan
Livington Seagull . . . John Cross Loses . . . peaches . . . sex . . .
streaking . . . the Exorcist . . . The Way We Were . . . 18 minute
gap . . . Seals and Croft . . . Senator Sam . . . Boogie . . . oil em-
bargo . . . gas lines . . . Dylan returns . . . impeachment . . . J.
Geils Band . . . Mafia . . . Arab-Israeli confrontation . . . Billy Jean
King . . . Bobby Riggs . . . Last Tango in Paris . . . Modern English
Grammar . . . Truckers . . . Equal Rights Amendment . . . Sky Lab
. . . Cheech and Chong . . . Mahavishnu Orchestra

197419741974197419741974197419741974197

Artin R. Alexander
Editor



indianhead

Vickie West



Paul Szumelda

Debbie Kenner



Warren Baker



Tomi Vignetti

Robby Dole



Lee Ann Brown



Bob Johnson



Debbie Bailey



Robert Davis



Rudy Conrad



AMEN





