

IN THE FIELD

Winter
2007/08

THE FIELD MUSEUM'S MEMBER PUBLICATION



Maps: Finding Our Place in the World

GEORGE WASHINGTON CARVER OPENS FEBRUARY 1

EXPEDITIONS PROGRAM MAKES EXPLORERS OF US ALL



FROM THE PRESIDENT

A Step Toward Greener Living

The average person living in the United States produces more carbon emissions in a year than 200 trees can absorb. By contrast, the average person living in Africa needs just one tree to absorb his or her carbon output, while the average Hong Kong resident needs 50 trees and the average Japanese citizen 100 trees.



NANCY STONE

Deforestation causes about 25% of greenhouse gases today. The Field Museum works to prevent logging in places like Cordillera Azul Park in Peru, so as to reduce these emissions while also protecting biological and cultural diversity.



WILLIAM ALVERSON

There's something about seeing your grandchildren grow that sharpens your perspective on the environmental issues future generations will have to face. We know that human activity, like driving, flying, and using electricity, is contributing to the rise in the Earth's temperature. As a public institution with a strong conservation mission, we at The Field Museum have a responsibility to stimulate people to think more about carbon emissions and global warming, and have come up with a way that individuals visiting the Museum can take action on these issues.

As a way to help Americans shrink the size, or footprint, of their carbon emissions, The Field Museum has launched "Take 1 Step," an innovative voluntary program that allows Museum visitors to purchase credits that will offset the carbon emissions they generate by traveling to the museum. The Field Museum is the first museum in the U.S. to offer such a program.

Each carbon emissions credit will cost just \$1, which will be used to offset the emissions generated by the average trip to the Museum, based on the estimated amount of carbon emitted by a mid-sized car over the mean distance visitors travel to the Museum. The money will help combat global warming by promoting the development of renewable energy technologies, as well as by habitat restoration projects and the conservation of intact forests.

With the dollar that visitors contribute to Take 1 Step, the Museum purchases carbon emission contracts on the Chicago Climate Exchange (CCX), the world's only global marketplace for trading emission reductions and offsets for all six greenhouse gases. The Field Museum has long sponsored programs that directly reduce global carbon footprint. The Field's conservation programs in the Andean foothills, Amazonian lowlands, Madagascar, The Philippines and other locations already have saved more than 30 million acres of pristine wilderness.

Will you join us in our effort to reduce carbon emissions through Take 1 Step? It's a small step, but never doubt that every step counts.



John McCarter
John McCarter
President and CEO



Maps: Finding Our Place in the World

Special Exhibition Runs Through Jan. 27, 2008

What makes maps so hypnotic? Is it their endless, beautiful detail that magically draws us in? The worlds of possibilities they offer as they take us on vicarious journeys? Or is it their connection to a moment in history?

Above, left to right: a handheld device employing global positioning system (GPS) technology, map of the Theatro de la Tierra Universal, poster-sized map of the London Underground from 1933, 17th century Ottoman map, and geographical field analysts collect data for GPS.

Whatever you find fascinating about maps, there's much to discover in *Maps: Finding Our Place in the World* (opened Nov. 2 and runs through Jan. 27, 2008). This is a once-in-a-lifetime opportunity to see more than 130 of the world's greatest maps: Maps from ancient Rome and Babylonia, ground-breaking maps by Leonardo da Vinci and Mercator, and maps borrowed from the Vatican, Her Majesty Queen Elizabeth II, and the great libraries of the world. You'll see the oldest road map of Britain and the map that drew the first boundaries around a new American nation. Maps that scarcely look like maps at all: mysterious forms carved in wood, landscapes fired on ceramic vessels, navigational charts composed of sticks and shells. You'll see maps made by dreamers like J.R.R. Tolkien and by visionaries like the Internet pioneers. You'll learn how early maps were made, discover how map-making has changed over centuries, and see how map technology is being used by Field Museum scientists today. And in a series of high-tech displays, you'll have a unique opportunity to experience the latest map technologies.

Maps: Finding Our Place in the World is organized by The Field Museum and the Newberry Library. In addition to maps from over 60 lenders worldwide, it features artifacts from both organizing institutions, including more than 20 rare maps from the Newberry's world-famous collections.

Unfolding the Meanings of Maps

"Maps tell us much more than where a place is or how to get from here to there. They tell us what was important to the people who made or used them," says James Akerman, PhD, director of the Newberry Library's Hermon Dunlap Smith Center for the History of Cartography.

For example, in places where river transport was of prime importance, rivers are shown as much wider than they would be if drawn to scale; modern road maps emphasize drivable roads, with little regard for rivers and lakes; and subway maps note the order of stations, usually without regard for the distance between them. They also tell us what's not considered important to the makers and users—such as a map of colonial America that completely ignores large Indian nations.

World maps are equally revealing. In maps that represent religious or traditional views of the world, a sacred place—Jerusalem for the Medieval Christian world, the mountains of central Asia for Hindus and Buddhists—is often at the center, and spiritual or supernatural realms may appear beside geographic locations. Navigational maps may focus on patterns of wind and waves or on measurements of latitude, longitude, and angles—all aimed at getting sailors where they need to go. And the Congo artist who created a conceptual map of local chiefdoms, history, and politics—was concerned as much with secret knowledge of genealogy as with visible places.

"We deliberately set out to stretch visitors' ideas of what a map can be," explains Robert W. Karrow, Jr., PhD, curator of special collections and curator of maps at the Newberry. The idea driving the exhibition, he says, is to look at maps on their own terms.

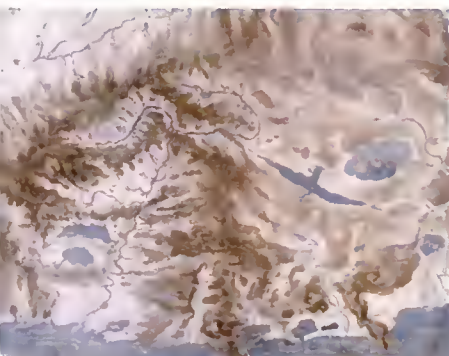
Expanding Our Knowledge

The exhibition offers many examples of map-makers developing ways to convey knowledge, especially new knowledge, about the world we inhabit: visible things, like the newly discovered continents of the Americas, and things not yet seen, like the roundness of the earth and the geography of fictional lands.

Scientists, in particular, often have the imagination as well as the knowledge to map things unseen. Leonardo da Vinci was a cartographer as well as an artist, and his map of central Italy—the first to use color to indicate changes in elevation—was a breakthrough.

Scientific maps can even *create* knowledge and make important discoveries themselves. Perhaps the most famous of these was a geological map of England created 200 years ago by William Smith. In revealing the relative ages of layers of rocks, it laid the foundation for Darwin's work a few decades later—and came to be called "the map that changed the world."

Leonardo da Vinci introduced the cartographic convention of using color to indicate changes in elevation.



ROYAL COLLECTION © 2006
HER MAJESTY QUEEN ELIZABETH II



FESTIVAL OF MAPS CHICAGO

This fall and winter, The Field Museum joins more than 30 other scientific and cultural organizations in a unique citywide collaboration that features maps, globes, artifacts, exhibitions, artworks and lectures. Festival of Maps Chicago tracks the evolving technology of wayfinding from ancient to modern times and celebrates the maps that record our boldest explorations. Up-to-the-minute information including schedules, maps and a blog, can be found at www.festivalofmaps.org.

Mapping the Road to the Future

Nearly 250 years ago, Captain Cook set sail with a new kind of chronometer and for the first time was able to accurately measure longitude and pinpoint his position on a map. Today we go to a website to chart the best route to a new restaurant and use an in-car navigation system to get us there. Computer animation, videos, and interactive displays throughout the exhibition provide engaging opportunities to understand all of these technologies.

Chicago-based NAVTEQ, *Maps* sponsor, has contributed to these displays that demonstrate how mapping technologies and information impact modern daily life. "The need to understand where we are and where we are going is as old as the human race itself. Printed maps have addressed this need over time. But in today's world where location, directions, and guidance are essential components of our daily lifestyle, digital maps are transforming the way we use such information and are helping us find our way to people, places, and opportunities more easily and safely than ever before," says Judson C. Green, President and CEO, NAVTEQ Corporation. **ITF**

Maps: Finding Our Place in the World is organized by The Field Museum and The Newberry Library.

Presented by NAVTEQ

Exploring Innovations in Agricultural Science

A Conversation with Michael O. Dillon

By Kara E. Rogers, *Writer*

With today's rebirth of organic farming and sustainable agriculture, The Field Museum is looking back to the turn of the 20th century to see what we can learn from American agriculturist George Washington Carver. Born a slave during the Civil War and later joining the faculty at what is today Tuskegee University, Carver's imagination and innovations have touched people from all walks of life. Michael O. Dillon, PhD, chair of the Department of Botany at The Field Museum, discusses the upcoming exhibition, *George Washington Carver*, which opens Feb. 1, and runs through July 6, 2008.



DIANE ALEXANDER WHITE

Dr. Michael Dillon is an expert on the flowering plants of the Neotropics.

ITF: *What was the inspiration for The Field Museum's exhibition on Carver?*

Dr. Dillon: Well, Carver was a humanist and a scientist, and he was a pioneer in nearly everything he did. His bridging of relations between blacks and whites at the turn of the 20th century was remarkable, and as a scientist, he did things that were innovative. He took things that were around him and made them into scores of different products. He is also inspiring because he spent so much of his time helping others.

ITF: *What were some of the factors in Carver's life that made him so versatile?*

Dr. Dillon: His mother and father died when he was very young and he was raised by his former owner, Moses Carver. He also grew up in a very rural setting in Diamond Grove, Missouri (today known as Diamond), where everybody lived by common-sense rules. These things taught him about the importance of helping others and living off of what he had.

He had a great imagination. Carver was a wizard at showing people how to make drapes out of flour sacks or cotton sacks and making a sort of white wash to use on the exterior of their homes. All of these products he showed people how to make were made from plants.

Carver was also accepted among many whites; more so in Iowa when he was at Simpson College and later Iowa State, than when he was at Tuskegee in Alabama. There was a very different culture then between Iowa and Alabama, and probably it was a bit of a shock for him moving there. The poverty when he arrived in Alabama must have been striking because cotton was king, and the soils were depleted, and everything was much more run down. But, overall, among blacks and whites, he was largely accepted, and this certainly contributed to his versatility. I think his attitude of 'Hey, we can do it,' was also very important.



ITF: *What are some of the highlights of the Carver exhibition?*

Dr. Dillon: One of the real highlights is some video footage of Carver, which is very rare. We also have a recorded interview with him from probably toward the end of his career. He discusses some of his work and how he developed different products. Another interesting aspect of the exhibition is that we will have on display a lot of artifacts from Tuskegee University, where he spent most of his career.

ITF: *What do you hope visitors will learn?*

Dr. Dillon: I hope that it's going to be uplifting. I think people will realize how far ahead of his time Carver was, while also really being a man of his time. We can also learn from his work on plants, not just about the many peanut products he made. He contributed a lot to agriculture, such as crop rotation, efficient use of water, planting legumes to return nitrogen to the soil, and using cow manure as fertilizer. Many of the other things he did a century ago, like trying to make bio-fuels, we're just starting to come around to.

'I think people will realize how far ahead of his time Carver was, while also really being a man of his time.'

ITF: *The Field Museum also is showing an exhibition of beautiful botanical paintings through Jan. 6, 2008. Talk a little bit about the exhibition, Plant Portraits: The California Legacy of A.R. Valentien.*

Dr. Dillon: The San Diego Natural History Museum discovered a group of over 1,000 paintings that had been commissioned back in the early 1900s by the artist Albert Robert Valentien. These paintings were virtually unknown, and they are paintings of native plants of California. There is a tremendous selection of plants, they are done in a really excellent way, and we're showing 40 of the best ones. They are anatomically and morphologically correct representations. The art of botanical representation is something that is still done today. When I discover a new species I always have an illustration done for it, and we all wish we could afford to commission a paintings like Valentien's. The exhibition also features art by modern-day botanical artists. [More about Plant Portraits on page 12.] **ITF**

Lead Sponsor: Motorola Foundation
Major Sponsor: Sara Lee Foundation

Above, clockwise from top: Carver in his lab, examining a yucca plant, and posed with Henry Ford, who like Carver experimented with plant-based fuels.

ALL IMAGES © TUSKEGEE UNIVERSITY
ARCHIVES/MUSEUM



Always interested in sharing his discoveries to help others, Carver used this insect sheet as a tool to teach farmers about pests.



KAREN CARR

Mastodon Camp!

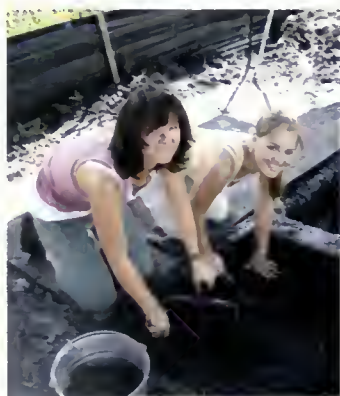
The Field Museum, Teachers, and Young Scientists Excavate an Ice Age Beast

By Richard A. Kissel, Science Program Developer

Enthusiastic dig participants uncovered dozens of bone, tusk, and wood fragments from an American mastodon.



RICHARD KISSEL



RICHARD KISSEL

Ann Covert (left) of Naperville's May Watts Elementary School and Meredith Lanan of St. Charles North High School dig in.

Stripped of its technical language, its lengthy monographs, and its inevitable politics, science is actually quite simple: it is the attempt to understand the world in which we live. Whether its focus is the life that surrounds us, the workings of our planet, or the birth of stars, all science starts with a basic question. Scientists are simply those kids who never stopped asking: Why?

In 2005, several molars and a rib fragment of an 11,500-year-old mastodon were discovered in DuPage County at Pratts Wayne Woods Forest Preserve. Standing nearly 10 feet tall and weighing up to six tons, the American mastodon (*Mammuth americanum*) was one of the greatest mammals to ever thunder across the Midwest. But by 10,000 years ago, the great mastodon, as well as many other ice age mammals, fell to extinction.

Typically, a team of specialists would excavate the remaining mastodon fossils. Instead, The Field Museum's Education Department and the Forest Preserve District of DuPage County developed *Mastodon Camp!*, a two-week program that allowed 12 teachers and 22 high school students to participate in the dig.

During the first three days of the *Mastodon Camp!*, participants attended lectures and behind-the-scenes tours at the Museum, where they focused on paleontology and archaeology. They then spent seven days in DuPage County, where—thousands of years ago—a mastodon lay down near the edge of a lake and took its last breath.

Conditions at the excavation site certainly weren't ideal. It was hot and muddy. At one point, participants were threatened by a tornado warning. But despite the conditions, the enthusiasm of the teachers and students made the program an overwhelming success. And although complete bones proved elusive, the group uncovered dozens of bone, tusk, and wood fragments.

Those familiar with science know that it possesses a history punctuated by change. In a type of academic natural selection, the discoveries and ideas of one generation are inherited by the next, which then contributes its own discoveries and ideas, and so on. Teaching the next generation is therefore critical to the progress of science. As future scientists pass through their doors, it is hoped that the 12 participating *Mastodon Camp!* teachers are inspired to bring their experience into the classroom. For the 22 *Mastodon Camp!* students, this experience has allowed them to pursue their interest in science, and hopefully compel them to never stop asking, "Why?" **ITF**

'Scientists are simply those kids who never stopped asking: Why?'

EXPLORE MASTODON CAMP! AT WWW.FIELDMUSEUM.ORG/EXPEDITIONS

Support for this project provided by The Grainger Foundation.

DECEMBER–FEBRUARY

The Field
Museum

program calendar

WINTER 2007/08

National Geographic Live! Speaker Series

NATIONAL GEOGRAPHIC LIVE! BRINGS YOU ENTERTAINING AND VISUALLY SPECTACULAR PRESENTATIONS BY DYNAMIC NATIONAL GEOGRAPHIC EXPLORERS, SCIENTISTS, FILMMAKERS, AND PHOTOGRAPHERS.

The spring series will feature **DAVID DOUBILET**, considered the leading underwater photographer in the world. Doubilet has shot more than 60 stories for NATIONAL GEOGRAPHIC, introducing a generation of readers to the mysteries and wonders of the deep. Join us for a magical evening as Doubilet takes us into remote, delicate, and sometimes dangerous underwater Edens.

4-part series runs February–May.

SERIES TICKETS ON SALE DECEMBER 6!

UNRESERVED SEATS:

\$84, \$70 members, \$48 students & educators/SERIES

PATRON SEATS: \$110, \$100 members/SERIES

EXPLORERS CIRCLE PACKAGE: \$360, \$350 members/SERIES

SINGLE TICKETS ON SALE JANUARY 17!

UNRESERVED SEATS:

\$24, \$22 members, \$15 students & educators

PATRON SEATS: \$30, \$28 members

For information on program tickets for National Geographic Live!, please call **312.665.7400** or visit **www.nglive.org**.

DAVID DOUBILET

DAVID DOUBILET



PROGRAM TICKETS & INFO > 312.665.7400 GENERAL MUSEUM INFO > 312.922.9410 VISIT > www.fieldmuseum.org

Please note: Refunds will be issued by Field Museum staff, minus a \$10 processing fee, for group and family overnights only.

Cancellations must be made 24 hours in advance of the overnight in order to receive a refund. No refunds or exchanges are permitted for any other programs. Fees for programs that are cancelled by The Field Museum will be refunded in full.

december

KRAFT STORY TIME*

Take a seat in the Crown Family PlayLab to hear a story and make an art project—all in 20 minutes!

EVERY SATURDAY & SUNDAY, 11:30am & 1:30pm

MORNING STORIES* (members only)

Listen to a story before you set off on an exploration of The Field!

EVERY MONDAY, WEDNESDAY, & FRIDAY, 9:30am

NATIONAL GEOGRAPHIC LIVE!

CONNECT WITH ANYBODY, ANYWHERE Lecture

Journey alongside Annie Griffiths Belt, a veteran National Geographic photographer, as she explains how to find common ground in uncommon places.

DECEMBER 11, 7:30pm

UNRESERVED: \$24, \$22 members, \$15 students/educators

RESERVED: \$30, \$28 members

USDA SCIENTIST AT THE FIELD

Visit *Underground Adventure* and get a chance to see and feel different soil types!

DECEMBER 13, 11am–2pm

Free with admission to *Underground Adventure*

FAMILY FIELD DAY*

Meet your favorite WTTW Kids character, Clifford the Big Red Dog, while you hear a story or take part in free art and science activities! Third Saturday of every month.

DECEMBER 15, 10am–2pm

SCIENTIST AT THE FIELD*

Meet a Field Museum scientist and see rarely displayed specimens from our collections.

DECEMBER 15, 11am–2pm

ARTISTS AT THE FIELD*

Get tips from professional artists throughout the Museum as they draw, paint and sculpt.

DECEMBER 15, 11am–2pm

ARTISTS AND AUTHORS*

Carl R. Sams II and his wife Jean Stoick create children's books about wildlife and their niece and nephew Laura and Robert Sams turn them into movies. This wonderful winter afternoon includes a reading of their book *Stranger in the Woods* and a screening of the movie. Families will be invited to build a snowman (weather permitting) or create a craft snowman.

DECEMBER 15, 1pm–4pm

january

DOZIN' WITH THE DINOS Overnight

JANUARY 4 & 11, 5:45pm–9am • \$55, \$47 members & groups
Pre-registration required.

TWO OF US: TRACKS IN THE SNOW Family Workshop

Sing songs and create art projects while learning how to identify and match tracks to winter animals. For families with children ages 3–5.

MONDAYS, JANUARY 7–28, 10am • \$32, \$23 members

Price is per 4-week session and includes one chaperone per child.
Pre-registration required.

MAPS: FINDING OUR PLACE IN THE WORLD* Lecture Series presented by The Field Museum and The Newberry Library

Chart an extraordinary journey through culture and technology! This six-part series will feature presenters from all disciplines.

SATURDAYS, JANUARY 12, 19 & 26, 11am at The Newberry Library
Admission is free. For more information, call 312.255.3700 or visit www.fieldmuseum.org/maps.

FAMILY FIELD DAY*

Meet your favorite WTTW Kids character, Curious George, while you hear a story or take part in free art and science activities!

JANUARY 19, 10am–2pm

WHODUNNIT? SOLVING A NATURAL HISTORY MYSTERY Family Workshop

Someone took our snowman's nose! All that is left are six sets of tracks. Help us solve this mystery. For families with children ages 5–10.

JANUARY 19, 10am • \$5, \$3 members

Pre-registration required.

VOICES: CELEBRATING THE LIFE OF MARTIN LUTHER KING, JR.*

Enjoy a choral performance from community choirs as we celebrate the legacy of Martin Luther King, Jr. through song.

JANUARY 19 & 20, 12pm

THE MLK PROJECT: THE FIGHT FOR CIVIL RIGHTS*

Written by Yolanda Androzso, Directed by Ron OJ Parson, SSDC,
Performed by Sharyon Culberson

Weaving together poetry, songs, images, personal interviews and speeches, join us for this play about the Midwest experience during the Civil Rights Movement.

JANUARY 19, 20, & 21, 2pm

EVOLVING SCIENCE AT THE FIELD*

Come hear Field Museum Provost Dr. Neil Shubin discuss his new book *Your Inner Fish* which shows the extraordinary impact the 3.5 billion year history of life has had on the human body.

JANUARY 26, 2pm

february

TUSKEGEE UNIVERSITY: THE CARVER LEGACY* Lecture

Understand George Washington Carver's powerful impact on Tuskegee University and his role in shaping it to be a world-class institution.

FEBRUARY 2, 2pm

THE JOHN WORK CHORALE*

Hear a performance by this singing group named in honor of composer, educator, choral director, and ethnomusicologist John Wesley Work, II.

FEBRUARY 3, 12pm

TUSKEGEE SCIENCE STATIONS*

Learn about the latest science projects coming out of Tuskegee University, including research on the sweet potato, and meet the Tuskegee graduate students leading those efforts.

FEBRUARY 2 & 3, 11am–2pm

TWO OF US: PEANUTS! Family Workshop

Did you know that peanuts can be used to make things like shampoo, plastic and paint? Join us for this four-week excursion where you will learn about the inventions of George Washington Carver. For families with children ages 3–5.

MONDAYS, FEBRUARY 4–25, 10am • \$32, \$23 members

Price is per 4-week session and includes one chaperone per child. Pre-registration required.

DOZIN' WITH THE DINOS Overnight

Spread your sleeping bag in the middle of some of our most popular exhibitions! For families with children ages 6–12.

FEBRUARY 15 & 22, 5:45pm–9am • \$55, \$47 members & groups

Pre-registration required.

PEANUT BUTTER AND CARVER! Family Workshop

Come learn about George Washington Carver as a young boy who was curious about the world around him just like you! For families with children ages 2–6.

FEBRUARY 16, 10am • \$5, \$3 members

Pre-registration required.

FAMILY FIELD DAY*

Meet your favorite WTTW Kids character, Hooper, while you hear a story or take part in free art and science activities!

FEBRUARY 16, 10am–2pm

SCIENCE IN YOUR BACKYARD Family Workshop

Learn how George Washington Carver used plants in his inventions by conducting experiments on plants found in your own backyard! For families with children ages 6–12.

FEBRUARY 16, 10am • \$7, \$4 members

Pre-registration required.

exhibitions

CROWN FAMILY PLAYLAB

PERMANENT EXHIBITION

Little explorers have their own place in a big museum! Watch your little explorer dig up dino bones, grind corn in a Pueblo, make music with instruments from around the world, and lots more!

The Crown Family PlayLab is generously sponsored by the Crown family.

DARWIN

THROUGH JANUARY 1, 2008

Discover the man and the revolutionary theory that changed the world.

Darwin is organized by the American Museum of Natural History, New York in collaboration with The Field Museum, Chicago; the Museum of Science, Boston; the Royal Ontario Museum, Toronto, Canada; and the Natural History Museum, London, United Kingdom.

PLANT PORTRAITS:

THE CALIFORNIA LEGACY OF A.R. VALENTIEN

THROUGH JANUARY 6, 2008

Albert Valentin's vivid, precisely observed watercolors portray plants from California's deserts, mountains, and rocky beaches.

This exhibition was organized by the San Diego Natural History Museum with the collaboration of the Irvine Museum.

HIGHLIGHTS FROM THE

MARY W. RUNNELS RARE BOOK ROOM

THROUGH JANUARY 20, 2008

Feast your eyes on an exquisite selection of unique and rare books, hand-written manuscripts, and prints drawn from the spectacular collections of The Field Museum's Library.

The new Brooker Gallery is made possible by a gift from T. Kimball and Nancy N. Brooker. The gallery's inaugural exhibition was organized by The Field Museum.

MAPS: FINDING OUR PLACE IN THE WORLD

THROUGH JANUARY 27, 2008

More than one hundred of the world's greatest maps chart an extraordinary journey through culture, technology, and imagination.

Maps: Finding Our Place in the World is organized by The Field Museum and The Newberry Library.

Presented by NAVTEQ

This exhibition is supported by an indemnity from the Federal Council on the Arts and the Humanities.

GEORGE WASHINGTON CARVER

FEBRUARY 1, 2008 THROUGH JULY 6, 2008

Discover George Washington Carver, scientist and humanitarian, whose groundbreaking work creating products from plants continues to influence scientists—and our own lives—today.

This exhibition was created by The Field Museum in collaboration with Tuskegee University and the National Park Service.

Lead Sponsor: Motorola Foundation

Major Sponsor: Sara Lee Foundation

don't miss these special programs!

CELEBRATE THE OPENING OF GEORGE WASHINGTON CARVER BY PARTICIPATING IN THE FOLLOWING PROGRAMS:

THE CHICAGO CHILDREN'S CHOIR*

Enjoy a special performance by The Chicago Children's Choir — a multicultural choral music education organization shaping the future by making a difference in the lives of children.

FEBRUARY 2, 12pm

TUSKEGEE UNIVERSITY: THE CARVER LEGACY* Lecture

Understand George Washington Carver's powerful impact on Tuskegee University and his role in shaping it to be a world-class institution.

FEBRUARY 2, 2pm

THE JOHN WORK CHORALE*

Hear a performance by this singing group named in honor of composer, educator, choral director, and ethnomusicologist John Wesley Work, III.

FEBRUARY 3, 12pm

*FREE WITH MUSEUM ADMISSION

TWO OF US: PEANUTS! Family Workshop

Did you know that peanuts can be used to make things like shampoo, plastic and paint? Join us for this four-week excursion where you will learn about the inventions of George Washington Carver. For families with children ages 3–5.

MONDAYS, FEBRUARY 4–25, 10am • \$32, \$23 members

Price is per 4-week session and includes one chaperone per child. Pre-registration required.

PEANUT BUTTER AND CARVER! Family Workshop

Come learn about George Washington Carver as a young boy who was curious about the world around him just like you! For children ages 2–6.

FEBRUARY 16, 10am • \$5, \$3 members

Pre-registration is required.

SCIENCE IN YOUR BACKYARD Family Workshop

Learn how George Washington Carver used plants in his inventions by conducting experiments on plants found in your own backyard! For children ages 6–12.

FEBRUARY 16, 10am • \$7, \$4 members

Pre-registration is required.

visitor information

GETTING HERE: Field Museum visitors can park in Soldier Field's parking garage. Visit www.fieldmuseum.org for information on parking lots/rates, and public transit.

HOURS: 9am–5pm daily. Last admission at 4pm. Hours are subject to change.

ADMISSION AND TICKETS: Member passes can be reserved through the membership department (312.665.7705) or picked up at the membership services desk. For non-members, The Field Museum's gold pass, which includes general admission plus one special exhibition, ranges in price from \$8 to \$19, depending on your age and whether you are a Chicago resident. Please bring your ID to receive the appropriate ticket price. Tickets are available at the Museum's admission desks, or in advance via www.fieldmuseum.org or **866.FIELD.03**. For admission and ticket details, visit www.fieldmuseum.org.

ACCESSIBILITY: Visitors using wheelchairs or strollers may be dropped off at the new East entrance or at the West entrance. Call 312.665.7400 to check on the accessibility of programs that take place outside of the Museum.

INFORMATION: 312.922.9410 or www.fieldmuseum.org



MIKE SIDOREK

The Field Museum salutes the people of Chicago for their long-standing, generous support of the Museum through the Chicago Park District. In addition, Museum programs are partially supported by a CityArts Program 4 Grant from the City of Chicago Department of Cultural Affairs and the Illinois Arts Council, a state agency.

In accordance with Title IX of the Education Amendments Act of 1972, we do not discriminate on the basis of sex in our programs or activities. Please call 312.665.7271 to contact our Title IX Coordinator in the human resources department should you have any questions or concerns.

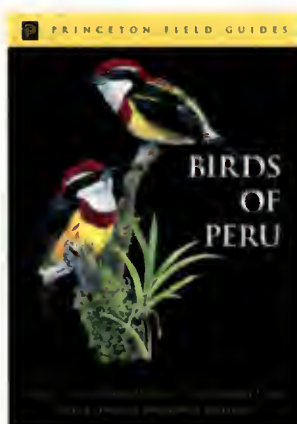
Birds of Peru: New Field Guide by Museum Scientists is a Landmark Tool for Conservation

There are field guides to birds.

Field guides to mammals, insects, wildflowers. Field guides to the planets and stars. Field guides are so deeply ingrained in our culture that the “field guide” label now lends itself to humorous parodies such as *Flattened Fauna: A Field Guide to Common Animals of Roads, Streets, and Highways*. As easy as the field guide is to take for granted, it is a deceptively revolutionary form of literature, enabling us to put names to the plants and animals that we see around us. In this way, the original field guide, Roger Tory Peterson's first handbook to the birds of eastern North America, brought generations of U.S. citizens into the conservation movement.

But field guides are unavailable for many parts of the world. Ironically, the countries without field guides often are those with the most species. Peru is one such country, blessed with 1800 bird species but no functional guide. *Birds of Peru*, released in November 2007 by Princeton University Press, and with a Spanish edition following shortly, is designed to fill this void.

The 304 color plates include all bird species reported from Peru. Opposite each plate is a concise summary of key information—habitat and abundance, behavior and voice, appearance and field marks—to supplement the superb illustrations. This stripped-down format makes *Birds of Peru* a guide to be carried into the field, not left behind in the car, hotel, or research station.



Birds of Peru authors Tom Schulenberg (left) and Doug Stotz (right).

This book had its origins more than 30 years ago, during campfire conversations between John P. O'Neill, PhD, then of Louisiana State University, and the late Ted Parker, who became the premiere field ornithologist of Latin America and an ardent conservationist. Following Parker's death in Ecuador in 1993, the book project ground to a halt. It was resurrected by The Field Museum in the late 1990s, as Doug Stotz, PhD, and I, both of Environmental and Conservation Programs, took the lead in completing this tool for field identification. The product is a true team effort, with five authors, 13 artists, assistance from most of the world's natural history museums, and input from dozens of birders and ornithologists.

Eagerly anticipated for years, *Birds of Peru* will reach the thousands of birders, ecotourists, and more traditional tourists who visit Peru's natural areas with the desire to be enchanted by its birdlife. A forthcoming Spanish edition greatly will extend the reach of the book. Like the Peterson guides in the U.S., the Spanish *Aves del Perú* will bring the splendor of Peru's biological treasures to all Peruvians, and greatly advance bird conservation in Peru. **ITF**

Thomas S. Schulenberg, PhD, Conservation Ecologist, Environmental and Conservation Programs contributed this Scientist's Pick.

CELEBRATE BIRDS OF PERU

AT A RECEPTION ON
WEDNESDAY, DEC. 5TH
AT 5:30pm

- Guest speaker:
Cornell's John Fitzpatrick
- Book sales and signing
- Specimens from
the collection

This event is free and open to all who RSVP to djmartin@fieldmuseum.org or call 312.665.7434 by Nov. 27th.

Museum Expeditions: On-line Exploration and Fieldwork

by Lance Grande, PhD, Senior Vice President, Head of Collections and Research

Whether fishing for 50-million-year-old fossils in the high mountain deserts of Wyoming, exploring deep sea vents 8,000 feet below the surface of the Pacific Ocean, or collaring lions in the Kenyan bush, Field Museum scientists are all over the world. Get virtual access to our scientists in the field with a click of your mouse through expeditions@fieldmuseum!



AKIKO SHINYA



HANS PLENGE



ANDREW KARANJA

Field Museum curators in the field, from left: Lance Grande wields a power saw at a Wyoming excavation, Corine Vriesendorp waits for the perfect shot in Peru, and Bruce Patterson collars a lion in Tsavo, Kenya.

The Field Museum is firmly committed to outreach activities that effectively communicate our mission and programs. So it should be no surprise that we are continually looking for ways to better communicate our diverse scientific programs to the broadest possible audience. The expeditions@fieldmuseum program is one of those communication pathways, and it serves to highlight fieldwork of both Collections and Research, and our Environmental Conservation Programs. It is one of many ways we translate the Museum's unique assets in biodiversity and cultural patrimony into something for public enrichment.

Expeditions@fieldmuseum is a web-based outreach program that allows visitors virtual access to field trips with Field Museum scientists via web-casts, e-mail dispatches, interactive maps, photo galleries, and videos. The site provides an inside look at exploration and research in places ranging from international frontiers to Chicago's own backyard. It is currently the Museum's primary distance learning program and the most successful science program on the website. It is also the only online program that communicates the Museum's explorations and scientific work to both general and classroom audiences. The site provides an over-the-shoulder feeling of immediacy and an in-depth, yet accessible, overview of featured research areas.

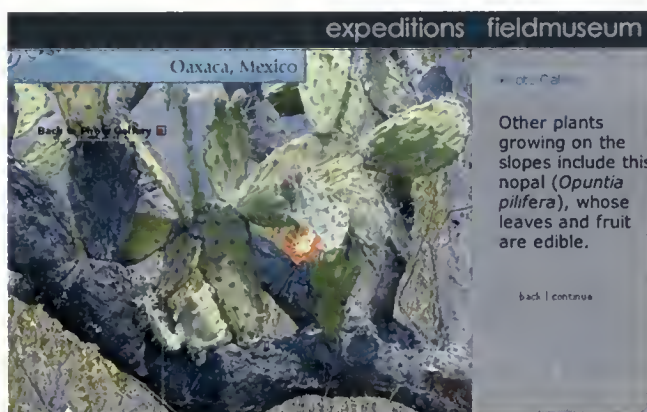
History

Expeditions was created in 2002 with a generous grant from the Negaunee Foundation. The first featured scientists were Gary Feinman, PhD, curator, Department of Anthropology, at his archaeological excavation at El Pamillo Oaxaca in Mexico, and Janet Voight, PhD, curator, Department of Zoology, at her underwater exploration of deep sea hydrothermal vents in the East Pacific Rise. There were 21 expeditions with 10 different scientists between 2003 and 2006, all viewable at <http://www.fieldmuseum.org/expeditions>, including:

- Dinosaur dig in Wyoming
- Fossil fish excavation in Wyoming
- Deep Sea Vents in the Pacific Ocean
- Archaeology in Oaxaca, Mexico
- Archaeology in Peru
- Archaeology in Shandong, China
- Archaeology in the Kankakee Valley, IL
- The Chicago Peregrine Falcon Program
- Behind-the-Scenes with The Field Museum's Mammal Collections
- Maneless lions in Tsavo, Kenya
- Tropical fungi in Costa Rica

In 2006, the Collections and Research Division was awarded another generous grant of \$150,000 by the Negaunee Foundation for continuation of the program, which by then had grown substantially—growing from 550 subscribers in 2003 to about 3,000 (including 250 teachers). The site now averages well over 2,500 visitors per month from all 50 states, the UK, Australia, Japan, Canada, Ghana, and Kenya.

Currently, we are moving our video to a high-definition format, increasing the number of featured projects each year, increasing the geographical coverage, and looking for ways to tie in other types of electronic media. We will also continue to archive all *expeditions* websites to build a large, comprehensive electronic library for the general public.



'The site provides an inside look at exploration and research in places ranging from international frontiers to Chicago's own backyard.'

Some of the projects available now or planned for 2007–2009 include:

- Mastodon excavation in Dupage County, IL
- Small mammals in the Philippines
- Toucans in South America
- Conservation in Ecuador and Peru
- The Museum's new Collections Resource Center (CRC)

The Field Museum is invested in breaking through to new frontiers—exploring new field sites, making new research discoveries, and developing new technologies to better communicate what we are doing. Please visit our site at www.fieldmuseum.org/expeditions and let us know what you think of it. **ITF**

www.fieldmuseum.org/expeditions

Plant Portraits: The California Legacy of A.R. Valentien



Watercolors of the calabazilla and Hairy Matilija poppy show Valentien's precision and powers of observation.

© SAN DIEGO NATURAL HISTORY MUSEUM

The Field Museum Showcases Botanical Watercolors Through January 6

Chicago's winter grayness finds a welcome counterpoint in the beauty of California's flowers and flora, as seen in *Plant Portraits: The California Legacy of A.R. Valentien*, on view until January 6, 2008. The exhibition showcases 40 watercolor paintings.

In 1908, an artist named Albert Robert Valentien embarked on a remarkable undertaking: he set out to document the plants of California by painting precisely observed portraits of the plants he collected on his travels throughout the extremely diverse ecosystems of the state, from deserts to high alpine forests to rocky oceanfront beaches. Originally commissioned by San Diego philanthropist Ellen Browning Scripps to paint California wildflowers, he dedicated the next 10 years to capturing the beauty of California's countryside. Many of the 1,000 paintings he created chronicle plants that are endemic to California and many of those plants are now rare or endangered.

Valentien (1862–1925) came to the project without any formal botanical training. A native of Cincinnati, he studied painting at the University of Cincinnati School of Design and began his career as a pottery designer, working first for Wheatley Pottery in Cincinnati and then working with great success for 24 years at the renowned Rookwood Pottery.

His California watercolors depict the unique features of each plant he chose, so that leaves and flowers seem to curl with life and freshness off the paper. Originally, Valentien assumed that his work would be published at its completion; however the project's benefactress felt the publication would be too costly. The exhibition's catalogue *Plant Portraits: The California Legacy of A.R. Valentien*—a fine volume of essays and 325 color illustrations—was finally published by the Irvine Museum and the San Diego Natural History Museum in 2003. **ITF**

This exhibition was organized by the San Diego Natural History Museum with the collaboration of the Irvine Museum.

'His California watercolors depict the unique features of each plant he chose, so that leaves and flowers seem to curl with life and freshness off the paper.'



GEORGE PAPADAKIS

Capital Campaign Approaches Final Phases

The Campaign for The Field Museum: Understand the Past, Shape the Future is in the final phases of its ambitious plan to raise \$176 million. Conceived as an initiative for improvement that would affect every corner of the institution, it addressed nothing less than a complete upgrade of the Museum's technology, facilities and scientific capabilities. Led by Campaign Chairman Marshall Field V, the Campaign makes possible the priorities identified in the Museum's strategic plan, a roadmap for the institution's work for years to come. The Campaign has focused on funding initiatives such as the new *Evolving Planet* and *Ancient Americas* exhibitions and the construction of our 180,000 square-foot storage facility, the Collections Resource Center (CRC). We are more than 92% toward the \$176 million goal, thanks to our wonderful community of supporters, including many of you.

While the Campaign has been a great success, it is now in its final quarter. During this critical phase of the Campaign, we are reaching out to thousands of households via letter and telephone. "Many of the exhibitions and projects that were key funding priorities of this Campaign have been already opened to the public and are expanding the reach of the Museum both to its visitors and the scientific community," noted Field. "However, funds are still needed to help us reach the campaign goal, and every dollar counts. Please join me in helping the Museum grow and plan for the future."

Campaign contributions are donations over and above memberships or annual unrestricted gifts. To learn more about opportunities to make a contribution to the *Campaign for The Field Museum*, please call 312.665.7666, or email campaign@fieldmuseum.org. **ITF**



JOHN WEINSTEIN/GN91071.40D



© THE FIELD MUSEUM

Left, from top: The Campaign for The Field Museum has made possible Evolving Planet, new storage facilities in the Collections Resource Center, and the just-opened Ancient Americas exhibition.

Below: Campaign Chair Marshall Field has stewarded the Campaign.

CAMPAIGN *for* THE FIELD MUSEUM

UNDERSTAND THE PAST
SHAPE THE FUTURE



PAM PEAK

Theatres of Nature: Dioramas at The Field Museum New Book Showcases Popular Collection

Gaze through the glass curtain of any given diorama at The Field Museum. A magical world of nature unfolds: distant lands, rare species, and exotic vegetation.

The diorama, with its rich array of animals, flora, and landscape painting, offers a panorama of life, a kaleidoscope of the Earth. A sensory experience as much as an intellectual one, the dioramas at The Field Museum encompass geography, taxidermy, landscape painting, expeditions, and botanical models.

For generations, The Field Museum's 85 dioramas have engaged the imaginations of visitors of all ages, drawing them into vivid encounters with the wonders of our natural world. Generations

of youngsters have stared at giraffes grazing by an African water-hole, or delighted in the reckless agility of gibbons swinging from branch to branch. Those same youngsters returned as adults to contemplate the exotically plumaged birds resting in a papyrus-filled marsh or to marvel at nature's glorious diversity. Regardless of age, all visitors experienced vicariously the thrill felt by those who first spotted the animals in their habitats. Striking tableaux, created by artists and craftsmen of exceptional skill and training, presented a kind of stage set, waiting only for a visitor's eyes and imagination to come to vibrant life. For many, the dioramas were their first encounter with the wildlife of another country. Even in this internet age, the dioramas offer an immediacy and sense of immersion that resonate with the viewer, providing a meaningful context for understanding.



The Field Museum's African Water-Hole diorama was the world's largest diorama at the time of its unveiling.



JOHN WEINSTEIN/Z94464.23D



CSZ52015

In 1924, Mrs. Marshall Field III captured a jaguar still on view in the Museum's Capybaras and Jaguar diorama.

'For generations, The Field Museum's 85 dioramas have engaged the imaginations of visitors of all ages...'

Now, for the first time, the Museum's dioramas have been documented in a new book, *Theatres of Nature: Dioramas at the Field Museum*. Authored by Sally Metzler, PhD, the book discusses the rich history of Field Museum dioramas and some of the colorful personalities involved in creating them, from Hemingway-esque big-game hunters to the brilliant taxidermist Carl Akeley, legendary as much for strangling a leopard with his bare hands as for the innovations he introduced. An in-depth look at selected highlights and a comprehensive catalogue of every diorama in the Museum's collection complete the book.

Today, The Field Museum continues the tradition of creating dioramas as an exhibition and education strategy. Recently created mini-dioramas in *The Ancient Americas* permanent exhibition provide insight into the lives of Aztec village inhabitants and their culture. Beloved by visitors of all ages, the Field Museum dioramas continue to educate, illuminate, and charm with their evocations of nature. **ITF**

Advance Preview: 2008 Special Exhibitions

Members can look forward to free tickets to a wealth of special exhibitions in 2008. The number of free tickets is based on your level of membership. Family memberships receive four tickets, while individual and senior members receive two and student members one ticket. Next year's ticketed exhibitions include:



Mythic Creatures: Dragons, Unicorns & Mermaids (March 21–Sept. 1) traces the cultural and natural history roots of some of the world's most enduring mythological beasts of land, sea, and air, such as dragons, griffins, mermaids, sea serpents, and unicorns. This exhibition will feature preserved specimens and fossils of prehistoric animals to

investigate how they could have inspired the development of these legendary beasts. Spectacular sculptures, paintings, textiles, and cultural objects illuminate the surprising similarities as well as differences in the ways people around the world have envisioned these legendary creatures. *Pictured left: This sculpture of Pegasus, the winged horse of Greek mythology, was carved by Joe Leonard, a noted contemporary American woodcarver.*

© ANDREW RESSETTI, ON LOAN FROM BETTY JEAN CONANT



Nature Unleashed: Inside Natural Disasters (May 23–Jan. 4, 2009) will go beyond the sensational headlines to explore the principles at work behind Earth's most powerful natural phenomena: earthquakes, tornadoes, hurricanes, volcanoes, and tsunamis. Offering visceral experiences, compelling media, and multi-disciplinary

science, the exhibition will also feature real objects that tell stories about the impact these phenomena have on our lives, and how the choices we make can lessen or worsen the ways that natural disasters affect our lives.

Pictured left: Tornado seen during a thunderstorm offers spectacular evidence of nature's power. © DON FARRALL/PHOTODISC/GETTY IMAGES

Aztecs (Nov. 2–Apr. 19, 2009) celebrates the remarkable skill of pre-Columbian artisans and examines the sophistication and complexity of the vast but short-lived Aztec Empire during the 16th century. Colorful ceramic goblets, glittering gold pendants and ear spools, obsidian masks, and intricate stone figurines of deities—drawn mostly from the vast collections at the National Anthropology Museum and the Templo Mayor Museum in Mexico City—provide valuable insight into the lives and beliefs of the many levels of Aztec society.

News You Can Use

Gift Memberships the Perfect Holiday Gift

During the holiday season it's only too easy to become overwhelmed by shopping hassles. Why not make it easy on yourself with the perfect one-size-fits-all gift: a gift membership to the Field Museum, available at the click of a mouse in the museum's online store.

Not only does membership mean free museum admission all year, but free passes to special temporary exhibitions and invitations to exclusive member previews. Members receive discounts in the Museum Stores and the Museum's Corner Bakery and McDonald's, free tickets to our popular annual Members' Night, reciprocal admission to 200+ science and technology museum nationwide, and much more. For more information or to purchase a membership, go to either the membership or online store pages at www.fieldmuseum.org, or call 312.665.7705.

Save the Date for 2008 Members' Nights

Mark your calendars now for the ever-popular Members' Nights, scheduled for Wednesday and Thursday, March 26 and 28, 2008. Help us celebrate the opening of *Mythic Creatures*, and go behind the scenes to meet our scientists and explore our collections. For reservations or information, call 312.665.7705.

New Crown Family PlayLab Offers Special Access to Members

The *Crown Family PlayLab* is open daily from 9am to 4pm. The 9–10am hour is reserved for Field Museum members and their children only. On Mondays, Wednesdays, and Fridays at 9:30am, a special story time will be offered.

Annual Fund and Founders' Council News

Giving before year's end has never been more important! The IRA charitable rollover provision states that individuals age 70½ and older may immediately make gifts from their Individual Retirement Accounts to charitable organizations without tax penalty up to \$100,000 per taxpayer per year until Dec. 31, 2007. Since this is your last chance to take advantage of this tax benefit, there has never been a better time to give a gift to the Field.

Our Founders' Council (donors giving \$2,500 and above) has been at hard at work this year, planning 2008 events and programming. One change we look forward to is the opportunity to bring The Field Museum to you—our scientists into your communities! We currently have over 550 Founders' Council members and our goal is to increase membership in 2008. Our Annual Meeting is scheduled for Jan. 10, 2008. For more information on becoming a part of The Founders' Council please call 312.665.7773.

In addition, a gift to The Field Museum's Annual Fund not only helps to finance extraordinary exhibitions, but directly supports the scientific research and conservation currently being conducted by our scientists in over 70 countries. *This is your last opportunity to enjoy benefits by giving at the Field Contributor level of \$150–\$249. We are no longer able to offer Annual Fund benefits for gifts less than \$250 in 2008.* A substantial portion of all gifts to The Annual Fund are tax deductible. Please use the enclosed reply envelope to donate to The Annual Fund before Dec. 31, 2007 to receive these tax benefits! For more information on The Annual Fund, please call 312.665.7777 or visit www.fieldmuseum.org/annualfund.

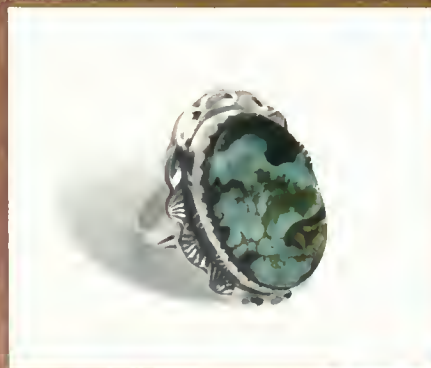
Thank you for your generous support throughout 2007!

We promise a great year in 2008.

11.26–12.02

Annual Member Discount Shopping Days

Mark your calendars for the Museum Stores' Annual Member Discount Shopping Days, which will be held Monday, Nov. 26 thru Sunday, Dec. 2 this year from 10am to 5pm daily. Field Museum members enjoy double discounts during this week, and will receive 20% off all purchases made at the onsite Museum Stores. Be sure to visit our two new stores: *The Ancient Americas* store next to the Corner Bakery, which offers stunning one-of-a-kind jewelry and artwork from the Americas; and the *What is An Animal?* store on the ground level, featuring animal-themed gifts for the whole family.



And as you plan your holiday shopping, remember to take advantage of shopping online 24 hours a day at www.fieldmuseum.org, where our online store features many Field Museum favorites as well as one-of-a-kind treasures.

*This turquoise ring by Deau Sandoval
is now available at our store.*

The **Field**
Museum
1400 South Lake Shore Drive
Chicago, IL 60605-2496