

SUMMER 2014

# in the Field

THE FIELD MUSEUM MEMBER MAGAZINE



**EDITOR**

Franck Mercurio, [mercurio-exhibits.com](http://mercurio-exhibits.com)

**PHOTO CONTENT SPECIALIST**

Nina Cummings, *The Field Museum*

**DESIGN**

Bockos Design, Inc.

All images © The Field Museum unless otherwise specified.

IN THE FIELD (ISSN #1051-4546)

is published three times a year by The Field Museum. Annual subscriptions are \$20; \$10 for schools. Museum membership includes IN THE FIELD subscription.

Opinions expressed by authors are their own and do not necessarily reflect the policy of The Field Museum.

Notification of address change should include address label and should be sent to the membership department.

**POSTMASTER**

Send address changes to:  
Membership, The Field Museum  
1400 South Lake Shore Drive  
Chicago, IL 60605-2496



**ON THE COVER**

Peru's Kampankis Mountains contain a diverse mix of Amazonian lowland and Andean montane forests. Read more about Field Museum research on Amazonian trees on pages 4 and 5.

ECCO12006 / ALVARO DEL CAMPO

The **Field**  
Museum

1400 South Lake Shore Drive  
Chicago, IL 60605-2496  
312.922.9410  
[fieldmuseum.org](http://fieldmuseum.org)

dear member

**Your Museum is a global institution.**

I recently witnessed this firsthand when I journeyed with Field Museum scientists to Peru. Every year, our researchers travel to the Andes-Amazon region of South America to conduct Rapid Inventories. These surveys document plant and animal life in this biologically diverse area of the world, and our scientists' findings have supported the establishment of millions of acres of newly protected habitats over the past decade.

As we traveled through the country, local people—urban dwellers and rural indigenous people alike—welcomed us in a way that I will never forget. Armed with cameras and paper for autographs, they flocked to our scientists.

This type of reception is not unwarranted or uncommon. The Rapid Inventory team collaborates with local communities year after year. Together, they advance partnerships that lead to the protection of precious land. By uniting our scientists' expertise with data from the Inventories, these efforts multiply the impact of Museum resources.

Your support enables us to send scientists on these expeditions and others around the world.

**You extend our global reach.**

Thank you for supporting the growth of our Field Museum family and ensuring our worldwide impact.

**RICHARD W. LARIVIERE, PHD**  
PRESIDENT AND CEO



ALVARO DEL CAMPO



© VELIZAR SIMEONOVSKI

# Madagascar: Envisioning the Past

**ISABELLE HEYWARD, EXHIBITION DEVELOPER,**

**INTERVIEWS ILLUSTRATOR VELIZAR SIMEONOVSKI**

**SINCE MOVING TO CHICAGO TEN YEARS AGO,** Velizar “Vel” Simeonovski has collaborated with Field Museum scientists to create images of animals—both extant and extinct—through the art of scientific illustration. You might have seen Vel’s work in *Mammoths and Mastodons: Titans of the Ice Age* in 2010.

Recently, Vel teamed up with Museum scientist Steve Goodman, PhD, and Bill Jungers, PhD, of SUNY Stony Brook to reconstruct the vanished habitats and species of Holocene-era Madagascar for a new book and upcoming exhibition, *Extinct Madagascar: Picturing the Island’s Past*.

Isabelle Heyward of The Field’s Exhibitions Department recently spoke to Vel about his approach to scientific illustration and how he collaborated with Steve and Bill to recreate scenes of ancient Madagascar.

**Heyward:** Can you tell me a little bit more about your background?

**Simeonovski:** When I finished art school, I decided to study biology. I have always been interested in animals. I have a master’s degree in Zoology—as well as that artistic background—which is useful.

**Heyward:** When you start an illustration, which background takes precedence, the artistic or the scientific?

**Simeonovski:** When creating a scientific illustration, I need to keep the artistic background on the back plane because the scientific illustration has a specific purpose—to demonstrate certain characteristics of animals. I approach it more like a scientist rather than an artist.

**Heyward:** How closely did you work with Steve Goodman in developing these scenes?

**Simeonovski:** We went back and forth a lot. He would tell me, “we have a cave,” or “we have bones.” He described the bones’ details and the environment where they were found, then I reconstructed the animals and developed the composition. I have to recreate his thoughts, what he is telling me. It is kind of a process.

**Heyward:** These illustrations depict many extinct animals. How do you go about illustrating species that no longer exist?

**Simeonovski:** In general, how you approach reconstruction is: you have skeletons or remains, you reconstruct the skeleton and muscles, and then you look for animals which are related or have a similar way of life. But not everything extinct has living relatives, so you look for correlations in modern animals and then apply those to extinct animals... It’s a discussion. In the end, it’s technically a scientific result, which can change if new data are found.

**Heyward:** How do you know when you’re done?

**Simeonovski:** You work until you feel it. Just work, work, work, and when you’re done, it says you’re done. **ITF**

This project is made possible by a grant from the U.S. Institute of Museum and Library Services and support from Joyce Chelberg.



# ALL THE TREES IN THE AMAZON

By Nigel Pitman, Robert O. Bass Senior Visiting Scientist

**MORE THAN A DECADE AGO, IN MARCH 2003, I ACCOMPANIED FIELD MUSEUM COLLEAGUES CORINE VRISENDORP, PHD, AND ROBIN FOSTER, PHD, ON A RAPID BIOLOGICAL INVENTORY LOOKING AT TREES ALONG**

**THE REMOTE AND UNINHABITED YAVARÍ RIVER,** where it forms the border between Amazonian Peru and Brazil. The Yavarí region was once populated by the Matsés, an indigenous people of the Amazon, and then colonized by farmers before it was abandoned due to a fierce malaria epidemic. In what looked like untouched forest, 100 km from the nearest road, we kept coming across rubber trees scarred with the distinctive signs of *tapping* (when people score the bark to harvest the tree's latex).

"How many of these things are out here?" Corine wondered.

"No idea," I said.

Little did we suspect that 11 years later we'd have an answer. In a paper published last October in *Science*\*, we and a team of colleagues used the largest database of Amazonian tree inventories ever assembled—including the tree plots we set up in 2003 on the Yavarí—to generate the first-ever estimates of the total number of trees in the Amazon (390 billion), the total number of tree species in the Amazon (16,000), and the estimated population sizes for some 5,000 individual species we were able to sample, including rubber.



COURTESY NIGEL PITMAN

*A rubber tree in the Yavarí watershed, Peru, scarred by ancient tapping marks.*

To put those numbers in perspective, there are approximately 650 tree species native to the United States and Canada.

The research was a collaboration between Field Museum researchers and colleagues from dozens of other museums, universities, botanical gardens, and government agencies around the world who have spent decades inventorying a forest nearly as large as the contiguous United States. Our findings came in part from over 1,300 individual tree inventories carried out across the Amazon, and in part from mathematical and statistical models that allowed us to extrapolate from that relatively tiny sample to the continental scale.



COURTESY NIGEL PITMAN

One of the most surprising discoveries is that an infinitesimal proportion of tree species in the Amazon account for half of all the trees there. These 227 species—just 1.4% of all Amazonian tree diversity—dominate the basin to such an extent that we had to invent a new term to describe them: *hyperdominants*.

We're pretty certain that these hyperdominants inhabit most of the corners of Amazonia where scientists have yet to set foot, but we're still puzzling over why some tree species are hyperdominant and others are rare.

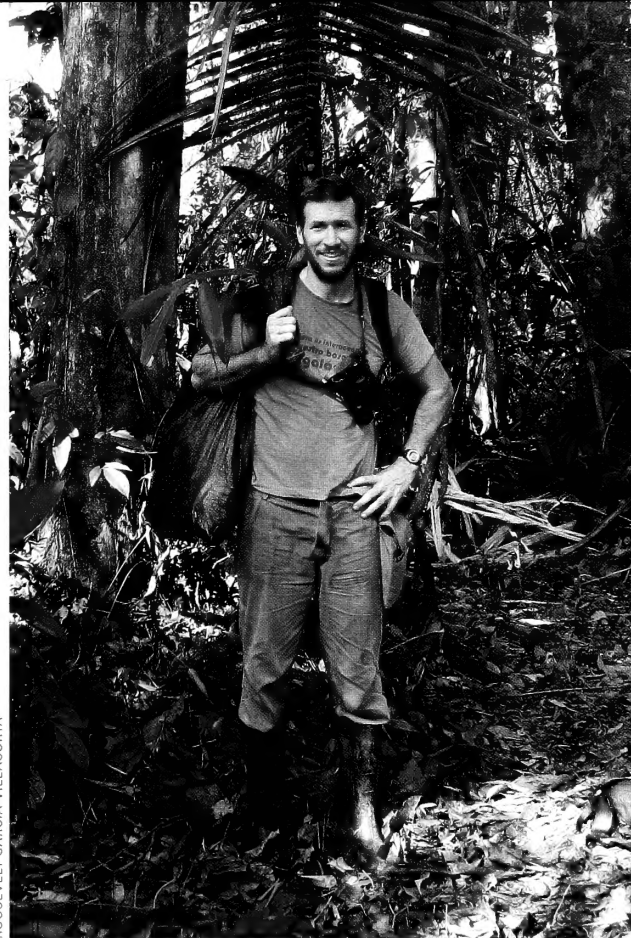
Nigel Pitman on Peru's Yaguas River in 2010.

One intriguing clue to the mystery is that a large number of hyperdominants—including Brazil nut, chocolate, açai berry, and rubber—have been used for millennia by human populations in Amazonia. Some researchers believe these trees are common because indigenous peoples found them useful and cultivated them across the Amazon region for centuries before the Conquistadors arrived. Others, however, think that the hyperdominants were already common long before the arrival of people to the Americas, presumably because they possess adaptations that allow them to out-compete the other 15,800 species in the basin.

Researchers are also trying to determine how Amazonian deforestation impacts population sizes of different tree species—which should help groups like the Museum's Science Action Center identify particular trees and regions in special need of conservation attention.

Oh, and the actual number of rubber trees in the Amazon? It's three billion. Or 1.9 billion, depending on how you parse the taxonomy. But that's another story.... **ITF**

**For more information on Amazonian trees, check-out Nigel's blog at: [fieldmuseum.org/users/nigel-pitman/blog/](http://fieldmuseum.org/users/nigel-pitman/blog/)**



ROOSEVELT GARCIA-VILLACORTA

## Scientist Spotlight: Nigel Pitman

By Franck Mercurio, Editor

Nigel Pitman began his association with The Field Museum in 1994 when he met conservation ecologist Robin Foster in Ecuador. Since then, Nigel has participated in five rapid biological inventories in the Amazon with Museum staff. Currently, Nigel is serving as the Robert O. Bass Senior Visiting Scientist until July 2014. During his one-year tenure, Nigel has conducted research and collaborated with the Museum's Director of Andes-Amazon Programs, Corine Vriesendorp, on the Amazon tree project. He has also helped to identify likely partnerships across research divisions within the Museum.

Well prepared for research in the Amazon, Nigel studied tropical biology at Princeton University and earned a doctorate from Duke University in plant ecology.

\*ter Steege, H., N. Pitman, and 118 others. 2013. Hyperdominance in the Amazonian tree flora. *Science* 342, 1243092 (2013). DOI: 10.1126/science.1243092

# The Founders' Council Welcomes NEW LEADERSHIP

By Madalyn Kenney, Annual Giving Director

**IT'S A NEW ERA FOR THE FOUNDERS' COUNCIL**, as we thank a savvy wealth manager and volunteer firefighter for his historic service, and welcome an entrepreneurial attorney and a champion of Chicago baseball to head this group of leadership-level donors.

Founders' Council members provide essential unrestricted support for The Field Museum to sustain innovation in scientific research, engage visitors, and inspire the next generation of scientists. Investing considerable time and resources, The Founders' Council Steering Committee helps raise funds and host donor events.

For the past seven years, Trustee Bob Loveman has chaired the Steering Committee. When not in Chicago leading his own wealth management firm, Loveman serves as part of the volunteer fire department in Boulder, Colorado. "With integrity and passion, Bob called upon himself and others to improve the world by supporting the Museum," says President Richard Lariviere.

## The Founders' Council is pleased to announce the new co-chairs of the Steering Committee.

### LIZ SHARP

Liz Sharp has practiced commercial law and litigation in Chicago for more than 25 years, starting her own firm in 2010. In 2012, she was named one of Chicago's "100 Women to Watch" by *Today's Chicago Woman*. She has served on the Steering Committee since 2007 and been a member of the Women's Board since 2009. Liz has also helped recruit new Founders' Council members by hosting an annual event in her home featuring Museum scientists dubbed *Thaw Out Your Brain!*

### TOM RICKETTS

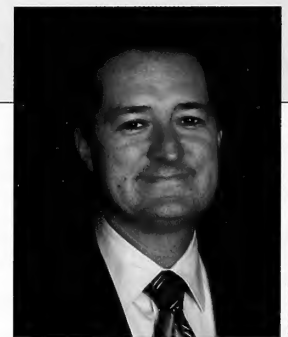
As chairman of the Chicago Cubs, Tom Ricketts has led investments in player development and young baseball talent, including a practice complex in Arizona. He has continued the team's tradition of giving back; more than \$1 million is donated each year to Chicago organizations through Chicago Cubs Charities. Tom is also the chairman and co-founder of Chicago-based global investment bank Incapital LLC. In 2010, he was named Ernst & Young's Midwest Finance Entrepreneur of the Year. He has served on the Museum's Board of Trustees since 2010.

"The Founders' Council forms a core group of the Museum's supporters," says fellow Committee member Lis Meeker. "The Field is so excited to see it grow under Tom and Liz's leadership." **ITF**

For more information about The Founders' Council or to make a gift, please contact Madalyn Kenney, Annual Giving Director, at [mkenney@fieldmuseum.org](mailto:mkenney@fieldmuseum.org) or 312.665.7801.



Field Museum Trustee  
Liz Sharp



Field Museum Trustee  
Tom Ricketts

STEVE STARR

GN91885\_084D / JOHN WEINSTEIN

# Women In Science ENCOURAGING DIVERSITY

By Franck Mercurio, Editor



**IN FEBRUARY 2013, ASSOCIATE CURATOR CORRIE MOREAU, PHD, FORMED FIELD MUSEUM WOMEN IN SCIENCE** “to inspire, encourage, and increase participation by women in the sciences.” Since then, the group has gained over 200 members—both women and men—and created successful programs at the Museum, including internships, seminars, and symposia.

Across the scientific world, women comprise a much smaller percentage of professional scientists than do men. Traditionally, this has been true at The Field Museum, too. One aspect of Women in Science’s stated mission is to “strive to eliminate gender bias through education, opportunity, mentoring, and dialogue.”

Mentorship is a large part of Women in Science’s work. During the summer of 2013, the group inaugurated an internship program for young women interested in science as a career path. Through the support of the Museum’s Women’s Board and the Science & Education Scholarship Committee, the internship program has been expanded this summer to include six interns: three high school students and three college undergraduates. They are working on research-based projects alongside a Field Museum mentor and documenting their research and experiences in short videos.

Creating a public dialogue about women and science is another important goal. The group hosts a seminar series on the first Monday of each month at noon, which is open and free to the public. Museum members are especially encouraged to attend. Upcoming speakers include the Museum’s own Emily Graslie from The Brain Scoop, who will share her thoughts and experiences (on Monday, May 5) about how women scientists are portrayed in the media.

Increased participation in the sciences is important to everyone, and The Field hopes to support and inspire the next generation of women scientists in Chicago and beyond. **ITF**

**To join Women in Science, learn about upcoming seminars, view videos created by interns, or apply for an internship, please visit:**

**[fieldmuseum.org/womeninscience](http://fieldmuseum.org/womeninscience)**



IMAGES: CORRIE MOREAU

## First Monday Seminars for Summer 2014

### Monday, June 2

**Dr. May Berenbaum**

*Professor and Head, Department of Entomology,  
University of Illinois, Urbana-Champaign*

### Monday, July 7

*Visit the Women in Science website  
for information about July’s seminar at  
[fieldmuseum.org/womeninscience](http://fieldmuseum.org/womeninscience)*

### Monday, August 4

*Meet the Women in Science interns and  
see the videos they have created during their  
summer internships*

# Enhancing the Learning Experience: Biomechanics Toolkit

By Heidi Rouleau, School Partnerships and Program Manager

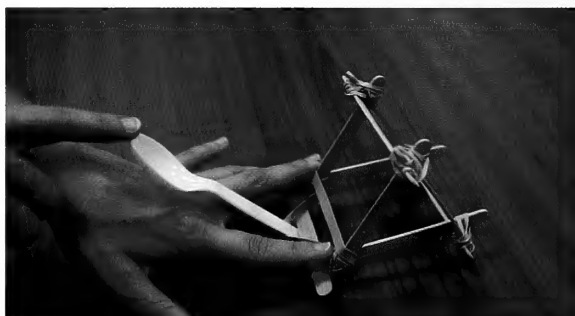
**THE FIELD MUSEUM'S NEWEST EXHIBITION, *The Machine Inside: Biomechanics***, investigates the marvels of natural engineering and the unique ways in which plants and animals are adapted for survival. Visitors to the exhibition can learn about the principles of biomechanics through hands-on interactives, life-like models, amazing video footage, and rare specimens selected from the Museum's vast collections.

But how can visitors get a deeper learning experience? This is the charge of the Museum's Education Department. A team of professional educators creates resources that compliment exhibitions and enables students and teachers—and families with kids—to learn more about the science presented inside the Museum.

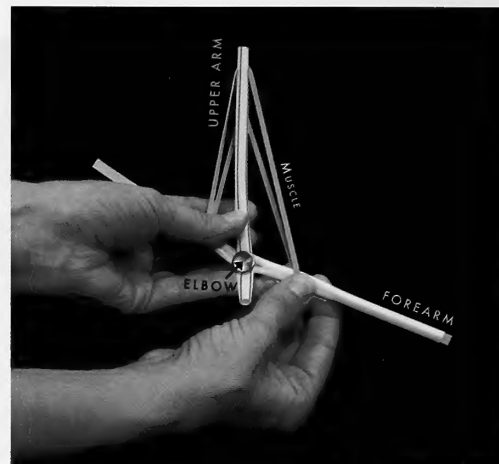
To help visitors engage with the principles of biomechanics outside the exhibition, Museum educators have developed a Biomechanics Education Toolkit. Available in both English and Spanish, this collection of web-based digital resources is designed for students and teachers, but is versatile enough for families with children to use outside the classroom.

In designing the Toolkit components, flexibility was an important consideration; each activity can be experienced on its own or as part of a suite of activities. The Toolkit contains several ways to explore biomechanics,

*The workings of this toy catapult are based on biomechanics principles, a field known as biomimicry.*



For more info about the Toolkit, visit [biomechanics.fieldmuseum.org](http://biomechanics.fieldmuseum.org) and click on "Explore More." Don't miss *The Machine Inside: Biomechanics* now on view!



IMAGES: KATE WEBBINK / EDUCATION DEPARTMENT

*An experiment explores how variations in leverage and muscle mass effect strength in different animals.*

including design challenges, videos, and an online game—all meant to be fun and educational.

Toolkit users can explore such diverse concepts as the remarkable strength of domes in natural and man-made structures, the relationship between animal size and temperature regulation, and the advantages of biological levers such as jaws.

The videos bring learners into the Museum's Mammal Wet Lab to observe scientists dissecting a real giraffe heart (a model is featured in the exhibition) and discover how this organ acts as a super-pump delivering blood seven feet up from the giraffe's torso to its brain.

Check out the Biomechanics Education Toolkit for yourself—both before and after visiting the Museum—and enrich your experience of *The Machine Inside: Biomechanics*. It's a resource all learners can enjoy. ITF

The Machine Inside: Biomechanics was developed by The Field Museum, Chicago, in partnership with the Denver Museum of Nature & Science.

Lead Sponsor: 

Funded by: 

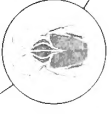
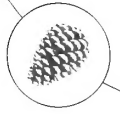
The Searle Funds  
at The Chicago Community Trust



THE ANNUAL FUND

Thank You  
for your  
generosity!

The Field  
Museum



*A gift to the Annual Fund helps sustain Field Museum research, exhibits, and education. Thank you for your partnership and support.*

- I/We would like to support The Field Museum beyond my/our membership by making a contribution to the Annual Fund at the following level:
    - Founders' Council    \$2,500 and more     Field Adventurer    \$250 - \$499
    - Field Explorer    \$1,000 - \$2,499     Field Contributor    \$1 - \$249
    - Field Naturalist    \$500 - \$999     Other    \$ \_\_\_\_\_
  - I/We currently support The Annual Fund and would like to make an additional contribution of \$ \_\_\_\_\_.
  - Please send me information about Planned Giving.
- Double the impact of your gift and visit [www.fieldmuseum.org/support/matching-gifts](http://www.fieldmuseum.org/support/matching-gifts) to see if your employer has a matching gifts program.

# Engaging Community, Restoring Habitat

By Mark Bouman, Associate Director of Science Action Center

**THE FIELD MUSEUM SENDS ITS SCIENTISTS AND RESEARCHERS AROUND THE WORLD** to understand, explain, and sustain cultural and natural diversity. These efforts benefit both people and nature.

Here in Chicago, the Museum has unique interests in conserving habitats and encouraging biodiversity. Building on local community engagement stretching back to the 1990s, a team of scientists from the Museum's Science Action Center—including Mark Bouman, Jacob Campbell, Mario Longoni, Alison Paul, and Alaka Wali—has developed new projects to connect community residents with ecological restoration projects happening at the Museum's doorstep.

Chicago's Bronzeville neighborhood occupies a special location on the south lakefront, adjacent to Lake Michigan and to parkland that frames its eastern border and reaches northward to the Museum's south stairs. A vibrant center of African American cultural

Young "Green Ambassadors"



COURTESY IMANI MITCHELL

heritage, Bronzeville historically has been cut off from lakefront parks by a swathe of railway tracks, a screen of weed trees, the traffic of Lake Shore Drive, and the dynamics of race and class.

The new "Burnham Wildlife Corridor" presents an opportunity to both restore habitat and connect Bronzeville residents with the lakefront. Field Museum scientists have long shown that the city's lakeshore is a vital stop for migratory birds.

To enhance this environment, the Chicago Park District is working to replace turf grass and invasive tree species with a landscape of prairie flowers and native trees that, when finished, will extend from McCormick Place to Hyde Park.

The Museum's Science Action Center is also collaborating with the Park District and Bronzeville residents to deepen community participation in the creation of this new wildlife corridor.



STOCK COM / NADGER



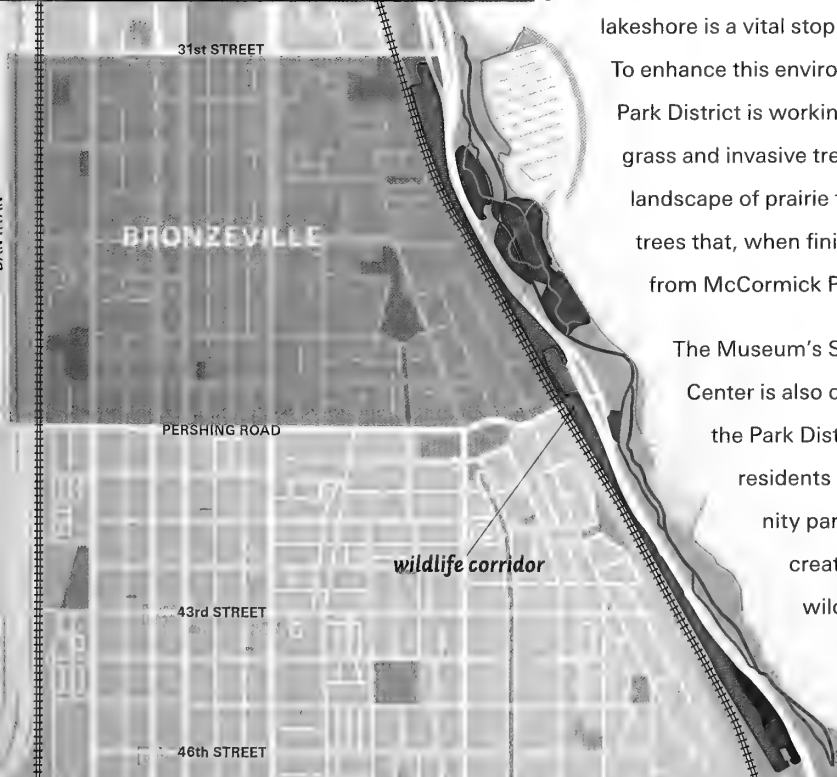
SACS01 / ALVARO DEL CAMPO

Native oak trees attract migratory birds like Cooper's Hawk to Chicago's lakefront.

A cadre of multi-generational Green Ambassadors—including some 600 volunteers from the Pilsen and Bronzeville neighborhoods—will assist in the stewardship of the lakefront landscape. These Ambassadors will help design nature paths and plant thousands of young native trees—mostly oaks—that will fill the neglected space between Lake Shore Drive and the railway tracks.

Tree planting will be completed by the end of 2014 with enhancements continuing over the next several years. The result will be a more bird-friendly environment—stretching some three miles along the lakefront—and a more invested community. **ITF**

*This project is supported by the McCormick and Driehaus Foundations, The Boeing Company, US Fish and Wildlife Service, and the Chicago Park District.*



# In the Spotlight: MALVINA HOFFMAN SCULPTURES

By Franck Mercurio, Editor



**A SERIES OF BRONZE SCULPTURES POPULATE THE MEZZANINE OVERLOOKING STANLEY FIELD HALL. FEATURED ARE LIKENESSES OF PEOPLE FROM AROUND THE WORLD:** a surfer from Hawaii, a family from the Congo's Ituri Forest, and a woman from Burma wearing the distinctive neck coils of the Padaung people.



CSGN76580

*Malvina Hoffman's sculptures were originally exhibited in the Hall of Races of Mankind (top, right). Today, many of the sculptures are located on the Museum's mezzanine (top, left). Malvina Hoffman in Jaipur, India, 1931 (above).*

These sculptures, commissioned by The Field Museum in 1930 to portray human physical diversity, are part of a unique artistic legacy. American sculptor, Malvina Hoffman, created these figures specifically for a new—and now controversial—Museum exhibition titled the *Hall of Races of Mankind*.

The original exhibition is long gone, but the sculptures remain. The Field Museum is currently undertaking a conservation project to clean, repair, and restore these distinctive artworks for the enjoyment of future generations.

When Museum anthropologists sent Hoffman around the world in the early 1930s to record “racial types” among Earth’s diverse peoples, race was strongly connected to human biology. Today, scientists no longer view race as an appropriate way to categorize human physical variation; rather, the concept of race speaks more about our cultural attitudes towards different groups of people.

“The Hall of Man presented a 1930s view on race and biology,” says Alaka Wali, curator of the Museum’s North American collections. “We’ve learned a lot since then; not only has our understanding of human biology grown, but also our investigations of ‘race’ as an idea, and how it has shaped social life.”

GREG MERCER (TOP, LEFT)  
CSA77747 / CHARLES CARPENTER (TOP, RIGHT)

AB0615 / SAMUEL B. GRIMSON

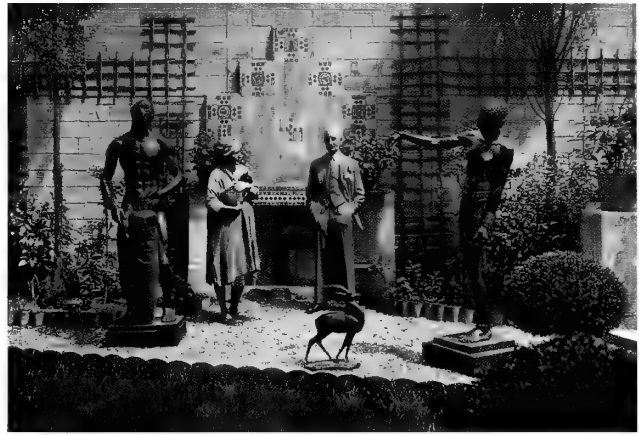


Artist Malvina Hoffman and model Kamala Chatterji in Calcutta, India.

MH39C



Bengali Woman, 1933



GN80305

Malvina Hoffman and Field Museum President, Stanley Field, at Hoffman's Paris Studio, circa 1930.

When the *Hall of Races of Mankind* first opened in June of 1933 (coinciding with the opening of Chicago's Century of Progress Exposition), it marked a radical departure from previous anthropology exhibitions in how it represented the human form.

"The very name over the entrance to most [anthropology] halls—'Anthropology'—evokes in our minds dummies of sawdust or painted plaster with staring glass eyes and false hair," wrote Hoffman in her memoir *Heads and Tales* published in 1936.

Instead of using these more conventional techniques to create the figures, Hoffman convinced Museum officials to allow her to use bronze, a medium that was more commonly displayed in art galleries than in natural history museums. It was a deft move on the part of the artist and helped establish her sculptures as a durable and long-lasting legacy to the Museum.

As times changed, so did ideas about race and biology. The *Hall of Races of Mankind* was eventually dismantled in the late 1960s. Some of Hoffman's sculptures were placed in the Museum's vaults, while others were displayed throughout the Museum's public halls, divorced from their original context.

Some 80 years after the sculptures were created, they stand as great artistic achievements, despite the original intent behind the works. They read today as masterful, individualized portraits. Hoffman, who studied under the French sculptor Auguste Rodin, brought to the project an artistic sensibility, a love for the human form, and a keen sense of observation that helped her model each figure as an individual person.

Over the years, Hoffman's sculptures have accumulated fine layers of dust and dirt. Generations of Museum visitors have touched the bronze surfaces and worn away noses and other protruding body parts. In some instances, spears and other accoutrements have been bent or broken.

A generous gift from Pamela K. and Roger B. Hull is enabling the Museum to restore the sculptures. Mrs. Hull is the great-great-granddaughter of Marshall Field I, The Field's founder and original benefactor.

The sculptures are currently being taken off display, one by one, and carefully transported to the Museum's conservation lab, where they will be repaired and restored. When the project is finished, in Summer 2015, many of Hoffman's

sculptures will be placed on permanent exhibition once again—this time displayed safely outside of human reach.

A temporary exhibition about the conservation project, Hoffman's unique artistic process, and our changing attitudes about race and human biology is planned for the future. **ITF**

Conservator gently removes dust from a sculpture's surface using a cotton swab.



RUTH NORTON



RUTH NORTON

A sculpture's nose shows signs of wear from generations of people touching the bronze surface.

# Digitizing the Mazon Creek Fossils

By Mark Alvey, Communications and Strategy, Science & Education

**WHAT'S THE FIELD MUSEUM'S COOLEST FOSSIL?** Sure, there's that big toothy *T. rex* from South Dakota, but my vote goes to the unique and mysterious Tully Monster (*Tullimonstrum gregarium*) found nowhere else but the Mazon Creek fossil beds, just an hour's drive south of the Museum.



Mazon Creek is one of the world's most important and diverse fossil assemblages; its preserved specimens provide a snapshot of life in the greater Chicago area during the Pennsylvanian period (about 300 million years ago). Tropical and swampy, the region was once home to 100-foot-tall club mosses, foot-long millipedes, and waterways teeming with jellyfish, sharks, and "Tullies." Fossils of these animals and plants—representing more than 420 species—reside here in the Museum, which boasts the most comprehensive collection of Mazon Creek fossils in the world.

Research on the fossils received a boost from a recent technology grant from The Grainger Foundation, which is supporting a massive effort to photograph and organize the most significant specimens and make data more easily accessible.

"The Grainger initiative is enabling a unique part of Illinois' heritage—a bizarre 300-million-year-old lost world—to become available to everyone online," explains Ian Glasspool, the Museum's Paleobotany Collections Manager.

Last year, a team of dedicated interns digitized all of the Mazon Creek type specimens. (A "type" is the specimen on which a new species description is based.) The Grainger grant is also supporting work on other collections, including butterflies and moths from South America and Africa, South American plants, ceramic vessels from the Americas, Asia,

and Near East, and lichen types—all of which rank among the world's best collections of their kind.

The Museum already shares tens of thousands of its specimens with hundreds of scientists every year through visits and loans, but thanks to The Grainger Foundation, more of the Museum's nearly 26 million objects will soon be available online, not only to researchers, but to students, teachers, and the public. ■■

To see more images of Mazon Creek fossils, visit [fieldmuseum.org/explore/multimedia/mazon-creek-fossil-invertebrates](http://fieldmuseum.org/explore/multimedia/mazon-creek-fossil-invertebrates).



GE085141C / RON TESTA & SOPHIA ANASTASIOU WASIK



PAUL MAYER

Nicole Karpus,  
Geology Fossil  
Invertebrates intern,  
photographs Mazon  
Creek fossils.

SPECIMENS ABOVE: PE10504 / FIELD MUSEUM (TOP),  
PE36861 / FIELD MUSEUM (BOTTOM)

# Going Batty: Field Work in Kenya

By Emily Graslie, Chief Curiosity Correspondent

**AS A CHILD I IDOLIZED JANE GOODALL.** I dreamt of the day when I would have a job exploring nature through a scientific lens. However, somewhere between middle school and college, I gave up on having the capacity to spend time observing wildlife and writing papers, figuring field research was not in my future.

It turns out I was wrong—I recently *did* get to live out my childhood fantasy of participating in scientific fieldwork, and I learned that expeditions are a lot messier than lazing back in a canopy of trees and doodling animal behaviors.

This past January, I spent a week traversing the national parks of Kenya in pursuit of bats with Field Museum Curator of Mammals Bruce Patterson, PhD, and videographers Emily Ward and Greg Mercer of the Museum's Exhibitions Department.

Museum researchers frequently journey across the country and the globe to study certain species in their natural environments and collect data directly from the source. The Kenyan expedition stands out as a special collaboration between Field Museum staff and Kenyan biologists

to produce a field guide to the bats of Kenya. It is a much-needed catalog, considering there are over 100 known bat species and potentially many more to be described and categorized. Bats play an important role in the environment as insect-eaters and seed-dispersers, but their impact on human populations is not readily known—hence the need for continued study.

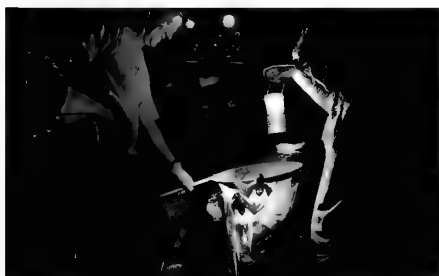
Documenting this trip was an eye-opening experience for myself and the film crew as we witnessed first-hand the various ways in which scientists collect data from these animals, whether from live-netting or spelunking deep into undisturbed caves. Our feet sank into guano (bat feces) as we battled swarms of curious beetles that live off of the refuse! It may not sound incredibly glamorous, but I considered it the trip of a lifetime, returning to Chicago with a renewed appreciation for the lengths that researchers go to teach us about the natural world. **ITF**

*Surprise! Team releases captured bats back into the wild.*



GREG MERCER

Paul Wehala, PhD, of Kenya's Moi University collaborates on the Kenya Bat Research Project.



GREG MERCER



Emily Graslie, YouTube personality and the Museum's first-ever Chief Curiosity Correspondent, hosts the popular web series, *The Brain Scoop*. Visit [youtube.com/thebrainscoop](http://youtube.com/thebrainscoop).



EMILY WARD

Expedition team member, Greg Mercer, videotapes Emily Graslie interviewing Bruce Patterson.

# Summer Exhibitions at The Field Museum

By Franck Mercurio, Editor

**SUMMER IS A GREAT TIME TO VISIT THE FIELD MUSEUM.** In addition to popular permanent exhibitions like *Evolving Planet* and *The Ancient Americas*, the Museum is presenting a number of engaging temporary shows. Experience these exhibitions before they close and (re)discover the world of science this summer!



GN90799D WFWC 16W

## Science, Off Script: Teens Take The Field Through September 1

Have you ever wondered what you would do if you had insider access to The Field Museum? A few Chicago teens have lived it—and made movies about it. View their unique perspectives on the Museum's collections and research projects.

## Opening the Vaults: Wonders of the 1893 World's Fair

Through September 7

Filled with unique objects that amazed the world in 1893, step back in time and see why the *Chicago Tribune* calls *World's Fair* a "first-rate new exhibition."

## Before the Dinosaurs: Tracking the Reptiles of Pangaea

Through February 1, 2015

Journey to Tanzania with Field Museum paleontologists as they search for the fossil remains of ancient reptiles that roamed the Earth before the dinosaurs.

## Bunky Echo-Hawk: Modern Warrior

Through June 7, 2015

Artist Bunky Echo-Hawk's paintings, skateboard decks, and clothing line for Nike debunk stereotypes about contemporary Native American art and design. **ITF**

## The Machine Inside: Biomechanics

Through January 4, 2015

How do cheetahs run so fast and fleas jump so far? How do toucans stay cool in the jungle and seals stay warm in the Arctic? How do Venus flytraps detect their next meal and hammerhead sharks sense their prey? Investigate these and other marvels of natural engineering through hands-on interactives, life-like models, amazing video footage, and rare specimens selected from the Museum's vast collections.



© BUNKY ECHO-HAWK

GN91915 003D / KAREN BEAN

© MARLENE HILL DONNELLY / THE FIELD MUSEUM



# INTRODUCING FIELD LOYALTY CLUB

## THE FIELD MUSEUM EXTENDS ITS GRATITUDE AND APPRECIATION TO

the inaugural members of the Field LOYALTY Club for their ongoing support. Their dedication to the Museum sets a philanthropic example for fellow supporters, visitors, and friends.

This list reflects current members and donors with twenty or more years of support as of December 31, 2013. Those individuals whose cumulative support reaches twenty years in 2014 will be added to the Field LOYALTY Club this year, with a new class in each following year.

If you feel an error has occurred in compiling this list or want more information about the Field LOYALTY Club, please contact Erin King at 312.665.7715 or [eking@fieldmuseum.org](mailto:eking@fieldmuseum.org). *Thank you!*

- Anonymous (8)\*  
Ms. Charlotte D. Abarbanell  
Mr. and Mrs. Anthony Abboreno  
Mr. and Mrs. Isaac Abella  
Mr. Cyrus H. Adams  
Mr. and Mrs. Leonard J. Adams, Jr.  
Mrs. Keene H. Addington II  
Mrs. Elaine Adelson  
Mr. and Mrs. David L. Ader  
Mr. Stuart Adler  
Mr. Roger H. Affleck  
Mrs. Mary Aiston  
Ms. Judith A. Akers  
Mr. William N. Aldeen and  
Ms. Shelley Torres  
Mr. Adrian Z. Alexander  
Alexander and Alexander  
Attorneys at Law\*  
Mr. and Mrs. Walter Alexander  
Mr. James H. Allamian  
Mr. and Mrs. Stanley N. Allan  
Mr. and Mrs. David J. Allen  
Mrs. Roberta R. Allen  
Mr. and Mrs. Thomas D. Allen  
Ms. Carolyn M. Allison  
Dr. and Mrs. Dominic J. Allocco  
Mr. and Mrs. Richard J. Almeida  
Mrs. Marilynn Alsdorf  
Mr. Allan L. Alson and  
Ms. Sue Ann Glaser  
Mr. and Mrs. Michael Altman  
Mr. and Mrs. Richard M. Amend  
Mr. and Mrs. Craig A. Anderson  
Mrs. Mary A. Anderson  
Mr. and Mrs. Timothy K. Andrasek  
Mrs. Anna J. Anrod  
Mrs. Birute J. Apke  
Ms. Penny Applegate and Mr. Jay Owens  
Ms. Ruth Archer and Mr. Jim Helke  
Mr. and Mrs. Robert Arensman  
Mrs. T. Stanton Armour\*  
Mr. and Mrs. Barry G. Arnason  
Ms. Harriet B. Arnold  
Dr. Andrew J. Aronson  
Mrs. Beryl Aronson  
Ms. Laura L. Arterburn  
Mrs. Ann Marie Ascitto  
Dr. David L. Ashbach  
Mr. and Mrs. Calvert W. Audrain  
Ms. Kaye B. Aurigemma  
Mr. and Mrs. Alan Axelrod  
Dr. and Mrs. Edward Axelrod  
Mr. Harry Axelrod  
Cinda Axley  
Mrs. Juliette F. Bacon  
Mr. Marlowe Bacon  
Mr. and Mrs. Morris Baillies  
Susan and Stephen Baird  
Ms. Barbara L. Baker  
Mrs. Jane L. Baker  
Mr. E. M. Bakwin  
Mr. and Mrs. John T. Baldwin  
Dr. Martin S. Balin  
Ms. Jo Anne Bailauer  
Dr. Eugene L. Balter and  
Ms. Judith R. Phillips  
Mr. and Mrs. Leo J. Baran  
Mr. and Mrs. Frederick A. Barber  
Mr. and Mrs. Robert Barsy  
Mr. Robert J. Bart  
Mr. and Mrs. Wilbert B. Bartelt  
Mr. J. Frederick Bartlett  
Ms. Marie T. Bartolotta  
Ms. Linnea M. Bass  
Mr. Frederick N. Bates and  
Ms. Ellen J. Benjamin  
Ms. Dianne Batzkall  
Ms. Ruth Bauer and  
Mr. Steven Cothard  
Deborah Baughman  
Mrs. Mary J. Bauhs  
Mr. and Mrs. Douglas D. Baum  
Mr. and Mrs. John C. Baumgartner  
Mr. Robert Baumruk  
Mr. and Mrs. Kenneth J. Bazarnik  
Mr. and Mrs. Edward G. Bazelon  
Ms. Susan R. Beal  
Dr. and Mrs. Robert A. Beatty  
Reverend and Mrs. William C. Beckmann  
Mr. and Mrs. Jeffrey Beech  
Ms. Norine Beirne  
Dr. Peter J. Bell  
Mrs. Audrey A. Benchik  
Dr. David J. Benditzson  
Arlene and Wayne Bennett  
Mr. and Mrs. George Benson  
Ms. Marjorie Benson  
Ms. Lorraine G. Benz  
Mr. and Mrs. Thomas C. Berg  
Theodore Berland  
Mr. and Mrs. Julian Berman  
Mr. and Mrs. Robert L. Berner, Jr.  
Robert and Ruth Berns  
Mr. and Mrs. Howard Bernstein  
Mr. and Mrs. Lawrence Bernstein  
Mr. Gordon Berry and  
Mrs. Mary Hynes-Berry  
Ms. Sandra A. Bertrand  
Mrs. Lieselotte N. Betterman  
Mrs. Eleanor P. Betz  
Mr. and Mrs. Adrian D. Beverly  
Mr. Roger J. Bialcik  
Ms. Lois J. Bider  
Ms. Joan Bieler  
Dr. Linas A. Bieliauskas  
Ms. Delphine Bilski  
Mr. and Mrs. William P. Bird  
Mr. and Mrs. Harrington Bischof  
Mr. and Mrs. Raymond Bishop  
Ms. Mary Jo Black  
Mr. and Mrs. Richard B. Black  
Ms. Elizabeth Blackwell and  
Mr. Alec Breckenridge  
Mrs. Bowen Blair  
Mr. Thomas R. Bland  
Dr. and Mrs. Norman L. Blankenship  
Ms. Loretta Blanski  
Mr. Robert S. Blatt  
Joan and Henry Bliss  
Mr. and Mrs. Andrew K. Block  
Dr. Joel A. Block and  
Dr. Barbara Bayldon  
Mr. and Mrs. \* Philip D. Block III  
Dr. and Mrs. Robert S. Block  
Mr. and Mrs. Michael J. Bloink  
Mrs. Edwin R. Blomquist  
Ms. Barbara A. Bobrich  
Mr. George Bokios  
Mr. and Mrs. Claude C. Boles  
Mr. Richard L. Bolton  
Mr. Lawrence J. Bommer  
Mr. and Mrs. Russell A. Bonham  
Ms. Manuela R. Bonilla  
Mr. and Mrs. John J. Borland, Jr.  
Dr. and Mrs. Gene H. Borowitz  
Mr. and Mrs. Fred P. Bosselman  
Mr. Richard F. Bough and  
Dr. and Mrs. F. David Boulanger  
Mr. George W. Boulton, Jr.  
Mr. and Mrs. Theodore A. Boundas  
Dr. and Mrs. Arthur Bourgeois  
Willard L.\* and Susan K. Boyd  
Mrs. Jeanne Brady  
Mr. Richard J. Brandt  
Mr. and Mrs. William Bratschun  
Mr. and Mrs. William Brauneis  
Mr. and Mrs. Ethan Braunstein  
Mr. and Mrs. Abdon J. Bray  
Mr. and Mrs. Robert B. Breisblatt  
Mrs. Marie Brelin  
Dr. David S. Bresnahan  
Mr. and Mrs. Michael Bresolin  
Mrs. Martha H. Bright  
Mr. and Mrs. Douglas Bristol  
Mr. and Mrs. Aaron Brodsky  
Mrs. Anna-Marie Brodsky  
Mr. and Mrs. John Broeker  
Mr. and Mrs. K. D. Brooks  
Mrs. Joanna Brofman  
Rabbi and Mrs. Herbert Bronstein  
Mr. T. Kimball Brooker  
Mr. and Mrs. Allan Brown  
Mr. and Mrs. Andrew W. Brown  
Barbara and Roger Brown  
Mrs. Cameron Brown  
Mr. and Mrs. Charles M. Brown  
Mr. Edwin S. Brown  
Mr. Herbert L. Brown, Jr.  
Mr. and Mrs. James M. Brown  
Mrs. Jane R. Brown  
Nancy L. and William M. Brown  
Ms. Sondra Brunke  
Mr. and Mrs. Lawrence T. Bryant  
Mr. Gerald P. Buck  
Mr. and Mrs. Robert E. Buecker  
Mr. David Bulicek  
Rosemarie and Dean Buntrock  
Reverend and Mrs. Robert F. Burke  
Mr. and Mrs. Clark Burrus  
Mr. and Mrs. Robert Norcross Burt  
Mr. and Mrs. Theodore R. Butz / The Butz Foundation  
Mr. and Mrs. Joseph M. Cabik  
Ms. Marilyn E. Cahill  
Mr. and Mrs. Louis P. Cain  
Mr. Jack L. Calabro  
Mrs. Christine Calandra  
Mr. and Mrs. Nicase Calderone  
Mr. and Mrs. Wiley N. Caldwell  
Mr. John W. Callaghan  
Ms. Karen A. Callaway  
Mrs. Fern Callistein  
Ms. Judith A. Caloud  
The Achnacarry Foundation / Lenore and Douglas Cameron  
Mr. Ray H. Camp  
Mr. and Mrs. Lew Campione  
Mr. and Mrs. Thomas Caragher  
Mr. and Mrs. Arthur J. Caraher  
Mrs. and Mr. Betty W. Carbol  
Mr. and Mrs. Richard L. Carlson  
Mr. and Mrs. Peter R. Carney  
Mrs. Dell R. Carpenter  
Mrs. Robert Adams Carr  
Mr. and Mrs. Irving C. Carrig  
Dr. and Mrs. Robert Wells Carton  
Mr. and Mrs. Milton Blouke Carus  
Mr. and Mrs. F. Willis Caruso

Mr. Michael Casale  
 Mr. and Mrs. John A. Catalani  
 Ms. Anne D. Catterson  
 Dr. and Mrs. Robert P. Cavallino  
 Mr. and Mrs. Robert Cecchi  
 Mr. Robert A. Cechner  
 Mr. Richard A. Cederoth and  
 Ms. Lisa Cederoth  
 Mrs. Hammond Chaffetz  
 Mr. and Mrs. Henry T. Chandler  
 Mr. and Mrs. Richard M. Chaney  
 Mr. and Mrs. John S. Chapman  
 Mrs. Rita S. Charak  
 Dr. and Mrs. Allan G. Charles  
 Ms. Mary E. Chase  
 Mr. and Mrs. Thomas Chase  
 Mrs. Joyce E. Chelberg  
 Ms. Joan S. Cherry and Mr. John R. Cara  
 Mrs. Alice G. Childs  
 Dr. Anne Chodzko and  
 Col. Carol O'Donnell  
 Mr. and Mrs. Michael J. Christie  
 Mr. and Mrs. Alan R. Christopher  
 Stephen and Jennifer Christy  
 Mr. James Chrobak  
 Mr. Robert F. Chrupka  
 Dr. Mary A. Chuman  
 Kenneth and Linda Ciriacks  
 Mr. and Mrs. Allen Cizner  
 Mr. and Mrs. Arthur L. Clark  
 Ms. Barbara Clarke  
 Mr. Irving V. Clarke  
 Mr.\* and Mrs. Worley H. Clark, Jr.  
 Mr. and Mrs. Albert C. Claus  
 Ms. Lea Cloninger  
 Mr. Benjamin A. Coats  
 Mr. and Mrs. Robert P. Coffin  
 Mrs. Clarice J. Cogen  
 Ms. Barbara Lee Cohen  
 Mr. Eric Cohen and Ms. Melinda Gould  
 Mr. and Mrs. Etahn Cohen  
 Mr. and Mrs. Joseph J. Cohen  
 Dr. and Mrs. Mimis Cohen  
 Mr. and Mrs. Steven P. Cohn  
 Ms. Sharon P. Cole  
 Mr. John T. Coletta  
 Mrs. Rosemary E. Collard  
 Mr. and Mrs. Thomas G. Collinet  
 Mr. Marvin L. Collins  
 Mr. and Mrs. John C. Colman  
 Ms. Adele W. Combs  
 Mr. James W. Compton\*  
 Mr. Donald E. Conklin  
 Mr. Gregory G. Connell  
 Mrs. Dorothy E. Connolly  
 Mr. and Mrs. Andrew H. Connor  
 Mr.\* and Mrs. Frank W. Considine  
 Ms. Sharon Conway  
 Mr. and Mrs. Alan J. Cook  
 Mr. Stanton R. Cook\*  
 Mrs. Edward Cooper  
 Mr. and Mrs. Paul R. Cooper  
 Mr. and Mrs. Gilbert Cornfield  
 Mr. Lawrence M. Coronelli and  
 Ms. Janet Sheffer  
 Mr. Patrick Corrado  
 Mr. Edward Corwin  
 Ms. Kristine N. Cosentino  
 Ms. Jeannine Cotnoir  
 Mrs. Jane R. Coulson  
 Mr. Stephen E. Cox  
 Mr. William D. Cox, Jr.  
 Mr. Chris D. Cozart and Mr. Steve Cozart  
 Mr. David L. Crabb  
 Mr. Edgar H. Craig  
 Mr. John Craig and Ms. Brenda Nelms

Mark and Connie Crane  
 Mr. and Mrs. William A. Crane  
 Mr. and Mrs. Dewey B. Crawford  
 Ms. Mary J. Cray  
 Mrs. Claire L. Crews  
 Mr. Russell E. Crider  
 Mr. Jim W. Croft\* and  
 Mrs. Marilyn Martinson Croft  
 Ms. Louise Z. Cromer  
 Mr. and Mrs. John V. Crowe  
 Mr. and Mrs. Lester Crown  
 Ms. Rebecca Crown  
 Mrs. Sandra K. Crown  
 Mr. Michael J. Cumberland  
 Mrs. Helen M. Cunningham  
 Mr. and Mrs. John J. Currano  
 The Honorable Barbara Flynn Currie  
 Mr. and Mrs. James K. Curtin  
 Ms. Diane Curtis  
 Ms. Vicki Y. Curtis  
 Ms. Melitta J. Cutright and  
 Mr. James P. Smith  
 Ms. Theresa Czarnik and  
 Mr. Garrick M. Palese  
 Mrs. Jeannette C. Dahl  
 Mr. and Mrs. Richard Dahm  
 Mr. and Mrs. James M. Daly II  
 Mr. and Mrs. Alfred E. D'Ancona II  
 Mrs. Dino J. D'Angelo  
 Mr. and Mrs. John A. Daniels  
 Jackie and Donald R. Dann  
 Robert and Marletta Darnall  
 Dr. and Mrs. Lloyd Davidson  
 Mrs. Margaret R. Davies  
 Mr. and Mrs. George W. Davis  
 Kent and Susanne Davis  
 Mr. and Mrs. Michael Davis  
 Mr. Michael Davis and  
 Ms. Deborah Jones  
 Mr. and Mrs. Clark E. Davoust  
 Dr. and Mrs. Joseph L. Daw  
 Dr. and Mrs. Larry P. Dawson, O.D.  
 Mr. and Mrs. Mark D. Dawson  
 Mr. Paul C. Dayton  
 Mrs. Howard M. Dean, Jr.  
 Mr. and Mrs. Dennis De Bruler  
 Mr. and Mrs. Timothy De Wine  
 Ms. Diana L. DeBoy  
 Dr. and Mrs. Thomas DeCoursey  
 Ms. Sylvia J. Dedo  
 Ms. M. Linda Deiss  
 Mr. Mark Roe DeLancey  
 Mrs. James F. Delaney  
 Mr. and Mrs. Charles Dennehy  
 Ms. LaVerne H. Dennhardt  
 Mr. and Mrs. Joseph DeSalvo  
 Ms. Amy Desens  
 Owen Deutsch and Rona Talcott  
 Mr. and Mrs. David Devonshire  
 Ms. Eloise DeYoung  
 Mr. and Mrs. John H. Dick  
 Mr. and Mrs. Byram E. Dicks  
 Mrs. Annette M. Dickler  
 Mr. William A. Dickman  
 Ms. Olive Dilworth  
 Mr. and Mrs. James S. DiMatteo  
 Ms. Lisa A. Dimberg  
 Mr. and Mrs. Charles Dinger  
 Mrs. Judith Disman  
 Dr. and Mrs. John F. Disterhoft  
 Mrs. Rosalie Dixler  
 Mr. and Mrs. John M. Dixon  
 Dr. and Mrs. Morton Doblin  
 Ms. Martha Doerr  
 Mrs. Elaine Dolan  
 Dr. Margaret M. Dolan

Mr. Thomas R. Doler  
 Mr.\* and Mrs. Thomas E. Donnelly II  
 Mr. Mark I. Donnelly and  
 Ms. Veta A. Bonnewell  
 Mr. and Mrs. Robert Donze  
 Dr. Patricia D. Dore, Ph.D.  
 Mr. and Mrs. Joseph M. Dorton  
 Mr. and Mrs. Richard M. Doub  
 Ms. Mary C. Doyle  
 Ms. Jacqueline Drake  
 Mr. and Mrs. Arunas K. Draugelis  
 Mr. Ray F. Drexler  
 Mr. Raymond Drymalski  
 Mr. and Mrs. Richard Dubberke  
 Richard and Hylene Dublin  
 Mr. Thomas W. Duda  
 Ms. Andrea M. Dudek  
 Mrs. Glenda W. Duncan  
 Ms. Jean Dunkerley  
 Ms. Monica E. Dutkiewicz  
 Mr. and Mrs. Daniel G. Dvorkin  
 Mrs. Rose Dyrud  
 Ms. Patricia Dzik  
 Mrs. Joyce Ebersman  
 Ms. Mary Alison Ebert  
 Mr. Daniel Edelman and Ms. Fran Kravitz  
 Mr. and Mrs. James Edstrom  
 Mark G. Egan and Katherine Z. Egan  
 Ms. Linda L. Egebrecht  
 Mr. and Mrs. John M. Ehrenberg, Jr.  
 Ms. Margaret M. Eiden  
 Mrs. and Mr. Roberta Eisenberg  
 Mr. and Mrs. Jon Ekdahl  
 Mr. and Mrs. William L. Ekvall  
 Mr. and Mrs. Paul Eldersveld  
 Ms. Janet C. Elenbogen  
 Mrs. Thomas C. Eley  
 Mr. and Mrs. Walter Eliassen  
 Mr. and Mrs. Larry Elkins  
 Mr. J. Thomas Eller  
 Phyllis Weil Ellis  
 Mr. and Mrs. Samuel H. Ellis  
 Mr. Olin N. Emmons  
 Mr. and Mrs. Tomy Endo  
 Mr. and Mrs. Dan Engel  
 Ms. Katherine Engel  
 La and Philip Engel  
 Mr. and Mrs. Jami D. English  
 Mr. and Mrs. Charles B. Engvall  
 Enivar Charitable Fund  
 The Donald Ephraim Family Foundation  
 Ms. Erika E. Erich  
 Ms. Verna E. Erickson  
 Mr. and Mrs. Ronald L. Eshleman  
 Mrs. Jerome L. Ettelson  
 Ms. Linda J. Evans  
 Mr. Richard F. Eveleth  
 Mr. and Mrs. Frederick Ewing  
 Dr. Carl E. Eybel, M.D.  
 Mr. and Mrs. Thomas J. Eyerman  
 Mr. and Mrs. Fabio Fabbri  
 Ms. Elizabeth A. Fama and  
 Mr. John H. Cochrane  
 Mrs. Patricia Farnham  
 Mr. and Mrs. W. James Farrell  
 Mr. and Mrs. Alexander H. Faurot  
 Mrs. Virginia Fealey  
 Mary and Bruce Feay  
 Ms. Julie A. Federico and  
 Mr. Jay Mitchell  
 Mr. and Mrs. Anthony W. Fedor, Jr.  
 Ms. Barbara D. Fedor  
 Ms. Linda Feinberg  
 Mr. and Mrs. Walter Felde  
 Dr. and Mrs. Joseph L. Feldman  
 Mr. and Mrs. James E. Fellowes

Mr. and Mrs. E. G. Felsenthal III  
 Mr. John Fenley  
 Mrs. Carole Ferguson  
 Ms. Angela M. Ferraina  
 Mr. Rudolph V. Ferraro  
 Mr. and Mrs. Robert H. Fesmire  
 Mr. Clark W. Fetridge  
 Mr. and Mrs. Conrad T. Fialkowski  
 Mr. John A. Field  
 Mr.\* and Mrs. Marshall Field  
 Mr. and Mrs. Thomas W. Filippini  
 Mary Ann Finnegan  
 Mr. and Mrs. Robert S. Firlit  
 Dr. Edward M. Fitch  
 Mrs. Lola Flamm  
 Mr. and Mrs. Dale Fleming  
 Mr. and Mrs. Peter L. Flemister  
 Mr. Geoffrey A. Flick  
 Sonia and Bill Florian  
 Mr. and Mrs. William D. Folland  
 Mr. and Mrs. Robert B. Footlik  
 Ginny and Peter Foreman  
 Mr. and Mrs. Scott M. Forsythe  
 Mr. and Mrs. Francis G. Foster, Jr.  
 Mr. Samuel E. Fox  
 Mr. and Mrs. Robert Fragen  
 Mr. and Mrs. Reno Franceschi  
 Dr. and Mrs. Alvin L. Francik  
 Mr. and Mrs. George K. Francis  
 Mr.\* and Mrs. James S. Frank  
 Mr. Ross Fraser  
 Mr. and Mrs. Earl J. Frederick  
 Ms. Dorothy R. Freedman  
 Dr. and Mrs. Kenneth A. Freedman  
 Mr. and Mrs. Paul Freehling  
 Donna and Peter Freeman  
 Mr. and Mrs. John Frei  
 Mr. and Mrs. Cyrus F. Freidheim, Jr.  
 Dr. Fred G. Freitag and  
 Ms. Lynn N. Stegner  
 Joanne Benazzi Friedland  
 Mrs. and Mr. Marjorie Friedman  
 Mr. and Mrs. Cezar M. Froelich  
 Marshall B. Front Family Charitable  
 Foundation / Laura De Ferrari  
 and Marshall B. Front\*  
 Mr. and Mrs. William D. Frost  
 Mr. and Mrs. Robert Fucik  
 Ms. Anne T. Fuelling and  
 Mr. Tom Fuelling  
 Dottie Fugiel and Jerry Smith  
 Mr. and Mrs. Maurice F. Fulton  
 Ms. Marlene Furch  
 Mr. John F. Fyfe and Ms. Joan M. Greco  
 Mr. and Mrs. Glenn L. Gabanski  
 Mr. and Mrs. Max C. Gabbard  
 Mr. Bob Gadbois  
 Mr. Frank M. Gagliardi  
 Mr. Gregory J. Gajda  
 Mr. and Mrs. Edward P. Gamson  
 Mr. James G. Gannon  
 Mr. Paul N. Garcy  
 Mr. John T. Garrity  
 Mr. Lawrence E. Gartman  
 Dr. and Mrs. John S. Garvin  
 Mr. and Mrs. Richard Gass  
 Mr. John Gbur  
 Dr. and Mrs. Stephen H. Geer  
 Mr. and Mrs. John Gehron  
 Ms. Hildegard H. Geiger  
 Mrs. Steffi Geisel  
 Mr. and Mrs. Richard Gendon  
 Mr. and Mrs. Jack M. George  
 Mr. and Mrs. John T. George  
 Mr. and Mrs. Basil Georgeson  
 Mr. and Mrs. John E. Gepson

YOU MAY ALSO CONTRIBUTE ONLINE OR BY PHONE

[www.fieldmuseum.org/annualfund](http://www.fieldmuseum.org/annualfund)  
312.665.7777

Enclosed is my/our contribution of \$ \_\_\_\_\_

Payment Type: Check made payable to The Field Museum.

Please charge my:  Visa  MasterCard  Discover  American Express

ACCOUNT NUMBER

EXP. DATE

CVV CODE

Please complete the following:

SIGNATURE (REQUIRED)

NAME

MEMBER # (IF KNOWN)

ADDRESS

CITY

STATE

ZIP

Please check here if you wish for this gift to be anonymous

We prefer to waive all benefits associated with this gift, including membership, making the entire contribution tax deductible

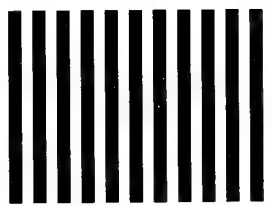


NO POSTAGE  
NECESSARY  
IF MAILED  
IN THE  
UNITED STATES

**BUSINESS REPLY MAIL**  
FIRST-CLASS MAIL PERMIT NO. 7401 CHICAGO, ILLINOIS

POSTAGE WILL BE PAID BY ADDRESSEE

**THE FIELD MUSEUM**  
The Annual Fund — 40308  
1400 S Lake Shore Dr  
Chicago IL 60605-9907



Mr. and Mrs. Isak V. Gerson  
 Ms. Katherine Gesiakowski  
 Ms. Joan M. Giardina  
 Mr. James A. Gibbs  
 Ms. Barbara A. Giddings and  
 Mr. Robert Giddings  
 Christina and Ron\* Gidwitz  
 Ellen and Paul Gignilliat  
 Mrs. Terry Gillespie  
 Mr. and Mrs. Thomas Gillespie  
 Mr. and Mrs. Joseph Ginex  
 Mrs. Arlene Ginsburg  
 Mr. Robert Ginsburg and  
 Ms. Geri Kahn  
 Ms. Robin Gintert  
 Mrs. Susan Gittings and  
 Ms. Natasha Gittings  
 Mr. and Mrs. Marvin Gittler  
 Mr. and Mrs. James J. Glasser  
 Mrs. Tressa L. Glassman  
 Mr. and Mrs. Jordan M. Glassner  
 Ms. Roberta Glick  
 Ms. Paula Glitman and Mr. Doug Stone  
 Mr. and Mrs. John O. Goad  
 Ms. Anne Goldberg  
 Mr. and Mrs. Barry Goldberg  
 Mr. and Mrs. Howard Goldberg  
 Mr. and Mrs. Samuel D. Golden  
 Mr. Arthur H. Goldenberg  
 Mrs. Julian R. Goldsmith  
 Ms. Joan Goldstein  
 Mr. and Mrs. William A. Goldstein  
 Dr. and Mrs. Silvano Gomez  
 Mr. and Mrs. David E. Good  
 Mrs. and Nancy Goodman  
 Mrs. Helene Gordon  
 Mr. and Mrs. Marc Gordon  
 Mr. Marvin A. Gordon  
 Mr. Jack H. Gore  
 Ms. Eve M. Gorman  
 Ms. Donna Govas  
 The Honorable and Mrs. John F. Grady  
 Mr. and Mrs. Jerold N. Graff  
 Mrs. William B. Graham  
 Mr. and Mrs. Frank Grantham  
 Ms. Elizabeth H. Gray  
 Mr. J. D. Gray  
 Karen Z. Gray  
 Richard and Mary L. Gray  
 Dr. Robert A. Greendale  
 Mrs. Delta A. Greene  
 Timothy and Joyce Greening  
 Dr. and Mrs. Joel Greenman  
 Mr. and Mrs. Charles E. Gregersen  
 Mr. L. Bradford Gregg  
 Mr. Noel R. Grego  
 Mrs. Judith D. Grenawalt  
 Mr. and Mrs. William G. Grice  
 Dr. B. Herold Griffith  
 Mr. John R. Grimes  
 Mr. and Mrs. Barry Gross  
 Dr. and Mrs. Mortimer D. Gross  
 Mr. Ronald M. Gross  
 Mr.\* and Mrs. Lewis S. Gruber  
 Mr. and Mrs. David L. Grumman  
 Mr. and Mrs. Carl A. Grunschel  
 Mrs. and Mr. Constance Guardi  
 Ms. Martha C. Guarin  
 Mr. Patrick T. Reynolds and  
 Ms. Lourdes S. Guerrero  
 Ms. Gail P. Guggenheim  
 Mr. and Mrs. Scott W. Gunnison  
 Dr. and Mrs. John W. Gustaitis, Jr.  
 Mr. and Mrs. Dean L. Haas  
 Mr. Stanton T. Hadley  
 Mrs. Charles C. Haffner III

Mrs. Margaret Hagedorn  
 Mr. and Mrs. William J. Hagenah III  
 Mr. Charles Haines  
 Mr. and Mrs. James E. Hajek  
 Ms. Sally Marie Hajek  
 Ms. Carol Haliday McQueen  
 Ms. Holley Hall  
 Mrs. Rita Hall  
 Ms. Sophia H. Hall  
 Mr. Walter S. Hallen, Jr.  
 Mr. and Mrs. Burnett A. Halstead  
 Mr. and Mrs. Dorrance Halverson  
 Dr. Ernestine Hambrick  
 Ms. Kathleen Hamilton and  
 Mr. James Reiche!  
 Dr. and Mrs. Chester S. Handelman  
 Mr. and Mrs. Joel L. Handelman  
 Mrs. Esther R. Hankin  
 Dolores K. Hanna  
 Mrs. Gretchen R. Hannan  
 Mrs. Irene Hansen  
 Mr. and Mrs. David L. Hanson  
 Mr. and Mrs. Thomas R. Hanson  
 Mr. Joseph T. Hapak  
 Mr. and Mrs. Sol D. Hara  
 Mr. Edward H. Hard, Jr.  
 Mrs. D. Foster Harland  
 Ms. Ileana P. Harman  
 Ms. Alice E. Harper  
 Harris Family Foundation  
 Mrs. Joan B. Harris  
 Mrs. Henry G. Hart /  
 Hart Family Foundation  
 Mr. and Mrs. Richard Harter  
 Mrs. Helen Henri Hartman  
 Mr. and Mrs. Raymond V. Hartman  
 Mr. Charles F. Hartt  
 Dr. Stephen M. Hashioka and  
 Mr. Roy Hashioka  
 Dr. Malcolm H. Hast  
 Mr. and Mrs. Edward D. Hatcher  
 Ms. Betty Ann Hauser  
 Mr. and Mrs. Allan Hausfeld  
 Mrs. Harriet Hausman  
 Mrs. H.S. Hawkins and Mr. S.W. Udelson  
 Mr. and Mrs. David C. Hawley  
 Mary J. Hayes, D.D.S.  
 Dr. Charles W. Hayford and  
 Dr. Elizabeth R. Hayford  
 Mr. and Mrs. Jo N. Hays  
 Mr. and Mrs. Thomas C. Heagy  
 Mrs. Roselle Hechter  
 Mr. and Mrs. Edward A. Hedborn  
 Wayne E.\* and Colette J. Hedien  
 Mr. and Mrs. Kurt A. Hedlund  
 Ms. Pat Heidkamp  
 Dr. and Mrs. Bernard Heilicser  
 Mr. Fred Heilizer  
 Mr. and Mrs. Philip G. Henderson  
 Mr. David E. Henkle  
 Ms. Dolores E. Henning  
 Mr. and Mrs. Donald J. Henry  
 Mr. C. Warren Henske  
 Mr. and Mrs. Patrick J. Herbert III  
 Mrs. Helen C. Herdrich  
 Mr. Christopher M. Hering  
 Mr. and Mrs. Paul M. Herkes  
 Mr. and Mrs. Stanton B. Herzog  
 Ms. Ruth J. Hess  
 Dr. Hewings and Dr. Hewings  
 Mr. H. R. Heydegger  
 Mr. and Mrs. George A. Heyman  
 Mr. and Mrs. Robert M. Hickey  
 Dr. Alexander Hiikevitch  
 Mr. and Mrs. Stacy H. Hill  
 Ms. Ruth Hiiti

Mr. Kenneth R. Hilton and  
 Mr. Kenton Owens  
 Mr. and Mrs. Edward M. Hines  
 Mrs. Harold H. Hines, Jr.  
 Mr. and Mrs. John L. Hines  
 Mrs. Patricia M. Hines  
 Mrs. Donna J. Hippensteel  
 Mr. Norman Hirsch  
 Mr. and Mrs. Richard M. Hirsch  
 Ms. Geraldine B. Hletko  
 Ms. Peggy Hoberg  
 Mr. John Hockman  
 Ms. Freda Hodge  
 Mr. and Mrs. Thomas H. Hodges  
 Mr. Ralph Hodosh  
 Mr. Robert A. Hoffmann  
 Mr. and Mrs. James M. Hohner  
 Mrs. John A. Holabird, Jr.  
 Ms. Judith Hollander  
 Doris B. Holleb\*  
 Mr. and Mrs. Lawrence P. Holleran  
 Dr. and Mrs. H. Steele Holley  
 Dr. and Mrs. Wayne J. Holman III  
 Cynthia and Ron Holmberg  
 Ms. Carol B. Holmes  
 Mr. and Mrs. Arthur Holzheimer  
 Mr. and Mrs. Thomas C. Homburger  
 Mr. and Mrs. David B. Horn  
 Mr. Donald S. Honchell and  
 Ms. Susan K. Horn  
 Mr. and Mrs. William L. Hood, Jr.  
 Mrs. H. Earl Hoover  
 Mrs. Elizabeth A. Hopp-Peters and  
 Mr. Kurt T. Peters  
 Mr. and Mrs. Donald E. Hosek  
 Rose Houston Charitable Foundation  
 Mr. and Mrs. Bruce Howard  
 Mr. and Mrs. Robert A. Howard  
 Mr. Vance F. Howard  
 Mr. Lawrence V. Howe, Jr.  
 Mr. James W. Howlett  
 Dr. and Mrs. Michael S. Huckman  
 Ms. Laurie Huget and Mr. Werner Huget  
 Mr. and Mrs. Peter Huizenga  
 Pamela K. and Roger B. Hull  
 Tex and Susan Hull  
 Mr. and Mrs. Philip W. Hummer  
 Mrs. Diane S. Humphrey  
 Ms. Janice Humphrey  
 Mr. Rex M. Hunt  
 Mr. and Mrs. J. Thomas Hurvis  
 Mr. and Mrs. Robert A. Hutchins  
 Mr. Jonathan Huth  
 Mrs. Robert C. Hyndman  
 Mr. Martin Hynes  
 Mr. and Mrs. Thomas Ioppolo  
 Mr. Steve M. Isaac and Ms. Judy Olds  
 Ms. Ellen Isaacson  
 Mrs. Sue B. Ish  
 Mrs. Barbara Jackson  
 Dr. Judith M. Jackson and  
 Dr. Danielle G. Jackson  
 Mr. and Mrs. Richard L. Jackson  
 Dr. Norman M. Jacobs  
 Ms. Sharon Jacobs  
 Mr. and Mrs. Fruman Jacobson  
 Mr. and Mrs. Kent E. Jaffe  
 Reinhardt H & Shirley R Jahn Foundation  
 Mr. and Mrs. Jeffrey Jahns  
 Mr. W. Joseph Jahrke  
 Mrs. Eva Jalakas  
 Ms. Marjorie Jansa  
 Mr. and Mrs. Sidney F. Jarrow  
 Mr. Steven P. Jasper  
 Mr. James J. Jedd  
 Miss Rose Mary Jelinek

Mr. and Mrs. James Jendruczek  
 Ms. Betty A. Jenkins  
 Mr. and Mrs. William R. Jentes  
 Mr. Edward Jerkey  
 Fred Johanson and Rosalie Johanson  
 Ms. Karen J. Johnson  
 Ms. Pamela M. MacVicar Johnson  
 Mr. and Mrs. Raymond Johnson  
 Dr. and Mrs. Robert E. Johnson  
 Mr. and Mrs. Roderic Johnson  
 Ms. Kathleen D. Jones  
 Dr. and Mrs. Richard E. Jones  
 Mr. Richard M. Jones\*  
 Mr. and Mrs. Robert A. Jones, Jr.  
 Mr. Ronald E. Jones  
 Mr. and Mrs. David Joravsky  
 Mr. John Jovanes  
 Mr. and Mrs. John B. Judkins, Jr.  
 Mr. Stephen C. Juhasz and Mrs. Barbara Brigel  
 Mrs. Elizabeth E. Jurjevich  
 Mr. and Mrs. William A. Kaepplinger  
 Mr. Dale G. Kalina and Dr. Davida W. Kalina  
 Ms. Patricia Kallio  
 Ms. Grace Kaminkowitz  
 Dr. Mary G. Kane and Mr. Vern Kerchberger  
 Mr. Alvin M. Kanter  
 Ms. Ina Kantor  
 Dr. Benjamin M. Kaplan  
 Mr. Robert Kapoun  
 Mrs. Judith Karnes  
 Mr. Stuart T. Karno  
 Mr. and Mrs. John A. Karoly  
 Mr. and Mrs. Donald Karper  
 Mr. Byron C. Karzas and Mrs. Diane S. Karzas  
 Mrs. Diane Karzen  
 Ms. Verla Kasmerchak  
 Ms. Jo Anne Kastrup  
 Mr. Ronald S. Katch  
 Dr. and Mrs. Melvin P. Katz  
 Mr. and Mrs. Stanley N. Katz  
 Mrs. Lindsay Anne Kaufman  
 Mr. and Mrs. John T. Keane  
 Mrs. Marilyn Kearney  
 Ms. Geraldine M. Kearns  
 Mrs. and Mr. Lucie S. Keating  
 Mr. Peter D. Keefe  
 Mr. and Mrs. Vincent Keefe  
 Mrs. Lynn A. Keefer  
 Mr.\* and Mrs. Michael L. Keiser  
 Constance\* and Dennis Keller  
 Mr. and Mrs. John P. Keller  
 Mr. and Mrs. Roger A. Keller  
 Ms. Eva S. Kelly  
 Mr. and Mrs. James T. Kelly  
 Mr. and Mrs. Jerry M. Kelly  
 Dr. Jonathan R. Kelly, M.D.  
 Ms. Katharine Kelly  
 Mr. and Mrs. Donald G. Kempf, Jr.  
 Mr. and Mrs. G.W. Kennedy  
 Mr. and Mrs. Roger K. Kenney  
 Mr. and Mrs. Sheldon E. Kent  
 Ms. Janet Z. Kessler  
 Mr. and Mrs. Michael H. King  
 Jenny and John Kinsella  
 Mr. and Mrs. William T. Kirk, Jr.  
 Mr. and Mrs. John E. Kirkpatrick  
 Mr. Alfred Kitch  
 Ms. A. M. Klaprat  
 Mr. Wayne G. Klasing  
 Ms. Kristin Klass  
 Mrs. Frances Kleehammer  
 Ms. Kathryn C. Klein  
 Mr. and Mrs. Saul H. Klibanow  
 Ms. Patricia Klick  
 Ms. Arlene M. Kline  
 Mr. Don Klugman

Mr. and Mrs. H. William Knauz  
Mrs. Myrna Knepler  
Ms. Nancy W. Knowles  
Mr. and Mrs. Douglas C. Knuth  
Ms. Linda K. Koch  
Mr. and Mrs. Norman A. Koglin  
Mr. Gordon M. Koizumi  
Mr. Henry Ken Kokrda  
Mrs. Ruth Kolodny  
Mr. and Mrs. Sanfred Koltun  
Mrs. Carol Konagamitsu  
Mr. and Mrs. Leonard V. Kondrot  
Mr. and Mrs. Edmund Konwinski  
Mr. and Mrs. Lawrence A. Kosiba  
Mrs. Alberta Kosik  
Mr. and Mrs. Robert Kozeika  
Laurie and Rich Kracum  
Ms. Regina Krakowski  
Mr. Kenneth Kralik  
Mr. and Mrs. Thomas Kranc  
Mr. and Mrs. Lee V. Kremer  
Mr. Paul R. Kressin and Ms. Kay Lee  
Eleanor C. Krieter  
Mr. and Mrs. Thomas Krigas  
Mr. and Mrs. Larry S. Krucoff  
Mr. Denis Kruk and Mr. Alan Wallie  
Mr. John F. Krupka and Ms. Judith Haila  
Mr. and Mrs. William J. Kucera  
Mrs. Marilyn Kucharski  
Mr. and Mrs. Michael J. Kuehl  
Mr. James Kulikauskas  
Ms. Kathryn S. Kundert  
Mr. William C. Kunkler\* and  
Ms. Susan Crown  
Mr. George J. Kunzmann  
Mr. and Mrs. Thomas E. Kupferer  
Mr. William H. Kurtis\* and  
Ms. Donna La Pietra  
Mr. Randolph R. Kurtz\*  
Mr. and Mrs. Lawrence Kurtzon  
Mr. and Mrs. Michael Kurtzon  
Mr. Roger Kutzner  
Mr. Edward J. Lace  
Caron and Alan Lacy  
Mr. and Mrs. William L. Lamey, Jr.  
Mr. James R. Lancaster  
Mr. and Mrs. Eliot A. Landau  
Mr. and Mrs. Lee Lane  
Ms. Karen H. Laner  
Ms. Beth Lange and Mr. Bill Martin  
Mr. Bradley Langer and Ms. Julia Bernatz  
Mrs. Olive Langlois  
Mrs. Joyce Lankton  
Mrs. Sheri Latash  
Ms. Linda S. Lauterbach  
Dr. Arthur G. Lawrence  
Mrs. Barbara Lawrence  
Mr. and Mrs. Robert D. Leach  
Mrs. Winfred M. Leaf  
Mr. Edwin F. Lebryk  
Mr. and Mrs. Robert P. Ledermann  
Mr. and Mrs. David A. Lee  
Mr. and Mrs. Elliot Lehman  
Mr. and Mrs. John R. Lee  
Dr. and Mrs. Raymond J. Lehman  
Mr. Jeffrey Lennard  
Ms. Nancy A. Lennon  
Mr. and Mrs. David Lentz  
Mr. and Mrs. Henry S. Leonard  
Mr. Jack Lerman and  
Mrs. Elise Pike Lerman  
Mr. Barry Lesht and Ms. Kay Schichtel  
Mr. and Mrs. Gary Lessenberry  
Mrs. Ida Lessman  
Mr. and Mrs. John G. Levi  
Mrs. Nancy R. Levi

Dr. and Mrs. Murray L. Levin  
Mrs. Ann Levinson  
Dr. and Mrs. Riccardo Levi-Setti  
Mr. and Mrs. Donald H. Levy  
Dr. Jonathan Lewis  
Dr. and Mrs. Michael S. Lewis  
Ms. Eileen Libby  
Dr. Eva F. Lichtenberg  
Dr. and Mrs. David B. Lieb  
Dr. and Mrs. Jack L. Lieberman  
Mr. and Mrs. Jeffrey Lieblich  
Mr. James Lilly and  
Mrs. Kathleen Bradley  
Mr. and Mrs. Jon R. Lind  
Ms. Marilyn R. Lind  
Dr. and Mrs. Thayer E. Lindner  
Ms. Dorothy J. Lingeman  
Mrs. Barbara F. Link  
Mrs. Robert R. Lipsky  
Mr. and Mrs. Michael P. Litt  
Dr. Jonathan W. Littman, M.D.  
Ms. Irene Lizak  
Mr. and Mrs. John S. Lizzadro  
Mrs. Helen Lloyd  
Mr. Larry Loecker and Ms. Judith Ruhana  
Mr. Richard J. Loewenthal, Jr.  
Mr. and Mrs. George H. Logan  
Ms. Renée Logan  
Mrs. Estelle London  
Ms. Cheryl Longhini  
Shery and Mel Lopata  
Mrs. and Dr. Jadwiga Lopez-Majano  
Ms. Margaret A. Lorincz  
Mr. and Mrs. Maynard K. Louis  
Mr. and Mrs. Ralph Love  
Dr. and Mrs. Louis P. Lukancic  
Ms. Beatrice Lumpkin  
Mr. Mark Luscombe  
Mr. and Mrs. David H. Lux  
Mr. and Mrs. Lee B. Lygiros  
Ms. Patricia Lykins  
Mr. and Mrs. Robert Lynch  
Ms. Corinne M. Lyon  
Mr. James Macdonald  
Dory and Larry Machtinger  
Mrs. Martha H. Mackin  
Mr. and Mrs. Barry L. MacLean  
Holly and John Madigan  
Mr. and Mrs. David Maher  
Mr. and Mrs. Richard E. Mahin  
Mr. and Mrs. Thomas Major  
Ms. Beverly Malen  
Cary J.\* and Lisa Klimley Malkin  
Mr. and Mrs. Timothy J. Malloy  
Mr. John Maloney  
Ms. Andrea Mancillas  
Mr. Richard J. Mandahl  
Mr. and Mrs. Richard L. Mandel  
Mr. and Mrs. Myril Manhoff  
Mr. and Mrs. Floyd Manilow  
Lewis and Susan Manilow  
Ms. Katharine B. Mann  
Sandy and Jerry Manne  
Mrs. Ludwig Mannheimer  
Mr. and Mrs. Frederick J. Manning  
Ms. Karen L. Mansfield  
Mr. and Mrs. Ira Marcus  
Mrs. Barbara Marder  
Mr. and Mrs. Alan J. Marek  
Dr. and Mrs. Lawrence N. Margolies  
Mr. William J. Marino  
Mrs. Charlotte Marks  
Peter Marks and  
Dorothy Mackevich Marks  
Mr.\* and Mrs. Scott P. Marks, Jr.  
Marie Marotta

Dr. and Mrs. Antonio Marra  
Dr. Benjamin D. Martinez  
Mr. and Mrs. James Marucecki  
Ms. Elfriede Matejisik, Ph.D.  
Jane M. Mather and Christine Mather  
Ms. Janet L. Mather  
Mr. and Mrs. Jeremy Mathers  
Dr. and Mrs. Richard Mattis  
Mr. Bruce A. Maxwell  
Mr. and Mrs. Charles M. May  
Mr. and Mrs. Frank D. Mayer, Jr.  
Mr. and Mrs. Richard P. Mayer  
Ms. Charlotte Mays  
Mr. Raymond Mc Bride  
Mrs. Judith A. Mc Kee  
Mr. and Mrs. Richard McAvoy  
Mr. and Mrs. Robert G. McCann  
Mrs. Ellen J. McCarthy  
Mr. and Mrs. Mark J. McCarville  
Mr. and Mrs. Archibald McClure  
Bess Catherine McCord and  
James McCord  
Mrs. George Barr McCutcheon II  
Mr. and Mrs. Leo J. McDonald  
Dr. William B. McDonald and  
Ptah Sekhmat Osiris  
Mrs. Barbara McDonough  
Ms. Mary J. McEnery  
Mr. Patrick McGee  
Paul and Bonnie McGrath  
Dr. Kennon P. McKee  
Mr. and Mrs. Ronald McKee  
Mr. and Mrs. Andrew J. McKenna, Sr.  
Ms. Patricia M. McKiernan  
Mrs. Elaine McLaughlin  
Mr. and Mrs. Robert G. McLennan  
Mrs. Carol McManus  
Mr. and Mrs. Michael B. McMurry  
Mr. Michael A. McNamara  
Mr. Thomas B. McNeill  
Mr. and Mrs. Charles P. McQuaid  
Mr. and Mrs. John S. Meany, Jr.  
Erma S. Medgyesy  
Mrs. Terry J. Medhurst  
Dr. and Mrs. Thomas P. Meehan, D.V.M.  
Ms. Judith M. Meek and  
Ms. Nancy Wardrope  
Ms. Elisabeth C. Meeker  
Mrs. Withrow W. Meeker  
Mr. John M. Meeks  
Mr.\* and Mrs. Hugo J. Melvoine  
Mr. and Mrs. Dennis A. Meritt, Jr.  
Mr. Peter Merwin  
Ms. Susan F. Messinger  
Dr. and Mrs. John J. Messitt  
Mr. Roger K. Metz  
Mrs. Beverly M. Meyer  
Ms. Karen M. Meyer  
Mr. and Mrs. James M. Meyers  
Dr. and Mrs. Ernest E. Mhoon, Jr.  
Mrs. Blanche M. Mica  
Mr. Daniel J. Michalak  
Ms. Irene V. Migdalek  
Mr. Richard A. Mikulec  
Mr. and Mrs. George E. Milkowski  
Mr. and Mrs. Craig Miiler  
Ms. Evelyn Miller  
Mr. Irving Miller  
Mr. Randall A. Miller  
Dr. and Mrs. Robert P. Miller  
Mr. and Mrs. Roger H. Miller  
Mr. Thomas L. Miller and  
Ms. Stephanie Wilson  
Mrs. Victoria A. Miller  
Mr. August E. Miltz  
Mr. Gregory Minnis

Mr. and Mrs. Philip Mitchell  
Dr. Hattula Moholy-Nagy  
Mr. and Mrs. Roger J. Mohr  
Mr. and Mrs. Thomas M. Monahan  
Ms. Gayle Moody  
Ms. Madeline G. Moon  
Mrs. Frank J. Mooney  
Mr. and Mrs. Carl E. Moore, Jr.  
Mr. and Mrs. Leon W. Moore  
Mr. and Mrs. David D. Morimoto  
Mr. and Mrs. Rick Morimoto  
Mr. Donald Moritz  
Mr. and Mrs. John H. Morrison  
Ms. Mary E. Morton  
Dr. and Mrs. Richard Moser, M.D.  
Mrs. Janice M. Mouton  
Mr. and Mrs. Kurt M. Mueller  
Ms. Laura Mueller  
Mr. and Mrs. David Mui  
Mr. and Mrs. Thomas M. Mulcahy  
Mr.\* and Mrs. Leo F. Mullin  
Mr. Thomas E. Mulvihill  
Mr. and Mrs. Raymond Munaretto  
Mr. and Mrs. Hector I. Munoz  
Mr. and Mrs. Colin Munro  
Mr. Ellis Murphy  
Mr. Hollace C. Murphy  
Mr. John J. Murphy, Jr.  
Mr. and Mrs. Michael E. Murphy  
Mrs. Nancy Murphy  
Mr. Daniel R. Murray  
Mr. Glen P. Murrin  
Mr. Michael J. Murrin  
Mr. and Mrs. Philip R. Murtaugh  
Mr. and Mrs. Timothy J. Murtaugh III  
Ms. Barbara A. Murtha  
Mr. David E. Muschler and  
Ms. Ann L. Becker  
Dr. and Mrs. Charles F. Nadler  
Mrs. Vreni Naess  
Mrs. Mary O. Naftzger  
Sidney Nagel  
Mrs. Patricia R. Naguib  
Ms. Carolyn K. Nakamura  
Ms. Mary Nalbandian  
Ms. Eleanor Nangle  
Mrs. Carolyn Narasimhan  
Ms. Carolyn E. Nasheim  
Mr. and Mrs. Joseph E. Nathan  
Ms. Sheila M. Naughten  
Mr. James Naughton and  
Ms. Anita Andren  
Mrs. Earl L. Neal  
Mr. and Mrs. Kenneth Nebenzahl  
Mr. Seymour Neems  
Mrs. Betty Nehls  
Mrs. Mady Newfield and  
Mr. Rob Plunkett  
Mr. and Mrs. John W. Newlin, Jr.  
Mr. and Mrs. Ray E. Newton  
Mr. and Mrs. John Doane Nichols  
Ms. Eleanor A. Nicholson  
Mr. James Nicholson and  
Ms. Patricia L. Callis  
Ms. Karen Nickelson  
Mr. Oliver Nicklin  
Mr. and Mrs. Allan N. Niederman  
Mr. and Mrs. John P. Nielsen  
Mrs. Verna Niemann  
Ms. Gwen Nodiff  
Mr. Raymond L. Noftzger and  
Dr. Tina Forchetti  
Mr. J. P. Noonan  
Dr. and Mrs. David Noparstak  
Dr. Joseph R. Nora  
Mrs. Mary Jane Nordlund

\*TRUSTEE

Ms. Anna M. Norehad  
Mr. Andrew A. Norton  
Ms. Rita M. Novak  
Ms. Catherine A. Novotny Brehm  
Mr. Kenneth Nowakowski and  
Mr. Dennis Canopin  
Dr. and Mrs. P. A. Nowakowski  
Diane and Neal Nowicki  
Mr. William Nowicki  
Mrs. Rosalie Nunez  
Mr. James Nutt  
Mrs. Dorothy Jeanne Oakley  
Ms. Leona O'Brien  
Mr. Todd Ochs and Mrs. Janet Agranoff  
Mr.\* and Mrs. James J. O'Connor, Jr.  
Mr.\* and Mrs. James J. O'Connor, Sr.  
Mr. James V. O'Connor  
Ms. Alice C. O'Dell  
Mr. and Mrs. Donald R. Oder  
Mr. and Mrs. Paul W. Oliver, Jr.  
Mr. and Mrs. Anton J. Olson  
Mr. and Mrs. E. Robert Olson  
Mr. and Mrs. Keith A. Olson  
Mr. and Mrs. William J. O'Neill  
Mr. and Mrs. Robert Opie  
Mr. and Mrs. Charles Orlove  
Mr. Neal Ormond  
Mr. and Mrs. Charles J. Osicka  
Mr. Robert I. Osterberg  
Jim and Diane Otis  
Mr. Bart R. O'Toole  
Mr. David Otto  
Mrs. China I. Oughton  
Mr. and Mrs. Charles Owen  
Ms. Donna L. Owens  
Mr. Rodney Pacilio and  
Ms. Nicole Pacilio  
Ms. Sarah R. Packard  
Mrs. Clarice J. Paliatka  
Ms. Iris A. Palm  
Mrs. JoAnn Papanek  
Mr. and Mrs. Peter Parcell  
Mr. Courtney L. Parker  
Mr. and Mrs. Eugene N. Parker  
Ms. Mary A. Parker  
Mr. Steven Parker and Ms. Ruth Rankin  
Robert K. Parsons and Victoria J. Herget  
Lanny and Terry Passaro  
Mr. and Mrs. Joseph Paszczyk  
Mr. Robert Paszczyk  
Mr. Phillip J. Patinkin  
Mr. and Mrs. Donald W. Patterson  
Mr. and Mrs. John T. Patterson  
Mr. and Mrs. O. M. Patterson  
Mr. William Patterson, Jr.  
Mr. and Mrs. James B. Patton  
Mr. and Mrs. Robert J. Pavich  
Mr. Rich Pawlowski  
Mr. and Mrs. Jerry K. Pearlman  
Mr. Frederic C. Pearson  
Ms. Kathryn S. Pearson  
Mr. Francis J. Pendergast III  
Mrs. Marie E. Peregrine  
Mrs. Ricarda A. Perez  
Mr. Gregory J. Perisin  
Mr. and Mrs. Robert P. Perkaus, Jr.  
Mary Lou Perkins  
Ms. Joan Perkins  
Mr. and Mrs. Michael S. Perlman  
Mr. Noel B. Perlman  
Mrs. Thelma Perkins  
Ms. Mary Anne Peruchini  
Ms. Marjorie Pesaresi  
Mrs. Marilyn E. Peters and  
Mr. Harry M. Thompson  
Mr. and Mrs. James Petrzilka  
Mr. and Mrs. Sheldon Pevsner  
Mrs. Marlene W. Phillips  
Mr. James M. Phipps and  
Mrs. Jackie Bernak  
Mr. and Mrs. James Piechowski  
Mr. and Mrs. Robert G. Pierce  
Dr. and Mrs. Louis R. Pignotti, Sr.  
Mr. and Mrs. Haskell M. Pitluck  
Dr. and Mrs. Marvin J. Pitluk  
Mr. David Pitrak and Ms. Susan J. Taylor  
Mr. and Mrs. Walter J. Plank  
Mrs. Carol Plochman  
Mrs. John W. Pocock  
Mr. and Mrs. Glenn Podgorski  
Mr. and Mrs. Walter F. Podolski  
Mr. James Podraza  
Mr. Richard Pokorny and  
Ms. Ellen Wehrle  
Ms. Patricia A. Polich  
Mr. John D. Polka  
Mr. and Mrs. Jay Pollitt  
Mr. Stanley L. Pollock  
Mr. and Mrs. William P. Porcelli  
Mrs. Betty Portenlanger  
Dr. and Mrs. Steven Potashnick  
Mr. and Mrs. Charles S. Potter, Jr.  
Mrs. Celia Powers  
Mrs. Sally F. Prager  
Ms. Dalma Praznowski  
Mr. and Mrs. Michael Pregont  
Mrs. and Mr. Marion Prins  
Mrs. Dora Prinz  
Mr. Herbert V. Prochnow, Jr.  
Ms. Catherine V. Pucci  
Mr. Alan J. Pulaski and  
Mrs. Jane C. Grady  
Mrs. Doris J. Puntney  
Mr. and Mrs. John W. Puth  
Mr. and Mrs. Albert E. Pyott  
Mr. Edward P. Pyterek  
Dr. Smilja Rabinowitz  
Mrs. Jennette Rader  
Mr. Matthew J. Radloff  
James A. Radtke and Susan A. Kressin  
Mr. and Mrs. Bruce Rahn  
Dr. Shaku Rajagopal  
Mr. and Mrs. John S. Ralston  
Miss Dorothy V. Ramm  
Mr. and Mrs. Ronald Ramos  
Mr. and Mrs. Gordon P. Ramsey  
Dr. and Mrs. Francisco J. Randin  
Mr. and Mrs. James M. Ratcliffe  
Mr. and Mrs. Mark A. Ratner  
Mrs. Agnethe Rattenborg  
Ms. Lynne Rauscher-Davoust  
Dr. Richard Raymer  
Mr. and Mrs. Gary Raymond  
Mr. Marco A. Reategui  
Ms. Bernadine E. Reckert  
Mr. James H. Reddy  
Mrs. John Shedd Reed  
Dr. Larry Reed  
Mr. Spencer S. Reese  
Mrs. Doris I. Rehm  
Mr. Jerry R. Reich  
Reverend A. Paul Reicher  
Mr. and Mrs. James T. Reid  
Mr. and Mrs. Clyde W. Reighard  
Mr. and Mrs. Norbert Reinhard  
Mr. Eugene R. Reinhold  
Mrs. Laurie N. Reinstein  
Dr. Sigrida Renigers and  
Ms. Astra M. Patrick  
Mrs. Jane L. Renze  
Mr. Ralph R. Resney  
Dr. Raiselle C. Resnick and  
Dr. Kenneth I. Resnick  
Ms. Madeline Reyer  
Dr. Marleta Reynolds, M.D.  
Mrs. Olive L. Rhodes  
Mr. and Mrs. John Rice  
Mr. and Mrs. Jerald F. Richman  
Mr. and Mrs. John F. Richmann  
Mr. Anthony Richter  
Dr. Harry M. Richter and  
Mrs. Susan M. Scherer  
Mr. and Mrs. Harold D. Rider  
Mrs. Kathryn R. Riemer  
Dr. Edward O. Riley  
Mrs. Ellen Rissman  
Mrs. Vivian M. Rivard  
Mr. and Mrs. Robert Rivas  
Roberts Family Foundation  
Mr. and Mrs. Clark R. Robinson  
Mr. and Mrs. Jay S. Robinson  
Ms. Joan Robinson  
Mr. and Mrs. William J. Robinson, Jr.  
Ms. Vivian Rogala  
Ms. Anita J. Rogers  
Dr. and Mrs. B.H. Gerald Rogers  
Mr. and Mrs. David J. Rogers  
Mr. George W. Rogers  
Mr. Howard J. Romanek and  
Mr. Irwin Romanek  
Ms. Sylvie Romanowski  
Mr. and Mrs. Edward M. Roob  
Mr. Matthew A. Rooney and  
Mrs. Diane S. Kaplan  
Mr. and Mrs. Phillip B. Rooney  
Ms. Nancy Rose  
Mr. and Mrs. Gerald Rosenband  
Ms. Diane Rosenberg  
Mr. and Mrs. Marc L. Rosenberg  
Mr. and Mrs. Richard M. Rosenberg  
Mr. Robert S. Rosenberg  
Mr. and Mrs. Robert C. Rosenfeld  
Mr. and Mrs. Harold Rosenson  
Mr. Edward L. Rosenthal  
Mr. and Mrs. James E. Rosenthal  
Mr. Warner A. Rosenthal  
Robert and Marsha Rosner  
Mr. and Mrs. Jeffrey S. Ross  
Mrs. Donald I. Roth  
Mr. and Mrs. Warren J. Roth  
Mrs. Elizabeth D. Rothermel  
Mrs. Laila Rothstein  
Dr. David S. Rozenfeld  
Mr. and Mrs. Norman J. Rubash  
Dr. Myron E. Rubnitz and  
Mrs. Susan B. Rubnitz  
Dr. Henry Ruder  
Ms. Catherine Rudolph  
Ms. Barbara Ruggles  
Mr. and Mrs. George T. Rummel  
Mr. Charles R. Rusin  
Mr. David W. Ruttenberg  
Mr. and Mrs. Patrick G. Ryan  
Ms. Barbara Ryan  
Mrs. Rachel Ryan  
Mrs. Rita Ryan-Novak  
Mr. and Mrs. Robert M. Rybicki  
Mrs. Carol S. Sadow  
Mr. and Mrs. Dieter Saegbrecht  
Rabbi and Mrs. James L. Sagarin  
Mrs. Marilyn I. Salek-Zepf and  
Mr. Michael Zepf  
Mr. Alan Salseski and  
Ms. Christine Haught  
Mr. and Mrs. George Sallmann, Jr.  
Dr. and Mrs. Paul W. Saltzman  
Mr. James Salvatore  
Mr. A. William Samuel  
Mr. and Mrs. Eduardo J. Sanchez  
Ms. Verie Sandborg  
Mr. Richard H. Sanders  
Mr. Norman L. Sandfield  
Mrs. Robert E. Sargent  
Mr. William D. Saulters  
Mr. and Mrs. Giovanni Savaglio  
Mr. Richard E. Savin  
Mr. and Mrs. Michael T. Sawyier  
Mrs. Rita J. Scanlan  
Ms. Gloria J. Scardino  
Mr. and Mrs. Luke Schaap  
Ms. Marie M. Schamberger  
Mr. Tom Schatzeder and Ms. Susan Reedy  
Mr. Alfred Schectman and Mrs. Carol Jab-Schectman  
Mrs. Marian E. Scheffler  
Dr. David L. Scheiner and Dr. Margaret Creedon  
Mr. and Mrs. Haskell Schiff  
Mrs. Louise L. Schiff  
Dr. and Mrs. John P. Schiffer  
Mr. and Mrs. David M. Schiffman  
Mr. Laurence D. Schiller and Ms. Cathleen A. Weigley  
Mr. Stephen J. Schlegel  
Mr. and Mrs. Daniel I. Schlessinger  
John and Shirley Schlossman  
Ms. Maria Schmidt  
Mr. Wilbur E. Schmidt  
Mr. and Mrs. F. Eugene Schmitt  
Mr. and Mrs. Karl E. Schmitt  
Mrs. Donna L. Schmitz  
Patricia and Richard H. Schnadig  
Ms. Carol H. Schneider  
Dr. John F. Schneider  
Karen and Frank Schneider  
Ms. Sandy Schneider and Mr. Gerald Higgins  
Dr. Joy Schochet  
Ms. Renee M. Schoenberg  
Mr. and Mrs. Len Schoepp  
Mr. and Mrs. Thomas B. Schrey  
Mrs. Anita Schroeder  
Mr. and Mrs. Paul W. Schroeder  
Mr. and Mrs. George H. D. Schulz  
Mr. Andrew J. Schumi  
Mr. Duane Schustek  
Dr. and Mrs. Jerrold J. Schwartz  
Mr. and Mrs. John D. Schwartz  
Mr. Marvin P. Schwartz  
Dr. Milford Schwartz  
Dr. Neena B. Schwartz  
Mr. and Mrs. Seymour J. Schwartz  
Mr. William Schwer  
Mr. and Mrs. John E. Schwolow  
Mr. and Mrs. Jack Scott  
Ms. Margaret F. Scott  
Mrs. Martha Scott and Ms. Julie Scott  
Stephen A. and Marilyn Scott  
Mr. and Mrs. Irving Seaman, Jr.  
Mrs. William L. Searle  
Mr. and Mrs. Raymond Sedivec  
Dr. Marshall B. Segal  
Segal Family Foundation  
Mrs. Catherine Sell  
Ms. Jacqueline M. Sell  
Mr. and Mrs. Richard J. L. Senior  
Mr. and Mrs. Allen Sered  
Ms. Benita C. Serio  
Ms. Marjorie Shafton  
Dr. Rupa M. Shah and Mr. Abhishek Vora  
Mr. and Mrs. C. Kevin Shannahan  
Mrs. Beverly Shapiro  
Mr. and Mrs. Gerald M. Shapiro  
Mr. and Mrs. Lawrence A. Sharken  
Mrs. Lillian Shaw  
Dr. and Mrs. Richard D. Sheffer  
Pam and Tom Sheffield / JS Charitable Trust  
Dr. and Mrs. Mitchell B. Sheinkop  
Mr. and Mrs. Kenneth C. Shepro

Ms. Elaine A. Sherman  
Mrs. Ann T. Shields  
Mr. Thomas Shields  
Mr. and Mrs. James Y. Shikami  
Ms. Joan R. Shogren  
Mr. and Mrs. Richard W. Shubart  
Ms. Elizabeth A. Shubeck  
Mr. and Mrs. Romolo Sidoli  
Mrs. Barbara Siebel  
Mrs. Ann Siegel  
Mr. Paul R. Sievert  
Mr. and Mrs. Bruce K. Siewerth  
Mr. and Mrs. Michael S. Sigal  
Ms. Bette H. Sikes  
Mr. and Mrs. Thomas A. Silberman  
Mr. Michael Silverstein and  
Ms. Mara Tapp  
Adele S. Simmons\* and  
John L. Simmons  
Mr. and Mrs. Michael L. Simon  
Mr. and Mrs. Morris Simon  
Mr. and Mrs. Michael Simpson  
Mr. Kenneth W. Singer  
Mr. Ronald E. Siwek  
Ms. Carol B. Skala  
Mrs. Victoria M. Skala  
Dr. Phillip A. Skoczelas  
Mr. Gary Slutsky  
Mrs. Jackson W. Smart, Jr.  
Ms. K. Smigielski and Mr. T. Mc Clellan  
Mr. and Mrs. Arthur Smith  
Mr. and Mrs. Garth D. Smith  
Marvin and Annette M. Smith  
Maureen Dwyer Smith\* and  
Edward Byron Smith, Jr.  
Ms. Nancy A. Smith  
Mr. Robert K. Smither and  
Mrs. Carol Meyer  
Mr. and Mrs. Robert W. Smolen  
Ms. Mary J. Snell  
Mr. and Mrs. Dan W. Snyder, Jr.  
Ms. Elizabeth L. Snyder  
Mr. and Mrs. John B. Snyder  
Mrs. Ida N. Sondheimer  
Mr. Glenn R. Sonlitner  
Mr. and Mrs. O. J. Sopranos  
Mr. Ben Z. Sosewitz  
Mr. Tom Sourlis  
Mr. and Mrs. Galen South  
Mr. Donald Southworth and  
Ms. Marilyn Cantisano  
Mr. and Mrs. John Souza  
Mr. Jay T. Sparber  
Mrs. Patricia G. Spear  
Mrs. Elissa Speizman and  
Mr. Doug Walder  
Mrs. Carole Spidalette and  
Ms. Angela Spidalette  
Ms. Sarah D. Sprowl  
Joachim and June Staackmann  
Mr. Walter J. Stachon, Jr.  
Dr. and Mrs. Thomas J. Stafford  
Mr. and Mrs. Ronald F. Stajkowski  
Ms. Linda Stanislawski  
Mr. and Mrs. Harlan F. Stanley  
Mrs. Patricia Stanley  
Mr. John Staudinger  
Mr. Paul R. Steadman  
Mr. Michael P. Stearns  
Mr. and Mrs. Neele E. Stearns, Jr.  
Mr. and Mrs. Leon C. Stecher  
Mr. Michael L. Stein and  
Ms. Laurie J. Butler  
Dr. Donald F. Steiner  
Mr. M. A. Steinschneider  
Mr. Robert Stelton  
Mrs. Doris F. Sternberg  
Mrs. Dorothy Stevens  
Mr. and Mrs. Adlai E. Stevenson III  
Ms. Margaret Stewart  
Liz Stiffel  
Mr. Ronald Stoch  
Dr. and Mrs. Ralph W. Stoll  
Donna and Tom Stone  
Mrs. Harriet C. Stone  
Mr. and Mrs. Robert J. Stracks  
Mr. Gary L. Strawn  
Mr. James R. Streicker and  
Ms. Mary W. Stowell  
Mr. and Mrs. Robert D. Stuart, Jr.  
Mrs. Barbara Stucker  
Ms. Lauri Sugerman and Mr. Gray Booth  
Mr. and Mrs. Michael A. Sulewski  
Mr. Barry Sullivan  
Mr. and Mrs. John B. Sullivan  
Mr. Rajendra Supkar  
Mr. and Mrs. Harold Sutton, Jr.  
Ms. Karen A. Svendsen  
Ms. Helen M. Sweeney  
Dr. and Mrs. Martin Swerdlow  
Mr. and Mrs. Edward F. Swift III  
Mr. and Mrs. Hampden M. Swift  
Mr. and Mrs. Mark Swiss  
Mr. and Mrs. Irwin S. Sylvan  
Mr. and Mrs. Brian E. Symonanis  
Mr. and Mrs. Casimir Szczepaniak  
Mr. Don Szczodrowski  
Dr. and Mrs. Jan P. Szidon  
Dr. Sara Szuchet  
Mr. and Mrs. Earl T. Szymanski  
Mr. George Tafelski and  
Mrs. Rita Harmata  
Ms. Nina Tai  
Mr. and Mrs. Jordan M. Tark  
Mr. Charles A. Tausche  
Tawani Foundation  
Ms. Elaine R. Taylor  
Mr. and Mrs. John W. Taylor III  
Reverend Joseph C. Taylor  
Mr. and Mrs. Jan Teetsov  
Mr. and Mrs. Anthony Terrulli  
Mrs. Sophey Thain  
Mr. and Mrs. Ed Thayer  
Mr. George P. Thermos  
Mr. and Mrs. Richard A. Therrio  
Mr. Allen Thieme  
Ms. Kathy Tholin and Mr. Steve Starr  
Mr. John Thompson  
Mr. John T. Thompson and  
Ms. Evelyn L. Panice  
Mr. and Mrs. Nick Thomas  
Mr. and Mrs. Richard L. Thomas  
Mr. and Mrs. Robert W. Thomas  
Mrs. Nina Thorp  
Mrs. Charlotte Tiekem  
Ms. Jacqueline Tilles  
Mr. and Mrs. Stephen B. Timbers  
Mr. and Mrs. Michael Tipp  
Elizabeth Tisdahl  
Ms. Cynthia Toback  
Ms. Virginia Tolck  
Mr. and Mrs. William C. Tompsett  
Mrs. Nancy D. Toomey  
Mr. and Mrs. Ronald Tracy  
Mr. and Mrs. Richard Traut  
Mrs. Lila R. Treadwell  
Mr. and Mrs. George S. Trees, Jr.  
Dr. and Mrs. Michael R. Treister  
Mr. and Mrs. Barton G. Tretheway  
Mr. Lawrence Trickle and  
Ms. Marlene Magon  
Mr. Howard J. Trienens  
Mr. and Mrs. Mitch Trilling  
Mr. and Mrs. Ralph Trimble  
Dr. Richard E. Trueheart  
Mr. Robert H. Tucker  
Mr. Michael D. Tufano and  
Mrs. Mary Neilly  
Mr. and Mrs. John E. Tulley  
Mr. and Mrs. Edward Turkington  
Dr. and Mrs. David A. Turner  
Mrs. Charlotte L. Tyksinski  
Ms. Muriel F. Underwood  
Mr. Irving Ungar  
Ms. Paula M. Uscian  
Ms. Crystal Usher  
Ms. Marguerite M. Valadez  
Mr. and Mrs. James Vallyely  
Dr. E. Jay Van Cura  
Mr. and Mrs. J. V. Van Cura, Jr.  
Mr. and Mrs. James Van Ness  
Mr. and Mrs. Peter E. Van Nice, Sr.  
Ms. Melody A. Van Wermeskerken  
Mrs. Theodore W. Van Zelst  
Mrs. Herbert A. Vance  
Mr. John D. VanPelt and  
Ms. Sharon M. Quintenz  
Dr. Daina Variakojis  
Mr. and Mrs. Edward Vardnell  
Ms. Phyllis Victorson  
Mr. and Mrs. James R. Vieregge  
Mr. and Mrs. Joseph M. Vijuk  
Mr. and Mrs. David J. Vitale  
Ms. Jo-Anne Vogt  
Ms. Kathleen Vogt  
Mr. Philip V. Voorhees  
Ms. Jacqueline Vossler  
Mr. Joseph P. Wabol  
Dr. and Mrs. Albert F. Wagner  
Mrs. Elizabeth Wagner and  
Mr. William Pecquet  
Dr. and Mrs. Kurt J. Wagner  
Mr. and Mrs. Robert J. Wagner  
Mr. and Mrs. Richard A. Waichler  
Ms. Belle Waldfogel and  
Ms. Georgean Goldenberg  
Mrs. Jacqueline Waldstein  
Mrs. Allison D. Walker  
Mr. and Mrs. David L. Wallace  
Mr. and Mrs. Douglas H. Walter  
Mr. Kurt M. Walther  
Mrs. Roy I. Warshawsky  
Mr. John A. Wasserstrom and  
Ms. Susan A. Kelly  
Ms. Sophia A. Watson  
Mr. and Mrs. David B. Waud  
Mr. Owen C. Wavrinek  
Mr. John R. Weber  
Mr. Leonard L. Weber  
Mr. and Mrs. Richard N. Weber  
Professors Johannes and  
Julia R. Weertman  
Mr. and Mrs. Richard Weiland  
Ms. Dianne Weinand  
Mr. John F. Weinberger and  
Mrs. Mary A. Motejzik  
Mr. Alan J. Weiner  
Ms. Janice L. Weiner  
Mrs. Myra T. Weiner  
Mr. and Mrs. Bernie Weinstein  
Mrs. Carolyn H. Weinstein  
Mr. Robert Weinstock  
Mr. John E. Weir  
Dr. and Mrs. Samuel Weiss  
Mr. and Mrs. Steven Weiss  
Mr. Carey Weiss and Dr. Karen Pierce  
Mr. and Mrs. Robert Weissbourd  
Mr. and Mrs. Barry Weitz  
Mr. and Mrs. Howard R. Weitzman  
Mrs. Jane Wells and Mr. Burton C. Ferrini  
Ms. Naomi Wentworth  
Mrs. Mary T. Wersells and  
Ms. Elizabeth Wersells  
Mrs. Barbara Wetzel  
Mrs. Madelin M. Wexler  
Mrs. Henry P. Wheeler  
Mr. and Mrs. Richard J. Wheeler  
Mrs. Carolyn M. White  
Mrs. Dorothy B. White  
Ms. Elizabeth A. White  
Kim\* and Miles\* White  
Ms. Mary D. White  
Ms. Stephanie C. White  
Ms. Cynthia L. Wiatr  
Mr. Robert P. Wiegand  
Mr. Gary I. Wigoda and Mrs. Barbara Gressel  
Ms. Laura A. Wilber  
Mr. and Mrs. Lawrence G. Wilcox  
Mr. Bill Wild  
Mr. and Mrs. Stanley A. Wilk  
Mrs. Julian B. Wilkins  
Mr. Clifton J. Wilkow  
Mr. and Mrs. Dennis A. Williams  
Mr. Robert L. Williams  
Mr. and Mrs. Roger G. Williams  
Ms. Bernadine Wilson  
Ms. Charlotte Wilson  
Mr. and Mrs. Dennis Wilson  
Mr. and Mrs. Leslie B. Wilson  
Mrs. Phyllis E. Wilson  
Mrs. Robert H. Wilson  
Mr. Robert I. Wilson  
Ms. Nancy Hamill Winter  
Mr. and Mrs. Gregory Wintroub  
Mr. and Mrs. James R. Wise  
Mr. and Mrs. Robert F. Witherspoon  
Mr. and Mrs. Arnold A. Witt  
Mr. and Mrs. William W. Witzemann  
Mrs. Suzanne Wodka  
Ms. Melanie R. Wojtulewicz  
Mrs. Jane Wolak  
Cari Wolf and Jennie Sochon  
Mr. and Mrs. Charles Wolf  
Mrs. Ann S. Wolff  
Mrs. Louise Woodier  
Mr. Leon Wool  
Mr. and Mrs. Robert C. Worley  
Mr. and Mrs. Tom Wotovich  
Mr. and Mrs. Larry V. Wright  
Mr. David S. Yablong  
Mr. and Mrs. Robert Yassan  
Mr. and Mrs. Robert R. Yohanan  
Mrs. Lisa Yondorf  
Ms. Carole Y. Yoshida  
Mrs. George B. Young  
Dr. and Mrs. Gerald D. Young, Jr.  
Mr. and Mrs. Jim Young  
Mr. and Mrs. Michael P. Young  
Dr. Quentin D. Young  
Mr. Richard F. Young  
Ms. Susan N. Young  
Mr. and Mrs. George S. Zahrosky  
Professor and Mrs. Jerrold H. Zar  
Ms. Barbara Zenner  
Mr. Marvin Zerwekh  
Ms. Jaquelyn Zevin  
Mr. and Mrs. James P. Ziegler  
Mr. and Mrs. Frederick N. Zimmermann  
Mr. and Mrs. Earl Zingraf  
Mrs. Tellervo R. Zoller  
Mark H. Zornow, M.D.  
Mr. and Mrs. Richard E. Zulkey  
Mrs. Janice Zulkey



## In Memory of Juli Plant Grainger (1926–2014)



COURTESY GRAINGER FAMILY

Juli Grainger joined the Women's Board in 1979 and became a Field Museum Trustee in 1987. Through The Grainger Foundation, Mrs. Grainger supported the Museum for nearly 50 years, including its science, education, and technology programs. The Foundation also supported the stunning transformation of the Museum's Gem collection into the *Grainger Hall of Gems* and presentation of the temporary exhibitions *Jacqueline Kennedy: The White House Years* and *The Nature of Diamonds*. The *Grainger Hall of Gems* was dedicated in Mrs. Grainger's honor on October 23, 2009 and will remain a lasting legacy to her generosity and commitment to the Field.

## Field Associates

The Field Associates, the Museum's young professional supporters, will host *Evolve*, their annual benefit, on Saturday, August 16. Proceeds from the event will help ensure the sustainability of The Field Museum's education programs, research projects, exhibitions, and collections. Join The Field Associates now and watch for event updates by visiting [fieldmuseum.org/fieldassociates](http://fieldmuseum.org/fieldassociates).



GN91513\_225D / JOHN WEINSTEIN



The Field Museum salutes the people of Chicago for their long-standing support of the Museum through the Chicago Park District.



ILLINOIS  
ARTS  
COUNCIL  
AGENCY

This program is partially supported by a grant from the Illinois Arts Council Agency.

## Field Museum Memberships

**Time to renew your membership?**

Call 312.665.7700 • Mon.–Fri., 8:30am–4:30pm

Visit [fieldmuseum.org/membership](http://fieldmuseum.org/membership)

*Field memberships also make great gifts!*

## museum campus neighbors

### SHEDD AQUARIUM

Feel the wonder at Shedd Aquarium through hands-on encounters with stingrays, sea stars and sturgeons! Enjoy the sensation of cownose rays gently brushing your outstretched hand when the popular **Stingray Touch** experience reopens in late May. In **Polar Play Zone's** touch pool for kids of all ages, marvel at the tickly, prickly skin of sea stars and urchins. Then get a new feeling about the Great Lakes as you touch one of the large, armor-plated lake sturgeons in the **At Home on the Great Lakes** exhibition.

### ADLER PLANETARIUM

See the stars and planets, and discover the thrills and dangers of being a space explorer at the Adler, America's first planetarium. **Planet Explorers** is a hands-on exhibition created for families. The new summer show, **Destination Solar System**, takes adventurous space explorers on an immersive tour of the Solar System. From sizzling solar flares on the Sun to liquid methane lakes on Saturn's moon, Titan, tours to the most spectacular sights in the Solar System will launch daily from the Adler's Grainger Sky Theater beginning May 16.

# program calendar

Program Tickets + Info 312.665.7400

General Museum Info 312.922.9410

## may

### Art and Science Spotlight\*

**5.17, 11am–2pm** > Meet a Field Museum scientist and get up close with some creepy crawly LIVE insects! Learn about the difference between spiders, scorpions, and insects at this month's Art and Science Spotlight. Stop in the Art Studio to make your own insect themed craft to take home with you.

## june

### Art and Science Spotlight\*

**6.21, 11am–2pm** > Calling all future paleontologists and dinosaur enthusiasts! Listen to the story *The Field Mouse and a Dinosaur Named Sue* by Jan Wahl during story time. Dig for a dinosaur bone and examine fossils in the science lab then go to the Art Studio to create a dinosaur mask to take home with you.

## july

### Art and Science Spotlight\*

**7.19, 11am–2pm** > Meet the Teens@TheField! Practice scientific skills through observation and hands-on activities while learning about the sciences of geology, zoology, botany, and anthropology with our summer teen volunteers.

## august

### Art and Science Spotlight\*

**8.16, 11am–2pm** > Be an explorer, scientist, artist and much more! Take part in fun-filled art and science activities in the *Crown Family PlayLab*. Hear a storytelling performance, meet a Field Museum scientist, or work with Chicago artists to create your own masterpiece!

\*FREE with Museum Admission  
 in the *Crown Family PlayLab*

## overnights <sup>DOZIN' WITH THE DINOS</sup> at the museum

Bring your sleeping bag and explore one of the most exciting spots in town! *Dozin' with the Dinos* is a chance for children ages 6–12 to spend the night at The Field Museum. Enjoy activities like games from around the world or see and touch live insects from your own backyard. Enjoy a snack break to fuel yourself for a self-guided tour of *Inside Ancient Egypt*—in the dark! (Make sure to bring your

flashlight!) Before you know it, you're listening to bedtime stories in the shadow of SUE the *T. rex* and crawling into your sleeping bag in one of our wondrous exhibitions. Fridays, 5:45pm to 9am the following morning.

**Standard Overnight:** \$63, \$55 members and groups

**REMAINING 2014 DATES**  
May 9 & 30

Visit [fieldmuseum.org/overnights.org](http://fieldmuseum.org/overnights.org) or call 312.665.7400 to register.

**Tickets for the 2015 season of Dozin' with the Dinos will go on sale July 1!**



## meet a scientist

**Fridays > 10am–12pm**

Stanley Field Hall / East Entrance (locations vary)

**Come to The Field Museum and get to know some of our scientists!** Every Friday from 10am to noon, scientists will be out in the Museum sharing the wonders of our collections and highlights of their research. Hear about their work, see real artifacts and specimens from the over 24 million objects not on display at The Field, and experience the Museum like never before. Topics will range from birds to insects, from mammals to plants, from pottery to spear points, and more.

[fieldmuseum.org](http://fieldmuseum.org)  
event details are available online!

# SUMMER PROGRAMS+CAMPS



## Dino Camp 2014 > ages 3-4 (with adult caregiver)\*

**I Spy a Dinosaur! Do you?** *Dino Camp* is an early childhood camp designed expressly for young explorers ages 3-4 with their caregivers. During two days of discovery, we will learn how to spot a dinosaur, see SUE's skull, dig for dinosaur bones, and much more!

**9am-11:30am** > four sessions are available

- 1: Tuesdays, June 3 & 10
- 2: Wednesdays, June 4 & 11
- 3: Tuesdays, June 17 & 24
- 4: ~~Wednesdays, June 18 & 25~~  
Sold out!

\$67 for members,  
\$76 for non-members.  
To register please visit  
[fieldmuseum.org/dinocamp](http://fieldmuseum.org/dinocamp)  
for more information.



\*All campers must be between the ages of 3 and 4 and attend with an adult caregiver. One adult caregiver is required for every two children.



## Game Design\* > teens ages 12-13

**6.23-7.3, 9am-3pm** > Game Design is an intensive one-and-a-half week game design workshop for middle school teens and tweens. In this program, teens will learn about how birds communicate and then create game prototypes for their friends to play. Family members and friends are invited to the Museum on the final day of the program for a play event.



## Biomechanics Design\* > teens ages 14-17

**7.14-7.25, 9am-3pm** > Ever wondered how the cheetah is able to reach top speeds or how birds fly? Explore these phenomena and others principles of biomechanics in *The Machine Inside: Biomechanics* then put your creative talents to work by designing a catapult.



## Sound Design\* > teens ages 14-17

**7.28-8.8, 9am-3pm** > Sound Design is an intensive two-week sound design workshop that investigates anthropology through the lens of music. Teens will explore how cultures around the world have created instruments and music that is reflective of their history and environment. Teens will create a soundscape that is representative of their community, which will be presented on the final day of the program to family and friends.

\* To apply, visit [fieldmuseum.org/happening/teens-2014](http://fieldmuseum.org/happening/teens-2014)  
All programs are FREE. Applications due May 9.



## Summer World's Tour > ages 5-10

*Summer World's Tour* offers a week of adventure in Chicago's premier museums for children entering kindergarten through fifth grade in the fall of 2014. In this week-long camp, campers will explore other worlds in our galaxy as an astronomer at the Adler Planetarium, discover the science behind biomechanics at The Field Museum, and become an aquatic scientist while exploring underwater environments at the Shedd Aquarium. Activities include investigating exhibitions, creating original art projects, playing learning games, and having lunch along the shoreline of Lake Michigan.

**9am-3pm** > four one-week sessions are available

- 1: July 7-11
- 2: ~~July 14-18~~  
Sold out!
- 3: July 21-25
- 4: July 28-August 1

\$265 for members, \$295 for non-members.

Please visit [www.adlerplanetarium.org/camps](http://www.adlerplanetarium.org/camps) to register.

## Sign up for the Crown Family PlayLab E-News!

This e-newsletter is an early science literacy resource geared towards families with young children ages two through eight. Each quarterly issue will feature downloadable theme-based activities and articles designed to encourage outdoor exploration, creative play, and self-expression.

Email us at [playlab@fieldmuseum.org](mailto:playlab@fieldmuseum.org) to subscribe.



## LECTURES + BOOK SIGNINGS

### Atlas to Selected Land Vertebrates of Madagascar

Friday, June 27 > 5-7pm

Please join Field Museum scientist, Steve Goodman, PhD, for a lecture and book signing of *Atlas to Selected Land Vertebrates of Madagascar*. The *Atlas* provides new insights into the animals of Madagascar from reptiles to birds to small mammals. Steve will speak about the *Atlas* and its potential as a conservation tool for supporting the unique biodiversity of Madagascar.

### Extinct Madagascar: Picturing the Island's Past

Saturday, August 30 > 2-4pm

In conjunction with the new Field Museum exhibition, *Extinct Madagascar: Picturing the Island's Past*, please join Steve Goodman, PhD, for a lecture and book signing of his new publication of the same title. Steve and co-author Bill Jungers will speak about their collaboration with scientific and wildlife illustrator Velizar Simeonovski to reconstruct the vanished habitats and species of Holocene-era Madagascar. (See story on page 3.)

Both lectures are FREE to members and open to the general public.

Please visit [fieldmuseum.org/explore/steve-goodman](http://fieldmuseum.org/explore/steve-goodman) or call 312.665.7430 for more information.

## Handcrafted Gifts from the Amazon

The Field Museum's Science Action Center joins forces with the Museum Stores to bring you handcrafted goods from the Amazon! Bags from Peru's Pisqui River valley are hand-embroidered by Shipibo women with designs passed down for generations. Purchasing these beautiful items helps to provide an environmentally-friendly source of income for the Shipibo.

Remember, Field Museum members receive a 10 percent discount on everything in the Museum Stores, and each purchase supports the Museum's public and scientific programs. As always, you can shop 24 hours a day at [store.fieldmuseum.org](http://store.fieldmuseum.org).

## THANK YOU LOYALTY CLUB MEMBERS

Inside this issue, The Field Museum extends its gratitude and appreciation to the inaugural members of the **Field LOYALTY Club** for their ongoing support. See page 15 for more information.



JOSH RINK