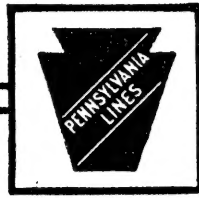
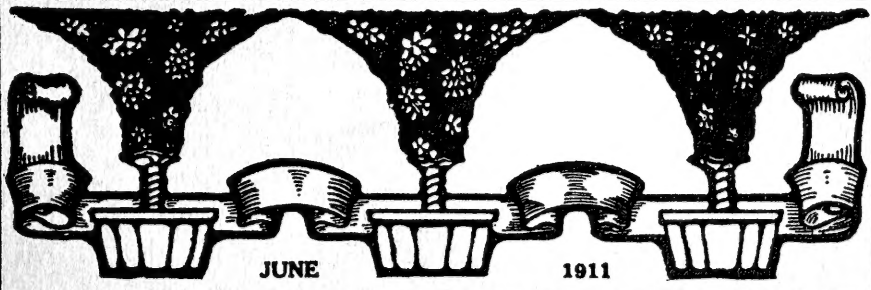


INCREASE THE CROP PER ACRE



USE OF DYNAMITE ON THE FARM

Issued by
THE PENNSYLVANIA LINES





Intensive Farming and Use of Dynamite



60

Issued by
THE PENNSYLVANIA LINES
June, 1911

Copyrighted 1911
BY
THE PENNSYLVANIA RAILROAD

PRINTED BY
THE LORD BALTIMORE PRESS
BALTIMORE, MD.

©Cl. A 292725

INDEX

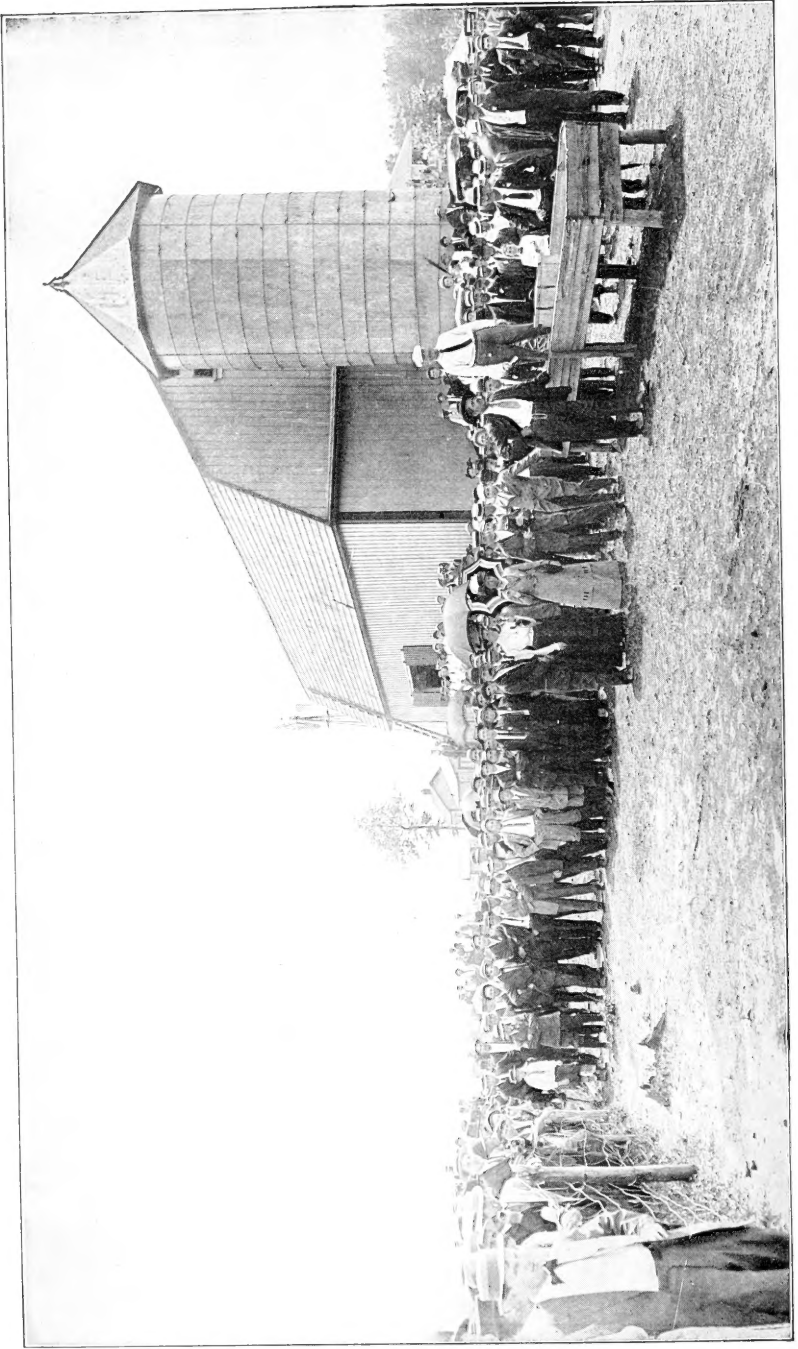
	PAGE
Bar for Punching Holes.....	51
Bigtree Stumps	31
Blasting Caps	93
Blasting by Electricity	94
Blasting Machines	96
Blasting Supplies	93
Boulder Blasting	39
Burning Out Stumps.....	17
Caps: Blasting	93
Cap Crimpers	94
Cedar Stumps: Western.....	29
Cellar Digging	55
Charging	91
Clearing Land	13
Connecting Wire	97
Cultivating Fruit Trees.....	79
Cypress Stumps	33
Detonators	86
Ditching	45
Draining Swamps	53
Electrical Blasting	94
Electric Fuzes	97
Explosives: Principle of.....	85
Felling Trees	35
Fir Stumps: Western.....	29
Foundations: Excavating for.....	55
Fuse	93
Fuzes: Electric	97

HANDBOOK OF EXPLOSIVES

	PAGE
Hardpan Blasting	63
Ice Blasting	79
Implements Used in Land Clearing.....	19
Introduction	7
Leading Wire	97
Log Jams	82
Log Splitting	35
Note	92
Ordering	98
Packages of Explosives.....	86
Pine Stumps: Southern.....	25
Pine Stumps: Western.....	29
Planting Fruit Trees.....	71
Plowing with Dynamite.....	63
Post Hole Digging.....	57
Precautions	99
Priming	89-98
Principle of Explosives.....	85
Redwood Stumps	31
Road Building	55
Second-Growth Stumps	27
Sinking Wells	57
Southern Pine Stumps.....	25
Splitting Logs	35
Storage of Explosives.....	86
Stump Blasting	32

I N D E X C O N T I N U E D

	PAGE
Stump Blasting; Advantages of	13
" " Cost of	15
" " Gauging the Charge	15
" " Proper Explosive for	14
Subsoil Blasting	63
Swamp Draining	53
Tamping	92
Thawing of Dynamite	87
Thawing Kettles	87
Transportation of Explosives	86
Tree Felling	35
Tree Planting and Cultivating	71
Well Sinking	57
Western Cedar Stumps	29
Western Fir Stumps	29
Western Pine Stumps	29
Wire: Leading and Connecting	97



FARMERS' INSTITUTE IN VIRGINIA ATTENDING STUMP BLASTING DEMONSTRATION

INTRODUCTION

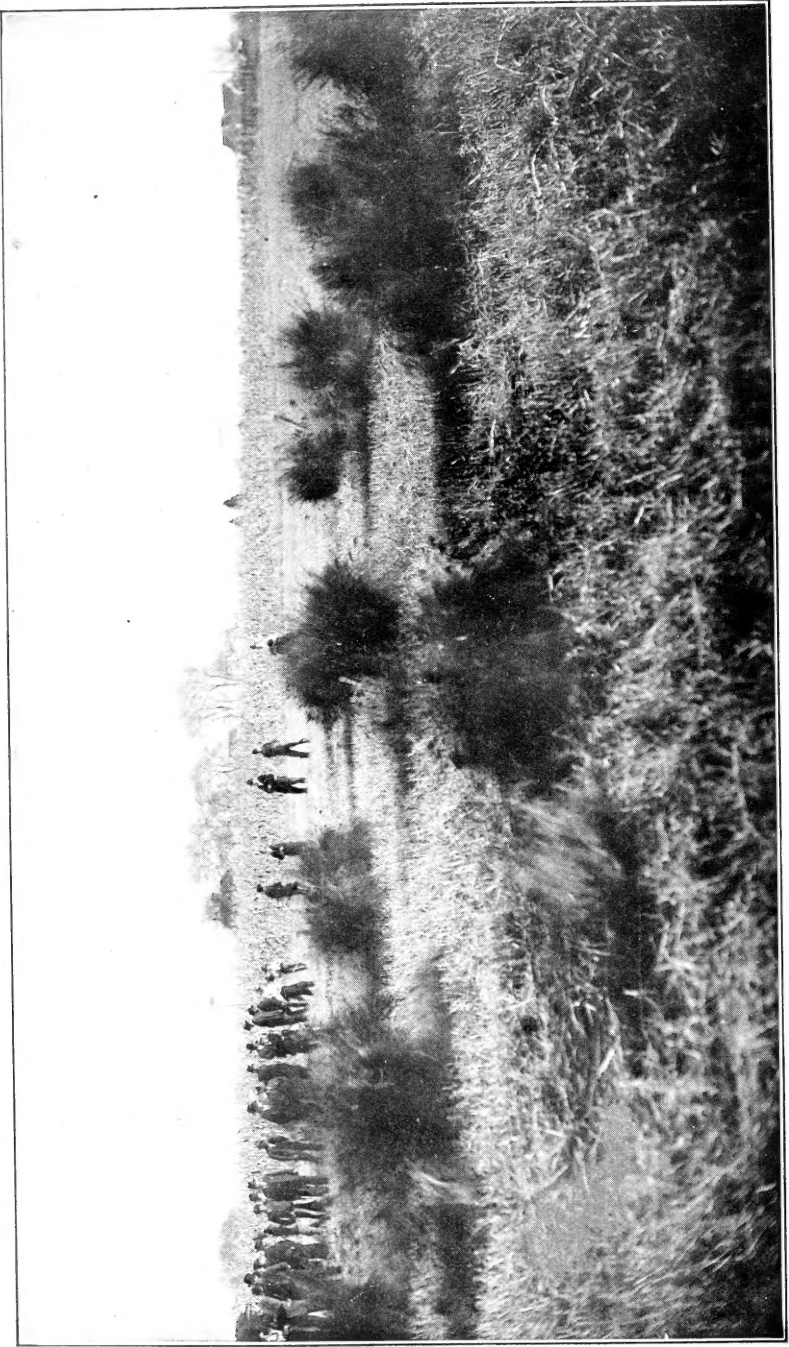
NOT many years ago the farm was about the last place where one would expect to find up-to-date mechanical appliances.

Steam, explosives, electricity—the factors which have made the world what it is to-day—were indispensable for the railroad and the steamboat, the factory and the mine, but the farmer's work was generally run on a comparatively small scale, and was mostly done by the muscles of men or draft animals. To-day, however, the farmer, as well as the manufacturer, the contractor and the miner, fully appreciates the value of labor-saving devices. Every up-to-date farm, large or small, has modern machinery that tends to reduce the cost of production or to improve farm products.

Explosives were first used in warfare and hunting, then for blasting. Their early use in mining and excavating was very limited, but it did not take long to learn that, if used in the right way, they could do in an instant as much work as a man, or even a machine, could do in many days. As soon as this was understood, explosives were applied to new kinds of work and special kinds of explosives were produced, particularly adapted to these new uses.

The history of the use of explosives in farming has been much the same as in other industries. At first it was supposed that they could only be used for loosening stumps, so that they could be dug out more easily. Later on, after stump blasting had been carefully studied, and more suitable and cheaper explosives manufactured, it was found that by far the cheapest and quickest way to get rid of a stump of any size, no matter what kind of soil it stood in, was to lift it completely out of the ground, and split it up at the same time, with explosives.

About this time it was discovered that it was cheaper to blast out boulders and plant the ground they occupied than to plow around them. Then some enterprising farmer who had had trouble with foundations settling, decided that it was a good plan to build his house and his barns on rock, and learned that it did not cost much



BLASTING HARDPAN NEAR LA HARPE, KANSAS, NOVEMBER, 1909

I N T R O D U C T I O N

to do the necessary blasting for foundations and cellars. This led to the idea of blasting the rock encountered in digging drains, and in using a small quantity of explosives to hurry along the work of digging holes for fence posts and for poles. The rock met with in sinking wells was soon cut through with explosives. Early in the spring, when the ice came down the streams, and a gorge at the bridge threatened to cause a flood and carry away the bridge too, a little dynamite quickly relieved the situation. In lumber districts, log jams were started in the same way, and the use of a small quantity of explosives saved time and trouble on the rollway.

A few years ago the plan of breaking up hardpan and other impervious subsoils was tried by Samuel J. Crawford, then governor of Kansas, and a number of other influential Kansans who were interested in farming. The results of their experiments were so successful that hardpan is now being blasted quite generally, and many acres of land, which were practically worthless before they were blasted, are now bearing phenomenal crops.

The most recently discovered plan of saving money by using dynamite is in blasting ditches and in draining swamps by blowing holes through the impervious clay under them. Dynamite has long been used to shatter rock encountered in digging drains and ditches, but ditches through earth have never been excavated entirely with explosives until recently.

Many fruit growers know how great a help dynamite is in planting fruit trees and in keeping them thrifty. The ground where the tree is to be planted can be loosened up, and the hole partly dug, in a moment, by exploding a very small charge of dynamite a short distance below the surface.

Good roads about the farm are practically indispensable, and they cannot be built quickly or cheaply without at least some explosives.

Explosives are also used to advantage for splitting logs for rails or any other purpose, for felling trees, destroying old buildings and for almost any kind of work where a strong force, quickly applied, is desirable. Dynamite is simply concentrated power or condensed strength. In order to have it work in the correct way, and move in the right direction, it must be properly harnessed and the bit kept in its mouth, but this is easily done if the directions given in this handbook are followed intelligently.

HANDBOOK OF EXPLOSIVES

As time passes, farmers will find other ways of saving money by using explosives, for the demand for farm products is increasing so rapidly that greater acreage must be put under cultivation, and the old acres must increase their yield. In order to do this successfully and to meet competition, every device and arrangement that really saves labor and makes for economy, either in the present or the future, must be adopted. The farmer who fails to realize this, and still believes that he can get along in the old way, will soon find himself hopelessly defeated.

THE FIRST STAGE

CLEARING THE LAND

BLASTING OUT STUMPS

FELLING TREES

SPLITTING LOGS

BLASTING BOULDERS



A FUTURE SUBJECT

CLEARING THE LAND

EVER since the first white man started a permanent settlement in this country, the transformation of forests into farms has been continuous. So great is the total of land clearing operations to-day, and so large is the annual expenditure in this work, that it has become a factor of prime importance in the national economy, and the necessity for a careful study of all of its phases, to the end of improving the various methods now in practice, is everywhere recognized.

If, after the passing of the wood-chopper and the sawmill, the land were ready for the plow, there would be no problem to solve; but a great area covered with stumps—thirty, fifty, a hundred, two hundred to the acre—often with boulders scattered here and there, is very far from a crop-bearing proposition. This, however, is what many of our farms are made from, and the question is, how to bring about the necessary transformation without spending more than the probable returns will warrant.

For generations farmers have chopped, burned and dug away at stumps which have slowly yielded to their efforts. To-day a quicker and more effective way of getting rid of them is imperative. The subject has been studied and experimented with for years by the Agricultural Department of the National Government and of different States, by many large land companies, by railroads and by thousands of individuals. Numerous ideas and plans have been suggested and worked out, but none of them has been successful or economical without the use of dynamite. When explosives are properly used, stumps and boulders are not only blasted out of the ground, but are at the same time broken into pieces which can be easily handled—burned, if stumps, or, if boulders, used for building roads, etc.

When a stump is properly blasted, but little of the soil is thrown out with it, and it is not necessary to spend time and money clearing the earth from the roots, and filling a great hole in the ground, as must be done when the stump is taken out with a stump puller.

HANDBOOK OF EXPLOSIVES

Neither is any special fertilization of the spot formerly occupied by the stump necessary to bring it into proper crop-bearing condition, as must be done after a stump has been burned out.

Only a very small outlay is necessary at one time when explosives are used, and one man can work with them just as well as a dozen or a hundred. When the proper explosive is selected, and



A FIVE-FOOT DIAMETER WASHINGTON FIR WINDFALL SHOWING THE ENORMOUS SPREAD OF THE ROOTS

when it is used in the right way, there is no cheaper method of getting rid of stumps or boulders.

There are many kinds of dynamite, each expressly intended to do a particular kind of work, and as the conditions under which stumps and boulders are blasted differ widely, it is not possible to recommend any one grade for general use.

C L E A R I N G T H E L A N D

On the Pacific Slope, where the stumps are of great size, stumping powder is the favorite, but in other parts of this country, where the stumps are smaller, dynamite is used almost exclusively.

It is equally difficult to state accurately, the quantity or strength of the explosive necessary to blast out a stump of a given diameter. This is because the size of the stump is not the only factor, and perhaps not even the most important one, to consider when estimating the charge required. Whether the soil in which the stump stands is wet or dry, light or heavy, the kind of wood, age of the stump, the nature and position of the roots, etc., are all matters of great importance when determining the quantity, strength and location of the charge of explosives. Careful records have, however, been kept of the cost of explosives, including blasting caps and fuse or electric fuzes, used in blasting stumps in different parts of the country, some of which we give below:

	Average Diameter	Average Cost of Explosives per Stump
768 Southern Pine Stumps	29"	30c
78 Oak, Walnut, Gum, etc., Stumps in Illinois	30"	53c
329 White Pine, Oak, Maple, Birch, etc., Stumps in Michigan	32"	47c
37 Apple, Ash, Oak and Chestnut Stumps in Pennsylvania	34½"	56c
77 Washington Fir Stumps	50"	\$1.13

The explosive used in most cases, except for blasting the Washington firs, was 40 per cent. dynamite. The fir stumps were blasted with 20 per cent. strength stumping powder and low powder (5 per cent. strength). These calculations are based on retail, not wholesale prices.

Records kept by A. J. McGuire, Superintendent of the Northeast Experimental Farm of the University of Minnesota, show even lower costs.

Some of Mr. McGuire's records are as follows:

	Average Diameter	Average Cost of Explosives per Stump
255 Popple	14"	12c
255 Jack Pine, Norway Pine and White Pine	14½"	18c
395 Birch, Ash, Spruce, Pine, etc.	20"	16c

HANDBOOK OF EXPLOSIVES

Mr. McGuire used 25 per cent. to 40 per cent. ammonia dynamite, and states that the best and most economical results were had with 25 per cent. and 27 per cent. grades.

The Iowa State College recently blasted eighty-two oak and elm stumps and trees averaging 20 inches in diameter, at an average cost of about 38 cents each for explosives.

On a large land clearing operation in Minnesota during the summer of 1909, eight thousand, nine hundred and seventy stumps were blasted out. Although a considerable number of these were



WASHINGTON FIR STUMPS

large pine stumps, an average of less than three-quarters of a pound of dynamite per stump was used.

Accurate records of the cost of blasting stumps on a Long Island farm, including the wages of the men who did the work, were recently kept by representatives of the Long Island Railroad Com-

pany. The entire cost of blasting out and burning up one hundred stumps was only \$16.

Although one unaccustomed to using explosives might find the costs running higher at the start than some of those given above, it does not require an unusual amount of experience to learn approximately the minimum charge required to blast stumps.

When cut-over land, which is covered with stumps and boulders, can be cleared, and turned into farms at a profit, it is hard to understand why anyone should let stumps or boulders take up valuable land, plowing around them year after year. A lot of time is wasted swinging around even a few stumps and boulders when plowing a field, to say nothing of the damage to plow, harness and team if a root is struck. Besides this, each medium-sized stump, with its spreading roots, or even a comparatively small boulder, will take up the space of many stalks of corn or of other crops. It has been estimated that a single stump of average size occupies as much ground as would support six hills of corn.

The corn from six hills would in a very few years pay for enough dynamite to blow out many stumps and boulders.

One suggestion which should be made to those who have land to clear is: Always do your stump blasting, if possible, when the ground is wet. Almost every kind of ground when it is wet, offers stronger resistance to the action of dynamite than it does when dry. Therefore, when the ground is wet a stump or boulder can be blasted out with less dynamite than when the same ground is dry.

One of the most objectionable methods of trying to get rid of stumps is burning them out. When stumps have been blasted out and split up with dynamite, it is an easy matter to heap up the pieces and burn them, but to burn a standing stump is a different proposition. Those who have tried it can testify to the time spent in keeping the fire going, and that it is practically impossible in this way to get rid of much of the stump below the surface of the ground. Probably the worst feature of burning out stumps is the damage



A WELL CLEARED FIELD—STUMPS SO SPLIT THAT THEY WILL BURN EASILY
(See Page 20 for the Result)

C L E A R I N G T H E L A N D

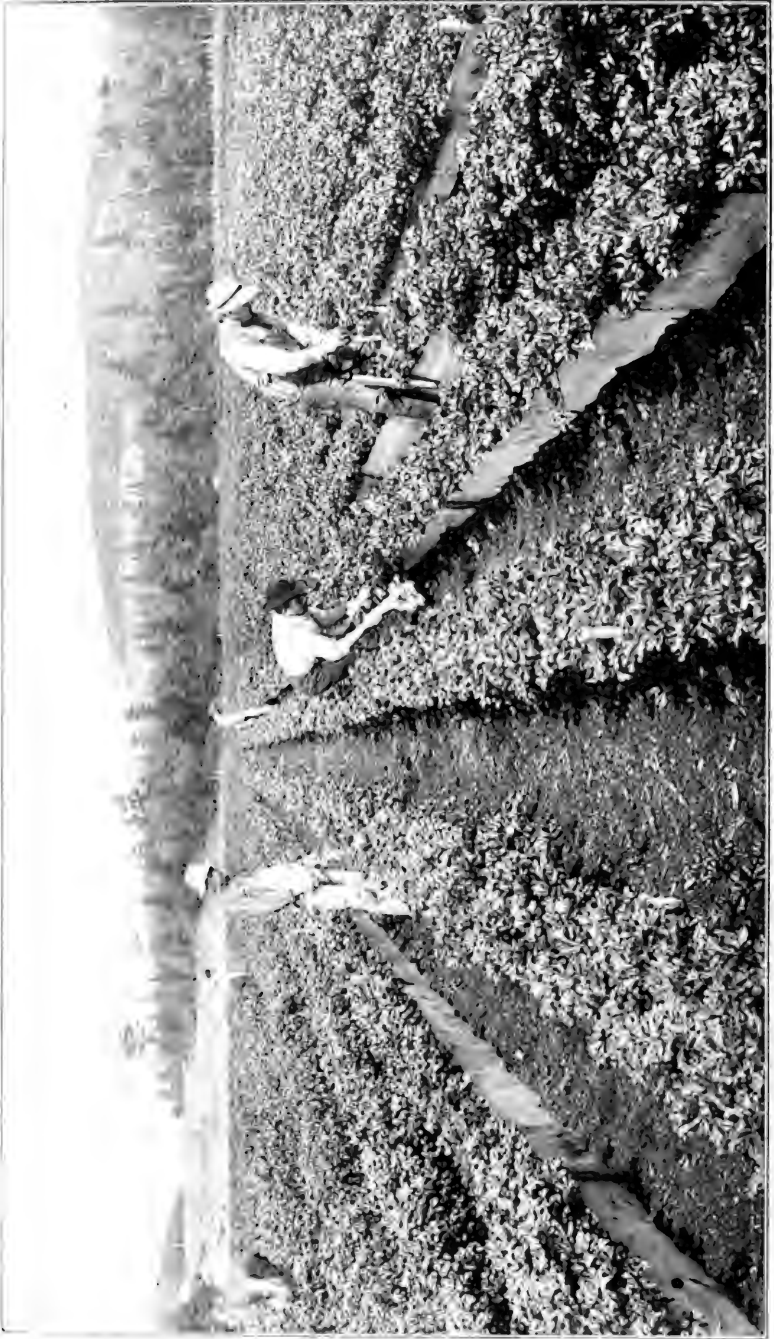
done to the ground by the fire, which burns out the humus to such an extent that it requires much cultivation to bring the ground where the stump was burned into good condition. The following from the Tacoma, Wash., "Ledger" of October 20, 1909, explains very clearly the damage done to new land by burning out stumps:

"Last summer Prof. W. J. McGee, of the Department of Agriculture, in coöperation with Prof. Henry Landes, Dr. Benson and Dr. Fry, of the State University, studied the best methods of utilizing cut-over or logged-off lands. Prof. McGee gives some of the findings, and they argue strongly against burning cut-over lands. Fire destroys the humus in the soil, and when the humus is gone, the fertility is greatly lessened. The danger of burning logged-off lands is that the fire will burn the humus for some distance below the surface. When the humus is burned out, it takes time to build up a fertile soil again. The fire destroys the work it took nature many years to do."

The implements needed in stump and boulder blasting are few and inexpensive, and most of them are always to be found on the farm.

Big stumps like those found along the Pacific Coast usually require a comparatively bulky charge of low-grade explosives, which means that a large hole must be dug. In case the stump is very large it is best to dig a trench under it, using a little dynamite to assist in the digging. In this work a pick or mattock and a long-handle shovel are necessary. As a matter of fact these two tools, and an axe, are usually required, no matter how the hole for the explosive is made.

For medium-size and smaller stumps, a two-inch wood augur to drill under the stump (and into the tap root if there is one), is necessary, and a crowbar with one pointed end and one chisel end is very useful. One of the most important implements used in stump blasting, is the tamping stick. This must have no metal about it. The tamping sticks used on the Pacific Coast are six to eight feet long and two to three inches in diameter. For tamping the holes under other stumps a stick five or six feet long and one and a half inches in diameter is large enough.



TEN MONTHS LATER—\$800.00 WORTH OF CELERY PER ACRE
(See Page 18)

C L E A R I N G T H E L A N D

For blasting large boulders it may be necessary to use a hammer and hand drill, unless they are to be broken by mudcapping or by placing the explosive underneath them. The hole under the boulder can be made with a crowbar. If the boulder is drilled, a small tamping stick, from one-half to three-quarters of an inch in diameter should be used. If the charge is put under the boulder, the tamping stick should be one and a half inches in diameter and five or six feet long. Hardwood tamping sticks are, of course, best, because they last longest.



ONE MORE OUT OF THE WAY



BORING THE HOLE UNDER THE STUMP

BLASTING STUMPS

IT IS usually necessary in blasting stumps to place the charge as close as possible to the toughest part of the stump, so that the part most difficult to break will be hit first and hardest. Generally this spot will be directly under the middle of the stump, and it is sometimes necessary to bore into the tap root. When a very big stump is rotten at the middle, but has several large branching roots, better results will be had if the charge is increased a little and located deeper in the ground, or if under each of the large roots a small charge is placed, and all of the charges fired simultaneously with a blasting machine.



STUMP BOUND WITH CHAIN

In order to keep the explosive from splitting the stump, and wasting a part of the force which should be expended in lifting it out, it is the practice of some blasters to wind a stout chain around the stump several times. It is a good idea to use a chain with all hollow stumps.

Some large stumps can be effectively removed by exploding simultaneously charges loaded in holes bored from different sides, so that they will intersect under the center of the stump. The cartridge containing the detonator (blasting cap or electric fuze)



PLACING THE DYNAMITE CHARGE

should be loaded first, so that it will be at the intersection of the holes; then the different holes should be loaded, making sure that the first cartridge in each hole touches the primer (the cartridge containing the detonator). When the primer is exploded, it will explode the entire charge.

If the above directions are closely adhered to, the general run of stumps can be blown out satisfactorily and cheaply. The stumps of some kinds of trees, however, require special treatment to get the best results, and detailed instructions concerning them are given in the following pages.

Southern Pine Stumps

The use of explosives in blasting southern pine stumps, especially in very sandy soils, has not been generally recommended in the past, because the cost has seemed high in comparison with the value of the land. The increased value of land and the improvements in explosives have, however, now made it entirely feasible to remove these stumps with dynamite. This work can be done with less dynamite, if a good team of horses with a bull chain is used to pull out pieces and drag them from the field.

Pine stumps should be considered in two classes—those with tap roots and those without. The first part of a pine stump to rot is the tap root, and a field that looks very discouraging will often be found easy to clear.

In blasting southern pine stumps the important feature is to place the explosive close to the point of greatest resistance, which is in the tap root directly under the center of the stump. This tap root can usually be located by digging underneath the smooth side of the stump. When the tap root is located, dig an opening, one to two feet deep, down by the side of the tap root; then bore an augur hole two inches in diameter into the tap root on an angle of from 35 degrees to 50 degrees. The augur hole should be bored not less than three-quarters of the way through the tap root; care being taken not to drill entirely through, for by so doing a great deal of the explosive force would be wasted in the back of the hole, which would then be in the ground. Load with from one to three $1\frac{1}{4}$ x 8-inch cartridges (depending on the size and age of the stump), of 40 per cent. dynamite, and tamp firmly to the surface with damp clay. The blast will cut off the tap root twenty



BLASTING STUMPS AT IVOR, VIRGINIA

to thirty-six inches below the surface and turn out the stump in pieces. These stumps can also be blown out without taking the time to bore into the tap root, if a little larger charge of dynamite be placed firmly against the tap root a foot or two below the surface and closely confined with tamping. A convenient implement for making the hole in the ground when blasting in this way is a three-inch post-hole augur.

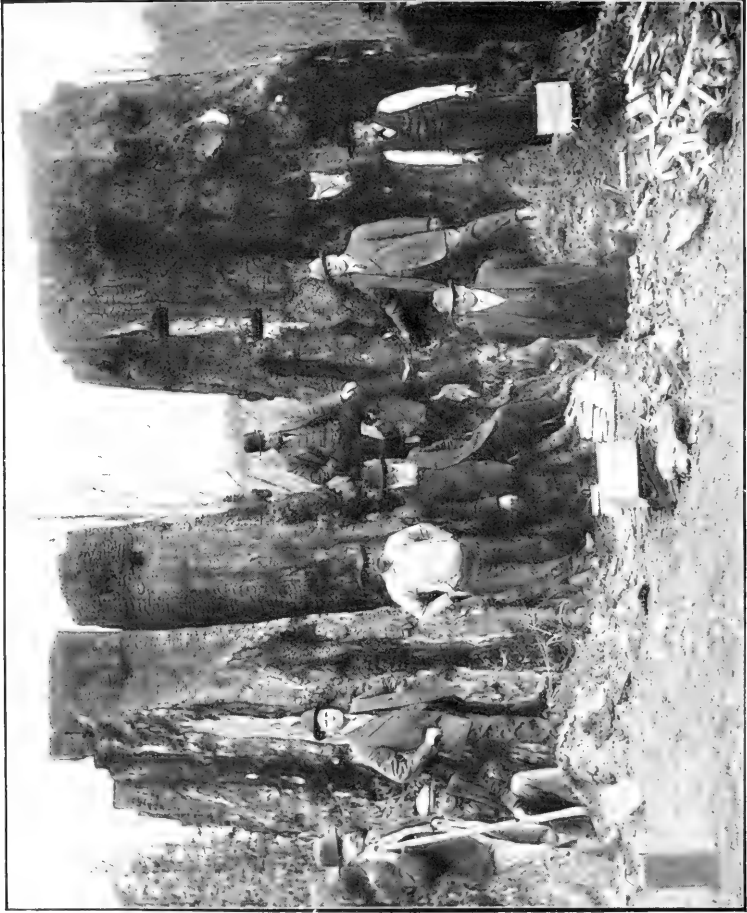
When the tap root is to be bored into, it is advisable to use a two-inch wood auger, as the dynamite can then be more closely compressed under the center of the stump where the resistance is greatest. If clay cannot be found to tamp the charge under the first stump blasted, use sand. After one stump is blasted, you can usually find good tamping material at the bottom of its roots.

Careful record was recently kept, in order to arrive definitely at the exact cost of explosives necessary to properly blast out these southern pine stumps. Three hundred and twenty-five stumps were blasted which averaged in diameter $28\frac{1}{2}$ inches, and the cost of explosives, including dynamite fuze and blasting caps, or electric fuzes, averaged a little more than 18 cents per stump.

Southern pine stumps without tap roots are sometimes found in land having a sandy top soil with a hard subsoil. In this case 30 per cent. dynamite may give the best results. The charge should be placed under the middle of, and as close to the stump as possible.

Second-Growth Stumps

There is often directly under a second-growth stump, the decayed remains of the original stump; this is soft, and the force of the explosive when placed on it, seems to merely scatter this dead wood and has no marked effect upon the stump. To overcome this difficulty, it is a good plan to dig under the stump and place a good-sized flat stone between the roots, leaving only room on top of the stone for the dynamite. Damp clay should then be firmly packed around the dynamite. This gives the explosive sufficient resistance to lift out the stump. 30 or 40 per cent. dynamite should be used. It should be remembered that best results will be had from the explosives recommended for blasting the above stumps, if they are exploded with No. 6 or stronger detonators.



A CALIFORNIA REDWOOD STUMP, EUREKA, CAL., FEBRUARY, 1910—BEFORE THE BLAST
The circumference of this stump at the ground line was 75 feet. It was a single stump in the ground, but divided into two just above the surface.

Western Fir, Pine and Cedar Stumps

In the States of Washington, Oregon and California, where the rainfall is large and the ground in the forests is always damp, many of the trees grow to great size—some being eight or ten feet in diameter. The roots of these trees usually spread out near the surface and do not grow deep into the ground, as might be expected, tap roots being extremely rare. The object when blasting the stumps of these trees is not to split them, but to bring them out entire at one blast, with all of the roots possible, because if the charge of explosives is so gauged and located as to split the stump, it generally fails to bring out all of the pieces. As the principal object is to get out as much of the stump as possible at a minimum cost, it is better to blast it out first and then it can be easily split afterward, by means of a small quantity of dynamite exploded in auger holes.

The common rule in blasting these stumps is to use one and one-half pounds of stumping powder per foot of diameter, with stumps up to four feet, when the bottom is clay. For larger sizes it is advisable to use two to two and one-half pounds of this powder for each foot in diameter. For stumps in gravelly or loose ground one pound more should be used for each foot in diameter.

The charge of explosives is best placed when there is sixteen to twenty-four inches of earth between the charge and the bottom of the stump. This results in the force of the explosion radiating to all sides, lifting the stump clear of the ground, and bringing with it the greatest length of roots. If the charge is placed too close to the stump, the effect is to split it, leaving the roots to be dug out at extra labor and expense. It is advisable with large stumps to chamber, or expand, the bottom of the hole, so that the entire charge can be concentrated under the center of the stump. To do this a hole is bored beneath the stump by means of a dirt auger or small post-hole auger. In this hole a small charge is usually exploded with fuse and blasting cap and no tamping is used. The quantity of explosives to be used in chambering, depends, of course on the size of the charge necessary to blast out the stump. Usually from half a cartridge to two cartridges of stumping powder will be sufficient. After the hole is chambered the blasting charge should be loaded in the usual way and thoroughly tamped.



A CALIFORNIA REDWOOD STUMP—THE BLAST

Note that the main part of the stump is split into several pieces and lifted straight up while the smaller sections, which were blown out first, are already falling to the ground. This shows that no more explosive than necessary was used in this blast.

Redwood and *Bigtree Stumps

The best explosive for these stumps is a comparatively slow-acting explosive, which has more of a lifting and heaving, than a shattering effect.

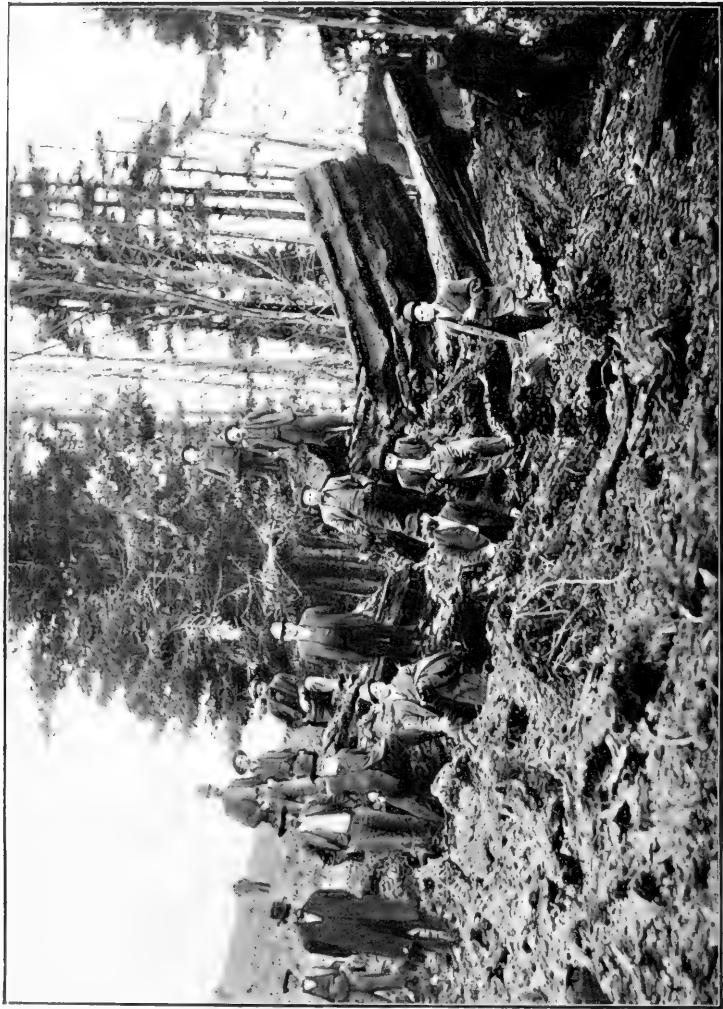
The way to approximately estimate the quantity of explosive necessary to blast out stumps larger than eight feet in diameter, is to square the largest diameter in feet, the result being approximately the number of pounds required. For example, if a stump is eight feet in diameter the largest way, the charge should be about sixty-four pounds. Stumps less than eight feet in diameter require a little greater charge *for their size* than do the larger stumps, and the rule with them is to use as many pounds as eight times the largest diameter in feet. On this basis a stump six feet in diameter would need about forty-eight pounds of powder. However, the successful blasting of these large stumps depends greatly on the judgment of the blaster, and these rules can only be considered as a general guide. This can easily be understood when it is remembered that, owing to difference in soil or some peculiarity in the growth of the tree, it sometimes requires the same quantity of explosives to properly bring out a stump six feet in diameter as it does one eight feet in diameter.

In blasting these stumps a trench is dug large enough to permit placing the entire charge of explosives directly underneath the center of the stump. A little dynamite blasted in holes punched with a crowbar will prove of great assistance in digging this trench. If *low powder* is used and the ground is wet, the charge should be placed in a waterproof bag.

A detonator equivalent to, or stronger than, a No. 6 blasting cap, or electric fuze, should always be used in one of the priming cartridges. The proper way to make the primer is shown on pages 88 and 90. If several cartridges are used as a primer, they should be tied in a compact bundle with the primed cartridge in the center.

Avoid being on the same side of the stump as the trench when the blast is fired, as fragments, etc., are thrown with more violence and to greater distances on that side.

*"Bigtree" is the name given to the "Sequoia Washingtoniana," one of the gigantic trees of the Pacific Northwest.



A CALIFORNIA REDWOOD STUMP—AFTER THE BLAST

The tree had been cut from the stump for twenty-five or thirty years, but the stump was perfectly solid.
It made about thirty-five cords of wood.

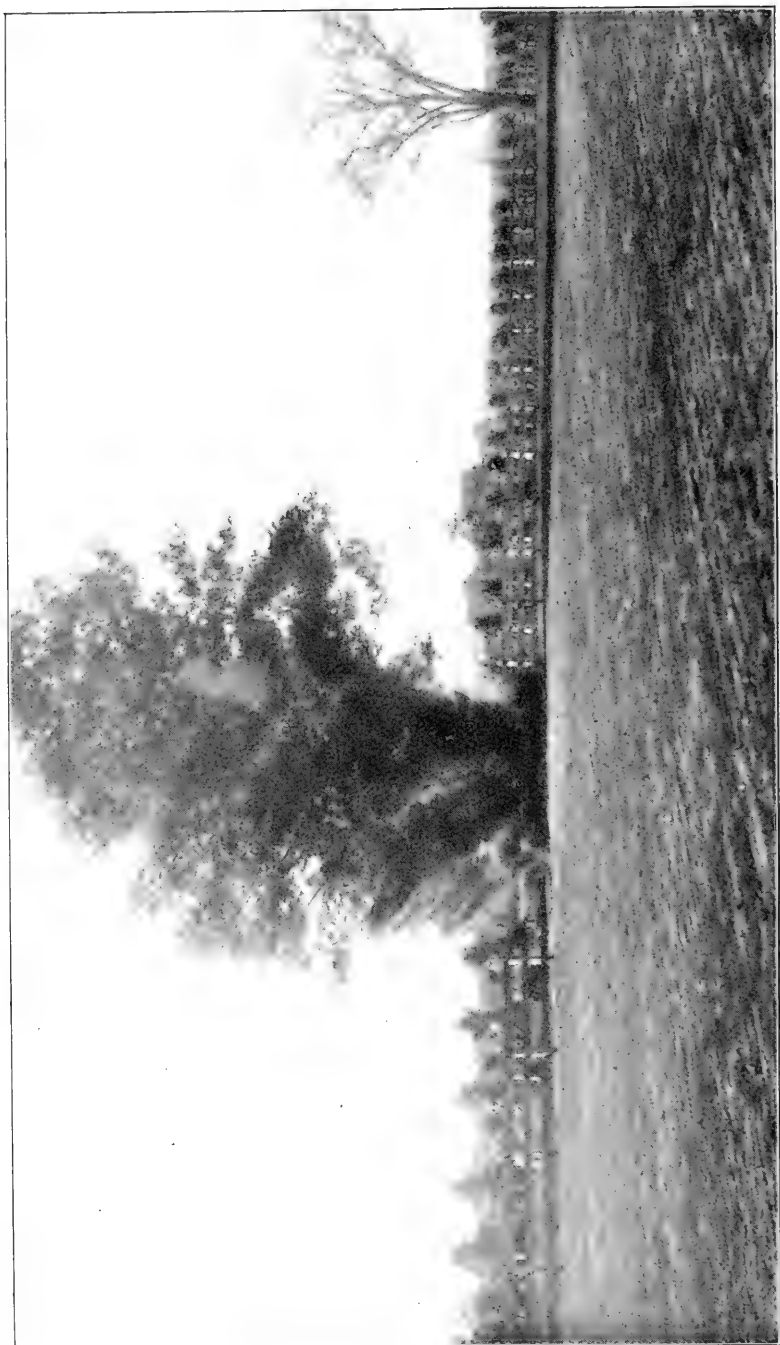
Stumping powder is also used in blasting California redwood stumps. The illustration on page 28 shows two large redwood stumps which had practically one root below the surface, although this root had separated above ground into two trees. The circumference of the stump just above the surface of the ground was seventy-five feet. This stump was completely removed, as shown on pages 28, 30 and 32, with ninety-three pounds of stumping powder. Six trenches were dug under the stump at different points, five of these being loaded each with twenty-five $1\frac{1}{2}$ x 8-inch cartridges of this explosive, and the sixth with thirty $1\frac{1}{2}$ x 8-inch cartridges. These charges were then connected up electrically, and the trenches were thoroughly and compactly tamped above the explosives to the surface of the ground. The six charges were then fired simultaneously with a blasting machine. The illustration on page 28 shows the blasting machine used and the cartridges of stumping powder on the ground preparatory to charging the trenches.

Cypress Stumps

Cypress stumps are found, as a rule, in swamps where the soil is a soggy muck often covered with water. Through the land-reclaiming operations in the Southern States many of these swamps have been drained, leaving land of wonderful fertility. The cypress stumps have no tap root, but have large "spreaders" reaching out in all directions to such an extent that they are interwoven with those of neighboring stumps, forming a tangle of roots that never rot. The strongest and quickest dynamite in the hands of careful blasters gives the best results in this work. The common practice is to place $1\frac{1}{4}$ x 8-inch cartridges under each of the principal spreaders, and fire all simultaneously by means of a blasting machine. The cypress wood, being extremely soft, splits easily, and the quick explosive shatters the stump and releases it from the entangling roots.

In order to obtain the best results in blasting cypress stumps the electric system of blasting should be employed. Sixty per cent. dynamite detonated with a No. 6 electric fuze is recommended for this work.

When cypress stumps are not blasted until after the swamps have been drained, 40 per cent. dynamite should be used.



FELLING A TREE—THE BLAST

FELLING TREES

Occasionally when clearing land of growing timber, it is of advantage to blast out the entire tree and saw off the root afterward. The process here is exactly the same as in stump blasting, but little, if any, more dynamite being required to bring out the tree, roots and all, than to blast the stump after the tree has been cut. The blast lifts the tree straight up a foot or two; then it falls, generally with the wind.

SPLITTING STUMPS AND LOGS

When stumps, particularly large ones, are blasted out whole or nearly so, it is usually necessary to split them up so that they can be conveniently handled or burned. This can be readily accomplished with dynamite; only a small quantity being required, if the charge is properly tamped in auger holes bored part way through the stump.

In the South the pine stumps are very large producers of turpentine and by-products. Before the wood in the stump can be distilled, it must be broken into pieces small enough to suit the retort. Nothing is so effective as dynamite for breaking up a stump for this purpose. Charges of a few inches of dynamite exploded simultaneously in several auger holes bored in the stump, will shatter it into exactly the size required.

When logs are split up to be burned quickly, the same method is used as when splitting stumps; but if they are to be split for fence rails, cord-wood, charcoal, or other purposes where comparatively even and regular sections are required, blasting powder may be used. This explosive is so much slower in action than dynamite that a series of properly gauged and properly placed charges will split a log along the grain, just as evenly as if a number of wedges were used. This method of splitting logs is so much quicker, cheaper and easier than any other, that those who have once become proficient at it, never give it up. Auger holes are bored along the line of the grain, about one-quarter to one-half of the way through the log, the depth of the holes and the distance between them depending on the kind of wood, the grain and the diameter of the log. A few ounces of FF blasting powder is put into the bottom of each hole, care being first taken to see that the hole is dry, then wooden plugs are

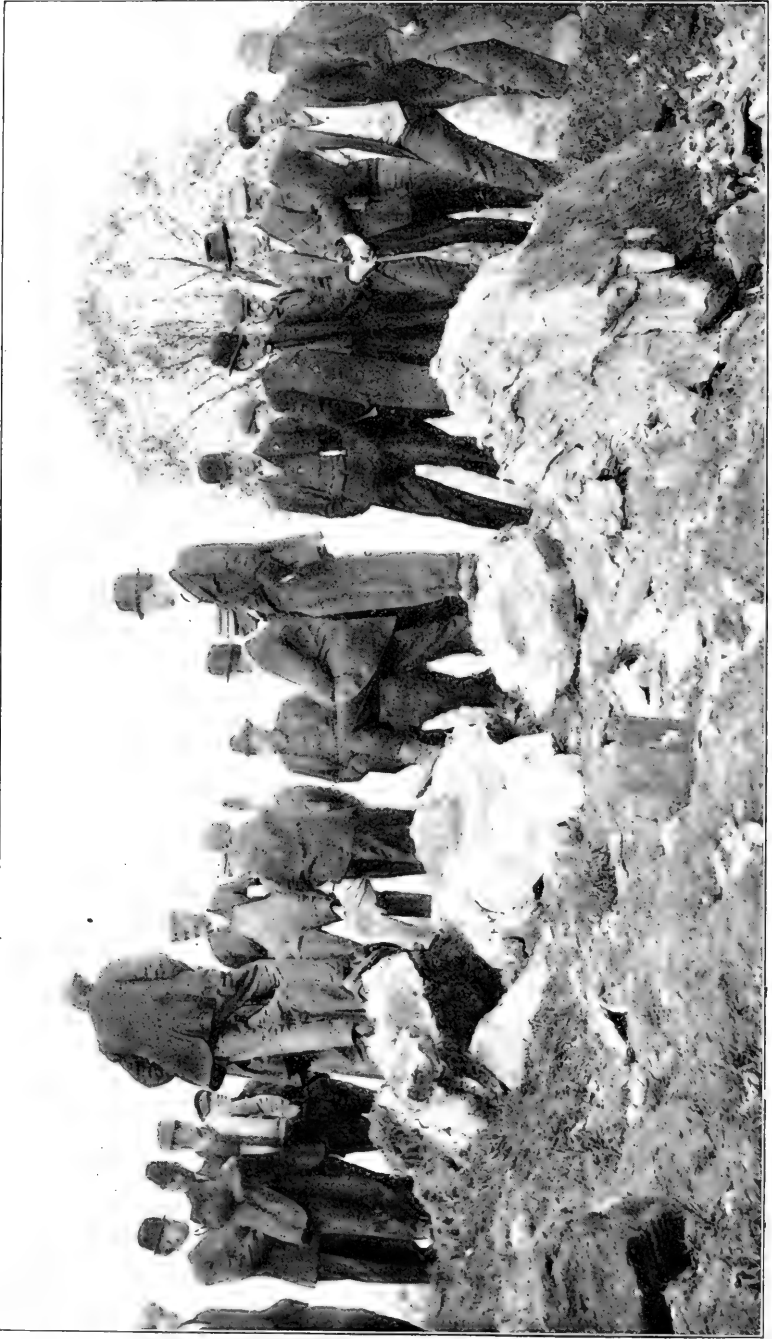


FELLING A TREE--THE RESULT
Tree laid down in proper place without injuring adjoining fence

C L E A R I N G T H E L A N D

driven firmly into the tops of the holes to tamp or confine the charge. In some kinds of wood it is best to leave a considerable air space between the bottom of the plug and the powder. The plugs must have a groove in the side large enough to admit the electric squib wires or fuse. As blasting powder is exploded by a spark or flame it is not necessary to use a detonator (blasting cap or electric fuze) when blasting with it. If electric squibs and a blasting machine are used for exploding the charges, they can all be fired simultaneously. This usually is the best and cheapest way, as a little less powder is required than when the charges are exploded separately with fuze. Electric squibs are similar in appearance to electric fuzes, except that they have a paper capsule instead of a copper cap. They do not explode when the electric current passes through them, but ignite the blasting powder by a flash. When using electric squibs, it is only necessary to have the groove or channel in the sides of the wooden plugs large enough for the two small wires to run through it, if the cap of the electric squib is put in place before the plug is driven in. When driving the plug care must be taken that the wires are kept free, and that the insulation on them is not abraded. If it is not convenient to provide wooden plugs in this work, damp clay tamping may be used on top of a wad of newspaper. A log two feet in diameter, and four or five feet long, can usually be split in two with one two-ounce charge of FF blasting powder, fired as described above. Longer logs require two or more holes, and logs of greater diameter require heavier charges. The holes should be from one and one-eighth to two inches in diameter.

Logs up to six feet in length can be split at once into a number of pieces, by exploding a single charge of low-grade dynamite in a hole bored about twelve or fourteen inches straight into the center of one end. Two ounces is about the right charge for a log two feet in diameter.



BLASTING BOULDERS AT BENNINGTON, VERMONT, MAY, 1910

BOULDER BLASTING



THE BOULDER—BEFORE THE BLAST

THERE are three ways in which boulders can be blasted. These are known as “Mudcapping,” “Snakeholing” and “Blockholing.” “Mudcapping” and “Snakeholing” are the easier and quicker methods, but require more dynamite. It is almost impossible to shatter large round boulders of hard rock by either of these methods, without using an excessive quantity of explosives, which makes blockholing necessary with boulders of this kind.

Mudcapping (“Doby Shooting” or “Blistering”)

Boulders may frequently be broken by exploding a small charge of dynamite on their surface. The charge should be placed on the spot which would be struck with a sledge if the boulder was to be broken in that way. The dynamite should be packed in a solid mass by slitting the paper cartridge shells, but should not be spread over the surface of the boulder any more than absolutely necessary. A blasting cap crimped on to fuse should be placed in the middle of the charge, and the whole covered with six inches of damp clay or sand. This material should be pressed firmly over the mass of dynamite, care being taken not to cover the free end of the fuse.



BLASTING A BOULDER

C L E A R I N G T H E L A N D

It is advisable if the boulder is deeply imbedded in the ground, to dig away or loosen some of the earth surrounding it before blasting.

If the boulder is cracked or seamy, the best results may be secured by placing the charge in some depression and covering it with a quantity of clay or sand. This will furnish more resistance and make available a greater force from the explosive.

The quantity and grade of explosives required naturally depend on the size and shape of the boulder. The "grain" and kind of rock are also important points. Forty per cent. dynamite is the grade recommended, and the quantity required will vary from one to ten pounds, the latter quantity being necessary only when the boulder is a very large one. The dynamite should be exploded with a No. 6 detonator.

Snakeholing

Proceed as in stump blasting, taking care that the hole in the ground be made under a flat or hollow side of the boulder and not under a bulging side. Make a hole with a crowbar or a dirt auger, close up under the center of the boulder and load the dynamite into the hole in the same manner as you would for stump blasting. Care should also be taken when the charge is placed, to leave no means by which the force of the dynamite may escape. If it has not been thoroughly tamped, or if it is too near the surface of the ground, and not in the proper position beneath the boulder, the dynamite may blow the dirt out and leave the boulder untouched.

Dynamite of 30 per cent. to 40 per cent. strength should be used when breaking up boulders in this way. Only from one-half to two-thirds the quantity of dynamite that would be required to mudcap the same boulder, is needed provided the boulder has a hollow or concave side underneath. The results are better in damp, heavy soil than in light or sandy soil.

Blockholing

This is the most economical method of using dynamite to break up boulders, and although it takes some time and labor to drill the one or more necessary holes in the boulder, it will often be found the most satisfactory in the long run. The holes in large

HANDBOOK OF EXPLOSIVES

boulders should be an inch or more in diameter, while three-quarters or seven-eighths of an inch will answer for the smaller ones. To properly break up a boulder weighing about ten tons, a hole should be drilled in it from ten to twenty inches deep, as the shape and grain of the rock may demand, and large enough in diameter to hold a pound or more of dynamite with the necessary tamping. Smaller boulders require holes from four to six inches in depth, which, if necessary, can be filled full of dynamite, and no tamping used.

30 per cent. dynamite will usually give best results in blockholing, unless the boulders are very large and hard, when 40 per cent. should be used.



THE BOULDER—AFTER THE BLAST

THE SECOND STAGE

GETTING THE FARM IN SHAPE

DIGGING DITCHES

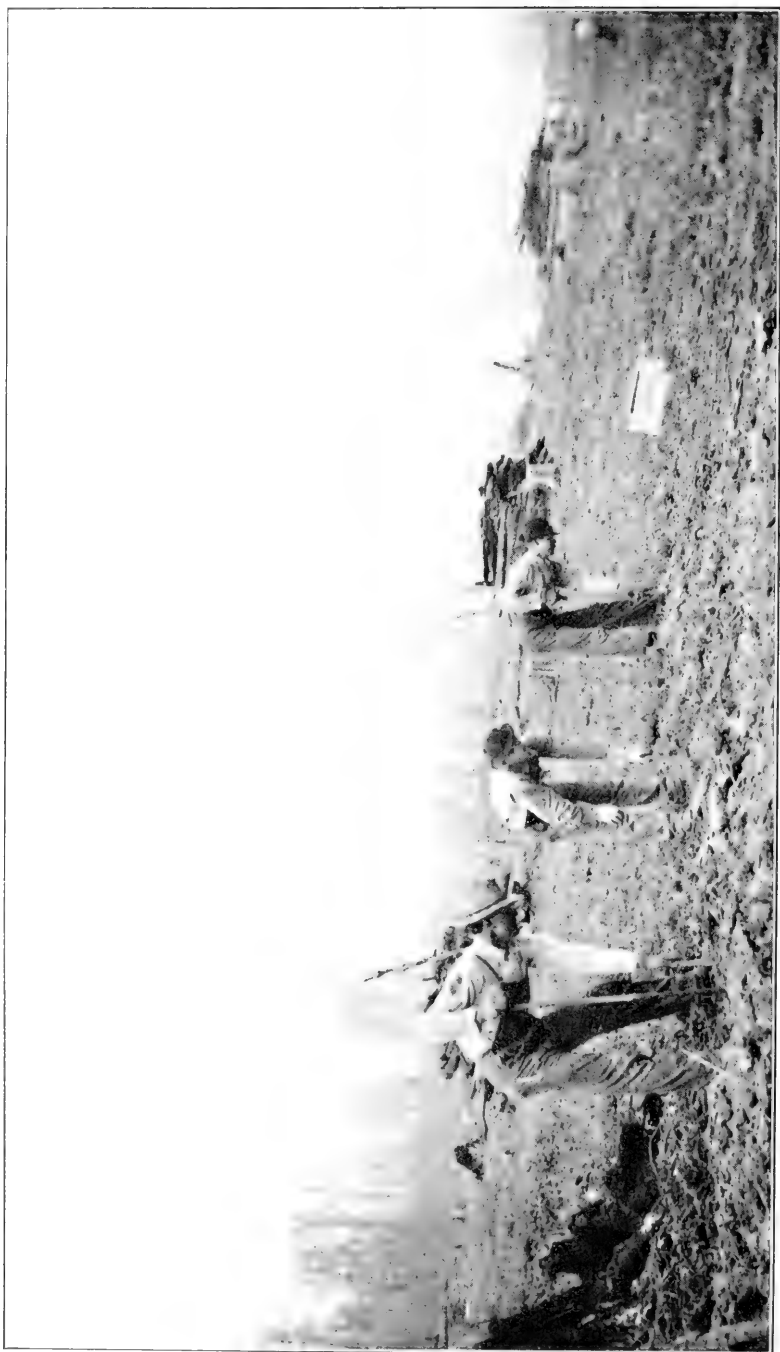
DRAINING SWAMPS

GRADING ROADS

EXCAVATING FOR BUILDING
FOUNDATIONS AND CELLARS

SINKING WELLS

DIGGING HOLES FOR FENCE-
POSTS



PUNCHING THE HOLES FOR DITCH BLASTING

GETTING THE FARM IN SHAPE

WHEN the land has been cleared the work of getting the farm into shape begins. Ditches must be dug to properly drain the fields—particularly the swampy ones, where often the best soil is found. Roads must be constructed, wells sunk, barns, houses and other buildings erected, fences built, and so on. Dynamite is necessary in every one of these operations, if the work is to be done expeditiously and economically. The information to be found in the succeeding pages, as well as that already given, has been secured entirely from farmers and others who have used explosives for the various purposes described.

DITCHING

Ditches for draining, and trenches for pipe lines and tiling, are necessary on every farm, and should always be dug with explosives. The ditching which pays best is that which drains swampy lands. There are about seventy million acres of this land in the United States, much of which would bear magnificent crops, if drained. The cost of draining by the usual method of digging ditches by hand or machine, has been almost prohibitive, with the result that this land is still lying idle. Now that it has been found that dynamite will dig ditches through any swamp where a man can penetrate, no matter how thick the vegetation covering it may be, there is no reason why the large majority of this seventy million acres of swamp land should not be cultivated.

When a ditch is blasted there is no outlay for expensive equipment, because the only machinery necessary is an iron bar, pointed at one end. In hard, dry ground, a sledge or maul is needed to drive the bar down to the necessary depth. There is no delay and expense getting machinery into place through swamps and thickets. Not even a team is needed when ditches are dug with dynamite, for one or two men can easily carry sufficient dynamite to dig a ditch four or five hundred feet long, four or five feet wide, and three or four feet deep.



BLASTING A DITCH

GETTING THE FARM IN SHAPE

When ditches are dug with dynamite the material taken from the ditch is practically all thrown out by the blast, and little or no shoveling is necessary. This material is not heaped up along the sides of the ditch, where it would occupy land that should be raising crops, and would prevent free drainage into the ditch, but is spread evenly over the ground for a considerable distance on each side of the ditch.

Ditches can be dug with dynamite at any time on a couple of hours' notice, as dealers who handle explosives can be found in almost every locality. In wet weather, especially after heavy rain falls, when it may be necessary to cut ditches and channels in a hurry, this method is invaluable.

It is just as easy to dig a curved ditch with dynamite as it is to dig a straight one, because the center of the ditch follows the line of holes in which the dynamite is loaded.

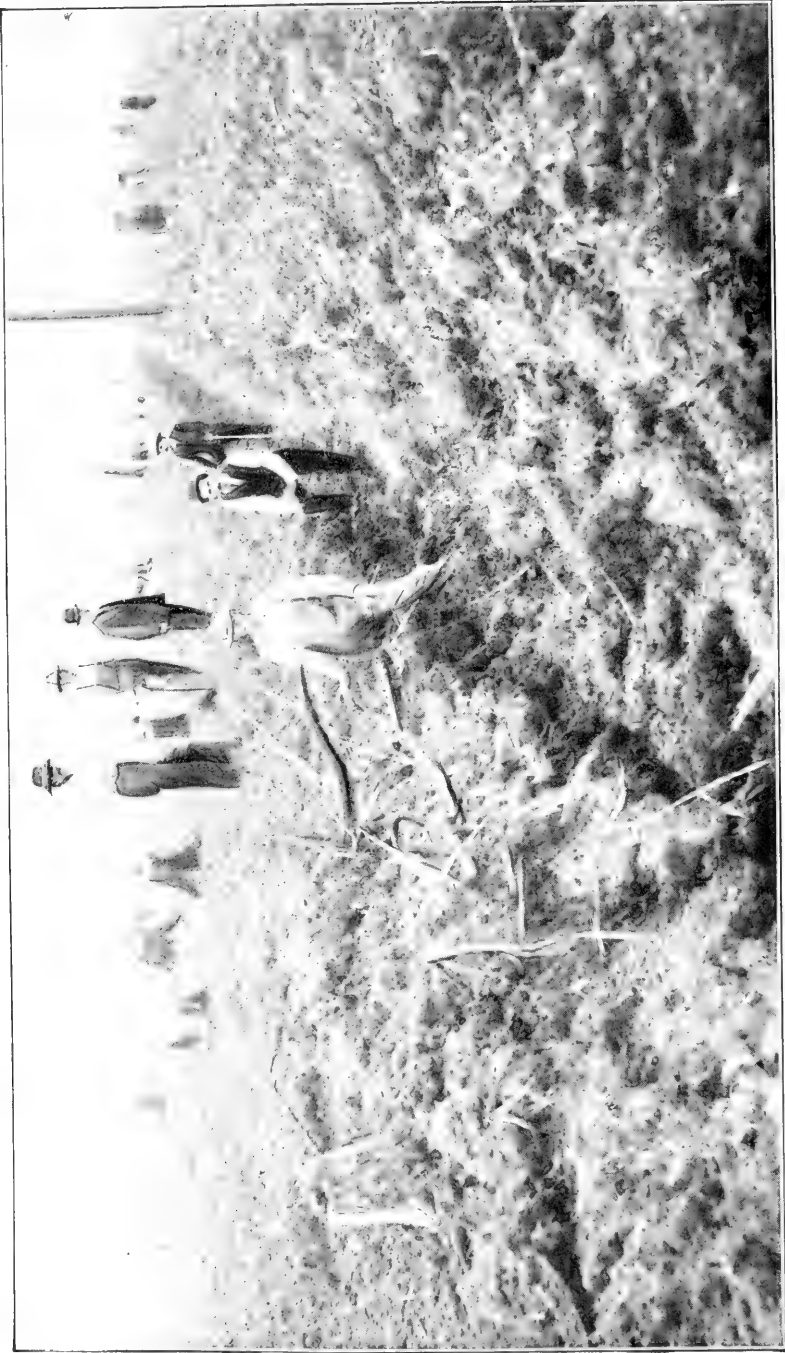
Although a channel or ditch dug with dynamite, and particularly one cut through dry or sandy ground, is not so even and regular at first as one dug by hand or machine, it will square up very soon after water fills it, and, as the banks have a good slope, there is little caving afterward.

How it is Done

Dynamite digs the cleanest and most regular ditches in wet clay or gumbo. In this kind of ground it is not necessary to put the holes so close together, or to use quite so much dynamite as when the clay is only damp. In dry clay, sand marl, or other loose ground, the weaker and consequently less expensive grades of dynamite give best results.

If the soil is very light, it may occasionally be necessary to "trim up" the ditch a little by hand after the blast, but even then it is at least 25 per cent. cheaper to dig the ditch with dynamite than by machine, and it is also many times quicker.

When ditches are dug in wet clay it is best to explode the dynamite with blasting cap and waterproof fuze. If the holes are spaced the proper distance, only the hole in the middle of the row requires a blasting cap, as the explosion of the dynamite in this hole explodes that in the next holes on either side, and so on almost instantaneously from hole to hole, to the two opposite ends of the

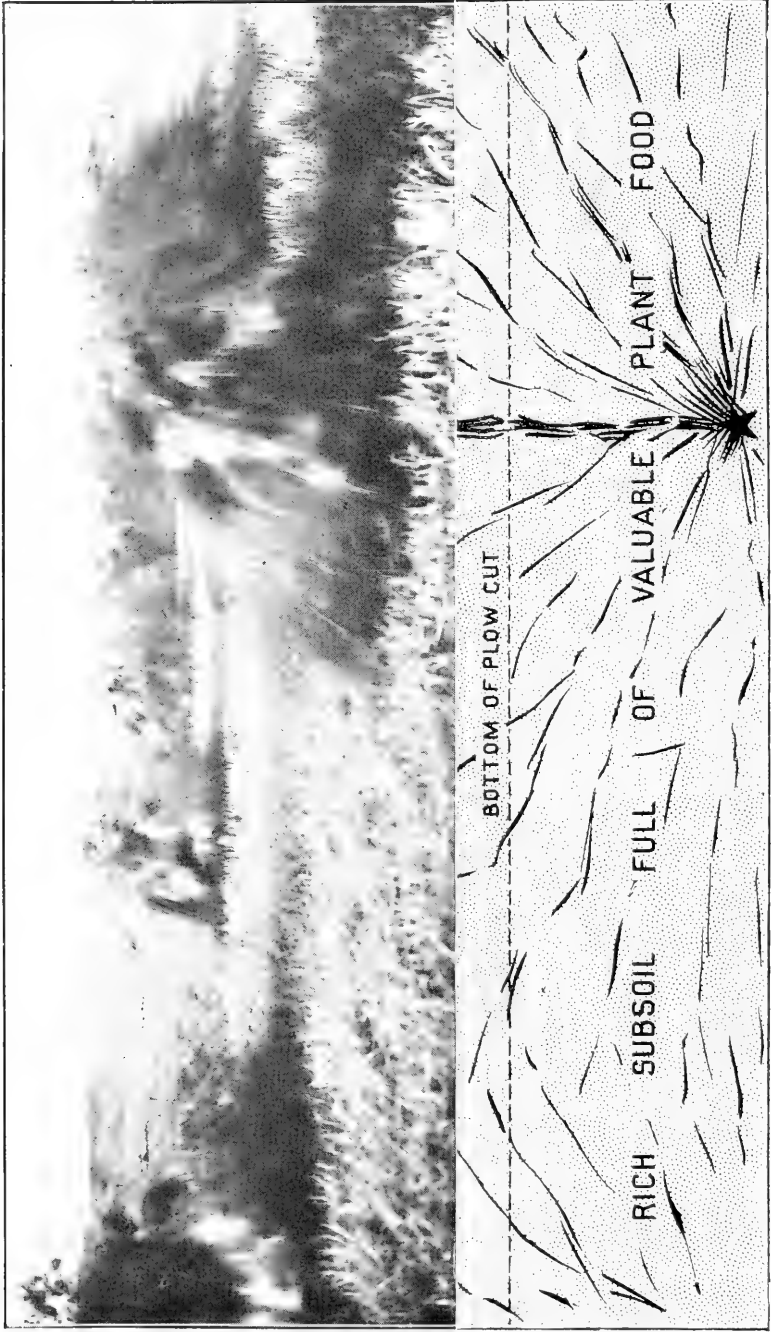


A DITCH BLASTED WITH DYNAMITE—WILL SQUARE UP AS SOON AS FILLED WITH WATER

GETTING THE FARM IN SHAPE

row. This plan of exploding the dynamite in one hole by that in the next hole, instead of putting a detonator in each hole, works best in wet ground, and when the ground and water are not cold. The temperature of the air, water and ground is an important point. If it is below 50 degrees F., the dynamite may become so insensitive that the charge in one hole will not explode the next one. It is, therefore, recommended that whenever possible, this work be done when the ground is wet and the weather warm.

When all conditions are favorable the holes can be spaced two feet apart, put down three feet and loaded with one cartridge, $1\frac{1}{4}$ x 8 inches of 50 per cent. or 60 per cent. dynamite, for a ditch four feet deep and six feet wide at the top. Three men can dig a thousand feet of this ditch in three days, with two hundred and fifty pounds of dynamite, and at about one-third of the cost of any other method. Fifty, sixty, or even a greater number of holes, can be blasted simultaneously with a blasting cap in the middle hole only. Sometimes as much as a quarter of a mile of ditch is blasted in this way at once, but unless a number of men are loading the holes it is not advisable to blast so much at one time, because the dynamite in the holes first loaded will be under water so long, before the last holes are loaded, that it may deteriorate. The middle hole should be loaded heavier than the others—say, with three cartridges instead of one cartridge, one of them being the “primer”; that is, the cartridge in which the blasting cap crimped to the fuze has been placed. It is also a good plan to load the next hole on either side of the middle one with three cartridges instead of one. When water covers the holes, or almost fills them, it acts as a tamping, and no other tamping is necessary. The middle hole should be loaded last, so as not to keep the blasting cap and fuse under water longer than absolutely necessary. The blasting cap SHOULD BE CAREFULLY CRIMPED TO THE FUSE WITH A CAP CRIMPER, and NOT with a knife or the teeth. After the blasting cap has been crimped to the fuse, thick grease or tallow (*not oil*) should be spread over the fuze where it enters the blasting cap. You cannot be sure that everything will work satisfactorily, unless you use a high-grade of waterproof fuze and a No. 6, or stronger, blasting cap. Blasting caps are weakened by dampness, so it is always better to use a grade stronger than one which would only just explode the dynamite.



SUBSOIL BLASTING BY ELECTRICITY—HOLES TWENTY FEET APART. SECTION SHOWS HOW BLAST BREAKS UP SUBSOIL

GETTING THE FARM IN SHAPE

Always cut the end of the fuse squarely across, and always put the fresh cut end in the blasting cap.

The iron or steel bars for punching the holes in the ground should be a little larger in diameter than the dynamite cartridges, sharpened to a blunt point on one end and at least two feet longer than the depth of the ditch. For making holes in dry ground, where the bar is driven down with sledges or mauls, it is a good plan to have it only long enough to extend about four inches above the surface when the hole is deep enough. This short bar should have a ring or collar welded on close to the top, so that it can be easily loosened with a crowbar if it becomes fast. The bars should have a blunt point and not a long, tapering one, because the dynamite cartridge cannot be easily forced to the bottom of a hole if made by the latter.



BAR FOR PUNCHING THE HOLES

The labor of punching the holes may be reduced by spacing them farther apart, but when this is done it is necessary to increase each charge of dynamite. If under the conditions described above the holes were spaced three feet instead of two feet apart, the charge of dynamite in each one should be increased to one and a half $1\frac{1}{4}$ x 8-inch cartridges.

Ditches up to sixteen feet wide can be dug with dynamite, but for this width three rows of holes placed alternately, as shown below, are necessary.



The rows should be about the same distance apart as the distance between the holes in the row.

When deeper ditches are wanted, the holes must be put down deeper, and larger charges of explosives be used.

A ditch, two or two and one-half feet deep, and five feet wide, can be blasted through wet clay or gumbo at a cost of $1\frac{1}{2}$ cents, or less, per lineal foot of ditch.

One Missouri farmer recently stated that a ditch which he had just dug through swampy land with dynamite for \$100, would have cost \$400 or \$500 if it had been dug in any other way.

When the clay or gumbo is only moderately wet or damp, it is necessary to locate the holes closer together, if a blasting cap is used in only one of them, as the shock from exploding dynamite will not carry as far through the dryer ground, as it will through wet ground or water; and it will not carry as far through light or loose earth, as through that which is close and heavy. The distance between the holes in clay, which is only damp, should not be greater than a foot and a half; and in wet sand, from a foot to a foot and a half.

When the ditch is to be dug through dry ground, it is necessary to have a detonator (blasting cap and fuse or electric fuze), in each hole, and to tamp with damp earth above the explosives to the top of the hole. The best plan is to fire a number of holes at one time by electricity, so that each charge can help the other.

Although it takes a little longer to dig ditches with dynamite in dry ground than it does in wet ground, because each hole must be primed, it is but little, if any, more expensive, as the holes can be spaced from two and a half to three feet apart, and a lower grade of dynamite can be used. The proper explosive for blasting dry ground in this way is dynamite of 25 per cent. to 40 per cent. strength, of which about two $1\frac{1}{4}$ x 8-inch cartridges should be used in each hole.

In blasting ditches, as in all other blasting, the grade and quantity of explosives to use, and the spacing and depth of bore holes, are governed by the kind of ground in which the work is to be done, whether it is wet or dry, and by the size of the ditch to be dug.

If lateral ridges are left in the bottom of the ditch, the holes should be spaced a little closer in the next attempt. Sometimes the material blasted out is thrown farther away from the ditch if the holes are put down at an angle of about 45 degrees instead of vertically.

There is a great deal of difference between the way an explosive acts in close, wet ground, which offers considerable resistance, and the way it acts in open dry ground, offering very little resistance. Consequently it is necessary, in order to get the best work out of

GETTING THE FARM IN SHAPE

explosives, that is, to make them do the most work possible for the money they cost, to use one kind in close, wet ground, and another kind in open, dry ground. It is also cheapest to space the holes and to fire the explosives differently according to the kind of ground.

As ground in which ditches are to be dug is not always either wet clay or dry loam, but often ranges between the two, it may be necessary to modify the two methods described above in the spacing of bore holes and size of charges.

When shale or rock is encountered in digging ditches, holes must be drilled and fired as in any other kind of rock blasting. The depth and spacing of these holes, and the kind and quantity of explosives which will give best results, depend altogether on the nature of the rock.

DRAINING SWAMPS

In comparatively flat, open country underlaid by a clay subsoil, swamps, often several acres in extent, occupy the lower areas. These swamps are natural reservoirs, generally formed by drainage filling up the depressions until the water is high enough to flow out over the lowest barrier. They are not fed by springs, but by the natural drainage. To drain these swamps by means of ditches would sometimes require several miles of ditching, which in many cases is impracticable. Yet such swamps often cover the very best kind of crop-bearing ground, and accordingly any practical method by which they can be disposed of, is a matter of great interest to many farmers. That many of them can be completely drained without ditching, and at very little expense, has been clearly demonstrated. This is done by boring holes down through the impervious ground in the bottom of the swamps, to the sand, gravel or other open material below, and exploding relatively heavy charges of 40 per cent. semi-gelatin in the holes. The number of holes required depends on the size of the swamps and the thickness of the subsoil. Sometimes a comparatively large swamp can be permanently dried up by means of three or four well-blasted holes in the lowest part of the bottom. Again a row of holes, spaced thirty or forty feet apart, across the lowest part of the swamp may be necessary. For lasting results, the holes must sometimes be drilled as deep as thirty feet, although ten-foot holes are often sufficient. A two-inch

wood or dirt auger is generally used. This auger is welded to a piece of gas-pipe six or eight feet long. The top of this is threaded and a tee attached so that a wood or pipe handle can be used to turn the auger. When the hole is bored down until the handle of the auger approaches the surface of the water, or as low as it can be conveniently operated from the raft or boat, the tee is unscrewed, another section of pipe attached, and the tee is screwed on to the top of this section. This process is repeated until the hole has reached the required depth. Then the dynamite is loaded. To do this properly a section of two-inch gas-pipe should be pushed into the hole for six or eight inches. This pipe should be long enough to extend above the surface of the water. Through this the $1\frac{1}{4}$ x 8-inch cartridges should be pushed, one or two at a time, with a wooden stick, to the bottom of the hole, where they will remain when the stick is withdrawn, if given a good firm push. The last cartridge should be primed with a No. 6 waterproof electric fuze, for good results cannot be expected if fuze and blasting caps are used in this work. The electric fuze must have wires long enough to reach well above the surface of the water. No tamping is required, as the water above the explosive serves the purpose. After the primer cartridge is in position, draw out the gas-pipe carefully, so as not to pull the electric fuze out of the cartridge. The electric fuze wires should then be connected to well-insulated leading wire (all connections being carefully waterproofed), and the leading wire should be carefully paid out, while the raft or boat is moved fifty to one hundred yards away. The other ends of the leading wire should then be attached to the blasting machine, the operation of which will explode the charge in the bottom of the hole. The approximate charge for a hole ten feet deep is seven cartridges, for a hole fifteen feet deep, twelve cartridges, and for a hole thirty feet deep, twenty-five cartridges, $1\frac{1}{4}$ x 8 inches, of 40 per cent. semi-gelatin.

A few years ago a Kansas farmer, who had owned a farm for twelve years with a forty-acre swamp on it, blasted a row of holes spaced about thirty-five feet apart, across the lowest part where the water was three feet deep. The swamp dried up immediately and the first year sixteen hundred bushels of oats were raised on the ground it had occupied. Since then four crops of alfalfa per year have been raised on this ground.

GETTING THE FARM IN SHAPE

ROAD BUILDING

No farm can be properly conducted without good, hard roads, and the only way to have good roads about the farm is to lay them out correctly in the first place, and then grade and ditch them properly. This grading and ditching always takes more or less digging, but by using dynamite to loosen up the hard ground or shale, and to blast out the rock, roads can be built quickly and at comparatively little expense.

To blast cuts not more than five feet deep through hard earth or shale, drive a bar down to within six inches or a foot of "grade," and in the hole thus made explode one of two cartridges of 30 per cent. dynamite. Be sure to first tamp the charge properly. Holes should be spaced five to eight feet apart. In this way the material to be removed is not only broken up so that it can be shoveled very easily, but a good portion of it is spread over the surrounding land and does not have to be handled.

Roads can be ditched with but little shoveling, by exploding about half a cartridge of 30 per cent. dynamite in holes a foot deep and two to three feet apart along the line of the ditch.

If it is necessary to cut through rock, the holes should be drilled closer together and heavier charges used. When crushing stone for country roads and turnpike, it will be found much cheaper to locate the crusher at a ledge, and blast out the rock, than to keep teams traveling over the whole countryside, gathering up boulders and hauling them to the crusher.

DIGGING CELLARS AND FOUNDATION TRENCHES

No farmer wants to put an expensive barn or house on a poor foundation, and it would be hard to find a greater benefit to a farm than a good cellar. The proper location for a building is on a knoll, and the rock often comes nearer to the surface on the knolls than it does in the hollows. This makes both good foundations and good cellars possible with the help of dynamite. With sharp drills, a couple of sledges, 40 per cent. dynamite, fuse and No. 6 blasting caps, a cellar can be excavated, and the rock squared up for foundation piers or walls, in a short time and at little expense. In fact, it takes little, if any, more blasting to put a house or barn on rock than it does to quarry elsewhere the necessary stone for cellar walls and



GRADING A ROAD—THE BLAST

GETTING THE FARM IN SHAPE

foundations. The rock blasted out can also be used for the walls and piers.

If it is not possible to locate the house and barns on rock, then the foundation trenches and cellar in the clay, gravel or shale can be dug much more quickly and easily if the material is loosened up with an occasional charge of 30 per cent. dynamite.

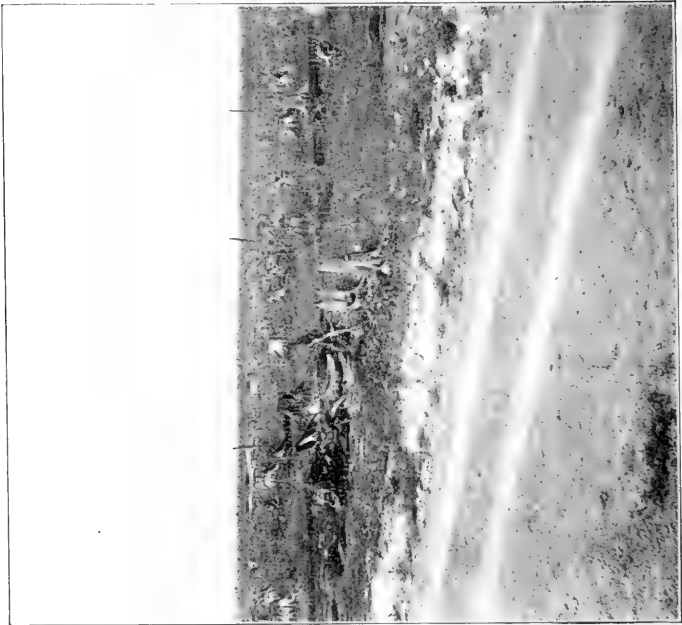
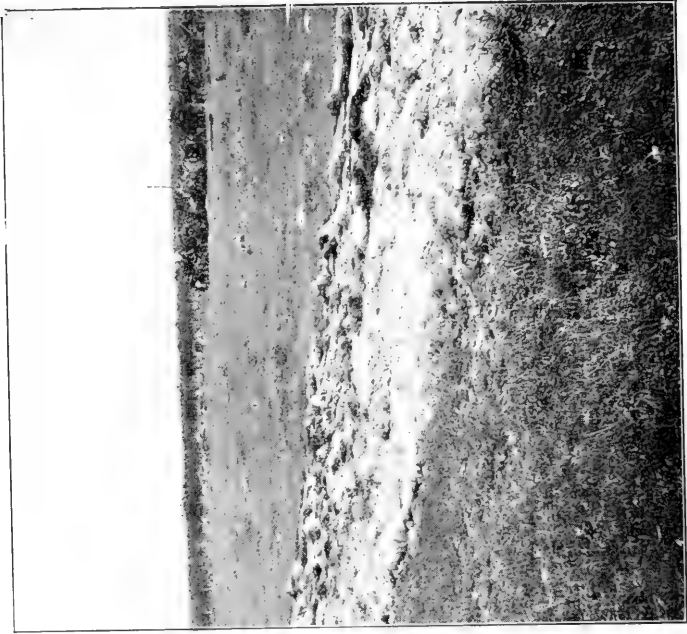
The stone for cement construction of all kinds can be easily blasted out in the proper size for the crusher with 40 per cent. dynamite.

WELL SINKING

Wells are frequently sunk through rock or ground which cannot be dug to advantage without the aid of explosives. In well sinking, when rock is reached and the earth or sand above is properly shored, a circle of four or five holes should be drilled about half-way between the center and the sides of the well, pointing at an angle, that will bring them close together near the center when they are three or four feet deep. These holes should be loaded about half-full of 40 per cent. gelatin dynamite, with damp clay tamping packed firmly above this to the top of the hole, and then fired simultaneously from the surface by electricity. The result of this shot will be to blow out an inverted cone or funnel in the center, and the bottom can then be squared up with another circle of holes drilled vertically as close to the walls as possible. If the well is large it may be necessary to drill a circle of holes between the inner and outer circle. The above process should be repeated until the well has passed through the rock or has been sunk to the necessary depth. Nothing weaker than No. 6 electric fuzes should be used to explode the gelatin dynamite.

DIGGING HOLES FOR POLES AND POSTS

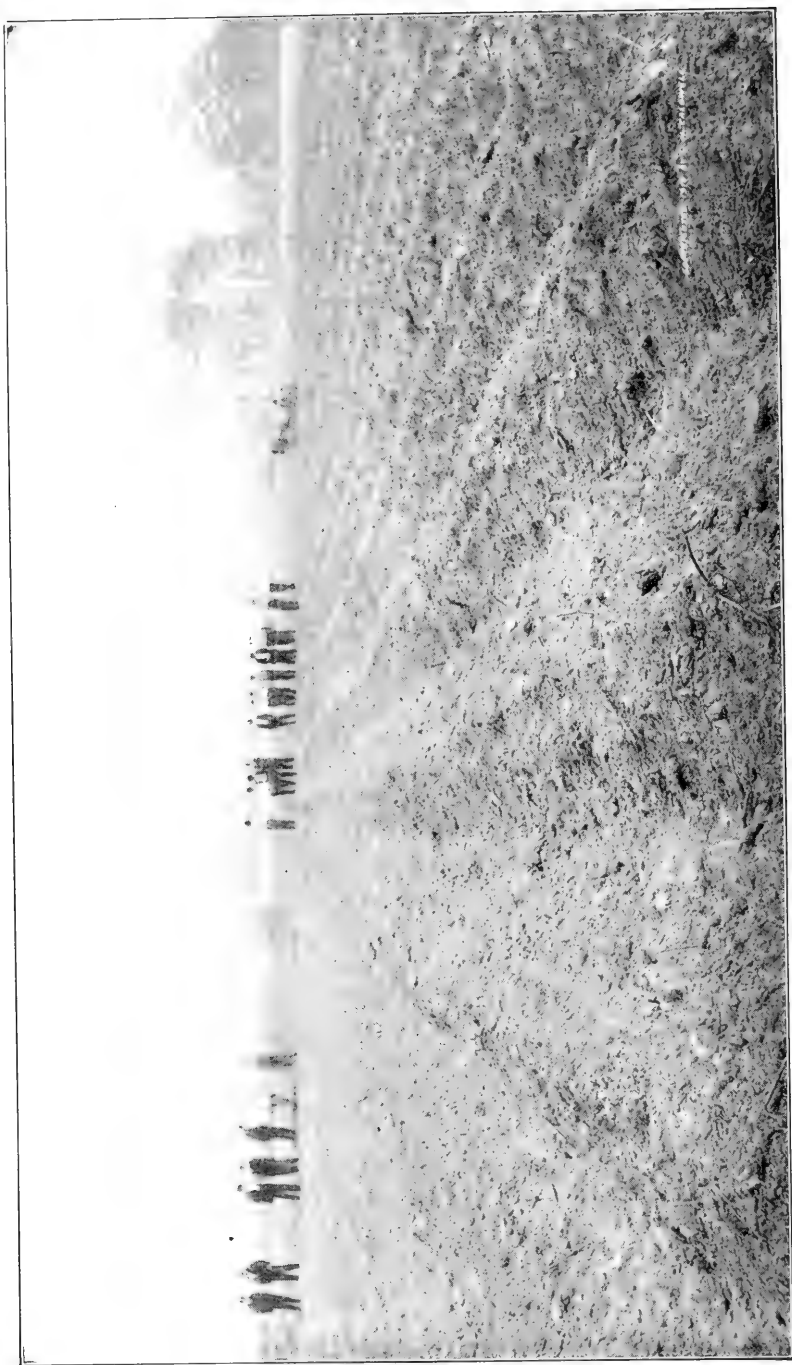
Much time and labor can be saved by using dynamite as an assistant in digging holes for poles and posts. Only enough explosive should be used to make the digging easy, as larger charges loosen up the ground to such an extent that it is difficult to make the poles or posts as firm as they should be. This applies particularly to large poles.



FIELD NEAR HIBBING MINN.—BEFORE AND AFTER CLEARING

GETTING THE FARM IN SHAPE

The best way to do this blasting is to drive a crowbar down into the ground within six inches of the desired depth of the hole. In the bottom of the hole made by the crowbar, explode from one-quarter of a cartridge to one cartridge of 40 per cent. dynamite. *Do not tamp*, as this would cause the explosive to loosen the ground too much.



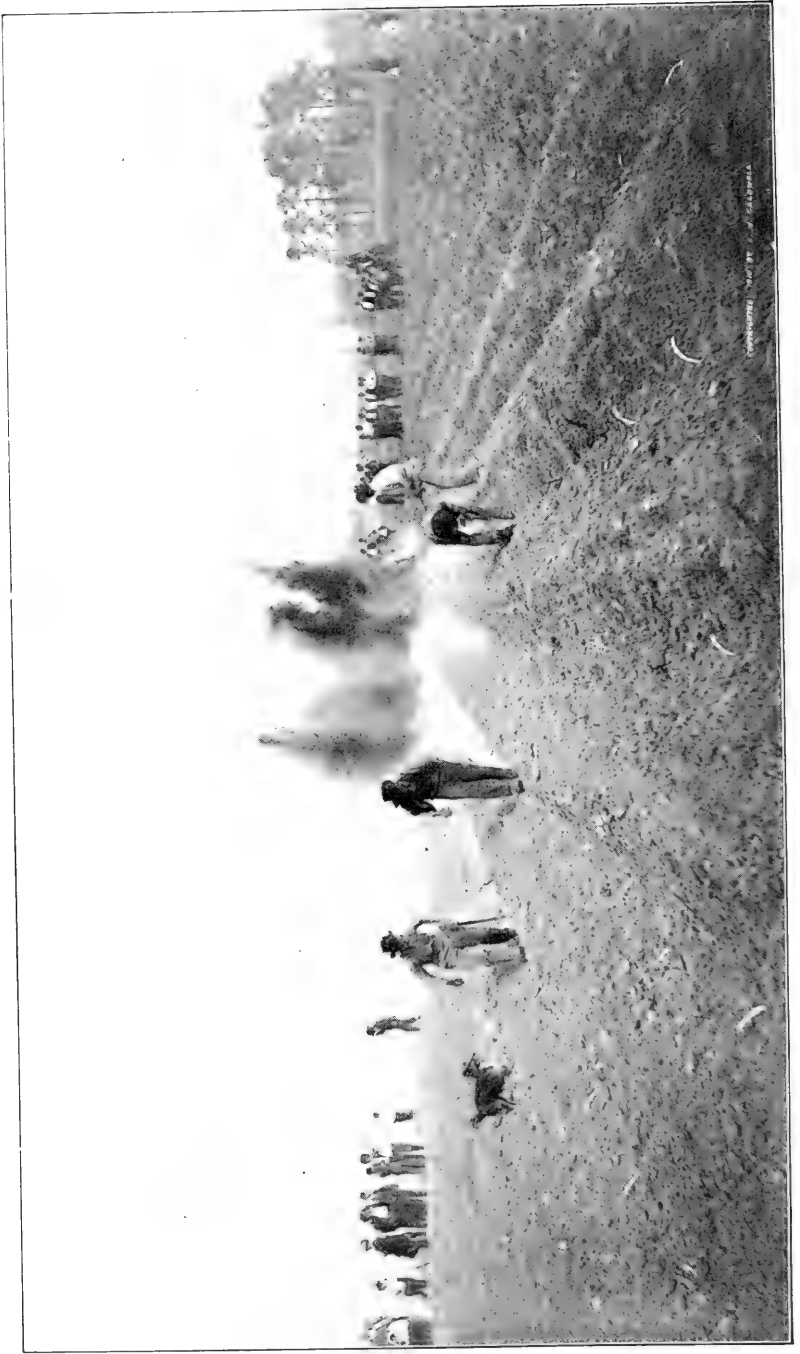
SUBSOIL BLASTING—HOLES CHARGED AND FUSE READY TO LIGHT—SPARTANBURG, SOUTH CAROLINA, APRIL 1910

THE THIRD STAGE

PREPARING THE LAND FOR CROPS

PLOWING WITH DYNAMITE

DYNAMITE IN THE ORCHARD



SUBSOIL BLASTING—LIGHTING THE FUSE

PREPARING THE LAND FOR CROPS

PLOWING WITH DYNAMITE

PLOWS have been used for many centuries to break up the surface of the earth, so that seeds could be easily planted and grow better; but from the forked stick of the savage to the great gang plow of the modern farmer, plows have rarely broken up the ground satisfactorily to a depth greater than eight or ten inches.

In rich, open soil that is properly fertilized, plowing will break up the ground sufficiently for many years, but eventually a hard stratum, sometimes called "plow hardpan" or "plow sole," forms just below the depth to which the plow reaches. This "plow sole" must be broken up, or the land will begin to fail. Even when "plow sole" does not exist, land that has been bearing crops for many years is wonderfully improved, if the lower soil is broken up and aerated once in every six or eight years.

Land that has only a thin surface soil underlaid by an impervious or partly impervious subsoil, sometimes known as "hardpan," will not produce crops at all, or else only produce them in a very limited degree, or for a short time only, unless the subsoil be thoroughly broken up. Where the fertile surface soil is fairly deep, attempts have been made to farm this land by means of drainage and irrigation, the surplus water of the wet season being drained off, and the lack of water in the dry season being overcome by irrigation. This system is expensive, and at best gives only temporary relief, for in the end it tends to increase the thickness of the hardpan, and in some localities may be responsible for alkali soil. The heavy rains of the wet season often cannot penetrate this subsoil, so the water rushes to the low ground, carrying much of the valuable surface soil with it. There, still unable to sink through the hardpan, it prevents plowing until the water evaporates or causes the seed to rot if it is already in the ground.



SUBSOIL BLASTING—THE RESULT—CORN RAISED ON THE BLASTED GROUND

PREPARING THE LAND FOR CROPS

In places where irrigating is carried on extensively, the ground sometimes becomes so saturated that the water level rises close to the surface. This makes the land practically worthless for vegetation of any kind other than pasturage. If alkali exists in the soil, or is deposited by irrigation, no crops can be raised when the ground water reaches the level of the plants' roots.

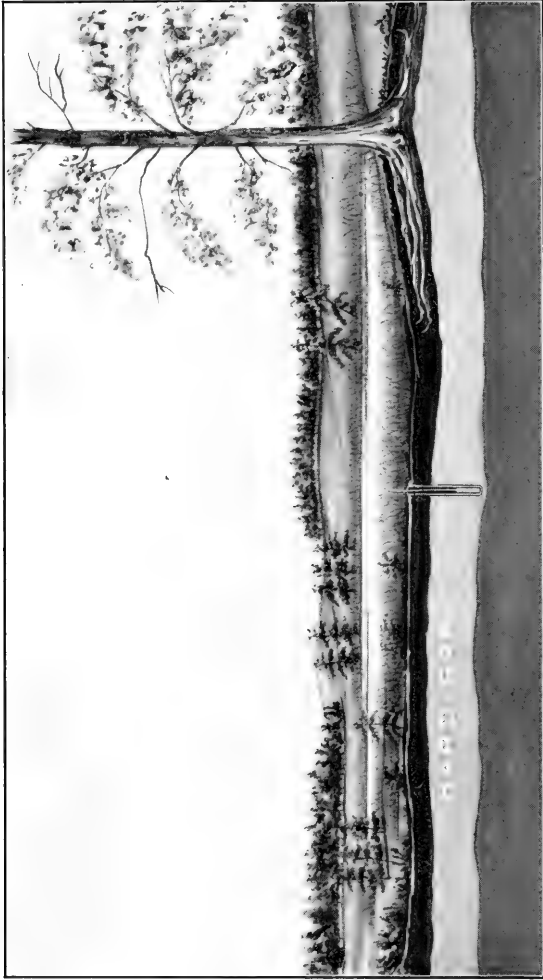
In some parts of the country, ridges or "dikes" are run at regular intervals over all of the higher ground, to keep the thin surface soil from being washed away. Considerable time and labor is required to make these dikes, as well as to keep them in shape, and they take up ground that should be bearing crops. On land of this kind, drainage, irrigation, dikes, late plowing and rotting seed could all be done away with if the subsoil or hardpan were properly broken up.

There is only one practical way to upturn and aerate these lower soils, or to shatter hardpan, and that is by blasting.

Subsoil and hardpan can be plowed just as effectively with explosives as surface soil can be with a plow, and just as cheaply, too, for it is only necessary to do this subsoil plowing once in a number of years.

Blasting subsoil has been practiced for some years by a few progressive farmers in different parts of the country. These men have had wonderful results in the way of increased crops on land already under cultivation, and in transforming into excellent growing land that which would have been worthless without dynamite.

It is only lately, however, that the benefits from plowing with dynamite have become generally recognized. The Department of Agriculture, the various agricultural colleges, and men prominently identified with farming in different parts of the country, are all now making a careful study of this question in order to determine the strength, quantity and kind of explosives, the most effective way of using them, and the depth and spacing of the holes, for best results. Farmers everywhere are experimenting on their own account. Many are already claiming that subsoil plowing with explosives will be a common custom in a few years, and will represent millions of dollars in increased crops from lands already under cultivation, and more millions from land now producing nothing but weeds and considered entirely worthless. Along with this increase in land production,



SECTION THROUGH HARDPAN SHOWING PROPER DEPTH FOR BORE HOLE

PREPARING THE LAND FOR CROPS

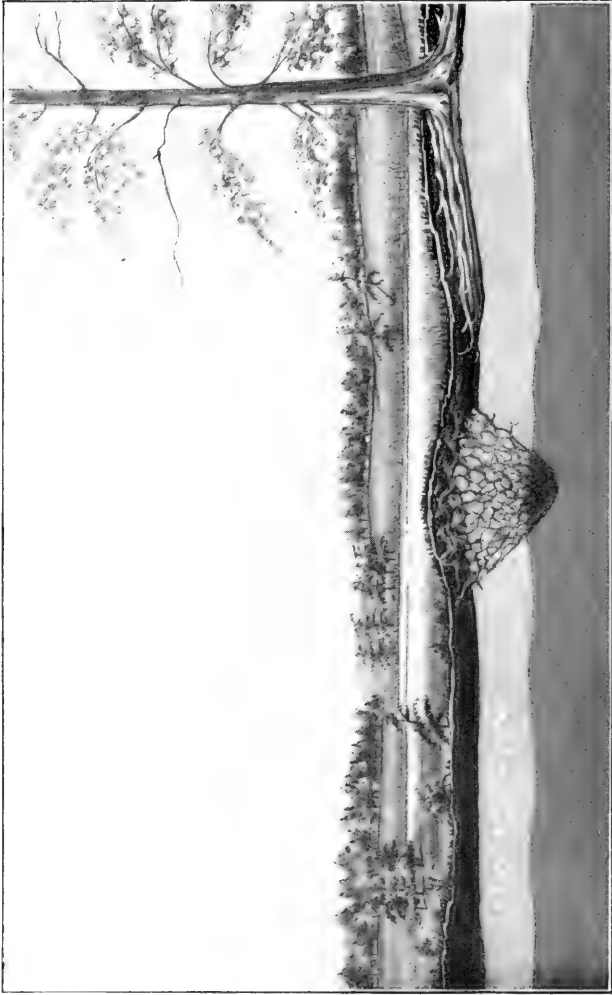
will be a reduction in the expense of draining and irrigating; because, when hard subsoils are properly shattered with explosives, the surplus water falling in rainy seasons sinks down to the lower soils, and does not need to be drained off. Neither is it necessary in dry seasons to provide water by means of irrigating to keep the crops from drying up, because the water which has settled deep in the ground during the heavy rains is drawn up in the dry season by the plant roots as they need it.

Forty-nine per cent., representing about two and one-half million bales, of the damage done to the 1909 cotton crops was due to either excessive or insufficient moisture. This loss could have been largely prevented by blasting the subsoil so that it could absorb the surplus water in wet weather and retain it for the dry weather, when the plants need it.

In some places the subsoil is so close to the surface, and so hard, that the plant roots grow down to it, but are unable to penetrate it. Ground of this nature will not produce crops amounting to anything until the subsoil has been blasted, no matter how much it is drained and irrigated. After being blasted, however, it often becomes wonderfully productive.

Different methods of loading and spacing the holes are practiced in different places, the usual distance apart in the South being 4 to 8 feet, with a charge of about one-fourth of a 1¼ x 8-inch cartridge of 30 per cent. or 40 per cent. dynamite in each hole. In Kansas and other Western States, holes are spaced from 15 to 30 feet apart and loaded with a charge of from one to one and a half 1¼ x 8-inch cartridges of 15 per cent. or 25 per cent. dynamite, in each hole. The proper place to locate the charge so that it will shatter a maximum area of subsoil, is two to three feet below the surface, if the hardpan is thin, and the holes are placed four to eight feet apart. In thick hardpan, with the holes 15 to 30 feet apart, the charge should be located about six inches above the bottom of the hardpan.

In California, hardpan has been blasted very effectively and cheaply with 5 per cent. low powder. A slow-acting dynamite does better work than a quick one, because its effect is more spreading. The difference in the results of the use of slow explosives and of quick ones on hardpan is illustrated on pages 66, 68 and 70.



SECTION THROUGH HARDPAN SHOWING EFFECT OF A QUICK-ACTING EXPLOSIVE

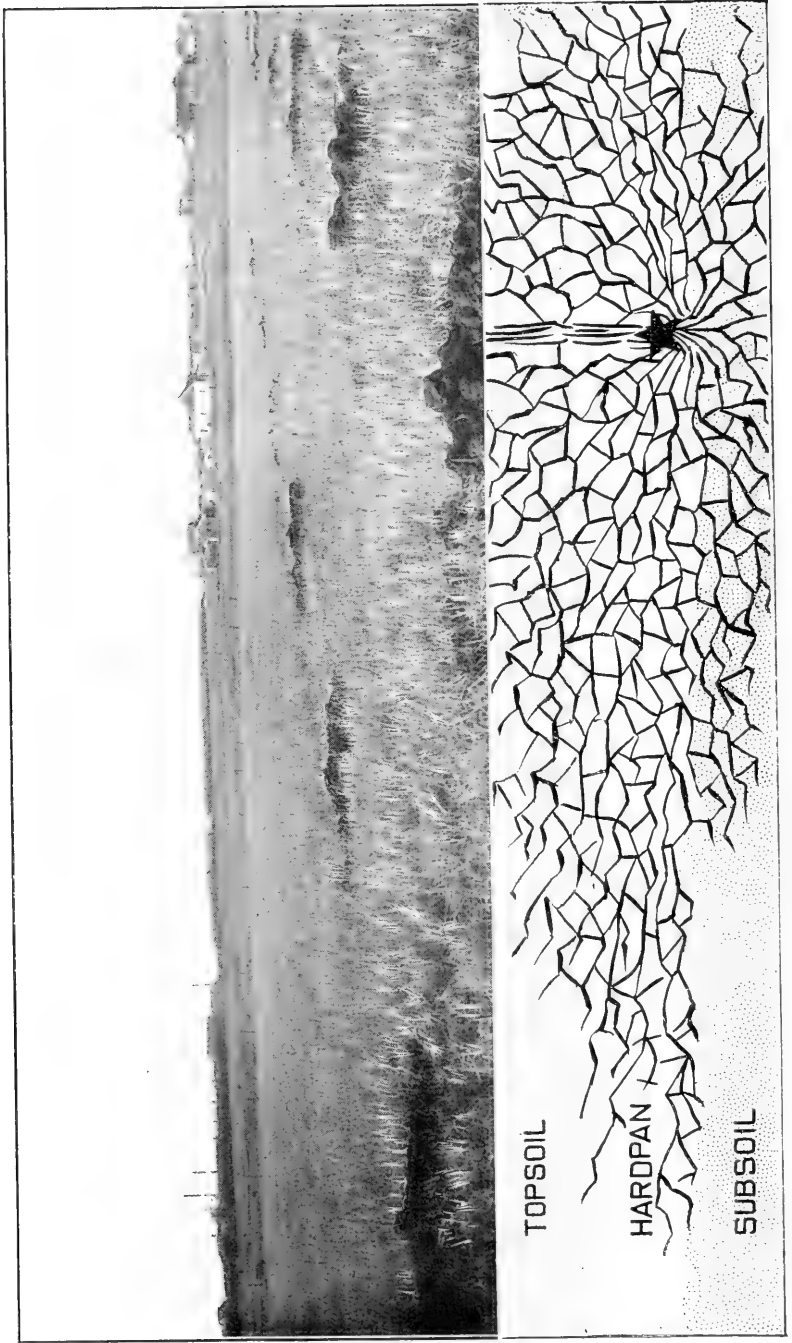
PREPARING THE LAND FOR CROPS

The exact size of the charge, the proper spacing of the holes, and their depth, depend largely on the kind of subsoil to be broken, its thickness and distance below the surface.

When the bore holes are 15 feet or more apart, it is best to explode a number of charges simultaneously by means of electricity, but when the bore holes are closer it answers the purpose about as well to explode the charges with fuse and blasting caps.

Some years ago F. G. Moughon, of Walton County, Georgia, blasted a piece of land with charges of about one-third of a $1\frac{1}{4}$ x 8-inch cartridge of dynamite in bore holes, two and a half to three feet deep, spaced eight and ten feet apart. This ground has produced since then phenomenal crops of watermelons, averaging 50 to 60 pounds each. J. H. Caldwell, of Spartanburg, S. C., advocates holes two feet deep spaced four feet apart. He explodes in each of these about one-fourth of a $1\frac{1}{4}$ x 8-inch cartridge of 30 per cent. dynamite. These holes are not thoroughly tamped, but when they are loaded enough loose dirt is pushed into each one to close up the opening and hold the fuse upright. Although this lack of tamping undoubtedly results in wasting some of the force of the dynamite, Mr. Caldwell believes that it is cheaper in the end, because of the saving of time in loading the holes. When the ground was not blasted, the corn had to be planted 18 inches apart in the row, with rows 4 feet apart. The blasted ground was able to nourish stalks six inches apart, with the rows spaced as before. The corn on the blasted ground grew almost one-half taller than that on the unblasted ground and produced a crop 33 per cent. greater. This corn was weighed by a committee of the Chamber of Commerce, of Spartanburg, S. C., and report made to Col. E. J. Watson, United States Commissioner of Agriculture, of Columbia, S. C. The committee also stated that the blasted ground produced fuller ears and firmer grains.

It is impossible, in the limited space of this handbook, to give details concerning the results of the subsoil blasting done by many of those who have profited greatly by it, but J. T. Garrett, of Laurens, N. C., who greatly improved his corn and watermelon yield, and M. T. Williams, of Medicine Lodge, Kan., who increased the value of his land almost tenfold for alfalfa, must be mentioned.



SECTION THROUGH HARDPAN, SHOWING EFFECT OF A SLOW-ACTING EXPLOSIVE

PREPARING THE LAND FOR CROPS

The entire cost, including labor and explosives, of blasting an acre of ground with holes 3 feet deep and 15 feet apart, using a half-cartridge $1\frac{1}{4} \times 8$ inches in each hole amounts to about \$18. The same charge in holes spaced 20 feet apart brings the cost per acre down to about \$11. If charges of one cartridge be used in holes 20 feet apart, the entire cost will be about \$15 per acre.

In many parts of California and some of the other Western States *true hardpan* exists. The only way in which land underlaid by this hardpan can be made worth anything, is to break up the hardpan with explosives. Then fruit trees will grow and bear just as well as anywhere else.

Tools Used When Blasting Subsoil

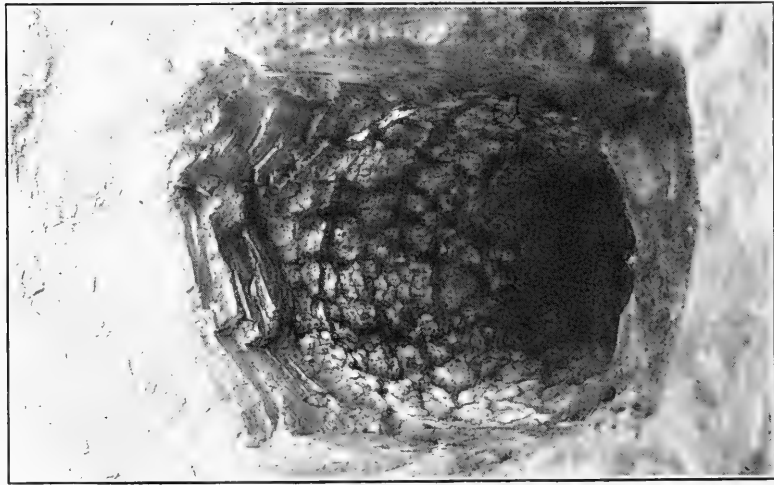
In the South the holes in which the dynamite is exploded are made by driving into the ground with sledges a steel bar, two and a half to three feet long, and a little larger in diameter than the dynamite cartridges. This bar has either a flange or a lug near the top, so that after it has been driven down it can be loosened with a crowbar. The bar should have a short point, for a long, tapered point would make a hole so small at the bottom that the dynamite cartridge would lodge part way down. An illustration of this bar will be found on page 51.

In Kansas the holes are usually bored with a 2-inch dirt or wood auger having a long shank, as the bottom of the hardpan there is often several feet below the surface. A crowbar to drive stones out of the course of the auger is also useful.

If you have not tried blasting subsoil, or "plowing with dynamite," we suggest that you lay off an acre, or else a plot 100 feet by 200 feet in one of your fields, and blast it as described above. Plant the whole field and note how much better and heavier the crop is on the blasted ground. An experiment of this kind will cost but little, and should be the means of greatly increasing your income in the future.

DYNAMITE IN THE ORCHARD

Dynamite is an exceedingly valuable aid to the successful growing of fruit trees. Those who have tried it are firmly convinced that no method of excavating the hole for the roots of the young tree, whatever may be the soil conditions, is so economical, quick or productive of as desirable after-results, as blasting with dynamite.



BLASTED HOLE SHOWING HOW THE SOIL IS OPENED UP

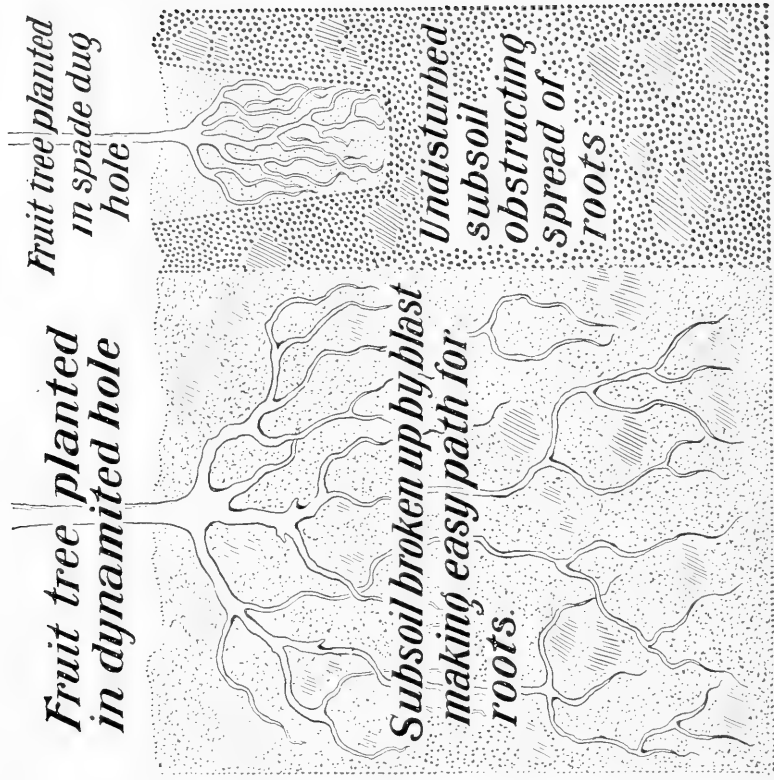


DIAGRAM SHOWING HOW ROOT GROWTH IS HELPED BY BLASTING

PREPARING THE LAND FOR CROPS

Dynamite should be used when planting trees, because one cartridge of 30 per cent. dynamite will excavate instantly the hole in which to plant the tree, and because the explosion of the dynamite loosens up the soil for many yards around, giving the tree roots a better opportunity to spread out than when the hole is dug by hand. The explosion also destroys all insects and grubs in the ground nearby. Every year or so during the life of the trees, small charges of 30 per cent. dynamite should be exploded midway between them, and some four or five feet below the surface of the ground. This tends to keep the soil open so that it will hold moisture and gives the tree roots every chance to spread, besides keeping the ground free from grubs.

When older trees begin to fail, it is sometimes of much benefit to detonate a charge of explosives directly under them. To do this a hole should be started seven or eight feet away from the tree and driven downward and toward the tree on a dip of about forty-five degrees. When the hole is in twelve feet, the bottom will be from eight to nine feet directly under the trunk of the tree. This hole should be "sprung," or "chambered," with a $1\frac{1}{4}$ x 8-inch cartridge of 40 per cent. dynamite, and then loaded with from 5 to 10 pounds of low powder, with tamping above the charge to the mouth of the hole. The explosion of this charge breaks up the hard soil below the roots of the tree, so that it can hold a greater quantity of moisture, which the tree roots will take up as they require it. The beneficial results from this blasting may not appear in the next crop, but will be manifest in succeeding ones for many years.

When breaking up hardpan between the trees in the California orange groves, it is the custom to bore down with an auger just through the hardpan—usually about four feet below the surface. This hole is "sprung" or "chambered" with one-half of a $1\frac{1}{4}$ x 8-inch cartridge of stumping powder (10 per cent.), and then, after being loaded with about one and a half pounds of low powder, and well tamped, is blasted.

If the soil is inclined to be swampy, heavier charges, exploded deeper in the ground, will break up the lower impervious stratum, and permit the surplus water to sink into the earth, where it will be conserved, and afterwards given up to the roots of the trees as they require it.



BORING HOLES FOR HARDPAN BLASTING NEAR LAHARPE, KANSAS, NOVEMBER, 1909

PREPARING THE LAND FOR CROPS

An example of the great benefit derived from the use of explosives, for excavating the holes in which young trees are to be planted, was recently brought to our attention by a well-known fruit grower, who reported that he planted nine peach trees a few years ago to determine positively whether anything was to be gained by using dynamite. Three of the trees were planted in holes made by drilling a two-inch auger hole three to four feet deep, and exploding a charge of dynamite in the bottom; the other six trees were planted in holes of the regulation size dug by hand. Three years later the three trees which had been planted in the blasted holes were strong and healthy, and produced between five and six bushels of very fine peaches; but the other six trees, planted on the same ground without blasting, bore practically no peaches at all, both fruit and leaves having shrivelled up and dropped off during the dry season.

A similar experience was that of a Western farmer, who set out an apple orchard more than twenty years ago. After digging a number of holes for the young trees, he decided that life was too short for such slow methods, and drove to town, where he bought a case of dynamite, some blasting caps and fuse from the hardware dealer. With this he blasted holes for the remaining trees, and today, twenty years later, he reports that the trees planted in the blasted holes are superior in every way to the others, and that they have produced better fruit and more of it, ever since they began bearing.

One successful Missouri fruit grower states that he would never think of replanting where a tree had died out, without blasting the hole for the new tree with dynamite. The new trees then are not so likely to be attacked by wet rot and other diseases, and are markedly better than those planted in holes which are not blasted.

So many other similar cases have been brought to our attention that we feel every fruit grower should give the question of using explosives careful and thorough consideration.



A DIFFICULT PROBLEM

Although the tree had been cut from this stump for many years
the stump was still comparatively solid

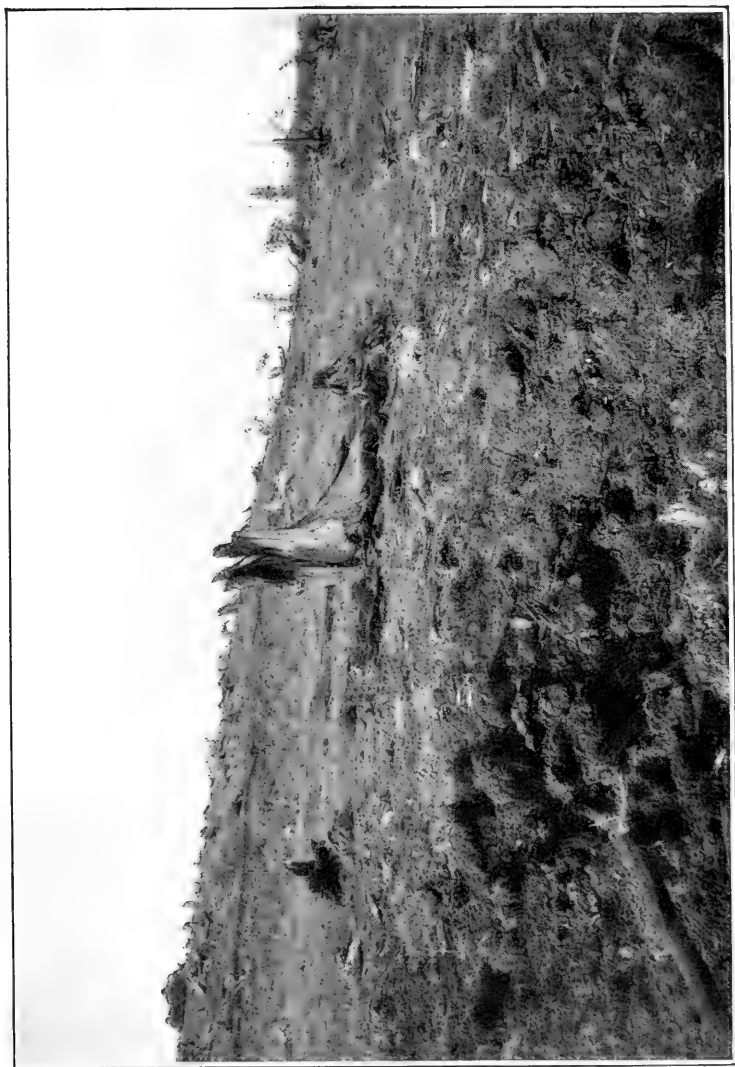
THE LAST STAGE

KEEPING UP THE FARM

BREAKING UP ICE GORGES

STARTING LOG JAMS

BREAKING UP LOG ROLLWAYS



EASILY SOLVED WITH DYNAMITE
The stump blown entirely out of the ground and split into several pieces

KEEPING UP THE FARM

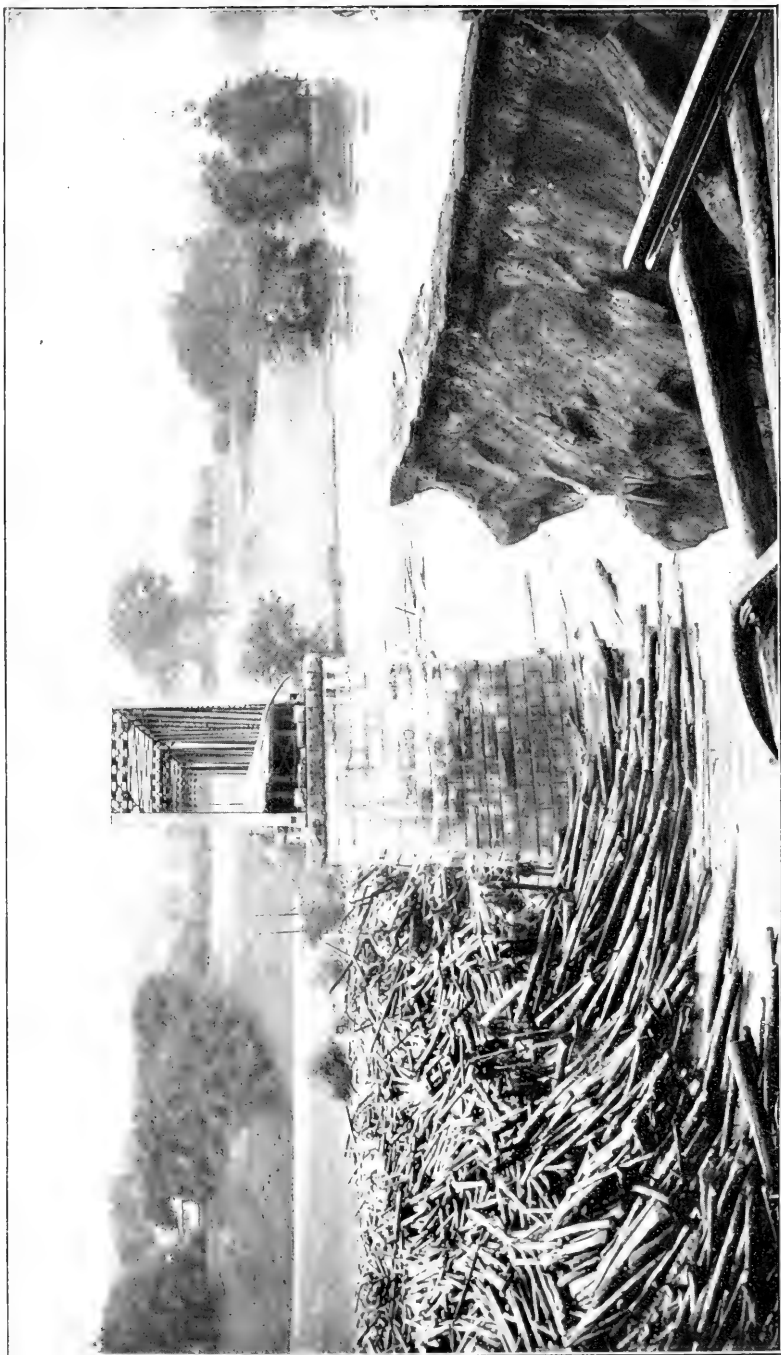
AFTER a farm has been properly laid out and drained, with all buildings erected, roads graded and fences up; when wells have been driven, fruit trees planted and subsoil blasted, there is still work to be done year by year, and in much of this work the use of dynamite means a great saving of time and money. Its use for blasting up subsoil in land that is deteriorating, for blasting under and between failing fruit trees, and for cleaning up occasional stumps and boulders overlooked in the first clearing, has already been referred to. It is also necessary for keeping roads and ditches in shape, and is indispensable in those parts of the country where ice may form gorges in the streams in the early spring. Unless these gorges are promptly broken, great damage may be caused by the water backing up behind them, sometimes overflowing farms and towns, and carrying away buildings and bridges.

Dynamite is also of great service in starting log jams, breaking up "rollways," etc., in the districts where timbering is carried on.

BLASTING ICE

Ice in streams sometimes forms jams or gorges 10 to 40 feet high. When water backs up behind these, bridges may be carried away and other great damage and loss to the community result. All of this can be prevented at a small expense by the use of dynamite.

To break up floating ice so that a gorge will not be formed, charges of dynamite should be exploded on the surface of the ice, the size of the charge depending on the thickness of the ice. If the floating ice is in large sections, the work of blasting should be conducted on a broad, slow-running part of the stream, where it is possible to get on to the ice either directly from the shore or in boats. Successive charges, consisting of a number of cartridges of 40 per cent. dynamite, tied together in a bundle, should be laid on the ice



A PLACE WHERE A FEW DOLLARS' WORTH OF DYNAMITE USED AT THE RIGHT TIME MIGHT HAVE SAVED THOUSANDS OF DOLLARS

PREPARING THE LAND FOR CROPS

and exploded with fuse and blasting cap, until the ice is properly broken. When the streams are narrow, the charges of explosives may be thrown on to the ice from the shores or, if the ice is running swiftly, the charges may be dropped on to the cakes from the downstream side of bridges. The charge to be thrown on the floating ice should be prepared by tying securely together in a bundle the required number of cartridges, the cartridge in the middle of the bundle having been primed with a blasting cap and waterproof fuse. The place where the fuse enters the blasting cap should be well coated with soap or thick grease to keep water from getting into the blasting cap and damaging it. A block of wood, a stone, or some other object that would prevent its rolling should then be tied to the charge, which, after the fuse is lighted, should be thrown or dropped as nearly as possible on to the middle of the ice cake. Particular attention must be given in this operation to the length of the fuse. Fuse generally burns from two to three feet per minute, and when the fuse is lighted, with the dynamite still in the hands of the operator, extra time for possible emergencies should be allowed.

To blast out ice gorges the charge, usually of from 5 to 25 pounds of 40 per cent. dynamite, should be pressed into a hollow or crevice at what appears to be the weakest part of the gorge. This charge should be exploded from a distance by electricity, so that the operator can be on shore when the explosion takes place and the gorge moves out. If the first shot does not start the gorge, the process should be repeated until it is broken. To open great ice gorges, such as the one that formed in the Niagara River in April, 1909, much larger charges are necessary. In one blast on this work a charge of 2500 pounds of dynamite was exploded.

Watering places for stock along the banks of streams can be easily kept free from ice in winter by the use of a little dynamite from time to time.

Since ice blasting is always done in cold weather, it is necessary to give particular attention to having the dynamite thoroughly thawed. If this is not done, poor results will follow.

“STARTING” LOG JAMS

Forty per cent. semi-gelatin is invaluable for breaking log jams. A charge exploded on a log, above or below water, will cut it in two as readily as can be done with an axe, with the advantage of the operator being at a safe distance when the jam “starts.”

BREAKING UP “ROLLWAYS”

Forty per cent. dynamite can be used to great advantage in breaking up “rollways” of logs, large quantities of this powerful explosive being used each season by the lumbermen. A case of this explosive, thawed in the morning, will, if covered by an old coat or blanket and protected from the cold, be ready for use at any time during that day. The huge piles of logs, frozen and bound together with snow and ice, can be instantly loosened with a little dynamite instead of prying them apart slowly and laboriously with cant hooks and levers. At a season when time is truly money, the dynamite used in this way saves many times its cost. The cases of dynamite can be transported easily and safely if properly handled. No logging camp can afford to be without it a single day when engaged in this work.

EXPLOSIVES AND BLASTING SUPPLIES

**HOW TO HANDLE, STORE
AND USE THEM**

BLASTING BY ELECTRICITY



DEMONSTRATOR SHOWING HOW TO PRIME A DYNAMITE CARTRIDGE FOR HARDPAN BLASTING

PRINCIPLE OF EXPLOSIVES

BLASTING Explosives are divided into two general classes, known as high explosives and low explosives; dynamite and low powder are examples of the former, and blasting powder of the latter. They are solids, having bound up in themselves very powerful energy, which, when properly directed, can be made to do an enormous amount of valuable work. To get them to do this work economically, they must be closely confined in the midst of the material which is to be broken or thrown out, and then exploded; that is, instantly changed from a small volume of a solid to a very large volume of a gas. Low explosives (blasting powder) will do but little, if any work, if not tightly confined or corked up when exploded, but high explosives change from a solid to a gas so quickly that they will jar and break material on which they are lying when they explode, even though they are confined very little, as in "mud-capping" or "blistering" boulders, or if not confined at all, as when floating ice is blasted.

Low explosives are exploded by a spark, but a spark will not explode high explosives, although it may ignite them, and the heat and pressure caused by burning in a confined space may result in an explosion after a time.

High explosives can only be properly exploded by a very powerful shock. This shock is brought about in their use by exploding a detonator, which has been inserted in the charge of explosives. This detonator is either a blasting cap, which is exploded by a spark from the fuse, or an electric fuze (pronounced fu-zee) which is exploded by a fine wire, superheated by an electric current.

When fuse and blasting caps are used it is necessary for the blaster to cut the necessary length of fuse from a roll, and fasten the blasting cap to the freshly cut end of the fuse with a cap crimper. The electric fuze is furnished with the two wires sealed into it.

Blasting powder is exploded by the spark from fuse or an electric squib, no detonator being required.

The Detonator

When "high explosives" were first manufactured, they were not as safe to handle or use as the properly made ones now are. Consequently they could be exploded with a small and weak detonator. The standard explosives now manufactured cannot be *completely* exploded, and give best results, if anything weaker than a No. 6 detonator is used with them. Nevertheless, many dealers will sell to inexperienced consumers No. 3 or No. 4 detonators, simply because the price is a little lower than that of stronger ones. This they do regardless of the fact that the reduction in price is much more than offset by the loss of power due to the incomplete detonation of the explosives with which these weak detonators are used.

Storage

Explosives should be stored in a dry, well-ventilated place, not warmer than 80 or 90 degrees Fahrenheit. They should always be kept under lock and key, so that children or irresponsible people will not have access to them, and should not be stored in a locality where hunting or other shooting may be done, unless they are kept in a bullet-proof building.

Most high explosives freeze at a temperature between 45 and 50 degrees Fahrenheit, and when frozen, will explode either only imperfectly or not at all. *Frozen dynamite should therefore never be used under any circumstances.*

Packages and Transportation

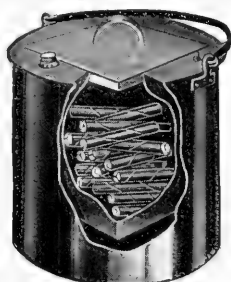
High explosives are put up in cartridges, generally 1¼ x 8-inch, and then packed with sawdust in wooden cases. They can, when thus packed, be shipped on freight trains or carried in wagons, with but little danger of explosion. There have been instances where they have been dropped, and the cases smashed, without an explosion resulting, showing that these high explosives stand very rough treatment; still, *it should never be forgotten* that they are *explosives*, and we would particularly direct the reader's attention to pages 99 to 101 of this handbook, where stress has been laid on "What Not to Do." If these instructions are observed, the user need have no fear of an accidental explosion.

EXPLOSIVES AND BLASTING SUPPLIES

Thawing

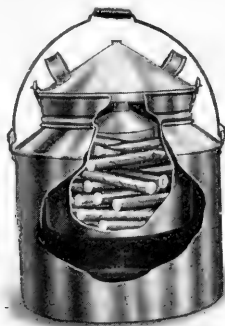
There are various ways of thawing high explosives, but the only safe methods are those which *thaw slowly and gradually*.

Burying dynamite in water-tight boxes in manure is a safe and fairly effective way to thaw it, provided the manure is fresh.



THAWING KETTLE

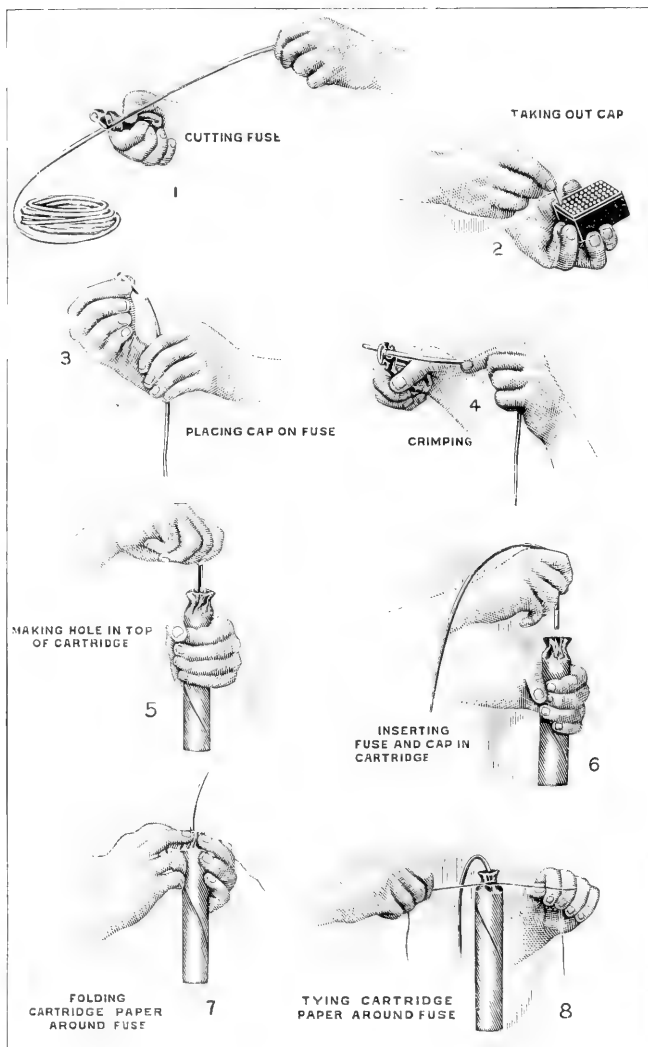
The safest and best way is in a "thawing kettle." A thawing kettle is a double-galvanized iron bucket, having an outside space for hot water and an inner water-tight receptacle for the dynamite. Some thawing kettles are made in one piece, while others are in effect two pails, the outer one for hot water and the inner one for the dynamite. (See illustrations.)



THAWING KETTLE

Never thaw dynamite by putting it near a fire, nor in the oven, nor against a stove or steam pipe. Do not try to thaw dynamite by exposing it to steam, nor by soaking it in hot water.

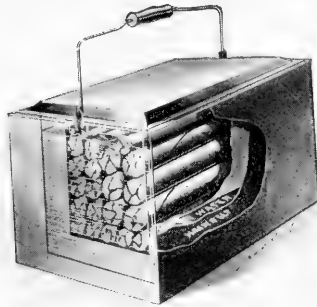
It is not at all necessary that the cartridges should feel warm. All that is necessary is to have them soft *all the way through*.



ONE METHOD OF MAKING A PRIMER WITH BLASTING CAP AND FUSE

EXPLOSIVES AND BLASTING SUPPLIES

Every user of dynamite who has occasion to thaw it should make it a rule never to heat water in the thawing kettle, but in some other receptacle, and then, after removing the dynamite, pour the hot water into the water compartment. This water should not be so hot that it would burn the hand. Water may be heated in the outer pail of two-piece thawing kettles, provided the inner pail has been removed; but it is never safe to put a one-piece thawing kettle over a fire, even after the dynamite has been removed, because enough nitroglycerin may have leaked out from dynamite previously thawed, to cause an explosion if the thawing kettle is put over a fire.



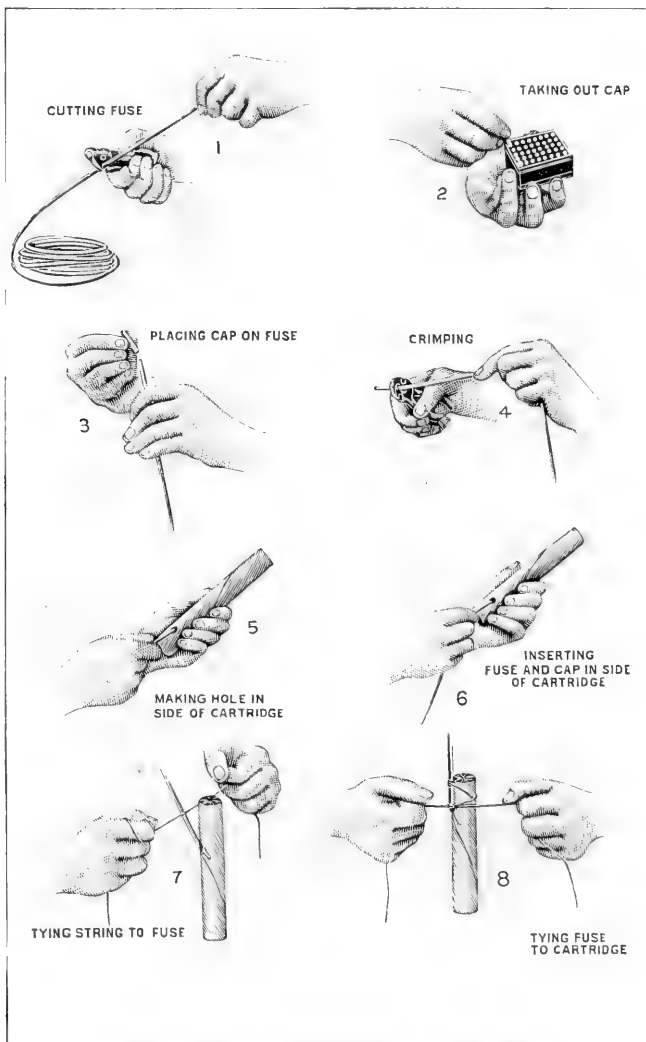
THAWING KETTLE

A simple and effective thawing arrangement may be made by suspending a small pail or bucket containing the dynamite in a larger bucket partly filled with warm water. Care must be taken to prevent any of the water from getting into the inner pail, which should have a tight-fitting lid. The whole should be covered with a piece of carpet, or an old coat, until the dynamite has thawed.

Priming

Placing the detonator in a cartridge or charge of high explosives is called priming it, and the cartridge or part of a cartridge with the detonator in it is called the "primer" or "primer cartridge."

The first step in the preparation of the primer is to cut the necessary length of fuse from the roll, cutting it squarely across and not diagonally. After carefully inserting the fresh-cut end as far as it will go into the blasting cap, fasten the latter securely to the fuse with a cap crimper. When crimping the blasting cap to the fuse, the crimp should be made near the end which the fuse enters, so as not to disturb in any way the explosive which the blasting cap con-



ANOTHER METHOD OF MAKING A PRIMER WITH BLASTING CAP AND FUSE

EXPLOSIVES AND BLASTING SUPPLIES

tains. An attempt to crimp the blasting cap near the other end would be likely to cause it to explode. The crimp should be made secure enough to prevent the fuse from pulling out of the blasting cap during the charging and tamping of the bore hole, and, what is quite as important, particularly in wet work, the crimp should be tight enough to keep water out of the blasting cap. A coating of soap, tallow or thick grease, spread over the fuse where it enters the blasting cap, will help greatly to keep the water out. This grease should not be applied until after the blasting cap has been crimped to the fuse. Oil should not be used for this purpose, as it may soak into the fuse and damage it.

Be sure to cut the fuse long enough to allow it to extend several inches from the mouth of the bore hole when the primer is in place, and also long enough for the blaster to reach a place of safety before the charge explodes. Fuse burns from two to three feet per minute.

To prime a dynamite, or other high explosive, cartridge with blasting cap and fuse, make a hole in the end of the cartridge after unfolding the paper shell, or in the side of the cartridge near one end, with a small pointed stick, about the diameter of a lead pencil. This hole should not be much larger in diameter than the blasting cap, for an air space around it always detracts from the force with which a blasting cap shoots into the explosive. The blasting cap should not be so deep in the cartridge that the fuse will come in contact with the explosive for any appreciable distance, as side spitting of the fuse usually ignites the explosive.

Best results will be had if the blasting cap is pointed *straight down* into the primer cartridge.

When the blasting cap has been put in the end of the cartridge, the paper must be folded carefully about the fuse, and tied securely with a piece of string. When the blasting cap is inserted in the side of the cartridge near the end, the fuse is held in position by tying it with a double loop of string around the cartridge. Both of these methods of priming are clearly shown in the illustrations on pages 88 and 90.

Charging

Having primed the cartridge in the manner described, insert it in the bore hole and push it carefully home. It is sometimes well in *dry ground* to slit the paper shells lengthwise before putting the

cartridges into the bore hole. Push them firmly into place, so that they will fill up the diameter of the hole, for crevices or air spaces greatly lessen the power of an explosive. If more than one cartridge is used in a charge, it is only necessary to prime the top or outside one, but in the bore hole each cartridge must touch the one previously loaded. If any space between the cartridges occurs through falling dirt or stones, or through the sticking of a cartridge in the bore hole, a partial misfire may result.

Tamping

After the charge is pressed home, as directed, put in two or three inches of fine dirt or sand, and tamp (pack) *lightly*. Then fill up two or three inches more of the hole with tamping material, packing it in a little more firmly. After five or six inches of tamping covers the charge, the tamping may be pressed firmly into place without danger of premature explosion. The tamping material should be packed as firmly on top of the charge as can be done without moving the electric fuze or blasting cap and fuse in the primer, but it is not safe to tamp by a blow any stronger than can be given by hand. Fill the bore hole up with tamping until even with the surface. The firmer and harder the tamping can be made (without overlooking the above precautions) the better will be the results. If the bore hole is not properly tamped, the charge is likely to "blow out," or at any rate some of its force will be wasted.

Be sure the tamping is done with a wooden stick. *Never use a metal bar or anything having metal parts.*

NOTE

Always be careful, when using dynamite, not to taste it nor get it on the hands, for the smallest quantity will nearly always cause a violent headache. It is an excellent plan to wear a pair of old gloves, which should be destroyed before they become saturated with the nitro-glycerin in the dynamite. With a little care, a great deal of dynamite can be handled before it is necessary to destroy the gloves.

EXPLOSIVES AND BLASTING SUPPLIES

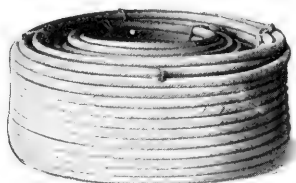
BLASTING SUPPLIES

When detonating high explosives with fuse and blasting caps, the only supplies necessary besides the fuse and blasting caps, and the tools for making the hole and for tamping, are the cap crimper and the thawing kettle. The latter has been described under the paragraph on "Thawing," page 87.

When the blasting is done by electricity, a blasting machine, coil of leading wire and electric fuzes take the place of fuse and blasting caps. A spool of connecting wire and roll of insulating tape should also be provided. A leading wire reel is not a necessity, but saves time and keeps the leading wire in good condition.

Fuse

Fuse is made in several different grades, put up in double coils, consisting of two single coils of 50 feet each, and packed in cases containing from 500 to 6000 feet. In wet work, "double-tape" or "triple-tape" fuse should be used, while "single-tape" or "cot-



COIL OF FUSE

ton" will answer in dry work. Fuse should be stored in a cool, dry place to keep it from hardening so that it will break when it is unrolled, or from getting soft and defective. In cold weather fuse becomes stiff and must be unrolled very carefully to keep it from breaking. Most fuse burns from two to three feet per minute.

Blasting Caps

Blasting caps are small copper cylinders closed at one end, which contain a sensitive and highly explosive compound. They must always be handled carefully, kept away from heat or sparks, and must not be subjected to heavy knocks or jars. They should never be carried loose in the pocket, nor permitted to lie about where children may find them. They are very dangerous in the hands of a child or irresponsible person. They should never be stored or

carried with dynamite, because they are more easily exploded by accident than is dynamite, and if they explode in close proximity to dynamite they will probably cause it to explode also, and do great damage. If blasting caps are to do good work, they must be stored in a perfectly dry place, and must not be permitted to lie in a damp place for even a short time before using. The charge which they contain is very quickly damaged by moisture, and, although it may explode when damp, it explodes with so little force that it may not detonate the charge of dynamite, or may only partly detonate it.



No. 6 BLASTING CAP

Blasting caps are put up in tin boxes, containing 100 each. These boxes are then packed in wooden cases, containing from 500 to 5000 blasting caps. They are manufactured and sold in six sizes—No. 3, No. 4, No. 5, No. 6, No. 7 and No. 8, but nothing weaker than the No. 6 can be depended on to develop the full strength of the explosive.

Cap Crimpers

A cap crimper is inexpensive, and absolutely necessary if the blasting cap is to be properly fastened to the fuse. Fastening blasting caps to fuse with a knife or with the teeth is exceedingly dangerous and inefficient.

BLASTING BY ELECTRICITY

When a good deal of blasting is to be done, it is usual to set off the blast by means of a blasting machine and electric fuzes. In this way any number of charges, from one up to forty or more, can be fired simultaneously. This is found very convenient when it is necessary to get rid of a large stump or an extra big boulder, as frequently several charges fired at the same time will do more work than the same charges fired successively, or than one charge as big as all of the smaller ones combined.

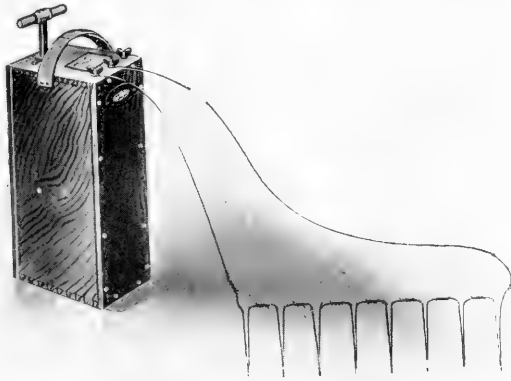
A very little thought will show that more work will be done when firing a number of blasts *simultaneously* than when firing them singly, while a little experience will teach that much is to be gained

EXPLOSIVES AND BLASTING SUPPLIES

by firing even single shots electrically. Another advantage gained in firing by electricity is, that in case of a misfire (which can rarely happen by this method), it is unnecessary to wait a considerable time before returning to the work, as must be done when using fuse.

Directions

Use electric fuzes, leading and connecting wire, and blasting machine, instead of fuse and blasting caps. The electric fuze wires must be long enough to extend several inches out of the bore hole, and care must be taken when tamping not to break these wires or damage the insulation on them. If more than one charge is to be



METHOD OF CONNECTING TWO LEADING WIRES TO A THREE-POST BLASTING MACHINE

fired at one time, separate the two electric fuze wires extending from each hole and connect one of these wires to one extending from the hole on one side, and the other one to one of the wires extending from the hole on the other side, and so on, until all are connected together in a string, with one free wire extending from the first hole, and another extending from the last hole. If the electric fuze wires are not long enough to reach each other, use a piece of connecting wire to join them.

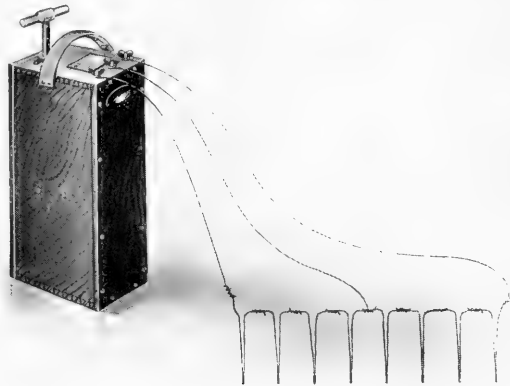
Be sure that all wire ends are scraped clean and bright before they are connected together.

The charges having all been connected as directed above, the free wire of the first hole should be joined to one of the "leading" wires, and the free wire of the last hole to the other leading wire.

The leading wires should be long enough to reach a point at a safe distance from the blast—say 250 feet, at least.

All being ready, and not until everybody is at a safe distance, connect the leading wires to the binding posts on the top of the blasting machine, through each of which a hole is bored for the purpose, and bring the wing nuts down firmly upon the wires.

Now to fire: If using a push-down blasting machine, take hold of the handle, lift the rack bar (square rod toothed upon one side) to its full height and push it down with all force, bringing it to the bottom of the box with a *solid thud* and the blast will be made.



METHOD OF CONNECTING THREE LEADING WIRES TO A THREE-POST BLASTING MACHINE

The Blasting Machine

The “push-down” blasting machine is made in three sizes: No. 2, which will fire up to 20 electric fuzes at one time; No. 3, which will fire up to 30 electric fuzes at one time; and No. 4, which will fire up to 50 electric fuzes at one time. The No. 3 size is made with three posts, when so ordered, without extra cost, and the No. 4 size is always made with three posts. The rated capacity of a three-post blasting machine is increased about 50 per cent. when three leading wires are used.

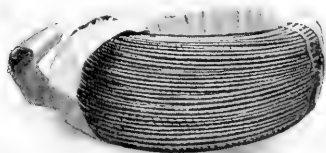
Blasting machines with three posts can be used with either two or three leading wires. When used with two leading wires, one wire is connected to the middle post and the other to either one of the outside posts. When used with three leading wires, those from

EXPLOSIVES AND BLASTING SUPPLIES

the two outside posts are connected to the electric fuzes on the ends of the circuit, and that from the middle post is connected to the electric fuze wire, or the connecting wire, somewhere near the middle of the circuit.

Leading Wire

At least 250 feet double of leading wire should be provided, so that the blaster will be out of danger when he fires the shot. If the blast is a large one, it will probably be necessary for the blaster



COIL OF LEADING WIRE

to be 300 or even 500 feet away. Leading wire is sold in 250-foot, 300-foot and 500-foot coils.

It is sold by the pound, and weighs about two pounds to the hundred feet.

Connecting Wire

Connecting wire is used to connect electric fuze wires in adjoining bore holes when the wires are not long enough to reach each



SPOOL OF CONNECTING WIRE

other. It is wound on spools holding one pound or two pounds, and is sold by the pound.

Electric Fuzes

The electric fuze is a blasting cap having two insulated copper wires fastened into it with a composition plug. These wires are

joined together in the cap by a very fine and delicate wire, which rough handling may break and make the electric fuze worthless. The charge which they contain is just as sensitive to shock, and just as easily affected by moisture, as that of the blasting cap; so the same



ELECTRIC FUZE

rules for storing and handling must be observed. Electric fuzes are put up 25 or 50 in pasteboard cartons, which are packed for shipment in wooden cases. They are made in four grades, numbered 4, 6, 7 and 8, and with wires from 4 feet to 30 feet long. The strength of electric fuzes is exactly the same as that of blasting caps bearing the same number, and nothing weaker than the No. 6 grade can be depended on for best results from high explosives.

TO PRIME A CARTRIDGE WITH AN ELECTRIC FUZE

The correct way to prime a high explosive cartridge with an electric fuze is to follow the same methods as when fuse and blasting cap are used. (See pages 88 and 90.)

The common custom of taking one or more loops, or half-hitches, around the cartridge with the wires themselves, after inserting the electric fuze cap in a hole made diagonally in the side of the cartridge near one end, is always to be condemned. The principal objection is that the looping of the wires is very likely to break the insulation, causing short circuits, or leakage of electric current in wet work. Sometimes even the wires themselves are broken.

Ordering

If there is an uncertainty as to what grade of explosive should be ordered for any work, a letter, addressed to the nearest office of some responsible dynamite manufacturer, telling just what work is to be done, will have careful attention.

If the work to be done warrants it, the manufacturers will send to any part of the world, at their own expense, a competent man to explain the use of explosives.

EXPLOSIVES AND BLASTING SUPPLIES

Precautions to be Observed in General with Regard to Explosives

- DON'T forget the nature of explosives, but remember that with proper care they can be handled with comparative safety.
- DON'T smoke while you are handling explosives, and DON'T handle explosives near an open light.
- DON'T shoot into explosives with a rifle or pistol either in or out of a magazine.
- DON'T leave explosives in a field or any place where stock can get at them. Cattle like the taste of the soda and saltpetre in explosives, but the other ingredients would probably make them sick or kill them.
- DON'T handle or store explosives in or near a residence.
- DON'T leave explosives in a wet or damp place. They should be kept in a suitable, dry place, under lock and key, and where children or irresponsible persons cannot get at them.
- DON'T explode a charge to chamber a bore hole and then immediately reload it, as the bore hole will be hot and the second charge may explode prematurely.
- DON'T do tamping with iron or steel bars or tools. Use only a wooden tamping stick, with no metal parts.
- DON'T *force* a primer into a bore hole.
- DON'T explode a charge before every one is well beyond the danger zone and protected from flying debris. Protect your supply of explosives also from danger from this source.
- DON'T hurry in seeking an explanation for the failure of a charge to explode.
- DON'T drill, bore or pick out a charge which has failed to explode. Drill and charge another bore hole at least two feet from the missed one.

H A N D B O O K O F E X P L O S I V E S

- DON'T use two kinds of explosives in the same bore hole, except where one is used as a primer to detonate the other, as where dynamite is used to detonate low powder. The quicker explosive may open cracks in the rock and allow the slower to blow out through these cracks, doing little or no work.
- DON'T use frozen or chilled explosives.
- DON'T use any arrangement for thawing dynamite other than one of those recommended by the dynamite manufacturers.
- DON'T thaw dynamite on heated stoves, rocks, sand, bricks or metal, or in an oven, and don't thaw dynamite in front of, near or over a steam boiler or fire of any kind.
- DON'T take dynamite into or near a blacksmith shop or near a forge on open work.
- DON'T put dynamite on shelves or anything else directly over steam or hot-water pipes or other heated metal surface.
- DON'T cut or break a dynamite cartridge while it is frozen, and don't rub a cartridge of dynamite in the hands to complete thawing.
- DON'T heat a thawing house with pipes containing steam under pressure.
- DON'T place a hot water thawer over a fire, and never put dynamite into hot water or allow it to come in contact with steam.
- DON'T allow thawed dynamite to remain exposed to low temperature before using it. If it freezes again before it is used, it must be thawed again.
- DON'T allow priming (the placing of a blasting cap or electric fuze in dynamite) to be done in a thawing house or magazine.
- DON'T prime dynamite cartridges, or charge or connect the bore holes for electric firing, during the immediate approach or progress of a thunderstorm.

EXPLOSIVES AND BLASTING SUPPLIES

- DON'T carry blasting caps or electric fuzes in your pocket.
- DON'T tap or otherwise investigate a blasting cap or electric fuze.
- DON'T attempt to take blasting caps from the box by inserting a wire, nail or other sharp instrument.
- DON'T try to withdraw the wires from an electric fuze.
- DON'T fasten a blasting cap to the fuze with the teeth or by flattening it with a knife—use a cap crimper.
- DON'T keep electric fuzes, blasting machines or blasting caps in a damp place.
- DON'T attempt to use electric fuzes with the regular insulation in very wet work. For this purpose secure those which are waterproof.
- DON'T worry along with old, broken leading wire or connecting wire. A new supply won't cost much and will pay for itself many times over.
- DON'T handle fuse carelessly in cold weather, for when cold it is stiff and breaks easily.
- DON'T store or transport blasting caps or electric fuzes with high explosives.
- DON'T store fuse in a hot place, as this may dry it out so that uncoiling will break it.
- DON'T "lace" fuze through dynamite cartridges. This practice is frequently responsible for the burning of the charge.
- DON'T operate blasting machines half-heartedly. They are built to be operated with full force. They must be kept clean and dry.
- DON'T cut the fuse short to save time. It is dangerous economy.
- DON'T expect a cheap article to give as good results as a high-grade one.
- DON'T expect explosives to do good work if you try to explode them with a detonator weaker than a No. 6.



DEMONSTRATING STUMP BLASTING IN NEW YORK STATE

**THE PENNSYLVANIA
LINES AND THE
FARMER**



Creating Traffic through Co-operation of Farmer and Railroad

TWO years ago farmers in the Eastern States had never seen an educational train, and tales of one would no doubt have been received with some misgivings. To-day it is no unusual sight to see a hundred or more farmers waiting at a small Pennsylvania Railroad way-station for a special train that is to bring them a message on "good roads," or one dealing with the latest scientific methods of orchard development, improving corn, alfalfa, and various staple crops.

The conservation of our natural resources is receiving no stronger support than that afforded by the railroads in this educational campaign. Much that is left of the farms to-day is skimmed milk. Our forefathers took the cream. Every sand-drift and worked-out acre is a monument to the indifference of the farmer who refuses to believe that somebody knows more about farming than his grandfather.

In the last analysis, domesticity of the highest type is being promoted by this policy of enlightened self-interest which the railroads are pursuing. Farms are being improved, and the farmer is being taught to make money. The practical illustration of new methods and ideas is creating better farmers; they are happier; their families are happier, and citizenship is bettered.

"You are taking coals to Newcastle!" the skeptics tell the railroads, but the latter know better. They have talked with the farmers. They know that from sections of New Jersey, where potato growing on a commercial basis was not thought of ten years ago, hundreds of thousands of barrels are now being shipped every season. The railroads have found it profitable to induce farmers to increase the number of cattle on their farms, because live stock must have feed and railroads must haul it; because dairy products are in demand and must be carried to market.

Through the schools of a number of the corn-growing States, boys and girls are being stimulated by prizes to plant little patches of

CREATING TRAFFIC THROUGH CO-OPERATION

corn. Out of each community where an exhibit is held, ten prize-winning ears are sent to the county exhibit. The best ten at the latter are entered in a State show, and later the States compete. The Maryland, Delaware and Virginia Railway is trying the same plan in Virginia; prizes are being offered children for the largest potato grown by themselves.

II

Interest in scientific agriculture is growing. The city and the farm are being brought closer together. Even to-day, experienced railroad men are predicting that only a short time will elapse before the country will be dotted with small experimental farms established by the railroads to show the farmers in each section just what possibilities are within their reach.

This agricultural awakening is bearing fruit abundantly. Crops that were formerly supposed to belong only to one section are being introduced into others; farmers are experimenting in growing various cereals, fruits and vegetables, in much the same way as a railroad experiments with all manner of appliances, looking for the best. Opportunities without number are opening up every day before both the railroad and the farmer, by reason of the newly formed partnership.

The Pennsylvania Railroad Company has in the past three years been conducting an active campaign in the interests of scientific farming. Co-operating with State Agricultural Colleges, special educational trains and steamboats have been run through various sections of the country, and the enthusiasm that has been aroused has proved to the Railroad Company the wisdom of its efforts. The intense interest displayed on every hand has given evidence of the fact that the farmers are in a receptive mood, and that only a little headway must be made before results in increased traffic will be apparent.

The value of staple crops grown in the United States last year—crops such as corn, hay, wheat, barley, oats, potatoes, tobacco, etc.—was more than \$3,600,000,000. In Pennsylvania alone, the value of staple farm crops for the year was \$157,000,000, and there were some 224,000 farmers who shared in this production. It has been estimated by the Chief Agronomist of the State College of Agriculture of Pennsylvania that if each of these 224,000 farmers would increase the yield of corn 1 bushel to the acre, the additional

revenue to them from corn grown in the State would amount to \$1,044,000. Further than that, \$780,000 would roll into the pockets of these farmers if they would select and test their seed corn carefully and thus add ten kernels to each ear of corn grown by them.

III

Fifteen years ago, Sanford, Fla., was one of the great orange-growing centers in that State. Thousands of carloads were shipped to Northern markets every year. In 1895, a cold wave sent the thermometer scudding down to a degree seldom reached in that section of Florida; every orange tree thereabouts was frozen, and the farmers were in a pitiable plight. One of the more progressive growers did not sit around and cry over his ill-luck, but started experiments to see what he could grow on his land that had so suddenly fallen in value. He began with the cultivation of celery, and the success he has had, as well as that enjoyed by his neighbors, is seen in the fact that the shipments of celery from Sanford last season amounted to some 1200 carloads. In addition, various vegetables are being raised in other seasons on the same land.

It is this sort of development for which the Pennsylvania Railroad is working. Just as it has been adding second, third and fourth tracks to its line, just so it is seeking the same intensive development of the agricultural districts. The Railroad realizes that with expansion limited, as it is to-day, by reason of the network of lines that cover the country, there must be an internal unfolding of resources.

Several years ago, a representative of the Pennsylvania Railroad was compelled to while away a few hours between trains in a small town. He inquired of the station agent what was to be seen in the neighborhood and was advised to take a boat trip up the river. In the course of a ride of an hour or more, he noticed a number of vineyards lining the river banks. The railroader was an observing man, and his first thought was, "To what place are those grapes shipped and over what road?" All thoughts of catching the train left his mind, and a horse and wagon was summoned to take him on a tour of the different farms. After a few interviews, he learned that the grapes were used for wine, which was shipped over another railroad to market.

CREATING TRAFFIC THROUGH CO-OPERATION

In the travel of a day, the freight agent saw every grower of grapes in the district, and, after some hesitation, they agreed to ship some of their product over his road if he would provide means of getting it to the Railroad, and find some one to handle it at the market. Trouble loomed up, however, when a commission man in a nearby city said that a carload of white Niagara grapes would flood the market in his town; but he finally agreed to take them on consignment, and arrangements were made for the grapes to arrive on a Saturday morning. On Friday afternoon a wagon, provided by the railroad, went from farm to farm and collected the grapes, taking them to the car. The latter arrived at its destination about 4 o'clock the next morning, and the grapes were distributed among the retailers. In the meantime, large placards had been printed by the freight agent, reading:

"TAKE HOME A BASKET OF WHITE NIAGARA GRAPES FOR 15 CENTS."

At 9 o'clock on Saturday morning, every basket of the grapes had been sold and people were calling for more. Such was the start of a traffic in grapes from one station, which is to-day shipping nearly a thousand carloads every season.

The Railroad provided the transportation, the market, the buyers, the advertising and the customers, yet not one whit of expense did it incur outside of its ordinary expenses of hauling, other than the hire of a horse and wagon for a few hours, and the cost of printing the placards.

Another striking illustration of this policy was afforded several years ago on the Long Island Railroad. The owner of a small pond of water in New York State harvested about 5000 tons of ice every winter. He sold it in the summer to cottagers. The traffic manager of the Railroad called on this iceman and found that he actually sold only about 1500 tons a year.

"Why don't you ship your ice to the city?" he inquired.

"Oh, I have no loading facilities, and if I did, I don't know anyone in the city who would buy the ice," was the reply.

"We will arrange for such facilities, and will also see that you find a market for your ice."

The bargain was struck. The Railroad provided facilities and found a customer for the ice, a large ice-cream factory. That winter 20,000 tons of ice were shipped from the small pond that

had formerly yielded but 1500 tons in sales. So much for the winter. The traffic man went to the officers of an ice company and induced them to lease the icehouse near the pond for the season that they might supply the people of the town with ice in the summer. When the small town was not shipping ice to the city, the city was shipping ice to the village. As the traffic man put it: "We have to get it coming and going."

To induce the Florida farmers to grow pineapples, the Florida East Coast Railway supplied the seed and agreed to build a side-track into each farm that undertook the cultivation of pineapples. The result has been that this season the shipments of this delightful fruit from points on the East Coast Railway will amount to a million crates.

IV

These incidents illustrate how alive to opportunities are the railroads, and now comes the latest move in this direction—one that bids fair to work wonders for agricultural States; namely, the educational campaign that is being waged by means of schools on wheels. When the mountain would not come to Mahomet, Mahomet went to the mountain; so it is with the railroads, which carry to the gate of every farm along their lines practical lessons in farming. They are supplying the trains and have secured the cooperation of the State Agricultural Colleges to supply the teachers. The latter are not a silk-stocking lot, but practical farmers, who talk in practical terms; they are men who have made a study of soil conditions, and know the needs of each locality. They deliver their talks in the cars, which are fitted up as lecture rooms.

Stops of 45 minutes are usually made by these farmers' specials and not more than five minutes is lost in getting the people in and out of the cars. The moment the train stops, there is a rush for seats, for it is not infrequent that the crowd at a station is so large that an overflow meeting is held, with a lecturer talking from the rear platform of a car. There is no boisterousness and no levity at the meetings. The farmers are serious in their endeavor to secure ideas that will help them in their work.

In the audiences at these schools on wheels are found farmers from every class. Old men hobbling on canes are seen sitting beside the farmer who has just reached the age of manhood. There are women anxious for lessons in poultry farming. There are tenants,

CREATING TRAFFIC THROUGH CO-OPERATION

laborers, and farm owners. They have come with samples of corn, alfalfa, and other things they raise, that they may be told how to improve them. They are taught how to plant and prune as well as to spray fruit trees properly, that they may combat the dreaded San Jose scale and other pests. The desire for information is as apparent in the old man of 80 as in the younger farmer. Intelligent questions from the auditors meet with intelligent replies, in words that can be understood by all.

A record was kept of the attendance at the lectures on a farmers' special that recently made a three-day trip through Eastern Pennsylvania on the Pennsylvania Railroad, and it showed that no less than 5000 farmers were present. These farmers in many instances came from miles around. At practically every station there were hundreds of vehicles of all descriptions. The boat-shaped Conestoga wagon stood alongside of the automobile, while the ox-cart hobnobbed at the same hitching post with a fine pair of mules attached to a farm wagon of latest design.

What can they teach a farmer in 40 minutes? Fundamental principles, which, if applied, will make a difference in the number of kernels on an ear of corn; principles which, if applied, will increase the yield of an acre of wheat, of oats, or potatoes.

Below is an extract from a lecture as given on a farmers' special, showing how quickly they reach the meat of the topic under discussion. At Gap, Pa., last spring, the professor, who was addressing a hundred or more farmers in the alfalfa car, began his talk in some such manner as this:

"An acre of good alfalfa produces twice as much digestible nutriment as an acre of red clover. It is therefore profitable for our farmers to make every effort to establish alfalfa fields. Your climate is favorable to alfalfa, which can be grown on a variety of soils. The most favorable is a gravelly loam with a porous subsoil. There must be drainage, fertility, lime and inoculation. Alfalfa is a lime-loving plant, and if you haven't a limy soil, apply lime at the rate of 1000 to 2000 pounds per acre, etc."

In addition to the lecture which the farmer hears on the train, he receives without charge copies of various pamphlets treating in detail of the subjects under discussion, and he may take these pamphlets home with him for reference.

The success attained with farmers' trains caused the Pennsylvania Railroad to go a step further in this direction. It sent a special train over parts of its line to collect the agents in charge of stations in rural communities, that they themselves might visit the Pennsylvania State College for an inspection of the experiment station maintained there. The authorities at the college gave their hearty co-operation, devoting an entire day to showing the agents just what work was done there, and also what could be accomplished by the farmers in the State if they would follow certain principles that have been found by scientific experiment to be cardinal to the success of a farm. The agents returned to their homes enthusiastic missionaries in the cause of good farming—intensive farming.

The Pennsylvania Railroad has this year undertaken the dissemination of farming literature. This is being done, the company announced, to offer to farmers in the territory which it serves, the benefits of scientific research and improvement in methods resulting from careful study and experiment. The first pamphlets issued were on "Alfalfa," and "The Use of Lime on Land." Some 30,000 copies were distributed. Later, four booklets on orchard development were sent out. The subjects of these were "Planting," "Cultivation," "Pruning," and "Spraying."

V

The railroads are imparting these new ideas in a novel manner, and, further, they are demonstrating that the ideas are practical. It is at this point that the experimental farm of a railroad is not only useful, but essential.

Five years ago, the president of the Long Island Railroad established an experimental farm on 10 acres of what was supposed to be waste land—the poorest land on Long Island. A competent man was placed in charge and was given carte blanc to go ahead and see what he could do in the way of raising truck. A year later another farm was established by the Long Island Railroad. Last summer 300 different kinds of plants, vegetables and fruits were grown on these farms. A head of cabbage as large as a wheelbarrow was grown on land that five years ago the company was told was good for nothing but salt ponds. The farmers were astonished—dumfounded—to see the opportunities within their reach.

CREATING TRAFFIC THROUGH CO-OPERATION

The result is that truck farms have multiplied on the eastern end of Long Island and a large freight traffic has been created.

The Long Island experimental farms have been managed on economical lines. Money has not been lavished on them. On the contrary, they have more than met their own expenses. So successful have they been that the Pennsylvania Railroad established a similar farm on the Delaware Peninsula—already one of the greatest truck-growing sections of the country. Here, however, a different proposition must be met. Some of the land has been exhausted; instead of increasing the fertility of the soil all the time, farmers have permitted it to deteriorate, until to-day great difficulty is experienced in growing crops that 10 years ago were produced in abundance. The Railroad intends to demonstrate the fact that there is a great opportunity there to improve the land.

All of the efforts on this experimental farm will not be directed to that end, however, as the Delaware Peninsula is fortunate in having both a soil that, for the most part, is as fertile as any in the country, and farmers whose intelligence is as far advanced as that of the farmers of any section in America. The Railroad now intends to demonstrate what vegetables and fruits and staple crops can be grown on the peninsula, in addition to those that are now being cultivated there.

VI

The Railroad, however, must do more than create traffic. After persuading the farmer that he can make a greater profit by varying his crops and raising certain vegetables or staples that he has not been growing, the Railroad must assist him to market his crop profitably.

To meet this contingency the Pennsylvania Railroad is undertaking to exploit the agricultural districts through which it runs. The plan aims at supplying to commission and produce merchants desiring to buy, a list of reliable growers and shippers of commodities in various territories.

In addition, the Railroad supplies information that may be desired regarding the commercial interests of different districts. If any one is seeking a farm, a manufacturing site, or a suburban home, the company supplies a list of real estate agents, and a full description of available properties.

H A N D B O O K O F E X P L O S I V E S

When a railroad creates traffic, and markets as well, it must offer a train service that will place the commodity in the most favorable market in the best possible condition. This is done by the Pennsylvania Railroad through the operation of preference freight trains on fast time schedules, so arranged that the freight will reach the market at the time when commission merchants make their deliveries to their customers.

In this manner does the Railroad supply a market, and, by so doing, while improving the condition of the farmer, it receives a revenue from hauls to various parts of the system, instead of a haul to one market, and that one near by. The acreage planted in produce increases, and a corresponding growth is felt in the traffic offered the Railroad for shipment.

Agents of railroads scour the country for advance information about farm crops. They realize the extent of a tonnage, the value of which is expressed in billions of dollars. Special agents go out into the byways and hedges to see the growers themselves. They obtain by personal interviews information which enables them to estimate correctly what crops will be offered for transportation. In this way, cars are provided at different stations at appointed times and crops moved with dispatch.

For instance, the Pennsylvania Railroad makes an official estimate every year of the peach and pear crops of the Delaware Peninsula. This is sent to buyers in the different markets, who are enabled to regulate their contracts accordingly.

VII

What does it all mean to the Railroad? It means there will be more fertilizers to haul, more farm implements, more raw material from which these tools are made, more crops to haul, and more passengers to carry; it means that the Railroad will be doing its duty to the public, to its stockholders in the intelligent exercise of its initiative, and, when reduced to a finality, that the Railroad is performing its share of the work which must be done by the newly formed partnership, Railroad and Farmer, if agricultural communities are to progress and prosper.



One copy del. to Cat. Div.

MAY 27 1911



0 002 758 428 7

INCREASE THE CROP PER ACRE



USE OF DYNAMITE ON THE FARM

Issued by
THE PENNSYLVANIA LINES

