

10697 - ✓ 10741

#10697

Vol. 592

Property of

Arthur Cronquist
United Nations - FAO
P.O. Box 1555
Tehran, Iran

Reward

for return

10697 - 27 June 1969

Cronquist & Parviz Babakhanlou

Common in clay-loam soil
on rolling summit land, west
central Elburz Mts., 85
km east of Roodbar, Iran,
about 6600 feet elevation.
Flowers bright yellow.

Galium verum L.

Galium verum (3)

27 - June, 1969

1 & 2 - Rice paddies

along Sefidrud River

below Rudbar - west bank

of Elburz mts - near

Caspian sea ca 800 feet

10698. 27 June, 1969

Same place as 10697.

Forming clumps up to
several feet across. Flowers
white, the lower lip
slightly ~~obovate~~.
Stamens 4, ascending under
the galea.

Phlomis anisodonta Boiss.



Phlomis (4) - aff. *rigida*

10699 - 27 June, 1969

Same place as 10697.

Stems arising singly
from a creeping rhizome,
often only one stem per
year. Flowers white to
faintly ochroleucous. Anthers
4.

Nepeta sintenesii Bornm.

Mint. (3) *Nepeta*

10700 - 27 June, 1969

Cronquist + Parviz Babakhanlou

Same place as 10697.

Stems numerous from a
taproot, prostrate, forming
a mat. Peduncles curved-
-erect. Flowers bright
yellow.

Lotus corniculatus L.

Lotus (3)

10701, 27 June, 1969
Cronquist + Parviz Babakhantou
Same place as 10687

Stems arising singly, some-
times producing short
rhizomes. Flowers
blue-violet

Campanula glomerata L.

Campanula (4)

#3+4. nice paddies,
same place as 1+2

10702 - 5 July 1969

In gravel and rock crevices
about a dark igneous outcrop
just northwest of ridge
crest above Meygoon, about
55 km. (by road) northeast
of Teheran, Iran. Elevation,
about 3100 m. Flowers
pale pink-lavender.

✓
Valeriana sisymbriifolia Desf.

Valeriana (4)

10703 - 5 July, 1969

Same place as 10702

Flowers white.

Arabis caucasica Wild.

Arabis

Cryptantha - ~~*flavescens*~~?

3

10704- 5 July, 1969

Corolla of a dark igneous rock
outcrop. ... 10102.

Petals probably white when
young, turning pinkish in
age, the blade bilobed half
way to the base and bearing
a very deeply bifid, other-
wise entire appendage.

Calyx becoming somewhat
inflated and acute-red.

Style 3. Claw of the petals
expanded and auriculate
on each side at the top.

Silene odontopetala Fenzl,
var. *latifolia* Boiss.

Silene (2)

10705 - July 5, 1969

Cremices of basaltic and rhyolitic
rock outcrops - as in 10702.

Flowers yellow, turning
reddish purple in age.

Pistillate flowers in several
series, with a ligule 1.5-2.5
mm long, slightly longer to
slightly shorter than the
pappus. All but the innermost
pistillate flowers fertile,
with flattened, 2-nerved
achene. Involucres relatively
few, with 4-toothed corolla
and elongate, empty achene.
Outer pappus present but
scanty and inconspicuous.

Psychogaster amorphotossus
(Boiss.) Hervey

asteroid comp. (3)

antheridia

10706 - July 5, 1969

Same place as 10702. Plants
taprooted, often with elongate
slender, rhizome-like caudical
branches. Flowers blue-violet,
with a small white eye.

Veronica

Veronica (4)

15707 - 5 July, 1969 -

Crevices of igneous rock outcrops
- - - - - as in 15702.

Stems clustered on a sprout
and branching caudex, the leaves
appressed to the rachis. Rays
white, mostly 15-29. Disk
yellow. Pappus prominent.
Receptacle naked.

Chrysanthemum^m ~~sp.~~ *hololeucum*
Bornm.



aff *Pyrethrum*

Chrysanthemum (3)

10703-5 July, 1969

Moist gravelly northwest
slope alongside melting
snowbank just northwest
of ridge crest above Meygoon,
about 55 km. (by road) north-
east of Tehran, Iran.

Elev. about 3100 m. Tepals
yellow above, green beneath.

Growing with # 17809,
which seems distinct in
having shorter, blunter
tepals and wider leaves.

Gagea

Yellow (3)

10709 - 5 July, 1969

Same places 17808.

Growing with #17808,

which seems distinct in
its longer, more pointed
tepals and narrower leaves.

Gagea pusilla Schm.

yellow like (3)

10710 - 5 July, 1969

Same place as 17808

Stems arising singly.

Leaves blue-green.

Flowers dark red-purple
on white.

Corydalis verticillaris DC.

Corydalis (3)

10711-5 July 1969

Same place as 10702.

Flowers erect, rather
light blue.

Campanula stevenii M.B.
var. *vesiculosa* Bornm.
(=ssp. *beauverdiana*)

Campanula (2)

10712 - 5 July, 1967

Open, stony, overgrazed
ridgetop at summit saddle
above Meysoon, about 50
km. (by road) northeast of
of Tehran, Iran.

Stems clustered on a
woody, branching caudex
which surmounts a taproot.
Plants aromatic. Flowers
blue-violet. Stamens 4,
about equal

Nepeta ~~racemosa Lam.~~

elburzensis Rech. f.

Mint

(4)

10713-5 July, 1969.

Same place as 10712.

Plants forming spring

cushions 3-4 dm. wide.

Flowers bright pink-purple.

Onobrychis cornuta

Astragalus (2)

#5, 6, 7.

Rocky outcrops at base
no. 10702-11 were collected

10714 - 6 July, 1969

Campes + Parviz Babakhanlou

Wet lush slope along

Salween about 20 km.

east of Palau, elev.,
about 2350 m. Stems

erect singly. Stems

conspicuous, yellow,

leaves inconspicuous

whitish, tinged with

purple

Thalictrum ~~simplex~~ *simplex* L.

simplex L.

Thalictrum

(4)

10715 - 6 July, 1969
Cranquist & Harry Balaban

Same place as 10714.

Plants short-lived per-
ennial, fibrous-rooted
with 1-3 stems. Heads
yellow. Marginal flowers
pistillate, with a tiny
ligule less than 1 mm
long, surpassed by the
disk, their achenes 3-nerved
but empty. Achenes
with 2 marginal and
one ventral nerve.

Pappus none. Receptacle
hemispheric, naked.

Matricaria corymbifera DC.

(= *Stanaemum disciforme*)

Tanacetum (2)

10716 - 6 July, 1969

Cronquist & Parviz

Bahabakan.

Same place as 10714.

Plants robust, up to 1.5
m. tall, with basal leaves
up to 8 x 2 dm. Heads
yellow, with 2-4 rays
up to about 1 cm long.

Ligularia persica Boiss.

Senecio ?

19717 - 6 July 1959
Cronquist & Perry Bababanton

12 ~~km~~ km. n. of Palau on
Abgarm Road - about 2450 m.
Open, rocky - grass-
north slope. petals dull
pinkish

Open, rocky north slope in
grass-Forb vegetation about
12 km. north of Palau on
road to Abgarm. Elevation
about 2450 m. Root
tuberous - thickened. Petals
dull pinkish, connate
at the base. Stamens 10.

Craunthorn (1)

8. 11 the big mountain

12. Senecio (10716), with
Bababalan.

~~Damarand~~ Ruh. 5670 m
Damarand

Damarand

10718 - 11 July, 1969

Block 34, Homard Range
Station, about 70 km.
east of Tchern. Gravelly
clay soil overlying lime-
stone, outwash plain
at foot of Elburg Mts.
about 1900 meters elev.,
Flowers mostly 25-40
to a head, ochroleucous,
often with lavender purple
anthers. Involucral
bracts about 50-70 to a
head. Achenes angular-
-roughened, dentate at the
summit, and with a pappus
of coarse, deciduous bristles

Cousinia squarrosa Boiss.

det. K. H. Rechinger

Cousinia (5)

10719 - 11 July, 1969

Same place as 10718.

Flowers (especially the
anthers) purple.

Con

Cucumis (3)

10720 - 11 July, 1969

Block 33, otherwise

Same place as 10718

Bracts ochroleucous, becoming
light yellow in drying.

Flowers orange-yellow.

Helichrysum arenarium L.

Helichrysum (3)

1072 | 11 July, 1969

Rocky clay loam in Quzineh enclosure, about 106 km. east

of Tehran, in lower reaches of the Elburz Mts. Elev.

about 2200 m. Forming clust. up to several dm across. Pleasantly aromatic.

Stamens 2.

Flowers lavender.

Local name Absham

Zizyphora rigida (Boiss.)

Stuepf

mint (3) 2 st

10722 11 July, 1969

Same place as 10721.
Plants almost eradicated.

Flowers white with pink
lines. Upper lip somewhat
galeate, conspicuously
white usually inside
and out. Stamens 4,
the lower pair the longer.

Lagochilus aucheri Boiss.
var. *kotschyanus* (Boiss.)
Bornm.

ment. 421. (3) 1.0

10723 - 13 July, 1969

Open plains at Rudshur,
about 50 km. southeast of
Tehran, Iran. Elev. about
1000 m. Plants shrubby
at the base, with bright
glaucous-green, succulent
stems and branches.

(Cronquist and Parris Baba-
khanlou.)

Aellenia glauca

See also note in E. J. P. 1981

Salsola ③

10724 - 18 July, 1969

Common roadside weed
along the Tehran - Saatchi
road, about 70 km. south-
west of Tehran, in open,
overgrazed gravelly plains.

Elev. about 1250 m.

Selected small specimens,
Well developed plants
up to about 1 m. tall and
with several branches.

Heads lavender-purple,

Onopordon ~~scaberrimum~~
heteracanthum C. A. Mey.

✓

Onopordum (3)

10725 - 18 July, 1959
Gravelly plains, especially
along a shallow dry wash,

on open, overgrazed plains
along the Tehran - Saveh
highway about 70 km.
southwest of Tehran.

elev. about 1250 m.

Flowers yellowish.

Foliage blue-green.
Plant with an unusual
odor.

Ducrosia anethifolia (DC.)
Boiss.

Umbel

(3)

10726 15 July, 1969

Same place as 10725.

Perennial from deep-seated
running roots, the stems
arising singly, green,
becoming much branched
and forming a tumbleweed-
like mass 4-6 dm. high
and wide. Flowers yellow,
mostly 6 (7) to a head.
Achenes rather light brown,
prominently ridged and
furrowed longitudinally,
somewhat compressed.
Pappus copious, of
capillary, barbellate,
white bristles.

Microhynchus spinosa
(Forsk.)

Launaea spinosa

Scorzonera (3)

10727-18 July, 1969

Open, gravelly, overgrazed
plains. Sta. 0725.

Plants with a stout,
woody taproot and a much
branched woody caudex,
producing short, leafy,
nearly prostrate sterile
stems and more erect
fertile stems with
larger leaves. Flowers
whitish. Upper lip of the
corolla deeply cleft, its
two lobes seeming almost
like extra lobes of the
lower lip. Stamens 4

Teucrium polium L.

Ment (2)

1-2 - *Hultthemia* sp.

20 km. n. of highway

3-5 *Cassiope*

10728 - 18 July, 1969

About quartzite rock outcrops
along the crest of a small ridge
about midway on the map
between Ghazvin and Saveh,
to the west of Tehran.

Elevation about 1700 m.

Plants several-stemmed from
a perennial taproot and branched
caudex. Flowers lavender-
purple. Heads with 6-9
fertile disk flowers and
about 5 marginal neutral
flowers.

Centauria squarrosa Willd.

Centauria (3)

10729-18 July, 1969

Stony, porphyritic slope
overlooking a small artificial
pond at north base of a dry
ridge in open, overgrazed

country about 14 km west of
Shadash, which is west of Karadji.

↑ Plants forming mats flat
on the ground. Flowers white

↓ Elevation about 1400 m.

Overlooking Jaffarabat enclosure,

Galium humifusum M. B.

Galium (3)

10730 - 18 July, 1969

Same place as 10729.

Plants forming mats flat
on the ground. Flowers
at first nearly white,
later turning pink.

Trifolium fragiferum L.

— 4024 ±

Claver (3)

837 - 95

10731-18 July, 1969

Same place as 10729,

Flowers whitish. Sta-
mens 4, the lower pair
thick-walled. Stamens clustered
in a woody base.

Lagochilus insignis Belang.

Lagochilus

①

6, 7 - *A. herba alba*
s. exposita 11 km E of
T. ... 1700 + m.

8 & 9 - *A. anethum* 11 km
W of T. ... 2100 m. n. slope

10-11 - *A. macrogyna* s.
Finnovschii s. chlorocera
144 km E of T. ...
1700 + m.

10732 - 25 July, 1969

Common on stony, gravelly east
slope overlooking a small stream
11 km. south of the highway
summit north of Sari, in the
Elburg Mountains, Iran.
Stems clustered on a woody
root and branched, much
caudex. Flowers bright
pink-purple. Calyx 5-lobed,
10-nerved. Upper lip of corolla sub-
gulate, entire or nearly
so. Stamens 4, about equal,
barely exserted from the
corolla-tube. Plants with
a distinctive aroma.

Elevation about 1300 m.
Corolla tube with a ring of
hairs 3 mm. above the base.

Stachys laxa Benth. & Hook.

Mint — (3)

10733 - 26 July, 1969
Flat sandy bottom of small
cove in sand dunes behind
the beach, doubtless flooded
by storm tides. South shore
of the Caspian Sea, 29 km,
north of Sari, Iran.

Plants annual, prostrate
and rooting, forming flat
mats with short peduncles.
Corolla bilobed, at first
white, soon turning lavender
with a deeper red-purple
spot at the base of the lower
lobe. Stamens 2.

Phyla nodiflora (L.) Greene

Phyla (3)

10734 26 July 1929

Same place as 10733.

Annual. Corolla ^{limb} deep pink,
5-lobed, regular. Stamens
5. Stigma capitate. Ovaries
numerous, probably on
parietal placentae.

Centaurium spicatum
(L.) Fritsch

Gentianaceae *Centaurium* (3)

10735 - 26 July, 1969

Same place as 10733.

Corolla limb deep pink, with
a small white eye.

Centaurium pulchellum
(Swartz) Druce

Centaurium pulchellum (Swartz) Druce (3)

10736-26-July 1957

Same place as 10733.

Plants also abundant on the
open dunes, but there were
all prostrate. Outer bracts
3-nerved below

Plantago indica L.

Plantago indica

10737 - 28 July 1969

Cronquist + Parry Babakhanlou

With *Asteriscia monogyna* on

ruchy, open north slope

circumlocating station in Elburz

Mountains 94 km northeast of

Maragha and 19 km west of Shah-Asad

Elevation about 3500 m.

Upper part of stem and branches

strongly bluish, as also

the upper side of the leaves.

Styles bright light blue.

Corolla nearly pale blue-

lacinated. Stems arising

single, seldom paired from

a stout taproot

Eryngium caeruleum W. B.

biebersteinianum

Nevski

Eryngium 3

10738 - 28 July, 1969
Cronquist + Percy Babakhanlou
Open sunny benches above
stream in Elburz Mountains
about 100 km. northeast of
Yorgan and 25 km. northeast
of Shah-Pasand.

Elevation about 600 m.

Half shrub about 1 m. tall.

Flowers bright blue.

Stamens 2. Corolla tube
with a strongly oblique
ring of hairs between the
middle and the

Perowskia artemisioides
Boiss.

(Distinct from *P. abrotanoides*?)

Photo # 12

Label (3)

354

50379

55

1942

156

$$\begin{array}{r}
 1091 \quad 1703 \\
 1091 \\
 \hline
 6120 \\
 5455 \\
 \hline
 6655
 \end{array}$$

1500

117

142

98754

16.1

60

45
 1286
 288
 2916

Salary check 2485.53
 received 12 Aug. 1969

95662	White Plains	1.75
95815	9.7	3.00
96023	10.00	3.49
96194	13.7	6.75
96391	13.2	4.75
96575	11.2	3.15
96716	9.7	3.55
96896	12.0	4.00
97078	12.0	4.30
97269	14.1	5.20
97487	12.8	4.70
97639	12.2	4.14
97799	10.9	4.25
97993	14.0	5.60
98209	13.16	5.50
98346	8.3	3.30
98516	12.0	4.45



Notes

10739-6 Sept. 1969

Cache County, Utah. Semi-open
slopes near Tony Grove Lake,
~~Twp. 13 N, R. 3 E., S. 6.~~

about 20 miles northeast of
Luzon, in the Deer River Range.

Twp. 13 N, R. 3 E., S. 6

Soil about 8200 feet

shrubs up to about 8 dm. tall

Artemisia tridentata Nutt.

A. tridentata (D)

10740 - 8 Sept. 1969.

Cache Co., Utah. Broad, high
valley leading into Logan Canyon,
32 miles by highway east of
Logan, Twp. 14 N., R. 4 E., S. 22.

Elev. about ~~7000~~⁷⁵⁰⁰; ~~Two~~ Plants
1-2 (3) dm. tall, exclusive
of the inflorescence, growing
with # 10741, *A. tridentata*,

but sharply distinct, and
occupying adjacent territory,
with a sharp ~~to~~ areal
boundary. Photo shows 10740
in foreground, 10741 in back-
ground.

Artemisia arbuscula Nutt.
var. *arbuscula*

A. arbuscula (7)

10741 - 8 Sept. 1969,

Same place as 10740.

Plants (3) 4-8 dm. tall, echinace
of the inflorescence, growing
with #10740, *A. arbuscula*
var. *arbuscula*, but sharply
distinct, ~~very~~ occupying
adjacent territory with
a sharp aerial boundary.

Photo shows 10740 in foreground,
~~with~~ 10741 in background

~~*Artemisia tridentata*~~

Artemisia tridentata Nutt.

A. tridentata (4)

#12 & #1, Engelmann
Spruce - 3500 feet. Bighorn
Mts. †

2-10-11 - Lodgepole pine,
underside of Engelmann
Spruce. 11 - steep canyon
7500'

273 - *Aspen* with
"Cedar" quality,
n. of Bell Fork, S.D.
3400'

4, 5, 6 - Jack pine.
underside of spruce
fir. 20 miles n. of Yuma



Mc Cran Hill - ca	1.08
June 26	3.16
July 2	1.08
July 8	1.08
July 15	1.35
July 21	.56
July 29	3.31 2.60
Aug. 2	.56
Aug 3	1.60

Ramesh + Helen Rasi'

Dousette Daran

65500 Toluca

373 Howard

666 summit

860 Jari

896 Jari

919 Jari

At A. meibomia and what
may be A. monogyna from
top of at 4000 feet on the
side of Sillburg. Some are
hybrids.

At base north of Jari.

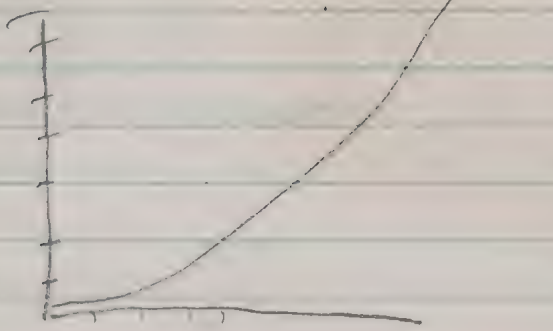
A. meibomia, leafy stem and
± green glaucous - puber-
ulent, and ± glandular, but
rarely tomentose. Branches of
the inf. leafy, axils round &
ascending (sometimes obscured
at the tip), the heads tend to
to not be very numerous
5

6649 - Gerson

379

66417 - Gerson

1	2,000,000
2	4,000,000
4	8,000,000
8	16,000,000
16	32,000,000
32	64,000,000
64	128,000,000
128	256,000,000
256	512,000,000
512	1,024,000,000
1024	2,000,000,000
2048	4,000,000,000
4096	8,000,000,000
8192	16,000,000,000
16384	32,000,000,000
32768	64,000,000,000
65536	128,000,000,000
131072	256,000,000,000
262144	
524288	
1048576	



Necklace	11,200
earrings	2200
brooch/pin	3300
miniature	1000
	<u>17,500</u>

238

$$\begin{array}{r}
 75 \overline{) 17850} \\
 \underline{150} \\
 285 \\
 \underline{225} \\
 600 \\
 \underline{600} \\
 0
 \end{array}$$

	N	238
	S	100
	<u>N</u>	<u>338</u>
pendant		
retail		

Brun h, ider gasser

12 dultelder festtrase

33.50

11.17

44.67

34-74-76

B. F.

1



The rise and fall
of Lyseus.

Medvedyer
Lerner transl.
Cal. U. Press

801-

9416-3220 - Price

8:

752-0835

Lane Hedden,
Rice Land & Oil Co.
Waller Bank Building
Logan - ground floor

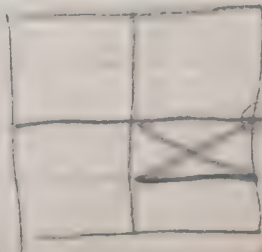
Warranty Deed. Russ & Cheryl
& Chuck & Cheryl Linnick
to Glenn F. Poore & Carla
Poore Linnick as joint
tenants

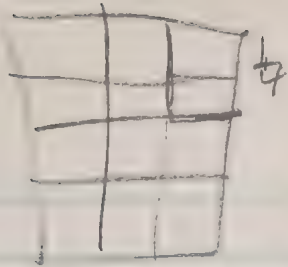
NE $\frac{1}{4}$ of SE $\frac{1}{4}$ of

sect 31, Twp 13N, R.
6E, Salt Lake meridian.

also
NW $\frac{1}{4}$ of SE $\frac{1}{4}$ of sect 31 etc.

30 June, 1967





A thistle 1.5 m tall,
crack seed, cottony
with ascending,
branched many
subsessile small
purple heads, the
bracts strongly
glutinous tipped
on glutinous on
the back, a ridge and
with an abrupt
rather short. Coarse
spine, styles
conspicuously
purple about the
pistil, white below
along outflow from
a stream along
high basalt cliffs
between ranch Yon
& Field . 402.1

with other cereals & many
tall lodges mesquite

79

5

6

We are getting up a
train to the Olym

GO 7779 - md.

X42 115 - Cal.

104. ~~12~~ Simon

Biological Conservation
ed Nichols Polunin

Elsevier Publishing Co
Ripple Road, Barking, Essex
England

in library 11/5/6

Mrs. Natalie Morozova

Lab 1 Cytogenetics

Exp. 1

Human

- send of Caltha paper
litho plates

If you will speak to Mrs.
~~Grin~~ Grinjanidze, we
will be happy to take
care with us. ~~2~~

ES 3-8674

5 S. 7 acama

1307 Park

#16

1307 Park,

The best-planned lays
of mice and men etc.

Koebel-Russell
in ~~the~~ ^{the} ~~field~~
It's

Are the Shetlers planning
to go with us on Saturday?
It makes a difference as to
how many cars we use.
Bob & Mae Thorne will come.

Have you spoken to
him about it?

I see three (possibly only two) Russians, you and Max, and myself, to make up six if we all go in one car. If we take two, we can add your former student, and the Shotters, who had also invited Armon and Andrei to go into the Cascades on Saturday. I believe their invitation came later.

- So 1 car with six
(or 2 with 9) what is your preference?

Mahon

Dr. Z. G. Vinitsh. I. r.
Inst. of Botany
of the Georgian ac. sc.
Kotaykashvili Highway
Tbilisi
USSR

Copy of the East &
West of Flowering
Plants - also to Arturo

to P. and only not inserted 104

The considerations are
that one car is easier to
manage, but we don't want
to leave any one out.

Pachysandra seedling T

What sort of reputation
does Professor Meusel,
from East Germany, have?
I am not sure but not very
reliable

Are you available for
a joint trip to Mt. Rainier
or the Olympics on Saturday
for A.T., A.F., & possibly
others. I can only six in
my car. J.A.P.

Jim Housh can take 2
more of I can take three
more to the museum & myself



Tues. 5-7 Willt

16516-25th north
open house - WSC - botanists
EM 2-9200

Note: Pay But Good,
Edwell. 2 Oct. 1967

Izadi-Building

220 Elm Street

Elizabeth Connecticut

Elizabeth Boulevard

Antennaria annua

has 3-pinnatifid

lobes radiis raris,

ca 1 mm wide.

substrate (terrestrial) requires
relatively shallow soil.

leaves flat

Do you know
Aurelio Fidalgo,
a mycologist from
Sao Paulo?

Who is our potential
mycologist committee
member?

Schopf
Lind

Christensen -
Cronquist -
Leopold Holm
Lent & Harkness
Uppsala

Hossein Lessani
at Karadi
Student of Helmsen,

A.T.

McMahon 1072

Fedorov 1070

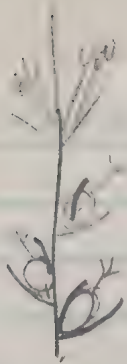
Wednesday Sept 3-

Painted Hills State Park

Campground, 3 P.M.

Mr. Shehbaz - Thelypodium

Austin III



Centaurea bieber L.
(Serrata)

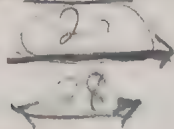
sein

Service du Patrouille

212 at summit

231 at a small town

July 26 ~~Saturday~~ Sat.



Gorgan - 41300 (km) →

Golestan forest

22500 = 3000 dollars

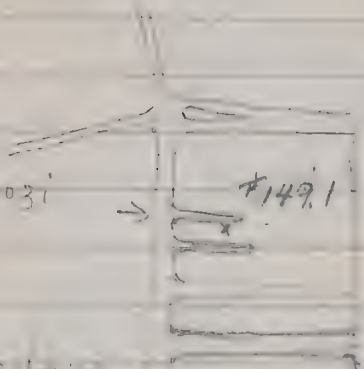
Via della Termi di
Caracalla

Jacob Mulikjanian
Olympic trips.

Ericson Bits Just

Hh. Neuroozi

#1491



Apartment

Bank

WPIA

Abasa

5/11/11

Takhta Taweh

1051 Kh, Nonrozi

Suggested schedule,

Lv Tehran Aug 6 A.M. ^{wed 15}

Arrive Vienna Aug 6 P.M.

work Vienna Aug 7⁸⁻⁹

Vienna to Rome Aug 10,

work Rome Aug 11-12,

Lv. Rome Aug. 13,

Lv. Tehran - Aug. 4

Sahena

8:45 (7:45 checked)

Lv. Rome - Aug. 13

11:00 Am. N4 7:20 P.M.

No 963255 Tolani

ABRISHAMI & Sons

No 770370 SHARUKH

Khob = 31

Khoda ~~Kharas~~ gl
Hafez

Kharesh mi Konam
please

Muchakaram - the
mutashakaram

Folios should not be thoroughly
washed.

No need for separate filter for
each specimen.

Moulin Rouge
Lactid

showing signs of staining (Khanom
Lactid)

Mm. corymbifera Cl.
= Ch. kwiatkowskii

Peston
Cineh h

EVINE - Agric Dept

12, Esfandiar.

KARADJ

Unit of ...

1. Perhaps 4000 specimens, but
many not mounted or not
numbered. Both separate
and mounted folders for bookshelves.
Some wrapped together
Belgian style. Mounted
much better types.

Mr. Behboudy

3. 2000 specimens - ± 6000 specimens,
many in small folders, or with
labeling. Some exchange.
A lot of good glue
probably stamps & such types.

Flore de l'Iran

Âhmed Parsa

Vol 1-5 1948 51

1-1951

1-2-1948

LI 1949

5-1950

Suppl. 1. 1952

Imprimerie Danesh

Téhéran.

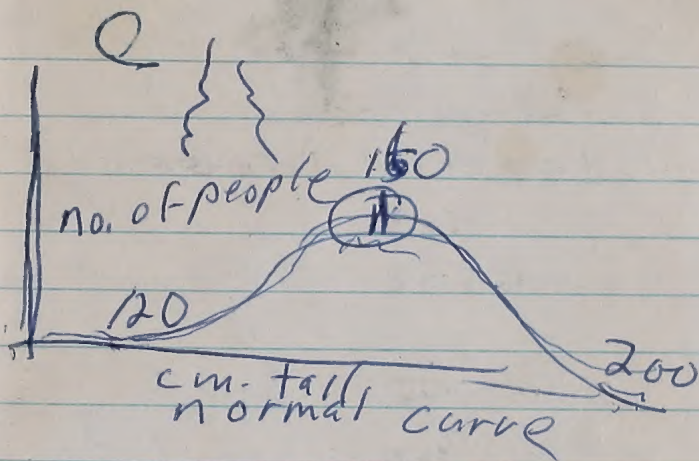
Publication du ministère de
l'éducation, Muséum d'histoire
naturelle de Téhéran.

Juncus

Juncaceae

Ginkgoaceae

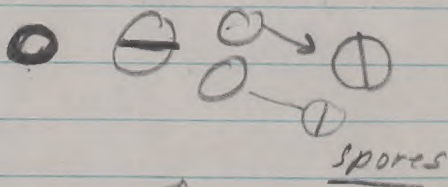
Jaffarabad end



Schizophyta

=

bacteria and blue-green algae



61

F103402

563.012

Pearse 761452 5-10-69

Kernick-UK

Maloney

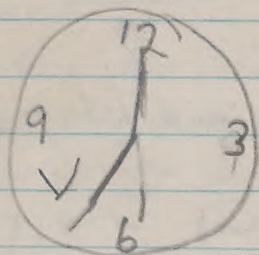
Djezeri - Bot. Garden.

Edmunson - Fodder crops - agron.

4000 rials - Iran

Mr. Chan Shah - 24 June, 1969 -
advance.

5000 rials per rone 28 June



Kathi

Tarida

43619 FAO

801-245-3048

VERNON MEMO. BOOKS

No.	LVS.	RULING	SIZE	
808	40	\$ & CTS.	5 X 3	O. S.
809	40	FAINT	"	"
811	40	"	3 X 5	O. E.
813	40	\$ & CTS.	6½ X 3½	O. S.
814	40	FAINT	"	"
817	72	\$ & CTS.	"	"
818	72	FAINT	"	"
820	72	"	3½ X 6½	O. E.
832	60	\$ & CTS.	6½ X 4½	O. S.
833	60	FAINT	"	"

MADE IN U. S. A.

VERNON ^{RD.} LINE

