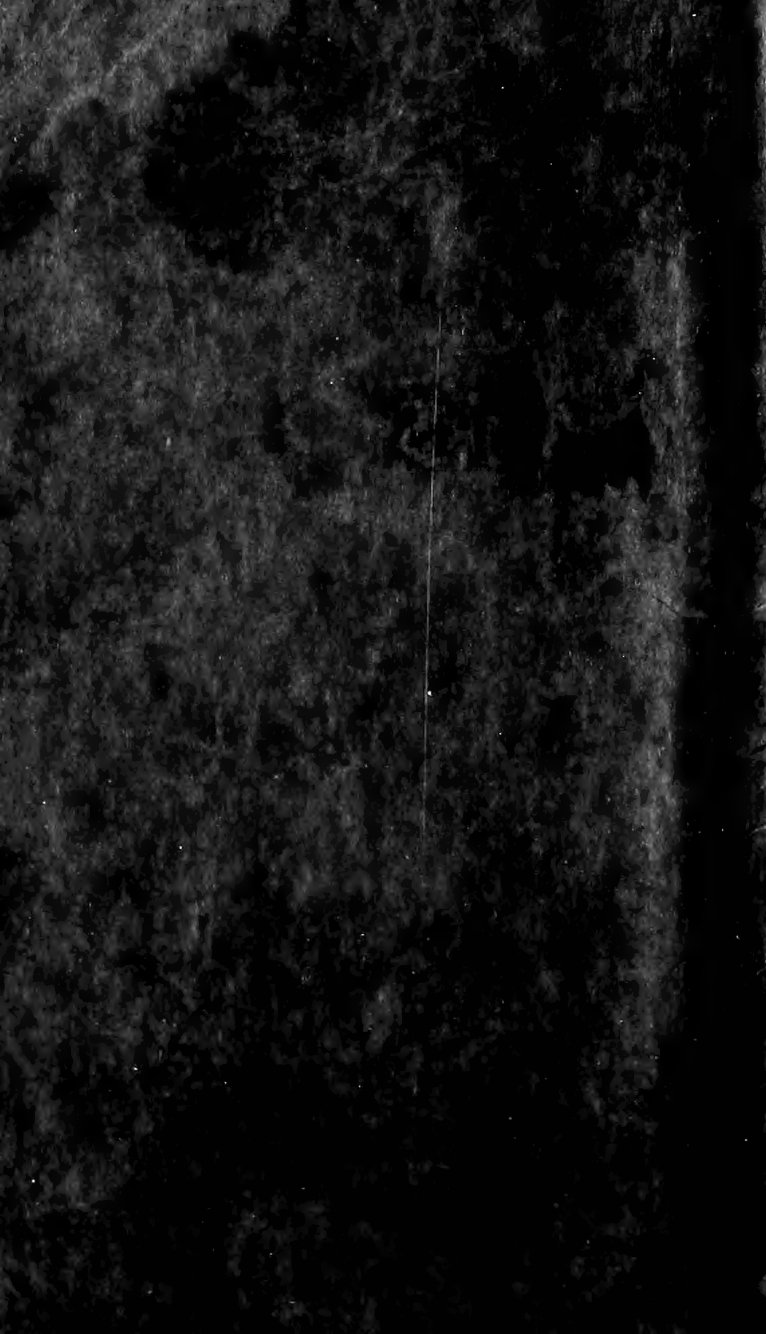


10697 - 10741



#10697

Vol. 592

Property of

Arthur Cronquist  
United Nations - FAO  
P.O. Box 1555  
Tehran, Iran

Reward

for return

10697 - 27 June 1969

Cronquist & Parviz Babakhanlou

Common in clay-loam soil  
on rolling summit land, west  
central Elburz Mts., 85  
km east of Roodbar, Iran,  
about 6600 feet elevation.  
Flowers bright yellow.

*Galium verum* L.

*Galium verum* (3)

27 - June, 1969

# 122 - *Picepadia*  
along Sefidrud River

between Rudbar - west side

of Elburz mts - near

Caspian sea ca 800 feet

10698. 27 Jun, 1969

Same place as 10697.

Forming clumps up to  
several feet across. Flowers  
white, the ~~lower lip~~  
~~slightly ochroleucous.~~  
Stamens 4, ascending under  
the galea.

*Phlomis anisodonta* Boiss.



*Phlomis* (4) - aff. *rigida*

10699 - 27 Jun, 1969

Same place as 10697.

Stems arising singly  
from a creeping rhizome,  
often only one stem per  
year. Flowers white to  
faintly ochroleucous. Anthers  
4.

*Nepeta sintenesii* Bornm.

Mint. (3) *Nepeta*

10700 - 27 June, 1969  
Cronquist + Parviz Babakhanlou

Same place as 10697.

Stems numerous from a  
taproot, prostrate, forming  
a mat. Peduncles curved-  
erect. Flowers bright  
yellow.

*Lotus corniculatus* L.

*Lotus* (3)



10701, 27 June, 1969  
Cronquist + Parviz Babakhanlou  
Same place as 10697

Stems arising singly, some-  
times producing short  
rhizomes. Flowers  
blue-violet

*Campanula glomerata* L.

*Campanula* (4)

#3+4. nice paddies,  
same place as 1 & 2

10757. 5 July, 1969

In granular rock crevices  
about a dark igneous outcrop  
just northwest of ridge  
crest above Mergoon, about  
55 km. (by road) northeast  
of Teheran, Iran. Elevation,  
about 3100 m. Flowers  
pale pink-lavender.

*Valeriana sisymbriifolia* O. F.

10703 - 5 July, 1969  
Same place as 10702  
*Flaccens umbilicis*

*Arabis caucasica* W. G. D.

*Arabis*  
~~10703 - 5 July, 1969~~ (3)

10704 - 5 July, 1969

Cross-section of a dark, aqueous, reddish  
outcrop. 10/10 d.

Petals probably white when  
young, turning pinkish in  
age, the lower bilobed, narrow  
way to the base and bearing  
a very deep lobe, other  
with entire appendage.

Calyx is becoming somewhat  
inflated and reddish.

Style 3. Claw of the petals  
expanded and acuminate  
in each side at the top.

*Silene odontoptala* Fenzl,  
*latifolia* Boiss.

*Silene* (2)

10705 July 5, 1969

series of basaltic and rhyolitic  
rock outcrops - as in 10702.

Flowers of ... turning  
at ... purple in age.

Flowers in several  
series, with ... 1.5-2.5

mm long, slightly ... to  
slightly ... than the

parent. All but ... in most  
plants ... fertile.

with ... 2 ...  
... in relation to

... with 4-lobed ...  
... simply ...

... present ...  
... specimen

...

...

(as ... 3) ...

10706 - July 5, 1969

Same place as 10702. Plants  
taprooted, often with a long tap-  
root, slender, rhizome-like caudex  
branches. Flowers blue violet,  
with a small white eye.

Veronica

Veronica (4)

15707 - 5 July, 1969 -

Series of igneous rock outcrops  
- - - - -

Stems clustered on a sprout  
and branches caudex, the leaves  
opposite to the rach. Rays  
white, mostly 15-29. Disk  
yellow. Pappus prominent.  
Receptacle naked.

*Chrysanthemum*<sup>m</sup> ~~hololeucum~~ *hololeucum*  
Bornm.

aff. *pyrothrum*

*Chrysanthemum*

(3)



10755-5 July, 1969

Moist gravelly northwest  
slope along side melting  
snowbank just northwest  
of ridge crest above Meygoon,  
about 55 km. (by road) north-  
east of Terran, Iran.

Elev. about 3100 m. Tepals  
yellow above, green beneath.

Growing with # 17807,  
which seems distinct in  
having shorter, blunter  
tepals and wider leaves.

Gageo

yellow (3)

10709 5 July, 1969

Same place as 17808.

Growing with #17808,

which is more distinct in  
its larger, more pointed  
leaves and narrower leaves.

*Gagea pusilla* Schum.

(yellow bell)

10710-5 July, 1969

Same place as 17803

Stems arising singly.

Leaves blue glaucous.

Flowers dark red-purple  
on white.

*Corydalis verticillata* DC.

*Corydalis* (3)

10711-5 July 1969

San Jacinto 10702.

Flowers erect, rather  
light blue.

*Campanula stevensii* M.B.  
var. *vesiculosa* Borman.  
(=ssp. *beauregardiana*)

(10711-5)

10712 - 5 July, 1961

Open, stony, overgrazed  
vegetation at summit saddle  
above Meysoon, about 1  
km. (by road) northeast  
of Tehran, Iran.

Stems clustered on a  
mossy, branching caudex  
which surmounts a taproot.  
Plants aromatic. Flowers  
blue violet, stamens 4,  
about equal

*Nepeta* ~~maculosa~~

*elburzensis* Rech. f.

Mint (4)

10-13-5 July, 1967.

Same place as 10-112.

Plants forming spring

cushions 3-4 dm. wide.

Flowers bright pink-purple.

*Onobrychis cornuta*

at 112

# 5, 6, 7.

Rocky outcrops 11.5 mi  
no. 10702 1/2 mi. collected

0714 6 July, 1969

Mount Pinig, Bahakha...

Wet lush slope along

... about 20 m.

east of ...

... 2350 m. Stems

erect, singly. Stems

conspicuous, yellow,

... pale inconspicuous

whitish; tinged with

purple

Thallus ...



simplest h.

Thallus

(4)



10719 - 6 July, 1967  
Cronquist & Parry, La Brea

same place as 10714.

Plants short lived per-  
ennial, fibrous-rooted  
with 1-3 stems. Heads

sessile, "Marginal" flowers  
pistillate, with a tiny  
ligule less than 1 mm

long. Anthers with  
2-3, their lobes 3-nerved  
but empty. Achenes

with 2 marginal and  
one central n.c.

Flowers axillary. Receptacle  
hemispheric, naked.

*Matricaria corymbifera* DC.

(= *Matricaria disciformis*)

Tanacetum (?)

10716 - 6 July 1969

Cronquist & Soreng

Balabakan

Same place as 10714.

Plants robust up to 1.5  
m. tall, with basal leaves  
up to 8 x 2 dm. Heads  
yellow, with 2-4 rays  
up to 1 cm long

*Ligularia persica* Boiss.

*Senecio* (?)

1977 - 6 July 199  
In region of P. ... Babia ...

12 km n. of Palau on  
Aqnam Road - about 2450 m  
open rocky - ground  
north slope of ...  
pinkish

Open rocky with sparse  
grass-forb vegetation about  
12 km north of Palau on  
road to Aqnam ...  
about 2450 m. Root  
tuberous - thick ...  
seeds pinkish, coniate  
at the base. Stamens 10.

Crauculaceae (1)

8.1' the old mountain

(2. L. Cicio 1976), with  
B. L. ...

~~D. ...~~ 5570 m  
... / ...

Damarans

10718 - 11 July, 1969

Block 34, Howard Range  
Station, about 70 km.  
east of Tehran. Gravelly  
soil overlying limestone,  
outwash plain  
at foot of Elburz Mts.  
About 1900 meters elev.,  
Flowers mostly 25-40  
to a head, ochroleucous,  
often with lavender purple  
inclusion. Involucres  
bracteolate 3-5. Petals  
5. Stamens angustate  
- ovate, dentate at the  
summit, and with a pappus  
of coarse, deciduous bristles

*Cousinia squarrosa* Esch.

det. K. H. Reichegger

*Cousinia* (5)

10719 - 11 July, 1969

Same place as 10718.

Flowers (especially the  
anthers) purple.

Con

*Trueselii* (3)

10720 - 11 July, 1969

Block 33, *Athenensis*

Same place as 10718

Bracts ochroleucous, becoming  
light yellow in drying.

Flowers orange-yellow.

*Helichrysum arenarium* L.

*Helichrysum* (3)

1072 | 11 July, 1969

Rocky clay loam in Ouzineh  
enclosure, about 106 km. east

of Teheran, in lower reaches  
of the Elburz Mts. Elev.

about 2200 m. Forming  
shrubbery to several dm  
across. Pleasantly aromatic.

Stamens 2.

Flowers lavender.

Local name Absham

*Zizyphora rigida* (Boiss.)  
Steph.

no. (3) 221



10722 11 July, 1969  
Same place as 10721.  
Plants almost unbranched.

Flowers white with pink  
lines. Upper lip somewhat  
galeate, conspicuously  
white usually inside  
and out. Stamens 4,  
the lower pair the longer.

*Lagochilus aucheri* Boriss.  
var. *kotschyana* (Boriss.)  
Boriss.

ment. 4 st. (3) 1.5

10723 - 13 June 1959  
Type locality at Redshur,  
about 50 km. southeast of  
Tehran, Iran. Elev. about  
1500 m. Plants shrubby  
at the base, with bright  
glaucous green, succulent  
stems and branches.

Cro. quinquifida P. B. & B. Baba  
Iranian

*Aellenia glauca*

See also noted in E. P. 1931

10723 (j)

10724 - 18 July, 1969

Common roadside weed  
along the Tehran - Saadeh  
road, about 70 km. south-  
west of Tehran, in open,  
overgrazed gravelly plains.

Elev. about 1250 m.

Selected small specimens,  
Well developed plants  
up to about 1 m. tall and  
with several branches.

Heads lavender-purple,

*Onopordum ~~sp. cf. heteracanthum~~*  
*heteracanthum* C. A. Mey.

*Onopordum* (3)

10725 - 18 July 1950  
Savanna plains, especially  
in a shallow dry wash,  
on open, overgrazed plains  
along the Tehran - Saveh  
highway about 70 km.  
southwest of Tehran.  
Elev. about 1250 m.  
Flowers yellowish.  
Fruit is blue glaucous.  
Plant with an unusual  
odor.

*Ducrosia anethifolia* (Dc.)  
Boiss.

Am. Bot.

(3)

10726 10/10/59 769

Same place as 10725.

Perennial from deep-seated

running roots, the stem  
erect singly, green,  
becoming much branched  
and forming a tumbleweed-  
like mass 4-6 dm. high  
and wide. Flowers yellow

mostly 6 (7) to a head.  
Stems rather light green,  
prominently ridged and  
furrowed longitudinally,  
somewhat compressed.

Pappus copious of  
scurfy, barbellate,  
white bristles.

*Microhynis* (Forsk.)

*Launaea sp. n.*

*Scorpioides* (3)

10727-18 July, 1969

Open, gravelly, emergent  
plains - etc. as in 10725.

Plants with a stout,  
woody taproot and a much  
branched woody caudex,  
producing short, leafy,  
nearly prostrate sterile  
stems and more erect  
fertile stems with  
larger leaves. Flowers  
whitish. Upper lip of the  
corolla deeply cleft, its  
two lobes seeming almost  
like extra lobes of the  
lower lip. Stamens 4

*Teucrium polium* L.

(10727)

#17. (Hill) home w.  
\_\_\_\_\_ Highway

3-5 [unclear]

10728 - 18 July, 1969

About quartzite rock outcrops  
along the crest of a small ridge  
about midway on the way  
between Bisqwin and Saach,  
to the west of Tehran.

Elevation about 1700 m.

Plants several stemmed from  
a perennial taproot and branched  
at the base. Flowers lavender-  
purple. Head with 6-9  
fertile disk flowers and  
about 5 marginal neutral  
flowers.

*Centauria squarrosa* Willd.

*Centauria* (3)



10729-18 July, 1969

Stony, porphyritic slope  
overlooking a small artificial  
pond at north base of a dry  
ridge in open, overgrazed

country about 14 km west of  
Shadash, which is west of Karadj.

Plants forming mats flat  
on the ground. Flowers white.  
Elevation about 1400 m.

(overlooking Jaffarabai exelos-  
ure,

*Galium* *indivisum* HBK.

*Galium* (3)

10732 - 18 July, 1969

Same place as 10729.

Plants forming mats flat  
on the ground. Flowers  
at first nearly white,  
later turning pink.

*Fraxinella* *fraxinella* L.

Drawn (3)

300 - 95

10731-18 July 1904  
- 1000 ft. 10731

Flowers white. Sta-  
mens 4, the lower pair  
the longest. The ovary  
is woody base.

- a white insignis below.

10731-18

D

# 6, 7 - *A. berba alba*  
D. ... 11 km S of  
1 ...

8-9 - *A. ...*  
2100m n slope

10-11 - *A. ...*  
1400m ...

10732 - 25 July, 1967

Common on stony, gravelly soil  
slope overlooking a small stream.  
11 km. south of the highway  
summit north of Gard, in the  
Elberg Mountains, Grant  
County, Oregon. Stem  
erect and branched, upright  
erect. Flowers bright  
pink-purple. Calyx 5-lobed, 10-nerve.  
Upper lip of corolla red  
glossy, entire or nearly  
so. Stamens 4, about equal  
length, inserted from the  
corolla tube. Pistils with  
a distinct aroma.

Elevation about 1300 m.  
Corolla tube 1.5-2 cm long,  
and 3 mm diameter at base.

Stachys ...

Mint - 3)

10772. J. C. Jolly, 1959  
Flowers white, in small  
Cane in sand dunes behind  
the beach, doubtless flooded  
by storm tides. South shore  
of the Bay of Sea, 29 km,  
north of San Juan.

Plants commonly prostrate  
and growing flat  
against the ground. Pedicels  
Corolla lobes, at first  
white, soon turning lavender  
with a deeper red-purple  
in the center. The  
leaves are

Phyc. nodis ...

Phyc.)

15734 - 26 July, 1959

*Lamium* ~~sp.~~

Annual. <sup>simple</sup> Corolla deep pink,  
5-lobed, regular. Stamens  
5. Stigma capitate. Anthers  
numerous, probably an  
parietal filament.

*Centaureum spicatum*  
(L.) Fritsch

*Gentiana* *Centaureum* 31

172251. 26 July, 1969

Same place as 172250.

Same as 172250 deep pink, with  
some white spots.

*Cerianthus pulchellum*

(Bourne & Druce)



10736-26 - July 1957

Same place as 10733.

Plants also abundant with  
expendures but there were  
all ~~the same~~ the same. Outer leaves  
3-4 inches long

*Plantago indica* L.

*Plantago* indica

10737 - 28 July 1969

... + Pamyz Babakhanlou

Witch. *Ailoneia monogyne* ...  
... in Elburz ... northeast of ...  
... about 2000 m

... stems arising ...  
... paired ...  
slant top root

*Eryngium ...*  
*biebersteinianum*  
Neski

*Eryngium*

10738 - 28 July 1957  
Caucasus - Parviz Babakhanlou  
open steppe, hills, a low  
mountain in Elburz Mountains  
about 100 km. northwest of  
Yorgan and 25 km. north  
of Shah-Pasad.

Plant about 60 cm.  
Half shrub about 1 m. tall.  
Flowers bright blue.  
Stems 2. Corolla tube  
with a strongly oblique  
ring of stamens. The  
middle of the

*Perowskia artemisioides*  
Boiss.  
(Distinct from *abidjanensis*)

40 # 2

35-1

3

7

1942

156

191 1703  
1091  

---

6120  
5455  

---

6650

98

16.1

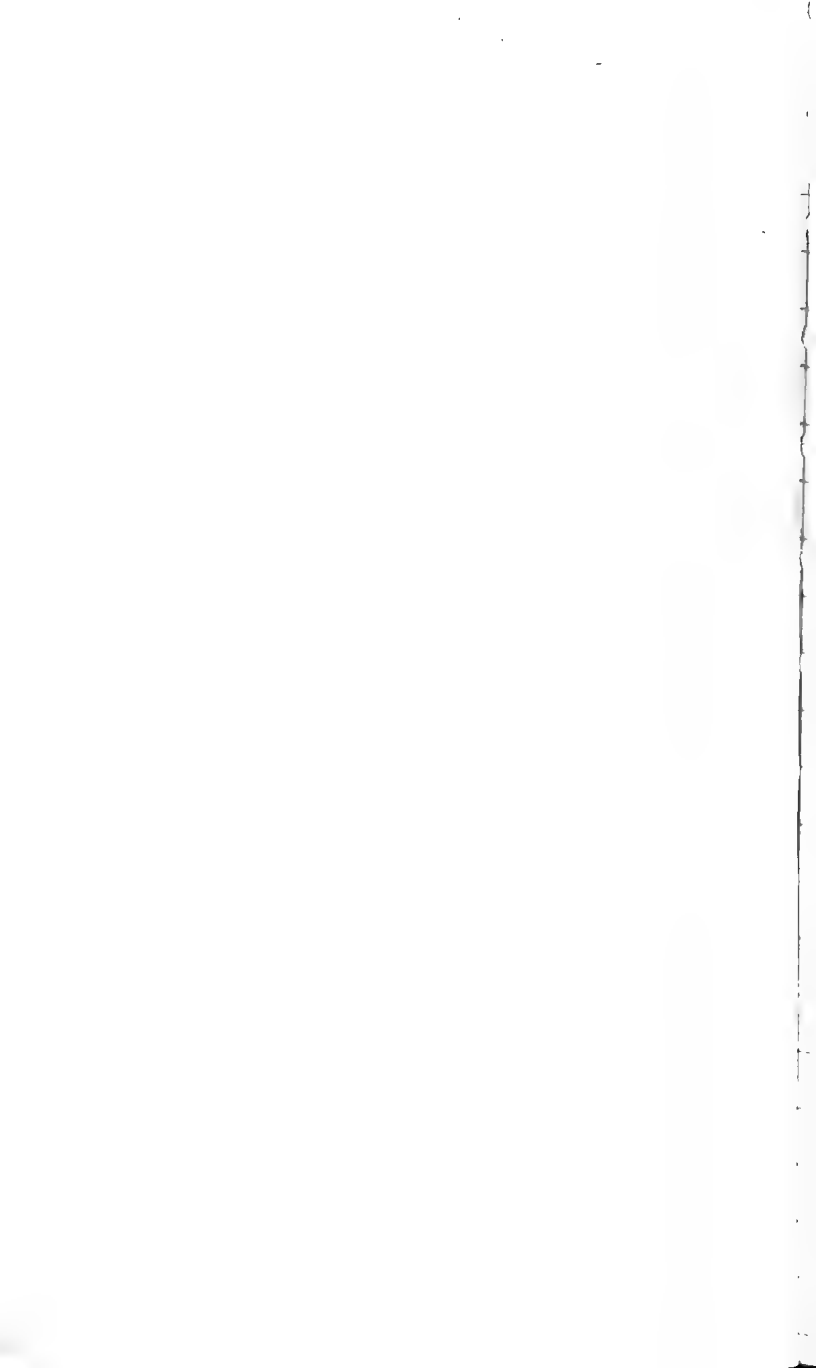
73  
 1296  
 1288  
 2016

Salary check 2485.53  
 received 12 Aug. 1969

---

9566	White	
95915	"	
96000	10.00	
96000	15.0	
96000	13.0	
96000	12.0	
96000	12.0	
96000	12.0	
96076	12.0	4.30
96269	12.0	5.10
97487	12.3	7.70
97639	12.2	4.14
97777	10.9	4.05
97993	14.0	5.60
98209	13.6	5.50
98346	8.3	3.30
98516	12.0	1.60

First



111  
Hofe b

10739-6 Sept. 1969

Cache County, Utah. Semi-open  
slopes near Tony Grove Lake,  
~~Twp. 13 N, R. 3 E., S. 6.~~

about 20 miles northeast of  
Lopez in the Dixie Range.

Twp. 13 N, R. 3 E., S. 6

Open about 8200 feet

shrubs up to about 8 dm. tall

*Artemisia tridentata* Nutt.

P. C. Linder 1000 (4)



10740 - 8 Sept. 1969.

Cache Co., Utah. Broad, high  
valley leading into Logan Canyon,  
3 1/2 miles by highway east of  
Logan, Twp. 14N., R. 4E., S. 22.

Slr. about ~~7500~~<sup>7500</sup>; ~~the~~ Plants  
1-2 (3) dm. tall, expression  
of the inflorescence, growing  
with # 10741, *A. tridentata*,

but sharply distinct, and  
occupying adjacent territory,  
with a sharp ~~to~~ areal  
boundary. Photo shows 10740  
in foreground, 10741 in back-  
ground.

*Artemisia arbuscula* Nutt.  
var. *arbuscula*

*A. arbuscula* (7)

10741 - 3 Sept. 1969,

Lam. sl. as 10740.

Plants (3) 4-8 dm tall, echinoid  
of the inflorescence, growing  
with #10740, *A. arbuscula*  
var. *arbuscula*, but sharply  
distinct, ~~very~~ occupying  
adjacent territory with  
a sharp ~~and~~ boundary.

Photo shows 10740 in foreground,  
~~10741~~ 10741 in background

~~*Artemisia tridentata*~~

*Artemisia tridentata* Nutt.

*Artemisia* (4)

#12 & #1, Engelmann  
spruce 3000 feet. Bighorn  
Mts. †

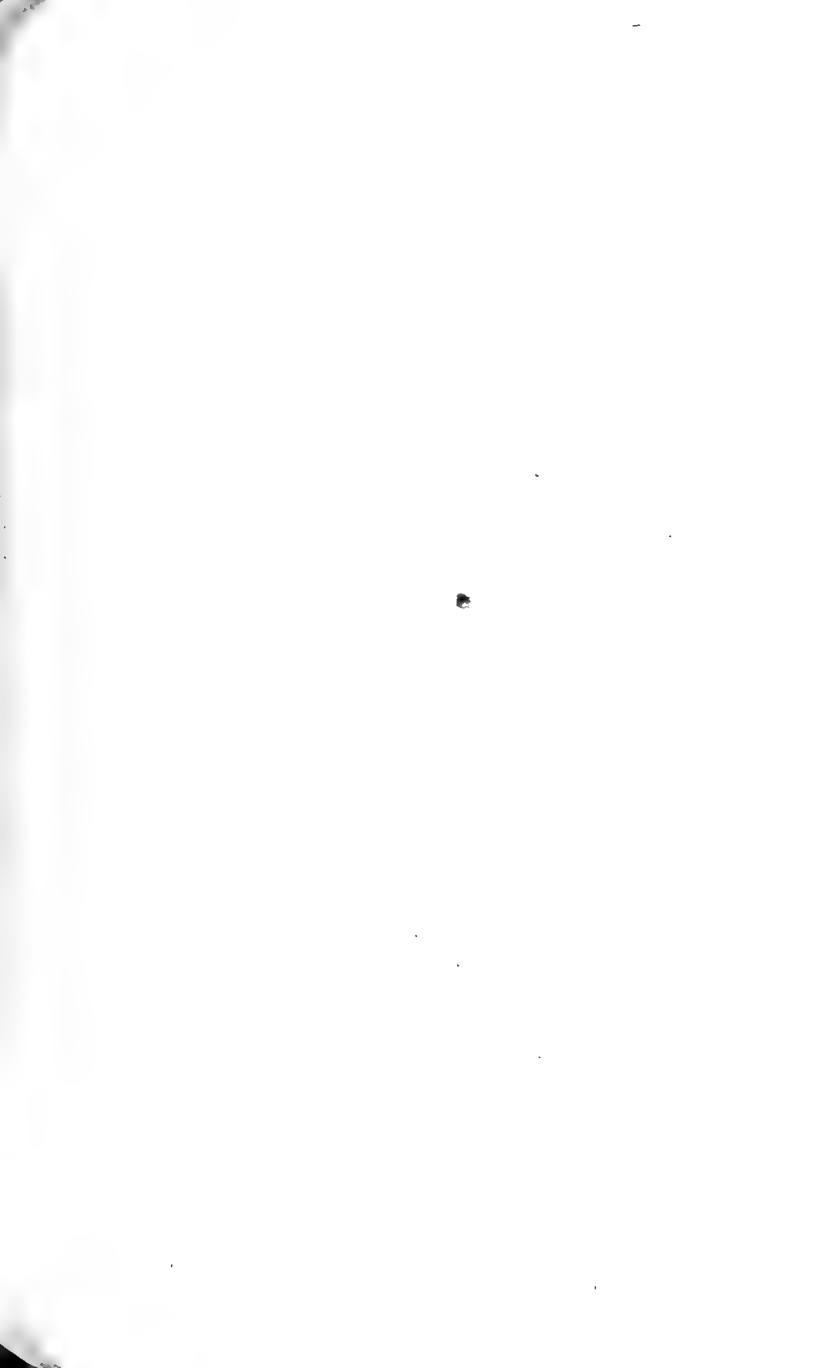
#11 - 3000 feet pine,  
usual variety of Engelmann  
spruce. 10000 feet 20000  
7500'

---

213 - *Aspen* *montana*  
"Cedrus" *alberta*  
n. side of divide, 2000  
3000'

---

4, 5, 6 - Jack pine.  
varieties of spruce.  
fir - *domine* *montana*



Mc Gran Hill - ca	1.08
June 26	3.16
July 2	1.08
July 8	1.08
July 15	1.35
July 21	.56
July 29	3.31
Aug. 2	.56
Aug 3	1.60

Rasa'i

Dousette Dafam



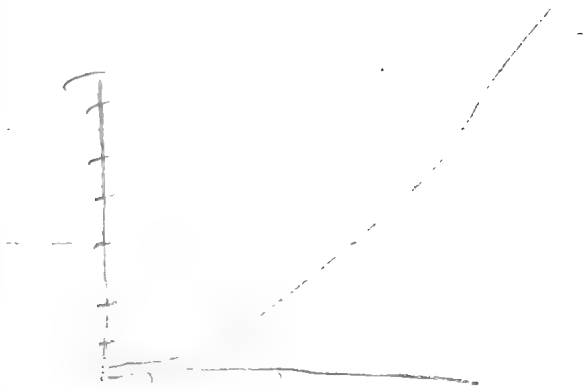
66419 [unclear]

8.15

66417 [unclear]



1	2,000,000
2	4,000,000
4	8,000,000
8	16,000,000
16	32,000,000
32	64,000,000
64	128,000,000
128	256,000,000
256	512,000,000
512	1,024,000,000
1024	2,048,000,000
2048	4,096,000,000
4096	8,192,000,000
8192	16,384,000,000
16384	32,768,000,000
32768	65,536,000,000
65536	131,072,000,000
131072	262,144,000,000
262144	524,288,000,000
524288	1,048,576,000,000
1048576	2,097,152,000,000



Necklace

1000

1000

2000

1000

3000

1000

4000

7,550

$$\begin{array}{r}
 235 \\
 75 \overline{) 17850} \\
 \underline{150} \phantom{0} \\
 285 \phantom{0} \\
 \underline{225} \phantom{0} \\
 600 \phantom{0} \\
 \underline{600} \\
 0
 \end{array}$$

Handwritten notes

333

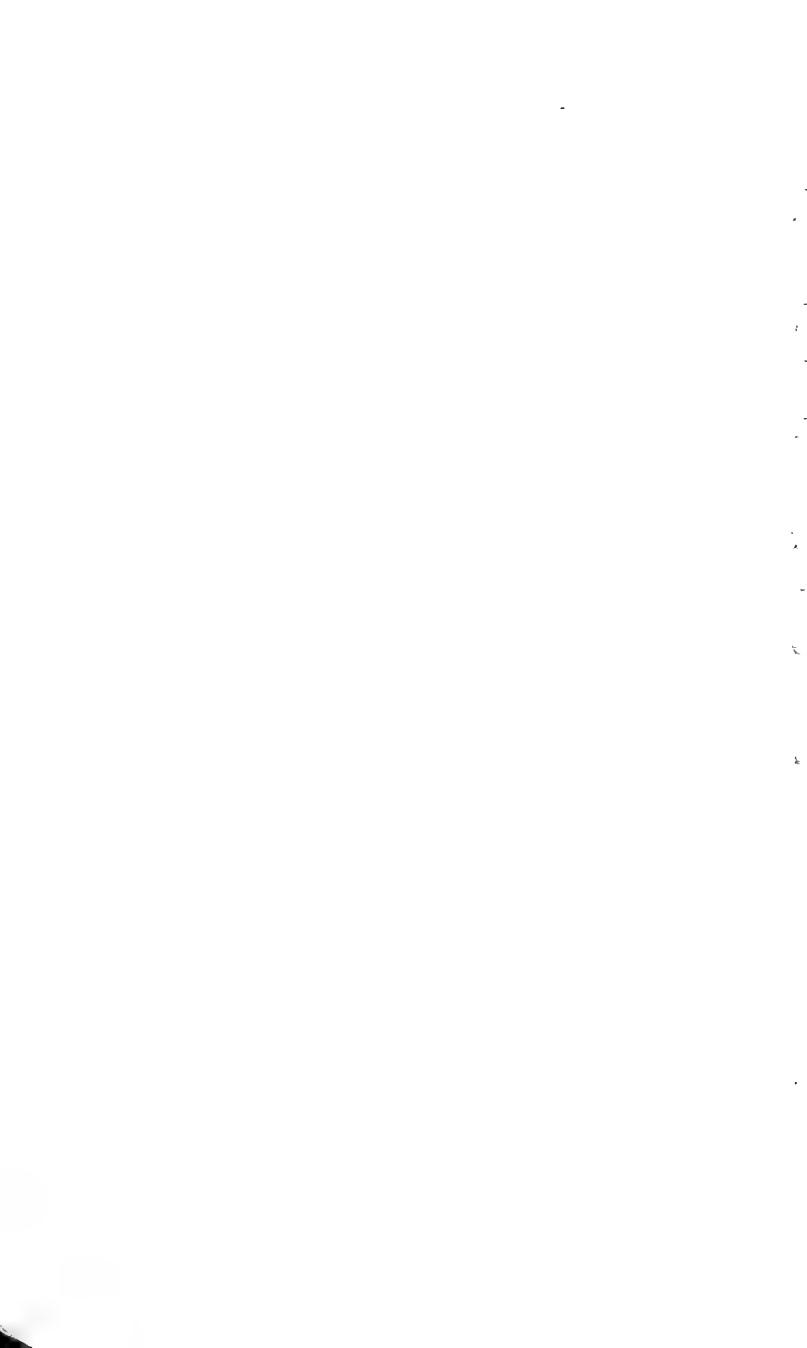
Brunhildergasse

12. Jhd. Tellerfesttage

$$\begin{array}{r} 33.50 \\ 11.17 \\ \hline 44.67 \end{array}$$

34 - 75 - 15

B. F. 1



12. 12. 1908  
17. 12. 1908

Medicine  
Lernen Ernst,

801-

9446-3220 Price

8:



752-0835

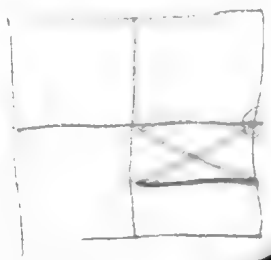
Low Water  
Pie Land Co.  
Walter ...  
Lagan - ...

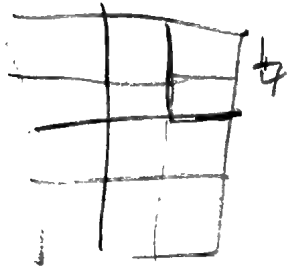
Warranty Deed ...  
to Glenn F. ... + ...  
...

NE 1/4 of SE 1/4 of

Sec 31, Twp 44, R. 6E, ...

NW 1/4 of SE 1/4 of Sec 31.  
30 June 1967







A little 15 m tall  
crack road, Cottentone  
~~fall~~ with ascending  
branches & many  
subsessile small  
purple heads, the  
parts strongly  
~~glabrous~~ tipped  
on glabrous on  
the back, wings  
with a small  
rather small  
specie styles  
conspicuously  
purple about the  
ovoid, white lobes -  
along outflow road  
a stream along  
high basalt cliffs  
between ranch Y  
& Field . 402.1  
with other vegetation  
at the edge of meadow

17  
2  
3

---

We are getting up a  
to the

G O 7779 - md.

X 42 115 - Cal

104. 102 ~~Summ~~

Biological Conservation  
- & Nicholas Poulton

Elstree Park  
Ripple Road, Barking, Essex  
England

encl. 1/15:

Mrs. Natalie Morozova

Lab / Cytology Unit  
Exp. Laboratory

St. Louis

-- Head of Cell Therapy  
at a state



If you will speak to Mrs.  
~~Go~~ Grinjaride, we  
will be happy to take  
care with us. ~~Dr.~~

ES 3-8674

5 S. Tacoma

Bellevue

4416

1307 Park,

The best-planned days  
of mine and mine

---

Koosman's  
in appearance like  
the

Are the Shetlers planning  
to go with us on Saturday?  
It makes a difference as to  
how many cars we use.

Bob + Mae Thorne will come.

Have you spoken to  
him about it?

I see three (possibly only two) Russians; you and Mae, and myself, to make up six if we all go in one car. If we take two, we can add your former student, and the Shetlers, who had also invited Armen and Andrei to go into the Cascades on Saturday - I believe their invitation came later.

- So 1 car with six  
or 2 with 9? What is  
your preference?

W. G. V. ...

Dr. Z. G. V. ...  
1921 of ...  
of the Georgia ...  
... higher ...

Copy of ...

... - also to ...  
... not ...

The considerations are  
that one car is easier to  
... but we ...  
... out.





Tues. 5-7 Willt

16516 - 25.26 months  
open house - W.S. botanical

E III 2-92-6

---

Notes Tony Bill Ford,  
Edwin 2 (2). 1967



Izadi - Building

~~#20 Elizabeth~~ monument

Elizabeth confederation

Elizabeth - Boulevard

---

*Antennaria annua*

has 3-pinnatifid

lobes, each lanceolate,

ca 1 mm wide.

relatively (terrestrial) elements

leaves flat.

Do you know  
Asevaldo Fidalgo,  
a mycologist from  
Sao Paulo?

---

Who is our potential  
mycologist - committee  
member?

---

Schubert  
Linné  
Christensen -  
Cronquist  
Lennart Holm  
Post. In. Dept. Box  
Uppsala

Hossein Lessani  
at Karadi  
Student of Helmsden.

---

A. J.  
McMahon 1072  
Felton 1070

Wednesday, Sept 3-  
Painted Hills State Park  
Campground. 3 P.M.  
Mr. Shekbar 7 thelypodium

Austin III



*Centaurea bieberi* L.  
(Semenov)

sein

Service du Patrouille

212 at summit

231 at small town



Gorgan : - 41300 m

Grosser...

27500 = 3000 l.l.

1/2 a di la Termi di  
Caracalla

Josef M. Kijanian  
Olympic tripe.

Ernesto B. de Just

Ab. Nécessari

#1491

Ab

Ab

to to  $\frac{1}{1000}$

Sh. Nouroozi

Suggested schedule,

Lv Tehran Aug 6 A.M. <sup>Wed 13</sup>

Arrive Vienna Aug 6 P.M.

work Vienna Aug 7-9

Vienna to Rome Aug 10,

work Rome Aug 11-12,

Lv. Rome Aug 13,

Lv. Tehran - Aug. 4

Sabena

8:45 (7:45 checked)

Lv. Rome - Aug. 13

11:00 Am. N9 7:20 P.M.



No 9537 7.4.7

18912 11.11.7

No 71270

Khob =

Khoda ~~Kharas~~ gl  
Hafez

Khahesh mi Konam  
please

Muchasarakat  
mutashakarat

... ..

... ..

... ..

... ..

... ..  
= Ch. descript...

restan  
Cineh h

EVINE - for the West

Dr. E. F. Anderson

KARAWAY

1912

Perhaps 4000 specimens in  
many small boxes. The  
number of the separate  
boxes is 100. Each sheet  
has a separate label  
and is mounted  
with a separate type.

Mr. Behrouzy

3. 2000 - ± 6000 specimens

in small boxes, mounted

with separate labels.

2000 - ± 6000 specimens

preserved in paper - 1000 type

Flore de l'Iran

Jamsa Pajsa

Vol 3 1-5 1948-51

1-1948

2-1948

4-1949

5-1952

Suppl. 1. 1952

Imprimerie Danesh

Téhéran

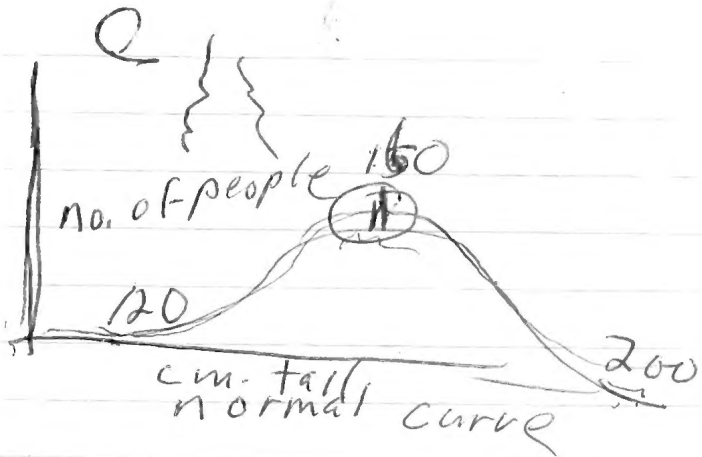
Publication du ministère de  
l'éducation, Muséum d'histoire  
naturelle et ethnographique.

Juncus

Juncaceae

Ginkgoaceae

Jaffarabad - exd.



Schizophyta

=

bacteria and blue-green algae



spores



61

F103402

563.012

Pearse 761452 5-10-69

Kernick - UK

Malone X

Djezeri - Bot. Garden.

Edmanson - Fodder crops - agron.

4000 rials - Iran

Mr. Chan Shah - 24 June 1969 -  
advance.

5000 Iranian Rials 28 June



Kathi  
Tania

43619 ) 100

801-245-3048

# VERNON MEMO. BOOKS

No.	LVS.	RULING	SIZE	
808	40	\$ & CTS.	5 X 3	O.S.
809	40	FAINT	"	"
811	40	"	3 X 5	O.E.
813	40	\$ & CTS.	6½ X 3½	O.S.
814	40	FAINT	"	"
817	72	\$ & CTS.	"	"
818	72	FAINT	"	"
820	72	"	3½ X 6½	O.E.
832	60	\$ & CTS.	6½ X 4½	O.S.
833	60	FAINT	"	"

MADE IN U. S. A.

VERNON  LINE

