

Historic, archived document

Do not assume content reflects current scientific knowledge, policies, or practices.

★ JUN 3 1933 ★
U. S. Department of Agriculture

62, 71

Catalog



"MELDORIC"
(SEE PAGE FIFTEEN)

Iris

" BEARDED
DUTCH
ENGLISH
JAPANESE
SPURIA

Poppies
Lilies

SUMMER
AND
FALL
1933



COOLEY'S GARDENS

810 NORTH WATER STREET
SILVERTON, OREGON

GREETINGS!

TO OUR MANY FRIENDS and customers everywhere we present herewith our offerings of choice Irises, Lilies, and other bulbs and plants. Our collection of iris is one of the best and most modern in the world, and as specialists in this flower we have devoted a major portion of our catalogue to the iris. But lovers of flowers in general will, we hope, find much of interest besides the iris, for we have to offer several especially fine HARDY LILIES, an exceptionally interesting collection of ORIENTAL POPPIES, and some unusual BULBOUS IRIS for the early spring garden. For satisfactory results all of these items should be planted in the summer or early autumn.

NO FALL CATALOG THIS YEAR—EVERYTHING WE OFFER IS LISTED HEREIN

Your attention is directed to a few novelties which we are listing for the first time. These include three new SPURIA iris, the rare and seldom listed bulbous iris JUNCEA, a new lily, the three French irises on page 4, and a new pink introduction on the same page.

COOLEY'S IRIS LIST has been built up during five successive years of personal visits and contacts with iris growers in practically every section of the United States. During this period, Mr. R. M. Cooley has visited at blooming time the famous iris growers and hybridizers in California, Nebraska, Missouri, Indiana, Ohio, Washington, D. C., Philadelphia, New York and New England, Illinois and Minnesota, besides numerous intermediate points. Probably no other iris enthusiast in this country has enjoyed as wide a personal acquaintance with iris celebrities, attended as many iris shows, or viewed a like number of commercial and private iris collections of fame and prominence.

And so, with this knowledge and experience, we have built up an iris planting which is absolutely up-to-date, with a minimum of duplications in color and style, and the purchaser can be assured that if it comes from our gardens, **it must be good!**



A WORD ABOUT OUR STOCK

Oregon, and especially the Willamette Valley, has acquired a world-wide reputation for bulb and plant production. Our gardens are located in the heart of this renowned valley, and all of the stock we offer is grown right here. This fact, coupled with our clean and intensive cultural methods, enables us to furnish plants of a quality that few growers can duplicate. Our iris rhizomes are of exceptional size and vigor, and in many instances one root purchased from us in July or August will reward the owner with two or three flower stalks the very first season after planting.

Our iris rhizomes are NOT IRRIGATED, NOT FERTILIZED, and we have NEVER HAD AN IRIS BORER! Likewise, our lilies and other bulbs are large, sound, and free from pests and diseases. They are grown right here and are perfectly fresh when they start on their journey to your garden.

NO ORDER ACCEPTED FOR LESS THAN \$1.00

Terms: Cash with the order, either check, draft, or money order. Enclosing cash in your letter may result in loss. 25% will hold until shipping date.

Discount: You may select additional plants to the value of 10% of your order if it totals \$3 or more.

THIS DOES NOT APPLY TO THE COLLECTION OFFERS, however. Three of any 25c irises for 50c.

Shipments: Will be made on bearded irises beginning about June 20th. If you wish your order sent later, or on any specific date, we shall carry out your instructions. Early shipments permit plants to become established before winter sets in, but rhizomes are not as large in July as they would be in August. We prefer to ship around July 10th as an ideal time. Bulbs, Japanese and Spuria iris, and Poppies, will not be shipped until the proper planting season, around September 1st, or slightly later.

Transportation: Prepaid express or parcel post, whichever we deem most expedient. Be sure and state your express office, if different from postal address. We pack in dry excelsior in well ventilated cardboard cartons and guarantee safe delivery to point of address. All shipments are insured. Remember, we PREPAY all costs—the prices quoted herein are for delivery to your door.

We Guarantee all bulbs and plants to be true to name, first size, free from disease and pests, and to reach you in live and healthy condition. We do not guarantee them to live or grow in your garden under conditions over which we have no control.



MIDGARD

IRIS PRICES REDUCED!

WE are firmly convinced that the day of the "super-high-priced" iris novelty is passed. Economic conditions throughout this country demand that, if there are any irises to be sold this year, **PRICES MUST COME DOWN!**

It costs us a great deal of money to place this catalog in your hands, and usually an expensive catalog means high prices, but rather than follow this policy now, and then of necessity come out late in the season with a list of drastic reductions, *we are making our cuts right now, in this catalog.*

True, there are a few limited items which we have in very small quantity, and the price on these we obviously cannot reduce. Nor can we supply a first quality rhizome at less than 25 cents unless ordered in quantity, as in the \$2 collections. But, as you turn through the following pages, you will find that most of those real iris aristocrats which you have been waiting to add to your own garden can now be had at **REAL DEPRESSION PRICES!**

Don't wait too long to place your order, if you expect to have your selection filled completely. We have considerable stock, but it may be snapped up quickly.

INDEX

	Page		Page
"Asia \$2 Collection"	21	Japanese Iris	28
Bearded Iris List	6 to 23	Juncea, a New Bulb Iris	26
"Clara Noyes" Collection	13	Lilies, New Sunset Lily	30-32
Cultivation of Bearded Iris	24	"Midgard" Collection	13
Cultivation of Bulbous Iris	24	New Introductions	4
"Dolly Madison" Collection	9	Oriental Poppies	29-30
"Desert Gold" Collection	9	"Phebus" Collection	5
Dutch Iris	25	Reticulata Iris	26
Dwarf Iris	26	Spuria Iris	26
English Iris	27	Terms, etc. READ IT!	2
"Frivolite" Collection	5		

New

IRISES from FRANCE

TWO years ago American iris enthusiasts visiting in France brought home glowing accounts of three new seedlings produced by that master hybridist, M. Cayeux, of Paris. Of course he exhibited thousands of seedlings in his gardens, but three of them were especially fine and excited comment from every English and American visitor. As soon as we heard about them we promptly ordered a few rhizomes of each, and despite their long journey over the Atlantic and thence across the United States, they reached us in splendid condition and flowered beautifully the following May.

These new irises, which will be released from Federal Quarantine about July 1st, are herewith offered for the first time in America.

JEAN CAYEUX

This is the most beautiful iris we have ever flowered in our gardens. Likewise, it is one of the most unusual in color—a soft, smooth light buff, described by some as “coffee colored” and by others as Havana-brown. The form is perfect, as the accompanying illustration shows, and the size is larger than average. In our garden it was splendidly branched, over three feet tall, and flowered over a long season. Jean Cayeux has been awarded a Certificate of Merit by the French Horticultural Society and won the Dykes Medal in 1931 for the finest iris introduced that year. Very limited stock this year.

Each \$20.00

MARQUITA

A well named iris in brilliant luminous ivory yellow and ochraceous maroon. The standards are ivory deepening to sulphur at the base; the falls are of the same color but are heavily and entirely lined with dark but brilliant maroon, giving to the flower a most striking and novel appearance. Limited stock.

Each \$12.00

PRESIDENT PILKINGTON

A very lovely pastel blend, which at one time bore the appropriate name of “Apparition”. When



JEAN CAYEUX



Mr. Mead saw it blooming in France, he described the color as “a lavender-blue elephant tone”, suffused with bronze. A huge flower, the stalks splendidly branched to 4 feet tall.

Standards are pale buff, with faint bluish and slightly rosy cast. Falls, wide and flaring lavender-blue with buffy yellow suffusion paling at the margins. Beard golden yellow.

Each \$10.00

ETHELWYN DUBUAR

Introduced for the first time. A deep pink self, grown by E. G. Lapham of Elkhart, Indiana. This is a huge flower, very much larger and a much deeper color than his “Eloise Lapham”. “Ethelwyn” is a very heavy flowerer, a single clump producing a solid mound of rich pink. Three feet tall. Beard lemon yellow.

Each \$5.00; three for \$12.00



“ZUNI”

“FRIVOLITE”

“PHEBUS”

Special Frivolite Collection

Any 8, Your Choice, for \$12.00

Frivolite, Andante, Britoness, Columbine, Grace Sturtevant, Gold Top, Hassan, Indian Chief, Los Angeles, Melchoir, Mirasol, Rosakura, San Diego, Henri Riviere, Sir Michael, Pluie D'or, Sunlight, Tuscany Gold.

Special Phebus Collection

All Rare Novelties!

Any 5, Your Choice, for \$25.00

Phebus, Buechley's Giant, Depute Nomblot, Dogrose, Meldoric (see cover), Ministre F. David, Pink Satin, Red Robe, Mary Geddes, Largo, Nurmahal.

THE WORLD'S FINEST IRISES



AMBER WAVE

AMBER WAVE

A luminous amber yellow self, suffused and shot with olive bronze. The falls have a lovely faint velvety violet blue flush at the haft, which is heavily reticulated. The whole flower is perfectly proportioned and well balanced, with very broad standards and falls, which characteristic it owes to one of the parents, Mrs. Valerie West. Height 3 feet. Very late.
Each \$4.00

ALLIES

An autumn flowering iris that, with us at least, has not only bloomed in the spring and fall, but throughout the summer as well. Those who already have among fall bloomers the white, purple, and yellow varieties from the Sass Brothers, will welcome this French variety, because it adds a different color note—one of red-brown and fawn, with some of the pigment found in Dauntless, although by no means as red. Rhizomes are usually quite small, but the flowers are of large size, and there just seems to be no end to its blooming possibilities.
Each 60c; three for \$1.50

ADOBE

A rich, soft, reddish buff combination that impressed me as the finest and most distinct of the Longfield seedlings when I visited there in 1930. The

stems are slender but the flowers are of very large size and well spaced. This is a lovely and very unusual blend, the colorings being suggestive of the name. Very few rhizomes for sale; **each \$7.50**

ALIQUIPPA

Good sized pale yellow with luminous center of deeper coloring. This iris, which has received a silver medal of the A. I. S., is a very free bloomer and increases rapidly, thus being especially desirable where a mass of soft yellow is wanted in the garden.
Each 25c; three for 50c

ANNE-MARIE CAYEUX

The smooth, soft tones of this iris are indescribable. The introducer says "a delicate blending of the sky's colors at sunset and those of a pigeon's throat." The flowers are very large, of an unusual thick and leathery substance. The whole effect is wonderfully beautiful—soft rosy heliotrope blended with greyish amber, beard orange. One of the finest things ever to come from France.
Each \$5.00

ASHTORETH

A delicate yellow of very large size and perfection of form, raised by Eugene Baudry of Massachusetts. At the Boston show in 1930 it was awarded an H. M. and created a very favorable impression at Freeport, Illinois, last spring. One of the best of our several outstanding new yellow irises.
Each \$12.00

ALLURE

An English silver medal winner, with ruffled flowers of blended tones in yellow and soft lavender-pink. The stems are slender and graceful, and it makes a lovely cut flower.
Each \$1.00; three for \$2.00

AMBASSADUER

A magnificent and very dependable iris that every garden should have. Bronze standards and rich red-brown falls, large in size, and of bold growing habit.
Each 25c

ANDANTE

The Longfield Iris Farm introduced Andante in 1930 as a greatly improved Germaine Perthuis. The great black buds unfold into flowers of perfect form and wondrous beauty. General effect is darkest purple, with very bright orange beard. One of the excellent features is the almost total absence of veining.
Each \$2.00; three for \$5.00

ANTARES

Fine new French introduction, but little known. Creamy standards, white falls, speckled and overlaid blue. Large bloom of unusual fragrance, and a novel color effect.
Each 35c

APACHE

A small flower of distinct red or crimson brown coloring. Makes a wonderful mass, and increases rapidly.
Each 35c

APHRODITE

Very fragrant and beautiful violet-pink self, with white flushed throat. Tall stalks, lasting long in bloom. **Each 30c; three for 80c**

ARGYNNIS

Very late sort with rich yellow standards and chestnut falls. Tall, slender stalks. One of the best variegatas. **Each 25c**

ASIA

One of the most famous irises ever offered and still one of the best and most distinct. Standards silvery lavender, shading to yellow. Falls pale red-purple, lighter near the margins. Very brilliant beard. Blooms of huge size, on four-foot stems. (See page 21. **Each 30c; three for 80c**

BALDWIN

One of the largest varieties, of a peculiar shade of manganese violet. A sort of heliotrope color, with monster blooms freely produced. **Each 75c**

BALLERINE

Another old but popular variety. Individual style and shape, carrying soft, silvery, lavender-blue flowers of great size. **Each 25c**

BELISAIRE

A fine blend, with light tan standards and pinkish cinnamon falls, overlaid brown. Superior to either Dejazet or Isoline. **Each 50c**

BONITA

A bright clear yellow, flowers of medium size, but well branched and produced abundantly. This is fine for massing, or to provide a rich yellow effect in the iris border. **Each 25c**

BEAU SABREUR

A rich variegata introduced in 1930 by the Longfield Iris Farm. Bright orange-yellow standards, lightly stained bronze; falls very rich and velvety, of deep red-brown. This is a very rapid increaser, a single rhizome making a clump in one year's time. The new "Crown Prince" is a flower of this type, but of much greater size and height. **Each \$1.00; three for \$2.50**

BLACKAMOOR

Nearly black until half opened, then taking on deepest blue tints, with a blue beard. A giant flower on a tall and heavy stalk, finely branched. H. M. AIS 1931. Very limited stock. **Each \$5.00**

BLUE VELVET

Few irises have received more favorable comment during the past three years than has this rich velvety seedling from the hand of Dr. Loomis of Colorado Springs. An iris of the Swazi type, larger, bluer, and finer in every way. Not very rapid of increase, it will be in demand for a long time to come. **Each \$4.00**

BRITTONESS

Pale lemon-cream, of Moonlight derivation. A very new introduction from England which has had little publicity, but is deserving of a place among the

iris aristocracy. Blossoms of great size, slightly ruffled, splendid stem and branching habit; slightly tender. **Each \$2.00**

BRUNO

This Dominion seedling is the parent or grandparent of a large majority of the finest Dominion strain irises of recent introduction. It stands today as one of the largest, richest, brightest and most velvety of all irises, and no collection should be without it. Standards are rosy fawn shading to yellow at the base; falls a glowing rich red-brown, edged with buff. **Each 50c; three for \$1.00**

BUECHLEY'S GIANT

Introduced by C. F. Wassenburg of Van Wert, Ohio. Like our old favorite, Lord of June, but of even greater size, on cane-like stalks and of wonderful substance. A great advance in the blue-toned group. **Each \$10.00**

BUTO

A very dark, solid purple, from the Sass Brothers, one of the darkest of all irises, and a very early one. Flowers are of large size, rounded in shape, and without any veining or reticulation. A very free blooming iris on medium height stems. **Each 50c**

CAMELLIARD

Fairly recent, not especially rare, but one of the best and most brilliant light type variegatas. Towering to four feet or more, a clump is a distinctive, high-light in the garden. Standards clear amber yellow, falls flushed light purple, yellow near the edges. One of Miss Sturtevant's best. **Each \$1.00**

CAMILLA DUBUAR

A pink self of good size, prolific in blooming habit, and with rampant foliage that is highly regarded as suitable for pool planting. This is something different. **Each \$1.00**

CANDLELIGHT

Pale pinkish buff, entirely overlaid lavender. Very tall, with vigorous foliage, and rapid of increase. **Each 60c**

CARDINAL

Certainly one of the best of all Dominion seedlings, and in fact one of the world's finest irises. Massive in size, with broad falls of deep, velvety, crimson-purple. Indispensable. **Each 80c**

CARFAX

This striking iris, produced on stems that branch four-way, six to eight in number, is heralded in England as an advance in iris breeding comparable to the introduction of Dominion. The blooms are huge, splendidly formed, and in color are a rich auricula red purple. The beard is inconspicuous, there being nothing to detract from the intense richness of the velvety falls. Height close to 4 feet. Carfax is another silver medal winner. **Each \$5.00**

CAROLINE E. STRINGER

A few years ago the Sass's gave us this lovely apple blossom pink—a pink so pale and delicate that it is almost a tinted white. It still stands as one of the really excellent things in fine iris, and at the present very low price no one should be without it.

Each 35c; three for 90c

CINNABAR

Wonderfully rich, deep purple, medium size flowers on tall stems.

Each 75c

CITRONELLA

Truly one of the finest garden irises, with brilliant yellow standards, and falls of the same color heavily stained carmine. Quite tall.

Each 25c

CLARA NOYES

A lovely warm blend from Hans Sass. At the time of my visit to his garden in 1930 I selected this as my favorite, and was equally impressed again last season. It was the favorite of all visitors to our own planting last May, and all of our available stock was quickly sold out. The coloring is a medley of peach and apricot tones, suggesting perhaps the rich and brilliant blendings of the rose "Talisman". Sherman Duffy says of it: "Perhaps the most strikingly colored of all the new irises I saw this year and one that attracted attention wherever shown. A very brilliant and beautiful iris that everyone wanted at sight." See reproduction on page 13.

H. M. AIS 1931. A. M. 1932.

Each \$3.00

CLASSIC

This was a "find" in the writer's trip through the mid-West in 1930. A gorgeous thing of the Asia type, of Dominion form and texture, with wide, flaring falls, and a stiff, cane-like stem. The huge standards appear to be fashioned out of gold leaf, gradually shading to reddish-lavender in the upper portion. The beard and center of the flower glows so vividly that Mr. Grinter, the hybridizer, says that when he looks into it, it almost seems to be alive. Classic is distinctly different from the average run of introductions, and we heartily recommend it.

Each \$4.00

COLUMBINE

Introduced as a white Aphrodite, one of the parents. As clean and clear as a crystal, with lovely form, slender branching stems, this free flowering white is distinct from all other white irises, and as a result it was awarded the silver medal at the English Iris Society's exhibit in London in 1930. Columbine is a very fast multiplier, our own stock increasing about 50 to one in three years.

Each \$2.50

CORONATION

For those who do not feel like investing in the newer yellows offered in this list because of the higher cost, we sincerely recommend Coronation. It is a uniform deep yellow, absolutely hardy, doesn't fade, and compares well with irises of recent introduction in other colors. Our large stock has been built up to meet the demand which we felt sure would come when growers realized the value of this yellow.

Each \$1.00; three for \$2.00



DAUNTLESS

COPPERSMITH

A very tall and robust iris with large flowers of copper-bronze, overlaid with velvety red.

Each 50c; three for \$1.00

CROWN PRINCE

For years Dr. Kleinsorge has been working for a true variegata with giant size, Dominion form, and on a tall and well branched stem. Crown Prince is a supreme achievement, and no other variegata seen in the four corners of the country compares with it. The standards are a solid deep orange-yellow, the falls solid velvety brownish-red. Crown Prince has every desired characteristic. It is the variegata that not only the Doctor has been looking for, but every other iris connoisseur as well. Very few plants.

Each \$15.00

DAUNTLESS

The peer of all red irises, a Dykes medal winner in America, and certainly one of the finest things ever introduced. The blooms are of great size, on tall stems, and flower over a long season. In color Dauntless appears much redder than most other so-called red irises, due partly to the fact that it carries a mixture of orange and brown in its pigment and very little blue or purple. Across the garden it glows like fire.

Each \$3.00; three for \$8.00



"DOLLY MADISON"

"INDIAN CHIEF"

"DESERT GOLD"

Dolly Madison Collection

Any 10, Your Choice, for \$5.00

Omaha, Swazi, Coronation, Surprise, Messaline, Sikh, Frieda Mohr, Dolly Madison, Beau Sabreur, Euphony (see cut, page 13), Ophelia, Purissima, Le Corregge, Cinnabar, Allure, Buto, Sonata, Cardinal, Elsinore, King Tut, Kansas, Labor, Lindbergh, Michelline Charraire, Realm.

Desert Gold Collection

Any 5, Your Choice, for \$15.00

Desert Gold, Rameses, Blue Velvet, Eloise Lapham, Amber Wave, Carfax, Classic, Goldilocks, Legend, M. A. Porter, Senlac, Vert-Galant, Erebian, Mrs. Herbert Hoover, or Eothen.

DEPUTE NOMBLOT

The world's greatest iris. Blooming for the first time in America during the season of 1930, it almost bowled over all who saw it. Since that time it has proven worthy of first impressions, and from England and France, as well as from all sections of this country, come songs of praise for this imposing giant of the race. Standards light glowing rosy-purple, overlaid bronzy-gold. Falls very wide, spreading, purplish garnet-red, shading to lighter rosy-bronze at the edge. Deep orange beard. Over four feet tall, wonderfully well branched. Depute Nomblot received a certificate of merit in 1929 at the Paris show, and in 1930 was awarded the Dykes medal.

Each \$7.00

DELIGHT

Very lovely plicata with only the rose style branches to detract from its whiteness.

Each 35c; three for 90c

DESERT GOLD

A very early, very large, and extremely fine addition to our growing list of yellow sorts. Desert Gold is not a deep yellow, nor is it a pale yellow comparable to anything we now have in this class. Standards are large and domed, pure light yellow. Falls are extra broad and are a very light yellow, but the central portion is of an unusually brilliant chrome, with a heavy, deep yellow beard, and this makes for an effect not present in any other yellow. It certainly is deserving of a position among the best new introductions. Nothing else like it. See cut on page 9. H. M. AIS 1931. A. M. 1932.

Each \$5.00

DOLLY MADISON

With the blended colorings of an intensified Quaker Lady, and size, branching habit and height comparable to the best, this Williamson introduction has no superior in its class. As the Longfield catalogue states: "Eventually you will own Dolly Madison." It carries some of the shades found in the new French varieties, Anne Marie Cayeux and Evolution. Reliable everywhere, and certain to evoke the admiration of all who see it. See cut on page 9.

Each 75c; three for \$2.00

DOGROSE

A very beautiful, superb pink iris, with very large, oval shaped flowers in a uniform shade of soft pink, with deep gold beard. The stalks are almost shoulder high, and in the English trial grounds at Wisley it proved a sensation. American visitors at the English shows were struck with its beauty. Dogrose was awarded the silver medal at the London show when exhibited as a seedling in 1929. Very limited stock.

Each \$8.00

DREAM

An old standby among the pinks. Rapid of increase and a picture in the garden. You must have it.

Each 25c

DUKE OF BEDFORD

One of the best of the Dominion race, with very large flowers of dark violet and rich purple.

Each 25c

DUKE OF YORK

Exquisite soft lavender-mauve, with tall and beautifully branched stalks. Vigorous and free blooming.

Each 25c

EGYPT

A grand iris of immense size and great substance, enduring wind and rain, as well as a strong sun. The flowers are of Mme. Gaudichau shape, but measure over five inches from top to bottom. Broad standards, stiff and erect, of a livid bronzy-violet. Falls very large, long and drooping, of deep velvety maroon-purple, with black sheen. Bright gold beard. Very little reticulation. A robust, free blooming, very tall and well branched new English variety from the firm of R. Wallace & Co.

Each \$3.00

EL CAPITAN

Giant blooms which always evoke exclamations of surprise. A bicolor of light manganese violet, of perfect shape and of excellent habit.

Each 75c

ELOISE LAPHAM

Raised by
MR. E. G. LAPHAM
Elkhart, Indiana

This delightful pink iris was discovered upon the occasion of my first visit to Elkhart in 1930. The color is indescribably soft and smooth, an even tone of delicate flesh pink, and the substance is like kid. The flower itself is about the size and shape of Midgard, and of medium height. As a clump in Mr. Lapham's garden it drew instant attention, and its rapid increase and freedom of bloom will be sure to make it a great favorite.

H. M. AIS 1932.

Each \$7.50

EL SINORE

A flower but little known, and one which is deserving of greater popularity. I found it blooming in splendid form in several gardens in New York, Connecticut, and about Boston, and it made an instant hit with me at least. Of only medium size, its dainty blossoms of pale primrose-yellow are delicately edged and stained violet, and are produced abundantly. Something different. Try it.

Each 75c

EOTHEN (Out of the East)

Soft, ivory-yellow, entirely overlaid buff, producing an effect of rich antique ivory. Typical Dominion shape, the falls flaring widely, and with domed standards. Large blooms, freely produced, make this a marvel in the garden picture.

Each \$5.00

EREBIAN

A self of rich, dark, bordeau red, lightened by a heavy gold beard. This iris, another of Dr. Loomis' wonderful seedlings, was one of the finest things I saw at Freeport in 1930.

H. M. AIS 1930.

Each \$5.00



WM. MOHR

EUPHONY

The Sass Brothers have given us, of late years, a series of irises of the Ophelia type, ranging in tone from deep yellow-browns to pale yellow-pinks. Euphony is one of the most beautiful and distinct of all this series. The standards are mustard yellow, waved and fluted, stained with light brown at the tips. Falls are squarely held, mustard yellow, flushed with blue in the central portion and overlaid soft brown. This is a lovely and bright color harmony, and the great freedom of bloom of this variety makes it a heavy favorite. See color reproduction on page 13.

EVADNE

Each 75c

Beautiful bronzy rose-red. This is one of the most brilliant of all irises when seen in a mass or clump. Sure grower and tremendous multiplier. Each 25c

FISMES

Seldom offered and quite rare. A large blend of cream, yellow and olive, with rich orange beard.

Each 35c

FRIEDA MOHR

Dependable anywhere, despite the fact that it was originated in California and contains tender blood. I have found it perfectly at home in Ohio, Minnesota, and New England, as well as in the moist climate of the Pacific Northwest. The color is a lively shade of violet-pink, standards slightly lighter than the falls. Its huge size and great height make it a leader in any color class. Each \$1.00; three for \$2.00

FRIVOLITE

This French introduction is offered as a great improvement upon the variety Marquisette. The general effect is one of rich and brilliant shrimp-pink, the entire blossom seemingly dusted with gold dust. Mr. Sherman Duffy, eminent iris authority and writer, states in Bulletin No. 41 for October, that during the past blooming season Frivolite made a distinct impression upon him, and that he considered it the finest thing in its class. A very lovely and unique novelty. Rapid of increase. See cut on page 5.

Each \$2.00; three for \$5.00

GAVIOTA

A creamy white plicata, with yellow and brown stitchings. Very fast increaser, and a color combination seldom seen.

Each 25c

GAY HUSSAR

A gay thing, indeed! A combination of richest and brightest yellow and velvety ox-blood red falls.

Each 75c

GEORGE J. TRIBOLET

This variety, rating 90, is one of our finest very dark irises. The color is blackish-purple, overlaid with a bronzy suffusion, and lit with a fine yellow beard. Vigorous and tall.

Each 25c

GEORGE YELD

An attractive and brilliant combination of apricot and crimson, the standards shaded rose, and the falls edged with a narrow band of buff. Another very easy grower and exceptionally prolific bloomer.

Each 25c

GERMAINE PERTHUIS

A wonderful iris, with substance like leather. A huge, glowing flower of bright red-purple, with a fiery orange beard. Very fragrant.

Each 60c; three for \$1.50

GLOWING EMBERS

Tan or chamois colored standards; falls of rich crimson with netted hafts of orange and yellow. Large bloom, very tall, and with heavy foliage.

Each 35c; three for \$1.00

GOLDEN PROMISE

Clear yellow standards, the falls yellow with lavender and golden bronze tints near the haft.

Each 35c; three for \$1.00

GOLD IMPERIAL

A solid chrome yellow self. Exceptionally rapid of increase, it soon makes a golden spot in the border.

Each 25c

GOLD STREAM

A very tall cream-yellow, with brilliant orange beard, giving it a very striking appearance.

Each \$1.00

GRACE STURTEVANT

Almost black-brown when first opening, this huge velvety Dominion seedling stands as one of the most popular of all irises.

Each \$2.50

GOLDILOCKS

Uniform yellow of a smooth, soft finish. I saw a splendid clump of this blooming in Mr. Wayman's garden. Not only is it one of the loveliest yellows we have, but the style and finish of the flower is especially pleasing. It was loaded with blooms, on three-foot stems, and the low and numerous branches make it a showy subject in the garden. An extra rapid increaser of unquestionable hardiness. Each \$5.00

GOLD TOP

Introduced by Carl Salbach in 1931. Rich old gold standards, set off by falls that are red violet in the center and edged old gold. The style arms and beard afford a further touch of gold. Blooms very early and continues all through the season, the colors growing richer as the season advances; 42 inches tall and well branched. To me, this iris presented the novel appearance of being fashioned out of brass, because of the odd brass-yellow color effect. You surely will like it.

Each \$2.50; three for \$6.00

HASSAN

This is a seedling of Zulu crossed with Moonlight, carrying the Dominion form and substance of the former and the general color tone of the latter. The standards are a glistening sulphury yellow, the falls quite similar, overlaid and suffused smoky violet with heavy greenish gold reticulations on white at the haft. Certificate of merit at the London show in 1930.

Each \$2.50; three for \$6.00

HERNANI

Among the brightest and most free flowering of the red group. The standards are rosy red, the falls are very brilliant garnet-red and are held horizontally. Planted with such pinkish toned varieties as Frivolite it presents a most striking pure red effect. Mr. Wister had a fine clump of this when I visited his garden in 1931 and I thought it the reddest iris I had seen at that time.

Each \$3.00

HENRI RIVIERE

The huge waxen standards are solid lemon yellow, the broad falls are delicate mauve, edged canary yellow and blending into canary yellow at the throat. An exquisite pale blend, the predominant note being bright yellow. This iris is of very large size, produced on vigorous stems, and M. Millet, the French hybridist, regards it as his highest achievement.

Each \$2.50

INDIAN CHIEF

Well named, for while classed as one of our superior reds, it carries a bronzy overcast, being regarded by some critics as a red blend. At any rate, Indian Chief is one of the most popular of the newer things, and a credit to Doctor Ayres, its introducer. A stalk of this was exhibited at the Boston show, and was one of the most talked of irises in the entire display. The velvety falls are deep blood-red, blended with bronze, and the standards are considerably lighter in tone. A large flower, quite tall, and very well branched. Shown in color on page 9.

Each \$2.00; three for \$5.00

IMPERATOR

A rose-red self, overlaid bronze and with considerable brown at the throat. Flower of good size and shape.

Each 35c

ION

An improved "Swazi" of great size, very deep Bradley's violet of wonderful form and immense size. Cream beard.

Each \$1.00

JANE WILLIAMSON

Exquisite blend of rose, old gold and maroon. Not large, but very floriferous and especially lovely.

Each 50c; three for \$1.25

JEAN CHEVREAU

A dainty speckled plicata of cream and white, heavily dotted with brown and flushed buff.

Each 25c

JEAN CAYEUX

The most striking new iris flowering in our gardens last season. This sensational flower is fully described on page 4, being one of our foreign novelties offered for the first time in America.

Each \$20.00

JULIA MARLOWE

Large and tall, giving a pink and red effect. One of Shull's best introductions.

Each 25c

KING TUT

One of the inherent qualities of the many new Sass irises is the element of rich red-brown in the various color schemes. This has been accomplished through the use of King Tut in the various crosses, and in spite of his almost countless progeny, the King still remains the most brilliant of all, blazing in the sunlight like a live ember. Easy to grow, a free flowerer. Every iris grower should have it.

Each \$1.00; three for \$2.50

KANSAS

This iris was introduced by Walter Timmerman, of Kansas City, and although but little known, it is certainly one of the very finest, large flowered, rose pink varieties. The color slightly resembles Frieda Mohr, but the flower is of an entirely different shape, being more rounded and without the wide, flaring falls. It is just a little lighter in tone, with a pale yellow beard.

Each 75c; three for \$2.00

KING MIDAS

One of the first of the tall bearded irises to flower. Of a soft and bewitching tone of golden buff overlaid garnet brown. The heavy beard is deepest orange, and the entire center of the bloom is illuminated with intense golden lights. Perfect in every detail. Medium in height.

Each \$2.50

KING SOLOMON

One of the recent arrivals from England that was heralded as a giant and improved Dominion. We paid \$50 for a single rhizome two years ago, but in our garden it has failed to come up with such things as Meldorie and Blue Velvet. For those who care to try it, we offer our limited stock at—

Each \$2.00

KLAMATH

A great, heavily textured, perfectly formed flower in tones of deep mulberry, bronze and brown. Not brilliant, but remarkably rich and sombre, suggesting a rare antique or valuable old tapestry.

Each \$2.50; three for \$6.00



"MIDGARD"

"EUPHONY"

"CLARA NOYES"

Special Midgard Collection

Any 10, Your Choice, for \$3.00

Midgard, Allies, Candlelight, Coppersmith, Delight, Fismes, Germaine Perthuis, Jane Williamson, La Bohemmiene, Labor, Montour, Rheingauferle, Romolo, Rosa Bonheur, San Louis Rey, Vesper Gold, Wedgwood, or Bruno. Or any of those in the "Asia" collection on page 21.

Special Clara Noyes Collection

Any 10, Your Choice, for \$20.00

Any 5, Your Choice, for 10.00

Clara Noyes, Dauntless, Egypt, Mable Taft, Sacramento, Tapestry, Venus de Milo, Persia, Zuni (see cut, page 5), Klamath, Peaches, Wamblika, or any of those in the "Frivolite" collection on page 5.

KING KARL

A dotted and sanded plicata in apricot tones, with specks of brown and red, giving it a unique and attractive effect. A large flower; late. **Each 40c**

LA BOHEMIENNE

A queer thing in deep hellebore red, bright orange beard. Small, but certainly a novelty.

Each 35c; three for 90c

LABOR

A deep garnet colored flower, overlaid with a copper and bluish sheen. This unusual tone has made Labor one of the best sellers of the past two seasons. This iris crowds Opera out of the picture, and is most effective as a clump where its intense color can be displayed to most advantage.

Each 60c; three for \$1.50

L'AIGLON

A flower of coppery tones, shaded red. Strong growing, with very fine large flowers abundantly produced. I recall a wonderful clump of this in Mr. Mead's garden in Fort Wayne, Ind. At that time I thought it superior to Coppersmith, which it resembles, and many regard it the best of Shull's introductions.

Each 50c

LE CORREGE

A very deep red-brown, with glowing orange beard. The standards are overlaid bronze. A browner and richer Ambassadeur; a really great iris.

Each \$1.00; three for \$2.00

LEGEND

A huge flower of the Cardinal type, rich deep claret in color, with heavy velvety falls. One of the largest and most majestic irises in our garden. It is taller than Cardinal, darker in color, and very much larger. An introduction from the Wareham collection, in Cincinnati, Ohio.

Each \$4.00

LINDBERGH

A new variety, having standards of lavender blue and falls of rich violet blue, bordered lavender. A striking flower.

Each 75c

LOELIA

An odd but very beautiful flower of deep heliotrope overlaid copper. This is a recent French sort, and very rare.

Each 50c

LOETITIA MICHAUD

Gigantic in size, perfect in every detail, this iris retains its popularity in spite of numerous competitors. Of an even tone of soft lobelia-blue, a little deeper than the blue of the sky, a light yellow beard for contrast. This oftentimes grows shoulder high, and is one of the many irises classed as tender that can be depended upon to thrive in almost any section of the country. Among the indispensables.

Each \$1.00

LODESTAR

A variegata with brightest yellow standards, and very dark falls. It made a fine showing in Mr. Wister's garden, and I was pleased to find a beautiful clump in Mr. Wayman's display on Long Island. Of such perfection in every way that I felt I could not do without it, even though we have two richly colored irises of this type in Crown Prince and Beau



MELDORIC

Sabreur. Lodestar is quite different from either of these. **Each \$1.00**

LOS ANGELES

Sister seedling of the wonderful plicata San Francisco. A giant in size, snowy white, with faint edgings of lavender-blue. Splendid stalks were on exhibit in the St. Paul iris show, and it was growing and blooming lustily in the Schreiner garden in that city, indicating that it is really quite hardy when once acclimated.

Each \$2.00

LORD LAMBOURNE

Very early, a tall and prolific blooming iris in tones of rosy fawn and brilliant madder crimson. Hafts netted with brown and gold. One of the very best irises at a low price.

Each 25c

LARGO

This is one of the two or three most outstanding new irises the writer saw last season. Really an un-found gem, because it has received almost no publicity and very few have ever seen or heard of it. The flower is of extra fine form and size, the stalks very tall and perfectly branched, and it lasted over a long period. Color is a harmony of wax yellow, mustard yellow, and citron yellow, the falls delicately overlaid mauve. In a class with Henri Riviere, Cameliard, and Gold Top, but having characteristics all its own; we regard it as the finest of the lot.

Each \$7.50

MARY GEDDES

A genuine novelty. "Indeed, it is one of the most stunning in color I have seen this year—or any year. It was so lovely we returned to it several times, going the following day to see it in its home garden, where it stood out among hundreds of seedlings. It is tall, the bloom well placed on a nice stalk. A self color of light ochraceous salmon, which should intrigue one planning for color in the garden."—Mrs. Hires, in A. I. S. Bulletin for July, 1930. A seedling raised by T. A. Washington of Nashville, and introduced by Mrs. Thos. Nesmith of Lowell, Mass.

Each \$8.00

MABEL TAFT

A giant Dominion violet blue, particularly outstanding among irises of this color class. Long admired by critics visiting the Taft estate, and Mr. Wareham has always been urged to introduce this.

Each \$3.00

M. A. PORTER

A very large seedling produced by E. G. Lapham, of Elkhart, Ind. Standards are close to Gaudichau in color, with much darker falls. A very deep violet of heavy substance, with brilliant orange beard. The growth of stem and leaf is very rampant, indicative of its vigor and size.

Each \$7.50

MAGNIFICA

As the name implies, a grand thing of monster size; a bright, glowing red violet, with throat overlaid soft brown. The standards are lighter in tone, almost pink, and exceptionally broad. A most impressive variety.

Each 25c

MAJESTIC

Standards clear blue, flushed bronze; falls broad and squarely held, of brilliant raisin purple. A Dominion seedling of wonderful form and huge size, with very tall and well branched stalks.

Each 25c

MELDORIC

Finest dark iris in existence today. This was a sensation in the gardens of Dr. Ayres in Cincinnati for two years, prior to our acquisition of the stock and subsequent introduction of it in 1931. It has created a fine impression in England, where it has flowered for two seasons.

Meldoric combines the richness of Dominion with the size and majesty of Mesopotamica, without the tenderness of the latter strain. The flowers are blue-black in effect, colossal in size, with broad, flaring falls and huge standards of darkest hue. It is more purple and less blue than Blue Velvet. This magnificent iris carries the endorsement of almost every iris critic who has seen it in flower. A gorgeous stalk, almost shoulder high, flowering in Weed's Gardens at Beaverton this past season, was the very finest single specimen iris this writer has ever viewed. See color reproduction on cover.

H. M. AIS 1931.

Monster rhizomes, each \$7.50

MARY BARNETT

A beautiful clear blue self with exceptionally brilliant center. This is a free blooming sort, and gives a very remarkable pale blue splash of color.

Each 35c; three for 90c

MARY GIBSON

Soft blend of peach and apricot. An entrancingly beautiful variety, producing many flowers on tall, wiry stems. Rapid of increase and a sure grower.

Each 25c

MESSALINE

One of the fairly recent French sorts which is known to but few growers. The standards of this iris are especially gorgeous, appearing as if covered with gold dust; the underlying color is light chamois. Falls are corinthian red, striped cream and buff. A large and tall iris, with broad foliage tinged purple at the base. We have built up a nice stock and offer it at a very reasonable price.

Each \$1.00; three for \$2.50

MELCHIOR

In many ways this was the outstanding iris blooming in our gardens in 1932. The deep velvet-maroon flowers left nothing to ask for in either size, shape, or all-round iris perfection. My own color description would be "a self of velvety-garnet, with beard of bronze-yellow." Melchior was introduced in England as an improved Mrs. Valerie West, but with us it is distinctly different, and we personally regard it as one of the world's very best.

Each \$2.00; three for \$5.00

MARQUITA

The brilliant new French iris which is offered for the first time in this country. Complete description on page 4.

Each \$12.00

MARQUISETTE

An odd tone of "shrimp pink". This is slightly similar to Frivolite, except that it is several shades lighter and lacks the golden sheen of this newer sort. Marquissette is most effective when established as a two-year clump.

Each \$1.00

MAGENTA

Very deep amethyst-violet, a shade not comparable to any other iris. Very free blooming, with flowers better than average size. This is another variety which makes a grand showing on a two-year clump, and especially when planted adjacent to pink or yellow.

Each \$1.50

MIDGARD

Three years ago this was hailed as the best production ever turned out by the Sass Brothers. The yellow-pink blended flowers introduced a new color note, and it became immediately so popular that there has never been sufficient stock to supply the demand. It is one of the most reliable new varieties for severe climates, besides being a very free bloomer and rapid multiplier. Its future is assured. See page 13.

Each 50c; three for \$1.00

MICHELLINE CHARRAIRE

Beautiful tall white, with golden beard. A clear white of large size, and very desirable.

Each 75c

MILDRED PRESBY

A distinct type with palest yellow standards and bright ruby falls, with a hairline of yellow at the edge. A very dependable and attractive variety.

Each 25c

MINISTRE FERNAND DAVID

A masterpiece in deep, rich, dark purple. This recent French introduction received much praise when first seen in Mrs. Pattison's garden at Freeport, Ill. A huge, well shaped flower, that has been awarded many certificates and prizes abroad.

Each \$6.00

MIRASOL

A very fine large yellow, containing some Mesopotamica blood, but reasonably easy to grow. The flowers are of large size, well formed, slightly rounded, and there are no markings to detract from the solid golden yellow color. Rich yellow beard. Three feet in height.

Each \$1.50

MME. CECILE BOUSCANT

Clear orchid pink, beard yellow-white. Very large flower and a lovely thing, but not a free bloomer.

Each 75c

MME. DURRAND

One of the most unusual and most beautiful irises in the world, a blend of pale buff and creamy lavender, marked old gold. A heavy flowerer, fine in every way, but rather tender in cold sections where it should have protection and perfect drainage.

Each 50c; three for \$1.25

MME. GAUDICHAU

Very early dark violet blue self, with heavy gold beard. Perfect in form and substance and of velvety texture. Very fragrant.

Each 25c

MOON MAGIC

I was privileged to visit Mr. Shull's own garden in Chevy Chase in 1931, and found this excellent iris at its very best. It is of a general buff-yellow tone, smooth and creamy in texture, of wonderful form. There is little doubt in my own mind but that Moon Magic will be proclaimed as Shull's greatest achievement since he gave us Morning Splendor. The accompanying photo gives a good idea of the opulence of bloom, branching, and general all-round good qualities which go to make this an iris of rare merit.

H. M. AIS 1922.

Each \$5.00

MONTEREY

Dark bronzed red-purple, a very deep tone of mulberry, stained with dregs of wine. The broad, velvety falls are edged with the lighter tone of the standards. Another of the Mitchell giants from California, with all good points, reaching a height of four feet.

Each \$1.50

MONTOUR

This little gem was growing in Mrs. Kellogg's famous garden (Over-the-Garden-Wall) in a group including Dauntless, and it struck me at first sight as an abridged edition of the giant red. The colors are more subdued, a medley of deep pink and brown, set with a bright orange beard. Fine for the front of a planting where taller sorts are used in the back-

ground. Montour is perfect in every detail, in a class entirely apart from most irises of dwarf stature.

Each 50c; three for \$1.00

MOONLIGHT

One of the earliest, a giant white with green and gold reticulations. Very heavy gold beard.

Each 25c

MORNING SPLENDOR

Certainly among the best no matter what the price. A huge flower of crimson or wine color, perfect in every detail. Has received many awards and is surpassed by nothing in its color class.

Each 25c; per dozen \$1.50

MOTHER OF PEARL

The name describes the color. Very tall, a reliable bloomer.

Each 25c

MRS. VALERIE WEST

Of the long line of Dominion seedlings put out by Mr. Bliss, he considers this his crowning achievement. It combines the rich colorings of Bruno and Cardinal into a flower of greater size on a taller stem, widely branched, and produces its enormous blossoms in great profusion. Heretofore the price of this has been almost prohibitive for widespread distribution, but our stock has increased so that we are able to offer it at the following unprecedented low price.

Each \$1.00; three for \$2.50



MR. SHULL AND "MOON MAGIC"



MRS. VALERIE WEST

MRS. MARION CRAN

One of the finest pink-toned iris ever introduced. Exceptionally tall, with large, well-formed flowers of bright rose-pink. This is the true variety, not to be confused with "Marion Cran".

Each 30c; three for 75c

MRS. HERBERT HOOVER

One of the new pink or near-pink varieties. The standards are old rose, lightly tinged with bronze, and are broad and ruffled. Falls are a deeper rose, with midrib of turquoise blue. The center of the flower is lit with a most brilliant beard and style arms. Exceptionally free flowering and rapid of increase. Stems are tall and well branched. In a class with Frivolite and Marquissette; between the two in general color effect.

Each \$5.00

MOA

Deep purple, almost black when first opening. A huge, very impressive flower of the original Dominion seedling set. Heavy stalks, 40 inches tall.

Each 50c; three for \$1.00

NEBRASKA

Deep golden yellow, with prominent veinings of reddish brown in the falls. A good sized flower, slightly ruffled.

Each 50c

NENE

Has the reputation of being the world's largest iris, and it certainly is a genuine stunner. The flowers are of staggering size, up to nine inches in height, and are produced on stems which almost remind one of corn stalks. In addition to its size, Nene is really a beautiful iris, with lilac standards and falls of rich wine-red, darker at the haft. Stock limited.

Each \$2.00

NINGAL

One of the recent productions of Dr. Ayres, of Cincinnati. A most lovely and unusual blend, unlike anything now in commerce. The standards are pure bronzy buff, extra large, and nicely domed. The flaring falls are of a smooth, warm buff, overlaid with iridescent very pale blue. This blue shading is deepest near the center and gradually fades to pale buff at the margin. Gigantic in stature, being up to 46 inches tall.

Very few rhizomes; each \$25.00

NUMA ROUMESTAN

Deep but bright garnet red, of a uniform shade in both standards and falls. More uniform in color than Dauntless; not as large nor as tall, however. Free blooming, and gives a fine red note in the garden. Very late.

Each \$2.00

NURMAHAL

One of the magnificent seedlings introduced by Col. Nicholls of Ithaca, N. Y. Standards deep brown, with a hint of violet, very large, circular and domed. Falls very deep black-brown with a red undertone. Yellow beard. Of the Grace Sturtevant type, but a larger flower with better substance and much finer standards. A wonderful new iris that is sure to attract instant attention.

Each \$6.00

NUSKU

Lovely old rose and yellow blend, a very luminous flower, tall and stately. Introduced by Mrs. Thos. Nesmith of Lowell, Mass., and my favorite of her seedlings. Flowers of large size, about three feet in height.

Each \$1.50

OMAHA

A beautiful coral-red self, with orange beard, producing a very striking contrast. Blooms are extra large and of lovely rounded form. The color effect is deep and brilliant pink, rather than red, and the petals have a glistening and fragile appearance, although on the contrary they stand up perfectly. A considerable novelty in color, and one of Sass's finest. Height about 30 inches.

Each 75c; three for \$2.00

OPHELIA

A blend of cream, old gold, pink, and pale blue, difficult to at once describe, but one of the loveliest of all irises. A beautiful variety under artificial light.

Each 75c; three for \$2.00

OPERA

An old but ever popular sort of rich ruby effect. Smaller and shorter than Morning Splendor.

Each 25c

OREGON BEAUTY

A large and well formed iris of Dominion blood, with standards shaded rose and chamois, the falls broad and flaring, a brilliant reddish-violet lightened with terra cotta, and edged the color of the standards. **Each \$4.00**

OREGON GIANT

Colossal flower of very dark coloring, the haft heavily marked and veined on a cream ground. **Each \$4.00**

PADRE

One of the newer sorts from California. A huge bloom of tall stature, with yellow and lavender blended standards, and rosy purple falls, flushed blue. Amber beard and style arms. **Each \$1.50**

PALEMOM

Coloring of the old "Afterglow", but a finer flower and much taller. A blend of lavender and yellow. **Each 25c**

PEERLESS

A magnificent iris of very bright mahogany red. One of the very largest, and of wonderful effect with its bright red color and heavy gold beard. **Each \$1.00**

PEACHES

A warm and bright blend of peach, apricot, and orange. Not so deep in color as Clara Noyes, and with more creamy markings in the falls. I saw this flowering as a clump in the garden of Mr. Hans Sass, and it was alive with flowers, presenting a bright, yet soft and delicate mass of color. **Each \$3.00; three for \$8.00**

PHEBUS

A new yellow from Cayeux. Unlike Pluie d'Or, this iris is a uniform shade of lemon yellow, absolutely pure. Fine rounded flower of good size, over three feet tall. The lemon color introduces a new tone in iris of this class. Phebus was the high spot in French introductions in 1930, and was priced at one thousand francs. It is a very rapid increaser. See cut on page 5. **Each \$7.50**

PERSIA

One of Dr. Ayres' masterpieces. Blended shades of pale blue, lavender, grey, and bronze, with a smoky veil enveloping the entire flower. Massive blooms in great abundance, with many tall and splendidly branched stalks. A well named variety that will prove an asset in any iris garden. **Each \$3.00; three for \$8.00**

PINK SATIN

Finest of all American pink irises. Jacob Sass raised dozens of excellent pink seedlings, and this one was deemed as most outstanding of all. The color is a very delicate and smooth, yet glistening and brilliant, pink without the usual rose or purplish cast. The stalks are tall and slender, with blooms of large size. Very rapid of increase, and of course perfectly hardy. **Each \$7.50**

PLUIE D'OR

A beautiful iris, on slender, perfectly branched stalks well over three feet tall. Fine rounded flowers of solid golden yellow, with deep yellow beard. Winner of the Dykes medal in France, it has proven an outstanding variety of this color both in Europe and America. Wherever I have traveled I have found hybridizers at work with crosses from this variety, an indication of the regard in which it is held by our foremost introducers. **Each \$1.75; three for \$4.00**

PRIMROSE

Another yellow, the standards lighter than the falls. A flower of good size and shape; undoubtedly one of the best low-priced sorts. **Each 35c**

PURISSIMA

If you live in the Pacific Northwest, in California or in the South, by all means add this glorious white to your collection! Nothing that grows can compare with it when flowered under congenial conditions. Growers in colder and wetter sections of the country can also succeed with it, but it must have winter protection except in warm climates. A normally flowered stalk of Purissima is a never-to-be-forgotten sight. **Each \$1.00; three for \$2.50**

PIONEER

A glowing flower of deep red purple. No veining whatever to detract from the solid, rich, purple coloring. Of good size and quite tall. **Each 25c**

PONGEE

Recent introduction of light chamois or "pongee" shade. Small flower, valuable as a clump when the tall, thin stems show off the flowers to best advantage. **Each \$2.00**

PRINCESS OSRA

Charming plicata, different from the usual run of this type, since the white ground color is not only edged with a blue stitching, but the entire flower is speckled and stained with blue. **Each 25c; three for 50c**

PRESIDENT PILKINGTON

The third of our new offerings from France for 1933. A great flower in pale pastel shades, described in detail on page 4. **Each \$10.00**

RAMONA

Another blend similar to Rameldo, with more blue in it, and a very bright orange beard. **Each 25c**

RAMESES

The 1932 Dykes medal winner in America. A very vigorous, healthy grower in all parts of the country and a fast increaser and free flowerer. Rameses is a symphony in rose, pink and buff, shading to yellow near the edges, and with a yellow glow at the center. Heavy apricot beard. 36 inches and over in height, gracefully branched. Limited stock. **Each \$4.00**



SANTA BARBARA

REALM

Intense, pure rich blue self. One of the best of this class. **Each 75c**

RED DOMINION

The much-heralded garnet-red Dominion from Dr. Ayres, introduced last year by Quality Gardens. I thrilled at the sight of this iris when I saw it growing in the garden of the originator, and have always spoken highly of it since that time. While the standards are a shade lighter than the falls, it is practically a self in effect—a piece of rich red velvet. The buds are particularly striking. Very limited stock. H. M. AIS 1931. **Each \$15.00**

RED ROBE

An enormous bloom of perfect shape and habit, considered by Col. Nicholls as the finest iris he has ever turned out. Standards deep petunia-violet, domed. Falls deep red-violet, uniformly colored to the edge. Yellow beard. The flower is of splendid rounded shape, a brilliant, glowing iris that lights up in the garden like a huge ruby. This iris sold at sight when in bloom, and as a result was unobtainable later in the season last summer. H. M. AIS 1932. **Each \$10.00**

RHEINGAUPERLE

A pink of the utmost beauty and distinction. To see it is to want it. Petals are edged with silver. **Each 40c; three for \$1.00**

RHEINTOCHTER

A recent German variety of deep red purple.

Each 50c

ROMOLO

A monster Dominion. Light rose standards, bright red-violet falls. One of the lightest colored of the Dominions. **Each 40c; three for \$1.00**

ROSA BONHEUR

Old gold standards, the falls same color, overlaid lavender and edged buff. **Each 35c**

ROSADO

A fine rose pink from California. Very tall, and blooms prolifically. **Each 25c**

ROSAKURA

A Williamson introduction of high merit, the name of which I understand means "Rising Sun". Like our old and true friend, Morning Splendor, this new iris needs to be seen with the sun behind it to be at its best. Then the rosy-purple standards and the rich red-purple falls take on a magnificence and splendor seldom found in any iris. Mrs. Hires, noted iris critic, has remarked that Rosakura is among Williamson's masterpieces and her favorite of his 1930 introductions. **Each \$1.50; three for \$4.00**

RHEA

Something of the coloring found in the old Isoline, but a flower of highest merit and stateliness. Tawny light violet, overlaid buff. This seedling from the Longfield Iris Farm has never been accorded the popularity it deserves. **Each 40c; three for \$1.00**

SANTA BARBARA

Here we have an iris which approaches perfection in the shape and size of its flowers, and in addition is possibly the finest and clearest lavender-blue so far introduced. The exhibition rating of 91 is well deserved. Having been in commerce sufficiently long to become fairly plentiful, it can now be bought at the following surprisingly low prices: **Each 30c; three for 75c**

SACRAMENTO

A plicata of the San Francisco type, but with reddish brown dots and reticulations instead of the usual blue or lavender. Ground color is a creamy white. A very tall variety, the large flowers being produced on well branched stems. This is another iris which was given one of the highest awards of the Iris Society in 1931, an H. M. It is probably even more dependable in unfavorable climates than are many of the other California productions. **Each \$2.50**

SACHEM

A glorified King Tut, grown by Dr. Loomis. Glorious in richest tones of red-brown, of heavy velvety texture. This, together with Erebian, was regarded as my choice of all the seedlings which Dr. Loomis had growing on trial at Mrs. Pattison's garden in 1930. **Each \$7.50**

SAN DIEGO

Monster blue, a seedling of Mme. Gaudichau, with the Mesopotamica qualities of height and large size. The color is a uniform shade of deep blue, with rich yellow beard. Awarded an H. M. by the American Iris Society in 1931. **Each \$1.50**

SAN LOUIS REY

On the order of Opera, but twice the size, and borne on beautifully branched stalks over three feet high. Center of the fall shades from red-purple into soft brown, with practically no veining, and a bright orange beard sets it off. **Each 50c; three for \$1.00**

SAN FRANCISCO

A four-foot plicata that has been awarded the Dykes medal by the American Iris Society. No other plicata approaches it in size and grandeur, heaviness of texture, or wide and low branching habit. It is not an iris for severe climates, but is worth the protection of a box or glass covering during the winter. In warmer sections it grows perfectly and is one of the truly "greats" of the iris world. At the price quoted it is worth trying even if you fail with it. **Each \$1.50**

SENLAC

Introduced by the Orpington Nurseries in England, this richly colored iris stands out as the reddest yet to come from that country. With blooms larger than the best of the Dominion race, it carries its brilliant claret-red flowers on strongly branched stems, and is so highly regarded in England that it is rated at 91. **Each \$5.00**

SENSATION

A clear and crisp self of cornflower blue, perfect in every way. Sensation was awarded the silver cup for the most outstanding flower in the Boston iris show, June 1931. It has no peer among the blue selfs. **Each \$2.00**

SELENE

A pure white of large size and lovely form, and of extra heavy substance. Introduced by Mr. Connell, the man who gave us the famous Dauntless. This variety was named for "The Moon Goddess". **Each \$5.00**

SIKH

Although this iris was introduced in England only recently, we were fortunate enough to secure it three years ago, and now have a large supply of well-grown plants. The color and form somewhat resemble Bruno, but is both more brilliant and coppery. Of largest size, on heavy stems, with broad foliage. It bloomed in the fall in our gardens. **Each \$1.00; three for \$2.50**

SIR MICHAEL

Unquestionably the finest blue and purple bicolor in the world. Standards are clear blue, falls deep rich mahogany, with a beard of red-gold. Regarded as the finest iris ever to come from England and a sensation wherever shown. In our own wet Northwest, in dry and sunny California, and in Nebraska,

Ohio, and the colder Minnesota and New England, we found it blooming equally well. A super iris, if ever there was one.

Each \$1.75; three for \$4.00

SONATA

A beautiful blend of the Mme. Durrand type. Standards are olive-buff, shading to sulphine yellow at the base. Falls lilac in the center, quickly shading out to the color of the standards. A fine large flower that is an excellent substitute where Mme. Durrand is tender. **Each 75c**

SUNLIGHT

A most luminous, tall yellow from Miss Sturtevant, large in size, and of extra good garden effect. The color is quite light, between cream and straw, with a beard of fiery orange-red. Free blooming and a tremendous increaser. This iris has been awarded an Honorable Mention by the American Iris Society when exhibited as a seedling. **Each \$1.75; three for \$4.00**

SUSAN BLISS

A pink of great refinement and perfect form. Pale orange beard. Its rapid growth is a desirable feature. **Each 25c**

SWAZI

One of the deep blue Dominions, considered by many as the finest of all. A very rich and velvety dark blue, with heavy gold beard. Tall and well branched. **Each 75c**

TAJ MAHAL

An old and well-known white, making a fast increase. **Each 25c**

TALISMAN

To those who know the Talisman rose, it need only be suggested that this iris is worthy of the name. The whole flower is a rich golden yellow suffused with peach-pink, more deeply in the falls than in the standards. There is an electric blue flush down the center of the falls, and the haft is reticulated bronze. Three feet tall; deliciously scented. From the Orpington Nurseries in England. **Limited stock; each \$7.50**

TENEBRAE

Richest, darkest purple. A very early Dominion of rapid growth and wonderful color effect. **Each 25c**

SURPRISE

Monster blue, flushed heliotrope, on stems up to four feet in height. The intense orange beard is a salient feature. This is our own introduction, and we are proud of the fact that it has been well received in all sections of the country. A fit companion to such blues as Santa Barbara, Loetitia Michaud, and Duchess Sarah. Bold foliage, almost evergreen.

Each \$1.00; three for \$2.00

For the beginner in Iris,
we again offer our

“ASIA COLLECTION”

Any 12, Your Choice, \$2

Yes, it's true! Just think of it—you pick out any 12 from the following list of 40 lovely beauties, all correctly labeled and postpaid, for only \$2. And the plants are guaranteed to be of first size only, not little nubbins such as some growers send out in cheap lots.

Asia, Argynnis, Aliquippa, Aphrodite, Apache, Ambassaduer, Bonita, Citronella, C. E. Stringer, Dream, Duke of York, Evadne, Gold Imperial, George Yeld, Golden Promise, Glowing Embers, Geo. Tribolet, Gaviota, Julia Marlowe, Jean Chevreau, Magnifica, Mildred Presby, Majestic, Morning Splendor, Mother of Pearl, Mrs. Marion Cran, Mary Gibson, Opera, Palemon, Pioneer, Princess Osra, Queen Caterina, Ramona, Rosado, Santa Barbara, Souv. Mme. Gaudichau, Tenebrae, Titan, 27th of Avril, Tropic Seas, and True Charm.

BE SURE to list two or three second choices, in case we are sold out of some in your list.



ASIA

THEODOLINDA

A gigantic plicata comparable to the famous pair from California—San Francisco and Los Angeles. However, this new seedling is a product from the gardens of Dr. Ayres of Cincinnati, and is therefore perfectly hardy anywhere.

Stock very limited; each \$25.00

TIGER-TIGER

Wareham's finest red, a brilliant iris of a shade entirely distinct from Dauntless. The very large blooms are rather rounded in shape, abundantly borne on three-foot stems. Splendid as either a specimen or a garden clump.

Each \$10.00

TITAN

One of the original Dominion Seedlings, and one of the largest irises in cultivation. The color is a rather drab purple, but the perfection of form, last-

ing substance and immense size cause it to remain quite popular.

Each 25c; three for 60c

TROPIC SEAS

Very tall flower of intense blue tones, with a most brilliant deep orange beard. A striking iris.

Each 25c

TRUE CHARM

Although inexpensive, True Charm is one of the very best things ever introduced, and still holds its place in any company. A plicata, of clear, sparkling white, with the standards and falls delicately etched lavender. Bright orange beard. It is up to four feet in height, especially well branched, and the blue-green foliage has a distinctive rush-like appearance, drooping near the top. This makes it an admirable plant for the edge of a pool, or for a position in the border.

Each 25c; \$2.00 per dozen

TAPESTRY

A subtle blend of monster size, smoky mulberry in general color effect, with the center of the fall intensely colored, passing out to the smoky tones of the standards. This variety calls to mind Dr. Ayres' famous "Persia", but the dominant note is dull red instead of dull blue. TAPESTRY is a favorite of Mrs. Ayres, who admired it especially as a cut flower in the house.

Each \$3.00; three for \$7.50

TUSCANY GOLD

An introduction from the Longfield Iris Farm, from whence came Dolly Madison and Rasakura. This one is a distinct shade of reddish-gold, a deeper colored flower than Vesper Gold. Falls squarely held.

Each \$1.75; three for \$4.00

VALOR

This remarkable flower was one of the sensations in the East last season, and every critic who saw it flower was enthusiastic over it. Col. Nichols, of Ithaca, N. Y., the introducer, thinks it his highest achievement thus far. In general effect Valor is a deep blackish blue violet bicolor, similar in some respects to Sir Michael, but a larger flower and with domed standards. One of the tallest of all varieties; very fragrant. H. M. AIS 1932.

Very limited stock; each \$15.00

VALENCIA

Distinct flower with predominate orange tone, from whence it takes its name.

Each 25c

VERT-GALANT

Like Damon and Pythias, Vert-Galant and Depute Nomblot are usually seen together—they are "pals inseparable." This one is in a distinct shade of brilliant copper-red, with coppery fawn standards. In a California garden in 1930 I found one rhizome putting forth four huge stalks. It was the largest and most outstanding thing in Mr. Wister's Philadelphia garden. In the garden of Robert Schreiner in St. Paul it was likewise of stupendous size, its second

ZUNI

A glorious, glowing red-brown, overlaid with a coppery suffusion. Very early, but with so many buds to the stalk that it lasts well into the season. The falls are a brilliant red when seen with the sun's rays through them, and the standards seem as if sprinkled with gold dust. Large in size, well branched, and about 40 inches in height. See cut on page 5.

Each \$4.00; three for \$10.00

similar performance there. The brilliant copper tone has extra good carrying quality, and the four-foot spikes dominate the garden. Another Dykes medal winner.

Each \$5.00

VESPER GOLD

Soft and smooth finished flowers of golden apricot. A very pleasing and distinct variety.

Each 35c; three for 90c

27TH AVRIL

Very strong growing, dark bicolor, with huge flowers on four-foot stalks.

Each 25c

W.M. MOHR

This strange and beautiful hybrid is named for one of the world's most famous hybridizers, and is considered as his greatest piece of work. The entire bloom is a self color of pale lilac, closely netted and veined with deep violet, producing a weird, yet very lovely effect. In some ways it resembles the variety "Susiana", but lacks the dullness of this older sort, and is not at all difficult to grow. A monster flower, produced on stems up to 30 inches tall. See page 11.

Each \$1.00; three for \$2.50

VENUS DE MILO

Out of perhaps a dozen superb whites, all large, tall, and in varying degrees of purity and color, this one has been selected as the best. It is an absolutely clear white, of a warm creamy tone, with a yellow beard. In size it is much larger than any hardy white we have seen, with exception of Wambliska, which has a distinct blue flush in the standards. VENUS DE MILO has petals of extra heavy texture; in fact, it stood up better in a 90-degree sun than any other iris in our garden. This is introduced at an exceptionally low price for a super iris. It is a rapid increaser, and thus a low introductory price is permitted. H. M. 1932.

Each \$3.00; three for \$8.00

W. R. DYKES

No iris has come to us from any source that has carried greater advance publicity, and it is doubtful if any has created as much comment. Here is a yellow iris that ranks with the very largest in size, with heavy crepey texture, and a color of richest golden-yellow. The falls are usually stained and streaked lightly with purple. In some flowers this is not evident at all, but the beauty of the blossom is not marred in the least. It has flowered well in almost every section of the country, but it does demand perfect drainage. Cold temperatures do not seem to harm the plant. A great novelty. Very limited stock.

Each \$7.50



WAMBLISKA

WACONDA

One of the newer things from Hans Sass. Deep fuschia red; a very velvety and brilliant iris of wonderful size and character. H. M. AIS 1931.

Each \$1.50

WEDGEWOOD

Solid wedgewood blue, with white beard. A very effective iris where a real blue tone is desired.

Each 35c; three for 90c

WHITE & GOLD

Glistening, satiny white, lit by the bright golden beard—the only other color in it. Tall and free.

Each 75c

WAMBLISKA

The huge white self, raised by Jacob Sass of Omaha, Nebraska. This was the most sensational iris of 1930, and is being proclaimed by all who have seen it as the greatest hardy white in the world. Few irises in existence are larger in size, and it flowers abundantly on four-foot sturdy stems. A faint blue flush at the base of the standards gives it a cool appearance, rather than the warm effect of creamy whites like Purissima, Michelline Charriere, etc.

H. M. AIS 1931.

Each \$3.00

YOLANDE

Of the Mme. Gaudichau type, being both larger and taller, with exceptionally fine falls.

Each 25c

CULTIVATION OF BEARDED IRISES

By G. L. PILKINGTON,
*Hon. Sec. of the Iris Society
of England.*

It should be unnecessary to point out what must by now be generally an accepted fact, namely, that these Irises are essentially sun-lovers. Furthermore that they should be planted in positions where good drainage exists, and should not be expected to give the best flowering results when placed in dense herbaceous borders where the sun can seldom penetrate to the rhizomes. If they can be grown in a sunny border by themselves so much the better; if not, then let them at least have a position in the front of the herbaceous border. They are not particular as to soil, and are far better not top-dressed with patent manures, bone-meal, etc. The use of lime is often quoted as being essential, and is often very much overdone in consequence.

I have always found that a dressing of ground limestone dug into the Iris border at the first planting supplies all that is needed in this respect, and is, moreover, practically everlasting, in that it dissolves very slowly indeed, and therefore cannot be given in excess.

Another important factor in the cultivation of these Irises is the transplanting. Opinions vary as to the best time for this operation, but I am inclined to think, after trying all times, that it makes little difference to the next year's blooming whenever it is done, provided that the ground is in

good order for the work, and that it is not left until too late in the autumn.

Late-planted Irises seldom get a hold before the real winter sets in and are, in consequence, often "heaved" out of the soil by frosts, and make a poor show the following summer. There is no rule for dividing and transplanting Irises, such as "every third year," as is often stated.

The condition of the plant must decide this. Some of the more rampant growers should be divided and transplanted every other year, and if this is done it will be found that they rarely suffer from rhizome rot. The vigorous growers, if allowed to remain undisturbed for a period as long as three years, make such a dense clump that the sunlight cannot penetrate, with the result that not only do they bloom sparsely, but often they are attacked by disease in the form of rhizome rot. This is particularly so in the case of Irises of the "Dominion" race.

A liberal use of superphosphate of lime, which can be incorporated in the soil whilst replanting the divisions, does much to ward off the attacks of this disease. "Doubtful" rhizomes of varieties which are too valuable to throw away should have all the soil removed from them, be dipped in a mauve solution of permanganate of potash, and then left in a dry, airy

place for a month or six weeks before transplanting.

If they are going to rot they will do so in spite of all these precautions. If they survive they can be replanted with every prospect of success.

Owing to the vagaries of our weather I frequently have Irises on my hands waiting for suitable weather and soil conditions to replant them for a month or more at a time, and though the rhizomes dry up entirely and the leaves die down considerably I have never found that the plant suffers in the least. Root-action goes on whilst the rhizome is in the dry state, and the plant goes ahead very quickly as soon as it is replanted. I would far rather adopt this principle than "heel in" the plants pending replanting, which generally results in the breaking off of new fibrous roots which the plant has made during the period of waiting.

One other point about planting. The rhizomes should not be planted deep, but should be placed just below the level of the soil surface and the roots spread out to insure firm planting and room for expansion. The rhizome will soon work to the surface again, but if planted on the surface in the first instance it is not so easy to get the plant firm in the ground, which is essential.—*Gardening Illustrated.*"

GROWING BULBOUS IRIS IN MASSACHUSETTS

By FRANK A. WAUGH



A good many years ago dealers were in the habit of offering bulbs of Spanish Iris at very low prices, often as low as fifteen or twenty cents a hundred. At that time I was accustomed to buy a few hundred each year and

plant them in the cutting garden. They were fairly hardy and in most cases would last for several years.

Then a few years ago I happened to be in England in July and saw the English Irises in blossom. Naturally I was completely captivated by them for they are wonderfully beautiful. As soon as I came home I wrote to one of the leading Iris specialists in the northeastern states, and asked him if he could supply me with the bulbs of the English Iris. His reply was that they did not carry them in stock nor recommend them to their clients as they were not entirely hardy and they did not like to supply their customers with anything which would prove a disappointment. Now, while this answer is entirely correct from the standpoint of the nurseryman, it did not completely satisfy me; so I went ahead and got bulbs of English, Dutch, and Spanish Iris and *have been growing them ever since with the utmost satisfaction!*

Let it be said at once that the distinctions between Spanish, English, and Dutch Iris, are rather uncertain. For general garden purposes they may be all lumped together as Bulbous Iris. These are apparently not the same ones, however, mentioned by Mr. Wood in *Flower Grower* for January, page 18, but on the whole I think they will prove quite as satisfactory as those he mentions, to the average gardener.

There are very few nurseries in the Eastern states which carry any stock of these varieties, though some of the bulb importers will supply Spanish varieties especially. The best source of supply which I have found is the Pacific Northwest. From that section we get larger, stronger, better bulbs than we have ever secured from any other source.

These bulbs come to us in late summer and are immediately planted in rows in the open garden, much as onion sets would be planted. They require no special care. They should be put out as soon as received which will be the latter part of September or some time in October; the earlier the better. In nearly all cases they will make some fall growth, often as much as five or six inches of green shoot showing above the ground when winter arrives. However, they do not seem to suffer any serious consequences from the freezing of these fall sprouts.

As a rule we put on evergreen boughs after the soil is thoroughly frozen; these are simply to hold the snow on as late as possible in the spring. No other protection is given. *So far as I know we have never lost a bulb by winter freezing!*

Some growers recommend that the bulbs be taken up after flowering late in July, dried out thoroughly, and replanted in September. We have done this several times with entire success. We have also left bulbs out year after year with no appreciable deterioration.

Some varieties increase in our garden, others hold their own, while some of them run out after a few years.

All of these varieties are extremely beautiful in flower. In fact they are one of the most striking plants in any garden. They are often compared with Orchids, and this is suggestive. Colors are mostly blue, white, and yellow. They are remarkably fine for cutting. Stems are tall, 12 to 30 inches, with good lines. The flowers last well in water.

According to my observation, not fully verified by experiment, the important requirements are clean, well-drained soil, with nearly full sunshine, but with protection from severe winds. It seems a pity that such beautiful plants as the Bulbous Irises should be neglected through a general misunderstanding of their cultural requirements.—*Flower Grower.*"



GOLDEN BRONZE

DUTCH IRIS

Their hardiness and the large color range has made them very popular as garden subjects, the brilliant clear yellows, flashing blues, and sparkling whites adding immeasurably to the spring border.

As with the English group, they are perfect material for cut flowers, as they will stand considerable handling and may be shipped safely for long distances if cut when in bud.

These irises **MUST BE PLANTED IN THE FALL**, not later than October. They are perfectly hardy except in extreme cold sections, where they should have a mulch of salt hay or tree boughs.

If you are not growing them you are missing one of the real joys of gardening. Use them in masses as you would tulips or daffodils. Plant 4 inches deep.

ADRIAN BACKER. A uniform purple-lilac, good substance. Height 20 inches.

D. HARING. Standards greenish white, falls pure white; a very large flower of great substance. Early. height 26 inches.

GOLDEN BRONZE. Standards dark violet, edged bronze, falls attractive golden bronze. A very beautiful, extremely luminous flower of large size, 22 inches tall. Price per dozen, \$1.75; \$12 per hundred.

LEONARDO DA VINCI. Standards creamy white, falls canary yellow with orange stripe. A very large flower, produced on stems up to three feet in height. Segments very broad and of wonderful texture.

POGGENBEECK. A splendid flower of uniform dark blue, a great improvement on the older Emperor. Height 20 inches.

THERESE VAN DUYLL-SCHWARTZE. Pale cornflower-blue standards, falls pure white, with very narrow orange stripe. This is of comparatively recent introduction and certainly one of the loveliest things in this list. 24 inches tall.

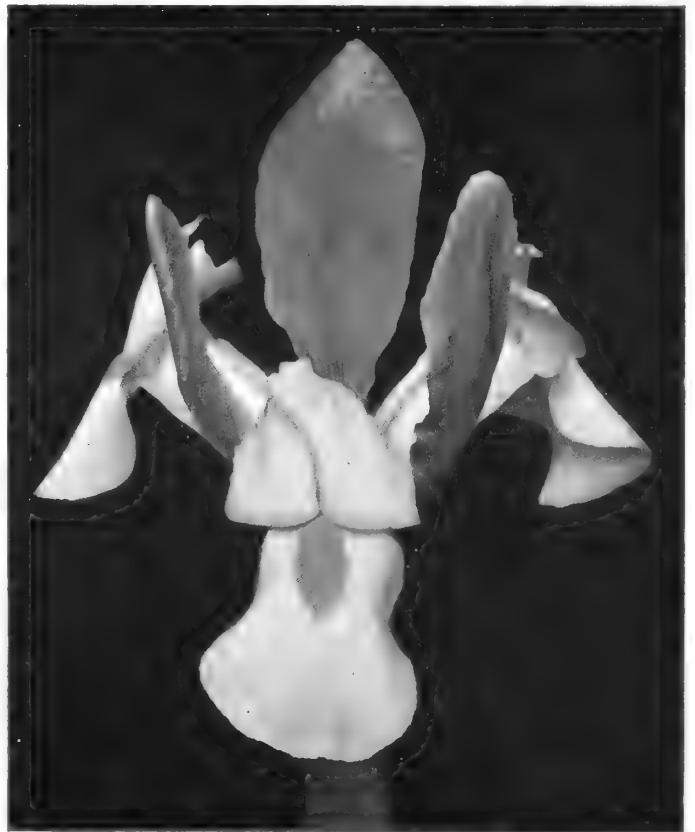
W. ZUIDERVELD (Violet Queen). Standards and falls uniform light bluish violet; very large flower of fine proportions. Price \$2 per dozen; \$14 per 100

WHITE EXCELSIOR. Marvelous pure uniform white, falls very broad, fine form and substance. Use of white and yellow adds life to any planting.

WEDGEWOOD. A Tingitana Hybrid resembling the Dutch iris in all respects, except that it flowers **ten days to two weeks earlier.** Fine large flowers of bright wedgewood blue, a uniform coloring that is most desirable either for garden or for cutting. An easy iris to grow but must be in well drained soil and planted about 5 inches deep. Wedgewood is always a sensation when exhibited at the spring flower shows.

YELLOW QUEEN. Standards and falls a bright golden yellow. This variety is the glory of the iris garden, for not only is it a beautiful and showy thing in itself, but the glorious splash of color which it carries enlivens the entire border. It is an indispensable subject in any iris planting and the long wiry stems make it an admirable cut flower. Large in size and up to three feet tall.

PRICES ON THE ABOVE: Except as noted, 75c per dozen, 3 dozen for \$2, \$4.50 per hundred, prepaid. PLEASE do not order less than one dozen. No bulbs shipped after November 1st.



W. ZUIDERVELD

IRIS "JUNCEA". Our imported stock of this rare bulbous iris from Africa has just been released. The flowers are a solid **very deep yellow**—the richest tone of this color in any iris. Form is similar to the Dutch or Spanish iris, but it blooms two or three weeks later, on straight and slender stems, 2 to 3 feet tall.

This is a genuine novelty, practically unknown to American gardens as yet. It has proven perfectly hardy in New York state.

Plant the bulbs 5 or 6 inches deep, in ordinary soil with good drainage.

Each 50c; three for \$1.25; \$4 per dozen

IRIS "RETICULATA". This little gem belongs among the first harbingers of spring, blooming even ahead of the crocus. The stems are about 8 or 10 inches high, crowned with brilliant purple blossoms lit with a bright orange blotch. They have a pronounced violet fragrance.

Reticulata makes a cheery patch in the rock garden or low border, and they last for two or three days when cut and brought into the house. Bulbs should be planted in the late summer or early fall, about 4 or 5 inches deep, in a well drained sunny location.

Each 50c; three for \$1.25; \$4 per dozen



SPURIAS—BEARDLESS IRISES

Below we list a number of rare species and hybrid irises—a distinct group. All of these flower later than the bearded section, many of them having very attractive foliage as well as colorful blossoms in various shades of blue, yellow, cream, copper and purple. They appreciate a slightly heavy and rich soil, and are at home in full sun. Plenty of moisture is appreciated, thus they are adaptable to planting near pools and streams.

AUREA. A tall deep yellow, the rich color being especially good. Do not confuse with the bearded iris Aurea.

Each 50c; three for \$1.00

A. J. BALFOUR. A 48-inch Monspur hybrid, with lovely Cambridge blue flowers. Seldom listed and quite scarce.

Each 50c; three for \$1.00

DOROTHY K. WILLIAMSON. This is a hybrid of Fulva and Foliosa, with brilliant flowers of dark madder violet. The stems are well branched, making it one of the most graceful and beautiful for cutting. Height 2½ feet. Flowers produced well above the narrow slightly drooping foliage.

Each 35c; three for 75c

FULVA. The native copper-red iris of the South. A novelty in color and perfectly hardy.

Each 50c; three for \$1.00

FULVALA. Cross of Fulva and Lamancea. Not unlike the above but the color takes on more of the copper tone of Fulva; a bright coppery red-purple. This is a fine grower, and a wonderful cut flower. Supply limited.

Each 50c

LORD WOLSELEY. A very rugged and dependable spuria with beautiful flowers of bright blue-purple. 40 inches.

Each 50c; three for \$1.00

MONAUREA. A cross between Aurea and Monnieri, producing flowers of clear deep yellow on exceedingly long stems. The foliage is especially good, making it a gem for the waterside.

Each 50c; three for \$1.00

MONNIERI. Deep primrose yellow, and very handsome. Likes a great deal of moisture, flowering very late. We highly recommend this as being of easy culture and a very notable flower.

Each 50c; three for \$1.00

MRS. A. W. TATE. Vigorous growing, soft porcelain blue. This is the very best of the light types.

Each 35c; three for 75c

OCHROLEUCA. A white flower with orange markings at the throat. Desirable for the border.

Each 50c; three for \$1.00

PSEUDACORIS. English yellow water iris. Grows very tall and flaunts its blossoms on 5-foot branching stems when grown in shallow pools with rich soil.

Each 50c; three for \$1.00

VERSICOLOR. Belonging to the Laevigata group, it is essentially water loving and so can be planted in shallow pools and swampy places. Flowers a beautiful shade of blue. Flourishes in acid soil.

Each 50c; three for \$1.00

NEW SPURIA IRIS

1933 Introductions

The three new Spurias listed below were raised by the late L. W. Sanford, who also was responsible for the new English iris introduced last year. They represent the cream of a large planting of selected seedlings.

ALADDIN'S LAMP. A very deep rich yellow. Wonderful clarity of color; heavy foliage. The finest deep yellow in our collection.

Each \$1; three for \$2.50

ORIOLE. Greenish primrose yellow. Fine large flowers on four foot slender stalks, with broad handsome foliage.

Each \$1; three for \$2.50

WHITE LANCE. Glistening satiny white. This is the best white Spuria iris we have ever seen. Outstanding in the border, a wonderfully effective subject near a pool or stream, and especially desirable as a cut flower. Four feet in height.

Each \$1; three for \$2.50

One each of the above new varieties for \$2.50.

DWARF BEARDED IRIS

For the rock garden, or for the edge of a border planting these are among the earliest of spring flowers and among the most colorful. Plant them in groups of several of a kind for best effect. They increase very fast and soon form a dense clump. We offer three varieties, all heavy bloomers and less than six inches high.

CYANEA. A brilliant red-purple.

COERULEA. Lovely sky-blue, clear in tone, and one of the first to bloom.

ORANGE QUEEN. A clean bright yellow; large flowers.

Prices: The above dwarfs are 25c each, three for 50c, ten for \$1.50, a hundred for \$10.



New ENGLISH IRIS

It seems that there is no group in the iris category so easily grown, so sure to flower, and so entrancingly beautiful, yet so little known, as the English Iris. None so nearly resemble the orchid, none is more adaptable to cutting, and in addition to these features, it flowers at a period midway between the bearded and Dutch varieties and the Japs.

The new introductions which we offer are larger in size, clearer in color, and finer in form and substance than the few sorts heretofore known. Surely they are triumphs of the plant breeder's art.

This is a bulbous plant and as in the case of tulips, daffodils, and the like, they should be planted about 4 or 5 inches deep **IN THE FALL**. If in a very cold climate, mulch with leaves, salt hay, or boughs as soon as the ground freezes.

NO IRIS SO NEARLY RESEMBLES THE ORCHID

Introduced last season, the demand for these was so great that we quickly sold out of many of them. Very limited stock this year.

GALE S. HILL

Dark wine-red, a very rich and striking flower, unlike any other in this list. The petals are broad and flare widely, and the deep coloring rivals some of the Dominion strain of bearded iris.

3 for \$1; \$3.50 per dozen

CRATER LAKE

A very bright clear blue self, quite tall, flowering in midseason.

3 for 60 cents; \$2 per dozen.

MOUNT RAINIER

A magnificent pure white, the giant of this group of introductions, with very bold foliage and tall stems. There is just the faintest yellow line near the throat. A grand flower and a true aristocrat. Very limited stock.

Each \$1

LINGERIE

The last word in an iris of orchid coloring and effect. The soft, even, clear mauve-pink of this splendid creation is unmarred by any other color whatever, and in it we have the ideal so long desired by

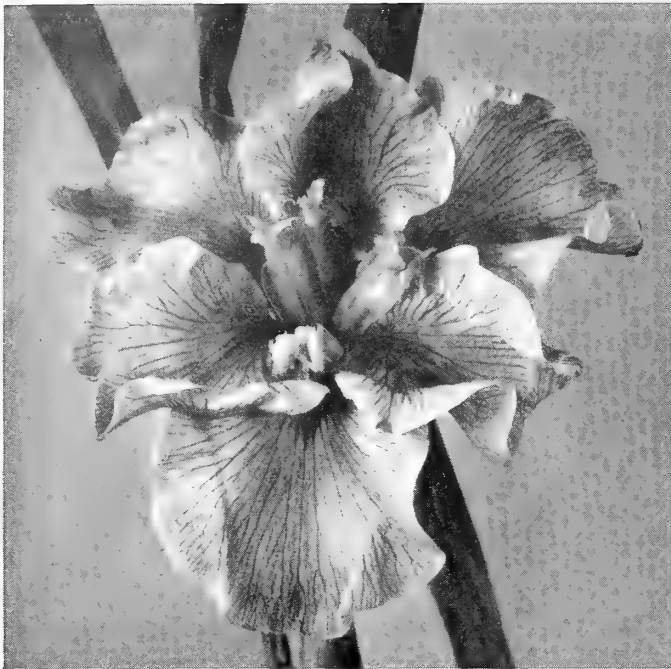
the hybridizer. In the garden and as a cut blossom in the house this iris arrests the attention of all who see it, and we predict that it will enjoy the widest possible popularity when it becomes plentiful. We have only a few bulbs to spare this fall. **Each \$3**

SANTIAM

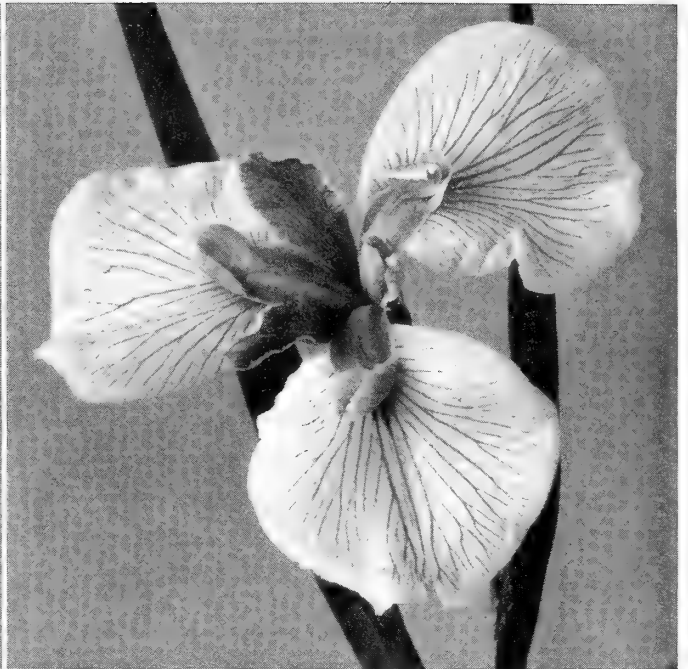
White, delicately touched with a reflection of pearl. A large flower making a rapid increase. As is the case with all the light toned varieties, this is a beautiful thing under artificial light.

3 for 60 cents; \$2 per dozen.

MIXED, a wonderful mixture of Standard and other varieties, providing a colorful show for the garden or wonderful material for cut flowers, at the very low price of 50 cents per dozen, or a whole hundred for \$4.00. Get acquainted with the English type of iris, you will love it. But it must be planted this Fall—next Spring! Place your order now.



“RISHONO”



“SHIMOYO”

JAPANESE IRIS

“There is nothing in the garden like Japanese Iris for arrogance, subtlety and sheer insolence of beauty. This is precisely the effect conveyed when one sees Japanese Irises in large masses. When a few plants are found on the banks of a stream, they have more of piquancy and less of boldness. They are the most striking flowers of July, and not so difficult to grow as the average gardener supposes.

“It is *not true* that Japanese Irises must have bogland or even water in which to bathe their roots. They love moisture, but will flourish in any good garden soil if water is applied in abundance and if the exposure is sunny. The latter point is important. It is useless trying to grow Japanese Irises in a shady spot. Sunlight and moisture are the two requisites for success with these plants.

“Let it be remembered that this type of Iris takes an entirely different treatment from the Bearded Iris. Instead of being planted almost on the surface of the ground, the crowns should be buried two inches.

“Peat can be added to advantage to soil where Japanese Irises are to go. Unlike the bearded Irises, which delight in lime, the Japanese forms prefer a soil which is somewhat acid. Lime should never be used with them. It is also important that the ground be kept well cultivated, never being allowed to become hard or dry. A summer mulch of pulverized peat lessens the amount of hoeing necessary and helps to hold the moisture.

“The location should be one where the drainage is good, even though it be close by a pond. These Irises like to have their roots reach water in summer, but stagnant water must not stand around the clumps, and it is imperative that they should not be caked over with ice in winter.

“Japanese Irises must have plenty of room, and must never have competition from weeds or grass. If they are used in a general garden away from water, a spot should be prepared for them by digging out a foot of earth and working in an abundance of well rotted cow manure. If the earth is at all heavy set the divided clump on a little mound of sand. When winter comes a light mulch will be needed.

“There is only one way in which to get an abundance of large flowers, and that is to supply water with a generous hand during the spring before the buds open.”—Extract from “*Horticulture*” Magazine.

◆ ◆ ◆

And from Mr. F. F. Rockwell’s valuable book on “Iris” we quote the following:

“Many gardeners have resorted to the expedient of ordering Japanese irises only in mixture, or as unnamed seedlings. All too often these mixtures turn out to contain but a few colors, and these of indifferent quality.

“All of these difficulties have conspired to prevent the Japanese irises from attaining the popularity which they so richly merit. I mention them, not to make any gardener hesitate about planting Japanese irises, but rather to explain why they are not more universally known and planted, and to caution the securing of stock from a thoroughly reliable source.

“The Japanese irises are the last of the more important groups to flower. Beginning before the latest of the Tall Bearded sorts have finished, they carry on the pageant of iris beauty for most of another month, and to new peaks of splendor.

“The Japanese irises, as already pointed out, differ from all of the preceding sorts not only in flower form, but in general habit of growth. They are considerably taller. The effect as they grow in the garden, either at close view in the hardy border or bed, or at a distance in landscape planting, is so radically different from that of the Tall Bearded irises that it would be well worth while to have both, even if they bloomed at the same time. Not only are the plants taller, but the foliage and flowers are less formal, and for that reason preferable for certain types of landscaping.

“For midsummer masses of color on a large scale, the Japanese irises are unsurpassed.”

LIST OF VARIETIES

	Each
ANGEL'S DEN. Dbl. Vinous purple; very good grower.....	.50
ASAGIRE. Dbl. White, etched with blue; a lovely thing.....	.50
AZURE. Dbl. Mauve blue, yellow blotch, dark halo.....	.75
CLOUD DRESS. Dbl. Grey, lined lightly with purple lines.....	.50
FRANCES E. CLEVELAND. Sgl. A gigantic blue-lavender; one of the best of all Japanese irises.....	.50
GOLD BOUND. Dbl. Large, pure snow white, gold bar.....	.50
HATSUKI. Sgl. Uniform blue; very attractive; strikingly blue.....	.50
HOSOKAWA. Dbl. Purple blue, with white lines radiating from golden bar at center.....	.50
HOTARI. Sgl. Beautiful light lavender, veined purple; "pinkish" in effect; very large.....	.75
JOSEPHINE HEYWOOD. Sgl. Bright blue, vivid purple sheen.....	.75
KAGARABI. Sgl. Fine light lavender, veined red purple.....	.50
KASUGANO. Dbl. Plum purple, pencilings of lavender, orange blotch.....	.50
KOKO-NO-IRO. Dbl. Fine large red purple with prominent orange blotch; very late.....	.50
KOMACHI. Dbl. Deep violet purple variety of great beauty.....	.50
KOMBARIN. Dbl. Extra fine early white.....	.50
KUMONO. Dbl. Lavender, veined white, yellow center.....	.50
KURO KUMO. Dbl. Deep purple, overlaid with blue; extra late.....	.50
NEPTUNE. Sgl. Beautiful dark red, large orange blotch.....	.75
NISHIKA. Sgl. Large crimson purple, penciled with white.....	.75
PARAGON. Sgl. Beautiful large flowers of deep wine red; very striking.....	.75
RISHONO. Dbl. Red purple, overlaid brilliant blue; orange center.....	.50
SHIGA. Dbl. Reddish blue, very large petals; heavily veined white.....	.50
SHIMOYO. Sgl. Heavily veined violet on a grey ground; see illustration.....	1.00
SURI. Sgl. Grey ground, slightly overlaid blue.....	1.00
TUJI. Sgl. Dark violet blue, flaked white.....	.75
VIOLET BEAUTY. Sgl. Pansy-violet, yellow blotch; drooping petals.....	.50
WAKAMURA. Dbl. Crimson violet, with white halo surrounding a yellow bar; sometimes blooms in fall.....	.75
YONOMO. Sgl. A monster flower in "mother of pearl" coloring.....	1.00

Three of the same variety for the price of two.

Special quotations on large lots.

Special Collection of Japanese Iris

Your choice of 10 for \$3.00 or any 5 for \$1.75, all labeled and postpaid. Please do not include varieties not in this list.

Make your selection from the following: Angel's Den, Josephine Heywood, Kagarabi, Kasugano, Koko-no-iro, Komachi, Kombarin, Kumono, Kuro Kumo, Neptune, Nishika, Paragon, Rishono, Shiga, Shimoyo, Tuji. Better include one or two second choices, in case we are sold out of some you select. Choose two each of five varieties, if you so desire.

ORIENTAL POPPIES AND THEIR CULTURE

By MRS. R. B. BRIDGEMAN (Mo.)

There is nothing more brilliantly attractive—more strikingly noticeable in any garden—than a clump of Oriental Poppies. The orange-scarlet, with big black velvety spots, is the one most frequently seen and, I think, the "Prince Charming" of them all, although there are blood-reds, lavenders, salmons and whites, all of which are very beautiful.

Many times I had bought plants, only to have them die, and many times I had planted seed—but with very

little success—simply because I did not know how to care for them. Finally I bought plants in the dormant season and set them out. After becoming established in their new home they made wonderful growth in the Fall.

Oriental Poppies are quite hardy, and stay green most of the winter under a light covering, which they should have. When spring comes the plants make rapid growth and very soon big fat buds appear. In a few days, these

buds burst into a radiant brilliance, to my joy and satisfaction.

Do not buy Poppies in the spring and expect them to do their best. Buy them in their dormant season, in August or early September—carefully plant them—let them get their roots firmly established—the little feeding roots active and ready for quick work in the spring—and you will have glorious Poppies in your garden, and a thrilling satisfaction in your heart.—From "*The Flower Grower*."

WE OFFER THE FOLLOWING VARIETIES:

BEAUTY OF LIVERMORE. Deep ox-blood red, velvety texture. **Each 50c**

CERISE BEDDER. Brilliant cerise pink, dwarf, producing a great abundance of flowers. **Each 50c**

KING GEORGE. Large fringed flowers of brilliant scarlet, petals deeply cut like a parrot tulip. Medium height, fast increaser. **Each 50c**

LORD LAMBOURNE. Fringed, like the foregoing but with heavy black blotches and a slightly different shade. **Each 50c**

LULU NEELEY. Finest Oriental Poppy in the world today that can be sold at a popular price. A prolific blooming sort of deep blood-red, massive in size, on tall straight stems.

Each \$1, three for \$2, a dozen for \$6

MASTERPIECE. Lilac color, marvelous flower, but should be grown with slight protection from the sun to prevent fading of the delicate color. **Each \$1**

MRS. FISHER. Extra large, deep crimson, 4-ft. stems. **Each \$1**

MRS. PERRY. A very lovely salmon-pink. **Each 50c**

PERFECTION. Large deep flowers, entrancing shade of pink with immense black spots at base. **Each \$1**

TRILBY. One of the last to bloom. Dark, lustrous, deep red, the petals having a plaited appearance. Very large, and one of the finest of all poppies. **Each \$2**

WATTEAU. Pure flesh-coral; covered with flowers. No blotch on petals. This is one of the rarest and loveliest in our list. **Each \$2**

WURTEMBERGIA. Enormous cerise scarlet; very tall growing. An outstanding flower, attaining almost unbelievable size. **Each \$1**

RECENT NOVELTIES IN ORIENTAL POPPIES

From Mr. Curtis, of Cincinnati:

AMUN RA. Red-orange, 28 to 30 inches high, flowers 8-9 inches across. Outstanding quality. **NET, each \$2.00**

PINK PEARL. Very fine and distinct; a delicate shade of light pearly pink, vigorous and prolific. Appears like one large tulip within a larger one. Its

delicate color cannot stand the strong reds and bright salmons, and to see it at its best, should be planted with blue iris or an early delphinium. Stock limited. Medium height. **NET, each \$2.50**

RED LACQUER. A new deep dark red, of strong appeal. Stiff erect stems to 44 inches tall. Blooms 7 to 9 inches across. Well named. **NET, each \$2.00**

From Dr. Neeley, of Paulding, Ohio:

CAVALIER. Larger than the enormous variety Wurtembergia, perfectly formed, and lasts extra long in flower. The color is glowing cerise. Few plants. **NET, each \$10**

ENCHANTRESS. Soft lilac-rose, a near approach to lavender. Opens perfectly, holds its color remarkably well for this shade. A true novelty of exceptional merit. Only a very few plants. **NET, each \$10**

~ ~ ~ ~

LILIES

*Two new Lilies, produced by
the U. S. Dept. of Agriculture!*

L. SHUKSHAN

To those familiar with *Lilium Humboldtii* this new lily might be easily visualized as a great improvement, with extremely large flowers of a soft tone of salmon-orange, and with a lesser number of spots. The few spots present are of large size and confined largely to the central portion of the flower. **Shukshan** is a loosely built flower, produced on stiff but slightly willowy stems. It is one of the easiest doers in our collection of new hybrid lilies, and will thrive in sun or semi-shade, is not particular as to soil as long as it is not too wet or hardpan. Plant about 10 inches deep or perhaps slightly deeper in the north-eastern part of the country. Height, up to 6 feet.

Each 75c, three for \$2.00

L. KULSHAN

Very much like the foregoing in all respects, except that it is very heavily speckled with soft brownish spots. Not quite as tall. The same type of hybrid, and should be accorded the same treatment. This is being offered for the first time this year. Very limited stock.

Each \$1.00, three for \$2.50

L. TESTACEUM

(The Nankeen Lily.) Perhaps the most distinct in color of all lilies—a soft apricot or yellow-buff, gen-

erally described as nankeen yellow. Although known and grown for many years, testaceum is still quite rare, mainly because so many growers send out diseased stock. We have secured the cleanest and healthiest planting of this lily that it has ever been our pleasure to see growing, and purchasers may be assured that finer bulbs will not be found anywhere. The Nankeen lily is very well adapted to planting in the border, and makes a lovely companion to delphiniums, as it blooms at about the same time. Plant quite shallow, about three inches, and do not disturb the clump. It will increase in size and beauty with each succeeding year. Especially selected large bulbs, **\$1 each, \$10 per dozen.** Plant this lily **early**; no deliveries after Oct. 20th.

L. REGALE

(Regal or Royal Lily.) Unquestionably the best known and most popular lily in the world today, discovered in the mountain fastnesses of China some years ago by E. H. Wilson, famed horticulturist. The huge flowers are trumpet shaped, brownish rose on the exterior, white suffused luminous yellow within. One of the easiest of all lilies to grow, it multiplies rapidly, and reaches a height of five or six feet on matured plants. The blossoms have a delicious scent. It flowers in late June and July, and should be planted about 8 or 10 inches deep in sun or light shade. Hardy anywhere. Extra selected bulbs.

Each 25c, three for 50c, \$1.75 per dozen

L. SULPHUREUM

One of the rarest and grandest of all lilies. It is among the last to bloom, the flowers being produced in September. Color inside is pale sulphur yellow, becoming more intense yellow in the throat. There is a greenish gleam inside the flower contrasting remarkably with the yellow tone, and the exterior is streaked and shaded reddish brown. The individual blossoms are enormous, attaining a length of ten to twelve inches. Height five to seven feet. As it is stem rooting, it should be planted very deep, ten inches at least, and in cold sections it should be covered with a mulch in winter. Our bulbs are grown right here in Oregon, and are of wonderful size. Very limited stock. **Each \$1.50, three for \$4.00**

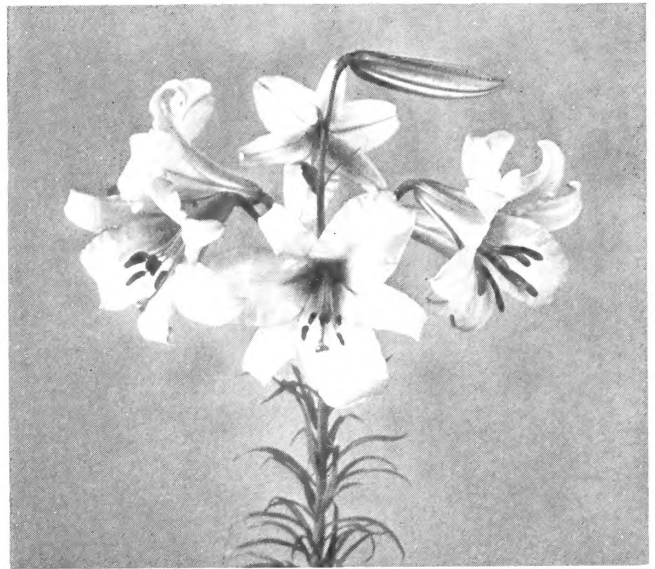
Lilium sulphureum

I measured one of the best stems today and found it to be 8 feet in height and carrying seven magnificent trumpet-shaped flowers each 8 inches in length and the same across the slightly recurved mouth, the spread of the horizontally-disposed blooms being 2 feet.

The soil in which the bulbs were planted consists of heavy and rather soapy loam, to which was added a little leaf-mould and sand. This was necessary as the natural soil here is sandy clay.

As this Lily grows so tall and slender—the stem is not more than $\frac{3}{4}$ inch in diameter—and blooms rather late, it is advisable to plant on the sheltered side of a wall or shrub in order that the huge flowers may be protected from the autumn gales. One of the groups in question faces full east with a 10-foot bush of *Erica arborea* in its rear, which breaks the strong gales we have from the west at this season of the year.

This fine, hardy Lily was discovered by Mr. W. Boxall in Upper Burma, and this gentleman sent bulbs to Messrs. Hugh Low and Co., with whom it flowered in 1889. For some reason it has been given the reputation of being only half-hardy, but I think that in time this will be found to be incorrect, and I advise anyone interested to plant it without the slightest hesitation, and plant the bulbs 9 inches deep, care being taken to see that the position is fairly well drained, especially where the natural soil is clay.—E. Markham in *Gardening Illustrated*.



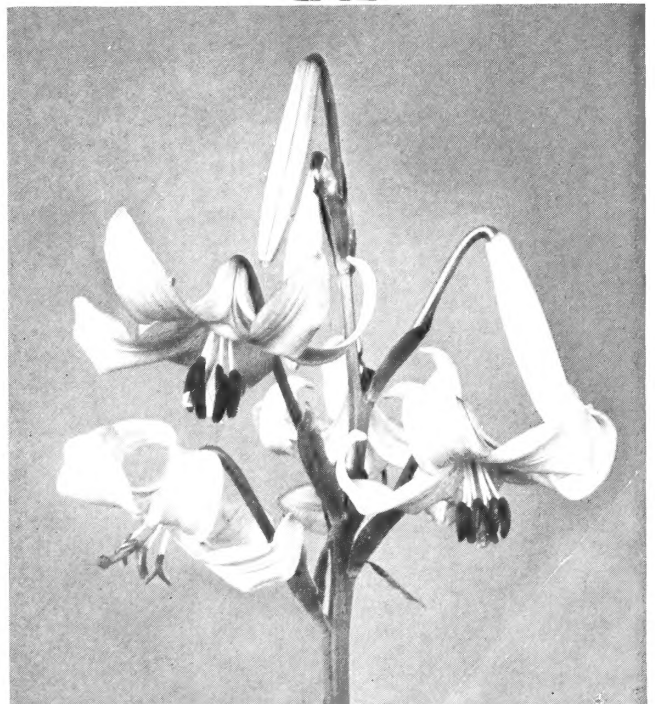
L. HENRYI

(The yellow Speciosum.) Here is one of the most dependable and robust of all lilies, as well as one of the most beautiful and distinct. Flowering in August, and lasting long in bloom, the Henryi lily is of a soft clear orange or orange-yellow, very heavy of substance, and with a sort of beard or tiny "teeth" about the center. There are a few greenish spots near the central portion as well, and the brown anthers swing loosely from pale green stamens. The stems reach a height of four to seven or even eight feet on established clumps. Should be planted 10 or 12 inches deep, preferably in slight shade. Very hardy, and thrives not only in cold sections but in the south as well. Very fine large bulbs. **40c each, \$3.50 per ten.** Mammoth size, **75c each.**

L. UMBELLATUM

A very easy subject to grow, and especially desirable because it flowers ahead of practically all the other lilies in this list, being at its best in early June. The flowers are produced in umbellate heads, several in the clusters, and are a bright orange or orange-red in color. The growth is stocky, stems being about two or two and one-half feet tall. Plant four or five inches deep. Hardy and most reliable.

Each 40 cents, \$3.50 per dozen.



Regal (above), Henryi (center), Testaceum (lower).

The New SUNSET LILY

On the right we present a color reproduction of this grand new lily, a flower which is destined to become universally popular.

Because of its ease of culture, rapidity of increase, and its extreme hardiness, the new SUNSET LILY is certain to achieve widespread favor. It is not only of the easiest culture, but is likewise of rare beauty and robust constitution. It has been known to attain a height of twelve feet, with from 20 to 40 flowers to the stalk, and may be depended upon to grow consistently to 5 or 6 feet. Not particular as to soil, it will thrive in full sun or partial shade, and while it appreciates good drainage, a liberal amount of water during the growing season pays good dividends in larger blossoms and greater height.

The SUNSET LILY has few rivals in the group which are generally characterized as RED. No other red lily compares with it in size nor height, and certainly none of them are as easy and simple to grow — it is practically fool-proof. As will be noted in the color illustration, this lily is bright red in color, the central portion being a bright yellow with dark spots. The anthers are long and very pronounced, lending grace and airiness to the flower. Stems are straight and strong with no tendency to droop. Plant medium depth, about eight or nine inches, in a position where water or seepage will not stand during the winter.

PRICES: Strong well grown bulbs, with two or more crowns, each 50c, 3 for \$1, 12 for \$3.50. Single crown bulbs for naturalizing, \$20 per hundred. Post-paid.

Every lily bulb we send out will be a healthy, clean, fresh specimen of flowering size. If you have been disappointed before in buying lily bulbs, just give us a trial order.



SUNSET LILY

(Please don't confuse with *L. Pardalinum*, which somewhat resembles this picture. The Sunset Lily is twice as large and finer in every respect.)

Cooley's Hardy Lily Collection

All seven of the following, properly packed, labeled and prepaid, for \$2.00.

- 2 Sunset Lily
- 1 Testaceum, apricot-yellow.
- 2 Regale, white.
- 1 Henryi, orange-yellow.
- 1 Umbellatum, orange-red.

All first quality blooming size bulbs.