

Historic, archived document

Do not assume content reflects current scientific knowledge, policies, or practices.

62.85

PORTER-WALTON CO.
P. O. BOX 1619 -- SALT LAKE CITY 11, UTAH

Iris

Madonna

Lilies

Perennial

Seeds

**June - July - August
1947**

**LIBRARY
RECEIVED**
★ JUL 29 1947 ★
U. S. Department of Agriculture

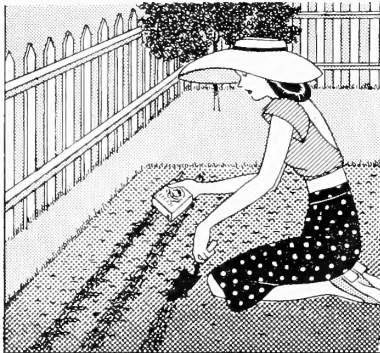
Sec. 562, P. L. & R.
U. S. POSTAGE
PAID
Permit No. 22
Salt Lake City, Utah

U.S. DEPARTMENT OF AGRICULTURE
LIBRARY
WASHINGTON 25, D.C.

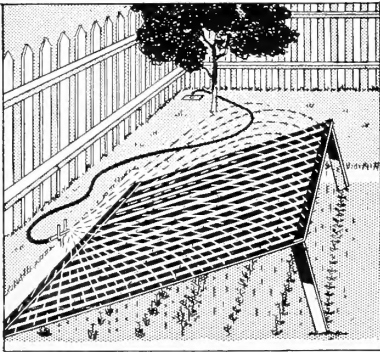
GROW YOUR OWN

Perennials

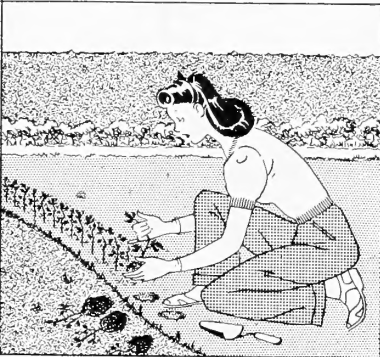
HAVE MORE PLANTS — AT SMALLER COST.
IT'S EASY — IT'S FUN



SOWING SEEDS (July)



WATERING AND SHADE (All Summer)



TRANSPLANTING (September)



YOUR REWARD

ALYSSUM

1800 **Saxatile Compactum** (Basket of Gold) (12")—The brightest yellow spring rock garden flower. **Pkt., 10c.**

AQUILEGIA (Columbine)

1820 **Scott Elliot's Long Spurred Hybrids** (26")—A wonderful mixture. Large flowers of pink, white, blue yellow and red. **Pkt., 25c.**

ARABIS (ROCK CRESS) (5")

1830 **Alpina**—Forms spreading tufts covered with sheets of pure white flowers. One of the earliest spring-flowering plants we have. Perfectly hardy and long-lived. **Pkt., 25c.**

COREOPSIS (24")

1900 **Sunburst**—Highly prized in cut flower decorations for their long graceful stems and exceptionally long keeping quality. **Pkt., 10c.**

CAMPANULA (Bellflower)

Calycanthemum (24")—This old favorite cup and saucer Canterbury Bell is a flower worthy of perpetuation in every garden of today. Because biennials live only 2 years and die after blooming, new plants should be started each year from seeds. Clear brilliant colors. 1870 **White** 1872 **Pink**; 1874 **Blue**; and 1876 **Mixed**. **Pkt., 10c each.**

1880 ***Persicifolia** (Peach Bells) (30")—A noble plant for the middle of the hardy border. Large, bright blue flowers neatly arranged around their straight stems which rise from low mounds of peach-like foliage. **Pkt., 25c.**

DIGITALIS (Foxglove) (48")

1950 **Gloxiniaeflora Mixed**—For stately and picturesque beauty, these have not been surpassed. The long tubular, spotted flowers hang in a mass on spikes 2'-3' long. Because biennials live only 2 years and die after blooming, new plants should be started each year from seeds. Mixture includes purple, rose yellow and white. **Pkt., 10c.**

PACIFIC HYBRID DELPHINIUM (72")

Since the introduction of this superb class of giant Delphiniums it has become everyone's favorite. The huge florets 2½" and more in diameter are practically 100% double. Our seed stock comes directly from the originator.

1910 **Black Knight Series**—Dark Blue

1916 **Galahad Series**—White

1920 **Summer Skies Series**—Clear Blue

1914 **Round Table Series**—Many different crosses and blends are included in this mixture.

New crop seed will be ready in July.

Pkt., 50c; 1/32 oz., \$1.00.

HOLLYHOCKS (72")

1994 **Double Mixed**. An old favorite for early summer flowers. Easy to grow. **Pkt., 10c.**

LUPINUS

2020 **RUSSELL STRAIN** (36")—Long, well-rounded symmetrical flower spikes of striking beauty. The color range is enormous. **Pkt., 25c.**

ICELAND POPPIES

2050 **Sanford's Giants Mixed**—This new strain of Iceland Poppies, we believe, is the finest obtainable. Great care in selection and reselection has produced a wonderful color balance, immense flowers and greater length of stems. **Pkt., 25c.**

PYRETHRUM (Painted Daisy) (24")

2070 **ROSEUM SINGLE AND DOUBLE MIXED**—An excellent variety of colors. 15% to 25% of the plants produce double flowers. They usually bloom for Decoration Day in Salt Lake Valley. **Pkt., 25c.**

SWEET WILLIAM (Dianthus Barbatum) (18")

Well known and well liked for its adaptability and beauty in many different situations.

2150 **Single Giant-Flowered Mixed**. **Pkt., 10c.**

2160 **Double Giant-Flowered Mixed**. **Pkt., 15c.**

2170 **NEWPORT PINK**—Large Single flowers. **Pkt., 15c.**

2180 **SCARLET BEAUTY**—Large single. **Pkt., 15c.**

Selections from the worlds finest Irises.

PORTER WALTON CO.

P. O. BOX 1619, SALT LAKE CITY 11, UTAH

Please **Order On This Blank**
Write your letters on
a separate sheet.

(Please print—Use name of head of family) Date _____ 194__

If you want this order shipped to an address or person different from that given at left, write directions here:

MISS _____
MRS. _____
MR. _____

Street _____
Address _____ Route _____ Box _____
(Please fill in completely whether needed for delivery or not)

Post Office _____ State _____

(Give your freight station on lines above if different from your Post Office)

HOW SHALL WE SHIP?

Parcel Post

Express

Freight

What railroad or truck line? _____

If any item is out of stock may we substitute? Write Yes or No _____

WHEN SHALL WE SHIP?

CATALOG NUMBER OF ARTICLE	QUANTITY WANTED	✓	NAME OF ARTICLE WANTED Abbreviate if necessary	SIZE	PRICE EACH OR LOT	TOTAL PRICE		SHIP. WTS.		✓
						DOLLARS	CENTS	LES.	OZ.	
										1
										2
										3
										4
										5
										6
										7
										8
										9
										10
										11
										12
										13
										14
										15
										16
										17
										18
										19
										20
										21
										22
										23
										24

If you have moved since sending your last order write old address here _____

NAME _____

STREET ADDRESS _____

POST OFFICE _____ STATE _____

C. O. D. SHIPMENTS MADE ONLY WHEN ORDER IS ACCOMPANIED BY CASH PAYMENT OF 25% OF THE AMOUNT OF THE ORDER

Do not send cash except in registered letter.

AMOUNT FOR GOODS	POUNDS	OUNCES
IF ABOVE IS LESS THAN \$1.00 ADD 25c SERVICE CHARGE		
AMOUNT FOR UTAH SALES TAX (2% of amount for goods)		
AMOUNT FOR POSTAGE (We refund any not used)		
Amount I owe PORTER-WALTONS (If any) from previous order		
TOTAL AMOUNT ENCLOSED		

TOT. WT. IN LBS.

● CHECK YOUR ORDER COMPLETELY TO BE SURE THAT YOU HAVE GIVEN ALL NECESSARY INFORMATION

● IF BY MAIL BE SURE TO INCLUDE ENOUGH FOR POSTAGE

● DO NOT SEND STAMPS

SUGGESTIONS ABOUT MAKING OUT THE ORDER—

Read page 3 of our latest catalogue. If there is any questions how we should ship your order, telephone your postmaster, or express agent for advice. Include as many as possible this season's requirements in each order. It will save money for you.

HOW TO SEND MONEY—

It is safest and best to send a Postal Money Order, Personal Check, American Express Money Order, Bank Draft or Cashier's Check. If you live on a rural route, the carrier will buy a Postal Money Order for you on request. Do not send cash except in registered letter. **DO NOT SEND STAMPS.**

PARCEL POST CHARGES—

See Parcel Post Zone Rate, page 3 of catalog, for amount to send. Don't hesitate sending too much for postage; we refund every penny not used.

FREIGHT OR EXPRESS CHARGES should not be sent with order except when there is no agent at your station.

USE
LETTER
POSTAGE
HERE

PORTER-WALTON COMPANY
SEED AND NURSERY SPECIALISTS

P. O. BOX 1619

SALT LAKE CITY 11, UTAH

FOLD ON THIS LINE

- | | |
|----------------------------------------------------------------------------------------|--------------------------------------------------------------------------|
| VEGETABLE SEEDS
FLOWER SEEDS & BULBS
SHRUBS & TREES
EVERGREENS
FRUIT TREES | BERRY PLANTS
LAWN SEED
PASTURE GRASS
FERTILIZER
INSECTICIDES |
|----------------------------------------------------------------------------------------|--------------------------------------------------------------------------|

IMPORTANT
 Before Seeding Be Sure That
 —Your name and address are printed plainly
 —Shipping instructions have been given
HAVE YOU ORDERED SUFFICIENT

FROM _____

“ONE GOOD TURN DESERVES ANOTHER”

The following persons, I think, will likely purchase Planting Materials and would appreciate your Catalog:

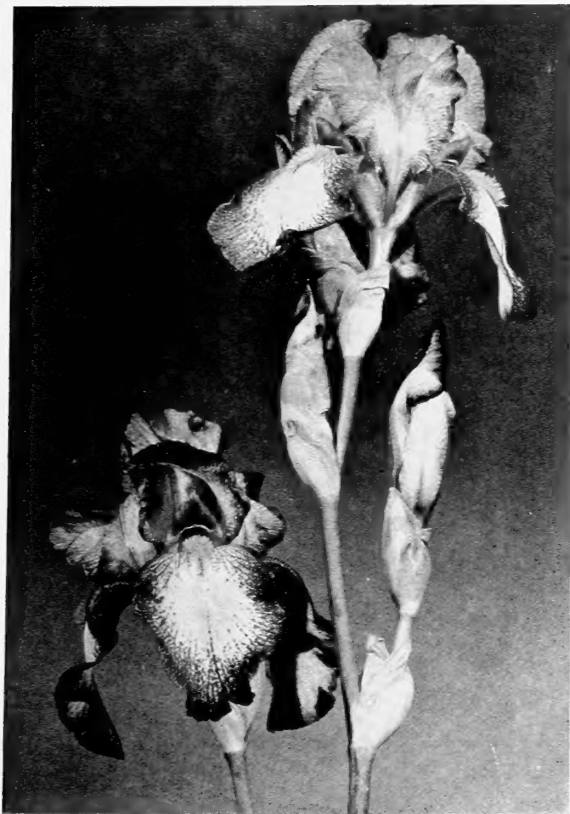
NAMES	ADDRESSES

Please indicate below by X the Free information leaflets desired:

- | | | | | | | | |
|-----------------------|-----|----------------------|-----|------------------|-----|---------------|-----|
| Bulb Planting | () | Lawn Making | () | Pruning | () | Peonies | () |
| Farm Seed Culture () | | Lawn Pests | () | Planting Nursery | | Roses | () |
| Fertilizers | () | Mushroom Culture () | | Stock | () | | |

YOUR FAVORITE Iris

IMPORTANT: The proper planting time for Iris is early July. Shipments will begin about July 1st. They should not be planted later than Sept. 30th. Please include postage with remittance. Average shipping weight is 6 ounces per plant.
The letters and figures following the name indicate the blooming season and height. (E - Early, EM - Early Midseason, M - Midseason, LM - Late Midseason, L - Late.)



TIFFANY

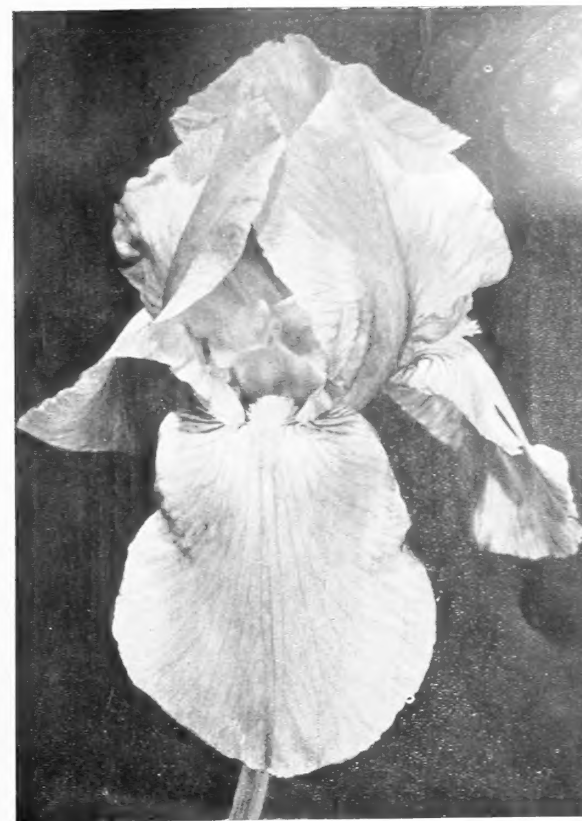
Novelty Special

THE IRIS LOVERS' COLLECTION

City of Lincoln
Great Lakes
Lighthouse
Ormohr
Snowking
Treasure Island

THESE 6 GREAT IRIS
ONLY \$3.50

Average Shipping Weight 2 lbs.



GREAT LAKES

WHITE

- 6800 - **GUDRUN E.** 30". Snowy White, warmed by a golden beard and fine sprinkling of gold dust. Large and shapely. 30c - 3 for 75c
6801 - **SNOW FLURRY EM.** 36". A beautiful ruffled cool white with a tint of blue in the newly opened blooms. Exquisite form. \$2.00 - 3 for \$5.00
6802 - **SNOWKING LM.** 36". Large flowers of pure white. Closed standards, and falls gracefully flaring. 30c - 3 for 75c

PLICATAS

- 6805 - **LOS ANGELES M.** 36". Pure white plicata with slight blue stitching at the center. 35c - 3 for 90c
6804 - **TIFFANY M.** 30". Gaily different. It is heavily stitched old rose on a yellow background. A profuse bloomer. 60c - 3 for \$1.50
6806 - **WASATCH E.** 32". A very large, broad petaled white plicata with even markings of mid-blue. 30c - 3 for 75c

BLUE

- 6810 - **BEUCHLEY'S GIANT E.** 40". A tall blue bi-color giant. A pleasing combination of light and deep blue. 25c - 3 for 60c
6812 - **EL CAPITAN M.** 38". Very large blue flowers, slightly tinted lavender. 25c - 3 for 60c
6814 - **GREAT LAKES M.** 36". This fine pure light blue iris ranks first among the nation's 100 best. Beautiful flaring form and excellent branching. \$1.40 - 3 for \$3.50
6816 - **MISSOURI LM.** 34". Definitely one of the best. The giant blooms of rich medium blue have a heavy enameled texture. 50c - 3 for \$1.25
6818 - **SHINING WATERS M.** Tall distinctive silvery blue. 35c - 3 for 90c
6819 - **SIERRA BLUE LM.** A smooth medium blue self. Makes a magnificent clump. 30c - 3 for 75c

PURPLE

- 6850 - **DEPUTE NOMBLOT LM.** 36". Rosy purple dusted with bronze and accented by gold beard. 25c - 3 for 60c
6825 - **ELMOHR LM.** 36". The most sensational seedling of Wm. Mohr. It is an exquisite shade, rich reddish mulberry, exceptionally glossy and lustrous. \$2.00 Each
6826 - **SABLE** — Deepest black violet, arresting in its depth of color. Its harmonizing violet beard and its lustrous finish make it a superior iris in its color. \$1.50 Each

MAUVE

- 6846 - **ORMOHR M.** 34". Distinguished from its parent, Wm Mohr., by a taller stem, larger flowers and deeper color with less contrast in its veining. 75c - 3 for \$2.00
6848 - **WM. MOHR E.** 28". Large exotic blooms of lavender closely netted overall with violet. 30c - 3 for 75c

YELLOW

- 6851 - **GOLDEN MAJESTY LM.** 34". One of the very fine new yellows. \$1.00 - 3 for \$2.50
6852 - **GOLDEN TREASURE M.** 36". Extremely charming creamy yellow with shimmering silky texture and a glowing golden light at the center. 40c - 3 for \$1.00
6854 - **HAPPY DAYS E.** 36". Extra large flowers of medium yellow which glisten in the sunlight. 30c - 3 for 75c
6856 - **NARANJA M.** 34". Good size and substance in rich deep yellow with a pronounced orange tone, mostly in the falls. 30c - 3 for 75c
6858 - **TREASURE ISLAND LM.** 36". Massive blooms of rich gold with a spot of cream on the falls. Moderately branched and hardy. 50c - 3 for \$1.25

AMOENA & VARIEGATA

- 6822 - **WABASH M.** 36". Without doubt the best amoena. The crisp white standards and deep violet blue falls edged white, make a distinctly fresh toned flower. \$1.00 - 3 for \$2.50
6820 - **CITY OF LINCOLN LM.** 38". King of the variegatas. Rich golden standards and bright velvety red falls produce a very striking color effect. \$1.00 - 3 for \$2.50

PINK

- 6828 - **CHINA MAID E.** 34". Luscious orchid pink, softened by a blend of golden buff at the haft. 90c - 3 for \$2.20
6832 - **LIGHT HOUSE L.** 32". From this tower of beauty radiate soft tones of rose and rose-red with a warm glow of gold at the center. 75c - 3 for \$2.00
6834 - **PRAIRIE SUNSET M.** 34". A gorgeous giant. Mingled tints of pink, rose, apricot, peach and gold. \$2.50 each

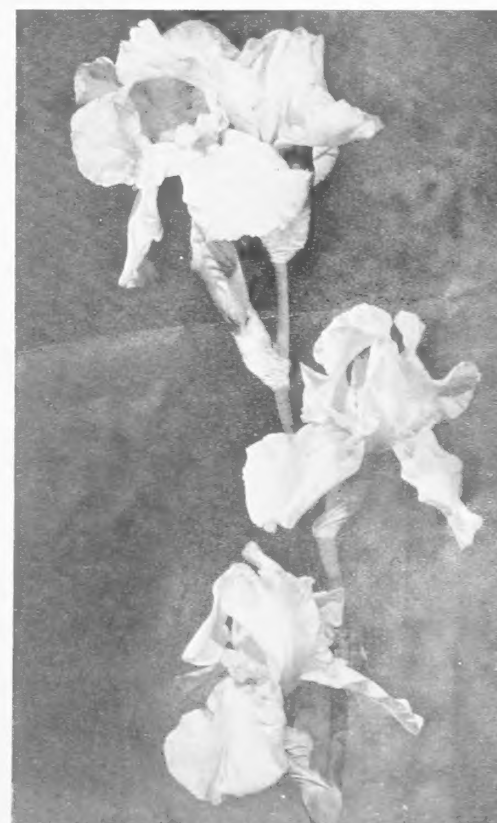
RED TONES

- 6838 - **DAUNTLESS M.** 32". A fine red that has enjoyed long popularity. 25c - 3 for 60c
6842 - **THE RED DOUGLAS LM.** 36". A magnificent iris of vibrant wine red with plus like quality. Its size and style add much to its beauty. \$1.00 - 3 for \$2.50

DWARF IRIS

- 6872 - **WHITE** 6880 - **YELLOW**
6876 - **VIOLET BLUE**

Excellent for edgings. They bloom very early. 3 for 60c; 10 for \$1.75



SNOW FLURRY

IRIS BONUS

If your Order totals.....	\$2.50	\$5.00	\$10.00
	↓	↓	↓
You may select from the group below an extra value up to.....	.30	.80	1.50
	BEUCHLEY'S GIANT - DEPUTE NOMBLOT - HAPPY DAYS MISSOURI - NARANJA - WABASH - WASATCH - WM. MOHR		

YOUR FAVORITE

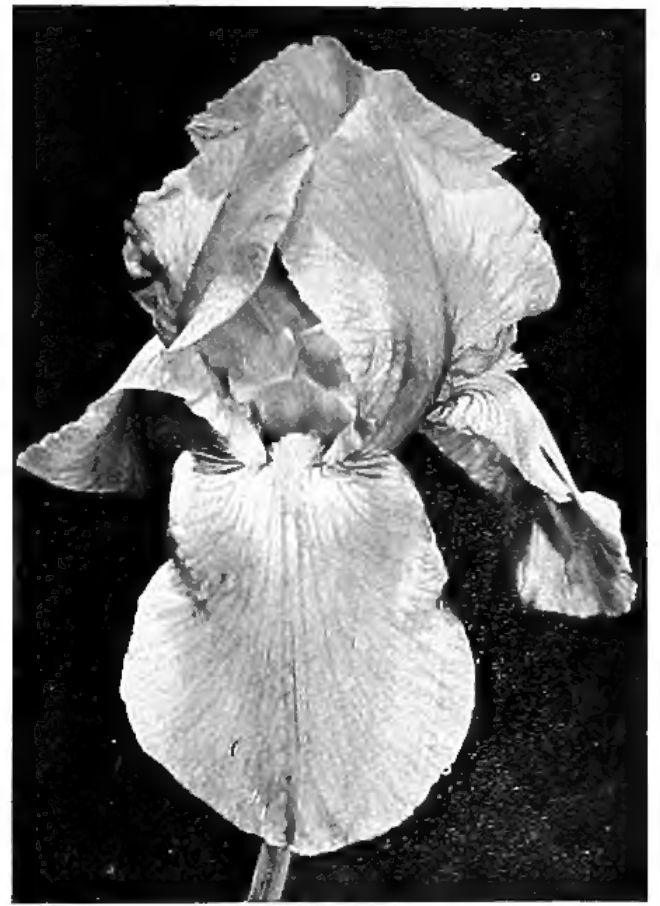
Iris

IMPORTANT: The proper planting time for Iris is early July. Shipments will begin about July 1st. They should not be planted later than Sept. 30th. Please include postage with remittance. Average shipping weight is 6 ounces per plant.

The letters and figures following the name indicate the blooming season and height. (E - Early, EM - Early Midseason, M - Midseason, LM - Late Midseason, L - Late.)



TIFFANY



GREAT LAKES

WHITE

- 6800 - **GU DRUN** E. 30". Snowy White, warmed by a golden beard and fine sprinkling of gold dust. Large and shapely. 30c - 3 for 75c
- 6801 - **SNOW FLURRY** EM. 36". A beautiful ruffled cool white with a tint of blue in the newly opened blooms. Exquisite form. \$2.00 - 3 for \$5.00
- 6802 - **SNOWKING** LM. 36". Large flowers of pure white. Closed standards, and falls gracefully flaring. 30c - 3 for 75c

PLICATAS

- 6805 - **LOS ANGELES** M. 36". Pure white plicata with slight blue stitching at the center. 35c - 3 for 90c
- 6804 - **TIFFANY** M. 30". Gaily different. It is heavily stitched old rose on a yellow background. A profuse bloomer. 60c - 3 for \$1.50
- 6806 - **WASATCH** E. 32". A very large, broad petaled white plicata with even markings of mid-blue. 30c - 3 for 75c

BLUE

- 6810 - **BEUCHLEY'S GIANT** E. 40". A tall blue bi-color giant. A pleasing combination of light and deep blue. 25c - 3 for 60c
- 6812 - **EL CAPITAN** M. 38". Very large blue flowers, slightly tinted lavender. 25c - 3 for 60c
- 6814 - **GREAT LAKES** M. 36". This fine pure light blue iris ranks first among the nation's 100 best. Beautiful flaring form and excellent branching. \$1.40 - 3 for \$3.50
- 6816 - **MISSOURI** LM. 34". Definitely one of the best. The giant blooms of rich medium blue have a heavy enameled texture. 50c - 3 for \$1.25
- 6818 - **SHINING WATERS** M. Tall distinctive silvery blue. 35c - 3 for 90c
- 6819 - **SIERRA BLUE** LM. A smooth medium blue self. Makes a magnificent clump. 30c - 3 for 75c

PURPLE

- 6850 - **DEPUTE NOMBLOT** LM. 36". Rosy purple dusted with bronze and accented by gold beard. 25c - 3 for 60c
- 6825 - **ELMOHR** LM. 36". The most sensational seedling of Wm. Mohr. It is an exquisite shade, rich reddish mulberry, exceptionally glossy and lustrous. \$2.00 Each
- 6826 - **SABLE** — Deepest black violet, arresting in its depth of color. Its harmonizing violet beard and its lustrous finish make it a superior iris in its color. \$1.50 Each

MAUVE

- 6846 - **ORMOHR** M. 34". Distinguished from its parent, Wm Mohr, by a taller stem, larger flowers and deeper color with less contrast in its veining. 75c - 3 for \$2.00
- 6848 - **WM. MOHR** E. 28". Large exotic blooms of lavender closely netted overall with violet. 30c - 3 for 75c

YELLOW

- 6851 - **GOLDEN MAJESTY** LM. 34". One of the very fine new yellows. \$1.00 - 3 for \$2.50
- 6852 - **GOLDEN TREASURE** M. 36". Extremely charming creamy yellow with shimmering silky texture and a glowing golden light at the center. 40c - 3 for \$1.00
- 6854 - **HAPPY DAYS** E. 36". Extra large flowers of medium yellow which glisten in the sunlight. 30c - 3 for 75c
- 6856 - **NARANJA** M. 34". Good size and substance in rich deep yellow with a pronounced orange tone, mostly in the falls. 30c - 3 for 75c
- 6858 - **TREASURE ISLAND** LM. 36". Massive blooms of rich gold with a spot of cream on the falls. Moderately branched and hardy. 50c - 3 for \$1.25

AMOENA & VARIEGATA

- 6822 - **WABASH** M. 36". Without doubt the best amoena. The crisp white standards and deep violet blue falls edged white, make a distinctly fresh toned flower. \$1.00 - 3 for \$2.50
- 6820 - **CITY OF LINCOLN** LM. 38". King of the variegatas. Rich golden standards and bright velvety red falls produce a very striking color effect. \$1.00 - 3 for \$2.50

PINK

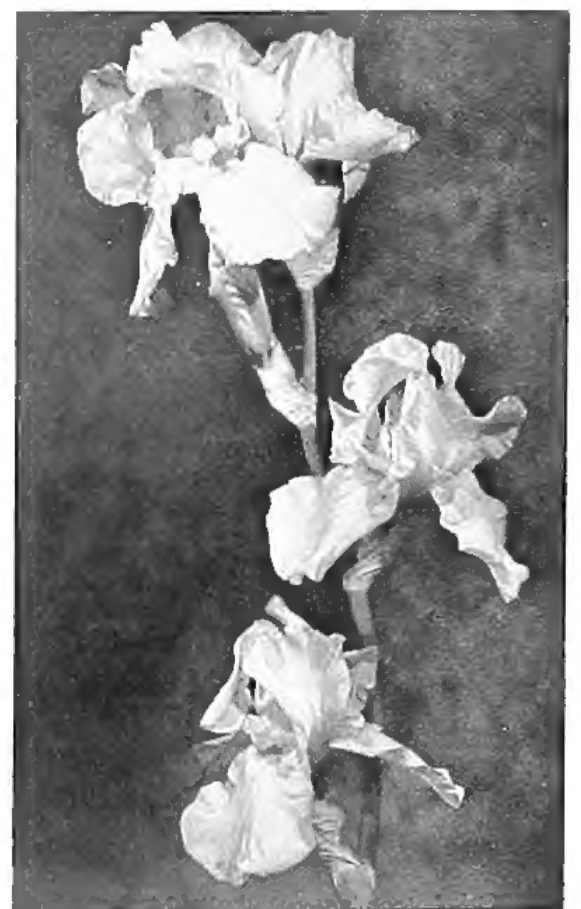
- 6828 - **CHINA MAID** E. 34". Luscious orchid pink, softened by a blend of golden buff at the haft. 90c - 3 for \$2.25
- 6832 - **LIGHT HOUSE** L. 32". From this tower of beauty radiate soft tones of rose and rose-red with a warm glow of gold at the center. 75c - 3 for \$2.00
- 6834 - **PRAIRIE SUNSET** M. 34". A gorgeous giant. Mingled tints of pink, rose, apricot, peach and gold. \$2.50 each

RED TONES

- 6838 - **DAUNTLESS** M. 32". A fine red that has enjoyed long popularity. 25c - 3 for 60c
- 6842 - **THE RED DOUGLAS** LM. 36". A Magnificent iris of vibrant wine red with plush like quality. Its size and style add much to its beauty. \$1.00 - 3 for \$2.50

DWARF IRIS

- 6872 - **WHITE** 6880 - **YELLOW**
 - 6876 - **VIOLET BLUE**
- Excellent for edgings. They bloom very early. 3 for 60c; 10 for \$1.75



SNOW FLURRY

Novelty Special

THE IRIS LOVERS' COLLECTION

City of Lincoln
Great Lakes
Lighthouse
Ormohr
Snowking
Treasure Island

THESE 6 GREAT IRIS ONLY \$3.50

Average Shipping Weight 2 lbs.

IRIS BONUS

If your Order totals.....	\$2.50	\$5.00	\$10.00
	↓	↓	↓
You may select from the group below an extra value up to.....	.30	.80	1.50

BEUCHLEY'S GIANT - DEPUTE NOMBLOT - HAPPY DAYS
MISSOURI - NARANJA - WABASH - WASATCH - WM. MOHR

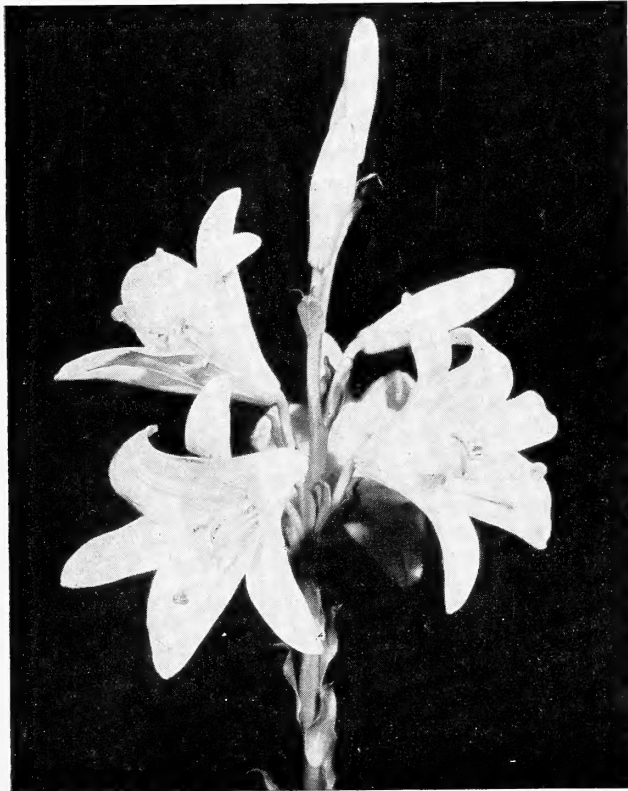
PORTER-WALTON COMPANY

Seedsmen and Nurserymen

P. O. Box 1619

Salt Lake City 11, Utah

Madonna Lily



CATALOG NO. 7116

Lilium Candidum (Madonna Lily) is the best known and the earliest blooming of the hardy white lilies. The stems, often 4 feet tall, carry 6 to 10 pure snow-white blooms with golden anthers. Very fragrant.

The bulbs should be planted in August or September, covering with 2 inches of soil above the bulb. They thrive in all soils and prefer sunny or partly sunny exposures. Large Bulbs 60c each; 3 for \$1.65; 10, \$5.00; 25, \$11.50.

Oriental Poppies

We offer only limited stocks of these fine poppies.

6915 - **Helen Elizabeth** — Large, magnificent blooms of clear La France pink with no dark base spots. Grows 30 inches tall and has a long blooming season.
75c each

6916 - **May Sadler** — A wonderful salmon toned pink with dark base spots.
75c each.

6917 - **Perry's White** — A fine satiny white with a dark maroon blotch at the base of each petal. **90c each.**