

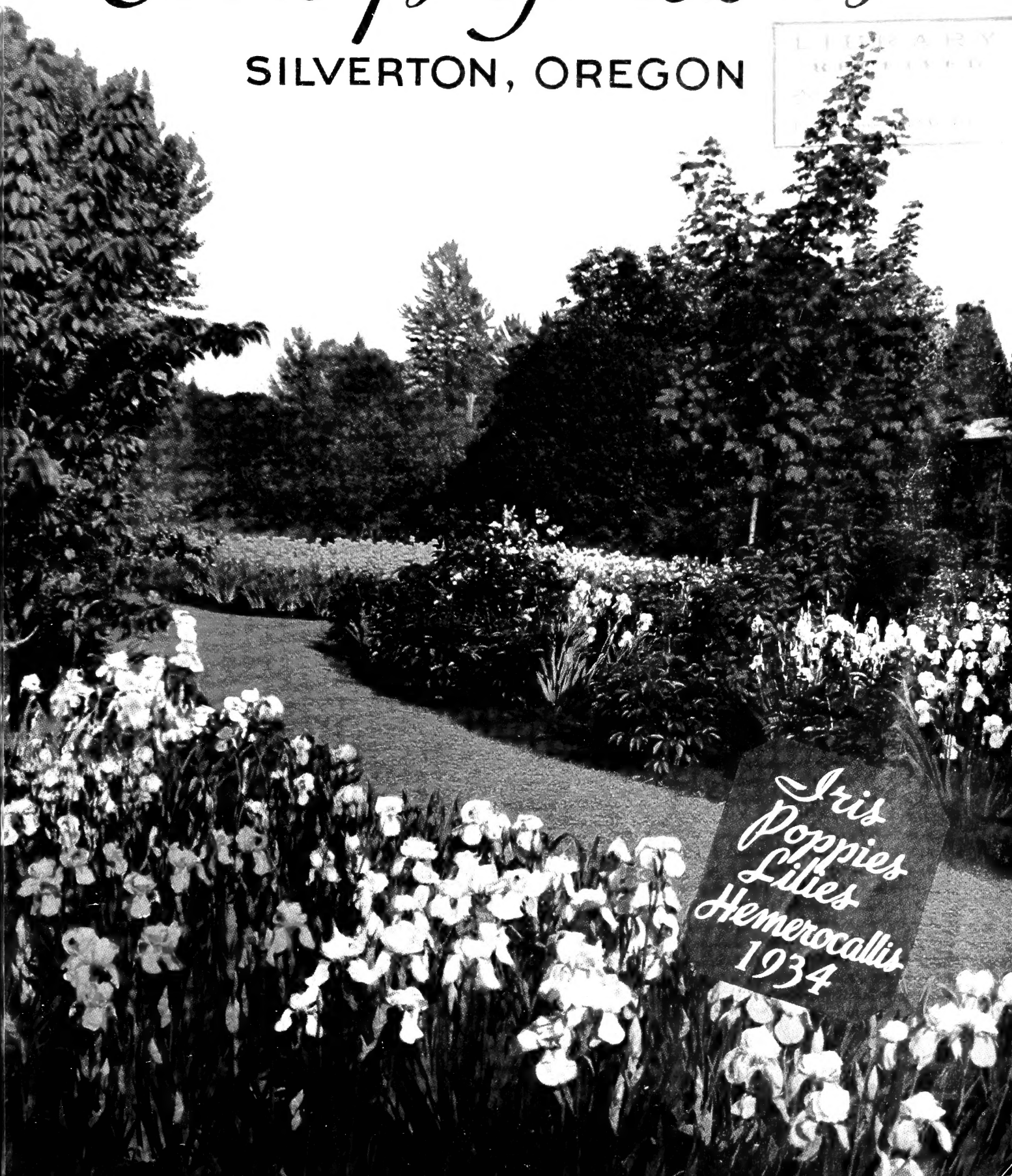
## Historic, archived document

Do not assume content reflects current scientific knowledge, policies, or practices.



# Cooley's Gardens

SILVERTON, OREGON



*Iris  
Poppies  
Lilies  
Hemerocallis  
1934*

# GREETINGS!

**T**O OUR MANY FRIENDS and customers everywhere we present herewith our offerings of choice Irises, Lilies, and other bulbs and plants. Our collection of iris is one of the best and most modern in the world, and as specialists in this flower we have devoted a major portion of our catalogue to the iris. But lovers of flowers in general will, we hope, find much of interest besides the iris, for we have to offer several especially fine **HARDY LILIES**, an exceptionally interesting collection of **ORIENTAL POPPIES**, a dozen new **HYBRID HEMEROCALLIS**, and some unusual **BULBOUS IRIS** for the early spring garden. For satisfactory results all of these items should be planted in the summer or early autumn.

## Index

	Page		Page
Bargain Collections—		Dwarf (Rock Garden) Bearded Iris.....	33
Iris, Asia .....	27	English Iris .....	34
Bulbous .....	30	English Iris, Cultivation of.....	29
Dolly Madison .....	13	Fall Blooming Irises .....	28
Frivolite .....	23	How to Grow Lilies Successfully (Important).....	33
Indian Chief .....	13	Introductions for 1934 .....	4, 5
Japanese .....	37, 38	Japanese Iris .....	35-39
Meldorie .....	16	Japanese Iris Collections.....	37, 38
Midgard .....	19	Lilies .....	44-47
Novelty .....	7	Lilies, Cultivation of (Important).....	33
Rare Varieties .....	16	Lilies, Hardy Collection .....	47
Lilies, Hardy .....	47	Lilies, Hemerocallis .....	40, 41
Hemerocallis .....	40	Lilies, Hemerocallis Collection .....	40
Poppies, Oriental .....	42	Lilies, Sunset .....	47
Bearded Iris List .....	4-28	Poppies, Oriental .....	42, 43
Bearded Iris, Cultivation of.....	29	Poppies, Oriental Collection .....	42
Cultivation of Bearded Irises.....	29	Rock Garden (Dwarf) Bearded Iris.....	33
Cultivation of Dutch, English, and Spanish Iris.....	29	Spanish Iris .....	31
Dutch Iris .....	30, 31	Spanish Iris, Cultivation of.....	29
Dutch Iris, Cultivation of.....	29	Special Combination Offers.....	4
		Spurias, Beardless Iris .....	32



## A WORD ABOUT OUR STOCK

Oregon, and especially the Willamette Valley, has acquired a world-wide reputation for bulb and plant production. Our gardens are located in the heart of this renowned valley, and all of the stock we offer is grown right here. This fact, coupled with our clean and intensive cultural methods, enables us to furnish plants of a quality that few growers can duplicate. Our iris rhizomes are of exceptional size and vigor, and in many instances one root purchased from us in July or August will reward the owner with two or three flower stalks the very first season after planting.

Our iris rhizomes are **NOT IRRIGATED**. **NOT FERTILIZED**, and we have **NEVER HAD AN IRIS BORER!** Likewise, our lilies and other bulbs are large, sound, and free from pests and diseases. They are grown right here and are perfectly fresh when they start on their journey to your garden.

## NO ORDER ACCEPTED FOR LESS THAN \$1.00

**Terms:** Cash with the order, either check, draft, or money order. Enclosing cash in your letter may result in loss. 25% will hold until shipping date.

**Discount:** You may select additional plants to the value of 10% of your order if it totals \$3 or more. **THIS DOES NOT APPLY TO THE COLLECTION OFFERS**, however. Three of any 25c irises for 50c.

**Shipments:** Will be made on bearded irises beginning about June 20th. If you wish your order sent later, or on any specific date, we shall carry out your instructions. Early shipments permit plants to become established before winter sets in, but rhizomes are not as large in July as they would be in August. We prefer to ship around July 10th as an ideal time.

**BULBS, JAPANESE AND SPURIA IRIS, AND POPPIES, WILL NOT BE SHIPPED UNTIL THE PROPER PLANTING SEASON, AROUND SEPTEMBER 1st, OR SLIGHTLY LATER.**

**Transportation:** Prepaid express or parcel post, whichever we deem most expedient. Be sure and state your express office, if different from postal address. We pack in dry excelsior in well ventilated cardboard cartons and guarantee safe delivery to point of address. All shipments are insured. Remember, we **PREPAY** all costs—the prices quoted herein are for delivery to your door.

**We Guarantee** all bulbs and plants to be true to name, first size, free from disease and pests, and to reach you in live and healthy condition. We do not guarantee them to live or grow in your garden under conditions over which we have no control.





# ALONG THE TRAIL OF BEAUTY

*For Color,  
Ease of Culture,  
Prolonged Flowering,  
A Joyful Hobby—*

## IRISES

*Are Unsurpassed*

•

*For the Amateur or  
the Connoisseur*

**25c to \$25**

*You'll find them all here*

•

*Are They Hardy?  
Can We Ship So Far?*

MAINE • AUSTRALIA

ALABAMA

ENGLAND • ONTARIO

*and Every State in the Union*

If you would paint your landscape with brilliance, or with bewitching pastoral tints; if you wish colorful border clumps, or if you grow your flowers for cutting and indoor enjoyment, the Iris, in some form or species, will fill the need. The collecting of fine irises, like the accumulating of rare paintings or antiques, is a fascinating and inspiring hobby. And best of all, no group of flowers presents fewer obstacles to success.

Among the world's finest and most varied collections is the planting in our gardens. The beginner with flowers, with only a small sum to spend, will find a wealth of beauty obtainable for a modest outlay. And likewise, the estate owner and others to whom expense is a secondary consideration will find the ultimate in rarity and perfection offered within these pages.

Right now, in every state in this country, every province in Canada except the extreme Northern portion, and in far away Australia as well as in the British Isles, Irises and other bulbs from Cooley's Gardens are growing lustily! On page 28 you will find a few expressions from satisfied gardeners who have entrusted us with their iris and other bulb orders. You too, if you live in a spot where a garden can be grown, may have complete confidence that stock bought from us will arrive in perfect condition, and, with reasonable care, enjoy perfect success.



KALINGA

## Cooley's Introductions for 1934

The following six new irises are herewith offered for the first time. They are the result of years of painstaking care and planning in hybridizing work carried on by Dr. R. E. Kleinsorge, and are distinct from anything now in commerce.

Cooley introductions of the past include many celebrities in the iris world—among them are Meldoric, Zuni, Venus de Milo, Eloise Lapham, Legend, Ethelwyn Dubuar, Tapestry, Surprise; and Klamath and Crown Prince by Dr. Kleinsorge. All of these have either received awards of the American Iris Society or have been accorded favorable publicity by the AIS bulletins and in exhibits here and abroad. We confidently expect these new varieties to make an equally impressive showing.

### *Special Combination Offers*

One each of these new introductions, the total list price of which is \$81.50, for **\$70.**

One of each, except ITASCA, a \$56.50 value, for **\$45.**

One of each, except ANAKIM and YAKIMA, a \$64 value, for **\$55.**



MOUNTAIN SUNSET



ITASCA

## ANAKIM

Gigantic lavender, so outstanding in its color class as to defy all predecessors. Despite its colossal size, the flowers are graceful in effect, well carried on stems over four feet tall. The extremely broad falls are a noticeable feature in this flower of architectural perfection.

**Each \$10.00**

## ITASCA

A positive self of the darkest, yet most vivid, deep amethyst. It carries no veining whatsoever, and the great depth of tone is intensified by a heavy brown beard, underlaid with blue. The texture is like silk, and the flowers are rounded in shape, with nicely branched stalks 30 to 36 inches high. Robert Schreiner, seeing this in flower in the originator's garden this spring, declared it to be one of the greatest and most distinct irises turned out in recent years. Very few plants in existence.

**Each \$25.00**

## YAKIMA

A most brilliant variegata that provides a notable highlight in any planting. This iris, in contrasting tones of yellow and reddish purple, differs from others of its type such as Crown Prince in that it is very much taller and contains more red than brown. Since it increases rapidly, we have a fair amount of stock and can price it very reasonably for a new introduction. A free bloomer and easy grower, making a spectacular garden mass. See page 7.

**Each \$7.50**

## KALINGA

Huge cream self, outstanding not only as an exhibition spike, but as a garden specimen as well. The broad, spreading, ivory textured blooms generally come out in groups of three or four simultaneously, and each stem will carry from twelve to fifteen flowers. The spacing is perfect, as the photograph on the opposite page is a normal specimen and gives a clear idea of the candelabra effect. An offspring of Dolly Madison, its hardiness is beyond question. Four feet in height.

**Each \$15.00**

## MEHAMA

A blend of pink and yellow, with an underlying cast of pale blue. A self in effect, although the standards are slightly lighter and reflect the glints of dust-like golden particles. A very large iris, quite early, on stems from 30 to 36 inches tall. With the sun on it, or through it, Mehama is one of the most enchanting things in the garden.

**Each \$12.00**

## MOUNTAIN SUNSET

An indescribable medley of fawn and old gold, equally suffused in the standards, and the falls entirely overlaid with varying shades of violet. Novel in shape as well as in color; a blend of pastoral tints that invites close inspection. Very late, medium in size, thirty inches tall.

**Each \$12.00**

# THE WORLD'S FINEST IRISES

## ADOBE

A rich, soft, reddish buff combination. The stems are slender but the flowers are of very large size and well spaced. This is a lovely and very unusual blend, the colorings being suggestive of the name. Very few rhizomes for sale; **each \$4.50**

## ALIQUIPPA

Good sized pale yellow with luminous center of deeper coloring. This iris, which has received a silver medal of the A. I. S., is a very free bloomer and increases rapidly, thus being especially desirable where a mass of soft yellow is wanted in the garden.

**Each 25c; three for 50c; \$1.50 per 10**

## ALLIES

An autumn flowering iris that, with us at least, has not only bloomed in the spring and fall, but throughout the summer as well. Those who already have among fall bloomers the white, purple, and yellow varieties from the Sass Brothers, will welcome this French variety, because it adds a different color note—one of red-brown and fawn, with some of the pigment found in Dauntless, although by no means as red. Rhizomes are usually quite small, but the flowers are of large size, and there just seems to be no end to its blooming possibilities.

**Each 25c; three for 50c**

## ALLURE

An English silver medal winner, with ruffled flowers of blended tones in yellow and soft lavender-pink. The stems are slender and graceful, and it makes a lovely cut flower. Small rhizomes.

**Each 35c; three for \$1.00**

## ALLUWE

A new type variegata from Hans Sass. Of Nebraska X Rameses parentage, with fine yellow standards and red falls, on 40-inch well branched stems.

**Each \$3.50**

## ALTA CALIFORNIA

Standards clear yellow, falls deep yellow, faintly bronzed. Unquestionably among the leading yellows of recent introduction, and has performed superbly in Minnesota as well as in New England and California. The large blossoms are of smooth firm texture, produced on splendid stems.

**Each \$6.00**

## AMBASSADUER

A magnificent and very dependable iris that every garden should have. Bronze standards and rich red-brown falls, large in size, and of bold growing habit.

**Each 25c**

## ANDANTE

The Longfield Iris Farm introduced Andante in 1930 as a greatly improved Germaine Perthuis. The great black buds unfold into flowers of perfect form and wondrous beauty. General effect is darkest purple, with very bright orange beard. One of the excellent features is the almost total absence of veining.

**Each 75c; three for \$2.00**

## ANDELIA

A new departure in the plicata group—a combination of light lilac standards with white falls bordered

rose. Beautifully ruffled, medium in size, it is a very dainty garden subject with the fragrance of clover.

**Each 75c**

## ANNE-MARIE CAYEUX

The smooth, soft tones of this iris are indescribable. The introducer says "a delicate blending of the sky's colors at sunset and those of a pigeon's throat." The flowers are very large, of an unusual thick and leathery substance. The whole effect is wonderfully beautiful—soft rosy heliotrope blended with greyish amber, beard orange. One of the finest things ever to come from France. Limited stock.

**Each \$4.00**

## ANTARES

Fine new French introduction, but little known. Creamy standards, white falls, speckled and overlaid blue. Large bloom of unusual fragrance, and a novel color effect.

**Each 25c**

## APACHE

A small flower of distinct red or crimson brown coloring. Makes a wonderful mass, and increases rapidly.

**Each 25c**

## APHRODITE

Very fragrant and beautiful violet-pink self, with white flushed throat. Tall stalks, lasting long in bloom.

**Each 25c; three for 50c**

## ARGYNNIS

Very late sort with rich yellow standards and chestnut falls. Tall, slender stalks. One of the best variegatas.

**Each 25c**

## ASHTORETH

A delicate yellow of very large size and perfection of form, raised by Eugene Baudry of Massachusetts. At the Boston show in 1930 it was awarded an H. M. and created a very favorable impression at Freeport, Illinois, last spring. One of the best of our several outstanding new yellow irises.

**Each \$7.50**

## ASIA

One of the most famous irises ever offered and still one of the best and most distinct. Standards silvery lavender, shading to yellow. Falls pale red-purple, lighter near the margins. Very brilliant beard. Blooms of huge size, on four-foot stems.

See page 27.

**Each 25c; three for 50c**

## BALDWIN

One of the largest varieties, of a peculiar shade of manganese violet. A sort of heliotrope color, with monster blooms freely produced.

**Each 40c**

## BEAU SABREUR

A rich variegata introduced in 1930 by the Longfield Iris Farm. Bright orange-yellow standards, lightly stained bronze; falls very rich and velvety, of deep red-brown. This is a very rapid increaser, a single rhizome making a clump in one year's time. The new "Crown Prince" is a flower of this type, but of much greater size and height.

**Each 50c; three for \$1.25**





ELOISE LAPHAM  
YAKIMA

DOGROSE  
TAPESTRY

### ***Special "NOVELTY" COLLECTION***

***Any 5, your choice, for \$12.50***

Dogrose, Largo, Rubeo, Depute Nomblot, Tiger-Tiger, Gilead, Ministre F. David, Mrs. Herbert Hoover, Nurmahal, Sachem, Selene, Ethelwyn Dubuar, Eloise Lapham, or any of those in the "Meldoric" collection on page 16.

## BELISAIRE

A fine blend, with light tan standards and pinkish cinnamon falls, overlaid brown. Superior to either Dejazet or Isoline.

**Each 50c**

## BLUE BANNER

A fine tall iris in two shades of blue, the standards very bright and frilled, the falls deep velvety blue with a narrow band of brilliant blue matching the standards. An outstanding blue effect in the garden.

**Each 85c**

## BLUE VELVET

Few irises have received more favorable comment during the past four years than has this rich velvety seedling from the hand of Dr. Loomis of Colorado Springs. An iris of the Swazi type, larger, bluer, and finer in every way. Not very rapid of increase, it will be in demand for a long time to come.

**Each \$2.00**

## BOADICEA

Soft yellow flushed light clear pink in both standards and falls, overlaid sky blue in the center of each fall. A flower of bewitching effect, ruffled like Midgard, and an extra free bloomer.

**Each \$2.00**

## BONITA

A bright clear yellow, flowers of medium size, but well branched and produced abundantly. This is fine for massing, or to provide a rich yellow effect in the iris border.

**Each 25c**

## BRITTONESS

Pale lemon-cream, of Moonlight derivation. A very new introduction from England which has had little publicity, but is deserving of a place among the iris aristocracy. Blossoms of great size, slightly ruffled, splendid stem and branching habit; slightly tender.

**Each \$1.00**

## BRUNO

This Dominion seedling is the parent or grandparent of a large majority of the finest Dominion strain irises of recent introduction. It stands today as one of the largest, richest, brightest and most velvety of all irises, and no collection should be without it. Standards are rosy fawn shading to yellow at the base; falls a glowing rich red-brown, edged with buff.

**Each 25c; three for 50c; \$1.50 per 10**

## BUECHLEY'S GIANT

Introduced by C. F. Wassenburg of Van Wert, Ohio. Like our old favorite, Lord of June, but of even greater size, on cane-like stalks and of wonderful substance. A great advance in the blue-toned group.

**Each \$6.00**

## BUTO

A very dark, solid purple, from the Sass Brothers, one of the darkest of all irises, and a very early one. Flowers are of large size, rounded in shape, and without any veining or reticulation. A very free blooming iris on medium height stems.

Planted with the yellow Desert Gold, which blooms at the same time, a most striking garden effect is created.

**Each 30c**

## CAMELLIARD

Fairly recent, not especially rare, but one of the best and most brilliant light type variegatas. Towering to four feet or more, a clump is a distinctive, high-light in the garden. Standards clear amber yellow, falls flushed light purple, yellow near the edges. One of Miss Sturtevant's best.

**Each 50c; three for \$1.25**

## CANDLELIGHT

Pale pinkish buff, entirely overlaid lavender. Very tall, with vigorous foliage, and rapid of increase.

**Each 35c**

## CARDINAL

Certainly one of the best of all Dominion seedlings, and in fact one of the world's finest irises. Massive in size, with broad falls of deep, velvety, crimson-purple. Indispensable.

**Each 40c**

## CARFAX

This striking iris, produced on stems that branch four-way, six to eight in number, is heralded in England as an advance in iris breeding comparable to the introduction of Dominion. The blooms are huge, splendidly formed, and in color are a rich auricula red purple. The beard is inconspicuous, there being nothing to detract from the intense richness of the velvety falls. Height close to 4 feet. Carfax is another silver medal winner.

**Each \$2.00**

## CAROLINE E. STRINGER

A few years ago the Sass's gave us this lovely apple blossom pink—a pink so pale and delicate that it is almost a tinted white. It still stands as one of the really excellent things in fine iris, and at the present very low price no one should be without it.

**Each 25c; three for 50c**

## CHROMYLLA

Another of the fine new yellows appearing in our catalog for the first time. With its soft smooth finish, heavy substance, and uniform lemon chrome coloring, Chromylla has steadfastly advanced in popularity until it stands in the front rank of modern yellow irises. Of course there are a number of very good new ones, and tastes are bound to differ, but we can highly recommend this one.

H.M., AIS 1931.

A.M., AIS 1932.

**Each \$7.50**

## CINNABAR

Wonderfully rich, deep purple, medium size flowers on tall stems.

**Each 35c; three for \$1.00**

## CITRONELLA

Truly one of the finest garden irises, with brilliant yellow standards, and falls of the same color heavily stained carmine. Quite tall.

**Each 25c**

## CLARA NOYES

This lovely warm blend from the Sass gardens has been a sensation in the iris world for the past three years. The coloring is a medley of peach and apricot tones, suggesting the rich and brilliant blendings of the rose "Talisman." A beautiful novelty which is always a complete sell-out each season, so order early to prevent disappointment. Small rhizomes always.

See page 19.

**Each \$2.50**



## CLASSIC

A gorgeous thing of the Asia type, of Dominion form and texture, with wide, flaring falls, and a stiff, cane-like stem. The huge standards appear to be fashioned out of gold leaf, gradually shading to reddish-lavender in the upper portion. The beard and center of the flower glows so vividly that Mr. Grinter, the hybridizer, says that when he looks into it, it almost seems to be alive. Classic is distinctly from the average run of introductions and we heartily recommend it. **Each \$1.50**

## COLUMBINE

Introduced as a white Aphrodite, one of the parents. As clean and clear as a crystal, with lovely form, slender branching stems, this free flowering white is distinct from all other white irises, and as a result it was awarded the silver medal at the English Iris Society's exhibit in London in 1930. Columbine is a very fast multiplier, our own stock increasing about 50 to one in three years. **Each \$2.00**

## COPPERSMITH

A very tall and robust iris with large flowers of copper-bronze, overlaid with velvety red.

**Each 25c; three for 50c**

## CORONATION

For those who do not feel like investing in the newer yellows offered in this list because of the higher cost, we sincerely recommend Coronation. It is a uniform deep yellow, absolutely hardy, doesn't fade, and compares well with irises of recent introduction in other colors. Our large stock has been built up to meet the demand which we felt sure would come when growers realized the value of this yellow. **Each 40c; three for \$1.00**

## CROWN PRINCE

Finest and richest of Dominion variegatas, with deep orange-yellow standards and falls of dark and velvety red-brown, solid to the edge. Produced by Dr. Kleinsorge, it was included in Schreiner's list of "100 Super-Iris" in 1933. A sturdy and reliable grower, it increases rather slowly, and we have only a few plants for sale. **Each \$7.50**

## DAUNTLESS

The peer of all red irises, a Dykes medal winner in America, and certainly one of the finest things ever introduced. The blooms are of great size, on tall stems, and flower over a long season. In color Dauntless appears much redder than most other so-called red irises, due partly to the fact that it carries a mixture of orange and brown in its pigment and very little blue or purple. Across the garden it glows like fire. **Each \$2.00; three for \$5.00**

## DELIGHT

Very lovely plicata with only the rose style branches to detract from its whiteness.

**Each 25c; three for 50c**

## DESERT DAWN

Glorious yellow and lavender blend, the gold of the center extending almost to the tips of the stan-



DAUNTLESS

dards and falls, which are pure lavender. A great improvement on Candlelight, with less lavender, larger blooms, and a stronger stem.

**Each \$5.00**

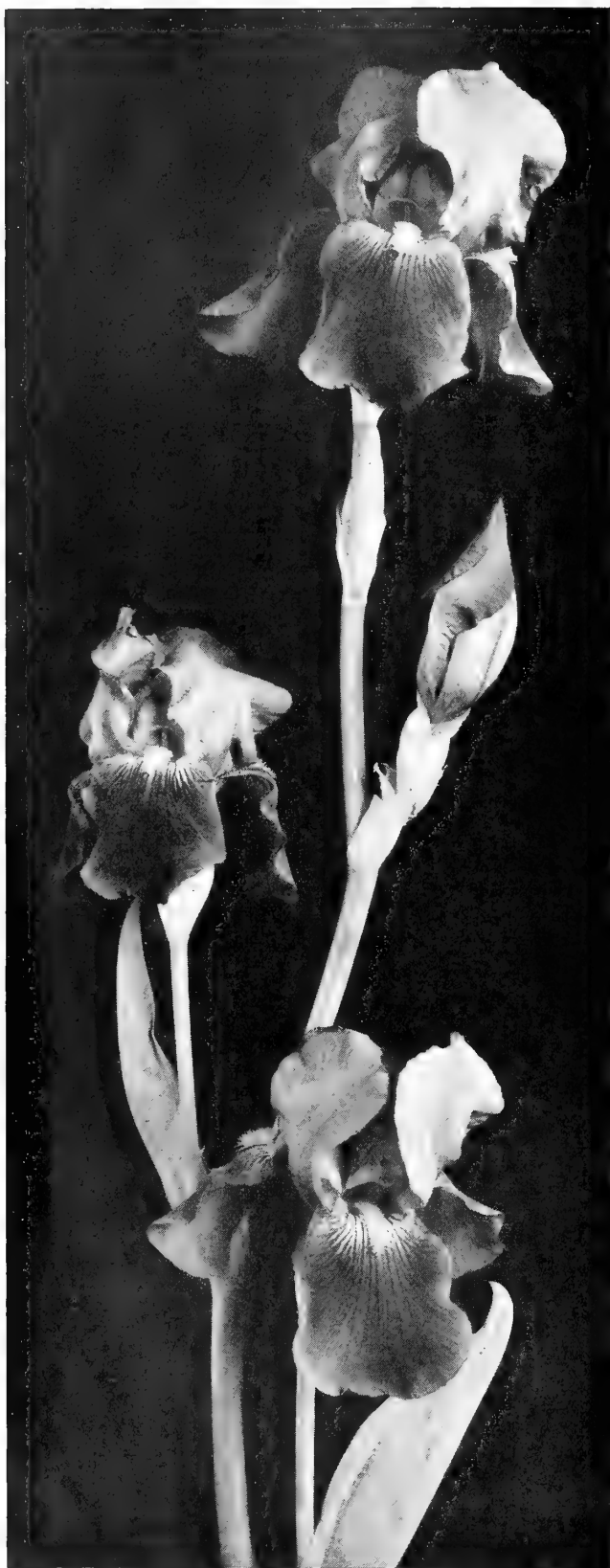
## DESERT GOLD

A very early, very large, and extremely fine addition to our growing list of yellow sorts. Desert Gold is not a deep yellow, nor is it a pale yellow comparable to anything we now have in this class. Standards are large and domed, pure light yellow. Falls are extra broad and are a very light yellow, but the central portion is of an unusually brilliant chrome, with a heavy, deep yellow beard, and this makes for an effect not present in any other yellow. It certainly is deserving of a position among the best new introductions. Nothing else like it. See cut on page 13. H. M. AIS 1931. A. M. 1932. **Each \$2.00**

## DOGROSE

A very beautiful, superb pink iris, with very large, oval shaped flowers in a uniform shade of soft pink, with deep gold beard. The stalks are almost shoulder high, and in the English trial grounds at Wisley it proved a sensation. American visitors at the English shows were struck with its beauty. Dogrose was awarded the silver medal at the London show when exhibited as a seedling in 1929. Very limited stock. See page 7.

**Each \$4.00; three for \$10.00**



DEPUTE NOMBLOT

## DEPUTE NOMBLOT

The world's greatest iris. Blooming for the first time in America during the season of 1930, it almost bowled over all who saw it. Since that time it has proven worthy of first impressions, and from England and France, as well as from all sections of

this country, come songs of praise for this imposing giant of the race. Standards light glowing rosy-purple, overlaid bronzy-gold. Falls very wide, spreading, purplish garnet-red, shading to lighter rosy-bronze at the edge. Deep orange beard. Over four feet tall, wonderfully well branched. Depute Nomblot received a certificate of merit in 1929 at the Paris show, and in 1930 was awarded the Dykes medal. **Each \$3.50**

## DOLLY MADISON

With the blended colorings of an intensified Quaker Lady, and size, branching habit and height comparable to the best, this Williamson introduction has no superior in its class. As the Longfield catalogue states: "Eventually you will own Dolly Madison." It carries some of the shades found in the new French varieties, Anne Marie Cayeux and Evolution. Reliable everywhere, and certain to evoke the admiration of all who see it. See cut on page 13.

**Each 30c; three for 75c**

## DREAM

An old standby among the pinks. Rapid of increase and a picture in the garden. You must have it.

**Each 25c**

## DUKE OF BEDFORD

One of the best of the Dominion race, with very large flowers of dark violet and rich purple.

**Each 25c**

## DUKE OF YORK

Exquisite soft lavender-mauve, with tall and beautifully branched stalks. Vigorous and free blooming.

**Each 25c**

## EGYPT

A grand iris of immense size and great substance, enduring wind and rain, as well as a strong sun. The flowers are of Mme. Gaudichau shape, but measure over five inches from top to bottom. Broad standards, stiff and erect, of a livid bronzy-violet. Falls very large, long and drooping, of deep velvety maroon-purple, with black sheen. Bright gold beard. Very little reticulation. A robust, free blooming, very tall and well branched new English variety from the firm of R. Wallace & Co.

**Each \$1.00**

## EL CAPITAN

Giant blooms which always evoke exclamations of surprise. A bicolor of light manganese violet, of perfect shape and of excellent habit.

**Each 40c**

## ELOISE LAPHAM

This delightfully ruffled flesh pink iris has received two successive awards, and made a universal hit last year when it flowered in various parts of the country. It appears to have the delicate smoothness of kid, and its rapid increase and great freedom of bloom will be sure to make it a great favorite. About the size and shape of Midgard; of medium height.

See page 7.

**Each \$3.00; three for \$8.00**

## ELSINORE

A flower but little known, and one which is deserving of greater popularity. Of only medium size, its dainty blossoms of pale primrose-yellow are delicately edged and stained violet, and are produced abundantly. Something different. Try it.

**Each 35c; three for \$1.00**

## EOTHEN (Out of the East)

Soft, ivory-yellow, entirely overlaid buff, producing an effect of rich antique ivory. Typical Dominion shape, the falls flaring widely, and with domed standards. Large blooms, freely produced, make this a marvel in the garden picture. **Each \$2.00**

## EREBIAN

A self of rich, dark, bordeau red lightened by a heavy gold beard. The big dusky flowers are freely produced on very tall and well branched stalks. This iris was produced by Dr. Loomis of Colorado Springs, who gave us the popular Blue Velvet.

H. M. AIS 1930. **Each \$2.50; three for \$6.00**

## ETHELWYN DUBUAR

A new outstanding pink, produced by E. G. Lapham, of Elkhart, Indiana, and introduced in 1933. A heavy flowering variety, it evoked the following comments in the AIS Bulletin for October, 1933: "The largest flower of any pink I have seen. A 'best seller' in my garden. A larger flower than Pink Satin." Deep pink in general effect, with lemon beard. Height 3 feet.

**Each \$3.00; three for \$8.00**

## EUPHONY

The Sass Brothers have given us, of late years, a series of irises of the Ophelia type, ranging in tone from deep yellow-browns to pale yellow-pinks. Euphony is one of the most beautiful and distinct of all this series. The standards are mustard yellow, waved and fluted, stained with light brown at the tips. Falls are squarely held, mustard yellow, flushed with blue in the central portion and overlaid soft brown. This is a lovely and bright color harmony, and the great freedom of bloom of this variety makes it a heavy favorite. See color reproduction on page 19.

**Each 35c; three for \$1.00**

## EVADNE

Beautiful bronzy rose-red. This is one of the most brilliant of all irises when seen in a mass or clump. Sure grower and tremendous multiplier. **Each 25c**

## FISMES

Seldom offered and quite rare. A large blend of cream, yellow and olive, with rich orange beard.

**Each 35c**

## FRIEDA MOHR

Dependable anywhere, despite the fact that it was originated in California and contains tender blood, it is perfectly at home in Ohio, Minnesota, and New England, as well as in the moist climate of the Pacific Northwest. The color is a lively shade of violet-pink, standards slightly lighter than the falls. Its huge size and great height make it a leader in any color class.

**Each 35c; three for 90c**

## FRIVOLITE

This French introduction is offered as a great improvement upon the variety Marquisette. The general effect is one of rich and brilliant shrimp-pink, the entire blossom seemingly dusted with gold dust. Mr. Sherman Duffy, eminent iris authority and writer, states in Bulletin No. 41 for October, that

during the past blooming season Frivolite made a distinct impression upon him, and that he considered it the finest thing in its class. A very lovely and unique novelty. Rapid increase. See cut on page 23.

**Each \$1.50; three for \$4.00**

## GAVIOTA

A creamy white plicata, with yellow and brown stitchings. Very fast increaser, and a color combination seldom seen.

**Each 25c**

## GAY HUSSAR

A gay thing, indeed! A combination of richest and brightest yellow and velvety ox-blood red falls.

**Each 40c**

## GEORGE J. TRIBOLET

This variety, rating 90, is one of our finest very dark irises. The color is blackish-purple, overlaid with a bronzy suffusion, and lit with a fine yellow beard. Vigorous and tall.

**Each 25c**

## GEORGE YELD

An attractive and brilliant combination of apricot and crimson, the standards shaded rose, and the falls edged with a narrow band of buff. Another very easy grower and exceptionally prolific bloomer.

**Each 25c**

## GERMAINE PERTHUIS

A wonderful iris, with substance like leather. A huge, glowing flower of bright red-purple, with a fiery orange beard. Very fragrant.

**Each 25c; three for 50c**

## GILEAD

A beautiful golden blend, tinged with bronze. The ground color is soft buff, overlaid amber, the falls somewhat deeper than the standards. These same lovely golden brown tones are found in the new French iris "Jean Cayeux", although the form is different. Gilead is one of the finest of all American introductions, and possesses a unique color distinction.

H. M., AIS 1932.

**Each \$5.00**

## GLOWING EMBERS

Tan or chamois colored standards; falls of rich crimson with netted hafts of orange and yellow. Large bloom, very tall, and with heavy foliage.

**Each 25c; three for 50c**

## GOLDEN PROMISE

Clear yellow standards, the falls yellow with lavender and golden bronze tints near the haft.

**Each 25c; three for 50c**

## GOLDILOCKS

Uniform yellow, of soft, smooth finish. This is one of the most free flowering of the new tall yellows, the numerous branches being heavily laden with blossoms. Very rapid of increase, it is a reliable and showy garden subject.

**Each \$2.50; three for \$6.00**

## GOLD IMPERIAL

A solid chrome yellow self. Exceptionally rapid of increase, it soon makes a golden spot in the border.

**Each 25c**

## GOLD STREAM

A very tall cream-yellow, with brilliant orange beard, giving it a very striking appearance.

**Each 50c**

## GRACE STURTEVANT

Almost black-brown when first opening, this huge velvety Dominion seedling stands as one of the most popular of all irises.

**Each \$1.25**

## GOLD TOP

Introduced by Carl Salbach in 1931. Rich old gold standards, set off by falls that are red violet in the center and edged old gold. The style arms and beard afford a further touch of gold. Blooms very early and continues all through the season, the colors growing richer as the season advances; 42 inches tall and well branched. To me, this iris presented the novel appearance of being fashioned out of brass, because of the odd brass-yellow color effect. You surely will like it.

**Each \$1.25; three for \$3.00**

## HASSAN

This is a seedling of Zulu crossed with Moonlight, carrying the Dominion form and substance of the former and the general color tone of the latter. The standards are a glistening sulphury yellow, the falls quite similar, overlaid and suffused smoky violet with heavy greenish gold reticulations on white at the haft. Certificate of merit at the London show in 1930.

**Each \$1.00; three for \$2.50**

## HEARTHSTONE COPPER

Here is a real surprise! Mr. Doub, the introducer, sent three rhizomes to us for trial in 1932. In May of last year they sent up ten bloom stalks, lighting the garden like a bonfire. With standards of bright old gold, it shades down to the fiery red falls, so bright as to be almost startling. The flowers are only of medium size, and form is not especially good, but for lively color nothing else approaches it. Truly something different.

**Each \$2.00**

## HENRI RIVIERE

The huge waxen standards are solid lemon yellow, the broad falls are delicate mauve, edged canary yellow and blending into canary yellow at the throat. An exquisite pale blend, the predominant note being bright yellow. This iris is of very large size, produced on vigorous stems, and M. Millet, the French hybridist, regards it as his highest achievement.

**Each \$1.25**

## HERNANI

Among the brightest and most free flowering of the red group. The standards are rosy red, the falls are very brilliant garnet-red and are held horizontally. Planted with such pinkish toned varieties as Frivolite it presents a most striking pure red effect.

**Each \$2.00**

## HOOGIANA

A very smooth toned species of sky blue,—one of the bluest of all irises. Petals have a peculiar metallic lustre. Must have good drainage but is not a difficult subject to grow.

**Each 35c; 3 for \$1.00**

## IDUNA

A German variety with creamy white standards and violet blue falls. Clean cut, and one of the few good ones in this combination of colors.

**Each 25c; three for 50c**

## IMPERATOR

A rose-red self, overlaid bronze and with considerable brown at the throat. Flower of good size and shape.

**Each 25c**

## INDIAN

But little known, this tawny blend of pale cinnamon and creamy buff is heavily ruffled and in form is somewhat like the popular variety "Euphony". Stock is exceedingly scarce.

**Each 50c**

## INDIAN CHIEF

Well named, for while classed as one of our superior reds, it carries a bronzy overcast, being regarded by some critics as a red blend. At any rate, Indian Chief is one of the most popular of the newer things, and a credit to Doctor Ayres, its introducer. The velvety falls are deep blood-red, blended with bronze, and the standards are considerably lighter in tone. A large flower, quite tall, and very well branched. Shown in color on page 13.

**Each 75c; three for \$2.00**

## ION

An improved "Swazi" of great size, very deep Bradley's violet of wonderful form and immense size. Cream beard.

**Each 50c**

## JANE WILLIAMSON

Exquisite blend of rose, old gold and maroon. Not large, but very floriferous and especially lovely.

**Each 25c; three for 50c**

## JEAN CHEVREAU

A dainty speckled plicata of cream and white, heavily dotted with brown and flushed buff.

**Each 25c**

## JERRY

Raised by Mr. E. G. Lapham, Elkhart, Ind.

We take particular pleasure in being numbered among the joint introducers of this perfectly formed, extremely brilliant red iris. Mr. Lapham has a splendid reputation for quality in his previous introductions, and enthusiasts will find that Jerry is very close to the reddest thing ever turned out in an iris. Not only that, but the large rounded flowers are as near perfection as could be desired. Height three feet, rapid of increase, hardness unquestioned. We recommend it whole-heartedly.

**Each \$10.00**

## JULIA MARLOWE

Large and tall, giving a pink and red effect. One of Shull's best introductions.

**Each 25c**



"DOLLY MADISON"

"INDIAN CHIEF"

"DESERT GOLD"

### ***Special "Dolly Madison" Collection***

***Any 10, your choice, for \$3.00***

Omaha, Dolly Madison, Padre, Surprise, Messaline, Sikh, Sonata, Wm. Mohr, Opaline, Beau Sabruer, Buto, Camelliard, Baldwin, Cardinal, Coronation, El Capitan, L'Aiglon, Lindberg, Le Corregge, Rhea, Swazi, King Tut, Moa, Realm, Rheingauferle, Mt. Royal, Allure, Candlelight, Cinnabar, Elsinore, Euphony (see page 19), Frieda Mohr, Loetitia Michaud, Antares, Fismes, Loelia, or any in the "Midgard" collection on page 19.

### ***Special "Indian Chief" Collection***

***Any 10, your choice, for \$5.00***

Melchoir, Rosakura, Sensation, Egypt, Hassan, Klamath, King Solomon, Indian Chief, San Francisco, Tuscan Gold, Blue Banner, Sunlight, Sir Michael, Andante, San Diego, Purissima, Pluie d'Or, Monterey, Magenta, Mirasol, Los Angeles, or any of those in the "Dolly Madison" collection on this page.



## KANSAS

This iris was introduced by Walter Timmerman, of Kansas City, and although but little known, it is certainly one of the very finest, large flowered, rose pink varieties. The color slightly resembles Frieda Mohr, but the flower is of an entirely different shape, being more rounded and without the wide, flaring falls. It is just a little lighter in tone, with a pale yellow beard.

**Each 50c; three for \$1.25**

## KOROLKOWI

Odd species with small ruffled and fluted blossoms in queer tones of copper flushed violet. An early bloomer, about one foot in height. Good drainage required.

**Each 35c; 3 for \$1.00**

## KING KARL

A dotted and sanded plicata in apricot tones, with specks of brown and red, giving it a unique and attractive effect. A large flower; late.

**Each 30c**

## KING MIDAS

One of the first of the tall bearded irises to flower. Of a soft and bewitching tone of golden buff overlaid garnet brown. The heavy beard is deepest orange, and the entire center of the bloom is illuminated with intense golden lights. Perfect in every detail. Medium in height.

**Each \$1.50**

## KING SOLOMON

One of the recent arrivals from England that was heralded as a giant and improved Dominion. We paid \$50 for a single rhizome three years ago, but in our garden it has failed to come up with such things as Meldoric and Blue Velvet. For those who care to try it, we offer our limited stock at—

**Each \$1.00**

## KING TUT

One of the inherent qualities of the many new Sass irises is the element of rich red-brown in the various color schemes. This has been accomplished through the use of King Tut in the various crosses, and in spite of his almost countless progeny, the King still remains the most brilliant of all, blazing in the sunlight like a live ember. Easy to grow, a free flowerer. Every iris grower should have it.

**Each 50c**

## KLAMATH

A great, heavily textured, perfectly formed flower in tones of deep mulberry, bronze and brown. Not brilliant, but remarkably rich and sombre, suggesting a rare antique or valuable old tapestry.

**Each \$1.00; three for \$2.50**

## LA BOHEMIENNE

A genuine novelty as to color, being a deep hellebore red, or russet-red, heavily veined cream and buff. Very low growing, less than 20 inches. This variety is positively smothered with flowers, and increases tremendously. A French introduction, exceptionally valuable for mass planting or to use in the foreground of taller sorts.

**Each 25c; three for 50c**



HANS SASS IN HIS GARDEN

## LABOR

A deep garnet colored flower, overlaid with a copper and bluish sheen. This unusual tone has made Labor one of the best sellers of the past two seasons. This iris crowds Opera out of the picture, and is most effective as a clump where its intense color can be displayed to most advantage.

**Each 25c; three for 50c**

## L'AIGLON

A flower of coppery tones, shaded red. Strong growing, with very fine large flowers abundantly produced. It somewhat resembles Coppersmith, but is more red and possibly a freer bloomer. Bold foliage and tall stems. Makes an excellent and brilliant mass.

**Each 30c; three for 75c**

## LARGO

Really an unfound gem, because it has received almost no publicity and very few have ever seen or heard of it. The flower is of extra fine form and size, the stalks very tall and perfectly branched, and it lasted over a long period. Color is a harmony of wax yellow, mustard yellow, and citron yellow, the falls delicately overlaid mauve. In a class with Henri Riviere, Cameliard, and Gold Top, but having characteristics all its own; we regard it as the finest of the lot.

**Each \$4.00**



## LE CORREGE

A very deep red-brown, with glowing orange beard. The standards are overlaid bronze. A browner and richer Ambassadeur; a really great iris.

**Each 40c; three for \$1.00**

## LEGEND

A huge flower of the Cardinal type, rich deep claret in color, with heavy velvety falls. One of the largest and most majestic irises in our garden. It is taller than Cardinal, darker in color, and very much larger. An introduction from the Wareham collection, in Cincinnati, Ohio.

**Each \$2.00**

## LINDBERGH

A new variety, having standards of lavender blue and falls of rich violet blue, bordered lavender. A striking flower.

**Each 40c**

## LODESTAR

One of the last to flower, this bright combination of glittering yellow standards and very dark brownish falls is a real "high light" in any garden. Flowers are of perfect formation, lavishly produced. Height about two and a half feet. Very small rhizomes always.

**Each 50c**

## LOELIA

An odd but very beautiful flower of deep heliotrope overlaid copper. This is a recent French sort, and very rare.

**Each 35c; three for 90c**

## LOETITIA MICHAUD

Gigantic in size, perfect in every detail, this iris retains its popularity in spite of numerous competitors. Of an even tone of soft lobelia-blue, a little deeper than the blue of the sky, a light yellow beard for contrast. This oftentimes grows shoulder high, and is one of the many irises classed as tender that can be depended upon to thrive in almost any section of the country. Among the indispensables.

**Each 35c; three for 90c**

## LORD LAMBOURNE

Very early, a tall and prolific blooming iris in tones of rosy fawn and brilliant madder crimson. Hafts netted with brown and gold. One of the very best iris at a low price.

**Each 25c**

## LOS ANGELES

Sister seedling of the wonderful plicata San Francisco. A giant in size, snowy white, with faint edgings of lavender-blue. Splendid stalks were on exhibit in the St. Paul iris show, and it was growing and blooming lustily in the Schreiner garden in that city, indicating that it is really quite hardy when once acclimated.

**Each \$1.00; three for \$2.50**

## MABEL TAFT

A giant Dominion violet blue, particularly outstanding among irises of this color class. Long admired by critics visiting the Taft estate, and Mr. Wareham has always been urged to introduce this.

**Each \$1.50**

## MAGENTA

Very deep amethyst-violet, a shade not comparable to any other iris. Very free blooming, with flowers better than average size. This is another variety which makes a grand showing on a two-year clump, and especially when planted adjacent to pink or yellow.

**Each \$1.00**

## MAGNIFICA

As the name implies, a grand thing of monster size; a bright, glowing red violet, with throat overlaid soft brown. The standards are lighter in tone, almost pink, and exceptionally broad. A most impressive variety.

**Each 25c**

## MAJESTIC

Standards clear blue, flushed bronze; falls broad and squarely held, of brilliant raisin purple. A Dominion seedling of wonderful form and huge size, with very tall and well branched stalks.

**Each 25c**

## M. A. PORTER

A very large seedling produced by E. G. Lapham, of Elkhart, Ind. Standards are close to Gaudichau in color, with much darker falls. A very deep violet of heavy substance, with brilliant orange beard. The growth of stem and leaf is very rampant, indicative of its vigor and size.

**Each \$2.50**

## MARQUISETTE

An odd tone of "shrimp pink". This is slightly similar to Frivolite, except that it is several shades lighter and lacks the golden sheen of this newer sort. Marquissette is most effective when established as a two-year clump.

**Each 50c**

## MARQUITA

A well named iris in brilliant luminous ivory yellow and ochraceous maroon. The standards are ivory deepening to sulphur at the base; the falls are of the same color but are heavily and entirely lined with dark but brilliant maroon, giving to the flower a most striking and novel appearance. Limited stock.

**Each \$8.00**

## MARY BARNETT

A beautiful clear blue self with exceptionally brilliant center. This is a free blooming sort, and gives a very remarkable pale blue splash of color.

**Each 25c; three for 50c**

## MARY GEDDES

In the forefront of American introductions during the past two or three seasons, and for that matter, one of the finest and most distinct irises of all time. The color is light ochraceous salmon, the falls stained deeper. In our garden it has always exhibited 4-way branching habit, and is one of our longest lasting varieties. Very little stock available anywhere in the country. Awarded an A. M. at Wisley, England, in 1933.

**Each \$6.00**

## MARY GIBSON

Soft blend of peach and apricot. An entrancingly beautiful variety, producing many flowers on tall, wiry stems. Rapid of increase and a sure grower.

**Each 25c**

## MELCHIOR

The deep velvet-maroon flowers leave nothing to ask for in either size, shape, or all-round iris perfection. My own color description would be "a self of velvety-garnet, with beard of bronze-yellow." Melchior was introduced in England as an improved Mrs. Valerie West, but with us it is distinctly different, and we personally regard it as one of the world's very best.

**Each \$1.00; three for \$2.50**



"MELDORIC"

**Special "Meldoric" Collection**

**Any 10, your choice, for \$20.00**

**Any 5, your choice, for \$10.00**

Clara Noyes (see page 19), Pink Satin, Phebus (see page 23), Meldoric, Depute Nomblot, Nurmahal, Sachem, Ethelwyn Dubuar, Eloise Lapham (see page 7), Mrs. Herbert Hoover, Rameses, Senlac, Vert-Galant, Erebian, M. A. Porter, Legend, or any in the "Frvolite" collection on page 23.

**Special "Rare Varieties" Collection**

**Any 5, your choice, for \$25.00**

Pres. Pilkington, Mary Geddes, Buechley's Giant, Alta California, Chromylla, Ashtoreth, Crown Prince, Red Robe, Tiger-Tiger, Gilead, Valor, or any of those in the "Novelty" collection on page 7.

## MELDORIC

Finest dark iris in existence today. This was a sensation in the gardens of Dr. Ayres in Cincinnati for two years prior to our acquisition of the stock and subsequent introduction of it in 1931. It has created a fine impression in England, and last year was among the few selected for trial at Wisley. In 1931 it was awarded an H. M. of the American Iris Society, and last season was included in Schreiner's list of "100 Super-Iris."

Meldorie combines the richness of Dominion with the size and majesty of Mesopotamia, without the tenderness of the latter strain. The flowers are blue-black in effect, colossal in size, with broad flaring falls and huge standards of darkest hue. It is more purple and less blue than Blue Velvet. A bright beard gives it life.

Certainly a member of the iris aristocracy.

**Each \$2.50; three for \$6.00**

## MESSALINE

One of the fairly recent French sorts which is known to but few growers. The standards of this iris are especially gorgeous, appearing as if covered with gold dust; the underlying color is light chamois. Falls are corinthian red, striped cream and buff. A large and tall iris, with broad foliage tinged purple at the base. We have built up a nice stock and offer it at a very reasonable price.

**Each 50c; three for \$1.25**

## MICHELLINE CHARRAIRE

Beautiful tall white, with golden beard. A clear white of large size, and very desirable. **Each 30c**

## MIDGARD

When this lovely beauty was first shown, it created a furore, because the yellow-pink blended flowers introduced a new color note, and the ruffled petals were an added touch of distinction. It has proven to be one of the most reliable varieties for severe climates, besides being a very free bloomer and rapid multiplier. No iris since the introduction of Morning Splendor has been so universally popular. Especially lovely under artificial light, and unsurpassed for massed planting on the landscape.

**Each 25c; three for 50c; \$1.50 per 10**

## MILDRED PRESBY

A distinct type with palest yellow standards and bright ruby falls, with a hairline of yellow at the edge. A very dependable and attractive variety.

**Each 25c**

## MINISTRE FERNAND DAVID

A masterpiece in deep, rich, dark purple. This recent French introduction received much praise when first seen in Mrs. Pattison's garden at Freeport, Ill. A huge, well shaped flower, that has been awarded many certificates and prizes abroad.

**Each \$4.00**

## MIRASOL

A very fine large yellow, containing some Mesopotamia blood, but reasonably easy to grow. The flowers are of large size, well formed, slightly rounded, and there are no markings to detract from the solid golden yellow color. Rich yellow beard. Three feet in height.

**Each \$1.00**

## MME. CECILE BOUSCANT

Clear orchid pink, beard yellow-white. Very large flower and a lovely thing, but not a free bloomer.

**Each 25c**

## MME. DURRAND

One of the most unusual and most beautiful irises in the world, a blend of pale buff and creamy lavender, marked old gold. A heavy flowerer, fine in every way, but rather tender in cold sections where it should have protection and perfect drainage.

**Each 35c; three for \$1.00**

## MME. GAUDICHAU

Very early dark violet blue self, with heavy gold beard. Perfect in form and substance and of velvety texture. Very fragrant.

**Each 25c**

## MOA

Deep purple, almost black when first opening. A huge, very impressive flower of the original Dominion seedling set. Heavy stalks, 40 inches tall.

**Each 35c; three for 90c**

## MONTEREY

Dark bronzed red-purple, a very deep tone of mulberry, stained with dregs of wine. The broad, velvety falls are edged with the lighter tone of the standards. Another of the Mitchell giants from California, with all good points, reaching a height of four feet.

**Each 60c; three for \$1.50**

## MONTOUR

This little gem, a medley of deep pink, cinnamon and red-brown, is perfect in every detail, and one of the very best for planting in the foreground of taller sorts. It is so much superior to such things as Opera and Apache that we shall drop these entirely next season. The bright brick-red effect is enlivened by a brilliant orange beard. Very rapid of increase, making a mass of bloom.

**Each 25c; three for 50c; \$1.50 per 10**

## MOONBEAM

The finest May-flowering (intermediate) iris in commerce with blooms which are above the average size for this group. Of fine substance and good form, a clear, pure, sulphur yellow self with no markings. Height about two feet. Excellent for planting to flower with the tulips.

**Each 85c**

## MOONLIGHT

One of the earliest, a giant white with green and gold reticulations. Very heavy gold beard. **Each 25c**

## MOON MAGIC

Of a general buff-yellow tone, smooth and creamy in texture, of wonderful form. The stalks are freely produced, low and widely branched. An iris of rare merit.

H. M. AIS 1932.

**Each \$2.00**

## MORNING SPLENDOR

Certainly among the best no matter what the price. A huge flower of crimson or wine color, perfect in every detail. Has received many awards and is surpassed by nothing in its color class.

**Each 25c; per dozen \$1.50**

## MOUNT ROYAL

A giant royal purple, practically a self in effect. Originated in Montreal, it is especially hardy, a rapid increaser, and is noted for its heavy fragrance.

**Each 35c; Three for \$1.00**

## MRS. HERBERT HOOVER

One of the new pink or near-pink varieties. The standards are old rose, lightly tinged with bronze, and are broad and ruffled. Falls are a deeper rose, with midrib of turquoise blue. The center of the flower is lit with a most brilliant beard and style arms. Exceptionally free flowering and rapid of increase. Stems are tall and well branched. In a class with Frivolite and Marquissette; between the two in general color effect.

**Each \$3.00**

## MRS. MARION CRAN

One of the finest pink-toned iris ever introduced. Exceptionally tall, with large, well-formed flowers of bright rose-pink. This is the true variety, not to be confused with "Marion Cran".

**Each 25c; three for 50c**

## MRS. VALERIE WEST

Of the long line of Dominion seedlings put out by Mr. Bliss, he considers this his crowning achievement. It combines the rich colorings of Bruno and Cardinal into a flower of greater size on a taller stem, widely branched, and produces its enormous blossoms in great profusion.

**Each \$1.00; three for \$2.50**

## NEBRASKA

Deep golden yellow, with prominent veinings of reddish brown in the falls. A good sized flower, slightly ruffled.

**Each 50c**

## NENE

Has the reputation of being the world's largest iris, and it certainly is a genuine stunner. The flowers are of staggering size, up to nine inches in height, and are produced on stems which almost remind one of corn stalks. In addition to its size, Nene is really a beautiful iris, with lilac standards and falls of rich wine-red, darker at the haft. Stock limited.

**Each \$2.00**

## NINGAL

One of the recent productions of Dr. Ayres, of Cincinnati. A most lovely and unusual blend, unlike anything now in commerce. The standards are pure bronzy buff, extra large, and nicely domed. The flaring falls are of a smooth, warm buff, overlaid with iridescent very pale blue. This blue shading is deepest near the center and gradually fades to pale buff at the margin. Gigantic in stature, being up to 46 inches tall.

**Very few rhizomes; each \$8.00**

## NOWETA

Here is one of the sensations of the past two seasons, an iris of the Midgard type, but of large size, exceptionally ruffled, of melting creamy pink. Of all the new irises we saw last season, this was our favorite. Stock was difficult to secure last summer, and it will probably be a sell-out again the coming season.

**Each \$5.00**

## NUMA ROUMESTAN

Deep but bright garnet red, of a uniform shade in both standards and falls. More uniform in color than Dauntless; not as large nor as tall, however. Free blooming, and gives a fine red note in the garden. Very late.

**Each \$1.00**

## NURMAHAL

One of the magnificent seedlings introduced by Col. Nicholls of Ithaca, N. Y. Standards deep brown, with a hint of violet, very large, circular and domed. Falls very deep black-brown with a red undertone. Yellow beard. Of the Grace Sturtevant type, but a larger flower with better substance and much finer standards. A wonderful new iris that is sure to attract instant attention.

**Each \$3.00**

## NUSKU

Lovely old rose and yellow blend, a very luminous flower, tall and stately. Introduced by Mrs. Thos. Nesmith of Lowell, Mass. Flowers of large size, about three feet in height.

**Each 50c**

## OMAHA

A beautiful coral-red self, with orange beard, producing a very striking contrast. Blooms are extra large and of lovely rounded form. The color effect is deep and brilliant pink, rather than red, and the petals have a glistening and fragile appearance, although on the contrary they stand up perfectly. A considerable novelty in color, and one of Sass's finest. Height about 30 inches.

**Each 50c; three for \$1.25**

## OPALINE

A very lovely blend of soft pink and yellow, the tallest of this type. A single stalk gives but a faint idea of the beauty of this flower; last year we had a huge clump and it was stunning!

**Each 50c; three for \$1.25**

## OPERA

An old but ever popular sort of rich ruby effect. Smaller and shorter than Morning Splendor.

**Each 25c**

## OPHELIA

A blend of cream, old gold, pink, and pale blue, difficult to at once describe, but one of the loveliest of all irises. A beautiful variety under artificial light.

**Each 25c; three for 50c**

## OREGON BEAUTY

A large and well formed iris of Dominion blood, with standards shaded rose and chamois, the falls broad and flaring, a brilliant reddish-violet lightened with terra cotta, and edged the color of the standards.

**Each \$1.50**

## OREGON GIANT

Colossal flower of very dark coloring, the haft heavily marked and veined on a cream ground.

**Each \$2.50**

## ORUGA

Large flowers, abundantly produced, in pale lavender, lighter at edges of the falls. Very prominent fuzzy beard.

**Each 35c**



"MIDGARD"

"EUPHONY"

"CLARA NOYES"

### ***Special "MIDGARD" COLLECTION***

***Any 10, your choice, for \$2.00***

Midgard, Euphony, Dolly Madison (see page 13), Ophelia, Bruno, Santa Barbara, Montour, Yolande, Robt. W. Wallace, Moonlight, Germaine Perthuis, Jane Williamson, L'Aiglon, Mary Barnett, Iduna, King Karl, Michelline Charraire, Allies, Coppersmith, La Bohemienne, Labor, Primrose, San Louis Rey, or any in the Asia collection on page 27.

## OTOE

An intermediate, flowering about ten days or more ahead of the regular tall bearded section. Color is deep velvety wine-red, shaded copper. Bronze beard. Extra free bloomer, about two feet in height.

**Each 35c**

## PADRE

One of the newer sorts from California. A huge bloom of tall stature, with yellow and lavender blended standards, and rosy purple falls, flushed blue. Amber beard and style arms.

**Each 50c**

## PEACHES

A warm and bright blend of peach, apricot, and orange. Not so deep in color as Clara Noyes, and with more creamy markings in the falls. One of the most prolific flowering varieties, with very heavily ruffled blossoms. Peaches is a very recently introduced variety and stock is still very scarce.

**Each \$2.00; three for \$5.00**

## PEERLESS

A magnificent iris of very bright mahogany red. One of the very largest, and of wonderful effect with its bright red color and heavy gold beard.

**Each 50c**

## PERSIA

One of Dr. Ayres' masterpieces. Blended shades of pale blue, lavender, grey, and bronze, with a smoky veil enveloping the entire flower. Massive blooms in great abundance, with many tall and splendidly branched stalks. A well named variety that will prove an asset in any iris garden.

**Each \$1.50; three for \$4.00**

## PHEBUS

A new yellow from Cayeux. Unlike Pluie d'Or, this iris is a uniform shade of lemon yellow, absolutely pure. Fine rounded flower of good size, over three feet tall. The lemon color introduces a new tone in iris of this class. Phebus was the high spot in French introductions in 1930, and was priced at one thousand francs. It is a very rapid increaser. See cut on page 23.

**Each \$2.50**

## PINK SATIN

Finest of all American pink irises. Jacob Sass raised dozens of excellent pink seedlings, and this one was deemed as most outstanding of all. The color is a very delicate and smooth, yet glistening and brilliant, pink without the usual rose or purplish cast. The stalks are tall and slender, with blooms of large size. Very rapid of increase, and of course perfectly hardy.

**Each \$2.50**

## PIONEER

A glowing flower of deep red purple. No veining whatever to detract from the solid, rich, purple coloring. Of good size and quite tall.

**Each 25c**

## PLUIE D'OR (Golden Rain)

A beautiful iris, on slender, perfectly branched stems well over three feet tall. Fine rounded flowers of solid golden yellow, with deep yellow beard. Winner of the Dykes medal in France, it has proven an outstanding variety of this color both in Europe and America, reliable as to hardiness, rapid of increase, and very free flowering.

**Each 75c; three for \$2.00; \$5.00 per 10**

## PRESIDENT PILKINGTON

A very lovely pastel blend, which at one time bore the appropriate name of "Apparition". When Mr. Mead saw it blooming in France, he described the color as "a lavender-blue elephant tone", suffused with bronze. A huge flower, the stalks splendidly branched to 4 feet tall.

Standards are pale buff, with faint bluish and slightly rosy cast. Falls, wide and flaring lavender-blue with buffy yellow suffusion paling at the margins. Beard golden yellow.

**Each \$6.00**

## PRIMROSE

Another yellow, the standards lighter than the falls. A flower of good size and shape; undoubtedly one of the best low-priced sorts.

**Each 25c**

## PRINCESS OSRA

Charming plicata, different from the usual run of this type, since the white ground color is not only edged with a blue stitching, but the entire flower is speckled and stained with blue.

**Each 25c; three for 50c**

## PURISSIMA

If you live in the Pacific Northwest, in California or in the South, by all means add this glorious white to your collection! Nothing that grows can compare with it when flowered under congenial conditions. Growers in colder and wetter sections of the country can also succeed with it, but it must have winter protection except in warm climates. A normally flowered stalk of Purissima is a never-to-be-forgotten sight.

**Each 75c; three for \$2.00**

## QUERIDA

A warm pastel effect in pinkish lavender, with style branches, beard and hafts all flushed yellow. Somewhat the coloring of the old Afterglow, but twice as large. Sometimes blooms in fall in California.

**Each 50c**

## RAMESES

The 1932 Dykes medal winner in America. A very vigorous, healthy grower in all parts of the country and a fast increaser and free flowerer. Ramses is a symphony in rose, pink and buff, shading to yellow near the edges, and with a yellow glow at the center. Heavy apricot beard. 36 inches and over in height, gracefully branched. Limited stock.

**Each \$2.00**

## REALM

Intense, pure rich blue self. One of the best of this class.

**Each 35c; three for 90c**

## RED DOMINION

A deep velvety garnet-red, produced by Dr. Ayres. While the standards are a shade lighter than the falls, it is practically a self in effect—a piece of rich red velvet. The buds are particularly striking. Very limited stock.

H. M. AIS 1931.

**Each \$8.00**





PHEBUS

### RED ROBE

An enormous bloom of perfect shape and habit, considered by Col. Nicholls as the finest iris he has ever turned out. Standards deep petunia-violet, domed. Falls deep red-violet, uniformly colored to the edge. Yellow beard. The flower is of splendid rounded shape, a brilliant, glowing iris that lights up in the garden like a huge ruby. This iris sold at sight when in bloom, and as a result was unobtainable later in the season last summer. H. M. AIS 1932.

**Each \$8.00**

### REDWING

One of the Sass varieties in bright reddish-brown. A perfectly formed flower of splendid size, three feet in height, of unquestioned hardiness and reliability.

**Each 50c**

### RHEA

Something of the coloring found in the old Iso-line, but a flower of highest merit and stateliness. Tawny light violet, overlaid buff. This seedling from the Longfield Iris Farm has never been accorded the popularity it deserves.

**Each 40c; three for \$1.00**

### RHEINGAUPERLE

A pink of the utmost beauty and distinction. To see it is to want it. Petals are edged with silver.

**Each 35c; three for \$1.00**

### ROBERT W. WALLACE

A tall, very rich, black-purple that ranks as one of the deepest in color of all irises. A good grower, very fragrant.

**Each 25c**

### ROMOLO

A monster Dominion. Light rose standards, bright red-violet falls. One of the lightest colored of the Dominions.

**Each 25c; three for 50c**

### ROSA BONHEUR

Old gold standards, the falls same color, overlaid lavender and edged buff.

**Each 25c**

### ROSAKURA

A Williamson introduction of high merit, the name of which I understand means "Rising Sun". Like our old and true friend, Morning Splendor, this new iris needs to be seen with the sun behind it to be at its best. Then the rosy-purple standards and the rich red-purple falls take on a magnificence and splendor seldom found in any iris. Mrs. Hires, noted iris critic, has remarked that Rosakura is among Williamson's masterpieces and her favorite of his 1930 introductions.

**Each \$1.00; three for \$2.00**

### RUBEO

An outstanding red from California, of huge size, excellent branching habit, and four feet in height. Standards are deep glistening rose, falls deep maroon of heavy velvety texture. The finest red among Mohr-Mitchell introductions.

**Each \$4.00; three for \$10.00**

### RUSTY GOLD

Another outstanding American introduction. An orange-bronze blend, flushed copper red. This is a particularly vivid iris, and is invaluable for garden effect. One of the newer shades that is largely responsible for the growing popularity of the iris. Vigorous in growth, hardy, and over three feet tall.

**Each \$4.00**

### SACHEM

A glorified King Tut, grown by Dr. Loomis. Glorious in richest tones of red-brown, of heavy velvety texture. Falls are especially brilliant.

**Each \$3.00**

### SACRAMENTO

A plicata of the San Francisco type, but with reddish brown dots and reticulations instead of the usual blue or lavender. Ground color is a creamy white. A very tall variety, the large flowers being produced on well branched stems. This is another iris which was given one of the highest awards of the Iris Society in 1931, an H. M. It is probably even more dependable in unfavorable climates than are many of the other California productions.

**Each \$1.50**



A group of San Francisco growing in the garden of George D. Jopson, at Saugerties, N. Y.

## SAN FRANCISCO

A four-foot plicata that has been awarded the Dykes medal by the American Iris Society. No other plicata approaches it in size and grandeur, heaviness of texture, or low and wide branching habit. While in the past we have suggested that it is not an iris for severe climates, the experience of many growers in the mid-West and New England in flowering it successfully, leads us to suggest that it probably is hardier than at first suspected. Note the picture of it growing in New York state.

**Each 75c; three for \$2.00**

## SAN DIEGO

Monster blue, a seedling of Mme. Gaudichau, with the Mesopotamica qualities of height and large size. The color is a uniform shade of deep blue, with rich yellow beard. Awarded an H. M. by the American Iris Society in 1931.

**Each 75c; three for \$2.00**

## SAN LOUIS REY

On the order of Opera, but twice the size, and borne on beautifully branched stalks over three feet high. Center of the fall shades from red-purple into soft brown, with practically no veining, and a bright orange beard sets it off.

**Each 25c; three for 50c**

## SANTA BARBARA

Here we have an iris which approaches perfection in the shape and size of its flowers, and in addition is possibly the finest and clearest lavender-blue so far introduced. The exhibition rating of 91 is well deserved. Having been in commerce sufficiently long to become fairly plentiful, it can now be bought at the following surprisingly low prices:

**Each 25c; three for 50c; ten for \$1.50**

## SELENE

A pure white of large size and lovely form, and of extra heavy substance. Introduced by Mr. Connell, the man who gave us the famous Dauntless. This variety was named for "The Moon Goddess".

**Each \$3.00**

## SENLAC

Introduced by the Orpington Nurseries in England, this richly colored iris stands out as the reddest yet to come from that country. With blooms larger than the best of the Dominion race, it carries its brilliant claret-red flowers on strongly branched stems, and is so highly regarded in England that it is rated at 91.

**Each \$2.50**

## SENSATION

A clear and crisp self of cornflower blue, perfect in every way. Sensation was awarded the silver cup for the most outstanding flower in the Boston iris show, June 1931. It has no peer among the blue selfs.

**Each \$1.00; three for \$2.50**

## SIKH

Although this iris was introduced in England only recently, we were fortunate enough to secure it four years ago, and now have a large supply of well-grown plants. The color and form somewhat resemble Bruno, but is both more brilliant and coppery. Of largest size, on heavy stems, with broad foliage. It bloomed in the fall in our gardens.

**Each 50c; three for \$1.00**

## SIR MICHAEL

Unquestionably the finest blue and purple bicolor in the world. Standards are clear blue, falls deep rich mahogany, with a beard of red-gold. Regarded as the finest iris ever to come from England and a sensation wherever shown. In our own wet Northwest, in dry and sunny California, and in Nebraska, Ohio, and the colder Minnesota and New England, we found it blooming equally well. A super iris, if ever there was one.

**Each 85c; three for \$2.25**

## SONATA

A beautiful blend of the Mme. Durrand type. Standards are olive-buff, shading to sulphine yellow at the base. Falls lilac in the center, quickly shading out to the color of the standards. A fine large flower that is an excellent substitute where Mme. Durrand is tender.

**Each 50c**

## SPRING MAID

Clear rose pink, with honey yellow flush through the center. Flower stalks are almost four feet high, strong, and well branched. The lovely fresh coloring, large size, and exquisite form, combine to make it one of the finest in our list.

H. M., AIS 1932.

**Each \$6.00**

## SUNBEAM

Another May-flowering (intermediate) type of iris. A rich, deep, canary yellow self, with standards and falls of identical tone and without markings. A fine companion for Darwin and Cottage tulips.

**Each 50c**

## SUNLIGHT

A most luminous, tall yellow from Miss Sturtevant, large in size, and of extra good garden effect. The color is quite light, between cream and straw, with a beard of fiery orange-red. Free blooming and a tremendous increaser. This iris has been awarded an Honorable Mention by the American Iris Society when exhibited as a seedling. Extra late.

**Each 85c; three for \$2.25**



“ZUNI”

“FRIVOLITE”

“PHEBUS”

### ***Special “FRIVOLITE” COLLECTION***

***Any 10, your choice, for \$10.00***

Columbine, Carfax, Blue Velvet, Dauntless (see page 9), Desert Gold (see page 13), Eothen, Frivolite, King Midas, Mabel Taft, Classic, Persia, Venus de Milo, Wambliska, Oregon Beauty, Moon Magic, Zuni, Tapestry (see page 7), Grace Sturtevant, Gold Top, Henri Riviere, Mrs. Valerie West, Los Angeles, M. A. Porter; or any of those in the “Indian Chief” collection on page 13.



WAMBLISKA

### SUSAN BLISS

A pink of great refinement and perfect form. Pale orange beard. Its rapid growth is a desirable feature.

**Each 25c**

### SWAZI

One of the deep blue Dominions, considered by many as the finest of all. A very rich and velvety dark blue, with heavy gold beard. Tall and well branched.

**Each 40c; three for \$1.00**

### TAJ MAHAL

An old and well-known white, making a fast increase.

**Each 25c**

### TALISMAN

To those who know the Talisman rose, it need only be suggested that this iris is worthy of the name. The whole flower is a rich golden yellow suffused with peach-pink, more deeply in the falls than in the standards. There is an electric blue flush down the center of the falls, and the haft is reticulated bronze. Three feet tall; deliciously scented. From the Orpington Nurseries in England.

**Limited stock; each \$3.00**

### TENEBRAE

Richest, darkest purple. A very early Dominion of rapid growth and wonderful color effect.

**Each 25c**

## SURPRISE

Monster blue, flushed heliotrope, on stems up to four feet in height. The intense orange beard is a salient feature. This is our own introduction, and we are proud of the fact that it has been well received in all sections of the country. A fit companion to such blues as Santa Barbara, Loetitia Michaud, and Duchess Sarah. Bold foliage, almost evergreen.

**Each 50c; three for \$1.00**

## THEODOLINDA

A gigantic plicata comparable to the famous pair from California — San Francisco and Los Angeles. However, this new seedling is a product from the gardens of Dr. Ayres of Cincinnati, and is therefore perfectly hardy anywhere.

**Stock very limited; each \$8.00**

## TIGER-TIGER

Our reddest iris! We are often asked what variety is the nearest to real red, and we never were quite sure until last season, at which time we made a special effort to compare all we were growing in the red class. Color is largely a matter of opinion, especially when the line is finely drawn, and some might not agree with us, but this large, rounded, perfectly formed iris from the Wareham collection is our choice for the world's nearest to real red. Very limited stock.

**Each \$5.00**

## TITAN

One of the original Dominion Seedlings, and one of the largest irises in cultivation. The color is a rather drab purple, but the perfection of form, lasting substance and immense size cause it to remain quite popular.

**Each 25c; three for 60c**

## TROPIC SEAS

Very tall flower of intense blue tones, with a most brilliant deep orange beard. A striking iris.

**Each 25c**

## TRUE CHARM

Although inexpensive, True Charm is one of the very best things ever introduced, and still holds its place in any company. A plicata, of clear, sparkling white, with the standards and falls delicately etched lavender. Bright orange beard. It is up to four feet in height, especially well branched, and the blue-green foliage has a distinctive rush-like appearance, drooping near the top. This makes it an admirable plant for the edge of a pool, or for a position in the border.

**Each 25c; \$2.00 per dozen**

## TUSCANY GOLD

An introduction from the Longfield Iris Farm, from whence came Dolly Madison and Rasakura. This one is a distinct shade of reddish-gold, a deeper colored flower than Vesper Gold. Falls squarely held.

**Each 85c; three for \$2.25**

## 27TH AVRIL

Very strong growing, dark bicolor, with huge flowers on four-foot stalks.

**Each 25c**

## VALENCIA

Distinct flower with predominate orange tone, from whence it takes its name.

**Each 25c**



SANTA BARBARA

## VALOR

This remarkable flower was one of the sensations in the East last season, and every critic who saw it flower was enthusiastic over it. Col. Nichols, of Ithaca, N. Y., the introducer, thinks it his highest achievement thus far. In general effect Valor is a deep blackish blue violet bicolor, similar in some respects to Sir Michael, but a larger flower and with domed standards. One of the tallest of all varieties; very fragrant. H. M. AIS 1932.

**Very limited stock; each \$8.00**

## VESPER GOLD

Soft and smooth finished flowers of golden apricot. A very pleasing and distinct variety.

**Each 25c; three for 50c**

## TAPESTRY

A subtle blend of monster size, smoky mulberry in general color effect, with the center of the fall intensely colored, passing out to the smoky tones of the standards. This variety calls to mind Dr. Ayres' famous "Persia", but the dominant note is dull red instead of dull blue. TAPESTRY is a favorite of Mrs. Ayres, who admired it especially as a cut flower in the house. Shown in color on page 7.

**Each \$2.00; three for \$5.00**





WM. MOHR

### VERT-GALANT

Brilliant coppery red, with copper-fawn standards. A giant sort that has the habit of putting up from two to four huge stalks from each rhizome. The falls are edged with the lighter fawn color of the standards, and the haft is beautifully marked with cream and brown. This variety is not only a striking exhibition flower, but it has extra good carrying quality, and the four-foot spikes dominate the garden. Another Dykes medal winner. **Each \$2.50**

### WAMBLISKA

The huge white self, raised by Jacob Sass of Omaha, Nebraska. Few irises in existence are larger

### VENUS DE MILO

Out of perhaps a dozen superb whites, all large, tall, and in varying degrees of purity and color, this one has been selected as the best. It is an absolutely clear white, of a warm creamy tone, with a yellow beard. In size it is much larger than any hardy white we have seen, with exception of Wambliska, which has a distinct blue flush in the standards. VENUS DE MILO has petals of extra heavy texture; in fact, it stood up better in a 90-degree sun than any other iris in our garden. H. M. 1932.

**Each \$1.50; three for \$4.00**

in size, and it flowers abundantly on four-foot sturdy stems. A faint blue flush at the base of the standards gives it a cool appearance, rather than the warm effect of creamy whites like Purissima, Michelline Charriere, etc.

H. M. AIS 1931.

**Each \$1.50**

### WEDGEWOOD

Solid wedgewood blue, with white beard. A very effective iris where a real blue tone is desired.

**Each 25c; three for 50c**

### WHITE & GOLD

Glistening, satiny white, lit by the bright golden beard—the only other color in it. Tall and free.

**Each 35c**

### WINNESHIEK

A gigantic blue-black of smooth finish, extra heavy substance, and very broad segments. Ranks with the finest imported novelties.

**Each \$3.00**

### WM. MOHR

This strange and beautiful hybrid is named for one of the world's most famous hybridizers, and is considered as his greatest piece of work. The entire bloom is a self color of pale lilac, closely netted and veined with deep violet, producing a weird, yet very lovely effect. In some ways it resembles the variety "Susiana", but lacks the dullness of this older sort, and is not at all difficult to grow. A monster flower, produced on stems up to 30 inches tall.

**Each 50c; three for \$1.00**

### W. R. DYKES

No iris has come to us from any source that has carried greater advance publicity, and it is doubtful if any has created as much comment. Here is a yellow iris that ranks with the very largest in size, with heavy crepey texture, and a color of richest golden-yellow. The falls are usually stained and streaked lightly with purple. In some flowers this is not evident at all, but the beauty of the blossom is not marred in the least. It has flowered well in almost every section of the country, but it does demand perfect drainage. Cold temperatures do not seem to harm the plant. A great novelty. Very limited stock.

**Each \$5.00**

### YOLANDE

Of the Mme. Gaudichau type, being both larger and taller, with exceptionally fine falls.

**Each 25c**

### ZAHAROON

One of the most unusual in color in this entire list, a blend of soft amber, buff, yellow, fawn and pale violet. The combined effect has been referred to as "biscuit" colored.

**Each \$5.00**

### ZUNI

A glorious, glowing red-brown, overlaid with a coppery suffusion. Very early, but with so many buds to the stalk that it lasts well into the season. The falls are a brilliant red when seen with the sun's rays through them, and the standards seem as if sprinkled with gold dust. Large in size, well branched, and about 40 inches in height. See cut on page 23.

**Each \$2.00; three for \$5.00**





ASIA

## ASIA COLLECTION "A"

*The following 10 for*  
**\$1<sup>00</sup>**

Every one a gem for the beginner with iris. All different—correctly labeled—postpaid—and, best of all, real quality plants; not the nubbins so often sent out by some growers at bargain rates: Here they are:

Midgard, pink.

Bruno, bronze.

Aliquippa, pale yellow

Morning Splendor,  
ruby red

True Charm, white

La Bohemienne, odd  
blend

Gold Imperial, deep  
yellow

Citronella, russet and  
yellow

Wedgewood, blue

Asia, the big blend

*Positively no changes will  
be made in this offer. Please  
don't ask us to do so.*

## ASIA COLLECTION "B"

You May Select Any 20 of the Following for Only \$3<sup>00</sup> POST PAID

Aliquippa, Ambassaduer, Apache, Aphrodite, Argynnis, Asia, Bonita, C. E. Stringer, Citronella, Coppersmith, Dream, Duke of Bedford, Duke of York, Evadne, Gaviota, Geo. Tribolet, Geo. Yeld, Glowing Embers, Golden Promise, Germaine Perthuis, Gold Imperial, Imperator, Jean Chevreau, Iduna, Julia Marlowe, La Bohemienne, Labor, Lord Lambourne,

Magnifica, Majestic, Mary Gibson, Mildred Presby, Mme. Cecile Bouscant, Mme. Gaudichau, Montour, Morning Splendor, Mrs. Marion Cran, Opera, Pioneer, Romola, Rosa Bonheur, Santa Barbara, Susan Bliss, Taj Mahal, Tenebrae, Titan, Tropic Seas, True Charm, Valencia, Vesper Gold, 27th Avril, San Louis Rey, Primrose, Ophelia, Midgard, Bruno, Jane Williamson.

*Detailed descriptions of each of the above will be found in the preceding pages. Just imagine what a glorious array may be yours for such a modest expenditure! Every one labeled, and if you have never bought Cooley's Oregon grown Irises, you will be pleasantly surprised when you open the package and see the vast difference between these and ordinary iris rhizomes.*

# FALL BLOOMING IRISES

Below we offer a few of the finest known new Autumn Flowering Irises. The development and improvement of this class of irises has quickened interest in them, and last season we received many requests for stock. The few we offer are distinct from each other, and are among the most reliable in fall flowering habit.

For best results fall bloomers should be brought to flower as early as possible in the spring, and should be watered in the fall if the season is dry. More frequent dividing and resetting than with ordinary irises is also advisable. They are not reliable in the northern portion of the country, but do extremely well in the South, on the Pacific Coast, and in the Central West and in the latitude of Tennessee. To bloom them successfully in the North, cold frame facilities should be provided to advance the spring blooming period.

## ELEANOR ROOSEVELT

Deep fluorite purple self, with very rich falls. An unusually reliable fall bloomer in Kansas, Nebraska, and Tennessee. A free bloomer, one of the very best.

**Each \$5.00**

## FROST QUEEN

Frosty white, covered with flowers, larger than other white autumn flowering sorts. A Kansas grower writes that he cut bouquets constantly last fall from this variety.

**Each \$10.00**

## GOLDEN HARVEST

Only yellow fall bloomer introduced to date. Standards olive yellow, tinted blue at base; falls citron yellow, with brown and bluish markings near the haft.

**Each \$2.00**

## OCTOBER OPERA

This is a new color in autumn flowering irises, a rich wine red, resembling the well known variety Opera.

**Each \$7.50**



## From the Gardener's Point of View

From far away Australia:

"The parcel of rhizomes and lily bulbs as per your advice of September 28th arrived safely and all of them were in good condition, and I have to thank you for your care in drying and packing."

L. W. WHEELER,  
24 Currie Street,  
Adelaide, So. Australia.

"The iris rhizomes arrived safely and opened up to my complete satisfaction. My thanks are due to you for including in the shipment the variety 'Legend'."

A. E. HARRISON,  
4 Hurlestone Street,  
Melbourne, Australia

"The collection of iris roots from you arrived in prime condition after a week's trip across the continent. You sure do grow them big! They are as fine a lot as I ever saw. I'll be back for more when times improve."

H. L. HUTT,  
Georgetown, Ont.

"The iris came in tonight and were the finest I have ever seen, so large and such wonderful root systems, and as fresh as though they were just dug. You spoke about Lodestar making a small rhizome—well it was as large as the largest I received from a mid-western grower, and that is not said in discredit to them, either, for I was entirely satisfied with their treatment, but your rhizomes are superb. Shall be with you again next year."

W. A. AEPPLI,  
Plymouth, Indiana.

"The iris and poppies were received by me yesterday and were in perfect shape. I beg to advise that the rhizomes were decidedly the largest and healthiest looking that I have ever purchased from anyone. It will be a pleasure for me to place my future orders for iris with your concern."

JAS. D. ADAMS,  
701 Commerce Street,  
Lynchburg, Virginia.

"Last year I purchased from you the Wm. Mohr collection and the Asia collection of iris, and I am pleased to report that every one lived and bloomed, and what a show!"

OSCAR DOUGLAS,  
Tecumseh, Nebraska.

"Many thanks for the clean and good looking plants, also for the extra. The plants sent last year all bloomed this spring."

STELLA F. A. STONE,  
11 Craven Circle,  
Waltham, Mass.

"The iris rhizomes ordered from you arrived in excellent condition this noon, and are already in the ground. If they do as well as those ordered last year, they will all blossom next June."

GEORGE H. BLISS,  
Newburyport, Mass.

"Just received your shipment of iris, and want to compliment you on the wonderful roots you sent me, also thank you for the extra. I certainly can recommend your iris very highly."

CARL O. SCHIRMER,  
6106 King Hill Ave.,  
St. Joseph, Missouri.

"I wish to thank you for the wonderful iris rhizomes you sent. They are by far the largest and most satisfactory I have ever bought."

MRS. J. T. BROWN,  
Woodland Hills,  
Jackson, Mississippi.

"Shipment of iris has arrived, and first of all I want to thank you for the extra—you couldn't have suited me better. Second, let me congratulate you on the quality of rhizomes; I have never seen finer, both as to size and healthy appearance."

SAM L. GRAHAM,  
Rome, Georgia.

# CULTIVATION OF BEARDED IRISES

By G. L. PILKINGTON,  
*Hon. Sec. of the Iris Society  
of England.*

It should be unnecessary to point out what must by now be generally an accepted fact, namely, that these Irises are essentially sun-lovers. Furthermore, that they should be planted in positions where good drainage exists, and should not be expected to give the best flowering results when placed in dense herbaceous borders where the sun can seldom penetrate to the rhizomes. If they can be grown in a sunny border by themselves so much the better; if not, then let them at least have a position in the front of the herbaceous border. They are not particular as to soil, and are far better not top-dressed with patent manures, bone-meal, etc. The use of lime is often quoted as being essential, and is often very much overdone in consequence.

I have always found that a dressing of ground limestone dug into the Iris border at the first planting supplies all that is needed in this respect, and is, moreover, practically everlasting, in that it dissolves very slowly indeed, and therefore cannot be given in excess.

Another important factor in the cultivation of these Irises is the transplanting. Opinions vary as to the best time for this operation, but I am inclined to think, after trying all times, that it makes little difference to the next year's blooming whenever it is done, provided that the ground is in

good order for the work, and that it is not left until too late in the autumn.

Late-planted Irises seldom get a hold before the real winter sets in and are, in consequence, often "heaved" out of the soil by frosts, and make a poor show the following summer. There is no rule for dividing and transplanting Irises, such as "every third year," as is often stated.

The condition of the plant must decide this. Some of the more rampant growers should be divided and transplanted every other year, and if this is done it will be found that they rarely suffer from rhizome rot. The vigorous growers, if allowed to remain undisturbed for a period as long as three years, make such a dense clump that the sunlight cannot penetrate, with the result that not only do they bloom sparsely, but often they are attacked by disease in the form of rhizome rot. This is particularly so in the case of Irises of the "Dominion" race.

A liberal use of superphosphate of lime, which can be incorporated in the soil whilst replanting the divisions, does much to ward off the attacks of this disease. "Doubtful" rhizomes of varieties which are too valuable to throw away should have all the soil removed from them, be dipped in a mauve solution of permanganate of potash, and then left in a dry, airy

place for a month or six weeks before transplanting.

If they are going to rot they will do so in spite of all these precautions. If they survive they can be replanted with every prospect of success.

Owing to the vagaries of our weather I frequently have Irises on my hands waiting for suitable weather and soil conditions to replant them for a month or more at a time, and though the rhizomes dry up entirely and the leaves die down considerably I have never found that the plant suffers in the least. Root-action goes on whilst the rhizome is in the dry state, and the plant goes ahead very quickly as soon as it is replanted. I would far rather adopt this principle than "heel in" the plants pending replanting, which generally results in the breaking off of new fibrous roots which the plant has made during the period of waiting.

One other point about planting. The rhizomes should not be planted deep, but should be placed just below the level of the soil surface and the roots spread out to insure firm planting and room for expansion. The rhizome will soon work to the surface again, but if planted on the surface in the first instance it is not so easy to get the plant firm in the ground, which is essential.—*"Gardening Illustrated."*

## GROWING BULBOUS IRIS IN MASSACHUSETTS

By FRANK A. WAUGH



A good many years ago dealers were in the habit of offering bulbs of Spanish Iris at very low prices, often as low as fifteen or twenty cents a hundred. At that time I was accustomed to buy a few hundred each year and

plant them in the cutting garden. They were fairly hardy and in most cases would last for several years.

Then a few years ago I happened to be in England in July and saw the English Irises in blossom. Naturally I was completely captivated by them for they are wonderfully beautiful. As soon as I came home I wrote to one of the leading Iris specialists in the northeastern states, and asked him if he could supply me with the bulbs of the English Iris. His reply was that they did not carry them in stock nor recommend them to their clients as they were not entirely hardy and they did not like to supply their customers with anything which would prove a disappointment. Now, while this answer is entirely correct from the standpoint of the nurseryman, it did not completely satisfy me; so I went ahead and got bulbs of English, Dutch, and Spanish Iris and have been growing them ever since with the utmost satisfaction!

Let it be said at once that the distinctions between Spanish, English, and Dutch Iris, are rather uncertain. For general garden purposes they may be all lumped together as Bulbous Iris. These are apparently not the same ones, however, mentioned by Mr. Wood in *Flower Grower* for January 1933, page 18, but on the whole I think they will prove quite as satisfactory as those he mentions, to the average gardener.

There are very few nurseries in the Eastern states which carry any stock of these varieties, though some of the bulb importers will supply Spanish varieties especially. The best source of supply which I have found is the Pacific Northwest. From that section we get larger, stronger, better bulbs than we have ever secured from any other source.

These bulbs come to us in late summer and are immediately planted in rows in the open garden, much as onion sets would be planted. They require no special care. They should be put out as soon as received which will be the latter part of September or some time in October; the earlier the better. In nearly all cases they will make some fall growth, often as much as five or six inches of green shoot showing above the ground when winter arrives. However, they do not seem to suffer any serious consequences from the freezing of these fall sprouts.

As a rule we put on evergreen boughs after the soil is thoroughly frozen; these are simply to hold the snow on as late as possible in the spring. No other protection is given. *So far as I know we have never lost a bulb by winter freezing!*

Some growers recommend that the bulbs be taken up after flowering late in July, dried out thoroughly, and replanted in September. We have done this several times with entire success. We have also left bulbs out year after year with no appreciable deterioration.

Some varieties increase in our garden, others hold their own, while some of them run out after a few years.

All of these varieties are extremely beautiful in flower. In fact they are one of the most striking plants in any garden. They are often compared with Orchids, and this is suggestive. Colors are mostly blue, white, and yellow. They are remarkably fine for cutting. Stems are tall, 12 to 30 inches, with good lines. The flowers last well in water.

According to my observation, not fully verified by experiment, the important requirements are clean, well-drained soil, with nearly full sunshine, but with protection from severe winds. It seems a pity that such beautiful plants as the Bulbous Irises should be neglected through a general misunderstanding of their cultural requirements.—*"Flower Grower."*

# DUTCH IRIS



DIRK DALENS

FROM WASHINGTON, D. C.—

After having grown a trial collection of bulbous irises, Mr. Chas. Gersdorff, well known iris hybridizer and horticultural specialist of Washington, D. C., wrote as follows: "I consider the Dutch improved hybrids, new Spanish iris, and Tingitana hybrid irises as ideal for garden use and for cutting for any amateur flower grower, for their ease of culture, hardiness and wonderfully long-keeping flowers."

FROM NEW HAVEN, CONN.—

Likewise, Mr. J. B. Wallace, Jr., past secretary of the Iris Society, ordered a complete collection for trial in the test gardens at Yale University in New Haven, Conn. He wrote us that he was very much surprised at the manner in which they so successfully grew and flowered, and that it was a great pity that so few gardeners realized how easy they were to grow.

## *Bulbous Iris Collection*

Selected for long season of bloom

- 1 Doz. "WEDGEWOOD"
- 1 Doz. "ADRIAN BACHER"
- 1 Doz. "THERESE SCHWARTZE"
- 1 Doz. "POGGENBEECK"
- 1 Doz. "YELLOW QUEEN"
- 1 Doz. "CAJANUS"
- 1 Doz. "PRINCE HENRY"

No substitutions will be made on this offer.

**The 7 Dozen, Postpaid, \$3.50**

Their hardiness and the large color range has made them very popular as garden subjects, the brilliant clear yellows, flashing blues, and sparkling whites adding immeasurably to the spring border.

As with the English group, they are perfect material for cut flowers, as they will stand considerable handling and may be shipped safely for long distances if cut when in bud.

These irises **MUST BE PLANTED IN THE FALL**, not later than October. They are perfectly hardy except in extreme cold sections, where they should have a mulch of salt hay or tree boughs.

If you are not growing them you are missing one of the real joys of gardening. Use them in masses as you would tulips or daffodils. Plant 4 inches deep.

**ADRIAN BACKER.** A uniform purple-lilac, good substance. Height 20 inches.

**D. HARING.** Standards greenish white, falls pure white; a very large flower of great substance. Early, height 26 inches.

**DIRK DALENS.** Quite a recent novelty and one of the boldest flowers in the Dutch group. Large pale blue standards, falls clear blue with very narrow orange stripe. **\$1.25 per dozen; \$10 per 100**

**GOLDEN BRONZE.** Standards dark violet, edged bronze, falls attractive golden bronze. A very beautiful, extremely luminous flower of large size, 22 inches tall. **Price per dozen, \$1.25; \$10 per hundred.**

**JAN WEENIX.** (Morning Mist) Standards and falls a uniform soft lavender blue. Another of the newer group of recently introduced sorts. One of the tallest, growing 30 inches in height. **\$1.25 per dozen; \$10 per 100**

**LEONARDO DA VINCI.** Standards creamy white, falls canary yellow with orange stripe. A very large flower, produced on stems up to three feet in height. Segments very broad and of wonderful texture.

**POGGENBEECK.** A splendid flower of uniform dark blue, a great improvement on the older Imperator. Height 20 inches.

**S. DE VLIET.** (Blue Horizon). Very broad and strong, light violet-blue standards, falls soft sky blue with narrow orange stripe. A large, beautiful flower 27 inches tall, which has received many awards. Late. **\$1.25 per dozen; \$10 per 100**

**THERESE VAN DUYLL-SCHWARTZE.** Pale cornflower-blue standards, falls pure white, with very narrow orange stripe. This is of comparatively recent introduction and certainly one of the loveliest things in this list. 24 inches tall.

**WEDGEWOOD.** A Tingitana Hybrid resembling the Dutch iris in all respects, except that it flowers **ten days to two weeks earlier.** Fine large flowers of bright wedgewood blue, a uniform coloring that is most desirable either for garden or for cutting. An easy iris to grow but must be in well drained soil and planted about 5 inches deep. Wedgewood is always a sensation when exhibited at the spring flower shows.

**WHITE EXCELSIOR.** Marvelous pure uniform white, falls very broad, fine form and substance. Use of white and yellow adds life to any planting.

**W. VERSCHUUR.** (Indian Chief). An odd and bronzy flower, with violet standards tinged bronze and falls of clear bronze. Very late, and has the distinction of a pronounced fragrance. 22 inches.

\$1.25 per dozen; \$10 per 100

**W. ZUIDERVELD (Violet Queen).** Standards and falls uniform light bluish violet; very large flower of fine proportions. Price \$1.50 per doz.; \$12 per 100

**YELLOW QUEEN.** Standards and falls a bright golden yellow. This variety is the glory of the iris garden, for not only is it a beautiful and showy thing in itself, but the glorious splash of color which it carries enlivens the entire border. It is an indispensable subject in any iris planting and the long wiry stems make it an admirable cut flower. Large in size and up to three feet tall.

**DUTCH IRIS PRICES:** Except as noted. 75c per dozen, 3 dozen for \$2, \$4.50 per hundred, prepaid. PLEASE do not order less than one dozen. No bulbs shipped after November 1st.

• • •

## SPANISH IRIS

A week or ten days later than the Dutch, but similar in form and habit, demanding identical treatment. They average a greater height than the foregoing varieties, and the falls are generally somewhat narrower. We offer these to prolong and round out the flowering season:

**CAJANUS.** (Yellow Giant). A very tall, large, golden yellow, giving the same effect as the Dutch "Yellow Queen", but long after it has finished flowering.

75c per dozen; \$5 per 100

**GOLDEN LION.** One of the newest things in bulbous iris,—a splendid flower with lemon yellow standards and very heavily ruffled falls of deep golden yellow. Exceptionally late. This is a genuine novelty.

\$4.00 per dozen; \$30 per 100

**HUMBOLT.** Lovely light blue, the best Spanish iris of this color. Very fragrant.

60c per dozen; \$4 per 100

**PRINCE HENRY.** Another unique color,—deep purple standards and brown falls, creating a very bronzy effect.

75c per dozen; \$5 per 100

**NOTE:** If you want 25 of any one variety, these may be had at  $\frac{1}{4}$  the hundred price. This does not mean a few selected here and there to total twenty-five. The prices quoted are for first size bulbs, not seconds which are often listed at much lower prices. Wedgewood makes the largest bulb of all, the rest of the Dutch are smaller, and the Spanish group are naturally a small bulb as compared with such things as tulips and daffodils.



GOLDEN BRONZE



W. ZUIDERVELD



## SPURIAS—BEARDLESS IRISES

Below we list a number of rare species and hybrid irises—a distinct group. All of these flower later than the bearded section, many of them having very attractive foliage as well as colorful blossoms in various shades of blue, yellow, cream, copper and purple. They appreciate a slightly heavy and rich soil, and are at home in full sun. Plenty of moisture is appreciated, thus they are adaptable to planting near pools and streams.

**A. J. BALFOUR.** A 48-inch Monspur hybrid, with lovely Cambridge blue flowers. Seldom listed and quite scarce.

Each 50c; three for \$1.00

**AUREA.** A tall deep yellow, the rich color being especially good. Do not confuse with the bearded iris Aurea.

Each 50c; three for \$1.00

**DOROTHY K. WILLIAMSON.** This is a hybrid of Fulva and Foliosa, with brilliant flowers of dark madder violet. The stems are well branched, making it one of the most graceful and beautiful for cutting. Height 2½ feet, flowers produced well above the narrow slightly drooping foliage.

Each 25c; three for 50c

**FULVA.** The native copper-red iris of the South. A novelty in color and perfectly hardy.

Each 50c; three for \$1.00

**FULVALA.** Cross of Fulva and Lamancea. Not unlike the above but the color takes on more of the copper tone of Fulva; a bright coppery red-purple. This is a fine grower, and a wonderful cut flower. Supply limited.

Each 50c

**LORD WOLSELEY.** A very rugged and dependable spuria with beautiful flowers of bright blue-purple. 40 inches.

Each 50c; three for \$1.00

**MONAUREA.** A cross between Aurea and Monnieri, producing flowers of clear deep yellow on exceedingly long stems. The foliage is especially good, making it a gem for the waterside.

Each 50c; three for \$1.00

**MONNIERI.** Deep primrose yellow, and very handsome. Likes a great deal of moisture, flowering very late. We highly recommend this as being of easy culture and a very notable flower.

Each 50c; three for \$1.00

**MRS. A. W. TATE.** Vigorous growing, soft porcelain blue. This is the very best of the light types.

Each 35c; three for 75c

**OCHROLEUCA.** A white flower with orange markings at the throat. Desirable for the border.

Each 50c; three for \$1.00

**PSEUDACORIS.** English yellow water iris. Grows very tall and flaunts its blossoms on 5-foot branching stems when grown in shallow pools with rich soil.

Each 50c; three for \$1.00

**VERSICOLOR.** Belonging to the Laevigata group, it is essentially water loving and so can be planted in shallow pools and swampy places. Flowers a beautiful shade of blue. Flourishes in acid soil.

Each 50c; three for \$1.00

## NEW SPURIA IRIS

### 1933 Introductions

The three new Spurias listed below were raised by the late L. W. Sanford. They represent the cream of a large planting of selected seedlings.

**ALADDIN'S LAMP.** A very deep rich yellow. Wonderful clarity of color; heavy foliage. The finest deep yellow in our collection.

Each \$1; three for \$2.50

**ORIOLE.** Greenish primrose yellow. Fine large flowers on four foot slender stalks, with broad handsome foliage.

Each \$1; three for \$2.50

**WHITE LANCE.** Glistening satiny white. This is the best white Spuria iris we have ever seen. Outstanding in the border, a wonderfully effective subject near a pool or stream, and especially desirable as a cut flower. Four feet in height.

Each \$1; three for \$2.50

One each of the above new varieties for \$2.50.



WHITE LANCE



# DWARF BEARDED IRIS

For the rock garden, or for the edge of a border planting these are among the earliest of spring flowers and among the most colorful. Plant them in groups of several of a kind for best effect. They increase very fast and soon form a dense clump. We offer three varieties, all heavy bloomers and less than six inches high.

**CYANEA.** A brilliant red-purple.

**COERULEA.** Lovely sky-blue, clear in tone, and one of the first to bloom.

**ORANGE QUEEN.** A clean bright yellow; large flowers.

Prices: The above dwarfs are 25c each, three for 50c, ten for \$1.50, a hundred for \$10.



## How to Grow Lilies Successfully

"Probably success with Lilies is among the proudest achievements that the gardener knows, yet many hesitate to seek it because of the difficulties believed to attend the culture of these noble flowers. And while it is quite true that certain species demand special conditions for their welfare, it is also true that many will thrive under ordinary garden conditions. Failure is nearly always due to a lack of understanding of the nature and requirements of the various species, for, as a matter of fact, no garden is so poor and hungry of soil, or so moist and shady, but it will successfully entertain several kinds of Lilies.

"Winter damp and late spring frosts cause disaster among them far more than actual cold; these are the forces chiefly to be guarded against. To this end, **good, sharp drainage should be given all Lilies**, and some sort of protective herbage through which the forward young shoots may make their way secure against unexpected frosts and rough winds. Later this herbage—it may be dwarf growing shrubs, ferns, or herbaceous plants—gives to the mature stem the protection it craves from the too great heat of the sun, and keeps the ground above the bulb more or less cool. These safeguarding conditions are always found wherever Lilies grow naturally, and such a broad hint from Nature will not be ignored by the wise.

"In planting Lilies in situations that are actually swampy, E. H. Wilson tells us to 'Invert the flower pot at the requisite depth, place the bulb on the upturned base, and surround it with silver or gritty river-sand.' This device somewhat reproduces its natural conditions.

"On the other hand, nearly all Lilies are dependent upon considerable moisture during the growing season and greatly relish **coolness above and below ground**. Thin woodland, gently sloping, where the soil is fibrous and rooty, and rich in leaf matter, furnishes ideal conditions.

"Although all Lilies may be said to enjoy some shade, many, if given protection above their lower stems, will thrive very well in sunny situations.

"In planting Lilies among other plants, it must be seen to that their neighbors are not of too stout and pervasive a character, for the bulbs resent being crowded and pressed upon. But delightful effects may be brought about by planting among the bulbs slender growing plants that will shelter the Lily stems and at the same time provide a becoming setting and foil for the Lily flowers.

"For all Lilies save the marsh dwellers, a soil of fibrous loam, sand, and leaf soil is the best, and should extend to a considerable depth. **No manure must come into contact with the sensitive bulb**, though feeding may be done from above by means of a mulch of **well rotted** manure. It is a safety first precaution to give all Lily bulbs, when planted, a cushion and covering of clean sand to drain away superfluous



ous water and at the same time to keep the bulb properly moist.

"The depth at which Lilies should be planted varies, not only according to size, but according as to whether they produce **one or two** sets of roots. Some Lilies send out only the fleshy perennial roots from the **base of the bulb**. These do not require deep planting—twice the depth of the bulb is sufficient and the Madonna Lily is happiest with its bulb just covered with soil—and pretty poor soil at that.

"The **stem-rooting species**, on the other hand, those that issue a mop of fibrous roots at the **base of the stem**, must be sufficiently deep to protect this second set of roots from injury from drought, frost and careless digging. Three and one-half times the depth of the bulb is none too deep; that is, if the bulb is two inches in diameter there should be seven inches of soil above it at the least.

"A large proportion of the finest Lilies have this peculiarity, and to heed its significance is of the utmost importance.

"To safeguard Lilies in winter, not from cold but from the continual freezing and thawing common to our climate (generally speaking, north of the Mason-Dixon line), which tears and injures the roots and often heaves the bulb completely out of the ground, a mulch of manure or marsh hay should be thrown over them **after** the ground becomes frozen. Thus they are secure until the ingratiating spring sunshine incites the tender young shoots to issue forth, and, thrusting aside the hard materials that surround it, push upward to greet another spring."—From "Beauty from Bulbs", Scheepers.

"A word as to their place in the garden picture. Remember, they are among the most striking of all garden plants. Unlike many other flowers, you do not need a 'mass effect' with them to enjoy their great beauty. In nature, they are seldom found in great quantities together. A single lily, standing out against a background of evergreens, a hedge, among tall shrubs, or making a charming contrast with a group of some other tall flower, such as delphiniums, may add more to the real beauty of the garden than an entire 'bed'. Study your garden most carefully to select the spots—not too many—where lilies are to go, and then plant not over six or a dozen, under ordinary circumstances, in a place; two or three will often look as well. Spend the extra amount on more varieties, which will give you a longer season of these beautiful flowers; they may be had from early June until October."—From The Book of Bulbs, by F. F. Rockwell.



# English Iris

It seems that there is no group in the iris category so easily grown, so sure to flower, and so entrancingly beautiful, yet so little known, as the English Iris. None so nearly resemble the orchid, none are more adaptable to cutting, and in addition to these features, they flower at a period midway between the Bearded and Dutch varieties, and the Japanese.

The demand during the past two years for the new introductions has forced us to limit our list of named varieties this season. However, we are offering again this year, as we have done in the past, a Special Assortment containing a very wide range of colors at a most attractive price. This is done primarily to acquaint those unfamiliar with this unusual type, and to prove how easy they are to grow.

Because of the prevailing opinion among many that English iris can be grown successfully in only a few limited localities, we quote herewith from two letters received last spring from widely separated points:

## No Iris so Nearly Resembles the Orchid

*This is a bulbous plant and as in the case of tulips, daffodils, and the like, they should be planted about four or five inches deep IN THE FALL. If in a very cold climate, mulch with leaves, salt hay, or boughs as soon as the ground freezes.*

FROM CALIFORNIA—

"Last night our Horticultural Society met and I had the very great pleasure of showing the fine English Iris blooms from bulbs bought from you last fall. I have had wonderful luck with them here in spite of the fact that many iris growers told me they would not grow. My bed was greatly admired by all who saw them, and they gave me nearly a month of bloom after the bearded iris had passed on."

M. D. CURRIER,  
1308 Waterman Avenue,  
San Bernardino, Calif.

FROM MAINE—

"The English Iris I bought from you last fall have just begun to flower. They are certainly beautiful. Every one who has seen them raves over 'Gale S. Hill.' In my opinion they crowd the Dutch Iris out of the picture, and a lot of the aristocrats in the bearded group also. I came home this afternoon just to erect a waterproof shelter over the blooms,

as there was a thunderstorm coming! I am enclosing an order for a few more in different colors from mine.

"You people are to be congratulated for securing such beautiful things as these new English Iris and making them available at such reasonable prices."

OLIVER P. YOUNG,  
6 Fowler Street,  
Bridgton, Maine.

## Mixed Bulbs 50c Doz., \$4 per 100

MIXED, a wonderful mixture of Standard and other varieties, providing a colorful show for the garden or wonderful material for cut flowers, at the very low price of—

**75c per dozen,  
or a whole hundred for \$5.00**

Get acquainted with the English type of iris, you will love it. But it must be planted this Fall—not next Spring! Place your order now.



## JAPANESE IRIS

"There is nothing in the garden like Japanese Iris for arrogance, subtlety and sheer insolence of beauty. This is precisely the effect conveyed when one sees Japanese Irises in large masses. When a few plants are found on the banks of a stream, they have more of piquancy and less of boldness. They are the most striking flowers of July, and not so difficult to grow as the average gardener supposes.

"It is *not true* that Japanese Irises must have bogland or even water in which to bathe their roots. They love moisture, but will flourish in any good garden soil if water is applied in abundance and if the exposure is sunny. The latter point is important. It is useless trying to grow Japanese Irises in a shady spot. Sunlight and moisture are the two requisites for success with these plants.

"Let it be remembered that this type of Iris takes an entirely different treatment from the Bearded Iris. Instead of being planted almost on the surface of the ground, the crowns should be buried two inches.

"Peat can be added to advantage to soil where Japanese Irises are to go. Unlike the bearded Irises, which delight in lime, the Japanese forms prefer a soil which is somewhat acid. Lime should never be used with them. It is also important that the ground be kept well cultivated, never being allowed to become hard or dry. A summer mulch of pulverized peat lessens the amount of hoeing necessary and helps to hold the moisture.

"The location should be one where the drainage is good, even though it be close by a pond. These Irises like to have their roots reach water in summer, but stagnant water must not stand around the clumps, and it is imperative that they should not be caked over with ice in winter.

"Japanese Irises must have plenty of room, and must never have competition from weeds or grass. If they are used in a general garden away from water, a spot should be prepared for them by digging out a foot of earth and working in an abundance of well rotted cow manure. If the earth is at all heavy set the divided clump on a little mound of sand. When winter comes a light mulch will be needed.

"There is only one way in which to get an abundance of large flowers, and that is to supply water with a generous hand during the spring before the buds open."—Extract from "*Horticulture*" Magazine.

♦ ♦ ♦

And from Mr. F. F. Rockwell's valuable book on "Iris" we quote the following:

"The Japanese irises are the last of the more important groups to flower. Beginning before the latest of the Tall Bearded sorts have finished, they carry on the pageant of iris beauty for most of another month, and to new peaks of splendor.

"The Japanese irises, as already pointed out, differ from all of the preceding sorts not only in flower form, but in general habit of growth. They are considerably taller. The effect as they grow in the garden, either at close view in the hardy border or bed, or at a distance in landscape planting, is so radically different from that of the Tall Bearded irises that it would be well worth while to have both, even if they bloomed at the same time. Not only are the plants taller, but the foliage and flowers are less formal, and for that reason preferable for certain types of landscaping.

"For midsummer masses of color on a large scale, the Japanese irises are unsurpassed."



The new  
 Kemp  
 JAPANESE  
 IRIS  
 "Richmond"



In keeping with the Cooley policy of procuring the newest and best, we have secured stock of a new strain of these gorgeous irises, the finest ever produced in this country. We refer to the "Kemp's Orchid Flowered Japs", listed and described below. While they have been available through a very limited number of sources for the past couple of seasons, stock is still very scarce and they have found their way into but few gardens. For size, delicacy of colorings and vigorous growth, they leave nothing to be desired. As will be noted in the descriptions, many of them run to shades of pink, rose, pale blue, gray and lilac. Can you imagine anything more lovely?

## LIST OF VARIETIES

**ATLANTA.** Double. Rosaline pink, with hue of soft lavender pink. Primrose yellow blotch from which radiate faint veins of bluish purple. Pistils greenish white with bluish tips. 45 inches in height.

Each 75c

**CELESTINE.** Single. Deep silvery pink, veined blue; orange blotch. Standards deep pink veined blue. A 7-inch flower, 50 inches tall.

Each 75c

**COLLINGWOOD.** Single. Lavender pink ground, heavily brushed with violet. Standards very upright and long, petunia violet edged pink. One of the most beautiful color combinations to be seen in a Jap Iris. 32 inches.

Each 75c

**CONSTANCE.** Single. Cerulean blue feathering, overlapping pale forget-me-not background; orange buff markings at base of petals. Flowering in mid-season, this is a prime favorite with visitors. 32 inches.

Each 75c

**DAY DREAM.** Single. Soft pinkish lilac, lightly veined pale violet blue with heavier shading of the same surrounding cadmium yellow blotch. Standards pale violet blue. Large in size, a soft pinkish lavender effect. Height 30 inches.

Each \$1.00

**HARMONY.** A finely ruffled variety, so distinct from others that it is in a class by itself. Single, of medium to large size, an exquisite oxide blue, veined and edged lilac pink. Very prominent orange blotch. Bright blue standards, pale lilac pink pistils. 42 inches. Limited stock.

Each \$1.00

**LAWRENCE.** Double. When flower first opens it is Hortense blue, quickly changing to Ontario violet. Huge blooms, with broad rounding petals. Rich blotch extending one-third way up the petals in featherlike formation. 42 inches.

Each 75c

**MARTHA KEMP.** Single. Deep lilac pink ground, brushed venetian blue. The upright standards are solid dark bluish violet; orange blotch. A very conspicuous flower, 7 inches in diameter, 4 feet in height.

Each 75c

# Collection of Kemp's New Jap Iris . . .

8 for \$5

Your choice of *any* 7 of  
the following sorts listed at  
75c each:

Atlanta  
Celestine  
Collingwood  
Constance  
Lawrence  
Martha Kemp  
Marvella  
Talmanya

and also, either  
HARMONY

or  
DAY DREAM

Eight plants in all; vigorous,  
husky roots, A-1 in every re-  
spect. Labeled and postpaid,  
of course.

---

---

Above:

"KOMBARIN"      *See next page.*

Below:

"MARVELLA"

---

---



**MARVELLA.** Single. Phlox purple, splashed phlox pink; orange blotch at base of petals. Pistils greenish white, tipped lavender pink. Very large blossoms, with broad petals. Midseason; height 32 inches.

**Each 75c**

**RICHMOND.** The newest Kemp introduction, put out last season. Its rich lustrous color approaches royal purple and dark violet. Some of the flowers are lightly mottled and splashed with light pink; prominent orange patch at base of petals. Mr. Kemp says, "By far the richest colored Jap Iris I have ever seen!" Only a few plants.

**Each \$1.50**

**ROMANCE.** Single. Cerulian blue, heavily marbled pinkish lilac; cadmium yellow blotch at the

throat. Standards are uniformly colored same as falls. Very showy variety with 8-inch blossoms; 40-inch flower stalk.

**Each 75c**

**TALMANA.** Pale king's blue, irregularly splashed venetian blue; very bright orange blotch. A splendid iris of great merit, of an unusual tone, with finely ruffled flowers 7½ inches in diameter, 40 inches in height.

**Each 75c**

**VERNON.** Single. Bright lavender blue on rose-line pink ground. Narrow band of orange on center of lower third of petals. Standards oxide blue, pistils creamy white. An 8-inch flower of medium height, being about 30 inches.

**Each 75c**

---

*There is a most interesting, well illustrated article on "The Iris in Japan," by George M. Reed of the Brooklyn Botanic Garden, in the July 1931 issue of American Iris Society Bulletin. Mr. Reed made a special trip to Japan to get the story he tells. This Bulletin may be obtained from the Science Press, Lime and Green Streets, Lancaster, Pennsylvania.*

---





## Make Your Own Selection of Jap Iris

*Any 10 for \$3.00*

*Any 5 for \$1.75*

Choose from these only:

Angel's Den  
Azure  
Cloud Dress  
Hatsuki  
Hosakawa  
Josephine Heywood  
Kagarabi  
Kasugano  
Koko-no-iro  
Komachi  
Kombarin  
Kumono  
Kuro Kumo  
Neptune  
Nishika  
Paragon  
Rishono  
Shiga  
Shimoyo  
Tuji  
Violet Beauty  
Wakamura  
Yonomo

Better include one or two  
second choices, in case we are  
sold out of some you select.

---

---

Above: "CELESTINE"

Below: "MARVELLA"

---

---

## SELECTED JAPANESE IRIS

	Each
<b>AIFUKURIN.</b> Sgl. White ground, suffused and heavily edged violet, petaloid stamens edged petunia violet. An exceptionally beautiful variety .....	\$ .75
<b>ALICE BLUE.</b> Db'. Large pale blue with yellow markings.....	.50
<b>ANGEL'S DEN.</b> Db'l. Vinous purple; very good grower.....	.50
<b>ASAGIRE.</b> Db'l. White, etched with blue; a lovely thing.....	.50
<b>AZURE.</b> Db'l. Mauve blue, yellow blotch, dark halo.....	.75
<b>CATHERINE PARRY.</b> Db'l. Blue, overlaid with rosy red glow; high tufts in center lend distinction.....	.50
<b>CLOUD DRESS.</b> Db'l. Grey, lined lightly with purple lines.....	.50
<b>DOJI.</b> Db'l. Beautiful, white overlaid lavender; of rare form and effect.....	1.50
<b>ELEANOR PARRY.</b> Db'l. Claret red, flamed white and blue as the flower ages .....	.50
<b>FRANCES E. CLEVELAND.</b> Sgl. A gigantic blue-lavender; one of the best of all Japanese irises.....	.50
<b>GENJIYAMA.</b> Db'l. Rich dark purple, long orange blotch and a halo of blue.....	.75
<b>GOLD BOUND.</b> Db'l. Large, pure snow white, gold bar.....	.50
<b>HATSUKI.</b> Sgl. Uniform blue; very attractive; strikingly blue .....	.50
<b>HOSOKAWA.</b> Db'l. Purple blue, with white lines radiating from golden bar at center.....	.50
<b>JEANETTE PARRY.</b> Sgl. White, suffused with lines of bluish violet. Deep amethyst violet standards.....	.50
<b>JOSEPHINE HEYWOOD.</b> Sgl. Bright blue, vivid purple sheen .....	.75
<b>KAGARABI.</b> Sgl. Fine light lavender, veined red purple.....	.50
<b>KASUGANO.</b> Db'l. Plum purple, pencilings of lavender, orange blotch .....	.50
<b>KOKO-NO-IRO.</b> Db'l. Fine large red purple with prominent orange blotch; very late.....	.50
<b>KOMACHI.</b> Db'l. Deep violet purple variety of great beauty.....	.50
<b>KOMBARIN.</b> Db'l. Extra fine early white.....	.50
<b>KUMONO.</b> Db'l. Lavender, veined white, yellow center.....	.50





JAPANESE IRIS "DOJI"

	Each
<b>KURO KUMO.</b> Dbl. Deep purple, overlaid with blue; extra late.....	\$ .50
<b>MARGARET S. HENDRICKSON.</b> Triple. Soft bluish violet, with white center, radiating out a blue cast. With its large, wavy petals, of triple formation, this iris is in a class by itself. Each.....	1.00
<b>NEPTUNE.</b> Sgl. Beautiful dark red, large orange blotch.....	.75
<b>NISHIKA.</b> Sgl. Large crimson purple, penciled with white.....	.75
<b>OSAMAKU MIYO.</b> Dbl. Creamy or ivory white, delicately veined with blue. A very rare iris.....	.75
<b>PARAGON.</b> Sgl. Beautiful large flowers of deep wine red; very striking .....	.75
<b>PRES. HARDING.</b> Dbl. Thick petaled flower of delicate shade of light blue, veined deep blue. Massive in size, extra late, said by some to be the best of all Jap iris. Limited stock. Each .....	1.00
<b>RISHONO.</b> Dbl. Red purple, overlaid brilliant blue; orange center .....	.50
<b>SHIGA.</b> Dbl. Reddish blue, very large petals; heavily veined white .....	.50
<b>SHIMOYO.</b> Sgl. Heavily veined violet on a grey ground.....	1.00
<b>SURI.</b> Sgl. Grey ground, slightly overlaid blue.....	1.00
<b>TUJI.</b> Sgl. Dark violet blue, flaked white.....	.75
<b>VIOLET BEAUTY.</b> Sgl. Pansy-violet, yellow blotch; drooping petals .....	.50
<b>WAKAMURA.</b> Dbl. Crimson violet, with white halo surrounding a yellow bar; sometimes blooms in fall.....	.75
<b>YONOMO.</b> Sgl. A monster flower in "mother of pearl" coloring .....	1.00

Three of the same variety for the price of two.

Special quotations on large lots.

**SPECIAL:** One each, Pres. Harding, Osamaku Miyo, M. S. Hendrickson, and Aifukurin,  
Four for \$2.50, postpaid.



OPHIR

MANDARIN

MIKADO  
HARVEST MOON

**COLLECTION OF ABOVE FOUR HEMEROCALLIS  
AS ILLUSTRATED, FOR \$4.00, POSTPAID**

These will provide a long season of bloom and give a good idea of the progress which has been made in hybridizing this flower.

(See opposite page for complete descriptions.)

A LOVELY stranger  
comes to our  
gardens . .

## NEW HYBRID HEMEROCALLIS

Not that this group of plants is exactly a stranger, but the new introductions listed herewith are so great an improvement on the familiar so-called "Day Lilies" or "Lemon Lilies" that you would scarcely recognize them as such.

We have gathered together this limited list of the finest new productions from American, English and Japanese hybridists, and we can assure you that no flower of the summer and early autumn season will provide greater satisfaction where tones of yellow and orange are desired. They are especially desirable in the Japanese Iris garden, or among the lily plantings, for they lend a splash of color wholly lacking in either of these groups. Besides, they are fine cut-flower subjects, for while the individual blossoms last for only a day, new ones follow so rapidly that there is a continuous succession of blooms. They are deliciously fragrant.

**CULTURE.** Simple and easy to grow, they demand only a reasonably moist soil, fairly rich, and prefer—but do not require—slight shade. They are true hardy perennials. Plants will be delivered in September or October.

We offer the following varieties:

**BAY STATE.** Brilliant and glistening deep yellow on four-foot stems. The flowers have a delightful wavy edge which greatly adds to their beauty. A free bloomer, commencing about July 1st and continuing through August.

**Each \$1.25, three for \$3.00**

**CINNABAR.** A recent variety of brownish red coloring; cadmium yellow throat, outer half of petals sprinkled with brown. Large flowers, with recurving petals. Blooms in July.

**Each \$1.50, three for \$4.00**

**D. D. WYMAN.** One of the famous Betscher hybrids, flowering throughout July and into August. The light golden yellow blossoms have a distinctive tawny splash across each petal. Very large.

**Each \$1.25, three for \$3.00**

**FLAMID.** Rich orange yellow, with brownish reverse. A very prolific bloomer. July flowering.

**Each \$1.00**

**GOLDENI.** This is one of the most distinct in the list, and while the flowers are not as large as some others, the coloring is especially rich and beautiful. A rich orange with apricot undertone, self



colored, and produced in the greatest profusion. A genuine gem, flowering throughout July and early August; medium in height.

**Each \$1.50, three for \$4.00**

**HARVEST MOON.** Somewhat like the foregoing, the coloring being sometimes referred to as "orange-sherbet". The petals are long and graceful, with medium height stems. This combines beautifully with blue flowers, either in the border or when cut. See illustration.

**Each \$1.25, three for \$3.00**

**LEMONA.** As the name implies, a pale lemon yellow self; extra large in size. The wide spreading blooms are borne on very tall stems, quite late in the season.

**Each \$1.00**

**MANDARIN.** Clear lemon yellow, with greenish cast in the heart of each blossom. A very tall, wide open, recurved type of flower, increasing rapidly and commanding special attention in any planting.

**Each \$1.00, three for \$2.50**

**MIKADO.** Large flowers rising fully 10 inches above the graceful curving foliage. Body of flower is rich orange, with center of each petal blotched ruddy purple-red. A striking and wholly different sort, with stems over three feet in height.

**Each \$2.00, three for \$5.00**

**MRS. A. H. AUSTIN.** A very handsome hybrid with deep golden yellow flowers; extra large and flowers over a long period.

**Each \$1.00**

**OPHIR.** Dark golden yellow, on stems that reach 42 inches. The individual flowers are extra large, of heavy texture, and make a splendid companion to the variety "Mandarin".

**Each \$1.00, three for \$2.50**

**VESTA.** One of the shorter hybrids, but very different and beautiful. Deep uniform orange-yellow, lightly touched with orange-red. Petals are very broad and overlapping, well borne above the foliage.

**Each \$1.50**

# Recent Novelties in . . . . ORIENTAL POPPIES

*From Mr. Curtis, of Cincinnati.*

**AMUN RA.** Red-orange, 28 to 30 inches high, flowers 8-9 inches across. Outstanding quality.

**NET, each \$1.50**

**PEARL PINK.** Very fine and distinct; a delicate shade of light pearly pink, vigorous and prolific. Appears like one large tulip within a larger one. Its delicate color cannot stand the strong reds and bright salmons, and to see it at its best, should be planted with blue iris or an early delphinium. Stock limited. Medium height.

**NET, each \$2.00**

**RED LACQUER.** A new deep dark red, of strong appeal. Stiff erect stems to 44 inches tall. Blooms 7 to 9 inches across. Well named.

**NET, each \$1.50**

**MANCHU'S FAN.** (Curtis, 1934.) Flame red, a very large flower, oval in form, with the green bracts extending almost to the top of the bloom. Makes an entirely original effect, different from any other poppy, and the originator says, "I have a feeling it will have an effect on the poppy family equal to that of Dominion in the iris world." Extra strong grower, rapid of increase.

**NET, each \$5.00**

*From Dr. Neeley, of Paulding, Ohio.*

**JUNE DELIGHT.** Very large bright silvery pink, the color improving with age. This plant is so outstanding among pink poppies that it is predicted to have an even greater future than the red variety Lulu Neeley. Possibly the greatest of all of Dr. Neeley's introductions. Limited stock.

**NET, each \$10.00**

**PURITY.** A beautiful soft pink without any spot or blemish whatsoever. For stiffness of stem, form, carriage, and clarity of color, no other poppy approaches it in its class. This, together with the other novelties listed above, will be a favorite the world over when sufficient stock can be propagated. Very few plants.

**NET, each \$10.00**

**CAVALIER.** Larger than the enormous variety Wurtembergia, perfectly formed, and lasts extra long in flower. The color is glowing cerise. Few plants.

**NET, each \$5.00**

**ENCHANTRESS.** Soft lilac-rose, a near approach to lavender. Opens perfectly, holds its color remarkably well for this shade. A true novelty of exceptional merit. Only a very few plants.

**NET, each \$5**

**SPLENDOR.** (Howe, 1933.) This new and entirely distinct novelty is being catalogued for the first time this season. Brilliant, huge, entirely novel in color, this blend of peach and apricot, entirely overlaid salmon, is unlike any poppy we have ever seen. Very late, and a vigorous grower.

**Each \$3.00**



LULU NEELEY

## Poppies for Every Garden

**BEAUTY OF LIVERMORE.** Deep ox-blood red, velvety texture.

**Each 50c**

**CERISE BEDDER.** Brilliant cerise, producing a great abundance of flowers.

**Each 50c**

**EDNA PERRY.** A very bright and lovely pink of good form.

**Each 75c**

**HENRI CAYEUX.** Deep old rose, shaded into wine color. An unusual and very beautiful poppy quite unlike any other. Should be grown in a spot protected from hot afternoon sun.

**Each 75c**

**KING GEORGE.** Large fringed flowers of brilliant scarlet, petals deeply cut like a parrot tulip. Medium height, fast increaser.

**Each 50c**

**LORD LAMBOURNE.** Fringed, like the foregoing but with heavy black blotches and a slightly different shade.

**Each 50c**

**LULU NEELEY.** Finest Oriental Poppy in the world today that can be sold at a popular price. A

### ***Oriental Poppy Collection***

**One of each for \$2.50, postpaid.**

LULU NEELEY—Giant blood red.

KING GEORGE—Fringed orange-scarlet.

QUEEN LOUISE—Strawberry pink.

OLYMPIA—Very double orange.

PERFECTION—Fine salmon pink.

WURTEMBERGIA—Huge scarlet.

prolific blooming sort of deep blood-red, massive in size, on tall straight stems.

**Each 75c; three for \$1.75; a dozen for \$6.00**

**MASTERPIECE.** Lilac color, marvelous flower, but should be grown with slight protection from the sun to prevent fading of the delicate color. **Each \$1**

**MENELIK.** A definite orange, without much of the scarlet tone, with black spots. **Each 50c**

**MRS. FISHER.** Extra large, deep crimson, 4-ft. stems. **Each \$1**

**MRS. PERRY.** A very lovely salmon-pink. **Each 50c**

**OLYMPIA.** A fluffy double poppy of soft orange, with gray stamens in the center. Very free bloomer, and the only double variety in the list. Increases very rapidly by runners, so plant away from other varieties. **Each 25c; three for 50c; \$1.75 doz.**

**PERFECTION.** Large deep flowers, entrancing shade of pink with immense black spots at base. **Each \$1**

**QUEEN LOUISE.** A melting strawberry pink flower of good finish, with prominent black and red base spots. To 40 inches tall. **Each 75c**


**SILVER KING.** A wonderful new white poppy of excellent form and unusual substance. A tall and profuse bloomer. **Each \$1.50**

**TRILBY.** One of the last to bloom. Dark, lustrous, deep red, the petals having a plaited appearance. Very large, and one of the finest of all poppies. **Each \$2**

**WATTEAU.** Pure flesh-coral; covered with flowers. No blotch on petals. This is one of the rarest and loveliest in our list. **Each \$1.50; three for \$4.00**

**WELCOME.** Deep scarlet, shaggy, with dusty black center. Very large. **Each \$1.00**

**WURTEMBERGIA.** Enormous cerise scarlet; very tall growing. An outstanding flower, attaining almost unbelievable size. **Each \$1**

  
HOME OF THE BINGHAMTON PRESS  
ABSOLUTELY FIRST CLASS

**The Binghamton Press**  
AND LEADER  
ESTABLISHED 1894  
ALL T. SHARPE KILMER

*Binghamton, N.Y.*

Cooley's Gardens,  
Silverton, Oregon.

Gentlemen:

A year ago I received a collection of iris and lilies from you as a present from my father, Mr. John Spargo of Bennington, Vt.

The iris especially were gorgeous and made a tremendous hit with my garden loving friends. Several of them have sent, or intend to send you orders on the strength of my display.

I have never seen such big, healthy rhizomes. Every one bloomed this year--and it was almost the first of November before I set them out!

As for the English iris--they made the hit of the season among flower lovers hereabouts.

Please rush me that catalogue!

George H. Spargo  
133 Moeller Street  
Binghamton, N.Y.

**MEMORANDUM**  
October 4th, 1933.

Cooley's Gardens,  
Silverton, Oregon.

Gentlemen:

I wish to let you know that the iris and poppies arrived in splendid condition on October 2nd. You certainly lived up to your promise by sending wonderful iris roots (rhizomes). I have never had such fine ones sent me from any other grower.

Thanking you for prompt shipment and courtesy,

Yours very truly,  
*Frank Stewart*  
2021 N. Florence St.,  
El Paso, Texas.

**CANADIAN NATIONAL RAILWAYS**  
EXPRESS DEPARTMENT

43 Lawrence Avenue W.,  
Toronto, 12, Ontario,  
July 19, 1933.

Cooley's Iris Gardens,  
Silverton, Oregon.

Gentlemen:

Acknowledging your card of the 14th in connection with my iris order.

Same was received at 3:00 P.M. today and I can assure you that I am more than delighted with the wonderful condition and size of the rhizomes.

The rhizome which you sent me as a premium is certainly far superior to anything my fondest imagination could lead me to expect.

It has been a pleasure to have had this opportunity of dealing with your firm and I will certainly recommend your company to any of my friends who may be interested.

It is more than likely I will be back for more next year.

Yours truly,  
*J. S. Ellison*

JSE/s.

F. E. REIBOLD  
1395 LINDA VISTA AVENUE  
PASADENA CALIFORNIA

July 1, 1933

Cooley's Gardens,  
Silverton, Oregon.

Gentlemen:

The iris rhizomes ordered from you were received and planted yesterday. If possible these plants are even better than those of last year and I know from experience what results I may expect next spring.

At the price you made me on this order I did not expect the additional rhizomes of Degrose and Ethelwyn Dubuar and I wish to thank you for your generosity. Both these varieties are now in my garden.

It will be a pleasure to recommend your firm to the visitors in this garden next spring.

Wishing you success, I am,  
Yours sincerely,  
*F. E. Reibold*





## LILIES—See page 33 for notes on Lily Culture

### BROWNI

The true form, very scarce. This is one of the finest lilies in cultivation. A noble pot plant. Immense trumpet flowers, pure white on the face with brown anthers and deep reddish brown externally. 2 feet. July.

**Flowering size \$2.00 each**

### GIGANTEUM HIMALAICUM

The noblest of all lilies. A most elegant plant with large heart-shaped leaves and a stem often 12 feet tall bearing at the top many long tubular white flowers with a tint of purple in the throat, very fragrant. The ideal place for this lily is an open woodland glade or a northern exposure sheltered from the hottest rays of the sun. The large bulbs should be set shallow in soft ground well mixed with leaf-mould and sand. Satisfactory results cannot be obtained by planting flowering-sized bulbs. We therefore supply only good sized bulbs to flower the year after planting. The leaves are very beautiful the first season without the flowers. 8 to 12 feet. June.

**Each \$4.00**

### HANSONI

A choice Korean species bearing many handsome yellow flowers. Petals thick and durable. Very dependable, but prefers leaf mould and partial shade. 3 to 4 feet. June.

**35c each, \$3.50 per doz.; 50c each, \$5.00 per doz.**

### HENRYI

(The yellow Speciosum.) Here is one of the most dependable and robust of all lilies, as well as one of the most beautiful and distinct. Flowering in August, and lasting long in bloom, the Henryi lily is of a soft clear orange or orange-yellow, very heavy of substance, and with a sort of beard or tiny "teeth" about the center. There are a few greenish spots near

the central portion as well, and the brown anthers swing loosely from pale green stamens. The stems reach a height of four to seven or even eight feet on established clumps. Should be planted 10 or 12 inches deep, preferably in slight shade. Very hardy, and thrives not only in cold sections but in the south as well. Very fine large bulbs, **40c each, \$3.50 per ten. Mammoth size, 75c each.**

### MARTAGON ALBUM

A very pretty and dependable little alpine species. Flowers pure white and waxy. Excellent for rock or wild garden. 2 to 3 feet. June.

**40c each, \$4.00 per doz.**

### PARRYI

A native of California, solid lemon yellow in color, and one of the most fragrant of all the lilies. When grown to perfection it reaches a height of six feet and carries from 10 to 25 blossoms. Will succeed best if planted in a clearance in shrubbery in leafy loam, where the roots can find sufficient moisture, although the bulbs should rest in gravelly soil. Resents lime. Base rooting, plant 5 inches deep. Blooms in July.

**Each \$1.00**

### REGALE

(Regal or Royal Lily.) Unquestionably the best known and most popular lily in the world today, discovered in the mountain fastnesses of China some years ago by E. H. Wilson, famed horticulturist. The huge flowers are trumpet shaped, brownish rose on the exterior, white suffused luminous yellow within. One of the easiest of all lilies to grow, it multiplies rapidly, and reaches a height of five or six feet on matured plants. The blossoms have a delicious scent. It flowers in late June and July, and should be planted about 8 or 10 inches deep in sun or light shade. Hardy anywhere. Extra selected bulbs.

**Each 25c, three for 50c, \$1.75 per dozen**



# The New SUNSET LILY

Because of its ease of culture, rapidity of increase, and its extreme hardiness, the new SUNSET LILY is certain to achieve widespread favor. It is not only of the easiest culture, but is likewise of rare beauty and robust constitution. It has been known to attain a height of twelve feet, with from 20 to 40 flowers to the stalk, and may be depended upon to grow consistently to 5 or 6 feet. Not particular as to soil, it will thrive in full sun or partial shade, and while it appreciates good drainage, a liberal amount of water during the growing season pays good dividends in larger blossoms and greater height.

The SUNSET LILY has few rivals in the group which are generally characterized as RED. No other red lily compares with it in size nor height, and certainly none of them are as easy and simple to grow — it is practically fool-proof. As will be noted in the color illustration, this lily is bright red in color, the central portion being a bright yellow with dark spots. The anthers are long and very pronounced, lending grace and airiness to the flower. Stems are straight and strong with no tendency to droop. Plant medium depth, about eight or nine inches, in a position where water or seepage will not stand during the winter. July flowering.

**PRICES:** Strong well grown bulbs, each 75c, 3 for \$1.75, 12 for \$5.00. Postpaid.

Every lily bulb we send out will be a healthy, clean, fresh specimen of flowering size. If you have been disappointed before in buying lily bulbs, just give us a trial order.



SUNSET LILY

(Please don't confuse with *L. Pardalinum*, which somewhat resembles this picture. The Sunset Lily is twice as large and finer in every respect.)

## *Cooley's Hardy Lily Collection*

All seven of the following, properly packed, labeled and prepaid, for \$2.50.

2 Sunset Lily

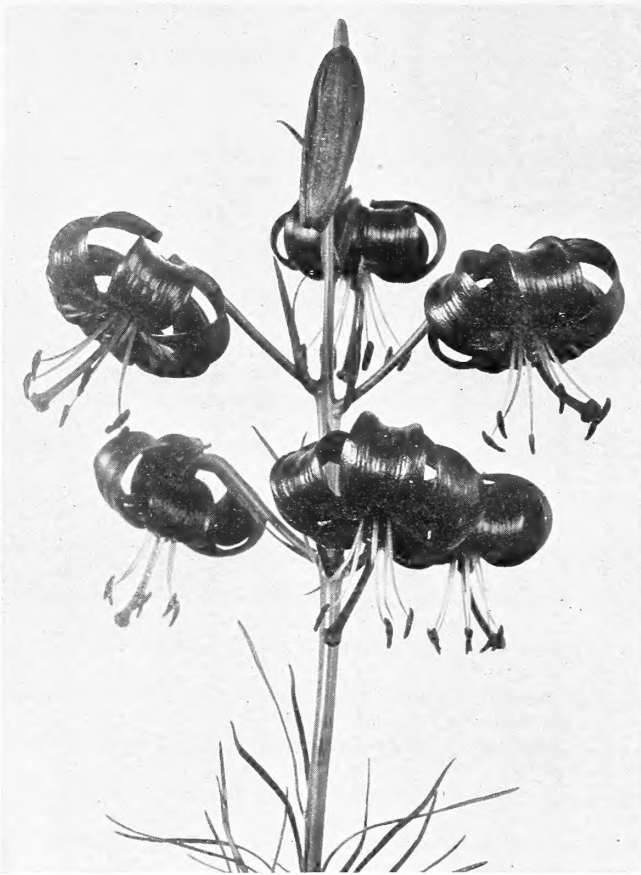
1 Testaceum, apricot-yellow.

2 Regale, white.

1 Henryi, orange-yellow.

1 Umbellatum, orange-red.

All first quality blooming size bulbs.



TENUIFOLIUM

*Two new Lilies, produced by  
the U. S. Dept. of Agriculture!*

#### SHUKSHAN

To those familiar with *Lilium Humboldtii* this new lily might be easily visualized as a great improvement, with extremely large flowers of a soft tone of salmon-orange, and with a lesser number of spots. The few spots present are of large size and confined largely to the central portion of the flower. **Shukshan** is a loosely built flower, produced on stiff but slightly willowy stems. It is one of the easiest doers in our collection of new hybrid lilies, and will thrive in sun or semi-shade, is not particular as to soil as long as it is not too wet or hardpan. Plant about 10 inches deep or perhaps slightly deeper in the north-eastern part of the country. Height, up to 6 feet.

**Each 75c, three for \$2.00**

#### KULSHAN

Very much like the foregoing in all respects, except that it is very heavily speckled with soft brownish spots. Not quite as tall. The same type of hybrid, and should be accorded the same treatment. This is being offered for the first time this year. Very limited stock.

**Each \$1.00, three for \$2.50**

#### SULPHUREUM

One of the rarest and grandest of all lilies. It is among the last to bloom, the flowers being produced

in September. Color inside is pale sulphur yellow, becoming more intense yellow in the throat. There is a greenish gleam inside the flower contrasting remarkably with the yellow tone, and the exterior is streaked and shaded reddish brown. The individual blossoms are enormous, attaining a length of ten to twelve inches. Height five to seven feet. As it is stem rooting, it should be planted very deep, ten inches at least, and in cold sections it should be covered with a mulch in winter. Our bulbs are grown right here in Oregon, and are of wonderful size. Very limited stock.

**Each \$1.50, three for \$4.00**

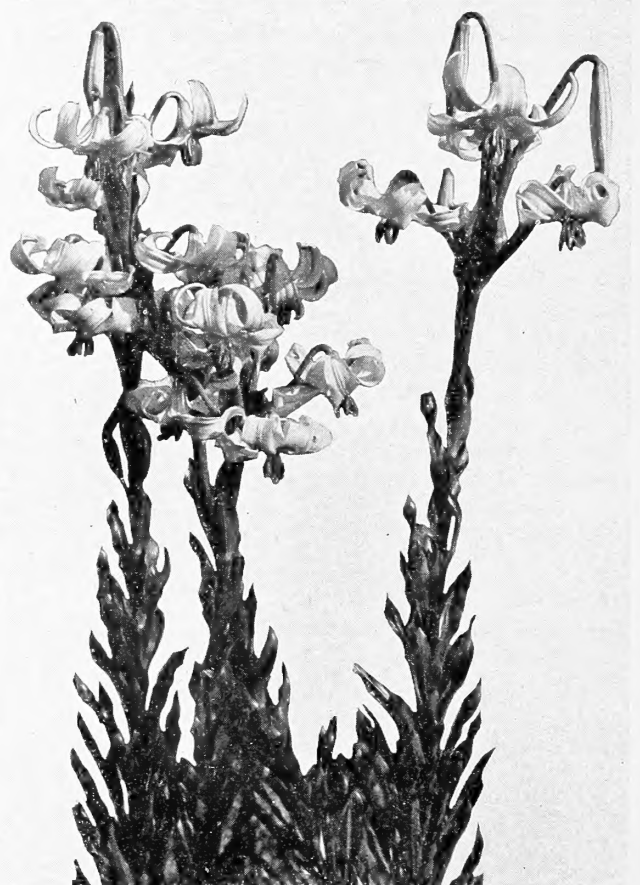
#### Lilium sulphureum

I measured one of the best stems today and found it to be 8 feet in height and carrying seven magnificent trumpet-shaped flowers each 8 inches in length and the same across the slightly recurved mouth, the spread of the horizontally-disposed blooms being 2 feet.

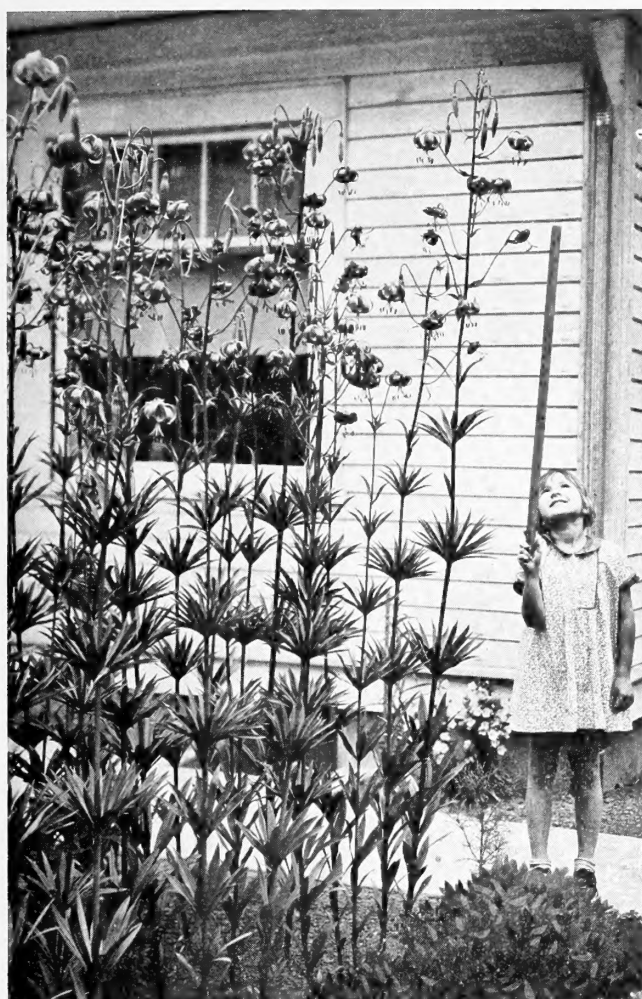
The soil in which the bulbs were planted consists of heavy and rather soapy loam, to which was added a little leaf-mould and sand. This was necessary as the natural soil here is sandy clay.

As this Lily grows so tall and slender—the stem is not more than  $\frac{3}{4}$  inch in diameter—and blooms rather late, it is advisable to plant on the sheltered side of a wall or shrub in order that the huge flowers may be protected from the autumn gales. One of the groups in question faces full east with a 10-foot bush of *Erica arborea* in its rear, which breaks the strong gales we have from the west at this season of the year.

This fine, hardy Lily was discovered by Mr. W. Boxall in Upper Burma, and this gentleman sent bulbs to Messrs.



TESTACEUM



SUNSET LILY AS GROWN IN THE GARDEN

Hugh Low and Co., with whom it flowered in 1889. For some reason it has been given the reputation of being only half-hardy, but I think that in time this will be found to be incorrect, and I advise anyone interested to plant it without the slightest hesitation, and plant the bulbs 9 inches deep, care being taken to see that the position is fairly well drained, especially where the natural soil is clay.—E. Markham in *Gardening Illustrated*.

## TENUIFOLIUM

(The Siberian Coral Lily.) Bright coral-red. Best for rock gardens. 12 to 18 inches tall. May and June. 15c each, \$1.50 per doz.

## TENUIFOLIUM GOLDEN GLEAM

A very fine form with flowers of a rich golden apricot shade. Identical otherwise with the common coral red type. 40c each \$4.00 per doz.

## TESTACEUM

(The Nankeen Lily.) Perhaps the most distinct in color of all lilies—a soft apricot or yellow-buff, generally described as nankeen yellow. Although known and grown for many years, testaceum is still quite rare, mainly because so many growers send out dis-

eased stock. We have secured the cleanest and healthiest planting of this lily that it has ever been our pleasure to see growing, and purchasers may be assured that finer bulbs will not be found anywhere. The Nankeen lily is very well adapted to planting in the border, and makes a lovely companion to delphiniums, as it blooms at about the same time. Plant quite shallow, about three inches, and do not disturb the clump. It will increase in size and beauty with each succeeding year. Especially selected large bulbs, \$1 each, \$10 per dozen. Plant this lily early; no deliveries after Oct. 20th.

## UMBELLATUM

A very easy subject to grow, and especially desirable because it flowers ahead of practically all the other lilies in this list, being at its best in early June. The flowers are produced in umbellate heads, several in the clusters, and are a bright orange or orange-red in color. The growth is stocky, stems being about two or two and one-half feet tall. Plant four or five inches deep. Hardy and most reliable.

Each 40 cents, \$3.50 per dozen.

## WASHINGTONIANUM

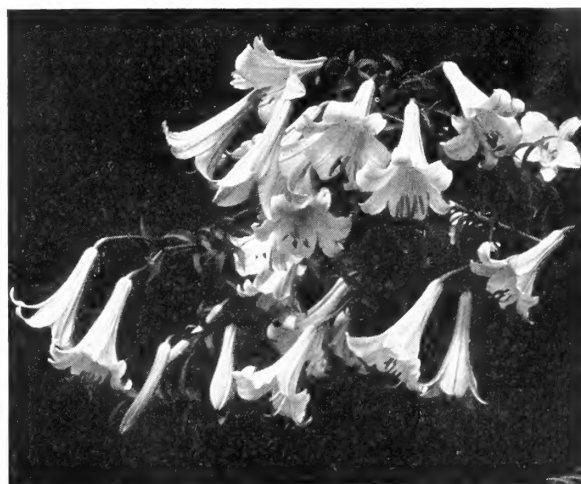
(Mt. Hood Lily.) This fine species from the mountains of Oregon is the principal trumpet-flowered lily native of America. Tall, leafy stems bear as many as 25 sweet-scented blooms which open white, but change to pink and wine color with age. Collected bulbs often supplied are liable to fail due to bruises and drying. Our garden-grown bulbs are fresh and healthy. Good drainage required.

40c each, \$4.00 per doz.

## WILLMOTTIAE

This is one of Mr. Wilson's best introductions from Central China. It ranks among the finest hardy lilies. Foliage long and very deep green. Flowers recurving, bright orange-red. 4 to 6 feet. July.

50c each, \$5.00 per doz.



SULPHUREUM

