

1930

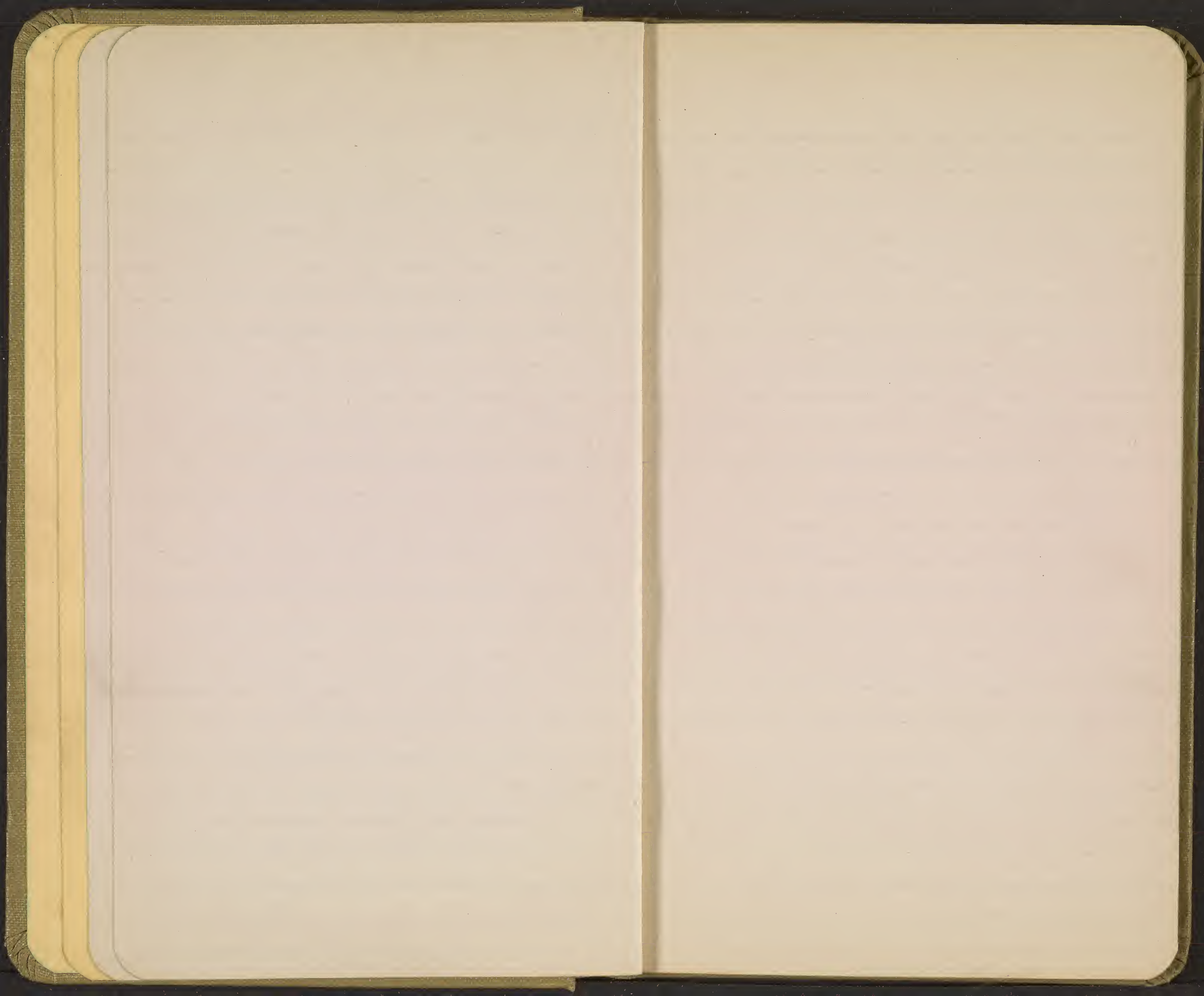


- 354 - In a stone fence at
Esquela de las Frias
Candelaria - Cuba
about March 20 - 1900 -
- 355 - On the road to
Batabanos - Stone fence
at Kil. 14 post - Cuba -
about March 19/1900 -
- 356 - La Vigia de Trinidad -
- 357 - " " " "
- 358 - " " " "
- 359 - About ³ Kilometers from
Sppimpa (near Kil 40) on
road bet Fomento & Trinidad.
- 360 - Same.
- 361 - Same -
- 362 - Same.
- 363 - Same.

March 1920

Fomento - Trinidad -

The new R.R. passes many mts of crystalline rock striking the impure lime at about Sopimpa. Thence for 10 miles or so to near Meyer is a wild region of heavily wooded mts and a sandy impure limestone. We stopped at about Kil 46 where a construction gang are working & the regular train slows up enough to jump on or off. We worked bet. Kil 45-47 in every possible station. Very dry period. Our choice of region made the day before after careful survey of entire route from car window.





6565

