

KAWAI

~~29 Dec 3~~

29-30 Dec 1966

R.S. Crossin

Recoveries 29 Dec.

RFB Imm. 767-50091

✓ Returns 29 Dec

587-84419 RFB Imm

Red paint splashed all
over back + wings.

NOT sprayed on, but
splashed in gobs.

Kilauea Lighthouse

29 Dec 66

Party of Walt + Pam Bulmer
+ Crossin arrive 1655.

1700 approx 5 ad RFB + 1

Imm in the air

Very heavy surf coming
into the cone, about 25-

30 knots, sky overcast

+ temp about 70°F, but

feels colder.

1710 : 3 RFB ad now

settled on opposite side

of cone in lower portion

of Scaevola above cliff.

Roughly 20 birds includ-
ing 2 Imm in air.

one Greater Frigate out over
cone.

29 Dec

1720: ca. 12 RFB ad now
roosting ~~on~~ opposite cone
from lighthouse. Ca. 30
more in air. One BFB
ad seen by Walt. who
is now setting rat traps

1730: 41 RFB now
roosting on ~~the~~ opposite
cliff from lighthouse, many
going into cliff beneath
edge ~~of cliff~~ around lighthouse
and around to NE - out
of sight from above.

1740: 83 RFB ad now
on roost opposite cone,
ca. 30 more in air
ca. 8 F in air and
roosting -

29 Dec.

1747 - one BB ad out
over cone. 135 RFB
on opposite cliff. Ca. 70
in air

1755 - roughly 150 RFB now on
opposite cliff - Ca. 100 in air
swirling back & forth.

1800 26F ♀ ad over cone.
RF now thinning out
only about 50 in air
not much change on
opposite coast. mostly
young birds settling on nesting
area about light house. Immatures
which fly in and settle were
twice noted being fed by parent.
~~no~~ No birds roosting on island
off point.

29 Dec.

2 ad ♀ GF chasing
an ad RFB. one ad
dark phase RFB.
The 2 ad GF teamed
upon another RFB ad
and kept ~~of~~ smashing
it into the H₂O. Each
time RF flew one of the
frigates would hit from
above.

ad. BFB goes by.
now nearly dark - 1810
1810 2 GF in air, ca
50 RFB, ca.²⁰⁰ on opposite
~~side~~ cliff, rough estimate
of 150 beneath cliff about
lighthouse out of sight.
Practically no birds
roosting in sight about
lighthouse nesting area.

29

'1815 - party goes for
chow. Traps all set (16)
last count made on way
out 262, ^{REB ad.} on opposite cliff.

2015 party returns from
chow at Pakaa. Walt
* crossin rock colony on
cliff opposite lighthouse. An
Estimated 500 birds perched
about both sides of the knoll.
Red-foots very flighty. total
of 35 samples taken - mostly
unbanded birds - no nesting
going on. Wind so strong
at times as to be dangerous
clambering about the cliffs.
Intermittent rain making
things very difficult.

29

Party took 7 more ^{RFB} samples
on opposite side.

Departed 0200 all birds
in the air.

30 Dec.

Spent the morning
panning down Sesa.
Spent the first half
of the afternoon searching
all around Sihua trying
to buy squips. (Bamboo
pole, eyes, cord, puppet)
The only way to capture
the boxlike at Kilaua
is to snare them with
a mouse on a pole.

29-30 Dec 1966

Crossin, Bulmer

Kilanea Pt., Kauai

Dec 29.

Red-foot Scaup
Band No. Age ~~Sex~~ color

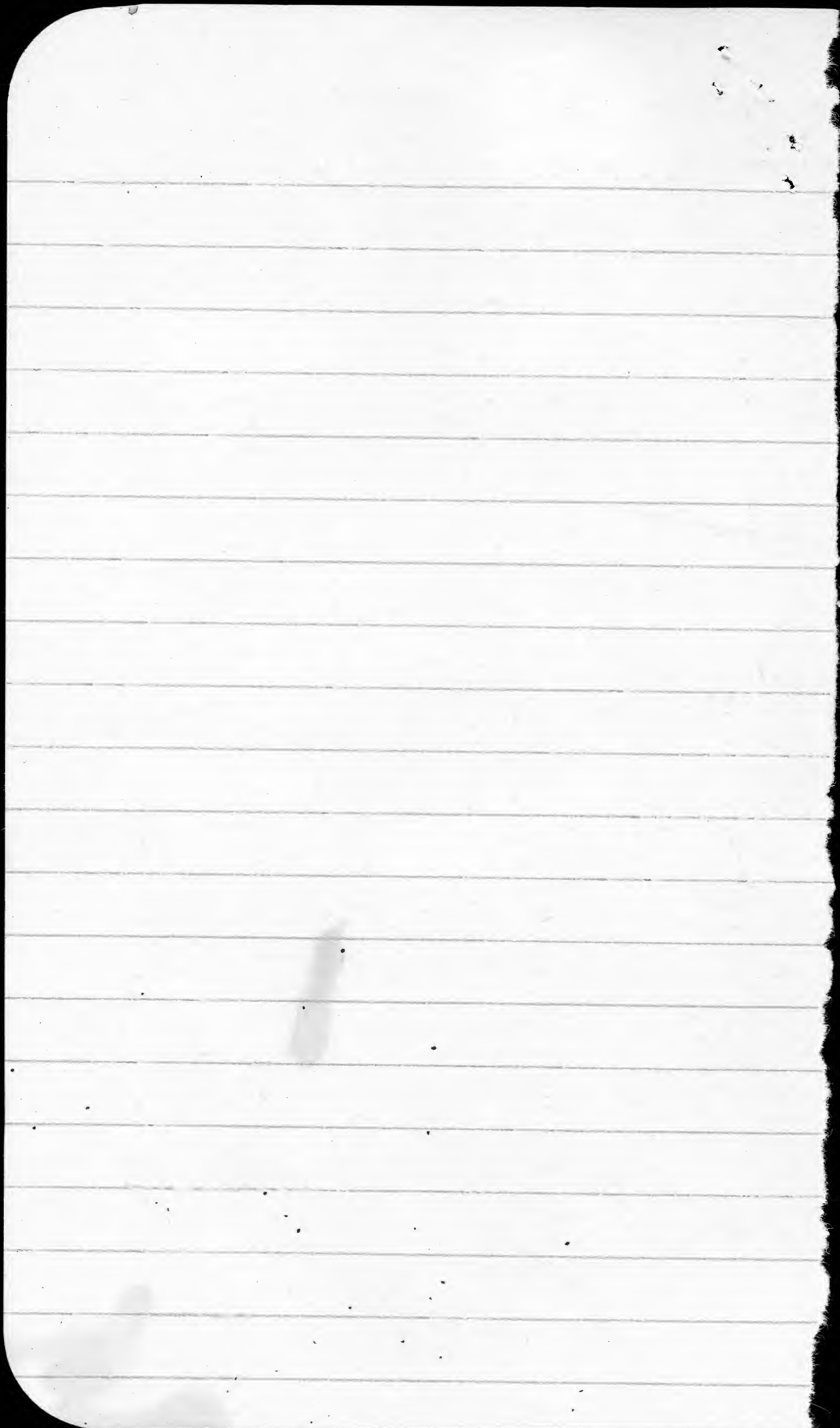
- | | | | | |
|----|-------------------|----|----|---------------------------|
| 1 | Ad 503 | 11 | Ad | light |
| 2 | 767 503 | 12 | Ad | light |
| 3 | 503 | 13 | Ad | light |
| 4 | | 14 | Ad | light |
| 5 | | 16 | Ad | light |
| 6 | | 15 | " | " |
| 7 | | 17 | " | " |
| 8 | | 18 | " | " |
| 9 | | 19 | " | " |
| 10 | 757-61148 | " | " | Mar. 66 Feb 64 |
| 11 | 587-90158 | " | " | " Apr. 66 |
| 12 | 157-60838 | " | " | " Feb 64 |
| 13 | | 20 | " | " |
| 14 | | 21 | " | " |
| 15 | | 22 | " | " |
| 16 | | 23 | " | " |
| 17 | | 24 | " | " |
| 18 | | 25 | " | " |
| 19 | 587-90108 | " | " | " Apr 66 |

Kaui

	Band #	age	C-phase
20	26	ad.	Light
21	27	"	"
22	767-45008	"	Sept 65
23	28	"	"
24	29	"	"
25	30	"	"
26	31	"	"
27	32	"	"
28	33	"	"
29	757-89260	"	July 64
30	34	SAd	
31	35	Ad	"
32	36	"	"
33	37	"	"
34	38	"	"
35	39	"	"
36	40	"	"
37	587-92844	"	May 65
38	41	"	"

Band # Blood #	Age	Col. Phase
39	42	ad- Light
✓ 40	767-43971	subad. CI
41	43	ad "
42	44	" "
43		
44		
45		
46		
47		
48		
49		
50		
51		
52		
53		
54		
55		
56		
57		
58		

<u>S.#</u>	<u>Band #</u>	<u>30 Dec.</u> <u>age</u>	<u>C. phase.</u>
43	587-90163	ad.	Apr 66 Night
44	<u>767-50345</u>	ad	"
45	46	"	"
46	47	"	"
47	48	Subad	"
48	49	ad	"
49	597-12409	Imm	July 64 westing
50	50	ad	"
51	51	Ad	16
52	52	"	"
53	53	"	29
54	54	"	"
55	55	"	"
56	56	"	"
57	57	"	"
58	58	"	"
59			
60			



Kilauea Pt. Kawai
5-8 Dec 1966
Hoff

Tue. 6 Dec.

1. immatures
2. "
3. " Peter
- 4.
5. " Benit
- 6.
7. adult
8. "
9. "

Wed 7 Dec.

1. adult
- 2.
- 3.

2 Hippoboscidae flies

✓ 5 87 - 84419

767 - 50301

✓ 767 - 50091

02

03

04

05

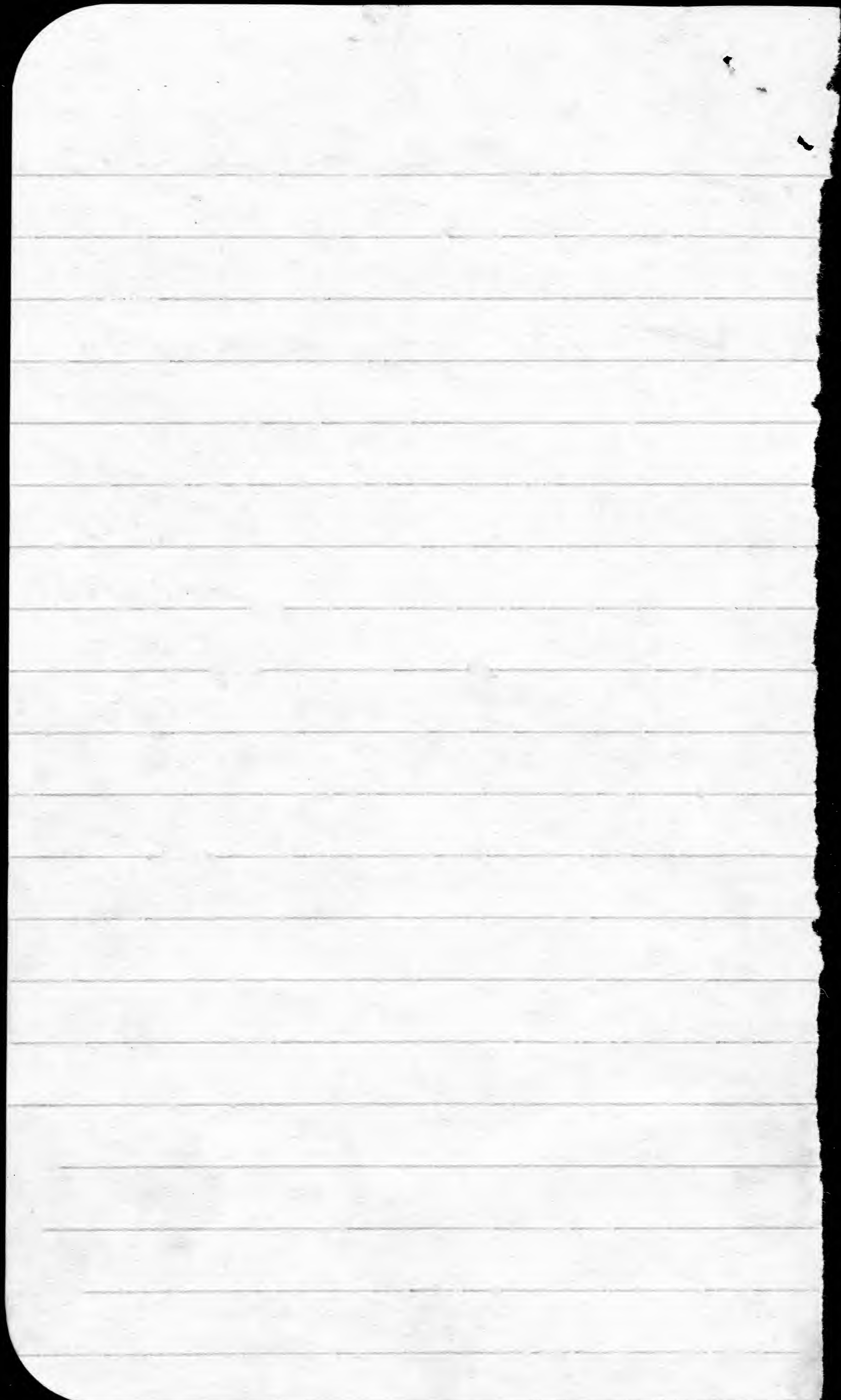
06

07

08

09

010



16-9 Oct 1966

Kilanea Pt., Kauai

Hoff

Kavai Island
Oct 6-9, 1966

David J. Hoff

Bands Issued
587-84401-84500 } size 7B
767-40501-40600 }

645-16001-16500 } size 5

Bands used Oct 7, 1966

Wedge-tail fledglings →

645-16,001-16,100

100 used

Bled

Red-footed Booby Adult
all light-phase

587-84,401-418 Red

Bled

Adult Wedgetails
all light-phase

645-16201-214

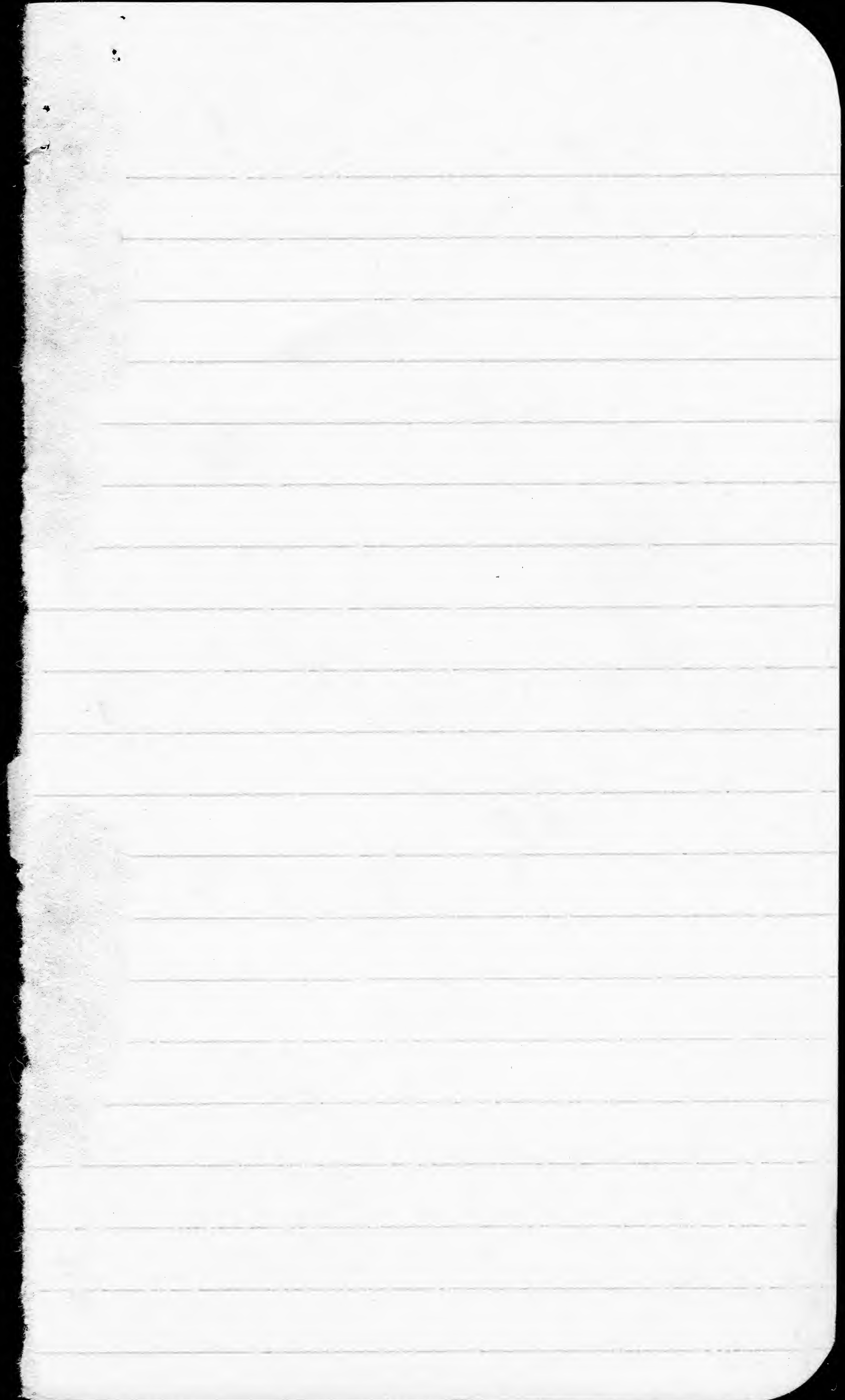
8 Oct Bled | Red foot booby ~~adult~~

587-84,419

Bled Wedgetailed Shear Light phase adult

645-16205-237





06 Oct 1966 - Depart Honolulu

06 Oct 1966 arrive Kauai

George Young - Ser

Dave Hoff - S.I.

Kilavea point

06 Oct. - George + I drove

~~to the point~~ to check out

10 immature Red-Foots

of the ridge during the after
soaring about the point.

Red-Foots were sitting in

07 Oct. Kilavea point

Wedgetail Shearwaters 645-16

1 white-tailed Tropicbird was

Hippoboscidae flies

100 Wedgetails fledglings were

352 burrows which were

to (commercial) 10:00

10:30

vice Personnel

out to Kilavea point
the bird situation, about
were sitting around the crest
soon with 10-12 more
a colony of light phase
brush below the point (colony 3)

058 - infected wing

001 - 16100 - fledging chicks
seen flying near the cliff face
were numerous on the wedgetails
banded in an area containing
checked.

07 Oct. 1966 ~~Red-foot Boob~~

Kilauea point



Wedgetails continued

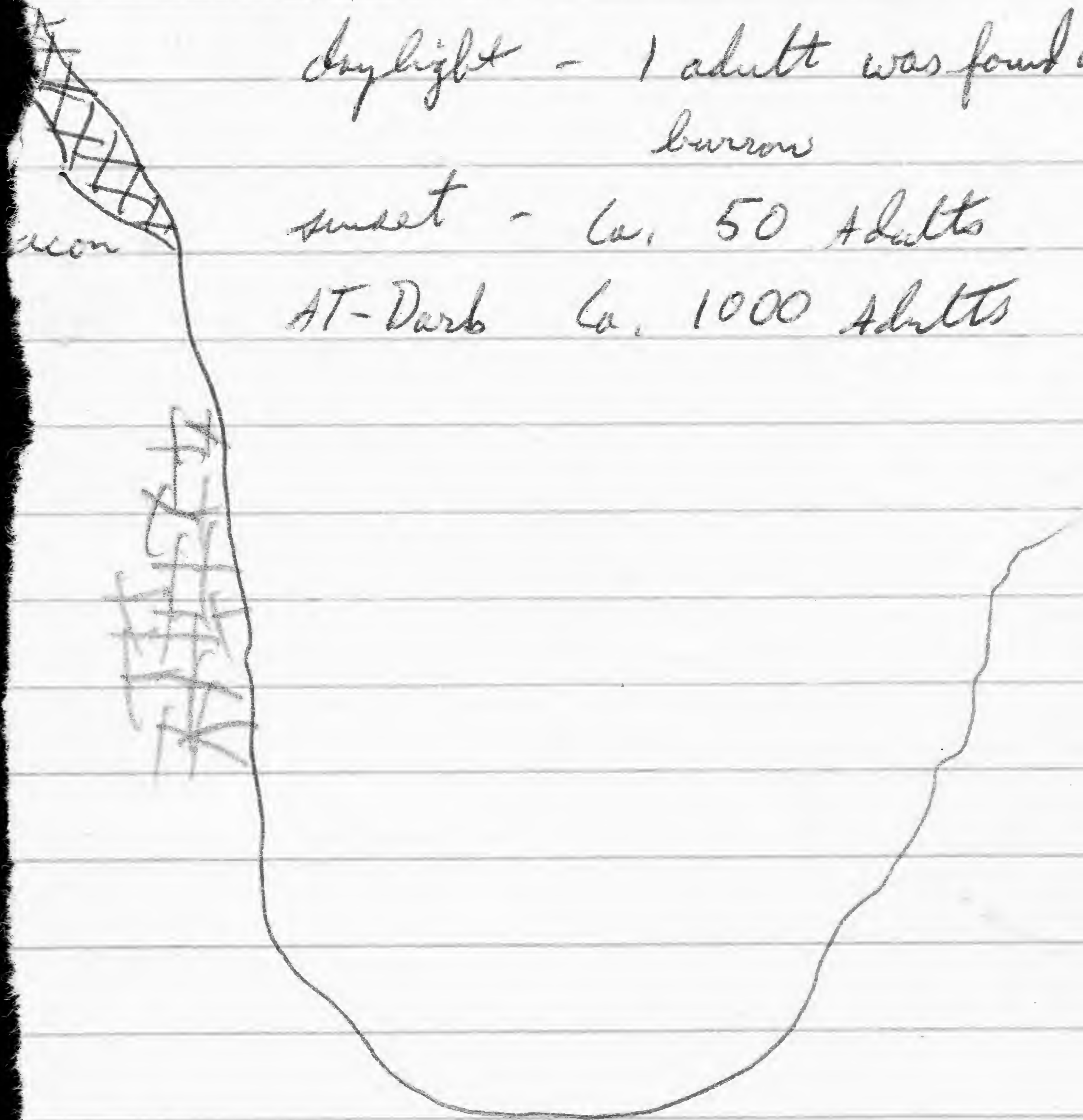
100 chicks in 352 burrows

assessable burrows number about 400

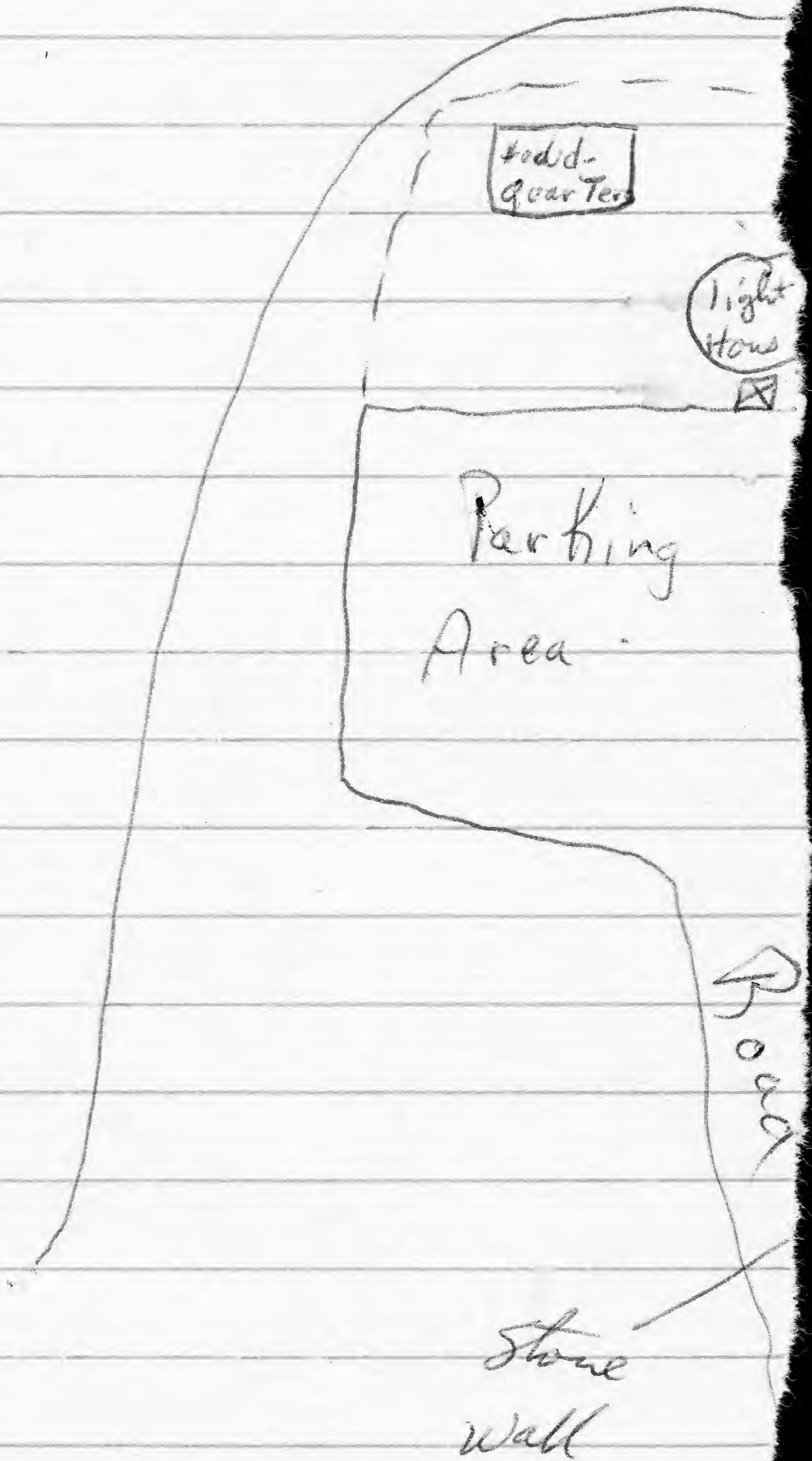
daylight - 1 adult was found in
burrow

sunset - ca. 50 Adults

AT-Dark ca. 1000 Adults



07 Oct. 1966 Red-Footed





island
 Ca. 50 adults } dark
 Ca. 10 immatures }

Boobies

Colony #1

daylight Ca. 5 immatures - all-flying
 sunset Ca. 40 immatures - 20 Ad - light phase
 at-dark Ca. 200 Adults
 Ca. 50 immatures



daylight Ca. 20

AT-Sunset Ca. 60

AT-Dark Ca. 100 Ad.

Colony #2

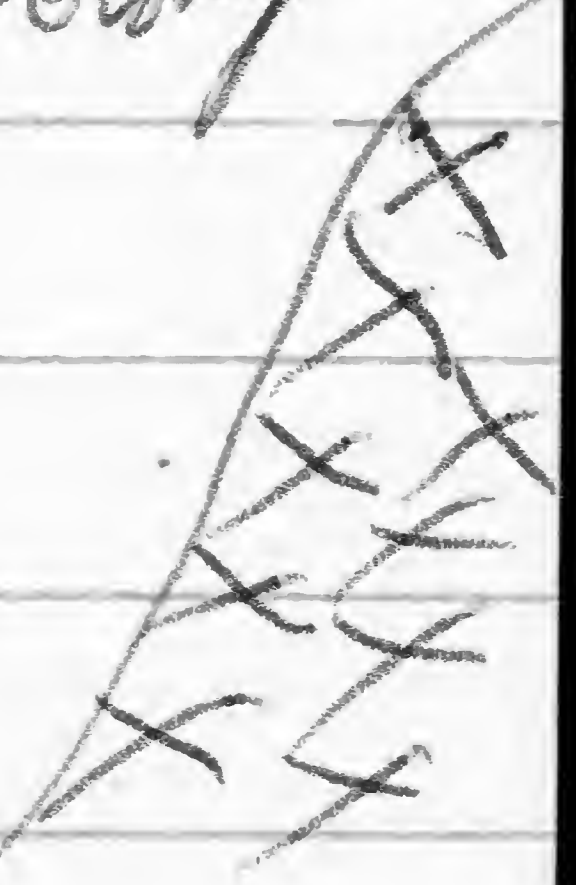
Sunset Ca. 40

AT-dark Ca. 1000 adults

Ca. 20 immatures

Daytime Ca. 5 immatures

Colony #3



07 Oct 1966 Red-footed

No Red-foot chicks
Immatures started roo
Light-phase adults beg
1730.

Adult Light-phase birds
the day in colony # 3
and slightly north of the

Ca. 20-30 Adult-light-phase
point 1730. Several in
on the island 1730.

3 contained ca. 60 birds at

Boobies

were seen. 3 immatures roosted at 1500.

ting in numbers about 1700

roosting in numbers about

(ca. 20) were roosting throughout
on a lushy area beneath
coves east-facing cliffs

birds roosted on the island off the
main ~~island~~ in to roost

1800.

Kilauea point

07 Oct 1966 Great Fri

1730-5 female ~~one~~ Great
Red-Foots but no
an unusual situation
several immature Red.
appeared to drive to
Frigate rose quite high
and flew east ~~along~~ above

Ca. 20-30 Adult Great
point at sunset

gatebird

Frigates hovered above the
paranthesis was observed.

was noticed in that
- Fools left the roost and
the Frigates away. The
high joined 3 other G Frigates
the shore bluffs

Frigates roosted on the island off the

07 Oct 1966

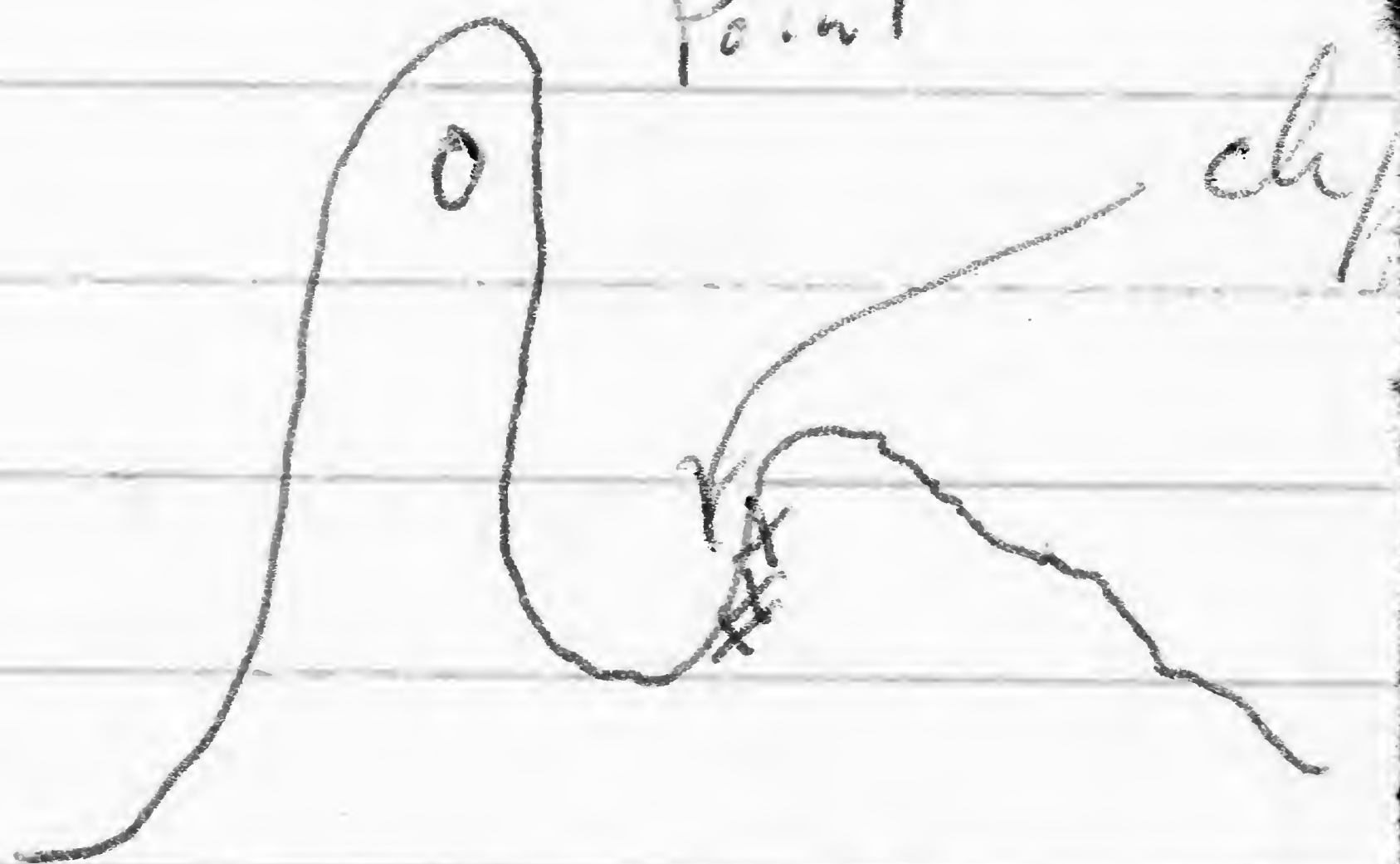
White-tailed

two white-tailed terns
the westward facing cliffs of
~~quarters~~ housing.

N



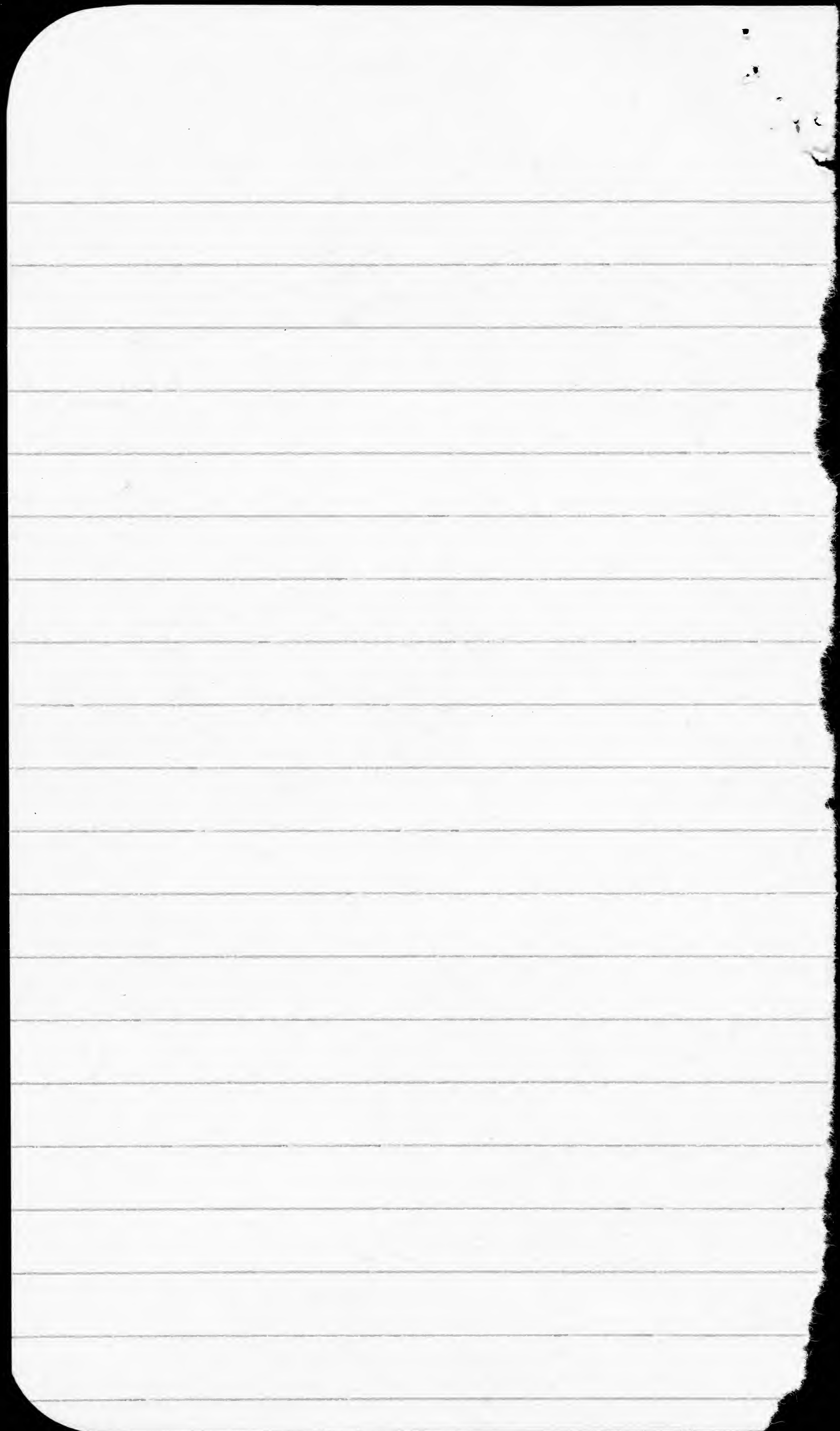
Kilauea
Point



tropicbirds

seabird were flying near
the cove near the coast guard

As where white-tailed tropicbird
were observed.



R-F Returns 7 Oct 1966

✓ 587-80736

~~7~~

Blood return

adult

Light phase

✓

90148

✓

90107

✓

90114

✓

90130

Red-footed Booby ~~B~~ Oct 7,

~~767~~-45014 Blood return
~~8/2/16~~ adult Light pl

~~757~~-89246

~~599~~-12612

1966

Red-footed Booby Banded

587-84 401-18 Adult

Light-phase

re

Q Wedge-Tail Shearwater
Bled + Banded

645-16201-14 Adult Light-phase

✓ 625-32400 - A-LT-

✓ 635-26169 -

✓ 635-26193 -

✓ ~~544~~ - 50515 -

✓ ~~645~~ - 00386 -

✓ ~~635~~ - 26104 -

✓ ~~645~~ - 05013 -

✓ 06364 -

✓ 15807 -



7 Oct. 1966

①

Wedgetails

Phase

② Wedge tail Shearwater
Blood returns

✓ 635-26 189 —

✓ 615-~~968~~15900 —

✓ 635-20 541 —

✓ 615-05106 —

✓ 615-07041 —

✓ 615-06373 —

✓ 625-32392 —

✓ 615-06439 —

✓ 615-07067 —

✓ 615-06346 —

✓ 635-26163 —

✓ 635-26117 —

✓ 615-05090 —

✓ 635-26127 —

✓ 615-05036 —

✓ 625-32262 —

✓ 605-26171 —

✓ 615-05145 —

8 Oct 1966

(2)

✓ 635 - 26129 -

✓ 675 - 15817 -

✓ 615 - 07100 -

Banded

645 - 16215 - 237

8 Oct 1966

Blood returns

✓ 757-61332

✓ 757-61321

✓ 757-61344

Red-foot Returns
immatures

