

Kuma?

Memoranda

155
- 66

221

32
11
8
1

✓ ADP
68 BF.
9 32 Lay.

CDT
~~Done~~
~~CDP~~

Bonin Burrows

M8 33703

S8 B

N9 33881

R2 - un Mark on base of

O11 - B

O2 - 33795

S5 33973

Q2 - Sigant

P11 B

773-18001-

Born Study

M-8 33703

S-8 B

N-9 33881

O-11 B

R-2-B-18001

S-5-33973

Q-2-33795

P-11-Nothing

Q-2-

Band

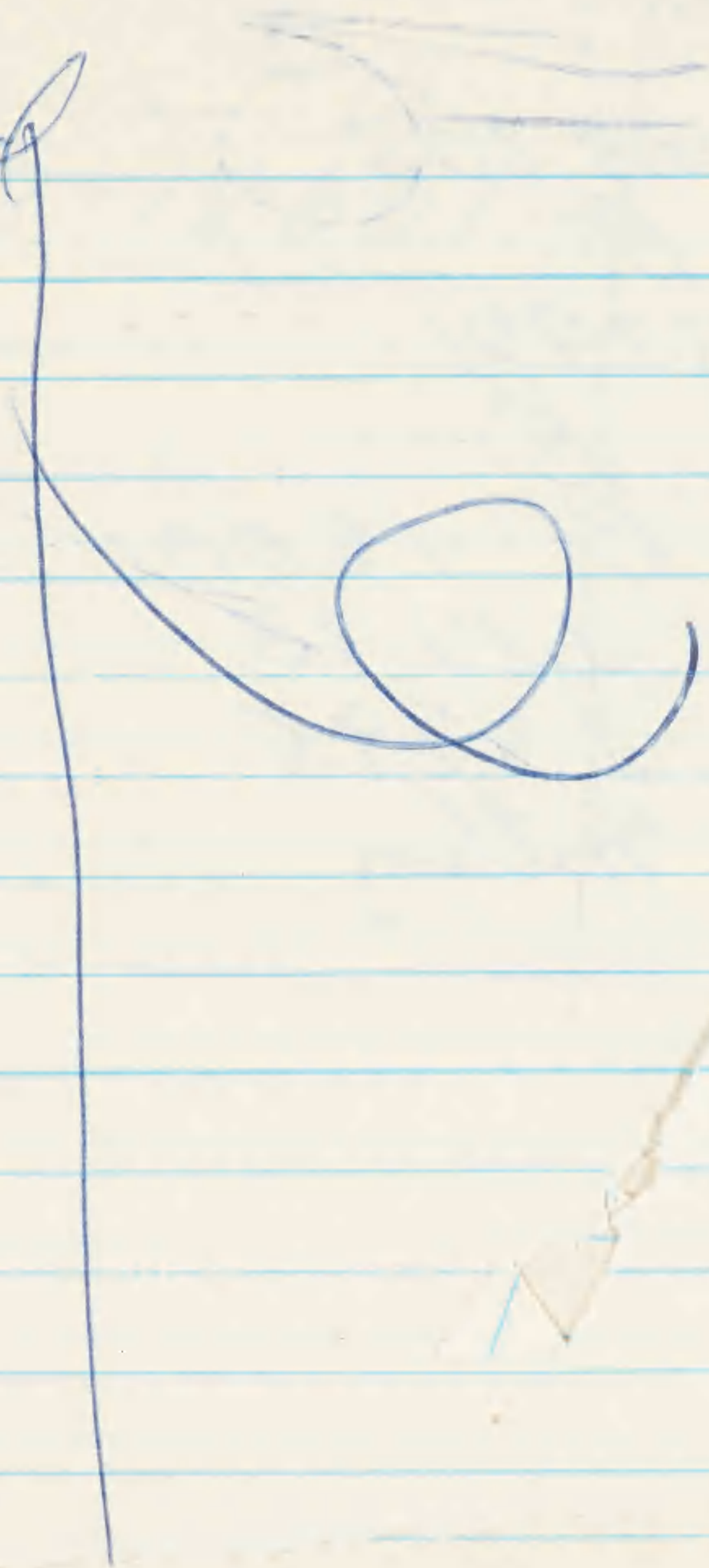
09
~~10~~ 10

11

12

1

17



2-24-64

Band

Banner

~~09~~ - - #

~~10~~

Bureau

~~10~~ 8 - W

~~5~~ 8 - B - 10 -

~~19~~ - W

~~R~~ 2 B

~~04~~ egg cald

~~55~~ ~~33~~ W

~~0-2~~ - W

~~P~~ 11 nothing

~~B~~ 2 equal

2-29-64

55 2/3 probe
R 2 }
0-2 W

33203
on ground

54 ✓

55 ✓

56 ✓

64 ✓

ice

605-12736 - Wedgetail
37

223 01 SAZ

182

04 SAZ

05

AF

54

2-02-64

0-2 broken egg

65 SAZ

82 SAZ

83 AF

100

~~597-38328 (PB)~~

55 ST 2

64 BOD

65

↓

~~66~~

85

86

ST 2

88

+

90

ST 2

↓
100

31 V.S.F. Books in ST 2

3-05-64

18101



5 SAE-2

6 SAE



30 SAE

31

3-08-64

SAE

75 ♂, 2

76 ♂, 2

77 ♂, 1

78 ♂, 3 : ♀ pres.

79 ♀, 1

80 ♀, 2

85 ♀, 3

81 ♂, 2

84 ♂, 2

83 ♀, 2

82 ♂, 2

86 ♀, 2

3-8-64

RTB #64, possible
nest in SAE

3-11-64

05 SAE-2

06

~~lost~~

~~18 70~~

09 SAE ✓

10 SAE

✓
18 SAE

Wedge 39
40 SAE
49 SAE

55

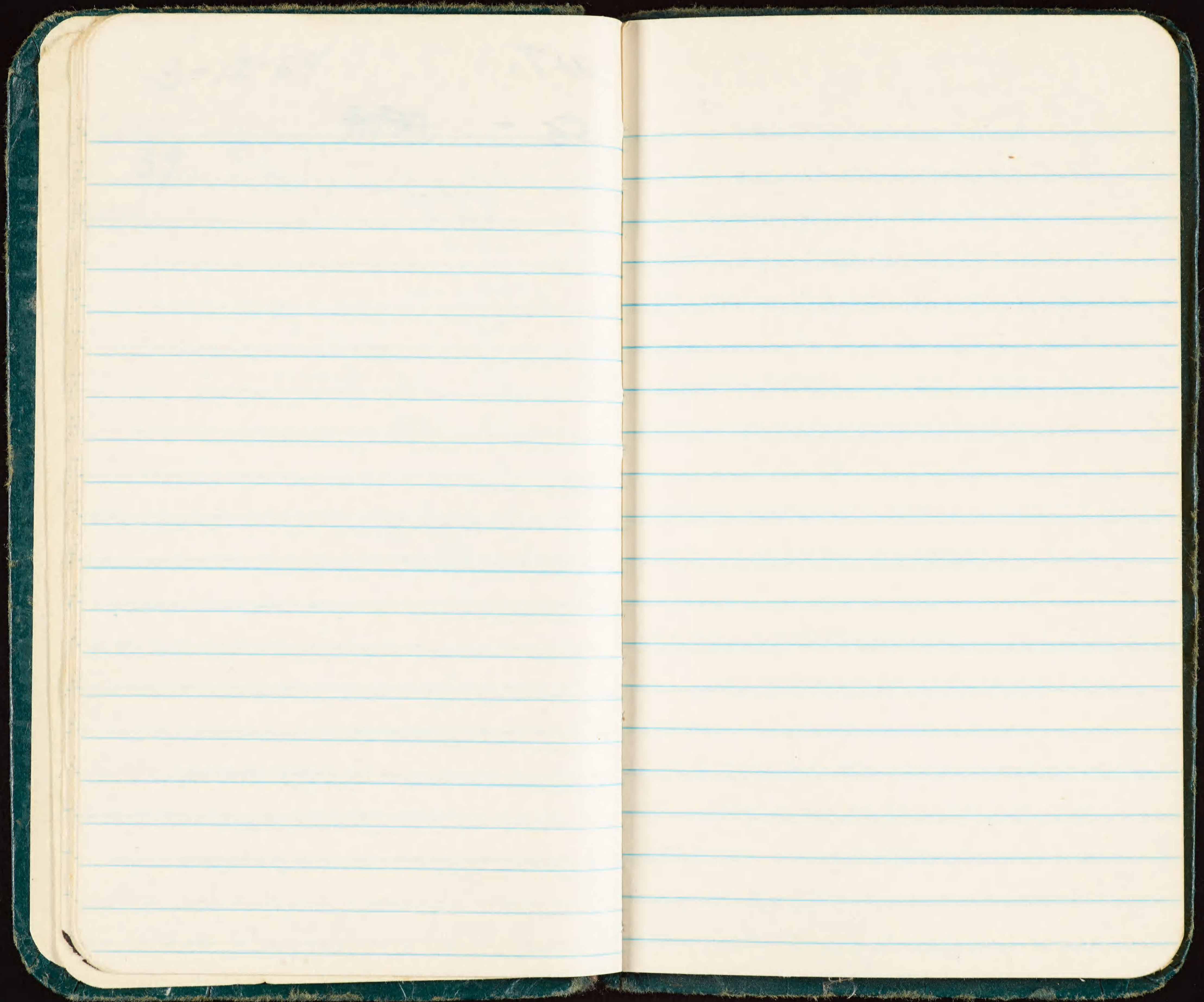
3-12-64

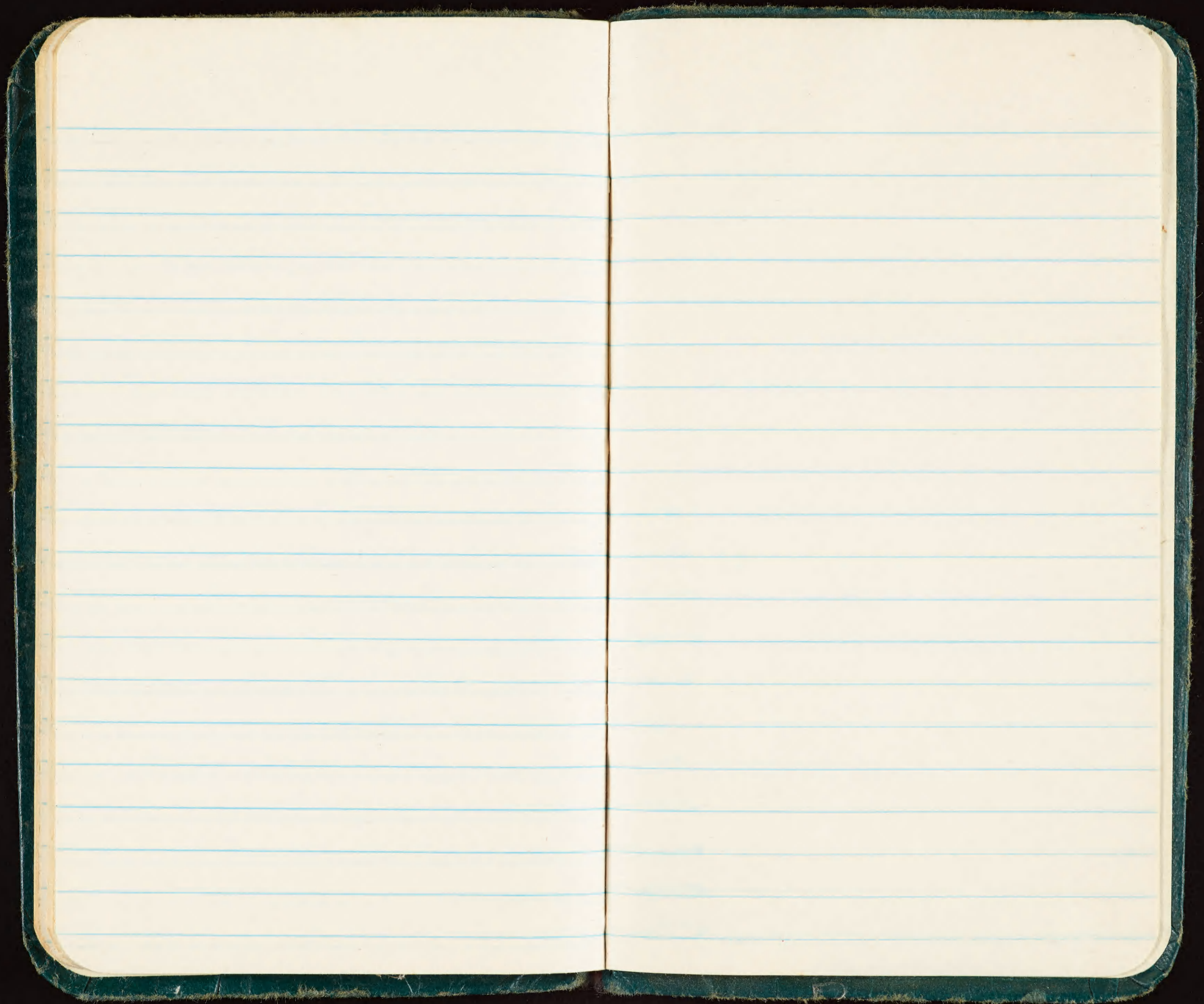
5A2

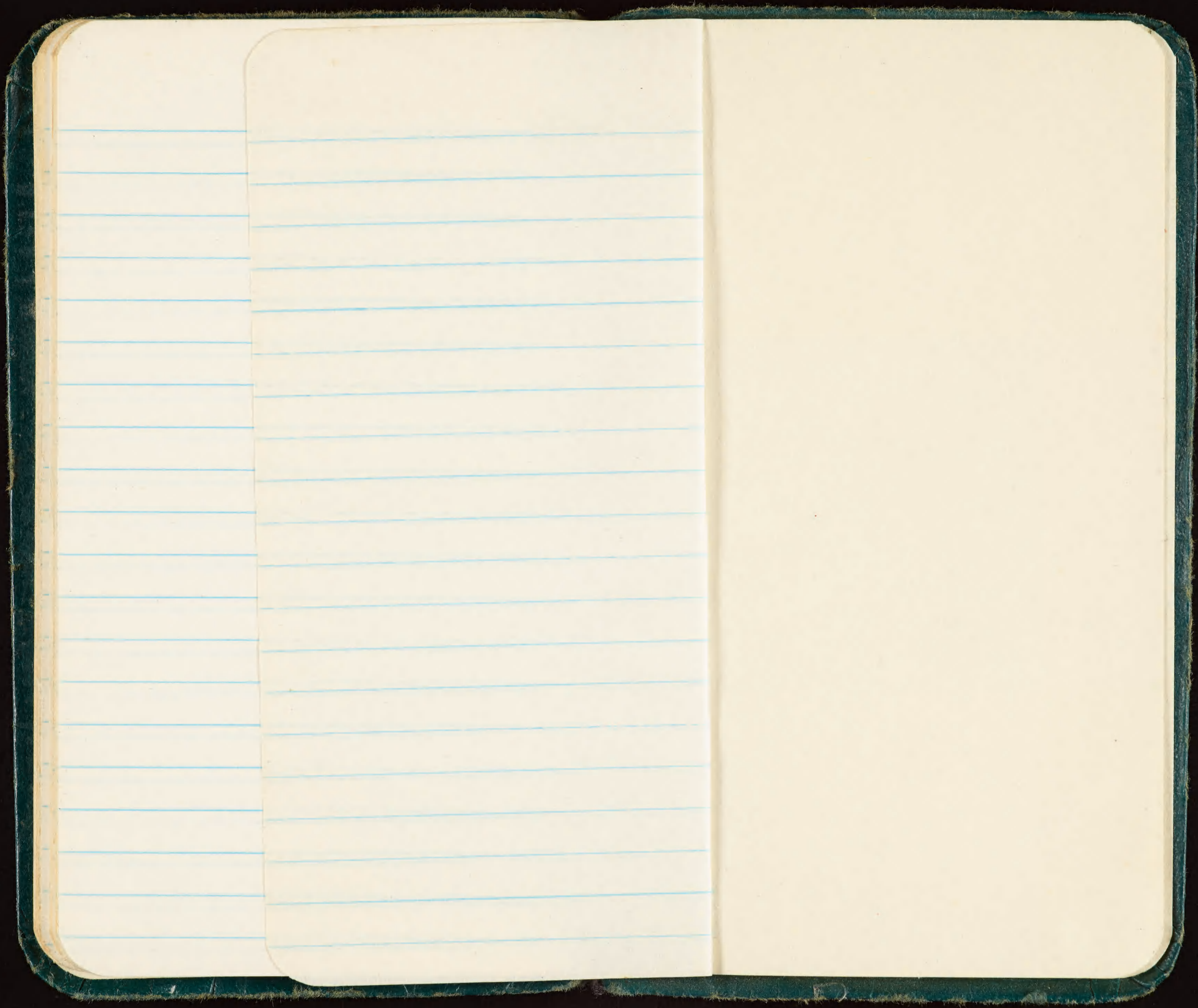
39

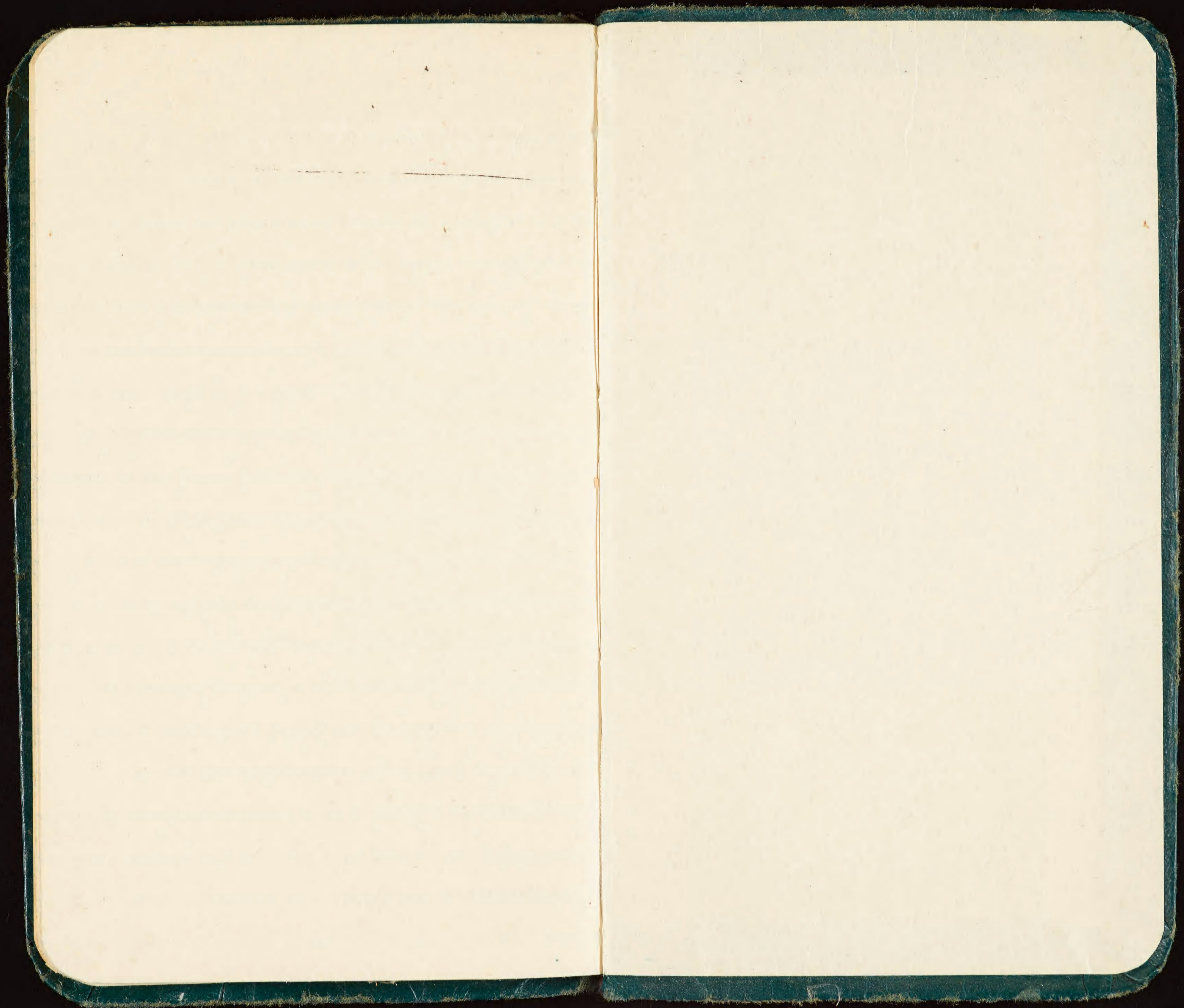
W-T,

56 - 5A2









7530-222-0078

FEDERAL SUPPLY SERVICE

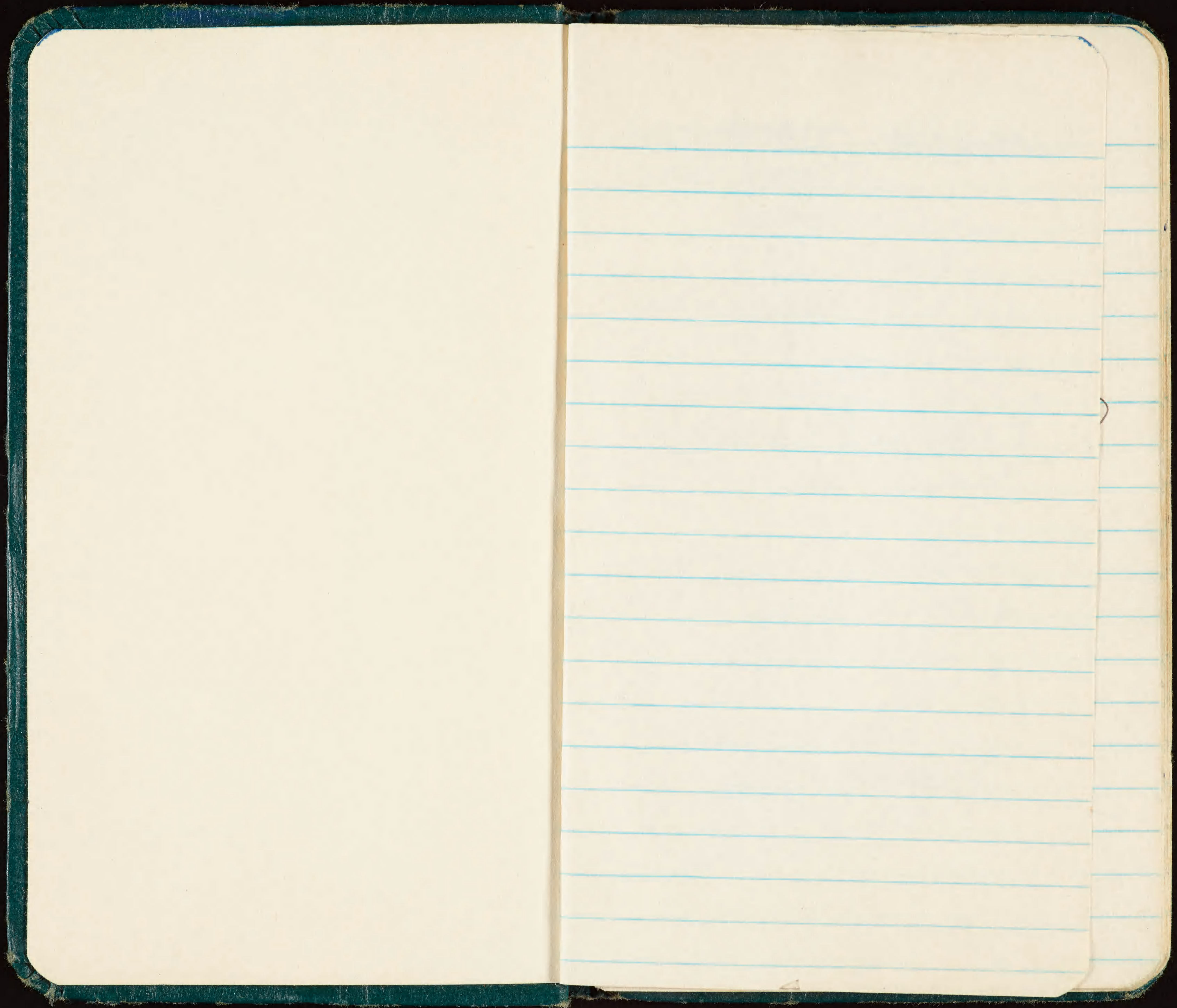
GPO 16-73124-1

Memoranda

Checked for ADP
None extractable
CPK

Done. CPK

1964



605-21114 N.T.

~~605-21098~~

605-21099

100

605-21201

NR 0001 HAYSHAW 8

~~X 21 = 106 (B)~~

~~egg 66.2 x 44.6~~

~~LOC.~~

~~X 22 = 109 (B)~~

~~egg 63.6 x 46.4~~

~~LOC~~

~~RFB 97
14 m am~~

~~Fing. 118
38 m am~~

~~49 LAUSANNS~~

~~44 ii~~

~~3 2 B.F.~~

~~Y-25 SN 23 (B)
egg 58.6 x 42.1
loc. K-21-22~~

~~Y-9 575-74558 (B)~~

~~Y-5 26 SN (B)~~

~~see 575-74543 (B)~~

~~K-14/95~~

~~200, 203~~

~~RTTB 113 9w egg
loc K-21-22~~

~~3 R~~

~~4 B~~

~~287 + sample loc. at K-22
239 loc. K-16-17~~

~~# Y-23~~

~~SN 21 (B) egg 61.9 x 45.3~~

~~loc. loc K-18-19~~

~~Y-24 SN 22 (B) egg 61.1 x 45.5
loc. K-18-19~~

~~Y-26 29 BN (B)
egg 64.8 x 46.7
loc. Bet. B.F. 5 road~~

~~no. 575-74529~~

~~Y-8 29 (B)~~

~~Y-7 30 (B)~~

~~Y-2 no egg
abandoned~~

get egg on Y-8, also location

Seeds

217 ~~at~~ K-14

~~Y-27 BIN 36 (B)~~

~~egg 67.1 x 44.6
loc. at road.~~

~~575-74552 (B)~~

~~565-47076 (B)~~

~~Y-28 BIN 42 (B)~~

~~egg 61.7 x 44.4
loc. near B.F. 6~~

249 ♀ w egg ~~over~~
#4

measurements;

culmen - 67 mm

wing - 329 mm

♂ sitting with ♀ was much smaller - ♀ gave repeated chirping call while captured

Y-29 BN 50 (B)

egg = 64.7 x 46.0

loc: near F-6

Seal #285 @ K 36

12019 } check
+ }
21255 } #8

Y30 BN 57 (B)

egg = 64.7 x 42.8

loc. E side runway, just opposite Radar tower

287 spung in grass on
cut mat (5) to arched
range.

667-39333 LAYSAN (OK)

Y31 BN 64 (B)

egg = 67.1 x 46.2

loc. in morning glow behind
oil tanks.

Y32 BN 21306 (B)

egg = 65.8 x 42.5

loc. 130D

~~Y-33 BN 21307 (B)~~

~~egg: 66.0 x 44.7~~

~~loc BOD~~

~~Y-34 BN 21308 (B)~~

~~egg 60.0 x 46.0~~

~~loc. BOD.~~

~~Y-35 BN 66 (B)~~

~~egg: 64.8 x 46.6~~

~~loc (A-9)~~

(3-23-64)

~~737-98016 AF~~

~~697-22565 (OK)~~

4-20-64

47

↓

53

SAZ

↓

58

"

H-23

BN 10 (A) ♀ w egg
C 62
W 309

BN 11 B ♂ W 313
C 65

12 B ♀ w egg
W 326
C 61

64.6

x

45.9

4-23-64

#34 DN 019 (R)

egg 65.9 x 42.5

loc in cut beyond #1

~~solid red brown~~ near longer pole

#35 DN 020 (R)

egg 64.4 x 43.1

loc. same as above:

closer to #1

dark red brown near longer pole

DN 21 (R) few egg

W 313

C. 62

near

#25

4-25-64

139

BN 23 (B)

egg 62.3 x 44.1 darker R.

loc N end of RW

140 BN 24 (B)

loc SAME

egg: 62 x 45.6

uniformly dark red, small
white area @ small p.

BN 26 (B) ♀ W. egg

L. 62

W. 315

N end RW

141 BN 28 (B)

egg 67.3 x 48.5 white of ground
uniformly red
(containing) speckles.
solid dark red at
large pole

142

BN 29 B

loc same

egg 65.9 x 44.4

same color overall except
for undefined darker
area at larger pole

143 BN 30 (B)

chick - just hatched
shell near by.

loc. same

144 BN 31 (A)

loc same

egg = 58.8 x 42.7

ground color white; heavy
with minute red specks;
slightly more dense in area
about larger pole

145 BN 32 (B)

loc same

egg 67.6 x 47.2

darken are at large pole

BN 33 (B) ♀ egg

loc same

W 330

C 67

146 BN 34 (B)

loc C.R

egg 64 x 44

even small red-purple

specks at 3 larger

cone at large pole

ADP

147

BN 605-21935 (B)

loc C.R. near 146

egg 58.1 x 47.6

conc. red area @
range pole

148 BN 35 (B)

loc C.R.

egg 74 x 46.5

dark area @ C.P.

149 BN 36 (B)

loc C.R.

egg = 64.4 x 43.7

150 BN 38⑤

loc. Camp S. of Wood/road.

egg 67.4 x 47.9

~~BN 40 @ Y8~~

4-26-64

151

BN 39 B

loc SFZ

egg 62.8 x 44.9

darker @ L.P.

mar 84 85
86

152

BN 41 (B)

loc SF-2

egg: 66.9 x 47.4

slightly darker @ L.P.

153

BN 42 (B)

loc SF-2

egg 62.3 x 48.3

darker conc. + some
white area @ L.P.

154 BN 43 (B)

loc SH-2

egg 63.9 x 44.0

slightly darker @ CP

155 BN 44 (B)

loc SH-2

egg 65.0 x 45.0

conc @ L.P.

156 BN 45 (B)

loc SH-2

egg = 65.6 x 46.6

much white ground

color, conc @ pale.

(
③ 0900
Xmas 766)
on egg 7-5

157 large chick no adult
2+ primaries, tail just
begin, breast, no back
down on head or post
back.

ET, 37-26-41-73
juv. feathers coat in black
stripes

158 BN 46③
loc SA-2

egg 61.4 x 44.6
no cont. @ LP

159 BN 47③
loc SA-2

egg 56.1 x 44.1
cont @ LP

Can Noddy
carrying
nest material

160 BN 48 B
loc. SA-2
egg 66.7 x 45.3
much ground color, cone @ L.P.

161 BN 49 (B)
loc SA-2
egg 66.0 x 43.4
much ground color, slight
cone @ L.P.

162 BN 50 (B)
egg 60.7 x 43.5
nearly all white w. cone @ L.P.
loc ~~SA~~ clump of
dock weed

H

163 BN 52 (B)

loc N of ^{pin} road, clump

egg 65.7 x 44.7

small speckles in mesh

ground color, conc @ L.P.

164 BN 53 (B)

loc clump N of pin rd.

egg 66.7 x 42.5

conc at L.P.

165 BN 54 (B)

loc clump S of dirt road

egg 61.4 x 45.0

conc @ L.P.

✓ADP

166 BN 55 (B)

LOC clump S of dock rd.

egg 63.0 x 45.3

irregular oval cone
at C.P.

167 BN 56 (B)

egg 62.7 x 44.3

LOC clump S of dock

heavy cone @ C.P.

168 BN 605-12676 (B) ✓

egg 69.0 x 44.7

gone off center @ C.P.

LOC clump S of dock rd

169 BN 57 (B)

egg 64.8 x 44.9

all white except for 1 small
pigment area on side 2 x 2 mm

LOC clumps 5 of deck rd.

170 BN 58 (B)

egg 60.6 x 43.9

even dark pigment, slight cone

① L.P.

LOC just 5 of K56

171 BN 66 (B)

egg 61.0 x 44.9 ^{LOC}

mod. cone at LP just

post

K56

172 BN 67 (B)

egg 64 x 44

same as
above

heavy pig, some remain LP

173 BN 68 (B)

egg 63.0 x 43.0

conc. @ LP, nearly solid
red brown pig. SP shows
solid pig. middle some
ground color

LOC same

174 BN 71 (A)

egg 59.4 x 43.7

LOC 1/2 way bet K35-36

Some pig. white, much
ground color, mod. conc. at
LP

175 BN 72 (B)

egg 59.5 x 49.4

slight conc. @ LP

LOC same

176 BN 73 (B)

egg 64.0 x 45.0
mostly solid, no core.
Loc same

177 BN 74 (B)

egg 62.0 x 47.5
small specks uniform, no core.
Loc same

178 BN 75 (B)

egg 66.0 x 46.0
big spaces & small, little core.
Loc same

179 BN 76 (B)

egg 63.4 x 46.5

Loc same

Core @ L.P.: Swirled
Clockwise from L.P.

✓ADP

180 605-12655 (B)

egg 62.5 x 44.0

cone @ L.P.
LOC K-35 N to 1/2 distance to K-36

181 BN 77 (B)

egg 63.5 x 44.9

slight cone @ L.P.
LOC same

182 BN 78 (B)

egg 61.7 x 44.2

moderate cone @ L.P.
LOC same

183 BN 79 (B)

egg 62.5 x 44.1

much ground color as purple part
LOC same in cone.

184 BN 80 B

egg 66.4 x 43.6
much ground color: pig core @
loc same L.P.

185 BN 81 B

egg 65.7 x 46.0
small specks w slight core
@ L.P.
loc same

186 BN 82 B

chick

loc same
E.T. 24-17-28-37

all down gray
except for feet,
gray white under

area

GP. III

RT III

Runway

GP. ~~III~~ III (15)(25)

RT II

AF

GP ~~III~~ III

RT ~~III~~ III

14

11
25
15
8

59

21

24

24

26

28

33

4-15-64

Y-151

BN 535 - 15663 (P) Nov. 10 64

loc B-12 AL

egg 62.5 x 45.4

slight conc @ LP

clockwise swirl from SP.

12

10

15

4/16

~~284~~

~~253~~

~~226@K94
is molting~~

Y-112

BN 137 (B) ^{only 1 tail}
^{feather}

loc near Jayson con #6
chick about 1 wk old

BN 141 (B) has ~~B~~ black
in 2ndary coverts (C)
leading edge of wing
on wing post. & medially
to join black scapulars
forming wing base
also black of dorsal
body feathers out of tail

~~Y-17
chick alone~~

Laysan chick

737-95401 - E side
runway
↓
46

~~73795201 - E side
runway
↓
54~~

~~6 Laysan egg in driftwood
nests @ 1029
2 unoccupied nests~~

~~10 noddy eggs @ E end of
runway
(1 ST egg abandoned)~~

Y-85

BA 142 (B)

ent 59.8 x 4/4.9
heavy pig, slight cone @ LF

LOC on S side of wide
cut from beach near

R 31

1A
2

4
15
2
3
3

27

26
10
2
1
1
13

53

~~SB count~~

GP 11 (9) (8) (3) (4)
(2)

RT IIII

CN (19) (19) (2)

B. F. albatross

737-45151

141

5-21

CN eggs 8
bet dock & K2

CN eggs 13
@ K3

CN eggs 2
bet K3-4

1 nest on scae no
egg, may be HN

2 eggs bet 4-5

1 Fairy Tern egg
on crutch of dead scae
bet K-4-5

CN egg bet K6-7

thru 24 NWR

25 →

put your

in

45
44
43
42
41
39
37
35

05-21-64

BANDING-SHEARWATER

615-04249

50

44 44 44 44 44 44

45

43

43

39

42

41 37

WT 5-24

B15 - 615-09106 0

B4 - 605-21539 1

615-09117 1

B1 MT

B9 - 605-21544 0

B3 could not reach end

B10 MT

B16 shearwater in

B-5 MT

44 44 44 44 44 44

43 43 43 43 43 43

42

41

39

37

35

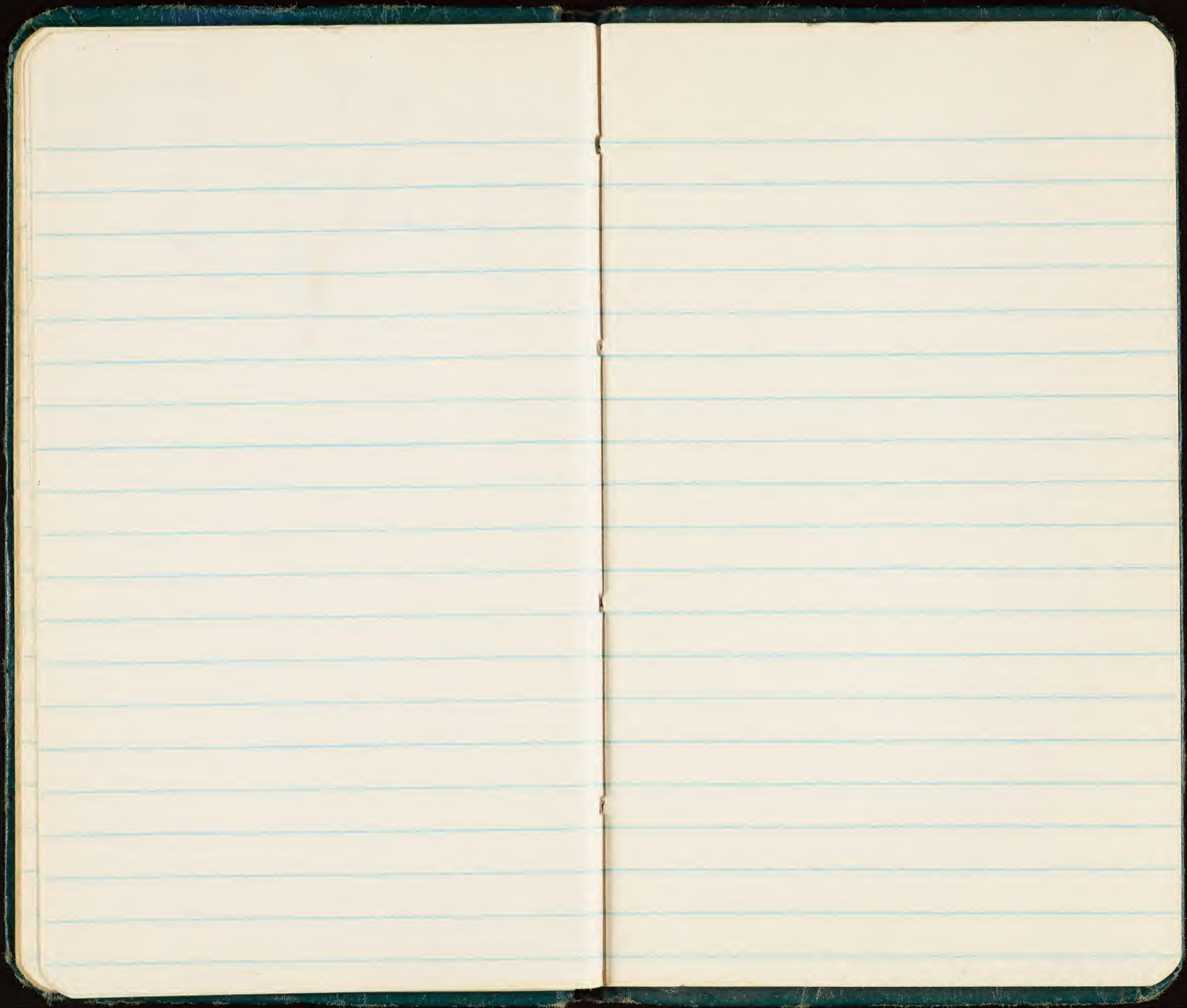
35

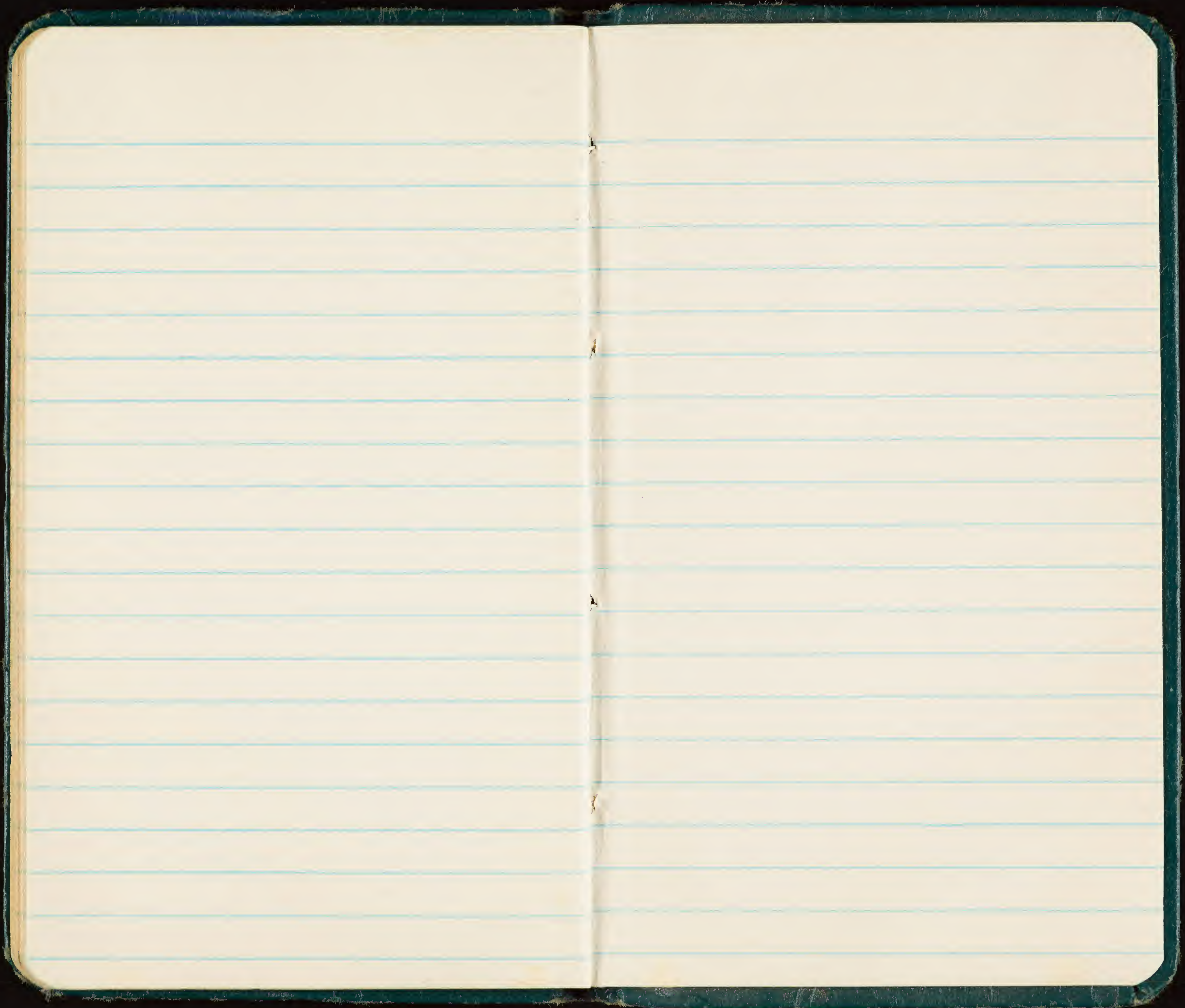
W.T.

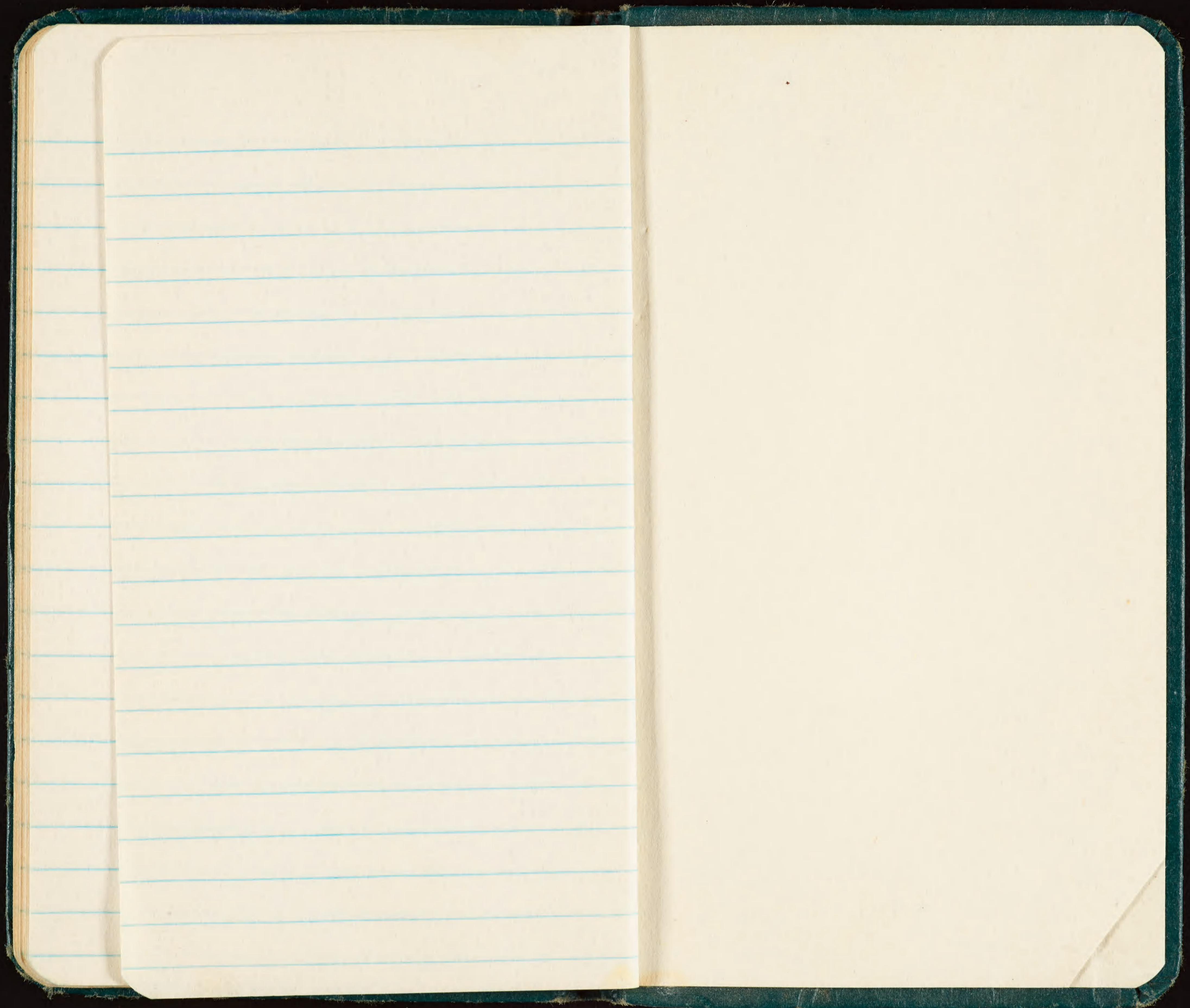
307 replaced
recovery
535-15745

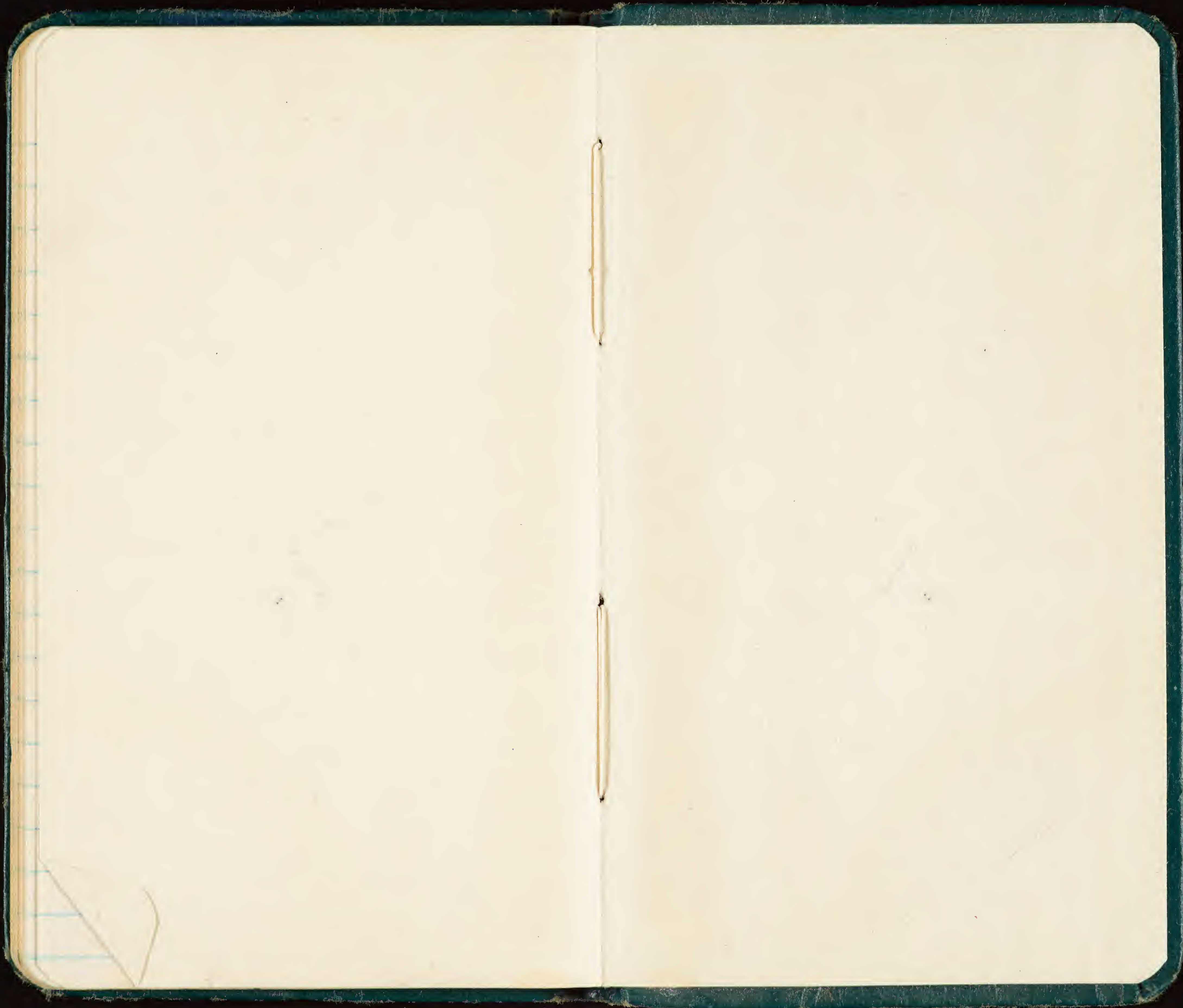
01
↓ SAZ
11

51
↓ SAZ
60









7530-222-0078
FEDERAL SUPPLY SERVICE

KURE

Memoranda

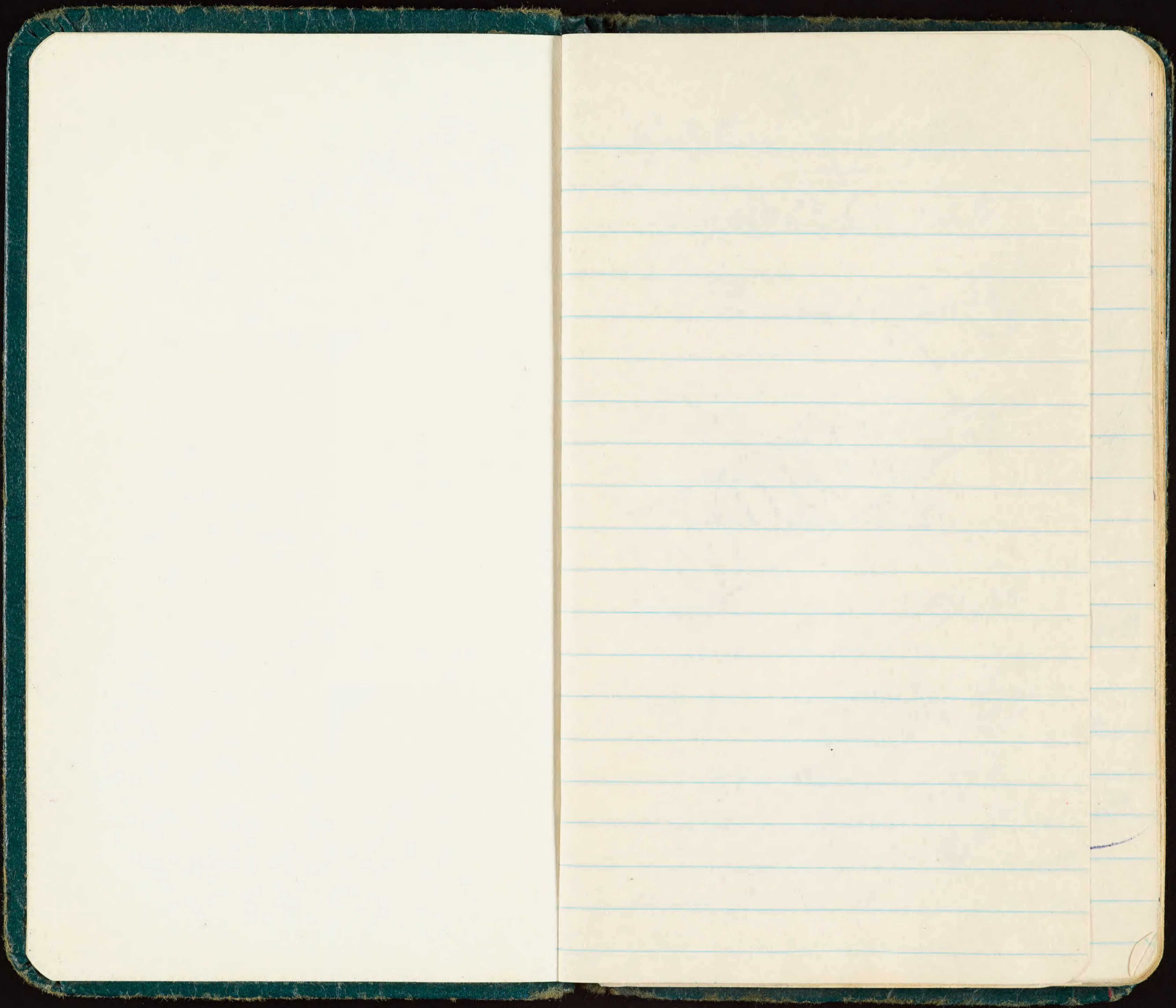
Kure Island

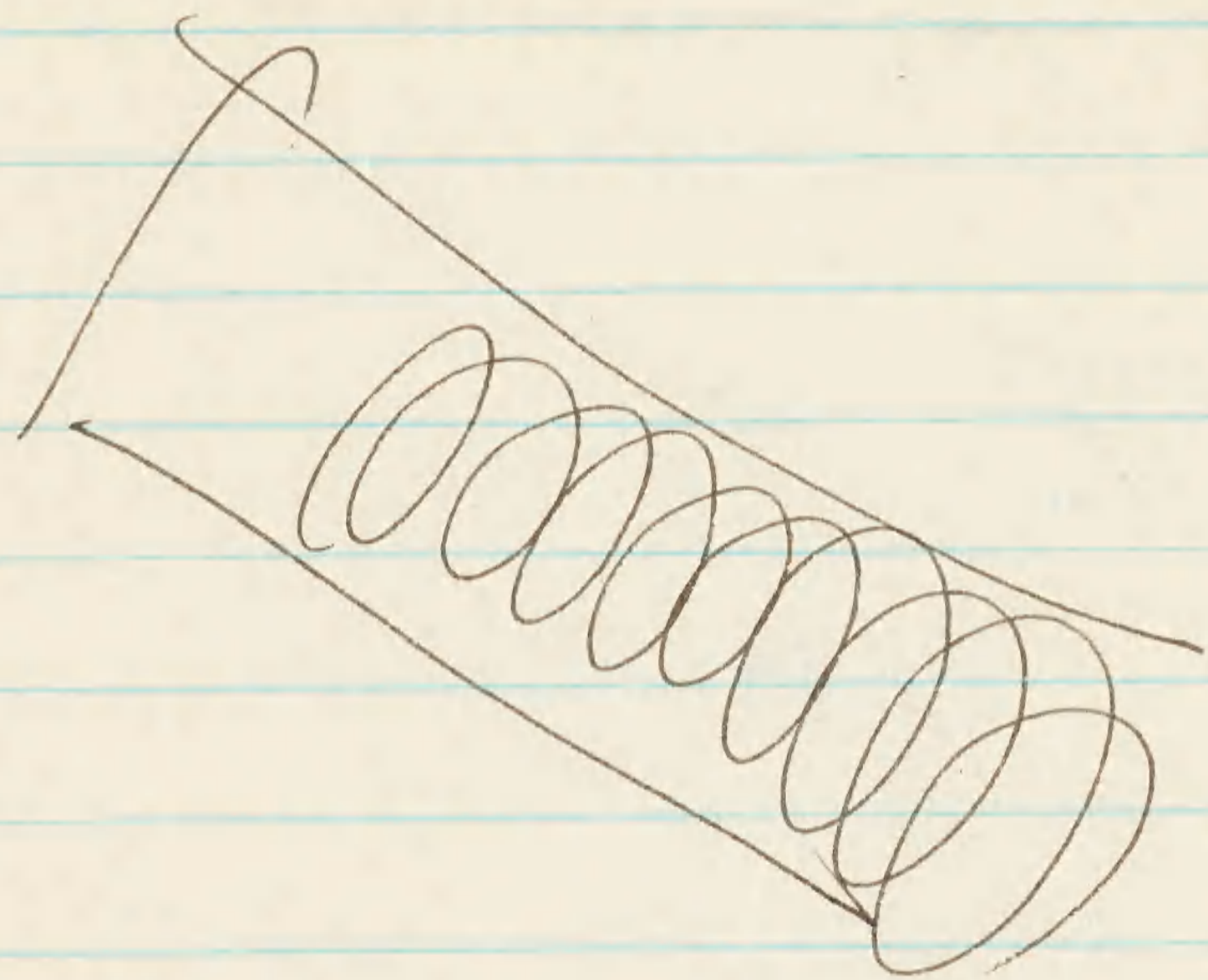
April 1964

1964

NO ADP
CDT

Done





~~Y-35~~

~~7-9~~

~~21501 (B)~~

~~29964.6 x 46.7~~

~~Y-3~~

~~21502~~

~~(B)~~

~~Y-44~~

~~BN 21506 (B)~~

~~299: 67.1 x 44.9~~

~~loc. near J-8~~

~~605-21291 25th~~

~~Y-45~~

~~21150 BN~~

~~(B)~~

~~299: 67.0 x 43.8~~

~~loc: near B.F.D. 31~~

~~21149 not painted~~

Y-476 BN 93 (B)

egg: 66.2 x 44.9

loc. near #55

~~605-21027 prob. belongs to
Y-1~~

Y-47 21297 BN (B)

egg = 61.1 x 45.0

loc. plant plot #17

Broken wing -

57 mm culmen

320 mm wing

#14 Oct 12 & 9

BN 21273 (B)

egg = 62.3 x 47.9

VADP

#15 BN 21254 (B)

loc. - ground dump from #

egg = 60.0 x 46.0

3-26-64

~~(103 R)~~

~~{ 575-74537 (B)
585-52214 } sand land~~

Y-48 21402 (B)

loc. dump N of road

egg = 64.1 x 46.6

Y-49 21403 (B)

loc. - dump N of road

egg = 60.8 x 44.8

Y-50 21404 (B)
loc. Camp N of road
299 64.0 x 45.7

3-27

Y-51 BN 21299
loc. 305 midway down,
center of cut.
299 57.0 x 45.1

Y-52 BN 21409 (B)
loc. CR near dead tree
299 65.7 x 47.4

At roads. #16 mats to
other one at Bull.

✓ADP

LAYSAN #29 / 51 ~~NUMBERS~~

697-22458

Y53 BN 15 (B)

in chick shell lying
in nest - Chest. Very
charcoal grey color.

beak black, face bare; above
white & charcoal grey
tips; feet & legs coral
pink with grey-black
distally.

50 of Biltmore on W side

Y54
575-74506 (B)

loc. W side of road, just N
of house (marked by large
299 65.0 x 44.4 ✓ rock

seals

~~seal #~~

~~# 294 individual box. R #113~~

~~# 225 @ NP~~

~~# 298 @ NP (alone)~~

2 moddies (w.c.) @ NP

10 Grey backed

10 Booby's

605-12678 duck

y-55

BN 27 (B)

loc. NPK-14

299 68.4 x 44.2

~~299 @ K22~~

2

2

~~324 BN(B) ♀ w egg
culmen = 64
wing = 322~~

~~♂
BN 33(B) culmen = 63
wing = 324~~

~~sat facing each other
♀ gave repeated chirping
call!~~

~~loc. N of # stake
on bench
clump~~

~~Y 57 35 BN(B)
loc. clump N of road
egg: 68.6 x 47.1~~

~~Y 58 37 BN(B)
egg 63.1 x 44.5
loc. clump N of road
each side~~

Y59 38 BN(B)
loc same as 58
egg 68.5 x 46.2

Y60 39 BN(B)
loc same as 58
egg: 62.8 x 45.3

Y61 BN40 (B)
loc same as 58
egg 63.6 x 45.6

2 pups, 1 adult together
on SW beach !!!

Rock of 22 B. Plover seen
on W beach - earlier on
runway

one Hawk Noddy
on big rock on WB

3-30

orange RFB

~~#4 w egg~~

~~#5 no egg~~

~~#6 no egg~~

#7 no egg

3-30

yellow Sing

~~#4 no egg on nest~~

~~#5 w egg on nest~~

~~#6 no egg on nest~~

yellow = Sing

#1 : ♀ on egg

#2 : ♀ " "

#3 : ♀ " "

orange = RFB

#1 : ♂ OE

#2 : ~~no egg~~ 3-30

#3 : NOE

Sing #2 laid bet today & day spent in CR

✓ ADP

Y-62

BN 42 (B)

loc in scae near #13

299 59.7 x 46.7

(605-12691) ?

Y-63

BN 43 (B)

loc. last dump scae on SP

299 = 66.7 x 45.1

X28

BN 45 (B)

Y-64

BN 575-74523 (B)

loc - head of dump N of road

299 64.4 x 46.1 ✓

~~Y-65 BN 47 (B)~~

~~loc same as 64~~

~~egg 65.2 x 46.7~~

~~875-74544 (B) ✓~~

~~Y-66 49 BN (B)~~

~~loc 75' No 1K-26~~

~~egg : 60.6 x 46.7~~

~~untagged or
unseen~~

~~|||||~~

	13
2	9
28	6
.6	1
35	7
222	8
30	25
<hr/>	
123	69

3-30-64

Shoreland count

area - GP 12
RT 13

~~WR RT II III III III III
GP III III III III III~~

~~Sam III~~

NP	GP	6	251 264
RT	3	III	
Sam	1		

~~NEB~~

~~RT: 1~~

~~wan Tat 1~~

265 but K17-18

~~GB RT III III~~

253 ~~at K28-29~~
232

235 @ K36

225 ~~(K36-34)~~

SP RT III (5)
GP (33) (2)

RT $25 + 13 = 38$

GP $29 + 22 + 2 = 53$

24
15
~~59~~
69

29 bot mother
(a) dump

runway GP 11 (9) 11 (4) ~~(1)~~
RT.

unless 1

Need of runway = GP = 43

AF (13) (4) (2) (6) (4)
GP 1
RT III (11) 1 (2) (7)

Y69

BW →

ⓑ 605-12634

loc ⓐ K-13

egg 66.4 x 44.3

✓ADP

Y-69 BN 51 (B)

loc (at) K 14

egg 65.4 x 45.6

Y 68 BN 52 (B)

loc: N roost near old camp

egg 64.9 x 56.3

Y 70 BN 54 (B)

loc in open area ^{upside just S of K 13} bet. ~~between K 13 & 14~~

egg 65.2 x 45.7

575.74568 ✓

mean
#Y67



✓ADP

Y 71
BN 575-74593 ✓
(B)

LOC. in open space behind
Sol K14.

299 62.8 x 45.5

Y 72 BN 57 (B)

LOC SP, deep in soil

299 64.8 x 45.1

Y 73 BN 58 (B)

LOC same as Y 72

299 65.4 x 47.3

Y 74 | 605-12636 (B)

loc. clump w Y6

egg: 60.1 x 42.5

Y 6 = 605-21041 (B)

Y 29 = 605-21459 (B)

Y 75 | 605-21461 (B)

loc. clump w Y74

egg 61.2 x 45.3

Y 76 | BN 62 (B)

loc. samples 75

egg = 68.6 x 45.0

1330/4/02

BN 605-21464 (B) ♀. just
laid egg - cloaca grossly
enlarged. Egg cracked down
side - shell pliable (soft).

Wing = 315 mm
culmen = 59 "

↓ Cloaca swollen & enlarged
20 mm in diameter - also
inflamed

Y 77 BN 67 (B)
loc. behind B.F #25
near tower (N)
egg 65.4 x 45.4

144
16
100
75

235

31 March 1964

605-2170

W.T. SHZ

↓
25

SHZ

26

SHF

♂

63

63

63

63

66

318

♀

61

59

64

57

65

60

6) 366 | 61

5) 318

63 3/5
18

61

21469 ♂

wing 333

culmen 63

12664 ♀ w egg

wing 308

culmen 61

~~Y-67 egg broken
measured~~

Y 78 BN 74 (B)

loc S side of Belt road

egg 64.4 x 24.9

Y 79 BN 78 (B)

loc S side Belt road

egg 60.6 x 24.3

Y80 ON 12673 (B)
loc. 55 Belt Road
egg 63.0 x 45.5

Y81 ON 76 (B)
loc same as above
egg: 64.3 x 46.0

6/10 mi. from
park area to dock

Y-82

BN 79 (B)

loc NEM B. F#75

egg 65.1 x 46.9

24 Am Noddies @ NP

~~201 @ NP~~

~~232 @ K-2~~

605-21021 ♀ w egg (B)

wing 314

culmen 61

83

BN 82 (B)

loc SAZ near B.F. B #9

egg 68.9 x 4.5.3

84

BN 83 (B)

loc same as 82

egg 61.1 x 4.7.1

85

BN 84 (B)

loc: same as 84

egg 66.4 x 4.7.1

86

BN 85 (B)

loc. same as 85

egg 65.5 x 4.5.9

87 BN 86 (B)
loc SH 2 (backport)
egg 65.7 x 46.0

88 BN 87 (B)
loc same as above (87)
egg 65.0 x 46.9

✓ADP

~~1100 hrs~~

~~50 c.N. @ dock~~

~~16 cN @ NP~~

~~4 Bm B @ NP~~

~~246 @ NP~~

~~256 at K12-13~~

~~289 @ K13~~

~~575M74531 @ Y57 ✓~~

Y-89

BN575-74534 (B) ✓

loc

egg 63.5 x 45.3

airplane casualty
Sex ♂ enlarged testis 11x5 mm
Wing: no meas. / wing damaged
culmen 64

66 SAZ
67 ~~300~~

VADP

4-07-64

♀ w egg = BN 21495 (B)
cul = 61
wing = 325

♂ BN 12496 (B) ✓
cul 62
wing 325
clump at
loc: road junction near station

X92 BN 21498 (B)
loc: in box near B.F. #10
egg 67.5 x 45.1

cul = 64
wing = 316

#20 BN 21902 (B) ♀ new
cloaca enlarged & inflamed
egg 62.1 x 45.5
loc. next to #16

Y93 BN 904 (B)

loc S side cut to beach just
S of archery range.

egg 62.5 x 45.2

Y94 BN 906 (B)

loc S side pistol range,
near beach

egg 62.0 x 43.7

Y95 BN 907 (B)

loc 100' W x 60' inland from K29

egg 65.2 x 44.7

~~(B) K29 (246)~~

Y96 ♂

908 (B)

loc near 54

egg 62.6 x 45.5

Y97 ♂

909 (B)

loc: just 50 of 54

egg: 61.1 x 45.6

♀

♂

265
259
258
247
264
252

239
264
261
270
263
246

247-265

239-270

4-08

~~Y16 BN 605-21913 (B)~~

Y98 BN 917 (B)

loc near Y69

egg 64.6 x 46.1

~~605-21918 (B) ♀ w egg~~

cul: 59

wing 301

Y99 BN 919 (B)

egg 53.3 x 45.4

loc just S of open ^{NP} area near
K-14

Y100 BN 920 (B)

egg 65.0 x 46.2

loc same as above

Y101

BN 927 (B)

loc 50' N of end runway
and W side.
egg 65.0 x 45.7

Y102

BN 928 (B)

loc near ~~#101~~ #102
egg 67.3 x 47.2

#102 R

Y103

BN 929 (B)

loc - middle of 2nd cut
50' road W side runway
egg 61.9 x 46.5 before
300

Y104 BN 930 (B)

loc 3rd 2/4 stake S, W ^{from road}
side runway

egg 57.8 x 43.6

Y105 BN 933 (B)

loc 2nd 2/4 post BoD, W
side.

egg 65.1 x 43.9

Y106 BN 934 (B)

loc N side of cut ^{near} tower
on W side runway

egg 58.2 x 43.8

Y107 BN 935 (B)

loc C.R. near RFB #4

egg 58.1 x 47.4

Y 108 ~~BN~~ 936 (B)

loc CR

~~egg 67.4 = 46.2~~

✓ ADP

Y109

605-21469 (B)

egg = 63.6 x 45.3

loc = NP next to Y20

Y16 near Y20

Y110

BN 605-12658 (B)

egg 66.7 x 46.2

loc. near Y46 (21)

Y46 & 21

21206 OK

removed 46

Y46

BN 605 2194 (B)

loc = near #53

egg : 61.2 x 44.9

2140
2130
2120

Y 111 BN 941 (B)
loc near #53
egg = 67.4 x 48.2

Y 112 BN 946 (B)
loc behind 5A-2 on path to
egg 64.1 x 44.3 ^{silt, more}

♀ w enlarged cloaca Egg
just laid

cul : 62

wing : 319

P : 39

Y113 BN 948 (B)

loc ~~50m~~ N of road
to dock

egg 62.4 x 45.6

Y114 BN 951 (B)

loc bet tower &
cillman rd

egg = 64.6 x 44.0

Y115 BN 952 (B)

loc - same as above

egg = 57.6 x 43.8

Y116 BN 955 (B)
loc end of Squaw wire
of N tower
eggs 65.8 x 46.6

Y117 BN 956 (B)
loc same as above
eggs 67.9 x 42.8

4-11-64

~~Y112 BN 59 (B)~~

~~w. 313~~

~~c. 62~~

~~p. 35~~

Y118 BN 60 (B) ♀

c.R just laid

egg 65.9 x 42.4

c 64

w 313

3-13-64

119

BN (H/R)

loc near E-6

63.6 x 45.9

(note oil gland on
post. back)

3-14-64

Y120
BN 67 (B)
LOC MP NOK 13

~~079 65.3 x 45.6~~

Y63 - BN 969 (B)

4-15

Y 121

BN 970 (B)

egg = 64.8 x 47.6

lec mean / 112

✓ ADP

4-17

Seals.

NP

259

201

Y 122

BN 575-74592(B)

egg 68.4 x 46.4

loc. mean Y 71

245 @ K15

239 @ K15-16

222 @ K-17

Y 123

BN 975 (B)

egg 65.3 x 45.2

loc (A) K-17

Y 118 / BN 985 (B)

VADP

Y124 BN 987 (B)
• loc 40's of 1513 ✓
egg 65.9 x 45.5

#29 | 605-12700 (A) ✓
egg 61.1 x 45.0
loc alt #5 & #23

R 21039 ✓ on egg
next to BF #5

991 (B) F w egg near BF
#5 - w 315
c. 60

✓ ADP

✓
✓
125 BN 21203 (B)

egg = 63.4 x 44.2

loc 10'S of 120

Y 126 BN 993 (B)

loc 20'S of K14

egg 63.5 x 45.2

127 BN 994 (B)

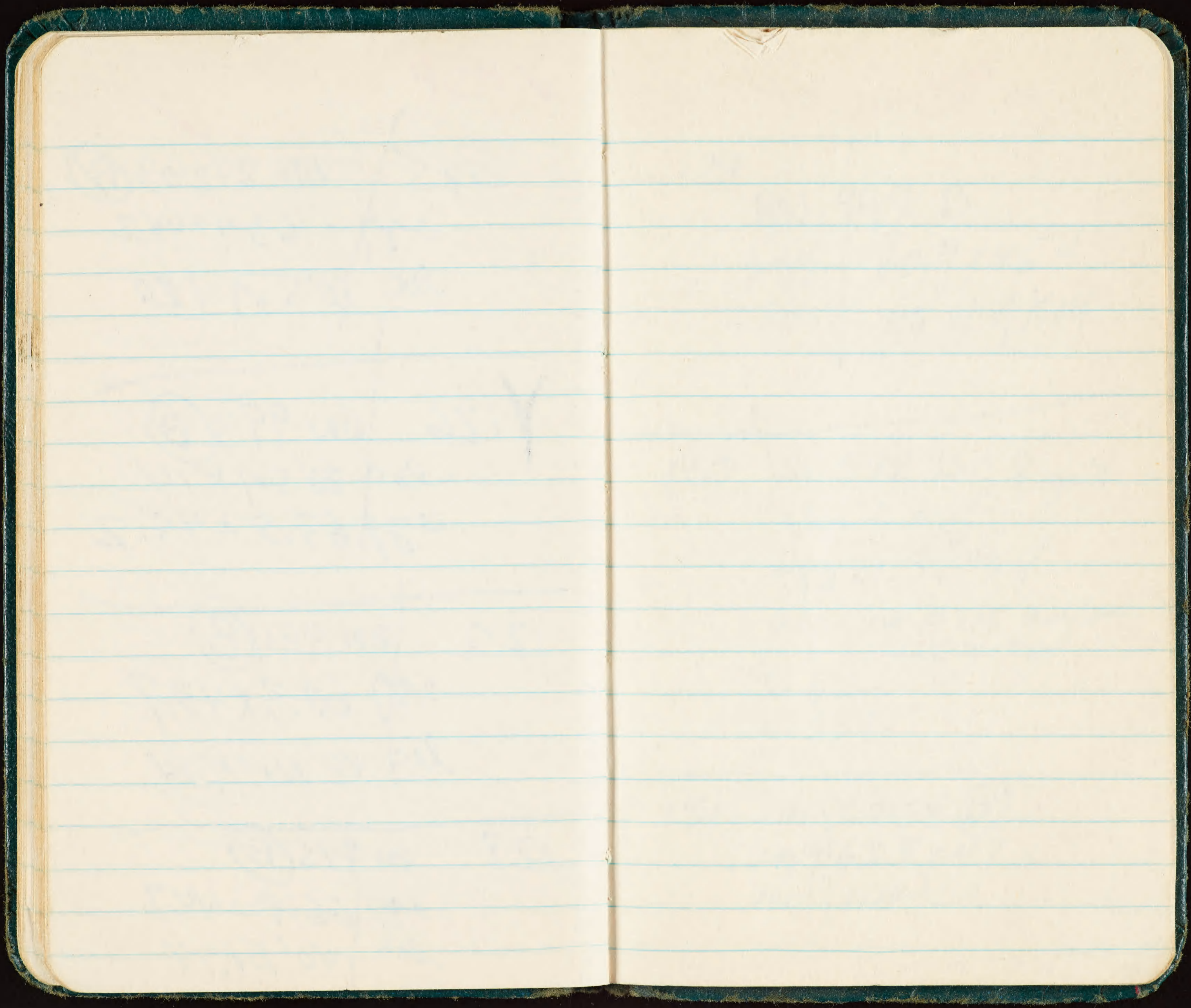
egg 60.3 x 43.7

loc 40' N of K14

128 BN 995 (B)

egg 66.8 x 44.7

loc 40' N of K14



✓ADP

129

BN 997 B

egg = 60.9 x 45.4

loc = 40' N of K14

130 BN 998 B ♀ just
laid egg

egg 61.3 x 43.7

loc near # Y18 halfway
bet K-13-14

E 62

W 332

Y 131 BN 21058 (B) ✓

egg 63.8 x 47.6

loc near 110

✓ ADP

Y132 BN 999 (B)

loc Near + behind 131

egg = 62.4 x 46.4

Y133 BN 605-21280 (B) ✓

egg 65.8 x 45.3

loc near #6 = 2nd
scor clump from SP

Y134 BN 615-10003

egg 68.8 x 44

loc same as above

Y135 BN 605-21251 ✓

egg 65.1 x 46.0

loc same as above

Y136 BN 04 (B)
egg: 64.2 x 45.2
loc same

Y137 BN 05 (B)
egg 62.1 x 44.6
loc same located for Y74

Y138 BN 06 (B)
egg 65.4 x 44.2
loc same

~~4-29~~

BN 84 85

✓ ADP

4-30-

SA-2

✓ 104 (Y112) 605-21946 R

105 605-21302 R ✓
299 68.6 x 46.6 com @ LP
106 615-10094 R x
299 69.4 x 42.

✓ 107 (Y86) 615-10095 R x

✓ 108 (Y85) R 10040 x

✓ 109 (Y84) 615-10096 R x

✓ 110 (Y151) 605-12638 R ✓

111 ON 615-10101 R x
299 68.9 x 45.2 com @ LP

112

615-10103 R

egg 59.0 x 44.9

conc slightly off center

@ LP

✓ 113

(487) ~~A~~

615-10104 R

114

615-10105 R

egg 65.1 x 46.8

conc @ both poles, lower

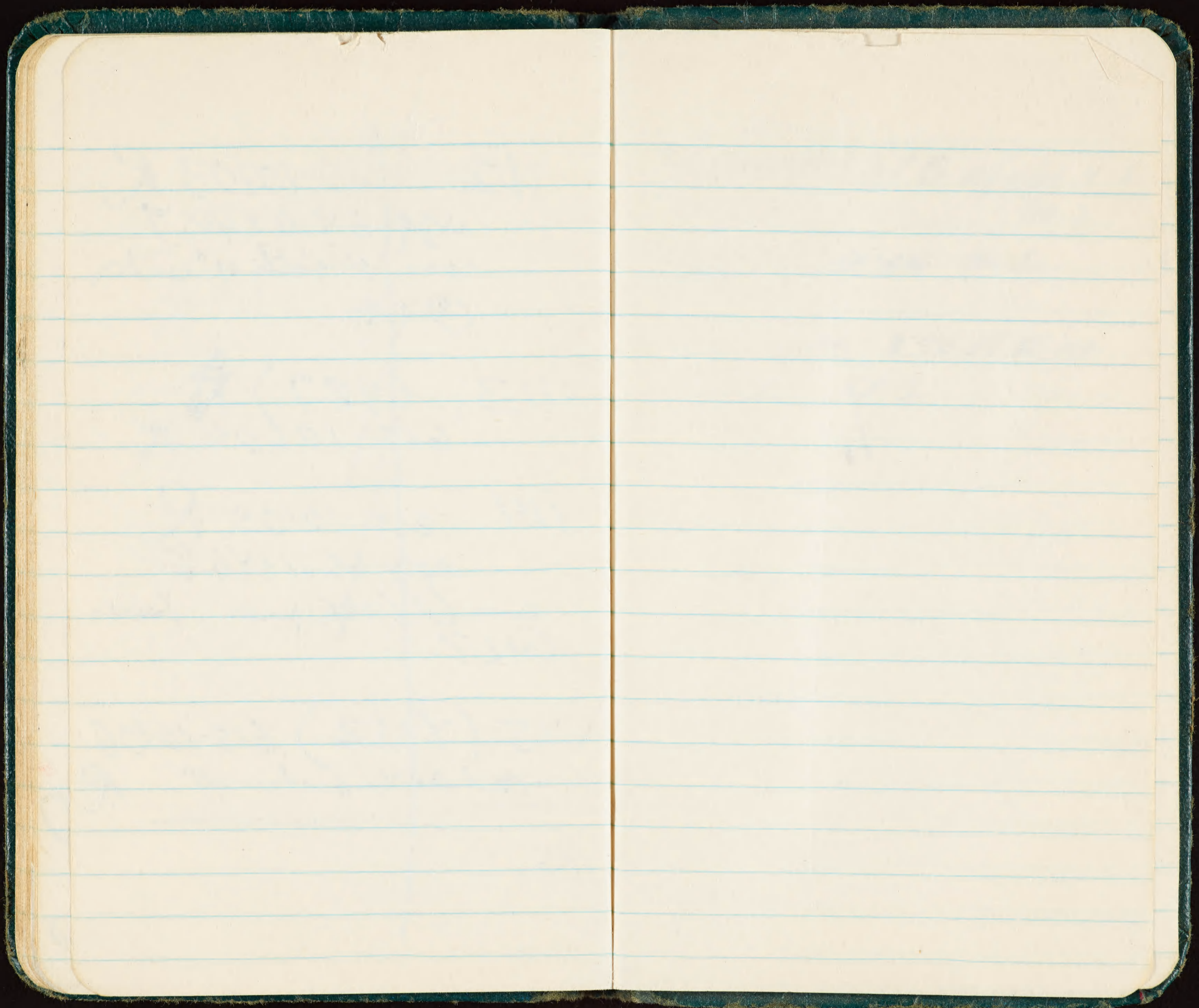
@ LP

✓ 115

(7152) 615-10106

tail feather broken off R

116



Y 84 #127B Feb 66.4 X
44.2

fig. at large pole.

Loc. near 50 ft W. of
SW cor. SA 1

✓ ADP

Y88 BN 135③

loc AL near 69

egg 62.9 x 45.2 ~~mm~~

mostly uniform pigment
slight conc @ SP.

Y3 chick Zuko?
angular egg.

Y86 BN 605-21503③

loc near # Y34 Y88

egg 64.3 x 44.0

~~Y162 - 615 - 10146 B~~
• Y152 - 147 B

loc. ~~B~~ 50 yds N. of rock
egg - much ground color
pig. at LP 68 x 46

~~Y163 - 148 B~~

~~Y164 - 149 B~~

Y87 - 150 B

loc. in seam above U-2

egg - uniform heavy pig

66.4 x 41.8

~~Y165 - 151 B~~

~~Y166 - 152 B~~

~~Y167 ~~at~~ - 153 B~~

~~on chick~~

~~Y168 ~~at~~ "young"~~

~~at~~ ~~at~~ 154 B

9 CN Eggs at doom
above H55

Y187

155 B

50 yds S. of dock

near Y168 egg?

~~pig~~ EP pig cons at LB

71.2 X 46.

~~Y169 on chick 156B~~

~~Y170 on chick 615-10058~~

~~Y170 615-10058~~

~~on chick - just hatched~~

~~Y173 157B~~

~~Y171 615-10066~~

~~Y172 615-10067~~

~~Y174 158B~~

~~Y175 615-10072~~

~~Y177 615-10074~~

~~egg pipping~~

~~Y179 "is gone"~~

~~Y198~~

~~159B~~

~~loc 50 yards S. of H55~~

~~near Y177 & Y179~~

~~egg: 61 x 43.8 pig zone~~

~~at LP, pig in clockwise
swirl from LP.~~

~~Y189~~

~~160B~~

~~egg: 58.3 x 43.7, uniform
pigment.~~

~~Y181~~

~~615 10077~~

~~Y183~~

~~161B~~

~~Y185 is gone~~

~~Y190~~

~~162B~~

~~loc: 30 south H52~~

~~near Y185~~

~~egg uniform pig. 62.7 x 44.8~~

✓ ADP

~~Y88 176B~~
~~Y4~~ ~~gone~~ ✓
NOR 605-21032R

~~in egg - 4ft from
old nest sight~~

~~177B~~
~~Y82 605-12679B~~
~~in chick~~

~~178 B~~
~~Y131 605-21058~~
~~in chick~~

~~Y110 no adult - chick~~
~~Y67 605-21500~~ ✓
~~Y70 605-21454~~ ✓

~~179B~~
~~Y124 180B~~
~~Y46 gone~~
~~Y111 181B~~

Laysans north point

~~557~~

558

~~north east hatch 559~~

JO

~~seal 222 H 13~~

~~seal 245 H 20+21 just~~
~~just molting~~

✓ ADP

~~Y18 ml~~

~~Y130 605-21998~~

182B

~~Y55 ml~~

183B

184B

~~Y126 605-21993~~

(53) 605-21060B

on old nest right

on egg

185B

186B

187B

~~575-74576~~

188B

189B

190B

191B

192B

193B

194B

195B

196B

197B

198B

199B

200B

~~65 BN #4~~

~~232 wt K13-14~~

~~335 @ K12~~

~~256 wt K13-14~~

~~221 @ K18~~

~~208 @ K26~~

~~264 wt K31-32~~

~~65
8-3/102/108/123/14/102~~

~~285 wt K32-33~~

~~shedding~~

WB

~~CN 50 + 16 + 5 + 70~~

~~HN 1 + 5 + 20~~

~~GP 1~~

NP

CN 50 + 6

BRN B. 12

21

22

48

~~EB CN 2 + 14 + 5 + 23 + 1~~

~~HN 1 + 2 + 1 + 1~~

+2

SP

21 CN

HN 4

WT 2

RT 4

GP 1

273

↓

9/4
↓ SH 2
000

5-31

320

↓

25

SH 2

↓
45

26
~~28~~
54

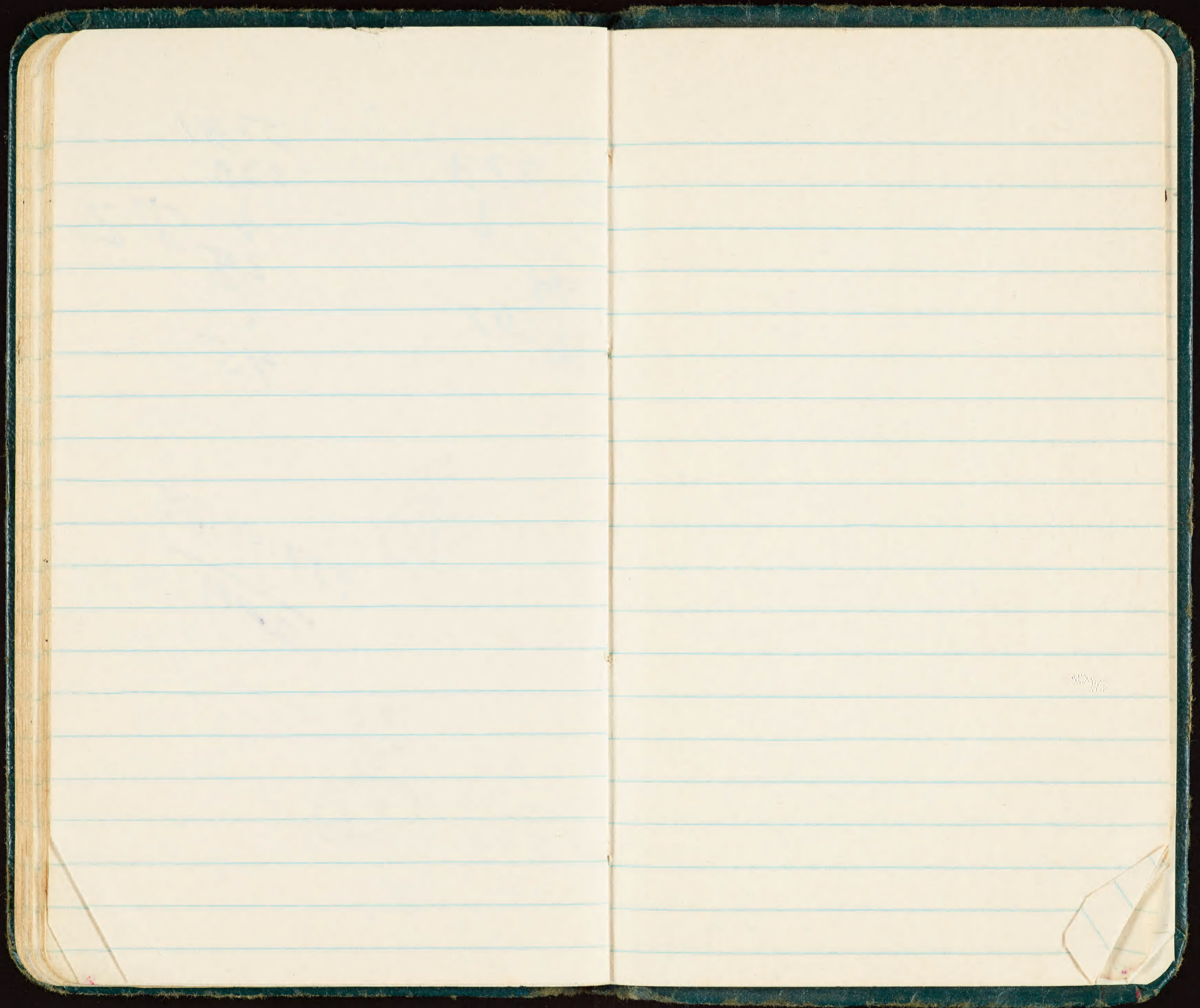
937.45188

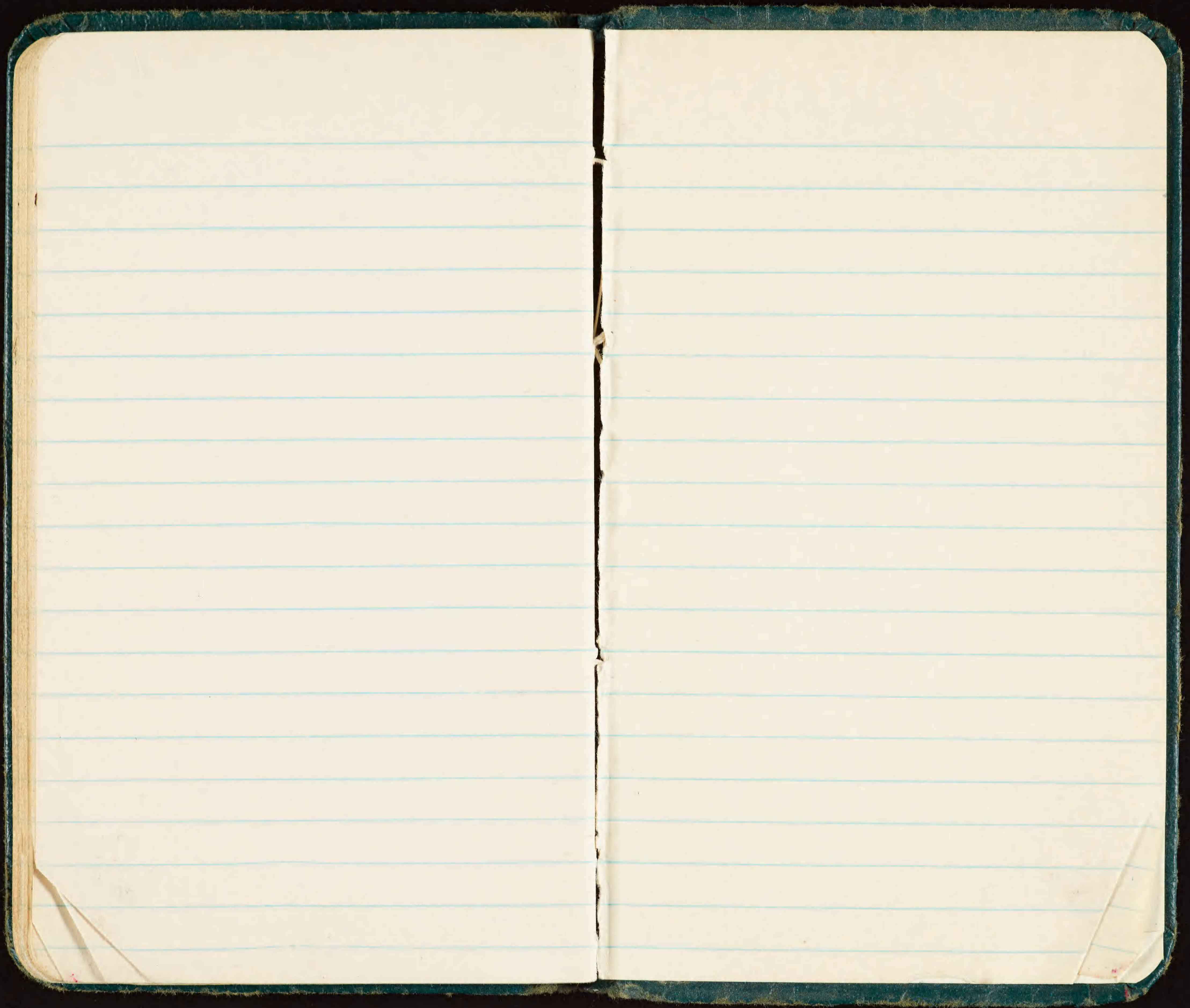
2017

28

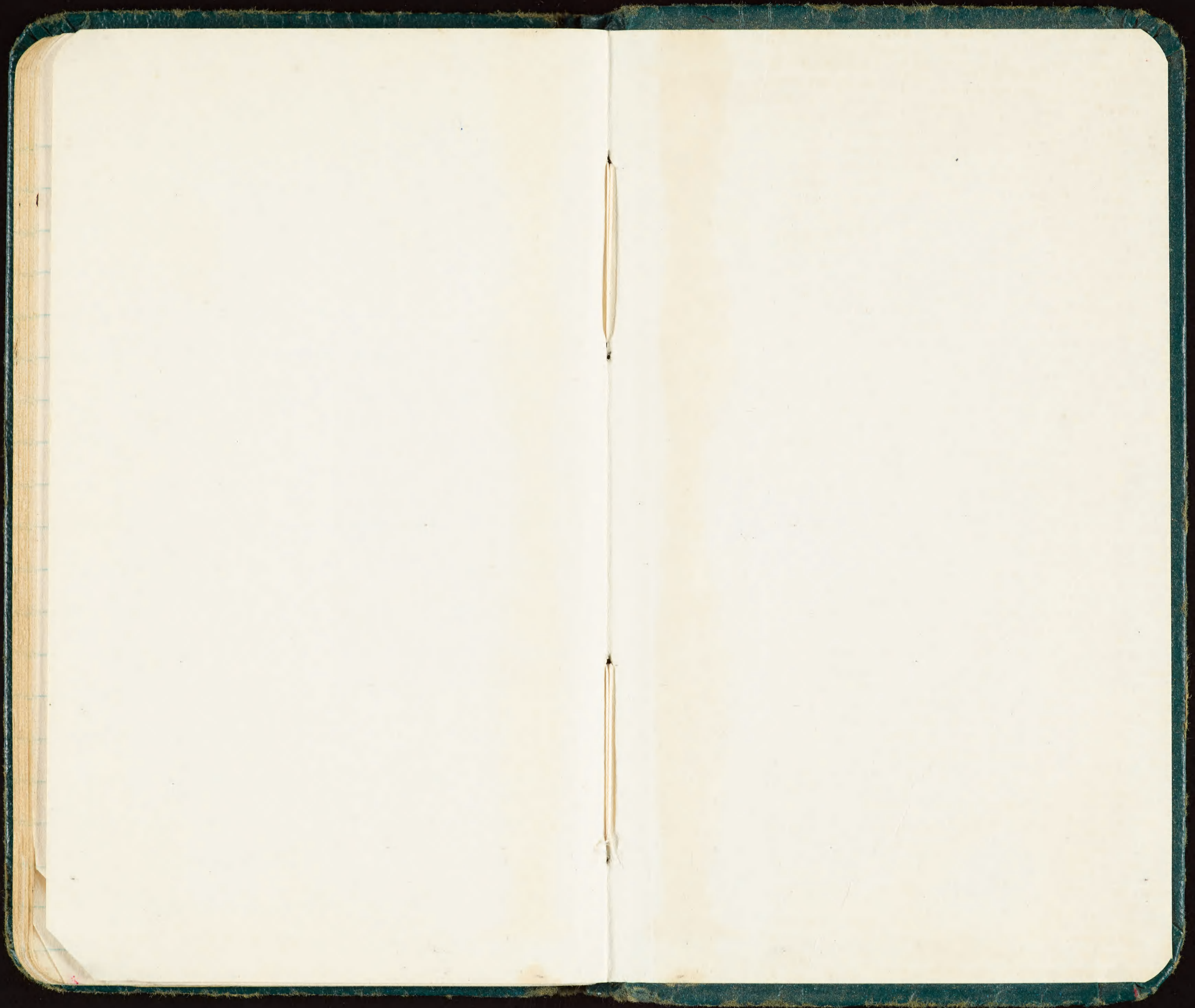
15

43









7530-222-0078
FEDERAL SUPPLY SERVICE